

A Creative Journey through the Open Campus

Sharing knowledge in the city of The Hague

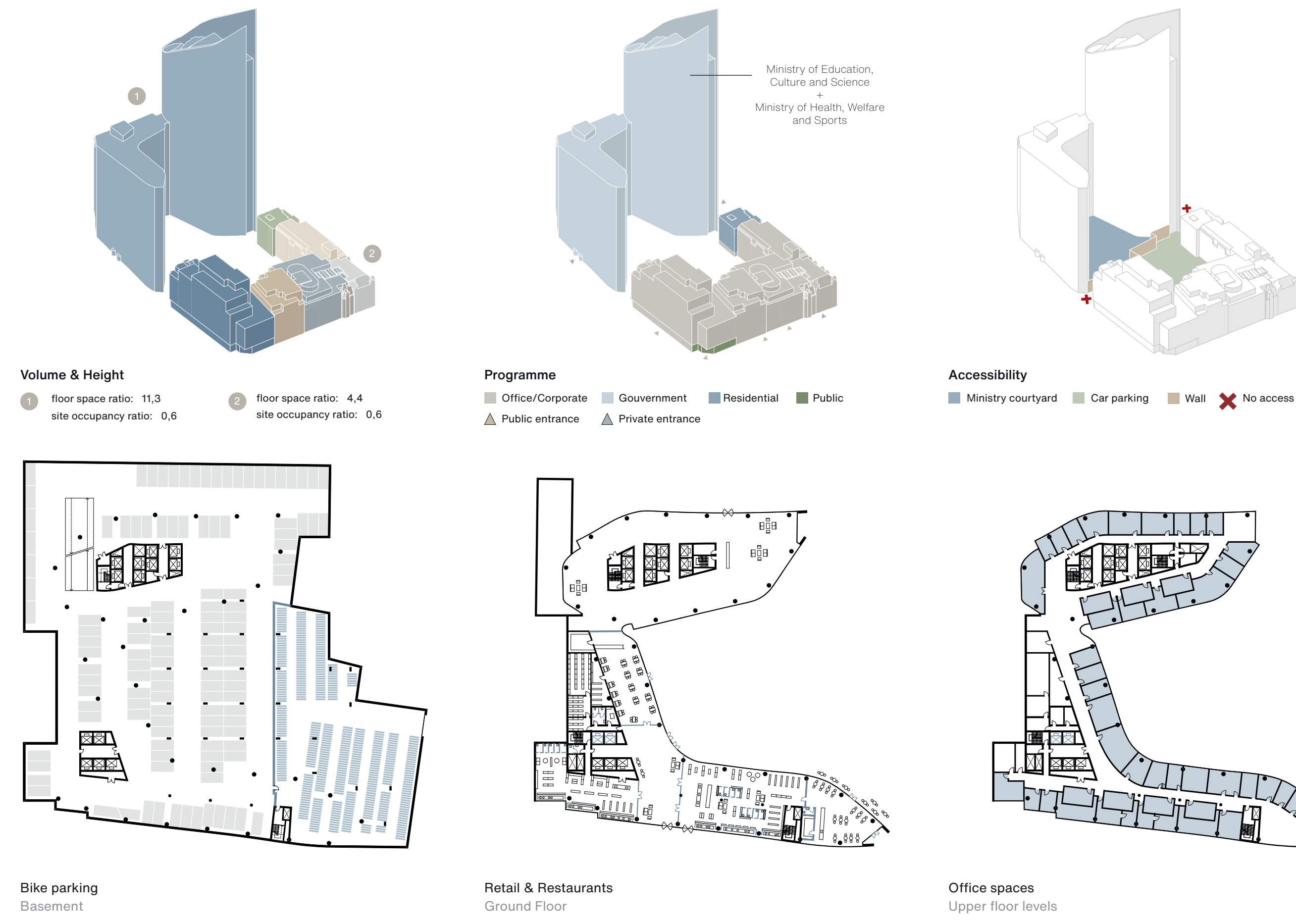


View towards the campus from the Koekamp park

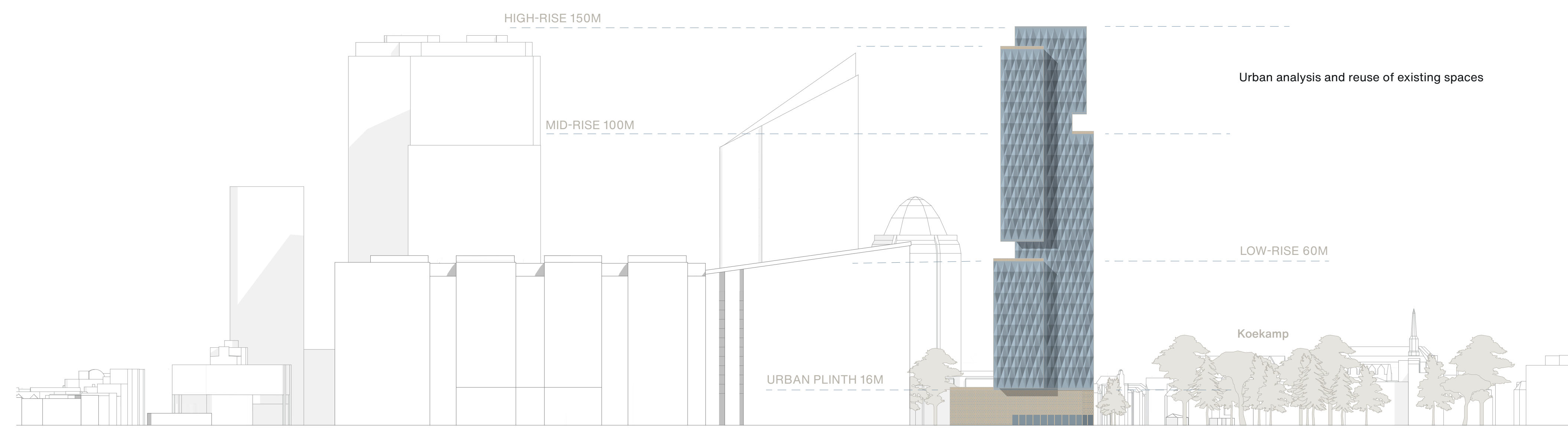
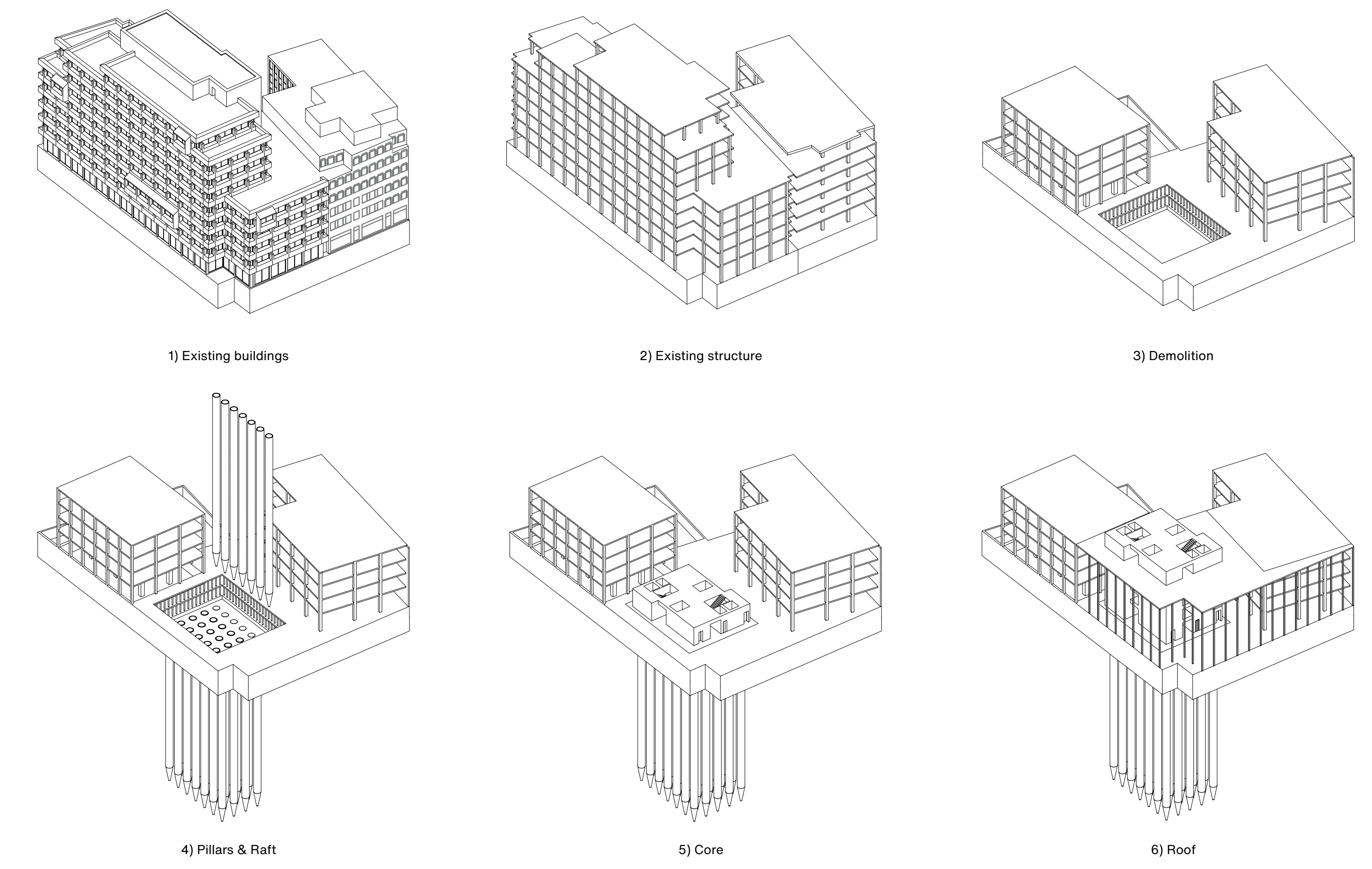


View towards the campus coming from the Central Station

URBAN ANALYSIS & SHARED SPACES



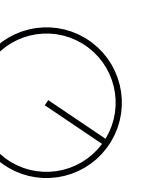
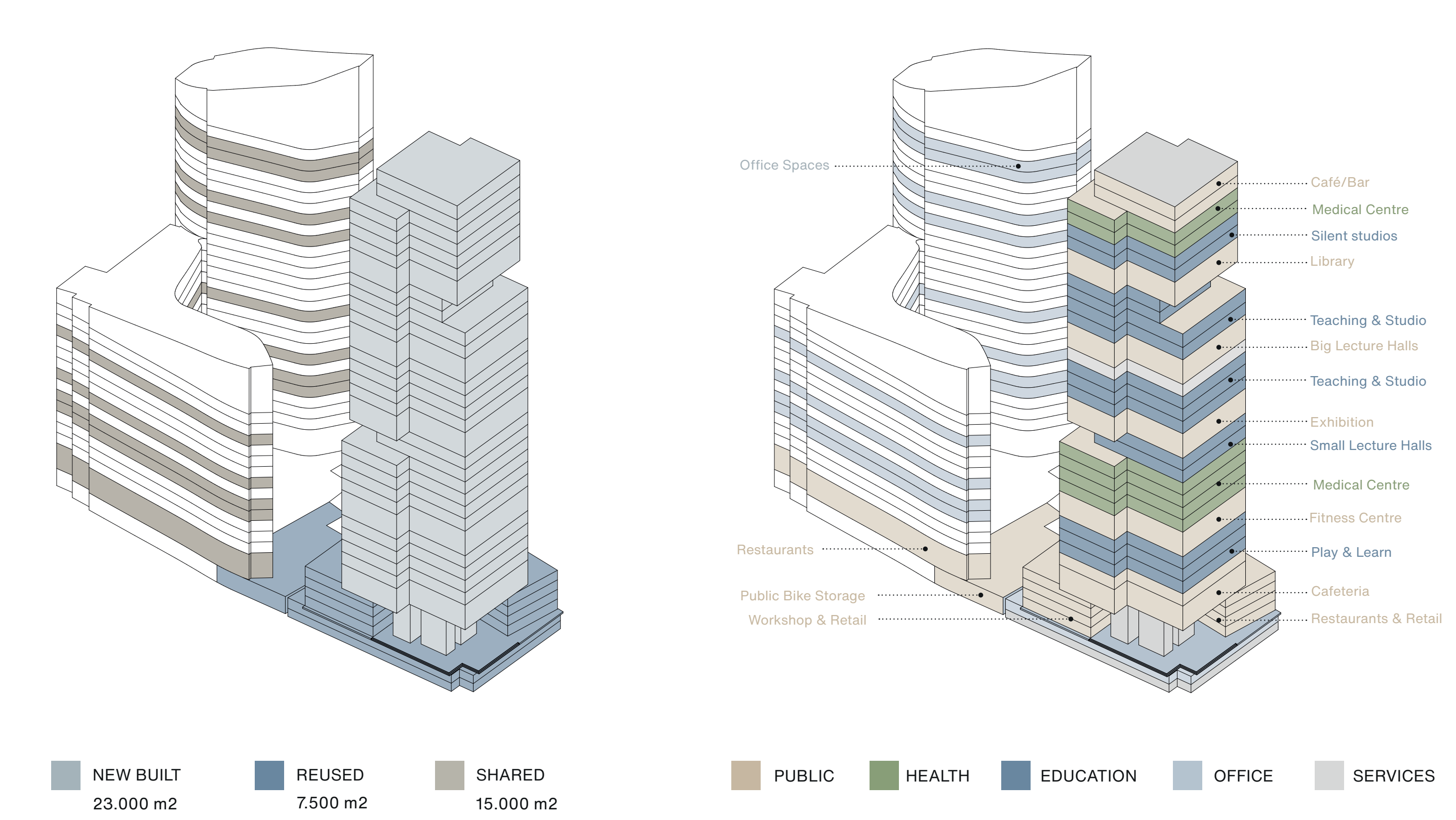
REUSE OF EXISTING STRUCTURES ON SITE



AMBITIONS OF THE DESIGN PROPOSAL

- Relation to the City**
- CONNECTION TO CITY & NATURE: opening-up & connection to existing power clusters and surrounding nature in the city
 - (VERTICAL) ACCESSIBILITY: 24/7 public accessibility to all age, gender, socio-economic, and religious groups
- Learning Environment**
- FLEXIBILITY: enhance soft skills like communication, creativity, critical thinking, and collaboration for constantly changing working environment
 - INTERDISCIPLINARITY: allow for individual and interdisciplinary studying and working approaches to generate and share knowledge
- Programme**
- HEALTHY WORK-LIFE-BALANCE: physical & mental health supporting environment by implementing spaces for relaxation, retreat spaces, psychological counselors, etc. and combining learning spaces and free-time activities

PROGRAMME & VOLUME

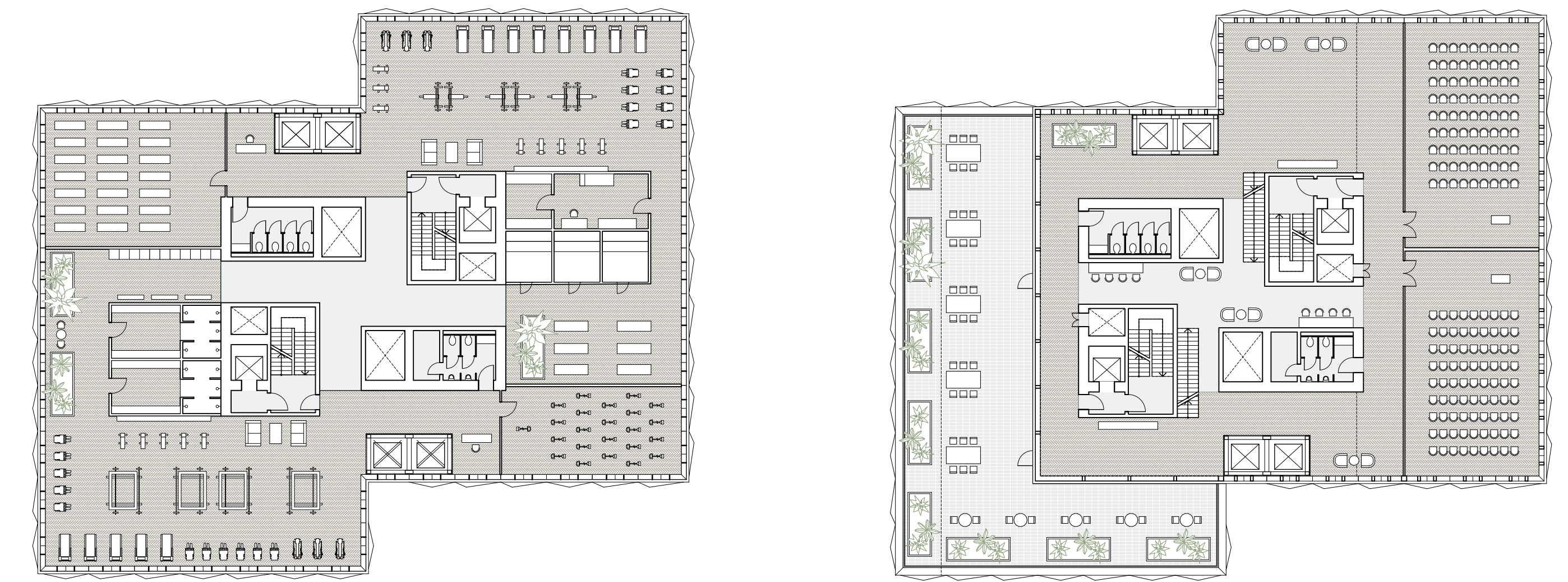


A Creative Journey through the Open Campus

Accessing knowledge in the Vertical Campus



Ground Floor Plan with De Hoforen and courtyard 1:500

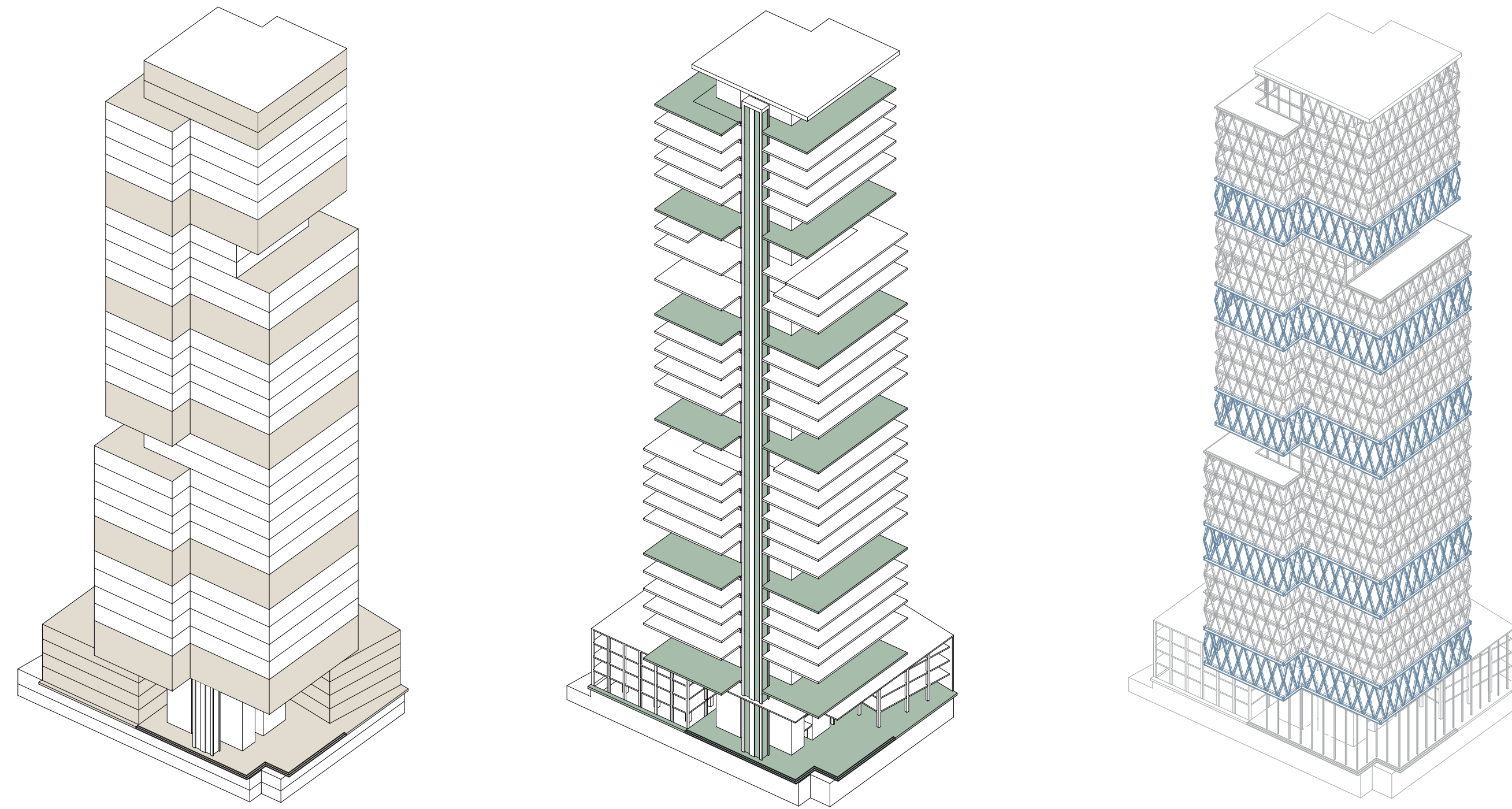


Fitness Centre 10th Floor
Small Lecture Halls & Terrace 15th Floor
Floor Plans 1:250

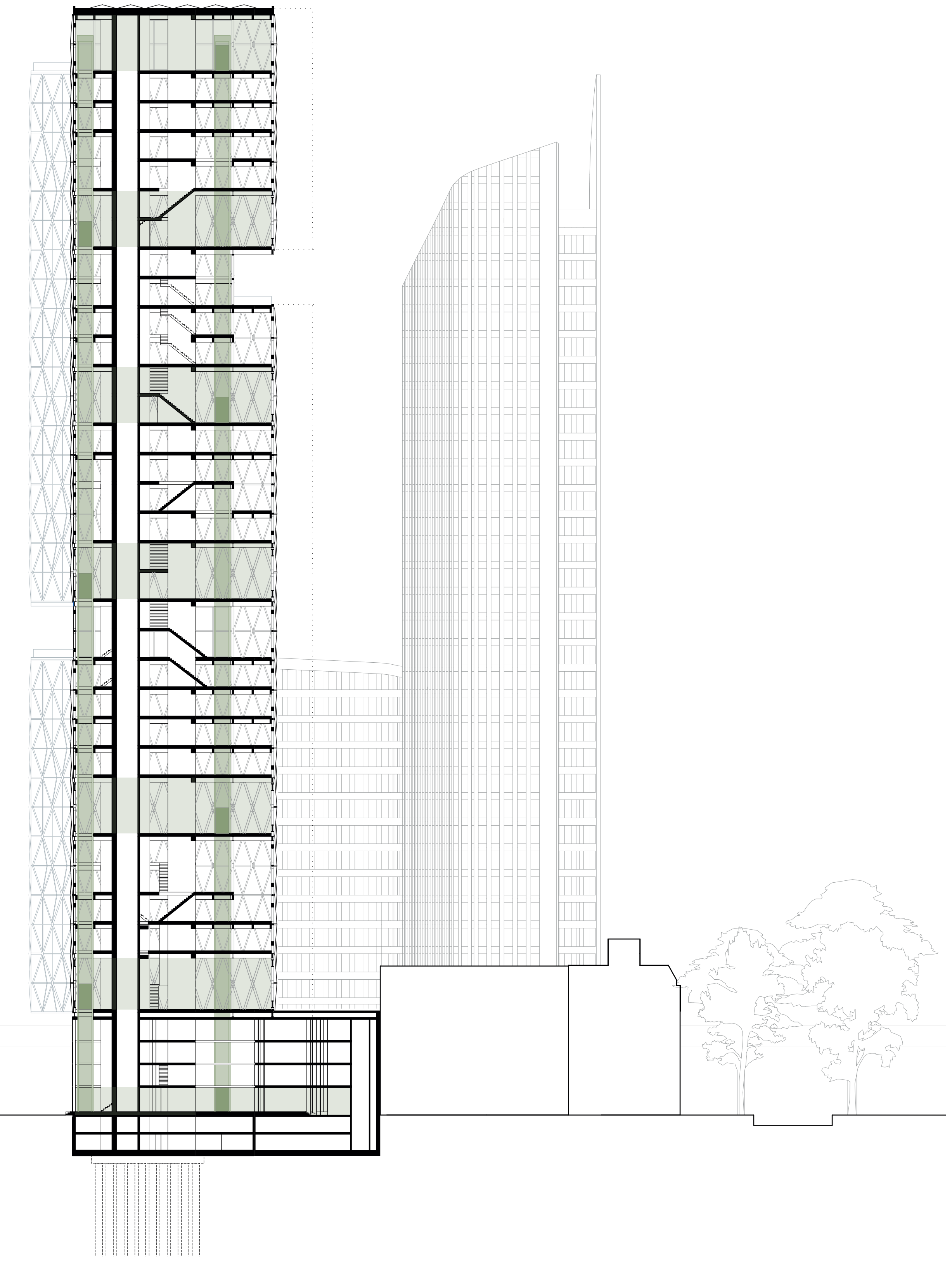
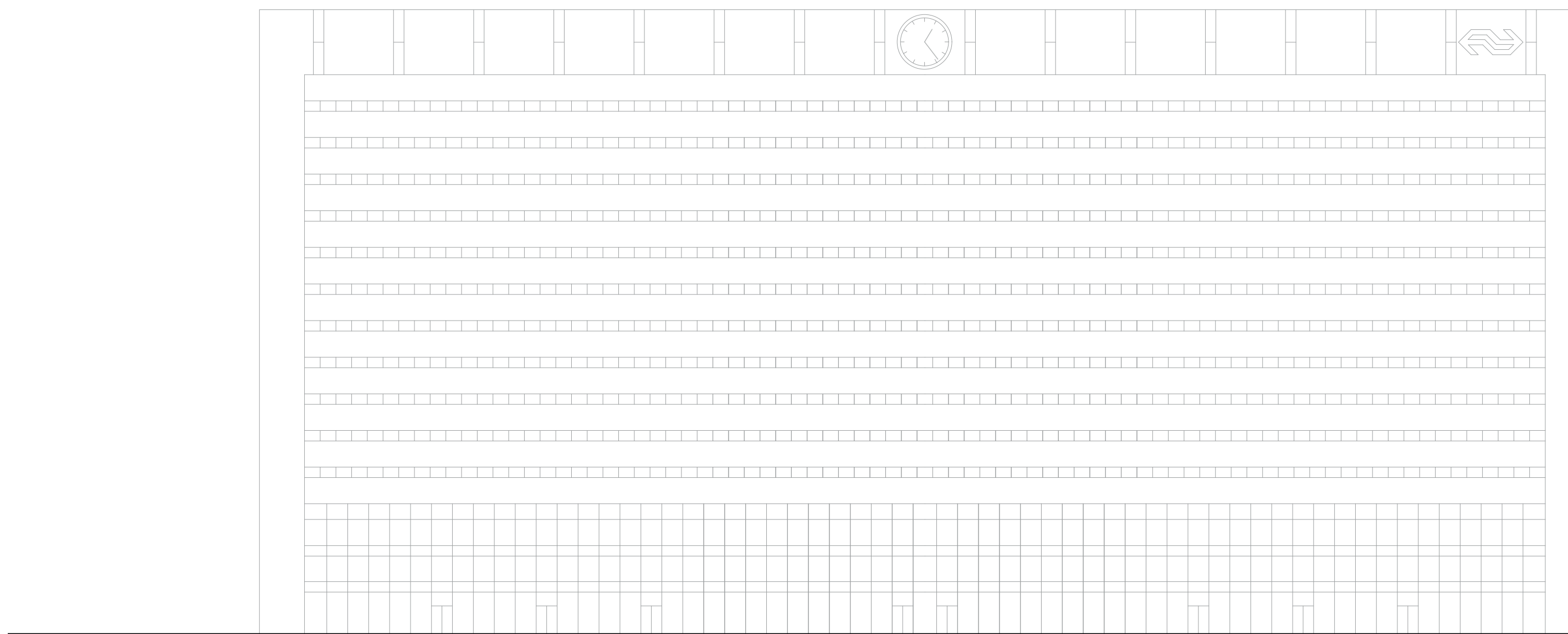


Ground Floor Plan 1:250

PROGRAMME - CIRCULATION - STRUCTURE



Public Programme integrated on double-height floors.
Express circulation arriving on public levels.
Load-bearing steel structure supporting public levels.



Cross-section 1:400

FACADE DESIGN CONCEPT

	Floor Plan	Section	Solar panel	Volumetric	Summer				Winter			
					09:00	12:00	15:00	18:00	09:00	12:00	15:00	18:00
North-East												
South-East												
South-West												
North-West												

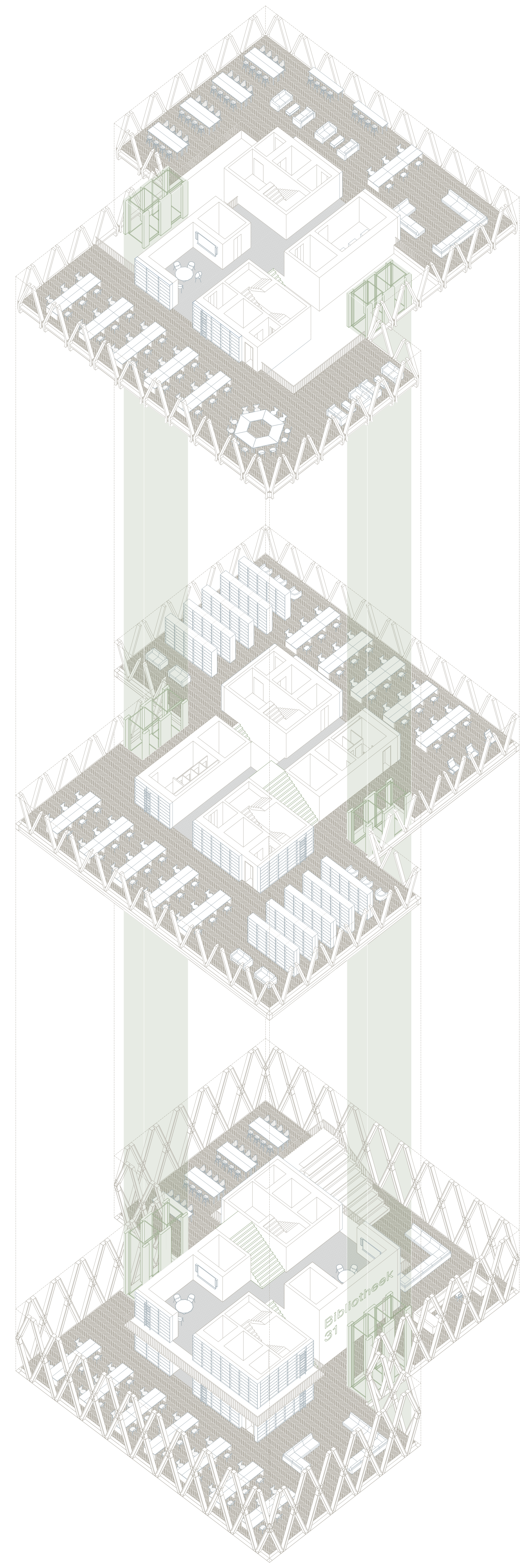


Courtyard perspective



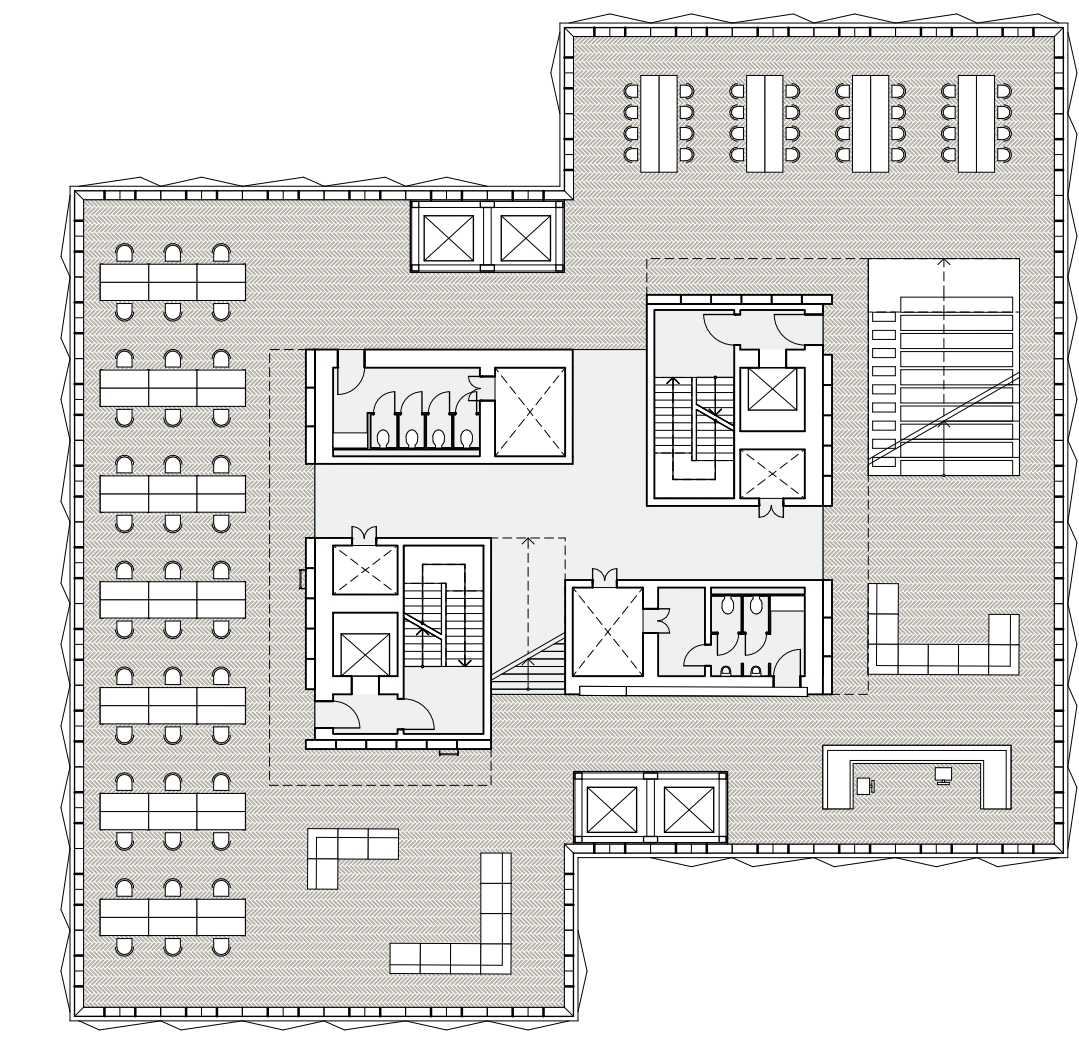
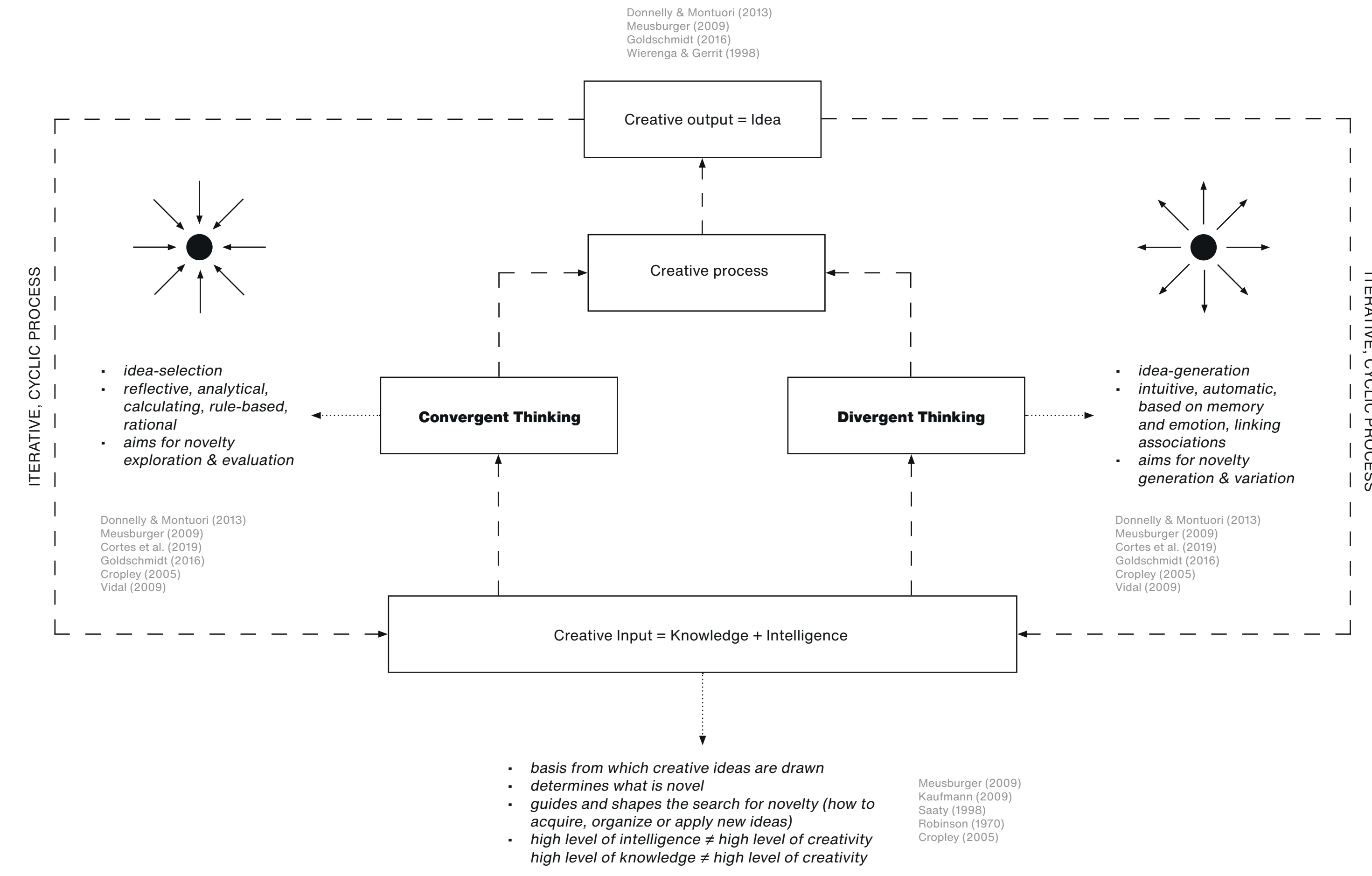
A Creative Journey through the Open Campus

Generating & evaluating knowledge in hybrid learning spaces

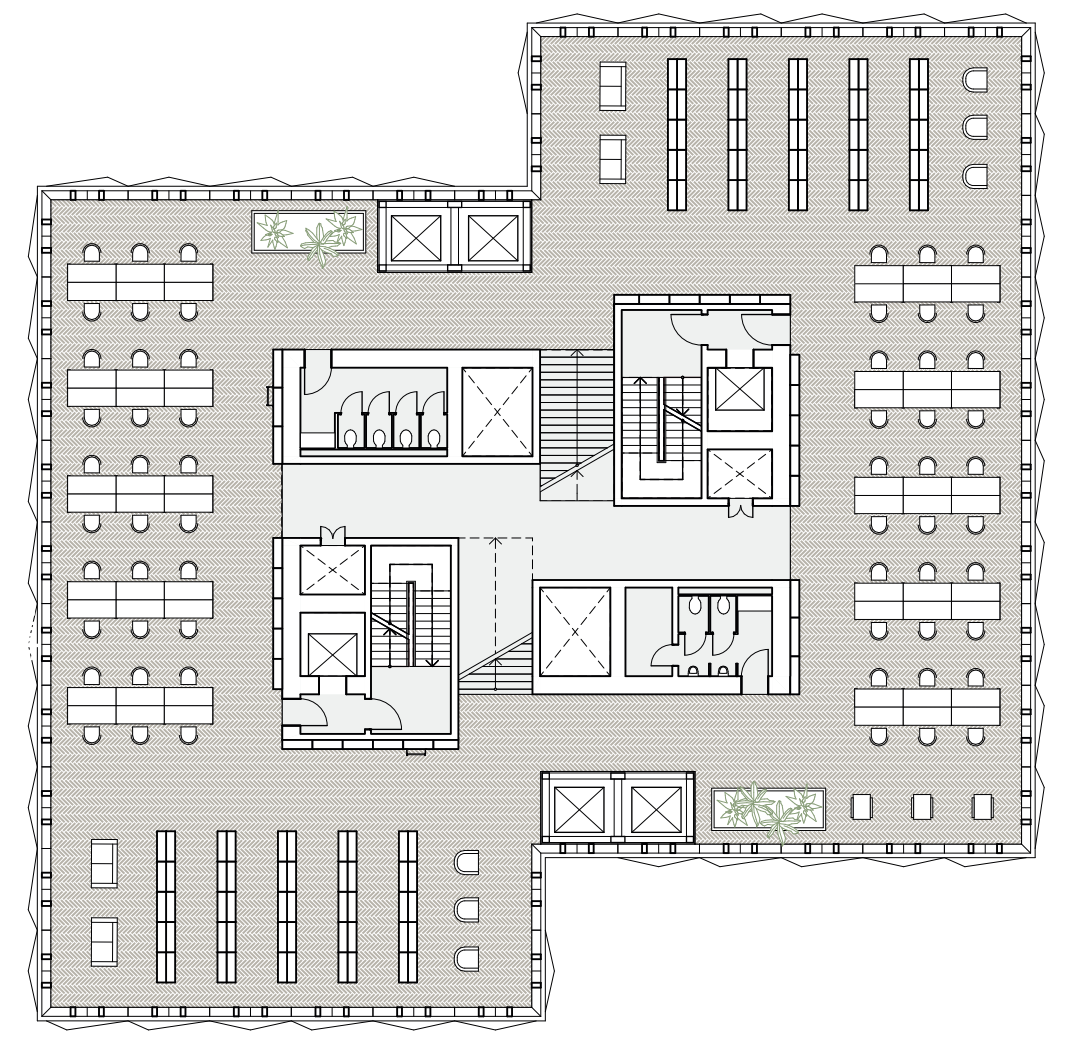


Explosion of library floors showing the different circulation layers

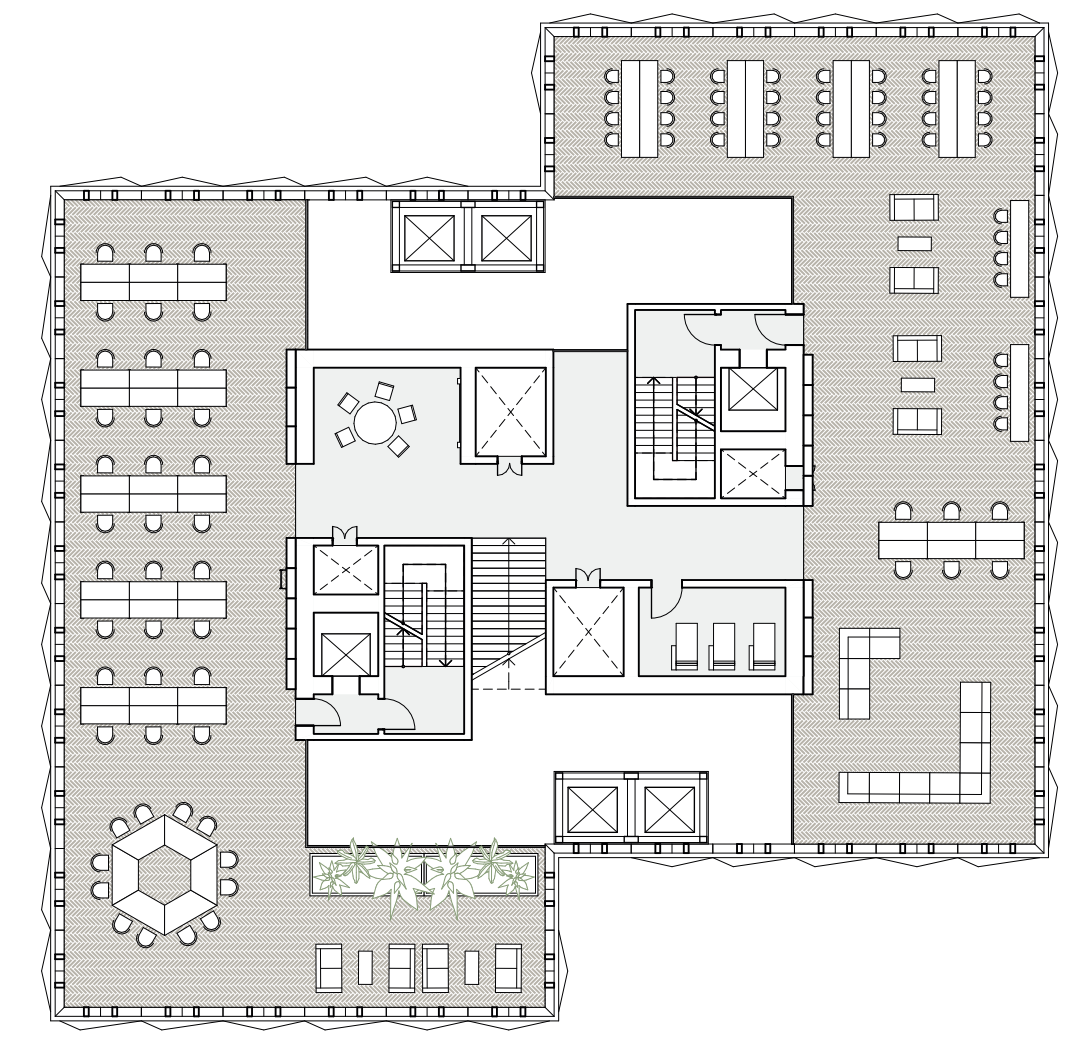
CONVERGENT & DIVERGENT CREATIVE THINKING PROCESSES



Library 27th Floor



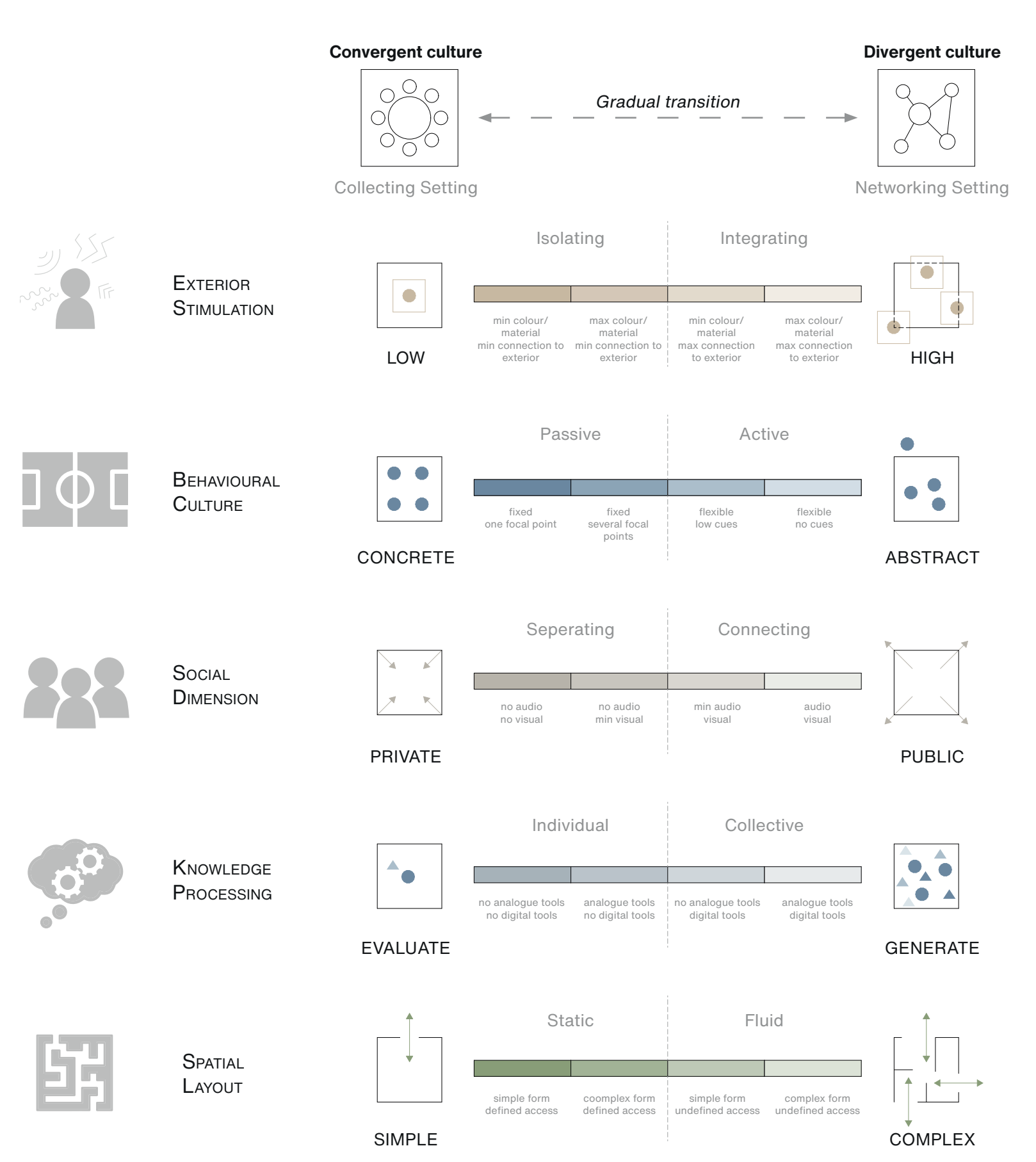
Library & Silent Studios 28th Floor



Silent Studios 29th Floor

Cross-section 1:400

DESIGN PRINCIPLES FOR DIVERGENT & CONVERGENT LEARNING SPACES



Axonometry of divergent & convergent learning spaces in the Vertical Campus



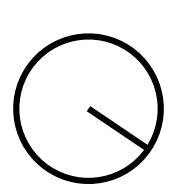
Interior perspective of library



Interior perspective of convergent learning space



Interior perspective of the Exhibition Floor



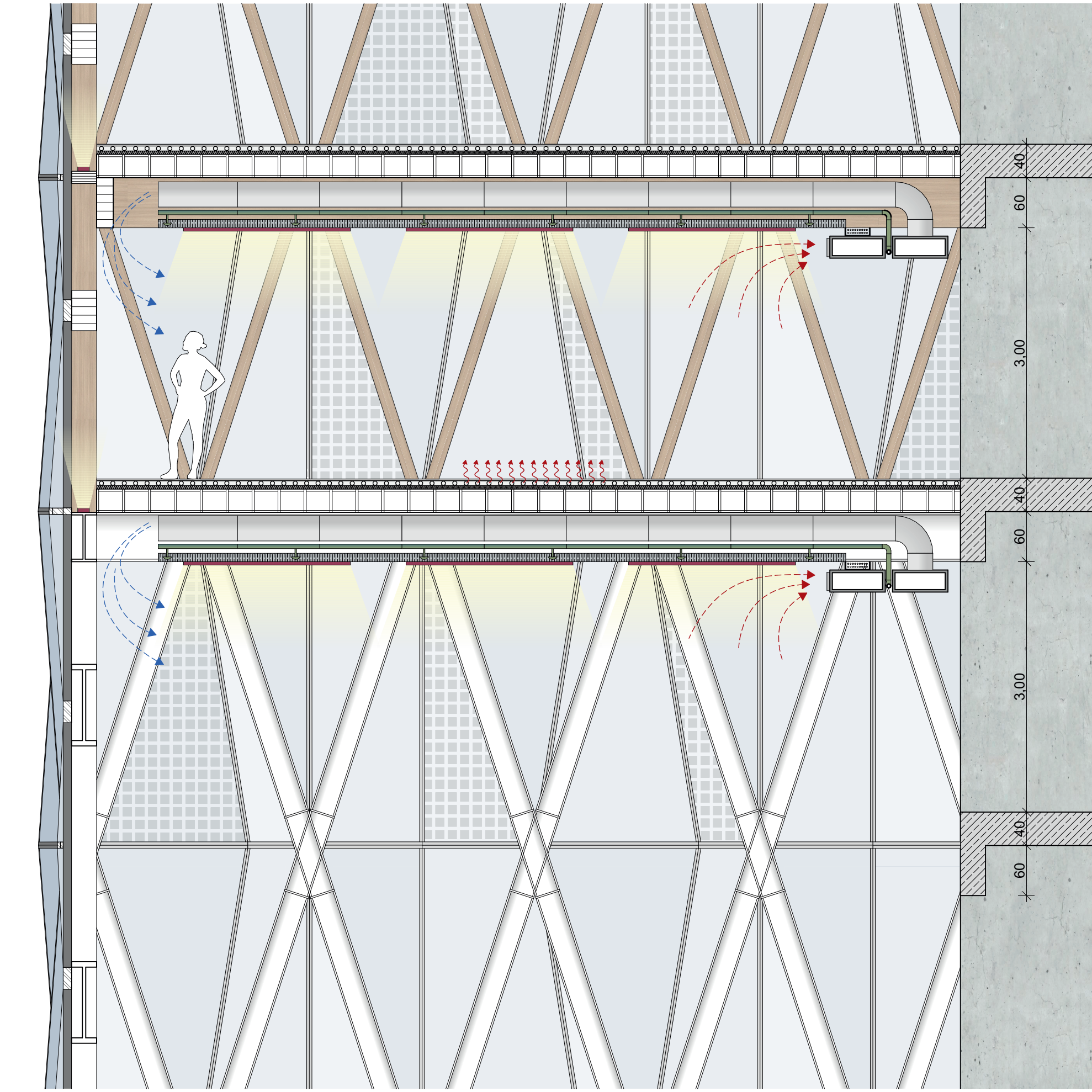
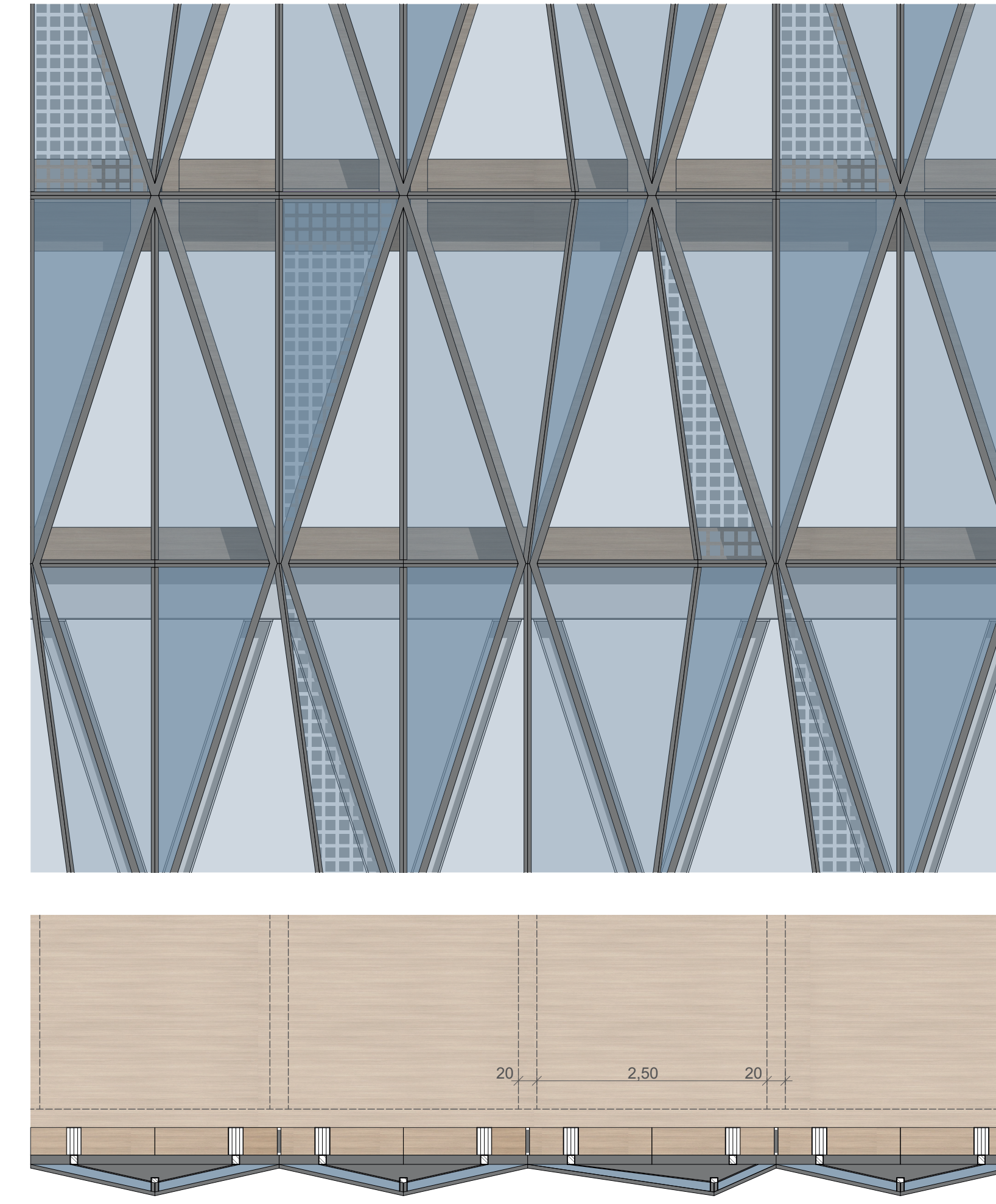
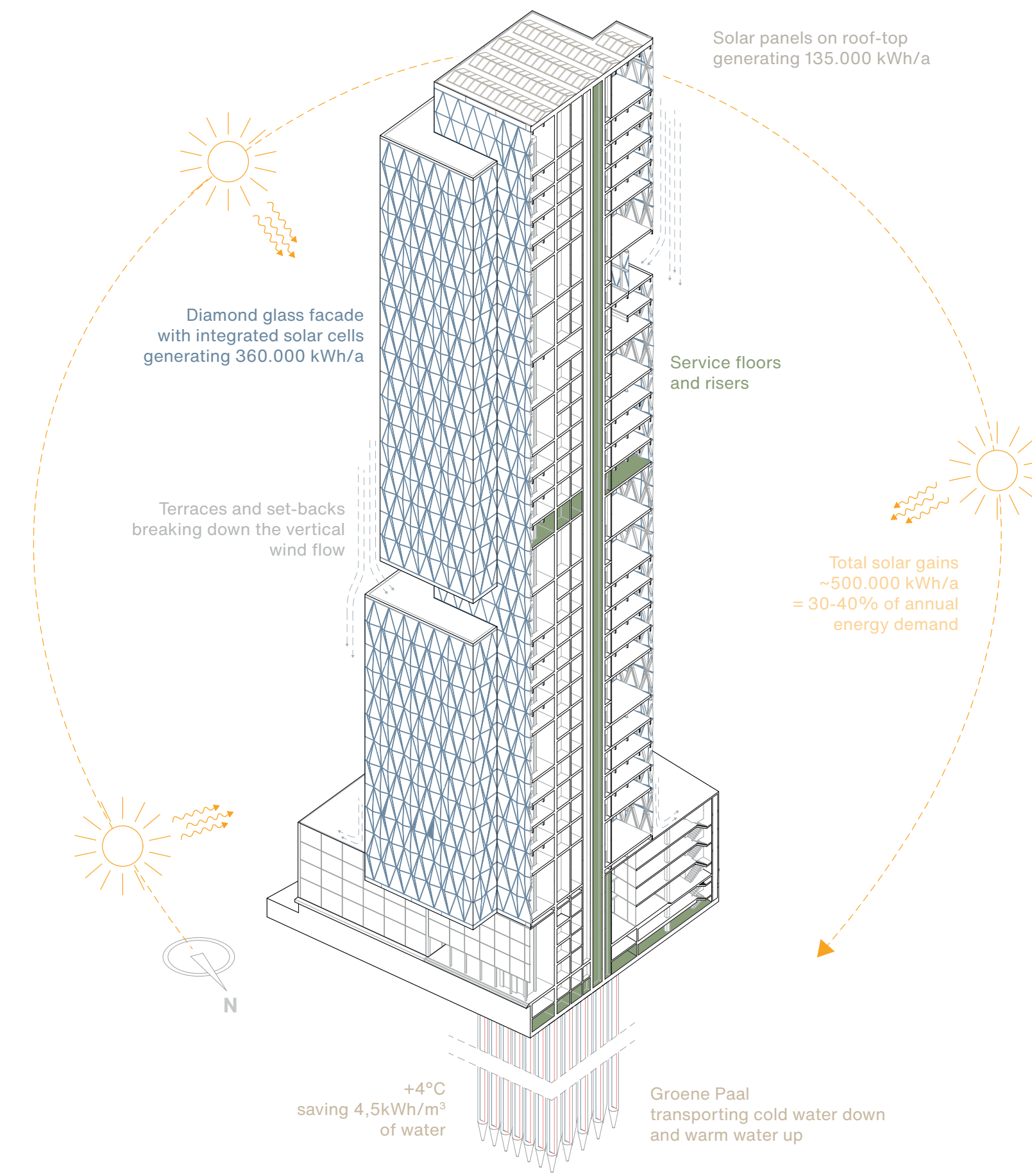
A Creative Journey through the Open Campus

Preserving knowledge in a sustainable hybrid structure



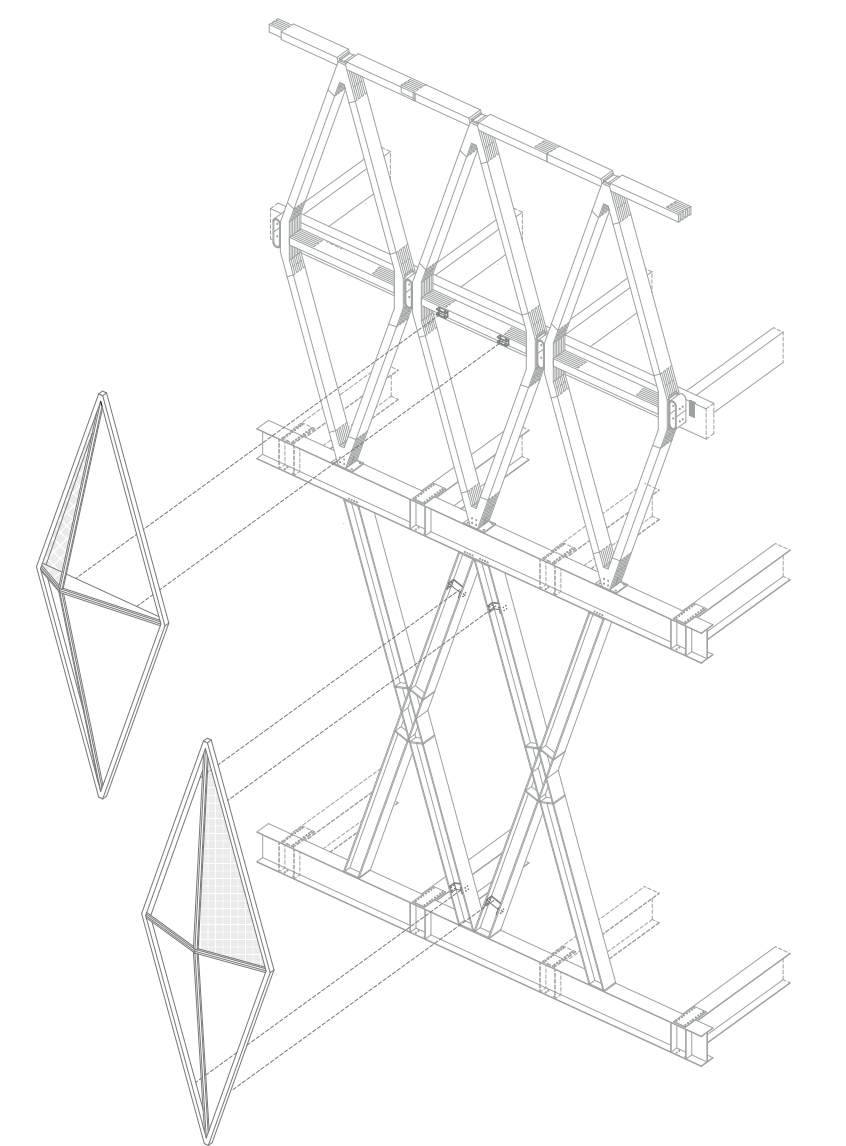
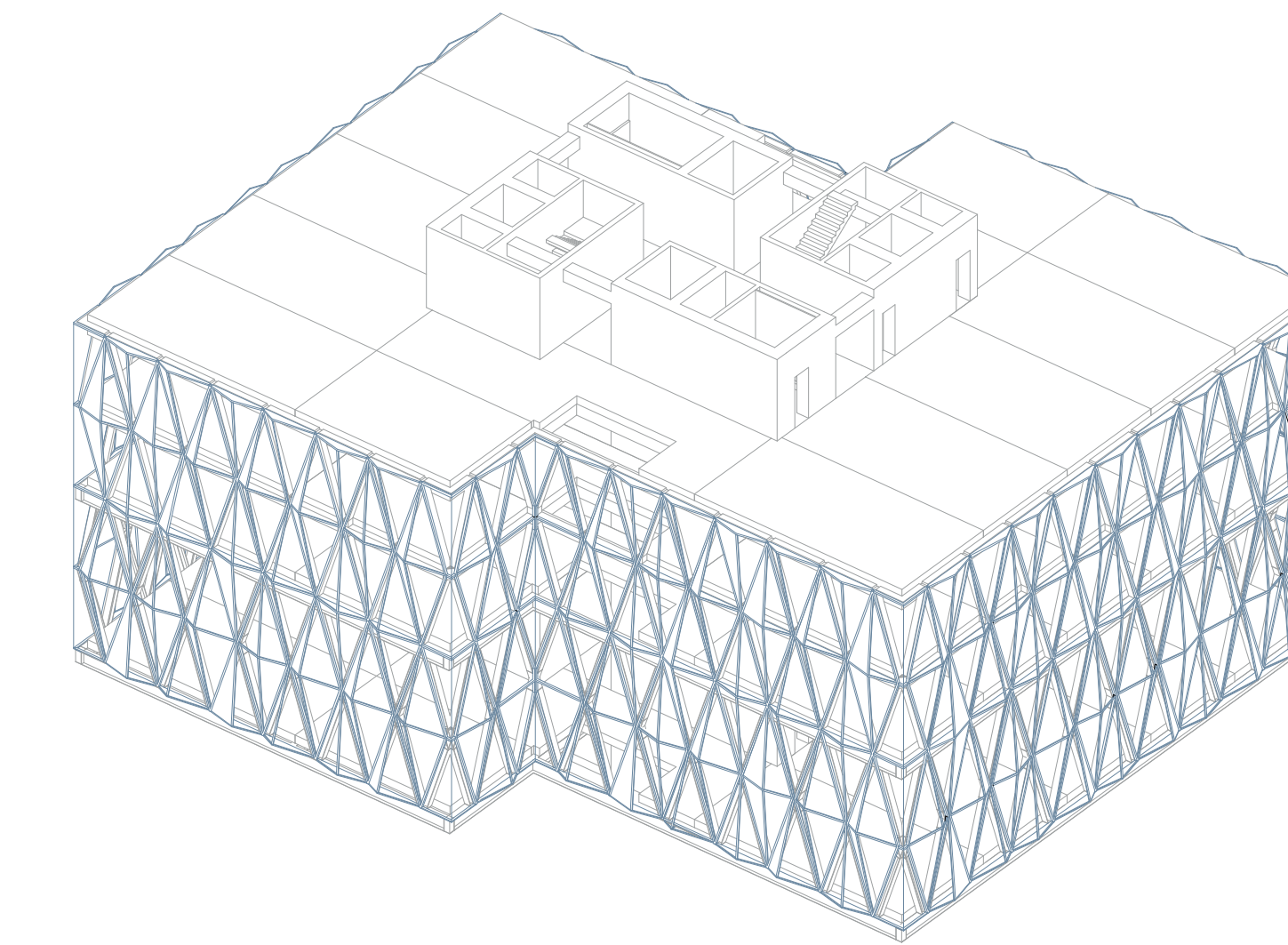
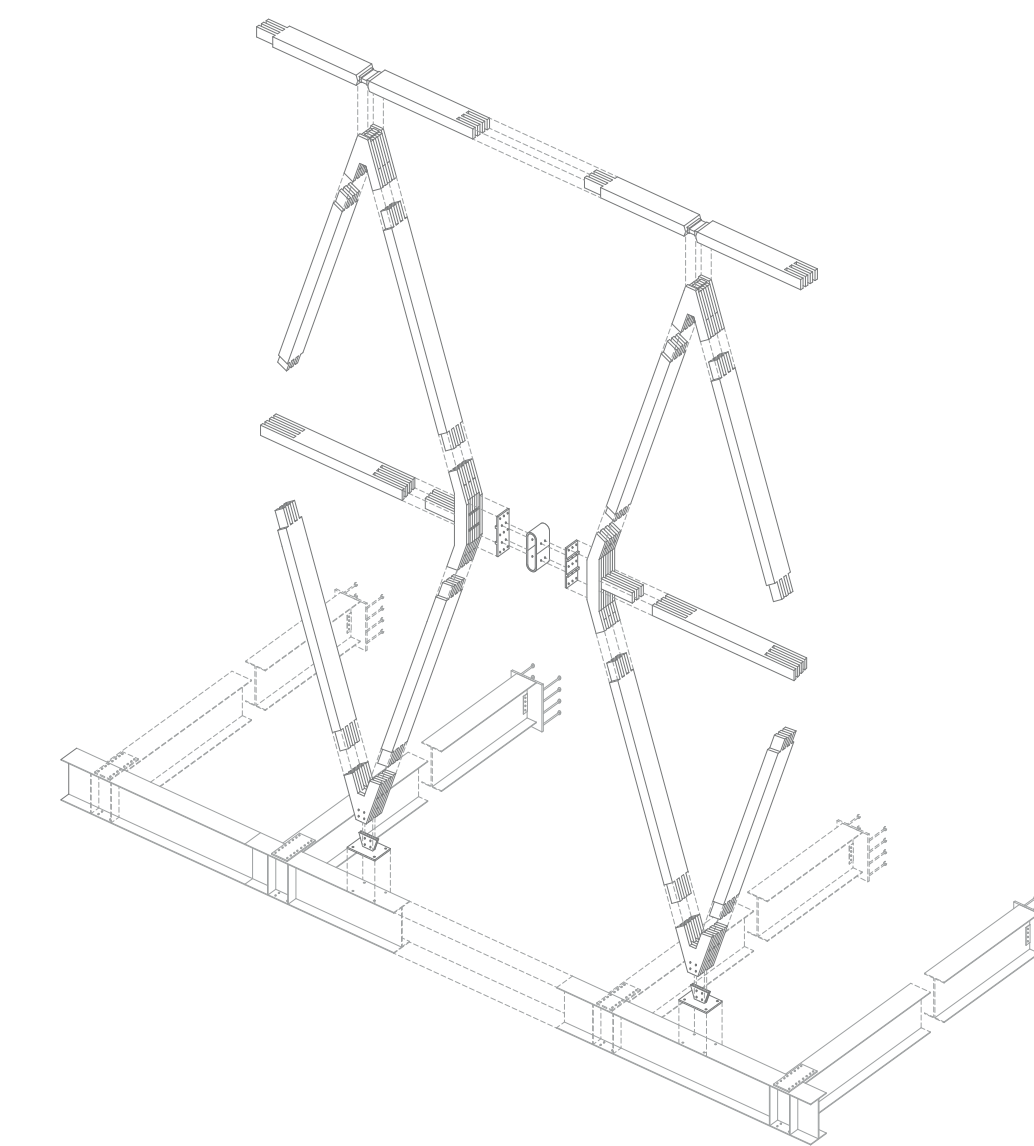
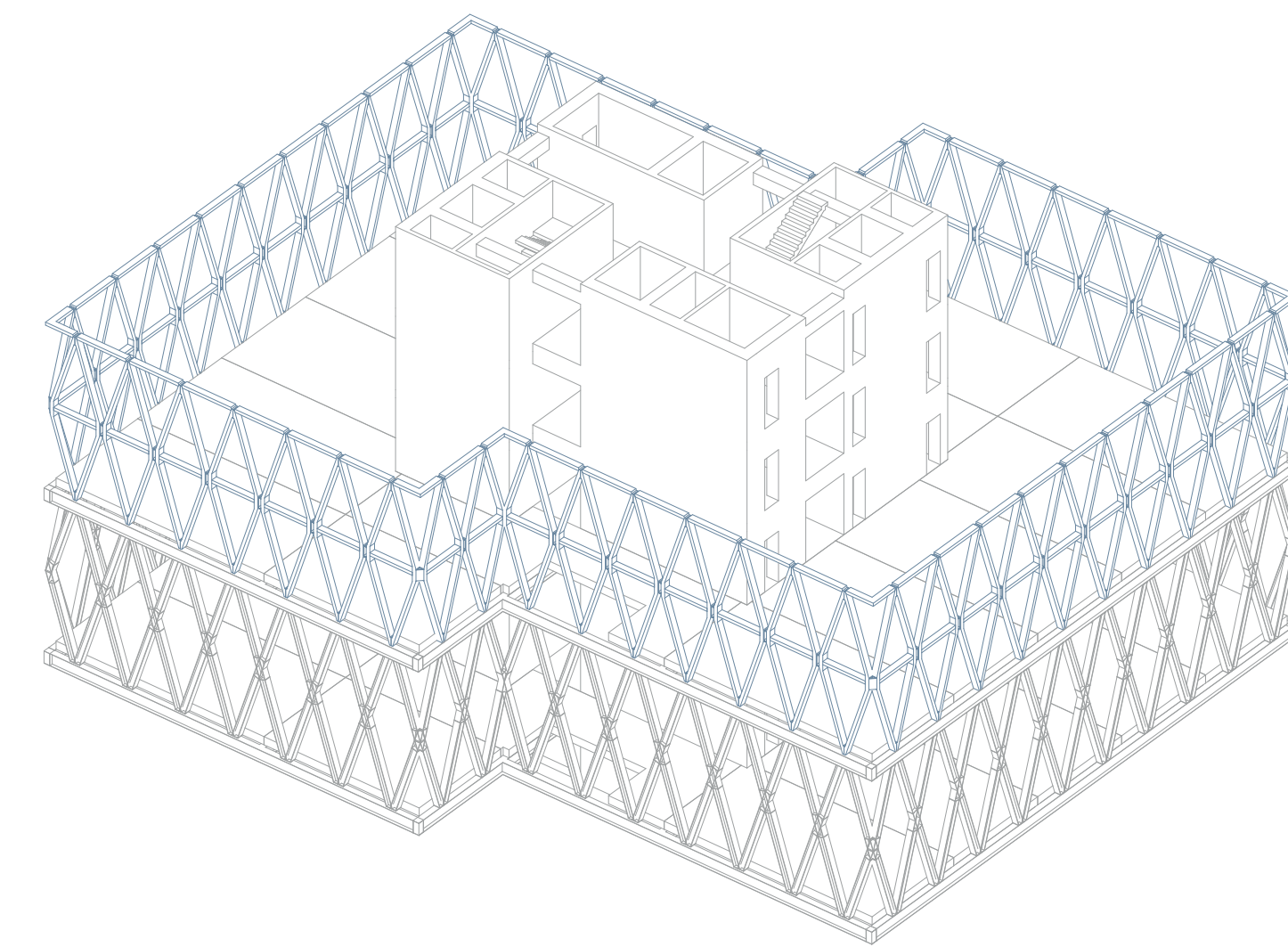
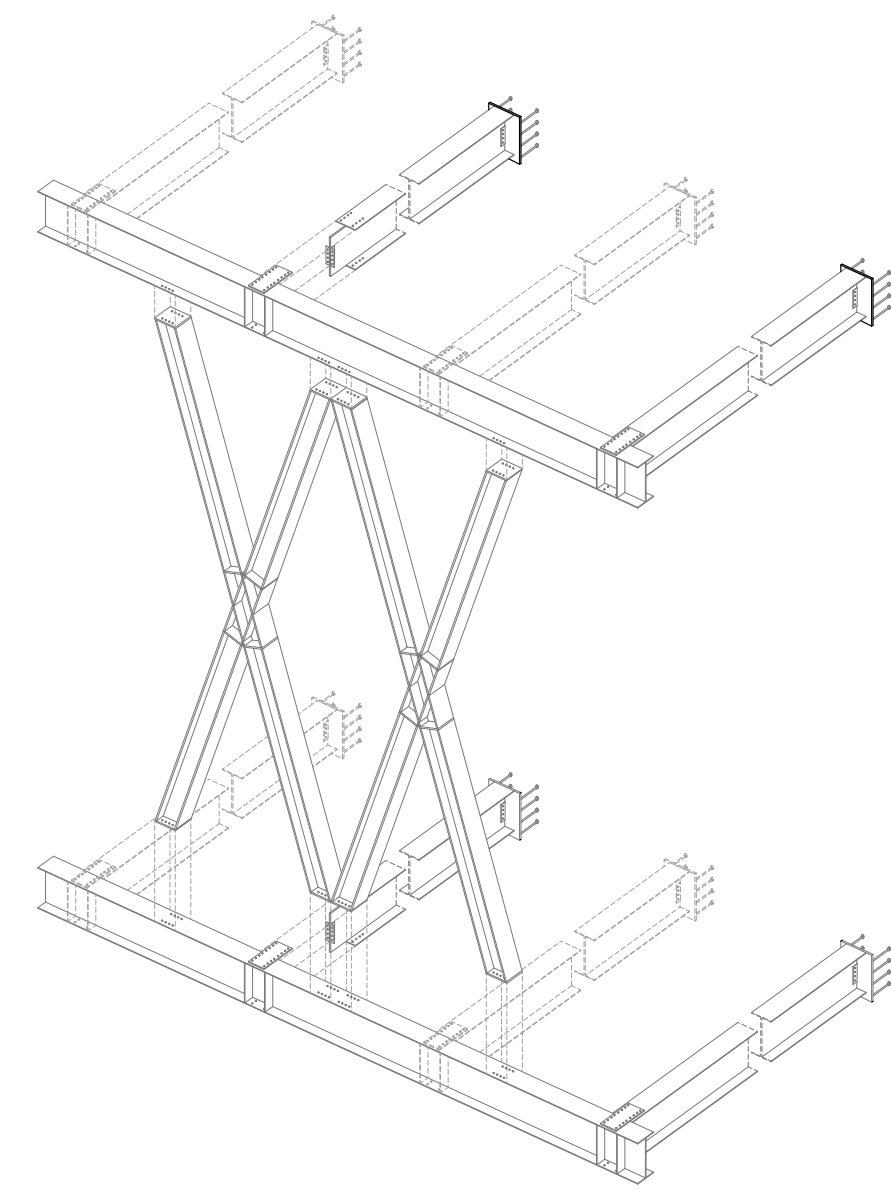
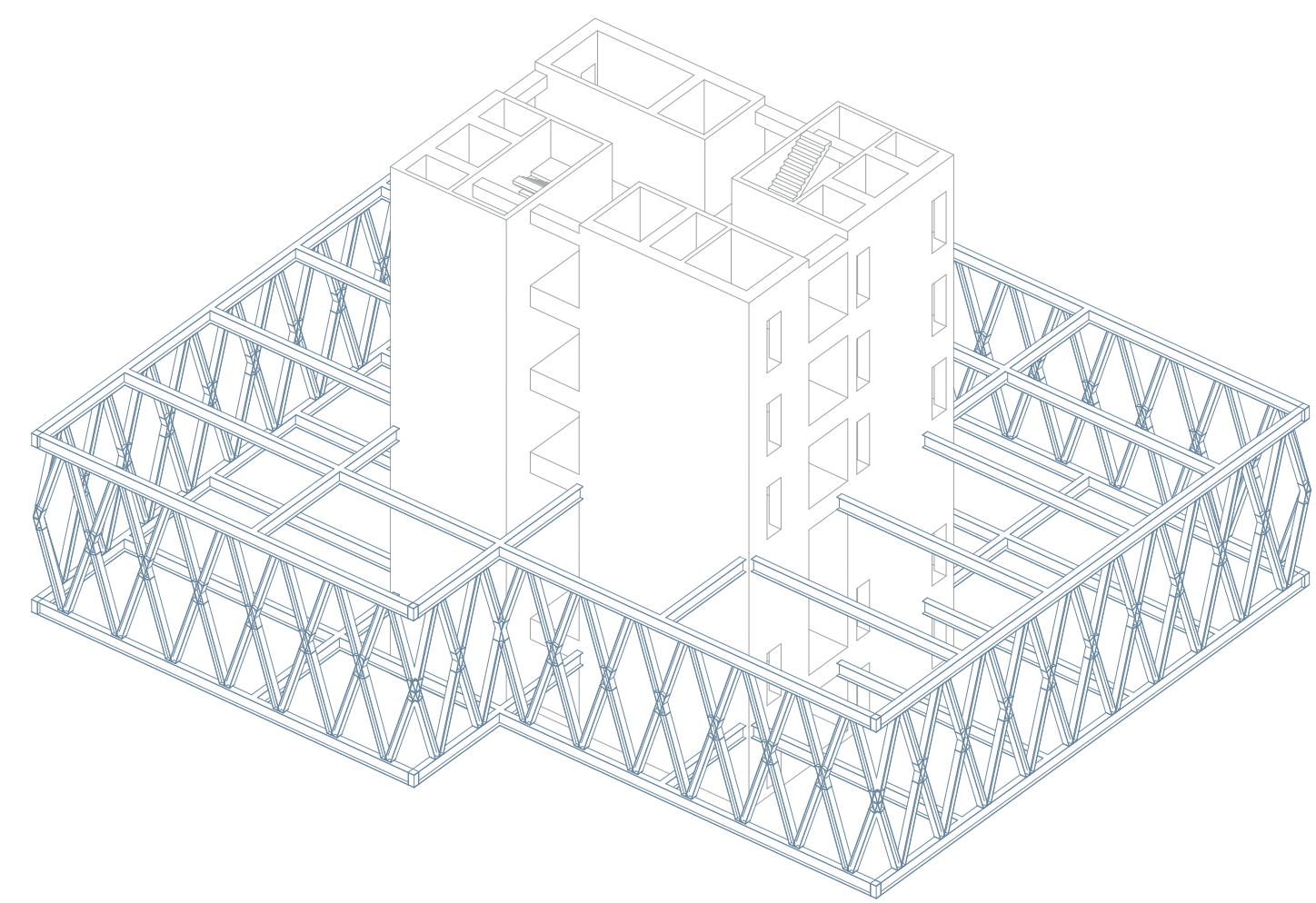
Interior perspective divergent learning space

CLIMATE CONCEPT

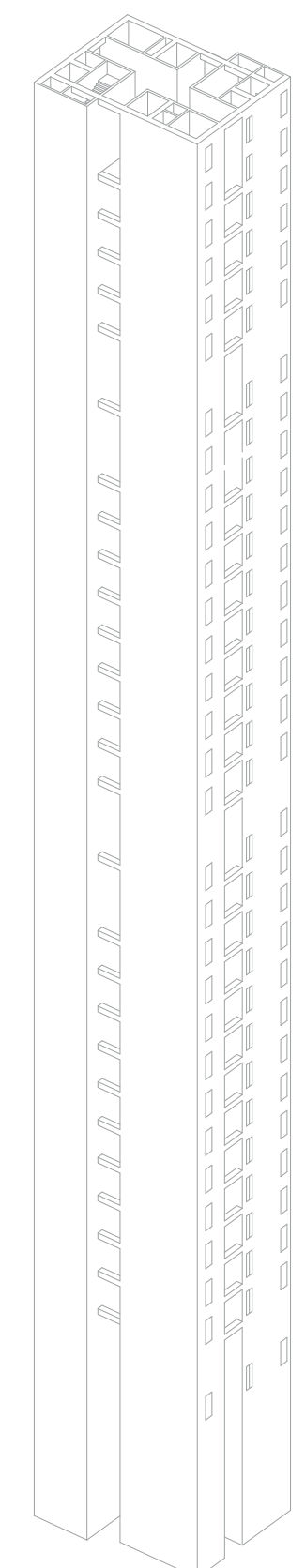


1:50 Three-panel-projection

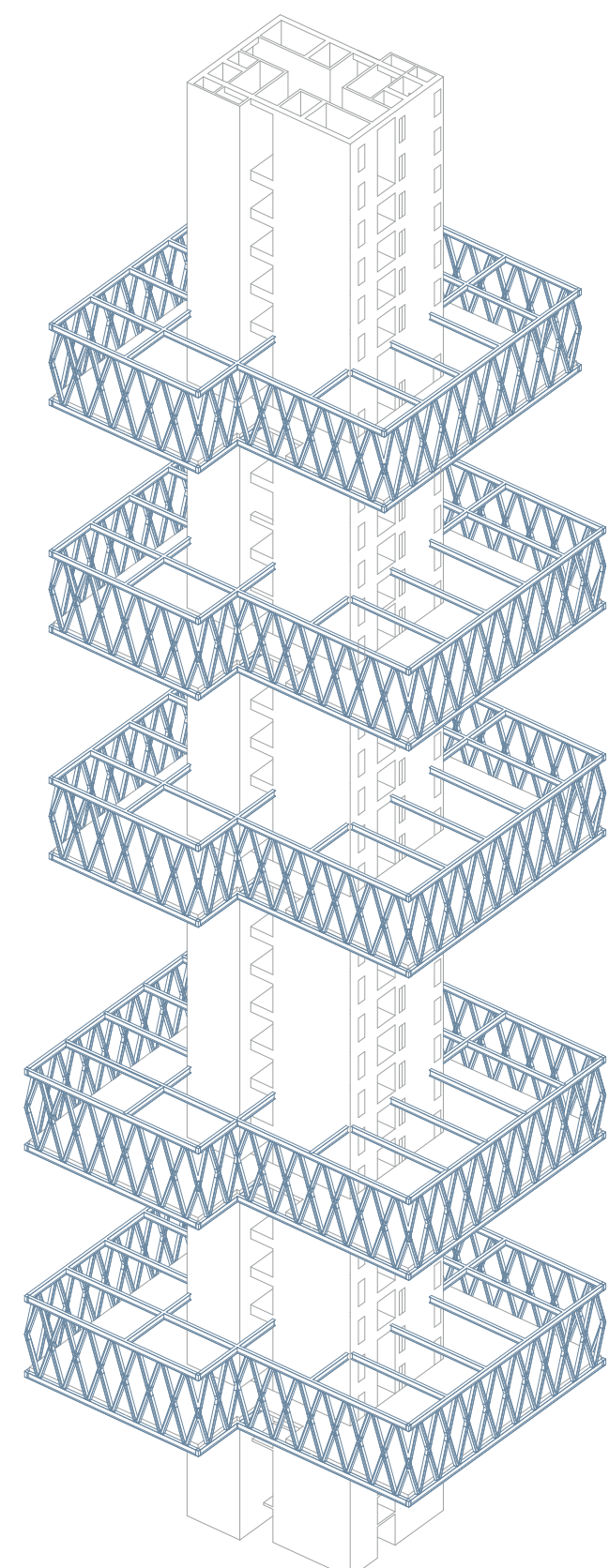
ASSEMBLY PROCESS



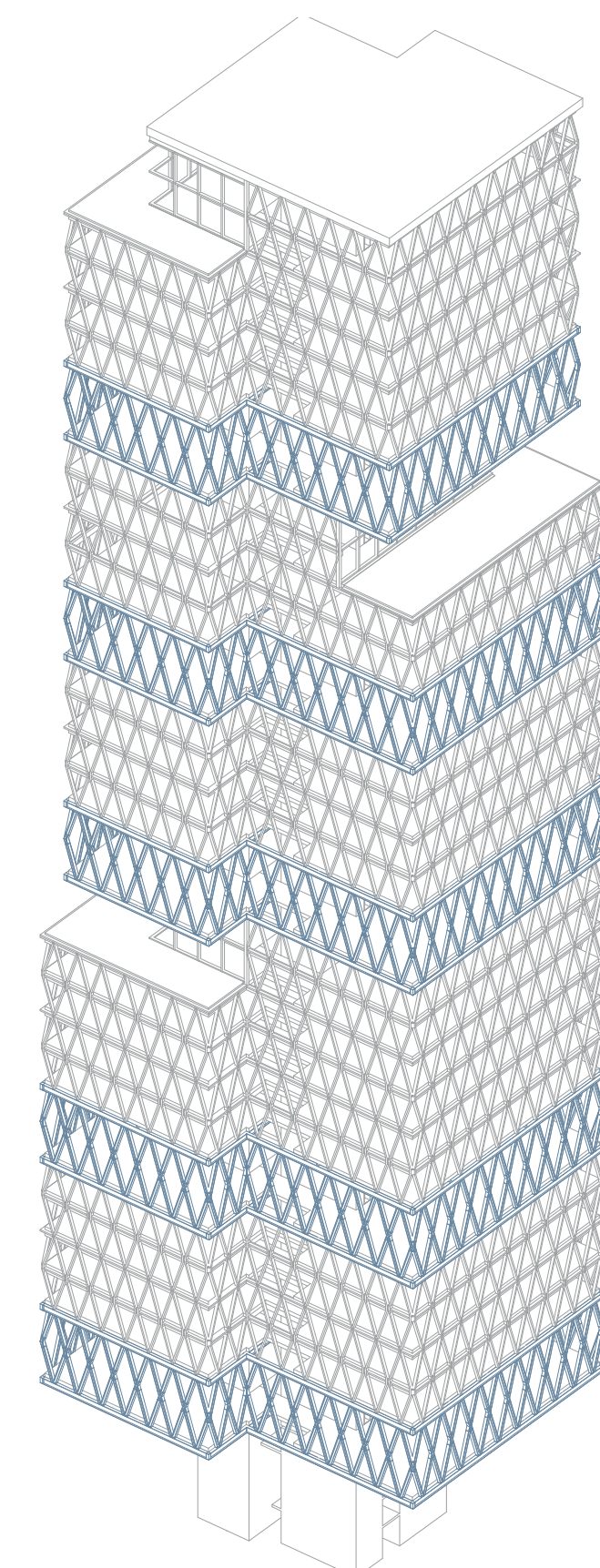
STRUCTURAL CONCEPT



Resilient concrete cores



Load-bearing steel structure



Flexible timber structure

CARBON FOOTPRINT

Shearing Layer	Material	Impact / m3	Volume [m3]	Carbon footprint [kg CO2eq]	
SKIN	Aluminium frame window	2282,1 kg CO2eq/m3	53	120.951,3	120.951,3
	Glass panel, triple-glazed	4761,7 kg CO2eq/m3	144	685.684,8	685.684,8
STRUCTURE	GLT / CLT	-664,0 kg CO2eq/m3	7.809	-5.185.176,0	/
	Construction timber	-680,0 kg CO2eq/m3	1.166	-792.880,0	/
	Structural steel	5.403,2 kg CO2eq/m3	108	583.545,6	/
FOUNDATION	Concrete C20/25	215,0 kg CO2eq/m3	6.201	1.333.215,0	3.031.715,0
	Concrete C30/37	282,0 kg CO2eq/m3	2.164	610.248,0	610.248,0
				-2.644.411,3 kg CO2eq	4.448.599 kg CO2eq
				= -2.644 t CO2eq	= 4.449 t kg CO2eq
				160% CO2 Reduction!	

FUTURE ADAPTABILITY

