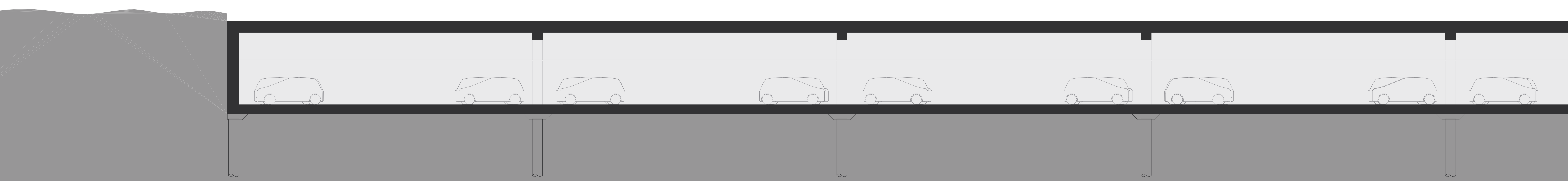
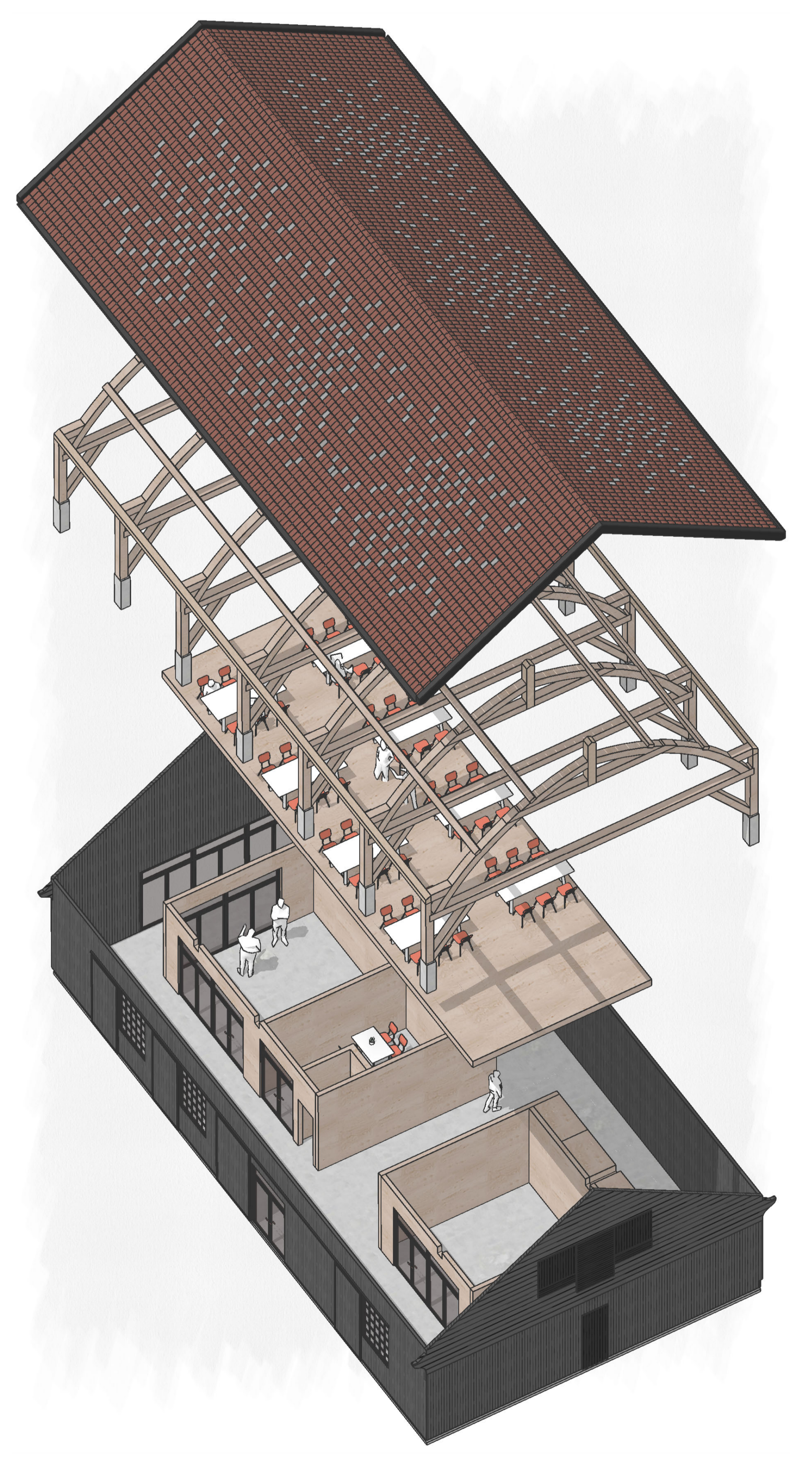
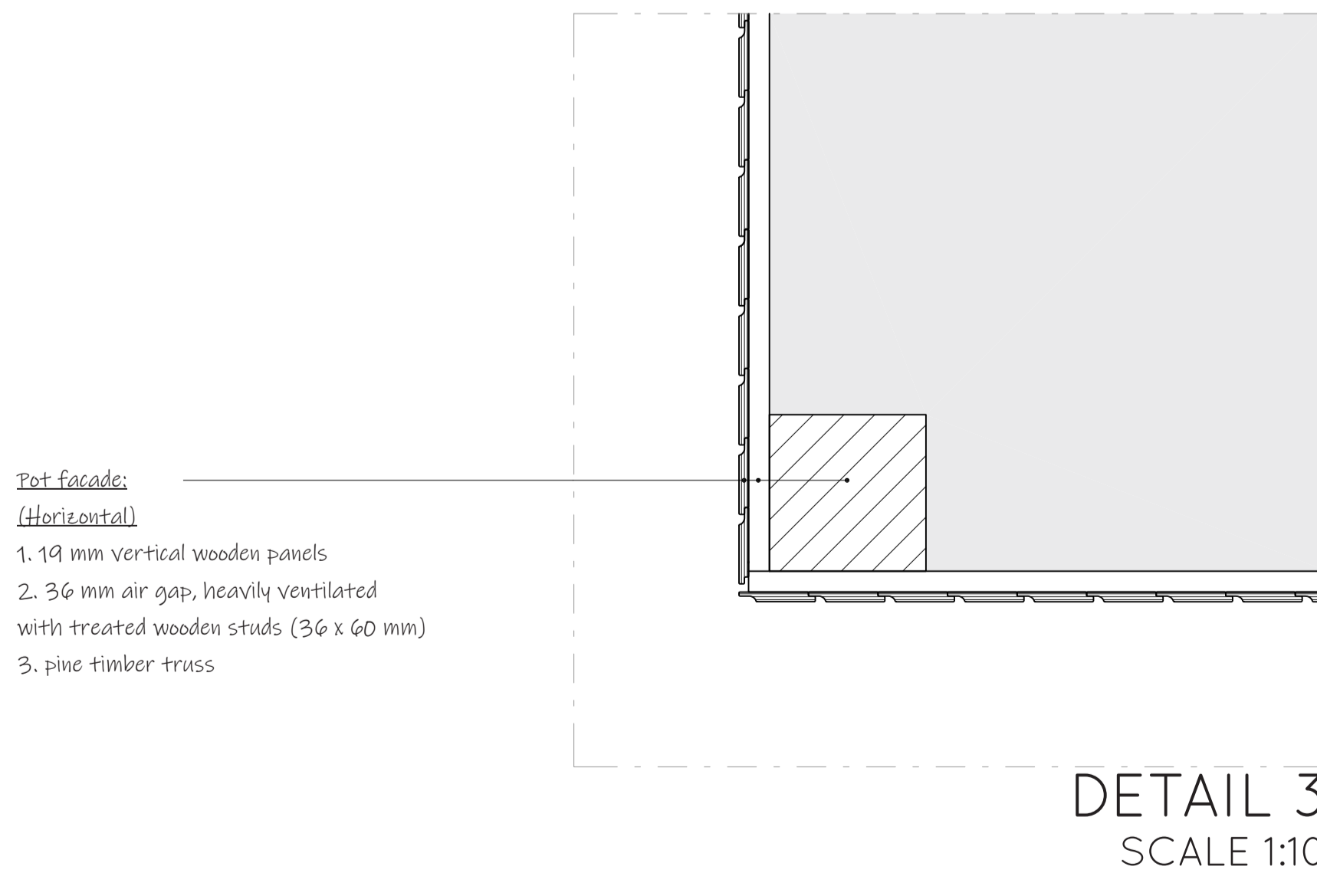
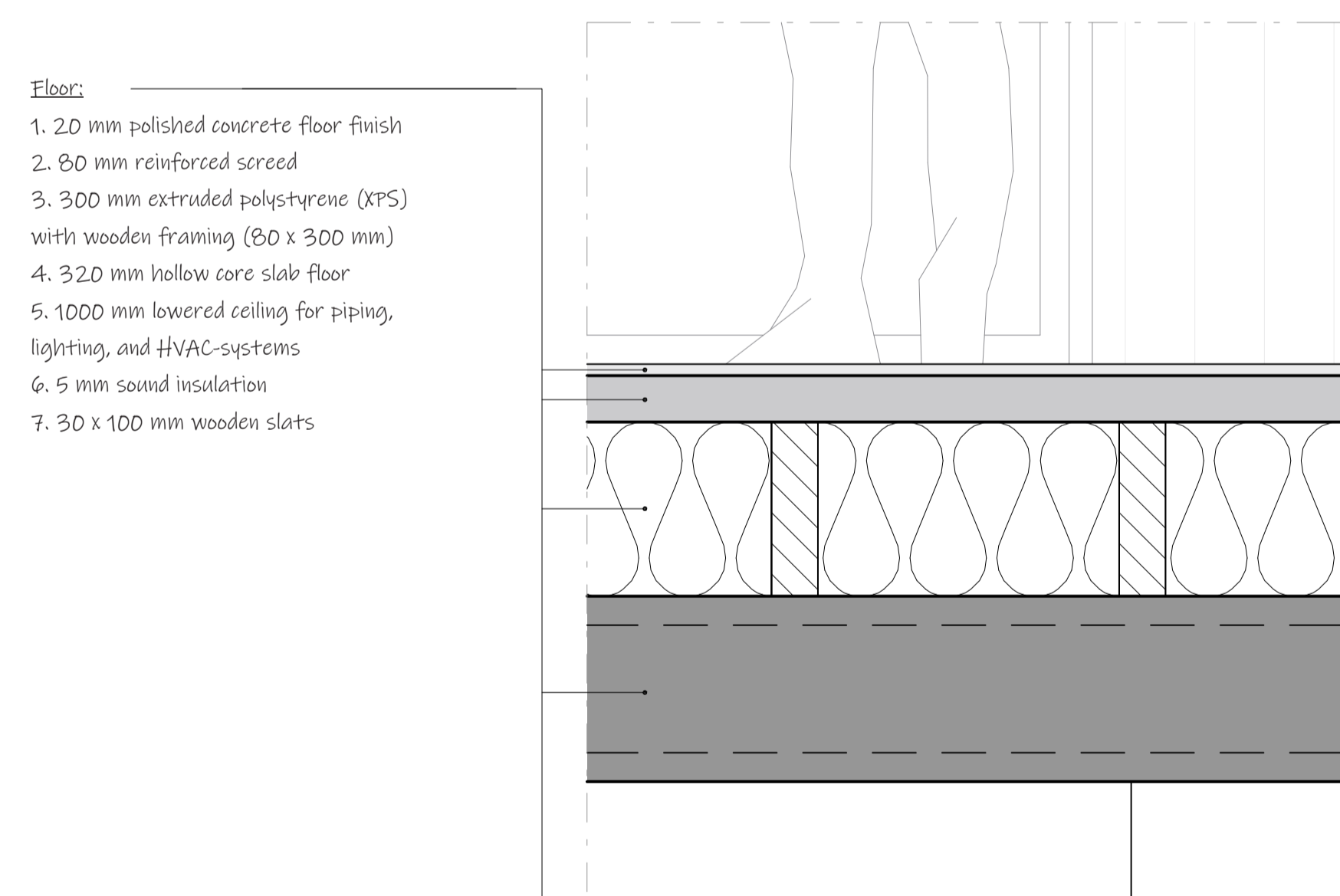
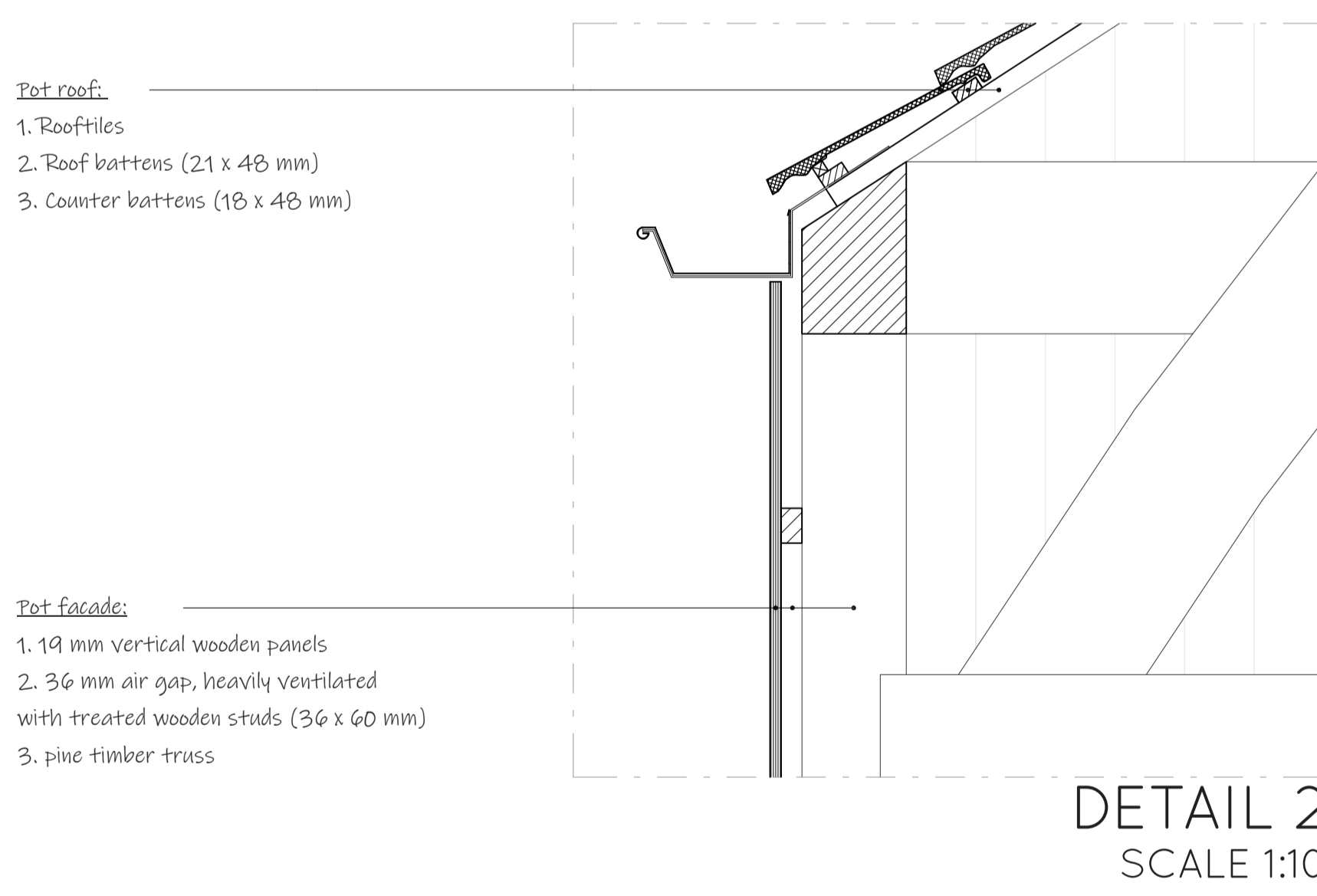
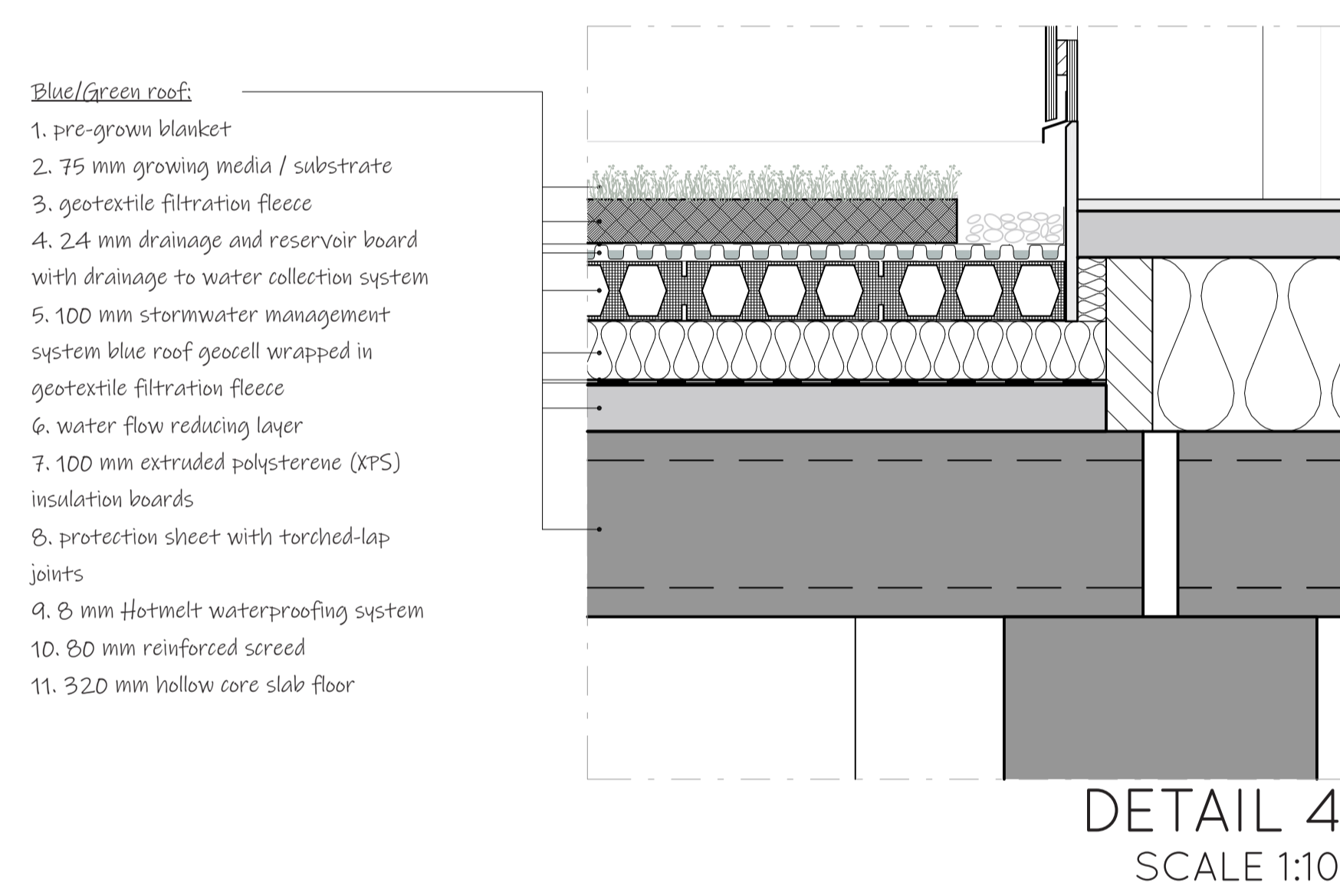
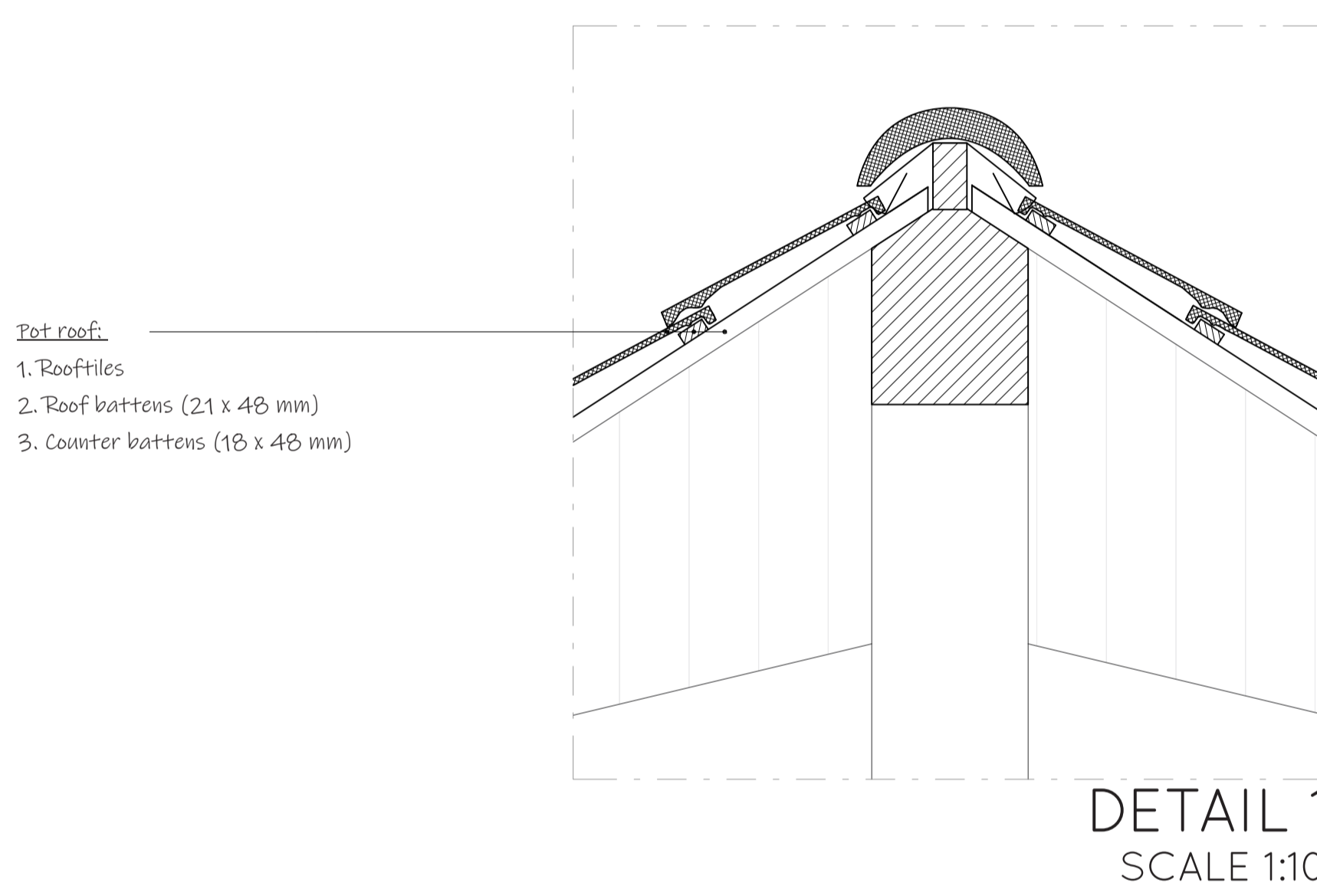
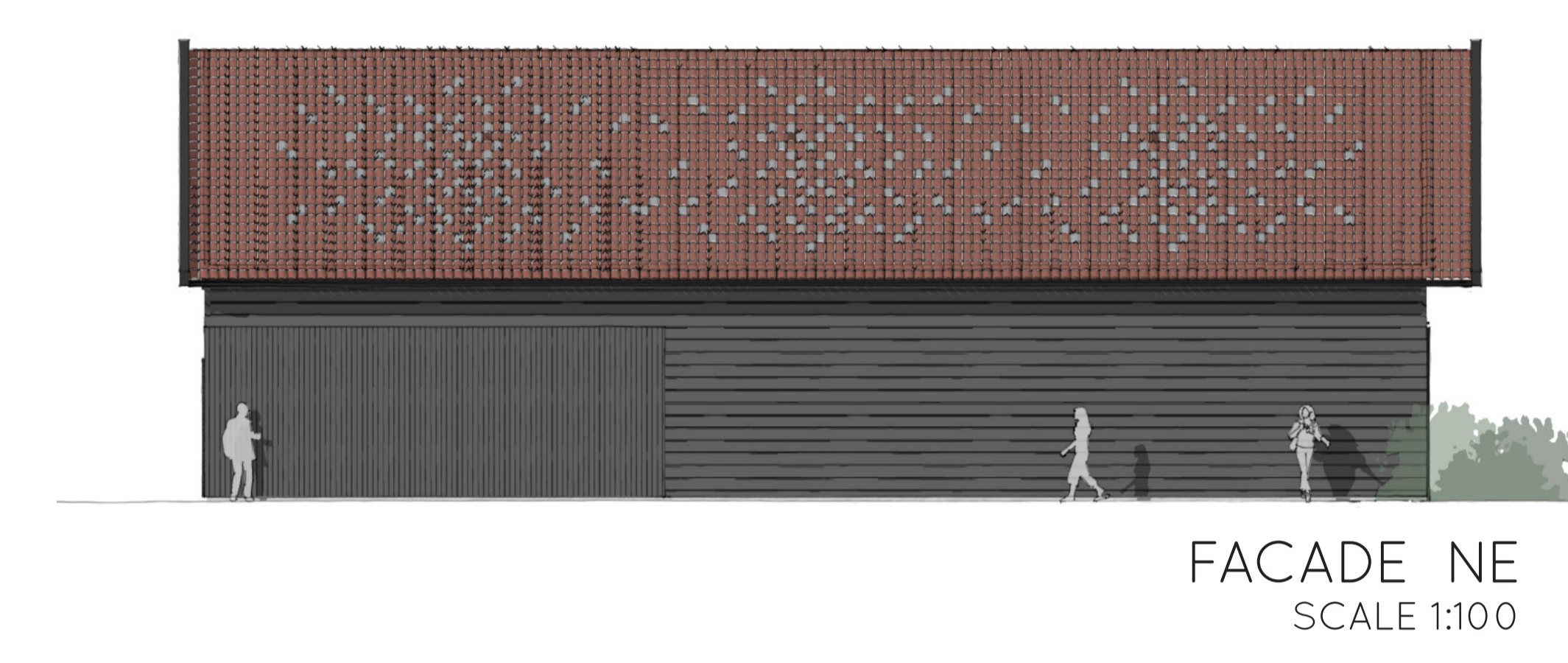
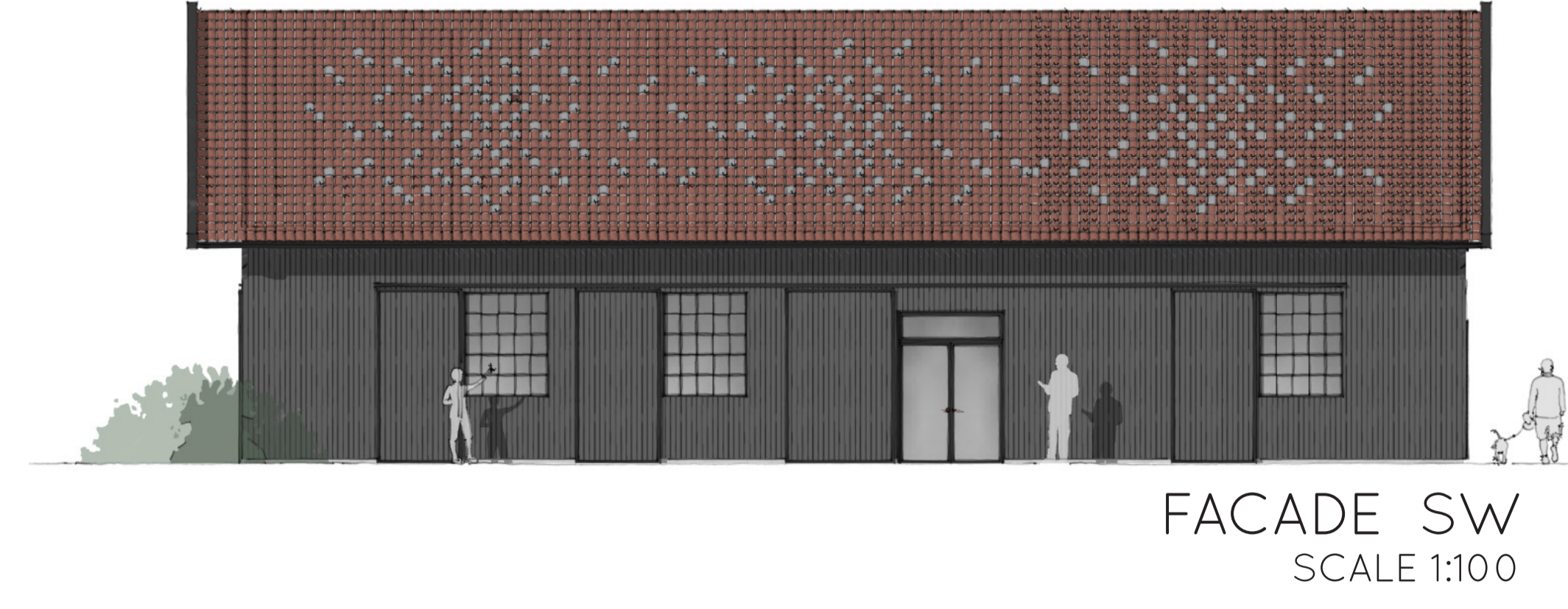
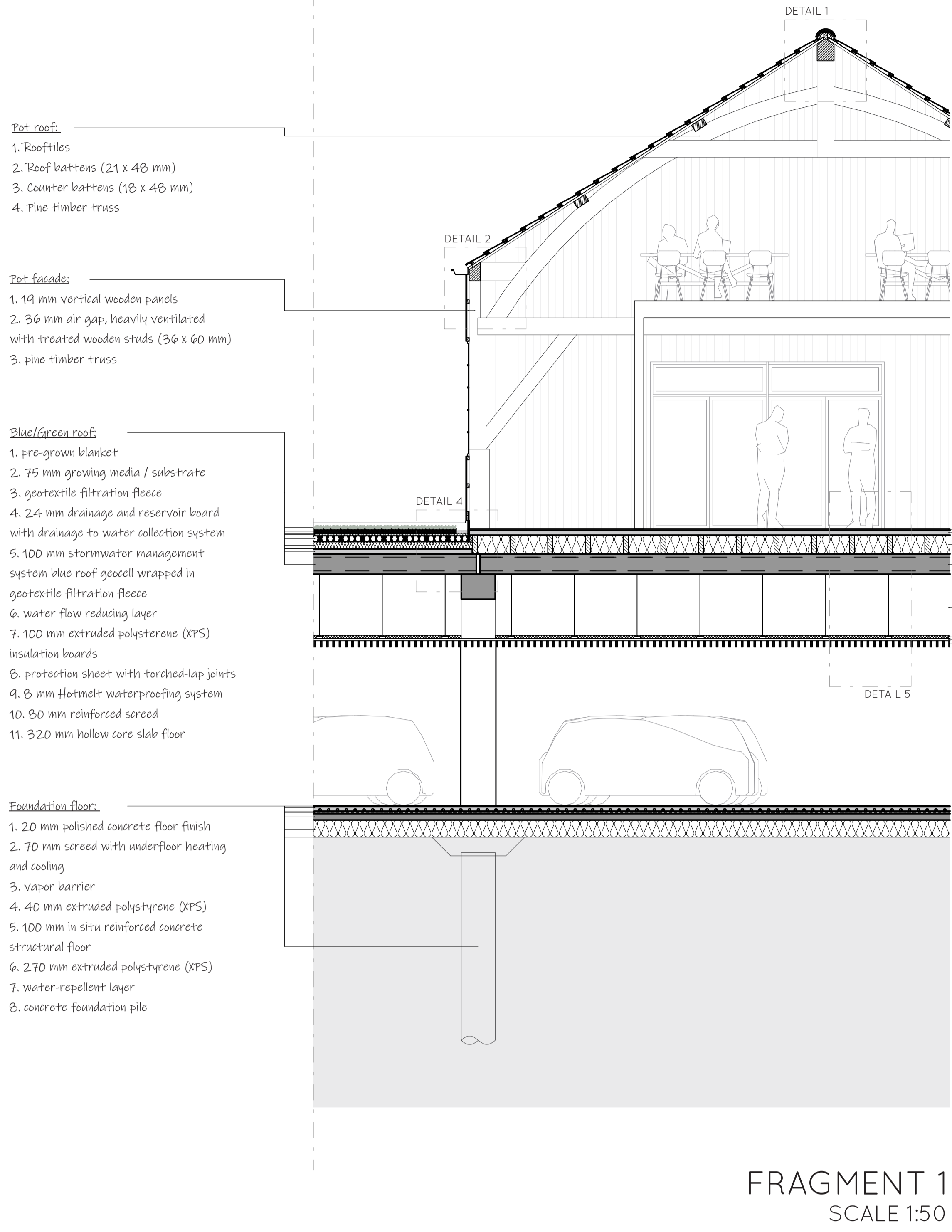


POT BARN



COMMUNITY BARN

Roof tiles:

1. roof tiles
2. roof battens (21 x 48 mm)
3. counter battens (18 x 48 mm)
4. water-resistant and vapor-permeable layer
5. 240 mm mineral wool with wooden framing (36 x 245 mm)
6. vapor barrier
7. 15 mm wooden cladding panel
8. glued laminated pine timber truss

Wooden facade:

1. 14 mm wooden panels
2. 72 mm air gap, heavily ventilated with treated wooden framing (36 x 60 mm)
3. water-resistant and vapor-permeable layer
4. 240 mm mineral wool with wooden framing (36 x 245 mm)
5. vapor barrier
6. 15 mm wooden cladding panel
7. glued laminated pine timber truss

Blue/green roof:

1. pre-grown blanket
2. 75 mm growing media / substrate
3. geotextile filtration fleece
4. 24 mm drainage and reservoir board with drainage to water collection system
5. 100 mm stormwater management system blue roof gogocil wrapped in geotextile filtration fleece
6. water flow reducing layer
7. 100 mm extruded polystyrene (XPS) insulation boards
8. protection sheet with torched-lap joints
9. 6 mm Hotmelt waterproofing system
10. 80 mm reinforced screed
11. 320 mm hollow core slab floor

Foundation floor:

1. 20 mm polished concrete floor finish
2. 70 mm screed with under-floor heating and cooling
3. vapor barrier
4. 40 mm extruded polystyrene (XPS)
5. 100 mm in situ reinforced concrete structural floor
6. 270 mm extruded polystyrene (XPS)
7. water-repellent layer
8. concrete foundation pile

Roof Cor-ten:

1. 5 mm cor-ten panels mechanically fixed to studs
2. 36 mm air gap, heavily ventilated with treated wooden studs (36 x 45 mm)
3. counter battens (18 x 48 mm)
4. water-resistant and vapor-permeable layer
5. 240 mm mineral wool with wooden framing (36 x 245 mm)
6. vapor barrier
7. 15 mm wooden cladding panel
8. glued laminated pine timber truss

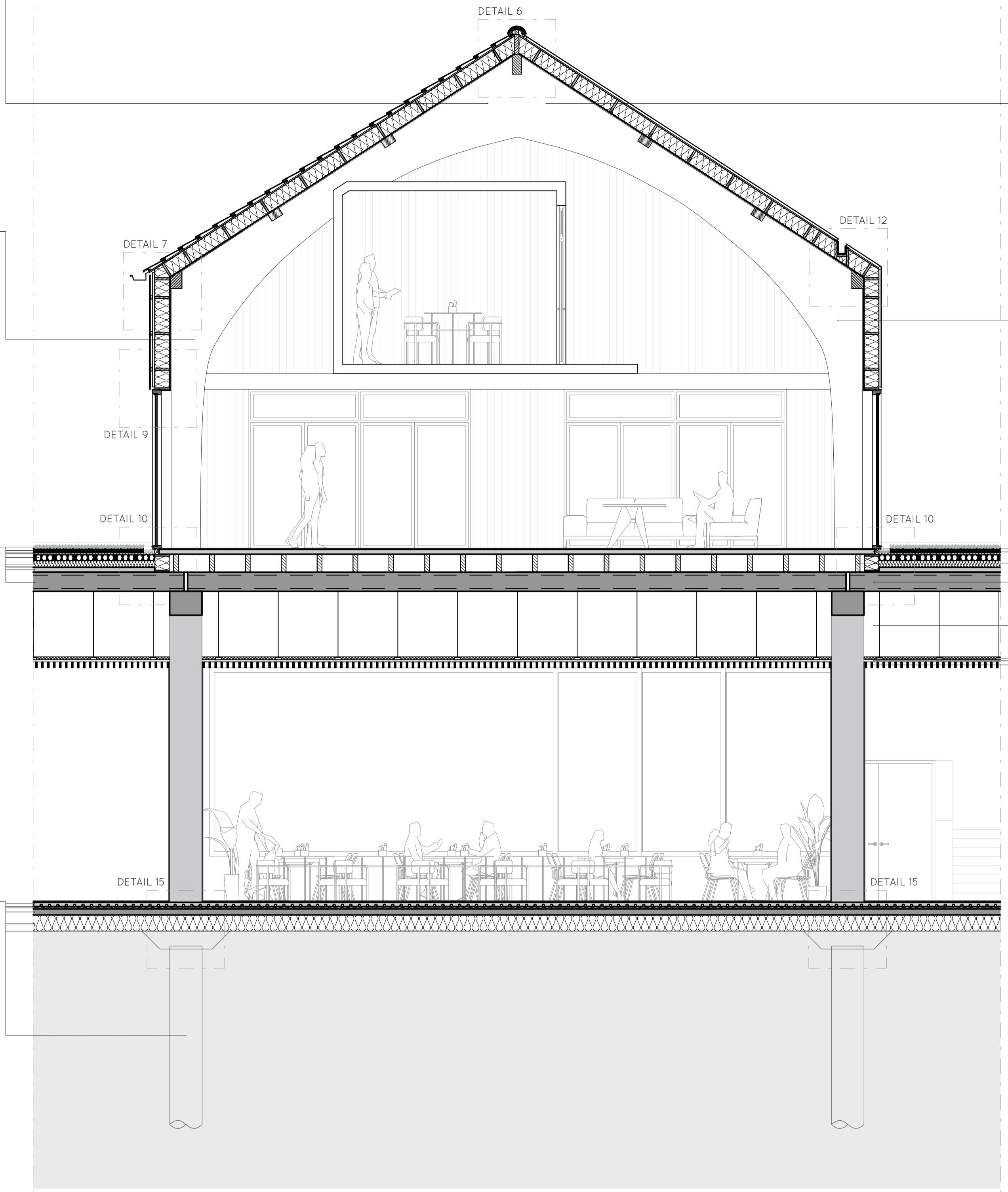
Cor-ten facade:

1. 5 mm Cor-ten panels mechanically fixed to studs
2. 36 mm air gap, heavily ventilated with treated wooden studs (36 x 45 mm)
3. water-resistant and vapor-permeable layer
4. 240 mm mineral wool with wooden framing (36 x 245 mm)
5. vapor barrier
6. 15 mm wooden cladding panel
7. glued laminated pine timber truss

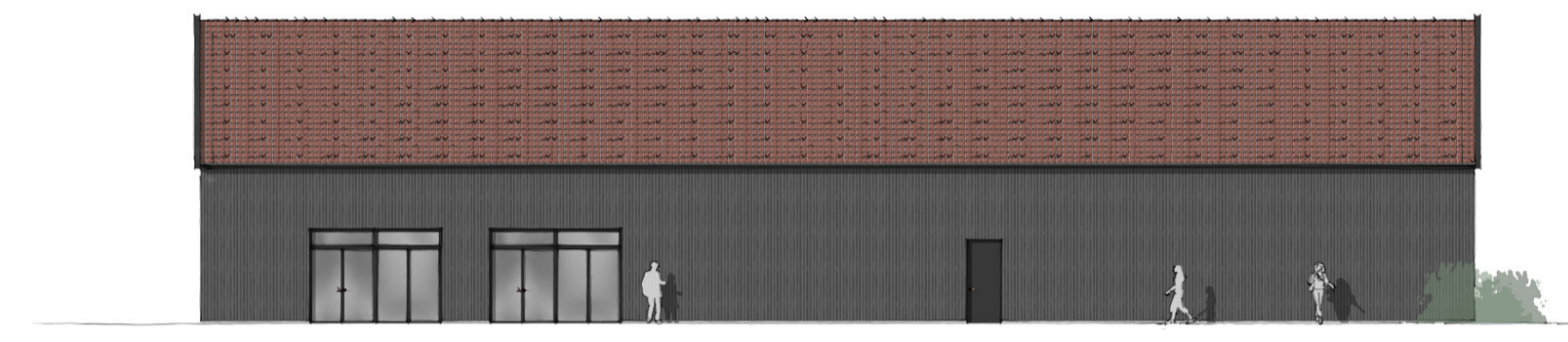
Floor:

1. 20 mm polished concrete floor finish
2. 80 mm reinforced screed
3. wooden framing (80 x 300 mm)
4. 320 mm hollow core slab floor
5. 1100 mm lowered ceiling for piping, lighting, and HVAC-systems
6. 5 mm sound insulation
7. 30 x 100 mm wooden slats

FRAGMENT 2 SCALE 1:50



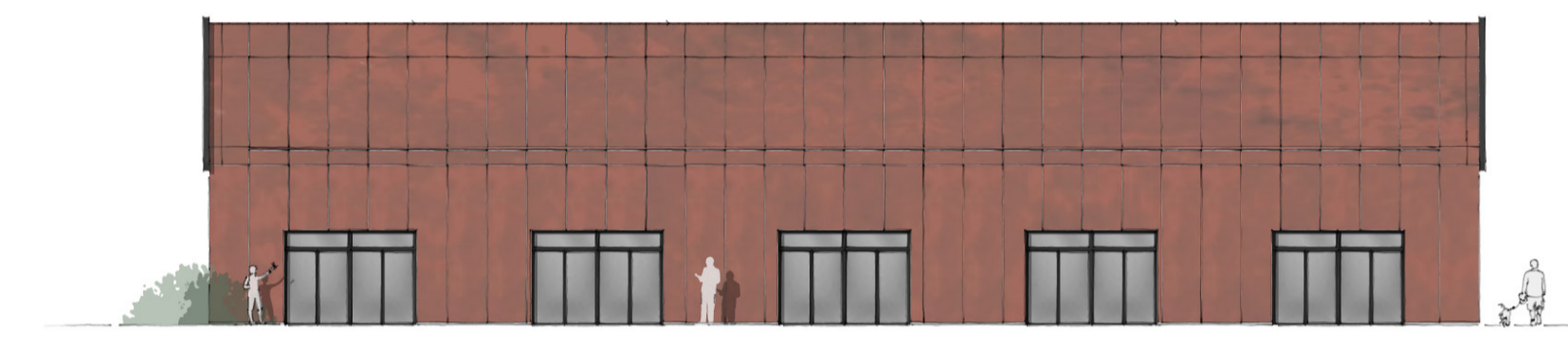
FACADE SE
SCALE 1:50



FACADE SW
SCALE 1:200



FACADE NW
SCALE 1:200

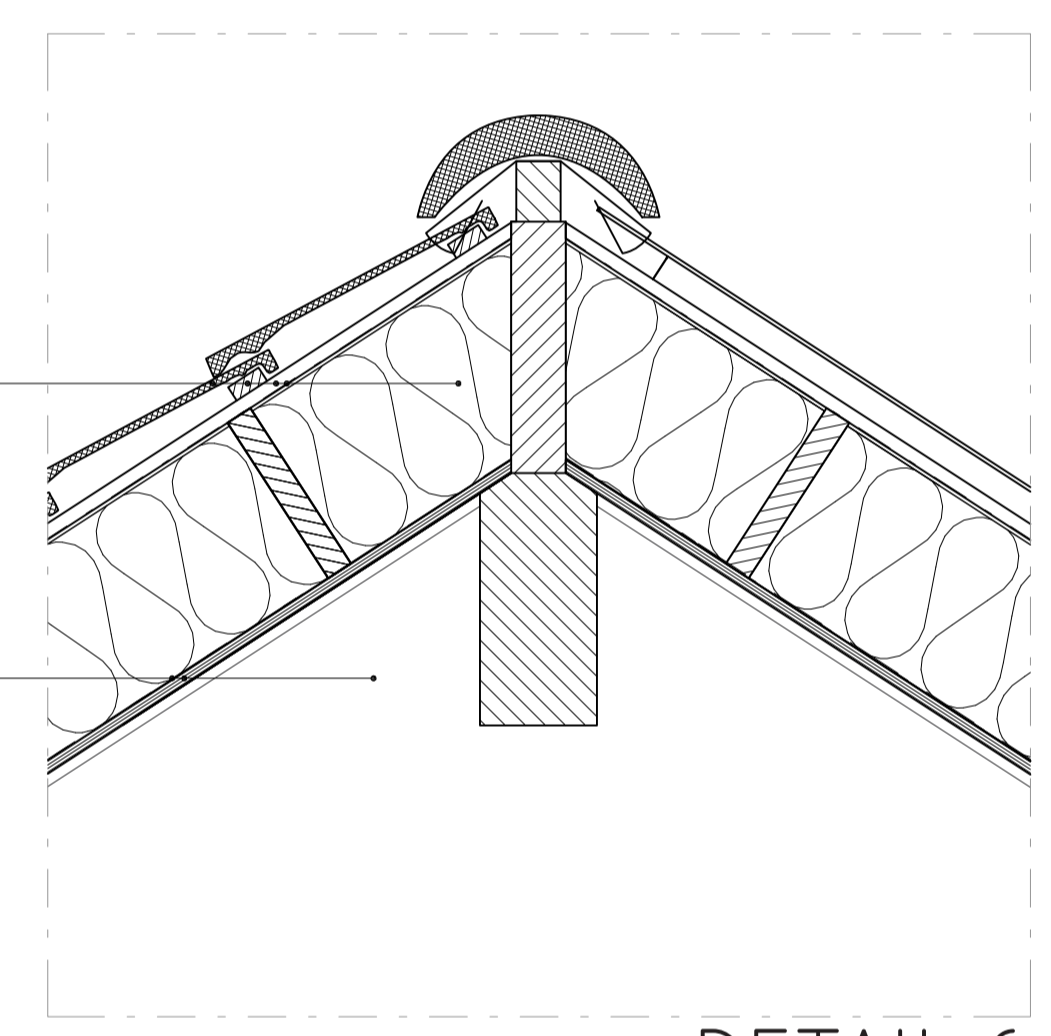


FACADE NE
SCALE 1:200

Roof tiles:

1. roof tiles
2. roof battens (21 x 48 mm)
3. counter battens (18 x 48 mm)
4. water-resistant and vapor-permeable layer
5. 240 mm mineral wool with wooden framing (36 x 245 mm)

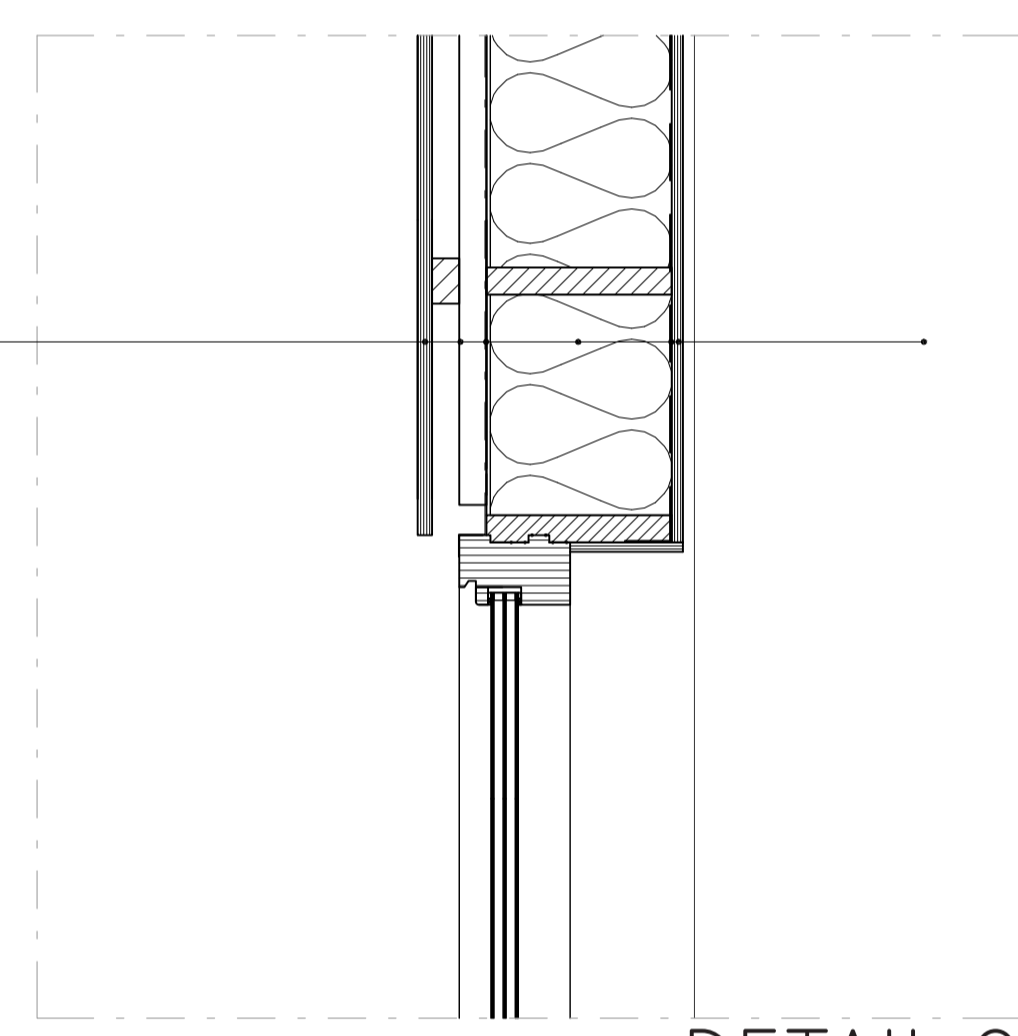
6. vapor barrier
7. 15 mm wooden cladding panel
8. glued laminated pine timber truss



DETAIL 6
SCALE 1:10

Wooden facade:

1. 14 mm wooden panels
2. 72 mm air gap, heavily ventilated with treated wooden framing (36 x 60 mm)
3. water-resistant and vapor-permeable layer
4. 240 mm mineral wool with wooden framing (36 x 245 mm)
5. vapor barrier
6. 15 mm wooden cladding panel
7. glued laminated pine timber truss

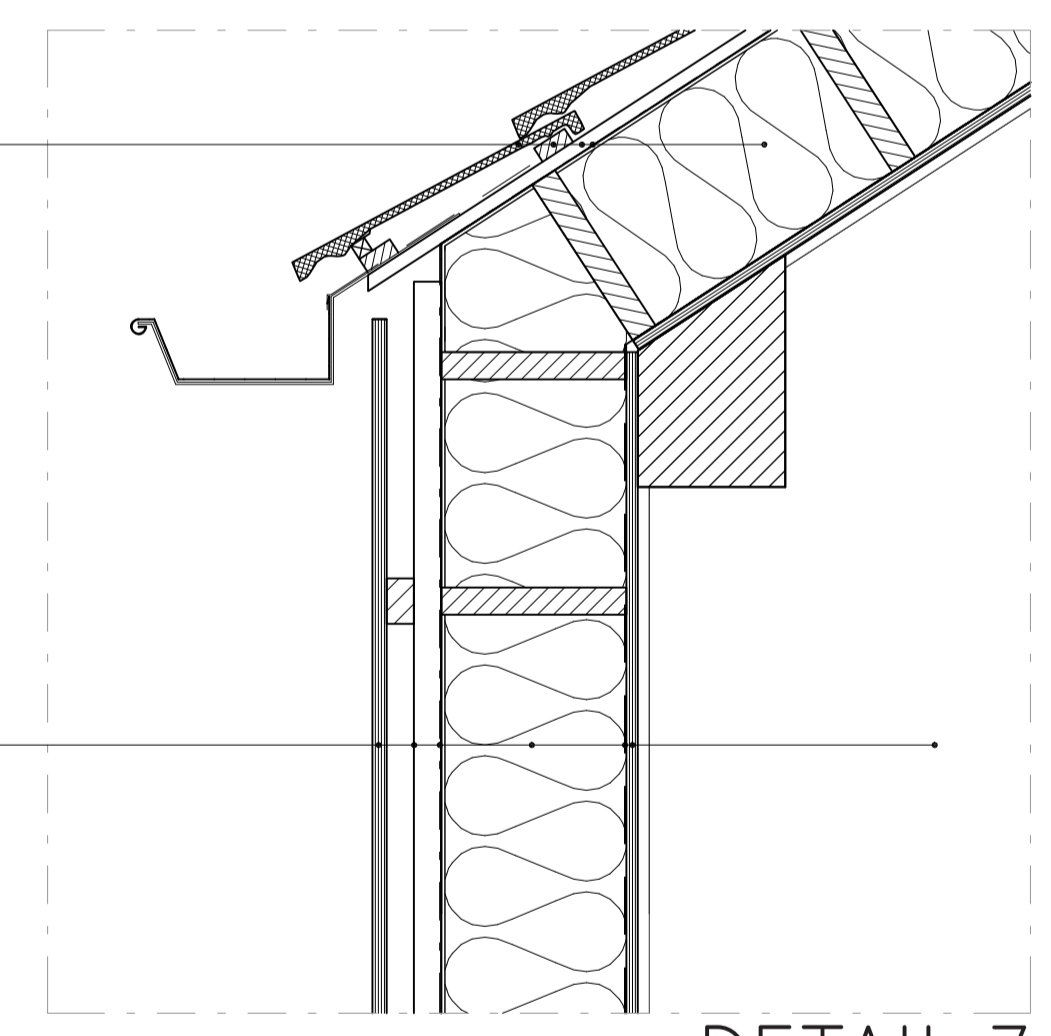


DETAIL 9
SCALE 1:10

Roof tiles:

1. roof tiles
2. roof battens (21 x 48 mm)
3. counter battens (18 x 48 mm)
4. water-resistant and vapor-permeable layer
5. 240 mm mineral wool with wooden framing (36 x 245 mm)

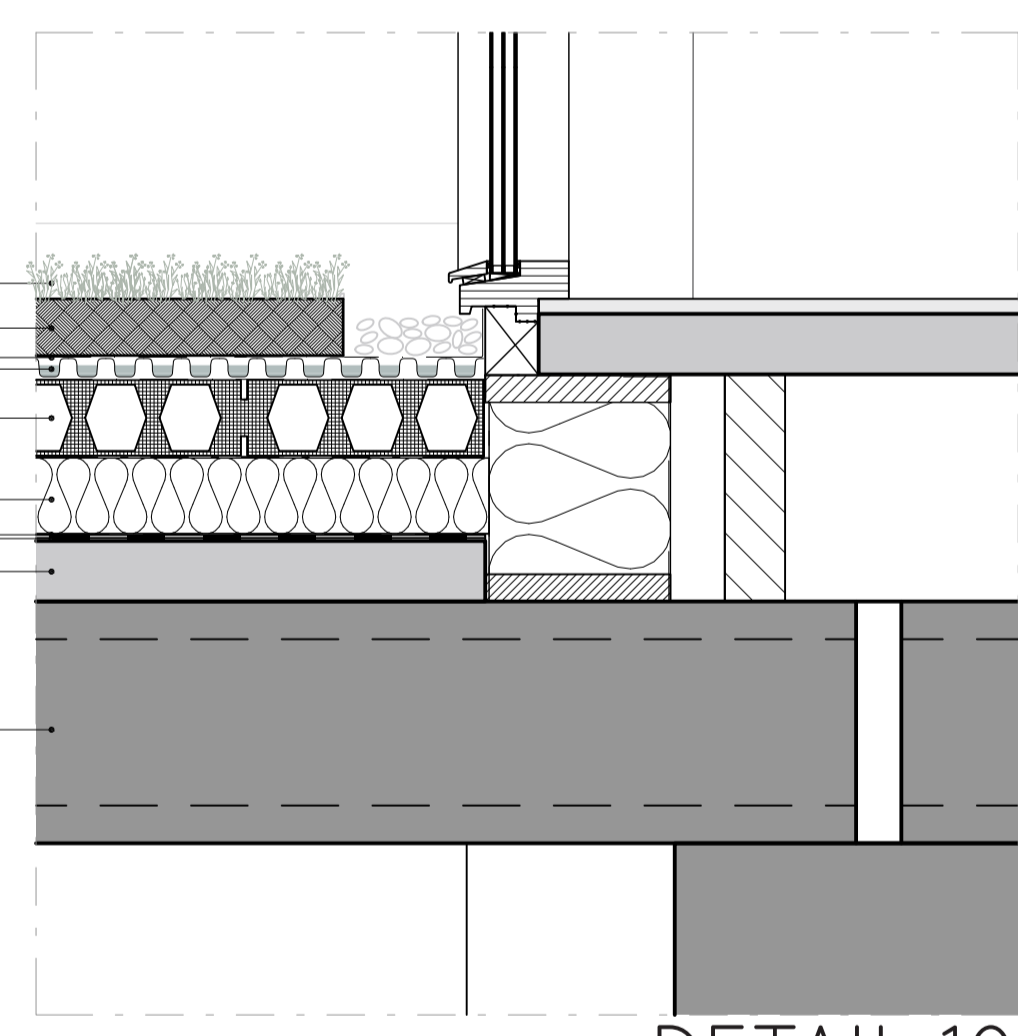
6. vapor barrier
7. 15 mm wooden cladding panel
8. glued laminated pine timber truss



DETAIL 7
SCALE 1:10

Blue/green roof:

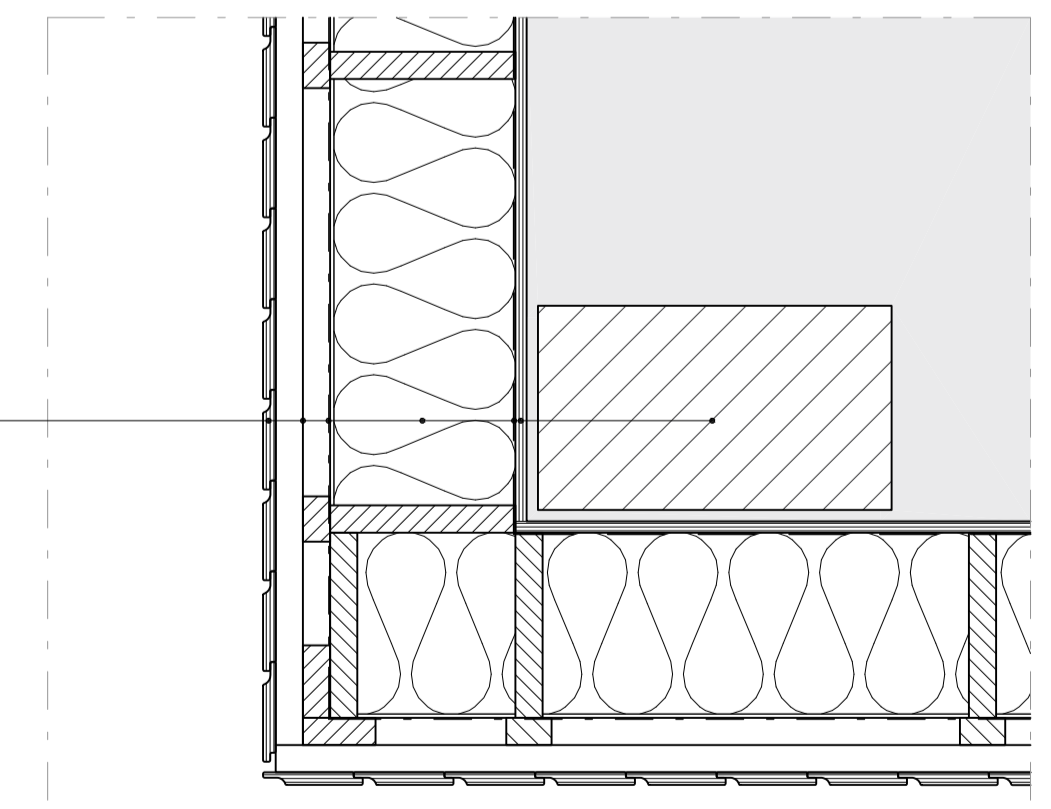
1. pre-grown blanket
2. 75 mm growing media / substrate
3. geotextile filtration fleece
4. 24 mm drainage and reservoir board with drainage to water collection system
5. 100 mm stormwater management system blue roof gogocil wrapped in geotextile filtration fleece
6. water flow reducing layer
7. 100 mm extruded polystyrene (XPS) insulation boards
8. protection sheet with torched-lap joints
9. 6 mm Hotmelt waterproofing system
10. 80 mm reinforced screed
11. 320 mm hollow core slab floor



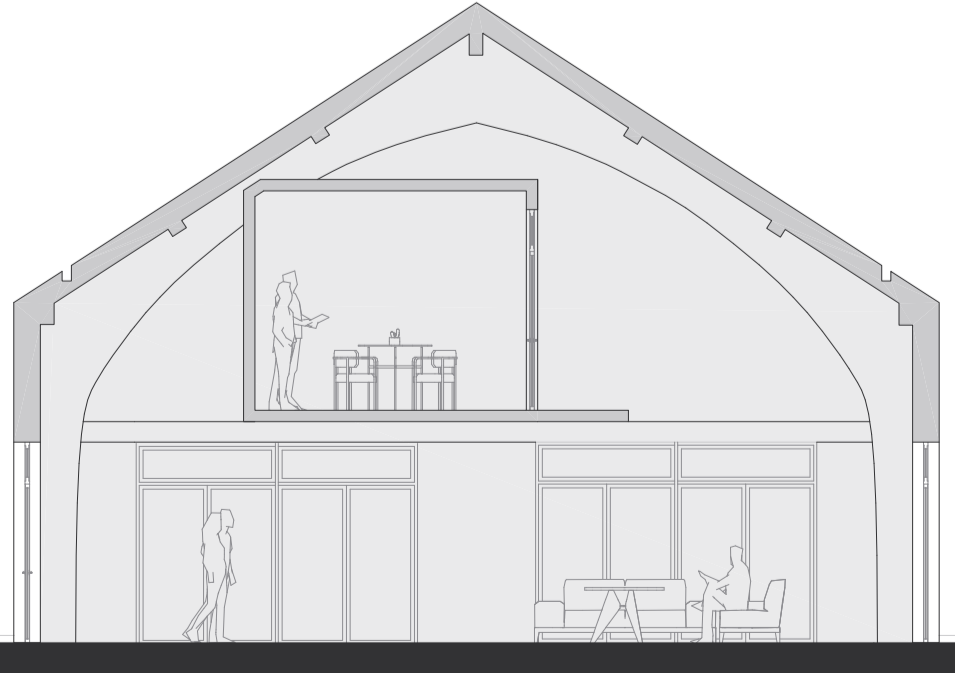
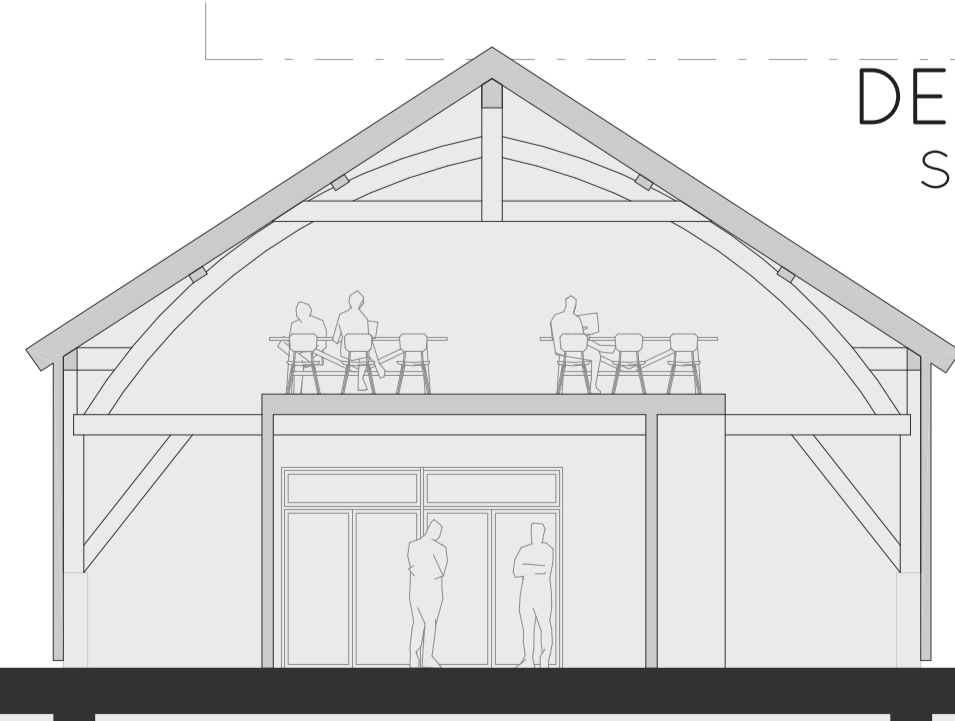
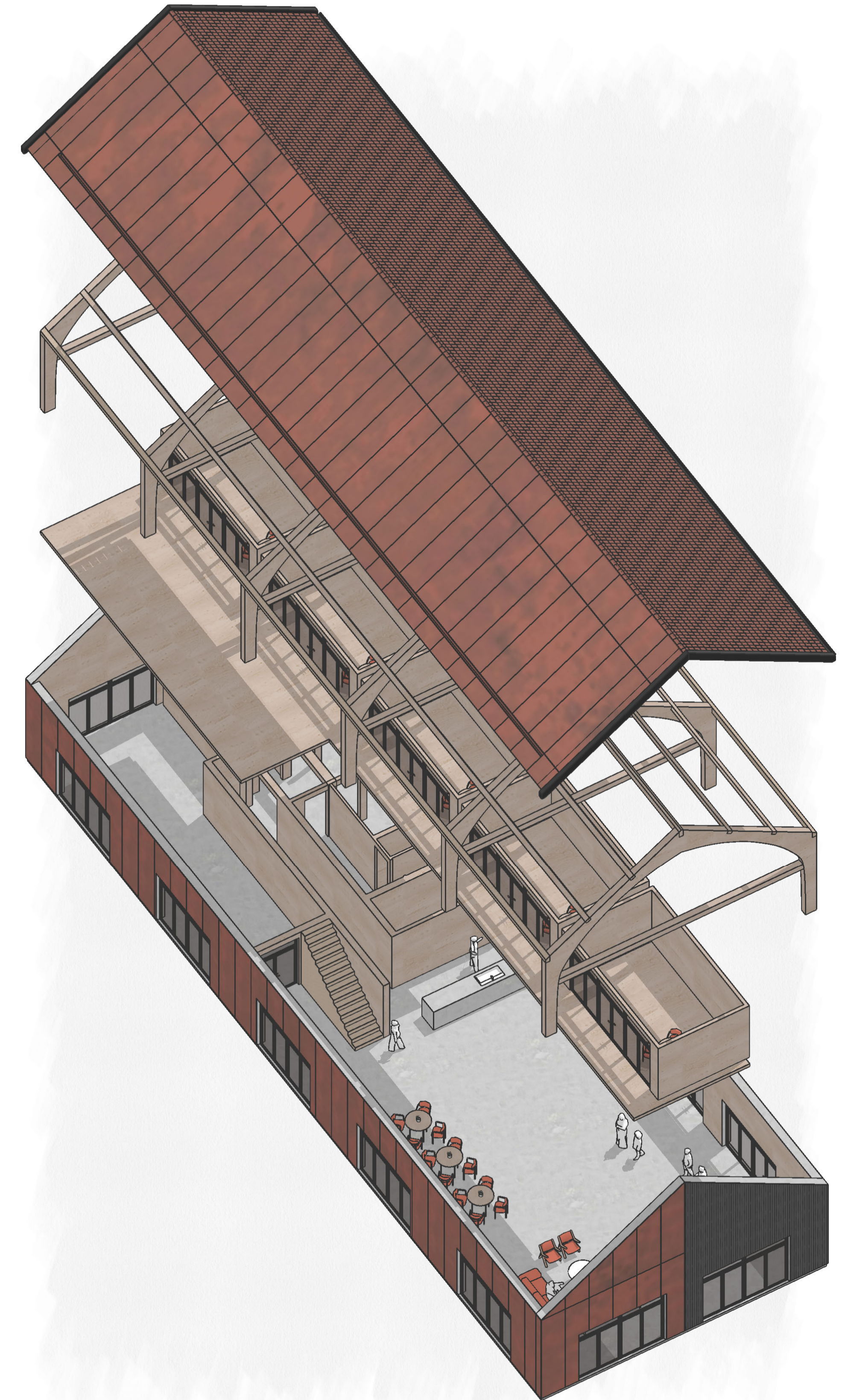
DETAIL 10
SCALE 1:10

Wooden facade:

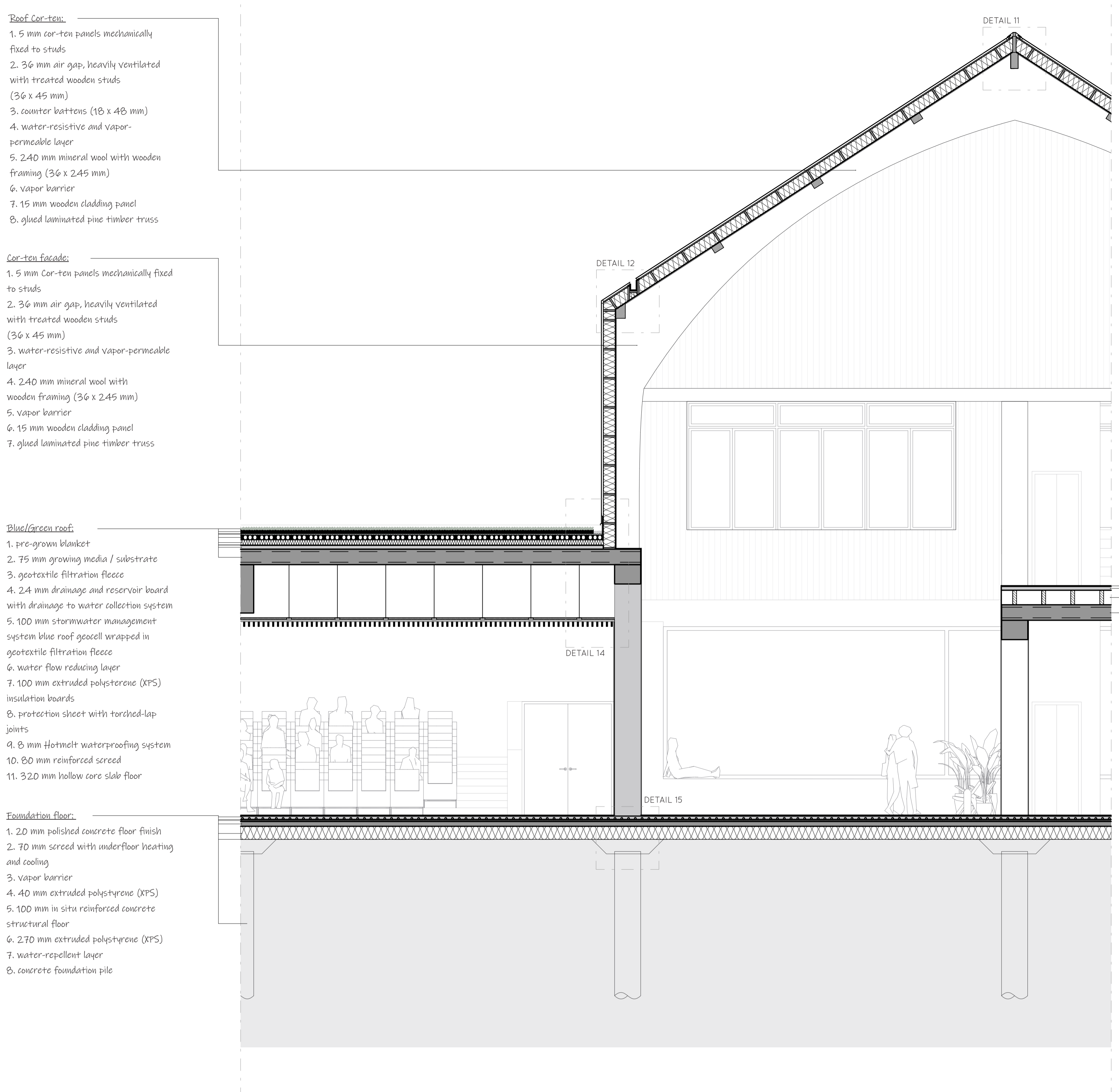
1. 14 mm wooden panels
2. 72 mm air gap, heavily ventilated with treated wooden framing (36 x 60 mm)
3. water-resistant and vapor-permeable layer
4. 240 mm mineral wool with wooden framing (36 x 245 mm)
5. vapor barrier
6. 15 mm wooden cladding panel
7. glued laminated pine timber truss



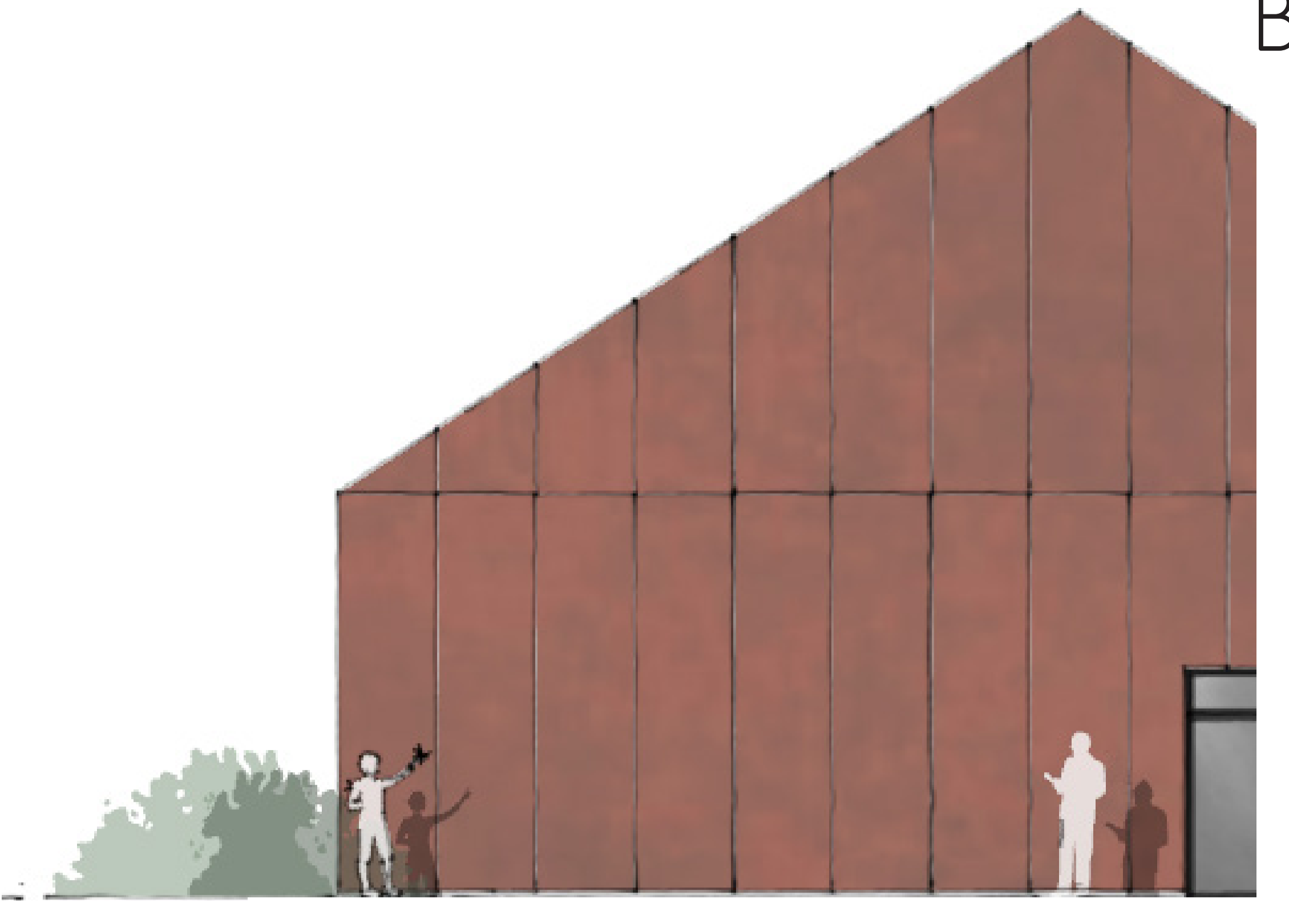
DETAIL 8
SCALE 1:10



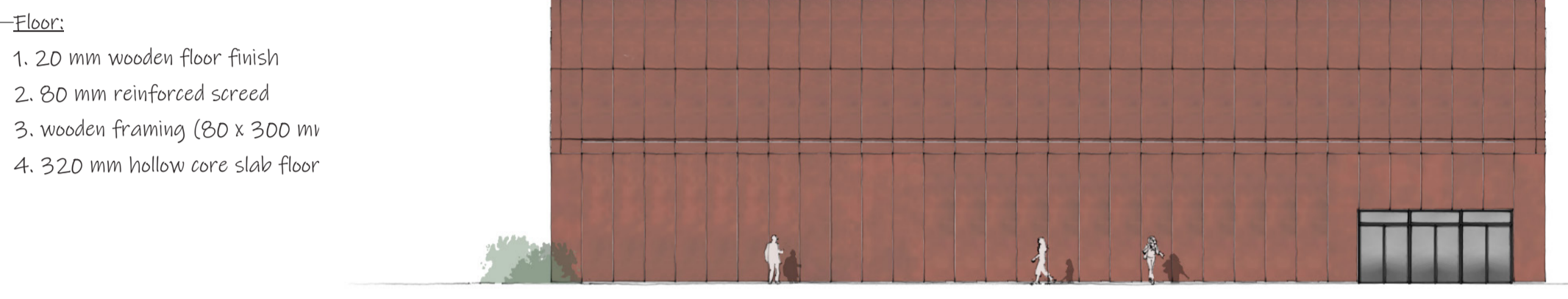
ENTRANCE BARN



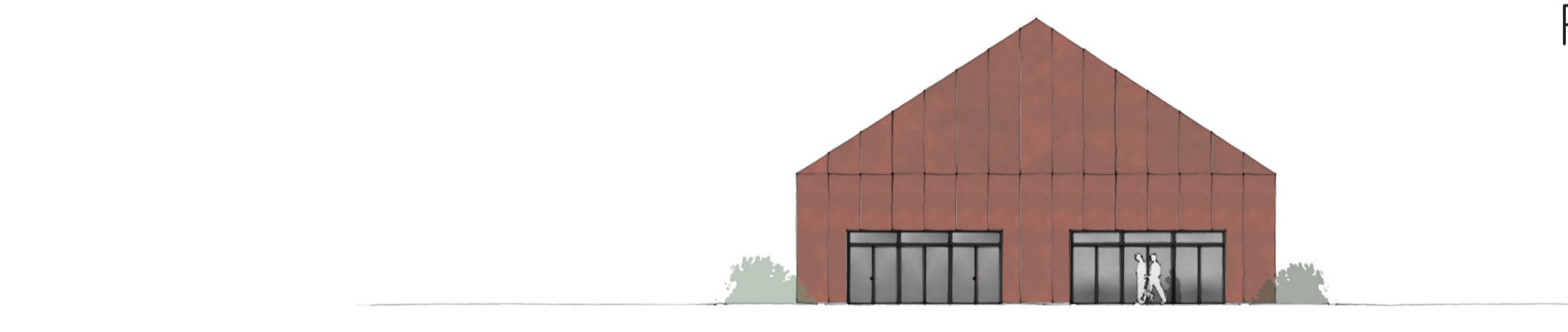
FRAGMENT 3
SCALE 1:50



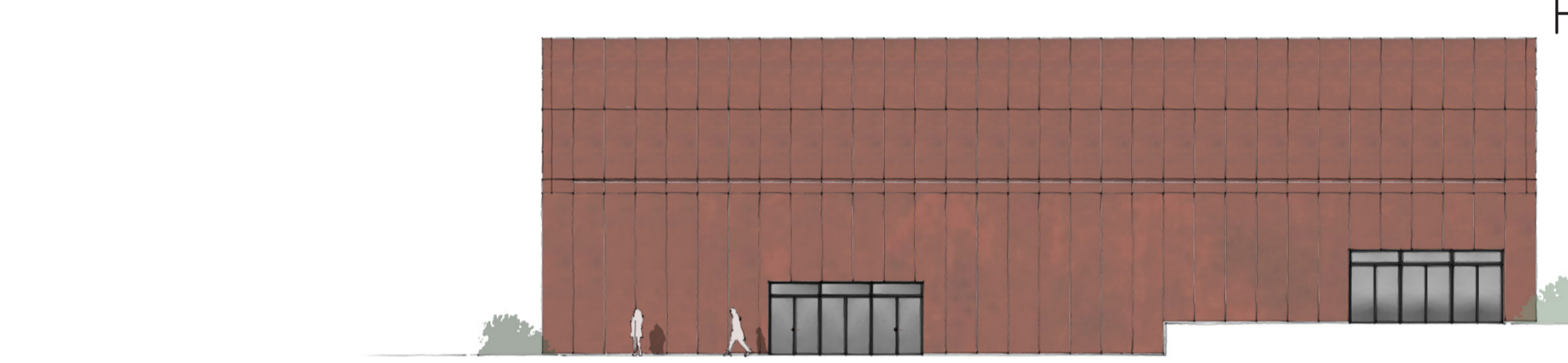
FACADE SE
SCALE 1:50



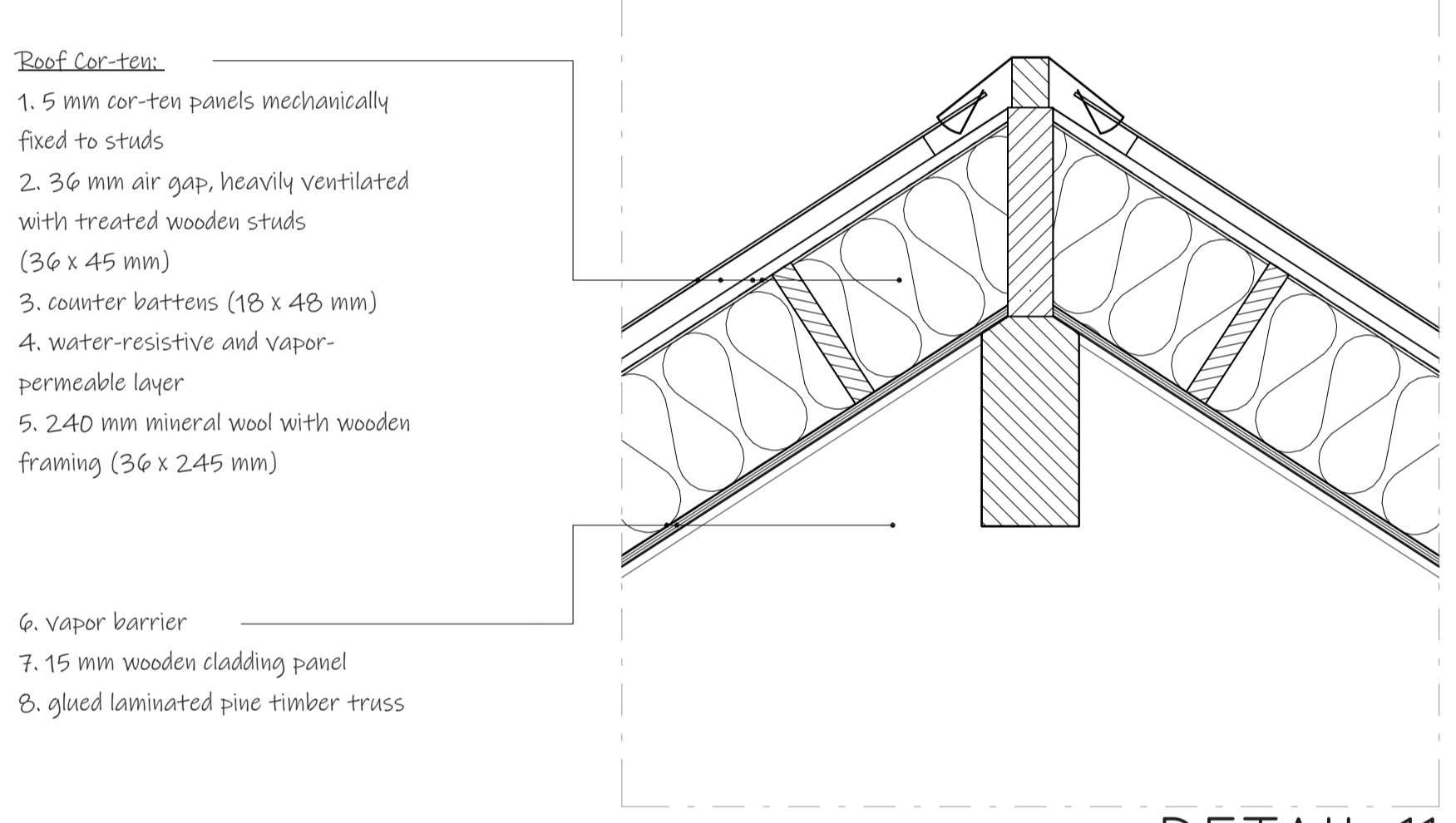
FACADE SW
SCALE 1:200



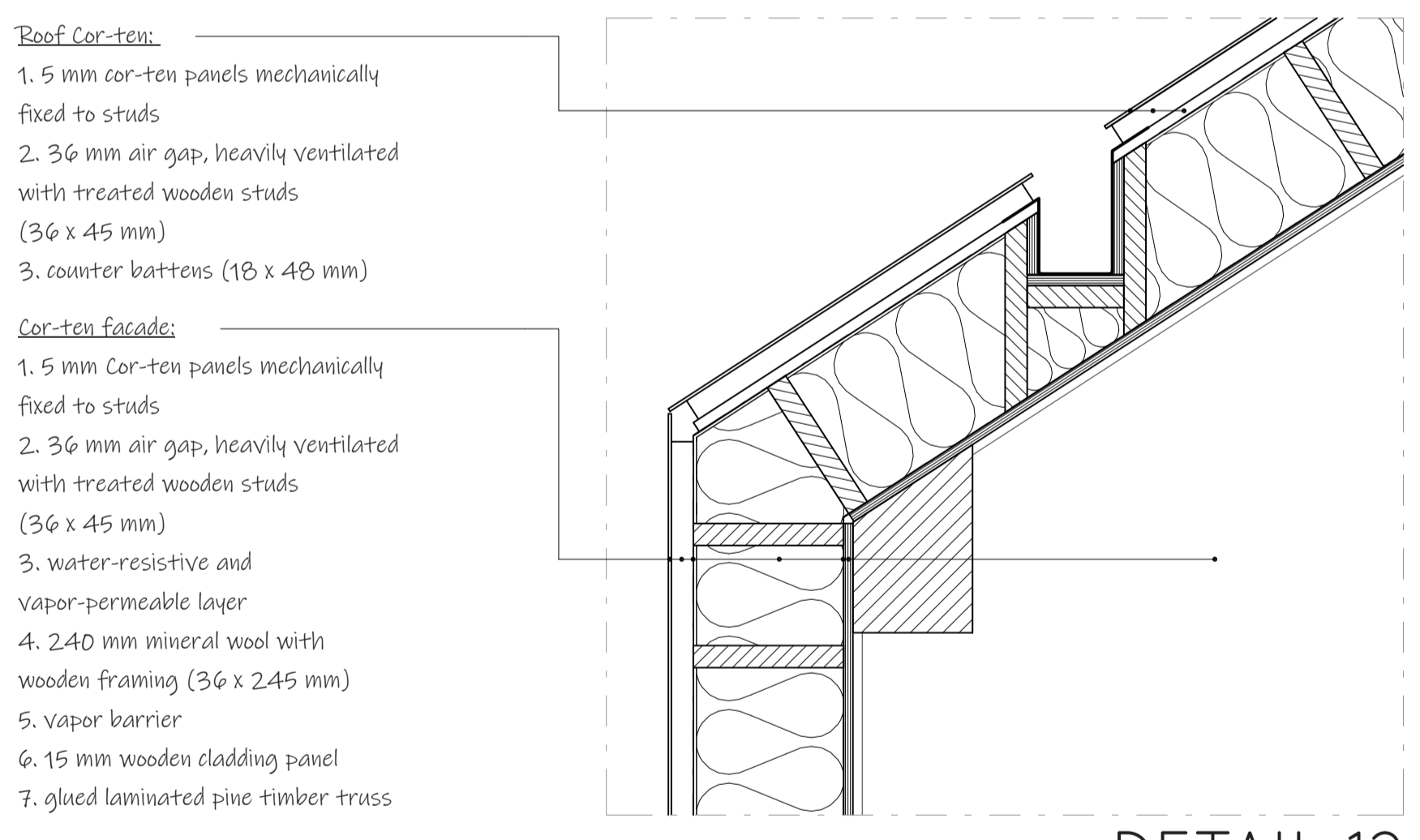
FACADE NW
SCALE 1:200



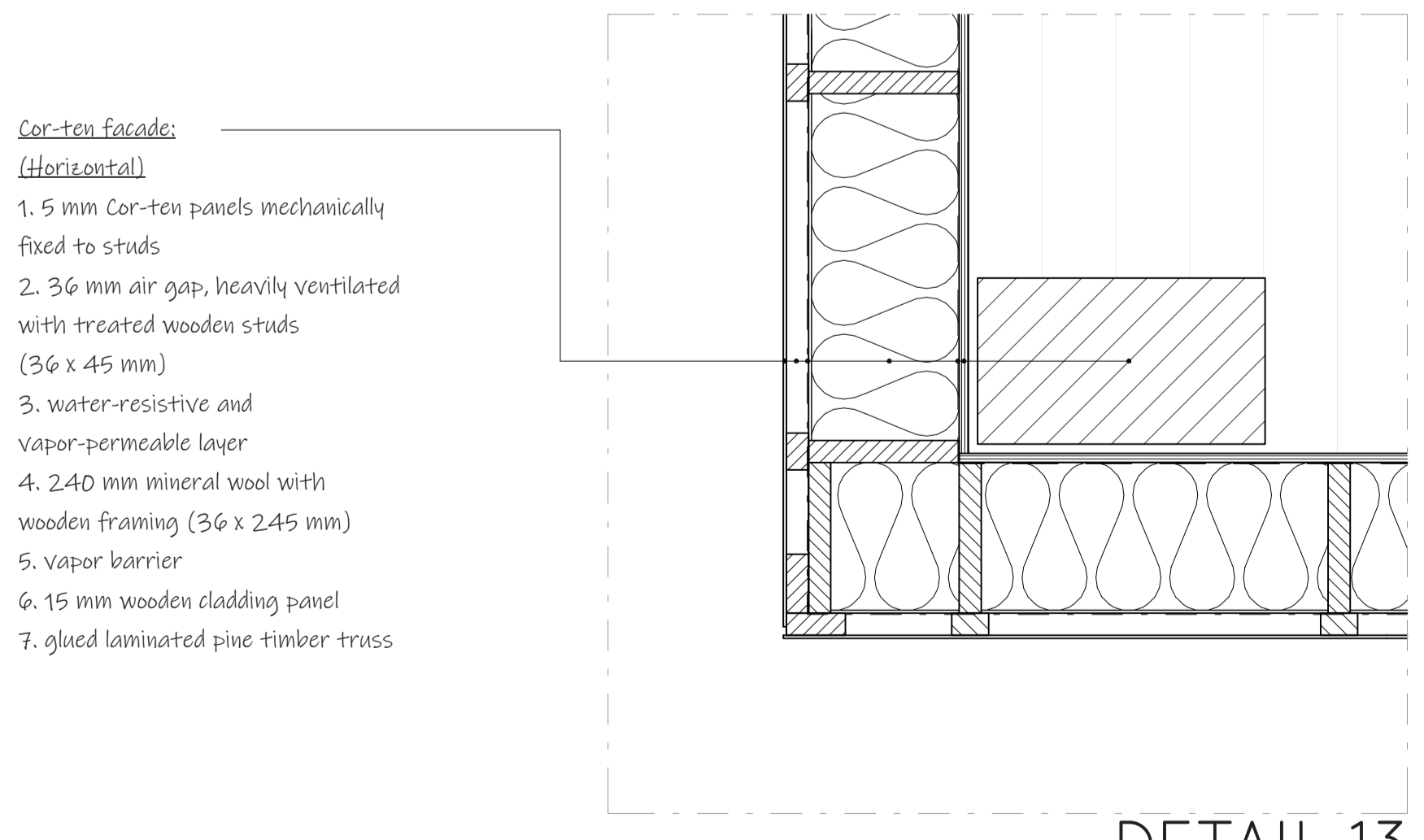
FACADE NE
SCALE 1:200



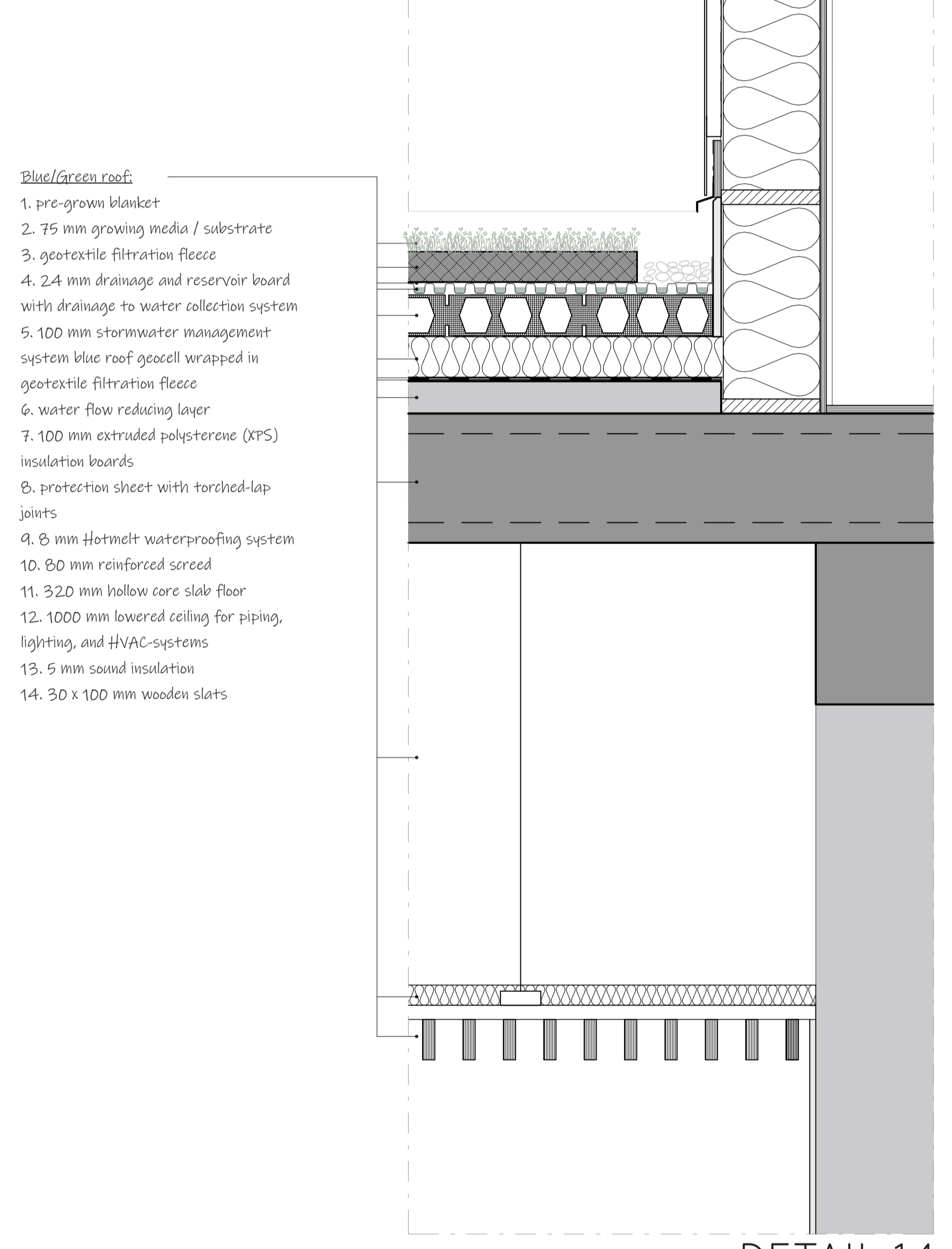
DETAIL 11
SCALE 1:10



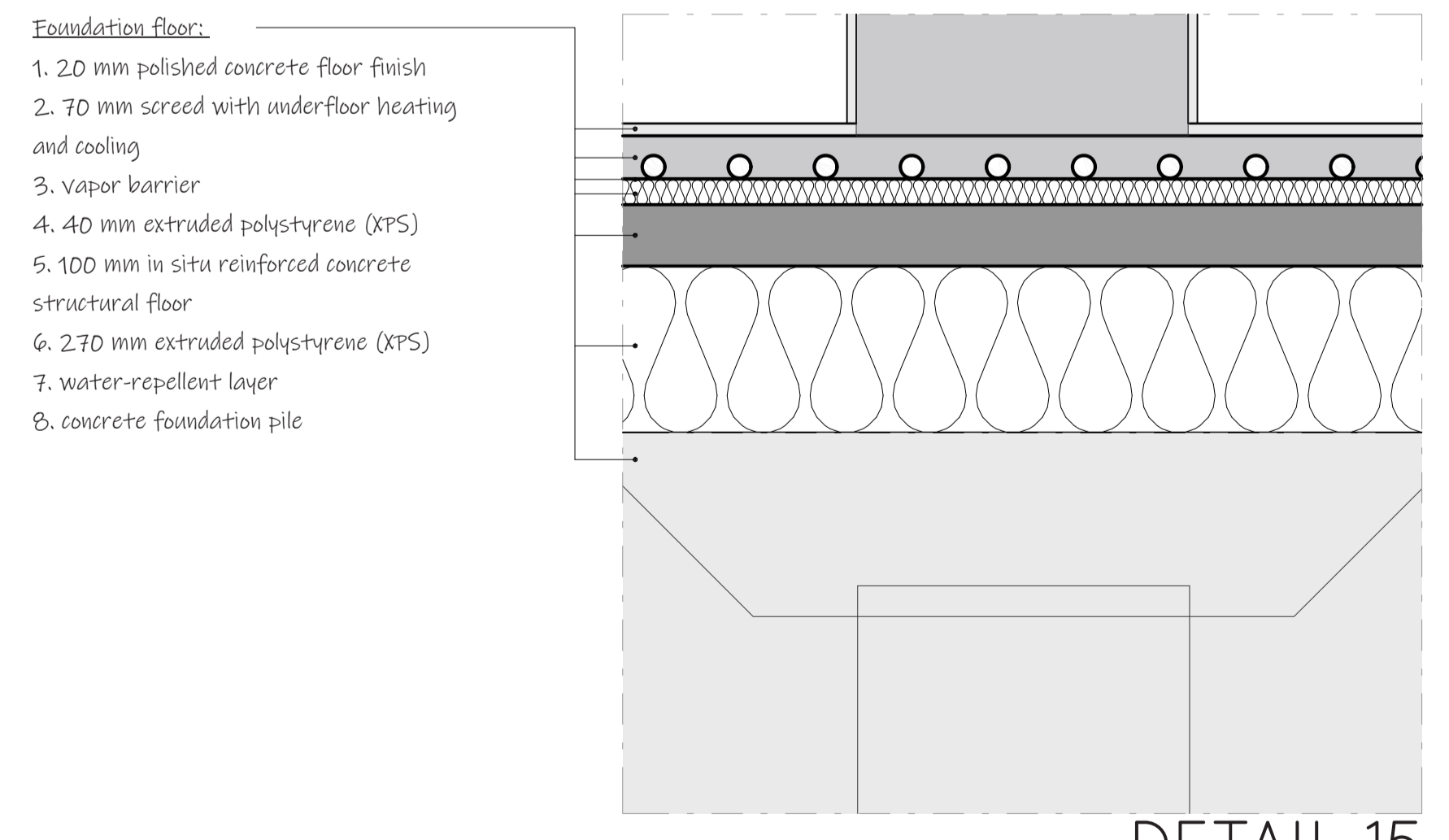
DETAIL 12
SCALE 1:10



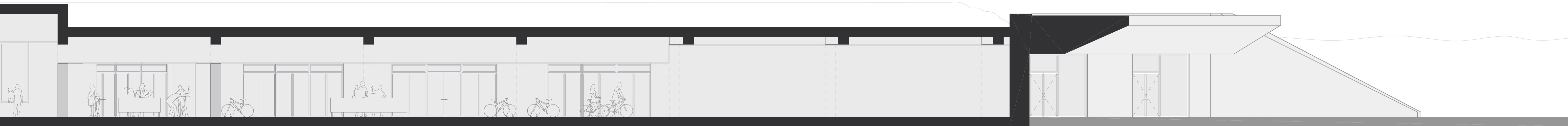
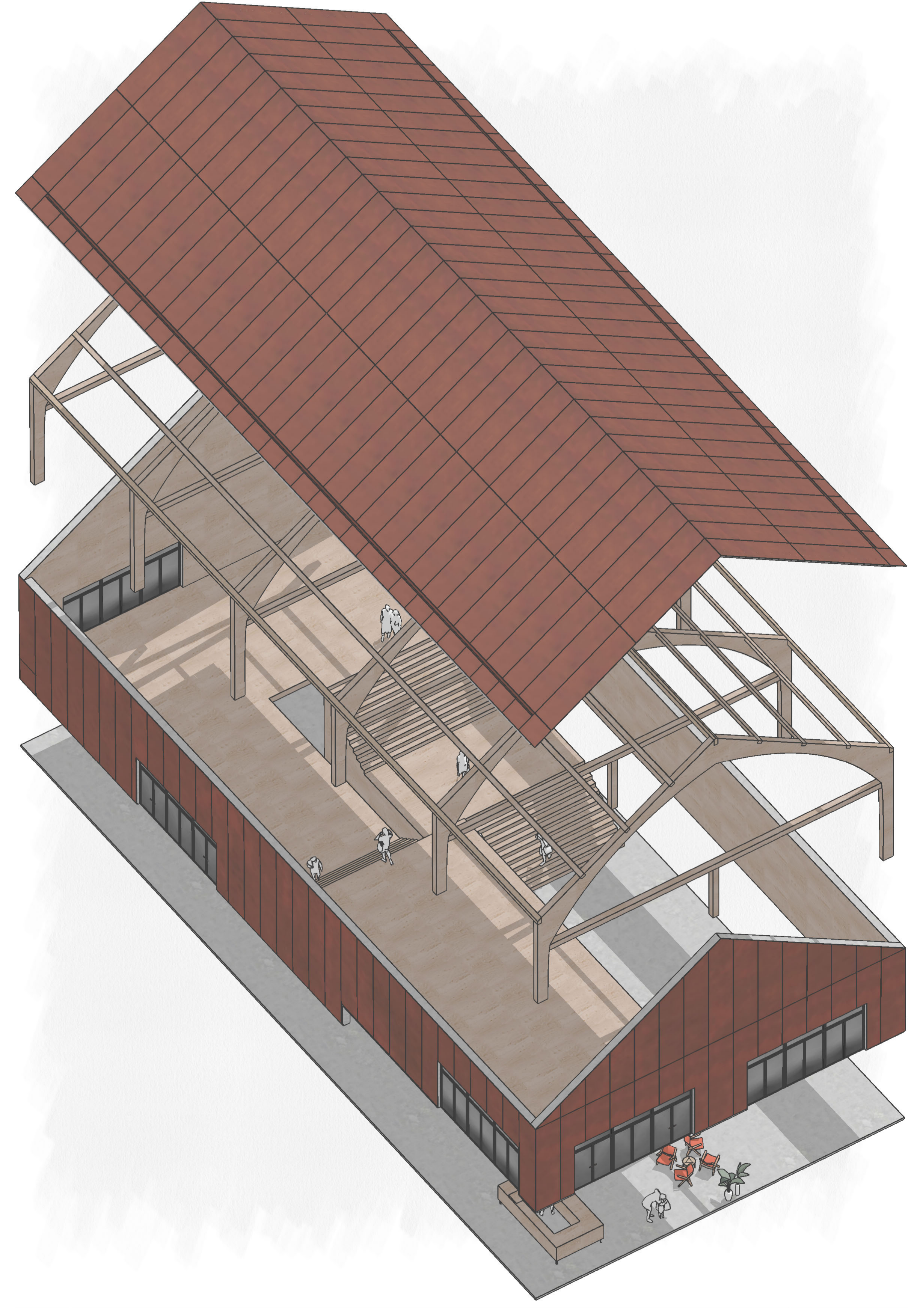
DETAIL 13
SCALE 1:10



DETAIL 14
SCALE 1:10



DETAIL 15
SCALE 1:10



SECTION
SCALE 1:100