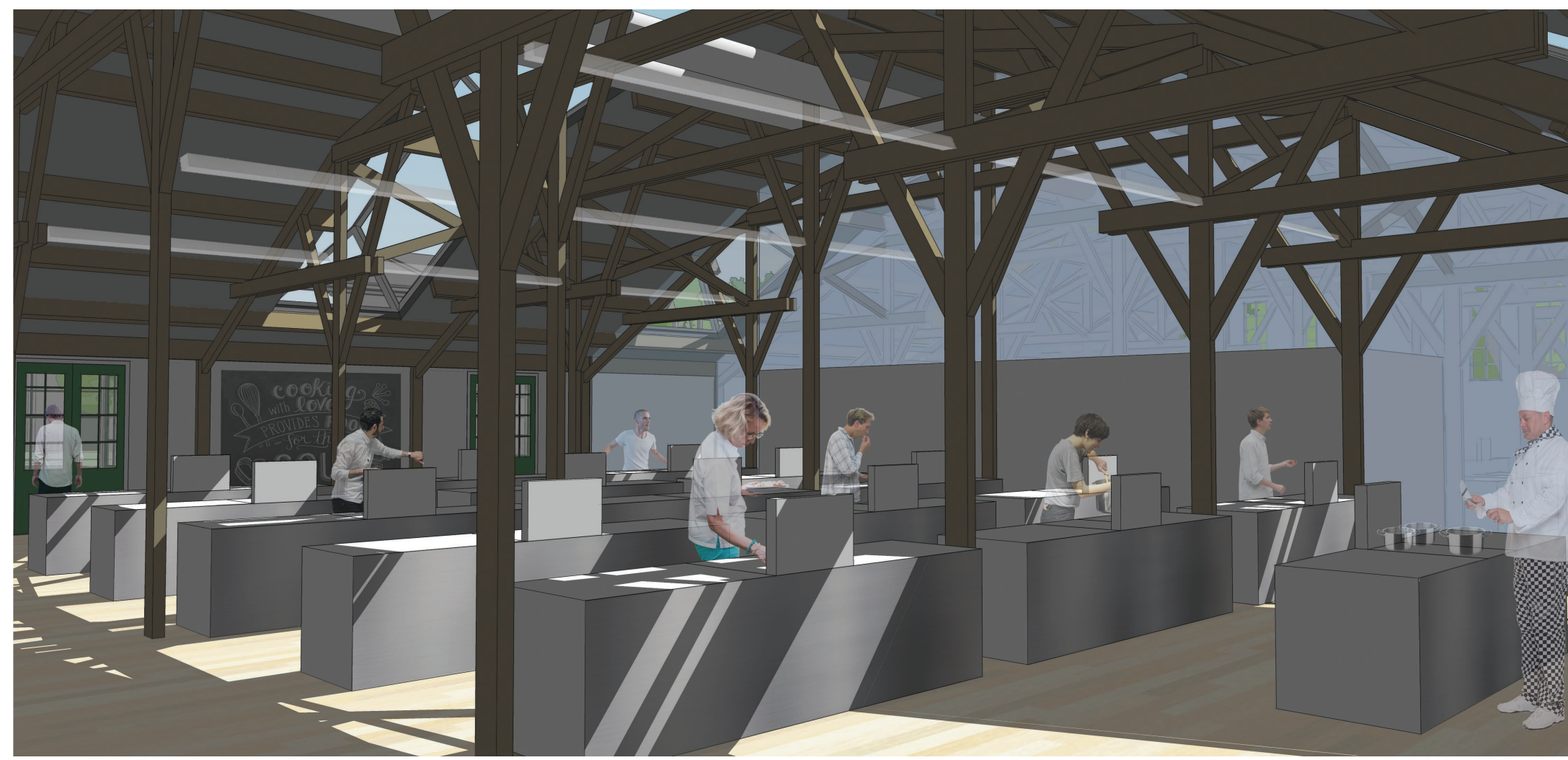


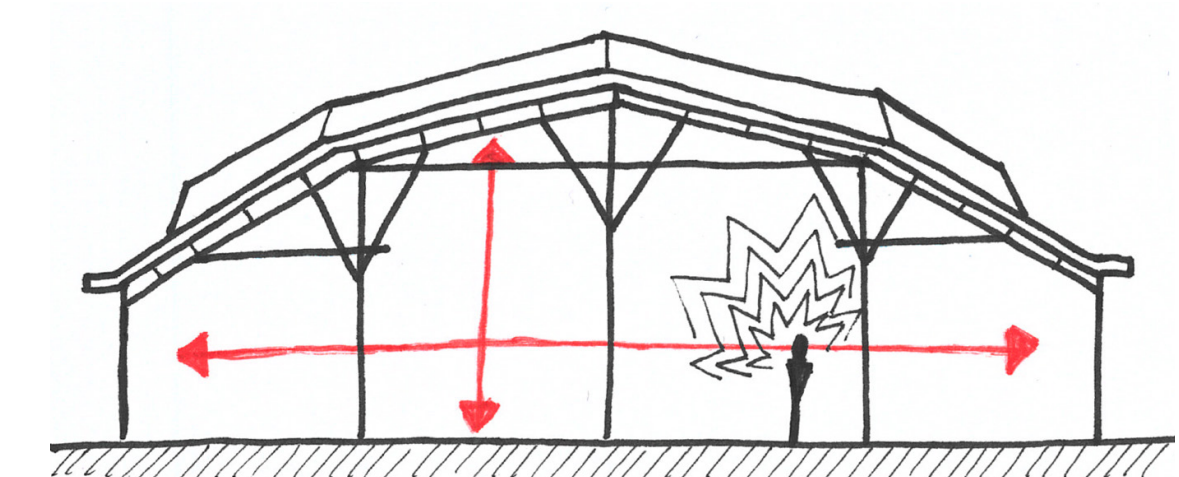
Washing hall



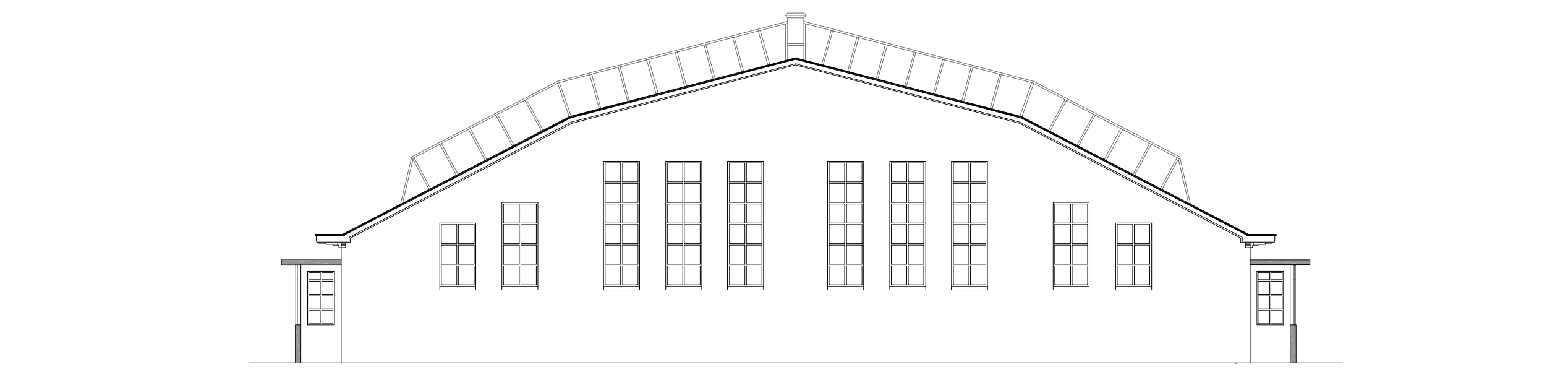
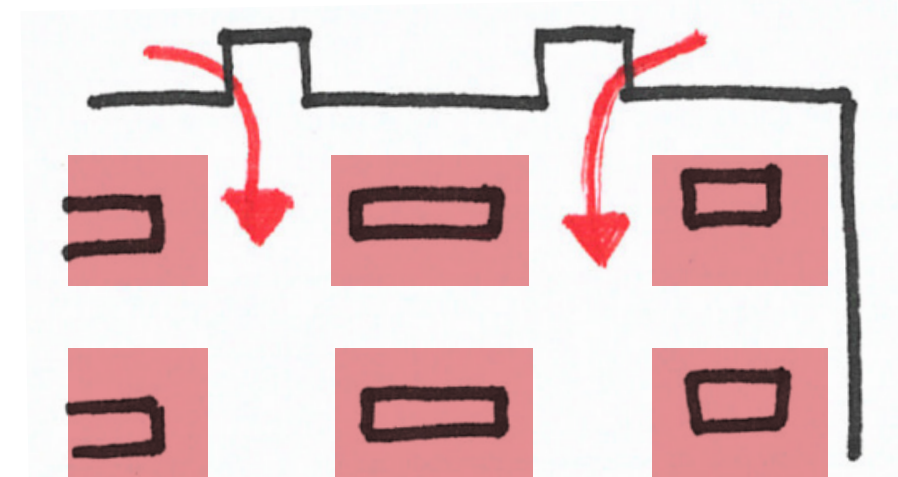
Model



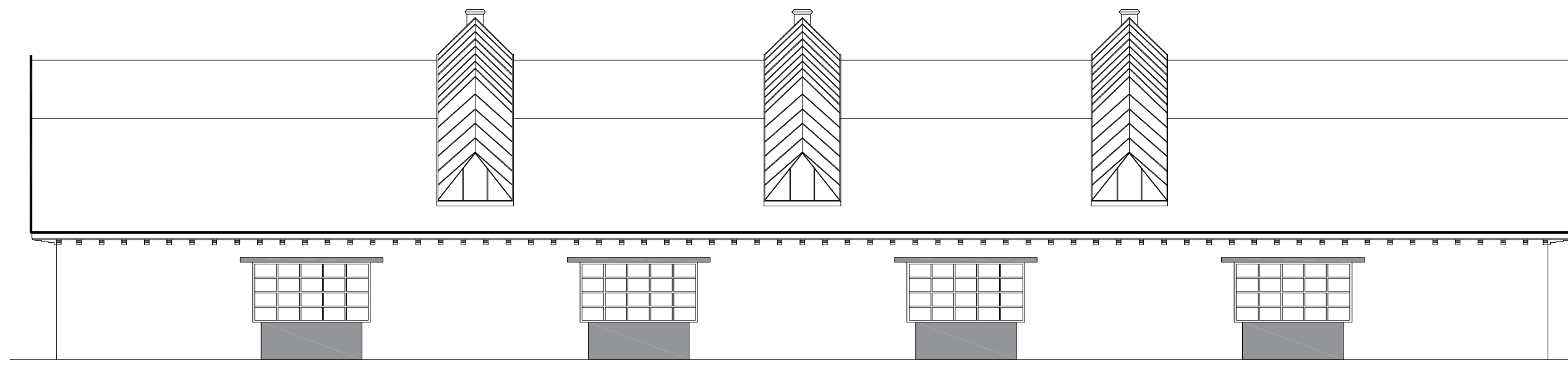
Interior impression



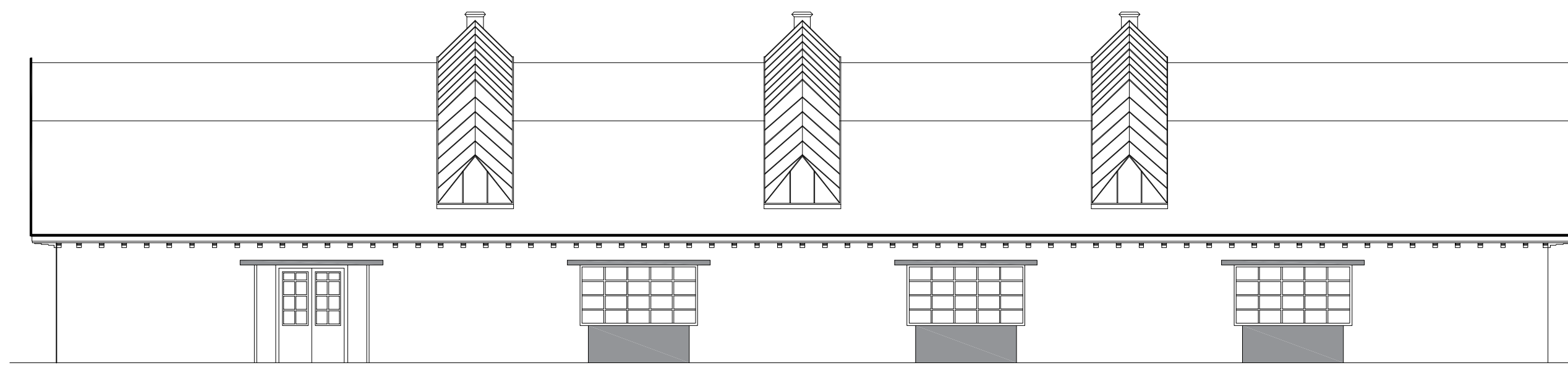
Cultural values



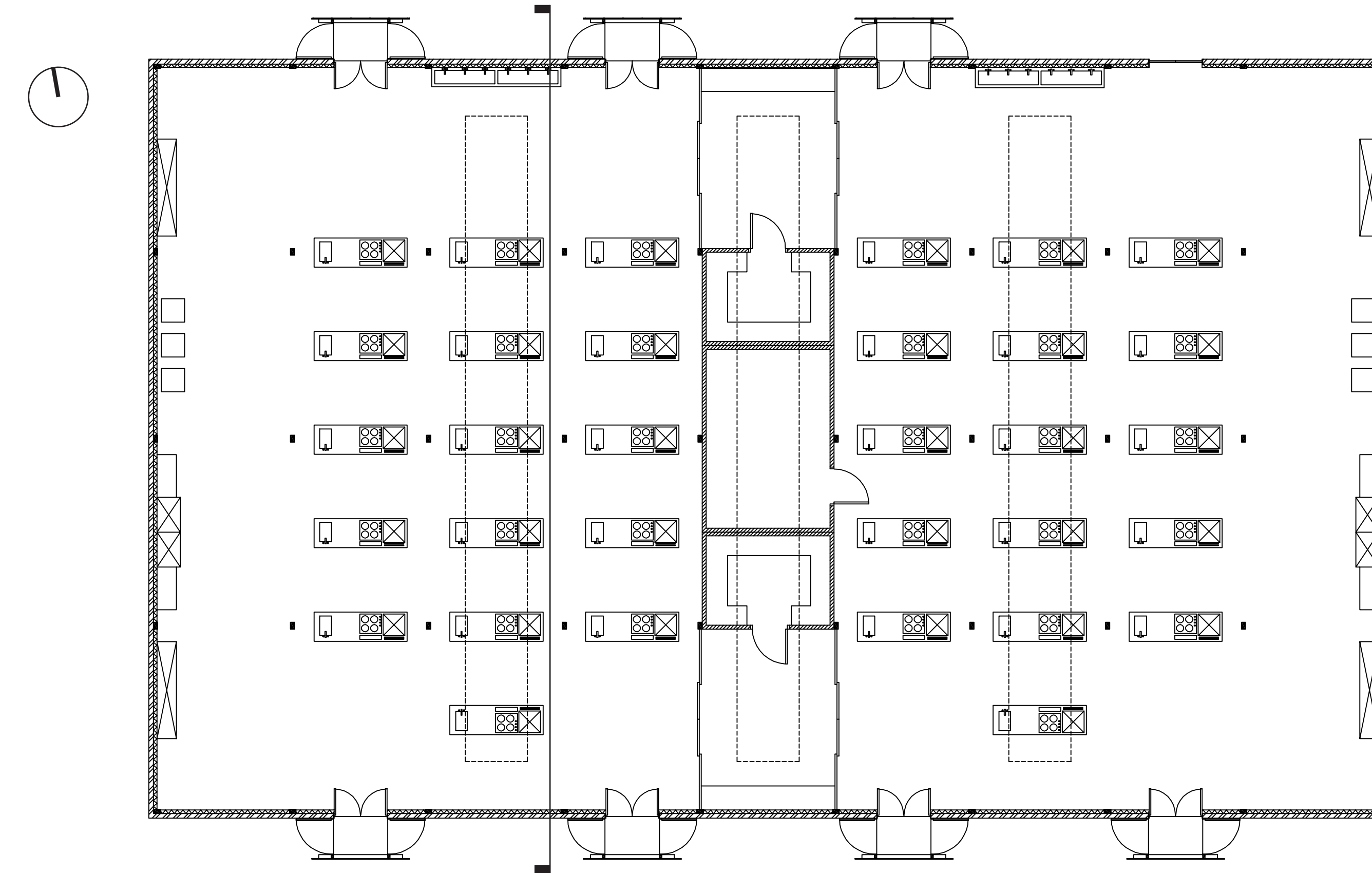
East and West elevation 1:100



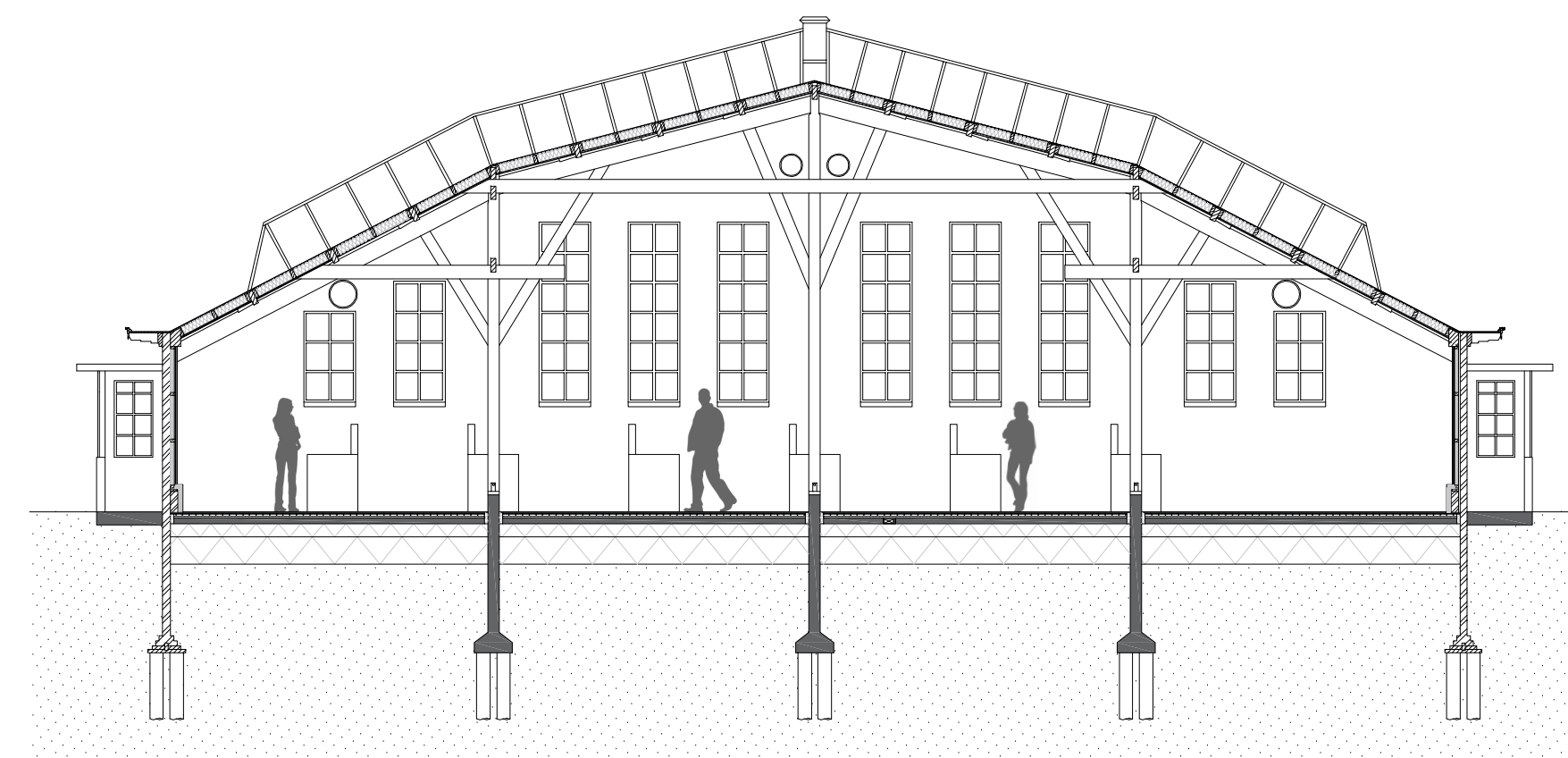
South elevation 1:100



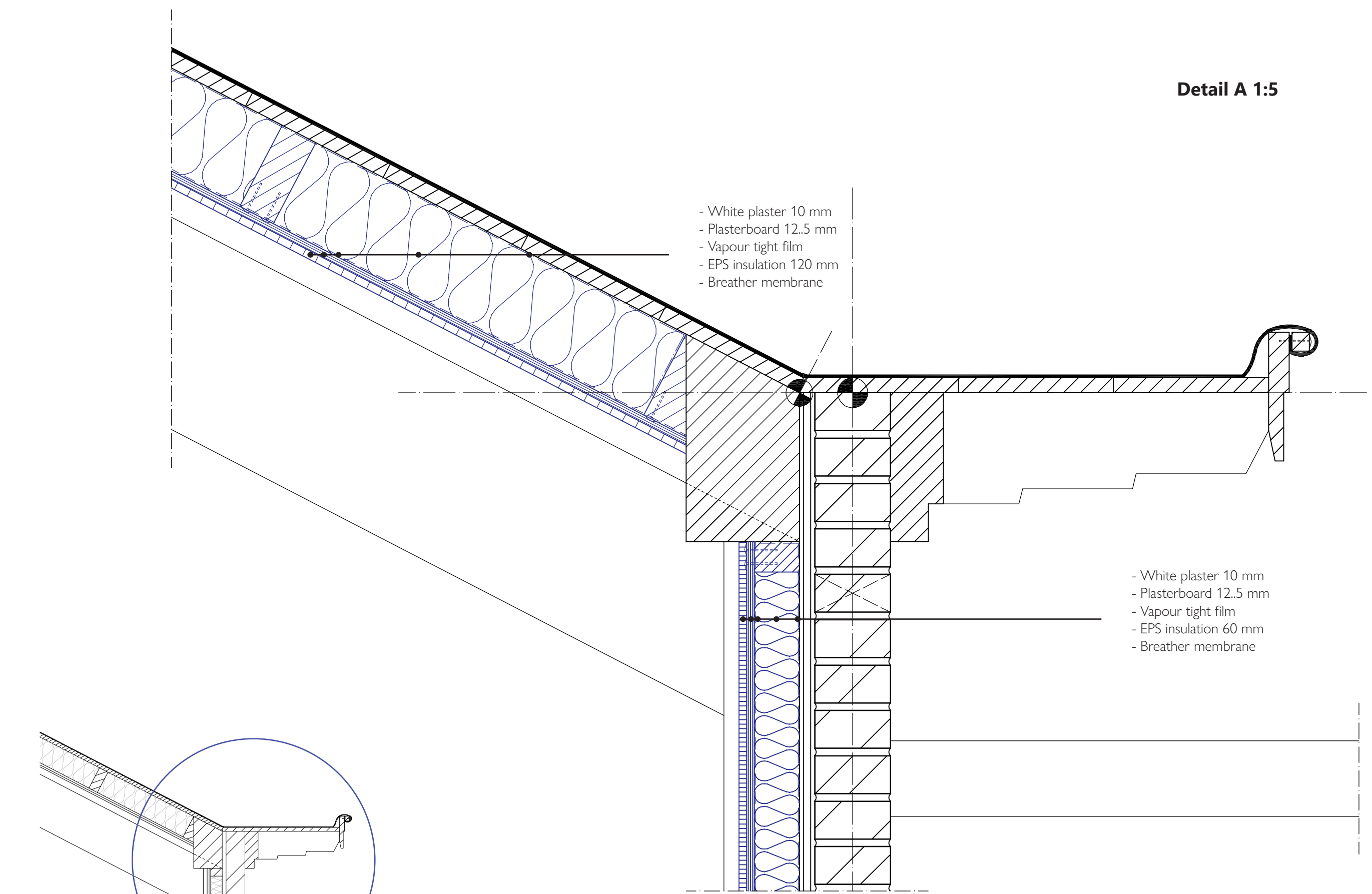
North elevation 1:100



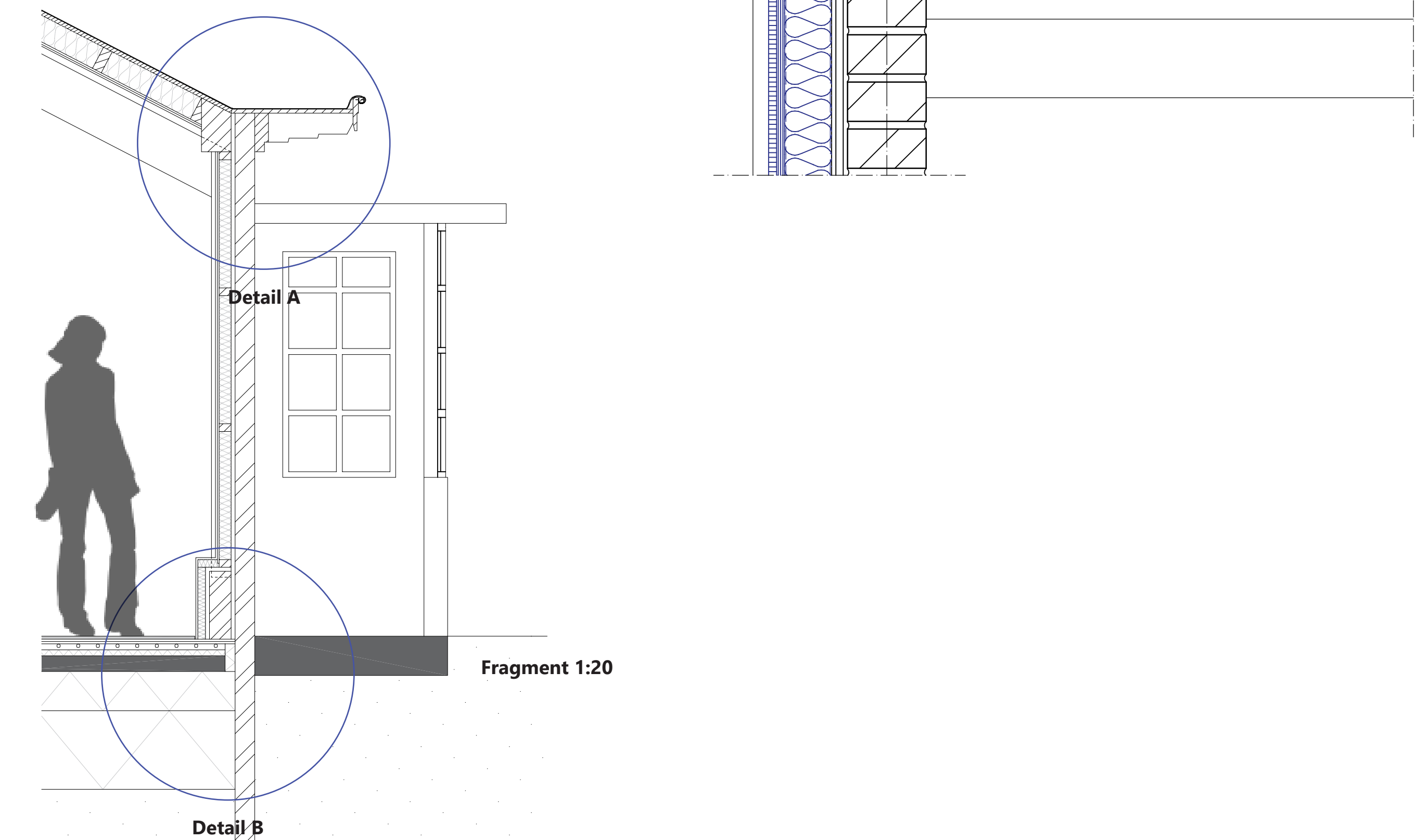
Floor plan 1:100



Cross-section 1:100



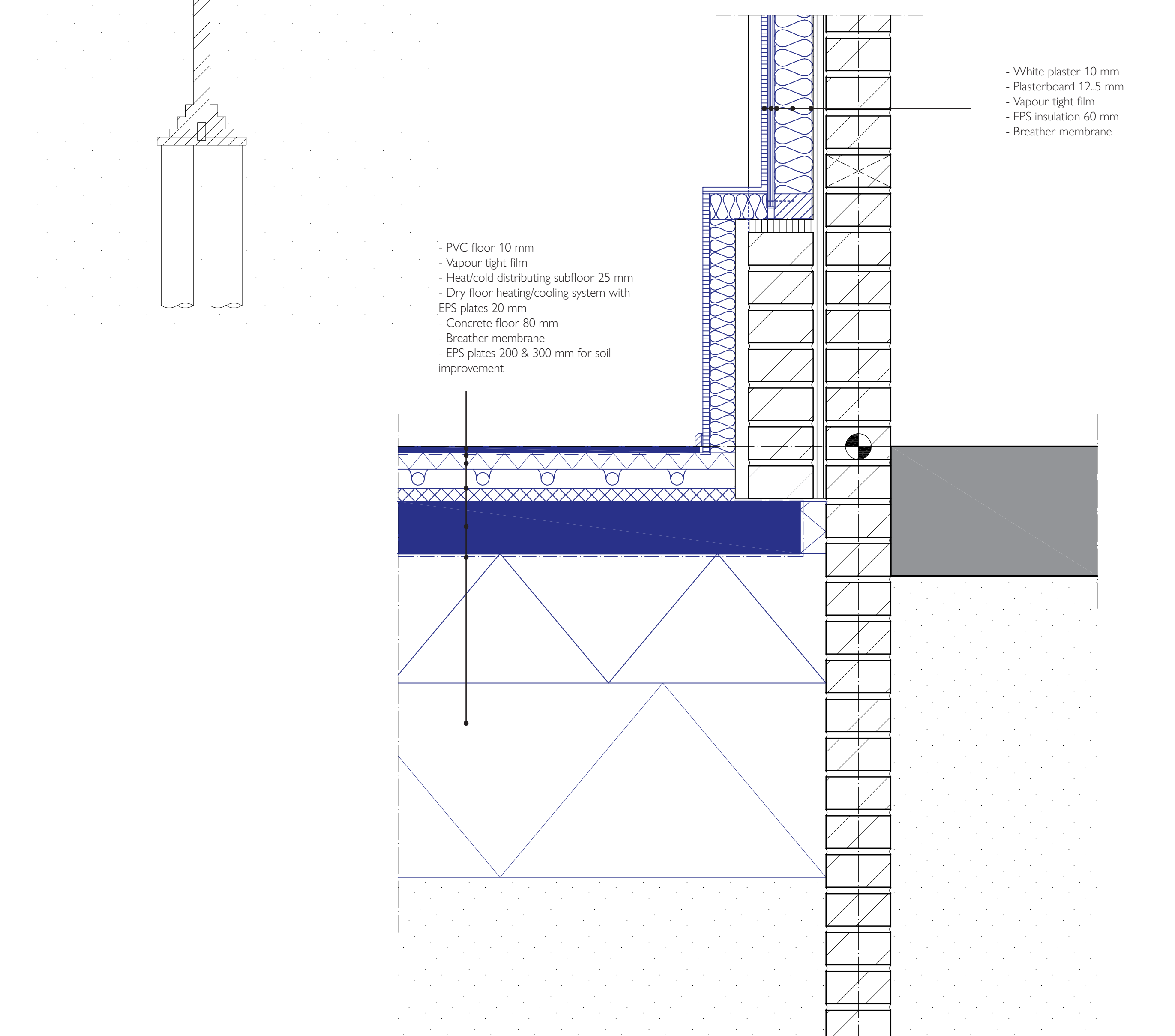
Detail A 1:5



Detail A

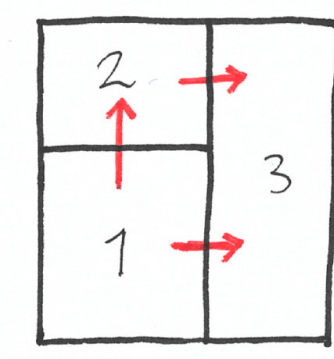
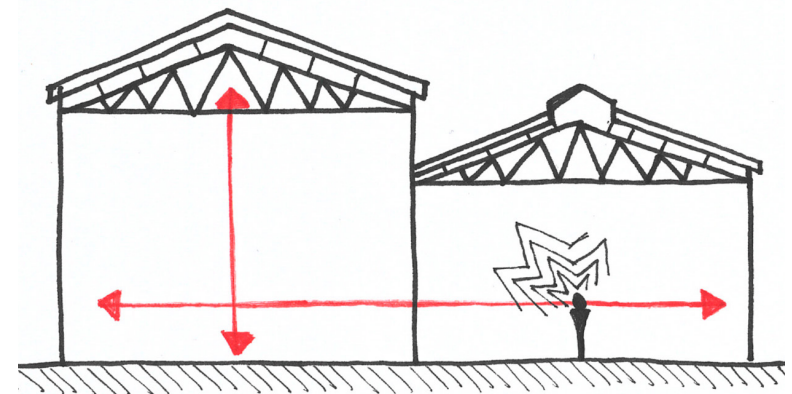
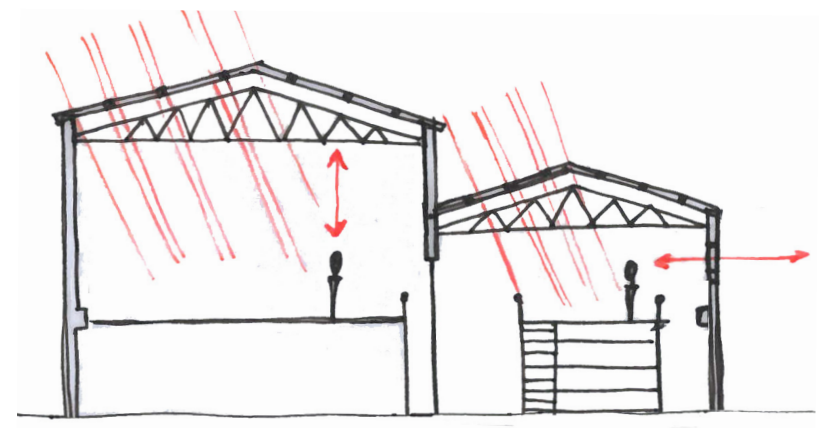
Fragment 1:20

Detail B



Detail B 1:5

Heat treatment building



Model

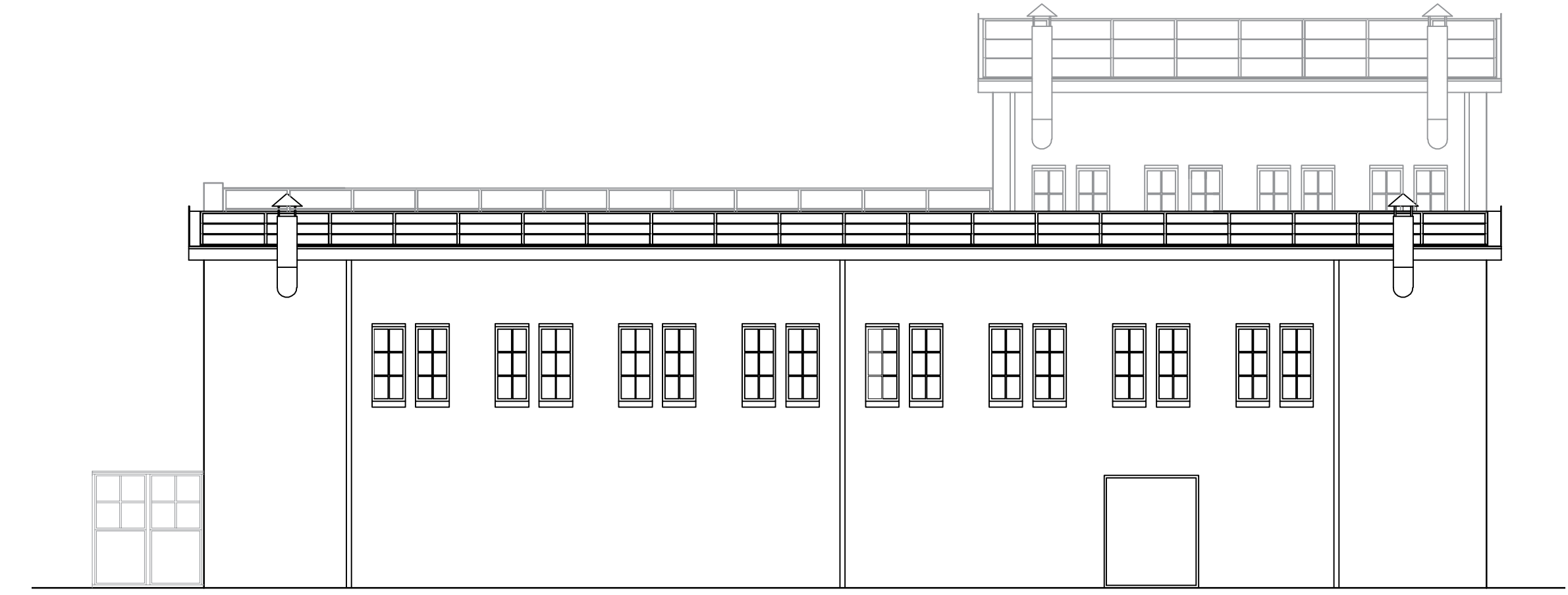
Cultural values



Interior impressions



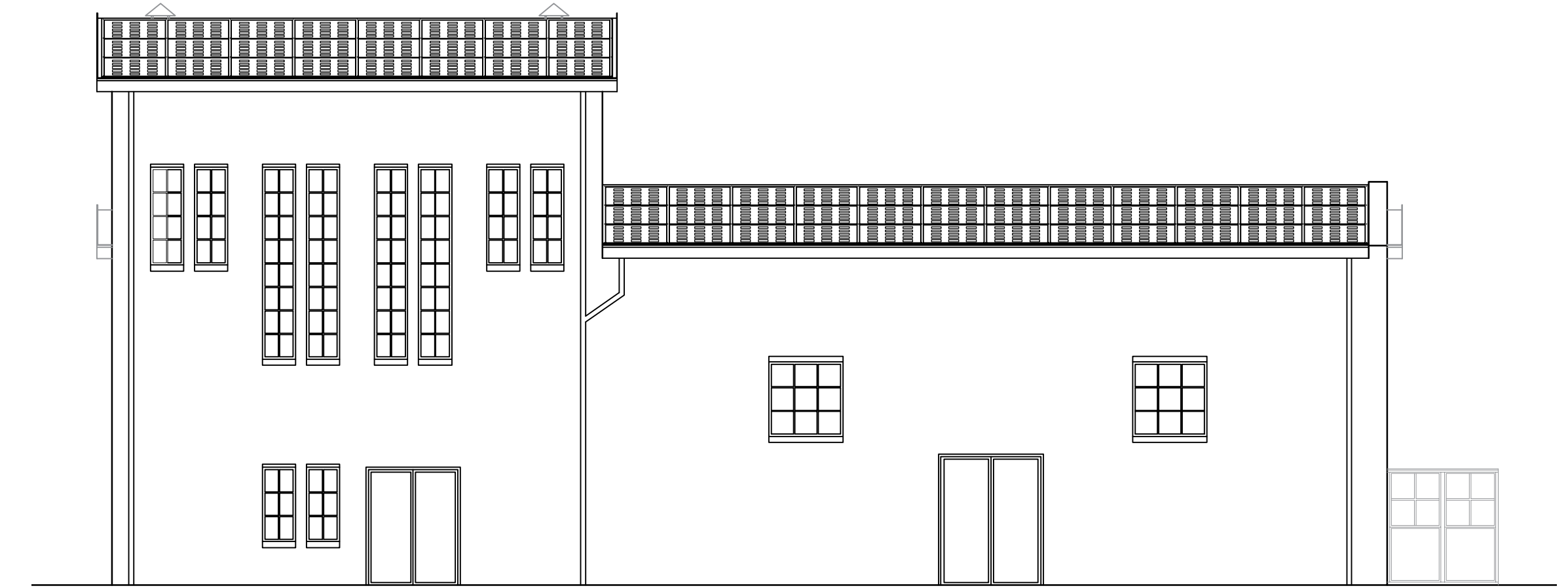
East elevation 1:100



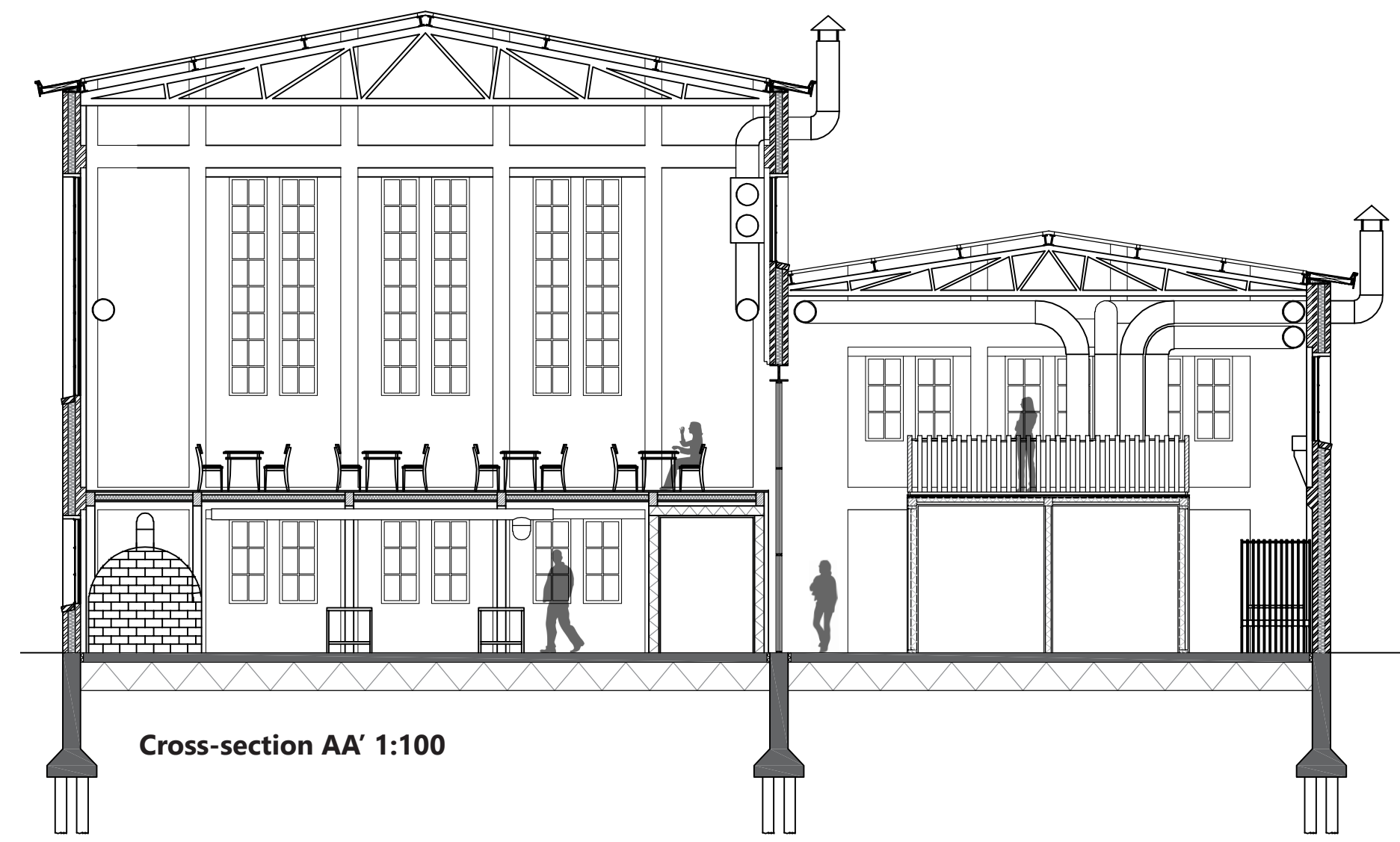
North elevation 1:100



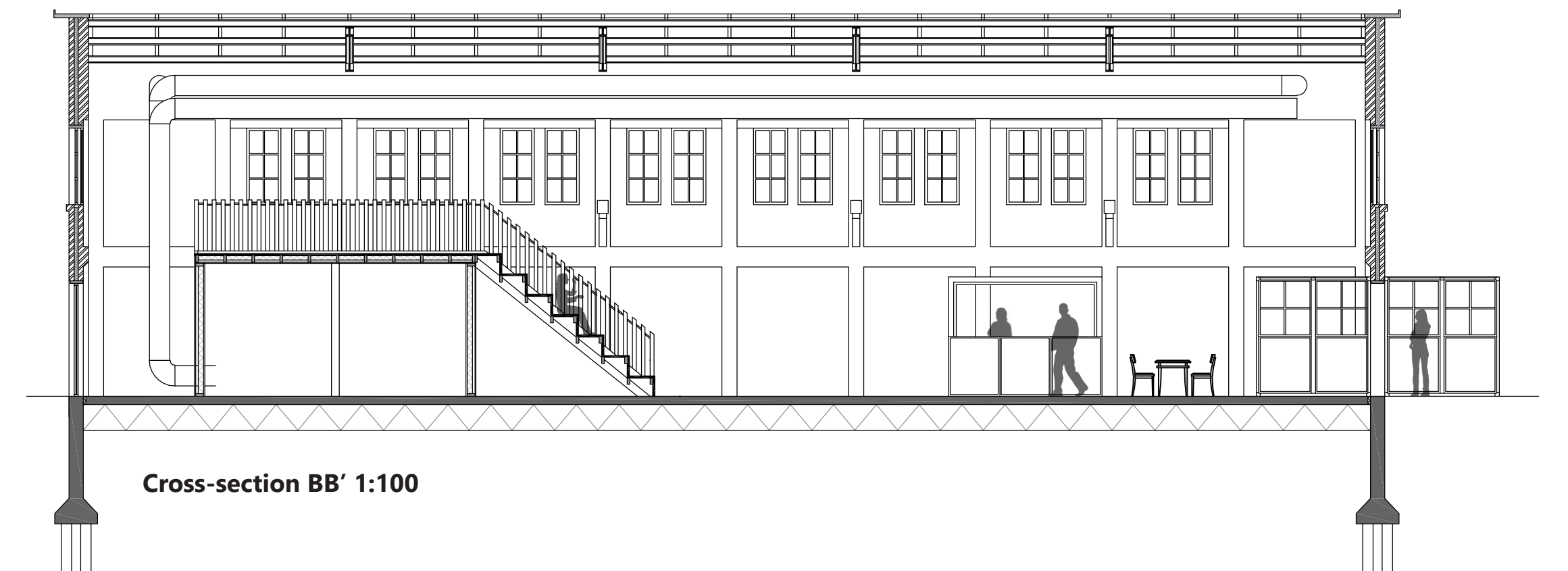
West elevation 1:100



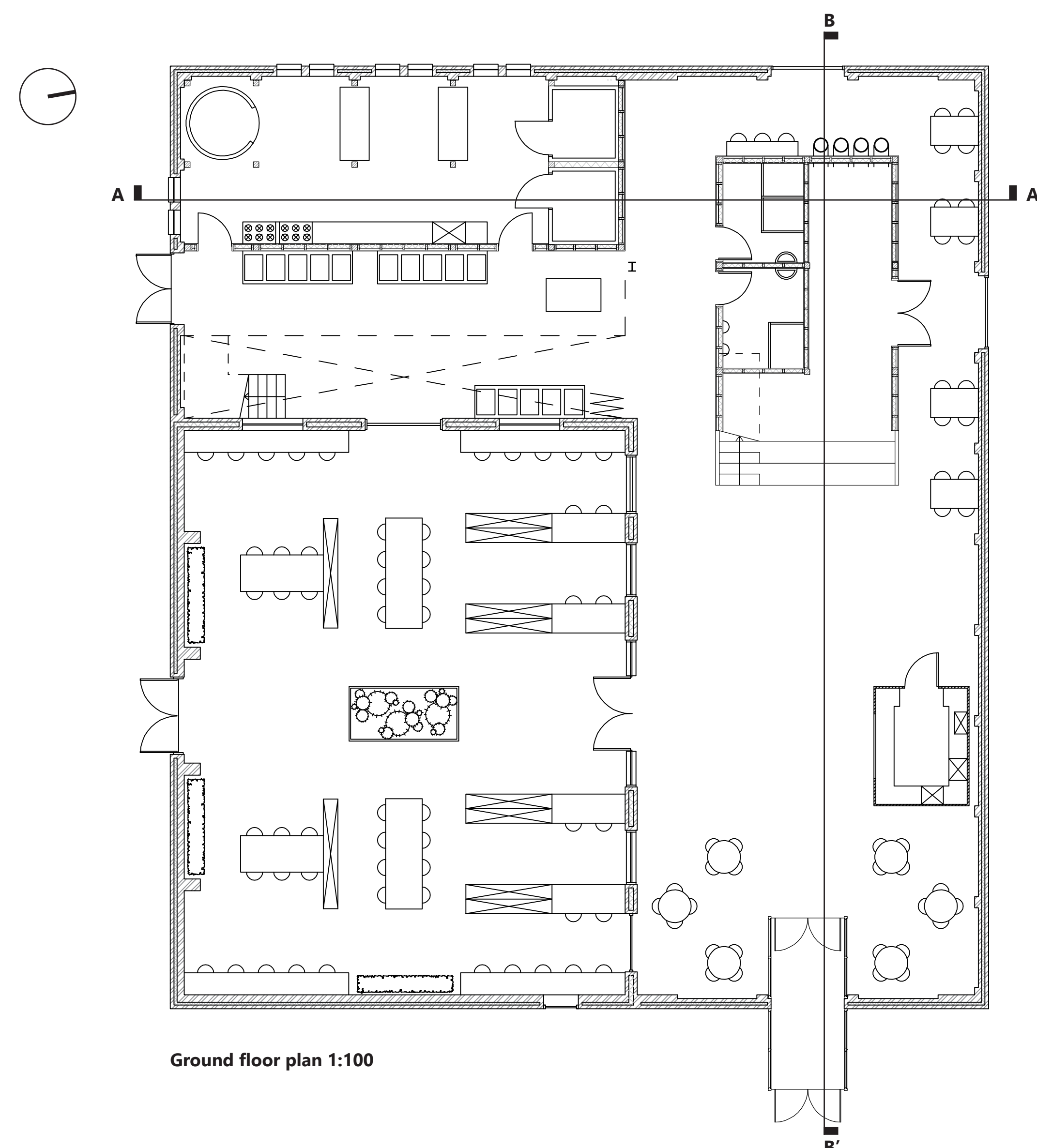
South elevation 1:100



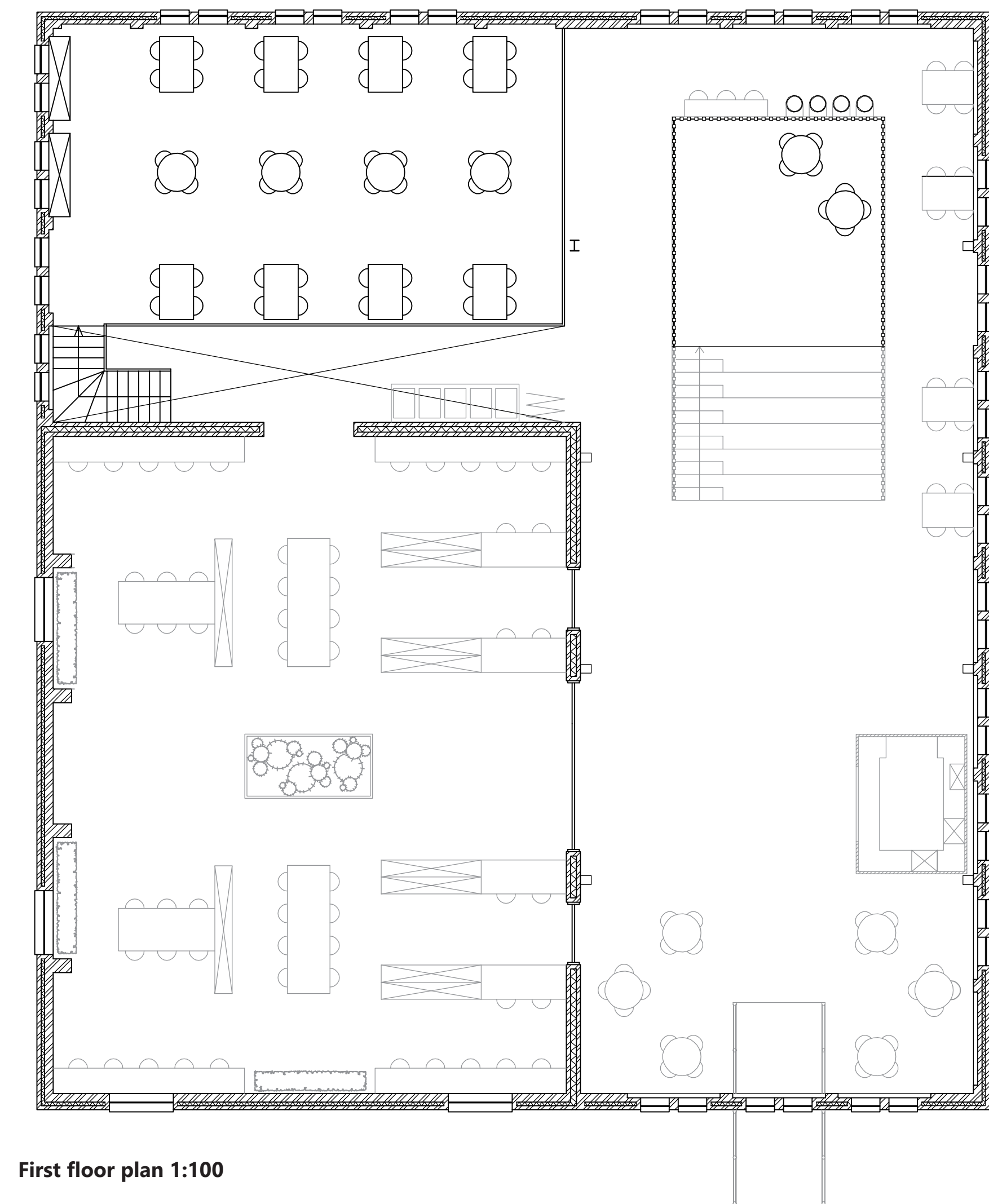
Cross-section AA' 1:100



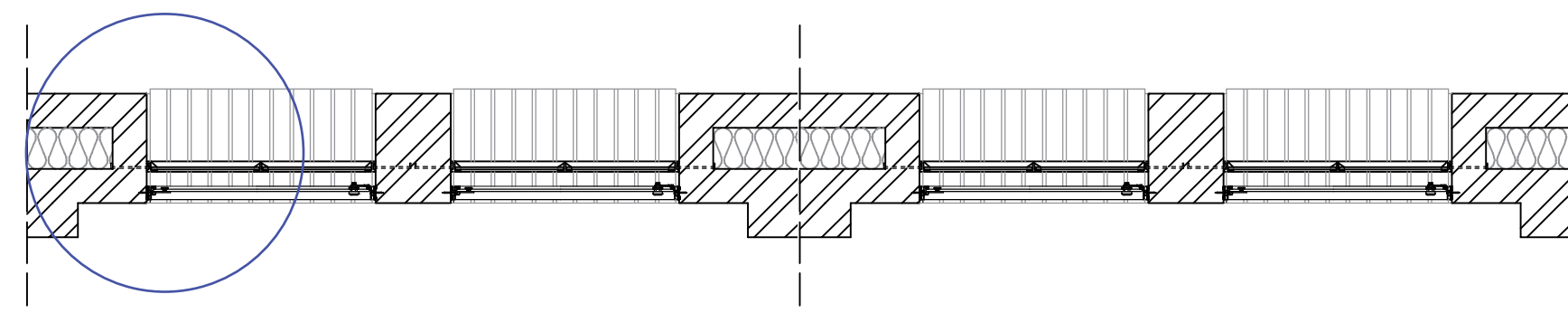
Cross-section BB' 1:100



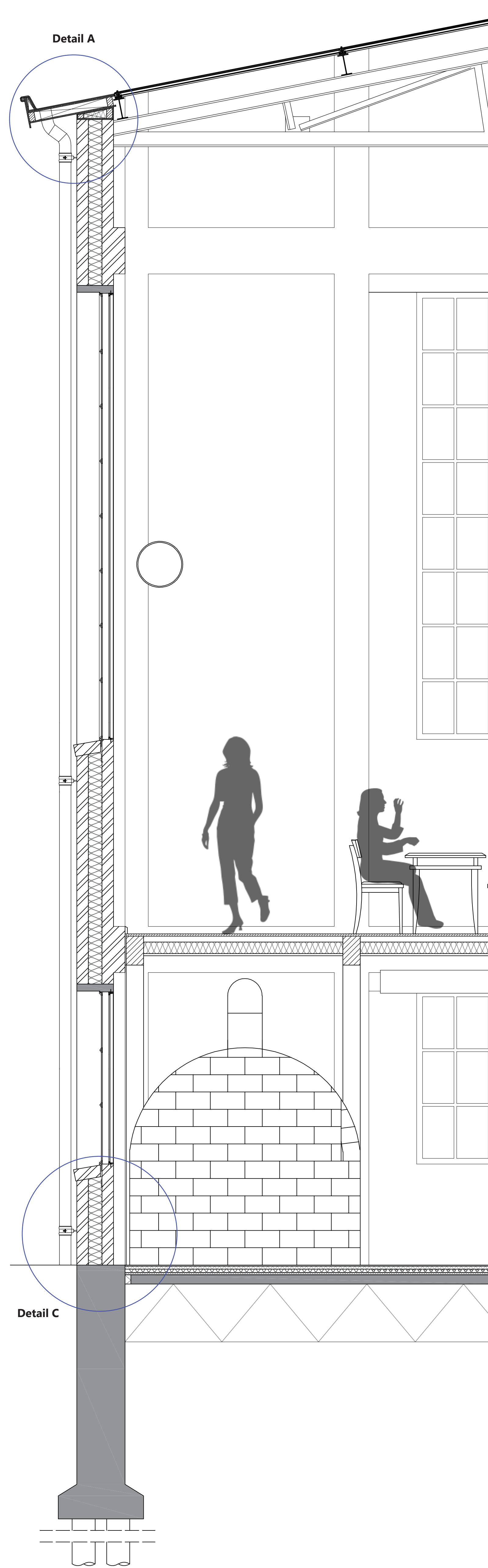
Ground floor plan 1:100



First floor plan 1:100

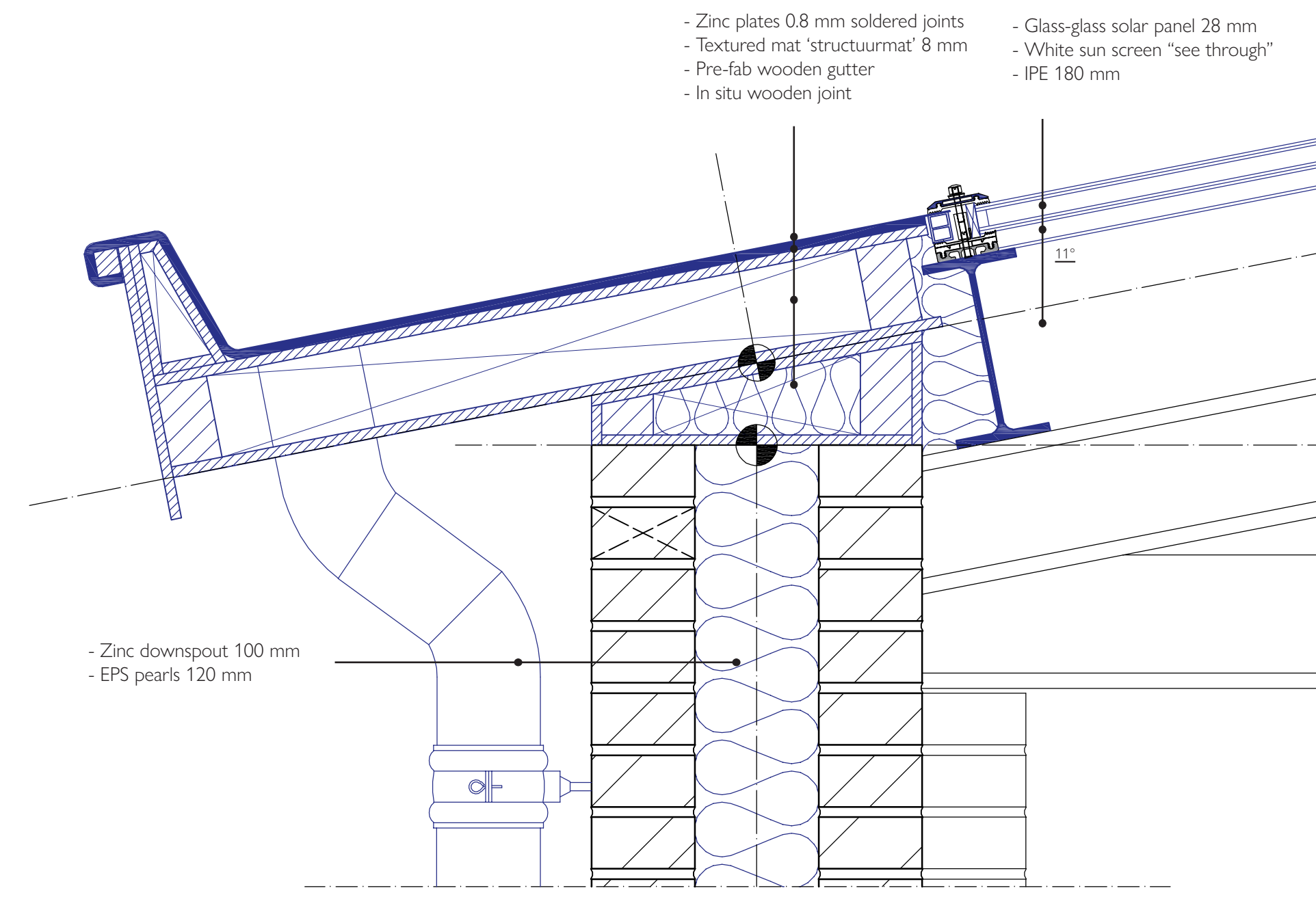


Detail D

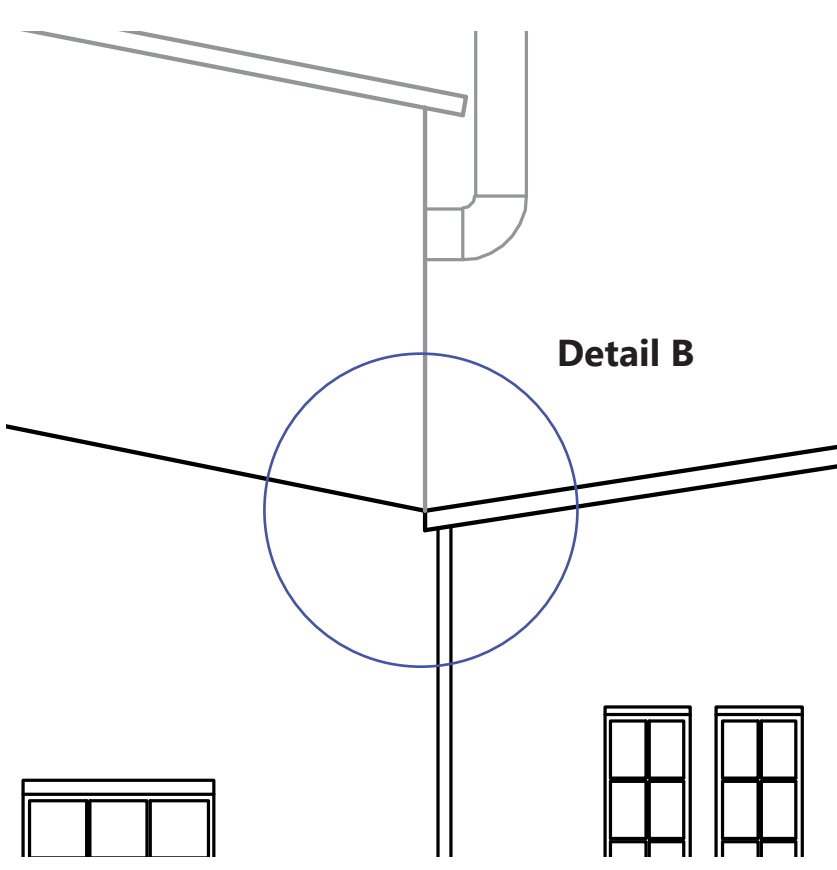


Detail A

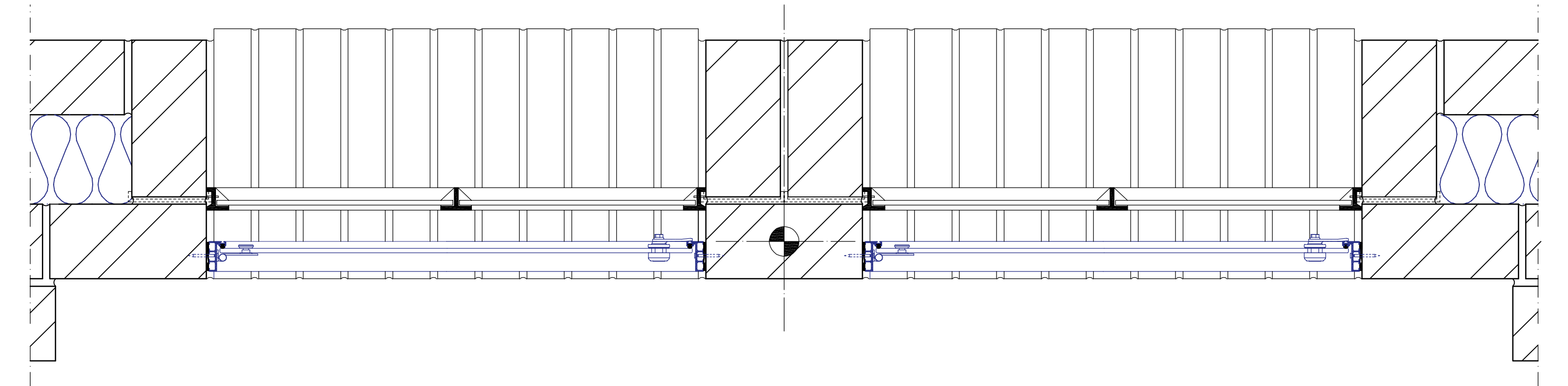
Detail C



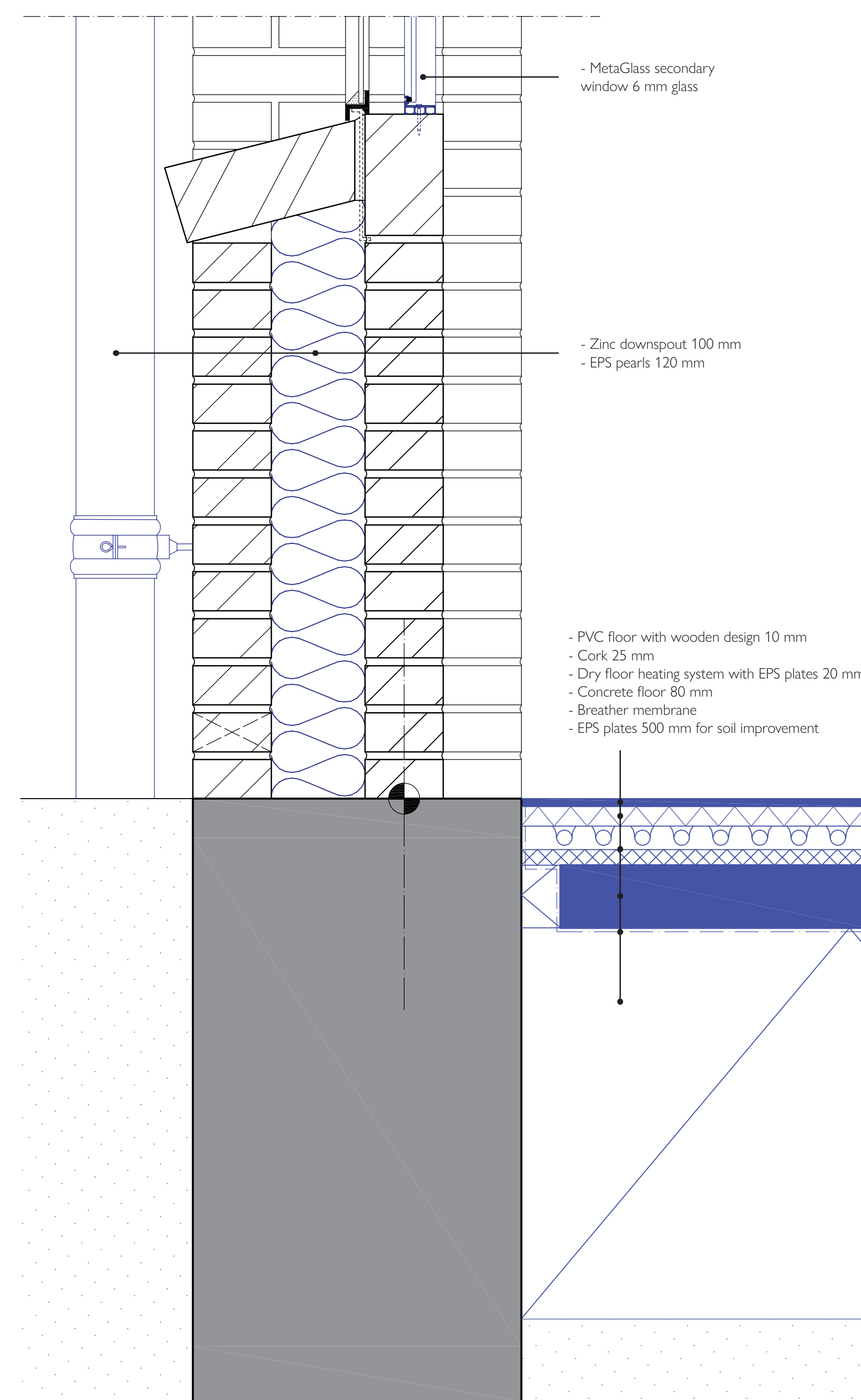
Detail A 1:5



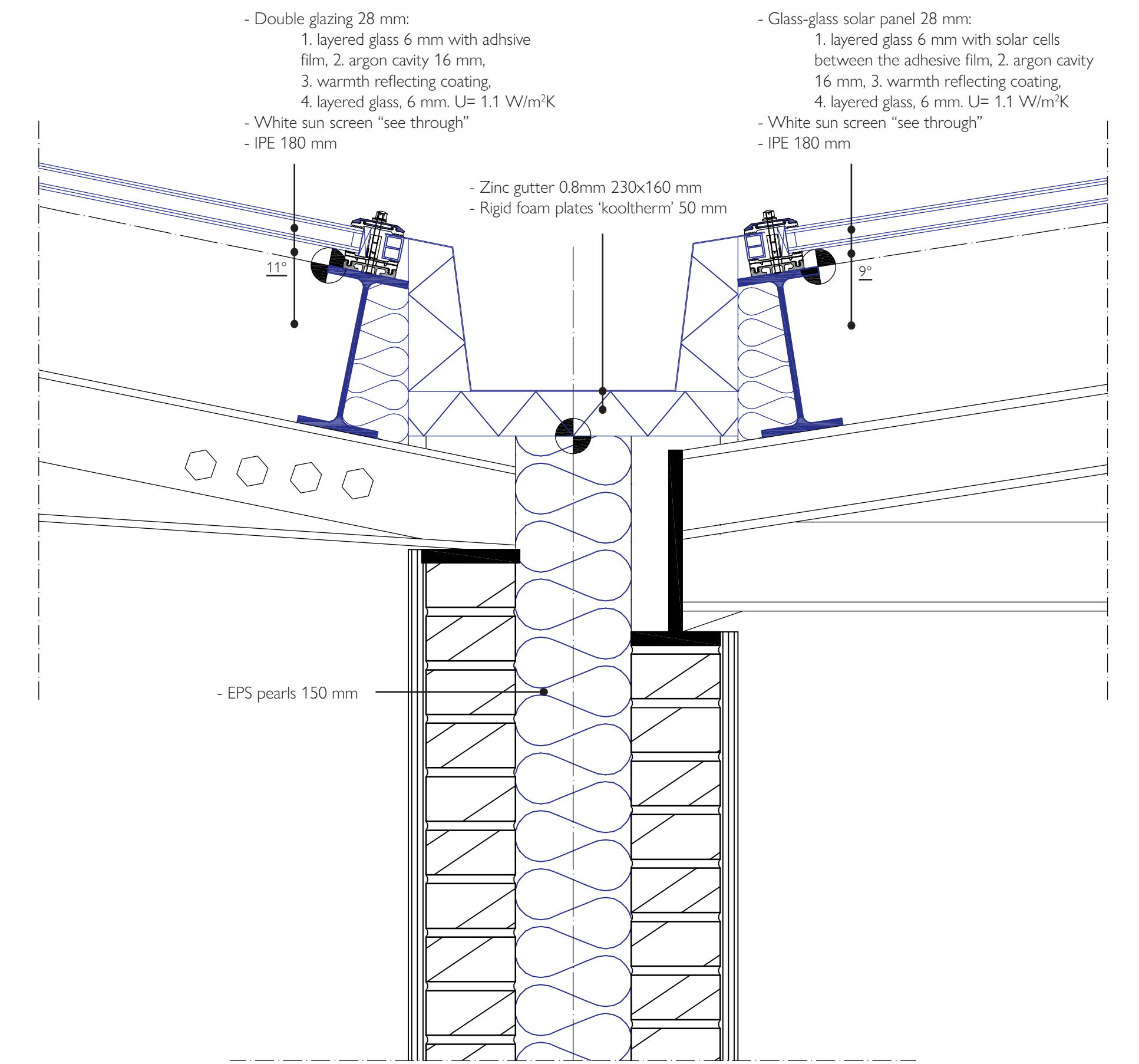
Detail B



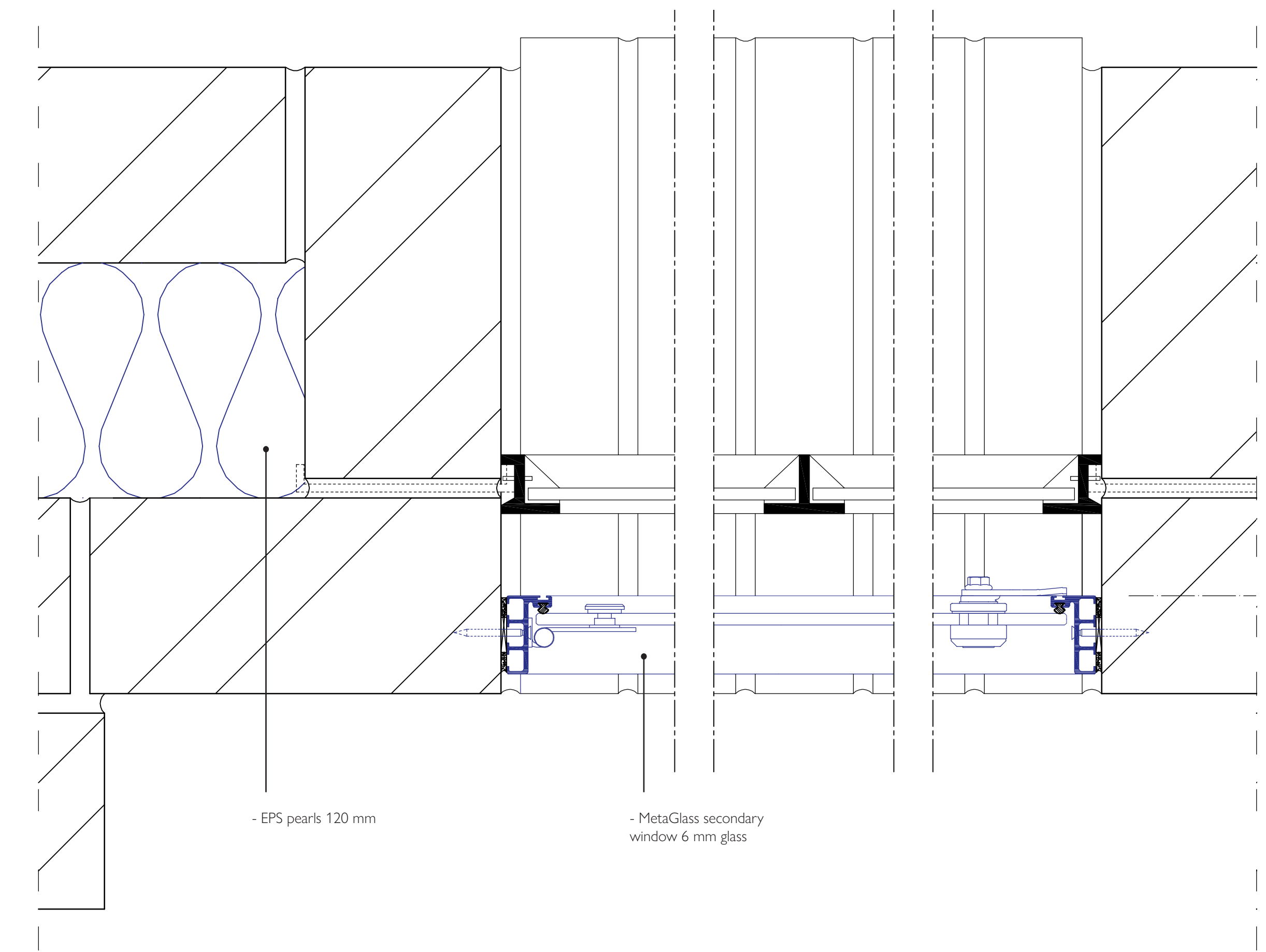
Detail B 1:5



Detail C 1:5



Detail B 1:5



Detail D 1:2

- Zinc plates 0.8 mm soldered joints
- Textured mat 'structurmat' 8 mm
- Pre-fab wooden gutter
- In situ wooden joint
- Glass-glass solar panel 28 mm
- White sun screen "see through"
- IPE 180 mm

- Double glazing 28 mm:
 1. layered glass 6 mm with adhesive film, 2. argon cavity 16 mm,
 3. warmth reflecting coating,
 4. layered glass, 6 mm. U= 1.1 W/m²K
- White sun screen "see through"
- IPE 180 mm
- Glass-glass solar panel 28 mm:
 1. layered glass 6 mm with solar cells between the adhesive film, 2. argon cavity 16 mm, 3. warmth reflecting coating,
 4. layered glass, 6 mm. U= 1.1 W/m²K
- White sun screen "see through"
- IPE 180 mm

- Zinc downspout 100 mm
- EPS pearls 120 mm

- Zinc gutter 0.8mm 230x160 mm
- Rigid foam plates 'kooltherm' 50 mm

- MetaGlass secondary window 6 mm glass

- Zinc downspout 100 mm
- EPS pearls 120 mm

- PVC floor with wooden design 10 mm
- Cork 25 mm
- Dry floor heating system with EPS plates 20 mm
- Concrete floor 80 mm
- Breather membrane
- EPS plates 500 mm for soil improvement

- EPS pearls 120 mm

- MetaGlass secondary window 6 mm glass