

North Sea: Landscapes of Coexistence  
*Transitional Territories Studio 2019-2020*

Technology Report

Zuzanna Rosinska

Archive Fever  
*Neighbourhood of data*





## **Index**

Abstract

1. General Arrangement

2. Climate Concept

3. Structural Concept

4. Facades

5. Details

6. Conclusion



## Abstract

The project emerges from the acknowledgement of the growing phenomena of archive fever (Derrida, 1995). Driven by the need, obligation, desire or simply possibility to store a growing amount of both - physical objects and digital data, and encouraged with a constantly increasing capacity of digital media storage - we keep on gathering more. Often unconsciously or with little curation of the collected content, we keep on creating a limitless cloud archive, that has an overwhelming physical presence that takes over hectare after hectare of land. Huge, anonymous, dark and hot space, placed in a remote location – that is a typical data centre. Blending into the neighbouring storage halls is easily omitted and stays hidden from the public sight.

Data storage came a long way from the representative architecture of banks, archives and city halls to a unit defined storage facility. Therefore, one may say that data centre is a continuation of the typology of storing and archiving. And a storage type that emerges is an opaque container defined by the size of a stored unit - server. These content defined buildings, technical as they are, allow for almost no human presence, but do potentially manage through their sheer size to organize and control the context they inhabit, the territory. One cannot underestimate their urban impact.

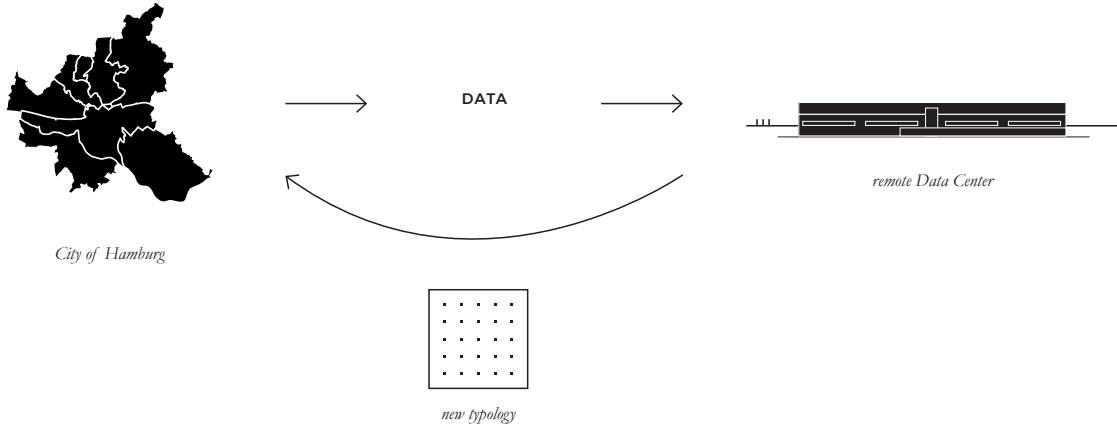
Current trends in technology, among others, the Internet of Things and a growing amount of latency dependent applications will generate a need to introduce data into the cities. That gives a unique opportunity to redefine existing data centre typology. Even though data is already fully integrated and present in our lives, we rarely acknowledge it. What is more, due to a lack of understanding of data flows we are often excluded from the discussion on the degree of its presence in our lives or surveillance.

The proposed project, is a gesture that brings data, technology, citizens and urban context together, emphasizing interconnections and interdependence of all aforementioned. This way introducing one of the most significant elements of our infrastructure physically into the culture, giving digital data a physical weight and interface. Creating friction between public and private, human and machine – that are completely dependent on each other and cannot function without the other.

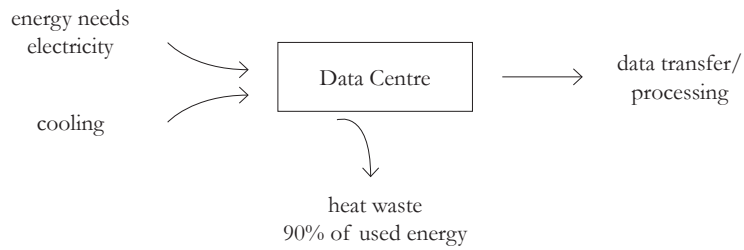
Keywords: data, archive fever, storage, unit defined

### General Arrangement

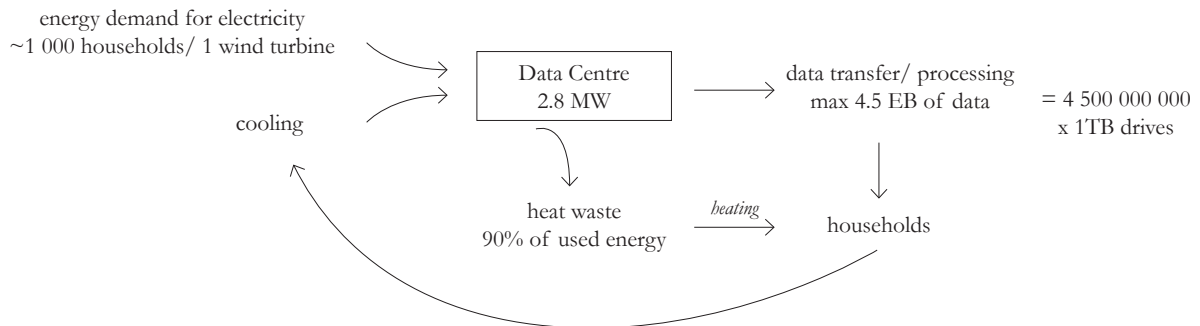
General description - specificity of DC

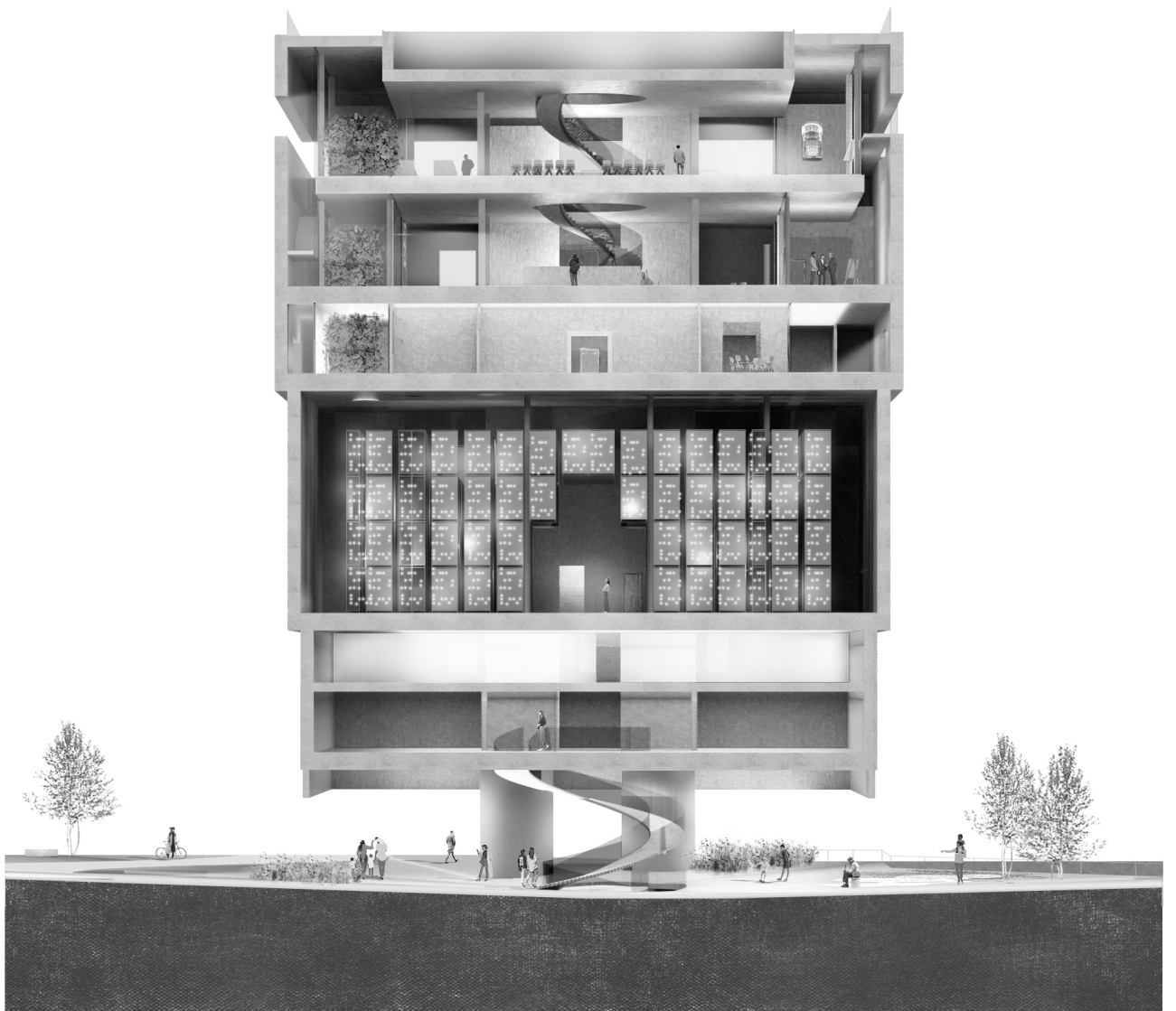


### TYPICAL LINERAL SYSTEM

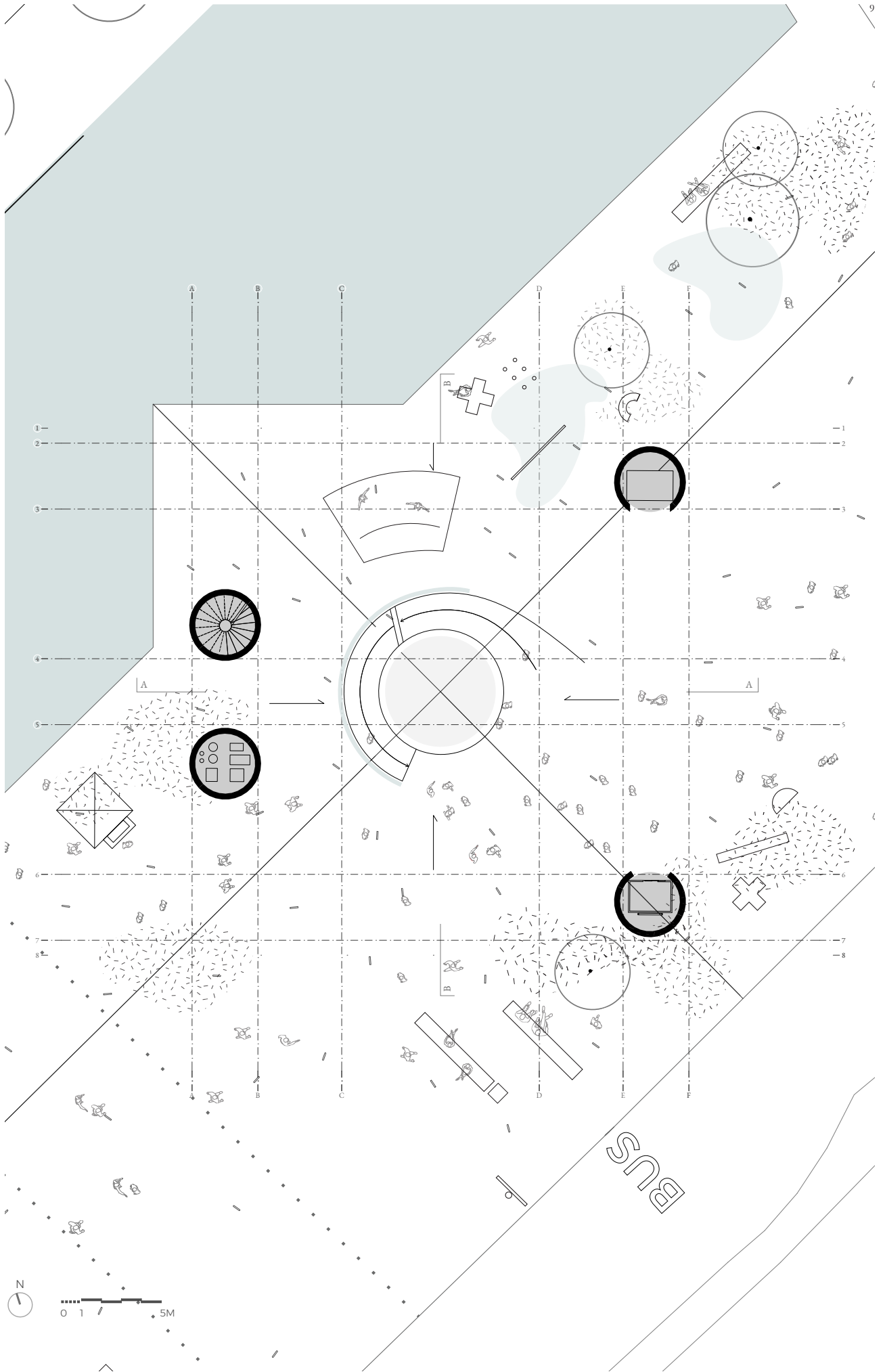


### PROPOSED CIRCULAR SYSTEM

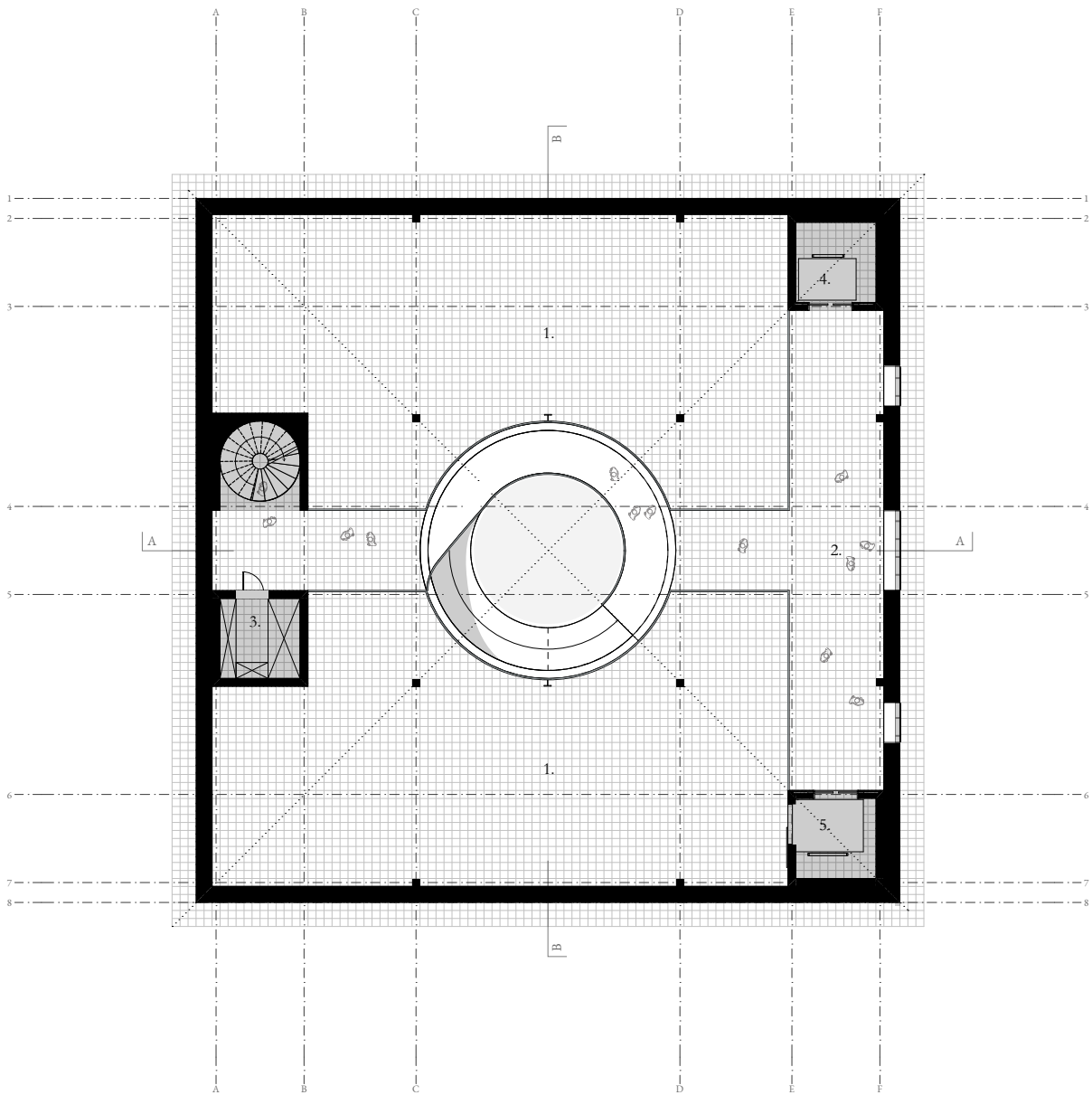






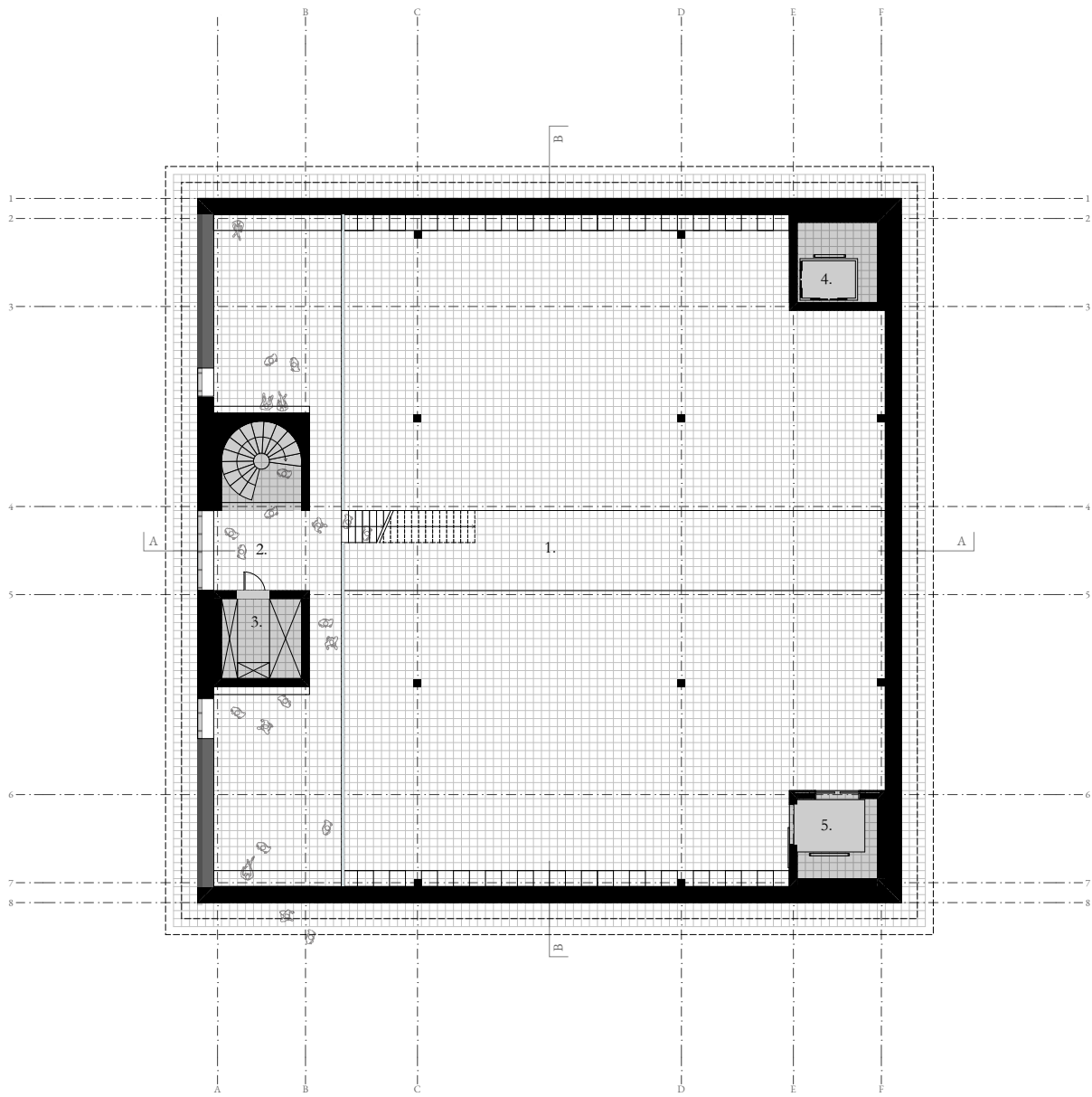


1. Technical floor | HEP & Electrical room
2. Viewpoint - vies towards:
  - Port Canteen*
  - International maritime museum*
  - Überseeboulevard*
3. Technical core - installation shafts access
4. Lift (employees and visitors)
5. Technical lift

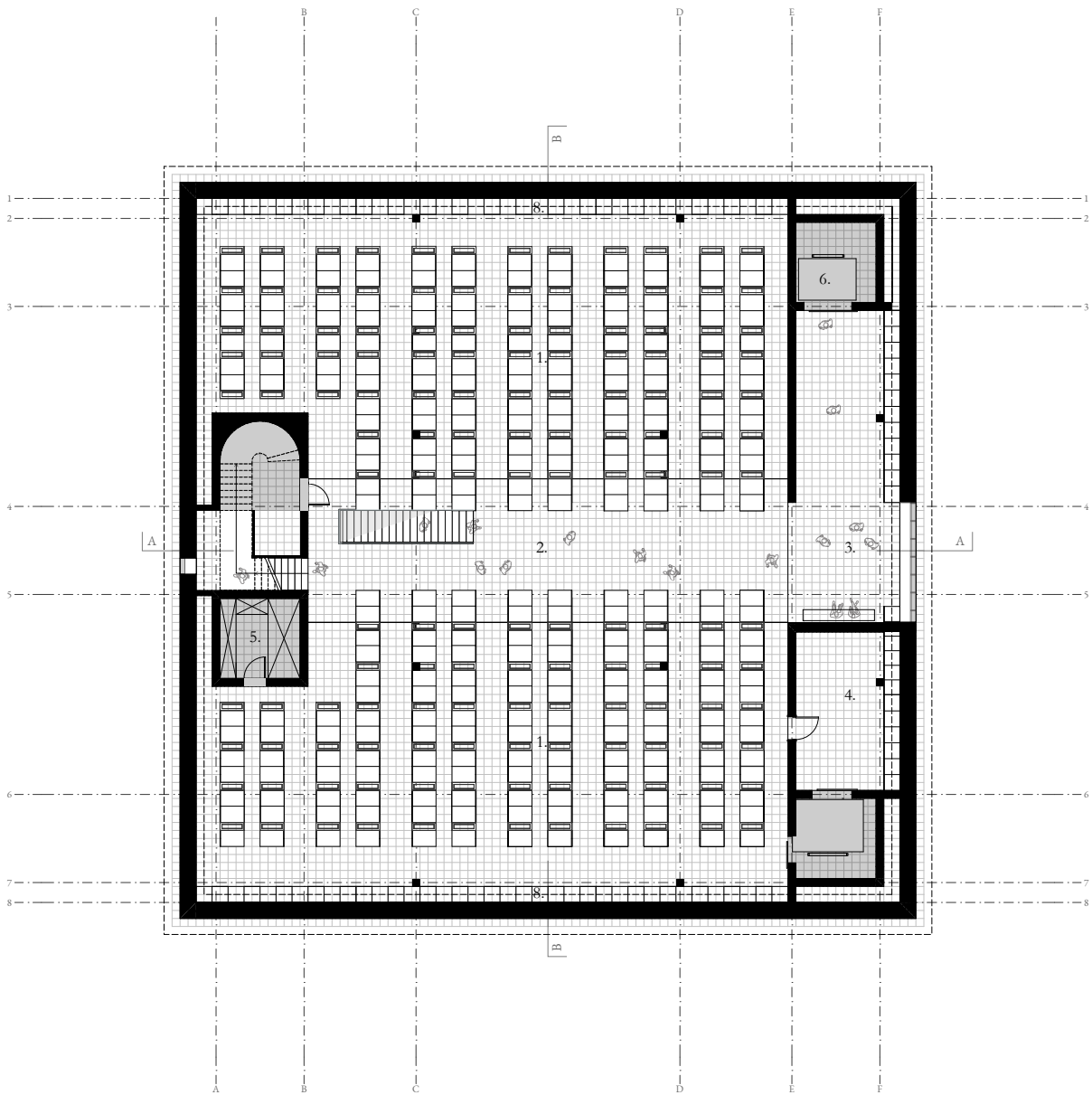




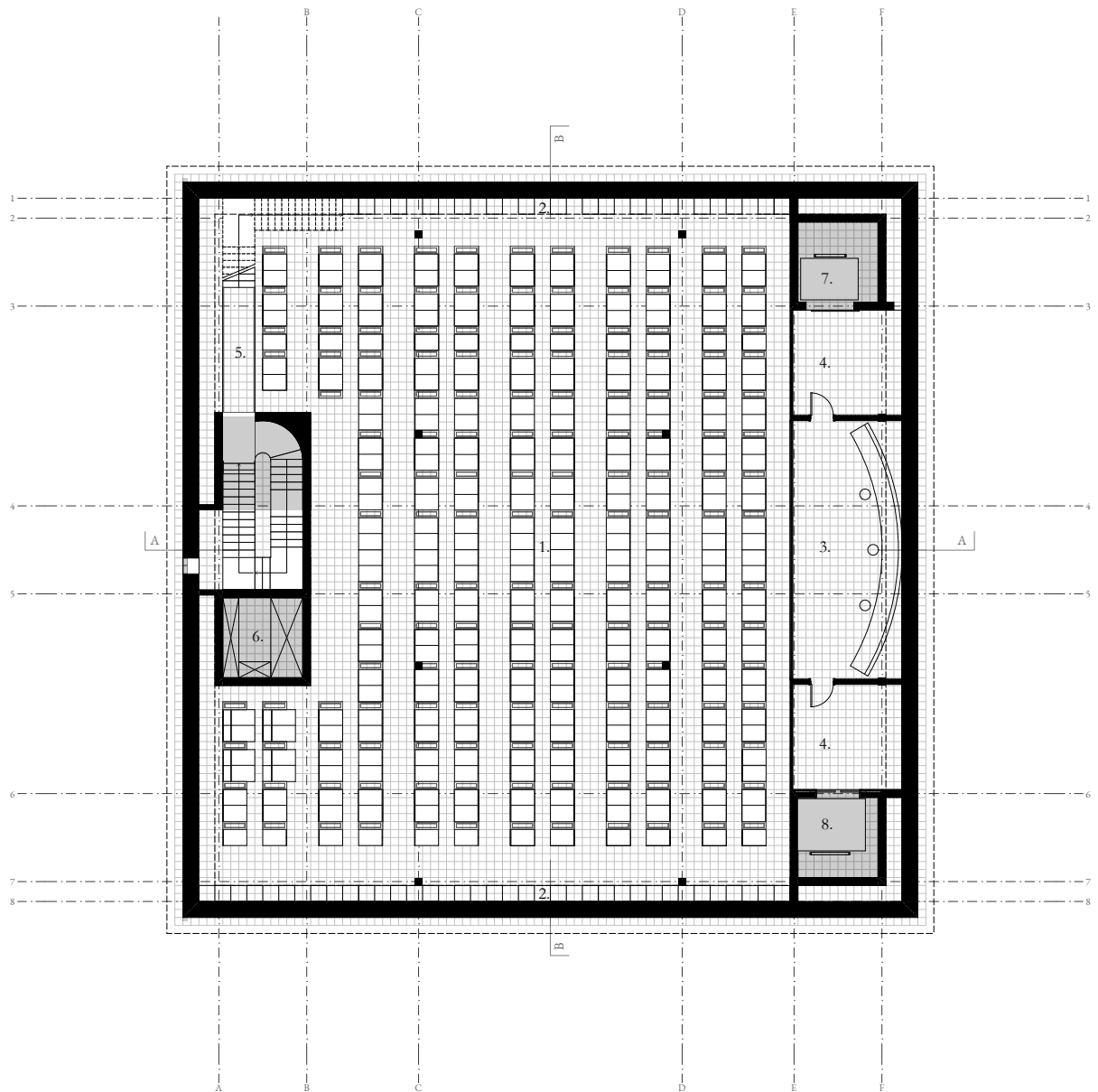
- 1. Conditioned storage
- 2. Viewpoint - vies towards:
  - HTH Hamburger tea trade*
  - Coffee trade - stock exchange*
  - St. Annen canal*
- 3. Technical core - installation shafts access
- 4. Lift (employees and visitors)
- 5. Technical lift



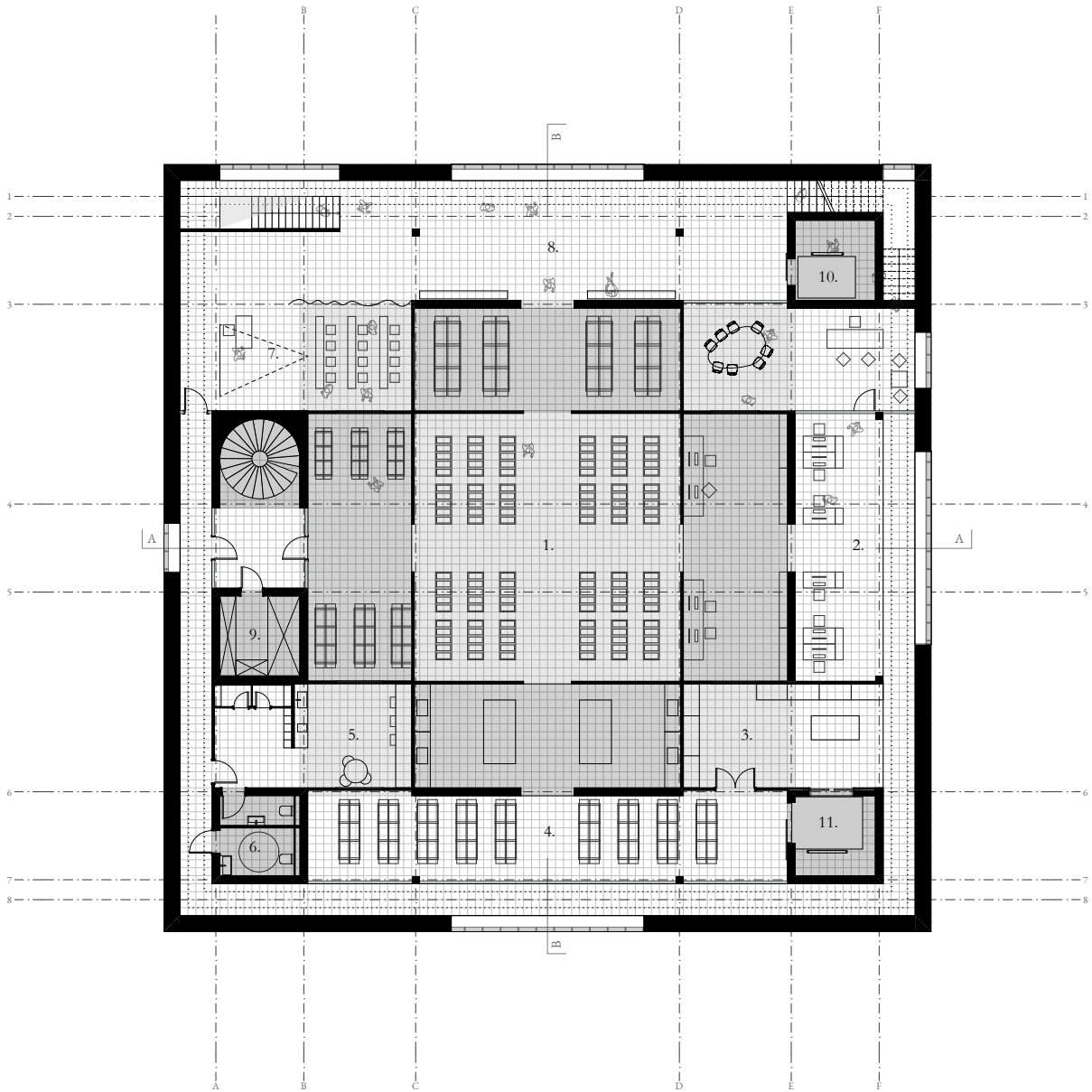
- 1. Data Centre white space
- 2. Visitor path - DC overview
- 3. Viewpoint - towards new HafenCity district  
*where data is produced and stored in the DC*
- 4. Staging room
- 5. Technical core  
*Computer Room Air Handling CRAH*
- 6. Lift (employees and visitors)
- 7. Technical lift
- 8. Main ditribution Frame MDF



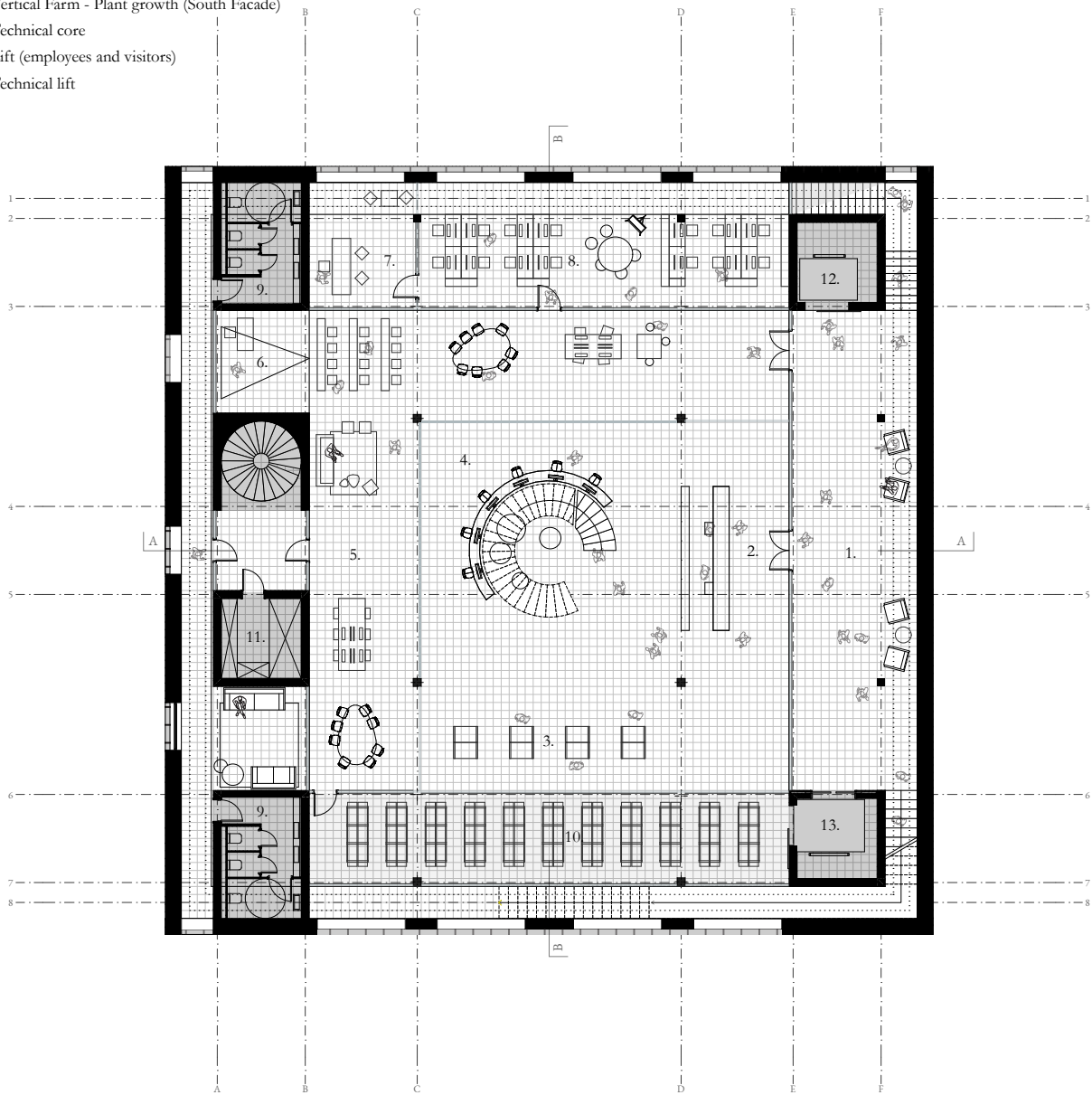
1. Data Centre white space
2. Main ditribution Frame MDF
3. Network Operation Centre NOC  
*monitoring performance of DC*
4. Access control
5. Bridge - overview of DC and technical connections to racks (*cables, pipes etc.*)
6. Technical core
7. Lift (employees and visitors)
8. Technical lift



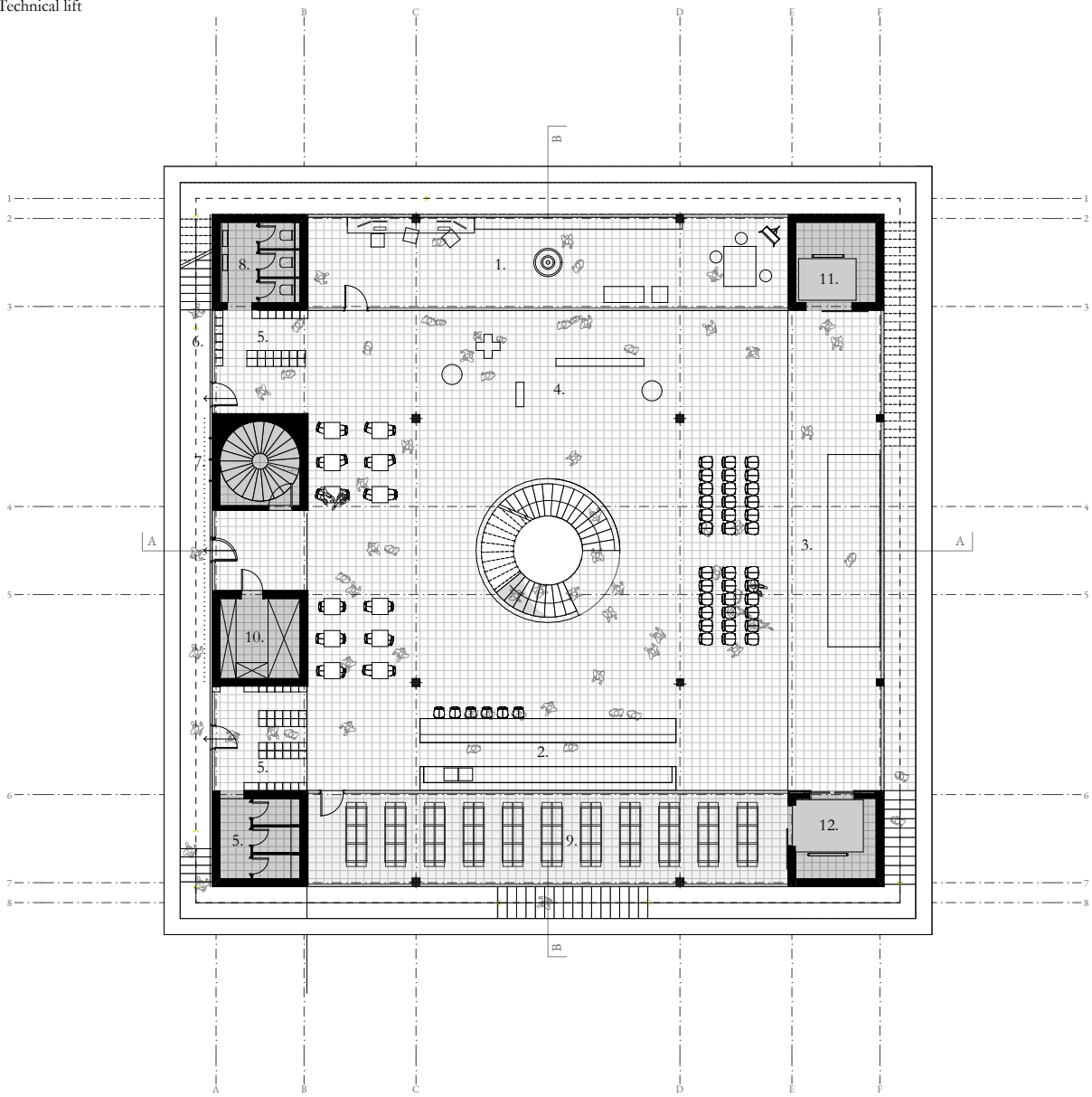
- 1. Vertical Farm Laboratory
- 2. Vert. Farm Offices
- 3. Food Storage
- 4. Vertical Farm - Plant growth (South Facade)
- 5. Employee changing room and kitchen
- 6. WC
- 7. Training space
- 8. Visitor Path
- 9. Technical core - Waste Heat distribution
- 10. Lift (employees and visitors)
- 11. Technical lift



- 1. Visitor Path
- 2. DC & Data Bank Reception
- 3. Data Bank self-service
- 4. Coworking - latency critical workspace
- 5. Office Open Space
- 6. Quantum Lab Training space
- 7. Executive Office
- 8. IT office
- DC optimisation*
- Big Data processing*
- 9. WC
- 10. Vertical Farm - Plant growth (South Facade)
- 11. Technical core
- 12. Lift (employees and visitors)
- 13. Technical lift

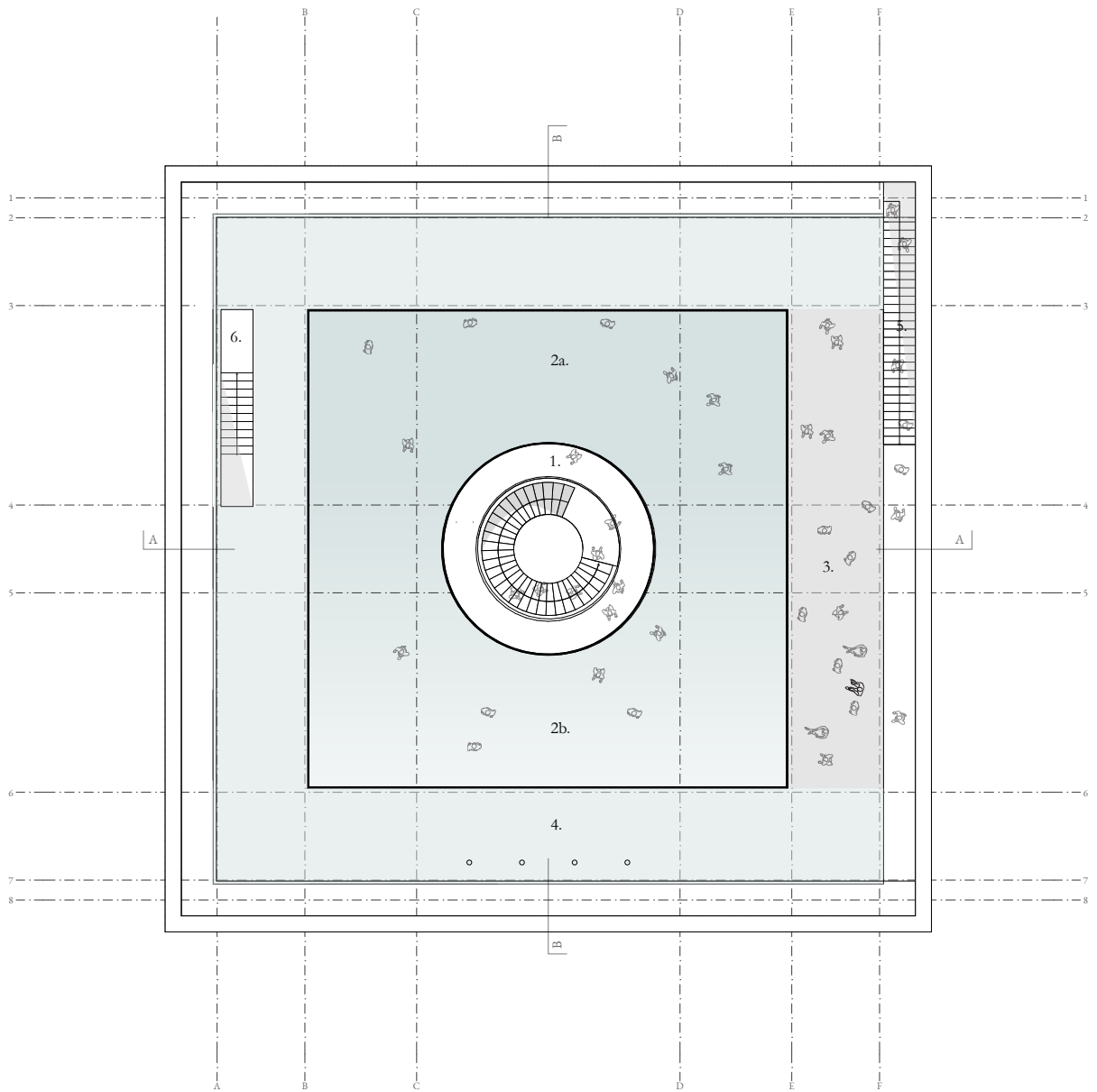


- 1. Quantum Lab
- 2. Café
- 3. Event Space with city view
- 4. Multifunctional space
- 5. Changing rooms
- 6. Swimming Pool Access
- 7. Outdoor showers
- 8. WC
- 9. Vertical Farm - Plant growth (South Facade)
- 10. Technical core
- 11. Lift (employees and visitors)
- 12. Technical lift



- 1. Observation Deck
- 2. Swimming Pool
  - a. deep water 1.5 m
  - b. shallow water
- 3. Terrace - rest zone - sunbathing
- 4. Outdoor showers
- 5. Swimming pool access
- 6. Evacuation Staircase

N1







## Climate Concept

### Climate concept







Description - specificity of DC

Heat waste

Summer

Winter

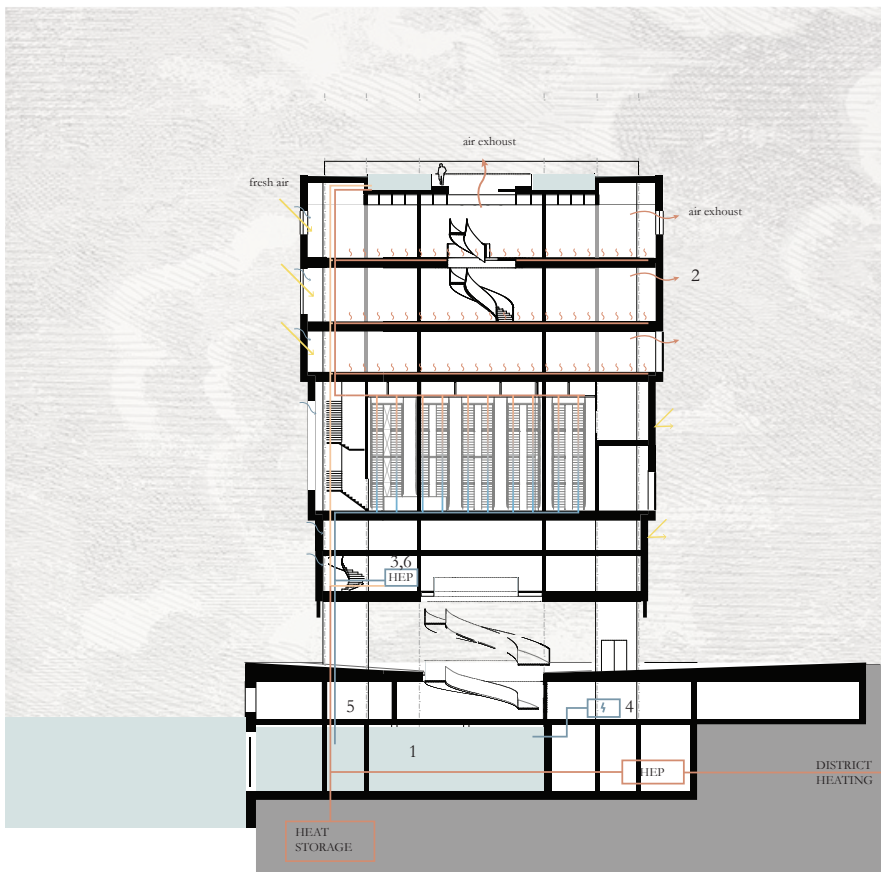
### Climate schemes

-  Tidal energy - electricity source
-  Liquid cooling system
-  Liquid low temperature heating system
-  Cooled water - used for room & pool heating
-  Mechanical ventilation with heat recovery
-  Ventilation - fresh air

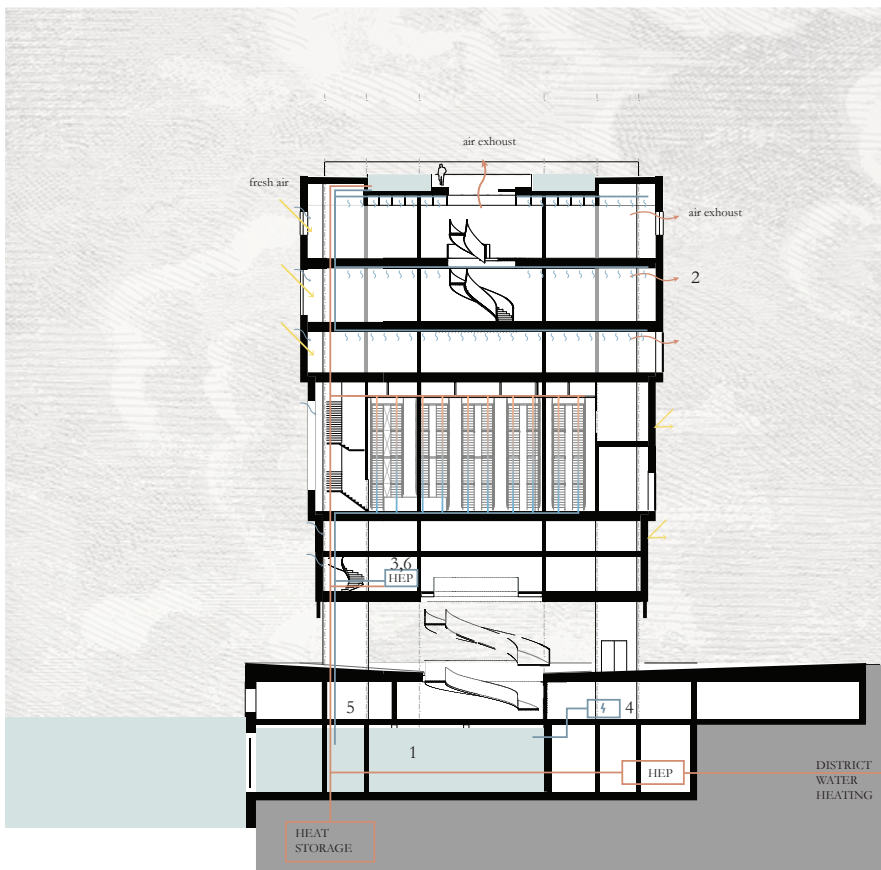
- 1 Tidal pools
- 2 Mechanical ventilation with heat recovery
- 3 Transformer / Inverter
- 4 Water-source heat exchanger (for server cooling)
- 5 Water pump (from canal for cooling)
- 6 Heat exchanger for ventilation



*Winter*



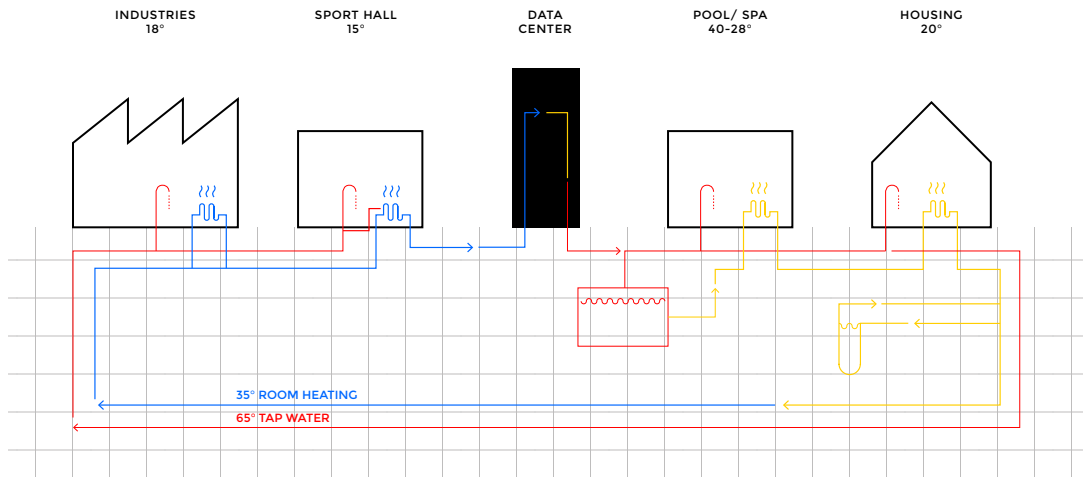
*Summer*

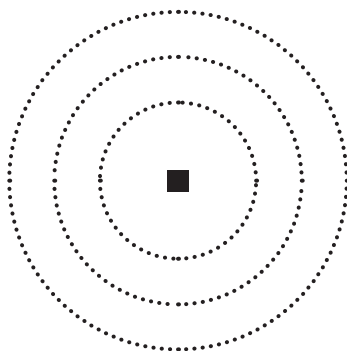


### Heat waste as a district heating

The Spark Model  
by Snøhetta

*drawing by author*





*Telia DC,  
Finland, 2015-18*

*Yandex DC,  
Finland, 2018*

*estimation for  
the Hamburg site*



24 MW

10 MW

~2.8 MW

DATA CENTER CAPACITY



5 000

2 100

~580

RACKS



8 400 M<sup>2</sup>

6 500 M<sup>2</sup>

~1 800 M<sup>2</sup>

SQ M



20 000

8 400

~2 000

HEATED FLATS



200 000 MWh/  
year

84 000 MWh/  
year

~23 300 MWh/  
year

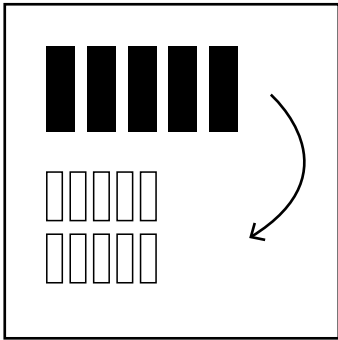
THERMAL ENERGY



## Structural Concept

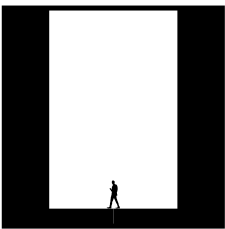
Structural Concept

Truss  
flexibility  
dimensions



Technological flexibility

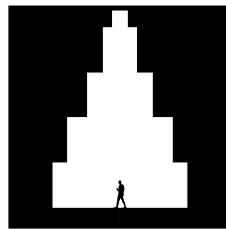
GROWING & SHRINKING DATA VISIBLE INSIDE  
*direct spatial impact of data amount*



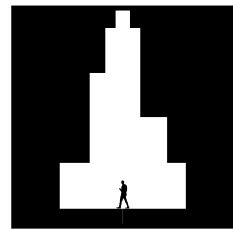
*overview of the  
collected data*



*principal  
of growth*



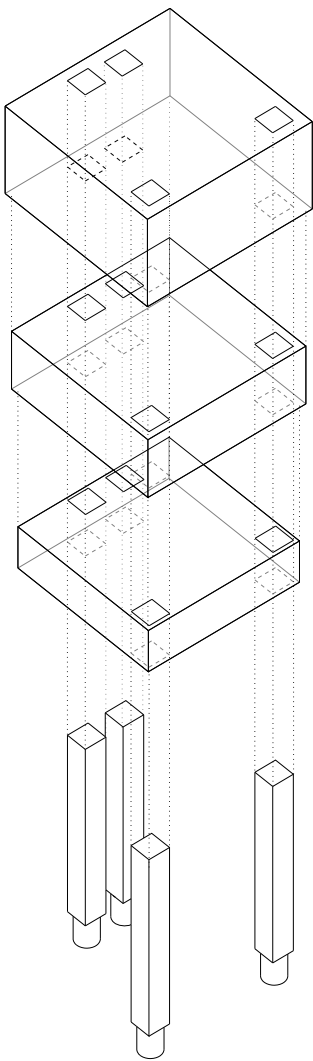
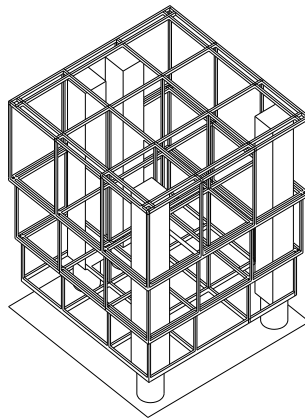
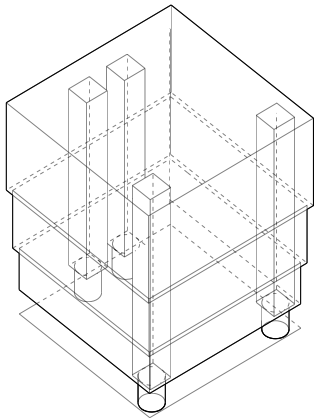
*growing  
data*



*base state  
(recurring due to server update  
~every 3-5 years)*

Structural concept axonometric view

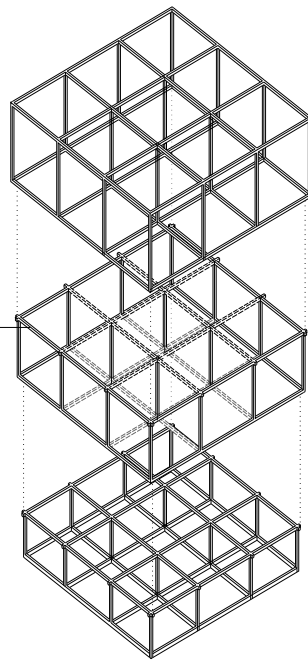




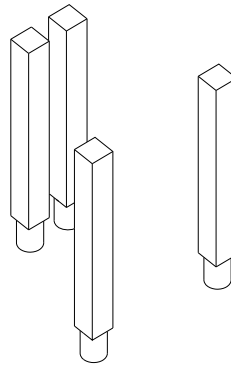
*steel veirendeel truss*

*double beam  
on the stepping*

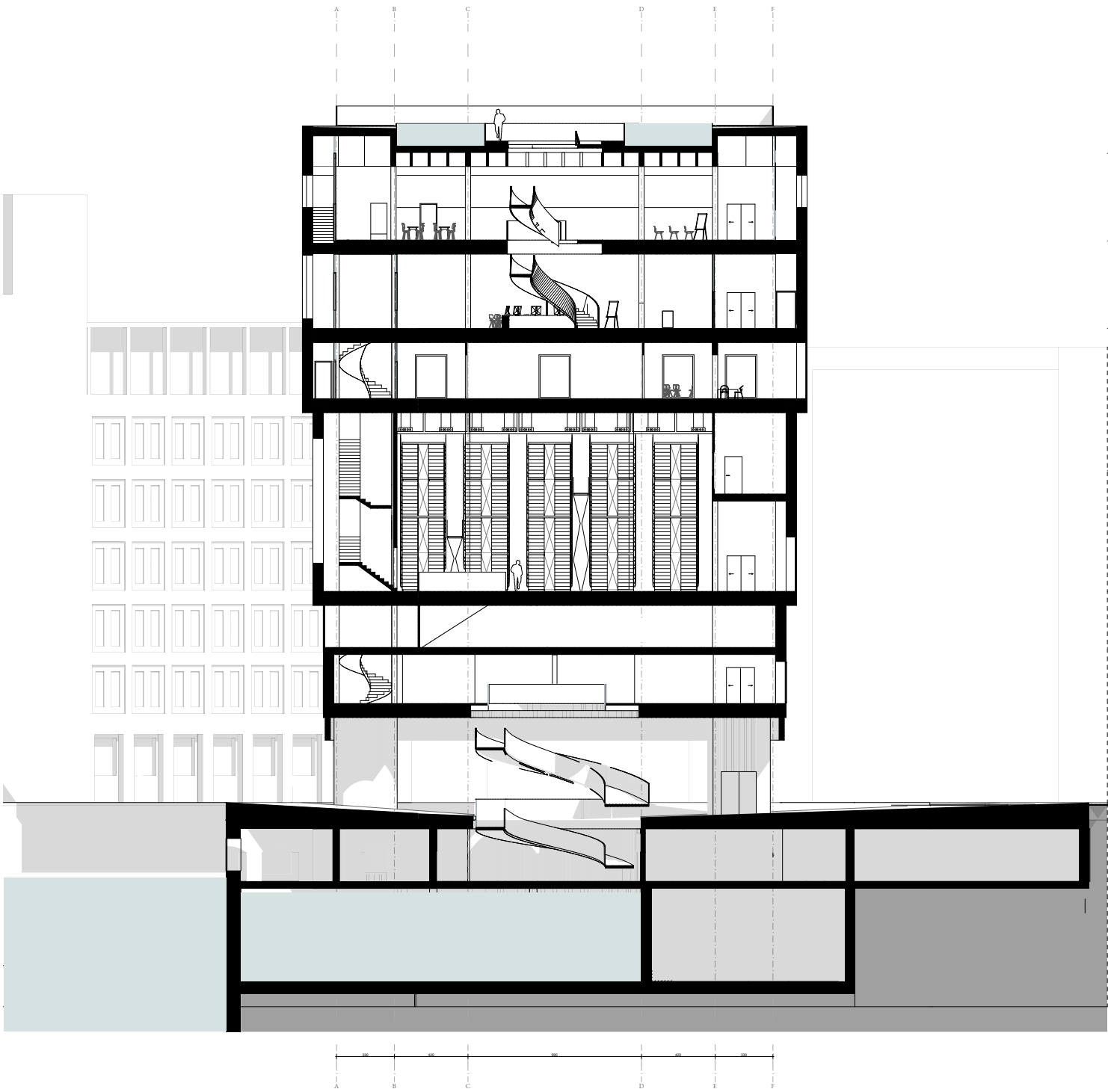
*bottom box - main  
load-bearing truss*

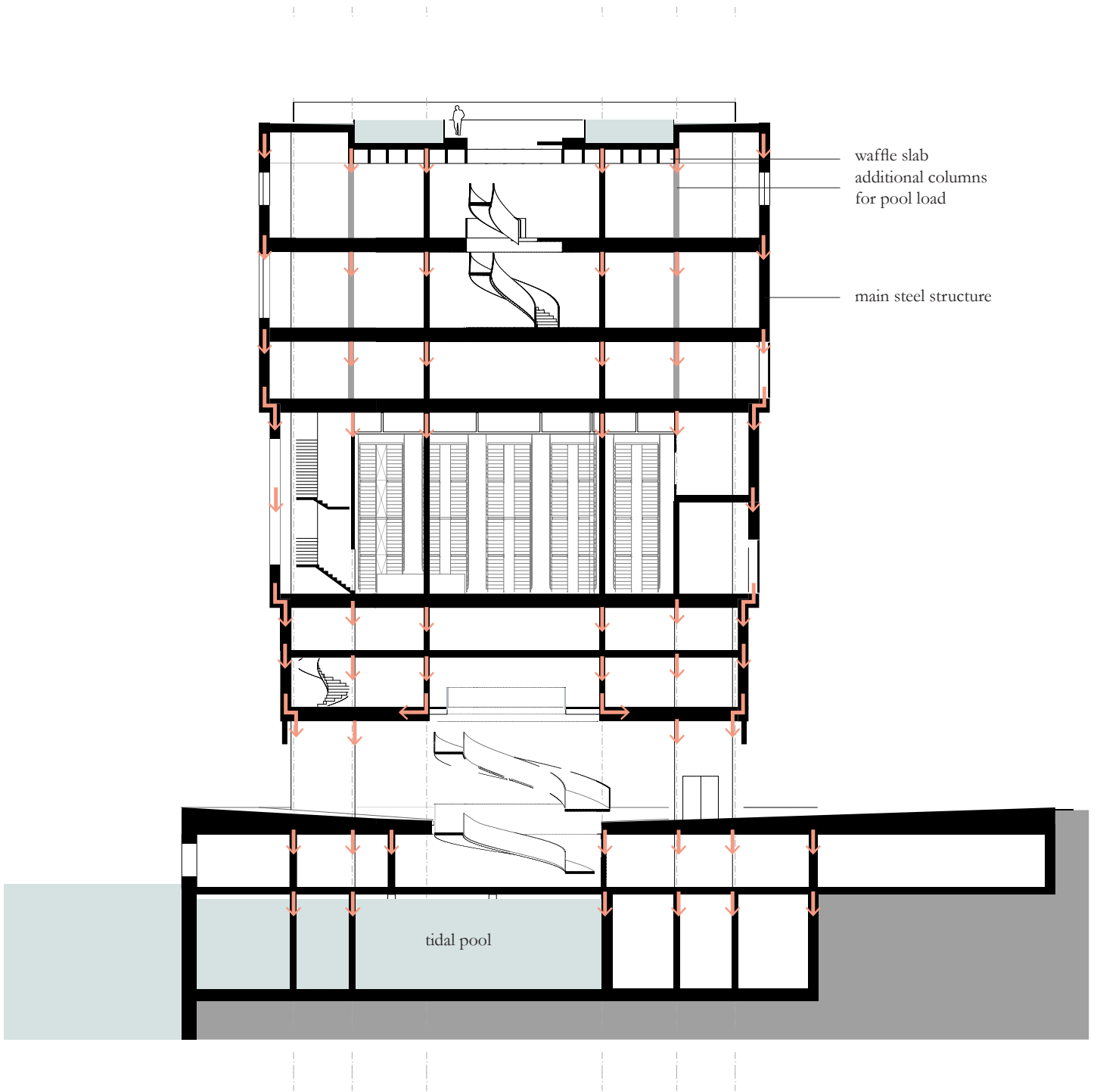


*concrete cores*

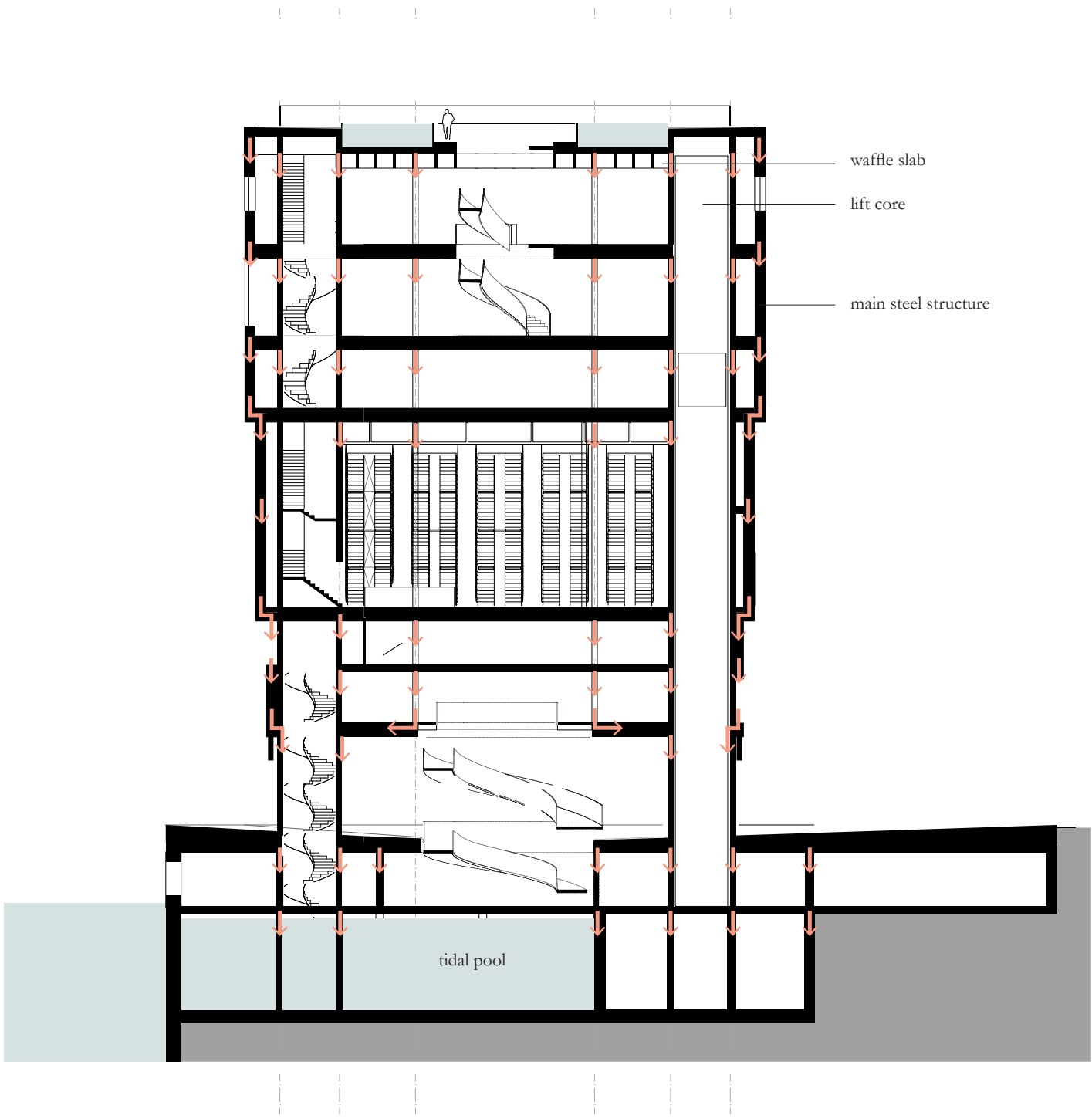








Structural concept main structure and pool load bearing structure  
1-200 @A3



Structural concept main structure section through cores 1-200 @A3





Façades

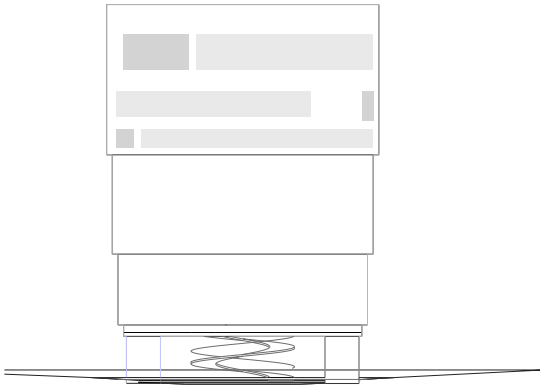
## Façades

Aluminium modules  
Windows

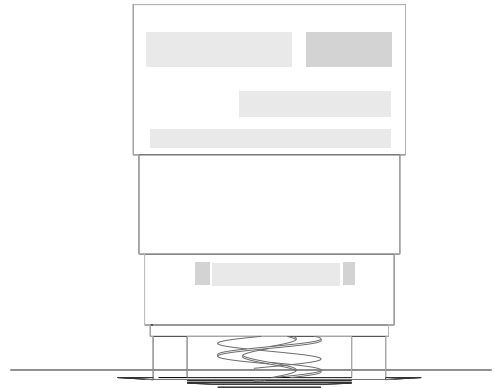
## Facade diagrams

-  opening - city view
-  perforation

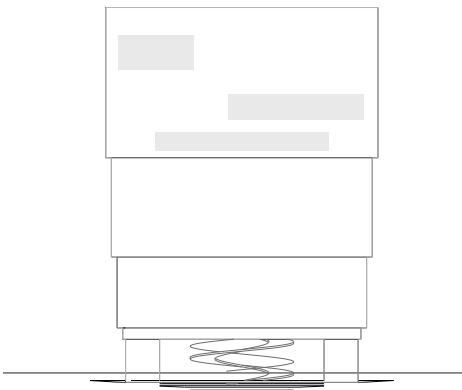




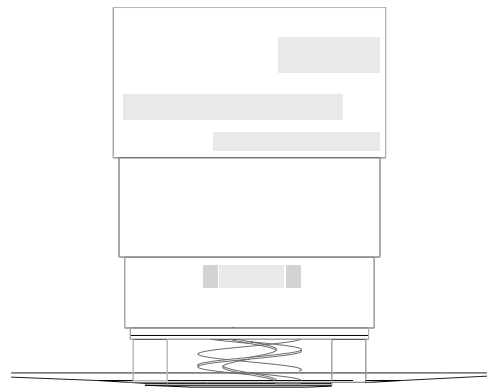
*North facade*



*East facade*



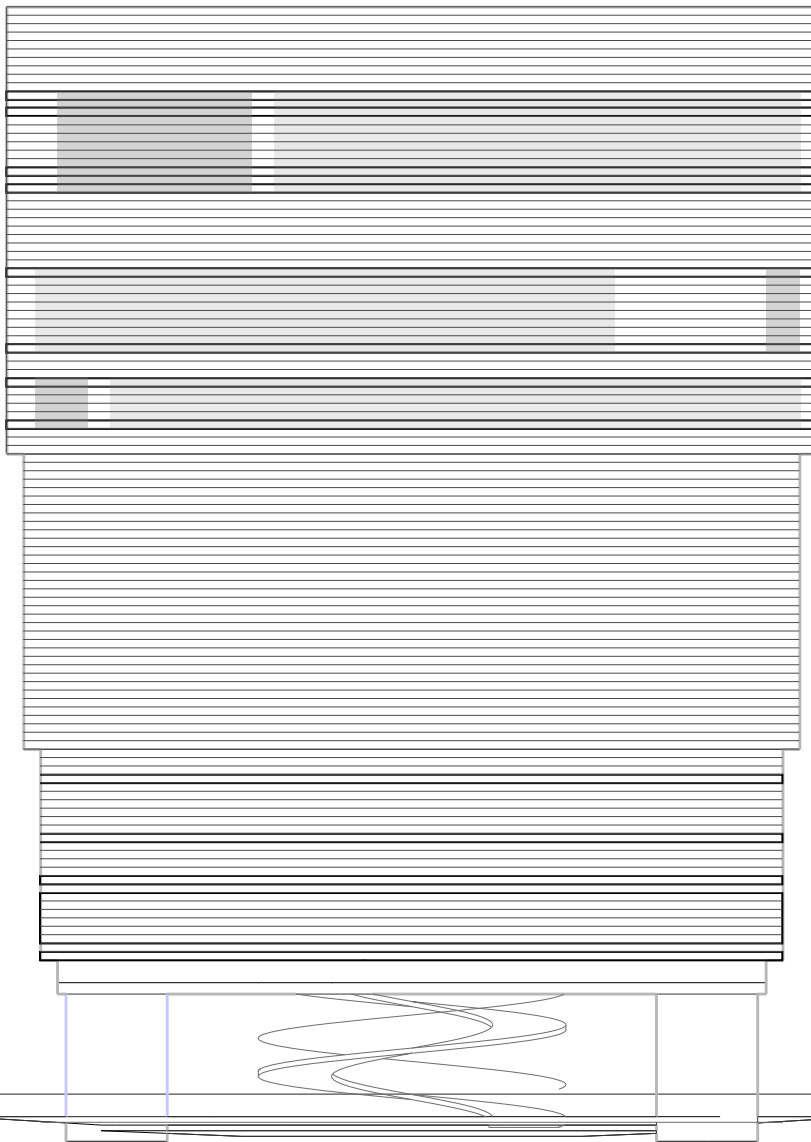
*South facade*



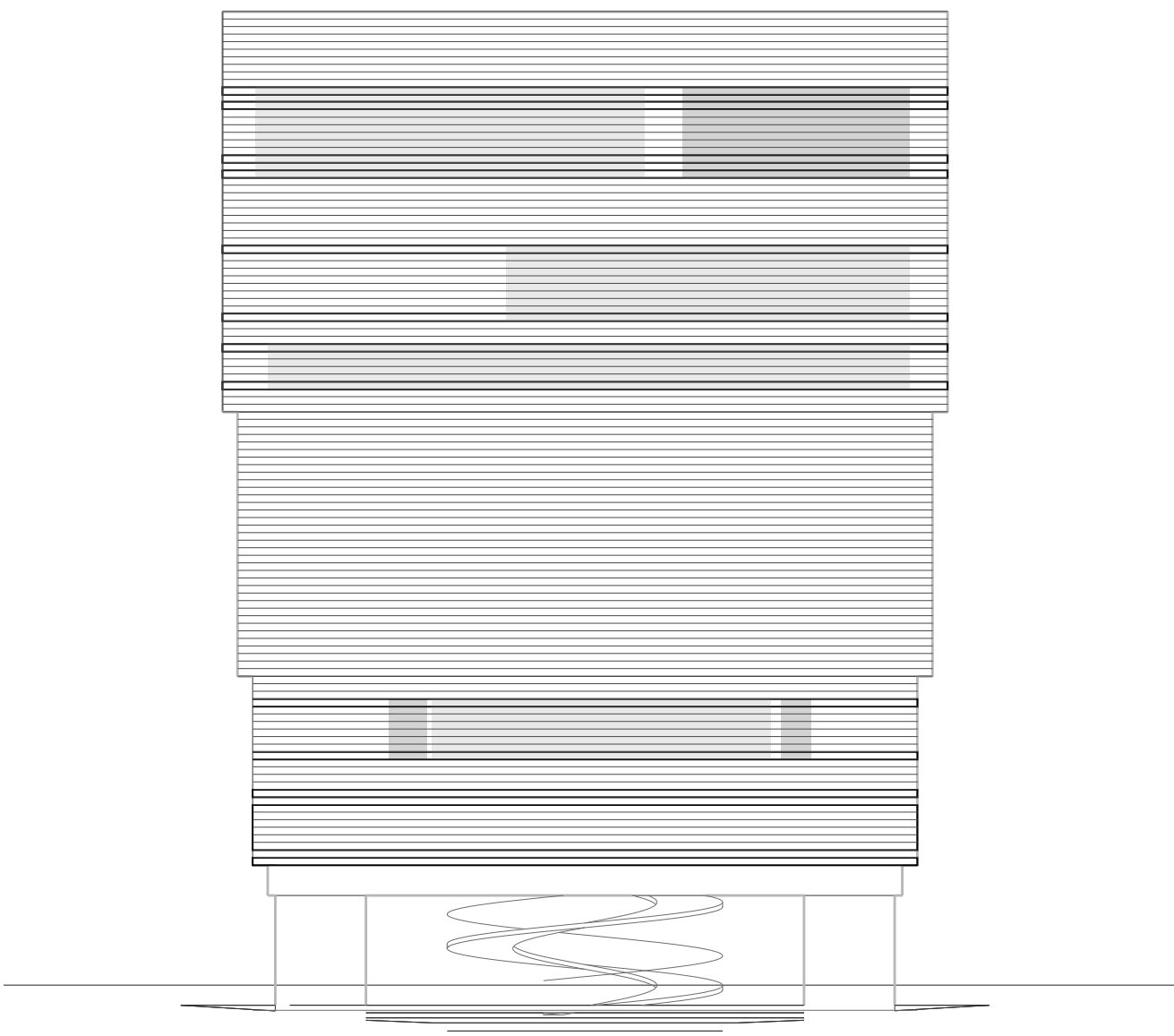
*West facade*

stripe - square panels  
window - open panels  
stripe - square panels

stripe - square panels  
offices - perforated panels  
stripe - square panels

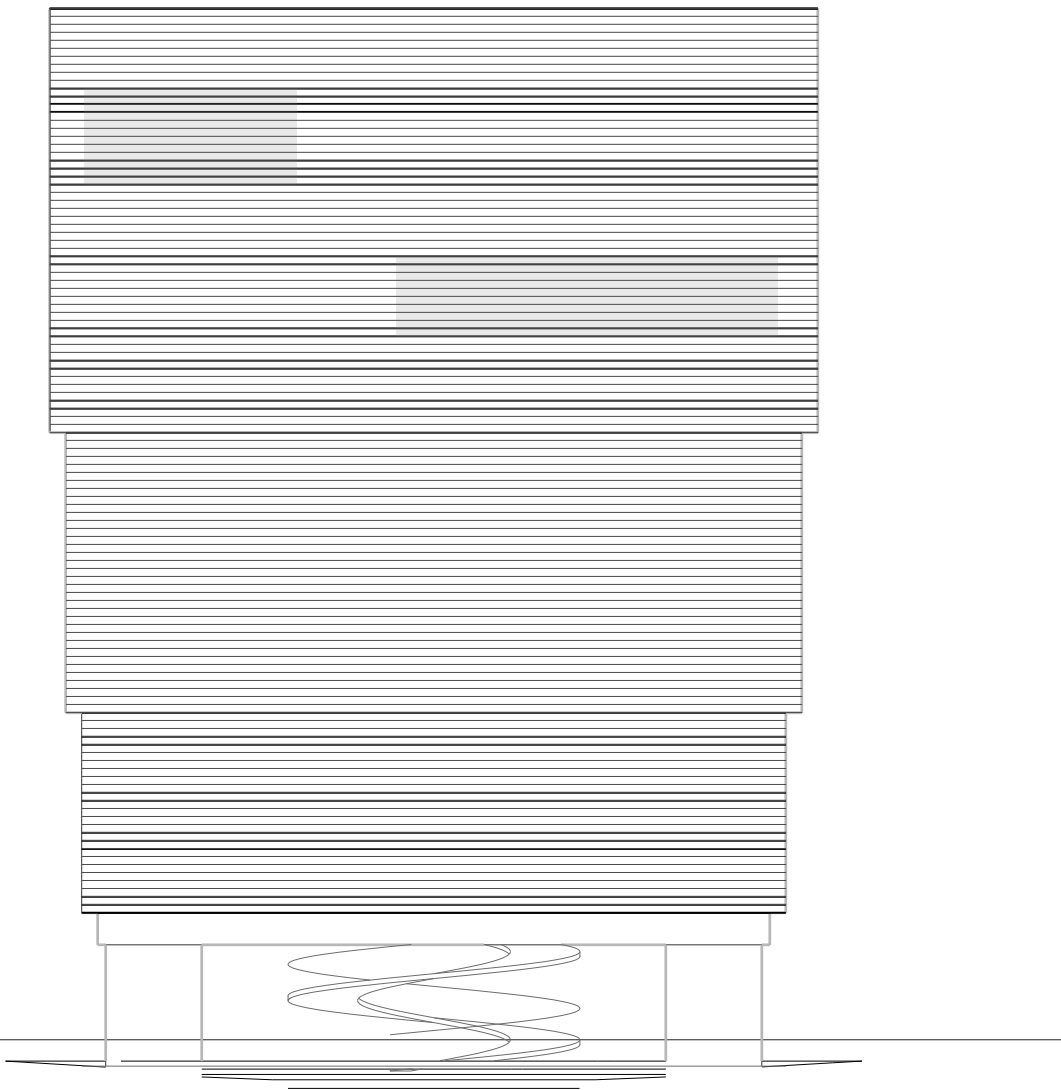


*North facade*

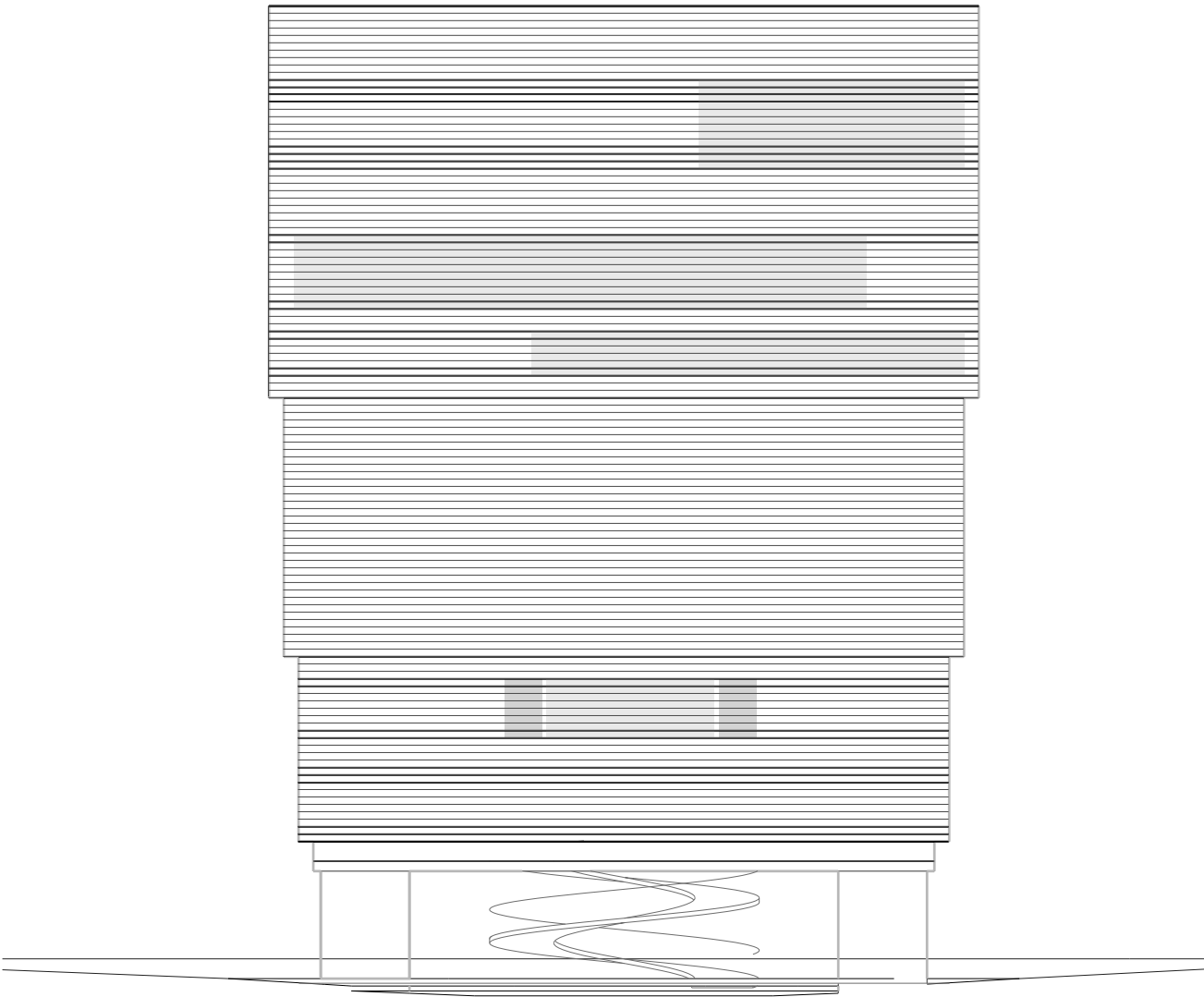


*East facade*





*South facade*

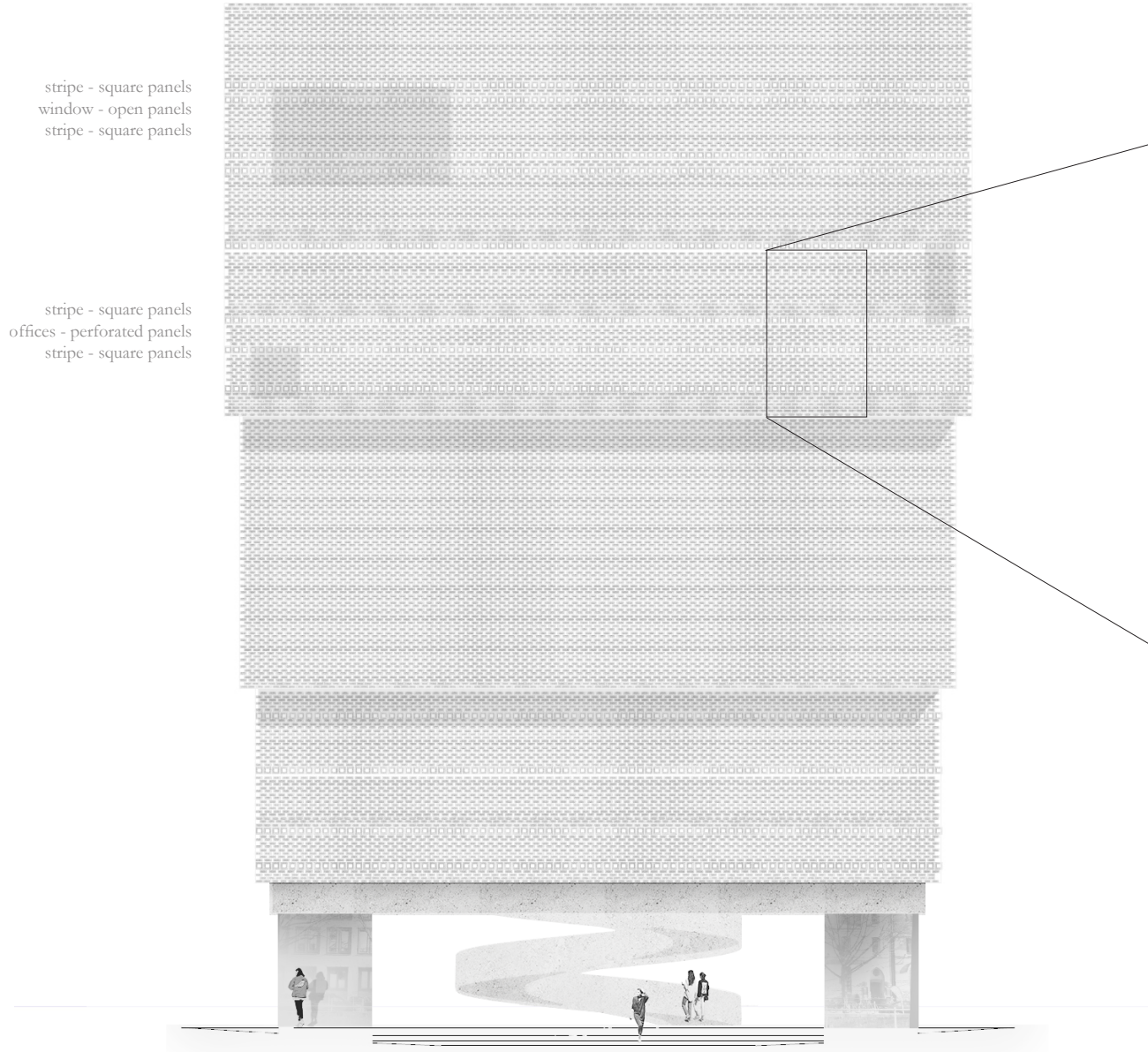


*West facade*

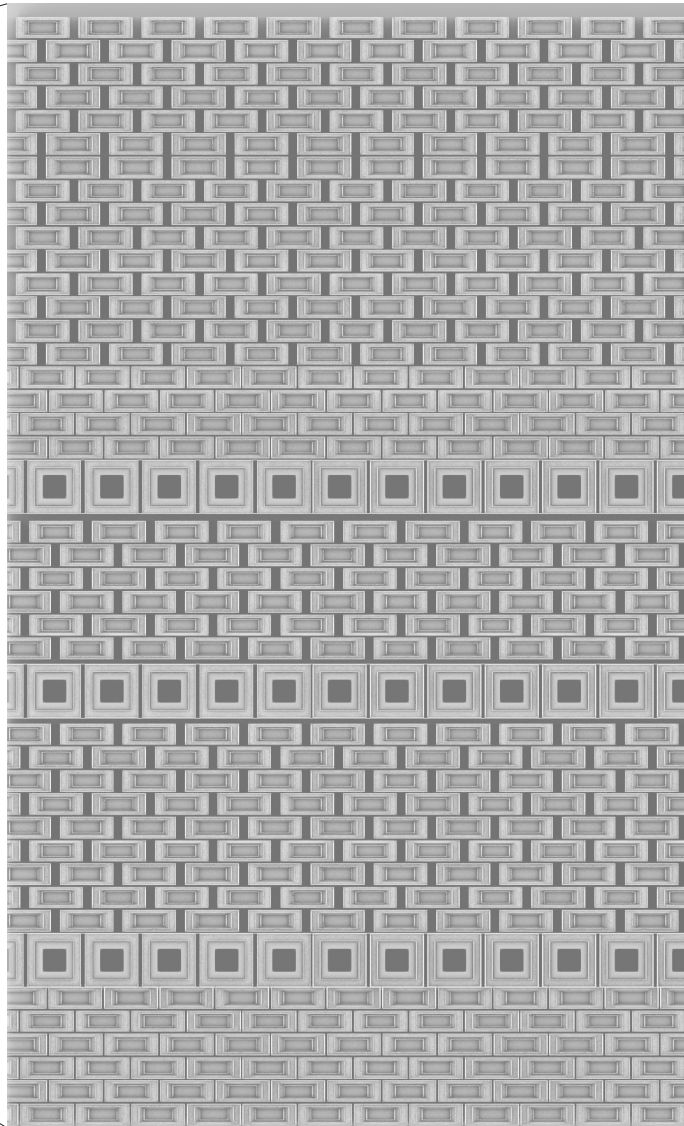
0 1 5M



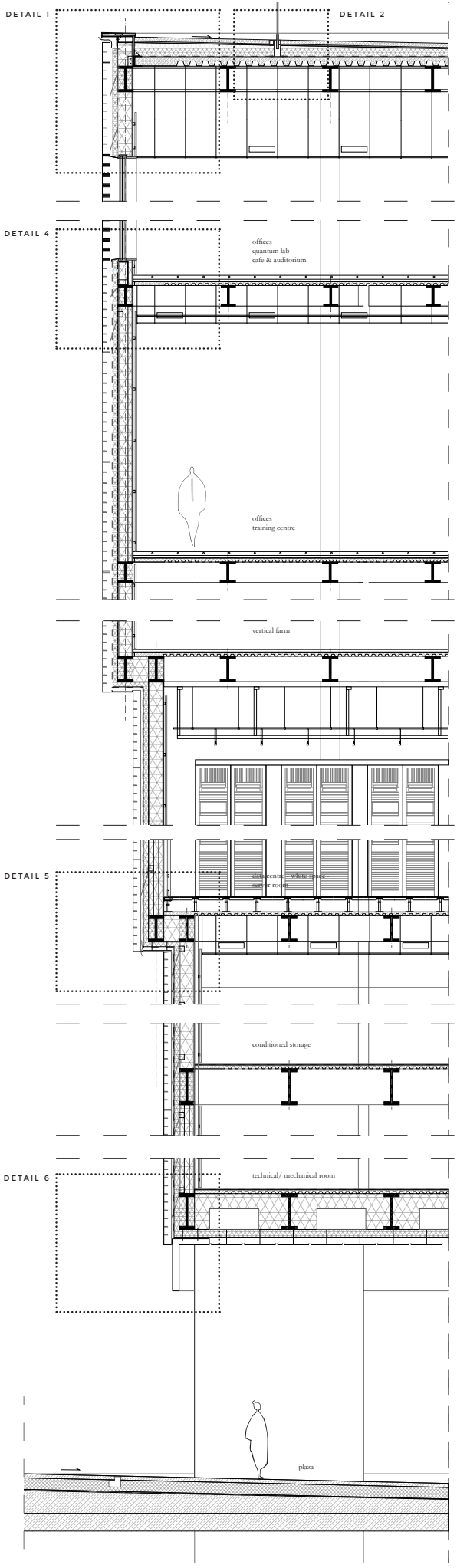
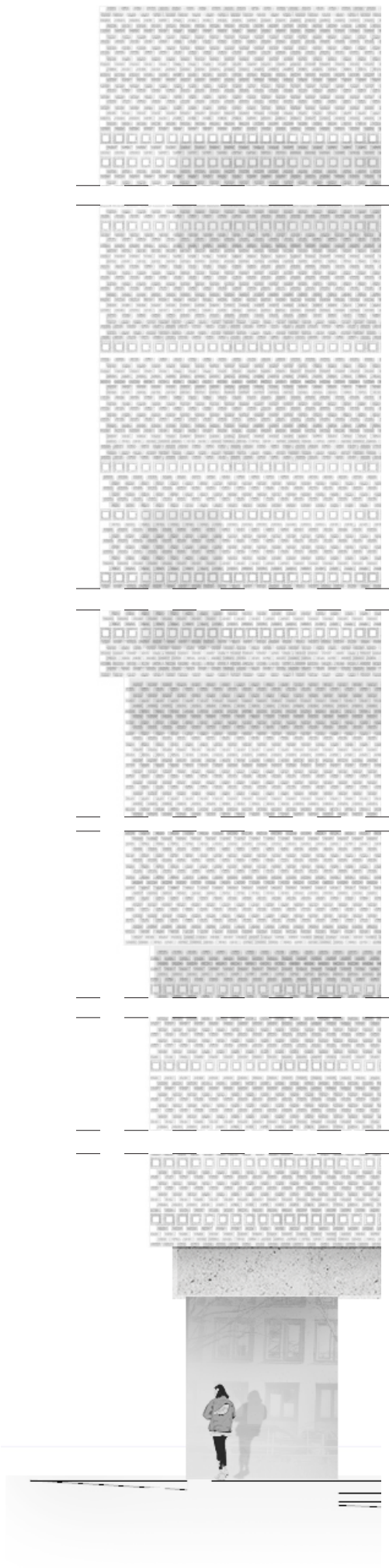
Details







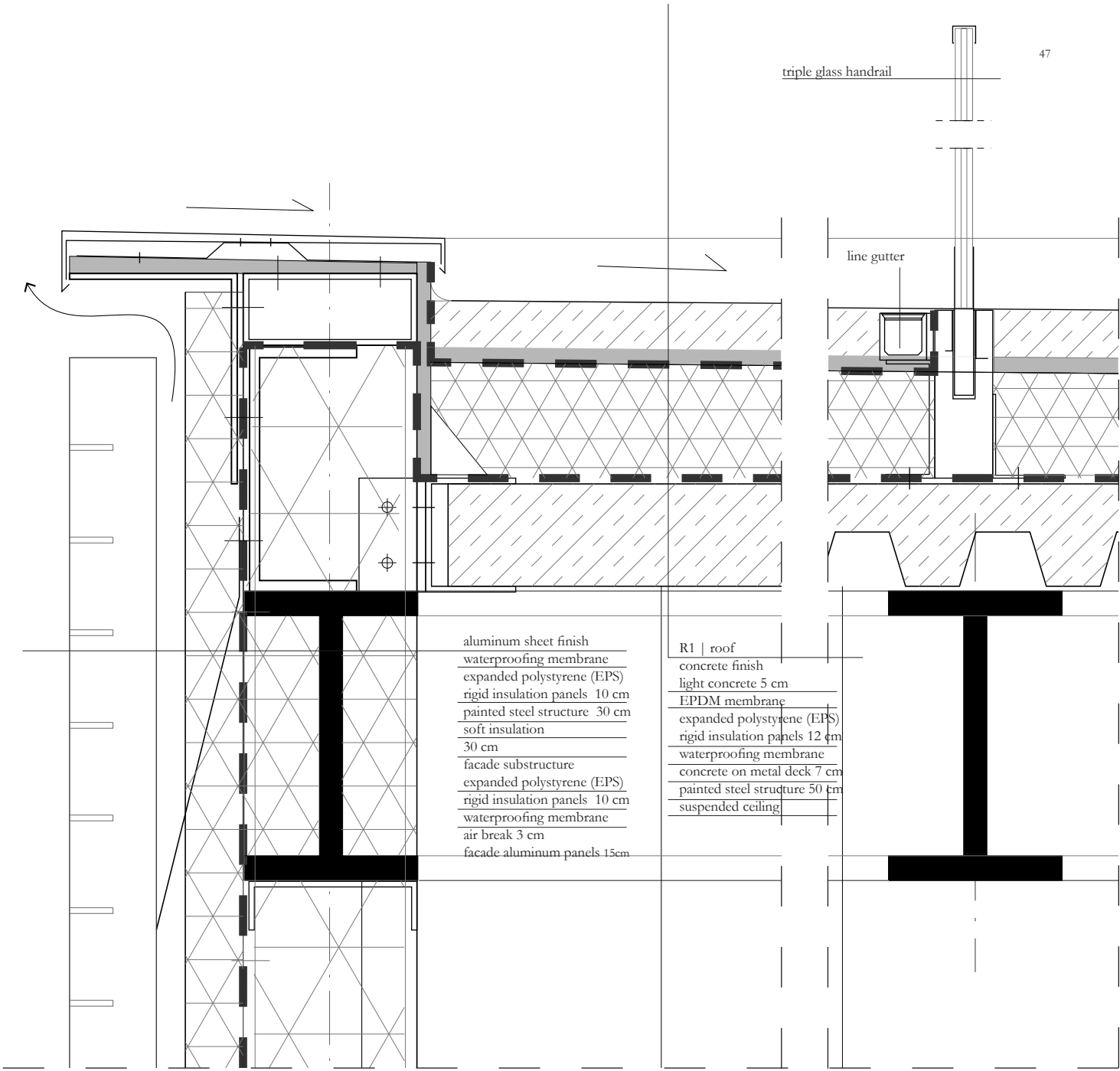
Facade Fragment original 1:20



Detail 1. & 2. 1:10  
(original scale 1:5)

triple glass handrail

line gutter



aluminum sheet finish  
 waterproofing membrane  
 expanded polystyrene (EPS)  
 rigid insulation panels 10 cm  
 painted steel structure 30 cm  
 soft insulation  
 30 cm  
 facade substructure  
 expanded polystyrene (EPS)  
 rigid insulation panels 10 cm  
 waterproofing membrane  
 air break 3 cm  
 facade aluminum panels 15cm

R1 | roof  
 concrete finish  
 light concrete 5 cm  
 EPDM membrane  
 expanded polystyrene (EPS)  
 rigid insulation panels 12 cm  
 waterproofing membrane  
 concrete on metal deck 7 cm  
 painted steel structure 50 cm  
 suspended ceiling

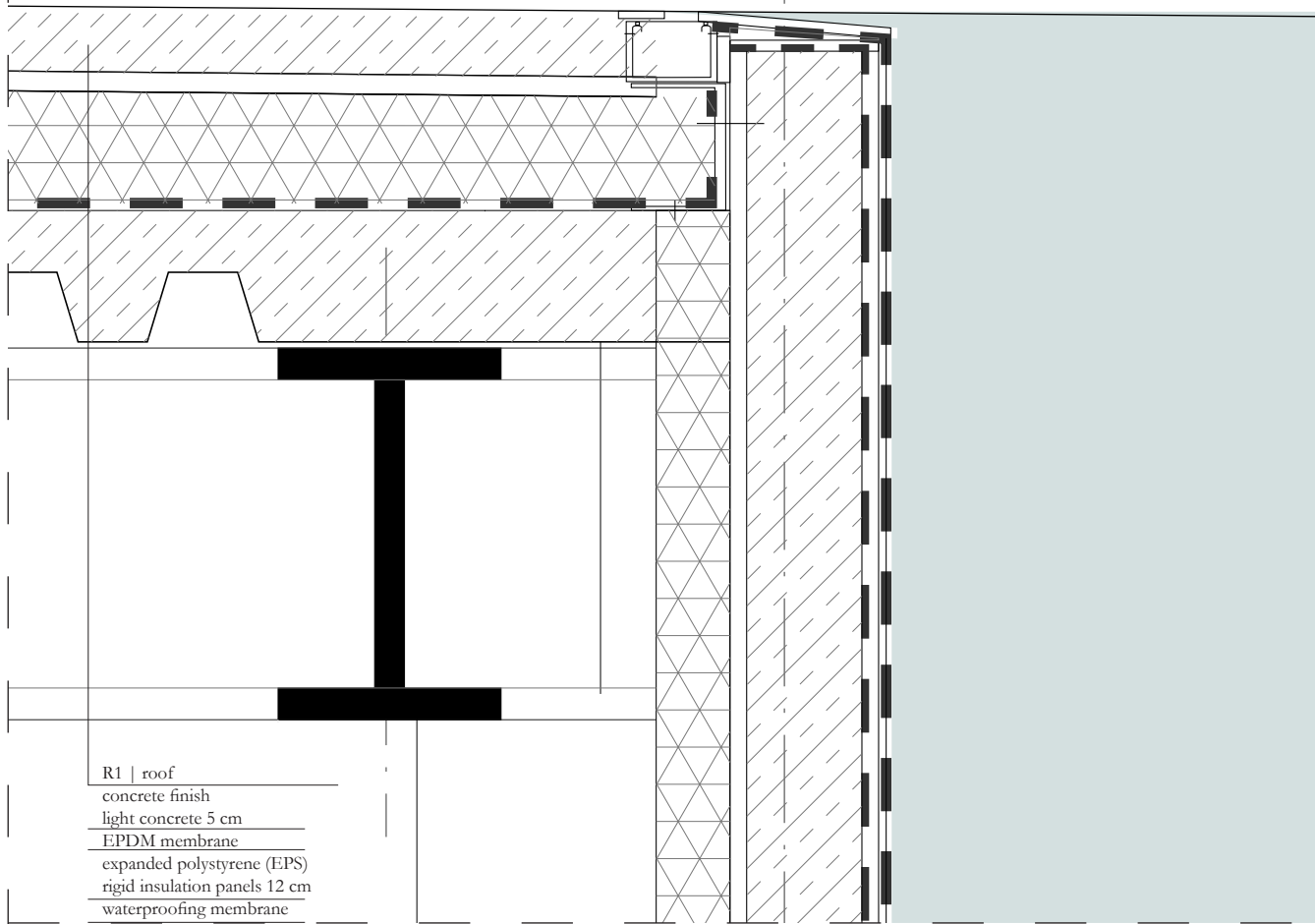
F1  
 concrete finish panel 3 cm  
 substructure for concrete  
 panels 3 cm  
 painted steel structure 30 cm  
 soft insulation  
 30cm  
 expanded polystyrene (EPS)  
 rigid insulation panels 10 cm  
 waterproofing membrane  
 air break 3 cm  
 facade aluminum panels 15cm

F2  
 concrete finish panel  
 window  
 air break  
 facade aluminum panels with  
 openings 15 cm

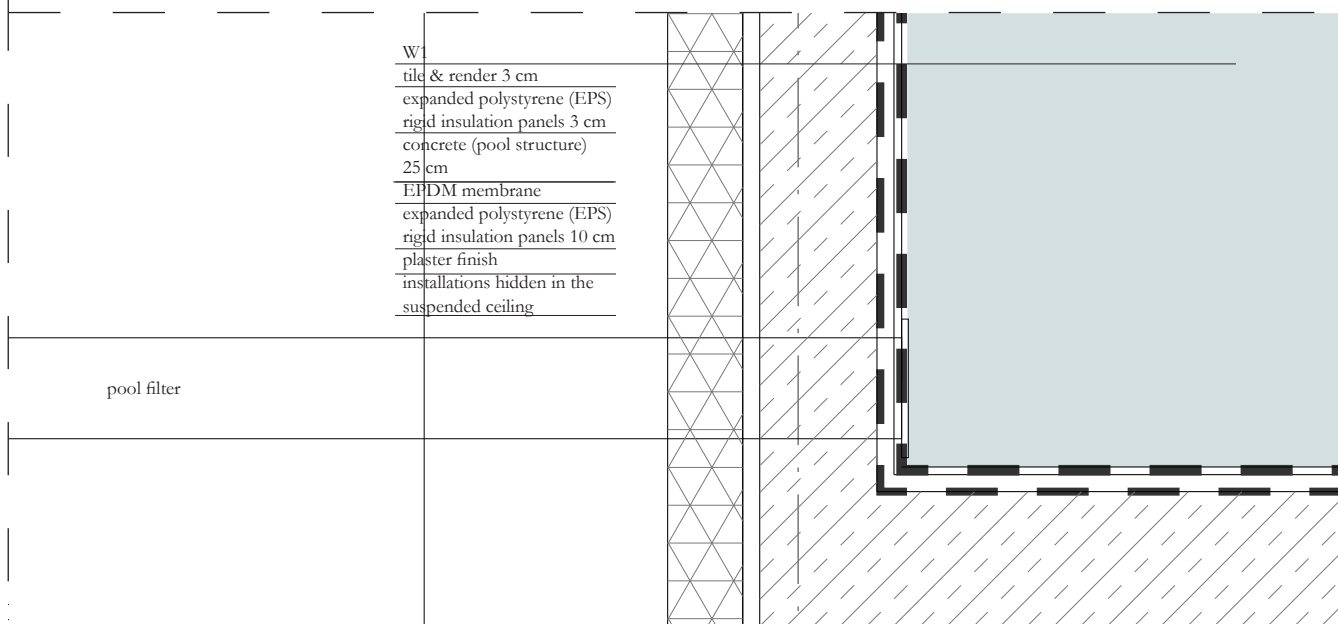
cooling panel

Detail 3 1:10  
(original scale 1:5)

Connection of the roof with the swimming pool.



R1 | roof  
concrete finish  
light concrete 5 cm  
EPDM membrane  
expanded polystyrene (EPS)  
rigid insulation panels 12 cm  
waterproofing membrane  
concrete on metal deck 7 cm  
painted steel structure 50 cm  
suspended ceiling

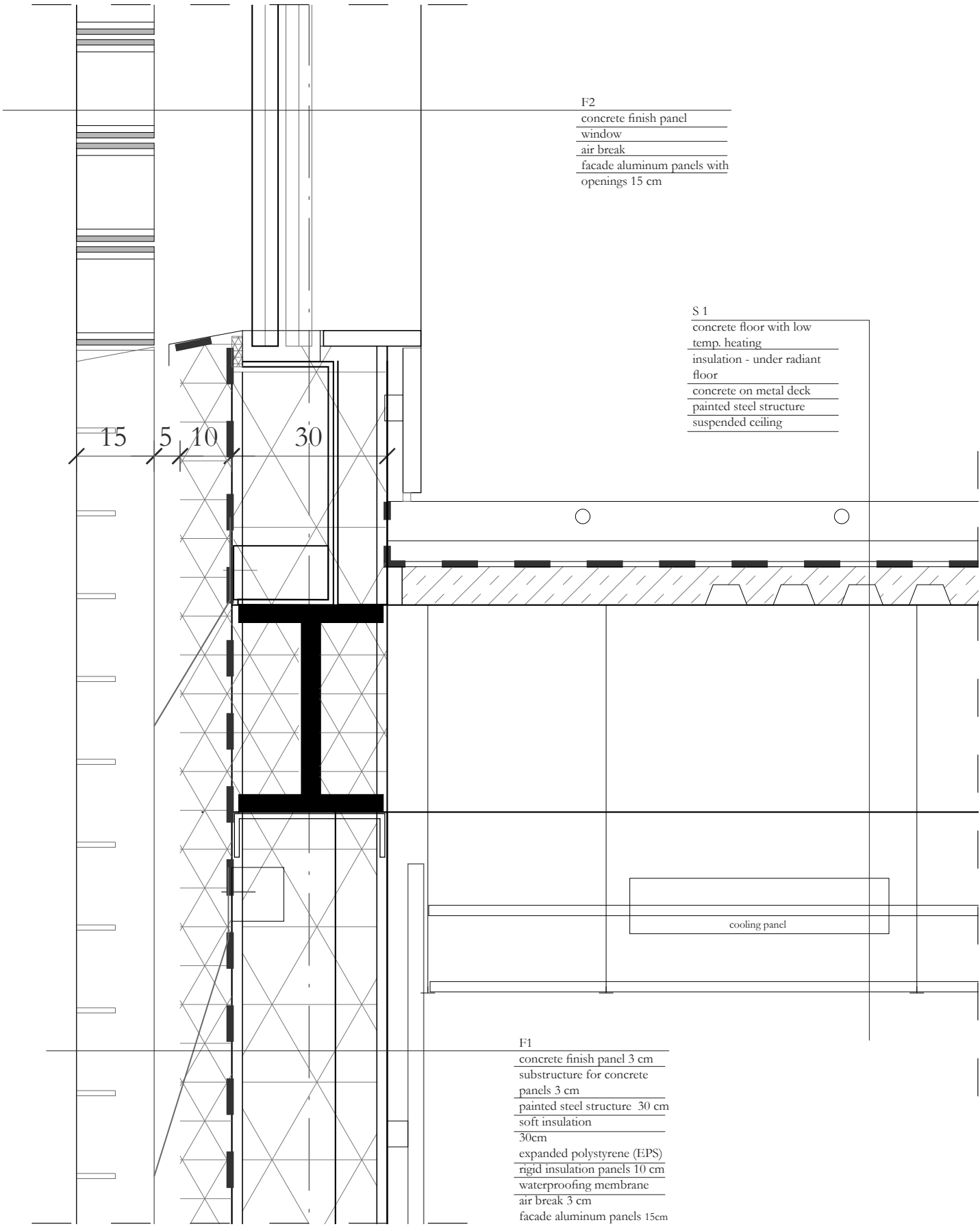


W1  
tile & render 3 cm  
expanded polystyrene (EPS)  
rigid insulation panels 3 cm  
concrete (pool structure)  
25 cm  
EPDM membrane  
expanded polystyrene (EPS)  
rigid insulation panels 10 cm  
plaster finish  
installations hidden in the  
suspended ceiling

pool filter

Detail 4. 1:10  
(original scale 1:5)





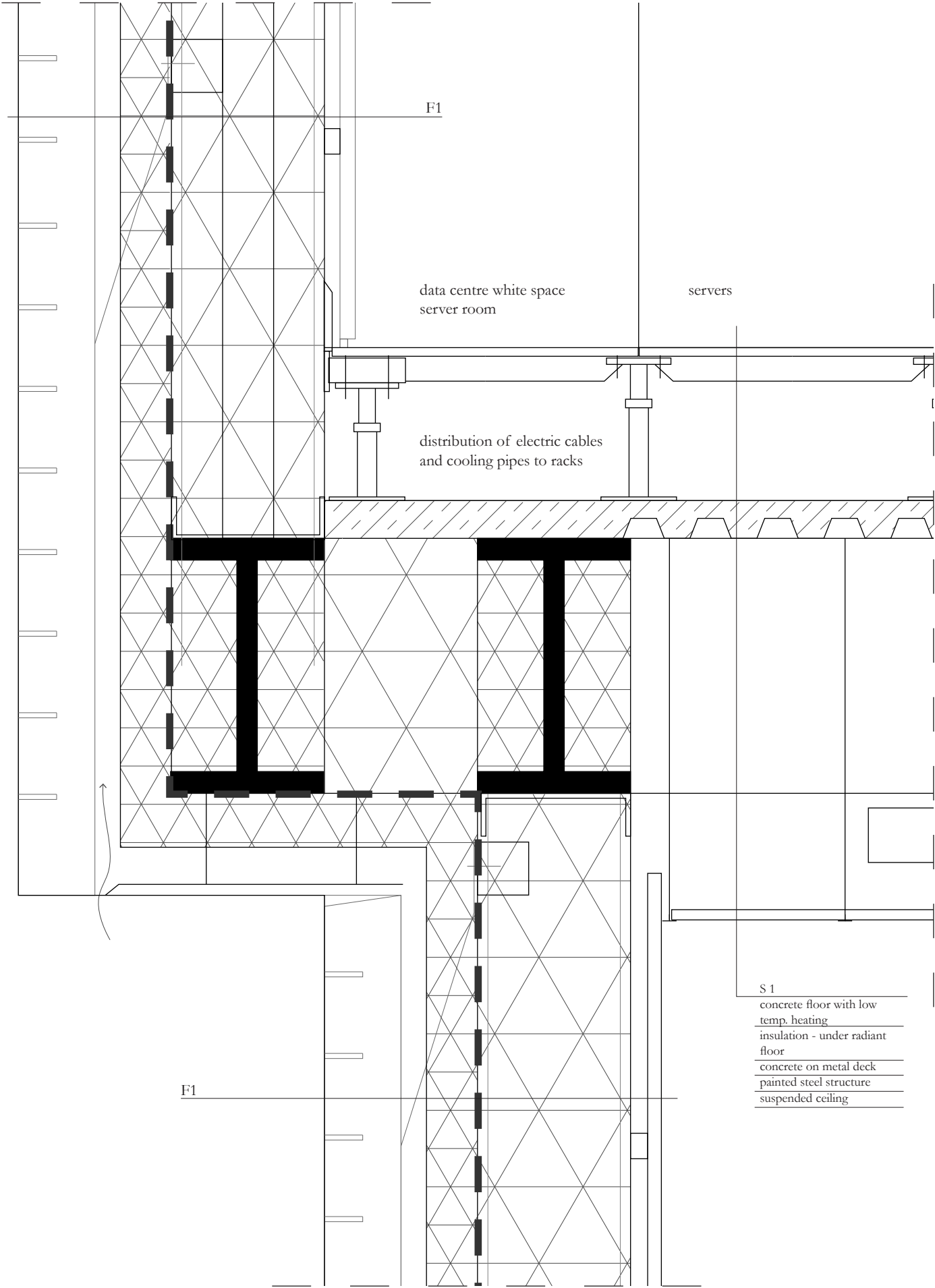
F2  
concrete finish panel  
window  
air break  
facade aluminum panels with  
openings 15 cm

S 1  
concrete floor with low  
temp. heating  
insulation - under radiant  
floor  
concrete on metal deck  
painted steel structure  
suspended ceiling

cooling panel

F1  
concrete finish panel 3 cm  
substructure for concrete  
panels 3 cm  
painted steel structure 30 cm  
soft insulation  
30cm  
expanded polystyrene (EPS)  
rigid insulation panels 10 cm  
waterproofing membrane  
air break 3 cm  
facade aluminum panels 15cm

Detail 5. 1:10  
(original scale 1:5)



F1

data centre white space  
server room

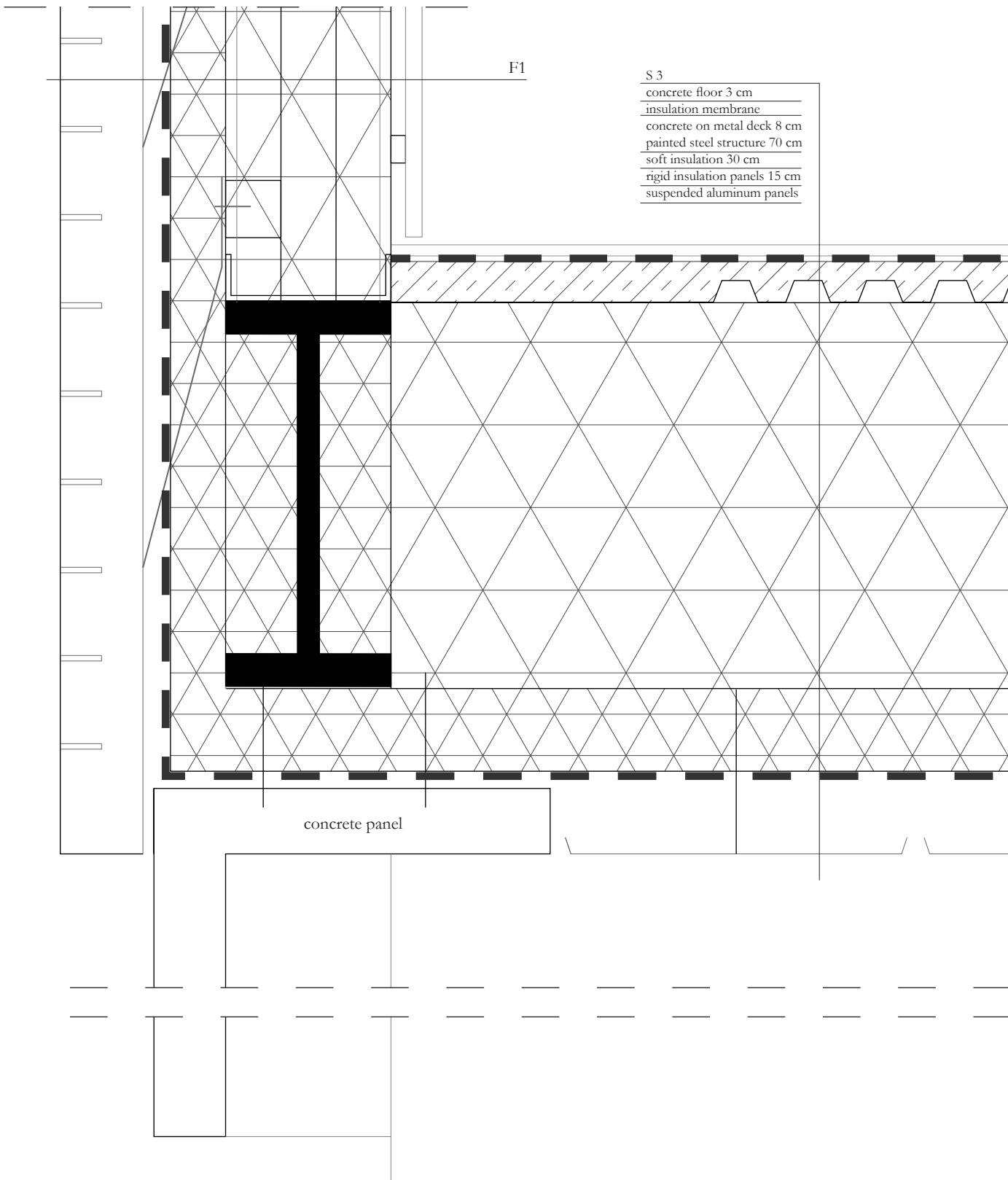
servers

distribution of electric cables  
and cooling pipes to racks

F1

- S 1
- concrete floor with low temp. heating
- insulation - under radiant floor
- concrete on metal deck
- painted steel structure
- suspended ceiling

Detail 6. 1:10  
(original scale 1:5)



F1

- S 3
- concrete floor 3 cm
- insulation membrane
- concrete on metal deck 8 cm
- painted steel structure 70 cm
- soft insulation 30 cm
- rigid insulation panels 15 cm
- suspended aluminum panels

concrete panel