

## A multiproxy database of western North American Holocene paleoclimate records

Routson, Cody C.; Kaufman, Darrell S.; McKay, Nicholas P.; Erb, Michael P.; Arcusa, Stéphanie H.; Brown, Kendrick J.; Kirby, Matthew E.; Marsicek, Jeremiah P.; Schoups, Gerrit; More Authors

**DOI**

[10.5194/essd-13-1613-2021](https://doi.org/10.5194/essd-13-1613-2021)

**Publication date**

2021

**Document Version**

Final published version

**Published in**

Earth System Science Data

**Citation (APA)**

Routson, C. C., Kaufman, D. S., McKay, N. P., Erb, M. P., Arcusa, S. H., Brown, K. J., Kirby, M. E., Marsicek, J. P., Schoups, G., & More Authors (2021). A multiproxy database of western North American Holocene paleoclimate records. *Earth System Science Data*, 13(4), 1613-1632. <https://doi.org/10.5194/essd-13-1613-2021>

**Important note**

To cite this publication, please use the final published version (if applicable). Please check the document version above.

**Copyright**

Other than for strictly personal use, it is not permitted to download, forward or distribute the text or part of it, without the consent of the author(s) and/or copyright holder(s), unless the work is under an open content license such as Creative Commons.

**Takedown policy**

Please contact us and provide details if you believe this document breaches copyrights. We will remove access to the work immediately and investigate your claim.



## A multiproxy database of western North American Holocene paleoclimate records

**Cody C. Routson<sup>1</sup>, Darrell S. Kaufman<sup>1</sup>, Nicholas P. McKay<sup>1</sup>, Michael P. Erb<sup>1</sup>, Stéphanie H. Arcusa<sup>1</sup>,  
Kendrick J. Brown<sup>2,3</sup>, Matthew E. Kirby<sup>4</sup>, Jeremiah P. Marsicek<sup>5</sup>, R. Scott Anderson<sup>1</sup>,  
Gonzalo Jiménez-Moreno<sup>6</sup>, Jessica R. Rodysill<sup>7</sup>, Matthew S. Lachniet<sup>8</sup>, Sherilyn C. Fritz<sup>9</sup>,  
Joseph R. Bennett<sup>10</sup>, Michelle F. Goman<sup>11</sup>, Sarah E. Metcalfe<sup>12</sup>, Jennifer M. Galloway<sup>13</sup>,  
Gerrit Schoups<sup>14</sup>, David B. Wahl<sup>15</sup>, Jesse L. Morris<sup>16</sup>, Francisca Staines-Urías<sup>17</sup>, Andria Dawson<sup>18</sup>,  
Bryan N. Shuman<sup>19</sup>, Daniel G. Gavin<sup>20</sup>, Jeffrey S. Munroe<sup>21</sup>, and Brian F. Cumming<sup>22</sup>**

<sup>1</sup>School of Earth and Sustainability, Northern Arizona University, P.O. Box 4099 Flagstaff, AZ 86011, USA

<sup>2</sup>Canadian Forest Service, Natural Resources Canada, Victoria, BC V8Z 1M5, Canada

<sup>3</sup>Department of Earth, Environmental and Geographic Sciences, University of British Columbia,  
Okanagan, BC V1V 1V7, Canada

<sup>4</sup>Department of Geological Sciences, California State University, Fullerton, 800 N. State College Blvd.,  
Fullerton, CA 98324, USA

<sup>5</sup>Department of Geoscience, University of Wisconsin-Madison, 1215 W. Dayton St. Madison, WI 53706, USA

<sup>6</sup>Departamento de Estratigrafía y Paleontología, Universidad de Granada,  
Avda. Fuentenueva S/N, Granada 18002, Spain

<sup>7</sup>Florence Bascom Geoscience Center, United States Geological Survey,  
12201 Sunrise Valley Dr. MS926A, Reston, VA 20192, USA

<sup>8</sup>Department of Geoscience, University of Nevada, Las Vegas,  
4505 S. Maryland Parkway, Las Vegas, NV 89154, USA

<sup>9</sup>Department of Earth and Atmospheric Sciences, University of Nebraska-Lincoln, Lincoln, NE 68540, USA

<sup>10</sup>Department of Biology, Carleton University, 1125 Col By Drive, Ottawa, ON K1S 5B6, Canada

<sup>11</sup>Department of Geography, Environment, and Planning, Sonoma State University,  
1801 E. Cotati Ave, Rohnert Park, CA 94928, USA

<sup>12</sup>School of Geography, University of Nottingham, University Park,  
Nottingham, Nottinghamshire, NG7 2RD, UK

<sup>13</sup>Geological Survey of Canada (Commission géologique du Canada), 3303 33rd St. NW,  
Calgary, AB T2L 2A7, Canada

<sup>14</sup>Water Resources Management, Delft University of Technology, P.O. Box 5048,  
Delft, 2600 GA, the Netherlands

<sup>15</sup>Geology, Minerals, Energy, and Geophysics Science Center, United States Geological Survey, 345  
Middlefield Rd., Menlo Park, CA 94025, USA

<sup>16</sup>Department of Geography, University of Utah, 260 Central Campus Dr #4625,  
Salt Lake City, UT 84112, USA

<sup>17</sup>Department of Marine Geology, Geological Survey of Denmark and Greenland (GEUS),  
Oester Voldgade 10, Copenhagen K, 1350, Denmark

<sup>18</sup>Department of General Education, Mount Royal University,  
4825 Mt Royal Gate SW, Calgary, AB T3E6K6, Canada

<sup>19</sup>Department of Geology and Geophysics, University of Wyoming, 1000 E. University Ave.,  
Laramie, WY 82071, USA

<sup>20</sup>Department of Geography, University of Oregon, 1251 University of Oregon, Eugene, OR 97403, USA

<sup>21</sup>Geology Department, Middlebury College, 276 Bicentennial Way, Middlebury, VT 05753, USA

<sup>22</sup>Department of Biology, Queen's University, 116 Barrie St., Kingston, ON K7L3J9, Canada

**Correspondence:** Cody C. Routson (cody.routson@nau.edu)

Received: 29 July 2020 – Discussion started: 30 September 2020

Revised: 31 January 2021 – Accepted: 10 February 2021 – Published: 19 April 2021

**Abstract.** Holocene climate reconstructions are useful for understanding the diverse features and spatial heterogeneity of past and future climate change. Here we present a database of western North American Holocene paleoclimate records. The database gathers paleoclimate time series from 184 terrestrial and marine sites, including 381 individual proxy records. The records span at least 4000 of the last 12 000 years (median duration of 10 725 years) and have been screened for resolution, chronologic control, and climate sensitivity. Records were included that reflect temperature, hydroclimate, or circulation features. The database is shared in the machine readable Linked Paleo Data (LiPD) format and includes geochronologic data for generating site-level time-uncertain ensembles. This publicly accessible and curated collection of proxy paleoclimate records will have wide research applications, including, for example, investigations of the primary features of ocean–atmospheric circulation along the eastern margin of the North Pacific and the latitudinal response of climate to orbital changes. The database is available for download at <https://doi.org/10.6084/m9.figshare.12863843.v1> (Routson and McKay, 2020).

## 1 Introduction

Reconstructing past climate is challenging because it is spatially and temporally complex and because all paleoclimate records are influenced by factors other than climate. Although rarely done, taking advantage of the full breadth of paleoclimatic evidence provides the best possibility of discerning signal from noise. Of all the geologic epochs, the paleoclimate of the Holocene (11.7 kiloannum (ka) to present) has been investigated most extensively. Studying the Holocene is useful, in part, because it serves as a baseline from which to assess natural versus human-forced climate changes. A keyword search on “Holocene” and “climate” returns approximately 21 000 studies globally on the Web of Science. The volume of this previous work, as well as the evolving scientific understanding that it represents, generates organizational challenges related to data validation, extraction, and application.

Here we present a new database of Holocene paleoclimate records from western North America and the adjacent eastern Pacific Ocean. The spatial domain (Fig. 1) extends from tropical Mexico to Arctic Alaska. This region was chosen because (1) it encompasses the large latitudinal range necessary to study effects of orbital changes, the primary climate forcing during the Holocene; (2) it is affected by the major modes of modern Pacific climate variability including the Pacific Decadal Oscillation (Mantua et al., 1997), El Niño–Southern Oscillation (ENSO) (Redmond and Koch, 1991), and the Northern Annular Mode (McAfee and Russell, 2008), among others; (3) it represents a range of climatologies, especially hydroclimate as influenced by the Pacific westerlies and North American monsoon (Adams and Comrie, 1997); (4) it features multiple sources of proxy climate information, including marine sediment, caves, glaciers, and lakes, which are sensitive to changes in wintertime mois-

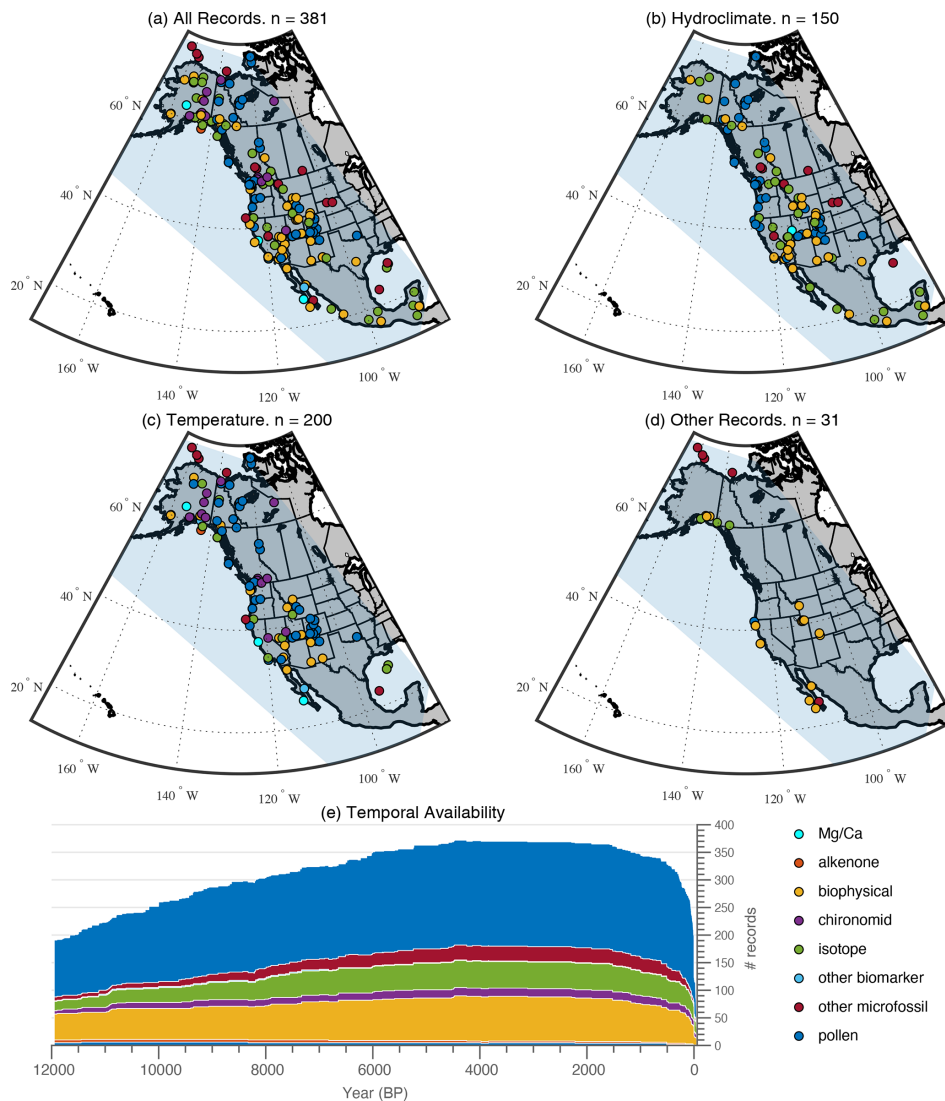
ture, a key variable for tracking the primary variability of North Pacific ocean–atmospheric circulation; and (5) it is a region of concern for future climate change, considering the large population growth and climate hazards related to, for example, water scarcity in the southern tier (Garfin, 2013) and changing wildfire hazards throughout (e.g., Marlon et al., 2012; Power et al., 2008).

This database is composed of records from individual site-level studies and records that were compiled by previous summaries. Many (42 %) of the records in this database are also included in version 1 of the global Temperature 12k database (Kaufman et al., 2020a). This database adds another 39 temperature-sensitive records, plus 179 records that reflect hydroclimate and circulation changes. The added data were published in various formats and often with little metadata to inform the reuse of the data. Together, this geographically distributed collection of proxy climate records integrates marine and terrestrial realms and forms a network from which to assess the spatial variability of regional climatic change and ocean–atmospheric circulation and to compare with climate model simulations of past climate states.

## 2 Data and methods

### 2.1 Data collection

Paleoclimate records located in western North America and the adjacent Pacific Ocean (Fig. 1) were considered for inclusion in the database. They were obtained from public archives in PANGEA and NOAA’s World Data Service (WDS) for Paleoclimatology using the keyword search “Holocene” and record duration searches on NOAA’s paleoclimate search engine. The remainder were obtained through either the supplements of publications or directly from individual data generators and are now being made available in



**Figure 1.** Spatiotemporal distribution of the western North American Holocene paleoclimate database. **(a)** The database includes 381 proxy records from a variety of archive and proxy types. Records include those in calibrated climate units (e.g., °C) and records in their native proxy units (e.g.,  $\delta^{18}\text{O}$ ). **(b)** Distribution of records sensitive to hydroclimate including precipitation, flood frequency, and  $P-E$  ( $n = 150$ ). **(c)** Spatial distribution of the subset of records sensitive to temperature ( $n = 200$ ) and **(d)** the spatial distribution of other records including upwelling, sea ice, glacier extent, dust, circulation, and climate modes ( $n = 31$ ). **(e)** Temporal availability of the records in the database by proxy type (proxy general in Supplement Table S1) over the last 12 ka.

digital form as part of this data product. This database builds on several previously published paleoclimate data compilations overlapping the spatial domain encompassed by this study. These include the global Holocene temperature reconstruction of Marcott et al. (2013) ( $n = 4$  records in western North America), Arctic Holocene Transitions database (Sundqvist et al., 2014) ( $n = 30$  records in western North America), a collection compiled to characterize Holocene North American monsoon variability (Metcalf et al., 2015) ( $n = 8$  records in common with this database), the Northern Hemisphere dataset used to reconstruct Holocene temperature gradients and mid-latitude hydroclimates (Routson et

al., 2019a) ( $n = 55$  records in common with this database), a network of Holocene pollen reconstructions (Marsicek et al., 2018) ( $n = 71$  records in common with this study), two collections of records focused on the last 2 millennia (Rodysill et al., 2018; Shuman et al., 2018) ( $n = 18$  and  $n = 16$  records in common with this study respectively), and the global Temperature 12k database (Kaufman et al., 2020a) ( $n = 161$  records in common with this database). Two dust deposition records were included from the global dust compilation (Albani et al., 2015). This database also complements the recently published PAGES (Past Global Changes) global multiproxy database for temperature reconstructions of the

Common Era (PAGES 2k Consortium, 2017) and the PAGES global database for water isotopes over the Common Era (Konecky et al., 2020), which are both structured in the same format as this database. A few of the records were not available from the original data generators, and therefore the time series data were digitized from the source publication (as noted in the metadata) using the MATLAB program `digitize2.m` (Anil, 2020). Digitized records were mainly included to fill geographic gaps in the network of proxy sites.

Other Holocene paleoclimate records were considered but ultimately excluded because they did not satisfy the selection criteria. The majority of excluded records either (1) lacked a clear relation between proxy and climate, (2) were of insufficient duration, (3) possessed large gaps between chronologic control points, or (4) did not meet the sampling resolution criteria. In some instances selection criteria were eased to fill geographic gaps or for reasons justified by the authors in the QC (quality control) comments metadata. Removing records from the database for subjective reasons, such as removing records with outliers, was avoided.

## 2.2 Relation between proxy and climate

Only records with a demonstrated relation to a climate variable were included, as interpreted by the original authors of the site-level studies, but some records are not calibrated to a climate variable. Calibrated records, for example, are presented in temperature units ( $^{\circ}\text{C}$ ) and precipitation units (mm). Other records are reported in their native proxy variables (e.g.,  $\delta^{18}\text{O}$ , ‰, or sediment mass accumulation,  $\text{g}/\text{cm}^2/\text{yr}$ ). Some calibrated records rely on statistical procedures to determine the relationship between proxy and instrumental data and to infer paleoclimate change, assuming that the processes that control the proxy signal remain constant down core (Tingley et al., 2012; Von Storch et al., 2004). Other calibrations rely on transfer functions based on the correlation of contemporary environmental gradients (e.g., Juggins and Birks, 2012) or the modern analogue technique, which uses the similarity between modern and fossil assemblages (e.g., Guiot and de Vernal, 2007). The original species assemblage data (primarily pollen) for these records are not included in this data product. However, a link to the Neotoma Paleocology Database dataset ID is provided where available. The Neotoma Paleocology Database is a community-curated database that is a primary repository for assemblage and other paleoecology data (Williams et al., 2018).

The database also includes proxy records that have not been calibrated to a specific climate variable but that display a clear relation between the proxy and climate. These “relative” climate indicators are useful because they (1) attest to the timing and relative magnitude of change, which is sufficient for many statistical reconstruction methods, especially those that do not assume linearity between proxy and climate variables; (2) can be used in proxy system modeling and in

some cases (e.g.,  $\delta^{18}\text{O}$ ) can be compared directly to the output of climate models; and (3) provide more complete spatial coverage.

## 2.3 Record duration and resolution

The database aims to document paleoclimate variability that ranges on the timescale of multi-millennial trends to centennial excursions. However, not all records encompass the entire Holocene epoch. To be included, records must span a duration of ca. 4000 years anytime between 0 and 12 ka. To focus on records that can resolve sub-millennial patterns, the database includes those with a sample resolution finer than 400 years (i.e., the median spacing between consecutive samples in the time series is less than 400 years over the past 12 000 years or over the full record length, if shorter).

## 2.4 Chronologic control

Age control is a fundamental variable underlying proxy records. The database includes the chronologic data necessary for reproducing original age–depth models for records from sediment and speleothem archive types. Chronologic data include depth, uncalibrated radiometric or other dates, analytical errors, and associated corrections where applicable. Other metadata, including material type analyzed and sample identifiers, were included when available. Time series with a maximum of 3000 years between dates within the 0–12 ka interval or with five or more relatively evenly distributed Holocene dates were included in the database. Overall, the age control screening retained a high proportion of available records while recognizing that such coarse age control often precludes the ability to address questions that require fine temporal-scale accuracy (Blaauw et al., 2018).

## 2.5 Metadata

The database includes a large variety of metadata (Supplement Table S1) to facilitate analyses and reuse. The metadata included in this database are largely consistent with those developed and used in the Temperature 12k database (Kaufman et al., 2020a), with some refinement for hydroclimate-related records. Predominant metadata are subdivided into the following categories:

1. Geographic information includes “site name”, “latitude”, “longitude”, and “elevation”. Geodetic data are relative to the WGS84 (World Geodetic System 1984) ellipsoid and in units of decimal degrees. “Country ocean” is generated based on the NASA GCMD (Global Change Master Directory) convention.
2. Bibliographic information includes the DOI (digital object identifier) when available. The original study is typically referenced in “publication 1”. “Publication 2” generally corresponds to subsequent publications contributing to record development or reuse.



3. The original data source (“original data citation”) is the persistent identifier (URL, Uniform Resource Locator, or DOI) that connects to the publicly accessible repository (e.g., PANGAEA and NOAA WDS paleoclimatology when available). Fields with the entry “wNAM” correspond to records transferred to a public repository for the first time by this study. “Neotoma ID” includes the Neotoma dataset ID when available for the original assemblage data.
4. Metadata describing the proxy record include “archive type”, “proxy general”, “proxy type”, “proxy detail”, “calibration method”, and “paleo data notes”. Archive type corresponds to the physical archive (e.g., lake sediment, marine sediment, peat, and speleothem). Proxy general simplifies plotting figures by grouping similar proxies from proxy type. For example, proxy general for “other biomarkers” includes proxy type TEX86 (tetraether index of 86 carbon atoms) and GDGT (glycerol dialkyl glycerol tetraether) but not alkenones, which are treated separately. Proxy general for “biophysical” includes biogenic silica, tree-ring width, total organic content, chlorophyll, and microfossils. Proxy general for “other microfossil” includes coccolith, diatom, dinocyst, and foraminifera. Pollen and chironomid records are treated separately. Proxy detail corresponds to specific species or material types. “Calibration method” is the statistical method used for proxy calibration. Paleo data notes include information from the original study to help users understand the proxy record.
5. For climate interpretation, primary “climate variables” include “*T*” (temperature), “*P*” (precipitation), and “*P-E*” (precipitation minus evaporation). Other climate indicators include “MODE” (climate modes such as ENSO), “upwelling” (coastal upwelling), “DUST” (dust deposition), “ICE” (sea ice extent), and “ELA” (glacier equilibrium line altitude). The “interpretation direction” is the sign relation (“positive” or “negative”) between the proxy value and the climate variable. Proxy records originally reported as *E-P* were cataloged as the climate variable of *P-E*, and the field interpretation direction was inverted from the original interpretation. “Variable name” corresponds to the specific variable type (e.g., “temperature” or “ $\delta^{18}\text{O}$ ”; oxygen-18 isotopes). “Units” correspond to the measurement unit specified in the variable name (e.g., “degC” or “permil”). “Climate variable detail” refines the climate variable field. Temperature records follow the structure of the variable sensed (e.g., “air”) at a specific level (e.g., “surface”). Examples include “air@surface”, “air@condensation”, and “sea@surface”. Hydroclimate and some other record types do not always conform as well to this format. Climate variable detail for these records specifies the variable sensed (e.g., “lake level”, “runoff”, “river flow”, and “amount”), at a specific level (e.g., surface). Examples include “lakeLevel@surface” and “runoff@surface”. If the variable sensed is the same as the climate variable (e.g., “precipitation”), the field is left blank. In these cases only the level is specified (e.g., “@surface”). In cases where the level was ambiguous, not specified, or not applicable (e.g., “soil moisture”, “lake salinity”, or “El Niño”), only the variable sensed was specified.
6. Seasonality information has been separated into two fields of “seasonality” and “seasonality general”. Seasonality includes the most specific seasonal information available including specific months in number format (July = “7”) or reconstructed seasons (e.g., “warmest month”, “summer”, “growing season”, “winter”, and “annual”). “Season general” distills season details into queryable seasons (“annual”, “summer only”, “summer+”, “winter only”, and “winter+”). Categories summer+ and winter+ indicate that another season (or annual) has also been reconstructed from the same site.
7. Metadata describing the underlying time series data include the youngest and oldest sample ages (“min year” and “max year”), the median sample resolution (“resolution”) over the past 12 000 years, and the frequency of age control points (“ages per kyr”), which includes radiocarbon and U-series (uranium) ages.
8. Quality control metadata include (“QC certification”) and (“QC comments”). QC certification includes the initials of the co-author of this data descriptor who was responsible for reviewing the screening criteria for records included in the data product. QC comments were written by the person who completed QC to improve reusability of the data.
9. Data access and visualization includes a website link for viewing and downloading the data in .csv (comma-separated value) or LiPD format (“link to LiPDverse”).

## 2.6 Database structure and format: Linked Paleo Data (LiPD)

The site-level data and metadata are formatted in the LiPD structure. The LiPD framework comprises JSON-formatted files that are machine-readable with MATLAB, Python, and R packages that enable rapid querying and data extraction (McKay and Emile-Geay, 2016). LiPD encodes the database into a structured hierarchy that allows for explicit descriptions at any level and aspect of the database. Code packages for evaluating the database can be accessed on GitHub (<https://github.com/nickmckay/LiPD-utilities>, last access: 29 March 2021).

## 2.7 Data visualization

A one-page dashboard for each record is included as a Supplement to this article. The dashboards include the primary information associated with each record including the location, the time series plot, bibliographic reference, and proxy data information (Supplemental dashboards). Each record is also linked to a web page (link to LiPDverse) where the data can be visualized and downloaded in LiPD or text versions. A globally distributed collection of paleoclimate LiPD files is housed at <https://lipdverse.org/> (last access: 29 March 2021). This western North American Holocene paleoclimate database is a subset of the records that can be found by choosing wNA in the LiPDverse browser. The full collection can also be accessed at [http://lipdverse.org/wNA/1\\_0\\_0/](http://lipdverse.org/wNA/1_0_0/) (last access: 29 March 2021).

## 3 Summary of database contents

### 3.1 Proxy records and climate variables

The western North American Holocene paleoclimate database includes proxy climate records from 184 different sites. Many “sites” (locations) are represented by more than one proxy “record” (time series). Multiple records from one site often represent different climate variables or reconstruction methods. Pollen assemblages, for example, are often translated into both temperature and moisture variables, sometimes for different seasons. The list of sites is shown by row in Table 1, whereas Supplement Table S1 contains a row for each record. In total, this database comprises 184 sites and 381 records.

The records are derived from nine archive types and are based on eight proxy categories (Supplement Table S1). The database includes 259 records from lake sediments, 58 records from marine sediment, and 64 other terrestrial.

The western North America database includes 84 records that are being transferred to a publicly accessible data repository for the first time with this data product. These include 61 “new” records as follows. Pollen ratio time series reflecting changes in the position of forest boundaries and long-term temperature change were calculated for 23 records. These ratios were computed by the original data generators following methods and rationale described in Jiménez-Moreno et al. (2019) and Johnson et al. (2013). The database also includes 20 precipitation records, which were generated by Marsicek et al. (2018) but not released with that publication. Finally, we have included 18 hydroclimate records based on subsets of packrat midden sites from Harbert and Nixon (2018), following the same methods applied for temperature reconstructions in Kaufman et al. (2020b). Briefly, the Climate Reconstruction Analysis using Coexistence Likelihood Estimation (CRACLE) method was used to infer absolute precipitation given the modern relationship between WorldClim climate data and packrat midden fos-

sil data. In the original paper (Harbert and Nixon, 2018), an overall MAT (mean annual temperature) anomaly that combines all sites is presented. This MAT is calculated by subtracting the WorldClim calibration data for each site and then averaging all inferred temperatures (across space) in discrete time intervals. Here we provide the absolute precipitation from CRACLE, without spatiotemporal averaging, and note that some of the inferred absolute precipitation appears more extreme than precipitation reconstructed from other proxies. For further details and code, please refer to Harbert and Nixon (2018). These midden records are noted in the QC comments column of Supplement Table S1.

The database contains 200 temperature-sensitive records; 150 hydroclimate sensitive records (e.g., precipitation, *P-E*, flood frequency, and streamflow); and 31 other records including upwelling, dust, climate mode, and sea ice extent. Marine records are primarily sea surface temperatures, but there are several marine records of other variables including sea ice extent, upwelling strength, and flood frequency. Many (228) of the proxy records are interpreted by the original authors to represent mean annual values of specific climate variables. Others represent individual seasons, primarily with some aspect of summer. Background information including the strengths, weaknesses, and underlying assumptions of the specific proxy types can be found in textbooks devoted to the topic (e.g., Bradley, 2015).

### 3.2 Geographic coverage

The geographic distribution of records within western North America is far from uniform (Fig. 1). The density of all sites is comparatively high in Alaska and the conterminous western United States. In contrast, Mexico is represented by few study sites, mainly because many studies failed to meet the inclusion criteria. Hydroclimate records have the most uniform coverage, albeit with a spatial gap in Mexico. The spatial distribution of temperature records has gaps in Canada, the midwestern United States, Texas, and continental Mexico.

### 3.3 Record length and temporal resolution

Median record duration is 10 725 years, not counting the duration of records beyond 12 000 years. Most of the records (94 %) extend back at least 6000 years, thereby including the frequently modeled 6 ka paleoclimate time slice. The median sample resolution of individual records in the database is 127 years (Fig. 2).

### 3.4 Geochronology

Original geochronologic data for each record are included in the database. The database includes 2353 individual age control points ( $^{14}\text{C}$ ,  $^{210}\text{Pb}$ , tephtras, etc.). Tree-ring age control points (two studies) were excluded from this number.

**Table 1.** Proxy records included in the database, listed alphabetically. See Supplement Table S1 for expanded metadata and links to the proxy time series and chronology data.

Site name	Lat	Long	Archive type	Proxy*	Original data citation (last access: 29 March 2021)	Reference
3M Pond	49.98	-121.22	LakeSediment	Chironomid	<a href="http://www.ncdc.noaa.gov/paleo/study/27330">http://www.ncdc.noaa.gov/paleo/study/27330</a>	Pellatt et al. (2000)
893A	34.29	-120.04	MarineSediment	$\delta^{18}\text{O}$	<a href="http://www.ncdc.noaa.gov/paleo/study/27330">http://www.ncdc.noaa.gov/paleo/study/27330</a>	Kennett et al. (2007)
Abalone	33.96	-119.98	LakeSediment	Pollen	<a href="http://www.ncdc.noaa.gov/paleo/study/27330">http://www.ncdc.noaa.gov/paleo/study/27330</a>	Cole and Liu (1994)
Alfonso Basin	24.65	-110.60	MarineSediment	Coccolith	wNA	Staines-Urías et al. (2015)
Andy	64.65	-128.08	LakeSediment	Pollen	<a href="http://www.ncdc.noaa.gov/paleo/study/15444">http://www.ncdc.noaa.gov/paleo/study/15444</a>	Szeicz et al. (1995)
Bald Lake	40.87	-110.49	LakeSediment	Eu/Zr	wNA	Munroe et al. (2020)
Banks Island (74MS12)	72.37	-119.83	LakeSediment	Pollen	<a href="http://www.ncdc.noaa.gov/paleo/study/27330">http://www.ncdc.noaa.gov/paleo/study/27330</a>	Gajewski et al. (2000)
Banks Island (74MS15)	73.53	-120.22	LakeSediment	Pollen	<a href="http://www.ncdc.noaa.gov/paleo/study/27330">http://www.ncdc.noaa.gov/paleo/study/27330</a>	Gajewski et al. (2000)
Battleground	45.80	-122.49	LakeSediment	Pollen	<a href="http://www.ncdc.noaa.gov/paleo/study/27330">http://www.ncdc.noaa.gov/paleo/study/27330</a>	Barnosky (1985b)
Beaver Lake	42.46	-100.67	LakeSediment	Diatom	<a href="http://www.ncdc.noaa.gov/paleo/study/23075">http://www.ncdc.noaa.gov/paleo/study/23075</a>	Schmieder et al. (2011)
Beef Pasture	37.47	-108.16	LakeSediment	Pollen	<a href="http://www.ncdc.noaa.gov/paleo/study/27330">http://www.ncdc.noaa.gov/paleo/study/27330</a>	Petersen (1985)
Begbie Lake	48.59	-123.68	LakeSediment	Pollen	wNA	Brown et al. (2019)
Bells Lake	65.02	-127.48	LakeSediment	Pollen	<a href="https://doi.org/10.21233/N35G6P">https://doi.org/10.21233/N35G6P</a>	Szeicz et al. (1995)
Big Lake	51.67	-121.45	LakeSediment	Diatom	<a href="http://www.ncdc.noaa.gov/paleo/study/23089">http://www.ncdc.noaa.gov/paleo/study/23089</a>	Cumming et al. (2002)
Bison Lake	39.76	-107.35	LakeSediment	$\delta^{18}\text{O}$	<a href="http://www.ncdc.noaa.gov/paleo/study/10749">http://www.ncdc.noaa.gov/paleo/study/10749</a>	L. Anderson (2011)
Blue Lake	37.24	-106.63	LakeSediment	XRF	<a href="http://www.ncdc.noaa.gov/paleo/study/27078">http://www.ncdc.noaa.gov/paleo/study/27078</a>	Routson et al. (2019b)
Boomerang Lake	49.18	-124.16	LakeSediment	Pollen	wNA	Brown et al. (2006)
Boone	55.58	-119.43	LakeSediment	Pollen	<a href="http://www.ncdc.noaa.gov/paleo/study/27330">http://www.ncdc.noaa.gov/paleo/study/27330</a>	White and Mathewes (1986)
Candelabra Lake	61.68	-130.65	LakeSediment	Pollen	<a href="http://www.ncdc.noaa.gov/paleo/study/15444">http://www.ncdc.noaa.gov/paleo/study/15444</a>	Cwynar and Spear (2007)
Carleton Lake	64.26	-110.10	LakeSediment	Chironomid	<a href="http://www.ncdc.noaa.gov/paleo/study/16296">http://www.ncdc.noaa.gov/paleo/study/16296</a>	Upton et al. (2014)
Carp	45.92	-120.88	LakeSediment	Pollen	<a href="http://www.ncdc.noaa.gov/paleo/study/27330">http://www.ncdc.noaa.gov/paleo/study/27330</a>	Barnosky (1985a)
Cascade Fen	37.65	-107.81	LakeSediment	Pollen	<a href="http://www.ncdc.noaa.gov/paleo/study/27330">http://www.ncdc.noaa.gov/paleo/study/27330</a>	Maher (1963)
Castor Lake	48.54	-119.56	LakeSediment	Reflectance	<a href="http://www.ncdc.noaa.gov/paleo/study/10310">http://www.ncdc.noaa.gov/paleo/study/10310</a>	Nelson et al. (2011)
Castor Lake	48.54	-119.56	LakeSediment	$\delta^{18}\text{O}$	<a href="http://www.ncdc.noaa.gov/paleo/study/10310">http://www.ncdc.noaa.gov/paleo/study/10310</a>	Nelson et al. (2011)
Chichancanab Lake	19.83	-88.75	LakeSediment	CaCO <sub>3</sub>	<a href="http://www.ncdc.noaa.gov/paleo/study/5483">http://www.ncdc.noaa.gov/paleo/study/5483</a>	Hodell et al. (1995)
Chichancanab Lake	19.83	-88.75	LakeSediment	S	<a href="http://www.ncdc.noaa.gov/paleo/study/5483">http://www.ncdc.noaa.gov/paleo/study/5483</a>	Hodell et al. (1995)
Chichancanab Lake	19.83	-88.75	LakeSediment	$\delta^{18}\text{O}$	<a href="http://www.ncdc.noaa.gov/paleo/study/5483">http://www.ncdc.noaa.gov/paleo/study/5483</a>	Hodell et al. (1995)
Chihuahueros Bog	36.05	-106.51	Peat	Pollen	wNA	R. S. Anderson et al. (2008a)
Chitina Loess	61.54	-144.38	Loess	Particle size	<a href="http://www.ncdc.noaa.gov/paleo/study/20529">http://www.ncdc.noaa.gov/paleo/study/20529</a>	Muhs et al. (2013)
Cleland Lake	50.83	-116.39	LakeSediment	$\delta^{18}\text{O}$	<a href="http://www.ncdc.noaa.gov/paleo/study/21250">http://www.ncdc.noaa.gov/paleo/study/21250</a>	Steinman et al. (2016)
Cleland Lake	50.83	-116.39	LakeSediment	$\delta^{18}\text{C}$	<a href="http://www.ncdc.noaa.gov/paleo/study/21250">http://www.ncdc.noaa.gov/paleo/study/21250</a>	Steinman et al. (2016)
Copley	38.87	-107.08	LakeSediment	Pollen	<a href="http://www.ncdc.noaa.gov/paleo/study/27330">http://www.ncdc.noaa.gov/paleo/study/27330</a>	Fall (1997)
Corser Bog	60.53	-145.45	Peat	GDGT	<a href="http://www.ncdc.noaa.gov/paleo/study/15444">http://www.ncdc.noaa.gov/paleo/study/15444</a>	Nichols et al. (2014)
Corser Bog	60.53	-145.45	Peat	$\delta\text{D}$	<a href="http://www.ncdc.noaa.gov/paleo/study/15444">http://www.ncdc.noaa.gov/paleo/study/15444</a>	Nichols et al. (2014)
Cottonwood Pass Pond	38.83	-106.41	LakeSediment	Pollen	<a href="http://www.ncdc.noaa.gov/paleo/study/27330">http://www.ncdc.noaa.gov/paleo/study/27330</a>	Fall (1997)
Crater Lake	37.67	-106.69	LakeSediment	Particle size	wNA	Arcusa et al. (2020)
Crevice Lake	45.00	-110.58	LakeSediment	$\delta^{18}\text{O}$	wNA	Whitlock et al. (2012)
Crevice Lake	45.00	-110.58	LakeSediment	CaCO <sub>3</sub>	wNA	Whitlock et al. (2012)
Cueva Diablo	18.18	-99.92	Speleothem	$\delta^{18}\text{O}$	<a href="http://www.ncdc.noaa.gov/paleo/study/10670">http://www.ncdc.noaa.gov/paleo/study/10670</a>	Bernal et al. (2011)
Cumbres Bog	37.02	-106.45	LakeSediment	Pollen	wNA	Johnson et al. (2013)
Dempster Hwy Peatland	65.21	-138.32	Ice-other	$\delta^{18}\text{O}$	<a href="http://www.ncdc.noaa.gov/paleo/study/27330">http://www.ncdc.noaa.gov/paleo/study/27330</a>	Porter et al. (2019)
DJ6-93SF-6	37.63	-122.37	MarineSediment	Mg/Ca	wNA	McGann (2008)
DSDP (Deep Sea Drilling Project) Site 480	27.90	-111.65	MarineSediment	Diatom	<a href="http://www.ncdc.noaa.gov/paleo/study/5855">http://www.ncdc.noaa.gov/paleo/study/5855</a>	Barron et al. (2004)
DSDP Site 480	27.90	-111.65	MarineSediment	BSi	<a href="http://www.ncdc.noaa.gov/paleo/study/5855">http://www.ncdc.noaa.gov/paleo/study/5855</a>	Barron et al. (2004)
Dune	64.42	-149.90	LakeSediment	$\delta^{18}\text{C}$	<a href="http://www.ncdc.noaa.gov/paleo/study/13076">http://www.ncdc.noaa.gov/paleo/study/13076</a>	Finney et al. (2012)
Eldora Fen	39.94	-105.58	LakeSediment	Pollen	<a href="http://www.ncdc.noaa.gov/paleo/study/27330">http://www.ncdc.noaa.gov/paleo/study/27330</a>	No publication on record
Eleanor Lake	47.68	-124.02	LakeSediment	BSi	wNA	Gavin et al. (2011)
Emerald Lake	39.15	-106.41	LakeSediment	Stratigraphy	<a href="http://www.ncdc.noaa.gov/paleo/study/23079">http://www.ncdc.noaa.gov/paleo/study/23079</a>	Shuman et al. (2014)
Emerald Lake	39.15	-106.41	LakeSediment	Pollen	wNA	Jiménez-Moreno et al. (2019)
EN32_PC6	26.95	-91.35	MarineSediment	Mg/Ca	<a href="http://www.ncdc.noaa.gov/paleo/study/27330">http://www.ncdc.noaa.gov/paleo/study/27330</a>	Flower et al. (2004)
EN32_PC6	26.95	-91.35	MarineSediment	$\delta^{18}\text{O}$	<a href="http://www.ncdc.noaa.gov/paleo/study/27330">http://www.ncdc.noaa.gov/paleo/study/27330</a>	Flower et al. (2004)
Enos Lake	49.28	-124.15	LakeSediment	Pollen	wNA	Brown et al. (2006)
EW0408_66JC	57.87	-137.10	MarineSediment	Alkenone	<a href="http://www.ncdc.noaa.gov/paleo/study/22400">http://www.ncdc.noaa.gov/paleo/study/22400</a>	Praetorius et al. (2015)
EW0408_66JC	57.87	-137.10	MarineSediment	$\delta^{18}\text{O}$	<a href="http://www.ncdc.noaa.gov/paleo/study/22400">http://www.ncdc.noaa.gov/paleo/study/22400</a>	Praetorius et al. (2015)
EW0408_85JC	59.56	-144.15	MarineSediment	Alkenone	<a href="http://www.ncdc.noaa.gov/paleo/study/21950">http://www.ncdc.noaa.gov/paleo/study/21950</a>	Praetorius et al. (2015)
EW0408_85JC	59.56	-144.15	MarineSediment	$\delta^{18}\text{O}$	<a href="http://www.ncdc.noaa.gov/paleo/study/21950">http://www.ncdc.noaa.gov/paleo/study/21950</a>	Praetorius et al. (2015)
EW0408-87JC	58.77	-144.50	MarineSediment	Alkenone	wNA	Praetorius et al. (2020)
Farewell Lake	62.55	-153.63	LakeSediment	Mg/Ca	<a href="http://www.ncdc.noaa.gov/paleo/study/15444">http://www.ncdc.noaa.gov/paleo/study/15444</a>	Hu et al. (1998)
Felker Lake	51.95	-122.00	LakeSediment	Diatom	wNA	Galloway et al. (2011)
Ferndale	34.41	-95.81	LakeSediment	Pollen	<a href="http://www.ncdc.noaa.gov/paleo/study/27330">http://www.ncdc.noaa.gov/paleo/study/27330</a>	Albert and Wyckoff (1981)
Foy Lake	48.20	-114.40	LakeSediment	Diatom	<a href="http://www.ncdc.noaa.gov/paleo/study/6188">http://www.ncdc.noaa.gov/paleo/study/6188</a>	Stone and Fritz (2006)
Frozen Lake	49.60	-121.47	LakeSediment	Chironomid	<a href="http://www.ncdc.noaa.gov/paleo/study/27330">http://www.ncdc.noaa.gov/paleo/study/27330</a>	Rosenberg et al. (2004)
GGC19	72.16	-155.51	MarineSediment	Dinocyst	<a href="http://www.ncdc.noaa.gov/paleo/study/15444">http://www.ncdc.noaa.gov/paleo/study/15444</a>	Farmer et al. (2011)
Great Basin	38.00	-116.50	Wood	TRW	<a href="http://www.ncdc.noaa.gov/paleo/study/17056">http://www.ncdc.noaa.gov/paleo/study/17056</a>	Salzer et al. (2014)
Greyling Lake	61.38	-145.74	LakeSediment	TOC	<a href="http://www.ncdc.noaa.gov/paleo/study/15444">http://www.ncdc.noaa.gov/paleo/study/15444</a>	McKay and Kaufman (2009)
Grutas del Rey Marcos	15.43	-90.28	Speleothem	$\delta^{18}\text{O}$	<a href="http://www.ncdc.noaa.gov/paleo/study/28351">http://www.ncdc.noaa.gov/paleo/study/28351</a>	Winter et al. (2020)
Guaymas Basin	27.48	-112.07	MarineSediment	$\delta\text{D}$	<a href="http://www.ncdc.noaa.gov/paleo/study/24890">http://www.ncdc.noaa.gov/paleo/study/24890</a>	Bhattacharya et al. (2018)
Guaymas Basin	27.48	-112.07	MarineSediment	$\delta\text{D}$	<a href="http://www.ncdc.noaa.gov/paleo/study/24890">http://www.ncdc.noaa.gov/paleo/study/24890</a>	Bhattacharya et al. (2018)
Gulf of Mexico	27.18	-91.42	MarineSediment	Foraminifera	wNA	Poore et al. (2005)
Hail Lake	60.03	-129.02	LakeSediment	Pollen	<a href="http://www.ncdc.noaa.gov/paleo/study/15444">http://www.ncdc.noaa.gov/paleo/study/15444</a>	Cwynar and Spear (2007)
Hallet Lake	61.49	-146.24	LakeSediment	TOC	<a href="http://www.ncdc.noaa.gov/paleo/study/15444">http://www.ncdc.noaa.gov/paleo/study/15444</a>	McKay and Kaufman (2009)
Hallet Lake	61.49	-146.24	LakeSediment	Bsi	<a href="http://www.ncdc.noaa.gov/paleo/study/15444">http://www.ncdc.noaa.gov/paleo/study/15444</a>	McKay and Kaufman (2009)
Hanging Lake	68.38	-138.38	LakeSediment	Pollen	<a href="http://www.ncdc.noaa.gov/paleo/study/27330">http://www.ncdc.noaa.gov/paleo/study/27330</a>	Cwynar (1982)
Harding Lake	64.42	-146.85	LakeSediment	TOC	<a href="http://www.ncdc.noaa.gov/paleo/study/15655">http://www.ncdc.noaa.gov/paleo/study/15655</a>	Finkenbinder et al. (2014)
Harding Lake	64.42	-146.85	LakeSediment	MS	<a href="http://www.ncdc.noaa.gov/paleo/study/15655">http://www.ncdc.noaa.gov/paleo/study/15655</a>	Finkenbinder et al. (2014)
Heal Lake	48.54	-123.46	LakeSediment	Pollen	wNA	Brown et al. (2006)
Hermit Lake	38.09	-105.63	LakeSediment	Pollen	wNA	R. S. Anderson et al. (2019)
Hidden Lake, CA	38.26	-119.54	LakeSediment	Chironomid	<a href="http://www.ncdc.noaa.gov/paleo/study/27330">http://www.ncdc.noaa.gov/paleo/study/27330</a>	Potito et al. (2006)



Table 1. Continued.

Site name	Lat	Long	Archive type	Proxy*	Original data citation (last access: 29 March 2021)	Reference
Hidden Lake, CO	40.51	-106.61	LakeSediment	Stratigraphy	<a href="http://www.ncdc.noaa.gov/paleo/study/23077">http://www.ncdc.noaa.gov/paleo/study/23077</a>	Shuman et al. (2009)
HLY0501	72.69	-157.52	MarineSediment	Dinocyst	<a href="http://www.ncdc.noaa.gov/paleo/study/15444">http://www.ncdc.noaa.gov/paleo/study/15444</a>	de Vernal et al. (2013)
Honeymoon	64.63	-138.40	LakeSediment	Pollen	<a href="https://doi.org/10.21233/N33Q7V">https://doi.org/10.21233/N33Q7V</a>	Cwynar and Spear (1991)
Hudson, AK	61.90	-145.67	LakeSediment	Chironomid	<a href="http://www.ncdc.noaa.gov/paleo/study/15444">http://www.ncdc.noaa.gov/paleo/study/15444</a>	Clegg et al. (2011)
Hunters Lake	37.61	-106.84	LakeSediment	Pollen	wNA	R. S. Anderson et al. (2008b)
Jellybean Lake	60.35	-134.80	LakeSediment	$\delta^{18}\text{O}$	<a href="http://www.ncdc.noaa.gov/paleo/study/5445">http://www.ncdc.noaa.gov/paleo/study/5445</a>	L. Anderson et al. (2005)
Jenny Lake	43.75	-110.73	LakeSediment	TIC	<a href="http://www.ncdc.noaa.gov/paleo/study/20128">http://www.ncdc.noaa.gov/paleo/study/20128</a>	Larsen et al. (2016)
Jones Lake	47.05	-113.14	LakeSediment	$\delta^{18}\text{O}$	<a href="http://www.ncdc.noaa.gov/paleo/study/23076">http://www.ncdc.noaa.gov/paleo/study/23076</a>	Shapley et al. (2009)
Keele	64.17	-127.62	LakeSediment	Pollen	<a href="http://www.ncdc.noaa.gov/paleo/study/27330">http://www.ncdc.noaa.gov/paleo/study/27330</a>	Szeicz et al. (1995)
Keystone Iron Bog	38.87	-107.03	LakeSediment	Pollen	<a href="http://www.ncdc.noaa.gov/paleo/study/27330">http://www.ncdc.noaa.gov/paleo/study/27330</a>	Fall (1985)
Kirman Lake	38.34	-119.50	LakeSediment	Diatom	<a href="http://dataverse.harvard.edu/dataverse/UCLAGMacDonald">http://dataverse.harvard.edu/dataverse/UCLAGMacDonald</a>	MacDonald et al. (2016)
Kite Lake	39.33	-106.13	LakeSediment	Pollen	wNA	Jiménez-Moreno and Anderson (2013)
KNR159_JPC26	26.37	-92.03	MarineSediment	Mg/Ca	<a href="http://www.ncdc.noaa.gov/paleo/study/27330">http://www.ncdc.noaa.gov/paleo/study/27330</a>	Antonarakou et al. (2015)
KNR159_JPC26	26.37	-92.03	MarineSediment	$\delta^{18}\text{O}$	<a href="http://www.ncdc.noaa.gov/paleo/study/27330">http://www.ncdc.noaa.gov/paleo/study/27330</a>	Antonarakou et al. (2015)
Koksilah River	48.76	-123.68	LakeSediment	Pollen	wNA	Brown and Schoups (2015)
Kurupa Lake	68.35	-154.61	LakeSediment	Chlorophyll	<a href="http://www.ncdc.noaa.gov/paleo/study/18995">http://www.ncdc.noaa.gov/paleo/study/18995</a>	Boldt et al. (2015)
Kusawa	60.28	-136.18	LakeSediment	BSi	<a href="http://www.ncdc.noaa.gov/paleo/study/15444">http://www.ncdc.noaa.gov/paleo/study/15444</a>	Chakraborty et al. (2010)
Lac Meleze	65.22	-126.12	LakeSediment	Pollen	<a href="http://www.ncdc.noaa.gov/paleo/study/27330">http://www.ncdc.noaa.gov/paleo/study/27330</a>	MacDonald (1987)
Lago Minucua	17.08	-97.61	LakeSediment	MS	wNA	Goman et al. (2018)
Lago Minucua	17.08	-97.61	LakeSediment	Varve	wNA	Goman et al. (2018)
Lago Puerto Arturo	17.53	-90.18	LakeSediment	$\delta^{18}\text{O}$	wNA	Wahl et al. (2014)
Laguna de Aljojuca	19.09	-97.53	LakeSediment	$\delta^{18}\text{O}$	<a href="http://www.ncdc.noaa.gov/paleo/study/17735">http://www.ncdc.noaa.gov/paleo/study/17735</a>	Bhattacharya et al. (2015)
Laguna de Juanacatlan	20.63	-104.74	LakeSediment	Ti	wNA	Jones et al. (2015)
Lake Elsinore	33.67	-117.35	LakeSediment	$\delta^{18}\text{O}$	<a href="http://www.ncdc.noaa.gov/paleo/study/30232">http://www.ncdc.noaa.gov/paleo/study/30232</a>	Kirby et al. (2019)
Lake Elsinore	33.67	-117.35	LakeSediment	Particle size	<a href="http://www.ncdc.noaa.gov/paleo/study/30232">http://www.ncdc.noaa.gov/paleo/study/30232</a>	Kirby et al. (2019)
Lake of the Woods	43.48	-109.89	LakeSediment	Stratigraphy	wNA	Pribyl and Shuman (2014)
Lake of the Woods	49.05	-120.18	LakeSediment	Chironomid	<a href="http://www.ncdc.noaa.gov/paleo/study/27330">http://www.ncdc.noaa.gov/paleo/study/27330</a>	Palmer et al. (2002)
Lehman Caves	39.00	-114.22	Speleothem	$\delta^{18}\text{C}$	<a href="http://www.ncdc.noaa.gov/paleo/study/19038">http://www.ncdc.noaa.gov/paleo/study/19038</a>	Steponaitis et al. (2015)
Lehman Caves	39.00	-114.22	Speleothem	Mg/Ca	<a href="http://www.ncdc.noaa.gov/paleo/study/19038">http://www.ncdc.noaa.gov/paleo/study/19038</a>	Steponaitis et al. (2015)
Leviathan	37.89	-115.58	Speleothem	$\delta^{18}\text{C}$	<a href="http://www.ncdc.noaa.gov/paleo/study/16517">http://www.ncdc.noaa.gov/paleo/study/16517</a>	Lachniet et al. (2014)
Leviathan	37.89	-115.58	Speleothem	$\delta^{18}\text{O}$	<a href="http://www.ncdc.noaa.gov/paleo/study/16517">http://www.ncdc.noaa.gov/paleo/study/16517</a>	Lachniet et al. (2014)
Lily	59.20	-135.40	LakeSediment	Pollen	<a href="http://www.ncdc.noaa.gov/paleo/study/15444">http://www.ncdc.noaa.gov/paleo/study/15444</a>	Cwynar (1990)
Lime Lake	48.87	-117.34	LakeSediment	$\delta^{18}\text{O}$	<a href="http://www.ncdc.noaa.gov/paleo/study/21250">http://www.ncdc.noaa.gov/paleo/study/21250</a>	Steinman et al. (2016)
Lime Lake	48.87	-117.34	LakeSediment	$\delta^{18}\text{C}$	<a href="http://www.ncdc.noaa.gov/paleo/study/21250">http://www.ncdc.noaa.gov/paleo/study/21250</a>	Steinman et al. (2016)
Little	44.17	-123.58	LakeSediment	Pollen	<a href="http://www.ncdc.noaa.gov/paleo/study/27330">http://www.ncdc.noaa.gov/paleo/study/27330</a>	Worona and Whitlock (1995)
Little Molas Lake	37.74	-107.71	LakeSediment	Pollen	wNA	Toney and Anderson (2006)
Little Windy	41.43	-106.33	LakeSediment	Stratigraphy	<a href="http://www.ncdc.noaa.gov/paleo/study/16096">http://www.ncdc.noaa.gov/paleo/study/16096</a>	Minckley et al. (2012)
Logan	60.58	-140.50	GlacierIce	$\delta^{18}\text{O}$	<a href="http://www.ncdc.noaa.gov/paleo/study/15444">http://www.ncdc.noaa.gov/paleo/study/15444</a>	Fisher et al. (2008)
Lone Fox Lake	56.72	-119.72	LakeSediment	Pollen	<a href="http://www.ncdc.noaa.gov/paleo/study/27330">http://www.ncdc.noaa.gov/paleo/study/27330</a>	MacDonald and Cwynar (1985)
Lone Spruce	60.01	-159.14	LakeSediment	BSi	<a href="http://www.ncdc.noaa.gov/paleo/study/15444">http://www.ncdc.noaa.gov/paleo/study/15444</a>	Kaufman et al. (2012)
Louise Pond	52.95	-131.76	LakeSediment	Pollen	<a href="http://www.ncdc.noaa.gov/paleo/study/27330">http://www.ncdc.noaa.gov/paleo/study/27330</a>	Pellat and Mathewes (1994)
Lowder Creek Bog	37.66	-112.77	Peat	Pollen	wNA	R. S. Anderson et al. (1999)
Lower Bear Lake	34.20	-116.90	LakeSediment	TOC	<a href="http://www.ncdc.noaa.gov/paleo/study/13215">http://www.ncdc.noaa.gov/paleo/study/13215</a>	Kirby et al. (2012)
Lower Bear Lake	34.20	-116.90	LakeSediment	C/N	<a href="http://www.ncdc.noaa.gov/paleo/study/13215">http://www.ncdc.noaa.gov/paleo/study/13215</a>	Kirby et al. (2012)
M Lake	68.27	-133.47	LakeSediment	Pollen	<a href="http://www.ncdc.noaa.gov/paleo/study/27330">http://www.ncdc.noaa.gov/paleo/study/27330</a>	Ritchie (1977)
Macal Chasm	16.88	-89.11	Speleothem	$\delta^{18}\text{C}$	<a href="http://www.ncdc.noaa.gov/paleo/study/20506">http://www.ncdc.noaa.gov/paleo/study/20506</a>	Akers et al. (2016)
Macal Chasm	16.88	-89.11	Speleothem	$\delta^{18}\text{O}$	<a href="http://www.ncdc.noaa.gov/paleo/study/20506">http://www.ncdc.noaa.gov/paleo/study/20506</a>	Akers et al. (2016)
Macal Chasm	16.88	-89.11	Speleothem	Reflectance	<a href="http://www.ncdc.noaa.gov/paleo/study/20506">http://www.ncdc.noaa.gov/paleo/study/20506</a>	Akers et al. (2016)
Marcella	60.07	-133.81	LakeSediment	$\delta^{18}\text{O}$	<a href="http://www.ncdc.noaa.gov/paleo/study/6066">http://www.ncdc.noaa.gov/paleo/study/6066</a>	L. Anderson et al. (2007)
Marion	49.31	-122.55	LakeSediment	Pollen	wNA	Mathewes (1973)
Marshall Lake	40.68	-110.87	LakeSediment	Ca/Ti	wNA	Munroe et al. (2020)
MD02_2503	34.39	-120.04	MarineSediment	$\delta^{18}\text{O}$	<a href="http://www.ncdc.noaa.gov/paleo/study/5582">http://www.ncdc.noaa.gov/paleo/study/5582</a>	Hill et al. (2006)
MD02_2515	27.48	-112.07	MarineSediment	Alkenone	<a href="https://doi.org/10.1594/PANGAEA.861260">https://doi.org/10.1594/PANGAEA.861260</a>	McClymont et al. (2012)
MD02_2515	27.48	-112.07	MarineSediment	GDGT	<a href="https://doi.org/10.1594/PANGAEA.861260">https://doi.org/10.1594/PANGAEA.861260</a>	McClymont et al. (2012)
MD02-2499	41.65	-124.94	MarineSediment	Diatom	<a href="http://www.ncdc.noaa.gov/paleo/study/24150">http://www.ncdc.noaa.gov/paleo/study/24150</a>	Lopes and Mix (2018)
Meli Lake	68.68	-149.08	LakeSediment	$\delta^{18}\text{O}$	<a href="http://www.ncdc.noaa.gov/paleo/study/5469">http://www.ncdc.noaa.gov/paleo/study/5469</a>	L. Anderson et al. (2001)
Mexican Marin	22.23	-107.05	MarineSediment	$\delta\text{D}$	<a href="http://www.ncdc.noaa.gov/paleo/study/24890">http://www.ncdc.noaa.gov/paleo/study/24890</a>	Bhattacharya et al. (2018)
Mica Lake	60.95	-148.15	LakeSediment	$\delta^{18}\text{O}$	<a href="http://www.ncdc.noaa.gov/paleo/study/6202">http://www.ncdc.noaa.gov/paleo/study/6202</a>	Schiff et al. (2009)
Midden Cluster 1	37.90	-110.13	Midden	Macrofossils	<a href="http://geochange.er.usgs.gov/midden/">http://geochange.er.usgs.gov/midden/</a>	Harbert and Nixon (2018)
Midden Cluster 2	36.38	-115.19	Midden	Macrofossils	<a href="http://geochange.er.usgs.gov/midden/">http://geochange.er.usgs.gov/midden/</a>	Harbert and Nixon (2018)
Midden Cluster 3	36.06	-108.08	Midden	Macrofossils	<a href="http://geochange.er.usgs.gov/midden/">http://geochange.er.usgs.gov/midden/</a>	Harbert and Nixon (2018)
Midden Cluster 4	43.65	-112.75	Midden	Macrofossils	<a href="http://geochange.er.usgs.gov/midden/">http://geochange.er.usgs.gov/midden/</a>	Harbert and Nixon (2018)
Midden Cluster 5	32.47	-106.02	Midden	Macrofossils	<a href="http://geochange.er.usgs.gov/midden/">http://geochange.er.usgs.gov/midden/</a>	Harbert and Nixon (2018)
Midden Cluster 6	32.47	-106.02	Midden	Macrofossils	<a href="http://geochange.er.usgs.gov/midden/">http://geochange.er.usgs.gov/midden/</a>	Harbert and Nixon (2018)
Midden Cluster 7	34.15	-116.00	Midden	Macrofossils	<a href="http://geochange.er.usgs.gov/midden/">http://geochange.er.usgs.gov/midden/</a>	Harbert and Nixon (2018)
Midden Cluster 8	32.31	-109.10	Midden	Macrofossils	<a href="http://geochange.er.usgs.gov/midden/">http://geochange.er.usgs.gov/midden/</a>	Harbert and Nixon (2018)
Midden Cluster 9	31.64	-115.55	Midden	Macrofossils	<a href="http://geochange.er.usgs.gov/midden/">http://geochange.er.usgs.gov/midden/</a>	Harbert and Nixon (2018)
Minnetonka Cave	42.09	-111.52	Speleothem	$\delta^{18}\text{C}$	<a href="http://www.ncdc.noaa.gov/paleo/study/23097">http://www.ncdc.noaa.gov/paleo/study/23097</a>	Lundeen et al. (2013)
Minnetonka Cave	42.09	-111.52	Speleothem	$\delta^{18}\text{O}$	<a href="http://www.ncdc.noaa.gov/paleo/study/23097">http://www.ncdc.noaa.gov/paleo/study/23097</a>	Lundeen et al. (2013)
Moose Lake	61.37	-143.60	LakeSediment	Chironomid	<a href="http://www.ncdc.noaa.gov/paleo/study/15444">http://www.ncdc.noaa.gov/paleo/study/15444</a>	Clegg et al. (2010)
Morris Pond	37.67	-112.77	LakeSediment	Pollen	wNA	Morris et al. (2013)
Mv0811-14JC	34.30	-120.00	MarineSediment	Stratigraphy	wNA	Du et al. (2018)
MV99_PC14	25.20	-112.72	MarineSediment	Mg/Ca	<a href="http://www.ncdc.noaa.gov/paleo/study/10415">http://www.ncdc.noaa.gov/paleo/study/10415</a>	Marchitto et al. (2010)
MV99-GC31	23.47	-111.60	MarineSediment	BSi	<a href="https://doi.org/10.1594/PANGAEA.824830">https://doi.org/10.1594/PANGAEA.824830</a>	Barron et al. (2012)
MV99-GC41/PC14	25.20	-112.72	MarineSediment	Particle size	<a href="https://doi.org/10.1594/PANGAEA.896898">https://doi.org/10.1594/PANGAEA.896898</a>	Arellano-Torres et al. (2019)
Natural Bridge Caverns	29.69	-98.34	Speleothem	Sr	wNA	Wong et al. (2015)
Nevada Climate Division 3	37.80	-115.80	Wood	TRW	<a href="http://www.ncdc.noaa.gov/paleo/study/6384">http://www.ncdc.noaa.gov/paleo/study/6384</a>	Hughes and Graumlich (1996)
North Crater Lake	49.07	-120.02	LakeSediment	Chironomid	<a href="http://www.ncdc.noaa.gov/paleo/study/27330">http://www.ncdc.noaa.gov/paleo/study/27330</a>	Palmer et al. (2002)
ODP_167_1019C	41.68	-124.93	MarineSediment	Alkenone	<a href="https://doi.org/10.1594/PANGAEA.841946">https://doi.org/10.1594/PANGAEA.841946</a>	Barron et al. (2003b)

Table 1. Continued.

Site name	Lat	Long	Archive type	Proxy*	Original data citation (last access: 29 March 2021)	Reference
ODP1019	41.68	-124.93	MarineSediment	Diatom	<a href="http://www.ncdc.noaa.gov/paleo/study/24150">http://www.ncdc.noaa.gov/paleo/study/24150</a>	Lopes and Mix (2018)
ODP1019	41.68	-124.93	MarineSediment	CaCO <sub>3</sub>	<a href="http://www.ncdc.noaa.gov/paleo/study/5867">http://www.ncdc.noaa.gov/paleo/study/5867</a>	Barron et al. (2003b)
ODP1019	41.68	-124.93	MarineSediment	Pollen	<a href="http://www.ncdc.noaa.gov/paleo/study/5867">http://www.ncdc.noaa.gov/paleo/study/5867</a>	Barron et al. (2003b)
Oregon Caves	42.08	-123.42	Speleothem	$\delta^{18}\text{C}$	<a href="http://www.ncdc.noaa.gov/paleo/study/13543">http://www.ncdc.noaa.gov/paleo/study/13543</a>	Ersek et al. (2012)
Oregon Caves	42.08	-123.42	Speleothem	$\delta^{18}\text{O}$	<a href="http://www.ncdc.noaa.gov/paleo/study/13543">http://www.ncdc.noaa.gov/paleo/study/13543</a>	Ersek et al. (2012)
Oro Lake	49.78	-105.35	LakeSediment	Diatom	<a href="http://www.ncdc.noaa.gov/paleo/study/23073">http://www.ncdc.noaa.gov/paleo/study/23073</a>	Michels et al. (2007)
Owens Lake	36.44	-117.97	LakeSediment	$\delta^{18}\text{O}$	<a href="http://www.ncdc.noaa.gov/paleo/study/5472">http://www.ncdc.noaa.gov/paleo/study/5472</a>	Benson et al. (2002)
P1B3	73.68	-162.66	MarineSediment	Dinocyst	<a href="http://www.ncdc.noaa.gov/paleo/study/15444">http://www.ncdc.noaa.gov/paleo/study/15444</a>	de Vernal et al. (2005)
Paradise	54.69	-122.62	LakeSediment	$\delta^{18}\text{O}$	<a href="http://www.ncdc.noaa.gov/paleo/study/21250">http://www.ncdc.noaa.gov/paleo/study/21250</a>	Steinman et al. (2016)
Paradise	54.69	-122.62	LakeSediment	$\delta^{18}\text{C}$	<a href="http://www.ncdc.noaa.gov/paleo/study/21250">http://www.ncdc.noaa.gov/paleo/study/21250</a>	Steinman et al. (2016)
Park Pond 1	43.47	-109.96	LakeSediment	Pollen	<a href="http://www.ncdc.noaa.gov/paleo/study/27330">http://www.ncdc.noaa.gov/paleo/study/27330</a>	Lynch (1998)
Pink Panther	32.08	-105.17	Speleothem	$\delta^{18}\text{O}$	<a href="http://www.ncdc.noaa.gov/paleo/study/9739">http://www.ncdc.noaa.gov/paleo/study/9739</a>	Asmerom et al. (2007)
Pixie	48.60	-124.20	LakeSediment	Pollen	<a href="http://www.ncdc.noaa.gov/paleo/study/27330">http://www.ncdc.noaa.gov/paleo/study/27330</a>	Brown and Hebda (2002)
Pixie Lake	48.60	-124.20	LakeSediment	Pollen	wNA	Brown et al. (2006)
Posy	37.94	-111.70	LakeSediment	Pollen	<a href="http://www.ncdc.noaa.gov/paleo/study/27330">http://www.ncdc.noaa.gov/paleo/study/27330</a>	Shafer (1989)
PS1410-06GC	37.33	-123.40	MarineSediment	Pollen	wNA	Barron et al. (2018)
PS1410-06GC	37.33	-123.40	MarineSediment	BSi	wNA	Barron et al. (2018)
Pyramid Lake	40.07	-119.58	LakeSediment	$\delta^{18}\text{O}$	<a href="http://www.ncdc.noaa.gov/paleo/study/5472">http://www.ncdc.noaa.gov/paleo/study/5472</a>	Benson et al. (2002)
Quartz	64.21	-145.81	LakeSediment	Chironomid	<a href="http://www.ncdc.noaa.gov/paleo/study/15444">http://www.ncdc.noaa.gov/paleo/study/15444</a>	Wooller et al. (2012)
Rainbow	60.72	-150.80	LakeSediment	Chironomid	<a href="http://www.ncdc.noaa.gov/paleo/study/15444">http://www.ncdc.noaa.gov/paleo/study/15444</a>	Clegg et al. (2011)
Rainbow Lake	44.94	-109.50	LakeSediment	Stratigraphy	wNA	Shuman and Marsicek (2016)
Ranger	67.15	-153.65	LakeSediment	Pollen	<a href="http://www.ncdc.noaa.gov/paleo/study/15444">http://www.ncdc.noaa.gov/paleo/study/15444</a>	Brubaker et al. (1983)
Rantin Lake	60.03	-129.03	LakeSediment	CaCO <sub>3</sub>	<a href="http://www.ncdc.noaa.gov/paleo/study/13095">http://www.ncdc.noaa.gov/paleo/study/13095</a>	Pompeani et al. (2012)
Rapid	42.73	-109.19	LakeSediment	Pollen	<a href="http://www.ncdc.noaa.gov/paleo/study/27330">http://www.ncdc.noaa.gov/paleo/study/27330</a>	Fall (1988)
RC12-10	23.00	-95.53	MarineSediment	Foraminifera	<a href="http://www.ncdc.noaa.gov/paleo/study/27330">http://www.ncdc.noaa.gov/paleo/study/27330</a>	Poore et al. (2003)
Red Rock	40.08	-105.54	LakeSediment	Pollen	<a href="http://www.ncdc.noaa.gov/paleo/study/27330">http://www.ncdc.noaa.gov/paleo/study/27330</a>	Maher (1972)
Rhamnus Lake	48.63	-123.72	LakeSediment	Pollen	wNA	Brown et al. (2006)
San Juan River Discharge	48.58	-124.31	LakeSediment	Pollen	wNA	Brown and Schoups (2015)
Schellings Bog	40.28	-123.36	LakeSediment	Pollen	wNA	Barron et al. (2003a)
Screaming Lynx Lake	66.07	-145.40	LakeSediment	Chironomid	<a href="http://www.ncdc.noaa.gov/paleo/study/15444">http://www.ncdc.noaa.gov/paleo/study/15444</a>	Clegg et al. (2011)
Silver Lake	35.37	-116.14	LakeSediment	Particle size	<a href="http://www.ncdc.noaa.gov/paleo/study/20106">http://www.ncdc.noaa.gov/paleo/study/20106</a>	Kirby et al. (2015)
Silver Lake	35.37	-116.14	LakeSediment	C/N	<a href="http://www.ncdc.noaa.gov/paleo/study/20106">http://www.ncdc.noaa.gov/paleo/study/20106</a>	Kirby et al. (2015)
Southern California	33.77	-116.66	Peat	Pollen	<a href="http://www.ncdc.noaa.gov/paleo/study/27330">http://www.ncdc.noaa.gov/paleo/study/27330</a>	Ohlwein and Wahl (2012)
Station 803	70.63	-135.88	MarineSediment	Dinocyst	<a href="http://www.ncdc.noaa.gov/paleo/study/27910">http://www.ncdc.noaa.gov/paleo/study/27910</a>	Bringué and Rochon (2012)
Stella Lake	39.01	-114.32	LakeSediment	Chironomid	<a href="http://www.ncdc.noaa.gov/paleo/study/27330">http://www.ncdc.noaa.gov/paleo/study/27330</a>	Reinemann et al. (2009)
Stewart Bog	35.83	-105.72	Peat	Pollen	wNA	Jiménez-Moreno et al. (2008)
Stowell Lake	48.78	-123.44	LakeSediment	Chironomid	<a href="http://www.ncdc.noaa.gov/paleo/study/27330">http://www.ncdc.noaa.gov/paleo/study/27330</a>	Lemmen and Lacourse (2018)
Swan Lake	42.16	-99.03	LakeSediment	Diatom	wNA	Schmieder et al. (2011)
Swasey Lake	40.67	-110.47	LakeSediment	Ca/Ti	wNA	Munroe et al. (2020)
Takahula	67.35	-153.67	LakeSediment	$\delta^{18}\text{O}$	<a href="http://www.ncdc.noaa.gov/paleo/study/8663">http://www.ncdc.noaa.gov/paleo/study/8663</a>	Clegg and Hu (2010)
Tangled Up Lake	67.67	-149.08	LakeSediment	$\delta^{18}\text{O}$	<a href="http://www.ncdc.noaa.gov/paleo/study/5469">http://www.ncdc.noaa.gov/paleo/study/5469</a>	L. Anderson et al. (2001)
Taylor Lake	40.79	-110.09	LakeSediment	Ca/Ti	wNA	Munroe et al. (2020)
Tiago Lake	40.58	-106.61	LakeSediment	Pollen	wNA	Jiménez-Moreno et al. (2011)
TN062-0550	40.87	-124.57	MarineSediment	Pollen	<a href="http://www.ncdc.noaa.gov/paleo/study/27330">http://www.ncdc.noaa.gov/paleo/study/27330</a>	Barron et al. (2018)
TN062-0550	40.87	-124.57	MarineSediment	BSi	<a href="http://www.ncdc.noaa.gov/paleo/study/27330">http://www.ncdc.noaa.gov/paleo/study/27330</a>	Addison et al. (2018)
TN062-0550	40.87	-124.57	MarineSediment	$\delta^{18}\text{C}$	<a href="http://www.ncdc.noaa.gov/paleo/study/27330">http://www.ncdc.noaa.gov/paleo/study/27330</a>	Addison et al. (2018)
TN062-0550	40.87	-124.57	MarineSediment	$\delta^{15}\text{N}$	<a href="http://www.ncdc.noaa.gov/paleo/study/27330">http://www.ncdc.noaa.gov/paleo/study/27330</a>	Addison et al. (2018)
Trout Lake	68.83	-138.75	LakeSediment	Chironomid	<a href="http://www.ncdc.noaa.gov/paleo/study/15444">http://www.ncdc.noaa.gov/paleo/study/15444</a>	Irvine et al. (2012)
Upper Big Creek Lake	40.91	-106.62	LakeSediment	Stratigraphy	wNA	Shuman et al. (2015)
Upper Fly	61.07	-138.09	LakeSediment	Pollen	<a href="http://www.ncdc.noaa.gov/paleo/study/15444">http://www.ncdc.noaa.gov/paleo/study/15444</a>	Bunbury and Gajewski (2009)
Upper Pinto Fen	53.58	-118.02	Peat	DBD	<a href="http://www.ncdc.noaa.gov/paleo/study/13665">http://www.ncdc.noaa.gov/paleo/study/13665</a>	Yu et al. (2003)
W8709-13PC	42.12	-125.75	MarineSediment	Diatom	<a href="http://www.ncdc.noaa.gov/paleo/study/24150">http://www.ncdc.noaa.gov/paleo/study/24150</a>	Lopes and Mix (2018)
WA01	61.24	-136.93	LakeSediment	TOC	<a href="http://www.ncdc.noaa.gov/paleo/study/18435">http://www.ncdc.noaa.gov/paleo/study/18435</a>	Rainville and Gajewski (2013)
Waskey Lake	59.88	-159.21	LakeSediment	TOC	<a href="http://www.ncdc.noaa.gov/paleo/study/15444">http://www.ncdc.noaa.gov/paleo/study/15444</a>	Levy et al. (2004)
Windy Lake	49.81	-117.88	LakeSediment	Chironomid	<a href="http://www.ncdc.noaa.gov/paleo/study/27330">http://www.ncdc.noaa.gov/paleo/study/27330</a>	Chase et al. (2008)
Wolverine Lake	67.10	-158.91	LakeSediment	MAR	<a href="http://www.ncdc.noaa.gov/paleo/study/23070">http://www.ncdc.noaa.gov/paleo/study/23070</a>	Mann et al. (2002)
Yellow Lake	39.65	-107.35	LakeSediment	$\delta^{18}\text{O}$	<a href="http://www.ncdc.noaa.gov/paleo/study/13120">http://www.ncdc.noaa.gov/paleo/study/13120</a>	L. Anderson (2012)

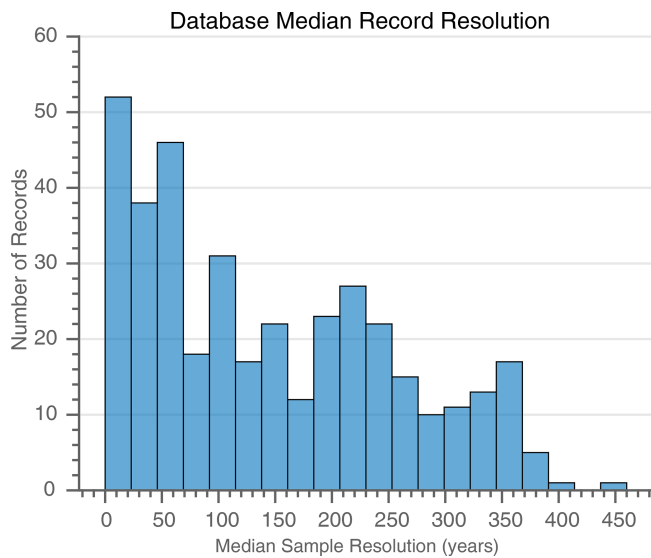
\* Abbreviations for proxy types: biogenic silica (BSi), calcium carbonate (CaCO<sub>3</sub>), dry bulk density (DBD), glycerol dialkyl glycerol tetraether (GDGT), mass accumulation rate (MAR), magnesium/calcium (Mg/Ca), sulfur (S), strontium (Sr), total organic carbon (TOC), tree-ring width (TRW), titanium (Ti), carbon-13 isotopes ( $\delta^{13}\text{C}$ ), oxygen-18 isotopes ( $\delta^{18}\text{O}$ ), and deuterium isotopes of leaf wax ( $\delta\text{D}$ ).

These primary age controls can be used to recalculate the age models for all of the <sup>14</sup>C-based sedimentary sequences and U-series-based speleothems using a systematic approach to addressing age uncertainty.

### 3.5 Uncertainties

A variety of approaches have been used to characterize uncertainties in paleoclimate variables, and there is no standard procedure for either calculating or reporting uncertainties (Sweeney et al., 2018). Generally, calibration and other uncertainties are large relative to the small amplitude of most

Holocene climate change, but these uncertainties are less important when investigating the relative magnitude of climate changes rather than the absolute value of a climate variable. Uncertainty arising from differences among records can be explored using a bootstrapped sampling with a replacement approach (e.g., Boos, 2003; Routson et al., 2019a); however, these ranges reflect a combination of record-level uncertainty and regional climate heterogeneity. In this database we are following other syntheses (Kaufman et al., 2020b; Marcott et al., 2013; Routson et al., 2019a) by applying a single uncertainty estimate for each proxy type (Supplement Table S1).



**Figure 2.** Median sample resolution for all records in the database (20-year intervals).

Proxy-specific uncertainties for temperature records follow Kaufman et al. (2020b), as did our approach for calculating uncertainty estimates for the hydroclimate records. For the calibrated hydroclimate records (primarily pollen based), we have calculated average RMSE values from the following references within or adjacent to the study region (Brown et al., 2006; Brown and Schoups, 2015, 2019; Harbert and Nixon, 2018; Marsicek et al., 2013). For the 163 uncalibrated records we have estimated the error as  $\pm 1$  SD (standard deviation) of the Holocene values.

### 3.6 Summarizing major trends

Recognizing major climatological differences across the study domain (spanning from tropical Mexico to Arctic Alaska), we have summarized some dominant patterns in the database including climate variables (temperature and hydroclimate), proxy group, and season. Dominant temperature and hydroclimate patterns by proxy group as specified in proxy general in Supplement Table S1 were evaluated (Fig. 3). Only proxy groups with more than 10 records were considered. The records were screened by season to include one record per site (“season general” for “annual” or “summer only” or “winter only”). Records were then binned to 500-year resolution by averaging data points within respective intervals, normalized to a mean of zero and 1 SD variance ( $z$  scores), and composited using the median to minimize the influence of outliers. Dominant temperature proxies include chironomids ( $n = 15$ ), biophysical ( $n = 17$ ), pollen ( $n = 130$ ), and isotopes ( $n = 14$ ). Chironomids show peak warmth in the Early Holocene (ca. 10 ka), followed by a Holocene cooling trend. Biophysical records have more variability, with peak warming at ca. 7 ka. Pollen records show

relatively low Holocene variability, with peak warming at ca. 6 ka. Isotopes have the highest Holocene variability and the lowest sample depth and show two intervals of warming (ca. 9 and 4 ka). Dominant hydroclimate proxies include other microfossils ( $n = 11$ ), biophysical records ( $n = 46$ ), pollen ( $n = 57$ ), and isotopes ( $n = 35$ ). Other microfossils show variable Holocene conditions, with the wettest period in the Early Holocene. This interval however, has very low sample depth. Biophysical records show only small Holocene hydroclimate changes. Pollen records show a strong Holocene wetting trend, whereas isotope records show variable conditions.

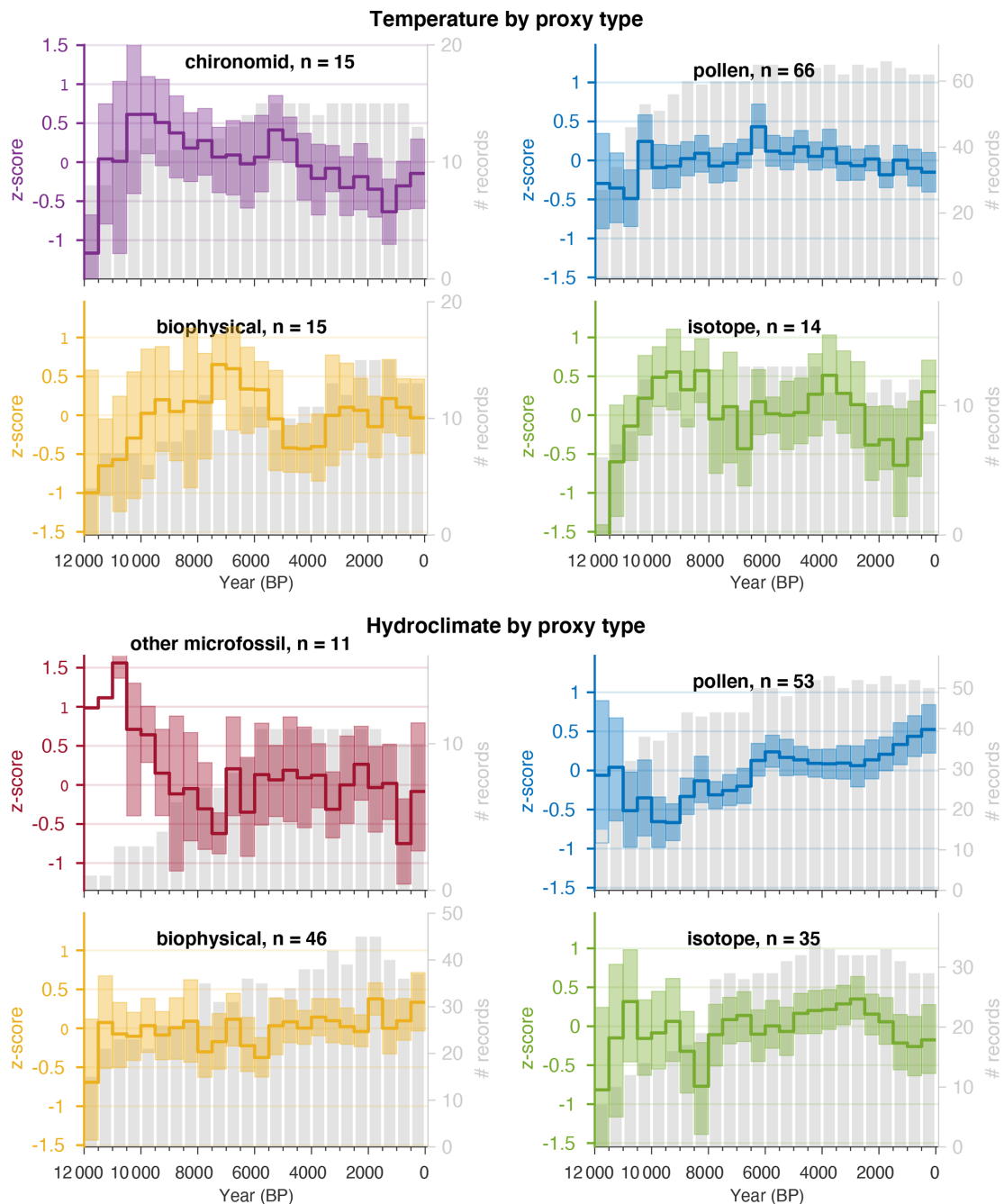
Temperature and hydroclimate trends were compared by summer, winter, and annual seasons (Fig. 4). The records were binned to 500-year resolution by averaging data points within respective intervals and normalized to a mean of zero and 1 SD variance ( $z$  scores). Records were then averaged into equal-area (127 525 km<sup>2</sup>) grids following Routson et al. (2019a). The grids were then combined into a single composite using the median. The most recent 500-year bin was then subtracted, registering the present end to zero. This was done to help compare the seasonal Holocene evolutions. In the Early to Middle Holocene (ca 12 to 6 ka), summertime and annual temperatures warmed faster than wintertime temperatures, consistent with Northern Hemisphere seasonal insolation forcing (Berger and Loutre, 1991). Temperatures in all seasons show a cooling pattern from ca. 6 ka to the present. Hydroclimate composites show a Holocene-length wetting trend in all seasons, with the largest trend in wintertime.

## 4 Code and data availability

The database is available for download at <https://doi.org/10.6084/m9.figshare.12863843.v1> (Routson and McKay, 2020), with serializations for MATLAB and R. We recommend accessing the database through the WDS-NOAA landing page where any subsequent versions will be made available: <https://www.ncdc.noaa.gov/paleo/study/30535> (last access: 8 April 2021). Supplement Table S1 lists the essential metadata. Data can also be viewed and accessed at [http://lipdverse.org/wNAM/1\\_0\\_0/](http://lipdverse.org/wNAM/1_0_0/) (last access: 29 March 2021). Code, including basic functions for analyzing LiPD files in three programming languages, is available on GitHub (<https://github.com/nickmckay/LiPD-utilities>, last access: 15 April 2021) and Zenodo (<https://doi.org/10.5281/zenodo.1256889>, Heiser et al., 2018).

## 5 Use and limitations

The machine-readable database includes multiple parameters for searching and screening records. The data compilation will form the foundation of new analyses of Holocene

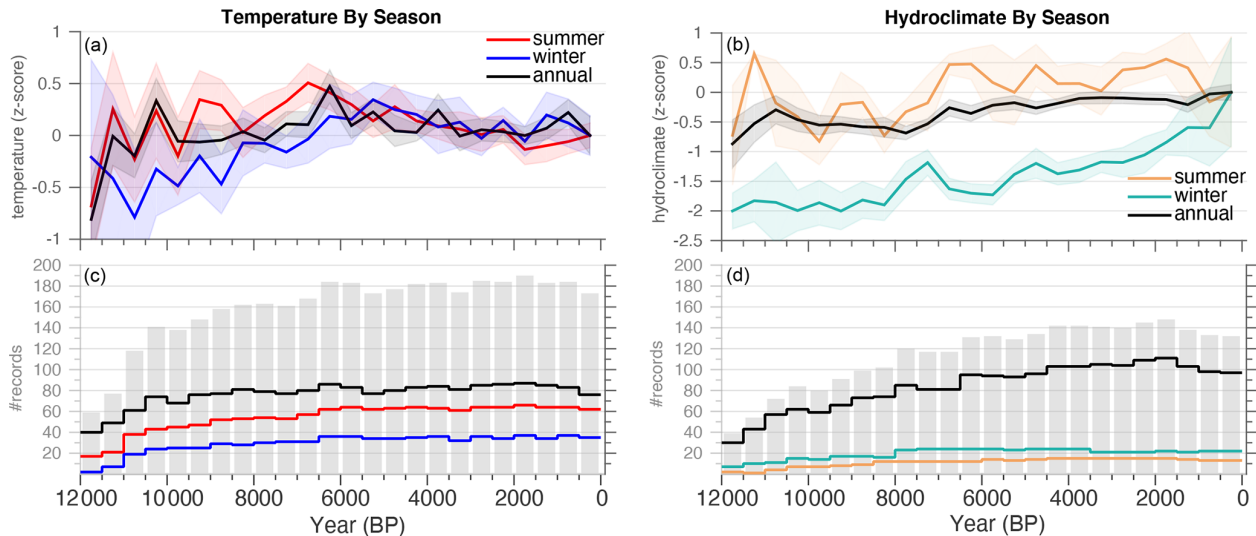


**Figure 3.** Temperature (top) and hydroclimate (bottom) composites by dominant proxy types (proxy general in Supplement Table S1). Only proxy types with  $n > 10$  are shown. The composites are produced from normalized (units of standard deviation) records to include both calibrated and uncalibrated time series. Records have been filtered by seasonality (season general for annual, summer only, and winter only), to include one record per site. Shading shows the 95 % bootstrapped confidence interval on the estimate of the mean over 1000 (sampling with replacement) iterations. Gray bars show the number of records contributing to each 500-year bin.

climate variability in western North America and will help identify future research priorities, including data-sparse regions. The 381 records in this database will enable studies of Holocene climate on centennial to multi-millennial timescales. At finer timescales, the number of records with

sufficient resolution and geochronological control is more limited. For example, 170 records have a median sampling resolution of better than 100 years, and only 26 sites have resolution finer than 10 years. The accuracy and precision of age control can also limit inferences involving correlations





**Figure 4.** Comparison of seasonal temperature (a, c) and hydroclimate (b, d) composites. The composites are produced from binned (500-year bins) and normalized (units of standard deviation) records averaged on an equal area grid. The most recent bin has been registered to zero to help compare the Holocene trends with respect to preindustrial conditions. Both calibrated and uncalibrated time series are included. Shading shows the bootstrapped confidence interval of 1 standard deviation on the estimate of the mean over 1000 (sampling with replacement) iterations. Gray bars (c, d) show the total number of records (all seasons) in each 500-year bin, whereas the time series (c, d) show the number of records contributing to each composite by color.

and spectral properties of the time series. The availability of the raw chronology data for each record in this database allows users to quantify and incorporate aspects of chronologic uncertainty into their analyses.

This database represents a concerted effort to generate a comprehensive data product but is an ongoing effort, with newly published records continuing to be added. Some published records that meet the criteria might have been inadvertently overlooked. Readers who know of missing datasets or who find errors in this version are asked to contact one of the authors so that future versions of the database will be more complete and accurate. Rather than issuing errata to this publication, errors and additions will be included in subsequent versions of the database.

**Supplement.** The supplement related to this article is available online at: <https://doi.org/10.5194/essd-13-1613-2021-supplement>.

**Author contributions.** CCR led the project, data collection, and data formatting. CCR, DSK, MPE, NPM, MEK, JPM, FSU, MSL, SHA, JRB, MFG, SEM, KJB, JMG, SCF, GS, JRR, JLM, DBW, RSA, BNS, JSM, BSC, and GJM contributed and certified data. CCR and MPE analyzed the database and produced the figures. NPM built the data infrastructure and performed data processing. CCR, DSK, and SHA did quality control, term standardization, and database cleaning. CCR and DSK wrote the paper with contributions from the other authors.

**Competing interests.** The authors declare that they have no conflict of interest.

**Acknowledgements.** We thank the USGS John Wesley Powell Center for Analysis and Synthesis, which hosted a meeting that led to this synthesis effort. Any use of trade, firm, or product names is for descriptive purposes only and does not imply endorsement by the US government. We thank the original data generators who made their data available for reuse, and we acknowledge the data repositories for safeguarding these assets.

**Financial support.** This research has been supported by the Directorate for Geosciences of the National Science Foundation (grant nos. AGS-1602105 and AGS-1903548).

**Review statement.** This paper was edited by Thomas Blunier and reviewed by Jessie Woodbridge and one anonymous referee.

## References

- Adams, D. K. and Comrie, A. C.: The North American Monsoon, *B. Am. Meteorol. Soc.*, 78, 2197–2213, [https://doi.org/10.1175/1520-0477\(1997\)078<2197:TNAM>2.0.CO;2](https://doi.org/10.1175/1520-0477(1997)078<2197:TNAM>2.0.CO;2), 1997.
- Addison, J. A., Barron, J., Finney, B., Kusler, J., Bukry, D., Heusser, L. E., and Alexander, C. R.: A Holocene record of ocean productivity and upwelling from the north-

- ern California continental slope, *Quatern. Int.*, 469, 96–108, <https://doi.org/10.1016/j.quaint.2017.02.021>, 2018.
- Akers, P. D., Brook, G. A., Railsback, L. B., Liang, F., Iannone, G., Webster, J. W., Reeder, P. P., Cheng, H., and Edwards, R. L.: An extended and higher-resolution record of climate and land use from stalagmite MC01 from Macal Chasm, Belize, revealing connections between major dry events, overall climate variability, and Maya sociopolitical changes, *Palaeogeogr. Palaeoclimatol.*, 459, 268–288, <https://doi.org/10.1016/j.palaeo.2016.07.007>, 2016.
- Albani, S., Mahowald, N. M., Winckler, G., Anderson, R. F., Bradtmiller, L. I., Delmonte, B., François, R., Goman, M., Heavens, N. G., Hesse, P. P., Hovan, S. A., Kang, S. G., Kohfeld, K. E., Lu, H., Maggi, V., Mason, J. A., Mayewski, P. A., McGee, D., Miao, X., Otto-Bliesner, B. L., Perry, A. T., Pourmand, A., Roberts, H. M., Rosenbloom, N., Stevens, T., and Sun, J.: Twelve thousand years of dust: the Holocene global dust cycle constrained by natural archives, *Clim. Past*, 11, 869–903, <https://doi.org/10.5194/cp-11-869-2015>, 2015.
- Albert, L. E. and Wyckoff, D. G.: *Ferndale Bog and Natural Lake: Five thousand years of environmental change in southeastern Oklahoma*, Oklahoma Archaeological Survey, Norman, USA, 1981.
- Anderson, L.: Holocene record of precipitation seasonality from lake calcite  $\delta^{18}\text{O}$  in the central Rocky Mountains, United States, *Geology*, 39, 211–214, <https://doi.org/10.1130/G31575.1>, 2011.
- Anderson, L.: Rocky Mountain hydroclimate: Holocene variability and the role of insolation, ENSO, and the North American Monsoon, *Global Planet. Change*, 92/93, 198–208, <https://doi.org/10.1016/j.gloplacha.2012.05.012>, 2012.
- Anderson, L., Abbott, M. B., and Finney, B. P.: Holocene climate inferred from oxygen isotope ratios in lake sediments, Central Brooks Range, Alaska, *Quaternary Res.*, 55, 313–321, <https://doi.org/10.1006/qres.2001.2219>, 2001.
- Anderson, L., Abbott, M. B., Finney, B. P., and Burns, S. J.: Regional atmospheric circulation change in the North Pacific during the Holocene inferred from lacustrine carbonate oxygen isotopes, Yukon Territory, Canada, *Quaternary Res.*, 64, 21–35, <https://doi.org/10.1016/j.yqres.2005.03.005>, 2005.
- Anderson, L., Abbott, M. B., Finney, B. P., and Burns, S. J.: Late Holocene moisture balance variability in the southwest Yukon Territory, Canada, *Quaternary Sci. Rev.*, 26, 130–141, <https://doi.org/10.1016/j.quascirev.2006.04.011>, 2007.
- Anderson, R. S., Hasbargen, J., Koehler, P. A., and Feiler, E. J.: Late Wisconsin and Holocene subalpine forests of the Markagunt Plateau of Utah, southwestern Colorado Plateau, USA, *Arct. Antarct. Alp. Res.*, 31, 366–378, <https://doi.org/10.1080/15230430.1999.12003321>, 1999.
- Anderson, R. S., Jass, R. B., Toney, J. L., Allen, C. D., Cisneros-Dozal, L. M., Hess, M., Heikoop, J., and Fessenden, J.: Development of the mixed conifer forest in northern New Mexico and its relationship to Holocene environmental change, *Quaternary Res.*, 69, 263–275, <https://doi.org/10.1016/j.yqres.2007.12.002>, 2008a.
- Anderson, R. S., Allen, C. D., Toney, J. L., Jass, R. B., and Bair, A. N.: Holocene vegetation and fire regimes in subalpine and mixed conifer forests, southern Rocky Mountains, USA, *Int. J. Wildland Fire*, 17, 96–114, <https://doi.org/10.1071/WF07028>, 2008b.
- Anderson, R. S., Soltow, H. R., and Jiménez-Moreno, G.: Postglacial environmental change of a high-elevation forest, Sangre de Cristo Mountains of south-central Colorado, in: *From Saline to Freshwater: The Diversity of Western Lakes in Space and Time*, edited by: Starratt, S. W. and Rosen, M. R., Geological Society of America Special Papers, [https://doi.org/10.1130/2018.2536\(13\)](https://doi.org/10.1130/2018.2536(13)), 2019.
- Anil: digitize2.m, MATLAB Central File Exchange, available at: <https://www.mathworks.com/matlabcentral/fileexchange/928-digitize2-m> (last access: 29 March 2021), 2020.
- Antonarakou, A., Kontakiotis, G., Mortyn, P. G., Drinia, H., Sprovieri, M., Besiou, E., and Tripanas, E.: Biotic and geochemical ( $\delta^{18}\text{O}$ ,  $\delta^{13}\text{C}$ , Mg/Ca, Ba/Ca) responses of *Globigerinoides ruber* morphotypes to upper water column variations during the last deglaciation, Gulf of Mexico, *Geochim. Cosmochim. Acta.*, 170, 69–93, <https://doi.org/10.1016/j.gca.2015.08.003>, 2015.
- Arcusa, S. H., McKay, N. P., Routson, C. C., and Munoz, S. E.: Dust-drought interactions over the last 15,000 years: A network of lake sediment records from the San Juan Mountains, Colorado, Holocene, 30, 559–574, <https://doi.org/10.1177/0959683619875192>, 2020.
- Arellano-Torres, E., Álvarez-Covelli, C., Kasper-Zubillaga, J. J., and Lozano-García, M. S.: A 14-ka record of dust input and phytoplankton regime changes in the subtropical NE Pacific: Oceanic and terrestrial processes linked by teleconnections at suborbital scales, *Paleoceanography and Paleoclimatology*, 34, 35–53, <https://doi.org/10.1029/2018PA003479>, 2019.
- Asmerom, Y., Polyak, V., Burns, S., and Rasmussen, J.: Solar forcing of Holocene climate: New insights from a speleothem record, southwestern United States, *Geology*, 35, 1–4, <https://doi.org/10.1130/G22865A.1>, 2007.
- Barnosky, C. W.: Late Quaternary vegetation in the southwestern Columbia Basin, Washington, *Quaternary Res.*, 23, 109–122, [https://doi.org/10.1016/0033-5894\(85\)90075-4](https://doi.org/10.1016/0033-5894(85)90075-4), 1985a.
- Barnosky, C. W.: Late Quaternary vegetation near Battle Ground Lake, southern Puget Trough, Washington, *Geol. Soc. Am. Bull.*, 96, 263–271, [https://doi.org/10.1130/0016-7606\(1985\)96<263:LQVNBG>2.0.CO;2](https://doi.org/10.1130/0016-7606(1985)96<263:LQVNBG>2.0.CO;2), 1985b.
- Barron, J. A., Heusser, L. E., and Alexander, C.: High resolution climate of the past 3,500 years of coastal northernmost California, in: *Proceedings of the Twentieth Annual Pacific Climate Workshop*, 13–22, 2003a.
- Barron, J. A., Heusser, L., Herbert, T., and Lyle, M.: High-resolution climatic evolution of coastal northern California during the past 16,000 years, *Paleoceanography*, 18, 1020, <https://doi.org/10.1029/2002PA000768>, 2003b.
- Barron, J. A., Bukry, D., and Bischoff, J. L.: High resolution paleoceanography of the Guaymas Basin, Gulf of California, during the past 15 000 years, *Mar. Micropaleontol.*, 50, 185–207, [https://doi.org/10.1016/S0377-8398\(03\)00071-9](https://doi.org/10.1016/S0377-8398(03)00071-9), 2004.
- Barron, J. A., Metcalfe, S. E., and Addison, J. A.: Response of the North American monsoon to regional changes in ocean surface temperature, *Paleoceanography*, 27, PA3206, <https://doi.org/10.1029/2011PA002235>, 2012.
- Barron, J. A., Bukry, D., Heusser, L. E., Addison, J. A., and Alexander, C. R.: High-resolution climate of the past ~7300 years of coastal northernmost California: Results from diatoms, silicoflagellates, and pollen, *Quatern. Int.*, 469, 109–119, <https://doi.org/10.1016/j.quaint.2016.10.039>, 2018.
- Benson, L., Kashgarian, M., Rye, R., Lund, S., Paillet, F., Smoot, J., Kester, C., Mensing, S., Meko, D., and Lindström, S.: Holocene

- multidecadal and multicentennial droughts affecting Northern California and Nevada, *Quaternary Sci. Rev.*, 21, 659–682, [https://doi.org/10.1016/S0277-3791\(01\)00048-8](https://doi.org/10.1016/S0277-3791(01)00048-8), 2002.
- Berger, A. and Loutre, M. F.: Insolation values for the climate of the last 10 million years, *Quaternary Sci. Rev.*, 10, 297–317, [https://doi.org/10.1016/0277-3791\(91\)90033-Q](https://doi.org/10.1016/0277-3791(91)90033-Q), 1991.
- Bernal, J. P., Lachniet, M., McCulloch, M., Mortimer, G., Morales, P., and Cienfuegos, E.: A speleothem record of Holocene climate variability from southwestern Mexico, *Quaternary Res.*, 75, 104–113, <https://doi.org/10.1016/j.yqres.2010.09.002>, 2011.
- Bhattacharya, T., Byrne, R., Böhnell, H., Wogau, K., Kienel, U., Ingram, B. L., and Zimmerman, S.: Cultural implications of late Holocene climate change in the Cuenca Oriental, Mexico, *P. Natl. Acad. Sci. USA*, 112, 1693–1698, <https://doi.org/10.1073/pnas.1405653112>, 2015.
- Bhattacharya, T., Tierney, J. E., Addison, J. A., and Murray, J. W.: Ice-sheet modulation of deglacial North American monsoon intensification, *Nat. Geosci.*, 11, 848–852, <https://doi.org/10.1038/s41561-018-0220-7>, 2018.
- Blaauw, M., Christen, J. A., Bennett, K. D., and Reimer, P. J.: Double the dates and go for Bayes – Impacts of model choice, dating density and quality on chronologies, *Quaternary Sci. Rev.*, 188, 58–66, <https://doi.org/10.1016/j.quascirev.2018.03.032>, 2018.
- Boldt, B. R., Kaufman, D. S., McKay, N. P., and Briner, J. P.: Holocene summer temperature reconstruction from sedimentary chlorophyll content, with treatment of age uncertainties, Kurupa Lake, Arctic Alaska, Holocene, 25, 641–650, <https://doi.org/10.1177/0959683614565929>, 2015.
- Boos, D. D.: Introduction to the bootstrap world, *Statist. Sci.*, 18, 168–174, <https://doi.org/10.1214/ss/1063994971>, 2003.
- Bradley, R. S.: *Paleoclimatology: reconstructing climates of the Quaternary*, Elsevier, San Diego, CA, USA, 2015.
- Bringué, M. and Rochon, A.: Late Holocene paleoceanography and climate variability over the Mackenzie Slope (Beaufort Sea, Canadian Arctic), *Mar. Geol.*, 291–294, 83–96, <https://doi.org/10.1016/j.margeo.2011.11.004>, 2012.
- Brown, K. J. and Hebda, R. J.: Origin, development, and dynamics of coastal temperate conifer rainforests of southern Vancouver Island, Canada, *Can. J. Forest Res.*, 32, 353–372, <https://doi.org/10.1139/x01-197>, 2002.
- Brown, K. J. and Schoups, G.: Multi-millennial streamflow dynamics in two forested watersheds on Vancouver Island, Canada, *Quaternary Res.*, 83, 415–426, <https://doi.org/10.1016/j.yqres.2015.03.003>, 2015.
- Brown, K. J., Fitton, R. J., Schoups, G., Allen, G. B., Wahl, K. A., and Hebda, R. J.: Holocene precipitation in the coastal temperate rainforest complex of southern British Columbia, Canada, *Quaternary Sci. Rev.*, 25, 2762–2779, <https://doi.org/10.1016/j.quascirev.2006.02.020>, 2006.
- Brown, K. J., Hebda, N., Schoups, G., Conder, N., Smith, K., and Trofymow, J.: Long-term climate, vegetation and fire regime change in a managed municipal water supply area, British Columbia, Canada, Holocene, 29, 1411–1424, <https://doi.org/10.1177/0959683619854523>, 2019.
- Brubaker, L. B., Garfinkel, H. L., and Edwards, M. E.: A Late Wisconsin and Holocene vegetation history from the Central Brooks Range: Implications for Alaskan palaeoecology, *Quaternary Res.*, 20, 194–214, [https://doi.org/10.1016/0033-5894\(83\)90077-7](https://doi.org/10.1016/0033-5894(83)90077-7), 1983.
- Bunbury, J. and Gajewski, K.: Postglacial climates inferred from a lake at treeline, southwest Yukon Territory, Canada, *Quaternary Sci. Rev.*, 28, 354–369, <https://doi.org/10.1016/j.quascirev.2008.10.007>, 2009.
- Chakraborty, K., Finkelstein, S. A., Desloges, J. R., and Chow, N. A.: Holocene paleoenvironmental changes inferred from diatom assemblages in sediments of Kusawa Lake, Yukon Territory, Canada, *Quaternary Res.*, 74, 15–22, <https://doi.org/10.1016/j.yqres.2010.04.011>, 2010.
- Chase, M., Bleskie, C., Walker, I. R., Gavin, D. G., and Hu, F. S.: Midge-inferred Holocene summer temperatures in Southeastern British Columbia, Canada, *Palaeogeogr. Palaeoclimatol.*, 257, 244–259, <https://doi.org/10.1016/j.palaeo.2007.10.020>, 2008.
- Clegg, B. F. and Hu, F. S.: An oxygen-isotope record of Holocene climate change in the south-central Brooks Range, Alaska, *Quaternary Sci. Rev.*, 29, 928–939, <https://doi.org/10.1016/j.quascirev.2009.12.009>, 2010.
- Clegg, B. F., Clarke, G. H., Chipman, M. L., Chou, M., Walker, I. R., Tinner, W., and Hu, F. S.: Six millennia of summer temperature variation based on midge analysis of lake sediments from Alaska, *Quaternary Sci. Rev.*, 29, 3308–3316, <https://doi.org/10.1016/j.quascirev.2010.08.001>, 2010.
- Clegg, B. F., Kelly, R., Clarke, G. H., Walker, I. R., and Hu, F. S.: Nonlinear response of summer temperature to Holocene insolation forcing in Alaska, *P. Natl. Acad. Sci. USA*, 108, 19299–19304, <https://doi.org/10.1073/pnas.1110913108>, 2011.
- Cole, K. L. and Liu, G.-W.: Holocene paleoecology of an estuary on Santa Rosa Island, California, *Quaternary Res.*, 41, 326–335, <https://doi.org/10.1006/qres.1994.1037>, 1994.
- Cumming, B. F., Laird, K. R., Bennett, J. R., Smol, J. P., and Salomon, A. K.: Persistent millennial-scale shifts in moisture regimes in western Canada during the past six millennia, *P. Natl. Acad. Sci. USA*, 99, 16117–16121, <https://doi.org/10.1073/pnas.252603099>, 2002.
- Cwynar, L. C.: A Late-Quaternary vegetation history from Hanging Lake, Northern Yukon, *Ecol. Monogr.*, 52, 1–24, <https://doi.org/10.2307/2937342>, 1982.
- Cwynar, L. C.: A late Quaternary vegetation history from Lily Lake, Chilkat Peninsula, southeast Alaska, *Can. J. Botany*, 68, 1106–1112, <https://doi.org/10.1139/b90-139>, 1990.
- Cwynar, L. C. and Spear, R. W.: Reversion of forest to tundra in the Central Yukon, *Ecology*, 72, 202–212, <https://doi.org/10.2307/1938915>, 1991.
- Cwynar, L. C. and Spear, R. W.: Paleovegetation and paleoclimatic changes in the Yukon at 6ka BP, *Géogr. Phys. Quatern.*, 49, 29–35, <https://doi.org/10.7202/033027ar>, 2007.
- de Vernal, A., Hillaire-Marcel, C., and Darby, D. A.: Variability of sea ice cover in the Chukchi Sea (western Arctic Ocean) during the Holocene, *Paleoceanography*, 20, PA4018, <https://doi.org/10.1029/2005PA001157>, 2005.
- de Vernal, A., Hillaire-Marcel, C., Rochon, A., Fréchette, B., Henry, M., Solignac, S., and Bonnet, S.: Dinocyst-based reconstructions of sea ice cover concentration during the Holocene in the Arctic Ocean, the northern North Atlantic Ocean and its adjacent seas, *Quaternary Sci. Rev.*, 79, 111–121, <https://doi.org/10.1016/j.quascirev.2013.07.006>, 2013.
- Du, X., Hendy, I., and Schimmelmänn, A.: A 9000-year flood history for Southern California: A revised stratigraphy of varved

- sediments in Santa Barbara Basin, *Mar. Geol.*, 397, 29–42, <https://doi.org/10.1016/j.margeo.2017.11.014>, 2018.
- Ersek, V., Clark, P. U., Mix, A. C., Cheng, H., and Lawrence Edwards, R.: Holocene winter climate variability in mid-latitude western North America, *Nat. Commun.*, 3, 1219, <https://doi.org/10.1038/ncomms2222>, 2012.
- Fall, P. L.: Holocene dynamics of the subalpine forest in central Colorado, *American Association of Stratigraphic Palynologists Contribution Series*, 16, 31–46, 1985.
- Fall, P. L.: Vegetation dynamics in the southern Rocky Mountains: Late Pleistocene and Holocene timberline fluctuations, PhD thesis, University of Arizona, Tucson, USA, p. 303, 1988.
- Fall, P. L.: Timberline fluctuations and late Quaternary paleoclimates in the Southern Rocky Mountains, Colorado, *Geol. Soc. Am. Bull.*, 109, 1306–1320, [https://doi.org/10.1130/0016-7606\(1997\)109<1306:TFALQP>2.3.CO;2](https://doi.org/10.1130/0016-7606(1997)109<1306:TFALQP>2.3.CO;2), 1997.
- Farmer, J. R., Cronin, T. M., de Vernal, A., Dwyer, G. S., Keigwin, L. D., and Thunell, R. C.: Western Arctic Ocean temperature variability during the last 8000 years, *Geophys. Res. Lett.*, 38, L24602, <https://doi.org/10.1029/2011GL049714>, 2011.
- Finkenbinder, M. S., Abbott, M. B., Edwards, M. E., Langdon, C. T., Steinman, B. A., and Finney, B. P.: A 31,000 year record of paleoenvironmental and lake-level change from Harding Lake, Alaska, USA, *Quaternary Sci. Rev.*, 87, 98–113, <https://doi.org/10.1016/j.quascirev.2014.01.005>, 2014.
- Finney, B. P., Bigelow, N. H., Barber, V. A., and Edwards, M. E.: Holocene climate change and carbon cycling in a groundwater-fed, boreal forest lake: Dune Lake, Alaska, *J. Paleolimnol.*, 48, 43–54, <https://doi.org/10.1007/s10933-012-9617-2>, 2012.
- Fisher, D., Osterberg, E., Dyke, A., Dahl-Jensen, D., Demuth, M., Zdanowicz, C., Bourgeois, J., Koerner, R. M., Mayewski, P., Wake, C., Kreutz, K., Steig, E., Zheng, J., Yalcin, K., Goto-Azuma, K., Luckman, B., and Rupper, S.: The Mt Logan Holocene – late Wisconsinan isotope record: tropical Pacific–Yukon connections, *Holocene*, 18, 667–677, <https://doi.org/10.1177/0959683608092236>, 2008.
- Flower, B. P., Hastings, D. W., Hill, H. W., and Quinn, T. M.: Phasing of deglacial warming and Laurentide Ice Sheet meltwater in the Gulf of Mexico, *Geology*, 32, 597, <https://doi.org/10.1130/G20604.1>, 2004.
- Gajewski, K., Mott, R. J., Ritchie, J. C., and Hadden, K.: Holocene vegetation history of Banks Island, Northwest Territories, Canada, *Can. J. Botany*, 78, 430–436, <https://doi.org/10.1139/b00-018>, 2000.
- Galloway, J. M., Lenny, A. M., and Cumming, B. F.: Hydrological change in the central interior of British Columbia, Canada: diatom and pollen evidence of millennial-to-centennial scale change over the Holocene, *J. Paleolimnol.*, 45, 183–197, <https://doi.org/10.1007/s10933-010-9490-9>, 2011.
- Garfin, A.: Assessment of climate change in the southwest United States: a report prepared for the National Climate Assessment, Island Press, Washington DC, 2013.
- Gavin, D. G., Henderson, A. C. G., Westover, K. S., Fritz, S. C., Walker, I. R., Leng, M. J., and Hu, F. S.: Abrupt Holocene climate change and potential response to solar forcing in western Canada, *Quaternary Sci. Rev.*, 30, 1243–1255, <https://doi.org/10.1016/j.quascirev.2011.03.003>, 2011.
- Goman, M., Joyce, A., Lund, S., Pearson, C., Guerra, W., Dale, D., Hammond, D. E., and Celestian, A. J.: Preliminary results from Laguna Minucúa: a potentially annually resolved record of climate and environmental change for the past ~5000 years in the Mixteca Alta of Oaxaca, Mexico, *Quatern. Int.*, 469, 85–95, <https://doi.org/10.1016/j.quaint.2017.01.027>, 2018.
- Guiot, J. and de Vernal, A.: Chapter Thirteen. Transfer functions: Methods for quantitative paleoceanography based on microfossils, in: *Developments in Marine Geology*, edited by: Hillaire-Marcel, C. and De Vernal, A., Elsevier, Amsterdam, Netherlands, 523–563, 2007.
- Harbert, R. S. and Nixon, K. C.: Quantitative Late Quaternary climate reconstruction from plant macrofossil communities in western North America, *Open Quaternary*, 4, 8, <https://doi.org/10.5334/oq.46>, 2018.
- Heiser, C., McKay, N. P., Simpson, G. A., and Routson, C. C.: nickmckay/LiPD-utilities: v0.2.5.5, Zenodo, <https://doi.org/10.5281/zenodo.1256889>, 2018.
- Hill, T. M., Kennett, J. P., Pak, D. K., Behl, R. J., Robert, C., and Beaufort, L.: Pre-Bølling warming in Santa Barbara Basin, California: surface and intermediate water records of early deglacial warmth, *Quaternary Sci. Rev.*, 25, 2835–2845, <https://doi.org/10.1016/j.quascirev.2006.03.012>, 2006.
- Hodell, D. A., Curtis, J. H., and Brenner, M.: Possible role of climate in the collapse of Classic Maya civilization, *Nature*, 375, 391–394, <https://doi.org/10.1038/375391a0>, 1995.
- Hu, F. S., Ito, E., Brubaker, L. B., and Anderson, P. M.: Ostracode geochemical record of Holocene climatic change and implications for vegetational response in the Northwestern Alaska Range, *Quaternary Res.*, 49, 86–95, <https://doi.org/10.1006/qres.1997.1936>, 1998.
- Hughes, M. K. and Graumlich, L. J.: Multi-millennial dendroclimatic studies from the western United States, in: *Climatic variations and forcing mechanisms of the last 2000 years*, Springer, Berlin, Heidelberg, 109–124, 1996.
- Irvine, F., Cwynar, L. C., Vermaire, J. C., and Rees, A. B. H.: Midge-inferred temperature reconstructions and vegetation change over the last 15,000 years from Trout Lake, northern Yukon Territory, eastern Beringia, *J. Paleolimnol.*, 48, 133–146, <https://doi.org/10.1007/s10933-012-9612-7>, 2012.
- Jiménez-Moreno, G. and Anderson, R. S.: Pollen and macrofossil evidence of Late Pleistocene and Holocene treeline fluctuations from an alpine lake in Colorado, USA, *Holocene*, 23, 68–77, <https://doi.org/10.1177/0959683612450199>, 2013.
- Jiménez-Moreno, G., Fawcett, P. J., and Scott Anderson, R.: Millennial- and centennial-scale vegetation and climate changes during the late Pleistocene and Holocene from northern New Mexico (USA), *Quaternary Sci. Rev.*, 27, 1442–1452, <https://doi.org/10.1016/j.quascirev.2008.04.004>, 2008.
- Jimenez-Moreno, G., Anderson, R. S., Atudorei, V., and Toney, J. L.: A high-resolution record of climate, vegetation, and fire in the mixed conifer forest of northern Colorado, USA, *Geol. Soc. Am. Bull.*, 123, 240–254, <https://doi.org/10.1130/B30240.1>, 2011.
- Jiménez-Moreno, G., Anderson, R. S., Shuman, B. N., and Yackulic, E.: Forest and lake dynamics in response to temperature, North American monsoon and ENSO variability during the Holocene in Colorado (USA), *Quaternary Sci. Rev.*, 211, 59–72, <https://doi.org/10.1016/j.quascirev.2019.03.013>, 2019.
- Johnson, B. G., Jiménez-Moreno, G., Eppes, M. C., Diemer, J. A., and Stone, J. R.: A multiproxy record of postglacial climate variability from a shallowing, 12-m deep sub-alpine bog in the south-



- eastern San Juan Mountains of Colorado, USA, Holocene, 23, 1028–1038, <https://doi.org/10.1177/0959683613479682>, 2013.
- Jones, M. D., Metcalfe, S. E., Davies, S. J., and Noren, A.: Late Holocene climate reorganisation and the North American Monsoon, *Quaternary Sci. Rev.*, 124, 290–295, <https://doi.org/10.1016/j.quascirev.2015.07.004>, 2015.
- Juggins, S. and Birks, H. J. B.: Quantitative environmental reconstructions from biological data, in: *Tracking Environmental Change Using Lake Sediments: Data Handling and Numerical Techniques*, edited by: Birks, H. J. B., Lotter, A. F., Juggins, S., and Smol, J. P., Springer, Dordrecht, The Netherlands, 431–494, 2012.
- Kaufman, D., Axford, Y., Anderson, R. S., Lamoureux, S. F., Schindler, D. E., Walker, I. R., and Werner, A.: A multi-proxy record of the Last Glacial Maximum and last 14,500 years of paleoenvironmental change at Lone Spruce Pond, southwestern Alaska, *J. Paleolimnol.*, 48, 9–26, <https://doi.org/10.1007/s10933-012-9607-4>, 2012.
- Kaufman, D., McKay, N., Routson, C., Erb, M., Davis, B., Heiri, O., Jaccard, S., Tierney, J., Dätwyler, C., Axford, Y., Brussel, T., Cartapanis, O., Chase, B., Dawson, A., de Vernal, A., Engels, S., Jonkers, L., Marsicek, J., Moffa-Sánchez, P., Morrill, C., Orsi, A., Rehfeld, K., Saunders, K., Sommer, P. S., Thomas, E., Tonello, M., Tóth, M., Vachula, R., Andreev, A., Bertrand, S., Biskaborn, B., Bringué, M., Brooks, S., Caniupán, M., Chevalier, M., Cwynar, L., Emile-Geay, J., Fegyveresi, J., Feurdean, A., Finsinger, W., Fortin, M.-C., Foster, L., Fox, M., Gajewski, K., Grosjean, M., Hausmann, S., Heinrichs, M., Holmes, N., Ilyashuk, B., Ilyashuk, E., Juggins, S., Khider, D., Koinig, K., Langdon, P., Larocque-Tobler, I., Li, J., Lotter, A., Luoto, T., Mackay, A., Magyari, E., Malevich, S., Mark, B., Massafiero, J., Montade, V., Nazarova, L., Novenko, E., Pañil, P., Pearson, E., Peros, M., Pienitz, R., Plóciennik, M., Porinchu, D., Potito, A., Rees, A., Reinemann, S., Roberts, S., Rolland, N., Salonen, S., Self, A., Seppä, H., Shala, S., St-Jacques, J.-M., Stenni, B., Strykh, L., Tarrats, P., Taylor, K., van den Bos, V., Velle, G., Wahl, E., Walker, I., Wilmschurst, J., Zhang, E., and Zhilich, S.: A global database of Holocene paleotemperature records, *Sci. Data*, 7, 115, <https://doi.org/10.1038/s41597-020-0445-3>, 2020a.
- Kaufman, D., McKay, N., Routson, C., Erb, M., Dätwyler, C., Sommer, P. S., Heiri, O., and Davis, B.: Holocene global mean surface temperature, a multi-method reconstruction approach, *Sci. Data*, 7, 201, <https://doi.org/10.1038/s41597-020-0530-7>, 2020b.
- Kennett, D. J., Kennett, J. P., Erlandson, J. M., and Cannariato, K. G.: Human responses to Middle Holocene climate change on California's Channel Islands, *Quaternary Sci. Rev.*, 26, 351–367, <https://doi.org/10.1016/j.quascirev.2006.07.019>, 2007.
- Kirby, M. E., Zimmerman, S. R. H., Patterson, W. P., and Rivera, J. J.: A 9170-year record of decadal-to-multi-centennial scale pluvial episodes from the coastal southwest United States: a role for atmospheric rivers?, *Quaternary Sci. Rev.*, 46, 57–65, <https://doi.org/10.1016/j.quascirev.2012.05.008>, 2012.
- Kirby, M. E., Knell, E. J., Anderson, W. T., Lachniet, M. S., Palermo, J., Eeg, H., Lucero, R., Murrieta, R., Arevalo, A., Silveira, E., and Hiner, C. A.: Evidence for insolation and Pacific forcing of late glacial through Holocene climate in the Central Mojave Desert (Silver Lake, CA), *Quaternary Res.*, 84, 174–186, <https://doi.org/10.1016/j.yqres.2015.07.003>, 2015.
- Kirby, M. E. C., Patterson, W. P., Lachniet, M., Noblet, J. A., Anderson, M. A., Nichols, K., and Avila, J.: Pacific southwest United States Holocene droughts and pluvials inferred from sediment  $\delta^{18}\text{O}$ (calcite) and grain size data (Lake Elsinore, California), *Front. Earth Sci.*, 7, 74, <https://doi.org/10.3389/feart.2019.00074>, 2019.
- Konecky, B. L., McKay, N. P., Churakova (Sidorova), O. V., Comas-Bru, L., Dassié, E. P., DeLong, K. L., Falster, G. M., Fischer, M. J., Jones, M. D., Jonkers, L., Kaufman, D. S., Leduc, G., Managave, S. R., Martrat, B., Opel, T., Orsi, A. J., Partin, J. W., Sayani, H. R., Thomas, E. K., Thompson, D. M., Tyler, J. J., Abram, N. J., Atwood, A. R., Cartapanis, O., Conroy, J. L., Curran, M. A., Dee, S. G., Deininger, M., Divine, D. V., Kern, Z., Porter, T. J., Stevenson, S. L., von Gunten, L., and Iso2k Project Members: The Iso2k database: a global compilation of paleo- $\delta^{18}\text{O}$  and  $\delta^2\text{H}$  records to aid understanding of Common Era climate, *Earth Syst. Sci. Data*, 12, 2261–2288, <https://doi.org/10.5194/essd-12-2261-2020>, 2020.
- Lachniet, M. S., Denniston, R. F., Asmerom, Y., and Polyak, V. J.: Orbital control of western North America atmospheric circulation and climate over two glacial cycles, *Nat. Commun.*, 5, 3805, <https://doi.org/10.1038/ncomms4805>, 2014.
- Larsen, D. J., Finkenbinder, M. S., Abbott, M. B., and Ofstun, A. R.: Deglaciation and postglacial environmental changes in the Teton Mountain Range recorded at Jenny Lake, Grand Teton National Park, WY, *Quaternary Sci. Rev.*, 138, 62–75, <https://doi.org/10.1016/j.quascirev.2016.02.024>, 2016.
- Lemmen, J. and Lacourse, T.: Fossil chironomid assemblages and inferred summer temperatures for the past 14,000 years from a low-elevation lake in Pacific Canada, *J. Paleolimnol.*, 59, 427–442, <https://doi.org/10.1007/s10933-017-9998-3>, 2018.
- Levy, L. B., Kaufman, D. S., and Werner, A.: Holocene glacier fluctuations, Waskey Lake, northeastern Ahklun Mountains, southwestern Alaska, Holocene, 14, 185–193, <https://doi.org/10.1191/0959683604hl675rp>, 2004.
- Lopes, C. and Mix, A. C.: North Pacific paleotemperature and paleoproductivity reconstructions based on diatom species, *Paleoceanography and Paleoclimatology*, 33, 703–715, <https://doi.org/10.1029/2018PA003352>, 2018.
- Lundeen, Z., Brunelle, A., Burns, S. J., Polyak, V., and Asmerom, Y.: A speleothem record of Holocene paleoclimate from the northern Wasatch Mountains, southeast Idaho, USA, *Quatern. Int.*, 310, 83–95, <https://doi.org/10.1016/j.quaint.2013.03.018>, 2013.
- Lynch, E. A.: Origin of a park-forest vegetation mosaic in the Wind River Range, Wyoming, *Ecology*, 79, 1320–1338, [https://doi.org/10.1890/0012-9658\(1998\)079\[1320:OOAPFV\]2.0.CO;2](https://doi.org/10.1890/0012-9658(1998)079[1320:OOAPFV]2.0.CO;2), 1998.
- MacDonald, G. M.: Postglacial vegetation history of the Mackenzie River Basin, *Quaternary Res.*, 28, 245–262, [https://doi.org/10.1016/0033-5894\(87\)90063-9](https://doi.org/10.1016/0033-5894(87)90063-9), 1987.
- MacDonald, G. M. and Cwynar, L. C.: A fossil pollen based reconstruction of the late Quaternary history of lodgepole pine (*Pinus contorta* ssp. *latifolia*) in the western interior of Canada, *Can. J. Forest Res.*, 15, 1039–1044, <https://doi.org/10.1139/x85-168>, 1985.
- MacDonald, G. M., Moser, K. A., Bloom, A. M., Potito, A. P., Porinchu, D. F., Holmquist, J. R., Hughes, J., and Kremenetski, K. V.: Prolonged California aridity linked to climate warm-

- ing and Pacific sea surface temperature, *Sci. Rep.*, 6, 33325, <https://doi.org/10.1038/srep33325>, 2016.
- Maher, L. J.: Pollen analyses of surface materials from the southern San Juan Mountains, Colorado, *Geol. Soc. Am. Bull.*, 74, 1485, [https://doi.org/10.1130/0016-7606\(1963\)74\[1485:PAOSMF\]2.0.CO;2](https://doi.org/10.1130/0016-7606(1963)74[1485:PAOSMF]2.0.CO;2), 1963.
- Maher, L. J.: Absolute pollen diagram of Redrock Lake, Boulder County, Colorado, *Quaternary Res.*, 2, 531–553, [https://doi.org/10.1016/0033-5894\(72\)90090-7](https://doi.org/10.1016/0033-5894(72)90090-7), 1972.
- Mann, D. H., Heiser, P. A., and Finney, B. P.: Holocene history of the Great Kobuk Sand Dunes, Northwestern Alaska, *Quaternary Sci. Rev.*, 21, 709–731, [https://doi.org/10.1016/S0277-3791\(01\)00120-2](https://doi.org/10.1016/S0277-3791(01)00120-2), 2002.
- Mantua, N. J., Hare, S. R., Zhang, Y., Wallace, J. M., and Francis, R. C.: A Pacific interdecadal climate oscillation with impacts on salmon production, *B. Am. Meteorol. Soc.*, 78, 1069–1079, [https://doi.org/10.1175/1520-0477\(1997\)078<1069:APICOW>2.0.CO;2](https://doi.org/10.1175/1520-0477(1997)078<1069:APICOW>2.0.CO;2), 1997.
- Marchitto, T. M., Muscheler, R., Ortiz, J. D., Carriquiry, J. D., and van Geen, A.: Dynamical response of the Tropical Pacific Ocean to solar forcing during the early Holocene, *Science*, 330, 1378–1381, <https://doi.org/10.1126/science.1194887>, 2010.
- Marcott, S. A., Shakun, J. D., Clark, P. U., and Mix, A. C.: A reconstruction of regional and global temperature for the past 11,300 years, *Science*, 339, 1198–1201, <https://doi.org/10.1126/science.1228026>, 2013.
- Marlon, J. R., Bartlein, P. J., Long, C., Gavin, D. G., Anderson, R. S., and Briles, C.: Natural versus human causes of fire in the western US, *Proc. Natl. Acad. Sci. USA*, 109, 535–543, 2012.
- Marsicek, J., Shuman, B., Brewer, S., Foster, D. R., and Oswald, W. W.: Moisture and temperature changes associated with the mid-Holocene *Tsuga* decline in the north-eastern United States, *Quaternary Sci. Rev.*, 80, 129–142, <https://doi.org/10.1016/j.quascirev.2013.09.001>, 2013.
- Marsicek, J., Shuman, B. N., Bartlein, P. J., Shafer, S. L., and Brewer, S.: Reconciling divergent trends and millennial variations in Holocene temperatures, *Nature*, 554, 92–96, <https://doi.org/10.1038/nature25464>, 2018.
- Mathewes, R. W.: A palynological study of postglacial vegetation changes in the University Research Forest, south-western British Columbia, *Can. J. Botany*, 51, 2085–2103, <https://doi.org/10.1139/b73-271>, 1973.
- McAfee, S. A. and Russell, J. L.: Northern Annular Mode impact on spring climate in the western United States, *Geophys. Res. Lett.*, 35, L17701, <https://doi.org/10.1029/2008GL034828>, 2008.
- McClymont, E. L., Ganeshram, R. S., Pichevin, L. E., Talbot, H. M., van Dongen, B. E., Thunell, R. C., Haywood, A. M., Singarayer, J. S., and Valdes, P. J.: Sea-surface temperature records of Termination 1 in the Gulf of California: Challenges for seasonal and interannual analogues of tropical Pacific climate change, *Paleoceanography*, 27, PA2202, <https://doi.org/10.1029/2011PA002226>, 2012.
- McGann, M.: High-resolution foraminiferal, isotopic, and trace element records from Holocene estuarine deposits of San Francisco Bay, California, *J. Coastal Res.*, 245, 1092–1109, <https://doi.org/10.2112/08A-0003.1>, 2008.
- McKay, N. P. and Emile-Geay, J.: Technical note: The Linked Paleo Data framework – a common tongue for paleoclimatology, *Clim. Past*, 12, 1093–1100, <https://doi.org/10.5194/cp-12-1093-2016>, 2016.
- McKay, N. P. and Kaufman, D. S.: Holocene climate and glacier variability at Hallet and Greyling Lakes, Chugach Mountains, south-central Alaska, *J. Paleolimnol.*, 41, 143–159, <https://doi.org/10.1007/s10933-008-9260-0>, 2009.
- Metcalf, S. E., Barron, J. A., and Davies, S. J.: The Holocene history of the North American Monsoon: “known knowns” and “known unknowns” in understanding its spatial and temporal complexity, *Quaternary Sci. Rev.*, 120, 1–27, <https://doi.org/10.1016/j.quascirev.2015.04.004>, 2015.
- Michels, A., Laird, K. R., Wilson, S. E., Thomson, D., Leavitt, P. R., Oglesby, R. J., and Cumming, B. F.: Multidecadal to millennial-scale shifts in drought conditions on the Canadian prairies over the past six millennia: implications for future drought assessment, *Glob. Change Biol.*, 13, 1295–1307, <https://doi.org/10.1111/j.1365-2486.2007.01367.x>, 2007.
- Minckley, T. A., Shriver, R. K., and Shuman, B.: Resilience and regime change in a southern Rocky Mountain ecosystem during the past 17 000 years, *Ecol. Monogr.*, 82, 49–68, <https://doi.org/10.1890/11-0283.1>, 2012.
- Morris, J. L., Brunelle, A., DeRose, R. J., Seppä, H., Power, M. J., Carter, V., and Bares, R.: Using fire regimes to delineate zones in a high-resolution lake sediment record from the western United States, *Quaternary Res.*, 79, 24–36, <https://doi.org/10.1016/j.yqres.2012.10.002>, 2013.
- Muhs, D. R., Budahn, J. R., McGeehin, J. P., Bettis, E. A., Skipp, G., Paces, J. B., and Wheeler, E. A.: Loess origin, transport, and deposition over the past 10,000 years, Wrangell-St. Elias National Park, Alaska, *Aeolian Res.*, 11, 85–99, <https://doi.org/10.1016/j.aeolia.2013.06.001>, 2013.
- Munroe, J. S., McElroy, R., O’Keefe, S., Peters, A., and Wasson, L.: Holocene records of eolian dust deposition from high-elevation lakes in the Uinta Mountains, Utah, USA, *J. Quaternary Sci.*, 36, 66–75, <https://doi.org/10.1002/jqs.3250>, 2020.
- Nelson, D. B., Abbott, M. B., Steinman, B., Polissar, P. J., Stansell, N. D., Ortiz, J. D., Rosenmeier, M. F., Finney, B. P., and Riedel, J.: Drought variability in the Pacific Northwest from a 6,000-yr lake sediment record, *P. Natl. Acad. Sci. USA*, 108, 3870–3875, <https://doi.org/10.1073/pnas.1009194108>, 2011.
- Nichols, J. E., Peteet, D. M., Moy, C. M., Castañeda, I. S., McGeachy, A., and Perez, M.: Impacts of climate and vegetation change on carbon accumulation in a south-central Alaskan peatland assessed with novel organic geochemical techniques, *Holocene*, 24, 1146–1155, <https://doi.org/10.1177/0959683614540729>, 2014.
- Ohlwein, C. and Wahl, E. R.: Review of probabilistic pollen-climate transfer methods, *Quaternary Sci. Rev.*, 31, 17–29, <https://doi.org/10.1016/j.quascirev.2011.11.002>, 2012.
- PAGES 2k Consortium: A global multiproxy database for temperature reconstructions of the Common Era, *Sci. Data*, 4, 170088, <https://doi.org/10.1038/sdata.2017.88>, 2017.
- Palmer, S., Walker, I., Heinrichs, M., Hebda, R., and Scudler, G.: Postglacial midge community change and Holocene palaeotemperature reconstructions near treeline, southern British Columbia (Canada), *J. Paleolimnol.*, 28, 469–490, <https://doi.org/10.1023/A:1021644122727>, 2002.
- Pellatt, M. G. and Mathewes, R. W.: Paleocology of postglacial tree line fluctuations on the Queen

- Charlotte Islands, Canada, *Écoscience*, 1, 71–81, <https://doi.org/10.1080/11956860.1994.11682230>, 1994.
- Pellatt, M. G., Smith, M. J., Mathewes, R. W., Walker, I. R., and Palmer, S. L.: Holocene treeline and climate change in the subalpine zone near Stoyoma Mountain, Cascade Mountains, southwestern British Columbia, Canada, *Arct. Antarct. Alp. Res.*, 32, 73–83, <https://doi.org/10.1080/15230430.2000.12003341>, 2000.
- Petersen, K. L.: Palynology in Montezuma County, southwestern Colorado: The local history of pinyon pine (*Pinus edulis*), *ASSP Contribution Series*, 16, 47–62, 1985.
- Pompeani, D. P., Steinman, B. A., and Abbott, M. B.: A sedimentary and geochemical record of water-level changes from Rantin Lake, Yukon, Canada, *J. Paleolimnol.*, 48, 147–158, <https://doi.org/10.1007/s10933-012-9602-9>, 2012.
- Poore, R. Z., Dowsett, H. J., Verardo, S., and Quinn, T. M.: Millennial- to century-scale variability in Gulf of Mexico Holocene climate records, *Paleoceanography*, 18, 1048, <https://doi.org/10.1029/2002PA000868>, 2003.
- Poore, R. Z., Pavich, M. J., and Grissino-Mayer, H. D.: Record of the North American southwest monsoon from Gulf of Mexico sediment cores, *Geology*, 33, 209, <https://doi.org/10.1130/G21040.1>, 2005.
- Porter, T. J., Schoenemann, S. W., Davies, L. J., Steig, E. J., Bandara, S., and Froese, D. G.: Recent summer warming in northwestern Canada exceeds the Holocene thermal maximum, *Nat. Commun.*, 10, 1631, <https://doi.org/10.1038/s41467-019-09622-y>, 2019.
- Potito, A. P., Porinchu, D. F., MacDonald, G. M., and Moser, K. A.: A late Quaternary chironomid-inferred temperature record from the Sierra Nevada, California, with connections to northeast Pacific sea surface temperatures, *Quaternary Res.*, 66, 356–363, <https://doi.org/10.1016/j.yqres.2006.05.005>, 2006.
- Power, M. J., Marlon, J., Ortiz, N., Bartlein, P. J., Harrison, S. P., Mayle, F. E., Ballouche, A., Bradshaw, R. H. W., Carcaillet, C., Cordova, C., Mooney, S., Moreno, P. I., Prentice, I. C., Thonicke, K., Tinner, W., Whitlock, C., Zhang, Y., Zhao, Y., Ali, A. A., Anderson, R. S., Beer, R., Behling, H., Briles, C., Brown, K. J., Brunelle, A., Bush, M., Camill, P., Chu, G. Q., Clark, J., Colombaroli, D., Connor, S., Daniau, A.-L., Daniels, M., Dodson, J., Doughty, E., Edwards, M. E., Finsinger, W., Foster, D., Frechette, J., Gaillard, M.-J., Gavin, D. G., Gobet, E., Haberle, S., Hallett, D. J., Higuera, P., Hope, G., Horn, S., Inoue, J., Kaltenrieder, P., Kennedy, L., Kong, Z. C., Larsen, C., Long, C. J., Lynch, J., Lynch, E. A., McGlone, M., Meeks, S., Mensing, S., Meyer, G., Minckley, T., Mohr, J., Nelson, D. M., New, J., Newnham, R., Noti, R., Oswald, W., Pierce, J., Richard, P. J. H., Rowe, C., Sanchez Gofii, M. F., Shuman, B. N., Takahara, H., Toney, J., Turney, C., Urrego-Sanchez, D. H., Umbanhowar, C., Vandergoes, M., Vanniere, B., Vescovi, E., Walsh, M., Wang, X., Williams, N., Wilmschurst, J., and Zhang, J. H.: Changes in fire regimes since the Last Glacial Maximum: an assessment based on a global synthesis and analysis of charcoal data, *Clim. Dynam.*, 30, 887–907, <https://doi.org/10.1007/s00382-007-0334-x>, 2008.
- Praetorius, S. K., Mix, A. C., Walczak, M. H., Wolhowe, M. D., Addison, J. A., and Prahl, F. G.: North Pacific deglacial hypoxic events linked to abrupt ocean warming, *Nature*, 527, 362–366, <https://doi.org/10.1038/nature15753>, 2015.
- Praetorius, S. K., Condron, A., Mix, A. C., Walczak, M. H., McKay, J. L., and Du, J.: The role of Northeast Pacific meltwater events in deglacial climate change, *Sci. Adv.*, 6, eaay2915, <https://doi.org/10.1126/sciadv.aay2915>, 2020.
- Pribyl, P. and Shuman, B. N.: A computational approach to Quaternary lake-level reconstruction applied in the central Rocky Mountains, Wyoming, USA, *Quaternary Res.*, 82, 249–259, <https://doi.org/10.1016/j.yqres.2014.01.012>, 2014.
- Rainville, R. A. and Gajewski, K.: Holocene environmental history of the Aishihik Region, Yukon, Canada, *Can. J. Earth Sci.*, 50, 397–405, <https://doi.org/10.1139/cjes-2012-0103>, 2013.
- Redmond, K. T. and Koch, R. W.: Surface climate and streamflow variability in the Western United States and their relationship to large-scale circulation indices, *Water Resour. Res.*, 27, 2381–2399, <https://doi.org/10.1029/91WR00690>, 1991.
- Reinemann, S. A., Porinchu, D. F., Bloom, A. M., Mark, B. G., and Box, J. E.: A multi-proxy paleolimnological reconstruction of Holocene climate conditions in the Great Basin, United States, *Quaternary Res.*, 72, 347–358, <https://doi.org/10.1016/j.yqres.2009.06.003>, 2009.
- Ritchie, J. C.: The Modern and Late Quaternary vegetation of the Campbell-Dolomite Uplands, near Inuvik, N.W.T., Canada, *Ecol. Monogr.*, 47, 401–423, <https://doi.org/10.2307/1942175>, 1977.
- Rodysill, J. R., Anderson, L., Cronin, T. M., Jones, M. C., Thompson, R. S., Wahl, D. B., Willard, D. A., Addison, J. A., Alder, J. R., Anderson, K. H., Anderson, L., Barron, J. A., Bernhardt, C. E., Hostetler, S. W., Kehrwald, N. M., Khan, N. S., Richey, J. N., Starratt, S. W., Strickland, L. E., Toomey, M. R., Treat, C. C., and Wingard, G. L.: A North American Hydroclimate Synthesis (NAHS) of the Common Era, *Glob. Planet. Change*, 162, 175–198, <https://doi.org/10.1016/j.gloplacha.2017.12.025>, 2018.
- Rosenberg, S. M., Walker, I. R., Mathewes, R. W., and Hallett, D. J.: Midge-inferred Holocene climate history of two subalpine lakes in southern British Columbia, Canada, *Holocene*, 14, 258–271, <https://doi.org/10.1191/0959683604hl703rp>, 2004.
- Routson, C. C. and McKay, N. P.: A multiproxy database of western North American Holocene paleoclimate records, figshare dataset, <https://doi.org/10.6084/m9.figshare.12863843.v1>, 2020.
- Routson, C. C., McKay, N. P., Kaufman, D. S., Erb, M. P., Gooose, H., Shuman, B. N., Rodysill, J. R., and Ault, T.: Mid-latitude net precipitation decreased with Arctic warming during the Holocene, *Nature*, 568, 83–87, <https://doi.org/10.1038/s41586-019-1060-3>, 2019a.
- Routson, C. C., Arcusa, S. H., McKay, N. P., and Overpeck, J. T.: A 4,500-year-long record of southern Rocky Mountain dust deposition, *Geophys. Res. Lett.*, 46, 8281–8288, <https://doi.org/10.1029/2019GL083255>, 2019b.
- Salzer, M. W., Bunn, A. G., Graham, N. E., and Hughes, M. K.: Five millennia of paleotemperature from tree-rings in the Great Basin, USA, *Climate Dynamics*, 42, 1517–1526, <https://doi.org/10.1007/s00382-013-1911-9>, 2014.
- Schiff, C. J., Kaufman, D. S., Wolfe, A. P., Dodd, J., and Sharp, Z.: Late Holocene storm-trajectory changes inferred from the oxygen isotope composition of lake diatoms, south Alaska, *J. Paleolimnol.*, 41, 189–208, <https://doi.org/10.1007/s10933-008-9261-z>, 2009.
- Schmieder, J., Fritz, S. C., Swinehart, J. B., Shinneman, A. L. C., Wolfe, A. P., Miller, G., Daniels, N., Jacobs, K. C., and Grimm, E. C.: A regional-scale climate reconstruc-

- tion of the last 4000 years from lakes in the Nebraska Sand Hills, USA, *Quaternary Sci. Rev.*, 30, 1797–1812, <https://doi.org/10.1016/j.quascirev.2011.04.011>, 2011.
- Shafer, D. S.: The timing of Late Quaternary monsoon precipitation maxima in the southwest United States, PhD thesis, University of Arizona, Tucson, USA, 234 pp., 1989.
- Shapley, M. D., Ito, E., and Donovan, J. J.: Lateglacial and Holocene hydroclimate inferred from a groundwater flow-through lake, Northern Rocky Mountains, USA, *Holocene*, 19, 523–535, <https://doi.org/10.1177/0959683609104029>, 2009.
- Shuman, B. N. and Marsicek, J.: The structure of Holocene climate change in mid-latitude North America, *Quaternary Sci. Rev.*, 141, 38–51, <https://doi.org/10.1016/j.quascirev.2016.03.009>, 2016.
- Shuman, B. N., Henderson, A. K., Colman, S. M., Stone, J. R., Fritz, S. C., Stevens, L. R., Power, M. J., and Whitlock, C.: Holocene lake-level trends in the Rocky Mountains, USA, *Quaternary Sci. Rev.*, 28, 1861–1879, <https://doi.org/10.1016/j.quascirev.2009.03.003>, 2009.
- Shuman, B. N., Carter, G. E., Hougardy, D. D., Powers, K., and Shinker, J. J.: A north-south moisture dipole at multi-century scales in the Central and Southern Rocky Mountains, USA, during the late Holocene, *Rocky Mountain Geology*, 49, 33–49, <https://doi.org/10.2113/rsrocky.49.1.33>, 2014.
- Shuman, B. N., Pribyl, P., and Buettner, J.: Hydrologic changes in Colorado during the mid-Holocene and Younger Dryas, *Quaternary Res.*, 84, 187–199, <https://doi.org/10.1016/j.yqres.2015.07.004>, 2015.
- Shuman, B. N., Routson, C., McKay, N., Fritz, S., Kaufman, D., Kirby, M. E., Nolan, C., Pederson, G. T., and St-Jacques, J.-M.: Placing the Common Era in a Holocene context: millennial to centennial patterns and trends in the hydroclimate of North America over the past 2000 years, *Clim. Past*, 14, 665–686, <https://doi.org/10.5194/cp-14-665-2018>, 2018.
- Staines-Urías, F., González-Yajimovich, O., and Beaufort, L.: Reconstruction of past climate variability and ENSO-like fluctuations in the southern Gulf of California (Alfonso Basin) since the last glacial maximum, *Quaternary Res.*, 83, 488–501, <https://doi.org/10.1016/j.yqres.2015.03.007>, 2015.
- Steinman, B. A., Pompeani, D. P., Abbott, M. B., Ortiz, J. D., Stansell, N. D., Finkenbinder, M. S., Mihindukulasooriya, L. N., and Hillman, A. L.: Oxygen isotope records of Holocene climate variability in the Pacific Northwest, *Quaternary Sci. Rev.*, 142, 40–60, <https://doi.org/10.1016/j.quascirev.2016.04.012>, 2016.
- Steponaitis, E., Andrews, A., McGee, D., Quade, J., Hsieh, Y.-T., Broecker, W. S., Shuman, B. N., Burns, S. J., and Cheng, H.: Mid-Holocene drying of the U.S. Great Basin recorded in Nevada speleothems, *Quaternary Sci. Rev.*, 127, 174–185, <https://doi.org/10.1016/j.quascirev.2015.04.011>, 2015.
- Stone, J. R. and Fritz, S. C.: Multidecadal drought and Holocene climate instability in the Rocky Mountains, *Geology*, 34, 409, <https://doi.org/10.1130/G22225.1>, 2006.
- Sundqvist, H. S., Kaufman, D. S., McKay, N. P., Balascio, N. L., Briner, J. P., Cwynar, L. C., Sejrup, H. P., Seppä, H., Subetto, D. A., Andrews, J. T., Axford, Y., Bakke, J., Birks, H. J. B., Brooks, S. J., de Vernal, A., Jennings, A. E., Ljungqvist, F. C., Rühland, K. M., Saenger, C., Smol, J. P., and Viau, A. E.: Arctic Holocene proxy climate database – new approaches to assessing geochronological accuracy and encoding climate variables, *Clim. Past*, 10, 1605–1631, <https://doi.org/10.5194/cp-10-1605-2014>, 2014.
- Sweeney, J., Salter-Townshend, M., Edwards, T., Buck, C. E., and Parnell, A. C.: Statistical challenges in estimating past climate changes, *WIREs Comput. Stat.*, 10, e1437, <https://doi.org/10.1002/wics.1437>, 2018.
- Szeicz, J. M., MacDonald, G. M., and Duk-Rodkin, A.: Late Quaternary vegetation history of the central Mackenzie Mountains, Northwest Territories, Canada, *Palaeogeogr. Palaeoclimatol.*, 113, 351–371, [https://doi.org/10.1016/0031-0182\(95\)00070-3](https://doi.org/10.1016/0031-0182(95)00070-3), 1995.
- Tingley, M. P., Craigmille, P. F., Haran, M., Li, B., Mannshardt, E., and Rajaratnam, B.: Piecing together the past: statistical insights into paleoclimatic reconstructions, *Quaternary Sci. Rev.*, 35, 1–22, <https://doi.org/10.1016/j.quascirev.2012.01.012>, 2012.
- Toney, J. L. and Anderson, R. S.: A postglacial palaeoecological record from the San Juan Mountains of Colorado USA: fire, climate and vegetation history, *Holocene*, 16, 505–517, <https://doi.org/10.1191/0959683606h1946rp>, 2006.
- Uptier, L. M., Vermaire, J. C., Patterson, R. T., Crann, C. A., Galloway, J. M., Macumber, A. L., Neville, L. A., Swindles, G. T., Falck, H., Roe, H. M., and Pisaric, M. F. J.: Middle to late Holocene chironomid-inferred July temperatures for the central Northwest Territories, Canada, *J. Paleolimnol.*, 52, 11–26, <https://doi.org/10.1007/s10933-014-9775-5>, 2014.
- Von Storch, H., Zorita, E., Jones, J. M., Dimitriev, Y., González-Rouco, F., and Tett, S. F. B.: Reconstructing past climate from noisy data, *Science*, 306, 679–682, <https://doi.org/10.1126/science.1096109>, 2004.
- Wahl, D., Byrne, R., and Anderson, L.: An 8700 year paleoclimate reconstruction from the southern Maya lowlands, *Quaternary Sci. Rev.*, 103, 19–25, <https://doi.org/10.1016/j.quascirev.2014.08.004>, 2014.
- White, J. M. and Mathewes, R. W.: Postglacial vegetation and climatic change in the upper Peace River district, Alberta, *Can. J. Botany*, 64, 2305–2318, <https://doi.org/10.1139/b86-302>, 1986.
- Whitlock, C., Dean, W. E., Fritz, S. C., Stevens, L. R., Stone, J. R., Power, M. J., Rosenbaum, J. R., Pierce, K. L., and Bracht-Flyer, B. B.: Holocene seasonal variability inferred from multiple proxy records from Crevice Lake, Yellowstone National Park, USA, *Palaeogeogr. Palaeoclimatol.*, 331/332, 90–103, <https://doi.org/10.1016/j.palaeo.2012.03.001>, 2012.
- Williams, J. W., Grimm, E. C., Blois, J. L., Charles, D. F., Davis, E. B., Goring, S. J., Graham, R. W., Smith, A. J., Anderson, M., Arroyo-Cabrales, J., Ashworth, A. C., Betancourt, J. L., Bills, B. W., Booth, R. K., Buckland, P. I., Curry, B. B., Giesecke, T., Jackson, S. T., Latorre, C., Nichols, J., Purdum, T., Roth, R. E., Stryker, M., and Takahara, H.: The Neotoma Paleocology Database, a multiproxy, international, community-curated data resource, *Quaternary Res.*, 89, 156–177, <https://doi.org/10.1017/qua.2017.105>, 2018.
- Winter, A., Zanchettin, D., Lachniet, M., Vieten, R., Pausata, F. S. R., Ljungqvist, F. C., Cheng, H., Edwards, R. L., Miller, T., Rubinetti, S., Rubino, A., and Taricco, C.: Initiation of a stable convective hydroclimatic regime in Central America circa 9000 years BP, *Nat. Commun.*, 11, 716, <https://doi.org/10.1038/s41467-020-14490-y>, 2020.
- Wong, C. I., Banner, J. L., and Musgrove, M.: Holocene climate variability in Texas, USA: An integration of existing paleoclimate data and modeling with a new, high-



- resolution speleothem record, *Quaternary Sci. Rev.*, 127, 155–173, <https://doi.org/10.1016/j.quascirev.2015.06.023>, 2015.
- Wooller, M. J., Kurek, J., Gaglioti, B. V., Cwynar, L. C., Bigelow, N., Reuther, J. D., Gelvin-Reymiller, C., and Smol, J. P.: An 11,200 year paleolimnological perspective for emerging archaeological findings at Quartz Lake, Alaska, *J. Paleolimnol.*, 48, 83–99, <https://doi.org/10.1007/s10933-012-9610-9>, 2012.
- Worona, M. A. and Whitlock, C.: Late Quaternary vegetation and climate history near Little Lake, central Coast Range, Oregon, *Geol. Soc. Am. Bull.*, 107, 867–876, [https://doi.org/10.1130/0016-7606\(1995\)107<0867:LQVACH>2.3.CO;2](https://doi.org/10.1130/0016-7606(1995)107<0867:LQVACH>2.3.CO;2), 1995.
- Yu, Z., Campbell, I. D., Campbell, C., Vitt, D. H., Bond, G. C., and Apps, M. J.: Carbon sequestration in western Canadian peat highly sensitive to Holocene wet-dry climate cycles at millennial timescales, *Holocene*, 13, 801–808, <https://doi.org/10.1191/0959683603hl667ft>, 2003.