

## Diameter Dependence of Transport through Nuclear Pore Complex Mimics Studied Using Optical Nanopores

Klughammer, Nils; Barth, Anders; Dekker, Maurice; Fragasso, Alessio; Onck, Patrick R.

**DOI**

[10.7554/eLife.87174.1](https://doi.org/10.7554/eLife.87174.1)

**Publication date**

2023

**Document Version**

Final published version

**Published in**

eLife

**Citation (APA)**

Klughammer, N., Barth, A., Dekker, M., Fragasso, A., & Onck, P. R. (2023). Diameter Dependence of Transport through Nuclear Pore Complex Mimics Studied Using Optical Nanopores. *eLife*, 12. <https://doi.org/10.7554/eLife.87174.1>

**Important note**

To cite this publication, please use the final published version (if applicable). Please check the document version above.

**Copyright**

Other than for strictly personal use, it is not permitted to download, forward or distribute the text or part of it, without the consent of the author(s) and/or copyright holder(s), unless the work is under an open content license such as Creative Commons.

**Takedown policy**

Please contact us and provide details if you believe this document breaches copyrights. We will remove access to the work immediately and investigate your claim.

# Diameter Dependence of Transport through Nuclear Pore Complex Mimics Studied Using Optical Nanopores

## Reviewed Preprint

Published from the original preprint after peer review and assessment by eLife.

## About eLife's process

## Reviewed preprint posted


June 20, 2023 (this version)

## Sent for peer review

February 27, 2023

## Posted to bioRxiv

February 18, 2023

Nils Klughammer, Anders Barth, Maurice Dekker, Alessio Fragasso, Patrick R. Onck, Cees Dekker 

Department of Bionanoscience, Kavli Institute of Nanoscience, Delft University of Technology, Van der Maasweg 9, 2629 HZ, Delft, The Netherlands • Zernike Institute for Advanced Materials, University of Groningen, Groningen, The Netherlands

 ([https://en.wikipedia.org/wiki/Open\\_access](https://en.wikipedia.org/wiki/Open_access))

 (<https://creativecommons.org/licenses/by/4.0/>)

## Abstract

The nuclear pore complex (NPC) regulates the selective transport of large biomolecules through the nuclear envelope. As a model system for nuclear transport, we construct NPC mimics by functionalizing the pore walls of freestanding palladium zero-mode waveguides with the FG-nucleoporin Nsp1. This approach enables the measurement of single-molecule translocations through individual pores using optical detection. We probe the selectivity of Nsp1-coated pores by quantitatively comparing the translocation rates of the nuclear transport receptor Kap95 to the inert probe BSA over a wide range of pore sizes from 35 nm to 160 nm. Pores below  $55 \pm 5$  nm show significant selectivity that gradually decreases for larger pores. This finding is corroborated by coarse-grained molecular-dynamics simulations of the Nsp1 mesh within the pore, which suggest that leakage of BSA occurs by diffusion through transient openings within the dynamic mesh. Furthermore, we experimentally observe a modulation of the BSA permeation when varying the concentration of Kap95. The results demonstrate the potential of single-molecule fluorescence measurements on biomimetic NPCs to elucidate the principles of nuclear transport.

### eLife assessment

This **important** study reports on a novel read-out methodology and fabrication strategy to mimic nuclear pore complexes, without the drawbacks of usual techniques, revealing a clear correlation between the size of the nuclear pore complex mimic and its transport selectivity. The methods are **compelling**, and the data, analyses and interpretation with coarse grained simulations and phenomenological models are **solid**, supporting the claims with minor weaknesses that would benefit from further clarification. This approach has **important** potential implications for further understanding of transport by the Nuclear Pore Complex.

## Introduction

The nuclear pore complex (NPC) forms the sole connection across the nuclear envelope that regulates all transport between the cytoplasm and nucleus. The central channel of this large protein complex (52 MDa in yeast to about 120 MDa in humans, Reichelt et al. (1990); Kim et al. (2018)) is lined with intrinsically disordered proteins that are rich in phenylalanine–glycine (FG) repeats, termed FG-Nups. The central transporter mesh constituted by these FG-Nups forms a selective barrier that facilitates the transport of dedicated nuclear transport receptors while blocking other proteins (Kim et al., 2018). Recently, it has been discovered that the inner diameter of the central transporter is variable and can dilate from 40 nm to 70 nm under different stress conditions (Zimmerli et al., 2021; Akey et al., 2022). How NPC dilation affects the efficiency and selectivity of nuclear transport remains an open question.

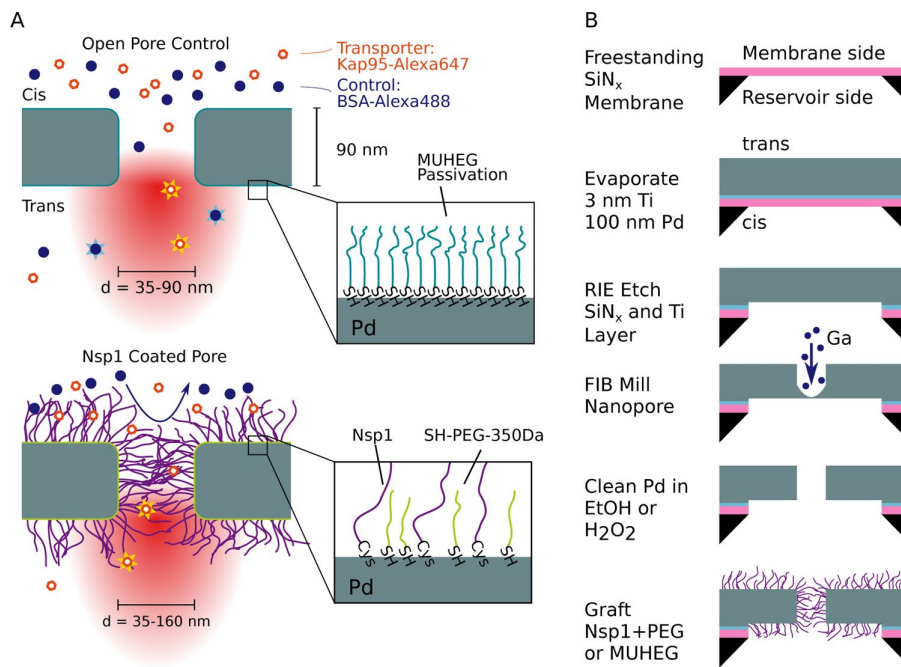
Despite extensive structural knowledge of the NPC scaffold, the mechanism of the selective barrier formed by the disordered FG-Nups remain highly debated (Lim et al., 2015; Schmidt and Görlich, 2016; Jovanovic-Talisman and Zilman, 2017). Remarkably, the NPC poses this selective barrier while enabling very high transport rates of ~1000 molecules per second that traverse the pore, referred to as the ‘transport paradox’ (Beck and Hurt, 2017). Whereas small molecules pass through the NPC channel without much obstruction, translocation of larger biomolecules is increasingly hindered and effectively blocked above a diameter of ~5 nm or a mass of ~30 kDa to 40 kDa unless they specifically interact with the FG-Nups mesh (Schmidt and Görlich, 2016; Mohr et al., 2009; Keminer and Peters, 1999). The efficient transport of large cargoes that carry a nuclear localization signal is facilitated by nuclear transport receptors (NTRs) which engage in multivalent interactions with the FG-repeats in the central transporter (Aramburu and Lemke, 2017).

One of the most studied systems is the Kap95–Kap60 system in yeast ( $\text{Imp}\beta$ – $\text{Imp}\alpha$  in humans), responsible for the import of proteins into the nucleus (Görlich and Kutay, 1999). Over the years, many models have been proposed to explain the selective properties of the central transporter, often originating from *in vitro* studies of isolated FG Nups (Rout et al., 2003; Frey et al., 2006; Frey and Görlich, 2007; Yamada et al., 2010; Schleicher et al., 2014; Kapinos et al., 2014, 2017). Following early models that explained the selectivity solely based on the properties of the FG Nups, more recent ‘Kap-centric’ models suggested a central role of NTRs as an active component of the selective barrier (Schleicher et al., 2014; Kapinos et al., 2014, 2017; Fragasso et al., 2022), supported by the presence of a large amount of strongly interacting transport receptors within the central transporter that engage in multivalent interactions with the FG repeats (Kim et al., 2018). This ‘slow phase’ is essentially immobile due to the high affinity of NTRs to the FG-Nup mesh. As the FG-mesh is saturated with NTRs, a mobile phase of NTRs emerges that is thought to diffuse along dedicated channels (Schleicher et al., 2014). So far, however, the dependence of transport rates and selectivity on the concentration of NTRs has hardly been studied directly.

Much research on the transport mechanism is carried out using *in vitro* experiments, since direct studies on the native NPC in its full complexity remain challenging. Using minimal biomimetic systems, it has been shown that a selective barrier with similar properties as the native NPC can be reconstituted using even a single native FG-Nup (Frey and Görlich, 2007; Jovanovic-Talisman et al., 2008; Kowalczyk et al., 2011; Ananth et al., 2018; Celetti et al., 2019) or artificial mimics thereof (Fragasso et al., 2021; Ng et al., 2021). Probing translocations through the FG-Nup mesh using solid-state nanopores grafted with FG-Nups was pioneered by Jovanovic-Talisman et al. (2008) using optical detection of fluorescently tagged molecules. However, this approach was limited to bulk measurements of transport through porous membranes that contained many such pores in parallel, thus lacking single-pore and single-molecule resolution. This limitation was subsequently addressed by measuring the electric

current through individual functionalized SiN<sub>x</sub> nanopores (Kowalczyk et al., 2011; Ananth et al., 2018; Fragasso et al., 2021). While this approach offers single-molecule sensitivity, the current-based readout remains unspecific (i.e. cannot distinguish different proteins), requires the application of a bias voltage which may influence the transport rate and speed of the translocations, and offers limited signal-to-noise ratio. It remains therefore restricted to pore sizes around 30 nm to 50 nm where the translocation of single molecules leads to a detectable current drop. For larger pores, the relative current blockage caused by a translocating molecule is too small compared to the noise, while the conductance of smaller coated pores is too low to detect translocation events.

Here, we implement a fluorescence-based assay for the multiplexed detection of single-molecule translocations through solid-state metal nanopores made of palladium, based on our previous work (Klughammer and Dekker, 2021). The translocation of individual molecules that were fluorescently labeled in multiple colors is monitored by a focused laser beam at a single nanopore which selectively excites molecules that exit from the pore (Figure 1 A). The <200 nm nanopores act as zero-mode waveguides (ZMW, Levene et al. (2003)) that block the propagation of the 485 nm to 640 nm wavelength excitation light through the metal membrane. Notably, this method does not require a bias voltage as it relies solely on the free diffusion of the fluorescent molecules, nor does the detection efficiency depend on the pore diameter. We developed robust protocols for efficient passivation of open pores and functionalization of the palladium surface with the FG-Nup Nsp1 to build a functional NPC mimic. After establishing a baseline for the translocation of fluorescently labeled proteins through open pores, we probe the selectivity of the biomimetic NPCs over a range of pore diameters from 35 nm to 160 nm by comparing the event rates of the transporter Kap95 to that of the inert probe BSA. We find that the selectivity of Nsp1-coated pores decreases with pore diameter, with the main loss of selectivity happening at about a diameter of 55 nm. We observe that smaller pores were selective, because Kap95 proteins can efficiently cross the pore while BSA transport is hindered. For larger pores, transport selectivity is gradually lost as both Kap95 and BSA were observed to cross the pore. Coarse-grained molecular dynamics simulations reproduce these experimental findings and show that the loss of selectivity is due to the formation of voids within the Nsp1 mesh of comparable size to BSA molecules. Upon increasing the concentration of the transporter Kap95 in the experiment, we observe a moderate increase of the transport selectivity for pores with a diameter below 50 nm. Intriguingly, we find that the event rate of BSA translocations for large pores *increases* with Kap95 concentration, suggesting that filling the FG-Nup mesh with NTRs reduces the selective volume. These results highlight the potential of our approach to unravel the physical principles underlying nuclear transport.



**Figure 1.**

**Experimental principle and nanofabrication.**

(A) Sketch of the experimental principle. Nanopores in a metal membrane block light from traversing if the pore diameter is small compared to the wavelength of light. The selectivity of Nsp1-coated metal nanopores is probed by measuring the translocation rate of fluorescently labeled proteins from the top reservoir (cis) to the detection (trans) side, where they rapidly diffuse out of the laser focus. Measurements on open pores (top) serve as a control where both the NTR Kap95 and the inert protein probe BSA pass unhindered. Nsp1-coated pores are expected to block

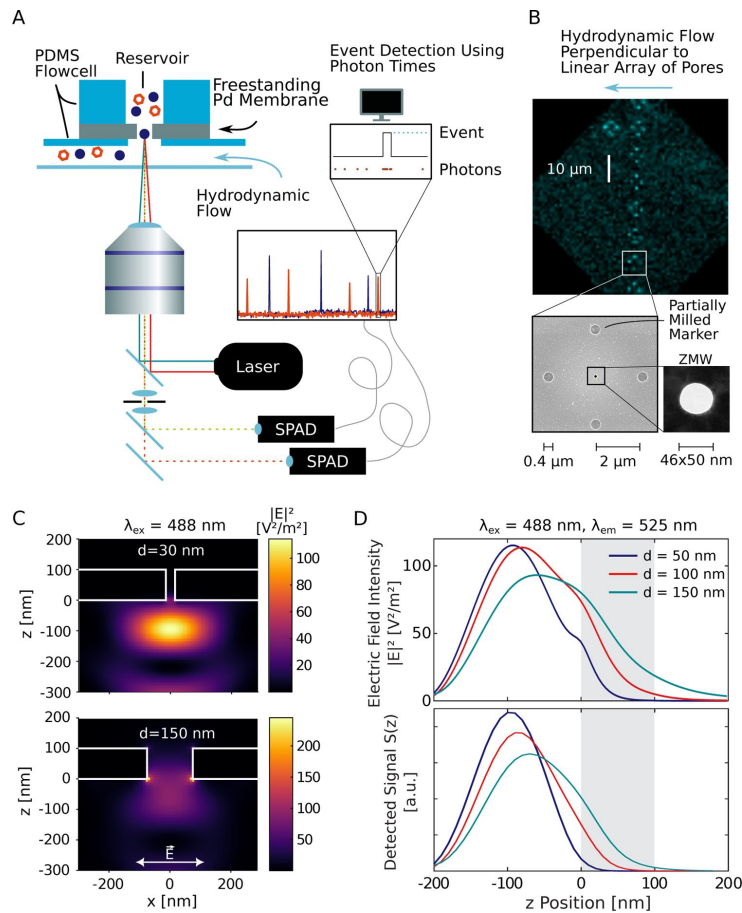
the translocation of BSA while still allowing Kap95 to translocate. Zooms at bottom right illustrate the passivation of open pores with MUHEG (top) and functionalization of the palladium surface with the FG-nucleoporin Nsp1 and 350 Da SH-PEG (bottom), achieved via thiol-palladium chemistry. (B) Fabrication of nanopores in a free-standing palladium membrane was performed by physical vapor deposition of palladium onto silicon nitride ( $\text{SiN}_x$ ), reactive ion etching (RIE), and focused-ion-beam (FIB) milling of the nanopores. The palladium surface was then cleaned either with  $\text{H}_2\text{O}_2$  or ethanol to remove contaminants before the functionalization step.

## Results

### Fabrication, surface grafting, and measurement setup

Our experimental approach is based on a free-standing palladium membrane into which nanopores were drilled using focused ion beam (FIB) milling (Figure 1 B). Fabrication of the metal membranes was achieved by evaporating a layer of Pd onto a  $\text{SiN}_x$  membrane (20 nm thickness) that was subsequently removed by reactive ion etching (in a process that was slightly adapted from Klughammer and Dekker (2021), see section Fabrication of freestanding Pd ZMWs for details). After processing, the Pd membrane had a thickness of  $\approx 90$  nm. To functionalize the metal surface we applied standard thiol chemistry which is well established for metals such as gold or palladium (Love et al., 2003; Jiang et al., 2004). After the FIB-milling step, a cleaning step was required to remove impurities from the Pd surface prior to thiol binding to ensure efficient surface grafting. Since previous protocols relied on freshly prepared surfaces, we developed a gentle cleaning protocol that used either hydrogen peroxide or boiling ethanol, inspired by Majid et al. (2003) (see Methods and Appendix 1). The cleaning step ensured that the Pd surface was competent for thiol binding, as validated by quartz crystal microbalance with dissipation monitoring (QCM-D) experiments (see Appendix 1—Figures 1–3) and surface plasmon resonance measurements (Andersson et al., 2022). We additionally confirmed that the cleaning procedure does not

alter the pore shape or closes the pores by transmission electron microscopy (TEM), cf. images shown at Klughammer *et al.* (2023b)).

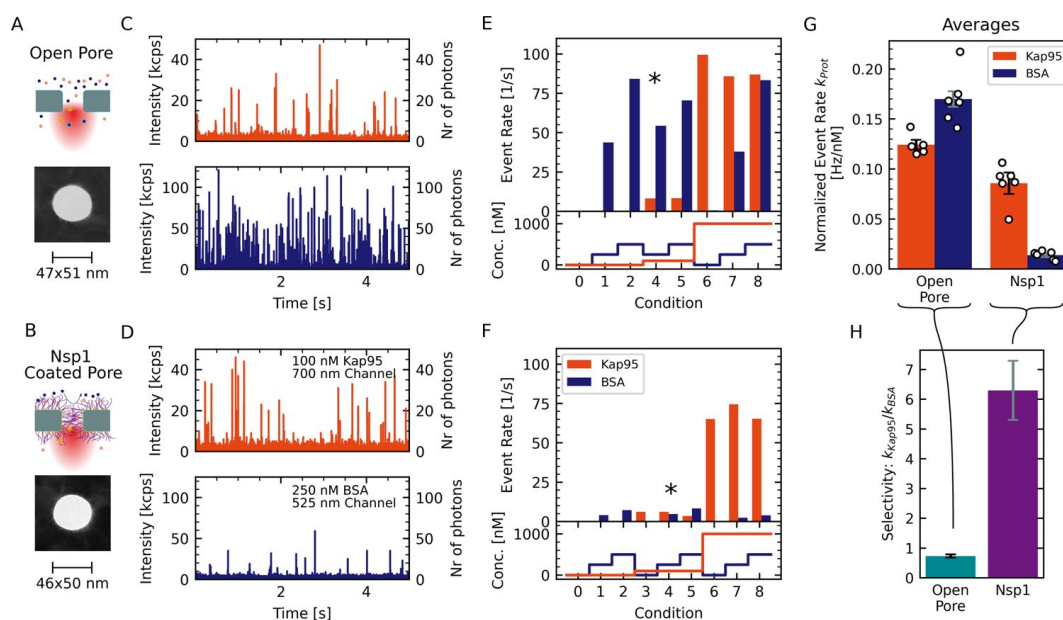


**Figure 2.**

**Experimental setup.**

(A) A free-standing Pd membrane containing the nanopores was mounted on a confocal microscope using a PDMS flow cell with a reservoir of  $\approx 3 \mu\text{L}$  on the dark (cis) side and a flow channel on the detection (trans) side that faced the objective lens. A constant flow in the channel avoided the accumulation of analytes on the detection side. The lasers were focused onto the nanopore by a high NA objective lens and the fluorescence signal was detected on single-photon avalanche photodiodes. From the recorded photon arrival times, fluorescence bursts were detected using a change point detection algorithm. (B) A total of eight pores were milled into the Pd membrane, each surrounded by partially milled markers that facilitate the localization of the nanopores in a bright-field image (top). An additional marker was added such that the individual pores in the array could be identified. A scanning electron microscope image of a single pore with markers is shown below. The size and shape of each ZMW pore used in this study was determined using transmission electron microscopy (bottom right). (C)

Simulated electric field intensity distributions in the  $xz$  plane near a freestanding ZMW for pore diameters of 30 (top) and 150 nm (bottom). A Gaussian laser beam was focused on the pore at a wavelength of 488 nm, polarized in the  $x$ -direction. See Appendix 2—Figure 1 for different pore sizes and excitation at 640 nm. (D) Electric field intensity  $|E^2|$  (top) and total detected signal  $S(z)$  (bottom) as a function of the  $z$ -position along the center of the pore for an excitation wavelength of 488 nm and an emission wavelength of 525 nm, corresponding to the blue detection channel, for pores of 50, 100, and 150 nm diameter. The palladium membrane is indicated by the gray shaded area. See Appendix 2—Figure 4 for the corresponding plots for the red channel.



**Figure 3.**

### Experimental workflow for measuring the selectivity of Nsp1-coated nanopores.

(A,B) Two pores of approximately 48 nm diameter were coated with MUHEG (A) or functionalized with Nsp1 (B). Pore dimensions were measured from TEM micrographs. (C,D) Fluorescence time traces recorded for the open and Nsp1-coated pores that are shown in A and B for Kap95–Alexa647 at 100 nM (red) and BSA–Alexa488 at 250 nM (blue). Both proteins were present at the same time. Whereas the Kap95 signal is comparable between the open and Nsp1-coated pores, a clear decrease of the BSA event rate is evident for the Nsp1-coated pore. (E,F) Measured event rates (top panel) resulting from the analyte concentrations for the different conditions probed sequentially from condition 0 to 8 during the experiment (bottom panel; see Appendix 4 for details). The concentrations used in the time traces shown in C and D are indicated with an asterisk. (G) In order to compare the different conditions, the obtained event rates are normalized to the respective protein concentration and corrected for the labeling degree (white dots in G). Bars indicate the average normalized event rates  $k_{\text{Kap95}}$  or  $k_{\text{BSA}}$  of the pore. Error bars represent the standard error of the mean. (H) The selectivity was calculated as the ratio of the average normalized event rates  $\frac{k_{\text{Kap95}}}{k_{\text{BSA}}}$ . Errors are propagated from the data shown in G. The data show a clear selectivity of the Nsp1-coated pore compared to the open pore.

To prevent unspecific sticking of proteins to the metal surface, the control open pores were passivated using 1-mercaptoundec-11-yl)hexa(ethylene glycol) (MUHEG), which forms a self-assembled monolayer by thiol-Pd binding enhanced with a dense packing due to the hydrophobic interactions between the alkane groups while providing a hydrophilic surface through the terminal hexaethylene glycol groups (Prime and Whitesides, 1993) (Figure 1 A, top). Coating of the biomimetic pores was performed with Nsp1 containing a C-terminal cysteine at a concentration of 1  $\mu\text{M}$ . We expect a lower limit for the grafting distance in the pore of 6.5 nm as measured previously by surface plasmon resonance experiments on flat gold surfaces (Fragasso et al., 2022). Additional passivation of the remaining free area

between Nsp1 molecules was achieved using short thiolated 350 Da PEG molecules (Jovanovic-Talman et al., 2008, 2014) (Figure 1 A, bottom).

After functionalization, the palladium membrane was mounted in a flow cell made of polydimethylsiloxan (PDMS) which provides a reservoir on the upper side for the addition of analyte, as well as a flow channel on the lower detection side to which a constant flow was applied to avoid accumulation of fluorescently labeled molecules (Figure 2 A). By diffusion, single proteins travelled through the pore upon which their attached fluorophore got excited by the laser. The fluorescence signal of molecules exiting the pore on the lower side was measured using a two-color confocal fluorescence microscope. A high-numerical aperture objective lens with a long working distance was used to focus the picosecond pulsed lasers in a diffraction-limited spot on the pore exit. The fluorescence signal was detected on single-photon avalanche photodiodes after passing through a pinhole and bandpass filter. For accurate and unbiased detection of the signal spikes originating from single-molecule translocation, we adapted a change point detection algorithm (Watkins and Yang, 2005) that takes full advantage of the single photon information, as described previously in Klughammer and Dekker (2021). To avoid biases in the event detection, we ensured that experimental parameters such as the event duration and the photons per molecule did not vary between experiments, e.g. due to variations of the laser intensity or setup alignment (see Data analysis for more details).

The metal membrane was thick enough to prevent the incident laser light from reaching the other side, which served to suppress the background fluorescence coming from the reservoir side. Additionally, the nanopore acted as a zero-mode waveguide (ZMW), resulting in an evanescent wave within the pore that exponentially decays on a length scale of 10 nm to 20 nm, depending on the pore size (Levene et al., 2003). To obtain more detailed insights into the optical properties in the proximity of the freestanding ZMW, we performed finite-difference time-domain simulations of the excitation electric field intensity and fluorescence emission (Figure 2 C,D and Appendix 2—Figure 1). As expected, the propagation of the excitation light is effectively blocked by the nanoaperture and the electric field intensity  $|E|^2$  decays exponentially within the nanopore. Interestingly, the presence of the reflecting metal surface also affects the intensity distribution further away from the nanopore, leading to the formation of a standing wave pattern. This effect is most visible for plane wave excitation (see Appendix 2—Figure 3), but is also present for focused excitation (Figure 2 C and Appendix 2—Figure 2). Molecules exiting the pore were hence mostly detected in the first lobe of the excitation profile and will likely diffuse away laterally before reaching intensity maxima further away from the membrane. To fully model the detected fluorescence signal  $S(z)$ , it is necessary to account for the modulation of the fluorescence quantum yield due to enhancement of the radiative and non-radiative rates by the metal nanostructure, as well as for the fraction of the signal that is emitted towards the upper side and thus cannot be detected (see Methods and Appendix 2—Figure 4). This further improves the blocking capability of the ZMW such that background signal from the reservoir is effectively suppressed even for large pores of 150 nm diameter (Figure 2 D). The detected fluorescence signal thus originates predominantly from molecules that exit from the pore and diffuse into the surrounding solution, which were excited by the truncated excitation volume below the pore.



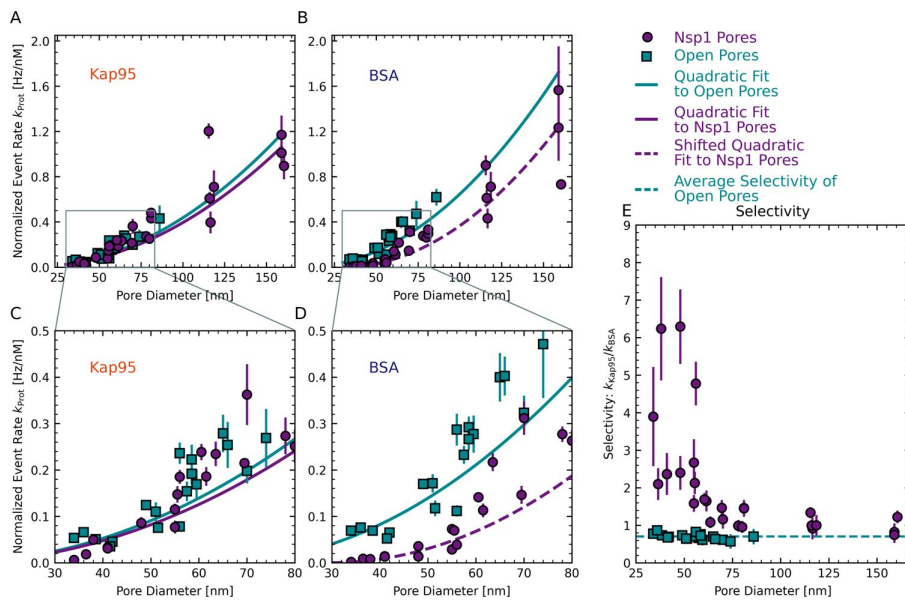


Figure 4.

## Dependence of translocation rates and selectivity on pore diameter

(A–D) Concentration-normalized event rate of Kap95 (A) and BSA (B) as a function of pore diameter for open pores (cyan squares) and Nsp1-coated pores (purple circles). While the normalized event rate for Kap95 did not change significantly between open and Nsp1-coated pores, a clear reduction was observed for BSA, which was most pronounced at small pore sizes. Solid lines are fits to a

quadratic function given in Equation 2. To model the size dependence of BSA translocations through Nsp1 pores, an offset was introduced that shifts the onset of the quadratic curve to higher diameters (dashed line, Equation 3). (C, D) Zoom-ins of the indicated regions in A,B. In A–D, the error bars represent the standard error of the mean of the normalized event rates obtained at different protein concentrations. (E) Apparent selectivity versus pore diameter. The data show that selectivity was lost for Nsp1-coated pores with increasing diameter. The average selectivity for open pores of  $0.70 \pm 0.01$  is shown by the dashed cyan line. Error bars indicate the propagated error from the normalized event rates shown in A–D.

Since the nanopores block the propagation of the excitation light across the membrane, they were not visible in a bright-field optical image. To facilitate the precise localization of the nanopores, we hence added a grid of *partially* milled markers centered around each pore that were easily visible on the microscope (Figure 2 B). To improve the throughput of the measurements, a linear array of eight pores of varying size was milled into the palladium membrane, and these pores were probed consecutively during the experiments. Crosstalk between pores was minimized by applying a flow orthogonal to the pore array, resulting in a false detection rate of less than 2 % (Appendix 3).

## NPC mimics show transport selectivity

To illustrate the workflow for estimating the transport selectivity of Nsp1-coated pores, we first describe our experiments on a pore with a diameter of 50 nm for which selectivity has previously been reported with Nsp1 in conductance measurements (Ananth et al., 2018) as shown in Figure 3 A,B. The recorded time traces of Kap95 labeled with the Alexa Fluor 647 dye (Alexa647, orange) at a concentration of 100 nM and BSA labeled with the Alexa Fluor 488 dye (Alexa488, blue) at a concentration of 250 nM show efficient translocations for both proteins through the open pore (Figure 3 C). While Kap95 still translocated through the Nsp1-coated pore at a high rate, BSA was clearly hindered as is evident from the reduction of the number of signal spikes in the time trace (Figure 3 D).

For each pore, we probed a total of three different concentrations of BSA (0 nM, 250 nM, 500 nM) and Kap95 (0 nM, 100 nM, 1000 nM), and all combinations thereof. This resulted in nine different conditions that were tested consecutively (see Figure 3 E–F, bottom), which allowed

us to assess the linearity of the measured event rates with respect to the analyte concentration. Since Kap95 interacts strongly with the Nsp1 mesh, we performed a step-wise increase of the Kap95 concentration throughout the measurement while probing the BSA response at every step (see Appendix 4). Importantly, this scheme enables us to test the influence of the Kap95 concentration on the event rates of BSA, as will be discussed below.

The measured event rates for Kap95 and BSA at the probed concentrations are shown in Figure 3 E–F, confirming the reduction of the BSA translocation for the Nsp1-coated pore. To quantify the selectivity, we computed the concentration-normalized event rate  $k_{\text{Kap95}}$  or  $k_{\text{BSA}}$  in units of Hz/nM as the average over all probed conditions and corrected for the degree of the fluorescent labeling (1 for BSA and 0.7 for Kap95, Figure 3 G). Finally, we define the selectivity of the pore as the ratio of the average normalized event rates for Kap95 and BSA,  $\frac{k_{\text{Kap95}}}{k_{\text{BSA}}}$ , which should be independent of the pore diameter for open pores. High selectivity values indicate that Kap95 translocates at a higher rate compared to BSA. For the open pore, we find an selectivity of  $0.73 \pm 0.05$ . A selectivity value between 0.7 and 0.8 is expected due to the smaller size and thus faster diffusivity of BSA, leading to a higher translocation rate compared to Kap95 (see Appendix 5—Figure 1 E). By contrast, the Nsp1-coated pore shows a significantly higher value of  $6.3 \pm 1.0$ , indicating a clear selectivity induced by the Nsp1 coating.

## Selectivity is lost at large pore diameters

Given recent reports on the dilation of the NPC central channel under stress conditions (Zimmerli et al., 2021), we set out to investigate the dependence of the transport selectivity on the pore diameter. Importantly, our approach allows us to measure pore sizes well above 60 nm that were previously inaccessible in conductance-based experiments (Kowalczyk et al., 2011; Ananth et al., 2018; Fragasso et al., 2021). We measured the normalized event rates and apparent selectivity of a total of 46 pores with diameters ranging from 35 nm to 160 nm, which were either open or coated with Nsp1 (Figure 4). Note that for pores above 80 nm diameter, it was necessary to reduce the fraction of labeled proteins five-fold in order to avoid too high event rates that would lead to nonlinearity in the event detection due to overlapping events. This dilution is accounted for in the reported normalized event rates. We made sure that all data sets showed the same average molecular brightness (i.e., fluorescence signal per molecule). Data sets with lower average molecular brightness, which could occur due to sub-optimal alignment or trapping of air bubbles in the flow cell, were removed from further analysis (see Data analysis for details).

We measured protein translocation rates versus pore diameter for transport of both Kap95 and BSA through both open pores and Nsp1-coated pores, see Figure 4. According to Fick's law of diffusion, the absolute translocation rate  $\kappa_{\text{Prot}}$  is expected to scale linearly with the concentration difference  $\Delta c$  between the cis and the trans side, and with the diffusivity of the probe,  $D$ . Additionally it scales linearly with the cross-sectional area of the pore, given by  $A = \pi r^2$  and thus it scales quadratically with the pore radius  $r$ . Further on, it scales inversely with the length of the pore,  $L$ . This results in a protein dependent translocation rate,

$$\kappa_{\text{Prot}} = AD \frac{\Delta c}{L} = \pi r^2 D \frac{\Delta c}{L}. \quad (1)$$

As a guide to the eye and for numerical comparison, we fitted the normalized event rates versus pore radius with such a quadratic function,

$$k_{\text{Prot}} = \alpha (r - r_{\text{Prot}})^2, \quad (2)$$

where  $k_{\text{Prot}}$  is the concentration-normalized event rate,  $r$  is the pore radius, and  $r_{\text{Prot}}$  is the radius of the protein (Kap95 in this case). Note that this equation accounts for a reduction of the effective cross-sectional pore area due to the fact that a protein has a finite volume and hence its center can not fully reach the rim of the pore. The only free parameter in the model is the multiplicative scaling factor  $\alpha$  which combines the effects of the pore length, concentration gradient, and protein diffusivity, as well as any experimental factors arising from event detection and protein-pore interaction (see Appendix 6 for further details). Note that this simple model does not include the pore diameter-dependent reduction of the diffusivity due to confinement (Dechadilok and Deen, 2006) which is discussed in Appendix 5.

For Kap95, the translocation rate through Nsp1-coated pores was reduced by only about 10 percent compared to open pores, see Figure 4 and Appendix 6—Figure 2 E. In other words, we observed *no* significant reduction of the normalized event rate for Nsp1-coated pores compared to open pores (Figure 4 A,C). While this is remarkable, since one might a priori expect a reduction of the rate as an Nsp1-filled pore might obstruct protein transport, this finding signals the optimized properties of the Kap95 that interacts in a highly dynamic way with the FG repeats in Nsp1, which facilitate efficient transport. Our finding is in agreement with previous results on pores smaller than 30 nm (Jovanovic-Talisman et al., 2008). Interestingly, we also observed no reduced diffusivity of Kap95 molecules on the pore exit side, as quantified by fluorescence correlation spectroscopy (FCS) (Appendix 7—Figure 1 A,B). However, we observed a shortening of the fluorescence lifetime of Kap95–Alexa647 for Nsp1-coated pores compared to open pores, which was not observed for BSA–Alexa488 (Appendix 7—Figure 1 C,D). As the fluorescence lifetime is shortened in the proximity of the metal nanostructure (see Appendix 2—Figure 4), this indicates that Kap95 resides longer in the Nsp1 mesh compared to BSA.

For BSA, the normalized event rates for Nsp1-coated pores were, by contrast, significantly reduced, especially at small pore diameters (Figure 4 B,D). More specifically, we observed an approximate 10-fold reduction of the event rate for Nsp1-coated pores with a diameter of 35 nm, whereas only a two-fold reduction was observed for pores with a diameter of 100 nm, which further decreases for larger pores (Appendix 6—Figure 2 E). Normalized event rates for open pores were well described by the quadratic function Equation 2. However, the BSA data for Nsp1-coated pores could not be described using the quadratic dependence with a single scaling factor over the whole range of pore diameters due to the steep increase of the event rate for larger pores (Appendix 6—Figure 2 B,D). We hence introduced an additional fit parameter  $b$ , which shifts the onset of the curve to higher pore diameters:

$$k_{\text{Prot}} = \alpha (r - r_{\text{Prot}} - b)^2. \quad (3)$$

The parameter  $b$  reduces the effective pore diameter accessible to BSA and can be seen as an estimate of the amount of Nsp1 inside the pore. From the fit, we obtained  $b = 11.5 \pm 0.4$  nm (error is SD estimated from the fit), which indeed is comparable to the height of Nsp1 brushes on flat surfaces (Wagner et al., 2015).

Next, we calculated the selectivity ratio  $\frac{k_{\text{Kap95}}}{k_{\text{BSA}}}$  to facilitate a direct comparison of pores with different diameters (Figure 4 E). For open pores, we find a selectivity ratio of  $0.70 \pm 0.02$ , independent of the pore diameter. This agrees well with predicted selectivity values of 0.7 to 0.8 for open pores, based on Fick's law for the different pore diameters (see Appendix 5—Figure 1). Note that the value of 0.70 deviates from 1 due to the different size of the two proteins which leads to different diffusion coefficients. For Nsp1-coated pores below 50 nm, selectivity ratios of individual pores ranged between  $2.1 \pm 0.4$  and  $6.3 \pm 1.0$ , which is three to nine times higher than for open pores. This observed selectivity for smaller pores originates

predominantly from a blockage of BSA translocations by the Nsp1 mesh, while the Kap translocation rates remain largely unaffected. For pores larger than 60 nm, we see a gradual decrease of the selectivity ratio with increasing pore diameter from  $1.7 \pm 0.2$  to a value of  $0.7 \pm 0.2$  for the largest pores, that approaches the selectivity ratio of open pores. The finite selectivity for large pores suggests that the Nsp1 coating on the pore walls still hindered the translocation of BSA, even after most of the selectivity was lost. The remaining selectivity decreased gradually with the pore diameter because the relative amount of Nsp1 molecules per pore cross-sectional area is reduced, as will be discussed in more detail below.

While the event rates were adequately described by the quadratic function, we observed a large variability between pores of similar size, even for open pores (Figure 4 A–D). As the variation of the event rate of Kap95 and BSA showed a high degree of correlation (see Appendix 8—Figure 1), the spread of the selectivity ratio was markedly reduced for open pore experiments. However, the spread remained high for Nsp1-coated pores (Figure 4 E), which we estimate to be due to pore-to-pore variations of the grafting density.

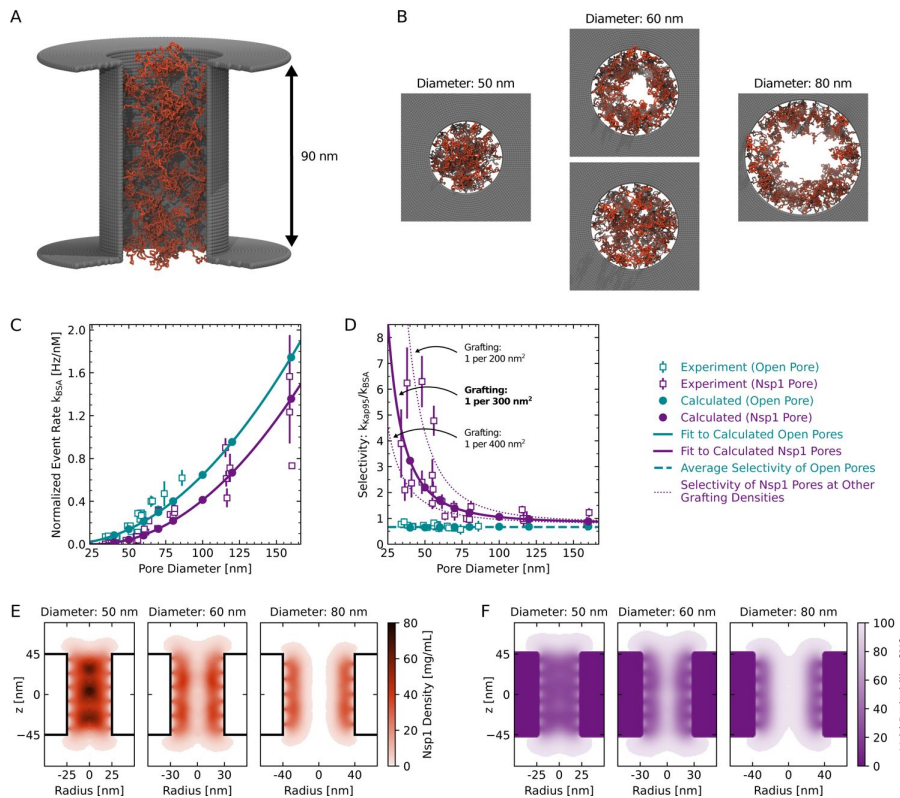
We note that the variability was not due to chip-to-chip variation as a similar spread is also seen within pores that were measured together on one chip in the same experiment (see Appendix 9—Figure 1).

## Coarse-grained modeling reveals transition of the Nsp1 mesh

To gain a microscopic understanding of the structure and dynamics of the Nsp1 meshwork, we performed coarse-grained molecular dynamics (CGMD) simulations of BSA transport across Nsp1-coated nanopores over a range of diameters and grafting densities. We used an earlier-developed residue-scale model (Ghavami et al., 2013, 2014; Dekker et al., 2022) that has been used to study Nsp1-functionalized nanopores (Ketterer et al., 2018; Ananth et al., 2018; Fragasso et al., 2022) and liquid-liquid phase separation of FG-Nups (Dekker et al., 2022). Within the microsecond time scale of our CGMD simulations, we found that passive diffusion of BSA through the nanopore channel was a rare event, especially at the smaller-size pores. To obtain statistically meaningful estimates of the translocation rates, we applied a void analysis method developed by Winogradoff et al. (2022). Rather than explicitly simulating translocation events, we used this theoretical approach to predict translocation rates based on the equilibrium fluctuations of the Nsp1 mesh. Because this method uses the entire simulation volume to characterize the energy barrier that a translocating protein such as BSA would need to overcome, the resulting event rates have much better statistical sampling than can be obtained from brute-force passive diffusion simulations. In brief, we estimated the energy barrier for the translocation of inert probes with the size of BSA from simulations of the Nsp1 mesh alone by quantifying the occurrence of openings (‘voids’) within the mesh that can accommodate the inert probe without steric clashes. The resulting probability distribution of the occupancy along the pore axis can then be converted into a potential of mean force (PMF) using Boltzmann inversion, which represents the energy barrier for translocation. From this, protein translocation rates were computed by relating the energy barrier to  $k_B T$  using the Arrhenius relation.

We performed simulations of nanopores with a length of 90 nm and diameters in the range of 40 nm to 160 nm. Nsp1 proteins were anchored at their C-terminus to the interior wall of the nanopore scaffold in a close-packed triangular distribution (Figure 5 A). From the equilibrium trajectories, we computed the PMF and use that to estimate the energy barrier,  $\Delta E$ , that BSA proteins need to overcome during translocation as the average value of the PMF at the center of the pore (Appendix 10—Figure 2). Translocation rates were then obtained using the Arrhenius relation:

$$k_{BSA} = k_{0,BSA} \exp(-\Delta E/k_B T), \quad (4)$$



**Figure 5.**

### Coarse-grained modeling of Nsp1-coated pores.

(A) One-bead-per-residue representation of an Nsp1-coated nanopore. (B) Top views of the Nsp1 meshwork in pores of 50 nm, 60 nm and 80 nm diameter (for a grafting density of 1 Nsp1 per 300 nm<sup>2</sup>). For pores with a diameter below 60 nm the Nsp1 meshwork was closed throughout the entire simulation, while for pores with diameters ≈60 nm transient openings were observed in the center of the pore, that were persistent for diameters ≥80 nm. (C) Calculated event rate of BSA as a function of pore diameter for open pores (cyan filled dots) and Nsp1-coated pores (purple dots) for a grafting density of 1 Nsp1 per 300 nm<sup>2</sup>. The calculated event rates are in good agreement

with the experimental event rates (open squares). Solid lines are fits to the calculated event rates using the quadratic function given in (2) for open pores and (3) for Nsp1-coated pores. (D) Calculated selectivity versus pore diameter, showing that the selectivity is lost for Nsp1-coated pores with increasing diameter. The average selectivity for open pores is shown as a green dashed line. The effect of grafting density on the apparent selectivity is indicated by the purple dotted lines that depict the results for grafting densities of 1 Nsp1 per 200 nm<sup>2</sup> and 1 Nsp1 per 400 nm<sup>2</sup> (see Appendix 10—Figure 3). (E) Axi-radial and time-averaged protein density distributions inside Nsp1-coated pores of 50 nm, 60 nm and 80 nm diameter at a grafting density of 1 Nsp1 per 300 nm<sup>2</sup>. For pore diameters below 60 nm, we observed the highest protein density along the pore axis, while for diameters ≥60 nm, the highest density was found near the pore walls. This observation was valid for each of the probed Nsp1 grafting densities (see Appendix 10—Figure 4). (F) Axi-radial and time-averaged void distributions inside Nsp1-coated pores of 50 nm, 60 nm and 80 nm diameter at a grafting density of 1 Nsp1 per 300 nm<sup>2</sup>. The void distributions suggest that for pores of 50 nm diameter there is no preferred pathway for the BSA proteins, while for larger pores the translocations happen mostly along the central axis. **Figure 5—video 1.** Video of the top view of the pores presented in B for 40 ns of the simulation.

where  $k_{0,BSA}$  is a proportionality constant to match the experimental event rates for open pores (see Appendix 10—Figure 1). While  $k_{0,BSA}$  is the same for open and Nsp1-coated pores of any diameter,  $\Delta E$  is calculated for each individual pore using the void analysis method.

As the precise grafting density of Nsp1 proteins within the pore in the experiment is not known accurately, we treated it as the only tunable parameter in the simulations to match the experimental BSA translocation rates. Using a previously estimated grafting density of 1 Nsp1 per 28 nm<sup>2</sup> for 20 nm thick solid state nanopores (Ananth et al., 2018), the calculated

BSA translocation rates significantly underestimated the experimental values (not shown here), which prompted us to probe much lower grafting densities between 1 Nsp1 per 200–400 nm<sup>2</sup>. The best match between the experimental and calculated BSA event rates over the whole range of probed diameters was obtained at a grafting density of 1 Nsp1 per 300 nm<sup>2</sup> (Figure 5 D and Appendix 10—Figure 3 A,B). Note that the estimated grafting density is approximately one order of magnitude lower compared to 20 nm-thick NPC mimics (Ananth et al., 2018). Yet, we still obtain comparable protein densities of 50–150 mg/mL because the relatively long channel of the ZMW pores prevents the Nsp1 molecules from spilling out of the pore as in the case for 20 nm thick SiN nanopores. Indeed, these FG-Nup densities are comparable to densities of 30–300 mg/ml found in simulations of full NPCs (Ghavami et al., 2014; Winogradoff et al., 2022).

The calculated BSA translocation rates continuously increased with increasing diameter and reproduced the trend of the experimental data well (Figure 5 C). Similar to the experimental data, we observed a delayed onset of the BSA translocation rate for Nsp1-coated pores with an offset of  $9.9 \pm 0.1$  nm, which compares quite well to the experimental value of  $11.5 \pm 0.4$  nm. To compute the selectivity ratio from the BSA translocation rates, we assumed that the Kap95 translocation rate through Nsp1-coated pores is equal to that for open pores, as we did not observe any significant hindrance of Kap95 translocation by the Nsp1 mesh in the experiment (Figure 4 A,C). The computed selectivity ratios for a grafting density of 1 Nsp1 per 300 nm<sup>2</sup> are in good agreement with the experimental values (Figure 5 D), especially given that we basically only employ a single fitting parameter.

Similar to the experiments, we observed a strong decrease of the selectivity with pore diameter that gradually approached the open pore base line. Additionally, we found that the selectivity ratio is highly sensitive to variations of the grafting density, suggesting that the considerable variation in the experimental data might originate from variations of the grafting density between 1 Nsp1 per 200 nm<sup>2</sup> to 1 Nsp1 per 400 nm<sup>2</sup> (Figure 5 D).

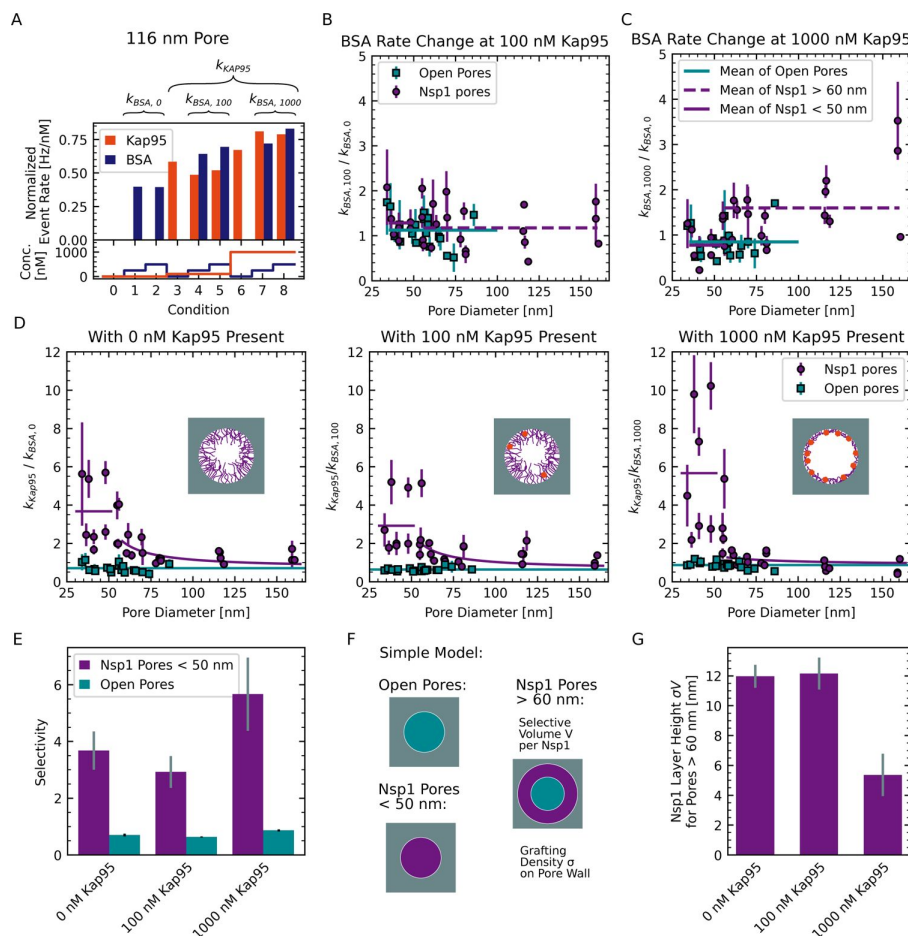
The simulations provide a microscopic view of the structure of the Nsp1 mesh within the pore (Figure 5 A,B,E, and Figure 5—video 1). At pore diameters below 60 nm, the Nsp1 mesh remained closed over the entire duration of the simulation and the highest protein density was found along the central axis. This is facilitated by the high cohesiveness of the N-terminal domains of Nsp1 which contain a large amount of hydrophobic amino acids (Dekker et al., 2022). For pore diameters above 60 nm, however, the highest protein density was found at the pore walls (Figure 5 E) and we observed the transient formation of a central channel that became persistent at pore diameters above 80 nm (Figure 5 B,E). Despite the transient appearance of a central channel at pore diameters of 60 nm and the shift of the highest protein density away from the center, the predicted translocation rates increased continuously and followed the quadratic model over the whole range of probed diameters (Figure 5 C). This finding is in contrast to an instantaneous onset of translocations as one might expect from a static opening of a central channel. As the pore diameter increased, the selectivity ratio became less dependent on the grafting density (Figure 5 D) because BSA translocated mainly through the wide central channel (Figure 5 B,C).

To estimate the pathways through which proteins can permeate the Nsp1 mesh, we determined the spatial distribution of the voids that can accommodate BSA, which represents the potential occupancy of BSA in the pore (Figure 5 F). For diameters below 60 nm, the distribution of the voids was homogeneous across the Nsp1 mesh, suggesting the absence of a preferred pathway. Surprisingly, the potential occupancy of BSA was not markedly reduced along the pore axis compared to the periphery, despite the high protein density in this region. For diameters above 60 nm, the distribution of voids closely followed the time-averaged protein density inside the pores, confirming that most BSA translocations occur through the central channel of the Nsp1 mesh. Although this central channel was not

continuously present in the 60 nm pores, the void distribution confirms that most translocations still occurred through the center at this diameter.

## Kap95 modulates the permeability for BSA

In the context of Kap-centric models of nuclear transport, it has recently been shown that depletion of Kaps from the FG-Nup mesh reduces the selectivity of the NPC in cells (Kalita et al., 2022). To test if a similar effect was present in our data, we averaged the concentration-normalized event rates for the two BSA concentrations (of 250 nM and 500 nM) measured at Kap95 concentrations of either 0 nM, 100 nM, or 1000 nM, and denoted them as  $k_{BSA,0}$ ,  $k_{BSA,100}$ , and  $k_{BSA,1000}$  (Figure 6 A). To minimize the dependence of the rates on the pore diameter, we assessed the relative rates with respect to the event rate in the absence of Kap95,  $\frac{k_{BSA,100}}{k_{BSA,0}}$  and  $\frac{k_{BSA,1000}}{k_{BSA,0}}$ , which serve as a measure for Kap-induced changes of the permeability of the pore for BSA (Figure 6 B,C). In other words, a factor of 1 for this ratio would indicate that BSA transport does not depend on the Kap95 concentration.



**Figure 6.**

### BSA permeation depends on Kap95 concentration.

(A) BSA event rates measured at the different Kap95 concentrations of 0 nM, 100 nM, and 1000 nM were averaged to obtain the Kap95-concentration dependent event rates  $k_{BSA,0}$ ,  $k_{BSA,100}$  and  $k_{BSA,1000}$ . Data shown were obtained using an Nsp1-coated pore with a diameter of 116 nm. (B,C) Plots of the relative change of the BSA event rate measured at 100 nM and 1000 nM Kap95 compared to no Kap95, i.e.  $\frac{k_{BSA,100}}{k_{BSA,0}}$  and  $\frac{k_{BSA,1000}}{k_{BSA,0}}$ , versus pore diameter. A considerable

increase of the BSA event rate is observed for large pores in the presence of 1000 nM Kap95. (D) Plots of the selectivity ratio, defined as the ratio of the normalized BSA event rate measured at a given Kap95 concentration to the average normalized Kap95 event rate of the pore,  $\frac{k_{BSA,i}}{k_{Kap95}}$  i.e. for  $i = 0, 100$  and  $1000$ , against the pore diameter. The average selectivity ratio of open pores (cyan) and Nsp1-coated pore smaller than 50nm (purple) are shown as a horizontal line. Data of large Nsp1-coated pores above 60 nm diameter were fitted to the selective area model function (purple lines, see Equation 5). (E) Average selectivity defined as for open pores and Nsp1-coated pores below 50 nm. Error bars represent standard deviations estimated from fitting horizontal lines. A moderate increase of the selectivity of Nsp1-coated pores is observed at 1000 nM Kap95. (F) Simple model for the selectivity of Nsp1-coated pores. We assume large Nsp1-coated pores  $\geq 60$  nm to separate into unselective and selective areas with selectivities equivalent to that of open pores or small Nsp1-coated pores, respectively. (G) The parameter  $\sigma V$  quantifies the thickness of the Nsp1 layer, which decreases in the presence of 1000 nM Kap95. Error bars represent standard deviations estimated from the fits.

We found no significant change of the BSA event rate at 100 nM Kap95 compared to the absence of Kap95

$$\left( \frac{k_{BSA,100}}{k_{BSA,0}} = 1.2 \pm 0.1 \right)$$

(Figure 6 B), which is similar to the value measured for open pores

$$\left( \frac{k_{BSA,100}}{k_{BSA,0}} = 1.3 \pm 0.1 \right)$$

. However, at a Kap95 concentration of 1000 nM, we observed a clear increase of the BSA leakage for pores larger than 60 nm

$$\left( \frac{k_{BSA,1000}}{k_{BSA,0}} = 1.6 \pm 0.2 \right)$$

, and a small reduction of the BSA translocation rates for smaller Nsp1-coated pores

$$\left( \frac{k_{BSA,1000}}{k_{BSA,0}} = 0.8 \pm 0.1 \right)$$

similar to the data for open pores

$$\left( \frac{k_{BSA,1000}}{k_{BSA,0}} = 0.9 \pm 0.1 \right)$$

, see Figure 6 C. The increase of the BSA translocation rate at a high concentration of Kap95 seems counter-intuitive given that the accumulation of Kap95 in the Nsp1 mesh is expected to obstruct BSA translocations by steric hindrance. However, we thus observed the opposite effect, where a high concentration of Kap95 appeared to increase the event rates of BSA. Since this effect was not observed for open pores, it must have been induced by a rearrangement of the Nsp1 mesh.

Next, we computed the selectivity ratio based on the normalized event rates of BSA measured at the different Kap95 concentrations (Figure 6 D). Note that for the calculation of the selectivity ratio, we assumed that the normalized event rate of Kap95 is independent of the Kap95 concentration by using the average normalized event rate over all concentrations,



$k_{\text{Kap95}}$ , which is an approximation for the more complex behavior discussed in (Appendix 11—Figure 1). For small pores (<50 nm), we observed a moderate increase of the selectivity ratio at 1000 nM Kap95 compared to lower concentrations of Kap95 (Figure 6 E). Interestingly, we found an almost two-fold increase of the Kap95 translocation rate for small pores at 1000 nM compared to 100 nM, which was absent for large pores (see Appendix 11—Figure 1). Combined, the reduction of the translocation rate for BSA and the increase for Kap95 resulted in an increase of the apparent selectivity for small pores to  $7.1 \pm 1.6$  at a Kap95 concentration of 1000 nM. No effect of the BSA concentration on the translocation rates of Kap95 was observed (Appendix 11—Figure 1). This suggests that the binding of Kap95 to the FG-Nup mesh increased the selectivity of Nsp1-coated pores, leading to a reduction of the BSA translocation rate, whereas no such effect was seen for open pores. In contrast, larger pores above 60 nm showed a lower selectivity at all Kap95 concentration compared to small Nsp1 pores (Figure 6 D). While this difference was small for Kap95 concentrations of 0 nM and 100 nM, a considerable reduction to almost the bare pore selectivity was observed for 1000 nM Kap95. After this initial step, we found a gradual decrease of the selectivity with the pore diameter, which is expected because the amount of Nsp1 deposited on the pore wall scales only linearly with the pore diameter while the pores cross-sectional area scales quadratically.

As suggested by the MD simulations, the loss of selectivity for pores above 60 nm may be explained by the opening of a central channel that allows BSA to pass unhindered. To obtain an estimate for the size of such a channel, we devised a simple model to estimate the fraction of the cross-sectional pore area that is occupied by the selective FG-Nup phase (Figure 6 F). The selective area fraction was obtained from the measured selectivity ratio under the assumption that large Nsp1-coated pores are divided into selective and non-selective areas, where the selective area was assumed to have a selectivity equivalent to the value measured for small pores. We related the selective area fraction to the structural change of the Nsp1 brush by assuming that each Nsp1 molecule renders a certain volume  $V$  selective. At a given grafting density  $\sigma$  on the pore wall of diameter  $r$ , the selective area fraction  $\frac{A_{\text{Nsp1}}}{A}$  is then given by:

$$\frac{A_{\text{Nsp1}}}{A} = \sigma V \frac{2}{r}, \quad (5)$$

where the factor  $\sigma V$  was the only fit parameter. The unit of the product  $\sigma V$  is a length which can be related to the apparent Nsp1 layer thickness at the pore wall (see Appendix 11 for the details of the model). From the selective area fraction, we computed the apparent selectivity of a pore and estimated the factor  $\sigma V$  by fitting it to the experimentally obtained selectivities (Figure 4 D and G). The estimated thickness in the absence of Kap95 of ~12 nm agrees well with measurements on flat surfaces (Wagner et al., 2015). While no significant change was detected at 100 nM Kap95, we observed a drastic decrease of the estimated layer thickness by a factor of  $\approx 2$  at 1000 nM Kap95 compared to the absence of Kap95 (Figure 4 G), suggesting that the Nsp1 layer collapsed as it was occupied by Kap95.

## Discussion

In this study, we present an assay to measure the selectivity of nanopore-based NPC mimics at single molecule resolution using optical detection. Our assay is based on nanopores drilled into freestanding palladium membranes that act as zero-mode waveguides to block the propagation of the excitation light. This allows the localized and selective detection of fluorescently labeled molecules that exit from the pore. We build on our previous work

which established palladium nanopores as a viable tool for single-molecule studies (Klughammer and Dekker, 2021) by functionalizing the nanopores with the FG-Nup Nsp1 to build a minimal biomimetic system of the NPC. To this end, we developed a gentle cleaning protocol that leaves the pore shape unaltered while rendering the metal surface susceptible for efficient thiol binding.

Our approach offers several advantages compared to conductance-based nanopore measurements (Kowalczyk et al., 2011; Ananth et al., 2018; Fragasso et al., 2021, 2022), namely a superior signal-to-noise ratio, an excellent specificity for the labeled analyte that enables multiplexed detection of different components, higher throughput by measuring multiple pores in a single experiment, no limitations on pore size, and the potential to add unlabeled components while still investigating their effects. Importantly, our approach also allows us to measure translocations by free diffusion in the absence of an external electric field which may potentially bias the experiment. Compared to previous optical approaches (Jovanovic-Talisman et al., 2008), our assay offers the capability to follow single molecules through individual pores. On the technological side, one could increase the throughput of our approach by moving towards a camera-based readout which would enable the simultaneous reading of hundreds of pores. Despite the many benefits of our approach, some differences remain when comparing our biomimetic ZMW pores to the NPC, as e.g. the 90 nm long channel used here is approximately three times longer (Kim et al., 2018), and FG-Nups are grafted to the entire metal surface rather than being limited to the pore walls. In spite of these differences, the *in vitro* biomimetic approaches remain useful to study key elements of nuclear transport.

To evaluate the performance and sensitivity of our approach, it is relevant to compare the absolute event rates through open pores to theoretical expectations. Compared to Fick's law of diffusion, the absolute event rates for BSA and Kap95 through open pores were underestimated by approximately a factor of 3, as estimated from the scaling factors (Appendix 5—Figure 1). Additionally, we had previously found that repeated detection of the same molecule leads to an overestimation of the event rate compared to the actual translocation rate by approximately a factor of 2 (Klughammer and Dekker, 2021). Combined, this resulted in a  $\approx 6$ -times lower translocation rate compared to what is predicted from Fick's law, potentially due to the hydrodynamic pressure applied in our experiments (Auger et al., 2014), protein-pore interactions, and missing of low-signal events by the detection algorithm.

Compared to the study of Jovanovic-Talisman et al. (2008), who report values of 0.003 Hz/nM obtained from bulk studies on 30 nm pores, we find an order of magnitude higher event rates of approximately 0.04 Hz/nM for pores of similar size. This discrepancy can be explained by the fact that the functionalized pores used by Jovanovic-Talisman et al. (2008) were placed at the ends of 6  $\mu\text{m}$  long channels which is expected to considerably reduce the translocation rates. When comparing with conductance-based nanopore measurements in 20 nm thick silicon nitride membranes, previous studies have reported rates of 0.0003 Hz/nM for 30 nm pores (Fragasso et al., 2021) and 0.000 05 Hz/nM for 42 nm to 46 nm pores (Kowalczyk et al., 2011). Both these values are many orders of magnitude lower compared to what is predicted by Fick's law, indicating that a large fraction of potential translocation events was previously not detected, cf. Plesa et al. (2013). On the other hand, Ananth et al. (2018) measured event rates of Kap95 through open 48 nm pores of 0.017 Hz/nM, which is much closer to our measurements of 0.08 Hz/nM compared to other conductance-based studies. The system in conductance-based experiments is more complex, however, with an interplay of diffusion and electro-osmotic and electro-phoretic forces. This illustrates that our optical approach offers a higher detection efficiency of translocation events and provides a better mimic of the diffusion driven transport through the real NPC, compared to conductance-based nanopore experiments.

We implemented an experimental scheme to assess the selectivity of single Nsp1-coated pores by measuring the concentration-dependent translocation rates of the inert probe BSA and the NTR Kap95. To elucidate the size dependence of the selectivity, we scanned a wide range of pore diameters from 35 nm to 160 nm, which was previously not possible in conductance-based approaches. We found a steep decrease of the selectivity with the pore diameter, where the BSA event rate approaches its open pore value for large pore diameters. For small diameters, the BSA event rate was decreased 10-fold compared to open pores, similar to a 5-fold decrease reported for pores smaller than 30 nm by [Jovanovic-Talisman et al. \(2008\)](#). For large pores, BSA translocation was only hindered by a factor of 1.4 ([Appendix 6—Figure 2 E](#)). On the other hand, translocation rates for Kap95 were unaffected by the Nsp1 coating (reduction factor of 1.1), in agreement with previous reports ([Jovanovic-Talisman et al., 2008](#); [Kowalczyk et al., 2011](#); [Ananth et al., 2018](#); [Fragasso et al., 2021](#)). Notably, our data reveals a gradual decrease of the selectivity rather than a threshold-like behavior, in line with the results of [Jovanovic-Talisman et al. \(2008\)](#) who found a gradual decrease of the selectivity for three distinct pore sizes of 30 nm, 50 nm, and 100 nm.

Coarse-grained molecular dynamics simulations allowed us to reproduce the experimental selectivities for a grafting density of  $1/(300 \text{ nm}^2)$ . While this value is lower compared to previous reports on silicon nitride nanopores ([Fragasso et al., 2021](#)), we still achieve similar protein densities at the center of the 90 nm-long channel. Similar to the experimental data, the steepest decrease of the selectivity occurred at small diameters. In addition, simulations at varying grafting density revealed that stochastic variation of the surface grafting efficiency is a likely cause for the pore-to-pore variation of the event rates observed in the experiment. The simulations reveal the opening of a central channel in the Nsp1 mesh for pore diameters above 60 nm. However, the event rates predicted by the void analysis showed a continuous decrease of the selectivity with pore diameter even before a central channel was observed in the Nsp1 mesh. This suggests that the formation of a stable transport conduit is not required for the permeation of BSA through the Nsp1 mesh, but may also occur efficiently through transient openings. The absence of a discrete step in the experimental selectivity at a specific pore diameter is thus at odds with a static picture of either an extended or collapsed Nsp1-mesh but rather supports a dynamic transition between both states for intermediate pore diameters. For larger pore diameters, a central channel opened and only a peripheral ring was occupied by Nsp1. This occurred due to the following factors. First, the increased entropic cost of extension for the Nsp1 molecules to interact across the pore. Second, the amount of Nsp1 molecules per pore volume decreases with pore diameter, as the volume increases quadratically while the number of molecules increases linearly. Last, while increasing the diameter, also the curvature decreases which reduces the lateral constraint of neighbouring Nsp1.

We found experimentally that the main loss of selectivity falls in a size range between 40 nm to 60 nm. Intriguingly, it has recently been reported that the inner ring diameter of the NPC can be significantly larger in situ at 60 nm compared to 40 nm for isolated NPCs ([Akey et al., 2022](#)). Furthermore, NPC dilation is modulated in cellulose in response to stress conditions such as energy depletion or osmotic shock ([Zimmerli et al., 2021](#)). This suggests that the dilation of the NPC might be a way for the cell to tune the permeability of the NPC under stress to increase the selectivity at the cost of lower transport rate.

In light of Kap-centric models of nuclear transport ([Lim et al., 2015](#)), we also tested the influence of the Kap95 concentration on the selectivity and permeability of Nsp1-coated pores. Small pores below 50 nm showed a moderate increase in selectivity at a Kap95 concentration of 1  $\mu\text{M}$  compared to the absence of Kap95, caused by a slight reduction of the permeability of the pores for BSA. A comparable effect was described by [Jovanovic-Talisman et al. \(2008\)](#), who found that the BSA flux through 30 nm pores halved when 2  $\mu\text{M}$  of the nuclear transport factor NTF2 was present. In contrast, we observed an almost 2-fold

increase of the BSA translocation rate for large pores above 60 nm by increasing the Kap95 concentration from 0  $\mu\text{M}$  to 1  $\mu\text{M}$ . This result seems counterintuitive considering that Kap95 occupancy within the pore should pose an additional hindrance for the translocation of BSA. Quantification of this effect, however, showed that the selective area fraction within the pore was significantly reduced at 1  $\mu\text{M}$  Kap95, which we attribute to a compaction of the Nsp1 layer. From our data, we found a 2-fold reduction of the cross-sectional area of the Nsp1 layer inside the pore. A much smaller Kap-induced compaction of 16 nm high Nsp1 brushes on flat surfaces of <10 % was observed in SPR measurements at a Kap95 concentration of 100 nM by [Wagner et al. \(2015\)](#), where however only a fragment of the extended domain of Nsp1 was used. The stark change of the Nsp1 layer thickness seen in our experiments could be a consequence of the pore geometry, which resembles the actual NPC much better than flat surfaces. Here, our measurements on large pores above 100 nm diameter provide an effective bridge between nanopore studies and surface techniques such as QCM-D and SPR. Note that the reported height change of the Nsp1 brushes serves as an approximate quantification due to the high pore-to-pore variability in the dataset. Additionally, we acknowledge that 1  $\mu\text{M}$  of Kap95 is still considerably below physiological Kap95 concentrations of around 4  $\mu\text{M}$  ([Kalita et al., 2022](#)), so it is hard to relate the effect we observed to the physiological NPC.

We have limited this study to a case study with single combination of FG-Nup (Nsp1) and NTR (Kap95), but our approach could easily be expanded to other FG-Nups, transporters, or control proteins. The NPC contains two main classes of FG-Nups that differ in their cohesiveness, amino acid composition and localization within the central channel. For instance, FxFG-type FG-Nups, such as Nsp1, contain mainly FxFG repeats and have a high content of charged amino acids in its extended domain. Consequently, they are more extended and do not phase separate ([Yamada et al., 2010](#); [Dekker et al., 2022](#)) but instead form percolating hydrogels at high concentration ([Frey et al., 2006](#)). These FxFG-Nups are predominantly anchored on the nuclear and cytosolic side of the NPC, with Nsp1 being an exception that is also located in the center ([Kim et al., 2018](#)). On the other hand, GLFG-type FG-Nups contain a low amount of charged amino acids and, as a result, are more cohesive and prone to phase separation ([Schmidt and Görlich, 2015](#); [Dekker et al., 2022](#)). They are localized mainly at the central channel of the NPC, where they might be necessary to form the selective barrier ([Strawn et al., 2004](#); [Adams et al., 2016](#)). While we observed moderate selectivity ratios of 2 to 6 for Nsp1, we expect that more cohesive GLFG-type FG-Nups, such as Nup100 in yeast or Nup98 in humans, would form a tighter, more selective barrier with lower permeability for BSA. While we did not observe a significant obstruction of the diffusion of Kap95 through the Nsp1 mesh, the dense FG-Nup phase formed by GLFG-type FG-Nups could pose a tighter barrier for Kap95 diffusion. Recent efforts have also focused on designing FG-Nups with desired properties from the bottom up, where our assay could provide important information on the relation between protein properties and transport selectivity and kinetics ([Fragasso et al., 2021](#); [Ng et al., 2021, 2022](#)).

Finally, our approach could be used to study the full systems for protein import or export with all required cofactors, including, for example, the Ran system that provides directionality to molecular transport across the nuclear envelope ([Görlich and Kutay, 1999](#)). In particular, by using specific labeling coupled with multicolor detection it will be possible to simultaneously follow different components of the transport machinery, providing direct mechanistic insights into important steps of the transport cycle, such as cargo release or transport factor recycling. An open question in the field also regards how large cargoes such as mRNA ([De Magistris, 2021](#)) or even viral particles ([Burdick et al., 2020](#); [Zila et al., 2021](#)) can pass through the NPC, which could be readily tested with our assay. We envision that NPC mimics based on metal nanopores will continue to provide important answers to key questions on the mechanism of nucleocytoplasmic transport.

## Methods and Materials

### Fabrication of freestanding Pd ZMWs

Fabrication of nanopores in freestanding palladium membranes was performed as shown in [Figure 1](#) based on the procedures described in [Klughammer and Dekker \(2021\)](#) with minor modifications. Freestanding 20 nm SiN<sub>x</sub> membranes were manufactured as described in [Janssen et al. \(2012\)](#) and cleaned using oxygen plasma for 2 min at 100 W at an oxygen flow rate of 200 ml/min using a PVA Tepla 300 plasma cleaner. As an adhesion layer, 3 nm titanium was deposited onto the SiN<sub>x</sub> membrane at 0.05 nm/sec under a base pressure of  $3 \times 10^{-6}$  torr in a Temescal FC2000 e-gun evaporator, immediately followed by a 100 nm layer of Pd at 0.1 nm/sec to 0.2 nm/sec with a base pressure below  $2 \times 10^{-6}$  torr without venting the chamber in between.

The SiN<sub>x</sub> and Ti layers were removed by dry etching using CHF<sub>3</sub> at a flow of 50 SCCM and O<sub>2</sub> at a flow of 2.5 SCCM for 10 min at 52 W power in a Sentech Etchlab 200 plasma etcher, resulting in an effective chamber pressure of 1.2 Pa. To ensure that the SiN<sub>x</sub> and Ti layers are completely removed, the etch time was chosen to partly etch into the Pd layer, resulting in a palladium membrane thickness of 90 nm after etching, estimated by cutting a slit into the palladium membrane using FIB milling and measuring the resulting wall thickness using an SEM on a FEI Helios G4 CX microscope. On the same FIB/SEM we developed a protocol to reproducibly mill circular nanopores into Pd membranes: After adjusting the eucentric height, the ion column for a 1.1 pA Ga beam at 30 kV acceleration voltage was automatically aligned on a reference sample of gold sputtered on carbon.

A test pore was then milled and inspected for circularity at high magnification using the immersion mode of the SEM. If the test pore was not circular due to astigmatism of the Ga beam, the ion column alignment was repeated. Linear pore arrays with surrounding markers were then milled on the membrane using an automatic script written in Nanobuilder. Individual pores were made at a distance of at least 9 μm, in order to avoid later cross talk between the individual pores during the experiment. An additional marker pattern without pore was added for the identification of individual pores on the membrane. Subsequently, each membrane was examined on a JEOL JEM-1400 transmission electron microscope (TEM) for integrity and the minimum and maximum diameter was determined for each pore from the TEM images. The two diameters typically differed by less than 10 %. Pore sizes stated in this study are the arithmetic means of these two values.

### Chemicals, protein purification and protein labeling

MUHEG ((11-Mercaptoundecyl)hexa(ethylene glycol)) with 90 % purity (Sigma-Aldrich) was dissolved at a concentration of 200 mM in degassed ethanol. Aliquots were prepared under nitrogen atmosphere and stored at -20°C until use. 350 Da thiol-PEG (Polyethylene glycol) with more than 95 % purity (Nanocs Inc., New York) was aliquoted under nitrogen atmosphere and stored at -20 °C until use. Nsp1 protein (Appendix 12) was kindly provided by the Görlich lab (Göttingen, Germany) in lyophilized form and resuspended in denaturing buffer at 10 μM. For long term storage, samples were snap frozen in liquid nitrogen and stored at -80 °C. Alexa488 labeled BSA was purchased from Invitrogen, Thermo Fisher. On average one BSA molecule was labeled with 6 Alexa488 molecules. It was diluted in PBS to a final concentration of 72.6 μM. The diluted sample was dialysed on ice using 10K Slide-A-Lyzer Dialysis Cassettes for 3 mL for 24 h, exchanging the 250 mL PBS dialysis buffer four times until no free fluorophores were detectable in the dialysis buffer in an FCS experiment. The protein solution was snap frozen in aliquots and stored at -20 °C until use

in the experiment. Unlabeled BSA was purchased from Thermo Fisher (Ultra Pure BSA (50 mg/ml), Invitrogen), diluted to 5 mg/ml split into aliquots, snap frozen and stored at  $-20^{\circ}\text{C}$  until use in the experiment. Kap95 (Appendix 12) was purified as described previously (Fragasso et al., 2021) and C-terminally labeled with AZDye647, which is structurally identical to AlexaFluor647, using sortase-mediated ligation. Sortase labeling was performed following published protocols at 50-fold excess of the dye-triglycine conjugate (Click Chemistry Tools, USA) for 1 h at room temperature in Tris buffer (50 mM Tris, 150 mM NaCl, pH 7.4) (Guimaraes et al., 2013). Unreacted dyes were removed by size exclusion chromatography on a Superdex S200 column pre-equilibrated with PBS buffer. To fully remove free fluorophores, labeled Kap95 was further dialyzed as described above. We used two separate preparations of the labeled Kap95 with 70 % and 62.5 % degree of labeling and 16.8  $\mu\text{M}$  and 5.9  $\mu\text{M}$  stock concentrations. The stock solutions were split into aliquots and stored at  $-80^{\circ}\text{C}$  after snap-freezing. The purity of Nsp1 and Kap95 samples was assessed using sodium dodecyl sulfate-polyacrylamide gel electrophoresis (SDS-PAGE).

## Cleaning and surface grafting of Pd

### Grafting of thiols to Pd surface

In order to make Pd accessible for thiol binding, a cleaning procedure was performed. Two different cleaning methods were used depending on the grafting solution. For ethanol based grafting solutions we performed cleaning in hydrogen peroxide and for PBS based grafting solutions we performed cleaning in boiling ethanol.

For MUHEG grafting, chips were mounted in a custom built teflon holder, rinsed with DI water and submersed in  $>99\%$  isopropylalcohol to remove bubbles. 30% hydrogen peroxide was brought to  $45^{\circ}\text{C}$  in a water bath. The chip was rinsed in DI water and then submersed in the hot  $\text{H}_2\text{O}_2$  for 15 min. MUHEG solution was prepared by diluting stock solutions in absolute ethanol to a final concentration of 250  $\mu\text{M}$ . The solution was sonicated for 5 min to 15 min at  $20^{\circ}\text{C}$ . The chip was taken out of the teflon holder, washed in DI water and submersed fully in the MUHEG solution for grafting. During the grafting, the chips were gently shaken over night at 450 rpm for 11 h to 22 h at  $20^{\circ}\text{C}$ . Before mounting, the chip was washed in ethanol for 15 min, dried under a stream of nitrogen and mounted within minutes after drying.

For Nsp1 grafting, chips were mounted in a teflon holder and rinsed with DI water. Pure Ethanol was heated in a water bath until boiling to  $78^{\circ}$ . The chip was submersed in boiling ethanol for 15 min and rinsed with DI water. Boiling ethanol was proposed to efficiently remove organic residues from silver surfaces Majid et al. (2003). Nsp1 aliquots were diluted to 1  $\mu\text{M}$  in PBS buffer. Tris-(2-Carboxyethyl)phosphine, Hydrochloride (TCEP, Supelco, Sigma-Aldrich) was added until a final concentration of 1 mM to reduce potential disulfide bonds. The solution was briefly vortexed and then incubated for 15 min at  $20^{\circ}\text{C}$ . Chips were incubated in the Nsp1 solution for 1 h while shaking at 450 rpm. The chips were then transferred to a solution containing 2 mM 350-Da PEG in PBS buffer with 5 mM TCEP for 1 h. Before mounting, the chip was washed in PBS for 15 min by shaking at 450 rpm, subsequently rinsed with DI water and dried under a flow of nitrogen. The chip was reimmersed in buffer within minutes after drying.

### QCM-D experiments

QSense Analyzer gold-coated quartz QCM-D chips were purchased from Biolin Scientific, Västra Frölunda, Sweden. Similar to the freestanding Pd membranes, a 3 nm titanium layer was deposited onto the Au surface at 0.05 nm/sec and a 100 nm layer of Pd was evaporated at 0.1 nm/sec with a base pressure below  $2 \times 10^{-6}$  torr in a Temescal FC2000 e-gun

evaporator. The cleaned chips were mounted in the flow cell in dried state. The flow cell was filled with buffer or ethanol until a stable base line was detected, before the respective grafting solution was applied. The experiments were conducted at 21 °C. See Appendix 1 for details.

## Experimental setup and measurement

Freestanding Pd membranes were mounted in a modified flow cell as described in Keyser et al. (2006) and are very comparable to what was used in Klughammer and Dekker (2021). The reservoir was made from a polydimethylsiloxane (PDMS) ring that was pressed onto the membrane chip. The reservoir volume was approximately 3  $\mu$ L. To avoid cross-contamination, the reservoir ring was discarded after each experiment, while the flow channel on the detection side was reused several times.

After drying, the chips were immediately mounted within minutes such that the Pd membrane faced towards the flow channel and the microscope objective. Nsp1-coated chips were immediately immersed in PBS buffer and contact with ethanol was avoided. MUHEG coated chips were flushed with 1:1 ethanol:water mixtures to remove air bubbles. The conductance of the chip was measured using Ag/AgCl electrodes and an Axopatch 200B amplifier (Molecular Devices) to check that they were properly wetted. The flow cell was subsequently mounted onto the stage of the confocal microscope. We applied a flow to the channel on the detection side using a Fluigent Microfluidic Flow Control System to prevent the accumulation of fluorophores. We applied 50 hPa of pressure to a vessel directly connected via 1 m of tubing (Masterflex Microbore Transfer Tubing, Tygon ND-100-80) to the flow cell. The outlet of the flow cell was connected to another tubing of the same length. Due to symmetry, this results in an estimated pressure of 25 hPa at the location of the membrane. The flow of buffer was measured to be 0.7 mL h<sup>-1</sup>. Since the applied pressure induces a backflow through the pores against the concentration gradient, we ensured that the flow was constant between different experiments such that the relative event rates remain unchanged. Experiments were performed at 21  $\pm$  1 °C in a temperature and vibration controlled room.

After positioning the membrane in the field of view, markers were localized using transmitted light and the laser focus was centered on the nanopore between the markers. Data was acquired on a Picoquant Microtime 200 microscope using the Symphotime software. We used a 60x Olympus LUMFLN60XW water immersion objective which provides a working distance of 1.5 mm to enable imaging of the mounted chip. Excitation lasers at wavelengths of 640 nm and 485 nm were operated in pulsed interleaved excitation at a repetition frequency of 40 MHz and 10  $\mu$ W power as measured at the imaging plane. Before each experiment, the collar ring of the objective was aligned by optimizing the molecular brightness of a solution of Alexa488 fluorophores. The emission light was passed through a 50  $\mu$ m pinhole, split by a dichroic mirror, and filtered by either a 600/75 or 525/50 optical band pass filters (Chroma, USA) before being focused on single-photon avalanche-diode detector (PD5CTC and PD1CTC, Micro Photon Devices, Italy).

For each experiment the same measurement scheme was followed as shown in Figure 3 and described in detail in Appendix 4. In this scheme, we continuously increased the Kap95 concentration during the experiment to avoid accumulation of Kap95 in the Nsp1 brushes. Before decreasing the BSA concentration, a wash with 5 % Hexane-1-6-diol was performed. For experiments involving pores of diameter larger than 70 nm, the labeled protein was mixed with unlabeled protein at a ratio of 1:4 to avoid that the event rate exceeded the detection limit. During the translocation experiment, the respective dilutions of proteins were prepared with PBS and kept on ice before pipetting them into the reservoir. After the

experiment, translocations of free Alexa647 and Alexa488 were measured to exclude that pores were clogged (see [Appendix 3—Figure 1](#)).

## Data analysis

Event rate detection was performed using a custom written python script based on several packages [Hunter \(2007\)](#); [Virtanen et al. \(2020\)](#); [Wes McKinney \(2010\)](#); [van der Walt et al. \(2011\)](#); [Perez and Granger \(2007\)](#). The analysis pipeline was based on previously published work ([Klughammer and Dekker, 2021](#); [Klughammer, 2020](#)) and is deposited in an open repository [Klughammer et al. \(2023a\)](#). In brief, photon bursts were detected using a change point detection algorithm ([Watkins and Yang, 2005](#)) that detects discrete changes of the photon statistics from the single-photon arrival times. Background events were discarded based on an empirical criterion. In previous work, we had interpreted subsequent events on the millisecond timescale as reentry events of the same molecule ([Klughammer and Dekker, 2021](#)). To avoid potential biases, no combination of closely spaced events was performed here. However, we could not exclude that molecules may re-enter the laser focus after translocation. Normalized event rates were calculated by dividing the measured event rate by the degree of labeling and the concentration of the respective protein. A purely statistical uncertainty of the event rate was estimated from the assumption that translocation events follow Poisson statistics.

Over the course of the study, several data sets had to be discarded based on the following criteria. First, we discarded a data set for which a lower excitation power was used (8 pores). Next, we discarded the data of 4 pores that showed negligible protein translocations due to clogging. For three full data sets totalling 24 pores, we found a significant reduction in the amount of photons detected per molecule which biased the event detection (see [Appendix 13—Figures 1, 2](#) for details). Further, in cases where the normalized Kap95 event rate differed significantly for one out of the three measurements for the same concentration, the condition was removed (17 conditions). When there was doubt about perfect focusing of the lasers for certain pores, these were discarded from further analysis (2 pores). Finally, if there was any indication of sticking of proteins to the pore surface, as visible from the FCS curve, these pores were removed (2 pores). In total, 46 pores (27 with Nsp1 coating, 19 open pores) with 400 time traces (248 for Nsp1-coated pore, 152 for open pores) from seven individual measurement days and chips were used for the final analysis.

Normalized event rates in [Figure 4](#) and [Figure 5](#) were fitted using Equation 2 and Equation 3 by optimizing the functions to the individual translocation datasets, taking into account their statistical errors using the least squares method (see [Appendix 6—Figure 1](#)).

Fluorescence Correlation Spectroscopy (FCS) and lifetime analyses were performed using the PAM software package ([Schrimpf et al., 2018](#)). For fitting of the FCS curves, the size of the confocal volume was determined from measurements of the free dyes Alexa647 and Alexa488 by fitting a single-component diffusion model with triplet state. The diffusion coefficients at 21 °C were set to 297  $\mu\text{m}^2/\text{s}$  for Alexa647 and 372  $\mu\text{m}^2/\text{s}$  for Alexa488, based on the values provided in ([Kapusta, 2020](#)). The axial and lateral sizes of the confocal volume,  $\omega_z$  and  $\omega_r$ , were fixed for further analysis. FCS amplitudes and diffusion coefficients were subsequently fitted for each dataset separately. For Kap95–Alexa647 containing samples, the triplet state was fitted individually for each FCS curve. Fluorescence lifetimes were determined by a single-exponential tail fit of the fluorescence decays, ignoring the first 1160 ps of the decay in order to reduce variations introduced by the instrument response function.



## Coarse-grained molecular dynamics simulations

Coarse-grained molecular dynamics simulations were performed with the implicit-solvent 1BPA-1.1 model for intrinsically disordered proteins (Ghavami et al., 2013, 2014; Jafarinia et al., 2020, 2022; Dekker et al., 2022). This residue-scale model discriminates between all 20 amino acids through residue-specific hydrophobic, charge and cation- $\pi$  interactions, and accounts for the sequence-specific backbone stiffness (see Dekker et al. (2022) for a detailed description of the 1BPA-1.1 model). Simulations were performed with the GROMACS (van der Spoel et al., 2005) molecular dynamics software (version 2019.4) using a time step of 0.02 ps and inverse friction coefficient  $\gamma^{-1} = 50$  ps for the Langevin dynamics integrator. All nanopores were simulated at 294K and a salt concentration of 150 mM KCl by setting the Debye screening constant  $k = 1.27 \text{ nm}^{-1}$ . Nanopore scaffolds were generated from partly-overlapping sterically inert beads with a diameter of 3.0nm with their centres placed 1.5 nm apart. Nsp1 proteins were then grafted to the scaffold wall at their C-terminal Cys-residue, with the N-terminus of the Nsp1 proteins pointing out of the nanopore occlusion. Nanopore systems were equilibrated for  $1.0 \times 10^8$  steps (2 $\mu$ s), followed by a production run of  $2.5 \times 10^8$  steps (5 $\mu$ s) to generate the equilibrium trajectories.

Axi-radial density maps were obtained from the equilibrium trajectories using the *gmx densmap* utility of GROMACS, where a sample was taken every 5000 steps (100 ps). The 2D number-density maps created by GROMACS (in  $\text{nm}^{-3}$ ) were converted to mass densities (in mg/mL) using the average mass of an Nsp1 residue (~100Da). We note that the obtained densities are slightly lower than observed previously for 20 nm-pores (Ananth et al., 2018), as there a simplified average residue mass of 120 Da was used.

## Void analysis method and calculation of translocation rates

Potential of mean force (PMF) curves for protein translocation across the Nsp1 pores obtained using the void analysis method of Winogradoff et al. (2022). The simulation volume was converted into a 3D grid where each voxel has a side length of 6 Å. For each instantaneous configuration of the Nsp1 mesh, we probed for each voxel whether a spherical probe with the size of the translocating protein (BSA or Kap95, see Appendix 10) could be placed at its center without sterically overlapping with an Nsp1 bead or the pore scaffold. The resulting 3D void map was then converted into a 1D potential occupancy map by calculating the percentage of available voxels for each slice along the pore axis. The potential occupancy function was calculated for every  $5 \times 10^4$  steps (1 ns) of the equilibrium trajectory. The trajectory average of the potential occupancy function was converted into an effective PMF curve through Boltzmann inversion, as shown in Appendix 10—Figures 1 and 2 (see Winogradoff et al. (2022) for a more detailed description of the procedure). The analysis was performed with the codes provided by the paper, where a custom constraint was used for each nanopore to exclude the Pd layer volume from the void analysis. Protein translocation rates were obtained from the PMF barriers, calculated by averaging the PMF over a specified range (Appendix 10—Figures 1 and 2), using an Arrhenius relation:

$$k = k_0 \exp(-\Delta E/k_B T), \quad (6)$$

in which  $\Delta E$  is the energy barrier that the translocating protein has to overcome and  $k_0$  is a proportionality constant that is obtained by fitting the calculated rates to the experimental event rates for open pores (see Appendix 10). This resulted in two independent scaling factors,  $k_{0,BSA}$  and  $k_{0,Kap95}$ , for BSA and Kap95, respectively. We note that the use of protein-

specific scaling factors follows from the observation that the void analysis method does not take into account any diffusion properties of the translocating protein. Nevertheless, the same scaling factor was used for both open and Nsp1-coated pores.

To assess the path that BSA proteins take through the Nsp1mesh, we determined the time-averaged distribution of the ‘voids’ in the Nsp1mesh. This was done by computing the 3D void map for each instantaneous configuration of the Nsp1 meshwork, and calculating the simulation average. This time-averaged void map represents the probability for each voxel to accommodate a BSA protein. The 3D void map was then circumferentially averaged around the pore’s axis to obtain the 2D ( $r, z$ ) void map shown in [Figure 5 F](#).

## Finite-difference time-domain (FDTD) simulations

Three-dimensional FDTD simulations were performed using Lumerical FDTD (ANSYS, Inc., USA). The surrounding medium was modeled as water with a refractive index of 1.33. The refractive index of the 100 nm thick palladium membrane was modelled according to [Palik \(1998\)](#). For the simulation of the excitation field, the ZMW was illuminated by a pulse from a total-field scattered-field source polarized in the x-direction, set as a plane wave source for widefield excitation and a Gaussian source with a numerical aperture of 1.2 for focused excitation. The simulation box size was  $1 \times 1 \times 0.8 \mu\text{m}^3$  for widefield excitation. A larger box of  $4 \times 4 \times 0.8 \mu\text{m}^3$  was required for the Gaussian source to correctly model the focused beam. The electromagnetic field intensity distribution was monitored in the xz and yz planes passing through the center of the pore and in the xy plane at the pore entry with a grid resolution of 5nm ([Appendix 2](#)). To model the dipole emission in the proximity of the ZMW, a dipole emitter was placed at varying z-positions at the center of the pore. For the estimation of the quantum yield, the radiated power was integrated over all sides of the box (see below). For the estimation of the detection efficiency, the emitted power was integrated only on the detection side of the ZMW. To model isotropic emission, all reported quantities were averaged over horizontal and vertical orientations of the dipole. The power was only weakly affected by the lateral position of the emitter with respect to the center of the pore (data not shown) ([Levene et al., 2003](#)). The simulated electric field intensities  $|E|^2$  are shown in [Appendix 2—Figures 1-3](#).

## Estimation of fluorescence lifetimes

In the absence of the ZMW, the decay rate of the excited molecule is given by  $\gamma^0 = \gamma_r^0 + \gamma_{nr}^0$ , where  $\gamma_r^0$  and  $\gamma_{nr}^0$  are the radiative and non-radiative decay rates. Note that  $\gamma_{nr}^0$  accounts only for internal processes that lead to non-radiative relaxation to the ground state and was assumed to be unchanged in the presence of the ZMW. The intrinsic quantum yield is defined as  $\Phi_0 = \gamma_r^0 / (\gamma_r^0 + \gamma_{nr}^0)$  and was estimated from the measured fluorescence lifetimes  $\tau_0$  for BSA-Alexa488 and Kap95-Alexa647 of 2.30 ns and 1.37 ns, respectively, as:

$$\Phi_0 = \frac{\tau_0}{\tau_{lit}} \Phi_{lit}, \quad (7)$$

where  $\tau_{lit}$  and  $\Phi_{lit}$  are reference values for the free dyes ( $\tau_{lit} = 4.0$  ns and  $\Phi_{lit} = 0.80$  for Alexa488,  $\tau_{lit} = 1.37$  ns and  $\Phi_{lit} = 0.33$  for Alexa647) ([Sanabria et al., 2020](#); [Hellenkamp et al., 2018](#)). This led to quantum yields of  $\Phi_0 = 0.46$  and 0.39 for BSA–Alexa488 and Kap95–Alexa647, respectively. Note that the quantum yield of Alexa647 increased slightly due to steric restriction when attached to the protein, an effect known as protein-induced fluorescence enhancement ([Stennett et al., 2015](#)).

In the presence of the nanostructure, the radiative decay rate  $\gamma_r$  is modified and an additional non-radiative rate  $\gamma_{\text{loss}}$  is introduced because part of the power emitted by the dipole is absorbed by the metal nanostructure. The quantum yield  $\Phi$  in the presence of the ZMW was given by Bharadwaj and Novotny (2007):

$$\Phi = \frac{\gamma_r/\gamma_r^0}{\gamma_r/\gamma_r^0 + \gamma_{\text{loss}}/\gamma_r^0 + (1 - \Phi_0)/\Phi_0}, \quad (8)$$

where  $\gamma_r^0$  and  $\gamma_r$  are the radiative rates in the absence and the presence of the ZMW respectively. The absolute decay rates  $\gamma_r$ ,  $\gamma_{\text{loss}}$ , and cannot be obtained from FDTD simulations. However, relative rates with respect to the radiative rate in the absence of the ZMW,  $\gamma_r^0$ , can be estimated from the power  $P$  radiated by the dipole (Novotny and Hecht, 2006) as:

$$\frac{\gamma_r}{\gamma_r^0} = \frac{P_{\text{ff}}}{P_r^0} \text{ and } \frac{\gamma_{\text{loss}}}{\gamma_r^0} = \frac{P_r}{P_r^0} - \frac{P_{\text{ff}}}{P_r^0}, \quad (9)$$

where  $P_r$  and are the powers radiated by the dipole in the presence and absence of the ZMW, and  $P_{\text{ff}}$  is the power that is radiated into the far-field in the presence of the ZMW. The fluorescence lifetime  $\tau$  is given by the inverse of the sum of all de-excitation rates and can be obtained from eq. 8 using the relation  $\tau = \Phi/\gamma_r$  as:

$$\tau = \frac{1}{\gamma_r + \gamma_{\text{loss}} + \gamma_{\text{nr}}} = \frac{1/\gamma_r^0}{\gamma_r/\gamma_r^0 + \gamma_{\text{loss}}/\gamma_r^0 + (1 - \Phi_0)/\Phi_0}, \quad (10)$$

Here, the intrinsic radiative rate  $\gamma_r^0$  in the numerator was estimated as  $\gamma_r^0 = \Phi_{\text{lit}}/\tau_{\text{lit}}$ . The detection efficiency  $\eta$  was estimated from the ratio of the power radiated towards the lower (detection) side of the ZMW,  $P_{\text{ff}}^{z^-}$ , to the total radiated power:

$$\eta = \frac{P_{\text{ff}}^{z^-}}{P_{\text{ff}}}. \quad (11)$$

Finally, the total detected signal as a function of the z-position of the emitter with respect to the ZMW was computed as the product of the excitation intensity  $I_{\text{ex}}(z)$ , detection efficiency  $\eta(z)$ , and quantum yield  $\Phi(z)$  as:

$$S(z) \propto I_{\text{ex}}(z)\eta(z)\Phi(z) \quad (12)$$

and normalized to unity. The computed detection efficiency  $\eta$ , quantum yield  $\Phi$ , detected signal  $S(z)$  and lifetime  $\tau$  as a function of the z-position within the ZMW are shown in [Appendix 2—Figure 4](#). The average fluorescence lifetimes over the signal profile  $S(z)$  correspond well to the experimental fluorescence lifetimes measured in the translocation experiments ([Appendix 2—Figure 4](#)).

## Data availability

All single photon counting data is deposited in the open Photon-HDF5 file format (In-gargiola et al., 2016) together with the unprocessed TEM images of nanopores are in a repository at ([Klughammer et al., 2023b](#)).

## Acknowledgements

We thank Eli van der Sluis, Ashmiani van den Berg, and Angeliki Goutou for support with protein expression and purification. We thank Paola de Magistris, Xin Shi, Sonja Schmid, and Biswajit Pradhan for fruitful discussions. The Nsp1 protein used in this study was a kind gift from Dirk Görlich. Financial support was provided by the NWO program OCENW.GROOT.2019.068, ERC Advanced Grant no. 883684, and the NanoFront and BaSyC programs of NWO/OCW. A.B. acknowledges funding from the European Union's Horizon 2020 research and innovation program under the Marie Skłodowska-Curie Grant agreement no. 101029907.

## Author Contributions

N.K.: Conceptualisation, Methodology (lead), Software, Validation, Formal Analysis, Investigation (lead), Data Curation, Writing – Original Draft Preparation (lead), Writing – Review & Editing, Visualization (lead), A.B.: Methodology, Software, Validation, Formal Analysis, Resources, Investigation, Writing –Original Draft Preparation, Writing –Review & Editing, Visualization, Funding Acquisition M.D.: Methodology, Software, Formal Analysis (lead), Investigation, Writing – Original Draft Preparation, Writing – Review & Editing, Visualization A.F.: Conceptualisation, Methodology, Resources, Writing – Review & Editing P.O.: Supervision, Funding Acquisition, Writing – Review & Editing C.D.: Conceptualization, Writing –Review & Editing,Supervision, Funding Acquisition N.K. performed nanofabrication,translocation experiments and the data analysis. N.K. and A.B. developed and optimized the experimental protocol. A.B. and A.F. performed protein labeling and purification. M.D. performed coarse-grained molecular dynamics simulations. N.K., A.B., and M.D. designed figures. N.K. and A.B. wrote the initial draft.

## Appendix 1 Different cleaning methods tested

We encountered that after fabrication, the Pd surface inside the pores needed thorough cleaning to be accessible for thiol binding. During the study we tested cleaning with 100 W Oxygen plasma, 25 % and 5 % nitric acid, 1 h and 15 min RCA1, 15 min sulfuric acid piranha solution, 1 M potassium hydroxide solution, 10 min fuming sulfuric acid, 1 min 1 M sulfuric acid, 15 min hydrogen peroxide solution at 45 °C and 20 °C, 3 % and 37 % hydrochloric acid, 1 min gold etch (KI and I<sub>2</sub>), 1:20 and 1:40 diluted commercial copper etch (Sigma Aldrich, comparable composition as commercial Pd etch), 30 % Ammonia, 2 min 1 M sodium hydroxide solution and boiling ethanol. Cleaning methods were evaluated based on two criteria. First, nanopores should remain intact, i.e, neither closed nor grew, and surfaces needed to be competent for thiol binding as monitored by QCM-D. Only hydrogen peroxide and ethanol boiling fulfilled both these conditions.

## QCM-D experiments

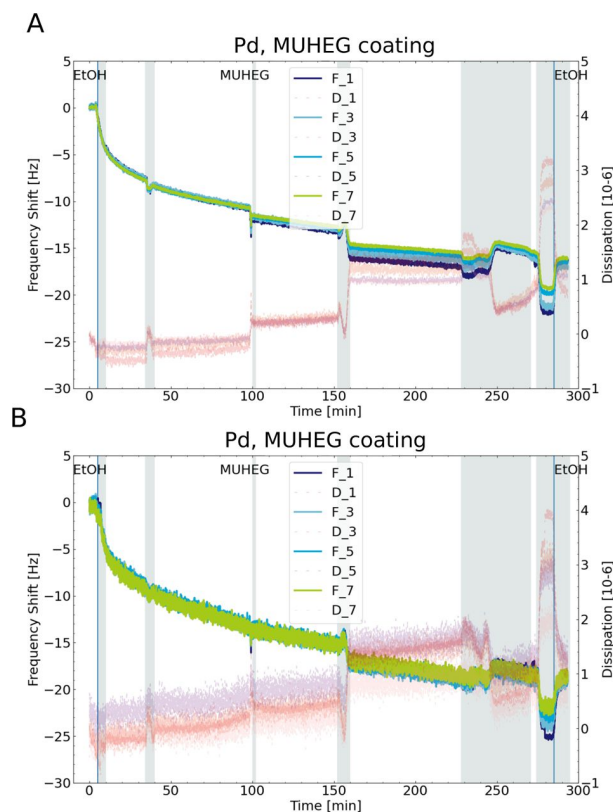
In order to test how well MUHEG passivates a hydrogenperoxide-cleaned Pd surface, we coated two QCM-D chips with MUHEG and monitored their frequency and dissipation shifts. We found a resulting frequency shift of about 15 Hz when switching back to ethanol after incubating the chip with 250  $\mu$ M of MUHEG in ethanol, indicating that mass had attached to the QCM-D chip and that the cleaning procedure thus allowed the thiols to bind to the surface (Appendix 1—Figure 1).

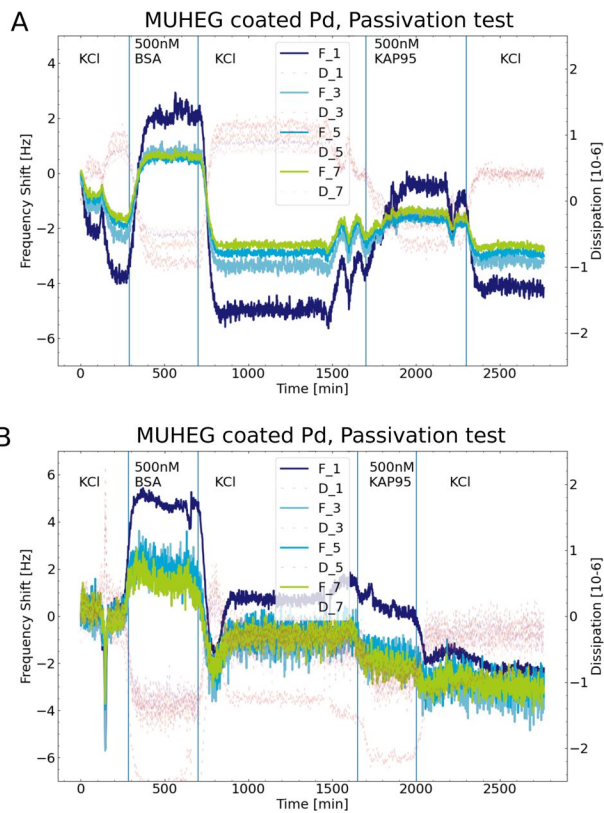
Next, we switched the buffers to 150 mM of KCl in 1xTE and flushed 500 nM of BSA followed by TE buffer and 500 nM of Kap95. After switching back to TE buffer, we found a frequency shift of less than 5 Hz, which was much less than expected for untreated surfaces (Appendix 1—Figure 2). This result indicates that the surface had been passivated against proteins adhering to the surface. While this was a promising result, we knew from previous experiments that even if a surface is passivated well enough on QCM-D, we might still see considerable effects of protein sticking in translocation experiments. Thus we determined a real proof of good passivation to be a linear relationship of concentration versus event rate in open pore experiments.

### Appendix 1—figure 1.

#### MUHEG grafting established on QCM-D.

(A,B) The frequency (F1-F7) and dissipation (D1-D7) response of the different harmonics (numbers) for two QCM-D sensors versus time upon grafting of 250  $\mu$ M MUHEG in ethanol (see Cleaning and surface grafting of Pd). The blue vertical lines show when the solution was switched in the flow cell. The grey shaded regions show the time when the solution was flowed through the flow cell. Upon MUHEG binding a decreasing frequency can be observed, which shows that mass attaches to the sensor's surfaces.

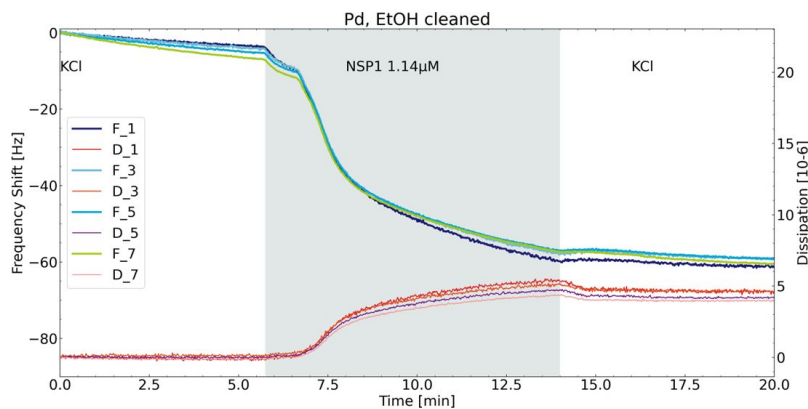




Appendix 1—figure 2.

### MUHEG passivation established on QCM-D.

(A,B) Same chips and setup as in Appendix 1—Figure 1. The frequency response of flushing 500 nM of BSA and 500 nM of Kap95 over the MUHEG passivated surface of the QCM-D chips only shows a minor frequency shift of less than 5 Hz (KCl level before and after flushing the proteins). This suggests that the Pd surface can be effectively passivated against adhering proteins by a MUHEG coating.



Appendix 1—figure 3.

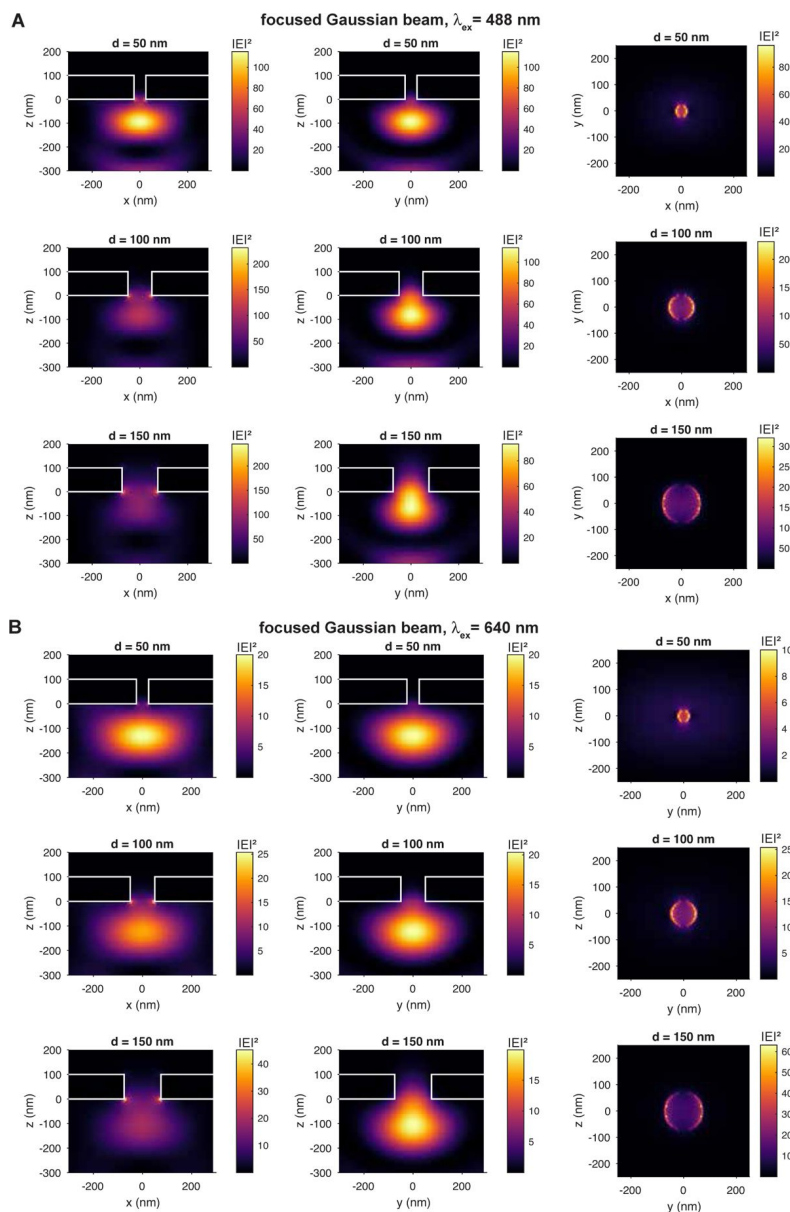
### Nsp1 binding on QCM-D

The frequency (F1-F7) and dissipation (D1-D7) response of the different harmonics (numbers) for a Pd coated QCM-D sensors versus time upon grafting of 1.14  $\mu\text{M}$  Nsp1 in PBS. The QCM-D chip was cleaned by boiling ethanol (see Cleaning and surface grafting of Pd). The frequency shift from before the Nsp1 coating to after was approximately 60 Hz which shows an acceptable coating efficiency. Nsp1 was flushed in the grey shaded area.

During our study, we noted that Pd nanopores could close upon incubation in PBS after peroxide cleaning. This effect was not observed for MUHEG coated pores that were

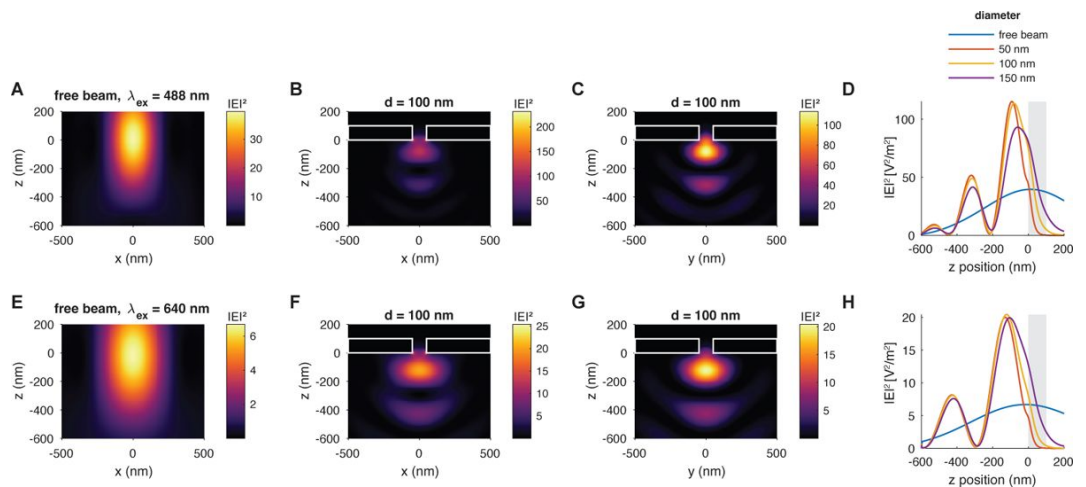
incubated for extended time in ethanol after the peroxide cleaning. Thus we developed another cleaning strategy for Pd surfaces based on ethanol boiling, inspired from Majid et al. (2003). In order to test the capability to bind Nsp1 after this treatment, we performed a QCM-D experiment. The cleaned chip was flushed with 150 mM KCl + 1xTE buffer, then 1.14  $\mu\text{M}$  of Nsp1 and then TE buffer buffer again. The resulting frequency shift due to Nsp1 attachment was determined to be approximately 60 Hz (Appendix 1—Figure 3). This was comparable to previous experiments on piranha cleaned gold QCM-D chips. Since deducing a grafting density from QCM-D experiments was difficult, this serves more as a qualitative result and the actual test of sufficient grafting needed to be made in the nanopore.

## Appendix 2 Finite-Difference Time Domain (FDTD) Simulations



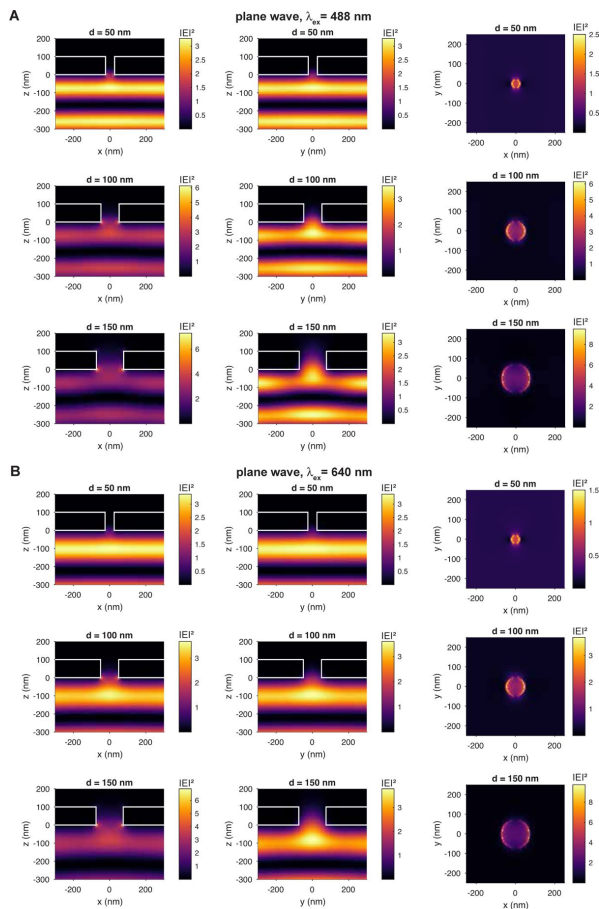
Appendix 2—figure 1.

Threedimensional finite-difference time-domain simulations of the electric field intensity distribution  $|E|^2$  in units of  $\text{V}^2/\text{m}^2$  in the proximity of the ZMW for excitation by a diffraction-limited focused Gaussian beam with wavelengths of 488 nm (A) and 640 nm (B). The lower side of the 100nm thick palladium membrane is placed at  $z = 0$  nm. The source is located at the bottom and the electric field is polarized in the x-direction. The electric field intensity distributions are shown for pores with a diameter of 50, 100, and 200 nm (from top to bottom) in the xz (left) and yz (middle) planes passing through the center of the pore, and the xy (right) plane at the entrance to the pore at  $z = 0$  nm. See Appendix 2—Figure 2 for a zoomed out representation of the intensity distribution.



Appendix 2—figure 2.

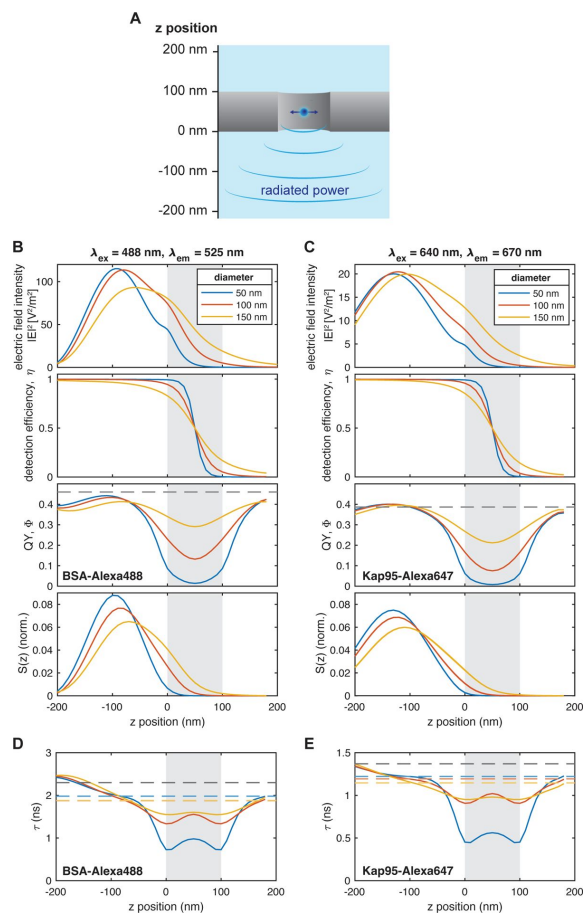
Three-dimensional finite-difference time-domain simulations of the electric field intensity distribution of the excitation spot in the presence of a freestanding ZMW (compare Appendix 2—Figure 1), at excitation wavelengths of 488 nm (A-D) and 640 nm (E-H). Shown are the intensity distributions of the focused Gaussian beam in the absence (A,E) and presence (B-C,F-G) of the freestanding palladium ZMW. (D,H) The z-profiles of the intensity distribution along the center of the pore. The position of the palladium membrane is indicated as a gray shaded area.



Appendix 2—figure 3.

Three-dimensional finite-difference time-domain simulations of the electric field intensity distribution  $|E|^2$  in units of  $V^2/m^2$  in the proximity of the ZMW for excitation by a plane wave with wavelengths of 488 nm (A) and 640 nm (B). The lower side of the 100 nm thick palladium membrane is placed at  $z = 0$  nm. The source is located at the bottom and the electric field is polarized in the x-direction. The electric field intensity distributions are shown for pores with a diameter of 50, 100, and 200 nm (from top to bottom) in the xz (left) and yz (middle) planes passing through the center of the pore, and the xy (right) plane at the entrance to the pore at  $z = 0$  nm.





Appendix 2—figure 4.

Finite-difference time-domain simulations of the dipole emission in the proximity of the freestanding ZMW. (A) A scheme of the simulation setup. The dipole is placed in the center of the pore in the  $xy$  plane at varying  $z$ -positions. The detected signal is monitored on the detection (i.e., lower) side. (B-C) From top to bottom: The  $z$ -profiles of the excitation probability, the detection efficiency  $\eta$ , the emitter quantum yield  $\Phi$ , and the total detected signal, along the center of the nanopore are shown for the blue (B,  $\lambda_{ex}=488$  nm,  $\lambda_{em}=525$  nm) and red (C,  $\lambda_{ex}=640$  nm,  $\lambda_{em}=670$  nm) channels. The total detected signal  $S(z)$  is defined as the product of the excitation intensity, detection efficiency, and quantum yield. (D-E) Predicted fluorescence lifetimes  $\tau$  of BSA-Alexa488 and Kap95-Alexa647. The position of the palladium membrane is indicated as a gray shaded area. The weighted averages of the fluorescence lifetime based on the detected signal  $S(z)$  are shown as colored horizontal dashed lines. The gray dashed line indicates the measured fluorescence lifetime in the absence of the ZMW. The predicted lifetimes are 1.98, 1.88, and 1.88 ns for BSA-Alexa488, and 1.22, 1.95, and 1.15 ns for Kap95-Alexa647, for pore diameters of 50, 100, and 150 nm, respectively. The quantum yields and fluorescence lifetimes were estimated based on a literature values of  $\Phi_0 = 0.8$  and  $\tau_0 = 4.0$  ns for Alexa488 (Sanabria et al., 2020), and  $\Phi_0 = 0.33$  and  $\tau_0 = 1.17$  ns for Alexa647 (Hellenkamp et al., 2018), and measured lifetimes in the absence of the ZMW of 2.3ns for BSA-Alexa488 and 1.37 for Kap95-Alexa647 (compare Appendix 7—Figure 1).

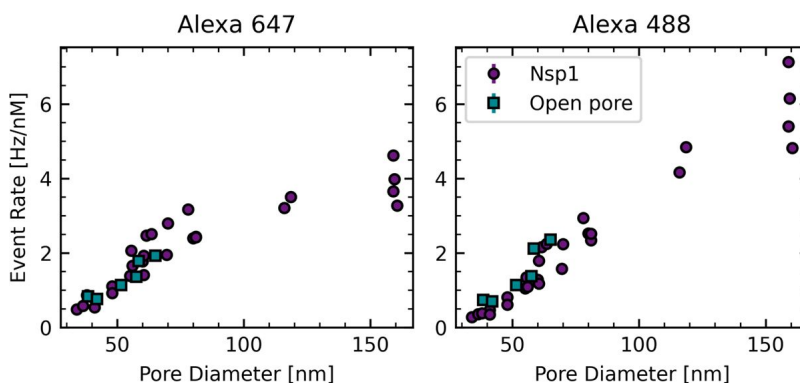
## Appendix 3 Free Alexa fluorophore translocation

At the end of a full experiment with BSA and KAP95, mixtures of 50 nM or 100 nM Alexa 647 and Alexa 488 were flushed into the reservoir to detect clogged pores from the absence of events for the small fluorophores. As expected, small fluorophores were barely hindered in their diffusion from the Nsp1 molecules in the pore. Notably, this contrasts the findings of Ananth et al. (2018), who reported only a residual conductance of (charged) ions through Nsp1-coated pores smaller than 40 nm, whereas we still found unhindered diffusion of free fluorescent dyes.

## Influence of neighboring pores

In order to estimate an upper limit on the event rate that is found at a pore location due to analytes that diffused into the detection region from adjacent pores, we looked for an experiment where a closed pore was neighbored by two unblocked pores. In an open pore experiment, we encountered such a setting, where the closed pore was identified by its very low event rate. Specifically, in this case, pore 6 had a diameter of 56 nm, pore 7 was closed and pore 8 had a diameter of 70 nm. The respective BSA translocation rates at 250 nM were:

36 Hz, 0.8 Hz, 93 Hz. Assuming that all events found on pore 7 were due to diffusion from their neighboring pores, this gives that on any pore less than  $2\% \approx \frac{0.8 \text{ Hz}}{36 \text{ Hz}}$  of the events are not due to translocations through the pore itself but are due to diffusion from neighboring pores.



Appendix 3—figure 1.

## Free fluorophore translocations

(A) Event rate versus pore diameter for Alexa 647. (B) Event rate versus pore diameter for Alexa 488. The event rate of both fluorophores does barely change between Nsp1-coated pores and open pores.

## Appendix 4 Measurement scheme

- The measurement scheme was the following:
  - No Kap95
    - – Measure PBS as a background reference
    - – pre-incubate with 500 nM of BSA, wash it out with 250 nM of BSA
    - – measure 250 nM of BSA
    - – measure 500 nM of BSA
  - Wash
    - – wash with PBS
    - – wash with 5 % Hexane-1-6-diol
    - – wash with PBS
  - 100 nM Kap95
    - – measure 100 nM of Kap95
    - – measure 100 nM of Kap95 and 250 nM of BSA

- – measure 100 nM of Kap95 and 500 nM of BSA
- Wash
  - – wash with PBS
  - – wash with 5 % Hexane-1-6-diol
  - – wash with PBS
- For some experiments an additional 200 nM of Kap95 measurement was performed at this point.
- 1000 nM Kap95
  - – measure 1000 nM of Kap95
  - – measure 1000 nM of Kap95 and 250 nM of BSA
  - – measure 1000 nM of Kap95 and 500 nM of BSA
- Wash with PBS
- Measure 50 nM of Alexa 488 and 50 nM of Alexa 647 in PBS.

Changing the analyte in the reservoir was done by replacing the volume at least three times. After changing the contents of the reservoir, a new transmission light scan of all pores was performed to obtain the accurate locations. Subsequently each pore was measured one after another.

Hexane-1-6-diol (Sigma-Aldrich) was diluted to 5% in 150 mM KCl with 1xTE buffer.

## Appendix 5 Detailed diffusion model

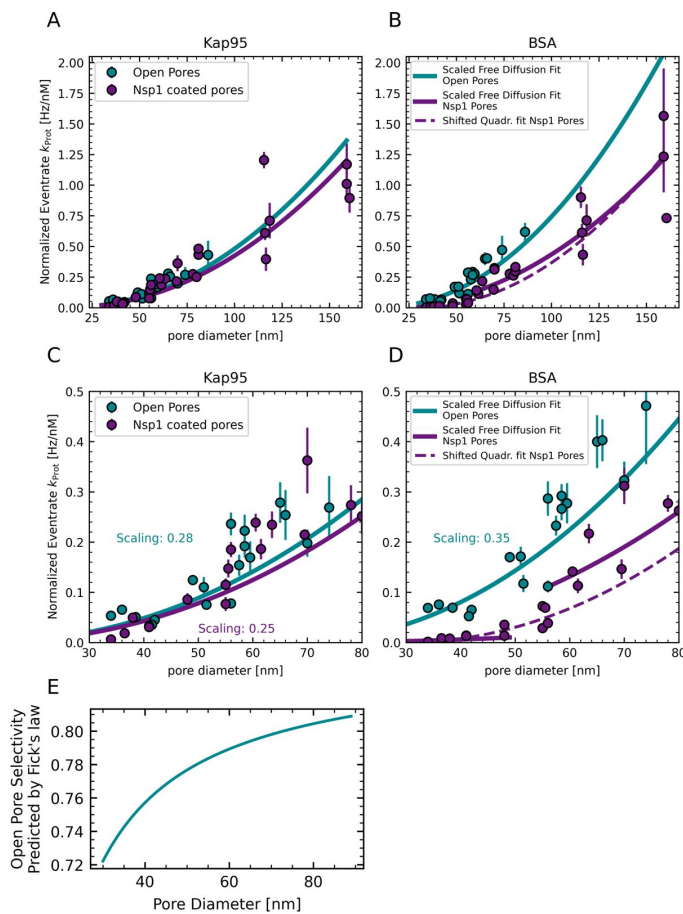
We explored how well the translocation rates can be accurately described by a diffusion model. In theory, the event rates should follow a diffusion model based on Fick's law. For reference, such a model was fit to the individual data points underlying the averages shown in [Figure 4 A-D](#) based on Fick's law of diffusion:

$$k_{\text{Prot}} = \alpha \pi r^2 D_p(r) \frac{\Delta c}{L}, \quad (13)$$

where  $k_{\text{Prot}}$  is the translocation rate,  $r$  the pore radius,  $\Delta c$  the concentration difference between cis and trans, and  $L$  the length of the pore. The scaling factor  $\alpha$  accounts for deviation from the ideal behavior due to protein pore interactions and events missed by the detection algorithm.  $D_p(r)$  is the reduced diffusion coefficient due to confinement in the pore and is calculated as given by [Dechadilok and Deen \(2006\)](#):

$$\begin{aligned} \frac{D_p(r)}{D} = & 1 + \frac{9}{8} \left( \frac{R_g}{r} \right) \ln \left( \frac{R_g}{r} \right) - 1.56034 \left( \frac{R_g}{r} \right) + 0.528155 \left( \frac{R_g}{r} \right)^2 + 1.91521 \left( \frac{R_g}{r} \right)^3 \\ & - 2.81903 \left( \frac{R_g}{r} \right)^4 + 0.270788 \left( \frac{R_g}{r} \right)^5 + 1.10115 \left( \frac{R_g}{r} \right)^6 - 0.435933 \left( \frac{R_g}{r} \right)^7, \end{aligned} \quad (14)$$

where  $R_g$  the radius of gyration of the protein ( $R_g = 3.15$  nm for Kap95 and  $R_g = 2.68$  nm for BSA as determined from their crystal structures) and  $D$  is the diffusion coefficient which was obtained from FCS measurements as  $D = 46 \mu\text{m}^2/\text{s}$  for Kap95 and  $D = 54 \mu\text{m}^2/\text{s}$  for BSA at 21 °C. As an alternative analysis, this model was fitted using the least-squares method to the individual data points underlying the averages from Figure 4 in the main text, as shown in Appendix 6—Figure 1. The open pore data as well as the Nsp1-pore data for Kap95 can be well fitted by the diffusion model. The BSA-rates through Nsp1 pores, however, can not be described with a single diffusion model. Inspired by the opening of the Nsp1 mesh seen in the CGMD simulations, we introduced a threshold, where the translocation rates would follow a different diffusion regime. We note however, that in this transition region between 48 nm and 55 nm the data is better described by the shifted quadratic function.



Appendix 5—figure 1.

(A,B) Normalized and averaged event rate vs. pore diameter as in Figure 4. Solid lines are fits of a diffusion model as described in this section. A single fit for BSA through Nsp1 would deviate both for small and large pore diameters. Therefore the dataset was split into two regimes: Below 50 nm and above 60 nm in order to fit the data. This threshold was inspired by the results of the CGMD simulations. The dashed line shows a fit of the shifted quadratic function to the BSA data through Nsp1 pores as described in the main text. (C,D) Zoom ins of (A,B). E: Selectivity of open pores, predicted by the diffusion model. The value is pore size dependent because of the different sizes of Kap95 and BSA.

## Appendix 6 Fitting of translocation rates

For congruence with the computational data, we fit a simplified diffusion model to the individual data points underlying the averages presented in Figure 4 using a quadratic function:

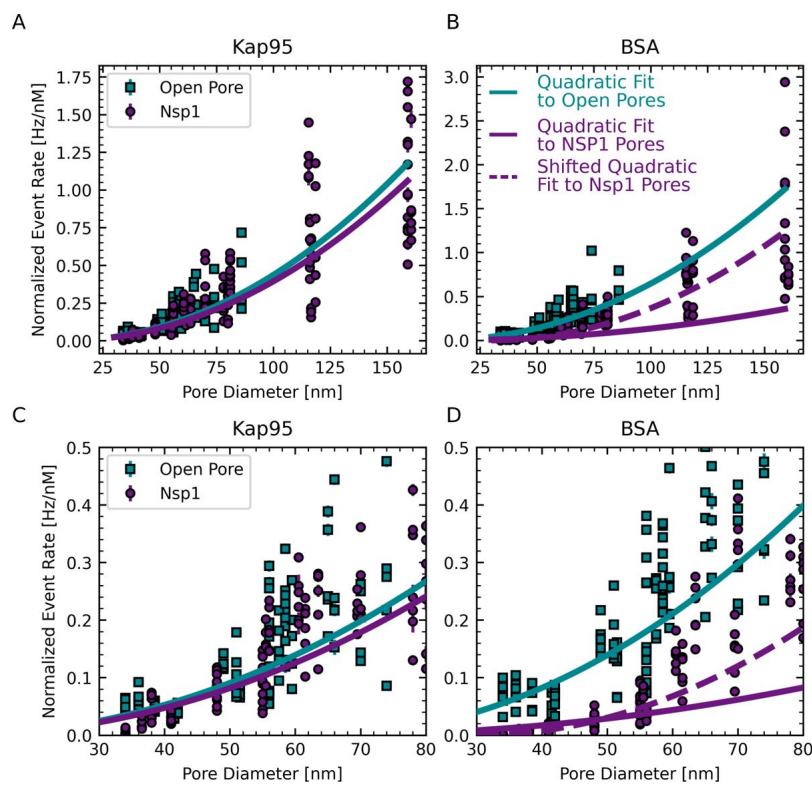
$$k_{\text{Prot}} = \alpha (r - r_{\text{Prot}})^2, \quad (15)$$

where  $k_{\text{Prot}}$  is the concentration-normalized translocation rate,  $r$  is the pore radius,  $r_{\text{Prot}}$  the protein's equivalent radius as proposed by Winogradoff et al. (2022) (see Appendix 10 for details), and  $\alpha$  a multiplicative scaling factor incorporating all factors such as concentration

gradient, pore length, etc. All fits were performed using a least squares fitting, taking a statistical error on the individual event rates into account. This error was estimated from Poisson statistics, where the number  $N$  of events within a timetrace leads to  $\Delta N = \sqrt{N}$ .  $a$  was fitted individually on the event rates of Kap95 through open and Nsp1-coated pores. Additionally, the BSA event rates through open pores were fitted separately. The parameter  $a$  resulting from the BSA translocations for open pores, was used as a fixed parameter when fitting the BSA event rates through Nsp1-coated pores with a shifted and reduced quadratic function:

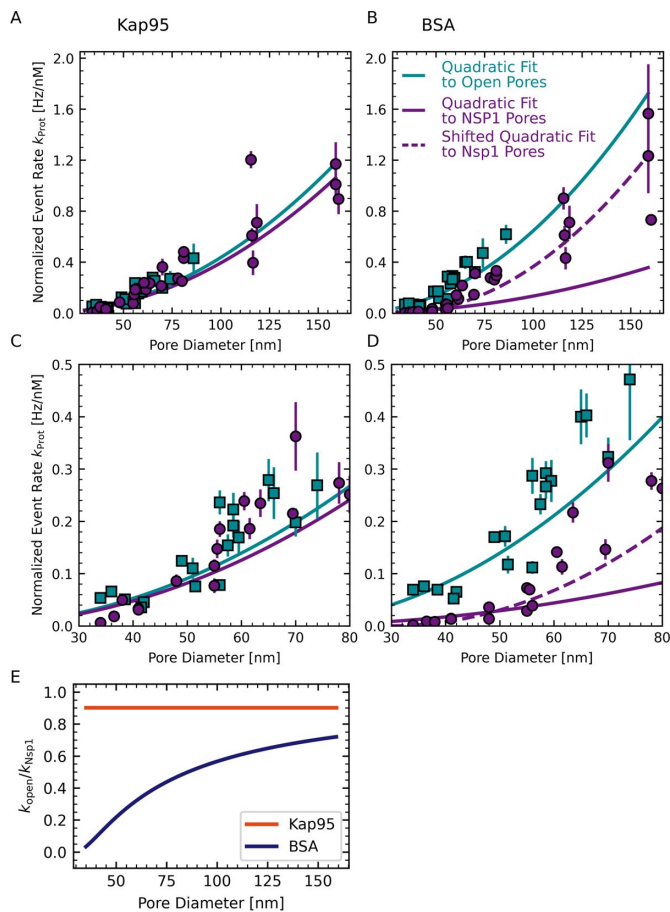
$$k_{\text{Prot}} = \alpha (r - r_{\text{Prot}} - b)^2, \tag{16}$$

where  $b$  is a shift parameter introduced to take into account a further reduction of the BSA event rate at small pore diameters.



Appendix 6—figure 1.

(A,B) Normalized event rate vs. pore diameter of the individual conditions underlying the points shown in Figure 4. Solid lines are fits of a quadratic function as given in Equation 15. The BSA event rates through Nsp1-coated pores were not well described by the quadratic function. Therefore, a shift parameter was introduced as given in eq. Equation 16 (dashed line). (C,D) Zoom ins of (A,B).



Appendix 6—figure 2.

(A,B) Normalized and averaged event rate vs. pore diameter as in Figure 4. Solid lines are fits of a quadratic function as given in Equation 15. The fit for BSA through Nsp1 deviates both for small and large pore diameters. Therefore a shift parameter was introduced as given in Equation 16 to fit the data (dashed line). (C,D) Zoom ins of (A,B). (E) Open pore event rates obtained from the quadratic fit divided by Nsp1 pore event rates obtained from the quadratic fit vs. pore diameter. While there is barely any decrease of the event rate for Kap95 when Nsp1 is present, BSA experiences an approximately 10-fold decrease for small pores of 35 nm diameter. This ratio increases with pore diameter and approaches a value of 1 in the limit to very large pores.

## Appendix 7 Diffusion coefficients and fluorescence lifetimes

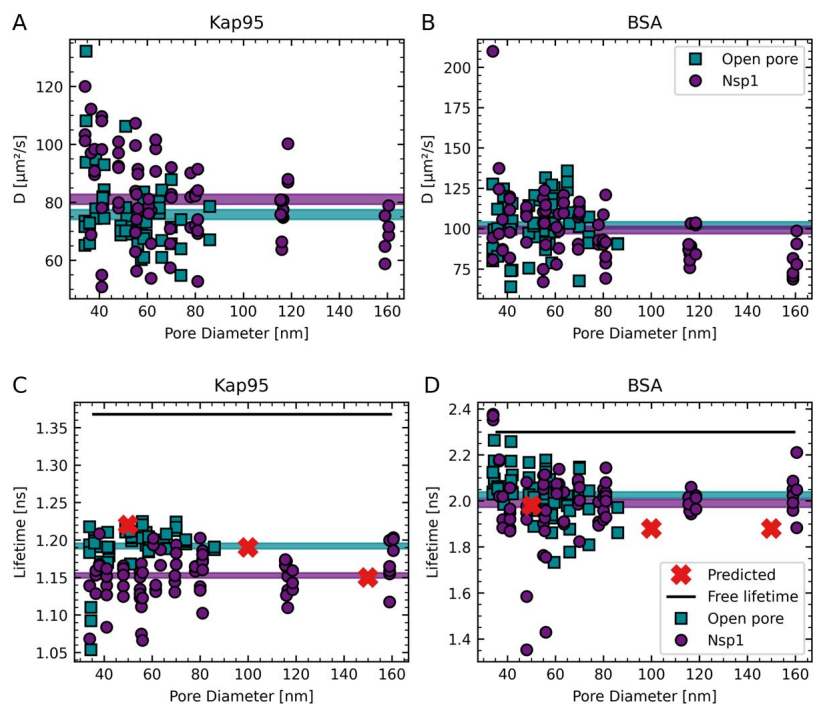
Our measurements provide additional information on the diffusivity of the proteins and the fluorescence lifetime of the fluorophores (Appendix 7—Figure 1). From this, we can gain additional insight on the interaction of the proteins with the Nsp1 mesh within the pore. Interestingly, we do not observe a significant hindrance of the diffusivity for either BSA or Kap95, despite the known interaction of Kap95 with the FG repeats of the Nsp1 mesh. This indicates that the dynamic and multivalent interactions do not markedly slow down the diffusion of Kap95.

Alternatively, it is possible that the fluorescence signal of the interacting species is quenched due to the close proximity to the metal surface due to metal-induced electron transfer (Gregor et al., 2019). This would render it impossible to detect the interactions because the detected signal would originate predominantly from freely diffusing molecules that have left the Nsp1 mesh.

Additional information on the photophysics is obtained from the fluorescence lifetime. We find a significant decrease of the fluorescence lifetime in the presence of the metal nanostructure (compared to open focus measurements) both for the dyes Alexa488 on BSA and Alexa647 on Kap95. Note that this lifetime reduction can originate both from metal-induced quenching (Gregor et al., 2019) or a radiative rate enhancement within the zero-mode waveguide (Levene et al., 2003). FDTD simulations of the dipole emission confirm that the fluorescence lifetime is shortened in the proximity of the metal nanostructure (Appendix

2—Figure 4 D-E) and provide good qualitative agreement with the measured fluorescence lifetimes of translocating molecules (see red crosses in Appendix 7—Figure 1 C-D).

Whereas for BSA there was no difference between the fluorescence lifetimes obtained for Nsp1-coated pores and open pores, we found a small but significant reduction of the fluorescence lifetime for Kap95 for Nsp1-coated pores. This indicates that, in the presence of Nsp1, Kap95 molecules either take a different path through the pore or spend more time in proximity of the metal nanoaperture. Intriguingly, it has recently been reported that Kap95 predominantly translocates along the periphery of the NPC (Chowdhury et al., 2022), which falls in line with our observation of a stronger coupling to the metal nanoaperture.

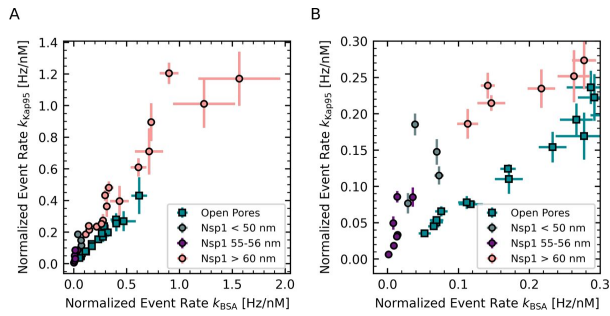


Appendix 7—figure 1.

(A,B) Plots of the diffusion coefficient vs. pore diameter for Kap95 and BSA, respectively. The diffusion coefficient is estimated by FCS analysis of the time traces obtained in the nanopore experiments at the highest protein concentration. The horizontal lines indicates the average diffusion coefficient and the width corresponds to twice the standard error of the mean. The average diffusion coefficient of both Kap95 and BSA shows no significant difference between open pores and Nsp1-coated pores. This indicates that interactions of the proteins with the Nsp1 mesh do not obstruct the diffusion. Alternatively, it is possible that the bound fraction is not detected in our experiments if it is close to the metal surface due to metal-induced quenching of the fluorescence signal. (C,D) Plots of the fluorescence lifetime vs. pore diameter for Kap95

and BSA, respectively. The fluorescence lifetime is calculated based on the individual time traces of the highest protein concentration. The mean (horizontal lines) with twice the standard error of the mean (width of the lines) gives an estimate of the spread. For both Kap95 and BSA, the average fluorescence lifetime is significantly lower than what is measured in open solution (black lines). This can be attributed to the influence of the nearby metal nanostructure on the radiative and non-radiative rates. The predicted lifetimes based on FDTD simulations are shown as red crosses (compare Appendix 2—Figure 4). Whereas for BSA the lifetime in Nsp1-coated pores and open pores does not differ significantly, there is a significant decrease of the fluorescence lifetime of Kap95 in Nsp1-coated pores compared to open pores. This suggests that Kap95 remains within the proximity of the pore for a longer time when Nsp1 is present.

## 8 Appendix

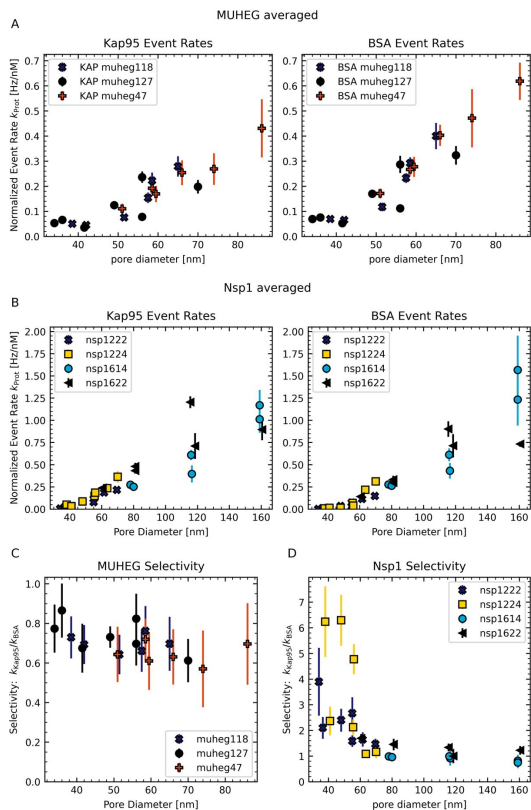


Appendix 8—figure 1.

### Correlation between event rates for Kap95 and BSA.

(A) Normalized event rates of Kap95 vs. BSA for small (purple) and large (pink) Nsp1-coated pores and open pores (cyan). The event rates show a high degree of correlation with correlation coefficients of 0.72, 0.93, and 0.98 respectively. Additionally pores with diameters of 55 nm to 56 nm are shown in grey. (B) zoom in of (A).

## 9 Appendix



Appendix 9—figure 1.

(A, B) Normalized event rates for different open pore and Nsp1 pore experiments, respectively. The different data sets were highlighted according to their experimental day. A label for each experimental realisation is given in the legend. We don't observe any striking day-to-day variation. (C,D) Selectivity for different open pore and Nsp1 pore experiments. Also in the selectivity we don't observe a striking difference between experimental repetitions.



## Appendix 10 Probe radius of BSA and Kap95

To determine the radius of a protein (used in the void analysis and for fitting the event rates), we used the procedure as described in (Winogradoff et al., 2022). We started by computing the protein's moments of inertia,  $I_X$ ,  $I_Y$  and  $I_Z$ , from the all-atom crystal structure. We then matched the moments of inertia of the protein with those of a constant density ellipsoid using  $I_X = 1/5m (b^2 + c^2)$ ,  $I_Y = 1/5m (a^2 + c^2)$  and  $I_Z = 1/5m (a^2 + b^2)$ , where  $m$  is the total mass of the protein and  $a$ ,  $b$  and  $c$  are the respective lengths of the three principal axes of the ellipsoid. To obtain the protein radius, we equated the volume of a sphere to the volume of the ellipsoid, i.e.,  $r_p = (abc)^{1/3}$ . Using this method we find a probe radius of  $r_p = 34$  Å for BSA(PDB ID: 4F5S) and  $r_p = 40$  Å for Kap95 (PDB ID: 3ND2).

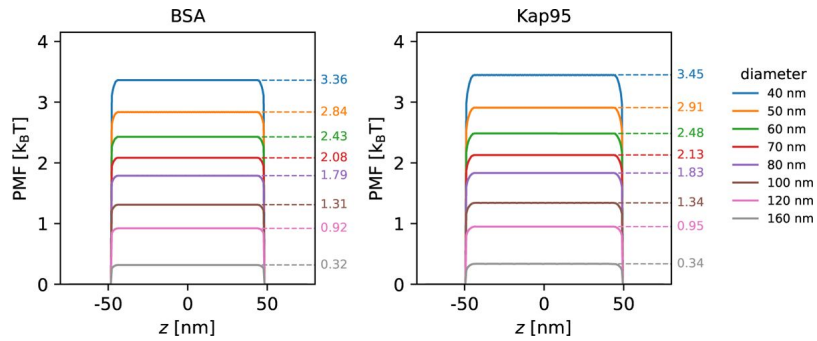
## Fitting calculated event rates for open pores

To obtain the scaling constant,  $k_0$ , of the Arrhenius relation, we fitted the calculated event rates for open pores, obtained from the PMF barriers using the Arrhenius relation, to the (concentration-normalized) experimental open pore event rates (see Appendix 6 for fitting procedure). We note that the calculated event rates for open pores follow Equation 2 exactly. We therefore scaled the calculated event rates such that they align with the fits in Figure 4 A,B (cyan lines) and used the same constant  $k_{0,BSA}$  to the Arrhenius relation for Nsp1-coated pores.

## Potential of mean force for Nsp1-coated pores

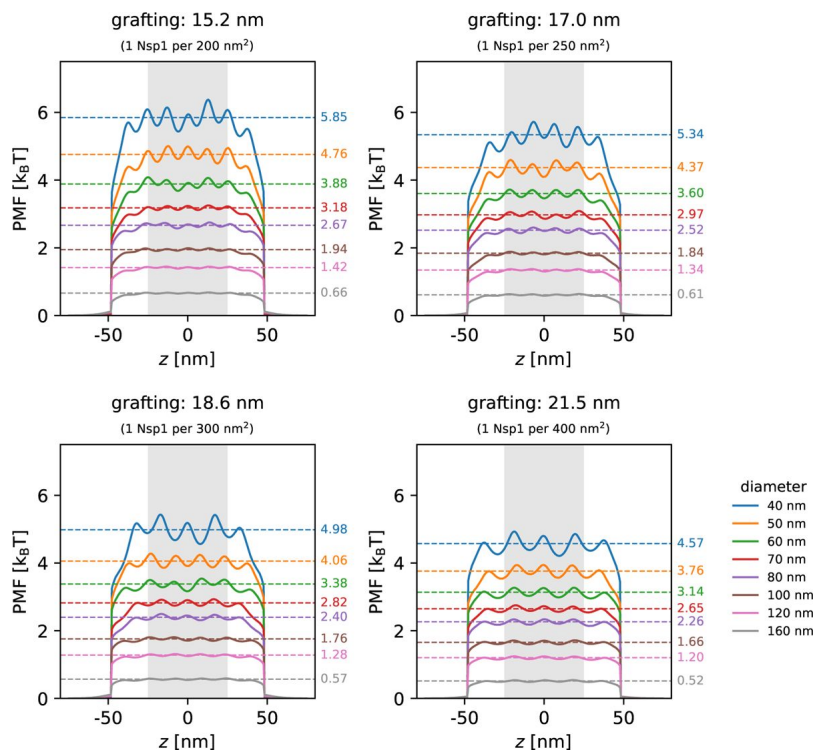
The Nsp1 proteins in our simulations were anchored to the surface in a triangular fashion to achieve a homogeneous grafting density across the entire scaffold. We note that the location of the peaks in the PMF curves align with the  $z$ -coordinates of the Nsp1 anchor sites. Although the anchor sites clearly contribute to the translocation barrier, it would not be correct to use the maximum PMF as the energy barrier for translocation, as the idealized anchoring of Nsp1 on the scaffold is not a good approximation of the experiments (where Nsp1 is not anchored at discrete  $z$ -positions). Instead, to obtain a correct estimate of the energy barrier,  $\Delta E$ , we used the average PMF for  $-25 \text{ nm} \leq z \leq 25 \text{ nm}$ .

## Dependence of selectivity on grafting density



Appendix 10—figure 1.

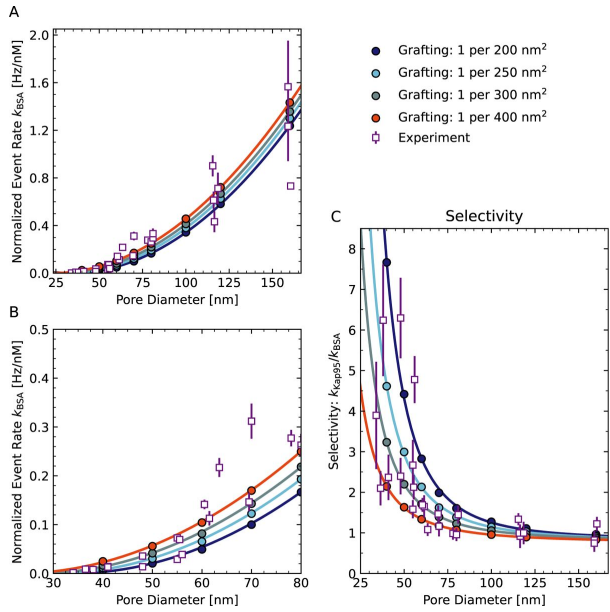
Potentials of mean force along the pore axis of open pores with various diameters derived from void analysis using a probe radius of  $r_{\text{probe}}$  of 34 Å for BSA and 40 Å for Kap95. The numbers next to the dashed lines indicate the permeability barriers  $\Delta E$ .



Appendix 10—figure 2.

Potentials of mean force along the pore axis of Nsp1-coated pores with various diameters and grafting densities using a probe radius of  $r_{\text{probe}} = 34$  Å (BSA) derived from void analysis. The height of the PMF barrier,  $\Delta E$  given on the right of the plots, is obtained by averaging the PMF between  $-25 \text{ nm} \leq z \leq 25 \text{ nm}$  (gray region). The location of the peaks in the PMF curves are at the same  $z$ -coordinates as the anchoring points of the Nsp1 proteins.

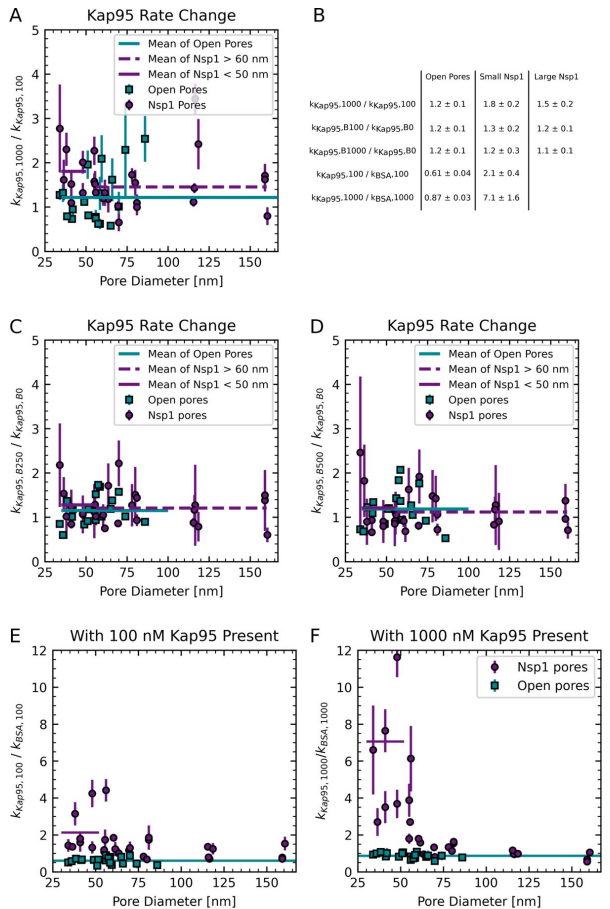
# Nsp1 density distributions



Appendix 10—figure 3.

## Effect of grafting density on the selectivity of Nsp1 pores.

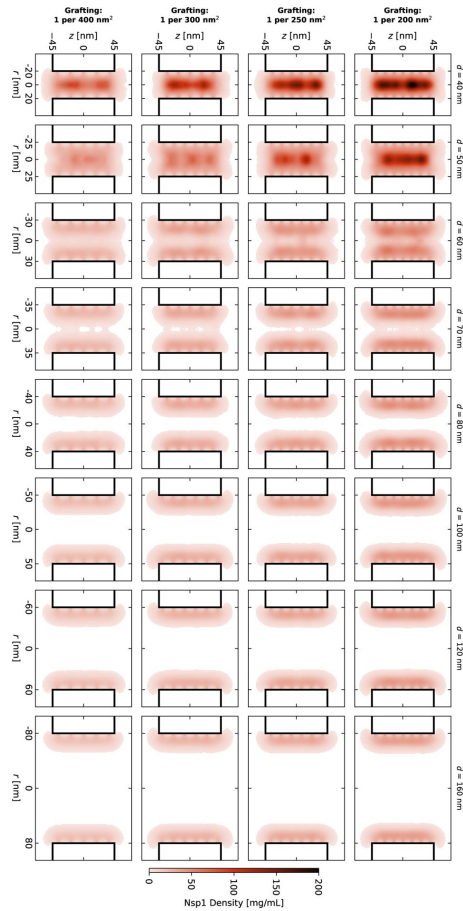
(A) Calculated BSA event rates for Nsp1 pores for various grafting densities. (B) Zoom-in of A. (C) Apparent selectivity versus pore diameter, where the selectivity is calculated as the ratio of Kap95 to BSA event rates. For Kap95 we assumed that the event rate is the same for open pores and Nsp1 pores.



Appendix 10—figure 4.

Time-averaged  $r$ - $z$  density distribution of Nsp1-coated nanopores for various diameters and grafting densities. Although there is a significant variation in the central channel densities for small diameter pores, the range of diameters at which the structural transition of the Nsp1 mesh takes place is largely independent of the Nsp1 grafting density in the range that was tested.

## Appendix 11 Kap95 rate change



Appendix 11—figure 1.

(A) Rate change of Kap95 vs. pore diameter. Event rate of Kap95 at 1000 nM ( $k_{\text{Kap95},1000}$ ) divided by the Kap95 event rate at 100 nM ( $k_{\text{Kap95},100}$ ). At high Kap95 concentrations there is an increase in normalized event rate for both open and Nsp1 pores. It is largest for small Nsp1 pores. (B) The averages indicated in the plots by horizontal lines given with standard deviation estimated from fitting horizontal lines. (C,D) Influence of BSA concentration on Kap95 event rate. When dividing the Kap95 event rate with 250 nM of BSA being present  $k_{\text{Kap95},B250}$  by the Kap95 event rate with 0 nM of BSA being present  $k_{\text{Kap95},B0}$  (C) this shows that the Kap95 event rate is barely influenced by the presence of BSA, as expected. The same holds for the Kap95 event rate change with 500 nM of BSA to 0nM being present. (E,F) Selectivity vs. pore diameter for different Kap95 concentrations. When switching from 100 nM of Kap95 to 1000nM of Kap95, the selectivity of small Nsp1 pores increases by a factor of 3, whereas the selectivity of large pore decreases.

## Model for the residual selectivity of large pores

The model as presented in Figure 6 is based on the assumption a pore is occupied by two separate cross-sectional areas, a selective area and an unselective area, whereas no assumption over their location (such as a ring) is made. The full cross-sectional area  $A$  is thus divided as

$$A = A_{\text{open}} + A_{\text{Nsp1}}, \quad (17)$$

where  $A_{\text{open}}$  is the open (unselective pore area) and  $A_{\text{Nsp1}}$  is the selective (Nsp1-filled) area. Here, the selectivity  $S$  of a pore is defined as the ratio of Kap95 and BSA rates

$$S = \frac{k_{\text{Kap95}}}{k_{\text{BSA}}}, \quad (18)$$

which can be expressed in terms of the contributions of the two phases as

$$S = \frac{A_{\text{Nsp1}} l_{\text{Kap95}}^{\text{Nsp1}} + A_{\text{open}} l_{\text{Kap95}}^{\text{open}}}{A_{\text{Nsp1}} l_{\text{BSA}}^{\text{Nsp1}} + A_{\text{open}} l_{\text{BSA}}^{\text{open}}}, \quad (19)$$

where  $l_{\text{protein}}^{\text{phase}}$  is the area normalized event rate constant for the respective protein in the different phases, i.e, open or Nsp1-filled.

Since we found experimentally the Kap95 event rates were unchanged by the presence of Nsp1, we approximate  $l_{\text{Kap95}} \approx l_{\text{Kap95}}^{\text{open}} \approx l_{\text{Kap95}}^{\text{Nsp1}}$ . The selectivity of a mixed phase pore is then given by:

$$S = \frac{l_{\text{Kap95}}}{l_{\text{BSA}}^{\text{Nsp1}} \frac{A_{\text{Nsp1}}}{A} + l_{\text{BSA}}^{\text{open}} \frac{A_{\text{open}}}{A}} = \frac{1}{\frac{l_{\text{BSA}}^{\text{Nsp1}}}{l_{\text{Kap95}}} \frac{A_{\text{Nsp1}}}{A} + \frac{l_{\text{BSA}}^{\text{open}}}{l_{\text{Kap95}}} \frac{A_{\text{open}}}{A}} = \frac{1}{\frac{1}{S_{\text{Nsp1}}} \frac{A_{\text{Nsp1}}}{A} + \frac{1}{S_{\text{open}}} \frac{A_{\text{open}}}{A}} \quad (20)$$

Note that this corresponds to the harmonic mean of the selectivities.

When considering the structure of the pore, the number of Nsp1 molecules in the pore is determined by the grafting density  $\sigma$ , the pore's radius  $r$  and length  $L$  as

$$N = 2\pi r \sigma L. \quad (21)$$

If we assume that each Nsp1 molecule renders a certain volume  $V$  selective, the effectively selective cross-sectional area can be calculated from the selective volume  $V_{\text{Nsp1}}$  as:

$$A_{\text{Nsp1}} = \frac{V_{\text{Nsp1}}}{L} = \frac{NV}{L} = 2\pi r \sigma V. \quad (22)$$

Thus, the selective area fraction depends on the pore radius as:

$$\frac{A_{\text{Nsp1}}}{A} = \frac{2\pi r}{\pi r^2} \sigma V = \frac{2}{r} \sigma V, \quad (23)$$

Combining both expressions for the selective area fraction, we obtain:

$$S = \frac{1}{\frac{1}{S_{\text{Nsp1}}} \frac{2}{r} \sigma V + \frac{1}{S_{\text{open}}} \left(1 - \frac{2}{r} \sigma V\right)} \quad (24)$$

where  $\sigma V$  is the only fit parameter that we fit to the selectivities measured in Figure 6.

Note that, if each Nsp1 molecule occupies the same volume  $V$ , the rim thickness would depend on the pore radius and the ring thickness  $h$  can be calculated using  $A_{\text{Nsp1}} = \pi r^2 - \pi(r-h)^2$  as:

$$h = r - \sqrt{r^2 - 2r\sigma V}, \quad (25)$$

which requires  $\sigma V < r/2$ . For flat surfaces, where  $r \rightarrow$  the parameter  $\sigma V h$  and  $\sigma V$  can be represents the Nsp1 layer height in these cases. In the case of curved surfaces, the layer height needs to be calculated using Equation 25. Notably, the assumption of constant volume that is applied here remains valid for situations where the Nsp1 phase is not localized in the rim, e.g. forming a central plug but is in contrast to previous models that assume a selective area (of whatever shape) similar in size to a ring of constant thickness, such as proposed by Kowalczyk et al. (2011).

## Appendix 12 Nsp1

The sequence of the Nsp1 used in this study was: MHHHHHHHHHHGSGENLYFQGT SMGNFNTPPQNKT PFSFGTANNNSNTTNQNSSTGAGAFGTGQSTFGFNNSAPNNTNNA NSSITPAFGSNNTGN TAFGNSNPTS NVFGSNSTNTFGSNSAGTSLFGSSAQQTKSNGT AGGNTFGSSSLFNNSTNSNTTKPAFGGLNFGGGNNTTPSSTGNANTSNNLFGATANANKP AFSFGATTNDDKKTEPDKPAFSFNSSVGNKTDAQPTTGFSGSQLGGNKTVN EAAKPSLSF GSGSAGANPAGASQPEPTTNEPAK PALSFGTATSDNKTTNTTPSFSFGAKSDENKAGATSKP AFSFGAKPEEKDDNSSKPAFSFGAKSNEDKQDGTAKPAFSFGAKPAEKNNNETSKPAFSFG AKSDEKKDGDASKPAFSFGAKPDENKASATSKPAFSFGAKPEEKDDNSSKPAFSFGAKSNE DKQDGTAKPAFSFGAKPAEKNNNETSKPAFSFGAKSDEKKDGDASKPAFSFGAKSDEKKDS DSSKPAFSFGTKSNEKKDSGSSKPAFSFGAKPDEKKNDEVSKPAFSFGAKAN EKKESDESKSA FSGSKPTGKEEGDGAKAAISFGAKPEEQKSSDTSKPAFTFGAQKDNEKKTEC

## Kap95

The sequence of the GST-3C-Kap95 before removal of the GST tag and before labeling was:

MSPILGYWKIKGLVQPTRL LLEYLEEKYEEHLYERDEGDKWRNKKFELGLEFP NLPYYIDGDVKTQSM AIIRYIADKHNMLGGCPKERA EISMLEGAVLDIRYGVSR IAYSKDFET LKVDFLSKLPEMLKMFEDRLCHKTYLNGDHVTHPDFMLYDALDVVLYMDPMCLDAFPKLV CFKKRIEAI PQIDKYLKSSKYIAWPLQGWQATFGGGDHPPKSDLEVLFGPASV GSMSTAEF AQLLENSILSPDQNI RLTSETQLKKLSNDNFLQFAGLSSQVLIDENTKLEGRILAAL TLKNELVSKDSVKTQQFAQRWITQVSPEAKNQIKTNALTALVSI EPRIANAAAQLIAAIADI ELPHGAWPEL MKIMVDNTGAEQPENVKRASLLALGYMCESADPQSQUALVSSSNNILIAIVQGAQSTETS KAV RLAALNALADSLIFIKN MEREGERNYLMQVVCEATQAEDIEVQAAA FGCCLKIMSLY YTFM KPYPMEQALYALTIATMKSPNDKVASMTVEFWSTICEEEIDIA YELAQFPQSP LQSYNFALSSIK DVVPNLLNLLTRQNE DPEDDDWNVSMSAGACLQ LFAQNCGNHILEPVLEFVEQNITADNW RNREAAVMAFGSIMDGPDKVQR TYYVHQALPSILNLMNDQSLQVKETTAWCIGRIADSVAE SIDPQQHLPGVVQACLIGLQDHPKVATNC SWTIINLVEQLAEATPSPIYNFY PALVDGLIGAA NRIDNEFNARASAFSALTTMVEYATDTVAETSASISTFVMDKLGQTMSVDENQLTLEDAQSL QELQSNILT VLA AVIRKSPSSVEPVADMLMGLFFR LLEKKDSAFIEDDVFYAISALAA SLGKGFE KYLETFS P YLLKALNQVDS PVSITAVGFIADISNSLEEDFR RYSDAMMNVLAQMISNP NARRE LKPAVLSVFGDIASNIGAD FIPYLN DIMALCVAAQNTK PENGTLEALDYQIKVLEAVL DAYVGI VAGLHDKPEALFPYVGTIFQFIAQVAEDPQLYSEDAT SRAAVGLIGDIAAMFPDGSIKQFYGG DWVIDYIKRTRSGQLFSQATKDTARWAREQQQRQLSLLPETGG

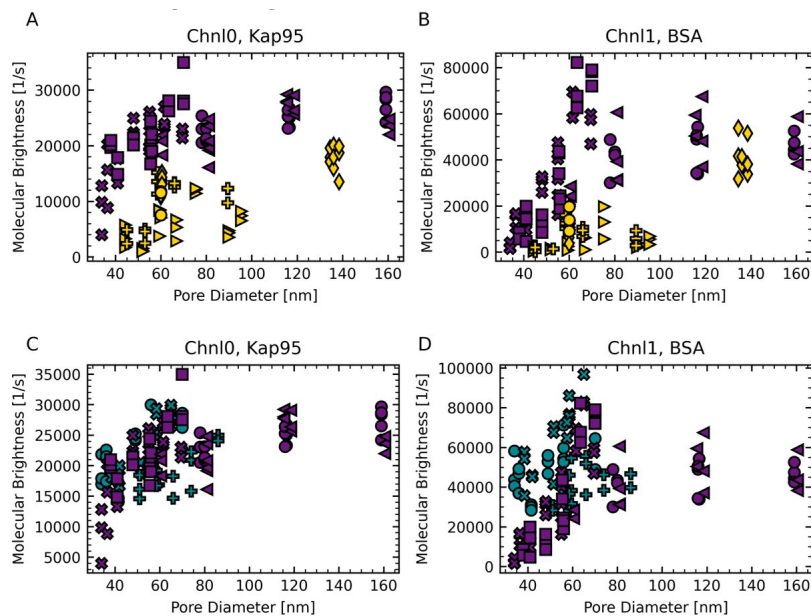
After removal of the GST tag and sortase labeling the sequence of Kap95 as used during the experiment was:

GPASV GSMSTAEF AQLLENSILSPDQNI RLTSETQLKKLSNDNFLQFAGLSSQVLIDENTK LEGRILAAL TLKNELVSKDSVKTQQFAQRWITQVSPEAKNQIKTNALTALVSI EPRIANAAAQL IAAIADI ELPHGAWPEL MKIMVDNTGAEQPENVKRASLLALGYMCESADPQSQUALVSSSNNI

LIAIVQGAQSTETSKAVRLAALNALADSLIFIKNNMEREGERNYLMQVVCEATQAEDIEVQAA  
 AFGCLCKIMSLYTFMKPYMEQALYALTIATMKSPNDKVASMTVEFWSTICEEIDIAVELAQF  
 PQSPLQSYNFALSSIKDVPNLLNLLTRQNEDEPDDDDWNVSMSAGACLQFAQNCGNHILE  
 PVLEFVEQNITADNWRNREAAVMAFGSIMDGPDKVQRYYVHQALPSILNLMNDQSLQVK  
 ETTAWCIGRIADSVAESIDPQQHLPVVQACLIGLQDHPKVATNCSWTIINLVEQLAEATPSPI  
 YNFYPALVDGLIGANRIDNEFNARASAFSALTTMVEYATDTVAETSASISTFVMDKLGQMS  
 VDENQLTLEDAQSLQELQSNILTVLAAVIRKSPSSVEPVADMLMGLFFRLLLEKKDSAFIEDDVF  
 YAISALAASLGKGFKEYLETFSPLYLLKALNQVDSVPSITAVGFIADISNSLEEDFRYSDDAMMN  
 VLAQMISNPNARRELKPAVLSVFGDIASNIGADFIPLYNDIMALCVAAQNTKPENGTLEAL  
 DYQIKVLEAVLDAYVGIVAGLHDKPEALFPYVGTIFQFIAQVAEDPQLYSEDATSRAAVGLIG  
 DIAAMFPDGSIKQFYGDWVIDYIKRTRSGQLFSQATKDTARWAREQQKRQLSLLPETGGG-  
 Alexa647

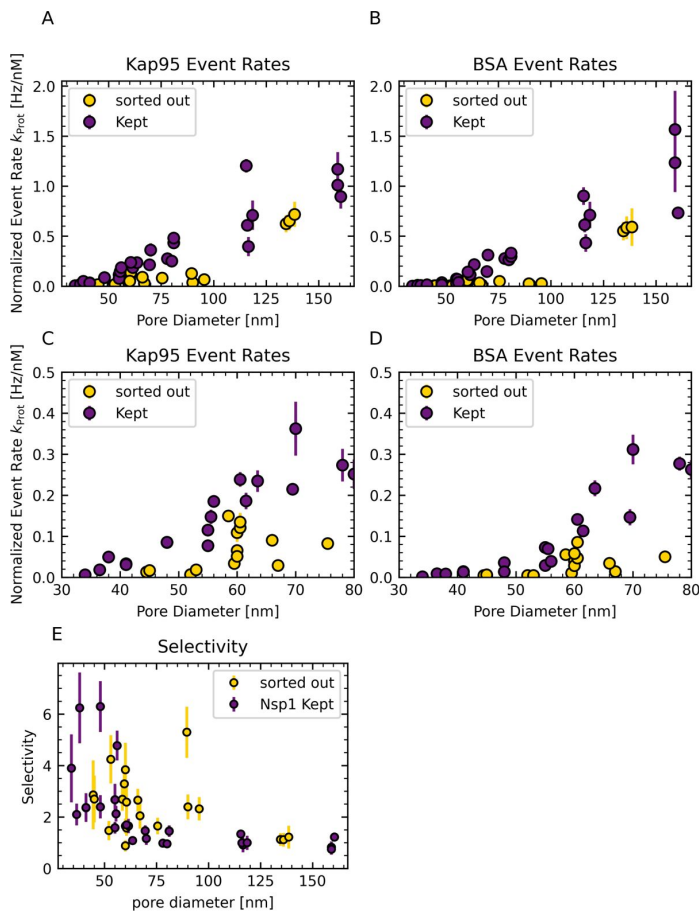
## Appendix 13 Data sanitation

As described in the methods section, some data sets were discarded due to a lower molecular brightness. In a plot of the molecular brightness against the pore diameter, these datasets were clearly identified as outliers (yellow markers in panels A and B of [Appendix 13—Figure 1](#)). We only used the molecular brightness of the Kap95 channel for discrimination because the low event rates for BSA at small pore diameters render the molecular brightness estimate unreliable. We additionally find a dependence of the molecular brightness on the pore diameter both for Nsp1-coated open pores, with a reduction of the molecular brightness at smaller pore diameters (panels C and D of [Appendix 13—Figure 1](#)). This effect was most evident for BSA in Nsp1-coated pores where event rates were low, where it most likely originates from a reduction of the correlation amplitude due to a larger contribution of background signal.



**Appendix 13—figure 1.**

(A,B) Molecular brightness per time trace versus pore diameter on Nsp1 pores. We see two populations for Kap95, labeled in purple and yellow. The yellow data sets showed a decreased molecular brightness and therefore these data sets were removed from further analysis. (C,D) Comparison of molecular brightness between Open Pores (cyan) and Nsp1 pores (purple). For Kap95 there is barely any difference of distribution visible. For BSA there is a decrease observed in molecular brightness for small pores of Nsp1. This can be explained by the lower event rate in these pores. Different markers show different experiments.



Appendix 13—figure 2.

(A,B) Event rates of discarded pores of Nsp1. For completeness, we show the event rates of pores that were not further considered in the analysis (yellow) due to their lower molecular brightness, as shown in the previous figure. As expected, these pores show a much decreased normalized event rate both for Kap95 and BSA compared to the Nsp1 pores that were kept in the analysis (purple). (C,D) Zoom in of (A,B). (E) Selectivity of discarded pores. The selectivity of discarded pores (yellow) deviates from the selectivity of the kept pores (purple). This can be explained when taking into account that a changed molecular brightness influences the event detection in each channel differently.

## References

Adams RL , Terry LJ , Wentz SR. (2016) **A Novel *Saccharomyces cerevisiae* FG Nucleoporin Mutant Collection for Use in Nuclear Pore Complex Functional Experiments** *G3*

*Genes | Genomes | Genetics* **6**:51–58

<https://doi.org/10.1534/g3.115.023002>

Akey CW , Singh D , Ouch C , Echeverria I , Nudelman I , Varberg JM , Yu Z , Fang F , Shi Y , Wang J , Salzberg D , Song K , Xu C , Gumbart JC , Suslov S , Unruh J , Jaspersen SL , Chait BT , Sali A , Fernandez-Martinez J , et al. (2022) **Comprehensive structure and functional adaptations of the yeast nuclear pore complex** *Cell* **185**:361–378

<https://doi.org/10.1016/j.cell.2021.12.015>

Ananth AN , Mishra A , Frey S , Dwarkasing A , Versloot R , van der Giessen E , Görlich D , Onck P , Dekker C. (2018) **Spatial structure of disordered proteins dictates conductance and selectivity in nuclear pore complex mimics** *eLife* **7**

<https://doi.org/10.7554/eLife.31510>



Andersson J , Svirelis J , Ferrand-Drake del Castillo G , Sannomiya T , Dahlin A. (2022) **Andersson J, Svirelis J, Ferrand-Drake del Castillo G, Sannomiya T, Dahlin A. Surface plasmon resonance sensing with thin films of palladium and platinum – quantitative and real-time analysis.** *Phys Chem Chem Phys.* **2022**; **24**:4588–4594. **10.1039/D1CP05381G**, doi: **10.1039/D1CP05381G**. *Surface plasmon resonance sensing with thin films of palladium and platinum – quantitative and real-time analysis.* *Phys Chem Chem Phys* **24**:4588–4594  
<https://doi.org/10.1039/D1CP05381G>

Aramburu IV , Lemke EA. (2017) **Floppy but not sloppy: Interaction mechanism of FG-nucleoporins and nuclear transport receptors** *Seminars in Cell & Developmental Biology* **68**:34–41  
<https://doi.org/10.1016/j.sem-cdb.2017.06.026>

Auger T , Mathé J , Viasnoff V , Charron G , Di Meglio JM , Auvray L , Montel F. (2014) **Zero-Mode Waveguide Detection of Flow-Driven DNA Translocation through Nanopores** *Phys Rev Lett* **7**  
<https://doi.org/10.1103/PhysRevLett.113.028302>

Beck M , Hurt E. (2017) **The nuclear pore complex: understanding its function through structural insight** *Nature Reviews Molecular Cell Biology* **18**:73–89  
<https://doi.org/10.1038/nrm.2016.147>

Bharadwaj P , Novotny L. (2007) **Spectral dependence of single molecule fluorescence enhancement** *Optics Express* **15**:14266–14274

Burdick RC , Li C , Munshi M , Rawson JMO , Nagashima K , Hu WS , Pathak VK. (2020) **HIV-1 uncoats in the nucleus near sites of integration** *Proceedings of the National Academy of Sciences* **117**:5486–5493  
<https://doi.org/10.1073/pnas.1920631117>

Celetti G , Paci G , Caria J , VanDelinder V , Bachand G , Lemke EA. (2019) **The liquid state of FG-nucleoporins mimics permeability barrier properties of nuclear pore complexes**  
<https://doi.org/10.1083/jcb.201907157>

Chowdhury R , Sau A , Musser SM. (2022) **Super-resolved 3D tracking of cargo transport through nuclear pore complexes** *Nature Cell Biology* **24**:112–122  
<https://doi.org/10.1038/s41556-021-00815-6>

De Magistris P. (2021) **The Great Escape: mRNA Export through the Nuclear Pore Complex** *International Journal of Molecular Sciences* **22**  
<https://doi.org/10.3390/ijms222111767>

Dechadilok P , Deen WM. (2006) **Hindrances Factors for Diffusion and Convection in Pores** *Industrial & Engineering Chemistry Research* **45**:6953–6959  
<https://doi.org/10.1021/ie051387n>

Dekker M , van der Giessen E , Onck PR. (2022) **Dekker M, van der Giessen E, Onck PR. Liquid-liquid phase separation of intrinsically disordered FG-Nups is driven by highly-dynamic hydrophobic FG-motifs.** *bioRxiv*. 2022; <https://www.biorxiv.org/content/early/2022/09/21/2022.09.20.508740>, doi: [10.1101/2022.09.20.508740](https://doi.org/10.1101/2022.09.20.508740).  
<https://doi.org/10.1101/2022.09.20.508740>

Fragasso A , de Vries HW , Andersson J , van der Sluis EO , van der Giessen E , Dahlin A , Onck PR , Dekker C. (2021) **A designer FG-Nup that reconstitutes the selective transport barrier of the nuclear pore complex** *Nature Communications* **12**  
<https://doi.org/10.1038/s41467-021-22293-y>

Fragasso A , de Vries HW , Andersson J , van der Sluis EO , van der Giessen E , Onck PR , Dekker C. (2022) **Transport receptor occupancy in nuclear pore complex mimics** *Nano Research*  
<https://doi.org/10.1007/s12274-022-4647-1>

Frey S , Görlich D. (2007) **A Saturated FG-Repeat Hydrogel Can Reproduce the Permeability Properties of Nuclear Pore Complexes** *Cell* **130**:512–523  
<https://doi.org/10.1016/j.cell.2007.06.024>

Frey S , Richter RP , Görlich D. (2006) **FG-Rich Repeats of Nuclear Pore Proteins Form a Three-Dimensional Meshwork with Hydrogel-Like Properties** *Science* **314**:815–817  
<https://doi.org/10.1126/science.1132516>

Ghavami A , van der Giessen E , Onck PR. (2013) **Coarse-Grained Potentials for Local Interactions in Unfolded Proteins** *Journal of Chemical Theory and Computation* **1**:432–440  
<https://doi.org/10.1021/ct300684j>

Ghavami A , Veenhoff L , van der Giessen E , Onck P. (2014) **Probing the Disordered Domain of the Nuclear Pore Complex through Coarse-Grained Molecular Dynamics Simulations** *Biophysical Journal* **9**:1393–1402  
<https://doi.org/10.1016/j.bpj.2014.07.060>

Görlich D , Kutay U. (1999) **Transport Between the Cell Nucleus and the Cytoplasm** *Annual Review of Cell and Developmental Biology* **15**:607–660  
<https://doi.org/10.1146/annurev.cellbio.15.1.607>

Gregor I , Chizhik A , Karedla N , Enderlein J. (2019) **Metal-induced energy transfer** *Nanophotonics* **8**:1689–1699  
<https://doi.org/10.1515/nanoph-2019-0201>

Guimaraes CP , Witte MD , Theile CS , Bozkurt G , Kundrat L , Blom AEM , Ploegh HL. (2013) **Site-specific C-terminal and internal loop labeling of proteins using sortase-mediated reactions** *Nature Protocols* **8**:1787–1799  
<https://doi.org/10.1038/nprot.2013.101>

Hellenkamp B , Schmid S , Doroshenko O , Opanasyuk O , Kühnemuth R , Rezaei Adariani S , Ambrose B , Aznauryan M , Barth A , Birkedal V , Bowen ME , Chen H , Cordes T , Eilert T , Fijen C , Gebhardt B , Götz M , Gouridis G , Gratton E , Ha T , et al. (2018) **Precision and accuracy of single-molecule FRET measurements—a multi-laboratory benchmark study** *Nature Methods* **15**:669–676

Hunter JD. (2007) **Matplotlib: A 2D graphics environment** *Computing in Science & Engineering* **9**:90–95  
<https://doi.org/10.1109/MCSE.2007.55>

Ingargiola A , Laurence T , Boutelle R , Weiss S , Michalet X. (2016) **Photon-HDF5: An Open File Format for Timestamp-Based Single-Molecule Fluorescence Experiments** *Biophysical Journal* **110**:26–33  
<https://doi.org/10.1016/j.bpj.2015.11.013>

Jafarinia H , Van der Giessen E , Onck PR. (2020) **Phase Separation of Toxic Dipeptide Repeat Proteins Related to C9orf72 ALS/FTD** *Biophysical Journal* **8**:843–851  
<https://doi.org/10.1016/j.bpj.2020.07.005>

Jafarinia H , Van der Giessen E , Onck PR. (2022) **Molecular basis of C9orf72 poly-PR interference with the  $\beta$ -karyopherin family of nuclear transport receptors** *Scientific Reports* **12**  
<https://doi.org/10.1038/s41598-022-25732-y>

Janssen XJA , Jonsson MP , Plesa C , Soni GV , Dekker C , Dekker NH. (2012) **Rapid manufacturing of low-noise membranes for nanopore sensors by trans-chip illumination lithography** *Nanotechnology* **23**  
<https://doi.org/10.1088%2F0957-4484%2F23%2F47%2F475302>

Jiang X , Bruzewicz DA , Thant MM , Whitesides GM. (2004) **Palladium as a Substrate for Self-Assembled Monolayers Used in Biotechnology** *Analytical Chemistry* **76**:6116–6121  
<https://doi.org/10.1021/ac049152t>

Jovanovic-Talisman T , Zilman A. (2017) **Protein Transport by the Nuclear Pore Complex: Simple Biophysics of a Complex Biomachine** *Biophys J* **113**:6–14

Jovanovic-Talisman T , Chait BT , Rout MP. (2014) **NPC mimics: probing the mechanism of nucleocytoplasmic transport** *In: Methods in cell biology* **122**:379–393  
<https://doi.org/10.1016/B978-0-12-417160-2.00017-5>

Jovanovic-Talisman T , Tetenbaum-Novatt J , McKenney AS , Zilman A , Peters R , Rout MP , Chait BT. (2008) **Artificial nanopores that mimic the transport selectivity of the nuclear pore complex** *Nature* **457**  
<https://doi.org/10.1038/nature07600>

Kalita J , Kapinos LE , Zheng T , Rencurel C , Zilman A , Lim RYH. (2022) **Karyopherin enrichment and compensation fortifies the nuclear pore complex against nucleocytoplasmic leakage** *Journal of Cell Biology* **1**  
<https://doi.org/10.1083/jcb.202108107>

Kapinos LE , Huang B , Rencurel C , Lim RYH. (2017) **Karyopherins regulate nuclear pore complex barrier and transport function** *Journal of Cell Biology* **216**:3609–3624  
<https://doi.org/10.1083/jcb.201702092>

Kapinos L , Schoch R , Wagner R , Schleicher K , Lim RH. (2014) **Karyopherin-Centric Control of Nuclear Pores Based on Molecular Occupancy and Kinetic Analysis of Multivalent Binding with FG Nucleoporins** *Biophysical Journal* **106**:1751–1762  
<https://doi.org/10.1016/j.bpj.2014.02.021>

Kapusta P. (2020) **Absolute Diffusion Coefficients:Compilation of Reference Data for FCSCalibration** *PicoQuant GmbH*

KeminerO Peters R. (1999) **Permeability of single nuclear pores** *Biophys J* **77**:217–228

Ketterer P , Ananth AN , Trip DSL , Mishra A , Bertosin E , Ganji M , van der Torre J , Onck P , Dietz H , Dekker C. (2018) **DNA origami scaffold for studying intrinsically disordered proteins of the nuclear pore complex** *Nature Communications* **12**  
<https://doi.org/10.1038/s41467-018-03313-w>

Keyser UF , van der Does J , Dekker C , Dekker NH. (2006) **Optical tweezers for force measurements on DNA in nanopores** *Review of Scientific Instruments* **77**  
<https://doi.org/10.1063/1.2358705>

Kim SJ , Fernandez-Martinez J , Nudelman I , Shi Y , Zhang W , Raveh B , Herricks T , Slaughter BD , Hogan JA , Upla P , Chemmama IE , Pellarin R , Echeverria I , Shivaraju M , Chaudhury AS , Wang J , Williams R , Unruh JR , Greenberg CH , Jacobs EY , et al. (2018) **Integrative structure and functional anatomy of a nuclear pore complex** *Nature* **555**:475–482  
<https://doi.org/10.1038/nature26003>

Klughammer N (2020) **Klughammer N, Code from Paper Palladium Zero-Mode Waveguides for Optical Single Molecule Detection with Nanopores; 2020.**  
[https://data.4tu.nl/articles/software/Code\\_from\\_Paper\\_Palladium\\_Zero-Mode\\_Waveguides\\_for\\_Optical\\_Single\\_Molecule\\_Detection\\_with\\_Nanopores/12888551](https://data.4tu.nl/articles/software/Code_from_Paper_Palladium_Zero-Mode_Waveguides_for_Optical_Single_Molecule_Detection_with_Nanopores/12888551),  
doi: **10.4121/12888551.v1**. Code from Paper Palladium Zero-Mode Waveguides for Optical Single Molecule Detection with Nanopores  
<https://doi.org/10.4121/12888551.v1>

Klughammer N , Barth A , Dekker M (2023) **Code for paper Diameter Dependence of Transport through Nuclear Pore Complex Mimics Studied Using Optical Nanopores** *4TU.ResearchData*  
<https://doi.org/10.4121/21027850>

Klughammer N , Barth A , Dekker M (2023) **Data from paper Diameter Dependence of Transport through Nuclear Pore Complex Mimics Studied Using Optical Nanopores** *4TU.ResearchData*  
<https://doi.org/10.4121/22059227>

Klughammer N , Dekker C. (2021) **Palladium zero-mode waveguides for optical single-molecule detection with nanopores** *Nanotechnology* **32**  
<https://doi.org/10.1088/1361-6528/abd976>

Kowalczyk SW , Kapinos L , Blosser TR , Magalhães T , van Nies P , Lim RYH , Dekker C. (2011) **Single-molecule transport across an individual biomimetic nuclear pore complex** *Nature Nanotechnology* **6**  
<https://doi.org/10.1038/nnano.2011.88>

Levene MJ , Korlach J , Turner SW , Foquet M , Craighead HG (2003) **Webb WW. Zero-mode waveguides for single-molecule analysis at high concentrations** *science* **299**:682–686  
<https://doi.org/10.1126/science.1079700>

Lim RYH , Huang B , Kapinos LE. (2015) **How to operate a nuclear pore complex by Kap-centric control** *Nucleus* **6**:366–372  
<https://doi.org/10.1080/19491034.2015.1090061>

Love JC , Wolfe DB , Haasch R , Chabiny ML , Paul KE , Whitesides GM , Nuzzo RG. (2003) **Formation and Structure of Self-Assembled Monolayers of Alkanethiolates on Palladium** *Journal of the American Chemical Society* **125**:2597–2609  
<https://doi.org/10.1021/ja028692+>

Majid A , Bensebaa F , Ecuyer PL , Pleizier G , Deslandes Y. (2003) **Modification of the metallic surface of silver by the formation of alkanethiol self-assembled monolayers with subsequent reaction with chlorosilanes** *Rev Adv Mater Sci* **4**:25–31

McKinney Wes (2010) **Data Structures for Statistical Computing in Python. In: Stéfan van der Walt Jarrod Millman, editors. Proceedings of the 9th Python in Science Conference** :56–61  
<https://doi.org/10.25080/Majora-92bf1922-00a>

Mohr D , Frey S , Fischer T , Güttler T , Görlich D. (2009) **Characterisation of the passive permeability barrier of nuclear pore complexes** *The EMBO Journal* **28**:2541–2553  
<https://doi.org/10.1038/emboj.2009.200>

Ng SC , Biswas A , Huyton T , Schünemann J , Reber S , Görlich D. (2022) **Barrier properties of Nup98 FG phases ruled by FG motif identity and inter-FG spacer length**

Ng SC , Güttler T , Görlich D. (2021) **Recapitulation of selective nuclear import and export with a perfectly repeated 12mer GLFG peptide** *Nature Communications* **12**  
<https://doi.org/10.1038/s41467-021-24292-5>

Novotny L , Hecht B. (2006) **Principles of Nano-Optics** *Cambridge University Press*  
<https://doi.org/10.1017/CBO9780511813535>

Palik ED. (1998) **Palik ED. Handbook of optical constants of solids, vol. 3. Academic press; 1998. Handbook of optical constants of solids 3**

Perez F , Granger BE. (2007) **IPython: A System for Interactive Scientific Computing** *Computing in Science Engineering* **9**:21–29

Plesa C , Kowalczyk SW , Zinsmeister R , Grosberg AY , Rabin Y , Dekker C. (2013) **Fast Translocation of Proteins through Solid State Nanopores** *Nano Letters* **13**:658–663  
<https://doi.org/10.1021/nl3042678>

Prime KL , Whitesides GM. (1993) **Adsorption of proteins onto surfaces containing end-attached oligo(ethylene oxide): a model system using self-assembled monolayers** *Journal of the American Chemical Society* **115**:10714–10721  
<https://doi.org/10.1021/ja00076a032>

Reichelt R , Holzenburg A , Buhle J E L , Jarnik M , Engel A , Aebi U. (1990) **Correlation between structure and mass distribution of the nuclear pore complex and of distinct pore complex components** *Journal of Cell Biology* **110**:883–894  
<https://doi.org/10.1083/jcb.110.4.883>

Rout MP , Aitchison JD , Magnasco MO , Chait BT. (2003) **Virtual gating and nuclear transport: the hole picture** *Trends in Cell Biology* **13**:622–628  
<https://doi.org/10.1016/j.tcb.2003.10.007>

Sanabria H , Rodnin D , Hemmen K , Peulen T , Felekyan S , Fleissner M , Dimura M , Koberling F , Kühnemuth R , Hubbell W , Gohlke H , Seidel C. (2020) **Resolving dynamics and function of transient states in single enzyme molecules** *Nat Commun* **11**

Schleicher KD , Dettmer SL , Kapinos LE , Pagliara S , Keyser UF , Jeney S , Lim RYH. (2014) **Selective transport control on molecular velcro made from intrinsically disordered proteins** *Nature Nanotechnology* **9**:525–530  
<https://doi.org/10.1038/nnano.2014.103>

Schmidt HB , Görlich D. (2016) **Transport Selectivity of Nuclear Pores, Phase Separation, and Membraneless Organelles** *Trends in Biochemical Sciences* **41**:46–61  
<https://doi.org/10.1016/j.tibs.2015.11.001>

Schmidt HB , Görlich D. (2015) **Nup98 FG domains from diverse species spontaneously phase-separate into particles with nuclear pore-like permselectivity** *eLife* **4**  
<https://doi.org/10.7554/eLife.04251>

Schrimpf W , Barth A , Hendrix J , Lamb DC. (2018) **PAM: A Framework for Integrated Analysis of Imaging, Single-Molecule, and Ensemble Fluorescence Data** *Biophysical Journal* **114**:1518–1528  
<https://doi.org/10.1016/j.bpj.2018.02.035>

van der Spoel D , Lindahl E , Hess B , Groenhof G , Mark AE , Berendsen HJC. (2005) **GROMACS: Fast, flexible, and free** *J Comput Chem* **26**:1701–1718  
<https://doi.org/10.1002/jcc.20291>

Stennett E , Ciuba M , Lin S , Levitus M. (2015) **Demystifying PIFE: The Photophysics Behind the Protein-Induced Fluorescence Enhancement Phenomenon in Cy3** *J Phys Chem Lett* **6**:1819–1823

Strawn LA , Shen T , Shulga N , Goldfarb DS , Wentz SR. (2004) **Minimal nuclear pore complexes define FG repeat domains essential for transport** *Nature Cell Biology* **6**:197–206  
<https://doi.org/10.1038/ncb1097>

van der Walt S , Colbert SC , Varoquaux G. (2011) **The NumPy Array: A Structure for Efficient Numerical Computation** *Computing in Science Engineering* **13**:22–30

Virtanen P , Gommers R , Oliphant TE , Haberland M , Reddy T , Cournapeau D , Burovski E , Peterson P , Weckesser W , Bright J , van der Walt SJ , Brett M , Wilson J , Jarrod Millman K , Mayorov N , Nelson ARJ , Jones E , Kern R , Larson E , Carey C , et al. (2020) **SciPy 1.0: Fundamental Algorithms for Scientific Computing in Python** *Nature Methods* **17**:261–272  
<https://doi.org/10.1038/s41592-019-0686-2>

Wagner R , Kapinos L , Marshall N , Stewart M , Lim RH. (2015) **Promiscuous Binding of Karyopherin $\beta$ 1 Modulates FG Nucleoporin Barrier Function and Expedites NTF2 Transport Kinetics** *Biophysical Journal* **108**:918–927  
<https://doi.org/10.1016/j.bpj.2014.12.041>

Watkins LP , Yang H. (2005) **Detection of Intensity Change Points in Time-Resolved Single-Molecule Measurements** *The Journal of Physical Chemistry B* **109**:617–628  
<https://doi.org/10.1021/jp0467548>

Winogradoff D , Chou HY , Maffeo C , Aksimentiev A. (2022) **Percolation transition prescribes protein size-specific barrier to passive transport through the nuclear pore complex** *Nature Communications* **9**  
<https://doi.org/10.1038/s41467-022-32857-1>

Yamada J , Phillips JL , Patel S , Goldfien G , Calestagne-Morelli A , Huang H , Reza R , Acheson J , Krishnan VV , Newsam S , Gopinathan A , Lau EY , Colvin ME , Uversky VN , Rexach MF. (2010) **A Bimodal Distribution of Two Distinct Categories of Intrinsically Disordered Structures with Separate Functions in FG Nucleoporins** *Molecular & Cellular Proteomics* **9**:2205–2224  
<https://doi.org/10.1074/mcp.M000035-MCP201>

Zila V , Margiotta E , Turoňová B , Müller TG , Zimmerli CE , Mattei S , Allegretti M , Börner K , Rada J , Müller B , Lusic M , Kräusslich HG , Beck M. (2021) **Cone-shaped HIV-1 capsids are transported through intact nuclear pores** *Cell* **184**:1032–1046  
<https://doi.org/10.1016/j.cell.2021.01.025>

Zimmerli CE , Allegretti M , Rantos V , Goetz SK , Obarska-Kosinska A , Zagorij I , Halavatyi A , Hummer G , Mahamid J , Kosinski J , Beck M. (2021) **Nuclear pores dilate and constrict in cellulose** *Science* **374**  
<https://doi.org/10.1126/science.abd9776>

## Author information

### Nils Klughammer

Department of Bionanoscience, Kavli Institute of Nanoscience, Delft University of Technology, Van der Maasweg 9, 2629 HZ, Delft, The Netherlands

ORCID iD: [0000-0002-8792-2459](https://orcid.org/0000-0002-8792-2459)

**Anders Barth**

Department of Bionanoscience, Kavli Institute of Nanoscience, Delft University of Technology,  
Van der Maasweg 9, 2629 HZ, Delft, The Netherlands  
ORCID iD: [0000-0003-3671-3072](https://orcid.org/0000-0003-3671-3072)

**Maurice Dekker**

Zernike Institute for Advanced Materials, University of Groningen, Groningen, The  
Netherlands  
ORCID iD: [0000-0001-6273-071X](https://orcid.org/0000-0001-6273-071X)

**Alessio Fragasso**

Department of Bionanoscience, Kavli Institute of Nanoscience, Delft University of Technology,  
Van der Maasweg 9, 2629 HZ, Delft, The Netherlands  
ORCID iD: [0000-0001-8366-2998](https://orcid.org/0000-0001-8366-2998)

**Patrick R. Onck**

Zernike Institute for Advanced Materials, University of Groningen, Groningen, The  
Netherlands  
ORCID iD: [0000-0001-5632-9727](https://orcid.org/0000-0001-5632-9727)

**Cees Dekker**

Department of Bionanoscience, Kavli Institute of Nanoscience, Delft University of Technology,  
Van der Maasweg 9, 2629 HZ, Delft, The Netherlands

**For correspondence:** [c.dekker@tudelft.nl](mailto:c.dekker@tudelft.nl)

ORCID iD: [0000-0001-6273-071X](https://orcid.org/0000-0001-6273-071X)

**Editors**

Reviewing Editor

**Patricia Bassereau**

Institut Curie, France

Senior Editor

**Aleksandra Walczak**

CNRS, France

**Reviewer #1 (Public Review):**

The contribution of Klughammer et al reports on the fabrication and functionalization of zero-mode waveguides of different diameters as a mimic system for nuclear pore complexes. Moreover, the researchers performed molecular transport measurements on these mimic systems (together with molecular dynamic simulations) to assess the contribution of pore diameter and Nsp functionalization on the translocation rates of BSA, the nuclear transport protein Kap95 and finally the impact of different Kap95 concentrations on BSA translocation and overall selectivity of the mimicked pores as a function of their diameter. In order to assess the effect of the Nsp1 on the coated pores to the translocation rates and molecular selectivity they also conducted separated experiments on bare nano-pores, i.e., without coating, and of different diameters. One of the most novel aspects of this contribution is the detection scheme used to assess the translocation rates & selectivity, i.e., the use of an optical



scheme based on single molecule fluorescence detection as compared to previous works that have mostly relied on conductance measurements. The results are in general convincing, the experiments carefully performed and the procedures explained in detail. Some weaknesses are identified on the FDTD simulations and interpretation of the single molecule data since they might be affected by quenching of the dye in close proximity to the pore. These weaknesses should be clarified and discussed properly.

Importantly, this study provides new insights on the mechanisms of nuclear transport contributing to further our understanding on how real nuclear-pore complexes (i.e., in living cell) can regulate molecular transport. The recent findings that the nuclear pore complexes are sensitive to mechanical stimulation by modulating their effective diameters, adds an additional level of interest to the work reported here, since the authors thoroughly explored different nano-pore diameters and quantified their impact on translocation and selectivity. There are multiple avenues for future research based on the system developed here, including higher throughput detection, extending to truly multicolor schemes or expanding the range of FG-Nups, nuclear transport proteins or cargos that need to be efficiently transported to the nucleus through the nuclear pore complexes. As a whole, this is an important contribution to the field.

## Reviewer #2 (Public Review):

- The central component of the Nuclear Pore Complex (NPC) that controls nucleocytoplasmic transport is the assembly of the intrinsically disordered proteins (IDPs) that line its passageway. Nanopore based mimics functionalized with these IDPs have been an important tool in understanding the mechanisms of protein transport through the NPC. This paper develops a new type of nanopore NPC mimic that acts as Zero Mode Waveguide enabling optical detection of protein translocations on the single molecule level in pores of different diameters. This is a significant improvement over previous mimics, where optical detection was used only for measurement of bulk fluxes, while single molecule detection relied on electrochemical methods that potentially introduce substantial artifacts. Studying the dependence of transport on the pore diameter is interesting because of its important connections to mechanosensitivity of protein partitioning in cells, which can be difficult to directly control and study in live cells.
- The authors study the transport of individual transport proteins in the dilute regime, and compare the transport of the transport proteins that naturally carry cargoes through the NPC with the transport of BSA that serves as a neutral control. The paper confirms the insights of previous work by the same and other authors - IDP functionalized nanopores are selective in a sense that they conduct the transport proteins well while blocking the passage of BSA. As reported in the paper, the selectivity disappears at large pore diameters which become similar to empty pores because the IDPs don't stretch far enough to cover the pore cross-section.
- The authors use one-bead-per-amino acid coarse grained modeling of the IDPs that they developed and validated previously, to model the distribution of the IDPs in the pores. Combining the simulations with the recently developed "void" model of transport through IDP network and phenomenological transport models, they provide an explanation for the observed reduction in the flux of the neutral control proteins compared to that of transport proteins. The translocation of transport proteins is not modeled directly.
- Together, the experimental and the computational results constitute convincing evidence that points toward the correctness of our current understanding of the

physical mechanisms of NPC transport.

- The authors study interference between the transport proteins and the neutral control proteins at high concentrations of the latter, where the pore is occupied by multiple transport proteins. The results appear to be different from previous observations (but more study is needed). I think more discussion of how the results seem with the previous work and what are the potential implication for NPC transport would be welcome.
- The authors use simulations and phenomenological models of transport to analyze the crowded regime. It appears there are some inconsistencies in the application of these models in the dilute and crowded regimes, that should be clarified.
- Some details of the experimental system and the appropriateness of the transport models should be explained more - such as the role of the hydrodynamic pressure gradient.

### Reviewer #3 (Public Review):

In this study, a minimalistic setup was used to investigate the selectivity of the nuclear pore complex as a function of its diameter. For this an array of solid-state pores was designed in a free-standing palladium membrane and attached to a PDMS-based fluidic cell, which could be mounted on a confocal microscope. In this way, the frequency of translocation events could be measured in an unbiased manner, i.e., no voltage was applied in this setup to facilitate them as it was done previously (Kowalczyk et al., 2011; Ananth et al, 2018; Fragasso et al., 2021, 2022), and therefore they can be considered as spontaneous. Moreover, the pores exhibited the key properties of the nuclear pore complex: (i) the size of the pore, (ii) disordered FG Nups specifically attached in the central channel; (ii) transport receptors that can shuttle through the central channel by binding to the FG Nups. Additionally, the properties of such minimalistic system could be well controlled. This gave the authors an advantage to monitor the translocation of multiple fluorescently labeled molecules (e.g. Kap95 and BSA) simultaneously, in real time and under well controlled conditions.

#### Strength:

By being able to adjust each system parameter independently, the authors were able to monitor a reciprocal influence of active transporters, such as Kap95, and passive diffusion (using BSA as passive cargo) at different pore sizes and protein concentrations. It was discovered that up to a certain pore size (ca. 50-60 nm, which is close to the diameter of the physiological nuclear pore complex) and the Nsp1 density, Kap95 binding in the pore significantly increases selectivity as it was previously predicted by 'Kap-centric control' model (Kapinos, et al, 2014, Wagner et al, 2015). However, in pores larger than 60 nm, this effect was fading and becoming negligible in very large pores (> 60 nm), showing that the pores could become leaky and less selective due to stretching, as has been previously suggested (Andreu et al., 2022). It was also shown that passive molecules, such as BSA, had no effect on the Kap95 translocation frequency through the pore.

The experimental data were also supported by coarse-grained modelling of Nsp1-coated pores, and the theoretical prediction correlates qualitatively with the experimentally obtained data. These simulations show that there is a relationship between pore diameter and Nsp1 conformation. Based on these simulations, the authors suggest that in small pores (<60 nm) Kap95 increases selectivity by interacting with the Nsp1-FG domains across the pore, whereas this is less likely for larger pore diameters and Kap95 may collapse the Nsp1-FG domains along the pore walls, making them more permeable.

Weaknesses:

However, the simulations did not consider an effect of Kap95 on the conformation of the Nsp1 layer within the pore, which weakens the conclusion of Kap95-induced collapse, even though it seems very plausible.

In addition, there is a discrepancy in the frequency of translocation events in different experimental setups reported in different studies. The authors suggest that this may be due to differences in the sensitivity of detection methods.

Strength of evidence:

However, this does not detract from the results obtained in this work, as the conclusions are based on the relative changes compared to the numerous controls within the same experimental setup and a careful evaluation of all possible sources of error.