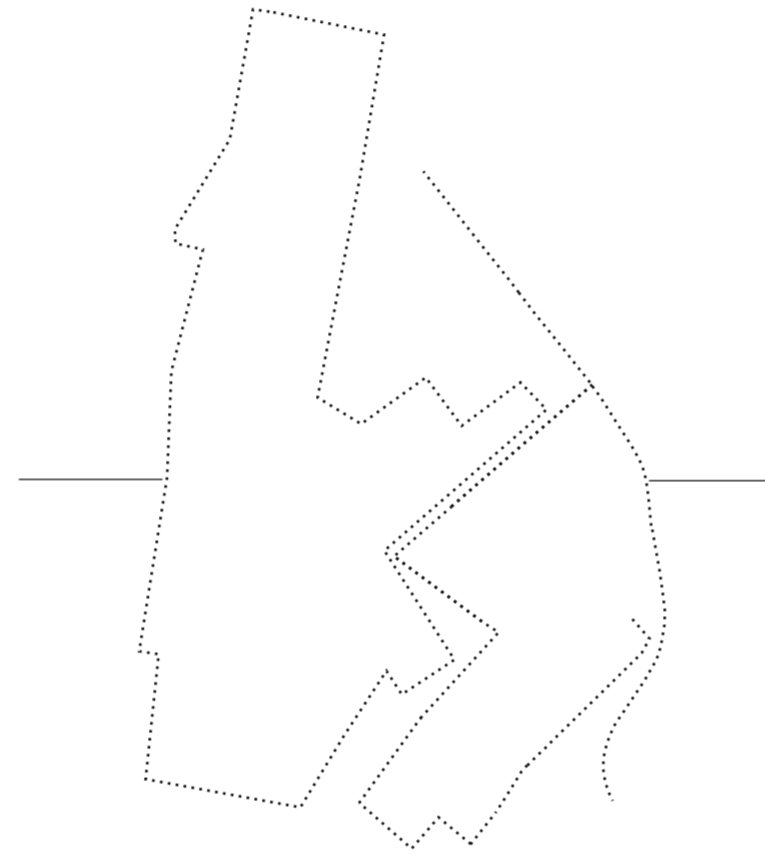


# Built to Crack

The physical isolation of Natzaret has protected and charged the neighborhood with “preserved” local aesthetics that grounds it as one-of-a-kind



The enclaved Natzaret to the west and the harbor wall to the east, are existing urban conditions that symbolize the politics of the built environment and all that is being retained within it, as a fertile ground for potential rehabilitation






Location Plan  
1:10000

1 Built to Crack  
2 Fashion House Valencia  
3 La Marina  
4 The Harbor  
5 Abandoned Formula One Circuit  
6 City of Arts and Sciences  
7 Turia Park  
8 Old Turia Riverbed  
9 La Punta

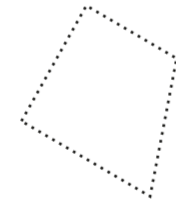
— The Wall of Natzaret  
- - - Transportation

0 100 200 300 400 m

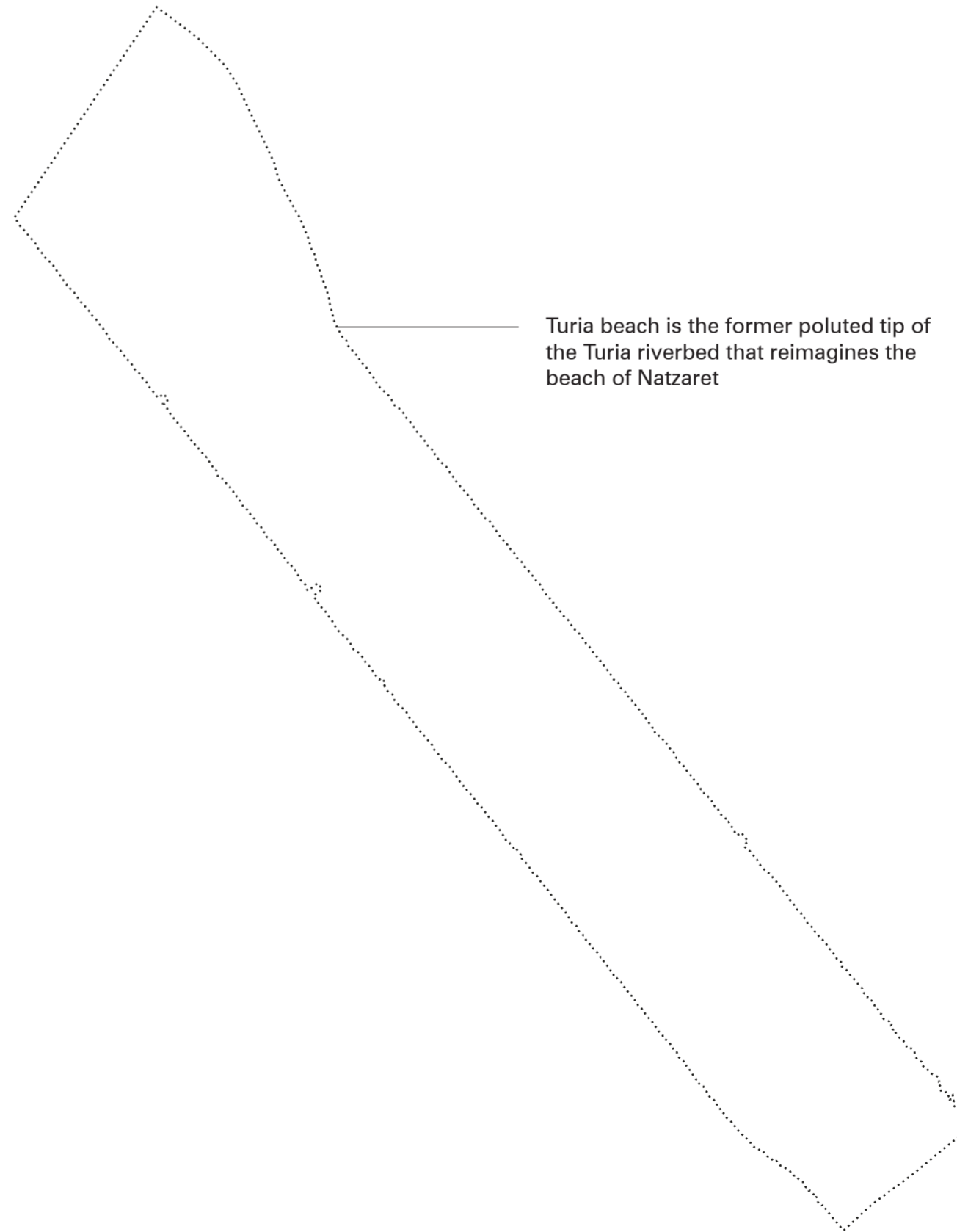




The reception building is the check-in point of the new guests before they are taken to their guestrooms somewhere in the neighborhood



Turia beach is the former polluted tip of the Turia riverbed that reimagines the beach of Nazaret







Site Plan  
1:1500

1 Reception  
2 Breakfast Club  
3 Valet Parking  
4 Sky Bar  
5 Turia Beach  
6 Athletic Park  
7 Gym & Wellness  
8 The Pools

— The Wall  
 [Stippled] Grass  
 [Dotted] Sand  
 [Wavy] Water  
 [Hatched] Asphalt / Concrete

0 20 40 60 m







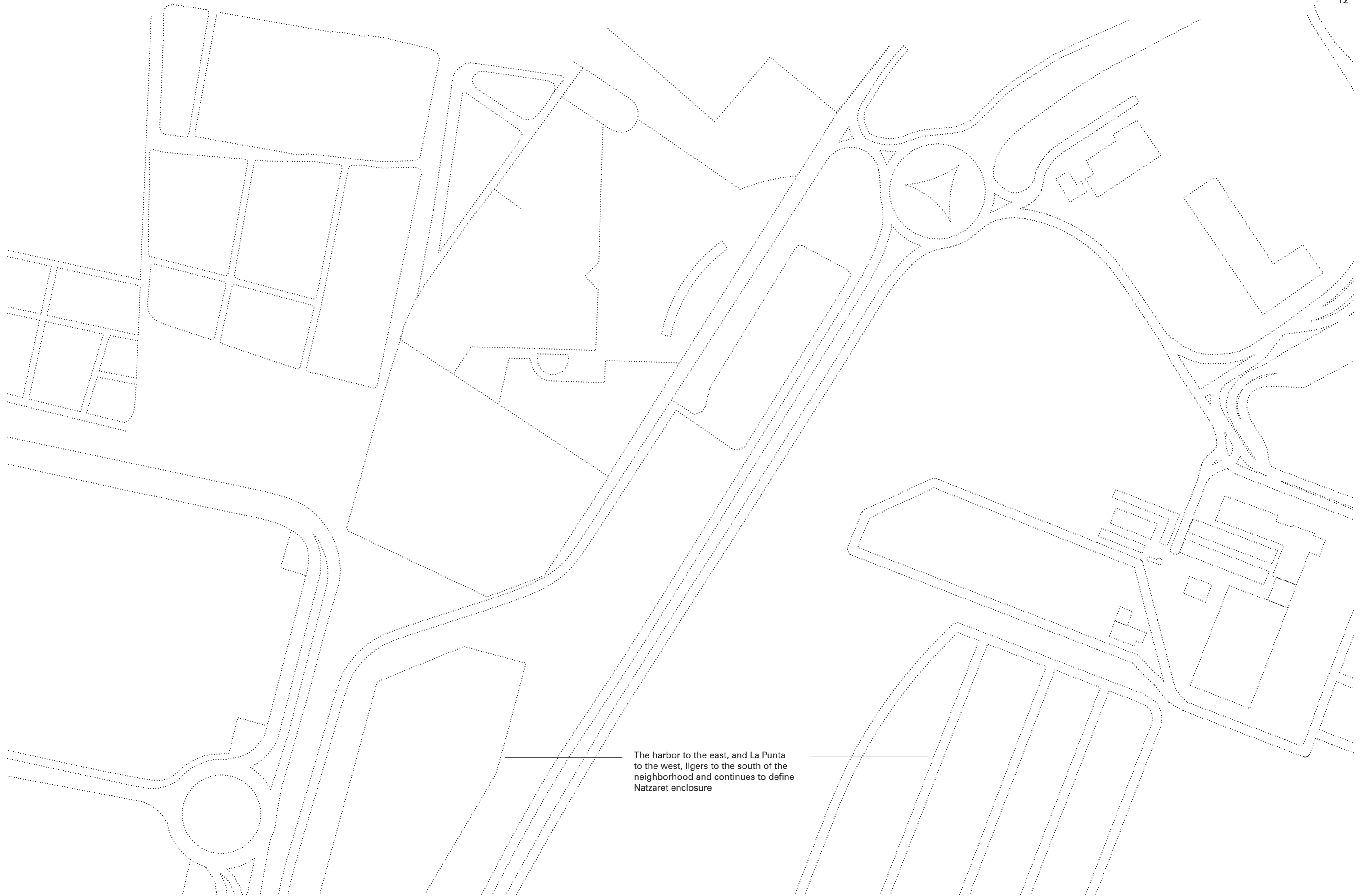
Site Plan  
1:1500

- 9 Paella Joint
- 10 The Spa
- 11 Coffee Place
- 12 Bike Rental
- 13 Repair & Maintenance
- 14 Margarita Bar
- 15 Laundry & Dry Cleaning
- 16 Pumptrack Park
- 17 Flower Garden
- 18 Grow-your-own Garden
- 19 Wine Bar
- 20 Bakery
- 21 El Cocinero
- 22 Administration
- 23 Service Training
- 24 Storage
- 25 Leisure Garden
- 26 Carverceria
- 27 Skating Ring
- 28 Benimar Ballroom

- T Tram Stop Natzaret
- The Wall
- Grass
- Sand
- Water
- Asphalt / Concrete

0 20 40 60 m





The harbor to the east, and La Punta to the west, ligers to the south of the neighborhood and continues to define Nazaret enclosure





2

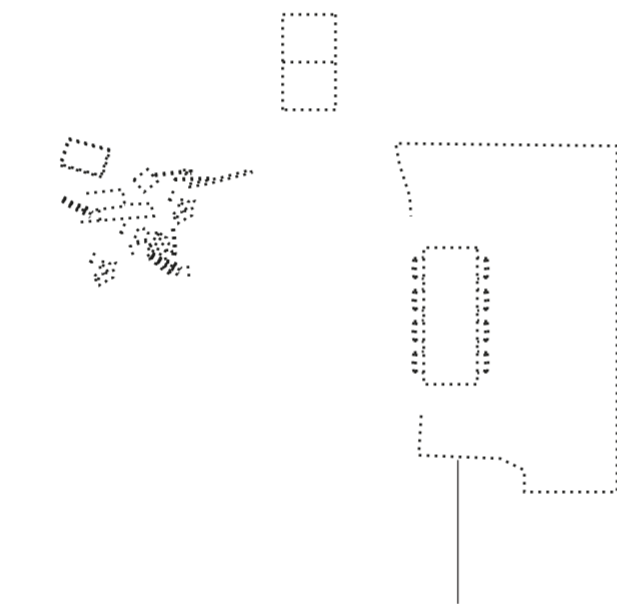
1

Site Plan  
1:1500

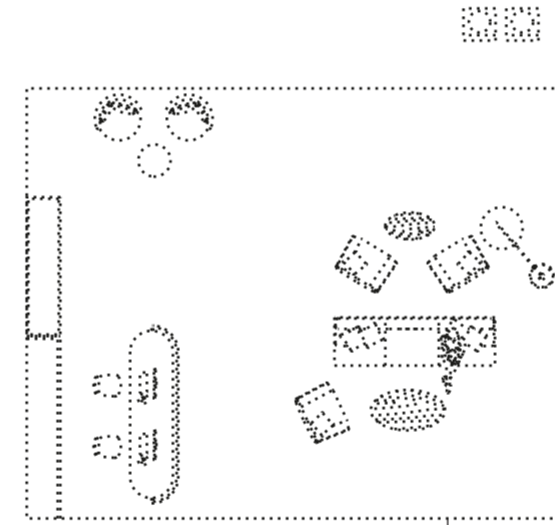
1 The Harbor  
2 La Punta

Grass  
Sand  
Water  
Asphalt / Concrete

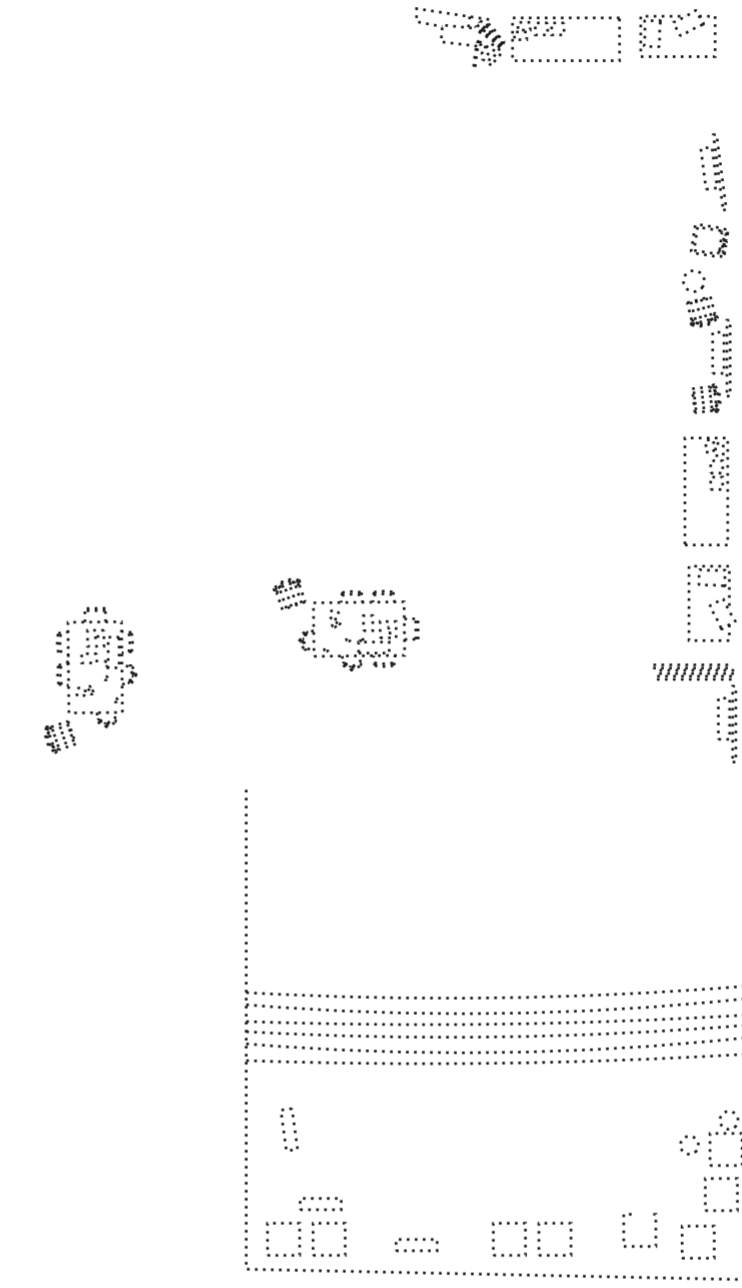
0 20 40 60 m



The staff dining area is located inside the shed that is open to the rest of the courtyard, allowing them to take breaks while playing table tennis with their guests

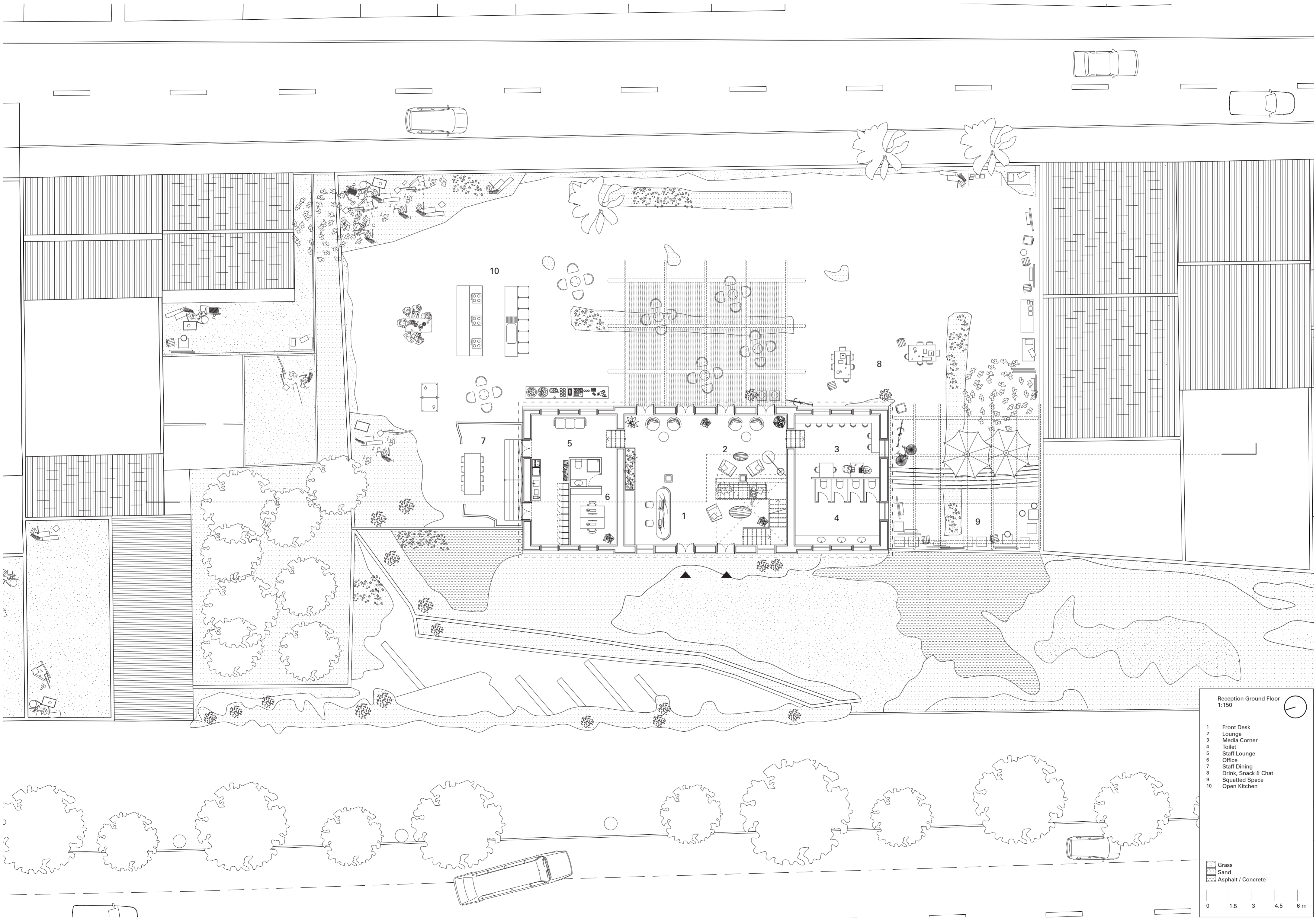


The reception space welcomes the visitors through the reception desk and offers a small lounge, while the more generous spaces are at the squatted courtyard with neighbors and staff



The squatted spaces at the courtyard of the reception building, used for laundry and shared meals by the neighbors, is where the hotel guests are invited to have food & beverage and chat with the local staff





Reception Ground Floor  
1:150

1 Front Desk  
2 Lounge  
3 Media Corner  
4 Toilet  
5 Staff Lounge  
6 Office  
7 Staff Dining  
8 Drink, Snack & Chat  
9 Squatted Space  
10 Open Kitchen

Grass  
Sand  
Asphalt / Concrete

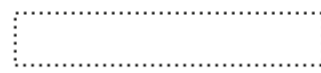
0 1.5 3 4.5 6 m



By their juxtaposed appearances, the dilapidated adjacent building facades highlight the new conceptualized reception building

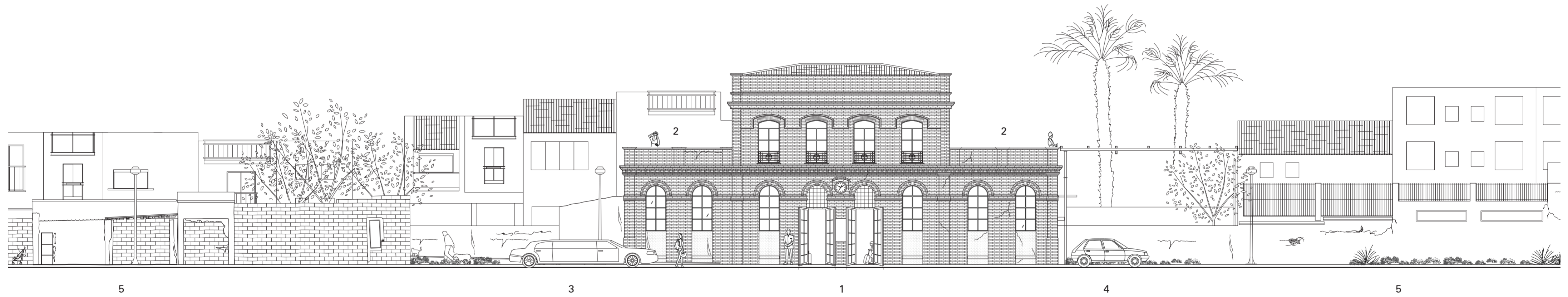


The entrance door is expanded to meet the street level and to invite guests or other visitors in



The balconies, an important Valencian building feature, are celebrated to look over the squatted outdoor space, allowing guests privacy while still capturing the daily atmosphere of the neighbors



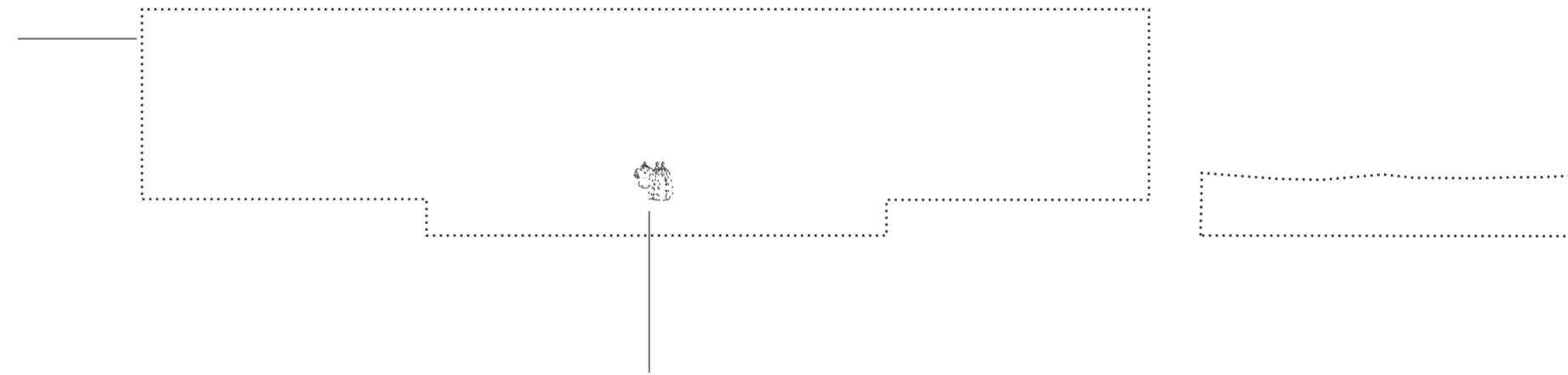


Reception West Elevation  
1:150

- 1 Entrance
- 2 Roof Terrace
- 3 Limo Service
- 4 Staff Car to Guestroom
- 5 Staff Residence / Guestrooms



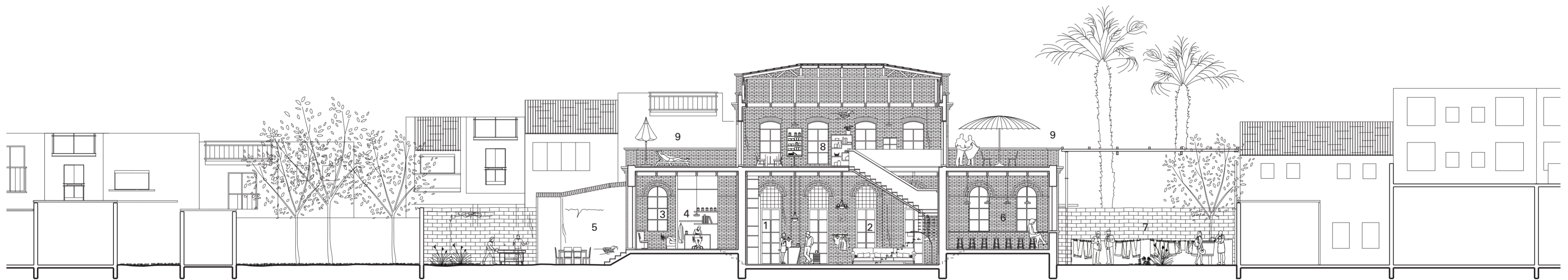
The reception space is lowered to meet the street level and re-establish the lobby as a shared and social space, while the two staff service areas remain at the original level



A "GUEST" T-shirt is given to hotel guests upon check-in completion to highlight their presence throughout the neighborhood and accelerating the services offered to them by the 6:1 staff surrounding them

The squatted space by the neighbors used for laundry and shared meals is where new guests can chat with their staff while waiting for their proper check-in



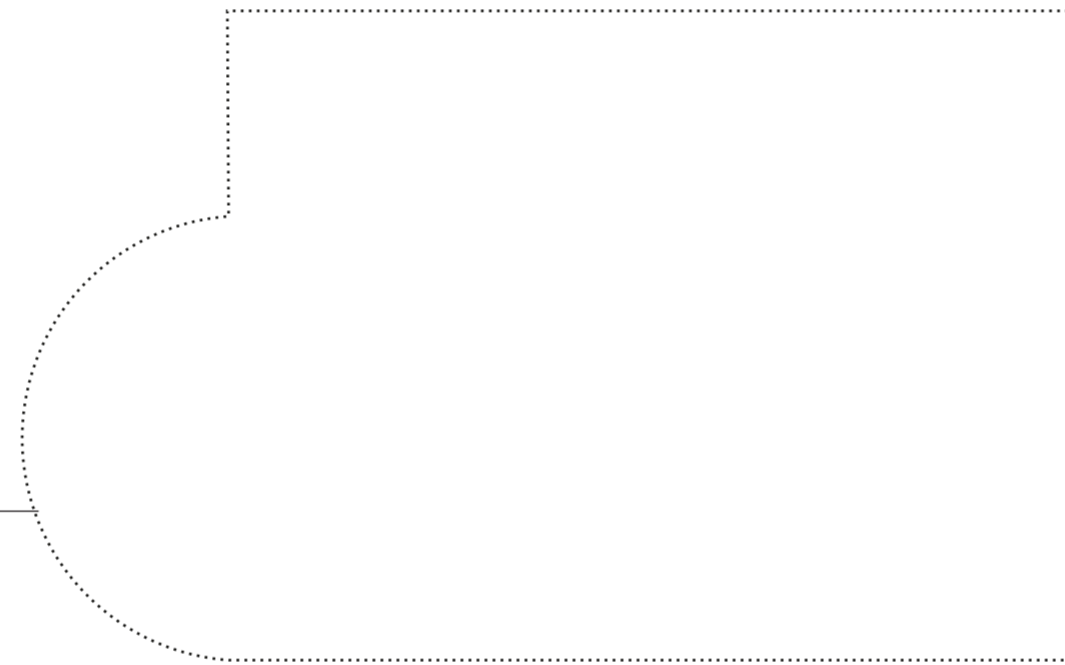


Reception Longitudinal Section  
1:150

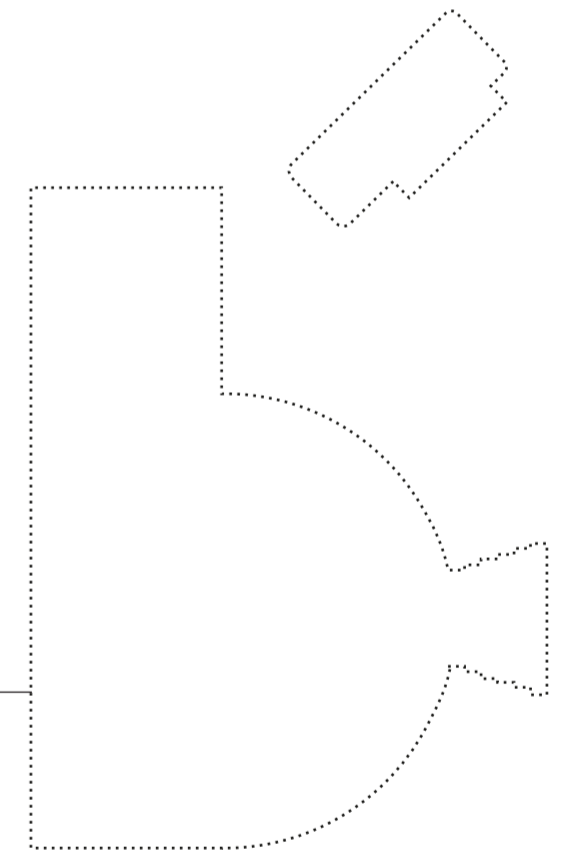
- 1 Front Desk
- 2 Lounge
- 3 Staff Area
- 4 Office
- 5 Staff Dining
- 6 Media Corner
- 7 Squatted Space
- 8 Hotel's Library and Display
- 9 Roof Terrace

0 1.5 3 4.5 6 m

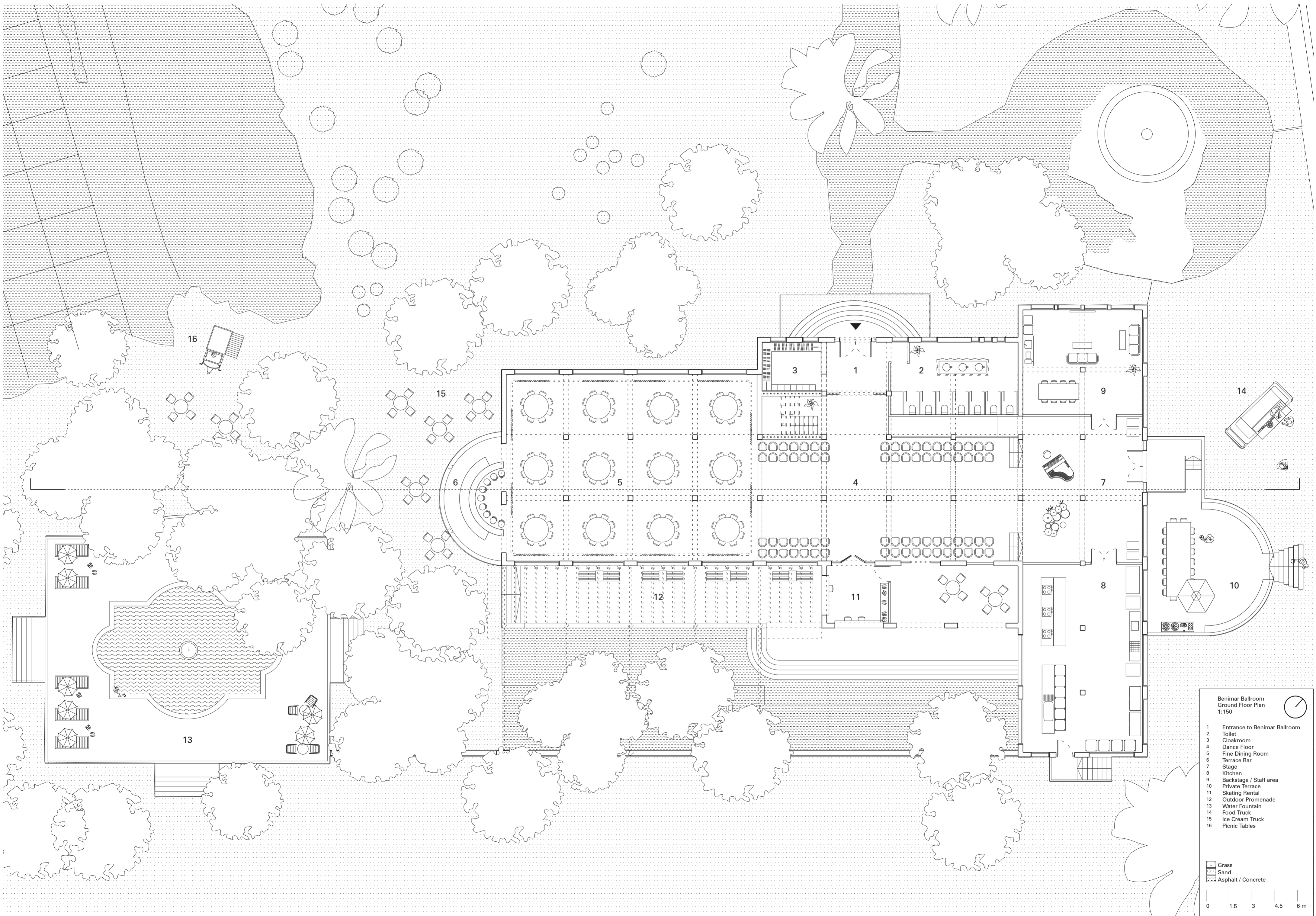
The fine dining room is adjacent to the bar terrace that serves both the seven-course-menu visitors and outdoor passersby



The private balcony offered as a luxury feature is facilitated by the food truck parked near by and served to the table by the equipped staff







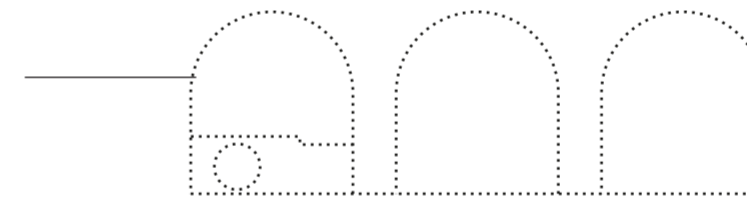
Benimar Ballroom  
Ground Floor Plan  
1:150

- 1 Entrance to Benimar Ballroom
- 2 Toilet
- 3 Cloakroom
- 4 Dance Floor
- 5 Fine Dining Room
- 6 Terrace Bar
- 7 Stage
- 8 Kitchen
- 9 Backstage / Staff area
- 10 Private Terrace
- 11 Skating Rental
- 12 Outdoor Promenade
- 13 Water Fountain
- 14 Food Truck
- 15 Ice Cream Truck
- 16 Picnic Tables

- Grass
- Sand
- Asphalt / Concrete



The original arched openings on the east facade leading to the main space, are offered as kiosks for skating rental equipment, to enjoy the skating ring near by, as part of the rehabilitation of both abandoned buildings and common spaces



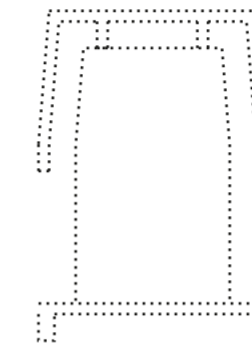




Benimar Ballroom  
East Elevation  
1:150

- 1 Water Fountain
- 2 Terrace Bar
- 3 Exterior Promenade
- 4 Skating Rental
- 5 Staff Entrance
- 6 Private Terrace
- 7 Rooftop View
- 8 Climbing Ladder





The Benimar Ballroom Tower Top is a space that captures the two emblematic horizons of the site: the housing guestrooms and the closed off harbor



The existing wooden passage on the ground floor is a threshold between the elaborated space for fine dining and the traditional space for Fallas dancing, enhancing everyday life with luxury lifestyle

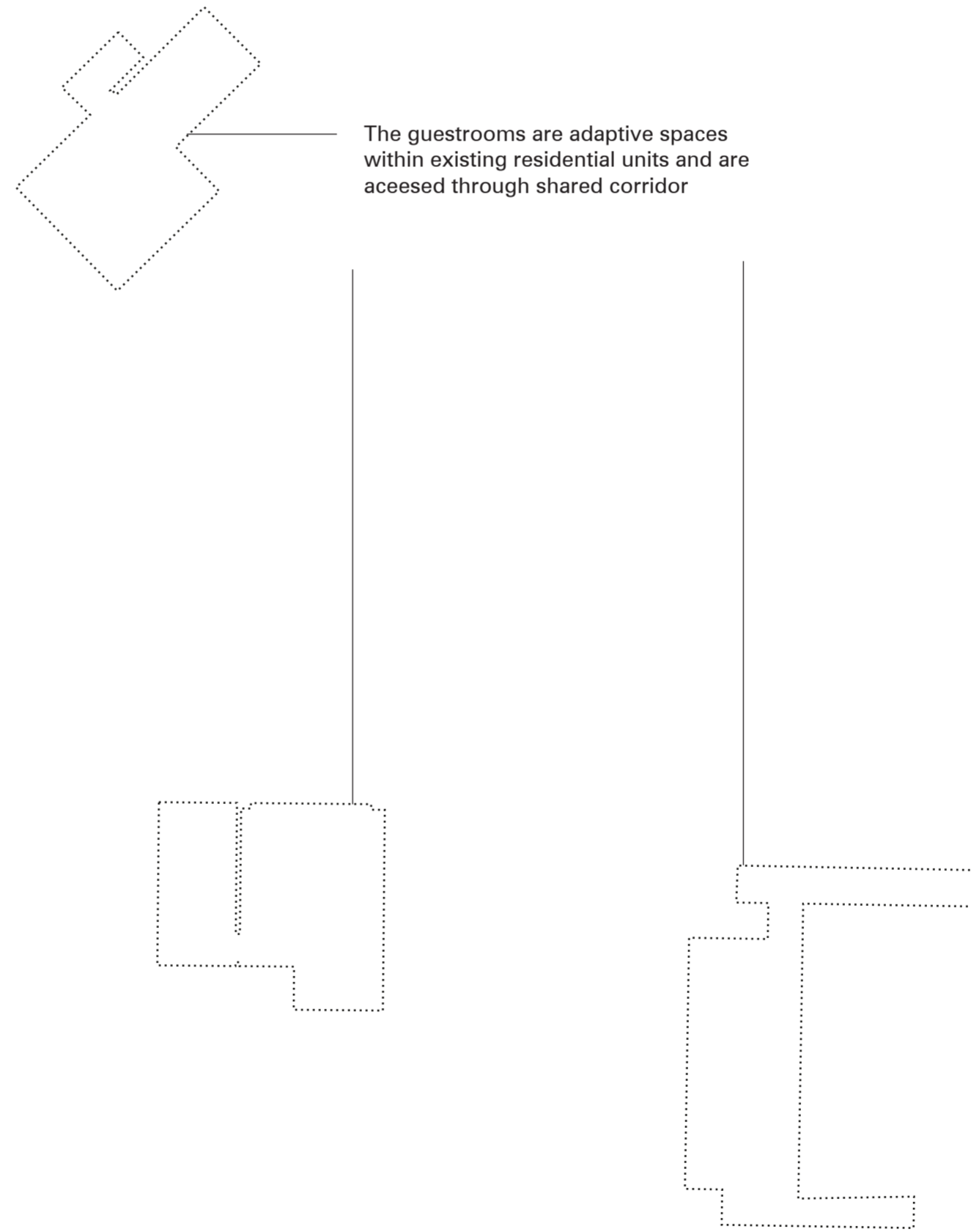




Benimar Ballroom  
Longitudinal Section  
1:150

- 1 Ice Cream Truck
- 2 Picnic Tables
- 3 Bar Terrace
- 4 Dining Room
- 5 Dance Floor
- 6 Stage
- 7 Private Terrace
- 8 Storage
- 9 Control Room
- 10 Offices
- 11 View Terrace
- 12 Rooftop View

0 1.5 3 4.5 6 m





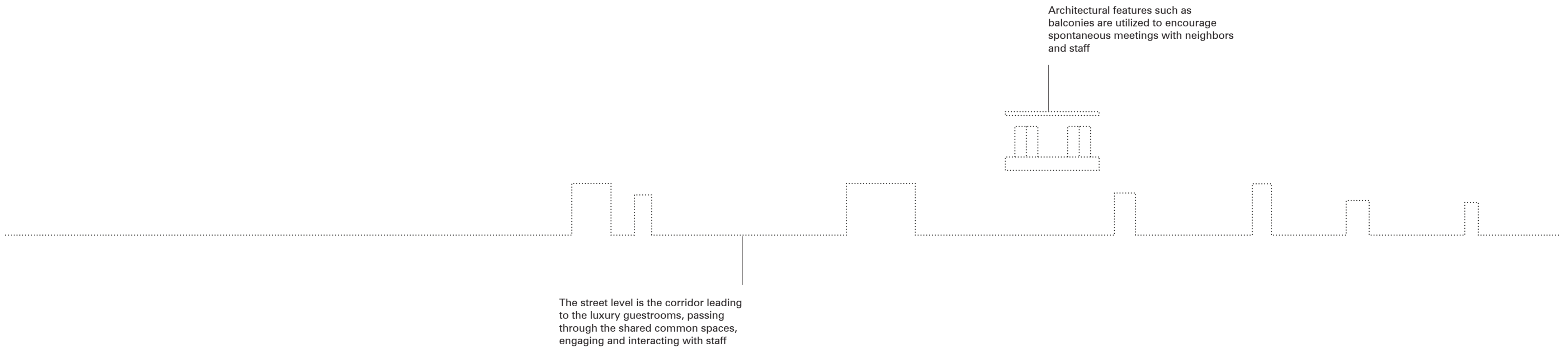


**Guestroom Floor Plans**  
1:150

1 Guestroom with balcony  
2 Guestroom with roof terrace  
3 Guestroom with a garden

Grass  
 Roof  
 Balconies  
 Water  
 Guestrooms

0 1.5 3 4.5 6 m







2

Guestrooms Elevation  
1:150

- 1 Guestroom with balcony
- 2 Guestroom's Building Entrance

0 1.5 3 4.5 6 m