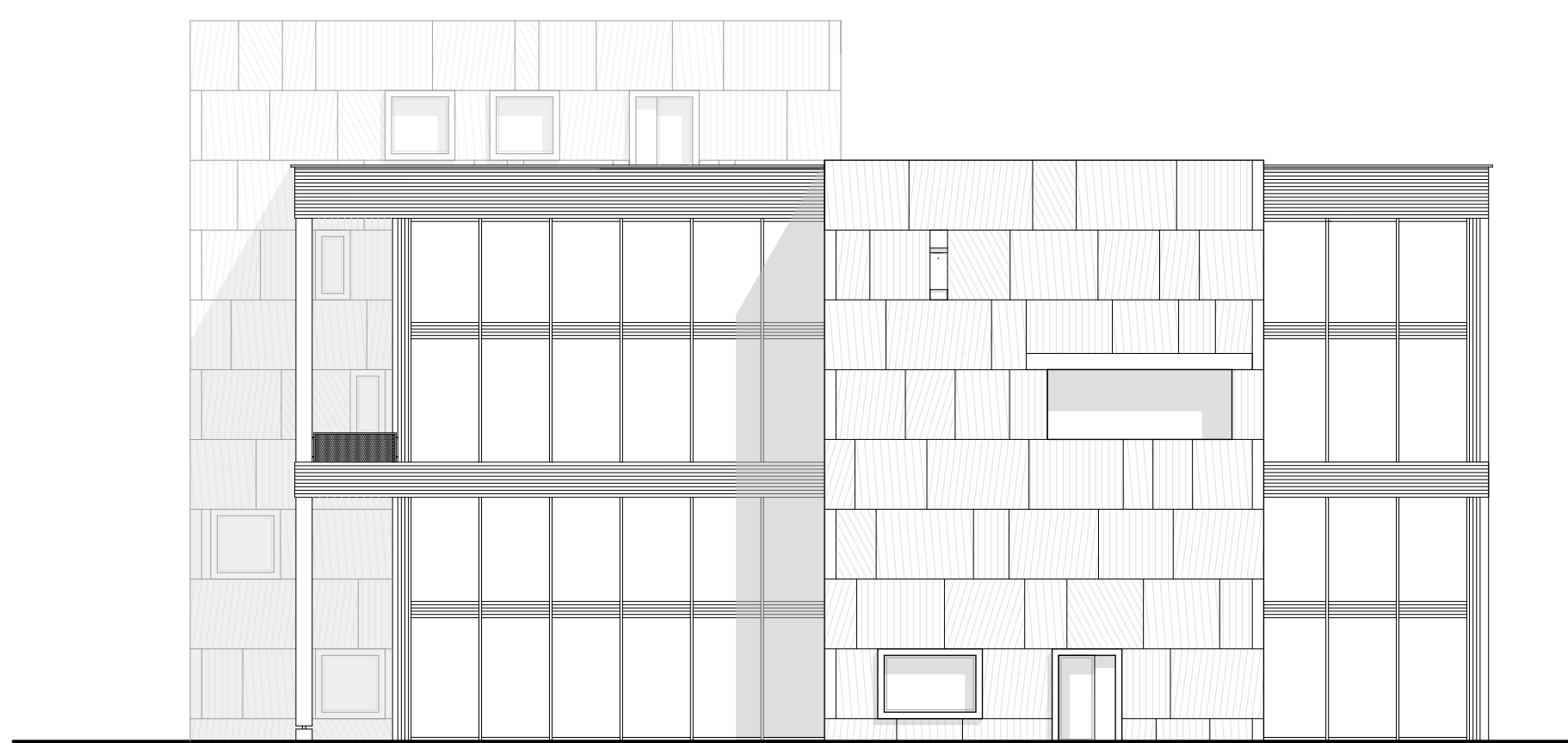
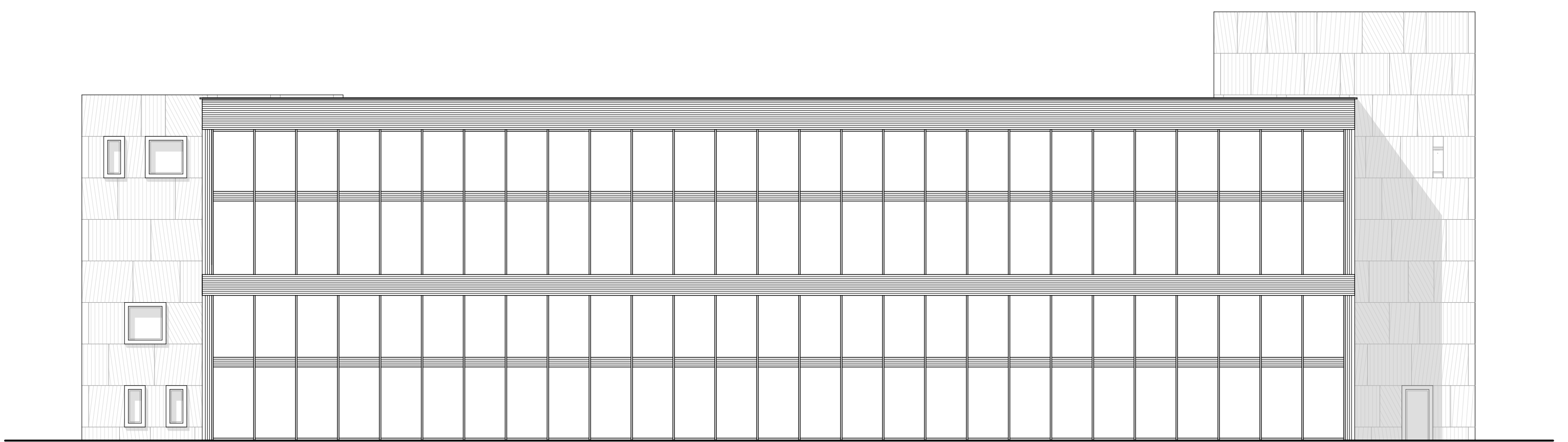
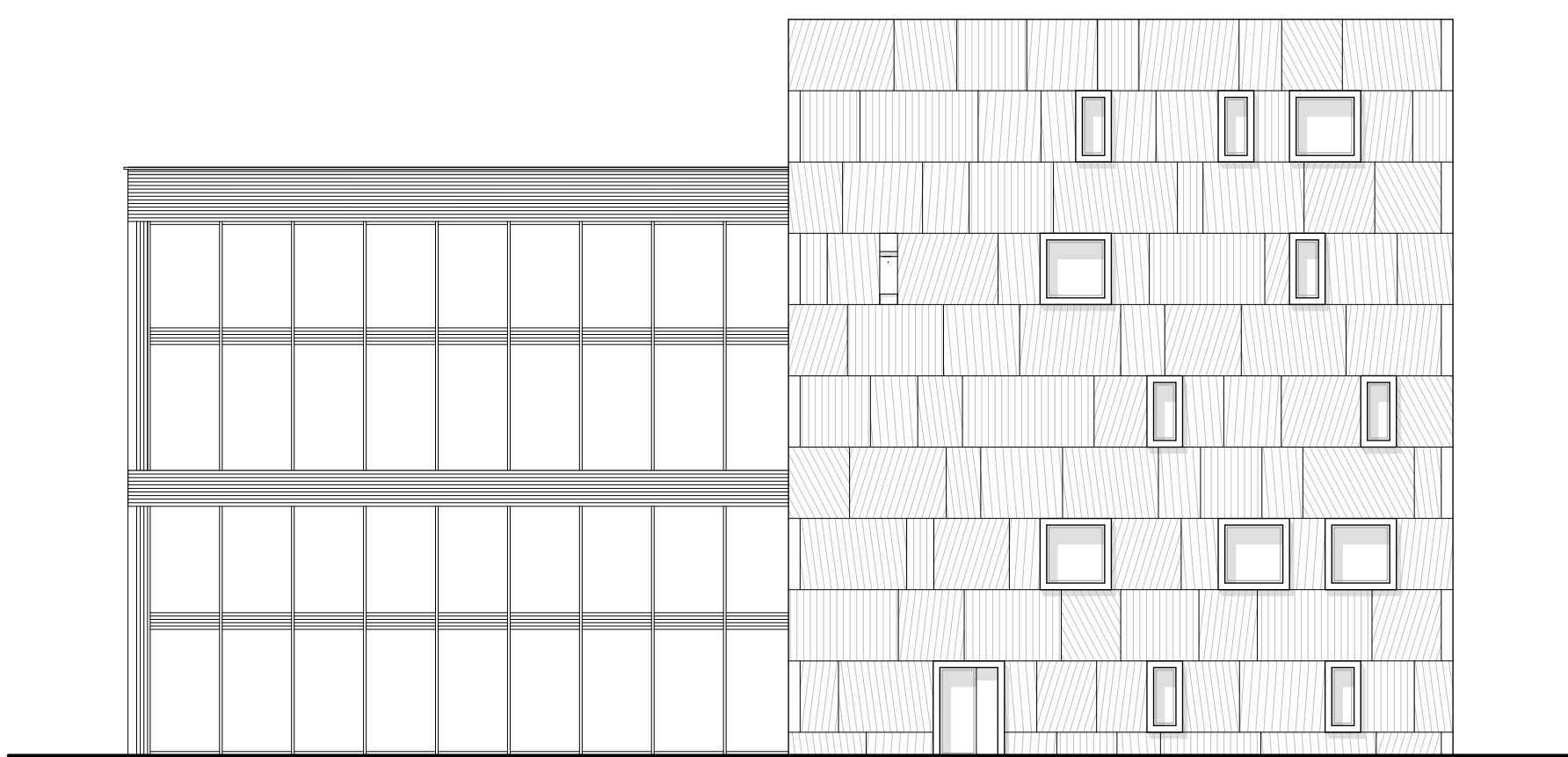
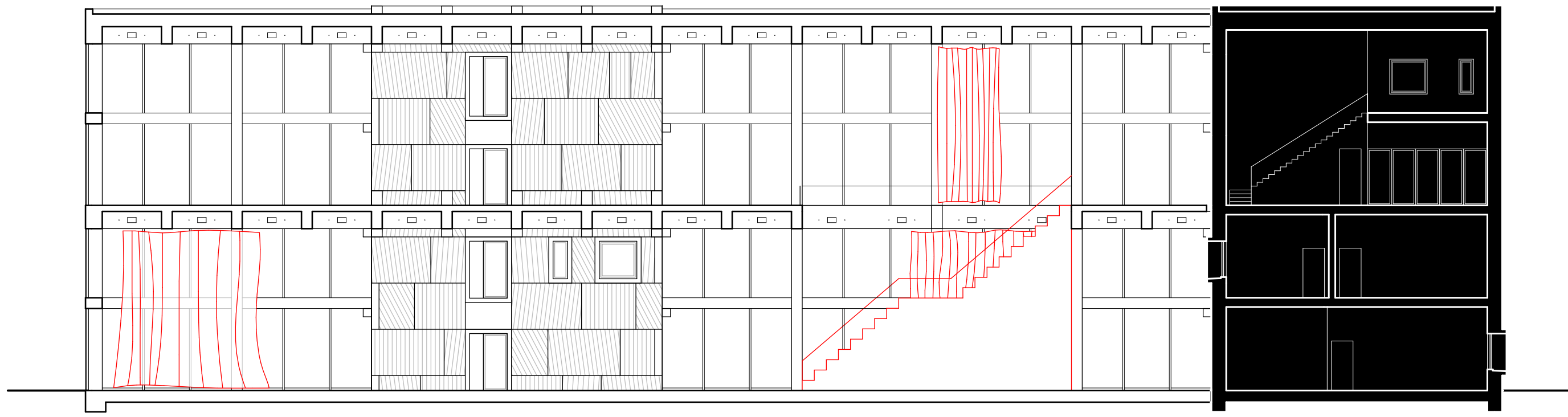


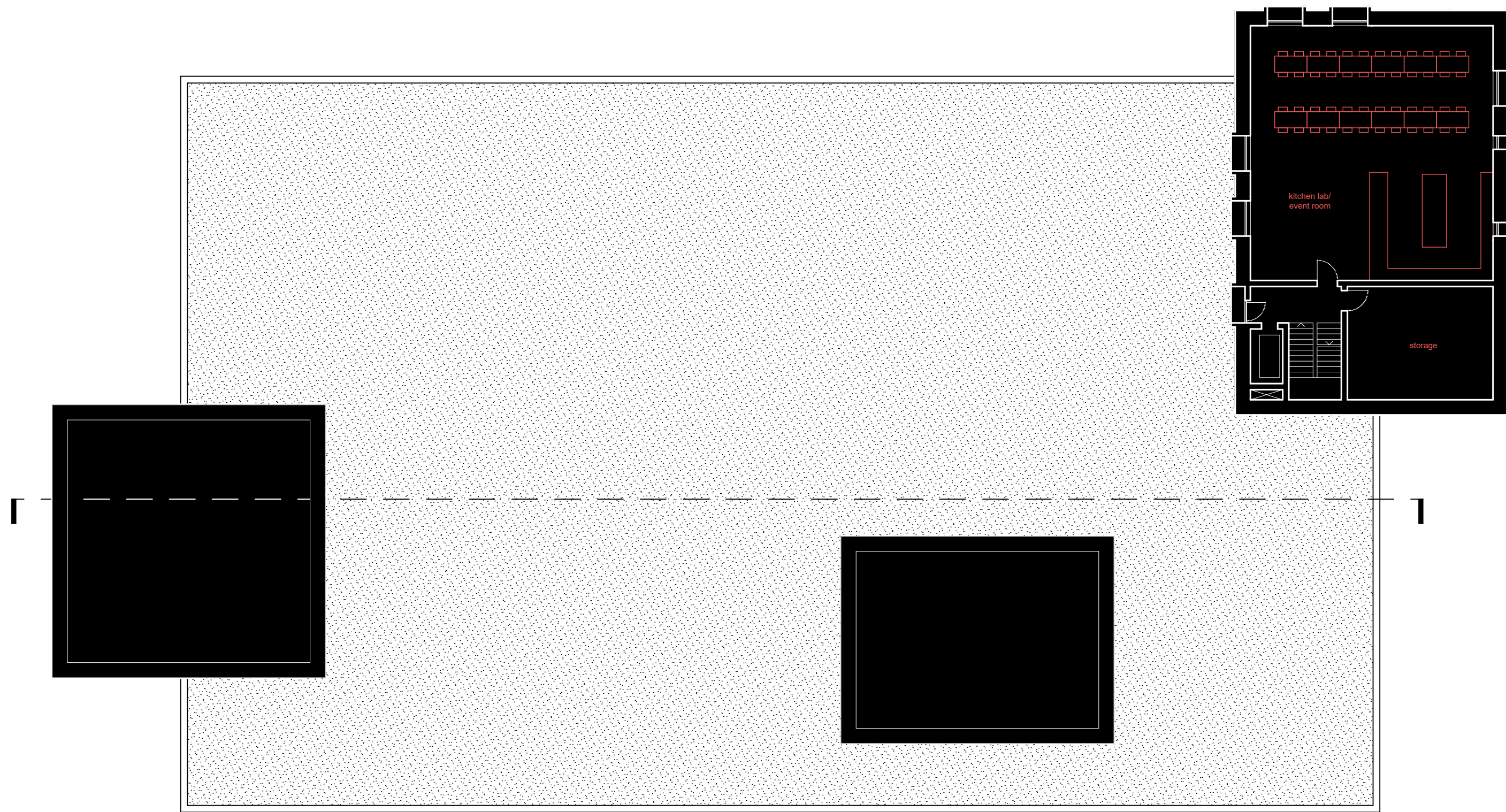
site plan 1:1000



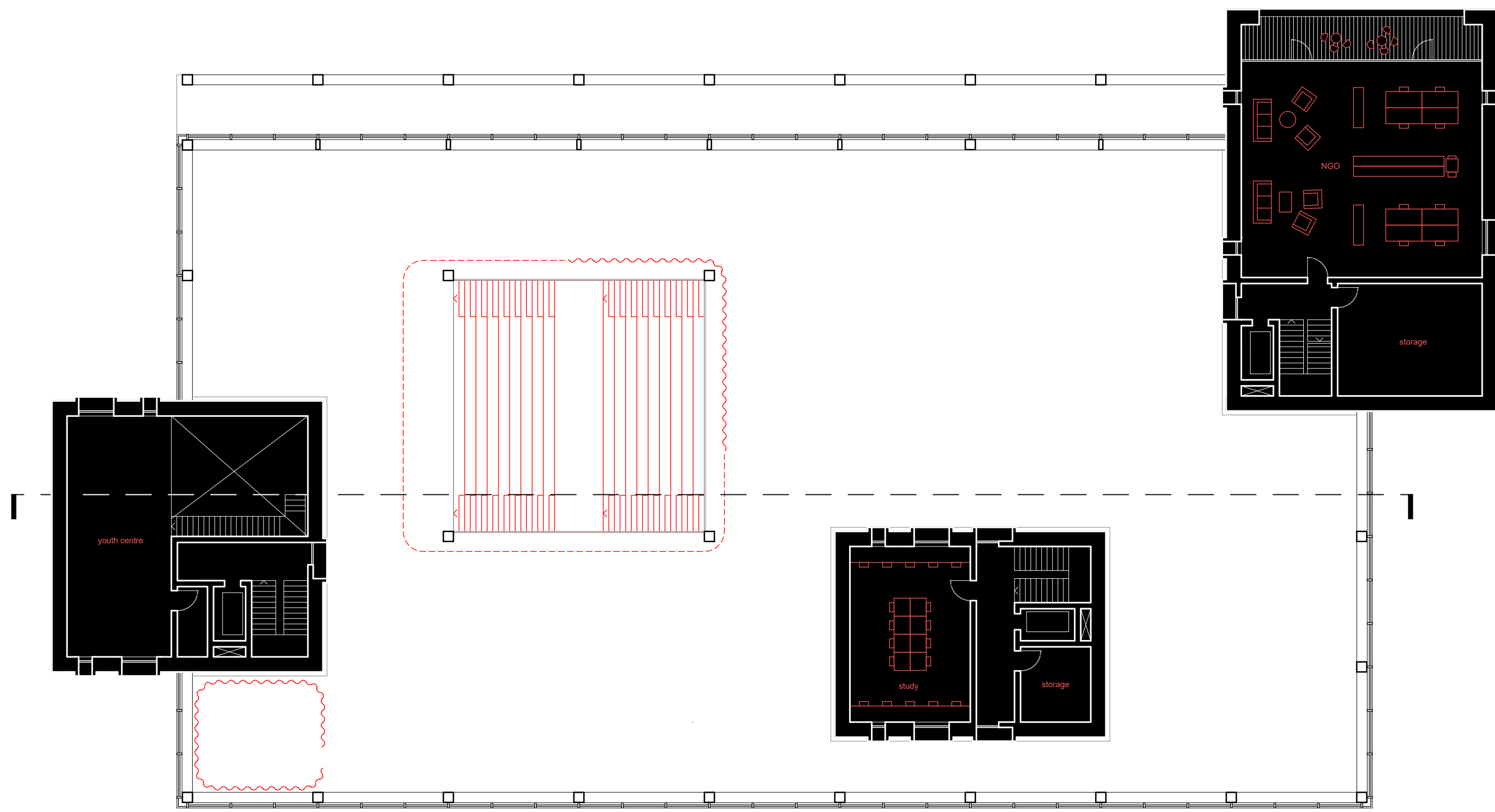
elevations 1:200



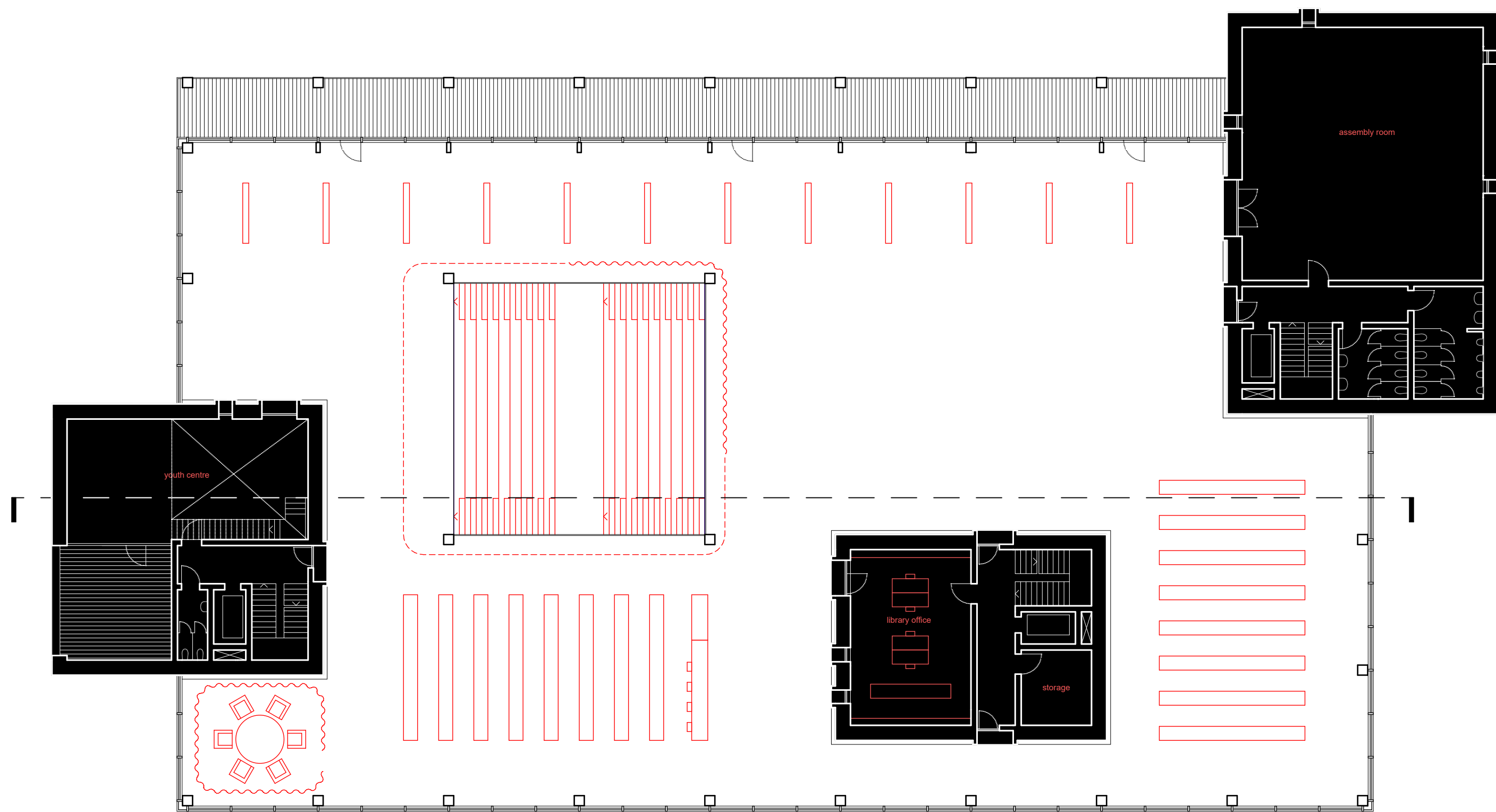
section 1:200



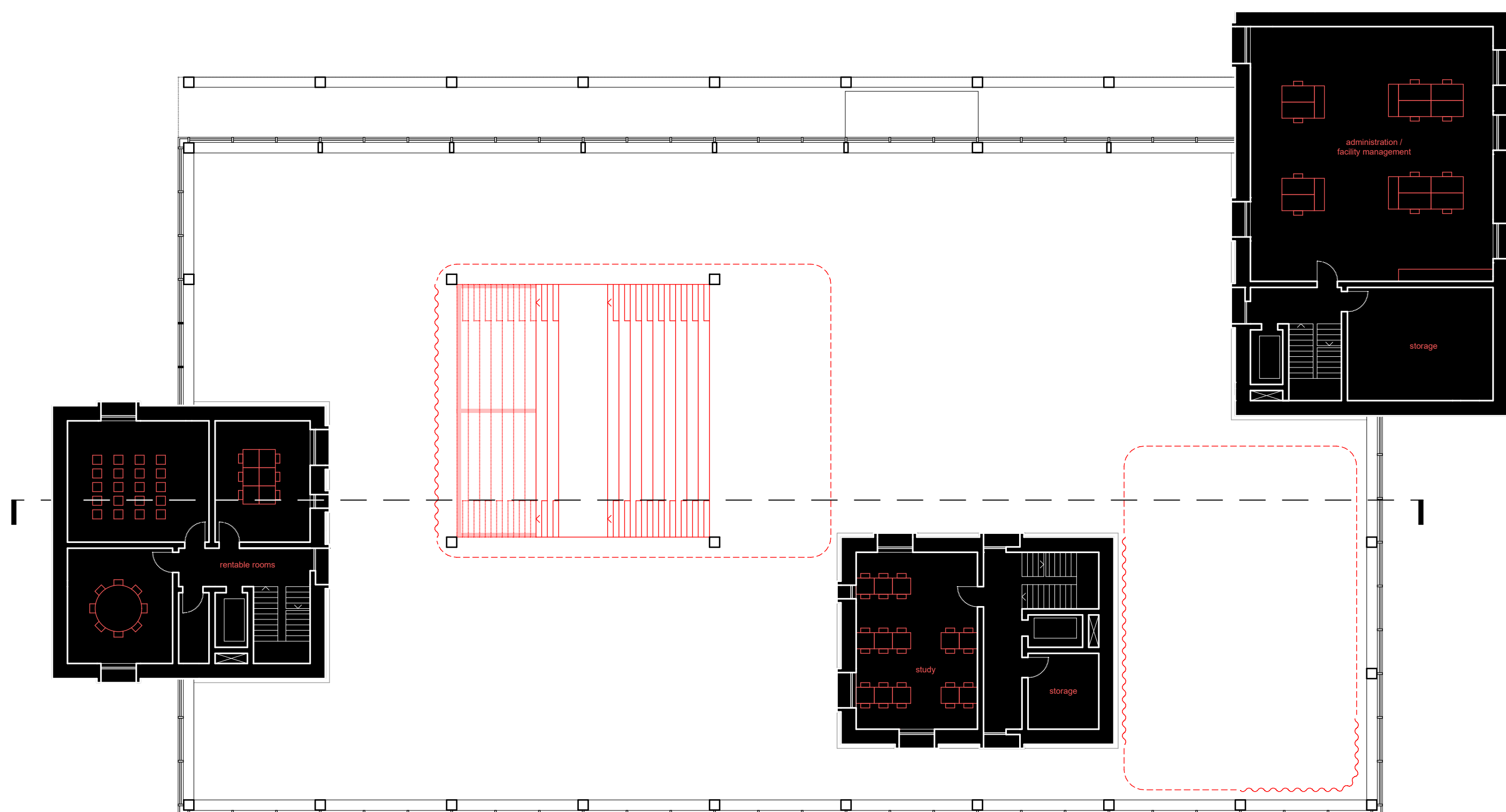
floor plan 2.0 1:200



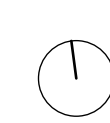
floor plan 1.5 1:200

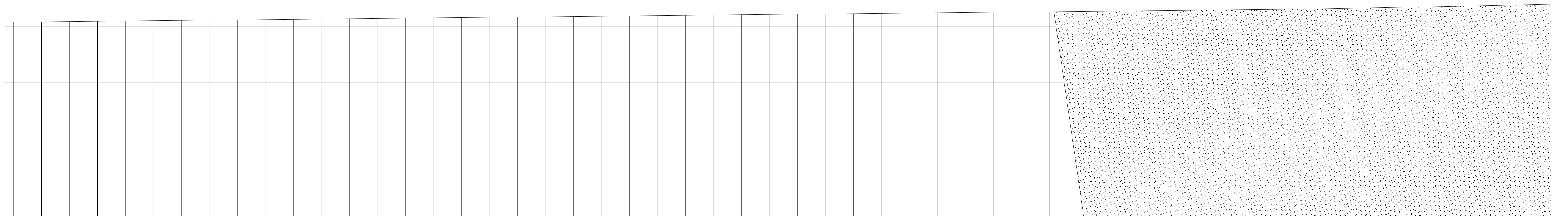
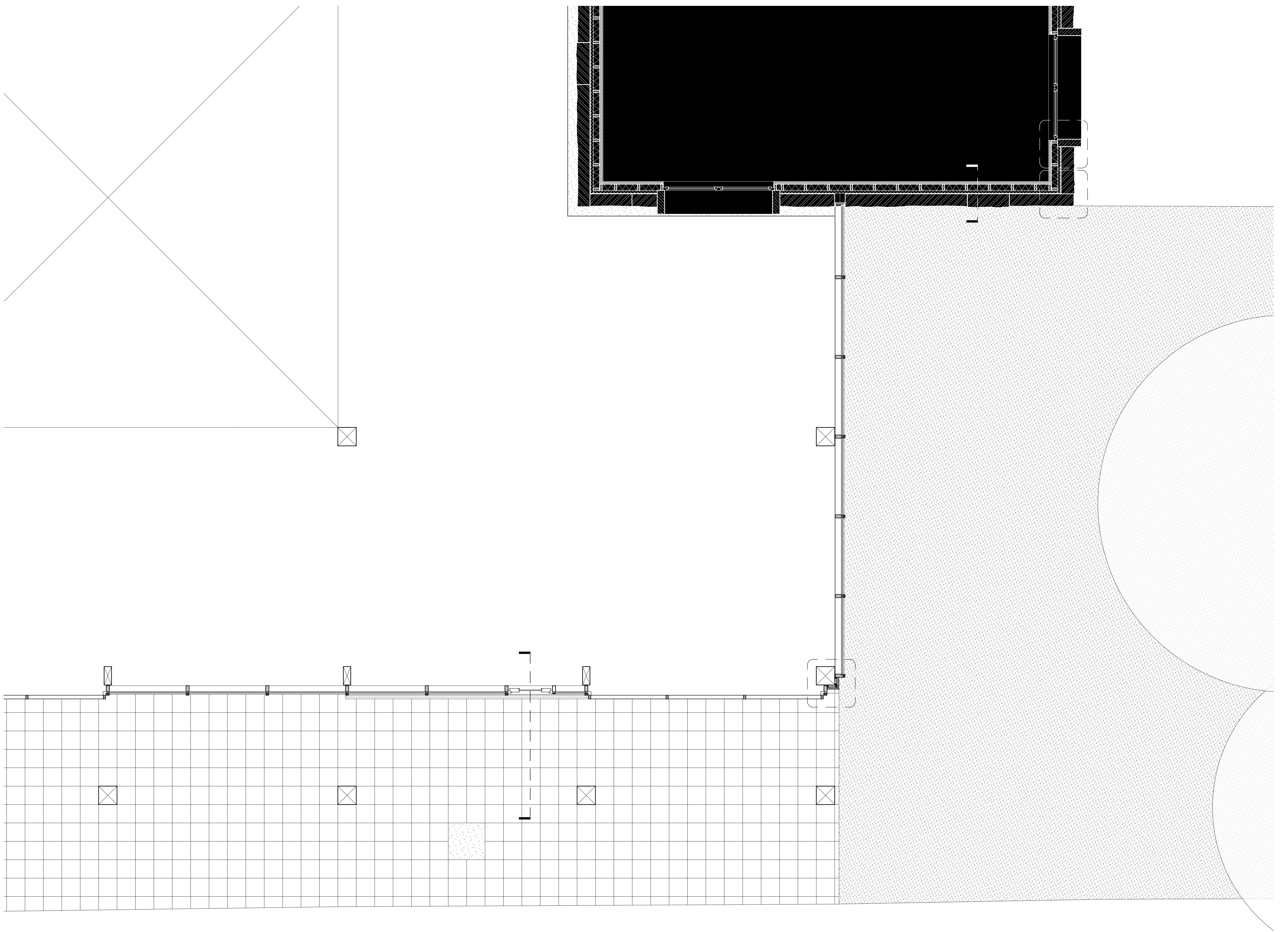


floor plan 1.0 1:200

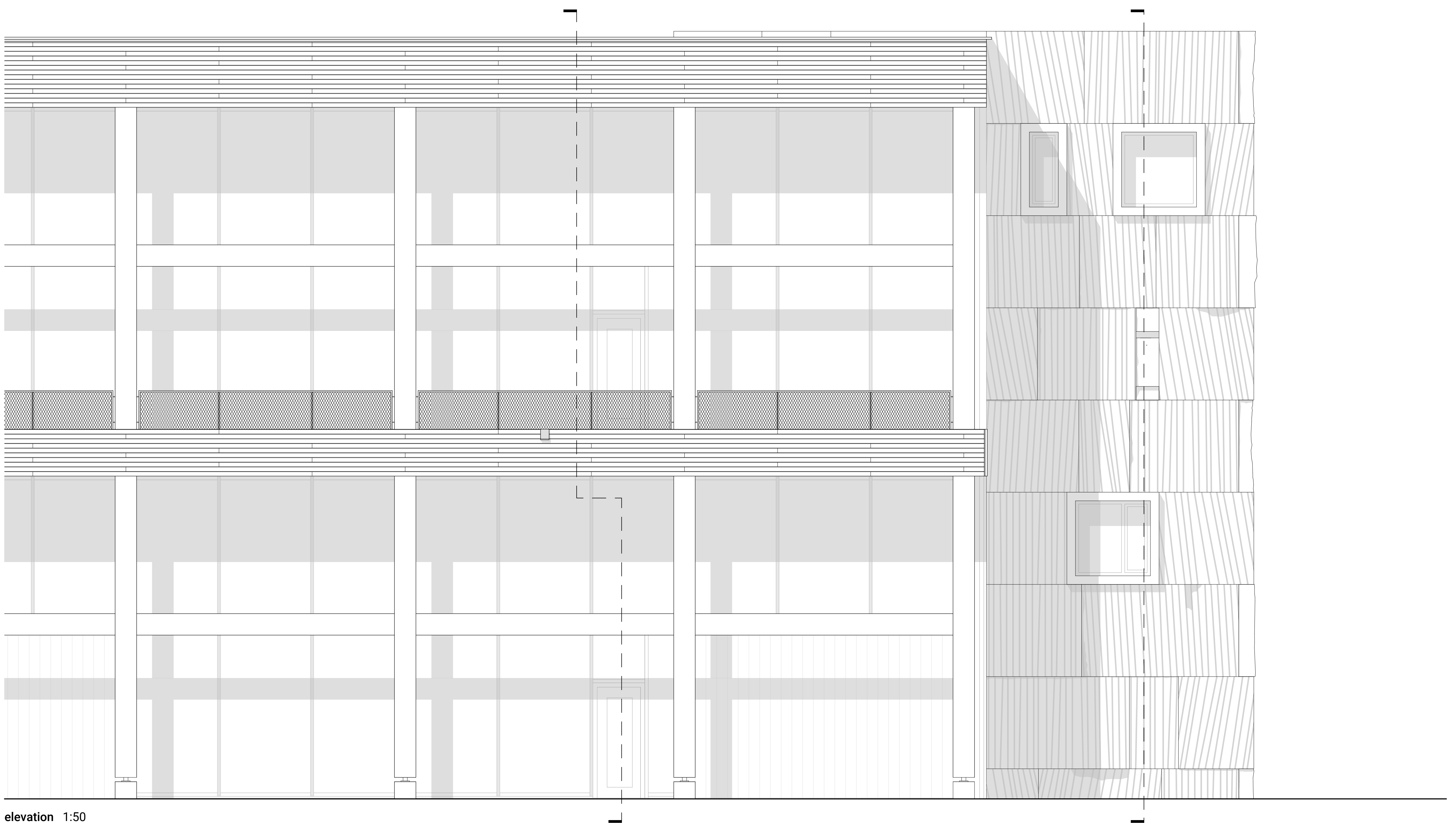


floor plan 0.5 1:200



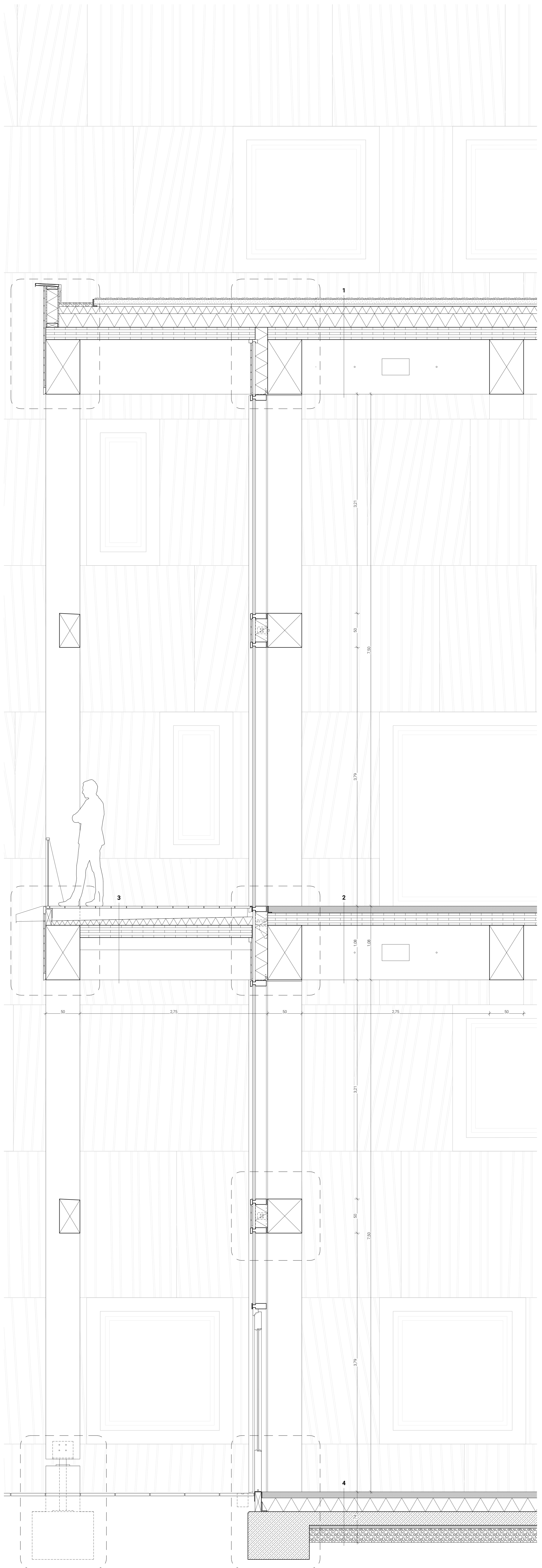


floor plan 0.0 1:50



elevation 1:50





**1 roof**

- 70 mm vegetation
- 30 mm soil
- 30 mm drainage
- bitumen membrane 2-layered
- sloped insulation
- 200 mm thermal insulation
- vapour barrier
- 180 mm CLT 5-layered
- 800 mm coffered ceiling with integrated installation, GLT beams 500 x 800 mm

**2 ceiling**

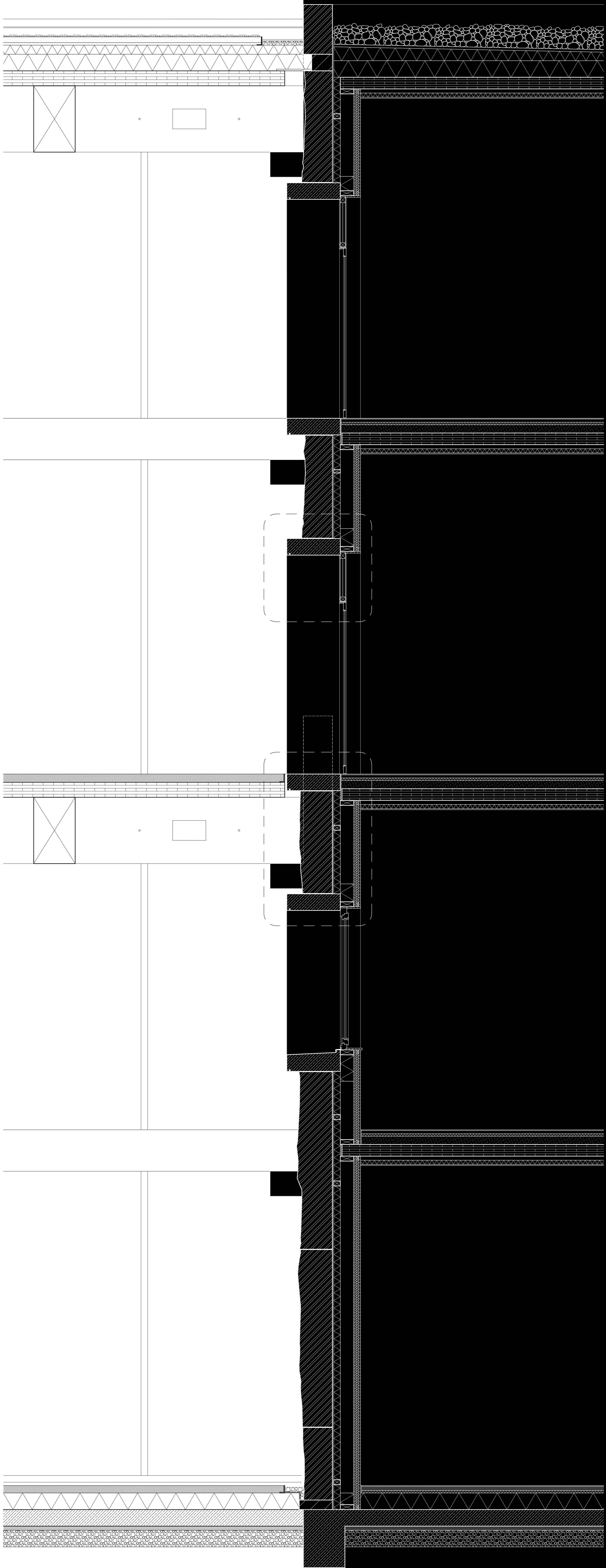
- 65 mm upper cement screed
- 35 mm lower cement screed with floor heating
- PE membrane
- 180 mm CLT 5-layered
- 800 mm coffered ceiling with integrated installation, GLT beams 500 x 800 mm

**3 gallery**

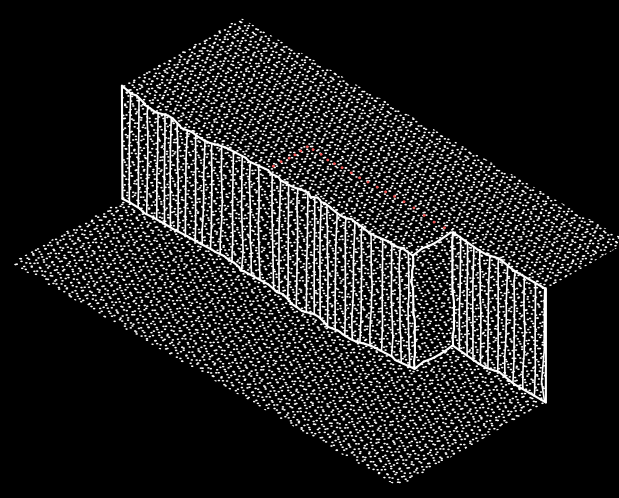
- 30 mm wood planking
- conical construction timber
- protective mat
- PE membrane
- sloped insulation
- 180 mm CLT 5-layered between beams
- 800 mm coffered ceiling, GLT beams 500 x 800 mm

**4 floor**

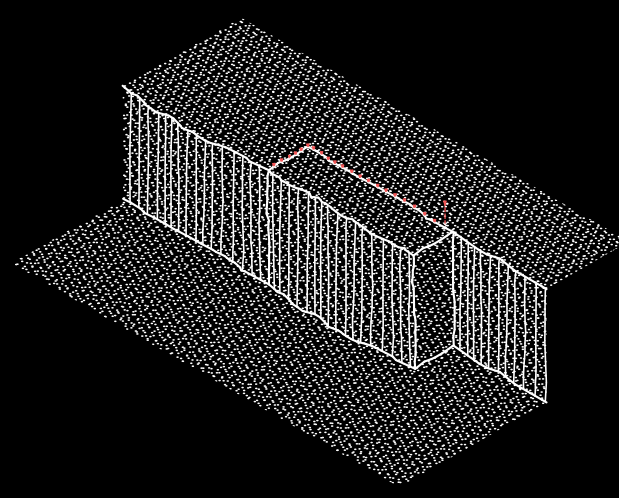
- 100 mm upper cement screed
- lower cement screed with floor heating
- PE membrane
- 200 mm thermal insulation
- bitumen membrane
- 200 mm reinforced concrete floor slab
- 50 mm binding layer
- PE membrane
- 200 mm anti-capillary layer



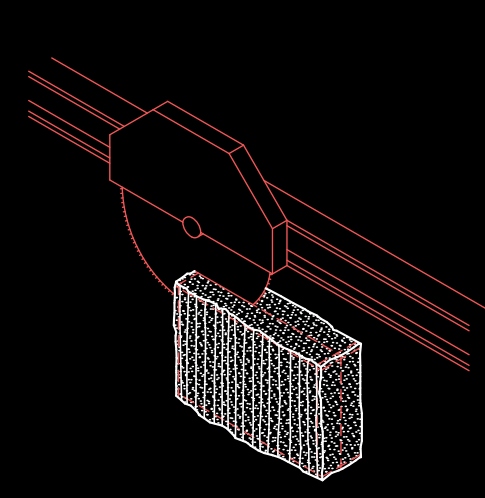
section 1:20



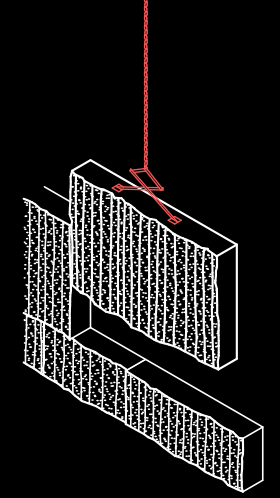
1 - drilling



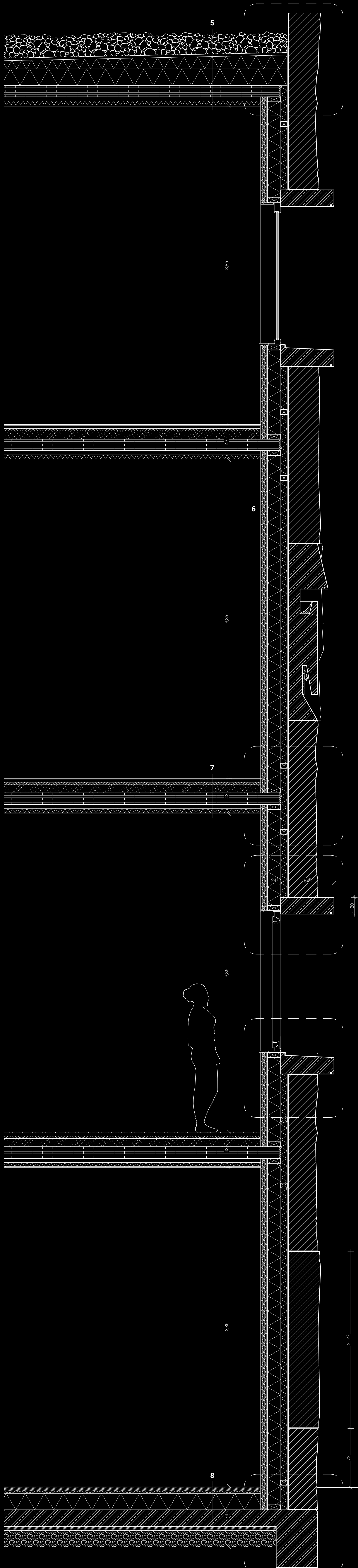
2 - breaking



3 - cutting



4 - stacking



**5 roof**

- lime stone gravel
- drainage
- bitumen membrane 2-layered
- sloped insulation
- 200 mm thermal insulation
- vapour barrier
- 180 mm CLT 5-layered
- 50 mm insulation
- 12.5 mm gypsum plaster board

**6 lime stone wall**

- 20 mm wall finishing (wood planking)
- 48 mm installation layer
- 15 mm OSB planking
- 160 mm construction timber 60 x 160 mm
- thermal insulation between timber
- 80 mm thermal insulation
- 15 mm plaster
- ~ 350 mm lime stone, line-split and cut

**7 ceiling**

- 10 mm floor finishing
- 37.5 mm dry screed, gypsum plaster boards
- 30 mm impact sound insulation
- 100 mm infill
- trickle protection
- 160 mm CLT 5-layered
- 50 mm insulation
- 12.5 mm gypsum plaster board

**8 floor**

- 10 mm floor finishing
- 50 mm floating cement screed
- PE membrane
- 30 mm impact sound insulation
- 200 mm thermal insulation
- bitumen membrane
- 200 mm reinforced concrete floor slab
- 50 mm binding layer
- PE membrane
- 200 mm anit-capillary layer

