

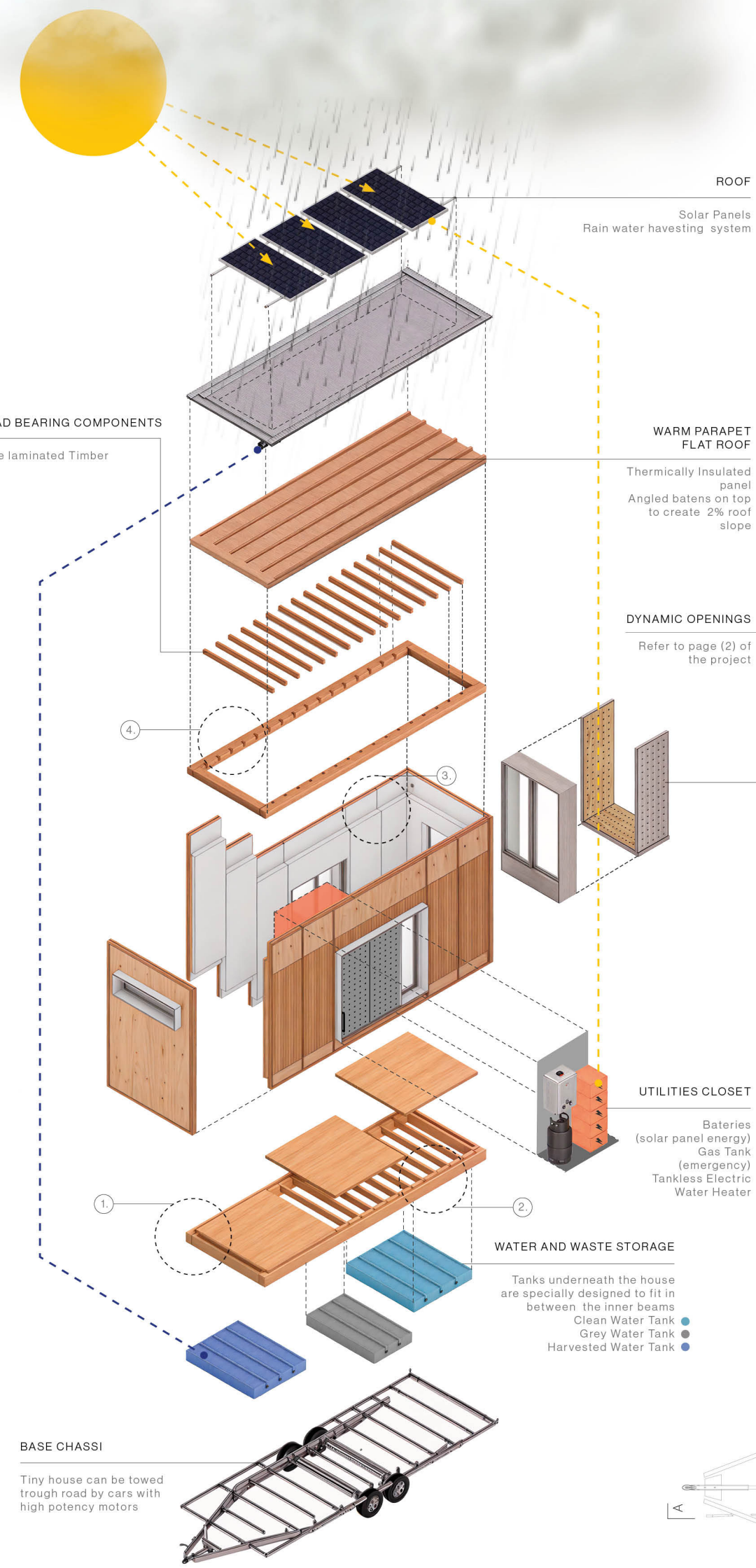
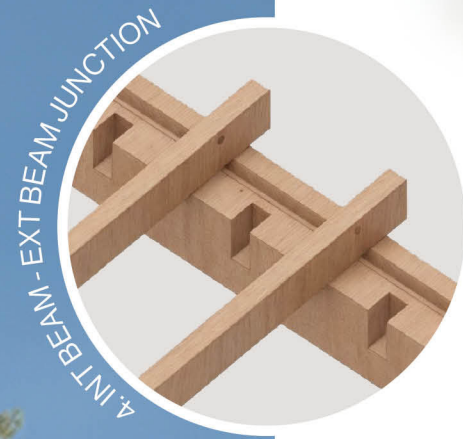
# AURA.

ADAPTABLE UNITS WITH RESIZABLE ARCHITECTURE.

**CONCEPT:** Aura is a modular housing system crafted for individuals seeking adaptable, customizable, and sustainable living solutions. It aims to address the housing challenges faced in the younger generation by offering a flexible pathway towards property ownership, rather than perpetuating the cycle of renting overpriced properties. Aura encourages investment in undervalued land, presenting an affordable, scalable alternative to traditional housing.

**CIRCULARITY:** It emphasizes sustainability with modular components that are easy to assemble and disassemble. Homes can adapt to temporary needs and be returned to the manufacturer for reconfiguration or recycling. This approach guarantees that all components have a circular life, reducing waste and promoting the reuse of materials in new models.

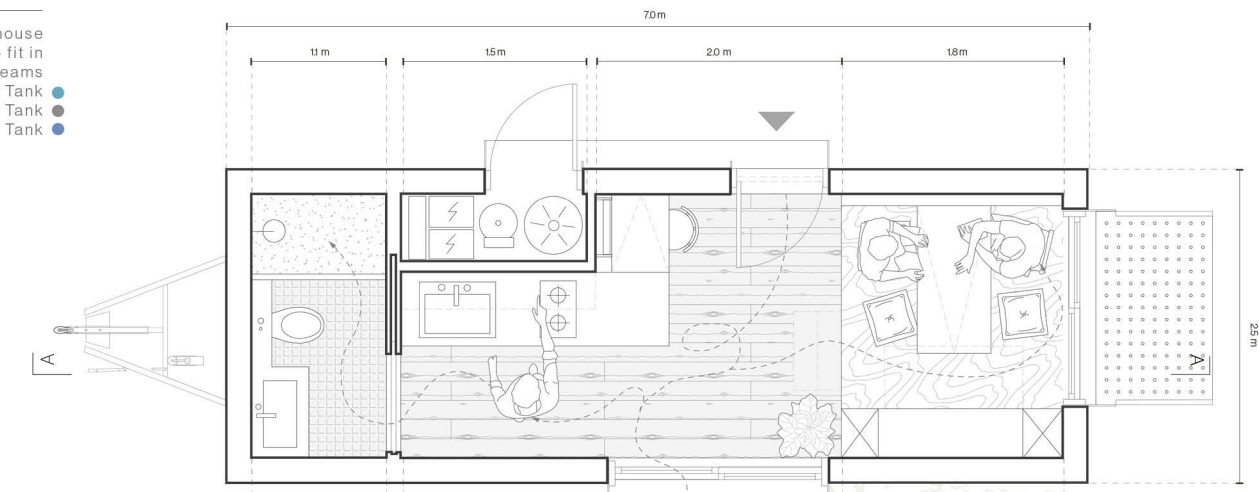
**AURA XS (On the Go):** is a mobile, fully off-grid version the AURA modular system, offering freedom for a nomadic lifestyle.



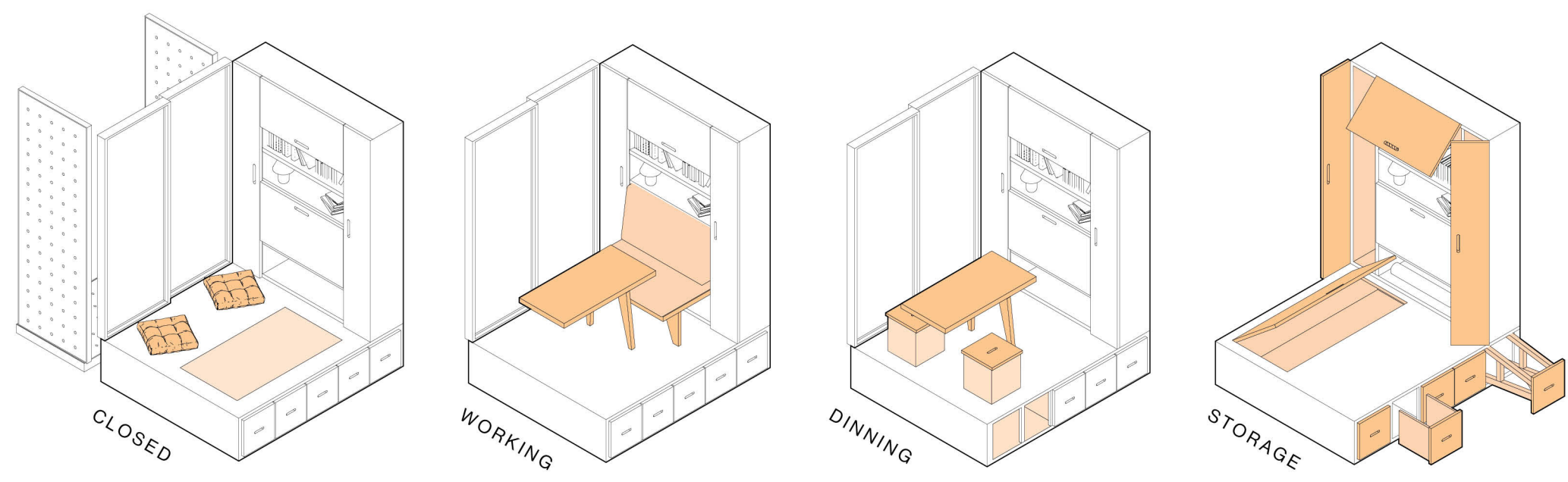
MULTIFUNCTIONAL AREA : CLOSED / OPEN



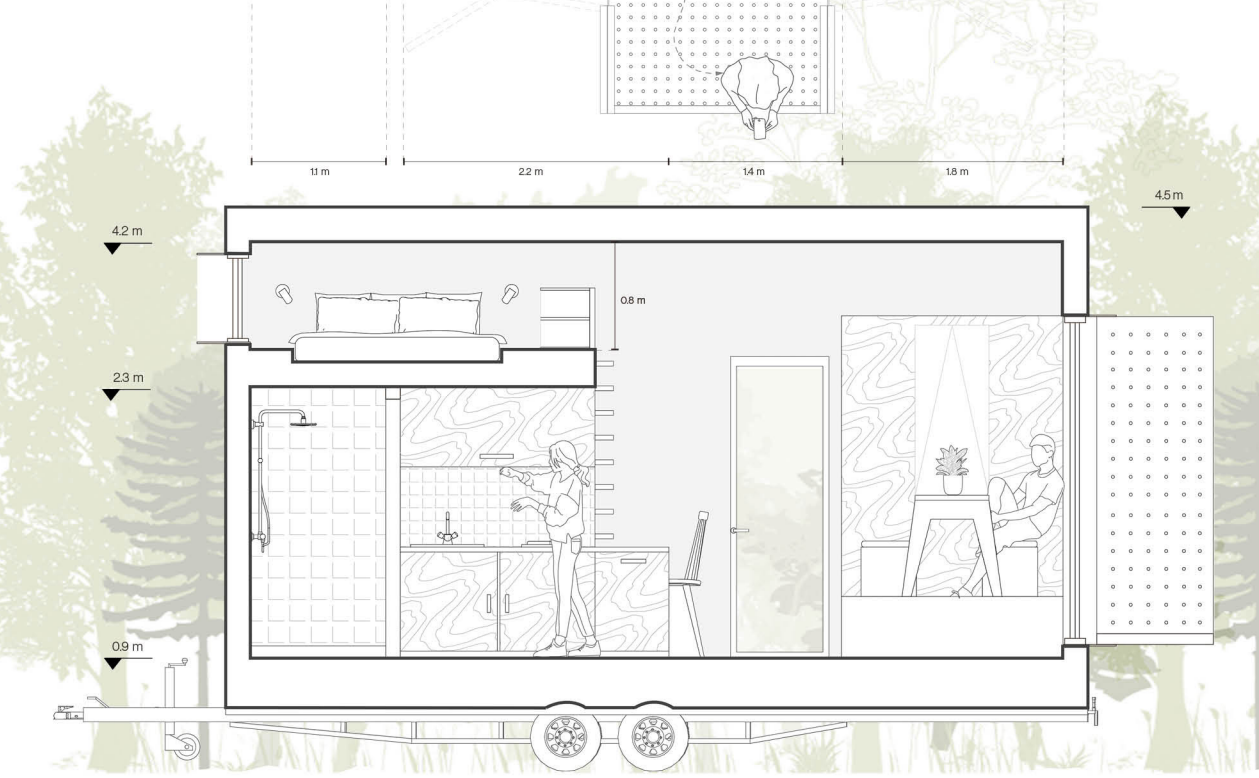
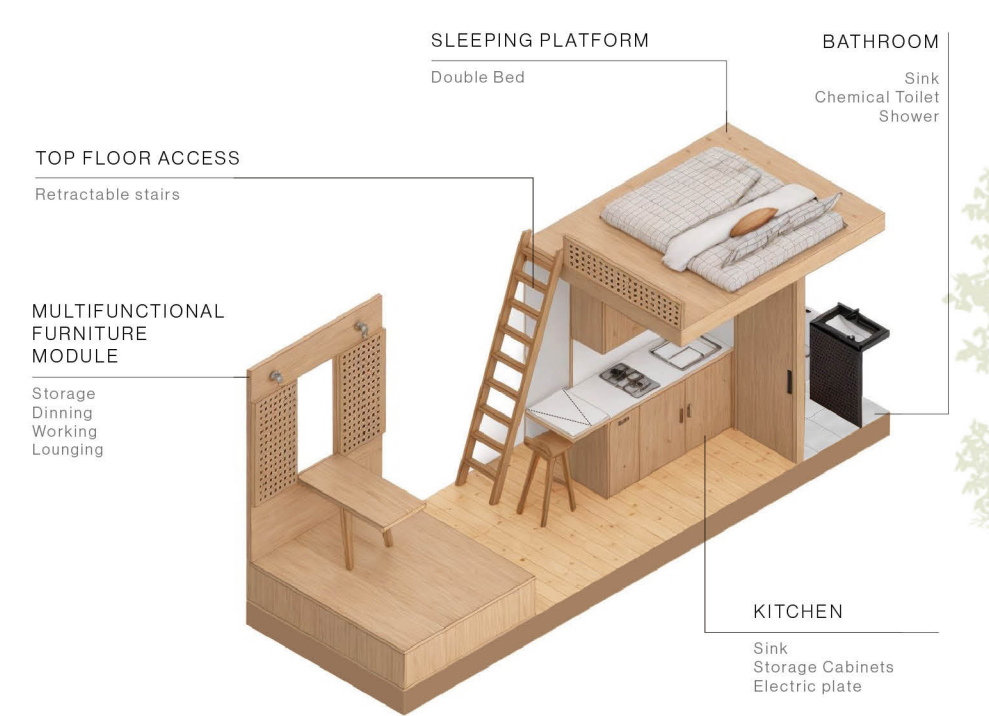
GROUND FLOOR PLAN 15.2 m2 - SECTION A-A'



MULTIFUNCTIONAL FURNITURE MODULE :



STRUCTURAL STRATEGY & SELF SUFFICIENT LIVING



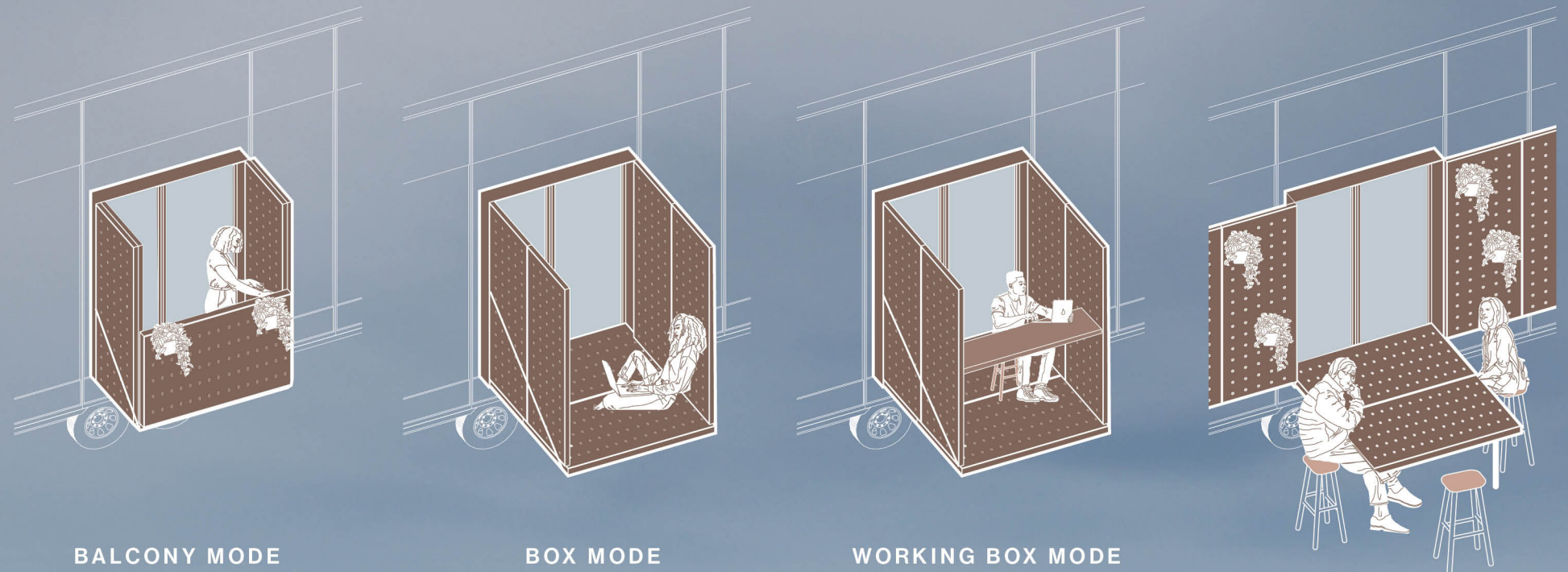


# AURA.

ADAPTABLE UNITS WITH  
RESIZABLE ARCHITECTURE.

**MOVEMENT:** The design of all Aura modules focuses on using movement to improve overall space quality, particularly in tiny spaces. Internally, versatile moving furniture allows users to functionalize a single space in multiple ways. Externally, dynamic openings with perforated panels enable the attachment of various fixtures. This ranges from using the panels to hang clothes for drying, attaching supports for bikes, boards, and plants, to creating an exterior workspace or dining table, encouraging users to bring activities outside and make the most of their surroundings. The panels are designed to fold and unfold in a way that creates two distinct environments. One configuration offers a private box-like space that frames the view and provides shelter from neighbors, ideal for campsites. The other configuration allows for complete openness, fostering a sense of community. This design enables users to effortlessly choose between privacy and social interaction.

## DYNAMIC OPENINGS DIFFERENT MODES OF USAGE



BALCONY MODE

BOX MODE

WORKING BOX MODE

DINING OUTSIDE MODE



INTERIOR VIEW - LIVING AREA

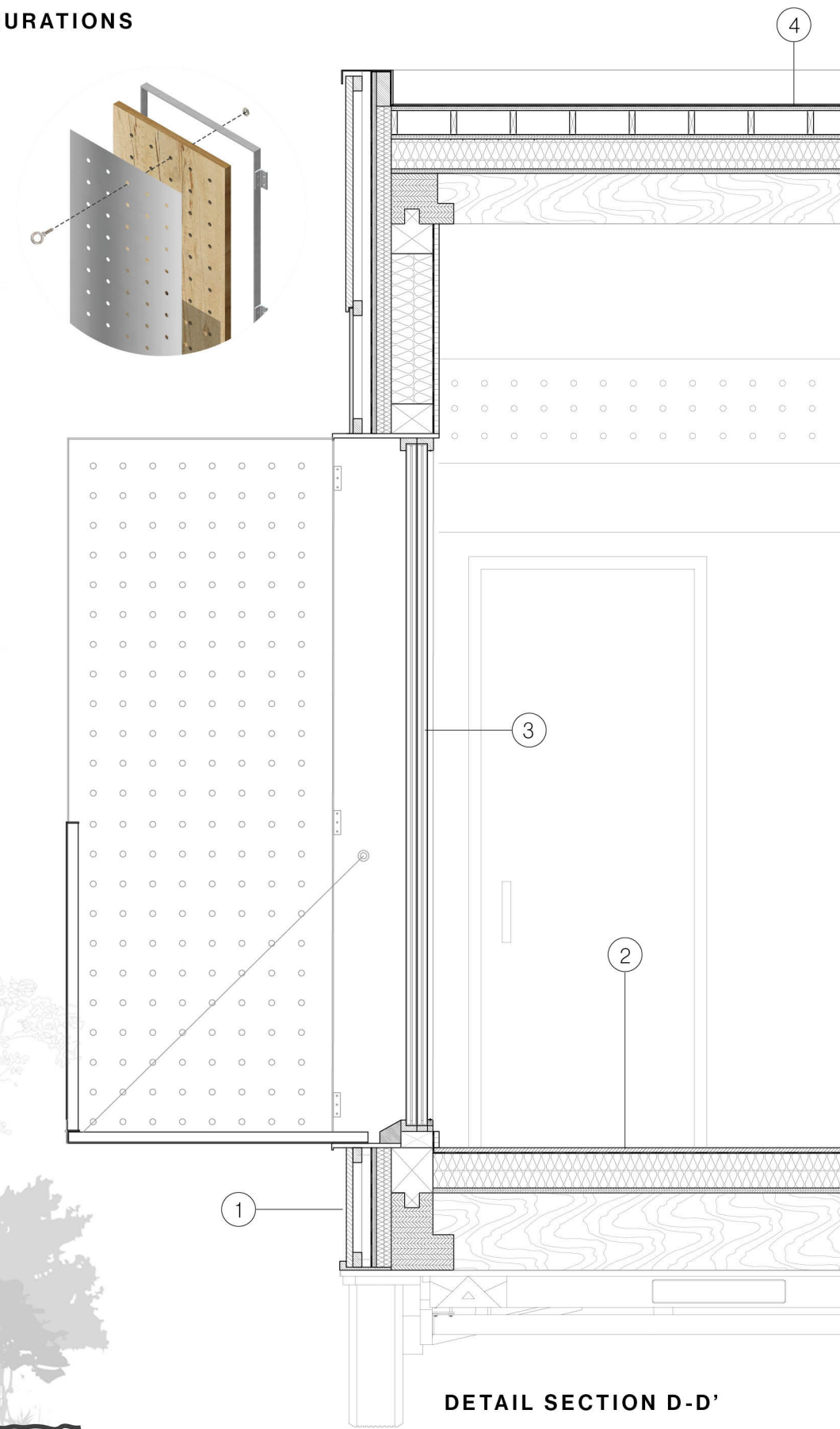
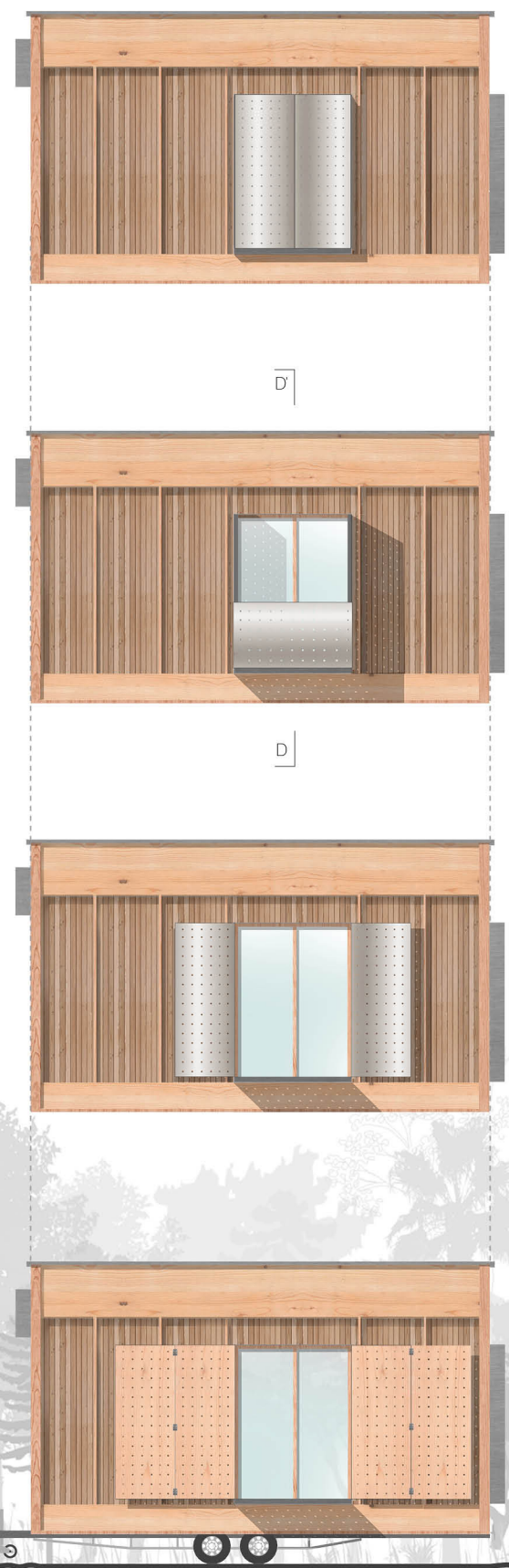
- 1. EXTERIOR WALL**
  - 12 mm European Larch Timber,
  - 30x50 mm Horizontal battens
  - 30x50 mm Vertical counter battens
  - Waterproof Membrane
  - 15 mm Marine Plywood
  - 50 mm Acoustic Cork insulation panel
  - 100 mm Thermal Insulation Cocunut Coir
  - Vapour Barrier
  - 16 mm Coated Mdf panel (White)

- 2. INTERNAL FLOOR**
  - 16 mm Oak Floor boards
  - Vapour Barrier
  - 100 mm Thermal insulation
  - 16 mm OSB panel
  - 60 x 140 mm Gluelaminated Timber Beam

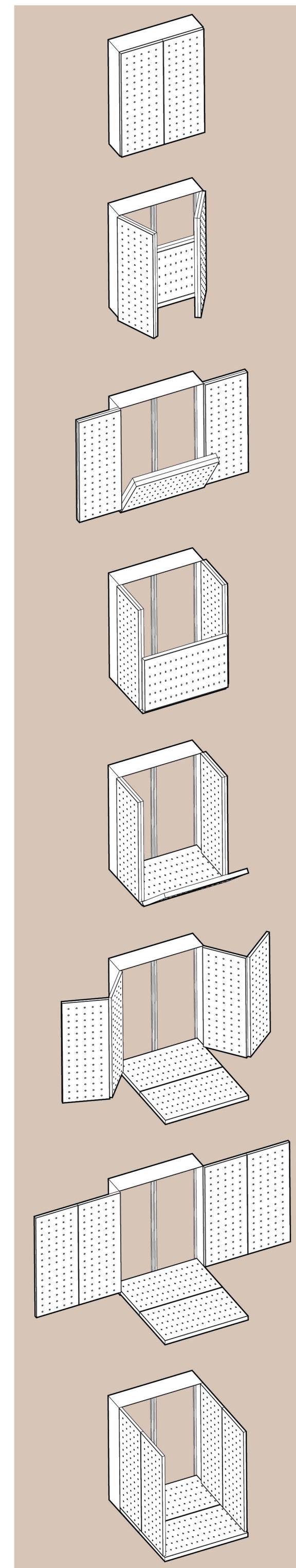
- 3. WINDOW**
  - Double Glazing : 12mm + 6mm Cavity + 12 mm
  - 100 mm Larch Timber Window Frame
  - 12 mm Glavanized Extruded Steel Frame

- 4. PARAPET WARM ROOF CONSTRUCTION**
  - 3 mm Zinc Roof Finish
  - Waterproof membrane
  - 15 mm Marine Plywood
  - 80 mm Mass Timber Angled Battens
  - 15 mm Marine Plywood
  - 100 mm Solid Thermal Insulation Board
  - 15 mm Marine Plywood
  - 60 x 100 mm Gluelaminated Timber Beam

## BACK ELEVATION - FACADE CONFIGURATIONS



DETAIL SECTION D-D'







# AURA grow.

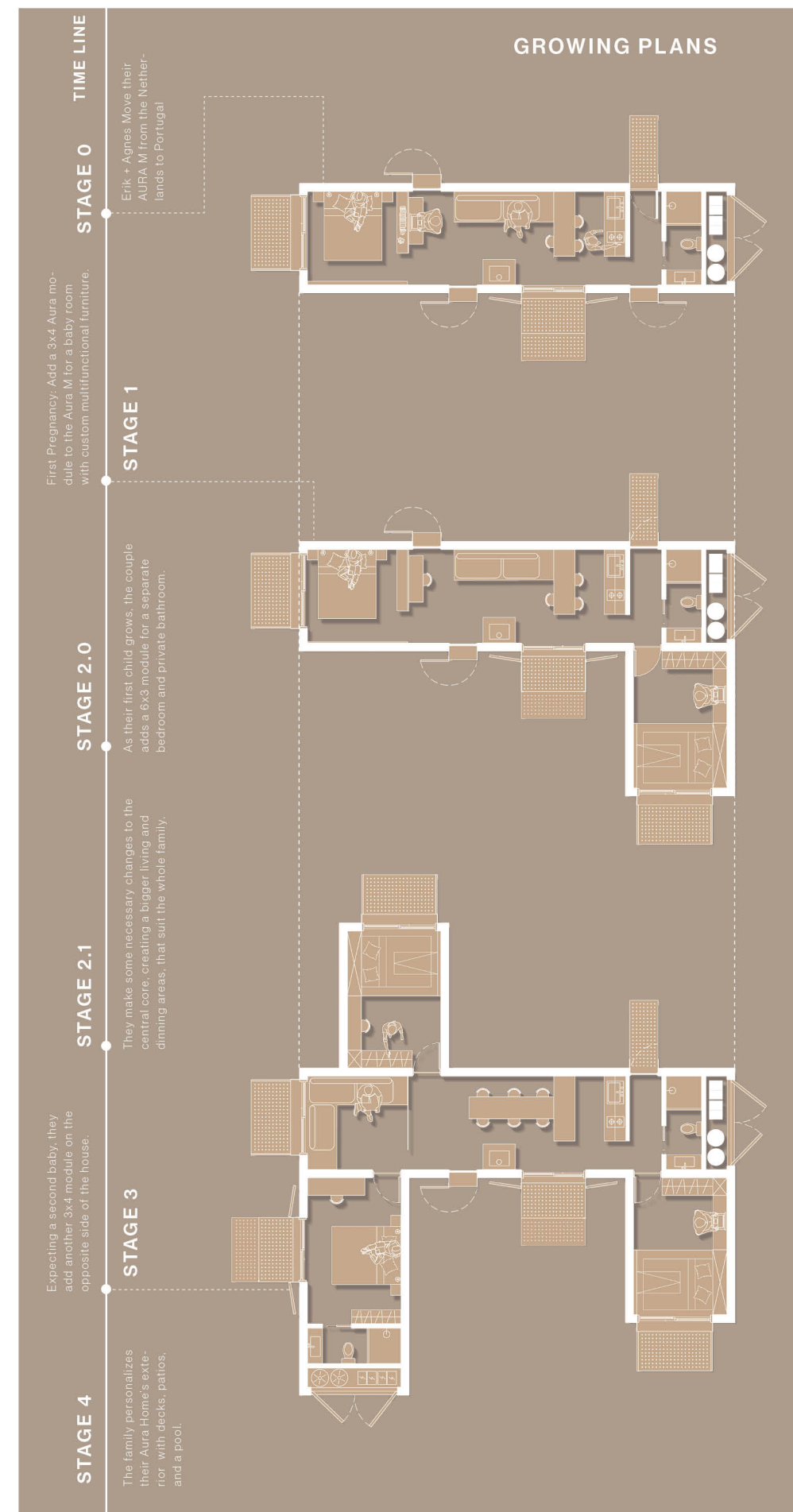
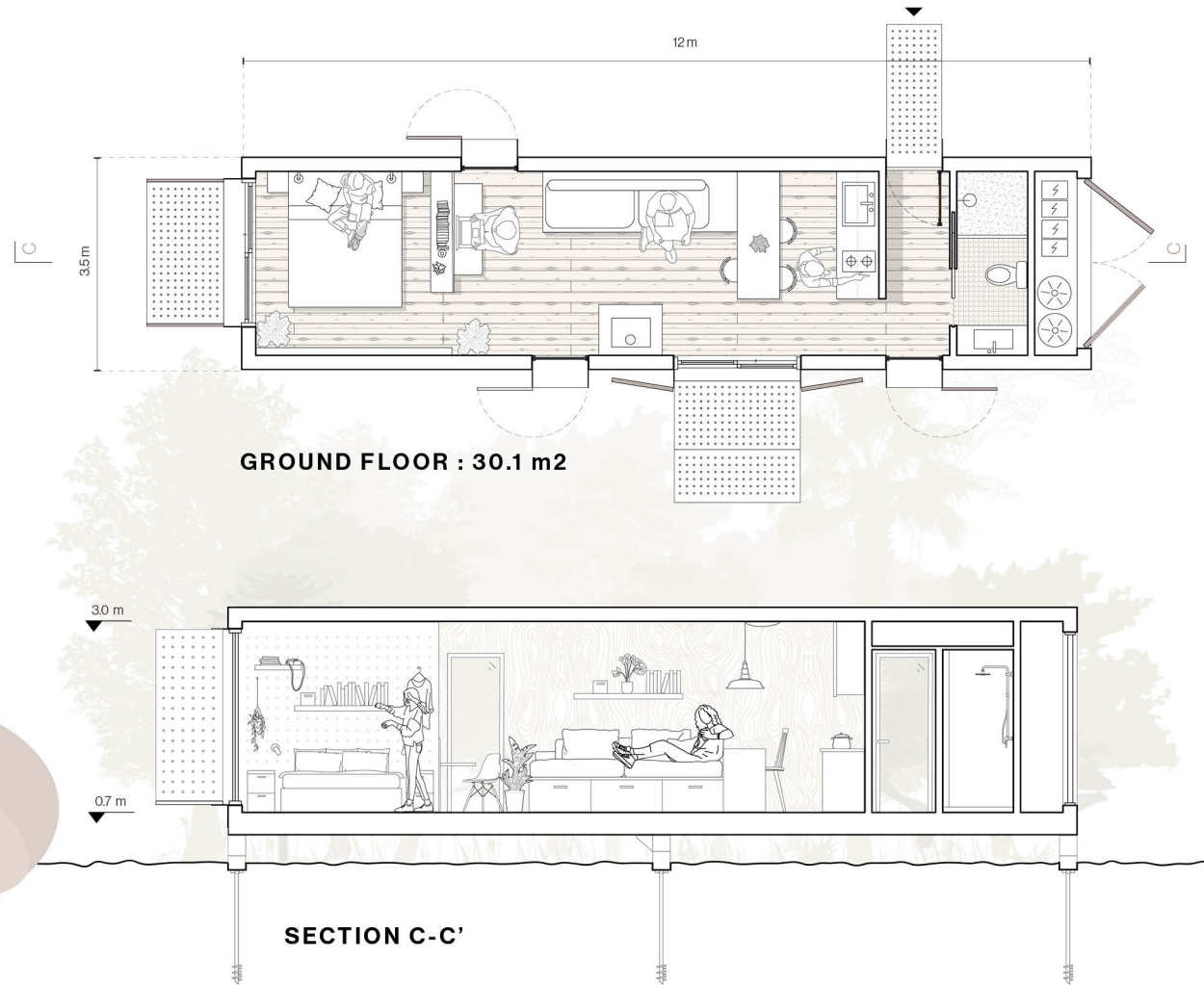
**THE GROW HOUSE CONCEPT:** The Aura modular housing system also offers permanent living solutions with high levels of adaptability. The modules can be easily transported by truck and are designed to grow with the user, adjusting to new needs and life changes. The structural system allows for seamless reconfiguration of facade elements, enabling new modules to be connected over time. As your family grows, your location changes, or new opportunities arise, this homes are designed to adapt. One of Aura's focal points was ensuring that, despite being a prefabricated home—often perceived more as a product—these modules could still offer the right balance of accessibility and personalization. It was essential that they provide a sense of home, catering specifically to individual needs, and it is this high level of adaptability and modularity that allows the system to cater to various scenarios, from hospitality and customized homes to emergency shelters.

**SITE PLACEMENT**  
By Crane

**TRANSPORT**  
Truck

**AXONOMETRIC FOUNDATIONS & PLACEMENT**

**FOUNDATIONS**  
Screw on Piles



**EXPLODED AXONOMETRIC COMPOSING MODULES**

