

## Miniaturized engineered heart tissues from HiPSC-derived co-culture

Windt, Laura; Dostanic, M.; Stein, Jeroen; Meraviglia, Viviana ; Campostrini, Giulia; Bellin, Milena; Orlova, Valeria; Mastrangeli, M.; Sarro, P.M.; van Meer, Berend

### Publication date

2020

### Document Version

Final published version

### Citation (APA)

Windt, L., Dostanic, M., Stein, J., Meraviglia, V., Campostrini, G., Bellin, M., Orlova, V., Mastrangeli, M., Sarro, P. M., van Meer, B., & Mummery, C. (2020). *Miniaturized engineered heart tissues from HiPSC-derived co-culture*. Poster session presented at European Organ-on-Chip Society Conference (EUROoCS Conference 2020).

### Important note

To cite this publication, please use the final published version (if applicable).  
Please check the document version above.

### Copyright

Other than for strictly personal use, it is not permitted to download, forward or distribute the text or part of it, without the consent of the author(s) and/or copyright holder(s), unless the work is under an open content license such as Creative Commons.

### Takedown policy

Please contact us and provide details if you believe this document breaches copyrights.  
We will remove access to the work immediately and investigate your claim.

Laura Windt<sup>1</sup>, Milica Dostanic<sup>2</sup>, Jeroen Stein<sup>1</sup>, Viviana Meraviglia<sup>1</sup>, Giulia Campostrini<sup>1</sup>, Milena Bellin<sup>1</sup>, Valeria Orlova<sup>1</sup>, Massimo Mastrangeli<sup>2</sup>, Lina P.M. Sarro<sup>2</sup>, Berend van Meer<sup>1,3</sup>, Christine L. Mummery<sup>1,4</sup>

<sup>1</sup> Anatomy and Embryology, LUMC, Leiden, The Netherlands

<sup>2</sup> Microelectronics, TU Delft, Delft, The Netherlands

<sup>3</sup> MESA+ institute, University of Twente, Enschede, The Netherlands

<sup>4</sup> Applied Stem Cell Technology, University of Twente, Enschede, The Netherlands

## 1. Introduction | Engineered Heart Tissues (EHTs)

Three-dimensional *in vitro* model of a human heart on-a-chip

- Mimicking the human heart as good as possible
- Personalized medicine
- High throughput research
- Cost effective

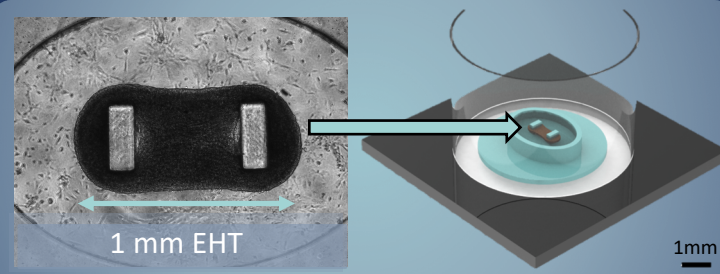
### Chip

Wafer-scale silicon- and polymer-based fabrication

### Cardiac tissue

Human induced pluripotent stem cell (hiPSC) derived:

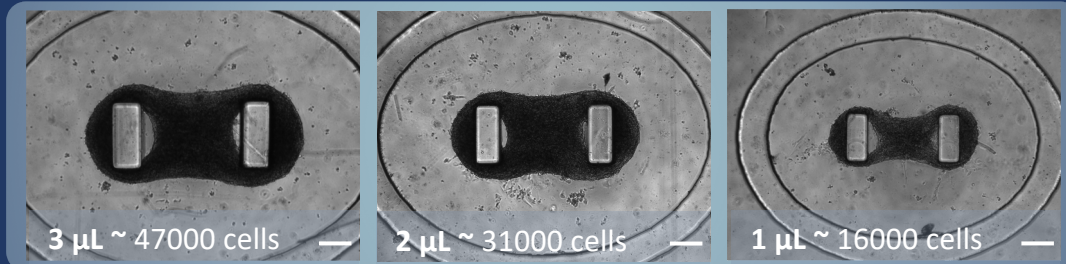
- 80% Cardiomyocytes
  - 20% Cardiac fibroblasts
- Mixing cells in collagen and matrigel (ECM)



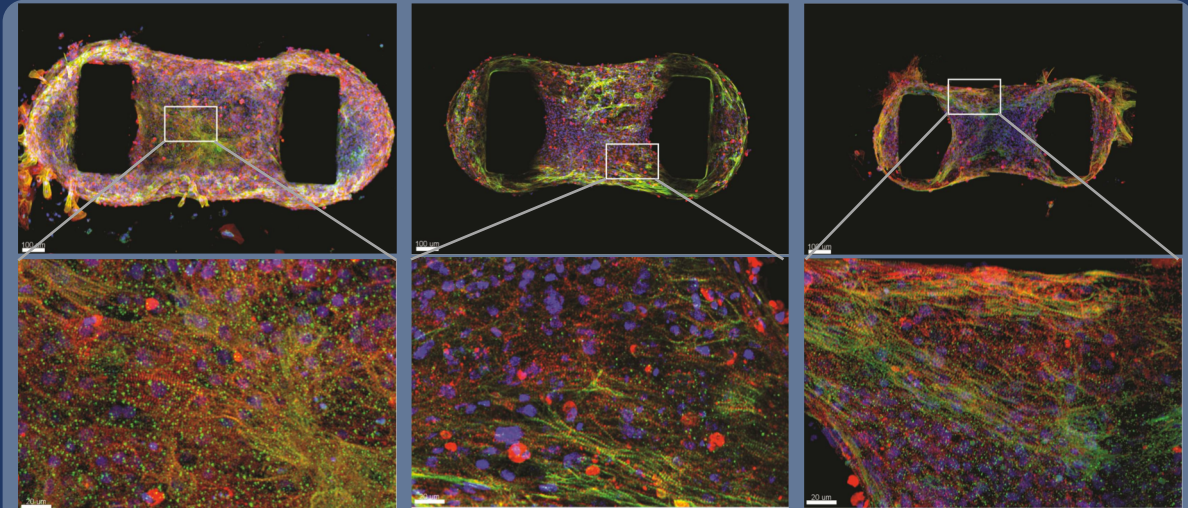
## 2. Methods | Miniaturized Engineered Heart Tissues

- Anisometrically downscaled
- Research (disease) mechanisms
- Volumes of cell-gel mix: 3, 2 and 1  $\mu$ L
- Test drug efficacy

Scale bars: 100  $\mu$ m



## 3. Results | Miniaturized EHTs show physiologically relevant sarcomere organization, contractile properties and drug efficacy

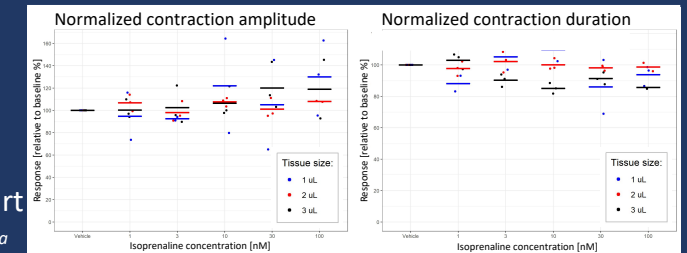


Immunofluorescence images of the three sizes of EHTs for cardiac specific markers: Alpha-actinin (red), Cardiac troponin-T (green), Nuclei: DAPI (blue) Scale bars: 100 and 20  $\mu$ m

### Drug incubation (day 13):

- Isoprenaline 1-100 nM
- Increased contraction amplitude
- Decreased contraction duration
- Similar effects as in the human heart

Preliminary data



## 4. Conclusions | Miniaturized Engineered Heart Tissues ...

- ... containing solely hiPSC-derived cells were successfully formed
- ... express cardiac specific markers distributed over the whole tissue
- ... exhibited physiologically relevant contractile responses to Isoprenaline