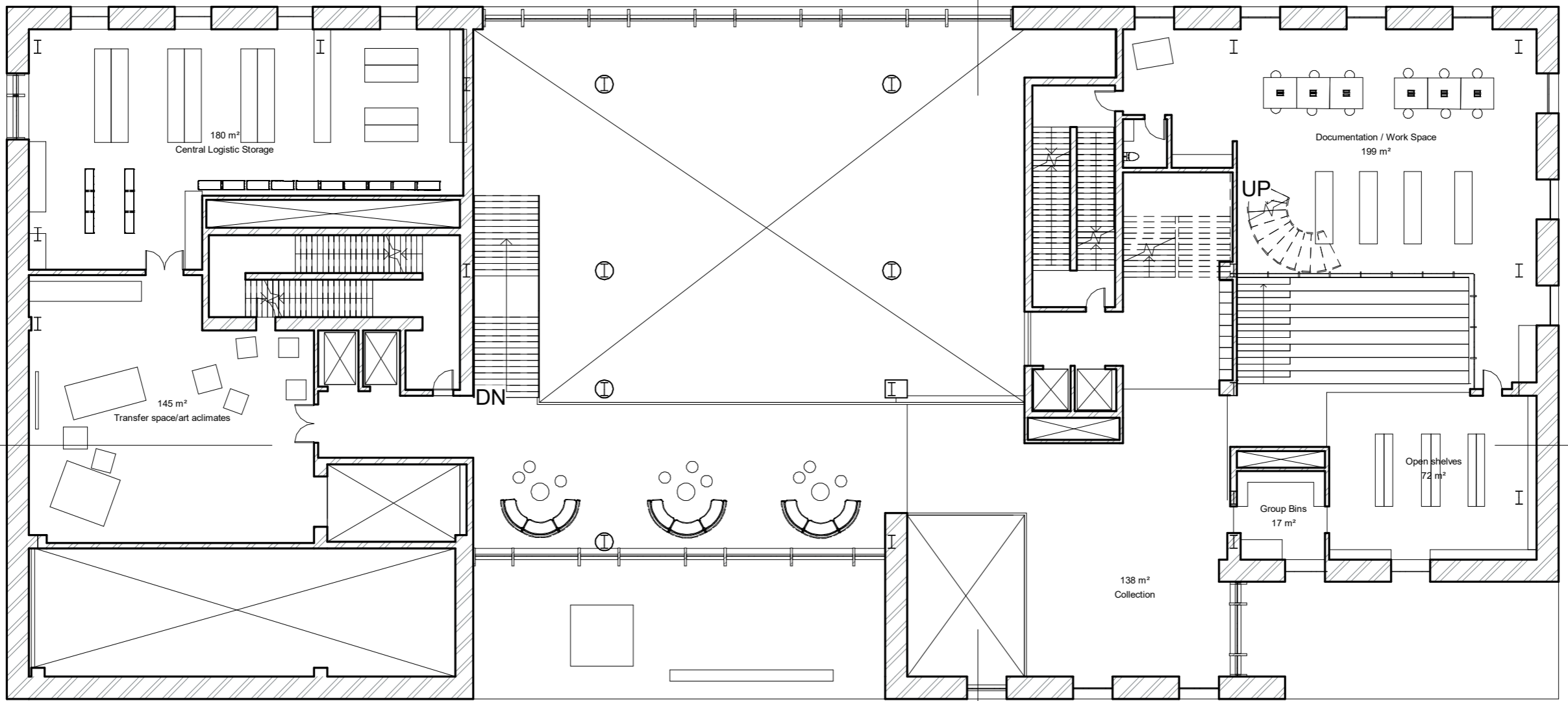
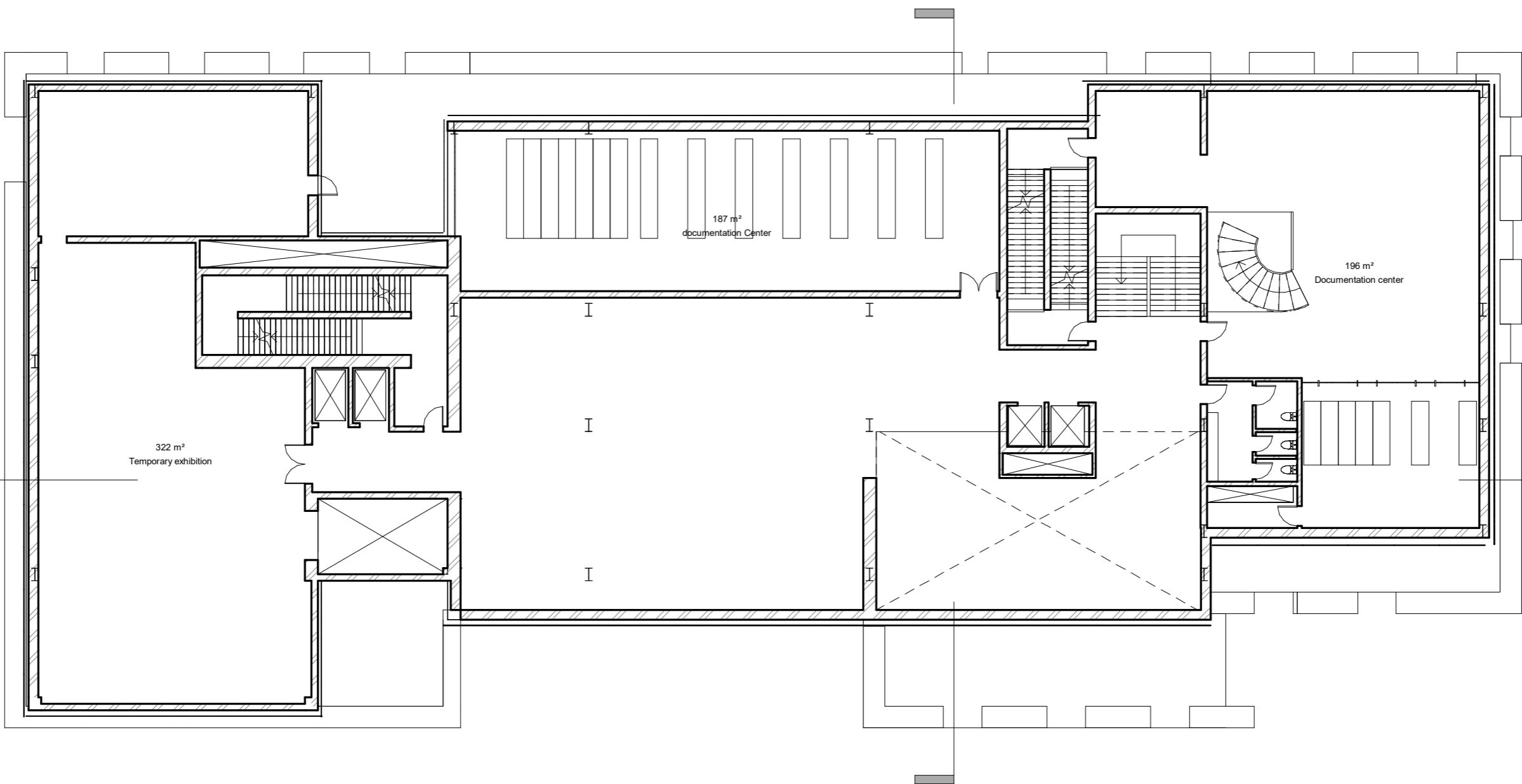


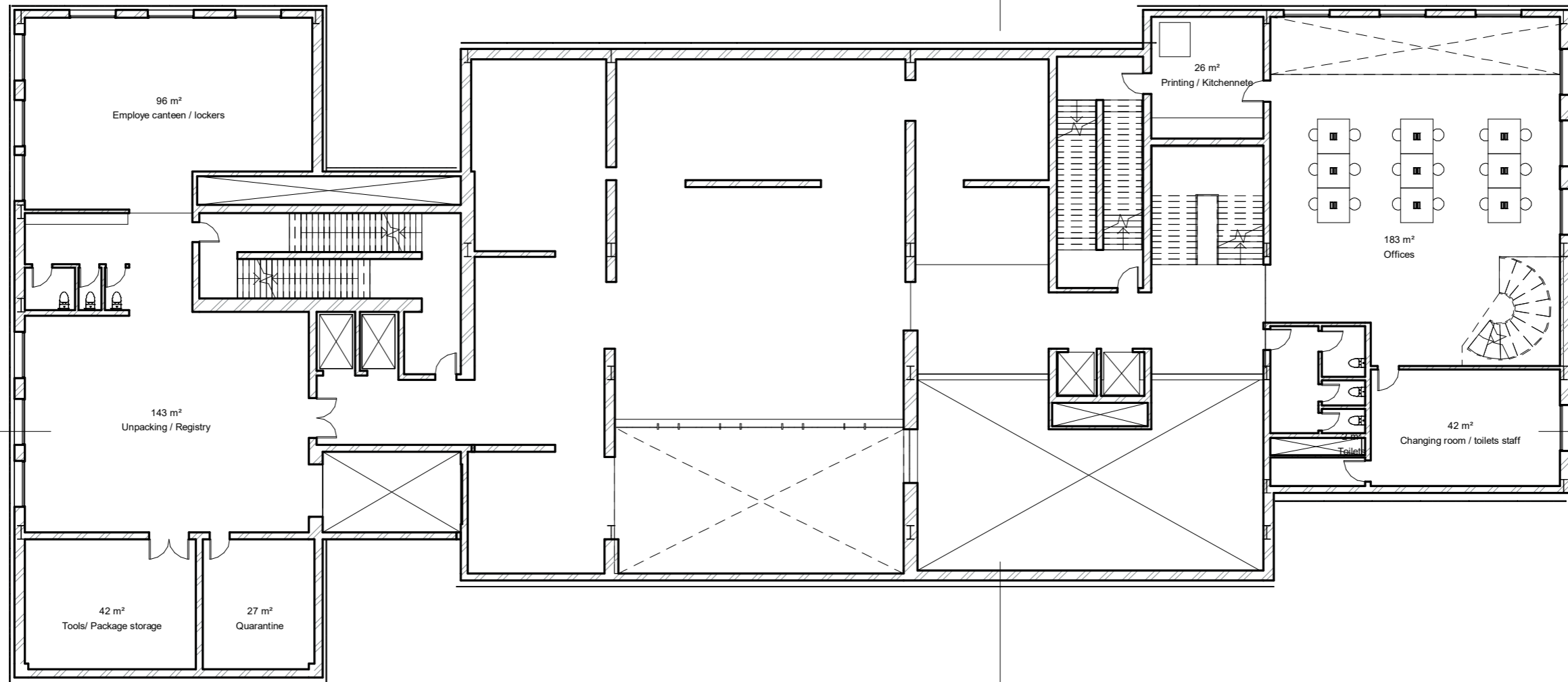
⌚ GROUND FLOOR
ESC 1:200



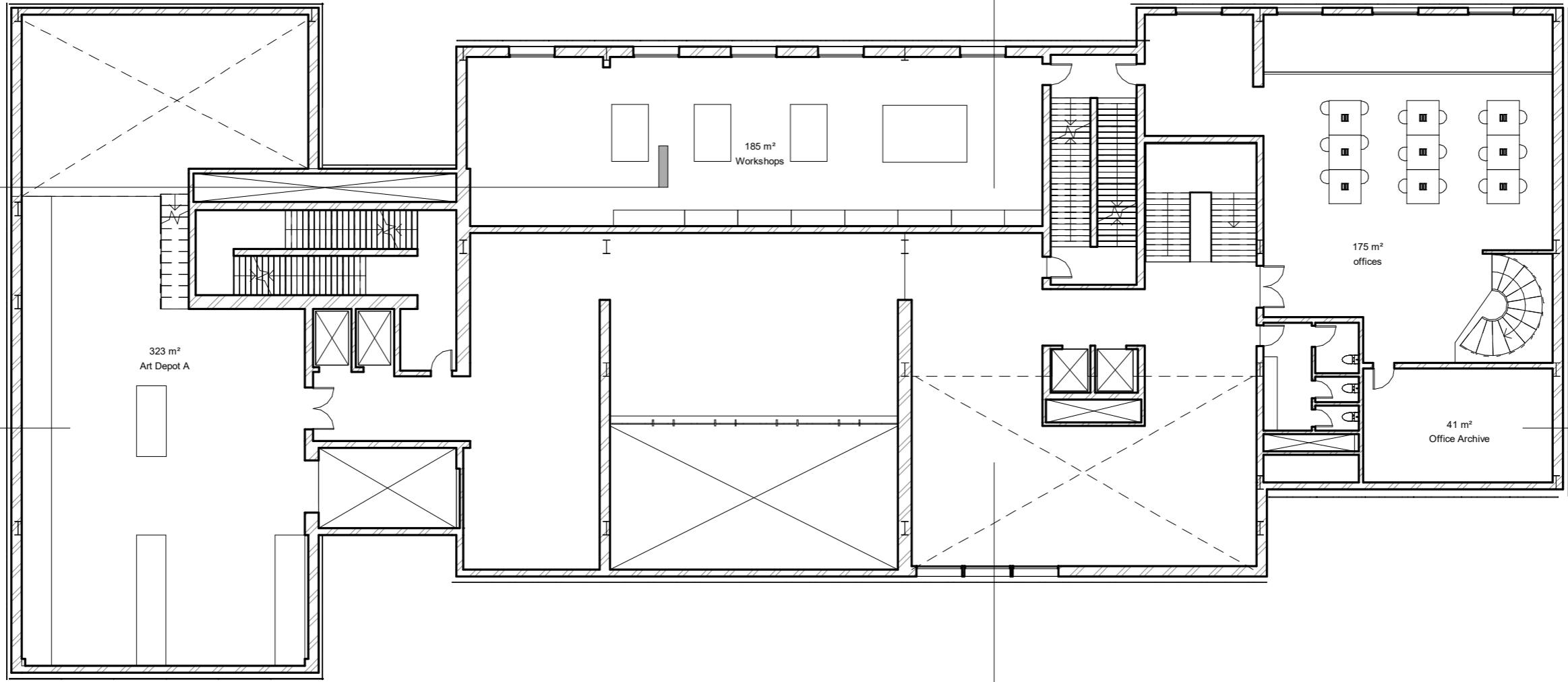

FIRST FLOOR
 ESC 1:200



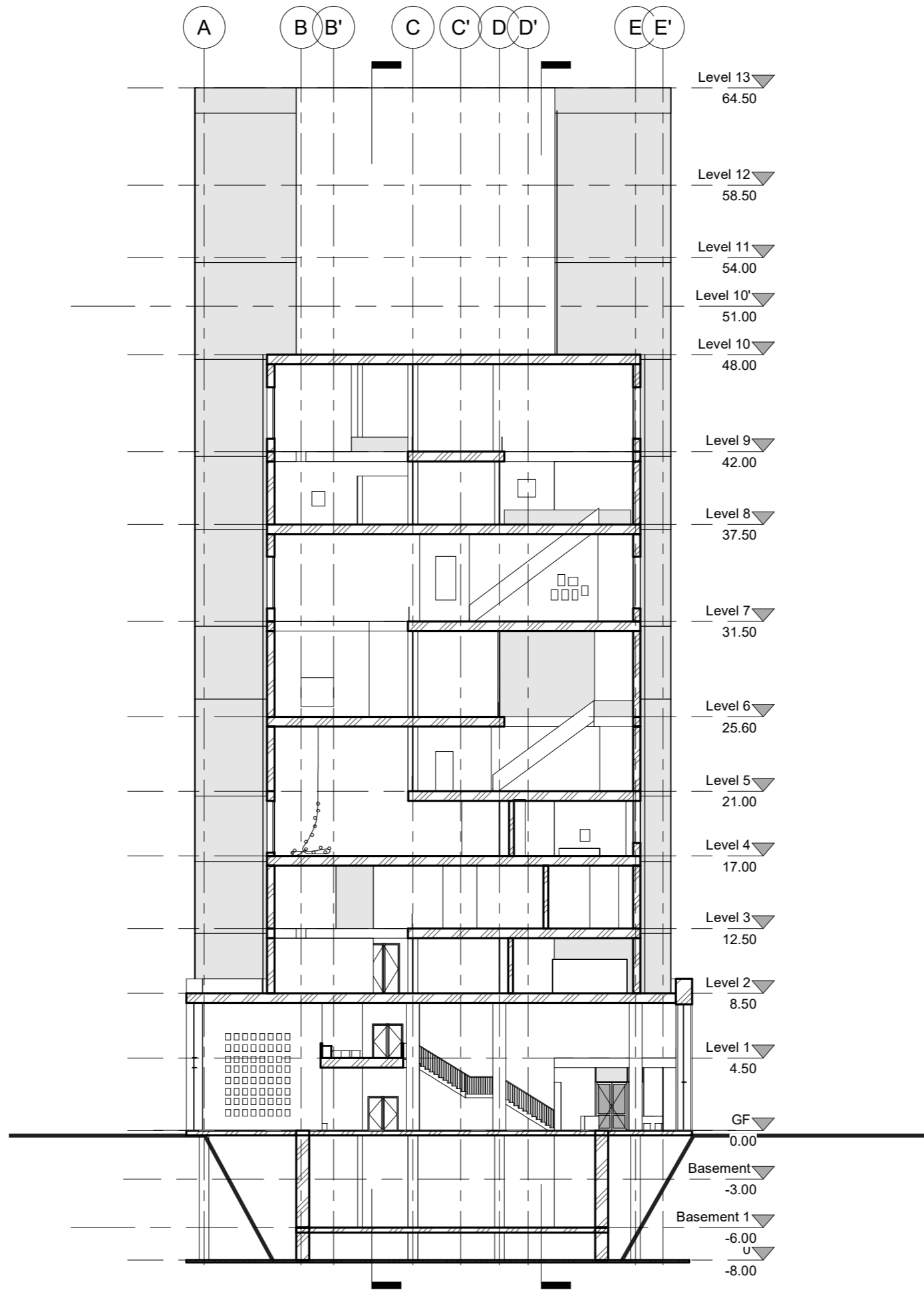
⌚ SECOND FLOOR
ESC 1:200



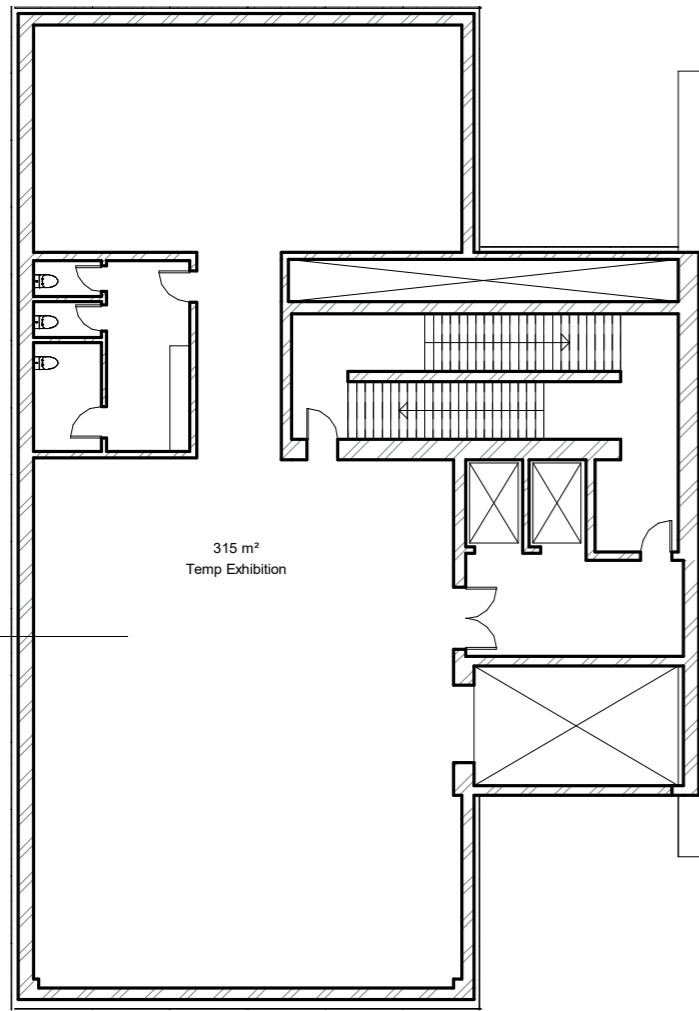
THIRD FLOOR
ESC 1:200



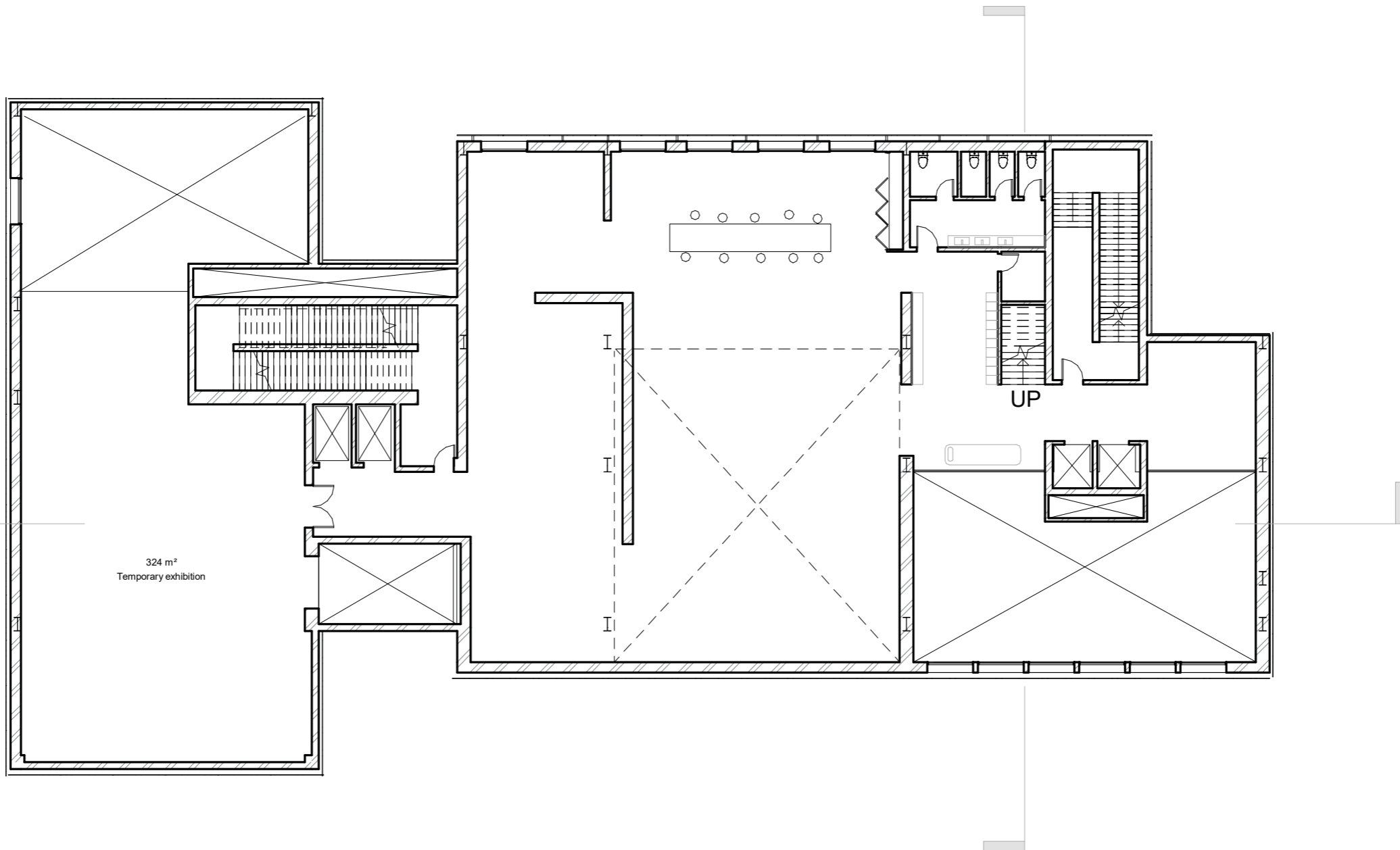
FOURTH FLOOR
ESC 1:200



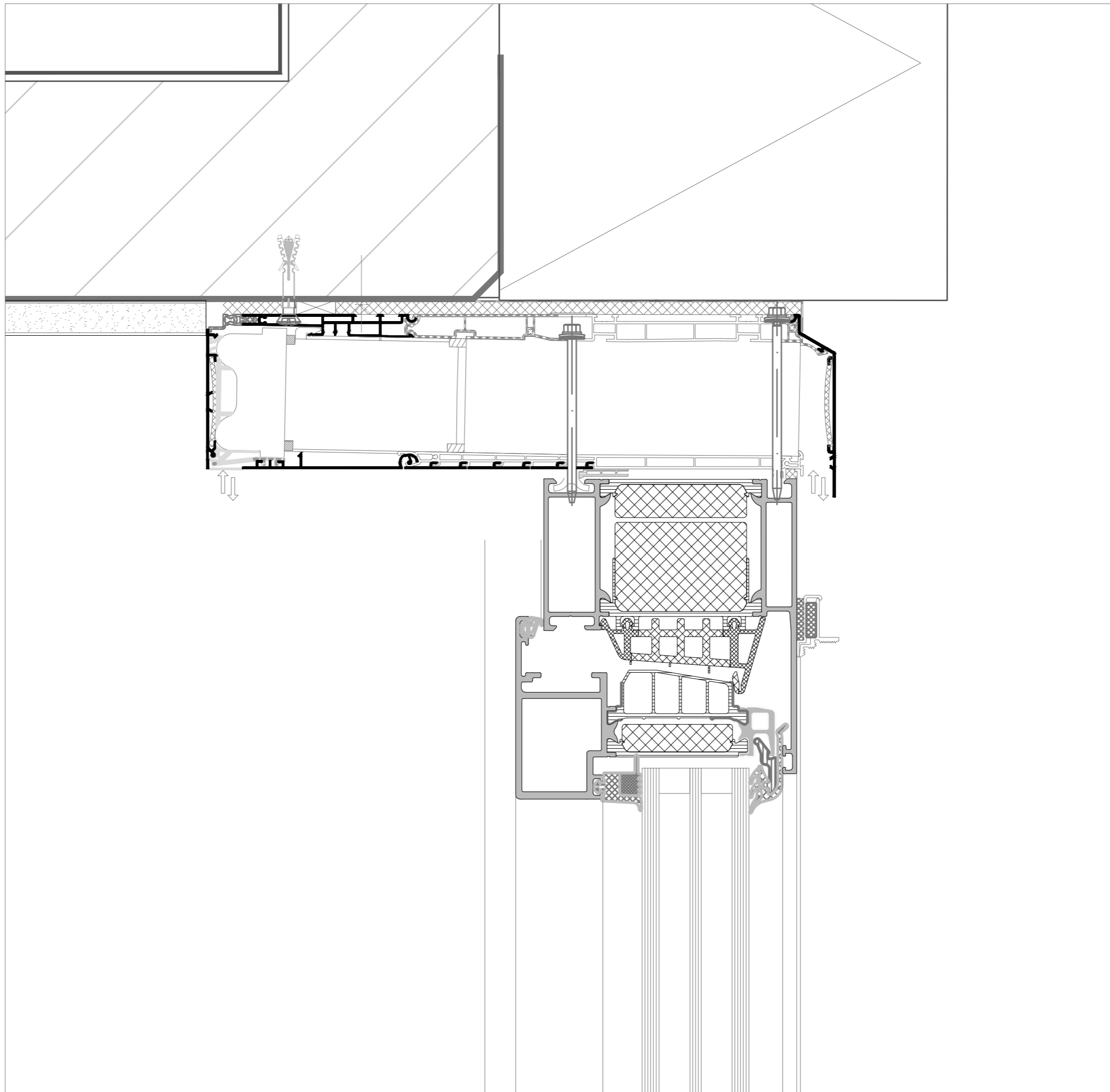
TRANSVERSAL SECTION
ESC 1:200



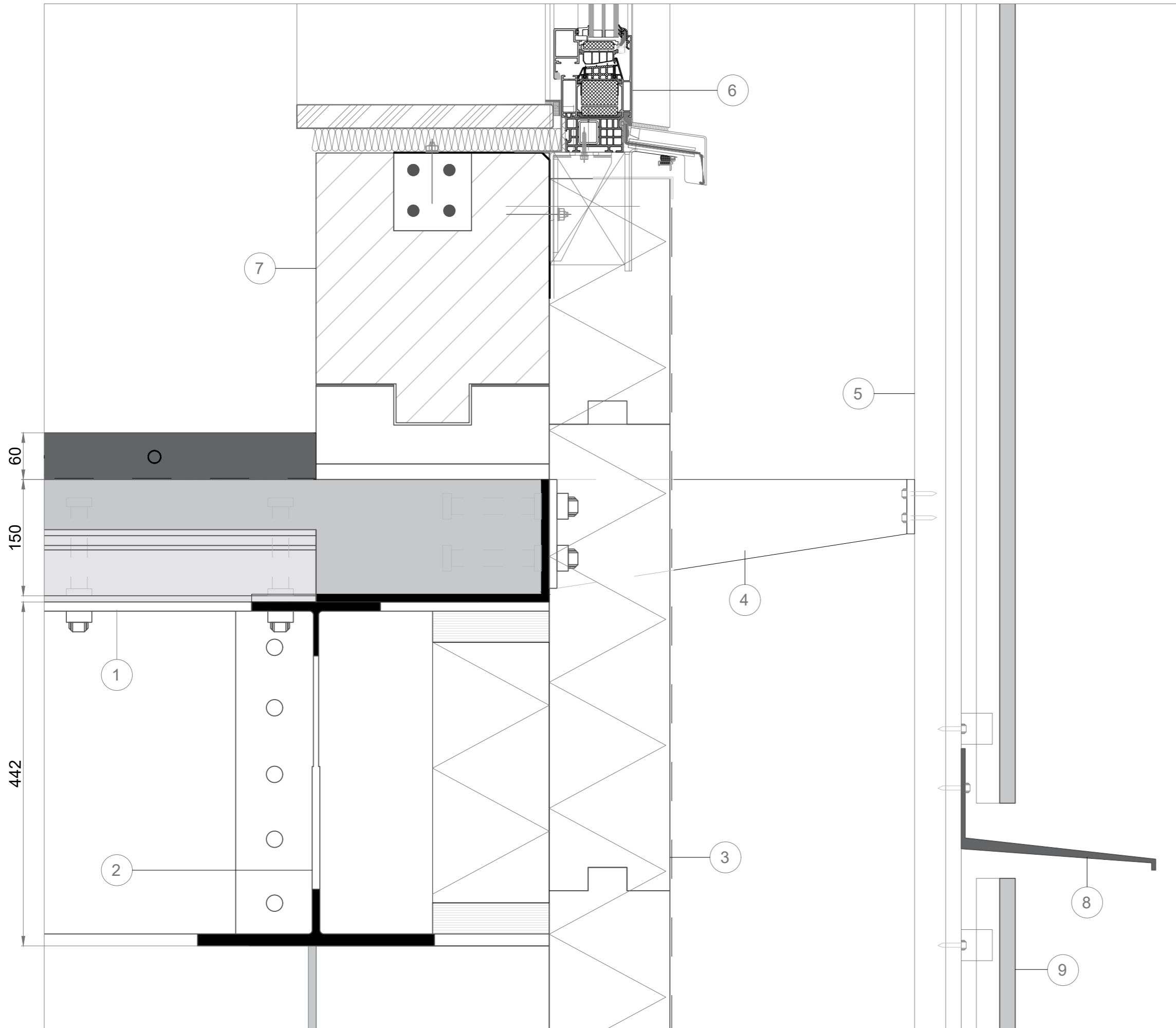
 TWELVE FLOOR
ESC 1:200



SEVENTH FLOOR
ESC 1:200

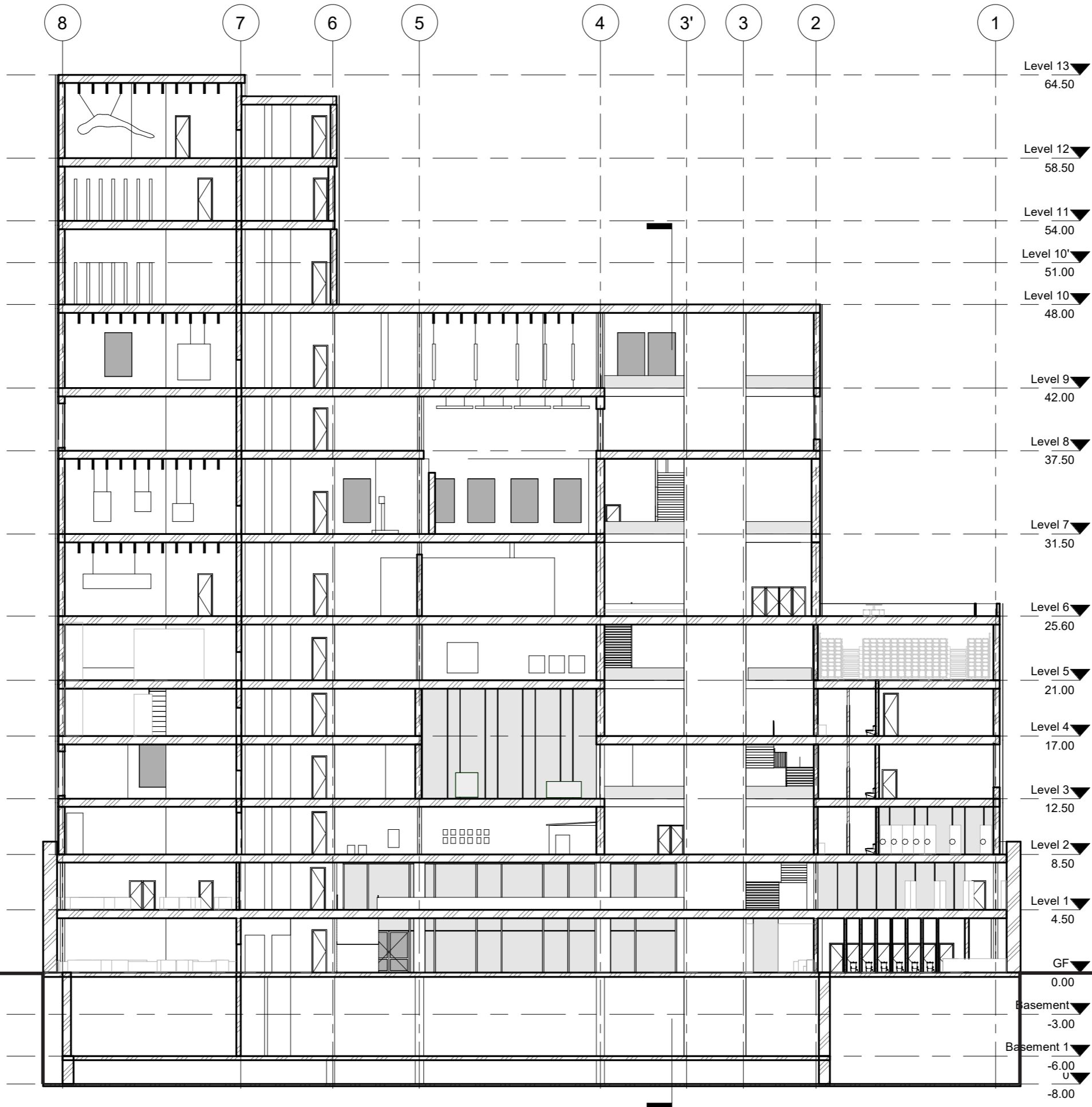


Decentralized window ventilation system Detail 1:2



1. composite floor slab
steel deck 8mm
in situ concrete 150mm
underfloor membrane
poured polished concrete with
integrated floor heating 60mm
2. structural cellular beam with 300mm
web openings.
3. weatherproof membrane
woodfiber insulation 160mm
4. steel support plate 15 mm
5. aluminium cladding profile 61mm
6. Schuco AWS 90+ window system
7. Hempblock masonry wall
water repelant mortar 20mm
concrete starter block
polythene damp course
hempblock LB 300 S 6000 x 300
in situ concrete reinforcement for
windows
8. aluminium trim profile
9. glass 15mm
aluminium frame 300 mm profile

Vertical Facade Detail 1:5



LONGITUDINAL SECTION
ESC 1:200