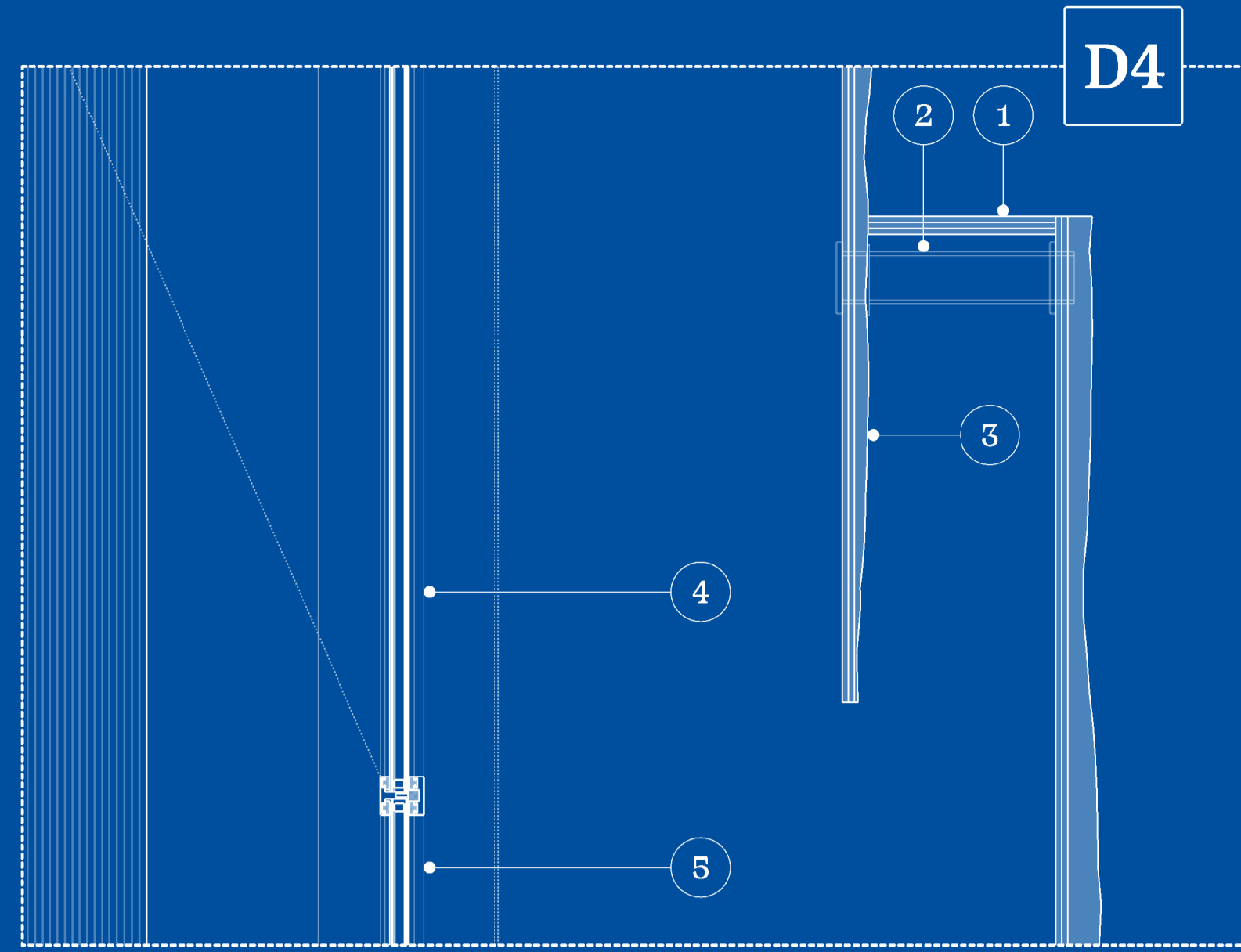
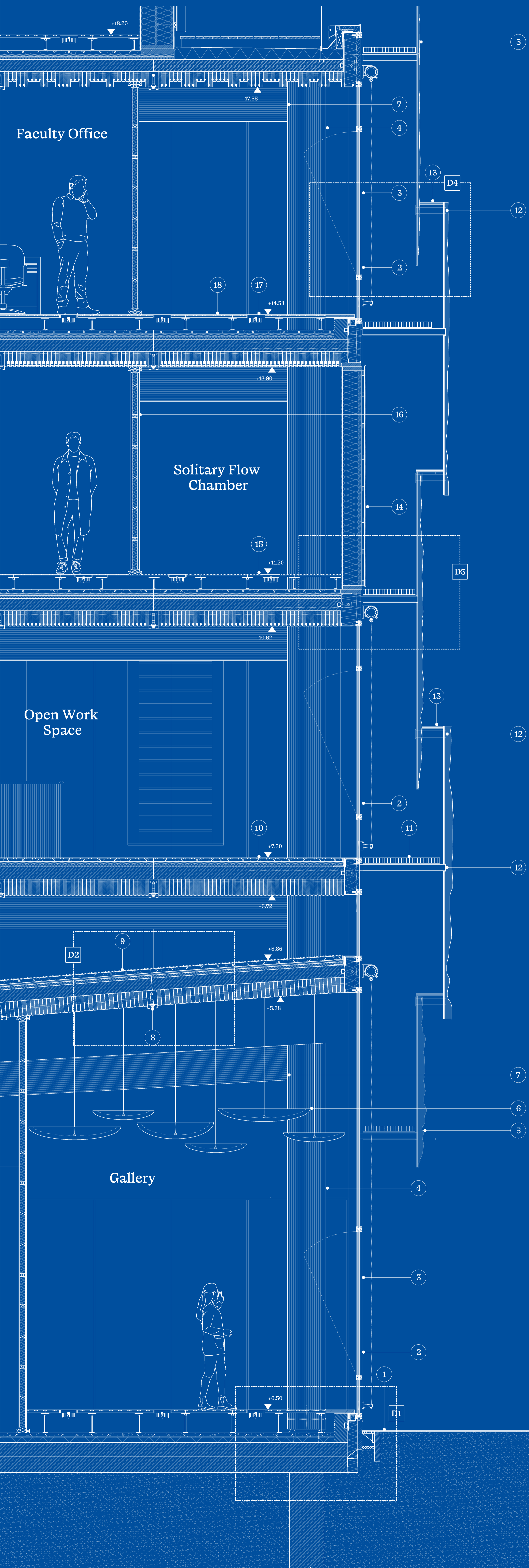


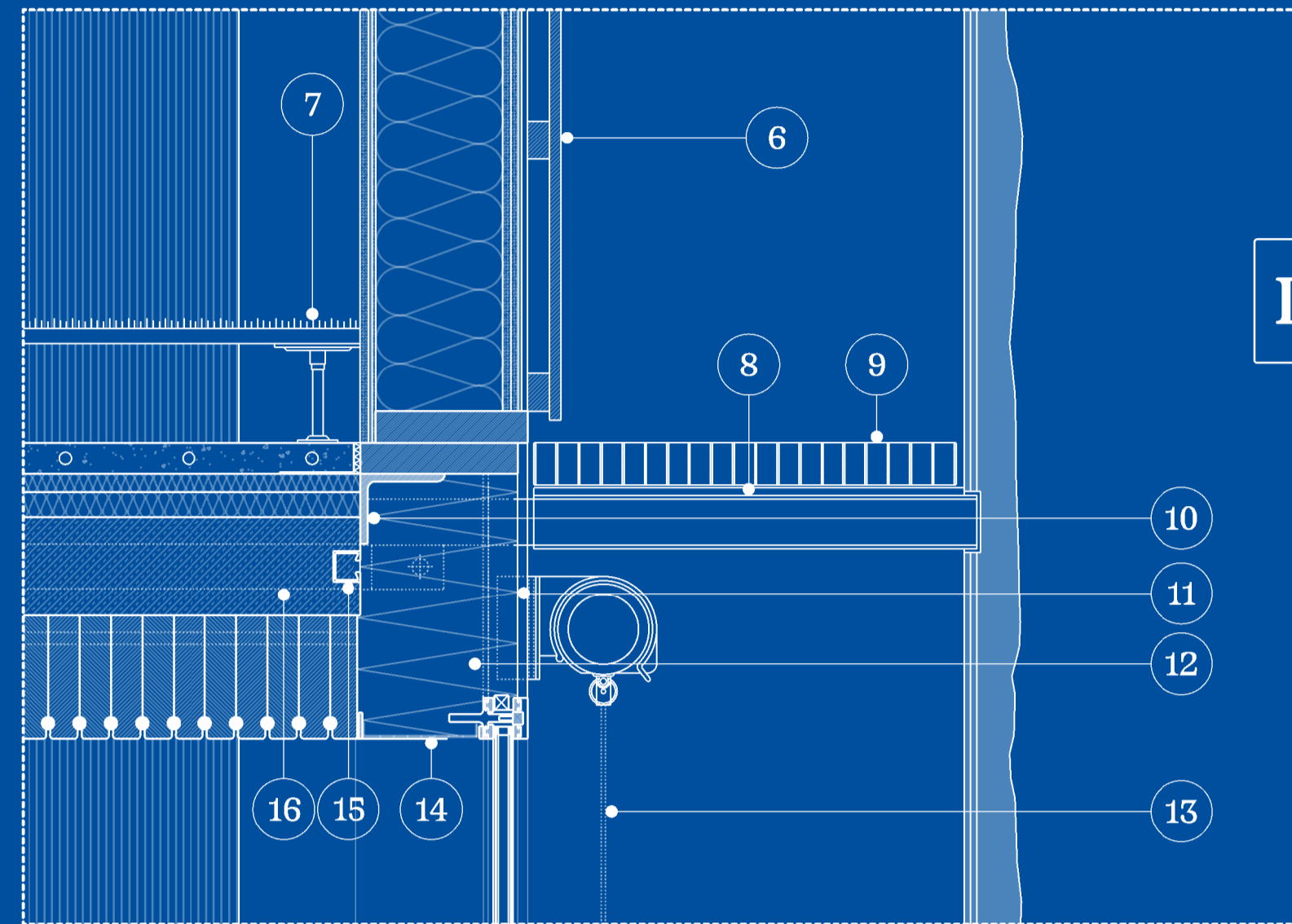
A Living Lab for Flow



DETAIL D4
1:10

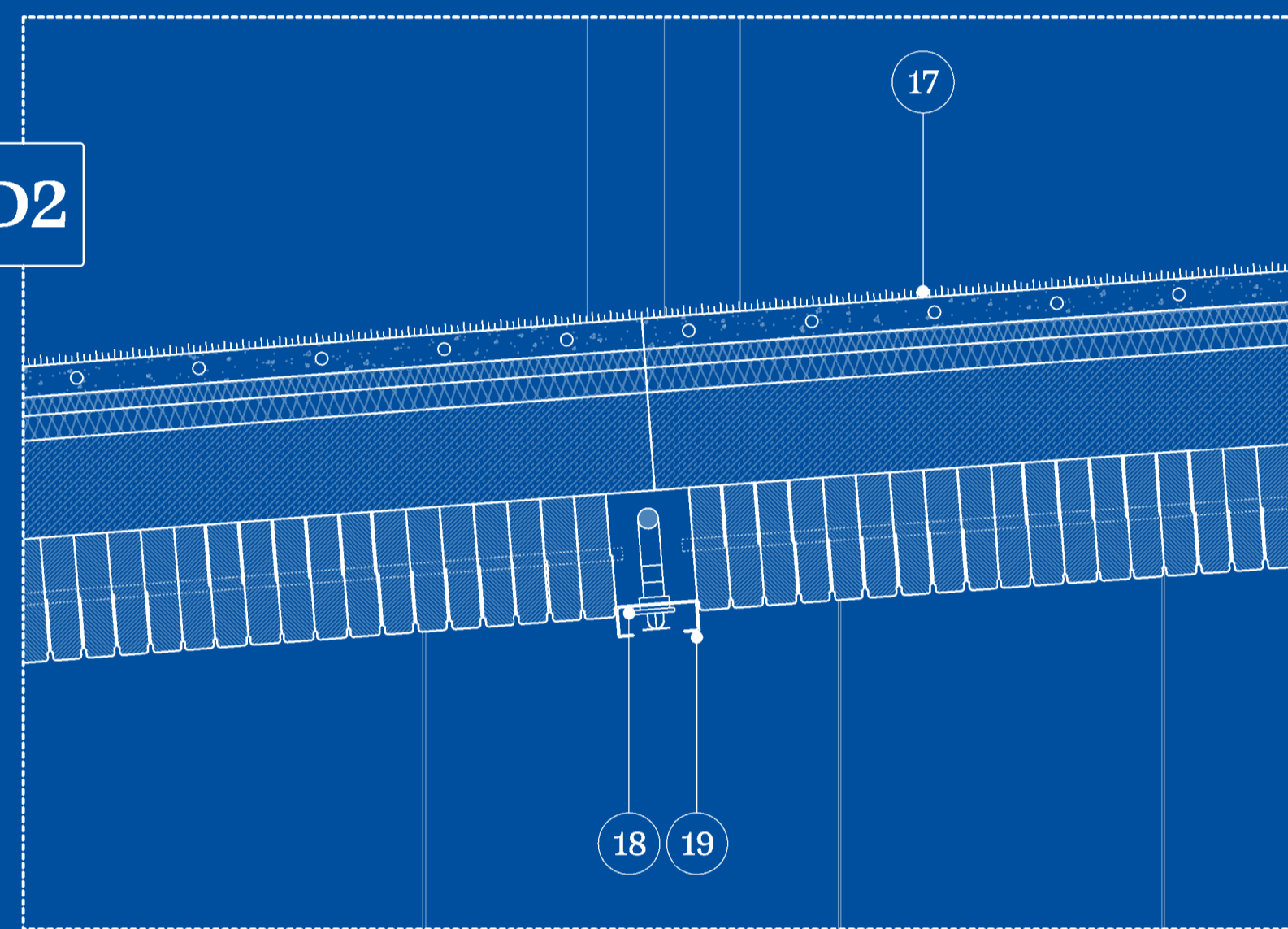
0 0.2 0.5 m
0.1

1. Horizontal glass element to close off facade for climate control
2. Mechanical connections panel to panel solid steel tube
3. Casted glass exterior facade, casted glass size 3800 x 2000 mm (t): 20 - 65 mm, laminate glass size: 3800 x 2000 mm (t) 10 x 2 mm
4. Hopper window
5. Double glazing



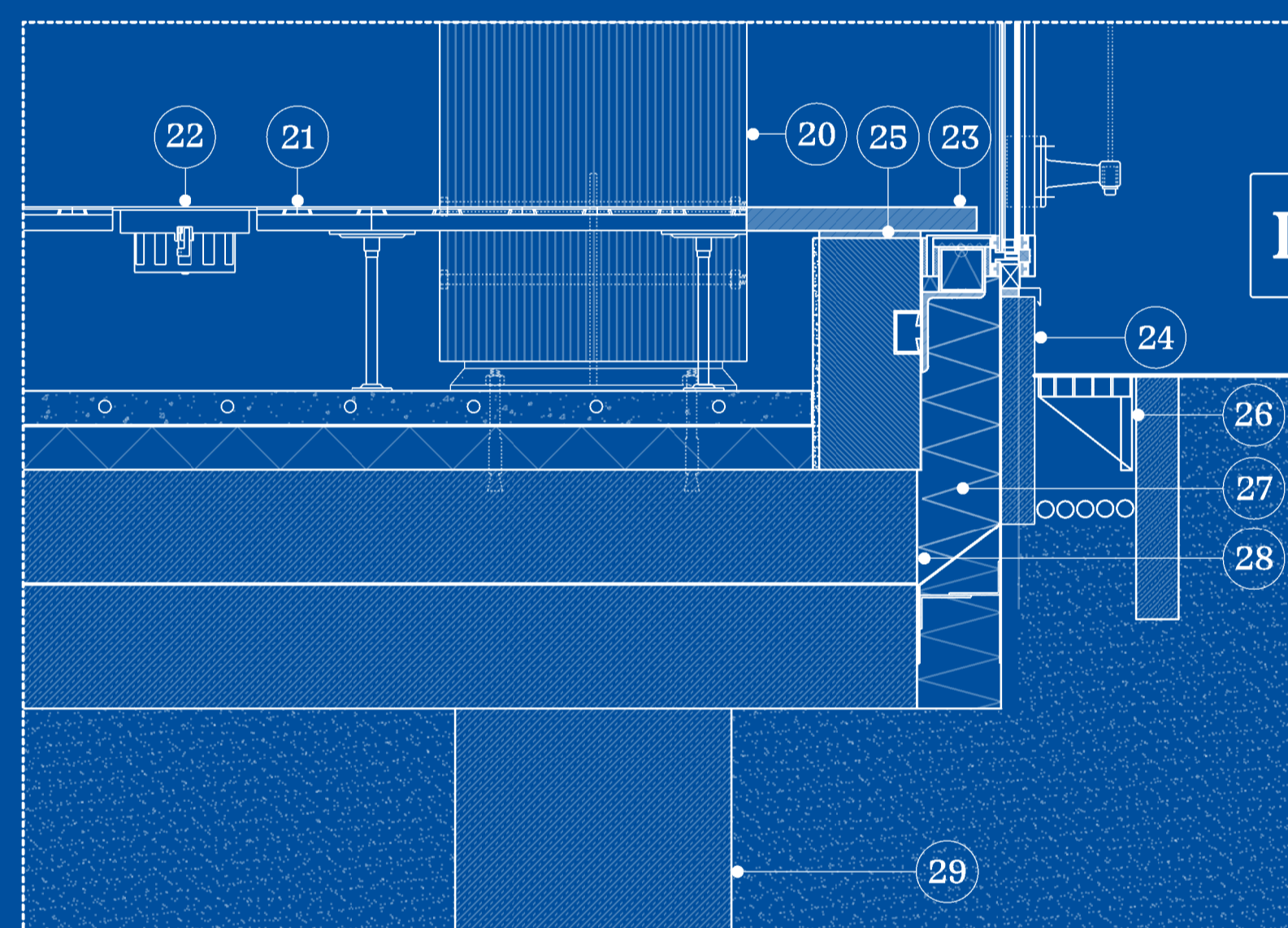
DETAIL D3
1:10

6. Larch facade cladding 19mm, horizontal battens 35mm, vertical battens 15mm, facade membrane and gypsum fibreboard 2 x 15mm, timber studs, thermal insulation 200mm, gypsum fibreboard and aluminium foil 15mm, gypsum fibreboard 13mm, floor covering 15mm
7. Screed with underfloor heating 50mm, acoustic mat 50mm, mineral fibre sound insulation 40mm, concrete 100mm, DLT ceiling (acoustic square profile w NRC = 0.5) 160mm
8. Casted glass to concrete slab connection
9. Steel grill walkway for maintenance
10. Steel angle
11. Larch facade panel
12. Thermal insulation
13. Steel bracket, hot dip galvanized Fabric sunshade
14. Vapour barrier
15. Cast-in slotted channel
16. Casted glass to concrete slab connection



DETAIL D2
1:10

13. Screed with underfloor heating 50mm, acoustic mat 50mm, mineral fibre sound insulation 40mm, concrete 100mm, DLT ceiling (custom curved profile) 160mm
14. Sprinkler system
15. Recessed track lighting



DETAIL D1
1:10

20. Glulam column bears on concrete with knife plate, circular profile - Ø 500mm
21. Floor covering 15mm, raised flooring 260mm, screed with underfloor heating 55mm, thermal insulation 70mm, concrete slab 135mm, concrete slab 200mm
22. AirPuse swirl diffuser (UFAD ventilation system)
23. Window board on framing
24. Concrete plinth
25. Spandrel
26. Grating
27. Thermal insulation
28. Vapor barrier
29. Pile foundation

CROSS SECTION AA'

1:20

CROSS SECTION NOMENCLATURE

1. Connection detail to ground
2. Hopper window
3. Double glazing
4. Glulam column Ø 500mm circular profile
5. Cast glass facade
6. Acoustic rock wool baffle system without frame, Ø 1200 - 800 mm (t): 50mm
7. Glulam beam 450 x 200 mm
8. Recessed track lighting
9. Carpet floor covering 13mm, screed with underfloor heating 50mm, mineral fibre sound insulation 30mm, additional mineral fibre sound insulation 40mm, concrete 100mm, Dowel laminated timber (curved custom profile) 160mm
10. Floor covering 15mm, screed with underfloor heating 57mm, mineral fibre sound insulation 30mm, additional mineral fibre sound insulation 40mm, concrete 100mm, dowel laminated timber (bullnose custom profile) 160mm
11. Steel grill walkway for maintenance
12. Casted glass to concrete slab connection
13. Horizontal glass elements to close facade for climate control
14. Larch facade cladding 19mm, horizontal battens 35mm, vertical battens 15mm, facade membrane and gypsum fibreboard 2 x 15mm, timber studs, thermal insulation 200mm, gypsum fibreboard and aluminium foil 15mm, gypsum fibreboard 13mm, floor covering 13mm
15. Carpet floor covering 13mm, raised flooring 150mm, screed with underfloor heating 50mm, mineral fibre sound insulation 30mm, additional mineral fibre sound insulation 40mm, concrete 100mm, Dowel laminated timber (acoustic square w/ wood fibre) 160mm
16. Acoustic slat wood panel 11m, timber stud walls with two layers of 5mm aluminium foil on either side, acoustic slat wood panels 11m
17. AirPuse swirl diffuser (UFAD ventilation system)
18. Floor covering 15mm, raised flooring 180mm, screed with underfloor heating 50mm, mineral fibre sound insulation 30mm, additional mineral fibre sound insulation 40mm, concrete 100mm, dowel laminated timber (acoustic square w/ wood fibre + felt profile) 160mm

0 0.2 0.4 1 m
0.1 0.3 0.5

A Living Lab for Flow

CROSS SECTION AA' DETAIL 1:20

CROSS SECTION NOMENCLATURE

- 1. Typical flat roof junction
- 2. Laminated safety glass railing
- 3. Larch untreated 30mm, solid structural timber conical 100 - 120mm, protective mat, sealing membrane, sound insulation 50 - 20mm, concrete 160mm, dowel laminated timber (random fluted w/ mineral wool) 160mm
- 4. Facade cladding, aluminium pyramid-profiled cladding with dichroic powdered finish
- 5. Extensive vegetation 100mm, drainage 10mm, waterproofing membrane 2 x 5mm, waterproofing self adhesive membrane with heat shield 3mm, thermal insulation 350mm, vapour barrier 3.8mm, dowel laminated timber (bullnose custom profile) 160mm



Living Lab

+22.50

+18.20

D6

D5

5

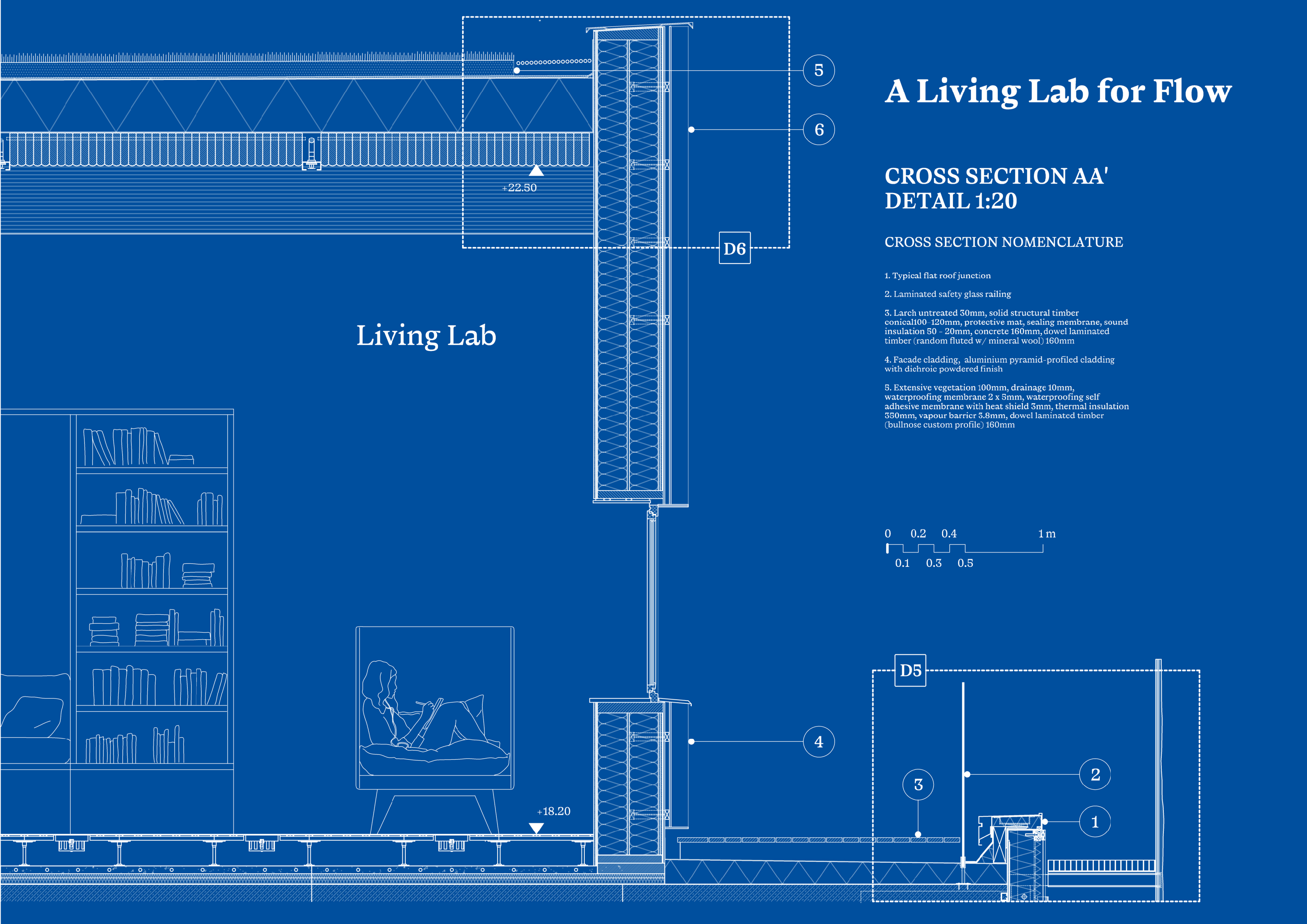
6

4

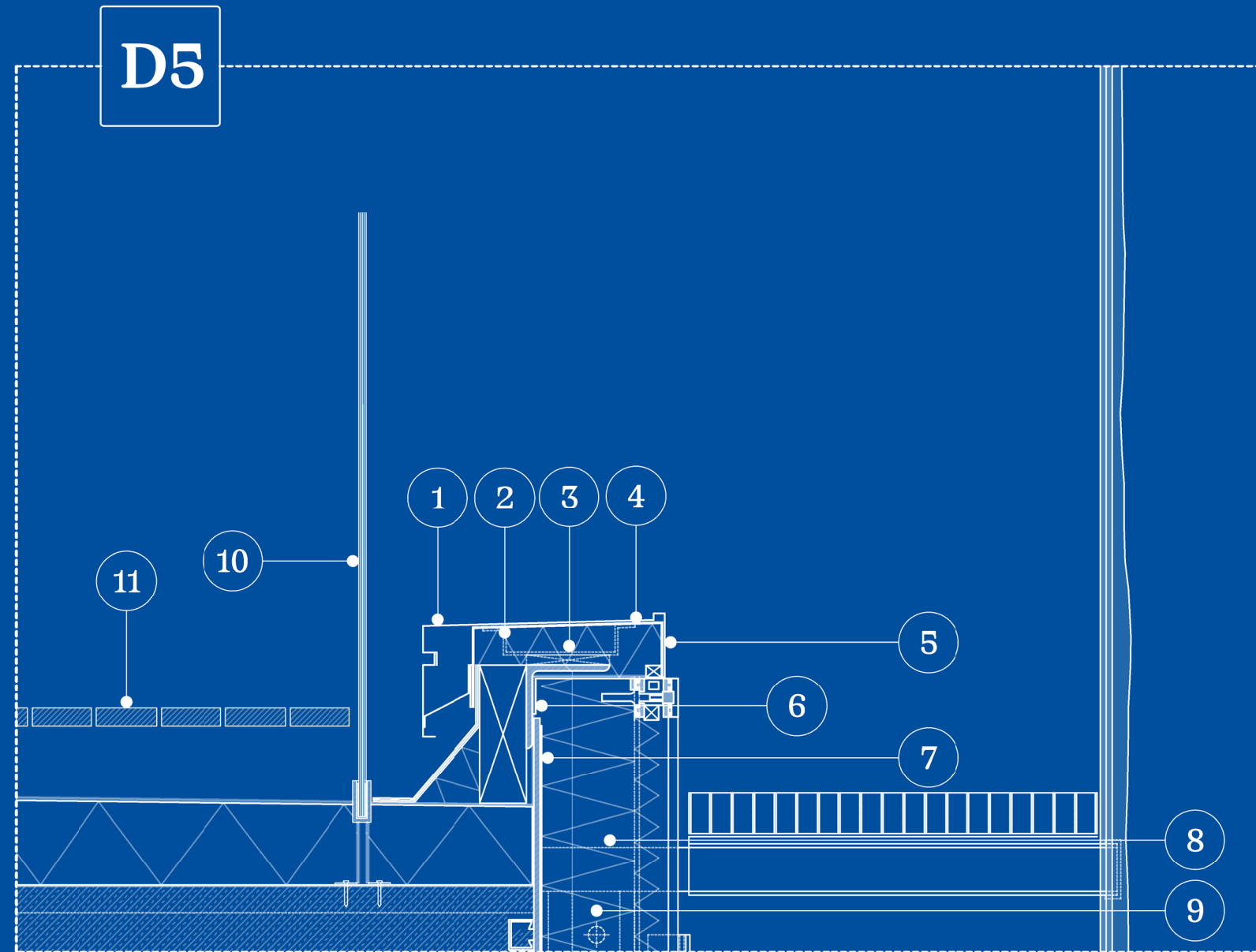
3

2

1



A Living Lab for Flow



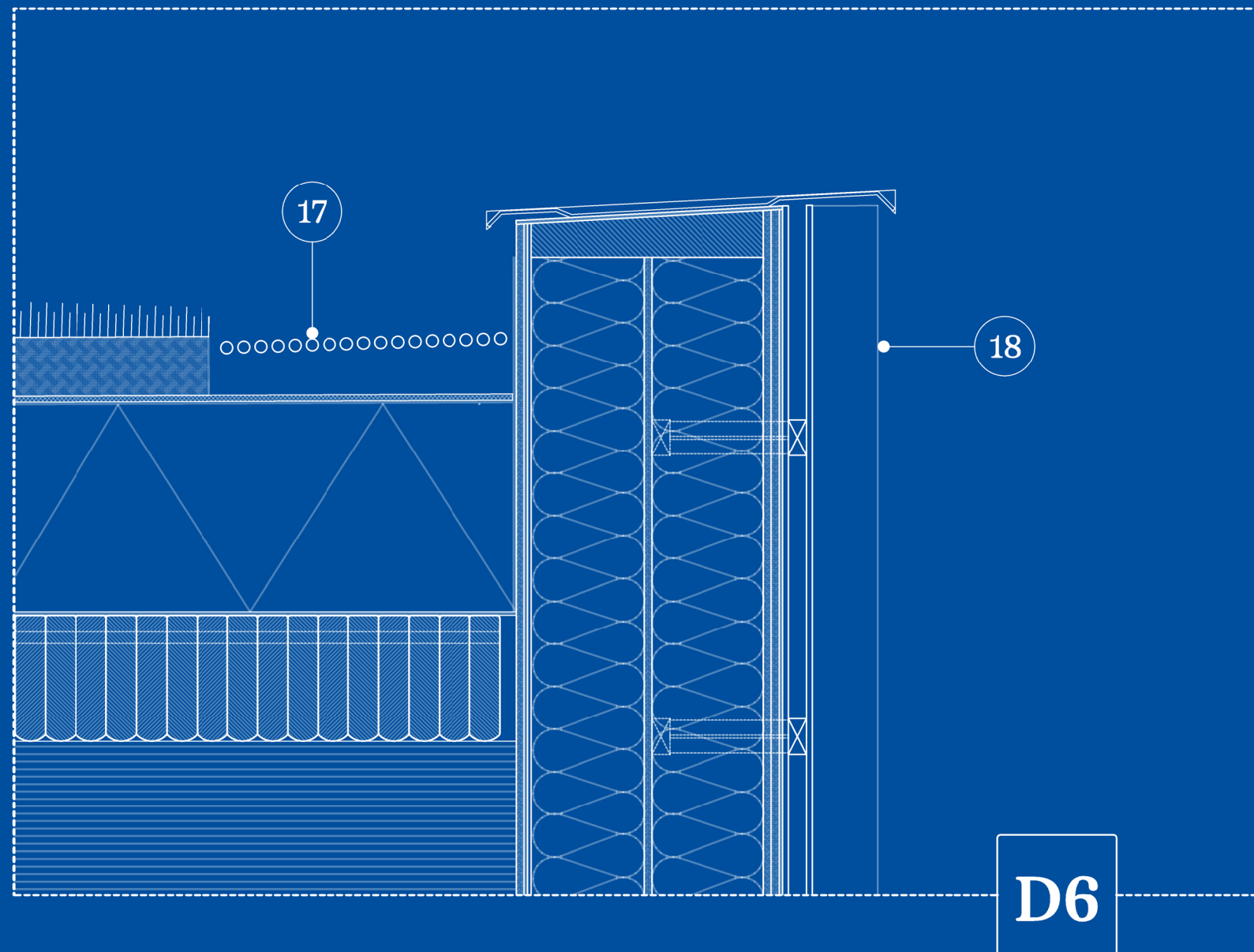
DETAIL D5 1:10

DETAIL NOMENCLATURE

1. Anodised aluminium sheeting
2. Thermal insulation
3. EPDM pad
4. EPDM Sheeting
5. Sheet metal cleat
6. Steel angle
7. Steel sheet
8. Steel angle
9. Bolt in elongated hole
10. Laminated safety glass railing
11. Larch untreated 30mm, solid structural timber, conical 100-120mm, protective mat, sealing membrane, sound insulation 50 - 20mm, concrete 160mm, dowel laminated timber (random fluted w/ mineral wool) 160mm

0 0.2 0.5 m
0.1

A Living Lab for Flow



DETAIL D6

1:10

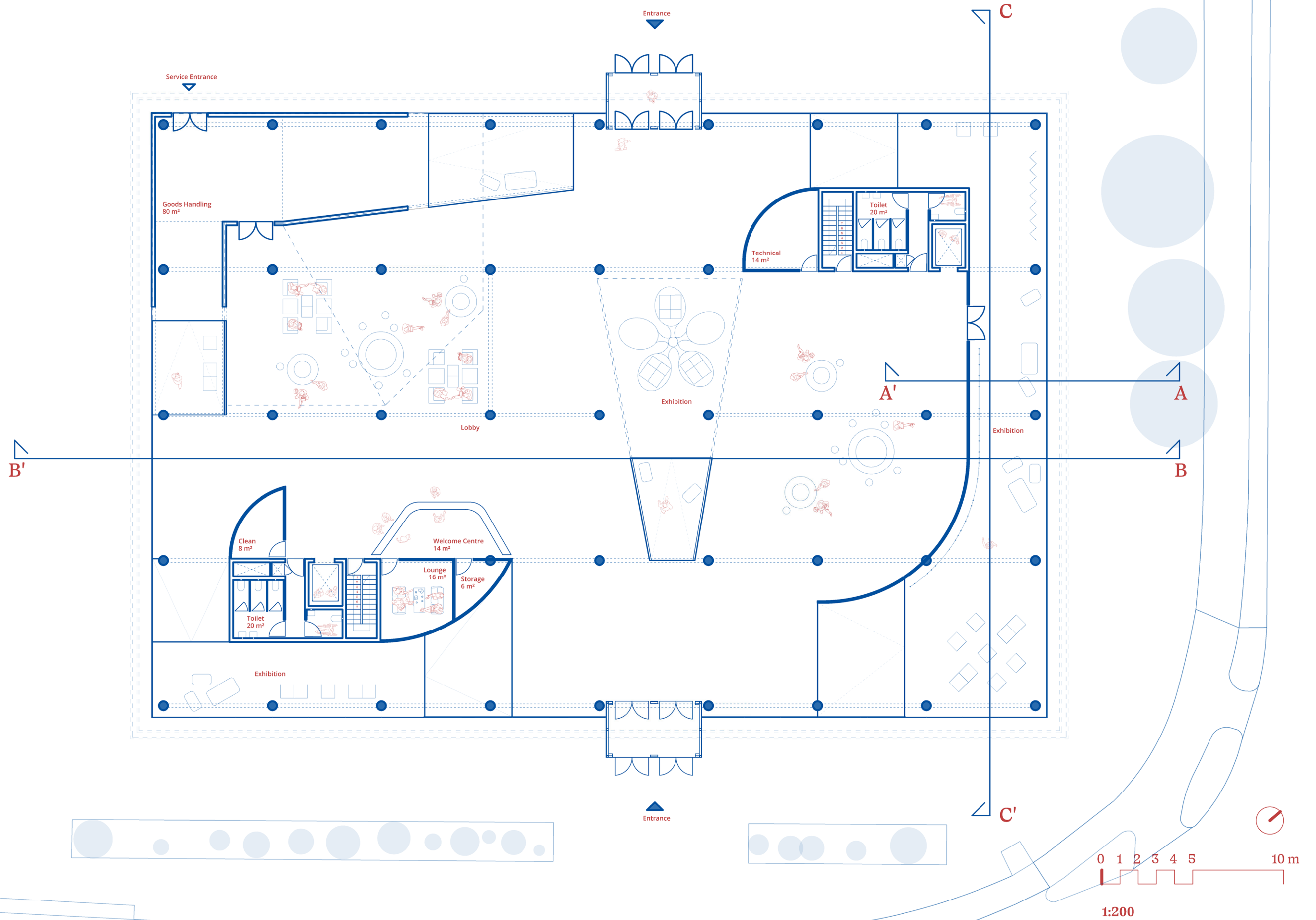
DETAIL NOMENCLATURE

17. Extensive vegetation 100mm, drainage 10mm, waterproofing membrane 2 x 5mm, waterproofing self adhesive membrane with heat shield 3mm, thermal insulation 350mm, vapour barrier 3.8mm, dowel laminated timber (bullnose custom profile) 160mm

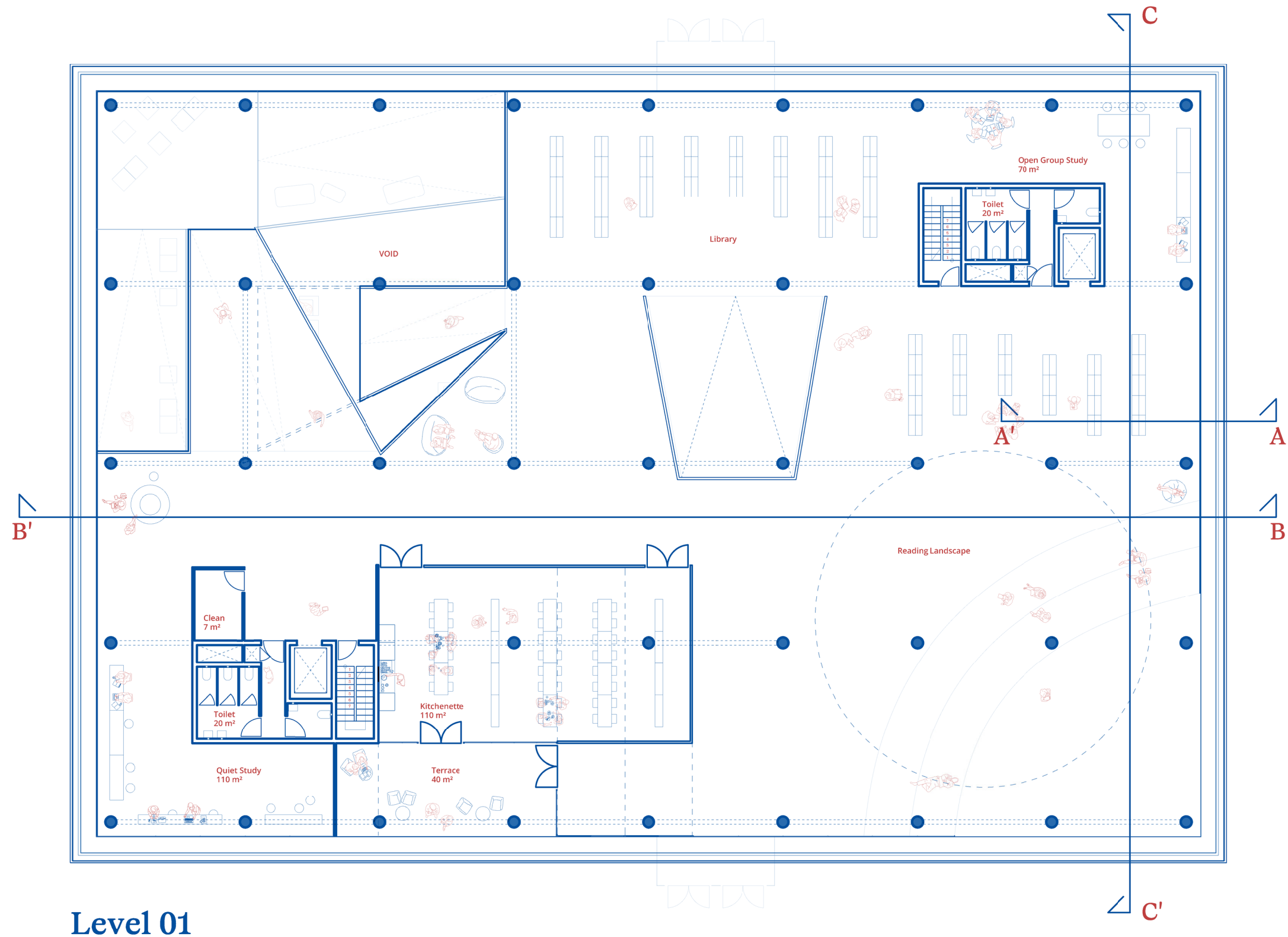
18. Aluminium pyramid-profiled cladding w/ dichroic powdered finish 10mm, facade membrane and gypsum fibreboard 2 x 13mm, timber studs, thermal insulation 190mm, gypsum fibreboard 13mm, timber studs, thermal insulation 190mm, gypsum fibreboard and aluminium foil 13mm, gypsum fibreboard 13mm

0 0.2 0.5 m
0.1

A Living Lab for Flow



A Living Lab for Flow

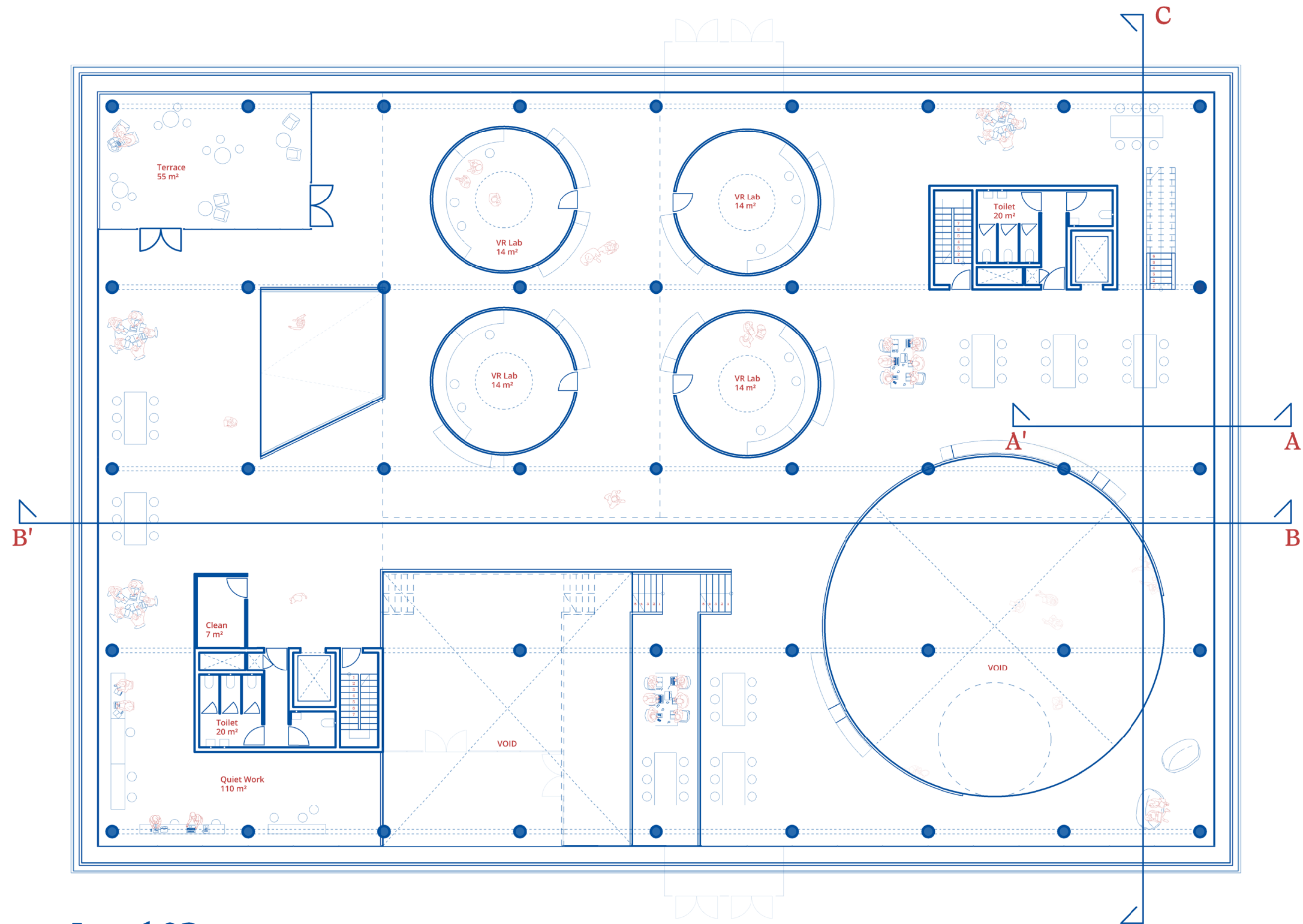


Level 01



1:200

A Living Lab for Flow

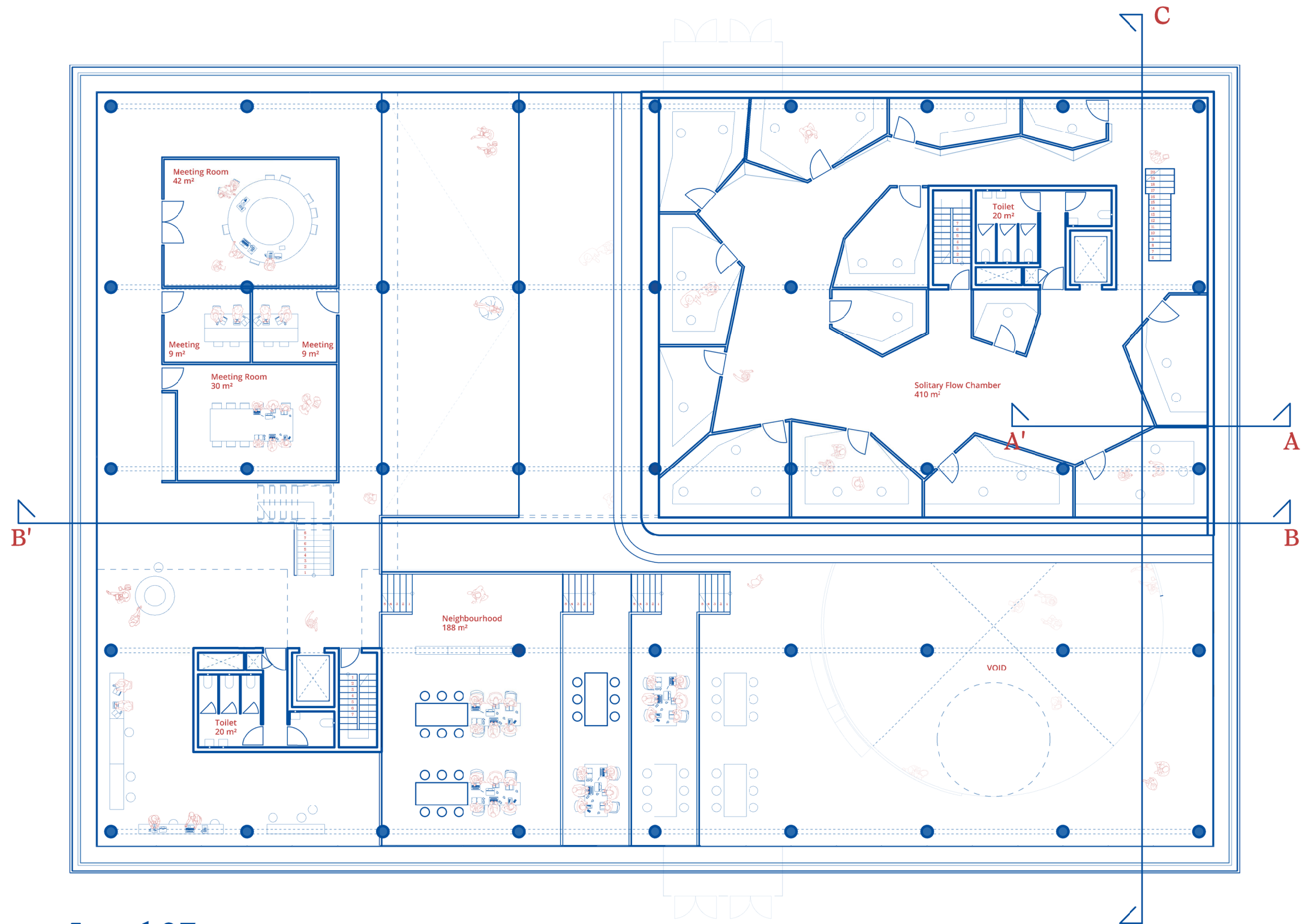


Level 02



1:200

A Living Lab for Flow

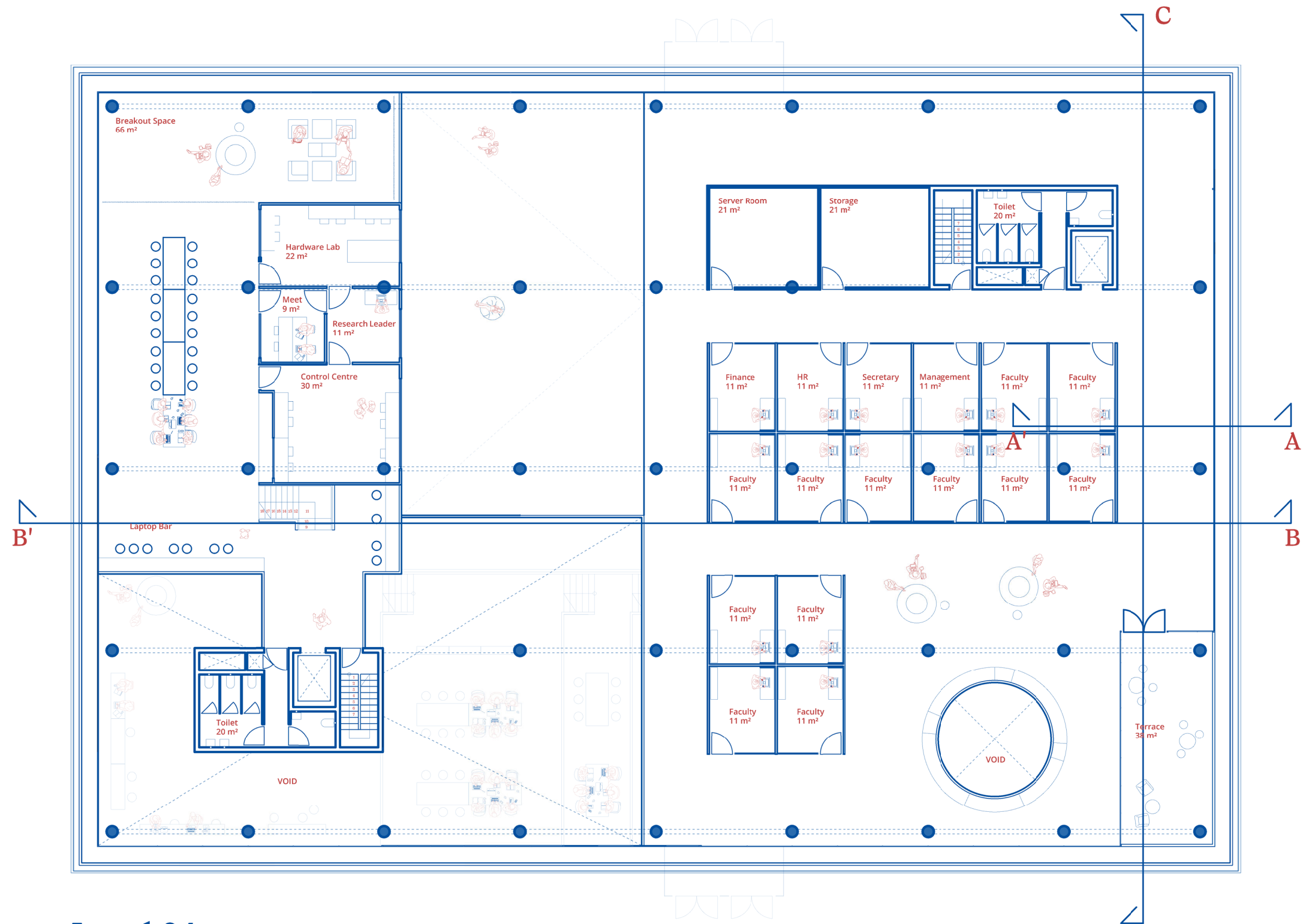


Level 03



1:200

A Living Lab for Flow

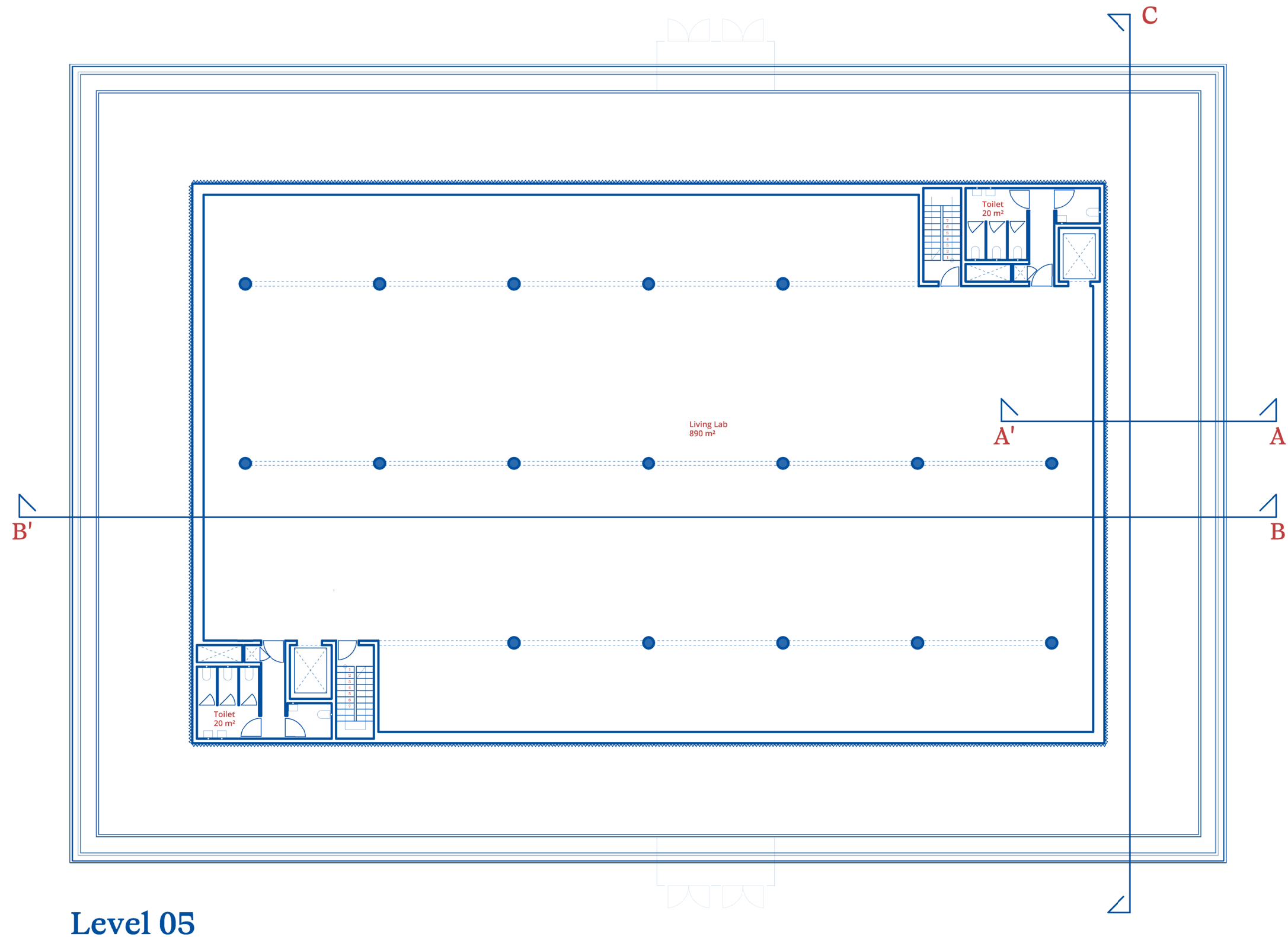


Level 04



1:200

A Living Lab for Flow

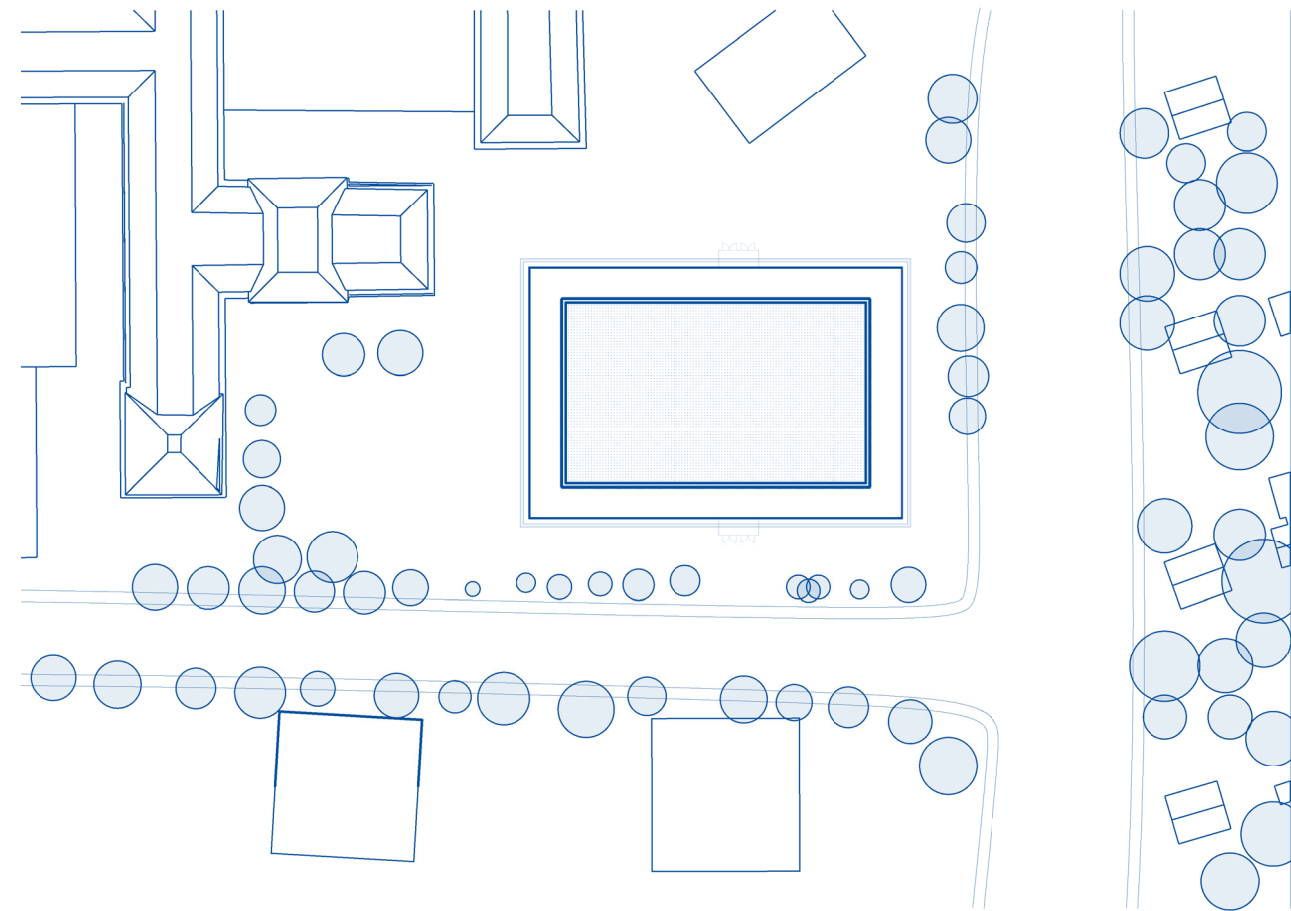


Level 05

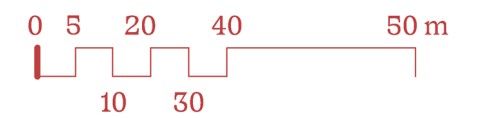


1:200

A Living Lab for Flow



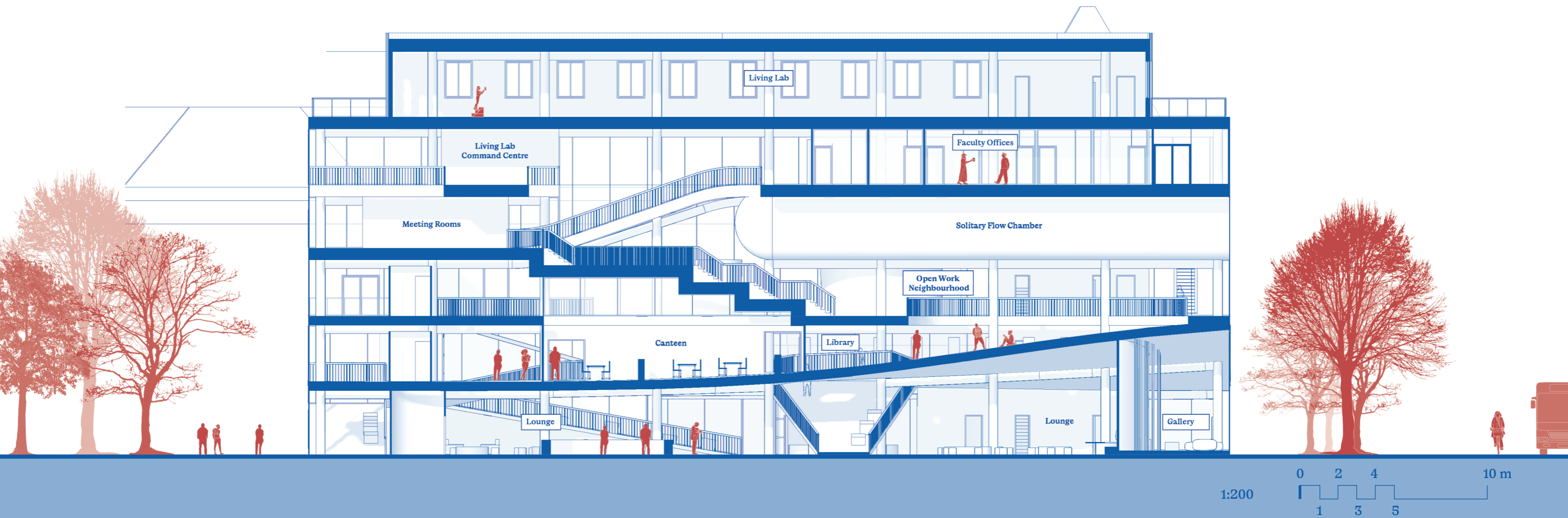
Master Plan



1:1000

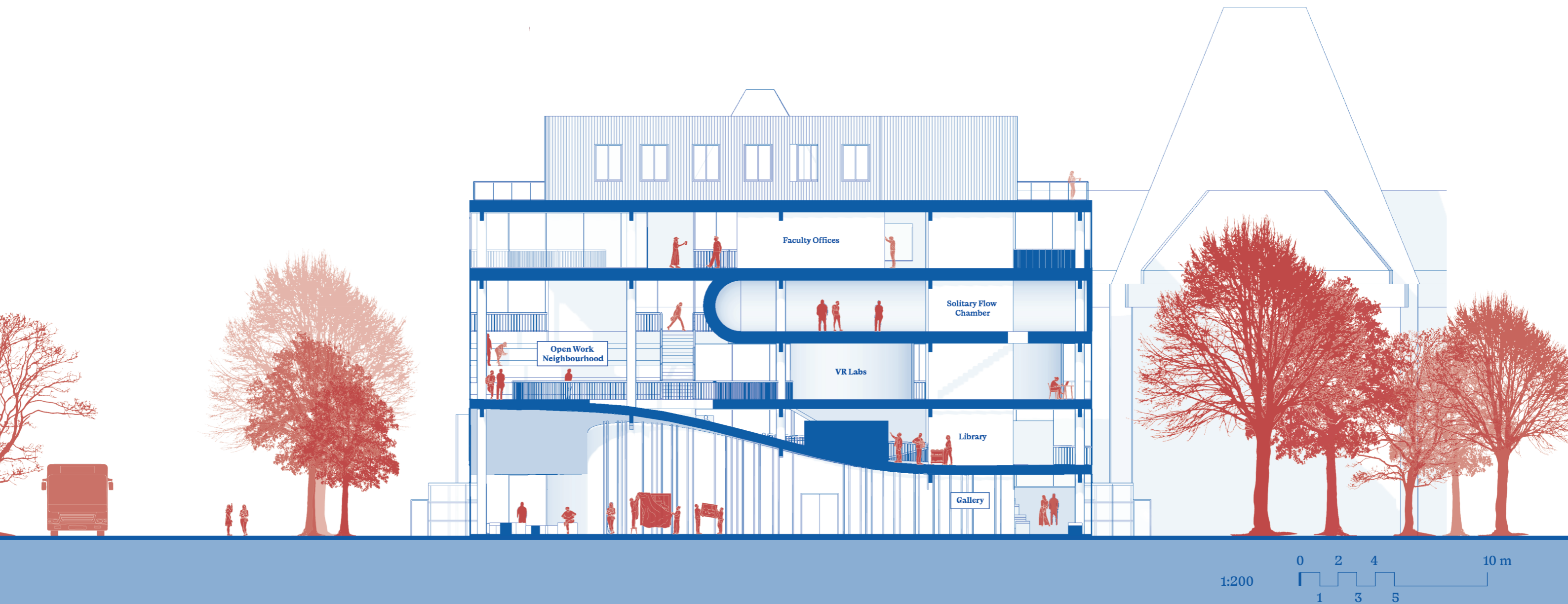
A Living Lab for Flow

Longitudinal Section B-B'



A Living Lab for Flow

Transversal Section C-C'



A Living Lab for Flow

Elevation Southeast

