

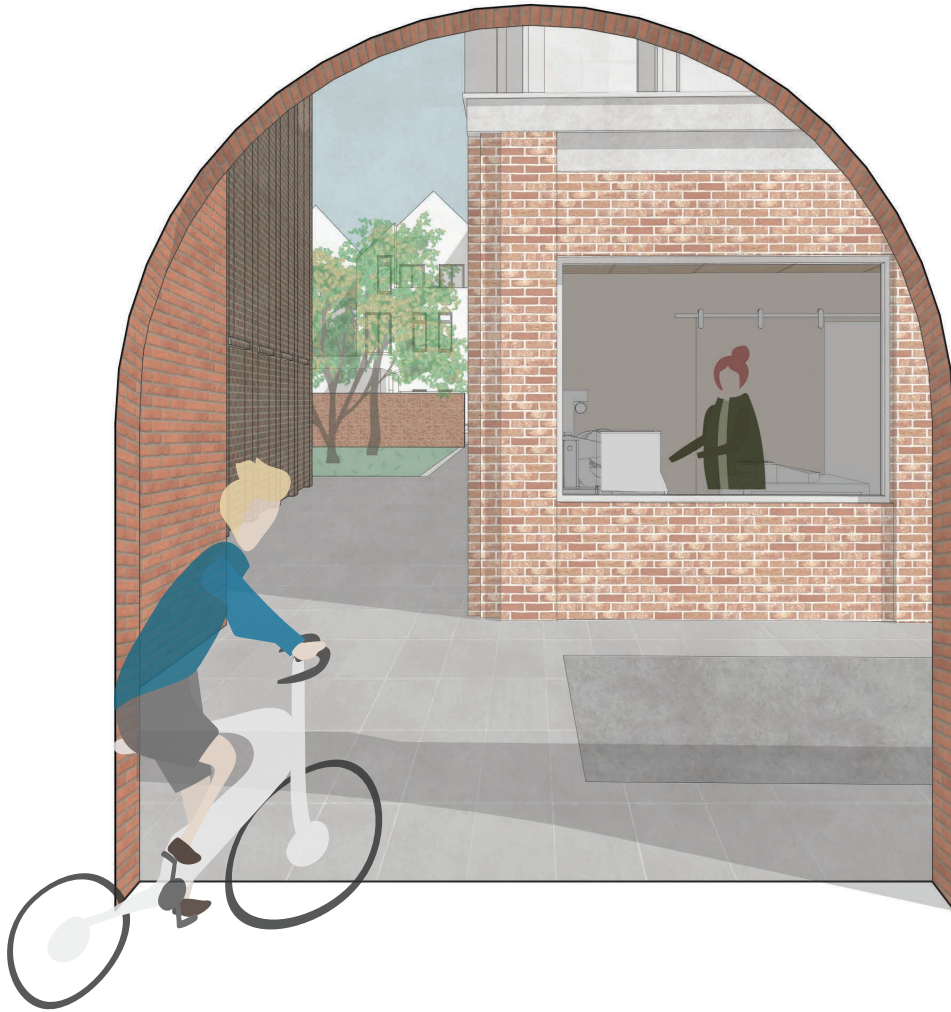
1

DAY IN THE LIFE

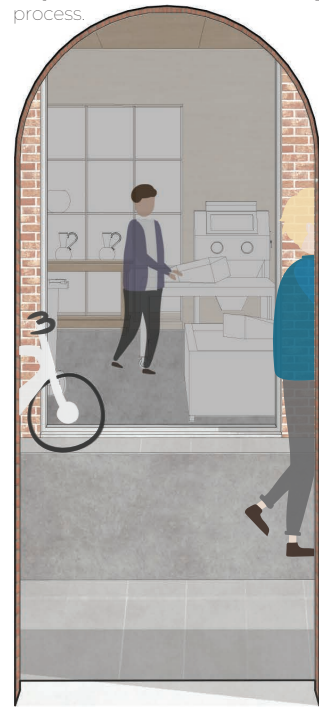




When walking up to the Gasthuisplaats a thought runs through your mind that it feels like almost a lifetime ago when you were in Brussels thinking about what you wanted to do. But now it is already a year since the Delft Glass School is built.



At the moment of passing by, suddenly a cyclist comes in front of you and goes through the first and goes past the workshop that is used for sanding and polishing the glass. He parks his bike in front of the large workshop where the large fuse ovens stand and where they make molds for the casting process.

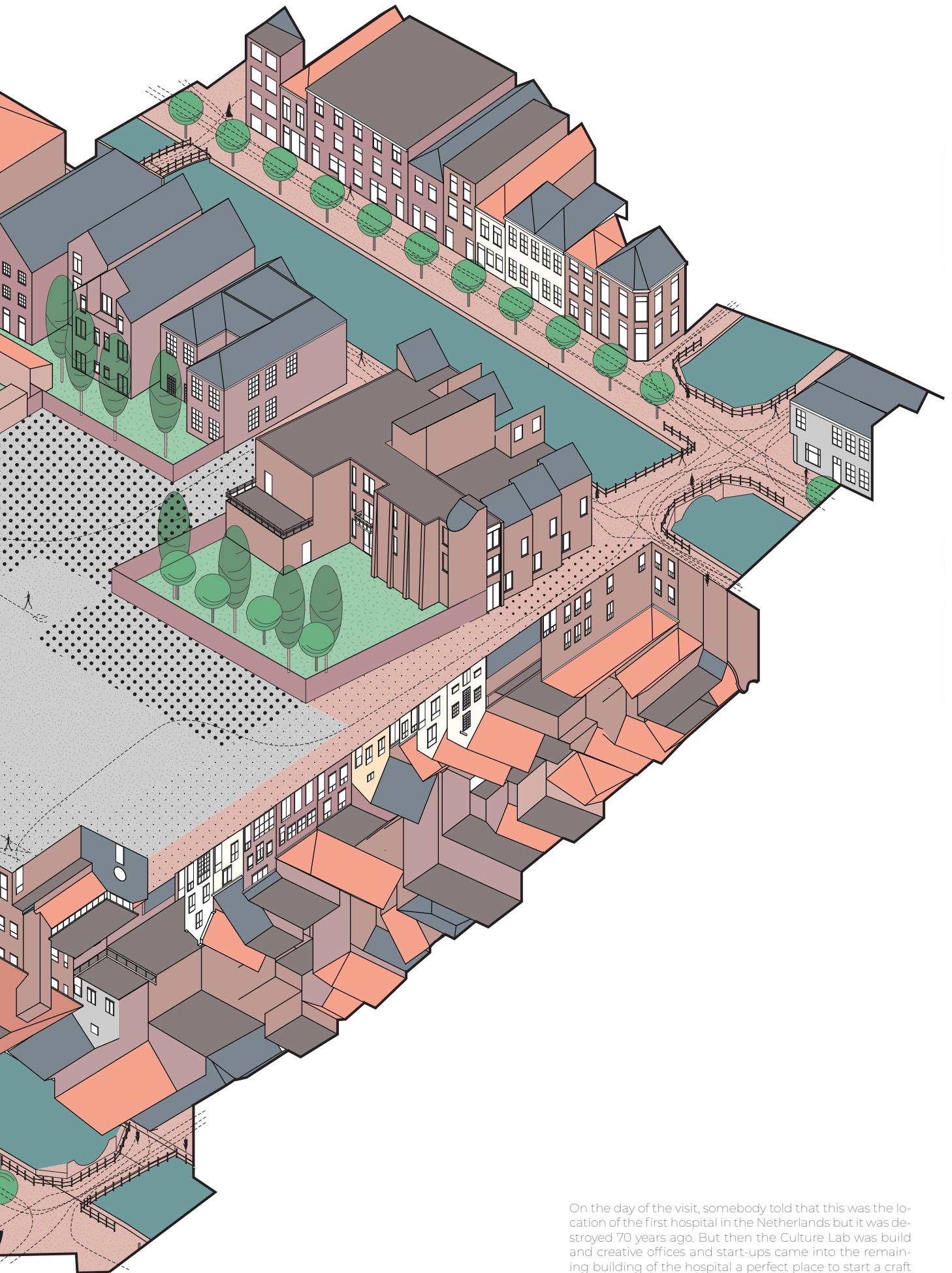




But when you enter through the main entrance and you enter the new Gasthuisplaats you finally recognize one of the students from the school. He is on his phone and does not see you standing in front of the arch of the old hospital entrance. Too bad you think. He does not seem to enjoy all the new buildings that were built here last year. And you think about the old situation that was this large space used as a parking lot...

Before the school was built you visited the Gasthuisplaats once to inspect the new location of the school. It was an odd place behind the wall and all its different corners and buildings. There were a lot of different facades connecting to the place what made it a sort of no man's land. People preferred to walk around the site and people only came in to get their car.





On the day of the visit, somebody told that this was the location of the first hospital in the Netherlands but it was destroyed 70 years ago. But then the Culture Lab was build and creative offices and start-ups came into the remaining building of the hospital a perfect place to start a craft community they said!

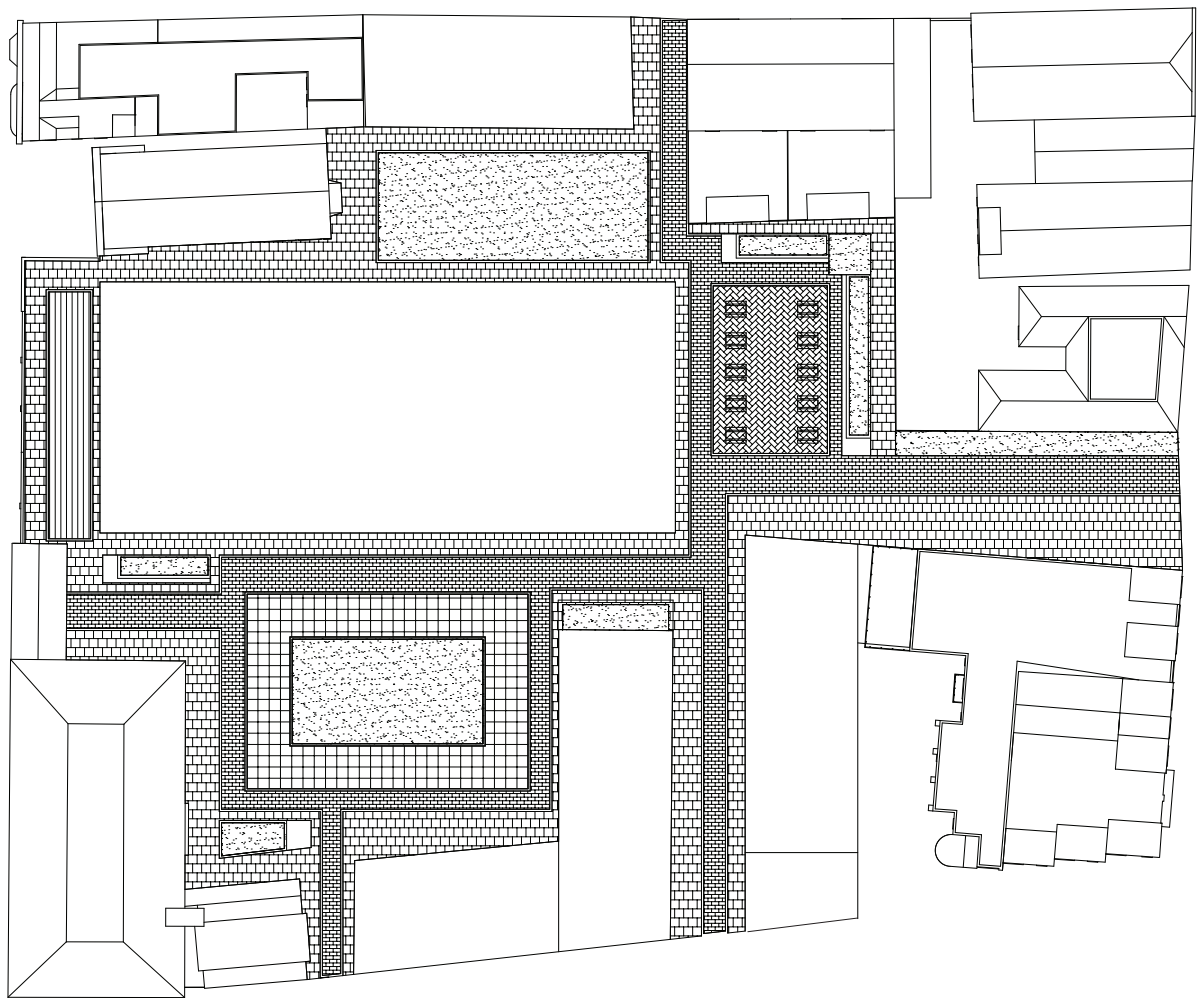


When you now stand in the middle of the Gasthuisplaats is now is a very lively place. You can see a lot of people working and practicing their craft. They often come in to the school use machines and borrow tools. This is not where the tools are meant for but they often give workshops inside of the school and during this last year you got to know them.

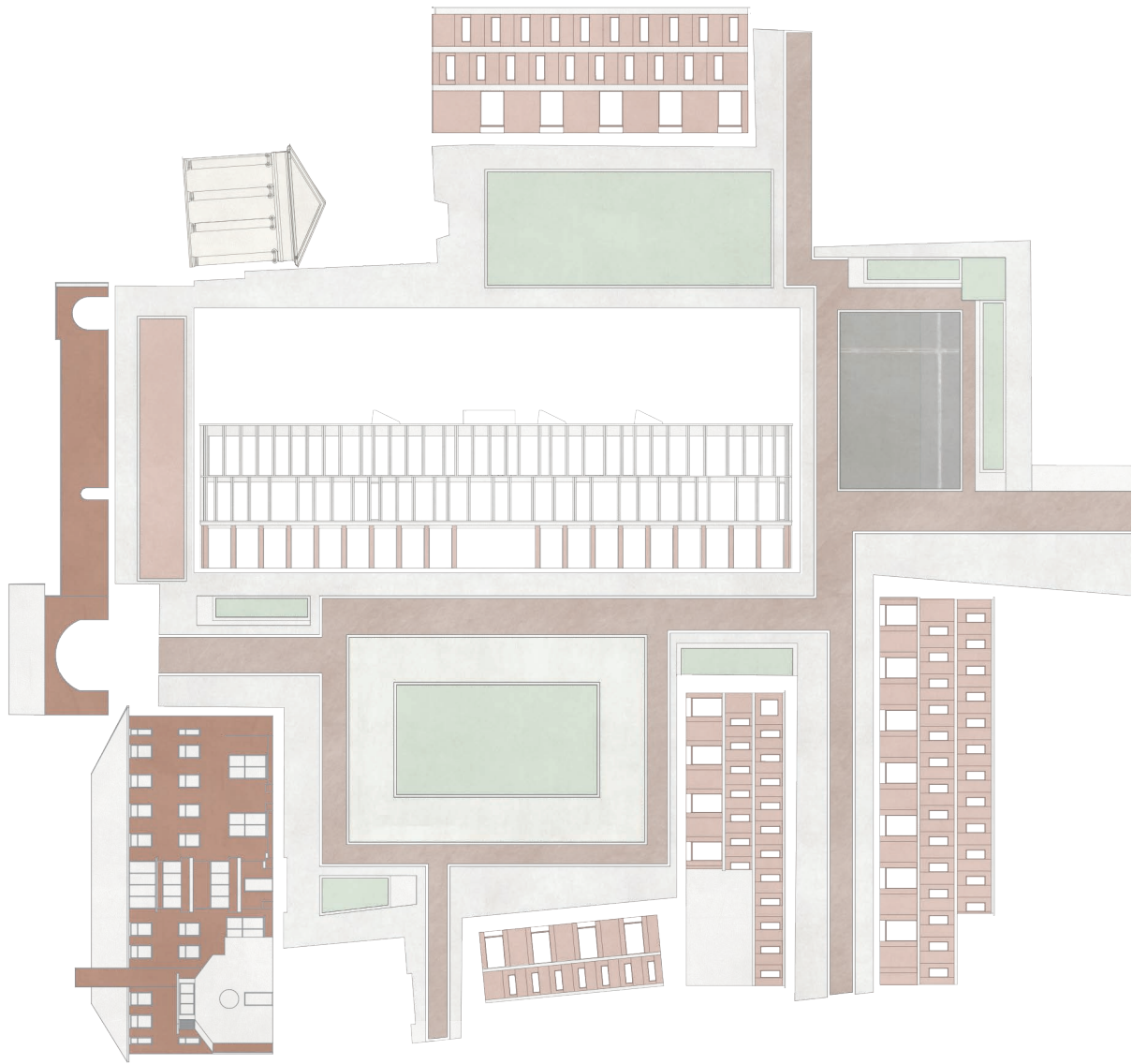




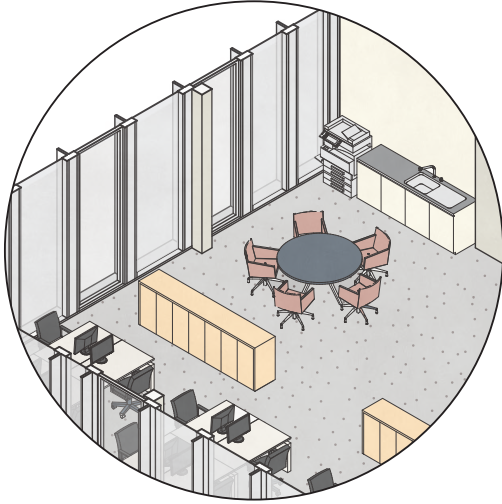
On the other side of the building is the cafe where you often drink a couple of beers with them at the end of the week. It is next to the Brabantse Turfmarkt so a lot of people walk by and visit the cafe. It is a very good place to meet new people and they all seem very interested when they look into the hot shop of the building and want to know more about glass. The different public spaces are a beautiful feature of the school. Something you had not thought about before.



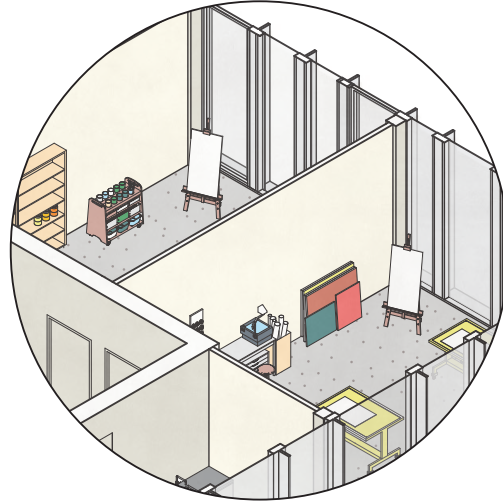
The public spaces are connected through a brick route. This is a public route for people not working or living inside of the Gasthuisplaats. The type of bricks is very common in Delft or any other old Dutch city so it creates a seamless connection to the city.



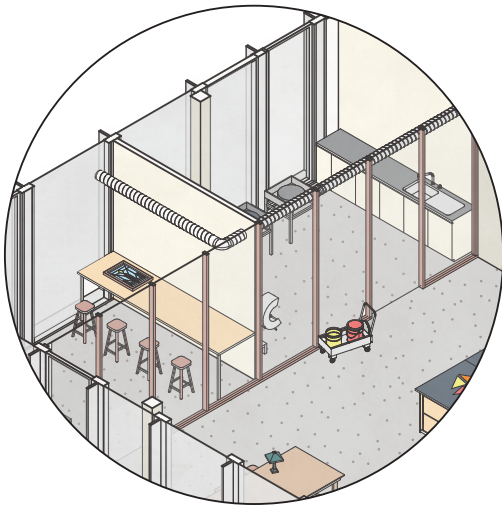
The materials inside of the Gasthuisplaats are combined to fit the context but also to show that something is going on inside of this place. The rough pink/red brick with the mortar pressed outward is a feature to show the craftsmanship inside of this new place. And all the different public spaces have another materiality to emphasize their difference... But that was enough daydreaming time to go inside and go back to work.



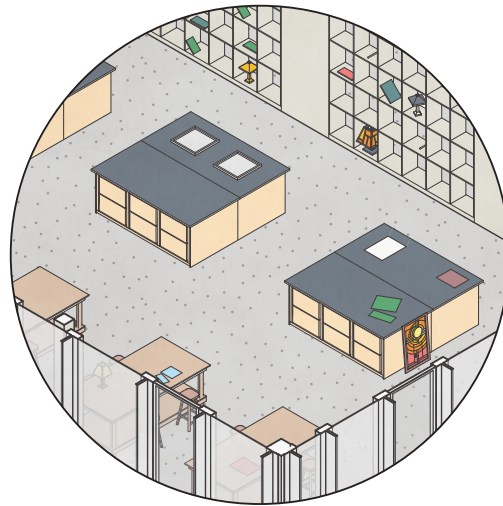
To begin the working day you I have to go to my desk but not before I do my daily check.



Where I go by the studios of the artists...



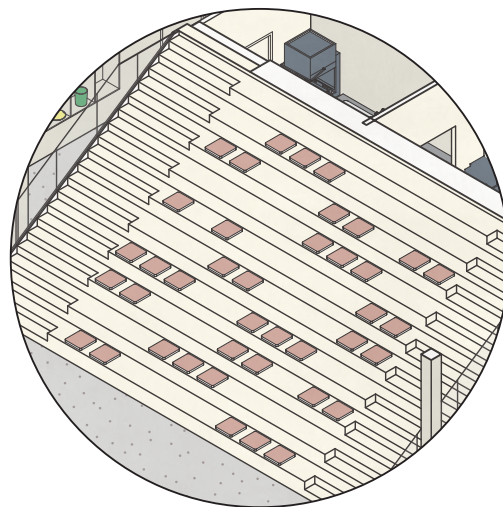
Visit the wet room and the soldering room of the students...



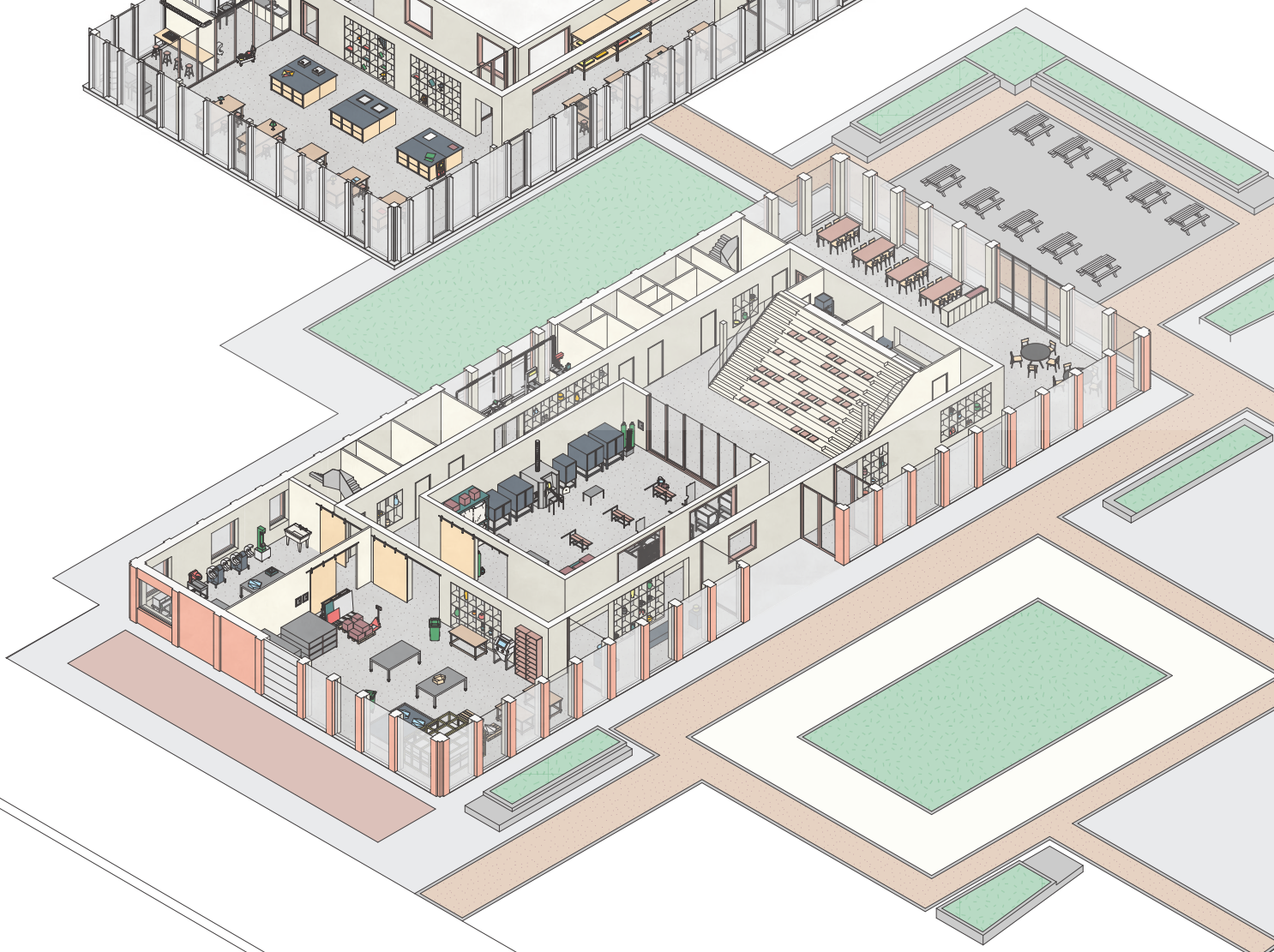
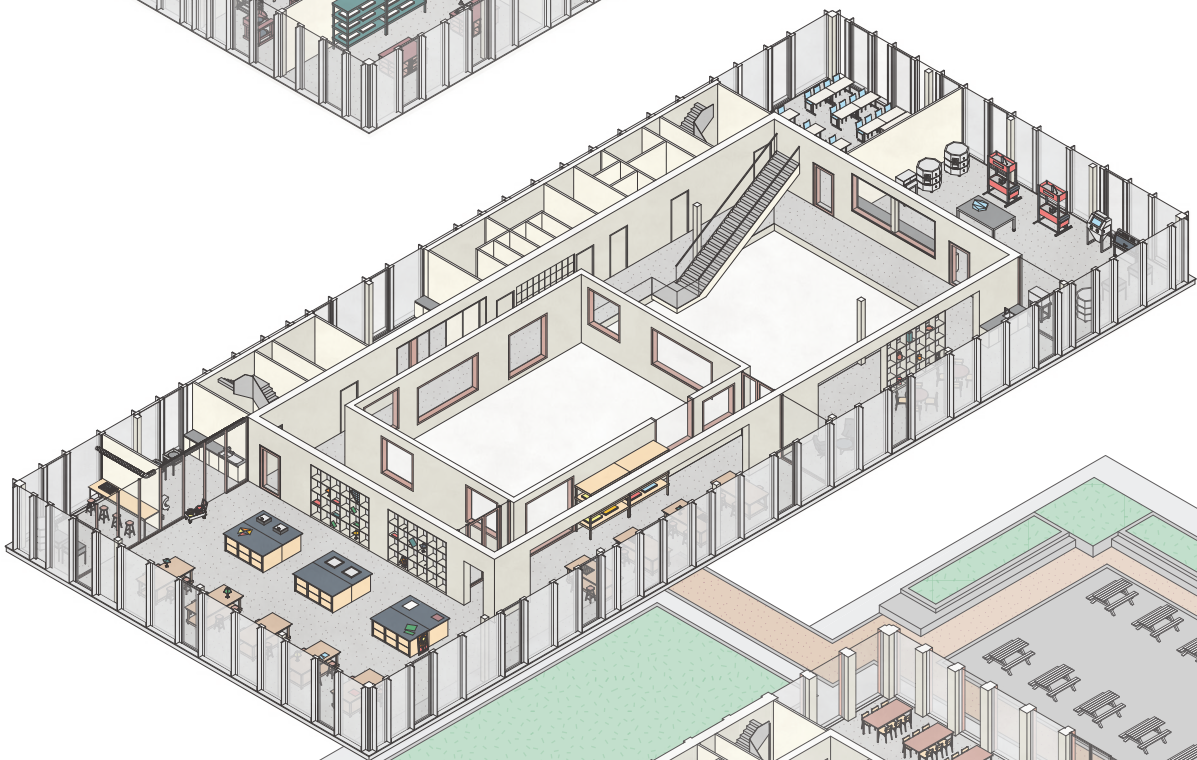
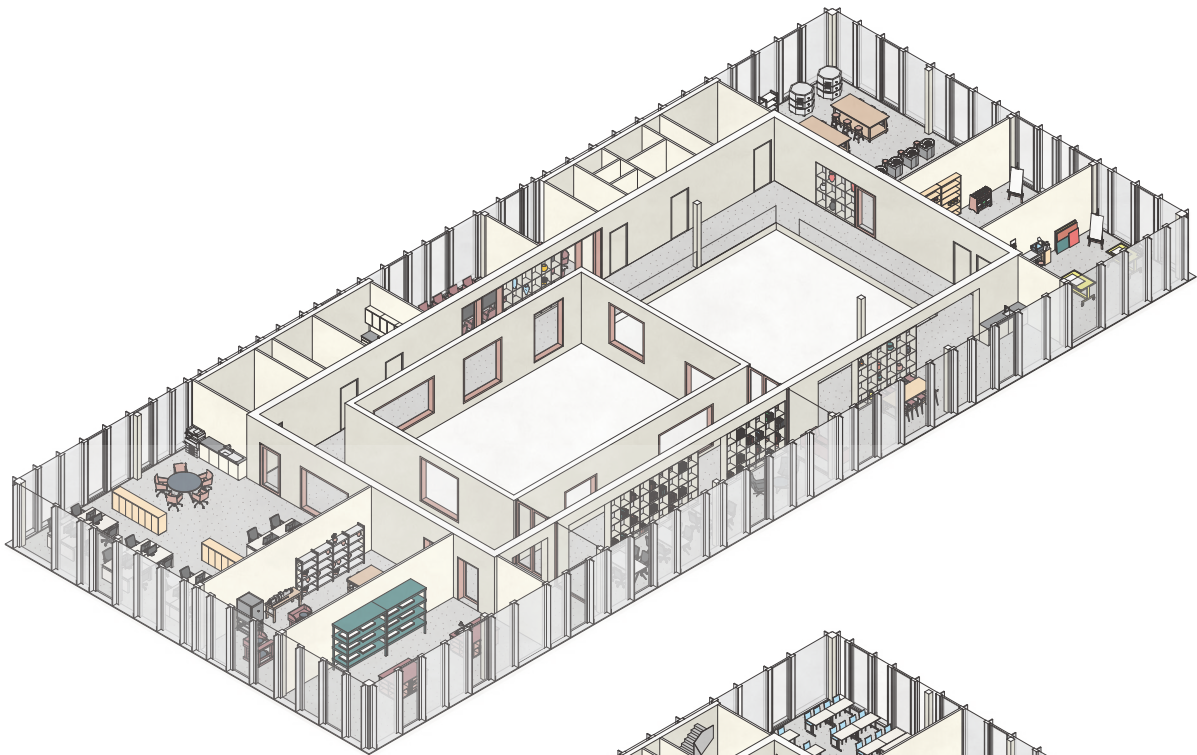
And check how everything is going on inside of the atelier.



Take a look into the hot shop and see who is working there.



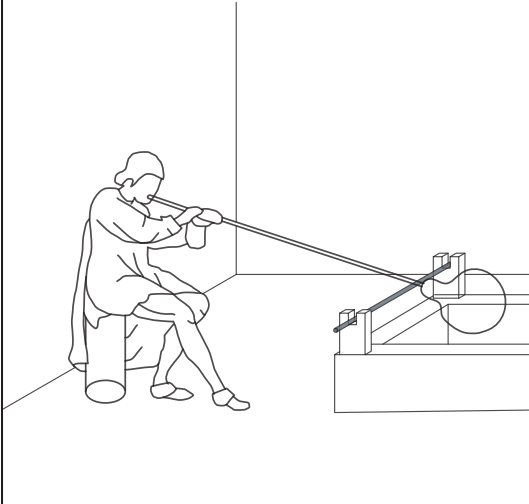
But of course, first you enter the building and walk trough the auditorium.



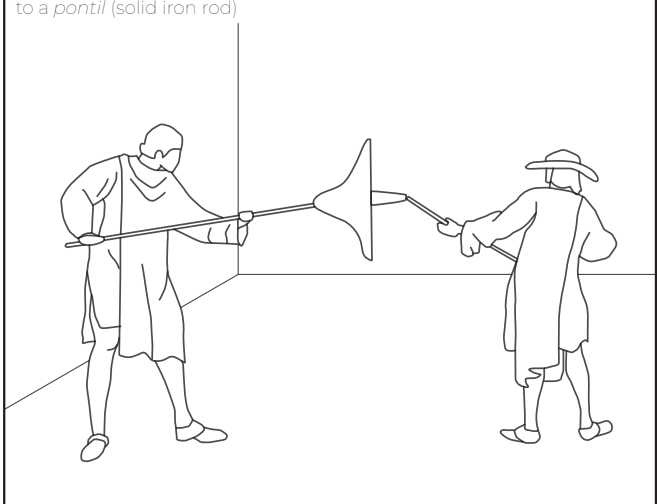
When you walk inside of the building you walk around the hot shop like you often do. There is a workshop going on how to make flat sheets of glass by using your *pointil* or blowing iron. This is done in two ways: One used already 1000 BC. And the other one was invented in 1850.



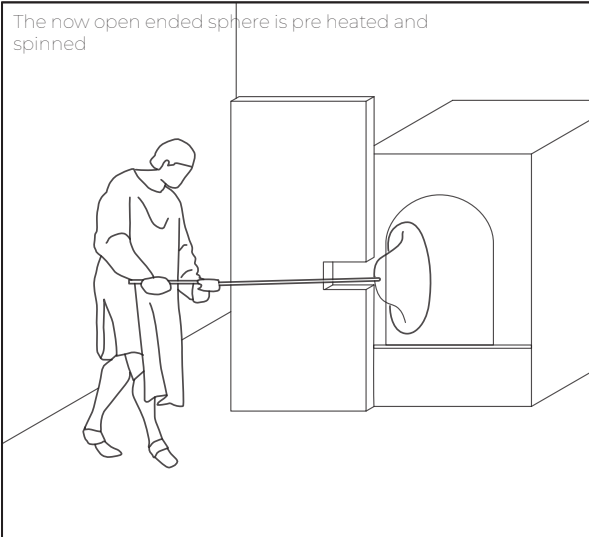
A clump of glass is blown into a hollow sphere



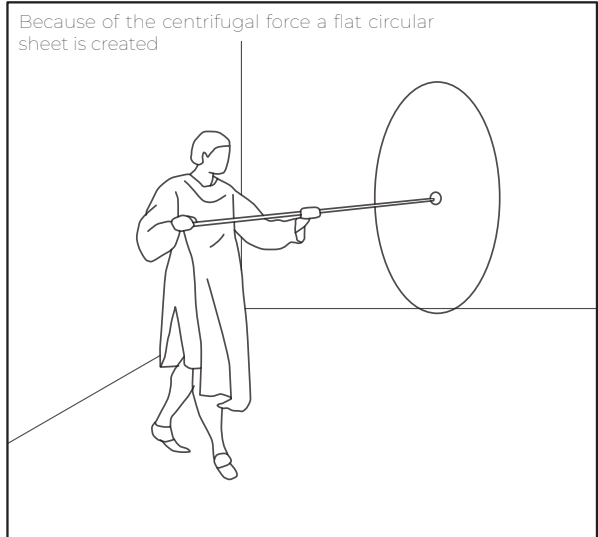
The glass is transferred from the blowing pipe to a *pointil* (solid iron rod)



The now open ended sphere is pre heated and spinned



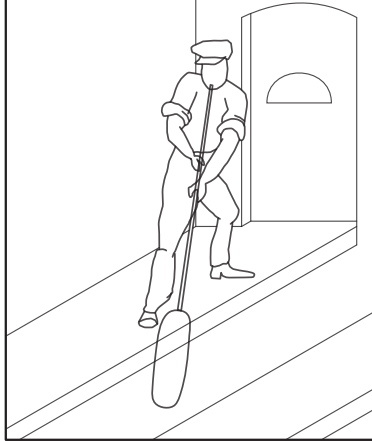
Because of the centrifugal force a flat circular sheet is created



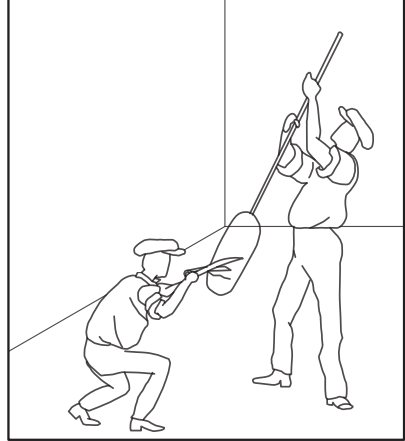
A clump of glass is collected out the oven.



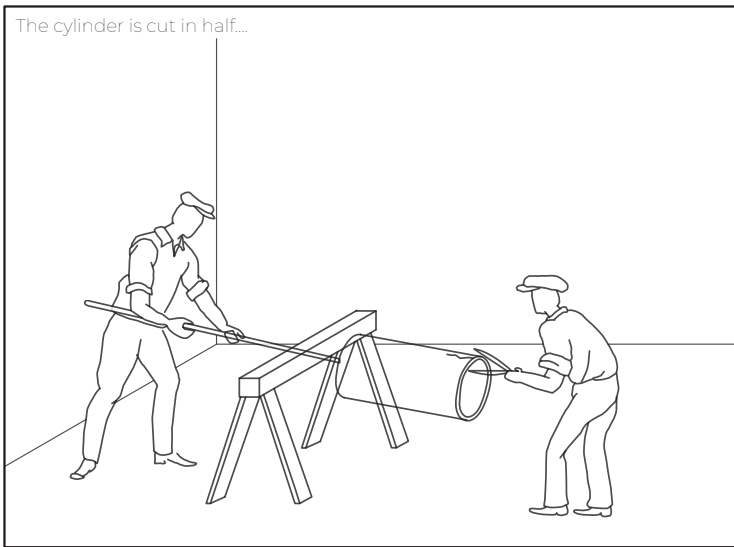
A hollow cylinder is formed by blowing and rotating.



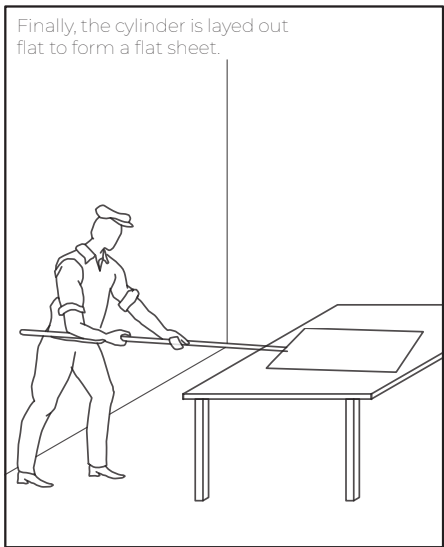
The heads of the cylinder are cut away



The cylinder is cut in half...



Finally, the cylinder is laid out flat to form a flat sheet.

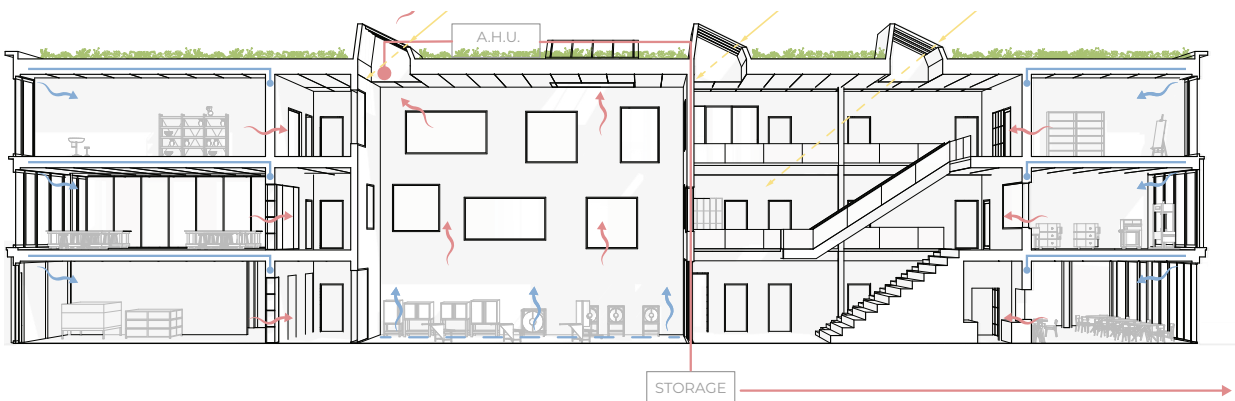


After looking for a while it is time to go. Up to the first floor. On the way, you glance back on time. This is one of your favorite views of the school. You can overlook everything and experience the whole space with its large window everywhere. This moment always makes a visitor think about why it is designed this way.





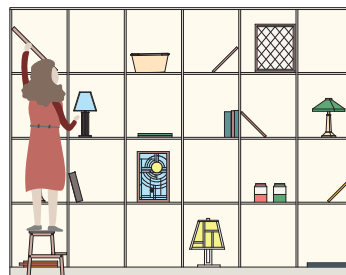
When you walk up the stairs you think about this and you see the light falling into the building inside of the hot shop. Throughout the whole building there is a lot of natural light coming inside from the facade and the skylight above.



You know the workshop is this high to allow the heat to rise up and it is still a comfortable temperature at the ground floor so people can work there. All the excess heat that is generated by the ovens is stored underground. And is used by the other buildings in the winter. The middle layer of the building is used for all the installations but it also has a multiple functions for the students and artist working here.



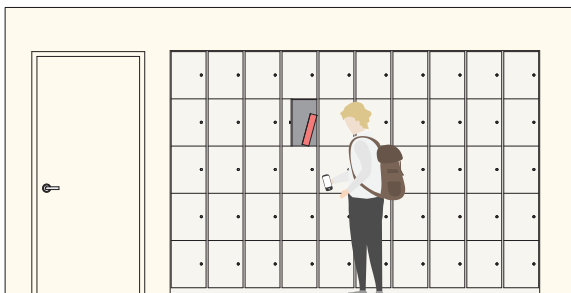
It is used as a vitrine...



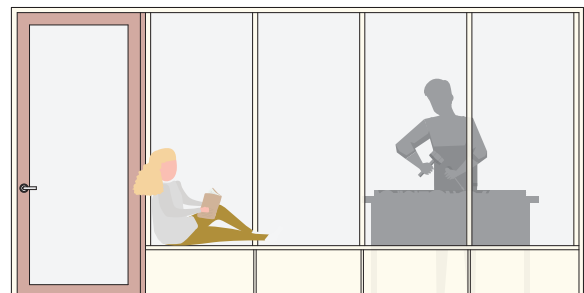
Storage for student work...



As a library...



For lockers...



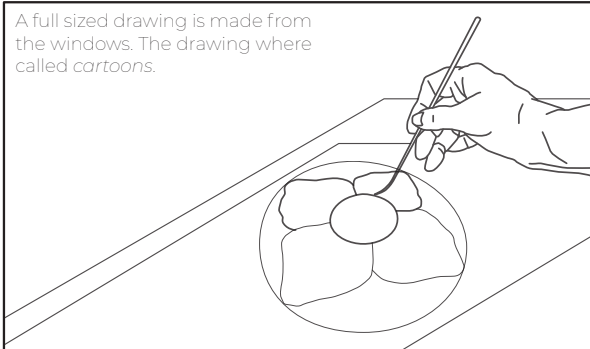
... And places to meet people.



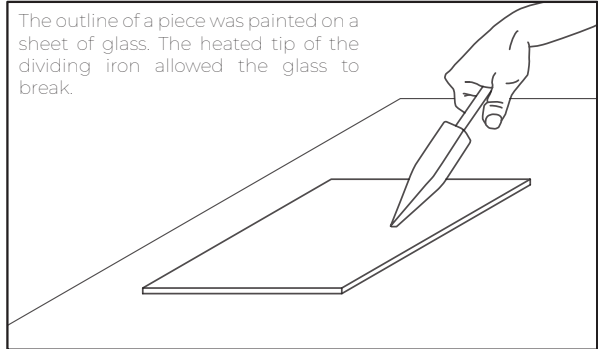
On your way up you come by the ateliers space where you always can see a lot of interesting things. You can just look outside where you have an overview of the Kóornmarkt and the new Gasthuisplaats. And a lot of students working on all sorts of stained glass projects like lamps, windows and panels. It always is a wonderful sight to see the process of a project...



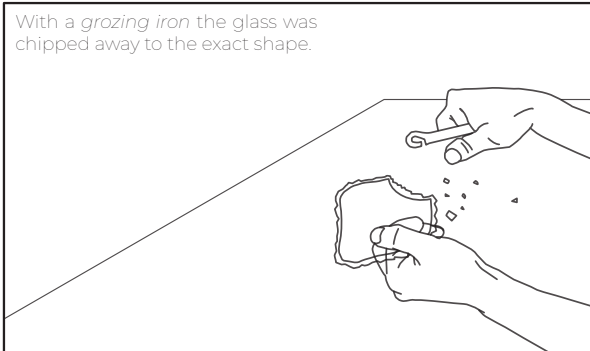
A full sized drawing is made from the windows. The drawing where called *cartoons*.



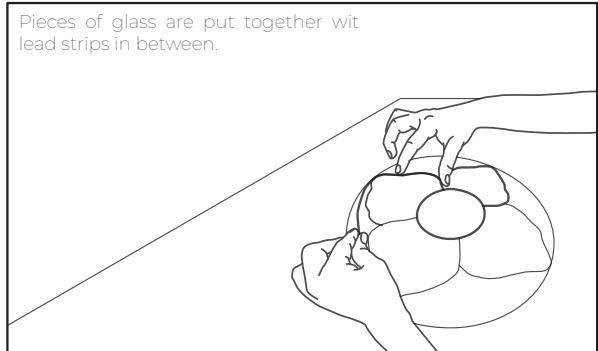
The outline of a piece was painted on a sheet of glass. The heated tip of the dividing iron allowed the glass to break.



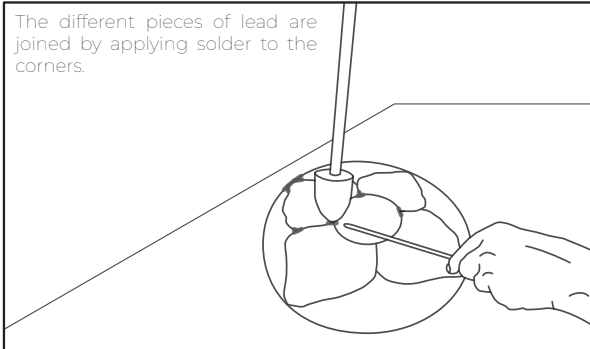
With a *grozing iron* the glass was chipped away to the exact shape.



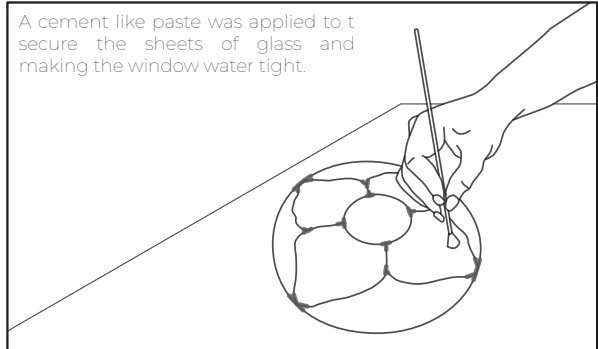
Pieces of glass are put together with lead strips in between.



The different pieces of lead are joined by applying solder to the corners.

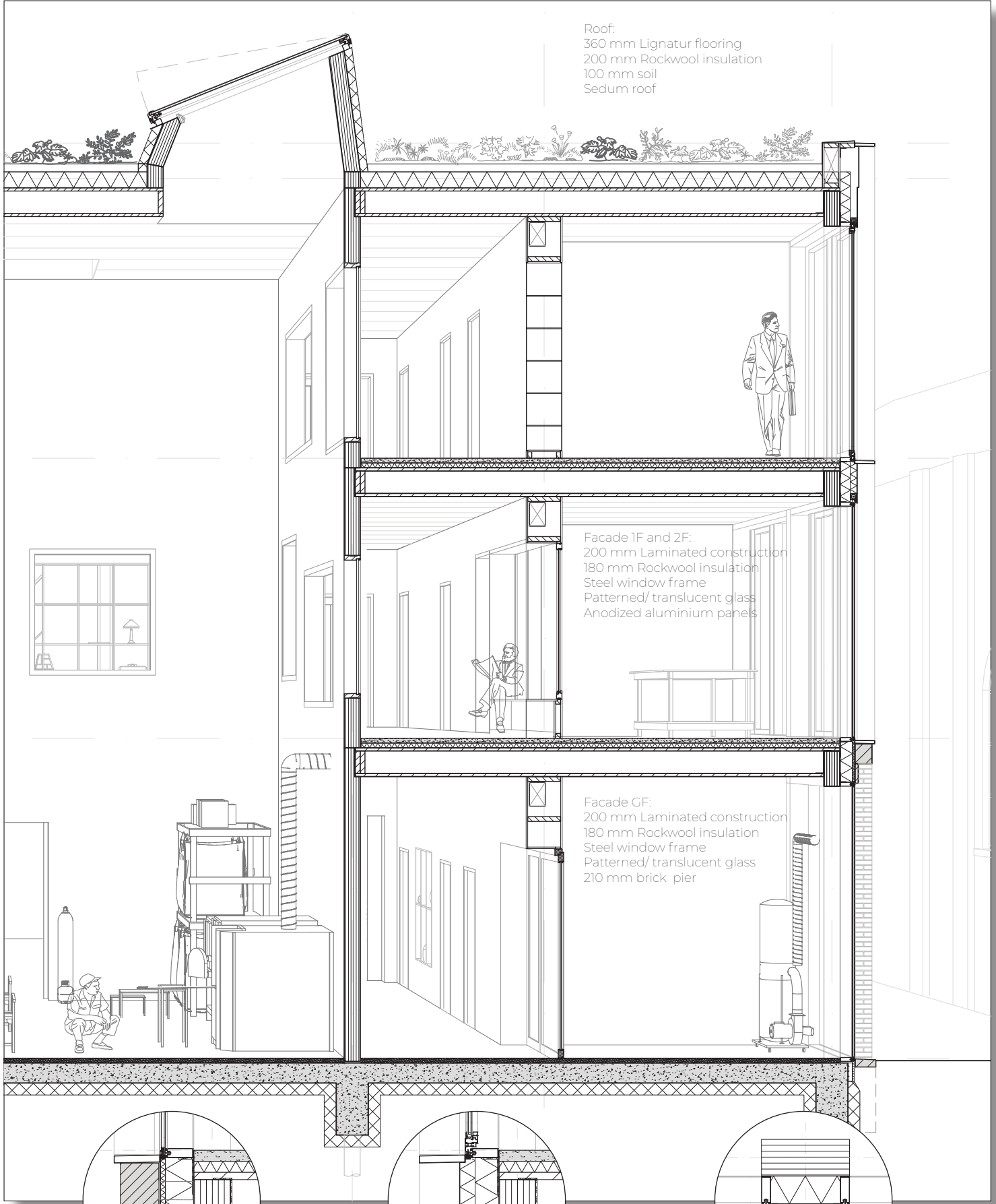


A cement like paste was applied to secure the sheets of glass and making the window water tight.





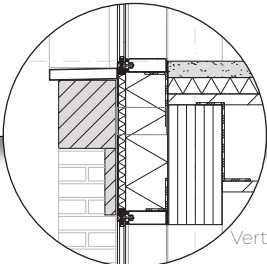
Finlay at you desk you take a look at the plans of the school that was given to you a year ago. In the afternoon there is a meeting to do a recap of the design of the building so you look at the drawings and see if something comes to mind that should be fixed.



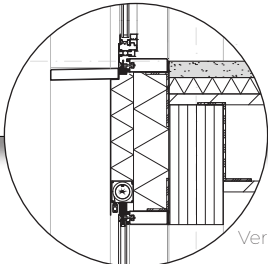
Roof:  
360 mm Lignatur flooring  
200 mm Rockwool insulation  
100 mm soil  
Sedum roof

Facade 1F and 2F:  
200 mm Laminated construction  
180 mm Rockwool insulation  
Steel window frame  
Patterned/ translucent glass  
Anodized aluminium panels

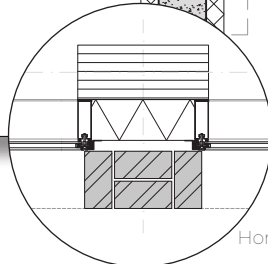
Facade GF:  
200 mm Laminated construction  
180 mm Rockwool insulation  
Steel window frame  
Patterned/ translucent glass  
210 mm brick pier



Vertical detail plint



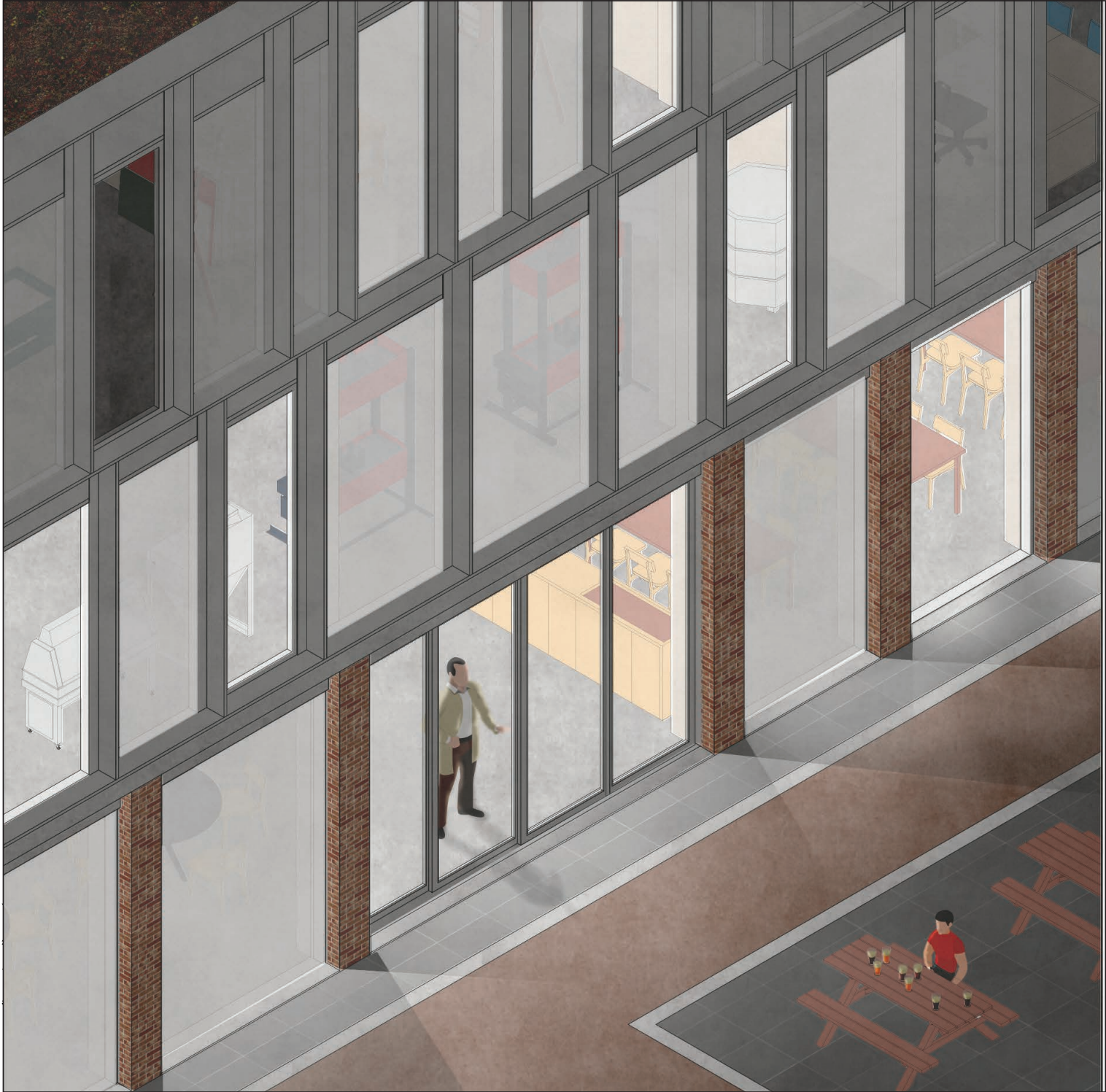
Vertical first floor



Horizontal detail plint



... Meanwhile the day passes an people walk trough the gasthuisplaats an look in to the building and see people working inside of the hot shop. The Gasthuisplaats functions as a community for craft and glass is the materials that is the catalyst to make this all happen...



After the meeting, at the end of the day you drink a couple of beers with your friends and colleagues and you think life is not so bad when you are the caretaker of the glass workshop...

