

# Stockholm Stadsbibliotek project journal

Mikolaj Waszkiewicz



Vol. I

Interiors  
Buildings  
Cities

*As most of the works are group project this logbook mainly concentrates on my individual progress and reflections.*

*All the images in the logbook are done by **Mikolaj Waszkiewicz** unless stated otherwise.*

# Table of contents

## **Introduction week**

WEEK 1.1 04/09-08/09 6

## **Model preparation**

WEEK 1.2 11/09-15/09 8

## **Assemblage**

WEEK 1.3 25/09-29/09 10

## **Stockholm**

WEEK 1.4 12/12-16/12 14

## **NEW BRIEF**

Week 1.5 02/10-06/10 20

## **INDIVIDUAL WORK**

Week 1.6 09/10-13/10 22

## **Research into Libraries**

Week 1.7 16/10-20/10 30

## **Modelling**

Week 1.8 23/10-27/10 36

## **DEADLINE RUSH**

Week 1.9 30/10-03/11 42

## **Research plan reflection - further research into libraries**

Week 1.10 6/11-10/11 58

## **Research work**

The collective work precedents 64

## **Bibliography**

References: 86

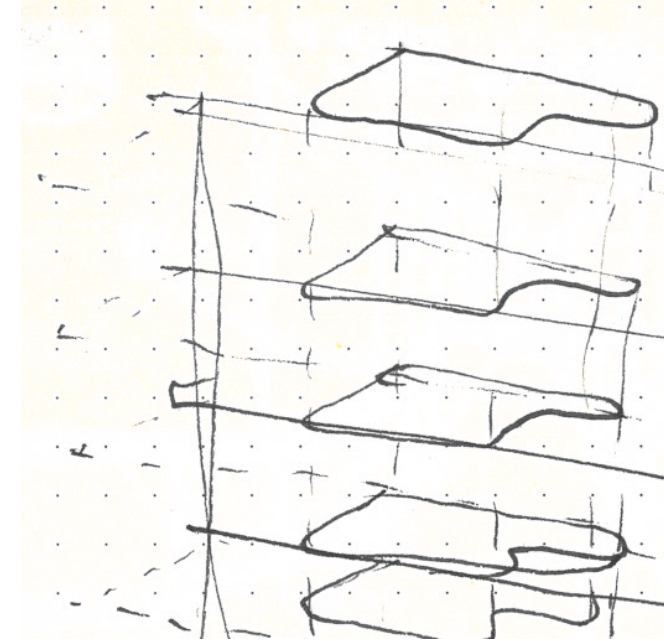
# Introduction week

## WEEK 1.1 04/09–08/09

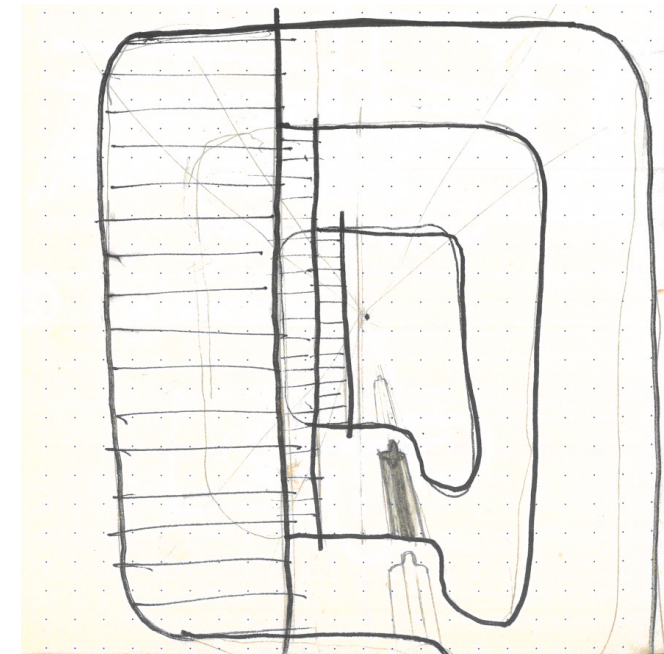
### Week overview.

Research seminar: First week where we have been introduced to the studio assignment and the groups for the rest of semester. The task is to analyse one of Erik Gunar Asplund's buildings. Although I was hoping for analysing the woodland chapel or woodland crematorium as I find it his most elegant and gracious creations of Asplund I was assigned to the Bradenberg store. The building has a lot of interesting details and it is a pleasure to research about it. Although it does not give as much of a 'genius loci' feeling as the woodland chapel and the crematorium but I do not believe a department store could be designed with such intention. We divided the task and I was responsible for finding the drawings and photos of the building together with completing the spatiality sketch. We discussed all the ideas of the building we want to present. Also I prepared an initial sketch of what we want to show for spatiality and the group agreed upon this idea.

Design studio: For the design studio we started with gathering the material for Asplund's Stockholm City Library. The studio is extremely well organised and there is an impressive amount of research material already available. This is incredibly comforting as it puts a lot of the stress off the shoulders in finding the right research material. It also saves time which is necessary for model making. My role is to start with the 3D model. The library seems like an interesting building to explore. What I like the most about it is the amount of detail and custom design that has gone into it. It is somewhat fascinating how an architect was able to convince the client to such total control over the design.



Sketch proposal for the final axonometric drawing.



Sketch proposal for the drawing showing spatiality



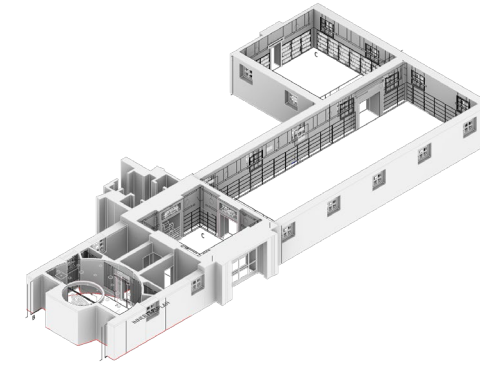
# Model preparation

## WEEK 1.2 11/09-15/09

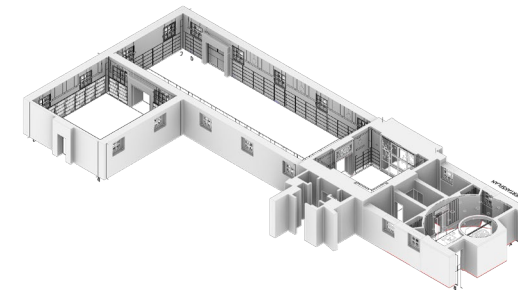
### Week overview.

Research seminar: The lecture this week was fascinating. Hard to follow yet incredibly inspiring. This week we have been presenting our findings in 10 minute presentation. The feedback was very good and we have some minor changes to work on for the final presentation. I finished the drawing for spatiality.

Design studio: I have been able to start the 3D model this week as the CAD drawings arrived on Monday. This was my sole focus of this week as we believe the it will be much easier to produce the physical model with assistance of the 3D model. This way we can use CAM to produce a lot of our results.



Axonometric view of the 3D model



Axonometric view of the 3D model

# Assemblage

## WEEK 1.3 25/09-29/09

### Week overview.

Research seminar: The research seminar has not occupied as much of my time this week. I have been mainly looking for photos which were suggested from previous feedback. It was quite crucial for the model that I concentrate on the bookshelves.

Design studio: This week was busy with working on the model. A lot of preparation was made to laser cut all the bookshelves. Over 67 bookshelves had to be laser cut and assembled. My initial hope was that the bookshelves in the library would all be the same. That would have required Asplund to use some kind of proportion system for all the rooms. Even with my great intentions and excessive use of algebra to arrive at some kind of proportion or unit system of bookshelves I failed. I finally came to realisation that there are just multiple different sizes of bookshelves. I designed the files first in 3D in Rhino. This helped me to visualise the assemblage of the bookshelf and also design a jig. Other group worked on the walls and ceiling based off my 3D model.

Long time was spent to figure out the correct colour for the bookshelves. Finally with help of the NCS colour pallet I was able to figure out what colour we need. Problem was availability but eventually I found a shop which has a correct brown.

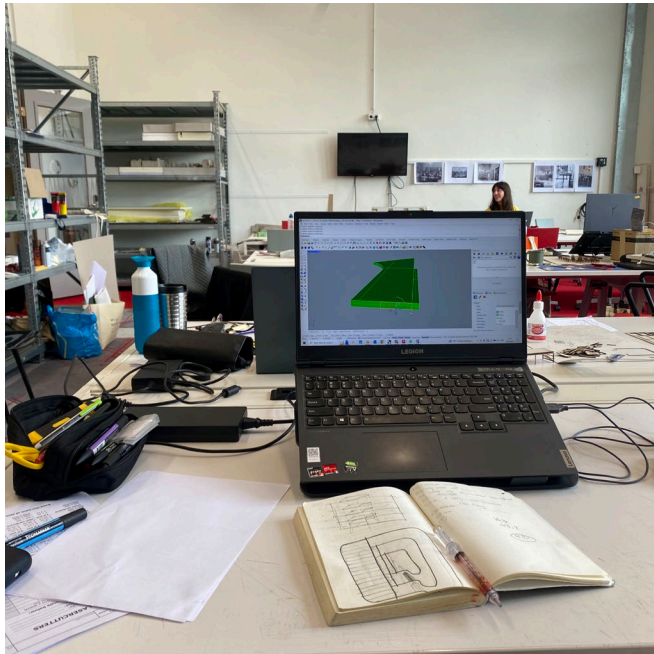


Gluing the bookshelves



Testing the colour schemes of the bookshelves





Working on the 3D model of the bookshelves



One of many lasercut files



Getting the feel of the final result



Group and studio before leaving for Stockholm



# Stockholm

## WEEK 1.4 12/12-16/12

### Week overview.

Research seminar: The visit to other works of Asplund puts the Bradenberg store in some context. The shop definitely stands out compared to the other works as it was designed as a commercial object not like the others. That comes through the pragmatism of his design. Somehow compared to his works on the woodland cemetery the shop does not seem as free in the creative intervention as the other objects he designed where he could have been a bit more extravagant.

Design studio: Upon my first arrival to the Stockholm city library I decided to record my initial impressions. In a sense I tried to capture 'genius loci'. My first impression was that it is a 'stone' in the landscape placed in a very calm environment. I was able to arrive at this impression as I stumbled upon the library first from the park side. However, when approaching the building from the street level and its actual front I realised that the building in fact is in a very busy context. As it later was explained it had a prominent location on of important streets of Stockholm. The context in which the building was made also quite an impression on me. I found it to be clean, slick and pedantic. The area was rather representative. Somehow it is interesting that many building in Stockholm including the library look new. This is because the new building and the old ones are cover in render and repainted. In countries which traditionally leave out a brick cladding the patina of old brick or their unusual sizes, or the hand craft are more visible and indicate the age more.

The exterior of the building is not overly impressive or maybe it has not mad such impression on me as I saw the building on photos so many times before. It is modest yet ornamental. However the landscape around the building is truly beautiful and it frames the views towards the library in a very romantic and gracious way.

Unfortunately due to ongoing renovation which is a result of ongoing dispute about the building the main entrance is not usable. Nor the children entrance could be used. This was disappointing. It feels like Asplund with limited budget really

carefully planned out in what he should invest his energy and resources. As a result the journey around the building seems to be carefully programmed and the entrances are part of it. Not using them took away from the whole experience. However when finally arriving in the entrance hall the architecture of interiors makes a great impression. The dark space which leads into the lit rotunda is a touching experience. While visiting the space during its working hours later in the day I was gladly surprised that the space is so widely used. I even struggled to find a free chair. Also I noticed that there are many school age students working on group projects. The space didn't really allow that as the communication in a library is limited to whispers.

Overall impression: The trip was very educational. I particularly enjoyed the talks of other architects. Especially sharing their experience which is very helpful to figuring out what I want to do after graduating and also what kind of position I would like to take in this profession.



Library from the park side



Recreating the story telling room photos -photo by Siem





Bradenberg Department Store under renovation



Children entrance - before the landscape design



Main entrance - unfortunately blocked



Woodland chapel - contrasts others on the page

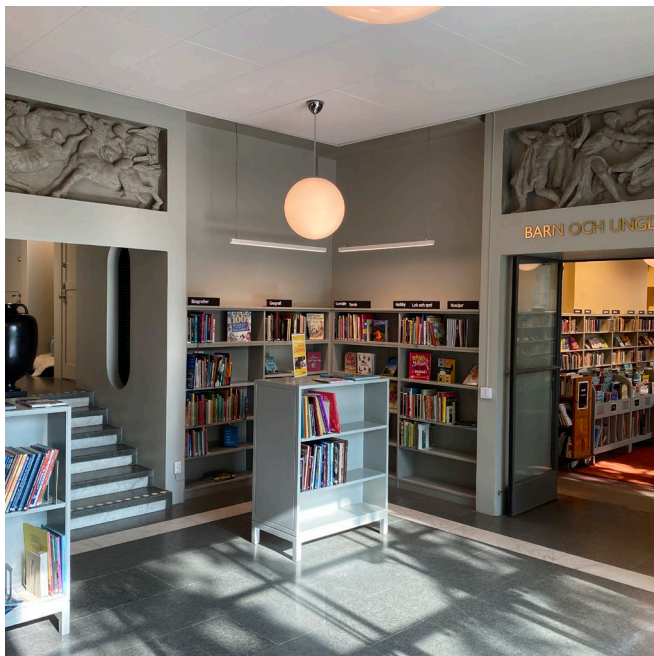




Before



Before



Now



Now



# NEW BRIEF

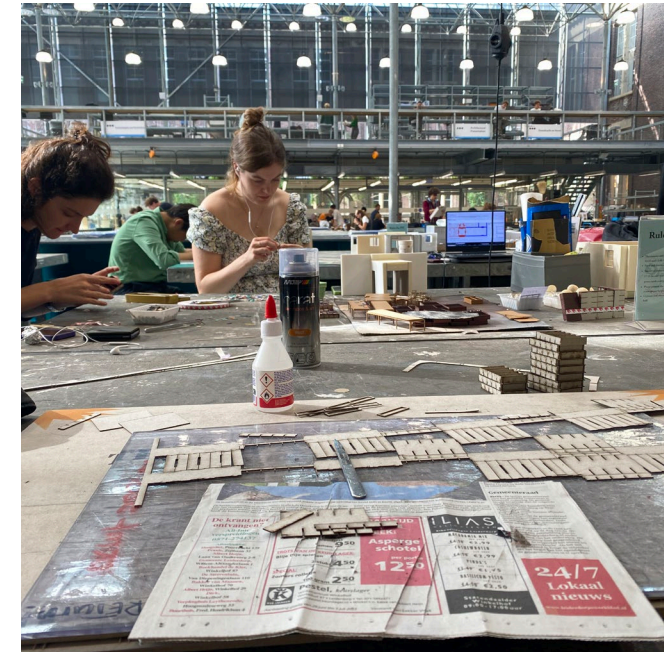
## Week 1.5 02/10-06/10

### Week overview.

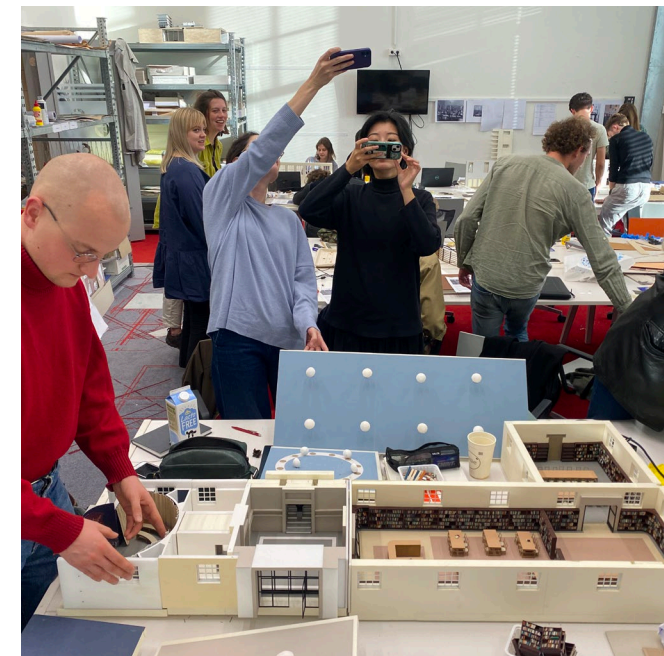
Research seminar: This week we were assigned new brief. The brief is to research 8 some contemporary some more historical libraries. Personally I find this task really helpful mainly because my mind is currently still wondering about a function of a library. It is especially helpful that the research everyone does will be shared in presentation so it is easy to cover many libraries deeply this way. Our group has the task of researching the Beinecke library. My initial thoughts are that it is a very weird building. No windows and no reading spaces. It is more of a safe then a library. I am also happy that OMA library in Seattle is on the list but perhaps I miss even more recently completed one. My simple reasoning for it is that it is my believe or at least a naive hope that new buildings are built upon the research on existing buildings. Somehow also they are all similar. So researching the new buildings gives us also the space of time to criticize them thus allowing to built better object upon the research done.

Design studio: The new brief is to design a room within a library. An abstract space which does not have to be located in any particular context. I understand the exercise to be completely free and where we can unveil our creativity. Precisely that makes it hard. It is insanely hard to design without a brief and context or programme. Especially after diving into library designs and being surrounded by the concept for so long that one questions what even a library is. For someone not being really surrounded by the topic library is a place where you loan books. It is much easier to design with such straightforward brief. Meanwhile the room I design is full of questions of what is right and what is wrong. In that sense I could not detach myself from the Swedish context. What stuck with me from the trip is that how controversial is spending tax payers money on such projects in Sweden. It is a part of political debate and conflicts but also the Swedish prefer the tax money to be spent on infrastructure. So in my head the object designed should be temporary, just when someone says they do not like it you can respond to it: - No problem,

we shall remove it, it will only take few weeks. The object should be in a constant status quo.



Putting the bookshelves together



Progress on the model

# INDIVIDUAL WORK

## Week 1.6 09/10-13/10

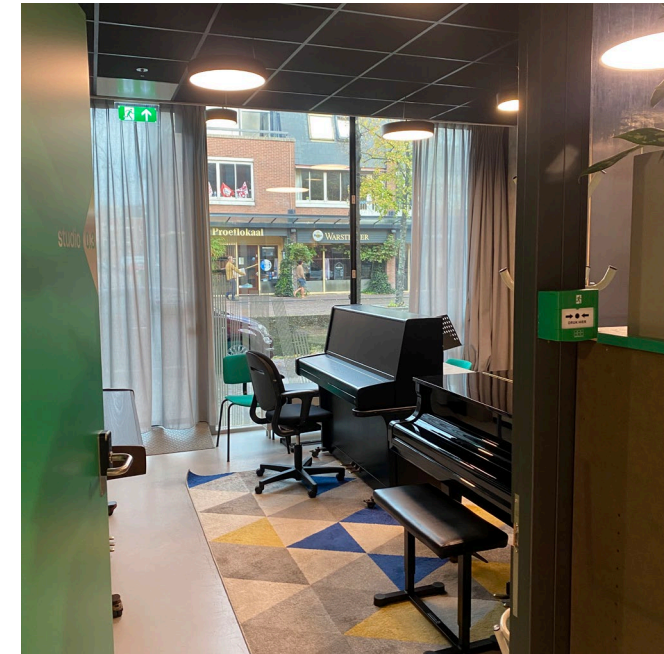
### Week overview.

Research seminar: This week I delivered the presentation about the Beinecke library. For this I organised the material like photographs and notes and did a drawing of the basement where the rest of the group concentrated on other challenging drawings. Then we came together and discussed the drawings and what we want to speak about and also consulted the content of the presentation. I find this group dynamic to work well as it really allows us to share our experience on the individual parts that we worked on.

The library it self was striking for me. Somehow I like it a lot even though I think as a building it is a bit pretentious. Yet, what I think it does well is it creates a unique experience, a moment of uplift. The high ceiling resemble cathedrals. Also the use of stone and marble as ornament. Especially the careful light that passes through the thin layer of marble is almost like a stained glass. This extravagant space is somehow very much responding to my inner debate also about architecture in general. I fell like architecture is very much driven now days by economy. In fact that is good - it is what Vitruvius prescribed centuries ago. It contributes to lower environmental impact, better optimisation. For me on a scale of rationality it is not possible to argue against economy. Myself I try to be efficient in the floor plans - the square area used, the materials used. Especially after working in a practice and having spoken to clients I understand how argument of economy is one of the strongest ones. But at the same time I am not convinced that at the age of smart phone and tablet a library can be economical. I visited some libraries in Stockholm on the outskirts of the city and they had a feeling of an office space. Low ceilings with the ugly yet economical 'office' ceiling and stacks of books. Furniture for people thrown in so disorderly and carelessly that it was actually saddening to watch this space. Yet, somehow this are the spaces which are to compete with multi-billion media industry which puts algorithm based videos on the shiny rectangles that children look at. In that sense I feel like a battle is already lost before even though it never officially started. The Beinecke library in its expression at least faces the challenge. I believe

the space created has a potential to inspire many young souls to become a scholar in a future or at least to read a book in their life. That is what I like a lot about this library.

Design studio: The first studio session where we were meant to come up with initial design ideas. For this week I have produced a model. The model that I have is a large box in a scale 1:25. Its footprint is an A3 sheet of paper and in real life it would measure approximately 10,5 x 7,42 x 9m tall. The building is meant to look like a storage facility with steel trusses bolted to the ground. The intention is that the building is sort of demountable structure with temporary feeling to it. The interior space is meant to be bright and vast creating a feeling of uplift similar to those of cathedrals - a feeling that one cannot replicate at home or a cafe. It is intending to create a space of unique feeling one wants to comeback to.

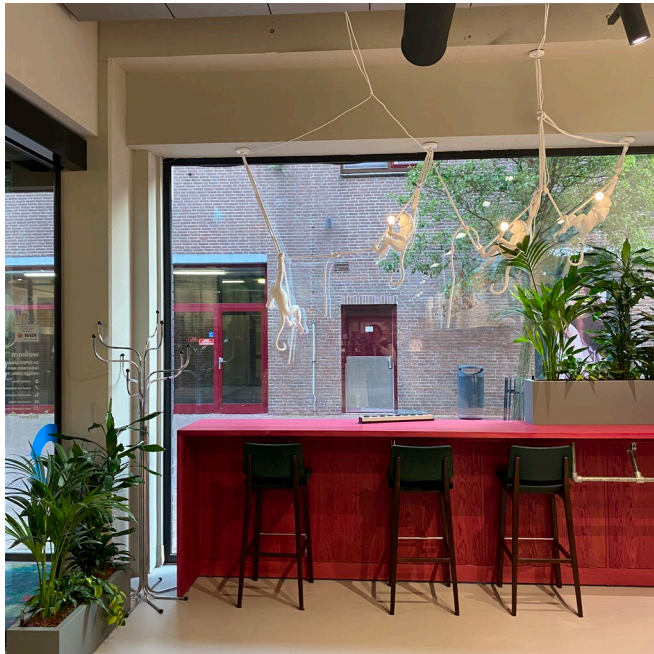


Modern library acting as Centre of cultures (music)



Perhaps reclaimed bookshelves

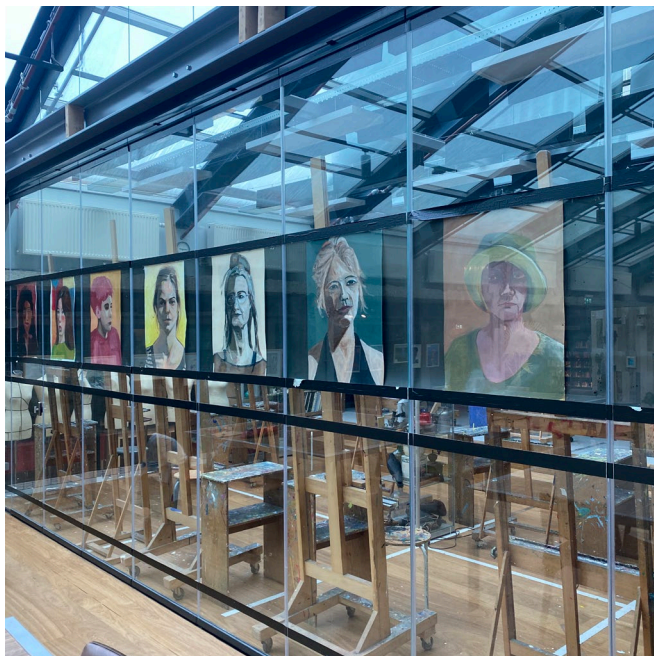




Cafe like reading setup



Displaying behind the scenes of a library

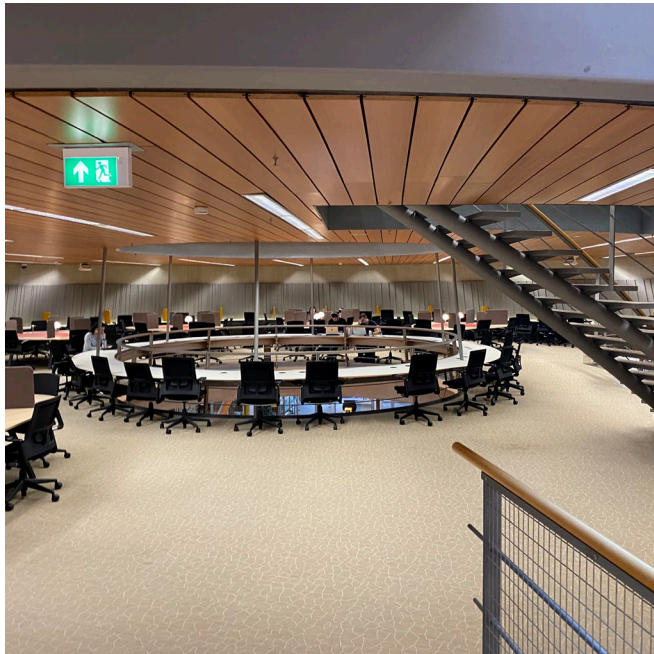


Modern library acting as Centre of cultures (art)

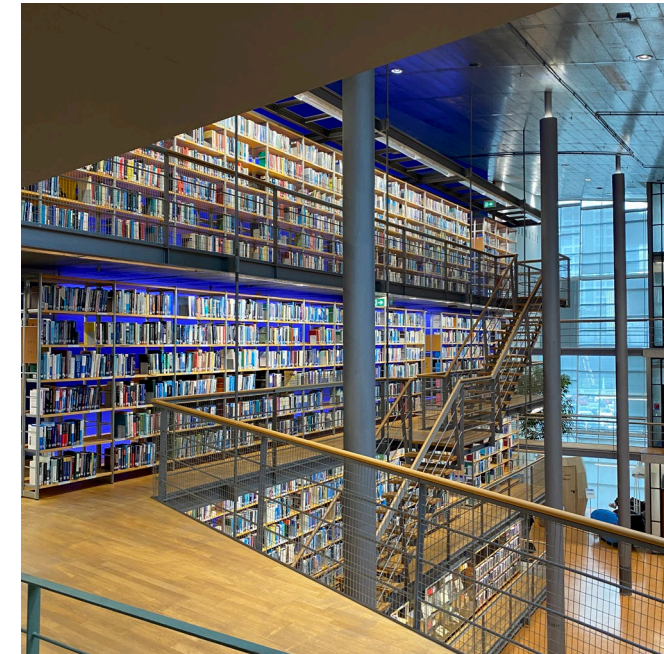


Structure exposed

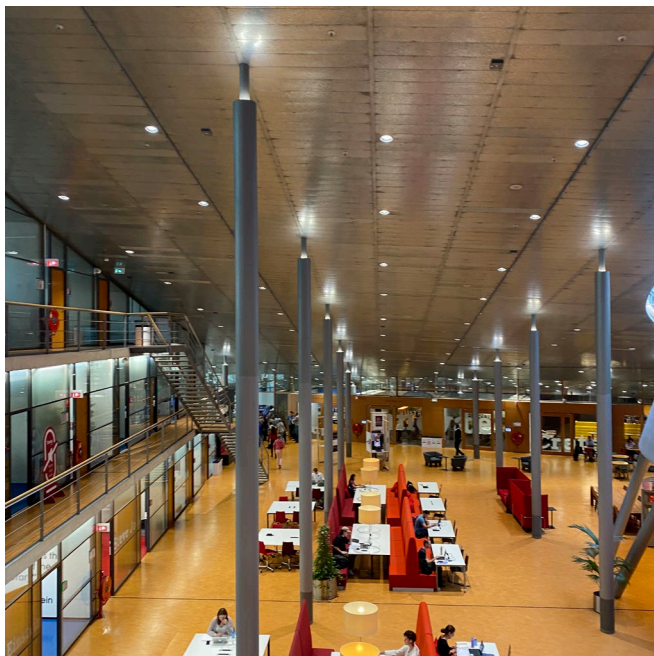




University library - working space needed.



Books as a manifestation



High ceilings and little books.



Putting efforts to make the library unique and a landmark





Repetitive structure - classical expression



Adding auditorium to share the knowledge



Trying to imagine what the space is like



First crit with all the models together

# Research into Libraries

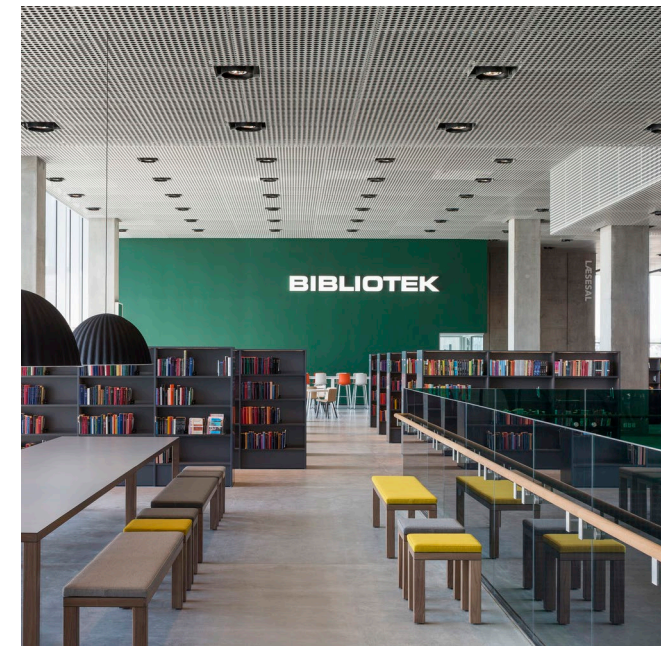
## Week 1.7 16/10-20/10

### Week overview.

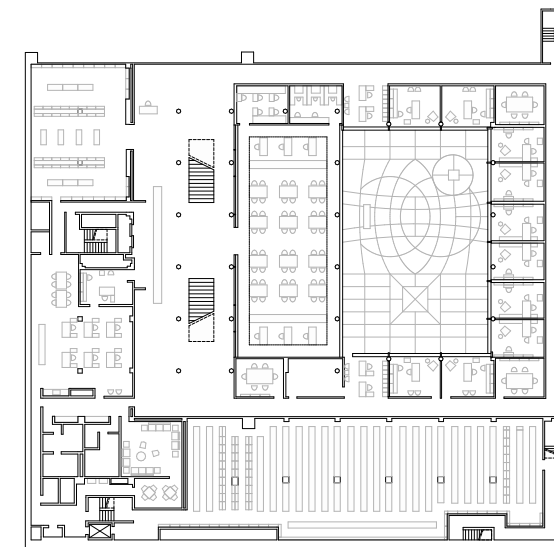
Research seminar: Acting upon the previous feedback and group discussions I worked on the lightweights in the drawings and created one of the ornament drawings where I show the facade detail of the Beinecke library and one of the cladding stones opening up like an origami. This is as according to our research the cladding was inspired by the origami which was popular at this time in the USA. Redrawing details always helps to understand the assembly of the building and its layers. I valued learning about how the water tightness was solved in the facade as it is clearly visible with all the flashings. On the tutorial day we were able to compare all the drawings together. It was fantastic to see the enormous differences of the footprint of each building, especially compared to the British library. This one really acts as a source of knowledge of the whole world. However, my favourite is Henri Labrouste Bibliothèque Nationale de France and Louis Kahn Exeter library. Definitely I am attracted to the visual appeal of the drawings of those buildings. The qualities such as composition, proportions and etc. seen on the drawings comes across in the beauty of the building. The building I like the least is the British Library. I find it hard to understand and confusing, where as previously mentioned libraries portray a straight and clear message. I am a fan of the Berlin library too but not from the drawings and its facade as I visited the building personally and liked the experience of the space. However I remember when I visited I didn't realise it was a library at first. This is because I wanted to come to the Mies van der Rohe pavilion and it was closed so I thought this building is interesting I might visit it. At first I thought it is an art gallery, later on a centre of culture. Only when I walked up the stairs I saw the bookshelves and realised this is a library. I believe that it might be one of the flaws of the building.

Design studio: This week I worked on the experience I want to create in my library room. I reflected on the atmosphere too. Vilhelm Hammershoi in his paintings beautifully portrays the moodiness of the Scandinavian sky. This is a certain experience

and moodiness I want to recreate in my library through use of light. For this I thought of Zumthor's skylight system for one of his art galleries. The idea is that through frosted glass one might only see the shadows of people passing and the trees and leaves touching the glass. This choice is rather selfish as it comes purely from my experience. That is because whenever I work at our university library I find myself sitting anywhere but by the window. To me the window is unnecessary distraction. Same while reading in my room I find myself sitting with my back to the window. I believe the primary reason is that when your brain works so hard on imagining the world in the book you just do not want to be distracted by the real world. Yet, I realise that a windowless library is rather unconventional experience, but so is the Beinecke library. The uniqueness of the experience in the library should make the process of reading special hence allow it to compete against the AI-based algorithms of social media.



Researching libraries  
<https://www.archdaily.com/644920/dokk1-schmidt-hammer-lassen-architects/5586f96ee58ece09c200020a-dokk1-schmidt-hammer-lassen-architects-photo>



Working on the drawings





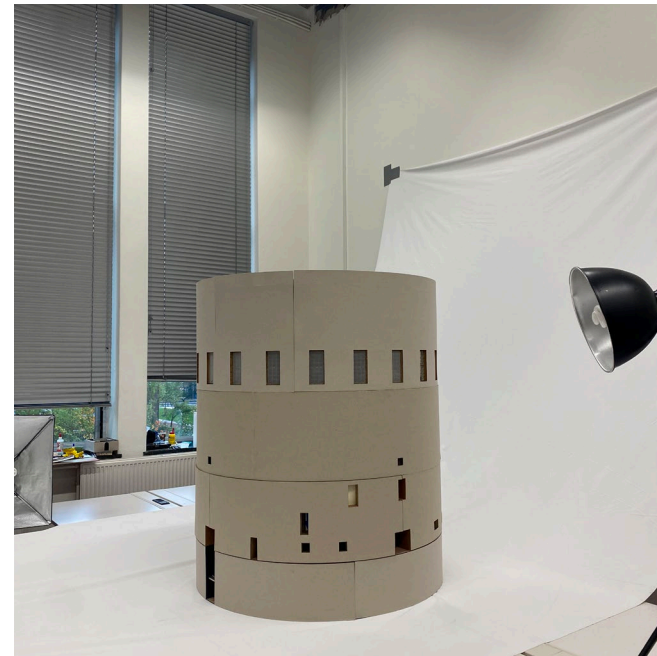
Separating the space - creating a cozy room



Photography workshop



The outside world



Photography workshop



Villem Hamershoi  
[https://www.meisterdrucke.nl/kunstwerke/400w/Vilhelm\\_Hammershoi\\_-\\_Living\\_in\\_Strand\\_Street\\_with\\_sunshine\\_on\\_the\\_floor\\_1901\\_-\\_\\_\(MeisterDrucke-389334\).jpg](https://www.meisterdrucke.nl/kunstwerke/400w/Vilhelm_Hammershoi_-_Living_in_Strand_Street_with_sunshine_on_the_floor_1901_-__(MeisterDrucke-389334).jpg)



Bibliothèque nationale de France  
<https://www.wowabouts.com/explore/post-bibliotheque-nationale-de-france-national-library-of-france>



Villem Hamershoi  
[https://upload.wikimedia.org/wikipedia/commons/thumb/4/47/Interi%C3%B8r\\_med\\_ung\\_l%C3%A6sende\\_mand.jpg/200px-Interi%C3%B8r\\_med\\_ung\\_l%C3%A6sende\\_mand.jpg](https://upload.wikimedia.org/wikipedia/commons/thumb/4/47/Interi%C3%B8r_med_ung_l%C3%A6sende_mand.jpg/200px-Interi%C3%B8r_med_ung_l%C3%A6sende_mand.jpg)



# Modelling

## Week 1.8 23/10–27/10

### Week overview.

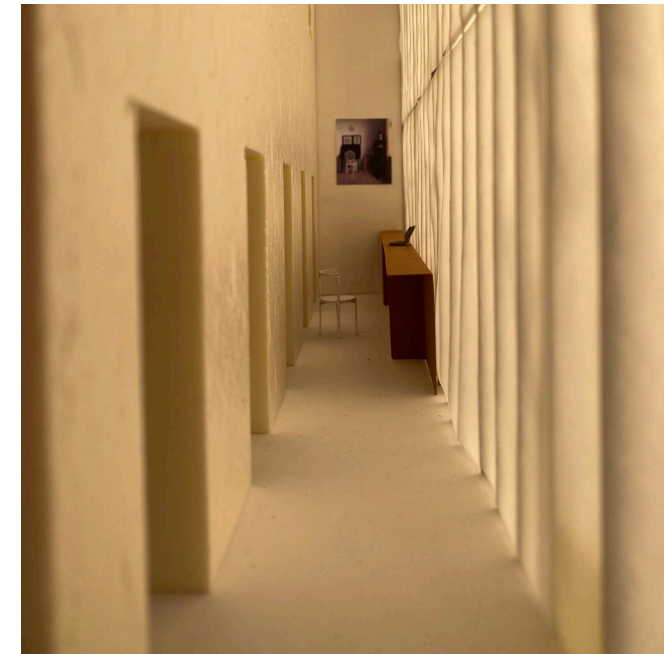
Research seminar: Apart from last adjustments to the drawings this week I have wrote the research proposal for the course. Narrowing down my thoughts to 500 words proved to be challenging. Taking position on what to design is also no something I particularly enjoyed doing. In a sense I believe both to my studio assignment and this assignment I would like to be slightly vague and leave room for interpretation. Making big statements at this time seems to be limiting in the future.

Design studio: This week me an most of the studio was working hard to finish the models. Working together is always nice and helpful so even though the days were busy this week I enjoyed being everyday in the studio. I have mainly worked on the last finishing steps for the design studio model this week. I worked out the whole atmosphere of the space I created in my head and it seemed perfect to me. This however changed during the meeting with the tutors. I am somehow baffled towards what my response and reaction to the feedback should be. In a sense in a graduation year I wonder if I should stand a someone who clearly knows what he wants to do and protect my decisions at all costs. After all the project should be mine and it should prove my ability of independent decision making - especially as I won't have the chance to get tutors feedback in a year from now after I graduate. But at the same time the points tutors have made were valid, highly inspirational and I agreed with all of them. I suppose the only problem is that I have not arrived to those conclusions myself. In regards to the design and modelling aspect I mainly concentrated on atmosphere. The question of atmosphere was initiated by looking at models of my fellow collages. Some models where more technical in a sense whereas some models whereas some models clearly concentrated on atmosphere leaving the function and structure abstract. To me those models were quite successful. They resembled a lot the qualities of Peter Zumthor especially when looking closer at sketches too the resemblance was quite big. To address the question of atmosphere I had

to concentrate more on how to achieve it. I had the gloomy and moody indirect light in my mind similar to previously shown paintings. To achieve it I looked up Steven Holl Atkins Museum for facade detail and Zumthors Kunsthaus Bregenz. To achieve it I used Tervakoski tracing paper which a very nice matt finish so it does not bounce off the light. The end product of the photos hoot is pleasing and the results are seen on the next pages.



Shadow on my model



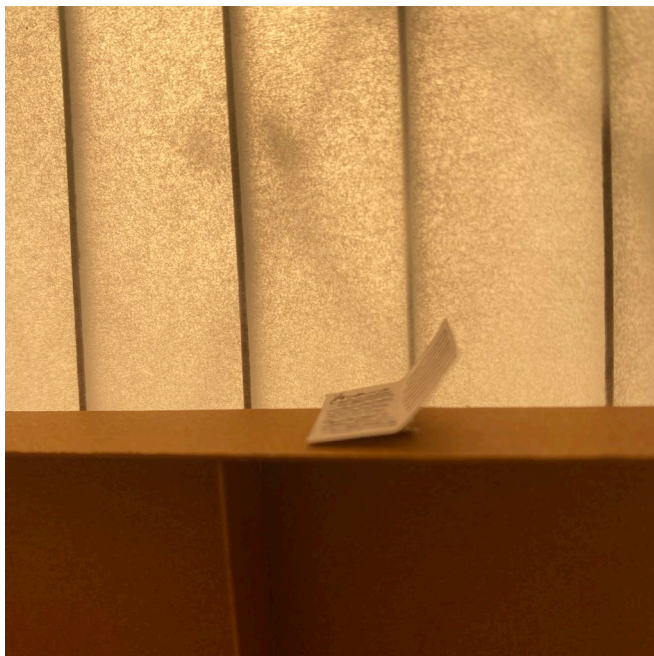
Interior shots of my model



Interiors of my model



Testing floor finishes

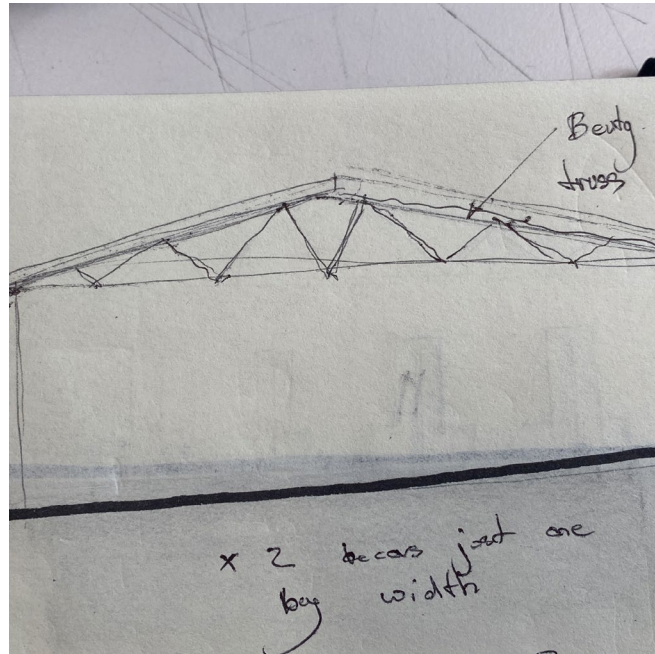


Photos of my model

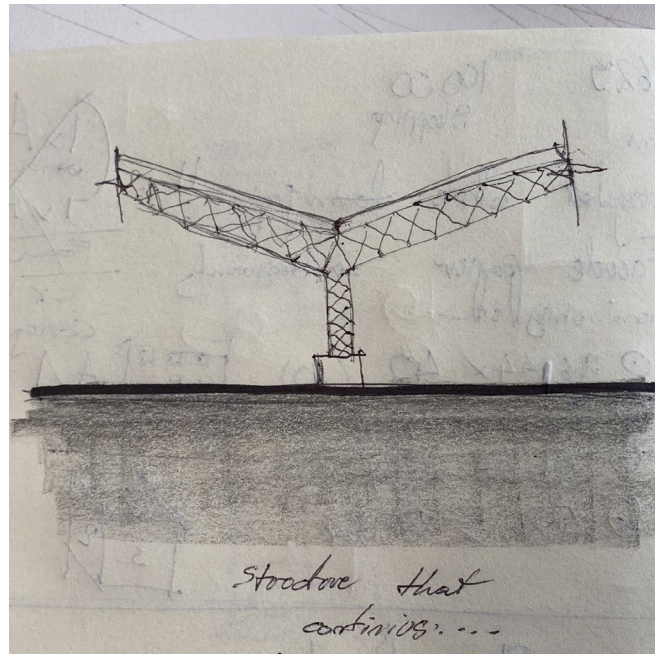


Photographing our model

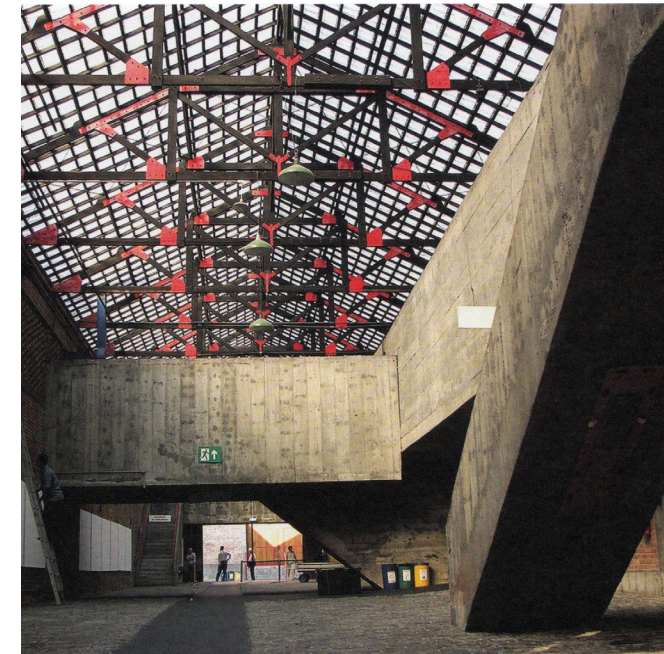




Truss idea



Idea for the model



Inspiration

<https://images.squarespace-cdn.com/content/v1/57e12832e6f2e1f209bff974/1474890089787-JVELS5QNSWB971W4Q0DN/image->



Inspiration

Available at: <https://ipinimg.com/1200x/14/62/c7/1462c7ef9bbbbae776c4debd5afbfff.jpg>



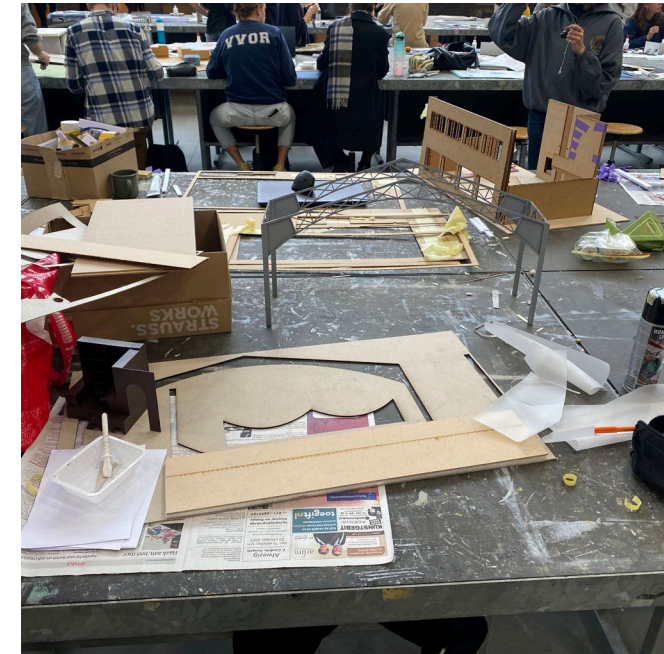
# DEADLINE RUSH

## Week 1.9 30/10-03/11

### Week overview.

Research seminar: Awaiting for feedback.

Design studio: The week was mainly attributed towards finishing the model and the final drawings. While working on the model I have made some adjustments to the colour and the heights as what I have modelled digitally did not seem to look so well in real life. Also the balance of colours plays an important aspect in my model so I realised that my initial concept where I envisioned everything in concrete is not going to work. Even though my colour scheme is not very ambitious as it is mostly white and grey there is an intention in these choices. The atmosphere in the space that I want to achieve is somewhat surreal. I would like the interior to be well lit with natural daylight and bright but at the same time having no see through glazing to the outside. The choice of colour that I made should emphasize that. An important aspect of my model is to show an illusion of infinity. For this I used mirrors on bot sides which seem to extend the space continuously. I thought that for the presentation it might be worth to also record a video and loop the transition between the library showing a continuous frame of scholars studying in the interior. My believe is that it would emphasize the message that I am trying to show suggesting almost a factory space for consumption of knowledge where everything happens in a grid that can be infinitely repeated- copied an pasted.



Moment when I realised the construction looks very Victorian compared to modern that I wanted to achieve.

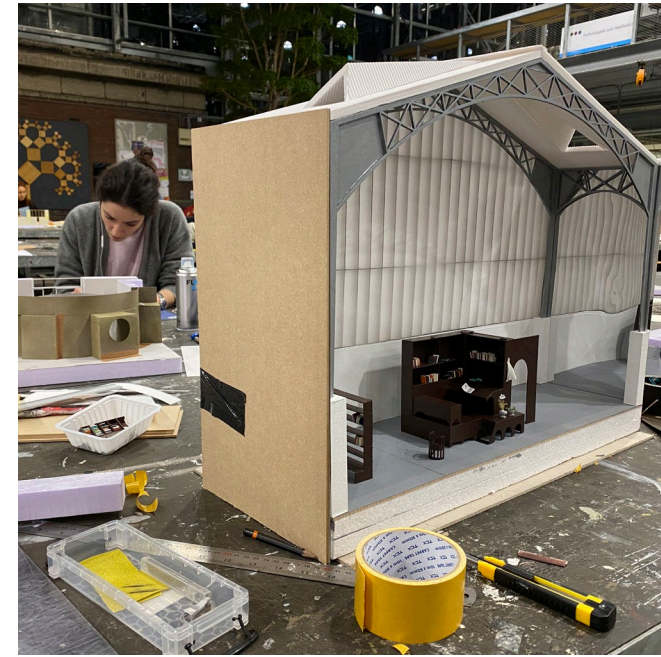


Testing - white balance in the space.

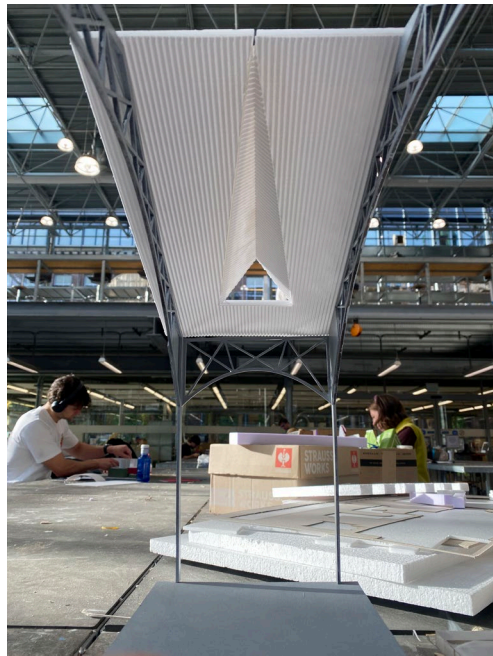




St. Jerome in his study  
Available at: [https://en.wikipedia.org/wiki/St\\_Jerome\\_in\\_His\\_Study\\_%28Antonello\\_da\\_Messina%29](https://en.wikipedia.org/wiki/St_Jerome_in_His_Study_%28Antonello_da_Messina%29)



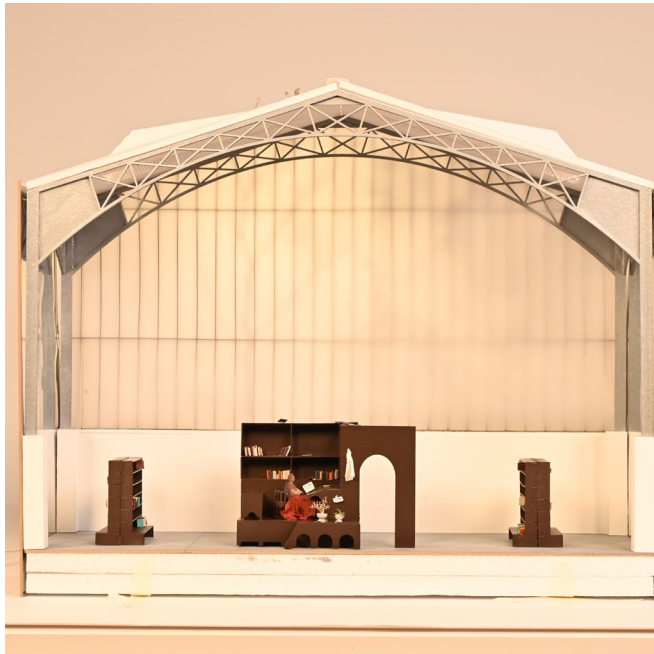
Contentious interiors



Testing the roof structure



Photoshoot



Front of the model

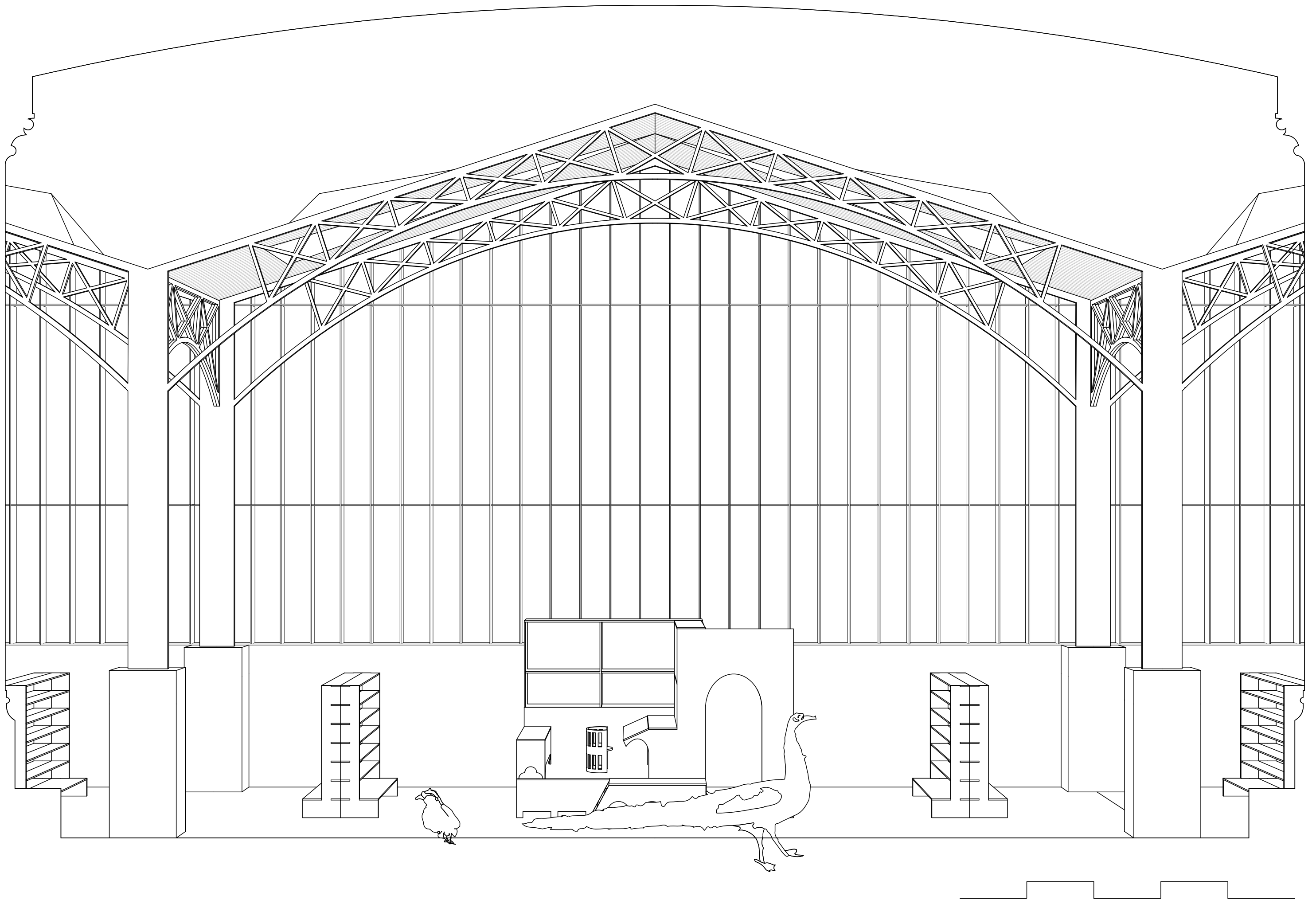


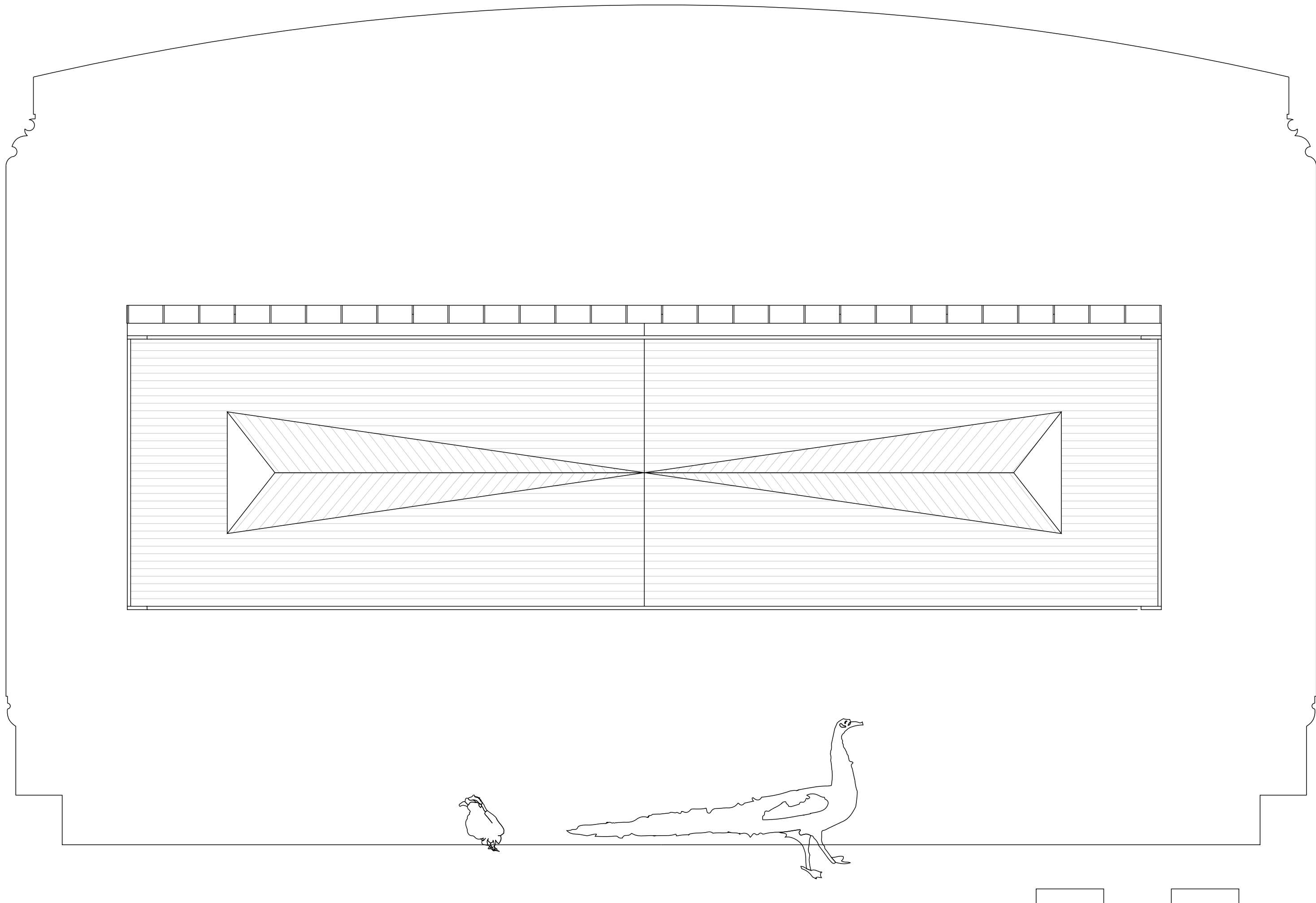
Roof structure

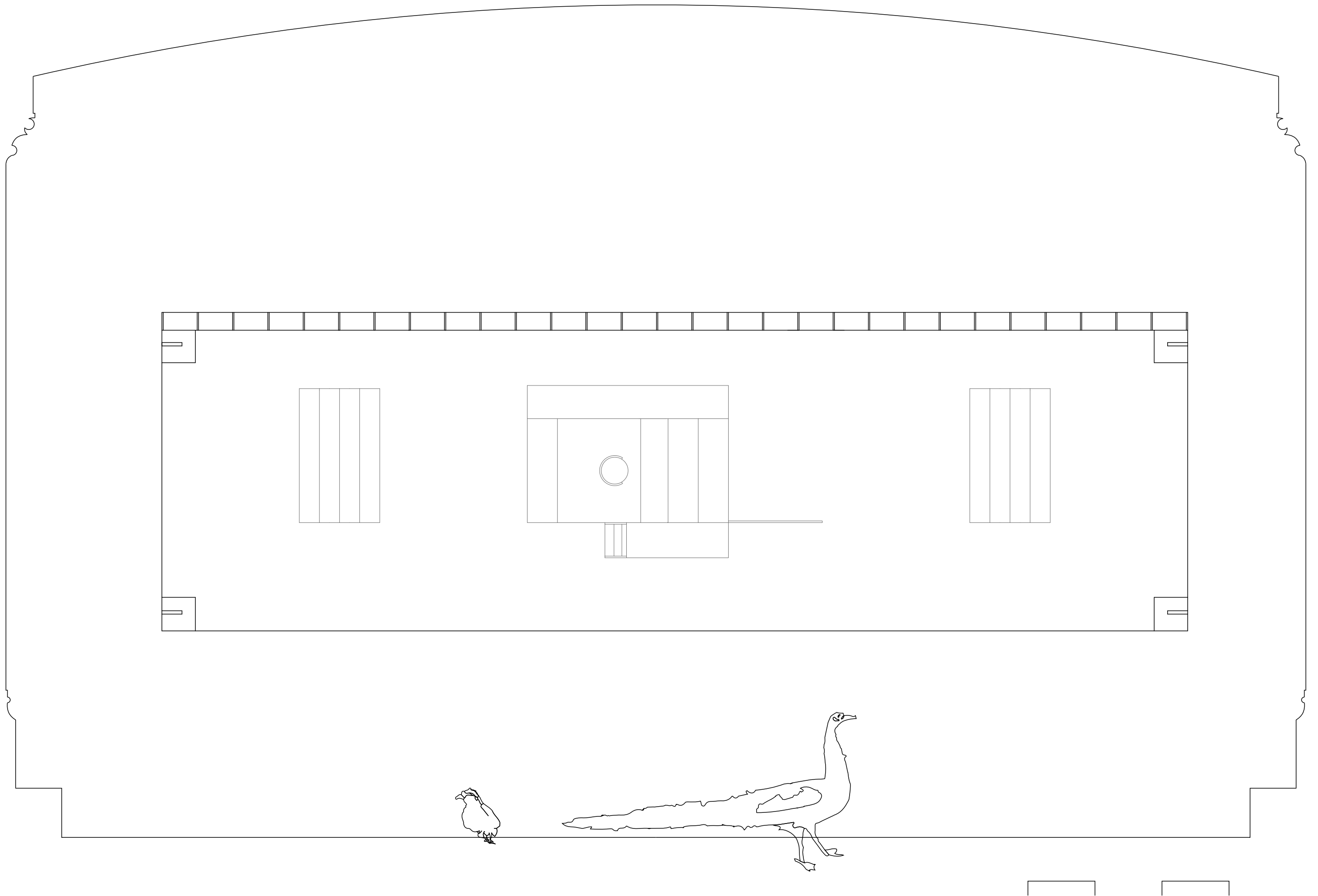


Back of the model





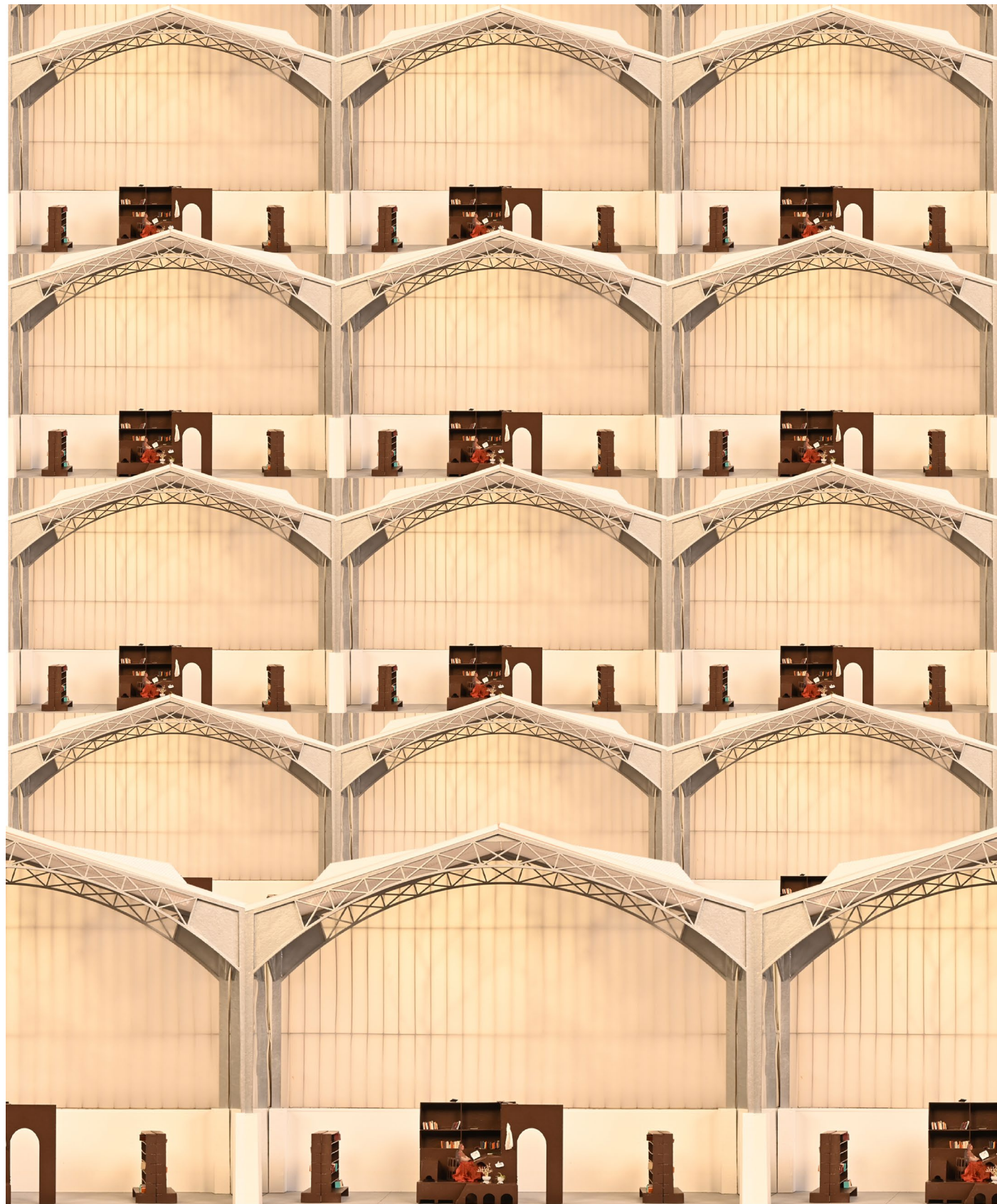














# Research plan reflection – further research into libraries

## Week 1.10 6/11–10/11

### Week overview.

Research seminar:

Design studio: I dedicated this week to research and explore public libraries in Krakow. I believe researching libraries and architecture in different countries has a particular value. Globalism maybe forced us to believe that some truths are universal but I highly doubt that. Especially when thinking between Dutch and Swedish context. The density of the population is incredibly different between those two countries – therefore I wonder if it would also impact certain parts of the culture and therefore architectural design. I couldn't help to think about it. At the same time it is true that main cities became pretty much globalised. There are differences in the use of the city – how vast it expands and how incredibly dense it can be but a lot of those aspects become rather universal. In that sense my model explored Swedish context. The room in the library that I designed is deliberately for one and it offers the person generous 60 sqm. Again this is probably not a way in which I would go about designing a public library but I see a value in a model posing and exploring those questions.

In regards to public libraries in Krakow this was a highly educational experience even though it was maybe not packed with innovative architecture. Yet, analysing a library in a country and therefore context that one knows gives a lot of confidence to be highly critical about it. I was mainly curious about how an intruder is going to use this library – mainly thinking about refugees especially because Poland – and especially Krakow which lies close to the border has received a lot of refugees from Ukraine recently. This is very apparent in the city – Ukrainian language is heard on every corner of the city – also in the library. Upon entering the main library one walks into the information room – where the text written notes are available in three languages. Polish, Ukrainian and English – exactly in this order what I think indicates the main groups of users and their size well. In that regard I think library has done a first step well to welcome and attract the groups of citizens who can receive a shelter (in a sense of a safe space – where an intruder to a new country, who has no job yet,

no house and does not know how to spend the time can come to and feel safe). One thing that however differs it from known to me libraries in Sweden, United Kingdom and Netherlands is the fact that to use it one needs a library card. The process takes 5 minutes however it requires a Polish citizen number, address of permanent residence and an email. Library card of course is needed to lend book in many instances but I do not recall a public library that needs a library card to enter. It is a weird legislative requirement which imposes that public building is dedicated for the citizens of the country who found its functioning. I asked the librarian whether it is possible for a Ukrainian refugee to use this building then and he responded that yes, and in fact many do but then he added that Ukrainian citizens have a Polish citizen number – only available when one crosses the border legally which implies that illegal refugees would not be able to use it. It is not for me to question rightfulness of that – I am primarily concerned only about what a notion of Public building means in a sense of an architectural typology and in that sense it is interesting that its understanding is adjusted by legislation. My experience in Netherlands is different even when it comes to university libraries. I know of people studying at Erasmus University in Rotterdam and living in Delft at the same time using the TU Delft library for studying. The legality of it is unknown to me, yet it makes a lot of sense for the educational institutions to be shared and equally accessible amongst people and education being a right for the people.

Now that one was able to access the library it is unknown to me whether it is possible to loan books in Netherlands or Sweden without a library card which implies that registration is need. My experience with United Kingdom and Poland is that it is not possible due to the risk of thievery. But the library in Krakow is inaccessible to enter without such card whereas it is not the case in other locations. In my opinion public building should be publicly open – again being this safe shelter for everyone.

One thing I liked about the public library in Krakow is the fact of subscription sharing which seems to have perfect sense in modern society. That is Adobe Suite subscription, Music making apps, Video making, Games for PS and Xbox – VR glasses, board games, vinyl records and etc. Many of the software being expensive for entry level professionals. Now I do not know whether it is possible to do so at the City library in Stockholm but the fact that I know it is possible in Krakow and it was apparent to me within 5 minutes of being in the space and it is not apparent to me about the Stockholm City Library in which I spent 8 or maybe more hours speaks about the success of the space and such service.

Working in “Arteka” based in Krakow a library which represent the subscription sharing program I mentioned was an interesting experience. I managed to see many people come and go during my time there. Especially many older people but

also I presume based on foreign language used, immigrants the country. Their ages also varied and many of them were reading big books and taking notes what makes me think that they are either students or studying to obtain polish qualifications for their professions as I came across a lady which was reading big biology book perhaps about medicine. A book called Polski hydraulik: i inne opowieści ze szwecji (Polish plumber and other stories from Sweden)(Zaremba, 2008) or Angole (The English) (Winnicka, 2014) describes this phenomenon. Based after 2004 upon Poland entering EU it describes the many polish doctors, architects and engineers migrating to western countries for a promise of a better life. Many of whom ended up being mixed in accommodation and work with criminals who escaped the country for their minor offense avoiding prison. Their education and skills were redundant for the society they joined but a library gives an opportunity to regain the qualifications and therefore to contribute.



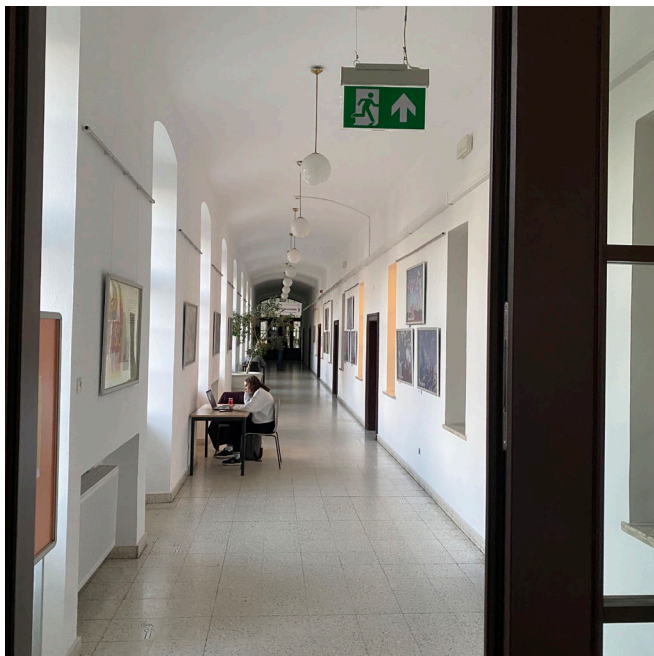
The sign saying main reading room - the marvel of a magic world of books hidden behind market doors.



The room feels very sterile - interestingly many hospitals in Poland I went to use exactly the same type of linen flooring.



Upon entering everyone is assigned a fixed seat and desk number



No coworking spaces, the corridors are occupied this way instead.

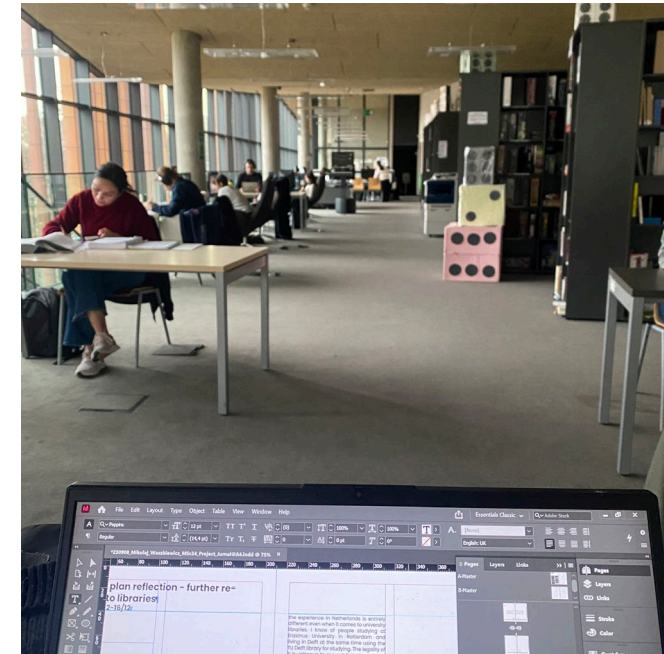


The library feels like a big government building where each category is a different room, which is interesting.





Cold and dark entry to the Arteka - not welcoming at all.



Working in Arteka.



Weird entry space without anyone to welcome.



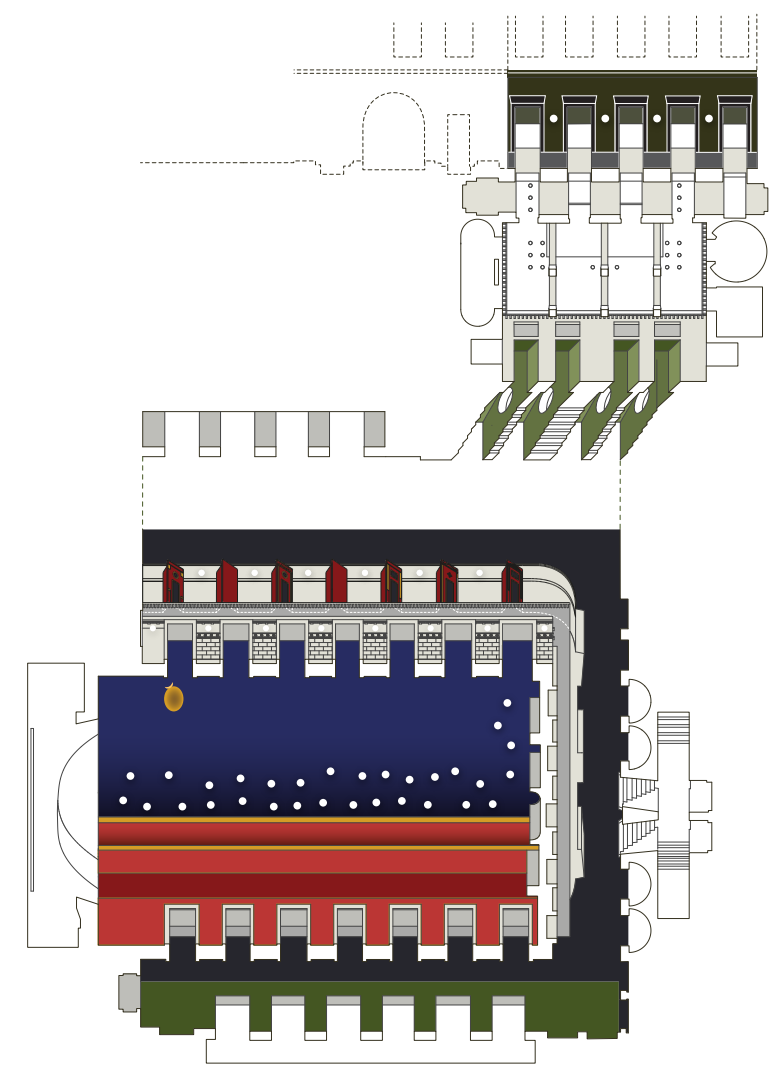
The library from the outside.

# Research work

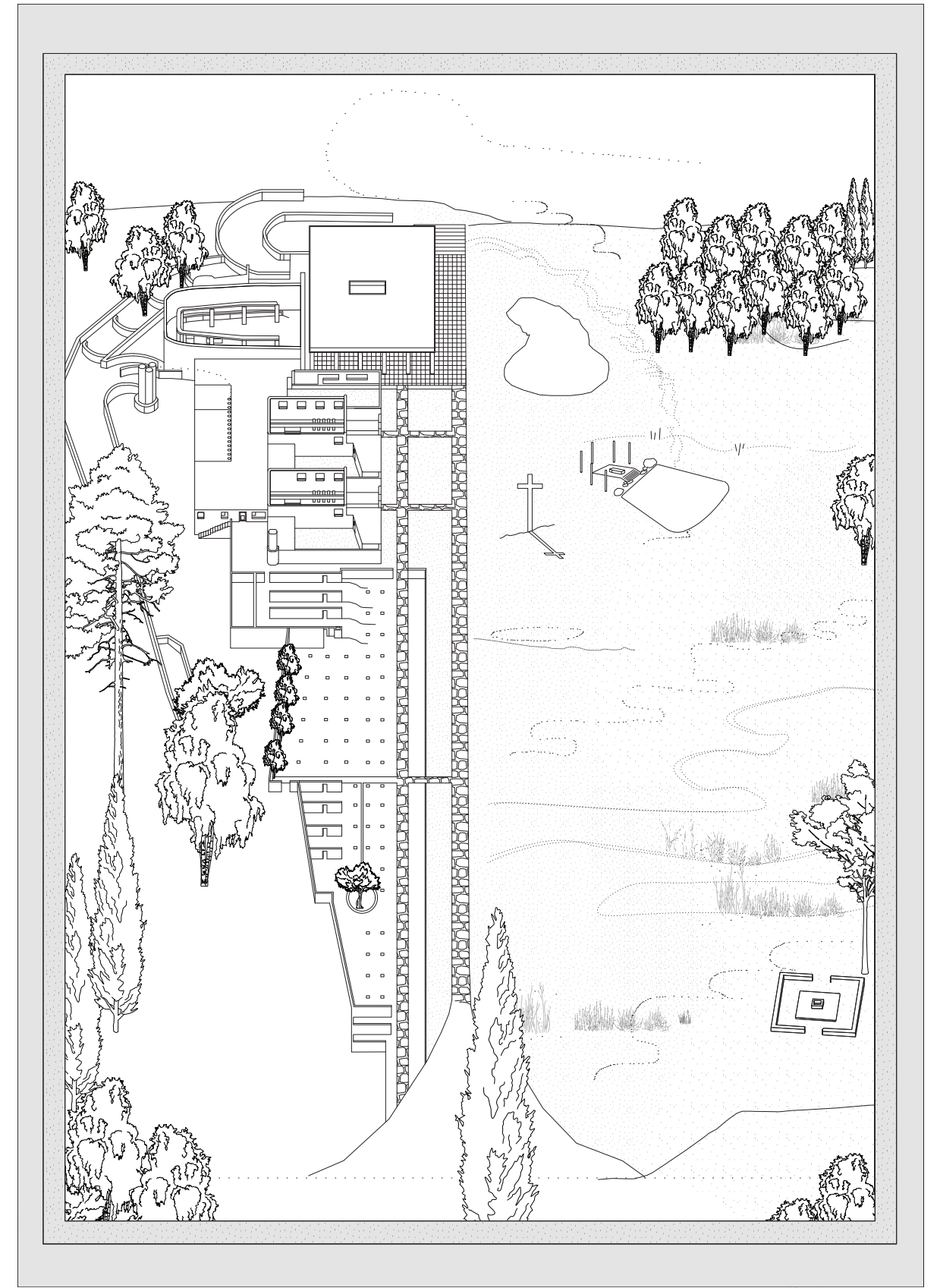
## The collective work precedents

### Week overview.

The following is selection of our collective research work done together as a studio. The selection is quite personal in a sense that I only include my personal favourites and objects which have a potential in influencing my design.

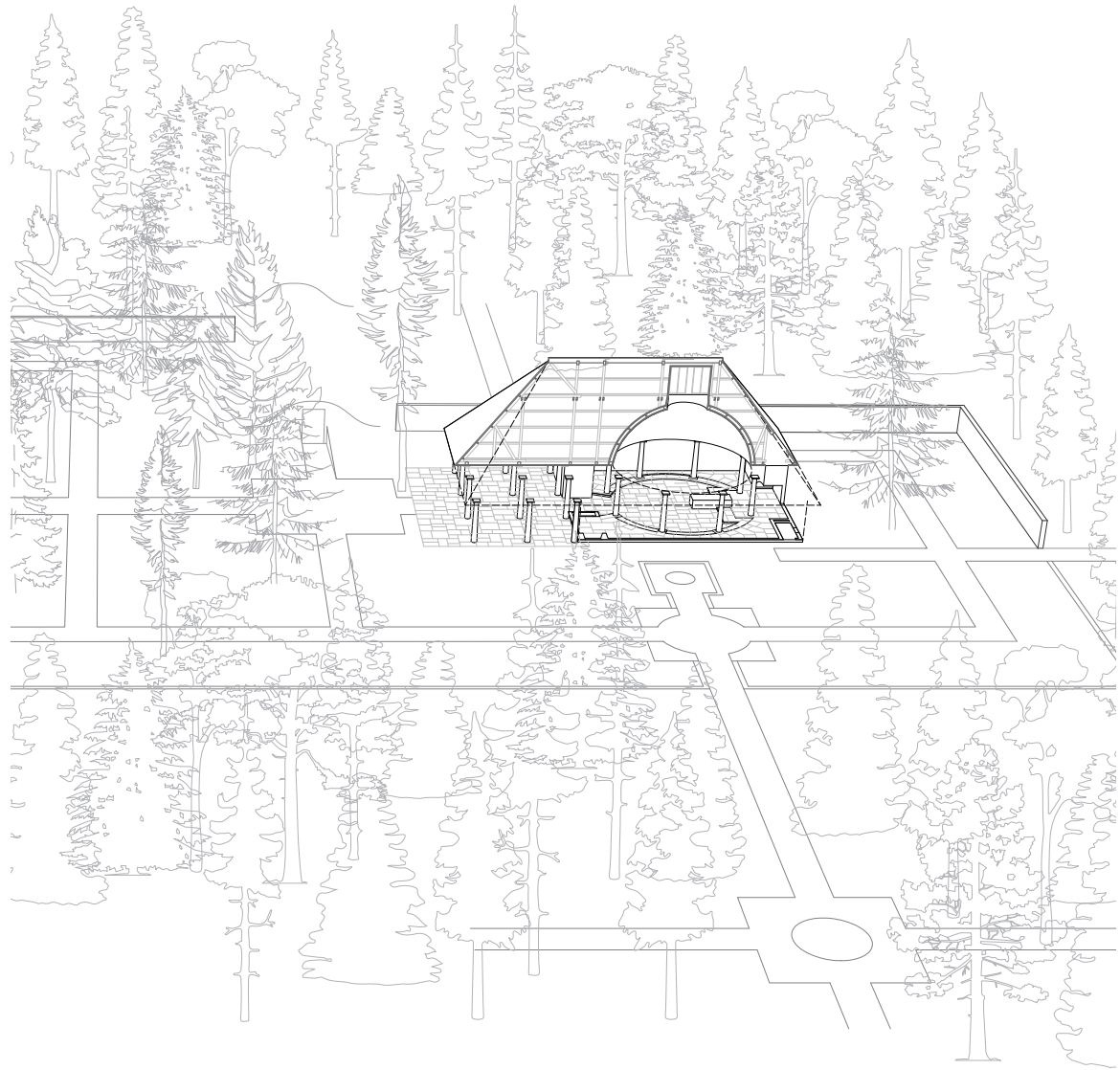


THE CINEMA IS A STAGE BETWEEN FANTASY AND REALITY  
Skandia Cinema, Gunnar Asplund  
1923

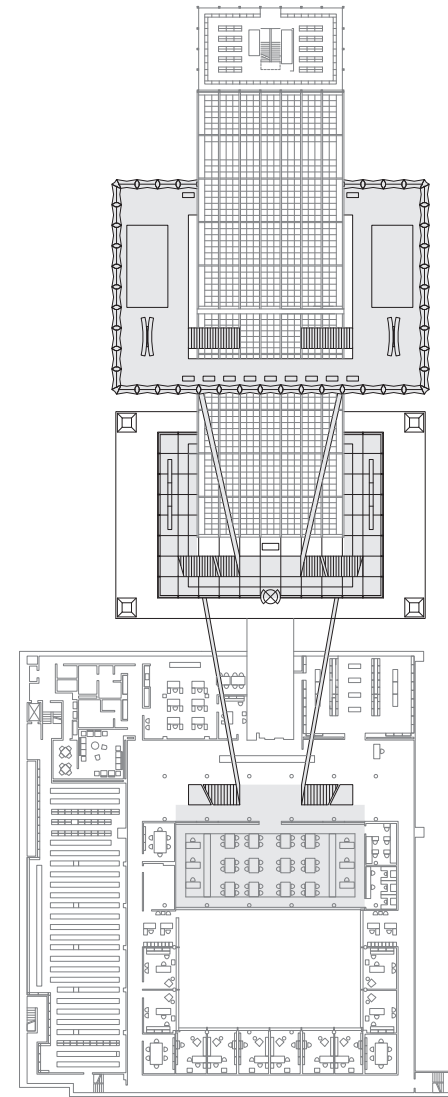


Woodland crematorium

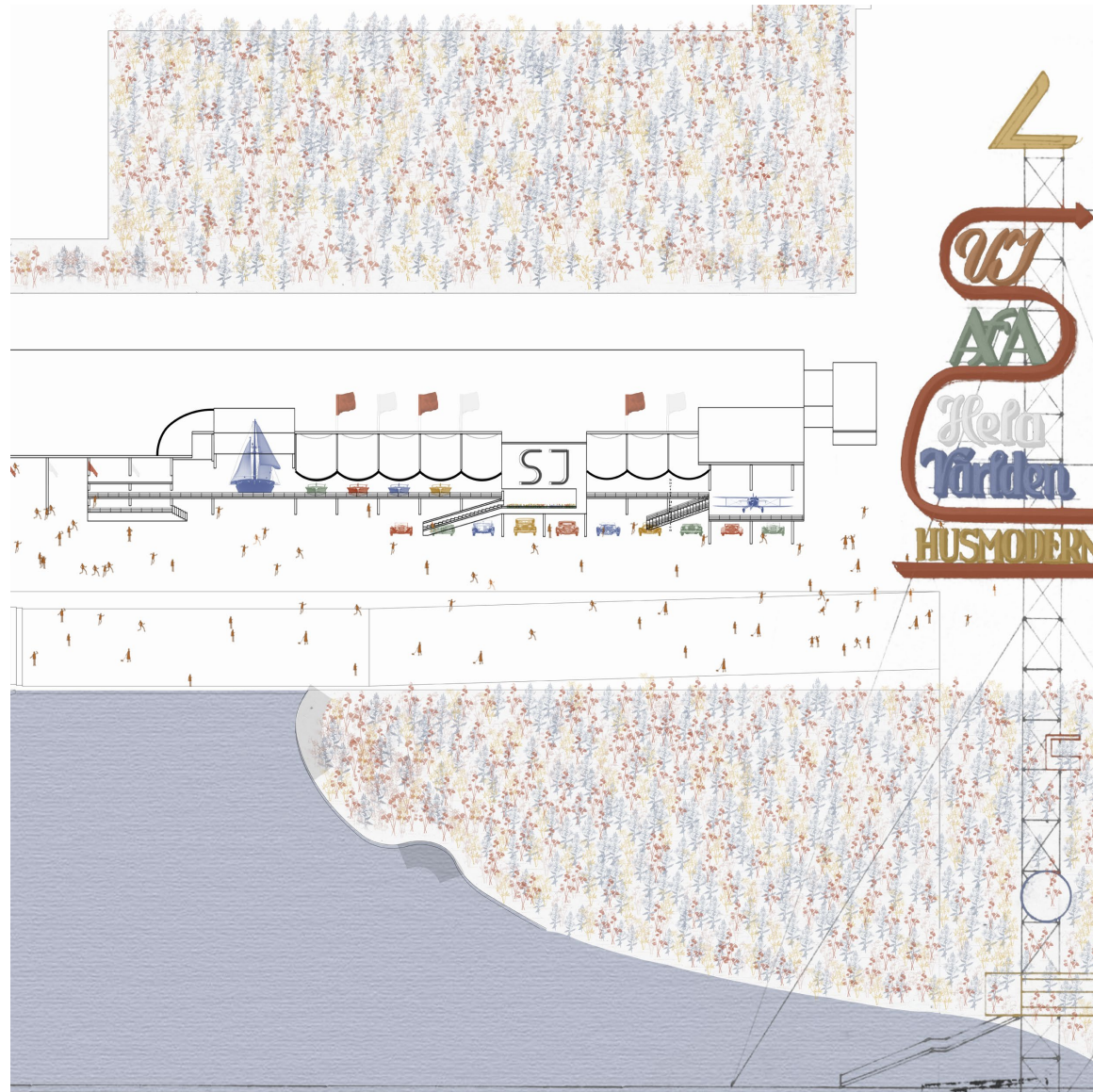




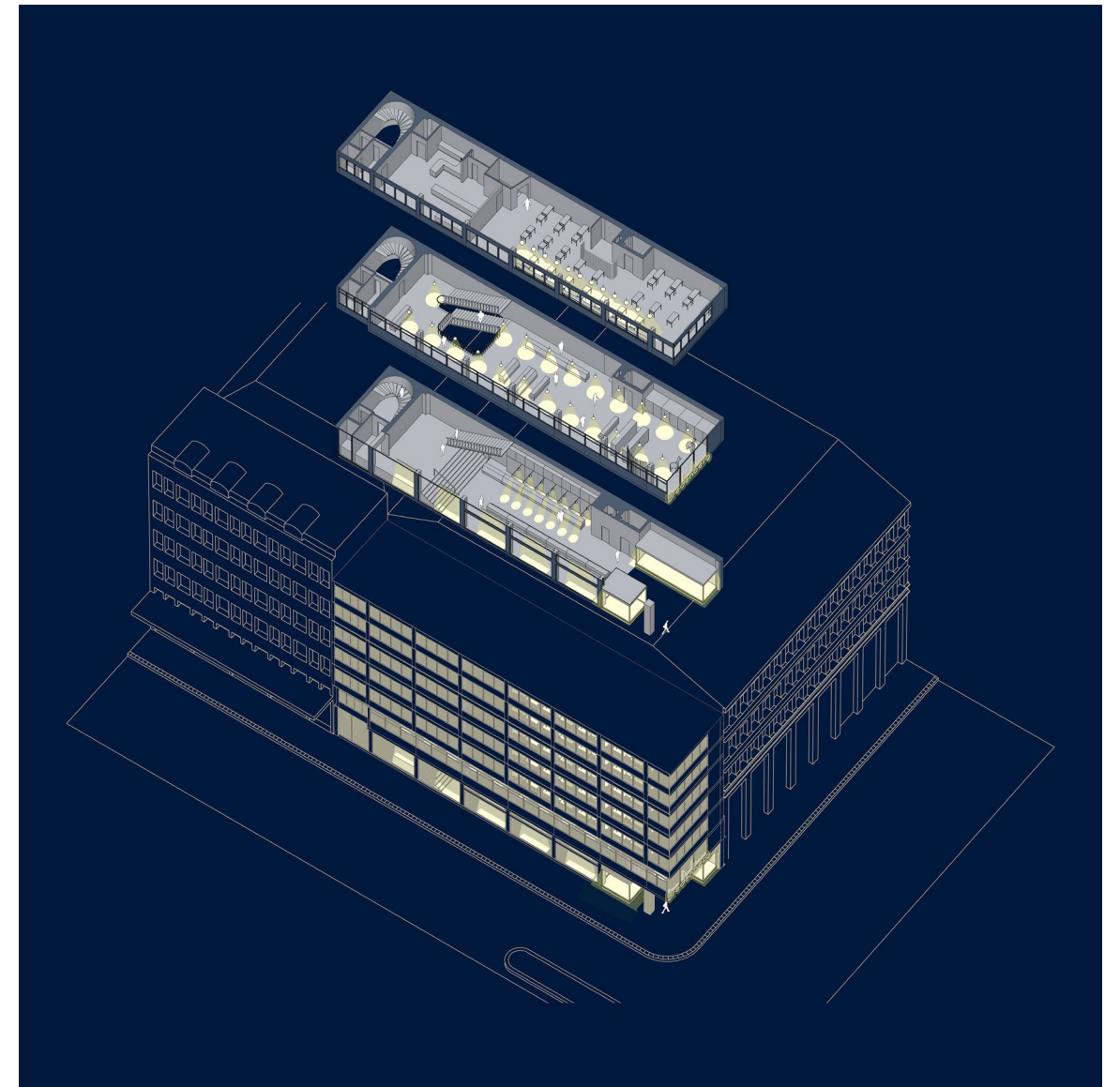
Woodland chapel



Beinecke Library, SOM

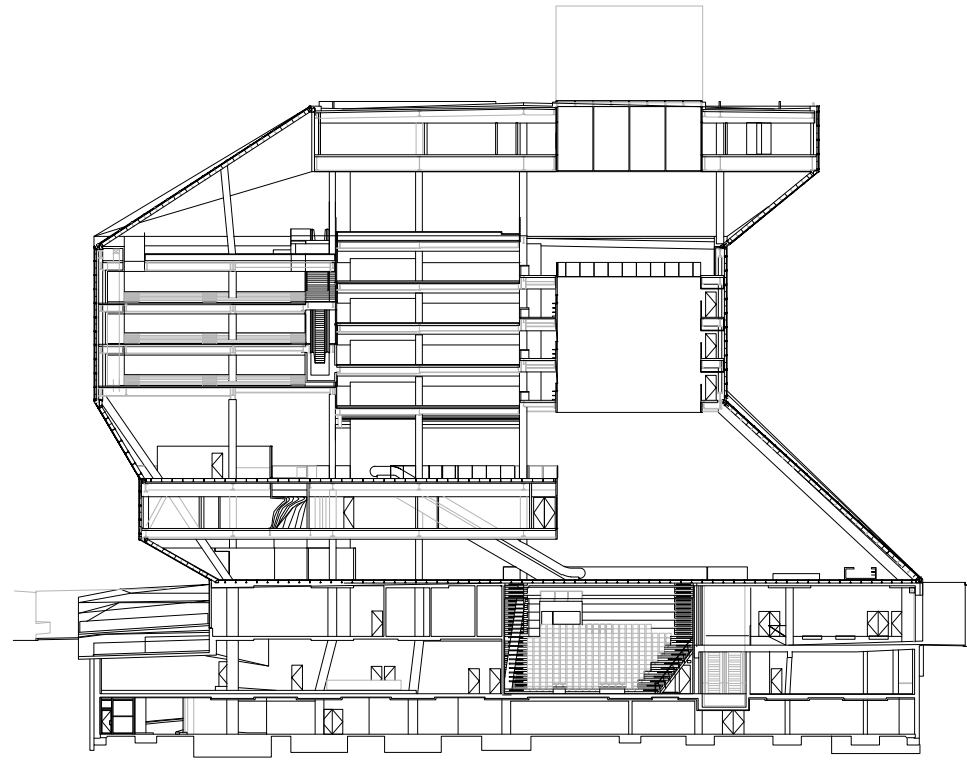


Stockholm Exhibition

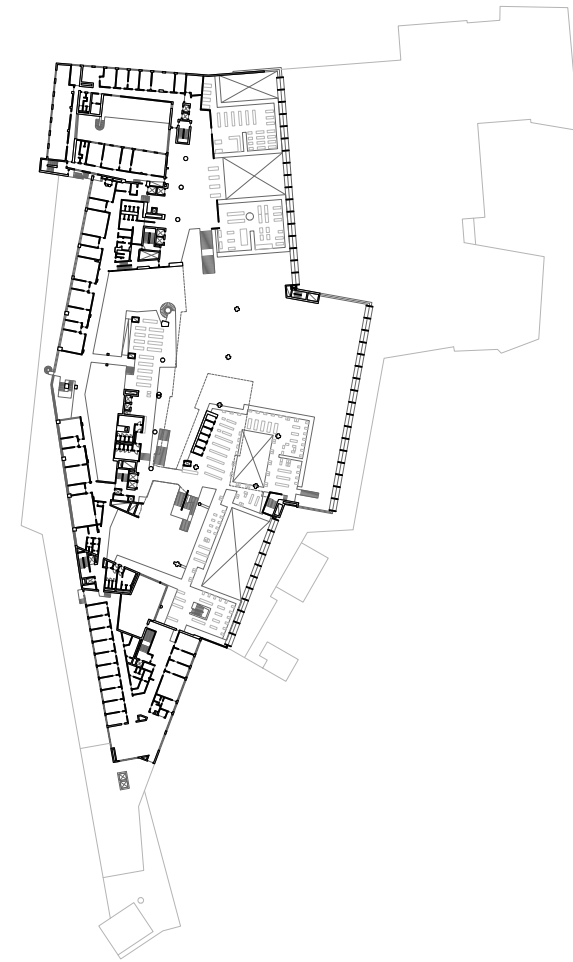


Bradenbergs department store

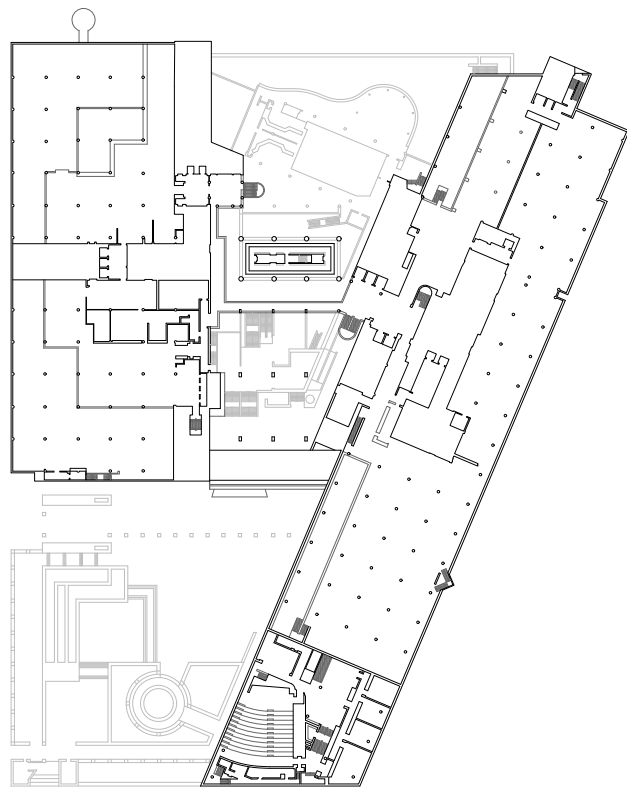




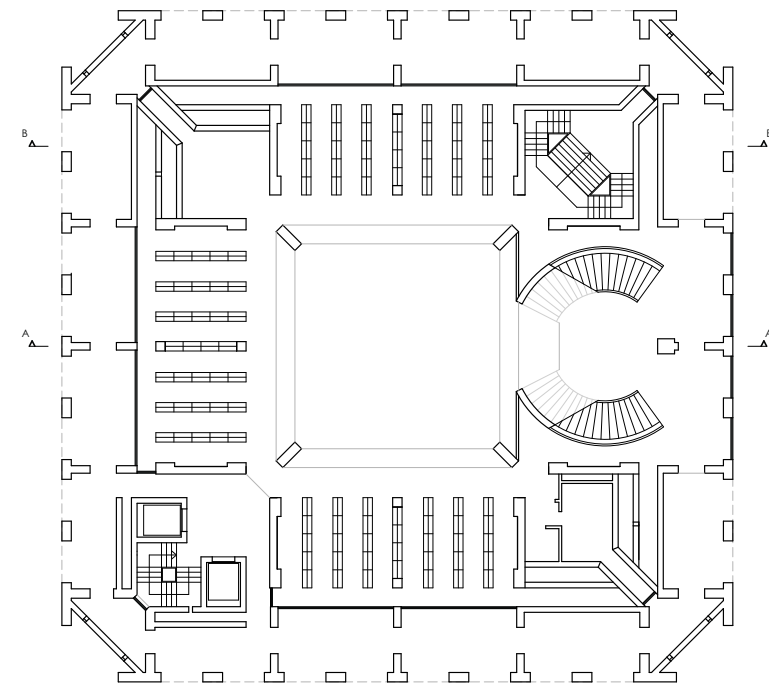
Seattle library, OMA



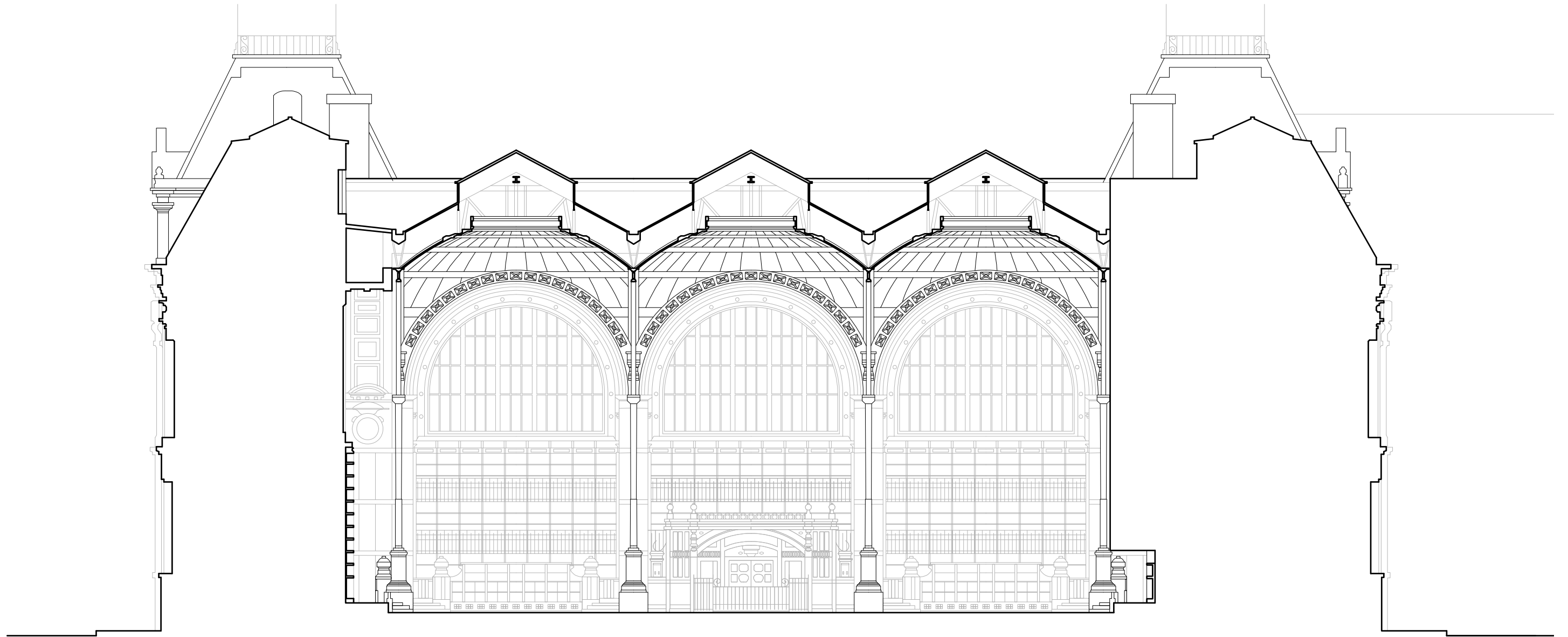
Berlin Statsbibliothek, Hans Scharoun



British Library, Colin St John Wilson



Exeter Library, Louis Kahn



de Lecture, Bibliothèque Nationale de France, Henri Labrouste





Stroy telling room - 125 model

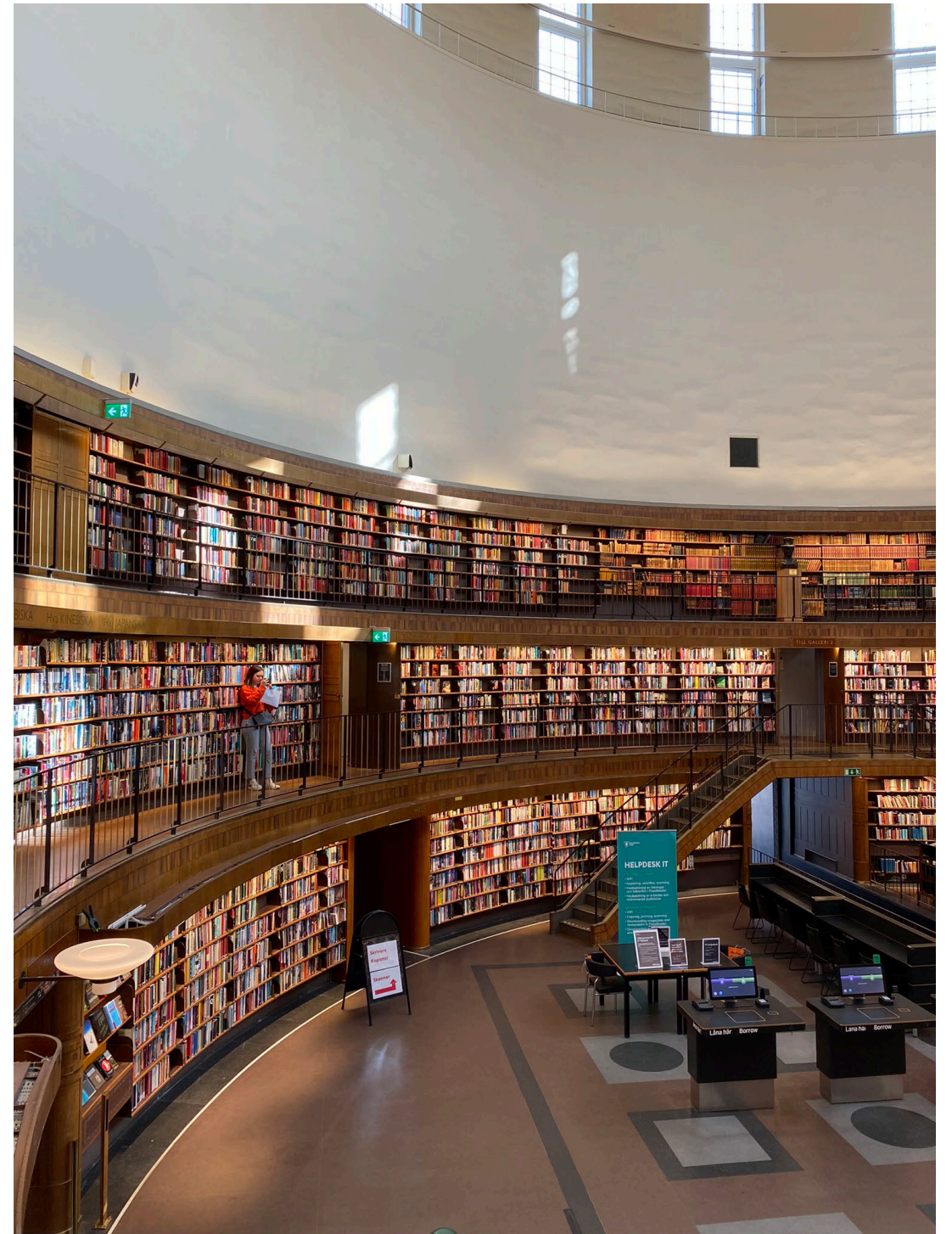


Stroy telling room - reak life





Rotunda - 125 model



Rotunda - real life





Rotunda stairs - 1:25 model

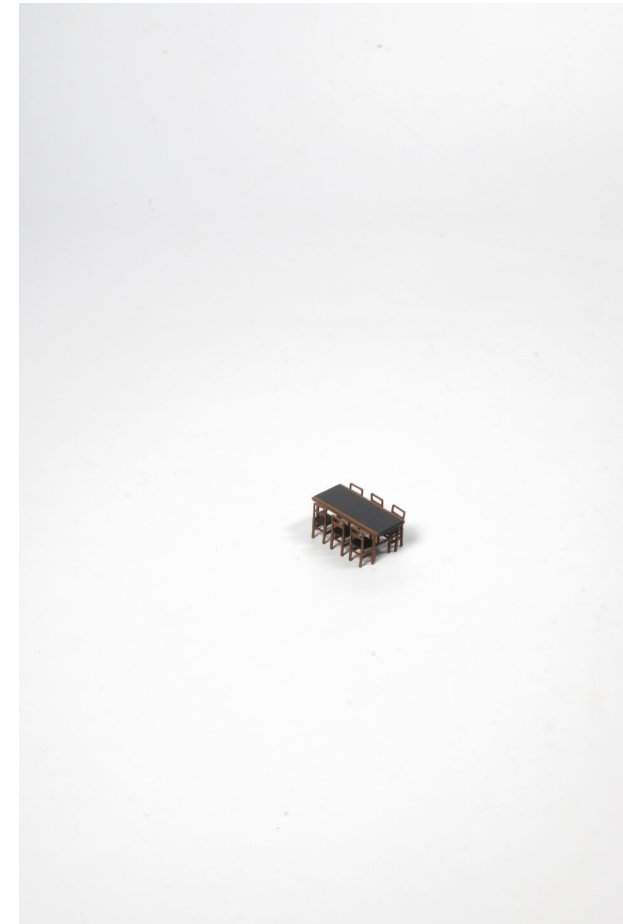


Rotunda stairs - reak life

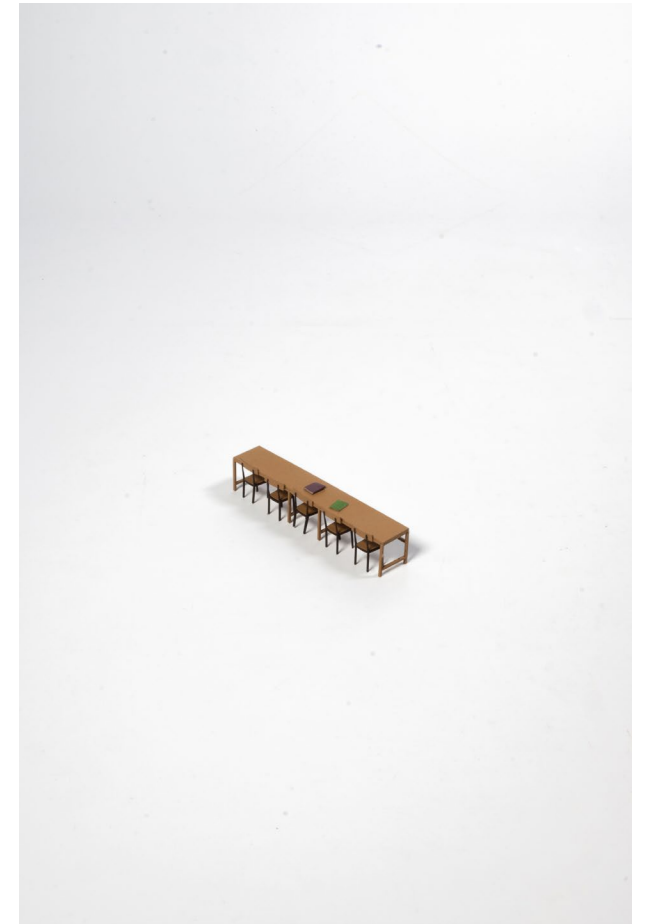




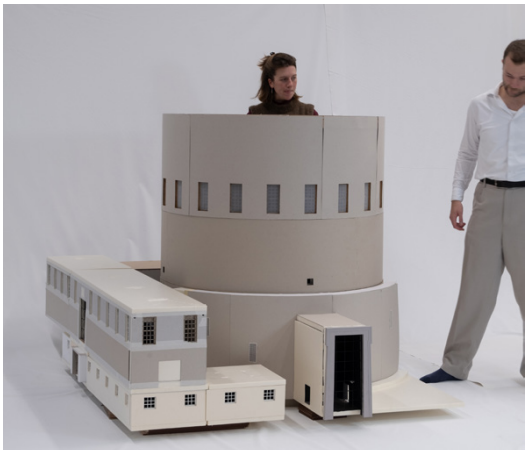
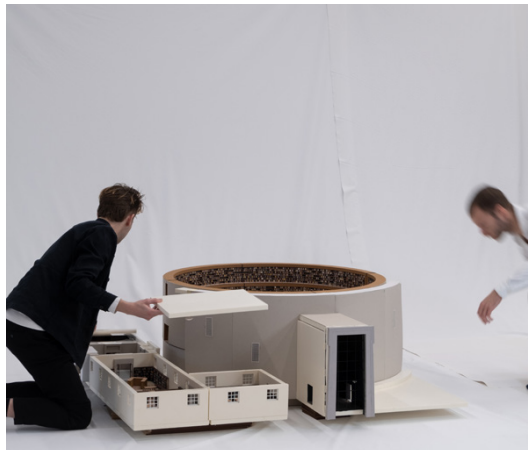
Furniture from 1:25 model



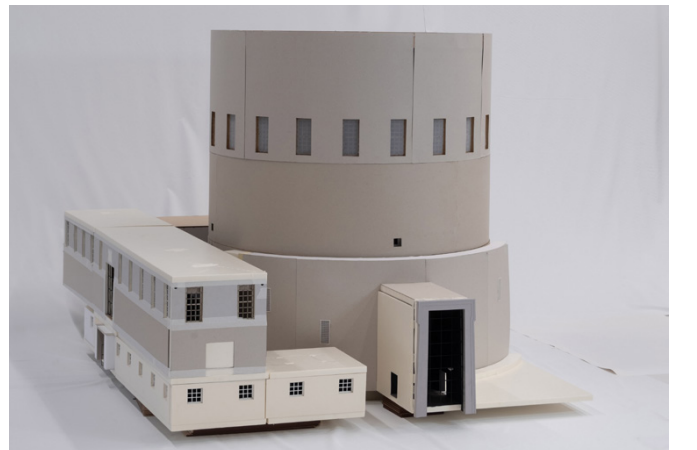
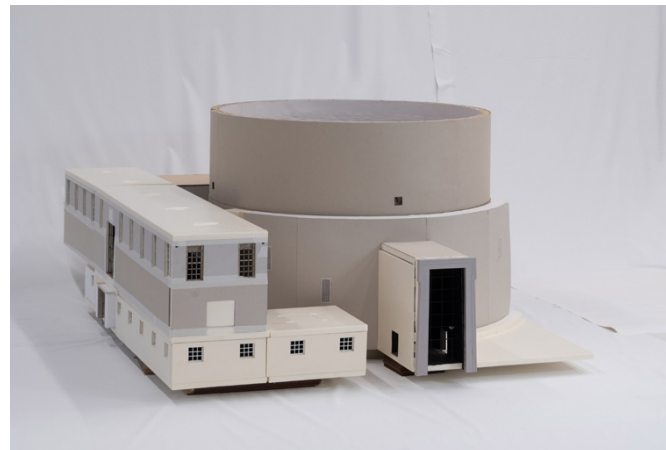
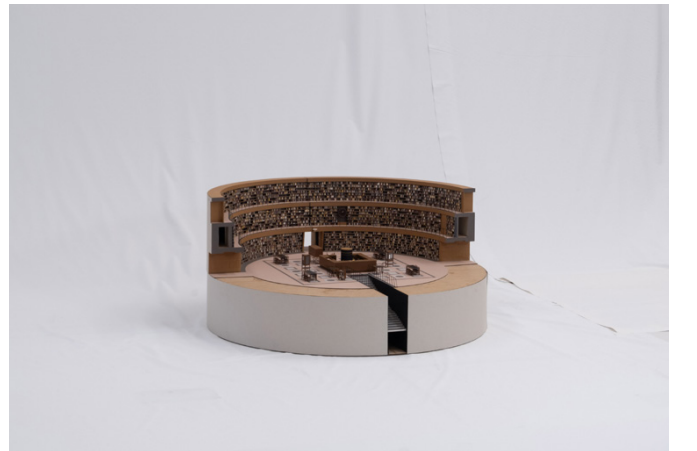
Furniture from 1:25 model













# Bibliography

## References:

Winnicka, E. (2014). Angole. Czarne.

Zaremba-Bielawski, M. (2008). Polski hydraulik i nowe opowieści ze Szwecji. Agora.