

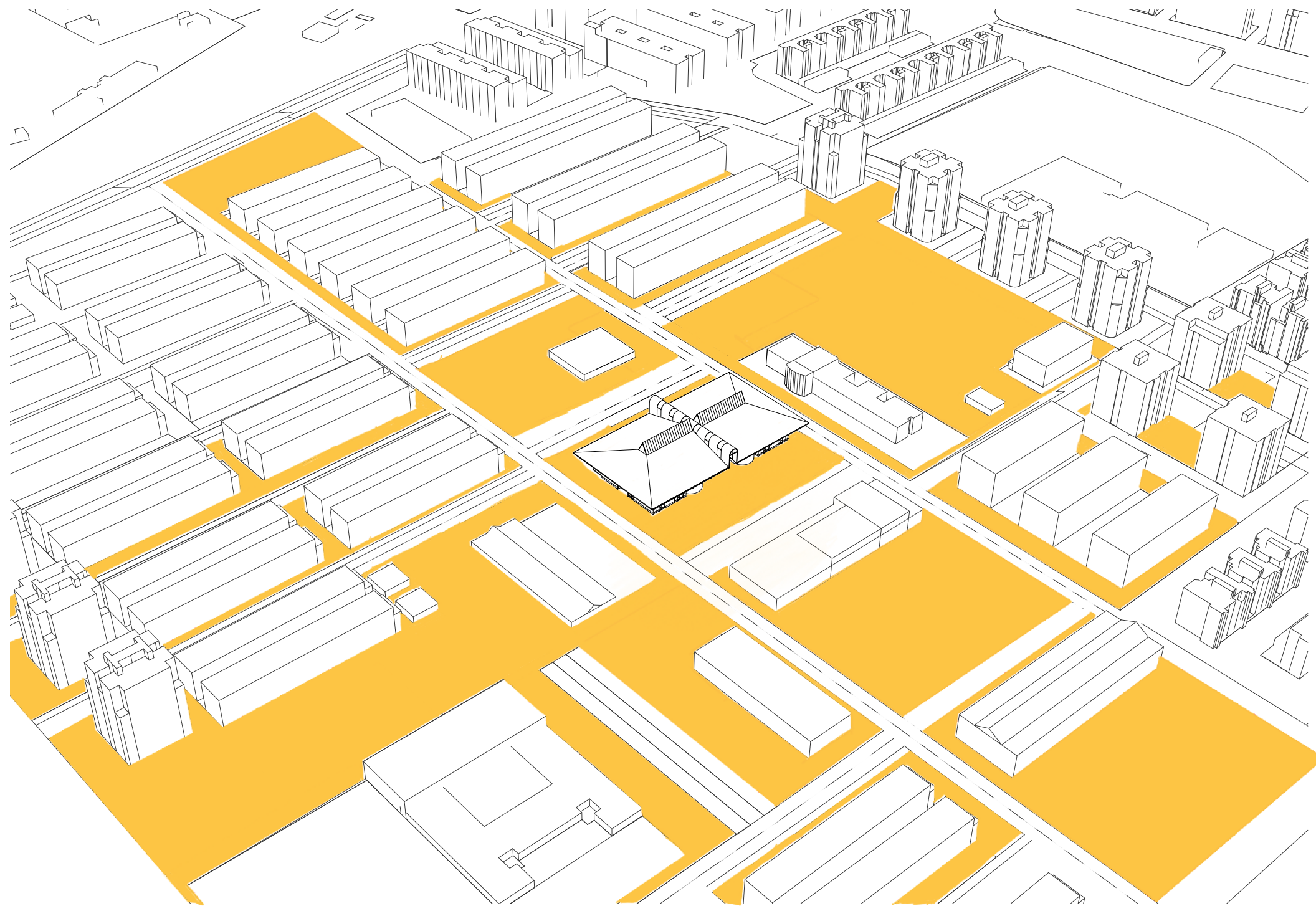


Areal view from 1989,
Orcasur

Places of Common as Social Incubators of Public Space

De-constructing **Systems of Neglect** and
Fostering **Networks of Growth**

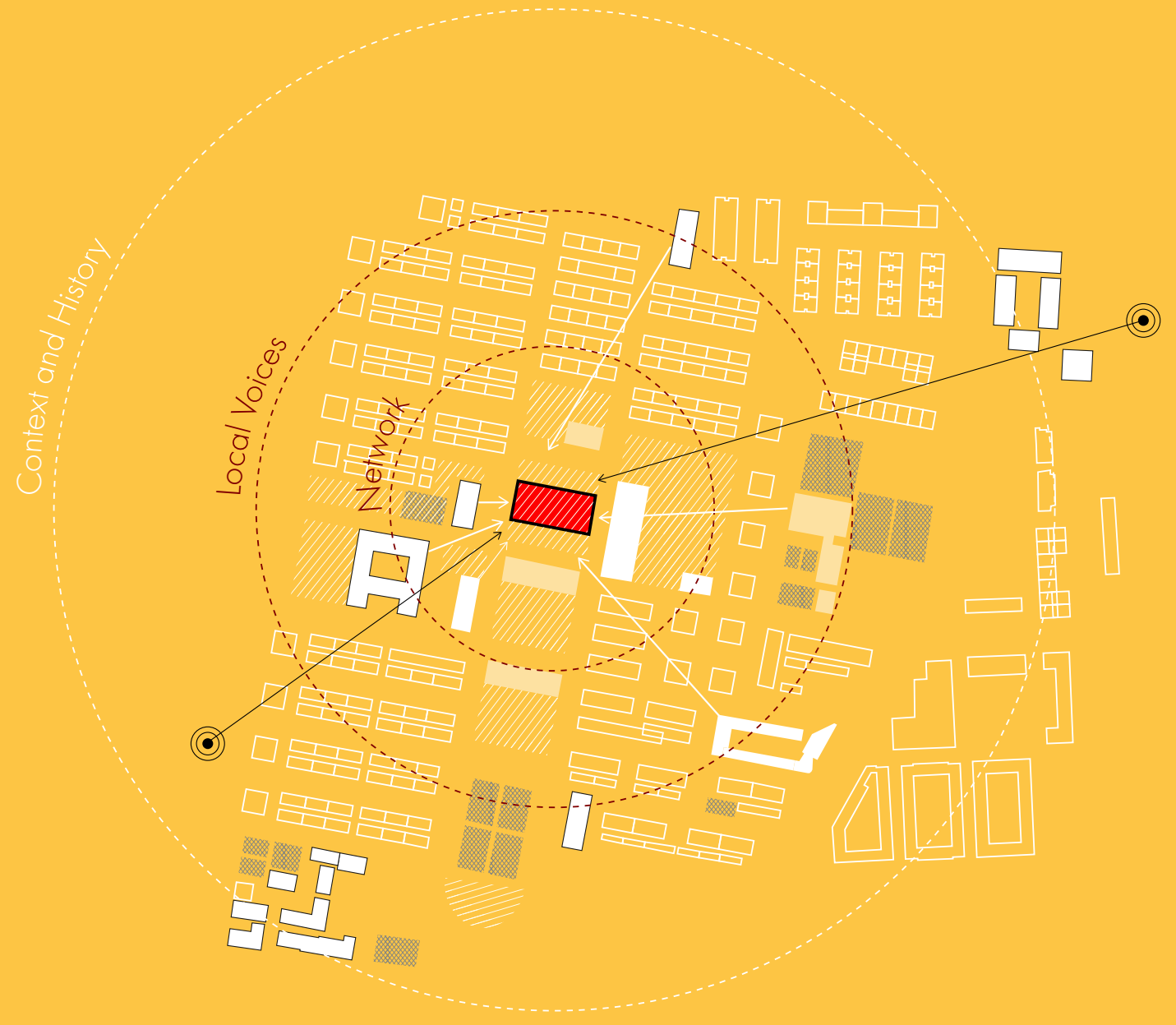
Presentation 5 / 2nd of July 2024 / Annika Gabriela Mayer





Spatial Nuancing

Spatial nuancing regards public space by its **inherit characteristics** and acknowledges its **complexity**. It renders the creation and reactivation of public space as **considerate and dynamic regeneration** and regards the potentials of the public space as opportunity for **new approaches in urban design**.



BARRIOS DE AUTOCONSTRUCCION

BARRIOS PUEBLO

1. Palomeras
2. Pozo del Tío Raimundo
3. Meseta de Orcasitas
4. Cornisa de Orcasitas
5. Fontarrón
6. Marquesa de Amboage
7. San Pascual. La Alegría

BARRIOS MARGEN

8. Pinar de Chamartín
9. El Carmen
10. Santa Petronila
11. Las Carolinas
12. Roger de Flor

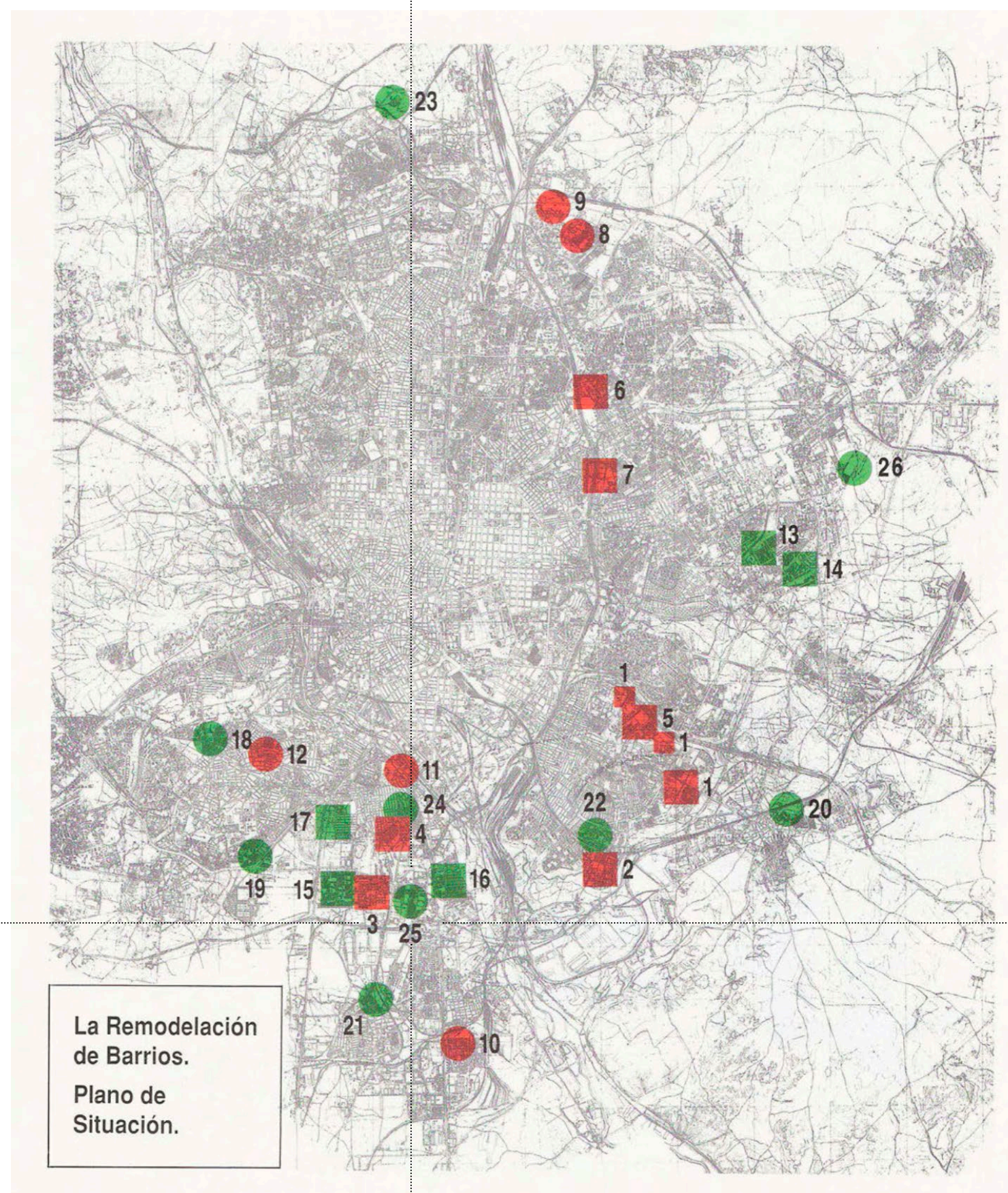
BARRIOS DE PROMOCION OFICIAL

POBLADOS DIRIGIDOS Y O.S.H.

13. San Blas I (O.S.H.)
14. San Blas II (P.D.)
15. Poblado Dirigido de Orcasitas
16. San Fermín (O.S.H.)
17. ZOFIO (O.S.H.)

CHABOLISMO OFICIAL

18. Los Cármenes. Caño Roto (Poblado Mínimo)
19. Pan Bendito (UVA y P.M.)
20. UVA de Vallecas
21. UVA de Villaverde
22. P.M. de Vallecas
23. Santa Ana Fuencarral
24. Almendrales
25. ORCASUR
26. Canillejas



„Barrios en Remodelación“
started in 1979

Villasante, T. R. (1989). Retrato de chabolista con piso: análisis de redes sociales en la remodelación de barrios de Madrid. pp.14-15.



1946



1956



1966

Nomecalles. Instituto de Estadística de la Comunidad de Madrid. <https://gestiona.comunidad.madrid/nomecalles/Inicio.icm?&top=4469434.5&bottom=4468661&left=439780.1&right=440030.1&capaBusqueda=151&valorBusqueda=0790101820&capas=%279%27,%271%27,%272%27,%27142%27&fondo=Catastro>. Retrieved: 11.12.2023.





provisional housing
Asociación Vecinos Orcasur (1986). Orcasur. IVIMA.



areal view, provisional housing strip
Espasa-Calpe (1979, May 9). S.A. Madrid. Orcasitas. por Javier Manzano Martos. n. 75. p.623.



1980



1991



2022

Nomecalles. Instituto de Estadística de la Comunidad de Madrid. <https://gestiona.comunidad.madrid/nomecalles/Inicio.icm?&top=4469434.5&bottom=4468661&left=439780.1&right=440030.1&capaBusqueda=151&valorBusqueda=0790101820&capas=%279%27,%271%27,%272%27,%27142%27&fondo=-Catastro>. Retrieved: 11.12.2023.



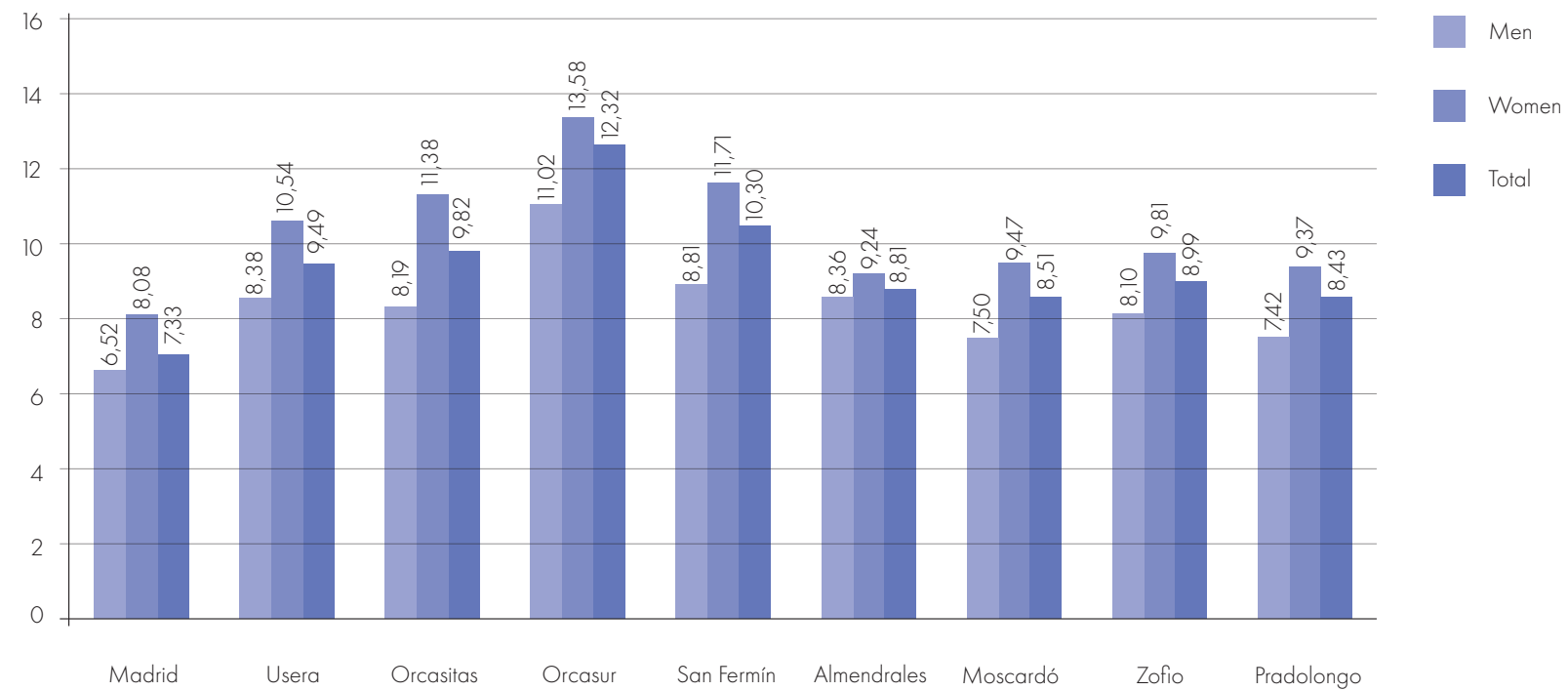


Asociación Vecinos Orcasur (1986). Orcasur. IVIMA.



Instituto de la Vivienda de Madrid

Absolute rate of registered unemployment by sex and geographical area (%). 2022



Own elaboration, data retrieved from: Urban Audit, via: Servicio Público de Empleo Estatal. Elaboración: Subdirección General de Estadística, Padrón y Procesos Electorales. Ayuntamiento de Madrid)

landuse and public transport



- residential
- commercial
- railway
- supportive
- institutional
- public
- subway

streets and parking



- streets
- parking

parks and outdoor facilities



- public green
- sports court
- playground
- sports centre

community infrastructure



- meeting places
- cultural
- associations
- educational
- library

activities



- outdoor sports
- playground
- church
- community garden
- annual festival

public space



- publicly accessible spaces
- street network

HOSTILE ARCHITECTURE >

Poisoned plants and a garden of pointed stones: when the hostile architecture comes from the neighbors themselves

The strategy of the inhabitants of the Plaza del Pueblo de Orcasur, in the Madrid district of Usera, to prevent drug users and homeless people from occupying the space is not new. We review the most (sadly) famous designs of hostile architecture



Miquel Echarri, "Plantas Envenenadas Y Un Jardín De Piedras Puntigudas: Cuando La Arquitectura 'Antipobres' Viene De Los Propios Vecinos," El País, November 12, 2020, <https://elpais.com/icon-de-sign/arquitectura/2020-11-12/plantas-envenenadas-y-un-jardin-de-piedras-puntigudas-cuando-la-arquitectura-antipobres-viene-de-los-propios-vecinos.html>

Spatial Nuancing

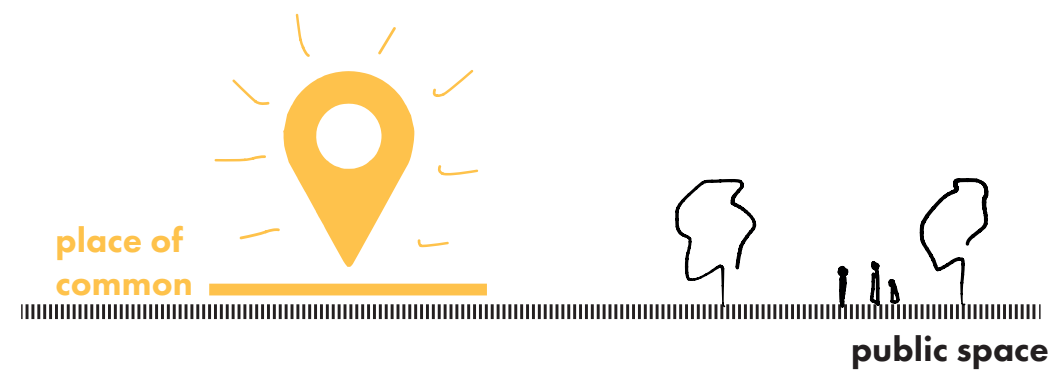
Spatial nuancing regards public space by its **inherit characteristics** and acknowledges its **complexity**. It renders the creation and reactivation of public space as **considerate and dynamic regeneration** and regards the potentials of the public space as opportunity for **new approaches in urban design**.

Public Space -> Place of Common



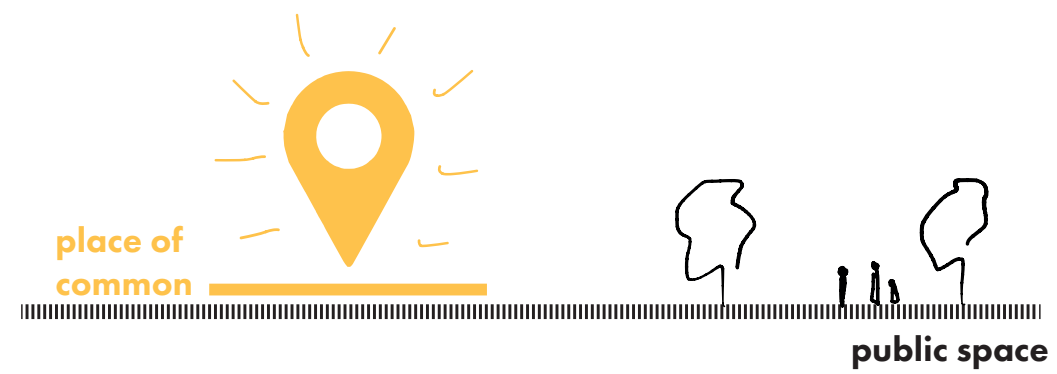
Space -> Place

meaning, identification



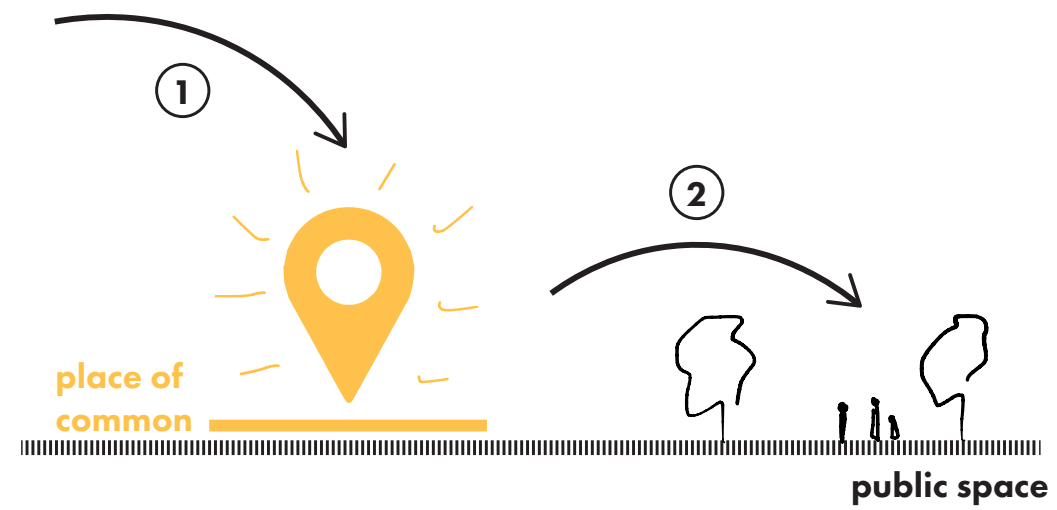
Public -> Common

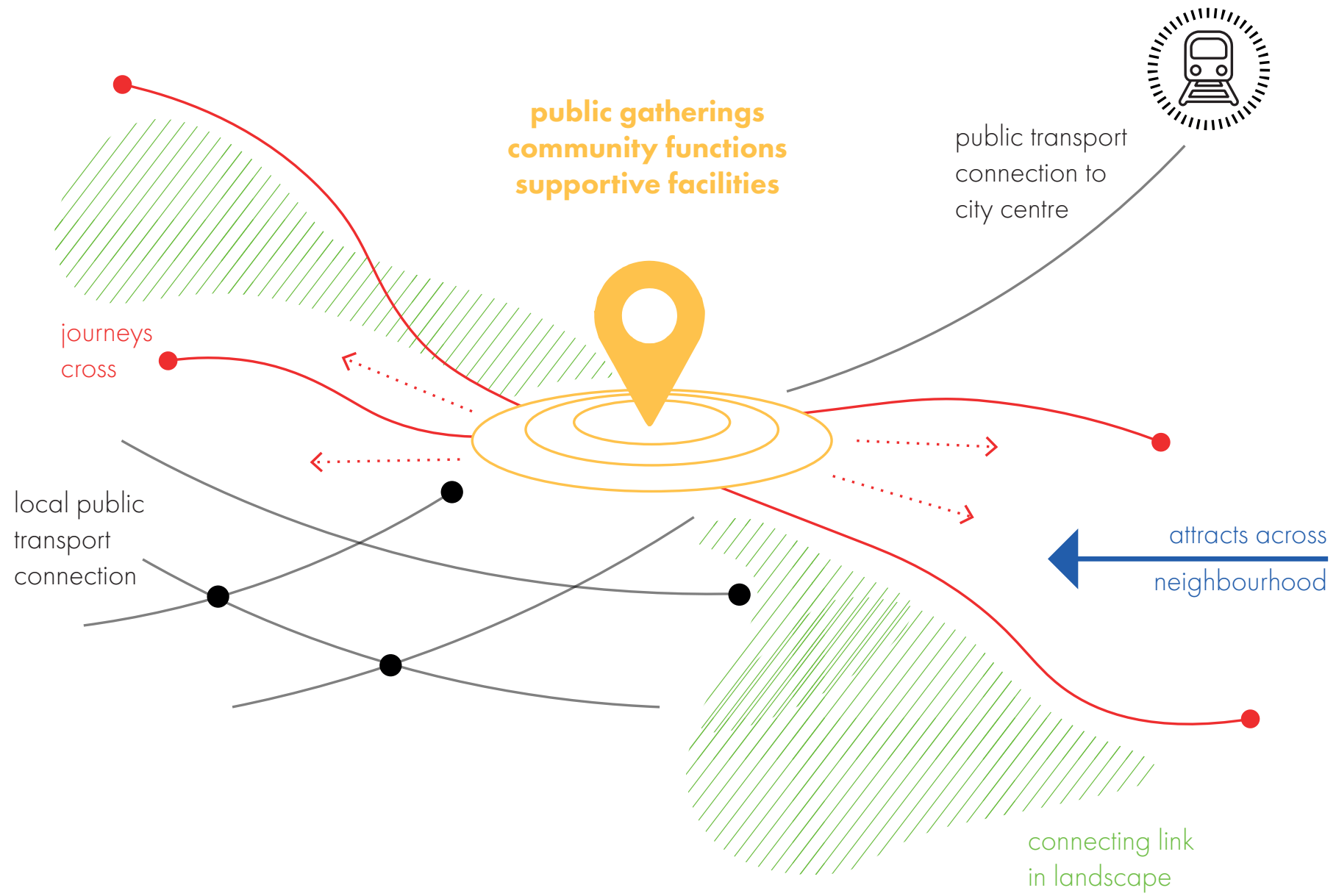
sharing, exchanging, personal engagement

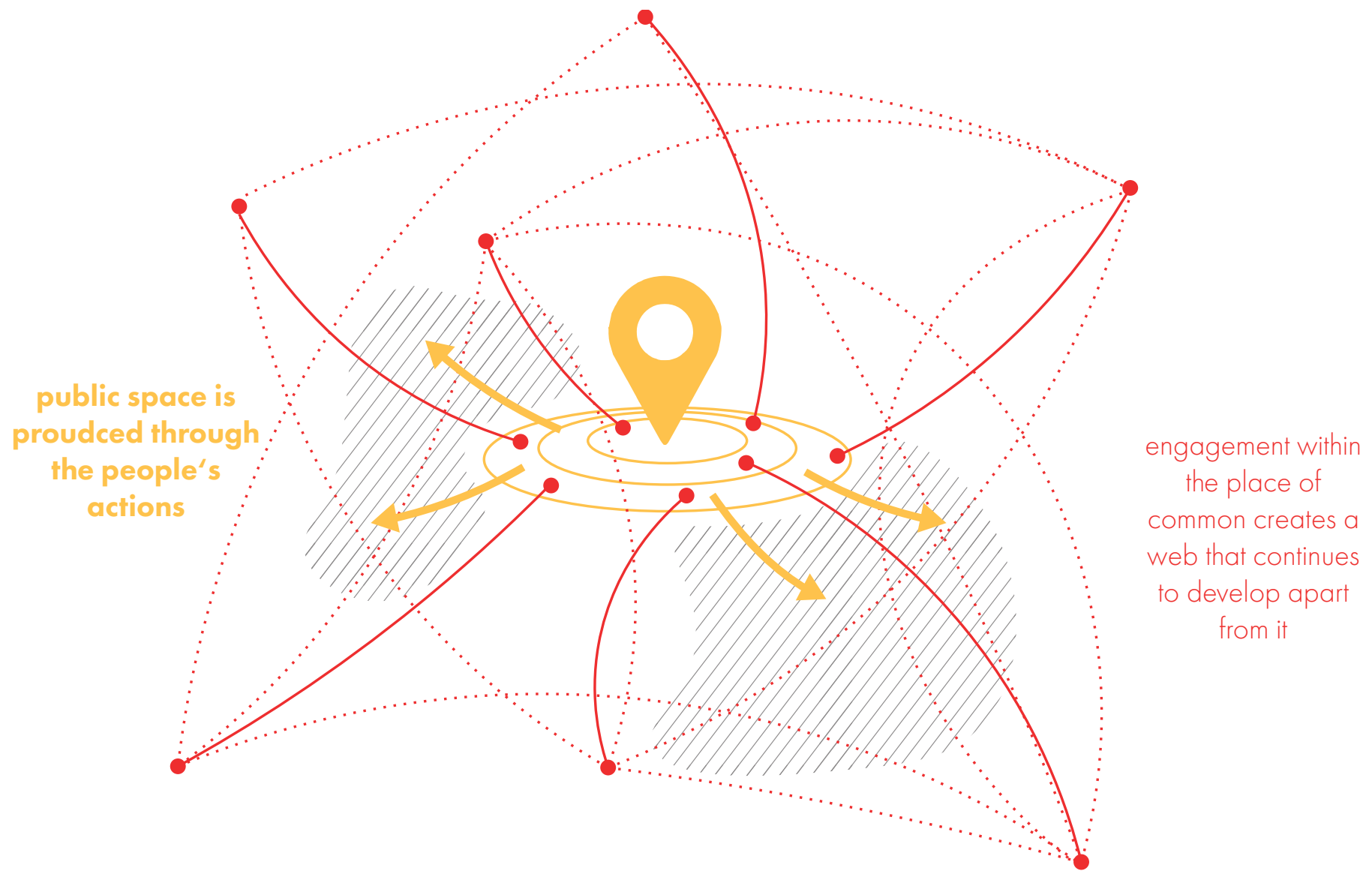


Place of Common

2-step placemaking strategy





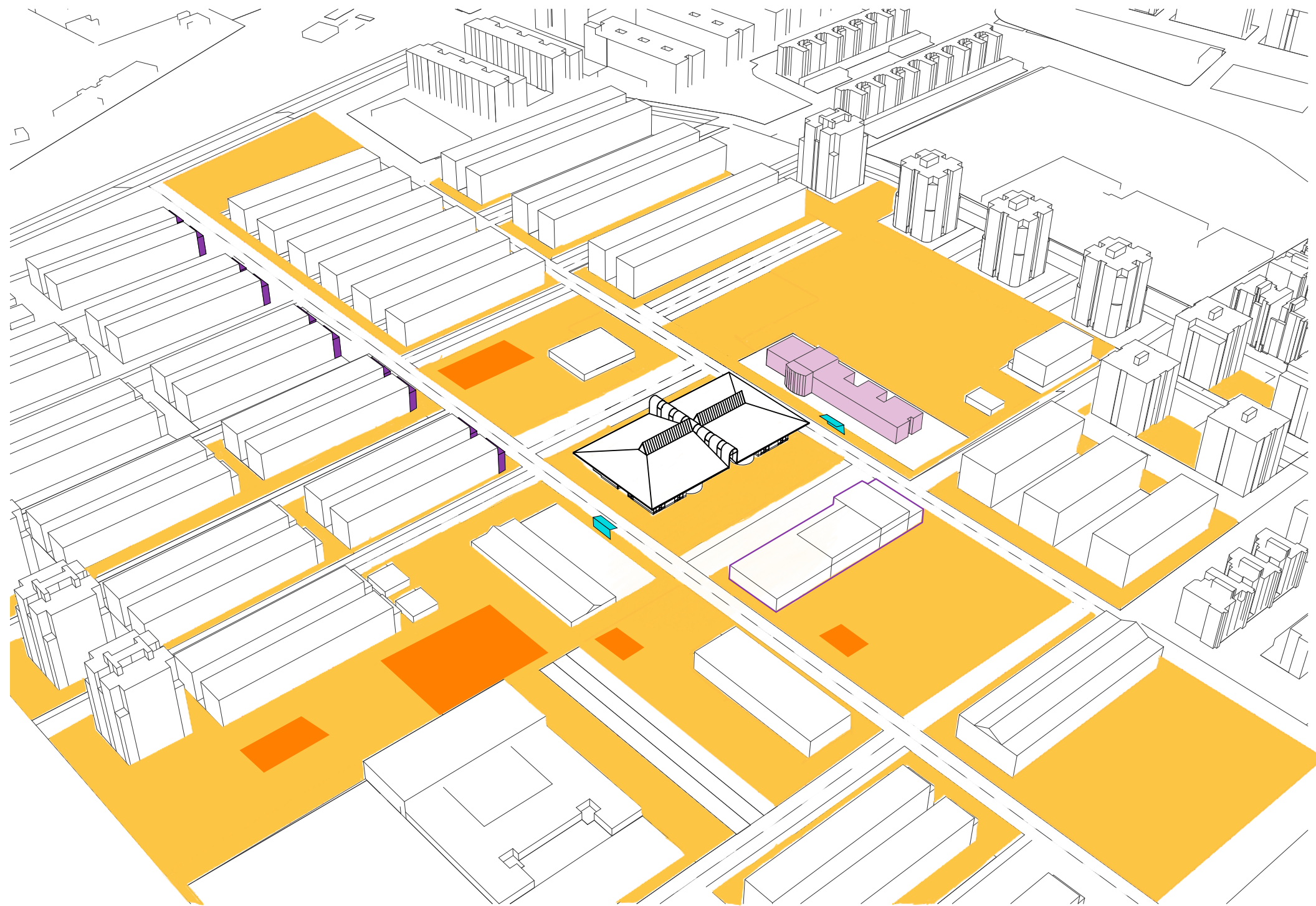


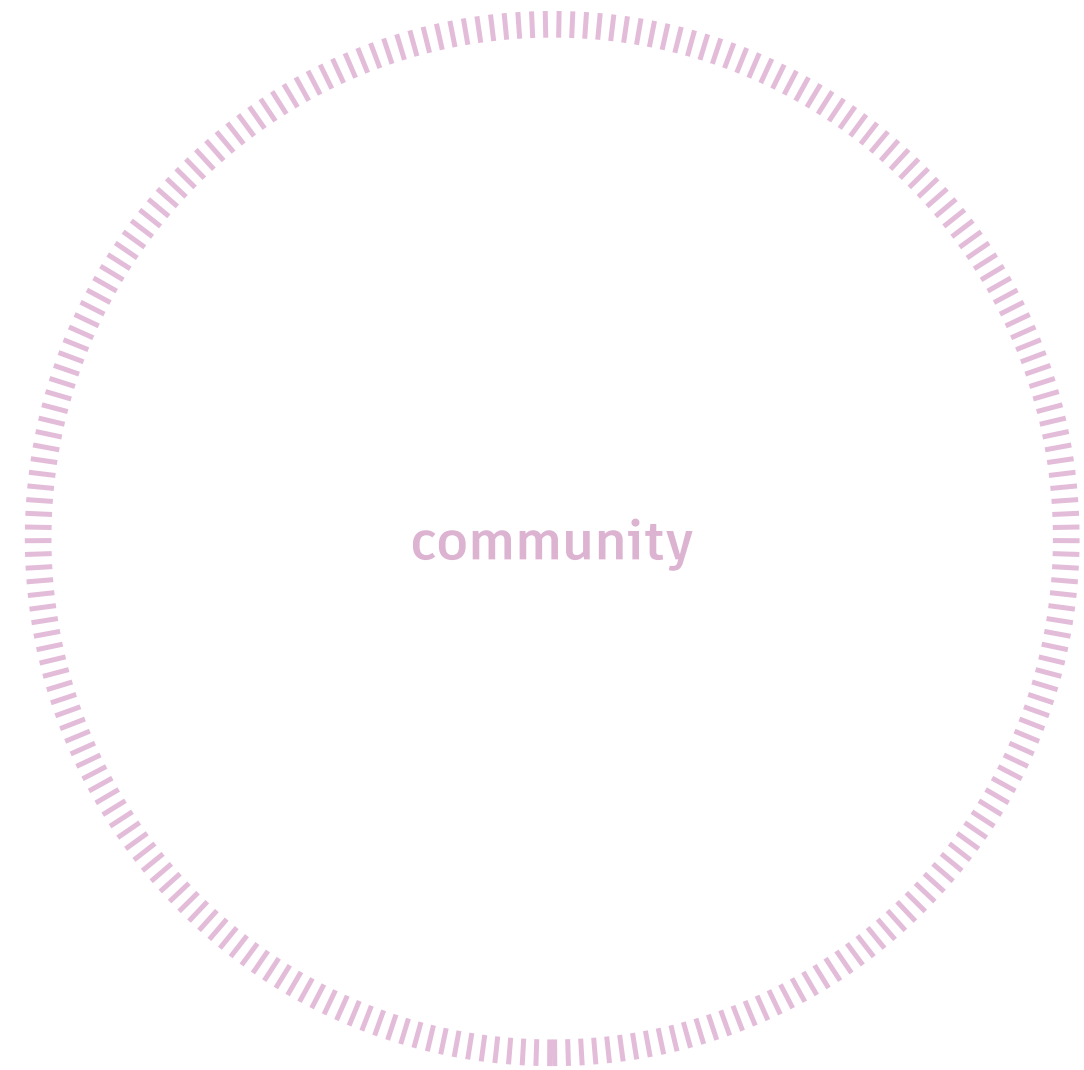
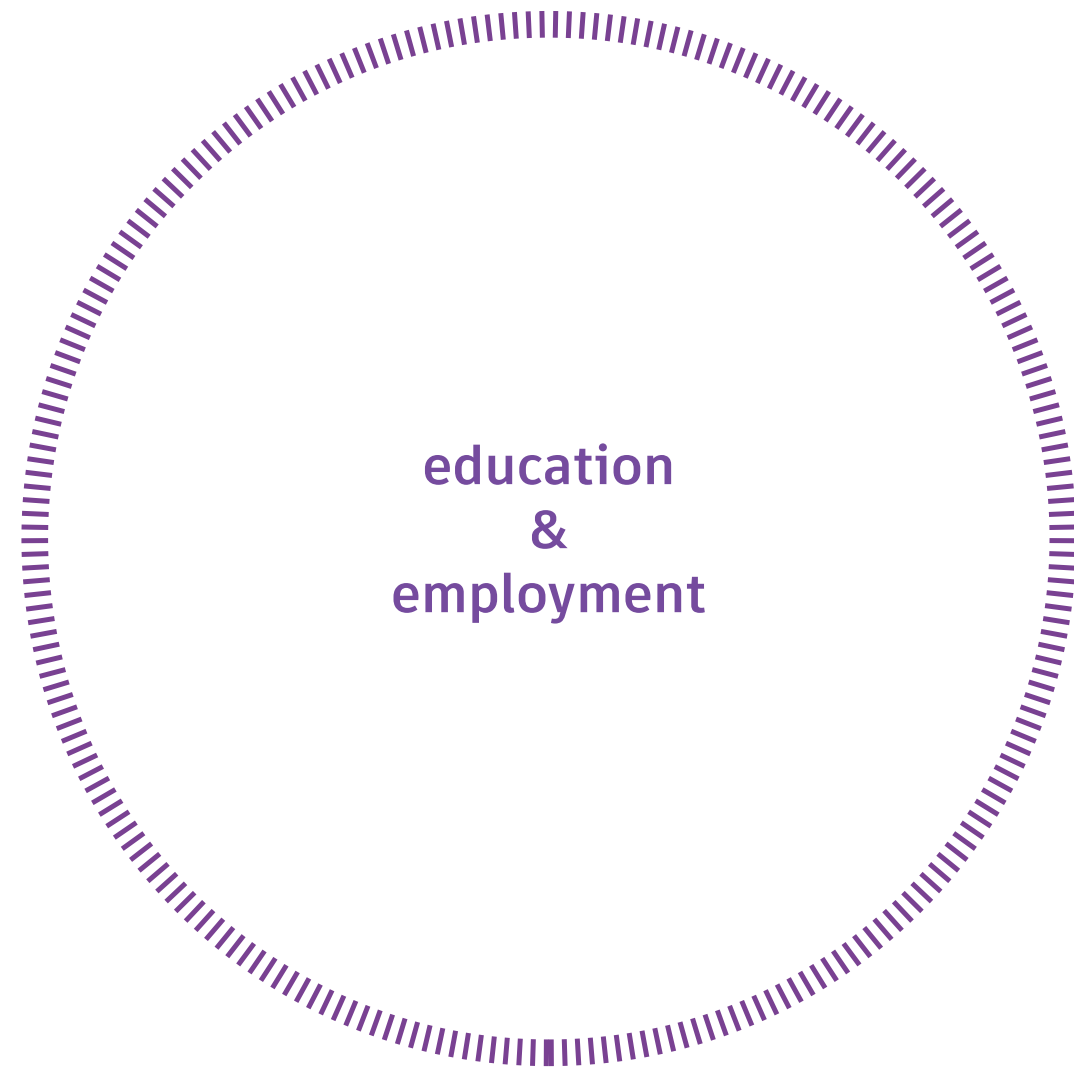


“El Caracol”



“El Caracol”









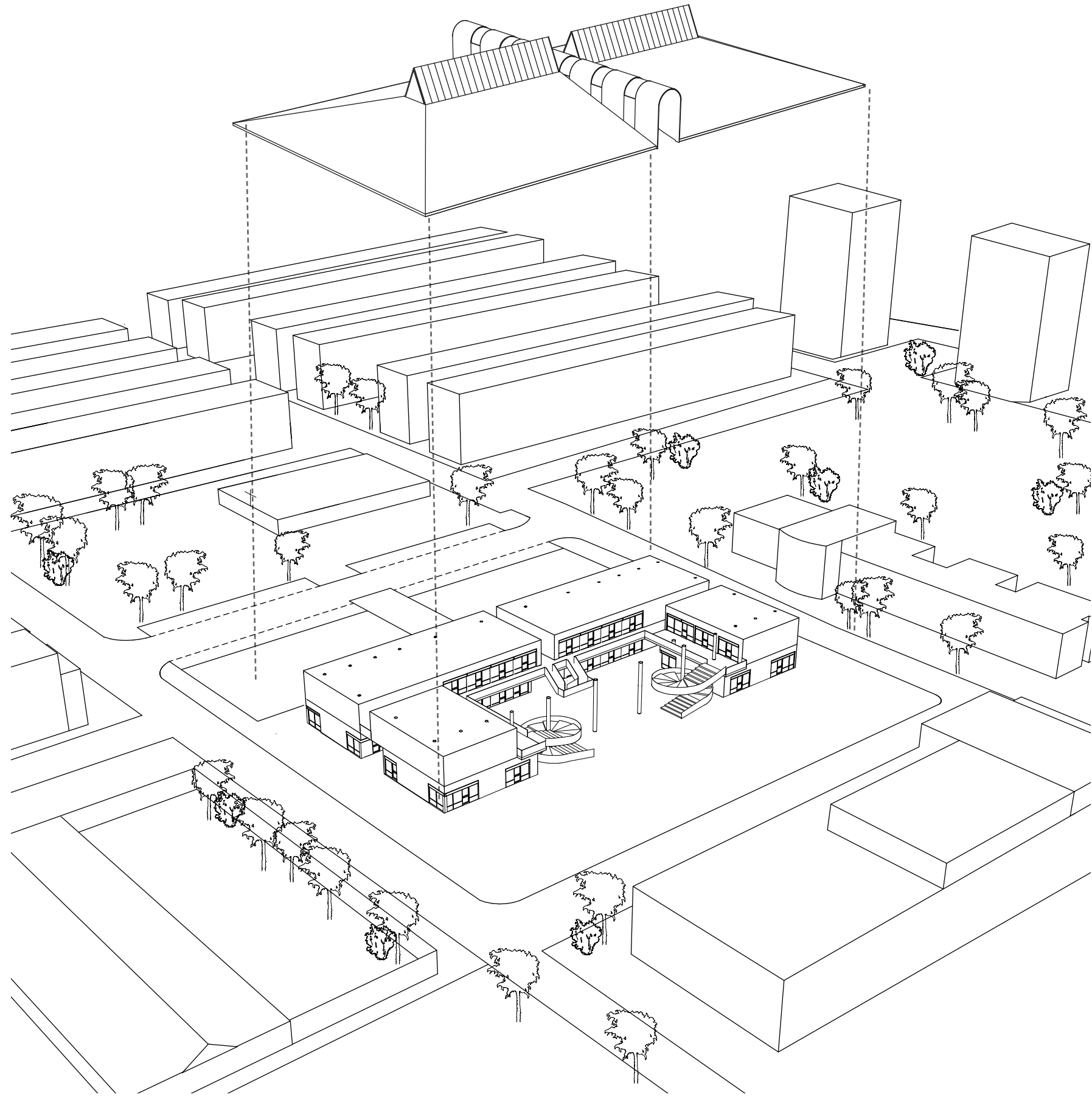
- public space
- commercial functions
- community functions
- green areas
- playground
- bus stop

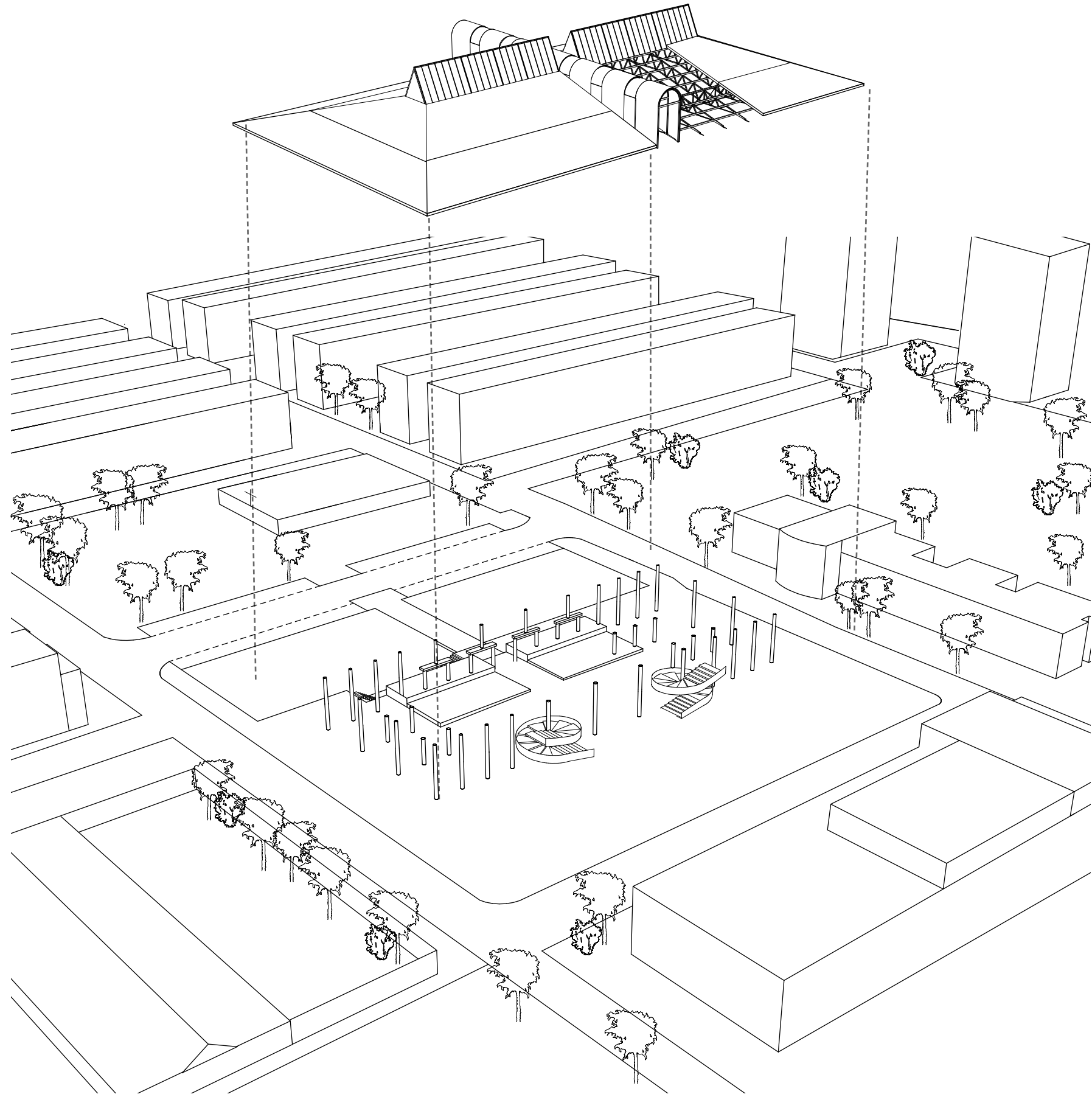




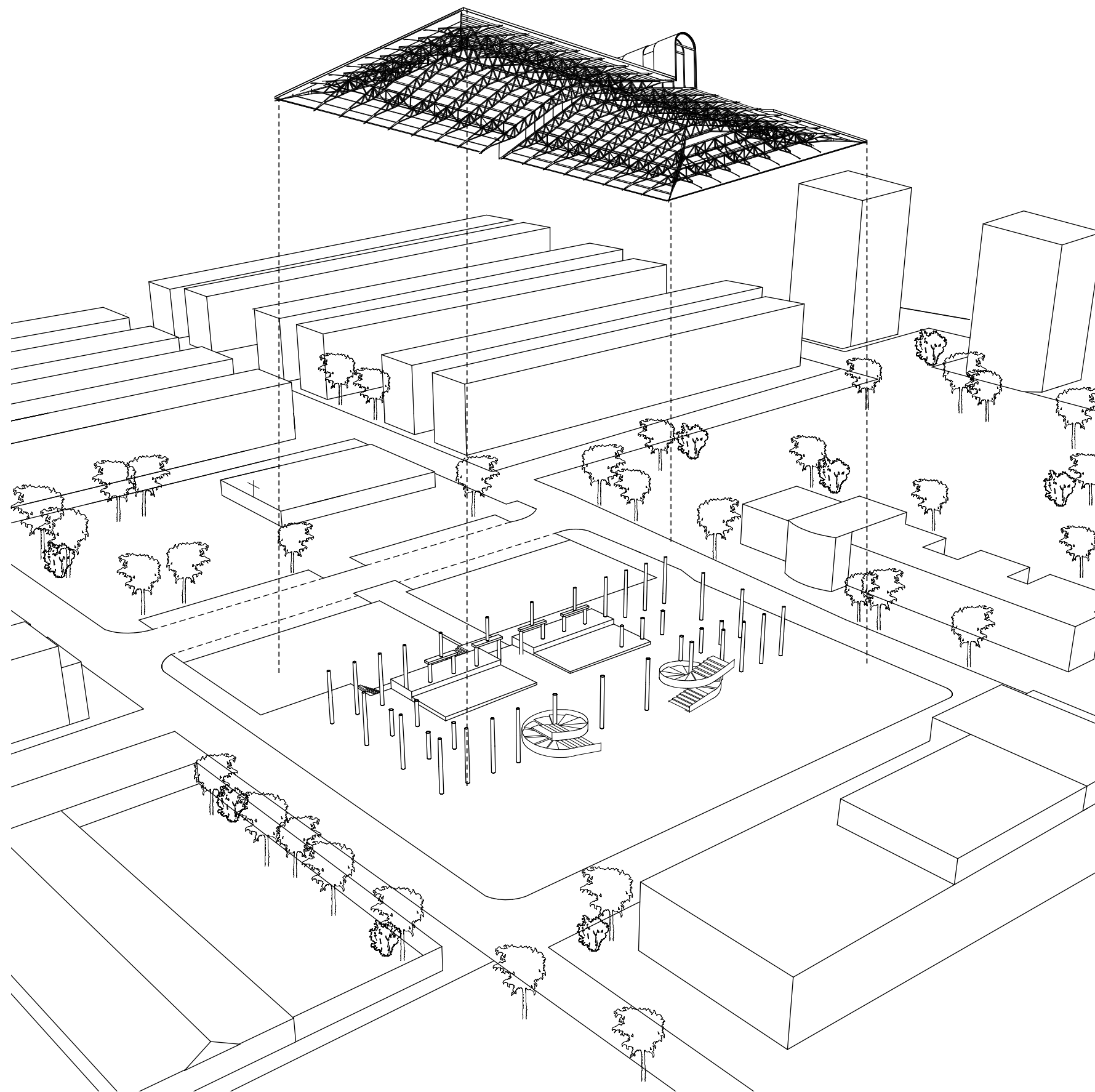
- public space 
- commercial functions 
- community functions 
- green areas 
- playground 
- bus stop 



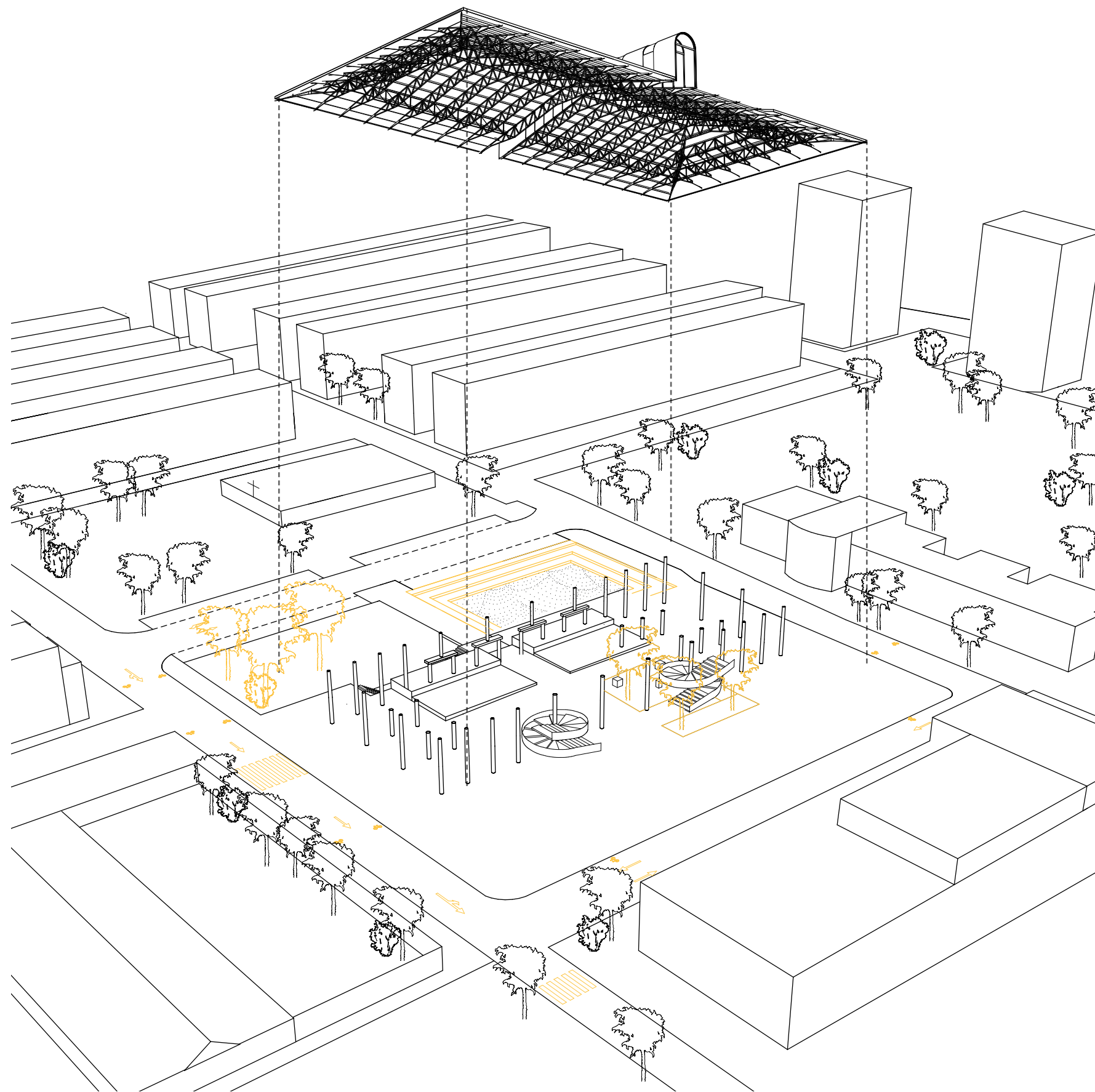




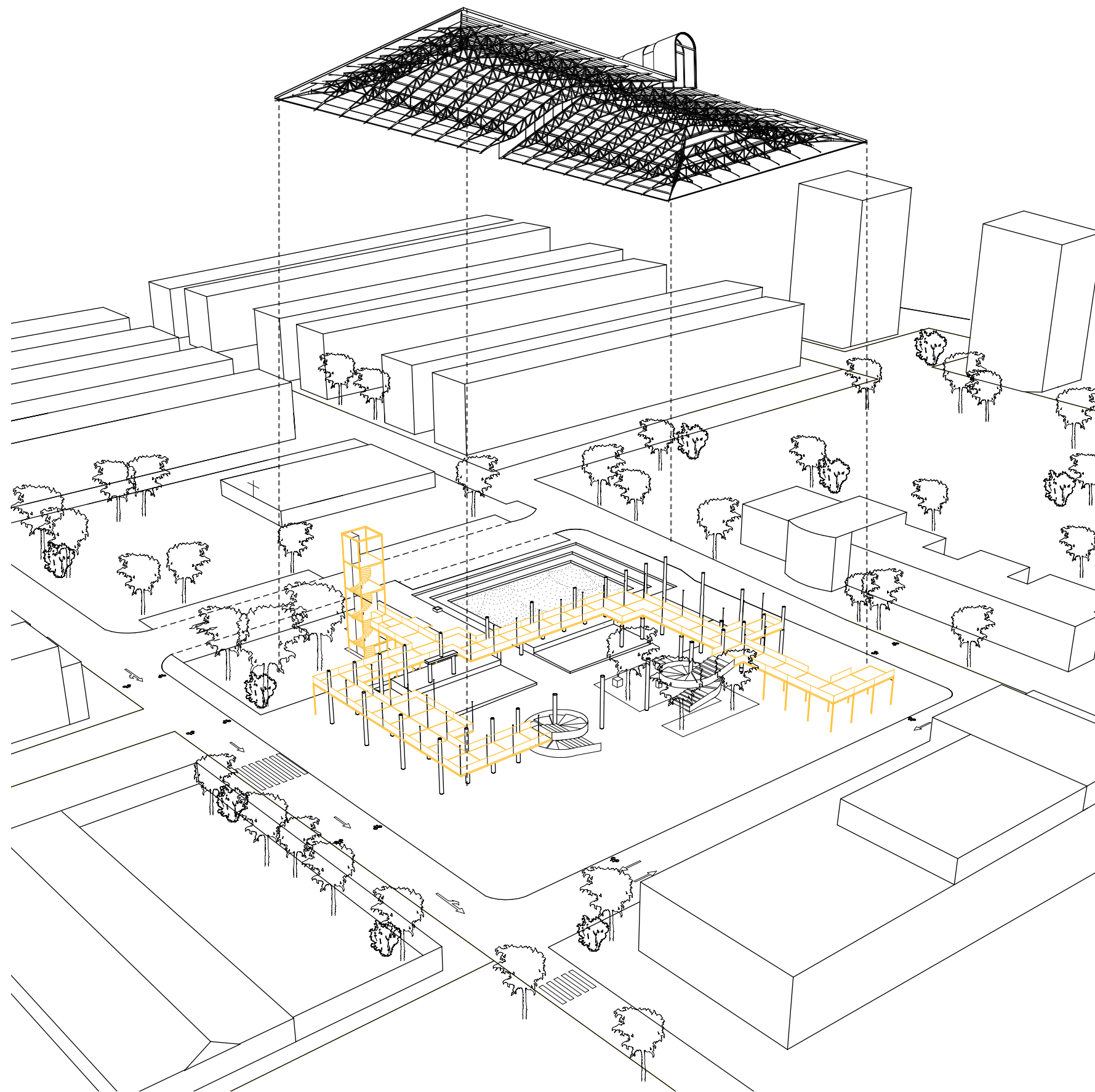
openings in roof and
removing of walls



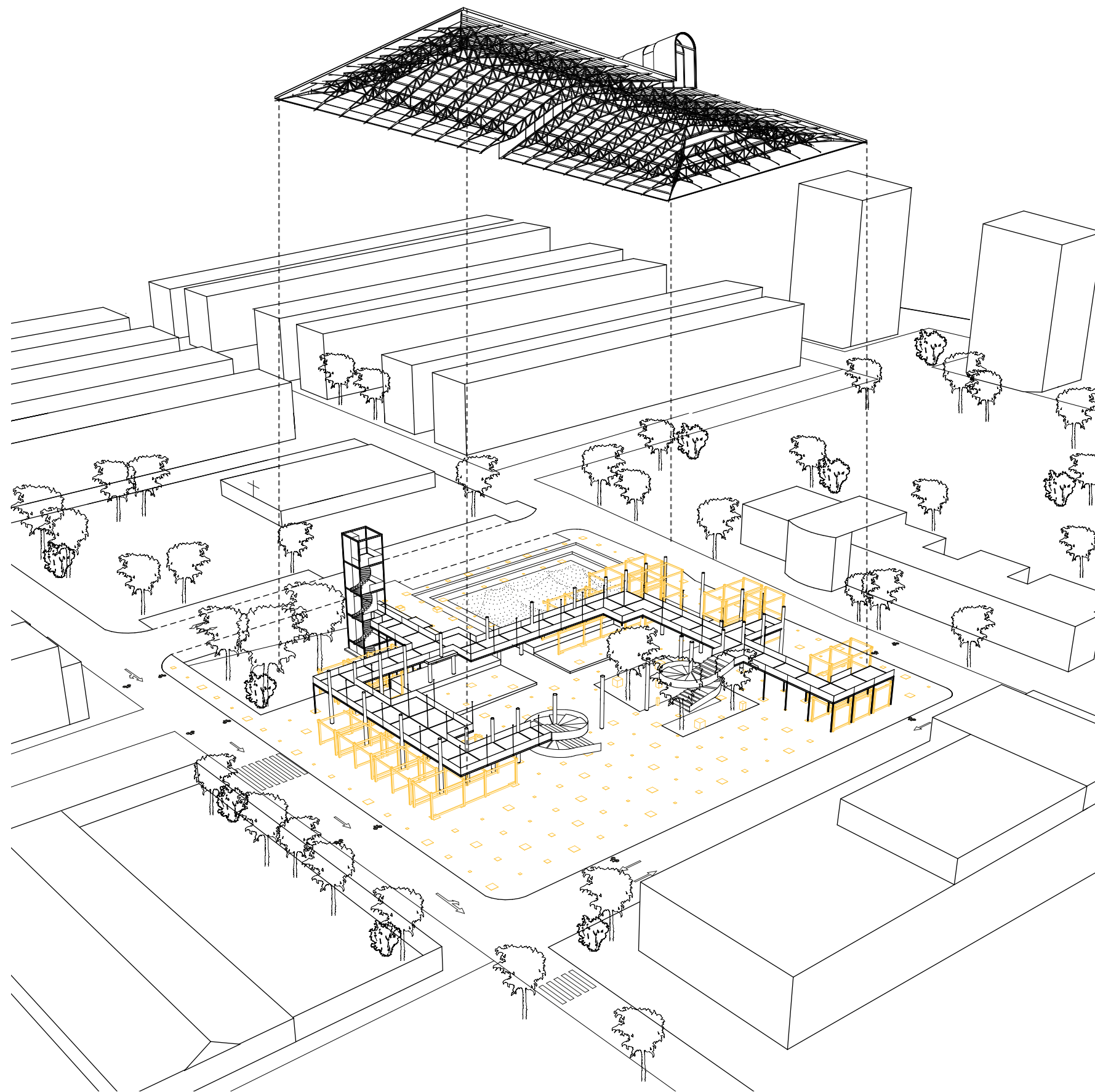
openings in roof and
removing of walls



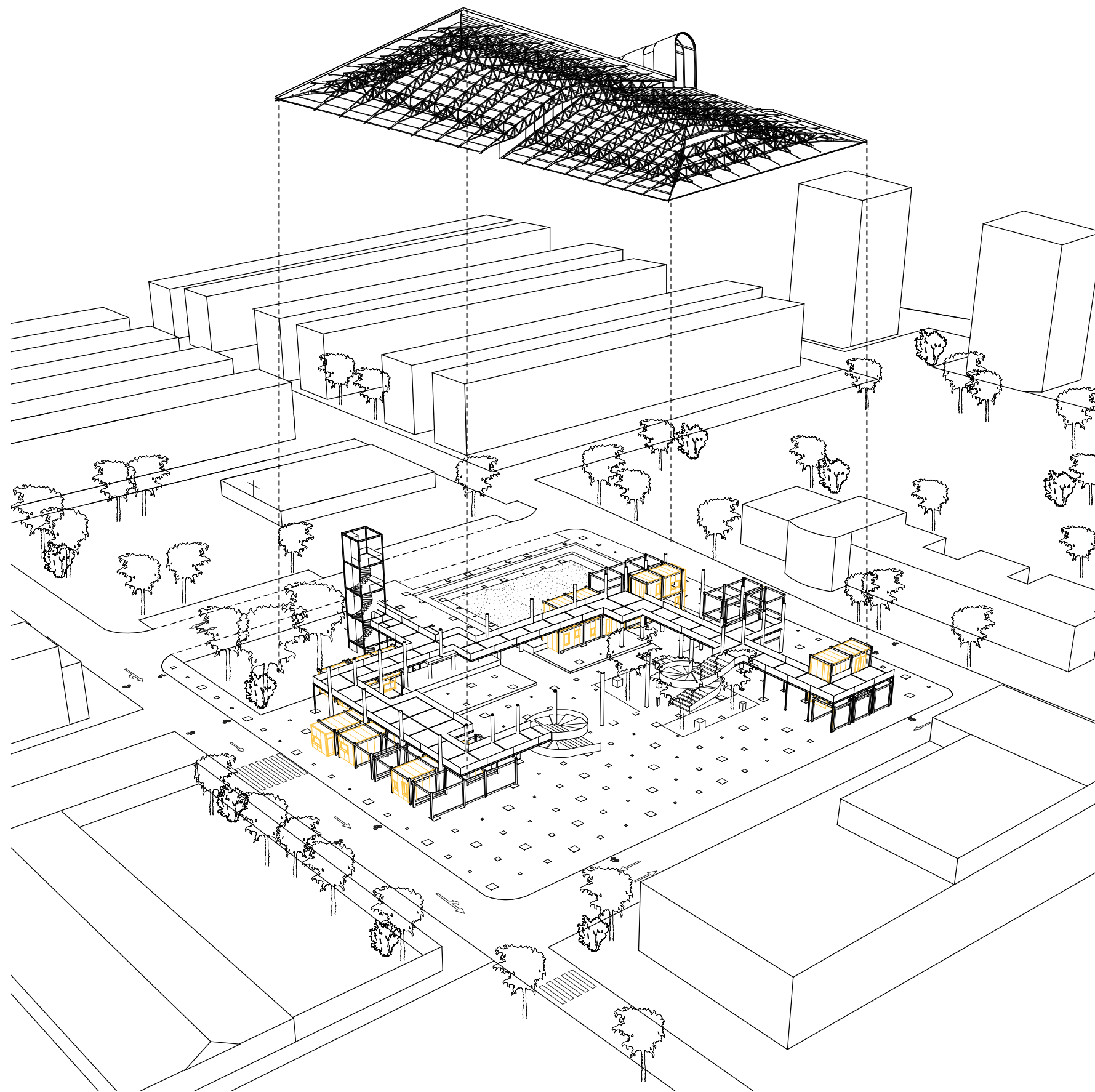
green and blue additions in the landscape of the building

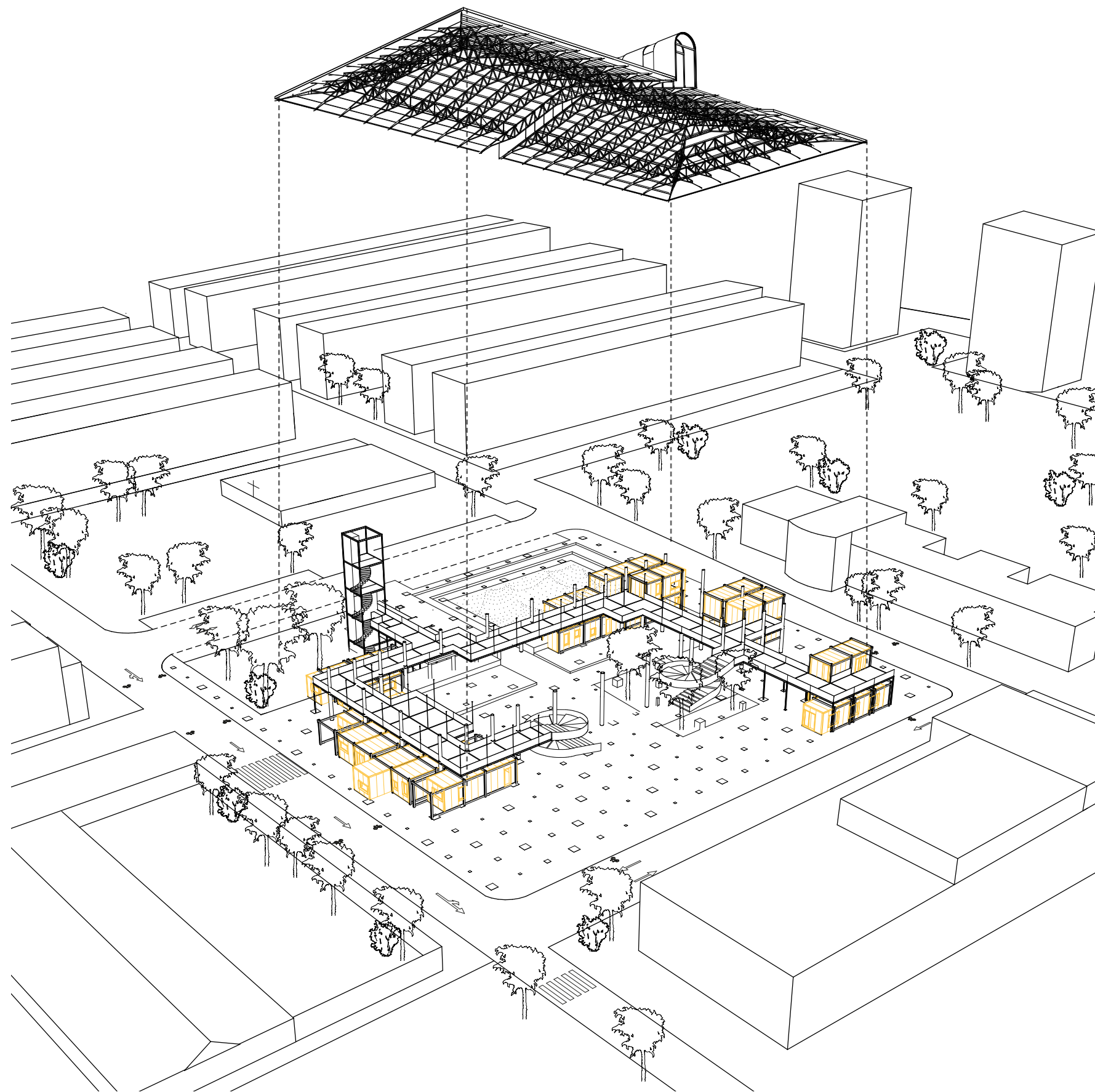


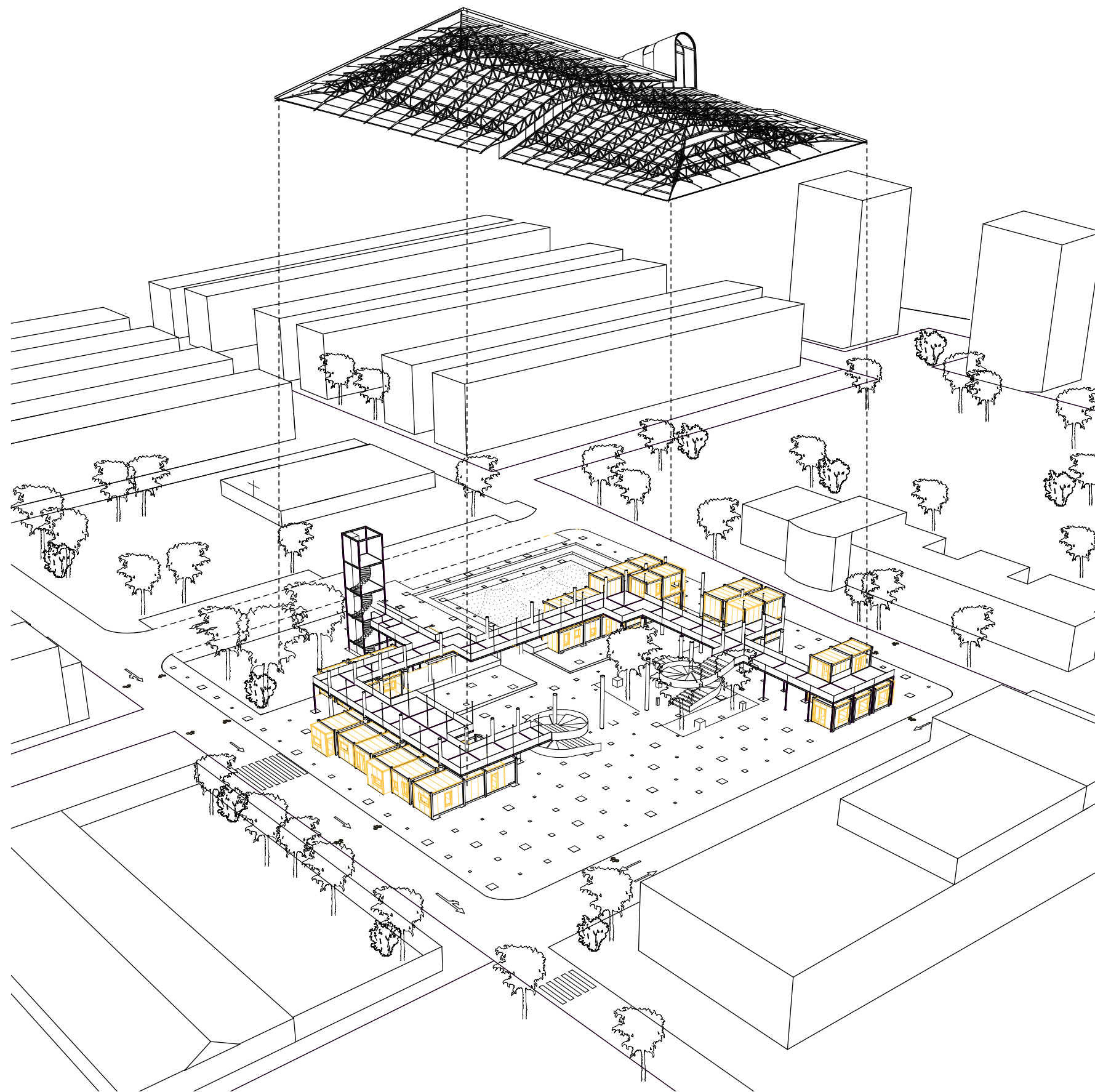
elevated public space
within existing grid

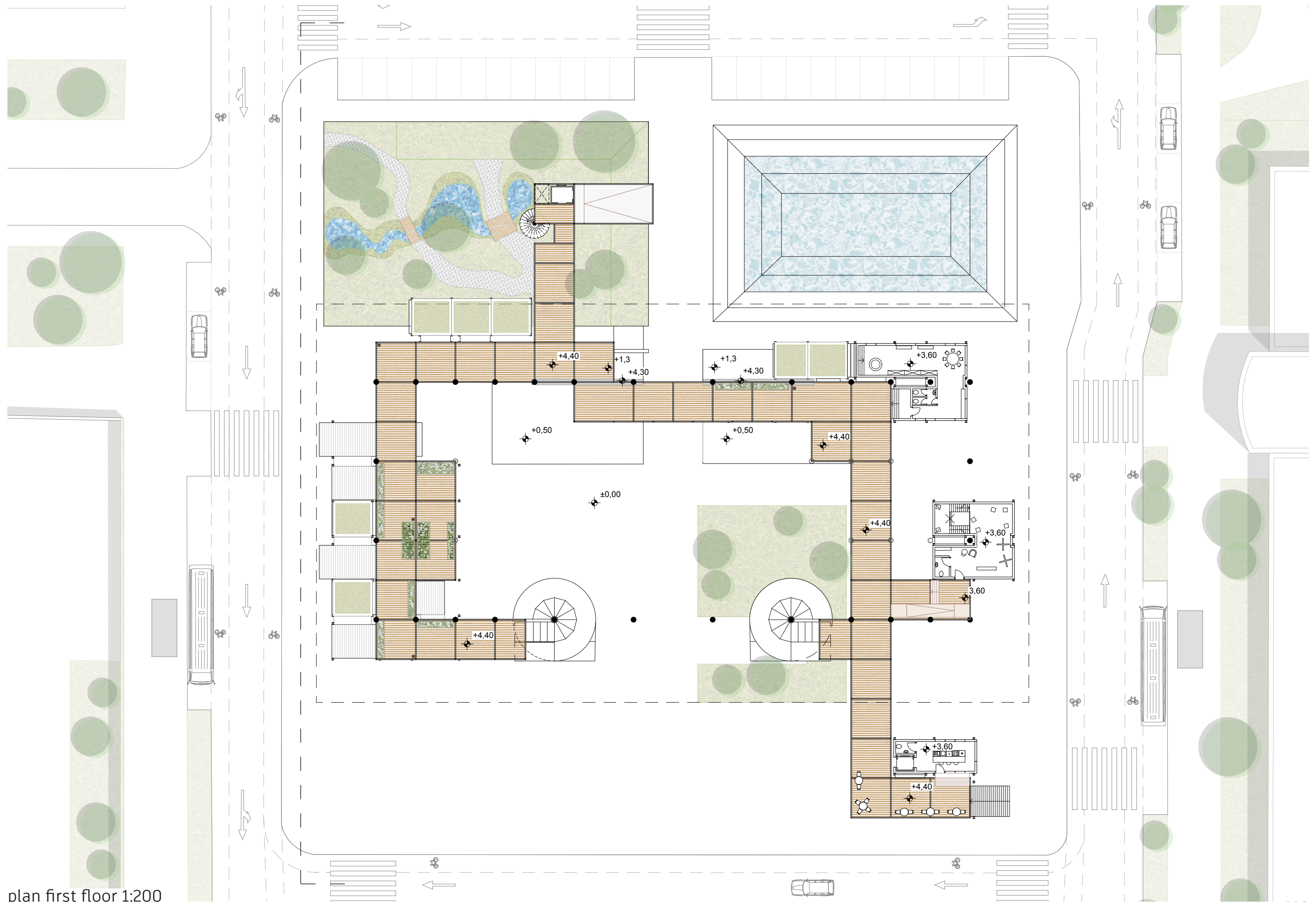


two- and three-dimensional
sub-grid

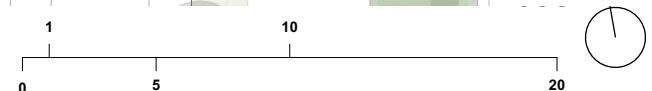


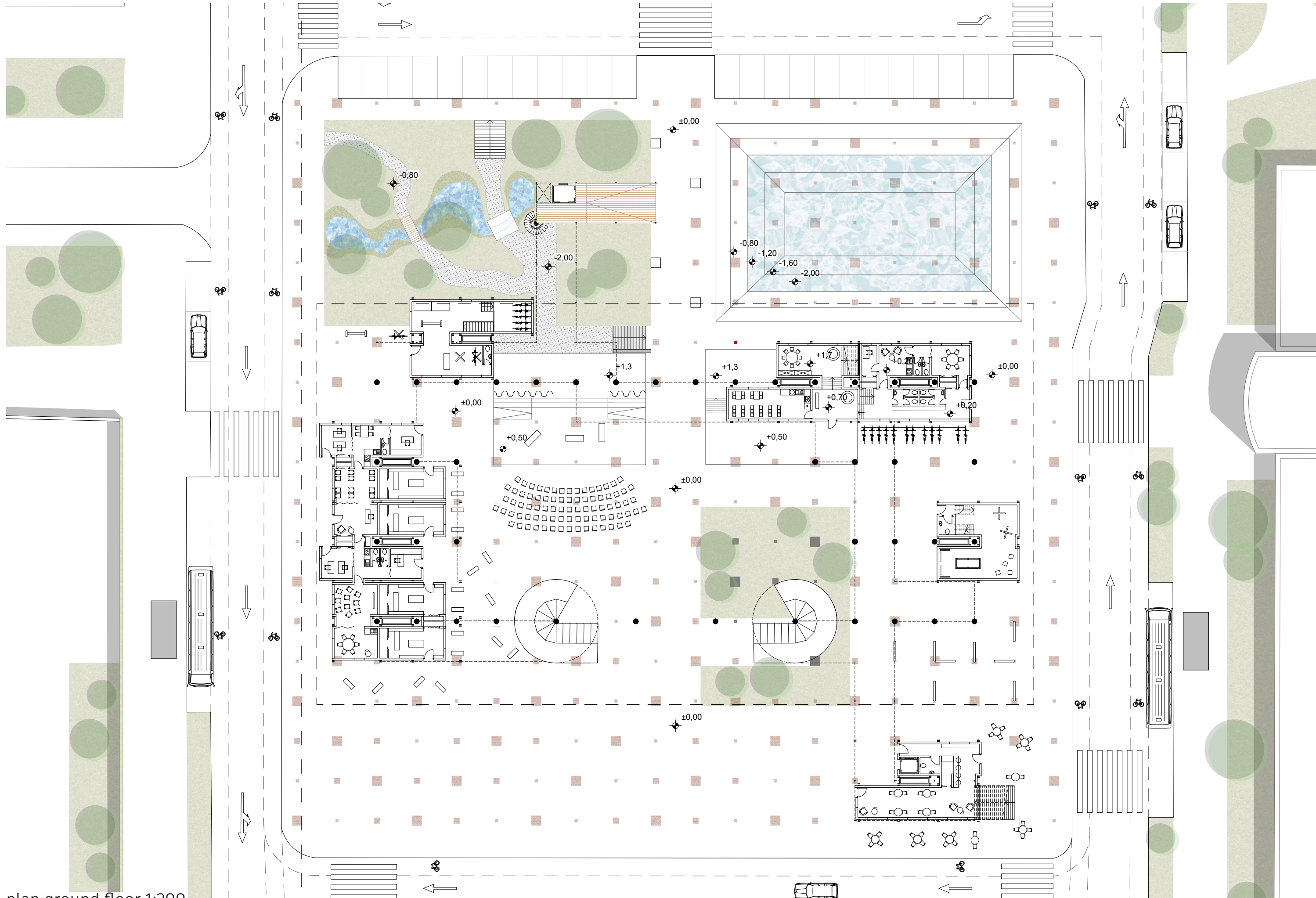






plan first floor 1:200





plan ground floor 1:200

