

In-between

on-site resources | brick re-use | deconstruction of tenement model

Row of tenements

Shift of the basic tenement unit towards the joint of the two former units

In-between: possibility of the new space

Existing Separation wall - unables cross ventilation and light inlet to the apartments

Large openings in the existing separation wall:

leftover bricks make up an extension of the new facade

Rooftop

- Living spaces | duplexes
- Working spaces | open space | shared

3rd floor

- Kindergarden
- Household working spaces | shared
- Living spaces | duplexes

2nd floor

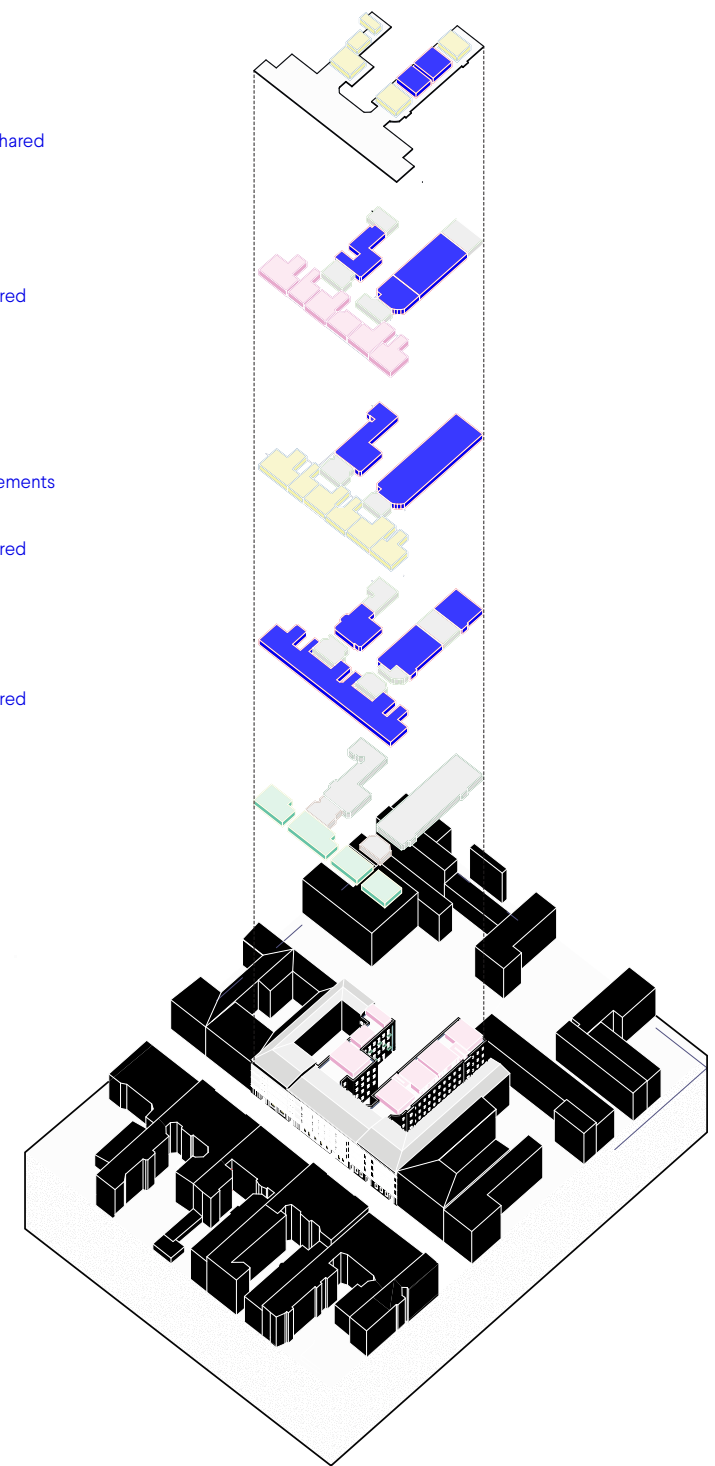
- Working spaces | former appartements shared & individual
- Household working spaces | shared
- Living spaces | duplexes

1st floor

- Household working spaces | shared
- Living spaces

Ground floor

- Workshops & sheds | shared
- Commercial



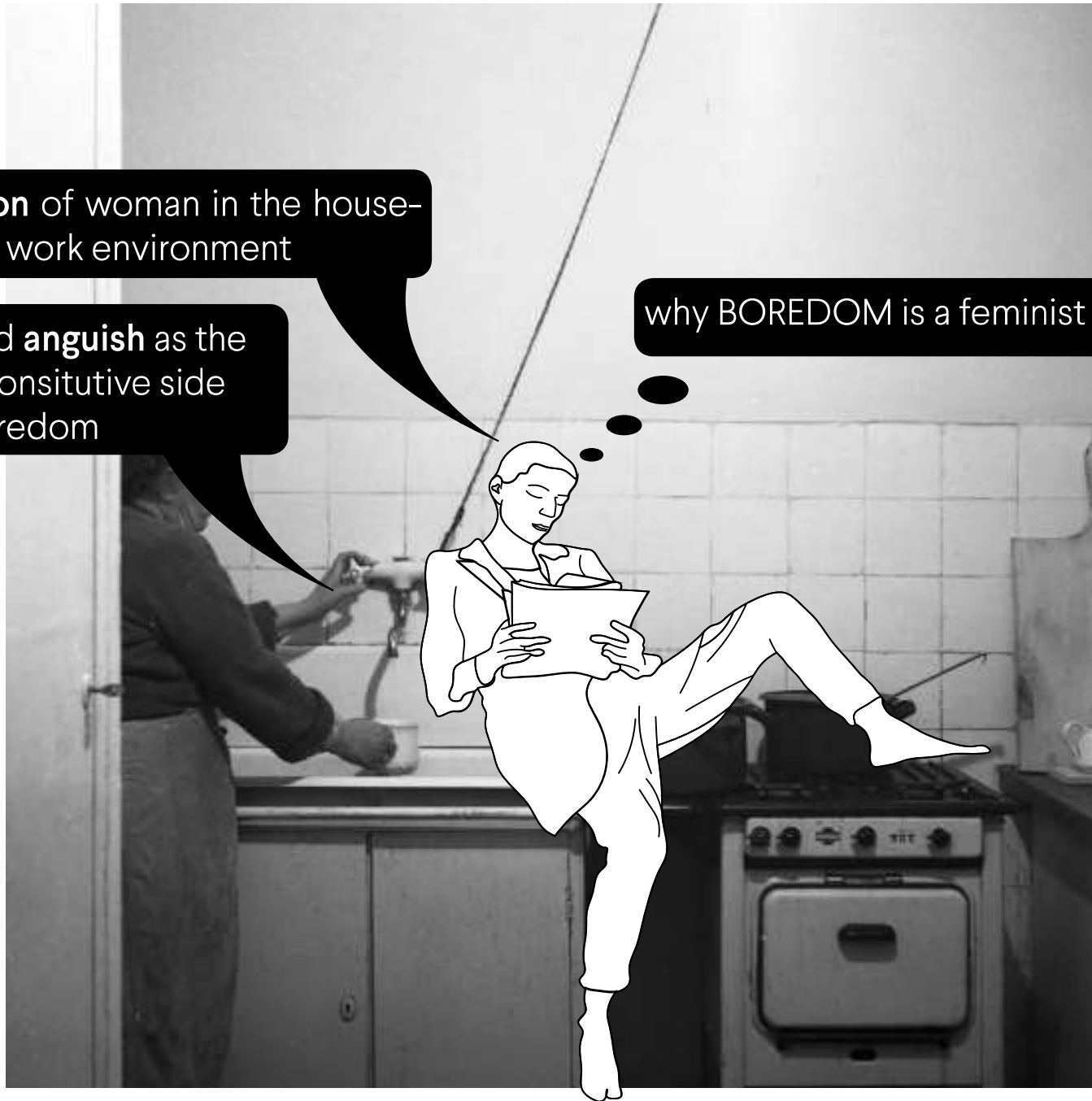
Hybrid of functions

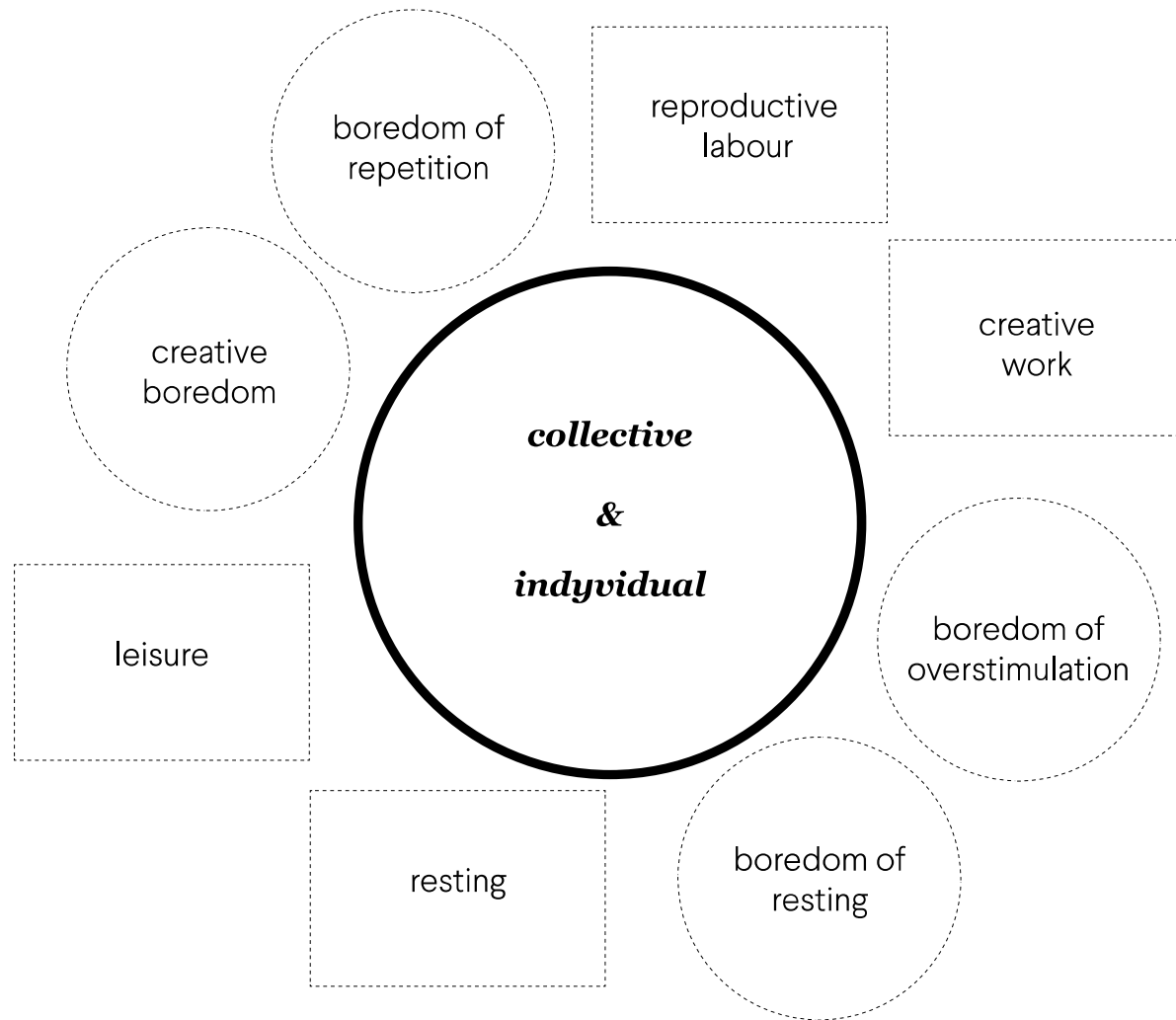
redefinition of contemporary dwelling

seclusion of woman in the house-
work environment

impatience and **anguish** as the
reverse and consitutive side
of boredom

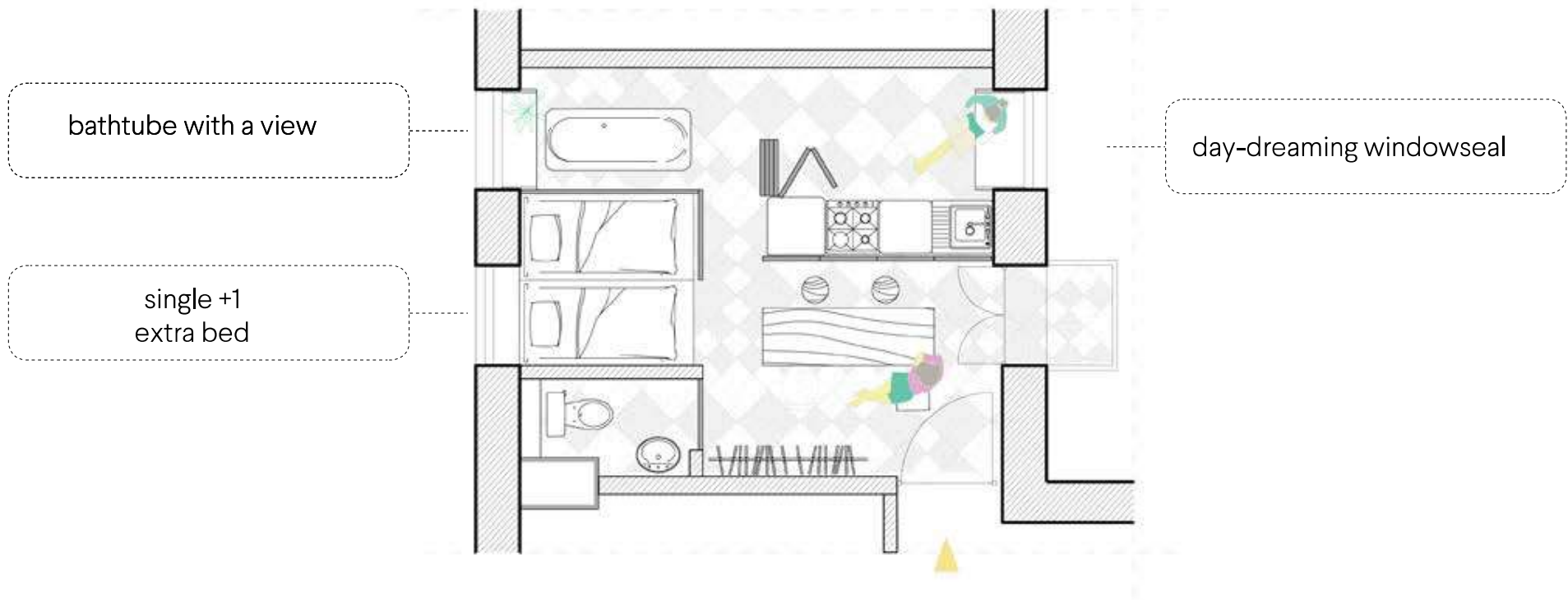
why **BOREDOM** is a feminist issue?





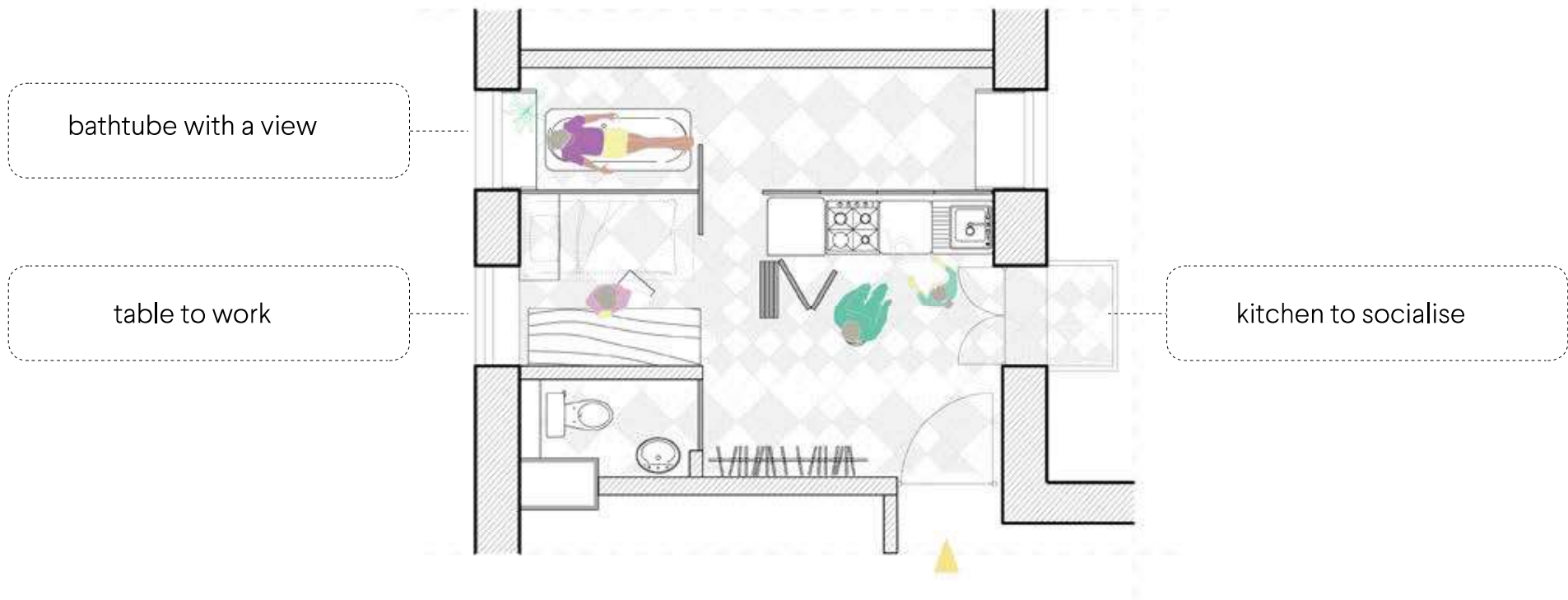
**SMALL
APARTEMENT**

**SINGLE
NO KIDS**



**SMALL
APARTEMENT**

**SINGLE
NO KIDS**



**MIDDLE
APARTEMENT**

**COUPLE
NO KIDS**



**MIDDLE
APARTEMENT**
COUPLE
NO KIDS

bathtub with a view

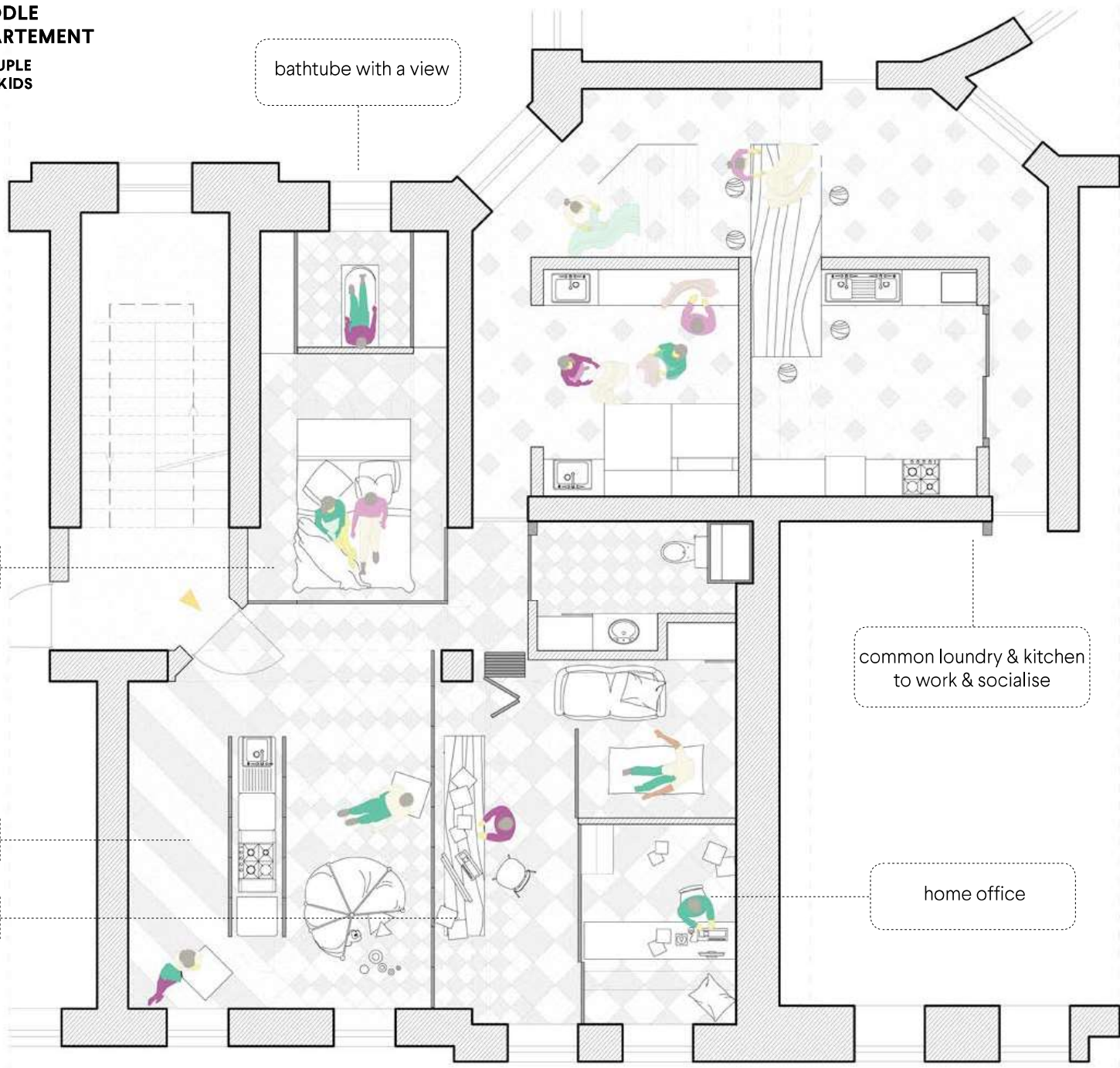
intimate zone

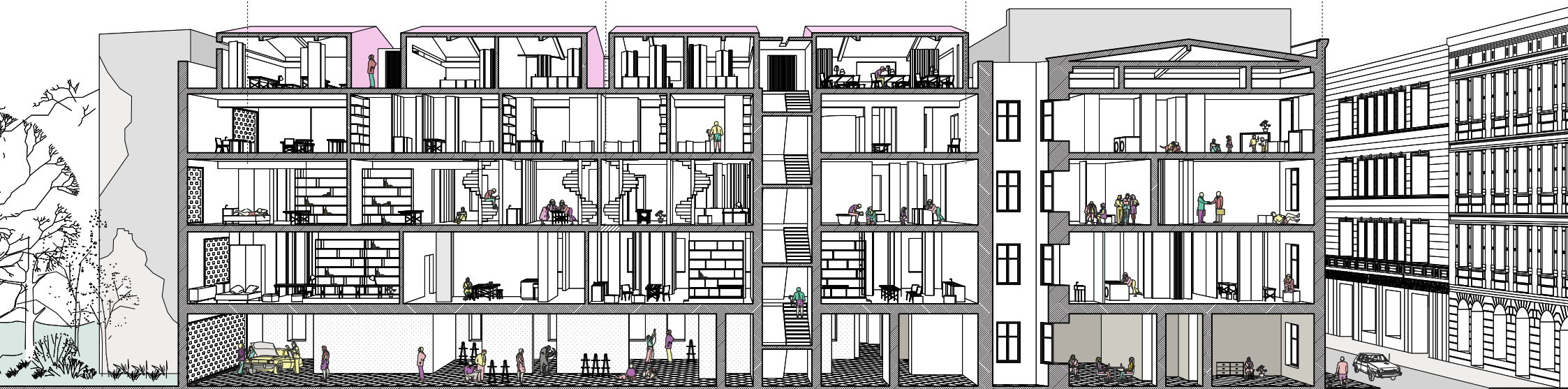
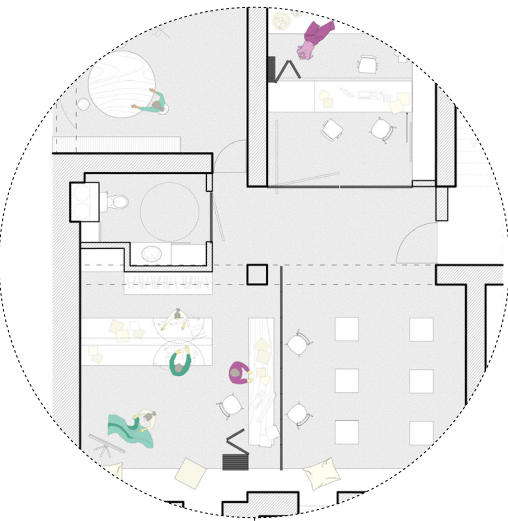
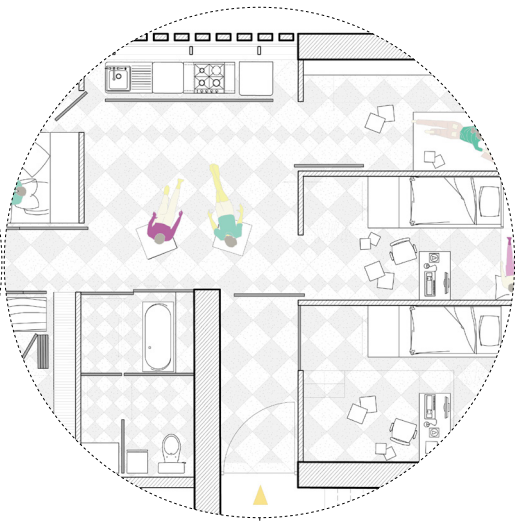
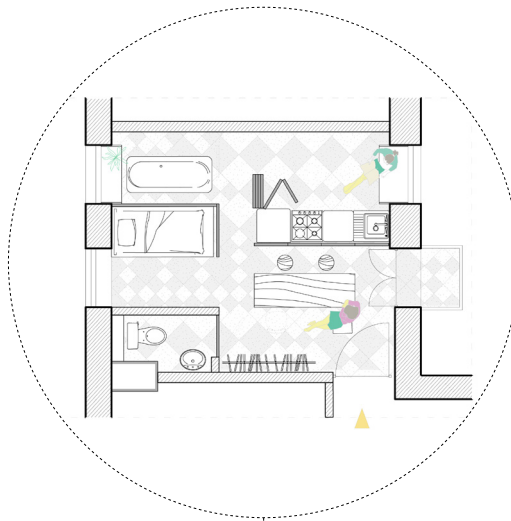
space to day-dream

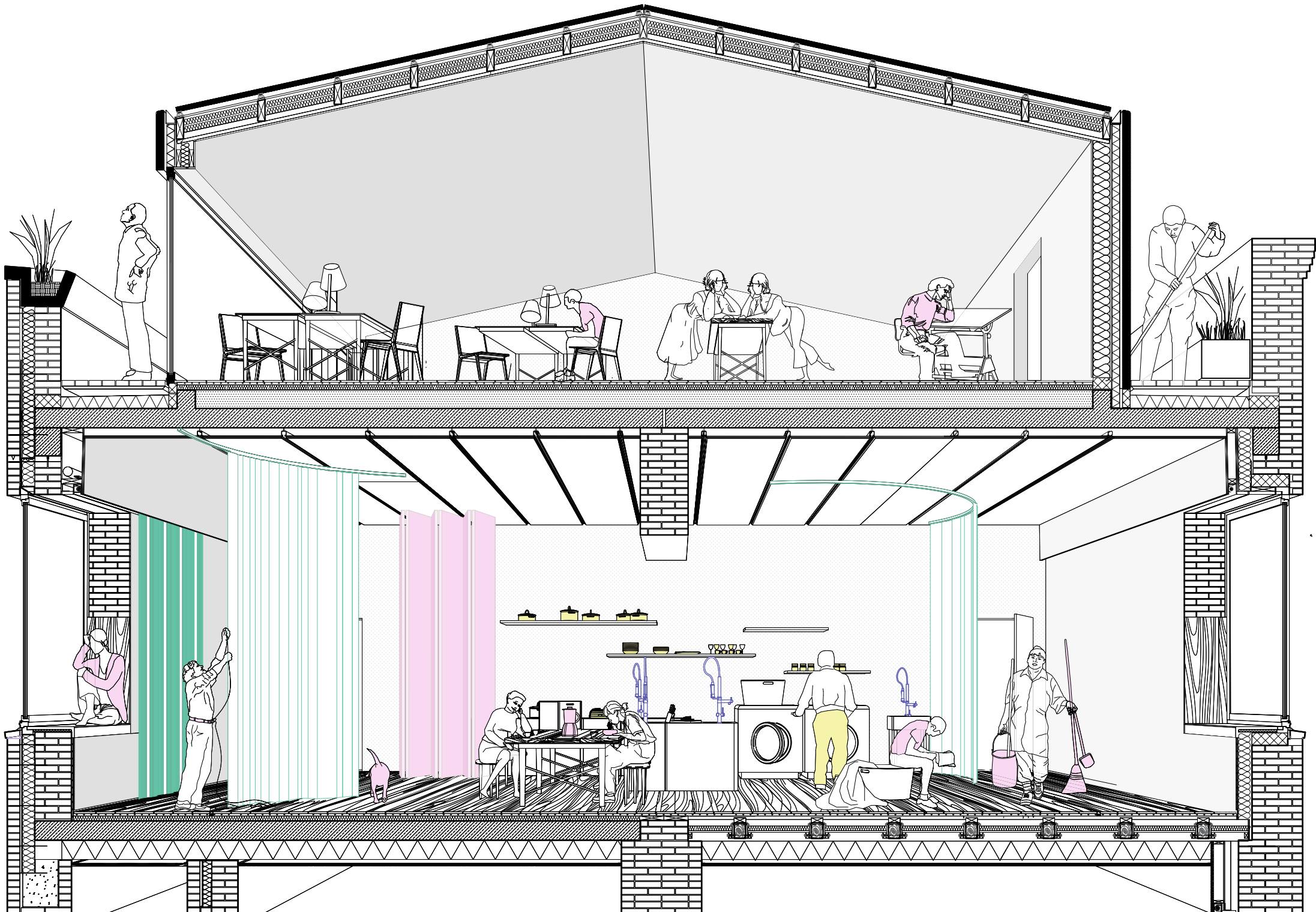
table to work

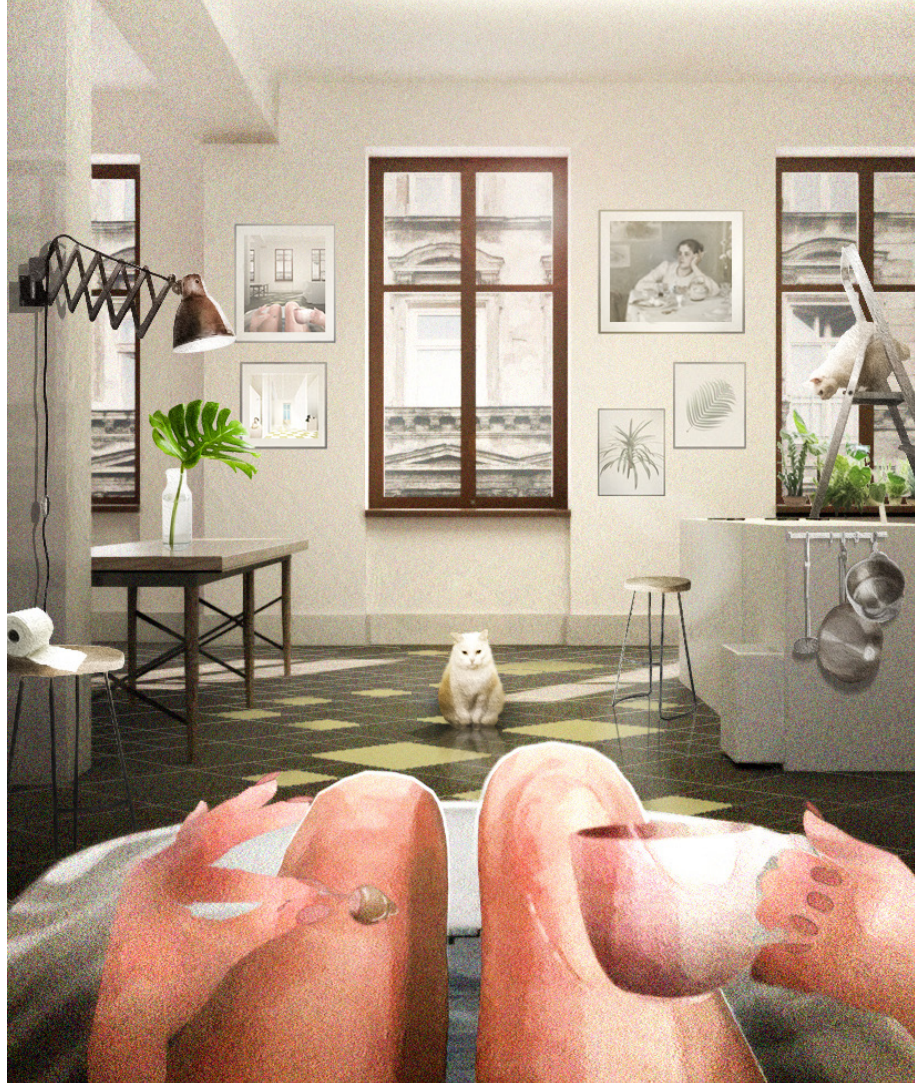
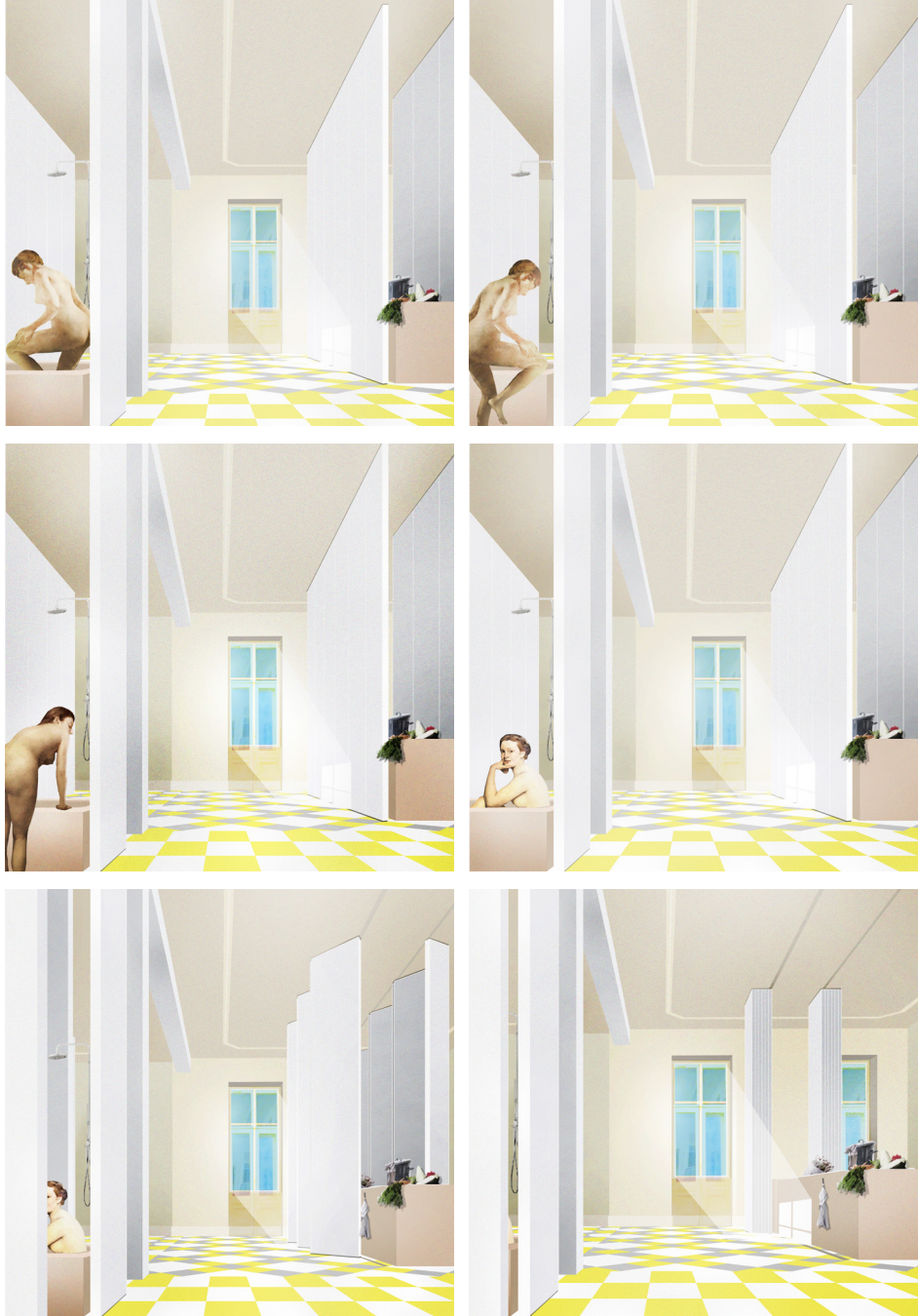
common laundry & kitchen
to work & socialise

home office

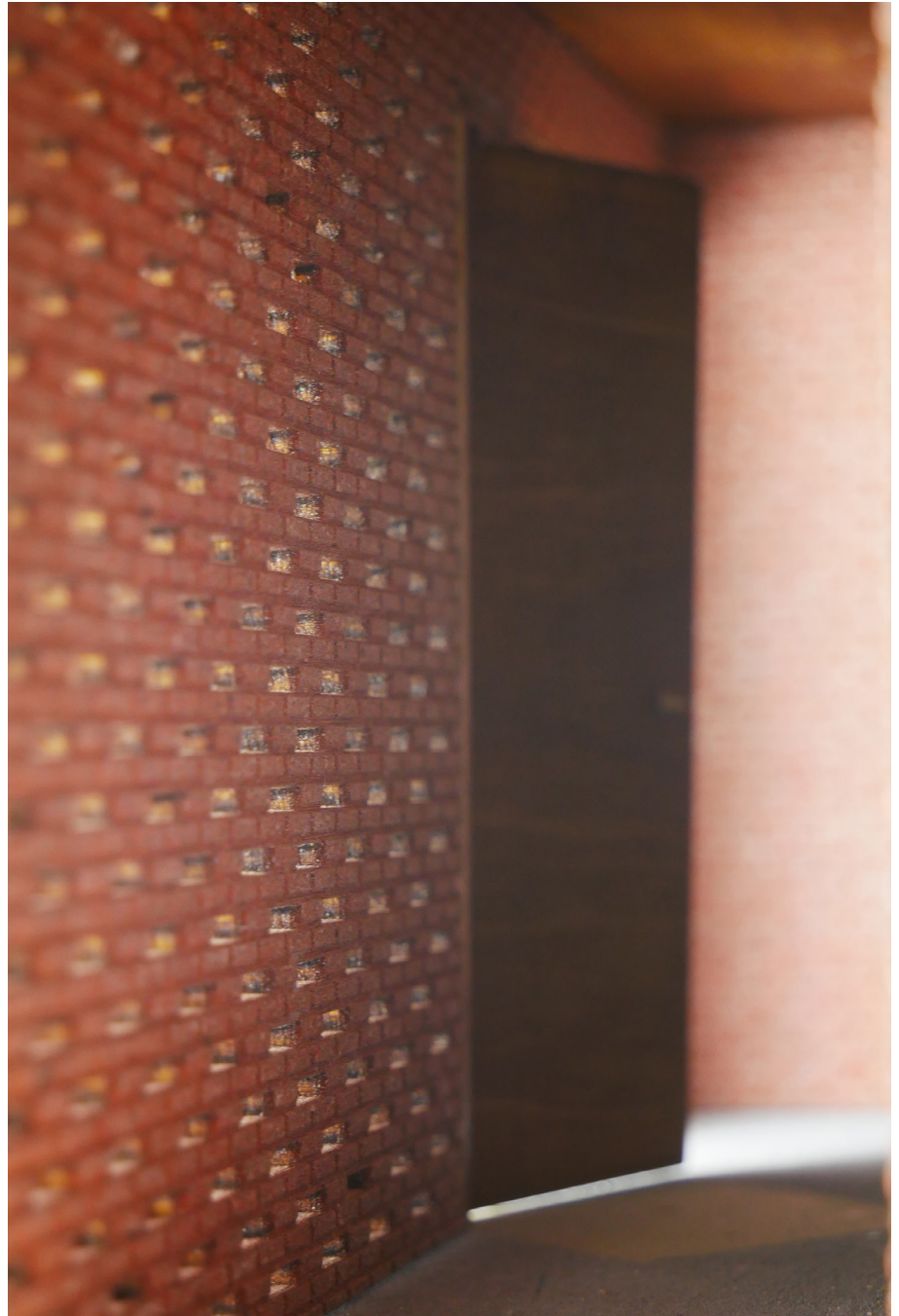


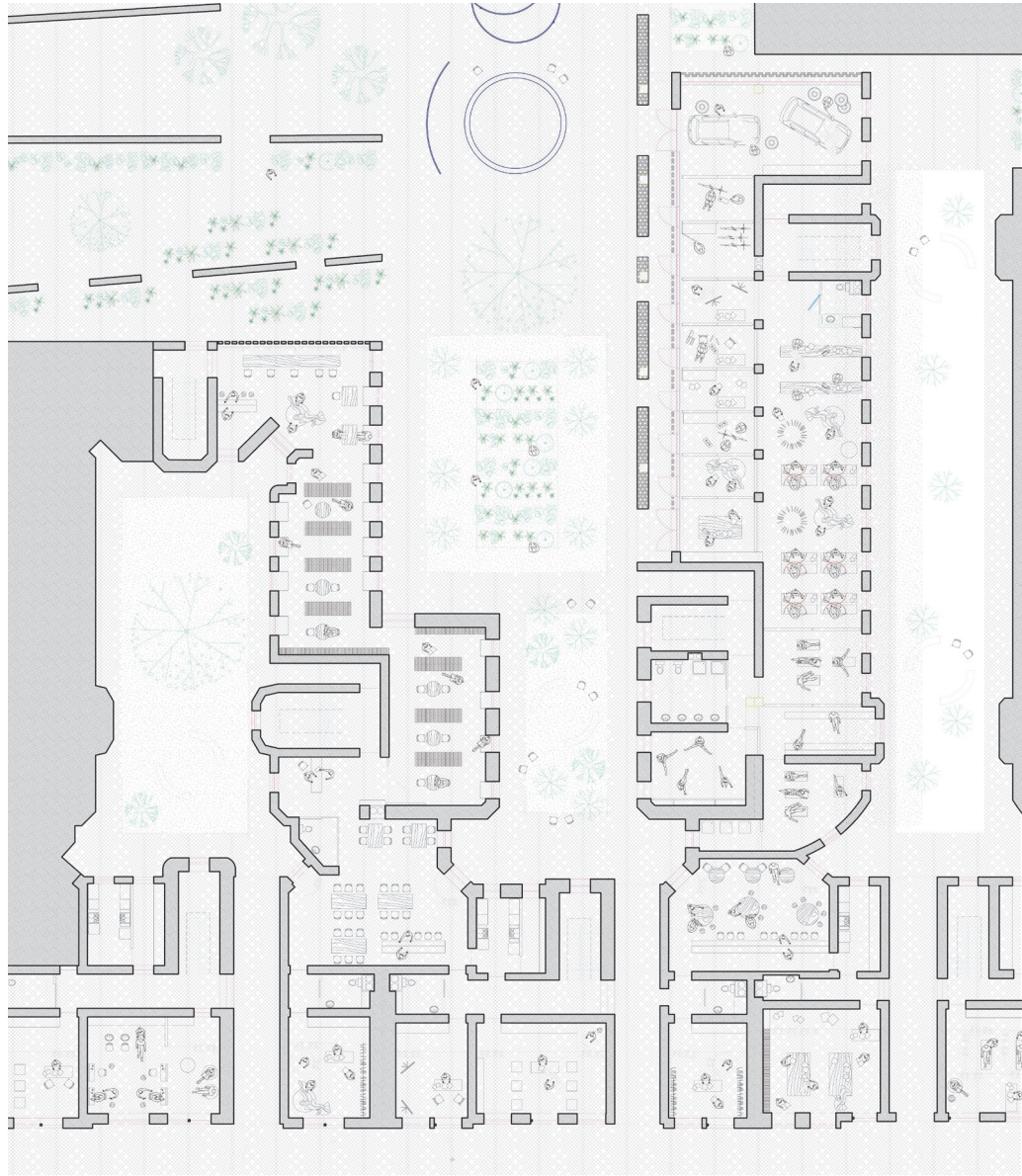














first floor
900



second floor
900



third floor
100



fourth floor
100

