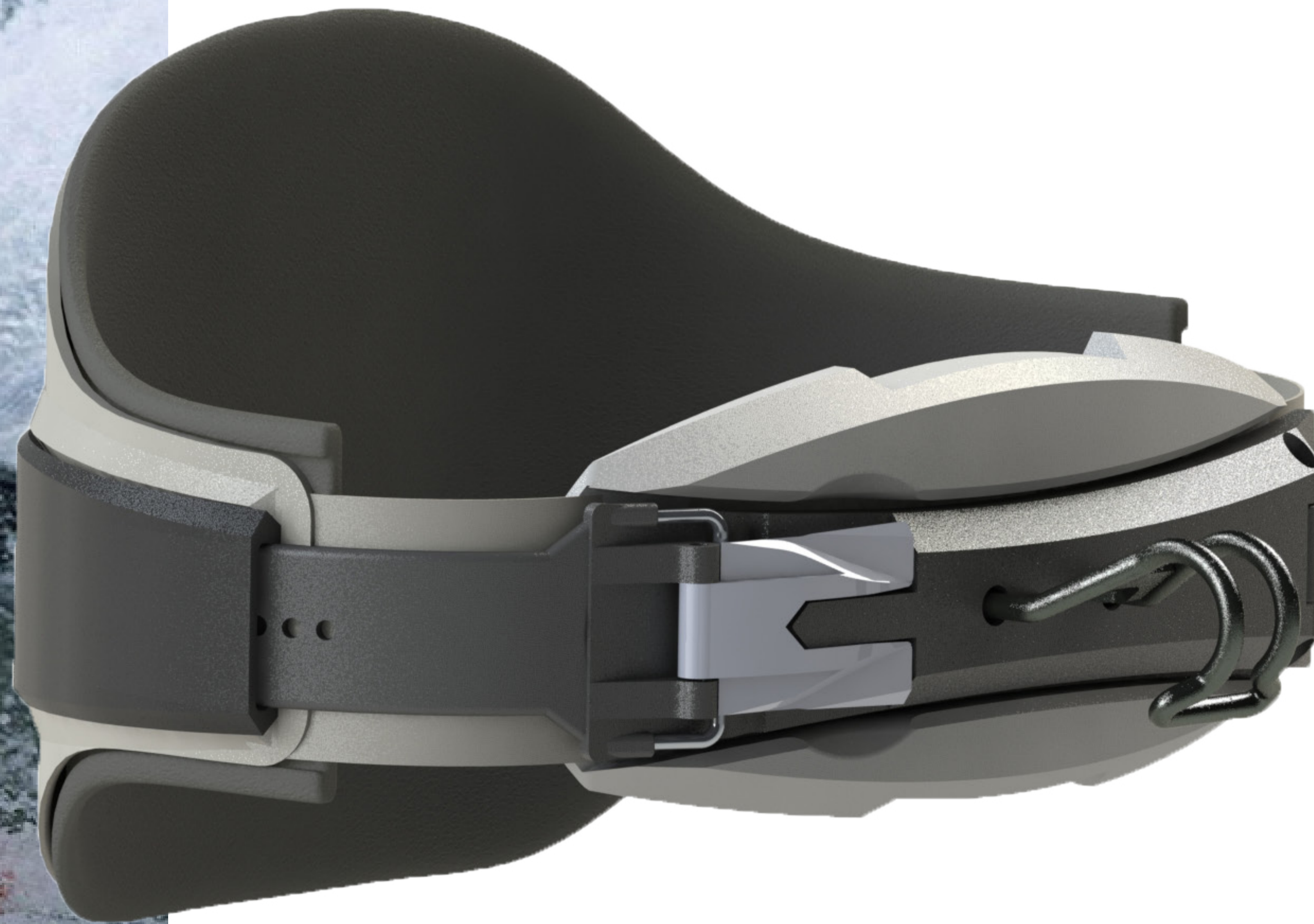


# THE ULTIMATE HARNESS

## A PERFORMANCE ENHANCING KITESURF HARNESS DESIGNED FOR MYSTIC BOARDING

KITESURFING, AN EXHILARATING WATERSPORT WHICH DEMANDS THE BEST EQUIPMENT. THIS PROJECT UNVEILS A CUTTING-EDGE KITESURFING HARNESS THAT REDEFINES USER EXPERIENCE THROUGH A SYMBIOSIS OF MODULAR DESIGN, ERGONOMICS, AND ADVANCED LOCKING MECHANISMS.



### MODULAR DESIGN

#### IMPROVED LOAD DISTRIBUTION

THE MODULAR FRAMEWORK FACILITATES THE DISTRIBUTION OF PRESSURE ACROSS THE HARNESS. RESULTING IN, ENHANCED COMFORT AND SAFETY DURING KITESURFING, ESPECIALLY DURING HIGH-STRESS MANEUVERS.

#### UPGRADE, REPAIR & MAINTENANCE

WITH MODULARITY AT ITS CORE, THE HARNESS ENABLES EFFORTLESS UPGRADES, QUICK REPAIRS, AND SIMPLIFIED MAINTENANCE, ENSURING LONGEVITY AND REDUCING ENVIRONMENTAL IMPACT.

### ERGONOMICS

#### WIDE VARIETY OF USERS

THE ERGONOMIC APPROACH EMBRACES THE CHALLENGE OF DESIGNING A HARNESS FOR A DIVERSE SPECTRUM OF USERS. ENSURING THAT THE HARNESS ACCOMMODATES RIDERS OF ALL SIZES AND BODY TYPES.

#### FREEDOM OF MOVEMENT VS LUMBAR LOCK

THE HYBRID APPROACH OFFERS BOTH SUPPORT AND FLEXIBILITY THROUGH A COMBINATION OF HARDSHELL AND SOFTSHELL FEATURES. MAXIMIZING FREEDOM OF MOVEMENT INTEGRATING LOCAL FLEXIBILITIES INTO THE BACKPLATE.

### LOCK AND RIDE

#### SEMI-PERMANENT TRIMMING

THE TRIMMING SYSTEM OFFERS A PERSONALIZED AND CONSTANT EXPERIENCE FOR USERS. IF LAST MINUTE TRIMMING IS NEEDED THE LEVER BUCKLE SYSTEM HAS BEEN REDESIGNED, WITH OPTIONS FOR LAST-MINUTE ADJUSTMENTS IN TIGHTNESS.

#### RIGID CONNECTION BETWEEN SPREADERBAR AND HARNESS

A RIGID CONNECTION BETWEEN THE SPREADER BAR AND THE HARNESS ENHANCING AND CONTROL DURING MANEUVERS AND RELIEVES THE PRESSURE ON THE RIBS DURING RIDING

Bowien van der Linden  
Designing a kitesurfing harness that decreases discomfort while increasing performance  
27-10-2023  
IPD

**Committee** Arjen Jansen  
Gonny Hoekstra  
Peter Rupert  
**Company** Mystic