

SeaLine

Project Description

Silva Haarbosch

Sealine is an ambitious architectural proposal in the coastal zone of Tallinn, Estonia. The design for a sailing school on the peninsula between the Linnahall and the Ferry Terminal establishes the connection between sea, city, nature (the coastal landscape) and sky. This connection is made in several ways, and has different forms: the building has direct contact with the water, is firmly anchored in the land, and there is a pavilion embraced by the sky. In addition, the design fits seamlessly into the existing urban structure.

The base of the sailing school is an elongated low volume (containing the boat storage, changing rooms and classroom) with a kink halfway up the volume and a kink towards the harbour. This base connects the Logi-Street to the sea via the publicly accessible roof with wide stairs. On the east side, the volume is buried in the mountainside and blends harmoniously into it; on the west side, the basement encloses a square with the boat docks and the façade rhythm mirrors the horizontally articulated Linnahall, but on its own smaller scale.

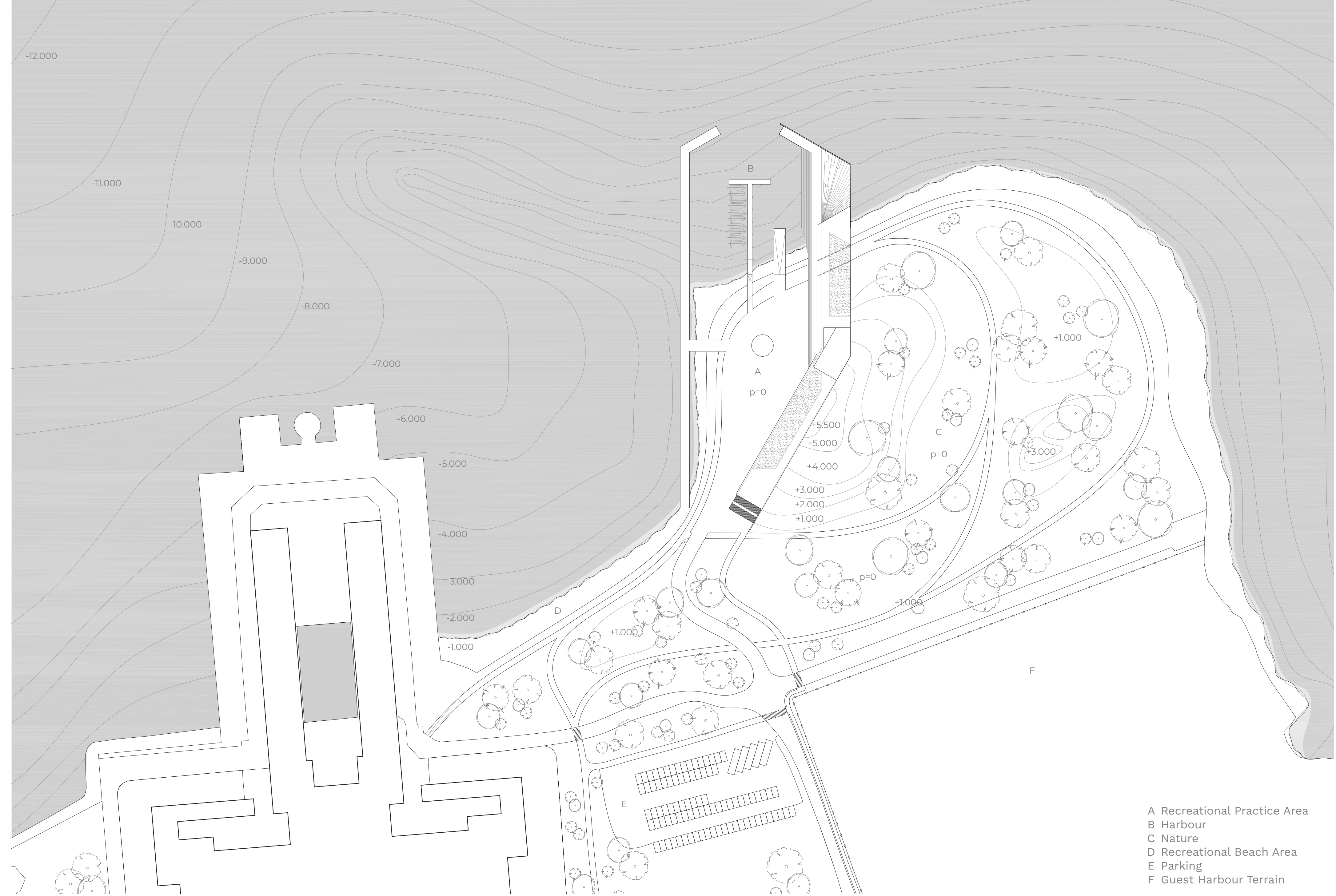
Above the kink, halfway up the volume, is a pavilion that manifests itself strikingly in the coastal silhouette; its directional play and detailing make it seem detached from the ground. It is intended for the sailing school but can also function independently as an outpost.

Both volumes are made of concrete (sturdy in the sea climate) and wood (soft and human-sized, a local building material).

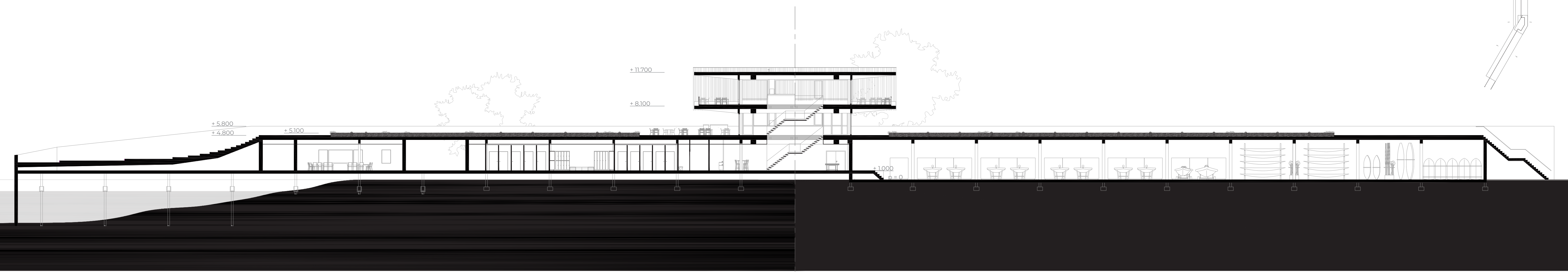
The design is a powerful, concrete example of how architecture, nature and human activities can reinforce each other.

Situation

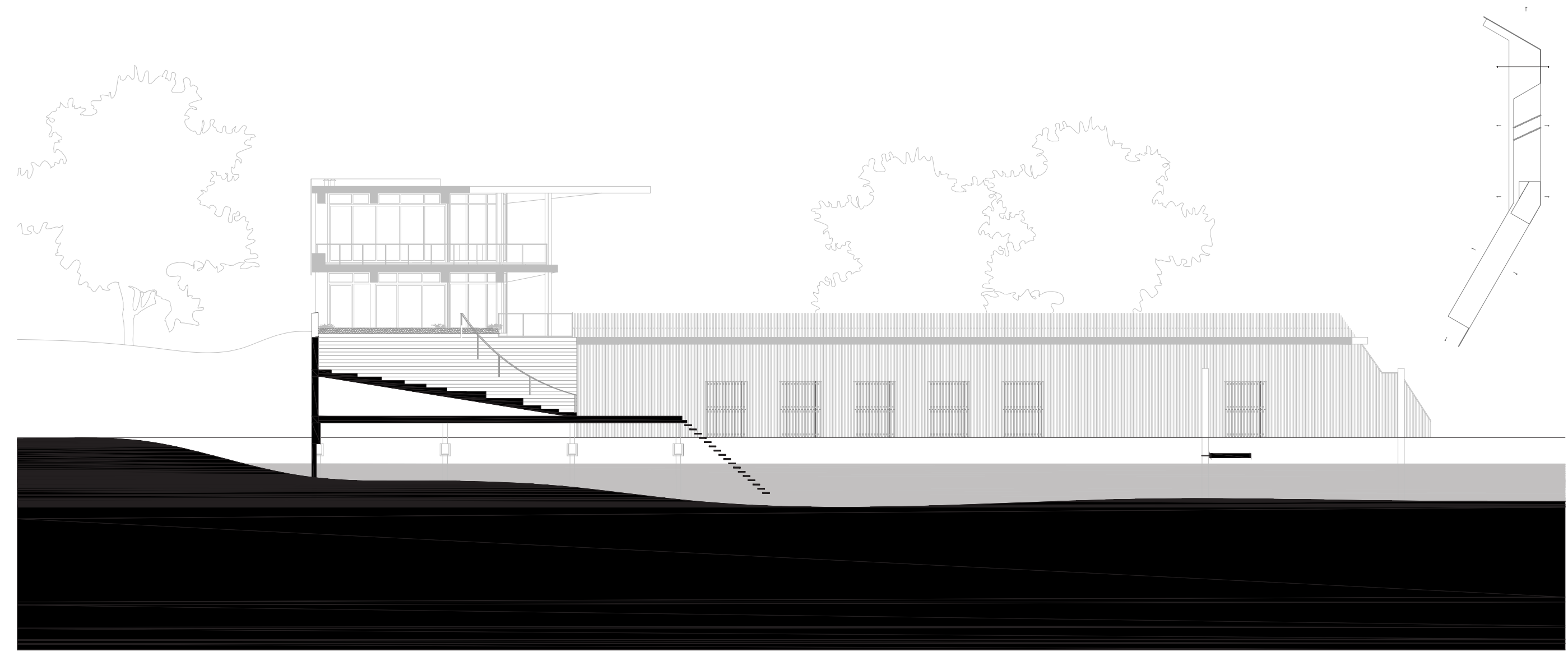
1:1000



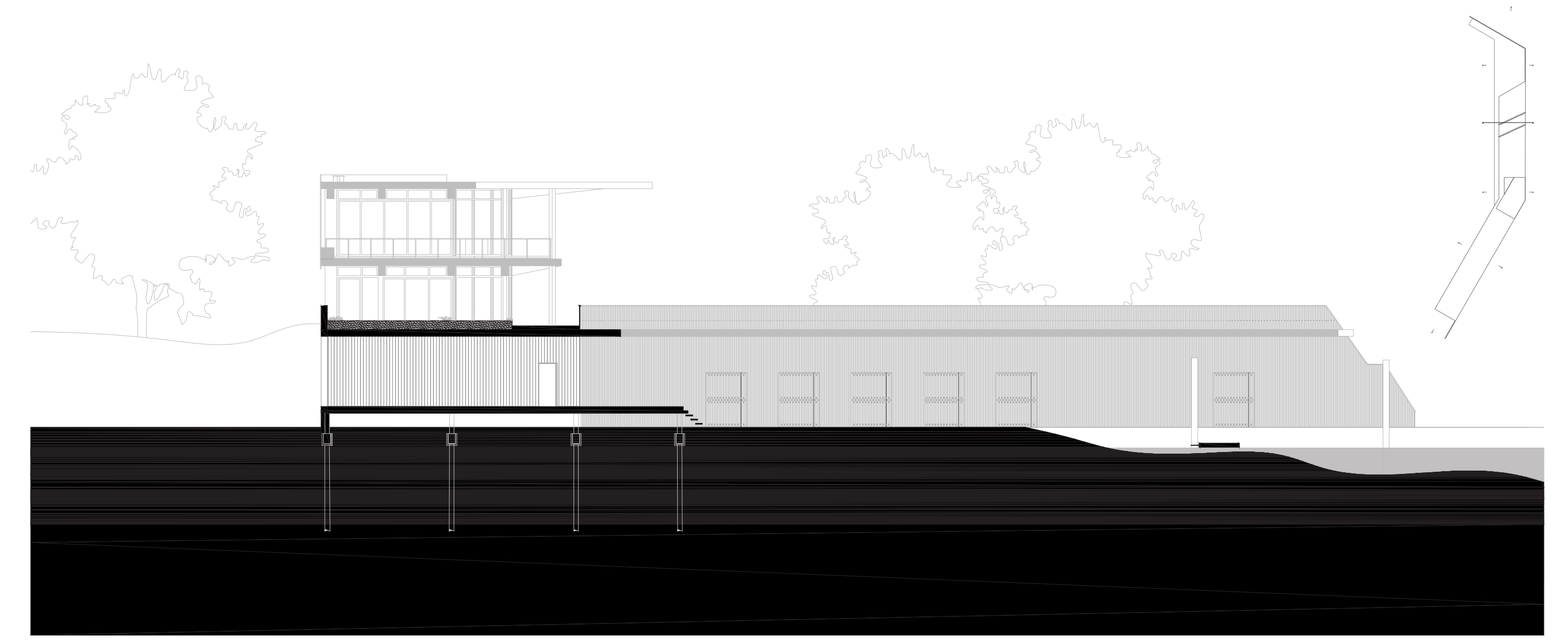
Sections



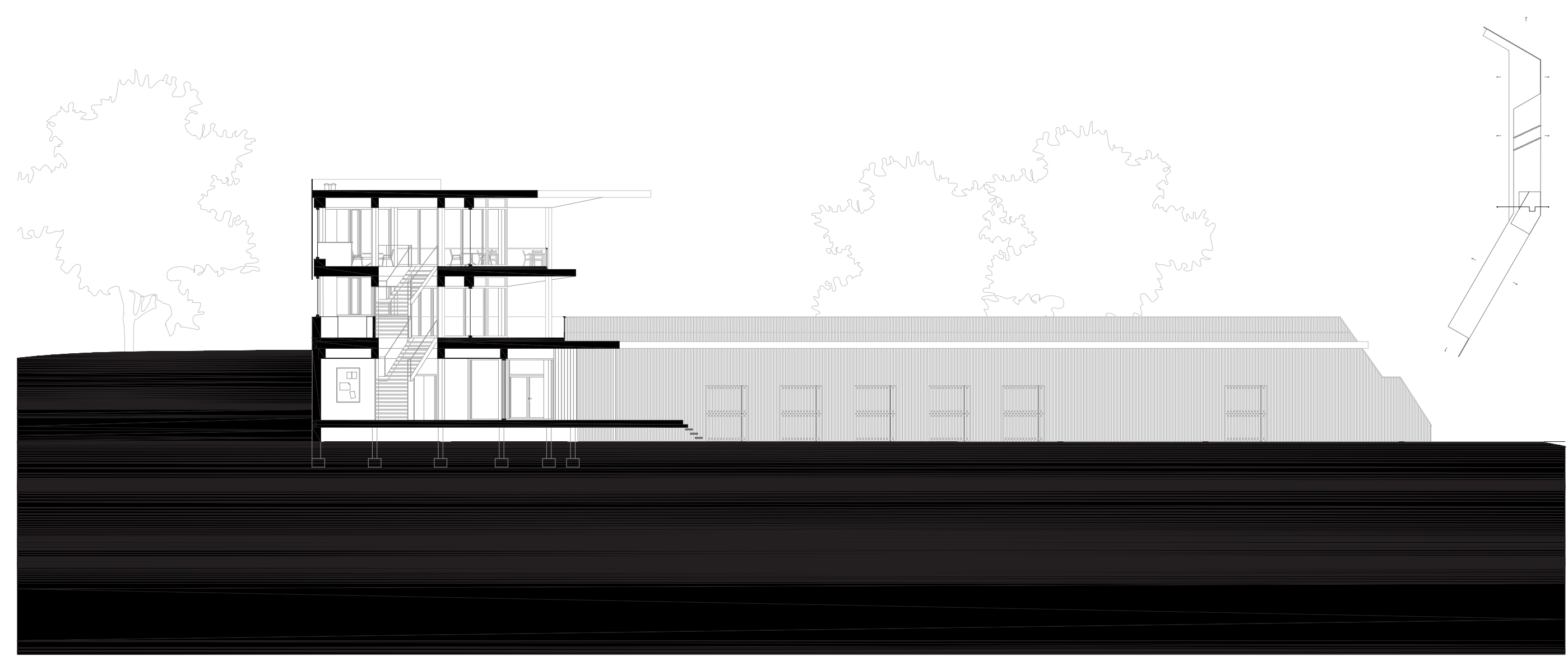
Section A-A
1:200



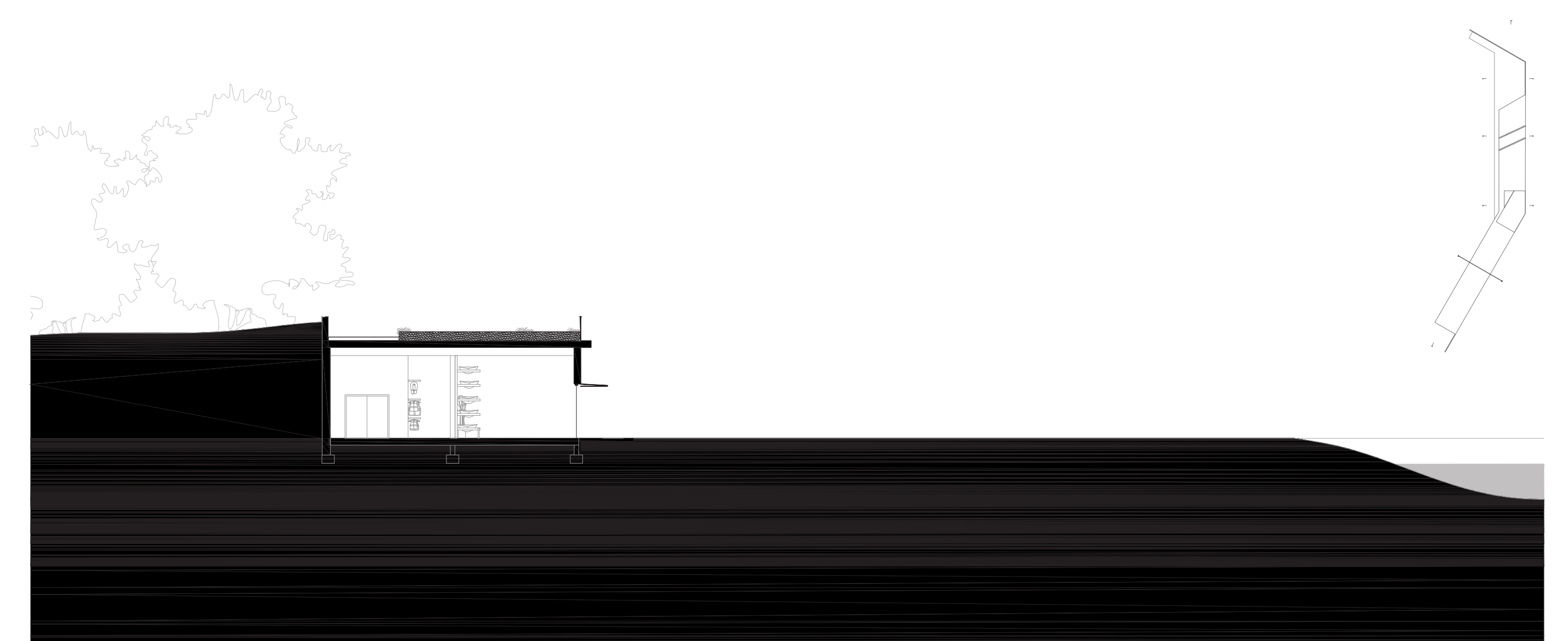
Section B-B
1:200



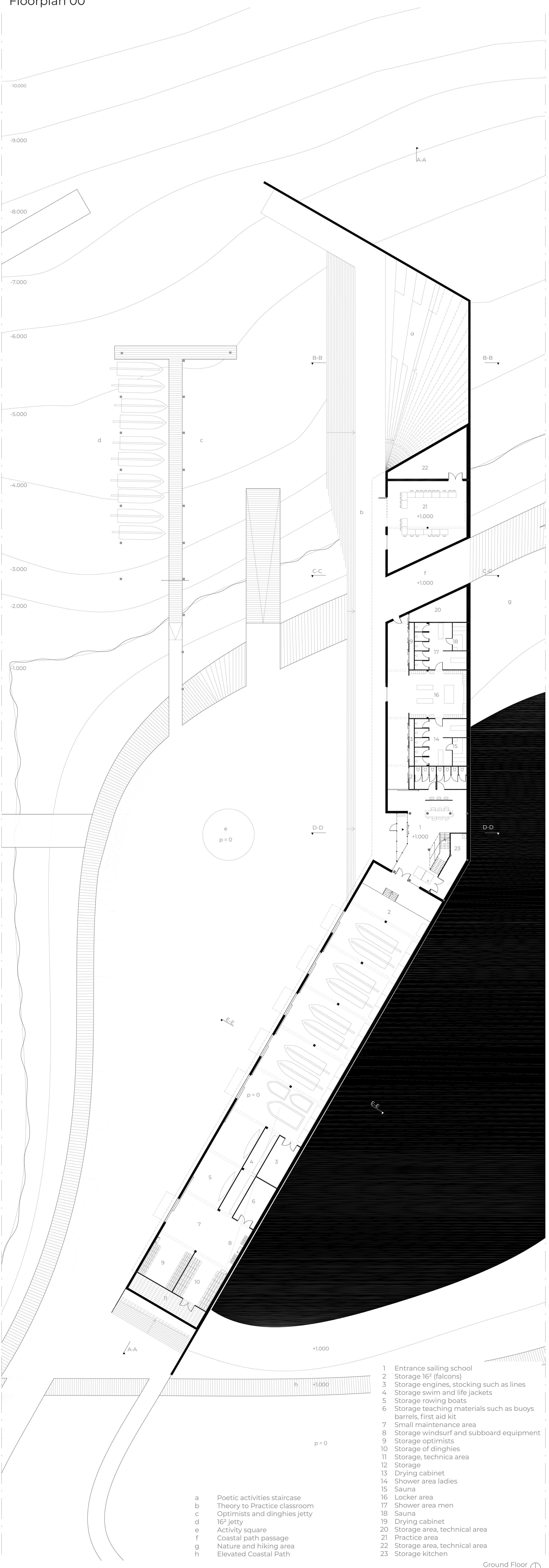
Section C-C
1:200



Section D-D
1:200

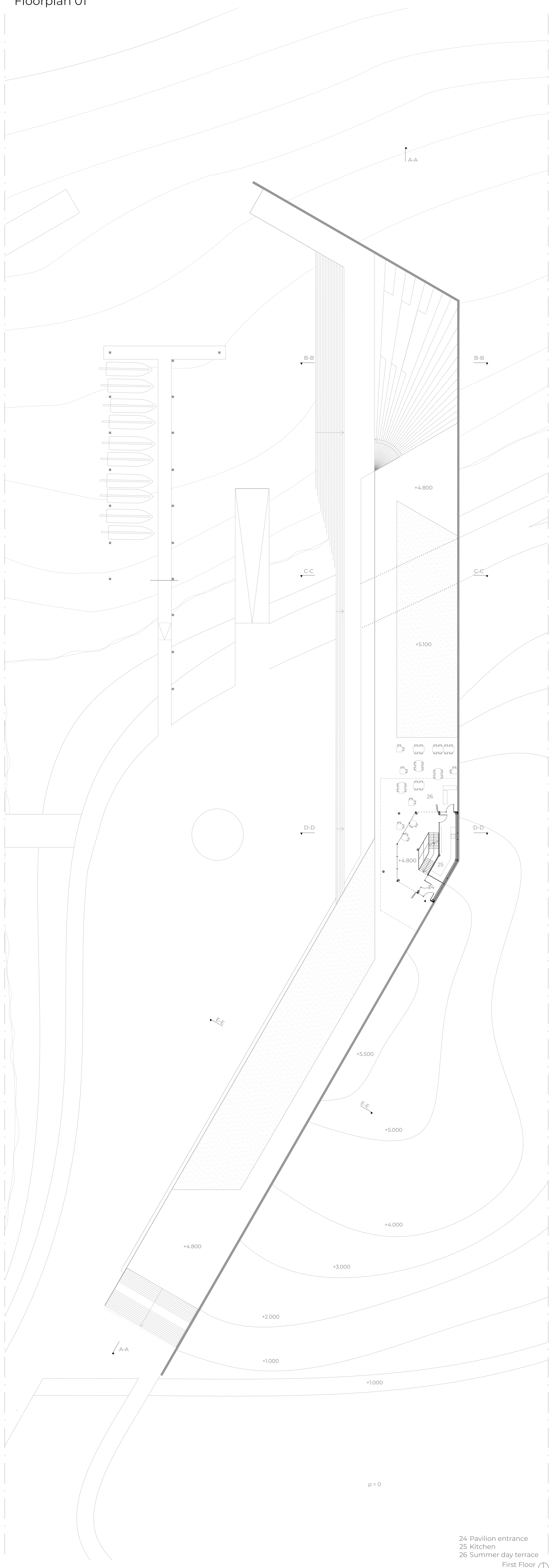


Section E-E
1:200

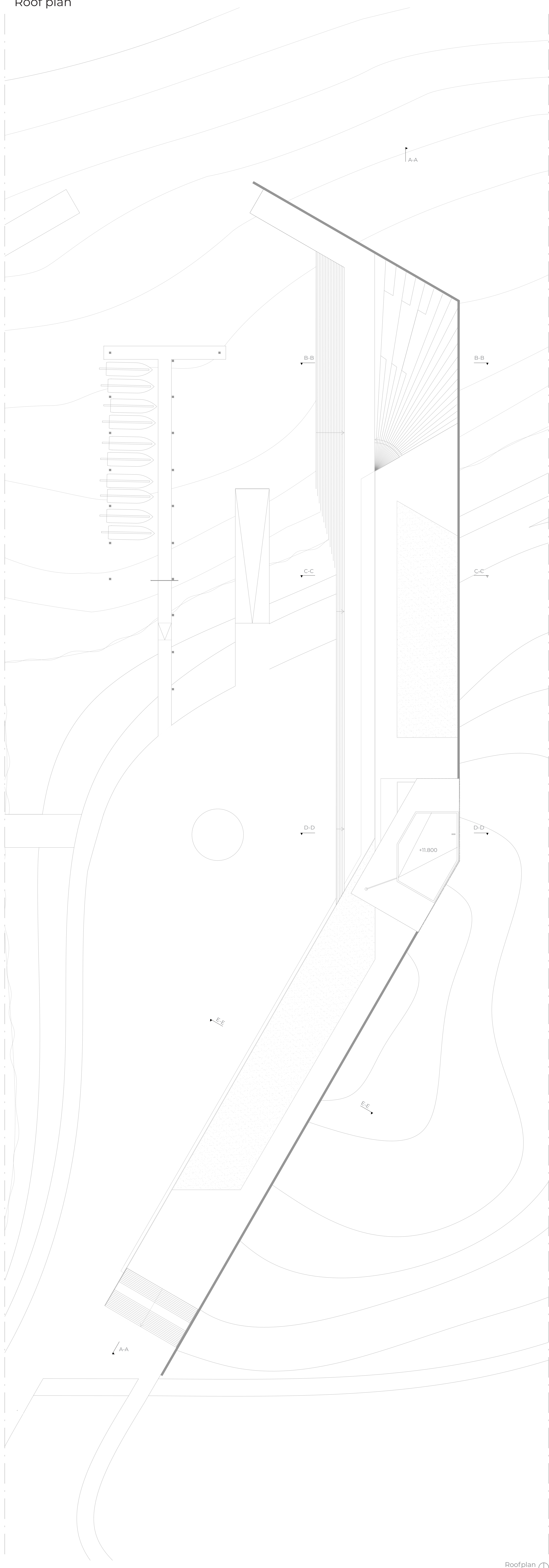
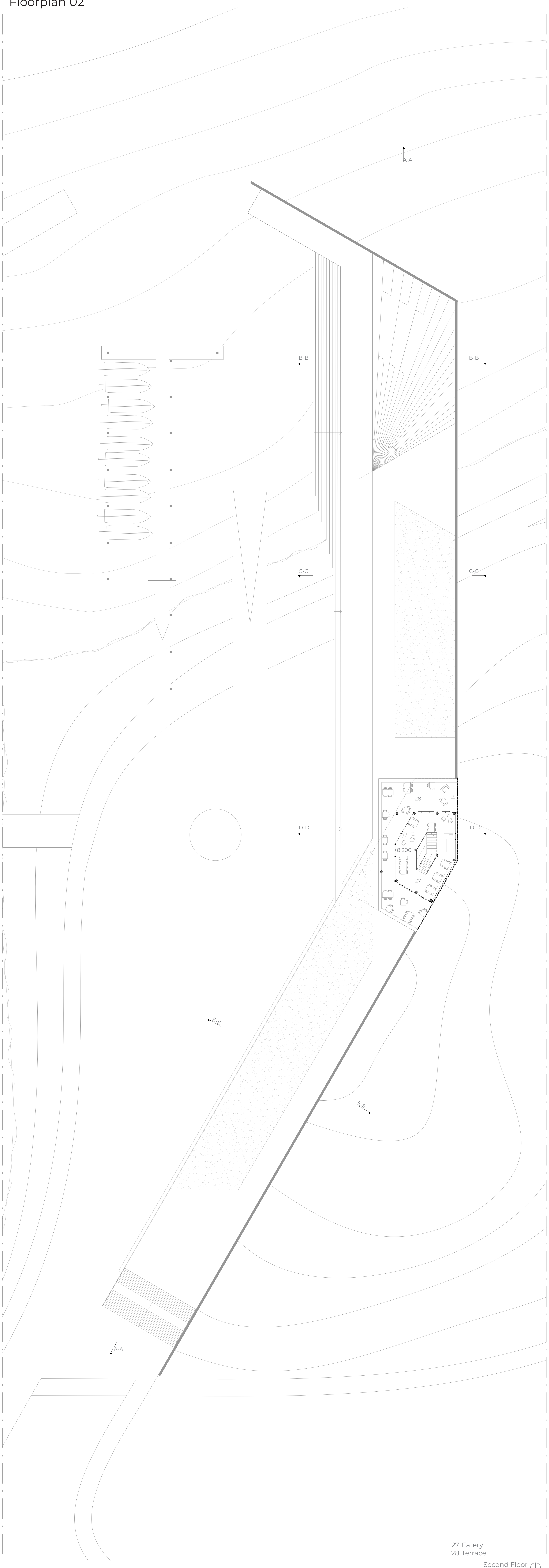


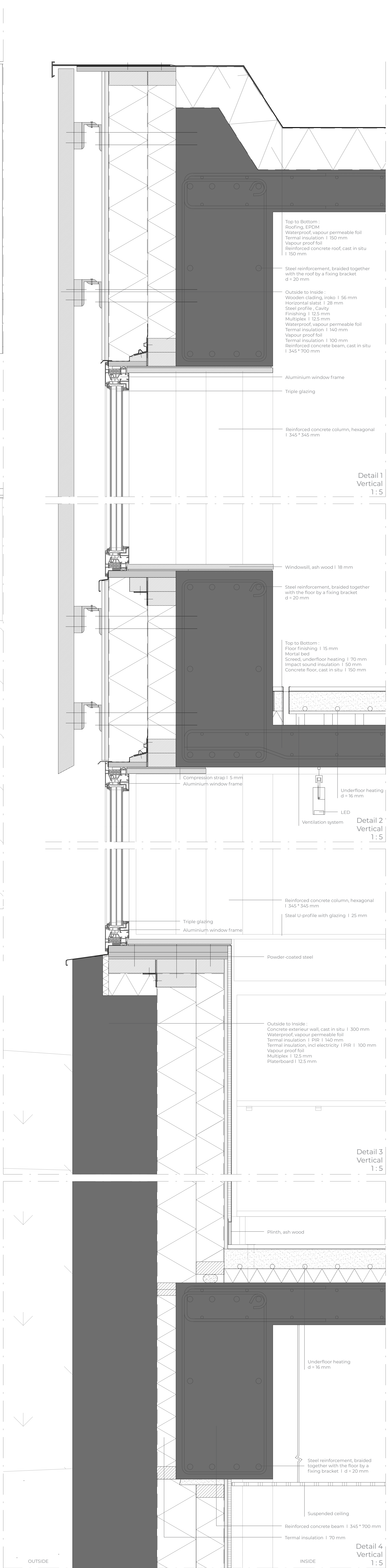
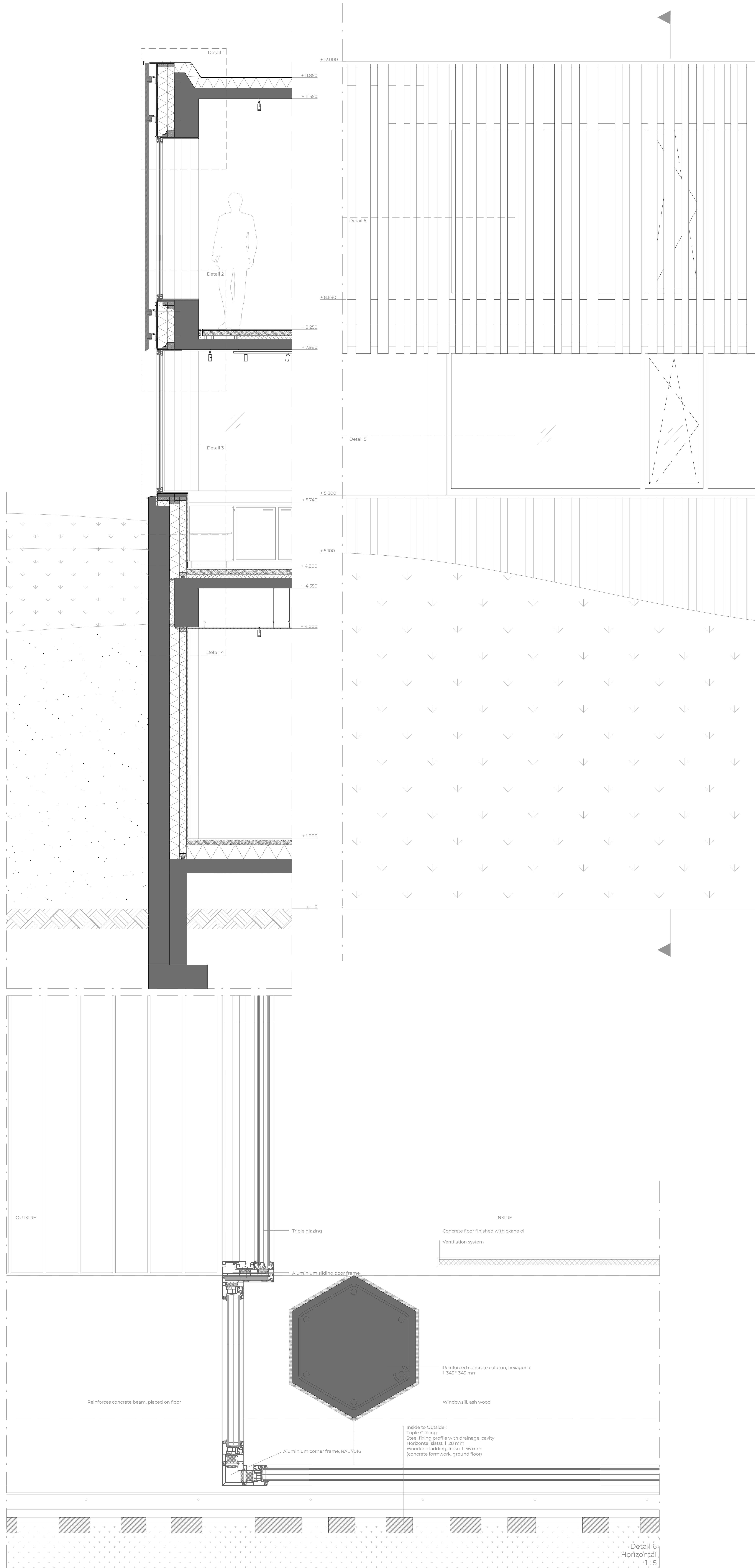
- 1 Entrance sailing school
- 2 Storage 16' (falcons)
- 3 Storage engines, stocking such as lines
- 4 Storage swim and life jackets
- 5 Storage rowing boats
- 6 Storage teaching materials such as buoys barrels, first aid kit
- 7 Small maintenance area
- 8 Storage windsurf and subboard equipment
- 9 Storage optimists
- 10 Storage of dinghies
- 11 Storage, technica area
- 12 Storage
- 13 Drying cabinet
- 14 Shower area ladies
- 15 Sauna
- 16 Locker area
- 17 Shower area men
- 18 Sauna
- 19 Drying cabinet
- 20 Storage area, technical area
- 21 Practice area
- 22 Storage area, technical area
- 23 Storage kitchen

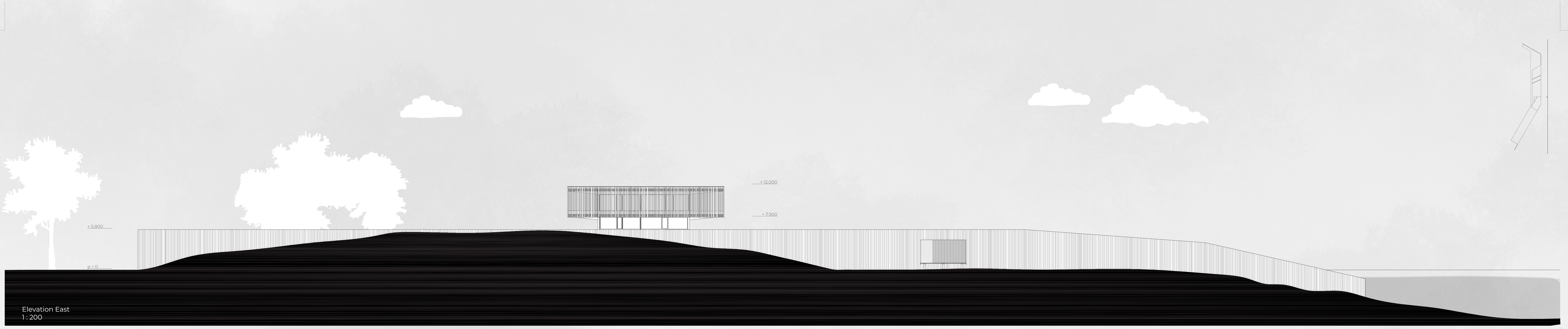
- a Poetic activities staircase
- b Theory to Practice classroom
- c Optimists and dinghies jetty
- d 16' jetty
- e Activity square
- f Coastal path passage
- g Nature and hiking area
- h Elevated Coastal Path



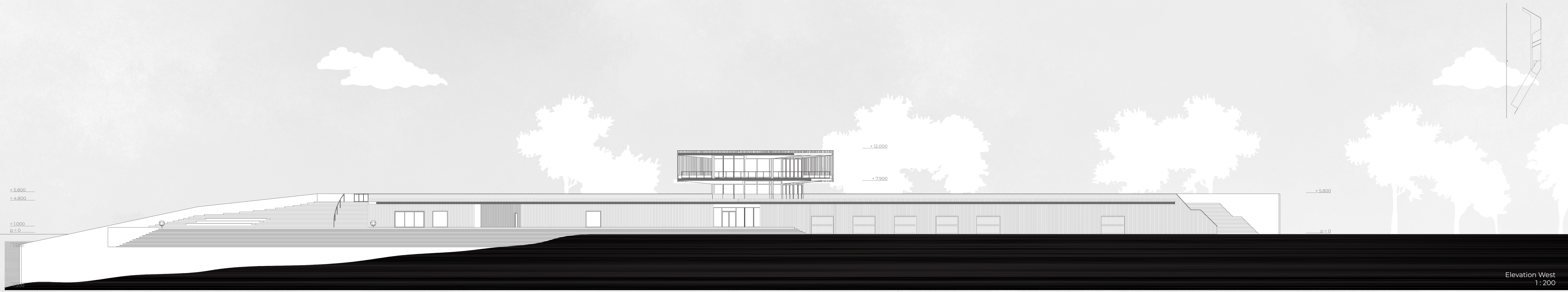
- 24 Pavilion entrance
- 25 Kitchen
- 26 Summer day terrace







Elevation East
1:200



Elevation West
1:200

Elevations



Elevation South
1:200



Elevation North
1:200