

Degradation of optical materials in solid-state lighting systems

Yazdan Mehr, M.; Bahrami, A.; van Driel, W.D.; Fan, X.J.; Davis, J.L.; Zhang, G.Q.

DOI

[10.1080/09506608.2019.1565716](https://doi.org/10.1080/09506608.2019.1565716)

Publication date

2020

Document Version

Final published version

Published in

International Materials Reviews

Citation (APA)

Yazdan Mehr, M., Bahrami, A., van Driel, W. D., Fan, X. J., Davis, J. L., & Zhang, G. Q. (2020). Degradation of optical materials in solid-state lighting systems. *International Materials Reviews*, 65(2), 102-128. <https://doi.org/10.1080/09506608.2019.1565716>

Important note

To cite this publication, please use the final published version (if applicable). Please check the document version above.

Copyright

Other than for strictly personal use, it is not permitted to download, forward or distribute the text or part of it, without the consent of the author(s) and/or copyright holder(s), unless the work is under an open content license such as Creative Commons.

Takedown policy

Please contact us and provide details if you believe this document breaches copyrights. We will remove access to the work immediately and investigate your claim.



Degradation of optical materials in solid-state lighting systems

M. Yazdan Mehr, A. Bahrami, W. D. van Driel, X. J. Fan, J. L. Davis & G. Q. Zhang

To cite this article: M. Yazdan Mehr, A. Bahrami, W. D. van Driel, X. J. Fan, J. L. Davis & G. Q. Zhang (2020) Degradation of optical materials in solid-state lighting systems, International Materials Reviews, 65:2, 102-128, DOI: [10.1080/09506608.2019.1565716](https://doi.org/10.1080/09506608.2019.1565716)

To link to this article: <https://doi.org/10.1080/09506608.2019.1565716>



© 2019 The Author(s). Published by Informa UK Limited, trading as Taylor & Francis Group



Published online: 27 Jan 2019.



Submit your article to this journal [↗](#)



Article views: 1275



View related articles [↗](#)



View Crossmark data [↗](#)



Citing articles: 2 View citing articles [↗](#)

Degradation of optical materials in solid-state lighting systems

M. Yazdan Mehr ^a, A. Bahrami^b, W. D. van Driel ^{a,c}, X. J. Fan^d, J. L. Davis ^e and G. Q. Zhang^a

^aEEMCS Faculty, Delft University of Technology, Delft, The Netherlands; ^bDepartment of Materials Engineering, Isfahan University of Technology, Isfahan 84156-83111, Iran; ^cSignify, Eindhoven, Netherlands; ^dDepartment of Mechanical Engineering, Lamar University, Beaumont, TX, USA; ^eRTI International, Research Triangle Park, NC, USA

ABSTRACT

In this paper, degradation mechanisms of optical materials, used in the light emitting diode (LED)-based products, are reviewed. The LED lighting is one of the fastest technology shifts in human history. Lighting accounts for almost 20% of the global electrical energy use, inferring that replacement of traditional lighting sources with LEDs with higher efficiencies will have major positive implications for the global energy consumption. Organic optical materials are key components in LEDs in the sense that they control the functionality of the device and they have decisive effects on the durability and reliability of LEDs. This paper aims at describing the influences of chemical structure and service conditions on the degradation mechanisms of organic optical materials in LEDs which lead to the lumen depreciation, discolouration, and colour shift of the LED light output. The contributions of different degradation mechanisms of optical and package materials in LED-based products to the lumen depreciation and colour shift are methodically reviewed.

ARTICLE HISTORY

Received 21 April 2018
Accepted 2 January 2019

KEYWORDS

Light emitting diodes (LEDs); lumen depreciation; discolouration; colour maintenance; material degradation; optical materials



Introduction to light emitting diodes

Solid-state lighting (SSL) technology is one of the greatest technological achievements in the last couple of decades. Light emitting diode (LED), based on SSL technology, is rapidly increasing its share in the general lighting market [1]. The lighting market for LEDs, in particular, is expanding rapidly with a market share that is expected to grow to almost full coverage in 2020. Packaged LED revenue was reported at \$14.4B (billion) for 2013 with a projection that the total will reach \$25.9B in 2018 (Ref: www.ledmagazine.com). Lighting accounts for ~20% of the global electrical energy use. LEDs are not only expected to be soon widely used in indoor lighting applications, but they are also becoming increasingly more popular in outdoor and industrial applications. Mobile devices, liquid crystal devices (LCDs), TV screens, and traffic lighting are other attractive market domains for LEDs [1,2]. LEDs have many advantages, compared to more traditional light sources (fluorescent lamps and tubes), including higher light output, smaller size, longer lifetime, eco-friendly, and more colour controllability. Last but not least are the energy considerations in light generation. LEDs have the lowest energy consumption per lumen produced among all available lighting sources [3,4]. The energy issue is obviously an extremely important aspect; knowing that this energy consumption has a major impact on global warming [3]. Figure 1 shows the trend in the energy consumption

for the lighting purposes in case LEDs are used as well as the growth in the market share for LEDs.

White light output in LEDs can be generated using four different methods [5–14], but the most widely used approach is based on the application of a blue-light chip together with yellow phosphor. In this case, a portion of the blue light radiation excites the phosphor which emits yellow light. White light is then generated by mixing of emitted yellow light (coming from yellow phosphor) with non-absorbed blue light. This method has the highest efficiency of all current approaches if a phosphor absorbs a blue photon at 450 nm and emits a red photon at 650 nm the energy efficiency of the process is 69%, with 31% of the initial energy being converted to heat in the phosphor layer [5]. The combination of yellow phosphor with the blue-light chip can be achieved either by direct deposition of a phosphor layer on or around the chip surface (i.e. proximate phosphor) or by incorporating phosphor particles in the lens (i.e. remote phosphor), as shown in Figure 2.

When it comes to quantifying the quality of LED lamps, three parameters are commonly used. The first and possibly the most important one is the light efficiency, also known as luminous efficacy, which is a measure of lumen output divided by the electrical power required to produce the light and is given in units of lumens/watt (Lm/W). The second quality factor is the lifetime, defined as the service time in which

CONTACT M. Yazdan Mehr  m.yazdanmehr@tudelft.nl  EEMCS Faculty, Delft University of Technology, Mekelweg 4, 2628 CD, Delft, Netherlands

© 2019 The Author(s). Published by Informa UK Limited, trading as Taylor & Francis Group

This is an Open Access article distributed under the terms of the Creative Commons Attribution-NonCommercial-NoDerivatives License (<http://creativecommons.org/licenses/by-nc-nd/4.0/>), which permits non-commercial re-use, distribution, and reproduction in any medium, provided the original work is properly cited, and is not altered, transformed, or built upon in any way.

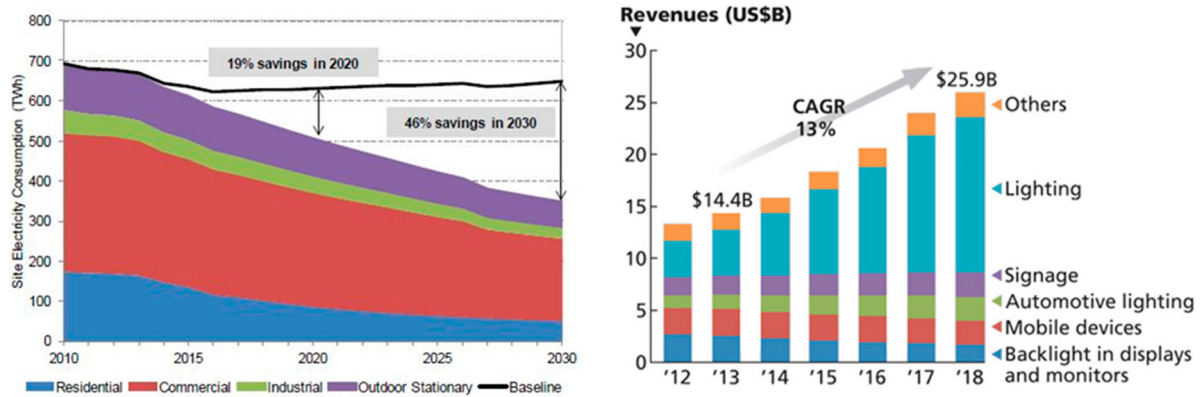


Figure 1. Trend in the energy consumption in the lighting market, in case LEDs are used as well as the growth in the market share of LEDs in different sectors (after US DOE, August 2014).

the source operates above the specified minimum lumen output. The third quality measure of an LED product is the colour rendering index (CRI), defined as the ability of a light source to reproduce the colours of a specific object when compared with a natural light source. Table 1 compares the three quality-related parameters of some commercial light sources, showing why LED will soon dominate the lighting market.

An LED lighting system consists of several components at different levels, making it a relatively complex system. These components have optical, electrical, or thermal functionalities, depending on the roles they have in the system. An LED lighting system has five levels [15,16]. Level 0 is the LED chip or bare die, which is the light-generating diode. Level 1 of the LED lighting system is the packaged LED chip. This system level has several functionalities including protecting the chip, soldered electrical connections to the next level on the bottom of the LED package, colour adjustment with phosphor, and heat management are all functionalities occurring in this level. Level 2 is defined as the LED array packages on a printed circuit board (PCB) to form an LED array or a module. Level 3 is assigned to light modules that are ready for final application, with the LEDs, packaged in a module with simple electrical/optical/thermal components.

Level 4 is assigned to the LED luminaire or lamp and combined the light modules with all other system components, including housings, sensors, controls, and data processing/communication units. Level 5 is assigned to a collection of luminaires to form a lighting system in space. All explained system levels in SSL system are shown in Figure 3. Over 30 failure modes have been reported in SSL devices and these failures can occur in any system level [17], some being shown in Figure 4. Other report >50 failure modes [add ref to chapter 1 of part II book]. These failure modes are unique to LED-based lighting products and are not comparable with the failure modes of other lighting devices. Fluorescent lamps, for instance, have less than 10 recognised failure modes, with some being inherently as simple as breakage of the glass envelope.

Most commonly seen failures and most dramatic ones are limited to the LED chip, the LED package, and its solder interconnects [17,18]. Some LED failures are not fully known, and more studies are needed to have a deeper insight into them, whereas others have been fully analysed [17]. Some examples of the latter case are degradation of Ohmic contacts [17], failures in the lead frames [18–20], discolouration of encapsulant materials [21], carbonisation of silicone encapsulant [22,23], and thermal quenching of phosphor [24].

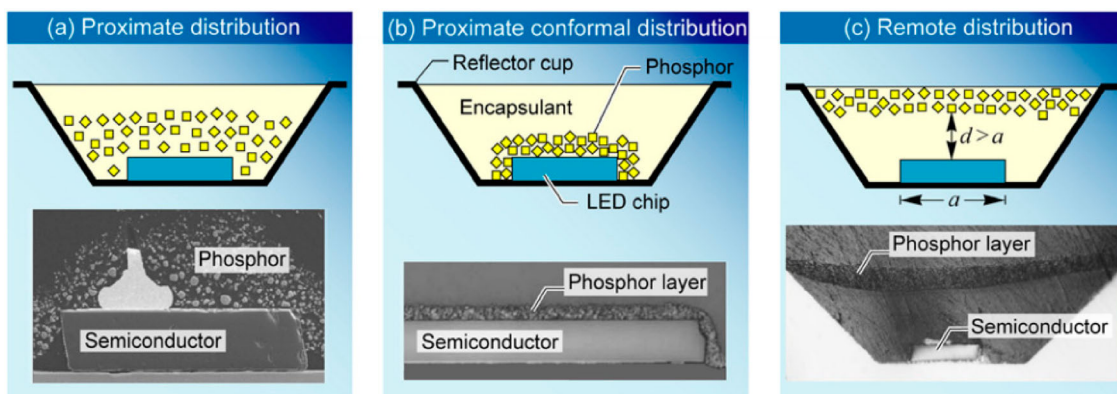


Figure 2. Different methods of incorporating phosphor into the LED package; (a) Proximate phosphor configuration, (b) Proximate conformal phosphor configuration [5,6], and (c) Remote phosphor configuration [5,6].

Table 1. Efficacy, CRI and lifetime of some common light sources [15].

Light source	Efficacy (lm/W)	CRI	Lifetime (h)
Incandescent (120 V)	14.4	100	1000
Compact fluorescent	51	80	10,000
High-pressure mercury	34	50	24,000
High-pressure sodium	108	22	24,000
LED	130–220	>80	25,000–50,000

Microelectronic components must be protected against the aggressive system and environmental stresses. This is routinely done by covering chips and other microelectronic components with a package that usually includes polymeric encapsulants to prevent the LED chip from being in direct contact with said environmental stresses. So, it is not surprising that many of LED failures are related to the package in a way or another. With that said, obviously, the right choice for packaging material is of crucial importance. The material used in LED applications should be stable enough to withstand the heat and high photon fluxes that occur in LEDs.

The main aim of this paper is reviewing the degradation and ageing mechanisms of different optical materials in SSL systems. This paper can be of great importance when it comes to materials selection for different working conditions. As well, this paper can be used for those who are involved in research, related to optimisation and increasing the lifetime of LEDs. In this paper, currently used optical polymers [25–31] are first introduced. Then common optical degradation mechanisms, observed in the LED polymer lens and encapsulants, are reviewed. Defects and failures are discussed from both chemical and optical points of view.

More attention is paid to the ones which could result in significant lumen losses and alterations in the chromaticity of LEDs.

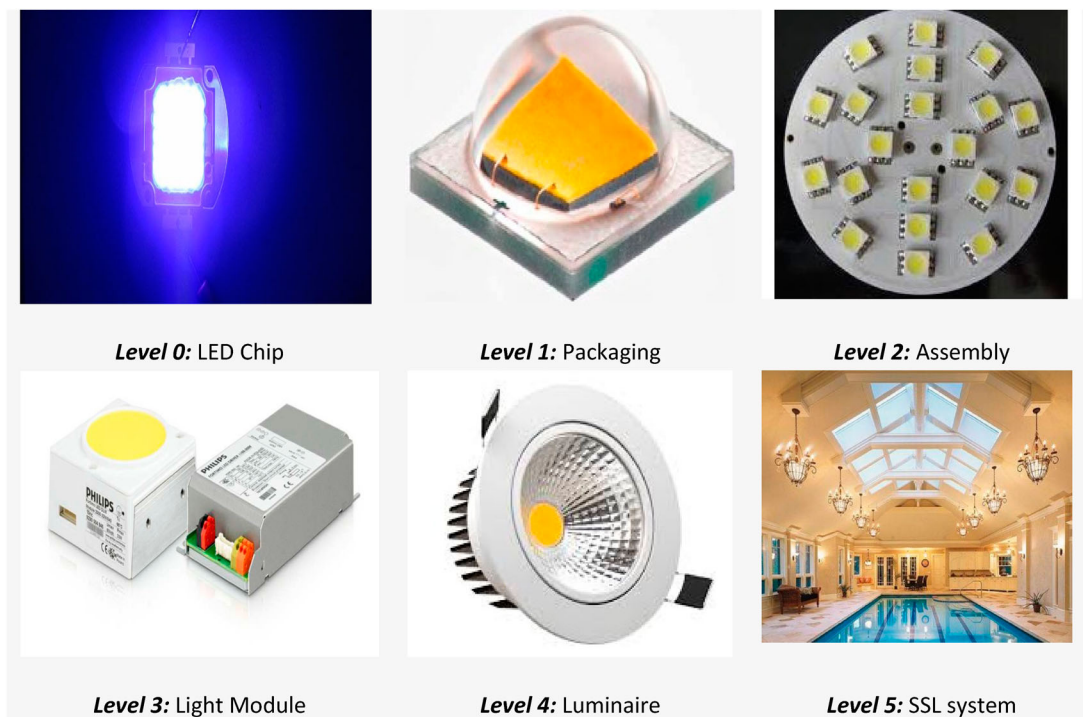
Optical materials, used in LEDs

Explaining and understanding different failure mechanisms in LEDs is not possible without having a fundamental knowledge about the structure of optical materials used in LED packages and other parts of the lighting device. Figure 5 shows the polymeric components of a typical LED system. Polymeric materials used in LED devices need to have an optimum combination of thermal, optical, electrical, and mechanical properties. For LED lighting to be a reliable light source, many technical complexities and challenges need to be addressed. Many of these challenges are introduced and will be discussed in this paper. Some challenges are materials-related, meaning that they cannot be resolved without materials optimisation. Optical materials are expected to have a high refractive index, good chemical resistance, strong adhesion and bond strength, good mechanical strength, stable microstructure, and high resistance against UV radiation. Table 2 gives a few examples of common technical challenges in LEDs, which can be resolved by materials optimisation.

Among different optical materials in LEDs, those which are more widely used in LEDs will be introduced in this paper, as follows.

Silicone

Silicones, having superior optical, thermal properties, are a serious competitor to other more traditionally

**Figure 3.** Different system levels in an LED system.



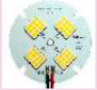



Level	Identified Failure Modes	
0: Bare Die		<ul style="list-style-type: none"> •LED catastrophic failure •Lumen depreciation (several causes) <ul style="list-style-type: none"> •Degradation of active region / ohmic contact •Electro-migration causing dislocations •Diffusion of metal atoms to the active region •Current crowding (uneven current distribution) •Doping related failures
1: Packaged LED		<ul style="list-style-type: none"> •Yellowing of packaging materials (degradation/aging) •Electrostatic discharge (ESD) •Interconnect failure (solder or die-attach) •Cracks (e.g. vertical die crack) •Delamination (at any interface) •Wire bond failure
2: LED's on substrate		<ul style="list-style-type: none"> •Cracks (e.g. in the ceramic) •Solder fatigue •PCB metallization problem •Short (e.g. due to solder bridging)
3: LED module		<ul style="list-style-type: none"> •Casing cracks •Optic degradation (browning, cracks, reflection change) •ESD failures
4: Luminaire		<ul style="list-style-type: none"> •Fractures (e.g. due to vibrations) •Moisture related failures (e.g. popcorning) •Driver failures •Deposition of outgassing material on the optics
5: Lighting system		<ul style="list-style-type: none"> •Software failures •Electrical compatibility issues •Installation & commissioning issues

Figure 4. Identified failure modes in LEDs.

used polymers (more specifically polycarbonates). The most widely applied silicones are polydimethylsiloxanes, polydiphenylsiloxanes, trimethylsilyloxy, methylphenyl, and terminated silicone. The latter has a unique

structure in the sense that it is a semi-organic substance in which organic groups (vinyl, methyl, etc.) are combined with Si–O inorganic backbone. The chemical structure of a general silicone is shown in Figure 6.

Silicones typically show absorption bands at 770, 1000–1100, and 1260 cm^{-1} in the infrared spectra. They do have some unique characteristics, including excellent moisture/UV light resistance, superior biocompatibility, and structural stability during service [32–40]. What makes silicones an attractive choice for LED applications is the fact that they maintain

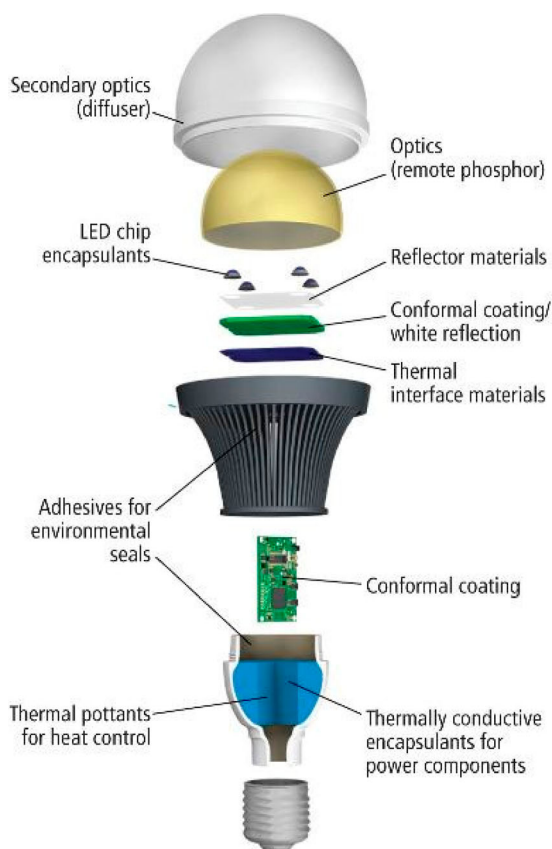


Figure 5. Polymeric materials used in secondary optical parts in LEDs [14].

Table 2. Examples of technical challenges in LEDs, and their corresponding materials solutions.

Challenge	Origin of the problem	Materials solutions
Light extraction	Refractive index mismatch between LED die and encapsulant	<ul style="list-style-type: none"> • Using high refractive index encapsulants
Thermal-induced yellowing of polymer	Thermal degradation of encapsulants, induced by a high junction temperature between LED die and lead frame	<ul style="list-style-type: none"> • Using modified resins or silicone-based encapsulants • Using low thermal resistance substrates
UV-induced yellowing	Photodegradation of encapsulants, induced by UV radiation from LED dies and outdoor environments.	<ul style="list-style-type: none"> • Using UV transparent encapsulant • Adding UV stabilizer to encapsulants
Stress/delamination	Failure of wire-bond or die attach caused by the CTE mismatch between the encapsulant, LED die, and lead-frame	<ul style="list-style-type: none"> • Using low CTE and modulus encapsulants • Using CTE matching materials between the surfaces

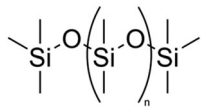


Figure 6. Chemical structure of a general silicone.

their electrical properties at high temperatures and in humid environments [34]. However, silicones are known to have some disadvantages, including their relatively low tear strength, poor adhesion, low glass transition temperature, large coefficient of thermal expansion (CTE), high moisture and gas permeability, and their relatively long production times. Another disadvantage of silicones is their price, which is higher compared to engineering polymers such as bisphenol-A polycarbonate (BPA-PC).

Recently, silica has been added to silicone to improve the mechanical and thermal stabilities of LED encapsulants. This obviously results in more chain stability, and this lessens the chain scission as a pathway to the degradation of silicones [36]. Comparing phenyl silicone with methyl silicone, one can see that the former has almost 10% more light output due to its higher refractive index. This will have a huge positive impact on the performance, reliability, and the final cost of the product provided that the thermal stresses remain low [37]. There are a couple of studies which deal with the effects of environmental factors on the structural evolution of silicones [37]. At this point, it is important to mention that a comprehensive way of looking at the degradation of silicones would be to match the chemistry and production method of silicones with environmental factors they face during use. Neglecting any of the mentioned aspects would certainly result in premature of the material and any device they are protecting. Details will be discussed later in this paper (see Section ‘Degradation of Silicone’).

Bisphenol-A Polycarbonate

One of the most commonly used polymers in LED device packaging is bisphenol-A polycarbonate (BPA-PC), which is a thermoplastic, with the formulation shown in Figure 7.

BPA-PC is known to have a relatively high elastic modulus, high fracture resistance, and very good thermal stability which leads to its widespread use for secondary optics in LED devices. Its applications are not limited to the LED market domain. In fact, BPA-PC is widely used in many other industrial sectors including compact discs (CDs), DVDs, safety and sunglasses, automotive interior, riot shields, and drinking water bottles [41–50]. There is a great deal of information about the structure, properties, and thermal/optical degradation mechanisms of polycarbonates [51–65].

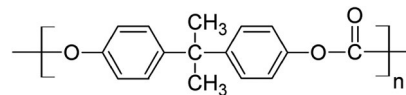


Figure 7. Chemical structure of bisphenol A polycarbonate (BPA-PC).

Polymethyl methacrylate

Another extensively used thermoplastic in LED lens and packaging is polymethyl methacrylate (PMMA) [66–72], with its structure being shown in Figure 8. PMMA is one of the cheapest options in the market. The widespread use of PMMA has to do in part with the glass transition temperature of PMMA, T_g , being between 105 and 110°C, which makes its processing and manufacturing relatively easy. PMMA is also commonly used for decorative and biomedical purposes including automotive windshields, window glazings, and displays. Biomedical uses of PMMA leverage the excellent biocompatibility of this polymer [73]. PMMA is known to have an excellent light/UV transmittance [74–79]. The downsides of PMMA are its tendency to discolour under high water absorption, low heat resistance, and low abrasion resistance [80–94].

There are many reports about the atmospheric, thermal, and UV light-induced degradations of PMMA [95–117]. The most commonly used analytical methods to study the degradation mechanisms and products in case of PMMA are UV-Vis, FTIR, and mass spectroscopy [118–137].

Epoxy

At this moment, epoxy materials have the biggest share in the LED packaging market [15] due to a good combination of low price, ease of manufacturing, mechanical stabilities, and moisture resistance [138–145]. Epoxies are widely used as die-attach and underfill adhesives and are used in many printed circuit boards (PCBs). The epoxide functional group which is the basis of the epoxy is, in fact, a strained oxygen-carbon ring, as depicted in Figure 9. The easiest way of making epoxies is the reaction of BPA with epichlorohydrin which results in (2,2-bis [4-(2’3’epoxy propoxy) phenyl] propane), also known as diglycidyl ether of BPA (DGEBA) [32,33]. As well, it is a routine practice to produce epoxies from

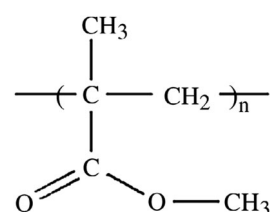


Figure 8. Chemical structure of PMMA.

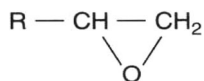


Figure 9. Chemical structure of Epoxy.

the reaction between alcohols and glycols with epichlorohydrin or phenol-formaldehyde resin with epichlorohydrin [32]. The end product of the former reaction is aliphatic epoxy and that of the latter one is Novolac epoxy. Novolac epoxy resin, cured by anhydride or amine agents, in general exhibits excellent chemical and thermal properties, which expectedly has to do with rather high aromatic and cross-link densities in this resin.

Epoxy resins are known to have two major shortcomings as LED encapsulants. The first issue is the brittleness of this resin due to the excessive cross-linking. The other disadvantage is the photodegradation of epoxy under radiation at high temperatures. Massive chain scission takes place at the said condition, resulting in a fast discolouration. Discolouration cannot be tolerated in LEDs since it leads to a reduction in transparency and a drop in light output [143].

Phosphors

Phosphors are typically combined with the polymers mentioned above and combined into parts of the LED lighting system such as encapsulants and lenses. Phosphor plays a vital role in a group of white-light LEDs by converting blue photons produced by the LED into white light through the process of photoluminescence (PL). These LEDs are commonly termed phosphor-converted white light LEDs (pc-WLEDs) [146–160]. Blue/UV light radiation from LEDs can be absorbed by the phosphor, resulting in an electron gaining sufficient energy to transition from the ground state energy level to an excited state energy level. These energised electrons will then lower their energies by emitting a photon through the process of luminescence [159]. This radiation can be in the form of visible light, UV, or infrared, depending on the difference between the energies of the excited and ground electronic states. Since phosphor excitation in LEDs takes place by absorption of a photon in the blue or UV spectral regions, the process is named PL [154].

Phosphors in LEDs are expected to have high absorbance for the primary LED emissions (i.e. blue or UV), high conversion efficiency, low oxygen/CO₂/moisture uptakes, high chemical stability, minimum thermal quenching, competitive durability, high light output intensity, and appropriate colour quality. Some examples of phosphors which have been using in LED industry are being shown in Table 3.

Table 3. Examples of commonly used phosphors in pc-WLEDs.

LED phosphor	Chemical composition
Blue phosphor	(Sr,Ca,Ba,Mg) (Ba,Sr) MgAl ₁₀ O ₁₇ /Eu (Sr,Ba) ₃ MgSi ₂ O ₈ /Eu
Green phosphor	SrGa ₂ S ₄ /Eu β-sialon/Eu SrSi ₂ O ₂ N ₂ /Eu Ba ₃ Si ₆ O ₁₂ N ₂ /Eu BaMgAl ₁₀ O ₁₇ /Eu,Mn SrAl ₂ O ₄ /Eu
Red phosphor	(Sr,Ca)S/Eu (Ca,Sr) ₂ Si ₃ N ₈ /Eu CaAlSiN ₃ /Eu La ₂ O ₂ S/Eu 3.5MgO ₃ 0.5MgF ₂ 3 GeO ₂ /Mn (Sr,Ca,Ba,Mg) ₁₀ (PO ₄) ₆ C ₁₂ /Eu,Mn Ba ₃ MgSi ₂ O ₈ /Eu,Mn
Yellow phosphor	YAG/Ce alkaline earth orthosilicate (BOSE)

Degradation of optical materials

Chromaticity shift in the output light is one of the most common failures in LEDs [161–181]. It is considered as one of the most important measures of quality and is often studied and reported [182–204]. Colour shift defined as the change in the chromaticity coordinates from its original values. It is named chromaticity shift, in case CIE1976 (*u'*,*v'*) chromaticity diagram is used. The (*u'*,*v'*) coordinates are related to the CIE 1931 (*x*, *y*) coordinates. A practical way of measuring the chromaticity shift in LED light sources is using MacAdam ellipses steps [28–31].

As a case in point, Scott Rosenfeld [19] reported chromaticity-consistency and chromaticity maintenance problems in LED lamps in a museum, using chromaticity shift, as shown in Figure 10. Chromaticity shifts as large as $\Delta u'v' = 0.0024$ were observed after only 4000 h of operation.

In another example, the dependency of $\Delta u'v'$ on temperature is shown for the Philips Lumileds Luxeon Rebel LED package in Figure 11 [199]. Results show that there is initially a rather fast shift in the chromaticity at all given temperatures, followed by a period in which the shift is almost negligible. The third stage is

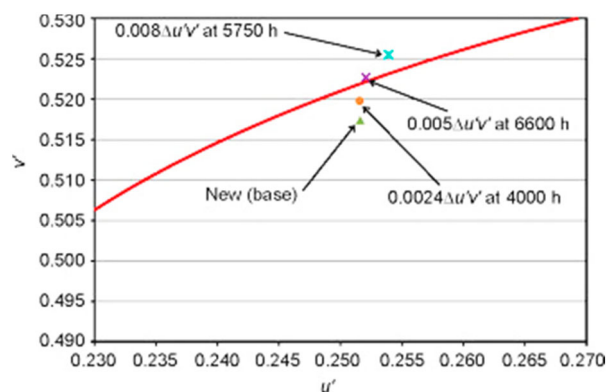


Figure 10. Colour shift results from the Smithsonian Institution [19], reproduced with permission.

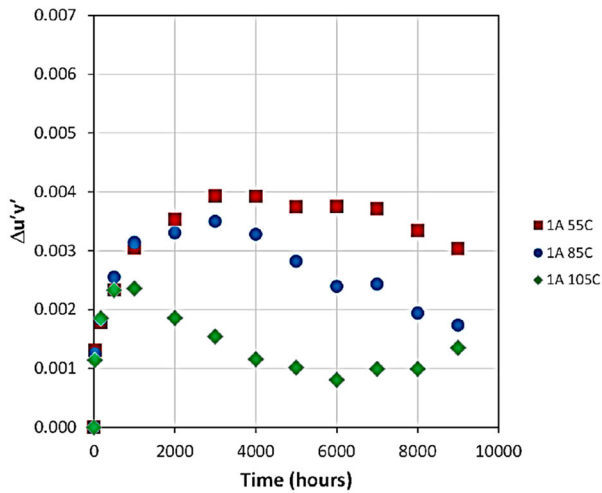


Figure 11. Effects of temperature on the chromaticity shift ($\Delta u'v'$) of Luxeon LEDs operated at 1 amp [199], reproduced with permission.

accompanied by a decrease in $\Delta u'v'$. The higher the temperature, the shorter is the plateau (second stage), such that the plateau is hardly discernible at 105°C. Even during the region of minimal change in $\Delta u'v'$, there can be significant changes in $\Delta u'$ or $\Delta v'$ [195].

Degradation of optical components in LED packages can have one of the most significant contributions to the chromaticity shift of LED devices. This has to do with the fact that optical components in LED packages have a central role in the optical performance of LED devices by controlling the emission of light from the device. In fact, any depreciation in lumen output may involve a chromaticity shift as well [161–176]. As already mentioned, an LED lamp is a complicated system, containing secondary lenses, reflective layers, and

diffusers, all intended to achieve a desired light emission pattern. Interrelations between mentioned components can have some implications for the chromaticity maintenance of the device during its lifetime. There are many different reasons that can lead to chromaticity shifts in LED luminaires and lamps. Given that chromaticity shifts can be originated from optical materials and/or subsystems (e.g. lens or diffusers), the directions of chromaticity shift can be different from case to case, as shown in Figures 12 and 13.

When chromaticity maintenance is a concern, LEDs exhibit much better performance, compared to halogen and CFL lamps [164]. Figure 14 shows the change in the chromaticity of three mentioned light sources with time.

LEDs, depending on their package type and manufacturing method, will have different chromaticity shift regimes [197,206]. The direction of the chromaticity shift is to some extent an indication of the degradation mechanisms that are active. For instance, any shift along the blue-yellow line is due to a change in the relative proportion of yellow to blue emissions. A shift in the blue direction could possibly be related to a combination of the loss of phosphor quantum efficiency, the operation of the phosphor beyond its saturation flux level, and mechanical damage such as cracks in the phosphor–binder interface. A green shift is an indication of a change in the wavelength of the emitted light, which in most cases is related to the phosphor. A yellow shift in most cases has to do with either an increase in the efficiency of phosphor, related to either temperature decrease or change in the chemical structure of the phosphor such as photo-brightening. In addition, discolouration of the reflector, oxidation of the secondary lens, and

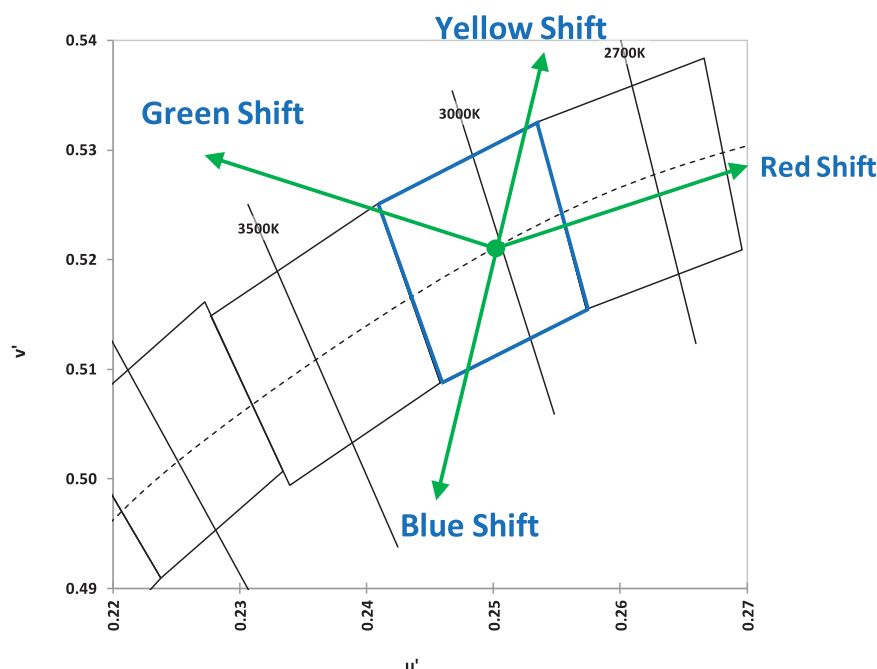


Figure 12. Directions of chromaticity shifts [201].

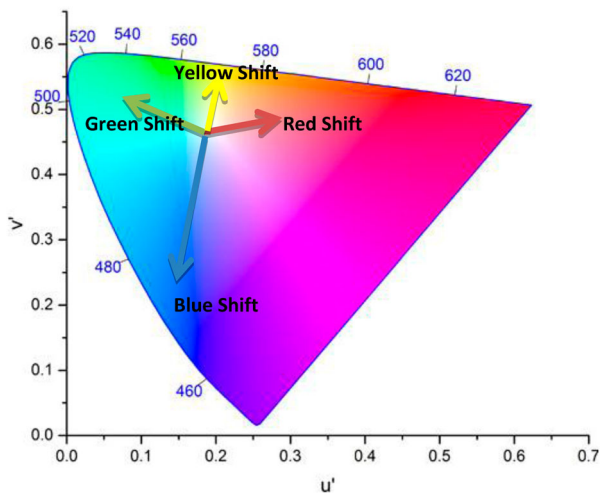


Figure 13. Illustration of colour shifts in the CIE 1976 colour space. Any change in the spectral proportion of any colours results in a chromaticity shift.

delamination/cracking at the phosphor-binder interface can cause yellow shifts. A red shift can be observed when a direct red light emitter is used [205]. Alternatively, a reduction in the balance of green emissions can also cause a shift in the red direction [203].

Other factors influencing chromaticity maintenance in LEDs include ageing-related structural changes of emitter, phosphor, and package/encapsulant materials. Ageing is accompanied with a decrease in the radiant flux of emitter over the time. Ageing can also influence the quantum efficiency of the phosphor. Encapsulants can undergo ageing-induced yellowing, cracking, and oxidation. In addition, the refractive index of encapsulants can also change in the course of time which can impact light extraction. Temperature accelerates the kinetics of degradation and therefore increases the magnitude of colour shift within a certain period of time. Temperature dependency of the chromaticity shift of a LED system is also a function of the manufacturing processes, LED design, and packaging materials.

The chromaticity shift taking place in LED-based products can in some cases be attributed to diffusion and reaction of contaminants, degradation of optical materials, and delamination at the interfaces. Among these reasons, optical materials degradation is the most crucial one. This includes the ageing of reflective surfaces inside the LED package as well as ageing of lens and encapsulants. The presence of contamination in the system can also have implications for the colour shift in LEDs. For instance, contaminants can alter the characteristics of reflective materials inside the LED, for example, by dulling silver, or by carbonisation of silicone. Another important cause of colour shift in the LEDs is believed to be interface delamination, which is defined as splitting of two materials at their interface [205]. In outdoor applications, the exposure of the package to the UV light can become a major concern. Even though the chromaticity shift issue has been comprehensively investigated, there are still many unknowns. More investigations should be conducted on the influences of lens materials, design, and different stresses (thermomechanical, photo-thermal, and hydrothermal) on the colour shift in LEDs.

In next sections (see Section 4), attention will be paid to important failure mechanisms, with all having significant influences on the chromaticity shift. The focus will be on discolouration, lens cracking, delamination, carbonisation, and thermal quenching of phosphors. Most observed and reported chromaticity shifts are due to either of these mechanisms (or a combination of them). Table 4 summarises mentioned failure mechanisms. Each mechanism will be explained in detail.

Discolouration

Polymeric materials degrade under light exposure and elevated temperatures, leading to chemical degradation through mechanisms such as chain scission and

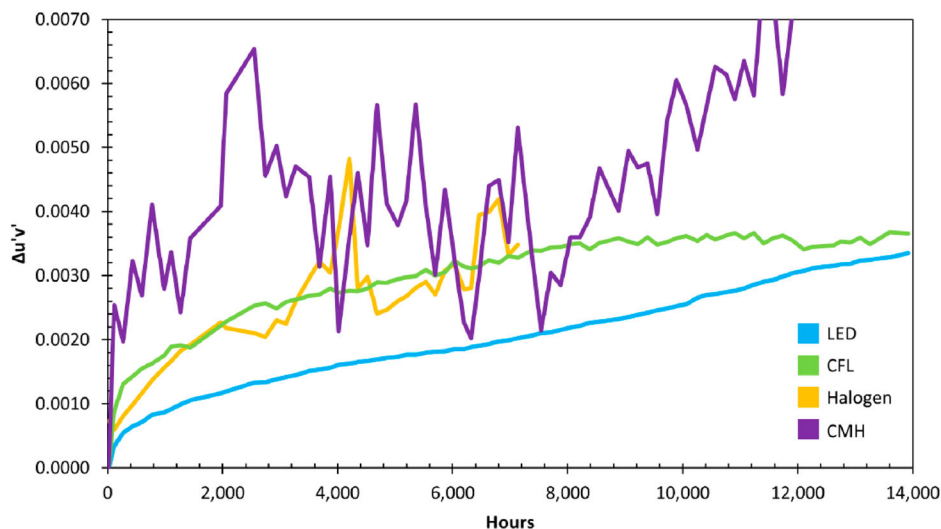


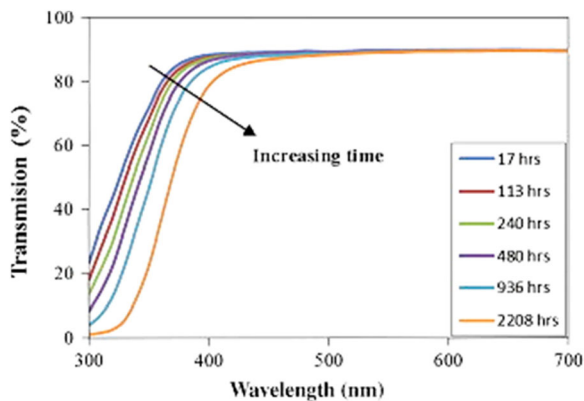
Figure 14. Average change in the chromaticity of different light sources with time [205].

Table 4. Summary of main failure mechanisms, which will have contribution to the colour shift [206].

Failure mechanisms	Description
Discolouration	<ul style="list-style-type: none"> Oxidative degradation of the encapsulant/lens materials (BPA-PC, PMMA, silicone, and epoxy), resulting in yellowing
Cracking	<ul style="list-style-type: none"> Oxidation degradation of reflective surfaces within the LED device
Delamination	<ul style="list-style-type: none"> Mechanical defects in the LED which change the average photon path through the phosphor Separation between different material interfaces, such as between the LED substrate and optical path materials
Carbonisation	<ul style="list-style-type: none"> Over-absorption of blue light by the phosphor Joule heating Self-heating of phosphors Radiation of lights with shorter wavelength
Phosphor degradation	<ul style="list-style-type: none"> Thermal-induced phosphorescence decay Phosphor thermal quenching

oxidation. Chemical ageing of polymers leads to the discolouration and yellowing of encapsulant/lens materials producing an increased absorption of blue light. Figure 15 illustrates the effect of photo-thermal ageing on BPA-PC. It is shown that in the wavelength 400–450, the absorption of blue light increases due to the oxidation of the lens materials [54].

The photodegradation of polymeric materials reduces their transparency, leading to the reduction of light output. The magnitude of this effect is typically dependent on the wavelength, with shorter wavelengths exhibiting larger attenuation [204]. Photodegradation depends on the exposure time and the intensity of radiation. The thermal effects, related to a junction temperature of the LED chip self-heating of the package [10] also play a major role in polymer discolouration in LED-based products [10]. Yazdan Mehr et al. [18] studied the effect of both thermal and photo-oxidation induced discolouration of BPA-PC. They have shown that radiation of blue light accelerates the thermal yellowing of BPA-PC. Narendran et al. [10] also postulated that temperature has a more prominent contribution to the yellowing than the short-wavelength radiation. The effect of humidity on the discolouration of polymers depends on the type of polymer. While epoxy is not significantly affected by

**Figure 15.** Transmission of light in photo thermally aged BPA-PC [54], reproduced with permission from Elsevier.

high humidity levels, BPA-PC shows more sensitivity to humidity [55].

Lens cracking

Degradation of optical properties in LEDs is not always controlled by chemical reactions. Sometimes it is originated from a mechanical defect in the system that may be caused by the chemical degradation of the polymer. One of the most common cases is the appearance of small cracks in the LED package, which increases internal reflections in LEDs, and this in turn adversely affects the light output of the device. This failure is reported to be more probable in PMMA and glass lenses which are used as a secondary lens. In addition, the operation condition is also considered to be a determining factor. For instance, stress variations induced by thermal shock can accelerate the formation of cracks in the epoxy lens [171,172]. Also, humidity and thermal exposure can result in deterioration of mechanical strength as well as fracture resistance, both having negative implications for crack resistance [173]. Xing Chen et al. [173] examined the effects of a phosphor coating on the structure and mechanical properties of silicone-phosphor composites using a uniaxial tensile test method. Results showed that the elongation of the composite is dependent on the volume fraction of phosphor [173]. It was also shown that crack initiation is more likely to take place in the vicinity of phosphor particles, where strain concentration is expectedly higher [173]. Adding phosphor to the polymer at some point is accompanied by stirring. If it is not performed well, bubbles could possibly be introduced to the mixture. De-aeration can eliminate most of macro-bubbles from the product. However, there is a chance that small bubbles cannot be completely extracted. When the polymer (especially silicone) undergoes curing, these small entrapped bubbles will to some extent expand and move towards the top surface of the encapsulant until polymer curing is complete. Moisture will also cause cracking by leaving an air gap after evaporation. Multiple heating and cooling cycles with the LED in on/off states will cause the defect to grow in size and the relative impact to increase. The importance of entrapped moisture on the lumen depreciation in LEDs and on the formation of cracks in silicone encapsulants, when both temperature and humidity are active stresses, have been reported by several research groups [36,184–186]. Examples of mentioned cracks are shown in Figure 16.

Delamination and debonding

One of the most prevalent failure mechanisms in high-powered LEDs is the delamination at the chip/phosphor interface, which in most cases is accompanied by chromaticity shifts in the yellow direction. Also,

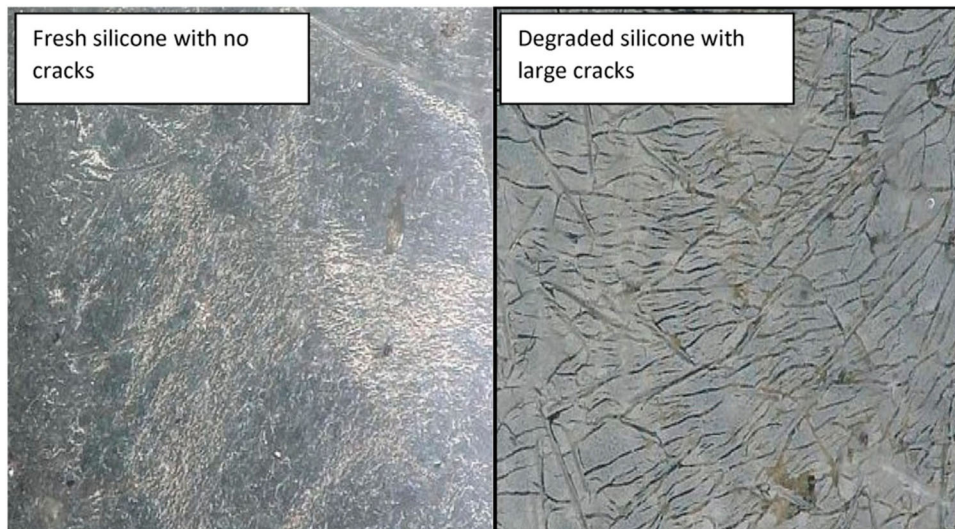


Figure 16. Cracks in the silicone after degradation [185], reproduced with permission from Elsevier.

debonding at the soldered areas, mainly caused by the existing differences between the CTEs as well as temperature cycles during production and service is another commonly observed failure modes in LEDs. Severe delamination is also reported at the interface of lead frames and epoxy moulding compound (EMC) used to encapsulate the lead frame [65,171,172]. It is reported that curing of epoxy resins during production is associated with a significant shrinkage, which is a source of internal stress and mismatch in the package [164]. In mid-power packages, the device consists of silicone encapsulants, metals, and moulding resins such as epoxies, each having different CTEs and mechanical properties. The integrity of the device in such complicated combinations strongly depends on the thermomechanical cycles during the production process as well as operating conditions. Any minor deviation from optimal production and operation windows can quickly result in delamination at the substrate/optical path interfaces. Figure 17 shows how the peeling of the phosphor-silicone secondary conversion layer at the edge and at the centre can influence the optical properties of the LED. In the former case, more blue light is allowed to escape without having interaction with phosphor, which can cause a chromaticity shift towards blue [171]. When delamination occurs (as shown in Figure 17), a low index of refraction material (i.e. air) is introduced into the optical path and the angle of refraction is changed. This is especially important in the central delamination example where the change in angle of refraction increases the path length of blue photons through the phosphor as shown in Figure 17. This mechanism is accompanied by a chromaticity shift towards the yellow direction. This has to do with the fact that central delamination increases the average path length of blue light in the phosphor, indicating that more blue light can be absorbed by the phosphor layer and be

converted into light of longer wavelengths (i.e. yellow). It is shown that moisture not only penetrates into the bulk of lens and encapsulant, but it also penetrates into the interface between these two [188,189]. Figure 18 shows examples of the mentioned interface delamination.

Carbonisation

Carbonisation is also believed to be an important reason for chromaticity shifts in LED packages [176]. It is reported that silicone can undergo severe carbonization, only by applying sufficient electrical current to the LED package to cause dielectric breakdown and an arc [176]. Carbonisation of the polymer material on the chip surface under electrical overstress leads to the damage of the diode by the formation of a conductive path across the LED. Carbonisation of the encapsulant also decreases the insulation resistance, significantly inhibiting its ability to provide electrical insulation between bond wires and lead chips [113]. The failure mode of carbonisation of the encapsulant is light output degradation. Meneghesso et al. [59] reported that polymer carbonisation was present along the bond wire, suggesting power or temperature-related encapsulant degradation.

Microstructural aspects of degradation

In previous sections (see Section ‘Degradation of optical materials’), failures classification and how they can be characterised were introduced. However, not much was said about the correlation between the chemical structure and the failure modes for different polymers lenses. In this section, the focus will be on chemical aspects of failures for different polymeric lens/encapsulants. When it comes to the chemical evolutions during ageing, it is important to mention how major stresses can influence polymer structures. Table 5 summarises

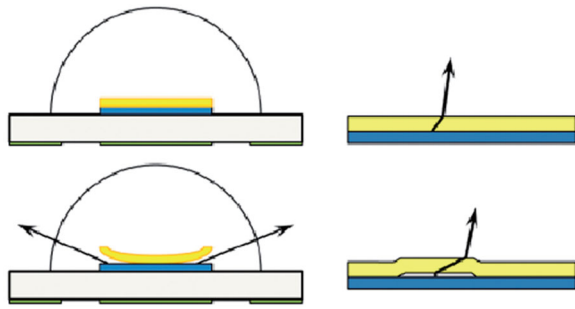


Figure 17. Edge and centre phosphor delamination in LED package [164].

different possible chemical changes under different stresses. The contributions of these stresses to the structure of polymers and how this will influence the failure modes of LEDs are discussed and reviewed in this section in detail.

Degradation of silicone

Effect of temperature

Temperature is one of the most important failure accelerators in LED systems. There are many studies, dealing with the influence of temperature on the optical properties, performance, and reliability of LED packages [59–64]. A key issue in this regard is to understand how temperature influences the chemical structure of the polymer over time and how this will affect the kinetics of thermal ageing. That is the reason that the majority of papers in this subject are focused on the chemistry and chemical aspects of degradation reactions [59–61]. On the other hand, there are a few papers, with their emphasis being mostly on the optics rather than the structure and the chemistry [60,62].

The thermal ageing of silicone/YAG phosphor composite specimens at 85°C leads to an initial increase in the conversion efficiency of YAG phosphor at the early stage of degradation, followed by a red shift [40]. The kinetics of temperature-induced degradation of silicone rubber/carbon black composite was also studied

Table 5. Chemical changes and chemical reactions, due to different stresses.

Stress	Possible chemical effects
Temperature	<ul style="list-style-type: none"> • Thermal oxidation reactions • Fries reaction • Depolymerisation • Chain scission • Ring oxidation • Molecular rearrangements • Cleavage rupture of Si–C₆H₄–Si bonds • Transformation of structure to monomers in PMMA • Deterioration of mechanical properties • Cross-linking • Weight loss • Deterioration of creep properties
Radiation of light	<ul style="list-style-type: none"> • Photo-Fries rearrangement • Increase of molecular mobility • Generation of chromophores • Side chain oxidation • Ring oxidation • Formation of radicals • Embrittlement • Cross-linking • Photo-polymerization • Photo-oxidation
Moisture	<ul style="list-style-type: none"> • Hydrolysis • Humidity-enhanced photo-oxidation • Deterioration of mechanical changes • Cracking • Brittleness • Conversion efficiency reduction in phosphors • Adhesion degradation

by TGA analysis in nitrogen [38]. It is known that adding conductive carbon black to silicone enhances its thermal stability. In that sense, carbon black is even more effective than silica (which is also commonly added to silicone rubber) [63,64]. Results show that the initiation of thermal degradation is at about 350°C and it approximately ends at 600°C [38]. Thermal degradation in silicone is always a multi-stage reaction. As well, the activation energies of degradation reactions are temperature-dependent, with this dependency becoming weaker at elevated temperatures. Effect of thermal ageing on silicon delamination is shown in Figure 19 in which the delamination at the silicone/PPA interface is seen in both blue and white LEDs.

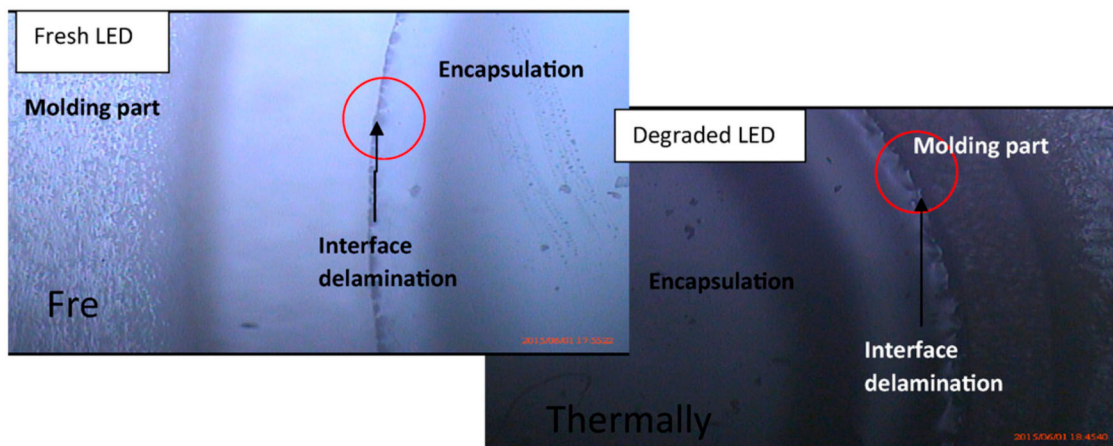


Figure 18. Optical microscope images of interface delamination in white high power LEDs [190], reproduced with permission from Elsevier.

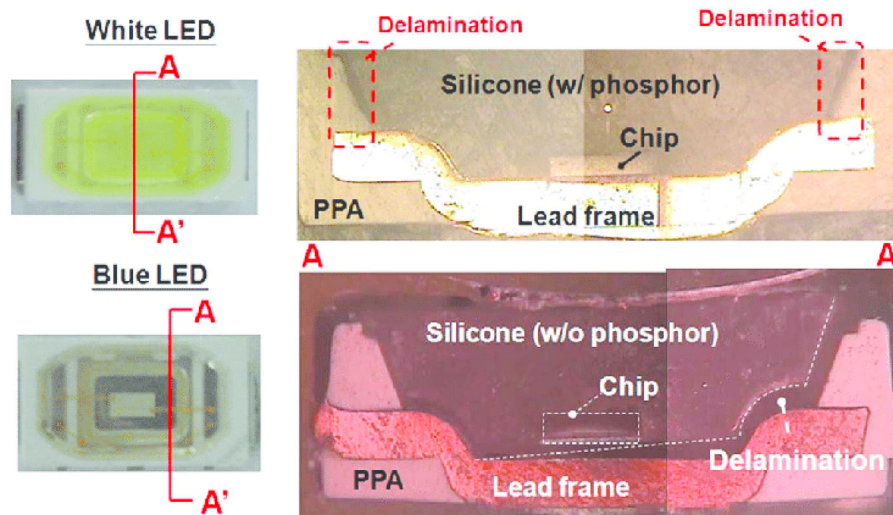


Figure 19. Effects of thermal ageing on the interface delamination failure in white and blue LED packages [193], reproduced with permission from Elsevier].

Effect of light

Fischer et al. [40] studied the influences of UV radiation on the mechanical and optical properties of silicones. Both discolouration and embrittlement, related to UV light exposure were observed and reported in their study. Fischer et al. [40] postulated that both mentioned phenomena are linked to UV-induced generation of radicals. This is followed by cross-linking reactions and consequently embrittlement and mechanical failures. With that said, it is not surprising that increasing the cross-link density in silicone and lowering the motion of chains, formed as a consequence of UV irradiation, can contribute positively to the optical and mechanical characteristics of silicone. Photo-induced radical generation in silicone can also result in the creation of nano-sized metallic clusters, which in turn accelerates the kinetics of discolouration in silicone. Figure 20 shows sandwiched samples of different kind of silicone glues after UV exposure. It is shown that the discolouration upon UV irradiation seems to be a general feature, being nearly independent of the molecular structure of the silicones.

One of the main failures in silicone materials in LED-based products is carbonisation caused by electrical overstress. It is reported that silicone can undergo severe carbonisation, by applying current to the LED package resulting in dielectric breakdown

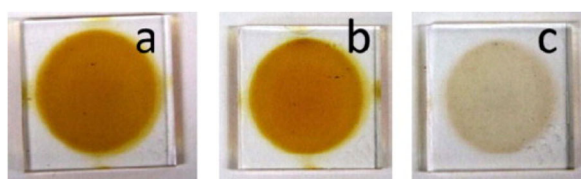


Figure 20. Picture of the sandwiched samples of the silicone glues after UV-exposure under vacuum using the ESTEC SUV facility [40].

[176]. Also, silicone carbonisation can in some instances be attributed to either of the following reasons (or a combination of them); (i) Over-absorption of blue light by the phosphor, (ii) Joule heating, (iii) Self-heating of phosphors, and (iv) radiation of lights with shorter wavelength (than blue light). An example of carbonisation is shown in Figure 21 in which the device is aged using temperature and current.

Effect of moisture and contaminations

To understand the attribution of humidity to the optical degradation of silicone, one needs to know the mechanisms of absorption and diffusion of water in silicone. The work, done by Xiao et al. [145], is a good reference in this regard, especially the part which correlates the absorption/desorption of water to the degradation reaction of silicone. Hydrothermal ageing of silicone, in the beginning, is accompanied by water absorption, confirmed by a weight increase. Assuming that water diffusion in silicone follows a Fickian law and that the degradation reaction is essentially controlled by hydrolysis, a model with a perfect agreement with experimental observations was proposed [145]. Zhang et al. [36] performed a series of experiments to examine the influences of humidity on the luminescence properties of the phosphor layer on silicone/YAG phosphor composites [36]. They concluded that a high level of humidity substantially decreases the conversion efficiency of silicone/YAG phosphor composites. Chemicals and contaminations can also result in LED light quality degradation and discolouration of encapsulant materials. Figure 22 illustrates the degradation effect from a volatile organic compound (VOC) that permeated the silicone encapsulant and covered the LED chip [207].

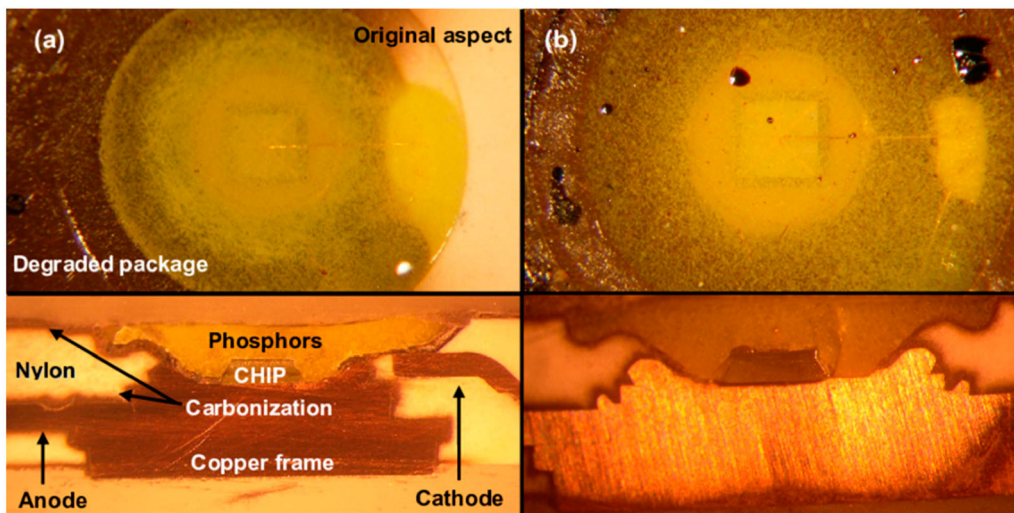


Figure 21. Carbonisation in LED package, (a) aged at 400 mA and (b) aged at 220°C [198].

When an LED lamp is in use (especially in the presence of heat and humidity), moisture can diffuse inwards and will go into these entrapped bubbles, which in turn results in an increase in their volume. Expanded bubbles at the interface can deteriorate the bond strength and hence can cause interface de-cohesion. Clusters of small voids can therefore form and at some point, the coalescence of voids are expected to take place. Figure 23 shows an example of the mentioned phenomenon. In this case, significant lumen depreciation is anticipated [183].

By increasing ageing time moisture level inside packaging materials in LED increases continuously. The hydro-mechanical stresses due to thermal mismatches can deteriorate the strength of the interface bonding, leading to the delamination [191,192]. Figure 24 shows typical delamination at the polymer/lead frame interface. Absorbed moisture has obviously an accelerating influence by providing oxygen and hydrogen ions [183].

Degradation of polycarbonate

Effect of temperature

Lee et al. [58] systematically studied the thermal degradation of BPA-PC above 300°C. They proposed three temperature-dependent degradation regimes; with the

first step being oxidation at 300–320°C. At a slightly higher temperature range (340–480°C), oxidation is followed by depolymerisation. Finally, at the third degradation mode, what controls the kinetics of thermal degradation is the chain scission reaction, reported at the temperature range 480–600°C. In an attempt to get closer to the real LED operational conditions, Yazdan Mehr et al. [60,62] performed a series of thermal degradation tests for BPA-PC polymer at 100, 120, and 140°C. This is addressed in Mehr et al results [21,60,62]. Thermal ageing at a low-temperature regime is associated with oxidation and rearrangement reactions, both having implications for discolouration of LEDs. A major consequence of yellowing is a decrease in the transmissivity in LED lenses [61]. Whether the rearrangement or oxidation reactions controls, the discolouration depends on the temperature and oxygen contents. Davis et al. [56] proposed that rearrangement products are expected to form at high temperatures, in the absence of oxygen. More common rearrangement products in BPA-PCs are phenols, phenylsalicylates, and diphenylcarbonates [52]. At low-temperature conditions, when oxygen is available, the formation of oxidation products in BPA-PCs is more anticipated [58,59]. Rivaton et al. [49] divided the oxidation reactions into two categories; ring and chain oxidation. They performed accelerated thermal ageing at



Figure 22. Influence of thermal ageing on the discolouration of LED optical package [207].

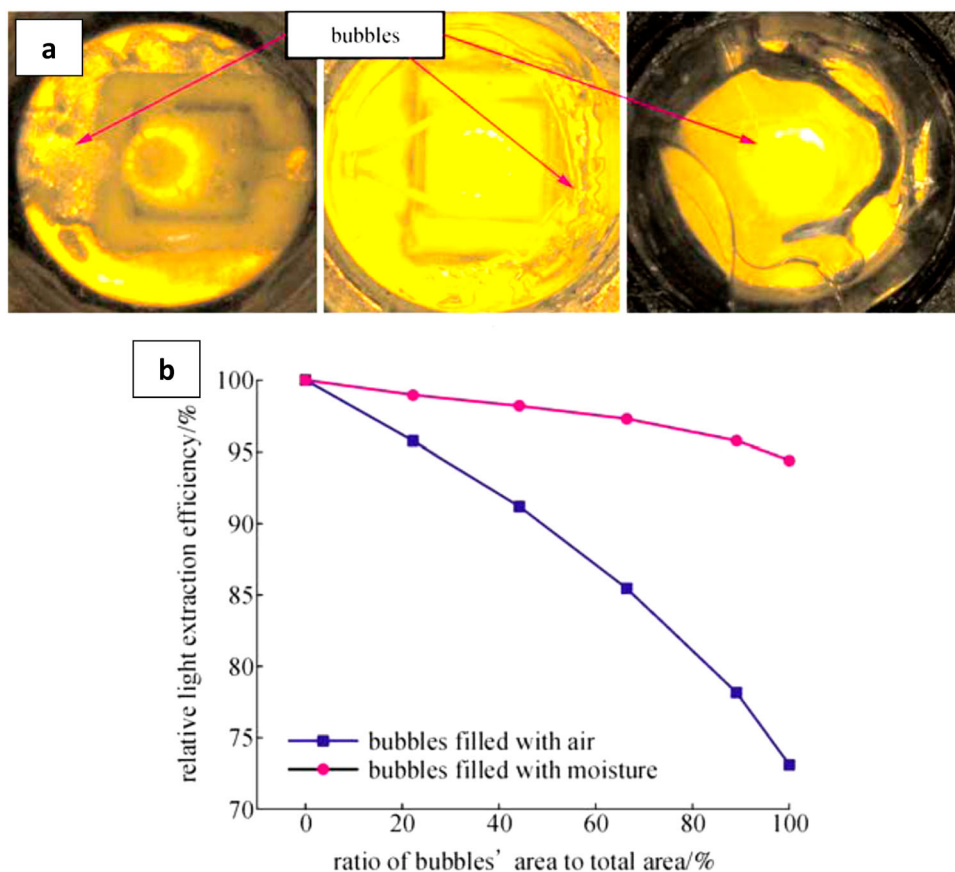


Figure 23. (a) Different forms of bubbles in silicone encapsulants and (b) effects of bubbles on the lumen output [183].

conditions of thermo-oxidation at 170°C. FTIR results (Figure 25) showed that dicarboxylic acids formed in ring oxidation thermally cyclise to form anhydrides characterised by the infrared absorption bands observed at 1860 and 1840 cm^{-1} of the appearance of infrared absorption bands at 1724 and 1690 cm^{-1} , attributable to aliphatic and aromatic ketones, are the evidence of side-chain oxidation in thermally aged PC.

The oxidation reaction in BPA-PCs can easily be confirmed by checking the FTIR-ATR spectra of specimens. Any increase in the absorption intensity around 1690, 1840/1860, and 1713 cm^{-1} , related to cyclic anhydrides, aromatic ketones, and cyclic anhydrides, could be a confirmation of thermal oxidation reaction [49]. In addition to the mentioned tendency for the chromaticity/colour shift in the secondary lens, encapsulant/lens materials in the LED package are also prone to turn yellow. This discolouration, in most cases, is oxidation-driven. Discolouration of BPA-PC lens in

different conditions has been comprehensively studied in previous works [60–62]. We showed that both thermal and photo-ageing result in yellowing and colour shift [60].

Effect of light

Light exposure, either in the UV or in the visible range, is considered as an important failure mode for packaging materials. The general concept is that light-matter interactions can increase molecular mobility in the polymer and they can also generate chromophores, with both being known as the main reasons for photodegradation. Photodegradation reactions in BPA-PC, in particular, take place via different reaction pathways known as oxidation and photo-Fries rearrangement. Depending on the wavelength, either of the said mechanisms can become dominant with the former being more important at wavelengths higher than 340 nm and the latter at a wavelength lower than 300 nm [46,47]. However,

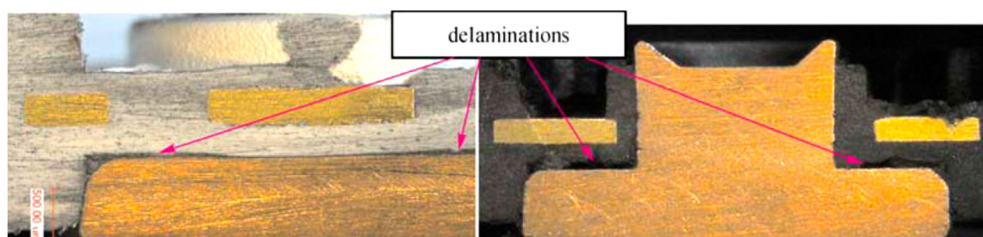


Figure 24. Delaminations in at the polymer packages of Luxeon [183].

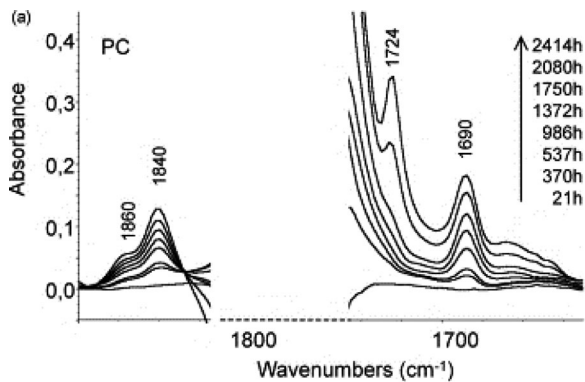


Figure 25. Changes in the carbonyl region of IR spectra of thermo-oxidised PC film at 170°C [49].

there are some reports, showing that photo-Fries rearrangement products can also form at wavelengths higher than 300 nm and indicated by the rising absorbance with time shown in Figure 26 [55].

The fact that polycarbonates contain phenyl ester groups makes them prone to undergo photo-Fries rearrangement reactions. This rearrangement reaction takes place in three steps; (1) the creation of radicals, (2) the recombination of radicals, and (3) hydrogen abstraction. More specifically, this reaction is accompanied by the rearrangement of carbonyl groups to phenylsalicylate (L_1), dihydroxybenzophenone (L_2) and L_3 , as depicted in Figure 27. The formation of photo-Fries reaction products deteriorates the optical properties of BPA-PC sample by increasing light absorbance.

As noted before, when the interacting light has wavelengths of greater than 300 nm, oxidation reactions in BPA-PC are more likely to take place than rearrangement reaction. Oxidation occurs in either the side chain or in the rings, but the probability of side chain oxidation in BPA-PC is reportedly higher than ring oxidation [35–44]. LED systems, based on blue-light emitting chips, are obviously in the long wavelength regime since the blue light has a

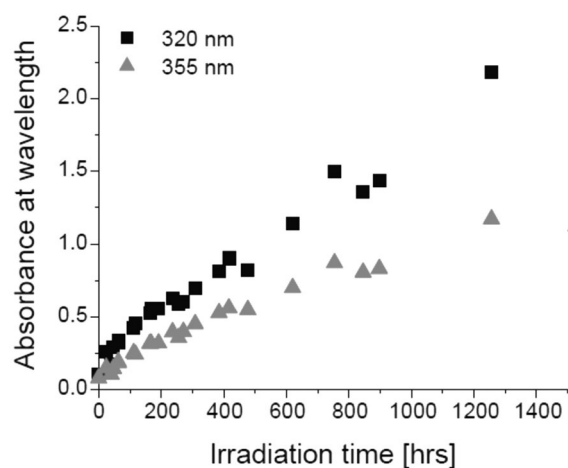


Figure 26. Photo-Fries rearrangement at 340 nm irradiation [63], reproduced with permission from Elsevier.

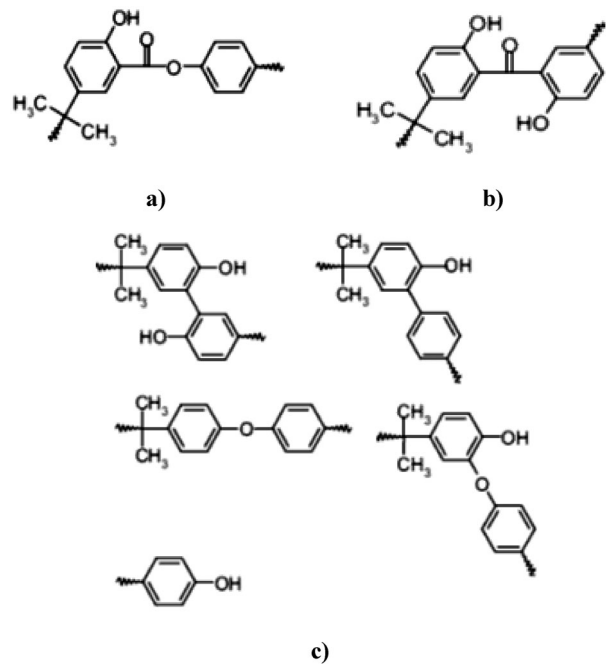


Figure 27. Photo-Fries rearrangement products (a) L_1 , (b) L_2 , and (c) L_3 [44], reproduced with permission from Elsevier.

wavelength in the range 445–450 nm. It is often safe to initially assume that both oxidation and rearrangement can potentially contribute to the degradation. Obviously, depending on the wavelength one might have a more dominant effect than the other. Light-PC interactions gradually change the colour of BPA-PC and decrease its transmissivity. This obviously can have negative impacts on the lumen output and effective lifetime of LEDs. A factor, named yellowing index (YI), is widely used to quantify discolouration in LEDs [62]. In one of our previous works [62], it was shown how YI changes with ageing time. YI alteration with time typically takes place in two successive regimes. The first stage is the induction period, where the YI is almost constant. In this induction period, the magnitude of oxidation and photo-Fries products is not high enough to induce any discolouration. At some point, the rate of the discolouration reaction is accelerated, and BPA-PC samples begin to turn yellow in colour. The transition time between the induction and the acceleration depends on the temperature and environmental conditions such as humidity and light levels. Obviously, the higher the temperature, the earlier the BPA-PC enters into the second regime [54]. Figure 28 shows this typical two-stage behaviour in BPA-PC. In this case, the applied stresses were temperature and temperature plus light. As expected, the induction period in the latter is faster and the YI is higher, inferring that light radiation can have a significant attribution to the yellowing [62].

Effect of moisture

Given that in many outdoor applications, polymers are expected to function well in atmospheres of

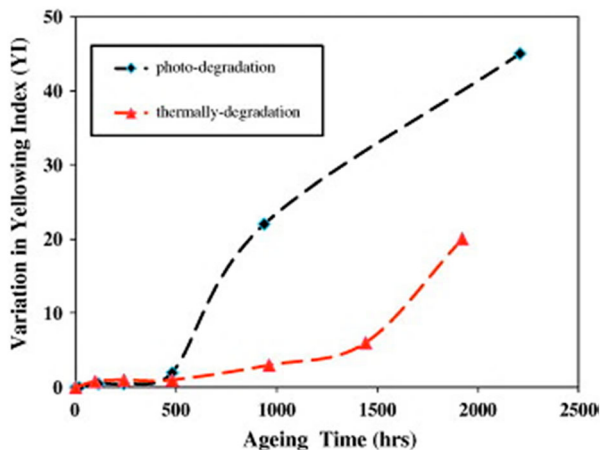


Figure 28. Effects of temperature and temperature plus blue light radiation on the YI of BPA-PC samples [62], reproduced with permission from Elsevier.

high humidity, understanding the nature and consequences of moisture-polymer reactions becomes crucially important. Clark et al. [54] examined the effects of high levels of humidity (% 50 relative humidity) on the photodegradation reactions of BPA-PC [54]. It was shown that in such high levels of humidity, the photo-oxidation reaction becomes a dominant degradation reaction. More details of their study are shown in Figure 29. The similarity between the nature of the surface after 180 days' exposure at two locations of Hot/WET and Hot/Dry is evident from the intensities increasing the intensity from C9O and O-C9O, and C-O components. It is clear from these data that extensive photodegradation has occurred. The carboxylate feature is predominant over the carbonyl component after 12 and 24 months'

exposure in H/D conditions, the reverse being the case for H/W weathering.

Robert et al. [64] also studied the influence of humidity on mechanical characteristic of BPA-PC. In this investigation, BPA-PC tensile specimens were aged for more than 15 months at relative humidity levels of 0, 75, and 100% and temperatures ranging between 60 and 93°C. They showed a significant weight reduction due to the hydrolysis of their BPA-PC samples. At a certain critical weight, a sharp drop in the strength of BPA-PC was observed. At this transition point, samples no longer showed ductile behaviour, and they all fractured in a brittle mode. Extrapolations, performed at this study [64], showed that it takes 5 years to reach this ductile-to-brittle transition point if BPA-PC sample is kept at 38°C at 100% relative humidity. Yet, even long before this transition, elongation is adversely affected due to the hydrolysis reaction. The influence of humidity levels (up to 42% relative humidity) on the kinetics of photo-degradation reaction in BPA-PC, exposed to UV light up to 3000 h, was also studied [65]. Results showed that photo-oxidation reactions became dominant with increasing ageing time. Humidity-induced photo-oxidation, associated with weight loss, results in the yellowing of the polymer and depreciation of its optical properties. The latter includes a decrease in light transparency and increase in haziness. The humidity-assisted photo-induced yellowing reaction is believed to be self-accelerating [65]. Rivaton et al. [208] also investigated the effect of moisture on photo-aged polycarbonate. They showed that products with molecular vibrations at 1840 and 1860 cm^{-1} have low intensity in aqueous conditions, compared to the dry condition, showing that oxidation products are dissolved by water.

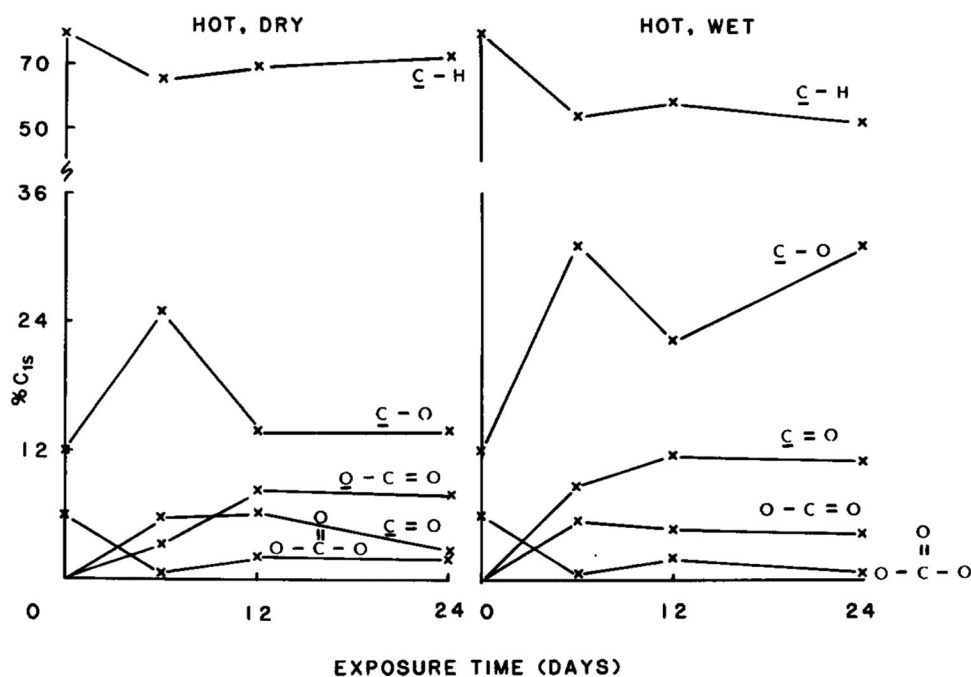


Figure 29. Cls X-ray photoelectron spectra components assigned from curve fits for photo-aged PC sample in wet/dry condition.

Degradation of PMMA

Effect of temperature

The temperature-induced failure of PMMA has been widely studied [77–88]. Thermal degradation of PMMA is accompanied by the transformation of initial structure to monomers when heated up to 550°C [78–81]. As well, there are some indications [85–88] that at least in some cases, degradation in PMMA takes place by the elimination of the side-groups and formation of unsaturated products. In PMMA, chain scission has a minor influence on the kinetics of thermal degradation due to that fact that the rate of recombination reaction of chain ends in this polymer is rather high [87,88]. Namouchi et al. [79] studied the influence of thermal exposure on the electrical properties of PMMA polymer. PMMA samples in their study were subjected to a continuous heating-cooling thermal cycle, with the maximum and minimum temperatures being 45 and 20°C, respectively. Results showed that oxidation has a prominent attribution to the thermal ageing of PMMAs. Lu et al. [91] drew a similar conclusion concerning the attribution of oxidation to the thermal ageing of PMMA. In their study, PMMA specimens, subjected to thermal exposure at 150°C, showed a significant raise in the FTIR oxidation peaks inferring that oxidation has taken place during thermal exposure [91]. Lue et al. [91] showed that at lower temperatures (around 100°C), absorption peaks in the range of 1500–1600 cm⁻¹ appeared in the FTIR spectra of PMMA samples as a consequence of thermal ageing. This peak is attributed to the asymmetric stretch of the carboxyl ACOOH group, which is an oxidation product. This finding confirms the occurrence of oxidation in PMMA during thermal ageing, even at temperatures as low as 100°C. Figure 30 illustrates that humidity, temperature and blue light radiation on PMMA.

While Lue et al. [91] claimed that such low-temperature oxidation has hardly any influence on the transmission spectra of aged PMMAs, Estupinan et al. [93] reported 1.01% decrease in the transmission at 450 nm, after only 90 h of temperature exposure at 72°C. This contradiction is most probably due to minor differences in the initial structure of PMMAs, used in these two studies. Luo et al. [94] studied the creep behaviour of PMMA at different temperatures under different loading conditions. Crissman [95] also tried to postulate how the chemistry and physics of degradation in PMMA are linked to its creep rupture characteristics. Cheng et al. [98] also studied the influence of thermal degradation on the mechanical properties of PMMA, using a scratching method. In fact, increasing the ageing time lowers this critical load. This link between the crack initiation strength and the degradation extent, if it is well understood, can be used as a simple and effective way of studying the thermal aging of PMMA.

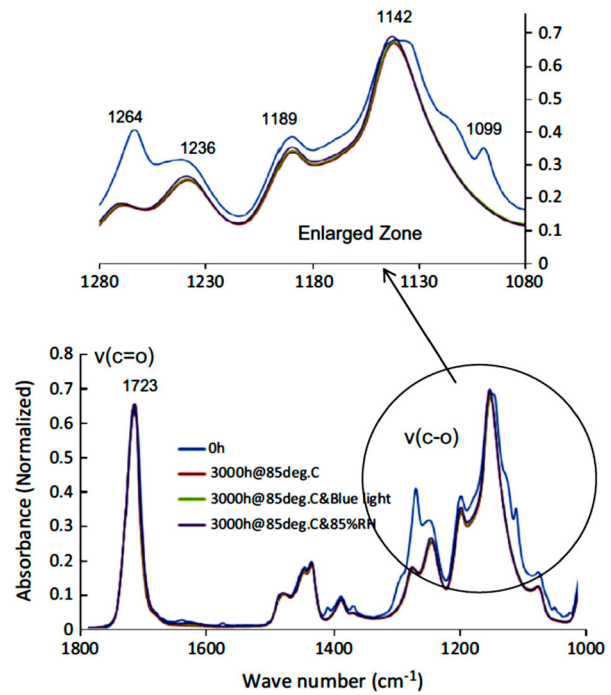


Figure 30. Infrared spectra of aged PMMA at different conditions [91], reproduced with permission from Elsevier.

BPA-PC and PMMA are normally used as a secondary lens in LED packages, due to their comparatively lower costs. Royer et al. [164] postulated that in case BPA-PC and PMMA are used as a secondary lens, they hardly have any contribution to the discolouration and colour shift of LED devices [164]. Lu et al. [93] examined the influence of temperature- and blue light radiation-induced degradation of BPA-PC and PMMA on their chromaticity shifts of LED devices. Results, depicted in 31, show that discolouration in both BPA-PC and PMMA lenses results in a change in the spectral power distribution, and this obviously leads to chromaticity and colour shifts. In the case of BPA-PC, degradation at 85°C up to 3000 h is associated with a decrease in the intensity of blue light peak, with almost no change in the intensity of the yellow peak. This obviously results in a yellow shift. Under similar test conditions, PMMA showed comparatively much lower changes (see Figure 31), inferring that in that sense it has a much lower sensitivity to the photo- and thermal degradations.

Figure 32 illustrates differences between the yellowing of PC and PMMA samples [91].

Effect of light

There are a few reports, concerning the photochemical degradation reaction of PMMA, mostly under UV-light exposure [66–103]. The main reported degradation phenomena in PMMA during photo-ageing include complete/partial side chain scissions, light-induced main chain defragmentation, and de-polymerisation [66–103]. Radiant-PMMA interactions, when the

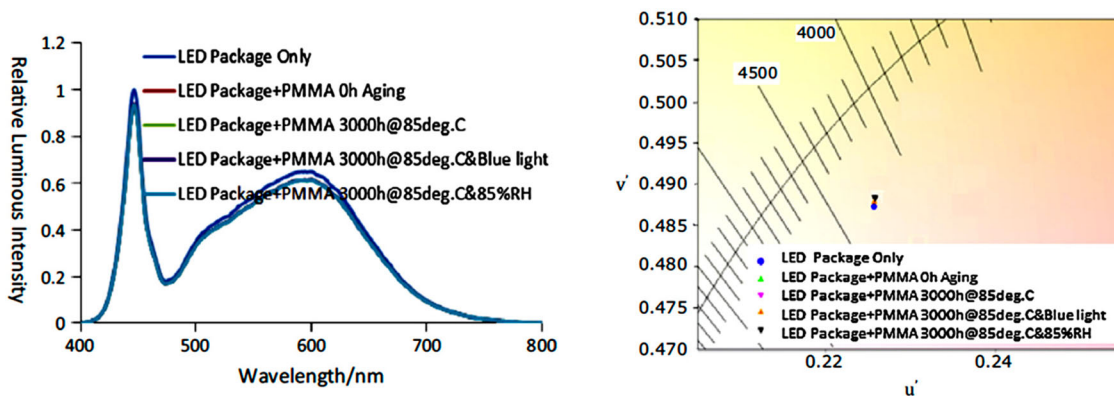


Figure 31. Spectral power distribution (left) and chromaticity diagram (right) of PMMA after 3000 h of thermal ageing at 85°C [91], reproduced with permission from Elsevier.

wavelength is shorter than 250 nm, reportedly results in the partial/complete scissions in the ester side chain [119–122], whereas in case of higher wavelengths, cross-linking, photo-polymerisation, or curing are more likely to occur [121,122]. Hu et al. [129] examined the photo-ageing reaction mechanism of PMMA under UV exposure. Expectedly, they reported alterations in the refractive index of the polymer. As well, they observed some reductions in the thickness of the aged spin-coated PMMA thin film samples. The observed thickness reduction in aged samples was reported to be in accordance with the measured weight loss. A group of researchers [103–110] examined the influence of radiated light dose (with wavelength in the range 193–308 nm) on the curing, photo-ageing, and photo-polymerisation of PMMA. It was shown that radiant-PMMA interaction reactions also depend upon the irradiation dose. At low irradiation dose regime, radiant-induced curing is likely to take place which results in the cross-linking of two neighbouring ester side chains. By increasing the

irradiation dose, radiant-induced curing reaction is replaced with the side chain scissions, which in turn is accompanied with an increase in the refractive index of PMMA. The spectrometric investigations yield the scheme of the main laser-induced photochemical reactions in PMMA as shown in Figure 33. The complete side chain is separated from the main chain. This photochemical reaction of Norrish Type I occurs left from the carbonyl group [110].

Degradation of epoxy

Effect of temperature

There are many reports [147–161], addressing degradation of optical materials (more importantly lens and reflectors) in LEDs, under different stresses, including temperature, UV/Visible light, ionic contaminations, and humidity. Thermal degradation of an epoxy resin, prepared by reaction of 2,2-bis(4'-hydroxy phenyl)propane (bisphenol-A) with

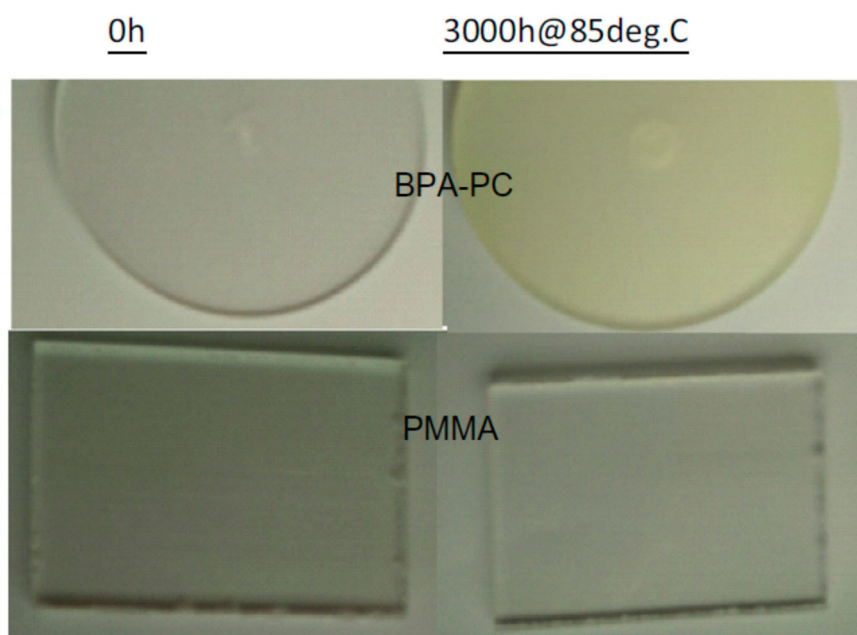


Figure 32. Yellowing of PC versus PMMA.

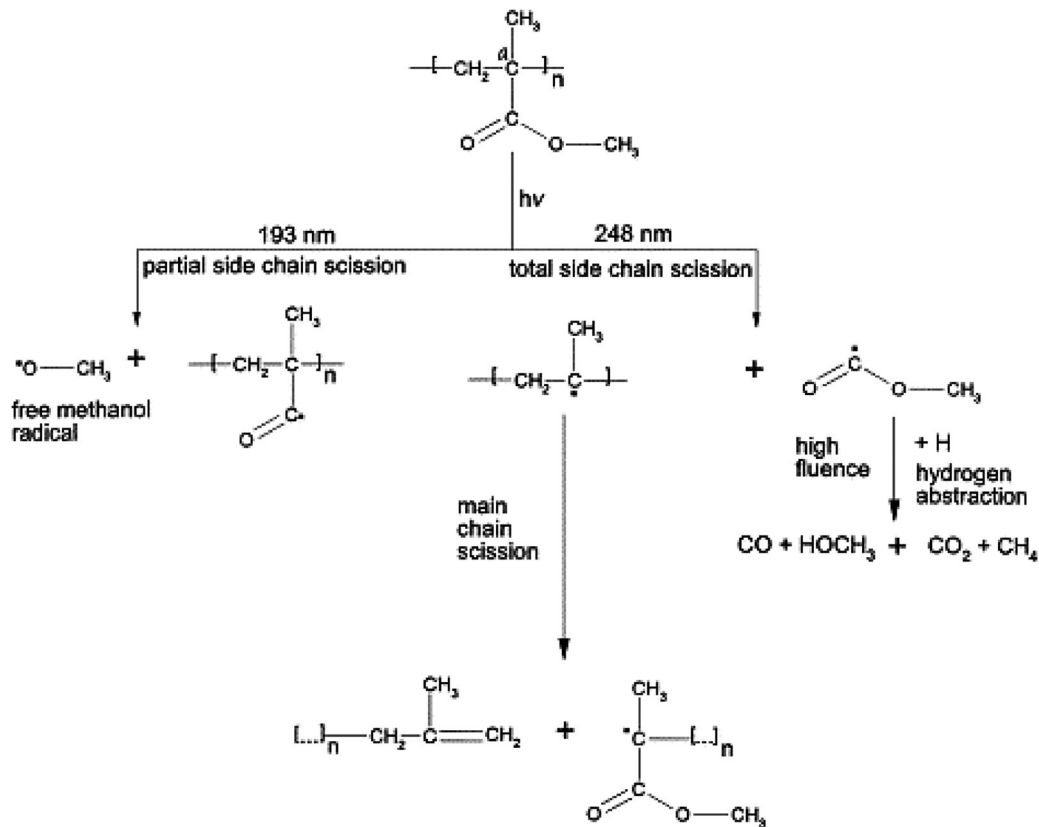


Figure 33. Simplified degradation scheme of irradiated PMMA [110].

1-chloro-2,3-epoxy propane (epichlorhydrin), was studied [138]. Thermal degradation at temperatures higher than 320°C results in brittle and insoluble residues. Above 340°C, cross-linking is associated with the decomposition of the residue, and this, in turn, results in the formation of phenolic compounds in combination with other complex products of comparatively high molecular weights [138]. The organophosphorus oligomer, poly(DOPO-substituted hydroxyphenyl methanol pentaerythritol diphosphate) (PFR), in this case, was synthesised by means of the polycondensation between 10-(2,5-dihydroxyl phenyl)-9,10-dihydro-9-oxa-10-phosphaphenanthrene-10-oxide (DOPO-BQ) and pentaerythritol diphosphonate dichloride (SPDPC). Results confirmed that the flame retardancy and thermal stability of silicone can dramatically be improved if it is mixed with PFR [143]. It was also shown that PFR can slightly increase strain-to-failure of epoxy, which is expectedly accompanied with a minor decrease in its mechanical strength. Based on the obtained results, it was postulated that the thermal degradation of EP/PFR compound takes place via two different temperature-dependent mechanisms. Thermal degradation of EP/PFR hybrid is either due to the decomposition of phosphate or that of aromatic structure.

Effect of light

Jung et al. [170] examined the influence of combined electro-thermal stresses (250 mA/DC at 85°C) on the

degradation of optical properties of white GaN-based LEDs (phosphor-converted). Results showed a very fast kinetics of degradation of optical outputs of the device. After 300 h of exposure, they observed 340 K increase in the colour temperature as well as a substantial decrease in the luminous flux (by a factor of 0.43). It is postulated that the mentioned degradation of optical properties is originated from the temperature-induced discolouration of packaging material. As well, non-radiative recombination defects formed under the influence of the current, play a prominent role.

Figure 34 illustrates the influence of thermal ageing at 55 and 105°C on the discolouration of epoxy in LED. While ageing at 55°C has not induced any yellowing, that at 105°C has resulted in a slight yellowing [29].

Effect of moisture

Hydrothermal ageing is known to be a major life-limiting and degradation-accelerating factor in epoxy resins [145].

In addition to heat and light effects in discolouration, humidity can also have an accelerating effect on the kinetics of yellowing in EMC used in some LED packages [29]. Figure 35 shows an example in which the effect of humidity on the yellowing of EMC is investigated. The sample in the wet high temperature (95°C) operation lifetime (WHTOL 95°C/95% RH) showed slightly more yellowing the one which is only thermally aged at 105°C (HTOL 105°C).

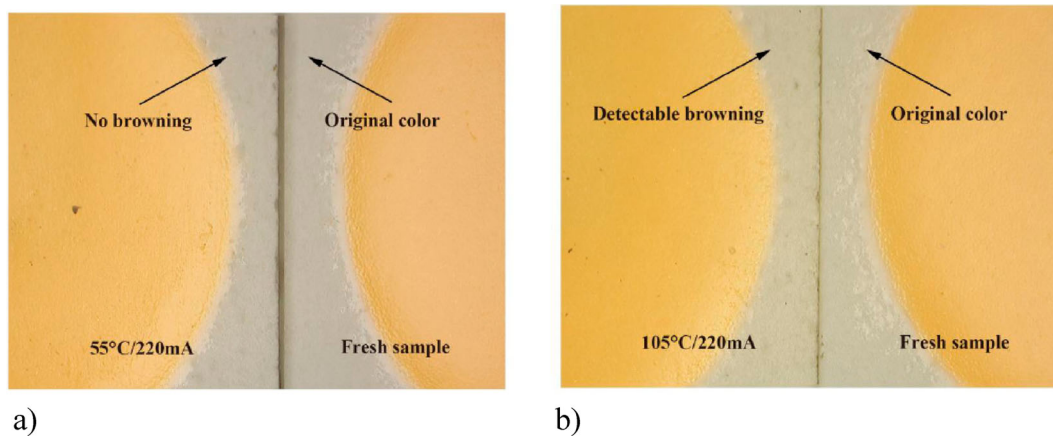


Figure 34. Influence of ageing at (a) 55°C and (b) 105°C for 6000 h on the discoloration of epoxy in LED [29], reproduced with permission from authors.

Degradation of phosphor

The efficiency of the phosphor is dependent on temperature; the higher the temperature, the lower is the efficiency. This phenomenon is known as phosphor thermal quenching. Phosphors, used in white LEDs, have basically relatively low thermal quenching [177]. Phosphorescence and fluorescence are two fundamental mechanisms of light generation, with the former having a comparatively longer emission pathway

(longer lifetime at the excited state). Phosphor thermal quenching can induce chromaticity shifts due to the relative reduction in the phosphor light output. Increasing temperature is associated with an increase in the probability of non-radiative transition which can cause a chromaticity in pc-LED devices to shift towards blue light and the broadening of spectral power distribution [178,179]. Another important issue concerning phosphor is the temperature at the interface of phosphor particles and the surrounding

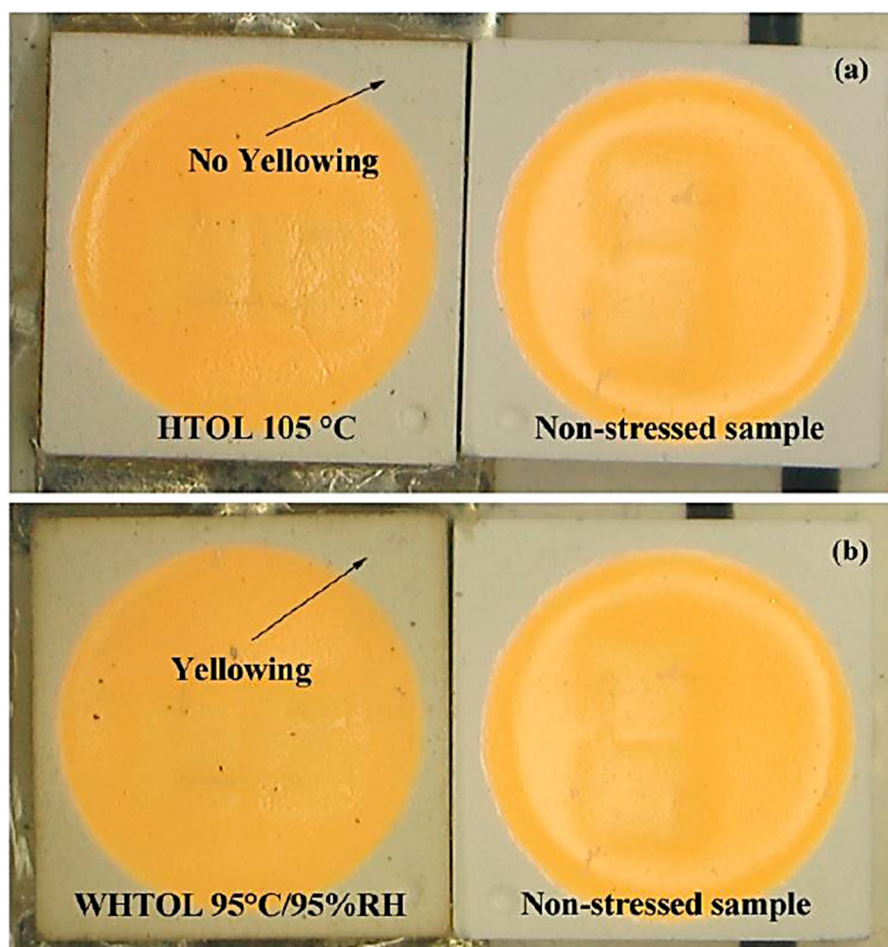


Figure 35. Influence of humidity of the yellowing of EMC [29], reproduced with permission from authors.

binder matrix. The temperature at the phosphor/binder interface can be up to 30–50°C more than the junction temperature of the LED. The higher temperature of the phosphor-binder layer is due to the heat generated in the phosphor (e.g. Stokes losses, light absorption), thermal energy from the LED, and the lack of effective heat dissipation. This will obviously have implications for the rate of chromaticity shift in LEDs. This slightly higher temperature at the interface can induce discolouration and cause decohesion and cracking; all having significant negative contributions to the lumen and chromaticity maintenance.

Conclusions and future prospect

This paper tries to give an overview of different failure mechanisms in LED devices. Most of the mentioned failure mechanisms are related to LEDs, used in the lighting market. The lighting market for LEDs, in particular, is expanding rapidly with a market share that is expected to grow to almost full coverage in 2020. The packaged LED revenue was reported at \$14.4B (billion) for 2013 with a projection that the total will reach \$25.9B in 2018 (Ref: www.ledmagazine.com). Lighting accounts for ~20% of the global electrical energy use. Knowing that LEDs consume 75% less energy, compared to traditional light sources, their impact on the global energy consumption is enormous and obviously extremely important most of the mentioned failure mechanisms are related to lighting for indoor applications. This paper is a comprehensive review of optical materials-related failure mechanisms. The main focus of this paper is on the chromaticity shift which is directly related to chemical reactions and structural changes in LED optical components. Optical components in LED-based products undergo different degradation reactions during service, which can obviously have implications for chromaticity shifts. So, chromaticity shifts can be controlled and postponed, using materials which are structurally and chemically more stable. Each material has its own characteristic optical properties and failure modes. Different optical materials and their contribution to LED-based product failures are systematically reviewed in this paper. It is also shown that light exposure, temperature, and humidity have significant contributions to the structural and chemical changes, and in turn on the ageing of optical polymers, used in LED-based products. LEDs are increasingly used in outdoor applications as well. When it comes to outdoor applications, especially in harsh environment conditions, other failure mechanisms, including UV radiation or ionic contaminations, should be taken into consideration. Not much is known about the failure mechanisms of LEDs in harsh environment conditions. Future research activities should focus on this important issue. There are other important market domains

for LEDs, including health care, mobile electronic devices, and automotive. Failure mechanisms in each of these applications might be different. Specific studies need to be done to evaluate exact failure mechanisms in different applications. Future developments in LED devices are very much dependent on how heat generation in devices is managed. Temperature has a big influence on the kinetics of degradation. Innovative device packages enabling lower working temperature will increase LED lifetimes. Further investigations are required to improve reliability and life time assessment models, in order to overcome several active failure mechanisms and link to life time assessments.

Disclosure statement

No potential conflict of interest was reported by the authors.

ORCID

M. Yazdan Mehr  <http://orcid.org/0000-0001-5935-7395>

W. D. van Driel  <http://orcid.org/0000-0001-8882-2508>

J. L. Davis  <http://orcid.org/0000-0001-6023-6558>

References

- [1] Holonyak N Jr, Bevaqua SF. Coherent light emission from GaAs(1-x)Px junctions. *Appl Phys Lett*. 1962;1:82–83.
- [2] Nakamura S, Pearton S, Fasol G. The blue laser diode: The complete history (chapter 2). Berlin: Springer-Verlag; 2000.
- [3] US DOE. Adoption of light-emitting diodes in common lighting applications, prepared for U.S. Department of Energy, prepared by Navigant Consulting, Inc., July 2017.
- [4] Pattison M, Bardsley N, Hansen M, et al. Solid state lighting 2017 suggested research topics: Technology and market context. J. Brodrick (Ed.) Report prepared for the U.S. Department of Energy; 2017. Available from: https://energy.gov/sites/prod/files/2017/09/f37/ssl_supplement_suggested-topics_sep2017_0.pdf.
- [5] Mueller-Mach R, Mueller GO, Krames MR. Phosphor materials and combinations for illumination graded white pLED Third Int. Conf. Solid State Lighting; 2003 Aug; San Diego, CA; Proc. SPIE 5187. p. 115.
- [6] Schubert EF, Kim JK, Luo H, et al. Solid-state lighting – a benevolent technology. *Rep Prog Phys*. 2006;69:3069–3099.
- [7] Mueller-Mach R, Mueller GO. Illumination grade white LEDs. *Proc SPIE*. 2002;4776:122–130.
- [8] Radkov E, Bompiedi R, Srivastava AM, et al. *Proc SPIE* 2004;5187; 171–177.
- [9] Chang MH, Das D, Varde PV, et al. Light emitting diodes reliability review. *Microelectron Reliabil*. 2012;52:762–782.
- [10] Narendran N, Gu Y, Freyssonier JP, et al. Solid-state lighting: failure analysis of LEDs. *Cryst Growth*. 2004;268:449–456.
- [11] Narendran N, Gu Y, Freyssonier-Nova JP, et al. Extracting phosphor-scattered photons to improve white LED efficiency. *Phys Stat Solidi (a)*. 2005;202:60–62.

- [12] Schlotter P, Baur J, Hielscher C, et al. Fabrication and characterisation of GaN/InGaN/AlGaN double heterostructure LEDs and their application in luminescence conversion LEDs. *Mater Sci Eng.* 1999;59:390–394.
- [13] Park JK, Kim CH, Park SH, et al. Application of strontium silicate yellow phosphor for white light-emitting diodes. *Appl Phys Lett.* 2004;84:1647–1649.
- [14] Da Silva H. Moldable optical silicones enable LED lamps and luminaire designs (MAGAZINE). *LEDs Magazine.* 2012;30:1–4.
- [15] Van Driel WD, Fan XJ. Solid state lighting reliability: components to systems (chapter 2). New York (NY): Springer-Verlag; 2012; chapter 2.
- [16] Zhang GQ. Shaping the new technology landscape of lighting. In: *Proceedings of green lighting forum, Shanghai China.* 2010.
- [17] LED life for general lighting: definition of life, Vol 1. Technical report, ASSIST recommendation, 2005;30:138.
- [18] Meneghini M, Trevisanello LR, Meneghesso G. Recent results on the degradation of white LEDs for lighting. *J Phys D: Appl Phys.* 2010;43:354007, (11pp).
- [19] Rosenfeld S. Lighting art at the Smithsonian American Art Museum. In: 2013 DOE Solid-State Lighting R&D Workshop, Long Beach, CA; 2013. http://apps1.eere.energy.gov/buildings/publications/pdfs/ssl/rosenfeld_smithsonian_longbeach2013.pdf.
- [20] Jung E, Kim M, Kim S. Analysis of contributing factors for determining the reliability characteristics of GaN-based white light-emitting diodes with dual degradation kinetics. *IEEE Trans Electron Devices.* 2013;60:186–119.
- [21] Yazdan Mehr M, van Driel WD, Udono H, et al. Surface aspects of discolouration in bisphenol A polycarbonate (BPA-PC), used as lens in LED-based products. *Opt Mater.* 2014;37:155–159.
- [22] McCluskey P, Mensah K, O'Connor C. Reliability of commercial plastic encapsulated microelectronics at temperatures from 125 C to 300 C in High Temperature Electronics, 1999. HITEN 99, 155–162.
- [23] McCluskey P, Mensah K, O'Connor C. Reliable use of commercial technology in high temperature environments. *Microelectron Reliab.* 2000;40:1671–1678.
- [24] Xie RJ, Hirosaki N. 2-phosphor-converted white light-emitting diodes using oxynitride/nitride phosphors. *Appl Phys Lett.* 2007;90:191101–4.
- [25] Schubert Rensselaer F. Light emitting diode. 2nd ed. Troy (NY): Polytechnic Institute.
- [26] Jones GR, Deakin AG, Spencer JW. Chromatic monitoring of complex conditions. London: Taylor & Francis Group; 2008.
- [27] MacAdam DL. Colour measurement: Theme and variations. 2nd ed. New York (NY): Springer-Verlag; 1985.
- [28] Wyszecki and Stiles. 1982, 2000; MacAdam, 1993; Berger-Schunn, 1994; CIE, 1995.
- [29] van Driel WD, Fan XJ, Zhang GQ. Solid state lighting reliability: Components to Systems part II, Springer, 2017, ISBN 978-3-319-58175-0 (Chapter 14).
- [30] van Driel WD, Fan XJ, Zhang GQ. Solid state lighting reliability: Components to Systems part II, Springer, 2017, ISBN 978-3-319-58175-0 (Chapter 10).
- [31] Poplawski ME, Ledbetter M, Smith MA. L-Prize: Stress testing of the Philips 60W replacement lamp entry. Available at http://www.lighting-prize.org/pdfs/lprize_60w-stress-testing.pdf; 2012.
- [32] Linear Polydimethylsiloxanes, ECETOC Joint assessment of commodity chemical 63148-62-9;1994.
- [33] Dow Corning Corporation. Silicone chemistry overview; 1997. <http://www.dowcorning.com/content/publishedlit/51-960A-01.pdf>.
- [34] Graiver D, Farminer KW, Narayan R. A review of the Fate and effects of silicones in the environment. *J Polym Environ.* 2003;11:129–136.
- [35] Xiang K, Guangsu Huang G, Zheng J, et al. Accelerated thermal ageing studies of polydimethylsiloxane (PDMS) rubber. *J Polym Res.* 2012;19:1–7.
- [36] Zhang Q, Feng J, Zhao H, et al. Effect of temperature and moisture on the luminescence properties of silicone filled with YAG phosphor. *J Semicond.* 2011;32:2465–2473.
- [37] Chen D, Nie J, Yi S, et al. Thermal behaviour and mechanical properties of novel RTV silicone rubbers using divinyl-hexa[(trimethoxysilyl)ethyl]-POSS as cross-linker. *Polym Degrad Stab.* 2010;95:618–626.
- [38] Yang Z, Feng L, Diao S, et al. Study on the synthesis and thermal degradation of silicone resin containing silphenylene units. *Thermochemica Acta.* 1970;521:170–175.
- [39] Zhang J, Feng S, Ma Q. Kinetics of the thermal degradation and thermal stability of conductive silicone rubber Filled with conductive carbon black. *Appl Polym.* 2003;89:1548–1554.
- [40] Fischer HR, Semprimoschnig C, Mooney C, et al. Degradation mechanism of silicone glues under UV irradiation and options for designing materials with increased stability. *Polym Degrad Stab.* 2013;98:720–726.
- [41] Legrand DG, Bendler JT. Handbook of polycarbonate science and technology. New York (NY): Marcel Dekker, Inc; 2000.
- [42] Schnell H, Bottenbruch L, Krimm H. Thermoplastic aromatic polycarbonates and their manufacture. United States Patent. 1962;3:365.
- [43] Fox DW. Polycarbonates of dihydroxyaryl ethers. United States Patent. 1964;3:148–172.
- [44] Rivaton A. Recent advances in bisphenol-A polycarbonate photodegradation. *Polym Degrad Stab.* 1995;49:163–179.
- [45] Rivaton A, Sallet D, Lemaire J. The photochemistry of bisphenol A polycarbonate reconsidered. *Poly Photochem.* 1983;3:463–481.
- [46] Lemaire J, Gardette JL, Rivaton A, et al. Dual photochemistries in aliphatic polyamides, bisphenol-A polycarbonate and aromatic polyurethanes. A short review. *Polym Degrad Stab.* 1986;15:1–13.
- [47] Torikai A, Mitsuoka T, Fueki K. Wavelength sensitivity of the photoinduced reaction in polycarbonate. *J Polym Sci.* 1993;31:2785–2786.
- [48] Collin S, Bussière P-O, Thérias S, et al. Physicochemical and mechanical impacts of photoageing on bisphenol a polycarbonate. *Polym Degrad Stab.* 2012;97:2284–2293.
- [49] Rivaton A, Mailhot B, Soulestin J, et al. Comparison of the photochemical and thermal degradation of bisphenol-A polycarbonate and trimethylcyclohexane-polycarbonate. *Polym Degrad Stab.* 2002;75:17–33.
- [50] Abbas KB. Thermal degradation of bisphenol A polycarbonate. *Polymer.* 1980;21:936–940.
- [51] Furneaux GC, Ledbury KJA. Photo-oxidation of thick polymer. *Polym Degrad Stab.* 1981;3:431–442.

- [52] Factor A. Mechanism of thermal and photo degradations of bisphenol A polycarbonate. *Adv Chem Series*. 1996;249:59–76.
- [53] Rufus IB, Shah H, Hoyle CE. Identification of fluorescent products produced by the thermal treatment of bisphenol-A-based polycarbonate. *J Applied Polymer Science*. 1994;51:1549–1558.
- [54] Clark DT, Munro HS. Surface and bulk aspects of the natural and artificial photo-ageing of bisphenol A polycarbonate as revealed by ESCA and difference UV spectroscopy. *Polym Degrad Stab*. 1984;8:195–211.
- [55] Montaudou G, Puglisi C. Thermal-Decomposition processes in bisphenol-A polycarbonate. *Polym Degrad Stab*. 1992;37:91–96.
- [56] Davis A, Golden JH. Thermal rearrangement of diphenyl carbonate. *J Chem Soc (B)*. 1968;1:45–47.
- [57] Mcneill IC, Rincon A. Degradation studies of some polyesters and polycarbonates – 8. Bisphenol A polycarbonate. *Polym Degrad Stab*. 1991;31:163–180.
- [58] Lee LH. Mechanism of thermal degradation of phenolic Condensation polymers. I. Studies on the thermal stability of polycarbonate. *Polym Sci A2*. 1964;5:1981–1989.
- [59] Trevisanello L, Meneghini M, Mura G, et al. Accelerated life test of high brightness light emitting diode. *IEEE Trans Device Mater Reliab*. 2008;8:304–311.
- [60] Yazdan Mehr M, van Driel WD, Jansen KMB, et al. Lifetime assessment of bisphenol-A polycarbonate (BPA-PC) plastic lens, used in LED-based products. *Microelectron Reliab*. 2014;54:138–142.
- [61] Giancaterina S, Ben Amor S, Baud G, et al. Photoprotective ceramic coatings on poly(ether ether ketone). *Polym*. 2002;43:6397–6405.
- [62] Yazdan Mehr M, van Driel WD, Jansen KMB, et al. Photodegradation of bisphenol A polycarbonate under blue light radiation and its effect on optical properties. *Opt Mater*. 2013;35:504–508.
- [63] Diepens M, Gijisman P. Photodegradation of BPA. *Polym Degrad Stab*. 2007;92:397–406.
- [64] Gardner RJ, Martin JR. Humid aging of plastics: effect of molecular weight on mechanical properties and fracture morphology of polycarbonate. *Appl Polym Sci*. 1979;24:1269–1280.
- [65] Tjandraatmadja GF, Burna LS, Jollandsb MC. Evaluation of commercial polycarbonate optical properties after QUV-A radiation—the role of humidity in photodegradation. *Polym Degrad Stab*. 2002;78:435–448.
- [66] Miller AA, Lawton EJ, Balwit JS. Effect of chemical structure of vinyl polymers on crosslinking and degradation by radiation. *J Polym Sci*. 1954;14:503–504.
- [67] Fox RB, Isaacs LG, Stokes S. Electron spin Resonance studies of photodegradation in poly(methylmethacrylate). *J Polym Sci A*. 1963;1:1079–1083.
- [68] Dole M. The radiation chemistry of macromolecules, vol. II. London (NY): Academic Press; 1973; 97.
- [69] Moore JA, Choi JO. Radiation effects on polymers. In: Clough RL, Shalaby SW, editors. *Fundamentals of space systems*. New York (NY): Oxford University Press; 1991. p. 158.
- [70] Ranby B, Rabek JF. Photodegradation, photooxidation and photostabilization of polymers, principles and applications. New York (NY): John Wiley and Sons; 1975. p. 153.
- [71] Hardy WB. *Developments in polymer photochemistry*, vol. 3. Allen NS, editor. London: Applied Science Publication; 1980. p. 322.
- [72] Schneider P, Steitz C, Schafer KH, et al. Hot embossing of pyramidal micro-structures in PMMA for cell culture. *Phys Status Solidi A*. 2009;206:501–507.
- [73] Lu C, Cheng MM, Benatar A, et al. Embossing of high-aspectratio-microstructures using sacrificial templates and fast surface heating. *Polym Eng Sci*. 2007;47:830–840.
- [74] Narasimhan J, Papautsky I. Polymer embossing tools for rapid prototyping of plastic microfluidic devices. *J Micromech Microeng*. 2004;14:96–103.
- [75] Palm G, Dupaix RB, Castro J. Large strain mechanical behavior of poly(methyl methacrylate) (PMMA) near the glass transition temperature. *J Eng Mater Technol*. 2006;128:559–563.
- [76] Ghatak A, Dupaix RB. Material characterization and continuum modelling of poly(methyl methacrylate) (PMMA) above the glass transition. *Int J Struct Changes Solids*. 2010;2:53–63.
- [77] Arruda EM, Boyce MC, Jayachandran R. Effects of strain rate, temperature and thermomechanical coupling on the finite strain deformation of glassy polymer. *Mech Mater*. 1995;19:193–212.
- [78] Mathiesen D, Vogtmann D, Dupaix RB. Characterization and constitutive modeling of stress-relaxation behavior of poly(methyl methacrylate) (PMMA) across the glass transition temperature. *Conf Proc Soc Exp Mech Ser*. 2013;2:9–15.
- [79] Namouchia F, Smaoui H, Fourati N, et al. Investigation on electrical properties of thermally aged PMMA by combined use of FTIR and impedance spectroscopies. *J Alloys Compd*. 2009;469:197–202.
- [80] Grassie N, Melville HW. The thermal degradation of Polyvinyl compounds. III. The effect of inhibitors and end groups on the degradation of Polymethyl methacrylate. *Proc R Soci*. 1949;199:24–39.
- [81] Barlow A, Lehrle RS, Robb JC. Direct examination of polymer degradation by gas chromatography: I. Applications to polymer analysis and characterization. *J Polym*. 1961;2:27–40.
- [82] Lehmann FA, Brauer GM. Analysis of pyrolyzates of polystyrene and poly(methyl methacrylate) by gas chromatography. *Anal Chem*. 1961;33:673–676.
- [83] Barlow A, Lehrle RS, Robb JC, et al. Direct examination of polymer degradation by gas chromatography II—Development of the technique for quantitative kinetic studies. *Polymer*. 1967;8:523–537.
- [84] Bagby G, Lehrle RS, Robb JC. Thermal degradation of poly(methyl methacrylate) in the range 300–500°C. Changes in mechanism confirmed by trends in molecular weight with conversion. *Makromolekul Chem Phys*. 1968;119:122–132.
- [85] Bagby G, Lehrle RS, Robb JC. Kinetic measurements by micropyrolysis-GLC: thermal degradation of polymethylmethacrylate possessing Lauryl-mercaptopyl end groups. *Polymer*. 1969;10:683–690.
- [86] Lehrle R, Atkinson D, Cook S, et al. Polymer degradation mechanisms: new approaches. *Polym Degrad Stab*. 1993;42:281–291.
- [87] Manring LE. Thermal degradation of saturated poly(methyl methacrylate). *Macromolecules*. 1988;21:528–530.
- [88] Manring LE. Thermal degradation of poly(methyl methacrylate). 2. Vinyl-terminated polymer. *Macromolecules*. 1989;22:2673–2677.
- [89] Zhu X, Liu G, Guo Y. Study of PMMA thermal bonding. *Microsyst Tech*. 2007;13:403–407.

- [90] Manring LE. Thermal degradation of poly(Methyl methacrylate). 4. Random side-group scission. *Macromolecules*. 1991;24:3304–3309.
- [91] Lu G, Yazdan Mehr M, van Driel WD, et al. Colour shift investigations for LED secondary optical designs: comparison between BPA-PC and PMMA. *Optical Mater*. 2015;45:37–41.
- [92] Yu JM, Tao XM, Tam HY, et al. Modulation of refractive index and thickness of poly(methyl methacrylate) thin films with UV irradiation and heat treatment. *Appl Surf Sci*. 2005;252:1283–1292.
- [93] Estupinan E, Wendling P, Kostrun M, et al. Accelerated optical polymer aging studies for LED luminaire applications. In: Jianzhong Jiao, editor. *LED-based Illumination Systems*, Proc. of SPIE, San Diego, California, USA, 2013: 8835, 883502–883519.
- [94] Luo WB, Wang CH, Zhao RG. Application of time-temperature-stress superposition. principle to non-linear creep of poly(methyl methacrylate). *Key Eng Mater*. 2007;340:1091–1096.
- [95] Crissman JM, McKenna GB. Physical and chemical aging in PMMA and their effects on creep and creep rupture behavior. *J Polym Sci Part B Polymer Phys*. 1990;28:1463–1473.
- [96] Zhou F, Hou S, Qian X, et al. Creep behaviour and lifetime prediction of PMMA immersed in liquid scintillator. *Polym Test*. 2016;53:323–328.
- [97] Oige K, Avarmaa T, Suisalu A, et al. Effect of long-term aging on oxygen sensitivity of luminescent Pd-tetraphenylporphyrin/PMMA films. *Polym Test*. 2005;106:424–430.
- [98] Cheng Q, Jian C, Zhang W, et al. Effect of thermal aging on the scratch behaviour of poly(methyl methacrylate). *Tribol Int*. 2016;101:110–114.
- [99] Gonzales OD, Nicassio A, Eliasson V. Evaluation of the effect of water content on the stress optical coefficient in PMMA. *Polym Test*. 2016;50:119–124.
- [100] Fox RB, Isaacs LG, Stokes S. Photodegradation of poly(methyl acrylate). *J Polym Sci A1*. 1963;1079:2085–2092.
- [101] Moore JA, Choi JO. Radiation effects on polymers. In: Clough RL, Shalaby SW, editors. *American Chemical Society*; 1991. p.158.
- [102] Hau-Nan L, Ediger MD. Mechanical rejuvenation in poly(methylmethacrylate) glasses molecular mobility after deformation. *Macromolecules*. 2010;43(13): 5863–5873.
- [103] Melville HW. The photochemical polymerization of methyl methacrylate vapour. *Proc R Soc Lond A*. 1937;163:511–542.
- [104] Kopietz M, Lechner MD, Steinmeier DG. Light-induced refractive index changes in polymethylmethacrylate (PMMA) blocks. *Polym Photochem*. 1984;5:109–119.
- [105] Tsao JY, Ehrlich DJ. Photochemical vapour deposition of amorphous silicon through 185 nm excitation of monosilane. *Appl Phys Lett*. 1983;42(12):99.
- [106] Jonsson S, Schaeffer W, Sundell P-E, et al. Proceedings of the Conference of Rad Tech International North America, Orlando. 1994;1:194.
- [107] Garnett JL. Radiation curing—twenty five years on. *Radiat Phys Chem*. 1995;46:925–930.
- [108] Frank WFX, Schosser A, Stelmaszyk A, et al. Lessard RA. *Polymers in optics: physics, chemistry and applications*, vol. CR63. SPIE; 1996; 65.
- [109] Kuper S, Stuke M. Direct observation of excimer-laser photoablation products from polymers by picosecond-UV-laser mass spectroscopy. *Appl Phys A*. 1989;49:211–215.
- [110] Wochnowski C, Metev S, Sepold G. UV-laser-assisted modification of the optical properties of polymethylmethacrylate. *Appl Surf Sci*. 2000;155:706–711.
- [111] Scully PJ, Caulder S, Bartlett R. 2000 UV-laser photo-induced refractive index changes in poly methyl methacrylate and plastic optical fibres for application as sensors and devices The Central Laser Facility Annual Report 1999–2000;145–147.
- [112] Sutcliffe E, Srinivasan R. Dynamics of UV laser ablation of organic polymer surfaces. *J Appl Phys*. 1986;60:3315–3322.
- [113] Wochnowska C, Shams Eldinb MA, Metev S. UV-laser-assisted degradation of poly(methyl methacrylate). *Polym Degrad Stab*. 2005;85:252–264.
- [114] Bertini F, Guido Audisio G, Zuev V. Investigation on the thermal degradation of poly-n-alkyl acrylates and poly-n-alkyl methacrylates (C1–C12). *Poly Degrad Stab*. 2005;89:233–239.
- [115] Caykara T, Guven O. UV degradation of poly(methyl methacrylate) and its vinyltriethoxysilane containing copolymers. *Polym Degrad Stab*. 1999; 65:225–229.
- [116] Nagai N, Matsunobe T, Imai T. Infrared analysis of depth profile in uv-photochemical degradation of polymers. *Polym Degrad Stab*. 2005;28:224–233.
- [117] Appajaiah A, Wachtendorf V, Jankowski L. Chemiluminescence investigation of high temperature and humidity aging of PMMA Based polymer optical fibres (POF), Proceedings of the (POF) Conference. USA. 2003:152–155.
- [118] Appajaiah A, Kretschmar HJ, Daum W. Aging behavior of polymer optical fibers: degradation characterization by FTIR. *J Appl Polym Sci*. 2007; 103:860–870.
- [119] Estler RC, Nogar NS. Mass spectroscopic identification of wavelength dependent UV laser photoablation fragments from polymethylmethacrylate. *Appl Phys Lett*. 1986;49:1175–1177.
- [120] Hiraoka H. Radiation chemistry of poly(methacrylates). *J Res Dev*. 1977;21:121–130.
- [121] Kuper S, Stuke M. UV-excimer-laser ablation of polymethylmethacrylate at 248 nm: Characterization of incubation sites with Fourier transform IR- and UV-spectroscopy. *Appl Phys A*. 1989;49:211–215.
- [122] Howard JN, Burch DE, Williams D. Infrared transmission of Synthetic atmospheres. II. Absorption by carbon dioxide. *J Optic Soc Am*. 1956;4:237–241.
- [123] Taguenang JM, Kassu A, Ruffinb PB, et al. Reversible UV degradation of PMMA plastic optical fibers. *Opt Commun*. 2008;281:2089–2092.
- [124] Weinert A, editor. *Plastic optical fibres: principles, components, installations*. Erlangen: Publicis MCD Verlag; 1999.
- [125] Baumer S. *Handbook of plastic optics*. Eindhoven: Wiley-VCH; 2005.
- [126] Bartlett R, Chandry R, Eldridge P, et al. Plastic optical fibre sensors and devices. *Trans Inst Meas Cont*. 2000;22:431–457.
- [127] Endruweit A, Alobaidani A, Furniss D, et al. Spectroscopic experiments regarding the efficiency of side emission optical fibres in the UV-A and visible blue spectrum. *Opt Laser Eng*. 2008;46:97–105.
- [128] Spigulis J, Pfafrods D. Clinical potential of the side-glowing optical fibres. *Proc SPIE*. 1997;2977:84–88.

- [129] Hu Y, Xu JJ, Yuan CW, et al. A single TiO₂-coated side glowing optical fiber for photocatalytic wastewater treatment. *Chin Sci Bull.* 2005;50:1979–1984.
- [130] Bilanin AJ, Kaufman AE, McCullough R. Lossy fiber UV curing method and apparatus. *United States Patent* 68,35,679. 2004;28.
- [131] Fawdington K, Tranter P. Changing the state of a body of material, UK Patent GB2423279, 23 August 2006.
- [132] Yahathugoda D, Evans N, Endruweit A, et al. Experimental investigation into UV curing of composites using integrated optical fibres. In: SAMPE Europe conference and exhibition 2007, France.
- [133] Alobaidani AD, Furniss D, Endruweit A, et al. Enhancement of the side emission efficiency of commercial PMMA optical fibres in the UV-A and visible blue spectrum for photocuring of epoxy resins. In: Thirteenth European conference on composite materials (ECCM13), Stockholm, Sweden, June 2–5, 2008.
- [134] Zubia J, Arrue J. Plastic optical fibers: an introduction to their technological processes and applications. *Opt Fiber Technol.* 2001;7:101–140.
- [135] Narasimhan J, Ian P. Polymer embossing tools for rapid prototyping of plastic microfluidic devices. *J Micromech Microeng.* 2004;14:96–103.
- [136] Puigdollers J, Voz C, Martin I, et al. Pentacene thin-film transistors on polymeric gate dielectric: device fabrication and electrical characterization. *J Non-Cryst Solids.* 2004;338:617–621.
- [137] Kim TG, Jeong EH, Lim SC, et al. PMMA-based patternable gate insulators for organic thin-film transistors. *Syn Metals.* 2009;159:749–753.
- [138] Grassie N, Guy MI, Tennent NH. Degradation of epoxy polymers: part 1-products of thermal degradation of bisphenol-A diglycidyl ether. *Poly Degrad Stab.* 1985;12:65–91.
- [139] Jain P, Choudhary V, Varma IK. Effect of structure on thermal behaviour of epoxy resins. *Eur Polym J.* 2003;39:181–187.
- [140] Wang X, Hu Y, Song L, et al. Flame retardancy and thermal degradation mechanism of epoxy resin composites based on a DOPO substituted organophosphorus oligomer. *Polymer.* 2010;11:2435–2445.
- [141] Sanchez G, Brito Z, Mujica V. The thermal behaviour of cured epoxy-resins. The influence of metallic fillers. *Polym Degrad Stab.* 1983;40:109–114.
- [142] Macan J, Brnardić I, Orlić S, et al. Thermal degradation of epoxy-silica organic-inorganic hybrid materials. *Polym Degrad Stab.* 2006;91:122–127.
- [143] Gu A, Liang G. Thermal degradation behaviour and kinetic analysis of epoxy/montmorillonite nanocomposites. *Polym Degrad Stab.* 2003;80:383–391.
- [144] Park SJ, Jae FL, Lee R. Thermal and mechanical properties of tetrafunctional epoxy resin toughened with epoxidized soybean oil. *Mater Sci Eng A.* 2004;374:109–114.
- [145] Xia G, Shanahan ZMER. Water absorption and desorption in an epoxy resin with degradation 1997. *Polym Phys.* 1997;16:2659–2670.
- [146] Braun C, Seibald M, Borger SL, et al. Material properties and structural characterization of M₃Si₆O₁₂N₂:Eu²⁺ (M = Ba, Sr) – a comprehensive study on a promising green phosphor for pc-LEDs. *Chem Eur J.* 2010;16:9646–9657.
- [147] Lee J, Sundar VC, Heine JR, et al. Full colour emission from II-VI Semiconductor quantum Dot-Polymer composites. *Adv Mater.* 2000;12:1102–1105.
- [148] Jang E, Jun S, Jang H, et al. White-light-emitting diodes with quantum dot colour converters for display backlights. *Adv Mater.* 2010;22:3076–3080.
- [149] Schneider G, Wrede P. Artificial Neural Networks for Computer-based molecular design. *Prog Biophys Mol Biol.* 1998;70:175–222.
- [150] Young S, Wang M, Gu F. Design of Diverse and focused Combinatorial Libraries using an alternating algorithm. *J Chem Inf Comput Sci.* 2003;43:1916–1921.
- [151] Rodemerck U, Baerns M, Holena M, et al. Application of a genetic algorithm and a neural network for the discovery and optimization of New solid catalytic materials. *Appl Surf Sci.* 2004;223:168–174.
- [152] Chen L, Chen KJ, Lin CC, et al. Combinatorial approach to the development of a single mass YVO₄:Bi³⁺,Eu³⁺ phosphor with red and green dual colours for high colour rendering white light-emitting diodes. *J Comb Chem.* 2010;12:587–594.
- [153] Lee B, Lee S, Jeong HG, et al. Solid-state combinatorial screening of (Sr,Ca,Ba,Mg)₂Si₅N₈:Eu²⁺ phosphors. *ACS Comb Sci.* 2011;13:154–158.
- [154] Lin CC, Liu RS. Advances in phosphors for light-emitting Diodes. *J Phys Chem Lett.* 2011;11:1268–1277.
- [155] Tanabe S, Fujitab S, Yoshiharab S, et al. YAG glass-ceramic phosphor for white LED (II): luminescence characteristics. *Proc of SPIE.* 5941: 594112–594116.
- [156] Tran NT, You JP, Frank GS. Effect of phosphor particle size on luminous efficacy of phosphor-converted white LED. *J. of Light Wave Tech.* 2009;27:5145–5150.
- [157] Blasse G, Grabmeier BC. Luminescent materials. Berlin: Springer-Verlag; 1994.
- [158] Nalwa HS, Rohwer LS. Handbook of luminescence, display materials, and devices Vol. 3: Display devices. Valencia (CA): American Scientific Publishers; 2003.
- [159] Feldmann C, Justel T, Ronda CR, et al. Inorganic luminescent materials. *Adv Funct Mater.* 2003;13:511–516.
- [160] Shigeo Shionoya WMY. Phosphor handbook. Boca Raton (FL): CRC Press; 1999.
- [161] Rosenfeld S. Lighting art with LEDs at the Smithsonian American Art Museum (brief summary). In: 2011 DOE Solid-State Lighting R&D Workshop, San Diego, CA; 2014. <http://energy.gov/eere/ssl/transformationslighting-eighth-annual-solid-state-lighting-rd-workshop>.
- [162] U.S. Department of Energy, Solid State Lighting Technology Fact Sheet: LED Colour Stability, PNNL-SA-101828 (http://apps1.eere.energy.gov/buildings/publications/pdfs/ssl/colour-shift_factsheet.pdf).
- [163] Gordon KL, Hafen RP, Hathaway JE, et al. Lumen maintenance testing of the Philips 60-Watt Replacement Lamp L Prize Entry, PNNL- 21594, Richland, Washington (DC): Pacific Northwest National Laboratory, [2013-08-01], http://www.lightingprize.org/pdfs/lprize_60w-lumenmaint-testing.pdf.
- [164] Royer M, Tuttle R, Rosenfeld S, et al. Colour maintenance of leds in laboratory and field applications, PNNL-22759, Richland, Washington (DC): Pacific Northwest National Laboratory, 2013, http://apps1.eere.energy.gov/buildings/publications/pdfs/ssl/2013_gateway_colour-maintenance.pdf.
- [165] Yazdan Mehr M, van Driel W, De Buyl F, et al. Study on the degradation of optical silicone exposed to harsh environments. *Materials.* 2018;11:1305–1315.

- [166] U.S. Department of Energy. Retail Lamps Study 3.2: Lumen and chromaticity maintenance of LED A lamps operated in steady-state conditions, PNNLSA-23984. Richland, Washington: Pacific Northwest National Laboratory, 2014. <http://energy.gov/eere/ssl/downloads/retail-lamps-study-32-lumen-and-chromaticity-maintenance-led-lamps-operated>.
- [167] Lu G, van Driel WD, Fan X, et al. Colour shift and mechanism investigation on the PMMA diffuser used in LED-based luminaires. *Optical Materials*. 2016;54:282–287.
- [168] Chang YN, Hung CC, Tung SC. Auto mixed light for RGB LED backlight module, ISIE 2009. IEEE international symposium; 2009;864–869.
- [169] Hewlett Packard. Reliability of precision optical performance AlInGaP LED lamps in traffic signals and variable message signs. Application Brief I-004; 1997.
- [170] Jung E, Ryu JH, Hong CH, et al. Optical degradation of phosphor-converted white GaN-based, light-emitting Diodes under electro-thermal stress. *J Electrochem Soc*. 2011;158(2):132–136.
- [171] Lumileds. Luxeon reliability, Reliability Datasheet RD25, Philips Lumileds; 2006.
- [172] Hsu Y-C, Lin Y-K, Chen M-H, et al. Failure mechanisms associated with lens shape of high-power LED modules in aging test. *IEEE Trans Electron Dev*. 2008;55:570–571.
- [173] Chen X, Wang S, Chen M, et al. Phosphor settling induced mechanical degradation of silicone/phosphor composite in light emitting diode packages. *Appl Polym Sci*. 2015;132:42006.
- [174] Shammas NYA. Present problems of power module packaging technology. *Microelectron Reliab*. 2003;43:519–527.
- [175] Zhang L. Study on Ag-plated Cu lead frame and its effect to LED performance under thermal aging. *IEEE Trans Device Mater Reliab*. 2014;14(4):1022–1030.
- [176] Huang J, Golubović DS, Koh S, et al. Chapter 14 degradation mechanisms of mid-power white-light LEDs. *IEEE Trans Device Mater Reliab*. 2015;15(2):1.
- [177] Chang SW. LED lighting: high efficiency and environmental benefit, vol. 206. Seoul: Samsung Economic Research Institute Economic Focus; 2008; 1–10.
- [178] Xie R-J, Hirosaki N, Kimura N, et al. 2-phosphor-converted white light-emitting diodes using oxynitride/nitride phosphors. *Appl Phys Lett*. 2007;90:1911011–13.
- [179] Jia D, Jia W, Jia Y. Long persistent alkali-earth silicate phosphors doped with Eu²⁺, ND³⁺. *J Appl Phys*. 2007;101:0235201–06.
- [180] Xie R-J, Hirosaki N, Mitomo M, et al. Highly efficient whitelight-emitting diodes fabricated with short-wavelength yellow oxynitride phosphors. *Appl Phys Lett*. 2006;88:1011041–1011043.
- [181] Tsai C-C, Wang J, Chen M-H, et al. Investigation of Ce:YAG doping effect on thermal aging for high-power phosphor-converted white-light-emitting diodes. *IEEE Trans Dev Mater Reliab*. 2009;9:367–371.
- [182] Uheda T, Hirosaki N, Yamamoto Y, et al. Luminescence properties of a red phosphor, CaAlSiN₃:Eu²⁺, for white lightemitting diodes. *Electrochem Solid-State Lett*. 2006;9:H22–H25.
- [183] LIU z, LIU S, WANG k, et al. Status and prospects for phosphor-based white LED packaging. *Optoelectron China*. 2009;2:119–140.
- [184] Chen ZH, Zhang Q, Wang K, et al. Reliability test and failure analysis of high power LED packages. *J Semicond*. 2011;32:14007–1. [4 pages].
- [185] Tan CM, Chen BK, Li X, et al. Rapid light output degradation of GaN-based packaged LED in the early stage of humidity test. *Device Mater Reliab IEEE Trans*. 2012;12:44–48.
- [186] www.osramos.com/Graphics/XPic0/00161697_0.pdf/Chemical%20Compatibility%20of%20LEDs.pdf.
- [187] Singh P, Tan CM. A review on the humidity reliability of high power white light LEDs. *Microelectron Reliab*. 2016;61:129–139.
- [188] Luo X, Wu B, Liu S. Effects of moist environments on LEDmodule reliability. *Device Mater Reliab IEEE Trans*. 2010;10:182–186.
- [189] Wu B, Luo X, Zhao Z, et al. Effect Investigation of Delamination on Optical Output of High Power LEDs, *Electronic Packaging Technology and High Density Packaging (ICEPT-HDP)*, 2011; 12th International Conference; pp. 1–5. doi:10.1109/ICEPT.2011.6067013.
- [190] Singh P, Tan CM, Chang L-B. Early degradation of high power packaged LEDs under humid conditions and its Recovery — Myth of reliability Rejuvenation. *Microelectron Reliab*. 2016;61:145–153.
- [191] Hu J, Yang L, Shin MW. Thermal effects of moisture inducing delamination in light-emitting diode packages. In: *Advanced LEDs for Solid State Lighting*. Gwangju: SPIE, 2006; 6355:635516.
- [192] Hu JZ, Yang L Q, Shin M W. Mechanism and thermal effect of delamination in light-emitting diode packages. *Microelectron J*. 2007;38(2):157–163.
- [193] Tsai MY, Chung YT, Wang CH, et al. Investigation on some parameters affecting optical degradation of LED packages during high temperature aging. *IEEE Trans Dev Mater Reliab*. 2015;15:335–341.
- [194] Royer M, Stalker C, Tuttle R. LED colour stability: 10 important questions, DOE webinar, April 15, 2014. Available at: http://apps1.eere.energy.gov/buildings/publications/pdfs/ssl/colour-stability-webinar_4-15-2014.pdf.
- [195] Davis JL, Mills KC, Johnson C, et al. (2017, May 31). System reliability model for solid-state lighting (SSL) luminaires. Contract DE-EE0005124. Final report prepared for the U.S. Department of Energy. Available at <https://www.osti.gov/servlets/purl/1360770>.
- [196] Yazdan Mehr M, van Driel WD, Zhang GQ. Reliability and lifetime Prediction of remote phosphor Plates in solid-state lighting applications using accelerated degradation Testing. *J Elect Mater*. 2015;45:444–452.
- [197] Davis JL, Young J, Royer M. U.S. Department of Energy CALiPER Report 20.5: Chromaticity Shift Modes of LED PAR 38 Lamps Operated in Steady-State Conditions, February 2016. Available at http://energy.gov/sites/prod/files/2016/03/f30/caliper_20-5_par38.pdf.
- [198] Trevisanello LR, Meneghini M, Mura G, et al. Thermal stability analysis of high Brightness LED during high temperature and electrical aging. *SPIE*. 2007;6669:666913-1.
- [199] Lumileds P. IESNA LM-80 Test Report for Luxeon Products, Design Re-source DR05-1; 2012.
- [200] Davis JL, Lamvik M, Bittle J, et al. Insights into accelerated aging of SSL luminaires. *Proc SPIE: LED-Based Illumination Syst*. 2013;8835:88350L-1–88350L-10.

- [201] Tuttle R, McClear M. Understanding the true cost of LED choices in SSL systems. *LEDs Magazine*; 2014.
- [202] Hansen M. The True Value of LED Packages. In *Strategies in Light*, Las Vegas, NV, February 2015.
- [203] Davis JL, Mills K, Bobashev G, et al. Understanding Chromaticity Shifts in LED Devices through Analytical Models, EuroSimE 2017: International Conference on Thermal, Mechanical and Multi-Physics Simulation and Experiments in Microelectronics and Microsystems 2017, Dresden, Germany.
- [204] Davis JL, Mills KC, Lamvik M, et al. Modeling the impact of thermal effects on luminous flux maintenance for SSL luminaires. In *Proceedings of the 2017 16th IEEE Intersociety Conference on Thermal and Thermomechanical Phenomena in Electronic Systems (iTHERM)*. 2017; Orlando, FL. p. 1004–1010. Available at <http://ieeexplore.ieee.org/document/7992598/>.
- [205] DOE SSL Program. CALiPER Report 20.4: Lumen and Chromaticity Maintenance of LED PAR38 Lamps Operated in Steady-State Conditions, December 2014. Available at https://www.energy.gov/sites/prod/files/2015/02/f19/caliper_20-4_par38_0.pdf.
- [206] Next Generation Lighting Industry Alliance and the LED Systems Reliability Consortium. LED luminaire reliability: The impact of color shift. 2017. Available at https://energy.gov/sites/prod/files/2017/04/f34/lsrc_colorshift_apr2017.pdf.
- [207] <https://www.led-professional.com/resources-1/articles/led-and-lens-degradation-through-volatile-organic-compounds-by-cree>.
- [208] Rivaton A, Sallet D, Lemaire J. The photo-chemistry of bisphenol-A polycarbonate reconsidered: Part3-influence of water on polycarbonate photo-chemistry. *Polym Degrad Stab*. 1986;14:23–40.