

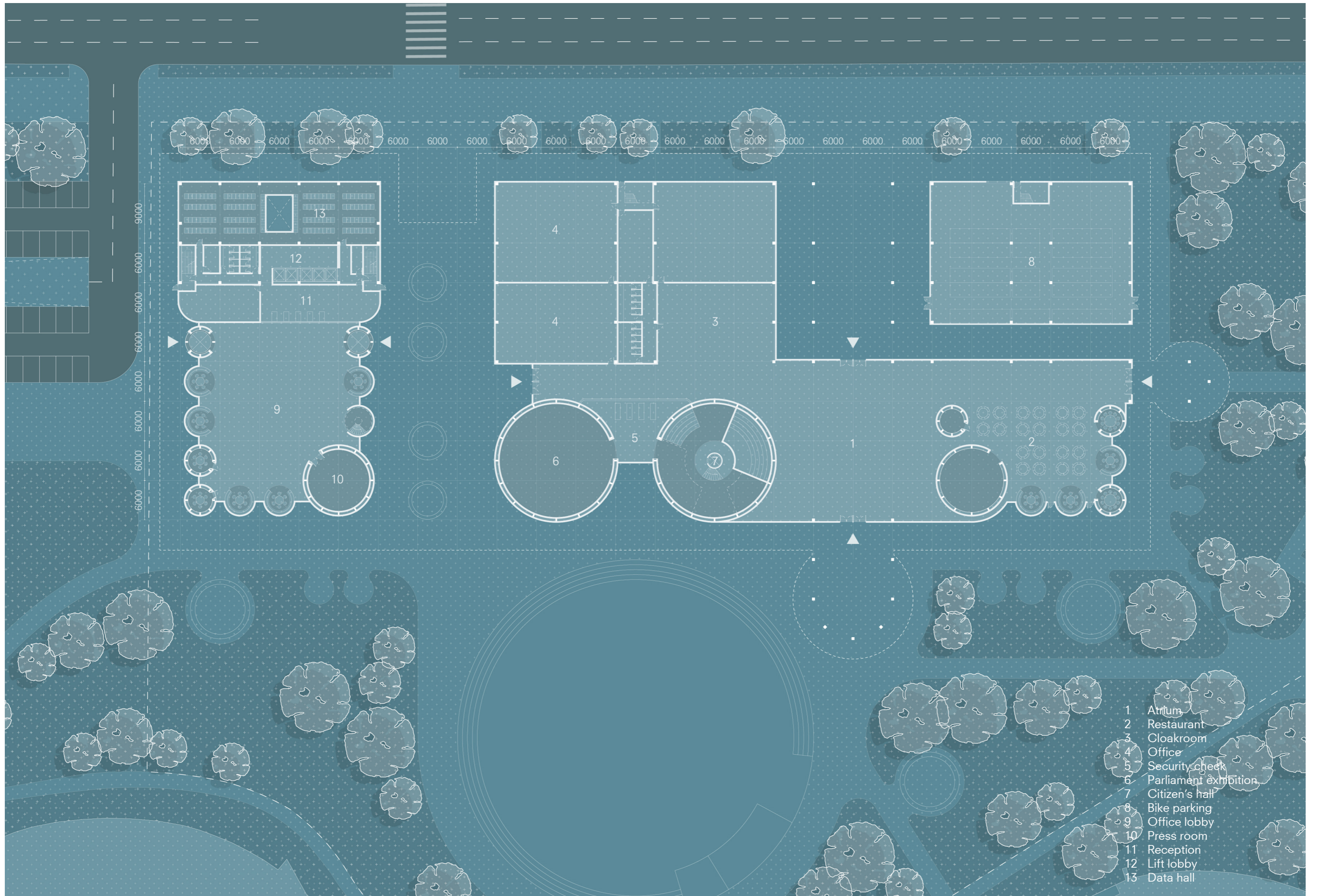


# COMPLEX PROJECTS

## **HYBRID COMMUNICATOR**

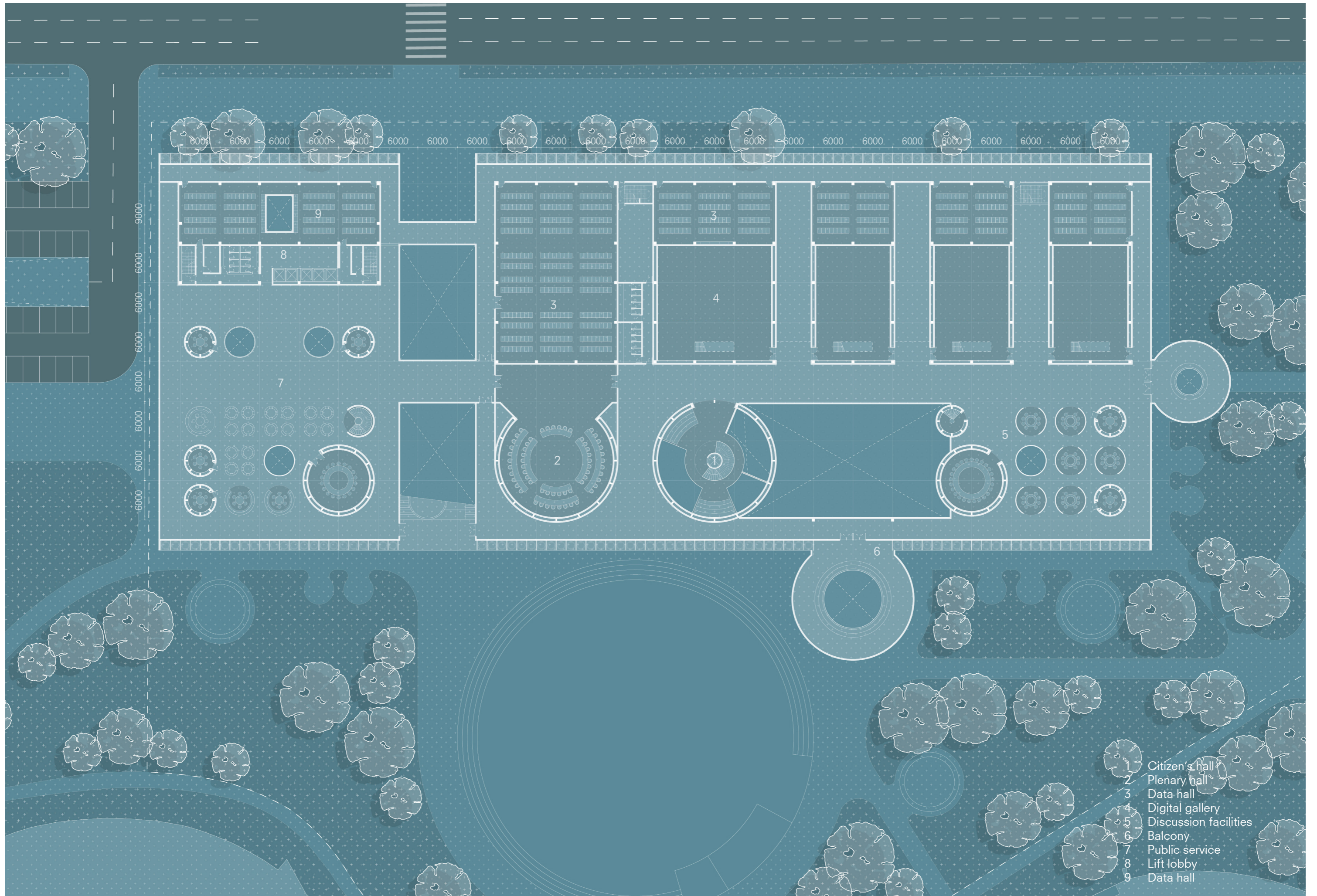
A3 Drawing set  
SitChiMan Simon  
01/07/2024





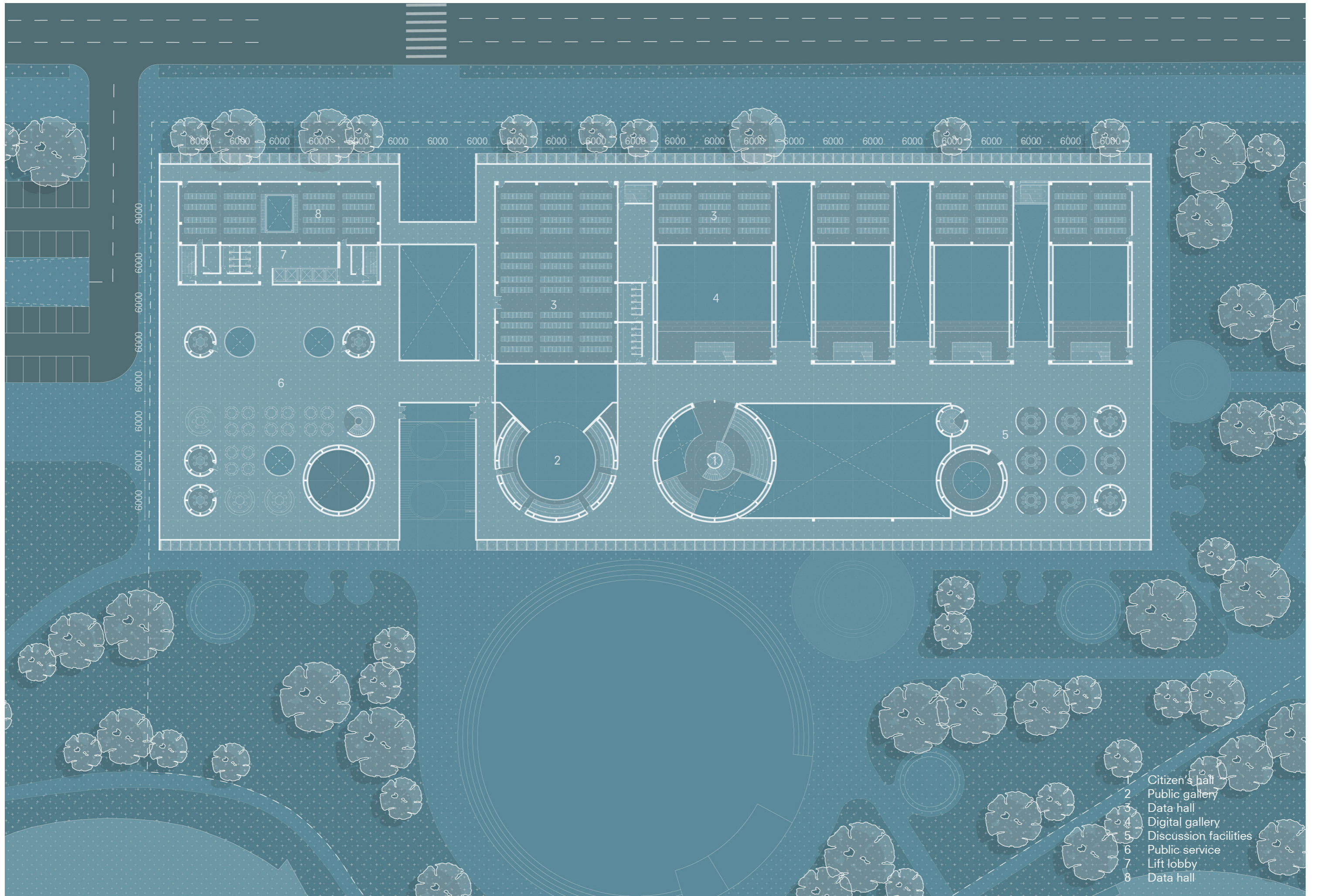
- 1 Atrium
- 2 Restaurant
- 3 Cloakroom
- 4 Office
- 5 Security check
- 6 Parliament exhibition
- 7 Citizen's hall
- 8 Bike parking
- 9 Office lobby
- 10 Press room
- 11 Reception
- 12 Lift lobby
- 13 Data hall





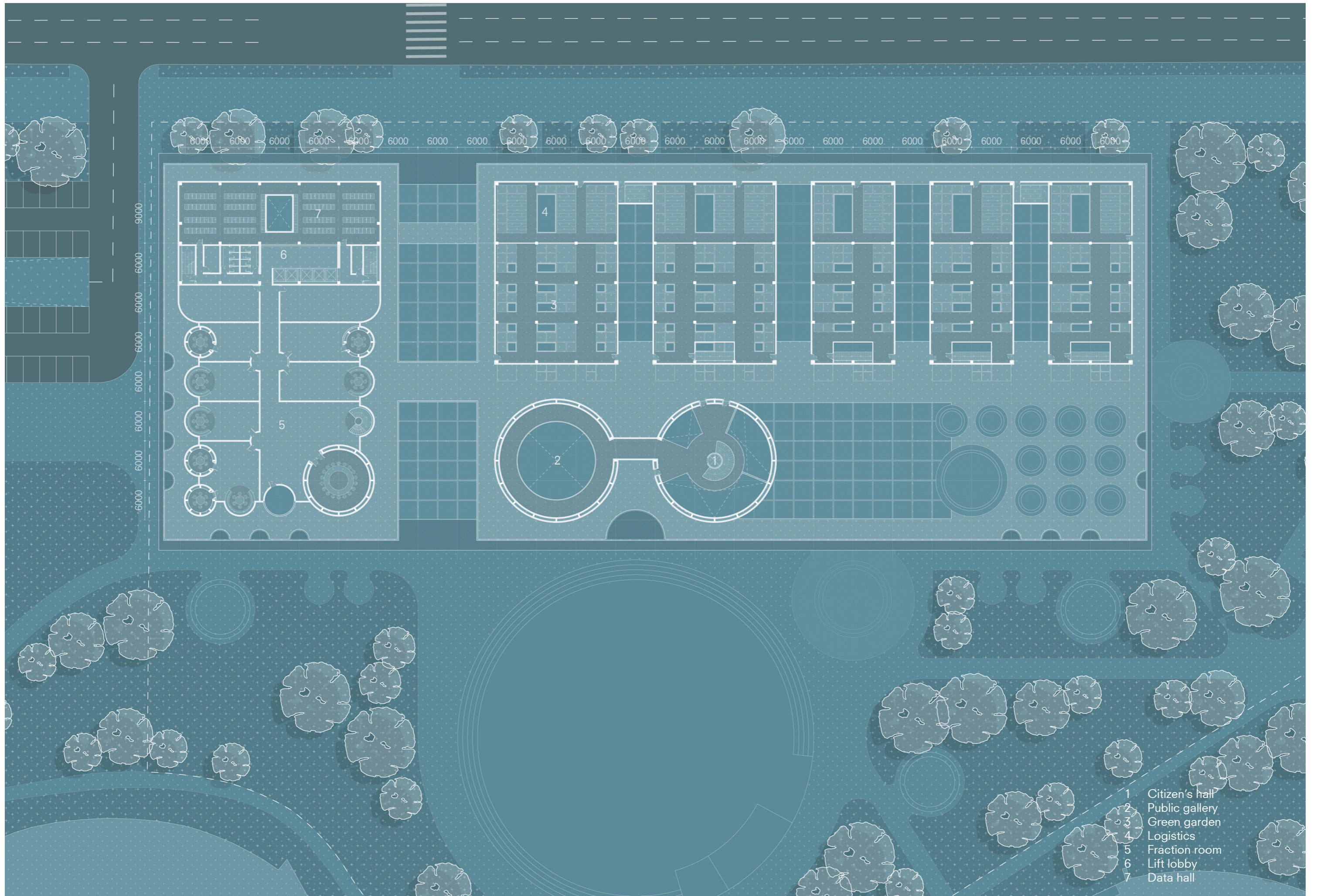
- 1 Citizen's hall
- 2 Plenary hall
- 3 Data hall
- 4 Digital gallery
- 5 Discussion facilities
- 6 Balcony
- 7 Public service
- 8 Lift lobby
- 9 Data hall





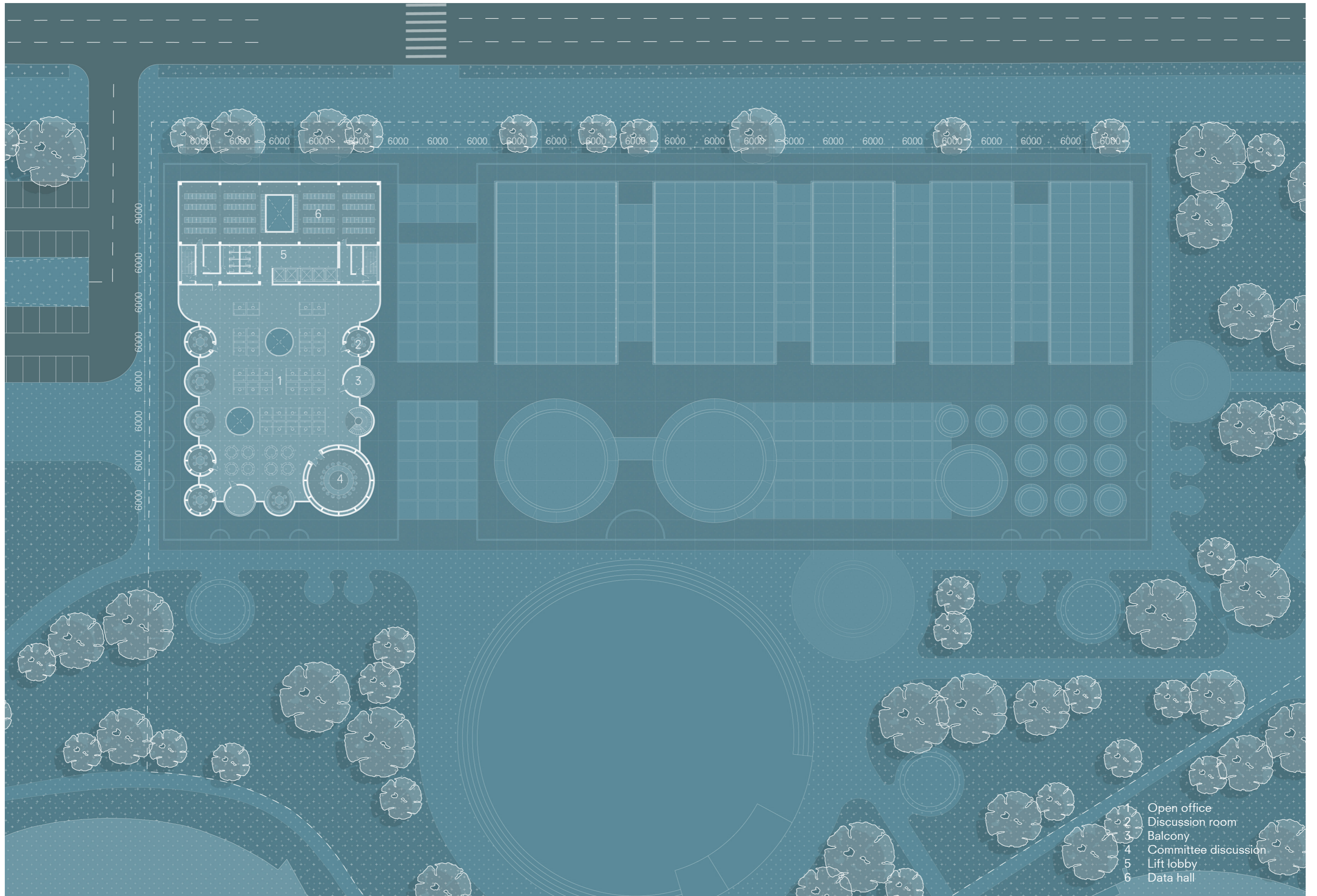
- 1 Citizen's hall
- 2 Public gallery
- 3 Data hall
- 4 Digital gallery
- 5 Discussion facilities
- 6 Public service
- 7 Lift lobby
- 8 Data hall





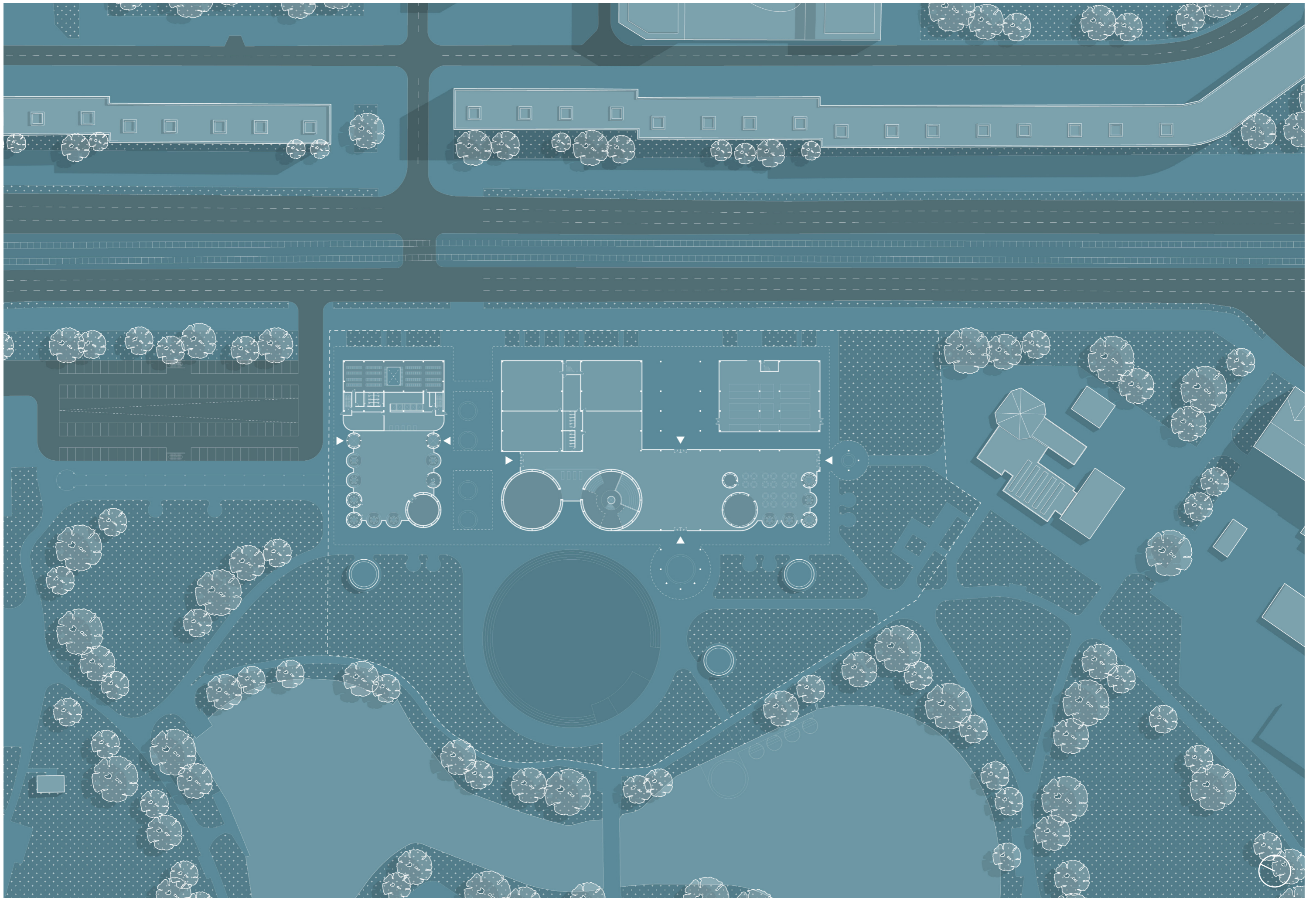
- 1 Citizen's hall
- 2 Public gallery
- 3 Green garden
- 4 Logistics
- 5 Fraction room
- 6 Lift lobby
- 7 Data hall





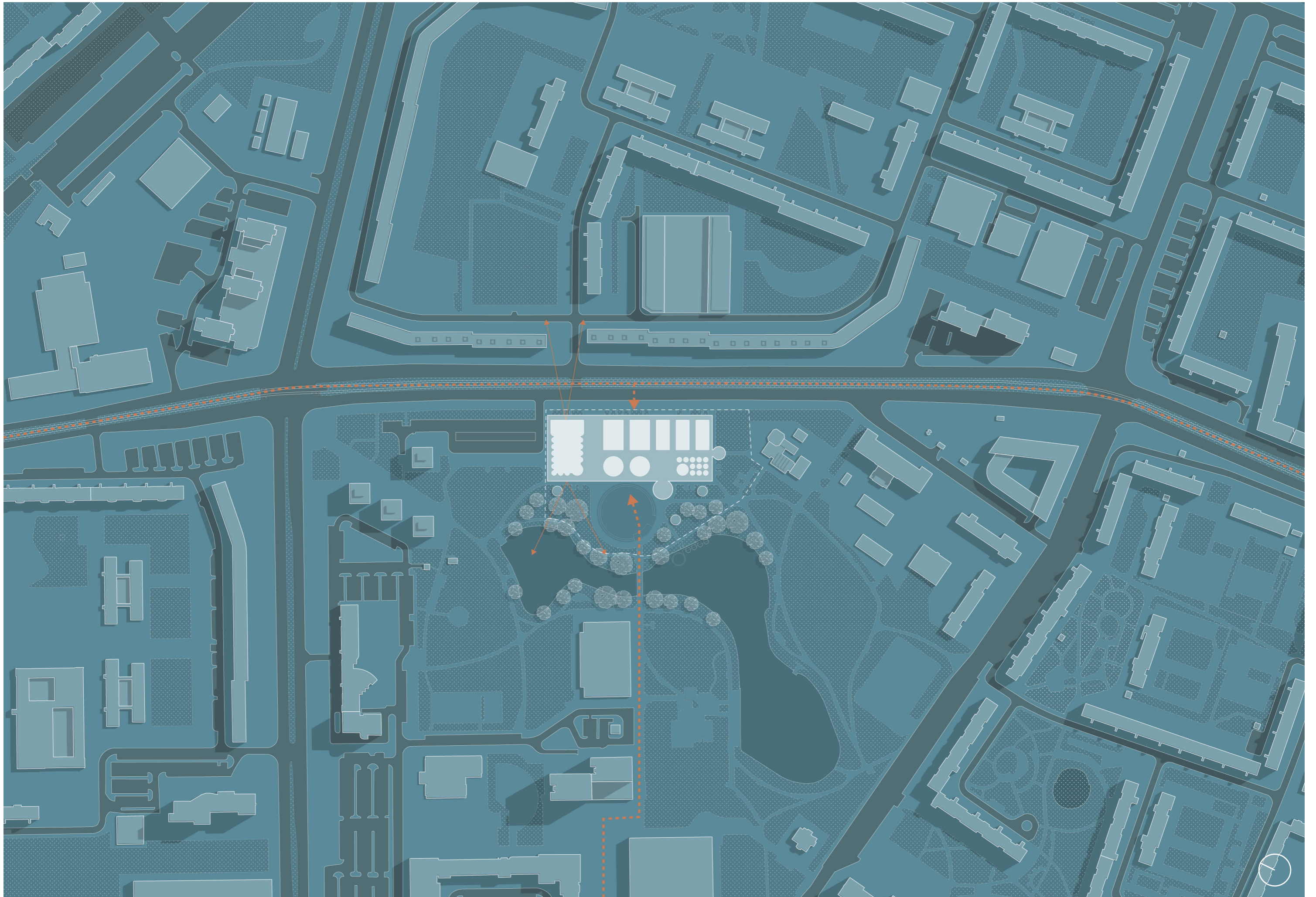
- 1 Open office
- 2 Discussion room
- 3 Balcony
- 4 Committee discussion
- 5 Lift lobby
- 6 Data hall





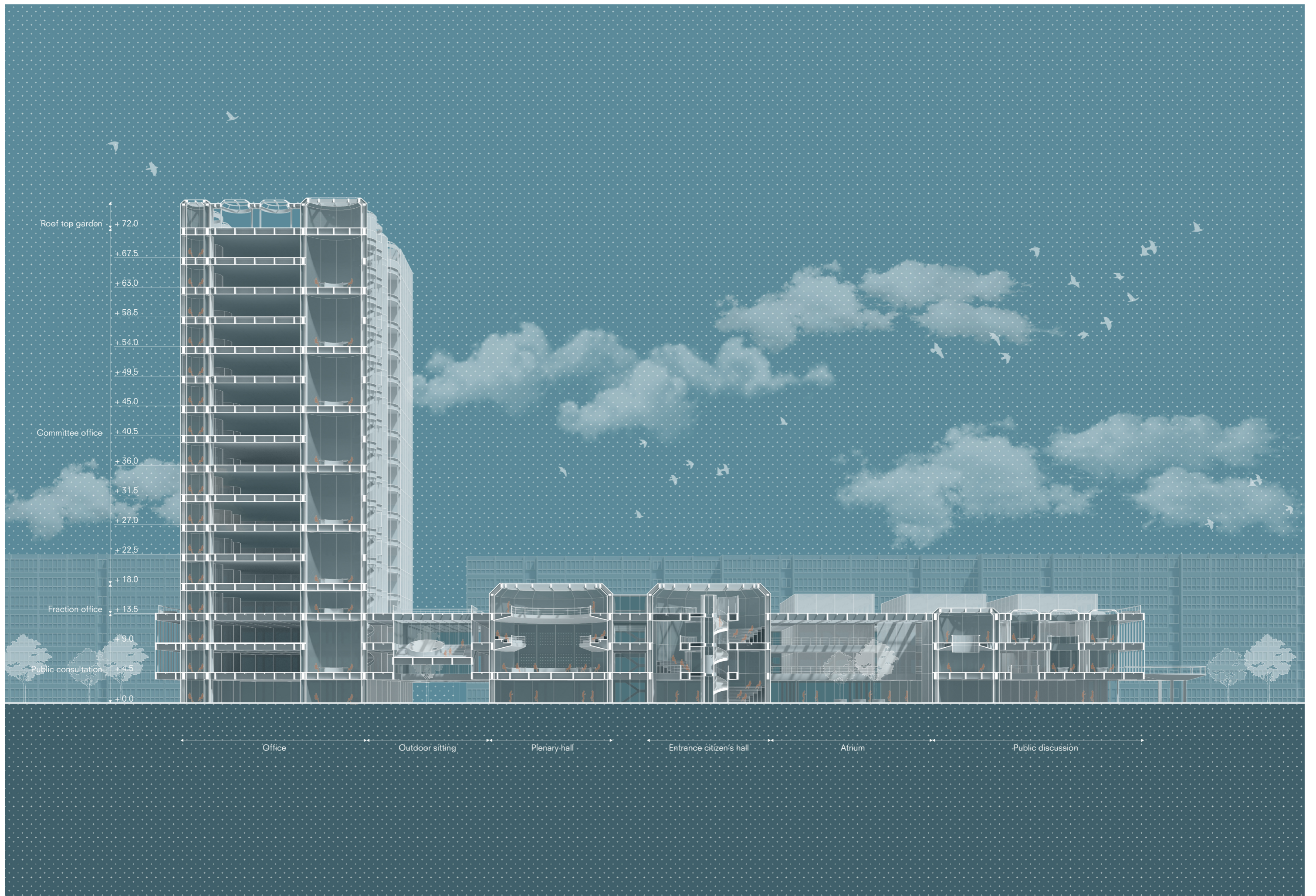
site plan





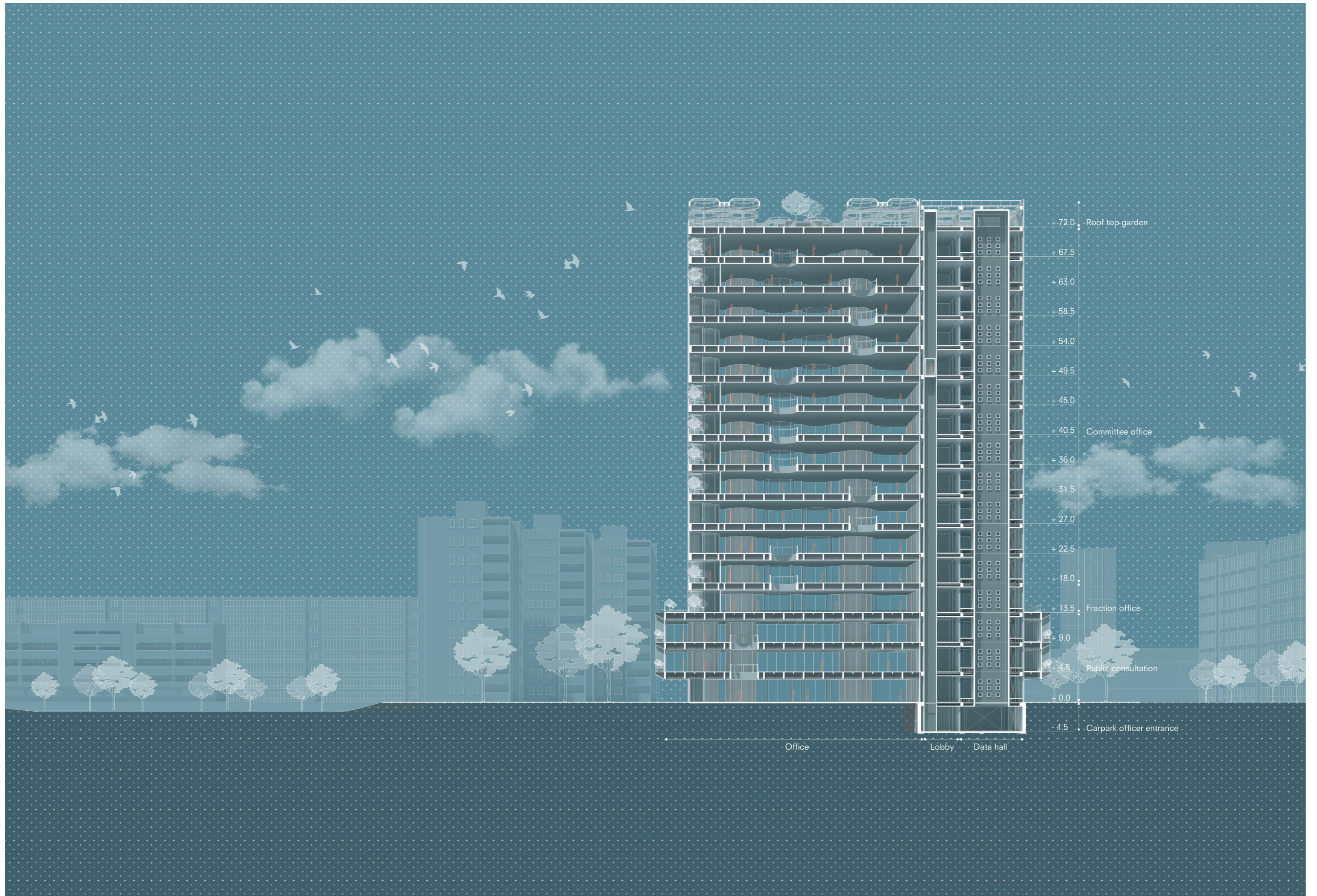
Urban plan





Longitudinal section





Office

Lobby

Data hall

+72.0 Roof top garden

+67.5

+63.0

+58.5

+54.0

+49.5

+45.0

+40.5 Committee office

+36.0

+31.5

+27.0

+22.5

+18.0

+13.5 Fraction office

+9.0

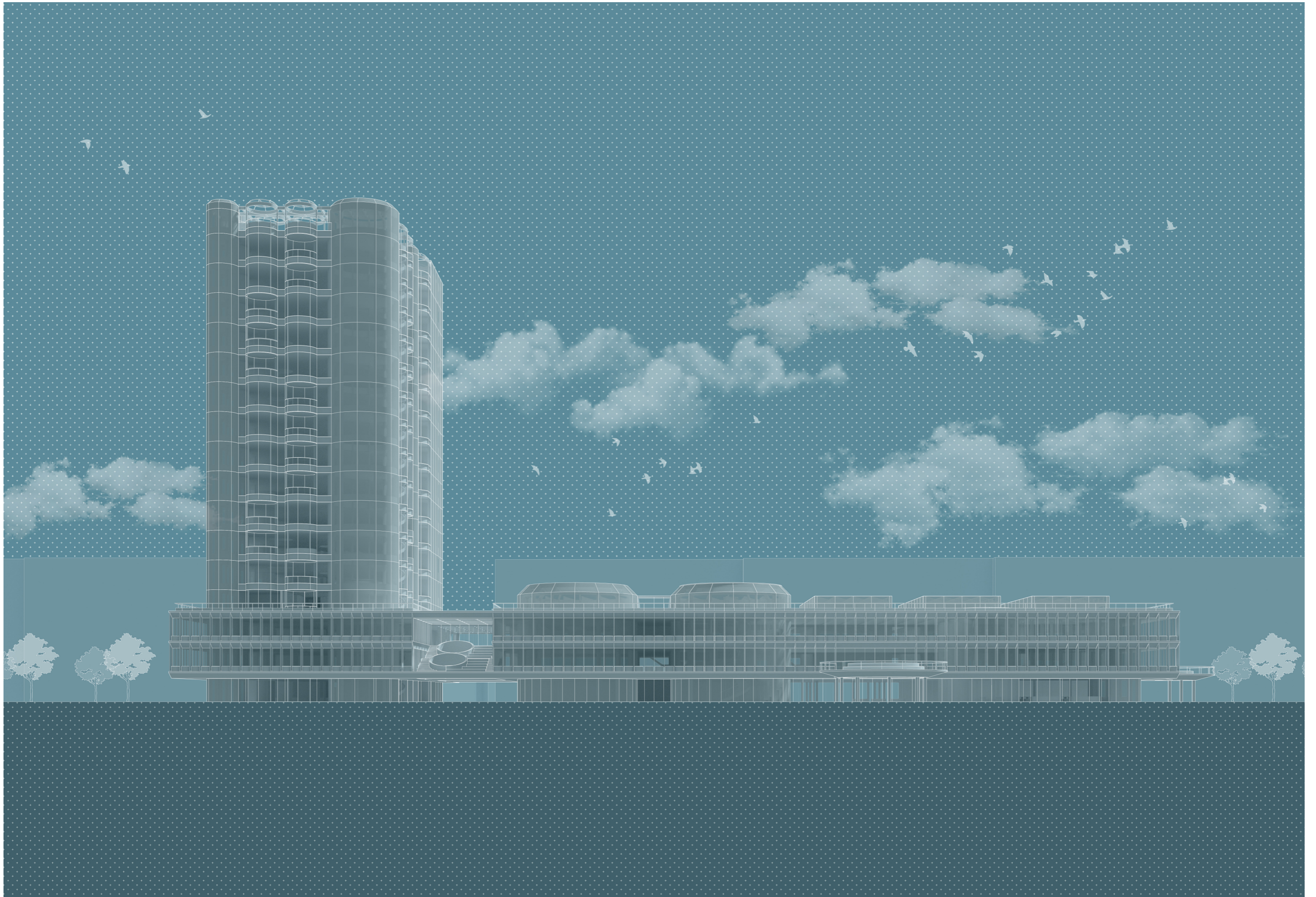
+4.5 Public consultation

+0.0

-4.5 Carpark officer entrance

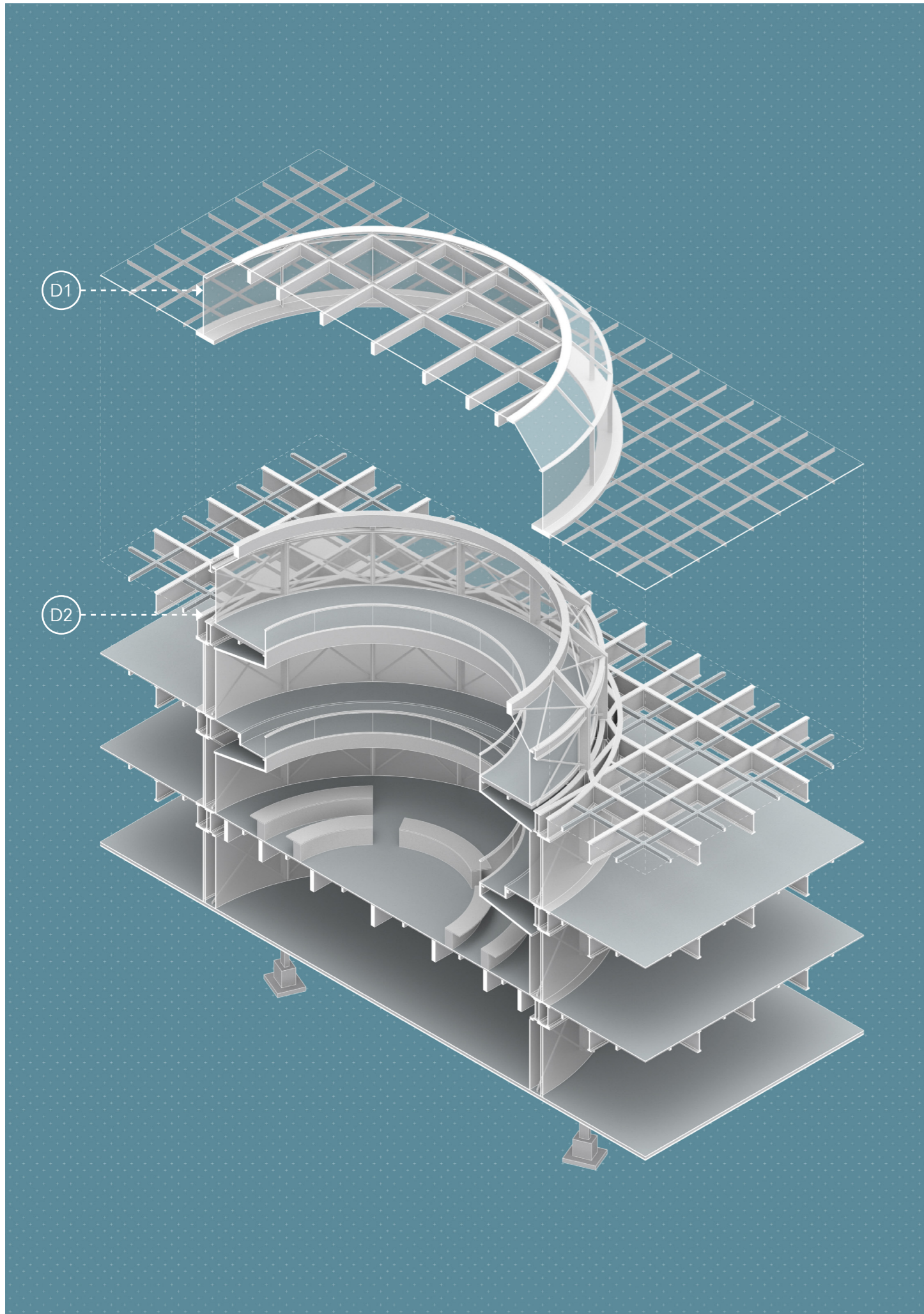
Longitudinal section



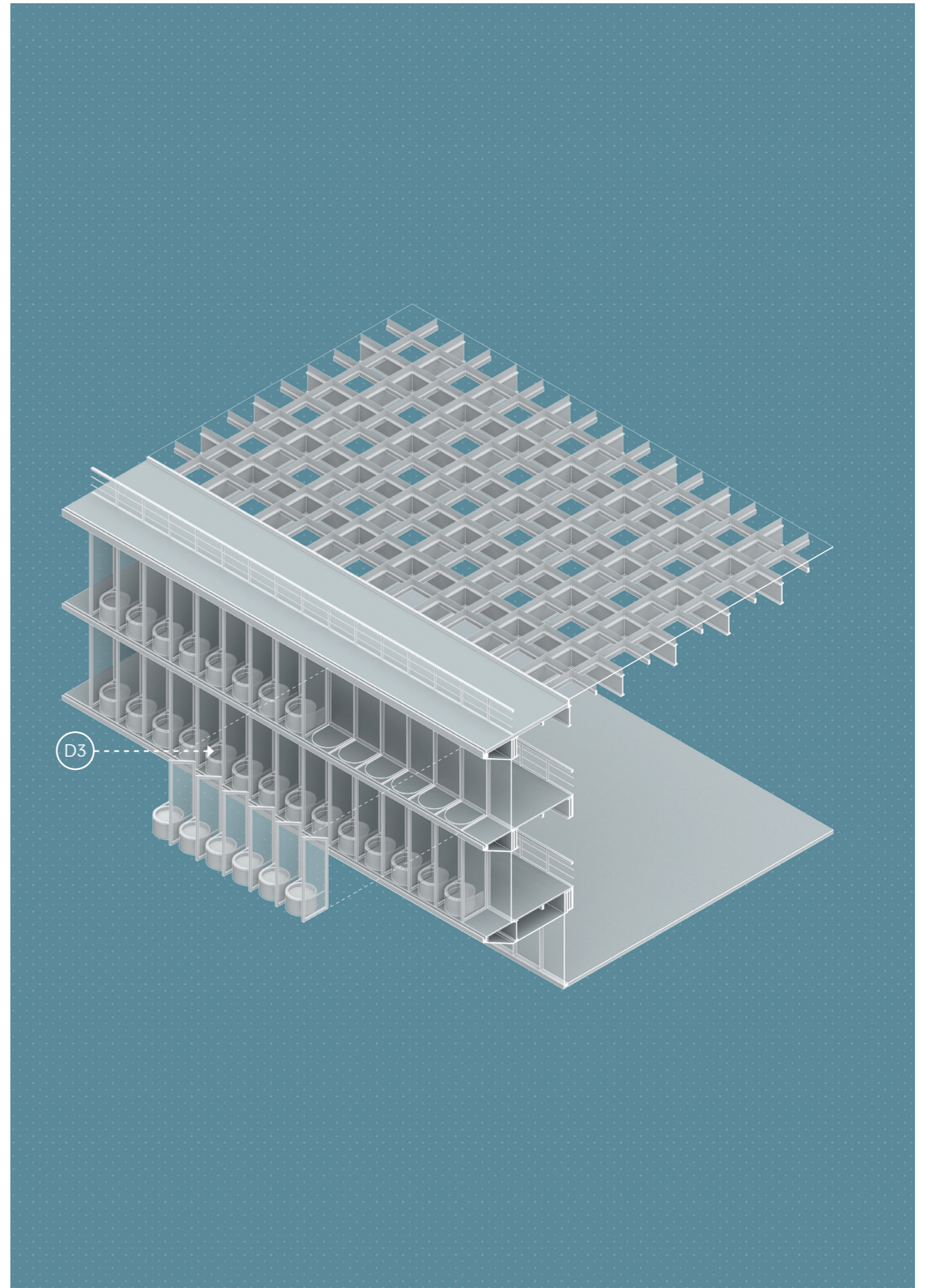


Elevation (from park side)



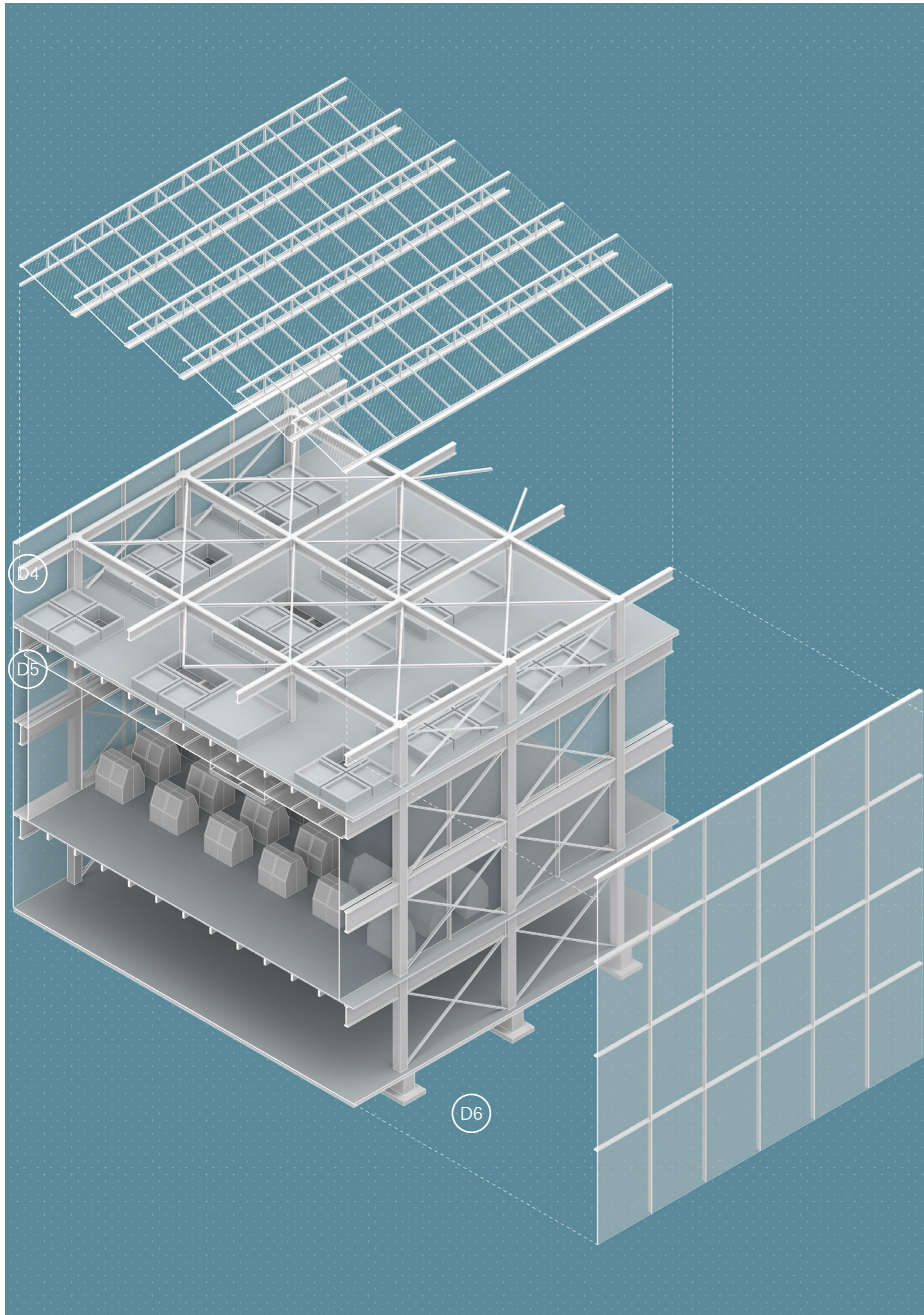


Discussion tube axonometric

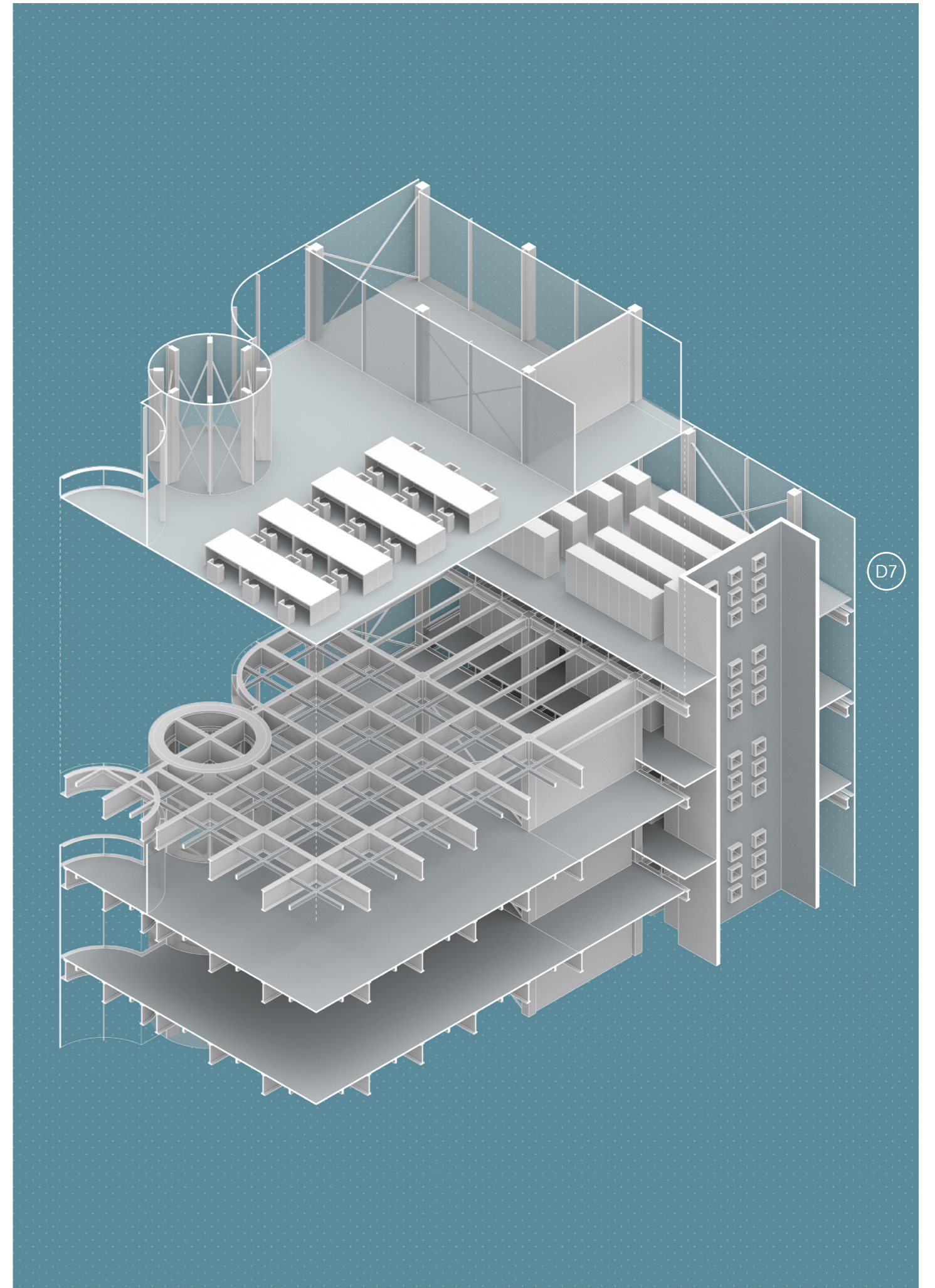


Facade axonometric



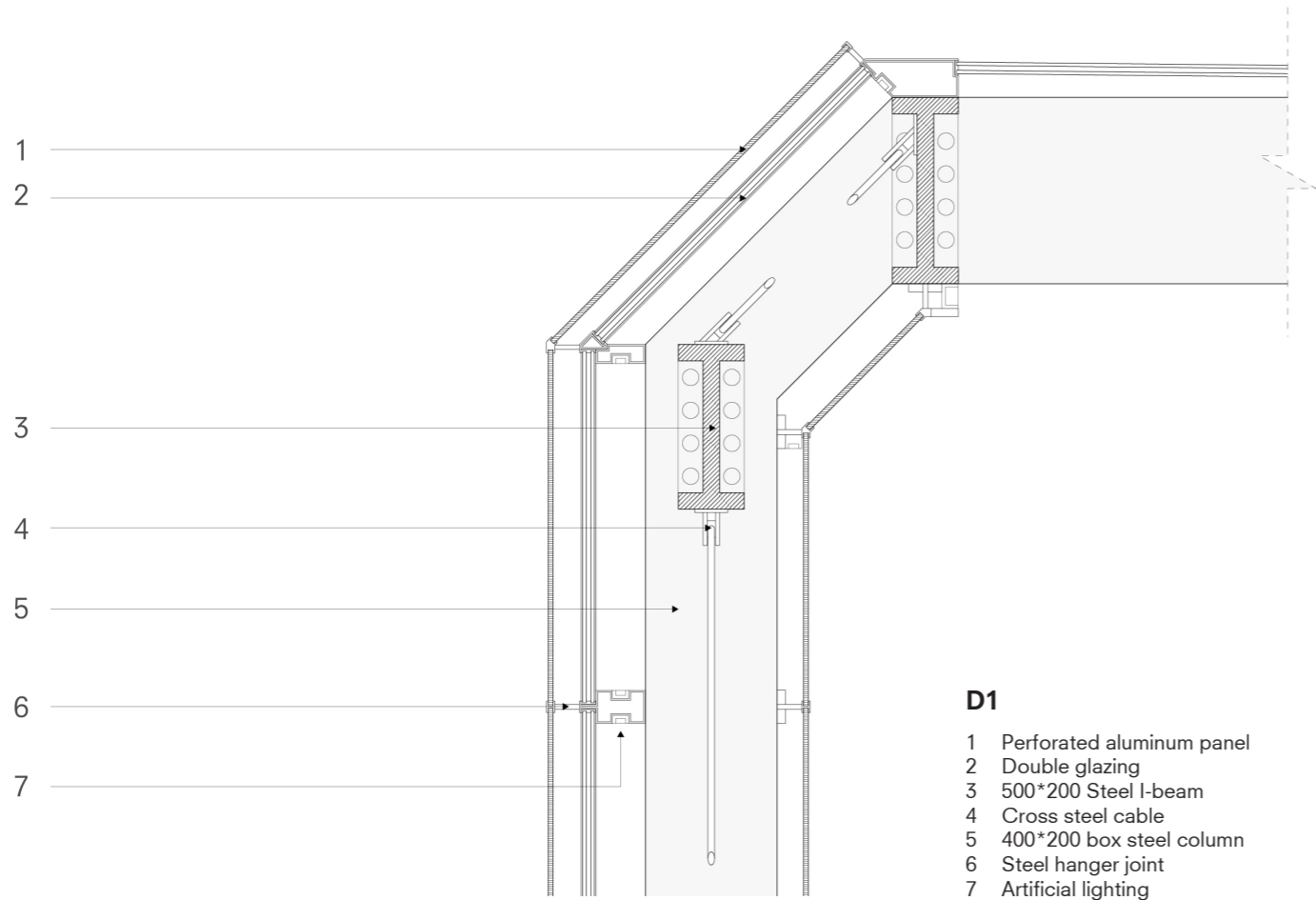


Digital gallery box axonometric

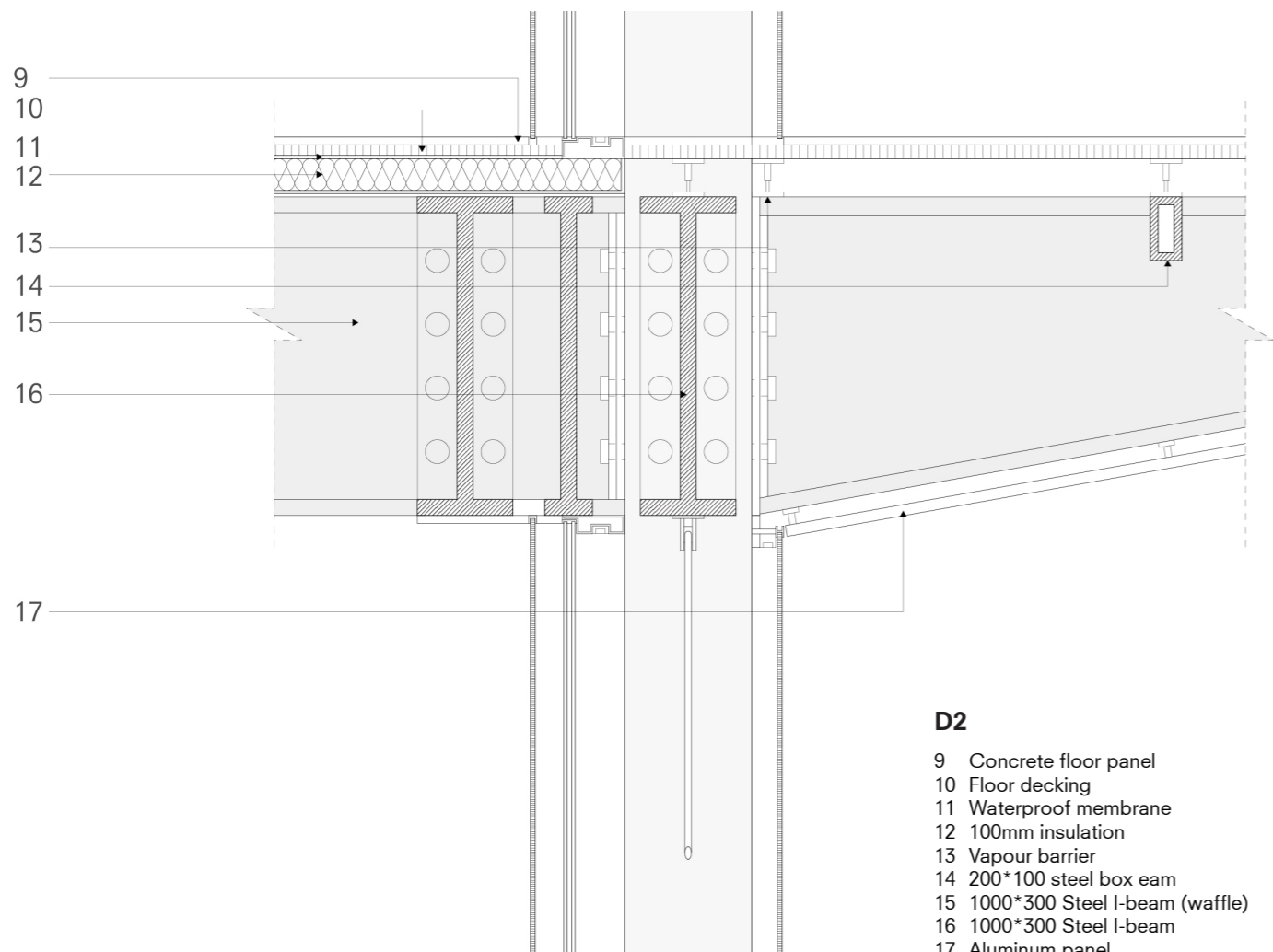


Tower axonometric

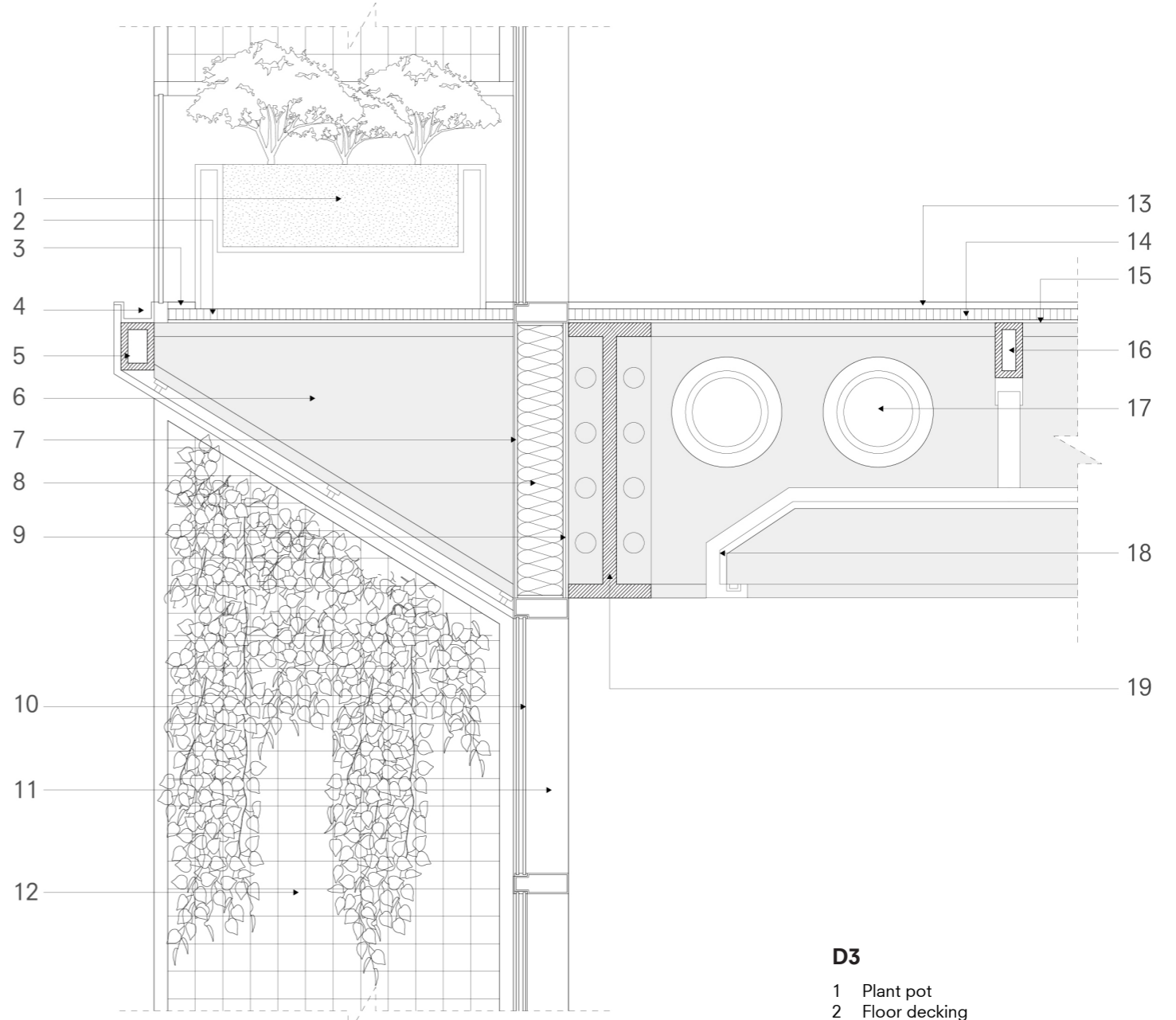




- D1**
- 1 Perforated aluminum panel
  - 2 Double glazing
  - 3 500\*200 Steel I-beam
  - 4 Cross steel cable
  - 5 400\*200 box steel column
  - 6 Steel hanger joint
  - 7 Artificial lighting



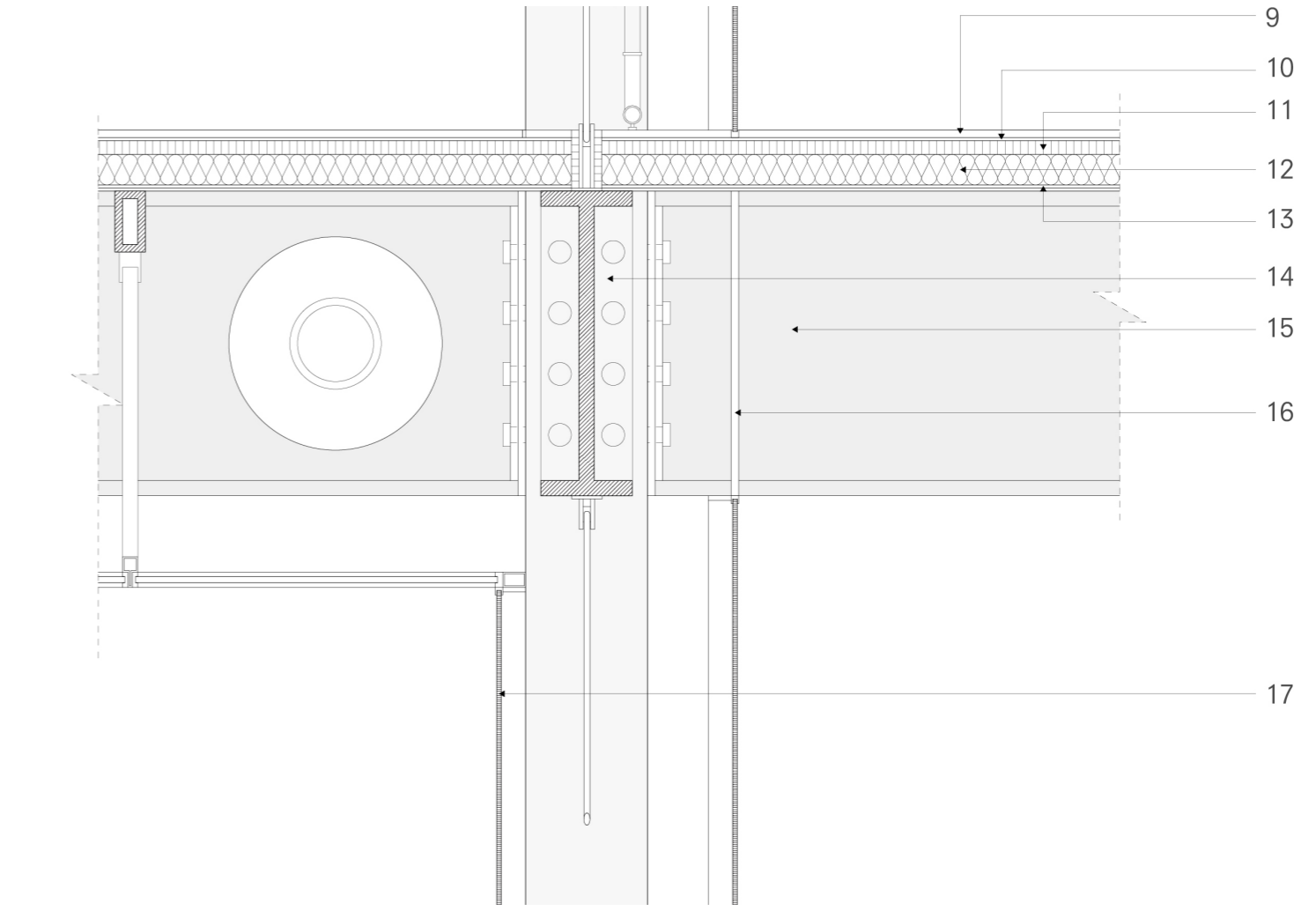
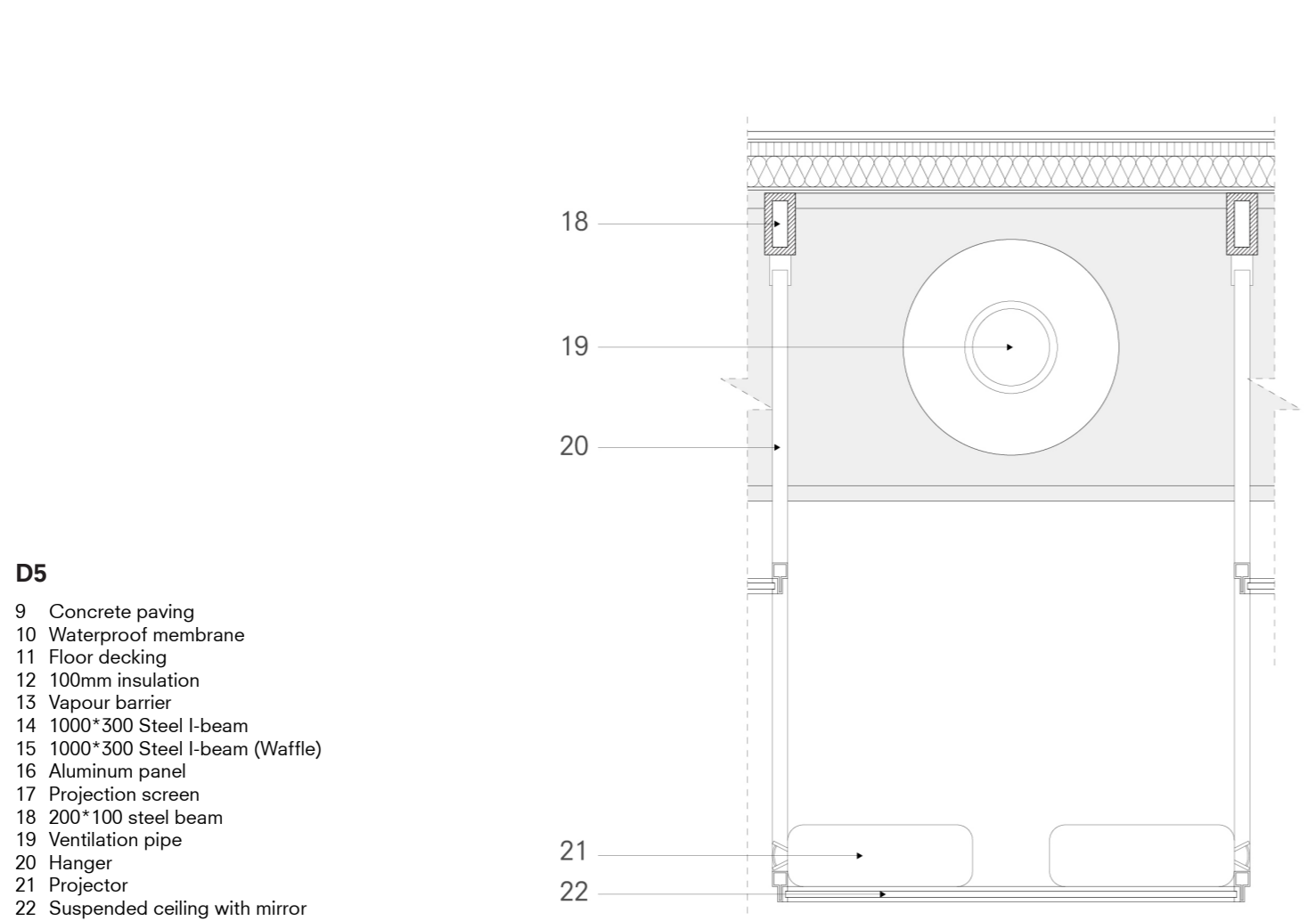
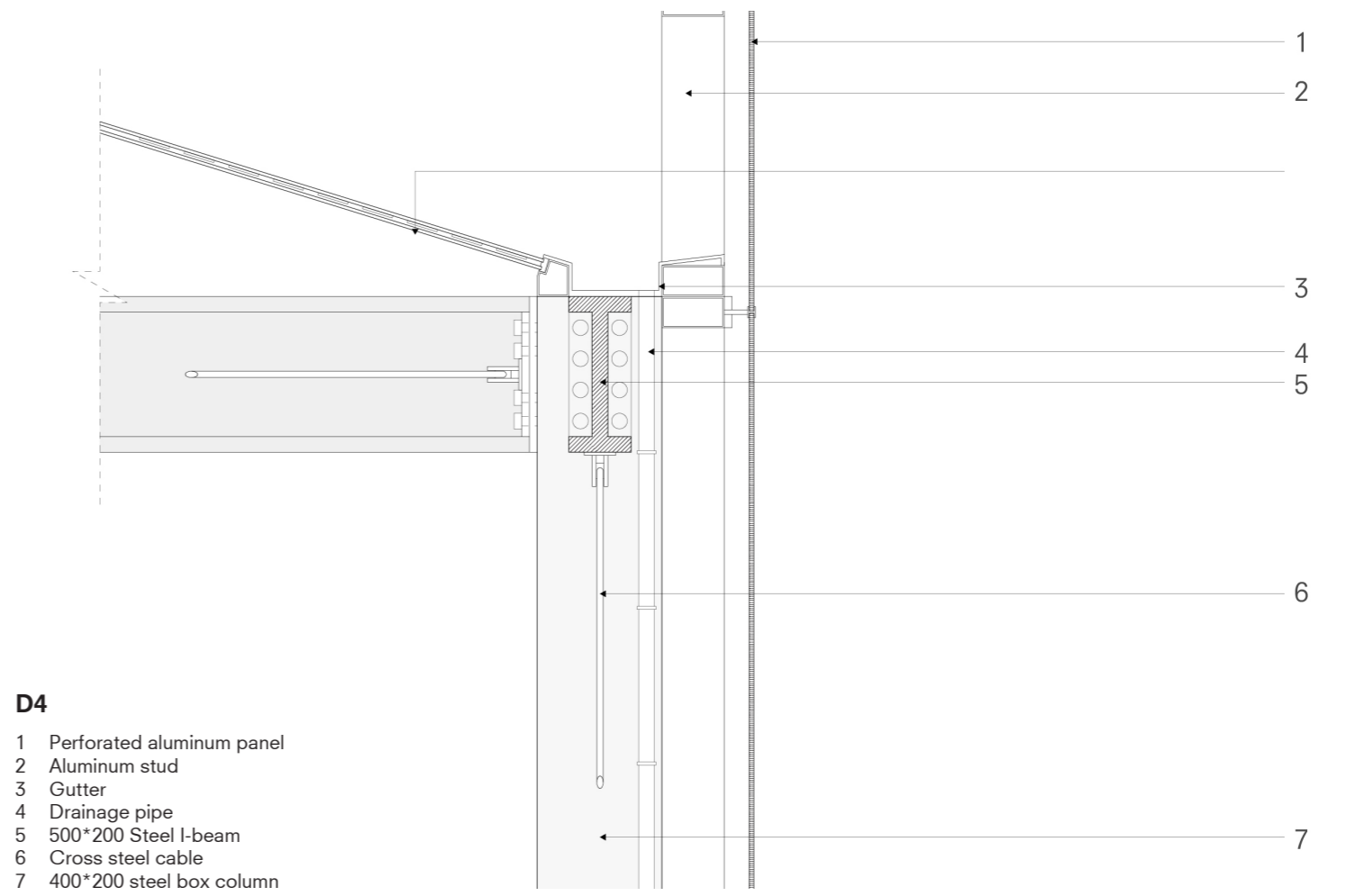
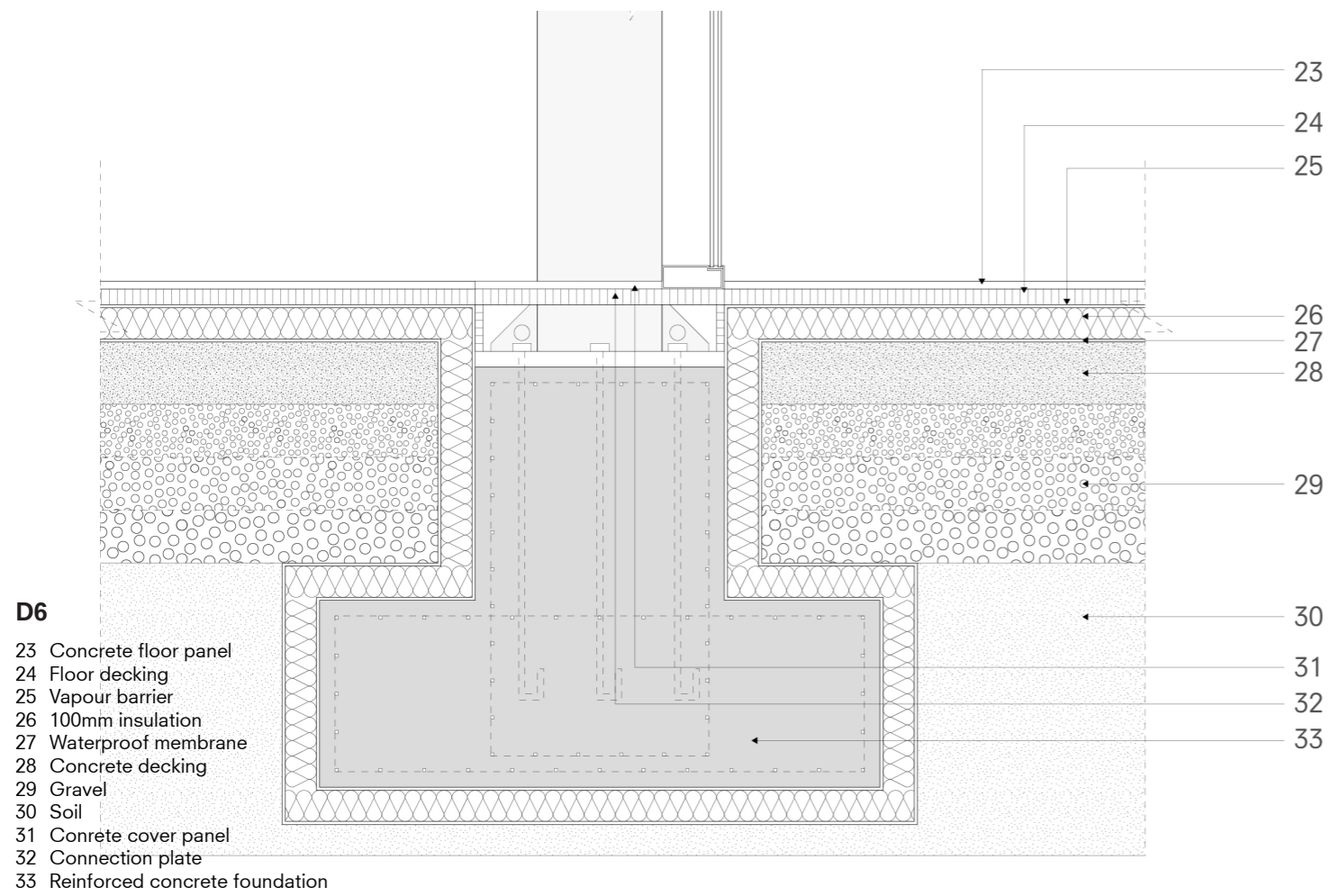
- D2**
- 9 Concrete floor panel
  - 10 Floor decking
  - 11 Waterproof membrane
  - 12 100mm insulation
  - 13 Vapour barrier
  - 14 200\*100 steel box beam
  - 15 1000\*300 Steel I-beam (waffle)
  - 16 1000\*300 Steel I-beam
  - 17 Aluminum panel



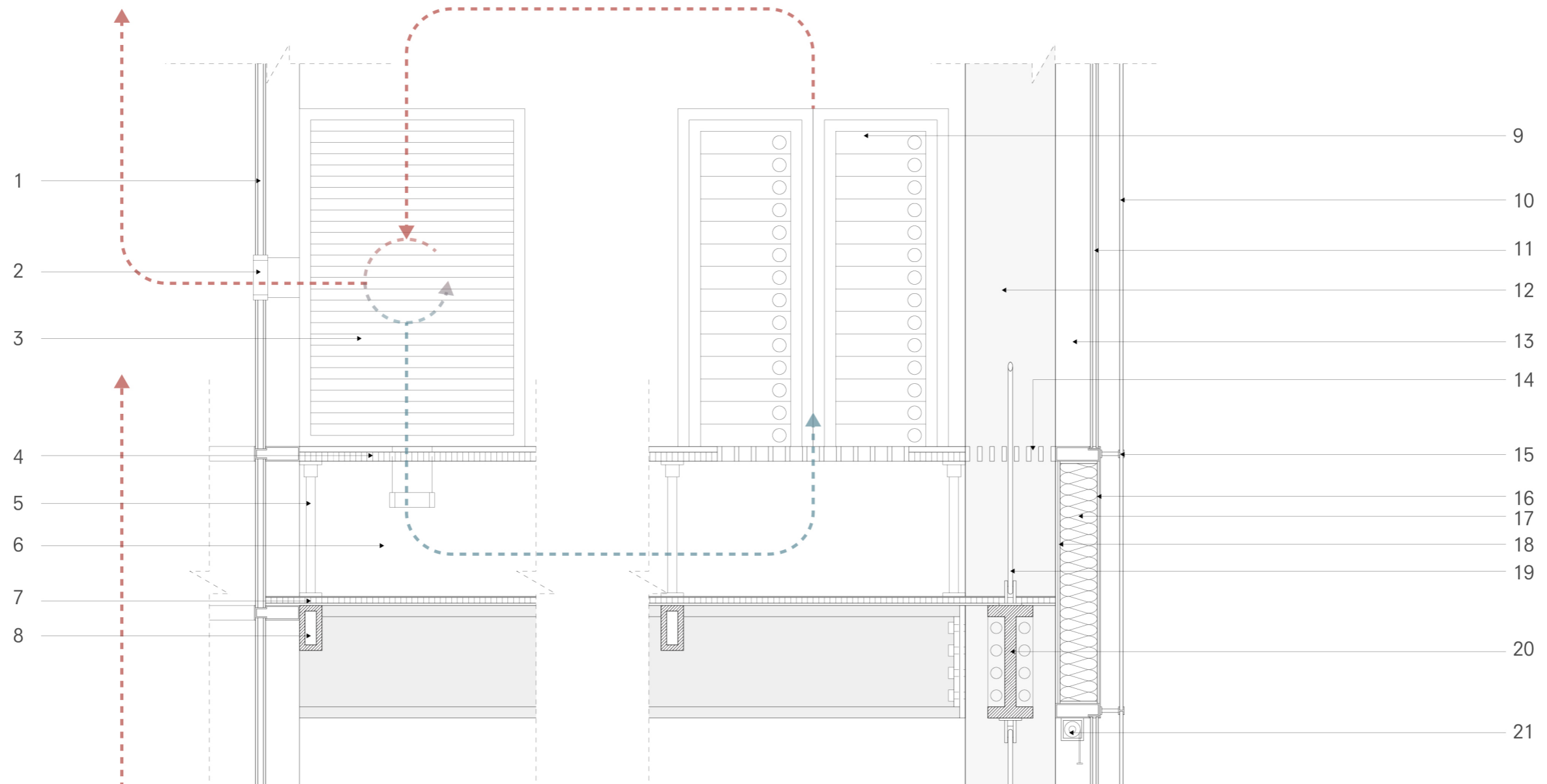
- D3**
- 1 Plant pot
  - 2 Floor decking
  - 3 Concrete paving
  - 4 Gutter
  - 5 Aluminum panel
  - 6 Flange steel I-beam
  - 7 Waterproof membrane
  - 8 100mm insulation
  - 9 Vapour barrier
  - 10 Operable window
  - 11 Aluminum stud
  - 12 Mesh panel with ivy
  - 13 Concrete floor panel
  - 14 Floor decking
  - 15 Aluminum panel
  - 16 200\*100 steel beam
  - 17 Mechanical pipe
  - 18 Artificial lamp
  - 19 1000\*300 Steel I beam

Detail section





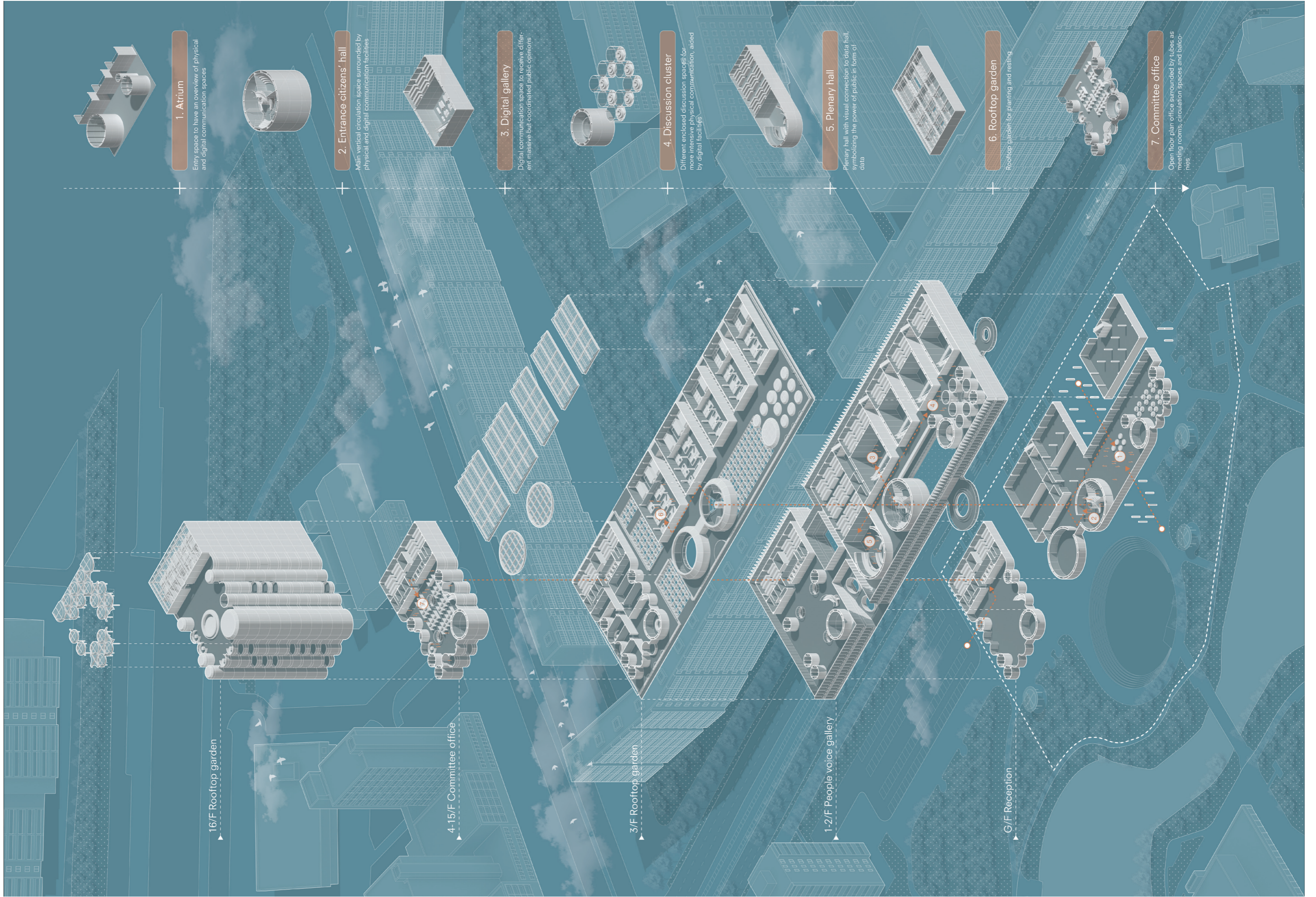




**D7**

- 1 Insulation panel
- 2 Exhaust pipe
- 3 CRAC
- 4 Floor decking
- 5 Floor joist jack
- 6 Cool aisle ventilation cavity
- 7 Insulation panel
- 8 200\*100 steel beam
- 9 Data rack
- 10 10mm Perforated aluminium panel
- 11 Double glazing
- 12 400\*200 box steel column
- 13 Aluminum stud
- 14 Grill
- 15 Steel hanger joint
- 16 Waterproof membrane
- 17 100mm insulation
- 18 Vapour barrier
- 19 Cross steel cable
- 20 500\*200 Steel I-beam
- 21 Window shutter





**1. Atrium**

Entry space to have an overview of physical and digital communication spaces

**2. Entrance citizens' hall**

Main vertical circulation space surrounded by physical and digital communication facilities

**3. Digital gallery**

Digital communication space to receive different, massive but coordinated public opinions

**4. Discussion cluster**

Different enclosed discussion spaces for more intensive physical communication, aided by digital facilities

**5. Plenary hall**

Plenary hall with visual connection to data hall, symbolizing the power of public in form of data

**6. Rooftop garden**

Rooftop garden for planting and resting

**7. Committee office**

Open floor plan office surrounded by tubes as meeting rooms, circulation spaces and balconies

16/F Rooftop garden

4-15/F Committee office

3/F Rooftop garden

1-2/F People voice gallery

G/F Reception