

LEGEND

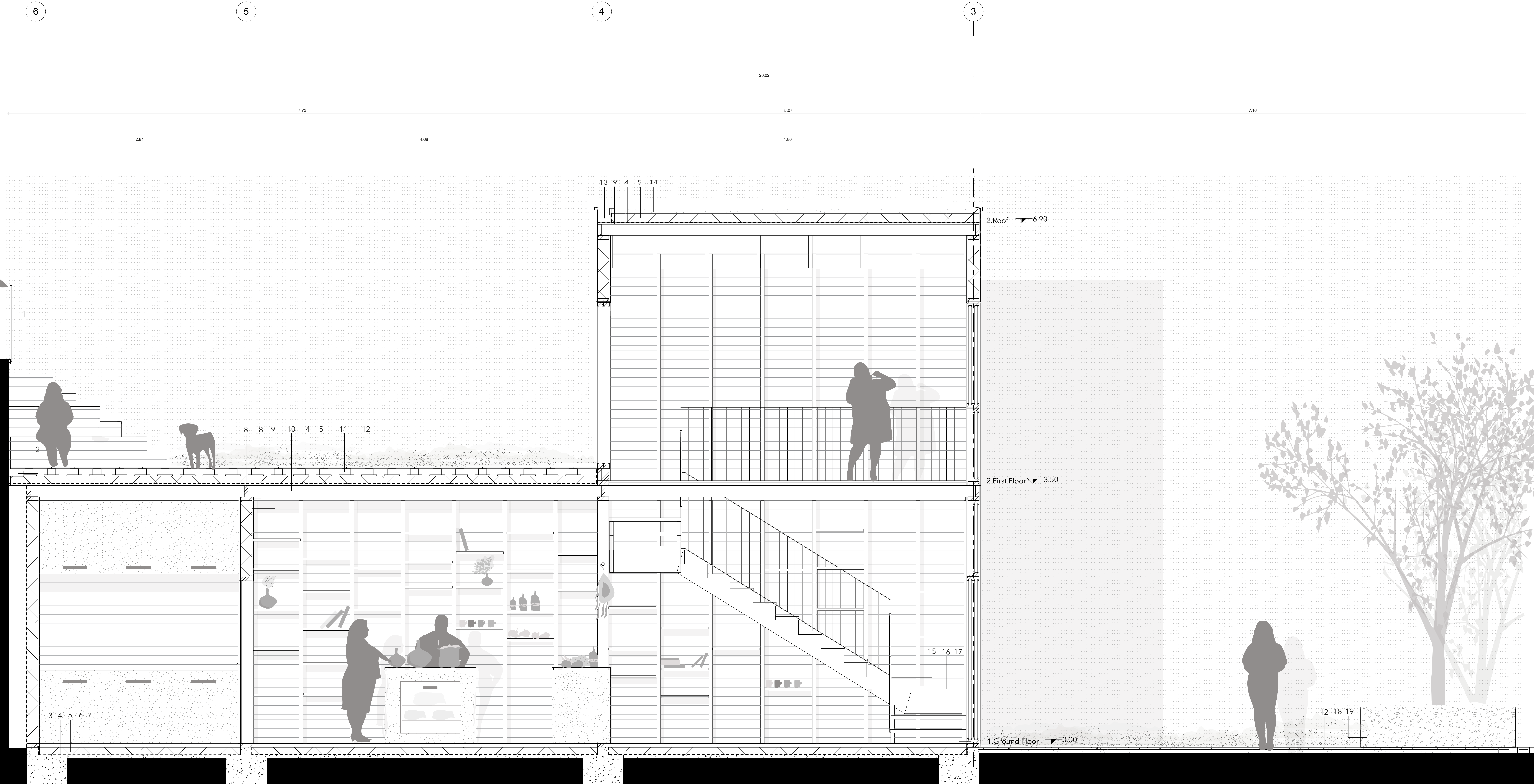
- 1-Black steel existing railing
- 2- Aluminium Gutter
- 3-Prefabricated Concrete Foundation
- 4- Waterproof Layer
- 5- Wooden Fiber Insulation , 100 mm
- 6- Screed Replacement Tiles , Jupiter System , 30 mm
- 7- Gres Porcelain Tiles, Light Concrete Effect, 600x400x20 mm
- 8-Balloon Frame Timber Element , 50x150x3200 mm
- 9- Wooden Board slats textures , 122 x 244 x 20 mm
- 10- Laminated Timber Beam , 50x150x4700 mm
- 11- Rubber Support Pads with self-levelling heads , 110x 110 x 70 mm
- 12- Black Concrete Tiles, 600x400x20 mm
- 13- Aluminium Gutter
- 14- Gravel , 40 mm
- 15-Black steel railing
- 16- Wooden Board , 200x300x1000 mm
- 17-Wooden Sliding Fixtures, 40 mm
- 18- Lean Concrete, 50 mm
- 19- Rocks Wall
- 20- Timber Wooden Beam, 50x150x1900 mm
- 21- Glass, 20 mm x 1200x 2000 mm

6

5

4

3



Materials

The choice of local and cheap material is a leading one, indeed wooden elements in standard dimensions are the main features of the project.

Rainwater Collection

The rainwater is collected and stored in a tank located underneath the public stairs outdoor.

Insulation

The layer of wood fiber insulation insulate the building and protects the interior in the colder days.

Urban Interstice

The surrounding buildings help to protect from the sun in the warmest days but also to shelter from other possible environmental situations.

Ventilation

Ensured by the shape of the building that works together with the numerous sliding windows and doors.

Light

Considering the reduced sources of natural light, the design solution of having big glass surfaces aim to provide natural light at its maximum.

Structure Resilience

The Timber structure is easily montable and demontable. This is in order to achieve "social" sustainability but also resilience in time.

Vegetation

Even if at the small scale of the interstice, increasing the green surfaces in the neighborhood is one of the aim of the project, together with the re-arrangement of the existing one.

Climate and Sustainability

The "Room" approach

