

SCHOOL OF TIMBER INDUSTRY 4.0

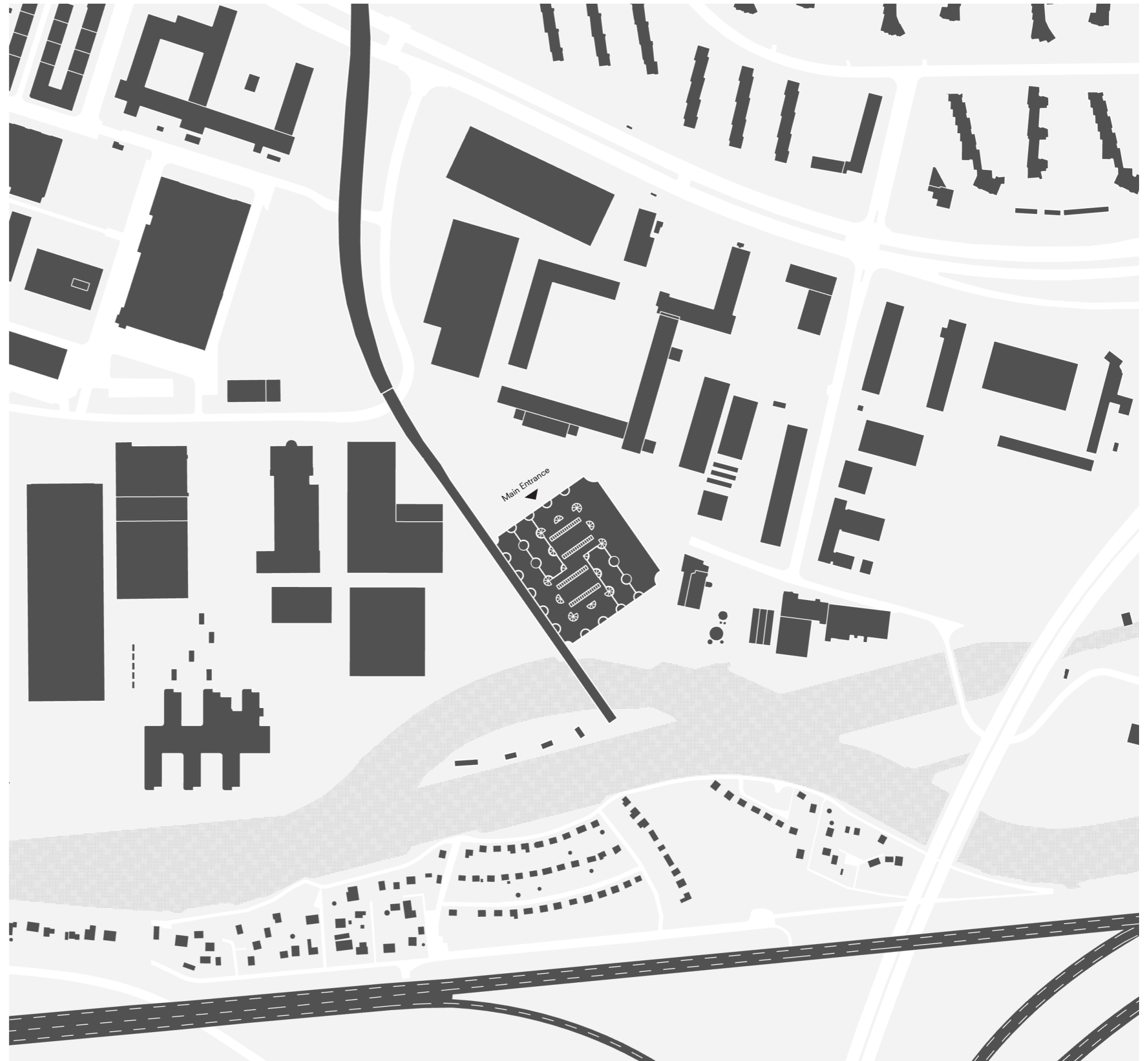
Bodies & Building Berlin Studio

Yifan Dong
Digitalization Group
July/1/2024

Site Plan

level of detail
printed scale

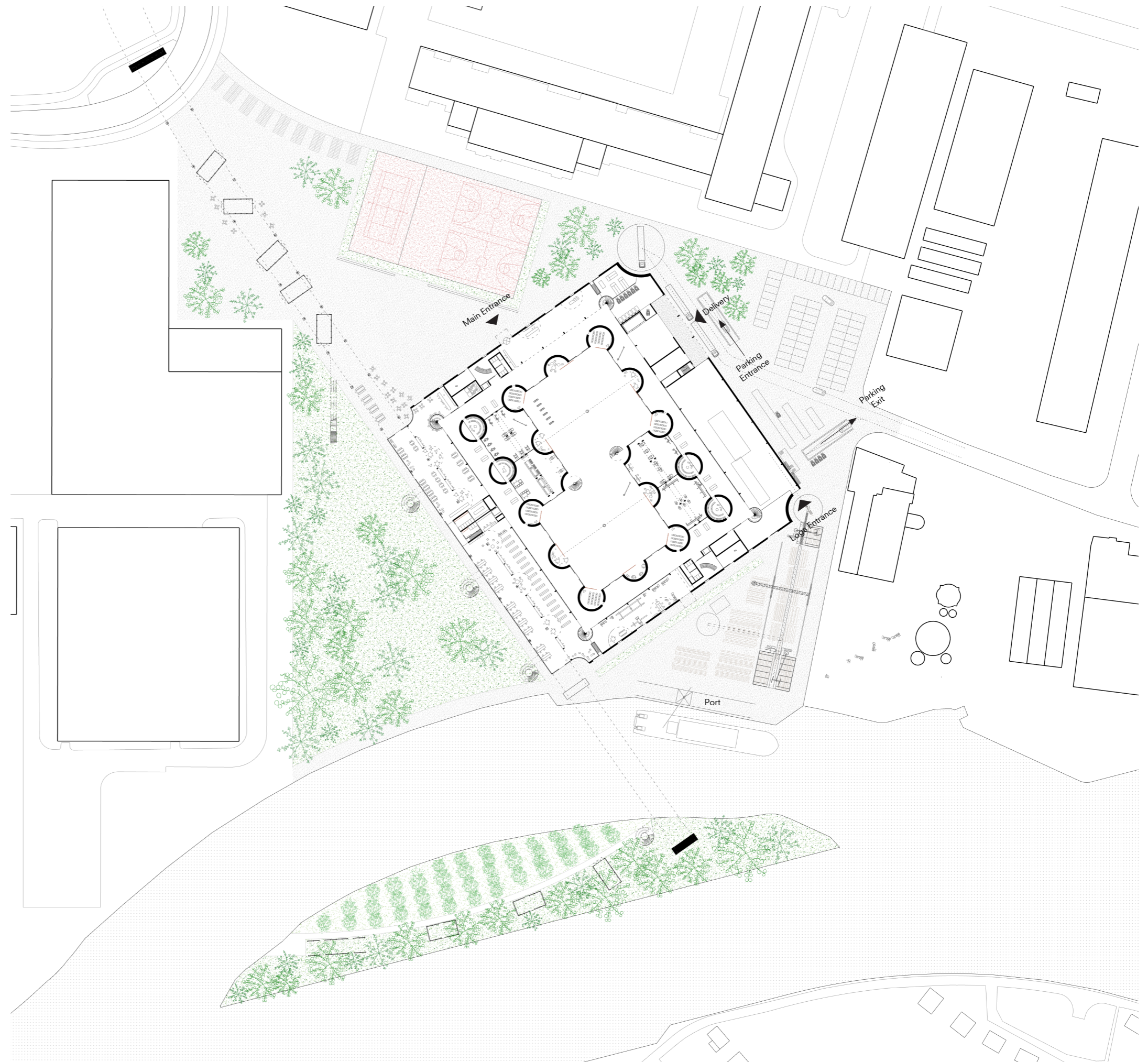
1:2000
1:3000



Urban Implementation Plan

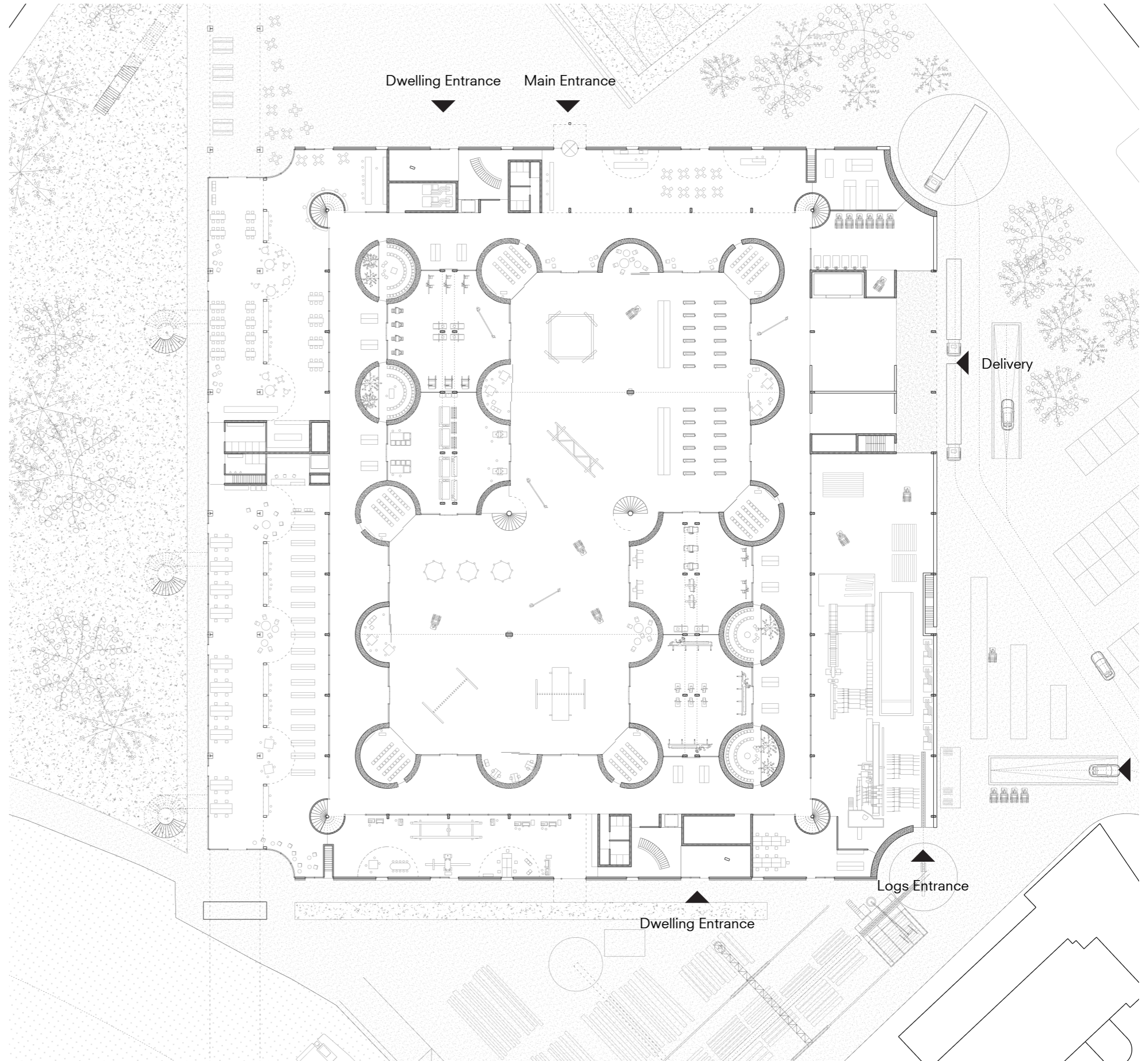


level of detail 1:500
printed scale 1:1500



Floor Plan

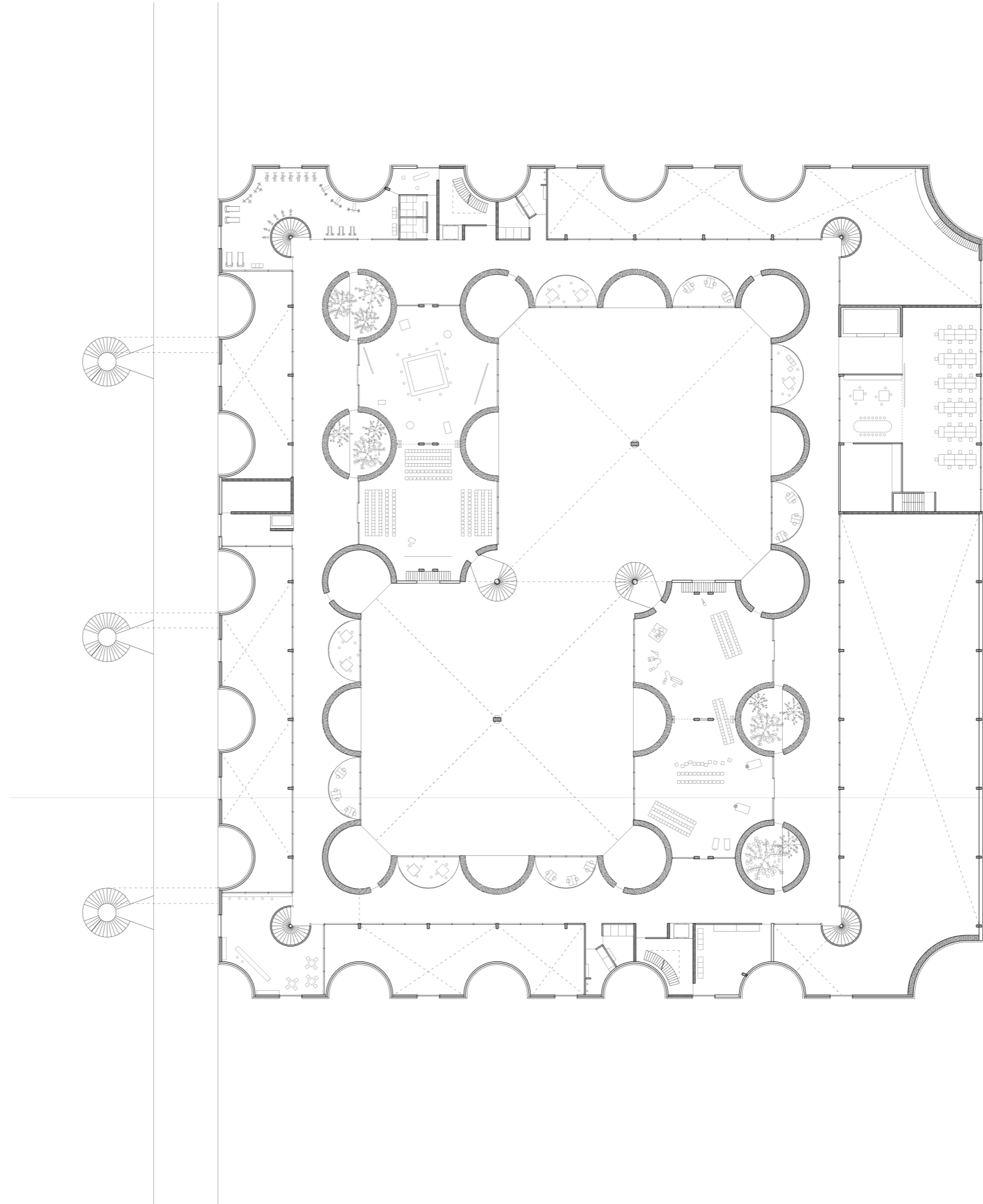
Ground Floor ±0.00 m
level of detail 1:200
printed scale 1:600



Floor Plan

First Floor 6.00 m

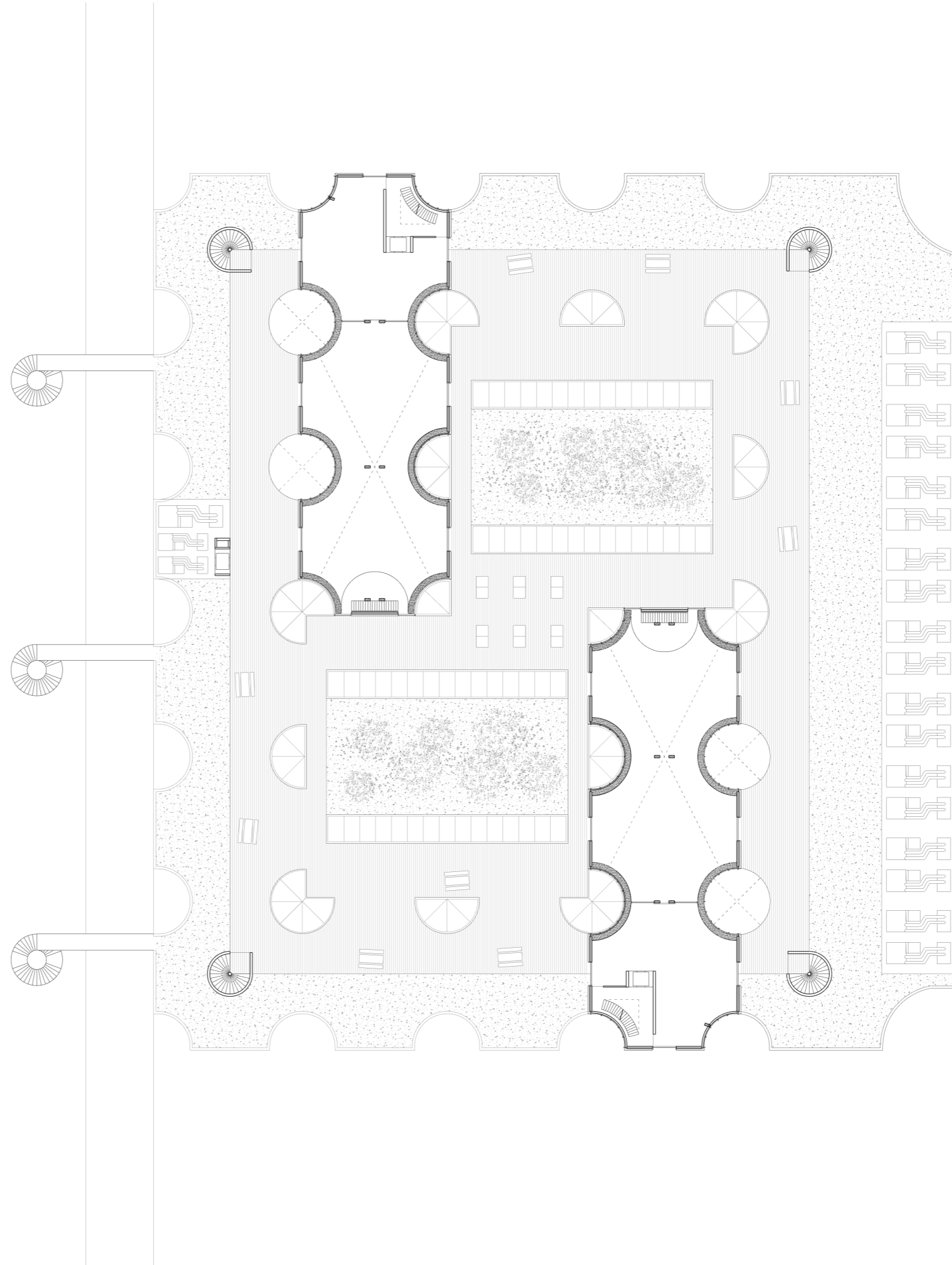
level of detail 1:200
printed scale 1:600



Floor Plan

Second Floor 10.60 m

level of detail 1:200
printed scale 1:600

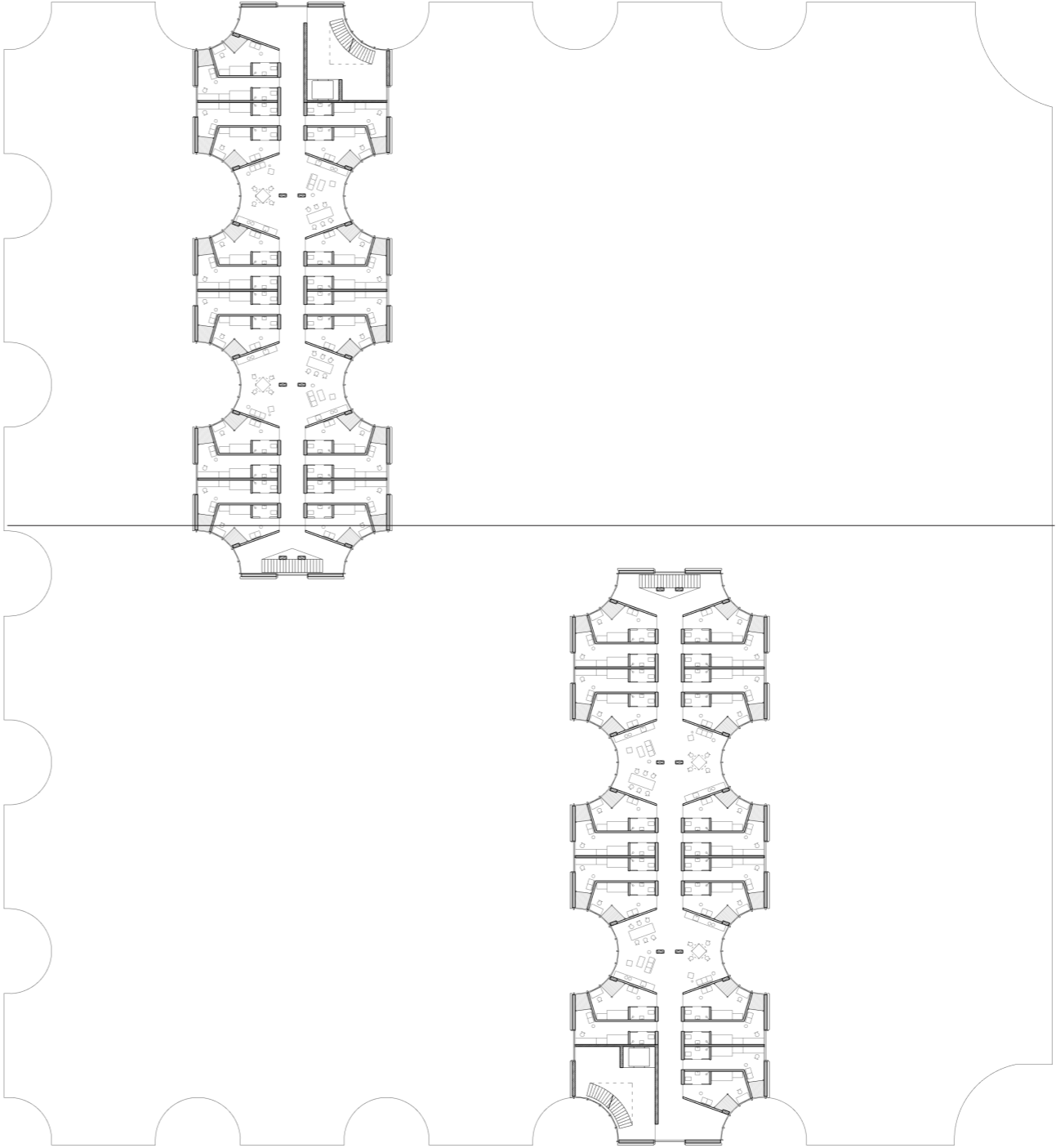


Floor Plan



Fourth Floor +17.30 m

level of detail 1:200
printed scale 1:600

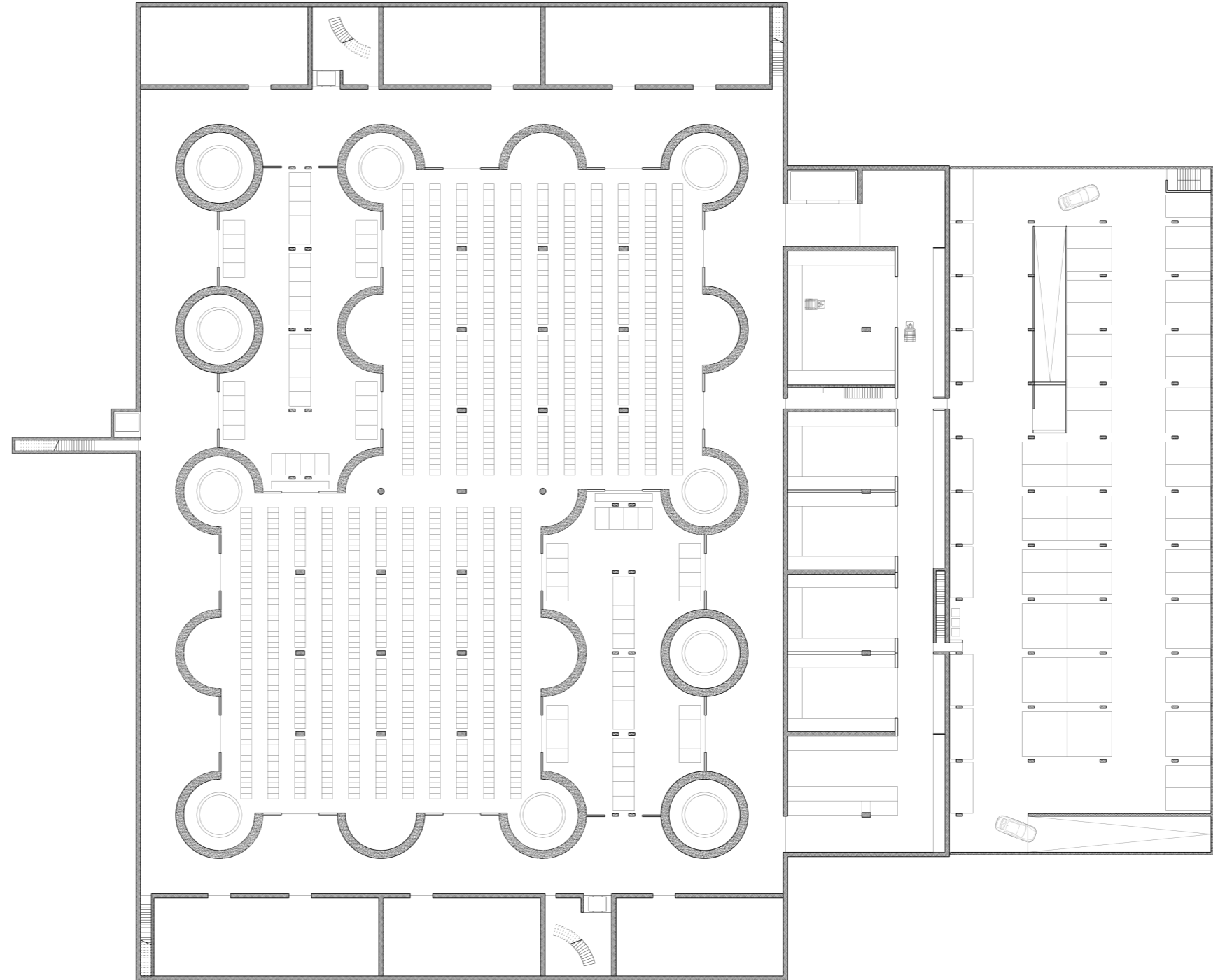


Floor Plan



Basement Floor -5.00 m

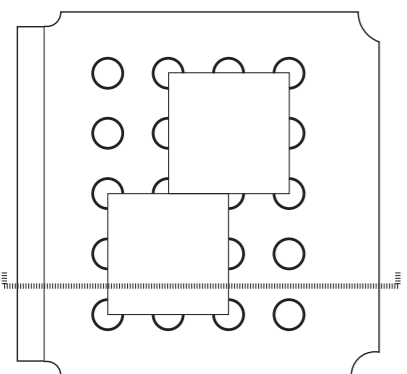
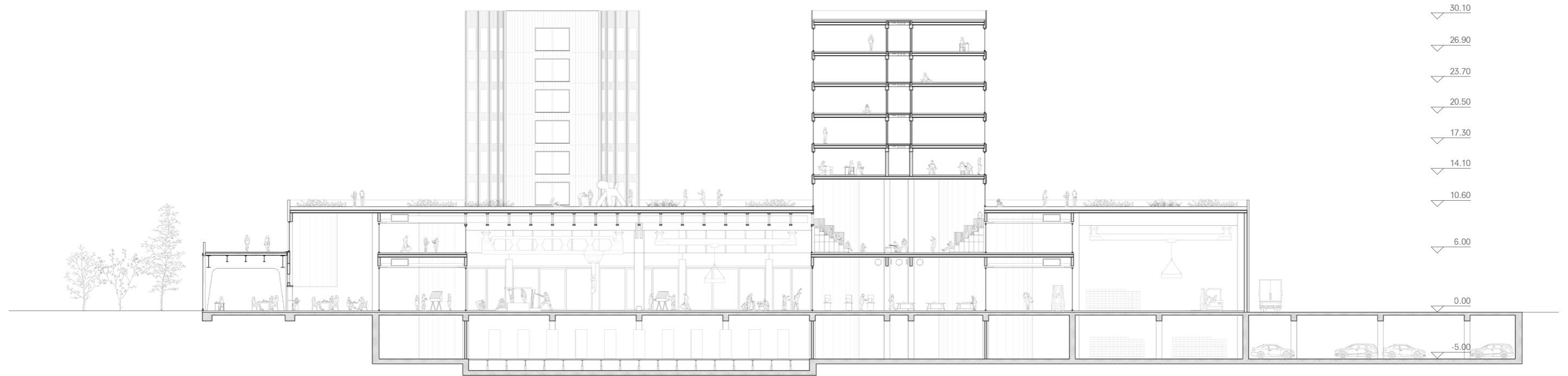
level of detail 1:200
printed scale 1:600



Section

Cross Section

level of detail 1:200
printed scale 1:400

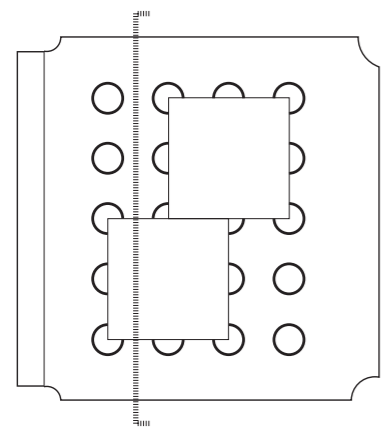
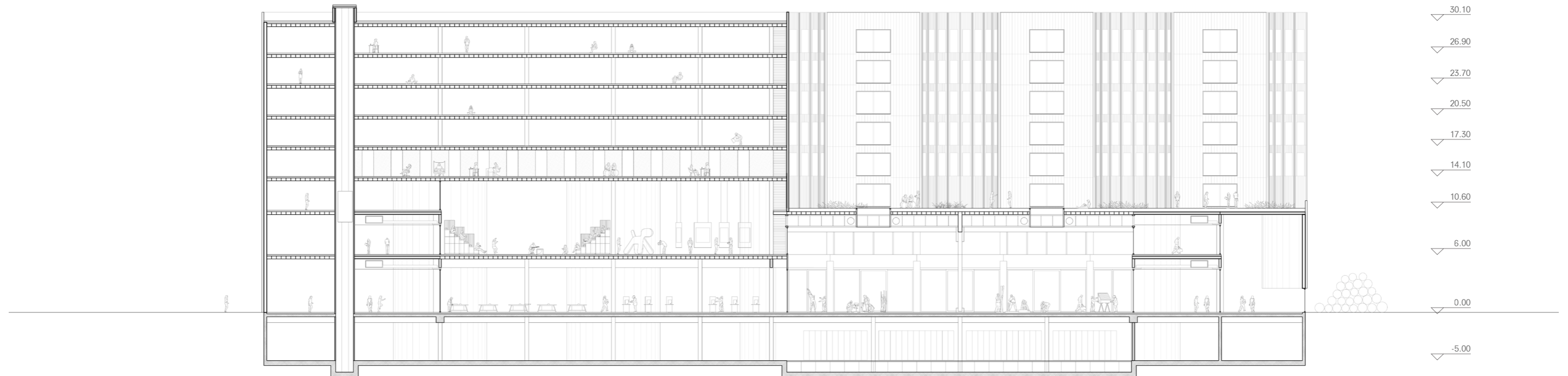


School of Timber Industry 4.0
Yifan Dong
Bodies & Building Berlin
Graduation Studio 2023-2024

Section

Longitude Section

level of detail 1:200
printed scale 1:400

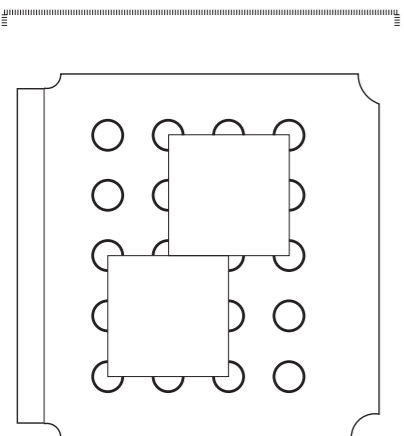
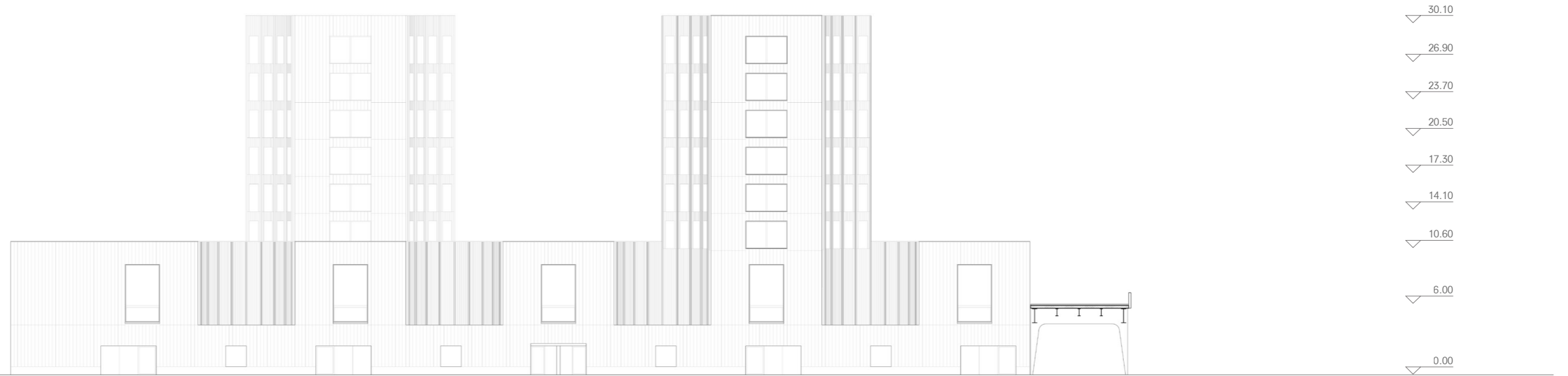


School of Timber Industry 4.0
Yifan Dong
Bodies & Building Berlin
Graduation Studio 2023-2024

Elevation

North Elevation

level of detail 1:200
printed scale 1:400



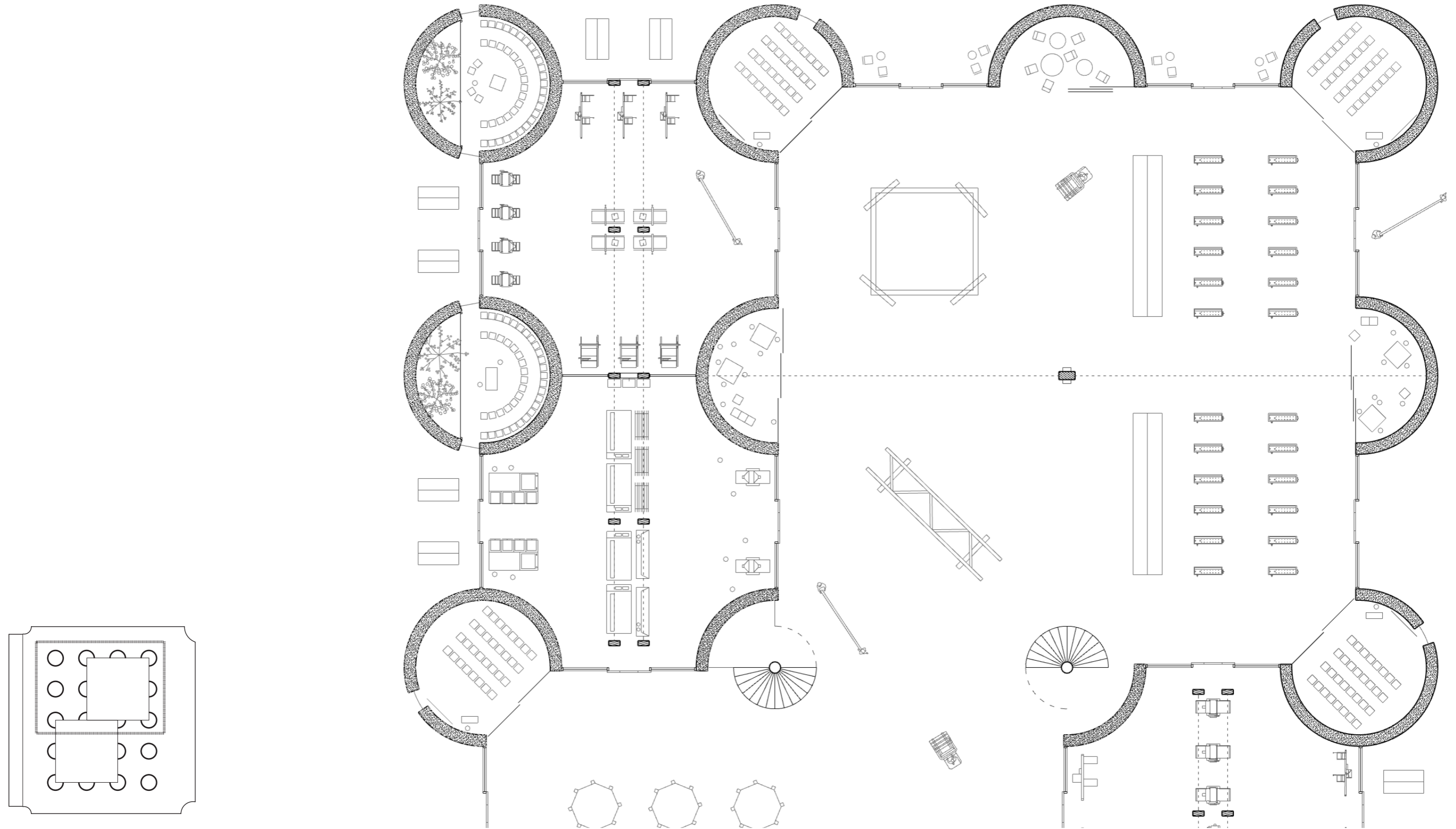
School of Timber Industry 4.0
Yifan Dong
Bodies & Building Berlin
Graduation Studio 2023-2024

Floor Plan Fragment



Workshop

level of detail 1:50
printed scale 1:250

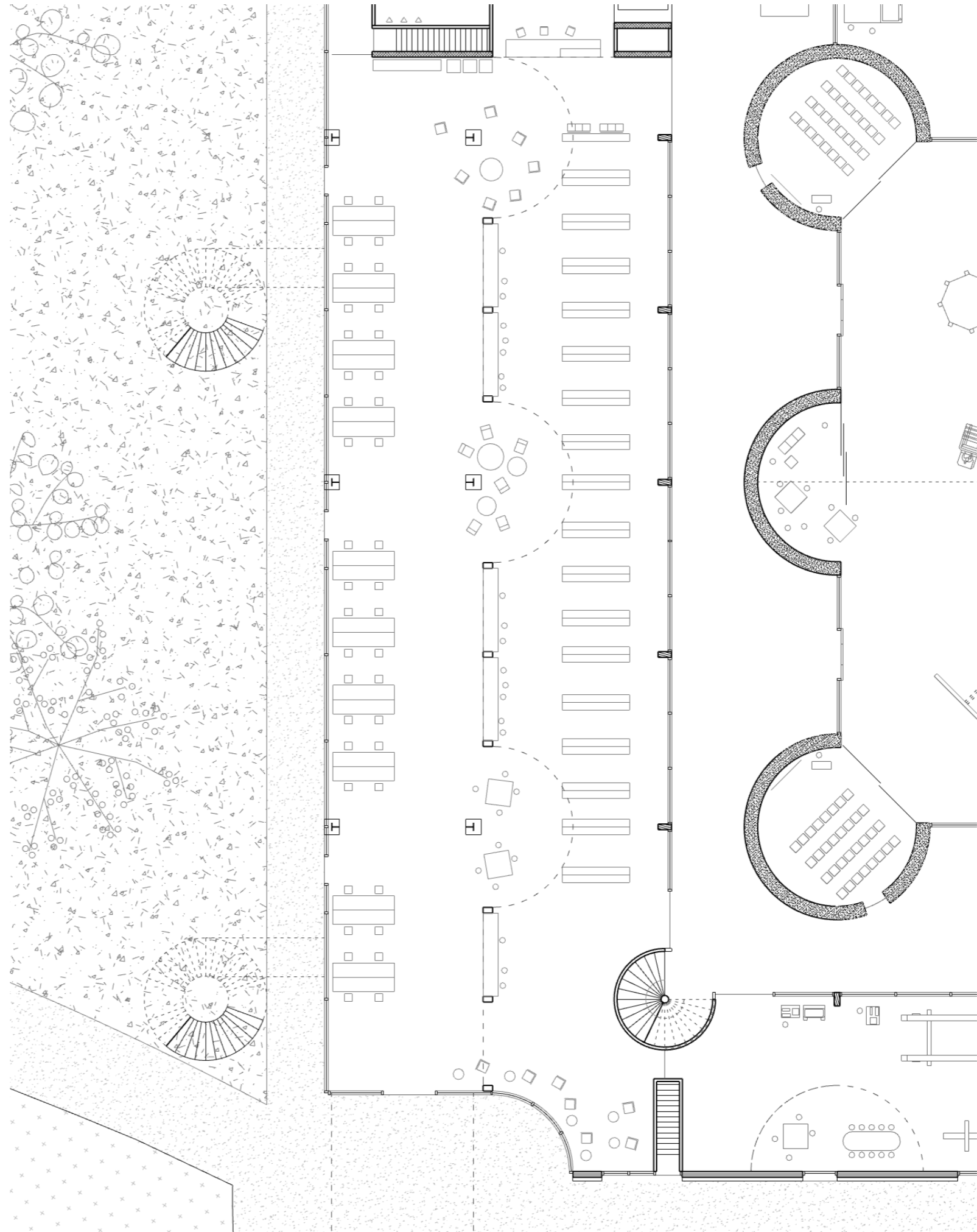
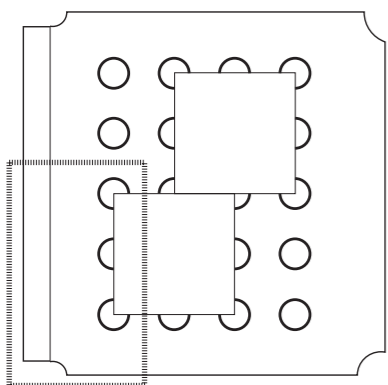


School of Timber Industry 4.0
Yifan Dong
Bodies & Building Berlin
Graduation Studio 2023-2024

Floor Plan Fragment

Railway Intervention

level of detail 1:50
printed scale 1:250

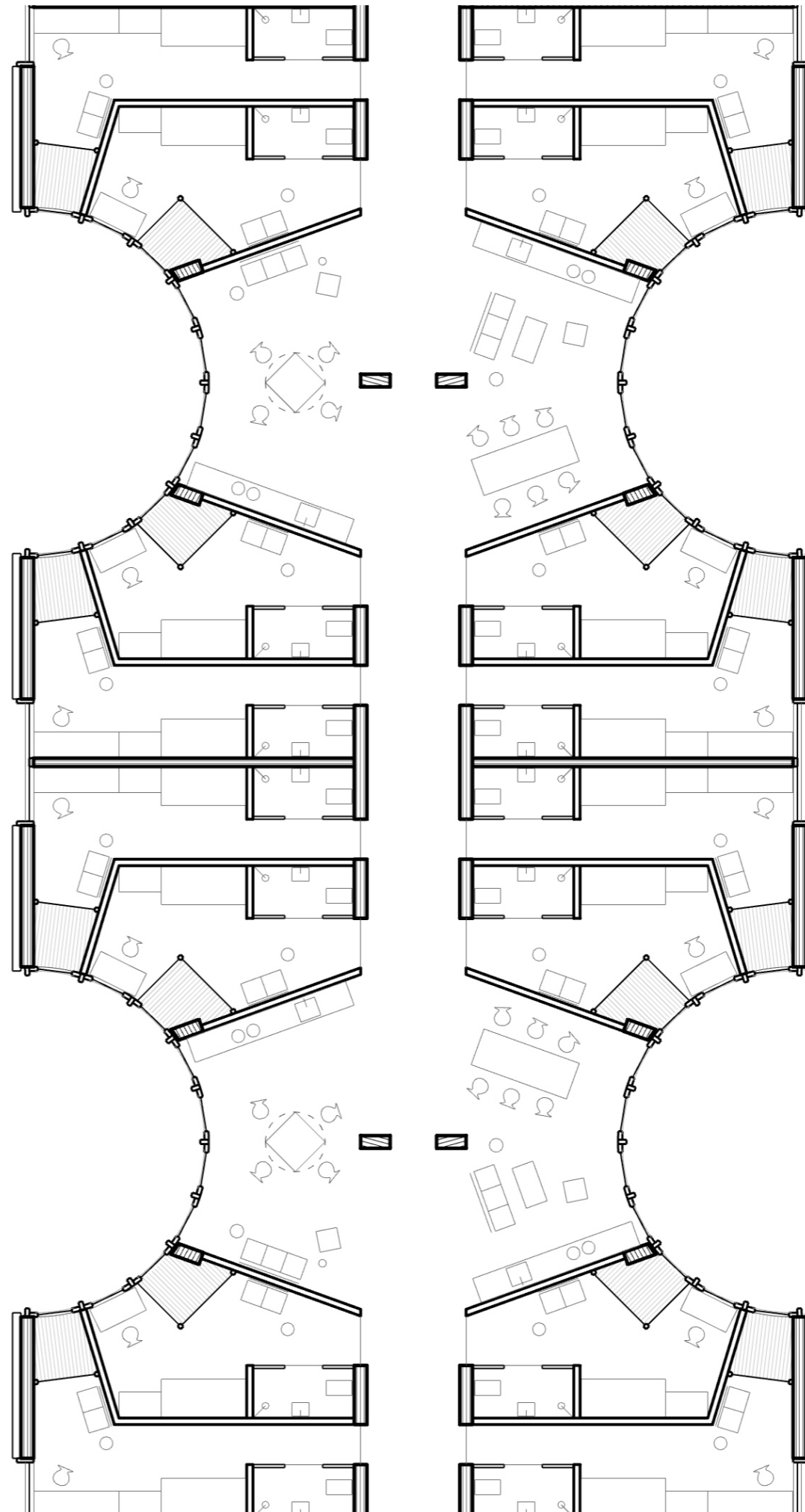
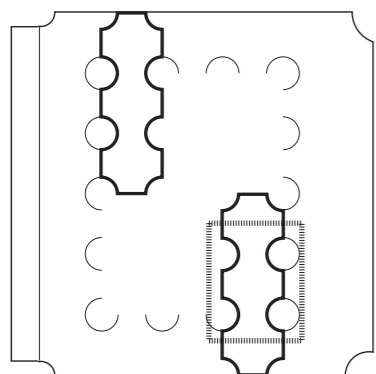


School of Timber Industry 4.0
Yifan Dong
Bodies & Building Berlin
Graduation Studio 2023-2024

Floor Plan Fragment

Dwelling Units

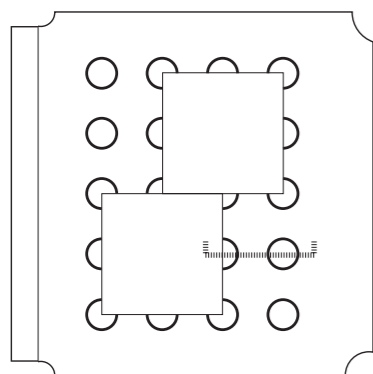
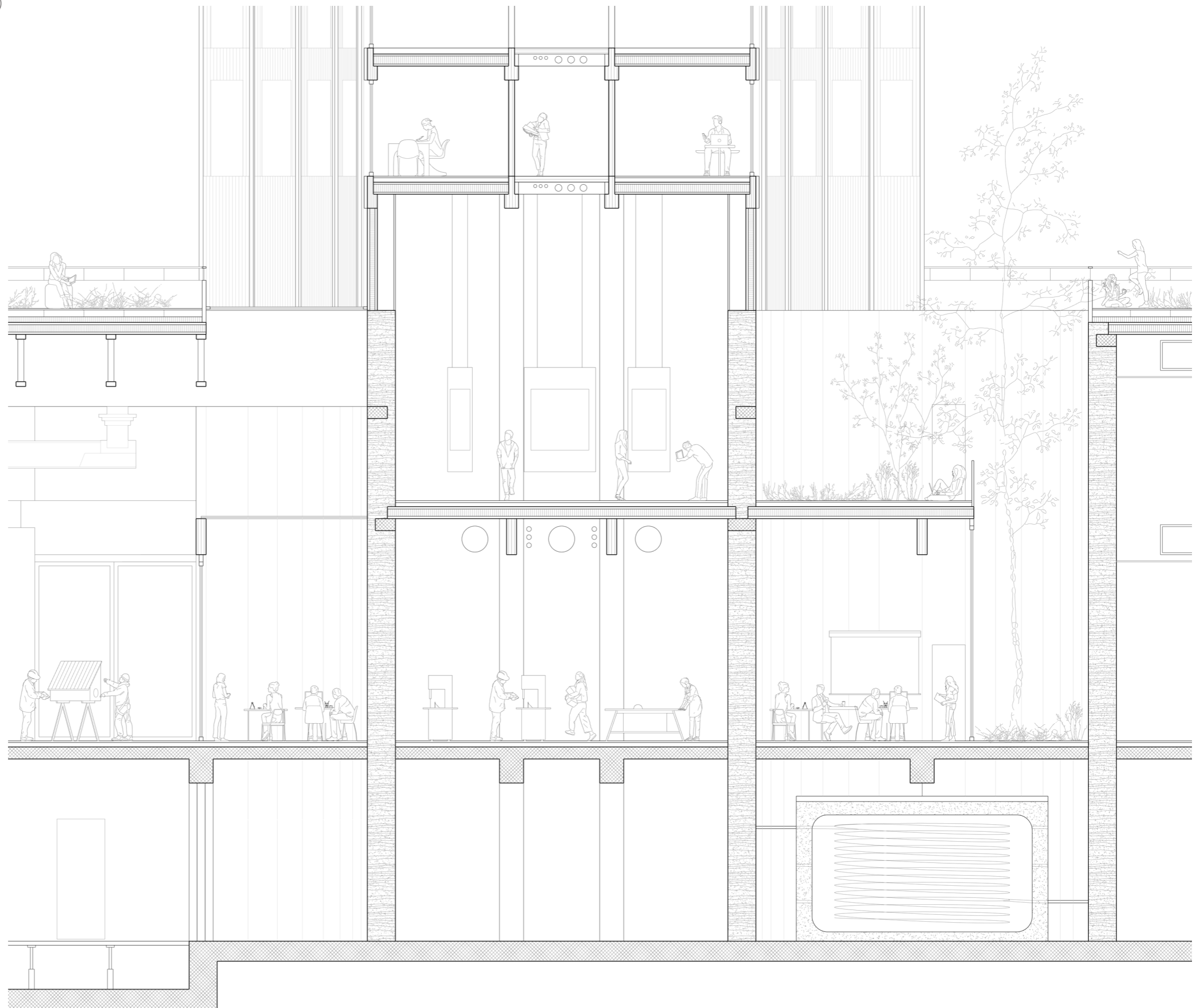
level of detail 1:50
printed scale 1:75



Section Fragment

Injection of Classrooms

level of detail 1:50
printed scale 1:100

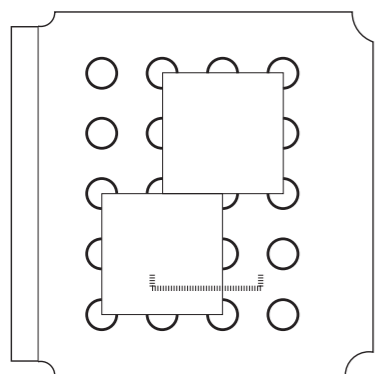
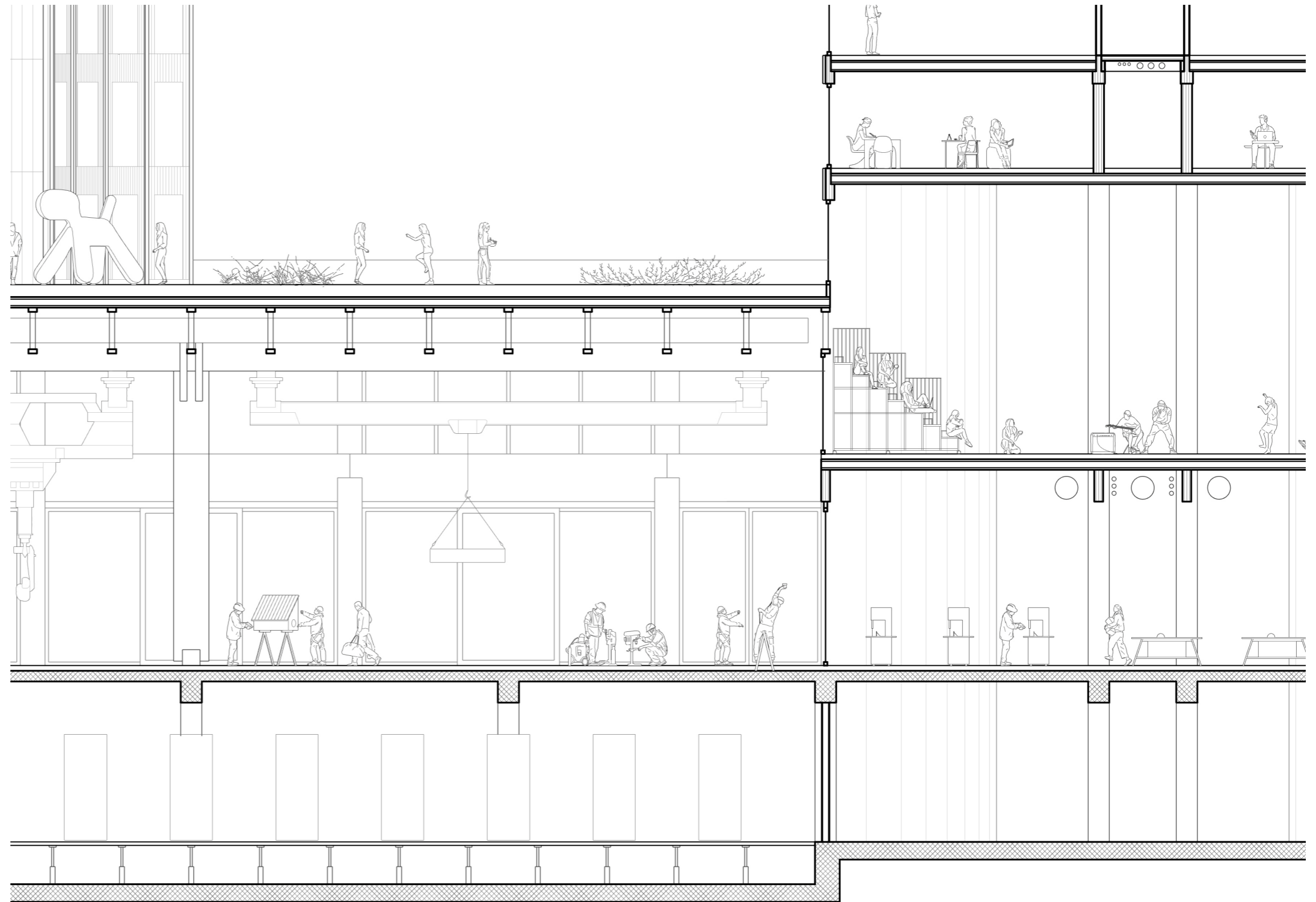


School of Timber Industry 4.0
Yifan Dong
Bodies & Building Berlin
Graduation Studio 2023-2024

Section Fragment

Workshop and Event Space

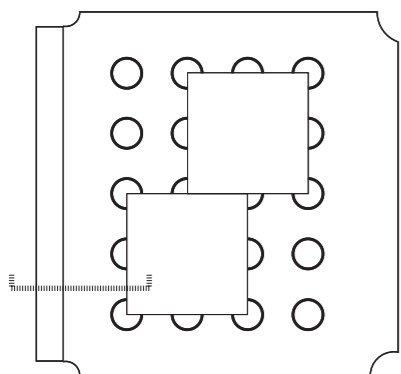
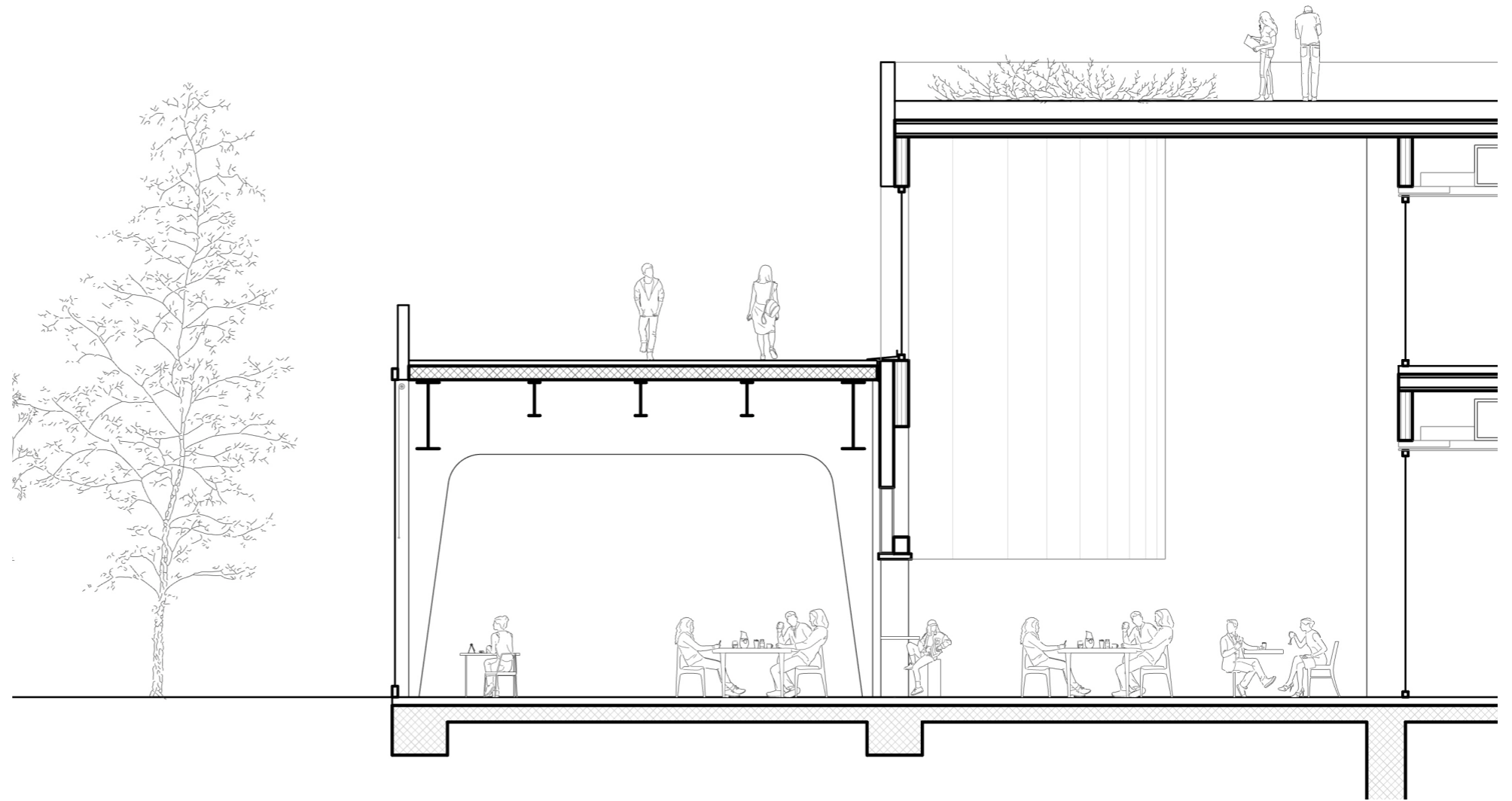
level of detail 1:50
printed scale 1:150



Section Fragment

Railway Intervention

level of detail 1:50
printed scale 1:100



School of Timber Industry 4.0
Yifan Dong
Bodies & Building Berlin
Graduation Studio 2023-2024

Envelope Fragment

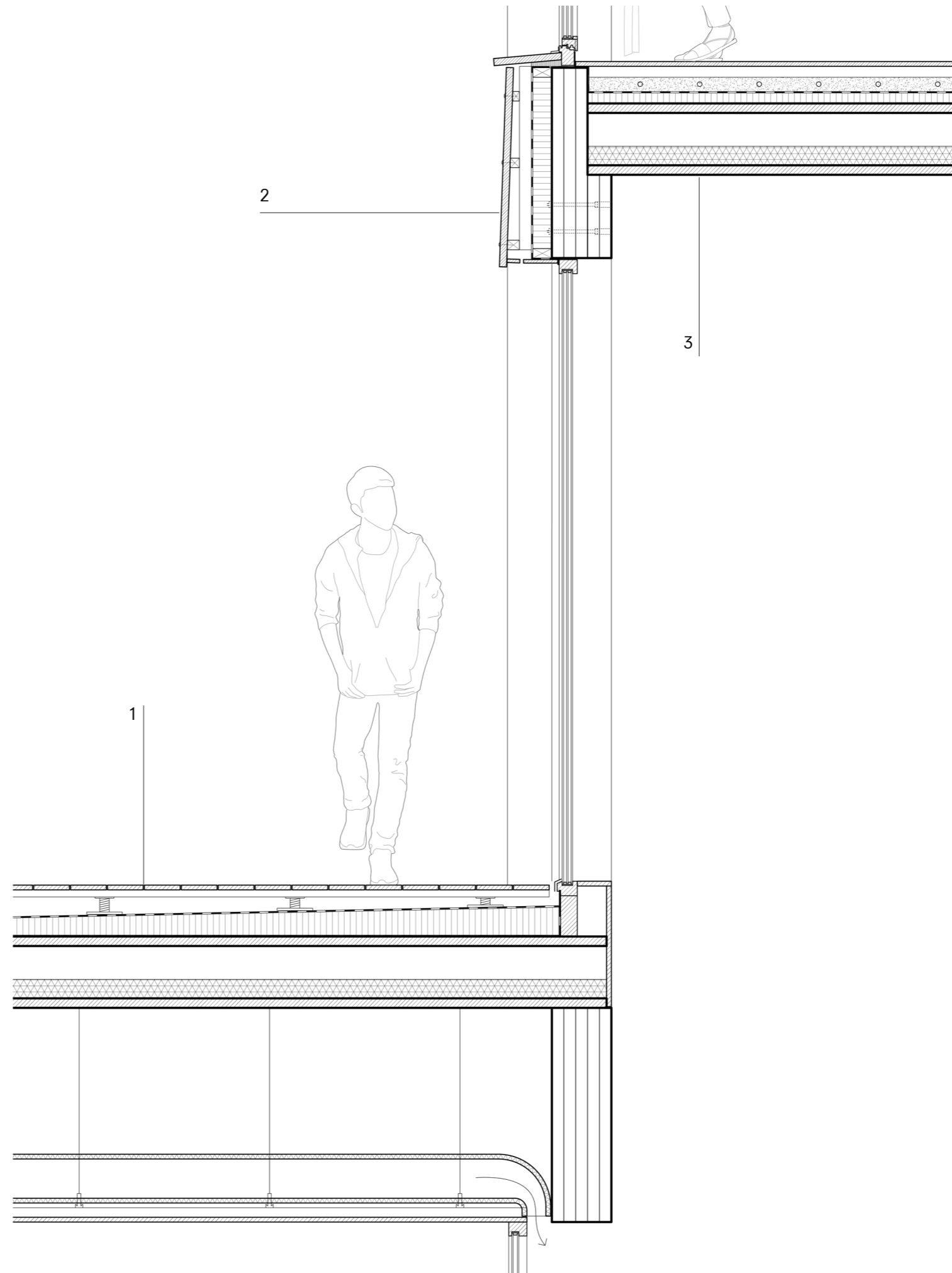
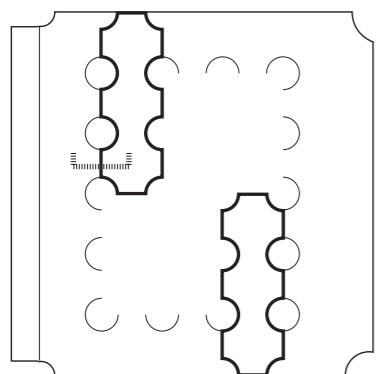
Accessible Roof

level of detail 1:20
 printed scale 1:20

1 Accessible roof:	
Wood decking	20 mm
Timber supporting structure	20 mm
Adjustable footings	
Elastomeric bearings	10 mm
Bituminous sheeting	4 mm
Cork-loam mixture sloping insulation	120 mm
Bituminous sheeting	4 mm
Lignatur surface element (LFE) with fill 50 kg/m ²	320 mm
Suspended timber ceiling supporting structure	30 mm
Plywood board ceiling	12mm

2 Exterior wall:	
Shou Sugi Ban cladding	30 mm
Wood battens	24 mm
Vertical battens with cavity	30 mm
Bituminous sheeting	4 mm
Insulation	80 mm
Glulam beam	250 mm

3 Dwelling floor:	
Wood flooring	20 mm
Flooring substructure	24 mm
Heated screed	60 mm
Waterproofing	2 mm
Insulation	40mm
Lignatur surface element (LFE) with fill 50 kg/m ²	320 mm



Envelope Fragment

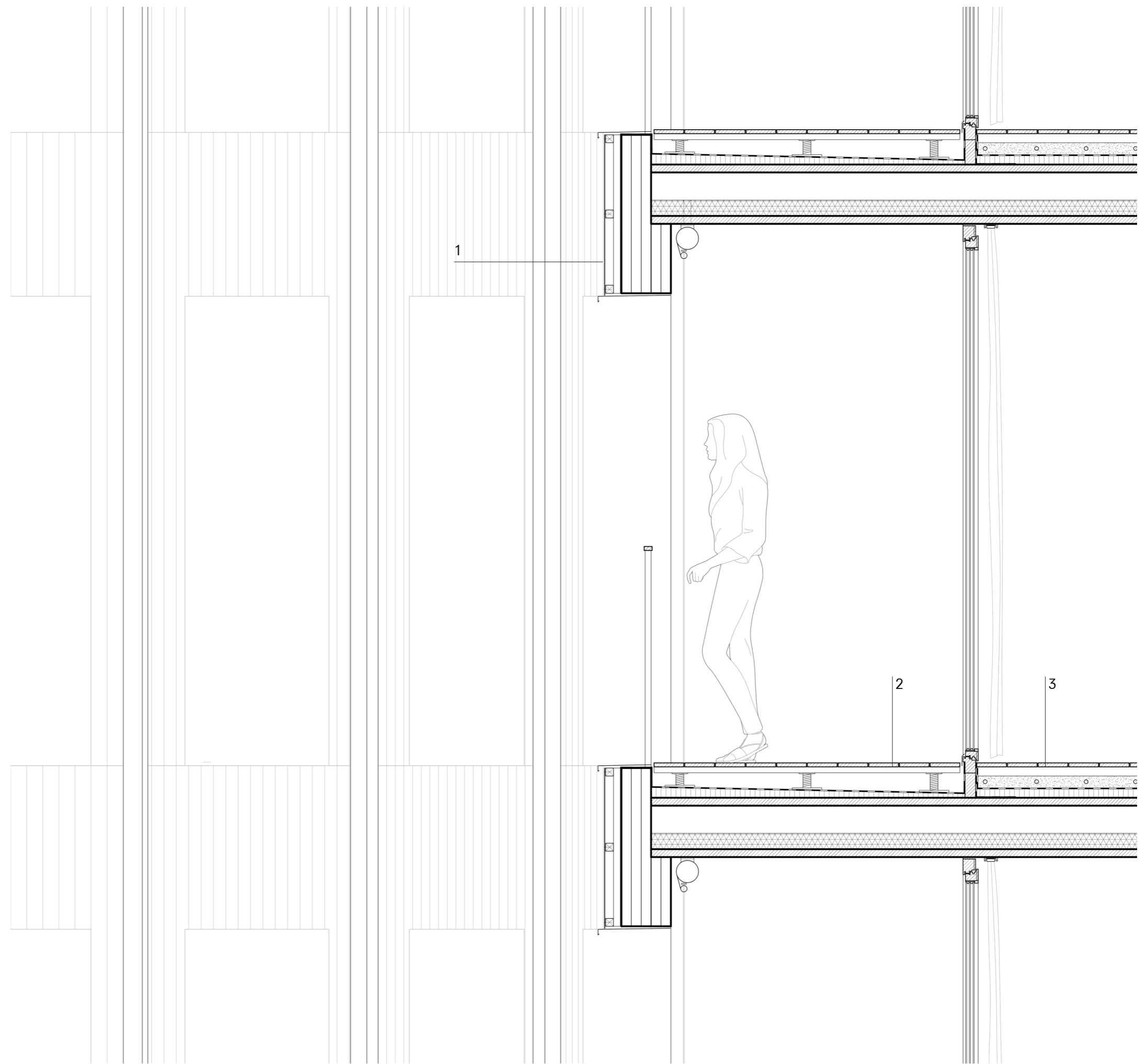
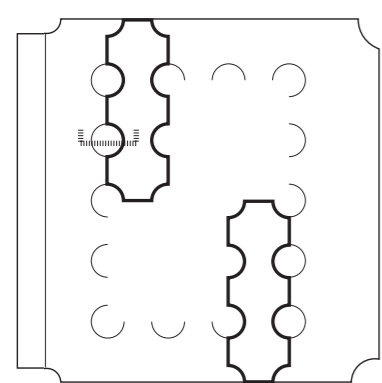
Loggia of Dwelling

level of detail 1:20
 printed scale 1:20

- 1 Exterior wall:
 - Corrugated steel sheeting 3 mm
 - Wood batten 24 mm
 - Vertical battens with cavity 30 mm
 - Glulam beam 250 mm

- 2 Loggia floor:
 - Wood decking 20 mm
 - Timber supporting structure 20 mm
 - Adjustable footings
 - Elastomeric bearings 10 mm
 - Bituminous sheeting 4 mm
 - Cork-loam mixture sloping insulation 120 mm
 - Lignatur surface element (LFE) with fill 50 kg/m² 320 mm

- 3 Dwelling floor:
 - Wood flooring 20 mm
 - Flooring substructure 24 mm
 - Heated screed 60 mm
 - Waterproofing 2 mm
 - Insulation 40mm
 - Lignatur surface element (LFE) with fill 50 kg/m² 320 mm



School of Timber Industry 4.0
 Yifan Dong
 Bodies & Building Berlin
 Graduation Studio 2023-2024

Construction Detail

Joint with Rail Viaduct

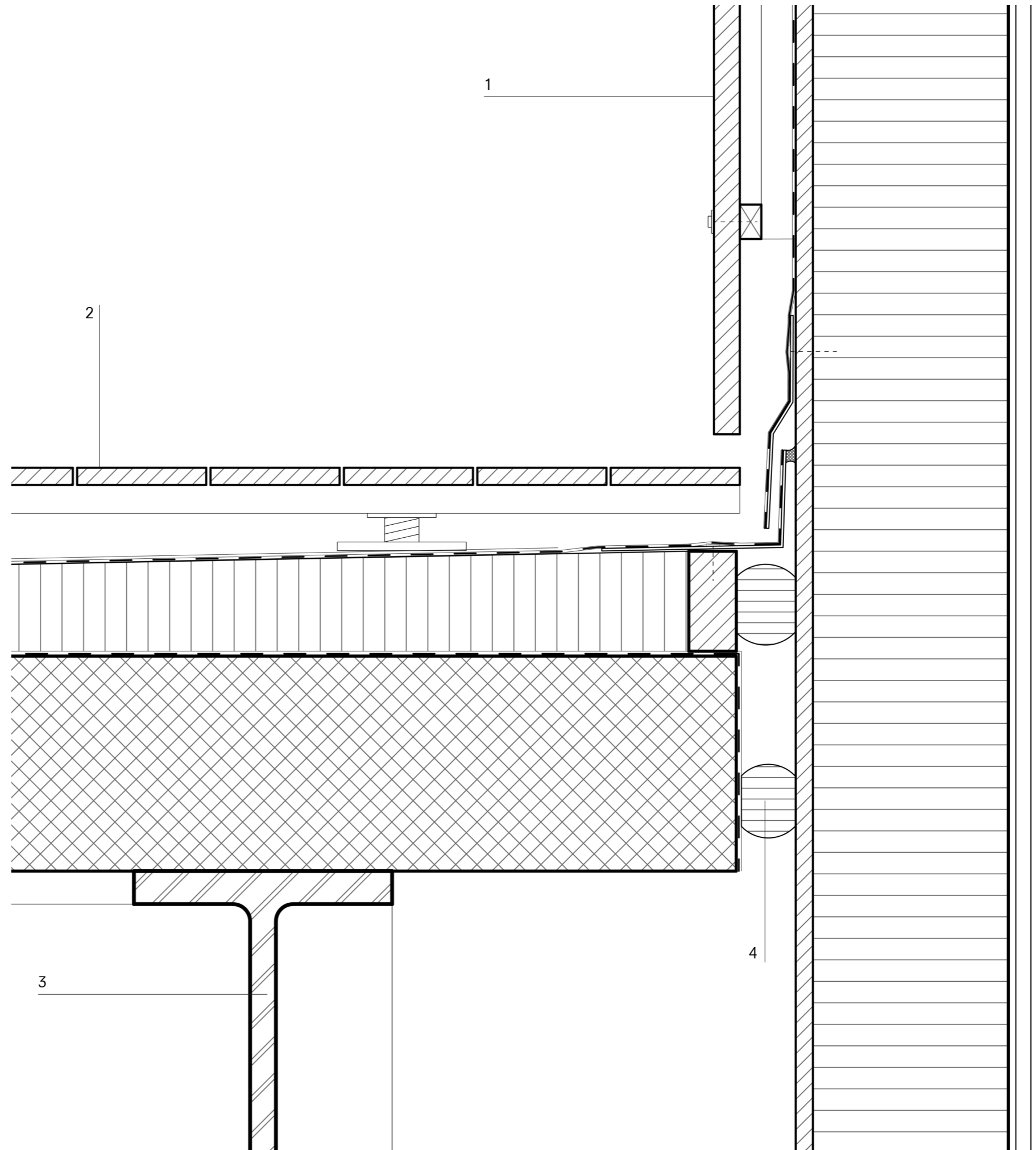
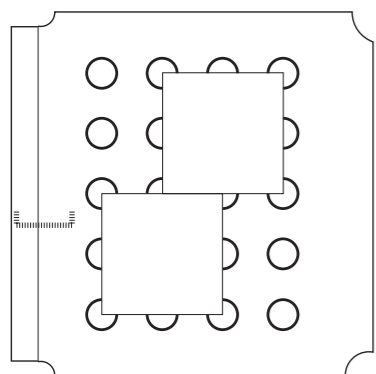
level of detail 1:5
 printed scale 1:5

- 1 Exterior wall:
- Shou Sugi Ban cladding 30 mm
 - Wood batten 24 mm
 - Vertical battens with cavity 30 mm
 - Bituminous sheeting 4 mm
 - Softboard 18 mm
 - Timber studding, insulation 220 mm
 - Solid timber loadbearing panel 35 mm

- 2 Accessible roof:
- Wood decking 20 mm
 - Timber supporting structure 20 mm
 - Adjustable footings 10 mm
 - Elastomeric bearings 4 mm
 - Bituminous sheeting 4 mm
 - Cork-loam mixture sloping insulation 120 mm
 - Bituminous sheeting 4 mm
 - Reinforced concrete slab 250 mm

3 Existing steel beam 300 * 1350 mm

4 Insulation



Construction Detail

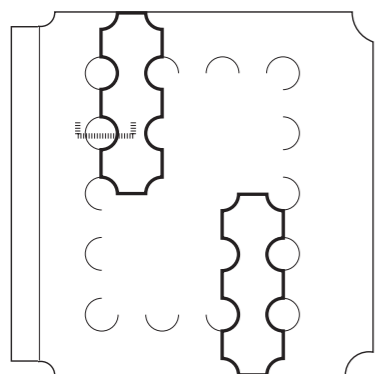
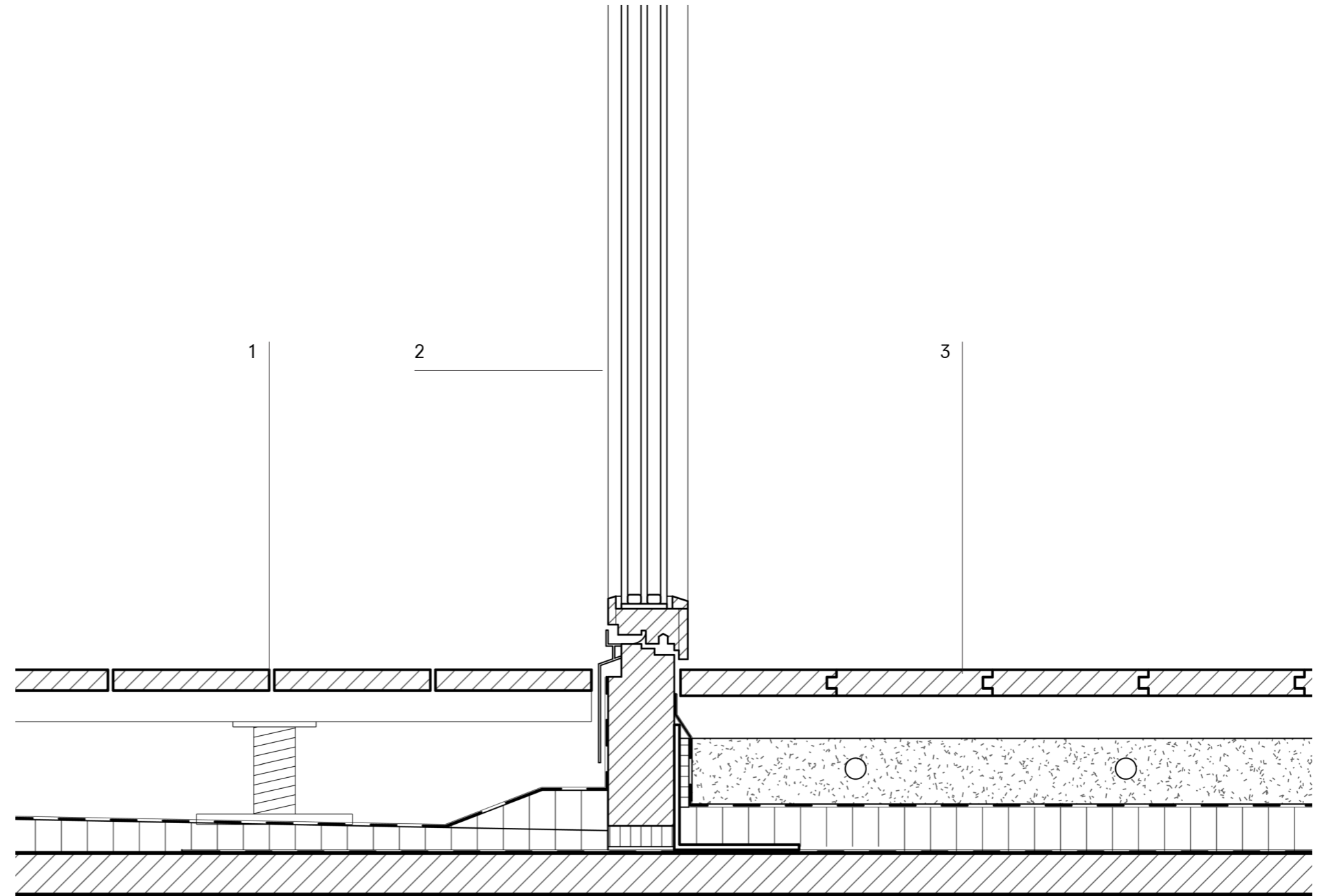
Loggia of Dwelling

level of detail 1:5
 printed scale 1:5

- 1 Loggia floor:
 - Wood decking 20 mm
 - Timber supporting structure 20 mm
 - Adjustable footings
 - Elastomeric bearings 10 mm
 - Bituminous sheeting 4 mm
 - Cork-loam mixture sloping insulation 120 mm
 - Lignatur surface element (LFE) with fill 50 kg/m² 320 mm

- 2 Door
 - Triple glazing in spruce timber frame

- 3 Dwelling floor:
 - Wood flooring 20 mm
 - Flooring substructure 24 mm
 - Heated screed 60 mm
 - Waterproofing 2 mm
 - Insulation 40mm
 - Lignatur surface element (LFE) with fill 50 kg/m² 320 mm



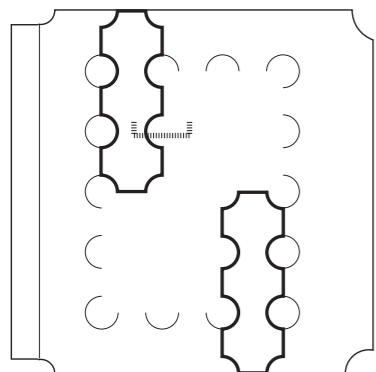
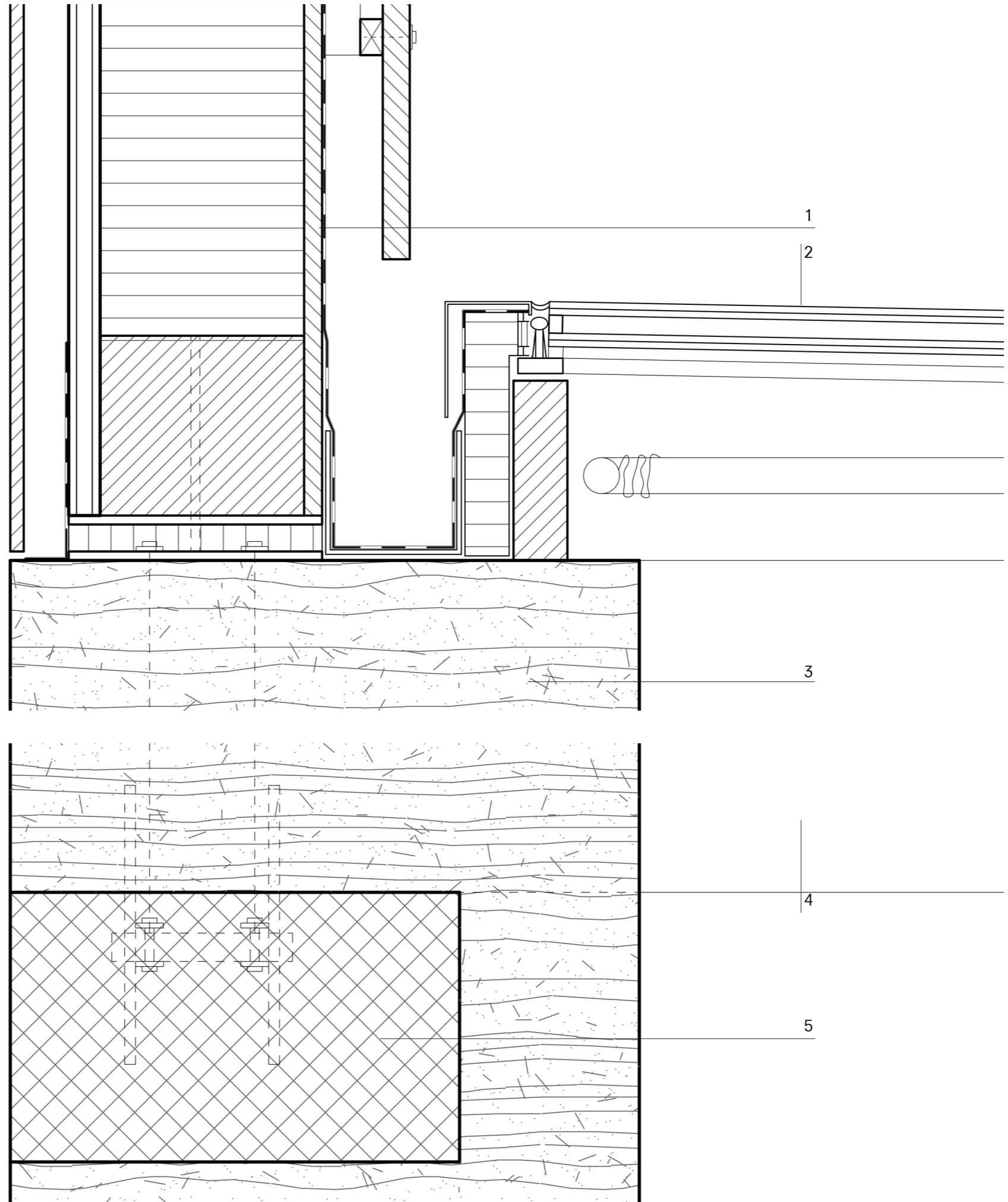
School of Timber Industry 4.0
 Yifan Dong
 Bodies & Building Berlin
 Graduation Studio 2023-2024

Construction Detail

Rammed Earth & Skylight Joint

level of detail 1:5
 printed scale 1:5

- 1 Exterior wall:
 - Shou Sugi Ban cladding 30 mm
 - Wood batten 24 mm
 - Vertical battens with cavity 30 mm
 - Bituminous sheeting 4 mm
 - Softboard 18 mm
 - Timber studding, insulation 220 mm
 - Solid timber loadbearing panel 35 mm
 - Vertical battens with cavity 30 mm
 - Interior finish board 12 mm
- 2 Skylight with double glazing
- 3 Rammed earth wall 700 mm
- 4 Glulam beam 1800 mm
- 5 Concrete ring anchor with reinforcement 300 * 500 mm

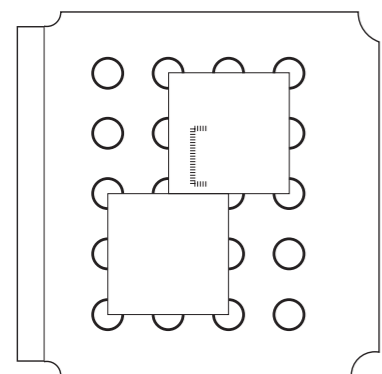
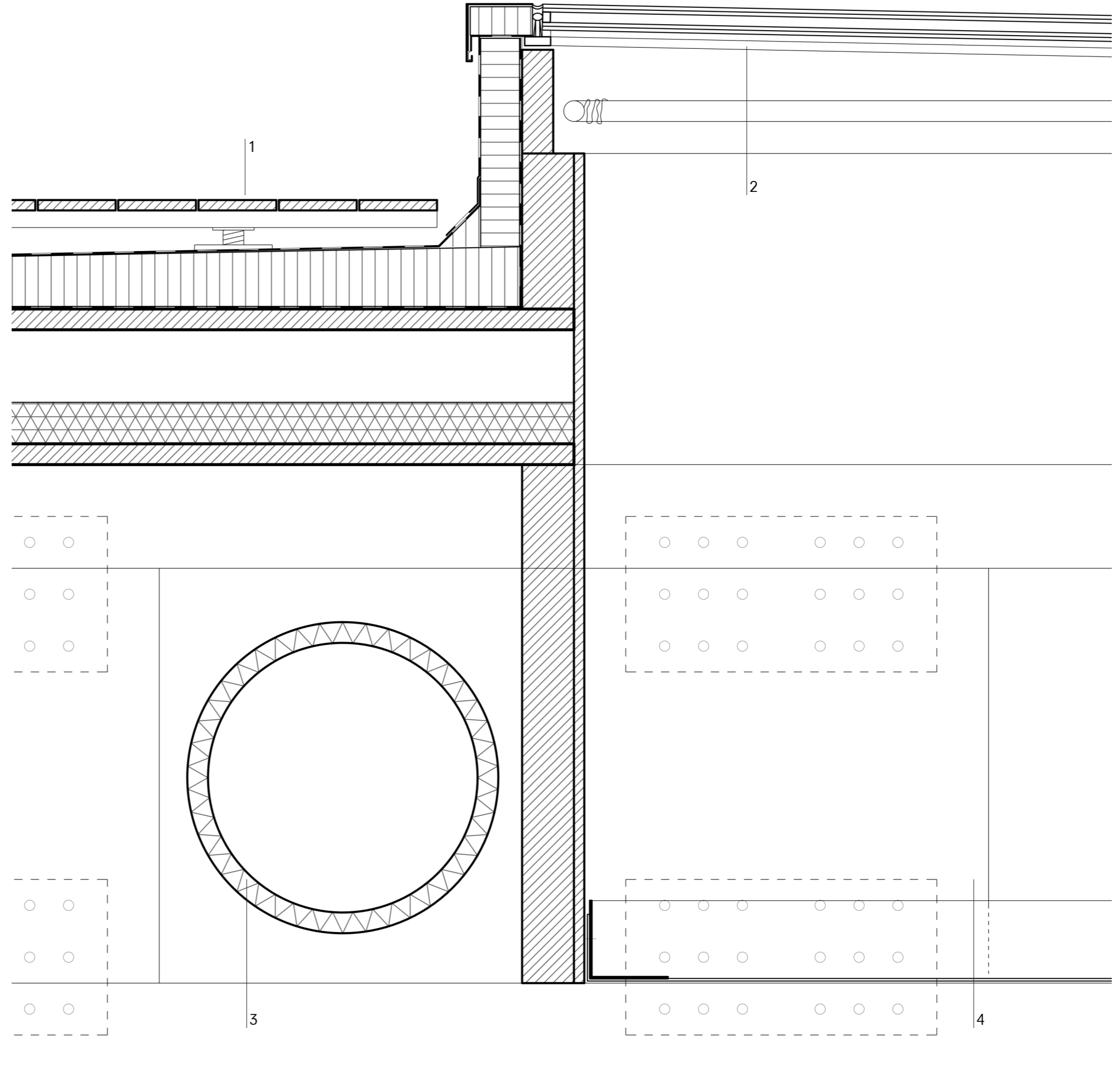


Construction Detail

Workshop Skylight

level of detail 1:5
 printed scale 1:8

- 1 Accessible roof:
 - Wood decking 20 mm
 - Timber supporting structure 20 mm
 - Adjustable footings
 - Elastomeric bearings 10 mm
 - Bituminous sheeting 4 mm
 - Cork-loam mixture sloping insulation 120 mm
 - Bituminous sheeting 4 mm
 - Lignatur surface element (LFE) with fill 50 kg/m² 320 mm
- 2 Skylight with double glazing
- 3 Airduct D= 600 mm
- 4 Timber truss 1200 mm



Construction Detail

Ground Joint

level of detail 1:5
 printed scale 1:8

- 1 Exterior wall:
 - Shou Sugi Ban cladding 30 mm
 - Wood batten 24 mm
 - Vertical battens with cavity 30 mm
 - Bituminous sheeting 4 mm
 - Softboard 18 mm
 - Timber studding, insulation 220 mm
 - Solid timber loadbearing panel 35 mm
 - Vertical battens with cavity 30 mm
 - Interior finish board 12 mm
- 2 Ground floor:
 - Wood flooring 20 mm
 - Flooring substructure 24 mm
 - Heated screed 60 mm
 - Waterproofing 2 mm
 - Insulation 120 mm
 - Reinforced concrete slab 250 mm

