

Exciton-to-trion conversion as a control mechanism for valley polarization in room-temperature monolayer WS₂

Carmiggelt, Joris J.; Borst, Michael; van der Sar, Toeno

DOI

[10.1038/s41598-020-74376-3](https://doi.org/10.1038/s41598-020-74376-3)

Publication date

2020

Document Version

Final published version

Published in

Scientific Reports

Citation (APA)

Carmiggelt, J. J., Borst, M., & van der Sar, T. (2020). Exciton-to-trion conversion as a control mechanism for valley polarization in room-temperature monolayer WS₂. *Scientific Reports*, 10(1), Article 17389. <https://doi.org/10.1038/s41598-020-74376-3>

Important note

To cite this publication, please use the final published version (if applicable). Please check the document version above.

Copyright

Other than for strictly personal use, it is not permitted to download, forward or distribute the text or part of it, without the consent of the author(s) and/or copyright holder(s), unless the work is under an open content license such as Creative Commons.

Takedown policy

Please contact us and provide details if you believe this document breaches copyrights. We will remove access to the work immediately and investigate your claim.



OPEN

Exciton-to-trion conversion as a control mechanism for valley polarization in room-temperature monolayer WS_2

Joris J. Carmiggelt^{1,2}, Michael Borst^{1,2} & Toeno van der Sar¹✉

Transition metal dichalcogenide (TMD) monolayers are two-dimensional semiconductors with two valleys in their band structure that can be selectively addressed using circularly polarized light. Their photoluminescence spectrum is characterized by neutral and charged excitons (trions) that form a chemical equilibrium governed by the net charge density. Here, we use chemical doping to drive the conversion of excitons into trions in WS_2 monolayers at room temperature, and study the resulting valley polarization via photoluminescence measurements under valley-selective optical excitation. We show that the doping causes the emission to become dominated by trions with a strong valley polarization associated with rapid non-radiative recombination. Simultaneously, the doping results in strongly quenched but highly valley-polarized exciton emission due to the enhanced conversion into trions. A rate equation model explains the observed valley polarization in terms of the doping-controlled exciton-trion equilibrium. Our results shed light on the important role of exciton-trion conversion on valley polarization in monolayer TMDs.

Transition metal dichalcogenide (TMD) monolayers are direct-bandgap semiconductors of which the conduction and valence band extrema consist of two valleys^{1,2}. The broken inversion symmetry of the lattice gives rise to optical selection rules that enable valley-selective, inter-band excitation of electrons using circularly polarized light^{3–5}. A strong Coulomb interaction results in the subsequent formation of excitons⁶, which maintain a valley polarization that is determined by the ratio between the intervalley scattering time and the exciton lifetime^{3,7}. Such valley-polarized excitons have been proposed as carriers of information and play a central role in the field of valleytronics^{8,9}. As such, understanding the processes that govern the exciton lifetime and associated valley polarization is important for assessing the potential applicability of valley-polarized excitons in devices.

Under optical excitation, a charge-density-controlled chemical equilibrium between neutral and charged excitons (trions) forms in a TMD monolayer^{10–12}. The conversion into trions reduces the exciton lifetime¹³ and may therefore be expected to lead to a large valley polarization of excitons that are created via valley-selective optical pumping, but demonstrating this effect has thus far remained elusive.

The charge density of TMD monolayers can be controlled via electrostatic gating or chemical doping^{10,11,14–20}. While electrostatic gating is a flexible technique that allows a continuous change of the charge density^{10,11,14}, chemical doping provides a convenient alternative that requires no microfabrication and is well suited for achieving high doping levels^{15–20}. Here, we study the valley polarization of excitons and trions in monolayer WS_2 and show that chemical doping via aromatic anisole (methoxy-benzene) quenches the exciton photoluminescence and causes the spectrum to become dominated by trions with a strong valley polarization. A spatial study of the remaining exciton emission shows that also the excitons attain a strong valley polarization, which we attribute to the rapid doping-induced conversion into trions. We extend a rate equation model describing exciton-trion conversion¹⁰ to include the two valleys and use it to explain the observed valley polarization in terms of the doping-controlled chemical equilibrium between excitons and trions.

¹Department of Quantum Nanoscience, Kavli Institute of Nanoscience, Delft University of Technology, Lorentzweg 1, 2628 CJ Delft, The Netherlands. ²These authors contributed equally: Joris J. Carmiggelt and Michael Borst. ✉email: t.vandersar@tudelft.nl

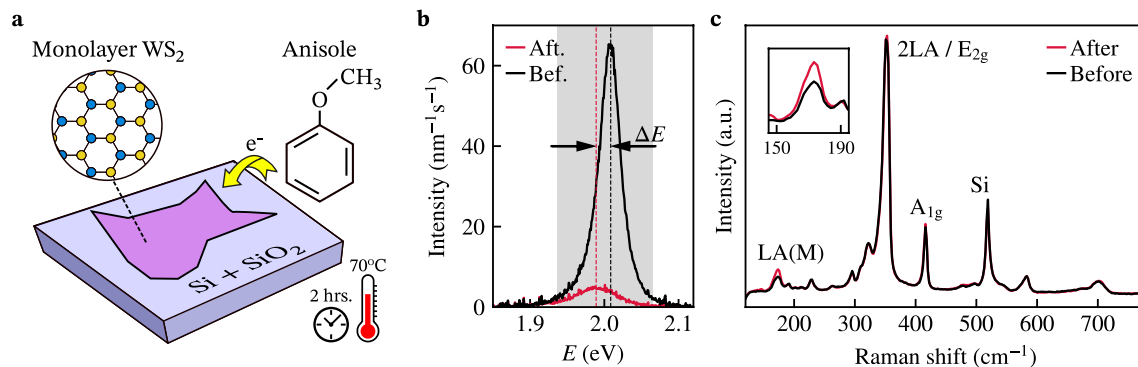


Figure 1. Controlling the photoluminescence properties of monolayer WS₂ via chemical doping. **(a)** WS₂ monolayers on Si/SiO₂ substrates become n-doped by treating them with anisole for 2 h at 70 °C. The insets show the chemical structures of WS₂ and anisole. **(b)** Photoluminescence spectrum of a monolayer WS₂ before and after the anisole treatment. The treatment quenches the neutral exciton resonance, leading to the emergence of the trion resonance. The spectrum before (after) treatment was taken at 4 μW (40 μW) off-resonant laser excitation ($E = 2.331$ eV, $\lambda = 532$ nm). The shaded area indicates the transmission window of the bandpass filter used for the maps in Fig. 2. **(c)** Raman spectra before and after the treatment of the same monolayer as in **(b)**, at 514 nm laser excitation. The inset shows the enhanced intensity of the longitudinal acoustic LA(M) phonon mode, attributed to the adsorption of the anisole molecules. Both spectra are averages over multiple positions of the flake, which all show the same mode enhancement.

Results

When doping a TMD monolayer using aromatic molecules such as anisole, Hard Soft Acid Base (HSAB) theory allows predicting whether the dopant will be n- or p-type¹⁶. Electrons hop between the adsorbed molecules (*A*) and the monolayer (*B*) to compensate for the difference in chemical potential μ between both systems²¹. The chemical hardness η of the materials determines how quickly an equilibrium is reached, leading to an average number of transferred electrons per molecule ΔN :

$$\Delta N = \frac{\mu_A - \mu_B}{\eta_A + \eta_B}. \quad (1)$$

For both anisole and monolayer WS₂, the chemical potential and chemical hardness has been calculated using density functional theory^{22,23}. Using these values (Supplementary Section S1) we find $\Delta N = 0.22$, such that we expect the monolayer to be n-doped upon physisorption of anisole molecules (Fig. 1a).

To study the effect of chemical doping with anisole on the valley polarization properties of WS₂, we start by characterizing the photoluminescence of exfoliated WS₂ monolayers on 280 nm Si/SiO₂ substrates. The emission spectrum of an as-prepared monolayer shows the characteristic bright exciton resonance at 2.01 eV (Fig. 1b, black line)²⁴. After chemical doping by a 2-h treatment in liquid anisole at 70 °C, the bright exciton resonance is strongly quenched and only a weak emission peak that is red-shifted by $\Delta E = 23$ meV remains (Fig. 1b, red line). Because the increased binding energy of trions compared to excitons should lead to such a red shift¹⁴ and the expected n-type doping by the anisole molecules should favour trion formation, we attribute this peak to emission associated with trions. This conclusion is further supported by spatial studies of emission spectra showing both exciton and trion components that we will describe below. As expected, the trion emission is weak due to its long radiative lifetime and strong non-radiative decay attributed to Auger recombination^{10,25,26}.

Doping by adsorbed carbon-hydrogen groups²⁷ was previously shown to result in an increase of the longitudinal acoustic LA(M) and LA(K) modes in the Raman spectrum of WS₂ monolayers. Our treatment causes a similar increase of the LA(M) Raman mode (Fig. 1c), which we therefore attribute to the adsorption of anisole molecules. We do not observe an associated increase of the LA(K) mode at about 190 cm⁻¹, which may be due to the different nature of the adsorbates resulting in different lattice deformations and/or defects in the monolayer. We note that a similar behaviour was observed in previous work on WS₂ monolayers⁷, which showed an increasing intensity of the LA(M) Raman mode without an associated increase in the LA(K) mode as a function of the defect concentration. In addition, we find that the double-resonance 2LA(M) mode remains unaffected by the doping, indicating that our treatment does not significantly change the monolayer's electronic structure²⁸.

To study the valley polarization of chemically-doped WS₂ monolayers, we use near-resonant excitation with a 594 nm circularly polarized, continuous-wave laser that is focused to a diffraction-limited spot. The resulting photoluminescence is polarization filtered and collected using a home-built confocal microscope (see “Methods” section). Before detecting the emission with an avalanche photodiode (APD), we apply a spectral bandpass filter with a transmission window centred around the exciton and trion resonances (see the shaded area in Fig. 1b).

We quantify the valley polarization ρ via polarization-resolved photoluminescence measurements according to

$$\rho = \frac{I_{\sigma^+} - I_{\sigma^-}}{I_{\sigma^+} + I_{\sigma^-}}. \quad (2)$$

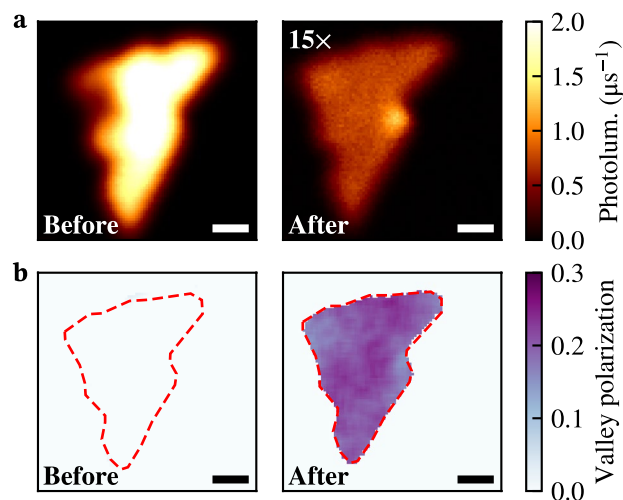


Figure 2. Spatial maps of the photoluminescence (a) and valley polarization (b) of a monolayer WS₂ before and after chemical doping with anisole. The treatment quenches the brightness of the flake and gives rise to strongly valley-polarized emission. The flake was exfoliated on a Si/SiO₂ substrate and excited near-resonance ($E = 2.087$ eV, $\lambda = 594$ nm, $4 \mu\text{W}$). Scale bar: $2 \mu\text{m}$.

Here, I_{σ^+} and I_{σ^-} represent the intensities of the right- and left-handed emission by the sample under σ^+ excitation and the total photoluminescence is given by $I = I_{\sigma^+} + I_{\sigma^-}$. By scanning the sample while detecting its emission using the APD, we make photoluminescence and valley-polarization maps of our flakes, before and after treating them.

Before the anisole treatment, the photoluminescence is characterized by bright exciton emission (Fig. 2a, left panel) with no valley polarization (Fig. 2b, left panel). Strikingly, the trion emission that remains after chemical doping (Fig. 2a, right panel) has a valley polarization of about 25% (Fig. 2b, right panel). We consistently observe the emergence of strong valley polarization after anisole treatment in multiple samples (Supplementary Section S2).

Next, we demonstrate the substrate independence of the effect of our treatment by repeating the measurements on an yttrium iron garnet (YIG) substrate. YIG is a magnetic insulator that was shown to effectively negatively dope MoS₂ monolayers at low temperatures, possibly due to dangling oxygen bonds at the YIG surface²⁹. As such, the total level of doping could be larger for monolayers on YIG due to additional doping from the substrate.

We exfoliated monolayers WS₂ onto polydimethylsiloxane (PDMS) stamps and deposited them onto the YIG substrates³⁰. As before, the emission of the monolayers is strongly quenched after chemical doping and a valley polarization of about 20–40% emerges (Fig. 3, Supplementary Section S2). Compared to the monolayers on Si/SiO₂ substrates we conclude that these data do not indicate significant additional doping from the YIG substrate.

To assess the spatial homogeneity of the doping, we characterize the photoluminescence and valley polarization of a relatively large-area monolayer flake on YIG (Fig. 3a,b). In most parts of the flake, we observe a valley polarization of about 40%. In addition, at multiple spots in the monolayer, we observe an enhanced photoluminescence and reduced valley polarization. A comparison with an atomic force microscope topography image (Fig. 3c) shows that these spots are associated with wrinkles in the flake. Spectrally, the spots are characterized by the simultaneous presence of an exciton resonance and a trion resonance, with the exciton resonance rapidly vanishing as we move off the spot and the trion resonance remaining approximately constant (Fig. 3d). We extract the valley polarization and brightness of the exciton and trion resonances by fitting similar emission spectra near multiple wrinkles with an exciton and trion component (Supplementary Section S3). The extracted trion brightness and valley polarization is independent of the local exciton emission (Fig. 3e), highlighting their spatial homogeneity. In particular, the trion valley polarization of about 40% is similar to that in the flat areas of the flake (Fig. 3b,f). The stronger exciton emission at wrinkles indicates that the doping is less effective, possibly resulting from the restricted physical access to the monolayer at wrinkles or from a decreased substrate-induced doping due to the increased substrate-monolayer distance. In addition, the exciton and trion formation could be altered at the wrinkles as a result of local strain³¹.

Strikingly, the excitons at the wrinkles also attained a strong valley polarization, as can be seen from the spectra in Fig. 3d. We extend an existing rate equation model¹⁰ to argue that this is the result of the doping-induced conversion of excitons into trions (Fig. 4a). This conversion acts as a decay channel for the excitons, enhancing their valley polarization and quenching their photoluminescence. The model predicts that the excitonic valley polarization starts to increase strongly when the conversion rate into trions $\Gamma_{T \leftarrow X}$ becomes comparable to the intervalley scattering rate $\Gamma_{IV,X}$ (Fig. 4b, green line). Since $\Gamma_{T \leftarrow X}$ is proportional to the electron density as described by a law of mass-action^{11,12}, indeed an emergent exciton polarization is expected when doping is strong.

Strongly valley-polarized excitons are expected in the limit of large doping (Fig. 4b). For our flakes, doping is strongest in the flat areas away from the wrinkles as reflected by the low photoluminescence in these areas.

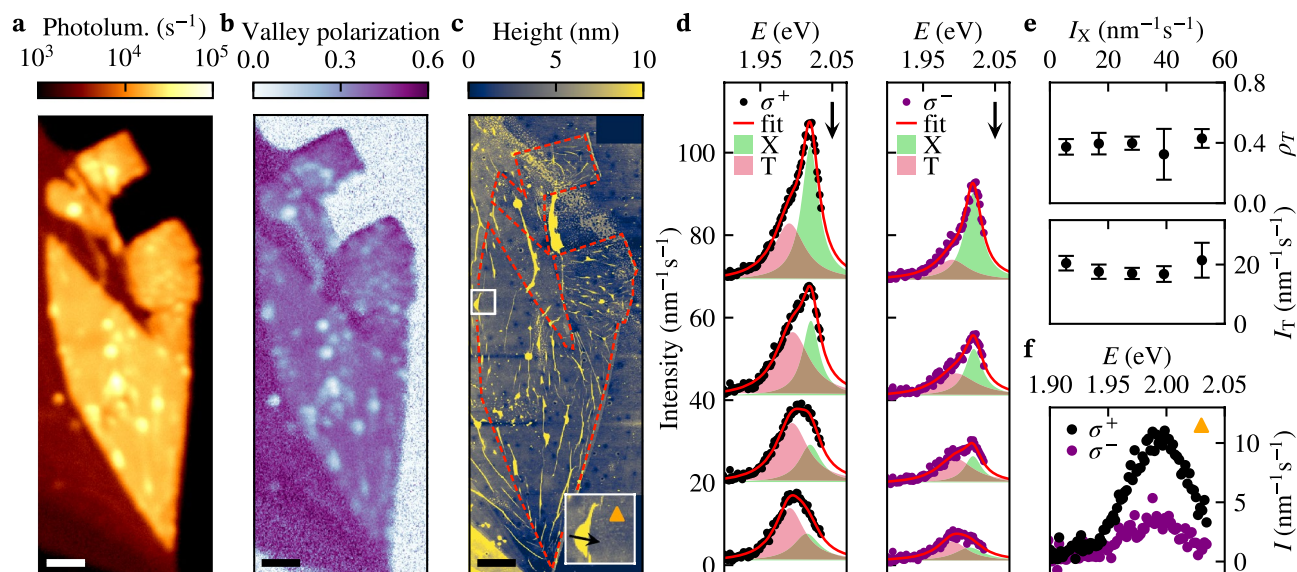


Figure 3. Spatial characterization of the exciton and trion emission of a chemically-doped monolayer WS₂ on an yttrium iron garnet (YIG) substrate. **(a,b)** Spatial maps of the photoluminescence and valley polarization under near-resonant excitation (594 nm, 200 μ W) after chemical doping. The sample was submerged in liquid anisole for 12 h at room temperature and vacuum-annealed for 6 h (400 $^{\circ}$ C, < 1 mTorr) to remove contaminants. Multilayer areas of the flake surrounding the monolayer are identified by their low brightness due to their indirect bandgap² and large polarization³³. A comparison with the atomic force microscope image in **(c)** shows that spots with increased photoluminescence and reduced valley polarization occur at wrinkles of the monolayer. **(d)** Emission spectra at different locations close to a wrinkle indicated by the black arrow in the inset of **(c)**. Lorentzian fits of the trion (red) and exciton (green) resonances reveal the simultaneous presence of trion and exciton emission at wrinkles. **(e)** Average trion brightness and valley polarization plotted against the local exciton photoluminescence at different wrinkles. **(f)** Typical σ^+ and σ^- emission spectra of trions in flat parts of the flake, obtained at the location indicated by the triangle in the inset of **(c)**, corresponding to a valley polarization of about 40%. Scale bar: 5 μ m.

Because we are unable to spectrally distinguish the weak exciton emission from the dominant trion emission in these areas, we analyse the valley polarization of the integrated photoluminescence spectrum using our APD. When plotting the local valley polarization against the local photoluminescence (Fig. 4c), we observe a non-monotonous behaviour with a maximum at low photoluminescence. According to our model, this maximum occurs because the exciton valley polarization (green line in Fig. 4b) increases with doping while the exciton photoluminescence vanishes. As a result, the trion contribution (red line) starts to dominate the total signal (black line). These results highlight that the exciton valley polarization becomes large because of the rapid conversion into trions.

On wrinkles, we observe that the excitons have a lower valley polarization than the trions (Fig. 3d). In contrast, our model predicts that the local valley polarization of the trions cannot exceed that of the excitons even at low doping (Fig. 4b, Supplementary Section S4). This indicates that the observed spectra on wrinkles are a result of spatial averaging over less-doped, wrinkled areas with a strong exciton contribution and strongly-doped surrounding areas with a dominant trion emission (Supplementary Section S5). Such averaging is expected from the diffraction-limited optical spotsize of our confocal microscope (diameter: \sim 500 nm).

In summary, we have demonstrated that chemical doping with anisole is an effective method to generate highly valley-polarized excitons and trions in monolayer WS₂ at room temperature. The emission spectrum of as-prepared monolayers is characterized by a bright exciton resonance that exhibits no valley polarization. After chemical doping, a trion resonance appears with a polarization up to 40%. The doping is less efficient at wrinkled areas, which are marked by the simultaneous presence of exciton and trion resonances. The excitons have a robust valley polarization, which we attribute to the rapid conversion into trions induced by the doping. A rate equation model captures the quenching-induced valley polarization, indicating the presence of excitons with a higher polarization than trions in the limit of maximal quenching. Our results shed light on the effect of the doping-controlled conversion between excitons and trions on the valley polarization in single layers of WS₂ and highlight that valley polarization by itself does not necessarily reflect optovalletronic potential, since a strongly-quenched carrier lifetime and emission may constrain its application in devices.

Methods

Experimental setup. A schematic overview of the setup is presented in Supplementary Section S6. Our samples are excited by a lowpass-filtered 594 nm OBIS laser (Coherent) of which we control the polarization using achromatic half- and quarter-wave plates (Thorlabs). A 50 \times , NA = 0.95 (Olympus) objective focuses the laser to a diffraction-limited spot and collects the emission from the sample. The emission is separated from the

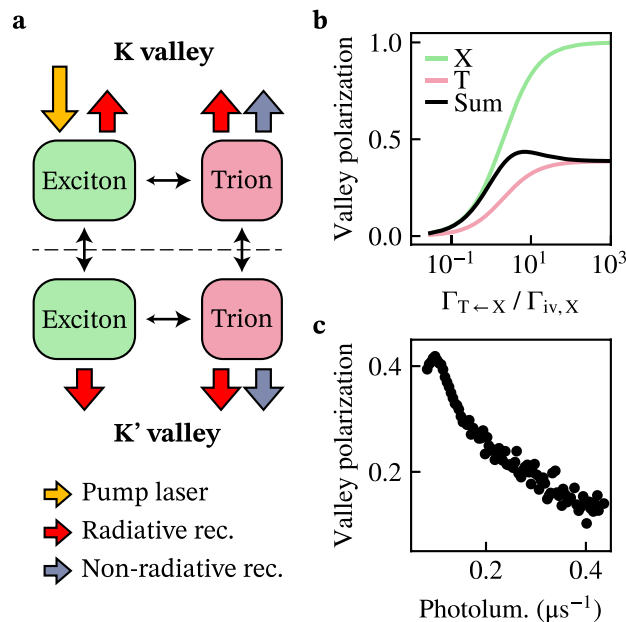


Figure 4. Doping-controlled valley polarization of excitons and trions. **(a)** Schematic depiction of the rate equation model used to describe the optically detected valley polarization. Excitons are created by valley-selective optical excitation, after which they can decay radiatively, scatter between the valleys at a rate $\Gamma_{iv, X}$, or change into trions at a doping-controlled rate $\Gamma_{T \leftarrow X}$. The trions can scatter between the valleys, decay radiatively or non-radiatively, and change back into excitons. **(b)** Valley polarization of excitons, trions, and their photoluminescence-weighted average as a function of $\Gamma_{T \leftarrow X} / \Gamma_{iv, X}$ calculated using the rate equation model shown in **(a)**. **(c)** Valley polarization versus photoluminescence extracted by averaging data from individual pixels in the monolayer area of Fig. 3a,b.

excitation by a 10:90 beam splitter (R:T, Thorlabs). The handedness of the excitation and detection is controlled by a second quarter-wave plate, which projects both circular polarizations of the photoluminescence onto two orthogonal linear polarizations of which we select one with the polarizer. The emission is longpass filtered ($2 \times$ Semrock, BLP01-594R-25) to eliminate the laser reflection. We use a mirror on a computer-controlled flipmount to switch between a fiber-coupled spectrometer (Kymera 193 spectrograph with a cooled iVac 324 CCD detector) and an avalanche photodiode (APD, Laser Components) for the detection of the photoluminescence. Before the emission is detected by the APD, it is filtered with a pinhole and bandpass filter (Semrock, FF01-623/32-25). The sample is mounted on an xyz-piezo stage (Mad City Labs, Nano-3D200FT) to allow nanoscale positioning of the sample. An ADwin Gold II was used to control the piezo stage and read out the APD. The grating in the Raman microscope (Renishaw inVia Reflex, 514 nm laser) had 1600 lines per mm, giving a spectral resolution of $\sim 2 \text{ cm}^{-1}$ per pixel. All measurements were performed at room temperature.

Sample fabrication. The WS_2 monolayers were exfoliated from commercially-purchased bulk crystals (HQ Graphene) on PDMS stamps, and were transferred to Si/SiO_2 and YIG chips. The 245 nm thick YIG films were grown on a gadolinium gallium garnet (GGG) substrate via liquid phase epitaxy and were purchased at Matesy gmbh. YIG samples were sonicated in acetone and cleaned in IPA before stamping.

Data availability

The numerical data plotted in the figures in this work are available in Zenodo³².

Received: 13 July 2020; Accepted: 29 September 2020

Published online: 15 October 2020

References

1. Mak, K. F., Lee, C., Hone, J., Shan, J. & Heinz, T. F. Atomically thin MoS_2 : a new direct-gap semiconductor. *Phys. Rev. Lett.* **105**, 136805. <https://doi.org/10.1103/PhysRevLett.105.136805> (2010).
2. Splendiani, A. *et al.* Emerging photoluminescence in monolayer MoS_2 . *Nano Lett.* **10**, 1271–1275. <https://doi.org/10.1021/nl903868w> (2010).
3. Mak, K. F., He, K., Shan, J. & Heinz, T. F. Control of valley polarization in monolayer MoS_2 by optical helicity. *Nat. Nanotechnol.* **7**, 494–498. <https://doi.org/10.1038/nnano.2012.96> (2012).
4. Cao, T. *et al.* Valley-selective circular dichroism of monolayer molybdenum disulphide. *Nat. Commun.* **3**, 887. <https://doi.org/10.1038/ncomms1882> (2012).
5. Zeng, H., Dai, J., Yao, W., Xiao, D. & Cui, X. Valley polarization in MoS_2 monolayers by optical pumping. *Nat. Nanotechnol.* **7**, 490–493. <https://doi.org/10.1038/nnano.2012.95> (2012).

6. Mueller, T. & Malic, E. Exciton physics and device application of two-dimensional transition metal dichalcogenide semiconductors. *npj 2D Mater. Appl.* **2**, 29. <https://doi.org/10.1038/s41699-018-0074-2> (2018).
7. McCreary, K. M., Currie, M., Hanbicki, A. T., Chuang, H.-J. & Jonker, B. T. Understanding variations in circularly polarized photoluminescence in monolayer transition metal dichalcogenides. *ACS Nano* **11**, 7988–7994. <https://doi.org/10.1021/acsnano.7b02554> (2017).
8. Mak, K. F., Xiao, D. & Shan, J. Light-valley interactions in 2D semiconductors. *Nat. Photonics* **12**, 451–460. <https://doi.org/10.1038/s41566-018-0204-6> (2018).
9. Schaibley, J. R. *et al.* Valleytronics in 2D materials. *Nat. Rev. Mater.* **1**, 16055. <https://doi.org/10.1038/natrevmats.2016.55> (2016).
10. Lien, D.-H. *et al.* Electrical suppression of all nonradiative recombination pathways in monolayer semiconductors. *Science* **364**, 468–471. <https://doi.org/10.1126/science.aaw8053> (2019).
11. Ross, J. S. *et al.* Electrical control of neutral and charged excitons in a monolayer semiconductor. *Nat. Commun.* **4**, 1474. <https://doi.org/10.1038/ncomms2498> (2013).
12. Siviniant, J., Scalbert, D., Kavokin, A. V., Coquillat, D. & Lascaray, J.-P. Chemical equilibrium between excitons, electrons, and negatively charged excitons in semiconductor quantum wells. *Phys. Rev. B* **59**, 1602–1604. <https://doi.org/10.1103/PhysRevB.59.1602> (1999).
13. Hl, P., Mondal, P., Bid, A. & Basu, J. K. Electrical and chemical tuning of exciton lifetime in monolayer MoS₂ for field-effect transistors. *ACS Appl. Nano Mater.* **3**, 641–647. <https://doi.org/10.1021/acsnanm.9b02170> (2020).
14. Mak, K. F. *et al.* Tightly bound trions in monolayer MoS₂. *Nat. Mater.* **12**, 207–211. <https://doi.org/10.1038/nmat3505> (2013).
15. Tanoh, A. O. A. *et al.* Enhancing photoluminescence and mobilities in WS₂ monolayers with oleic acid ligands. *Nano Lett.* **19**, 6299–6307. <https://doi.org/10.1021/acs.nanolett.9b02431> (2019).
16. Wang, Y. *et al.* Doping of monolayer transition-metal dichalcogenides via physisorption of aromatic solvent molecules. *J. Phys. Chem. Lett.* **10**, 540–547. <https://doi.org/10.1021/acs.jpcllett.8b03697> (2019).
17. Amani, M. *et al.* Near-unity photoluminescence quantum yield in MoS₂. *Science* **350**, 1065–1068. <https://doi.org/10.1126/science.aad2114> (2015).
18. Peimyoo, N. *et al.* Chemically driven tunable light emission of charged and neutral excitons in monolayer WS₂. *ACS Nano* **8**, 11320–11329. <https://doi.org/10.1021/nl504196n> (2014).
19. Mouri, S., Miyauchi, Y. & Matsuda, K. Tunable photoluminescence of monolayer MoS₂ via chemical doping. *Nano Lett.* **13**, 5944–5948. <https://doi.org/10.1021/nl403036h> (2013).
20. Tongay, S. *et al.* Broad-range modulation of light emission in two-dimensional semiconductors by molecular physisorption gating. *Nano Lett.* **13**, 2831–2836. <https://doi.org/10.1021/nl4011172> (2013).
21. Pearson, R. G. The electronic chemical potential and chemical hardness. *J. Mol. Struct. Theochem.* **255**, 261–270. [https://doi.org/10.1016/0166-1280\(92\)85014-C](https://doi.org/10.1016/0166-1280(92)85014-C) (1992).
22. Camacho-mendoza, R. L. *et al.* On the interaction of anisole and thioanisole derivatives with gold clusters studied by DFT. *Comput. Theor. Chem.* **1126**, 54–64. <https://doi.org/10.1016/j.comptc.2018.01.017> (2018).
23. Zhuang, H. L. & Hennig, R. G. Computational search for single-layer transition-metal dichalcogenide photocatalysts. *J. Phys. Chem. C* **117**, 20440–20445. <https://doi.org/10.1021/jp405808a> (2013).
24. McCreary, K. M. *et al.* The effect of preparation conditions on Raman and photoluminescence of monolayer WS₂. *Sci. Rep.* **6**, 35154. <https://doi.org/10.1038/srep35154> (2016).
25. Hanbicki, A. T. *et al.* Anomalous temperature-dependent spin-valley polarization in monolayer WS₂. *Sci. Rep.* **6**, 18885. <https://doi.org/10.1038/srep18885> (2016).
26. Kurzmann, A., Ludwig, A., Wieck, A. D., Lorke, A. & Geller, M. Auger Recombination in self-assembled quantum dots: quenching and broadening of the charged exciton transition. *Nano Lett.* **16**, 3367–3372. <https://doi.org/10.1021/acs.nanolett.6b01082> (2016).
27. Zhang, F. *et al.* Carbon doping of WS₂ monolayers: bandgap reduction and p-type doping transport. *Sci. Adv.* <https://doi.org/10.1126/sciadv.aav5003> (2019).
28. Berkdemir, A. *et al.* Identification of individual and few layers of WS₂ using Raman Spectroscopy. *Sci. Rep.* **3**, 1755. <https://doi.org/10.1038/srep01755> (2013).
29. Peng, B. *et al.* Valley polarization of trions and magnetoresistance in heterostructures of MoS₂ and yttrium iron garnet. *ACS Nano* **11**, 12257–12265. <https://doi.org/10.1021/acsnano.7b05743> (2017).
30. Castellanos-Gomez, A. *et al.* Deterministic transfer of two-dimensional materials by all-dry viscoelastic stamping. *2D Mater.* **1**, 011002. <https://doi.org/10.1088/2053-1583/1/1/011002> (2014).
31. Harats, M. G., Kirchoff, J. N., Qiao, M., Greben, K. & Bolotin, K. I. Dynamics and efficient conversion of excitons to trions in non-uniformly strained monolayer WS₂. *Nat. Photonics* **14**, 324–329. <https://doi.org/10.1038/s41566-019-0581-5> (2020).
32. Carmiggelt, J. J., Borst, M. & van der Sar, T. Exciton-to-trion conversion as a control mechanism for valley polarization in room-temperature monolayer WS₂. <https://doi.org/10.5281/zenodo.3932797> (2020).
33. Su, H. *et al.* Anomalous enhancement of valley polarization in multilayer WS₂ at room temperature. *Nanoscale* **9**, 5148–5154. <https://doi.org/10.1039/C7NR00554G> (2017).

Acknowledgements

This work was supported by the Netherlands Organisation for Scientific Research (NWO/OCW), as part of the Frontiers of Nanoscience program, through the Startup Grant 740.018.012, and by the Kavli Institute of Nanoscience Delft. The authors thank N. Papadopoulos, M. Lee for their advice on fabrication and I. Komen, L. Kuipers for experimental help and discussions.

Author contributions

J.C. and T.S. conceived the experiment. M.B. fabricated the samples. J.C. and M.B. conducted the experiment and analysed the results. M.B. created the figures. J.C. and T.S. wrote the manuscript. All authors reviewed the manuscript. T.S. supervised the project.

Competing interests

The authors declare no competing interests.

Additional information

Supplementary information is available for this paper at <https://doi.org/10.1038/s41598-020-74376-3>.

Correspondence and requests for materials should be addressed to T.S.

Reprints and permissions information is available at www.nature.com/reprints.

Publisher's note Springer Nature remains neutral with regard to jurisdictional claims in published maps and institutional affiliations.



Open Access This article is licensed under a Creative Commons Attribution 4.0 International License, which permits use, sharing, adaptation, distribution and reproduction in any medium or format, as long as you give appropriate credit to the original author(s) and the source, provide a link to the Creative Commons licence, and indicate if changes were made. The images or other third party material in this article are included in the article's Creative Commons licence, unless indicated otherwise in a credit line to the material. If material is not included in the article's Creative Commons licence and your intended use is not permitted by statutory regulation or exceeds the permitted use, you will need to obtain permission directly from the copyright holder. To view a copy of this licence, visit <http://creativecommons.org/licenses/by/4.0/>.

© The Author(s) 2020