

Draft Genome of *Scalindua rubra*, Obtained from the Interface Above the Discovery Deep Brine in the Red Sea, Sheds Light on Potential Salt Adaptation Strategies in Anammox Bacteria

Speth, Daan R.; Lagkourdos, Ilias; Wang, Yong; Qian, Pei Yuan; Dutilh, Bas E.; Jetten, Mike S.M.

DOI

[10.1007/s00248-017-0929-7](https://doi.org/10.1007/s00248-017-0929-7)

Publication date

2017

Document Version

Final published version

Published in

Microbial Ecology

Citation (APA)

Speth, D. R., Lagkourdos, I., Wang, Y., Qian, P. Y., Dutilh, B. E., & Jetten, M. S. M. (2017). Draft Genome of *Scalindua rubra*, Obtained from the Interface Above the Discovery Deep Brine in the Red Sea, Sheds Light on Potential Salt Adaptation Strategies in Anammox Bacteria. *Microbial Ecology*, 74(1).
<https://doi.org/10.1007/s00248-017-0929-7>

Important note

To cite this publication, please use the final published version (if applicable).
Please check the document version above.

Copyright

Other than for strictly personal use, it is not permitted to download, forward or distribute the text or part of it, without the consent of the author(s) and/or copyright holder(s), unless the work is under an open content license such as Creative Commons.

Takedown policy

Please contact us and provide details if you believe this document breaches copyrights.
We will remove access to the work immediately and investigate your claim.

Draft Genome of *Scalindua rubra*, Obtained from the Interface Above the Discovery Deep Brine in the Red Sea, Sheds Light on Potential Salt Adaptation Strategies in Anammox Bacteria

Daan R. Speth^{1,9} · Ilias Lagkourdos² · Yong Wang³ · Pei-Yuan Qian⁴ · Bas E. Dutilh^{5,6,7} · Mike S. M. Jetten^{1,8}

Received: 17 September 2016 / Accepted: 1 January 2017 / Published online: 10 January 2017
© The Author(s) 2017. This article is published with open access at Springerlink.com

Abstract Several recent studies have indicated that members of the phylum *Planctomycetes* are abundantly present at the brine-seawater interface (BSI) above multiple brine pools in the Red Sea. *Planctomycetes* include bacteria capable of anaerobic ammonium oxidation (anammox). Here, we investigated the possibility of anammox at BSI sites using metagenomic shotgun sequencing of DNA obtained from the BSI above the Discovery Deep brine pool. Analysis of sequencing reads matching the 16S rRNA and *hzsA* genes confirmed presence of anammox bacteria of the genus *Scalindua*. Phylogenetic analysis of the 16S rRNA gene indicated that this *Scalindua* sp. belongs to a distinct group, separate from the anammox bacteria in the seawater column, that contains mostly sequences retrieved from high-salt environments. Using coverage- and composition-based binning, we extracted and assembled the draft genome of the dominant

anammox bacterium. Comparative genomic analysis indicated that this *Scalindua* species uses compatible solutes for osmoadaptation, in contrast to other marine anammox bacteria that likely use a salt-in strategy. We propose the name *Candidatus Scalindua rubra* for this novel species, alluding to its discovery in the Red Sea.

Keywords *Scalindua* · Anammox · Red Sea · Genome binning · Metagenomics · Salt adaptation

Over 25 brine pools have been discovered along the rift through the middle of the Red Sea. These brine pools are characterized by anoxic, salty water, and in some cases geothermal activity [1]. The high salinity of the brine pools prevents mixing with the overlying seawater creating a brine-

Electronic supplementary material The online version of this article (doi:10.1007/s00248-017-0929-7) contains supplementary material, which is available to authorized users.

✉ Daan R. Speth
dspeth@caltech.edu

¹ Department of Microbiology, Institute for Water and Wetland Research, Radboud University, Nijmegen, The Netherlands

² ZIEL Institute for Food and Health, Technische Universität München, Freising, Germany

³ Institute of Deep-Sea Science and Engineering, Chinese Academy of Sciences, Sanya, China

⁴ Division of Life Science, Hong Kong University of Science and Technology, Clear Water Bay, Hong Kong

⁵ Theoretical Biology and Bioinformatics, Utrecht University, Utrecht, The Netherlands

⁶ Centre for Molecular and Biomolecular Informatics, Radboud University Medical Centre, Nijmegen, The Netherlands

⁷ Instituto de Biologia, Universidade Federal do Rio de Janeiro, Rio de Janeiro, Brazil

⁸ Department of Biotechnology, Delft University of Technology, Delft, The Netherlands

⁹ Present address: Division for Geological and Planetary Sciences, California Institute of Technology, Pasadena, CA, USA

seawater interface (BSI) featuring steep salt and, in the case of hot brines, temperature gradients. Several studies using 16S rRNA gene amplicon community profiling and shotgun metagenomics have recently revealed the abundant presence of *Planctomycetes* (5–35%) in the BSI above the Discovery Deep, Atlantis II Deep, and Kebrit Deep brine pools [2–4]. As these are low-oxygen environments, detection of *Planctomycetes* likely indicates the presence of anammox bacteria. Furthermore, recent studies have shown the presence of ammonia-oxidizing *Archaea* and nitrite-oxidizing *Bacteria* in the Atlantis II Deep BSI, indicating an active nitrogen cycle in these systems [5, 6]. To further investigate the presence and nature of anammox bacteria in the Red Sea BSI, we employed genome-resolved shotgun metagenomics of the BSI above the Discovery Deep, where 16S rRNA gene amplicon community profiling indicated that *Planctomycetes* were more abundant than in other brine pools [2].

Total microbial community DNA (sample DIS-BWI, see [2] for sampling and DNA extraction) was prepared for IonTorrent sequencing as previously described [7]. The resulting library was used for two sequencing runs, resulting in a total of 10.1 million single-end reads. Reads were trimmed on quality (quality limit = 0.05) and length (>100 bp) using CLCgenomics workbench (v8.0.3, CLCbio, Arhus, Denmark). The presence of anammox was investigated by reconstructing full-length sequences of the 16S rRNA and hydrazine synthase alpha (*hzsA*) genes by mapping and assembly using the CLCgenomics workbench, as described previously [8]. Two 16S rRNA genes matching the *Scalindua* clade, with coverage 52 \times and 14 \times , and two *hzsA* sequences, with coverage 37 \times and 16 \times , could be reconstructed. The 16S sequence obtained from the former, dominant *Scalindua* species (5.7% of all 16S rRNA gene reads in our dataset), hereafter referred to as *Candidatus Scalindua rubra*, is only 94% identical to *Candidatus Scalindua brodae* and clusters with sequences obtained from the Atlantis II Deep BSI, the brine adjacent to the Discovery Deep [4] (Fig. 1a). The latter, low abundant *Scalindua* species (1.3% of all rRNA gene 16S reads) clusters with sequences from the Arabian Sea oxygen minimum zone and other sequences obtained from the Atlantis II deep (Fig. 1a). Previously sequenced *Ca. S. brodae* [9] and *Candidatus Scalindua profunda* [10] formed a third cluster that also includes most sequences obtained from the Eastern Tropical South Pacific oxygen minimum zone (Fig. 1a). Phylogenetic analysis of the *hzsA* genes corroborates that *Ca. S. rubra* is distant from *Ca. S. profunda* and *Ca. S. brodae* (Fig. 1b). Interestingly, the partial sequences 16S rRNA and *hzsA* sequences obtained by Borin et al. [11] from the chemocline above Bannock brine in the Mediterranean, cluster with *Ca. S. brodae* and *Ca. S. profunda*, rather than with the sequences obtained from the Atlantis II Deep and Discovery Deep BSI.

To obtain a draft genome of *Ca. S. rubra*, we assembled the metagenome de novo using the CLCgenomics workbench with word size 31 and bubble size 5000. Contigs were assigned to *Ca. S. rubra* using emergent self-organizing maps [12, 13], coverage, and GC content [14]. Scripts used for binning are available at www.github.com/dspeth. The resulting 1020 *Ca. S. rubra* contigs were used for iterative reassembly using SPAdes (version 3.5.0) [15] and Bowtie2 [16], resulting in 443 contigs assigned to *Ca. S. rubra* (Table 1). Contigs were error corrected to account for persistent IonTorrent-specific errors as described previously [7] and annotated using Prokka (version 1.10) [17] using a custom database containing the six *Brocadiales* draft genomes in Genbank [7, 9, 18–21]. Coverage of the contigs representing the low-abundance *Scalindua* species was too low (~15 \times) to enable extraction of a good quality draft genome of this organism.

The *Ca. S. rubra* draft genome encoded the genes required for hydrazine metabolism, hydrazine synthase [22] (SCARUB_01028–SCARUB_01030), and hydrazine dehydrogenase [23] (SCARUB_00654). The genes encoding hydrazine synthase subunits B and C are not fused in *Ca. S. rubra*, suggesting that the fusion of these genes in *Ca. S. profunda* and *Ca. S. brodae* is a recent event. Like the other *Scalindua* species, *Ca. S. rubra* encodes a heme-*cd*₁ type nitrite reductase (*nirS*) (SCARUB_03231). In contrast to *Ca. S. profunda*, neither *Ca. S. brodae* nor *Ca. S. rubra* encode a cyanase. Another interesting feature in the *Ca. S. rubra* genome is the apparent capability to synthesize gas vesicles, as 11 gas vesicle synthesis proteins are present. Although gas vesicles are often regulated by light intensity, gas vesicle formation is induced by high salinity in halophilic *Archaeon Haloferax mediterranei* [24]. It is possible that *Ca. S. rubra* uses gas vesicles to stabilize its position within the BSI and prevent osmotic and/or heat shock as a result of the steep gradients in the BSI. The cellular location of gas vesicles in the already complicated cell architecture of an anammox bacterium is an interesting topic for further investigation.

To assess further adaptations to life in the BSI we searched the draft genome of *Ca. S. rubra* for mechanisms of osmoadaptation. Based on the recent work of Ngugi and colleagues [5], we used protein isoelectric point (IEP) distributions as indicator for a charged cytoplasm resulting from a “salt-in” osmoadaptation strategy [25]. We calculated the IEP of all predicted proteins in the eight available genomes of anammox bacteria using the “iep” script from the EMBOSS package (v6.5.7) [26]. Surprisingly, the median protein IEP of *Ca. S. rubra* is more basic than the median protein IEP of *Ca. S. brodae* and *Ca. S. profunda* and comparable to that of the freshwater species (Fig. 2). The acid-shifted distribution of protein IEP indicates that both previously sequenced *Scalindua* species have adapted to seawater salinity using a “salt-in” strategy, adding acidic residues to prevent protein denaturation in high-ion concentrations [27]. The observations that, in contrast

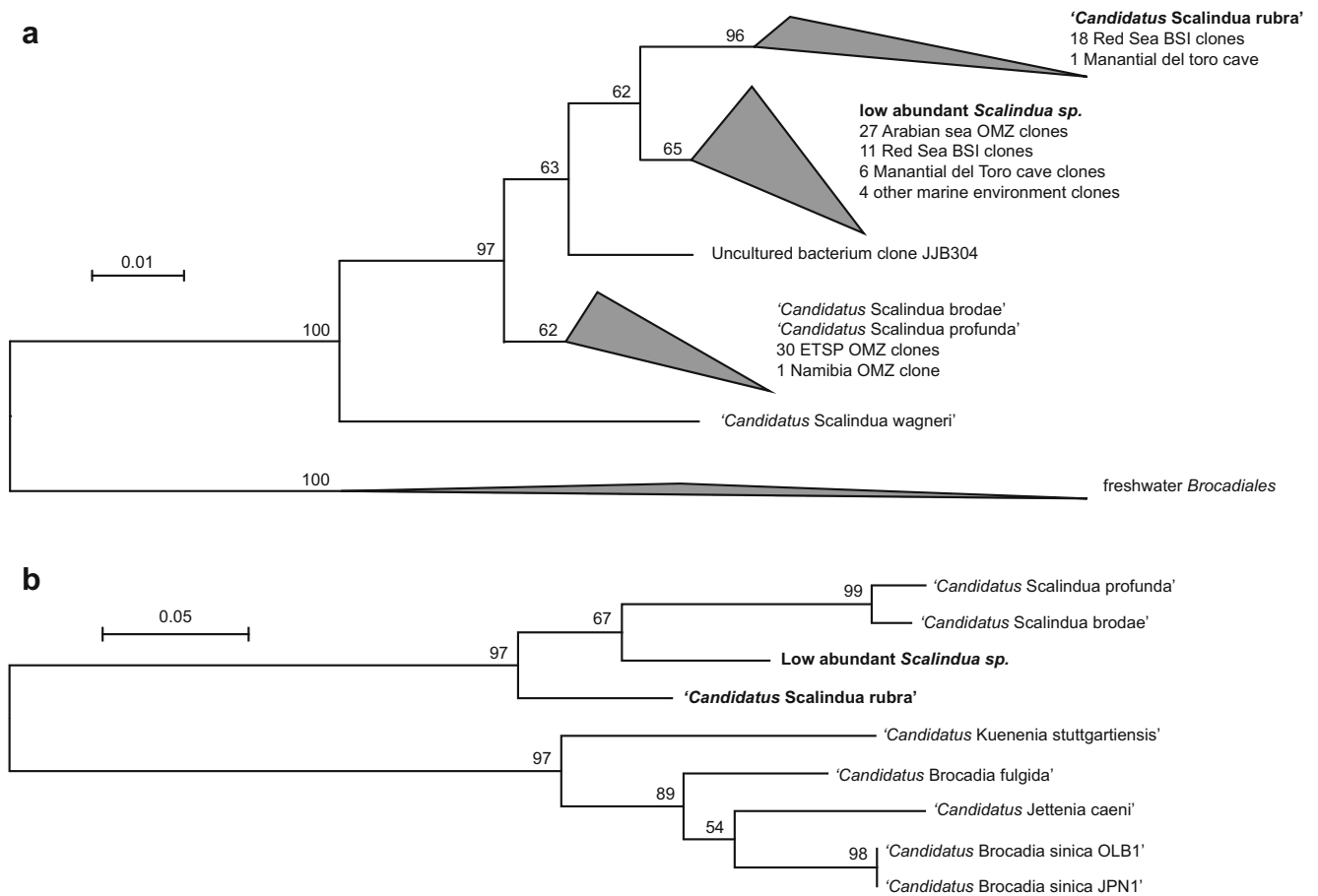


Fig. 1 Maximum likelihood trees of anammox 16S rRNA and *hzsA* genes. **a** Maximum likelihood tree of 109 near full-length *Brocadiales* 16S rRNA genes matching >90% of the length the *Ca. S. rubra* sequence, originating from enrichment cultures, draft genomes, and clone libraries of marine environments. **b** Maximum likelihood tree of all available full-length *hzsA* gene sequences obtained from draft genomes. Sequences

obtained in this study are indicated in **bold**. Trees were constructed using MEGA5 [36], bootstrapped with 1000 replicates, and visualized using the interactive tree of life (iTOL) v3 webserver [37]. Wedge height was scaled proportional to number of sequences. *OMZ* oxygen minimum zone, *BSI* brine-seawater interface, *ETSP* Eastern Tropical South Pacific

to freshwater species, salt in the growth medium was required to enrich *Ca. S. profunda* and that 90% of dry weight of this organism consisted of salt further support this interpretation [28, 29]. As expected, the acid shift is more pronounced if only cytoplasmic proteins are considered, and absent from membrane proteins (Supplemental Figure S1). In contrast, the more basic IEP of *Ca. S. rubra* proteins suggests that it relies on compatible solutes to cope with the salinity at the BSI. Synthesis of compatible solutes is energetically more costly

than coping with salinity using a salt-in strategy [30]. Although some halophiles use a salt-in strategy at higher salinity than observed at the Discovery Deep BSI [31, 32], it is possible that *Ca. S. rubra* uses compatible solutes to adapt to the range of salt concentrations resulting from the steep salt gradient in the Discovery Deep BSI [2]. In line with this hypothesis, the recently published genomes of ammonia-oxidizing *Archaea* and nitrite-oxidizing *Bacteria* from the BSI above the Atlantis II Deep, which is adjacent to the

Table 1 Metrics of the available *Scalindua* spp. draft genomes

Species	Genome size (Mbp)	GC content	Completeness (%)	Contamination (%)	# of contigs	Reference
<i>Candidatus Scalindua profunda</i>	5.14	39.1	95	3	1580	[10]
<i>Candidatus Scalindua brodae</i>	4.08	39.6	92	2.3	282	[9]
<i>Candidatus Scalindua rubra</i>	5.19	37.3	92	5.1	443	This study

Completeness and contamination of the *Scalindua* spp. draft genomes were estimated using checkM [35]

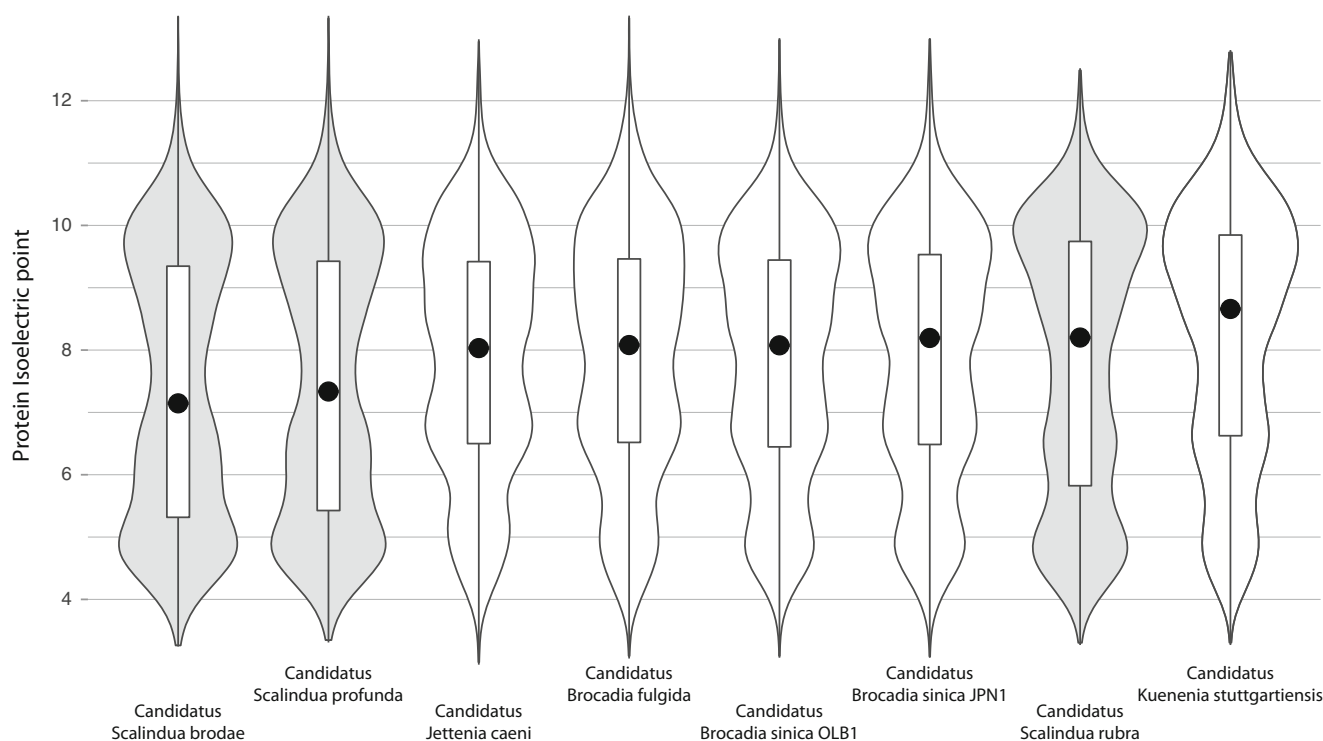


Fig. 2 Protein isoelectric point distribution in eight genomes of anammox bacteria. Violin plots indicating the isoelectric point distribution of total protein set of all eight available anammox genomes, ordered from lowest

to highest median value. Box plots (white bars) indicate 50% of the values around the median, indicated by a black circle. The three available genomes of *Scalindua* sp. are indicated by gray shading

Discovery Deep, also indicate that these organisms employ compatible solutes [5, 6].

We searched the *Ca. S. rubra* draft genome for proteins required for biosynthesis and transport of common compatible solutes. Many organisms use the amino acids glutamate, glutamine, or proline as compatible solutes [33]. All anammox bacteria can synthesize these amino acids, and thus, it is possible that *Ca. S. rubra* utilizes any or all three of these amino acids. This could also provide an explanation for the adaptation of freshwater anammox species *Ca. K. stuttgartiensis* to marine salt concentrations [34]. None of the *Scalindua* species is capable of synthesizing amino acid-derived compatible solutes glycine-betaine or (hydroxy)ectoine, but all three encode a glycine-betaine transporter. Furthermore, none of the *Scalindua* genomes encode the potential for biosynthesis of glycerate-derived compatible solutes or mannitol or sorbitol [33]. Conclusive evidence on the presence, and nature, of compatible solutes in *Ca. S. rubra* will require biomass for experimental verification of the amino acid content.

In conclusion, we have presented the draft genome of a moderately halophilic anammox bacterium, *Ca. S. rubra*. Our analysis of the adaptations to salt stress in this genome has shed new light on previous results of salt adaptation in anammox bacteria.

Acknowledgements Daan R. Speth was supported by BE-Basic FP 07.002.01. Bas E. Dutilh was supported by the Netherlands

Organization for Scientific Research (NWO) Vidi grant 864.14.004. Mike S. M. Jetten was supported by the European Research Council advanced grants 232937 and 339880 and the NWO gravitation SIAM 024002002.

Accession Numbers The raw sequencing reads described in this paper has been deposited to Genbank/EBI/DDBJ under SRA accession number SRX1894129. The assembled, annotated draft genome has been deposited at DDBJ/ENA/GenBank under the accession MAYW00000000. The version described in this paper is version MAYW01000000.

Compliance with Ethical Standards

Conflict of Interest The authors declare that they have no conflict of interest.

Open Access This article is distributed under the terms of the Creative Commons Attribution 4.0 International License (<http://creativecommons.org/licenses/by/4.0/>), which permits unrestricted use, distribution, and reproduction in any medium, provided you give appropriate credit to the original author(s) and the source, provide a link to the Creative Commons license, and indicate if changes were made.

References

1. Bischoff JL (1969) Red Sea geothermal brine deposits: their mineralogy, chemistry, and genesis. In: Degens ET, Ross DA (eds) Hot brines and recent heavy metal deposits in the Red Sea. Springer, Berlin Heidelberg, Berlin, Heidelberg, pp 368–401

2. Bougouffa S, Yang JK, Lee OO et al (2013) Distinctive microbial community structure in highly stratified deep-sea brine water columns. *Appl Environ Microbiol* 79:3425–3437. doi:10.1128/AEM.00254-13
3. Abdallah RZ, Adel M, Ouf A et al (2014) Aerobic methanotrophic communities at the Red Sea brine-seawater interface. *Front Microbiol* 5:487. doi:10.3389/fmicb.2014.00487
4. Guan Y, Hikmawan T, Antunes A et al (2015) Diversity of methanogens and sulfate-reducing bacteria in the interfaces of five deep-sea anoxic brines of the Red Sea. *Res Microbiol*. doi:10.1016/j.resmic.2015.07.002
5. Ngugi DK, Blom J, Alam I et al (2015) Comparative genomics reveals adaptations of a halotolerant thaumarchaeon in the interfaces of brine pools in the Red Sea. *ISME J* 9:396–411. doi:10.1038/ismej.2014.137
6. Ngugi DK, Blom J, Stepanauskas R, Stingl U (2016) Diversification and niche adaptations of Nitrospina-like bacteria in the polyextreme interfaces of Red Sea brines. *ISME J* 10:1383–1399. doi:10.1038/ismej.2015.214
7. Speth DR, In 't Zandt MH, Guerrero-Cruz S et al (2016) Genome-based microbial ecology of anammox granules in a full-scale wastewater treatment system. *Nat Comms* 7:11172. doi:10.1038/ncomms11172
8. Lücke C, Speth DR, Kox MAR et al (2016) Metagenomic analysis of nitrogen and methane cycling in the Arabian Sea oxygen minimum zone. *Peer J* 4:e1924. doi:10.7717/peerj.1924
9. Speth DR, Russ L, Kartal B et al (2015) Draft genome sequence of anammox bacterium “*Candidatus Scalindua brodae*,” obtained using differential coverage binning of sequencing data from two reactor enrichments. *Genome Announc*. doi:10.1128/genomeA.01415-14
10. van de Vossenberg J, Woebken D, Maalcke WJ et al (2013) The metagenome of the marine anammox bacterium “*Candidatus Scalindua profunda*” illustrates the versatility of this globally important nitrogen cycle bacterium. *Environ Microbiol* 15:1275–1289. doi:10.1111/j.1462-2920.2012.02774.x
11. Borin S, Mapelli F, Rolli E et al (2013) Anammox bacterial populations in deep marine hypersaline gradient systems. *Extremophiles* 17:289–299. doi:10.1007/s00792-013-0516-x
12. Ultsch A, Mörchen F (2005) ESOM-Maps: tools for clustering, visualization, and classification with Emergent SOM. <https://www.uni-marburg.de/fb12/datenbionik/pdf/pubs/2005/ultsch05esom>
13. Dick GJ, Andersson AF, Baker BJ et al (2009) Community-wide analysis of microbial genome sequence signatures. *Genome Biol* 10:R85. doi:10.1186/gb-2009-10-8-r85
14. Tyson GW, Chapman J, Hugenholtz P et al (2004) Community structure and metabolism through reconstruction of microbial genomes from the environment. *Nature* 428:37–43. doi:10.1038/nature02340
15. Bankevich A, Nurk S, Antipov D et al (2012) SPAdes: a new genome assembly algorithm and its applications to single-cell sequencing. *J Comput Biol* 19:455–477. doi:10.1089/cmb.2012.0021
16. Langmead B, Salzberg SL (2012) Fast gapped-read alignment with Bowtie 2. *Nat Methods* 9:357–359. doi:10.1038/nmeth.1923
17. Seemann T (2014) Prokka: rapid prokaryotic genome annotation. *Bioinformatics* 30:2068–2069. doi:10.1093/bioinformatics/btu153
18. Strous M, Pelletier E, Manganot S et al (2006) Deciphering the evolution and metabolism of an anammox bacterium from a community genome. *Nature* 440:790–794. doi:10.1038/nature04647
19. Hira D, Toh H, Migita CT et al (2012) Anammox organism KSU-1 expresses a NirK-type copper-containing nitrite reductase instead of a NirS-type with cytochrome cd1. *FEBS Lett* 586:1658–1663. doi:10.1016/j.febslet.2012.04.041
20. Ferousi C, Speth DR, Reimann J et al (2013) Identification of the type II cytochrome c maturation pathway in anammox bacteria by comparative genomics. *BMC Microbiol* 13:265. doi:10.1016/j.sbi.2008.02.002
21. Oshiki M, Shinyako-Hata K, Satoh H, Okabe S (2015) Draft genome sequence of an anaerobic ammonium-oxidizing bacterium, “*Candidatus Brocadia sinica*”. *Genome Announc*. doi:10.1128/genomeA.00267-15
22. Diel A, Ferousi C, Maalcke WJ et al (2015) The inner workings of the hydrazine synthase multiprotein complex. *Nature* 527:394–397. doi:10.1038/nature15517
23. Maalcke WJ, Reimann J, de Vries S et al (2016) Characterization of anammox hydrazine dehydrogenase, a key N₂-producing enzyme in the global nitrogen cycle. *J Biol Chem jbc.M116.735530*. doi:10.1074/jbc.M116.735530
24. Englert C, Home M, Pfeifer F (1990) Expression of the major gas vesicle protein gene in the halophilic archaeobacterium *Haloferax mediterranei* is modulated by salt. *Mol Gen Genet* 222:225–232. doi:10.1007/BF00633822
25. Sleator RD, Hill C (2002) Bacterial osmoadaptation: the role of osmolytes in bacterial stress and virulence. *FEMS Microbiol Rev* 26:49–71. doi:10.1111/j.1574-6976.2002.tb00598.x
26. Rice P, Longden I, Bleasby A (2000) EMBOSS: the European molecular biology open software suite. *Trends Genet* 16:276–277. doi:10.1016/S0168-9525(00)02024-2
27. Zaccai G, Cendrin F, Haik Y, Borochoy N, Eisenberg H (1989) Stabilization of halophilic malate dehydrogenase. *J Mol Biol* 208:491–500. doi:10.1016/0022-2836(89)90512-3
28. van de Vossenberg J, Rattray JE, Geerts W et al (2008) Enrichment and characterization of marine anammox bacteria associated with global nitrogen gas production. *Environ Microbiol* 10:3120–3129. doi:10.1111/j.1462-2920.2008.01643.x
29. Rattray JE, van de Vossenberg J, Hopmans EC et al (2008) Ladderane lipid distribution in four genera of anammox bacteria. *Arch Microbiol* 190:51–66. doi:10.1007/s00203-008-0364-8
30. Oren A (1999) Bioenergetic aspects of halophilism. *Microbiol Mol Biol Rev* 63:334–348
31. Bowers KJ, Mesbah NM, Wiegel J (2009) Biodiversity of poly-extremophilic bacteria: does combining the extremes of high salt, alkaline pH and elevated temperature approach a physico-chemical boundary for life? *Saline Syst* 5:9. doi:10.1186/1746-1448-5-9
32. Bowers KJ, Wiegel J (2011) Temperature and pH optima of extremely halophilic archaea: a mini-review. *Extremophiles* 15:119–128. doi:10.1007/s00792-010-0347-y
33. Empadinhas N, da Costa M (2008) Osmoadaptation mechanisms in prokaryotes: distribution of compatible solutes. *Int Microbiol* 11:151–161. doi:10.2436/im.v11i3.9665
34. Kartal B, Koleva M, Arsov R et al (2006) Adaptation of a freshwater anammox population to high salinity wastewater. *J Biotechnol* 126:546–553. doi:10.1016/j.jbiotec.2006.05.012
35. Parks DH, Imelfort M, Skennerton CT et al (2015) CheckM: assessing the quality of microbial genomes recovered from isolates, single cells, and metagenomes. *Genome Res* 25:1043–1055. doi:10.1101/gr.186072.114
36. Tamura K, Peterson D, Peterson N et al (2011) MEGA5: molecular evolutionary genetics analysis using maximum likelihood, evolutionary distance, and maximum parsimony methods. *Mol Biol Evol* 28:2731–2739. doi:10.1093/molbev/msr121
37. Letunic I, Bork P (2016) Interactive tree of life (iTOL) v3: an online tool for the display and annotation of phylogenetic and other trees. *Nucleic Acids Res* 44:W242–W245. doi:10.1093/nar/gkw290