

# Drawing Set

Lizanne Maat









# Katendrecht 1:5000

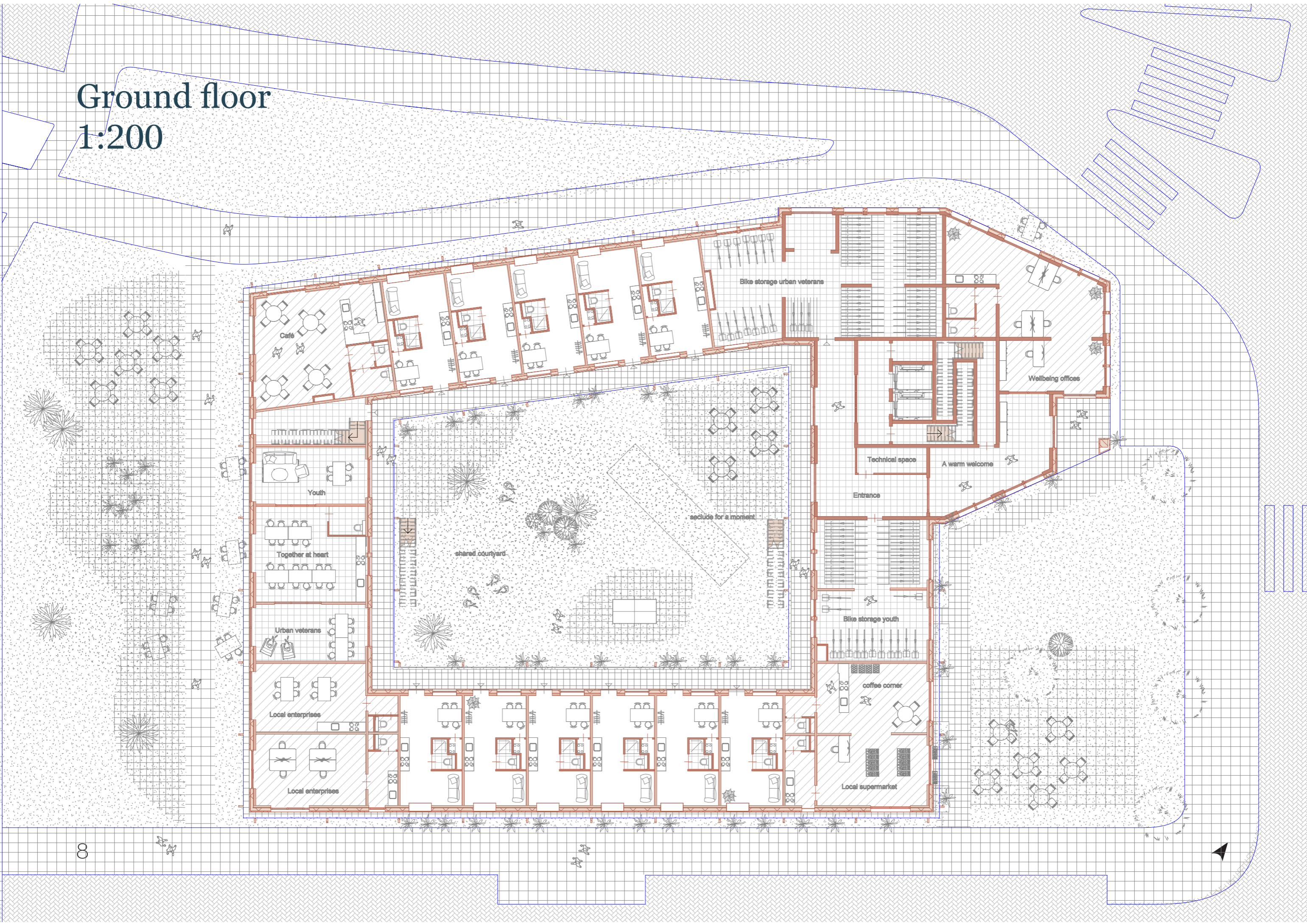


# Kaappark 1:500

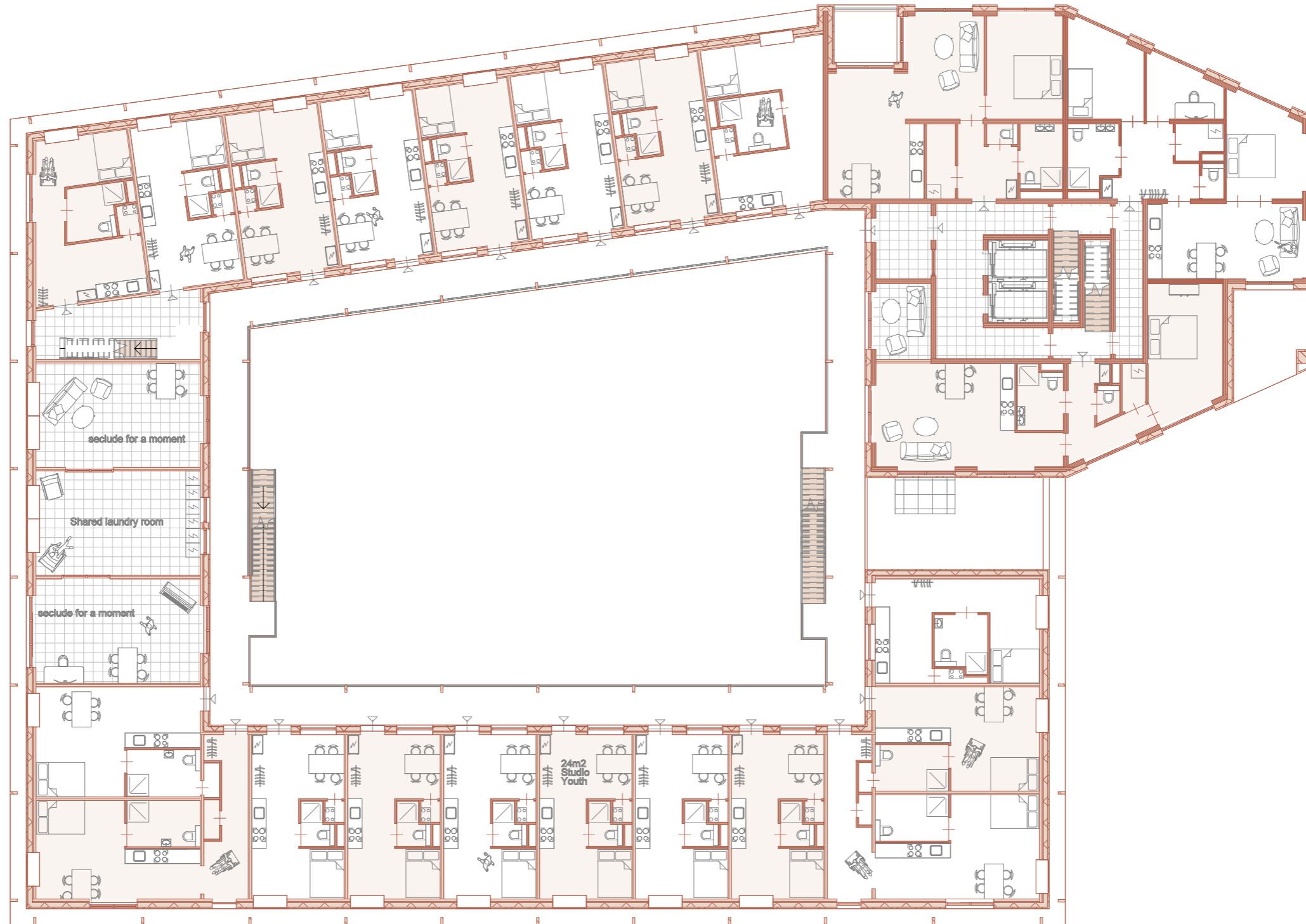


# Ground floor

1:200

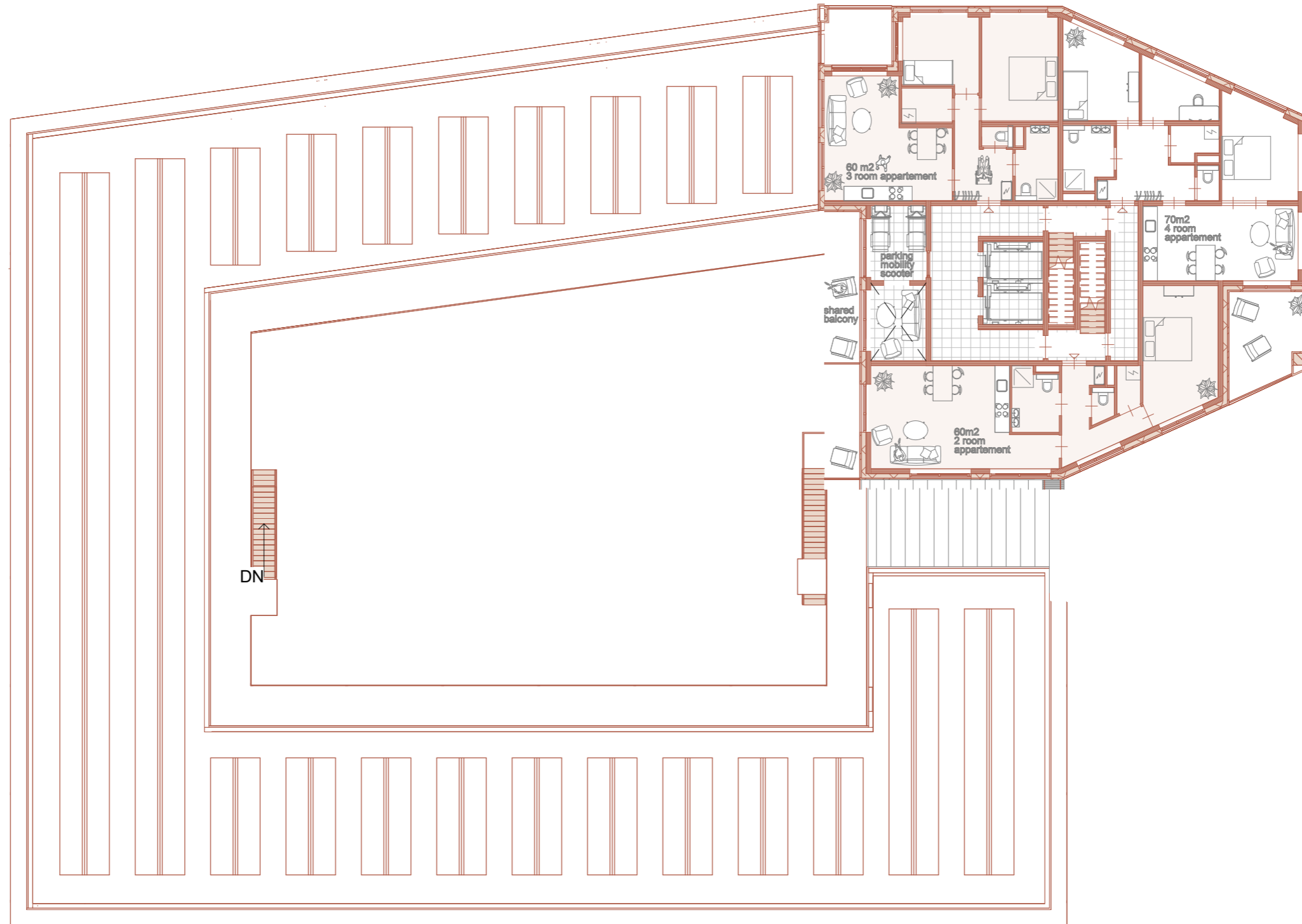


# First and Second floor 1:200





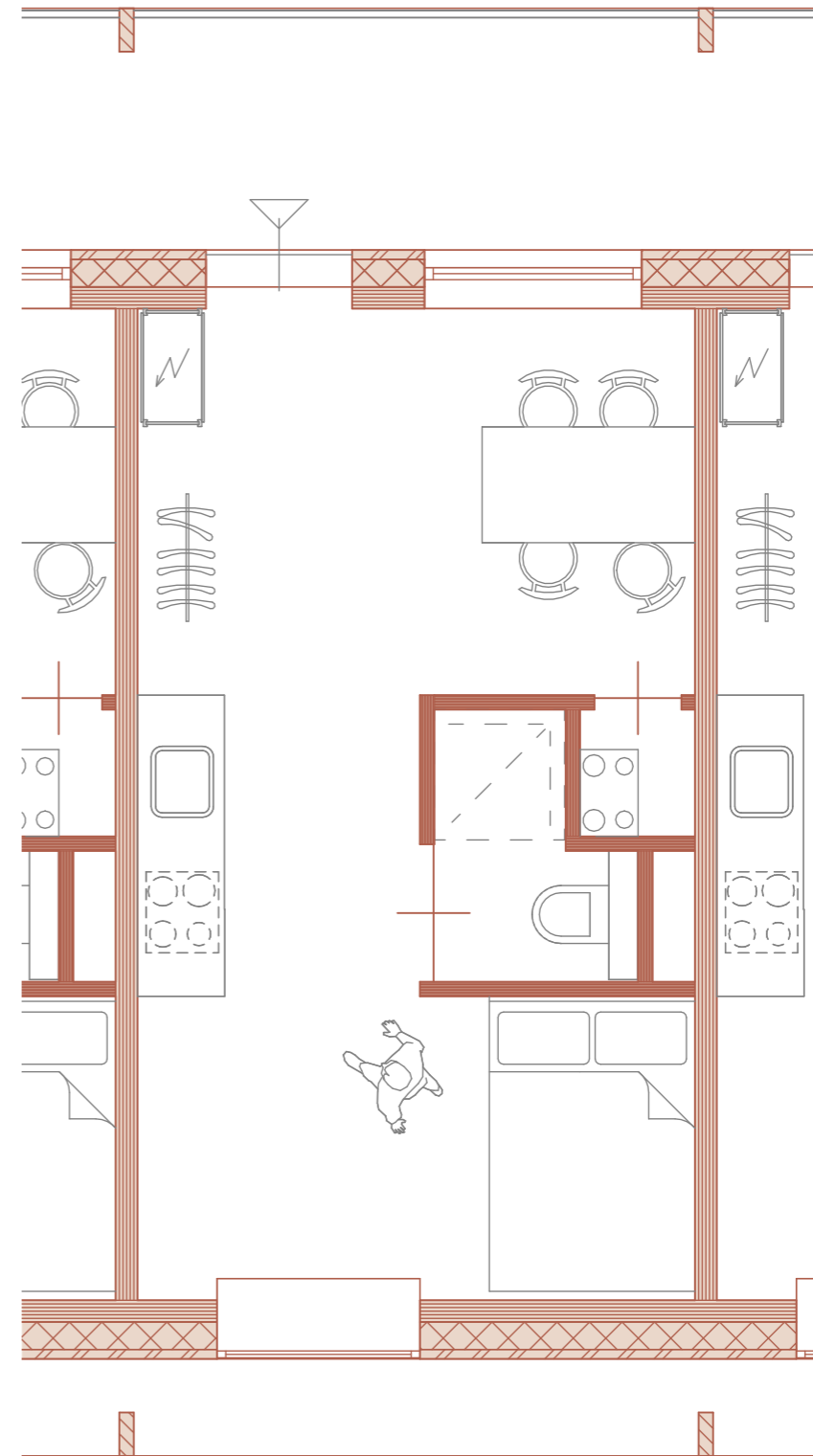
Third floor -  
Twelfth floor  
1:200



# Housing typologies

1:50

Home-seeking youth



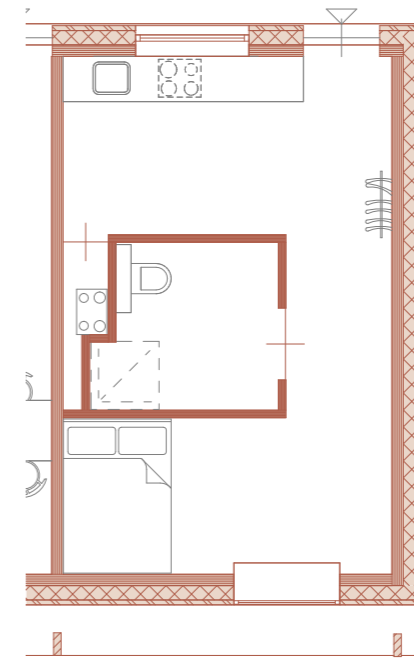
# Housing typologies

## 1:100

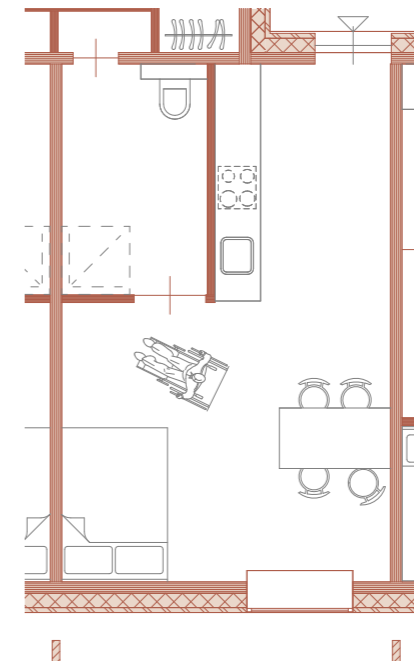
Home-seeking youth -  
accessible housing  
(mindervalide woningen)



A



B

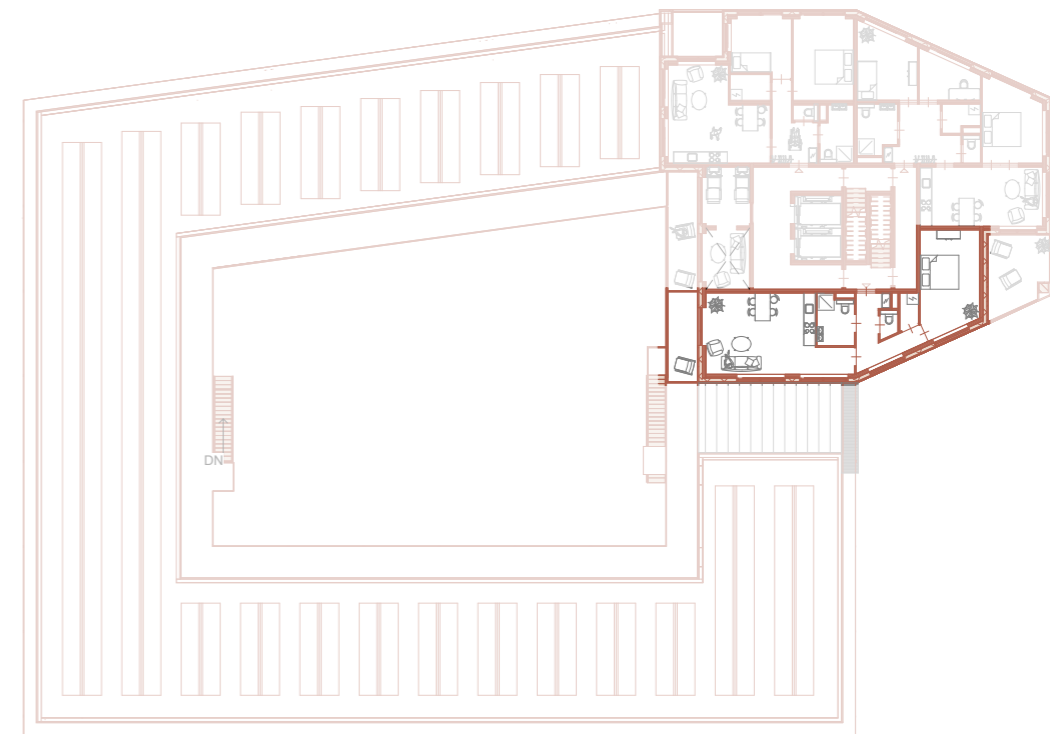
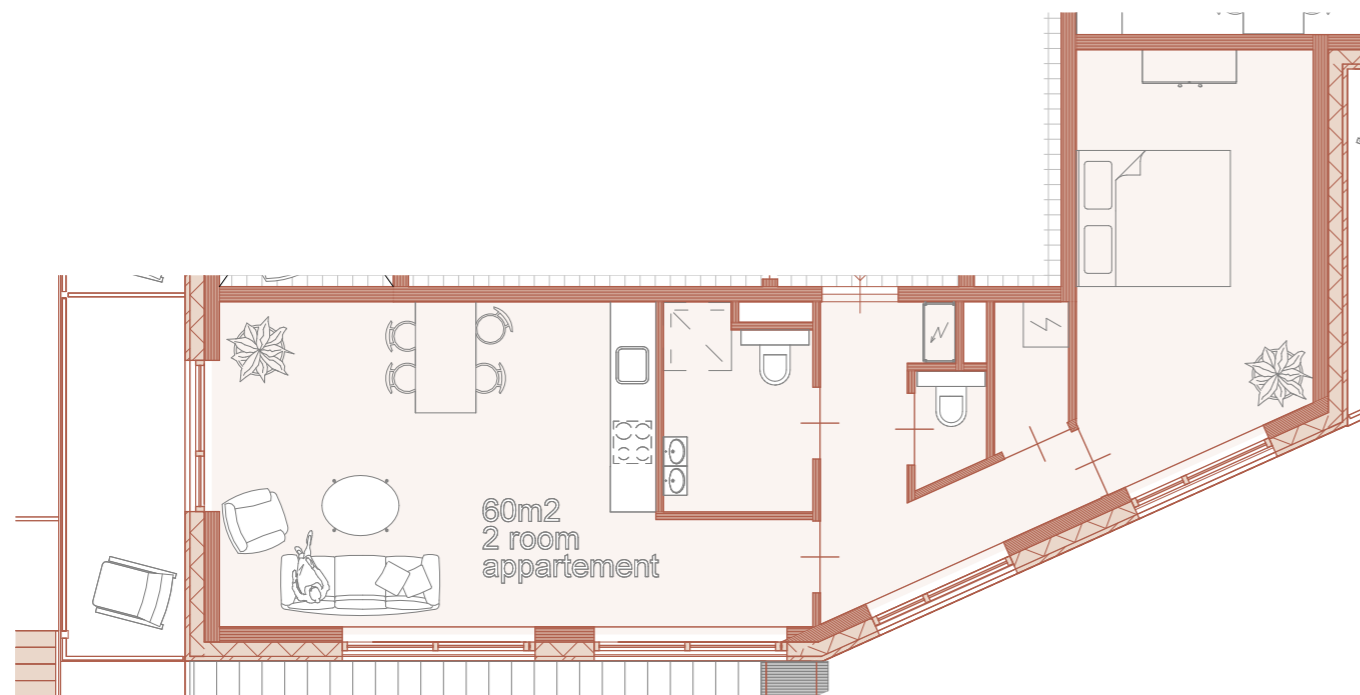


# Housing typologies

## 1: 100

Urban veterans

1 bedroom apartment

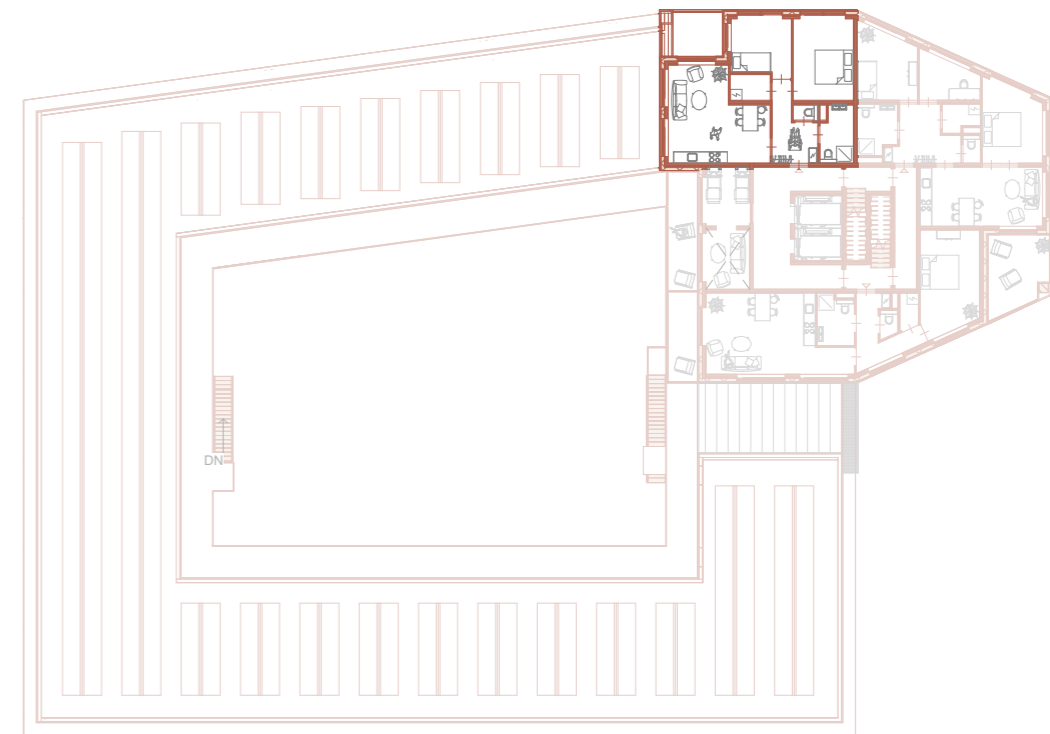
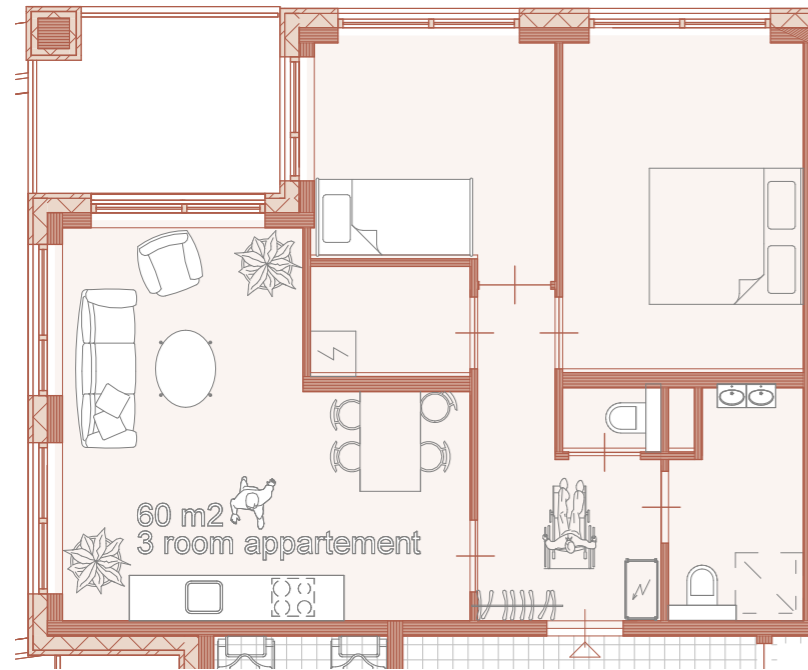


# Housing typologies

## 1: 100

Urban veterans

2 bedroom apartment

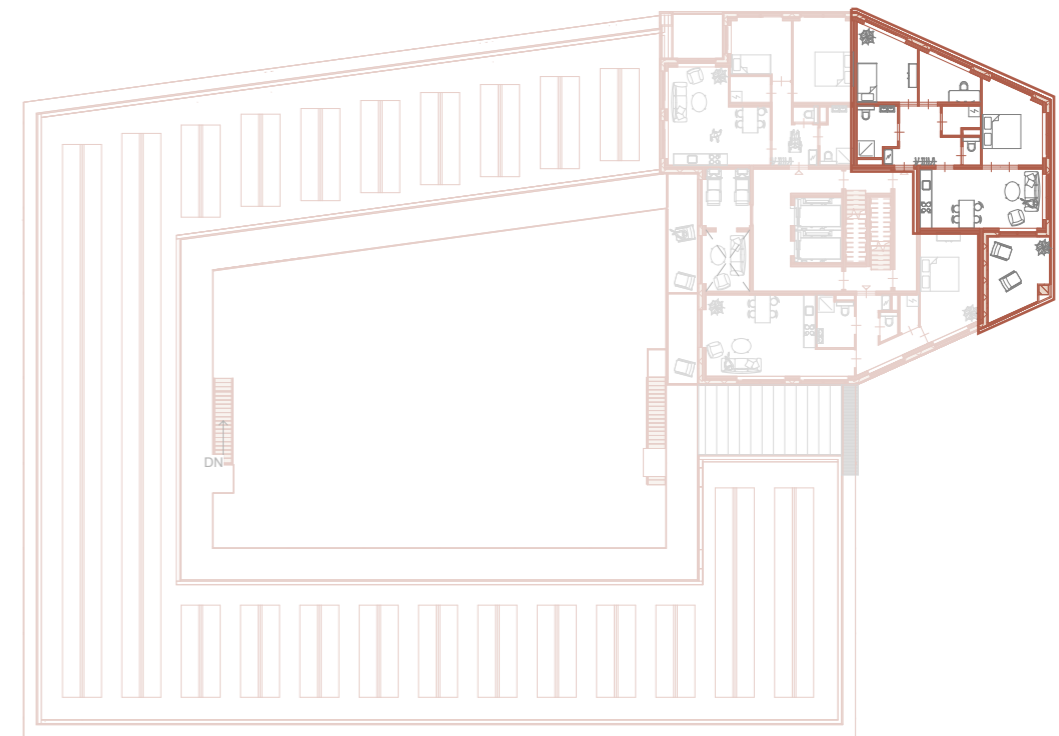
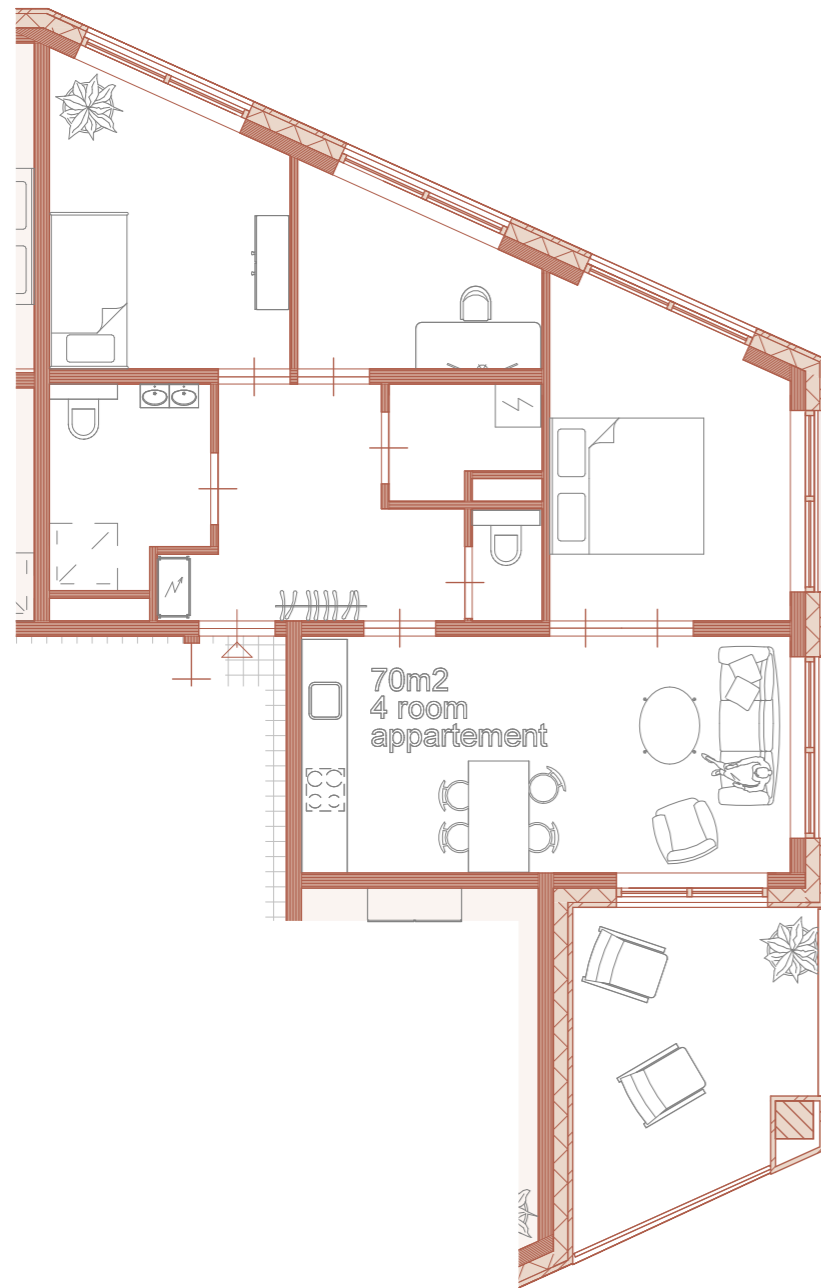


# Housing typologies

## 1: 100

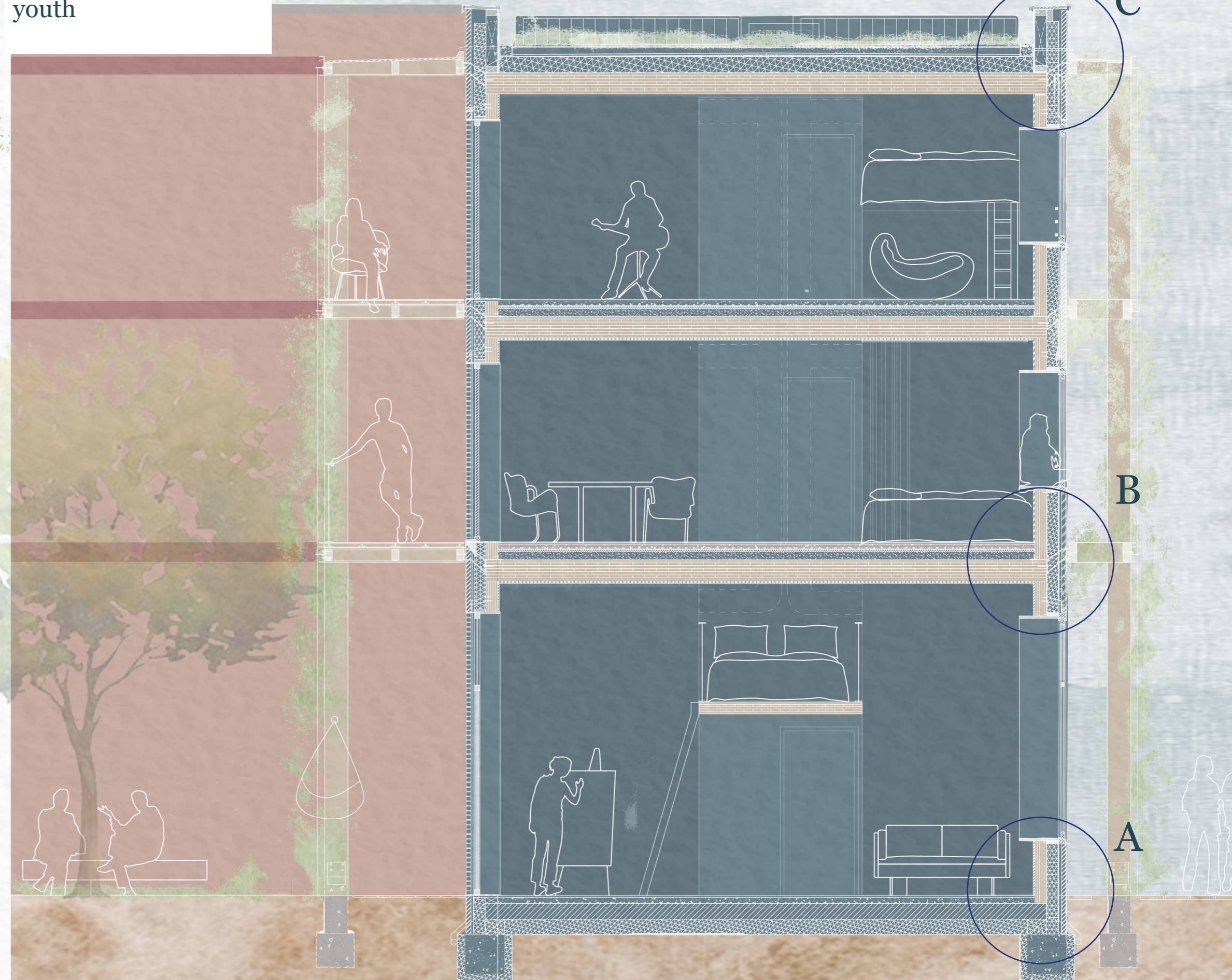
Urban veterans

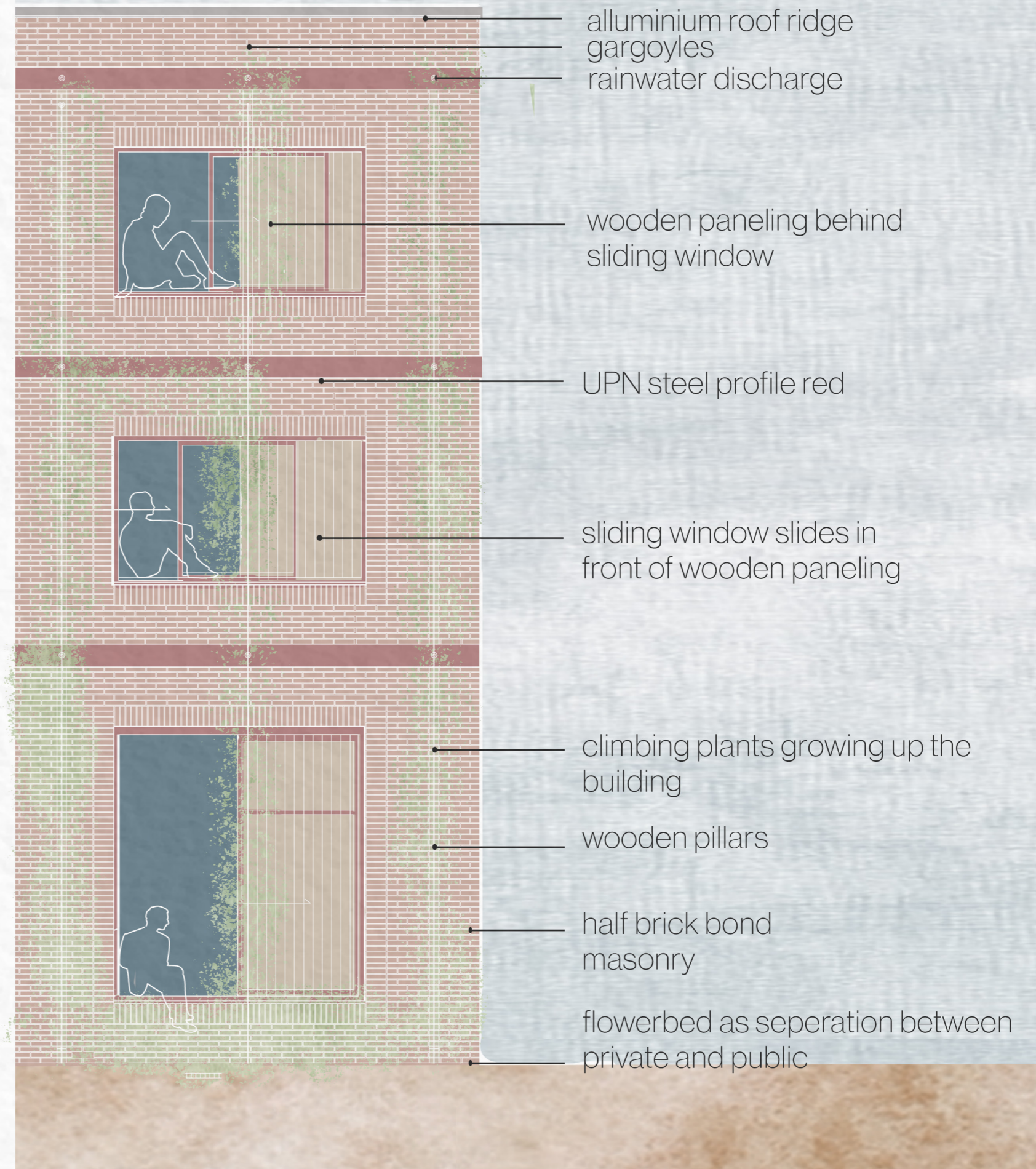
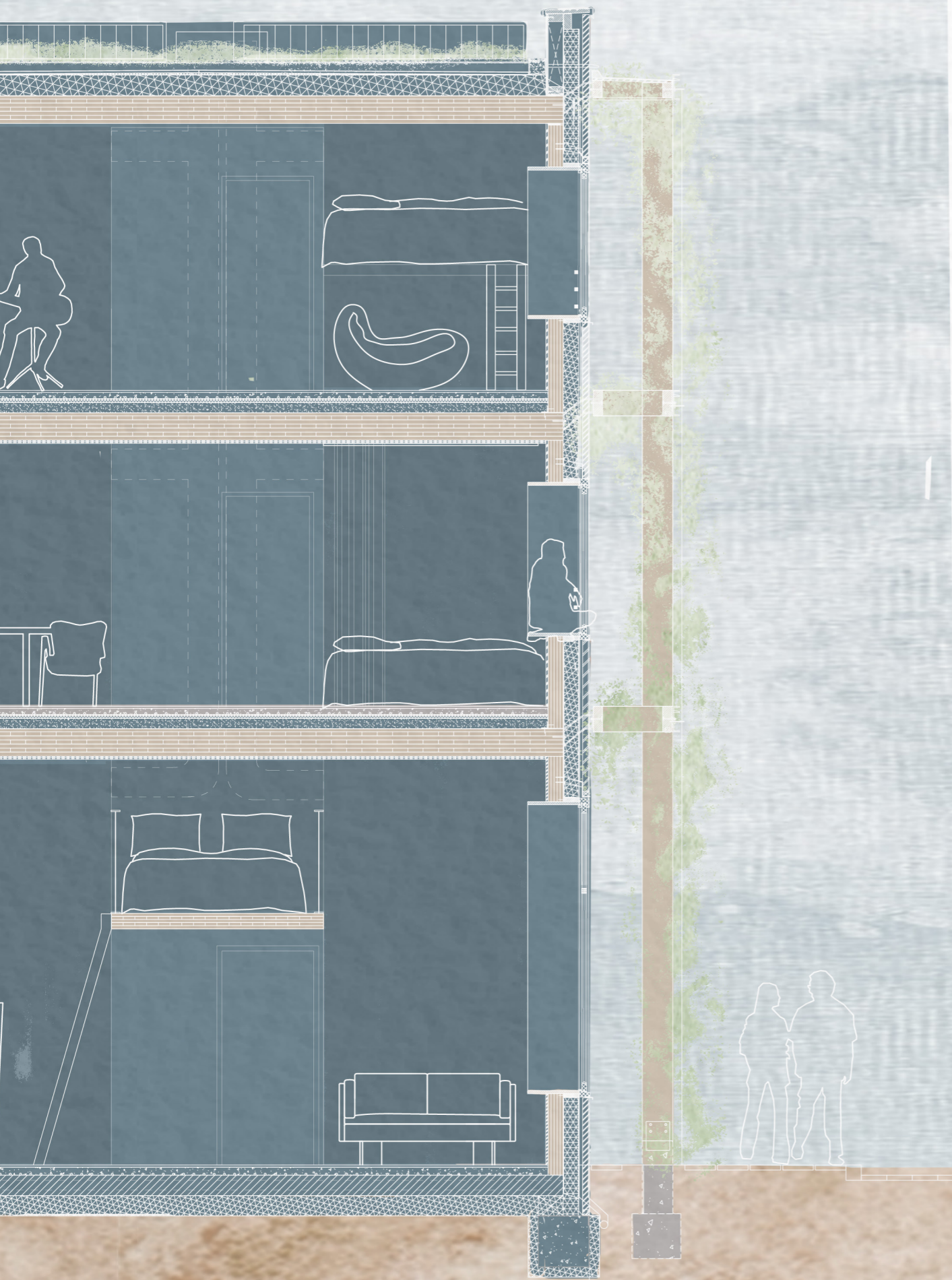
3 bedroom apartment



# Section 1:50

Home-seeking  
youth





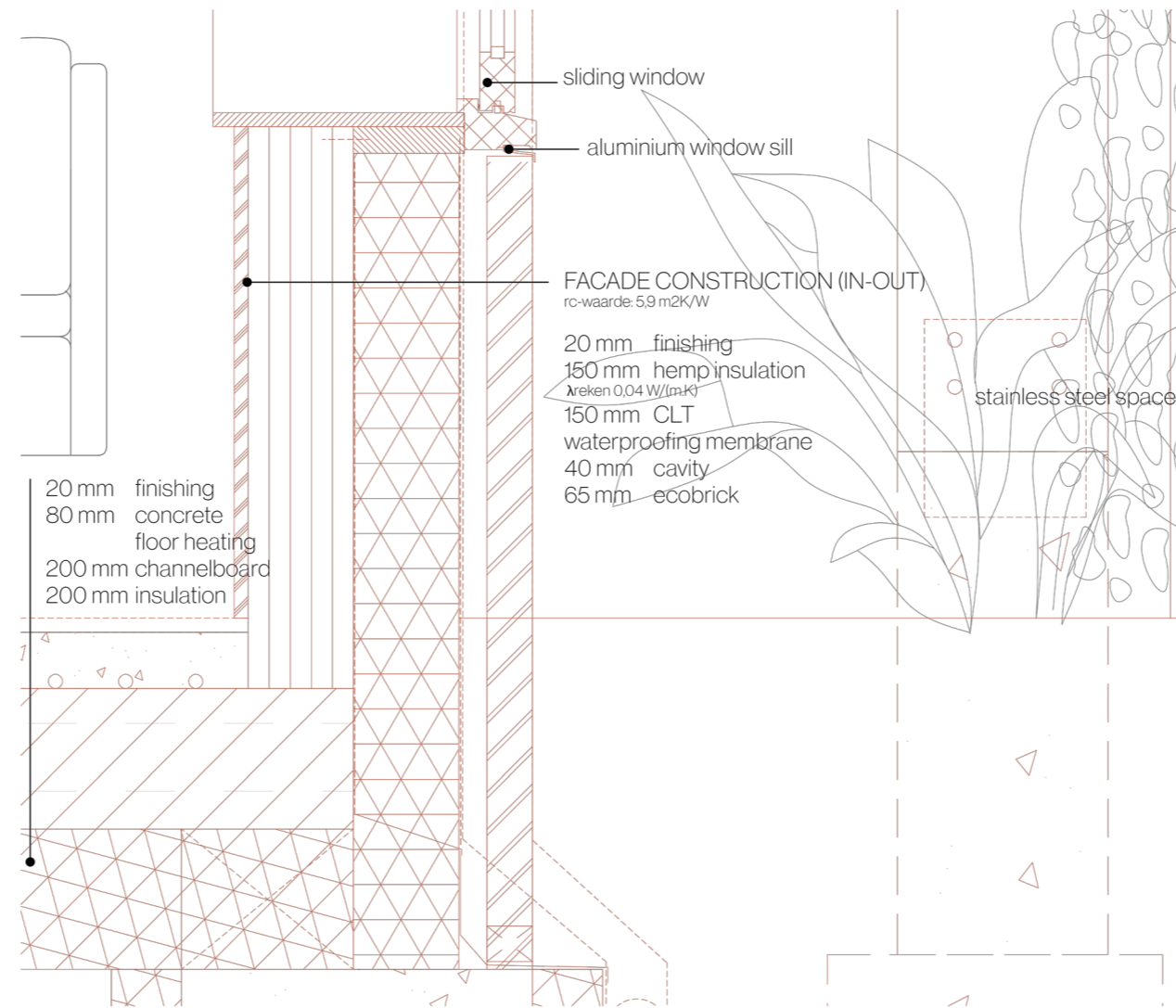


# Detail A

## 1:10

Sitting window

vertical

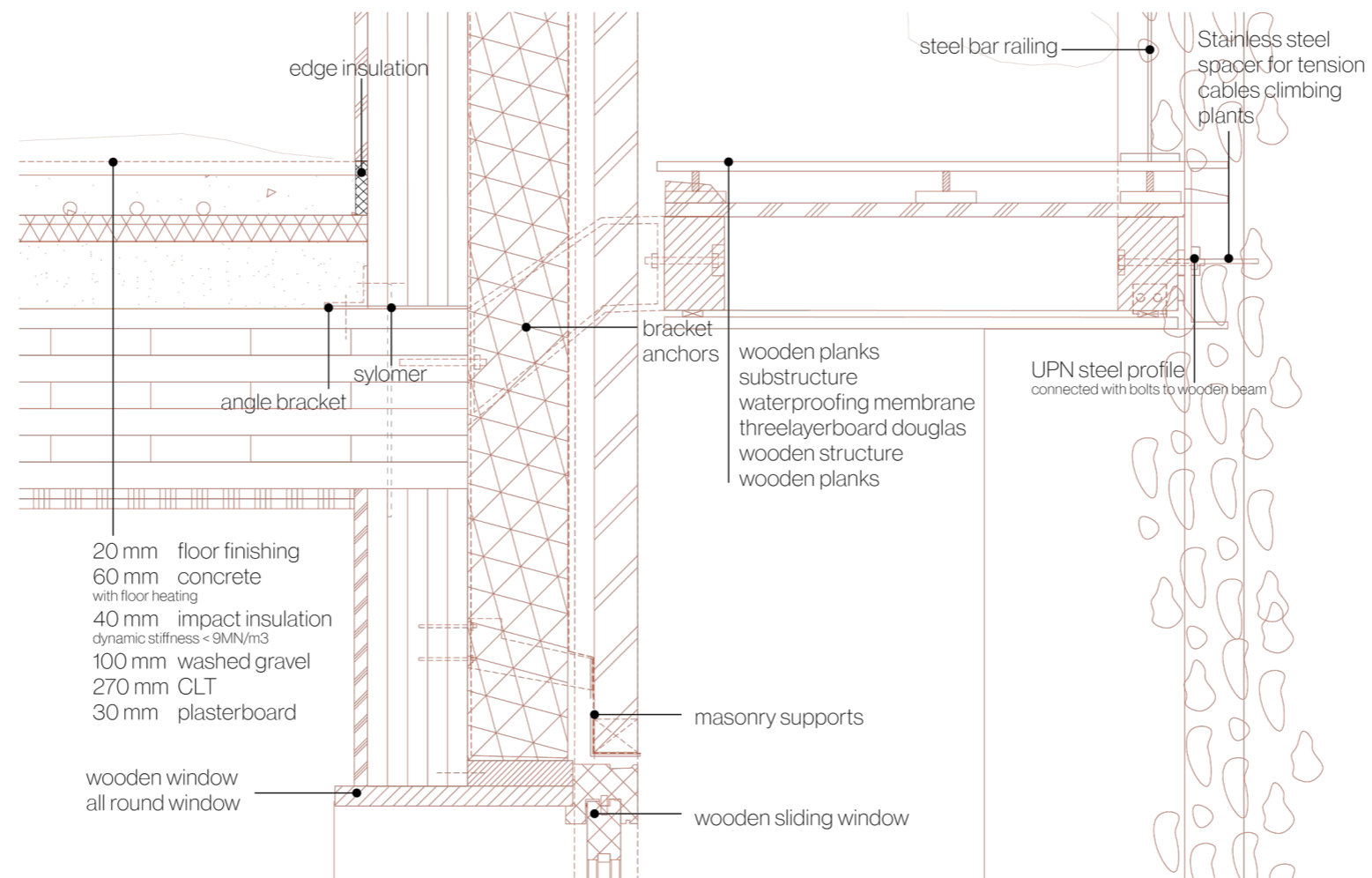


# Detail B

## 1:10

Sitting window

vertical

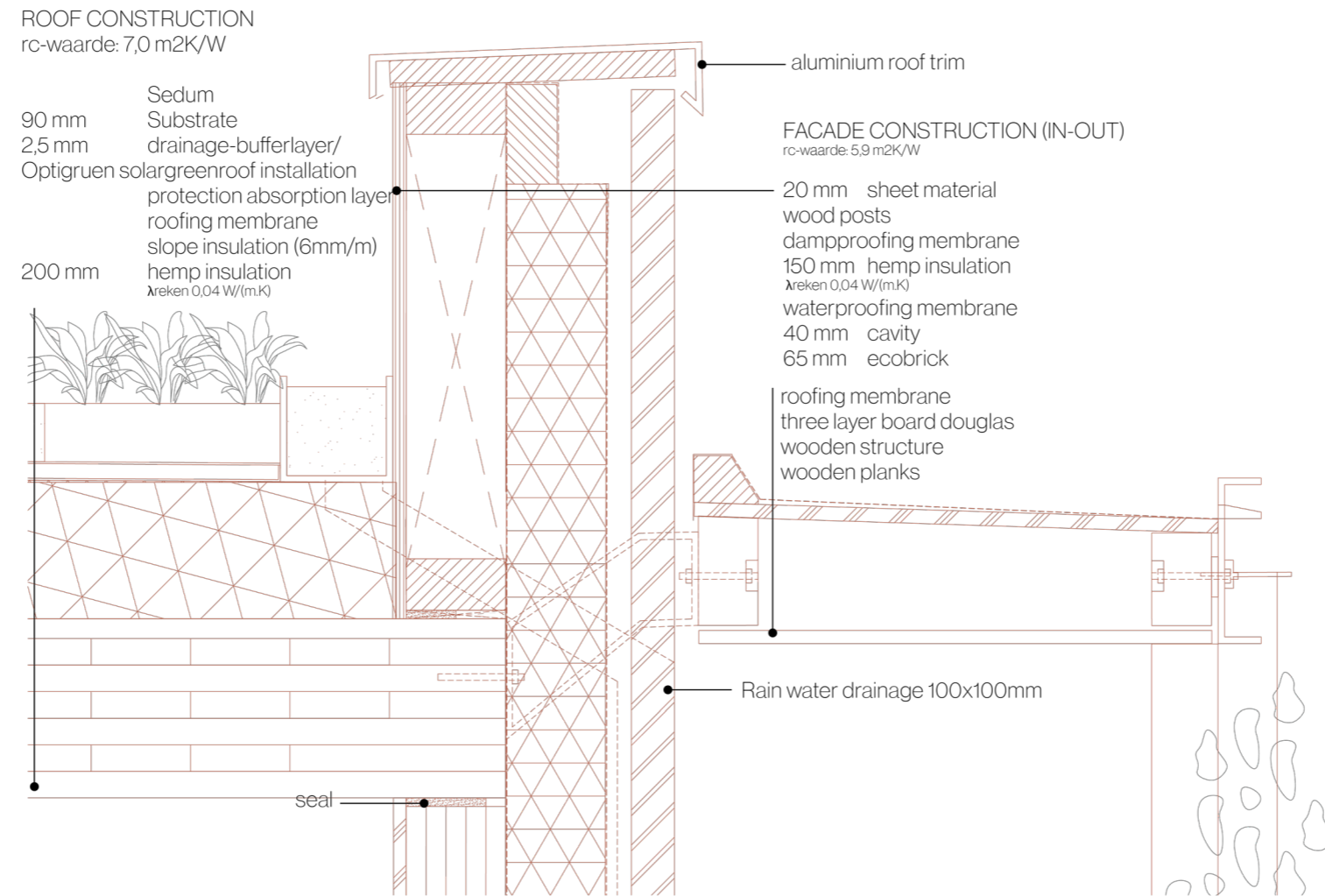


# Detail C

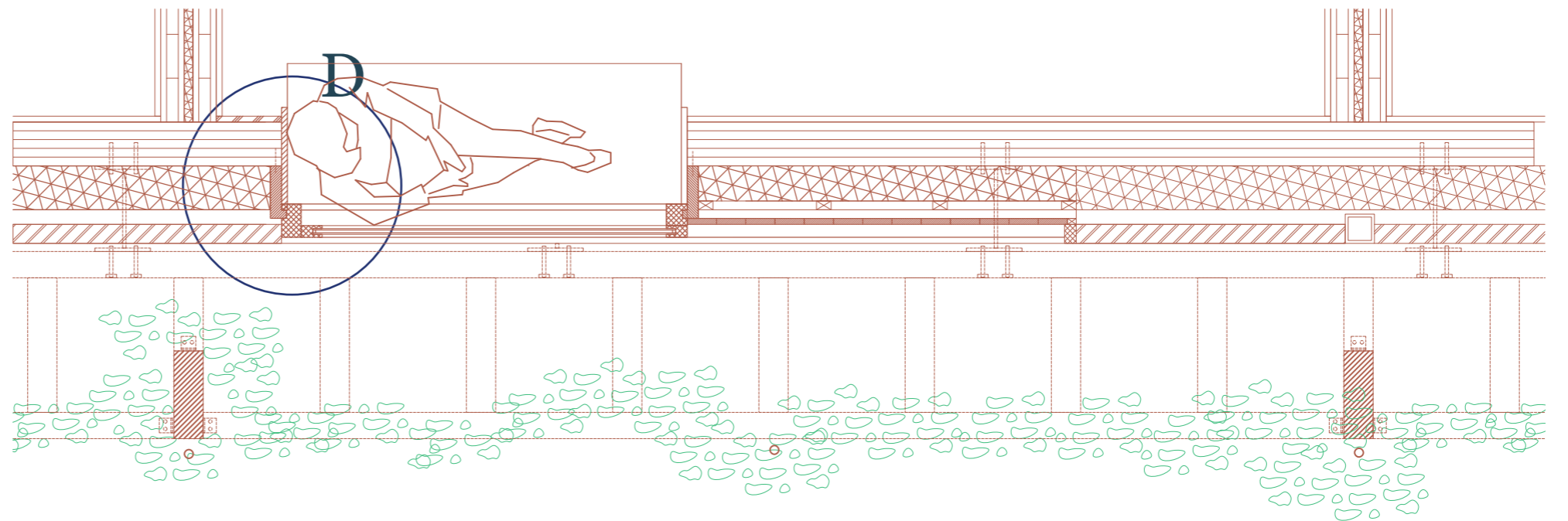
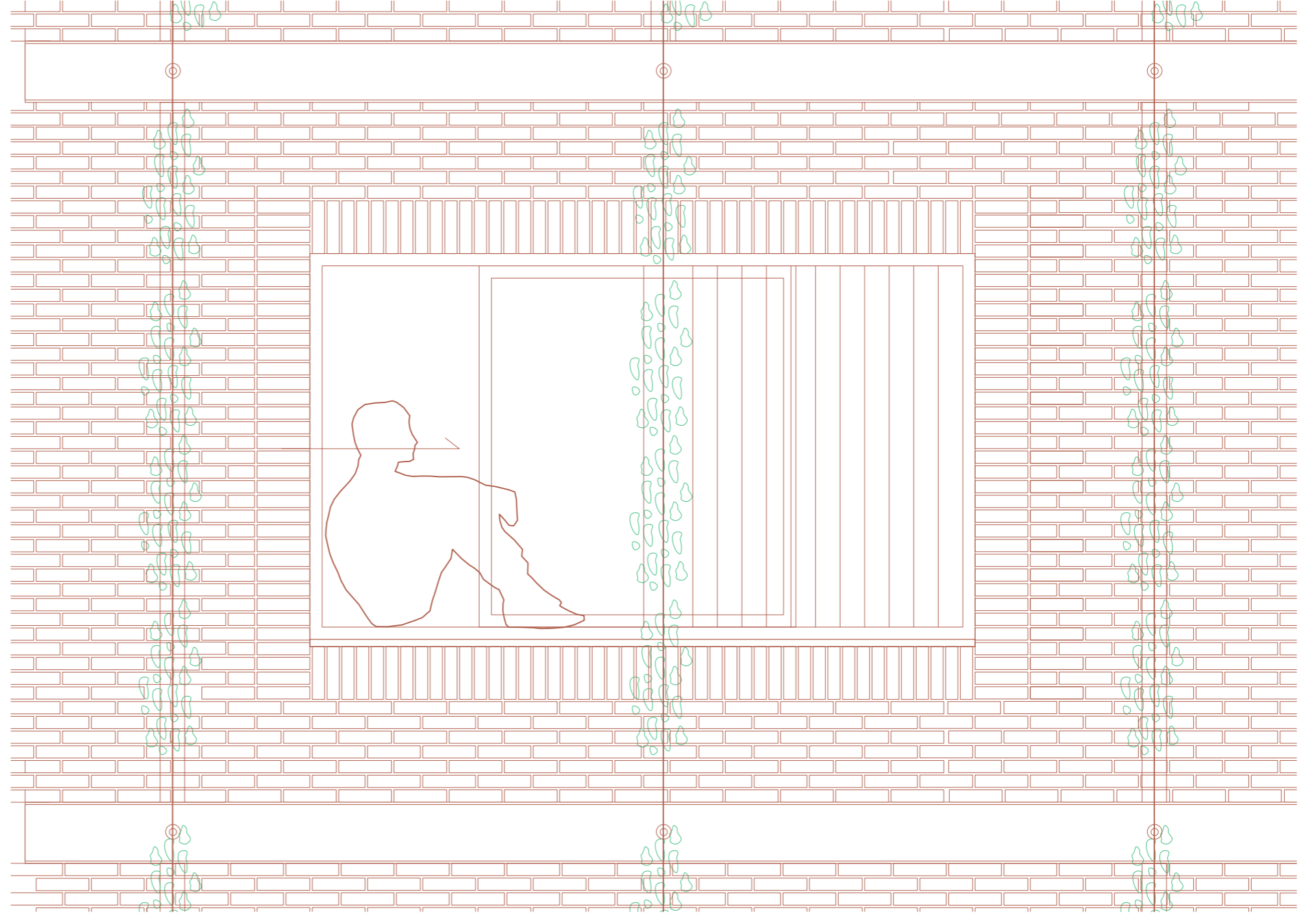
## 1:10

Sitting window

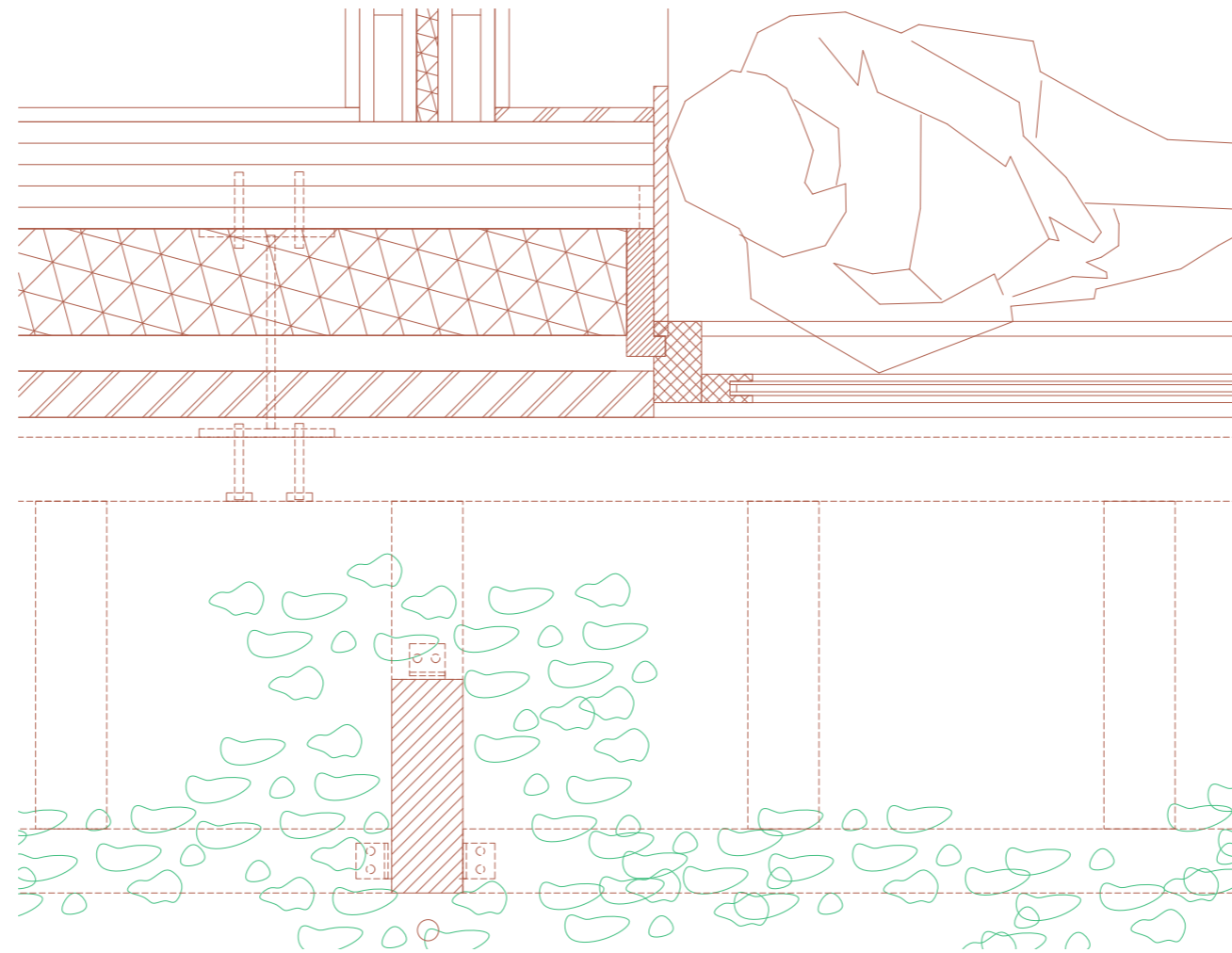
vertical



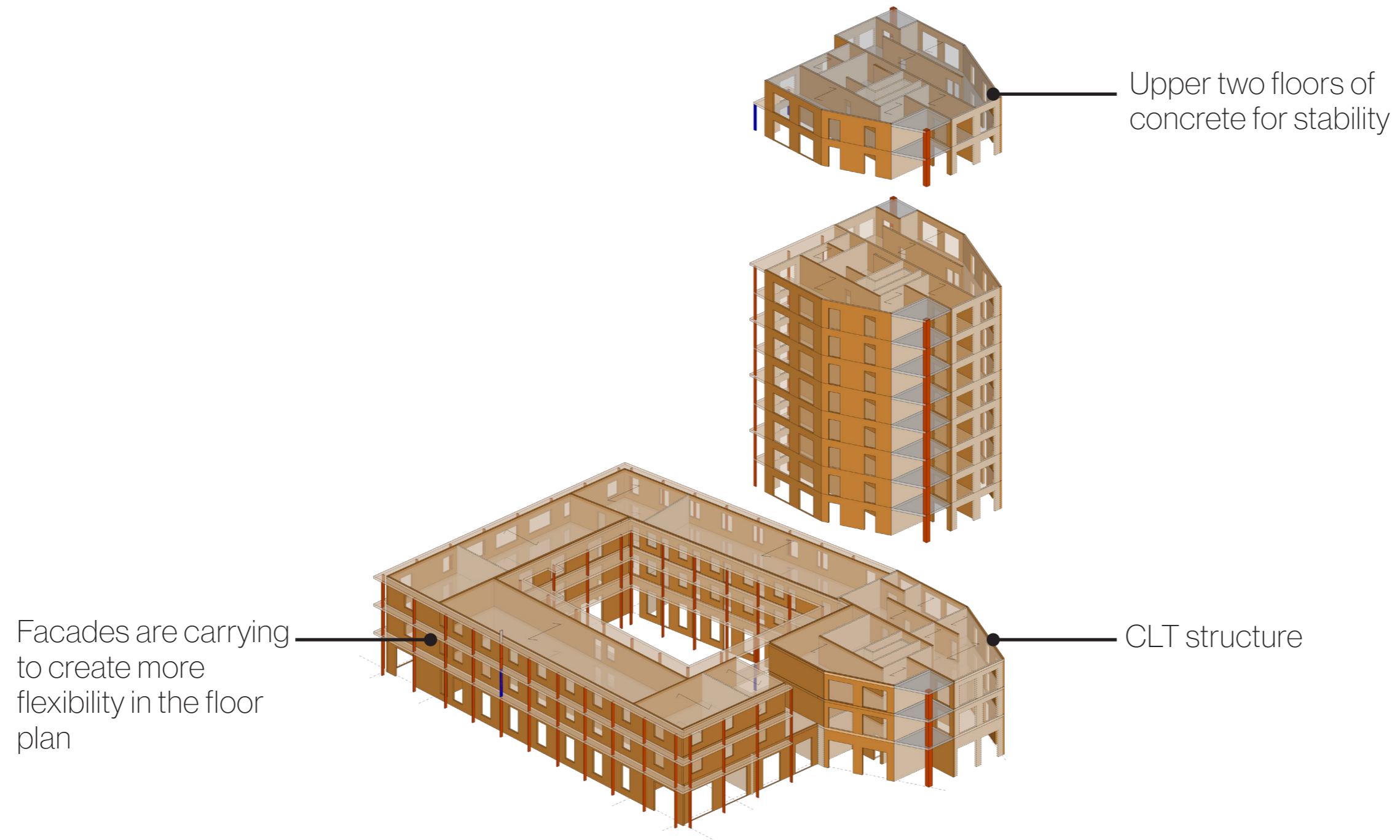
# Facade fragment 1:20



Detail D  
1:10  
Sitting window  
Horizontal

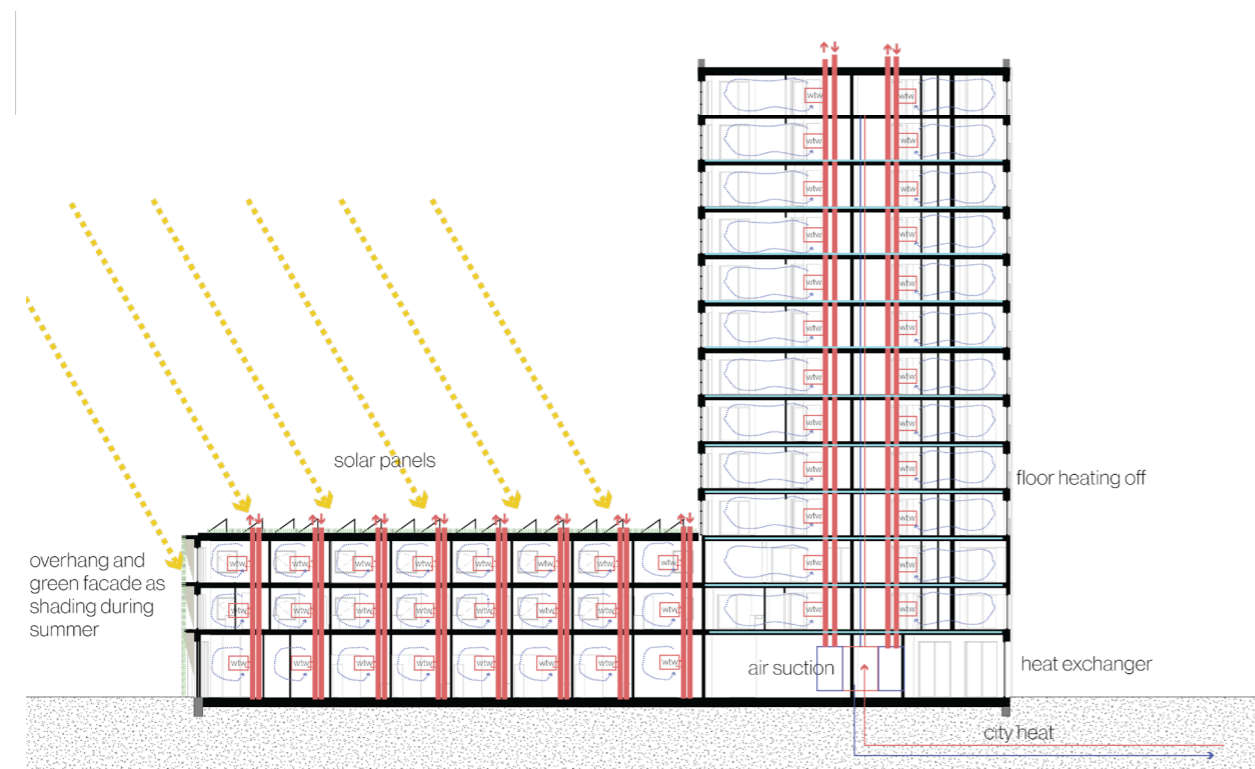


# Wooden Load bearing structure

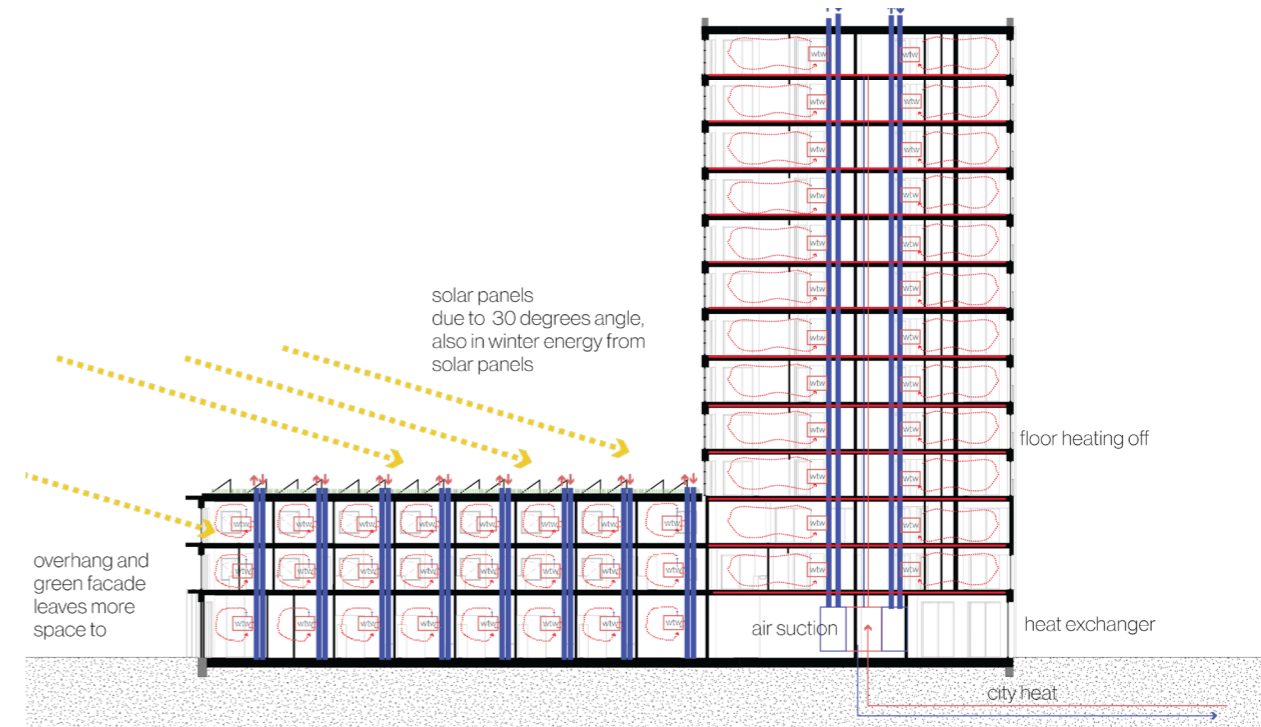


# Climate design

1:500



Summer



Winter