

MATERIALS  
KING'S CROSS, CANARY WHARF, BROADGATE AREA

MATERIALS

This booklet aims to give an overview on the materials which could define privately owned public spaces. Materials can be an indication of borders, thresholds or function and can make privatization visible. Just by looking at one patchwork of materials, it not only says something about transitioning, as well it can give an impression of the physical state of a certain object or even a part of the city. The study contains photographs of the materialisation of multiple privately owned public spaces within London, such as: *Pancras Square, Granary Square, Gasholder Park, Wharf Road Garden, Lewis Cubitt Park, Cabot Square, Canada Square Park, Jubilee Park, West India Quays, Crossrail Place Roof Garden, Reuters Plaza, Exchange Square, Bishops Square, Broadgate Plaza, Broadgate Circle and Finsbury Avenue Square*. The photographs are organised in a way that the sequence of spaces becomes visible. 'Materials' is the final part of a series, including: 'Usage' and 'Elements'. Photography was used as a medium to investigate those materials which define privately owned public spaces. In order to understand the grey area between privately owned 'public' space and public space.



PANCRAS SQUARE,  
GRANARY SQUARE,  
GASHOLDER PARK,  
WHARF ROAD GARDEN,  
LEWIS CUBITT PARK.

PRIVATELY OWNED BY: KING'S CROSS CENTRAL



**Grey natural stone**  
No disruptions, clean and orderly



**Beige natural stone**  
No disruptions, clean and orderly



**Grey natural stone**  
No disruptions, clean and orderly



**Material transitions**  
Clean and orderly, clear boundaries



**Material transitions**  
Clean and orderly, clear boundaries



**Material transitions**  
Clean and orderly, clear boundaries, textures



**Grey wood and pavement**  
No disruptions, clean and orderly



**Material transitions**  
No disruptions, clean and orderly



**Material transitions**  
Steel details and light elements



**Material transitions**  
Same material, different configurations



**Metal details**  
Clean and orderly, refined details



**Material transitions**  
Clean and orderly, clear boundaries



**Beige natural stone**  
Same material, different textures



**Beige natural stone**  
No disruptions, clean details



**Beige / grey natural stone**  
No disruptions, clean and orderly



**Beige natural stone, grey wood**  
Clean and orderly, clear boundaries



**Material transitions**  
Clean and orderly, clear boundaries



**Grey wood, steel elements**  
Clean and orderly



**Beige natural stone**  
Clean and orderly, clear boundaries



**Cortensteel, natural stone and concrete**  
Clean and orderly, clear boundaries



**Material transitions**  
Clean and orderly, clear boundaries



**Material transitions**  
Repetition cortensteel and color



**Material transitions**  
Clean and orderly, repetition of cortensteel



**Material transitions**  
Homogeneity of colors





**Beige natural stone**  
Homogeneity of materials



**Beige natural stone**  
Homogeneity of color



**Beige natural stone, steel and grey wood**  
Clean and orderly, clear boundaries



**Material transitions**  
Clean and orderly, clear boundaries



**Material transitions**  
Clean and orderly, clear boundaries



**Material transitions**  
Repetition of metal elements and pavement



**Beige natural stone, metal joints**  
Refined details



**Material transitions**  
Clean and orderly, clear boundaries



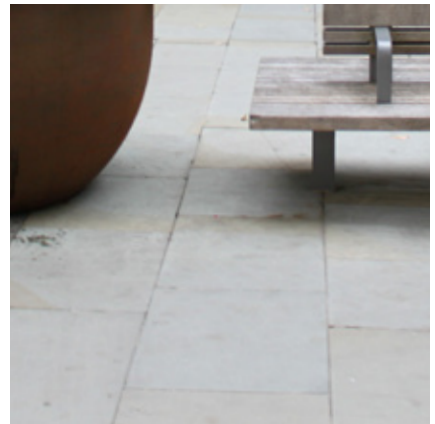
**Material transitions**  
Clean and orderly, clear boundaries



**Material transitions**  
Clean and orderly, clear boundaries



**Material transitions**  
Clean and orderly, repetition of cortensteel



**Grey natural stone, wood, (corten) steel**  
Repetition of steel elements



**Material transitions**  
Clean and orderly, clear boundaries



**Beige natural stone, concrete**  
Homogeneity of colors



**Material transitions**  
Clean and orderly, steel details



**Material transitions**  
Clean and orderly, clear boundaries



**Material transitions**  
Clean and orderly, clear boundaries



**Material transitions**  
Homogeneity of colors



**Material transitions**  
Repetition of pavement and steel elements



**Material transitions**  
Clean and orderly, clear boundaries



**Material transitions**  
Clean and orderly, clear boundaries



**Grey wood, steel elements**  
Repetition of materials



**Material transitions**  
Clean and orderly, clear boundaries



**Grey natural stone, steel, red pavement**  
Repetition of steel



**Material transitions**  
Repetition of steel and pavement



**Beige natural stone**  
Homogeneity of colors



**Wooden elements**  
Clean and orderly, clear boundaries



**Bricks, natural stone and steel elements**  
Clean and orderly, different textures



**Material transitions**  
Clean and orderly, clear boundaries



**Material transitions**  
Repetition of materials, different patterns



**Material transitions**  
Homogeneity of colors



**Steel elements, pavement and gravel**  
Clean and orderly, repetition of materials



**Material transitions**  
Changing textures



**Material transitions**  
Repetition of materials, clear boundaries



**Material transitions**  
Clean and orderly



**Grey pavement, cortensteel**  
Repetition of cortensteel



**Material transitions**  
Same materials, different patterns



**Brickwork, steel elements and rough pavement**  
More aged materials and textures



**Rough pavement, brickwork**  
More aged materials and textures



**Natural stone, beige pavement**  
Clean and orderly, repetition of elements



**Rough pavement, brickwork and natural stone**  
More aged materials and textures



**Material transitions**  
Repetition of metal elements and pavement



**Grey wood, steel elements**  
Repetition of materials



**Grey wood, (corten) steel**  
Repetition of materials



**Grey wood**  
Repetition of materials



**Corten steel and pavement**  
Repetition of materials, clear boundaries



**Grey wood, (corten) steel**  
Repetition of materials



**Material transitions**  
Clean and orderly, clear boundaries





**Material transitions**  
Grey natural stone, color signing, diverse scale



**Material transitions**  
Clean and orderly, clear boundaries



**Material transitions**  
Clean and orderly, clear boundaries



**Material transitions**  
Clean and orderly, clear boundaries



**Pavement, natural stone, mirrors**  
Clean and orderly, clear boundaries



**Material transitions**  
Indications of borders



**Steel, grey natural stone**  
Clean and orderly, clear boundaries



**Corten steel and beige pavement**  
Repetition of materials



**Corten steel**  
Repetition of materials



**Pavement, steel**  
Refined details



**Material transitions**  
Same materials, differences in joints



**Material transitions**  
Clean and orderly, clear boundaries



**Material transitions**  
Homogeneity of colors, soft boundaries



**Material transitions**  
Clean and orderly, clear boundaries



**Material transitions**  
Clean and orderly, clear boundaries



**Material transitions**  
Clean and orderly, clear boundaries



**Material transitions**  
Clean and orderly, clear boundaries



**Material transitions**  
Homogeneity of colors



**Corten steel**  
Repetition of materials



**Corten steel**  
Repetition of materials



**Corten steel and grey wood**  
Repetition of materials



**Material transitions**  
Clean and orderly, clear boundaries



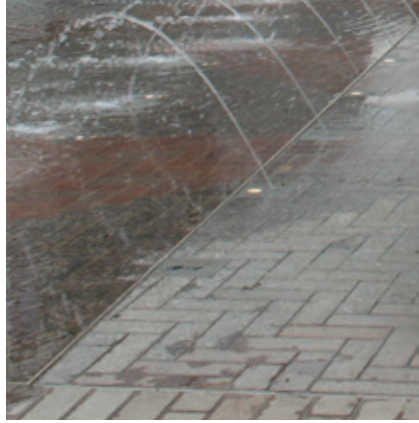
**Material transitions**  
Homogeneity of color and material



**Mixed pavement and steel elements**  
Clean and orderly, clear boundaries



**Steel, brickwork**  
Repetition of materials



**Material transitions**  
Clean and orderly, clear boundaries



**Grey wood and pavement**  
Repetition of materials



**Grey wood, steel and pavement**  
Repetition of materials



**Material transitions**  
Clean and orderly, clear boundaries



**Steel and multi-color pavement**  
Repetition of materials



**Material transitions**  
Repetition of color



**Material transitions**  
Clean details



WEST INDIA QUAYS,  
CABOT SQUARE,  
REUTERS PLAZA,  
CANADA SQUARE PARK,  
JUBILEE PARK,  
CROSSRAIL PLACE ROOF GARDEN.

PRIVATELY OWNED BY: ST. MARTINS PROPERTY GROUP & CANARY WHARF GROUP





**Material transitions**  
Mixed pavements, different patterns



**Material transitions**  
Mixed pavements, different patterns



**Grey pavement**  
More aged materials



**Material transitions**  
Clean and orderly, clear boundaries



**Material transitions**  
Clean and orderly, clear boundaries



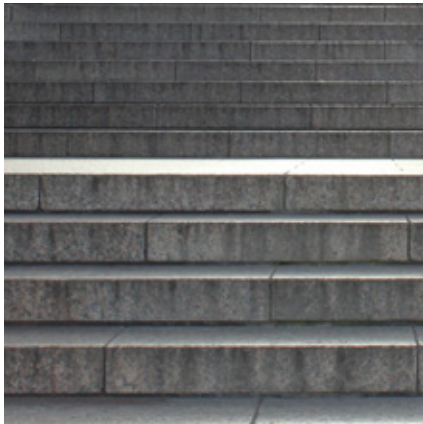
**Grey pavement, mixed colors and materials**  
Additions



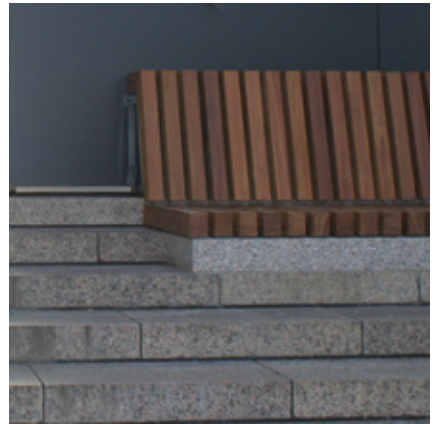
**Steel elements**  
Clean details



**Steel elements and light**  
Clean details



**Material transitions**  
Grey natural stone



**Grey natural stone and wood**  
Clean and orderly, clear boundaries



**Grey pavement, steel and wood**  
Repetition of materials



**Material transitions**  
Clean and orderly, clear boundaries



**Material transitions**  
Repetition of color and material



**Material transitions**  
Repetition of color and material



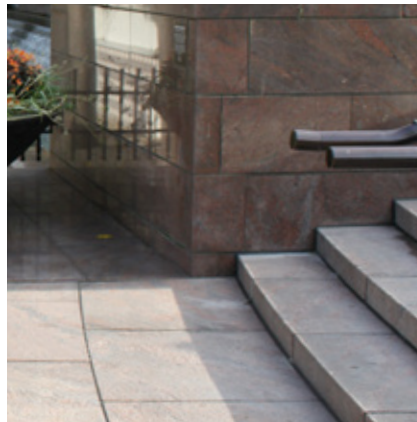
**Beige natural stone**  
Homogeneity of color



**Material transitions**  
Homogeneity of color



**Material transitions**  
Clean and orderly, clear boundaries



**Material transitions**  
Homogeneity of color



**Material transitions**  
Homogeneity of color and clean details



**Material transitions**  
Homogeneity of color and clean details



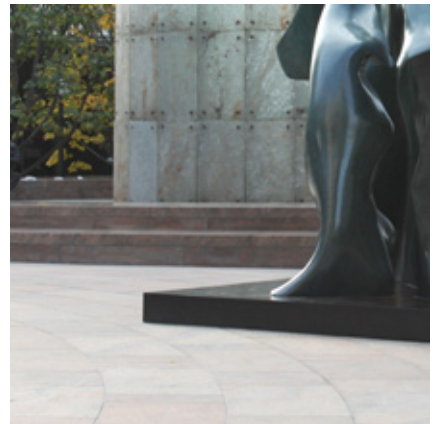
**Material transitions**  
Homogeneity of color and clean details



**Material transitions**  
Clean and orderly, clear boundaries



**Gravel and wood**  
Repetition of materials



**Material transitions**  
Clean and orderly, clear boundaries



**Grey pavement and light elements**  
Repetition of color, clear boundaries



**Grey pavement and light elements**  
Repetition of color, clean details



**Material transitions**  
Homogeneity of color



**Material transitions**  
Homogeneity of color



**Grey pavement and steel elements**  
Clean and orderly, clear boundaries



**Gravel and natural stone**  
Homogeneity of color



**Material transitions**  
Clean and orderly, clear boundaries



**Grey pavement and steel elements**  
Homogeneity of color and clean details



**Wood, steel and grey pavement**  
Repetition of materials



**Material transitions**  
Clean and orderly, clear boundaries



**Material transitions**  
Clean and orderly, clear boundaries



**Grey pavement and steel elements**  
Repetition of materials



**Material transitions**  
Clean and orderly, clear boundaries



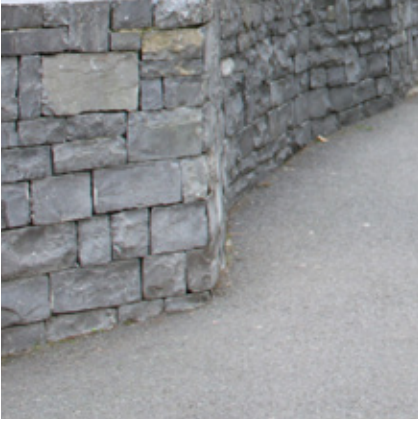
**Material transitions**  
Homogeneity of material and color



**Grey pavement and steel elements**  
Repetition of materials



**Wood, steel and grey pavement**  
Repetition of materials



**Material transitions**  
Clean and orderly, clear boundaries



**Material transitions**  
Clean and orderly, clear boundaries



**Material transitions**  
Clean and orderly, clear boundaries



**Material transitions**  
Clean and orderly, clear boundaries



**Material transitions**  
Clean and orderly, clear boundaries



**Material transitions**  
Clean and orderly, clear boundaries



**Material transitions**  
Clean and orderly, clear boundaries



**Material transitions**  
Clean and orderly, clear boundaries





**Material transitions**  
Clean and orderly, clear boundaries



**Grey / red pavement and steel elements**  
Repetition of material and color



**Material transitions**  
Clean and orderly, clear boundaries



**Wood, steel and grey pavement**  
Repetition of materials



**Red pavement and wood**  
Repetition of materials and color



**Material transitions**  
Clean and orderly, clear boundaries



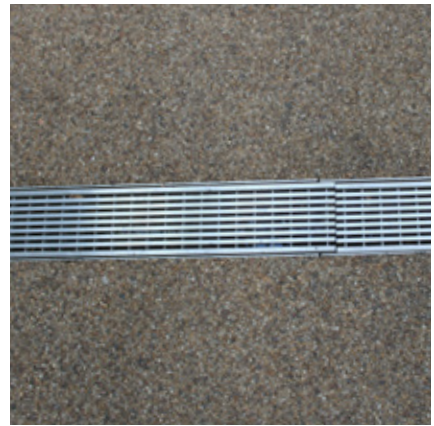
**Material transitions**  
Clean and orderly, clear boundaries



**Material transitions**  
Clean and orderly, refined details



**Material transitions**  
Clean and orderly, refined details



**Material transitions**  
Clean and orderly, refined details



**Material transitions**  
Repetition of material and color



**Material transitions**  
Clean and orderly



**Material transitions**  
Refined details



**Material transitions**  
Clean and orderly, clear boundaries



**Material transitions**  
Clean and orderly, clear boundaries



**Material transitions**  
Clean and orderly, clear boundaries



**Material transitions**  
Homogeneity of material and color



**Material transitions**  
Clean and orderly, clear boundaries



**Material transitions**  
Clean and orderly, refined details



**Material transitions**  
Clean and orderly, refined details



**Material transitions**  
Clean and orderly, refined details



**Material transitions**  
Clean and orderly, refined details



**Material transitions**  
Clean and orderly, refined details



BROADGATE PLAZA,  
EXCHANGE SQUARE,  
BROADGATE CIRCLE,  
FINSBURY AVENUE SQUARE,  
BISHOPS SQUARE.

PRIVATELY OWNED BY: BRITISH LAND AND GIC & JP MORGAN



**Material transitions**  
Clean and orderly, clear boundaries



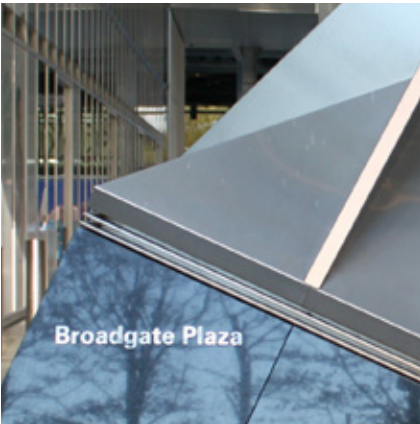
**Material transitions**  
Refined details



**Material transitions**  
Clean and orderly, refined details



**Wood and grey pavement**  
Clean and orderly



**Material transitions**  
Clean and orderly, refined details



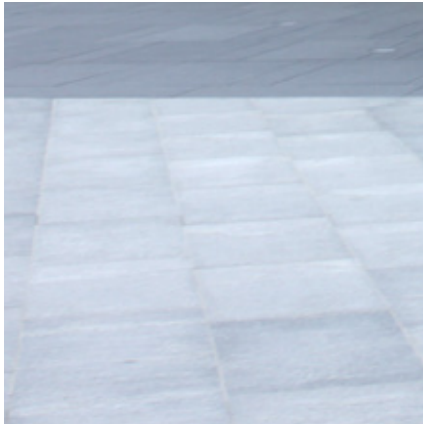
**Material transitions**  
Clean and orderly, clear boundaries



**Material transitions**  
Clean and orderly, clear boundaries



**Material transitions**  
Clean and orderly, refined details



**Material transitions**  
Clean and orderly, clear boundaries



**Wood and grey pavement**  
Clean and orderly, refined details



**Wood and grey pavement**  
Repetition of material and color



**Material transitions**  
Clean and orderly





**Steel elements and plants**  
Clean and orderly



**Material transitions**  
Clean and orderly, clear boundaries



**Under construction**  
Disruption



**Under construction**  
Disruption



**Steel elements, grey pavement and color use**  
Repetition of materials



**Material transitions**  
Clean and orderly, clear boundaries



**Material transitions**  
Clean and orderly, clear boundaries



**Concrete, steel and plants**  
Repetition of material and color



**Wooden element and grey pavement**  
Clean and orderly, refined details



**Wooden element and grey pavement**  
Clean and orderly, refined details



**Material transitions**  
Clean and orderly vs. more natural



**Material transitions**  
Clean and orderly



**Beige natural stone and grey pavement**

Repetition of material and color



**Material transitions**

Same material, different pattern



**Material transitions**

Clean and orderly, clear boundaries



**Grey pavement and green elements**

Repetition of material and color



**Material transitions**

Clean and orderly, clear boundaries



**Material transitions**

Homogeneity of color



**Material transitions**  
Clean and orderly



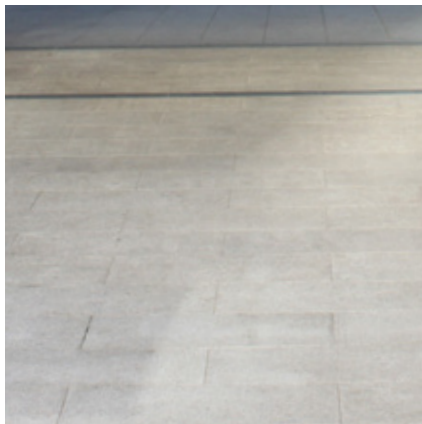
**Natural stone and steel elements**  
Repetition of material and color



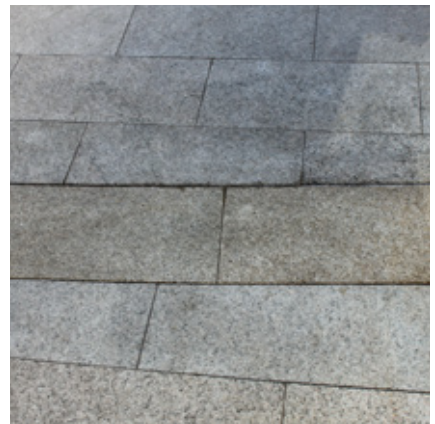
**Material transitions**  
Clean and orderly, clear boundaries



**Natural stone and steel elements**  
Repetition of material and color



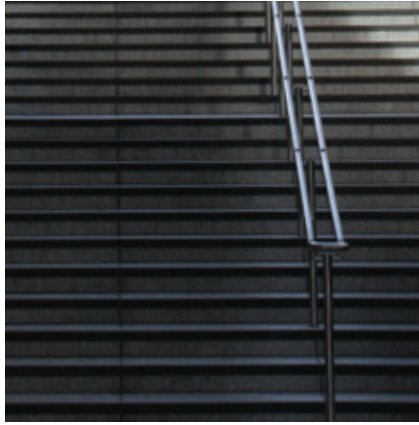
**Material transitions**  
Clean and orderly, clear boundaries



**Material transitions**  
Clean and orderly



**Material transitions**  
Clean and orderly, clear boundaries



**Natural stone and steel elements**  
Repetition of material and color



**Material transitions**  
Clean and orderly, clear boundaries



**Concrete and grey pavement**  
Repetition of material and color



**Material transitions**  
Clean and orderly, clear boundaries



**Material transitions**  
Clean and orderly, clear boundaries



**Material transitions**  
Clean and orderly, clear boundaries



**Material transitions**  
Clean and orderly, different textures



**Material transitions**  
Less orderly, nature intervenes



**Grey wood, grey pavement**  
Repetition of material and color



**Material transitions**  
More aged materials



**Material transitions**  
Less orderly, but clear boundaries



**Material transitions**

Physical borders



**Material transitions**

Physical borders



**Material transitions**

Less orderly, physical boundaries



**Grey pavement and concrete elements**

Repetition of material and color



**Material transitions**

Less orderly, more aged materials



**Material transitions**

Less orderly, more aged materials



**Material transitions**  
Clean and orderly, clear boundaries



**Material transitions**  
Clean and orderly, homogeneity in color



**Material transitions**  
Clean and orderly



**Grey pavement**  
Refined details



**Material transitions**  
Clean and orderly

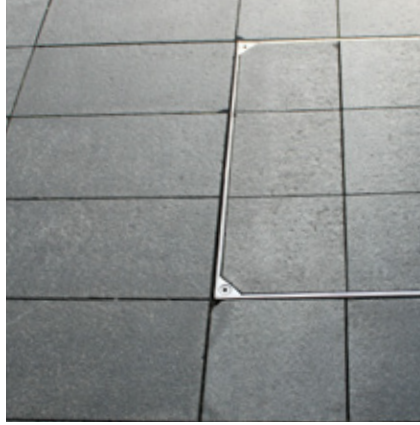


**Material transitions**  
Clean and orderly, very rigid





**Material transitions**  
Clean and orderly, clear boundaries



**Material transitions**  
Refined details



**Wood, steel and grey paving**  
Repetition of materials





The 15 privately owned public spaces as displayed in this booklet give insight in the way POPS are materialised and how materialisation can make privatisation more visible or tangible. What people experience in this privatised scenery is a more homogeneous material composition. Repetition of materials, similar color use, refined details and transitions create clean and orderly spaces where disruption is not often visible. When disruption does appear, maintenance instantly becomes visible as well. This homogeneity connects places to places, shows the well-maintained state of these places and therefore visualises ownership. ‘Materials’ can be indications of private and public which has a lot of potential: using certain materials might blur the borders between the two. Ownership could become less tangible and visible when one uses a mixture of material compositions and less repetition. In the end, the messiness or randomness of streets sometimes actually define the liveliness of the streets. It allows things to happen. In a way disorder is sometimes needed to create less homogeneous spaces.