

**Tuning of CgLP based reset controllers
Application in precision positioning systems**

ShirdastBahnamiri, Mahmoud; Karbasizadeh, Nima; Ahmadi Dastjerdi, A.; Saikumar, N.; Hossein Nia Kani, S.H.

DOI

[10.1016/j.ifacol.2020.12.2017](https://doi.org/10.1016/j.ifacol.2020.12.2017)

Publication date

2020

Document Version

Final published version

Published in

IFAC-PapersOnLine

Citation (APA)

ShirdastBahnamiri, M., Karbasizadeh, N., Ahmadi Dastjerdi, A., Saikumar, N., & Hossein Nia Kani, S. H. (2020). Tuning of CgLP based reset controllers: Application in precision positioning systems. *IFAC-PapersOnLine*, 53(2), 8997-9004. <https://doi.org/10.1016/j.ifacol.2020.12.2017>

Important note

To cite this publication, please use the final published version (if applicable).
Please check the document version above.

Copyright

Other than for strictly personal use, it is not permitted to download, forward or distribute the text or part of it, without the consent of the author(s) and/or copyright holder(s), unless the work is under an open content license such as Creative Commons.

Takedown policy

Please contact us and provide details if you believe this document breaches copyrights.
We will remove access to the work immediately and investigate your claim.

Tuning of CgLp based reset controllers: Application in precision positioning systems

Mahmoud Shirdast Bahnamiri* Nima Karbasizadeh**
Ali Ahmadi Dastjerdi** Niranjan Saikumar**
S. Hassan HosseinNia**

* *Department of Mechanics and Mechatronics, University of Minho,
Guimaraes, Portugal (e-mail: m.shirdast@gmail.com).*

** *Department of Precision and Microsystems Engineering, Delft
University of Technology, Delft, The Netherlands (e-mail:
{n.karbasizadehesfahani; a.ahmadidastjerdi; n.saikumar;
s.h.hosseinnia}@tudelft.nl)*

Abstract: This paper presents the tuning of a reset-based element called “Constant in gain and Lead in phase” (CgLp) in order to achieve desired precision performance in tracking and steady state. CgLp has been recently introduced to overcome the inherent linear control limitation - the waterbed effect. The analysis of reset controllers including ones based on CgLp is mainly carried out in the frequency domain using describing function with the assumption that the relatively large magnitude of the first harmonic provides a good approximation. While this is true for several cases, the existence of higher-order harmonics in the output of these elements complicates their analysis and tuning in the control design process for high precision motion applications, where they cannot be neglected. While some numerical observation-based approaches have been considered in literature for the tuning of CgLp elements, a systematic approach based on the analysis of higher-order harmonics is found to be lacking. This paper analyzes the CgLp behaviour from the perspective of first as well as higher-order harmonics and presents simple relations between the tuning parameters and the gain-phase behaviour of all the harmonics, which can be used for better tuning of these elements. The presented relations are used for tuning a controller for a high-precision positioning stage and results used for validation.

Copyright © 2020 The Authors. This is an open access article under the CC BY-NC-ND license (<http://creativecommons.org/licenses/by-nc-nd/4.0>)

Keywords: Nonlinear control, reset control, describing functions, higher-order harmonics, CgLp

1. INTRODUCTION

PID controllers continue to play a major role in the industry including precision motion applications like photolithography wafer scanners, atomic force microscopes due to their simplicity of design, implementation and compatibility with a wide range of applications. Additionally, PID controllers can be designed in the frequency domain using the well-known and studied loopshaping technique where the open-loop including controller and plant are shaped to achieve the required performance metrics in terms of tracking/disturbance rejection, stability/robustness and noise attenuation. However, all linear controllers suffer from the fundamental limitations of linear control represented by “Bode’s gain-phase relationship” and “waterbed effect”. This results in a trade-off between tracking precision and noise attenuation performance on one side and stability and robustness on the other side which has to be overcome if the ever increasing demands from the high-tech industry are to be met.

Among nonlinear control techniques, reset control has gained significant traction over the years due to its simple structure and compatibility with PID. Clegg (1958) introduced the reset integrator (henceforth referred to as Clegg

integrator (CI)), where the integrator state value is reset to zero when the error input is equal to zero. Through describing function analysis, Clegg showed that CI had the same gain slope with a significantly reduced phase lag of only 38° compared to 90° of a linear integrator. This idea was extended several years later in the form of “First order reset element” (FORE) by Horowitz and Rosenbaum (1975) which allowed for a first-order filter like design with the reset advantage. Apart from the tuning freedom, FORE was also used to show significant improvement in closed-loop control performance. Over the years, reset elements such as “Second order reset element” (SORE) (see L.Hazeleger and H.Nijmeijer (2016)) and “Fractional order reset element” (FrORE) (see Saikumar and HosseinNia (2017)) have been introduced to provide greater flexibility in tuning of these reset elements, with tuning freedom also being provided through techniques such as partial reset (see Baños and Barreiro (2011)) resulting in generalized reset elements in Y. Guo and Xie (2009); Saikumar et al. (2019a).

The advantage of reset in feedback control is investigated in several works in literature from process to motion control systems (see Baños and Barreiro (2011); Chen et al. (2001); Zheng et al. (2000); HosseinNia et al. (2013); Beker

et al. (2001); Wu et al. (2007); Guo and Wang (2015); Palanikumar et al. (2018); Chen et al. (2018, 2019); Akyüz et al. (2019); Valério et al. (2019); Saikumar et al. (2019)). While most of these works have mainly looked at the phase lag reduction advantage seen with reset, a combination of reset and linear filter for broadband phase compensation was introduced by Saikumar et al. (2019a) and used for hysteresis compensation as part of a disturbance observer in Saikumar et al. (2019b). The describing function of this element showed unity gain with phase lead over a wide range of frequencies and hence was named “Constant in gain Lead in phase” (CgLp). Saikumar et al. (2019a) also used CgLp as part of the PID framework to show improvements in tracking and steady-state precision as well as improvement in bandwidth.

While significant advantages in performance improvement have been seen with reset and especially with CgLp, the use of describing function for performance prediction and tuning of these controllers has not always proved accurate and deviations from expected performance were noted in Saikumar et al. (2019a); Akyüz et al. (2019). This is because describing function approximation in the frequency domain assumes that the first harmonic dominates the other harmonics. However, even when this is true, this approximation can prove insufficient for precision control applications. Hence the idea of describing functions was extended to include the higher-order harmonics by Nuij et al. (2006) for nonlinear systems in general as higher-order sinusoidal input describing functions (HOSIDFs) and was applied for reset controllers by Heinen (2018). HOSIDFs provide a more complete representation of the reset controller behaviour in the frequency domain and have the potential to enable better tuning of these controllers. While the use of HOSIDFs for better tuning of CgLp was attempted by Salman (2018); Hou (2019), no methods with a systematic analysis can be found in literature and this is the gap that this paper addresses.

The remainder of this paper is organized as follows. The required preliminaries for reset control are provided in Section 2. The describing functions and HOSIDFs are simplified for the reset elements which are used as part of CgLp in Section 3 and are analysed for tuning in Section 4. Based on the analysis, a simple design procedure is given in Section 5 which is validated with the results of implementation on a precision positioning stage in Section 6, followed by conclusions.

2. PRELIMINARIES

The preliminaries related to reset control definition, describing functions, reset elements and CgLp are provided in this section.

2.1 Reset controller definition

While reset controllers with various state/input/time dependent laws exist in literature, the most popular reset law is based on the zero-crossing of the error input and this general SISO reset controller can be defined as follows:

$$\Sigma_R = \begin{cases} \dot{x}(t) = Ax(t) + Be(t) & e(t) \neq 0 \\ x(t^+) = A_\rho x(t) & e(t) = 0 \\ u(t) = Cx(t) + De(t) \end{cases} \quad (1)$$

where $e(t) \in \mathbb{R}$ is the error input, $u(t)$ is the controller output and $x(t) \in \mathbb{R}^{n_r}$ are the states of the controller. A , B , C , and D represent the state-space matrices and are together referred to as the base-linear controller. The first equation provides the non-reset continuous dynamics referred to as flow dynamics, whereas the resetting action is given by the second equation referred to as the jump dynamic. A_ρ is resetting matrix which determines the after-reset values of the states and is generally of form $diag(\gamma_1, \gamma_2, \dots, \gamma_{n_r})$ where $\gamma_i \in [-1, 1]$.

2.2 Describing function (DF)

Due to the nonlinear nature of the controller, sinusoidal input describing function (DF) is used for frequency domain analysis. However, an isolated use of DF neglecting the higher-order harmonics is insufficient when designing controllers for high precision applications Akyüz et al. (2019); Saikumar et al. (2019). Hence the idea of higher-order sinusoidal input describing function (HOSIDF) presented in Nuij et al. (2006) was extended for reset controllers by Heinen (2018). The DF and HOSIDFs for a reset controller defined in (1) can hence be obtained analytically as

$$G_n(\omega) = \begin{cases} C(j\omega I - A)^{-1}(I + j\Theta_D(\omega))B + D & n = 1 \\ C(jn\omega I - A)^{-1}(j\Theta_D(\omega))B & \text{odd } n > 1 \\ 0 & \text{even } n > 1 \end{cases} \quad (2)$$

where n is the order of the harmonic and

$$\begin{aligned} \Lambda(\omega) &= \omega^2 I + A^2 \\ \Delta(\omega) &= I + e^{j\frac{\pi}{\omega} A} \\ \Delta_r(\omega) &= I + A_\rho e^{j\frac{\pi}{\omega} A} \\ \Gamma_r(\omega) &= \Delta_r^{-1}(\omega) A_\rho \Delta(\omega) \Lambda^{-1}(\omega) \\ \Theta_D(\omega) &= \frac{-2\omega^2}{\pi} \Delta(\omega) [\Gamma_r(\omega) - \Lambda^{-1}(\omega)] \end{aligned}$$

2.3 Stability of Reset control systems

The closed-loop stability of systems consisting of reset controllers defined as in (1) in the feedback loop has been extensively studied in literature. We refer the readers to the work of Beker et al. (2004) for H_β conditions and also to the work of Nešić et al. (2008) using piece-wise Lyapunov equations. We assume that stability checks are automatically part of the design procedure irrespective of the chosen stability condition and is not explicitly mentioned henceforth.

2.4 Reset elements

While several reset elements exist in literature, we present the relevant ones here.

GFORE: FORE presented by Horowitz and Rosenbaum (1975) was generalized and extended as GFORE by Y. Guo and Xie (2009) allowing for a first-order filter like reset element with control over the resetting matrix A_ρ . A GFORE element with its corner frequency at ω_r can be represented as below with the arrow indicating reset.

$$\text{GFORE} = \frac{1}{\frac{s}{\alpha\omega_r} + 1} A_\rho \quad (3)$$

where α accounts for the change in the gain of GFORE at high frequencies as noted in Saikumar et al. (2019a), $A_\rho = \gamma \in [-1, 1]$ with the value of α depending on the value of γ . The corresponding state-space matrices as per (1) are given as

$$A = -\alpha\omega_r, \quad B = \alpha\omega_r, \quad C = 1, \quad D = 0$$

GSORE: SORE allows for additional tuning of the damping parameter of the filter and is the reset equivalent of a linear second order low-pass filter. SORE presented in L.Hazeleger and H.Nijmeijer (2016) was generalized in Saikumar et al. (2019a) and can be represented as:

$$\text{GSORE} = \frac{1}{\left(\frac{s}{\kappa\omega_r}\right)^2 + 2\beta\frac{s}{\omega_r} + 1} A_\rho \quad (4)$$

where κ again corrects for the change in gain with ω_r , being the corner frequency, β being the damping coefficient and resetting matrix $A_\rho = \gamma I^{2 \times 2}$ with $\gamma \in [-1, 1]$. The corresponding state-space matrices as per (1) are given as

$$A = \begin{bmatrix} 0 & 1 \\ -(\kappa\omega_r)^2 & -2\beta\kappa^2\omega_r \end{bmatrix}, \quad B = \begin{bmatrix} 0 \\ (\kappa\omega_r)^2 \end{bmatrix}, \\ C = [1 \ 0], \quad D = 0$$

CgLp: “Constant in gain Lead in phase” element is designed to obtain phase lead with unity gain over a broad range of frequencies by combining a reset element (GFORE or GSORE) with a corresponding order linear lead filter. The linear lead filter is of the form

$$L(s) = \frac{\frac{s}{\omega_r} + 1}{\frac{s}{\omega_f} + 1} \text{ or } \frac{\left(\frac{s}{\omega_r}\right)^2 + 2\zeta\frac{s}{\omega_r} + 1}{\left(\frac{s}{\omega_f}\right)^2 + 2\frac{s}{\omega_f} + 1} \quad (5)$$

where $\omega_f \gg \omega_r$ and ζ is the damping factor of the second order lead. If a linear lag and lead filter with the same corner frequency are placed in series, then they cancel each-other in both gain and phase. However, since a reset filter GFORE or GSORE have significantly less phase lag while retaining the gain behaviour of their linear counterparts, the combination resulting in CgLp provides unity gain with a corresponding phase lead in the frequency range (ω_r, ω_f) .

3. SIMPLIFICATION OF DESCRIBING FUNCTIONS

The describing function of reset elements which approximates their behaviour in the frequency domain is accurate when the first harmonic dominates the other higher-order harmonics. Hence, it follows that if we are to use DF for loopshaping, then a reduction in the magnitude of the higher-order harmonics should allow for deviations between predicted and achieved performance to reduce. In this respect, the describing function equations are simplified in this section for different regions of frequency domain to allow for a simplified systematic analysis of the magnitude and phase behaviour of all the harmonics with the intention to look for tuning conditions allowing for better tuning of these elements. In this case, better tuning translates to ensuring required gain and phase behaviour are achieved by the first harmonic while the magnitude of higher-order harmonics are reduced to the maximum extent possible.

All systems considered in this section are assumed to be Schur stable. Hence for the reset controller defined as in (1) and DF and HOSIDF provided as in (2), the simplifications at low and high frequencies are provided as follows. In the case of high frequencies, the simplification is only performed for reset controllers of order $n_r \leq 2$. For low frequencies,

$$DF(\omega, n)_{lf} \approx \begin{cases} -CA^{-1}B + D & n = 1 \\ j\frac{-2\omega^2}{\pi}(1 - \gamma)CA^{-3}B & \text{odd } n > 1 \\ 0 & \text{even } n > 1 \end{cases} \quad (6)$$

For $n_r = 1$ at high frequencies,

$$DF(\omega, n)_{hf} \approx \begin{cases} C\frac{1}{j\omega}(1 + jF)B + D & n = 1 \\ C\frac{1}{jn\omega}(jF)B & \text{odd } n > 1 \\ 0 & \text{even } n > 1 \end{cases} \quad (7)$$

where $F = \frac{4}{\pi} \cdot \frac{1 - \gamma}{1 + \gamma}$. Subscript lf refers to low frequencies, i.e., small values of ω but not tending to zero, and subscript hf refers to high frequencies, i.e., large values of ω but not tending to infinity.

For $n_r = 2$ at high frequencies,

$$DF(\omega, 1)_{hf} \approx C \begin{bmatrix} \frac{1}{j\omega} & \frac{-A_{12}}{\omega^2} \\ \frac{-A_{21}}{\omega^2} & \frac{1}{j\omega} \end{bmatrix} \begin{bmatrix} 1 + jF & jF \frac{-A_{12}^2}{\omega^2} \\ jF \frac{-A_{21}^2}{\omega^2} & 1 + jF \end{bmatrix} B + D \quad (8)$$

$$DF(\omega, n)_{hf}|_{\text{odd } n > 1} \approx C \begin{bmatrix} \frac{1}{jn\omega} & \frac{-A_{12}}{n^2\omega^2} \\ \frac{-A_{21}}{n^2\omega^2} & \frac{1}{jn\omega} \end{bmatrix} \begin{bmatrix} jF & jF \frac{-A_{12}^2}{\omega^2} \\ jF \frac{-A_{21}^2}{\omega^2} & jF \end{bmatrix} B \quad (9)$$

where A_{nm} and A_{nm}^2 represent the element of n^{th} row and m^{th} column in Matrices A and A^2 , respectively.

Note: Due to errors in approximation of the term $e^{(\frac{\pi}{\omega}A)}$ at high frequencies, (8) and (9) are only precise enough to comprehend the changing trend of the reset system.

3.1 Simplified describing functions to GFORE

The simplified equations as applied to GFORE are presented as follows.

$$\text{GFORE}(\omega, 1)_{lf} \approx 1 \quad (10)$$

$$|\text{GFORE}(\omega, n)_{lf}|_{\text{odd } n > 1} \approx \frac{2(1 - \gamma)}{\pi} \frac{\omega^2}{(\alpha\omega_r)^2} \quad (11)$$

$$|\text{GFORE}(\omega, 1)_{hf}| \approx \sqrt{1 + F^2} \frac{\alpha\omega_r}{\omega} \quad (12)$$

$$\angle \text{GFORE}(\omega, 1)_{hf} \approx -\frac{\pi}{2} + \tan^{-1}(F) \quad (13)$$

$$|\text{GFORE}(\omega, n)_{hf}|_{\text{odd } n > 1} \approx F \frac{\alpha\omega_r}{n\omega} \quad (14)$$

3.2 Simplified describing functions to GSORE

Similarly for GSORE, the equations of DF and HOSIDF can be simplified at low and high frequencies as

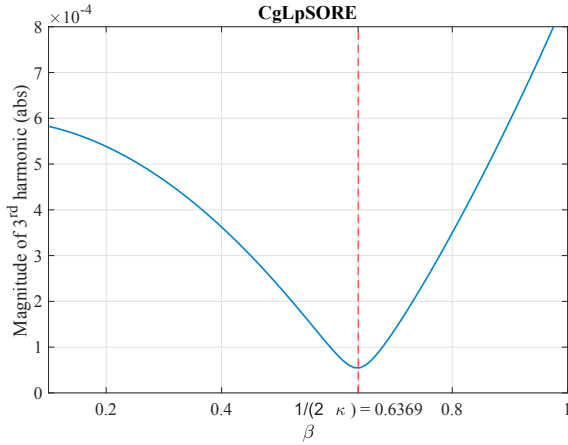


Fig. 1. Magnitude of 3rd order harmonic of GSORE as a function of β at $\omega = 5$ rad/sec with $\kappa = 0.785$ determined for $\gamma = 0$ to correct for change in corner frequency (see Saikumar et al. (2019a))

$$\text{GSORE}(\omega, 1)_{lf} \approx 1 \quad (15)$$

$$|\text{GSORE}(\omega, n)_{lf}|_{\text{odd } n>1} \approx \left| \frac{2(1-\gamma)}{\pi} \frac{4\kappa^2\beta^2 - 1}{(\kappa\omega_r)^2} \omega^2 \right| \quad (16)$$

$$|\text{GSORE}(\omega, 1)_{hf}| \approx \sqrt{1+F^2} \left(\frac{\kappa\omega_r}{\omega} \right)^2 \quad (17)$$

$$\angle \text{GSORE}(\omega, 1)_{hf} \approx \tan^{-1}(F) \quad (18)$$

$$|\text{GSORE}(\omega, n)_{hf}|_{\text{odd } n>1} \approx \left(\frac{\kappa\omega_r}{n\omega} \right)^2 F \quad (19)$$

According to (16), choosing $\beta = \frac{1}{2\kappa}$ results in zero higher-order harmonics at low frequencies. Figure 1 shows the trend of the magnitude of 3rd order harmonic of GSORE versus the parameter β at 5 rad/s, confirming the trend as expected from the simplified equations.

3.3 CgLp

CgLp is created through a series combination of GFORE or GSORE with a corresponding order lead filter. For the lead filters defined in (5), the magnitude and phase at low frequencies can similarly be simplified assuming $\omega_f \rightarrow \infty$ as follows. For the first order lead filter, we get,

$$L(j\omega)_{lf} \approx 1 \quad (20)$$

$$L(j\omega)_{hf} \approx \frac{\omega_r}{j\omega} \quad (21)$$

and in the second order case, we get,

$$L(j\omega)_{lf} \approx 1 \quad (22)$$

$$L(j\omega)_{hf} \approx \left(\frac{\omega_r}{j\omega} \right)^2 \quad (23)$$

Hence, the simplification of the DF and HOSIDF equations for CgLp based on GFORE as well as that based on GSORE can be obtained as follows:

$$|\text{CgLp-FORE}(\omega, n)_{lf}|_{\text{odd } n>1} \approx \frac{2(1-\gamma)}{\pi} \frac{\omega^2}{(\alpha\omega_r)^2} \quad (24)$$

$$|\text{CgLp-FORE}(\omega, 1)_{hf}| \approx \alpha \sqrt{1+F^2} \quad (25)$$

$$\angle \text{CgLp-FORE}(\omega, 1)_{hf} \approx \tan^{-1}(F) \quad (26)$$

$$|\text{CgLp-FORE}(\omega, n)_{hf}|_{\text{odd } n>1} \approx \alpha F \quad (27)$$

$$|\text{CgLp-SORE}(\omega, n)_{lf}|_{\text{odd } n>1} \approx \left| \frac{2(1-\gamma)}{\pi} \frac{4\kappa^2\beta^2 - 1}{(\kappa\omega_r)^2} \omega^2 \right| \quad (28)$$

$$|\text{CgLp-SORE}(\omega, 1)_{hf}| \approx \kappa^2 \sqrt{1+F^2} \quad (29)$$

$$\angle \text{CgLp-SORE}(\omega, 1)_{hf} \approx \pi + \tan^{-1}(F) \quad (30)$$

$$|\text{CgLp-SORE}(\omega, n)_{hf}|_{\text{odd } n>1} \approx \kappa^2 F \quad (31)$$

These simplified equations are used in the next section for analysis of CgLp elements.

4. CGLP TUNING

As noted earlier, the aim is to tune the CgLp element such that the required gain and phase behaviour of the first harmonic is achieved as accurately as possible to obtain the prescribed open-loop shape while at the same time reducing the magnitude of the higher-order harmonics to ensure reliability of using DF for loopshaping. The following analysis is based on (25) to (28).

4.1 Gain of 1st harmonic

CgLp aims to obtain unity gain over the entire frequency range (ω_r, ω_f). If as before, we assume $\omega_f \rightarrow \infty$, then this translates to a unity gain over the entire frequency range. From (10), (20), (15), and (22), this is automatically achieved at low frequencies. However, at high frequencies, choosing the corrective parameters α and κ as calculated in (32) and (33) results in unity gain according to (25) and (29).

$$\alpha = \frac{1}{\sqrt{1+F^2}} \quad (32)$$

$$\kappa = \frac{1}{\sqrt[4]{1+F^2}} \quad (33)$$

Although, this choice ensures that unity gain is achieved at low and high-frequencies, the same cannot be achieved at frequencies close to ω_r . In the case of CgLp-SORE, since $\beta = \frac{1}{2\kappa}$ is chosen to ensure reduced higher-order harmonics, the damping factor ζ can be chosen to ensure that minimum deviation from unity gain is achieved at all frequencies. Figure 2 shows the influence of the choice of both κ and ζ in CgLp-SORE in achieving unity gain over the entire frequency range.

4.2 Phase lead of 1st harmonic

The phase lead of the CgLp as seen in its first harmonic arises from the fact that the reset element has lesser phase lag compared to the phase lead achieved by the linear lead filter. At low frequencies, CgLp has 0° phase. The phase of CgLp starts rising before ω_r and from (26) and (30), it is clear that the asymptotic phase lead at high frequencies achieved by CgLp is only dependent on the value of γ . It is self-evident that in the context of loopshaping, that the value of ω_r should be appropriately chosen to be below or close to the bandwidth to obtain the required phase lead. From this it follows, that the phase lead obtained from CgLp at bandwidth is a function of ω_r and γ (see Saikumar et al. (2019a)). Figure 3 demonstrates the effect of the choice of these two parameters on the phase lead achieved

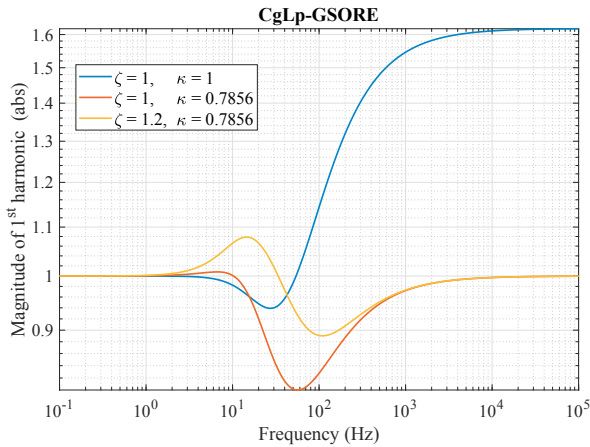


Fig. 2. Influence of choice of κ and ζ on first order harmonic of CgLp-SORE at high and mid-range frequencies. ($\gamma = 0, \beta = 1, \frac{1}{\sqrt{1+F^2}} = 0.7856$)

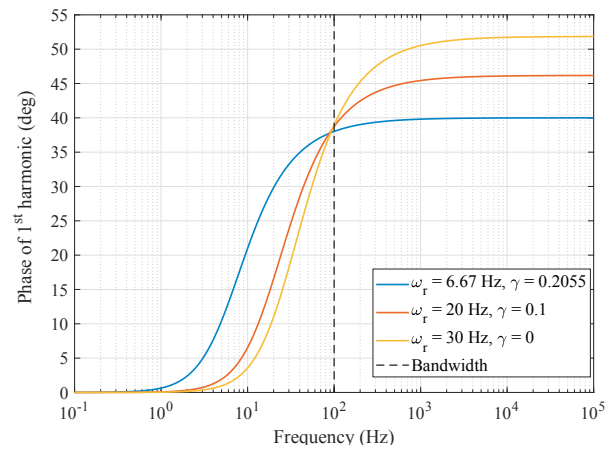


Fig. 4. Three different combinations of ω_r and γ which produce 40° of phase lead at 100 Hz . α is chosen to ensure unity gain.

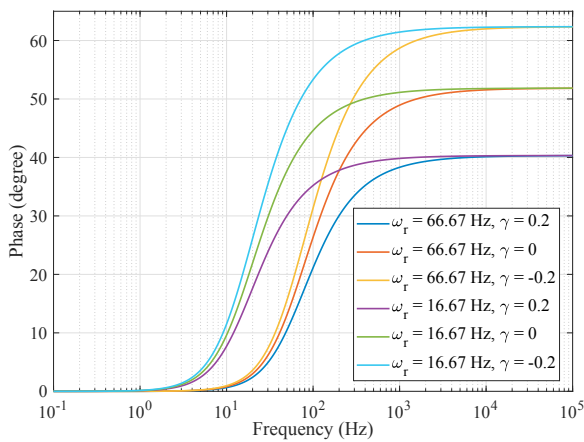


Fig. 3. Effect of choice of γ and ω_r on the phase lead achieved with CgLp-FORE at the required bandwidth frequency (100 Hz in this case). α is chosen to ensure unity gain.

at the frequency of 100 Hz . This clearly shows that CgLp can either be tuned to have ω_r very close to the bandwidth with a low value of γ or inversely with ω_r further to the left of bandwidth with a higher value of γ . This is more clearly shown in Figure 4, where the required phase lead is achieved with three different combinations of ω_r and γ . These chosen combinations however have different higher-order harmonic behaviour which is discussed next.

4.3 Higher-order harmonics

The idea of shaping the open-loop using DF is valid and more accurate when the first harmonic dominates the higher-order harmonics. Hence, it is the aim to reduce the magnitude of the higher-order harmonics at all frequencies of interest. Low frequencies are indeed of interest since they correspond to tracking region, while frequencies after the bandwidth are associated with noise attenuation. In real life implementation, due to sampling and discretization of controllers, any noise present at very high frequencies are not detectable according to Nyquist and hence the behaviour of higher-order harmonics is not of concern.

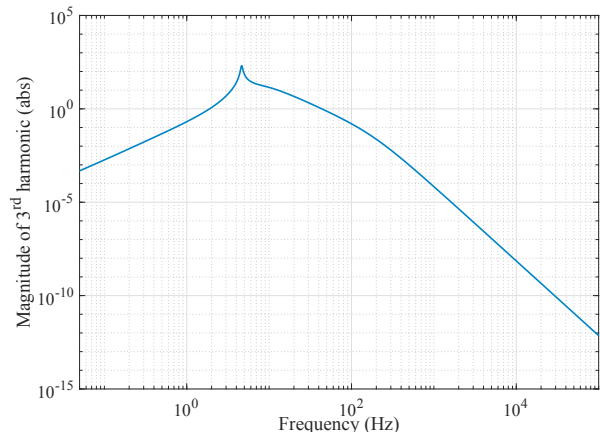


Fig. 5. Third harmonic gain of mass-spring-damper system controlled by CgLp-SORE + PID.

From (24) and (28), higher-order harmonic magnitudes are close to zero at low frequencies and reach a constant magnitude asymptotically at high frequencies as given by (27) and (31). Additionally, from (24), (27), (28), and (31), it is clear that there is a trade-off between the magnitudes of higher-order harmonics seen at low and high frequencies depending on the value of α and κ . However, these values are chosen to satisfy the unity gain of the first harmonic and hence cannot be used to influence the magnitude of higher-order harmonics. However from the context of overall controller design, the harmonics created by CgLp at high frequencies are attenuated by the low pass filter effect of the PID and plant. This can be seen in Figure 5 which shows the magnitude of third harmonic of a CgLp-SORE + PID controller designed for a mass-spring-damper system.

Since higher-order harmonics at high frequencies are attenuated by the plant with additionally discrete controller implementation neglecting all behaviour at really high frequencies, we aim to tune γ and ω_r to obtain the required phase lead with the lowest magnitude of harmonics at low frequencies, i.e., in region of tracking and disturbance rejection. A parameter σ is defined in (34) and (35) to compare the magnitude for different combinations of ω_r

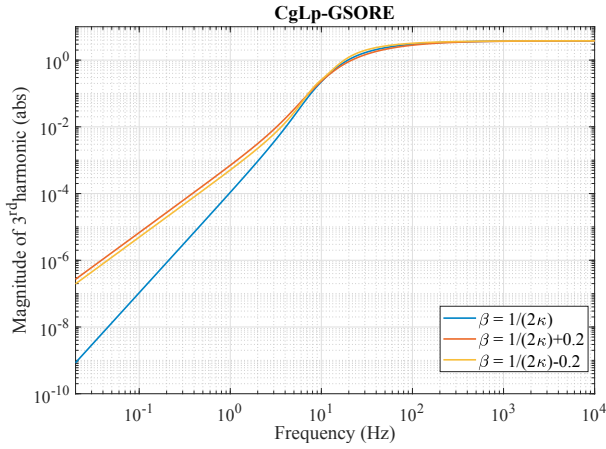


Fig. 6. Third harmonic of CgLp-SORE as influenced by choice of β ($\gamma = 0$, $\kappa = \frac{1}{\sqrt{1+F^2}}$, $\zeta = 1.2$)

and γ .

$$\text{CgLp-FORE: } \sigma = \frac{1 - \gamma}{(\alpha\omega_r)^2} \quad (34)$$

$$\text{CgLp-SORE: } \sigma = \frac{1 - \gamma}{(\kappa\omega_r)^2} \quad (35)$$

In the case of CgLp-SORE, the parameter β also has an effect on the magnitude. However it is already established that the lowest higher-order harmonics are achieved when $\beta = \frac{1}{2\kappa}$. Since the value of ζ has no effect on the higher-order harmonics, it is tuned purely to ensure as close to unity gain is achieved by CgLp-SORE. The effect of the choice of β on the magnitude of higher-order harmonics is shown in Figure 6.

5. TUNING PROCEDURE

Based on the analysis of the simplified DF and HOSIDF equations, the following procedure is determined and advised for the design of CgLp.

- (1) For a given amount of phase lead (ϕ) that has to be provided at the bandwidth by CgLp, calculate the maximum value of γ that can be chosen which can at least asymptotically provide the required phase lead. This can be obtained for CgLp-FORE as

$$F = \tan(\phi), \quad \gamma_{max} = \frac{\frac{4}{\pi} - F}{\frac{4}{\pi} + F}$$

However, as noted earlier, due to errors in approximation of the term $e^{(\frac{\pi}{\omega}A)}$ at high frequencies, the phase lead as calculated by (30) for CgLp-SORE is erroneous and hence the value of γ_{max} for CgLp-SORE has to be determined by trial and error or by using the graph provided in Saikumar et al. (2019a).

- (2) Depending on the value of γ determined in the previous step, heuristically choose an array $\Gamma = \{\gamma_1, \gamma_2, \dots\}$ where $-1 < \gamma_i < \gamma_{max}$. For all chosen values of γ , we will design the CgLp to obtain the required phase lead ϕ at bandwidth with the minimum magnitude higher-order harmonics in each case. Hence, for each case, follow steps (3) to (6).

Table 1. Parameters of the controllers. ω_i is the frequency at which integrator action stops and ω_f is the corner frequency of low-pass filter. All frequencies are in Hz

	ω_c	ω_i	ω_f	α, κ	β	ζ
CgLp-FORE	100	10	500	$\frac{1}{\sqrt{1+F^2}}$	-	-
CgLp-SORE	100	10	500	$\frac{1}{\sqrt[4]{1+F^2}}$	$\frac{1}{2\kappa}$	1

- (3) Ensure unity gain at high frequencies by choosing values of α and κ according to (32) and (33) respectively.
- (4) For CgLp-SORE, additionally, set $\beta = \frac{1}{2\kappa}$ and also choose ζ to ensure as close to unity gain as possible.
- (5) Determine the value of ω_r which provides the correct phase lead ϕ at the bandwidth. Due to the nonlinear nature of the equations, this has to be achieved through trial and error or a gradient descent algorithm. Additionally, since CgLp achieves a constant phase lead asymptotically, pay attention to ensure that the value of ω_r determined in each case is as high as possible while simultaneously satisfying the phase lead requirement. This ensures that magnitude of higher-order harmonics at low frequencies is minimised.
- (6) Calculate the factor σ and plot it.
- (7) Choose the γ and ω_r corresponding to the CgLp design with the lowest σ .
- (8) Choose a different array Γ with the values of γ determined by the interval around the value of γ chosen in the previous step for further optimisation of choice and repeat steps (3) to (8) till satisfied or based on computation power available.

6. PRACTICAL VALIDATION

A precision flexure-based positioning stage named ‘Spyder stage’ (Figure) is used for validation. Only one of the actuators (1A) is considered and used for controlling position of mass ‘3’ attached to same actuator resulting in a SISO system. The practically obtained frequency response of the system is shown in Figure 8 and the transfer function is estimated as in (36) for stability analysis. Different configurations of CgLp + PID controllers are implemented and the practical results are compared in terms of parameter σ for each configuration in order to evaluate the reliability of this parameter and the established procedure of the previous section.

$$G(s) = \frac{9602.5}{s^2 + 4.2676s + 7627.3} \quad (36)$$

For all the configurations, the linear part of the controller, i.e., PID is unchanged. Table 1 shows the general parameters as applicable to all controllers. Table 2 and Table 3 provide details of CgLp-FOREs and CgLp-SOREs respectively with all CgLp-FOREs providing 40° and all CgLp-SOREs providing 60° phase lead at the bandwidth (ω_c).

The main point of validation is to show that the advised procedure ensures that the magnitude of higher-order harmonics are reduced and minimal for the optimal configuration and hence this should have the least deviation

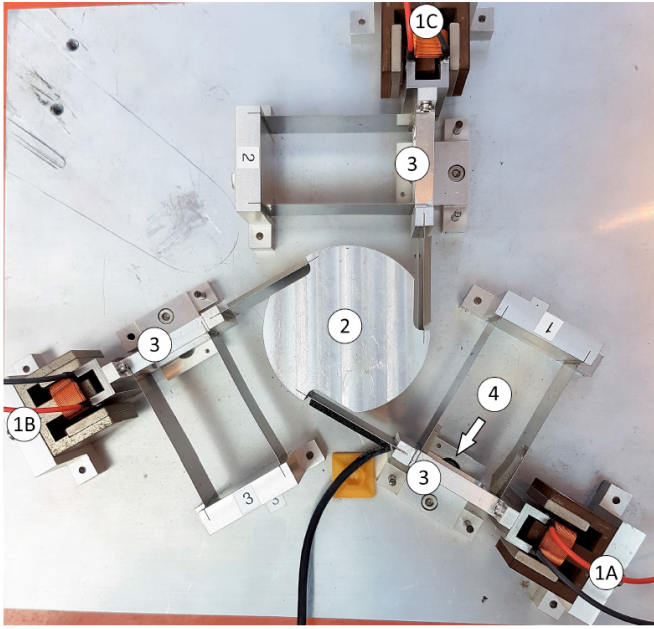


Fig. 7. 3 DOF planar precision positioning ‘Spyder’ stage. Voice coil actuators 1A, 1B and 1C control 3 masses (indicated as 3) which are constrained by leaf flexures. The 3 masses are connected to central mass (indicated by 2) through leaf flexures. Linear encoders (indicated by 4) placed under masses ‘3’ provide position feedback with a resolution of 100 nm.

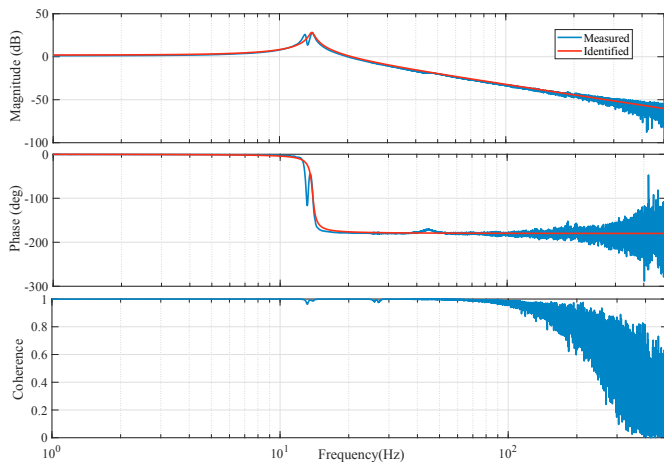


Fig. 8. Frequency response and estimated transfer function of the system

Table 2. Different CgLp-FORE configurations for 40° phase lead at the bandwidth with the RMS Error deviation provided for reference frequencies of 1 Hz and 5 Hz, where $\omega_r = \omega_c/a$

Ctrl	γ	a	σ	RMS Error Dev.	
				1 Hz	5 Hz
f_1	0.17	7	2.33e-04	6.4721	5.5437
f_2	0	4.3	1.23e-04	5.0038	4.1356
f_3	-0.1	3	8.58e-05	4.5575	3.5781
f_4	-0.2	2.4	8.14e-05	4.5292	3.4315
f_5	-0.3	2	8.68E-05	4.568	3.405

Table 3. Different CgLp-SORE setups for 60° phase lead at the bandwidth with the RMS Error deviation provided for reference frequencies of 1 Hz and 5 Hz, where $\omega_r = \omega_c/a$

Ctrl	γ	a	σ	RMS Error Dev.	
				1 Hz	5 Hz
s_1	0.28	14	2.88e-04	16.832	15.0511
s_2	0.2	2.43	1.02e-05	8.0738	7.0878
s_3	0.1	1.66	6.88e-06	4.6328	3.8989
s_4	0	1.37	7.70e-06	5.061	5.432

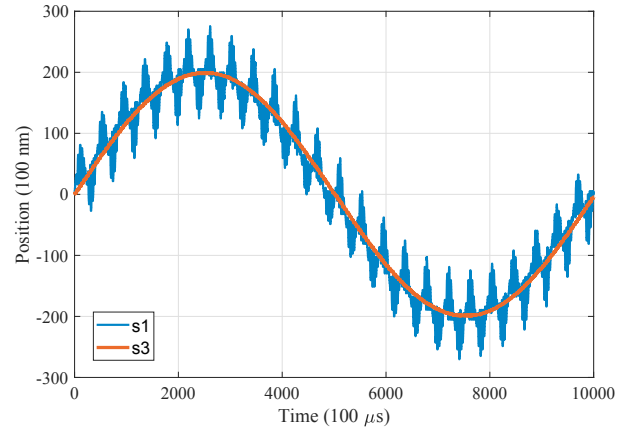


Fig. 9. Comparison between the practical result of the controllers s_1 and s_3 . The reference is a sinusoidal wave with amplitude of 20 microns and 1 Hz.

between expected error and measured error among all the configurations. The expected RMS error can be calculated as

$$\text{RMS Error} = \frac{SF(\omega) \cdot Ref(\omega)}{\sqrt{2}} \quad (37)$$

where SF is sensitivity function calculated based on DF and Ref is the amplitude of reference signal to the system. The deviation is calculated as the ratio of measured RMS error to expected RMS error with a smaller value indicating better prediction and a corresponding smaller error seen in practice.

The value of σ is an indication of the magnitude of the higher-order harmonics and hence a prediction measure for optimal CgLp configuration. Based on the values listed in Table 2 and Table 3, f_4 and s_3 have least magnitude harmonics and hence are expected to have best tracking performance. While this is true for a reference frequency of 1 Hz, this is not true for CgLp-FORE for 5 Hz. However, the difference between the values of both σ and RMS error deviation are small for f_4 and f_5 and hence can be considered as an aberration. In table 3, the trend of σ matches well with the RMS error deviation. Figure 9 compares the practical tracking results of the controllers s_1 and s_3 which produce the highest and the least magnitude of higher-order harmonics among the chosen controllers. The stark difference in tracking performance for the controllers can be clearly seen and showcases the need to systematically design these reset controllers.

7. CONCLUSIONS

The high precision and bandwidth requirements of the high-tech industry are pushing the limits of linear controllers which are restricted by water-bed effect. Reset controllers are a promising alternative which can be easily adopted into the PID framework with the CgLp element shown to provide significant performance improvements. However, most work in literature for tuning of reset controllers is based on describing function analysis. This can be highly inaccurate especially for precision applications and additionally the various choices in CgLp design which can provide different closed-loop performance is not captured by DF. Hence, in this paper, we present an analysis based approach to using the higher-order sinusoidal input describing function (HOSIDFs) which provide information related to the higher-order harmonics and develop a simple tuning procedure to design optimal CgLp based PID controllers. The iterative procedure is outlined and used to design different controllers for a precision positioning stage. The practical results validate the presented procedure and showcases that reset controllers especially based on CgLp design are industry ready.

REFERENCES

- Akyüz, E., Saikumar, N., and HosseinNia, S.H. (2019). Reset control for vibration disturbance rejection. *arXiv preprint arXiv:1907.08859*.
- Baños, A. and Barreiro, A. (2011). *Reset control systems*. Springer Science & Business Media.
- Beker, O., Hollot, C.V., and Chait, Y. (2001). Plant with integrator: an example of reset control overcoming limitations of linear feedback. *IEEE Transactions on Automatic Control*, 46(11), 1797–1799.
- Beker, O., Hollot, C., Chait, Y., and Han, H. (2004). Fundamental properties of reset control systems. *Automatica*, 40(6), 905–915.
- Chen, L., Saikumar, N., Baldi, S., and HosseinNia, S.H. (2018). Beyond the waterbed effect: Development of fractional order crone control with non-linear reset. In *2018 Annual American Control Conference (ACC)*, 545–552. IEEE.
- Chen, L., Saikumar, N., and HosseinNia, S.H. (2019). Development of robust fractional-order reset control. *IEEE Transactions on Control Systems Technology*.
- Chen, Q., Chait, Y., and Hollot, C. (2001). Analysis of reset control systems consisting of a fore and second-order loop. *Journal of Dynamic Systems, Measurement, and Control*, 123(2), 279–283.
- Clegg, J. (1958). A nonlinear integrator for servomechanisms. *Transactions of the American Institute of Electrical Engineers, Part II: Applications and Industry*, 77(1), 41–42.
- Guo, Y., X.L. and Wang, Y. (2015). Analysis and design of reset control systems. *Institution of Engineering and Technology*.
- Heinen, K. (2018). Frequency analysis of reset systems containing a clegg integrator: An introduction to higher order sinusoidal input describing functions.
- Horowitz, I. and Rosenbaum, P. (1975). Non-linear design for cost of feedback reduction in systems with large parameter uncertainty. *Int. J. Control*, 21(6), 977–1001.
- HosseinNia, S.H., Tejado, I., and Vinagre, B.M. (2013). Fractional-order reset control: Application to a servomotor. *Mechatronics*, 23(7), 781–788.
- Hou, X. (2019). Tuning of the constant in gain lead in phase element for mass-like systems.
- L.Hazeleger, M. and H.Nijmeijer (2016). Second-orderresetelements for stage control design. in *Proc. Amer. Control Conf.*, 2643–2648.
- Nešić, D., Zaccarian, L., and Teel, A.R. (2008). Stability properties of reset systems. *Automatica*, 44(8), 2019–2026.
- Nuij, P., Bosgra, O., and Steinbuch, M. (2006). Higher-order sinusoidal input describing functions for the analysis of non-linear systems with harmonic responses. *Mechanical Systems and Signal Processing*, 20(8), 1883–1904.
- Palanikumar, A., Saikumar, N., and HosseinNia, S.H. (2018). No more differentiator in pid: Development of nonlinear lead for precision mechatronics. In *2018 European Control Conference (ECC)*, 991–996. IEEE.
- Saikumar, N., Valrio, D., and HosseinNia, S.H. (2019). Complex order control for improved loop-shaping in precision positioning. In *2019 IEEE 58th Conference on Decision and Control (CDC)*, 7956–7962.
- Saikumar, N. and HosseinNia, H. (2017). Generalized fractional order reset element (gfre). In *9th European Nonlinear Dynamics Conference (ENOC)*.
- Saikumar, N., Sinha, R., and Hoseinnia, S.H. (2019a). constant in gain lead in phase element - application in precision motion control. *IEEE/ASME Transactions on Mechatronics*.
- Saikumar, N., Sinha, R.K., and HosseinNia, S.H. (2019b). Resetting disturbance observers with application in compensation of bounded nonlinearities like hysteresis in piezo-actuators. *Control Engineering Practice*, 82, 36–49.
- Salman, Y. (2018). Tuning a novel reset element - through describing function and hosidf analysis.
- Valério, D., Saikumar, N., Dastjerdi, A.A., Karbasizadeh, N., and HosseinNia, S.H. (2019). Reset control approximates complex order transfer functions. *Nonlinear Dynamics*, 97(4), 2323–2337.
- Wu, D., Guo, G., and Wang, Y. (2007). Reset integral-derivative control for hdd servo systems. *IEEE Transactions on Control Systems Technology*, 15(1), 161–167.
- Y. Guo, Y.W. and Xie, L. (2009). Frequency-domain properties of reset systems with application in hard-disk-drive systems. *IEEE Trans. Control Syst. Technol.*, 17(6), 1446–1453.
- Zheng, Y., Chait, Y., Hollot, C., Steinbuch, M., and Norg, M. (2000). Experimental demonstration of reset control design. *Control Engineering Practice*, 8(2), 113–120.