

Calibration of spatially distributed hydrological processes and model parameters in SWAT using remote sensing data and an auto-calibration procedure

A case study in a Vietnamese river basin

Hà, Lân; Bastiaanssen, Wim G.M.; van Griensven, Ann; van Dijk, Albert I. .J M.; Senay, Gabriel B.

DOI

[10.3390/w10020212](https://doi.org/10.3390/w10020212)

Publication date

2018

Document Version

Final published version

Published in

Water

Citation (APA)

Hà, L., Bastiaanssen, W. G. M., van Griensven, A., van Dijk, A. I. . J. M., & Senay, G. B. (2018). Calibration of spatially distributed hydrological processes and model parameters in SWAT using remote sensing data and an auto-calibration procedure: A case study in a Vietnamese river basin. *Water*, *10*(2), Article 212. <https://doi.org/10.3390/w10020212>

Important note

To cite this publication, please use the final published version (if applicable). Please check the document version above.

Copyright

Other than for strictly personal use, it is not permitted to download, forward or distribute the text or part of it, without the consent of the author(s) and/or copyright holder(s), unless the work is under an open content license such as Creative Commons.

Takedown policy

Please contact us and provide details if you believe this document breaches copyrights. We will remove access to the work immediately and investigate your claim.

Article

Calibration of Spatially Distributed Hydrological Processes and Model Parameters in SWAT Using Remote Sensing Data and an Auto-Calibration Procedure: A Case Study in a Vietnamese River Basin

Lan Thanh Ha ^{1,2,*} , Wim G. M. Bastiaanssen ^{1,3} , Ann van Griensven ^{4,5},
Albert I. J. M. van Dijk ⁶ and Gabriel B. Senay ⁷

¹ Faculty of Civil Engineering and Geosciences, Delft University of Technology, 2628 CN Delft, The Netherlands; t.l.ha-2@tudelft.nl

² Department of Training and International Cooperation, Institute of Water Resources Planning, Hanoi 100000, Vietnam; lanht.tl@mard.gov.vn

³ Integrated Water Systems and Governance Department, IHE Delft Institute for Water Education, 2611 AX Delft, The Netherlands; w.bastiaanssen@un-ihe.org

⁴ Water Science & Engineering Department, IHE Delft Institute for Water Education, 2611 AX Delft, The Netherlands; a.vangriensven@un-ihe.org

⁵ Hydrology and Hydraulic Engineering Department, Free University of Brussels (VUB), 1050 Brussel, Belgium

⁶ Fenner School of Environment & Society, Australian National University, Canberra, ACT 2601, Australia; albert.vandijk@anu.edu.au

⁷ U.S. Geological Survey Earth Resources Observation Science Center, North Central Climate Science Center, Fort Collins, Colorado, CO 80526, USA; senay@usgs.gov

* Correspondence: t.l.ha-2@tudelft.nl; Tel.: +84-947587759

Received: 14 December 2017; Accepted: 13 February 2018; Published: 16 February 2018

Abstract: In this paper, evapotranspiration (ET) and leaf area index (LAI) were used to calibrate the SWAT model, whereas remotely sensed precipitation and other climatic parameters were used as forcing data for the 6300 km² Day Basin, a tributary of the Red River in Vietnam. The efficacy of the Sequential Uncertainty Fitting (SUFI-2) parameter sensitivity and optimization model was tested with area specific remote sensing input parameters for every Hydrological Response Units (HRU), rather than with measurements of river flow representing a large set of HRUs, i.e., a bulk calibration. Simulated monthly ET correlations with remote sensing estimates showed an $R^2 = 0.71$, Nash–Sutcliffe Efficiency $NSE = 0.65$, and Kling Gupta Efficiency $KGE = 0.80$ while monthly LAI showed correlations of $R^2 = 0.59$, $NSE = 0.57$ and $KGE = 0.83$ over a five-year validation period. Accumulated modelled ET over the 5-year calibration period amounted to 5713 mm compared to 6015 mm of remotely sensed ET, yielding a difference of 302 mm (5.3%). The monthly flow at two flow measurement stations were adequately estimated ($R^2 = 0.78$ and 0.55 , $NSE = 0.71$ and 0.63 , $KGE = 0.59$ and 0.75 for Phu Ly and Ninh Binh, respectively). This outcome demonstrates the capability of SWAT model to obtain spatial and accurate simulation of eco-hydrological processes, also when rivers are ungauged and the water withdrawal system is complex.

Keywords: hydrological ecosystem services; auto-calibration; evapotranspiration; SWAT

1. Introduction

Managing river basins and environmental systems in a sustainable manner is receiving growing attention from national water resources institutes, the United Nations, non-governmental-

organizations, and international research institutes. The newly adopted Sustainable Development Goals (SDGs) prescribe key hydrological, environmental, and economical processes to be expressed in terms of performance indicators. Water accounting systems are currently under development to facilitate the mapping and description of these SDG indicators at river basin scale [1–4]. Water availability, water consumption, utilizable water, and water withdrawals are key elements of such accounting processes, as well as the services and benefits rendered. At the global scale, 60% of ET is from green water (precipitation stored in soil moisture), the rest being withdrawals from blue water sources (rivers, reservoirs, lakes, and aquifers) [5]. Eco-hydrological modelling tools have been developed to quantify a wide range of natural ecosystem services as well as human intervention derived from these significant volumes of water [6–8]. A comparison of different hydrological models that are suitable for modelling hydrological ecosystem services was conducted in [9], among them are the Soil Water Assessment Tool (SWAT) [10], Variable Infiltration Capacity VIC [11], Integrated Valuation of Ecosystem Services and Trade-offs INVEST [12], and ARTificial Intelligence for Ecosystem Services ARIES [13]. SWAT was indicated as a preferred tool in a rigorous review of the modelling of certain ecosystem services [14] for simulation of provisioning and regulating services, because hydrological, flow dynamics, water quality, plant growth and nutrient loading processes are included in the model. SWAT was also recommended as the most suitable model for long-term simulations in watersheds dominated by agricultural land uses [15], since its original design was to assess the impact of land management practices on water, sediments, and agricultural residues. SWAT model is also preferred in studies in ungauged basins [16,17].

Classically, the SWAT model is calibrated using a few hydro-meteorological stations e.g., [18–22]. Large uncertainties in observed stream flow data are common [23], and that more sophisticated calibration method needed to be developed. SWAT Calibration and Uncertainty Programs (SWAT-CUP) [24] was developed for automatically computing sensitive model parameters and calibrating SWAT by means of parameter optimization. Most SWAT-CUP applications are using Sequential Uncertainty Fitting (SUFI-2) algorithms and flow observations to define the best parameter set. Additional uncertainty bounds are computed according to the good parameter sets and typical SWAT parameters are calibrated by means of parameter optimization. The current paper investigates how SWAT can be set up for assessing ecosystem services in ungauged basins using remote sensing data and auto-calibration facilities.

Several review papers on remote sensing technology for hydrology, e.g., [25,26] and water management, e.g., [27,28] indicate that land cover, land use, precipitation, ET, soil moisture, snow cover, and water levels can be determined from spectral radiances measured remotely. Several open access databases on precipitation have recently been developed on the basis of remote sensing data; see [29,30]. A simultaneous development took place on operationalizing remote sensing-based energy balance models to accurately determine and upscale ET from local heterogeneous watersheds (e.g., [31]) to continental scale (e.g., [32]). Extensive reviews of remote sensing-based approaches to derive ET were carried out earlier by [33–36]. Remote sensing provides a great source of data to study vegetation indices and Leaf Area Index (LAI) from multi-spectral bands [37].

Some hydrological studies utilized remote sensing data before—or a combination of remote sensing and in situ data—to calibrate hydrological models, e.g., [38–42]. Earlier research demonstrated the capacity to calibrate SWAT with remotely sensed ET data, e.g., [43–47] and LAI [48,49]. Several studies in Vietnam integrated SWAT and remote sensing data, including [21], on the impact of climate change on stream flow in Dakbla River Basin. The objective of this Vietnamese case study is to use quasi open access remote sensing data to improve SWAT modelling performance using the standard SUFI-2 functionalities, both as forced variable, i.e., precipitation or calibration dataset, i.e., ET and LAI. The innovation is that the standard calibration module is based on remote sensing data instead of classical discharge data, and that it incorporates soil and vegetation parameters of individual Hydrological Response Units (HRU). The anticipated result of such a calibration approach is a better quantification of the natural and anthropogenic eco-hydrological processes in ungauged basins, which is vital for

reporting ecosystem services to governments and the United Nations. The novelty of this study is the application of SUFI-2 in the optimization of 15 input parameters of the soil vegetation processes using observations of actual water management processes, such as irrigation and conservation of water in wetlands in a local context. Such level of detail and reflection of real world interferences of mankind on the natural hydrological cycle can never be achieved from flow measurements, and opens better opportunities for simulation of local eco-hydrological processes that occur locally in ungauged basins, which can never be interpreted from bulk flow measurements, if there are any.

2. Study Area

The Day Basin is located between $19^{\circ}55'$ to $21^{\circ}10'$ N and $105^{\circ}20'$ to $106^{\circ}25'$ E. The Day Basin is a sub-basin of the transboundary Red River basin (See Figure 1). The total area of the basin is nearly 6300 km². The highest elevation is 1256 m in the western part of the basin. The Day Basin comprises several river tributaries, among which the largest is the Day River, with a total length of approximately 250 km. The Day Basin has a high biodiversity, with abundant flora and fauna in the forested hills, freshwater aquatics, and wetland. The land use is also diversified, although agricultural land use is dominant (64%).

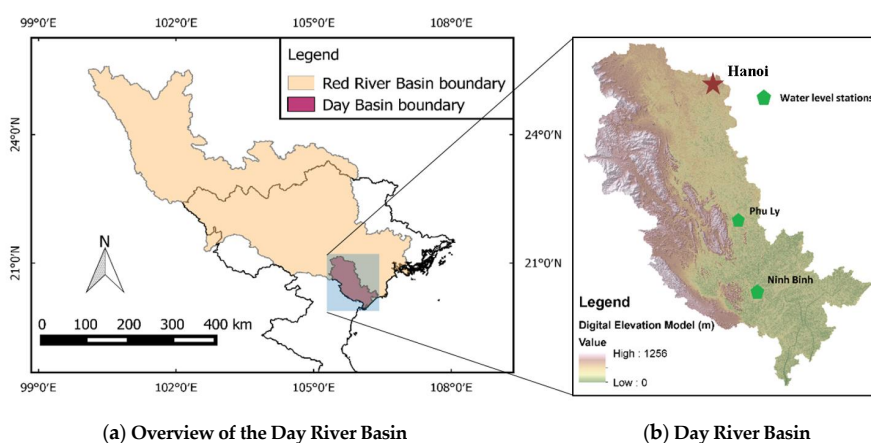


Figure 1. (a) Geographical location of the Day Basin as part of the Red River delta in Northern Vietnam. (b) Digital Elevation Model from Shuttle Radar Topography Mission (SRTM) for the Day River Basin and the location of two water level stations.

The Day Basin encompasses the capital city of Hanoi (population in 2015: 7.5 million inhabitants) in the northeast and several major economic centers located downstream, such as Nam Dinh (population: 1.8 million) and Ninh Binh (population: 0.9 million). Both the Red River and Day Basin have been exposed to various hydrological research activities before, e.g., [8,50–52] on hydrological and water quality modelling. Using the rating curve suggested in [50], discharge at two locations (i.e., Ninh Binh and Phu Ly) was reconstructed from the year 2000 up to 2013.

The annual total precipitation is around 1700 mm per year, and reference evapotranspiration (ET_0) is approximately 1100 mm per year. The climate in the Day Basin has a monsoonal character. The wet season lasts from May to September, and dry season from October to April. Precipitation can reach up to 450 mm per month in some parts of the basin, and as low as a few mm during January and February (Figure 2). Precipitation is measured at nine stations across the basin, and is available up to 2013. These measurements will be used to validate the open access precipitation product based on satellite measurements.

The water withdrawals for irrigation in the Day Basin are rather difficult to assess because various pumping stations lift water from the Red River, and also many inlets divert water from the river gravitationally. This diffusive and unmetered inter-basin water withdrawal complicates the computation of the irrigation hydrology and the water accounts related to that. The irrigation

supplies in SWAT will therefore be adjusted to reproduce an ET value that matches with ET estimates from satellites.

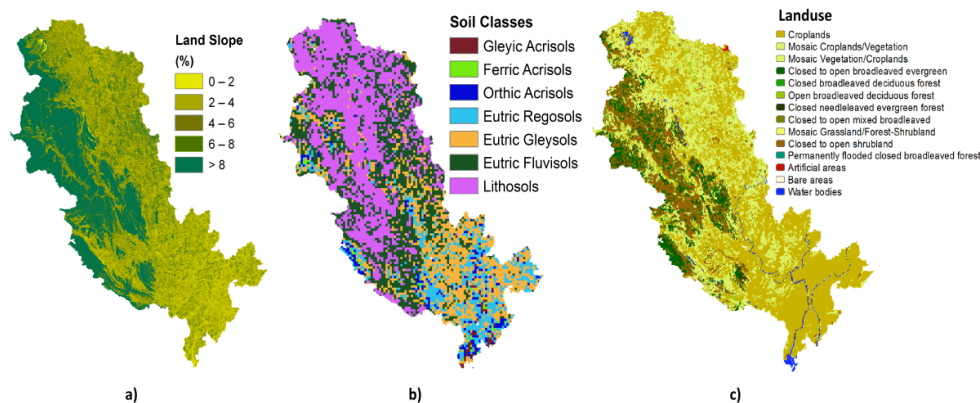


Figure 2. (a) Land slope, (b) Soil classes and (c) Land use maps used in Soil Water Assessment Tool (SWAT) to determine the Hydrological Response Unit (HRU).

3. Model and Methodology

3.1. Soil and Water Assessment Tool (SWAT)

The Soil and Water Assessment Tool (SWAT) [10,53] has been set up for the Day Basin to compute flows, fluxes, and stocks. A total amount of 119 sub-basins and 7909 HRU has been included for ensuring sufficient detail. HRU is a modeling unit that exists of a unique combination of land slope, land use, and soil type [54]. SWAT simulates eco-hydrological processes, i.e., surface runoff, groundwater recharge, baseflow, water stocks, erosion, plant production, and water quality. The production of food, feed, and timber, and the sequestration of carbon can be inferred from the biomass production [54]. SWAT estimates the fate and transport of nutrients, sediment, pesticides, and bacteria in both land and water phases [55]. This mathematical framework provides a great basis for the determination of various ecosystem services and SDG indicators. The soil water balance is conceptualized in SWAT using Equation (1), as described in [53]:

$$SW_t = SW_0 + \sum_{i=1}^t (P - Q_{surf} - E_a - w_{seep} - Q_{gw}) \quad (1)$$

in which t is the time (days), SW_t is the final soil water content at day t (mm H₂O); SW_0 is the initial soil water content, P is the amount of precipitation, Q_{surf} is the amount of surface runoff, E_a is the amount of actual evapotranspiration, w_{seep} is the amount of percolation entering the vadose zone from the soil profile, and Q_{gw} is the volume of streamflow originating from groundwater, all measured in mm H₂O on day i . The reference evapotranspiration (ET_0) is computed with Global Land Data Assimilation System (GLDAS) meteorological input data. SWAT does not allow reading layers of ET_0 directly, and therefore, meteorological records need to be prescribed. The chosen method for reference ET in SWAT is the Penman–Monteith method, as described in [53]. Compared with other equations in SWAT, i.e., Hargreaves [56] and Priestley–Taylor [57], the Penman–Monteith method fully takes advantage of remote sensing and global data source, such as GLDAS.

3.2. Model Calibration Using SUFI-2

The calibration of a semi-distributed and physical based model, such as SWAT, requires various plant and soil model parameters to be optimized, to ensure a rigorous representation of a basin's processes, e.g., streamflow, ET, ecological change, etc. The calibration task can become difficult and almost infeasible in large-scale applications [54]. A number of auto-calibration and uncertainty analysis

tools for SWAT were developed to support solving this problem, and are currently available to assist the optimization process. This study is based on the SUFI-2 model that is part of the SWAT-CUP supporting software package [58]. SWAT-Calibration and Uncertainty Program (SWAT-CUP) [24,58] is an auto-calibration and uncertainty analysis module program based on the SWAT engine that can deal with a range of input parameters. The optimization algorithm of SWAT-CUP allows model parameters to be predefined and optimized throughout the auto calibration process or manually adjusted iteratively between calibration batches. The employment of SUFI-2 is suitable for both new and advanced users of hydrological models, even though a good understanding of hydrologic processes and of parameter sensitivity is recommended in general terms [54]. In order to assess the efficacy of using remote sensing data and to compare with traditional discharge station-based for calibration, SWAT-CUP was run with two settings: (a) entirely based on remote sensing data (ET and LAI) and (b) entirely based on river discharge measurements. Among various evaluation coefficients allowed in SUFI-2, Nash–Sutcliffe (NSE) and Kling Gupta Efficiency (KGE) were chosen. For this particular study, a total number of 15 plant and soil parameters were pre-selected according to their sensitivity to the evolution of ET and LAI. The selection of these parameters was based on detailed reviews and analyses on SWAT parameters carried out before by various authors (e.g., [16,42,43,54,59]).

4. Spatial Input Datasets for SWAT

4.1. Physiographical Maps

The Digital Elevation Model (DEM) was downloaded from the Shuttle Radar Topography Mission (SRTM) with a resolution of 1 arc-second or 30 m (Figure 1b). The DEM is used to calculate slope, slope lengths, and to extract the stream network, solar angles, and air temperature corrections. The land use map is downloaded from Globcover [60]. Globcover is developed by the European Space Agency (ESA) and University of Louvain, with a spatial resolution of 300 m × 300 m. The satellite input data used for the classification was the MEdium Resolution Imaging Spectrometer (MERIS) sensor on the Environmental Satellite (ENVISAT) during 2009. While this dataset exists for several years, it captures the time span of the SWAT analysis very well. The major land cover in the Day Basin is agricultural land (64%), followed by forests (24%), and mixed mosaic (12%). Three thousand hectares (76%) of agricultural land is irrigated. The soil map used in this study originates from the International Soil Reference Information Centre (ISRIC) [61] and Food and Agricultural Organization (FAO) Digital Soil Map of the World [62]. The SoilGrids database (ISRIC, Wageningen, The Netherlands) has a spatial resolution of 1 km × 1 km, and is produced during 2014. The physical properties included in the dataset are (i) soil organic carbon (g/kg), (ii) pH index (H₂O solution) (%), (iii) sand, silt and clay content (kg/kg), (iv) coarse fragments (volumetric) (%), (v) bulk density (kg/m³), (vi) cation-exchange capacity (fine earth fraction) (cmol+/kg), and (vii) depth to bedrock (cm). A new soil map was created in this study by combining the two ISRIC and FAO soil maps with the aims to both (i) increase the spatial representation, and (ii) maintain the soil classification and soil properties from the FAO database. This task was accomplished by using standard unsupervised classification procedures (see Figure 2). Based on the distribution of land slope, soil type, and land use classes, the basin is divided into 119 sub-basins and 7909 HRUs.

4.2. Meteorological Data

4.2.1. Precipitation

Satellite precipitation data offers an attractive alternative to supplement in situ precipitation measurements in hydrological modelling, particularly in poorly gauged basins [29,63]. An evaluation of various open access precipitation products, such as the Tropical Rainfall Measuring Mission (TRMM 3B42V6, NASA Goddard Space Flight Center, Greenbelt, MD, USA), Climate Prediction Center Morphing technique (CMORPH, NOAA Climate Prediction Center, Silver Spring, MD, USA), and

Precipitation Estimation from Remotely Sensed Imagery Using Artificial Neural Networks (PERSIANN, The University of Arizona, Tucson, AZ, USA) at a resolution of $0.25^\circ \times 0.25^\circ$ for a subtropical watershed in China, concluded that TRMM 3B42 had the best performances, and was deemed to be reliable for hydrological applications, while PERSIANN had the worst performance [64]. In a similar study for Australia and Southeast Asia, TRMM and CMORPH outperformed, and an ensemble precipitation product was suggested as a reduction of system-specific and random errors [65]. TRMM data, in situ measurements and other atmospheric and climatology models were assimilated in [66] to create an ensemble precipitation product Climate Hazards Group InfraRed Precipitation with Station data (CHIRPS, University of California Santa Barbara - Climate Hazards Group, Santa Barbara, CA, USA) with a superior resolution at $0.05^\circ \times 0.05^\circ$. Precipitation from CHIRPS performed well statistically for flood and drought monitoring, particularly for meteorological complex regions [67].

The current study combines TRMM7.0 and CHIRPS2.0 rainfall products. The absolute precipitation data are taken from TRMM, and the spatial patterns from CHIRPS. The refined TRMM dataset with a resolution of $0.05^\circ \times 0.05^\circ$, so obtained, has been used as input data for SWAT. The combined precipitation product, so obtained, showed a good performance when compared to rain gauge measurements (Figure 3). Percent bias (PBIAS), NSE, Mean Absolute Error (MAE) denoted percent bias, Nash–Sutcliffe efficiency, and mean absolute error, respectively. The newly created precipitation product significantly improved the performance of the two original datasets in term of bias correction (PBIAS = -0.6) when averaging the errors from TRMM and CHIRPS. Nash–Sutcliffe efficiency slightly improved when comparing the ensemble precipitation to the CHIRPS (0.75 compared to 0.74), even though the MAE was marginally larger (45.98 compared to 44.31).

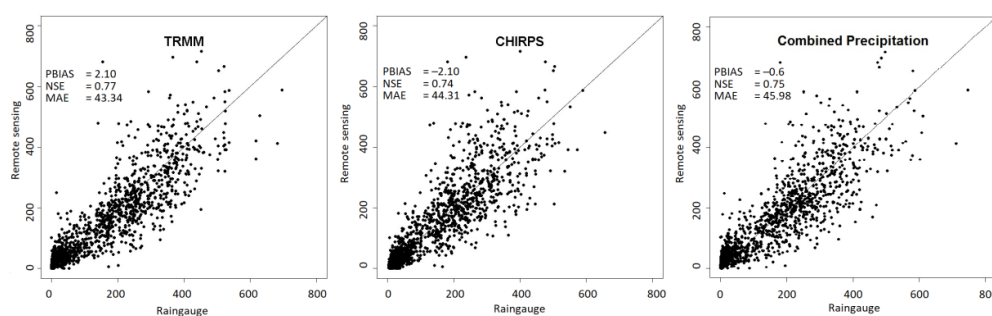


Figure 3. Performance of precipitation products Tropical Rainfall Measuring Mission (TRMM), Climate Hazards Group InfraRed Precipitation with Station (CHIRPS), and the Combined Precipitation against field measurements. Remotely sensed precipitation (mm) is displayed in the vertical axes while the horizontal axes show in situ measurement.

4.2.2. Meteorology

The meteorological dataset includes daily estimates of solar radiation, wind speed, air temperature (maximum, minimum) and relative humidity. The dataset was derived from GLDAS (NASA Goddard Earth Sciences Data and Information Services Center (GES DISC), Greenbelt, MD, USA). GLDAS simulates meteorological data with a numerical weather prediction model having a cell size of 0.25 degrees. The NOAA Land Surface Model (NOAH, National Center for Atmospheric Research (NCAR), Boulder, CO, USA), coupled to an atmospheric boundary layer model, assimilates satellite and in situ measurements to produce various land surface states and fluxes [68]. GLDAS meteorological data was downloaded as 3-hour intervals, and accumulated into 1-day time step as required by SWAT model to calculate evapotranspiration, plant growth etc.

4.2.3. Actual Evapotranspiration

The most common global scale ET dataset, developed with energy balance models using remote sensing data as input, a Penman–Monteith type of equation, is MOD16 (University of Montana,

Missoula, MT, USA) [69]. Several years of data can be downloaded if one is registered. MOD16 is based on a simplified stomatal conductance model governed by LAI, vapor pressure deficit, and air temperature. Soil evaporation is limited by a complementary relationship hypothesis which defines land–atmospheric interactions from vapor pressure deficit and relative humidity [69]. Various ET comparison studies using MOD16 data have been undertaken, see for instance [32,39,70]. MOD16 ET was validated [71] using flux towers in South Africa, and found that ET was systematically underestimated by 7.5 to 26.3 mm per month, something confirmed by [72,73]. On the contrary, studies conducted in Asia showed that MOD16 consistently overestimates ET for forested land cover [38].

Another example of a global energy balance model is SEBS (University of Twente, Enschede, The Netherlands) [74,75] that has a quasi-open accessibility to acquire the data. SEBS applies an analytical solution of surface roughness for heat transfer, and it was used to create a global scale dataset that is quasi open access. It limits the sensible heat flux estimates with upper and lower boundaries of the surface resistance to evaporation. The upper boundary is determined by latent heat flux equal to zero; the lower limit by potential evapotranspiration with a minimum bulk surface resistance. CMRSET (Commonwealth Scientific and Industrial Research Organisation (CSIRO), Canberra, Australia) [76] calculates actual ET from the Priestley and Taylor reference ET for water unlimited land surfaces [77] and a crop factor (K_c) based on an enhanced vegetation index (EVI). A global vegetation moisture index (GVMI) is used to account for non-optimal moisture conditions. This method is generally empirical, and aims to develop an ET dataset that GVMI is independent from land cover classification.

Another energy balance method is the Operational Simplified Surface Energy Balance (SSEBop, USGS EROS Center, Sioux Falls, SD, USA) [35] that employs a relationship between ET_0 and a land surface temperature-based scalar (ETrf) to express land wetness. An operational version of SSEB was proposed [78,79] by assimilating air temperature to account for the topographical and latitudinal heterogeneity impact on surface temperature. The SSEBop model defines the temperature scalar using hot and cold reference values for any pixel. The cold reference value is estimated as an empirically established fraction of the daily maximum air temperature; the hot reference value is obtained by adding a vertical temperature difference (dT) to the cold reference value [35].

Though progressing significantly in the past years and gaining maturity enough for calibration of hydrological models, remote sensing-based ET products still induce various uncertainties, e.g., [72,73,80]. These uncertainties come in various forms, such as from temperature and net radiation [35], and the aerodynamic component [81]. An uncertainty of up to 4 to 18% can be linked to sources of net radiation [35]. The largest uncertainty originates, however, from the impact of soil moisture on the regulation of the ET process. While thermal infrared measurements are excellent indicators of evaporative cooling [82], they are sensitive to cloud cover. Solutions based on microwave measurements are therefore suggested simultaneously for a long time [83,84]. Consequently, a suite of ET algorithms have been built during the last 25 years, and every algorithm will have its own model formulation and accuracy. Only physically-based algorithms with thorough validation in several environmental conditions should be considered for the calibration of hydrological models.

Because existing global scale ET products have different predictive capabilities, and there is no reliable ground truth dataset available in Day Basin to select any one of them, an ensemble ET product has been created in addition to the original datasets, on the basis of a simple linear average value for the Day Basin. The ensemble ET product used in this study is based on the combination of SEBS (5 km \times 5 km), CMRSET (5 km \times 5 km), SSEBop (1 km \times 1 km), and MOD16 data (1 km \times 1 km), and has a spatial resolution of 1 km \times 1 km grid. A finer ET map is deemed necessary to assess water balances at HRUs spatial level. The same downscaling procedure as described in CMRSET using the Enhanced Vegetation Index (EVI), and Global Vegetation Moisture Index (GVMI) was applied. The Residual Moisture Index (RMI) was used to describe the impact of vegetation moisture content on the crop coefficient.

The selection criteria for a certain ET product were based on the hydrological consistency between the annual totals of precipitation (ΣP) and discharge (ΣQ) for a time span of 10 consecutive years (2003

to 2012). The stream flow data (ΣQ) from the 2 stations (Phu Ly and Ninh Binh) were used (see Figure 4). In the case of the Day Basin, there is an unknown withdrawal from the Red River, which makes a direct comparison weaker. The analysis of the Day Basin demonstrates that SEBS produces the highest ET values, and MOD16 the lowest. CMRSET and MOD16 performed similarly for annual and seasonal periods, and both were lower than the ensemble ET. Of all five ET datasets (4 individual and 1 ensemble product), the ensemble ET, SSEBop, and CMRSET delivered similar annual ET rates, averaged for the drainage area at Phu Ly (ΣET of 1073 mm, 1041 mm, and 1007 mm, respectively) and Ninh Binh (ΣET of 1103 mm, 1044 mm, and 1031 mm, respectively). This is because the ensemble ET compensated for the difference between higher end and lower end ET products. Of all four ET datasets, SSEBop gave the most similar results compared to the ensemble ET. Albeit minor, differences were spotted during the dry period. For the dry season, ET from MOD16 is comparable with the ensemble ET (ΣET of 361 mm and 359 mm for Phu Ly, 376 mm and 369 mm for Ninh Binh, respectively), while SSEBop tends to give lower ET. The performance of a certain actual evapotranspiration (ET_{act}) algorithm is dependent on factors such as land use land cover type, climate, and the presence of mountains [8], meaning that the accuracy of ET_{act} predictions will vary across the basin. The seasonal performance of the ensemble ET values mismatch, due to storage changes in the soil water balance and the regulating role of lakes and reservoirs on river discharge. During the dry season, ET was much higher than precipitation hence, the displayed axis scale differed from the yearly average and the seasonal wet period. The interim conclusion is that the ensemble ET product generated from linear average SEBS, CMRSET, SSEBop, and MOD16 provided accurate and most stable results for the Day Basin. Accordingly, the ensemble ET data was tested further before being used in the optimization process.

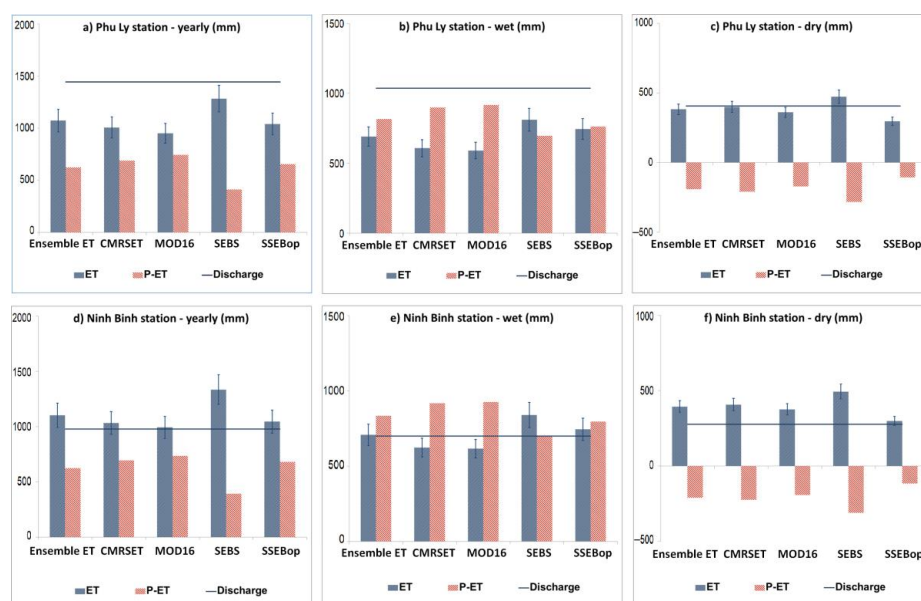


Figure 4. Comparison of accumulated evapotranspiration (ΣET), rainfall surplus $\Sigma P - \Sigma ET$, and discharge ΣQ over the 2007 to 2010 period at yearly (a,d), wet months (b,e), and dry months (c,f) at two stations, Phu Ly and Ninh Binh.

4.2.4. Crop Coefficient

Crop coefficient (K_c) was defined in [85] for unlimited soil water conditions, as the ratio of actual evapotranspiration to reference evapotranspiration (ET_o). The K_c value for paddy rice is suggested in various studies such as by [86–88]. K_c for rice varies between 1.02 and 1.23 [89] throughout various growth stages. The cropping pattern in the Day Basin consists of mainly paddy rice (2 seasons from February to April/May, and from May/June to September) and some other crops (vegetables, September/October to January). The ensemble ET data is assumed to represent paddy rice as the

dominant crop. The K_c derived from the ensemble ET and reference ET was tested to see if it falls within the range found in the literature.

In order to validate the accuracy of actual ET derived from satellites, reference evapotranspiration (ET_o) was calculated using the FAO56 Penman–Monteith equation [85]. GLDAS is a good example of global standardized datasets, in this case, being climate related. Figure 5 illustrates the average monthly K_c in the Day Basin. The maximum K_c values are experienced in the wet season (June to July). K_c is much lower in the dry months of January to February, because the crop intensity is strongly reduced by the lack of rainfall, and rice becomes fully dependent on irrigation water supply.

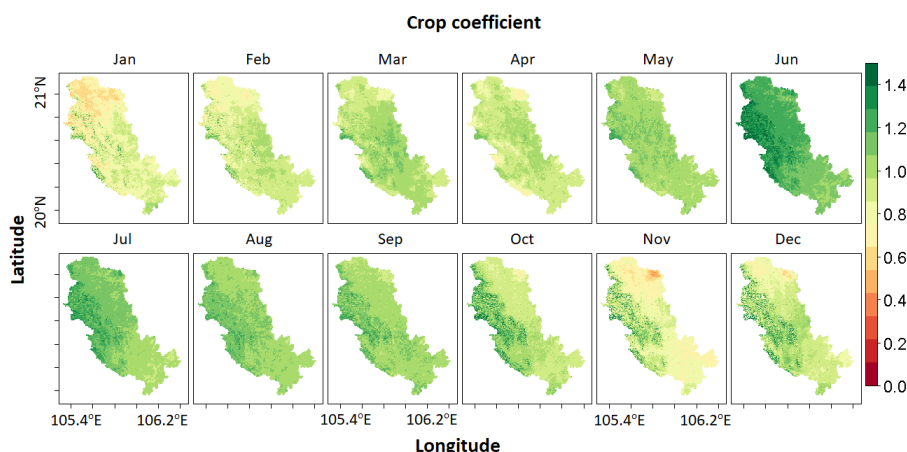


Figure 5. Monthly crop coefficient (K_c) derived from the ratio between the ensemble ET and reference ET.

The K_c values are plotted with a 3-month Simple Moving Average (SMA) filter (Figure 6). The K_c values during different growing stages typically vary between 0.70 and 1.00 (initial stage), and 0.90 to 1.20 (mid-season stage). The differences in K_c are due to the variety of cultivated paddy rice, as well as irrigation management. The K_c in June to July and October to November 2008 was exceptionally high, since this was a very wet year. The mid-season K_c reached 0.81 to 1.00, and 0.96 to 1.21, in March and June respectively. These values are similar to those of [88] with mid-season K_c reported to be around 1.23. The K_c during end-season (April to May for dry season rice and September for wet season rice) varies around 0.90 to 1.10, similar to crop coefficients estimated by [88,89]. Hence, the K_c values are falling within the acceptable range, indicating that the ensemble ET performed well for the Day Basin and can be used for SWAT model calibration.

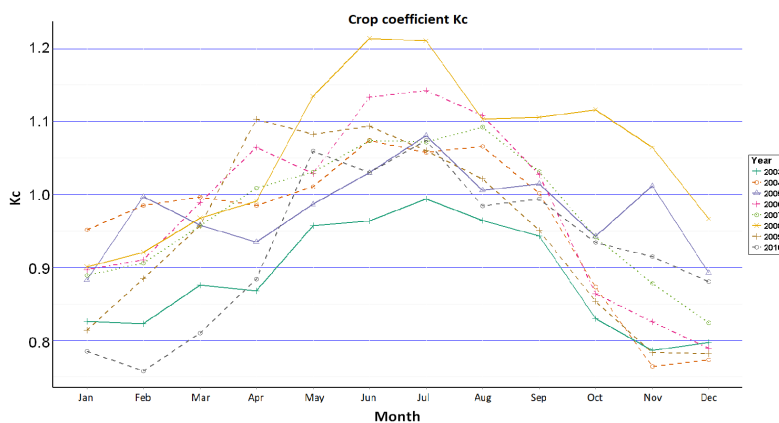


Figure 6. Simple Moving Average (SMA) for crop coefficient (K_c) for paddy rice in the Day Basin.

4.3. Leaf Area Index

Leaf Area Index (LAI) is defined as the area of green leaf per ground area. It is an important variable for eco-hydrological modelling and quantifying ecosystem services [90]. LAI influences the evapotranspiration rate and its partitioning into transpiration (T), soil evaporation (E), and interception (I). At the same time, LAI determines the amount of Absorbed Photosynthetically Active Radiation (APAR), which determines the energy level for photosynthesis. MOD15-LAI data (NASA EOSDIS Land Processes DAAC, USGS Earth Resources Observation and Science (EROS) Center, Sioux Falls, SD, USA) with an 8-day temporal resolution was downloaded from open access databases. Monthly average LAI values with a spatial resolution of 1 km have been reconstructed for the period of 2005–2011.

The SWAT model estimates LAI values assuming a certain upper boundary function of growth that is corrected for stress factors (temperature, water, and nutrients). These stress factors can vary greatly and have an empirical character. The calibration of the model including LAI measurements is therefore crucial. The empirical LAI parameters to be prescribed in SWAT use an internal crop development database [53].

5. SWAT Parameters to Be Optimized

A summary of various sets of parameters used in model calibration of different processes, i.e., surface runoff, snow, plant growth etc. can be found in [54]. A similar list of parameters was also suggested by [16,42,59]. Calibration of ET is less common, because this dataset is usually not available. More recent studies, including [8,43,45], demonstrated that SWAT can be calibrated against spatial ET data as well. Key parameters for the calibration of ET and their value range were derived from the SWAT user's manual [53]. Since the purpose of this study is to calibrate the model for ET and LAI, the model parameters to be optimized were divided into two groups: ET and LAI. This grouping indicates which parameters are most sensitive to ET and LAI, and thus, suitable for optimizing the model performance for these two processes. The list is long because one parameter might control more than one process, e.g., the available water capacity of soil layers affects the generation of surface runoff, but simultaneously determines the amount of water that is evaporated (ET) and percolated to the underground. SUFI-2 automatically optimizes the selected parameters within their predefined range, hence this aspect of parameter selection is following the default guidelines of the tool.

Six parameters ESCO, EPCO, REVAPMN, SOL_K, SOL_AWC, and SOL_BD have been selected to optimize the ET simulations. The baseflow recession constant ALPHA_BF and SCS runoff curve number (CN2) were also included because of their influences on the surface–subsurface hydrological processes, and thus, on the water availability for evapotranspiration. Seven other parameters are identified that influence the leaf area index development, see [53]: BLAI, ALAI_MIN, DLAI, LAIMX1, LAIMX2, FRGRW1, and FRGRW2. SUFI-2 thus optimizes 15 model parameters for different sub-basins and HRUs. Since SWAT-CUP is unable to read spatial data, time series of ET and LAI was derived and used as input into the model. While ET process is more dependent on the local climate and land cover properties, LAI is strictly driven by the plant type, and hence, the calibration should be done at sub-basin, land cover, and HRU levels. The utilization of high resolution spatial datasets as input into HRU analysis in SWAT (i.e., land use, DEM, soil maps) ensures fair distribution of HRUs, and hence, spatially distributed ET and LAI across the watershed.

In the case of conventional calibration using discharge, two river discharge points (i.e., Phu Ly and Ninh Binh) were used (500 simulations for both calibration and validation) and the acquired result was used to compare against the output from calibration technique using remotely sensed data.

In the first step of calibration technique using remote sensing data, average ET and LAI for 119 sub-basins and all land-cover groups was extracted from ensemble ET and Moderate Resolution Imaging Spectroradiometer (MODIS) and used as observed data in SWAT-CUP. Derived time series of ET and LAI from each sub-basin and land cover type was used to calibrate 15 parameters in each sub-basin and land cover group individually (500 simulations each run for calibration and validation). This first estimation of ET and LAI ensures a good agreement in term of average ET, LAI,

and subsequently, water balance. In the second batch of calibration, a number of HRUs from each sub-basin representing all land use classes and ensuring a total coverage of at least 50% the sub-basin's area were selected in the calibration (500 simulations each run for calibration and validation). The calibration result yields a set of soil and plant parameters which varies from sub-basins and land cover groups, and that reflects the local eco-hydrological processes, and is therefore highly valuable. This unprecedented spatial variability from SUFI-2 optimization cannot be obtained from soil surveys and soil maps, which makes this investigation interesting. The classical SUFI-2 calibration will give the same parameter value to all sub-basins and HRUs encompassed in a certain drainage area, and hence, the new system of calibration provides much more insight into the local characteristic of the soil and vegetation system.

6. Results and Discussions

The simulation covered the period 2000 to 2013 using 3 years of initialization (2000 to 2002) as modelling warm up period. Because remotely sensed data had a different temporal coverage—2003 to 2012 for ET and 2005 to 2011 for LAI—SWAT was calibrated from 2003 to 2007 for ET, and validated from 2008 to 2012. LAI was calibrated from 2005 to 2007, and validated from 2008 to 2011.

The monthly simulation for the entire Day Basin, as one bulk system, was presented in Figure 7. The simulated values related satisfactorily to the observed ensemble ET values. The ET peak value from remote sensing did not exceed 140 mm/month, while the modelled ET was as high as 160 mm/month. For remote sensing-based calibration, simulated ET in SWAT is underestimated by 5 to 10 percent in the irrigated agricultural land downstream, while the forest land showed good correlation. NSE yielded from 0.61 (calibration) to 0.65 (validation). R^2 for calibration and validation was 0.71, while Kling Gupta Efficiency (KGE) ranged from 0.80 to 0.83, respectively. The high values from KGE were due to the fact that low values were well represented for bias and correlation, as compared to NSE's reputation on overemphasizing peak values. By contrast, traditional discharge-based calibration performed statistically more inferior with NSE, which were only at -0.01 and -0.20 , and KGE at 0.46 and 0.47, while R^2 was of significant values 0.77 and 0.76, for calibration and validation, respectively. Discharge-based calibration results also encountered a consistent underestimation of ET temporally as compared to remote sensing-based method. Another observation in both cases is that the lower ET values simulated during winter were always lower than the observed values from remote sensing, even though this difference was much lower when using ET and LAI as calibration inputs. This could be related to the dry period in which SWAT computes water stress due to a lack of soil moisture. This could suggest that the storage capacity of the soil in reality is higher, or it could also be related to lower vertical water fluxes between the top soil, sub-soil, and the unconfined shallow aquifer, or the sensitivity of vegetation to soil moisture. A very low reference ET_0 during winter could also be an explanation. SUFI-2 ensured, however, that the spatial patterns match rather well. Some local differences occur unavoidably due to the inaccuracy of the various mathematical expressions used to compute a complex hydrological process such as ET. Remote sensing ET values reflect more the real world conditions as they are based on observations [33–35,42]. The agreement between SWAT and remote sensing data was expressed by means of the correlation coefficient and the bias. Using spatial dataset in the calibration yields resulted in much higher agreement, and reveals that both the ET formulations in SWAT as well as the SUFI-2 optimization techniques are adequate. The same conclusion was drawn earlier by other researchers that validate SWAT on the basis of ET data series.

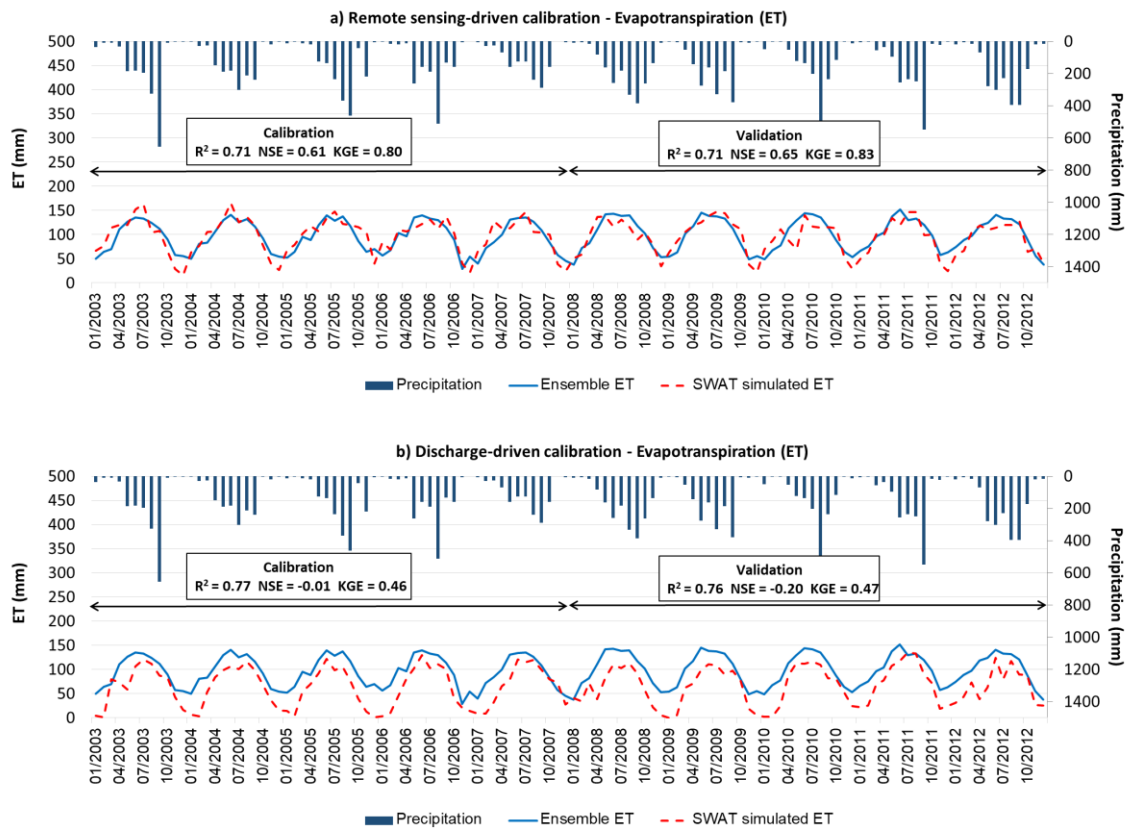


Figure 7. Temporal variability estimated from SWAT and the “observed” values from remote sensing in (a) remote sensing-driven calibration, and (b) conventional discharge-driven calibration.

Further to the evapotranspiration simulations of SWAT, the vegetation response to water can be evaluated by means of a comparison of the simulated LAI (see Figure 8) in two cases: (a) remote sensing-driven, and (b) discharge-driven calibration. The remote sensing-based calibration yielded acceptable NSE ranging from 0.50 for calibration and 0.57 for validation. R^2 for calibration and validation was 0.51 and 0.59, while Kling Gupta Efficiency (KGE) ranged from 0.59 to 0.75. Conventional discharge-based calibration performed poorly, in term of statistics, with NSE of only 0.35 and 0.43, KGE of -0.34 and 0.03 , while R^2 was higher at 0.67 and 0.77 for calibration and validation, respectively. LAI values in discharge-based calibration were consistently underestimated compared with observation from MODIS. With regard to remote sensing-based calibration, the timing of the green cover development seems acceptable. The peak LAI values during Spring 2005 and 2006 are not accurate. This may be due to constancy of the LAI related calibration parameters for all the different simulation years. It would be better to make the maximum LAI parameter variable for each year, to enable it to better respond to years with weather anomalies. A good description of LAI evolution will improve the timing of rice emergence, which in turn, affects the irrigation and transpiration processes.

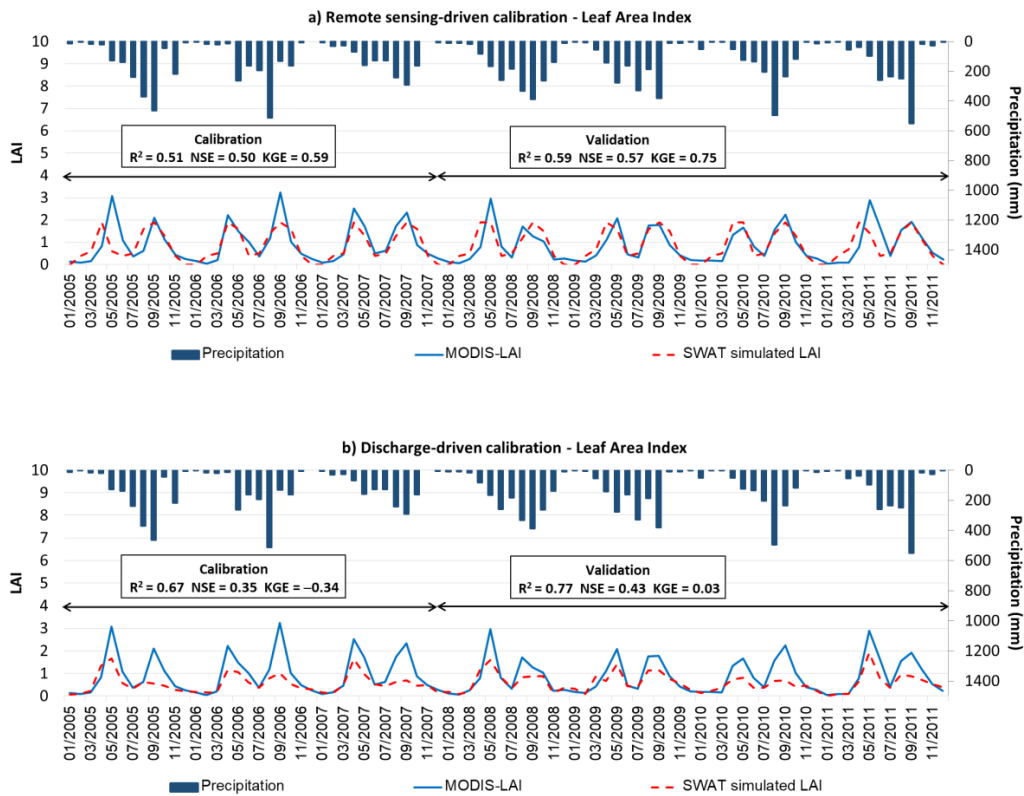


Figure 8. Determination of the LAI from MODIS and SWAT simulation for an HRU consisting of paddy rice for (a) remote sensing-driven calibration and (b) conventional discharge-driven calibration.

Figure 9 represents the accumulated ET during the calibration (2003 to 2007) and validation (2008 to 2012) period for remote sensing-based calibration. The total simulated ET is 5855 mm, compared with 5727 mm for the ensemble ET during the calibration, hence a difference of 128 mm (2.2%). The model performs consistently during the validation period with 5713 mm (simulated ET), as compared to 6015 mm (ensemble ET), leading to a difference of 302 mm (5.3%). In very general terms, the set of ET related equations in SWAT has a limited capacity to mimic the complex processes of soil evaporation, plant interception, and plant transpiration that occur in reality, due to the dynamic meteorological and hydrological processes. The results indicate that SUFI-2 succeeded in generating a close to reality ET in both calibration and validation of ET, both spatially and temporally.

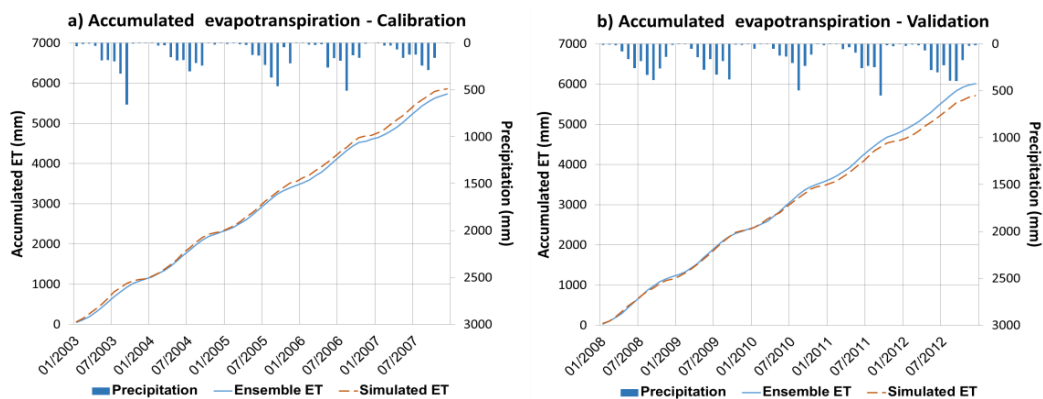


Figure 9. Accumulated ET for the period of five years for (a) calibration and (b) validation.

Figure 10 shows, for every HRU, the distributed ET from the SWAT model and ensemble ET over the period 2003 to 2012. These graphs showed a spatial coherence between the two datasets.

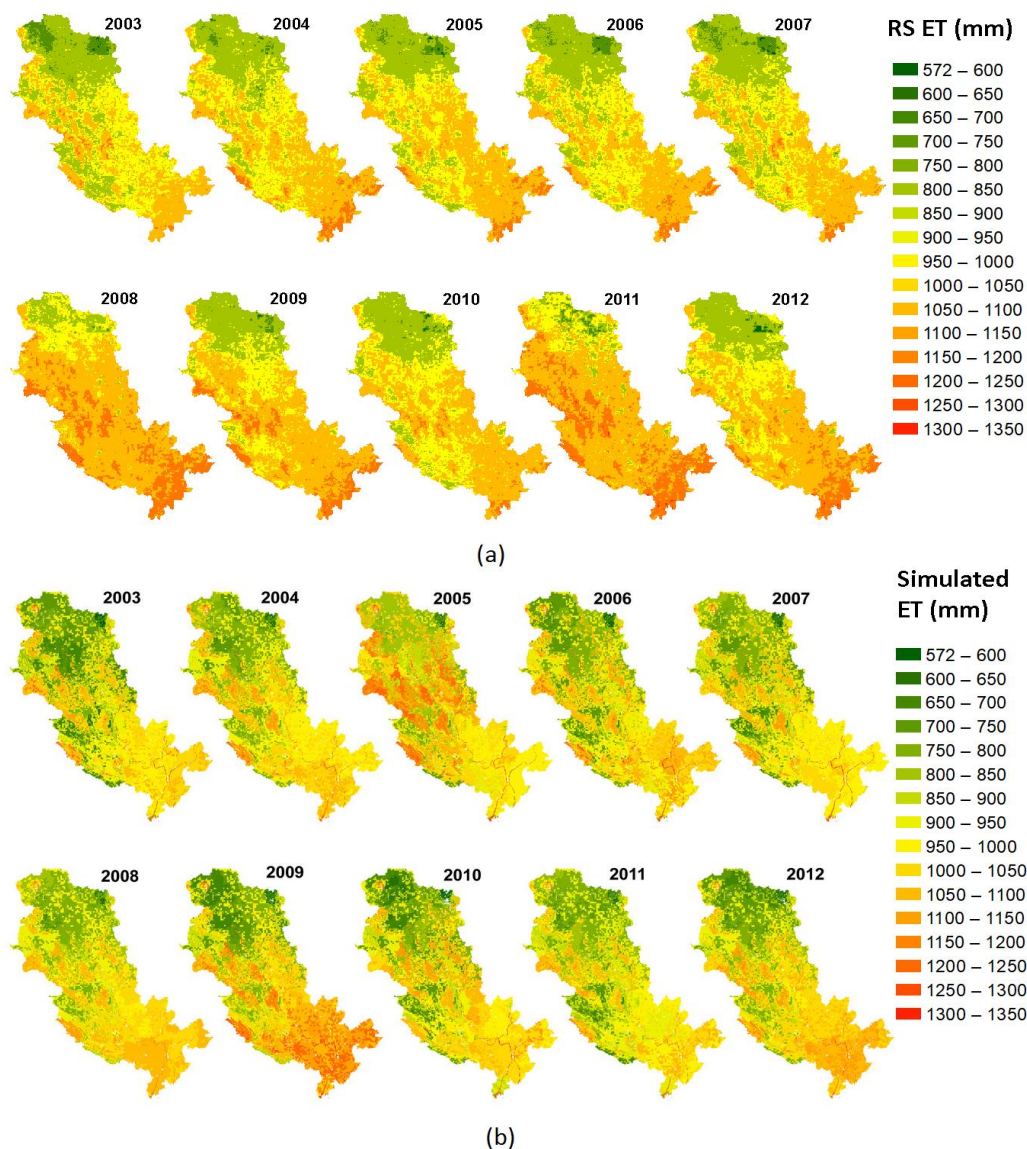


Figure 10. Spatial agreement between the ensemble ET from remote sensing (a) and the SWAT simulated ET (b) at an annual basis.

To verify simulated streamflow from the remote sensing-driven calibration, the relationship between monthly river flow simulations and flow measurements at the Phu Ly and Ninh Binh stations was assessed, as shown in Figure 11. The discharges in several cross sections was constructed using the rating curve of measured flows and water levels during restricted periods, measured using acoustic Doppler current profilers [51].

The agreement between simulated river flow and station discharge measurements was expressed through R^2 , ranging from 0.71 (Phu Ly) to 0.78 (Ninh Binh), and Nash–Sutcliffe from 0.55 to 0.63, respectively. Considering that river discharge was computed from measured water level [51], the agreement between simulated river flow and station discharge measurements is good. Measured river flow data were not used in the calibration process, which shows that a good simulation of ET facilitates the prediction of stream flow. Note that the flow in these rivers is far from being natural, due to all the irrigation practices that are occurring. Measured river flow data were not used in the

calibration process, which shows that a good simulation of ET will make it possible to calculate flows directly (streamflow and ET being the two largest components of the water balance) without having to optimize flow in the calibration process. Hence, this shows that flow data can be replaced by ET to optimize SWAT model performance, and that the ET is reflecting actual anthropogenic processes of the water cycle.

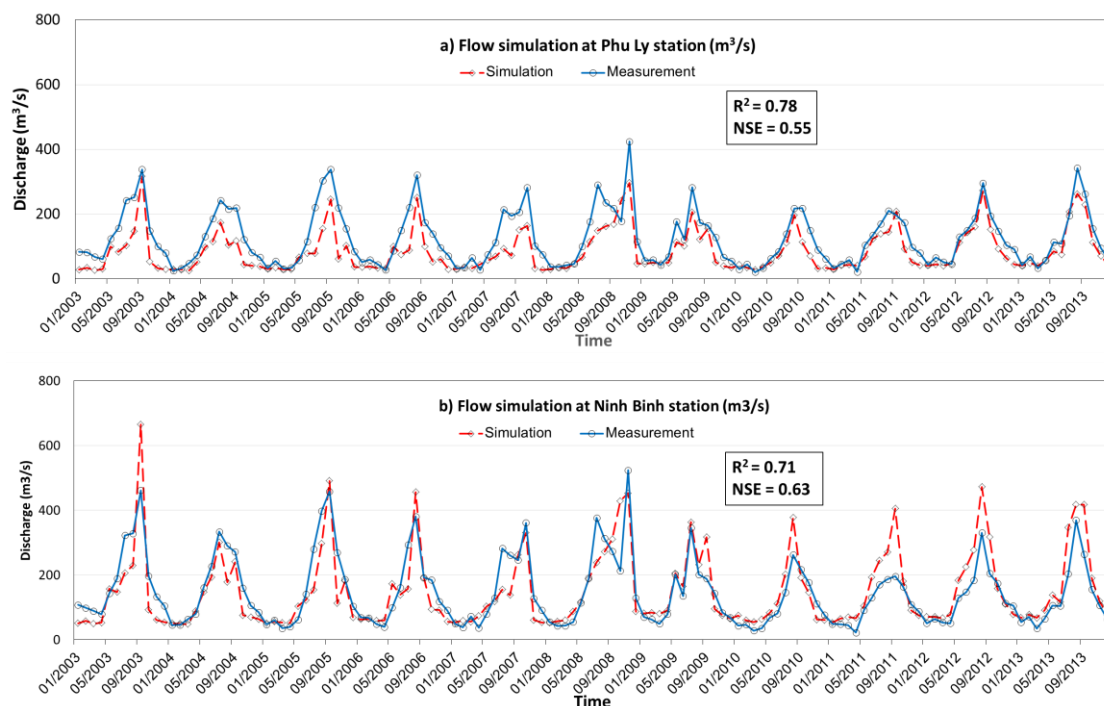


Figure 11. Flow simulation versus station measurements at Phu Ly (a) and Ninh Binh station (b).

To make the fit between remotely sensed precipitation and ET feasible, extra water has to be supplied to the land use class irrigated land in certain months. The total amount of irrigation water supply is computed to be 1.934 billion m^3/y , and this amount of water is thus withdrawn from the Red River through various ungauged inlet points. This number can now be estimated with more precision because ET is known [16,38,43]. The main water intake for irrigation is between January and March (during the Winter–Spring paddy rice) with a maximum amount of 98 mm during February. During the Summer–Autumn paddy rice season, the water intake is concentrated in July with an amount of 113 mm per month. The total storage change ΔS for the entire Day Basin indicates the difference between all inflow and outflow terms. ΔS during 2003 to 2013 for unsaturated and saturated zones are 11.7 and 9.6 mm/y, respectively, due to the fact that there is water locally stored in lakes, streams, and also moving within the saturated layers to the deep aquifer. This is a realistic number, and confirms that the water balance of the total system is rather accurately simulated.

The total water balance for the basin in average rainfall, a dry (2007), and a wet (2008) year, is shown in Table 1. While the average annual rainfall was 1710 mm/y, it reached 2121 mm/y in 2008 and 1496 mm/y in 2007. The ET in 2007 and 2008, was 985 and 1010 mm/y, respectively, compared to 958 mm/y on average. This quasi-constancy of ET is noticed more often in other studies. The regulating role of soil water storage in the vadose zone, and the lower evaporative demand in wet years and higher demand during dry years, are some major causing factors for restriction of ET dynamics. Due to the impact of rainfall variation to overall water budget, the change in soil water content (ΔSW) for 2007 was indeed negative ($\Delta SW = -27$ mm/y) while for 2008, it was positive ($\Delta SW = +80$ mm/y). The final calibrated range of 15 parameters is expressed in Table 2.

Table 1. Monthly water balance for an average precipitation year, expressed in mm/y for unsaturated and saturated zone.

Unsaturated Zone									
Year	Input			Output					Δu
	P	IRR	Revap	Q_{runoff}	Q_{lat}	ET	PERC	ΔER	
Average	1709.5	309.2	19.4	586.9	14.0	957.9	441.5	49.5	−11.7
2007	1496.1	302.0	3.6	447.2	11.1	985.0	347.9	−27.1	37.7
2008	2121.1	375.7	0.7	789.1	15.8	1009.5	606.2	80.1	−3.2
Saturated Zone									
Year	Input		Output			Δu			
	PERC	Revap	GW_RCH	SA_ST					
Average	441.5	19.4	436.1	−23.6	9.6				
2007	347.9	3.6	358.0	−7.8	−5.9				
2008	606.2	0.7	487.7	0.0	117.9				

P: precipitation; ET: evapotranspiration; Revap: water revap from saturated to unsaturated layer; ΔSW : change in soil water content; Q_{runoff} : generated surface flow, including surface runoff, Q_{lat} : later flow from vadose zone; IRR: applied amount of irrigation water; PERC: percolation to shallow aquifer; GW_RCH: recharge to deep aquifer r; SA_ST: change in shallow aquifer storage; Δu : the difference between input and output.

Table 2. Final values of fifteen parameters optimized in SWAT model used to mimic ET and LAI.

Parameter	Unit **	Default Range *	Final Value
ESCO	-	0–1	0–0.22
EPCO	-	0–1	0.88–1.00
REVAPMN	mm	0–500	248–395
SOL_K	mm/hr	0–2000	0.44–1262
SOL_AWC	mm water/mm soil	0–1	0.50–1
SOL_BD	mg/m ³ or g/cm ³	1.1–1.9	1.2–1.62
CN2	-	35–98	72.9–98
ALPHA_BF	-	0–1	0.42–0.75
BLAI	m ² /m ²	0.5–10	0.89–10
ALAI_MIN	m ² /m ²	0–0.99	0–0.98
DLAI	-	0.15–1	0.30–0.95
LAIMX1	-	0–1	0–0.75
LAIMX2	-	0–1	0–0.99
FRGRW1	-	0–1	0–0.76
FRGRW2	-	0–1	0–0.74

Note: *: Taken from Arnold et al. (2012); **: dimensionless parameters are shown as '-'.

7. Conclusions

The availability of spatially distributed precipitation, ET and LAI gridded data from open access—or partially open access—earth observation data platforms, makes it feasible to calibrate soil and vegetation process parameters of eco-hydrological models, also when rivers are ungauged and the water distribution system is complex. In this study, four individual ET models were averaged linearly to match the simulations of ET from SWAT. No in situ measurements were available to verify the performance of individual ET models. From inspection of the water balance, a simple linear average value gave best results as compared to streamflow and K_c crop coefficients, described in the international literature. Nevertheless, it is required to undertake more studies on the ensemble ET product to provide further progressive insights on averaging of individual estimates.

Secondly, this paper demonstrates the capabilities of SWAT and the auto-calibration SUFI-2 to render bio-physical processes in data scarce basins in a distributed manner. A total of 15 essential bio-physical parameters of the unsaturated zone and exchange processes seem to be adequately

calibrated in SWAT for each of the 7907 HRUs. Otherwise, there would not have been such a good agreement with the spatio-temporal variability of the remote sensing parameters, as in the case of conventional discharge-driven calibration. Furthermore, this level of spatial detail cannot be obtained from soil maps. The hydrological formulations in SWAT are thus adequate for simulating eco-hydrological processes. In the near future, remote sensing data on soil moisture, net primary production, and water quality will become available as well, which will undoubtedly further enrich the options to calibrate additional SWAT model parameters.

The approach proposed in this study using SWAT-CUP and SUFI-2 will improve the facilitation and standardization of calibration process for basins with scant field data. By optimizing evapotranspiration and photosynthesis for Hydrological Response Unit, swift estimates of surface runoff, erosion, groundwater recharge, baseflow, storage changes, withdrawals, and carbon assimilation can be determined and used to quantify ecosystems services. The availability of the system parameters will allow future predictions of the basin water cycle in response to external factors, such as climate and land-use changes, and computing scenarios for green growth, i.e., conservation plans, reduction of greenhouse gas emissions, etc.

Acknowledgments: This work was undertaken as part of the MK27 project “Inclusive development paths for healthy Red River landscapes based on ecosystem services” under the CGIAR Research Program on Water, Land and Ecosystems (WLE). The authors would like to express our gratitude for this support. Also thanks to Xuelong Chen (ITC) for providing the SEBS data. SSEBop ET was provided by the U.S. Geological Survey Earth Resources Observation and Science Center. Any use of trade, firm, or product names is for descriptive purposes only and does not imply endorsement by the U.S. Government.

Author Contributions: Lan Thanh Ha and Wim G.M. Bastiaanssen conceived and designed the experiments; Lan Thanh Ha performed the experiments; Lan Thanh Ha, Wim G.M. Bastiaanssen and Ann van Griensven analyzed the data; Albert I.J.M. van Dijk and Gabriel B. Senay contributed the ET dataset; Lan Thanh Ha wrote the paper; Wim G.M. Bastiaanssen revised the paper.

Conflicts of Interest: The authors declare no conflict of interest.

References

1. Molden, D. *Accounting for Water Use and Productivity*; SWIM Paper 1; International Irrigation Management Institute: Colombo, Sri Lanka, 1997; p. 26.
2. Vardon, M.; Lenzen, M.; Peevor, S.; Creaser, M. Water accounting in Australia. *Ecol. Econ.* **2007**, *61*, 650–659. [[CrossRef](#)]
3. Karimi, P.; Bastiaanssen, W.G.M.; Molden, D. Water Accounting Plus (WA+)—A water accounting procedure for complex river basins based on satellite measurements. *Hydrol. Earth Syst. Sci.* **2013**, *17*, 2459–2472. [[CrossRef](#)]
4. Salvatore, E.; Michailovsky, C.; Coerver, B.; Bastiaanssen, W.G.M. *Water Accounting in Selected Asian River Basins: Pilot Study in Cambodia*; Asian Development Bank: Manila, Philippines, 2016; p. 66.
5. Molden, D.; Frenken, K.; Barker, R.; de Fraiture, C.; Mati, B.; Svendsen, M.; Sadoff, C.; Finlayson, C.M. Trends in water and agricultural development. In *Water for Food, Water for Life: A Comprehensive Assessment of Water Management in Agriculture*; Molden, D., Ed.; Earthscan: Colombo, Sri Lanka; IWMI: London, UK, 2007; pp. 57–89.
6. Crossman, N.D.; Burkhard, B.; Nedkov, S.; Willems, L.; Petz, K.; Palomo, I.; Drakou, E.G.; Martín-Lopez, B.; McPhearson, T.; Boyanova, K.; et al. A blueprint for mapping and modelling ecosystem services. *Ecosyst. Serv.* **2013**, *4*, 4–14. [[CrossRef](#)]
7. Bagstad, K.J.; Johnson, G.W.; Voigt, B.; Villa, F. Spatial dynamics of ecosystem service flows: A comprehensive approach to quantifying actual services. *Ecosyst. Serv.* **2013**, *4*, 117–125. [[CrossRef](#)]
8. Simons, G.W.H.; Bastiaanssen, W.G.M.; Ngô, L.A.; Hain, C.R.; Anderson, M.C.; Senay, G.B. Integrating Global Satellite-Derived Data Products as a Pre-Analysis for Hydrological Modelling Studies: A Case Study for the Red River Basin. *Remote Sens.* **2016**, *8*, 279. [[CrossRef](#)]
9. Vigorstol, K.L.; Aukema, J.E. A comparison of tools for modeling freshwater ecosystem services. *J. Environ. Manag.* **2011**, *92*, 2403–2409. [[CrossRef](#)] [[PubMed](#)]

10. Arnold, J.G.; Srinivasan, R.; Muttiah, R.S.; Williams, J.R. Large-area hydrologic modeling and assessment: Part I. Model development. *J. Am. Water Resour. Assoc.* **1998**, *34*, 73–89. [[CrossRef](#)]
11. Liang, X.; Lettenmaier, D.P.; Wood, E.F.; Burges, S.J. A Simple hydrologically Based Model of Land Surface Water and Energy Fluxes for GSMs. *J. Geophys. Res.* **1994**, *99*, 14415–14428. [[CrossRef](#)]
12. Tallis, H.; Polasky, S. Mapping and valuing ecosystem services as an approach for conservation and natural-resource management, The Year in Ecology and Conservation Biology. *Ann. N. Y. Acad. Sci.* **2009**, *1162*, 265–283. [[CrossRef](#)] [[PubMed](#)]
13. Villa, F.; Athanasiadis, I.N.; Rizzoli, A.E. Modelling with knowledge: A review of emerging semantic approaches to environmental modelling. *Environ. Model. Softw.* **2009**, *24*, 577–587. [[CrossRef](#)]
14. Francesconi, W.; Srinivasan, R.; Pérez-Miñana, E.; Willcock, S.P.; Quintero, M. Using the Soil and Water Assessment Tool (SWAT) to model ecosystem services: A systematic review. *J. Hydrol.* **2016**, *535*, 625–636. [[CrossRef](#)]
15. Dechmi, F.; Burguete, J.; Skhiri, A. SWAT application in intensive irrigation systems: Model modification, calibration and validation. *J. Hydrol.* **2012**, *470–471*, 227–238. [[CrossRef](#)]
16. Gitau, M.W.; Chaubey, I. Regionalization of SWAT Model Parameters for Use in Ungauged Watersheds. *Water* **2010**, *2*, 849–871. [[CrossRef](#)]
17. Srinivasan, R.; Zhang, X.; Arnold, J.G. SWAT ungauged: Hydrological budget and crop yield predictions in the upper Mississippi river basin. *Trans. ASABE* **2010**, *53*, 1533–1546. [[CrossRef](#)]
18. Schneider, K.; Ketzner, B.; Breuer, L.; Vaché, K.B.; Bernhofer, C.; Frede, H.-G. Evaluation of evapotranspiration methods for model validation in a semi-arid watershed in northern China. *Adv. Geosci.* **2007**, *11*, 37–42. [[CrossRef](#)]
19. Van Griensven, A.; Ndomba, P.; Yalaw, S.; Kilonzo, F. Critical review of SWAT applications in the upper Nile basin countries. *Hydrol. Earth Syst. Sci.* **2013**, *16*, 3371–3381. [[CrossRef](#)]
20. Shrestha, B.; Babel, M.S.; Maskey, S.; van Griensven, A.; Uhlenbrook, S.; Green, A.; Akkharath, I. Impact of climate change on sediment yield in the Mekong River basin: A case study of the Nam Ou basin, Lao PDR. *Hydrol. Earth Syst. Sci.* **2015**, *17*, 1–20. [[CrossRef](#)]
21. Raghavan, S.; Tue, V.M.; Shie-Yui, L. Impact of climate change on future stream flow in the Dakbla river basin. *J. Hydroinform.* **2014**, *16*, 231–244. [[CrossRef](#)]
22. Abbaspour, K.C.; Rouholahnejad, E.; Vaghefi, S.; Srinivasan, R.; Yang, H.; Kløve, B. A continental-scale hydrology and water quality model for Europe: Calibration and uncertainty of a high-resolution large-scale SWAT model. *J. Hydrol.* **2015**, *524*, 733–752. [[CrossRef](#)]
23. Bitew, M.M.; Gebremichael, M. Evaluation of satellite rainfall products through hydrologic simulation in a fully distributed hydrologic model. *Water Resour. Res.* **2010**, *47*, W06526. [[CrossRef](#)]
24. Abbaspour, K.C. *SWAT-CUP: SWAT Calibration and Uncertainty Programs—A User Manual, Department of Systems Analysis, Integrated Assessment and Modelling (SIAM)*; Eawag. Swiss Federal Institute of Aquatic Science and Technology: Duebendorf, Switzerland, 2015; p. 100.
25. Pietroniro, A.; Leconte, R. A review of Canadian remote sensing applications in hydrology, 1995–1999. *Hydrol. Process.* **2000**, *14*, 1641–1666. [[CrossRef](#)]
26. Neale, C.M.U.; Cosh, M.H. *Remote Sensing and Hydrology*; IAHS Red Book Series; Publ. 352; IAHS: Wallingford, UK, 2010; p. 482.
27. Bastiaanssen, W.G.M.; Harshadeep, N.R. Managing scarce water resources in Asia: The nature of the problem and can remote sensing help? *Irrig. Drain. Syst.* **2007**, *19*, 269–284. [[CrossRef](#)]
28. Melesse, A.M.; Weng, Q.; Thenkabail, P.S.; Senay, G.B. Remote Sensing Sensors and Applications in Environmental Resources Mapping and Modelling. *Sensors* **2016**, *7*, 3209. [[CrossRef](#)] [[PubMed](#)]
29. Serrat-Capdevila, A.; Valdes, J.B.; Stakhiv, E.Z. Water Management Applications for Satellite precipitation products: Synthesis and Recommendations. *J. Am. Water Resour. Assoc.* **2014**, *50*, 509–525. [[CrossRef](#)]
30. Dembele, M.; Zwart, J.Z. Evaluation and comparison of satellite-based rainfall products in Burkina Faso, West Africa. *Int. J. Remote Sens.* **2016**, *37*, 3995–4014. [[CrossRef](#)]
31. Templeton, R.C.; Vivoni, E.R.; Méndez-Barroso, L.A.; Pierini, N.A.; Anderson, C.A.; Rango, A.; Laliberte, A.S.; Scott, R.L. High-resolution characterization of a semiarid watershed: Implications on evapotranspiration estimates. *J. Hydrol.* **2014**, *509*, 306–319. [[CrossRef](#)]

32. Wang-Erlandsson, L.; Bastiaanssen, W.G.M.; Gao, H.; Jägermeyr, J.; Senay, G.B.; van Dijk, A.I.J.M.; Guerschman, J.P.; Keys, P.W.; Gordon, L.J.; Savenije, H.H.G. Global root zone storage capacity from satellite-based evaporation. *Hydrol. Earth Syst. Sci.* **2016**, *20*, 1459–1481. [[CrossRef](#)]
33. Li, Z.-L.; Tang, R.; Wan, Z.; Bi, Y.; Zhou, C.; Tang, B.; Yan, G.; Zhang, X. A Review of Current Methodologies for Regional, Evapotranspiration Estimation from Remotely Sensed Data. *Sensors* **2009**, *9*, 3801–3853. [[CrossRef](#)] [[PubMed](#)]
34. Kalma, J.D.; McVicar, T.R.; McCabe, M.F. Estimating Land Surface Evaporation: A Review of Methods Using Remotely Sensed Surface Temperature Data. *Surv. Geophys.* **2008**, *29*, 421–469. [[CrossRef](#)]
35. Senay, G.B.; Leake, S.; Nagler, P.L.; Artan, G.; Dickinson, J.; Cordova, J.T.; Glenn, E.P. Estimating Basin Scale Evapotranspiration (ET) by Water Balance and Remote Sensing Methods. *Hydrol. Process.* **2011**, *25*, 4037–4049. [[CrossRef](#)]
36. Karimi, P.; Bastiaanssen, W.G.M. Spatial evapotranspiration, rainfall and land use data in water accounting—Part 1: Review of the accuracy of the remote sensing data. *Hydrol. Earth Syst. Sci.* **2015**, *19*, 507–532. [[CrossRef](#)]
37. Carlson, T.N.; Ripley, D.A. On the relation between NDVI, fractional vegetation cover, and leaf area index. *Remote Sens. Environ.* **1997**, *62*, 241–252. [[CrossRef](#)]
38. Droogers, P.; Bastiaanssen, W.G.M. Irrigation Performance using Hydrological and Remote Sensing Modeling. *J. Irrig. Drain Eng.* **2002**, *128*, 11–18. [[CrossRef](#)]
39. Schuurmans, J.M.; Troch, P.A.; Veldhuizen, A.A.; Bastiaanssen, W.G.M.; Bierkens, M.F.P. Assimilation of remotely sensed latent heat flux in a distributed hydrological model. *Adv. Water Resour.* **2003**, *26*, 151–159. [[CrossRef](#)]
40. Vazifedoust, M.; van Dam, J.C.; Feddes, R.A.; Feizi, M. Increasing water productivity of irrigated crops under limited water supply at field scale. *Agric. Water Manag.* **2008**, *95*, 89–102. [[CrossRef](#)]
41. Jhorar, R.K.; Smit, A.A.M.F.R.; Bastiaanssen, W.G.M.; Roest, C.W.J. Calibration of a distributed irrigation water management model using remotely sensed evapotranspiration rates and groundwater heads. *Irrig. Drain.* **2011**, *60*, 57–69. [[CrossRef](#)]
42. Githui, F.; Selle, B.; Thayalakumaran, T. Recharge estimation using remotely sensed evapotranspiration in an irrigated catchment in southeast Australia. *Hydrol. Process.* **2011**, *26*, 1379–1389. [[CrossRef](#)]
43. Immerzeel, W.W.; Droogers, P. Calibration of a distributed hydrological model based on satellite evapotranspiration. *J. Hydrol.* **2008**, *349*, 411–424. [[CrossRef](#)]
44. Immerzeel, W.W.; Gaur, A.; Zwart, S.J. Integrating remote sensing and a process-based hydrological model to evaluate water use and productivity in a south Indian catchment. *Agric. Water Manag.* **2007**, *95*, 11–24. [[CrossRef](#)]
45. Cheema, M.J.M.; Immerzeel, W.W.; Bastiaanssen, W.G.M. Spatial Quantification of Groundwater Abstraction in the Irrigated Indus Basin. *Ground Water* **2014**, *52*, 25–36. [[CrossRef](#)] [[PubMed](#)]
46. Sun, C.; Jiang, D.; Wang, J.; Zhu, Y. Validating remote sensing derived evapotranspiration with the soil and water assessment tool (SWAT) model: A case study in Zhelin Basin, China. *Afr. J. Agric. Res.* **2013**, *8*, 2090–2098. [[CrossRef](#)]
47. Sousa, A.M.L.; Vitorino, M.I.; Castro, N.M.R.; Botelho, M.N.; Souza, P.J.O.P. Evapotranspiration from Remote Sensing to Improve the SWAT Model in Eastern Amazonia. *Floresta Ambient.* **2015**, *22*, 456–464. [[CrossRef](#)]
48. Bréda, N.J.J. Ground-based measurements of leaf area index: A review of methods, instruments and current controversies. *J. Exp. Bot.* **2003**, *54*, 2403–2417. [[CrossRef](#)] [[PubMed](#)]
49. Van Griensven, A.; Maskey, S.; Stefanova, A. The use of satellite images for evaluating a SWAT model: Application on the Vit Basin, Bulgaria. In *International Environmental Modelling and Software Society (iEMSs) International Congress on Environmental Modelling and Software: Managing Resources of a Limited Planet: Pathways and Visions under Uncertainty, Sixth Biennial Meeting*; Seppelt, R., Voinov, A.A., Lange, S., Bankamp, D., Eds.; the International Environmental Modelling and Software Society (iEMSs): Leipzig, Germany, 2012; pp. 3030–3037. ISBN 978-88-9035-742-8.
50. Luu, T.N.M.; Garnier, J.; Billen, G.; Orange, D.; Néméry, J.; Le, T.P.Q.; Tran, H.T.; Le, L.A. Hydrological regime and water budget of the Red River Delta (Northern Vietnam). *J. Asian Earth Sci.* **2010**, *37*, 219–228. [[CrossRef](#)]
51. Le, T.P.Q.; Billen, G.; Garnier, J.; Théry, S.; Fézard, C.; Chau, V.M. Nutrient (N, P) budgets for the Red River basin (Vietnam and China). *Glob. Biogeochem. Cycles* **2005**, *19*, GB2022. [[CrossRef](#)]

52. Giuliani, M.; Anghileri, D.; Castelletti, A.; Vu, P.N.; Soncini-Sessa, R. Large storage operations under climate change: Expanding uncertainties and evolving tradeoffs. *Environ. Res. Lett.* **2016**, *11*, 035009. [[CrossRef](#)]
53. Neitsch, S.L.; Arnold, J.G.; Kiniry, J.R.; Williams, J.R. *Soil and Water Assessment Tool Theoretical Documentation Version 2009*; Texas Water Resources Institute: College Station, TX, USA, 2011.
54. Arnold, J.G.; Moriasi, D.N.; Gassman, P.W.; Abbaspour, K.C.; White, M.J.; Srinivasan, R.; Santhi, C.; Harmel, R.D.; Van Griensven, A.; Van Liew, M.W.; et al. SWAT: Model use, calibration, and validation. *Trans. ASABE* **2012**, *55*, 1491–1508. [[CrossRef](#)]
55. Cibir, R.; Sudheer, K.P.; Chaubey, I. Sensitivity and identifiability of stream flow generation parameters of the SWAT model. *Hydrol. Process.* **2010**, *24*, 1133–1148. [[CrossRef](#)]
56. Hargreaves, G.; Hargreaves, G.; Riley, J. Agricultural Benefits for Senegal River Basin. *J. Irrig. Drain Eng.* **1985**, *111*, 113–124. [[CrossRef](#)]
57. Priestley, C.H.B.; Taylor, R.J. On the assessment of surface heat flux and evaporation using large scale parameters. *Mon. Weather Rev.* **1972**, *100*, 81–92. [[CrossRef](#)]
58. Abbaspour, K.C.; van Genuchten, M.T.; Schulin, R.; Schlöppi, E. A sequential uncertainty domain inverse procedure for estimating subsurface flow and transport parameters. *Water Resour. Res.* **1997**, *33*, 1879–1892. [[CrossRef](#)]
59. Strauch, M.; Volk, M. SWAT plant growth modification for improved modeling of perennial vegetation in the tropics. *Ecol. Model.* **2013**, *269*, 98–112. [[CrossRef](#)]
60. Arino, O.; Bicheron, P.; Achard, F.; Latham, J.; Witt, R.; Weber, J.-L. GLOBCOVER the most detailed portrait of Earth. *ESA Bull.* **2008**, *136*, 24–31.
61. Hengl, T.; de Jesus, J.M.; MacMillan, R.A.; Batjes, N.H.; Heuvelink, G.B.M.; Ribeiro, E.; Samuel-Rosa, A.; Kempen, B.; Leenaars, J.G.B.; Walsh, M.G.; et al. SoilGrids1km—Global Soil Information Based on Automated Mapping. *PLoS ONE* **2014**, *9*, e105992. [[CrossRef](#)] [[PubMed](#)]
62. Food and Agricultural Organization (FAO). *The Digital Soil Map of the World and Derived Soil Properties [CD-ROM]*; Version 3.5; Food and Agricultural Organization: Rome, Italy, 1995.
63. Meng, J.; Li, L.; Hao, Z.; Wang, J.; Shao, Q. Suitability of TRMM satellite rainfall in driving a distributed hydrological model in the source region of yellow river. *J. Hydrol.* **2014**, *509*, 320–332. [[CrossRef](#)]
64. Li, Z.; Yang, D.; Gao, B.; Jiao, Y.; Hong, Y.; Xu, T. Multi-scale Hydrologic Applications of the Latest Satellite Precipitation Products in the Yangtze River Basin using a Distributed Hydrologic Model. *J. Hydr.* **2015**, *16*, 407–426. [[CrossRef](#)]
65. Pena-Arancibia, J.L.; van Dijk, A.I.J.M.; Renzullo, L.J.; Mulligan, M. Evaluation of Precipitation Estimation Accuracy in Reanalyses, Satellite Products, and an Ensemble Method for Regions in Australia and South and East Asia. *J. Hydrometeorol.* **2013**, *14*, 1323–1333. [[CrossRef](#)]
66. Funk, C.C.; Peterson, P.J.; Landsfeld, M.F.; Pedreros, D.H.; Verdin, J.P.; Rowland, J.D.; Romero, B.E.; Husak, G.J.; Michaelsen, J.C.; Verdin, A.P. *A Quasi-Global Precipitation Time Series for Drought Monitoring*; Data Series 832; U.S. Geological Survey: Reston, VA, USA, 2014; p. 4.
67. Toté, C.; Patricio, D.; Boogaard, H.L.; van der Wijngaart, R.; Tarnavsky, E.; Funk, C. Evaluation of Satellite Rainfall Estimates for Drought and Flood Monitoring in Mozambique. *Remote Sens.* **2015**, *7*, 1758–1776. [[CrossRef](#)]
68. Rodell, M.; Houser, P.R.; Jambor, U.; Gottschalck, J.; Mitchell, K.; Meng, C.-J.; Arsenault, K.; Cosgrove, B.; Radakovich, J.; Bosilovich, M.; et al. The Global Land Data Assimilation System. *Bull. Am. Met. Soc.* **2004**, *85*, 381–394. [[CrossRef](#)]
69. Mu, Q.Z.; Heinsch, F.A.; Zhao, M.; Running, S.W. Development of a global evapotranspiration algorithm based on MODIS and global meteorology data. *Remote Sens. Environ.* **2007**, *111*, 519–536. [[CrossRef](#)]
70. Hu, G.; Jia, L.; Menenti, M. Comparison of MOD16 and LSA-SAF MSG evapotranspiration products over Europe for 2011. *Remote Sens. Environ.* **2015**, *156*, 510–526. [[CrossRef](#)]
71. Ramoelo, A.; Majazi, N.; Mathieu, R.; Jovanovic, N.; Nickless, A.; Dziki, S. Validation of Global Evapotranspiration Product (MOD16) using Flux Tower Data in the African Savanna, South Africa. *Remote Sens.* **2014**, *6*, 7406–7423. [[CrossRef](#)]
72. Trambauer, P.; Dutra, E.; Maskey, S.; Werner, M.; Pappenberger, F.; van Beek, L.P.H.; Uhlenbrook, S. Comparison of different evaporation estimates over the African continent. *Hydrol. Earth Syst. Sci.* **2014**, *18*, 193–212. [[CrossRef](#)]

73. Knipper, K.R.; Kinoshita, A.M.; Hogue, T.S. Evaluation of a moderate resolution imaging spectroradiometer triangle-based algorithm for evapotranspiration estimates in subalpine regions. *J. Appl. Remote Sens.* **2016**, *10*, 016002. [[CrossRef](#)]
74. Su, Z. The Surface Energy Balance System (SEBS) for estimation of turbulent heat fluxes. *Hydrol. Earth Syst. Sci.* **2002**, *6*, 85–100. [[CrossRef](#)]
75. Chen, X.; Su, Z.; Ma, Y.; Yang, K.; Wen, J.; Zhang, Y. An Improvement of Roughness Height Parameterization of the Surface Energy Balance System (SEBS) over the Tibetan Plateau. *J. Appl. Meteorol. Climatol.* **2013**, *52*, 607–622. [[CrossRef](#)]
76. Guerschman, J.P.; van Dijk, A.I.J.M.; Mattersdorf, G.; Beringer, J.; Hutley, L.B.; Leuning, R.; Pipunic, R.C.; Sherman, B.S. Scaling of potential evapotranspiration with MODIS data reproduces flux observations and catchment water balance observations across Australia. *J. Hydrol.* **2009**, *369*, 107–119. [[CrossRef](#)]
77. Priestley, C.H.B.; Taylor, R.J. On the assessment of surface heat flux and evaporation using large scale parameters. *Mon. Weather Rev.* **1972**, *100*, 81–92. [[CrossRef](#)]
78. Senay, G.B.; Budde, M.; Verdin, J.P.; Melesse, A.M. A coupled remote sensing and simplified surface energy balance approach to estimate actual evapotranspiration from irrigated fields. *Sensors* **2007**, *7*, 979–1000. [[CrossRef](#)]
79. Senay, G.B.; Bohms, S.; Singh, R.K.; Gowda, P.H.; Velpuri, N.M.; Alemu, H.; Verdin, J. Operational evapotranspiration modeling using remote sensing and weather datasets: A new parameterization for the SSEB ET approach. *J. Am. Water Resour. Assoc.* **2013**, *49*, 577–591. [[CrossRef](#)]
80. Kim, H.W.; Hwang, K.; Mu, Q.; Lee, O.S.; Choi, M. Validation of MODIS 16 global terrestrial evapotranspiration products in various climates and land cover types in Asia. *KSCE J. Civil. Eng.* **2012**, *16*, 229–238. [[CrossRef](#)]
81. Westerhoff, R.S. Using Uncertainty of Penman and Penman–Monteith Methods in Combined Satellite and Ground-Based Evapotranspiration Estimates. *Remote Sens. Environ.* **2015**, *169*, 102–112. [[CrossRef](#)]
82. Bastiaanssen, W.G.M.; Allen, R.G.; Pelgrum, H.; de C. Teixeira, A.H.; Soppe, R.W.O.; Thoreson, B.P. Thermal-infrared technology for local and regional scale irrigation analyses in horticultural systems. *Acta Hortic.* **2008**, *792*, 33–46. [[CrossRef](#)]
83. Ferguson, C.R.; Sheffield, J.; Wood, E.F.; Gao, H. Quantifying uncertainty in a remote sensing-based estimate of evapotranspiration over continental USA. *Int. J. Remote Sens.* **2010**, *31*, 3821–3865. [[CrossRef](#)]
84. Bastiaanssen, W.G.M.; Hoekman, D.H.; Roebeling, R.A. A methodology for the assessment of surface resistance and soil water storage variability at mesoscale based on remote sensing measurements. In *IAHS Special Publications*; No. 2; IAHS Press, Institute of Hydrology: Wallingford, UK, 1993; p. 63.
85. Allen, R.G.; Pereira, L.S.; Raes, D.; Smith, M. *Crop Evapotranspiration: Guidelines for Computing Crop Water Requirements*; FAO Irrigation and Drainage Paper No. 56; FAO: Rome, Italy, 1998; p. 300.
86. Mohan, S.; Arumugam, N. Irrigation crop coefficients for lowland rice. *Irrig. Drain. Syst.* **1994**, *8*, 159–176. [[CrossRef](#)]
87. Vu, H.S.; Watanabe, H.; Takagi, K. Application of FAO-56 for evaluating evapotranspiration in simulation of pollutant runoff from paddy rice field in Japan. *Agric. Water Manag.* **2005**, *76*, 195–210. [[CrossRef](#)]
88. Tyagi, N.K.; Sharma, D.K.; Luthra, S.K. Determination of evapotranspiration and crop coefficients of rice and sunflower with lysimeter. *Agric. Water Manag.* **2000**, *45*, 41–54. [[CrossRef](#)]
89. Abdullahi, A.S.; Soom, M.A.M.; Ahmad, D.; Shariff, A.R.M. Characterization of rice (*Oryza Sativa*) evapotranspiration using micro paddy lysimeter and class “A” pan in tropical environments, Australian. *J. Crop Sci.* **2013**, *7*, 650–680.
90. Stisen, S.; Jensen, K.H.; Sandholt, I.; Grimes, D.I. A remote sensing driven distributed hydrological model of the Senegal River basin: A remote sensing-driven model. *J. Hydrol.* **2008**, *354*, 131–148. [[CrossRef](#)]

