



COMPLEX PROJECTS
BERLINER L-BAHN

P4 Book

Thomas Brandt

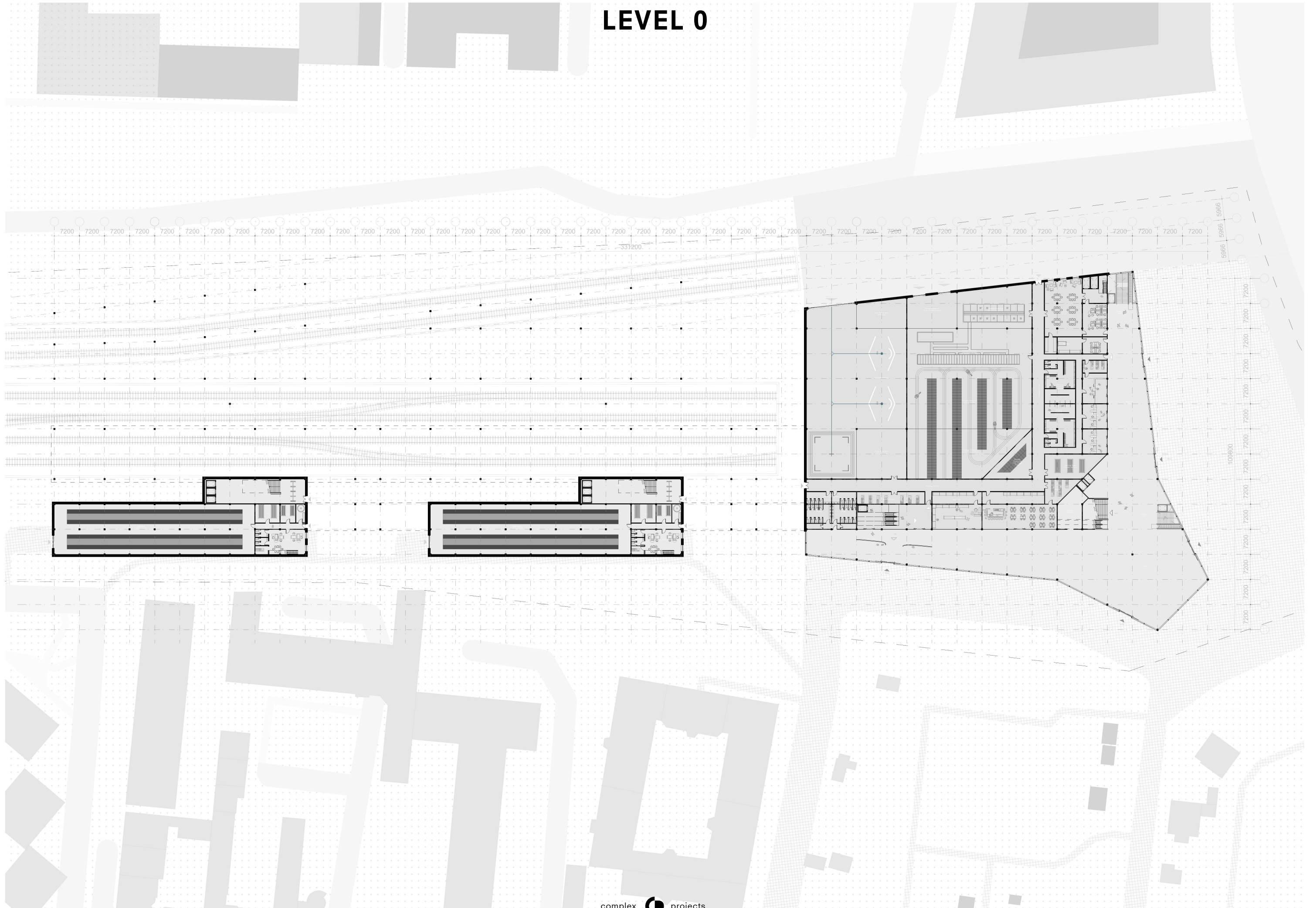
May 28th, 2024

PLANS

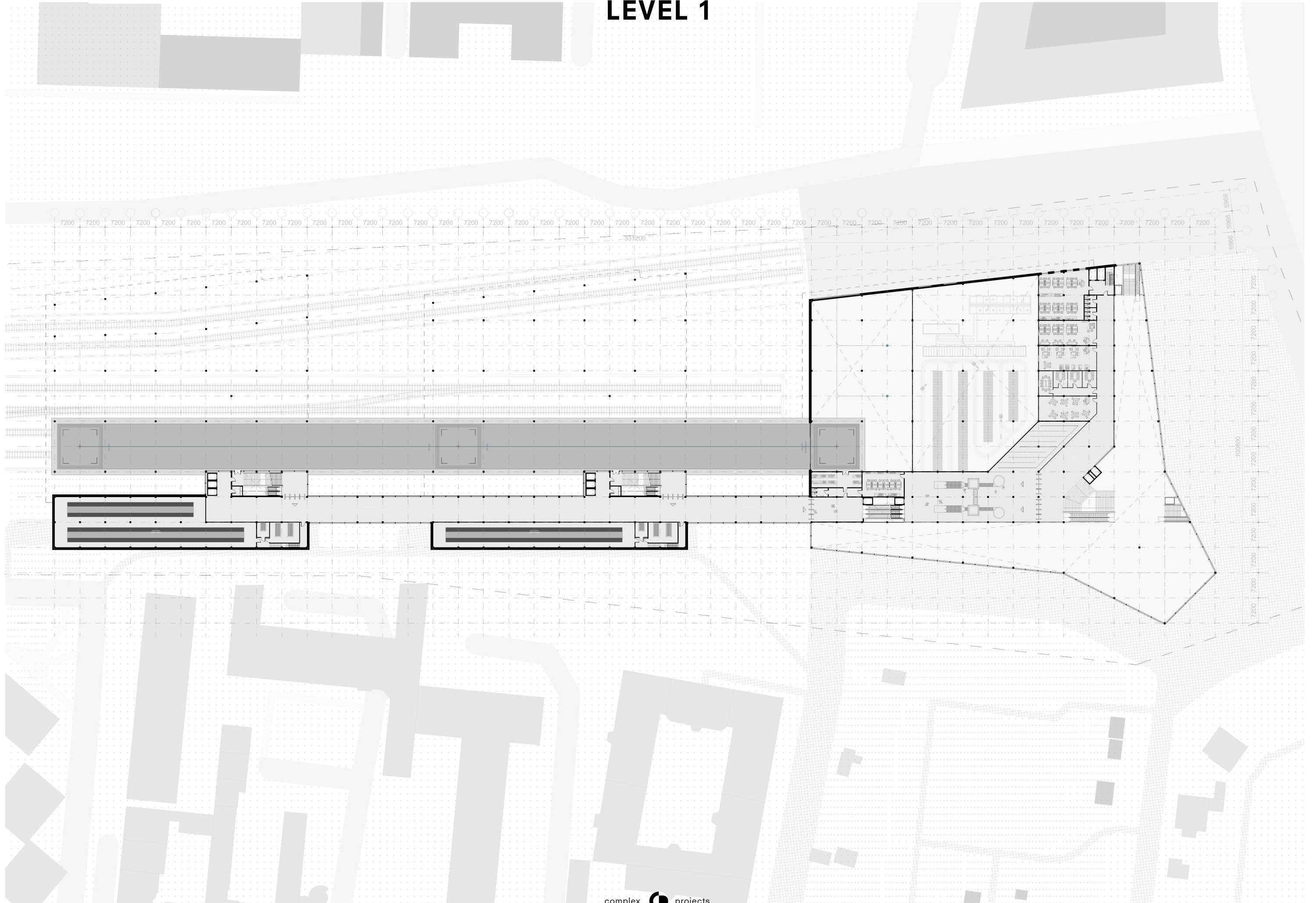
SITUATION



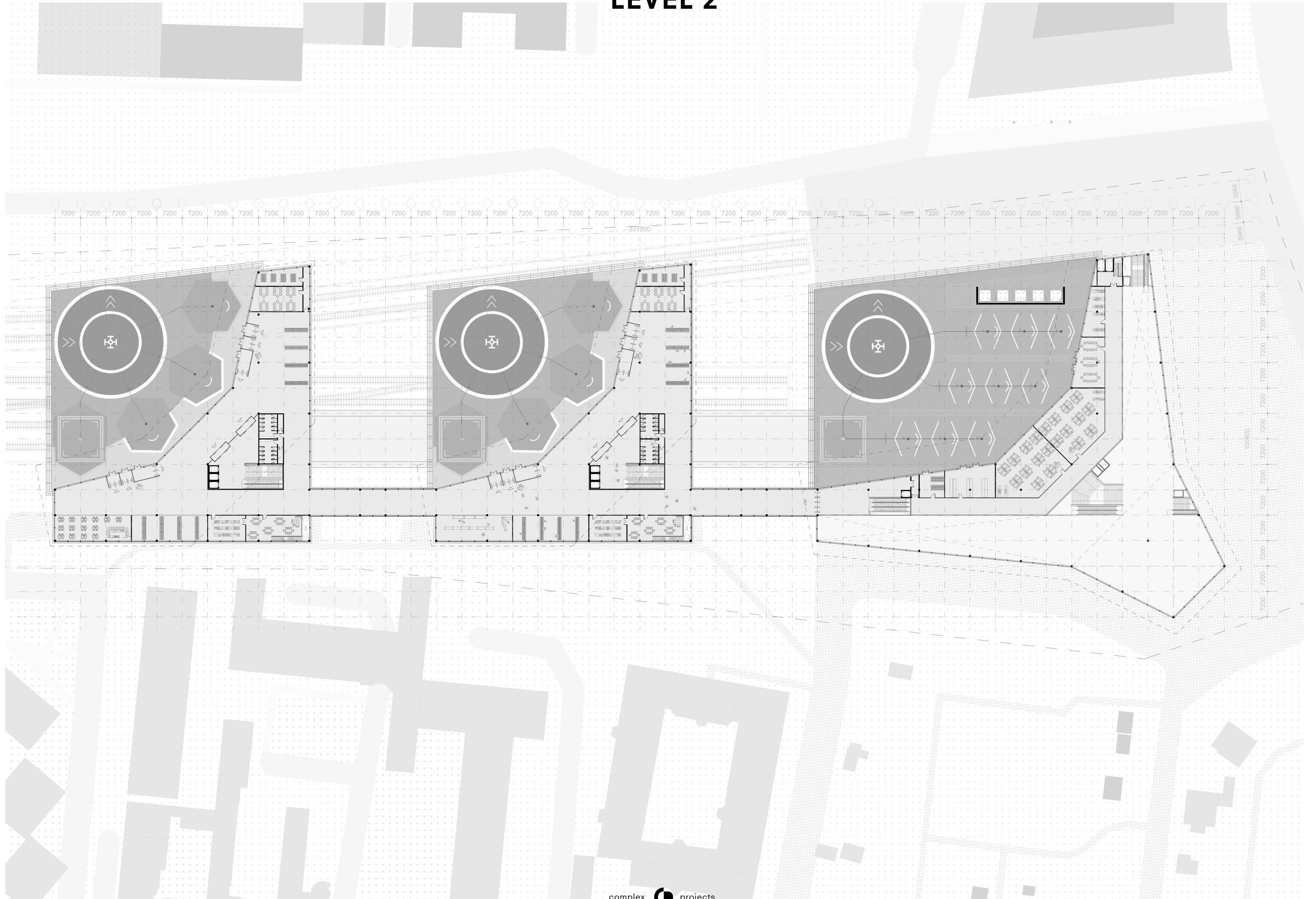
Full
LEVEL 0



Full
LEVEL 1

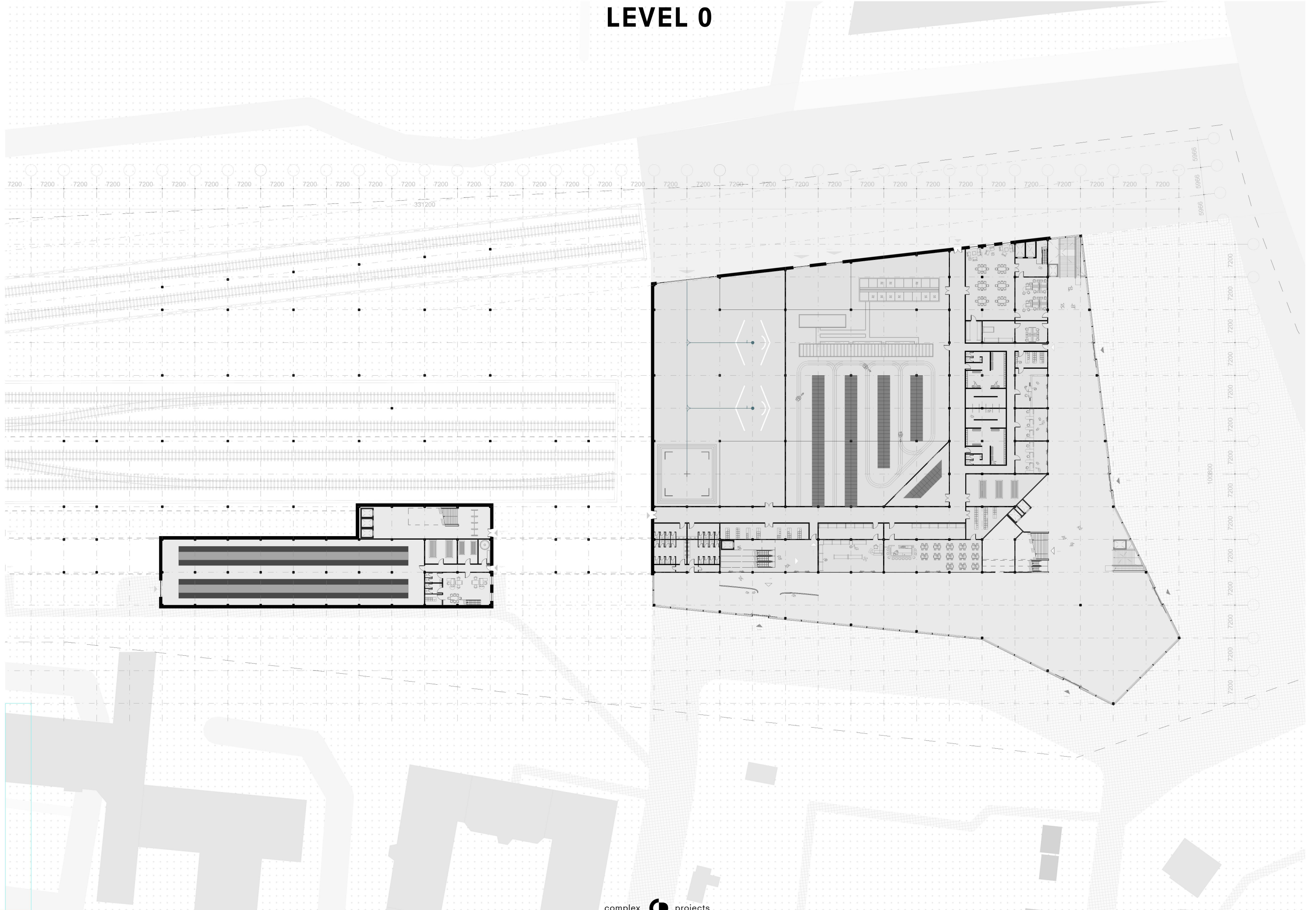


Full
LEVEL 2

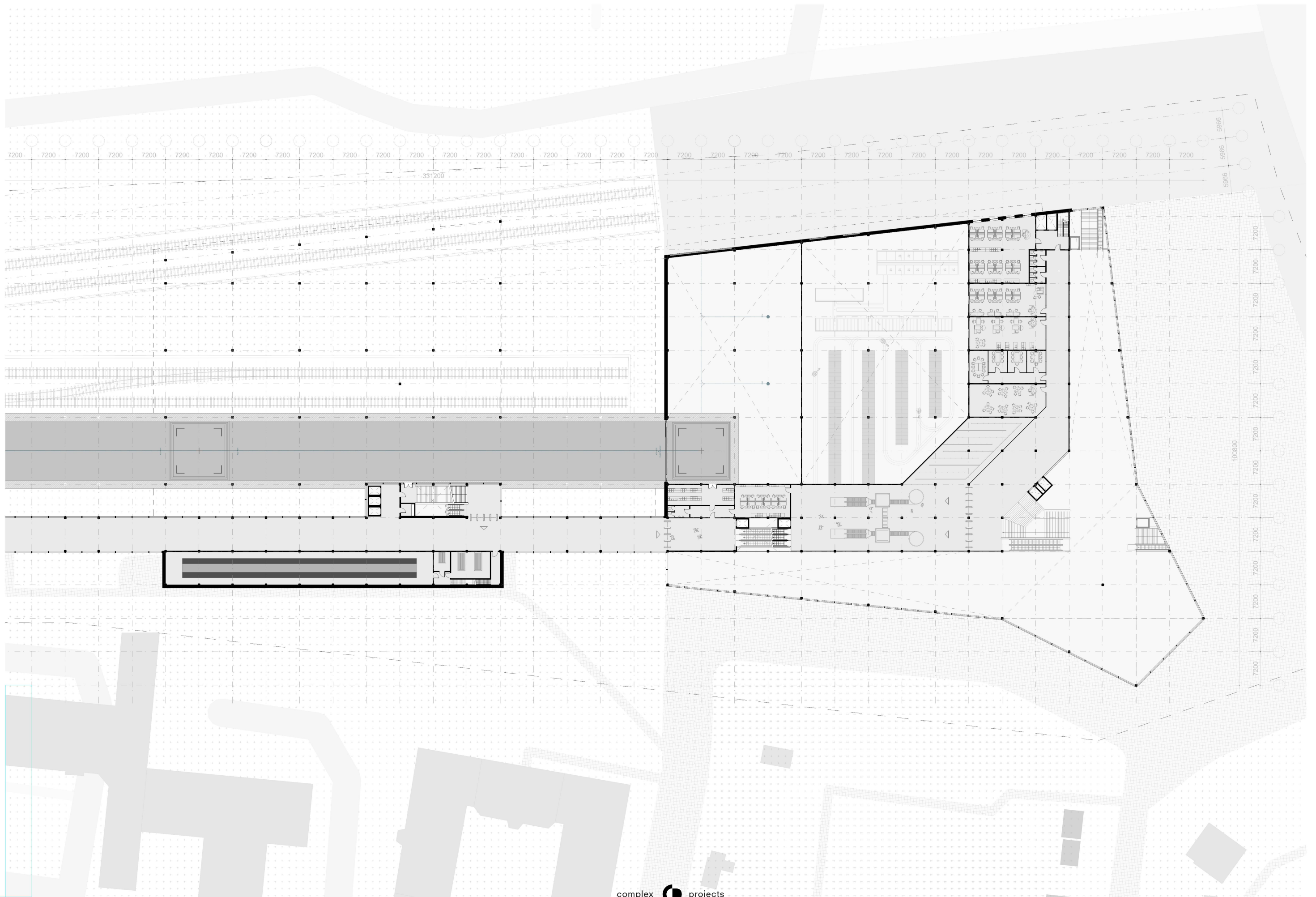


Main + Satellite

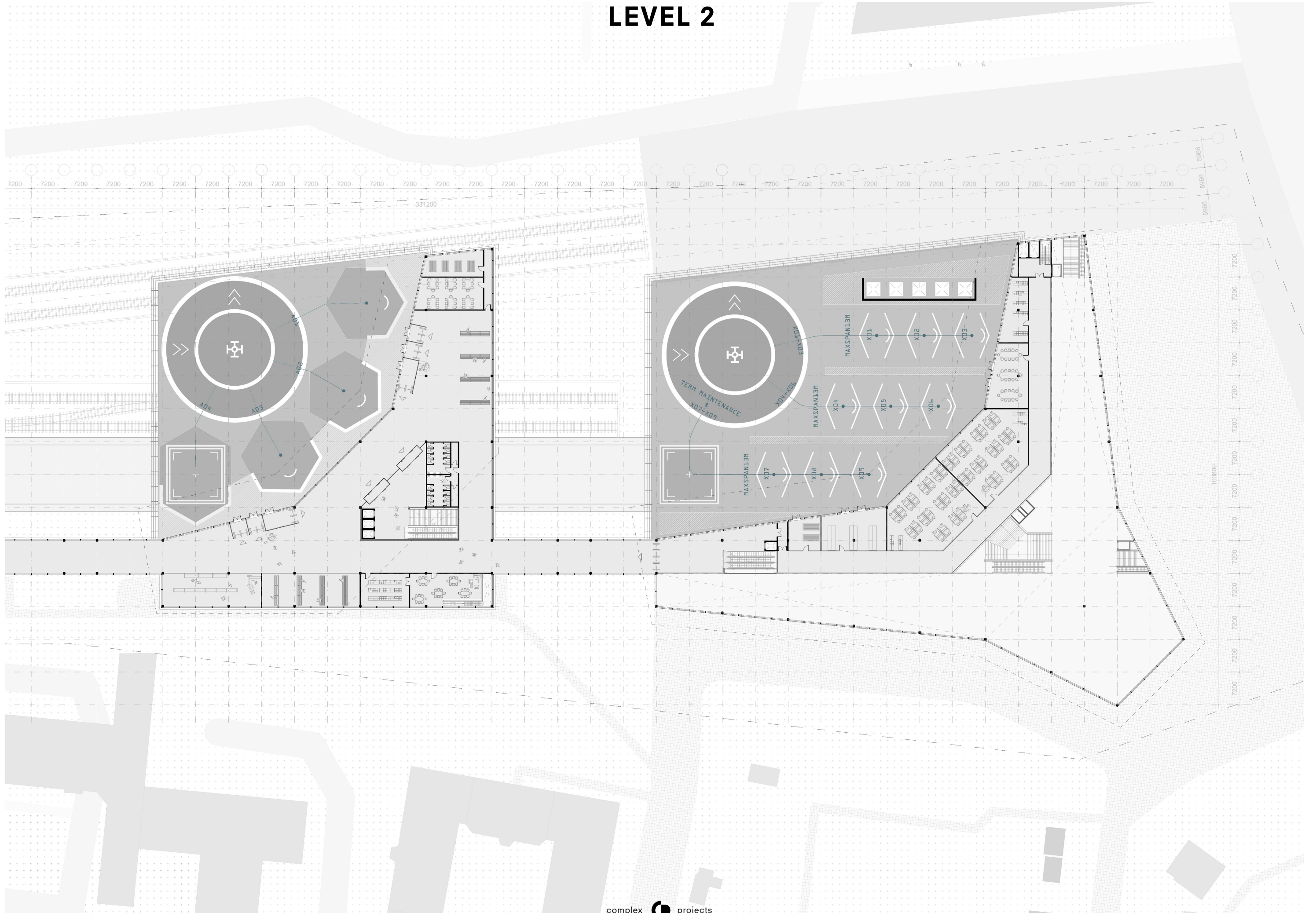
LEVEL 0



Main + Satellite
LEVEL 1

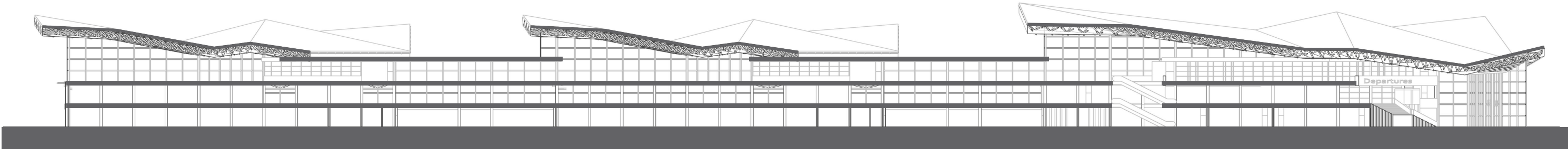


LEVEL 2

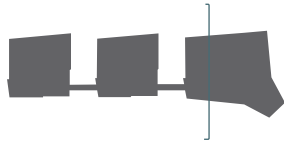
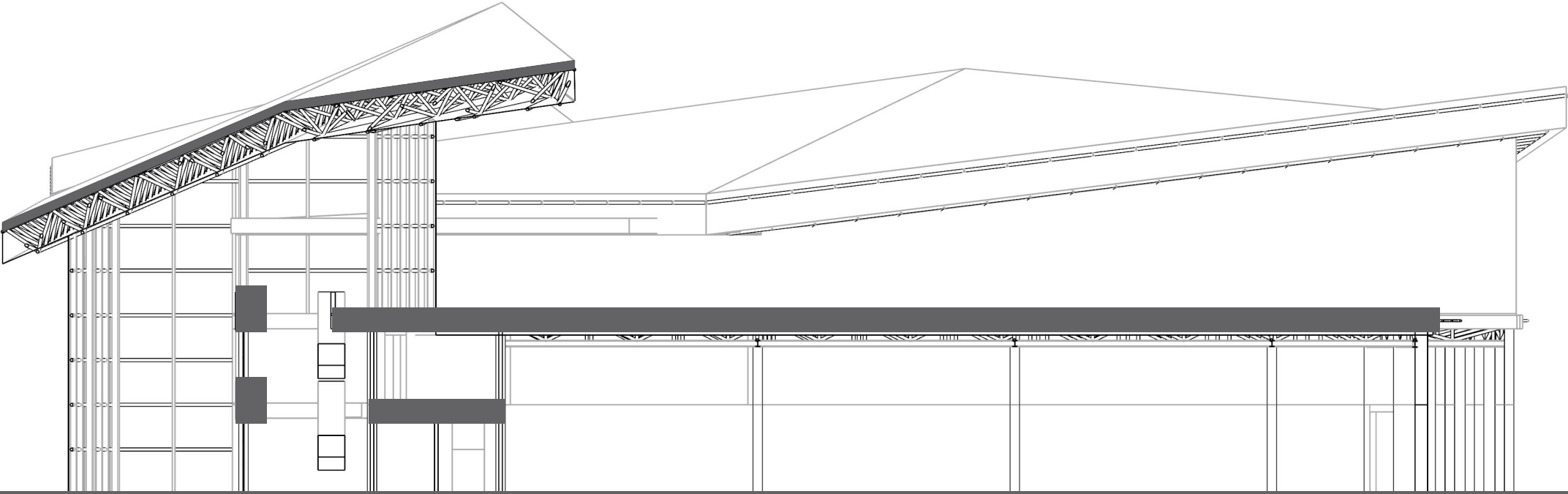


SECTIONS

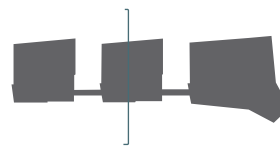
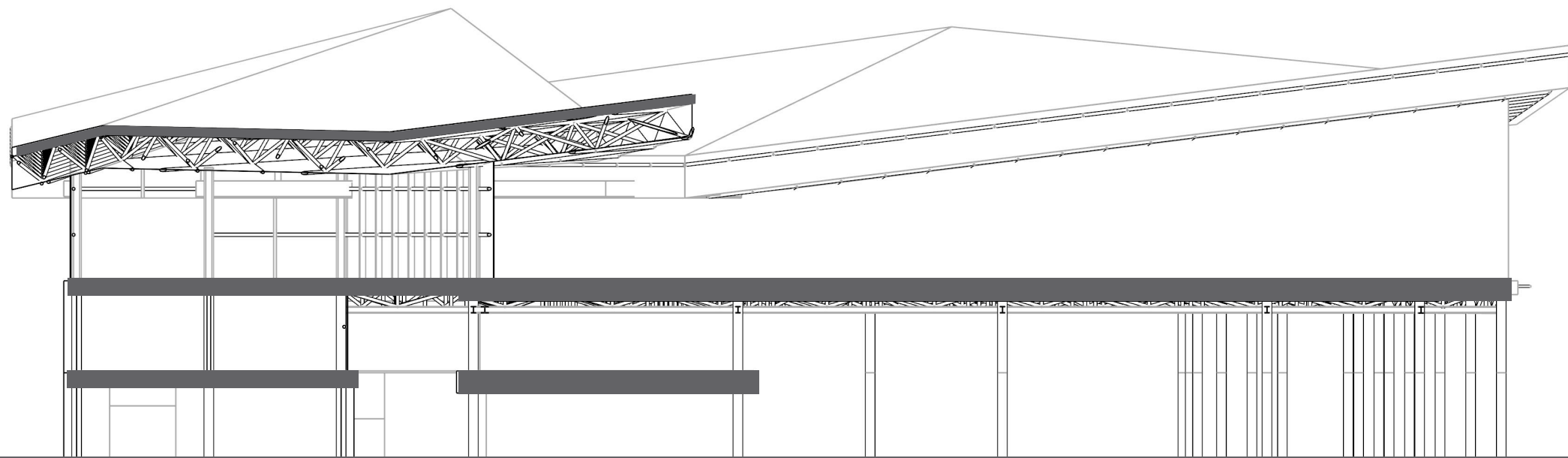
SECTION 1



SECTION 2

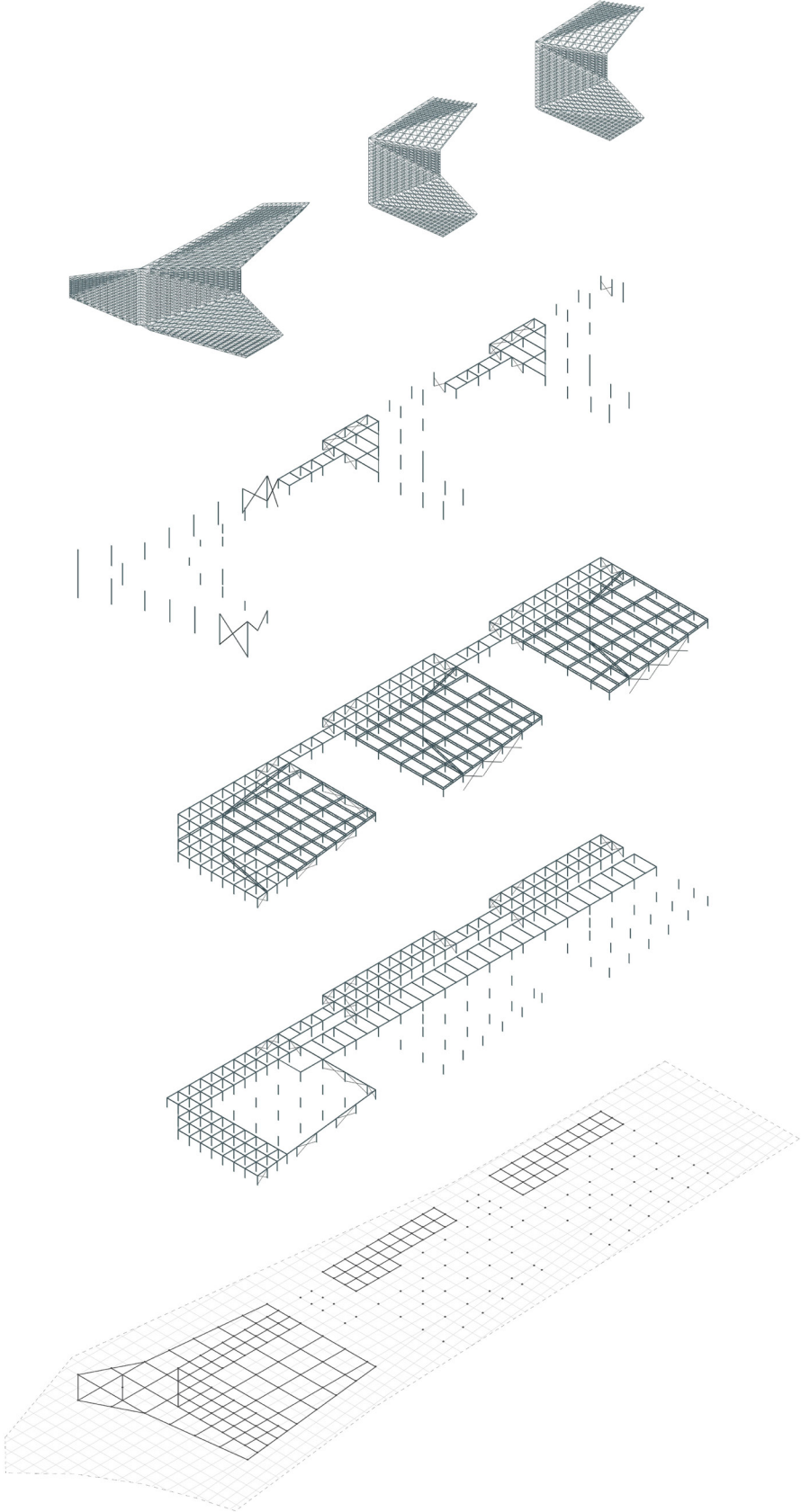
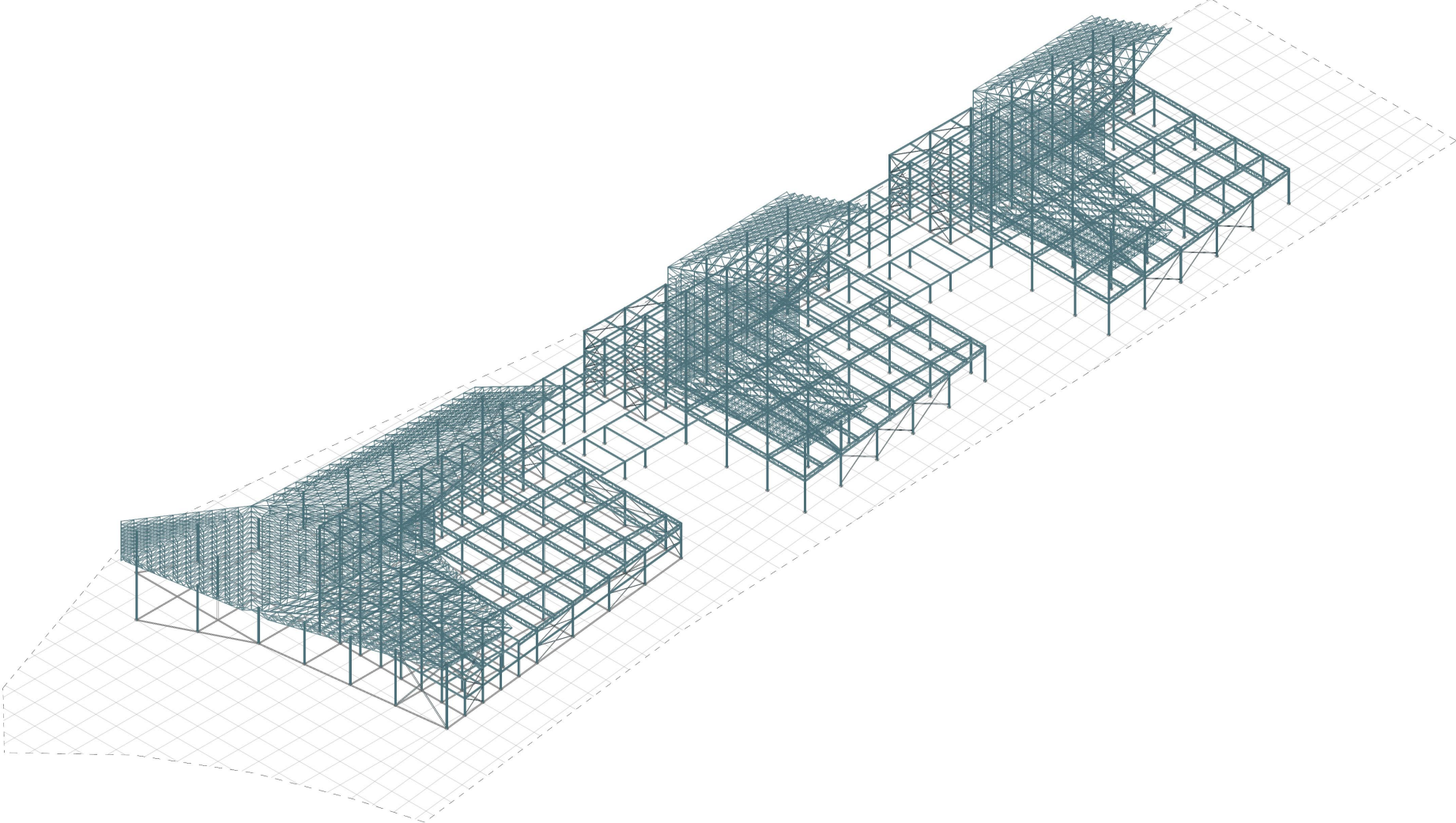


SHORT SECTION 3

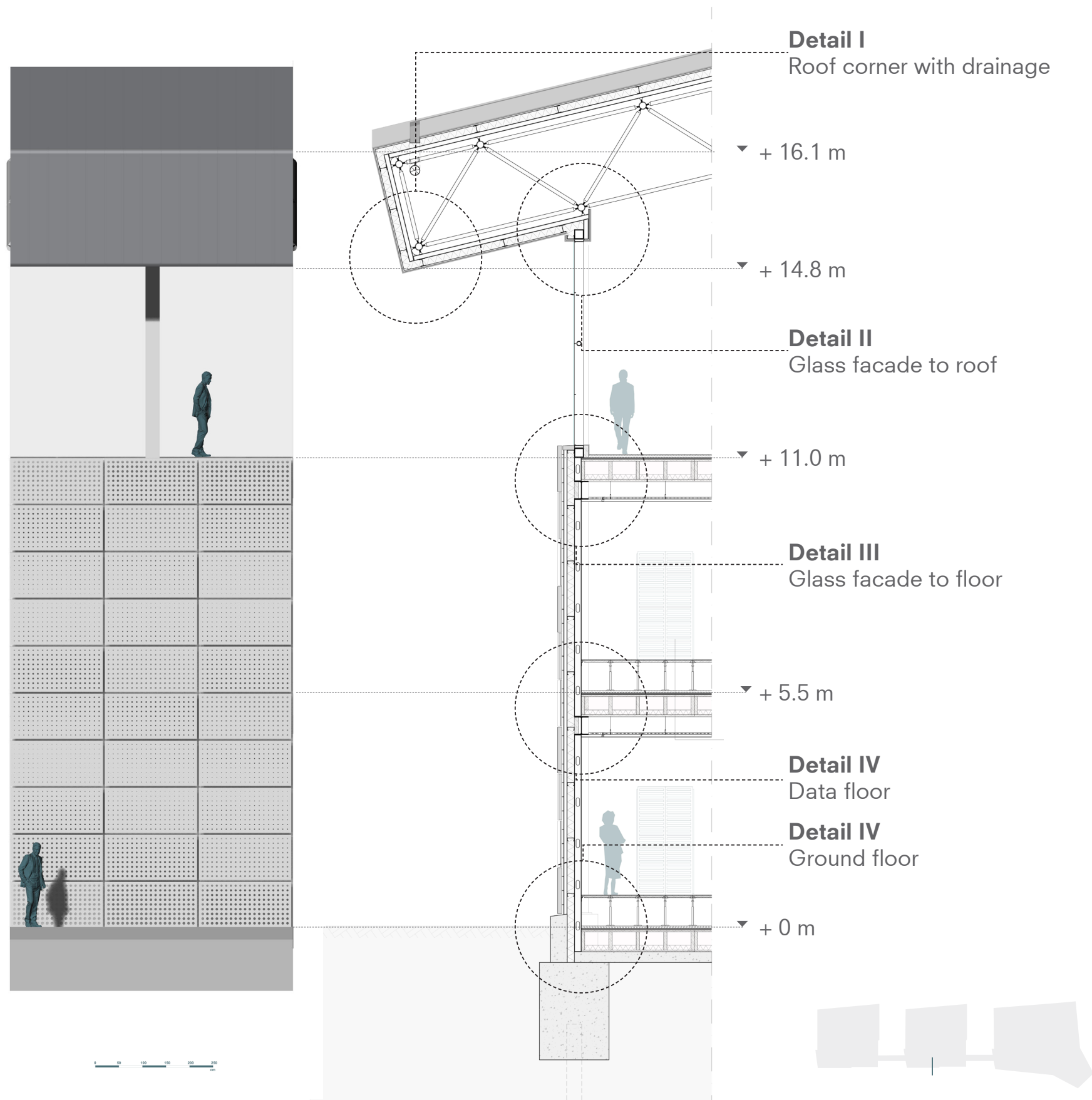
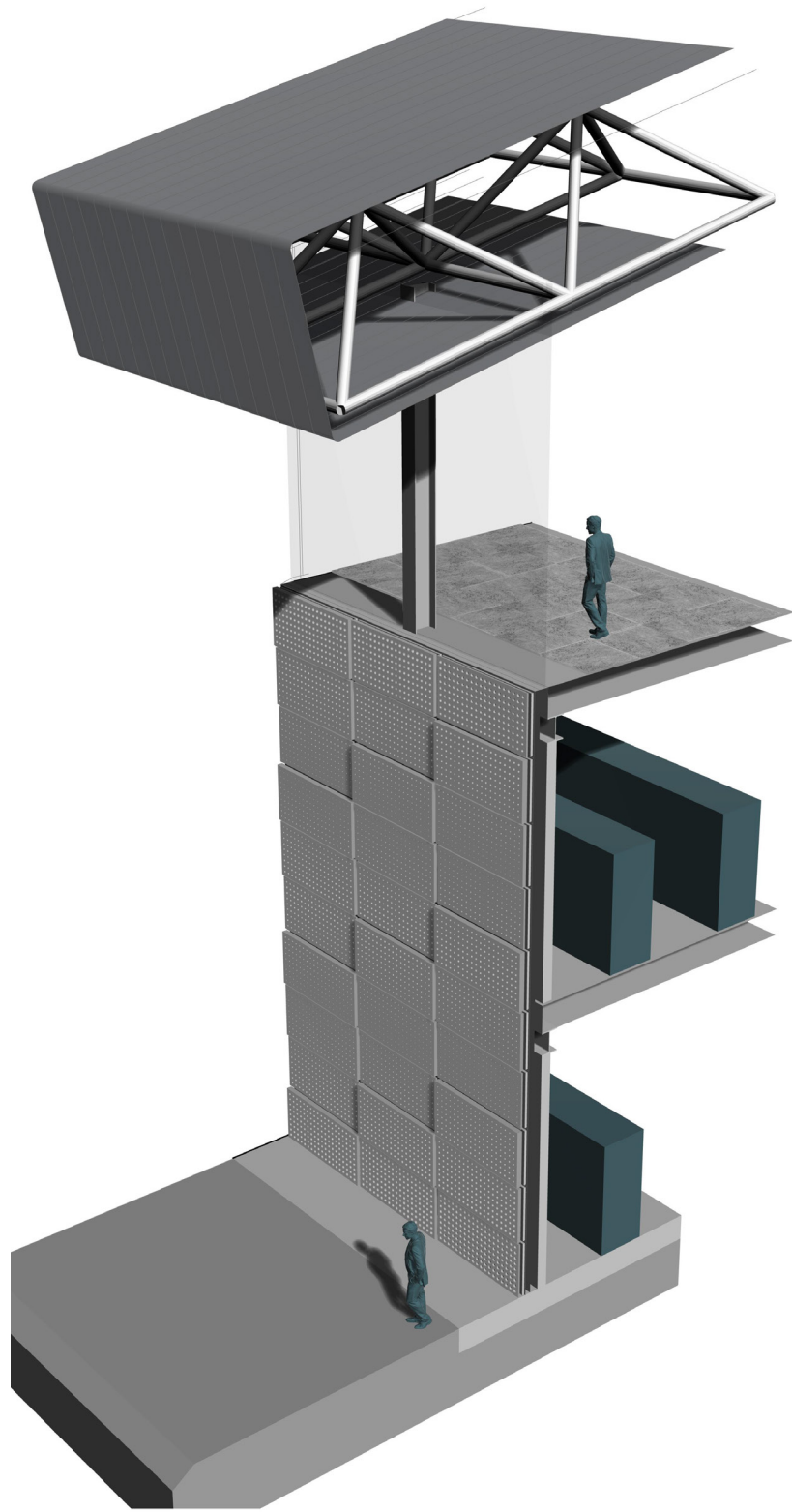


CONSTRUCTION

STRUCTURE AXONOMETRY



FACADE SECTION



Detail I
Roof corner with drainage

▼ + 16.1 m

▼ + 14.8 m

Detail II
Glass facade to roof

▼ + 11.0 m

Detail III
Glass facade to floor

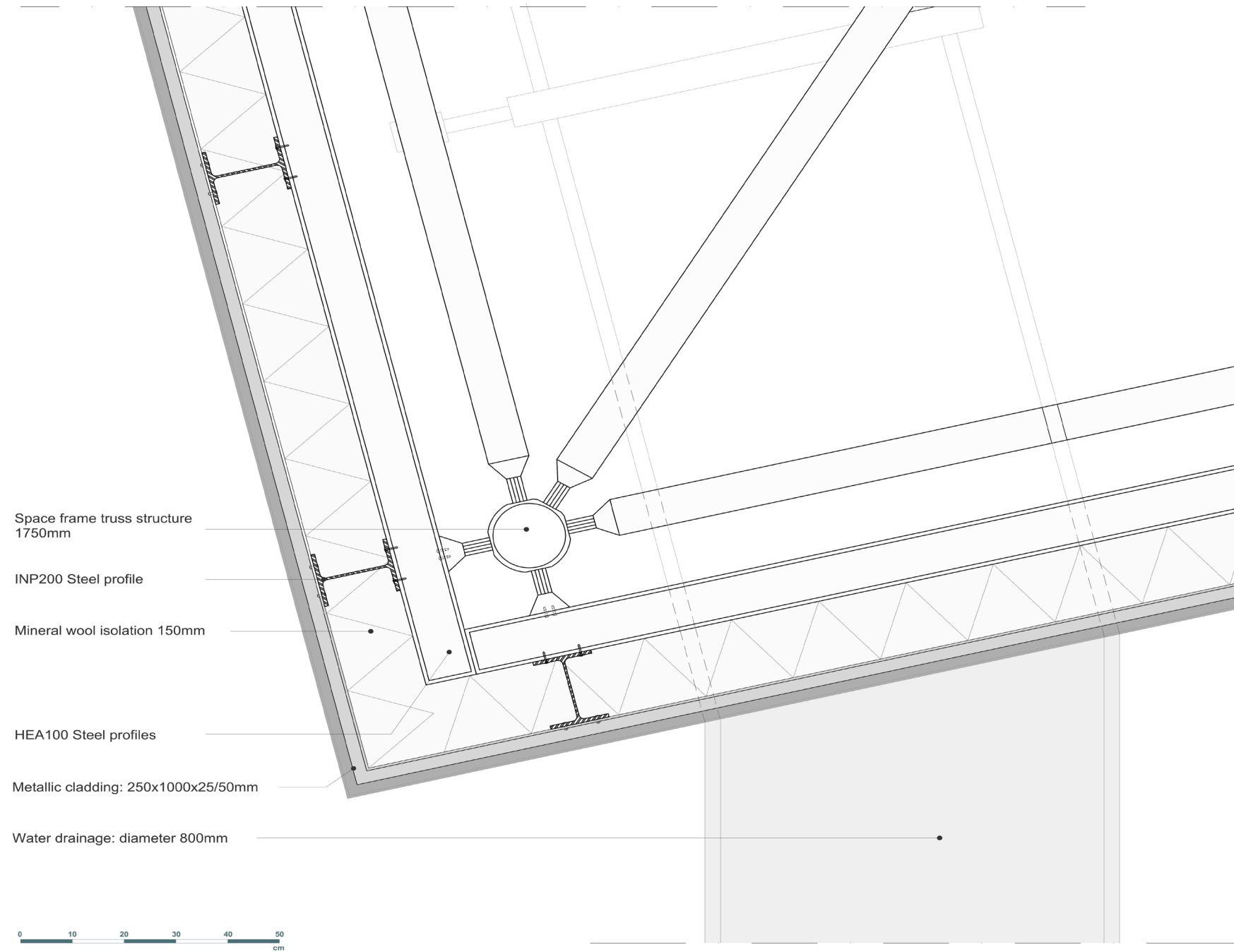
▼ + 5.5 m

Detail IV
Data floor

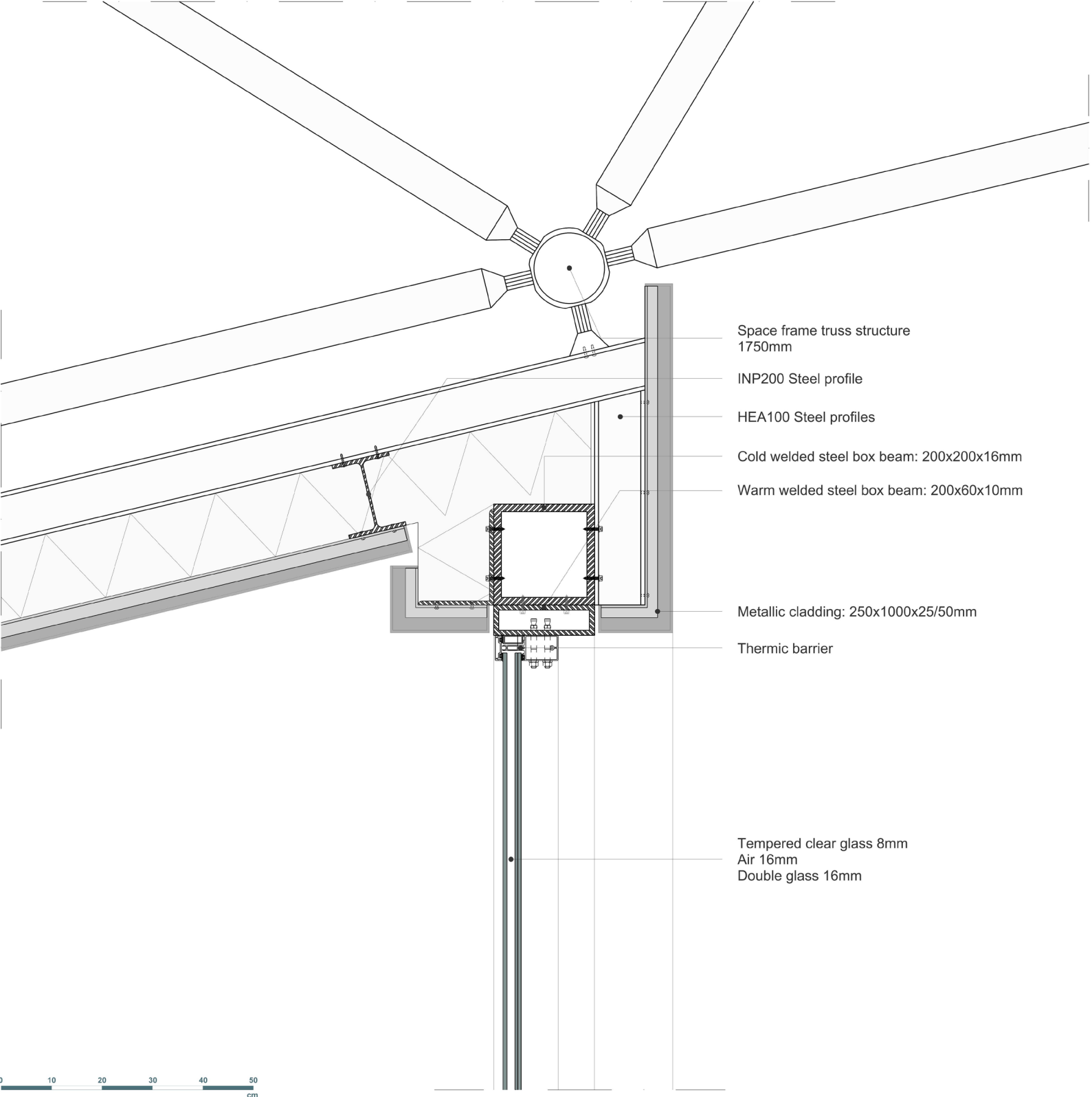
Detail IV
Ground floor

▼ + 0 m

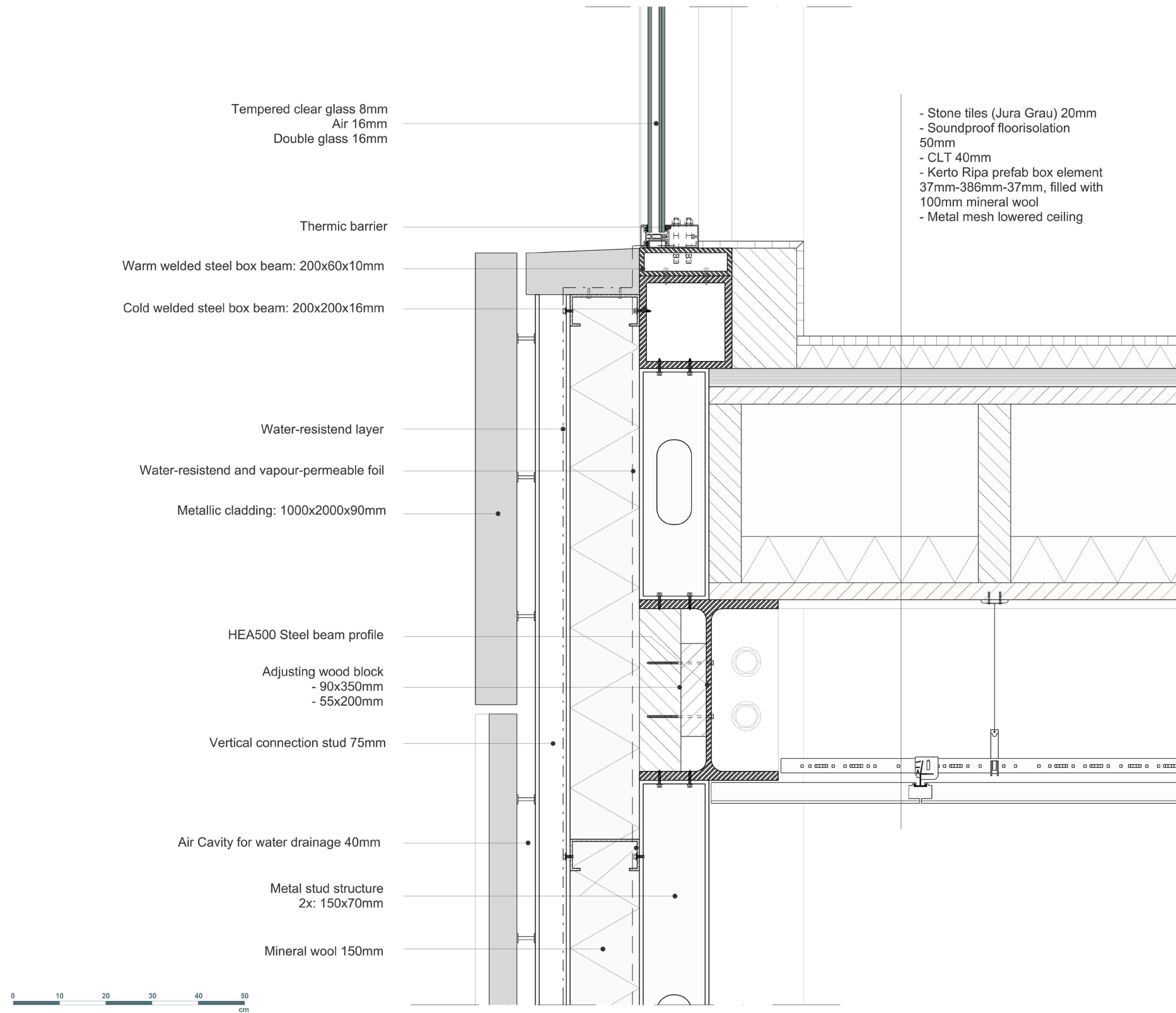
DETAIL I

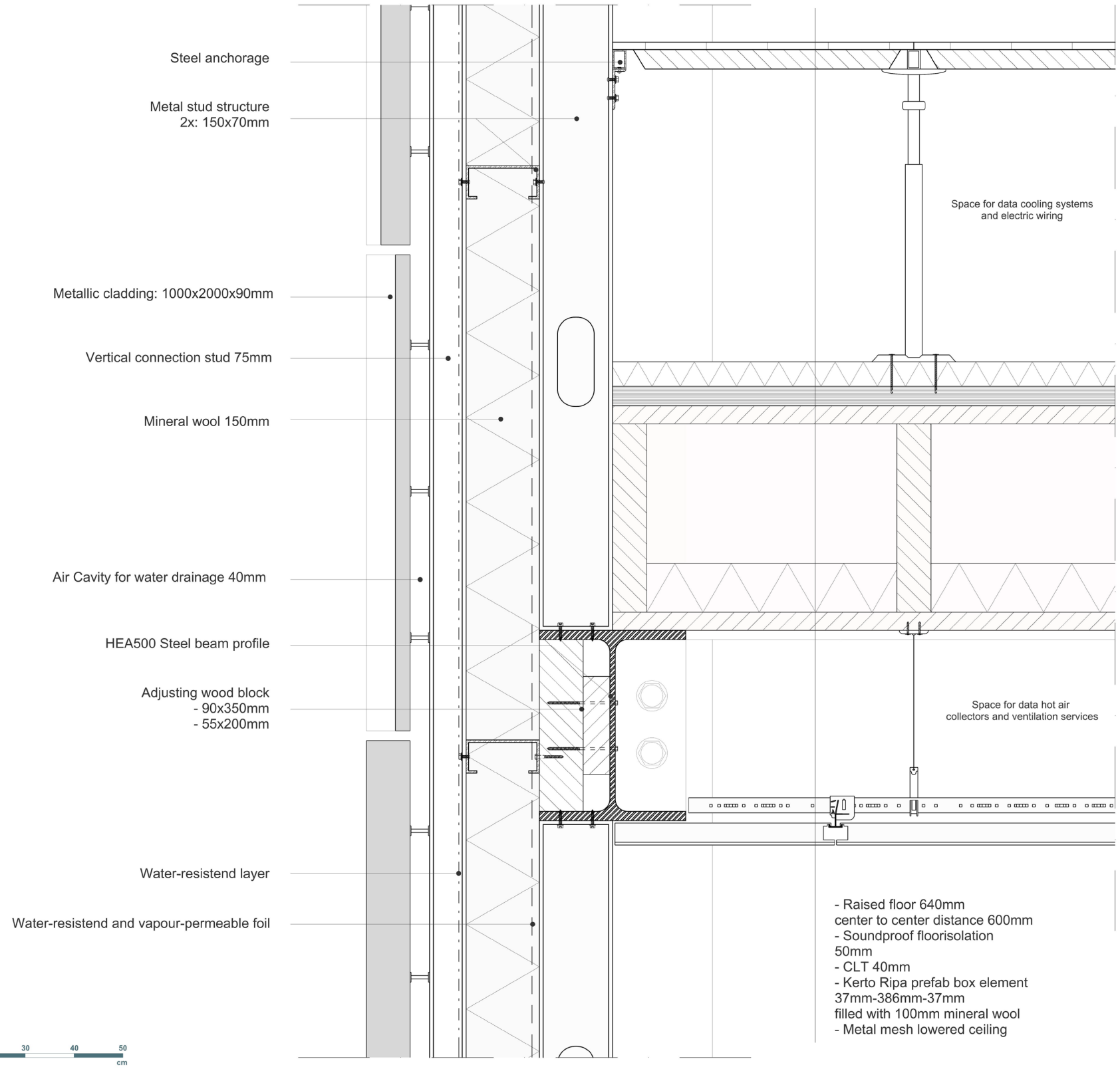


DETAIL II



DETAIL III





Steel anchorage

Metal stud structure
2x: 150x70mm

Metallic cladding: 1000x2000x90mm

Vertical connection stud 75mm

Mineral wool 150mm

Air Cavity for water drainage 40mm

HEA500 Steel beam profile

Adjusting wood block
- 90x350mm
- 55x200mm

Water-resistend layer

Water-resistend and vapour-permeable foil

Space for data cooling systems
and electric wiring

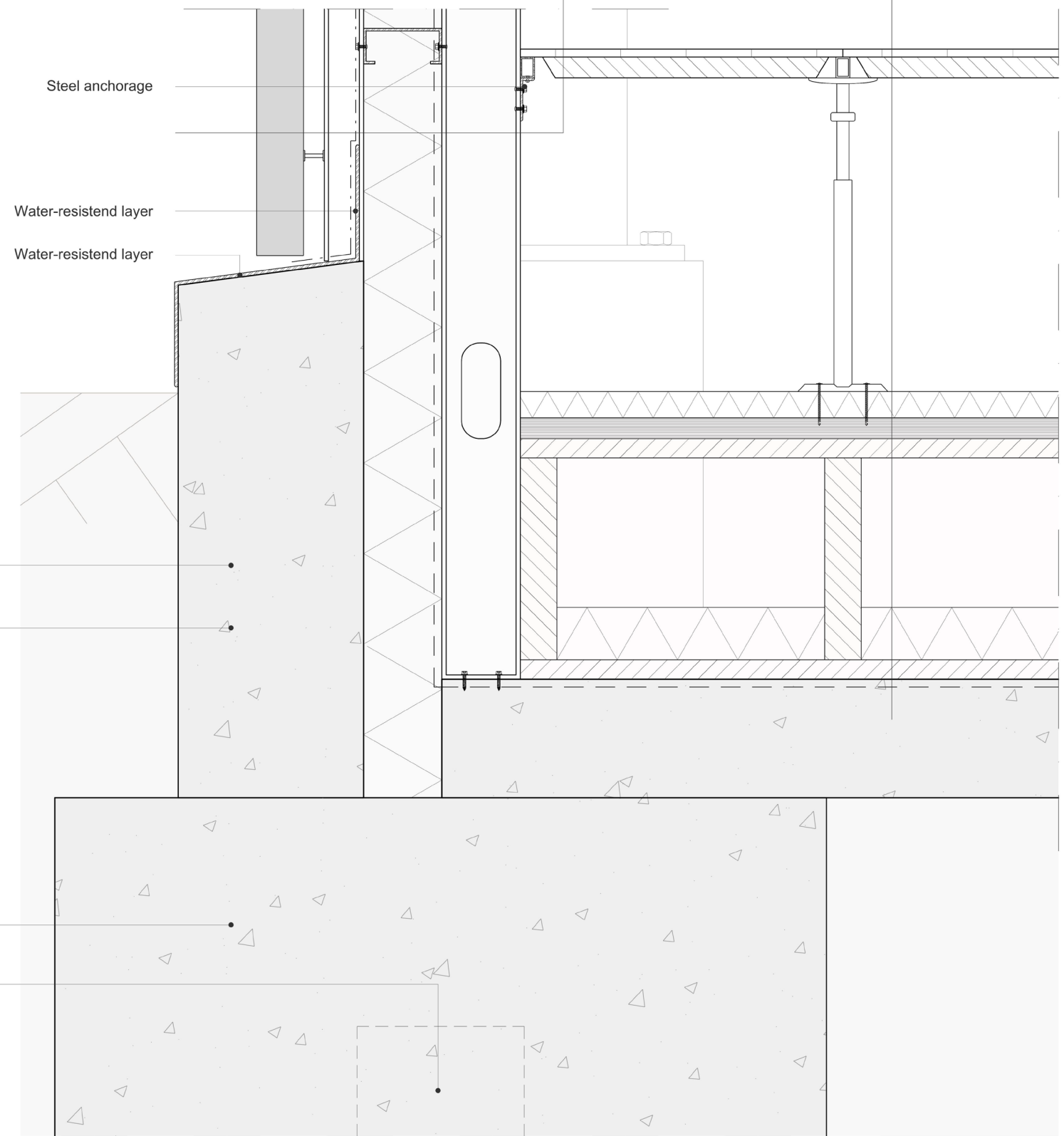
Space for data hot air
collectors and ventilation services

- Raised floor 640mm
center to center distance 600mm
- Soundproof floorisolation
50mm
- CLT 40mm
- Kerto Ripa prefab box element
37mm-386mm-37mm
filled with 100mm mineral wool
- Metal mesh lowered ceiling



- Metallic cladding: 1000x2000x90mm
- Air cavity for water drainage and ventilation
- Vertical connection stud 75mm
- Mineral wool 150mm
- Metal stud structure 150x70mm

- Raised floor 640mm center to center distance 600mm
- Soundproof floorisolation 50mm
- CLT 40mm
- Kerto Ripa prefab box element 37mm-386mm-37mm filled with 100mm mineral wool



Steel anchorage

Water-resistend layer

Water-resistend layer

Poured concrete foundation 350-1000mm

Water-resistend and vapour-permeable foil

Poured concrete base 230mm

Foundation pole >4000m deep

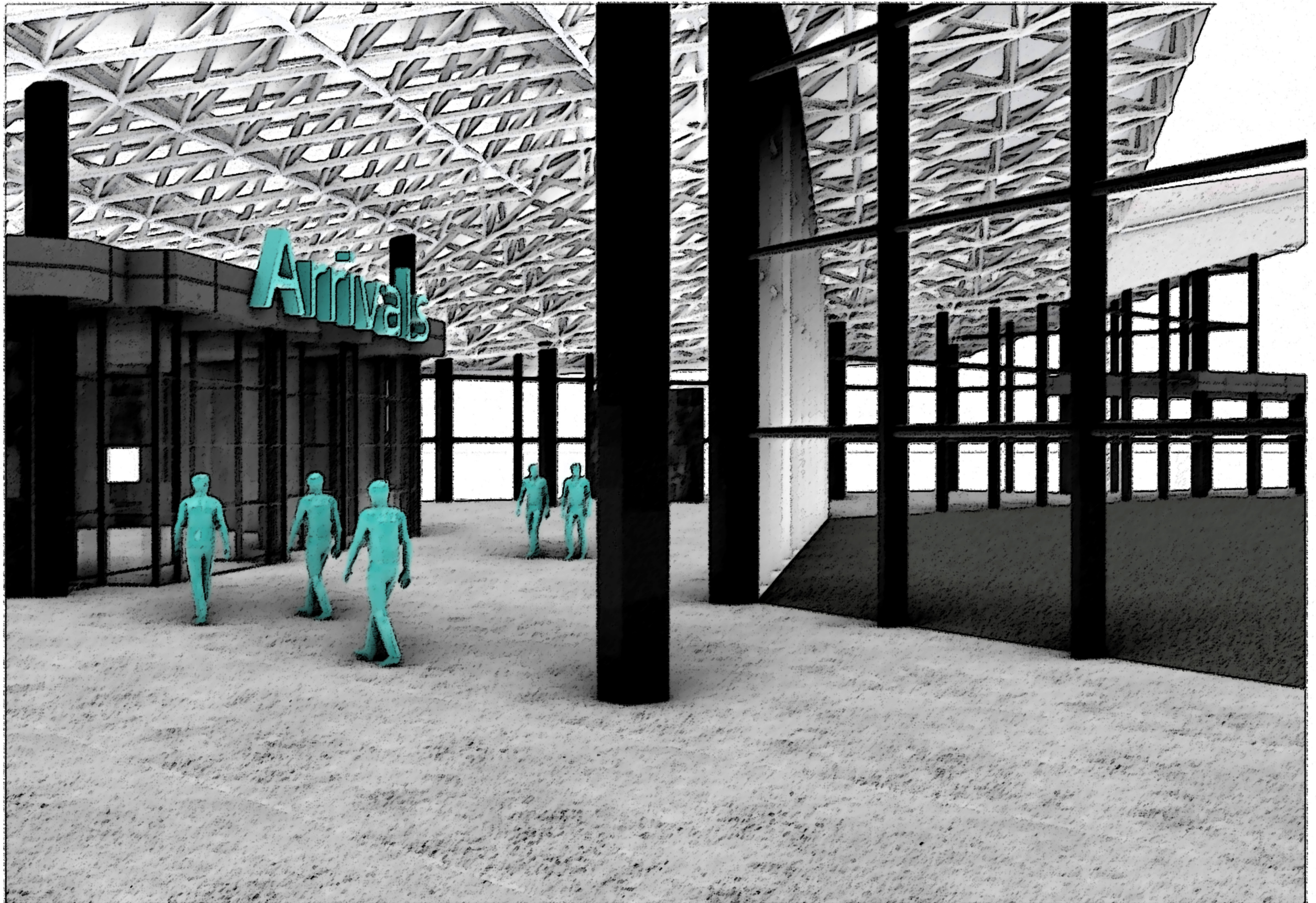


IMPRESSION

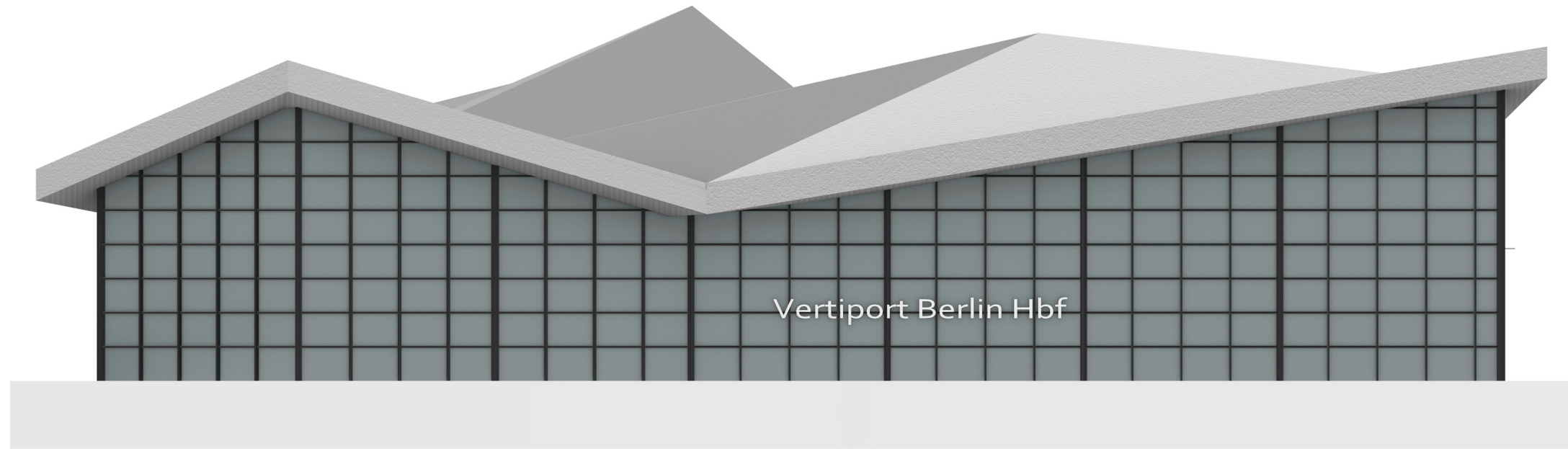
INTERIOR ATRIUM



INTERIOR TERMINAL



FRONT FACADE



WEST FACADE

