



Beyond informality

Exploring strategies for redevelopment in informal settlements
in Guangzhou (China)

Yixiang Huang
Nr.5107989

Graduation project 2020-2021
AR2U086 Planning Complex cities
First mentor: dr. ir. Gregory Bracken
Second mentor: ir. Gerdy Verschuure-Stuip

TU Delft Faculty of Architecture and the Built Environment
MSc Urbanism

01

CONTEXT

02

RESEARCH

03

ANALYSIS

04

STRATEGY

05

DESIGN
IMPLEMENTATION

What are the informal settlements?



Bangkok, Thailand



Caracas, Venezuela



Pune, India

A type of urban housing that is self-constructed and self-managed, and mostly without the formal control of the government, which are common to see in the Global South.

How do informal settlements look like in Chinese cities?



Urban villages



Basement apartments



Container dwellings

CONTEXT

Context

Research

Analysis

Strategy

Implementation



Urban villages

CONTEXT

Context

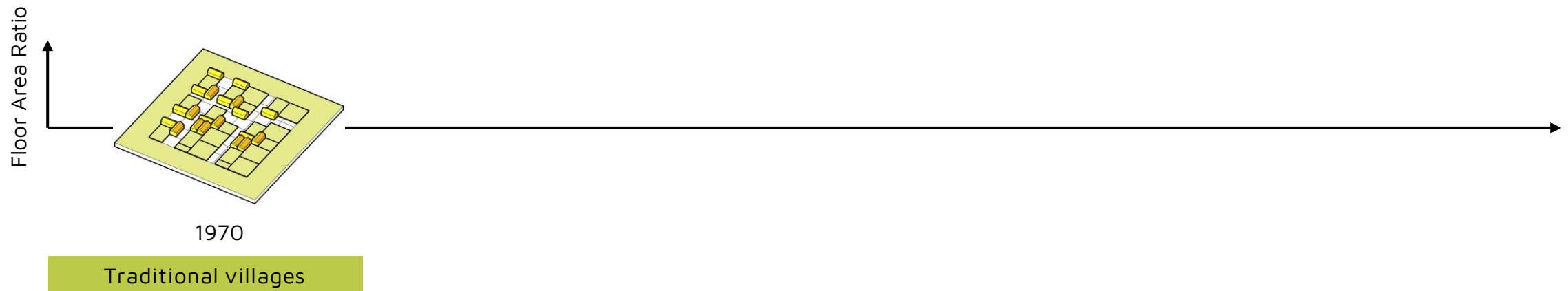
Research

Analysis

Strategy

Implementation

How do urban villages grow and develop?



CONTEXT

Context

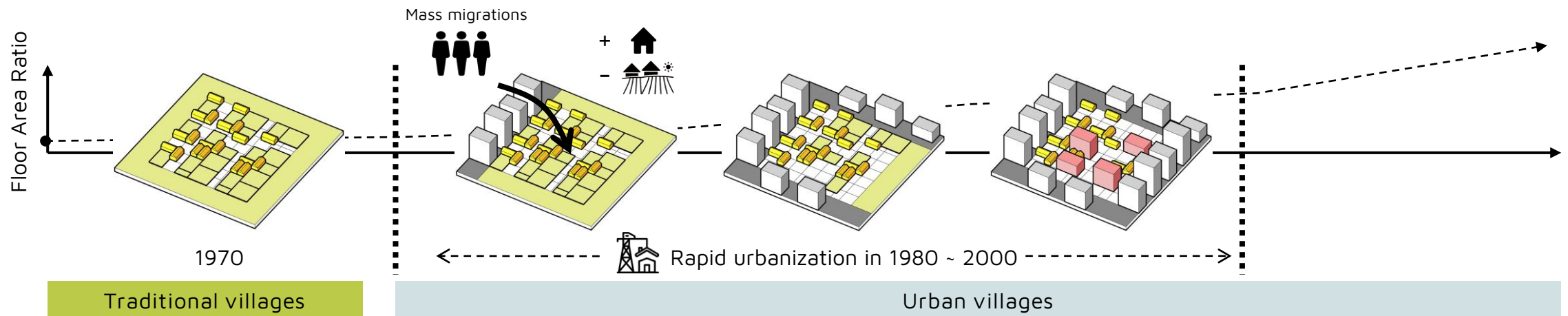
Research

Analysis

Strategy

Implementation

How do urban villages grow and develop?



CONTEXT

Context

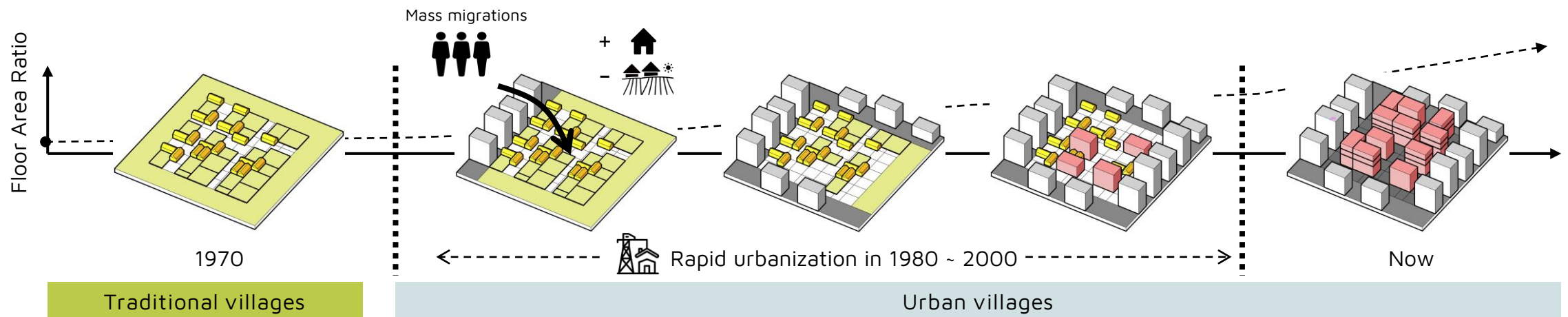
Research

Analysis

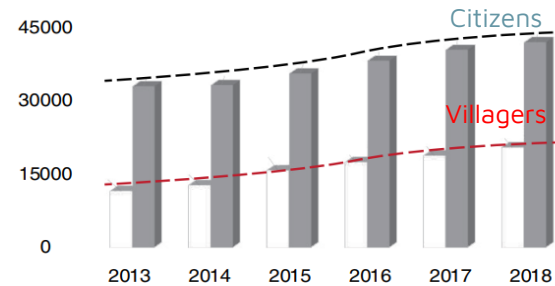
Strategy

Implementation

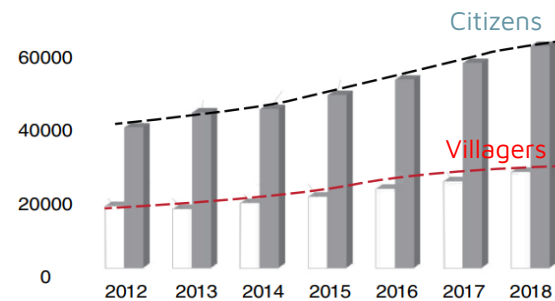
How do urban villages grow and develop?



What are the problems in urban villages?



1. The per capita disposable income of rural and urban residents in Guangzhou



2. Per capita consumption expenditure of rural and urban residents in Guangzhou



Social segregation

It is more difficult for Villagers and migrants to get into the formal market for jobs, education, and other social sources. Data shows that the average household income of residents in urban villages is 50% less than that of other urban residents

What are the problems in urban villages?



Lack of public facilities & public spaces

The self-constructions in the informal settlements are mostly “room-by room accretion”, which leaves less places for public spaces and public buildings.

PROBLEM

Context

Research

Analysis

Strategy

Implementation

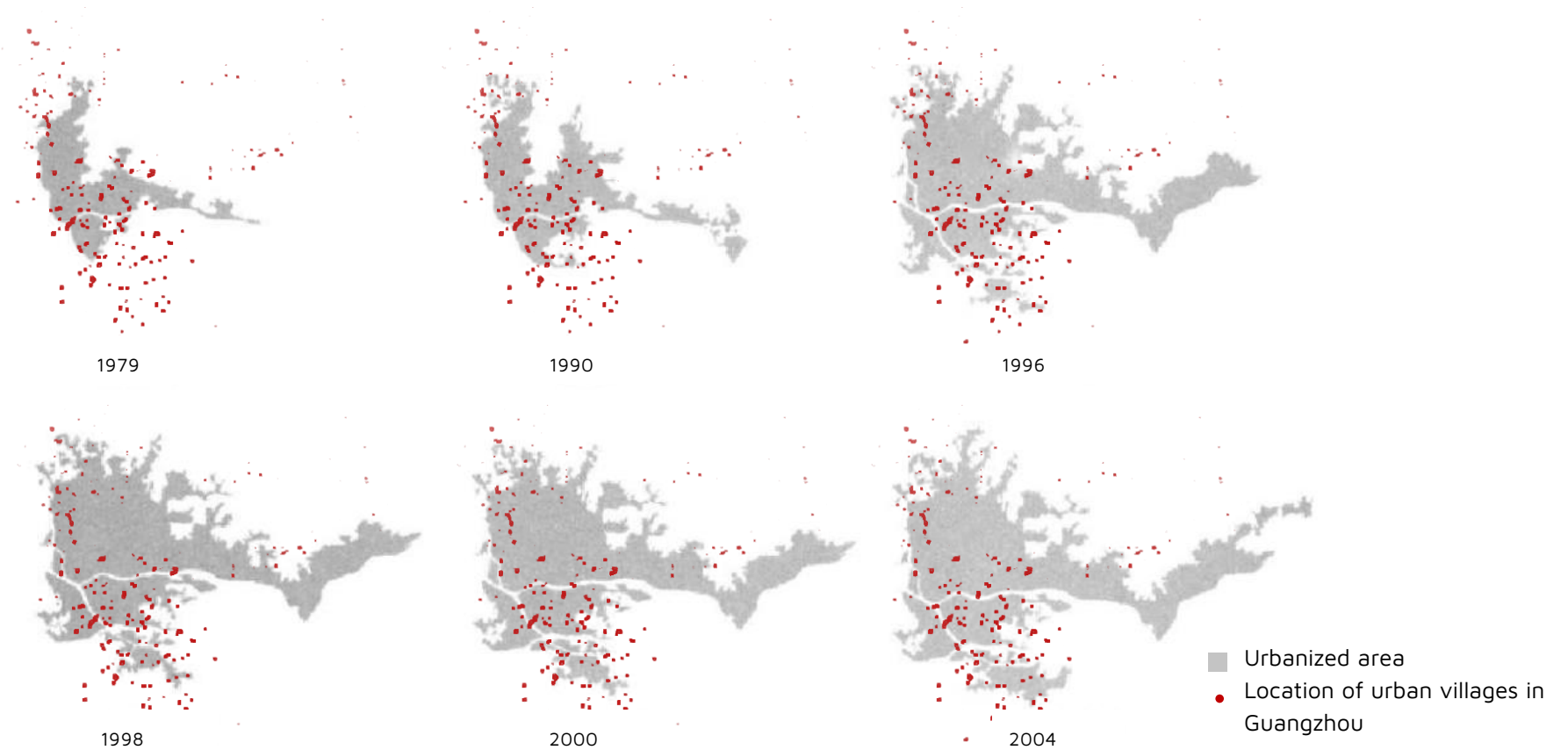
What are the problems in urban villages?



Pollution & unsafety

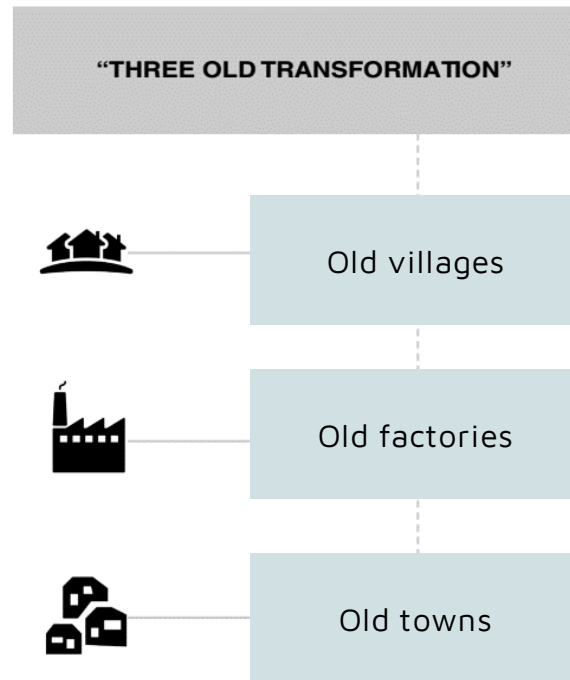
The sewage system in urban village is incomplete. 70% of the river pollution in Futian district (in Shenzhen) comes from urban villages. Also, from 2009 to 2014, there are 4132 fires happened in urban villages in Guangzhou, accounting for about 57.44% of all fires in the whole Guangzhou city.

Policy on regenerating the urban villages

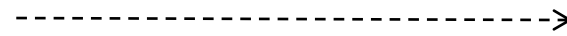


Urban expansion has led to a rise in the number of villages in the city, as well as the land value of these villages (Lin et al., 2011).

Policy on regenerating the urban villages



Before 2007



Now

Liede Village in Guangzhou

“Three old transformation” policy (2009)

By the end of June 2020, the local authority had given permission to more than 57 urban village redevelopment projects (covering 24.9 square kilometers in Guangzhou).

PROBLEM

Context

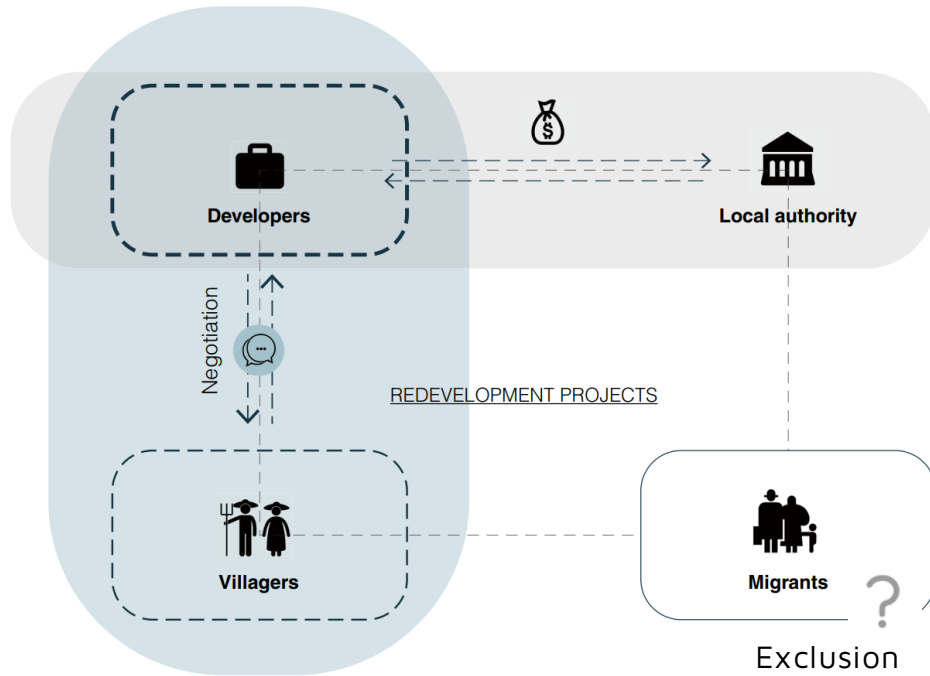
Research

Analysis

Strategy

Implementation

Policy on regenerating the urban villages



Housing demand of migrants are ignored in current market-led redevelopment programs



Gentrification

RESEARCH QUESTION

Context

Research

Analysis

Strategy

Implementation



How to facilitate the redevelopment of urban villages in Guangzhou in a more inclusive and sustainable manner, which provides a livable environment and promotes social integration?

RESEARCH QUESTION

Context

Research

Analysis

Strategy

Implementation

Main research question

How to facilitate the redevelopment of urban villages in Guangzhou in a more inclusive and sustainable manner, which provides a livable environment and promotes social integration?

ANALYSIS

Sub Group 1

Form
Role
Governance

←----- City scale ----->

RESEARCH QUESTION

Context

Research

Analysis

Strategy

Implementation

Main research question

How to facilitate the redevelopment of urban villages in Guangzhou in a more inclusive and sustainable manner, which provides a livable environment and promotes social integration?

ANALYSIS

EXPOSE

PROPOSE

Sub Group 1

Sub Group 2

Sub Group 3

Form
Role
Governance

Criteria for livability and social integration
Spatial & social characteristics
Demands of different stakeholders

Strategies and implementation

←----- City scale -----> | ←----- Village scale ----->

VILLAGES IN GUANGZHOU



VILLAGES IN GUANGZHOU

Context

Research

Analysis

Strategy

Implementation



Area of Guangzhou



Area of urban villages



Number of villages



Number of urban villages

7,434 km²
City

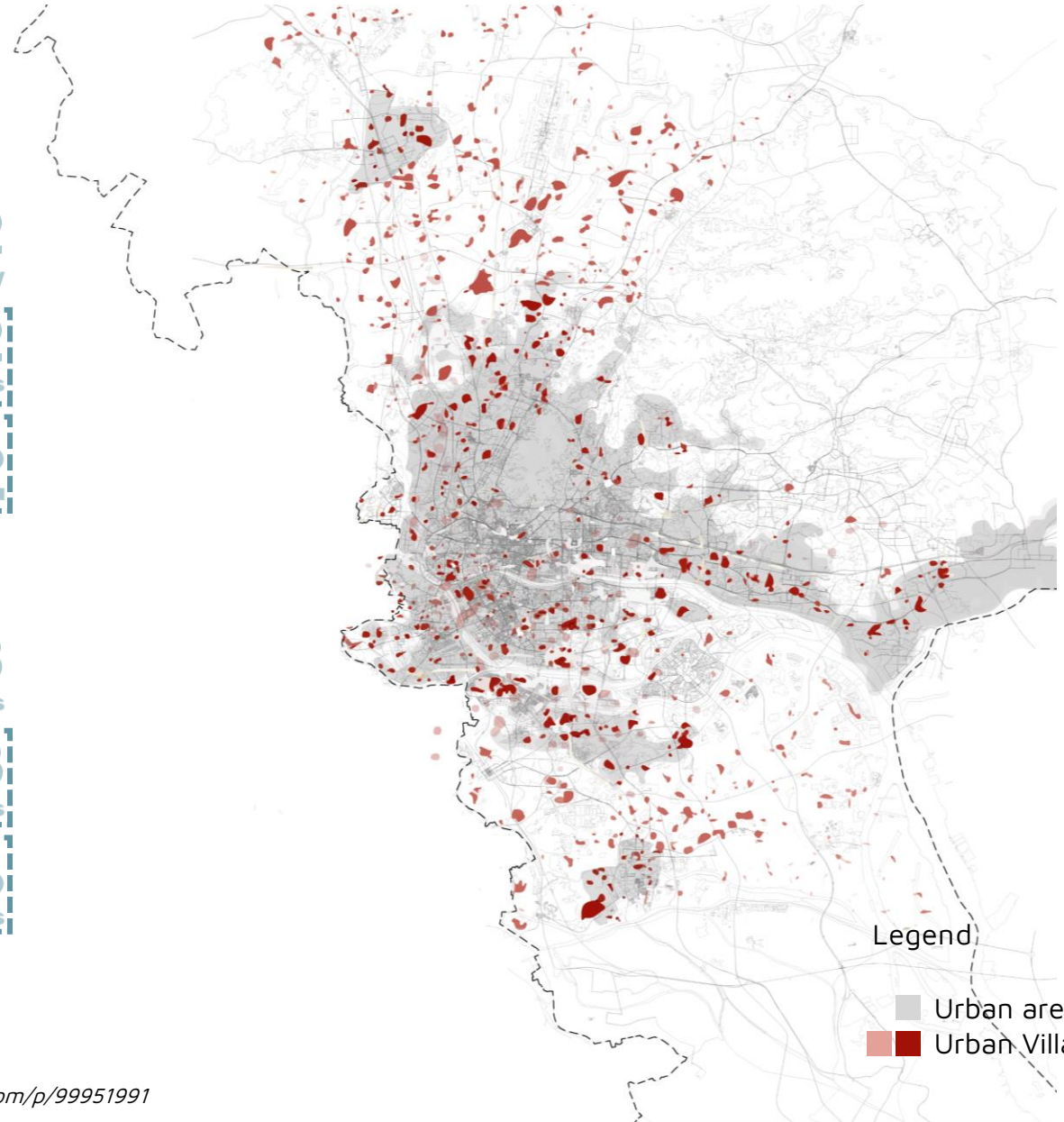
534.63 km²
Urban Villages

7.2%
of the total area of Guangzhou

1343
Villages

288
Urban Villages

21.4%
of the total number of villages



VILLAGES IN GUANGZHOU

Context

Research

Analysis

Strategy

Implementation

What are the roles of urban villages in the cities?



For migrants



Informal housing market provides affordable housing



Shops in urban villages offer services for people at a low price



Jobs offered by the shops and factories in urban villages

VILLAGES IN GUANGZHOU

Context

Research

Analysis

Strategy

Implementation

What are the roles of urban villages in the cities?



Informal housing market and informal shops organized by villagers



For villagers



Villagers build up schools, community center, and nursing home in the village



Villagers organize traditional events in the clan temples

VILLAGES IN GUANGZHOU

Context

Research

Analysis

Strategy

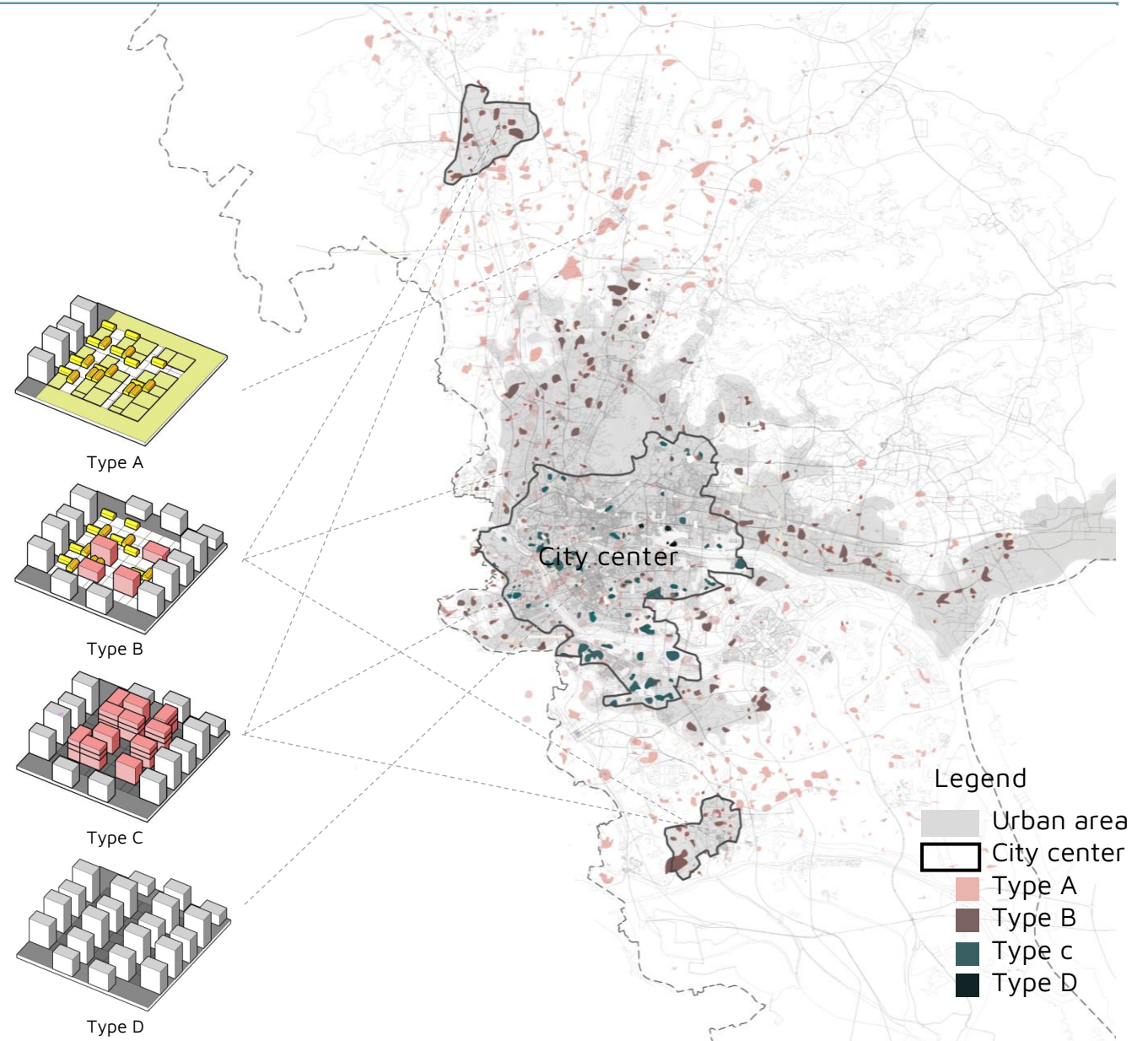
Implementation

A study on urban villages in Guangzhou

- Density
- Position
- *Hukou* state (related to social welfare)
- Land ownership & Management
- Farmland

Result:

- 4 Types
- Site selection for detailed analysis



VILLAGES IN GUANGZHOU

Context

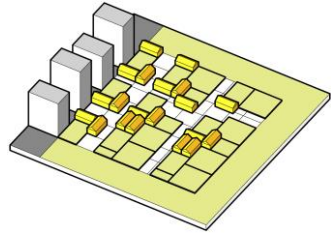
Research

Analysis

Strategy

Implementation

Type A

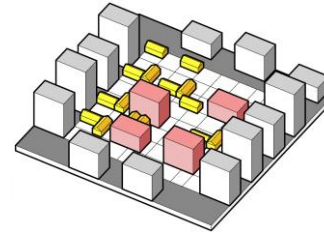


Typical case: Dongxiu Village

Density	
Location	
Hukou	Villagers: rural Migrants: rural/urban (nonlocal)
Land ownership	Owned by village collective
Farmland	Large amounts of farmland
Management	By village committee and collective economic organization

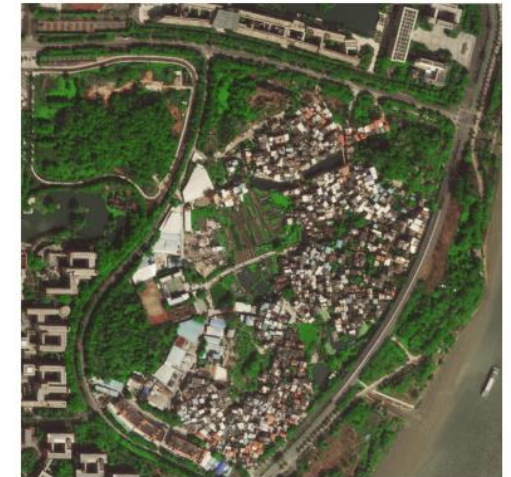


Type B



Typical case: Suishi Village

Density	
Location	
Hukou	Villagers: rural Migrants: rural/urban (nonlocal)
Land ownership	Owned by village collective
Farmland	A few farmland
Management	By village committee and collective economic organization



VILLAGES IN GUANGZHOU

Context

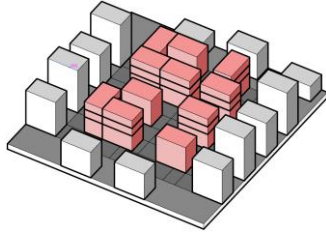
Research

Analysis

Strategy

Implementation

Type C

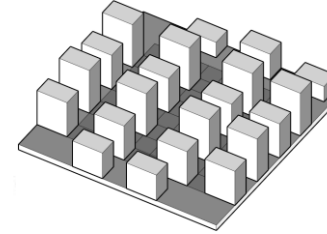


Typical case: Shipai Village

Density	
Location	
Hukou	Villagers: urban (local) Migrants: rural/urban (nonlocal)
Land ownership	Owned by the state
Farmland	No farmland
Management	By residents' committee and Urban village company



Type D



Typical case: Liede Village

Density	
Location	
Hukou	Villagers: urban (local) Migrants: rural/urban (nonlocal)
Land ownership	Owned by the state
Farmland	No farmland
Management	By residents' committee and Urban village company



VILLAGES IN GUANGZHOU

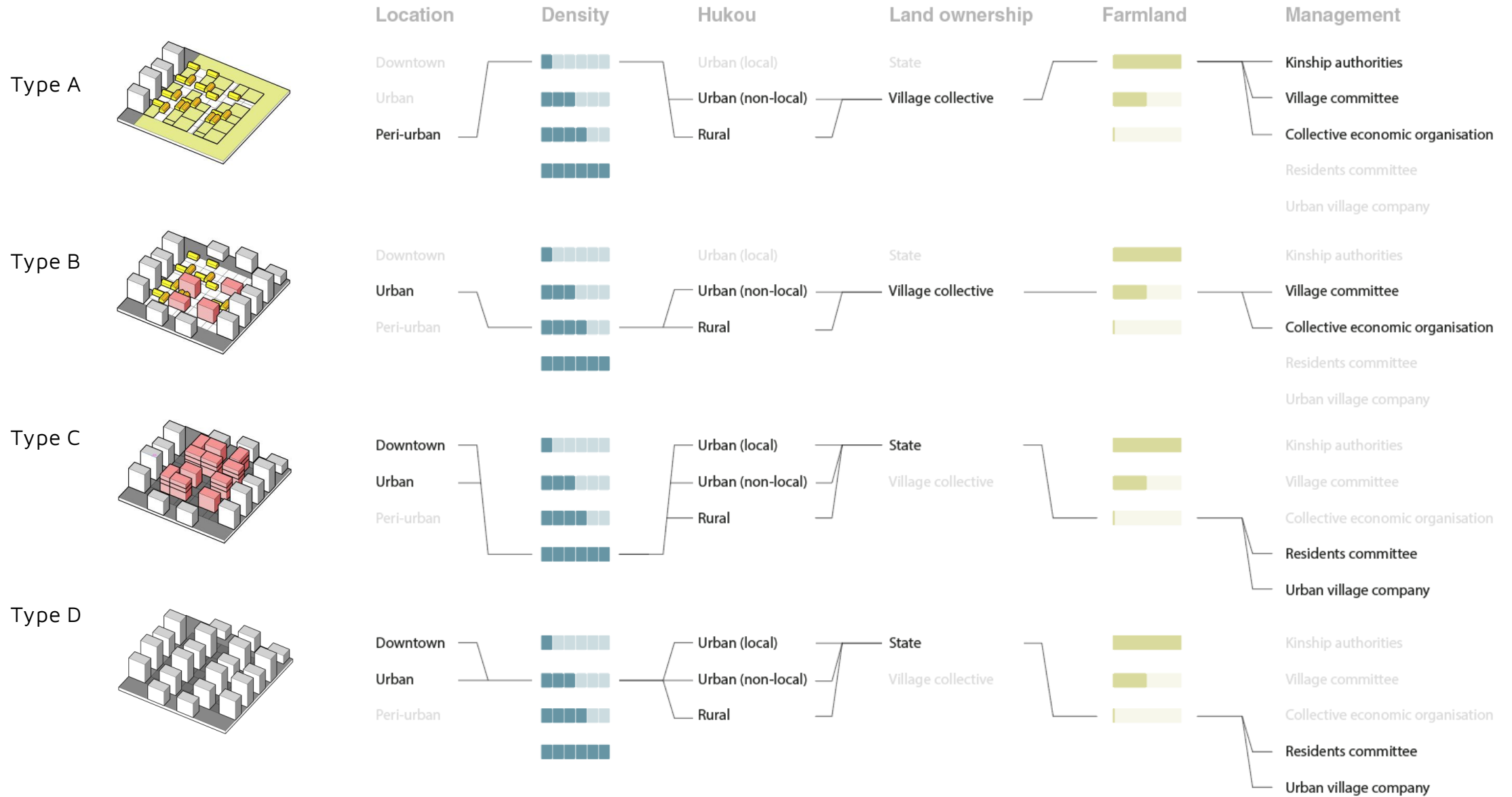
Context

Research

Analysis

Strategy

Implementation



VILLAGES IN GUANGZHOU

Context

Research

Analysis

Strategy

Implementation



ROAD MAP

Context

Research

Analysis

Strategy

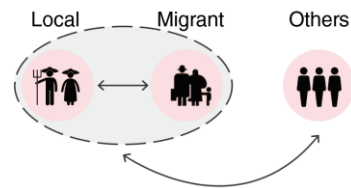
Implementation

Literature review

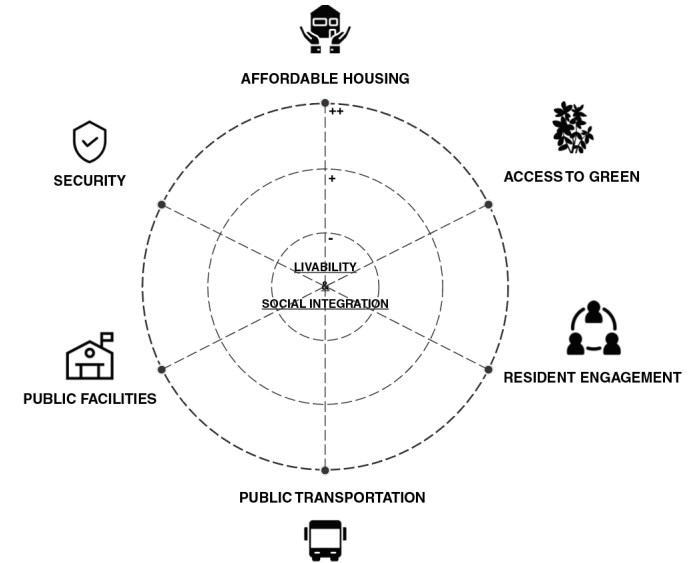
The determinants of urban livability in Chinese cities



Social integration in informal settlements



Assessment of livability & social integration in urban villages



ROAD MAP

Context

Research

Analysis

Strategy

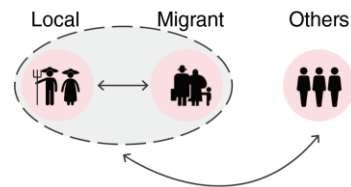
Implementation

Literature review

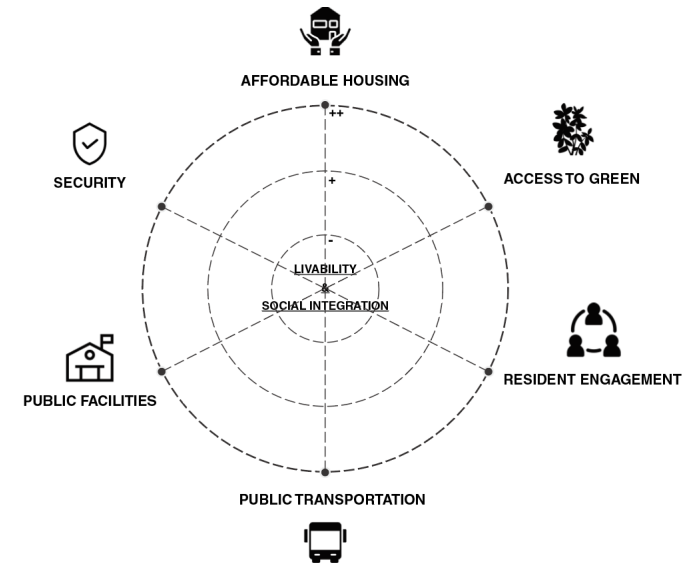
The determinants of urban livability in Chinese cities



Social integration in informal settlements

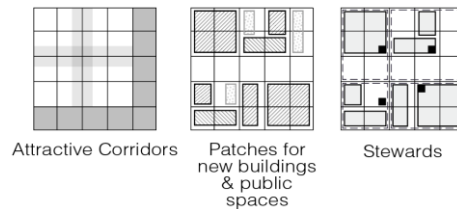


Assessment of livability & social integration in urban villages

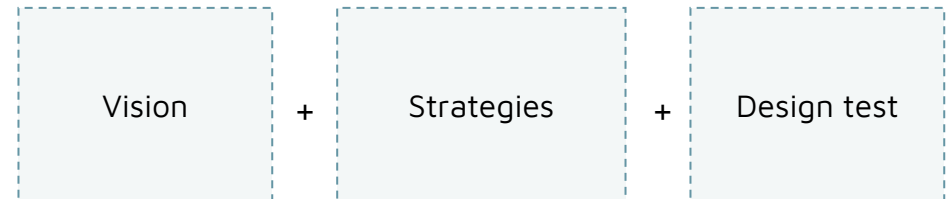


Literature review & cases

Spatial strategies and managerial strategies for upgrading informal settlements



Outcomes



METHODS

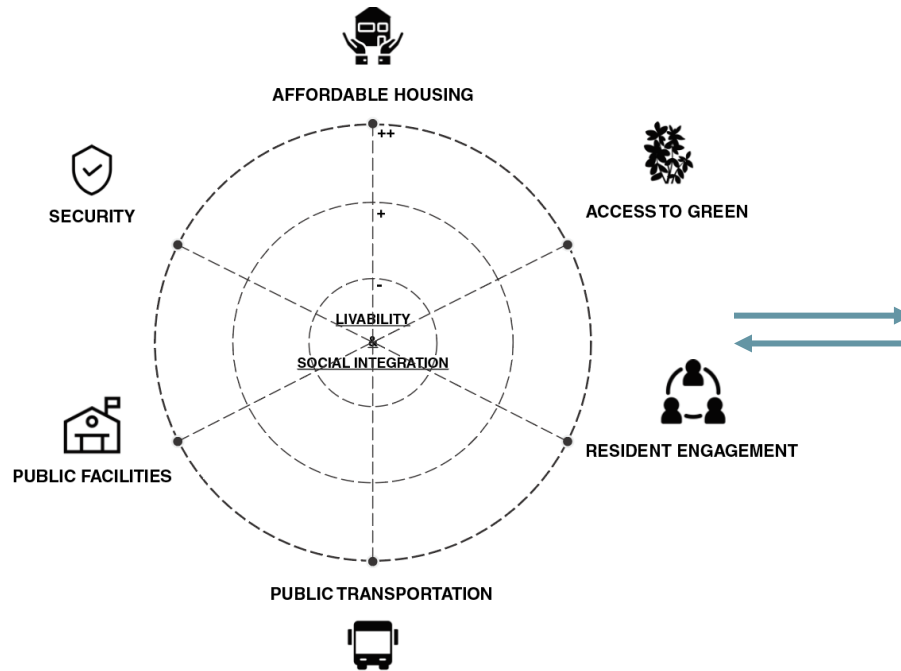
Context

Research

Analysis

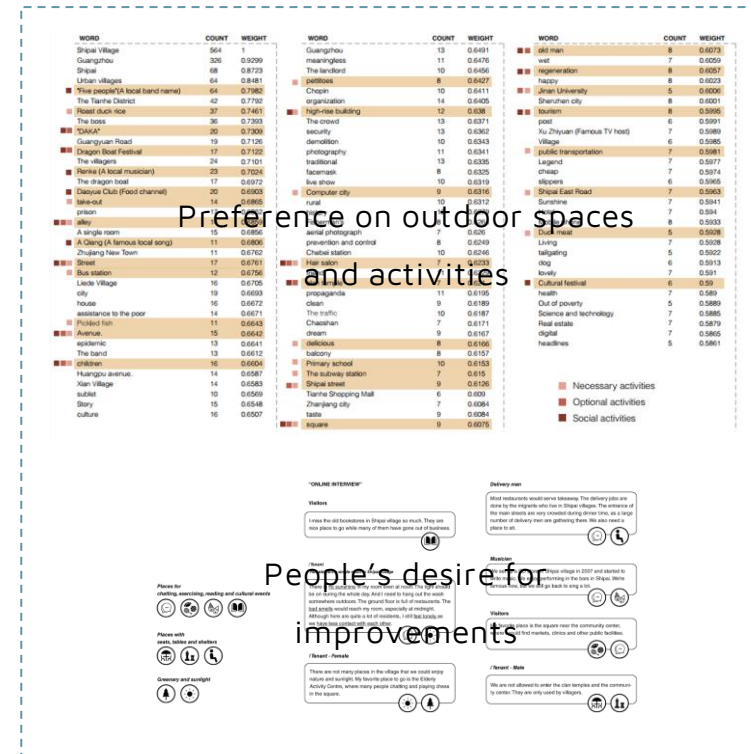
Strategy

Implementation



Mapping

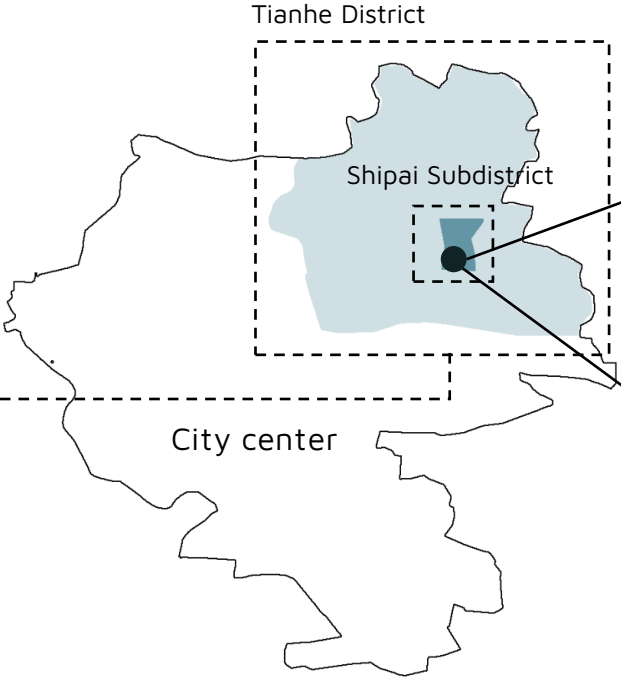
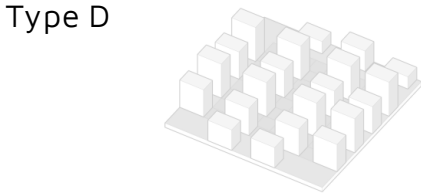
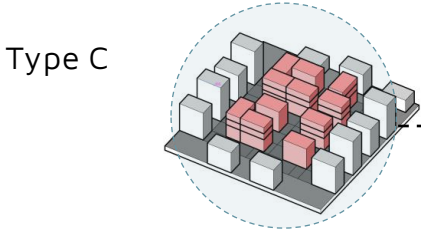
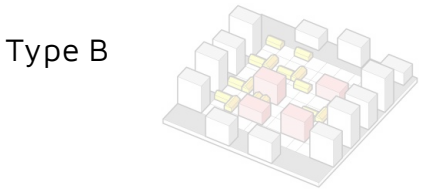
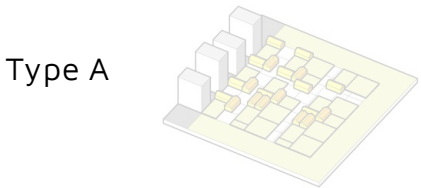
- Assess current situation of living environment and the interaction between residents



Data mining on social media

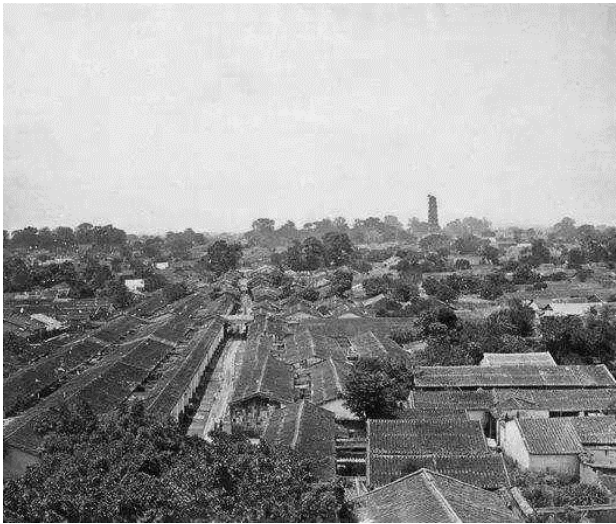
- Residents' preference on outdoor spaces and activities
- Improvements desired by people

A CASE STUDY: SHIPAI VILLAGE



A CASE STUDY: SHIPAI VILLAGE

How did Shipai Village come into being?



Before 1980s



Began to build sports center and railway station in 1987



Shipai village, surrounded by high-rise buildings

SITE ANALYSIS

Context

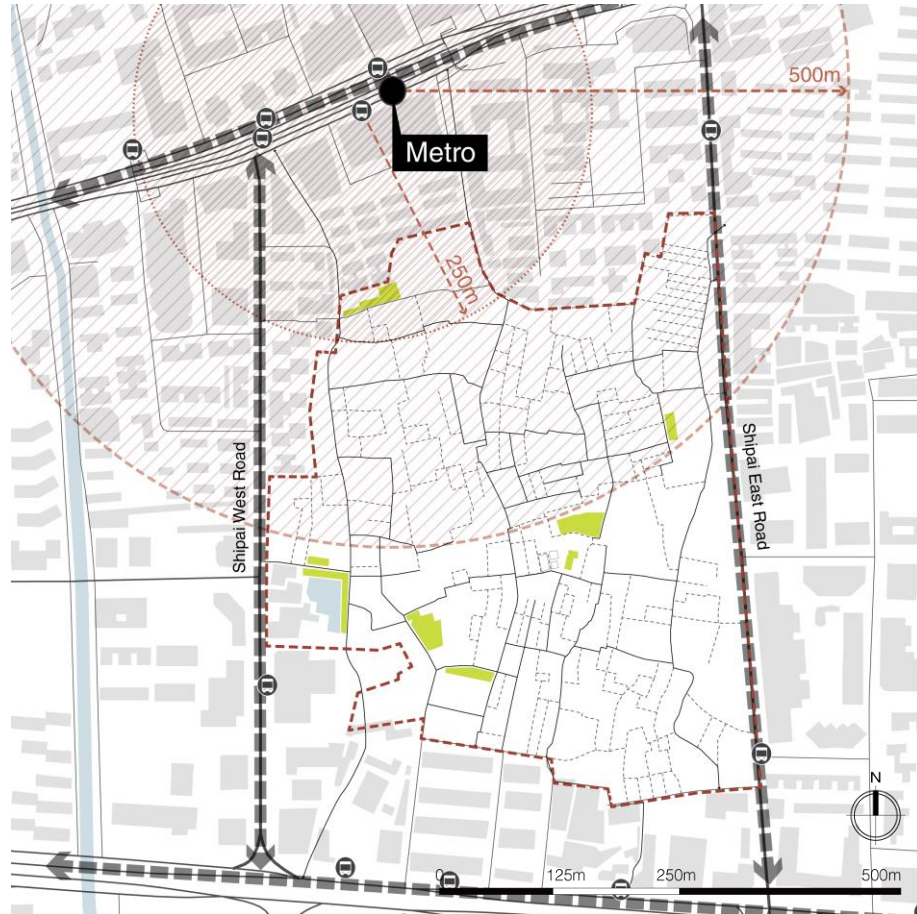
Research

Analysis

Strategy

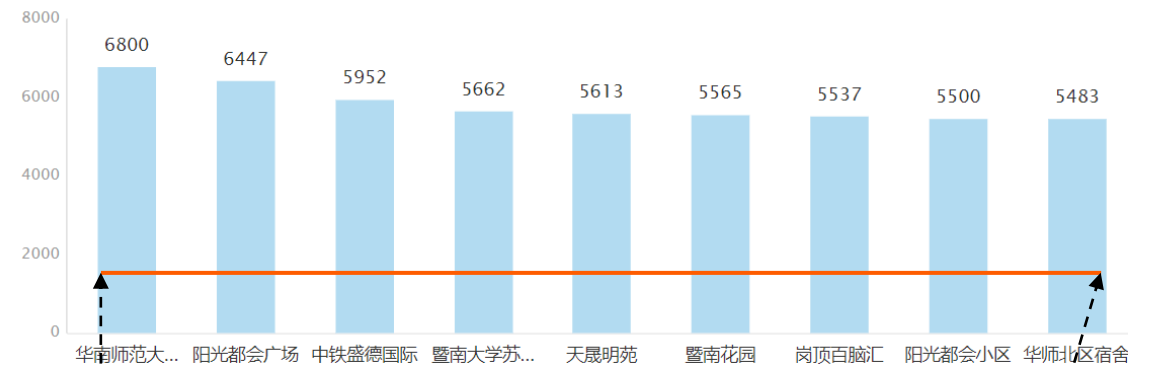
Implementation

The access to railway station and the low rental attract migrants to move in

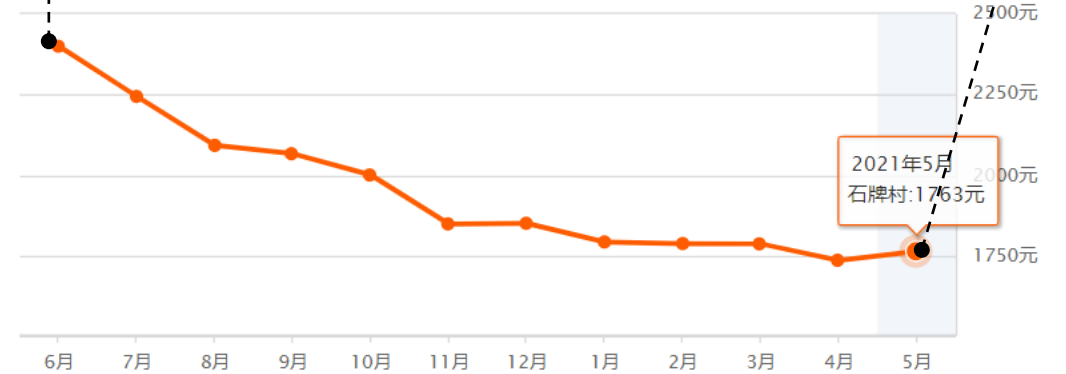


Railway station and bus stop

Other communities in the same district (¥/per month)



Shipai village (¥/per month)



Rental (2021)

SITE ANALYSIS

Context

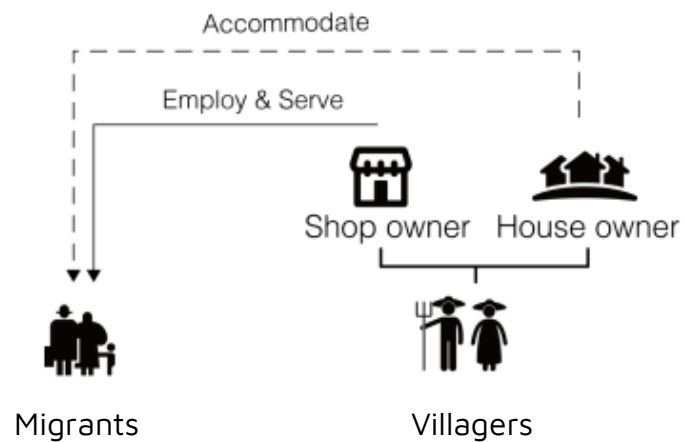
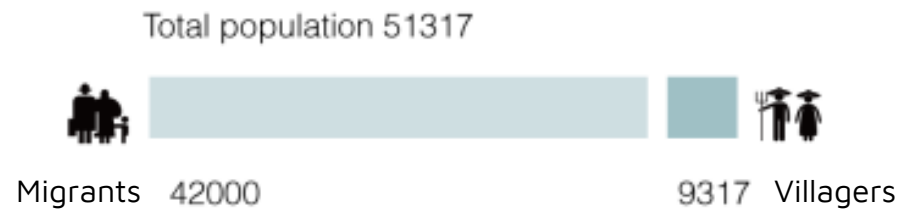
Research

Analysis

Strategy

Implementation

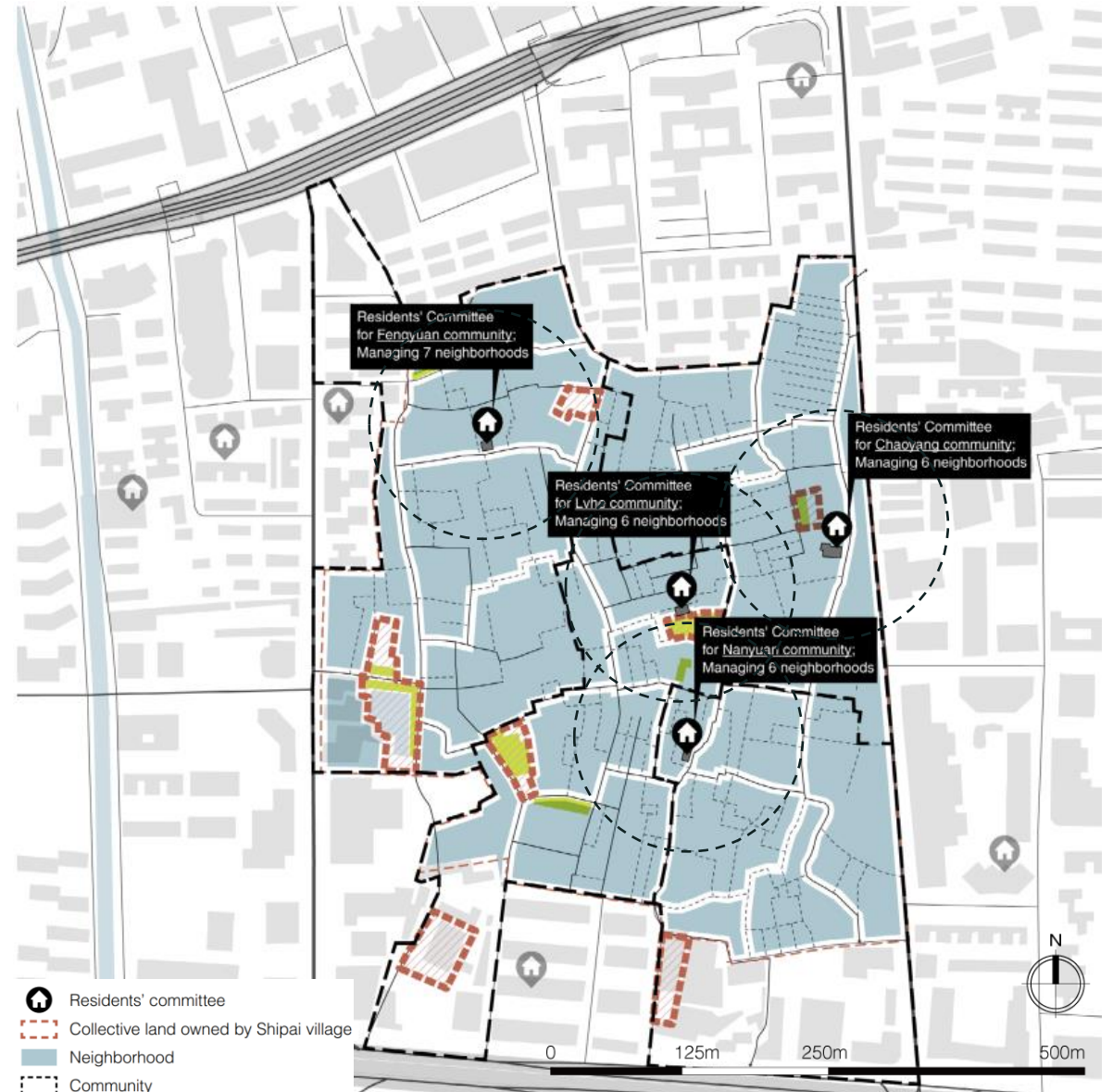
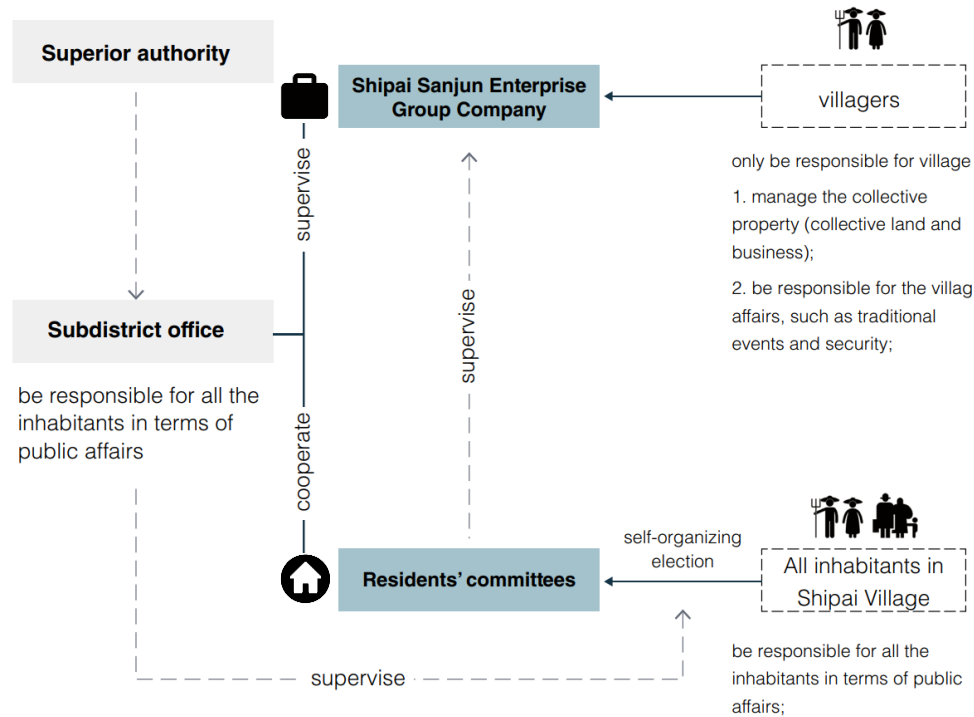
Relationship between villagers and Migrants



SITE ANALYSIS

Inequality in the self-management process

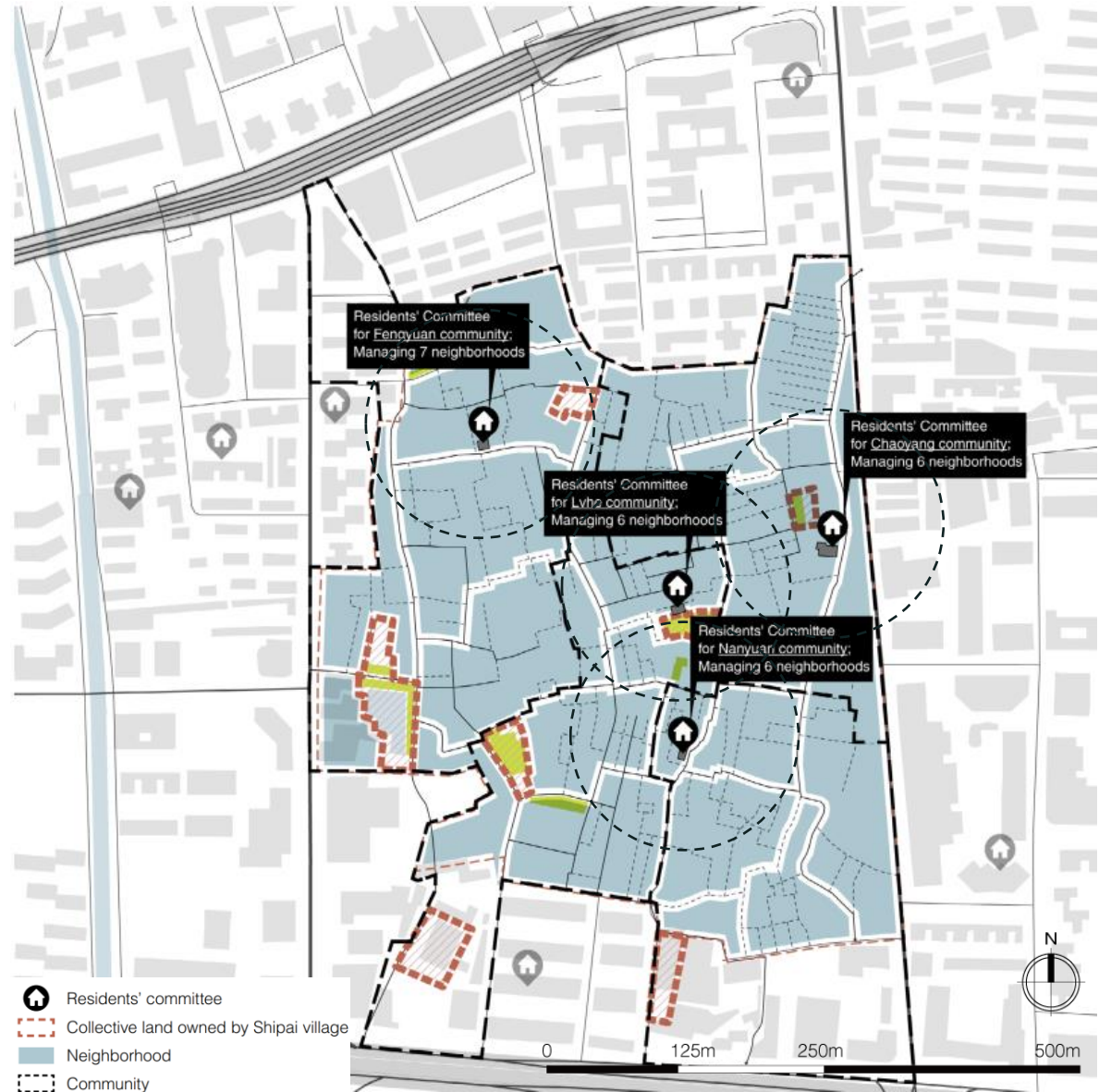
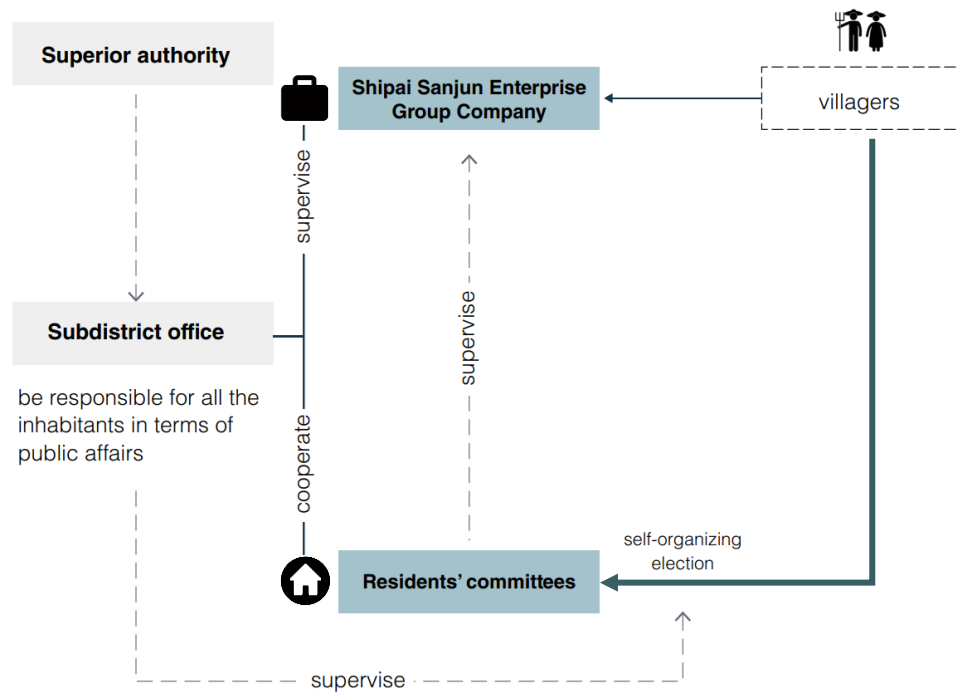
Management scheme in Shipai village



SITE ANALYSIS

Inequality in the self-management process

While in practice...



SITE ANALYSIS

Context

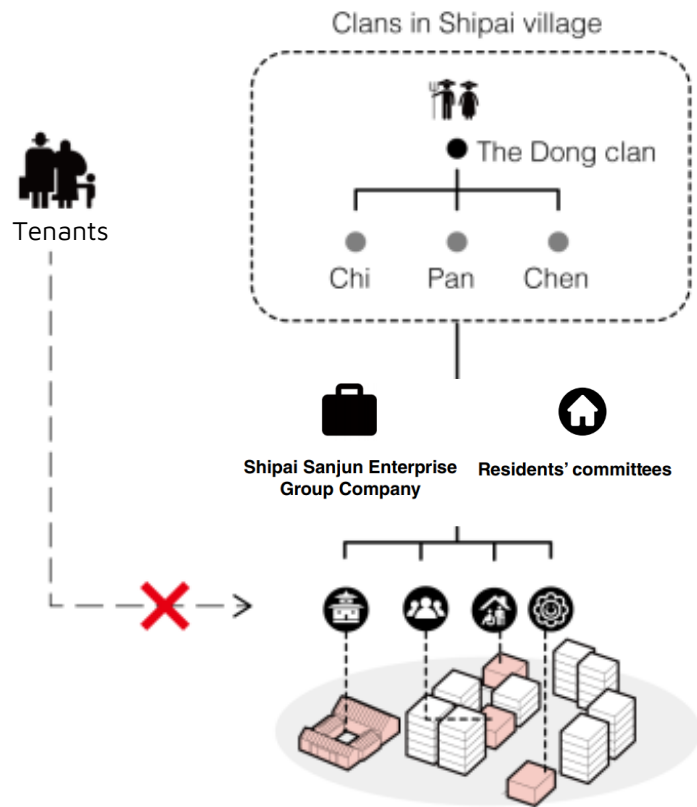
Research

Analysis

Strategy

Implementation

Social segregation caused by the clan culture



Clan temples



Places for ancestor worship



Traditional events for villagers

SITE ANALYSIS

Context

Research

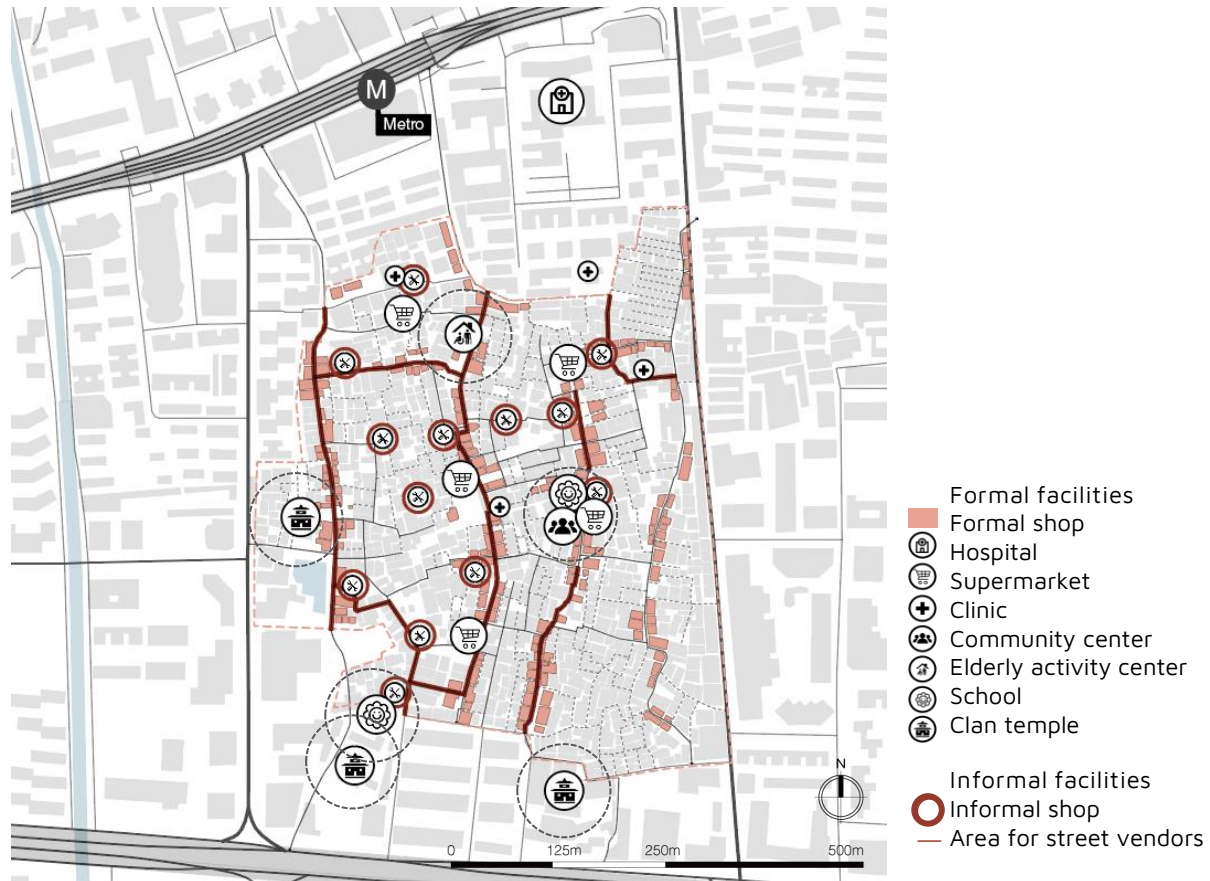
Analysis

Strategy

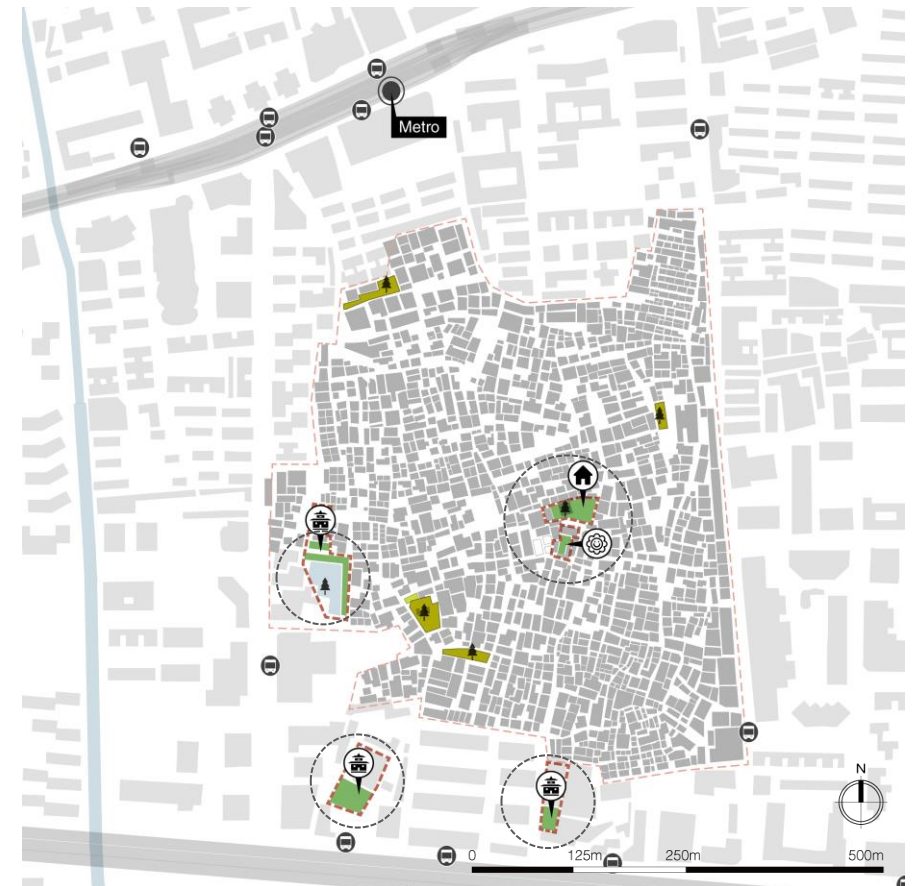
Implementation

..., which also impacts the access to public facilities

Access to public services



Access to green & recreation facilities



○ Access only by Villagers

ONLINE SURVEY

Context

Research

Analysis

Strategy

Implementation

Data mining on social media platform

- Residents' preferences on outdoor spaces and activities
- Improvements desired by people



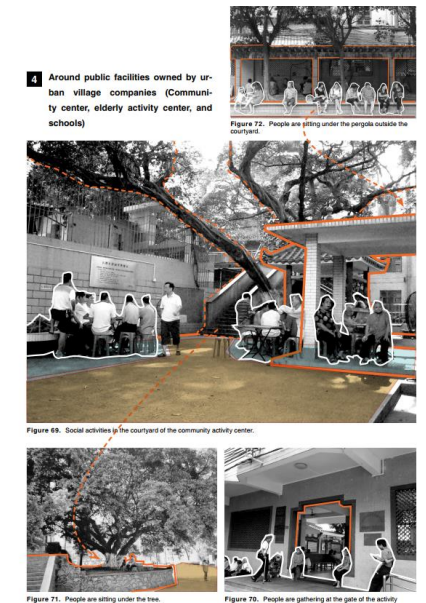
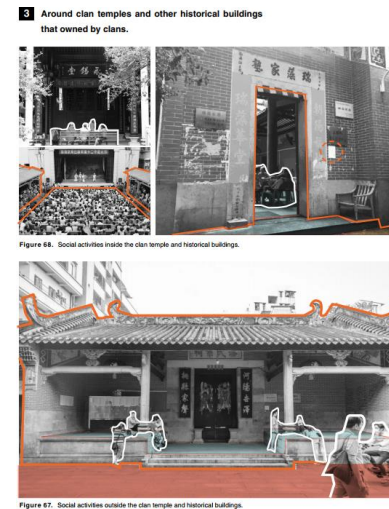
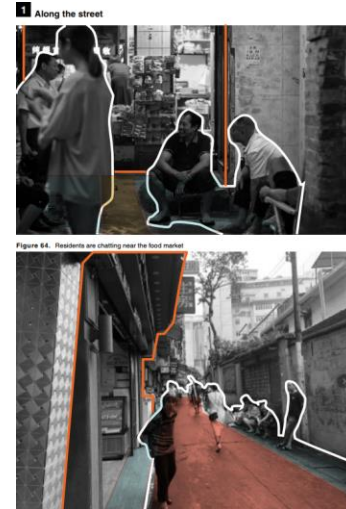
For migrants

Result:

- 567 posts in total (posted from 2014 to 2021) from users.
- Comments from tourists, passers-by, and residents



For villagers



ONLINE SURVEY

Context

Research

Analysis

Strategy

Implementation



pedestrian path trees

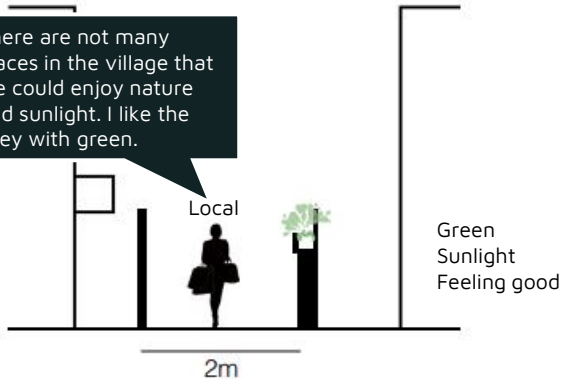


stacking/sitting pedestrian path parking/stacking/sitting

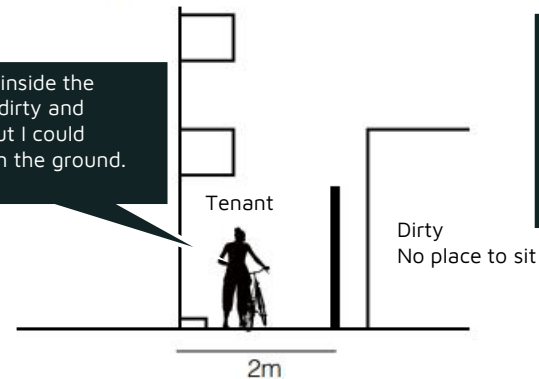


parking pedestrian path

There are not many places in the village that we could enjoy nature and sunlight. I like the alley with green.

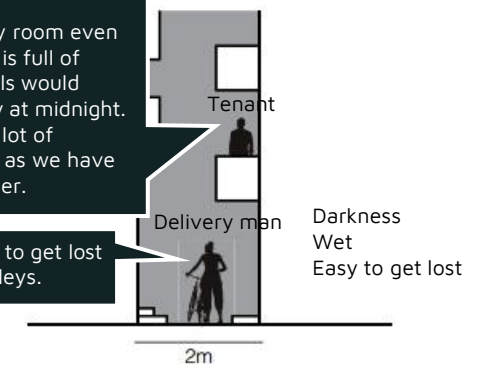


The road inside the village is dirty and messy. But I could only sit on the ground.



There is no sunshine in my room even at noon. The ground floor is full of restaurants. The bad smells would reach my room, especially at midnight. Although here are quite a lot of residents, I still feel lonely as we have less contact with each other.

It's easy to get lost in the alleys.



ONLINE SURVEY

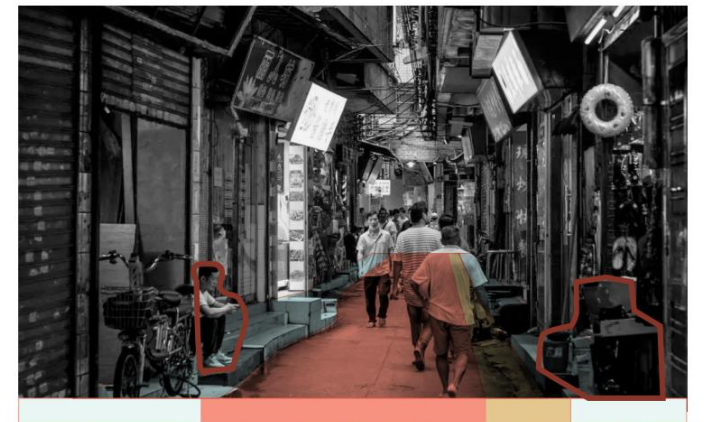
Context

Research

Analysis

Strategy

Implementation



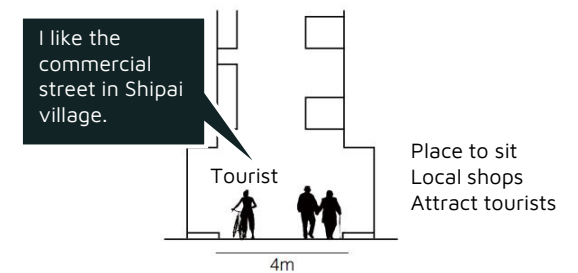
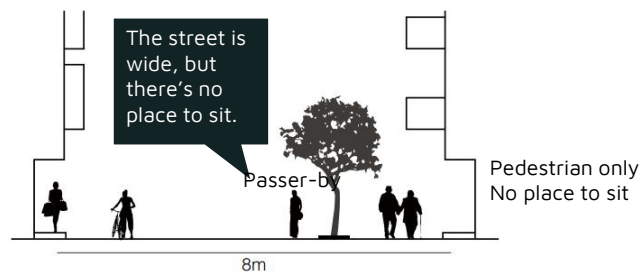
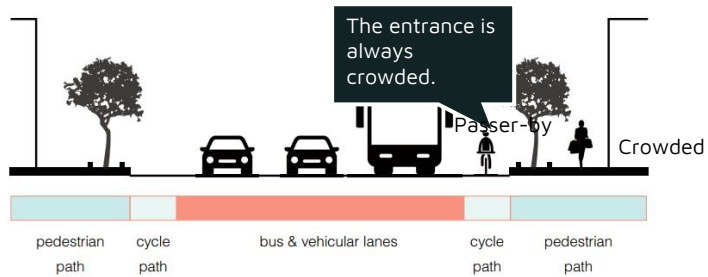
pedestrian path

trees/stacking

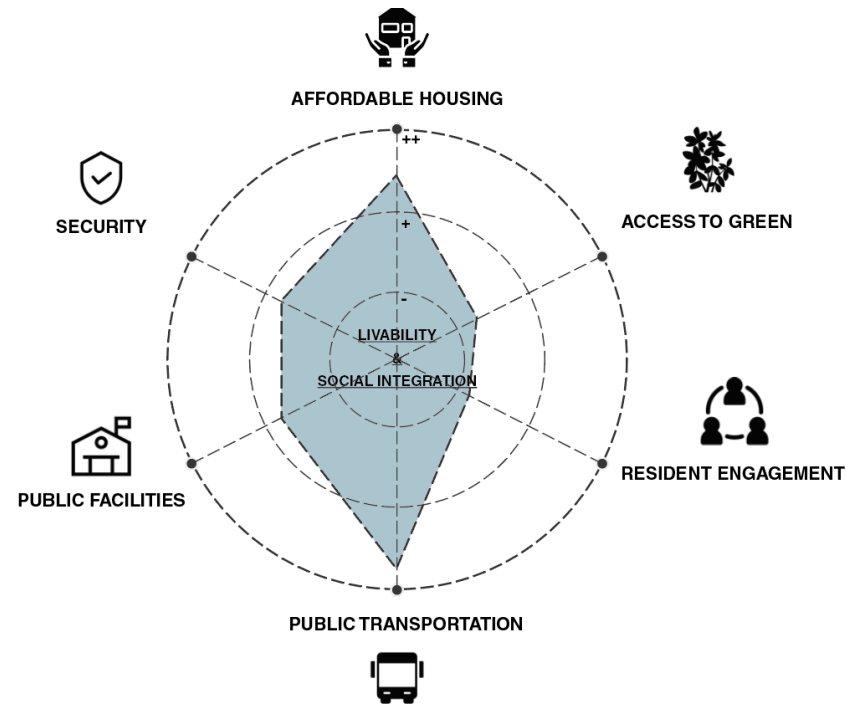
parking/stacking/sitting

pedestrian path

vendors parking/stacking/sitting



Assessment of current situation



Social segregation between villagers and migrants caused by clan culture

Inequality in the access to public facilities and recreation facilities

Needs for upgrading basic infrastructure for living security

Loss of voice of migrants in self-management process

VISION

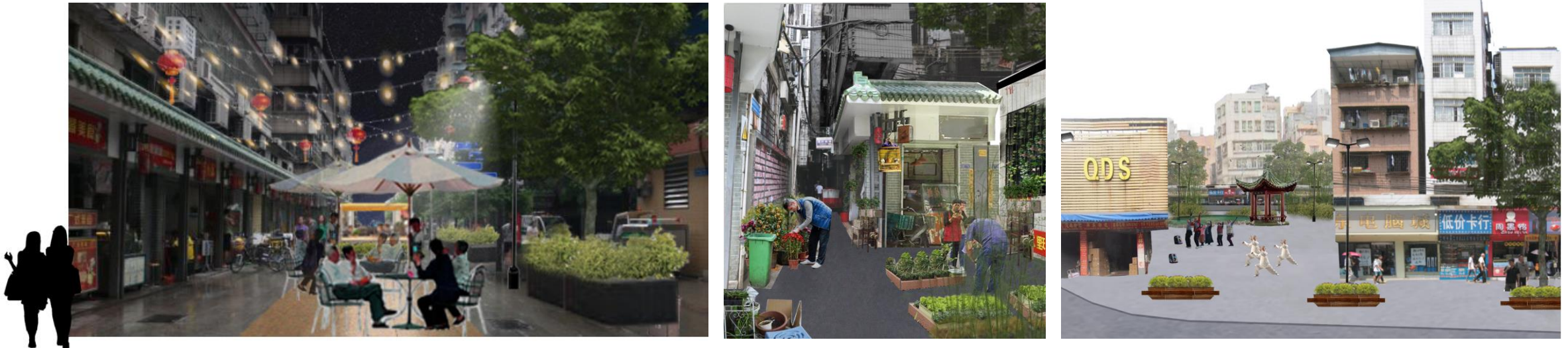
Context

Research

Analysis

Strategy

Implementation



Envision a future for Shipai village...

VISION

Context

Research

Analysis

Strategy

Implementation

Shipai village in the future...



Just and livable
environment

VISION

Context

Research

Analysis

Strategy

Implementation

Shipai village in the future...



Just and livable
environment



Diverse outdoor activities

VISION

Context

Research

Analysis

Strategy

Implementation

Shipai village in the future...



Just and livable
environment



Diverse outdoor activities



Affordable housing

VISION

Context

Research

Analysis

Strategy

Implementation

Shipai village in the future...



Just and livable
environment



Diverse outdoor activities



Affordable housing



Self-management



Resident engagement

VISION

Context

Research

Analysis

Strategy

Implementation

Shipai village in the future...



Just and livable environment



Diverse outdoor activities



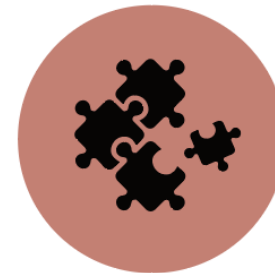
Affordable housing



Self-management



Resident engagement



Open to city

STRATEGY

Context

Research

Analysis

Strategy

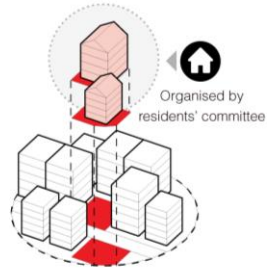
Implementation



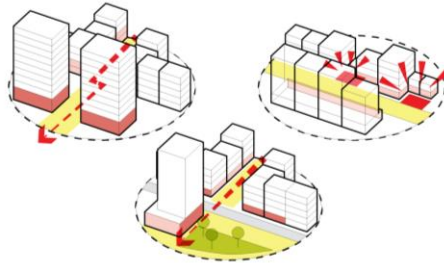
HOUSING

PROVIDE MORE AFFORDABLE HOUSES, AND BREAK THE EDGES

- 01 Increase affordable housing**
Provide policy and financial support on increasing affordable housing on vacant lands.



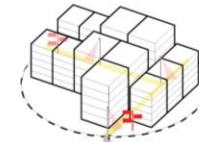
- 02 Open the edges**
Integrated with surrounding neighborhoods or break up some existing buildings on the edges to open the site up.



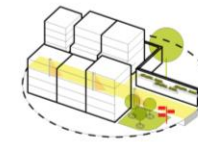
INFRASTRUCTURE

SAFE, LIVABLE, AND BOOST VIVID STREETLIFE

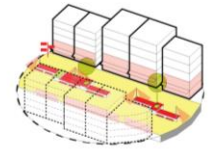
- 01 Lighten the path**
Provide lighting and drains to make the path safer and cleaner.



- 02 Green the path**
Place signal boards for passer-by and tourists to find their way easily. Put small green stuff along the path.



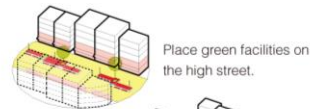
- 01 Be attractive and interactive**
High streets would integrate with informal market, green facilities and interactive facade to make it more walkable.



GREEN

GREEN FOR EVERYONE

- 01 Public green spaces**
Integrated public green spaces and recreation facilities with public facilities and commercial streets.



- 02 Planting activity and semi-public green spaces**

Encourage residents to use vacant lands, courtyards, and house roofs to make semi-public green spaces (community farm, pocket park and roof garden) by their own.



PUBLIC SPACE

CREATE DIVERSE OUTDOOR SPACES, AND GIVE GUIDELINES FOR SELF-ORGANIZED

A toolbox for public spaces is given. For each tool, it gives description on the level (for what range are the tool used), main users, main functions and recommendation for where it should be placed.

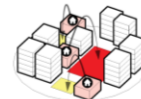
Public space for Shipai subdistrict



Public spaces for neighborhood

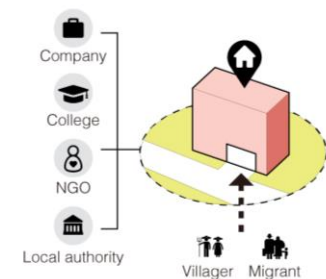


Public spaces for specific groups



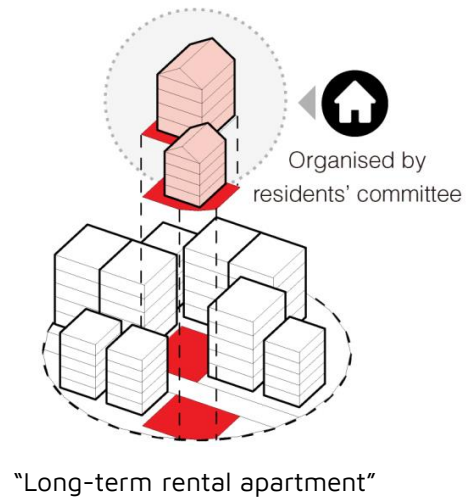
MANAGEMENT

Residents' committee would work as an intermediary to contact with local authority, companies and other institutions for technical and financial supports. A "Tenant Office" will be established in the committee, which encourage tenants to participate in public affairs.



Housing

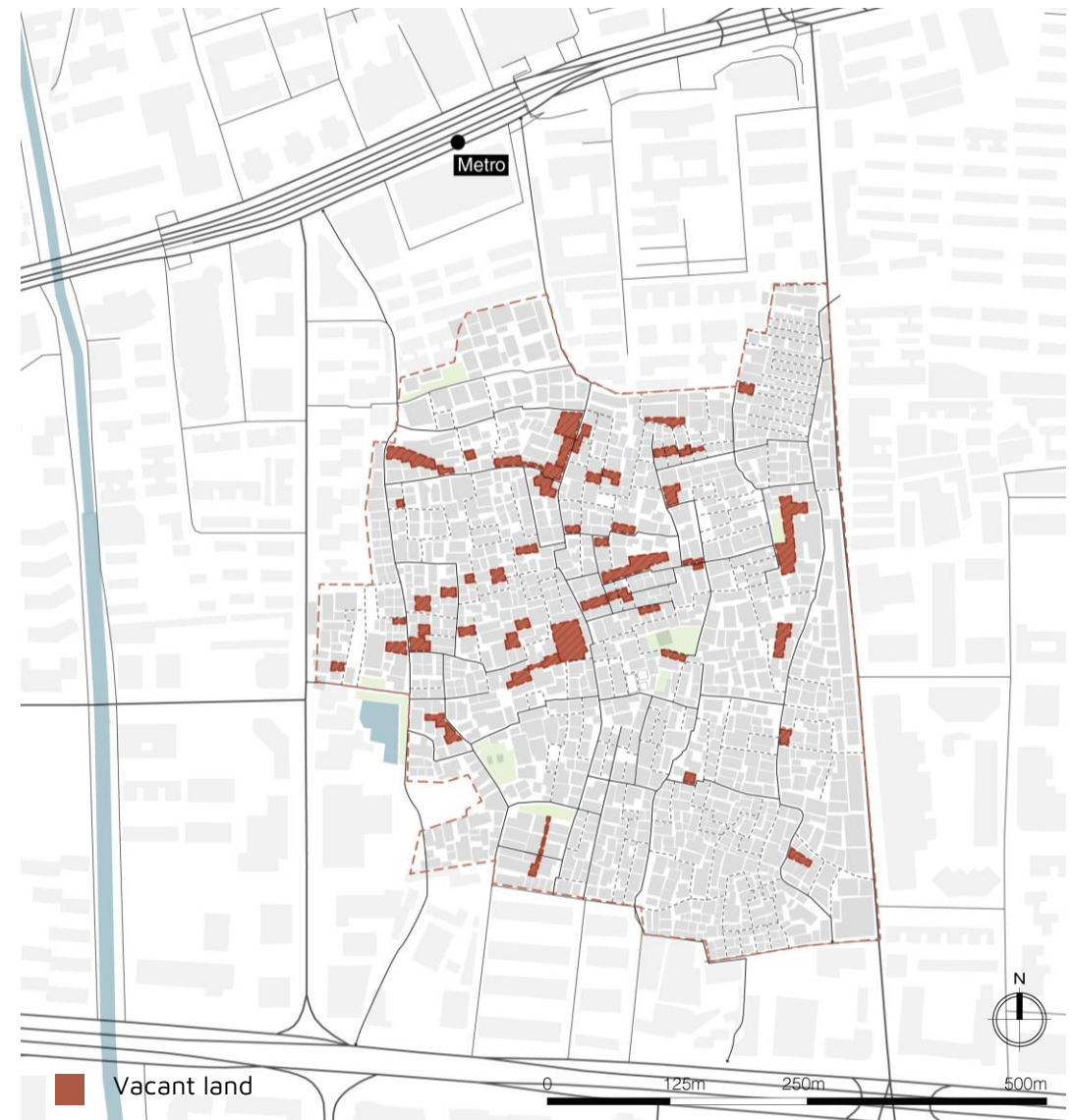
Increase affordable housing



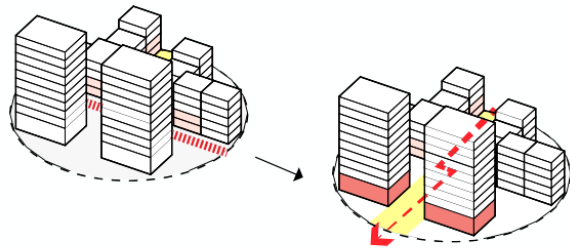
Policy support & Financial support:

"Long-term rentals" policy in the Guangzhou province;

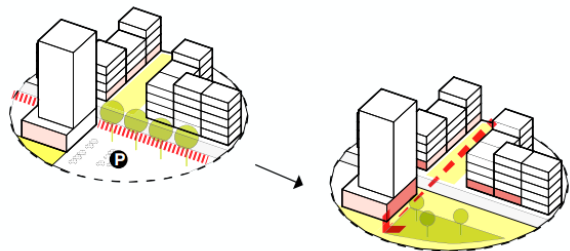
Residents' Committees are responsible for management and maintenance. Migrants and low-income group have priority on applying for these new apartments.



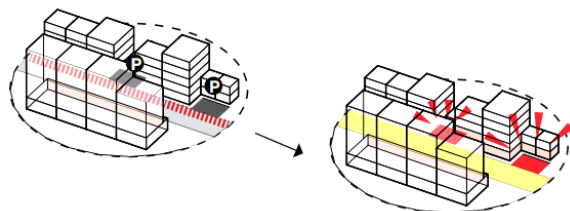
Housing Open the edges



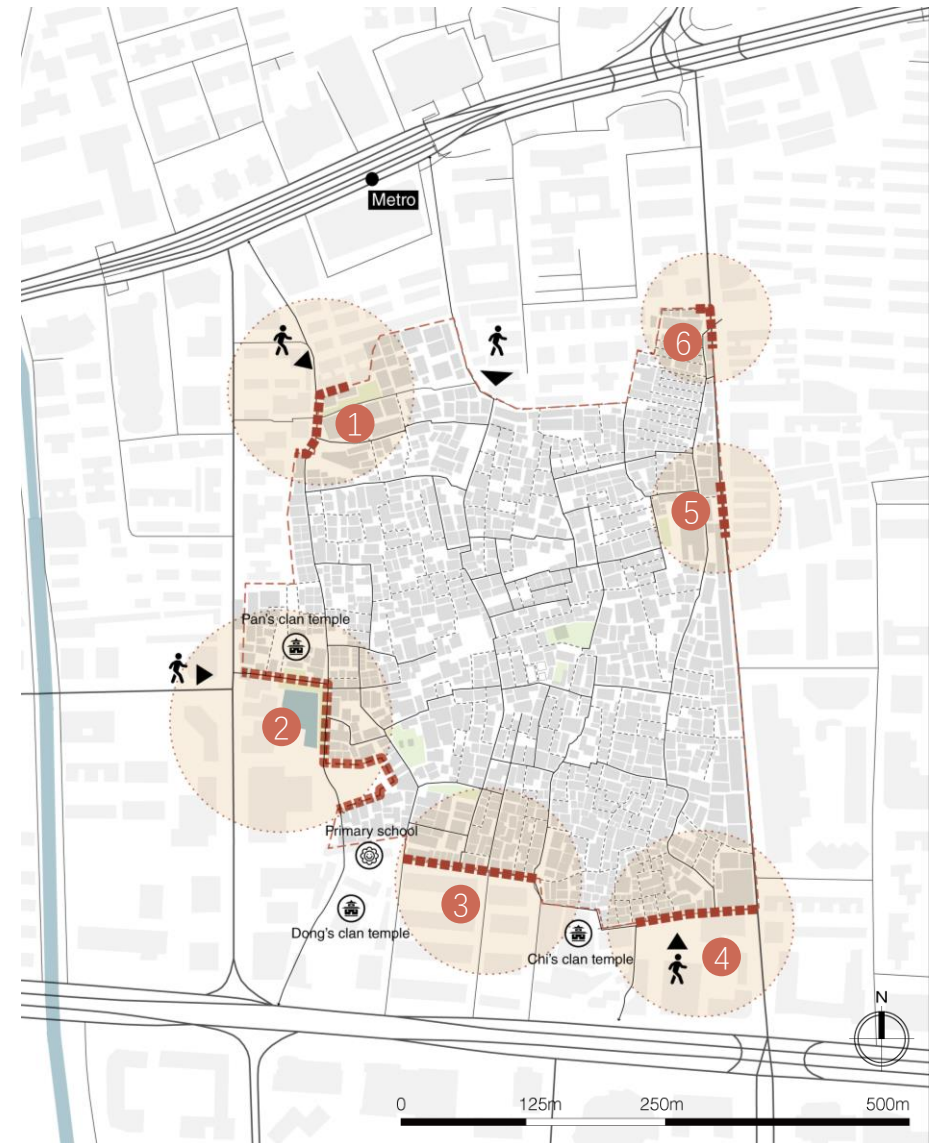
(1) expand the commercial street to the surrounding neighborhoods by reusing the podium and abandoned buildings. ① ② ③



(2) redesign the in-between spaces to connect with surrounding commercial areas. ① ④



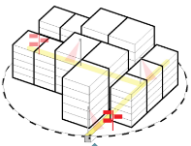
(3) remove parking areas along the commercial street and on the main entrance; replace them with squares or pocket park. ⑤ ⑥



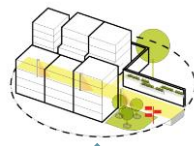
Infrastructure

Be safe, livable, and boost street life

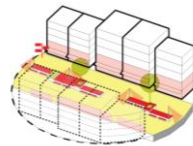
Step 1







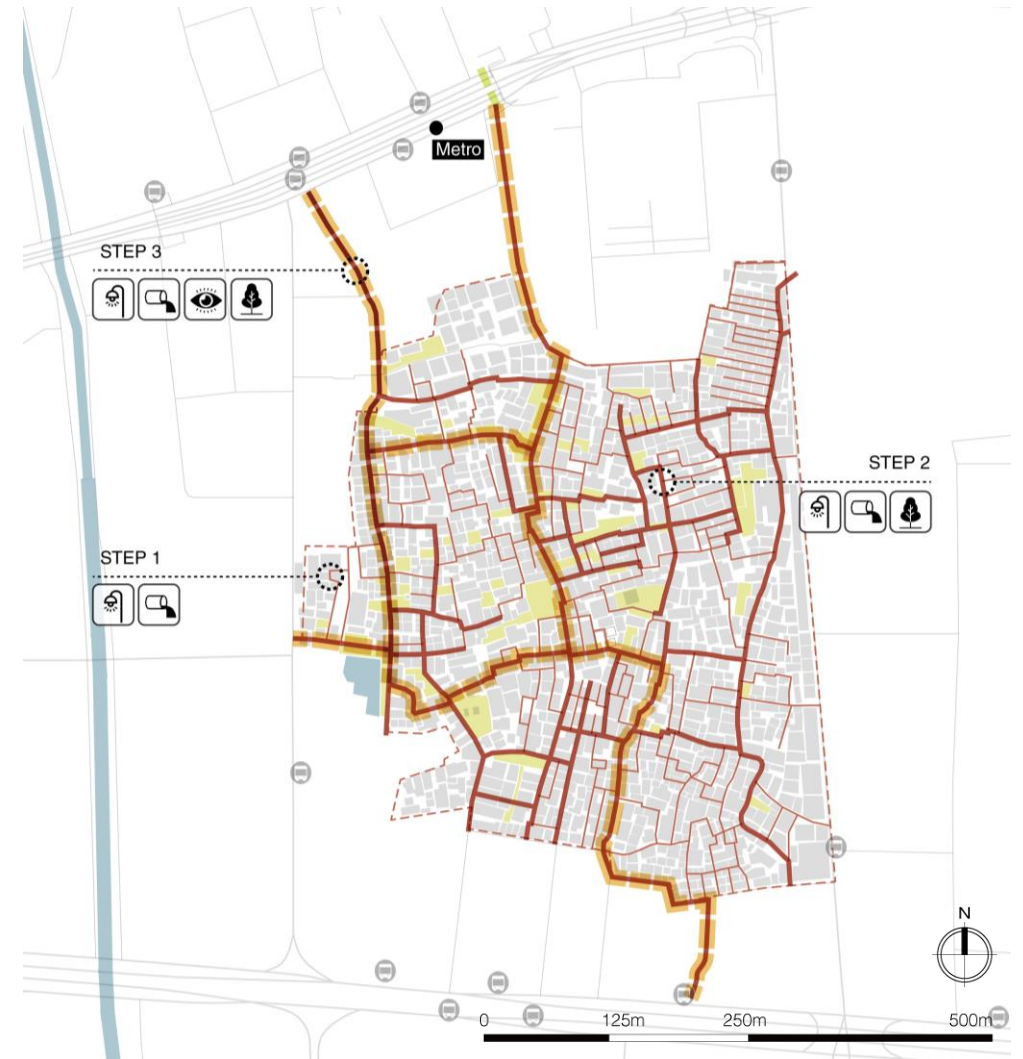
Step 2



Step 3



-  Lighting
-  Sewage system
-  Recreation facilities
-  Greenery



STRATEGY

Context

Research

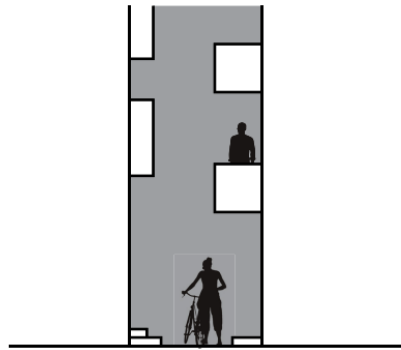
Analysis

Strategy

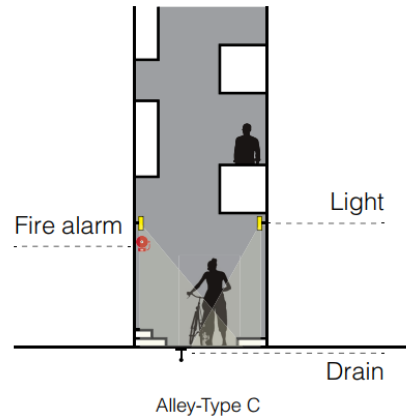
Implementation

Step 1  

BEFORE

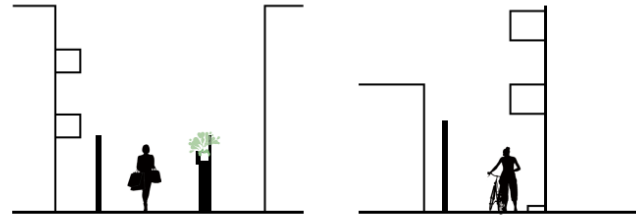


AFTER

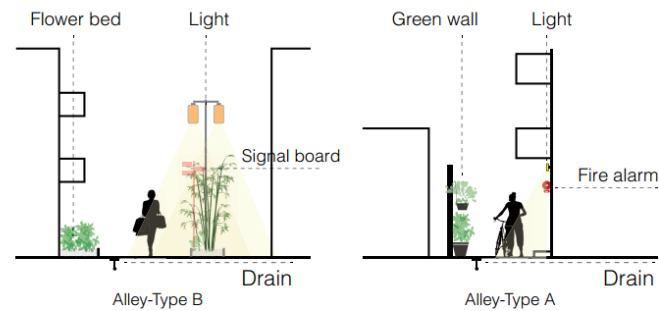


Step 2   

BEFORE

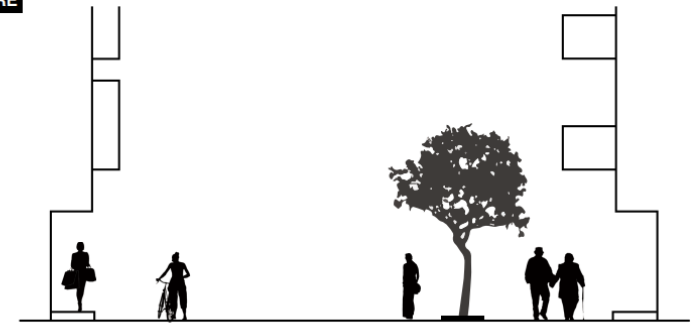


AFTER

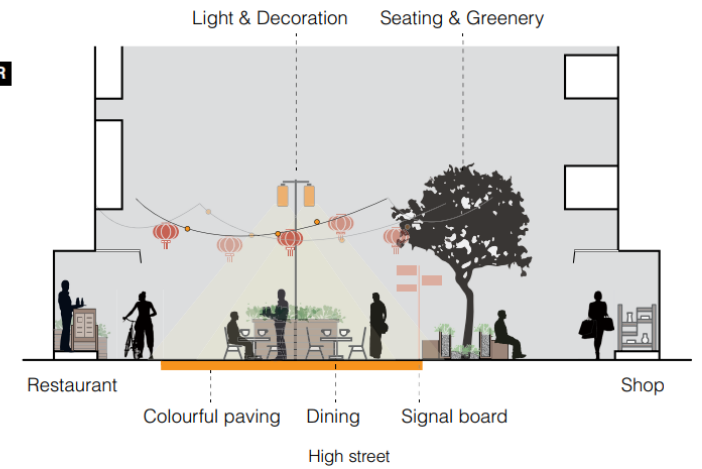


Step 3    

BEFORE



AFTER



STRATEGY

Context

Research

Analysis

Strategy

Implementation

Green

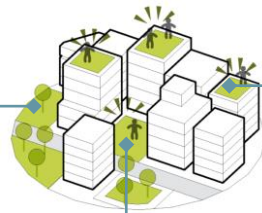
- Public green spaces:

Negotiate with locals to open the “village owned” green spaces.



- Planting activities on semi-public spaces

Encourage residents to use vacant lands, courtyards, and house roofs to make community farms, pocket parks and roof gardens.



Public space

Toolbox for Shipai village

- For whom?
- For what activities?
- Where should it be placed?

Based on the comments from different social groups

Places for
chatting, exercising, reading and cultural events



Places with
seats, tables and shelters



Greenery and sunlight



Visitors

I miss the old bookstores in Shipai village so much. They are nice place to go while many of them have gone out of business.



/ Tenant

Female, rent a single room in Shipai Village

There is no sunshine in my room even at noon. The light should be on during the whole day. And I need to hang out the wash somewhere outdoors. The ground floor is full of restaurants. The bad smells would reach my room, especially at midnight. Although here are quite a lot of residents, I still feel lonely as we have less contact with each other.



/ Tenant - Female

There are not many places in the village that we could enjoy nature and sunlight. My favorite place to go is the Elderly Activity Centre, where many people chatting and playing chess in the square.



Delivery man

Most restaurants would serve takeaway. The delivery jobs are done by the migrants who live in Shipai villages. The entrance of the main streets are very crowded during dinner time, as a large number of delivery men are gathering there. We also need a place to sit.



Musician

We set up a CD store in Shipai village in 2007 and started to write music. We enjoy performing in the bars in Shipai. We're famous now, but we still go back to sing a lot.



Visitors

My favorite place is the square near the community center, where I could find markets, clinics and other public facilities.



/ Tenant - Male

We are not allowed to enter the clan temples and the community center. They are only used by villagers.



Source: Part of the comments from social media, <https://weibo.com/>

STRATEGY

Context

Research

Analysis

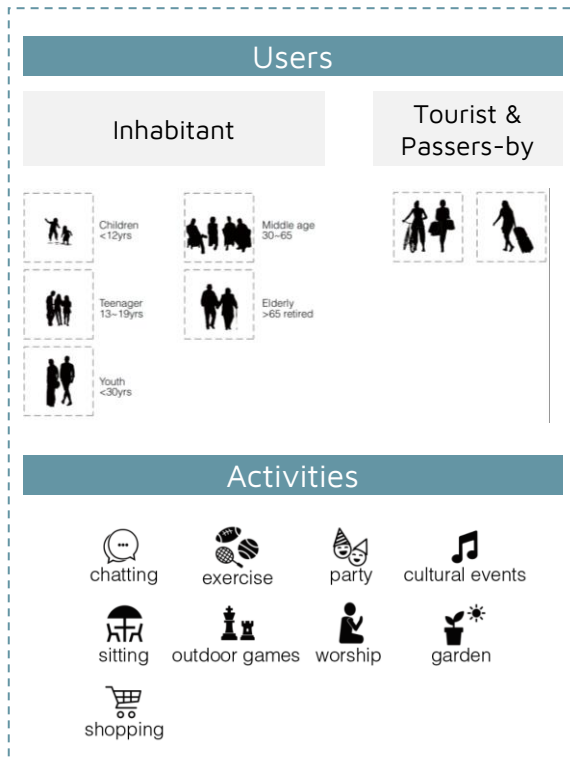
Strategy

Implementation

Public space

Toolbox for Shipai village

- For whom?
- For what activities?
- Where should it be placed?



STRATEGY

Context

Research

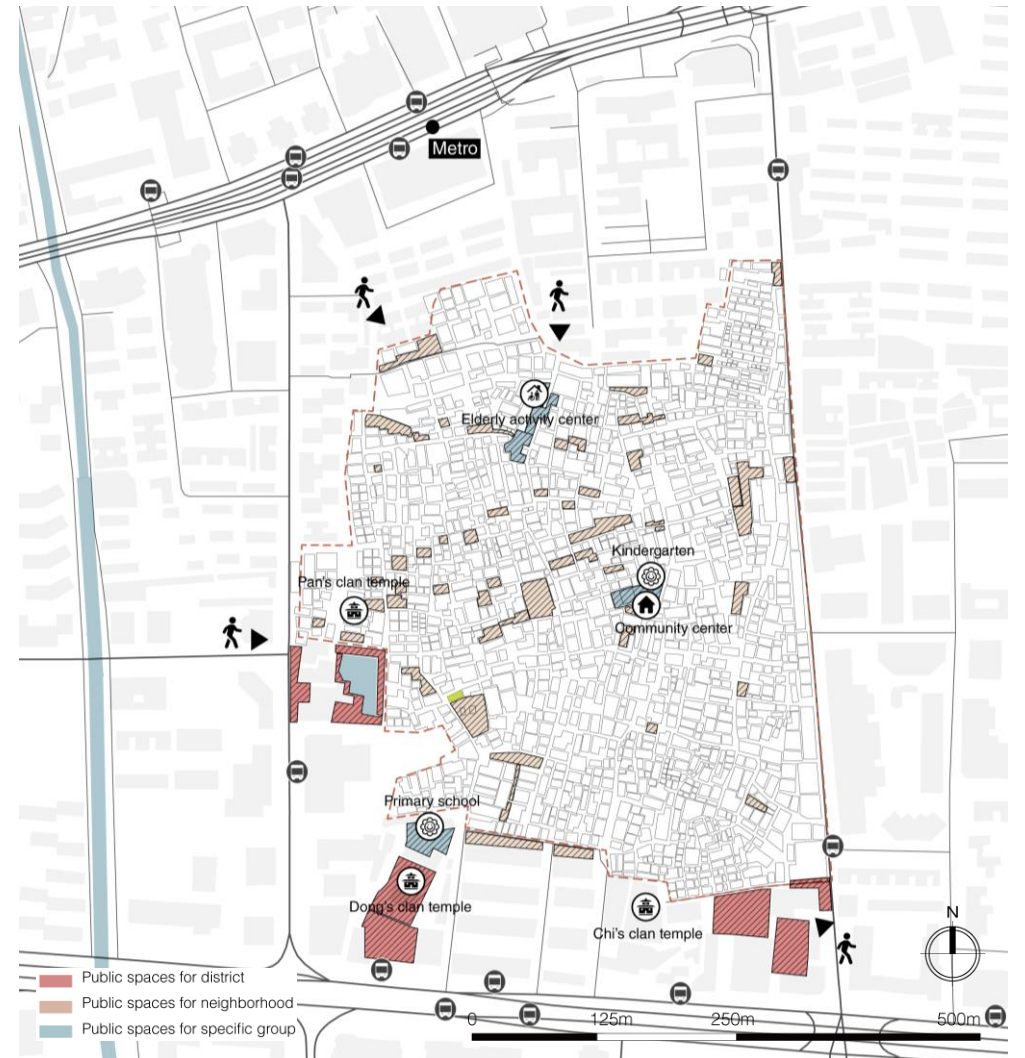
Analysis

Strategy

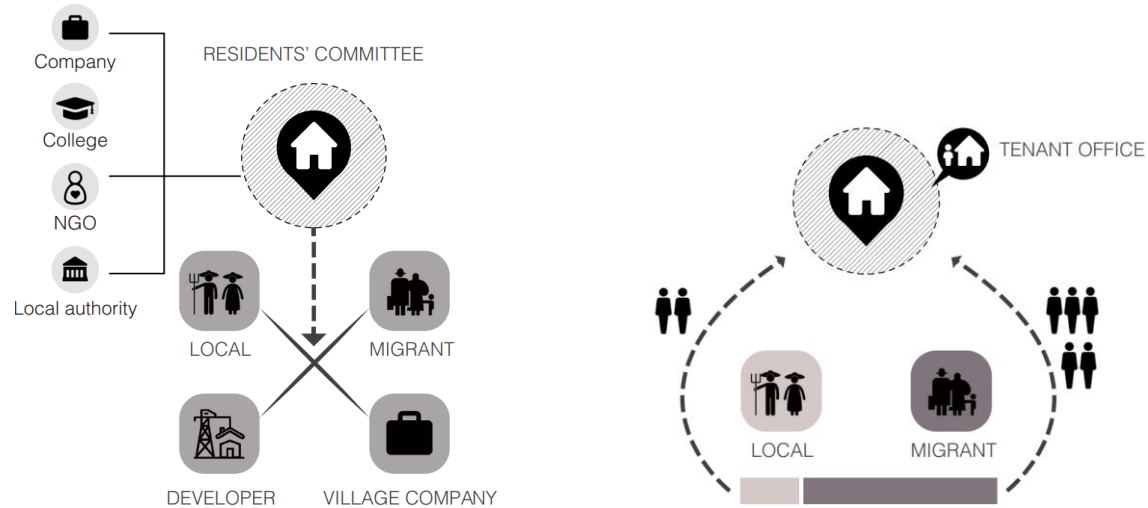
Implementation

Public space

Strategic plan



Management

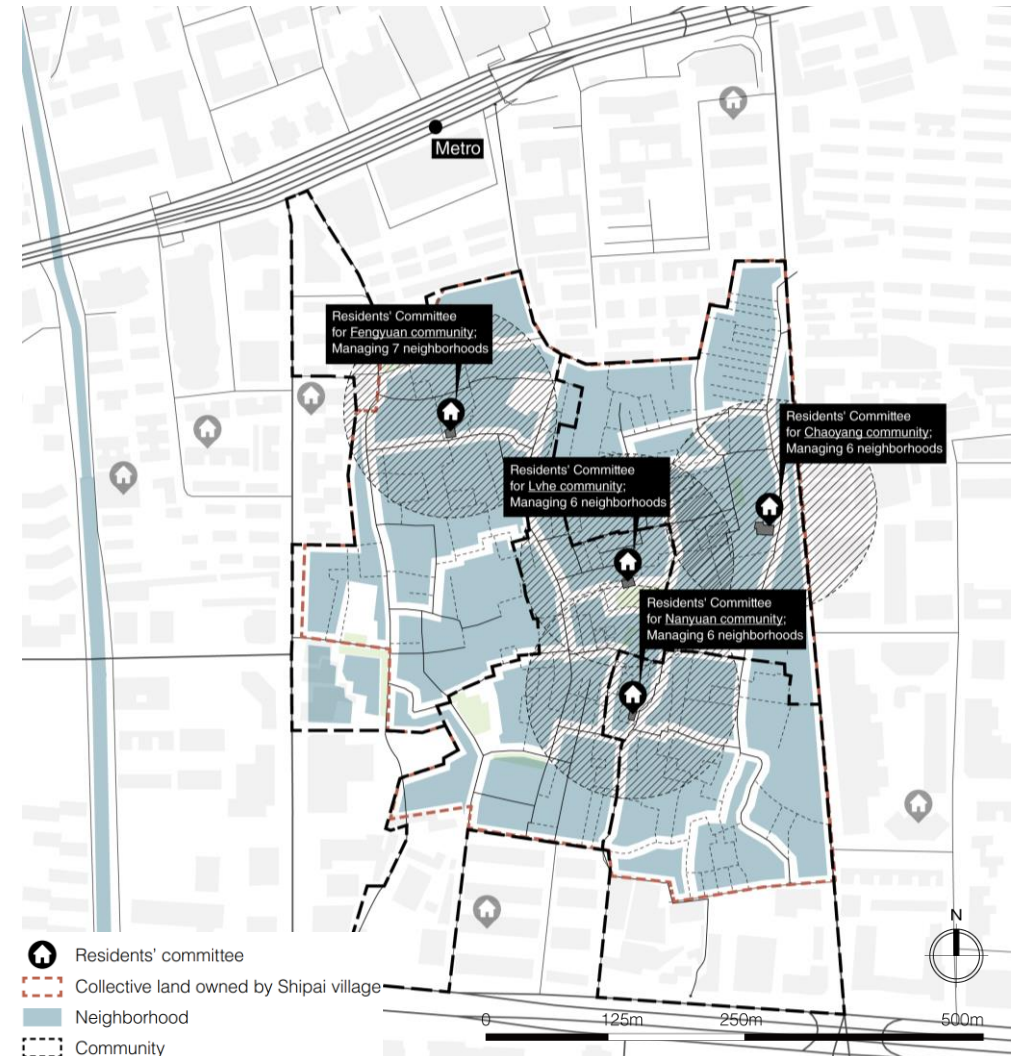


Residents' committee

work as an intermediary to contact with local authority, companies and other institutions for technical and financial supports.

Tenants' office

will be established in the committee, which encourage tenants to participate in community management.



STRATEGY

Context

Research

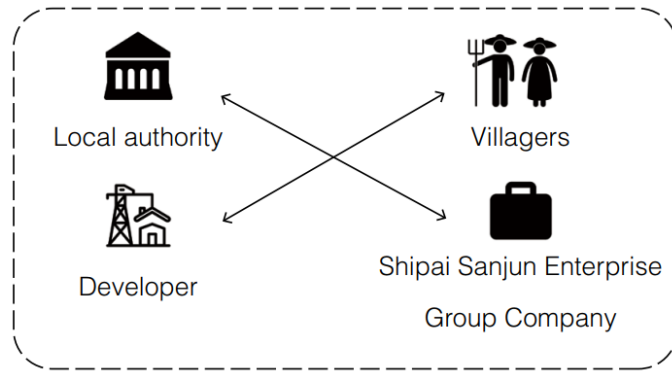
Analysis

Strategy

Implementation

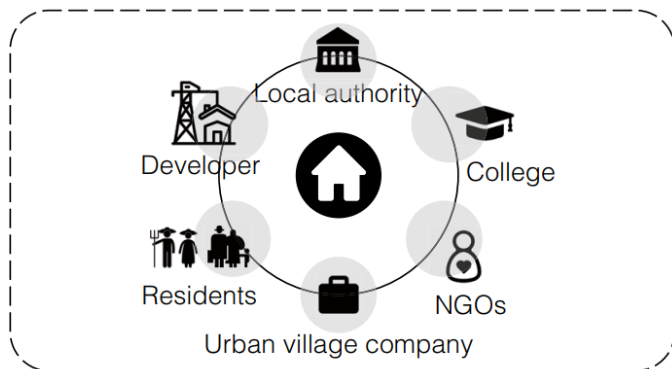
Management

Before

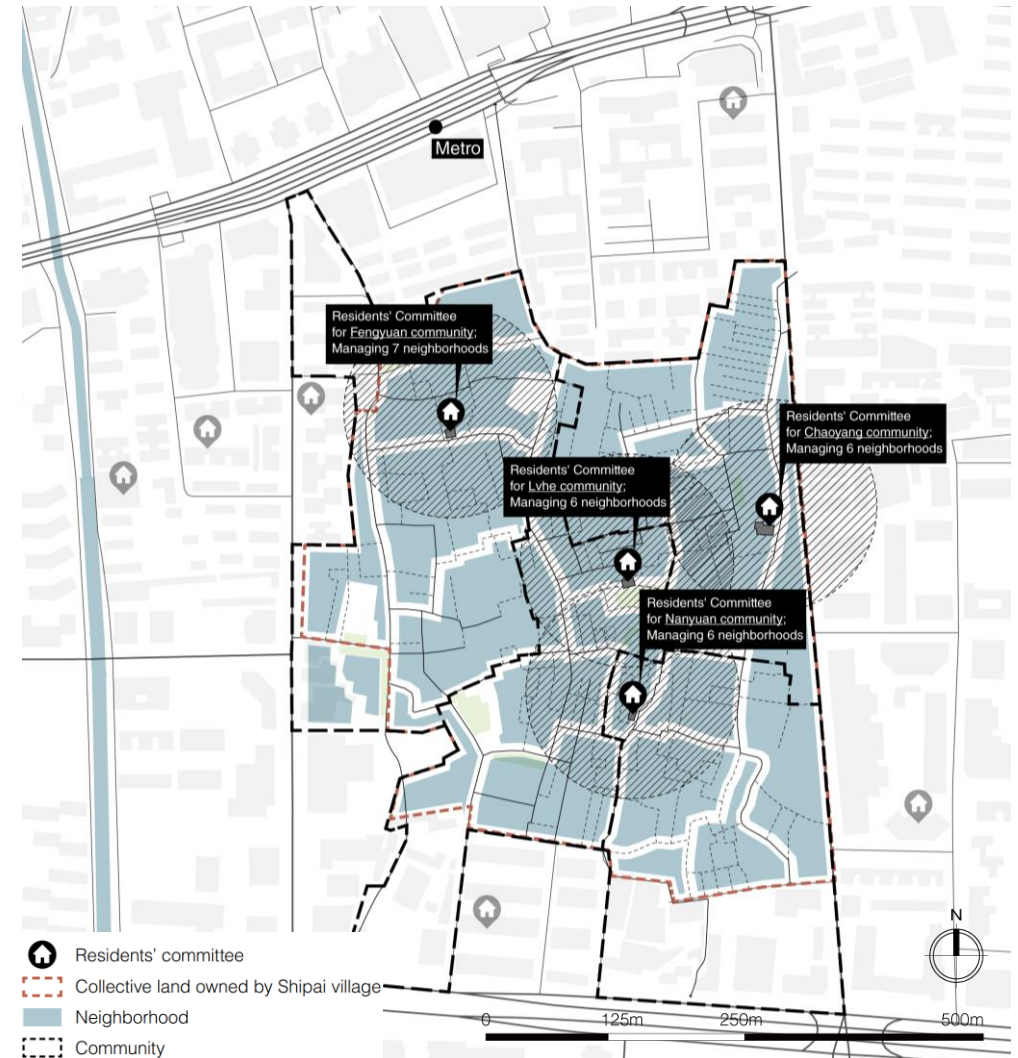


Market-driven

After



Cooperative



STEPS TOWARD VISION

Context

Research

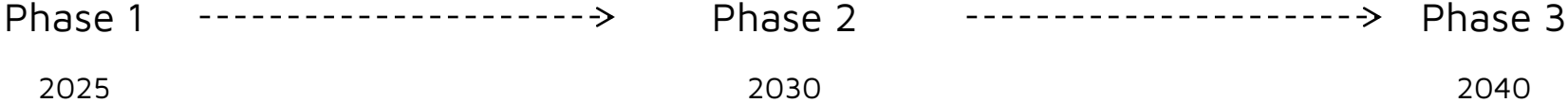
Analysis

Strategy

Implementation

How to implement the strategies?

STEPS TOWARD VISION



STEPS TOWARD VISION

Context

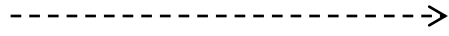
Research

Analysis

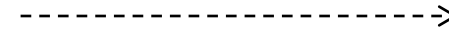
Strategy

Implementation

Phase 1



Phase 2



Phase 3

2025

2030

2040



- New affordable housing
- Path upgrading

Improve living security and provide more affordable housing



- Tenants' office
- Path upgrading
- Public space

Be livable and enhance resident engagement



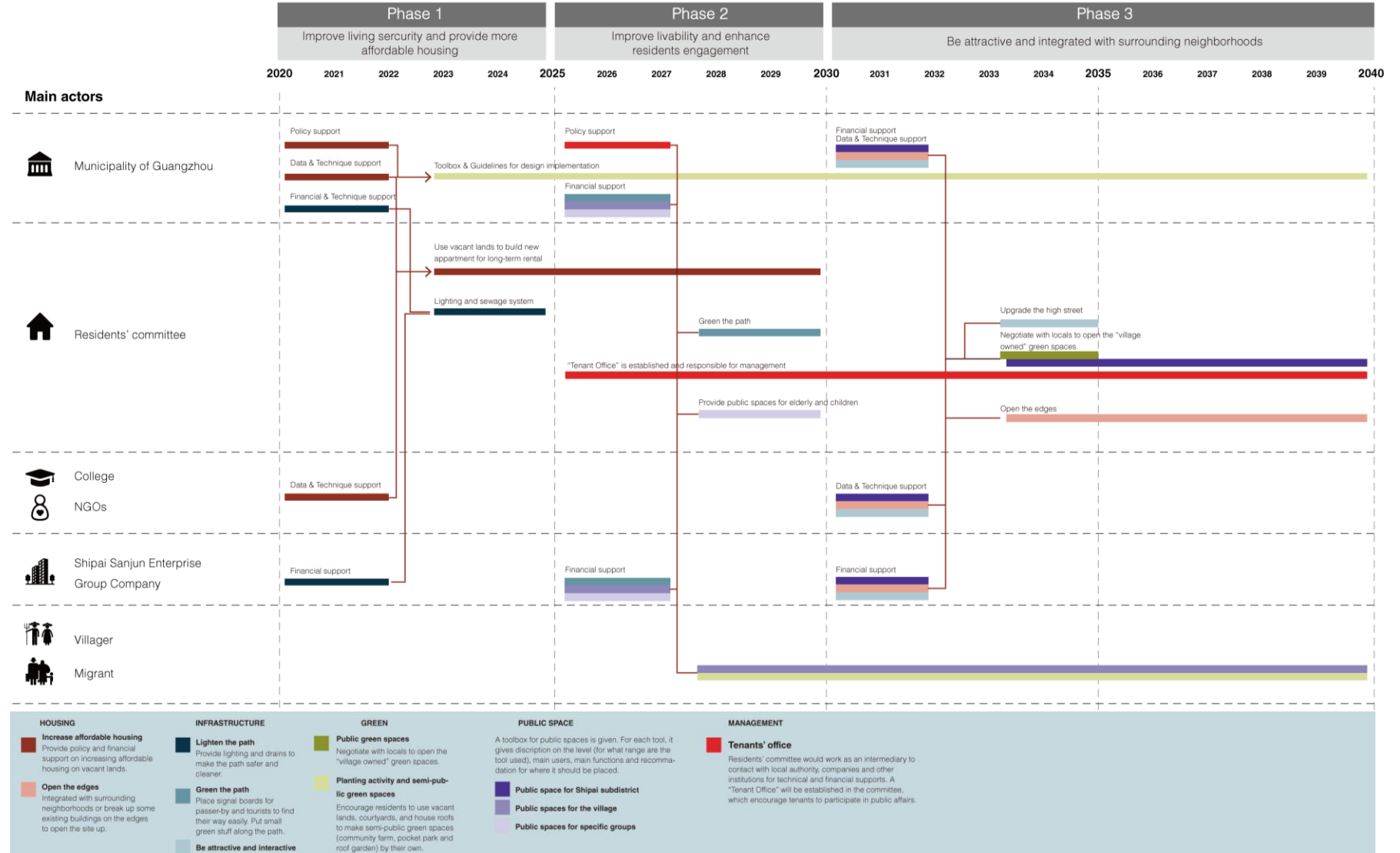
- Open the edges
- Commercial street upgrading
- Public space

Be attractive and integrated with surrounding neighborhoods

GENERAL TIMELINE



Actions



GENERAL TIMELINE

Context

Research

Analysis

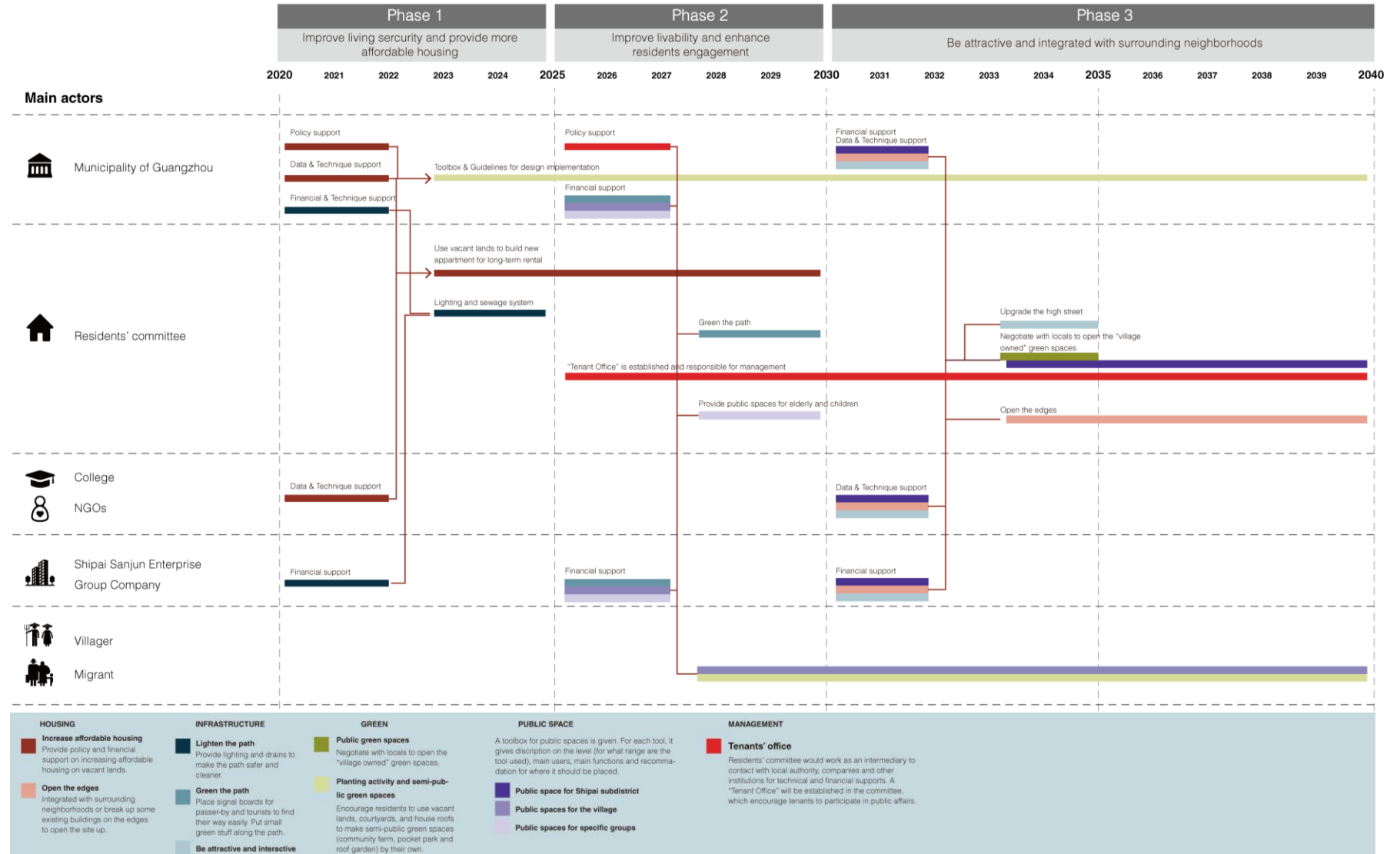
Strategy

Implementation

Actions



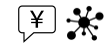
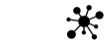
Finance



GENERAL TIMELINE



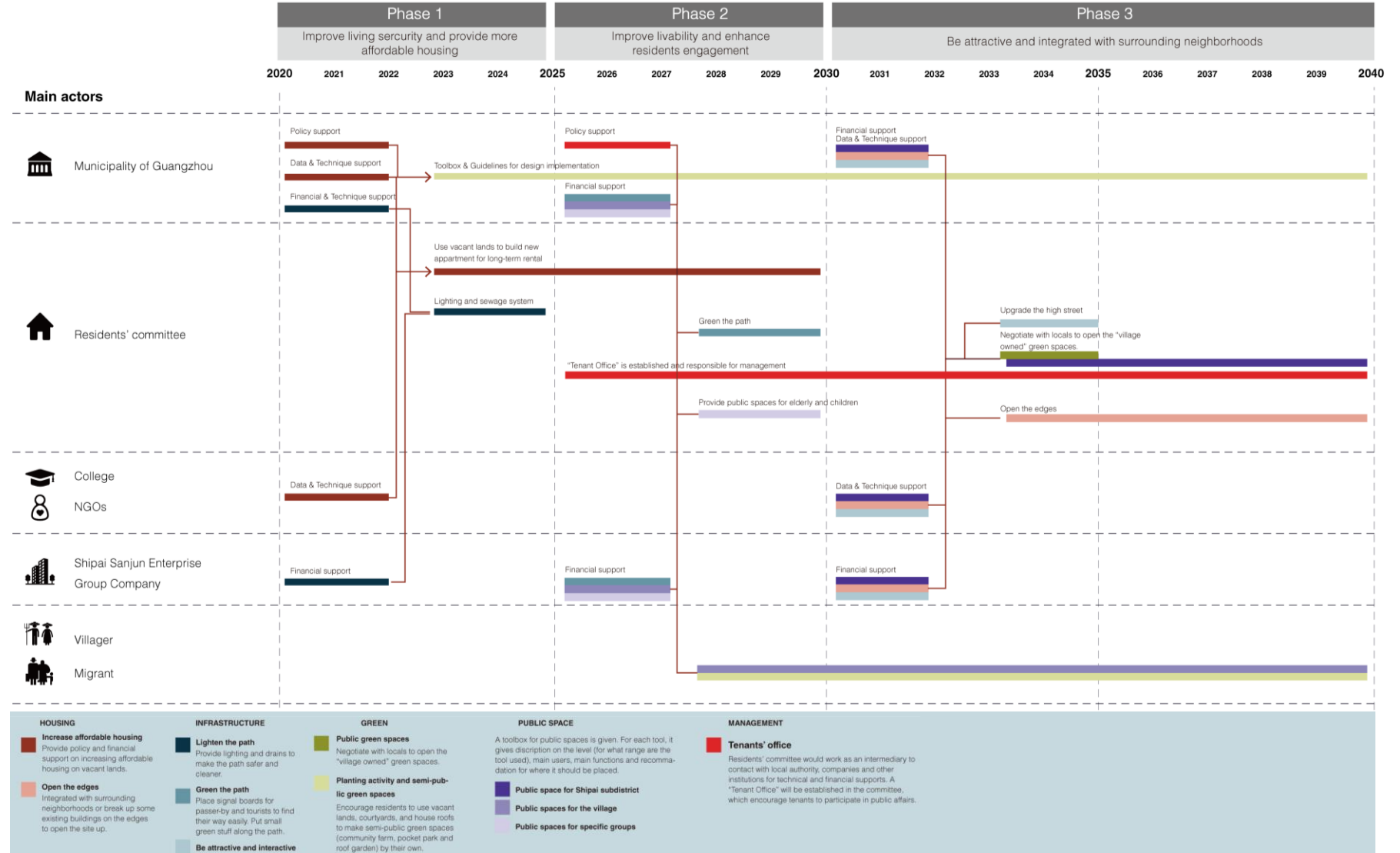
Actions



¥ Finance

Data & Technique

Policy



GENERAL TIMELINE

Context

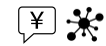
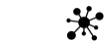
Research

Analysis

Strategy

Implementation

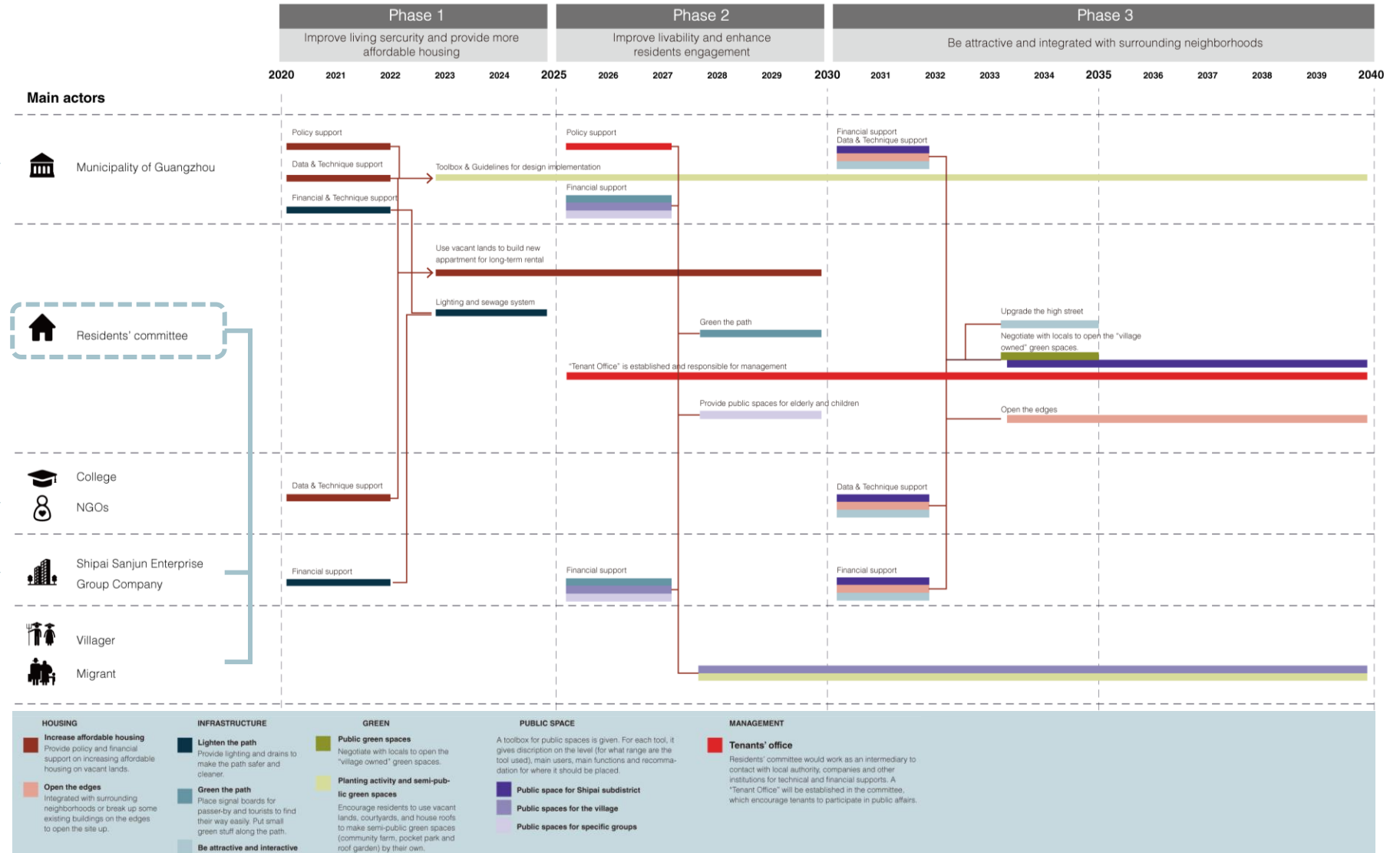
Actions



¥ Finance

Data & Technique

Policy



STAKEHOLDERS

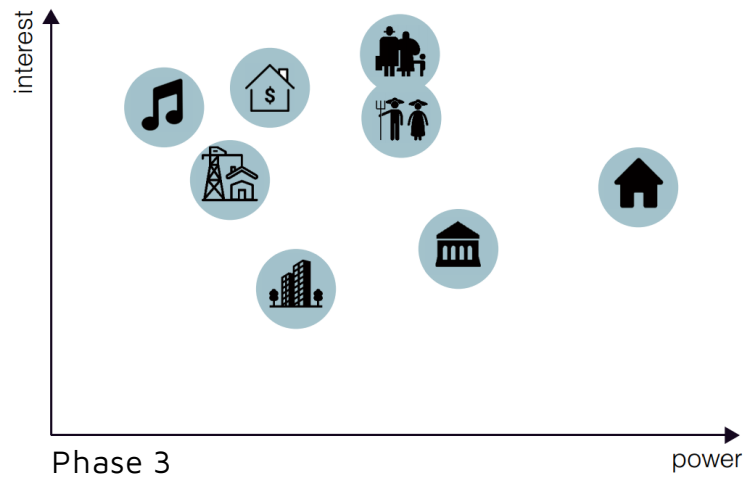
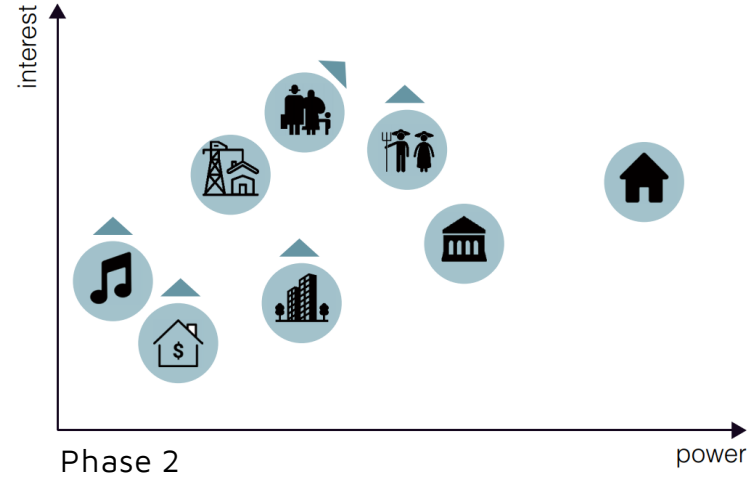
Context

Research

Analysis

Strategy

Implementation



- Municipality of Guangzhou
- Residents' committees
- Real estate developer
- Shippai Sanjun Enterprise Group Company
- Culture & Recreation
- Villager
- Migrant
- Local shops



STAKEHOLDERS

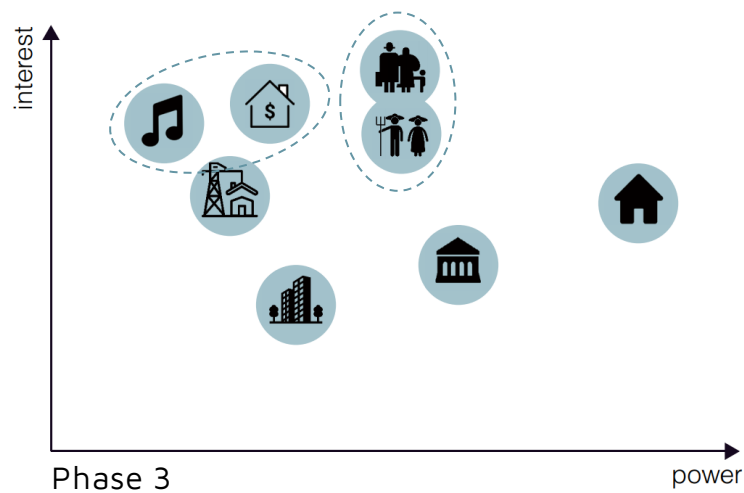
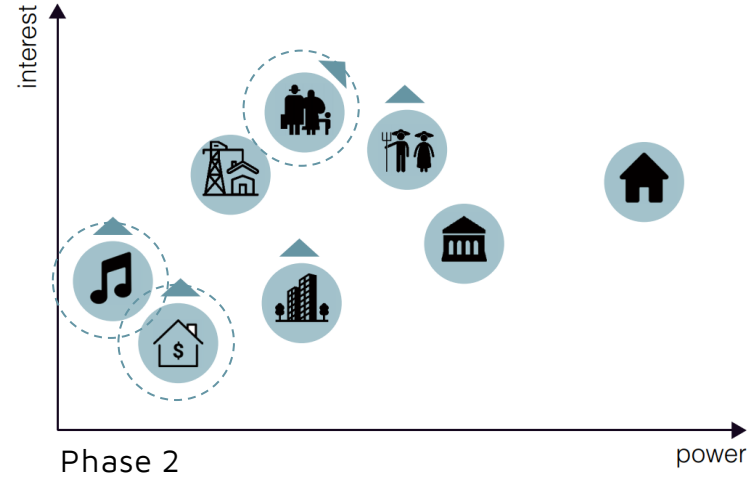
Context

Research

Analysis

Strategy

Implementation



- Municipality of Guangzhou
- Residents' committees
- Real estate developer
- Shipai Sanjun Enterprise Group Company
- Culture & Recreation
- Villager
- Migrant
- Local shops



DESIGN TEST

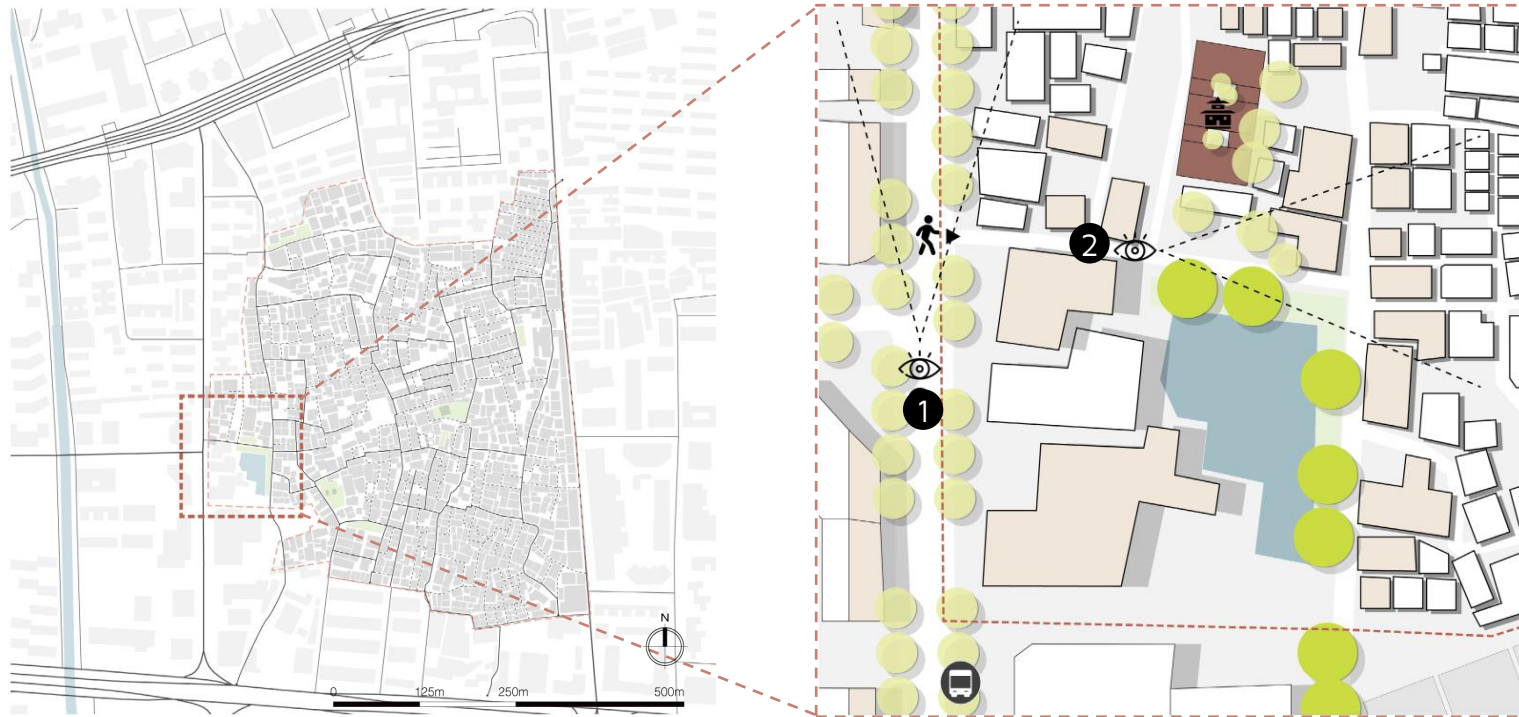
Context

Research





Analysis

Strategy

Implementation



The design test shows how strategies integrated with specific context. The chosen site is around the west entrance of Shipai village.

-  Bus stop
-  Clan temple
-  Store (ground floor)
-  Residential

DESIGN TEST

Context

Research



Analysis

Strategy

Implementation

Phase 1



-  Lighting
-  Sewage system

1

Before



After



Ensure the living security and keep the village clean

DESIGN TEST

Context

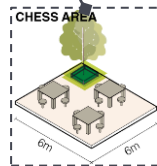
Research

Analysis

Strategy

Implementation

Phase 1



2

Before



DESIGN TEST

Context

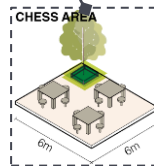
Research

Analysis

Strategy

Implementation

Phase 1



2

After



New apartments for migrants

DESIGN TEST

Context

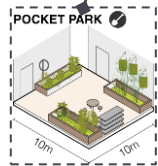
Research

Analysis

Strategy

Implementation

Phase 2



1

Before



DESIGN TEST

Context

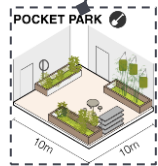
Research

Analysis

Strategy

Implementation

Phase 2



1



A tiny pocket park for traditional activities and gardening

DESIGN TEST

Context

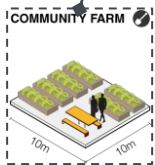
Research

Analysis

Strategy

Implementation

Phase 2



2

Before



After



Community farm

DESIGN TEST

Context

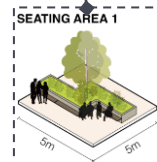
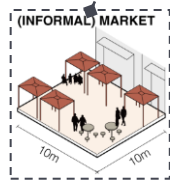
Research

Analysis

Strategy

Implementation

Phase 3



1



Before

DESIGN TEST

Context

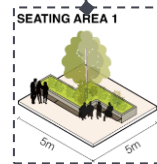
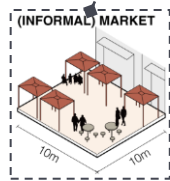
Research

Analysis

Strategy

Implementation

Phase 3



1

After



High streets become the new urban attraction for the whole subdistrict

DESIGN TEST

Context

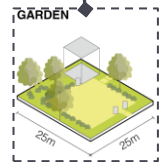
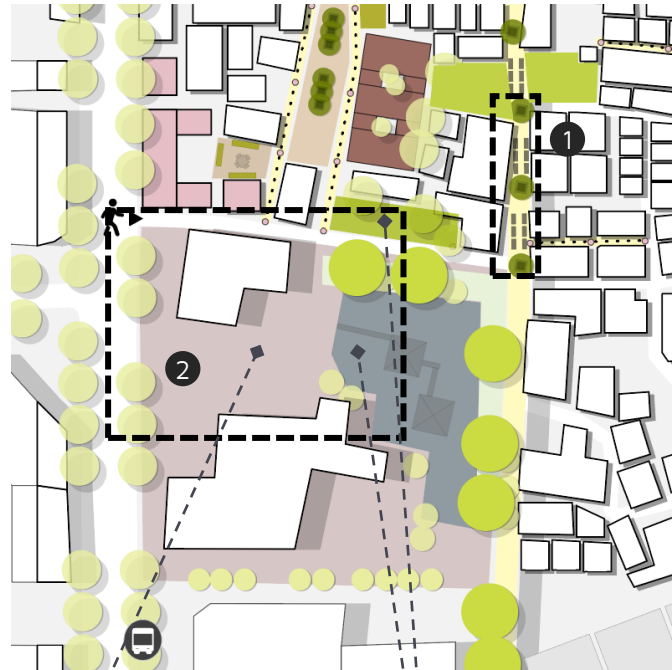
Research

Analysis

Strategy

Implementation

Phase 3



2

Before



DESIGN TEST

Context

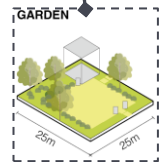
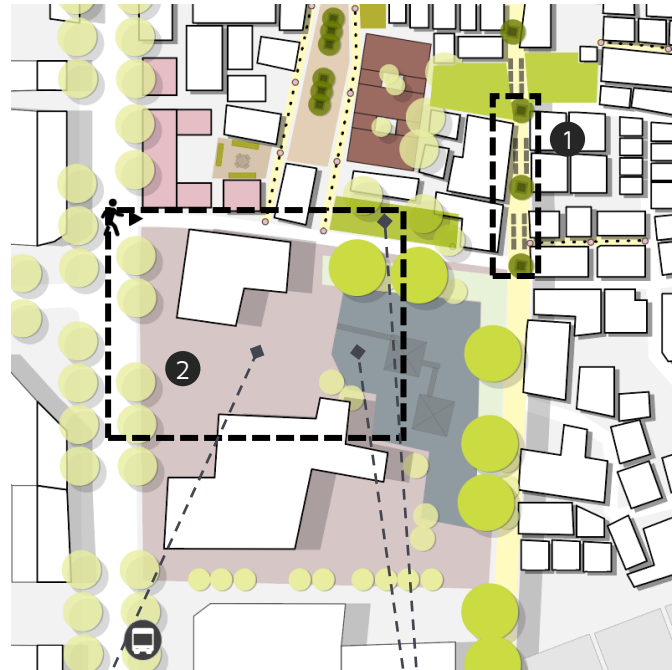
Research

Analysis

Strategy

Implementation

Phase 3



2

After



The square and garden allow people to do exercise and hold events

CONCLUSION

Context

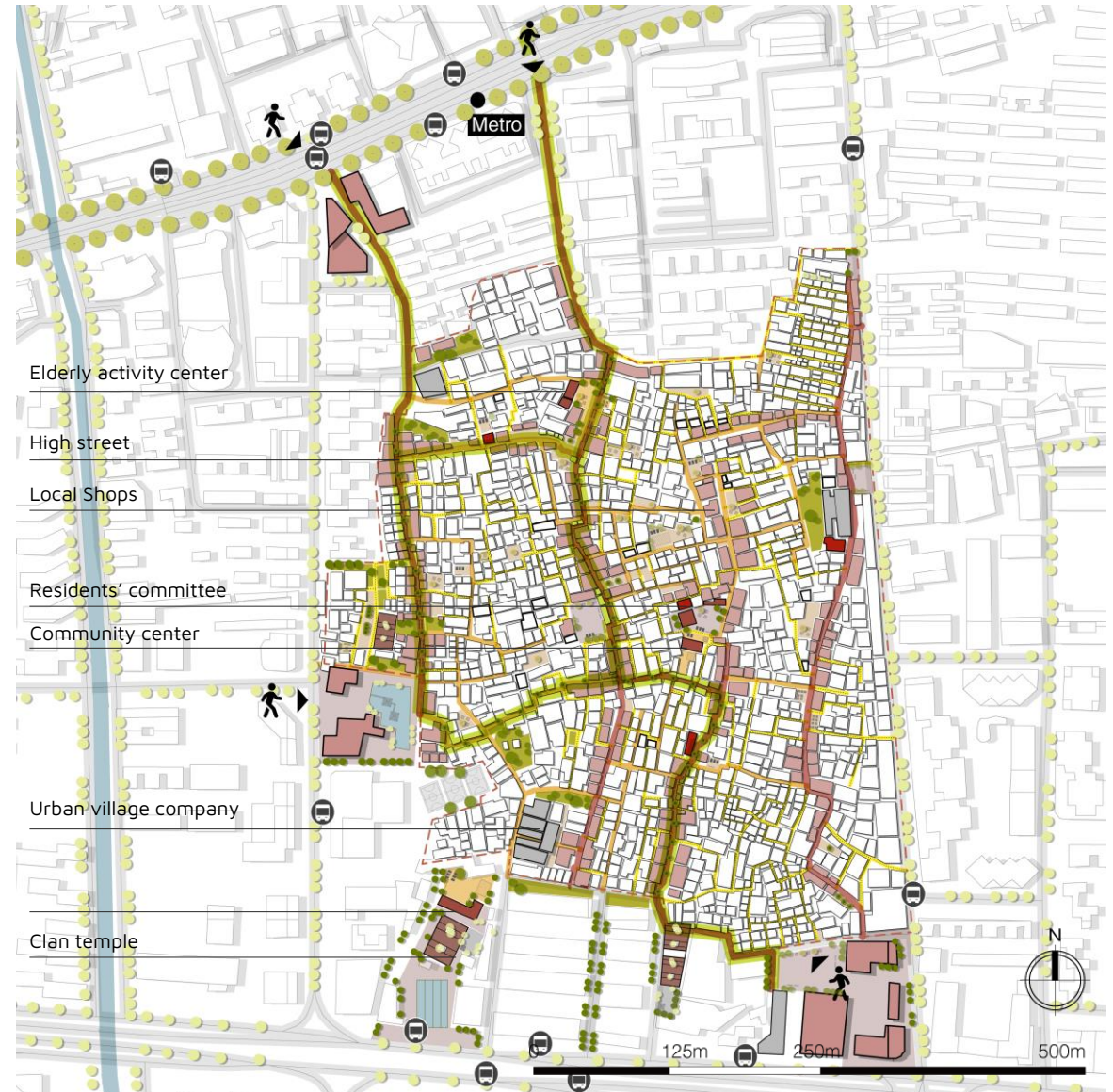
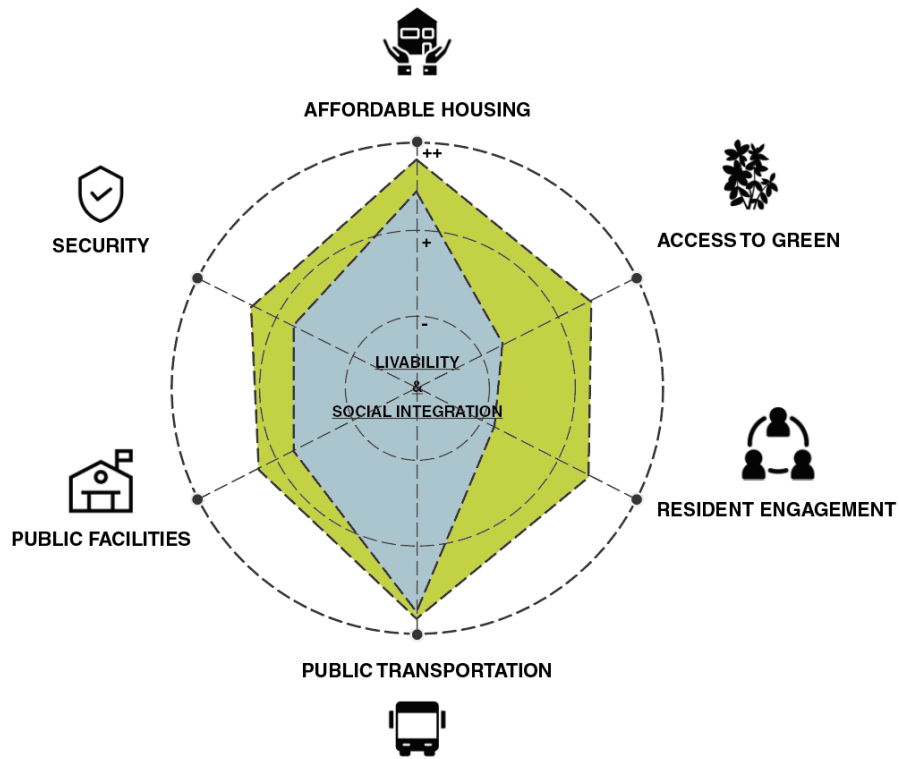
Research

Analysis

Strategy

Implementation

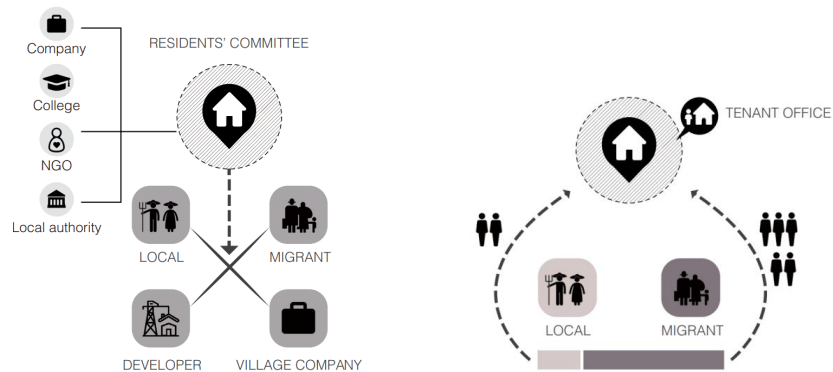
Assessment of proposed vision



How could the project contribute to other informal settlements?

Changes in current planning and management process

- Ideas of migrants participating into redevelopment process
- Spatial interventions



Changes in the self-management process



Spatial strategies to improve livability

REFLECTION

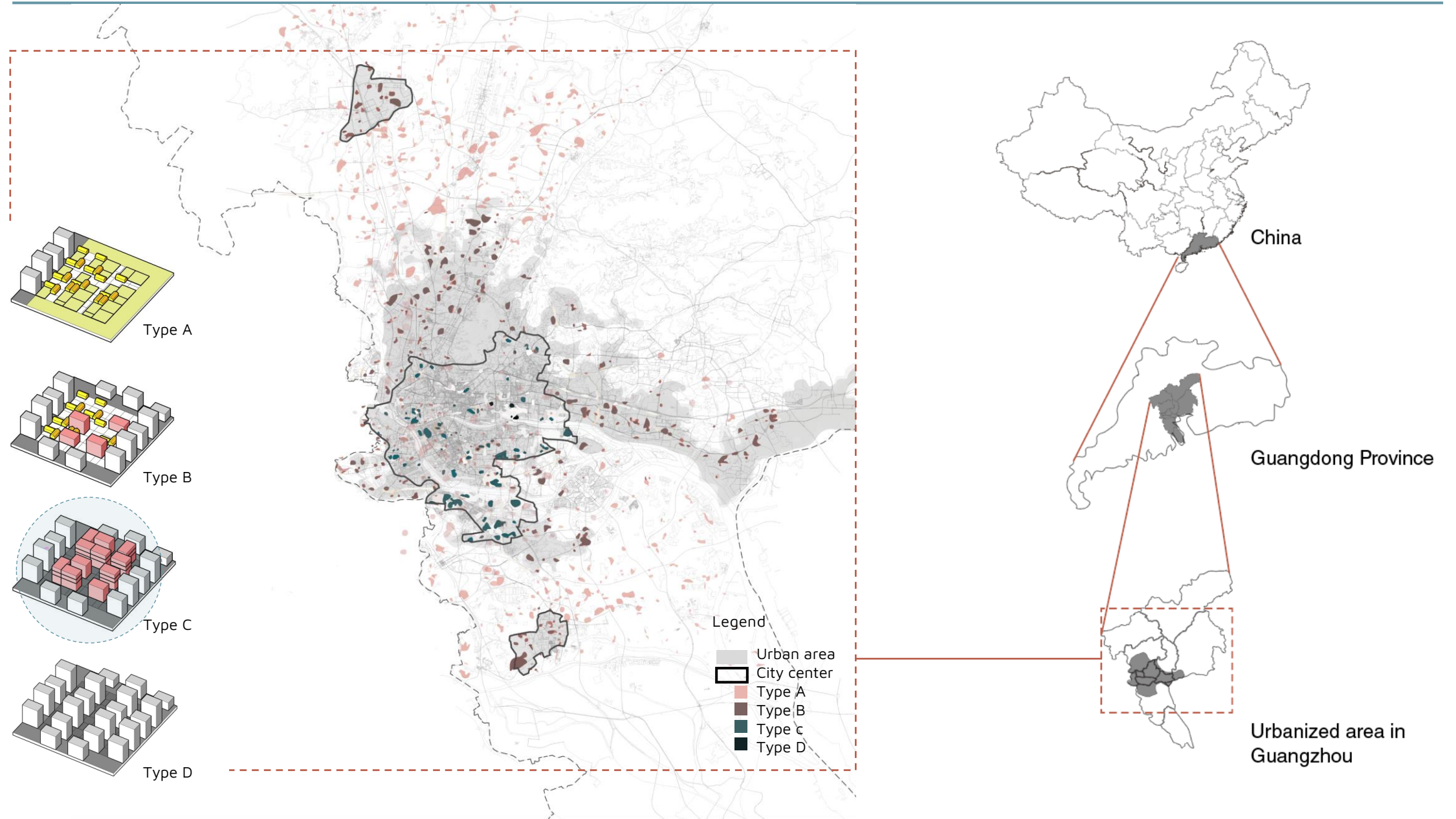
Context

Research

Analysis

Strategy

Implementation



REFLECTION

Context

Research

Analysis

Strategy

Implementation

Transferability

- Only used in Shipai village



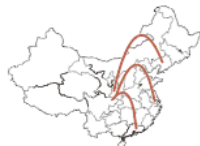
- Urban villages with similar conditions in Guangzhou (Density, position, *Hukou* state, land ownership, farmland)



- Other types urban villages in Guangzhou city



- Informal settlements in other regions



	DATA	METHOD	PRODUCT
ANALYSIS	<ul style="list-style-type: none"> Urban scale <ul style="list-style-type: none"> Density Position Hukou state Management Farmland Village scale <ul style="list-style-type: none"> Social network Infrastructure Facilities Public space & activities 	<ul style="list-style-type: none"> Online survey on social media <ul style="list-style-type: none"> Word frequency analysis "Interview" Mapping 	<ul style="list-style-type: none"> Urban scale <ul style="list-style-type: none"> Categorization Village scale <ul style="list-style-type: none"> Layer-analysis Assessment
DESIGN			<ul style="list-style-type: none"> Strategies <ul style="list-style-type: none"> Spatial Managerial Toolbox <ul style="list-style-type: none"> Public space

OVERALL CONCLUSION

Context

Research

Analysis

Strategy

Implementation

ANALYSIS

Sub Group 1

Form
Role
Governance

EXPOSE

Sub Group 2

Criteria for livability and social integration
Spatial & social characteristics
Demand of different stakeholders

PROPOSE

Sub Group 3

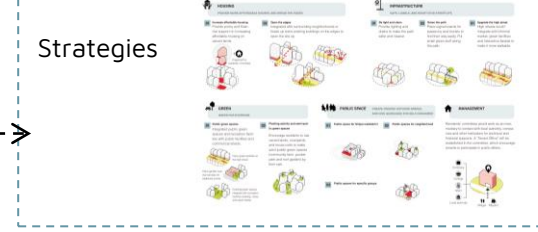
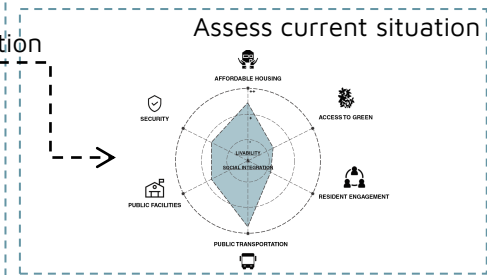
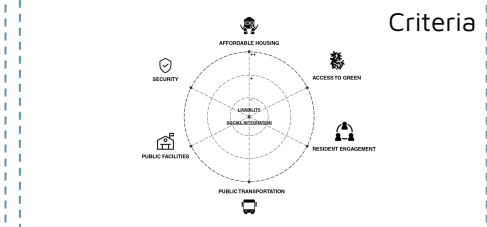
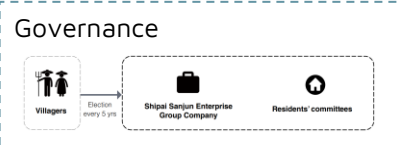
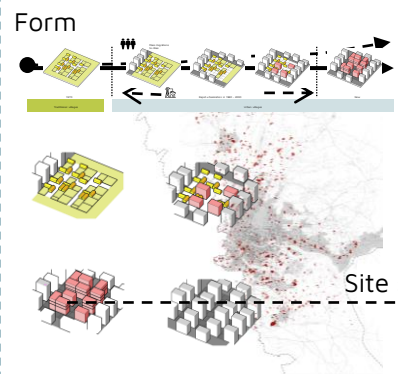
Strategies and implementation

Generalize the results

Main Research question

How to facilitate the redevelopment of urban villages in Guangzhou in a more inclusive and sustainable manner,

which provides a livable environment and promotes social integration?



For villages in Guangzhou
The propose solutions could be applied in other same type villages in Guangzhou.

For other types: Redo the assessment to define the problems

For villages in other cities
Methods

A grayscale photograph of a dense urban skyline. The foreground is filled with a dense cluster of low-rise, multi-story buildings, likely residential or commercial blocks. In the middle ground, several prominent, modern skyscrapers rise above the rest of the city. The background shows a continuation of the cityscape with more buildings under a bright, overcast sky. The overall scene depicts a vibrant, densely populated city.

Thank you for your listening!