

embedding a shelter for the homeless

design proposal for a homeless shelter
integrated in the streets of Bressoux

Teun van Dillen
Urban Architecture
Graduation booklet

mentors

Paul Vermeulen
Lex van Deudekom
Eireen Schreurs
Rosie van der Schans

Delft University of Technology
Msc. Architecture Urbanism and Building Sciences
Urban Architecture graduation studio
2022-2023

contents

introduction	5
site visit notes	6
design process 'embedding'	8
design process 'sturdy domesticity'	19
drawing set final design	27
reflection	72

introduction

This book, together with the essay on Weiterbauen, comprises the work on my graduation project. The essay forms the main part of my research and focusses on the positions of three architects concerning the attitude of Weiterbauen, providing a basis for my own architectural position on building in an existing context. This book portrays the design process of my graduation project, a shelter for the homeless embedded in the streets of Bressoux. Using a selection of drawings and studies from throughout the year, various stages of the process and corresponding decisions are highlighted, explaining the evocation of the design.

Firstly, notes of two site visits are included: a visit to the night shelter of Perspektief in Delft, and a visit to Pension van Schoonhoven in Antwerp. These visits have provided me with valuable input for the design, ranging from very hands-on experience with certain materials to insights in the routines and wishes of the users.

The second part consists of a selection of drawings and studies that chronologically show my design process of a shelter in Bressoux, divided in two themes: embedding and domesticity.

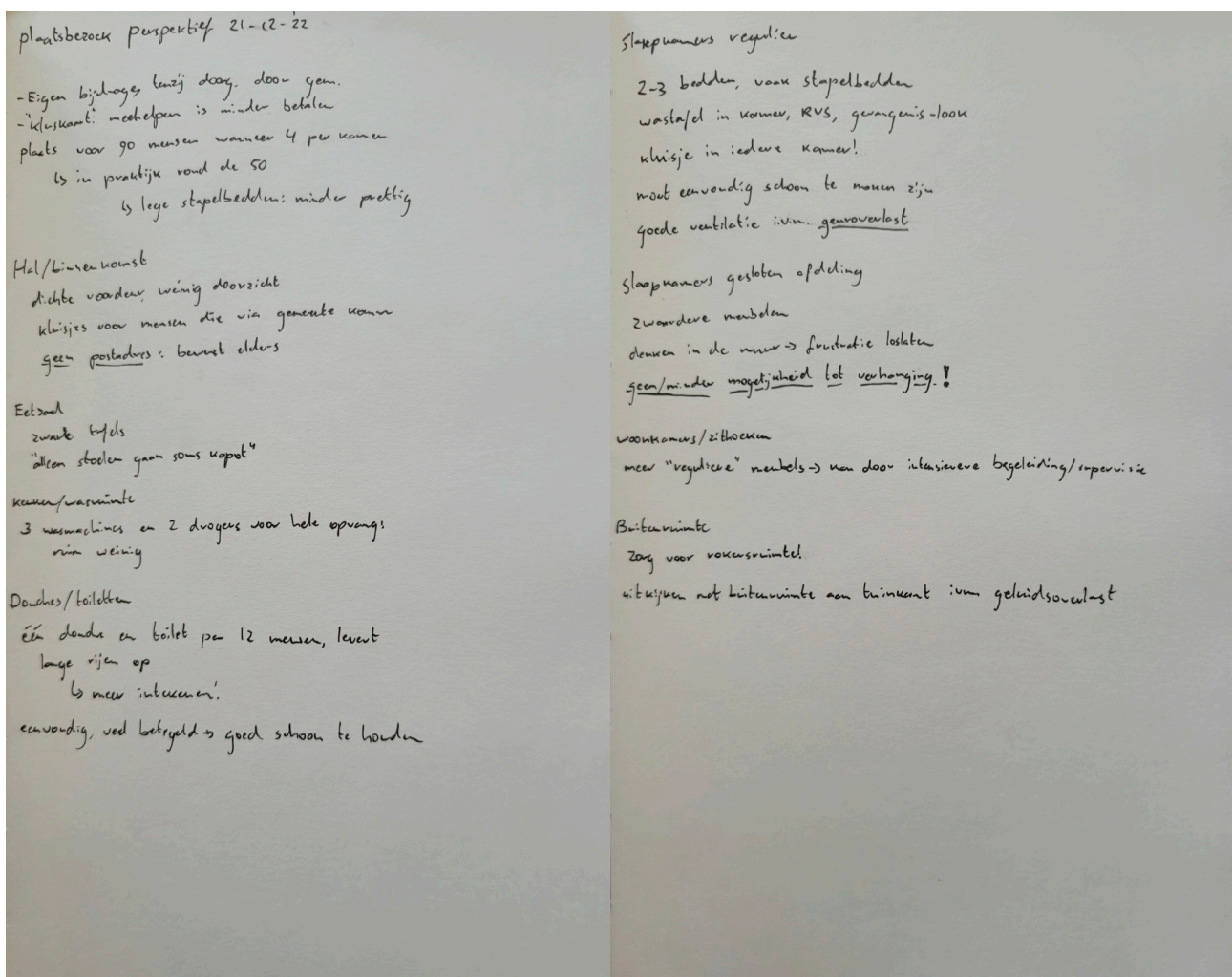
The first theme can be seen as the search for a way to integrate the shelter in the streets of Bressoux, developing my own position whilst simultaneously working on the essay.

The second theme concerns domesticity, an important luxury that I believe a homeless shelter should provide to its users. Since these kind of buildings can ask for a quite 'hufferproof' design, this theme can be seen as a search for robust, sturdy domesticity.

The final drawing set is also included, showing how the different themes and considerations have come together in the final design. This part of the book is roughly structured as a serial vision through the project. After the floor plans, showing the project in its entirety, the different kinds of drawings are grouped per building (part), ranging from sections to facade drawings and from impressions to details.

Finally, a reflection on the project is enclosed, looking back at the process and considering my goals, my used methods, my formulated position and the relevance of the project.

site visit notes



Dauzoentelling Koninklijke Bordenijnschichting + Klu Lensen
Koen Heerma
Carolien Georges

nachtopvang 280 plaatsen
vol in winter
22 jongeren
24 ziener

105 → 222 winter
flexibel inzetbaar

15 nov - 31 maart

gaat nu met minder onderscheid
Antwerpen meer

verlavingspr. → 50 naar 60

9-7 dagopvang, andere locatie dan nacht

outrijt en voornidlagend?
alcohol etc. ook issue

wettig verblijf leidt tot discussie, nachtdagen opvang?

CAW best nachtopvang uit

Streektoude

toegangscriteria zijn laag

veel te slaapend, veel paranoia

↓
grote drempel

jongeren vinden het op een jongens

dagopvang was geen succes → wettelijke blokken

oegedinteproof bouwen!

Dauzoopvang is compleet anders dan 24/24
↳ veel overzicht
↳ vooray om rust

steeds scherpere problematiek

tot rust brengen en uitschakelbaarheid is belangrijke
vermenschelijking!

metalen bedden

flexibiliteit spelen met capaciteit

opschaling tussen zomer en winter is er altijd
seizoensarbeiders

huishouden opvang

Bewaast kleine kamers, maar niet één persoon

veel en grote locaties, 24/7 open

van meerzijdige problematiek

overlast kan in bestaande wijke problemen geven

gebruik is gebouwen

7 miljoen uitbatingkosten (personeel)

hulpverlening heel persoonlijk

zorghoed, housing first

cadans wonen → intensieve begeleiding

veel focus op jongeren, kan diezelfde hulp ook voor
andere groepen?

↳ snel uit dauzoedronit stappen

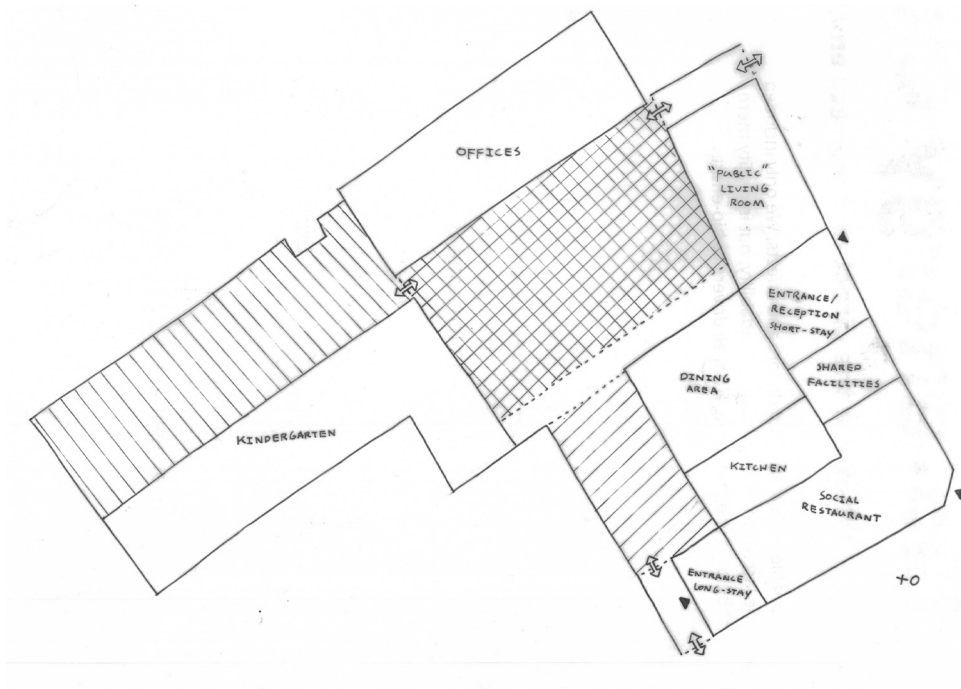
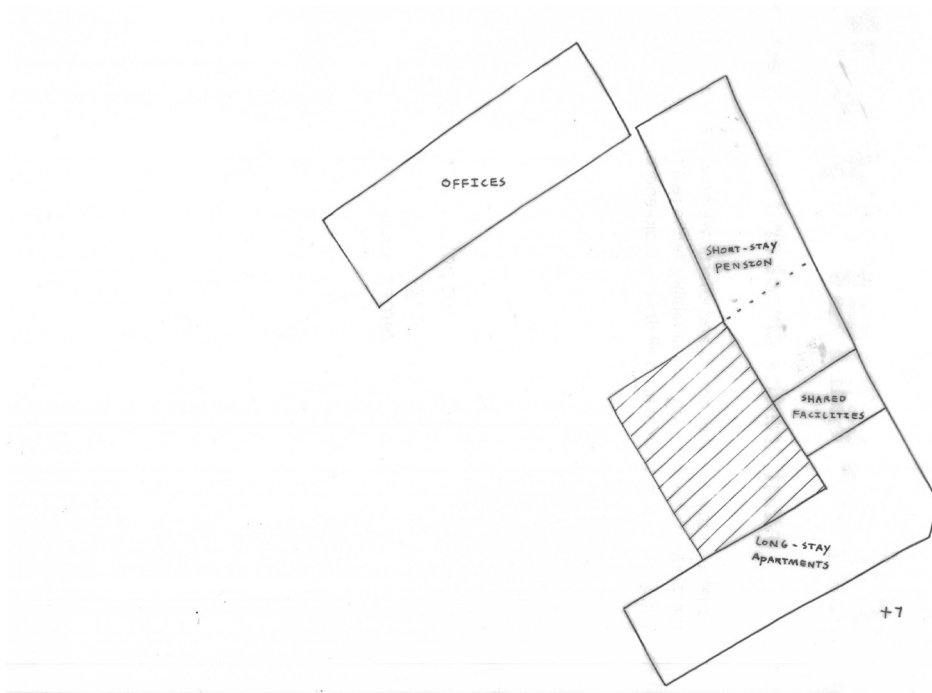
voldoende buitenruimte voldoende woonruimte

geen vachtbij op straat! kan intimiderend zijn

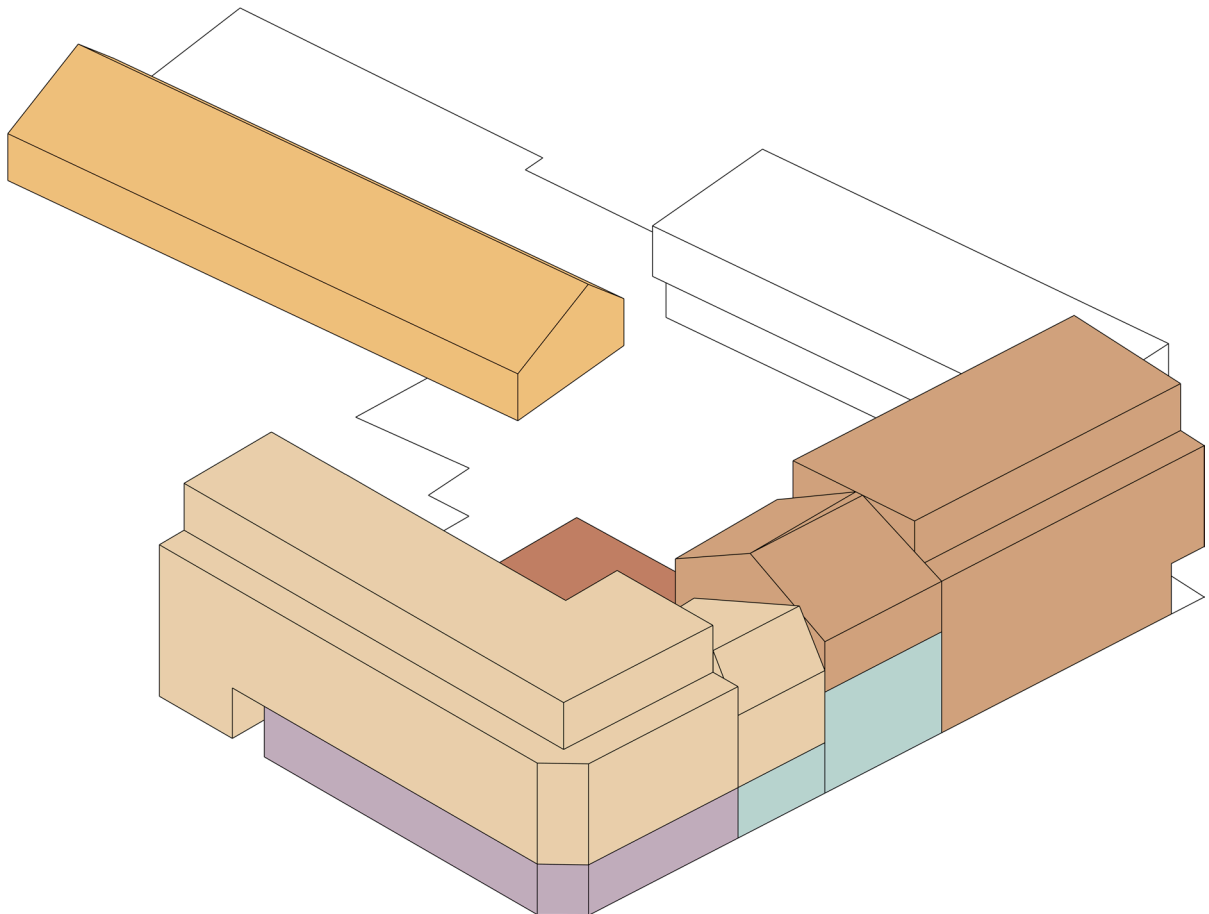
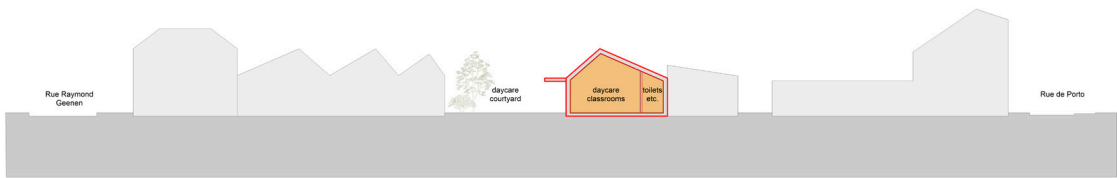
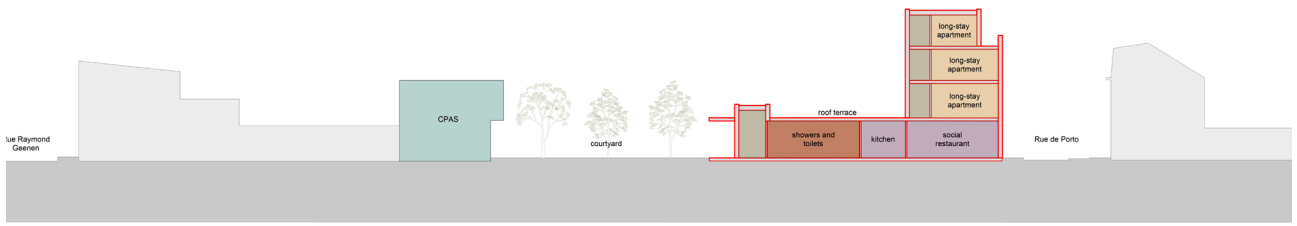
begeleidende en genderinchiel, hansen nu vaak af

veiligheidsgevoel bij buurt én mensen zelf, lastig combineren

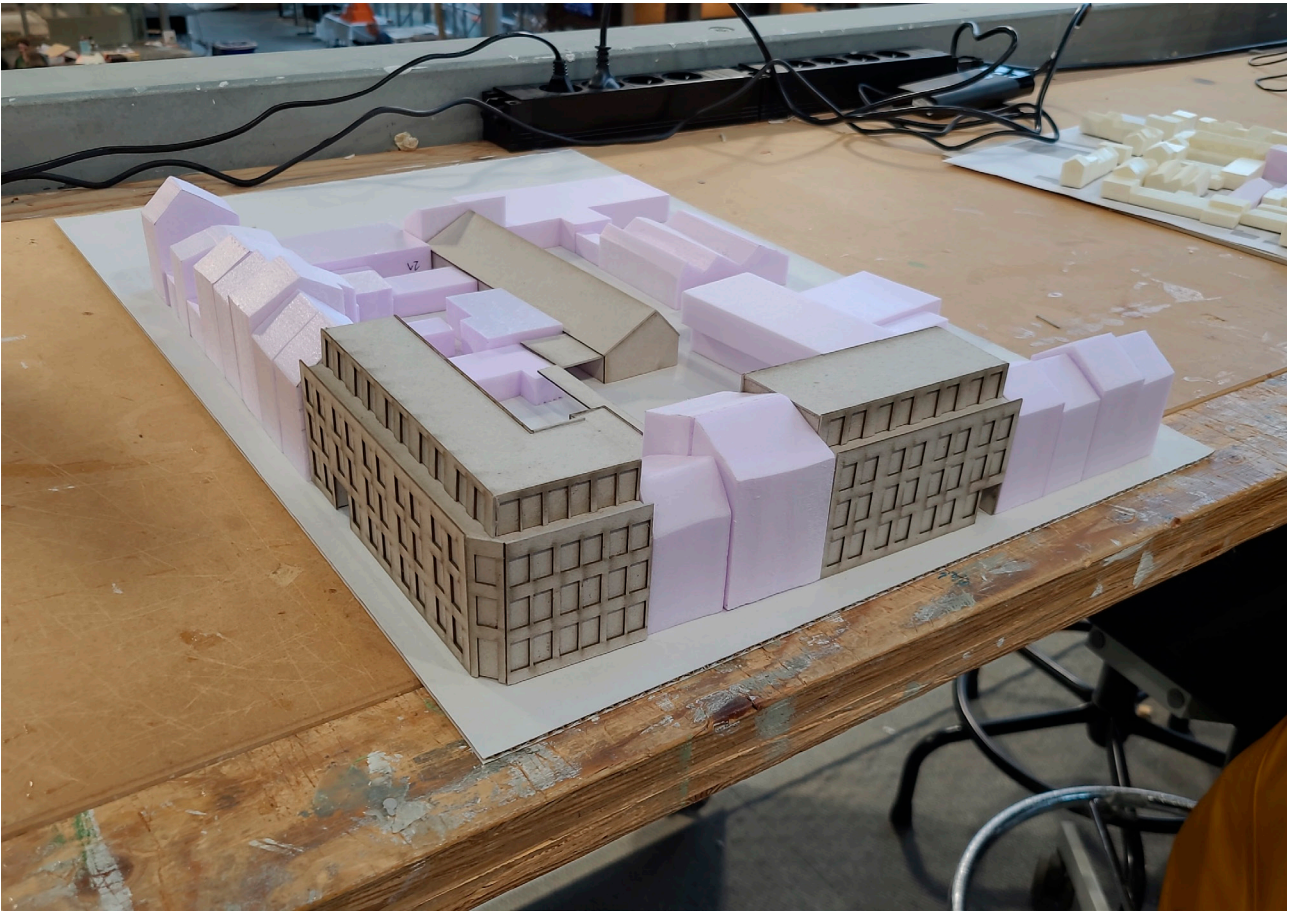
design process 'embedding'



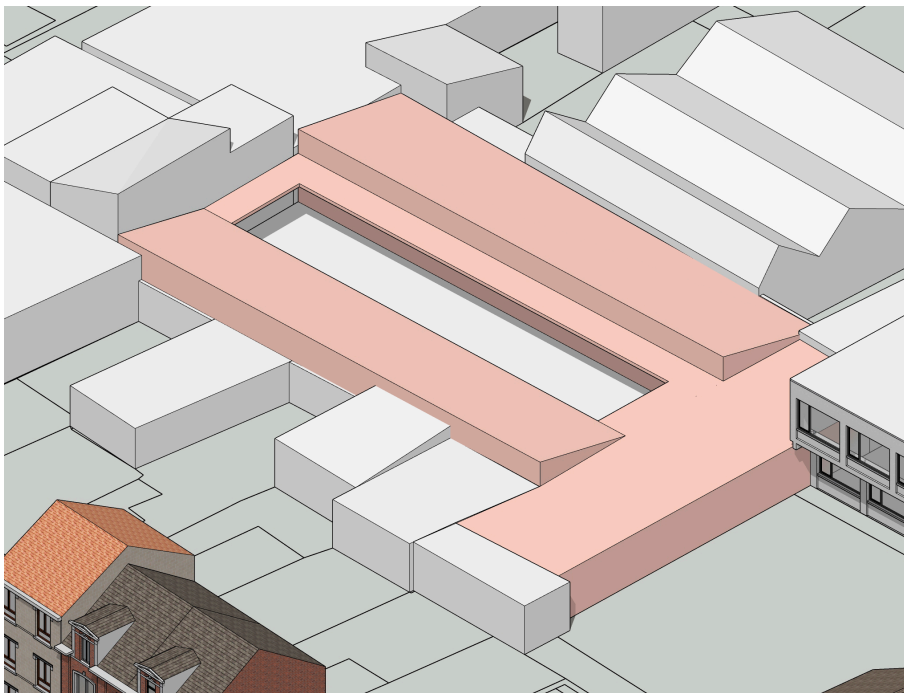
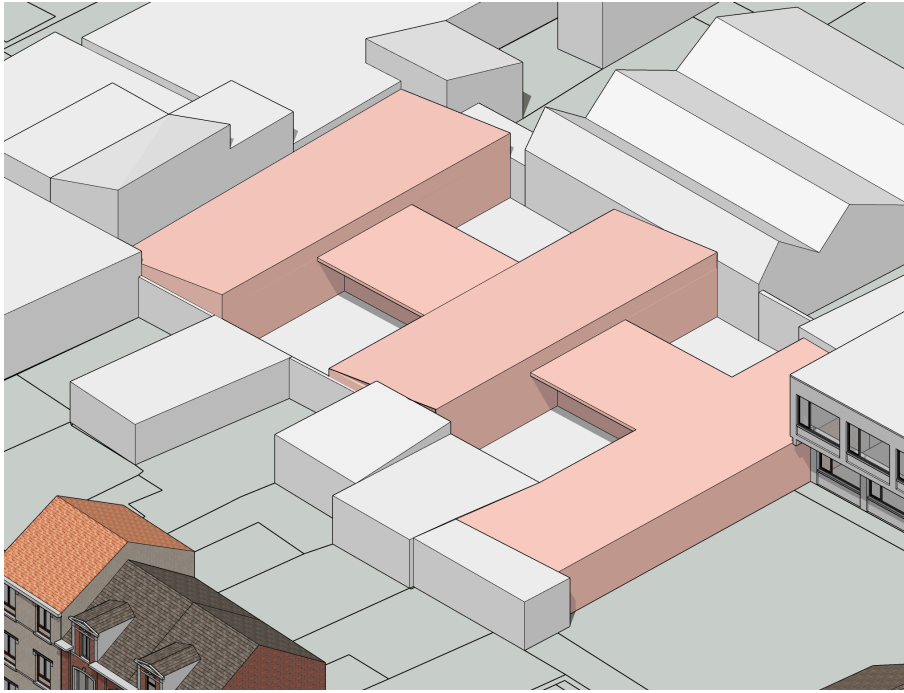
completing the building block, integrating existing houses but keeping them recognisable



9 completing the building block, offices as a central nave and a preschool in a shed-like volume

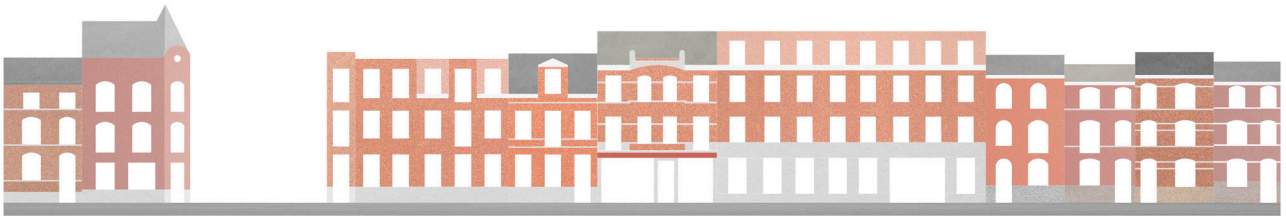


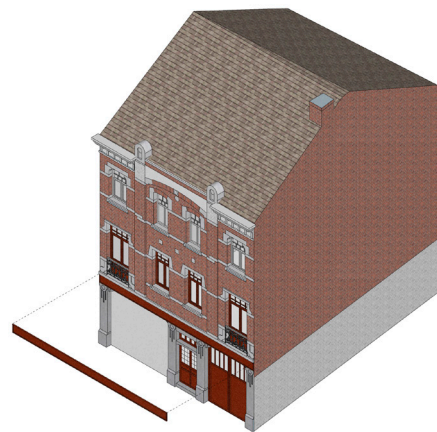
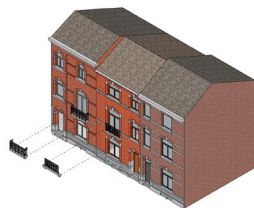
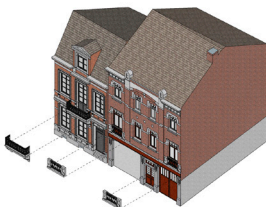
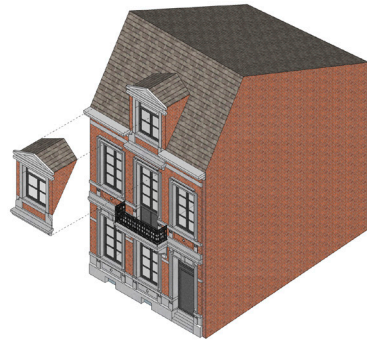
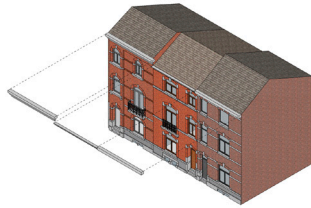
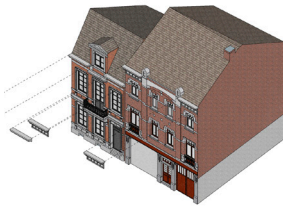
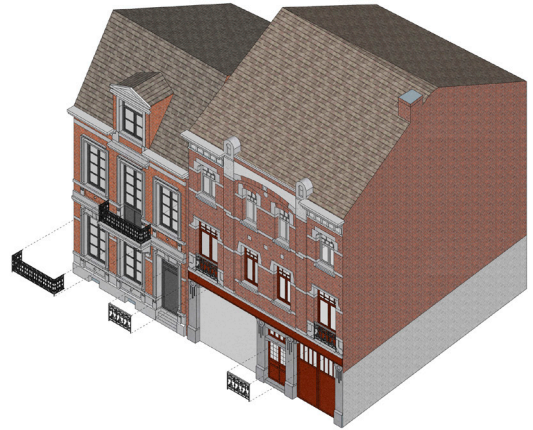
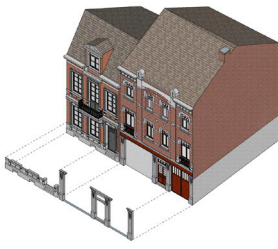
trying out a possible morphology and window rhythm corresponding to neighbours



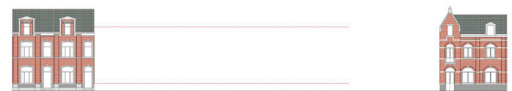


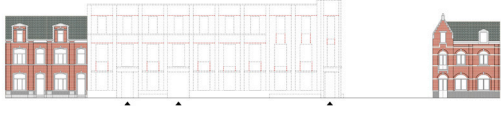
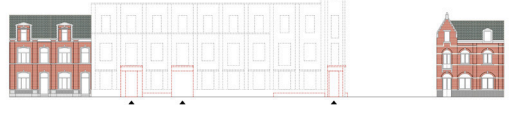
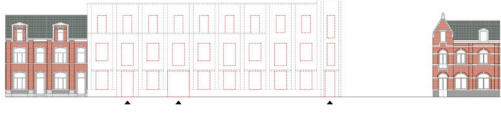
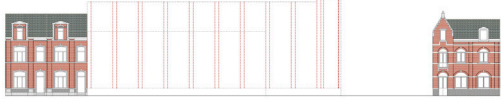
facade studies: what to continue?
how much can it be? how much is too much? 12







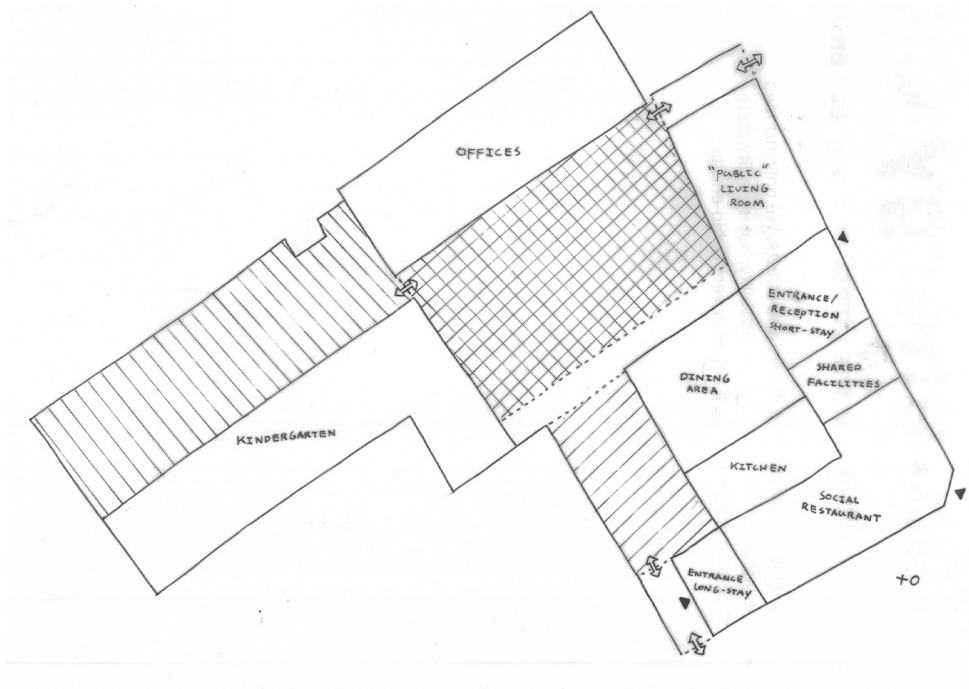
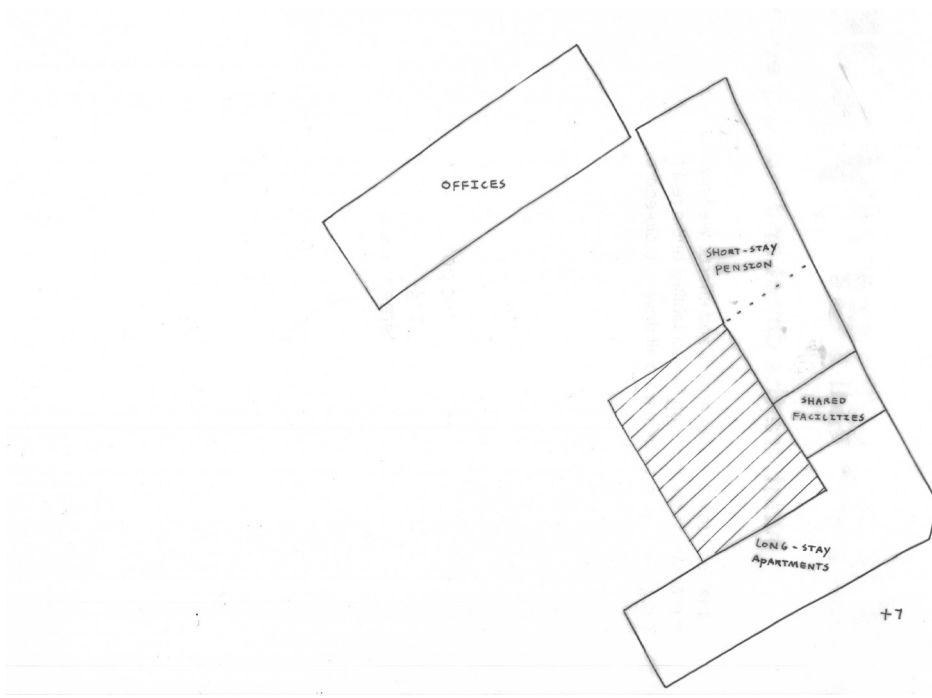


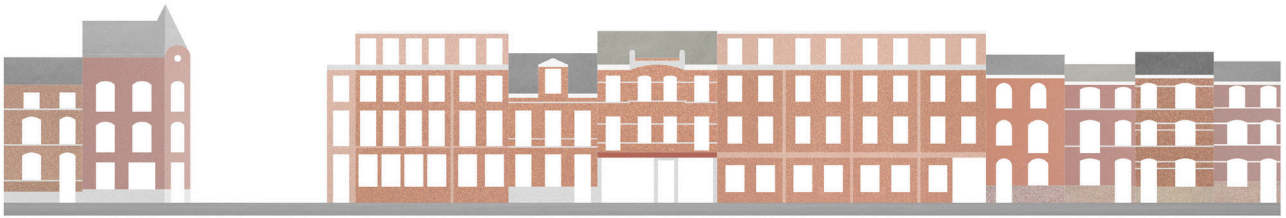




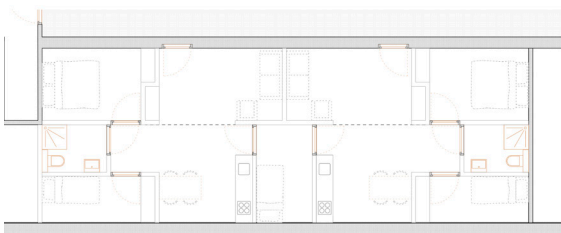
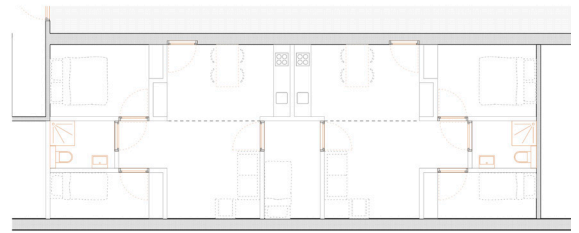
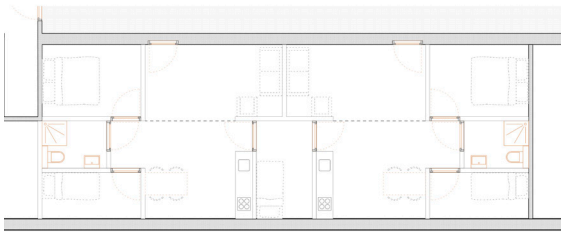
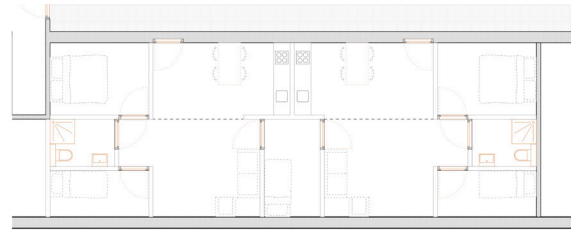
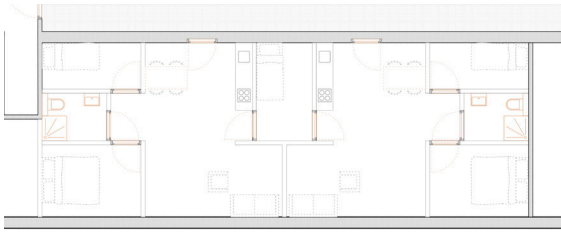
referring to the rhythm with 'negative' buttresses
clearer entrances with opportunities to sit down

design process 'sturdy domesticity'

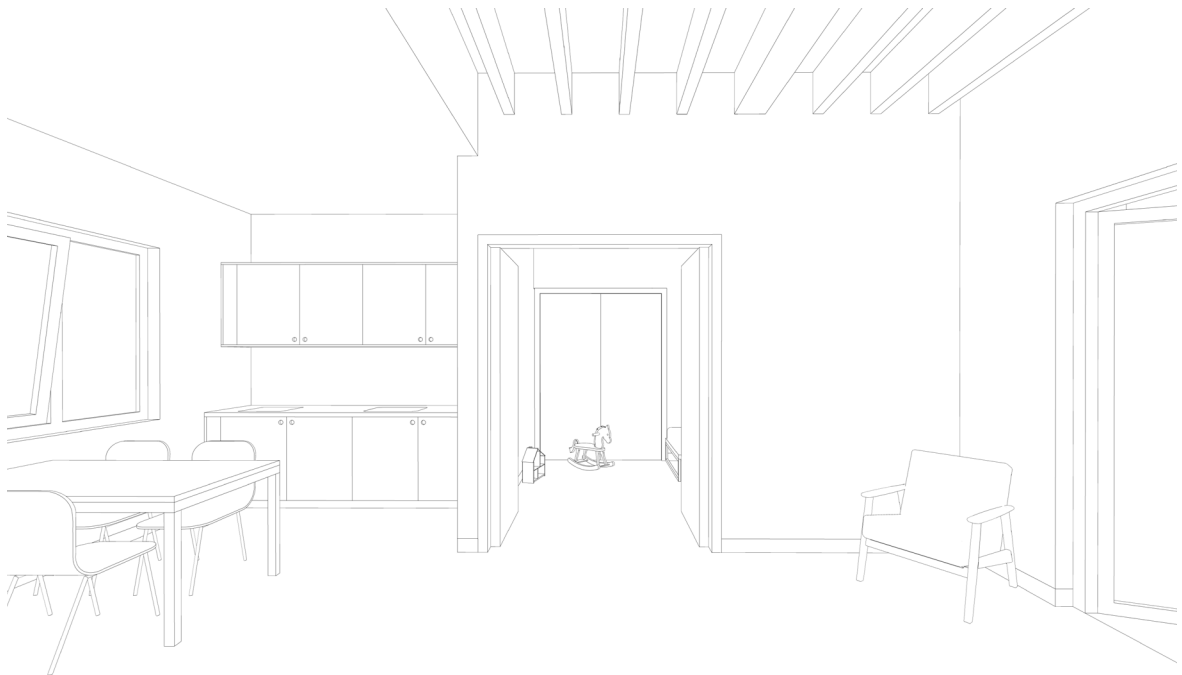
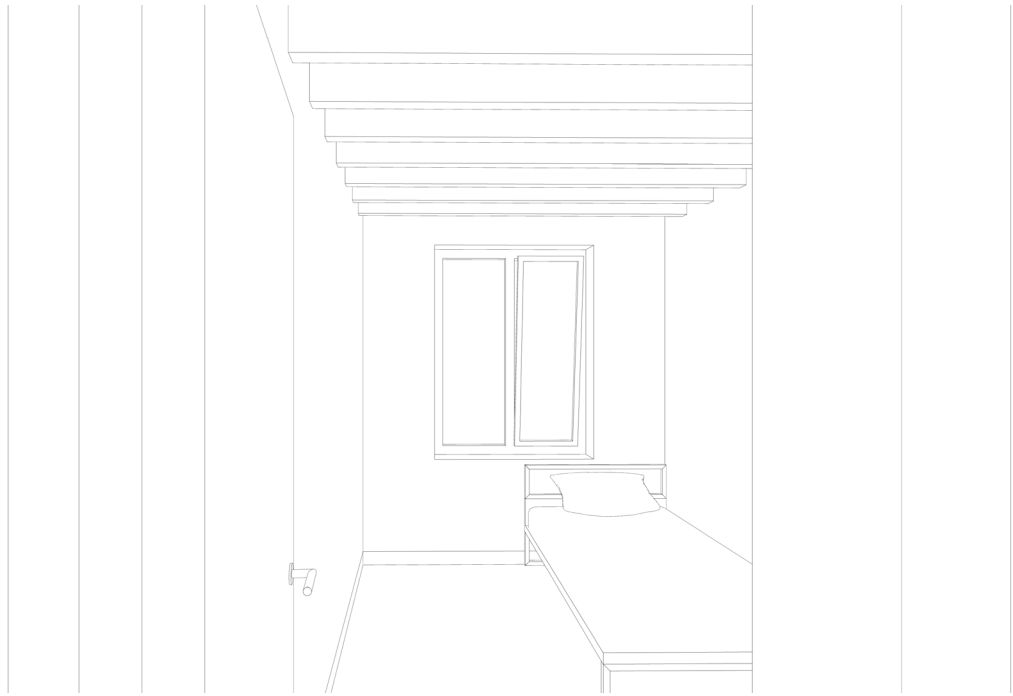




relating to the grain size of the street?
communal function as border, lots of outside space? 20



seating areas close to the street, everyone an own bedroom, and interchangeable rooms for flexibility with changing inhabitants



ceiling height differences, wooden ceilings and extended living space



23 widening the corridor and adding loggia's to sit, talk, smoke, and look at the street from a new perspective





Happel Cornelisse Verhoeven
Cadix Housing



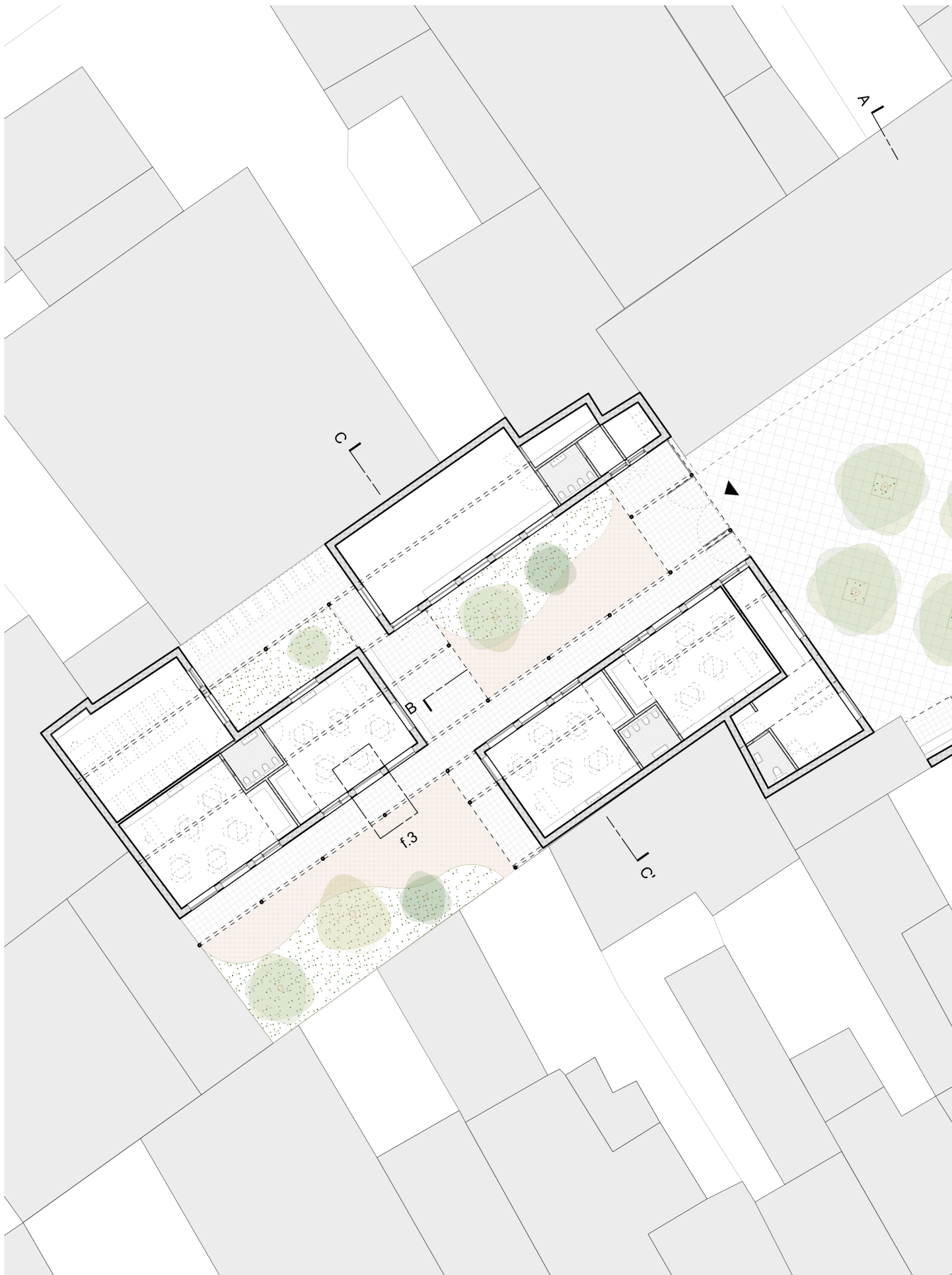
Bovenbouw Architectuur
Apartment building in the docklands



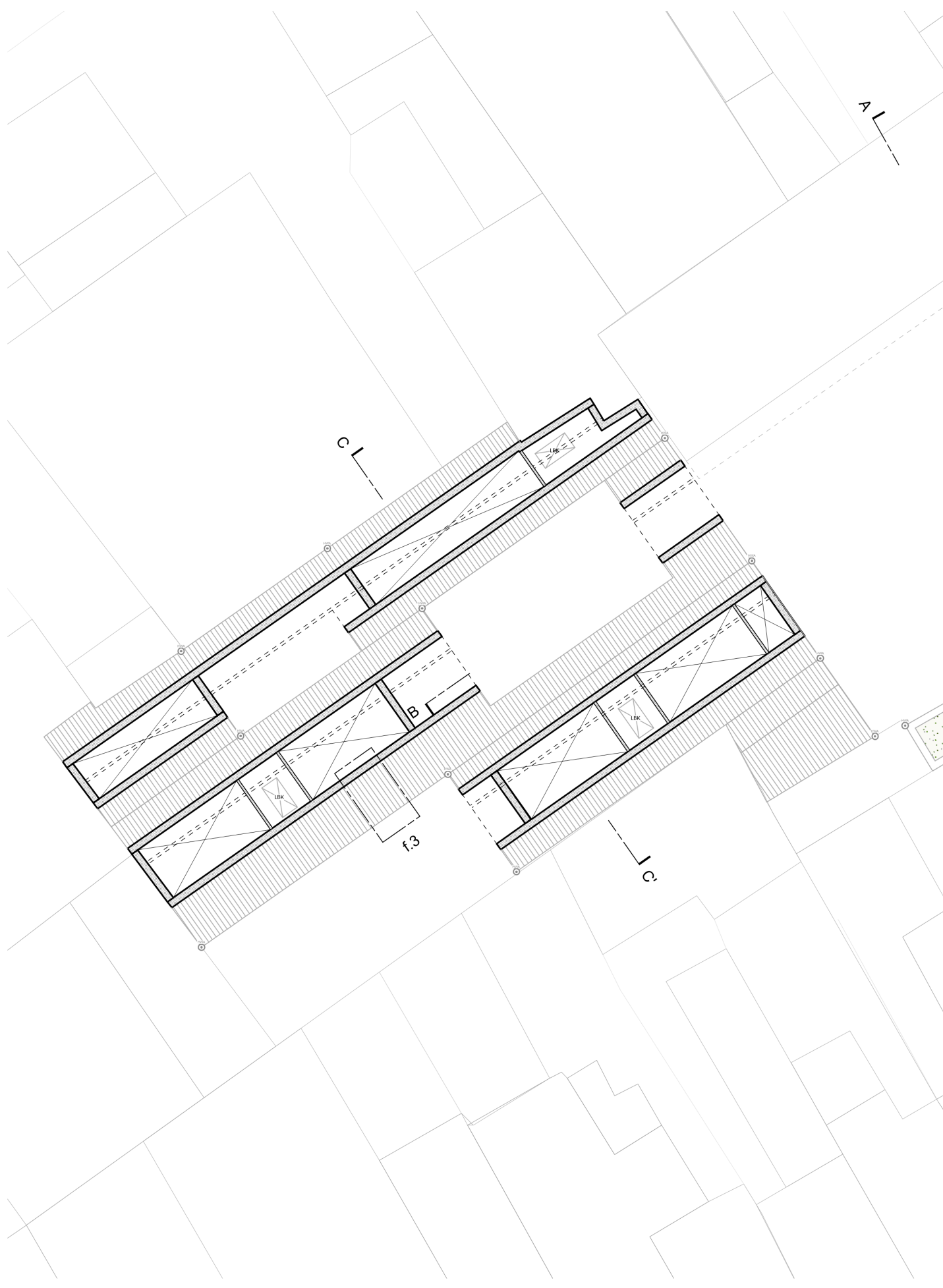
coming home, protection from the rain, a place to sit
a lighter volume behind the gallery, a bit too serious 26

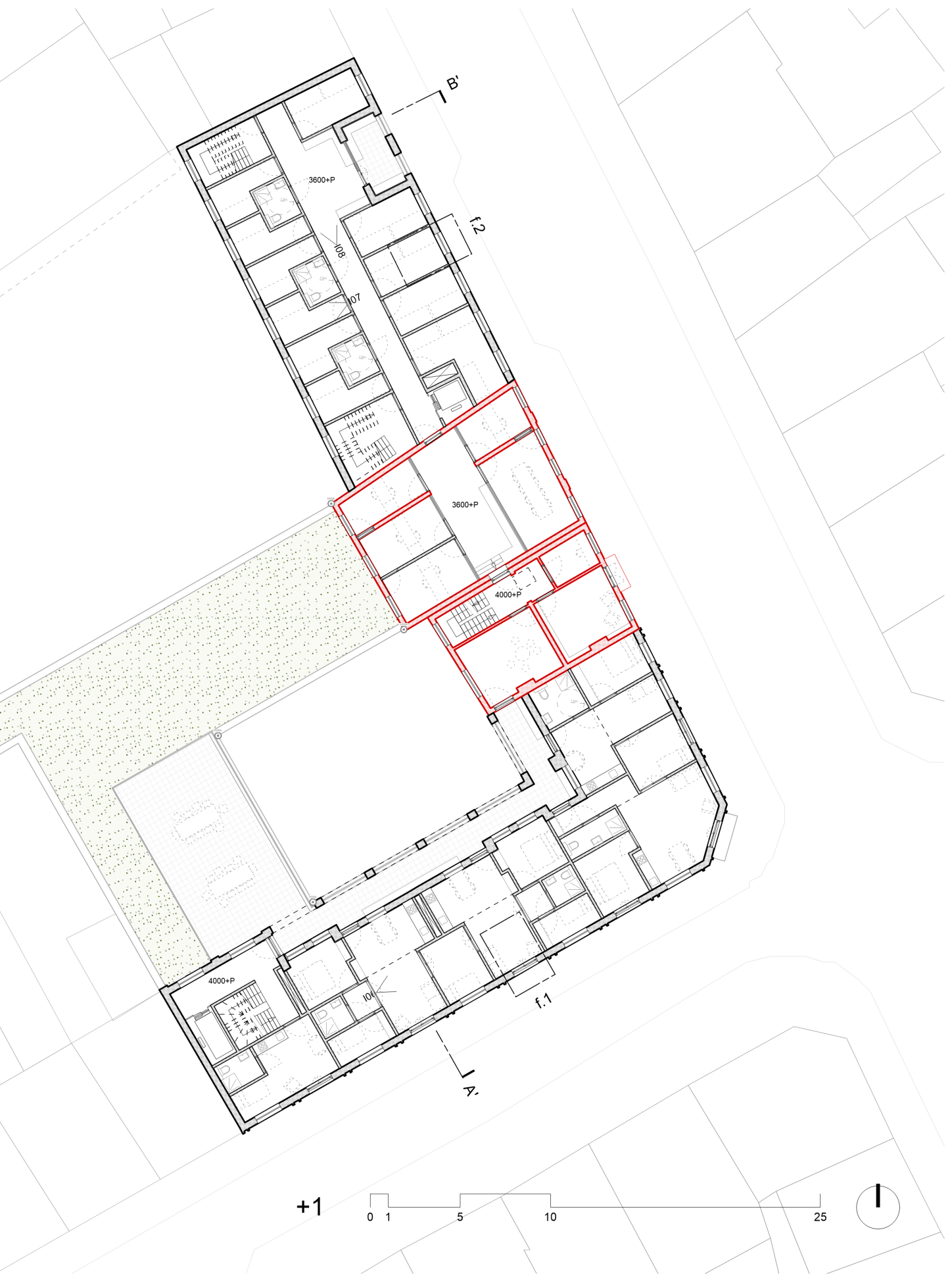
drawing set final design







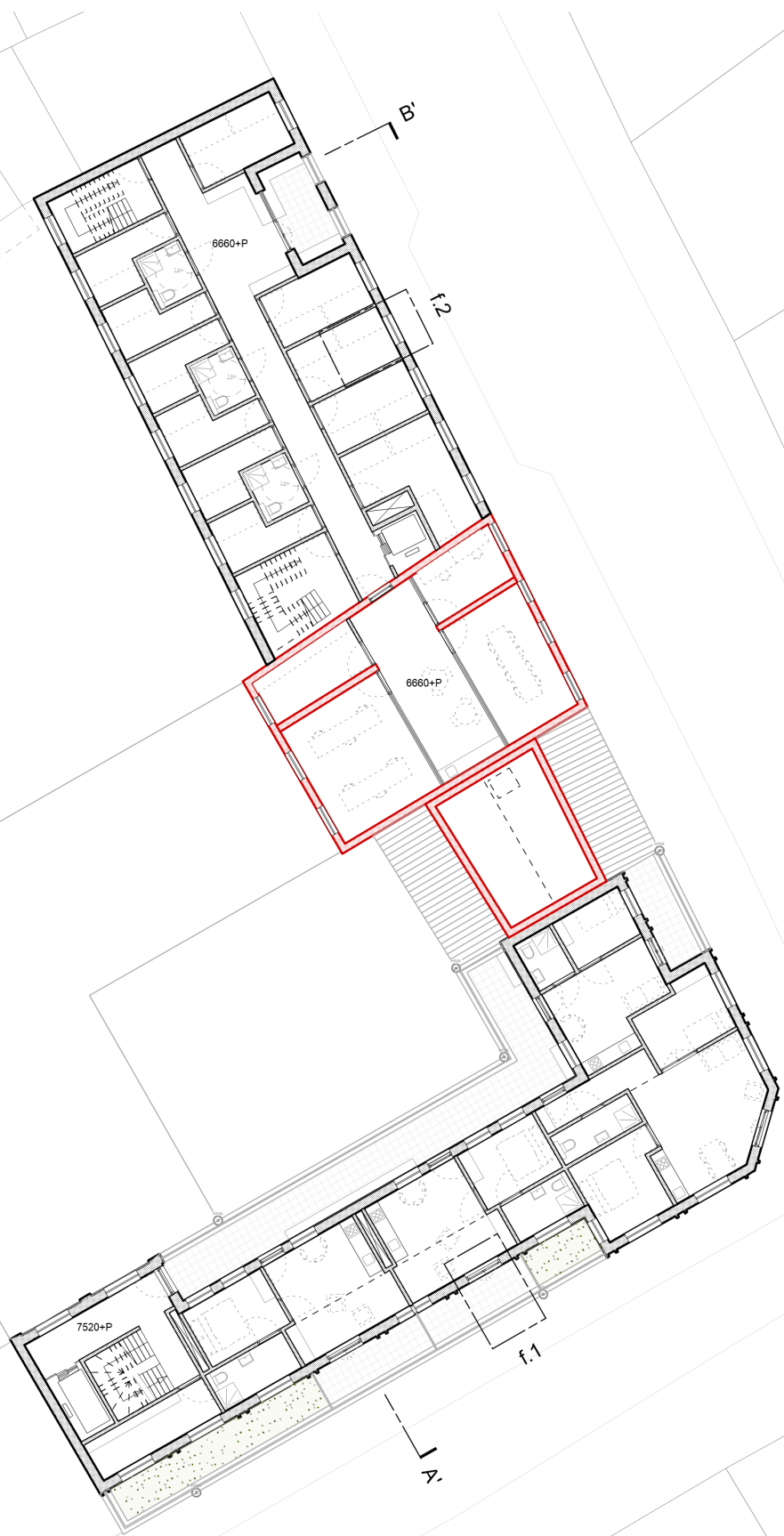




+1







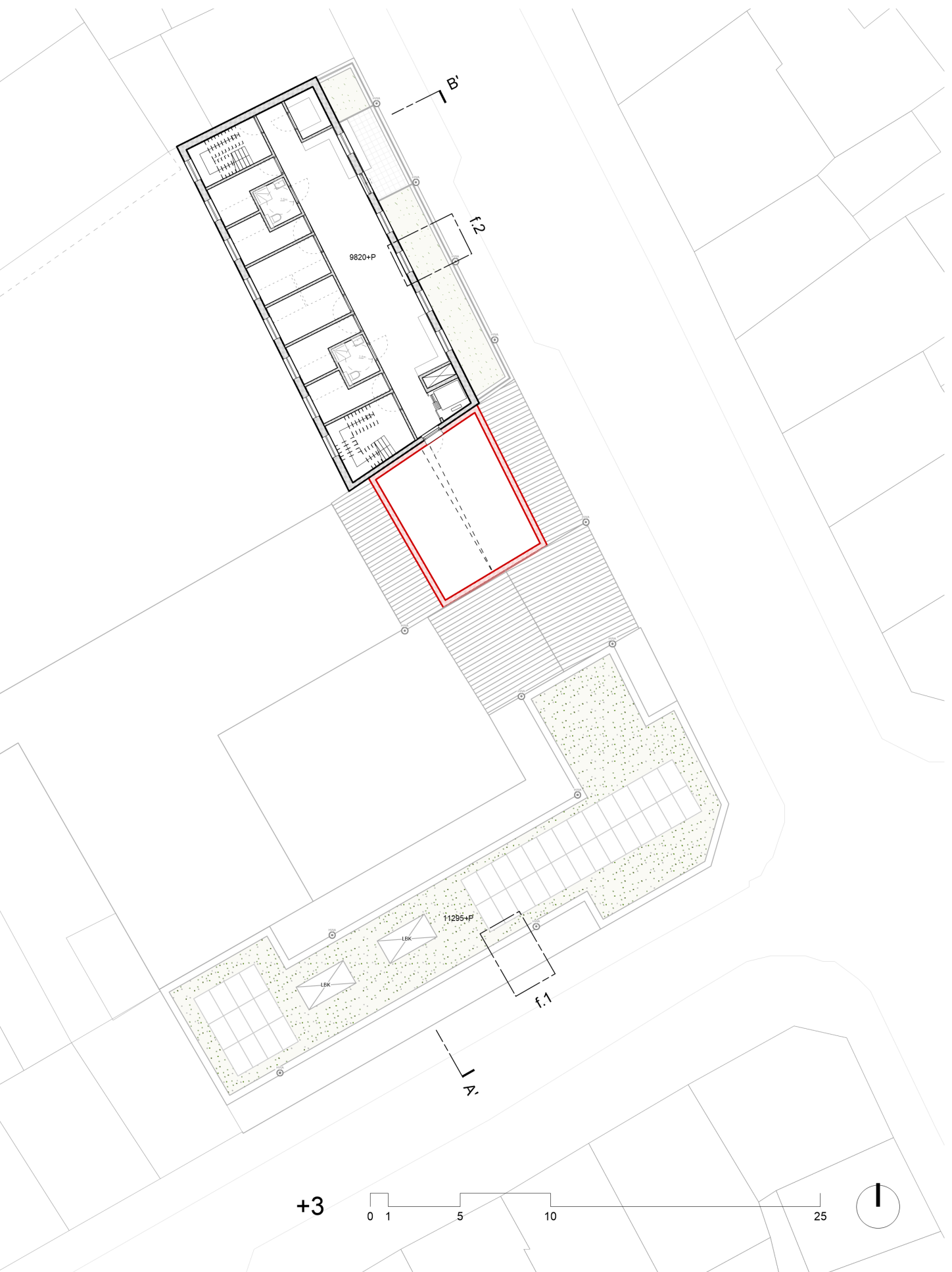
+2





A

B



+3



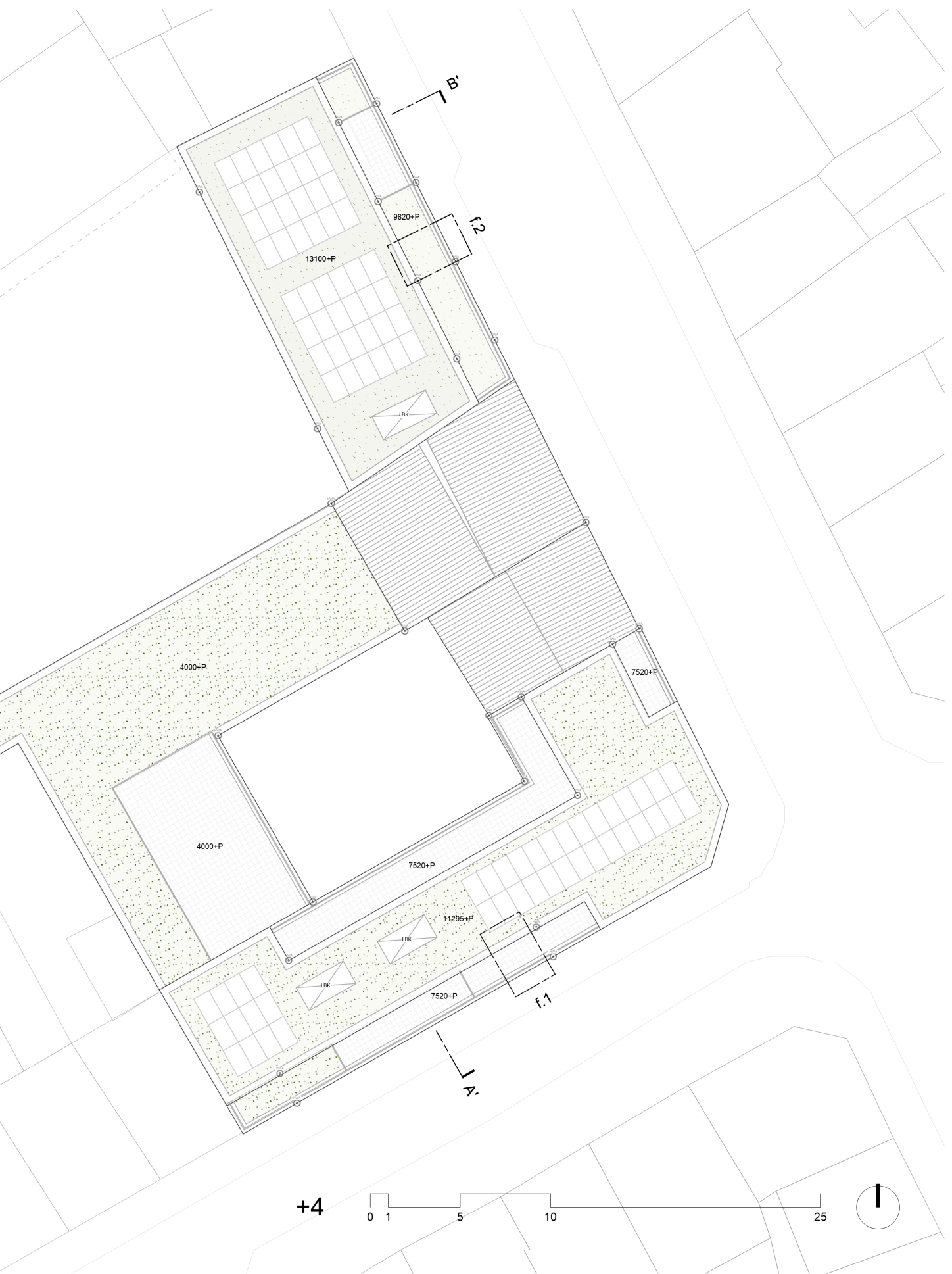


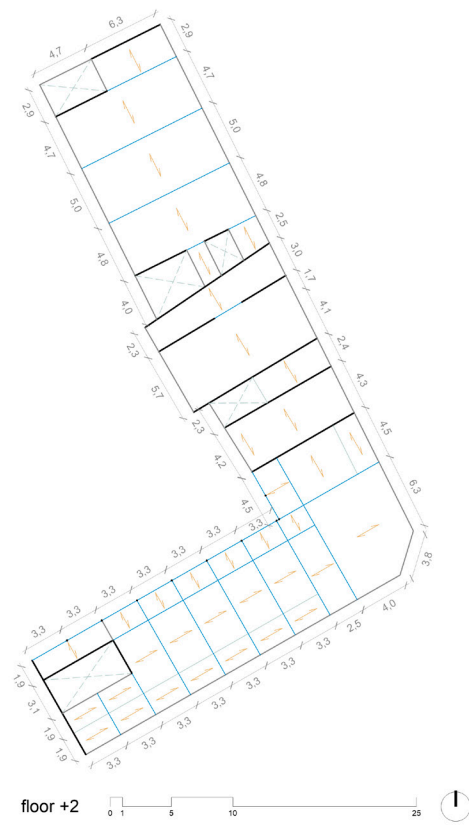
A

B

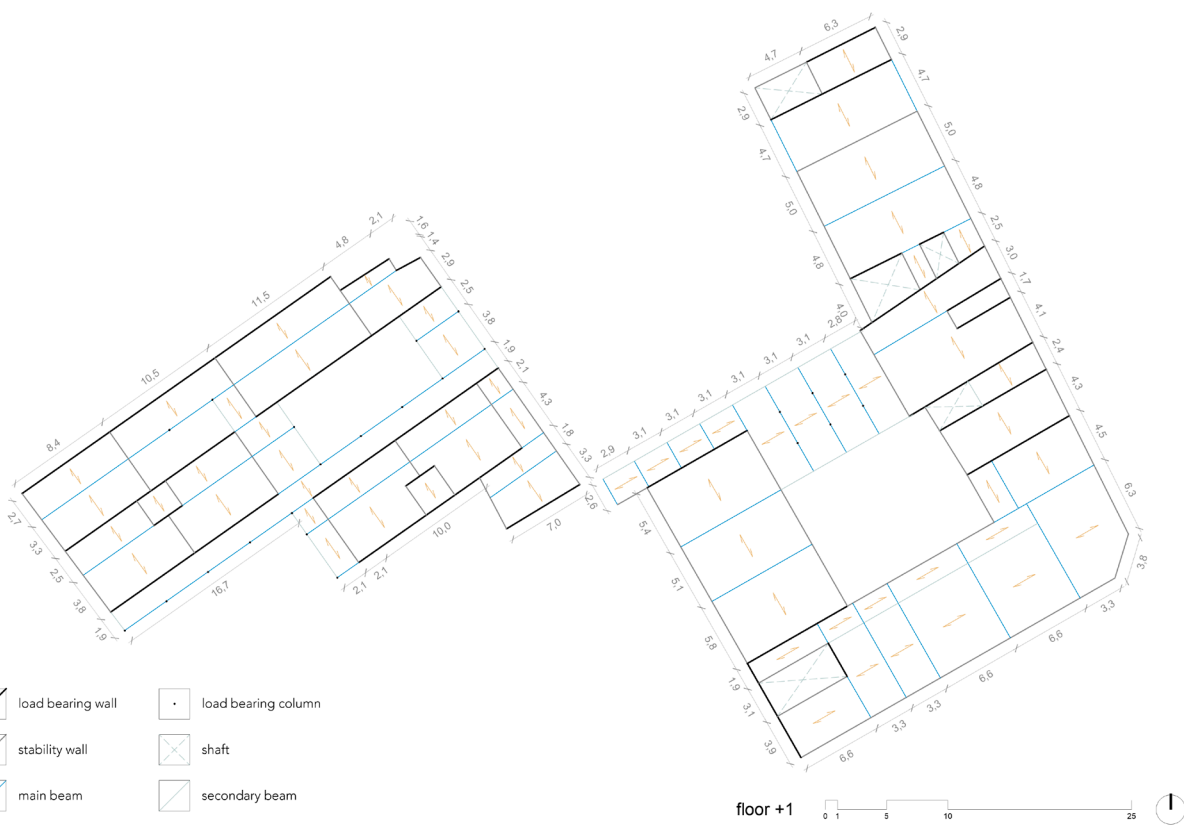












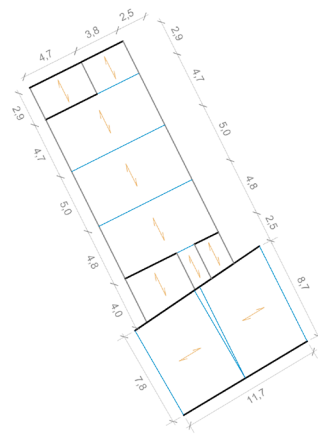


floor +2

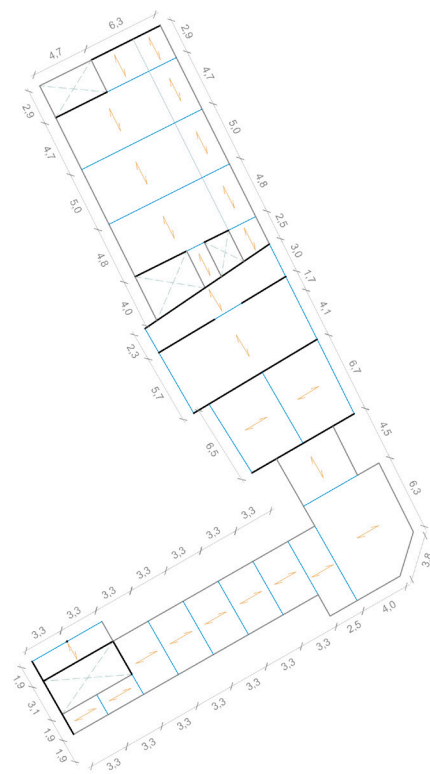


floor +1

- | | | | |
|---|-------------------|---|---------------------|
|  | load bearing wall |  | load bearing column |
|  | stability wall |  | shaft |
|  | main beam |  | secondary beam |

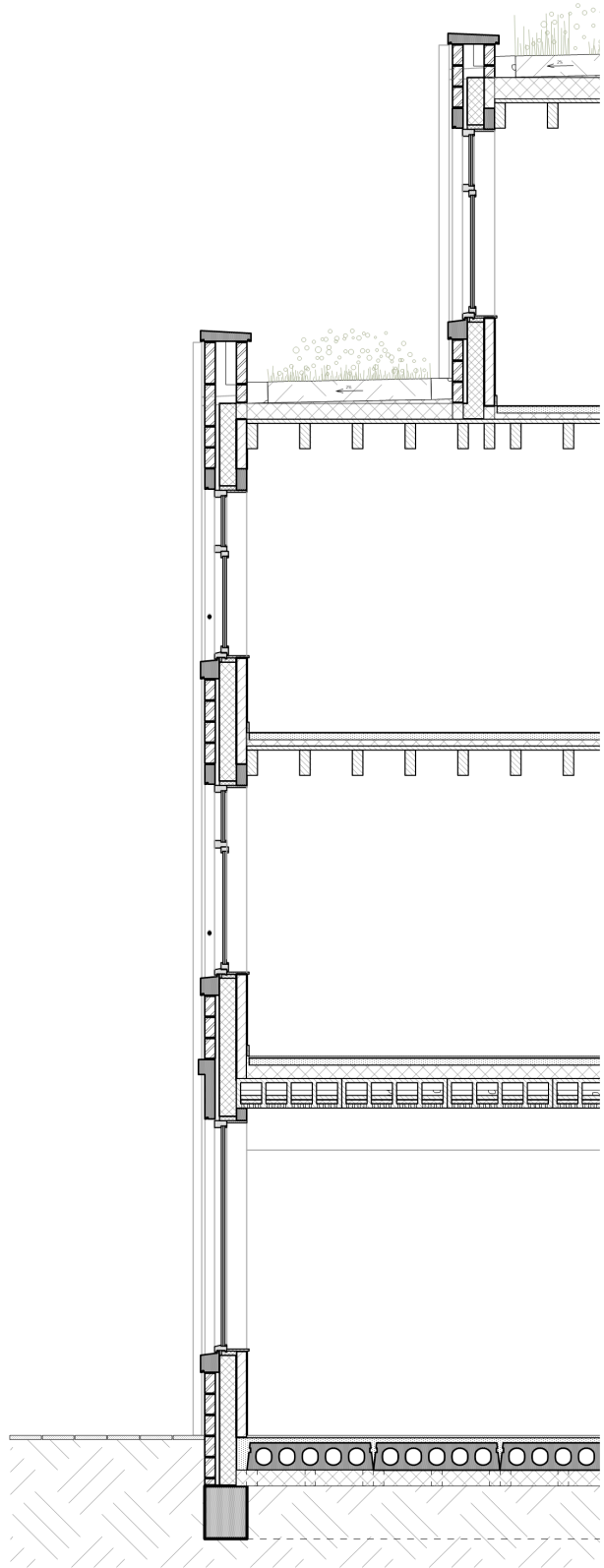
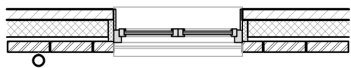
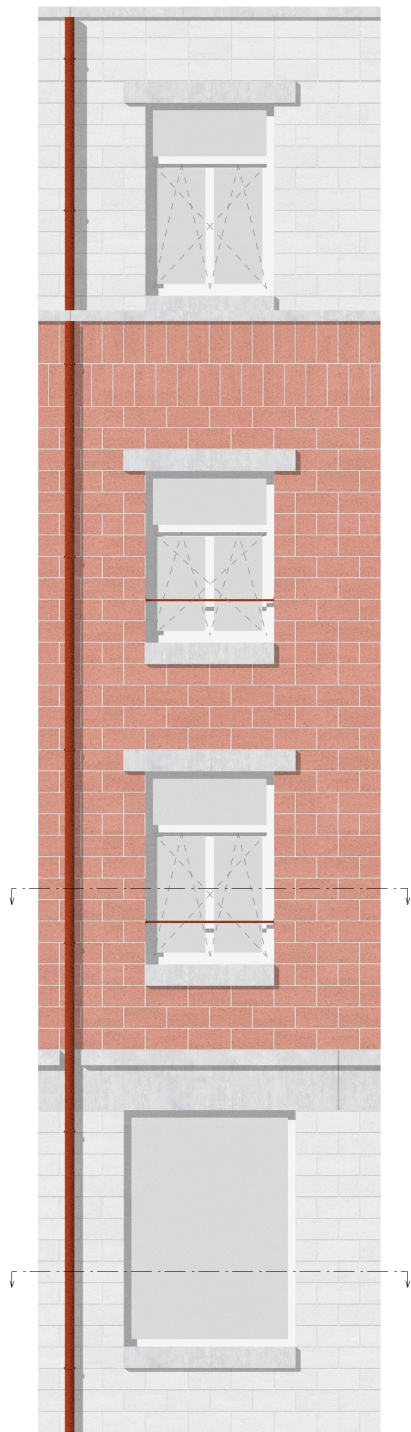


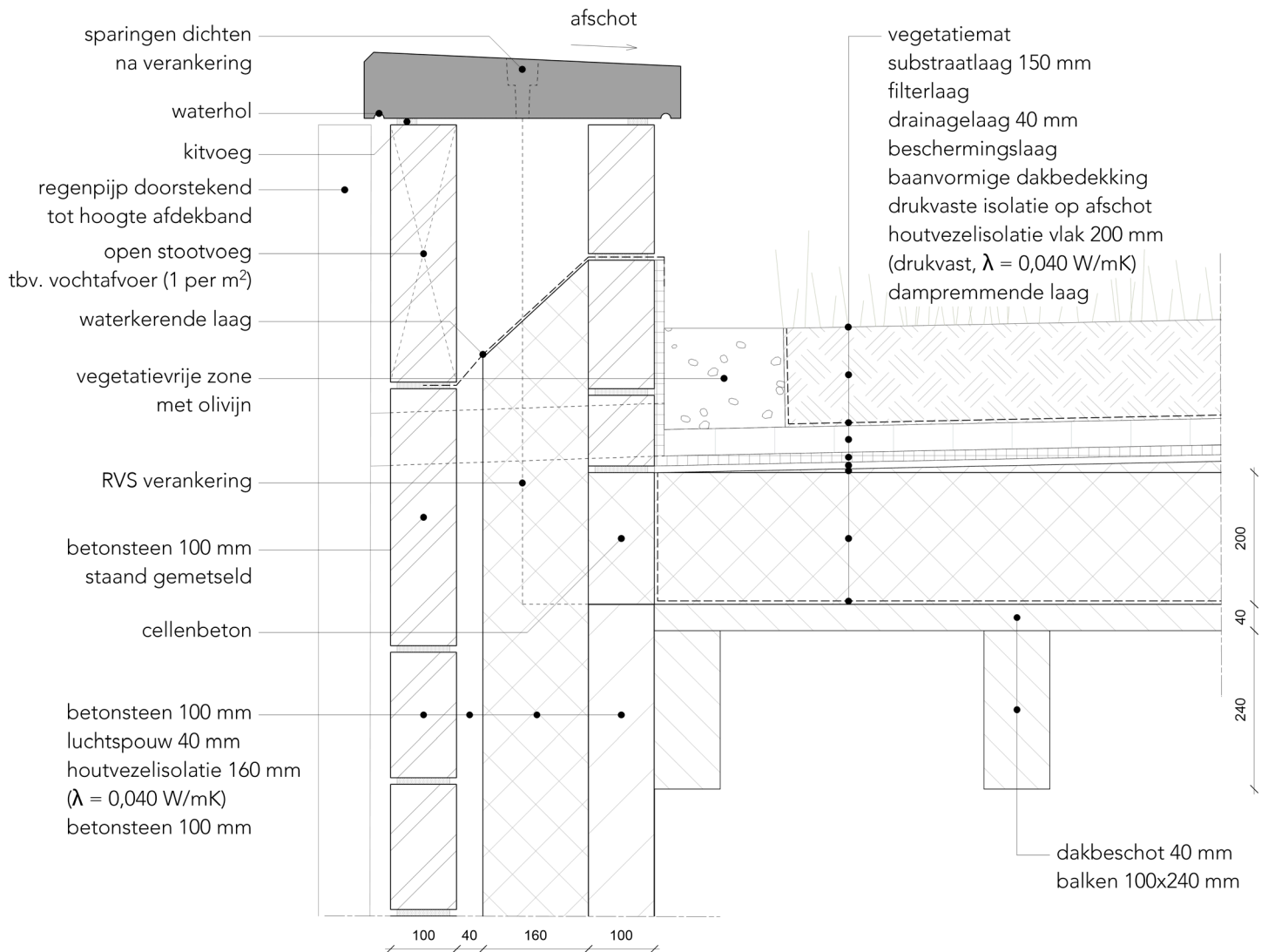
floor +4 0 1 5 10 25 



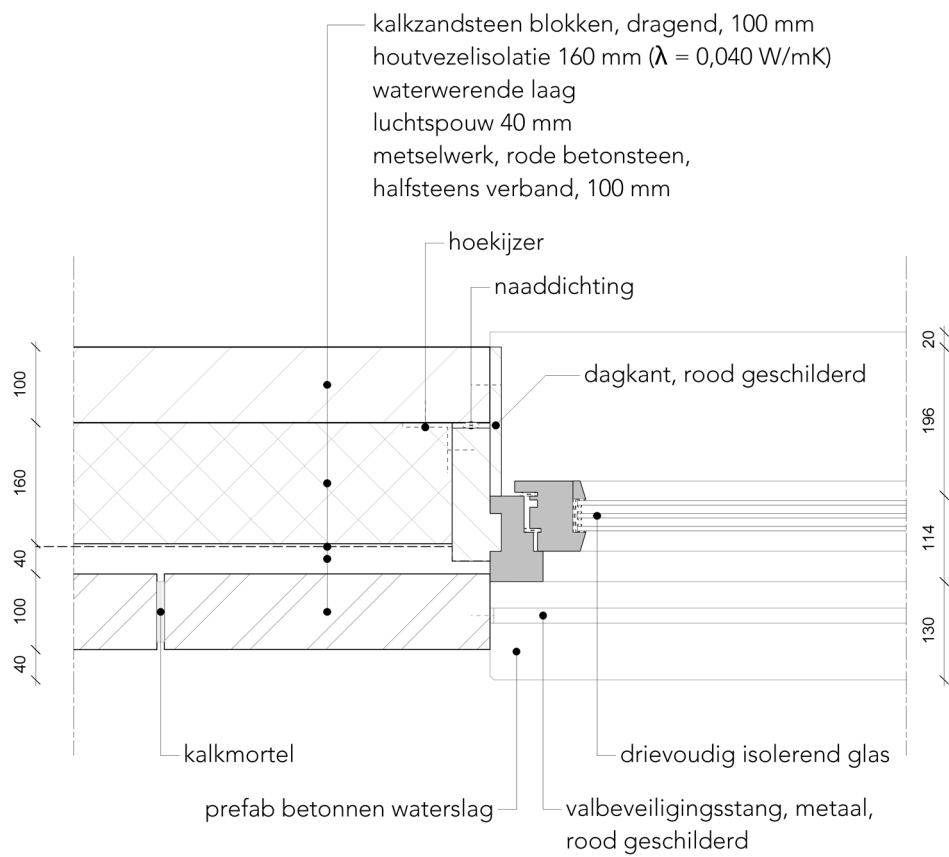
floor +3 0 1 5 10 25 



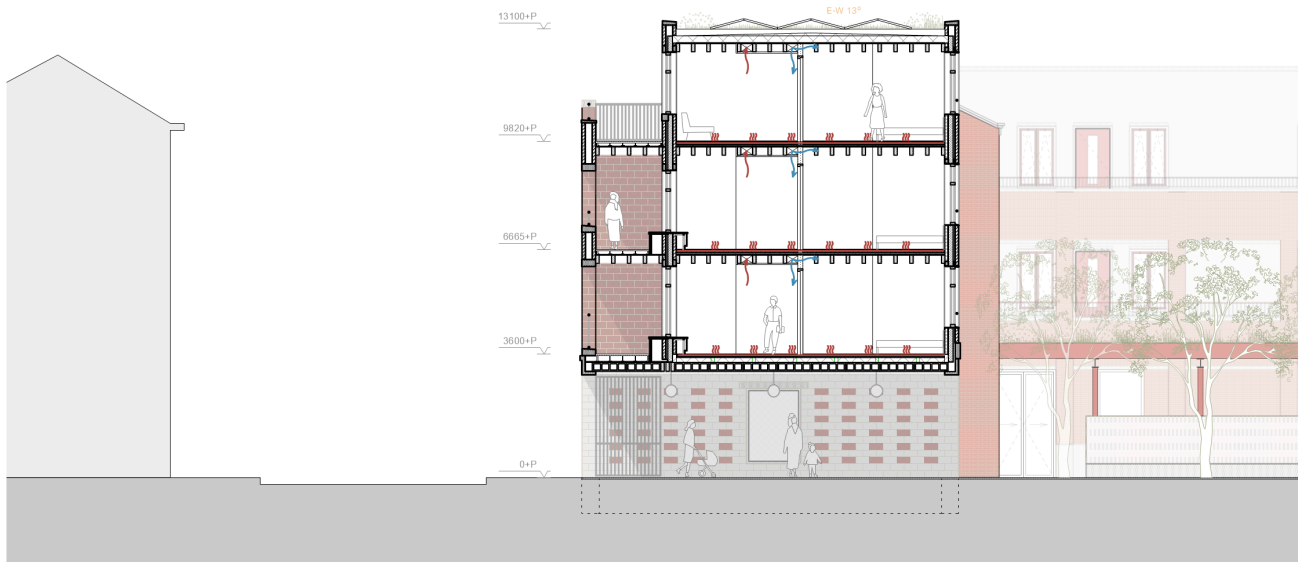




roof edge detail of the night shelter
(scaled from 1:5 to 1:10)



horizontal window detail of the night shelter
(scaled from 1:5 to 1:10)





section over the passage of the night shelter leading to the preschool, with the garden, locker canopy and seating in the back



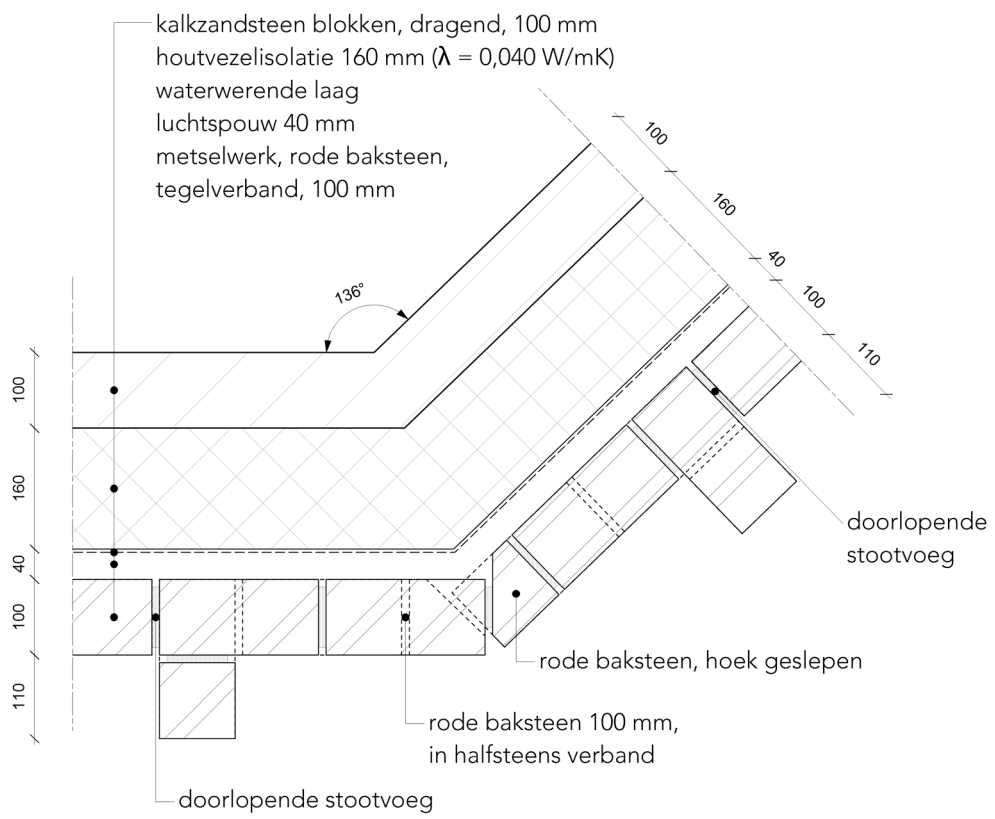
integrated benches and daylight in
the corridor and loggia of the night shelter



49 bedroom in the night shelter with a tiled floor,
view on the street and red window framing



corner of Rue Foidart and Rue de Porto with the entrance to the restaurant and red drainpipes and awnings 50



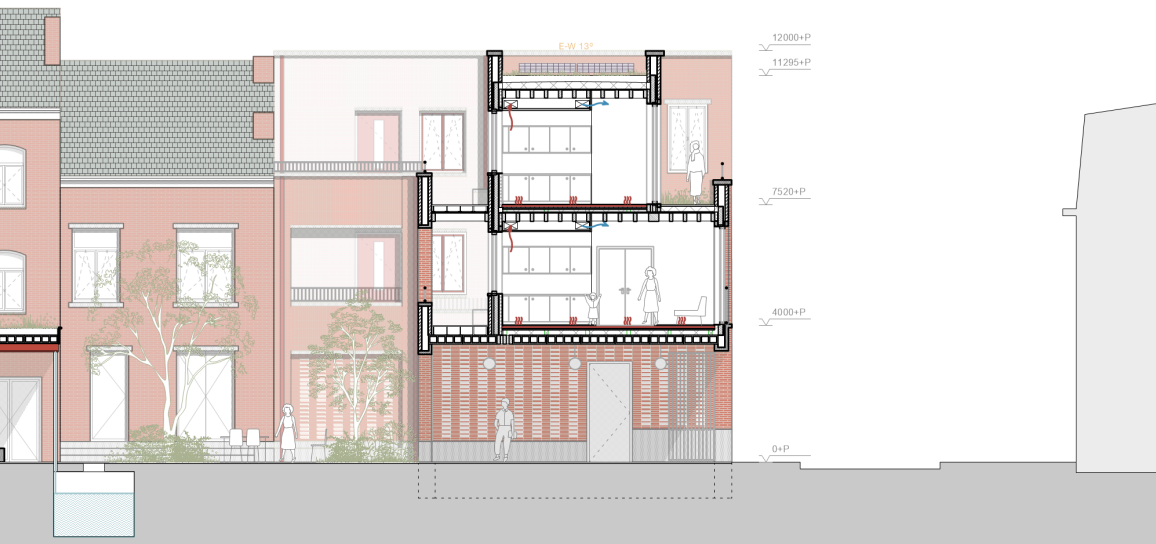


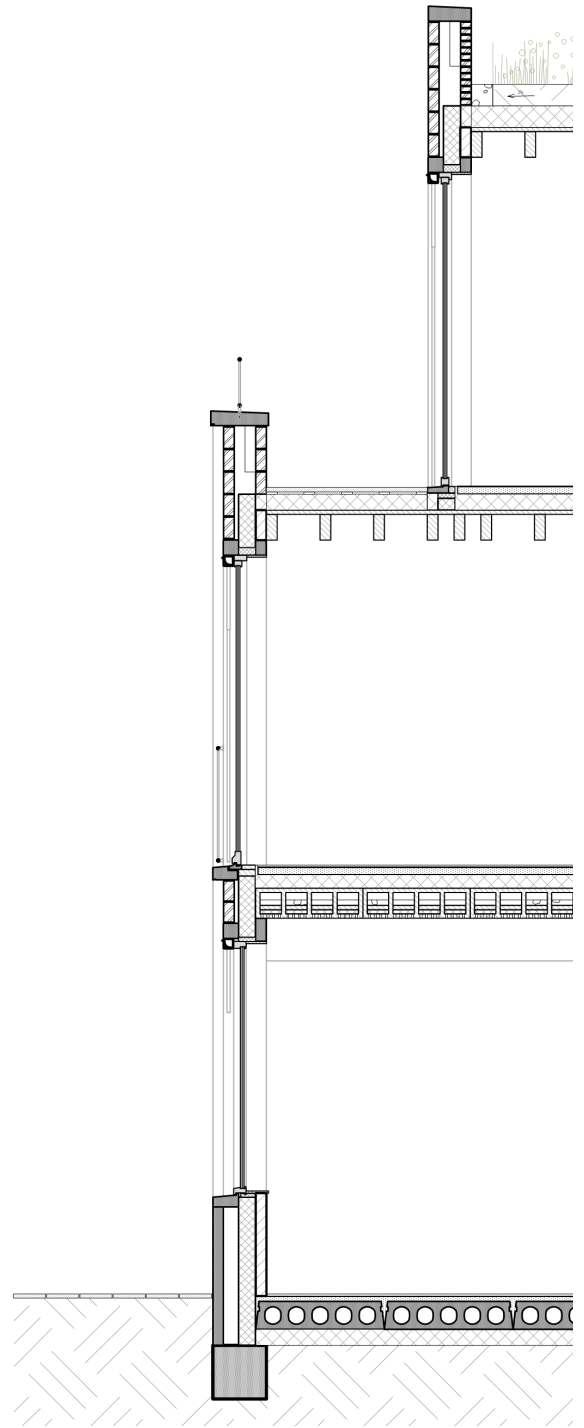
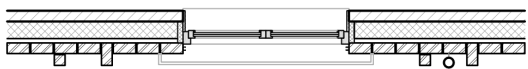
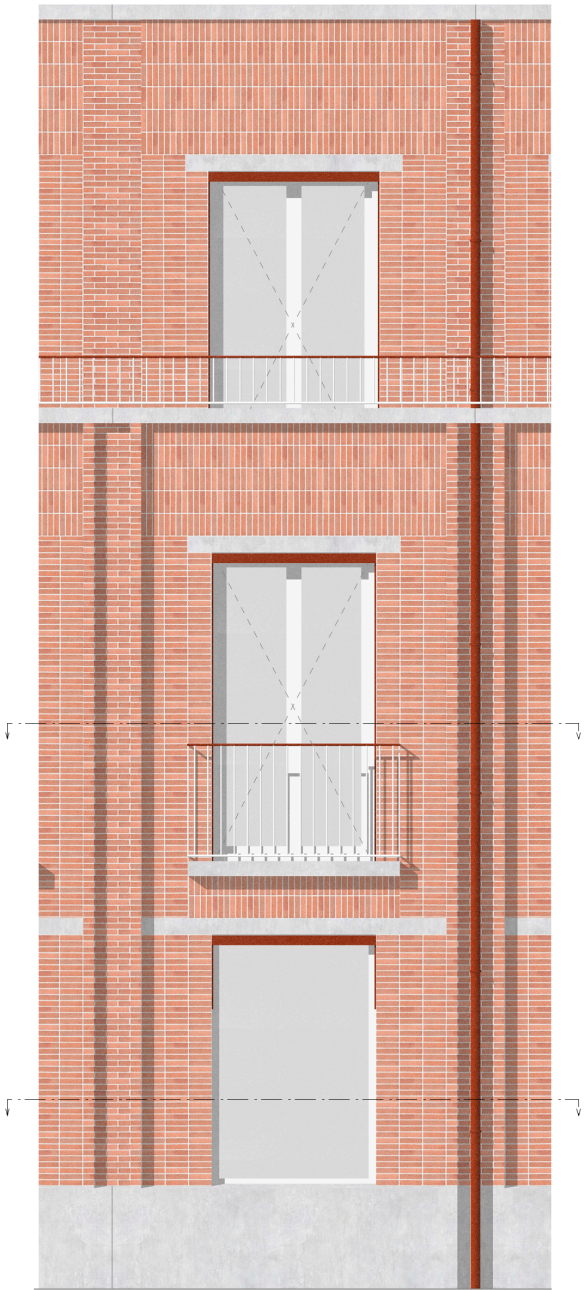
the social restaurant with an entrance
on the corner of the street

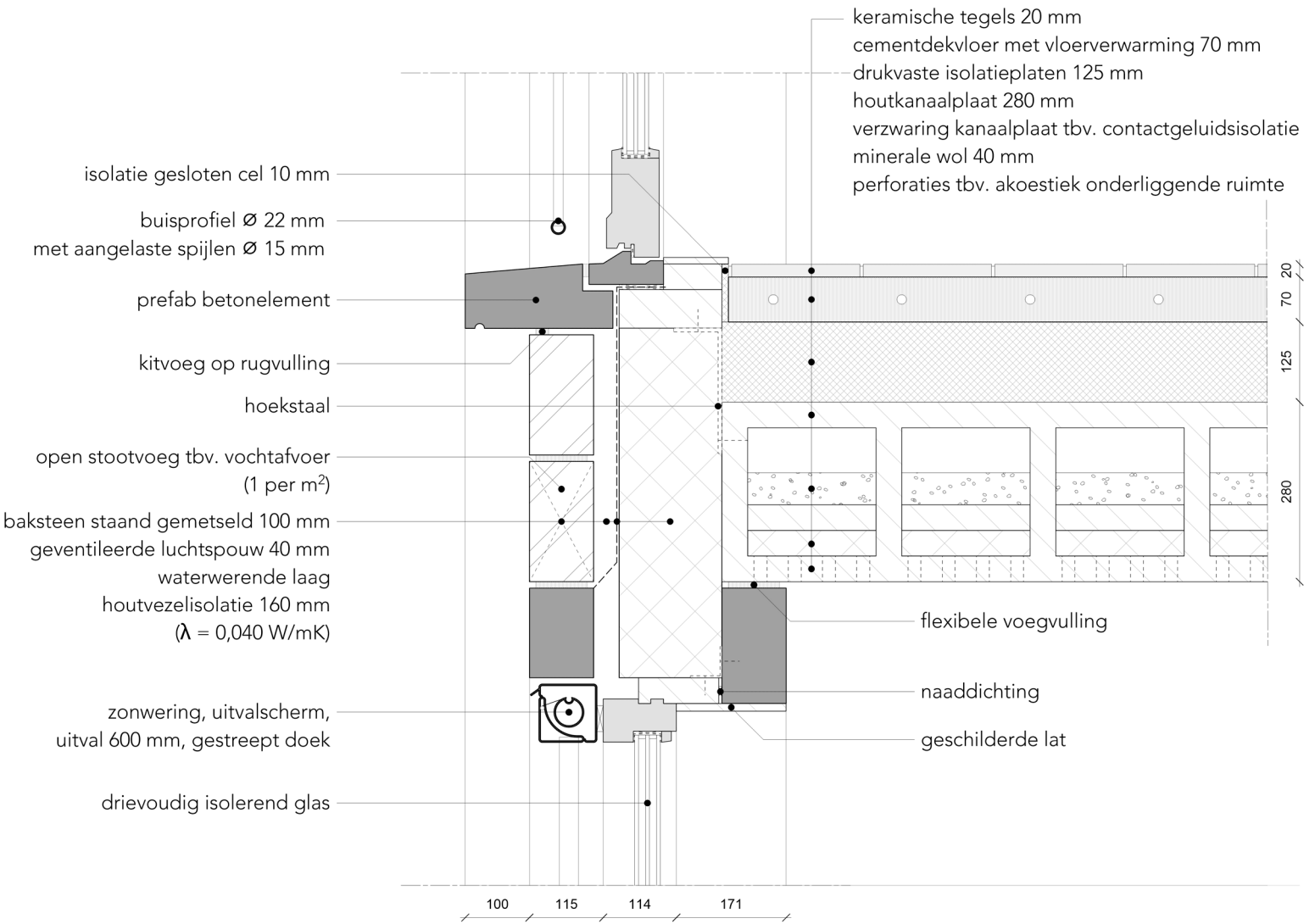


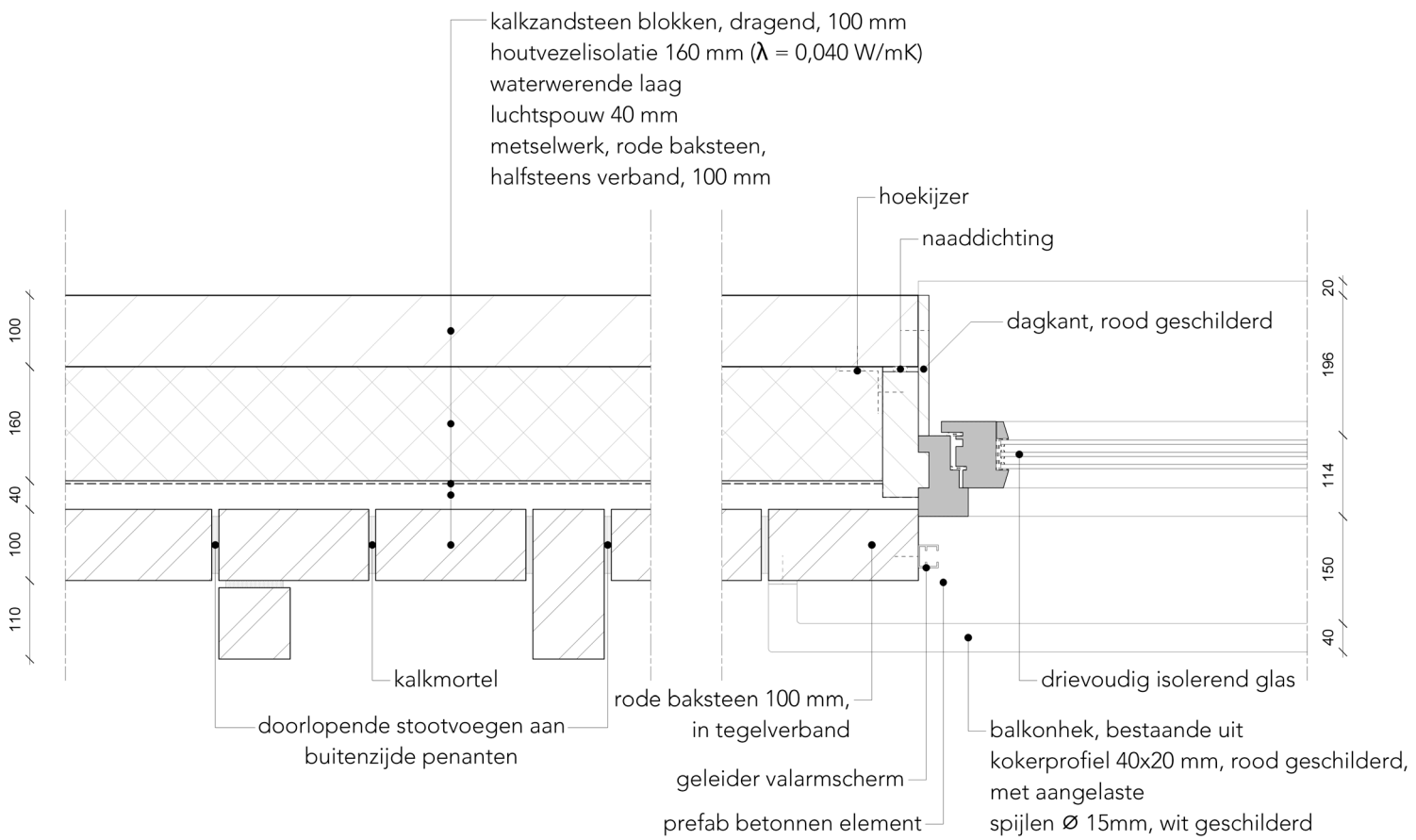
53 entrances to the apartments and garden,
with a pattern marking the passage and awnings
that indicate a difference in function











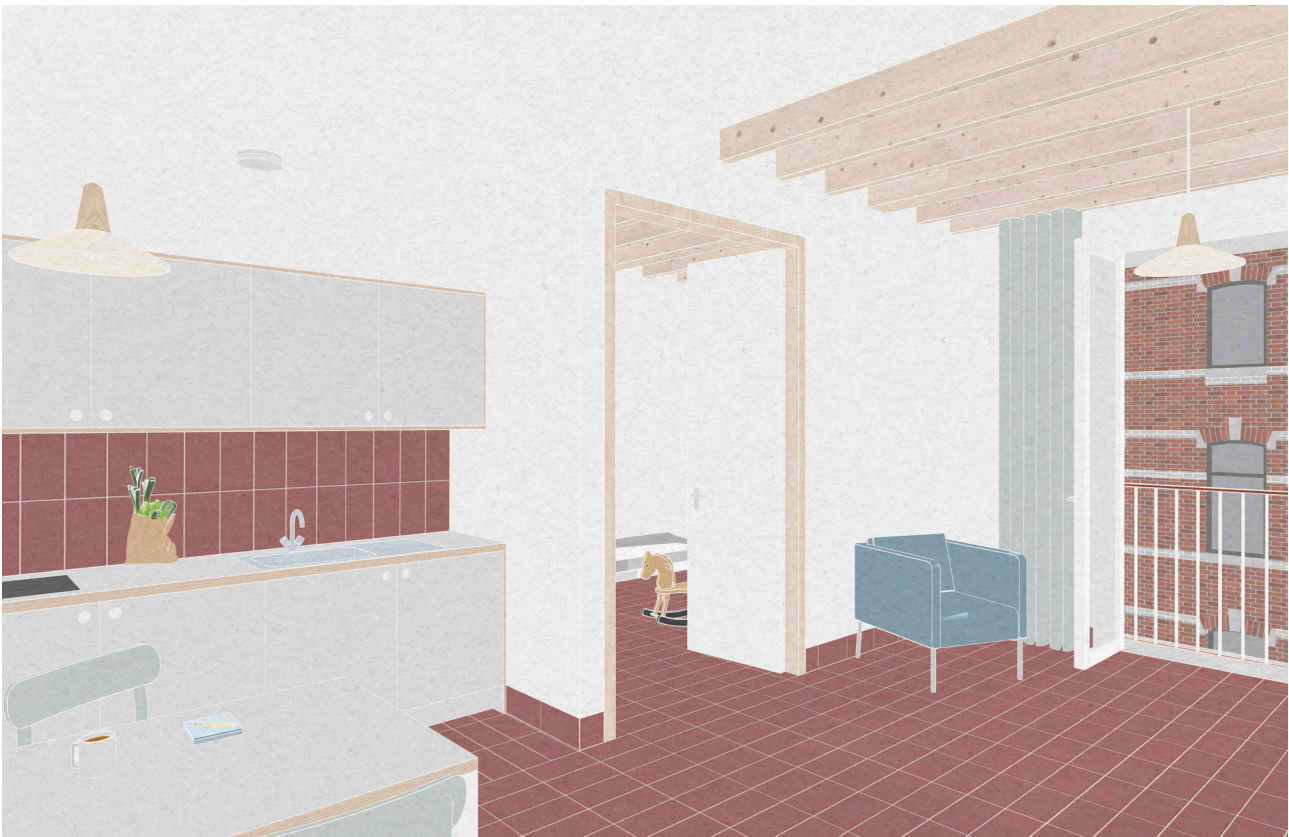
horizontal window detail of the apartments
(scaled from 1:5 to 1:10)



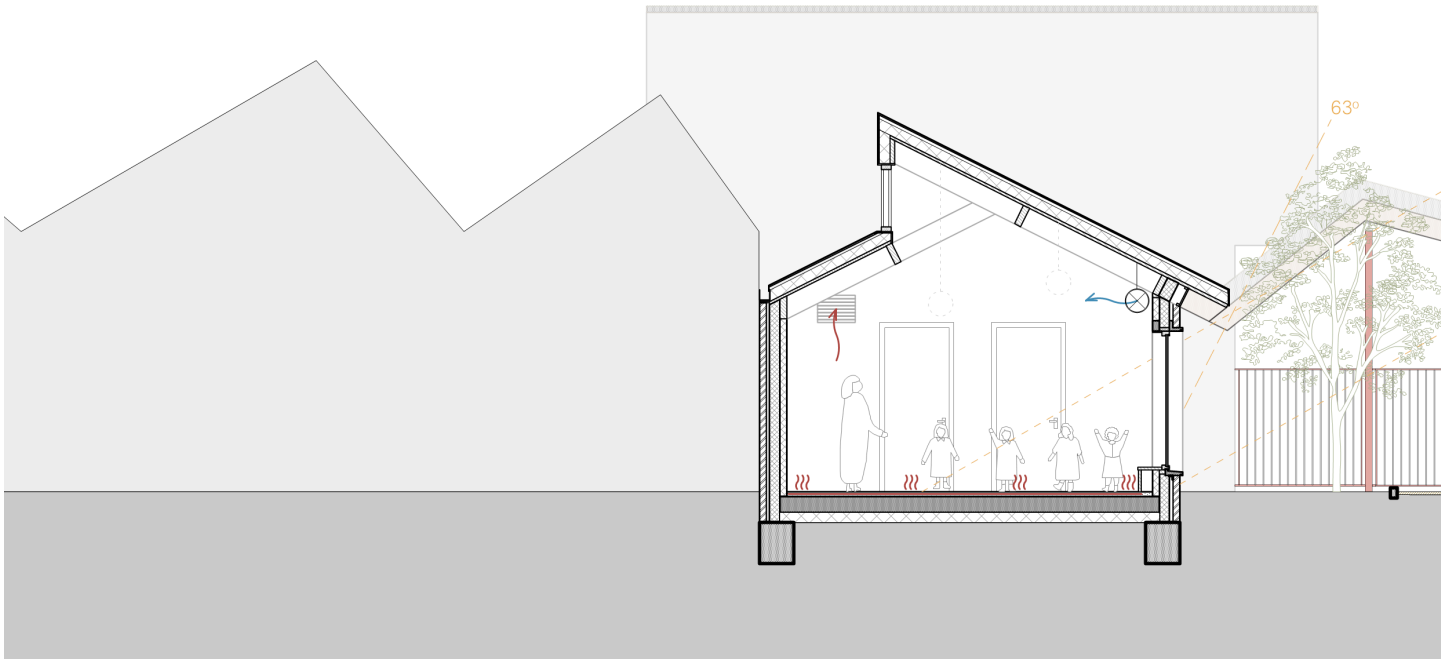
59 the garden between the restaurant and lockers,
with patterns marking entrances and seatings

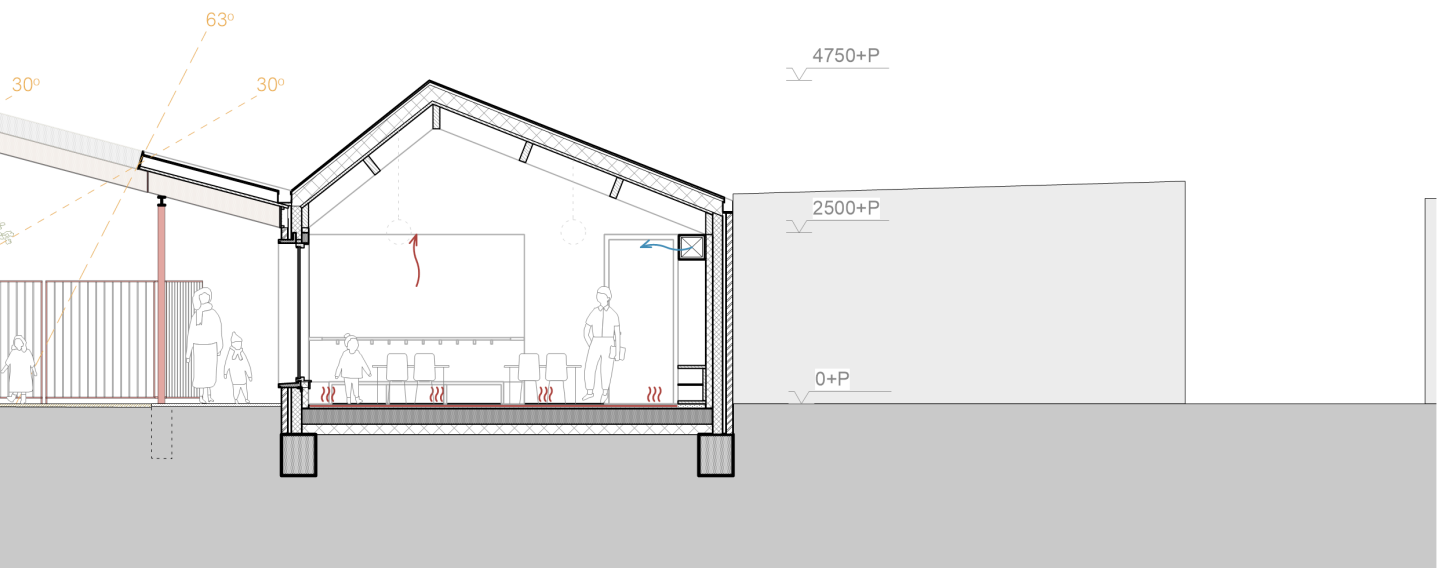


the gallery with benches for each of the apartments 60

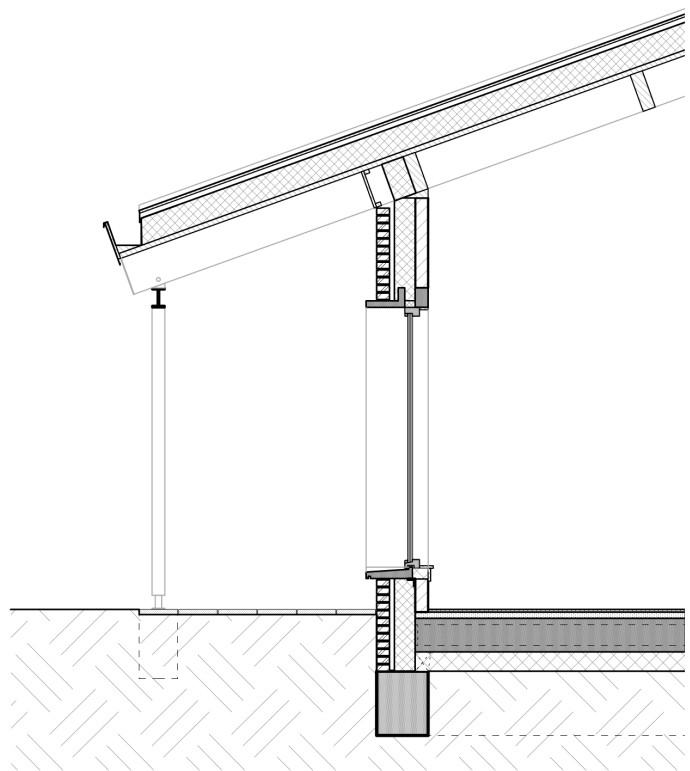
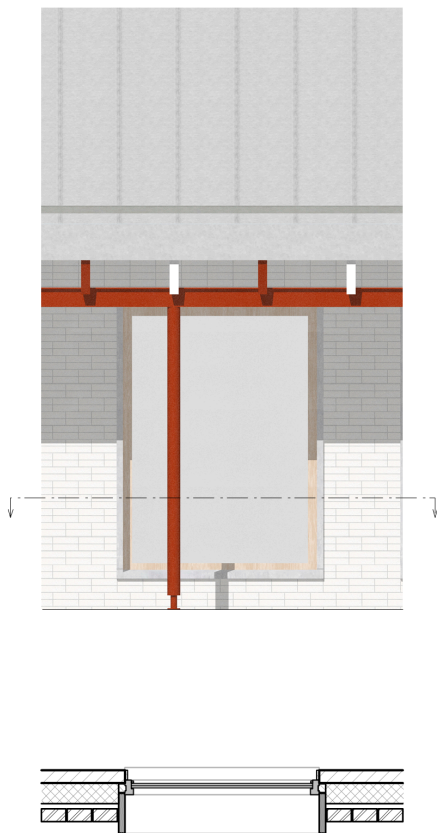


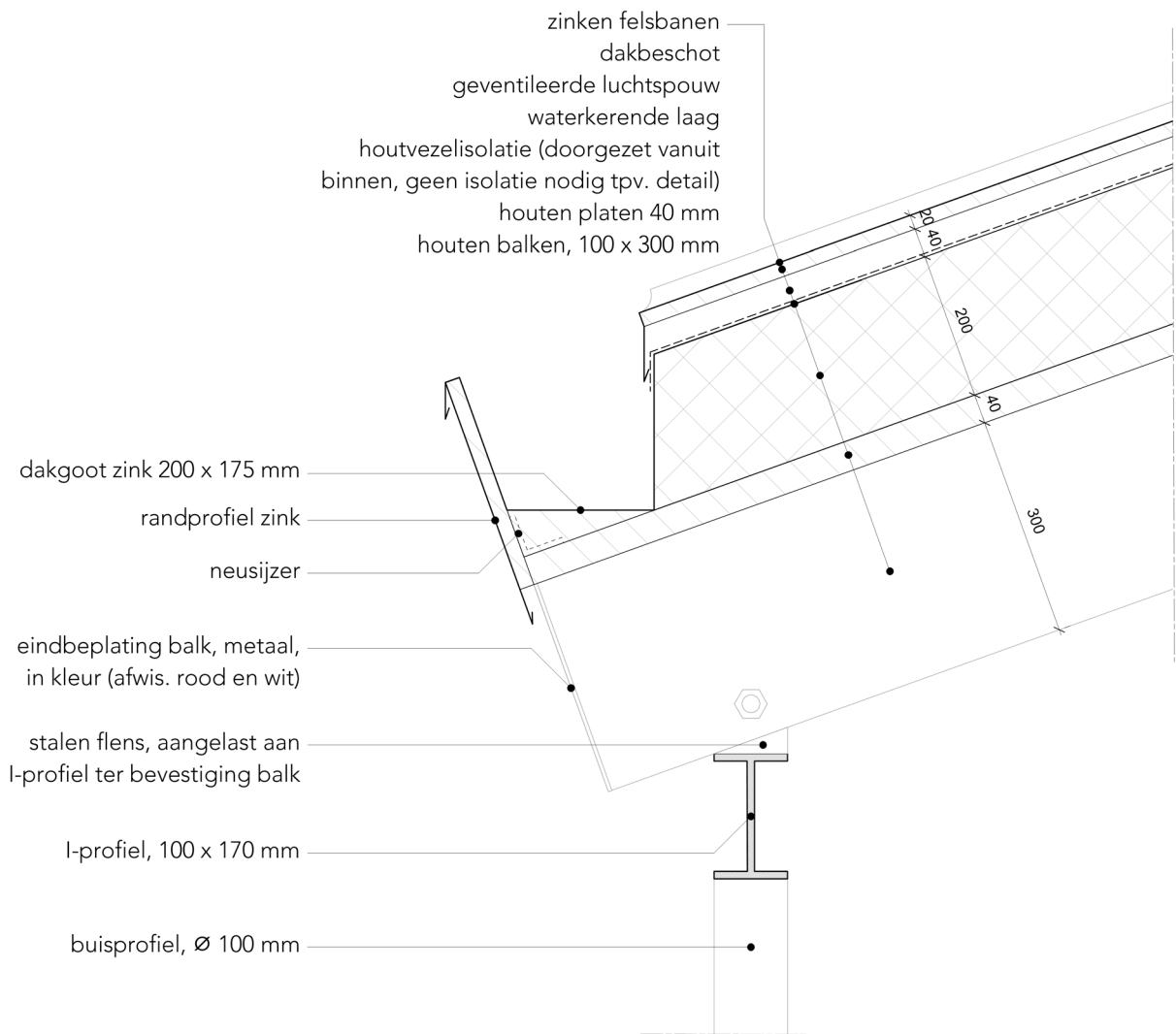
61 one of the apartments with an interchangeable room and views on the street



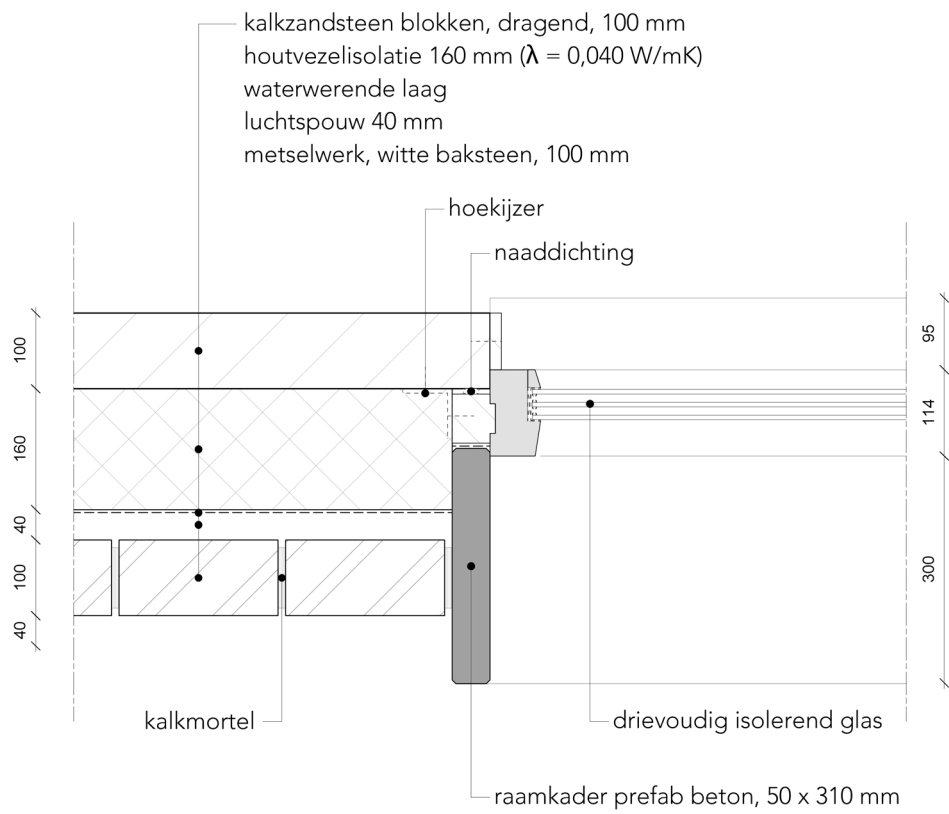


63 section over the multifunctional room,
a playground and a classroom of the preschool





roof edge detail of the preschool
(scaled from 1:5 to 1:10)



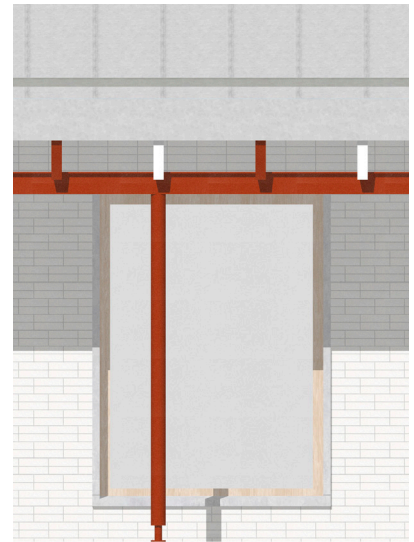
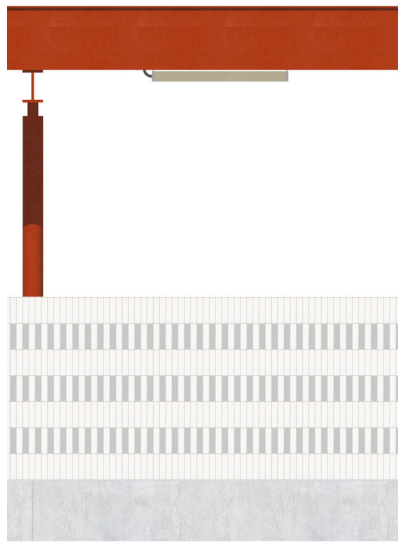
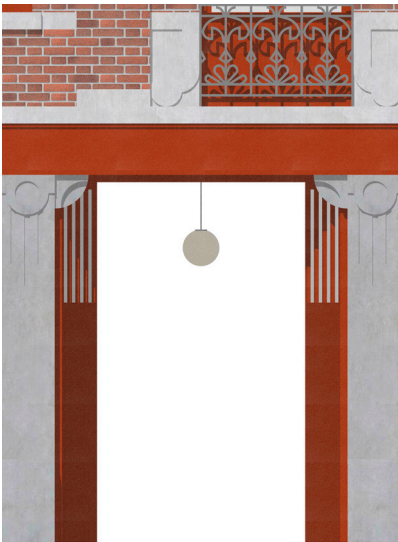
horizontal seating window detail of the preschool
(scaled from 1:5 to 1:10)

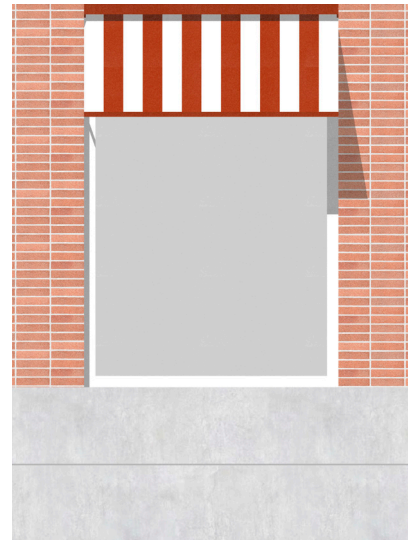
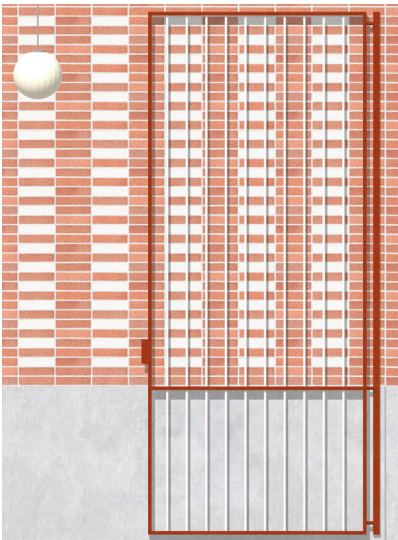


67 one of the classrooms with views of the playgrounds
and fixed furniture against the blind wall



view from one of the playgrounds of the preschool
with the covered 'corridors' and seating





reflection

Goal and motivation

During this graduation project, I have been working on a design proposal for a shelter for the homeless in Liège. As one of my interests in the field of architecture is how new additions to the built environment can react on their context, I decided to research the attitude of 'Weiterbauen'. I had heard of Weiterbauen before, but as I only knew of prestigious examples like the Alte Pinakothek by Hans Döllgast or the Neues Museum by David Chipperfield, I thought a further research into this attitude would be interesting. I wanted to focus on humbler, everyday projects in this research, to find a way to react to the context of my design proposal. My goal was to use this research to develop a proposal for a homeless shelter that would seem almost self-evident in its context using the approach of Weiterbauen, providing the users with a worthy place in the street and daily life of the city with a building that is properly embedded in the street.

Way of working

I decided to conduct two different researches: I visited multiple homeless shelters to get a grasp on the program and talk with the users to discover the needs and requests for such a building as input for my own design, and I started a research into the attitude of Weiterbauen using case studies and conducting literature research to learn more about the attitude. My initial approach was to redraw a number of projects to force myself to pay attention to exact details, and to then make analytical drawings to address my findings per project. Redrawing these projects did help me to find interesting details, but after a number of weeks I noticed that the analytical drawings did not work very well for me as a tool to make an in-depth analysis. I decided that writing an essay could be a more appropriate way to get the information I searched for, and Eireen suggested that I would try to find the underlying ideologies of the case studies' architects. This worked quite well: I used interviews, essays and presentations by the architects to distil their position in relating to the existing context, and then analysed the case studies to test how their positions are put to practise. This way I could use drawings of the projects to find interesting characteristics, and then try to reason why the architect would make a certain choice based on their thematised positions. At the suggestion of Eireen I compared the architects on the level of the city, building and detail, which helped me to find differences and draw parallels between the architects.

Research, design and my position

As I was writing my essay, I became more conscious about design choices I was making. This was not solely about a specific characteristic of the context or detail of a building and how to respond to that, as I might have expected at the start, but it also made me reflect on why I would make certain choices.

The comparison on three scale levels helped me to formulate my own position: at the urban scale, I find it important to continue on the morphology of the present city in a self-evident way. By filling in the voids in between existing buildings on the street, the building block is completed, providing the (temporary) inhabitants with a room or apartment close to the street. Further back in the building block, the preschool is situated in the middle of a plurality of sheds and extensions, and with its bigger grain size draws inspiration from the large workspaces with shedroofs that used to be situated here.

On the building scale, the buildings clearly relate to their surroundings and take over some characteristics, but do not literally interpret every detail of the neighbours. For example, the facades use similar proportions as the neighbours, but have a different grain size and

material use. My goal here was to work within the theme of the neighbourhood and take over its grammar, while searching for new interpretations. The new buildings relate mostly to the two existing buildings that are integrated in the proposal, emphasizing their functional relationship.

On the detail scale, this relation is further stressed. Elements with similar dimensions but different material are used for the new building, for example substituting natural stone window sills with concrete ones. The existing buildings have inspired the new additions in a more abstract way as well: the characteristic red colour of the reception building is used for highlighting certain elements such as drainpipes and awnings, and its large red steel beam is referred to with the canopies of the lockers and the preschool. This way relations with the existing context are created, trying to find new interpretations of the existing grammar.

Relevance and transferability

Although the research was mostly directed towards a personal understanding of Weiterbauen and the development of my own position, I think the essay can be interesting for others as well. Reading into the different positions of these architects could help with the development of a personal position and similar follow-up research can be conducted to study other positions and projects as well. I believe a conscious consideration of the existing context is of great importance and can lead to more than stark contrasts between old and new buildings. For me this research and design project have been an important step in developing my own position towards this theme, that I will gladly develop further in the rest of my career.

