

Drawing Set

Author: Xiang Fang
Student number:5021235

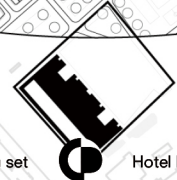
Tutors:
O.Caso, F.Eckardt, J.van Zalingen
Complex Projects
TU Delft, Msc 4

Drawing set

1:10000 GROUP SITE PLAN



Drawing set



Hotel New York

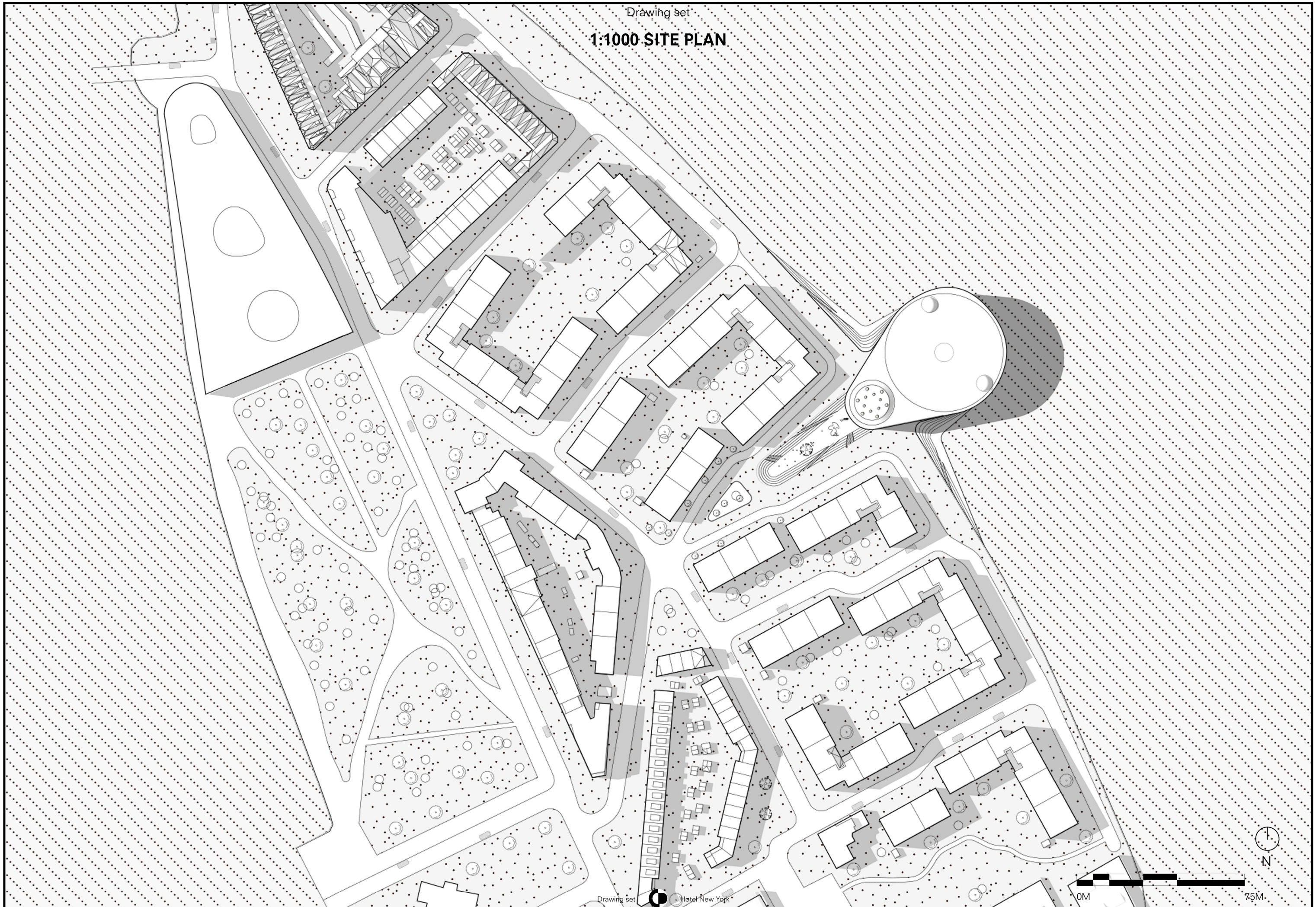
0M



400M

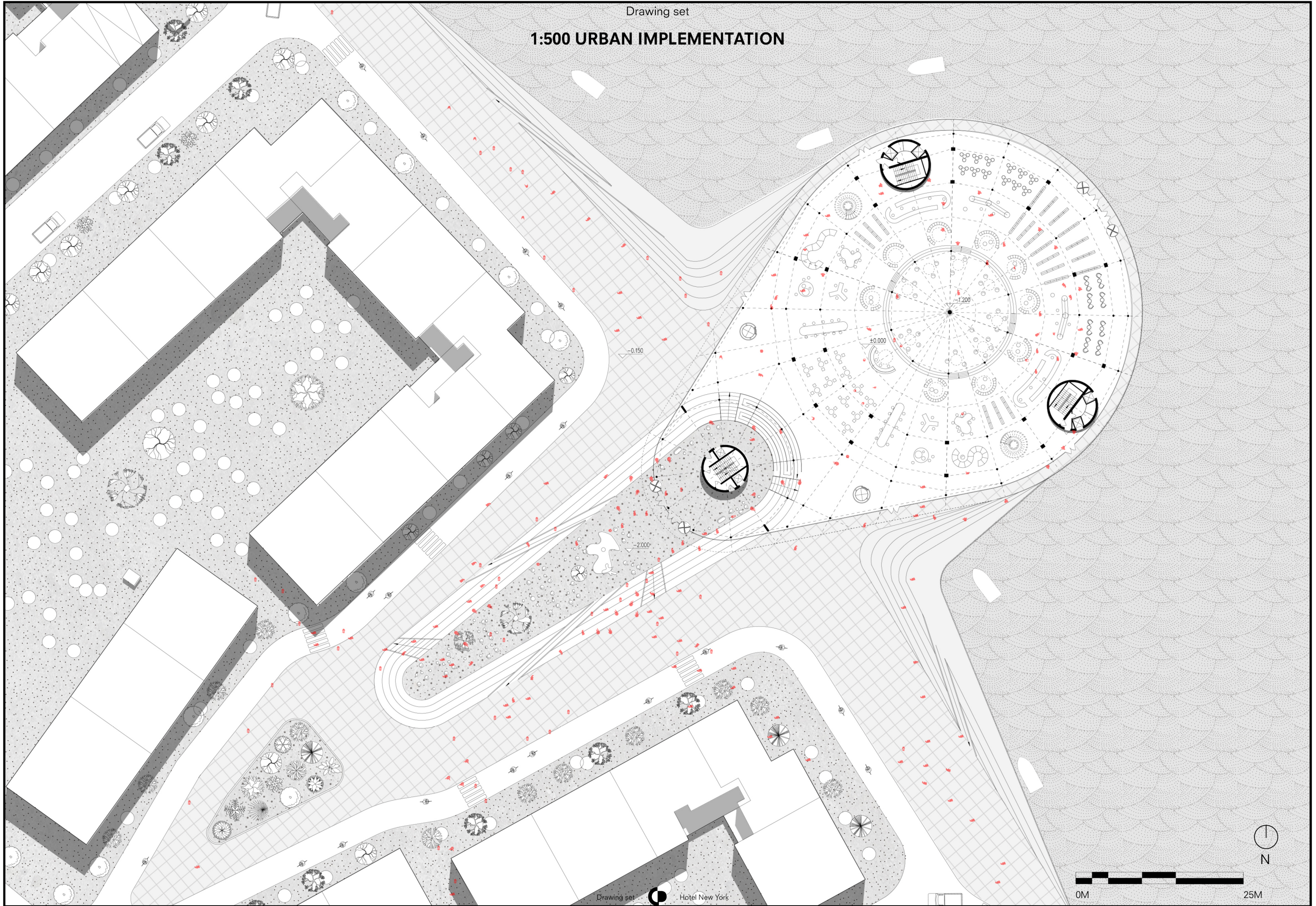


Drawing set
1:1000 SITE PLAN



Drawing set

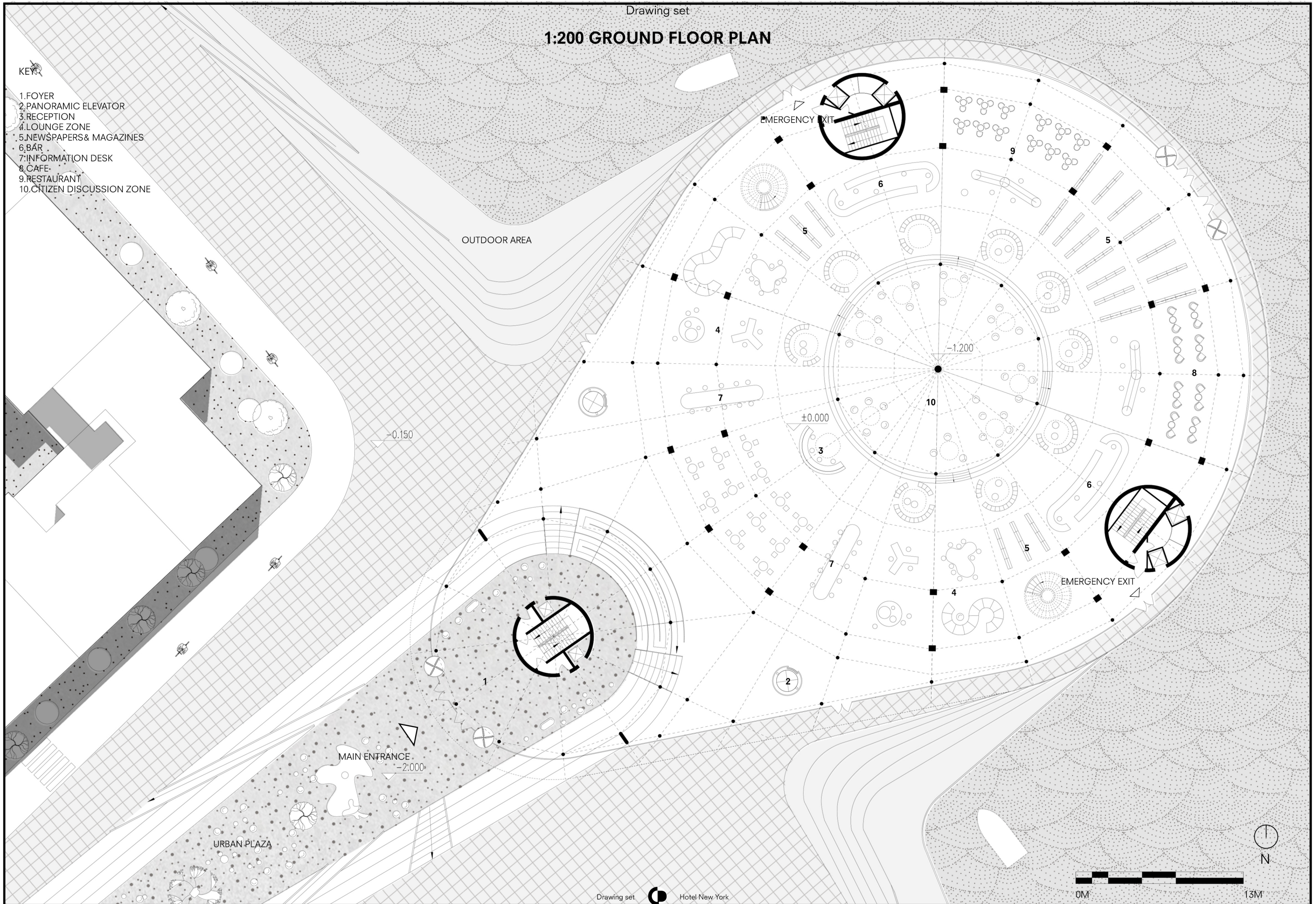
1:500 URBAN IMPLEMENTATION



1:200 GROUND FLOOR PLAN

KEY

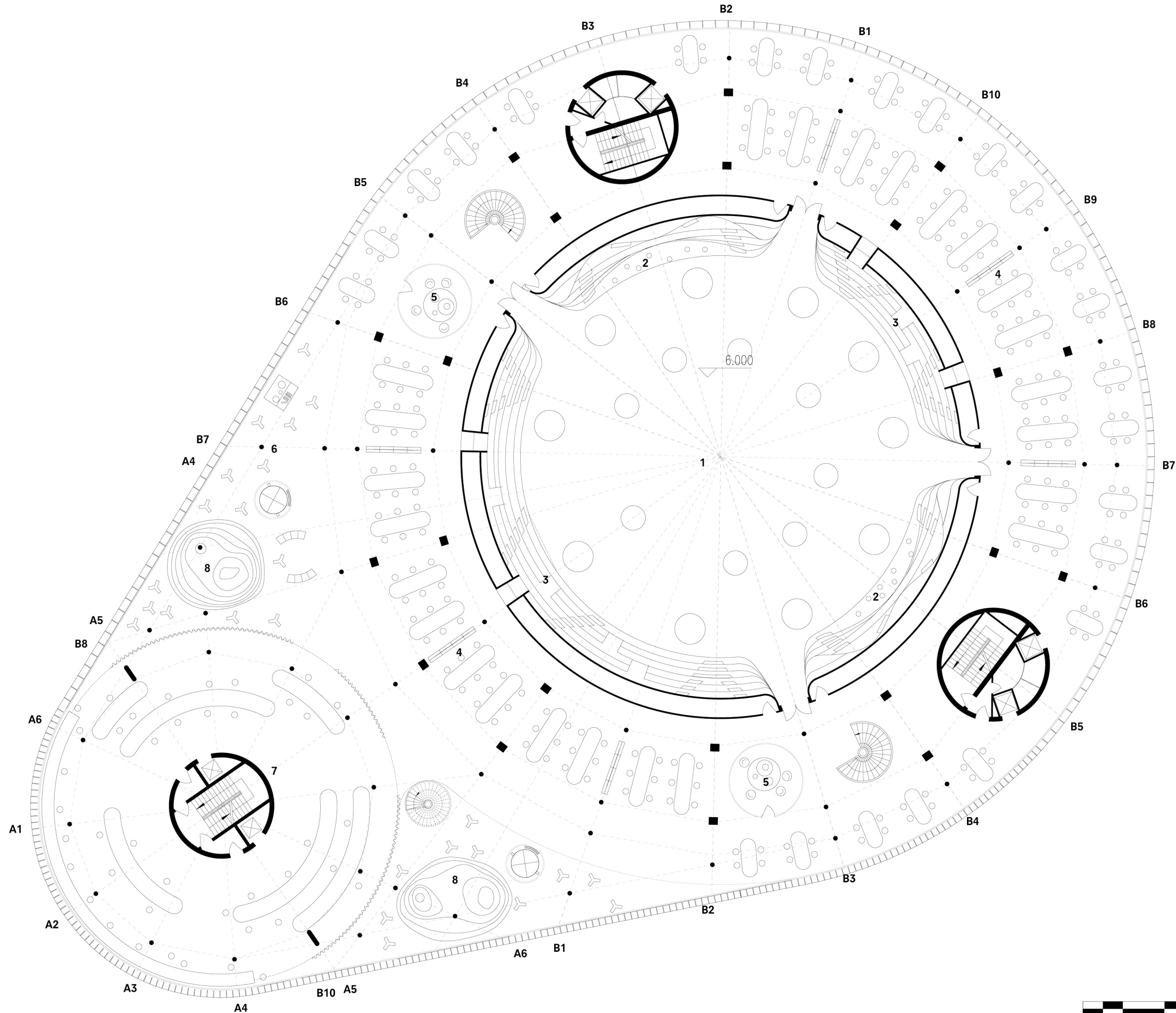
- 1. FOYER
- 2. PANORAMIC ELEVATOR
- 3. RECEPTION
- 4. LOUNGE ZONE
- 5. NEWSPAPERS & MAGAZINES
- 6. BAR
- 7. INFORMATION DESK
- 8. CAFE
- 9. RESTAURANT
- 10. CITIZEN DISCUSSION ZONE



1:200 6M PLAN

KEY:

- 1. ATRIUM
- 2. DISCUSSION ZONE
- 3. CASUAL INTERACTION ZONE
- 4. LEARNING ZONE
- 5. STUDY CELL
- 6. MEDIA CREATION (KIDS)
- 7. DIGITAL LAB (KIDS)
- 8. KIDS PARADISE



1:200 11M PLAN

KEY:

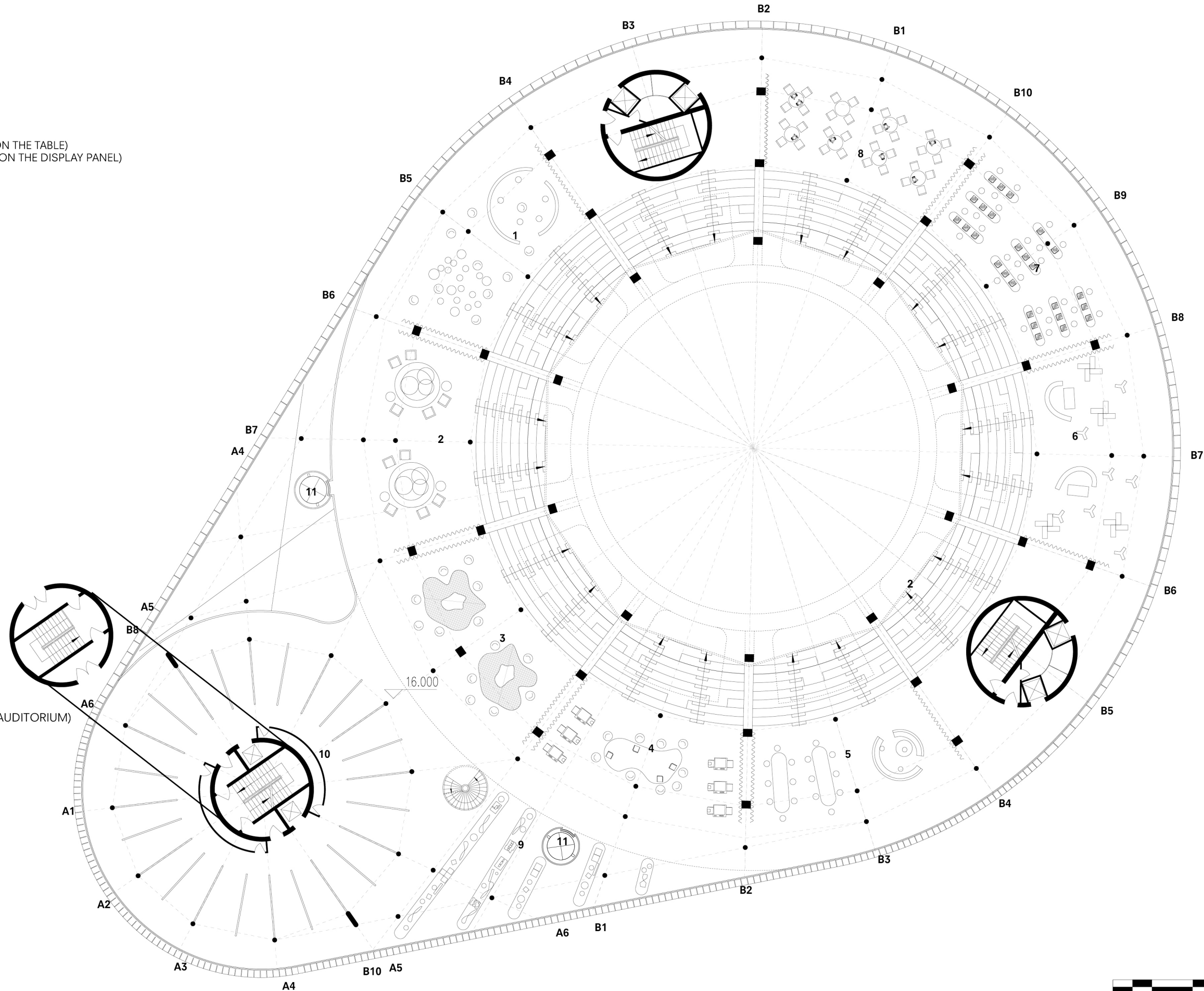
- 1. DIY STUDIO
- 2. VIDEO GAME STUDIO
- 3. MULTIMEDIA ZONE
- 4. STORYTELLING STUDIO
- 5. PLASTIC ART STUDIO
- 6. MULTIFUNCTIONAL STUDIO
- 7. CREATION ANN BROADCASTING STUDIO
- 8. MEETING ROOM
- 9. PANORAMIC ELEVATOR
- 10. IDEA PLATFORM



1:200 16M PLAN

KEY:

- 1. MEETING ZONE
- 2. DISCUSSION LAB
- 3. ROBOTIC LAB
- 4. DIGITAL LAB
- 5. MODELMAKING LAB
- 6. HANDICRAFT LAB
- 7. 3D PRINTING LAB
- 8. FOOD LAB
- 9. EXHIBITION ZONE (EXHIBITS ON THE TABLE)
- 10. EXHIBITION ZONE (EXHIBITS ON THE DISPLAY PANEL)
- 11. PANORAMIC ELEVATOR

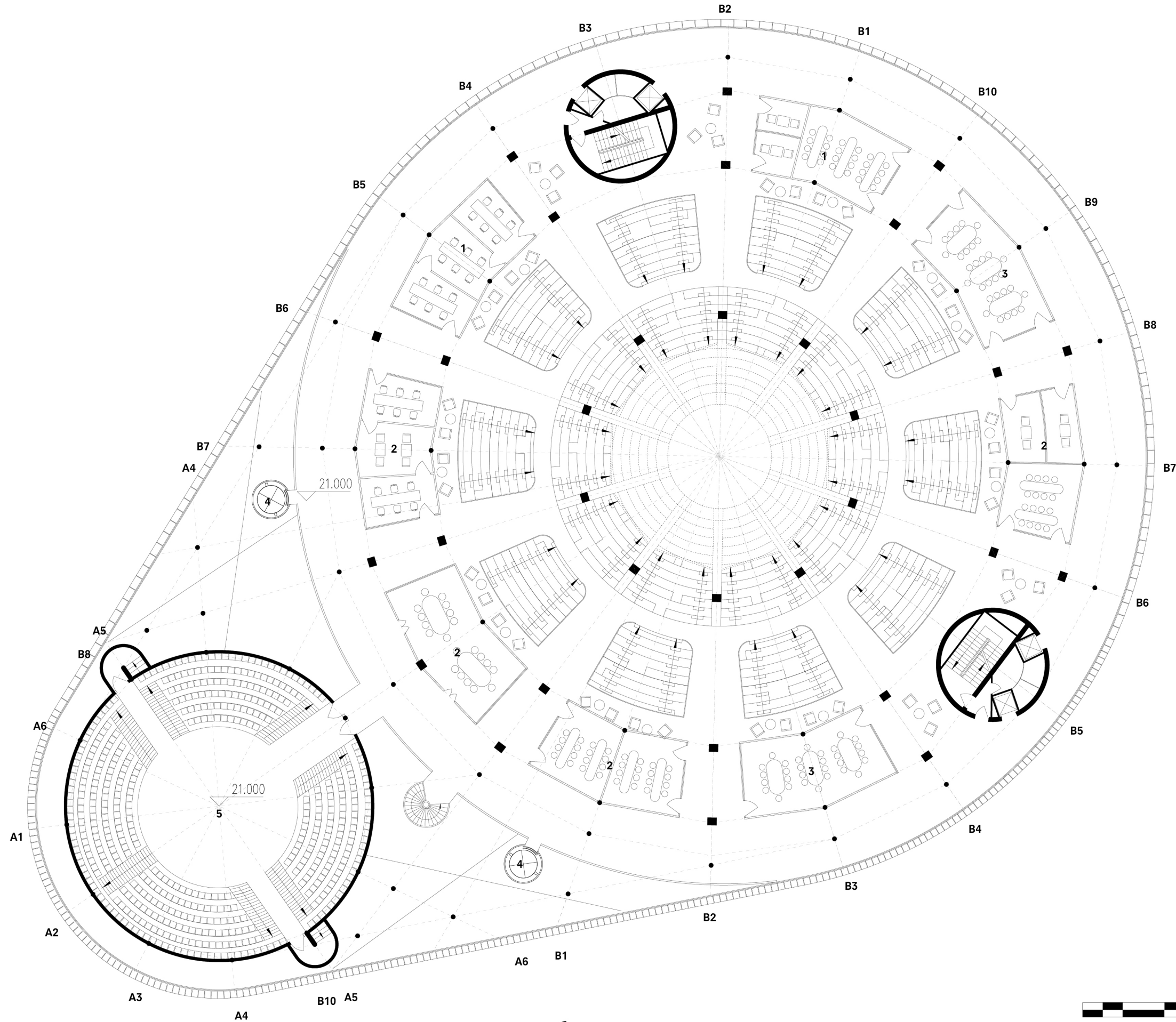


18.5M PLAN
(ESCAPING STAIR FOR AUDITORIUM)

1:200 21M PLAN

KEY:

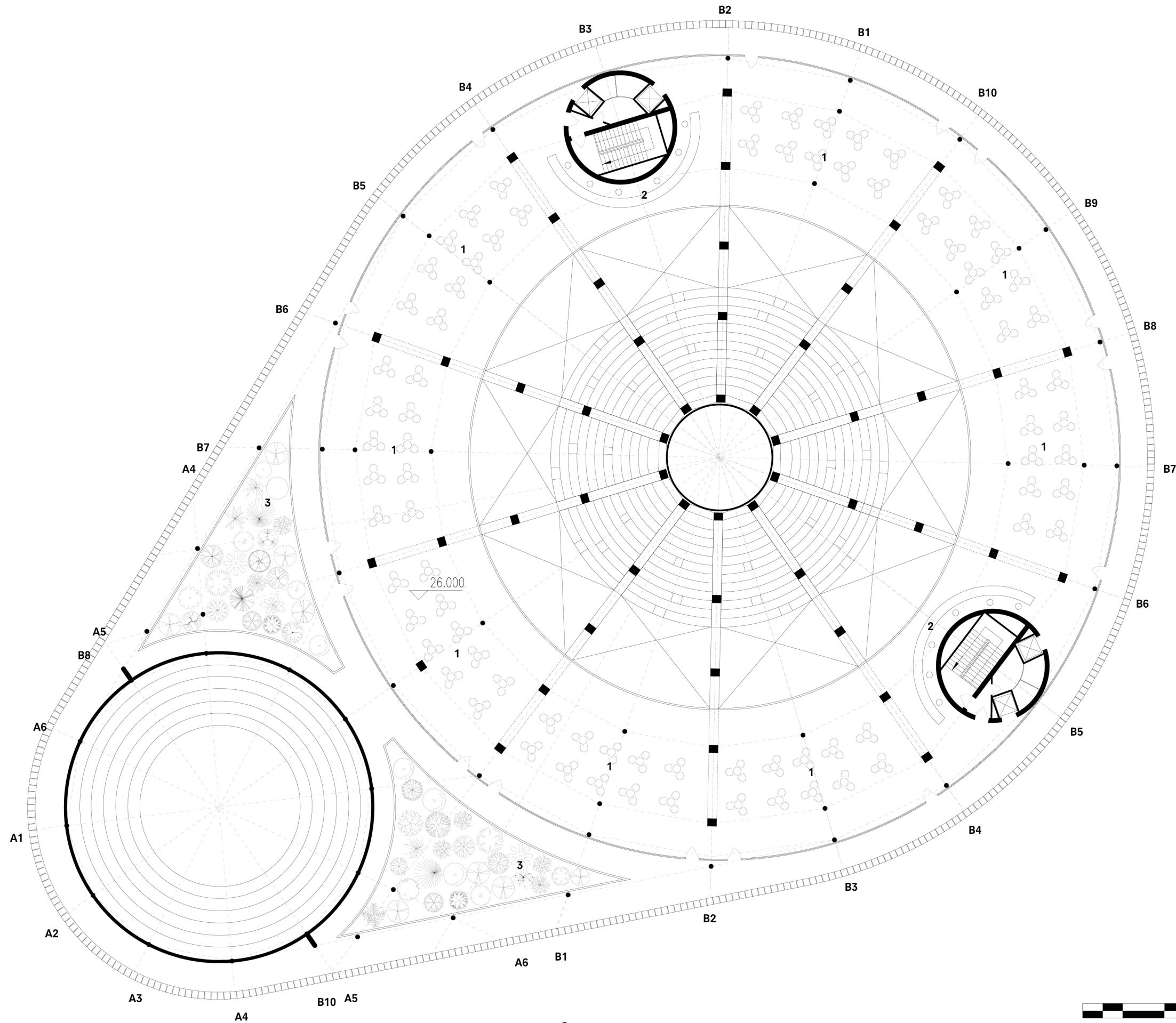
- 1. STAFF OFFICE
- 2. RENTAL OFFICE (CREATIVE CLASS)
- 3. MEETING ROOM
- 4. PANARAMIC ELEVATOR
- 5. AUDITORIUM (CREATIVE CLASS)



1:200 26M PLAN

KEY:

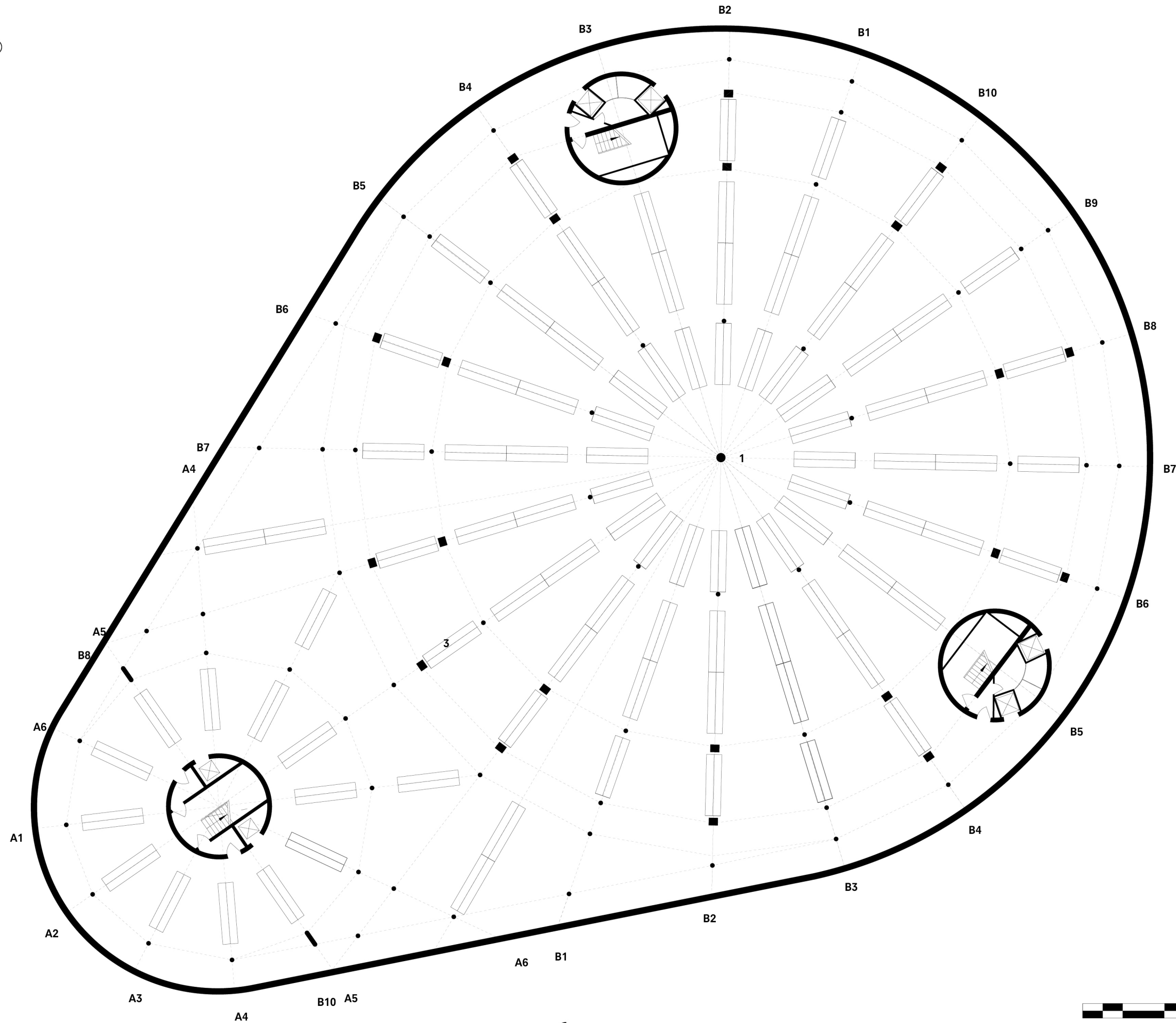
- 1. TERRACE CAFE
- 2. KITCHEN & BAR
- 3. ROOF GARDEN



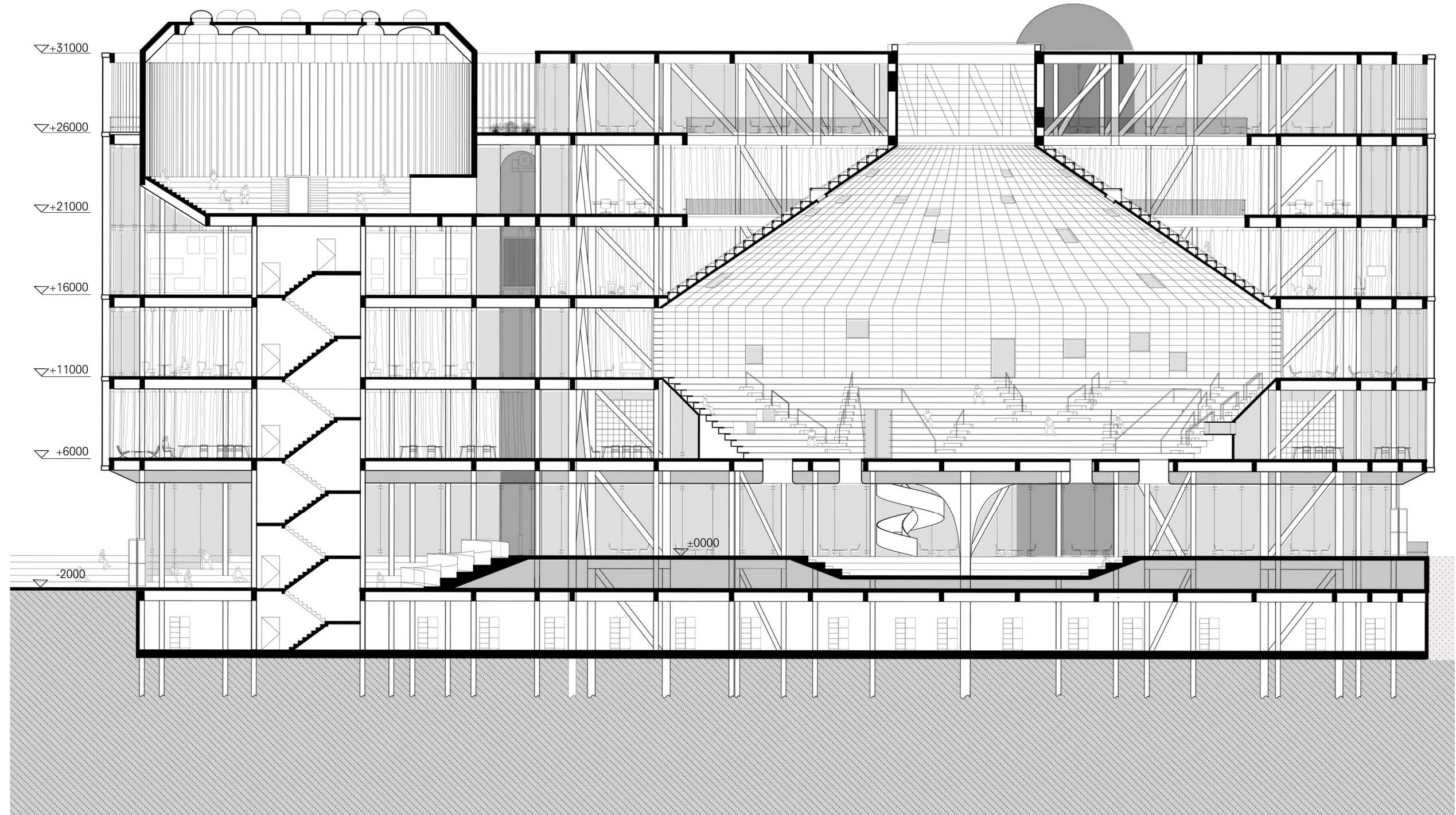
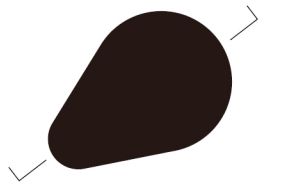
1:200 BASEMENT PLAN

KEY:

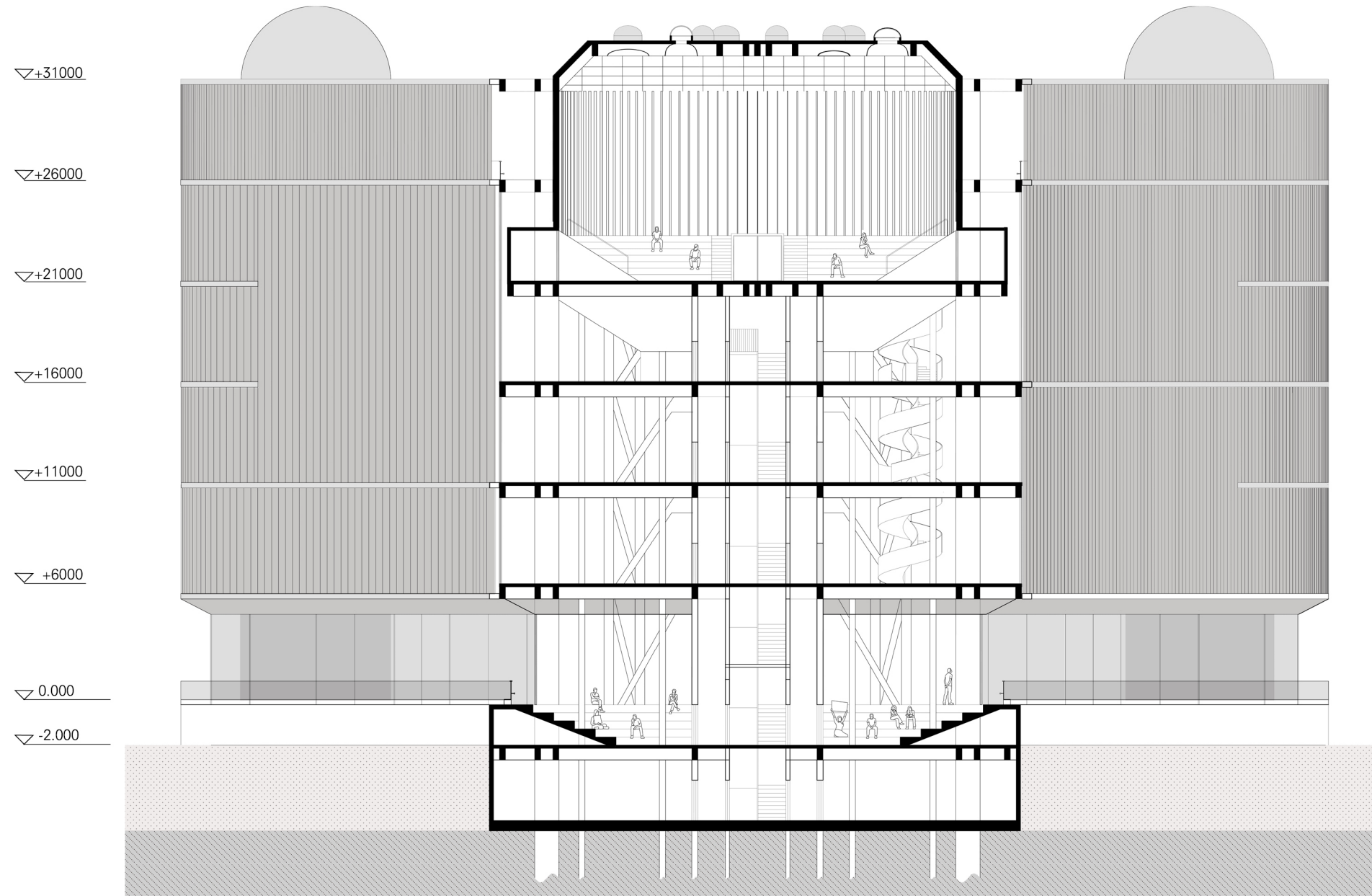
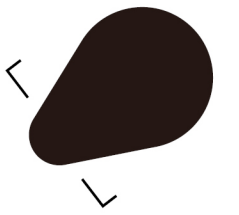
- 1.STORAGE OF IDEAS(DIGITAL&PHYSICAL)
- 2.COOLING PLANT



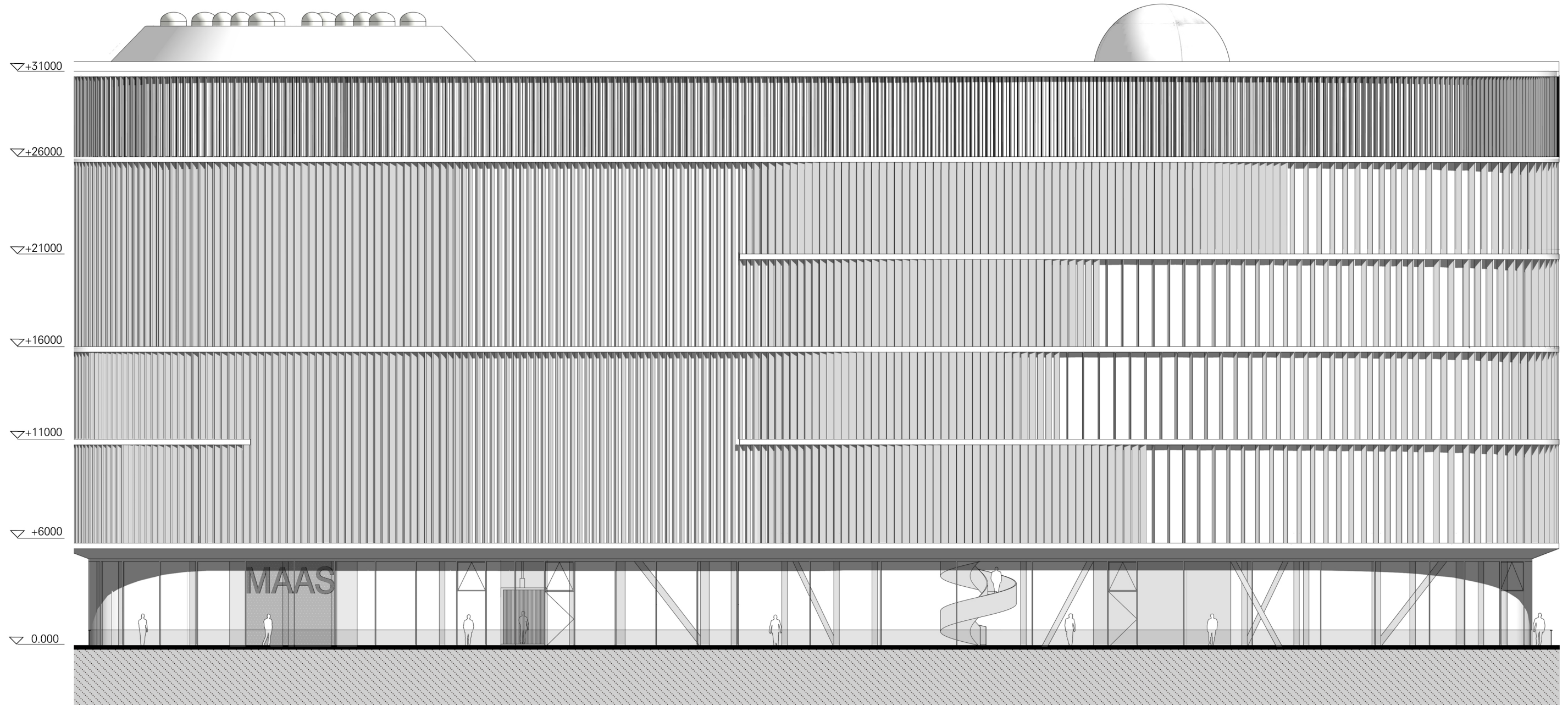
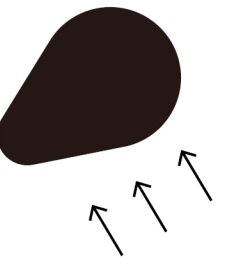
1:200 LONGITUDINAL SECTION



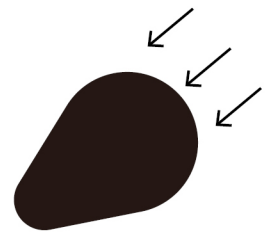
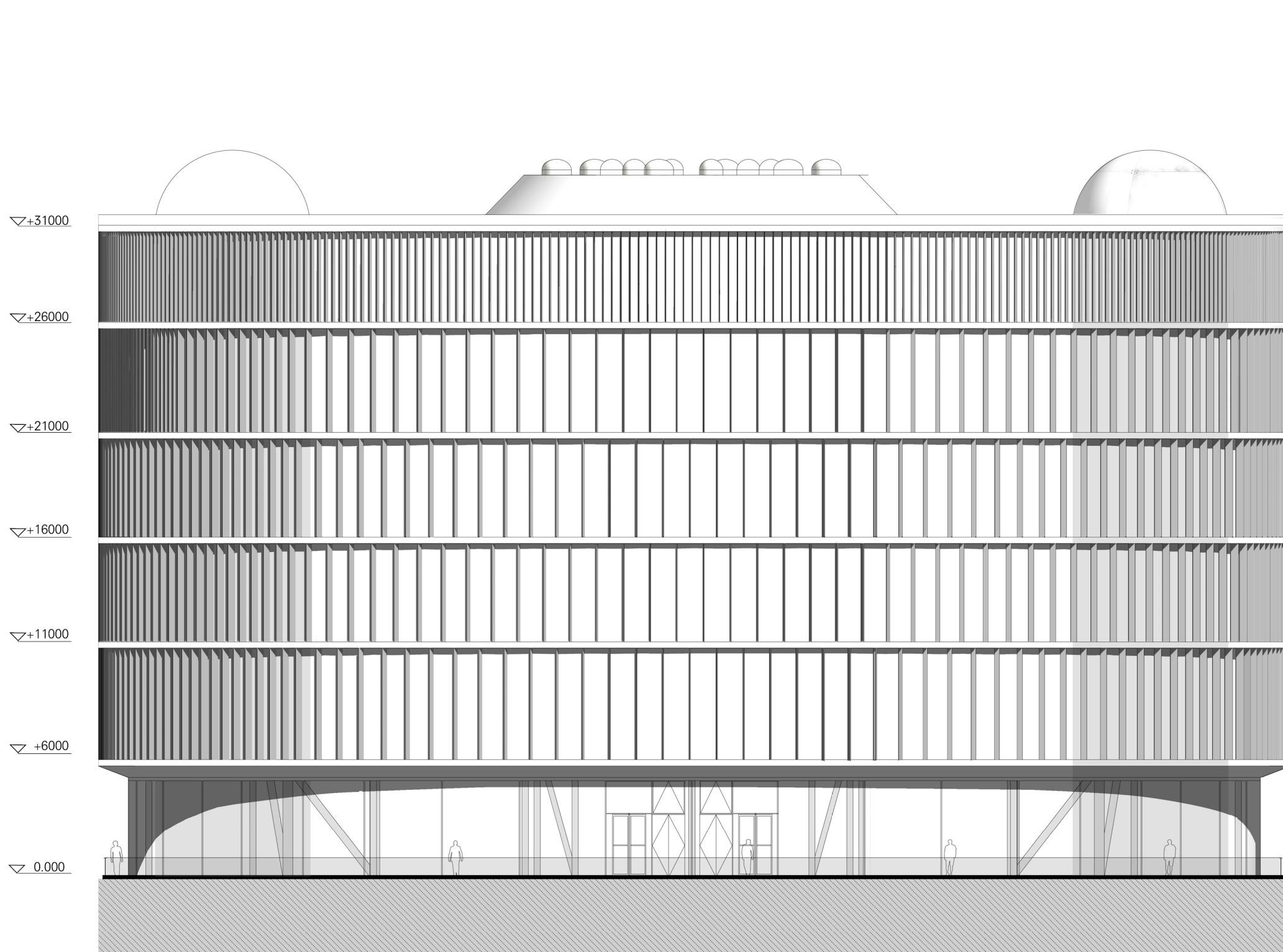
1:200 CROSS SECTION



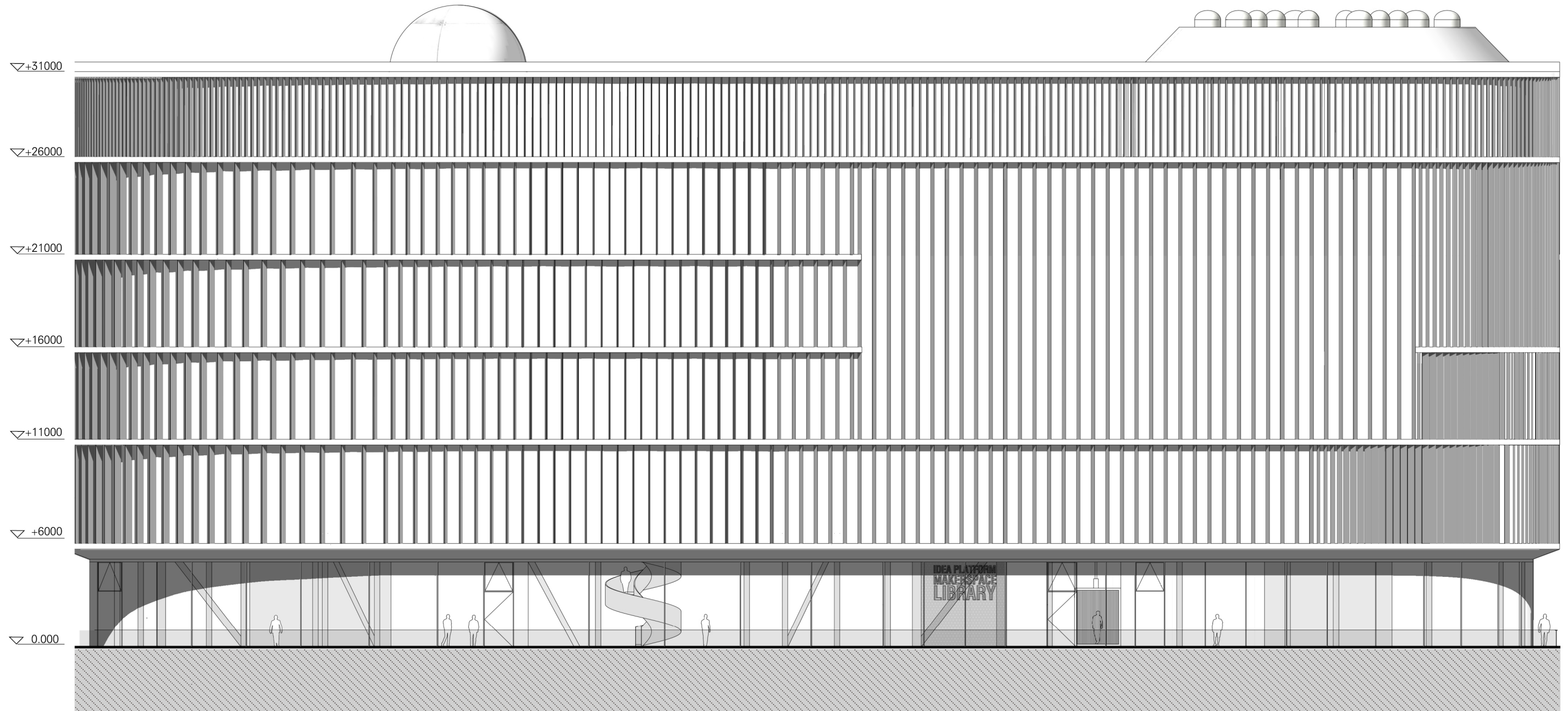
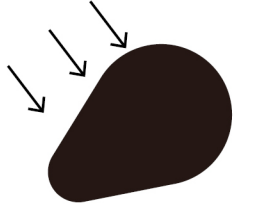
1:200 SOUTHERN FACADE



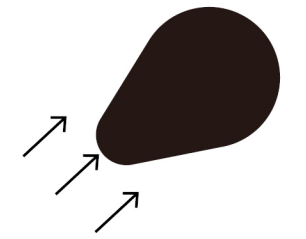
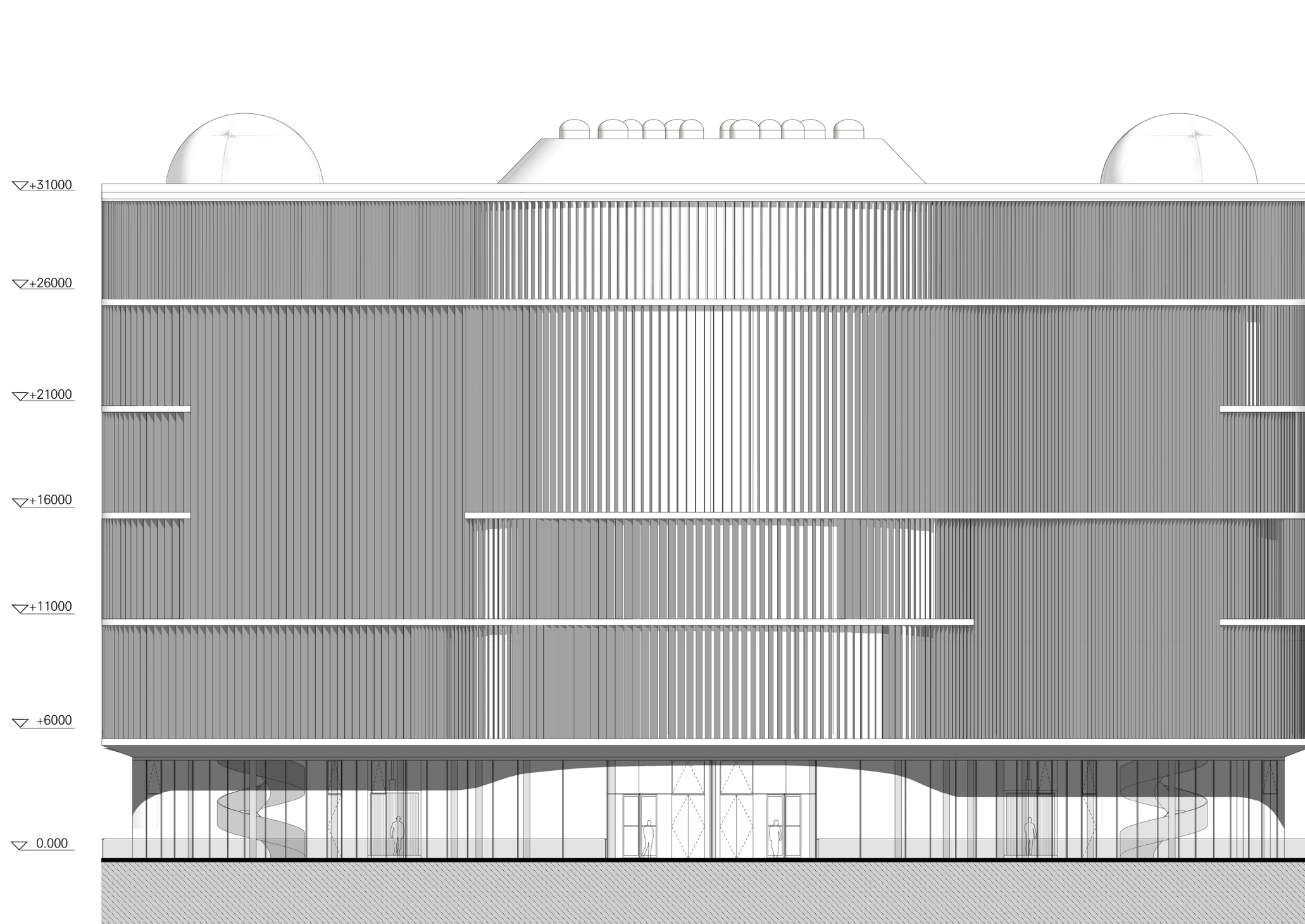
Drawing set
1:200 EASTERN FACADE



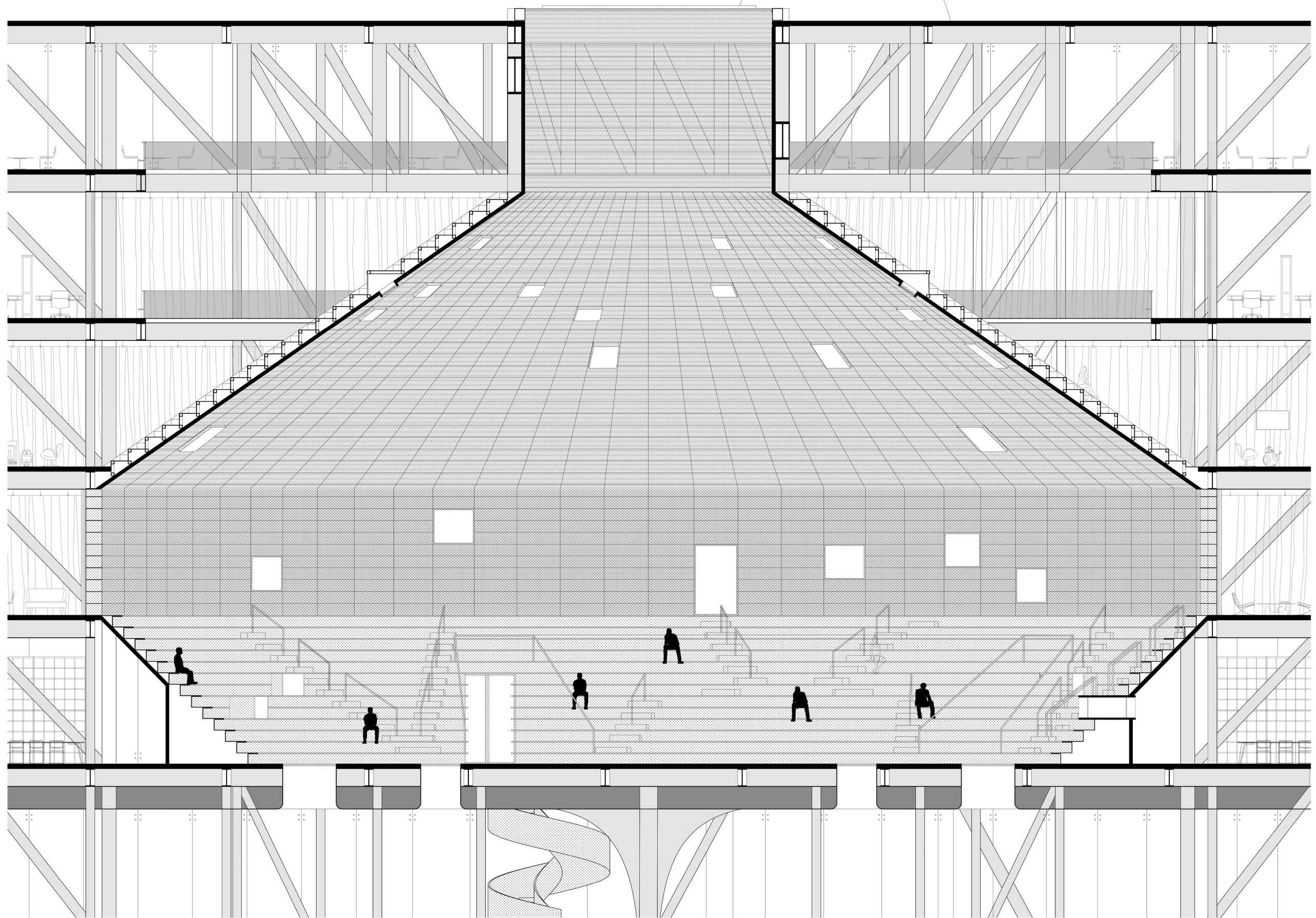
1:200 NORTHERN FACADE



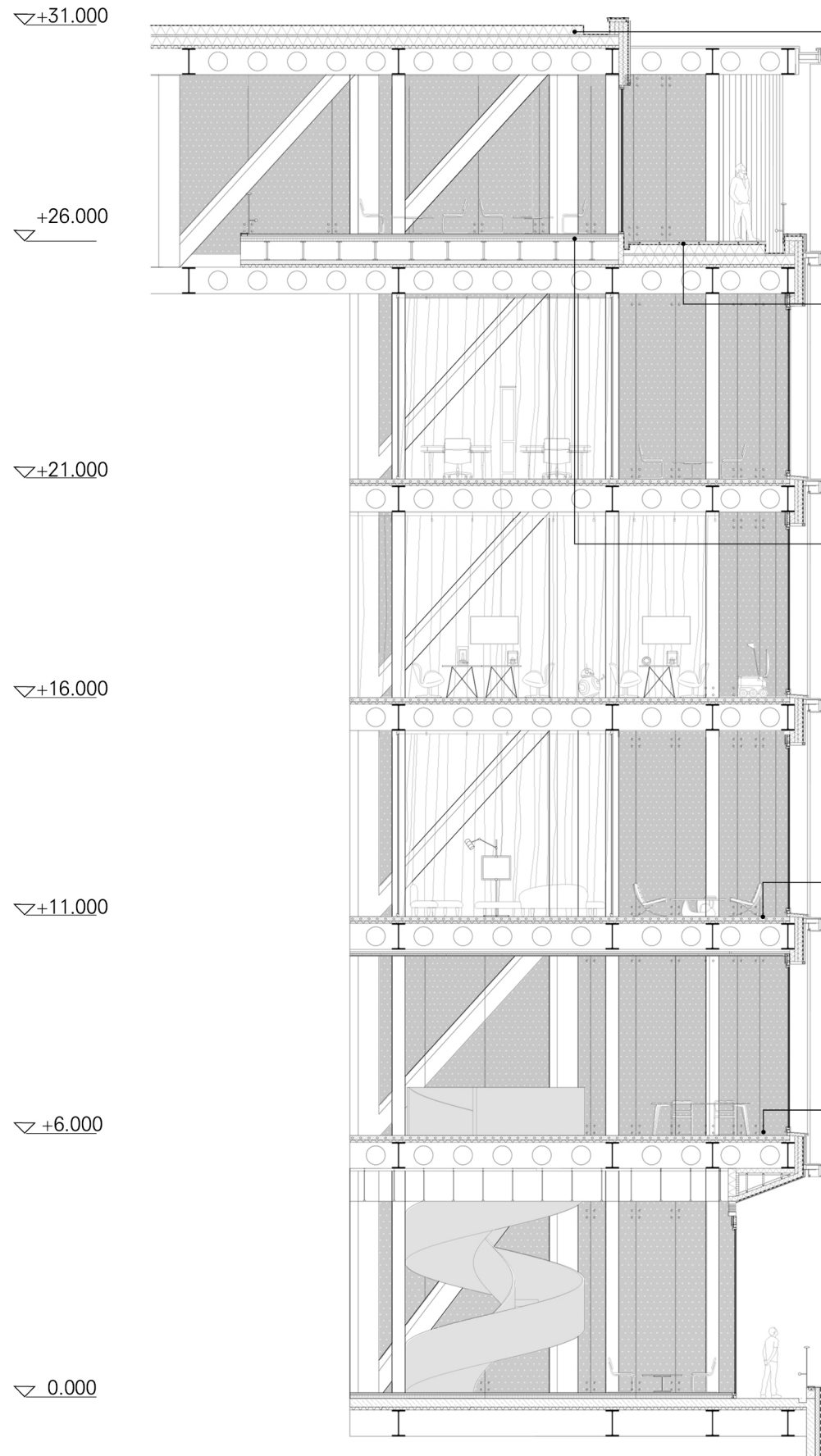
1:200 WESTERN FACADE



1:50 INTERIOR FRAGMENT



1:20 ENVELOPE FRAGMENT



Roof:
Bitumen membrane mechanically fastened in two layers
200mm x2 mineral wool thermal insulation in two layers
vapor barrier
50mm trapezoidal corrugated steel plate
300x600 mm profile steel beam

Facade on top floor:
vertical steel sheet
(3 mm natural colour anodised aluminium, gap: 430 mm)

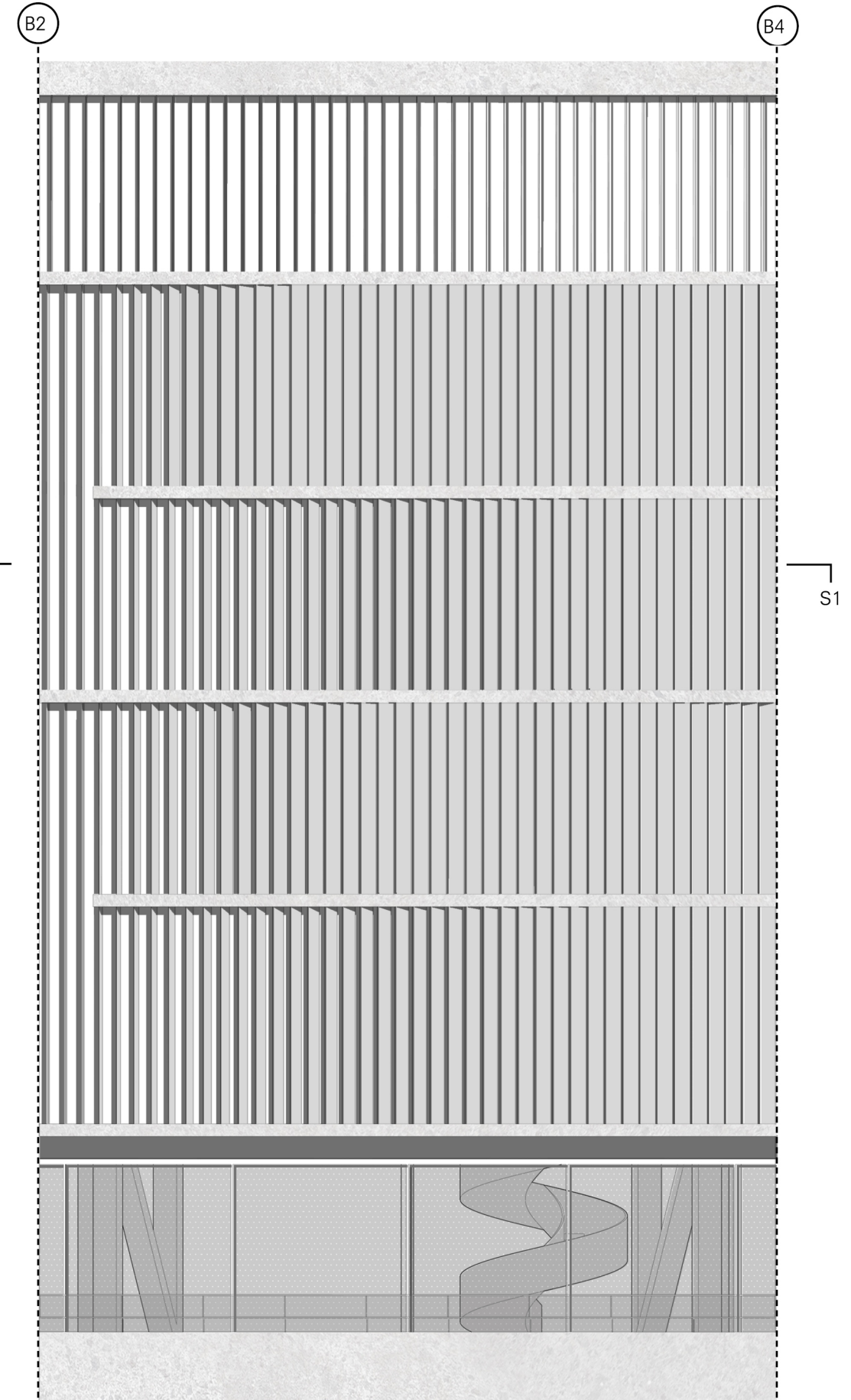
Terrace floor:
24mm larch board
30mm timber section on supports
200mmx2 mineral wool thermal insulation in two layers
30mm OSB board
1mm vapour barrier
70mm lean concrete
50mm trapezoidal corrugated steel plate
600mm steel I-beam

Interior top floor:
raised floor construction
16 mm oak parquet flooring on 30mm battens
40 mm composite wood boarding
100mm concrete slab
50mm trapezoidal corrugated steel plate
600mm steel I-beam

Facade :
Swivelling vertical shutter
(3 mm natural colour anodised aluminium)

Floor :
5mm soundproofing varnish
50mm polished concrete slab with water pipe
30mm extruded polystyrene
70mm lean concrete
50mm trapezoidal corrugated steel plate
600mm steel I-beam

Soffit:
5mm soundproofing varnish
50mm polished concrete slab (thermo active slab)
30mm extruded polystyrene
70mm lean concrete
50mm trapezoidal corrugated steel plate
600mm steel I-beam
30mm OSB board

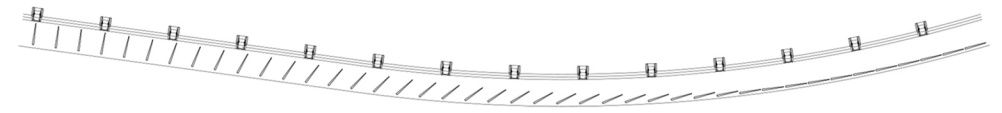


S1

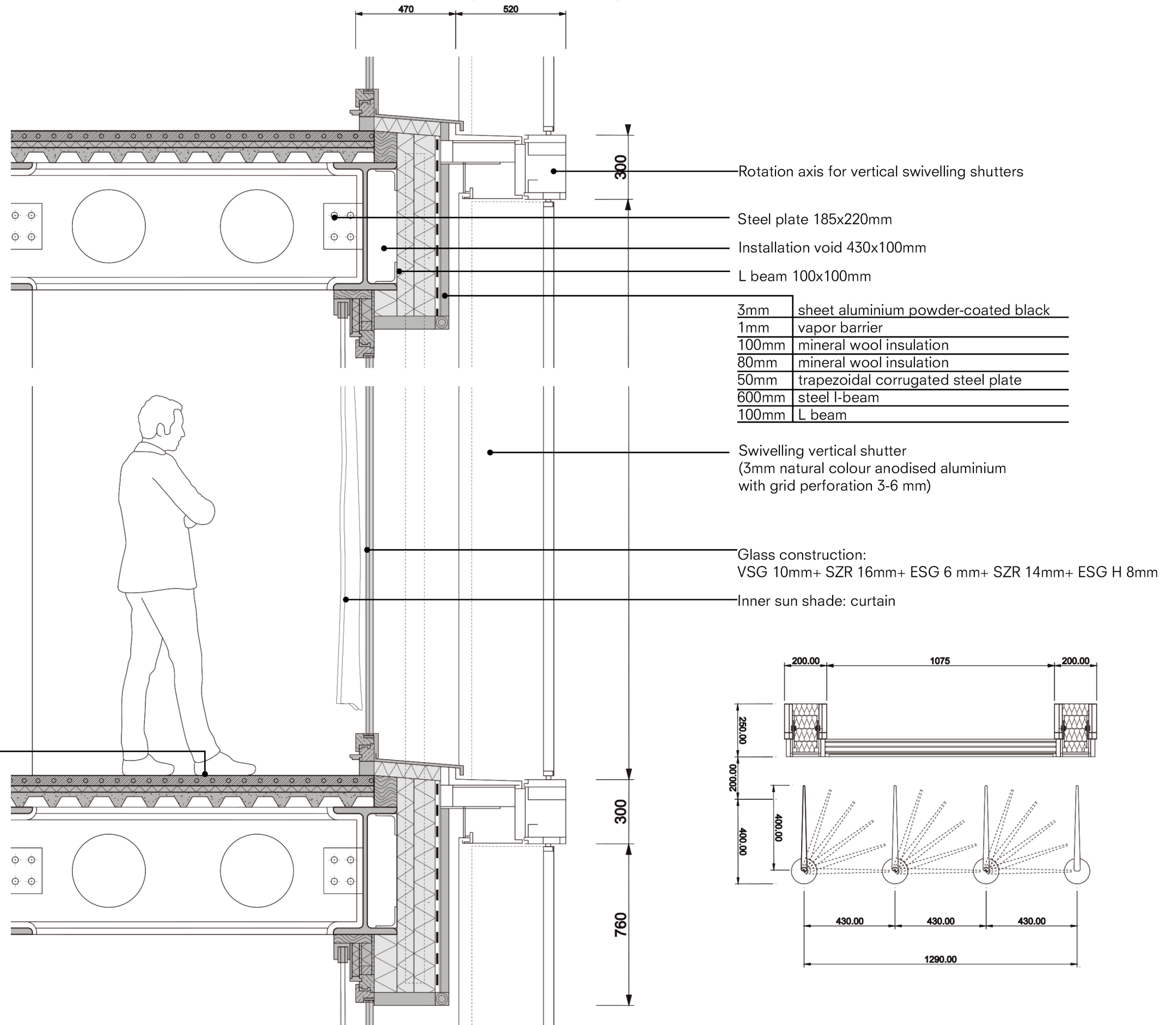
S1



Section S1



1:10 FACADE DETAIL(MIDDLE PART)

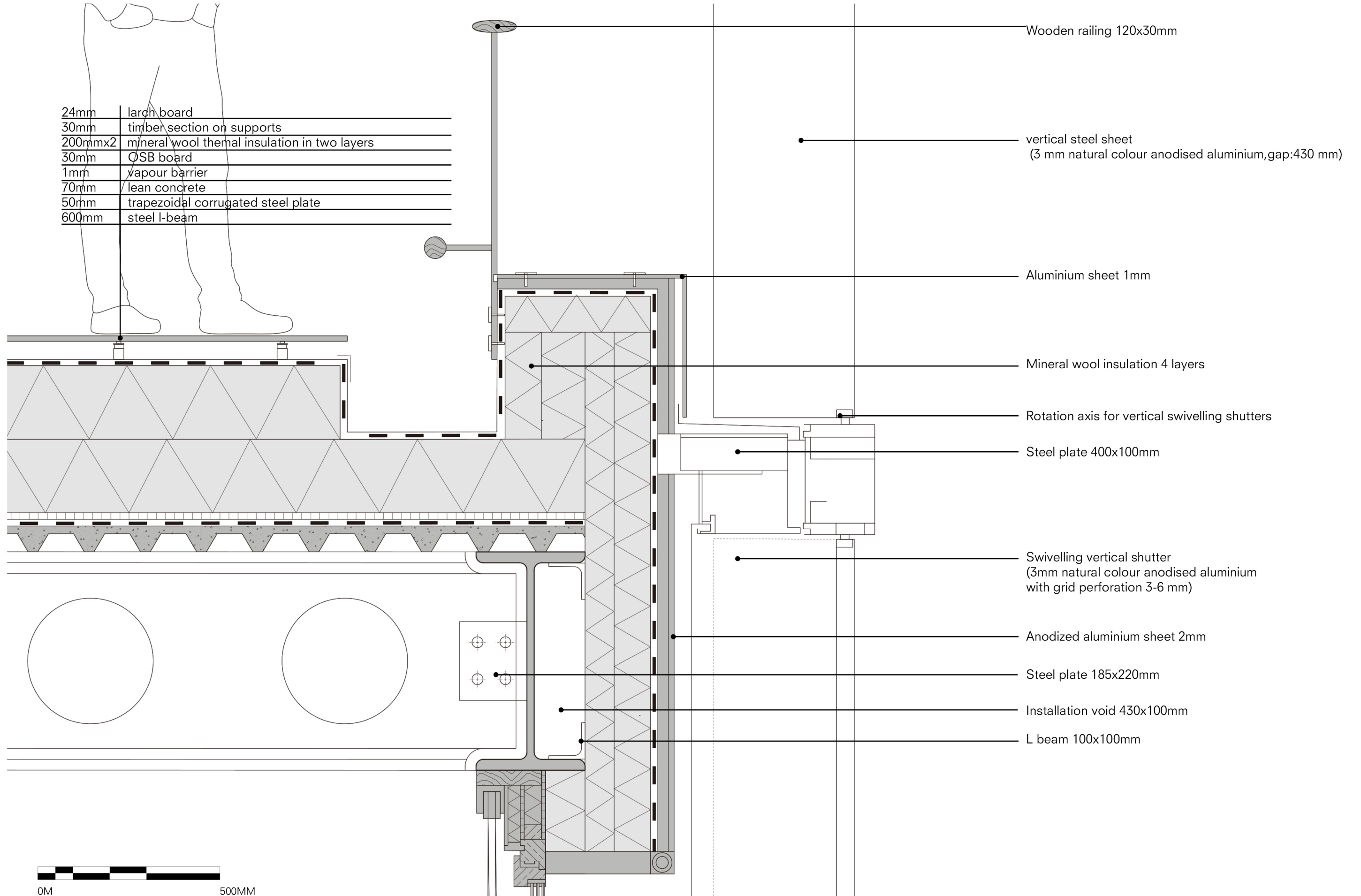


| | |
|-------|--|
| 5mm | soundproofing varnish |
| 50mm | polished concrete slab with water pipe |
| 30mm | extruded polystyrene |
| 70mm | lean concrete |
| 50mm | trapezoidal corrugated steel plate |
| 600mm | steel I-beam |



1:5 FACADE DETAIL(ROOF)

| | |
|---------|---|
| 24mm | larch board |
| 30mm | timber section on supports |
| 200mmx2 | mineral wool thermal insulation in two layers |
| 30mm | OSB board |
| 1mm | vapour barrier |
| 70mm | lean concrete |
| 50mm | trapezoidal corrugated steel plate |
| 600mm | steel l-beam |



Wooden railing 120x30mm

vertical steel sheet
(3 mm natural colour anodised aluminium,gap:430 mm)

Aluminium sheet 1mm

Mineral wool insulation 4 layers

Rotation axis for vertical swivelling shutters

Steel plate 400x100mm

Swivelling vertical shutter
(3mm natural colour anodised aluminium
with grid perforation 3-6 mm)

Anodized aluminium sheet 2mm

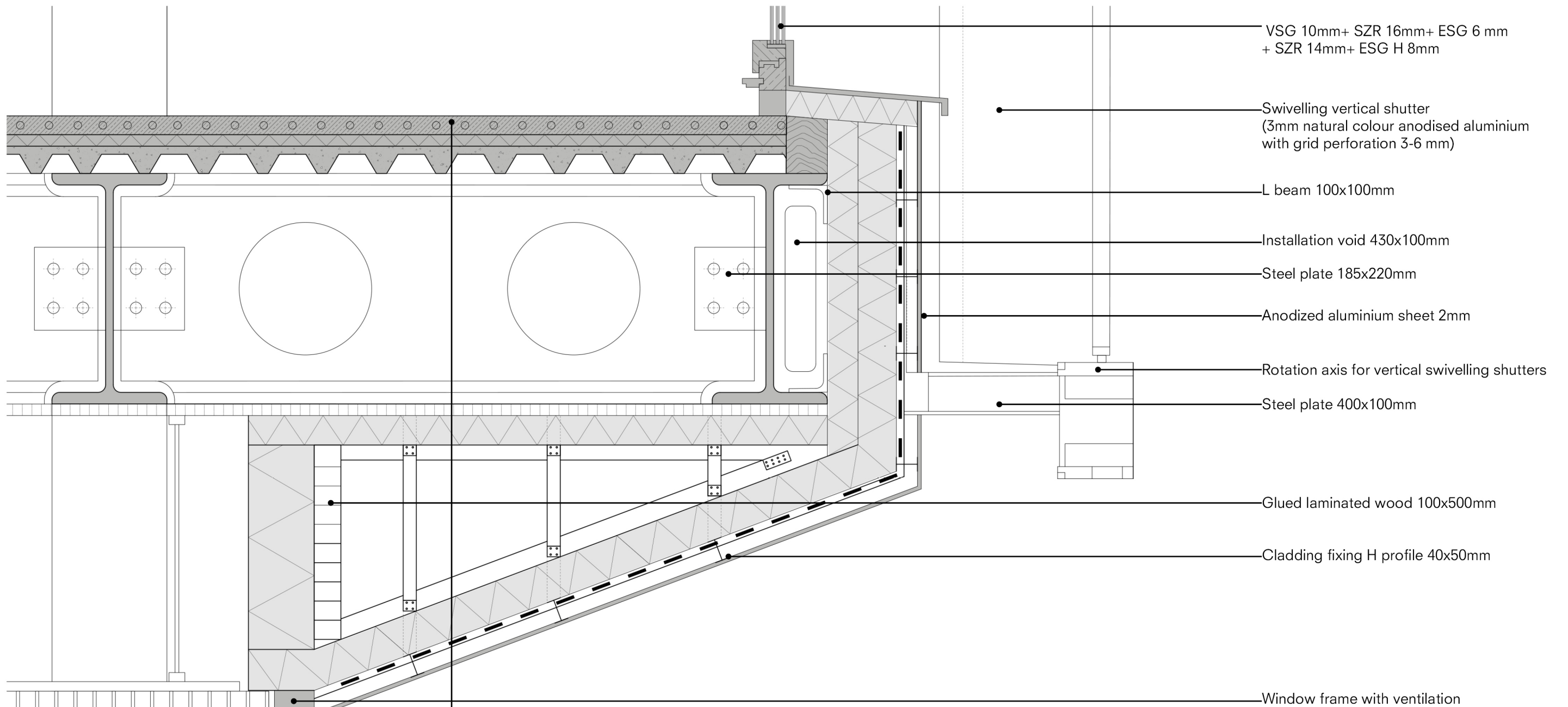
Steel plate 185x220mm

Installation void 430x100mm

L beam 100x100mm

0M 500MM

1:5 FACADE DETAIL(SOFFIT)



| | |
|-------|---|
| 5mm | soundproofing varnish |
| 50mm | polished concrete slab with water pipe(thermo active slab) |
| 30mm | extruded polystyrene |
| 70mm | lean concrete |
| 50mm | trapezoidal corrugated steel plate |
| 600mm | steel I-beam |
| 30mm | OSB board |
| 70mm | insulation EPS |
| 150mm | mineral wool insulation |
| 45mm | timber section |
| 100mm | installation void |
| 45mm | timber section |
| 100mm | fiberglass insulation |
| 1mm | vapour barrier |
| 2mm | aluminium panel ceiling |



1:10 ROOF GARDEN DETAIL

| | |
|-------|--|
| 600mm | high nutrient substrate |
| 100mm | soil filter fabric |
| 100mm | drain mat |
| 1mm | vapor barrier |
| 100mm | concrete slab |
| 200mm | mineral wool thermal insulation 2 layers |
| 1mm | vapor barrier |
| 70mm | lean concrete |
| 50mm | trapezoidal corrugated steel plate |
| 600mm | steel I-beam |

