

New analogue materials for nonlinear lithosphere rheology, with an application to slab break-off

Broerse, Taco; Norder, Ben; Govers, Rob; Sokoutis, Dimitrios; Willingshofer, Ernst; Picken, Stephen J.

DOI

[10.1016/j.tecto.2018.12.007](https://doi.org/10.1016/j.tecto.2018.12.007)

Publication date

2019

Document Version

Accepted author manuscript

Published in

Tectonophysics

Citation (APA)

Broerse, T., Norder, B., Govers, R., Sokoutis, D., Willingshofer, E., & Picken, S. J. (2019). New analogue materials for nonlinear lithosphere rheology, with an application to slab break-off. *Tectonophysics*, 756, 73-96. <https://doi.org/10.1016/j.tecto.2018.12.007>

Important note

To cite this publication, please use the final published version (if applicable). Please check the document version above.

Copyright

Other than for strictly personal use, it is not permitted to download, forward or distribute the text or part of it, without the consent of the author(s) and/or copyright holder(s), unless the work is under an open content license such as Creative Commons.

Takedown policy

Please contact us and provide details if you believe this document breaches copyrights. We will remove access to the work immediately and investigate your claim.

New analogue materials for nonlinear lithosphere rheology, with an application to slab break-off

Taco Broerse^{*1}, Ben Norder², Rob Govers¹, Dimitrios Sokoutis^{1,3}, Ernst Willingshofer¹, and Stephen Picken²

¹*Department of Geosciences, Utrecht University, Utrecht, The Netherlands*

²*Department of Chemical Engineering, Delft University of Technology, Delft, The Netherlands*

³*University of Oslo, Department of Geosciences, Oslo, Norway.*

This is the post-print of the manuscript published in *Tectonophysics*

Abstract

Stress-dependent nonlinear upper mantle rheology has a firm base in rock mechanical tests, where this nonlinearity results from dislocation creep of minerals. In the last few decades there has been some attention to nonlinear, power-law, materials for application in scaled analogue experiments for tectonic processes. However, studies describing the rheology of analogue materials with the same nonlinear dependency on stress as observed for lithospheric mantle materials at relevant stress levels, are still lacking.

In this study we have developed and rheologically tested materials based on combinations of silicone polymers and plasticine, with the aim of obtaining a material that can serve as a laboratory analogue to the power-law rheology of olivine aggregates at lithospheric mantle conditions. From our steady-state creep tests we find that it is possible to obtain such a power-law material, with effective viscosities over relevant model stress ranges [5–4000 Pa] that allow for nonlinear deformation at laboratory time scales.

We apply the developed material to a process where localized deformation of the lithosphere can be expected: slab break-off. We study this process using analogue models, where we apply the new nonlinear material to the lithospheric mantle domains, while we use Newtonian glucose to represent the low viscous asthenosphere. Now that we properly manage power-law behavior in our analogue lithosphere materials, we are able to model localized lithospheric tearing.

1 Introduction

Permanent deformation of the Earth's lithosphere can occur in brittle or ductile (viscous) modes, where the latter prevails for increasing temperatures and depths (Goetze and Evans, 1979; Kohlstedt et al., 1995). Ductile deformation involves a permanent change of shape without fracturing, and can be caused by various microphysical creep mechanisms, each of which results in deformation rates with different dependencies on external conditions such as stress or temperature, and microstructure of the material (Ranalli, 1995). For ductile steady-state

^{*}Email: d.b.t.broerse@uu.nl; Corresponding author

deformation we can discriminate between Newtonian rheology, where strain rate is proportional to stress and hence viscosity is constant, and nonlinear rheologies, where viscosity has a nonlinear dependency on stress (Ranalli, 1995). Nonlinear ductile deformation often comes in the form of power-law creep, where strain rate $\dot{\epsilon}$ has a power-law relation to stress σ , leading to material weakening at elevated stresses, a phenomenon often called pseudoplasticity:

$$\dot{\epsilon} = C\sigma^n \quad n > 1 \quad (1)$$

Many different materials, from tomato puree to metals exhibit both types of ductile deformation: linear Newtonian creep at low stresses and power-law creep at high stresses (Barnes, 1999). Also for mantle materials, such as olivine aggregates, laboratory tests at high temperatures show this transition from Newtonian to power-law creep with increasing differential stress (Hirth and Kohlstedt, 2003).

The existence of plate boundaries implies localized deformation, not only in the brittle, but also ductile regime in relatively weak shear zones (Bercovici, 1993). Localization of ductile deformation is often attributed to strain softening as a result of previously accumulated deformation (e.g. Poirier (1980); Bercovici and Karato (2002)), by mechanisms such as recrystallization (Karato et al., 1980) or shear heating (Regenauer-Lieb and Yuen, 1998). The amount of weakening or strengthening due to strain softening or hardening, respectively, in shear zones is however debated (De Bresser et al., 2001; Drury, 2005; Platt and Behr, 2011; Tasaka et al., 2017). Alternatively, in settings with highly varying stresses, power-law creep may result in high rates of deformation, as the strain rate will localize stronger than the stress itself. Such a system weakening will be especially efficient when it results in geometrical changes of tectonic units such that stress becomes increasingly localized by a positive feedback, as is observed in slab necking or tearing processes in numerical and analytical models (Andrews and

Billen, 2009; Schmalholz, 2011). Several numerical studies suggest the importance of power-law stress weakening of the lithosphere for transient localization phenomena; in subduction models power-law creep has been invoked as mechanism required for slab break-off (Davies and von Blanckenburg, 1995; Van Hunen and Allen, 2011; Duretz et al., 2011). Furthermore, power-law creep has been invoked to explain rapidly decaying postseismic deformation following several earthquakes (Freed et al., 2006, 2012; Masuti et al., 2016; Sobolev and Muldashev, 2017). In combination with strain softening a strongly stress-dependent rheology is a precondition for stable shear zones (Rutter, 1999).

Analogue models of tectonic processes aim at constructing a scaled representation of a natural tectonic setting, where application of geometrical, kinematic and dynamic scaling of the natural setting to the laboratory analogue is required (Hubbert, 1937; Weijermars and Schmeling, 1986). A precondition for correct dynamic similarity is that the rheological properties of the materials used are properly scaled with respect to the rheological properties of the respective natural rocks. Often in analogue models of tectonic processes, only the Newtonian behavior of rocks deforming in the ductile regime is modeled, by using materials that show near-Newtonian behavior, such as silicone polymers (Weijermars, 1986; Ten Grotenhuis et al., 2002; Rudolf et al., 2016). While for many tectonic settings the assumption of Newtonian behavior can be justified, processes that may involve a high variability of differential stresses call for materials that exhibit both Newtonian and power-law rheology.

Over the last few decades there have been a number of studies that tested power-law materials for the application in analogue models of tectonic processes (see an overview in section 4). However, rheological studies of analogue materials that are tailored to represent the rheology of the lithospheric mantle are currently missing. Especially, there is a lack of materials that show the same nonlinearity to stress, expressed by the stress exponent n , as

the most abundant upper mantle material olivine ($n \approx 3.5$ Hirth and Kohlstedt (2015)). For existing analogue materials, the power-law nonlinearity is either too weak, or overly strong compared to olivine aggregates (see section 4.2). Furthermore, rheological data for power-law lithosphere analogue materials is lacking at the low stresses that are typical for analogue models at the upper mantle scale (< 100 Pa, Boutelier and Oncken (2011)). In our paper we develop materials based on silicones and plasticine mixtures - informed by previous works of Weijermars (1986); Sokoutis (1987); Zulauf and Zulauf (2004) and Boutelier et al. (2008) - and study their behavior to determine how these can serve as mechanical analogs for nonlinear ductile creep in the lithospheric mantle. Furthermore, we are interested in the type of deformation behavior of the developed materials, distributed or localized, in tectonic settings where lithospheric tearing may occur.

This paper consists of two parts: in the first part we estimate the average rheology of the lithospheric mantle and test the rheology of silicone-plasticine materials at stress levels typical for analogue models at the mantle-lithosphere scale. In the second part we present an application in a model of break-off of subducted lithospheric slabs, where localisation of strain is a prerequisite and a power-law material may potentially facilitate this mode of deformation.

2 Nonlinear rheology of the lithospheric mantle

2.1 Laboratory flow laws

We intent to design a material that can function as a rheological analogue for the average lithospheric mantle rheology. Olivine ($(Mg, Fe)_2SiO_4$) makes up roughly half of the upper mantle composition at depths down to 400 km (Putnis, 1992) and is the weakest upper mantle constituent (Karato and

Wu, 1993). Therefore, olivine aggregate rheology is generally thought to represent the rheology of the upper mantle (e.g. Goetze and Evans (1979); Hirth and Kohlstedt (2003)). The steady-state rheology of olivine aggregates at high temperatures shows a transition from a viscosity that is stress-independent to a stress-dependent viscosity at increasing stress (Mei and Kohlstedt, 2000b). After application of a constant stress, olivine shows recoverable deformation, both immediate (elastic) and time-dependent (anelastic), next to permanent (viscous) deformation. After a transitional period where both anelastic and viscous deformation occur, strain rates decrease and converge to a steady-state regime (Chopra, 1997). Steady-state strain rates from rheological experiments on olivine can be explained from contributions from diffusion creep (Newtonian) and dislocation creep (power-law) (Hirth and Kohlstedt, 2003):

$$\dot{\epsilon} = \dot{\epsilon}_{\text{diff}} + \dot{\epsilon}_{\text{disl}} = C_{\text{diff}}\sigma + C_{\text{disl}}\sigma^n \quad (2)$$

where power-exponent n has been estimated to be in the range 3 - 4.9 (Mei and Kohlstedt, 2000a; Korenaga and Karato, 2008) and is likely close to 3.5 (Hirth and Kohlstedt, 2015). Parameters C are functions of grain size, temperature, pressure and water content (Hirth and Kohlstedt, 2003):

$$C = A d^{-p} C_{\text{OH}}^r \exp\left(-\frac{E + PV}{RT}\right) \quad (3)$$

with material parameter A , grain size d , grain size exponent p , C_{OH} the water content with exponent r , activation energy E , activation volume V , pressure P , gas constant R and temperature T in Kelvin.

2.2 Ellis rheology

Comparison and scaling of rheologies is simpler when the strain-rate vs. stress equation (2) is rewritten to a viscosity-stress relation:

$$\eta_{\text{eff}} = \frac{\sigma}{2\dot{\epsilon}} = \frac{1}{2C_{\text{diff}} + 2C_{\text{disl}}\sigma^{n-1}} = \frac{\frac{1}{2C_{\text{diff}}}}{1 + \frac{C_{\text{disl}}}{C_{\text{diff}}}\sigma^{n-1}} \quad (4)$$

which we rewrite to the Ellis rheological model:

$$\eta_{\text{eff}} = \frac{\eta_0}{1 + \left(\frac{\sigma}{\sigma_t}\right)^{n-1}} \quad (5)$$

with:

$$\eta_0 = \frac{1}{2C_{\text{diff}}} \quad (6)$$

$$\sigma_t = \left(\frac{C_{\text{diff}}}{C_{\text{disl}}}\right)^{\frac{1}{n-1}} \quad (7)$$

The Ellis model describes the combination of power-law and Newtonian rheological behavior in terms of the zero-stress Newtonian viscosity η_0 and transition stress σ_t (Barnes, 1999). At the transition stress, the strain rate contributions from the Newtonian and nonlinear mechanisms in equation (2) are equal, and σ_t thus marks the change of rheological behavior: Newtonian for stresses below σ_t and power-law above σ_t .

2.3 Average ductile lithosphere rheology

We are interested in an average ductile lithospheric mantle rheology, which we cast in terms of an Ellis rheology. For first order estimates of the variability of η_0 and σ_t , we use equations (3),(6) and (7), where we apply parameters for dry and wet (constant C_{OH}) olivine diffusion and dislocation creep from Hirth and Kohlstedt (2003), table 1, including the value for $n = 3.5$ for dislocation creep. We apply a correction to C for parameters based on uni-axial experiments: $C' = C \frac{2}{3^{(n+1)/2}}$ (Ranalli, 1995). We assume a linear geotherm between the Moho and 1350 °C at the base of the thermal boundary layer, where for continental lithosphere we place the Moho with a 400 °C temperature at 40 km depth and the 1350 °C isotherm at 200 km (e.g. Jaupart and Mareschal (2007)); and for an oceanic lithosphere we situate the Moho with a 50 °C temperature at 5 km depth, and the 1350 °C isotherm at 100 km depth. We define the ductile lithosphere between a brittle-plastic transition at a strain rate of 10^{-14} s^{-1} using the Goetze criterion for the brittle strength of the lithosphere ($\sigma_1 - \sigma_3 < P$) (Kohlstedt et al., 1995) and a lithospheric-asthenospheric

boundary (LAB) defined by $\eta_0 = 10^{20} \text{ Pa s}$.

Using the described wet and dry olivine rheologies, the continental and oceanic geotherms and a grain size range between 0.1 and 10 mm, we estimate η_0 and σ_t as a function of depth. The first two panels of figure 1 show results for an oceanic lithosphere with a dry rheology, where we normalise η_0 by $\eta_{0,\text{LAB}}$, the diffusion creep viscosity that defines our LAB. The zero-stress viscosity η_0 of the lithospheric mantle, for a constant grain size throughout the lithosphere, is highly variable, mainly due to the strong temperature dependency of diffusion creep. For lithospheric temperatures, the transition stress σ_t is dominantly dependent on the grain size due to the grain size dependency of diffusion creep: σ_t increases for decreasing grain size. For the last panel of figure 1 we take the average of η_0 , and use σ_t from the uppermost part of the ductile lithosphere (as the most viscous part should be representative for the overall strength) to arrive at an average rheology. We repeat the same analysis for wet as well as dry rheologies and continental as well as oceanic lithospheres, see figure 23. While for a given pressure and temperature the olivine creep law consistently results in a lower viscosity for a wet rheology compared to a dry rheology, this lower viscosity also results in a shallower brittle-plastic transition, resulting in a somewhat higher average η_0 .

Figure 1 shows that the average η_0 is not well constrained, as values are very sensitive the choice of grain size and to a lesser extent to the presence of water and type of lithosphere. Average ratio $\eta_0/\eta_{0,\text{LAB}}$ ranges between $2 \cdot 10^2$ and $4 \cdot 10^8$, with the lower value corresponding to the smallest considered grain size (0.1 mm). Similar large increases in viscosity throughout the lithosphere can be found in figure 2 of Karato and Wu (1993) or figure 2.1 of Freeburn (2016); Billen and Hirth (2007) consider a $10^6 - 10^7$ viscosity contrast for a subducting slab with respect to the asthenosphere, based on the same rheological parameters by Hirth and Kohlstedt (2003). The values for σ_t span a wide range: $2 \cdot 10^6 - 3 \cdot 10^9 \text{ Pa}$, comparable to the transition stresses in figure 6 from Drury (2005).

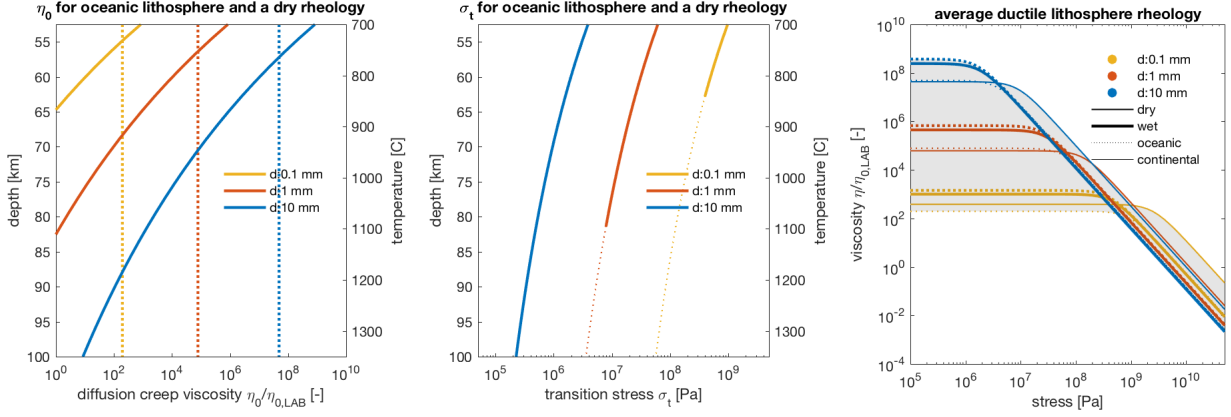


Figure 1: Average lithosphere rheology using olivine rheological parameters from Hirth and Kohlstedt (2003), left panel: η_0 for an oceanic lithosphere and a dry rheology for different values of grain size d , dotted lines denote average η_0 ; middle panel: σ_t for an oceanic lithosphere and a dry rheology, dotted lines denote values below the lithospheric-asthenospheric boundary (LAB) defined by $\eta_0 = 10^{20}$ Pa s. The top depth represents the brittle-plastic transition defined by the intersection of the Goetze criterion and the ductile stress at a strain rate of 10^{-14} s $^{-1}$. Right panel: combined results for oceanic and continental lithospheres with wet or dry olivine rheologies and 0.1 and 10 mm grain sizes, using the average η_0 and maximum σ_t and $n = 3.5$.

Nevertheless, once the power-law behavior is dominant at higher stresses, the right panel of figure 1 shows that the rheology follows a narrow band for all tested parameters.

Regarding parameters that describe recoverable deformation, the elastic shear modulus μ_e for the mantle lithosphere is on the order of 67 GPa (Dziewonski and Anderson, 1981), and anelastic olivine shear moduli μ_a have been estimated to be in the range 2.3 - 37 GPa (Chopra, 1997). We have thus obtained ranges for the three parameters of the Ellis model (n , σ_t and η_0) that can describe the average lithospheric mantle rheology, next to shear moduli that constrain the amount of recoverable deformation. We will use these values in the next sections for developing an analogue lithospheric material.

3 Dynamic scaling of non-Newtonian materials

Weijermars and Schmeling (1986) developed rules for dynamic similarity of power-law materials in the case of negligible inertia. We propose a simpler approach using the Ellis rheological model (equation (5)) for experiments performed under standard gravity. The Ellis model equation contains three variables for which we can make use of existing scaling laws. Namely, the stress exponent n should be equal for model analogue (m) and natural (n) materials (Weijermars and Schmeling, 1986):

$$n_m = n_n \quad (8)$$

Furthermore, similarity of viscous forces requires constant viscosity ratios between model and nature values (Hubbert, 1937), which implies that the zero-stress viscosity η_0 scales with the same ratio as all other viscosities:

$$\frac{\eta_{0,n}}{\eta_{0,m}} = \frac{\eta_n}{\eta_m} \quad (9)$$

Finally, for σ_t we can simply use the existing scaling relations for stresses (e.g. Weijermars and Schmelting (1986)):

$$\frac{\sigma_{t,n}}{\sigma_{t,m}} = \frac{\rho_n l_n}{\rho_m l_m} \quad (10)$$

where ρ is density and l is length. Alternatively, if dynamic scaling is performed by using density differences between the sinking material and the surrounding fluid $\Delta\rho$ (e.g. Ribe and Davaille (2013); Schellart and Strak (2016)), the expression becomes:

$$\frac{\sigma_{t,n}}{\sigma_{t,m}} = \frac{\Delta\rho_n l_n}{\Delta\rho_m l_m} \quad (11)$$

The expression for transition stress σ_t implies that model dimension scale is important in the transition from linear to nonlinear behavior for a given material rheology. Time furthermore scales as (Ramberg, 1981; Schellart and Strak, 2016):

$$\frac{t_n}{t_m} = \frac{\eta_n \Delta\rho_m l_m}{\eta_m \Delta\rho_n l_n} \quad (12)$$

4 Nonlinear analogue materials

4.1 Required analogue material rheology

Analogous to olivine aggregate rheology (section 2), the required lithospheric mantle material should behave Newtonian at low stresses, with a transition to power-law creep at increasing stress, with a stress exponent around 3.5. This parameter and other relevant rheological parameters for the analogue material are summarized in table 1. The table shows that the zero-stress viscosity η_0 for the lithospheric mantle should be in the range $2 \cdot 10^4 - 4 \cdot 10^{10}$ Pa s (when the asthenospheric mantle is modeled using glucose), and that the transition stress σ_t should fall somewhere between 0.2-300 Pa, depending on the size of the model and the scaling of densities, as explained by the caption of table 1. Values for η_0 and σ_t are highly correlated: large σ_t apply to low values of η_0 . Elastic and anelastic strains in settings with large permanent deformation should be small, a constraint which is satisfied when the shear moduli (approximately) scale to the natural

values. The shear modulus is scaled in the same manner as stress (Hubbert, 1937) (using equation (11) or (10)), which implies that for the analogue material the elastic shear modulus should be on the order of 10^4 Pa, and the anelastic shear modulus in the range $10^3 - 10^4$ Pa.

4.2 Previous studies on power-law analogue materials

Over the last few decades there have been a number of studies that apply power-law (pseudoplastic) materials in analogue models of tectonic processes. Figure 2 summarizes the rheology of existing materials with stress dependent ductile rheologies. We also include commonly used Newtonian silicone polymers for reference such as PDMS (Rudolf et al., 2016) and rhodorsil gum (Treagus and Sokoutis, 1992). The required power-law behavior is indicated in figure 2 by the diagonal lines that represent a stress-exponent n of 3.5. The grey curved band represent the appropriate viscosities for analogue lithospheric mantle materials as a function of applied stress, using the requirements from section 4.1 (figure 1) in combination with an analogue asthenospheric viscosity of $\approx 10^2$ Pa s (i.e., glucose).

Figure 2 shows that none of the available materials can be used as a lithospheric mantle analogue without any modifications or additional rheometric measurements. Plasticines, either pure (McClay, 1976; Treagus and Sokoutis, 1992; Barnes, 1999) or mixed with an oil (Zulauf and Zulauf, 2004) have too high viscosities, while paraffin has a similar disadvantage (Rossetti et al., 1999). Furthermore plasticines weaken too drastically for elevated stress, indicated by slopes that are steeper than the diagonals that represent $n = 3.5$; for plasticine stress exponents n have been estimated to be in the range 5-10 at room temperature (Weijermars, 1986; Schöpfer and Zulauf, 2002; Zulauf and Zulauf, 2004). However, an advantage of plasticine is its Newtonian behavior at low stresses, roughly below a transition stress σ_t of 10^4 Pa (Barnes, 1999). The rheology of the silicone putty Dow Corning 3179

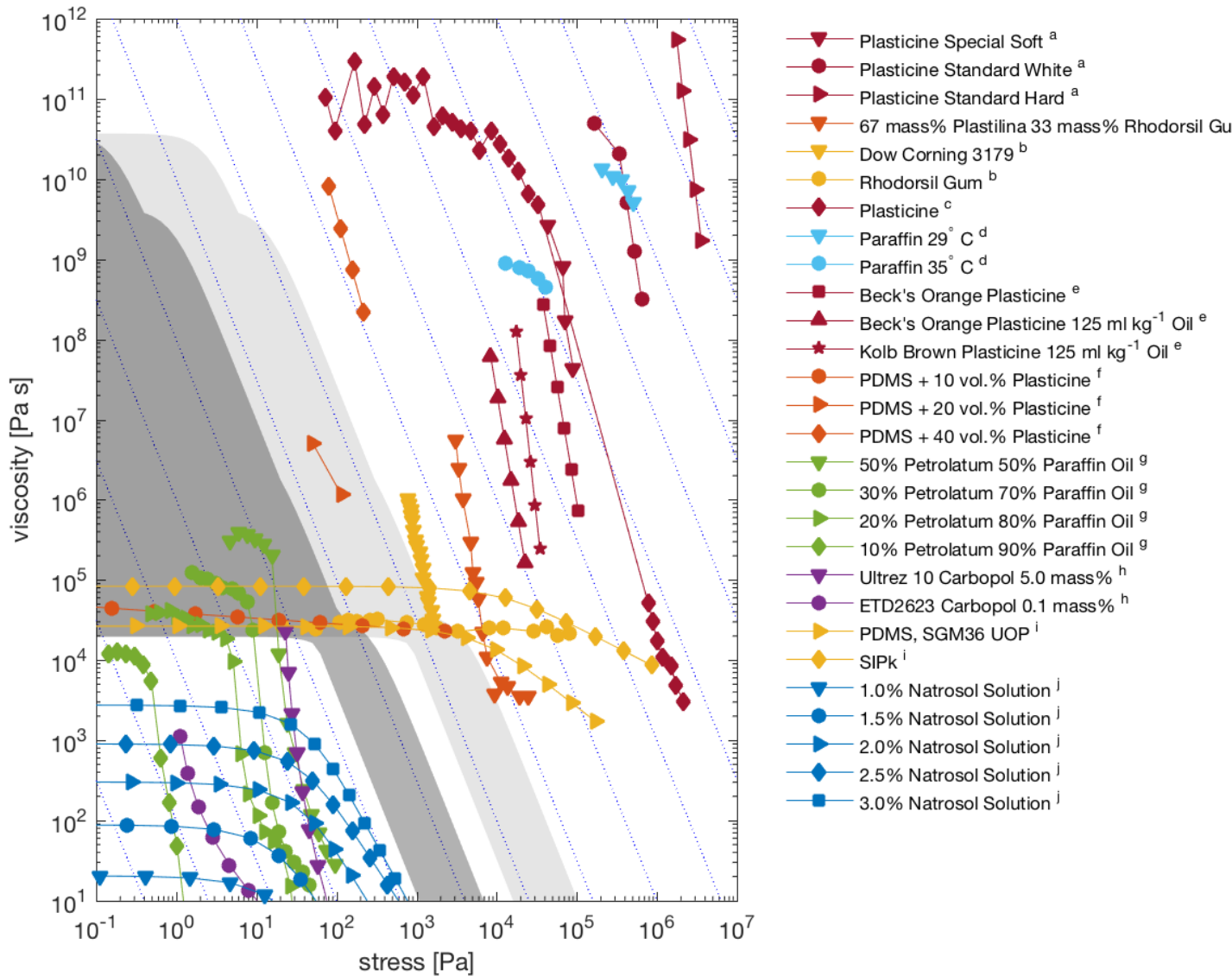


Figure 2: Overview of published rheological data on nonlinear materials used in analogue models: viscosity vs. stress, at approximate room temperature. References to tables and figures refer to the cited source. Diagonals represent a stress exponent of 3.5. The grey areas show appropriate viscosity vs. stress ranges for lithospheric mantle analogs in case analogue asthenosphere materials with an $\approx 10^2$ Pa s viscosity (e.g. glucose) are used. The light grey represents stress scaling option I, the darker grey option II, see section 4. ^a McClay (1976) (table 1): three different plasticines at a temperature $T = 25$ °C. ^b Treagus and Sokoutis (1992) (figure 2): plasticine-silicone polymer mix, a power-law and a Newtonian silicone polymer, at $T = 24$ °, 23 °, 24 °C, respectively. ^c Barnes (1999) (figure 19): plasticine at a wide range of stresses showing the transition from stress-independent to stress-dependent viscosity (unknown T). ^d Rossetti et al. (1999) (figure 2): paraffin viscosities at $T = 29$ ° and 35 °C, higher temperature measurements not included as these show near-Newtonian behavior. ^e Zulauf and Zulauf (2004) (using fitted parameters from table 1): plasticine and plasticine-oil mixtures at $T = 25$ °C, we included materials that show relatively strain-insensitive viscosities (see their figures 2 and 12). ^f Boutelier et al. (2008) (using fitted parameters from table 1): plasticine-silicone polymer mixtures at $T = 25$ °C. ^g Duarte et al. (2013) (figure 4): various petrolatum and paraffin oil mixtures, we included those with the lowest reported yield stresses. ^h Di Giuseppe et al. (2015) (using parameters from table 3): Carbopol at $T = 23$ °C, we include two-end members: one sample with the highest power-law exponent (Ultrez 10 5.0 mass%, pH 2.5, handmade, strain rate exponent $m = 0.29$, which translates to a stress exponent $n = 3.5$), and secondly, the sample with the lowest reported yield stress (ETD2623 0.1 mass% pH 5.7, machine stirred). ⁱ Rudolf et al. (2016) (using fitted parameters from table 3): a commonly used silicone-polymer and a silicone-polymer with fillers (other tested materials have very similar properties at the viscosity and stress ranges shown here), both at $T = 23$ °C. ^j Boutelier et al. (2016) (using fitted parameters of table 1): various concentrations of Natrosol in water at $T = 20$ °C.

variable	natural values	scale factor $\frac{n}{m}$	target analogue values
n	3.5	1	3.5
$\bar{\eta}_{0,\text{lith}}/\eta_{0,\text{asth}}$	$2 \cdot 10^2 - 4 \cdot 10^8$	1	$2 \cdot 10^2 - 4 \cdot 10^8$
$\bar{\eta}_{0,\text{lith}}$ [Pa s]	$2 \cdot 10^{22} - 4 \cdot 10^{28}$	$\approx 10^{18}$	$2 \cdot 10^4 - 4 \cdot 10^{10}$
σ_t [Pa]	$2 \cdot 10^6 - 3 \cdot 10^9$	$10^{6(\text{I})} - 10^{7(\text{II})}$	$2 - 300^{(\text{I})}/0.2 - 30^{(\text{II})}$
μ_e [Pa]	$7 \cdot 10^{10}$	$10^{6(\text{I})} - 10^{7(\text{II})}$	$7 \cdot 10^{4(\text{I})/3(\text{II})}$
μ_a [Pa]	$[0.2 - 4] \cdot 10^{10}$	$10^{6(\text{I})} - 10^{7(\text{II})}$	$[0.2 - 4] \cdot 10^{4(\text{I})/3(\text{II})}$

Table 1: Summary of average lithospheric mantle rheological values, scale values, and approximate target analogue rheological properties. Natural values have been discussed in section 2. Equation 8 prescribes that stress exponent n should be equal for nature and model. The scaling of stresses and moduli is dependent on the length scale of the model, as well as density or density difference scaling, which means that there is a possible range for the scaling of stress. We present two end-member scaling options; scaling option I uses a density difference scaling of $\frac{\Delta\rho_n}{\Delta\rho_m} = 0.5$ and uses a model height of 20 cm to represent an upper mantle depth of 660 km. This gives a stress scale $\sigma_n/\sigma_m \approx 10^6$ (equation (11)). This option resembles the setup of our models in the second part of this paper. For scaling option II we assume a 10 cm high model and a density ratio $\frac{\rho_n}{\rho_m} = 2$ (in line with densities of commonly used analogue materials), resulting in $\sigma_n/\sigma_m \approx 10^7$ (equation (10)). From equation 9 follows that the ratio $\bar{\eta}_{0,\text{lith}}/\eta_{0,\text{asth}}$ should be equal for nature and model. The value for the average analogue lithospheric viscosity $\bar{\eta}_{0,\text{lith}}$ depends on the model asthenospheric viscosity, in our case $2 \cdot 10^4 < \bar{\eta}_{0,\text{lith}} < 4 \cdot 10^{10}$ Pa s when $\eta_{\text{asth}} \approx 10^2$ Pa s (i.e., glucose, Schellart (2011)).

falls within the indicated area, but the nonlinearity of the material is too high, expressed by a stress exponent of ≈ 6 (Treagus and Sokoutis, 1992). The petrolatum + paraffin oil mixtures (designed to represent a subduction interface (Duarte et al., 2013)) display a reasonable Newtonian platform at low stresses as well, however these materials suffer from the same extreme weakening in the nonlinear regime as plasticines, which seems approximately constant for different petrolatum to paraffin oil ratios.

Carbopol has overall lower viscosities, but has been described to exhibit a yield stress (i.e., a stress below which no flow occurs) instead of a low-stress Newtonian plateau (Di Giuseppe et al., 2015), and viscosity decreases excessively at the stress range of interest. Natrosol solutions such as described by (Boutelier et al., 2016) nicely show a constant viscosity for low stresses, a slightly too low stress exponent ($n \approx 2$), while the viscosities are less than needed for lithospheric application.

The silicone polymer (PDMS) – plasticine mixtures as tested by Boutelier et al. (2008) approach the target rheology, but have either a slightly too low stress exponent ($n = 2.8$) for 20 volume % of plasticine or too high overall viscosity ($n = 4.6$) for 40 volume % of plasticine. Next, the stress levels over which the rheological parameters have been obtained are rather limited, and do not cover the expected stress range for upper mantle laboratory models. Silicone polymer – plasticine mixtures seem the most promising materials, which however need further adjustments to conform to the target rheology over wider stress ranges.

4.3 Material use in this study

Our goal is to develop an analogous material for olivine aggregate rheology at lithospheric conditions, combining both linear viscous (diffusion creep) behavior as well as power-law behavior, with a stress exponent n in the range 3–4, a zero-stress viscosity η_0 in the range $2 \cdot 10^4 - 4 \cdot 10^{10}$ Pa s and a transition stress σ_t in the range 2–300 Pa (corresponding to the light grey area in figure 2). We choose to work with plasticine–PDMS mixtures, as

Boutelier et al. (2008) show that the stress exponent can be adjusted by the ratio of PDMS to plasticine. Plasticine-silicone polymer materials have been used or tested in previous studies (Weijermars, 1986; Sokoutis, 1987; Treagus and Sokoutis, 1992; Schrank et al., 2008), and we aim to overcome the problem of the high viscosity of these materials by adding a low viscosity silicone oil, which is likely to have only limited effects on the stress exponent but can significantly reduce the overall viscosity (Zulauf and Zulauf, 2004). Both plasticine and PDMS exhibit Newtonian behavior at low stresses in accordance with the Ellis rheology. We use the following material components to develop a lithospheric mantle analogue material:

Plasticine

Plasticine, and plasticine-like materials made by various manufacturers, are non-drying materials, and sold commercially as modeling clays. The components of plasticine or its varieties that go by names such as plastilin or plastilina are usually confidential, but generally these materials consist of an organic matrix (wax, vaseline, oils) with inorganic fillers (McClay, 1976). Creep tests have shown the limited applicability of many plasticines, which often do not reach steady-state creep but exhibit increasing viscosities with increasing strain (Zulauf and Zulauf, 2004; Boutelier et al., 2008). Zulauf and Zulauf (2004) describe a plasticine-like material, that they label Beck's orange, containing organic fillers (potato starch) and that shows only limited strain dependency. However, this material is no longer in production. For our experiments we use a similar material that is currently produced by the manufacturer Becks Plastilin and sold under the name Natur-Kreativknete, and that we refer to as organic plasticine. Relevant properties are listed in table 2. According to the manufacturer the organic plasticine is composed of beeswax, natural oils and plant-based filler (potato starch). We observe that plasticine is not very self-adhesive, which means that seams originating from the assemblage of different tectonic units may act as weak zones.

PDMS

The silicone polymer polydimethylsiloxane, PDMS, is a commonly used material in analogue models, especially for its Newtonian rheological properties for a wide range of strain rates (Johnson, 1961; Weijermars, 1986). PDMS is produced in a continuous range of viscosities, where longer polymer lengths result in higher viscosities (Weijermars, 1986). The high-viscosity PDMS that we use in our study, SGM36 produced by Dow Corning, has a viscosity of about $2 \cdot 10^4$ Pa s for stresses below 4 kPa, or alternatively, below strain rates below $2 \cdot 10^{-1} \text{ s}^{-1}$ (Rudolf et al., 2016). For higher stresses, or strain rates, the material increasingly starts to behave like a power-law material. One of the advantages of PDMS is the self-adhesive character, allowing the construction of multi-layered tectonic models without weak zones stemming from the assembly of the model.

Low-viscosity silicone oil

Zulauf and Zulauf (2004) have shown that addition of oil to plasticines reduces the effective viscosity while affecting the stress exponent only in a minor way. We add various amounts of silicone oil (50 cs Xiameter PMX-200 fluid), which is chemically similar to the SGM36 PDMS, but due its shorter polymer chains has a viscosity six orders of magnitude lower than PDMS (see table 2).

Iron powder

PDMS, low viscosity silicone oil and organic plasticine have similar densities, all about 450 kg m^{-3} lower than the density of glucose (table 2), the material that we use to represent the low-viscosity sub-lithospheric mantle (e.g. Davy and Cobbold (1988); Faccenna et al. (1999); Guillaume et al. (2009); Duarte et al. (2013)). By adding fine iron powder (Funicello et al., 2004; Schellart, 2008; Guillaume et al., 2013) we adjust the mixture density to be able to create both buoyant and negatively buoyant materials. We mix and homogenise mate-

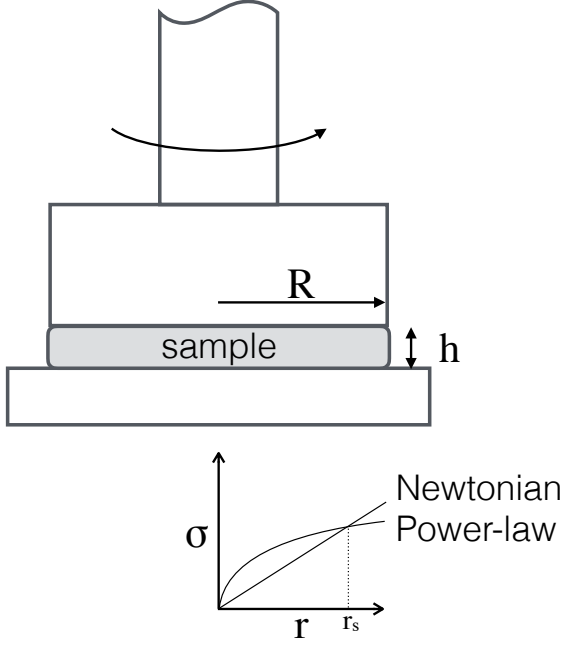


Figure 3: Schematic rheometer setup, with gap height h and disk radius R , including a schematic depiction of shear stress σ variation as function of radial distance r for Newtonian and power-law materials, r_s is the radial distance where the shear stress curves of Newtonian as well as power-law materials intersect (Carvalho et al., 1994).

rials by hand. Table 3 lists the composite materials tested in this study.

5 Measurement setup

We use an AR-G2 rheometer (by TA Instruments) that we operate in a parallel plate setup, as shown in figure 3. In all measurements the radius R of the upper plate is 12.425 mm and a gap height of 2.5 mm is applied. The rheometer applies a torque M and measures the angular deflection θ . Strain γ (engineering strain $\gamma = 2\epsilon$) is a simple linear function of radial distance r :

$$\gamma(r) = \frac{r}{h}\theta \quad (13)$$

Whereas the applied torque M is the integral of the product of shear stress and arm over the area:

$$M = \int_0^R \sigma(r) r 2\pi r dr \quad (14)$$

As Macosko (1994) shows, the shear stress at the rim ($r = R$) can be written as a function of the torque and the derivative of torque to strain:

$$\sigma(R) = \frac{M}{2\pi R^3} \left(3 + \frac{d \ln M}{d \ln \dot{\gamma}} \right) \quad (15)$$

The derivative is unknown, except for Newtonian materials, where it is 1. For that reason the rheometer reports apparent shear stress σ_a values at the rim that are equal to the true shear stress σ if the material would behave as a Newtonian material:

$$\sigma_a(R) = \frac{2M}{\pi R^3} \quad (16)$$

To calculate the actual stress (for a non-Newtonian material) either the derivative of the torque to strain rate should be measured, or one can make use of the fact that at one radial distance (r_s) the curves for apparent Newtonian σ_a and true power-law stresses σ intersect (see figure 3):

$$\sigma(r_s) = \sigma_a(r_s) \quad (17)$$

As shown by Carvalho et al. (1994) at radial distance $r_s = 0.755 * R$, the apparent and true shear stresses are equal with an error less than 1% for power-law materials with stress exponents n larger than 0.8. As both strain and apparent shear stress vary linearly with radial distance, we can apply this so-called one point correction by taking shear stress and strain at r_s :

$$\sigma(r_s) = \frac{r_s}{R} \sigma_a(R) = 0.755 \sigma_a(R) \quad (18)$$

$$\gamma(r_s) = \frac{r_s}{R} \gamma(R) = 0.755 \gamma(R) \quad (19)$$

We test the materials under constant stress, with apparent stress levels σ_a in the range [5;4000 Pa], in a creep and recovery setup. Because of our application to modeling tectonic deformation, we are interested in large and permanent deformation. A creep

Material name	organic plasticine	PDMS	low viscosity silicon oil	iron powder	glucose
commercial name	Natur-Kreativknete	SGM36	50 cs Xiameter PMX-200 fluid	unknown	Belgogluc HDE
producer	Becks Plastilin	Dow Corning	Dow Corning	unknown	Belgosuc
date purchased	06.2017	09.2015	07.2017	07.2017	12.2016
zero-stress viscosity [Pa s]	n.a.	$2 \cdot 10^4$ *	$5 \cdot 10^{-2}$ †	-	$1.6 \cdot 10^2$ ‡
density [kg m ⁻³]	1143 •	965 •	957•	7874	1405 •

Table 2: Overview of properties of materials used in this paper. All parameters determined at 20 °C. * Rudolf et al. (2016). † ‡ viscosity values according to manufacturer specifications. • Densities determined using a pycnometer, uncertainties are on the order ± 10 kg m⁻³.

	Sample name	organic plasticine	PDMS	low viscosity silicon oil	iron powder
1	40OPL 60PDMS 38.8Fe	40	60	-	38.8
2	60OPL 40PDMS 33.2Fe	60	40	-	33.2
3	60OPL 40PDMS 37.3Fe 8oil	60	40	8	37.3
4	60OPL 40PDMS 41.4Fe 16oil	60	40	16	41.4
5	60OPL 40PDMS 45.6Fe 24oil	60	40	24	45.6
6	80OPL 20PDMS 13.7Fe	80	20	-	13.7

Table 3: Overview of tested materials. Material name and mass fractions of the constituents. Mass percentages are chosen such that the high viscosity materials (organic plasticine and PDMS) represent 100%. All densities have been adjusted by addition of iron powder to obtain a uniform density of 1365 kg/m³.

and recovery setup allows for application of large strains, and due to the relaxation phase after each loading phase, it can discriminate between recoverable strain and permanent strain, where it does not need a priori assumptions on the type of rheology for the calculation of strain rates. Before the first application of stress we let the sample rest in the rheometer for at least 3 hours, to relax residual stresses. Stresses are applied in ascending order; figure 4 shows a typical relaxation phase after a period of loading. The duration of each stress application and subsequent relaxation differs for each stress level, where we aim at creating permanent deformation during stress application and (nearly) full relaxation during the rest period.

6 Data analysis

The creep and recovery tests show that the recorded strain contains a considerable elastic and anelastic component; from figure 4 we can observe immediate elastic (recoverable) deformation, followed by a superposition of a transient anelastic (recoverable) and steady-state (permanent) deformation. Especially for low stresses, where long periods of loading (several hours) are needed to produce significant permanent deformation, it is difficult to discriminate between the early transient deformation and the permanent deformation, which deviates slightly from a constant strain rate due to strain hardening or strain softening. While the strain curve resembles the theoretical curve for a Burgers body at constant stress (see Findley et al. (1976)), observed strain hardening (at low stress) or strain softening (at high stress) does not permit the application of the Burgers model.

In the absence of a mathematical model that would allow us to estimate a steady-state viscosity at each stress level, we therefore determine the mean steady-state viscosity per stress level. The total strain that has accumulated during the loading period up to the unloading time t_u comprises of elastic γ_e , anelastic γ_a and permanent γ_p strains, where

γ_e and γ_a recover during the relaxation phase, such that the remaining strain equals to γ_p (figure 4). The average steady-state viscosity then becomes:

$$\bar{\eta}(\sigma) = \frac{\sigma t_u}{\gamma_p} \quad (20)$$

To describe the stress-dependent viscosity we fit the Ellis model of equation (5) to the average viscosity $\bar{\eta}$ as a function of stress σ , or solely a power-law equation (equation (1)) in case no transition from linear to nonlinear viscosity could be observed. We perform the fitting in a weighted nonlinear least squares sense using the Levenberg-Marquardt algorithm, where we minimize:

$$\left(W * \left(\frac{\eta_0}{1 + \left(\frac{\sigma}{\sigma_t}\right)^{n-1}} - \bar{\eta}(\sigma) \right) \right)^2 \quad (21)$$

using weights $W = 1/\bar{\eta}(\sigma)$.

For strain rates below 10^{-4} 1/s, the rheometer reports increasingly noisy strain rates. To determine instantaneous effective viscosities η_{eff} , we therefore first smooth the strains using smoothing splines, and afterwards differentiate the smoothed strains $\hat{\gamma}$ with respect to time to create smoothed strain rates $\hat{\dot{\gamma}}$. Smoothed effective (time-dependent) viscosities then become:

$$\hat{\eta}_{\text{eff}} = \frac{\sigma}{\hat{\dot{\gamma}}} \quad (22)$$

At each stress level we derive the elastic μ_e and anelastic shear modulus μ_a from the elastic and anelastic strains (see figure 4) determined from the relaxation curves:

$$\mu_e(\sigma) = \frac{\sigma}{\gamma_e} \quad \mu_a(\sigma) = \frac{\sigma}{\gamma_a} \quad (23)$$

7 Rheometry results

7.1 Stress-dependent viscosity

Figure 5 shows how the smoothed effective viscosities $\hat{\eta}_{\text{eff}}$ for the six tested materials develop in time. Effective viscosity shows a relatively large

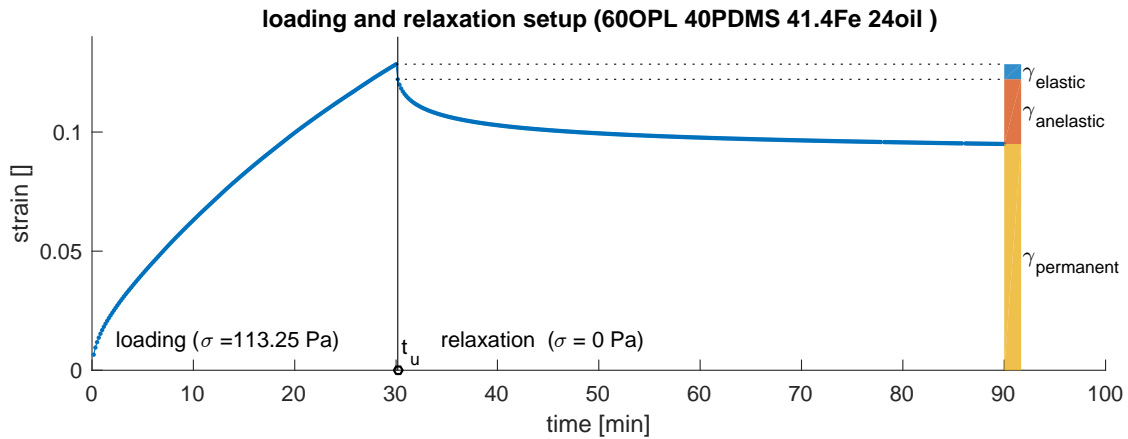


Figure 4: Loading and relaxation in the creep and recovery setup for each separate stress level, in this case 60OPL 40 PDMS 45.6Fe 24 oil at the stress level 113.25 Pa. Loading of the sample starts at $t = 0$ and ends at $t = t_u$. After relaxation the permanent strain γ_p can be determined from subtracting the recoverable strain from the total strain. The recoverable strains include the instantaneous, elastic strain γ_e at the time of unloading t_u and the subsequent time-dependent anelastic strain γ_a .

increase during the start of the loading, which is most pronounced at lower stresses. In this phase the strain rates are dominated by transient, anelastic deformation. For those stresses where the average steady-state viscosity $\bar{\eta}$ is close to the observed effective viscosity $\hat{\eta}_{\text{eff}}$ (depicted by a dot) the transient phase is over. We can still observe small (on logarithmic scale) variations in viscosity in the phase when only permanent deformation is occurring; here strain softening (decreasing viscosity) is observed for high stresses, strain hardening (increasing viscosity) for low stresses. For curves shown in grey there was an unknown amount of permanent deformation, as during the end of the chosen period for relaxation of the sample the strain rate was still too high (more than 15% of the final loading strain rate). All loading and relaxation strain curves are included in appendix A, whereas the rheometry data are published in a separate data publication (Broerse et al., 2018).

As shown by figure 6, five of the six materials (all except the sample 80OPL 20PDMS) exhibit a clear nonlinear stress dependent viscosity in the applied

stress ranges. The material with the lowest plasticine fraction (40OPL 60PDMS) shows the lowest zero-stress viscosity η_0 and the weakest stress non-linearity, demonstrated by the power exponent n of 2. Increasing the plasticine content increases the power exponent, as expected: all materials having a plasticine to PDMS mass ratio of 60:40 have power exponents in the 3–4 range. Only for higher silicone oil contents (24% and 16% mass fractions) we are able to observe a transition from Newtonian to nonlinear steady state viscosity. The addition of the low-viscosity silicone oil lowers the viscosity over the whole stress range, but seems to have a minor influence on the power exponent n (comparable to the findings of Zulauf and Zulauf (2004)). For the 60% plasticine materials with no or little added silicone oil (8%) we have no good observations of permanent strain at the lower stress range (so we fit a power-law equation to the curves of these materials). At even higher fractions of plasticine (80%) we obtain only a weak stress-dependence of the viscosity. As the parallel-plate setup leads to slip between material and plates at stresses at the high end of our applied stress range, we are not able to determine a possible transition to nonlinear viscosities

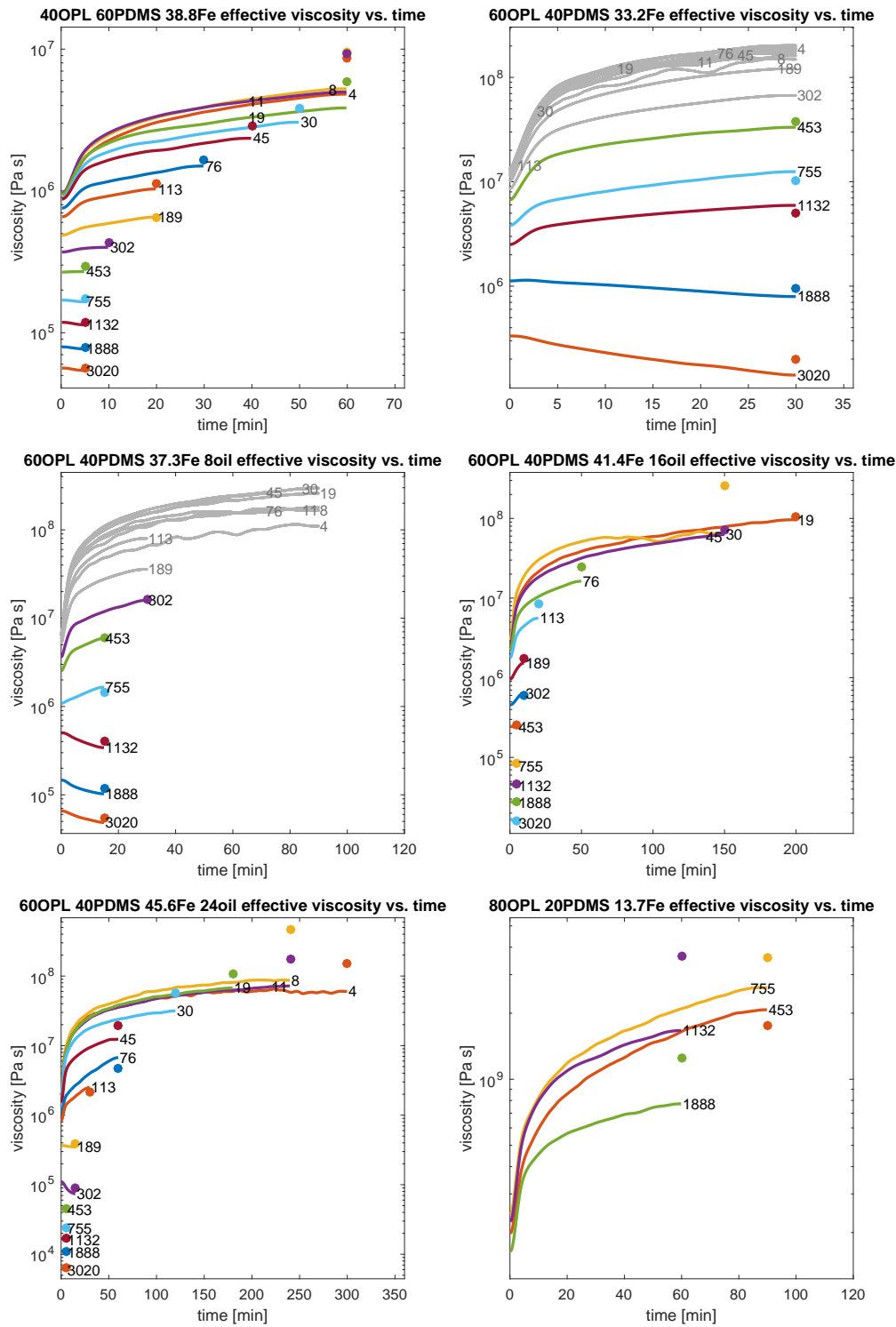


Figure 5: Effective smoothed viscosity $\hat{\eta}_{\text{eff}}$ versus time for the six tested materials. The coloured dot denotes the average viscosity based on the observed permanent strain $\bar{\eta}$. Grey lines stand for measurements for which we were not able to extract the permanent strain with sufficient confidence (i.e., the strain rate at the end of the relaxation period was higher than 15% of the strain rate at the end of the loading period). Numbers stand for stress level in Pa.

for this material at higher stresses. Table 4 summarizes the estimated parameters, next to the confidence intervals.

7.2 Elastic parameters

As figure 7 shows, the elastic shear modulus γ_e changes only little with stress, and decreases for larger fractions of PDMS and low viscosity silicone oil. Table 4 summarizes the average shear modulus for each material. The anelastic shear modulus γ_a is stress dependent: while constant at those stress intervals where the steady-state viscosity is Newtonian, γ_a increases in the power-law viscosity stress domain, implying a decreasing amount of anelastic deformation at increasing stress.

7.3 Temperature effects

To infer the viscosity sensitivity to temperature we test the material 60OPL 40PDMS 45.6Fe 24oil at 30 °C. Figure 8 shows a non-uniform and modest reduction in viscosity (by a factor of two on average) for an increase in temperature from 20 ° to 30 °C. The degree of nonlinearity, expressed by stress-exponent n is not significantly affected, see table ??.

7.4 Iron filler effects

Up to this point we have adjusted the iron powder content to achieve a uniform density for all samples. For analogue models, variations in density are needed to accommodate naturally occurring density variations throughout the lithosphere. To that end we test the influence of significant iron filler content variations on the rheology. Figure 9 shows that large changes in iron powder contents, which we vary between 37 - 92% in mass, have relatively small effects on the rheology. A higher iron filler content seems to slightly lower the viscosity at stresses below 100 Pa, and slightly increase viscosity above. The power-law behavior is hardly affected based on visual inspection of figure 9, but the estimated exponent n is lower for the 92.0 mass % iron sample. However, this can merely be attributed

to a worse fit to the data, as the sharp kink in viscosity at around 20 Pa cannot be properly represented by the Ellis model.

8 Discussion of analogue material rheology

In our search for analogs for the ductile deformation of olivine aggregates we find that the materials with a plasticine to PDMS mass ratio of 60:40 have the desired rheological characteristics. Firstly, the material shows a nonlinear stress dependence (expressed by a power exponent of around 3.5) that nicely matches the stress dependence reported for olivine (in the range 3–4.9 e.g. (Mei and Kohlstedt, 2000a; Korenaga and Karato, 2008)). Secondly, the zero-stress viscosity of about 10^8 Pa s (for a 24% inclusion of silicone oil) allows a viscosity contrast with the asthenosphere in the intended range of $2 \cdot 10^4 - 4 \cdot 10^{10}$ Pa s when glucose is used to represent the asthenosphere ($\eta_a \approx 10^2$ Pa s). The material can thus represent the average viscosity of that part of the lithosphere that deforms in a ductile regime. Furthermore, the transition stress σ_t (for 24% silicone oil added, see table 4) is in the appropriate range compared to scaled values for olivine: 2–300 Pa (see section 4). This indicates that the power-law behavior as witnessed in our materials can be effectuated in properly scaled laboratory models, as this transition occurs at realistic tectonic stresses. Finally, we observe that elastic and anelastic strains are limited and that both elastic as well as anelastic shear modulus properly scale with natural values (target γ_e and γ_a shear moduli are approximately 10^4 and $10^3 - 10^4$ Pa, respectively, section 4.1), which implies that the viscous behavior of the material is dominant for large deformation. All mixtures have self-adhesive properties, which prevents material boundaries to persist as weak zones in the final model assembly.

The occurrence of a transition from Newtonian behavior to power-law behavior, as described by Barnes (1999) has been subject of recent debate.

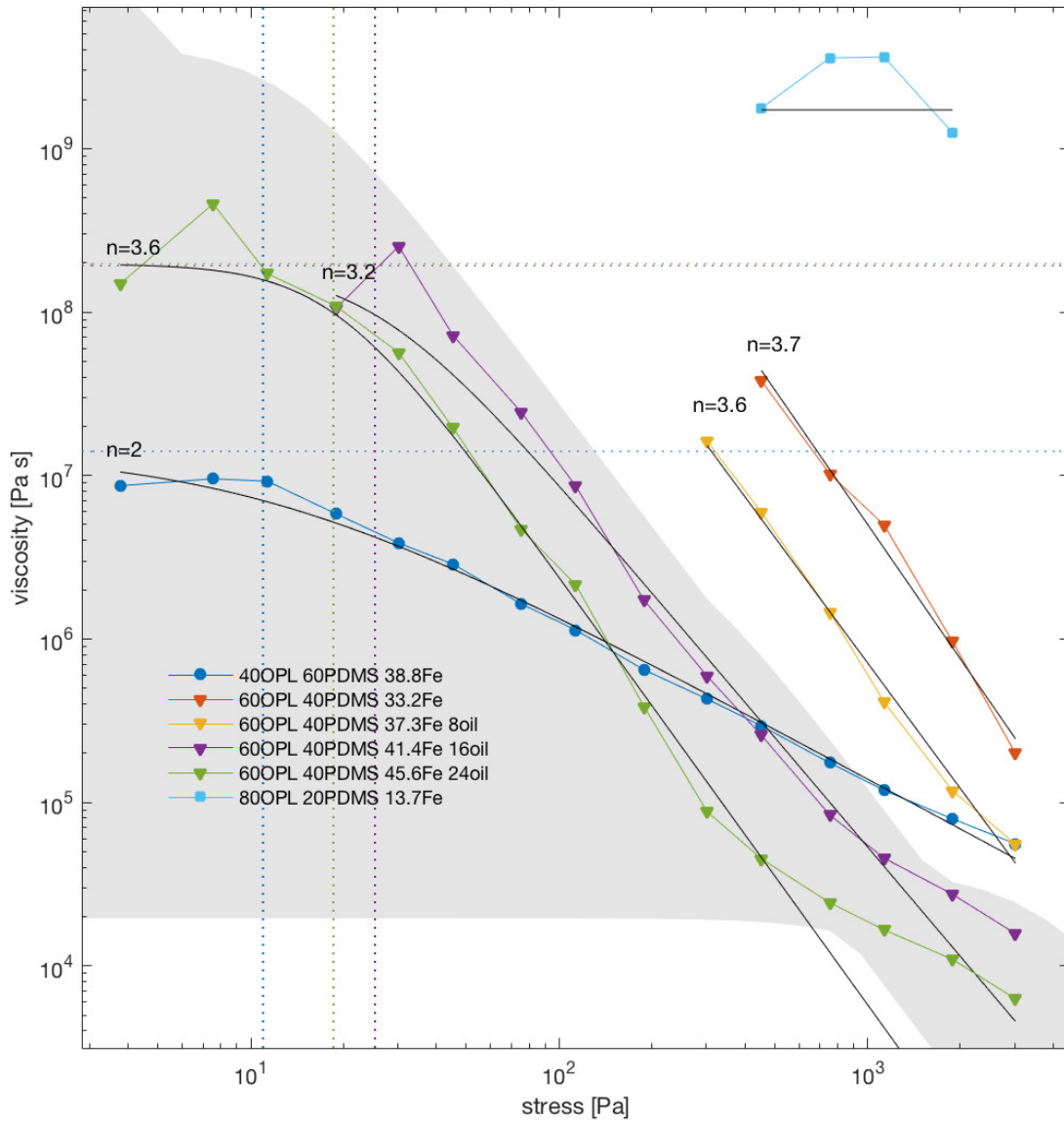


Figure 6: Steady state viscosities per stress level for the six tested materials (table 3) with a fit (equation (6)) to the theoretical models: power-law, Ellis and Newtonian rheologies. The grey area represents the desired range in viscosity vs. stress as described in section 4 for stress scale option I.

Material	n [-]	η_0 [Pa s]	σ_t [Pa]	C [Pa ⁻ⁿ /s]	$\bar{\mu}_e$ [Pa]	μ_a [Pa]
40OPL 60PDMS 38.8Fe	2.0(1.9 - 2.1)	$1 \cdot 10^7(9 \cdot 10^6 - 2 \cdot 10^7)$	11.0(4.5 - 17.4)	$6.2 \cdot 10^{-9}$	$2.5 \cdot 10^4$	$1.2 \cdot 10^3 - 6.4 \cdot 10^4$
60OPL 40PDMS 33.2Fe	3.7(3.4 - 4.1)	-	-	$1.2 \cdot 10^{-15}(1.2 \cdot 10^{-16} - 1.3 \cdot 10^{-14})$	$3.9 \cdot 10^5$	$2.5 \cdot 10^4 - 5.1 \cdot 10^4$
60OPL 40PDMS 37.3Fe 8oil	3.6(3.3 - 3.8)	-	-	$3.0 \cdot 10^{-14}(7.0 \cdot 10^{-15} - 1.3 \cdot 10^{-13})$	$1.5 \cdot 10^5$	$1.4 \cdot 10^4 - 8.5 \cdot 10^4$
60OPL 40PDMS 41.4Fe 16oil	3.2(2.8 - 3.7)	$2 \cdot 10^8(1 \cdot 10^1 - 5 \cdot 10^8)$	25.3(0.1 - 53.5)	$3.9 \cdot 10^{-12}$	$2.8 \cdot 10^4$	$4.6 \cdot 10^3 - 3.3 \cdot 10^5$
60OPL 40PDMS 45.6Fe 24oil	3.6(3.2 - 4.1)	$2 \cdot 10^8(4 \cdot 10^7 - 4 \cdot 10^8)$	18.5(7.6 - 29.5)	$2.4 \cdot 10^{-12}$	$1.8 \cdot 10^4$	$2.8 \cdot 10^3 - 5.2 \cdot 10^5$
80OPL 20PDMS 13.7Fe	1	$2 \cdot 10^9(3 \cdot 10^8 - 3 \cdot 10^9)$	-	-	$1.1 \cdot 10^6$	$1.2 \cdot 10^5 - 4.4 \cdot 10^5$

Table 4: Estimated parameters of steady-state viscosity as a function of stress (see figure 6): stress exponent n , zero-stress viscosity η_0 , transition stress σ_t , power-law material constant C , average elastic modulus $\bar{\mu}_e$ and range of anelastic shear modulus μ_a . Values within brackets provide the 95% confidence intervals.

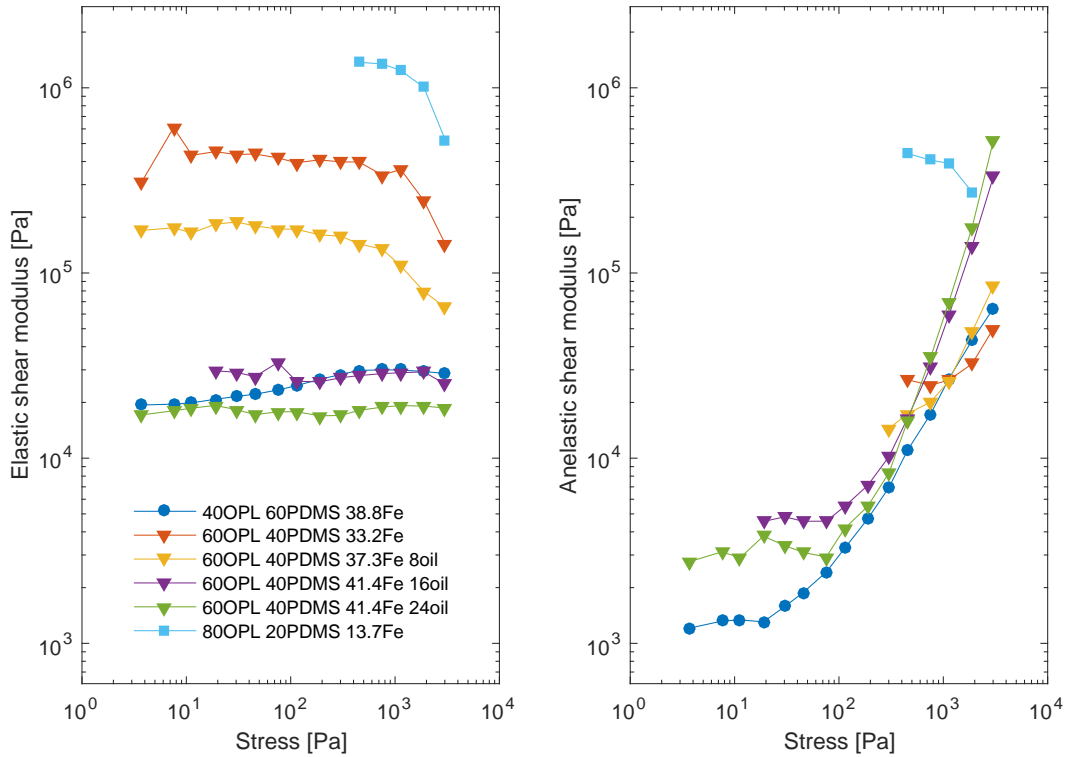


Figure 7: Shear moduli for all tested materials as function of applied stress. Left panel shows elastic shear modulus μ_e ; right panel shows anelastic shear modulus μ_a for the same stress levels as featured in figure 6.

The Newtonian plateau at low stress for Carbopol solutions – a material that has also received attention to serve as an analogue model for tectonic studies, e.g. Schrank et al. (2008); Di Giuseppe et al. (2015) and figure 2 – observed by Barnes (1999) has

been interpreted by Møller et al. (2009) as an experimental artefact (see also Denn and Bonn (2011); Dinkgreve et al. (2017)). These studies show that at low stresses the effective viscosity of a Carbopol solution increases with time, which these authors

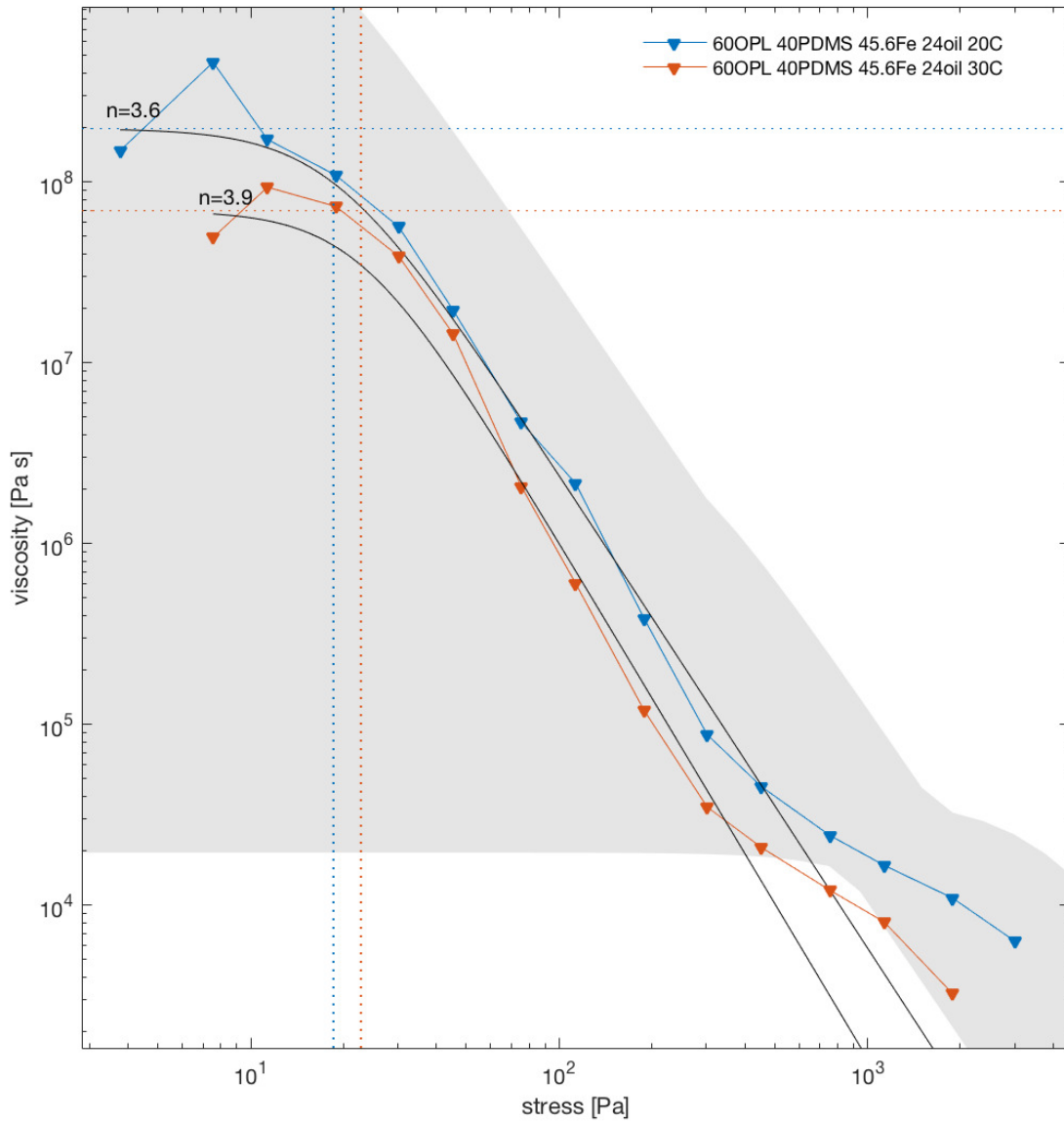


Figure 8: Steady state viscosities per stress level for 60OPL 40PDMS 45.6Fe 24oil at 20 °C and 30 °C with an Ellis fit (equation (6)). The grey area represents the desired range in viscosity vs. stress as described in section 4 for stress scale option I.

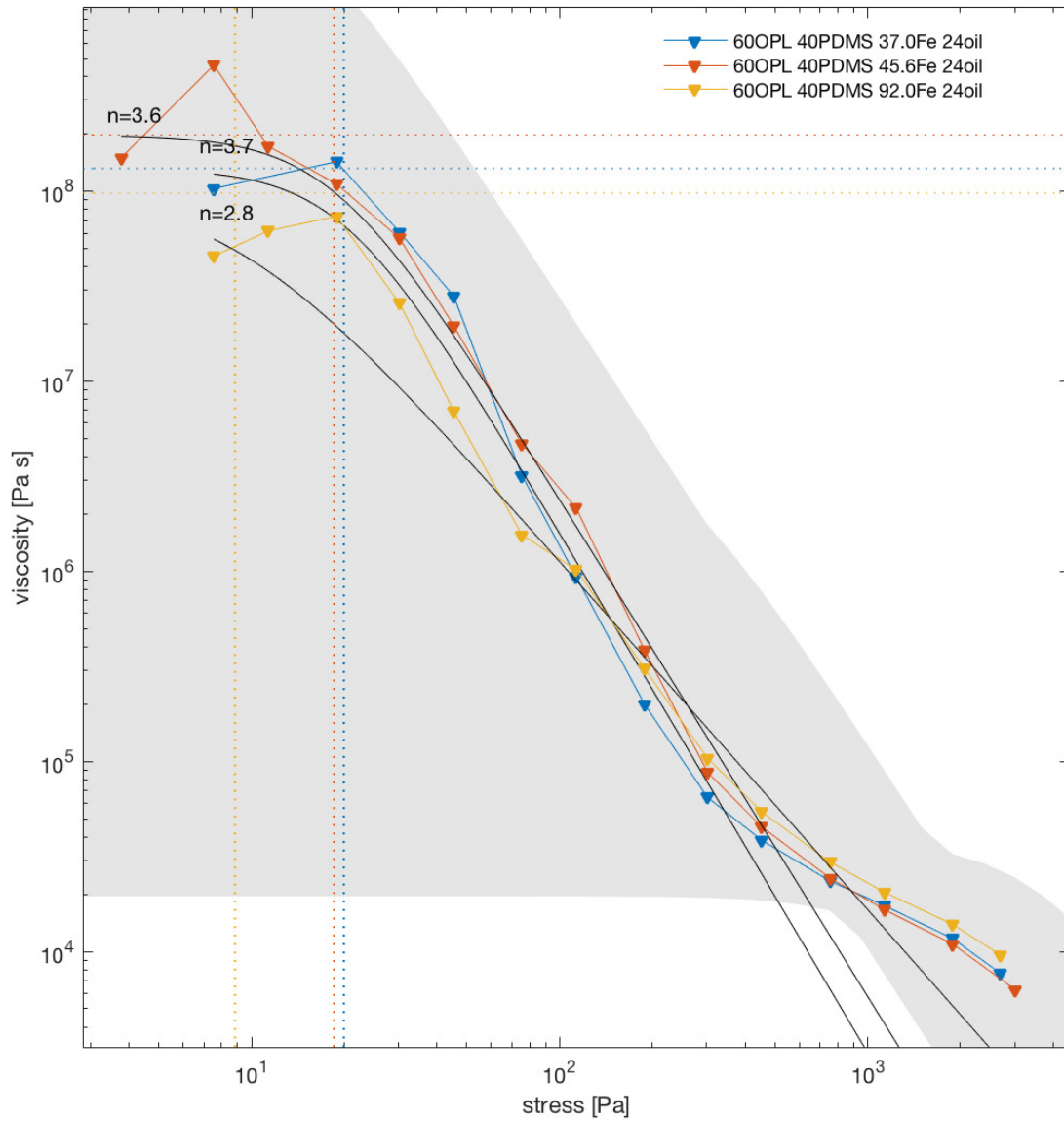


Figure 9: Steady state viscosities per stress level for 60OPL 40PDMS 24oil with three different iron filler ratio's, with an Ellis fit (equation (6)). The grey area represents the desired range in viscosity vs. stress as described in section 4 for stress scale option I.

attribute to anelastic deformation rather than Newtonian steady-state viscosity. They claim that there exists a yield stress below which no flow occurs, and that marks the transition material transforms from a solid to a liquid state. For two of our tested materials (40OPL 60PDMS and 60OPL 40PDMS 24oil) we find permanent strain for the complete applied stress range, which means that flow occurs down to the lowest stress level. For these two materials we observe a Newtonian plateau at low stress, a similar behavior as Boutelier et al. (2016) find for the low-viscosity natrosol solutions ($\eta \approx 10^1 - 10^4$ Pa s, see figure 2). The Ellis model fits well to the observed combined low-stress Newtonian and high-stress power-law viscosities, only at the highest stress levels the fit becomes less and the observations suggest a decrease in stress exponent.

9 Material application: slab break-off

To demonstrate the capability of our developed power-law material to create localized deformation in settings with significant variation of differential stress and a positive stress feedback, we apply the developed material in a model of continental collision and possible slab break-off (Davies and von Blanckenburg, 1995; Wong A Ton and Wortel, 1997). The subduction of oceanic lithosphere and the following closure of the ocean leads to the subsequent forced subduction of buoyant continental lithosphere. Whereas the negative buoyancy of oceanic lithosphere initially drives sinking of the oceanic slab into the asthenosphere, the positive buoyancy of continental will eventually halt subduction. Already in the early days of plate tectonic theory it has been proposed that when subduction has been brought to standstill, stresses in the subducted plate ultimately lead to break-off of the oceanic slab (McKenzie, 1969). The process of slab break-off shows from seismic tomographic images that indicate gaps at about 200 km depth in the downgoing slab in several subduction zones of the Mediterranean (Spakman et al., 1988; Wortel

and Spakman, 1992, 2000).

Numerical models suggest the detachment process takes place by necking of the slab due to tensile stresses, where localized thinning serves as separation mechanism between continental and oceanic lithospheres, with the subsequent sinking of the oceanic fragment (Gerya et al., 2004; Andrews and Billen, 2009; Van Hunen and Allen, 2011).

There are a few continental collision studies that make use of analogue models, which we will discuss hereafter in more detail. We discriminate between models that describe the rheological properties of the applied materials as elasto-plastic, in the sense that these materials should not exhibit viscous behavior, and studies that use visco-elastic materials for modeling lithosphere deformation. Another distinction can be made between studies that use external forcing as driving forces and models that are driven solely by buoyancy forces (Schellart and Strak, 2016).

Analogue models using elasto-plastic materials and external forcing by a piston include studies by Chemenda et al. (1995); Boutelier et al. (2004) and Boutelier and Cruden (2017), where the latter two studies are set up as thermo-mechanical experiments and lead in some of the experiments to break-off of the oceanic slab. As far as we know, the model setup by Boutelier and Cruden (2017) (next to that of Boutelier and Oncken (2011)) is unique in the sense that the horizontal forces exerted by the piston are actually measured, and can thus be checked for proper dynamic scaling. Boutelier and Cruden (2017) describe the applied analogue lithosphere material as elasto-plastic, in other words: there is no description of the material's viscous properties. However the question remains how the strain rate insensitive rheologies applied in these experiments can be related to viscous properties that are commonly attributed to the deeper lithosphere (e.g. Bürgmann and Dresen (2008)).

Regard et al. (2003, 2005, 2008) and Faccenna et al. (2006) use externally forced analogue models to study continental collision using Newtonian viscoelastic materials to represent the lower crust and upper mantle, next to an upper crust that deforms in a brittle manner. In those cases where the slab is allowed to penetrate the lower mantle, the models lead to detachment, in the form of distributed thinning. The distributed thinning, resulting in dripping of the oceanic lithosphere, may be resulting from both the Newtonian rheology (Schmalholz, 2011), as well as the relatively low viscosity contrast (two orders of magnitude) between the viscous lithosphere and asthenosphere (see for a comparable numerical result Pysklywec et al. (2000)). Guillaume et al. (2013) present a model that includes subduction of continental lithosphere, where the model is driven by buoyancy only and Newtonian viscous materials are applied. However, no break-off occurs after continental material has subducted. In the following we test whether it is possible to create localized slab break-off using the nonlinear viscoelastic material that we have developed.

10 Model setup

We set up a laboratory model of oceanic and continental subduction, that includes a nonlinear viscoelastic lithosphere and a Newtonian viscous asthenosphere, see figure 10. We present two model setups: one where the model has a long oceanic plate that after subduction becomes supported by the bottom of the model tank (i.e., the upper mantle-lower mantle boundary) before the continent is forced to subduct; in the second setup the model features a very short oceanic slab and a continental slab, designed such that after subduction the slab will hang freely in the surrounding asthenosphere (comparable to the numerical model by Tschanner et al. (2014)), while the bottom of the tank still coincides with the upper to lower mantle transition. We enforce a no-displacement boundary condition at the con-

tinental end of the plates for both models. Table 6 provides the dimensions of the models and the length scaling; the chosen length scaling is such that 1 cm in the model represents 33 km in nature. We also ran two comparable models at a smaller length scale (where 1 cm in the model represents 66 km in nature), for which we show the results in the supplement.

We use the organic plasticine-PDMS-silicone oil-iron powder mixture 60OPL 40PDMS 24oil to create our oceanic and continental lithospheres, whereas we use glucose with a Newtonian rheology for the low viscous upper mantle. Densities of the oceanic and continental lithospheres are representing bulk lithospheric densities, where we use varying iron powder content to correct densities (see tables ?? and 7). We base the density differences between each lithospheric unit and the asthenosphere on bulk density estimates from Cloos (1993), see equation (11). Table 7 provides all material properties and scale factors between model and nature (using scaling relations from section 3), complemented by realistic natural ranges from relevant literature. Rheological similarity for the model lithosphere (60OPL 40PDMS 24oil) follows from figure 9, which shows that the analogue lithosphere rheologies fall within the estimated range for average lithosphere rheology (section 2.3) for scaling option 1, which coincides with the length and density difference scales used here (tables 6 and 7, respectively). Furthermore, table 7 shows that elastic shear moduli μ_e for the lithosphere are of the right magnitude compared to natural values; anelastic shear moduli μ_a (down to one order of magnitude lower than μ_e) are in the range of estimated natural values (Chopra, 1997). We correct model images for perspective distortion, such that all views are perpendicular to the model axes, and straight lines in the model are indeed depicted as straight lines in the images. From the side view images we extract the side top and bottom edges of the slab using the canny edge detection algorithm (Canny, 1986). From the edge locations we derive the thickness of the slab in time. Model time scales to nature time using equation 12:

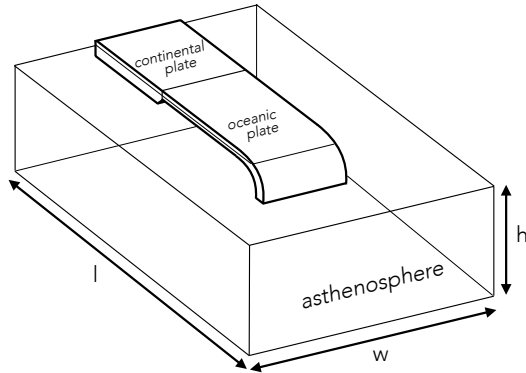


Figure 10: Schematic setup of the initial stage of the slab breakoff model. The model contains a lithosphere consisting of an oceanic part and a continental part overlying the asthenosphere that sits in a tank of with height h , width w and length l (for model dimensions see table 6). At the boundary between the continental and oceanic lithosphere we taper the thickness of the continental unit at an angle of approximately 45 degrees to create a gradual transition in thickness.

1 model minute scales to 0.75 Myr in nature (table 7).

11 Results of slab break-off model

After we initiate subduction by pulling glucose over the first few cm of the oceanic plate, subduction progresses in both models by rollback of the slab and retreat of the trench. In the long slab model the slab touches the bottom of the tank, after which all negatively buoyant oceanic lithosphere subducts. In this process, a part of the buoyant continental lithosphere is forced to subduct as well (figure 11), and the rollback velocity slows down to zero. Around the passive margin the slab slowly thins, a process that starts to accelerate around 30 minutes (23 Myr scaled) after subduction has started. Figure 13 shows the evolution of the minimum thickness of the slab: thinning starts to accelerate at 28 minutes (21 Myr scaled), followed by initiation of a

slab window updip of the passive margin that ultimately leads to full detachment of the oceanic lithosphere around 42 minutes (32 Myr scaled). A movie of the side view images augmented with the detected edges and estimated thickness can be found in supplementary movie S1.

We have performed two models with a short slab (figure 12), that leads to very similar results, with only small differences in the timing of breakoff. Here we discuss only the short slab model 2, as short slab model 1 has less quality images; figures and a movie of the latter can be found in the supplement. In the short slab model the buoyant continental lithosphere is forced to subduct before the oceanic slab touches the bottom of the tank, as the oceanic slab is significantly shorter than the upper mantle depth. Subsequently, around the time that the trench retreat velocity approaches zero (at 20 minutes/15 Myr scaled), the subducted part of the lithosphere is fully suspended from the continental lithosphere at the surface of the model. After 30 minutes (23 Myr scaled), a tear initiates at the right slab edge, just above the oceanic - continental transition, at an equivalent depth of 250 km. While slab break-off commences with the edge tear, the break-off process is complemented by a slab window and wholesale thinning at the same depth. Figure 13 shows accelerated thinning of the slab after 45 minutes (34 Myr scaled), that coincides with the tear migration visible from the front view in figure 12. The total break-off period is 20 minutes (from 30 to 50 minutes model time), which represents 15 Myr in nature.

We can observe that in the long slab model and the two short slab models the final tear occurred in the continental domain, just updip of the oceanic - continental transition. This is also visible in Supplement S1 and S2 that display the extracted edge and passive margin location in side view, together with the evolution of the thickness with depth. After break-off, in all models the continental lithosphere rebounds to the surface, while the oceanic lithosphere subducts further until it rests on the bottom of the model upper mantle. The Reynolds num-

Table 6: Geometrical parameters of the models, with scaled values in bold font. The horizontal dimensions of the model (asthenosphere) measure 35.5×44.5 cm ($w \times l$). The thickness of the continental lithosphere tends to reduce after final assembly of the model due to an excess in gravitational potential energy. The thickness of the continental lithosphere may therefore reduce by 25% before the beginning of the experiment. The room temperature during the experiment with the long slab model and short slab model 1 and 2 was 24, 20 and 23 °C, respectively.

	long slab model	short slab model 1 / 2		range in nature
l_n/l_m	$3.30 \cdot 10^6$	$3.30 \cdot 10^6$		
<i>asthenosphere</i>				
d_a [m]	$200 \cdot 10^{-3}$	$660 \cdot 10^3$	$200 \cdot 10^{-3}$	$660 \cdot 10^3$
<i>continental lithosphere</i>				
d_{cl}	$32 \cdot 10^{-3}$	$105 \cdot 10^3$	$32 \cdot 10^{-3}$	$105 \cdot 10^3$
w_{cl}	$160 \cdot 10^{-3}$	$528 \cdot 10^3$	$160 \cdot 10^{-3}$	$528 \cdot 10^3$
l_{cl}	$160 \cdot 10^{-3}$	$528 \cdot 10^3$	$100 / 160 \cdot 10^{-3}$	$330 / 528 \cdot 10^3$
<i>oceanic lithosphere</i>				
d_{ol}	$20 \cdot 10^{-3}$	$66 \cdot 10^3$	$20 \cdot 10^{-3}$	$66 \cdot 10^3$
w_{ol}	$160 \cdot 10^{-3}$	$528 \cdot 10^3$	$160 \cdot 10^{-3}$	$528 \cdot 10^3$
l_{ol}	$230 \cdot 10^{-3}$	$759 \cdot 10^3$	$80 / 70 \cdot 10^{-3}$	$264 / 231 \cdot 10^3$

ber is on the order of 10^{-4} , which justifies the assumption that inertia can be neglected. The two long slab models that we have performed at a two times smaller length scale lead to similar subduction and slab rollback, but did not result in any break-off (supplement).

12 Discussion of the slab break-off model

The location of tearing in both long and short slab models is just above where one would expect the largest tensile stresses for a stationary hanging slab: the transition between buoyant and negatively buoyant lithosphere (e.g. Van Hunen and Allen (2011); Tscharnier et al. (2014)). The tearing localizes updip of the continental-oceanic transition while the sinking oceanic plate behaves plate-like. In other words, the plate does not drip-off such as Regard et al. (2003) observe in analogue models of continental collision using a lithosphere with a Newtonian rheology. Schmalholz (2011) present an analytical study of slab detachment that shows the influence of power-law slab rheology on the minimum slab thickness in time. The acceleration in thinning that we see in figure 13 is very similar to the

results of the latter, where such an acceleration in thinning is typical for lithosphere with a power-law rheology, in contrast to linear thinning for a Newtonian slab rheology. We thus account the localization of deformation to the power-law rheology of the lithosphere materials.

For the short slab models it is straightforward to approximate the tensile stresses at the continental-oceanic transition at the time before thinning commences, by calculating the buoyancy forces resulting from the hanging oceanic slab. As the rollback has ended we can assume viscous forces exerted by mantle flow can be neglected. The stress at this location and time can be approximated by: $\sigma = g l_{ol} \Delta\rho_{ol-a}$ which is about 136 Pa. From figure 6 it shows that at this stress the material rheology is in the nonlinear regime, and resulting viscosity is about $1 \cdot 10^6$ Pa s. The absence of break-off in models with at a twice smaller scale (supplement) shows the influence of the non-linear rheology on model outcomes: as stress scales with length scale (equation 11) and the lithosphere rheology has a power-law dependence on stress (for the stress levels where break-off occurs), a reduction in scale translates to a power-law reduction in strain rates. The difference in model behavior at varying length scales re-

Table 7: Model parameters. *Density* ★ Reference densities of the asthenosphere, and continental and oceanic lithosphere are based on Cloos (1993), where the lithospheric densities represent bulk density. The oceanic lithospheric density of 3310 kg m^{-3} ($\Delta\rho_{ol-a} = 80 \text{ kg m}^{-3}$) assumes an oceanic crust that has been transformed into eclogite during subduction. Values within brackets denote values likely for lithosphere around a continental margin. ○ To arrive at these densities, 37% and 92% mass fraction iron powder (3.6 and 8.7 volume % respectively) has been used for continental and oceanic lithospheric materials (with 60% organic plasticine, 40% PDMS and 24% silicone oil in terms of mass). *Asthenosphere viscosity* † Asthenosphere steady-state viscosities estimates for subduction zones are commonly on the order of 10^{19} Pa s, based on observations of postseismic deformation (generally estimates are in the range $[10^{18} - 10^{20}]$ see table 1 of Wang (2007)). This viscosity estimate is in line with results from recent studies that interpret postseismic deformation after recent megathrust earthquakes, such as the 2004 Sumatra-Andaman earthquake (Hoechner et al., 2011; Broerse et al., 2015), the 2010 Maule earthquake (Klein et al., 2016; Bedford et al., 2016) or 2011 Tohoku earthquake (Hu et al., 2016). However, the asthenosphere viscosities reported for subduction zones may be more applicable to the mantle wedge than the sub-oceanic asthenosphere Hirth and Kohlstedt (2003), for which we adopt the higher value of $\approx 10^{20}$ Pa s (Hu et al., 2004; Broerse et al., 2015). *Analogue material rheology* ‡ Viscosity at 20° C according to manufacturer specifications. *Lithosphere rheology* ● The estimate for the mean zero-stress mean viscosity of the ductile lithosphere η_0 is based on diffusion creep parameters from Hirth and Kohlstedt (2003), see explanation in section 2. * Estimates for power-law exponent n for olivine range from 3 to 4.9 (Karato and Wu, 1993; Korenaga and Karato, 2008). ◇ The transition stress σ_t has a large range, but correlates strongly with η_0 , see figure 1. High values of σ_t apply to low values of η_0 . *Elastic parameters* ◆ mantle lithosphere shear modulus from PREM (Dziewonski and Anderson, 1981). § Anelastic shear modulus values from Chopra (1997) (table 2).

	model values	scaled values	range in nature
<i>density</i>			
$\Delta\rho_n/\Delta\rho_m$	0.48		
$\Delta\rho_{cl-a}$	-164	-79	-90 - -70 (-90)
$\Delta\rho_{ol-a}$	198	95	-330 - 170 (80) *
ρ_a [kg m^{-3}]	1405	-	3230 *
ρ_{cl}	1241 ○	-	3140 *
ρ_{ol}	1603 ○	-	3310 *
<i>rheology</i>			
η_n/η_m (eq. 9)	$6.25 \cdot 10^{17}$		
η_a [Pa s]	$1.6 \cdot 10^2$	$1.0 \cdot 10^{20}$	$10^{18} - 10^{20}$ †
η_0	$2.0 \cdot 10^8$	$1.2 \cdot 10^{26}$	$2 \cdot 10^{22} - 4 \cdot 10^{28}$ ●
n_n/n_m (eq. 8)	1		
n_l []	3.6	3.6	3 - 4.9 *
σ_n/σ_m (eq. 11)	$1.58 \cdot 10^6$		
σ_{t_1} [Pa]	20	$3.1 \cdot 10^7$	$2 \cdot 10^6 - 3 \cdot 10^9$ ◇
$\bar{\mu}_e$	$1.8 \cdot 10^4$	$2.8 \cdot 10^{10}$	$6.7 \cdot 10^{10}$ ◆
$\min(\mu_a)$	$2.8 \cdot 10^3$	$4.4 \cdot 10^9$	$2 \cdot 10^9 - 37 \cdot 10^9$ §
<i>time</i>			
t_n/t_m (eq. 12)	$3.95 \cdot 10^{11}$	(1 minute model : 0.75 Myr nature)	

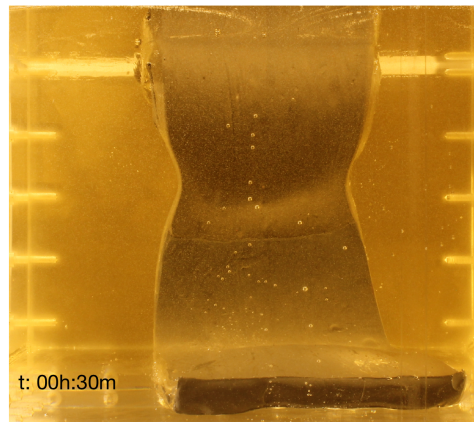
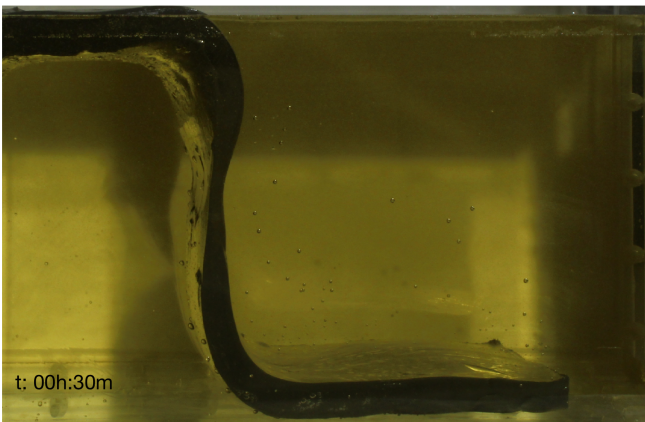
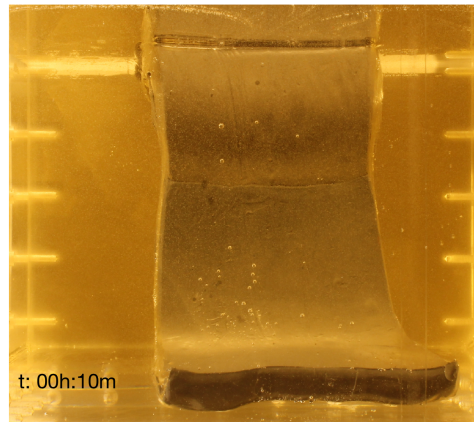
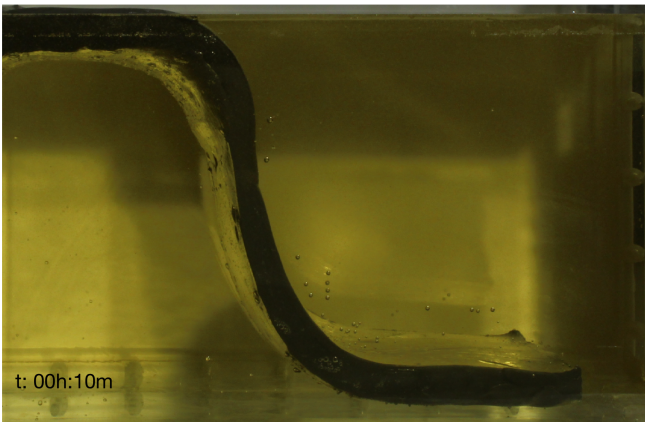
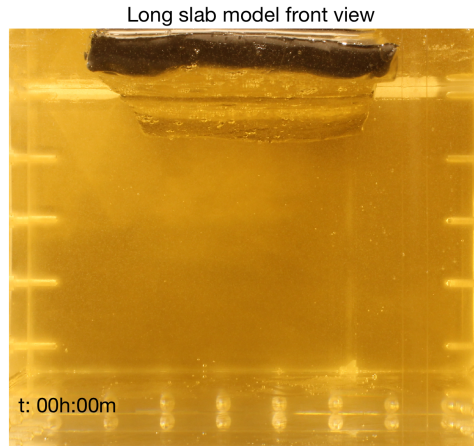
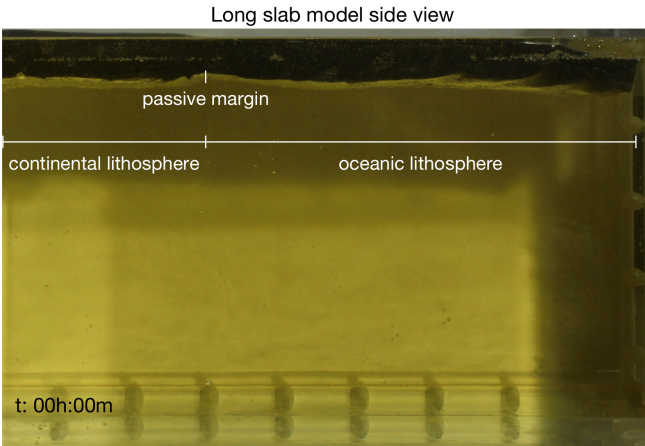


Figure 11: Snapshots of side and frontal views of the long slab model. The location of the continental and oceanic lithospheric units, as well as the passive margin are depicted in the upper panels.

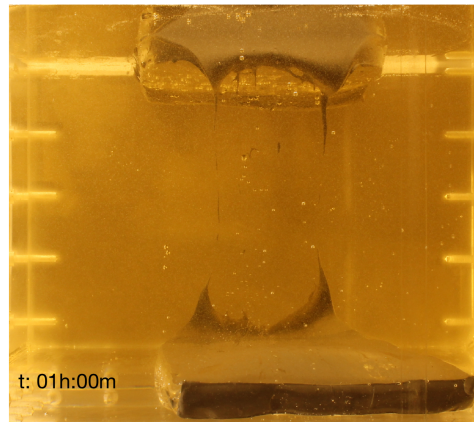
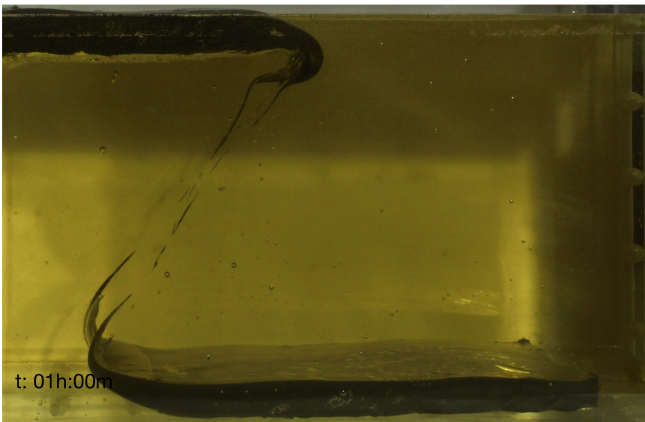
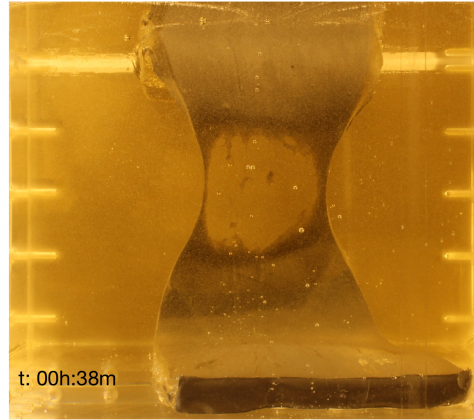
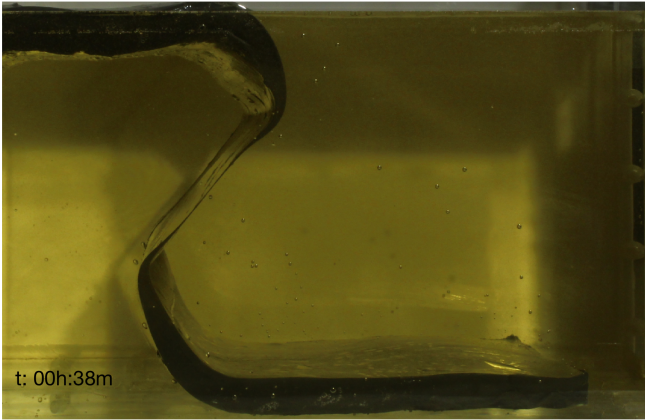
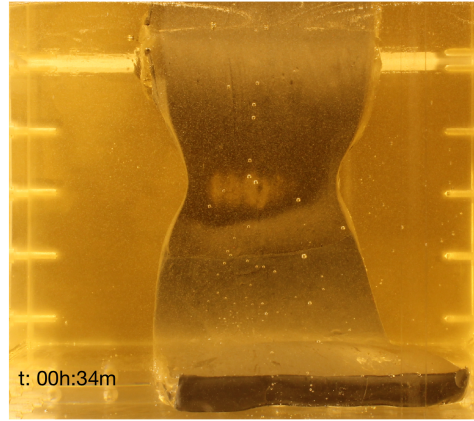
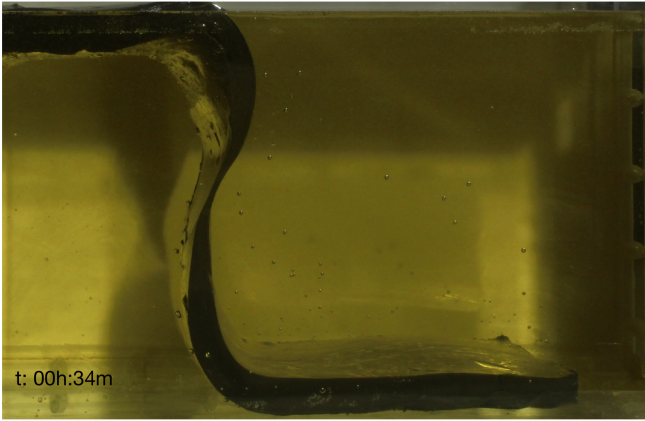


Figure 11: continued

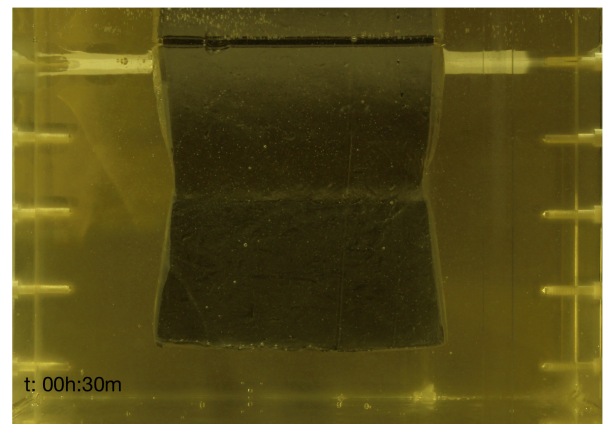
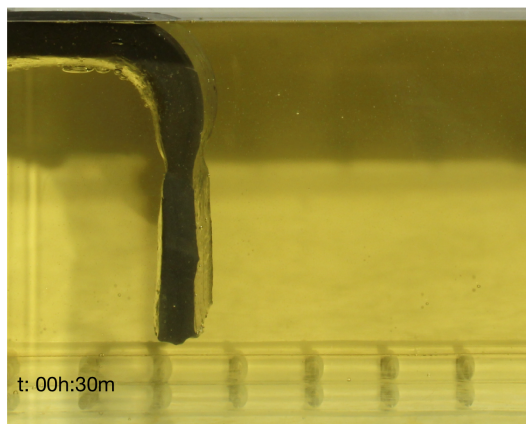
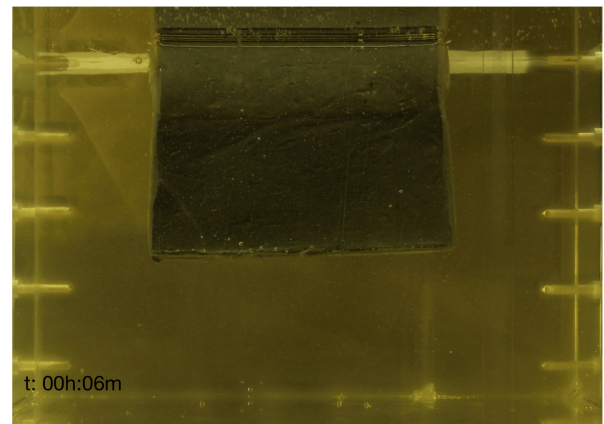
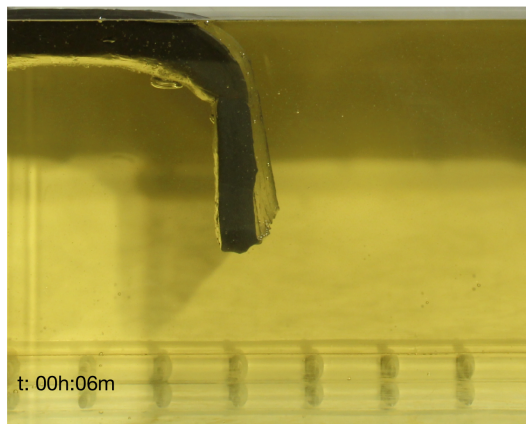
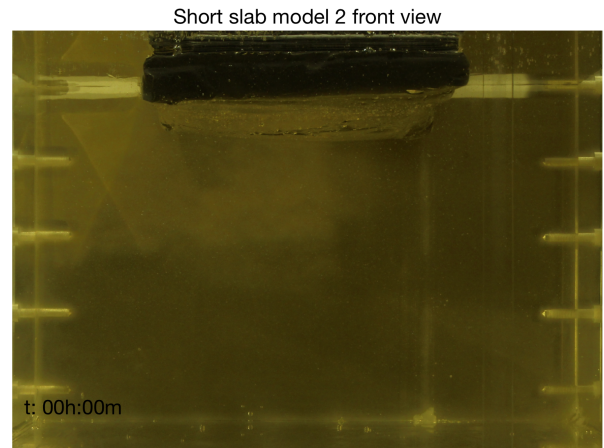
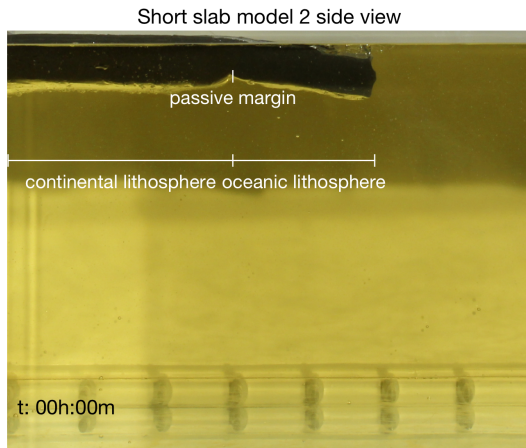


Figure 12: Snapshots of side and frontal views of short slab model 2. The upper left panel describes the location of the continental and oceanic lithospheric units, as well as the location of the passive margin.

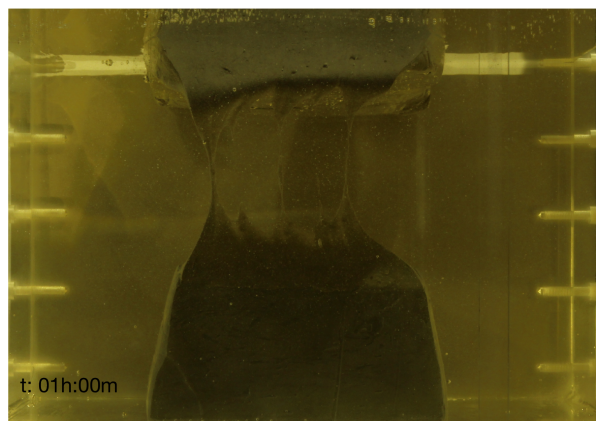
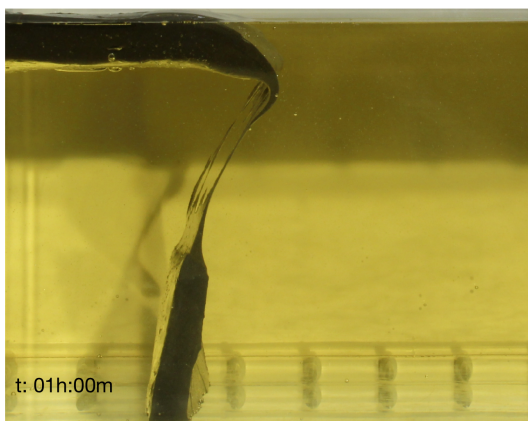
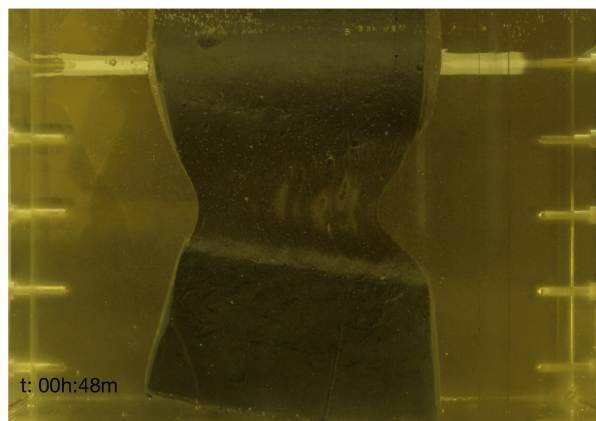
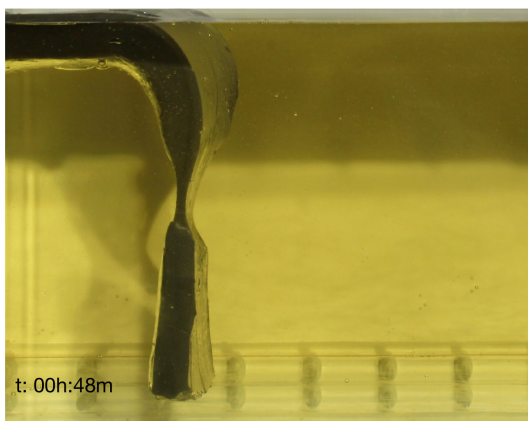
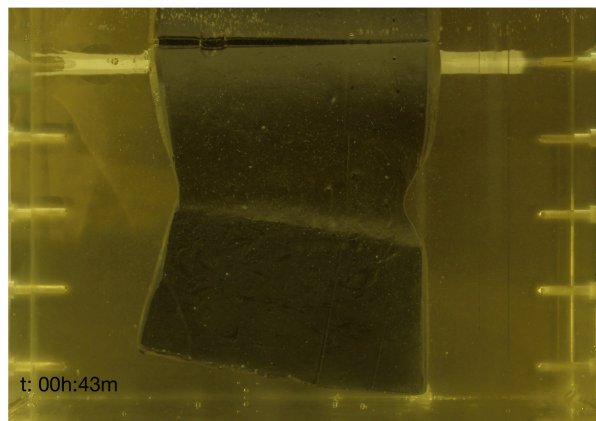
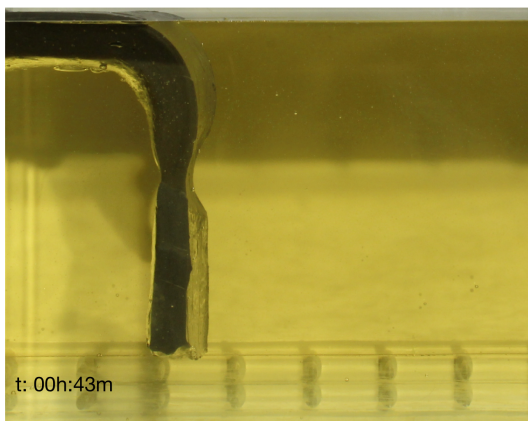


Figure 12: continued

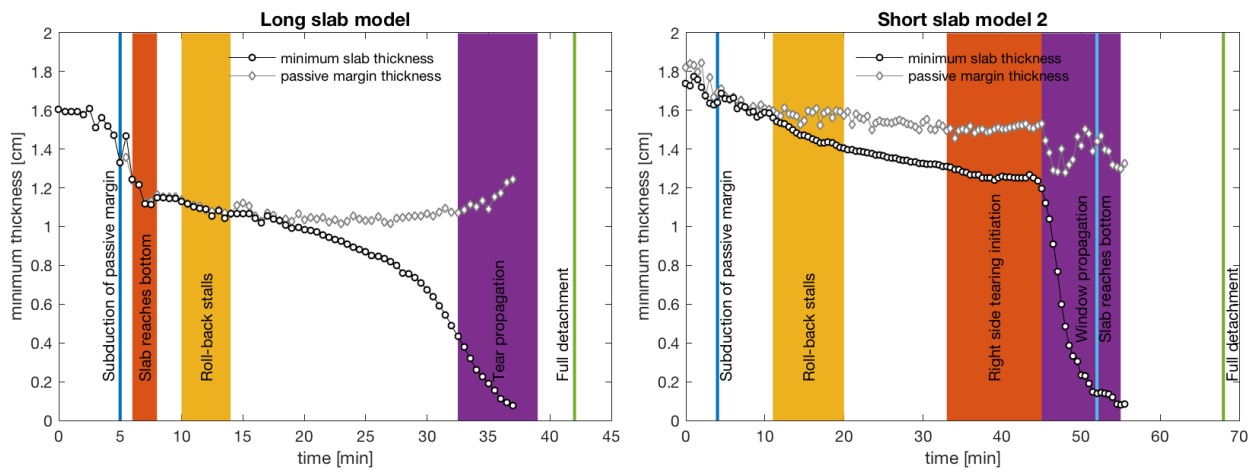


Figure 13: Evolution of the minimum thickness of the slab and thickness of the passive margin in time. Left: the long slab model; Right: short slab model 2. We estimate the thickness of the slab from the side view images, for the location of top and bottom slab edges and the evolution of the lithospheric thickness we refer to movie S1 and S2 in the supplement. The movie shows that the thinnest part of the slab is generally just updip of the passive margin. As in both models the tear manifests as a slab window that increases in size, the final thickness in these figures represents the width of a thin string of lithospheric material that connects the part of the lithosphere at the bottom of the model and the part that rises back to the surface. In the images the edges appear about four pixels wide, which translates into an uncertainty of located edges of about 0.06 cm. The colored bars denote the epochs of stalling of rollback, initiation of tearing, rapid slab window propagation, and final detachment of the oceanic lithosphere.

iterates that in the design of analogue experiments, the dynamic scaling of a power-law material should be carefully evaluated.

Recently, Boutelier and Cruden (2017) published results on a thermal-mechanical laboratory model of slab break-off, but as they describe the model lithospheric materials as exhibiting an elasto-plastic rheology (i.e., yielding at a specific stress, without viscosity) the results are difficult to interpret knowing that the lithosphere likely has a viscosity. Our results however show that localization can occur in a properly dynamically scaled analogue model using a power-law material, in a tectonic setting without adverse boundary effects such as in previous studies of the influence of rheological nonlinearity on shear localization (e.g. Schrank et al. (2008)).

13 Conclusions

We have created new materials to represent the lithospheric mantle in analogue models, based on silicone polymers and organic plasticine using creep and recovery tests.

Combinations of organic plasticine and PDMS exhibit deformation rates with a nonlinear dependence on stress. If mixed in a mass ratio 60:40, the plasticine-PDMS mixture behaves as a power-law viscoelastic material with a stress exponent of around 3.5, which fits in the range of reported values for olivine aggregates. At low stresses we observe that the material shows Newtonian behavior, with a transition to power-law viscosity beyond a critical stress level, comparable to composite flow laws for olivine creep that include both Newtonian diffusion and nonlinear dislocation creep. Addition of low-viscosity silicone oil is effective in lowering the material viscosities to suitable values that allow the use of the material in scale models of the ductile lithosphere.

Application of the developed nonlinear material in a model of forced subduction of continental litho-

sphere, leads to localized deformation and ultimately results in slab break-off.

14 Acknowledgements

This manuscript benefitted from the accurate comments of two anonymous reviewers. Taco Broerse was funded through the project "Location, nature, and evolution of the Caribbean-South America STEP plate boundary" (ISES 2014-UU-13) of the Netherlands Research Center for Integrated Solid Earth Science (ISES). We greatly appreciate the help of Janet Zulauf who has shared rheological data of organic plasticine and sent samples of plastiline. We would like to thank Benjamin Guillaume as well as João Duarte for sharing information on the use of iron powder in analogue materials. We would like to thank Nicolai Nijholt for comments on a previous version of the manuscript. Antoine Auzemery and Job Arts have been very helpful in the assembly of the laboratory models.

15 Data availability

The rheometry data have been published in an accompanying data publication: Broerse, Taco; Norder, Ben; Picken, Stephen; Govers, Rob; Willingshofer, Ernst; Sokoutis, Dimitrios (2018): Data supplement to: New analogue materials for nonlinear lithosphere rheology, with an application to slab break-off. GFZ Data Services. <http://doi.org/10.5880/figeo.2018.029>.

References

- Andrews, E. R. and Billen, M. I. (2009). Rheologic controls on the dynamics of slab detachment. *Tectonophysics*, 464(1):60–69.
- Barnes, H. A. (1999). The yield stress - a review or 'παντα ρει' - everything flows? *Journal of Non-Newtonian Fluid Mechanics*, 81(1):133–178.

- Bedford, J., Moreno, M., Li, S., Oncken, O., Baez, J. C., Bevis, M., Heidbach, O., and Lange, D. (2016). Separating rapid relocking, afterslip, and viscoelastic relaxation: An application of the post-seismic straightening method to the Maule 2010 cGPS. *Journal of Geophysical Research: Solid Earth*, 121(10):7618–7638.
- Bercovici, D. (1993). A simple model of plate generation from mantle flow. *Geophysical Journal International*, 114(3):635–650.
- Bercovici, D. and Karato, S.-i. (2002). Theoretical analysis of shear localization in the lithosphere. *Reviews in mineralogy and geochemistry*, 51(1):387–420.
- Billen, M. I. and Hirth, G. (2007). Rheologic controls on slab dynamics. *Geochemistry, Geophysics, Geosystems*, 8(8).
- Boutelier, D., Chemenda, A., and Jorand, C. (2004). Continental subduction and exhumation of high-pressure rocks: insights from thermo-mechanical laboratory modelling. *Earth and Planetary Science Letters*, 222(1):209–216.
- Boutelier, D. and Cruden, A. (2017). Slab breakoff: Insights from 3D thermo-mechanical analogue modelling experiments. *Tectonophysics*, 694:197–213.
- Boutelier, D., Cruden, A., and Saumur, B. (2016). Density and visco-elasticity of Natrosol 250 HH solutions: Determining their suitability for experimental tectonics. *Journal of Structural Geology*, 86:153–165.
- Boutelier, D. and Oncken, O. (2011). 3-D thermo-mechanical laboratory modeling of plate-tectonics: modeling scheme, technique and first experiments. *Solid Earth*, 2(1):35.
- Boutelier, D., Schrank, C., and Cruden, A. (2008). Power-law viscous materials for analogue experiments: New data on the rheology of highly-filled silicone polymers. *Journal of Structural Geology*, 30(3):341–353.
- Broerse, T., Norder, B., Picken, S., Govers, R., Willingshofer, E., and Sokoutis, D. (2018). Data supplement to: New analogue materials for nonlinear lithosphere rheology, with an application to slab break-off. *GFZ Data Services*.
- Broerse, T., Riva, R., Simons, W., Govers, R., and Vermeersen, B. (2015). Postseismic GRACE and GPS observations indicate a rheology contrast above and below the Sumatra slab. *J. Geophys. Res.*, 120(7):5343–5361.
- Bürgmann, R. and Dresen, G. (2008). Rheology of the lower crust and upper mantle: Evidence from rock mechanics, geodesy, and field observations. *Annu. Rev. Earth Planet. Sci.*, 36:531–567.
- Canny, J. (1986). A computational approach to edge detection. *IEEE Transactions on pattern analysis and machine intelligence*, (6):679–698.
- Carvalho, M., Padmanabhan, M., and Macosko, C. (1994). Single-point correction for parallel disks rheometry. *Journal of Rheology*, 38(6):1925–1936.
- Chemenda, A. I., Mattauer, M., Malavieille, J., and Bokun, A. N. (1995). A mechanism for syn-collisional rock exhumation and associated normal faulting: results from physical modelling. *Earth and Planetary Science Letters*, 132(1–4):225–232.
- Chopra, P. N. (1997). High-temperature transient creep in olivine rocks. *Tectonophysics*, 279(1):93–111.
- Cloos, M. (1993). Lithospheric buoyancy and collisional orogenesis: Subduction of oceanic plateaus, continental margins, island arcs, spreading ridges, and seamounts. *Geological Society of America Bulletin*, 105(6):715–737.
- Davies, J. H. and von Blanckenburg, F. (1995). Slab breakoff: a model of lithosphere detachment and its test in the magmatism and deformation of collisional orogens. *Earth and Planetary Science Letters*, 129(1–4):85–102.

- Davy, P. and Cobbold, P. (1988). Indentation tectonics in nature and experiment. 1. Experiments scaled for gravity. *Bull. Geol. Inst. Univ. Uppsala*, 14:129–141.
- De Bresser, J., Ter Heege, J., and Spiers, C. (2001). Grain size reduction by dynamic recrystallization: can it result in major rheological weakening? *International Journal of Earth Sciences*, 90(1):28–45.
- Denn, M. M. and Bonn, D. (2011). Issues in the flow of yield-stress liquids. *Rheologica acta*, 50(4):307–315.
- Di Giuseppe, E., Corbi, F., Funicello, F., Massmeyer, A., Santimano, T., Rosenau, M., and Davaille, A. (2015). Characterization of Carbopol® hydrogel rheology for experimental tectonics and geodynamics. *Tectonophysics*, 642:29–45.
- Dinkgreve, M., Denn, M. M., and Bonn, D. (2017). ?Everything flows??: elastic effects on startup flows of yield-stress fluids. *Rheologica Acta*, 56(3):189–194.
- Drury, M. R. (2005). Dynamic recrystallization and strain softening of olivine aggregates in the laboratory and the lithosphere. *Geological Society, London, Special Publications*, 243(1):143–158.
- Duarte, J. C., Schellart, W. P., and Cruden, A. R. (2013). Three-dimensional dynamic laboratory models of subduction with an overriding plate and variable interplate rheology. *Geophys. J. Int.*
- Duretz, T., Gerya, T. V., and May, D. A. (2011). Numerical modelling of spontaneous slab breakoff and subsequent topographic response. *Tectonophysics*, 502(1):244–256.
- Dziewonski, A. and Anderson, D. (1981). Preliminary reference Earth model. *Phys. Earth Planet. Inter.*, 25(4):297–356.
- Faccenna, C., Bellier, O., Martinod, J., Piromallo, C., and Regard, V. (2006). Slab detachment beneath eastern Anatolia: A possible cause for the formation of the North Anatolian fault. *Earth and Planetary Science Letters*, 242(1):85–97.
- Faccenna, C., Giardini, D., Davy, P., and Argentieri, A. (1999). Initiation of subduction at Atlantic-type margins: Insights from laboratory experiments. *Journal of Geophysical Research: Solid Earth*, 104(B2):2749–2766.
- Findley, W., Lai, J., and Onaran, K. (1976). *Creep and Relaxation of Nonlinear Viscoelastic Materials*. 1976. New York: Dover Publications.
- Freeburn, R. (2016). *Numerical modelling of slab breakoff and its magmatic effects*. PhD thesis, Durham University.
- Freed, A., Bürgmann, R., Calais, E., and Freymueller, J. (2006). Stress-dependent power-law flow in the upper mantle following the 2002 Denali, Alaska, earthquake. *Earth Planet. Sci. Lett.*, 252(3):481–489.
- Freed, A., Hirth, G., and Behn, M. (2012). Using short-term postseismic displacements to infer the ambient deformation conditions of the upper mantle. *J. Geophys. Res.*, 117(B1):B01409.
- Funicello, F., Faccenna, C., and Giardini, D. (2004). Role of lateral mantle flow in the evolution of subduction systems: insights from laboratory experiments. *Geophysical Journal International*, 157(3):1393–1406.
- Gerya, T. V., Yuen, D. A., and Maresch, W. V. (2004). Thermomechanical modelling of slab detachment. *Earth and Planetary Science Letters*, 226(1):101–116.
- Goetze, C. and Evans, B. (1979). Stress and temperature in the bending lithosphere as constrained by experimental rock mechanics. *Geophysical Journal International*, 59(3):463–478.
- Guillaume, B., Husson, L., Funicello, F., and Faccenna, C. (2013). The dynamics of laterally variable subductions: laboratory models applied to the Hellenides. *Solid Earth*, 4(2):179.
- Guillaume, B., Martinod, J., and Espurt, N. (2009). Variations of slab dip and overriding plate tectonics during subduction: insights from analogue modelling. *Tectonophysics*, 463(1):167–174.

- Hirth, G. and Kohlstedt, D. (2003). Rheology of the upper mantle and the mantle wedge: A view from the experimentalists. *Inside the subduction Factory*, pages 83–105.
- Hirth, G. and Kohlstedt, D. (2015). The stress dependence of olivine creep rate: Implications for extrapolation of lab data and interpretation of recrystallized grain size. *Earth and Planetary Science Letters*, 418:20–26.
- Hoechner, A., Sobolev, S., Einarsson, I., and Wang, R. (2011). Investigation on afterslip and steady state and transient rheology based on postseismic deformation and geoid change caused by the Sumatra 2004 earthquake. *Geochem. Geophys. Geosyst.*, 12:Q07010.
- Hu, Y., Bürgmann, R., Uchida, N., Banerjee, P., and Freymueller, J. T. (2016). Stress-driven relaxation of heterogeneous upper mantle and time-dependent afterslip following the 2011 Tohoku earthquake. *Journal of Geophysical Research: Solid Earth*, 121(1):385–411.
- Hu, Y., Wang, K., He, J., Klotz, J., and Khazaradze, G. (2004). Three-dimensional viscoelastic finite element model for postseismic deformation of the great 1960 Chile earthquake. *J. Geophys. Res.*, 109(B12).
- Hubbert, M. K. (1937). Theory of scale models as applied to the study of geologic structures. *Geological Society of America Bulletin*, 48(10):1459–1520.
- Jaupart, C. and Mareschal, J.-C. (2007). Heat flow and thermal structure of the lithosphere.
- Johnson, G. C. (1961). Flow Characteristics of Linear, End-Blocked Dimethylpolysiloxane Fluids. *Journal of Chemical and Engineering Data*, 6(2):275–278.
- Karato, S.-i., Toriumi, M., and Fujii, T. (1980). Dynamic recrystallization of olivine single crystals during high-temperature creep. *Geophysical Research Letters*, 7(9):649–652.
- Karato, S.-i. and Wu, P. (1993). Rheology of the upper mantle: a synthesis. *Science*, 260(5109):771–778.
- Klein, E., Fleitout, L., Vigny, C., and Garaud, J. (2016). Afterslip and viscoelastic relaxation model inferred from the large-scale post-seismic deformation following the 2010 M w 8.8 Maule earthquake (Chile). *Geophysical Journal International*, 205(3):1455–1472.
- Kohlstedt, D., Evans, B., and Mackwell, S. (1995). Strength of the lithosphere: Constraints imposed by laboratory experiments. *Journal of Geophysical Research: Solid Earth*, 100(B9):17587–17602.
- Korenaga, J. and Karato, S.-i. (2008). A new analysis of experimental data on olivine rheology. *Journal of Geophysical Research: Solid Earth*, 113(B2).
- Macosko, C. W. (1994). *Rheology: principles, measurements, and applications*. Wiley-vch.
- Masuti, S., Barbot, S. D., Karato, S.-i., Feng, L., and Banerjee, P. (2016). Upper-mantle water stratification inferred from observations of the 2012 Indian Ocean earthquake. *Nature*, 538(7625):373–377.
- McClay, K. (1976). The rheology of plasticine. *Tectonophysics*, 33(1–2):T7–T15.
- McKenzie, D. P. (1969). Speculations on the consequences and causes of plate motions. *Geophysical Journal International*, 18(1):1–32.
- Mei, S. and Kohlstedt, D. (2000a). Influence of water on plastic deformation of olivine aggregates: 1. Diffusion creep regime. *J. Geophys. Res.*, 105(B9):21457–21469.
- Mei, S. and Kohlstedt, D. (2000b). Influence of water on plastic deformation of olivine aggregates: 2. Dislocation creep regime. *J. Geophys. Res.*, 105(B9):21471–21481.
- Møller, P., Fall, A., and Bonn, D. (2009). Origin of apparent viscosity in yield stress fluids below yielding. *EPL (Europhysics Letters)*, 87(3):38004.

- Platt, J. and Behr, W. (2011). Grainsize evolution in ductile shear zones: Implications for strain localization and the strength of the lithosphere. *Journal of Structural Geology*, 33(4):537–550.
- Poirier, J. (1980). Shear localization and shear instability in materials in the ductile field. *Journal of Structural Geology*, 2(1-2):135–142.
- Putnis, A. (1992). *An introduction to mineral sciences*. Cambridge University Press.
- Pysklywec, R. N., Beaumont, C., and Fullsack, P. (2000). Modeling the behavior of the continental mantle lithosphere during plate convergence. *Geology*, 28(7):655–658.
- Ramberg, H. (1981). *Gravity, deformation, and the earth's crust: In theory, experiments, and geological application*. Academic press.
- Ranalli, G. (1995). *Rheology of the Earth*. Springer.
- Regard, V., Faccenna, C., Bellier, O., and Martinod, J. (2008). Laboratory experiments of slab break-off and slab dip reversal: insight into the Alpine Oligocene reorganization. *Terra Nova*, 20(4):267–273.
- Regard, V., Faccenna, C., Martinod, J., and Bellier, O. (2005). Slab pull and indentation tectonics: insights from 3D laboratory experiments. *Physics of the Earth and Planetary Interiors*, 149(1):99–113.
- Regard, V., Faccenna, C., Martinod, J., Bellier, O., and Thomas, J.-C. (2003). From subduction to collision: Control of deep processes on the evolution of convergent plate boundary. *Journal of Geophysical Research: Solid Earth*, 108(B4).
- Regenauer-Lieb, K. and Yuen, D. A. (1998). Rapid conversion of elastic energy into plastic shear heating during incipient necking of the lithosphere. *Geophysical Research Letters*, 25(14):2737–2740.
- Ribe, N. and Davaille, A. (2013). Dynamical similarity and density (non-) proportionality in experimental tectonics. *Tectonophysics*, 608:1371–1379.
- Rossetti, F., Ranalli, G., and Faccenna, C. (1999). Rheological properties of paraffin as an analogue material for viscous crustal deformation. *Journal of Structural Geology*, 21(4):413–417.
- Rudolf, M., Boutelier, D., Rosenau, M., Schreurs, G., and Oncken, O. (2016). Rheological benchmark of silicone oils used for analog modeling of short- and long-term lithospheric deformation. *Tectonophysics*, 684:12–22.
- Rutter, E. (1999). On the relationship between the formation of shear zones and the form of the flow law for rocks undergoing dynamic recrystallization. *Tectonophysics*, 303(1-4):147–158.
- Schellart, W. (2008). Kinematics and flow patterns in deep mantle and upper mantle subduction models: Influence of the mantle depth and slab to mantle viscosity ratio. *Geochemistry, Geophysics, Geosystems*, 9(3).
- Schellart, W. (2011). Rheology and density of glucose syrup and honey: determining their suitability for usage in analogue and fluid dynamic models of geological processes. *Journal of Structural Geology*, 33(6):1079–1088.
- Schellart, W. P. and Strak, V. (2016). A review of analogue modelling of geodynamic processes: Approaches, scaling, materials and quantification, with an application to subduction experiments. *Journal of Geodynamics*, 100:7–32.
- Schmalholz, S. M. (2011). A simple analytical solution for slab detachment. *Earth and Planetary Science Letters*, 304(1):45–54.
- Schöpfer, M. P. and Zulauf, G. (2002). Strain-dependent rheology and the memory of plasticity. *Tectonophysics*, 354(1):85–99.
- Schrank, C. E., Boutelier, D. A., and Cruden, A. R. (2008). The analogue shear zone: from rheology to associated geometry. *Journal of Structural Geology*, 30(2):177–193.
- Sobolev, S. V. and Muldashev, I. A. (2017). Modeling seismic cycles of great megathrust earthquakes

- across the scales with focus at postseismic phase. *Geochemistry, Geophysics, Geosystems*.
- Sokoutis, D. (1987). Finite strain effects in experimental mullions. *Journal of Structural Geology*, 9(2):233–242.
- Spakman, W., Wortel, M., and Vlaar, N. (1988). The hellenic subduction zone: a tomographic image and its geodynamic implications. *Geophys. Res. Lett.*, 15(1):60–63.
- Tasaka, M., Zimmerman, M. E., and Kohlstedt, D. L. (2017). Rheological Weakening of Olivine+ Orthopyroxene Aggregates Due to Phase Mixing: 1. Mechanical Behavior. *Journal of Geophysical Research: Solid Earth*, 122(10):7584–7596.
- Ten Grotenhuis, S., Piazzolo, S., Pakula, T., Passchier, C., and Bons, P. (2002). Are polymers suitable rock analogs? *Tectonophysics*, 350(1):35–47.
- Treagus, S. H. and Sokoutis, D. (1992). Laboratory modelling of strain variation across rheological boundaries. *Journal of Structural Geology*, 14(4):405–424.
- Tscharner, M., Schmalholz, S., and Duretz, T. (2014). Three-dimensional necking during viscous slab detachment. *Geophysical Research Letters*, 41(12):4194–4200.
- Van Hunen, J. and Allen, M. B. (2011). Continental collision and slab break-off: a comparison of 3-D numerical models with observations. *Earth and Planetary Science Letters*, 302(1):27–37.
- Wang, K. (2007). Elastic and viscoelastic models of crustal deformation in subduction earthquake cycles. *The seismogenic zone of subduction thrust faults*, pages 540–575.
- Weijermars, R. (1986). Flow behaviour and physical chemistry of bouncing putties and related polymers in view of tectonic laboratory applications. *Tectonophysics*, 124(3–4):325–358.
- Weijermars, R. and Schmeling, H. (1986). Scaling of newtonian and non-newtonian fluid dynamics without inertia for quantitative modelling of rock flow due to gravity (including the concept of rheological similarity). *Physics of the Earth and Planetary Interiors*, 43(4):316–330.
- Wong A Ton, S. and Wortel, M. (1997). Slab detachment in continental collision zones: an analysis of controlling parameters. *Geophys. Res. Lett.*, 24(16):2095–2098.
- Wortel, M. and Spakman, W. (1992). Structure and dynamics of subducted lithosphere in the Mediterranean region. *Proceedings of the Koninklijke Nederlandse Akademie van Wetenschappen*, 95(3):325–347.
- Wortel, M. and Spakman, W. (2000). Subduction and slab detachment in the mediterranean-carpathian region. *Science*, 290(5498):1910–1917.
- Zulauf, J. and Zulauf, G. (2004). Rheology of plasticine used as rock analogue: the impact of temperature, composition and strain. *Journal of Structural Geology*, 26(4):725–737.

A Strain plots

This section contains the loading and relaxation strain curves for all materials used at the stress levels that have been used in the estimation of rheological parameters.

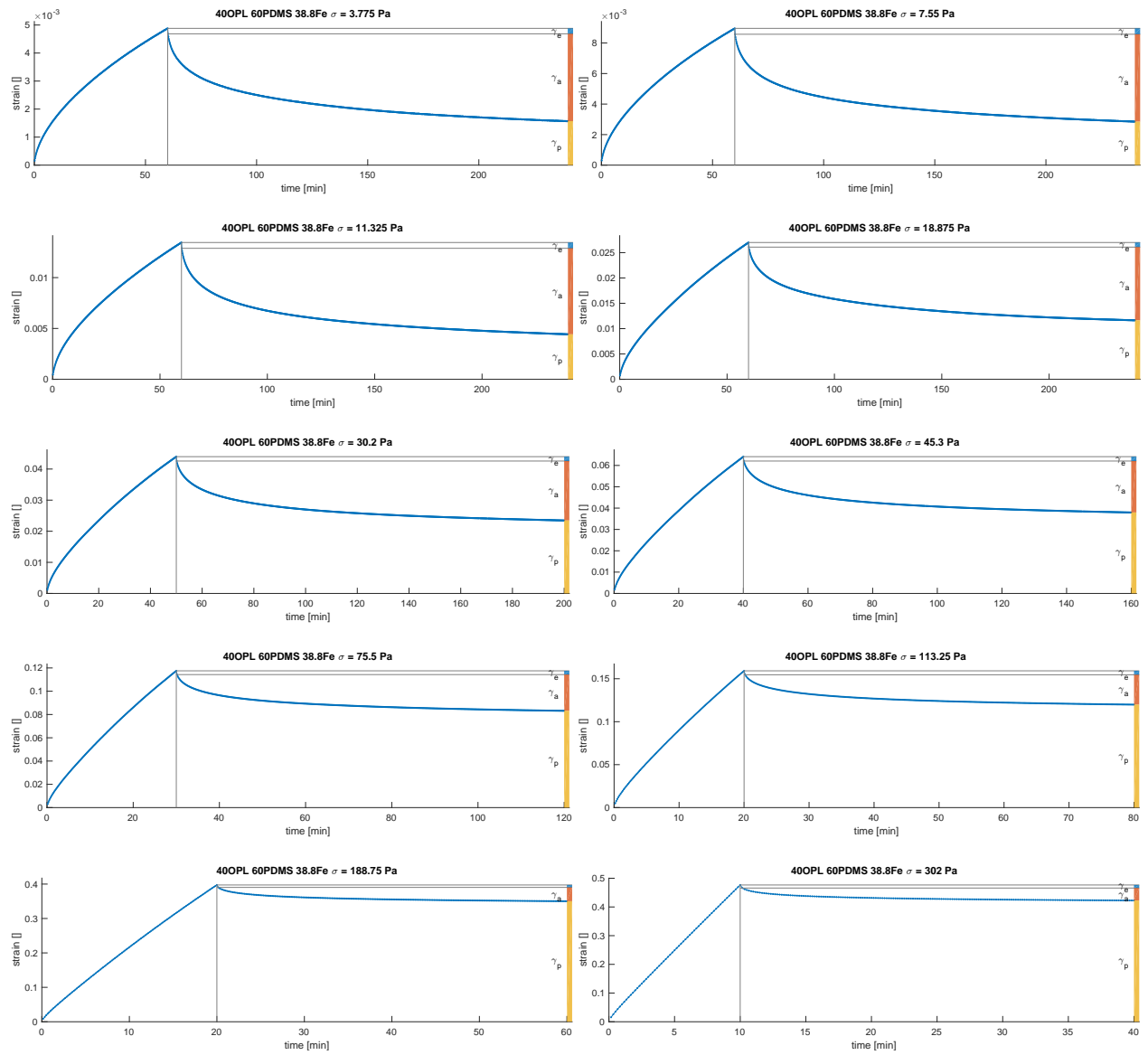


Figure 14: Strain during loading and relaxation for 40 OPL 60 PDMS at each stress level, with elastic strain γ_e , anelastic strain γ_a and permanent strain γ_p . Permanent strain is used to compute the mean strain rate and steady-state viscosity $\bar{\eta}$ (equation (20)).

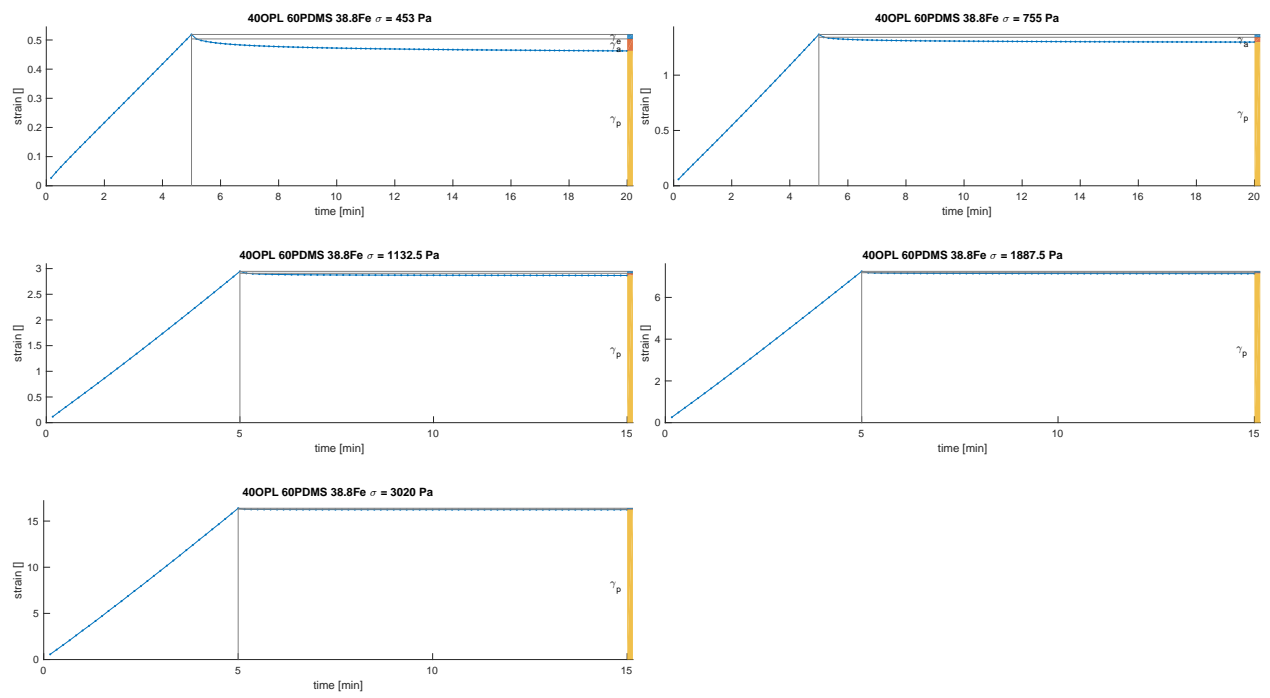


Figure 14: continued

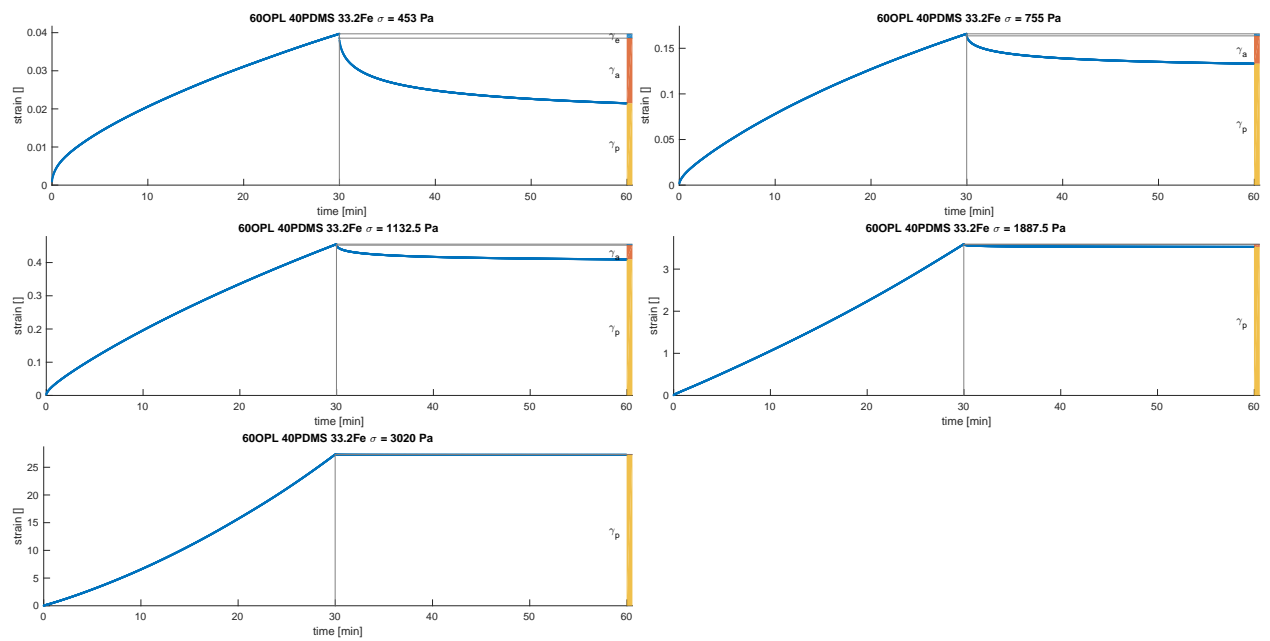


Figure 15: Strain during loading and relaxation for 60 OPL 40 PDMS at each stress level, with elastic strain γ_e , anelastic strain γ_a and permanent strain γ_p . Permanent strain is used to compute the mean strain rate and steady-state viscosity $\bar{\eta}$ (equation (20)).

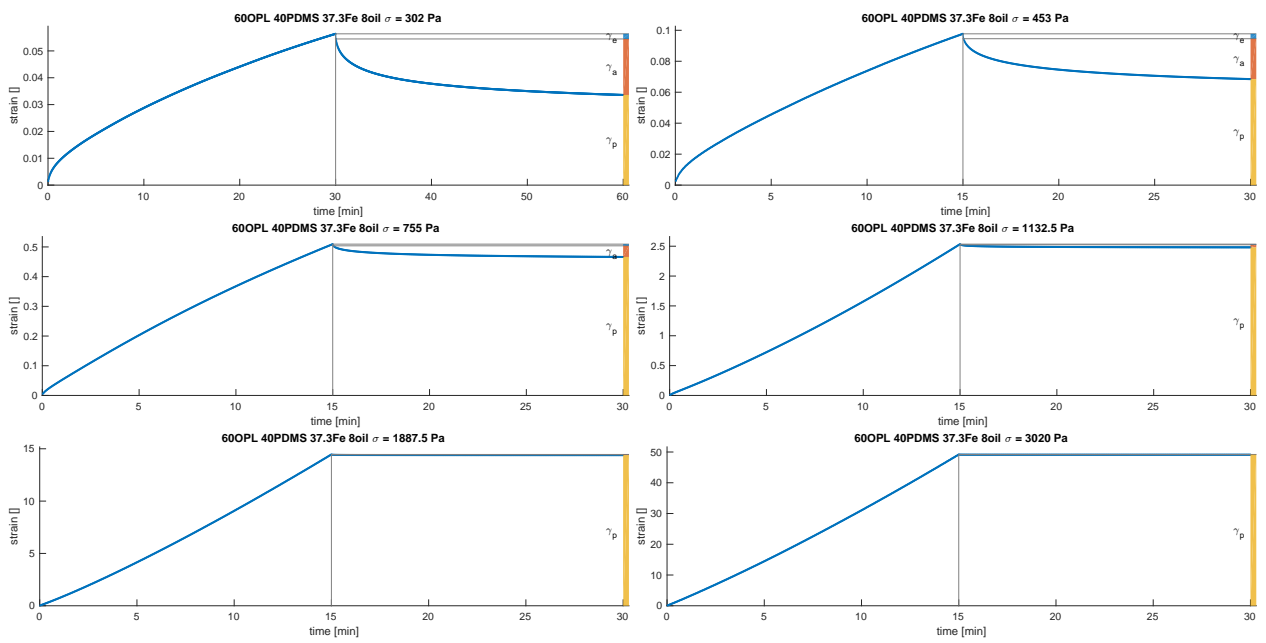


Figure 16: Strain during loading and relaxation for 60 OPL 40 PDMS 8 oil at each stress level, with elastic strain γ_e , anelastic strain γ_a and permanent strain γ_p . Permanent strain is used to compute the mean strain rate and steady-state viscosity $\bar{\eta}$ (equation (20)).

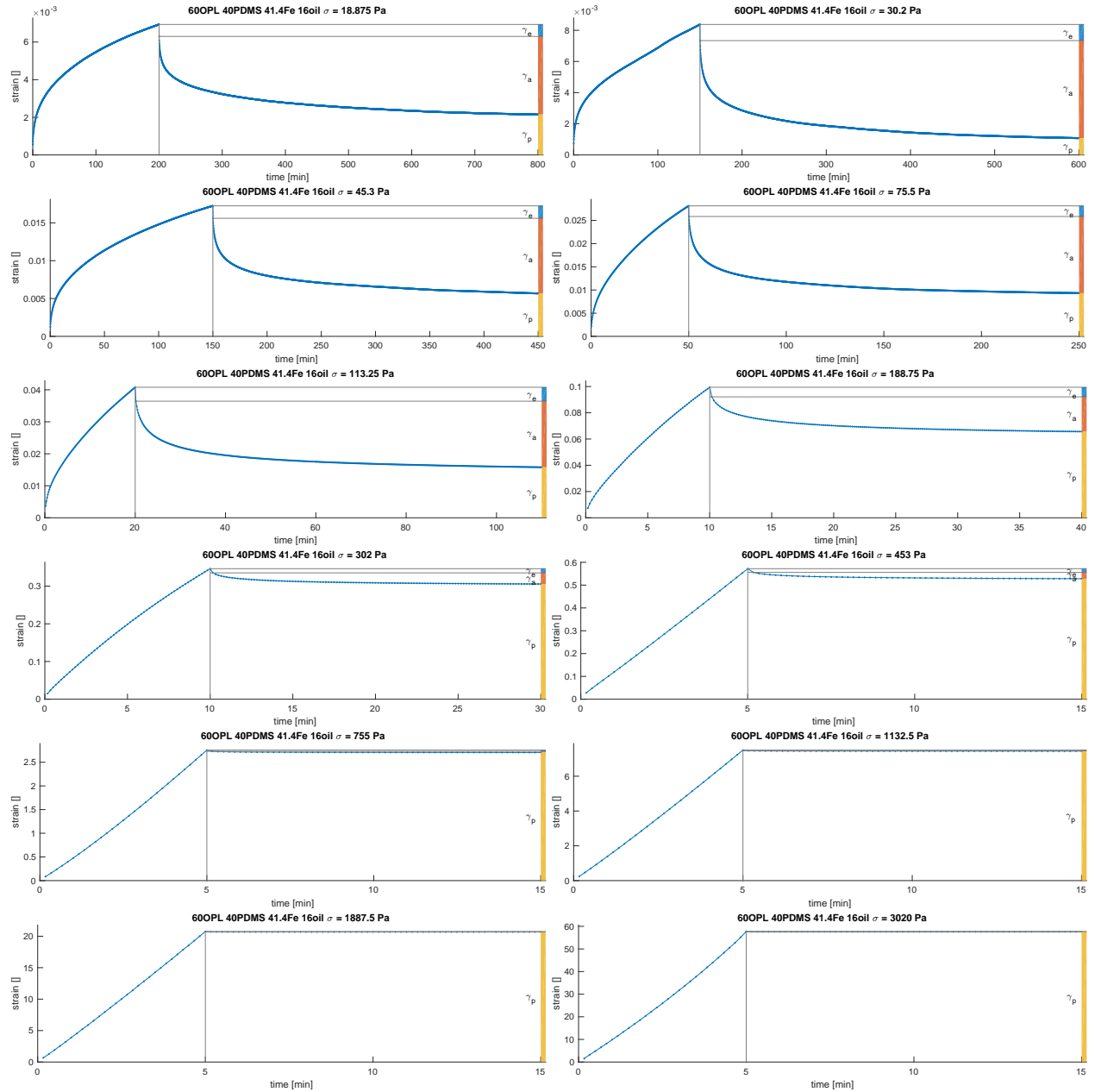


Figure 17: Strain during loading and relaxation for 60 OPL 40 PDMS 16 oil at each stress level, with elastic strain γ_e , anelastic strain γ_a and permanent strain γ_p . Permanent strain is used to compute the mean strain rate and steady-state viscosity $\bar{\eta}$ (equation (20)).

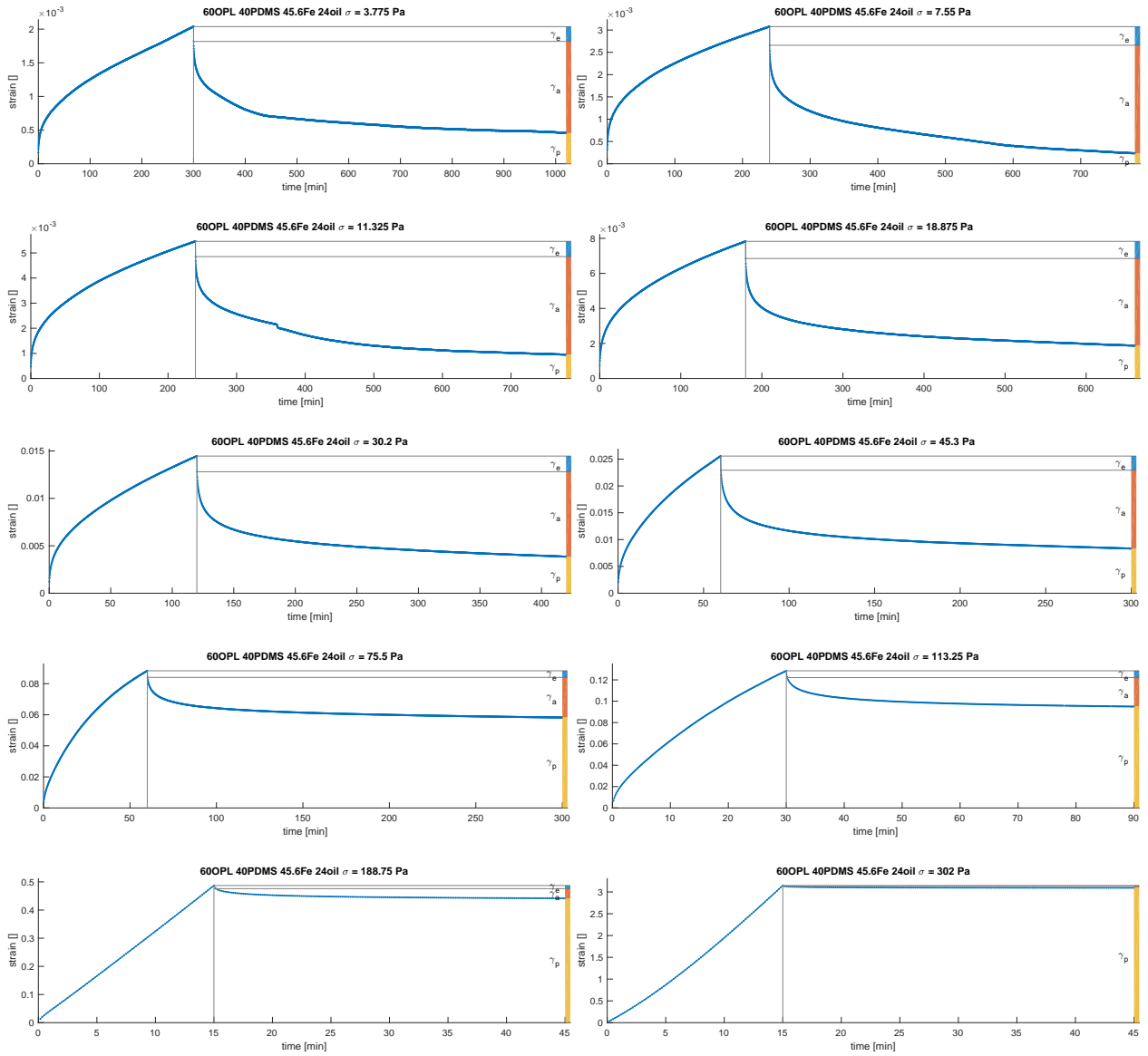


Figure 18: Strain during loading and relaxation for 60 OPL 40 PDMS 24 oil 45.6 Fe at each stress level, with elastic strain γ_e , anelastic strain γ_a and permanent strain γ_p . Permanent strain is used to compute the mean strain rate and steady-state viscosity $\bar{\eta}$ (equation (20)).

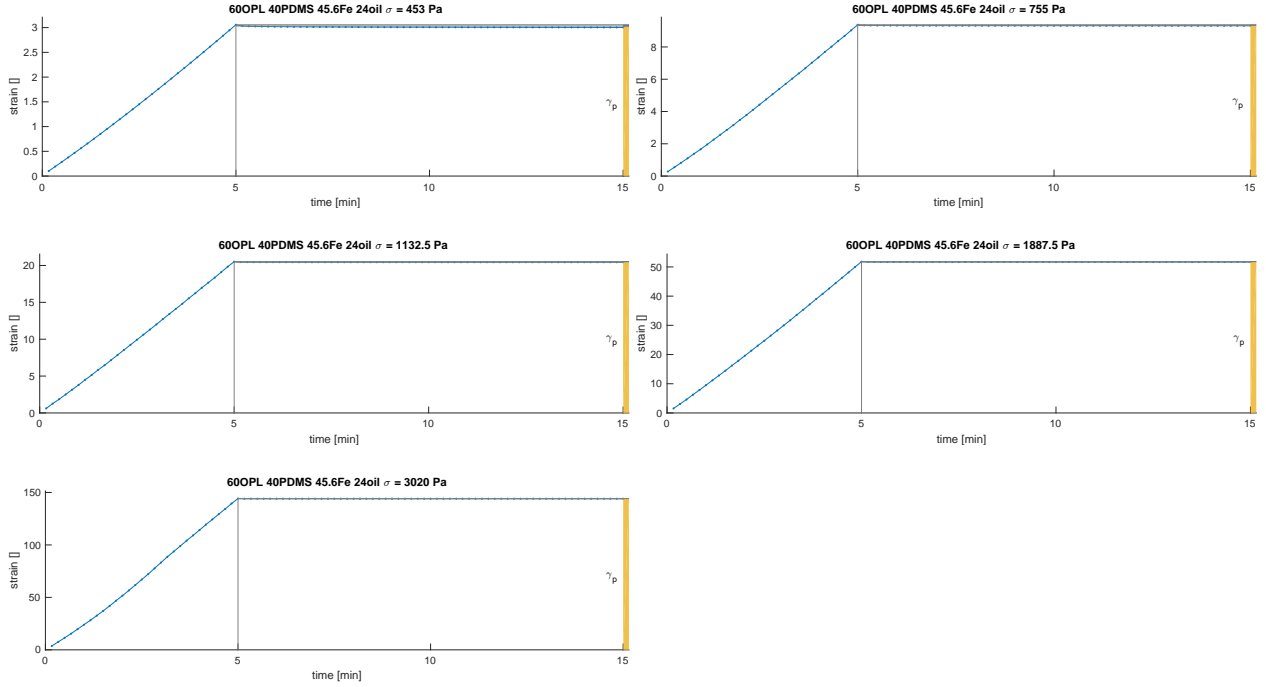


Figure 18: continued

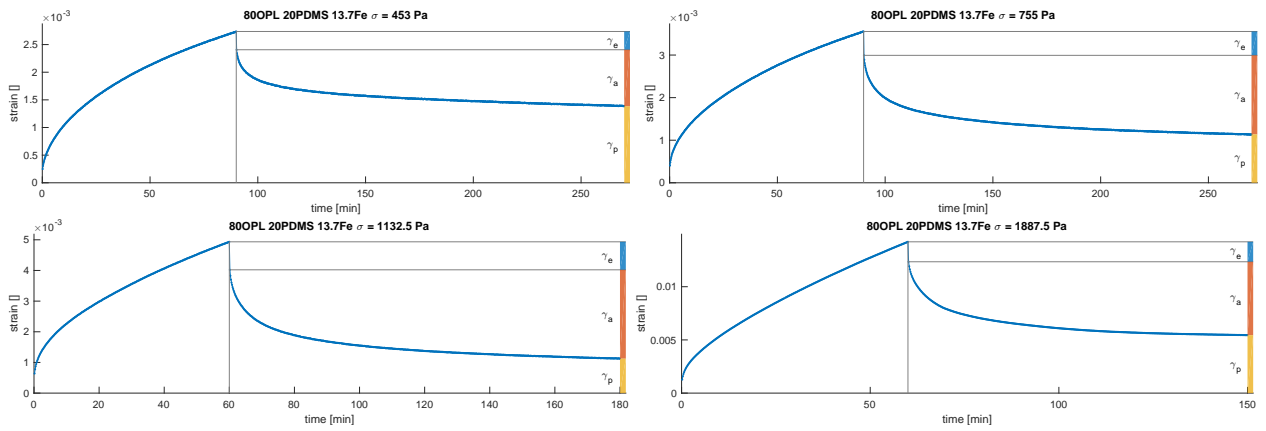


Figure 19: Strain during loading and relaxation for 80 OPL 20 PDMS at each stress level, with elastic strain γ_e , anelastic strain γ_a and permanent strain γ_p . Permanent strain is used to compute the mean strain rate and steady-state viscosity $\bar{\eta}$ (equation (20)).

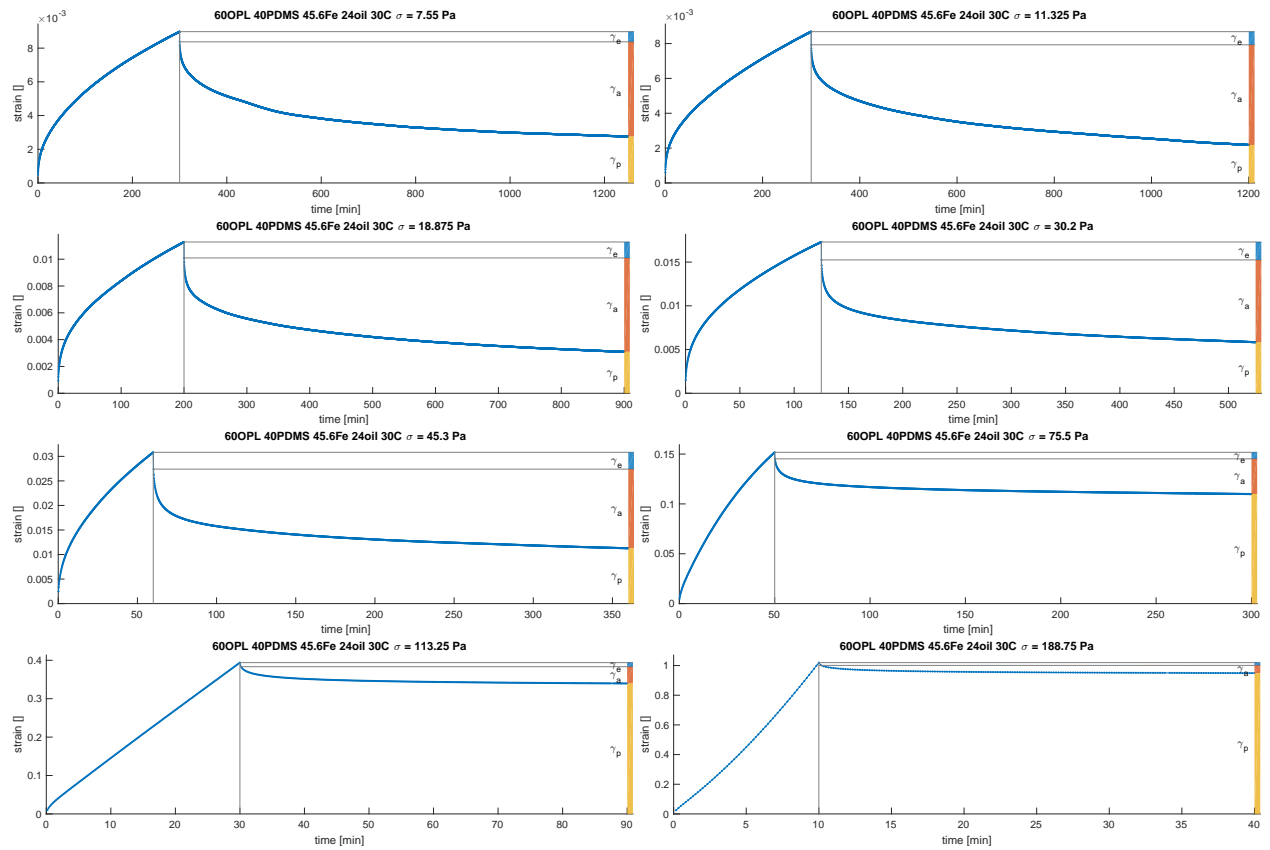


Figure 20: Strain during loading and relaxation for 60 OPL 40 PDMS 24 oil @ $T = 30^\circ\text{C}$ at each stress level, with elastic strain γ_e , anelastic strain γ_a and permanent strain γ_p . Permanent strain is used to compute the mean strain rate and steady-state viscosity $\bar{\eta}$ (equation (20)).

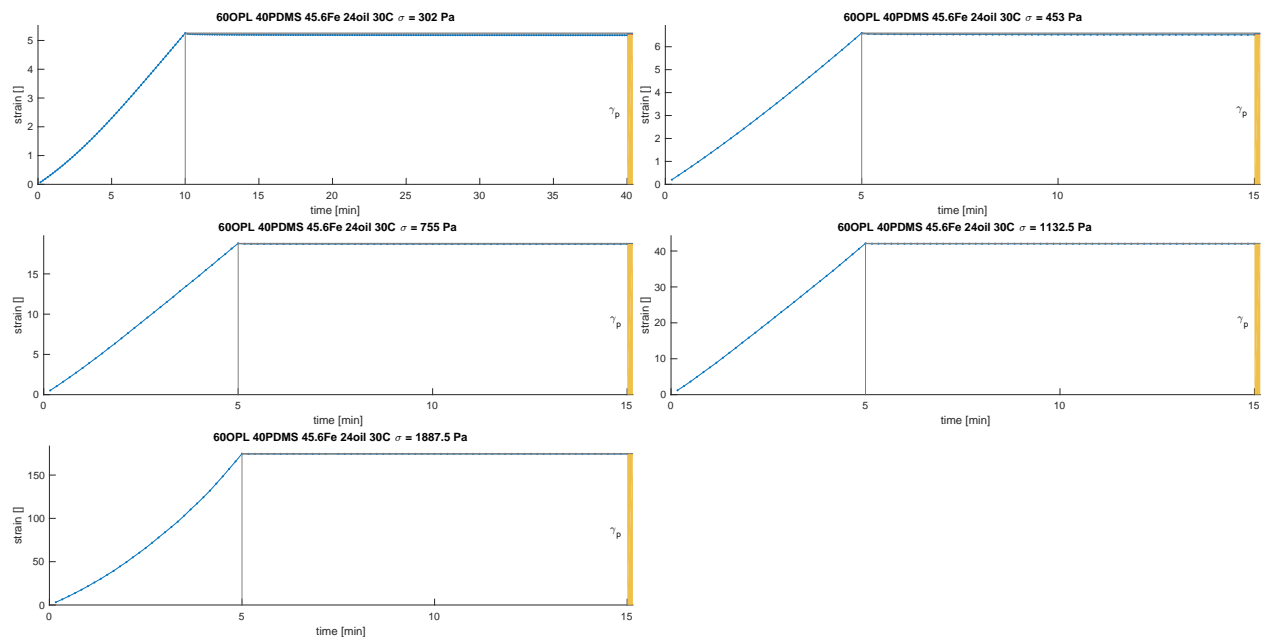


Figure 20: continued

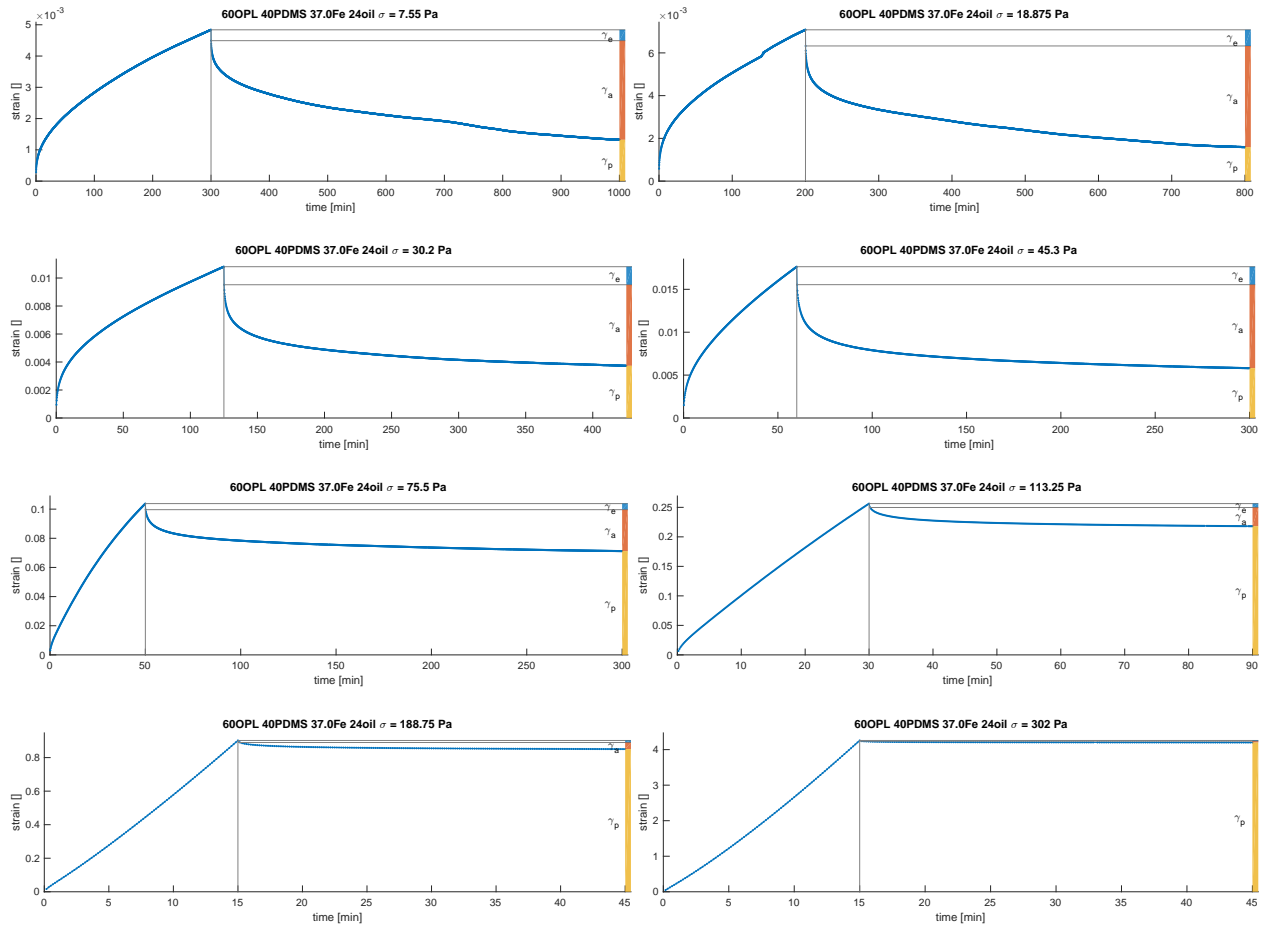


Figure 21: Strain during loading and relaxation for 60 OPL 40 PDMS 24 oil 37 Fe at each stress level, with elastic strain γ_e , anelastic strain γ_a and permanent strain γ_p . Permanent strain is used to compute the mean strain rate and steady-state viscosity $\bar{\eta}$ (equation (20)).

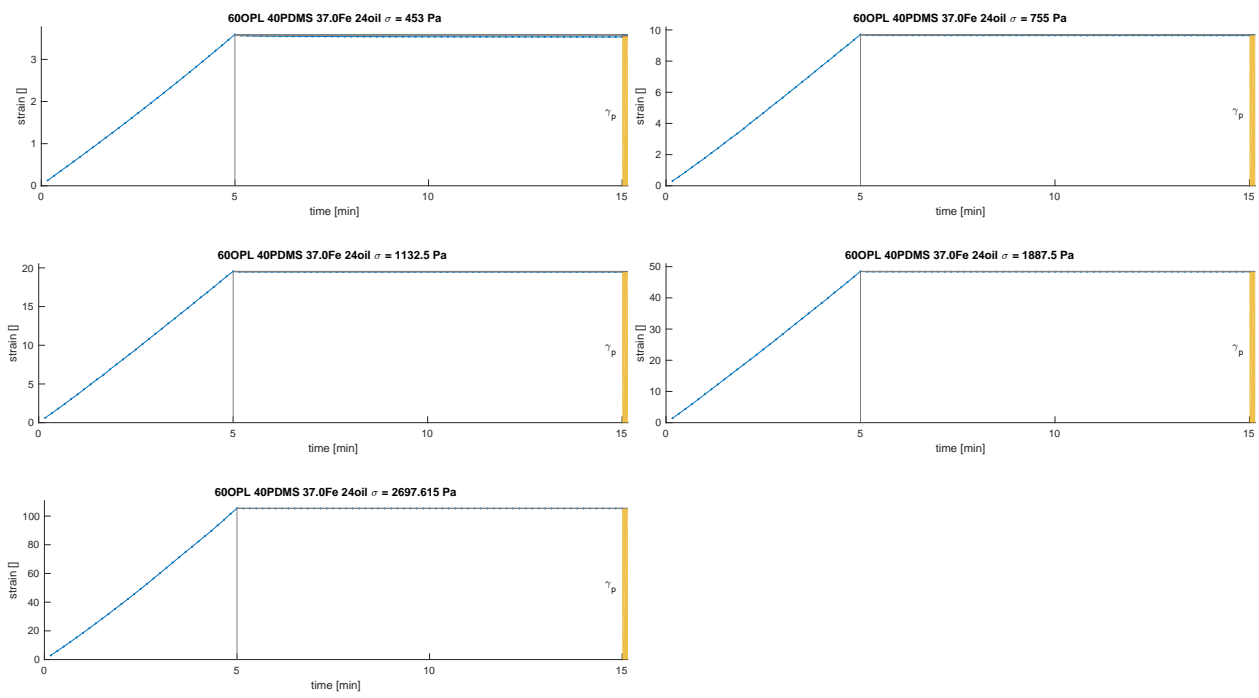


Figure 21: continued

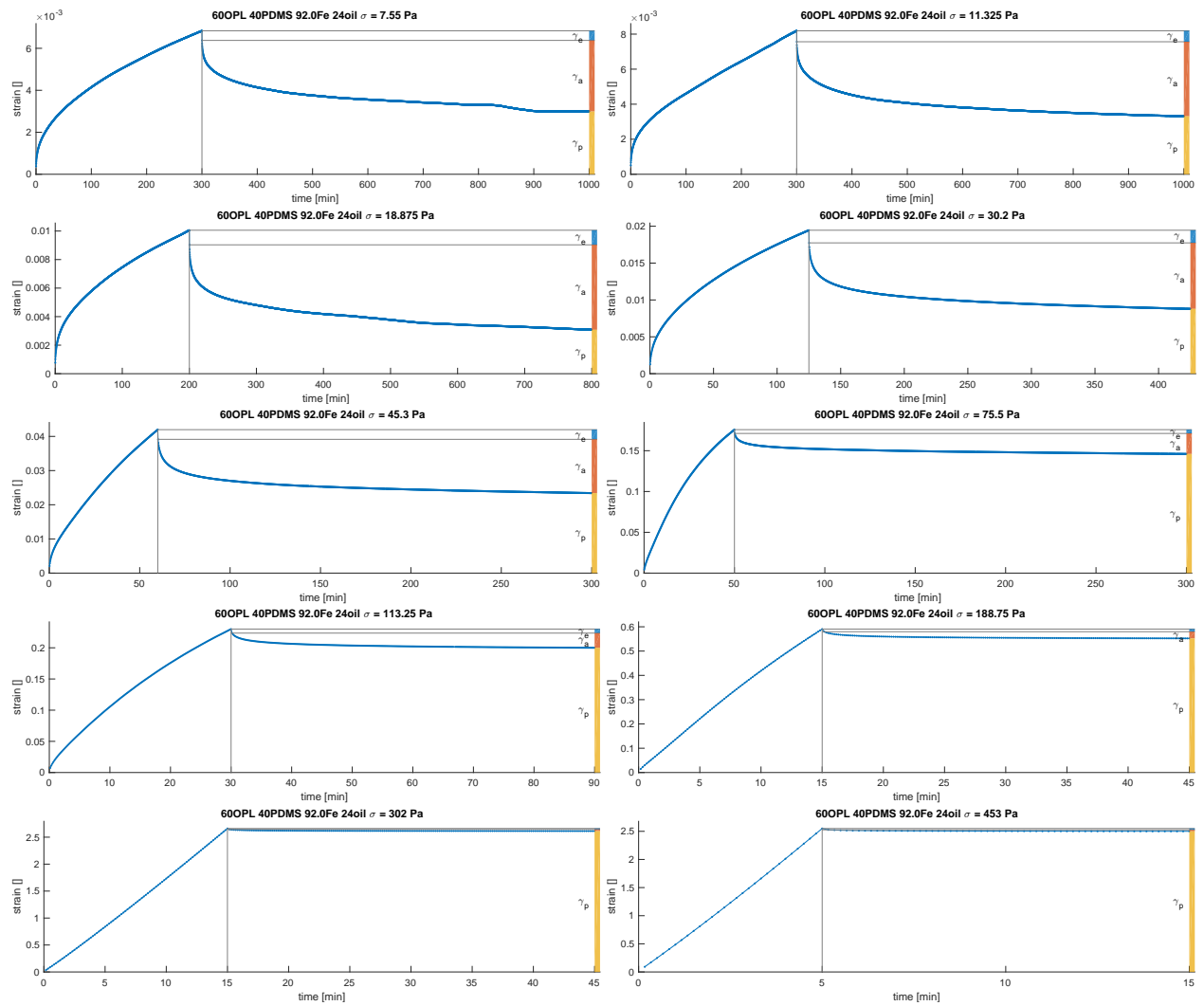


Figure 22: Strain during loading and relaxation for 60 OPL 40 PDMS 24 oil 92 Fe at each stress level, with elastic strain γ_e , anelastic strain γ_a and permanent strain γ_p . Permanent strain is used to compute the mean strain rate and steady-state viscosity $\bar{\eta}$ (equation (20)).

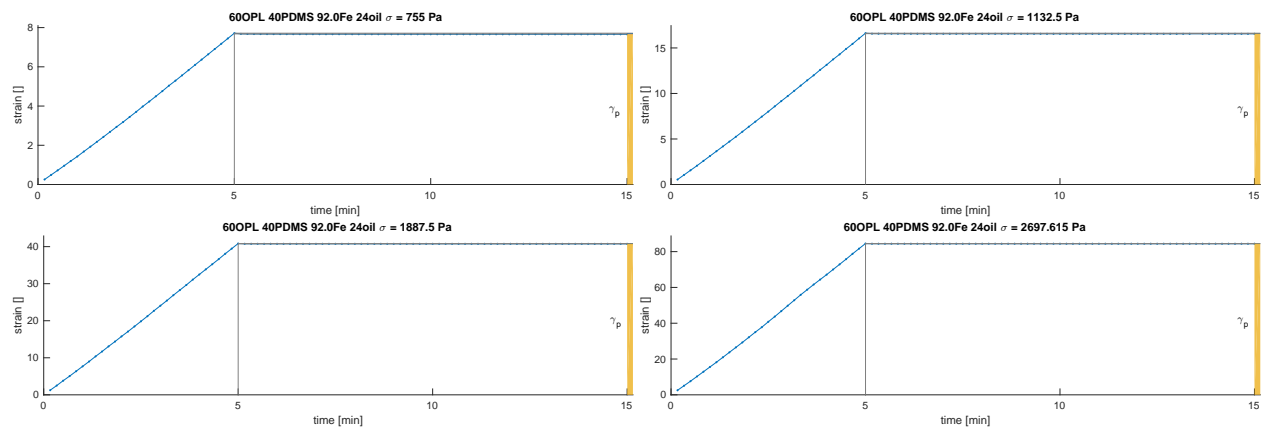


Figure 22: continued

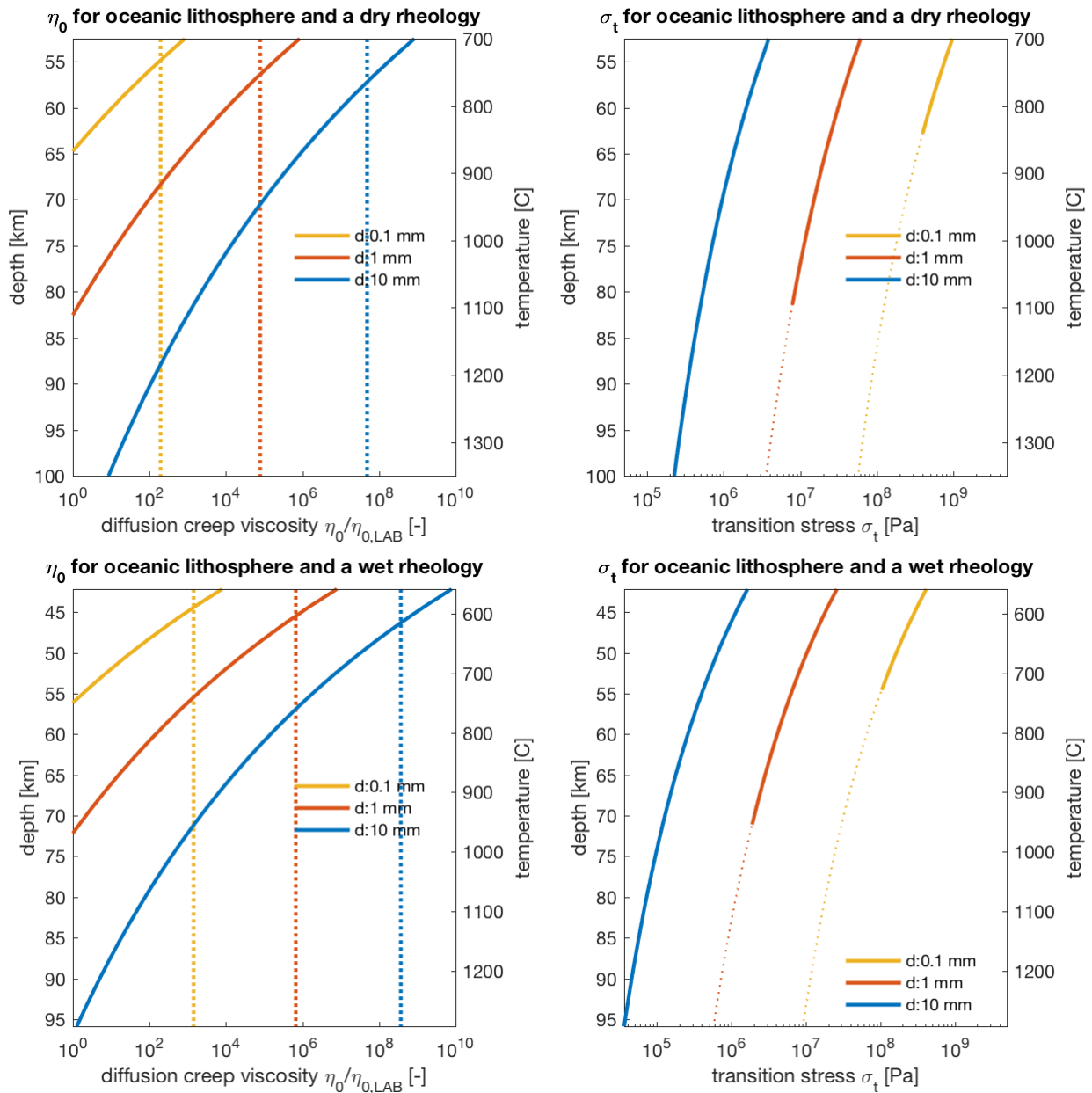
B Average lithosphere rheology

In figure 23 we show how we derive the average rheology using empirical parameters for dry olivine and an oceanic temperature depth profile. Here we provide the parameters used, taken from Hirth and Kohlstedt (2003). Figure 23 shows average rheologies for four cases: dry vs. wet olivine rheologies, for continental as well as oceanic geothermal gradients.

parameters		dry	wet	dry	wet
		diffusion		dislocation	
A	pre-exponential factor [$\text{Pa}^{-n} \mu\text{m}^p \text{s}^{-1}$]	1500	1	$11 \cdot 10^{-16}$	$9 \cdot 10^{-20}$
p	grain size exponent [-]	3	3	0	0
C_{OH}	water content [ppm-H/Si]	0	1000	0	1000
r	C_{OH} exponent [-]	0	1	0	1.2
E	activation energy [J/mol]	$375 \cdot 10^3$	$335 \cdot 10^3$	$530 \cdot 10^3$	$480 \cdot 10^3$
V	activation volume [m^3/mol]	$5 \cdot 10^{-6}$	$4 \cdot 10^{-6}$	$23 \cdot 10^{-6}$	$11 \cdot 10^{-6}$
n	stress exponent [-]	1	1	3.5	3.5
C'/C	scale factor [-]	1.5	1.5	5.92	5.92
ρ_{crust}	density of the crust [kg/m^3]	2700			
ρ_{mantle}	density of the mantle [kg/m^3]	3300			
g	gravitational acceleration [m/s^2]	9.8			

Table 8: Rheological parameters used in the equation $C = A d^{-p} C_{\text{OH}}^r \exp\left(-\frac{E+PV}{RT}\right)$ derived from table 1 of Hirth and Kohlstedt (2003). We apply a correction to C for parameters based on uni-axial experiments: $C' = C \frac{2}{3^{(n+1)/2}}$ (Ranalli, 1995). Grain size d is in μm , stress σ as well as pressure P are in Pa. Temperature T is in degrees Kelvin. Gas constant R is 8.314. We calculate lithostatic pressure P using the values listed for ρ and g .

Figure 23: Average lithosphere rheology using wet and dry olivine diffusion and dislocation creep rheological parameters from Hirth and Kohlstedt (2003) applied to continental and oceanic lithospheres (see section 2), left panels: η_0 for different values of grain size d , dotted lines denote average η_0 ; right panels: σ_t , dotted lines denote values below the LAB defined by $\eta_0 = 10^{20}$ Pa s. The top depth represents the brittle-plastic transition defined by the intersection of the Goetze criterion and the ductile stress at a strain rate of 10^{-14} s $^{-1}$.



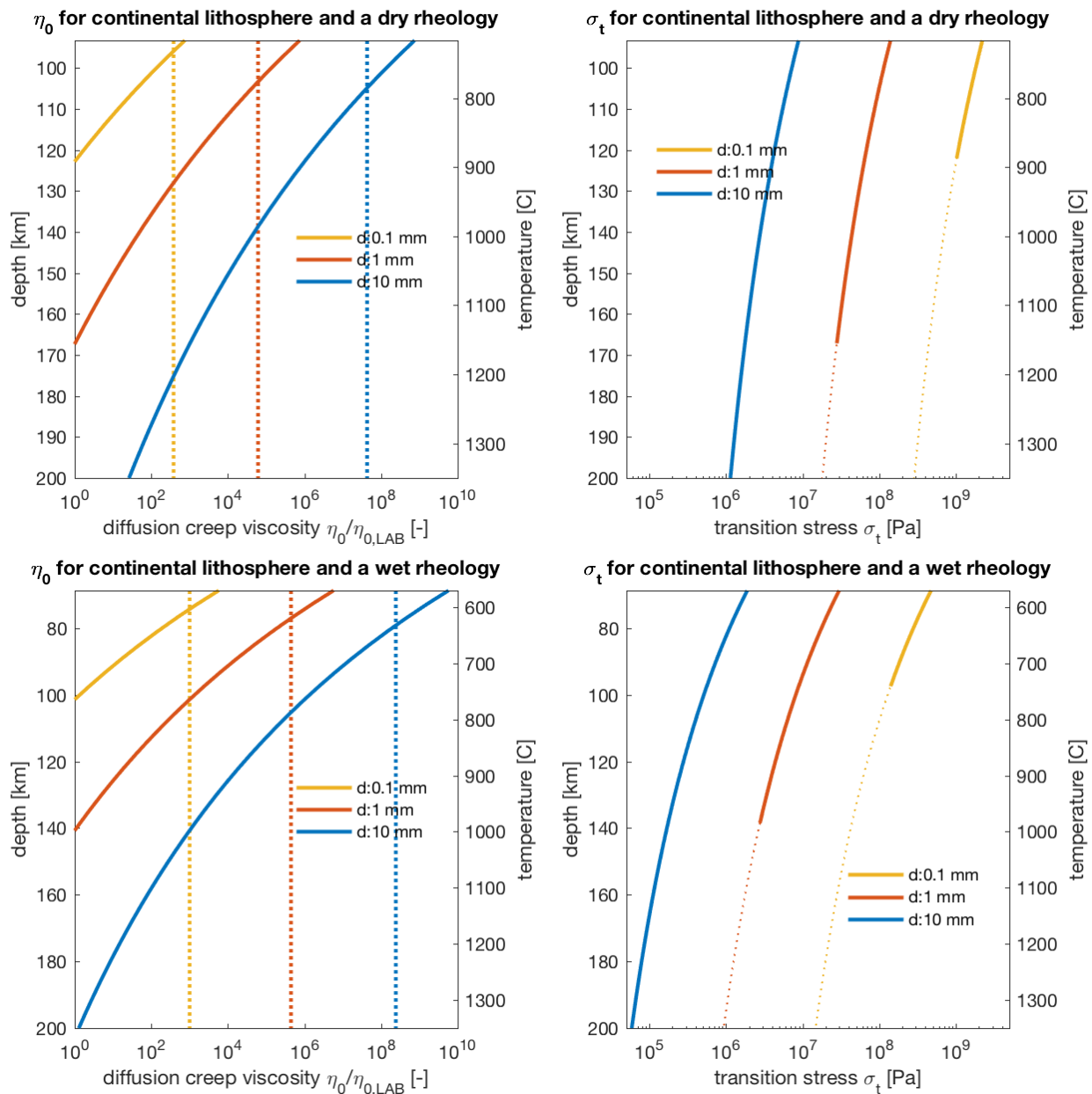


Figure 23: continued