



**Andrea Beznitchi / 5861683**

msc 3/4 palace stockholm - interiors buildings cities

## **design studio mentors**

Sam De Vocht

Daniel Rosbottom

Susanne Pietsch

Mark Pimlott

## **research seminar mentors**

Sereh Mandias

Jurjen Zeinstra

The architectural theme and spatial typology explored in the Interiors Buildings Cities graduation studio is the Palace. As a complex public institution that accommodates life and architecture at different scales, the Stockholm Public Library was the focal point for the studio this year. Around the turn of the century, libraries were confronted with increased digitalisation, privatisation of public space and questions about their role in society. The institution has gradually transformed - from a place dedicated to lending books to a complex public space that promotes inclusivity and diversity by allowing people to engage in the ever-growing world of knowledge.

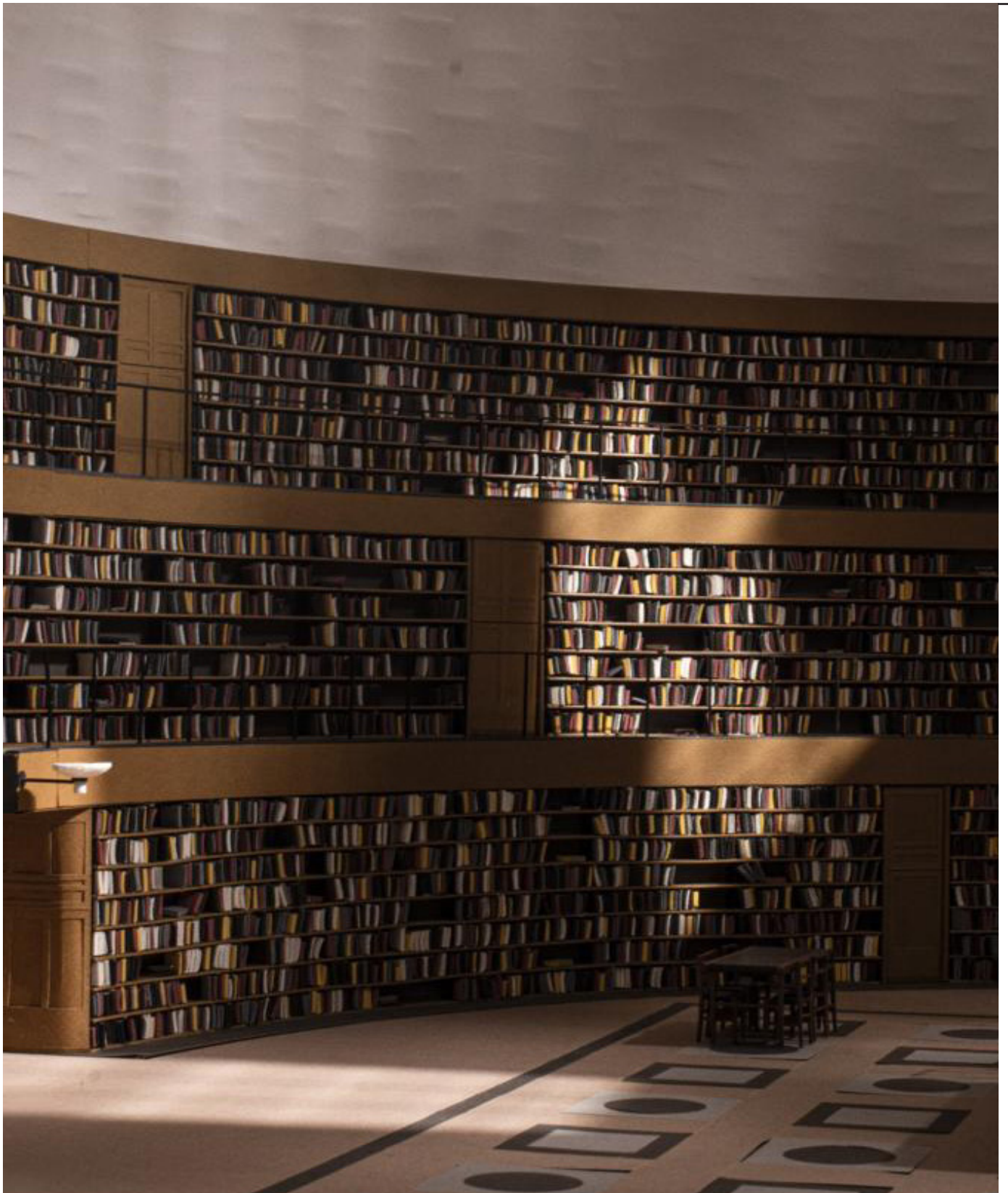
The starting point of the studio is the architectural competition launched in 2006, which sought the expansion of the Library and the possibility of a renewed urban strategy. The challenge then became addressing the identity of the monumental building and the integration of a wide range of programmes, as well as discussing and embracing issues of equality and multiculturalism.

## looking carefully - scenes from a public library

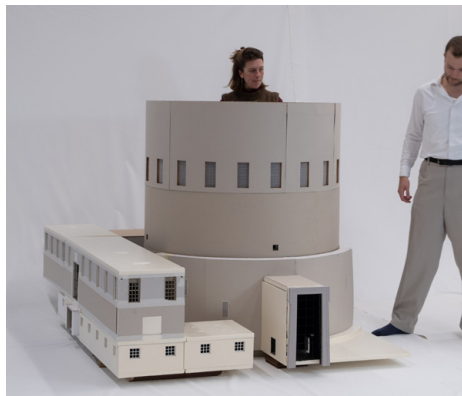
---

A 1:25 model of crucial spaces of the Library was built, by studying archival material. Intending to record how the library was conceived and perceived in its early existence, the studio was able to reflect, individually, on the overall strategy and the sensibility of the internal spaces. The main space in the Library, the Rotunda, is composed of walls housing a continuous horizontal system of open shelves. Constructed in a stepped manner, the space allows for a series of balconies to emerge, as well as the poche rooms behind the bookshelves. The modelling exercise enhanced the understanding of the seemingly endless room and the inhabited wall and its thickness, and it later became a critical aspect of the individual approach to the project.









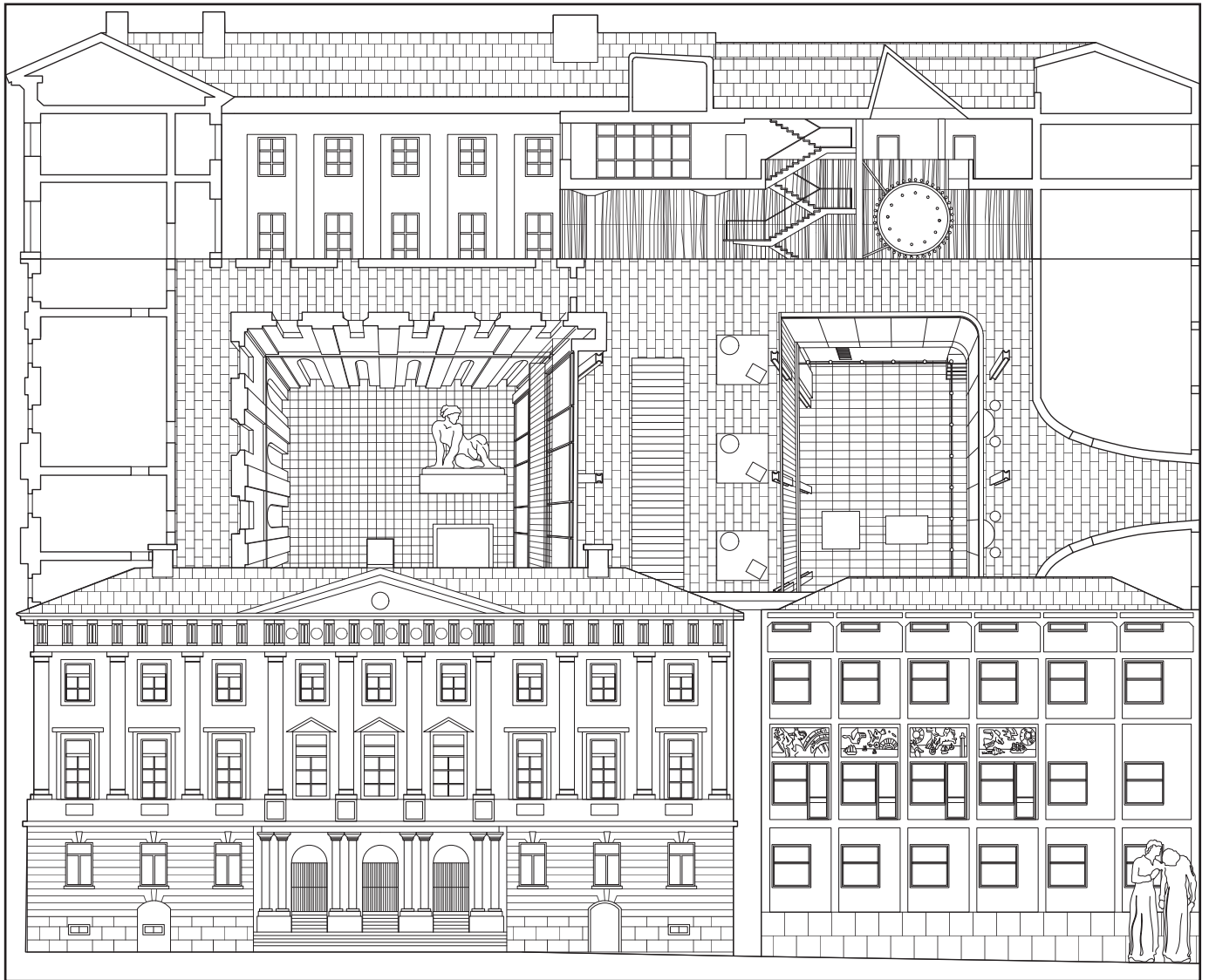
## looking carefully - Asplund's oeuvre

By LOOKING CAREFULLY, the studio has collectively examined the work and thinking of Gunnar Asplund. By studying the methods and compositional concerns of several projects, we were able to understand the wider frame in which the architect practised and developed individual positions towards the Library itself.

The research drawing of the Gothenburg Law Courts annex attempts to convey the most striking features of the proposal, focusing on the communication between the facades, in response to the square and internal courtyard, achieving symbiosis of the contemporary and the historic. Ultimately, the essence of the annex lies within its fluidity and effortlessness.



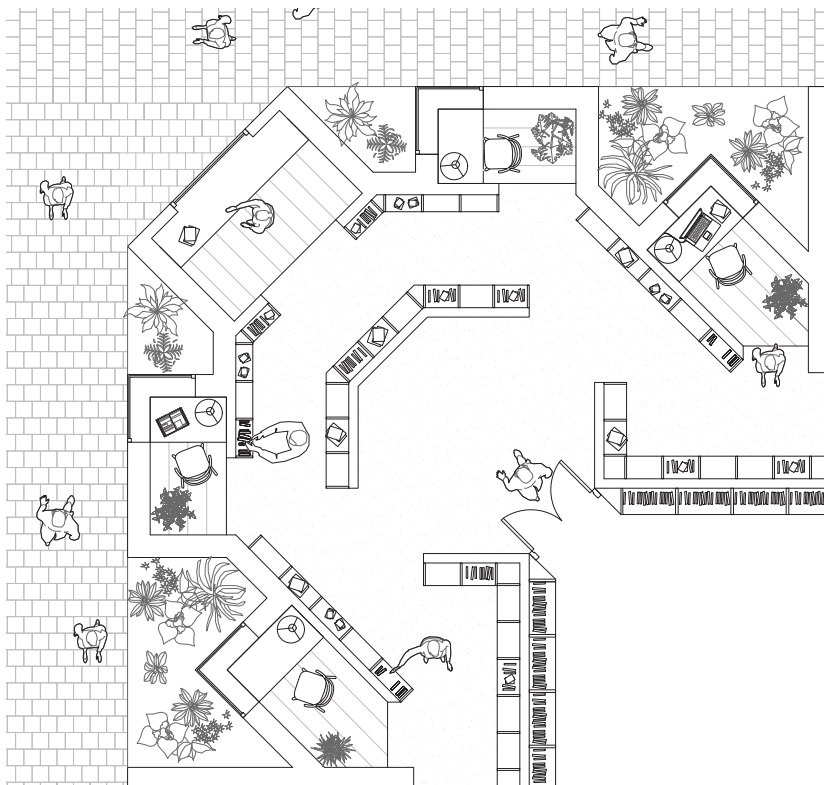




## first thoughts - the memory room

The proposal explores the concept of a library room as a memory collector, pondering the role of libraries in accommodating an immense body of knowledge and the connection between memory and the act of memorising the world. The envisioned space is described as a collector of different memories, architecturally embedded in a stretched-out wall.

Placed in a corner of a library, resembling a poché space, it facilitates the joy of discovering others' memories. The interconnected niches meet in the centre, forming the memory room. The focus, ultimately, lies in contrasting the monumentality of the memory room with the subtle acts and hidden objects/memories left behind.









## The Library - Public Destination for Private Intentions

The growing tendency in contemporary libraries is to get bigger and to offer more diverse programmes, almost becoming “cultural centres”. However, given the status of the Stockholm Public Library and its surroundings, my project is attempting to introduce new functions by increasing the quality of the existing spaces and providing increased accessibility through the independent structure. By carefully connecting the library and its existing annex, the proposal would be valuable in establishing a compelling and logical portrayal of the Public Library as a uniquely inclusive space.

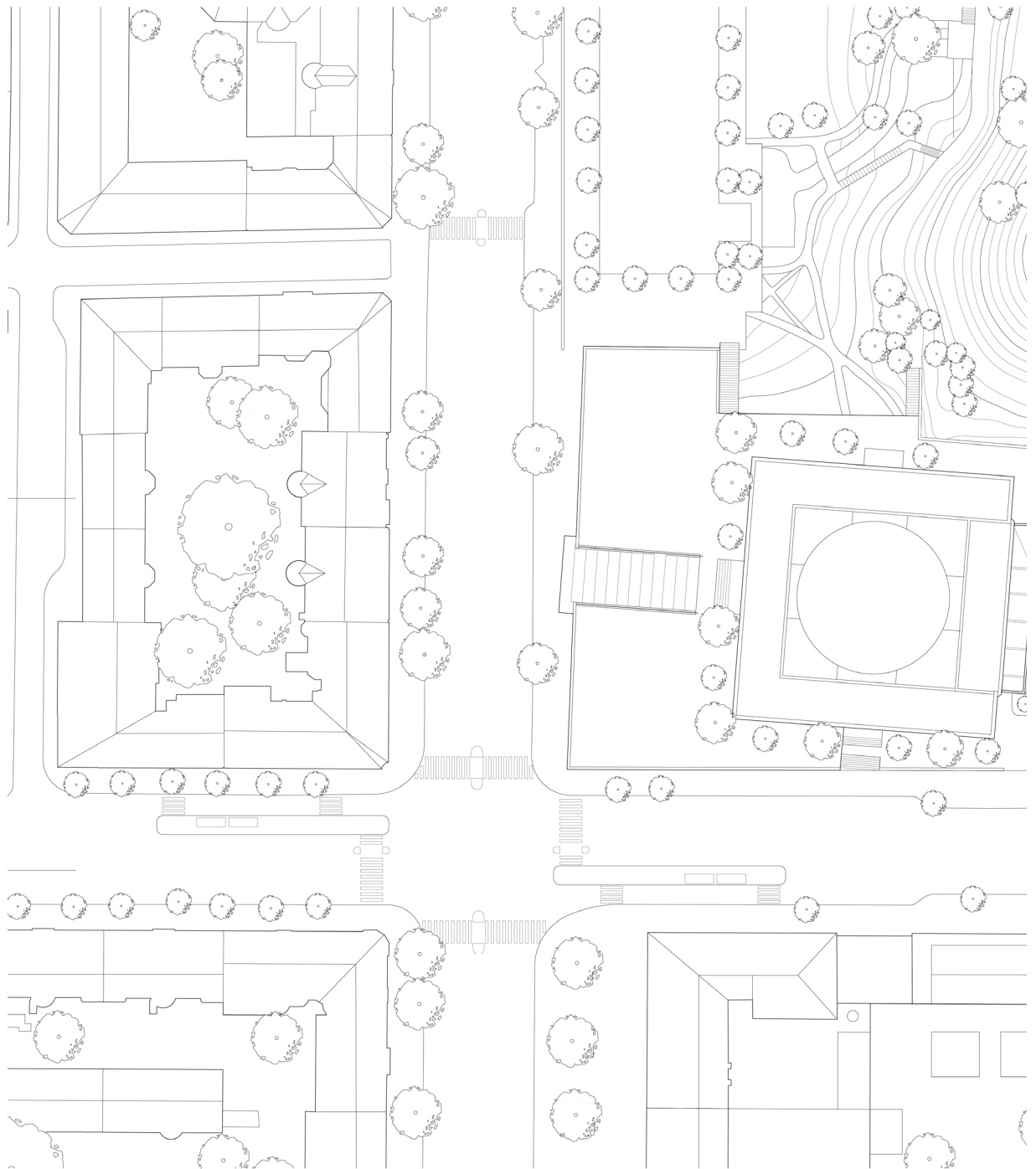


0

100

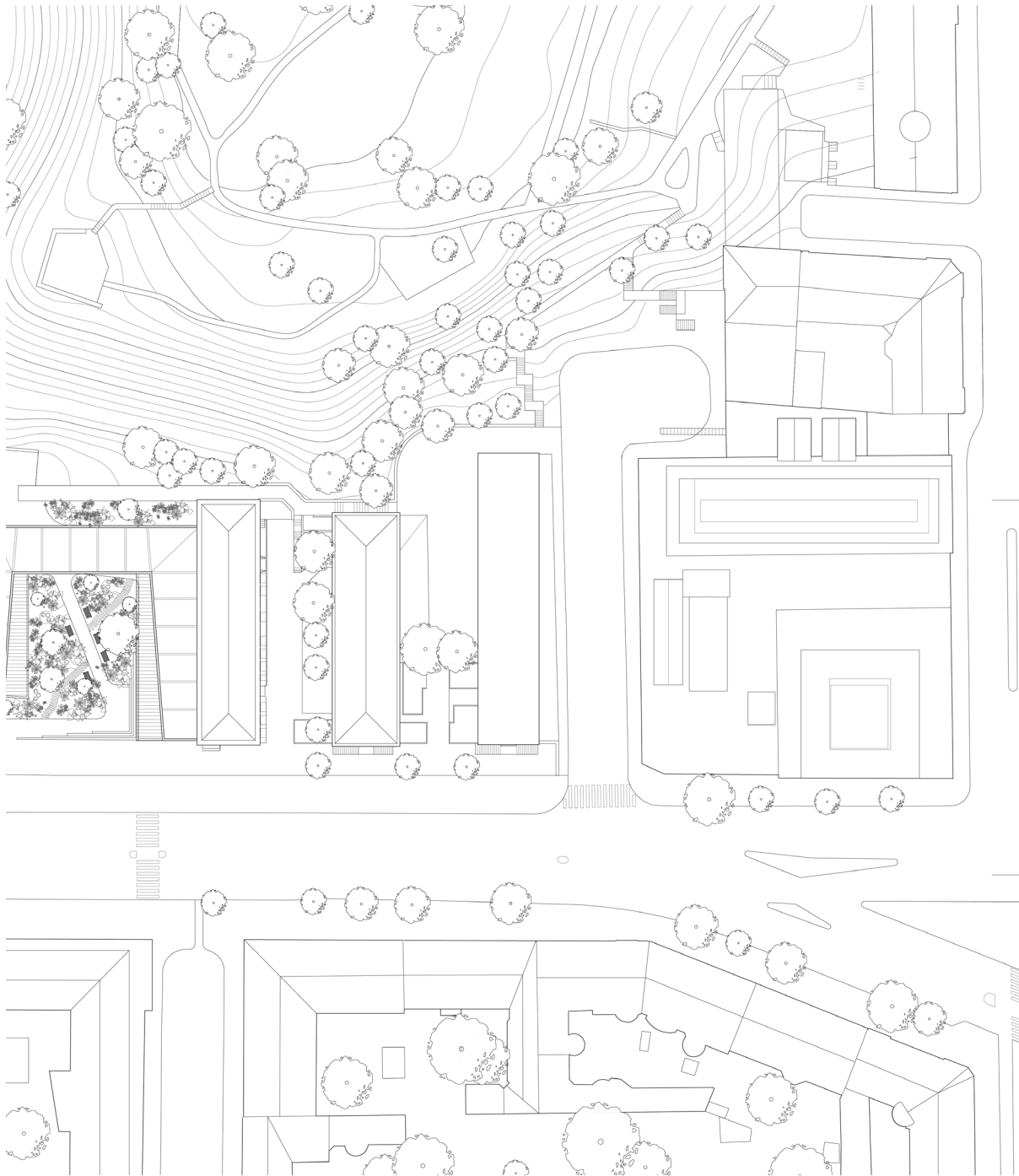
200

500m



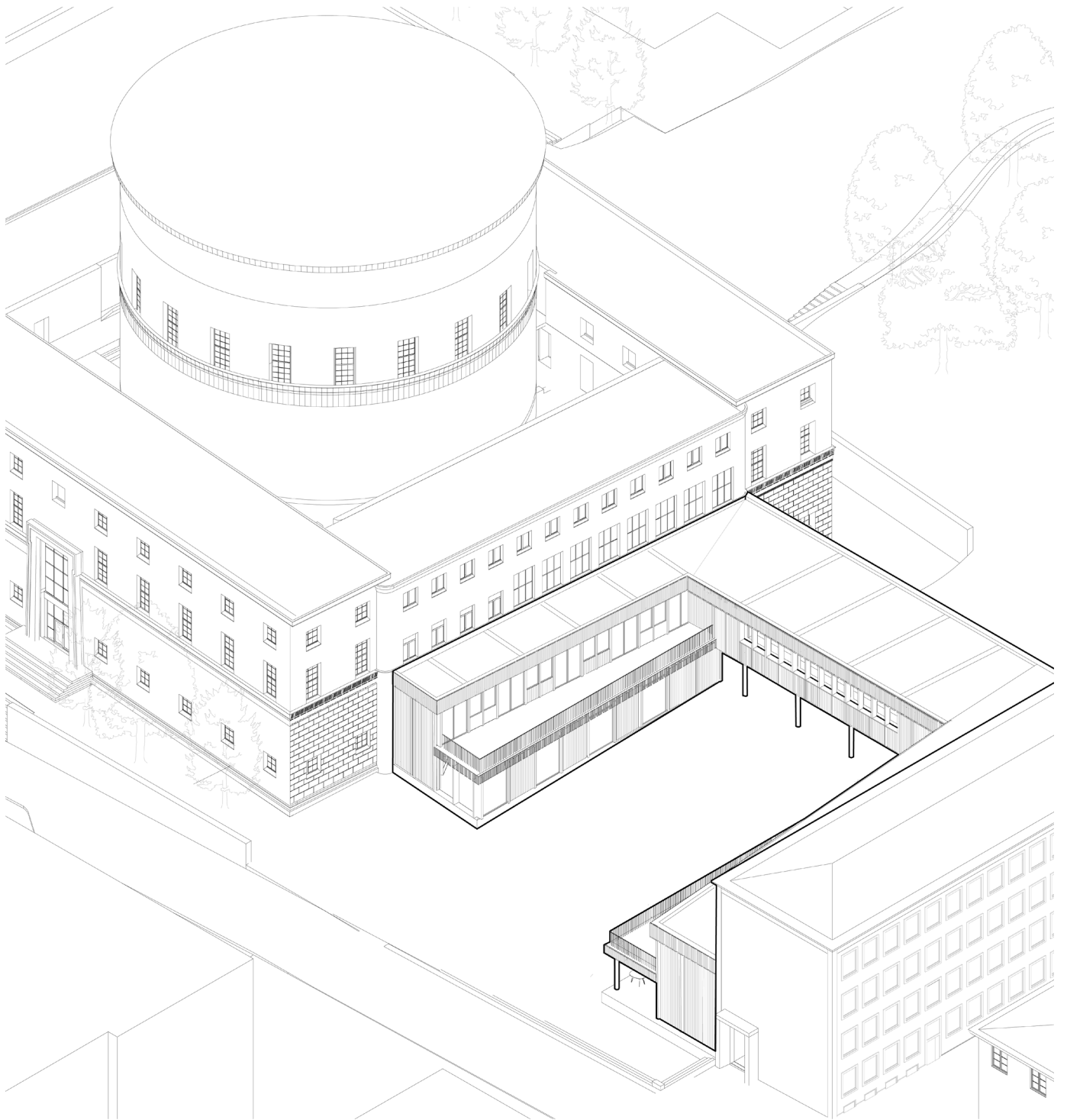
*site plan*





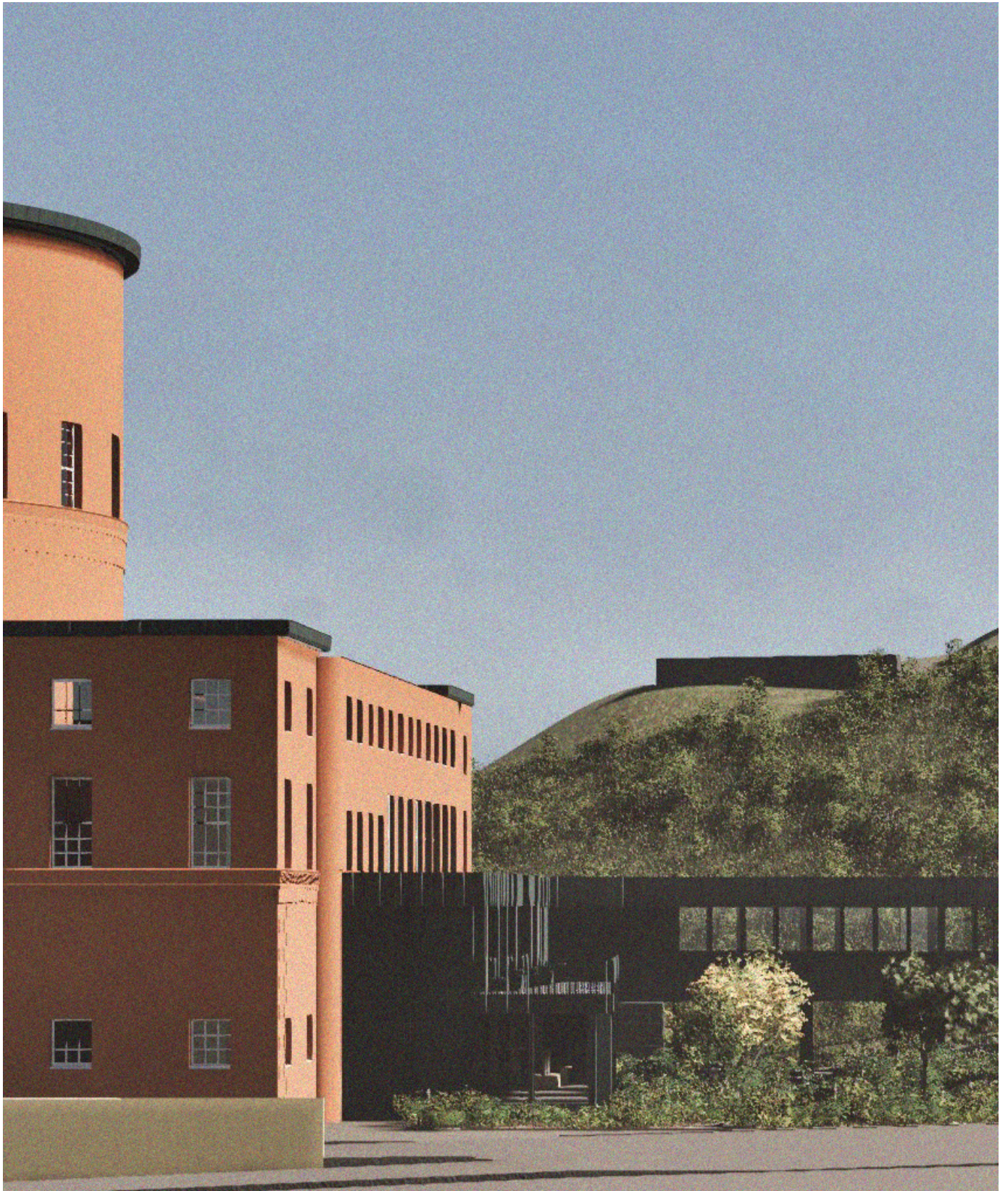
0 25 50 100m



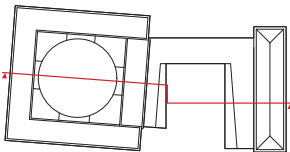
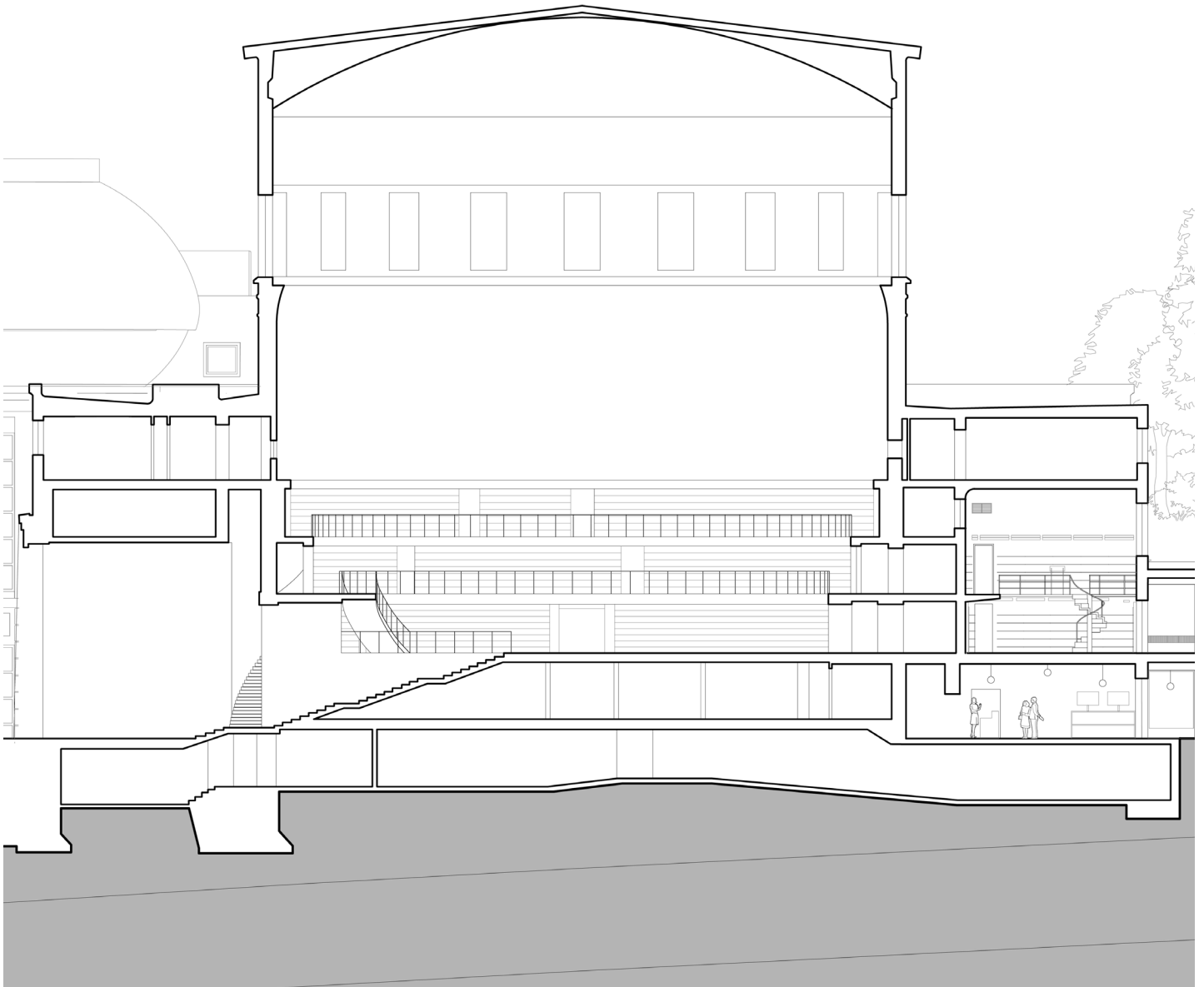


*building axonometric drawing*





*street view*



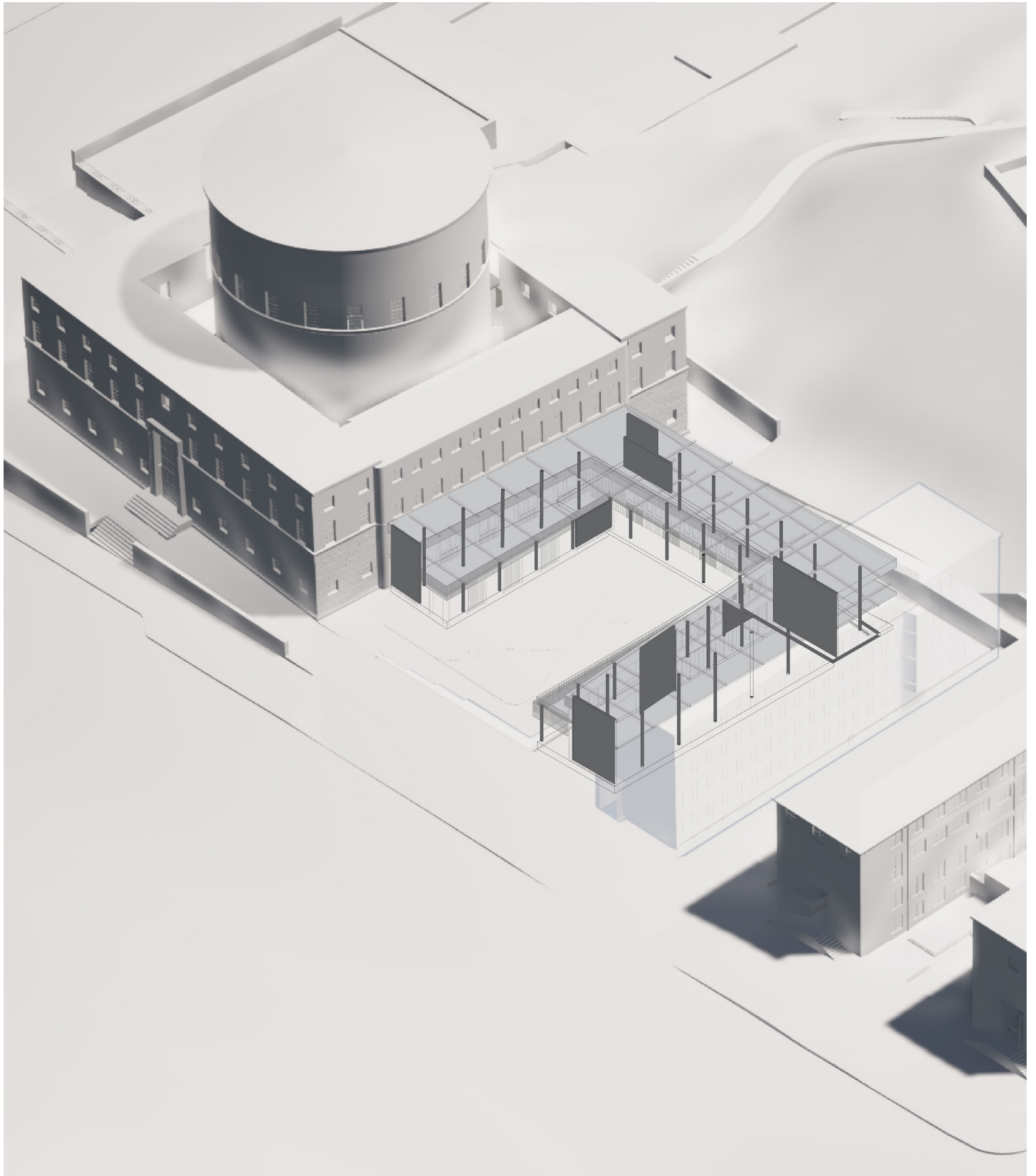
*section BB*



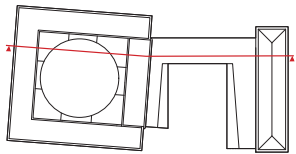
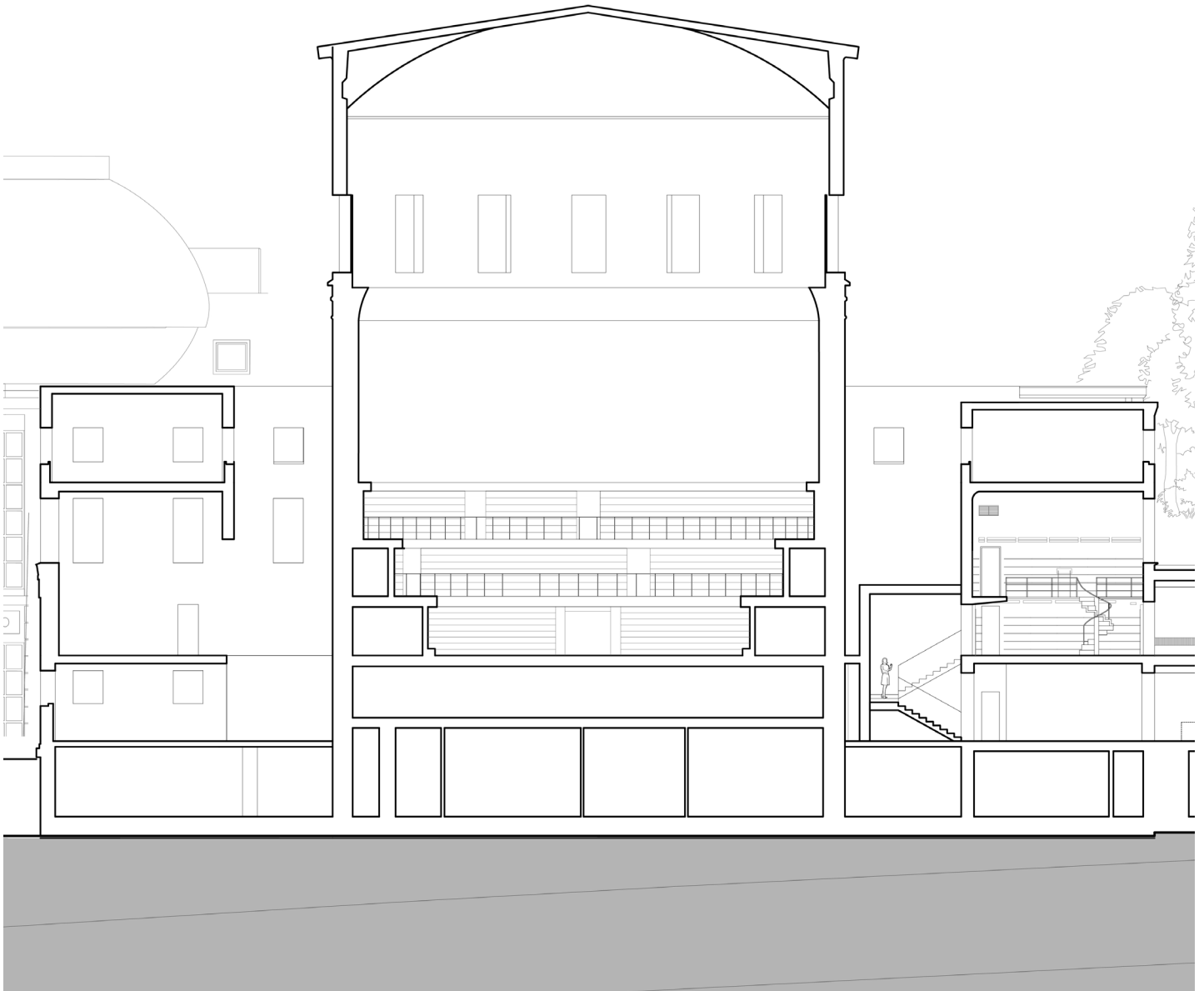
0 5 10 25m



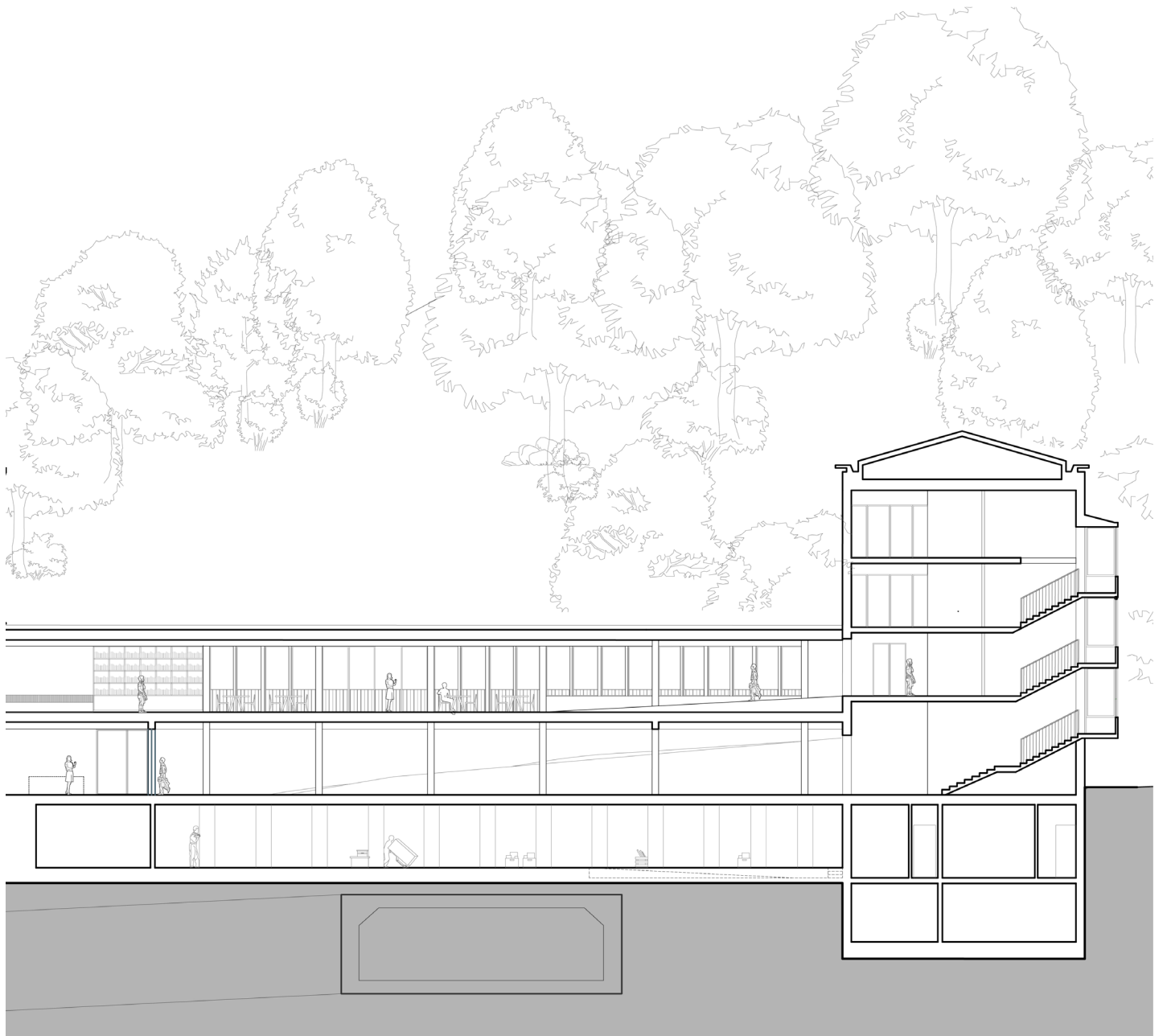




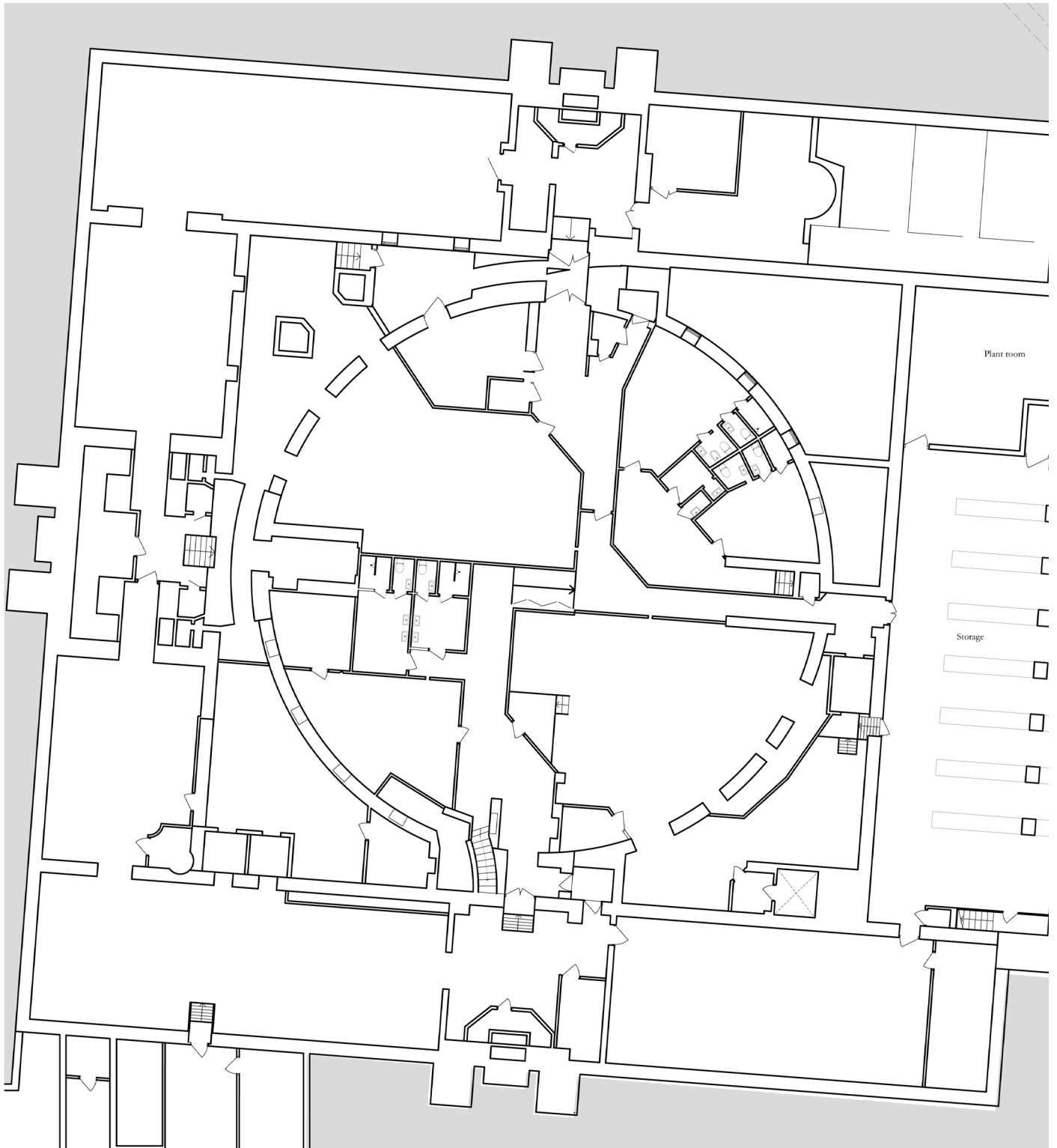
*structural diagram*



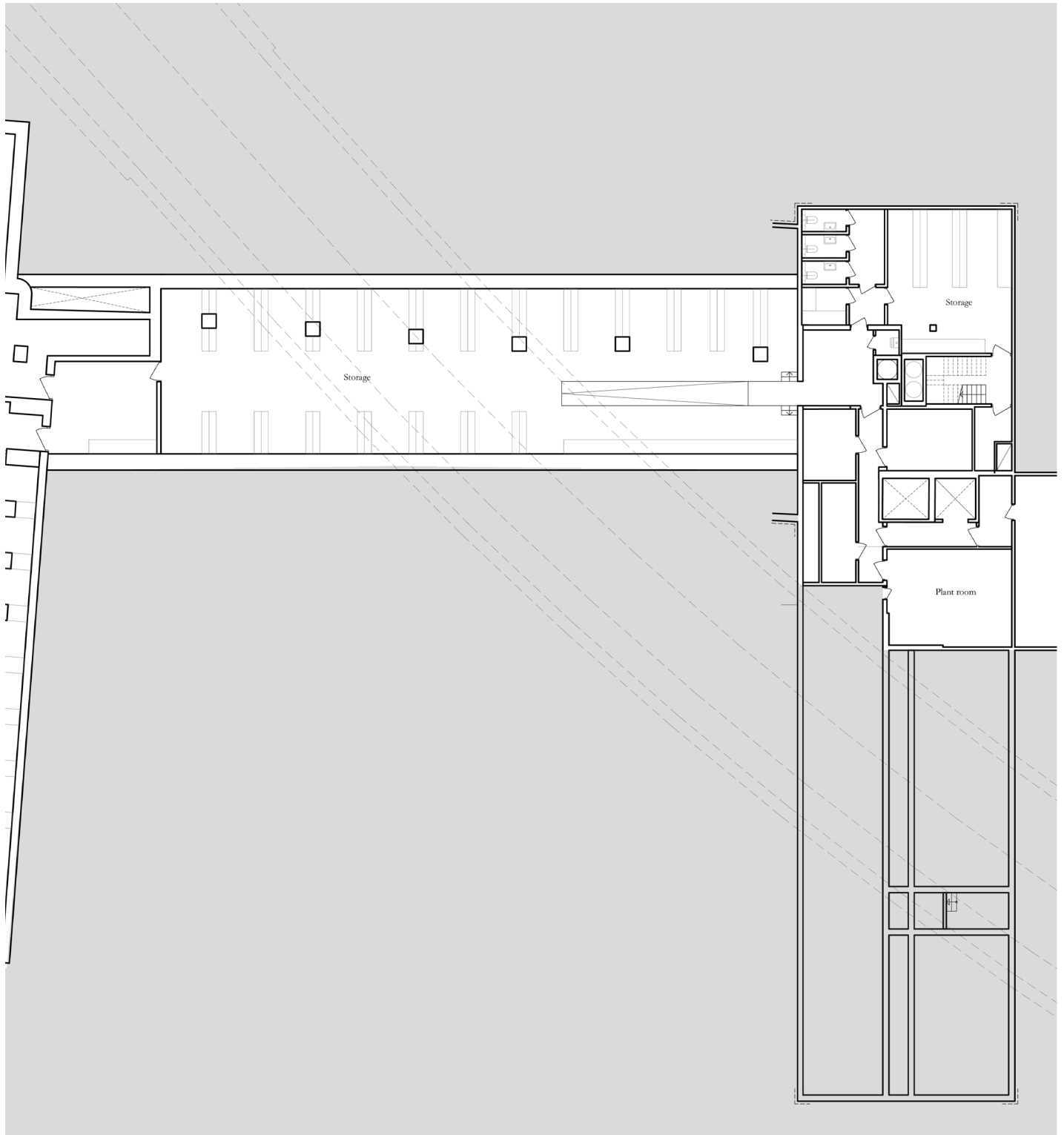
*section BB*

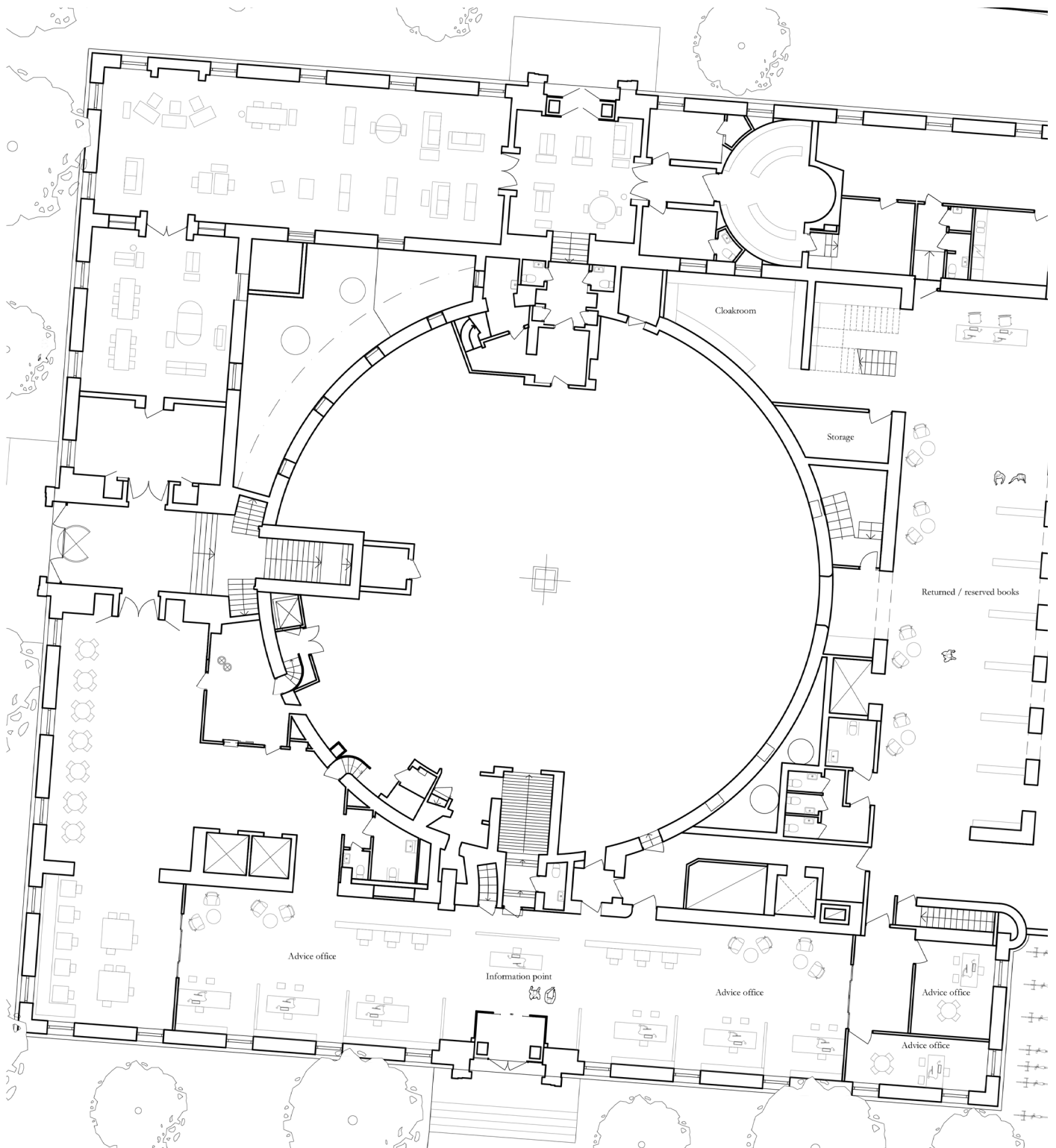


0 5 10 25m

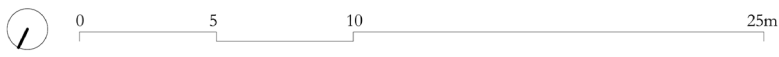


*basement plan*





*lower ground floor plan*

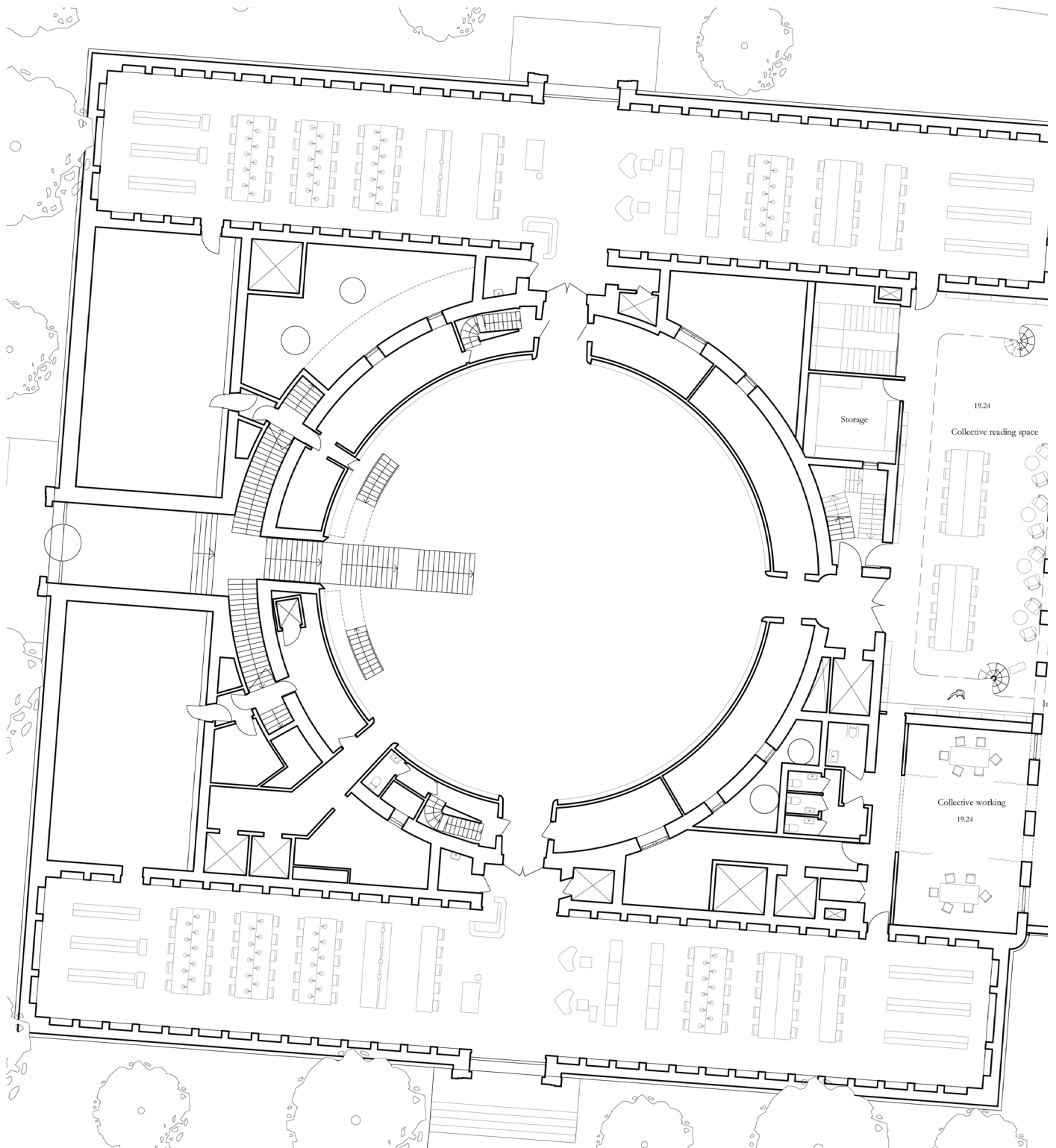




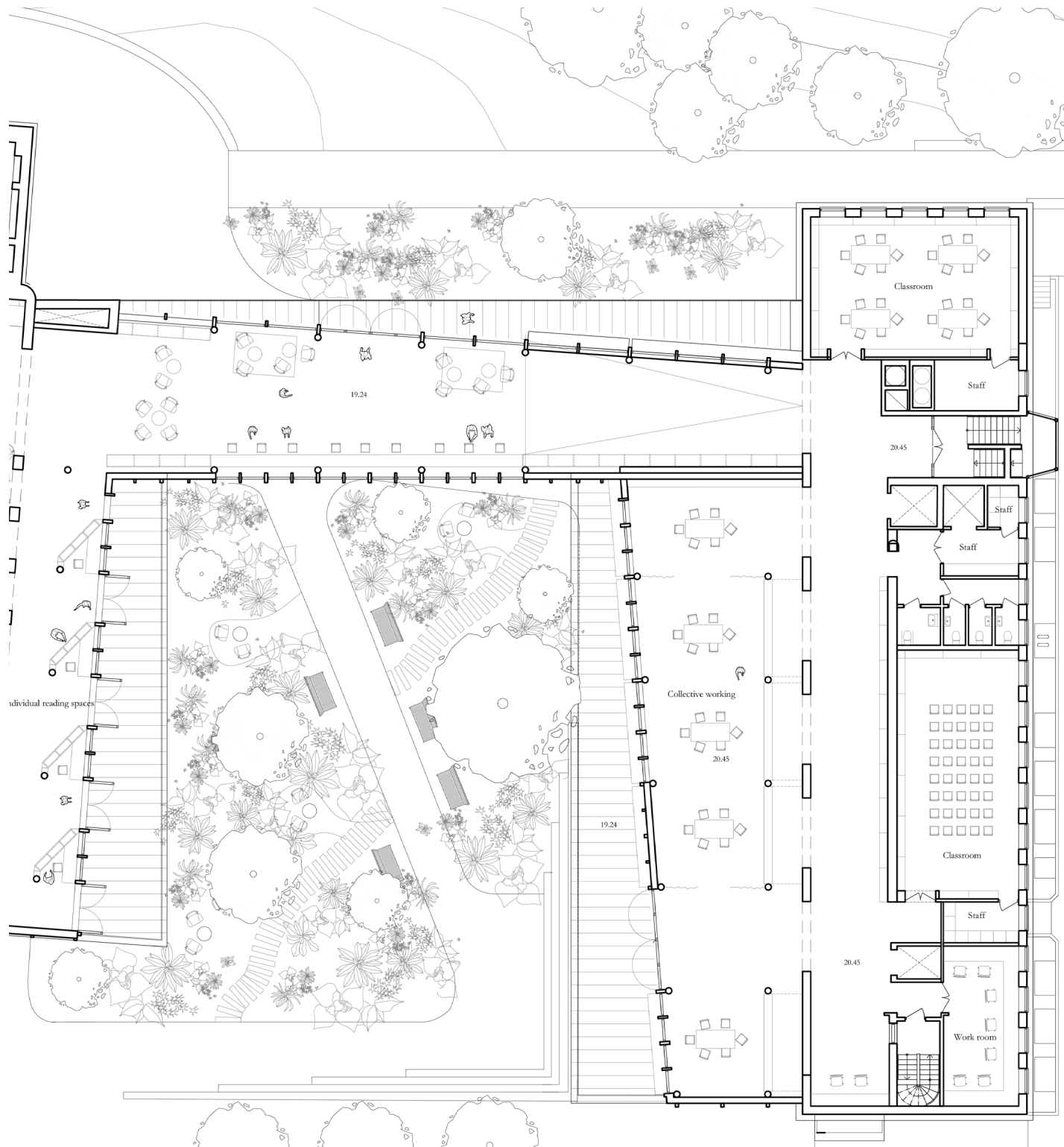


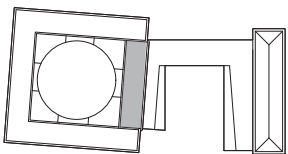
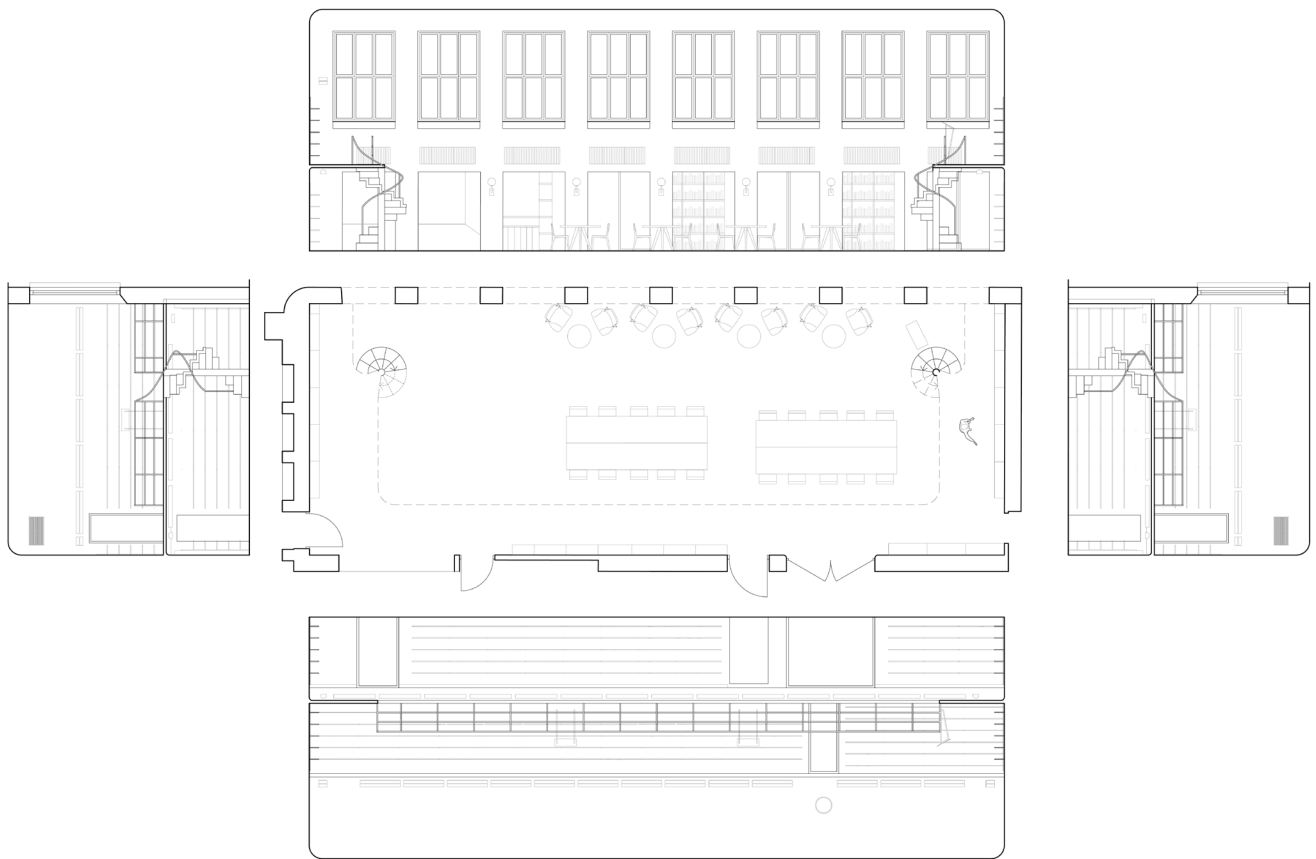


*proposed West Wing entrance - 1:25 model*

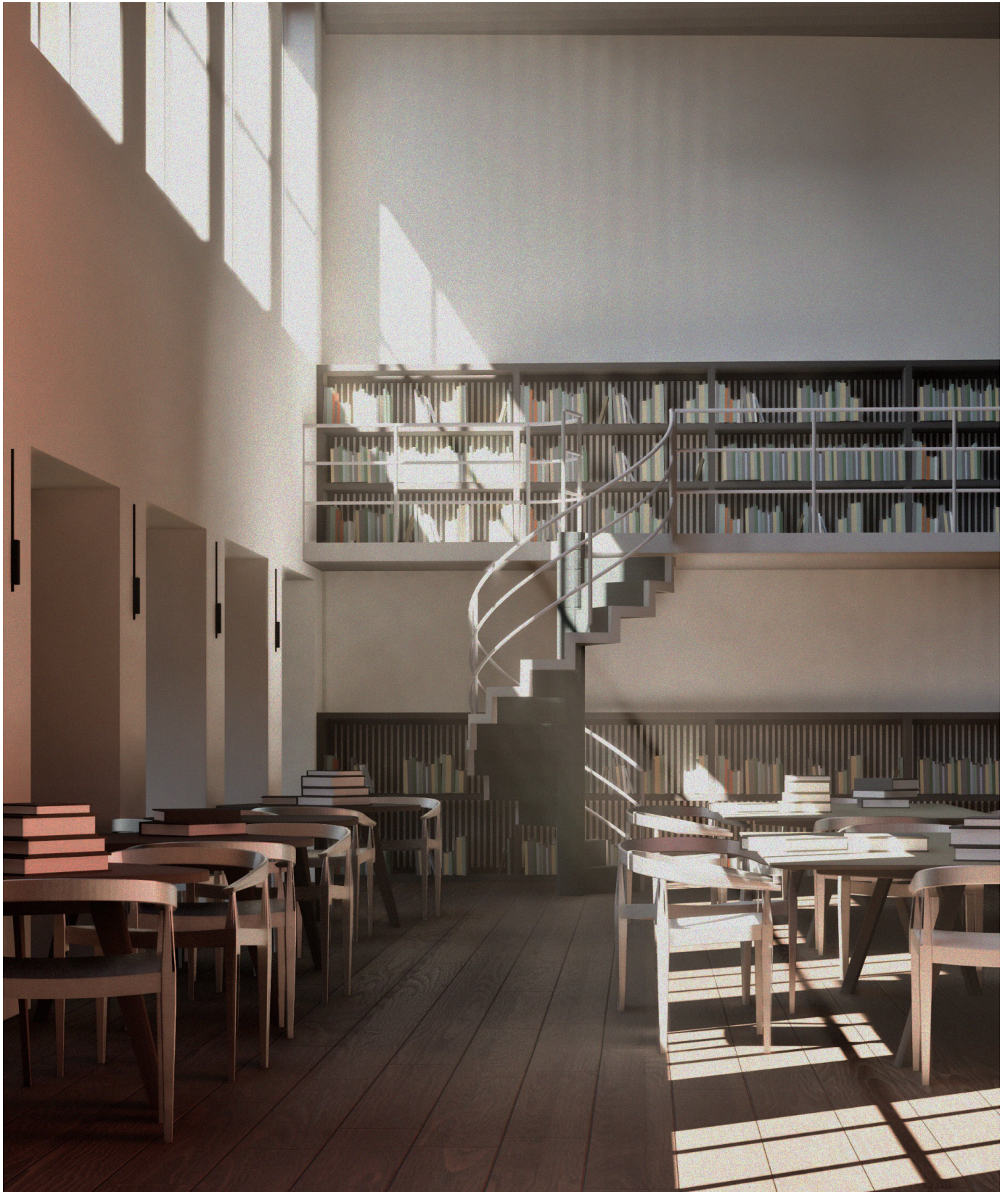


*ground floor plan*





*West Wing reading room*

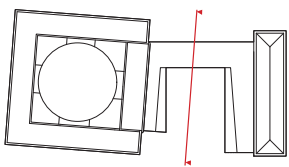


*view of the West wing reading room*



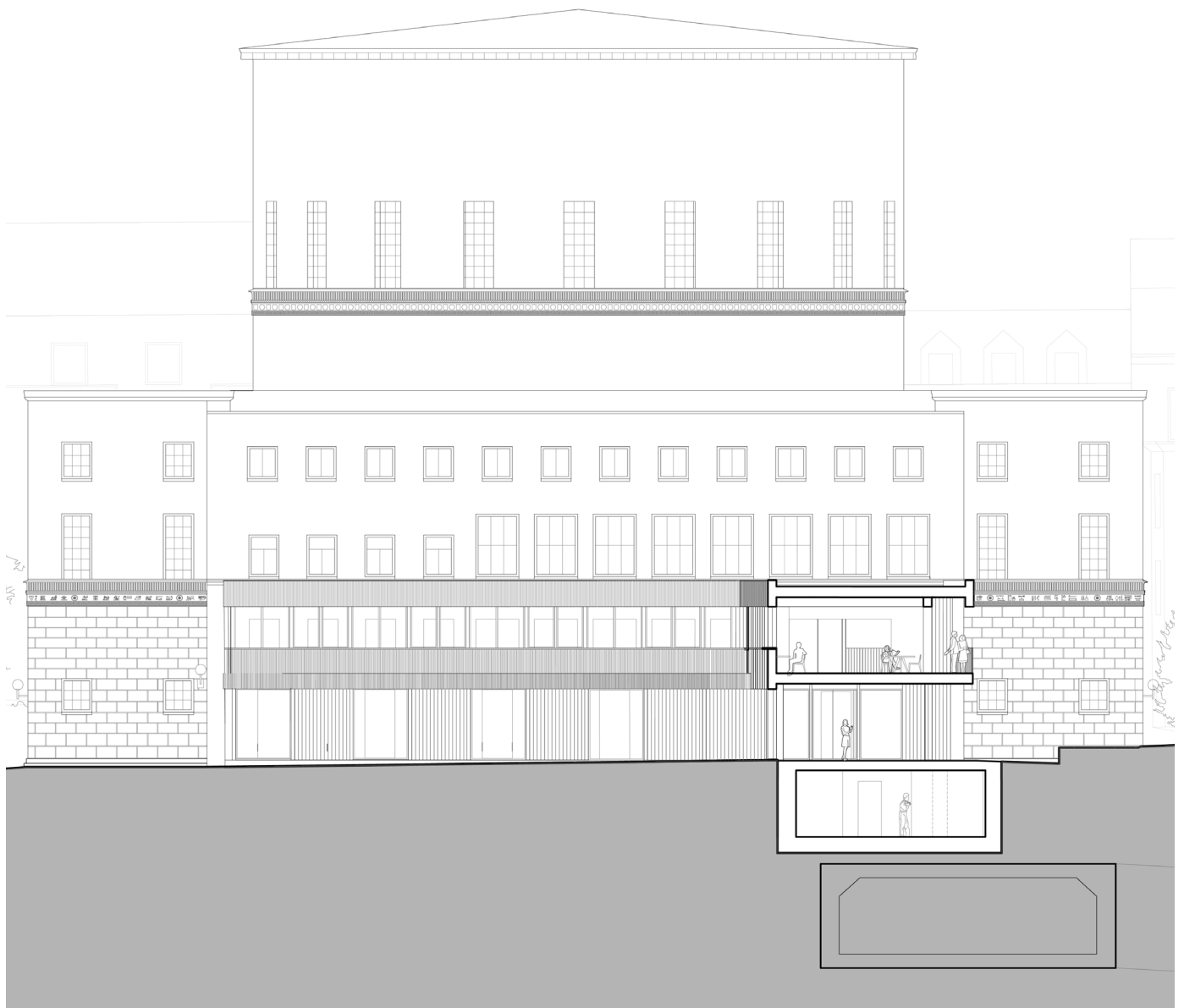


*view of the thematic furniture*

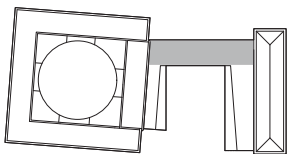


*section CC*





0 5 10 25m





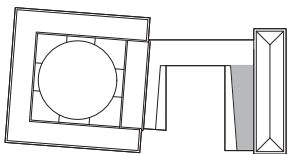
*view of the bridge looking towards the annex*



*view of the bridge from the terrace*

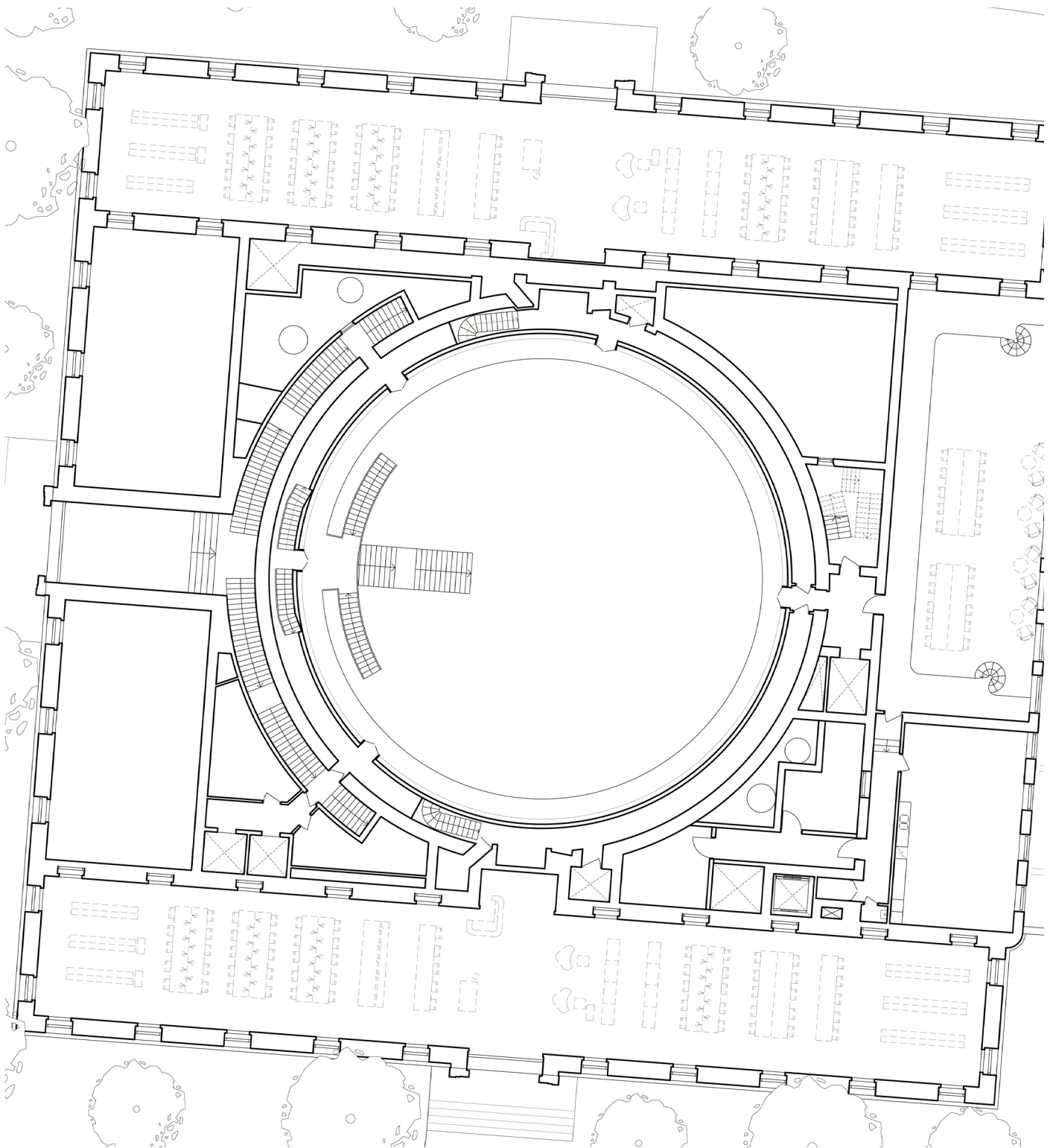


*view of the bridge looking towards the library*



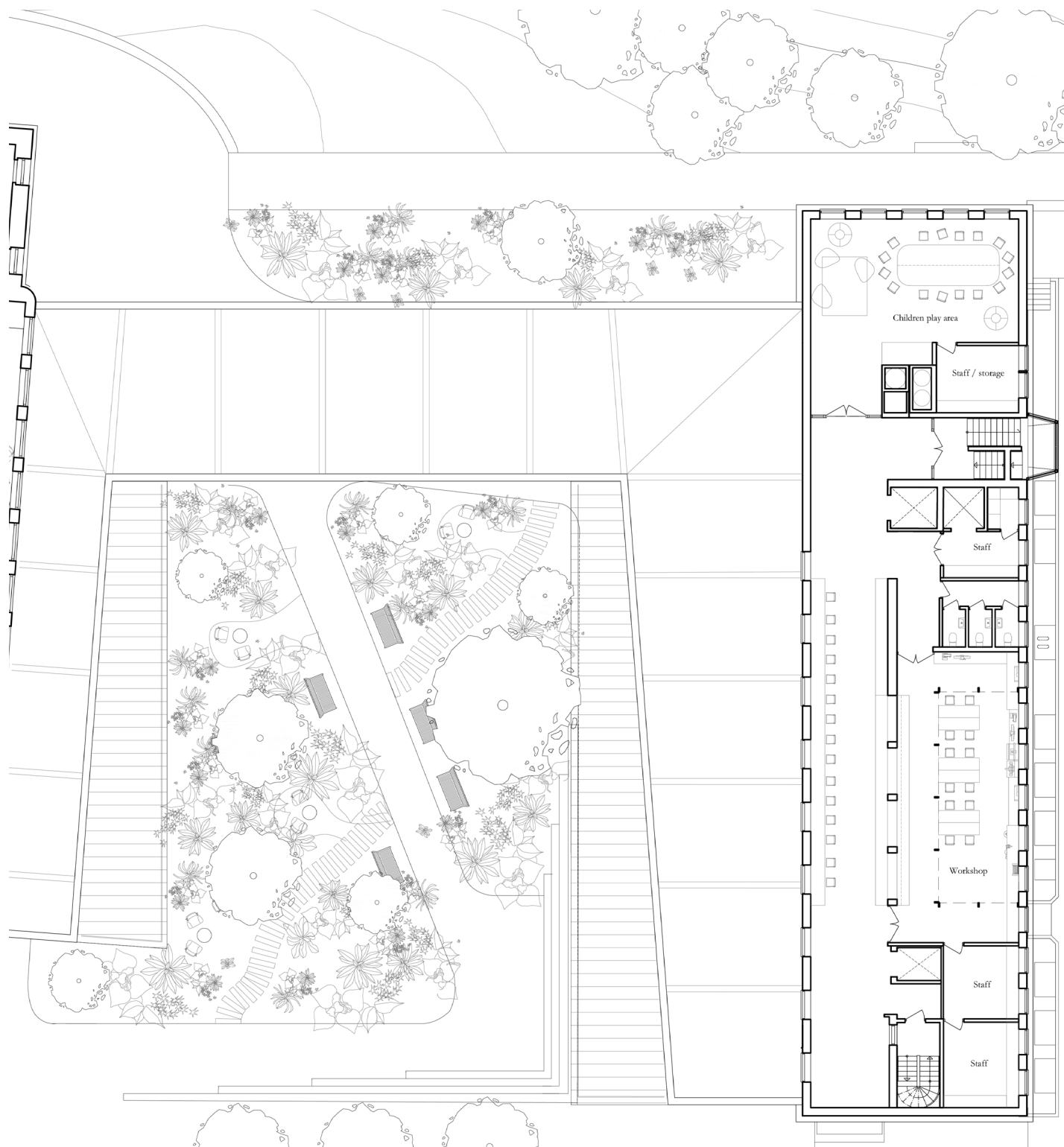


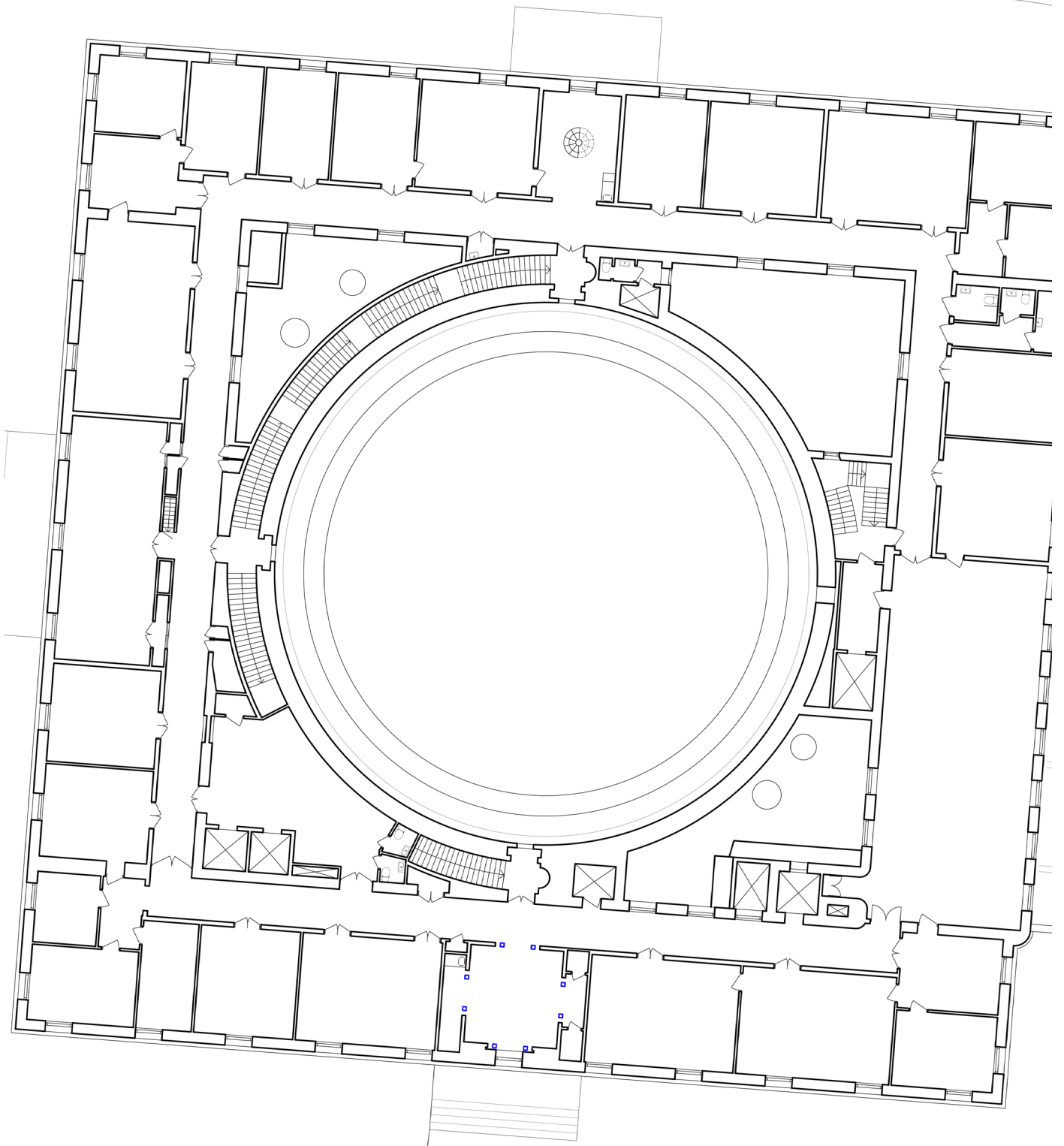
*view of the collective working spaces in the annex*



*first floor plan*





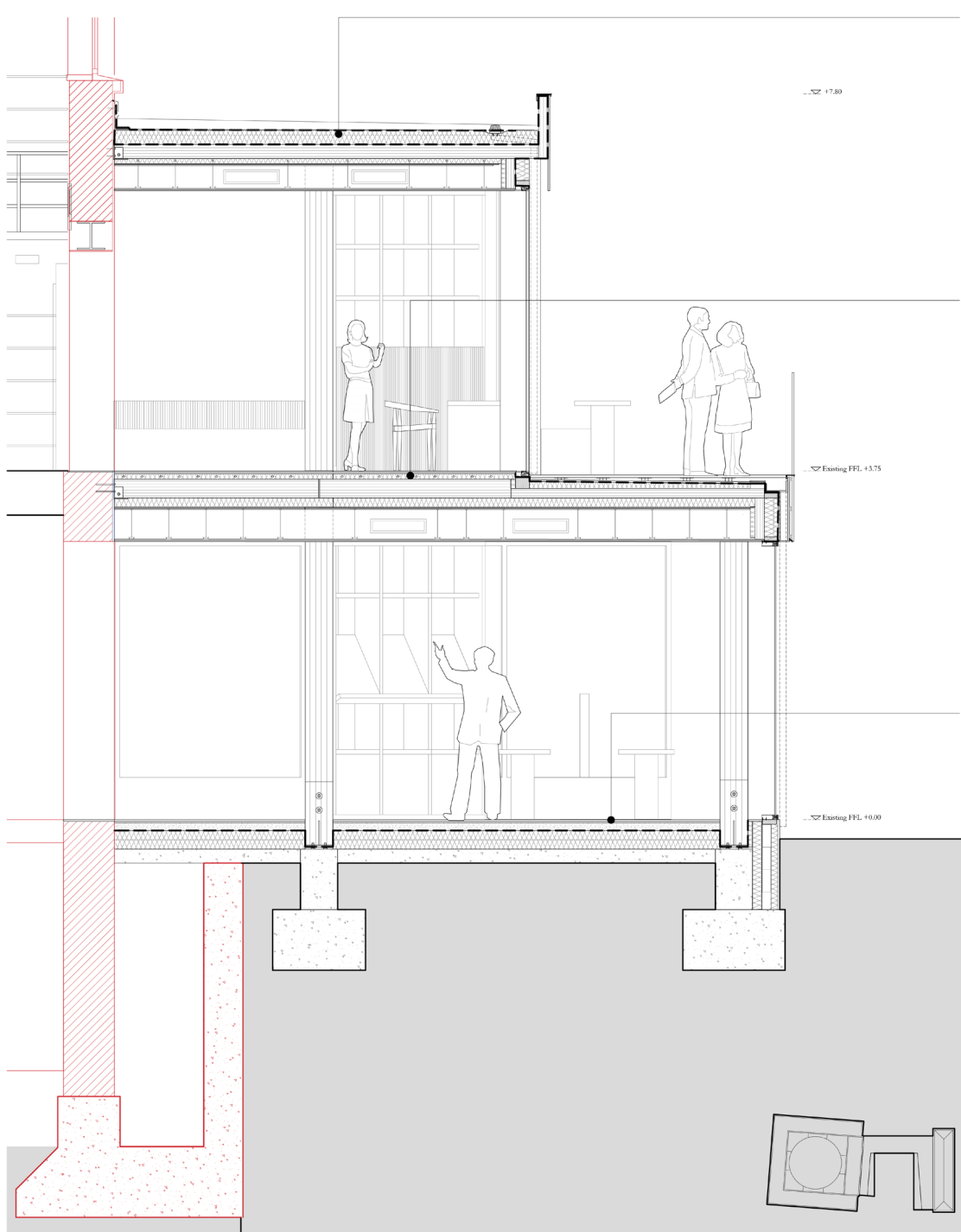


*second floor plan*



0 5 10 25m





1. roof construction

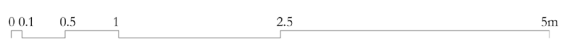
- protection layer
- breather membrane
- 150mm Rockwool insulation to fall
- vapour control layer
- 150mm CLT plate
- 60mm insulation
- 250mm service gap for mechanical ventilation ducts
- 25mm perforated timber panels

2. ground floor construction

- 20mm mycelium tiles on strong adhesive
- 60mm insulating board to facilitate UFH installation
- 200mm CLT plate in between
- 300mm I-beams
- 100mm Rockwool insulation
- 320mm service gap for mechanical ventilation ducts
- 25mm perforated timber panels

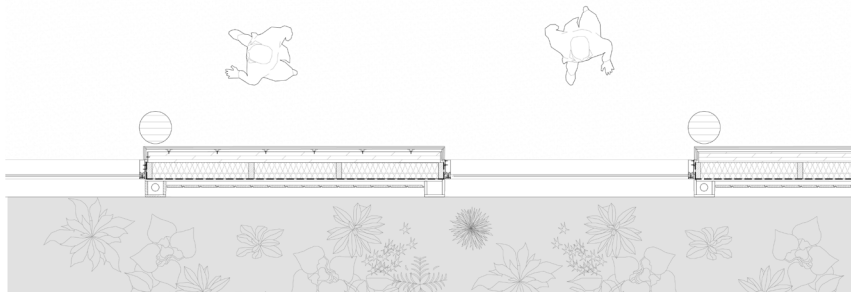
3. lower ground floor construction

- 20mm mycelium tiles on strong adhesive
- 70mm screed
- 200mm rigid insulation
- 150mm concrete slab



*detail section*





0.1 0.5 1 2.5 5m

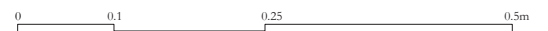
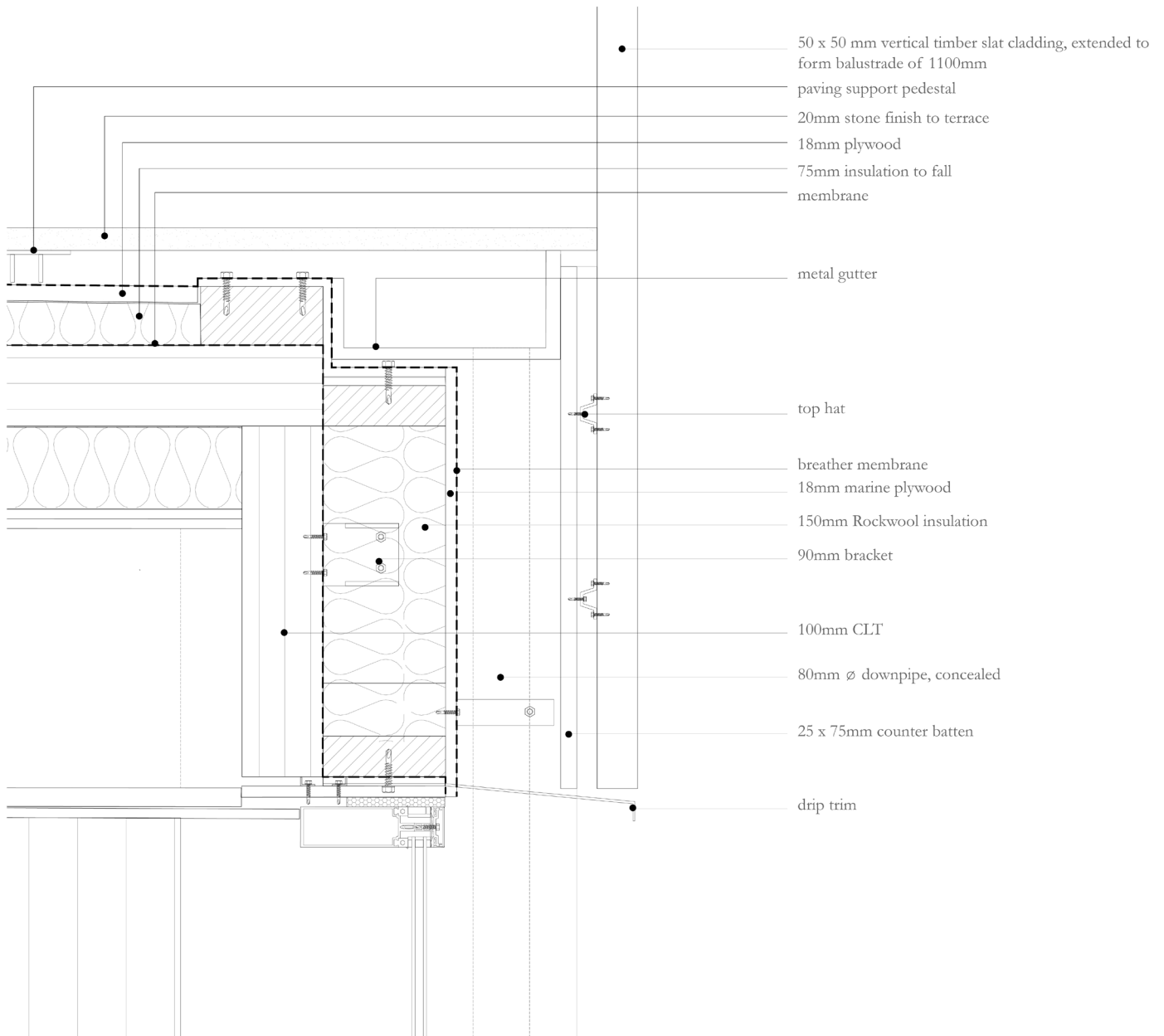
*detail plan & elevation*

Stockholm Public Library 55

*Design Project - Individual*

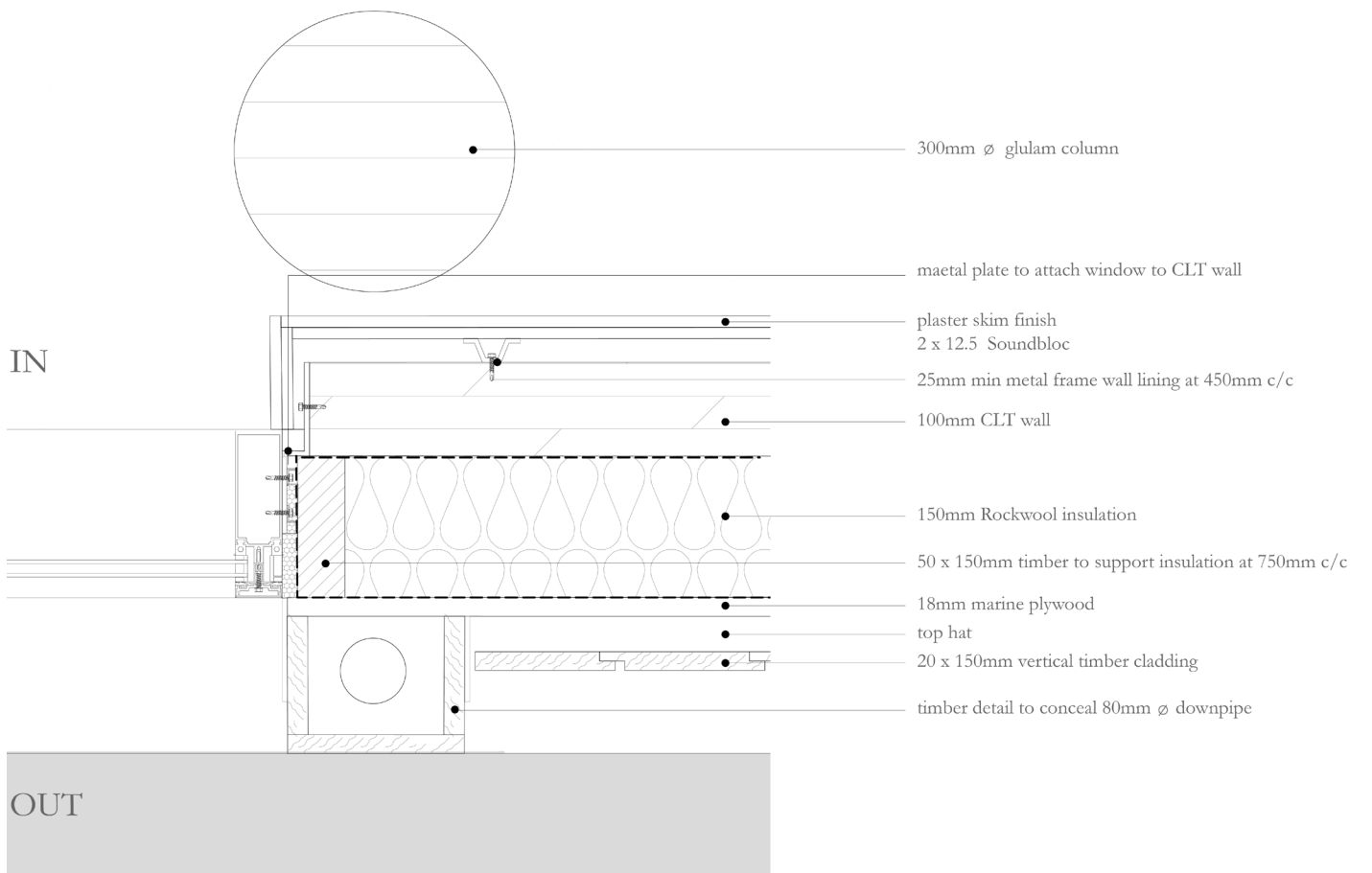






*terrace edge detail*





*wall detail*





*unfolded elevation of the new public front*



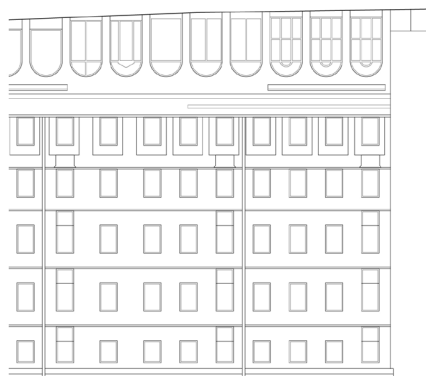
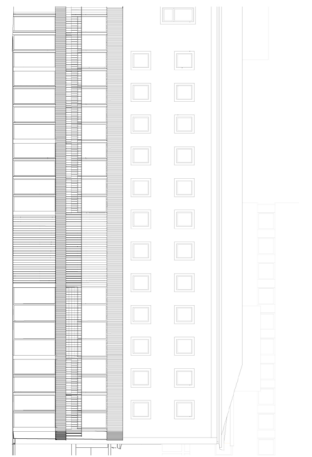
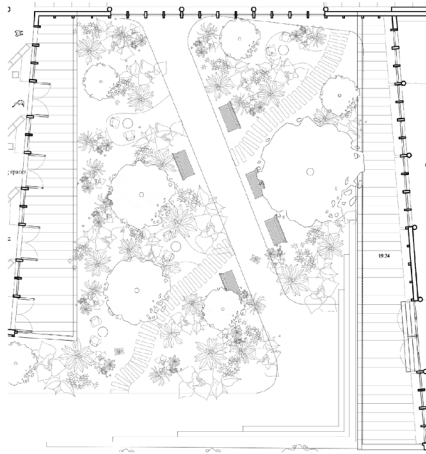
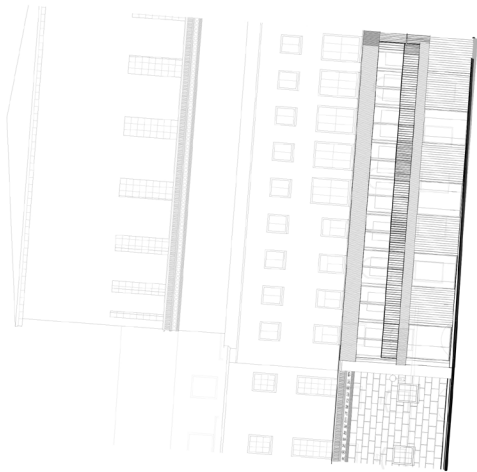
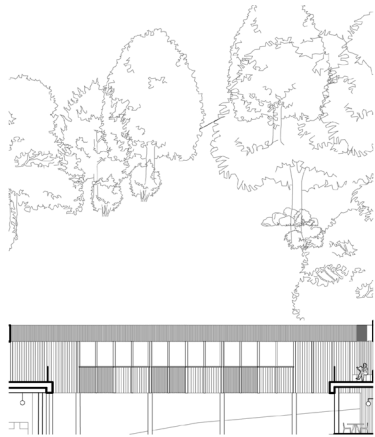
*new visible link between the Library and the annex, through balconies*



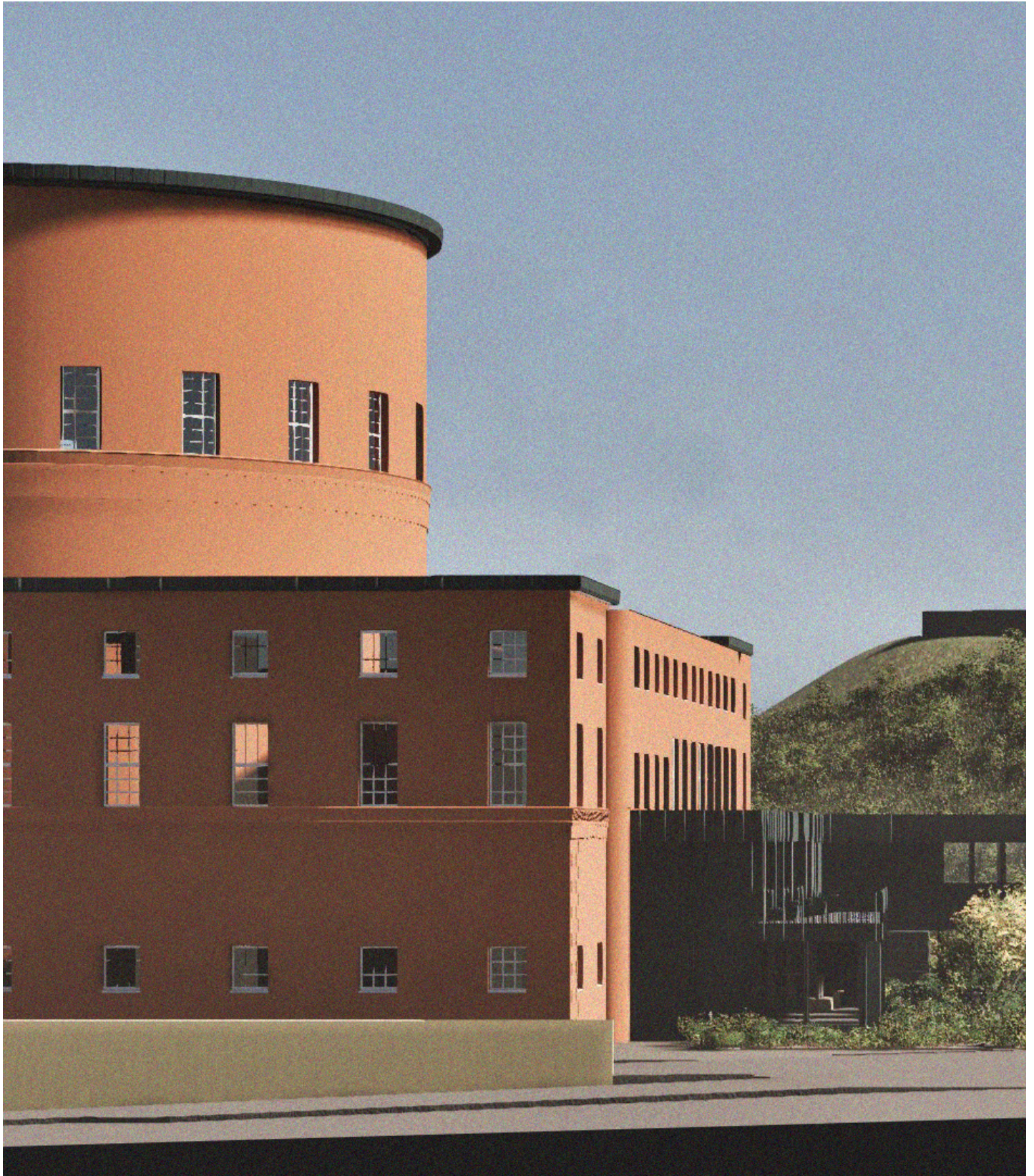
*new visible link between the Library and the annex, through balconies*



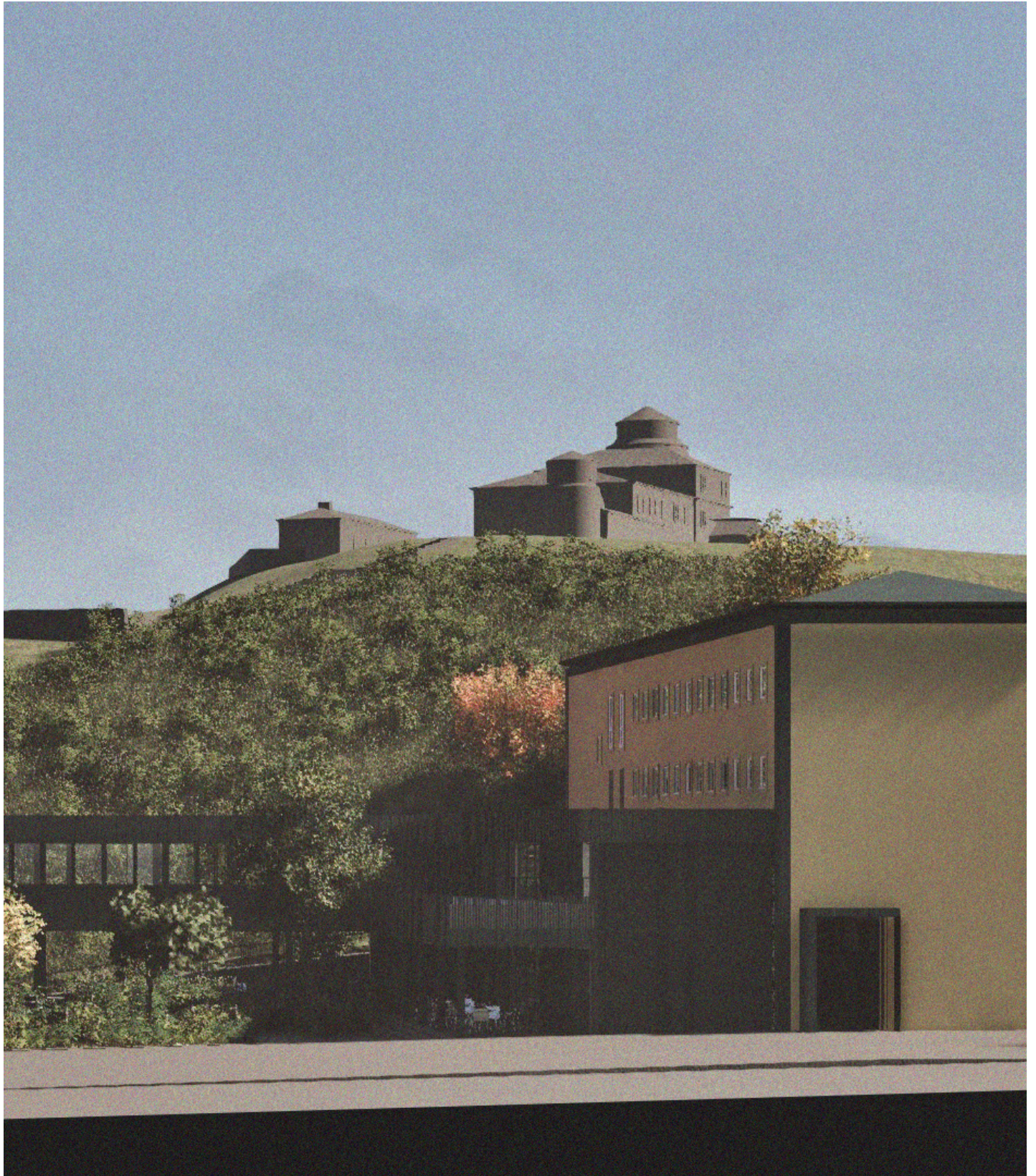




*diagram of courtyard creation*



*street view*



*street view*



*view of the garden*



*view of the garden*

