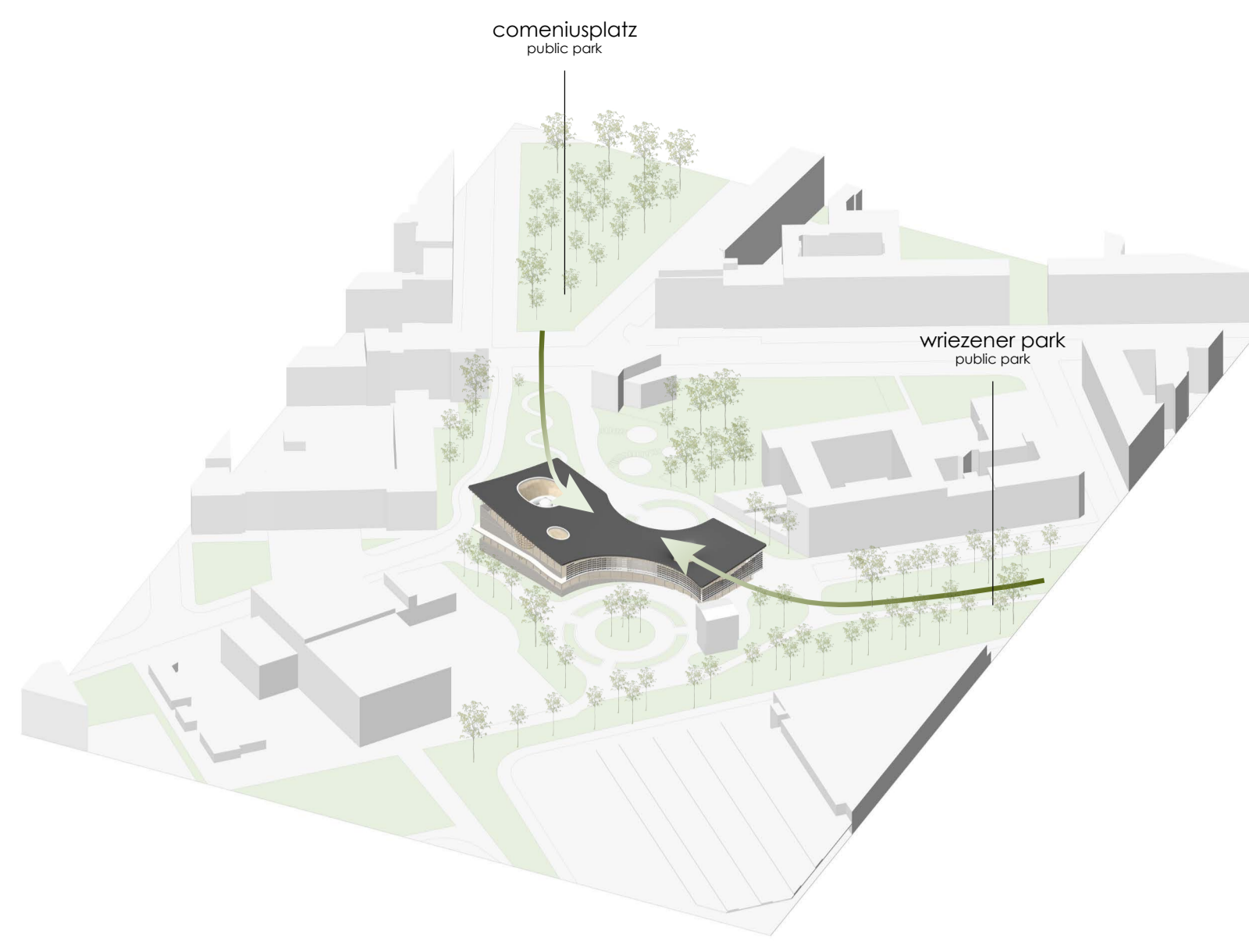
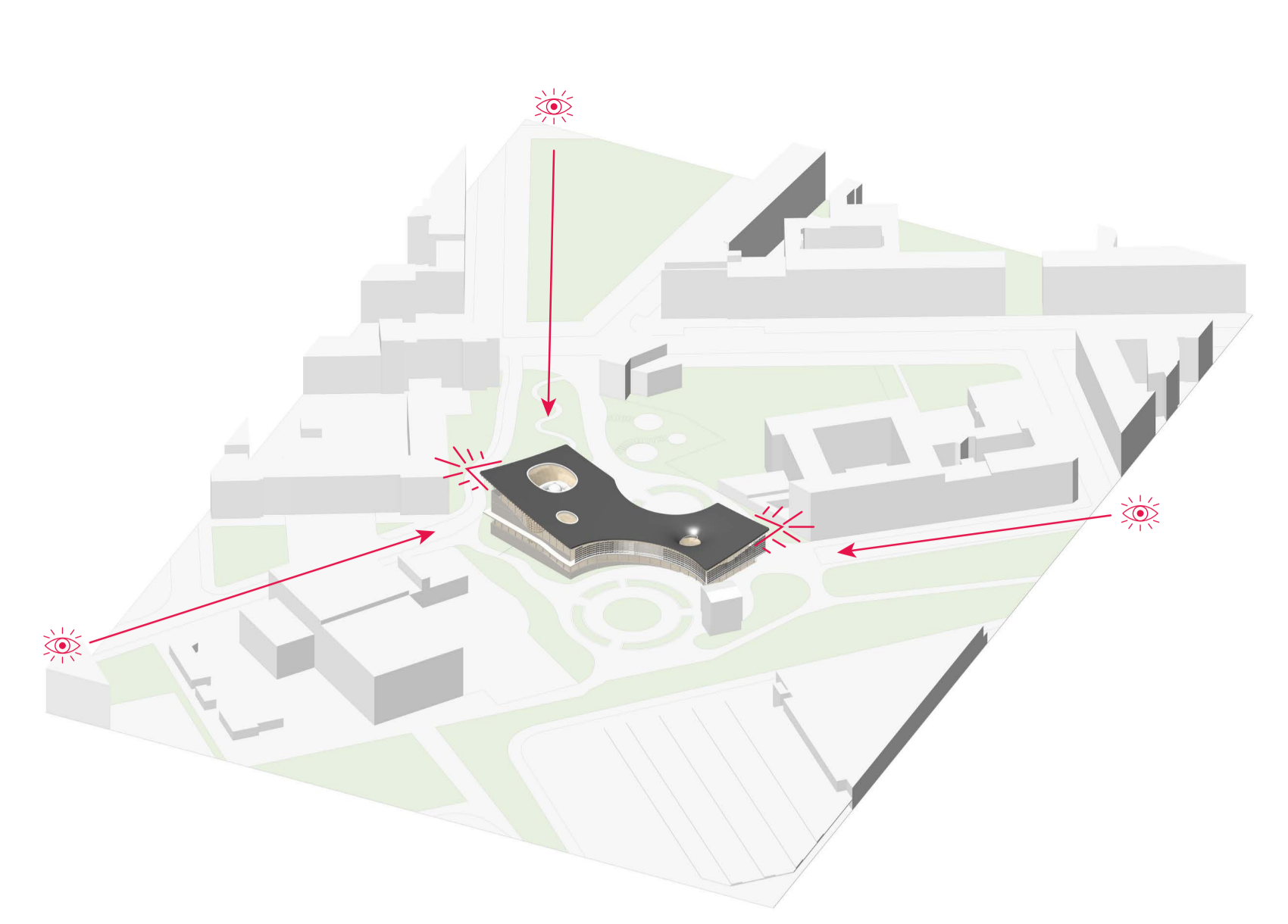


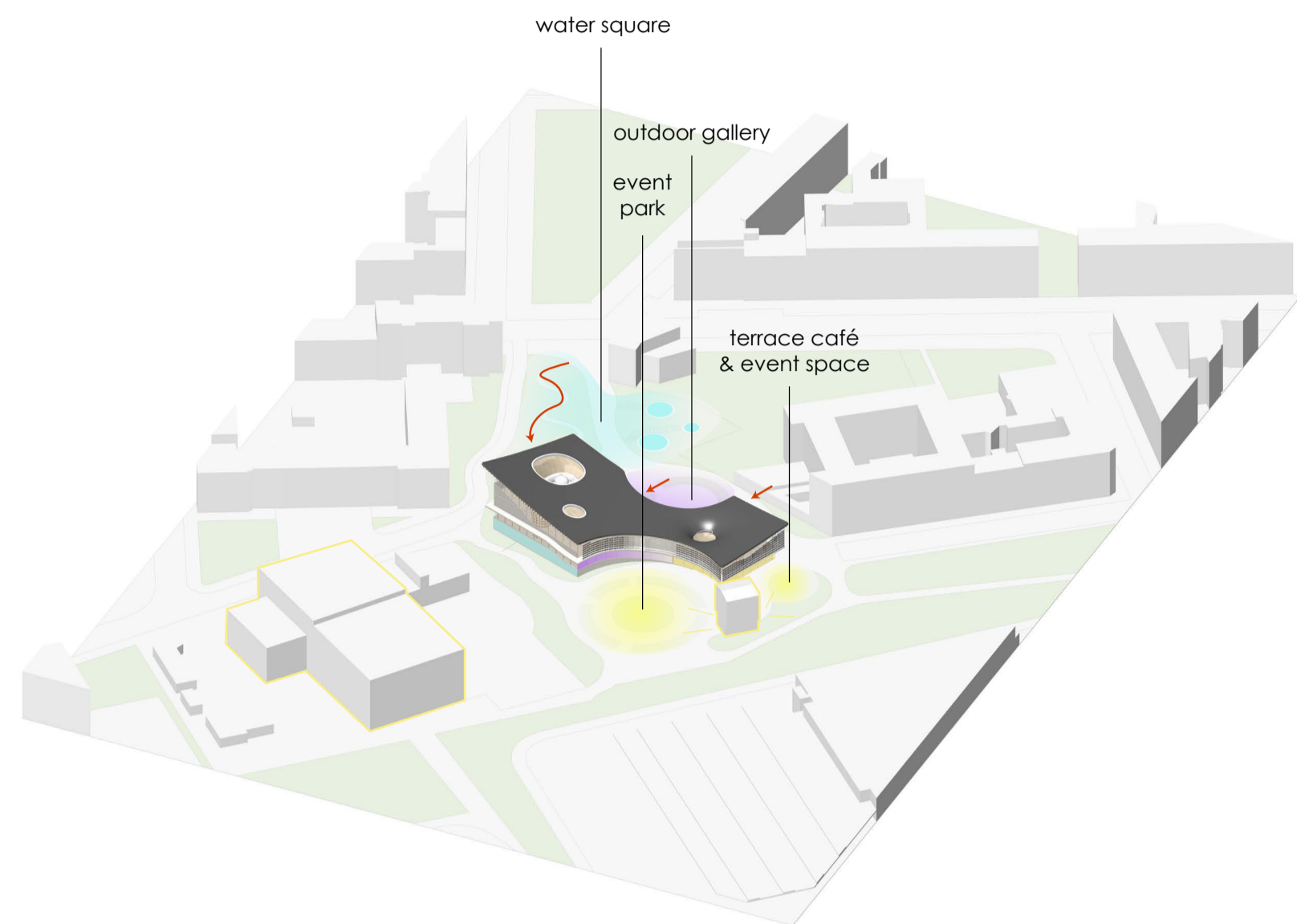
The building is located in an interesting site. Ostbahnhof and Warschauer Strasse train stations are a 10-minute walk away. World-famous club Berghain and event venue Nigendwo are adjacent buildings. Places where sex is celebrated, but behind exclusive doors. In contrast with this is the residential area with a school on the east side of the site. The building is placed at the intersection, with the intention of connecting them.



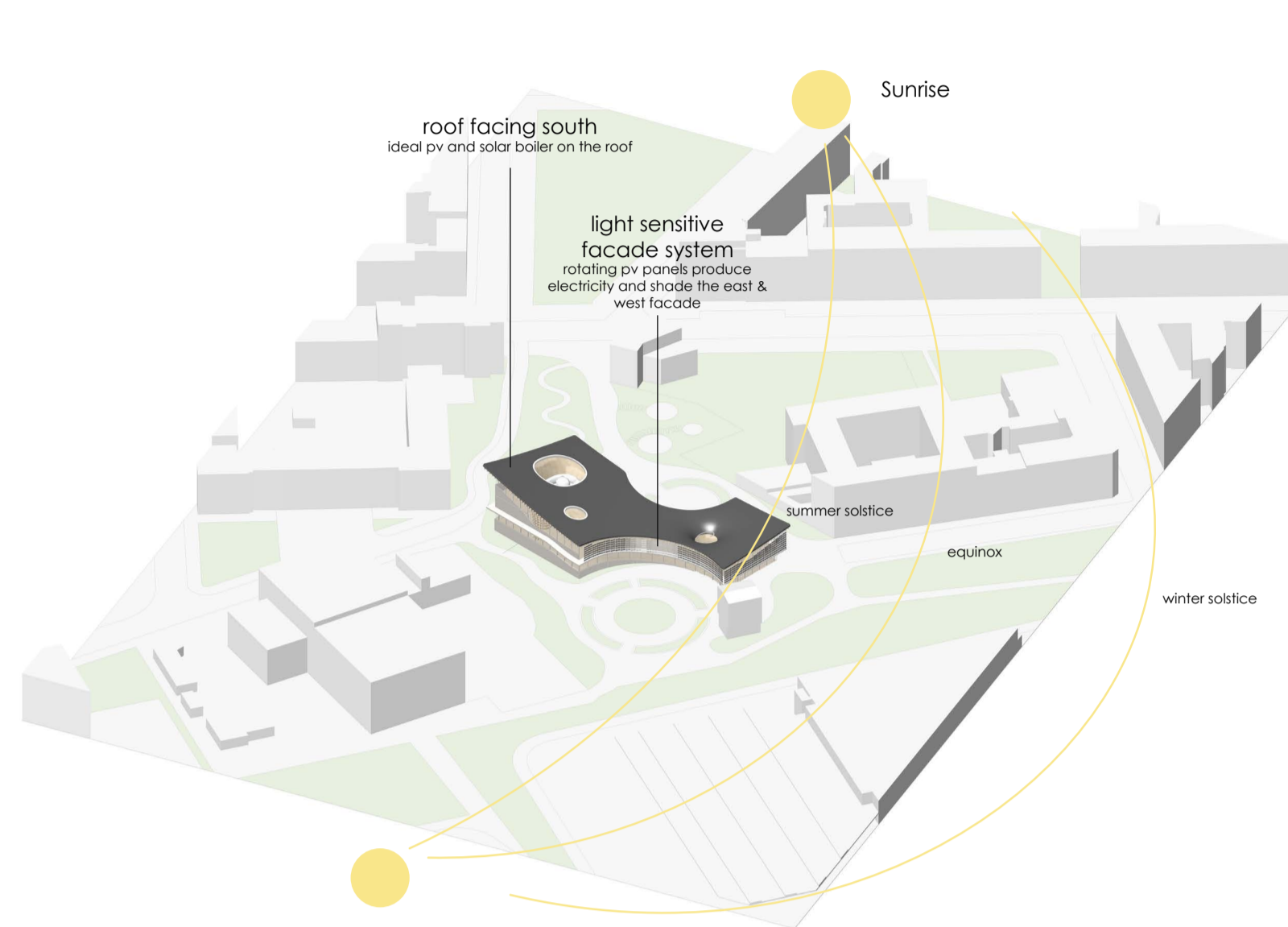
The site is located in between two parks: Wriezener Park and Comenius Platz. There is an opportunity to connect Wriezener Park to Comenius Platz. The public green space will act as a connecting factor. The new public green space will be used to create a gradual transition from the urban fabric to the building, which will only be accessible to pedestrians and cyclists.



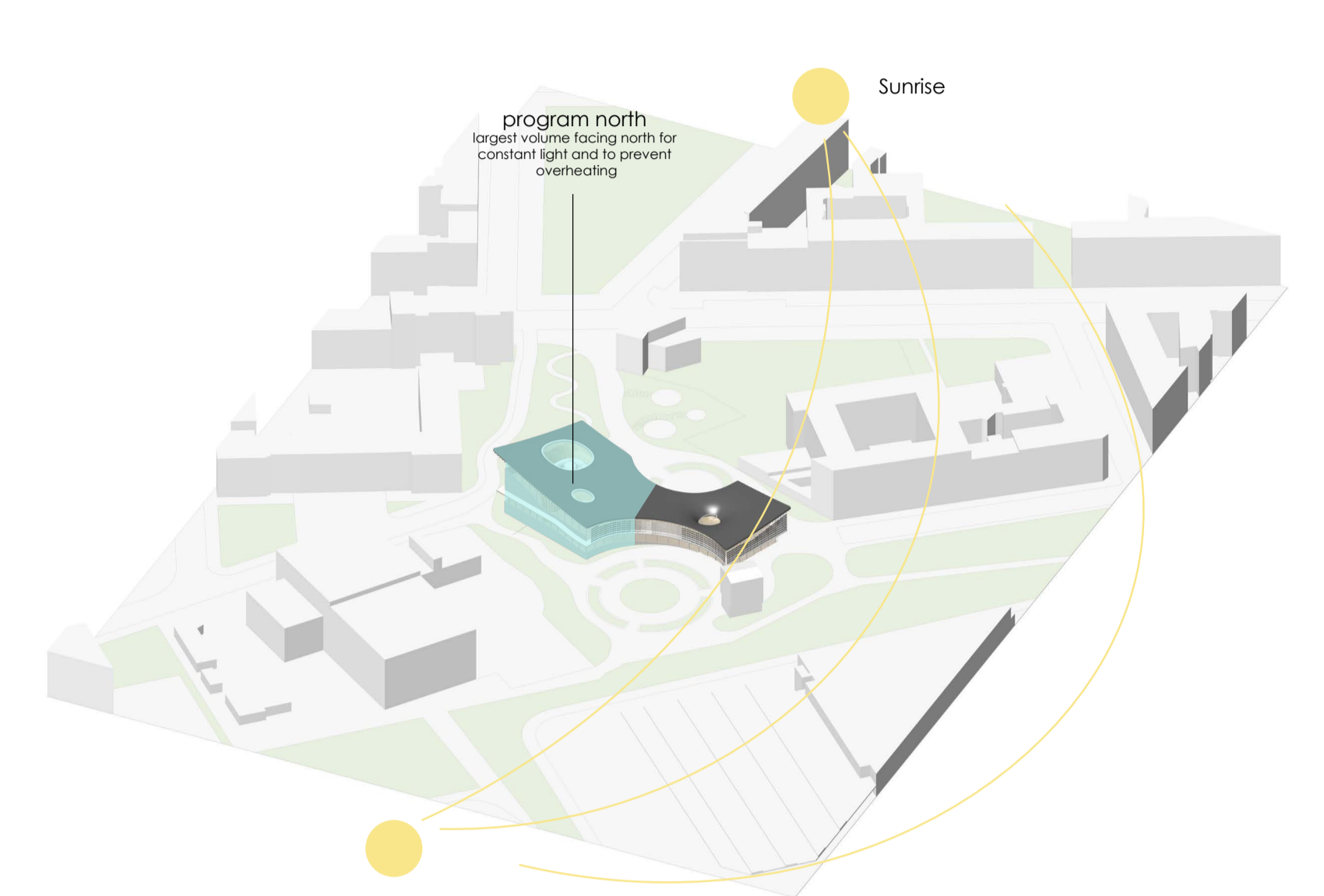
The building is placed on the sightlines of the main access roads and will be recognizable from a distance, as it expresses that sex is a matter that can be discussed and deserves attention.



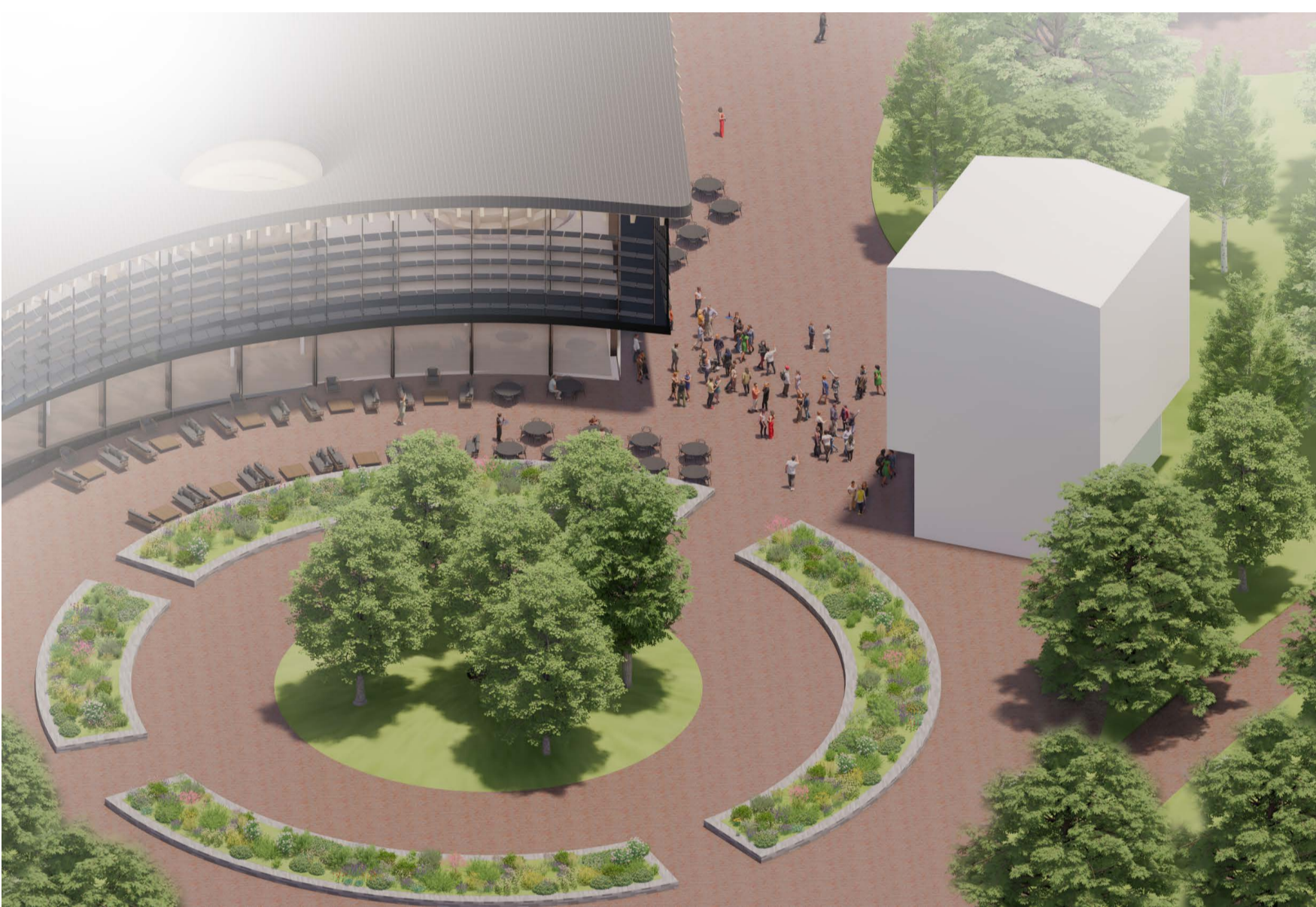
The park introduces the activities that will go on inside. There is a water square to introduce the bathhouse. A terrace for the café and the event space is placed next to the already existing event venue so that they can reinforce each other. Together they can host outside events during summer. Interactive installations, that trigger a multisensory experience are placed at the main entrance where outdoor gallery will transition into the indoors.



Volume and form are adapted to the surroundings. The roof faces south to capture as much sun as possible for the PV panels and solar boiler that provide power and hot water to the building. At the same time, the roof has an overhang providing shade on the facade. As this is not sufficient everywhere, a light-sensitive facade system is installed on the sun-exposed facades.



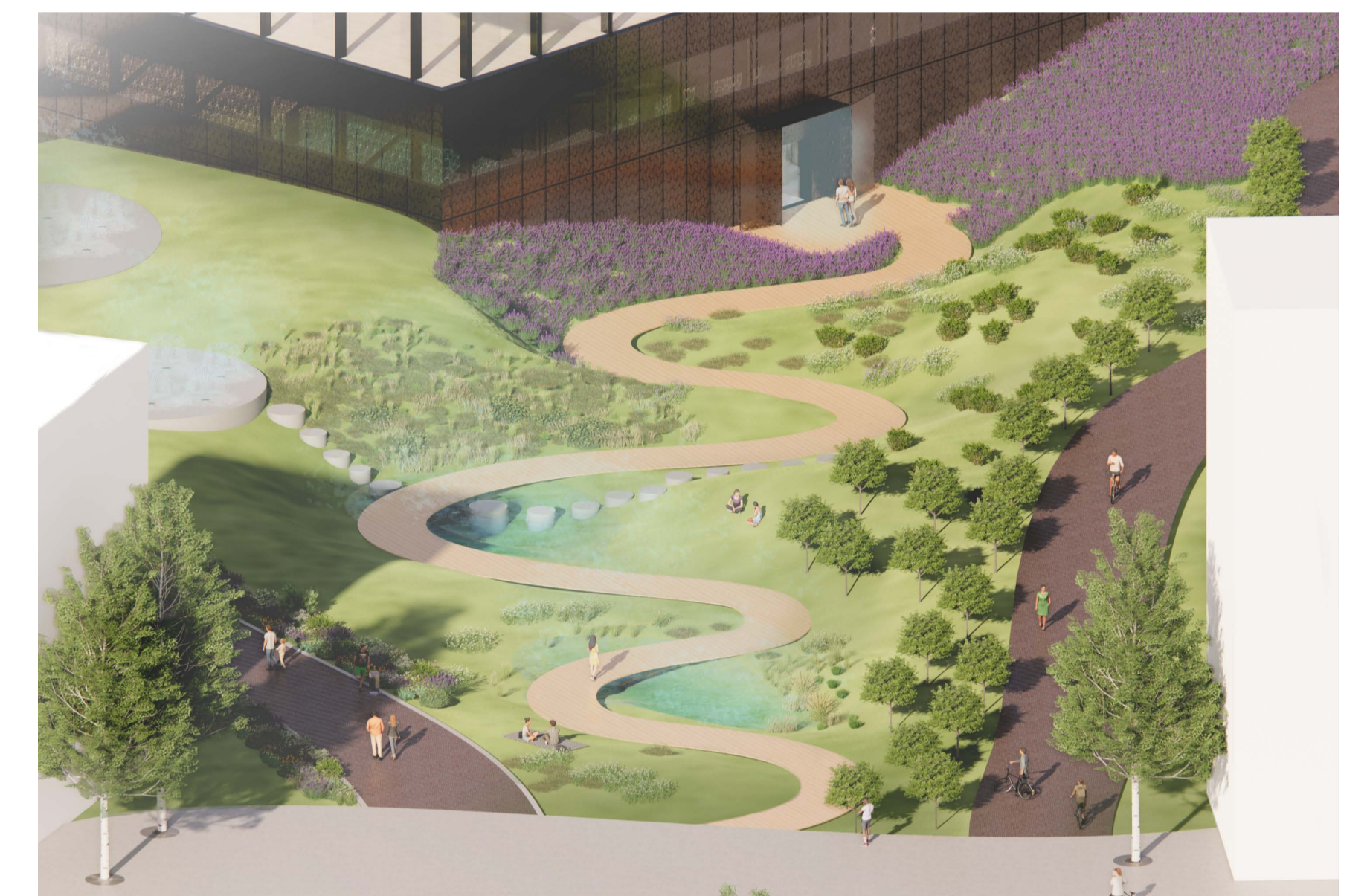
The most volume is on the north side. The areas where people spend long periods of time and organised activities take place are placed on the north. In these spaces is a more constant temperature and diffused sunlight provides the rooms with a consistent level of comfort. As a result, the surface area of the sun-exposed facade is proportionally small, which reduces the need for cooling.



event area



outdoor gallery



water square



site plan

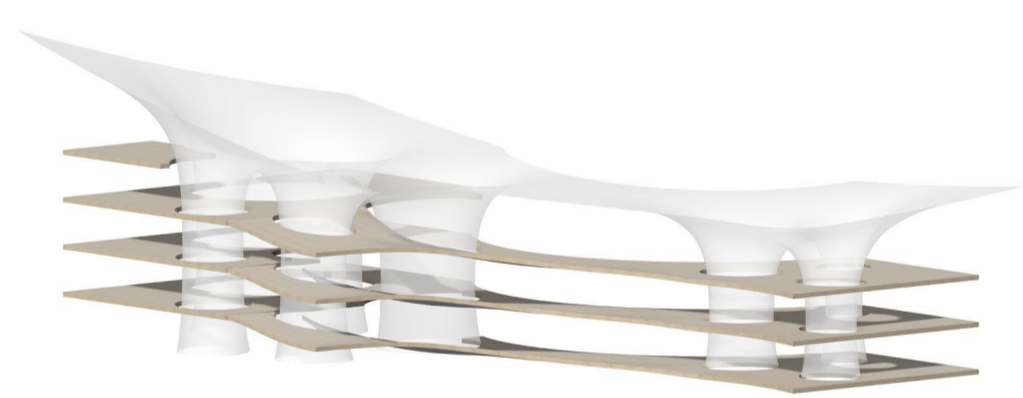
1:500 ⊕ N

# Get a room!

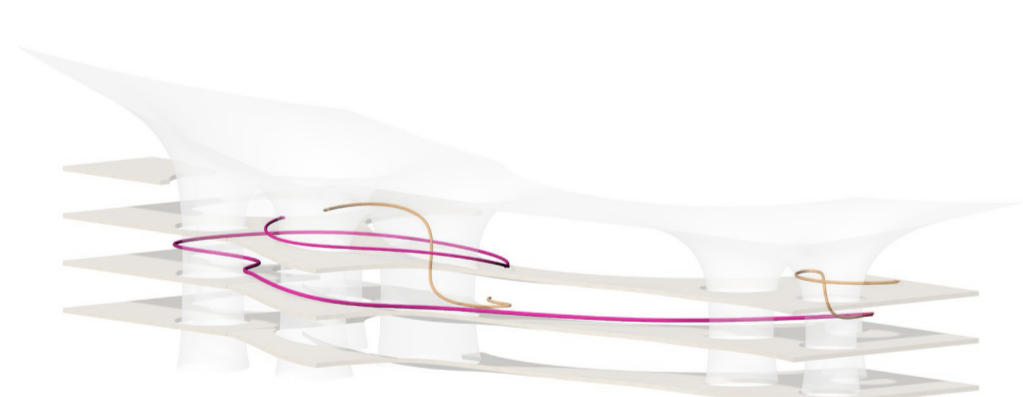
Sex & the Commons in Berlin



overarching forest structure



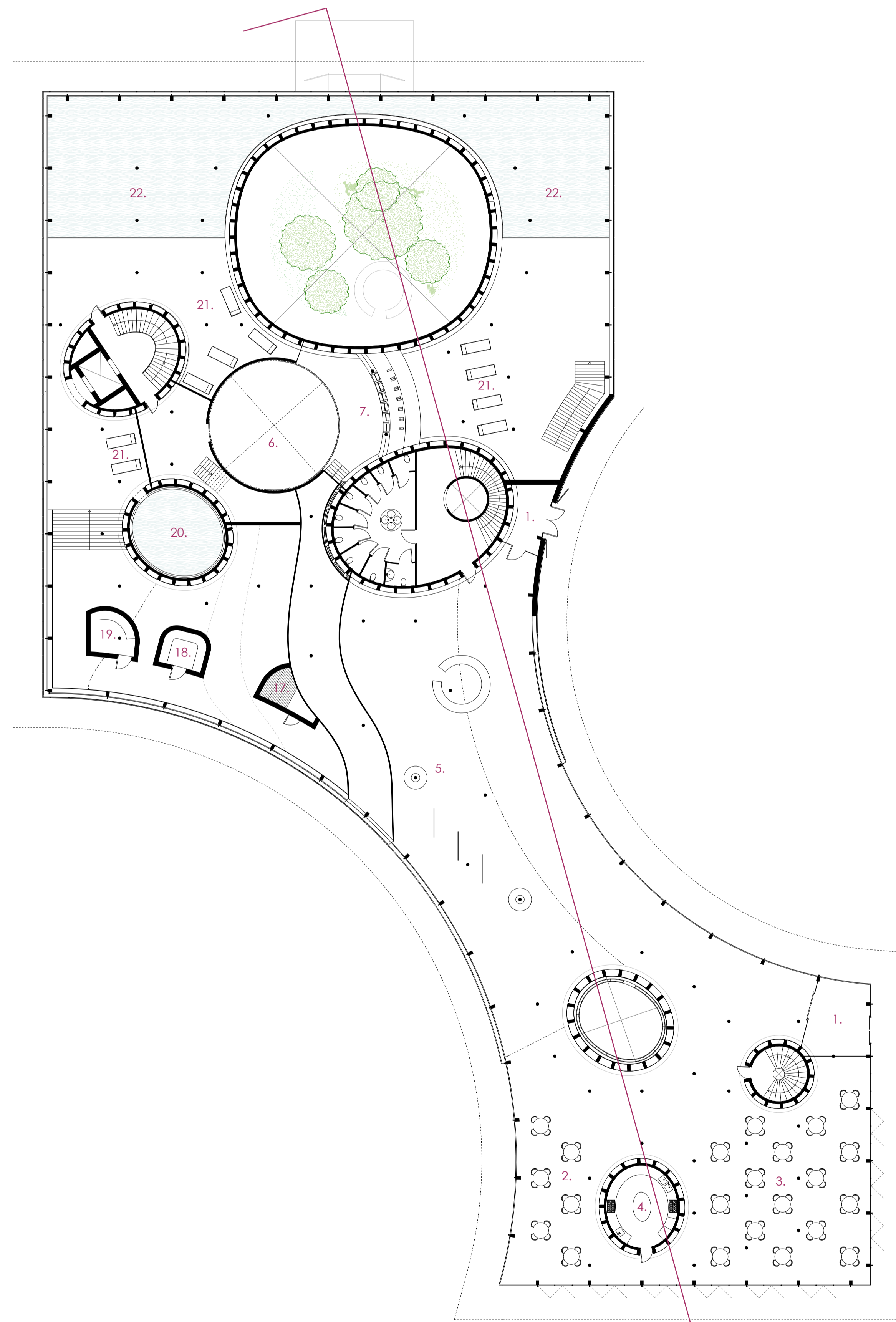
open landscape



diverse types of routes

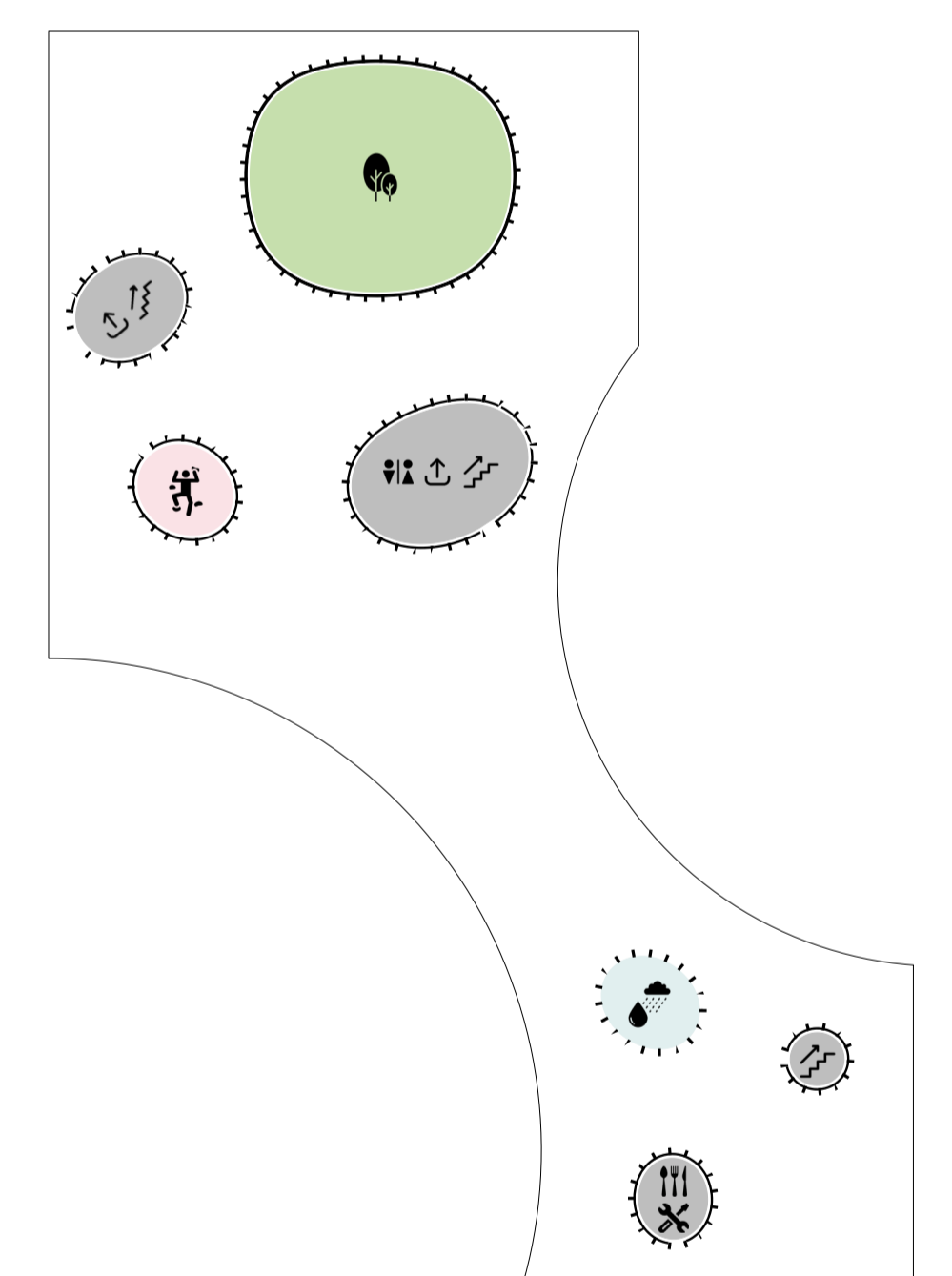


multi sensory trees



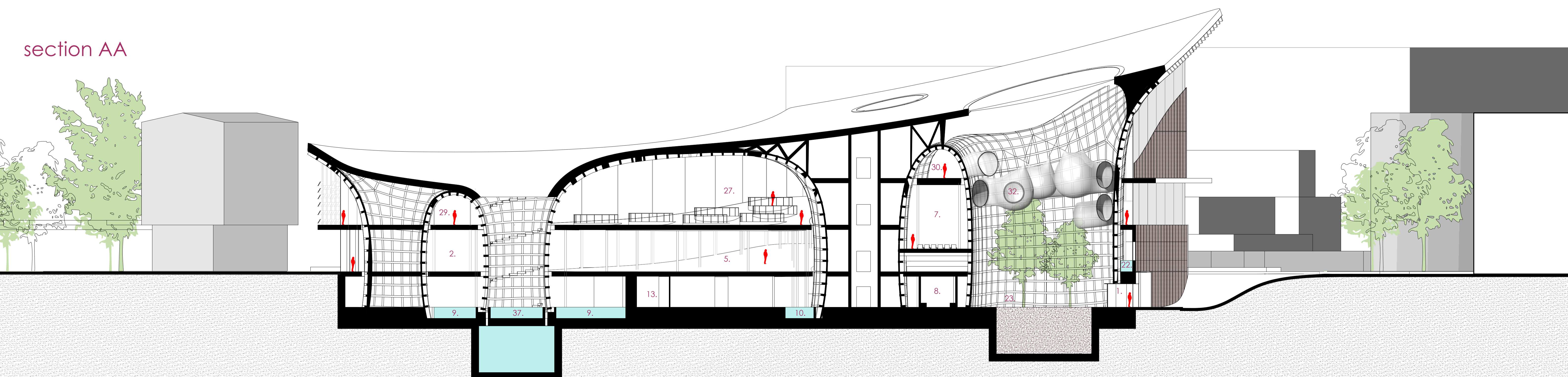
groundfloor

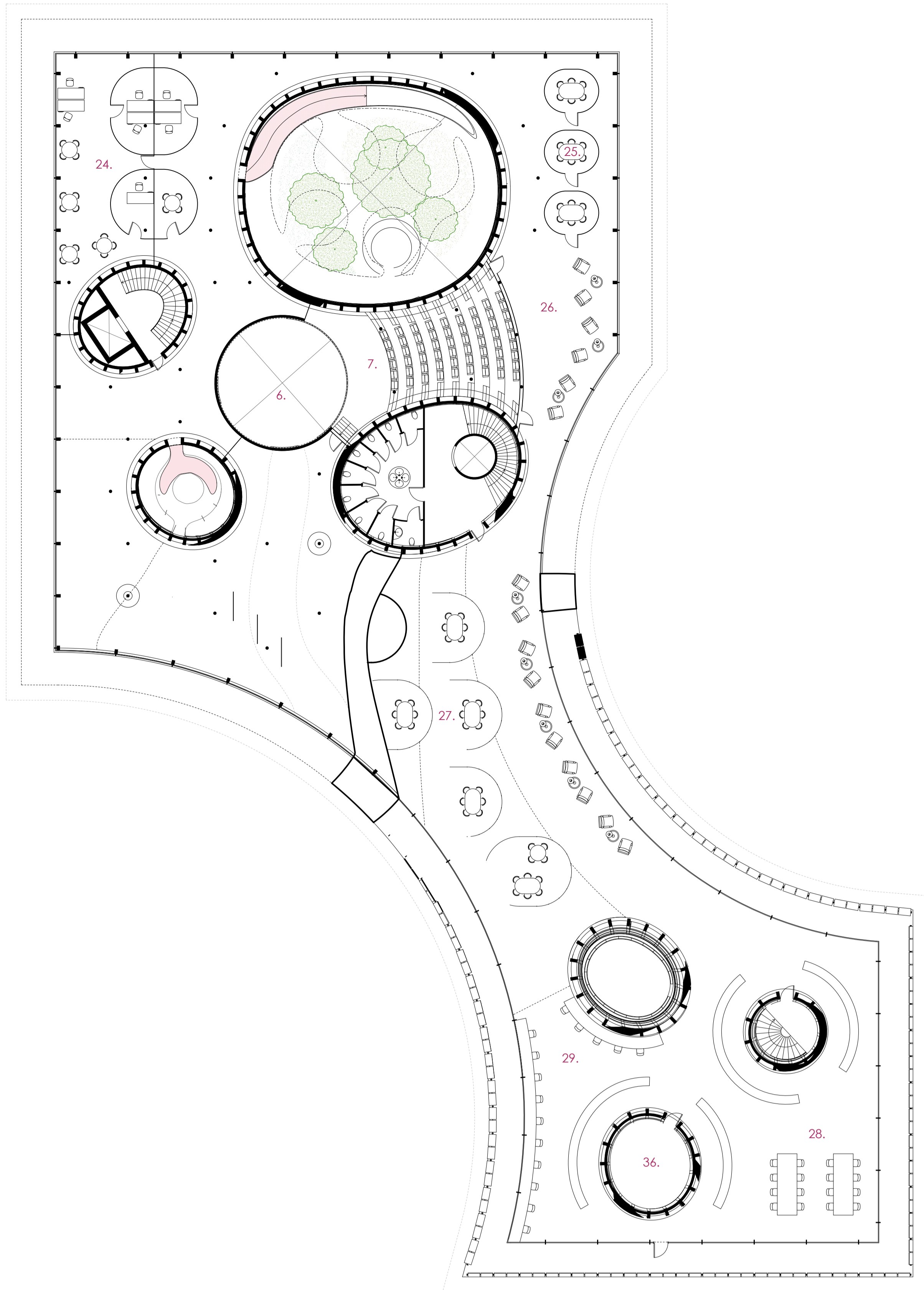
1:200 ⊕ N



- sensory garden
- multi sensory climbing tree
- rainwater collection tree

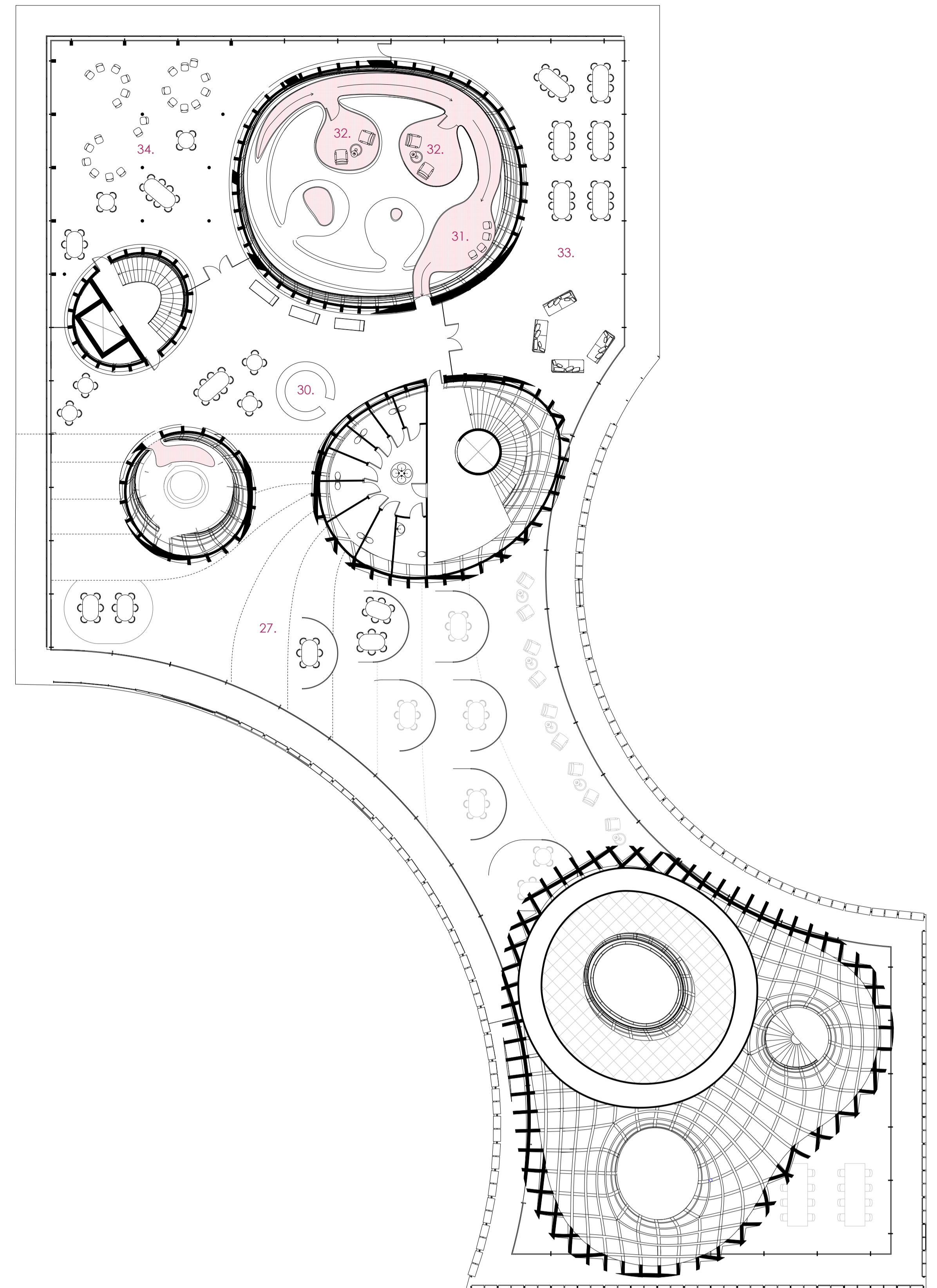
section AA





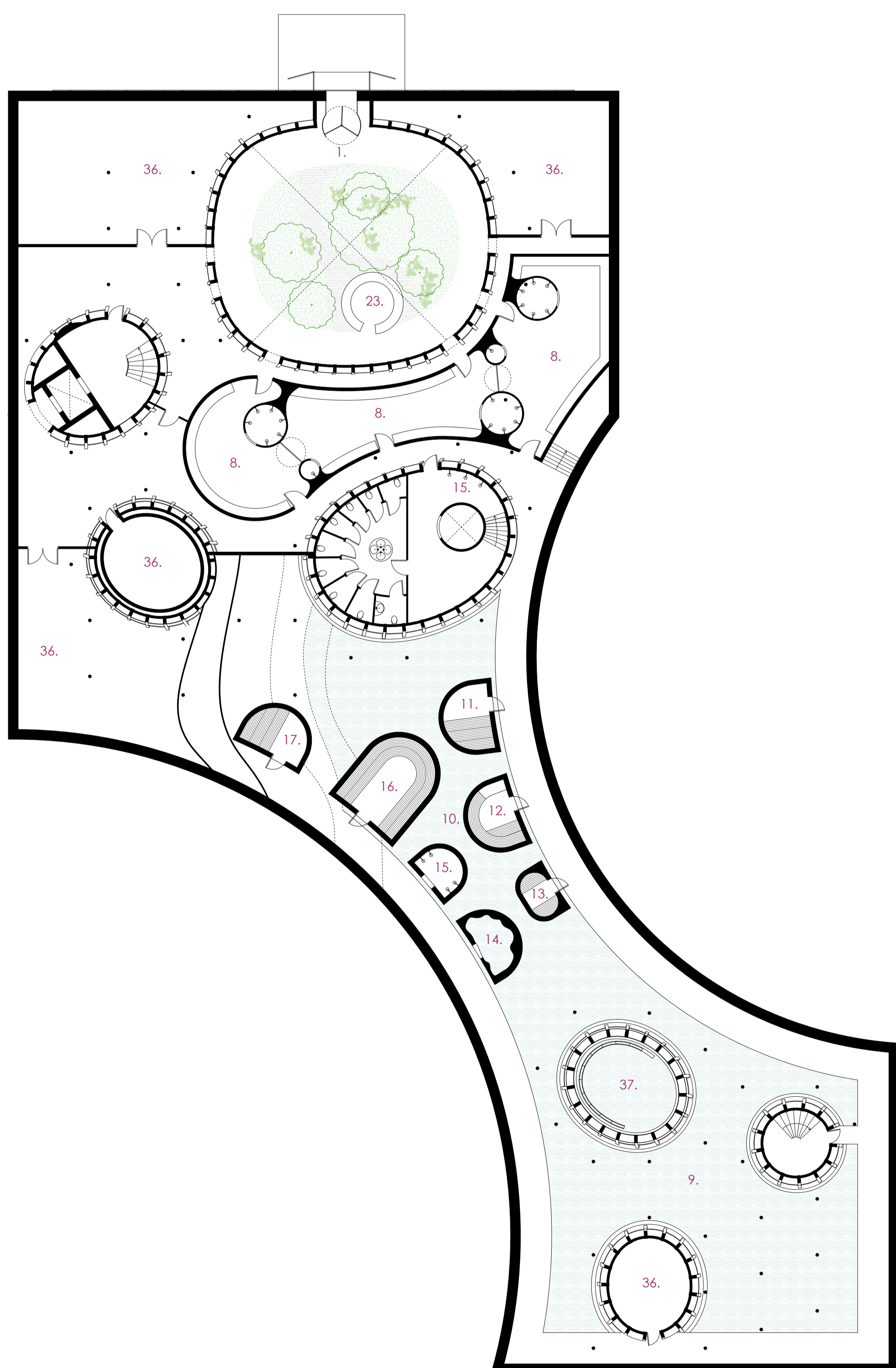
floor 1

1:200 ⊕ N



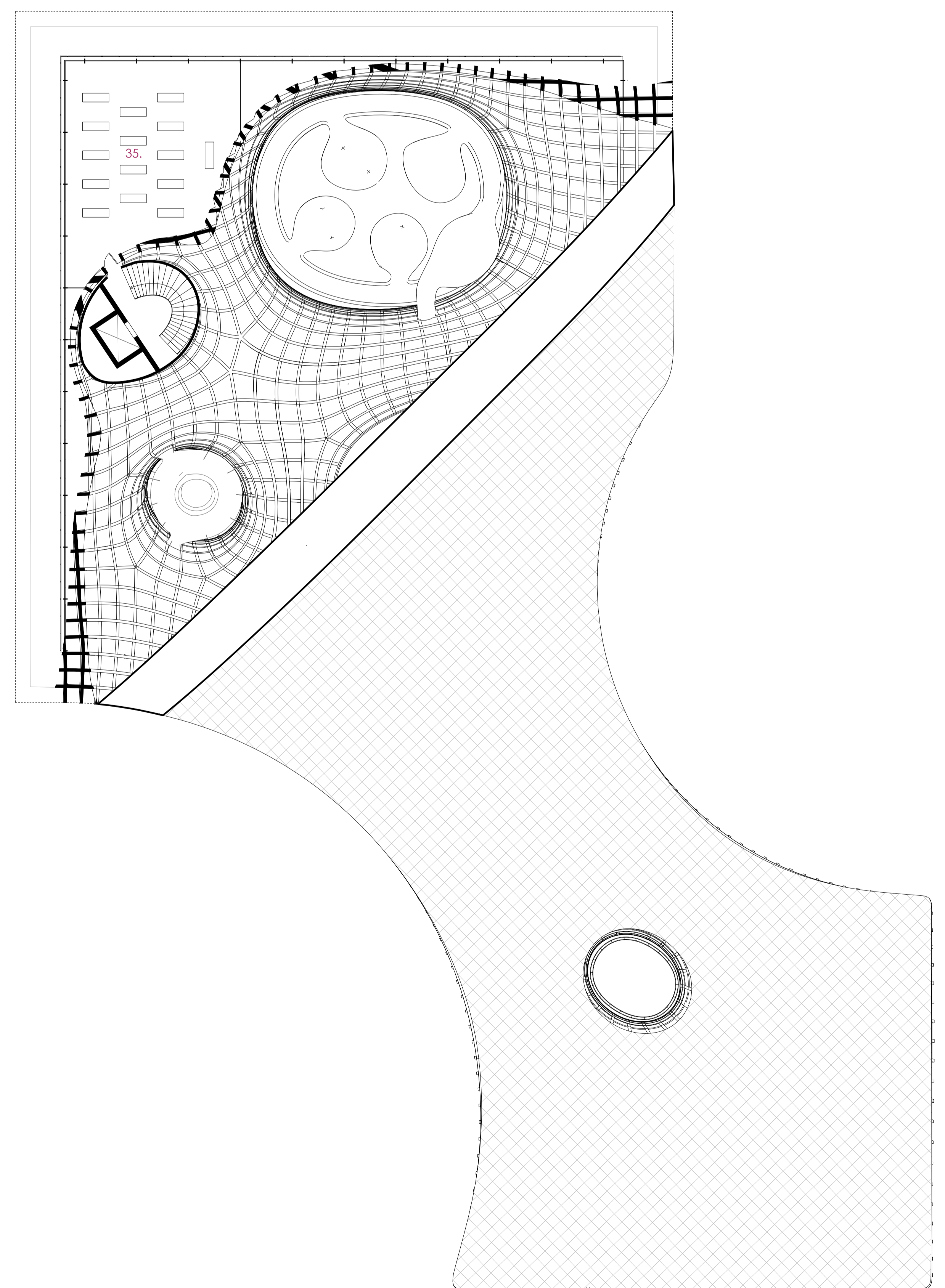
floor 2

1:200 ⊕ N



floor -1

1:200 ⊕ N



floor 3

1:200 ⊕ N

- 1. entrance
- 2. event space
- 3. cafe
- 4. kitchen
- 5. gallery
- 6. dance hall

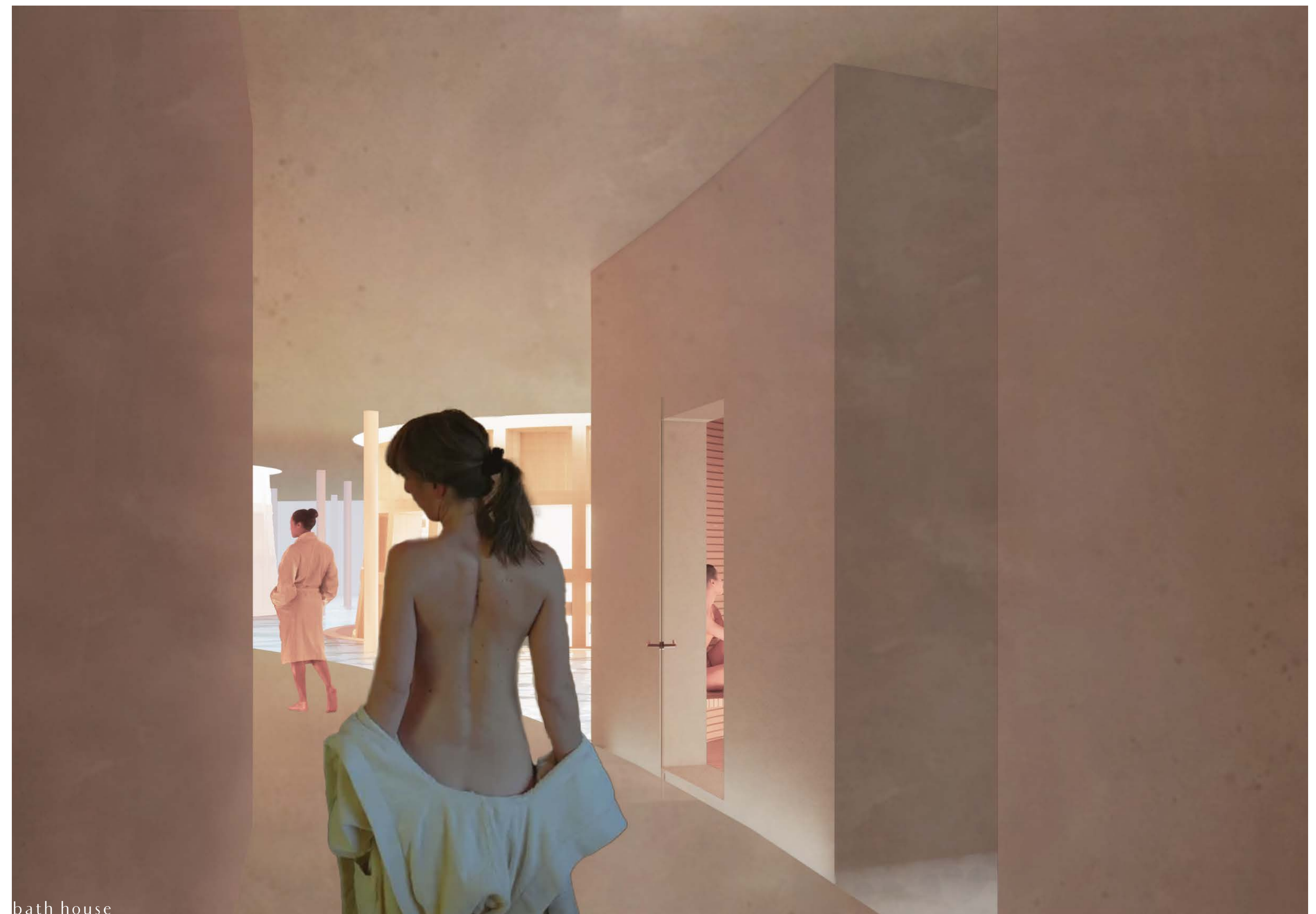
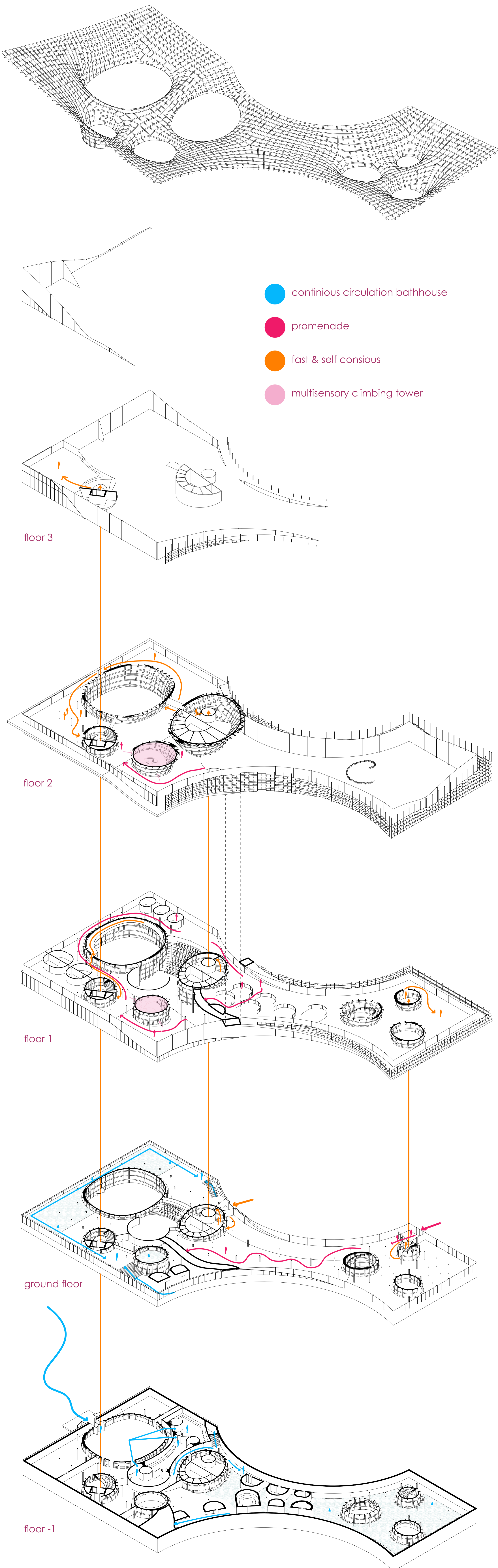
- 7. lecture hall
- 8. change room
- 9. social bath 32 °C
- 10. labyrinth bath 32 °C
- 11. herbal sauna 70 °C
- 12. finisch sauna 80 °C

- 13. infra red sauna 50-60 °C
- 14. cold bath 12 °C
- 15. hot showers
- 16. salt stone sauna 60 °C
- 17. extreme hot sauna 90 °C
- 18. music sauna 60 °C

- 19. steam room 45 °C
- 20. sky bath 36 °C
- 21. resting space
- 22. grand swimming pool 32 °C
- 23. check-in bathhouse
- 24. office

- 25. meeting rooms
- 26. lobby lecture hall
- 27. meeting landscape
- 28. reading room
- 29. individual work spots
- 30. coffee corner / desk workshops

- 31. waiting room
- 32. consult room
- 33. workshop space 1: open & playful
- 34. workshop space 2: soft & infinite
- 35. workshop space 3: sensual & spiritual
- 36. storage / tech space
- 37. water reservoir





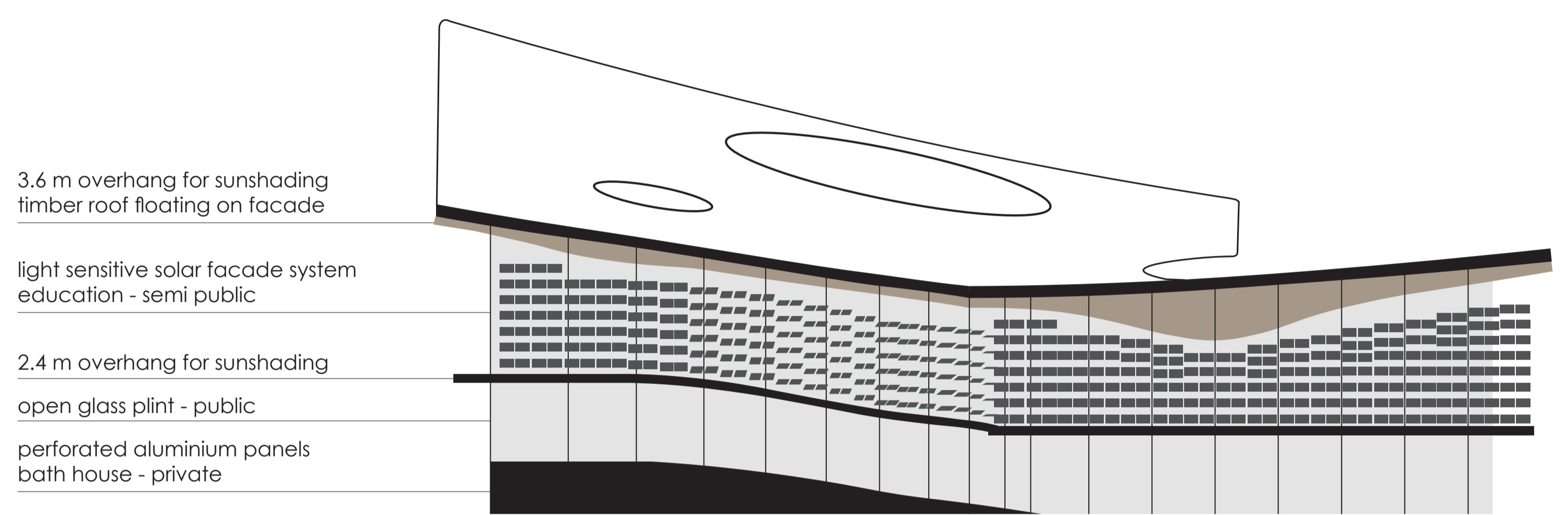
workshop coffee corner



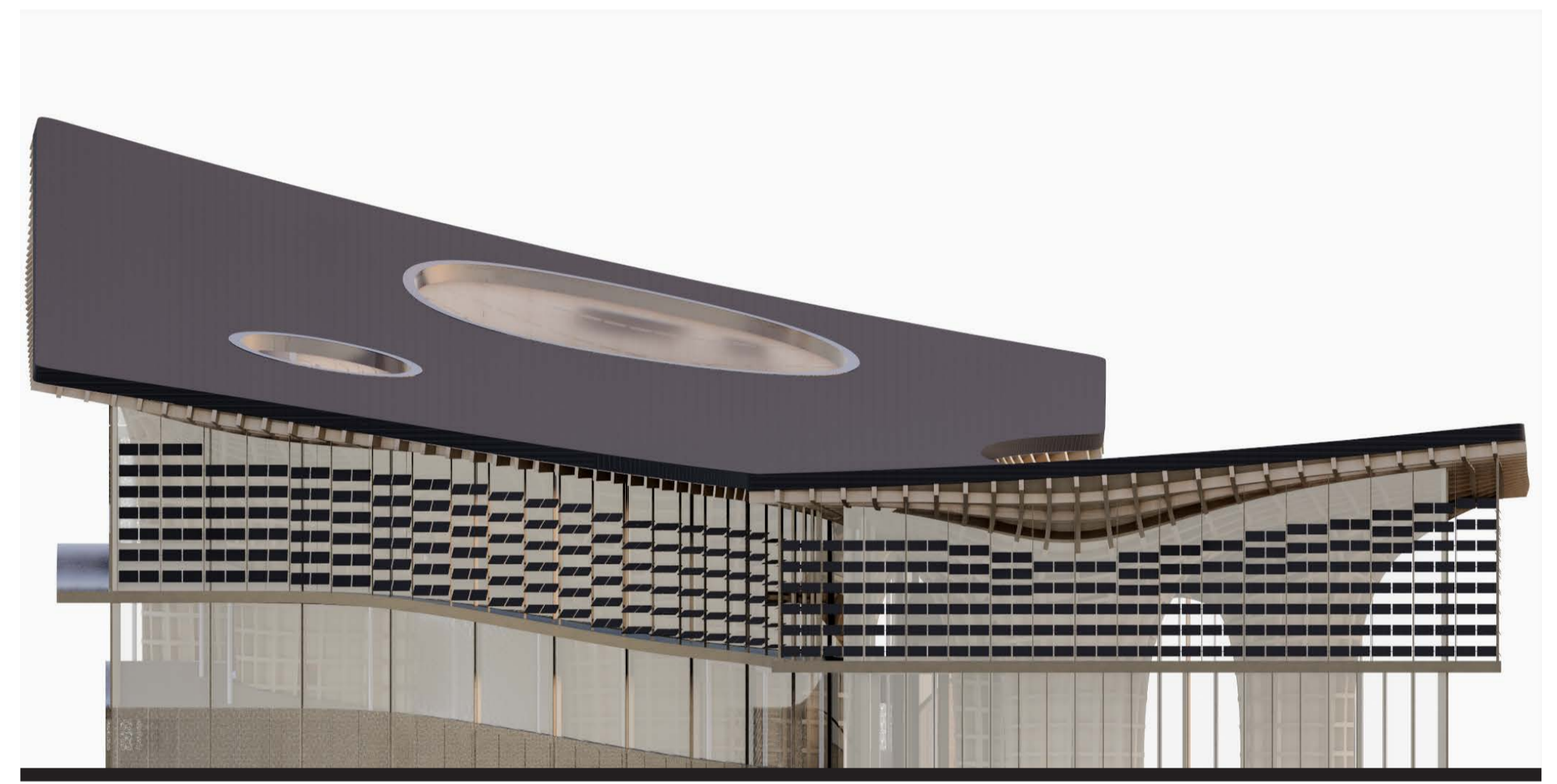
event area



staircase



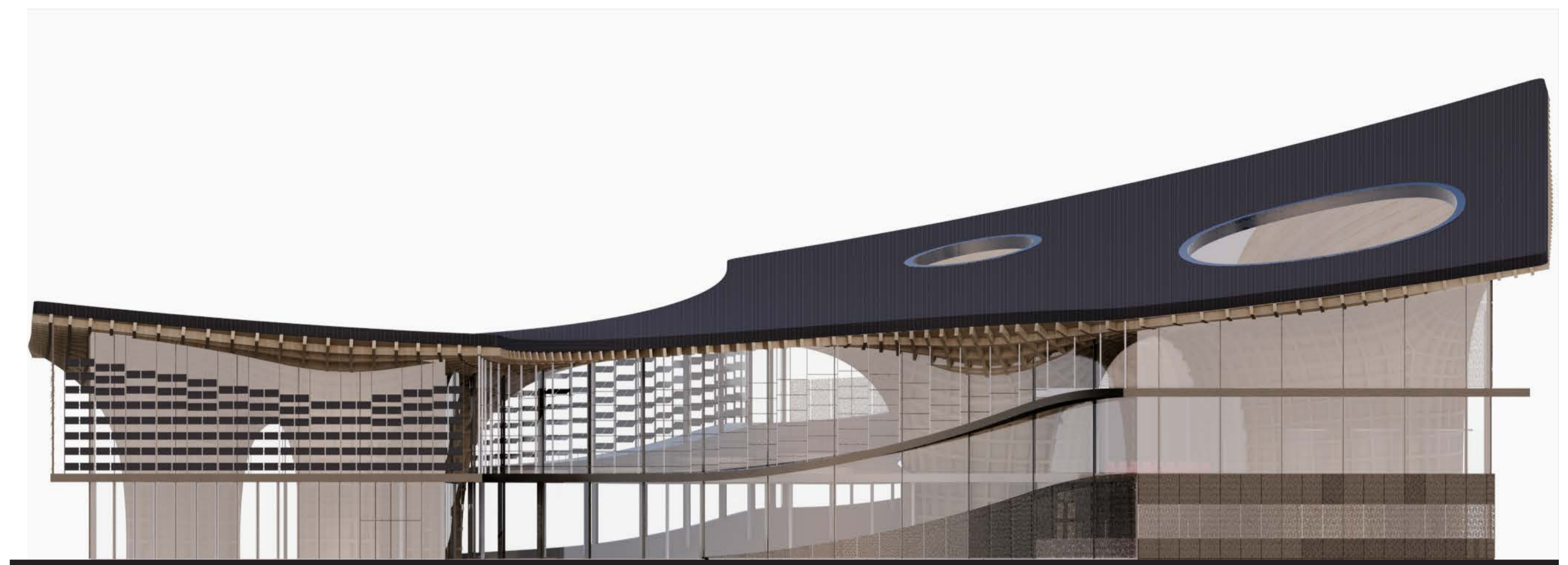
facade concept



south west facade



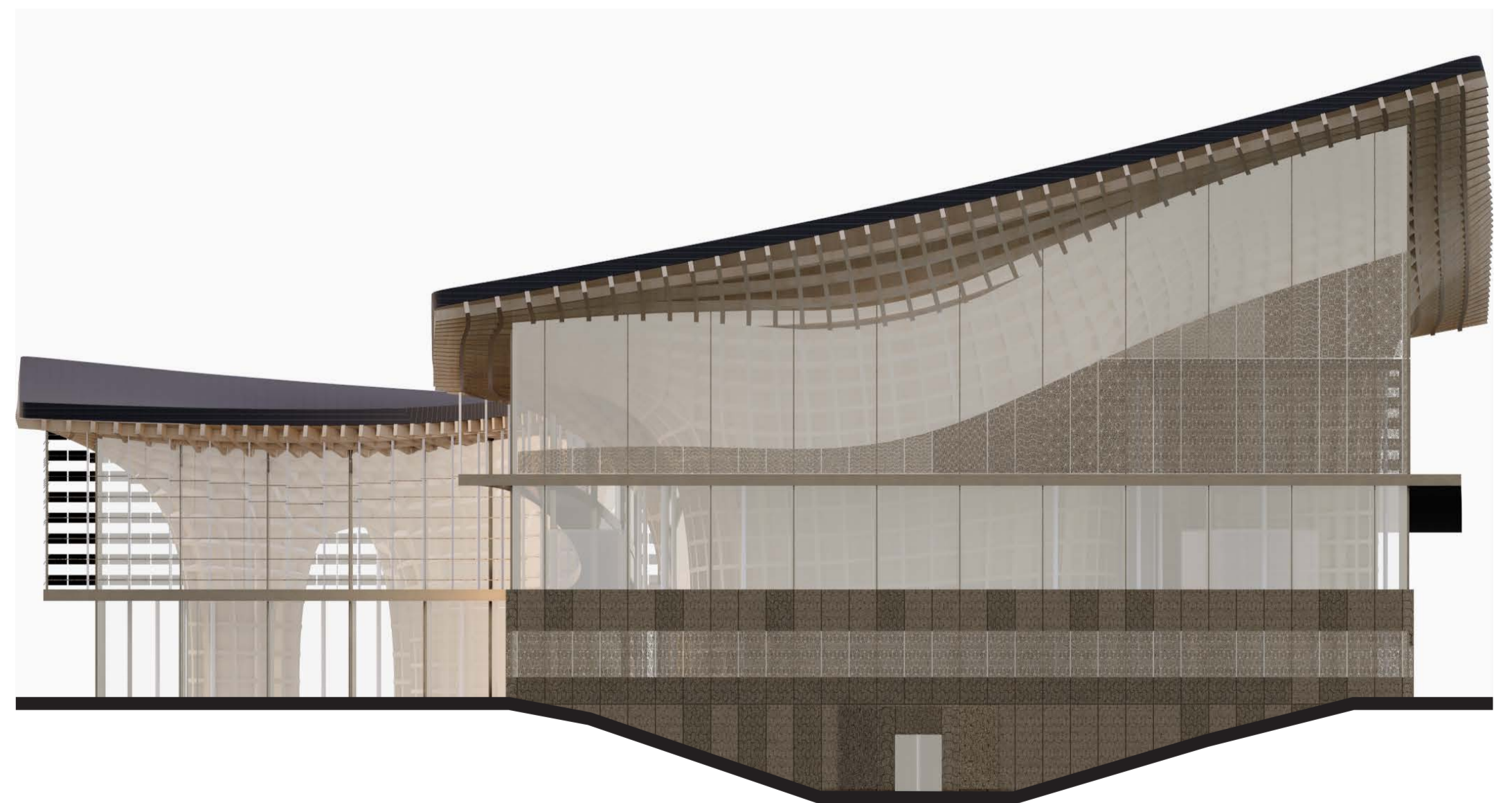
Warschauer Straße entrance



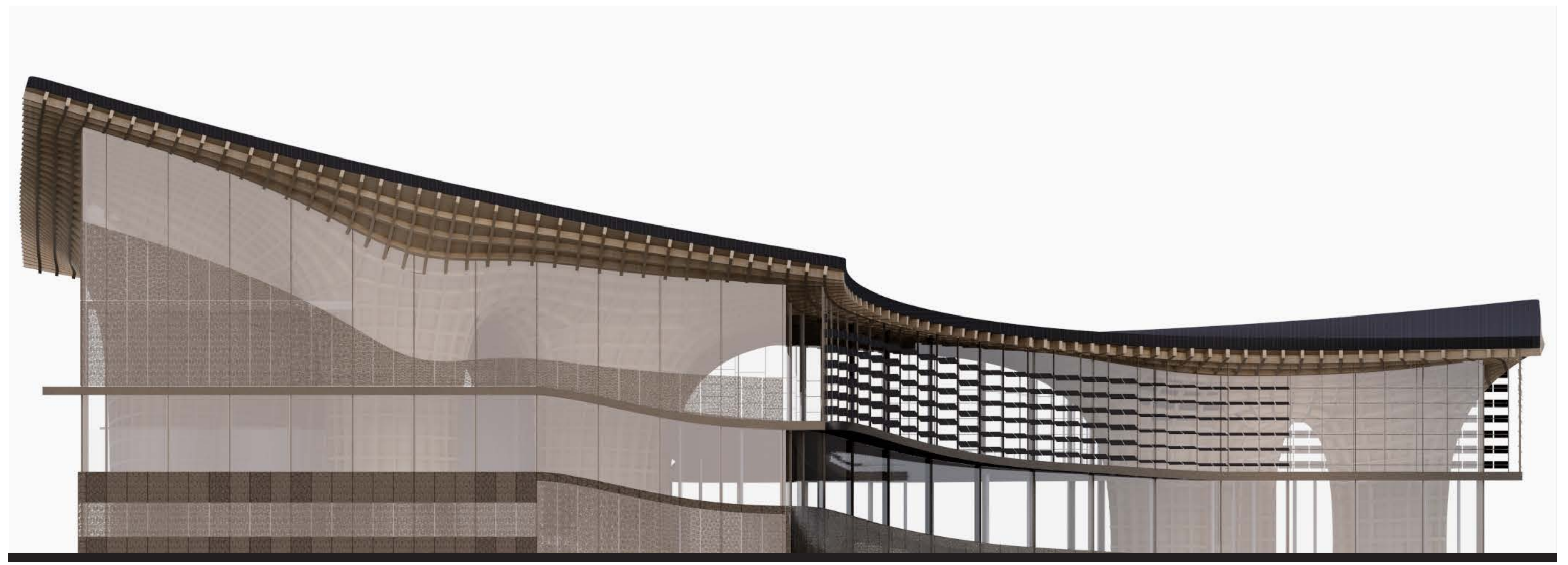
south east facade



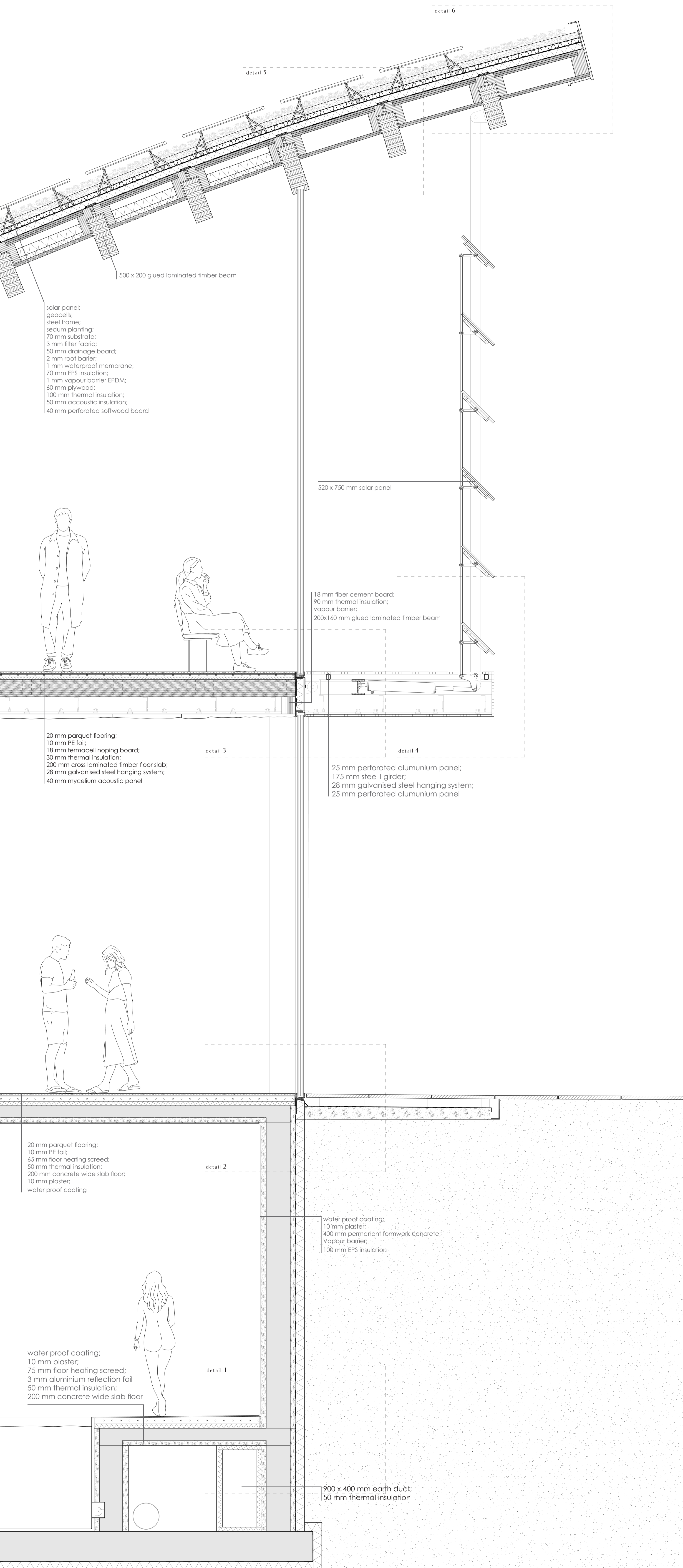
bath house entrance



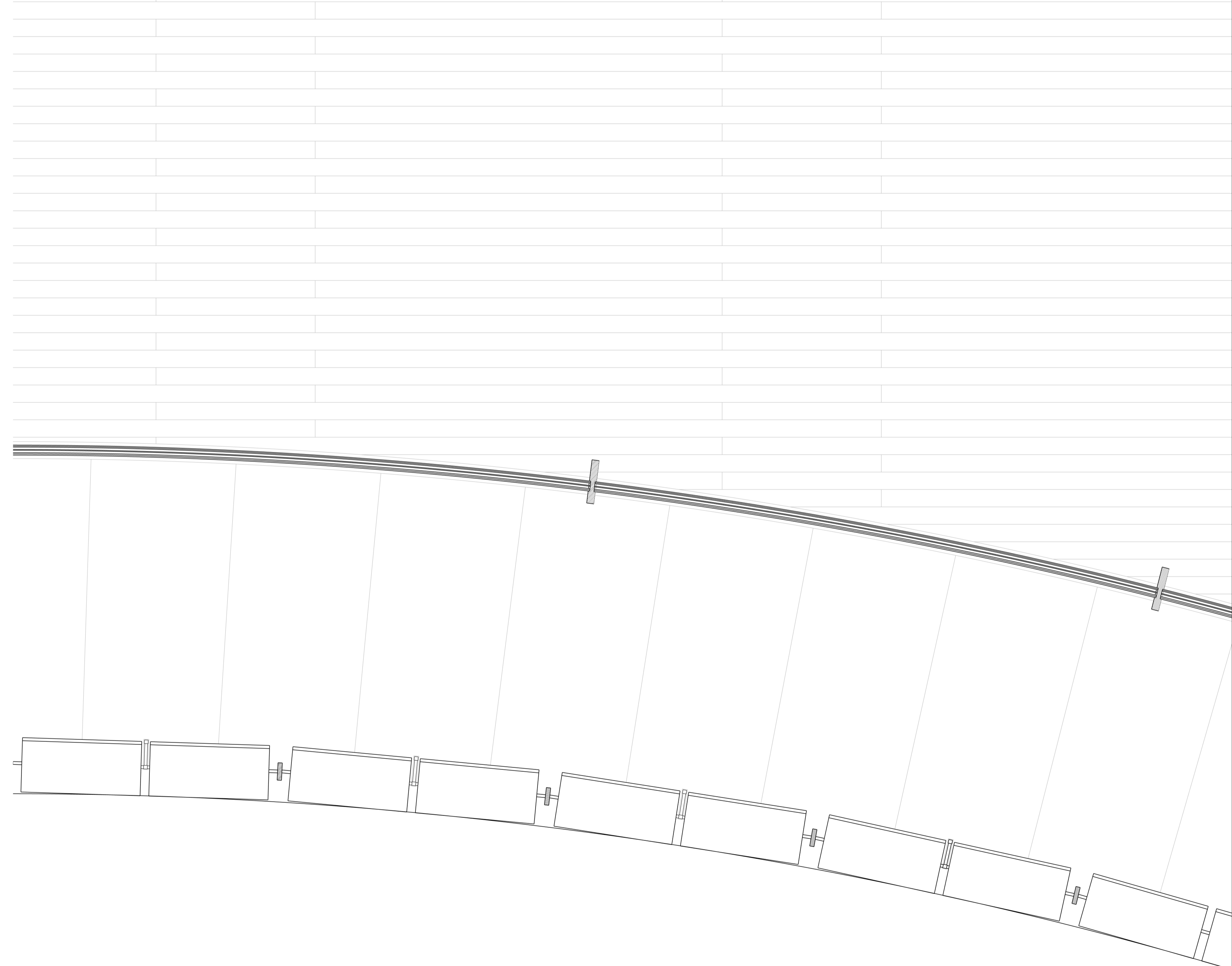
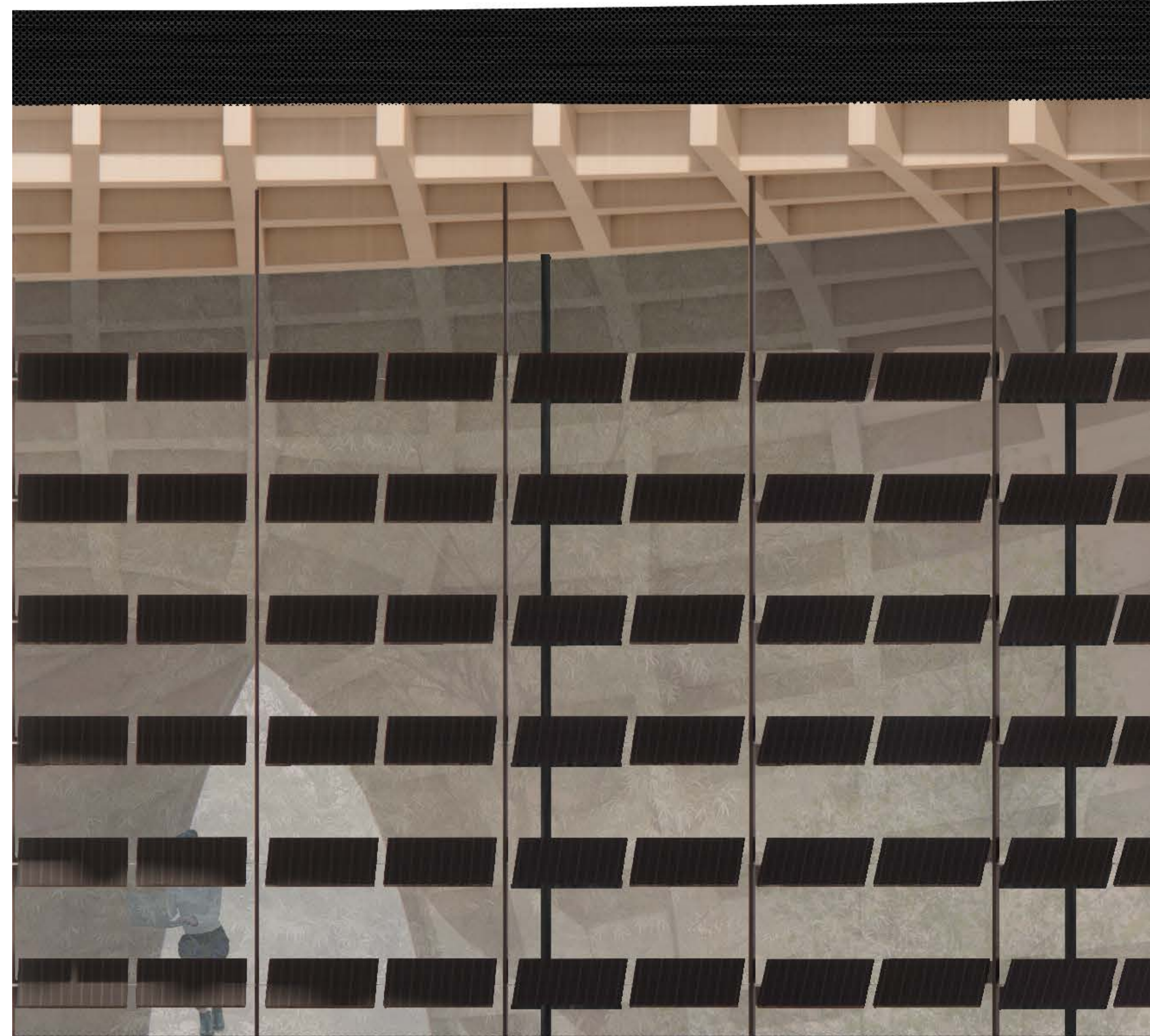
north east facade

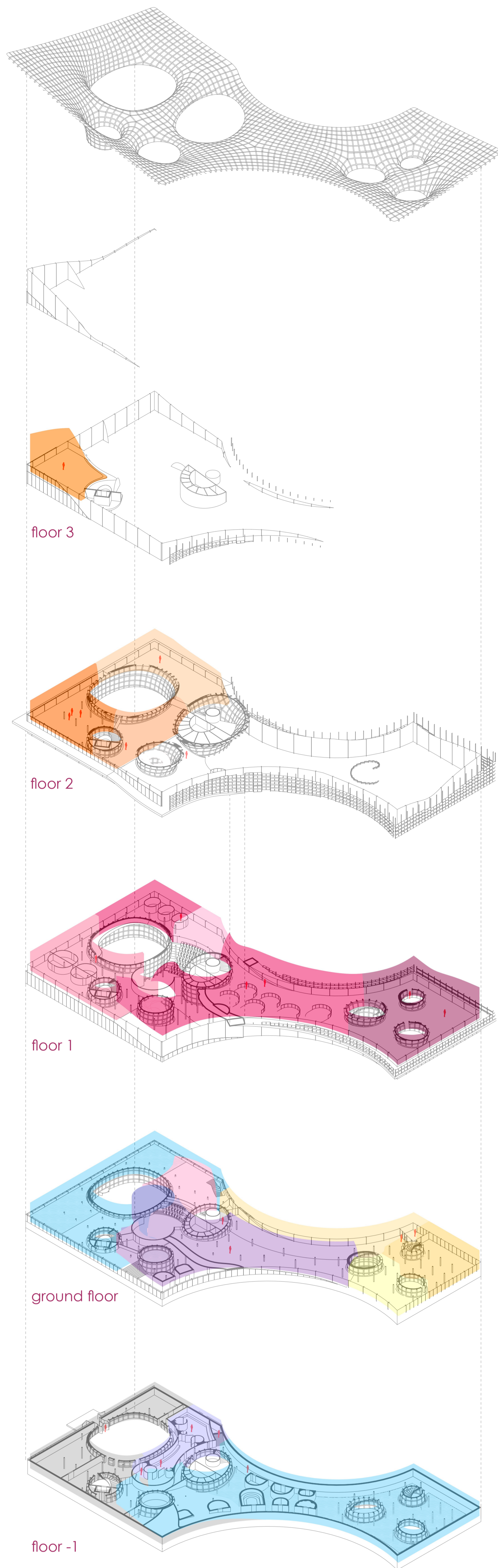


north west facade



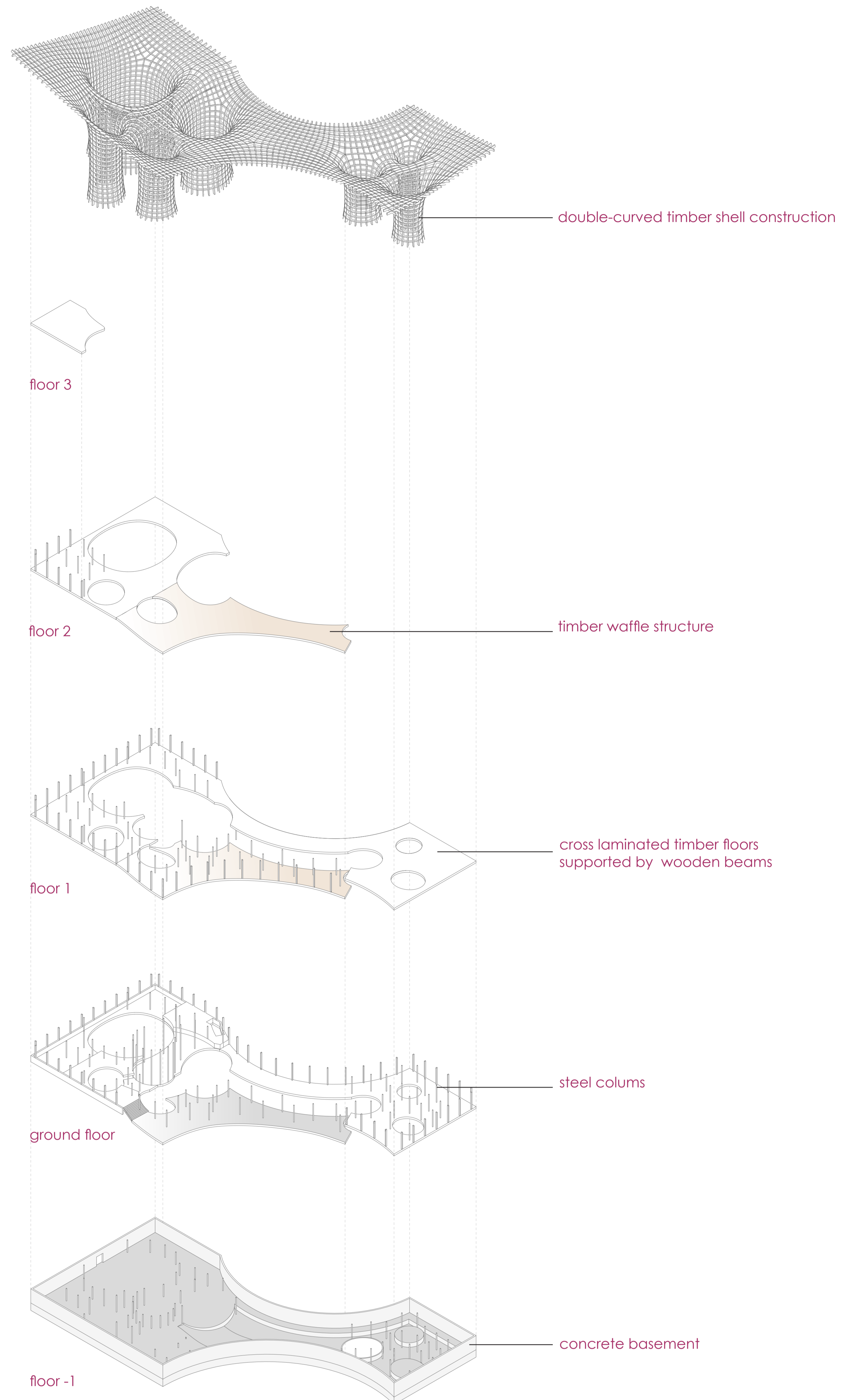
facade detail 1:20



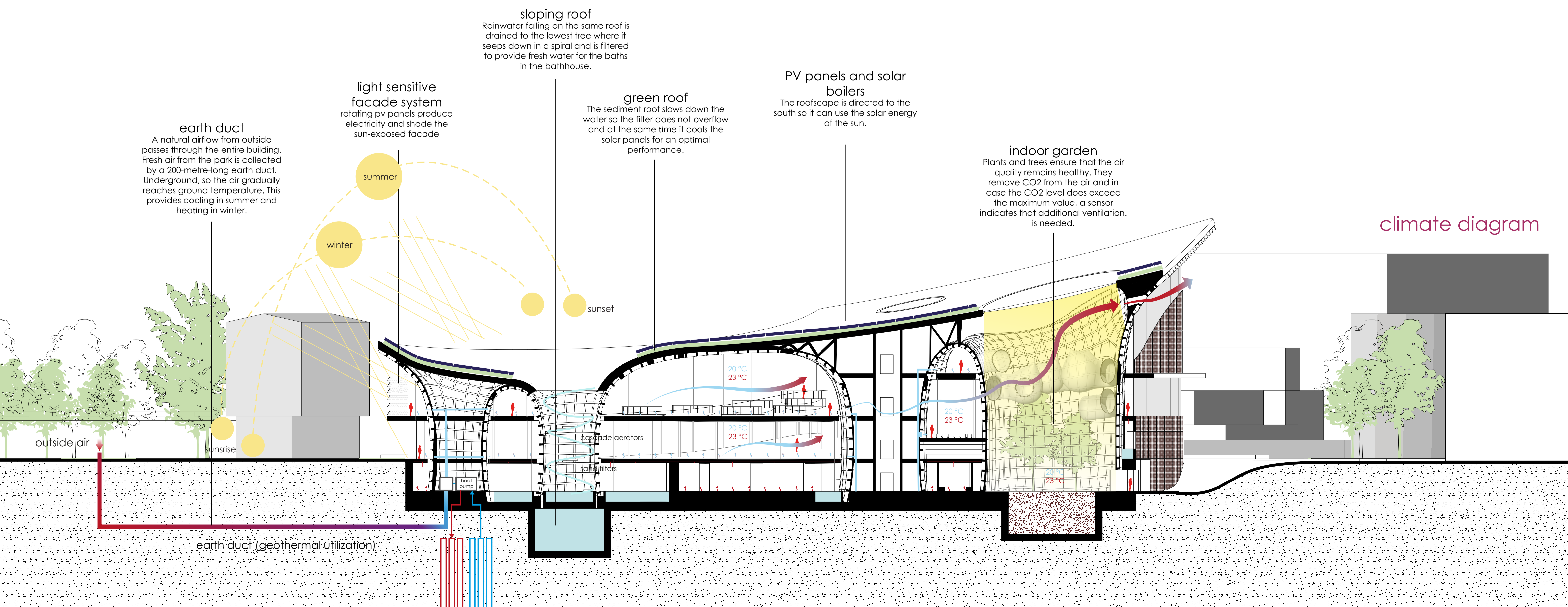


- workshop space 3: sensual & spiritual
- workshop space 2: soft & intimate
- workshop space 1: open & playful
- coffee corner / desk workshops
- office
- meeting area
- lecture hall (lobby)
- reading room
- cafe
- event space
- entrance
- 
- 
- bath house
- change rooms
- storage / tech space

program diagram



structure diagram



climate diagram