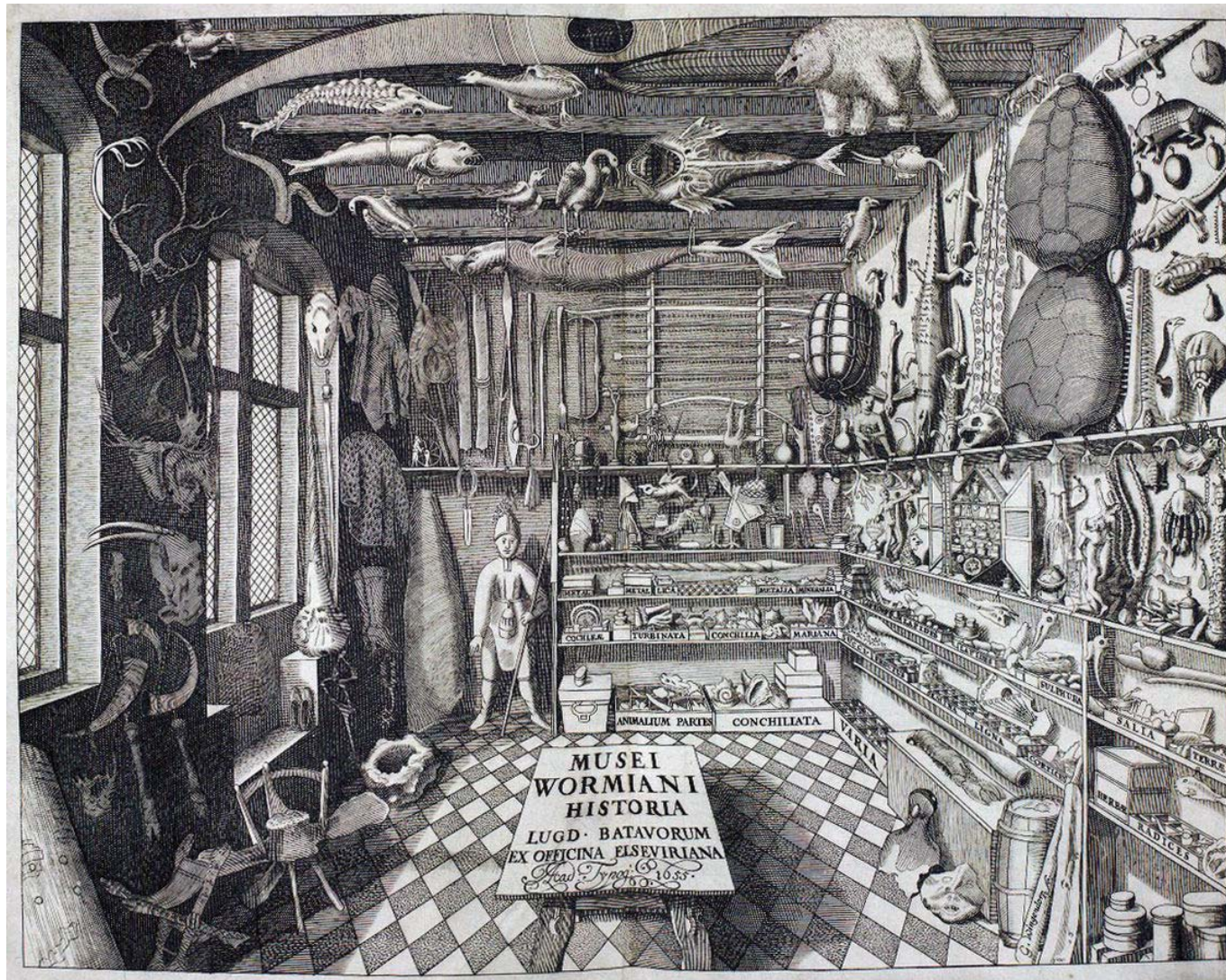


SPACE OF COLLECTION

P5 Presentation

Kaixiang Chen



Cabinet of Curiosities, 17th Century

Curiosities

Behavior

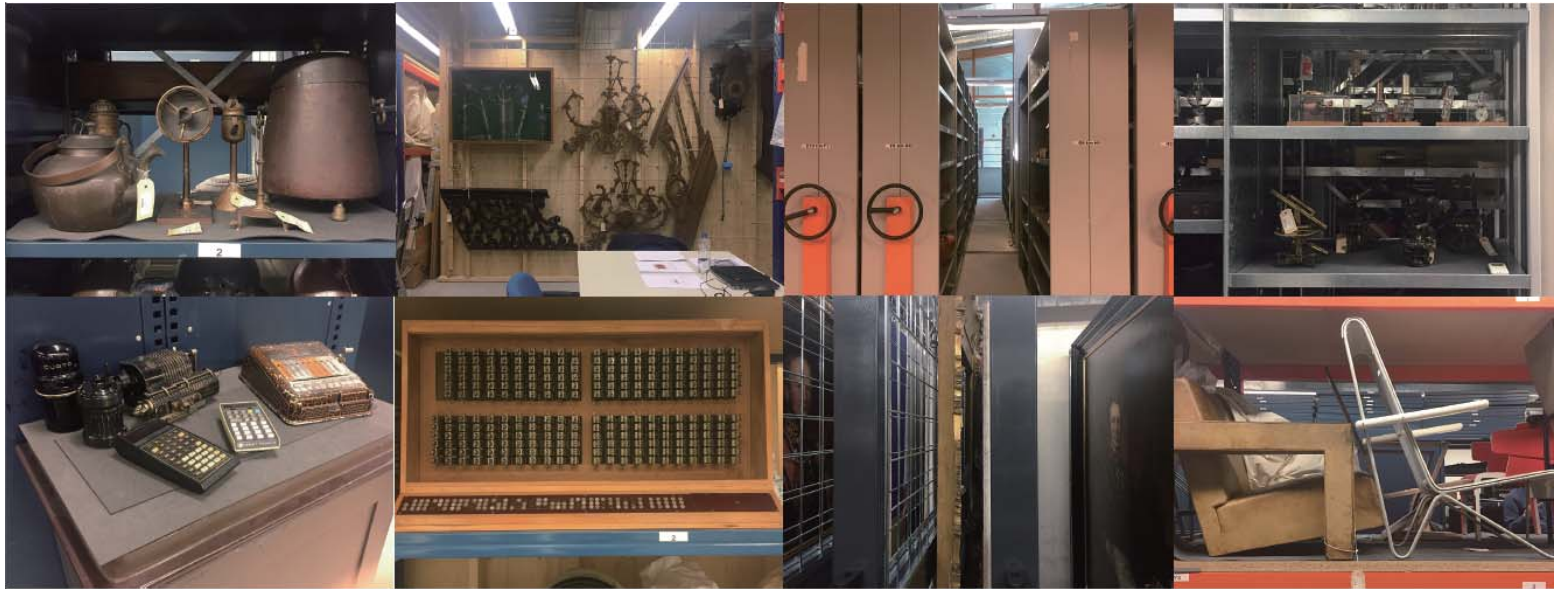
Collect

Show

Space

Storage

Display



Sluyterman Collection, TU Delft Library
Type of 'Space of Collection'



Library - Sluyterman Collection
Non-institutional Space in Urban Institution

Urban Institution

Safety and Health Care

Religion

Law & Politics

Education and Jobs

Culture Industry

Knowledge and skill

Ideas

Identity A

Education

Storage

Functional

Academic

.....

Identity B

Culture Influence

Display

Publicity

Routine

.....

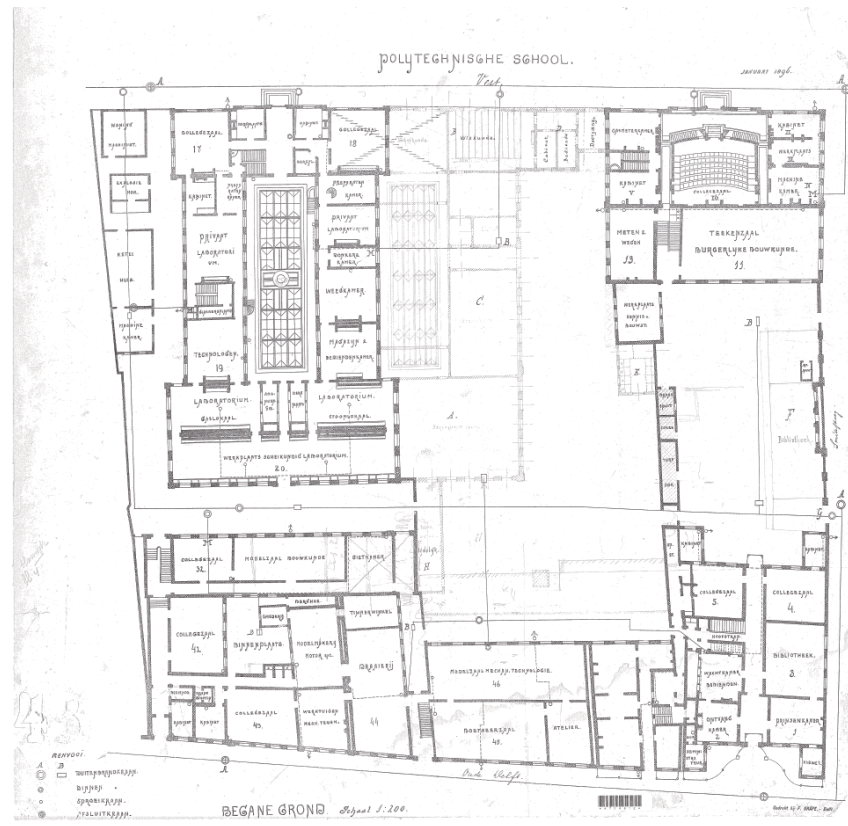
What's the relation of both identities?

How they embedded into the context as one architecture?

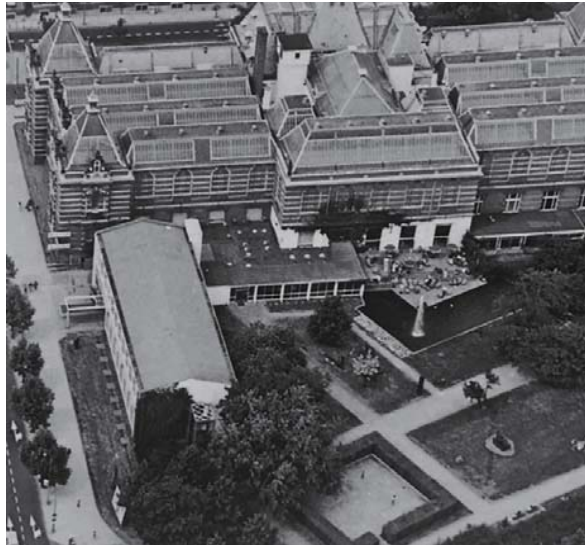


Site, Complex!

- Diverse styles and scales of surroundings
- Different openings of street facades

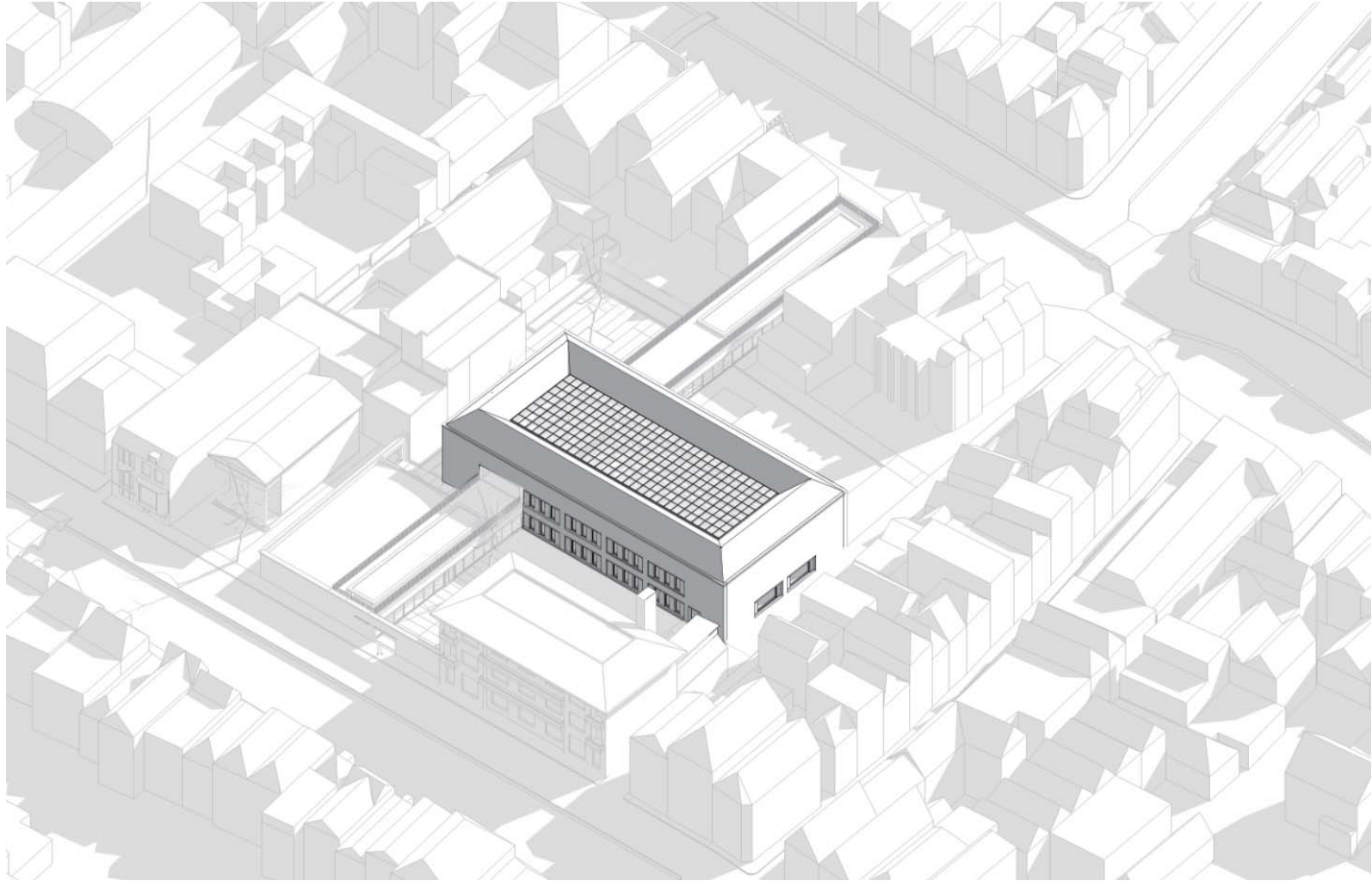


- 'De Engelenbak', Oude Delft
- One facade for Two buildings
 - A long street facade of urban institution



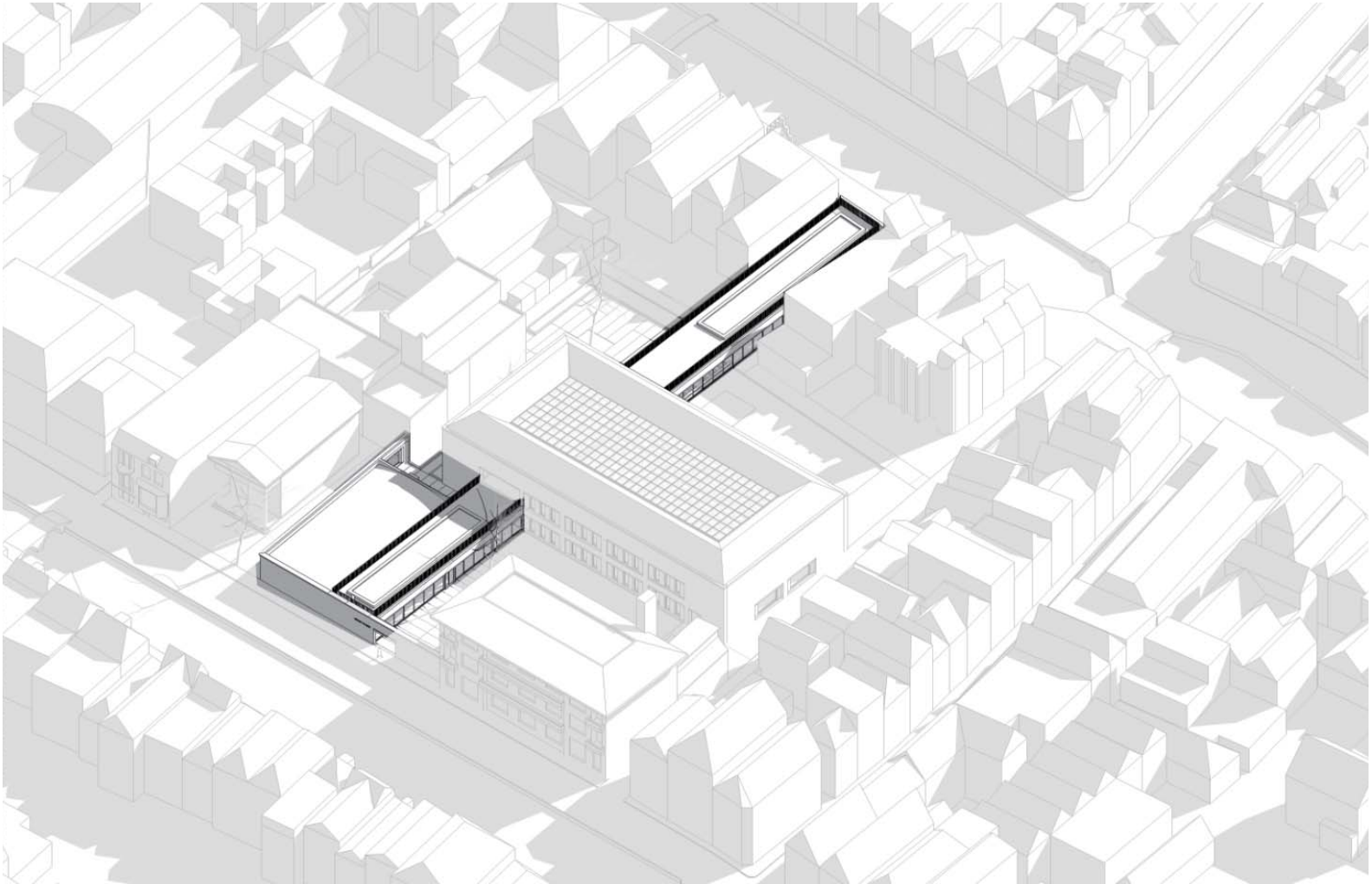
Sandbergvleugel, Stedelijk Museum, Amsterdam
- One independent building with the old one
- Unique identity, but modest





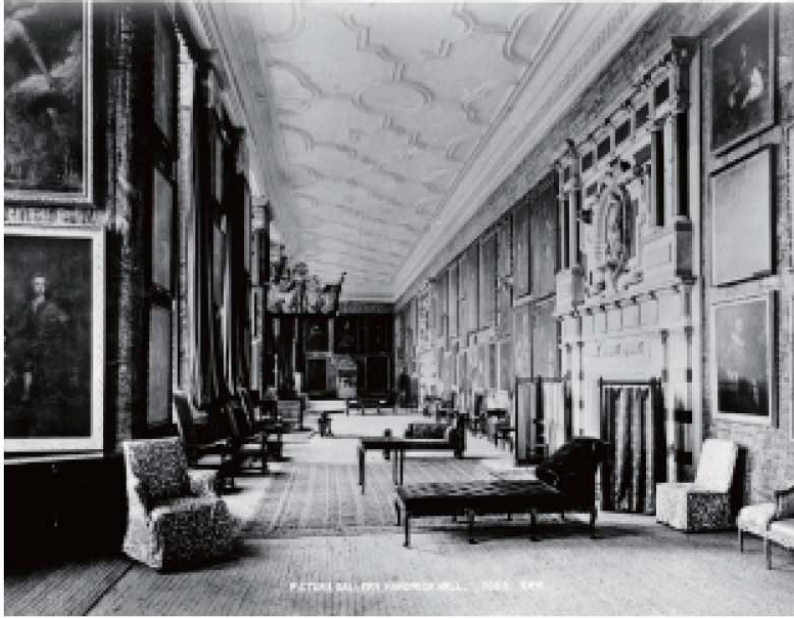
‘Archive’

- Substantial
- Compact
- Functional



'Long gallery'

- Transparent
- Imperceptible



Hardwick Hall, England



Syon House, England

'Long gallery'

What's the relation of both identities?

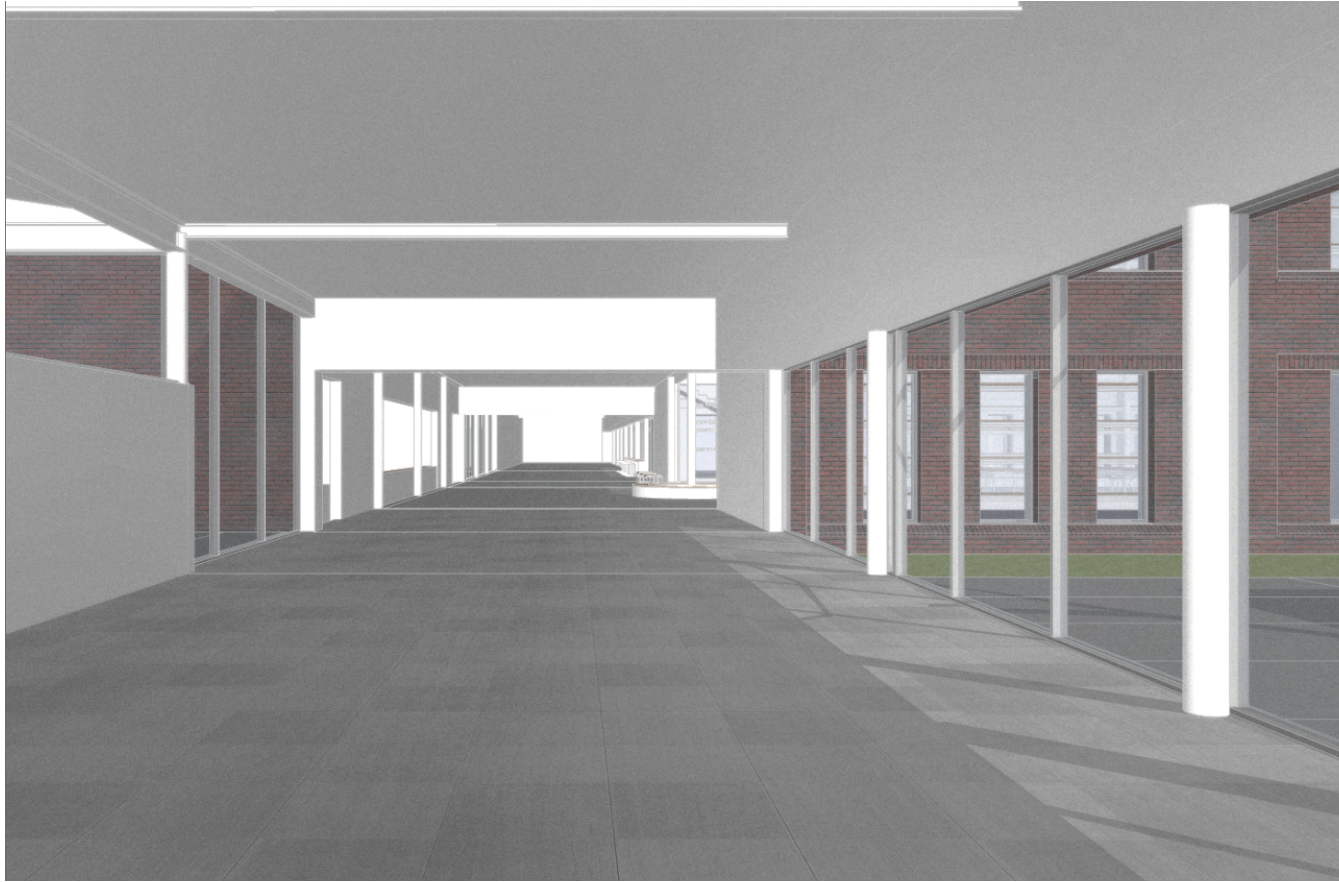


How they meet each other?



'Long gallery' passes across the archive

- A strong feeling of entering the 'archive'
- Fronting the centralized space
- Creating spaces in articulation



Entering the 'archive'



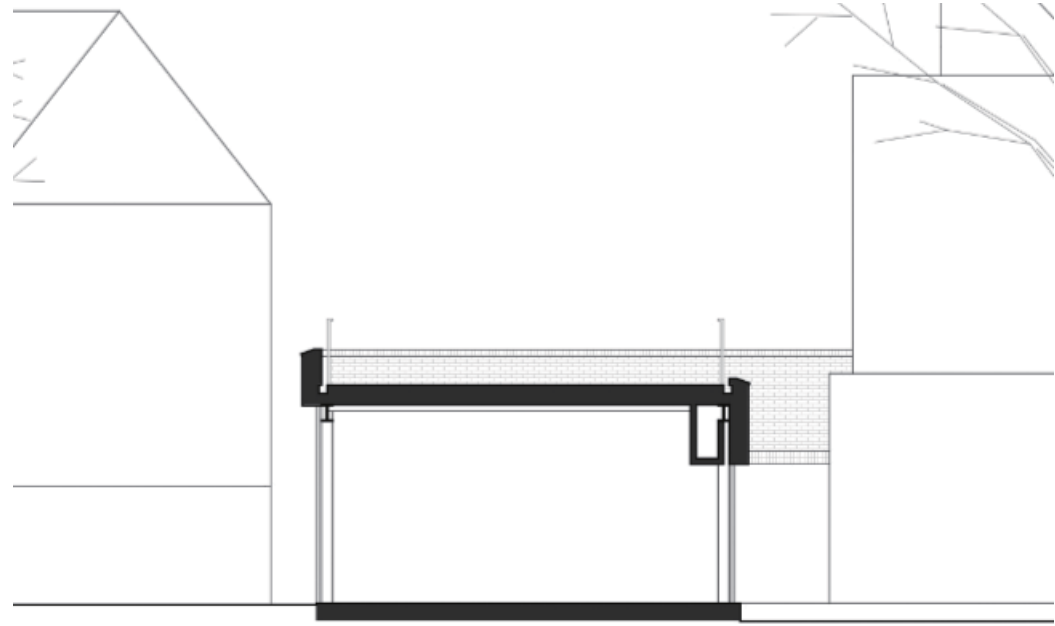
Fronting the centralized space

Creating spaces in articulation

How they embedded into the context as one architecture?



1. 'Long gallery'
2. Central Spaces





Multifunctional Exhibition

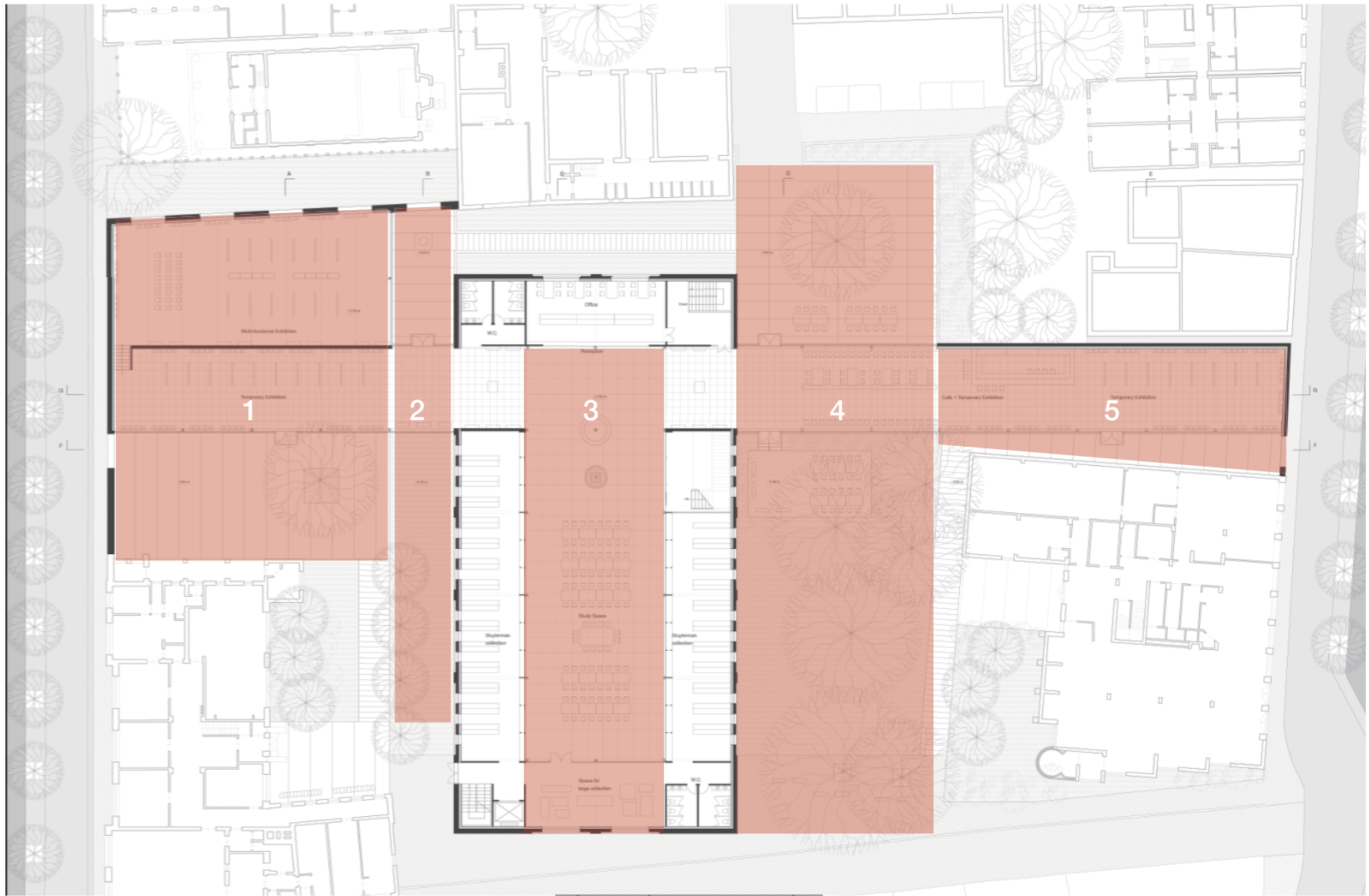
Student Gallery

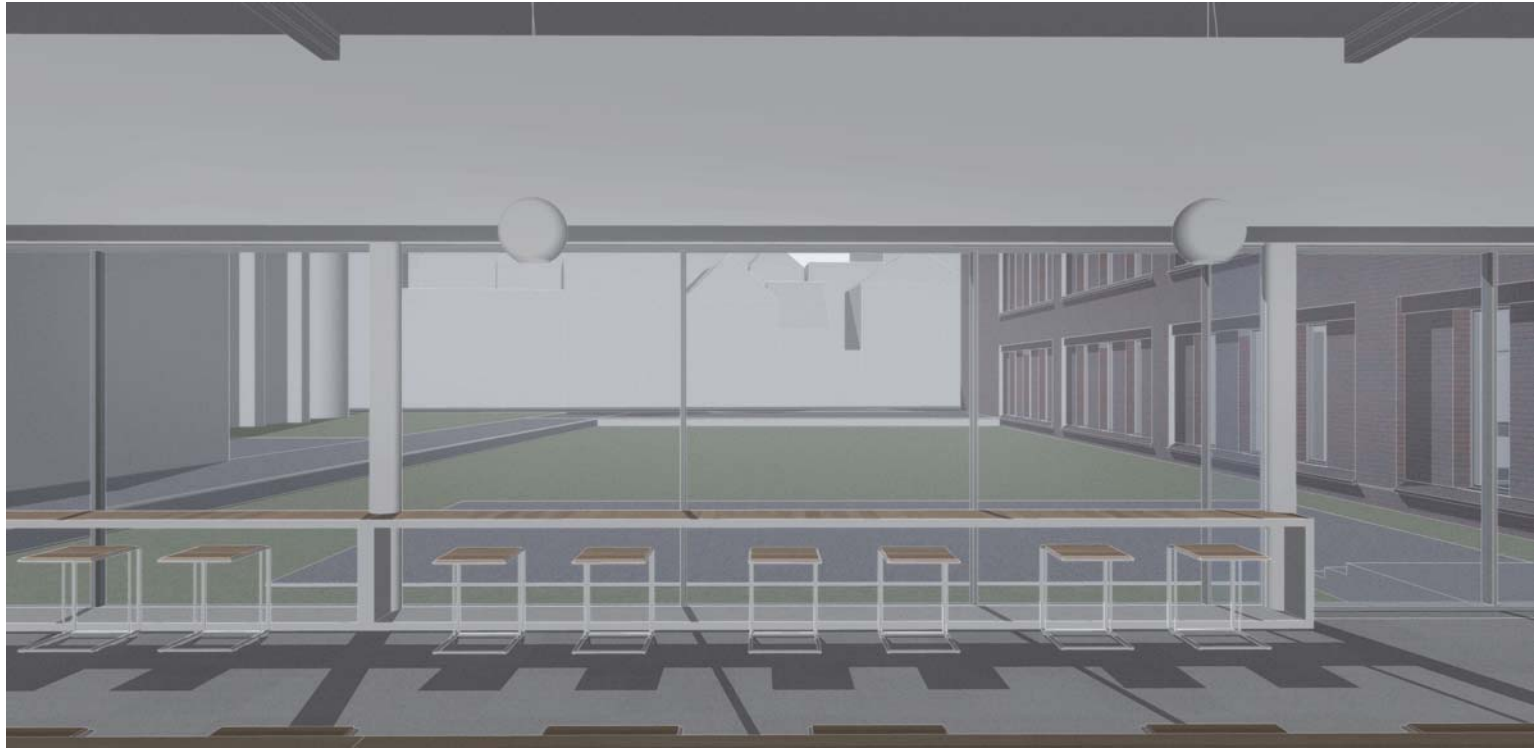
Rest

Reception for Archive

Cafe

Student Gallery

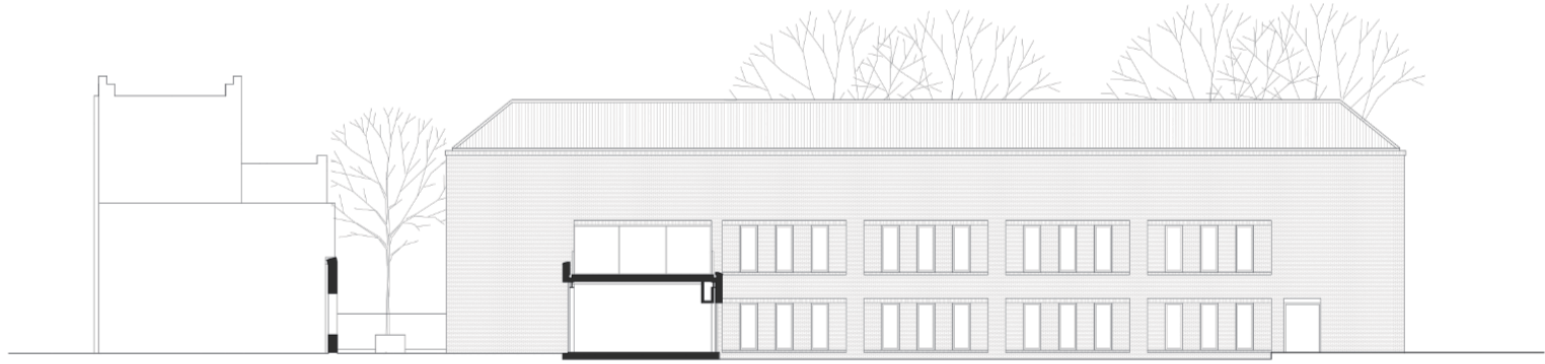






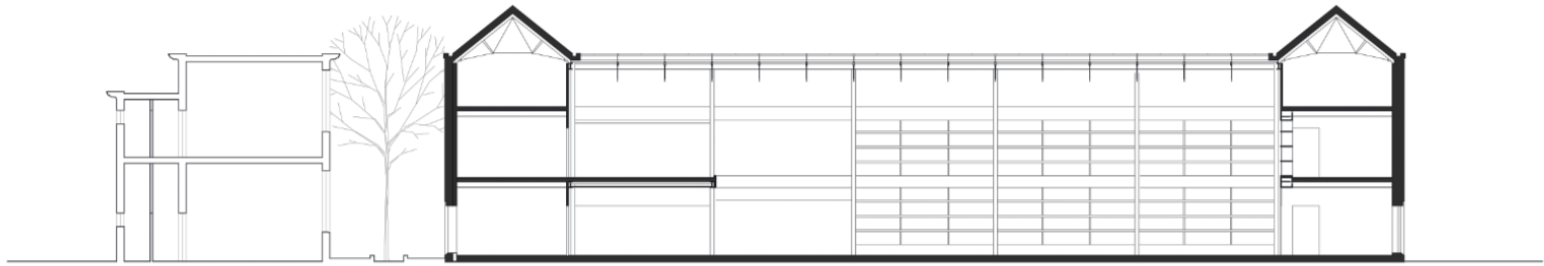
Section A - A 1: 200



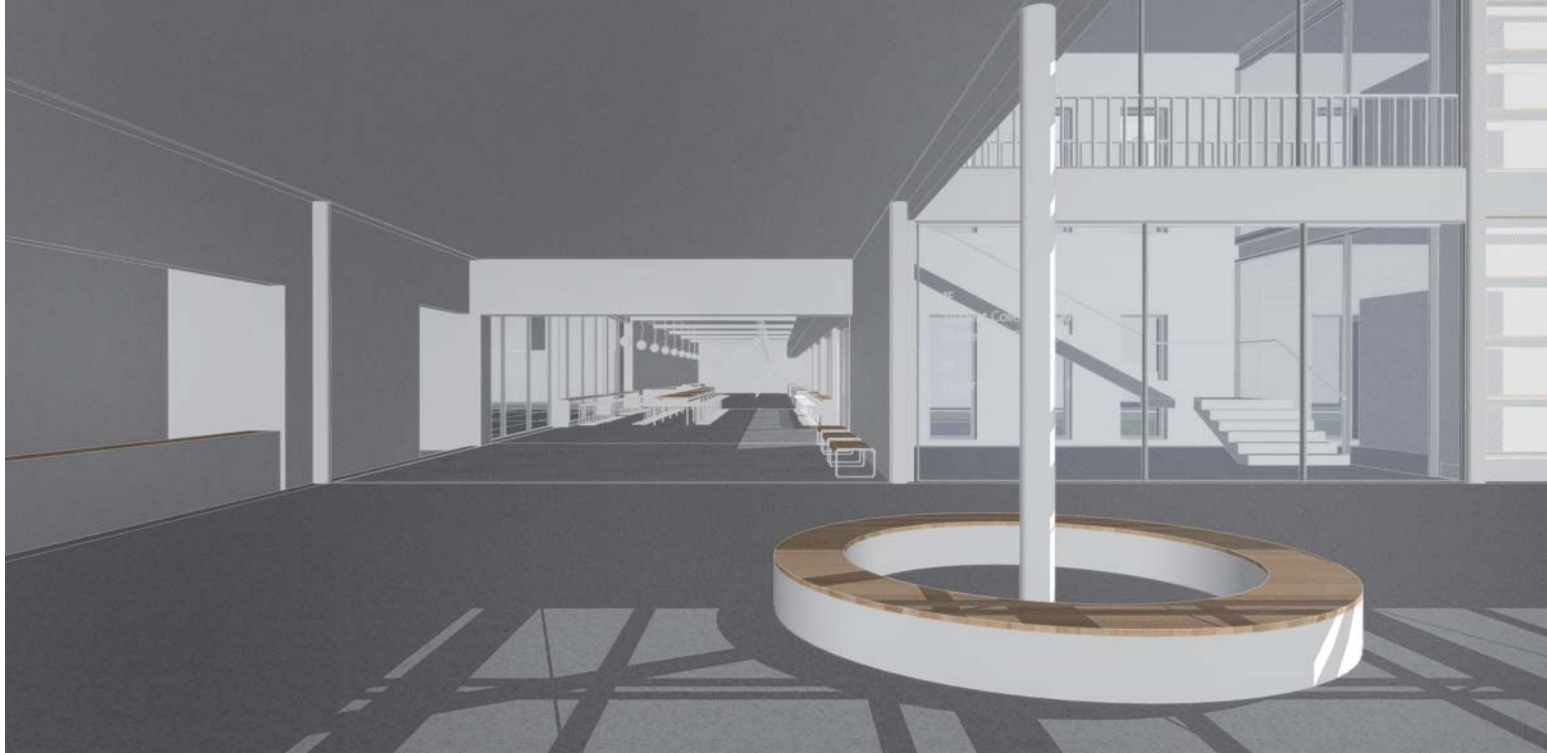


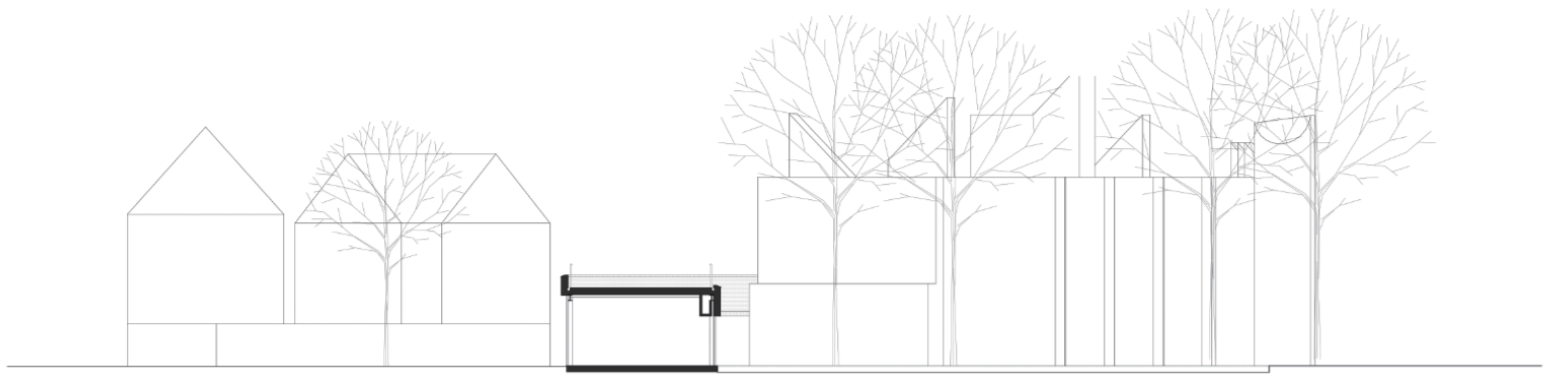
Section B - B 1:200





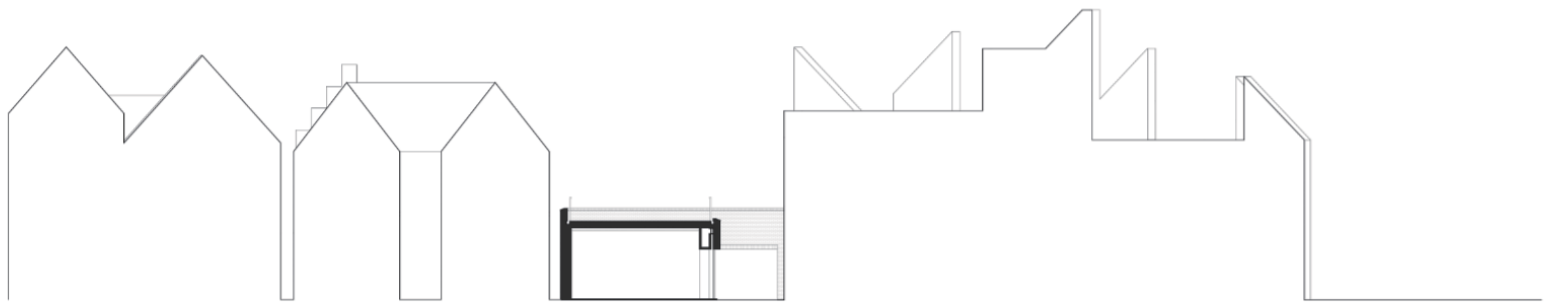
Section C - C 1: 200





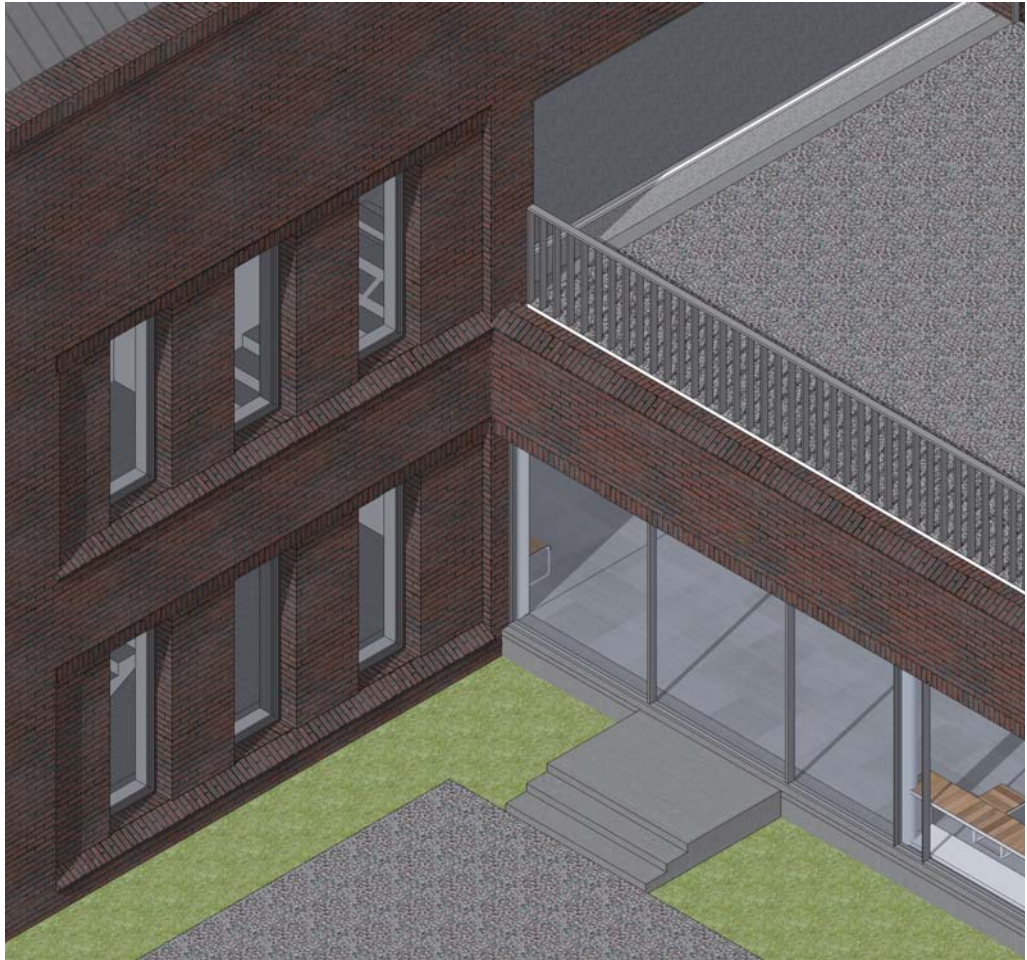
Section D - D 1:200





Section E - E 1:200















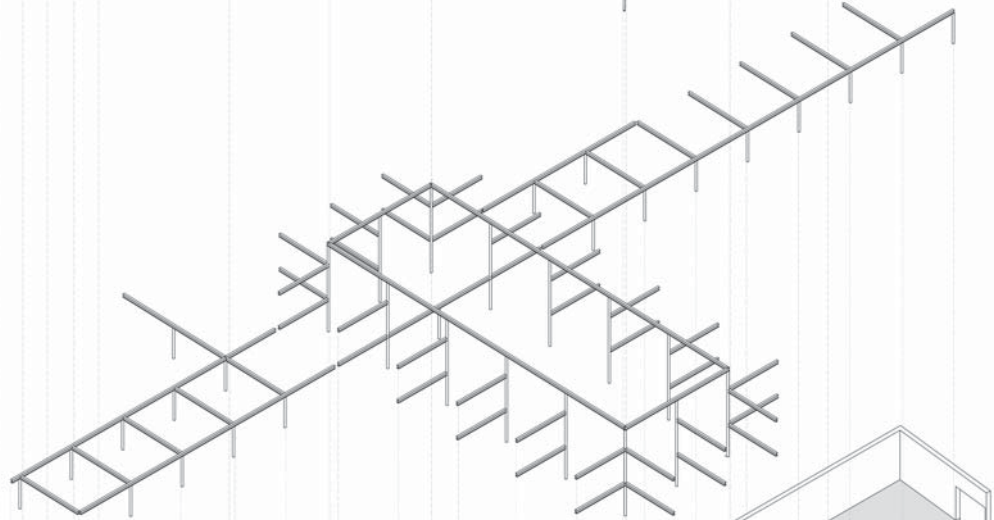




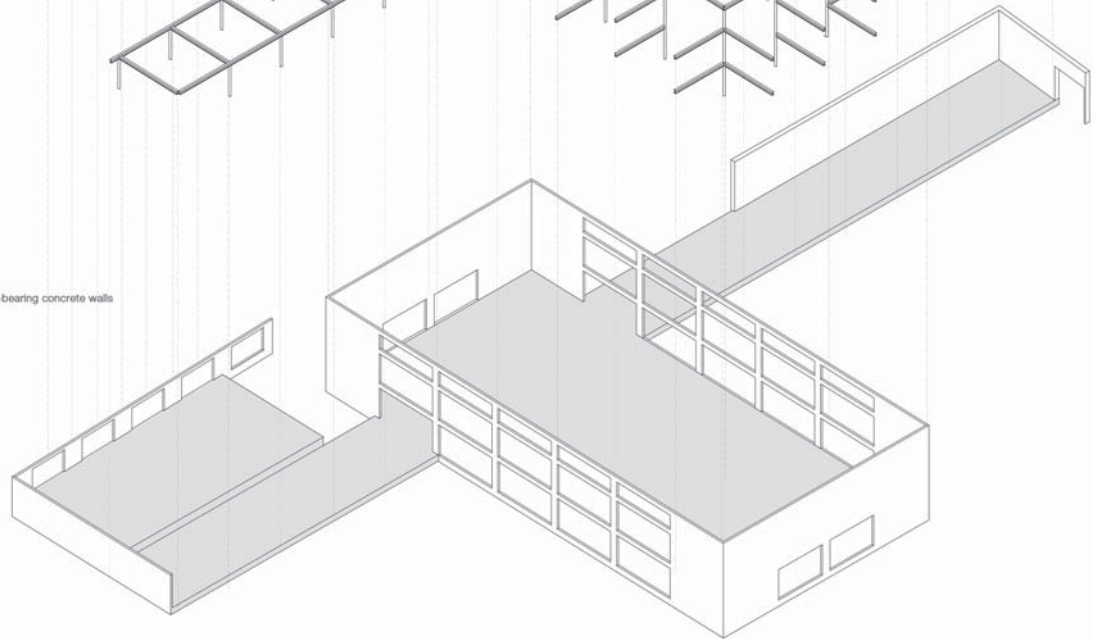
Steel Trusses

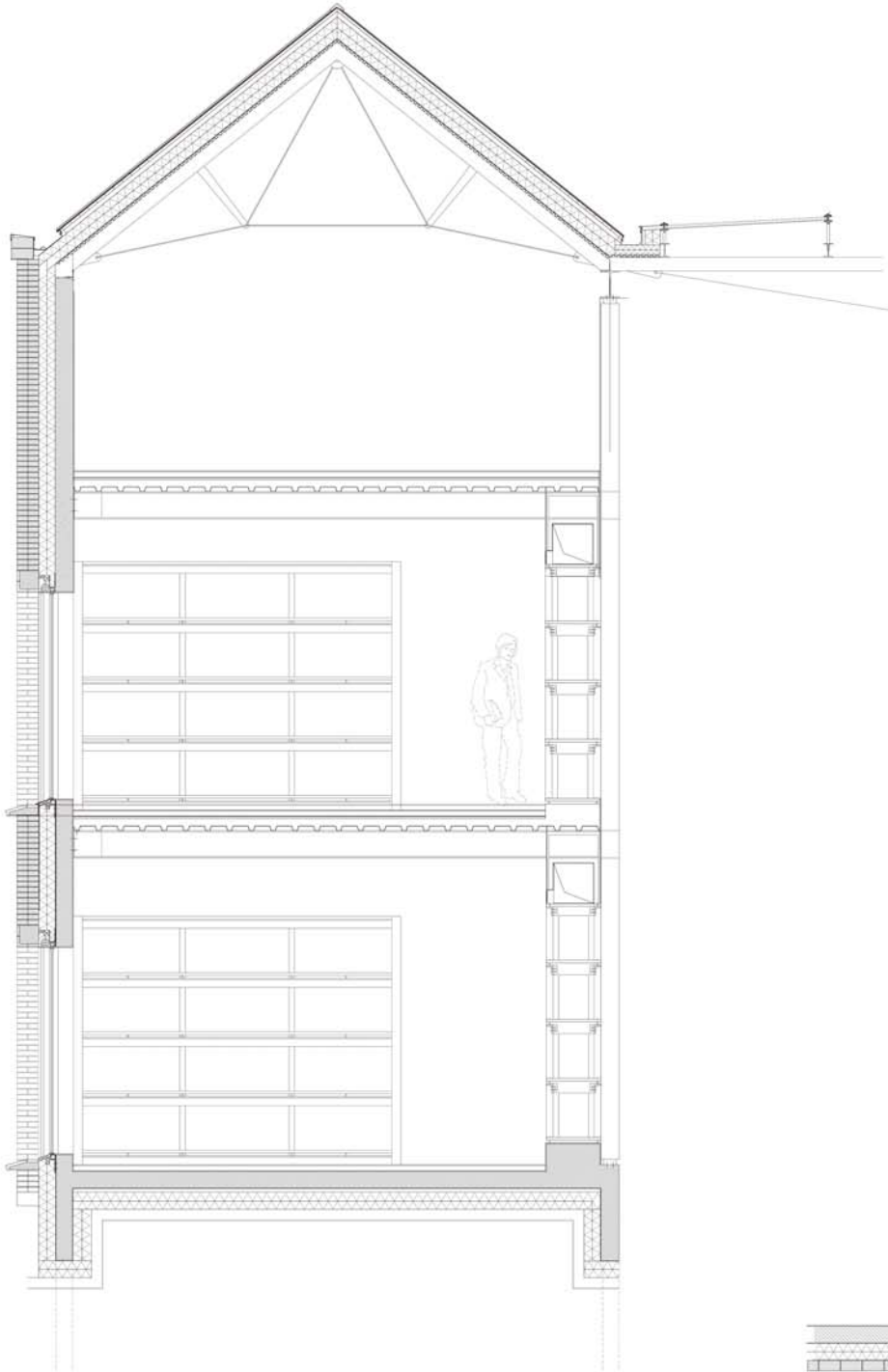


Steel Columns/ Beams

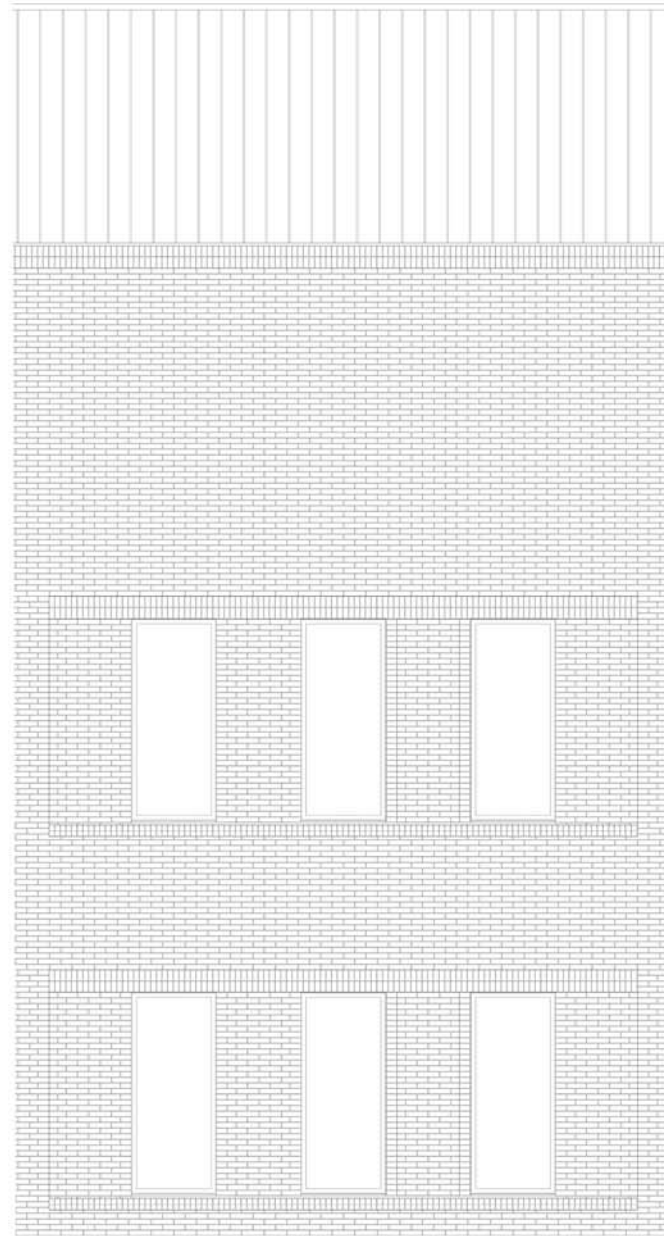


Load-bearing concrete walls

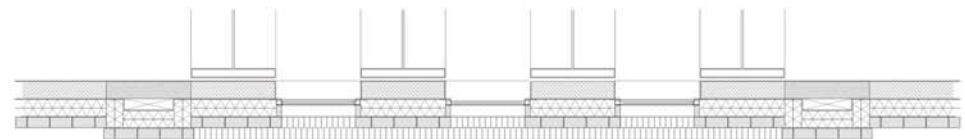




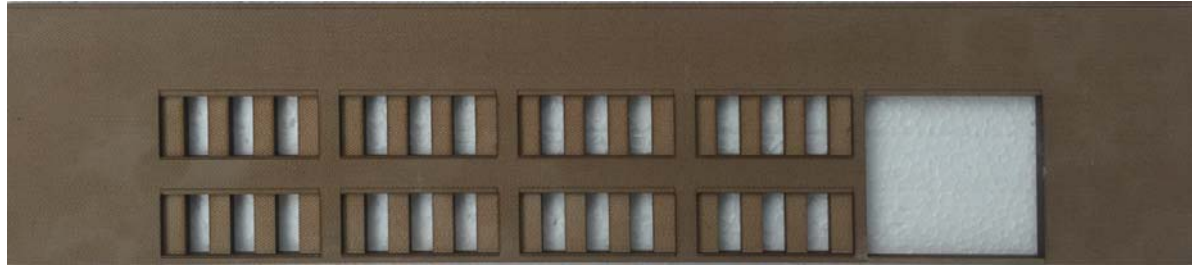
Detail Section 1: 20



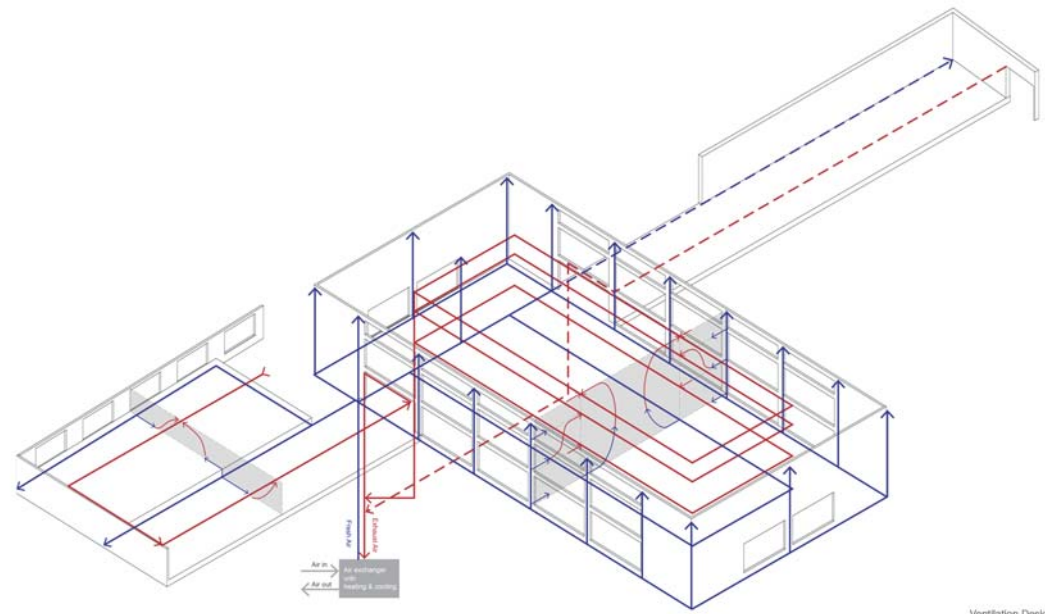
Detail Facade 1: 20



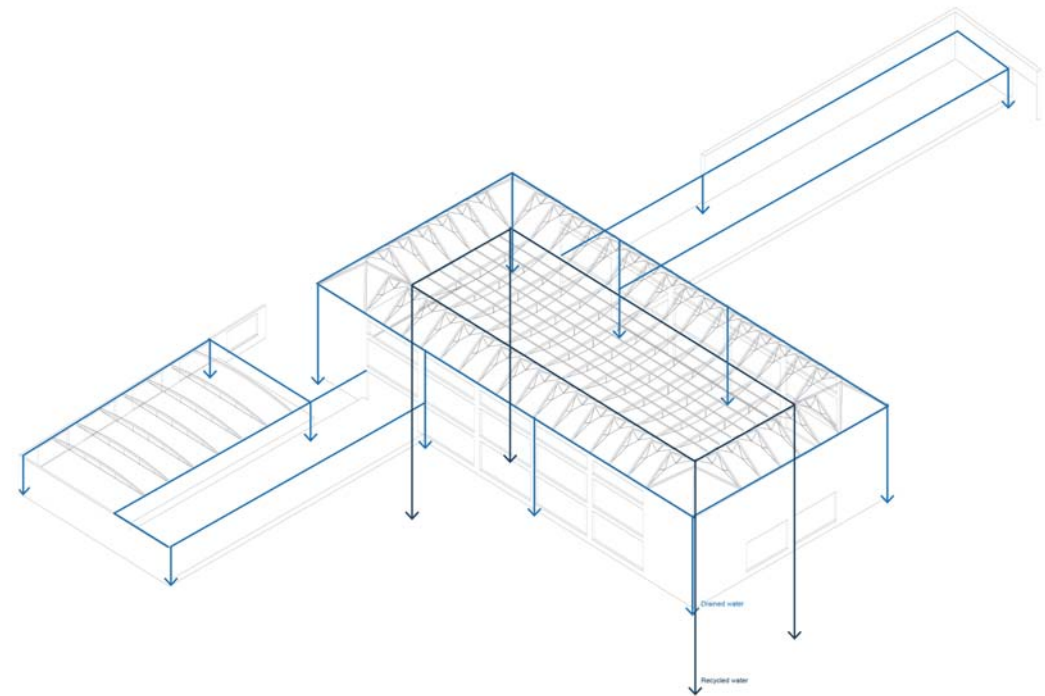
Detail Plan 1: 20



Facade Elements



Ventilation Design



Rainwater drainage