



ARTISTS

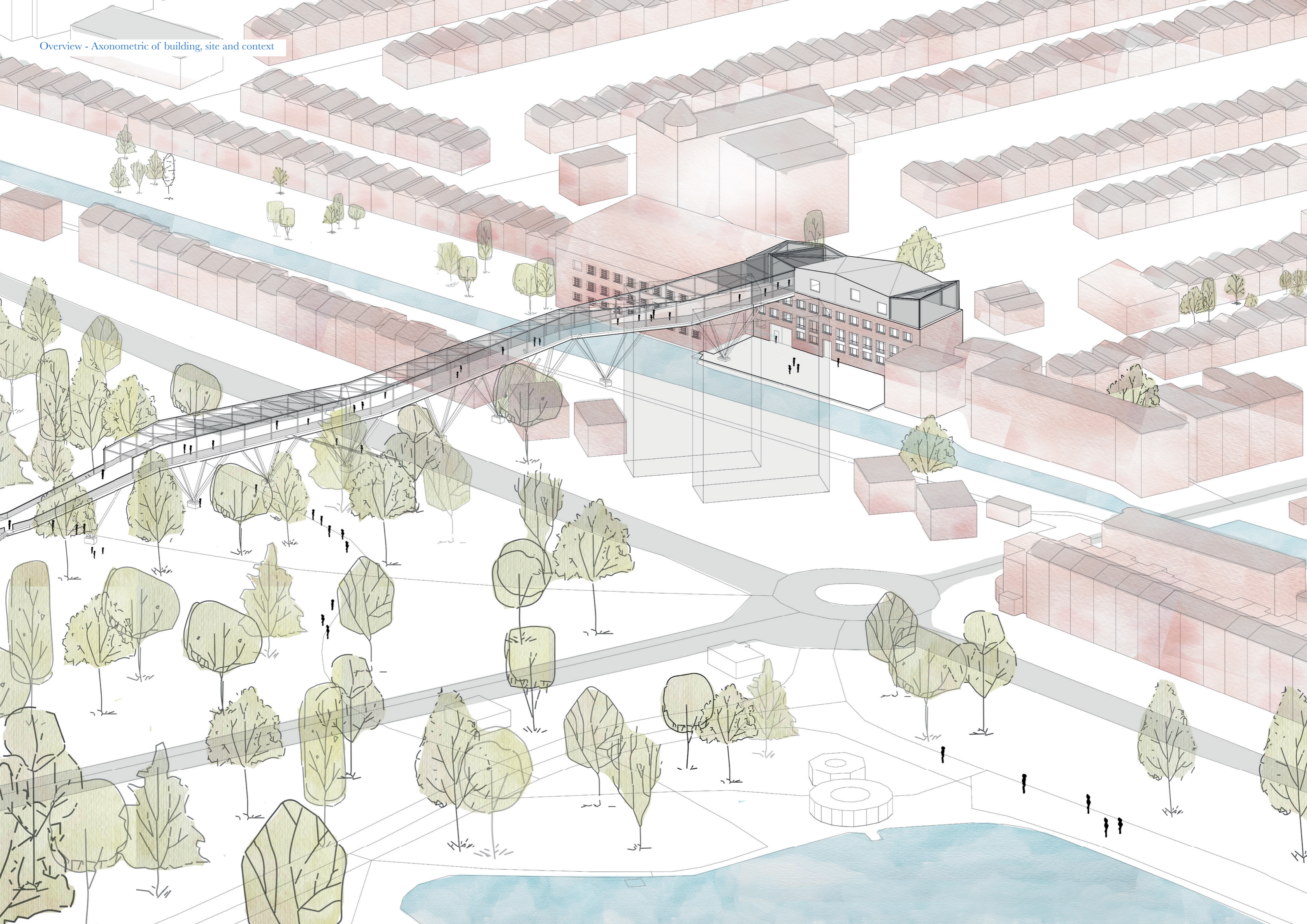
AS
AGENTS

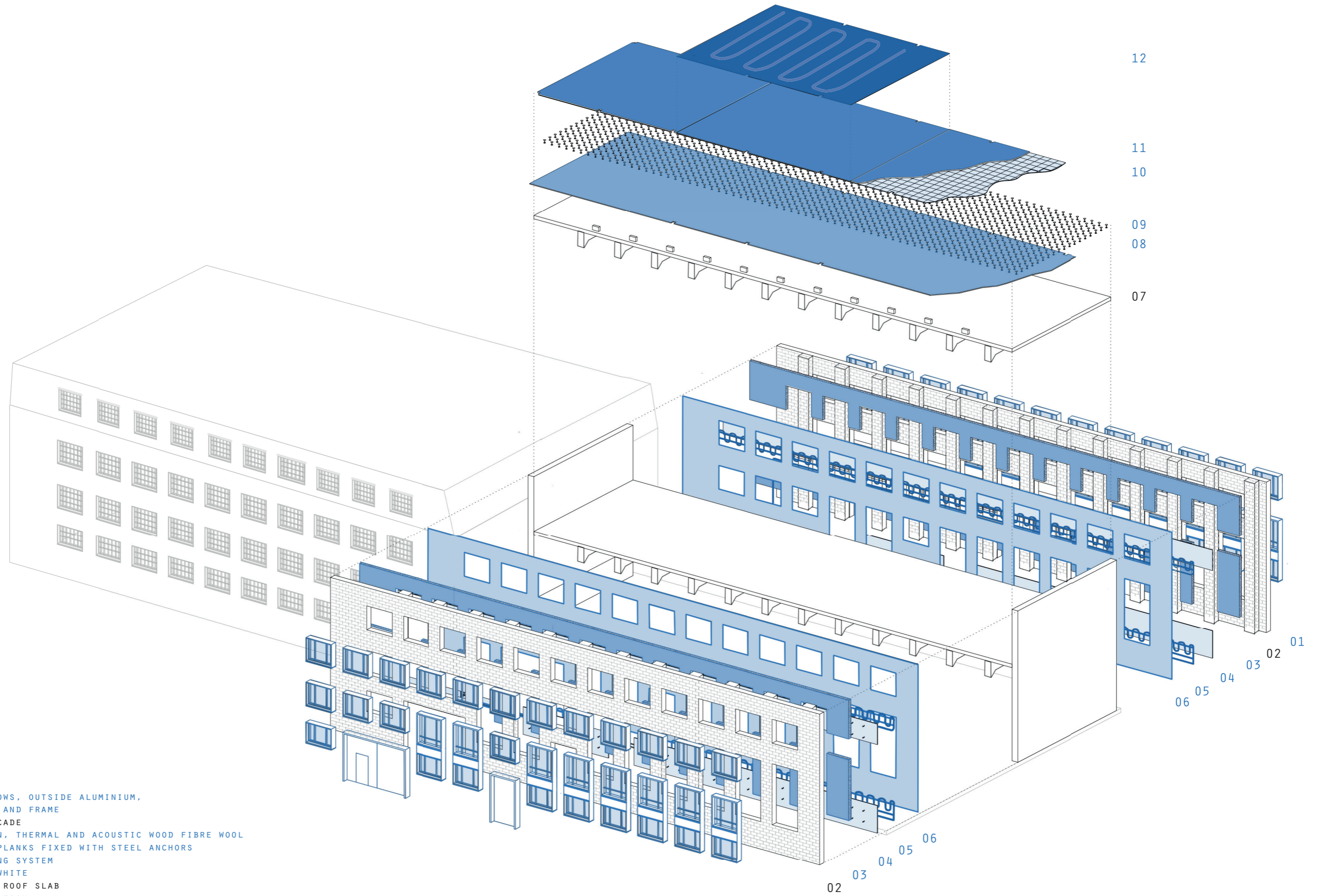
THE IMPACT OF ART(ISTS) AS AN EVERYDAY PRACTICE ON THE BUILT AND LIVED ENVIRONMENT

SET OF DRAWINGS



Overview - Axonometric of building, site and context

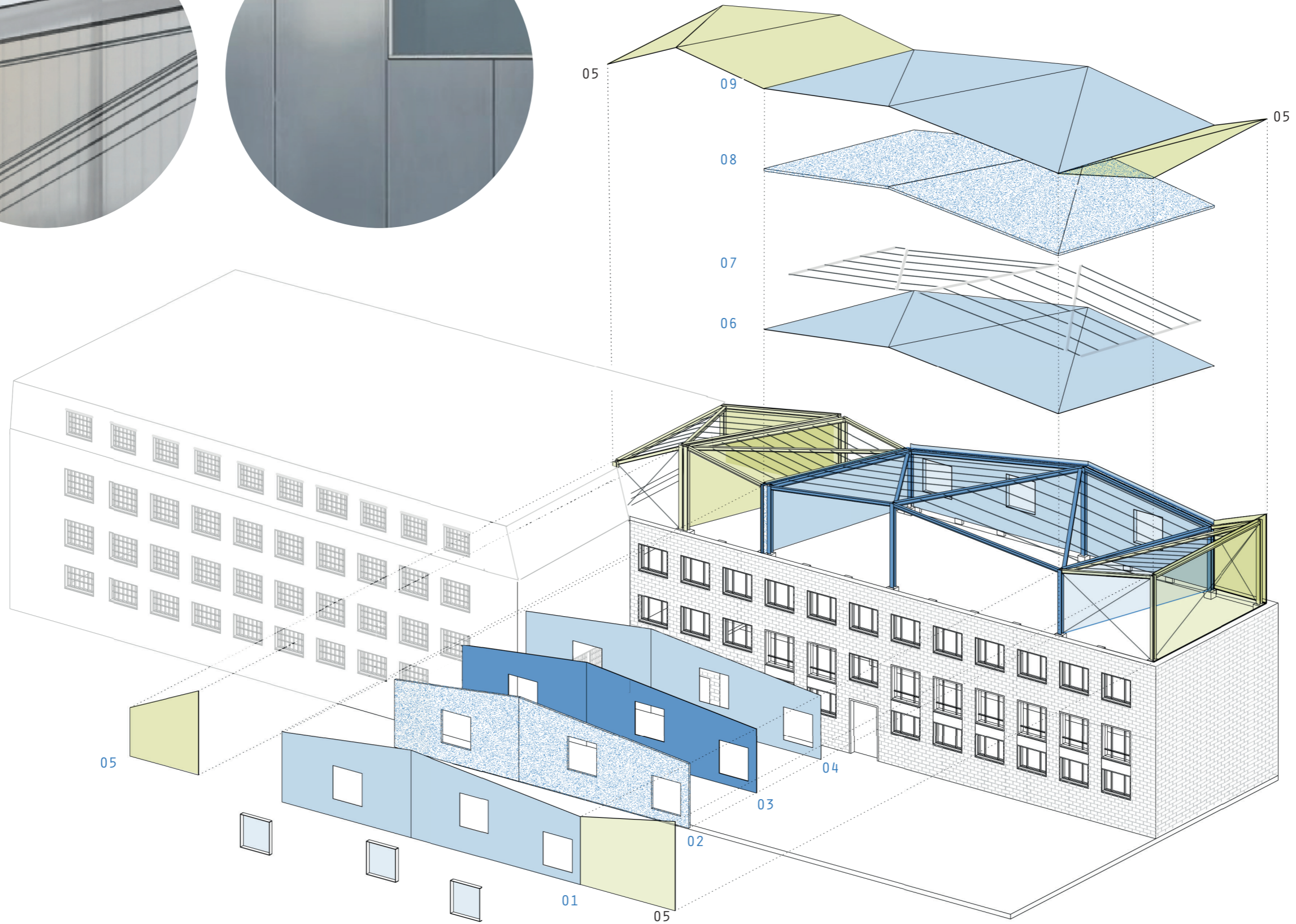
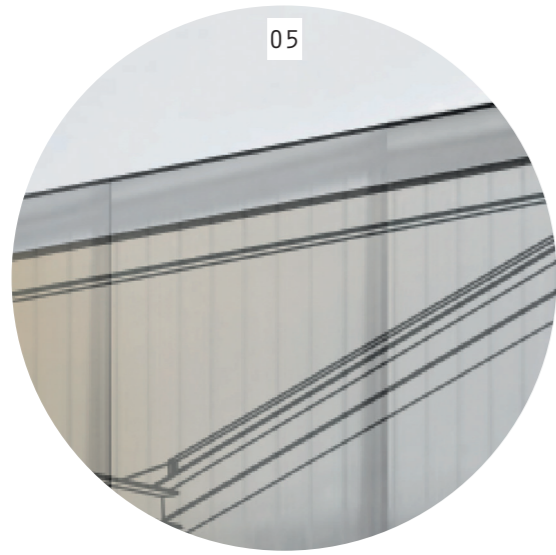




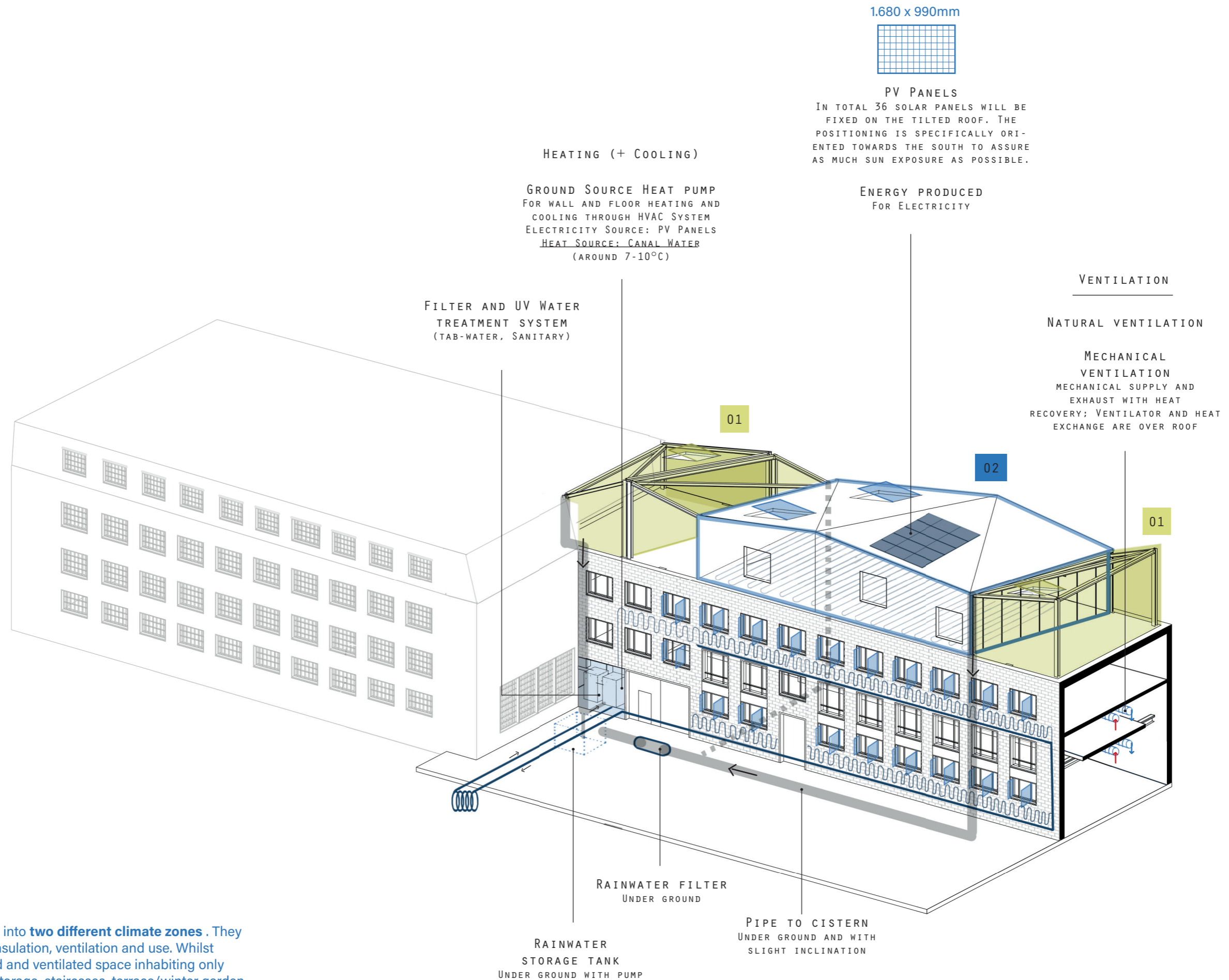
- 01 TRIPLE-GLAZED WINDOWS, OUTSIDE ALUMINIUM,
INSIDE WOOD PROFIL AND FRAME
- 02 EXISITING BRICK FACADE
- 03 INTERNAL INSULATION, THERMAL AND ACOUSTIC WOOD FIBRE WOOL
- 04 SUBSTRUCTURE, OSB PLANKS FIXED WITH STEEL ANCHORS
- 05 RADIANT WALL HEATING SYSTEM
- 06 ACOUSTIC PLASTER, WHITE
- 07 EXISITING CONCRETE ROOF SLAB
- 08 IMPACT SOUND INSULATION
- 09 RAISED FLOOR, USED FOR ELECTRICAL INSTALLATIONS
- 10 SUPPORT PLATE, GYPSUM FIBRE BOARD
- 11 SCREED, POLISHED
- 12 SCREED, POLISHED WITH FLOOR HEATING

01

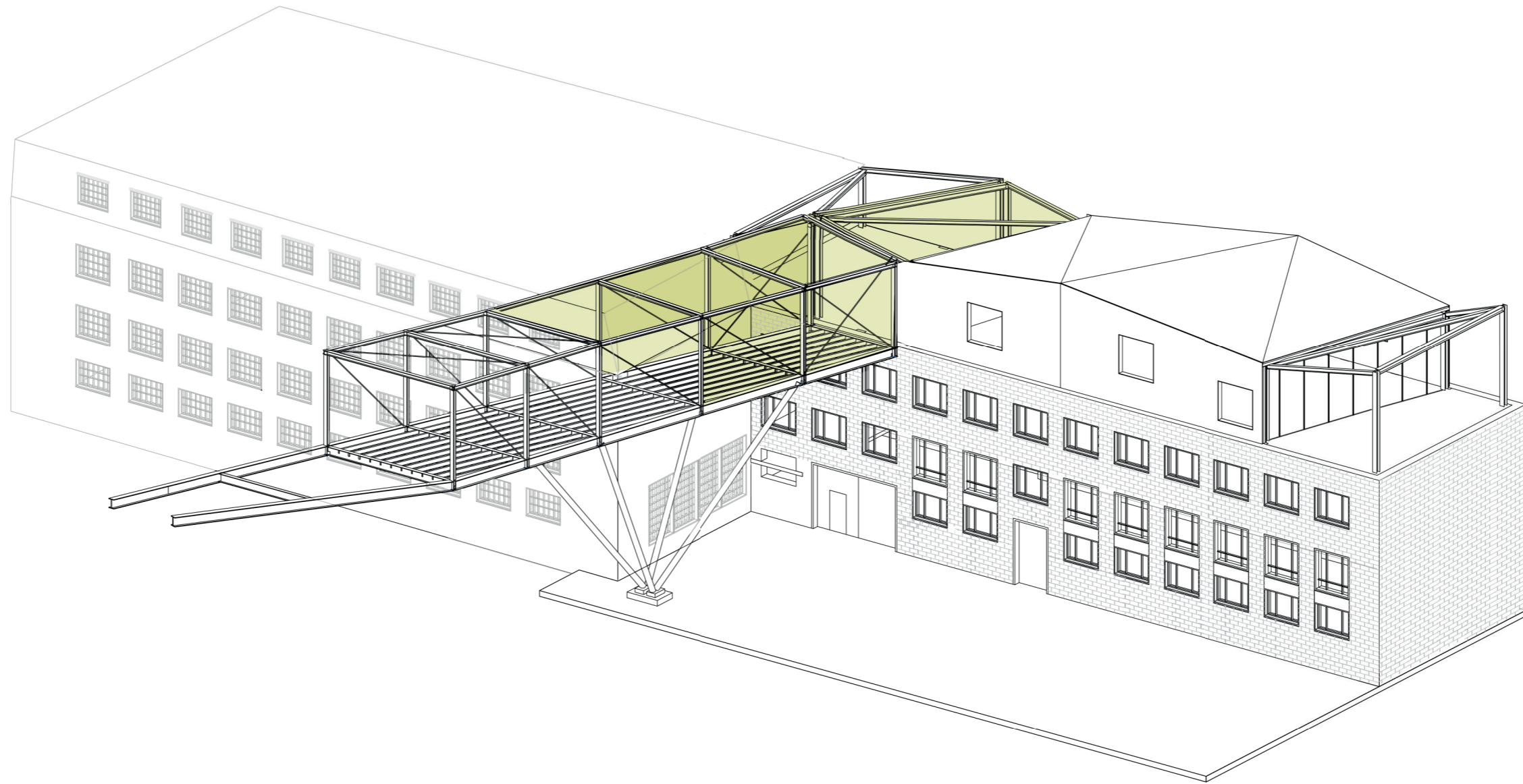
Explosion drawing: Intervention roof top addition



- 01 ALUMINIUM FACADE CLADDING
- 02 INSULATION, WOOL FIBRE
- 03 ACOUSTIC PANEL
- 04 ALUMINIUM CLADDING (INTERIOR)
- 05 POLYCARBONAT (PC), TRANSLUCENT
- 06 CEILING, ALUMINIUM PANELS
- 07 INSULATION, WOOD FIBRE
- 08 SUBSTRUCTURE - BATTENS
- 09 ALUMINIUM ROOF CLADDING

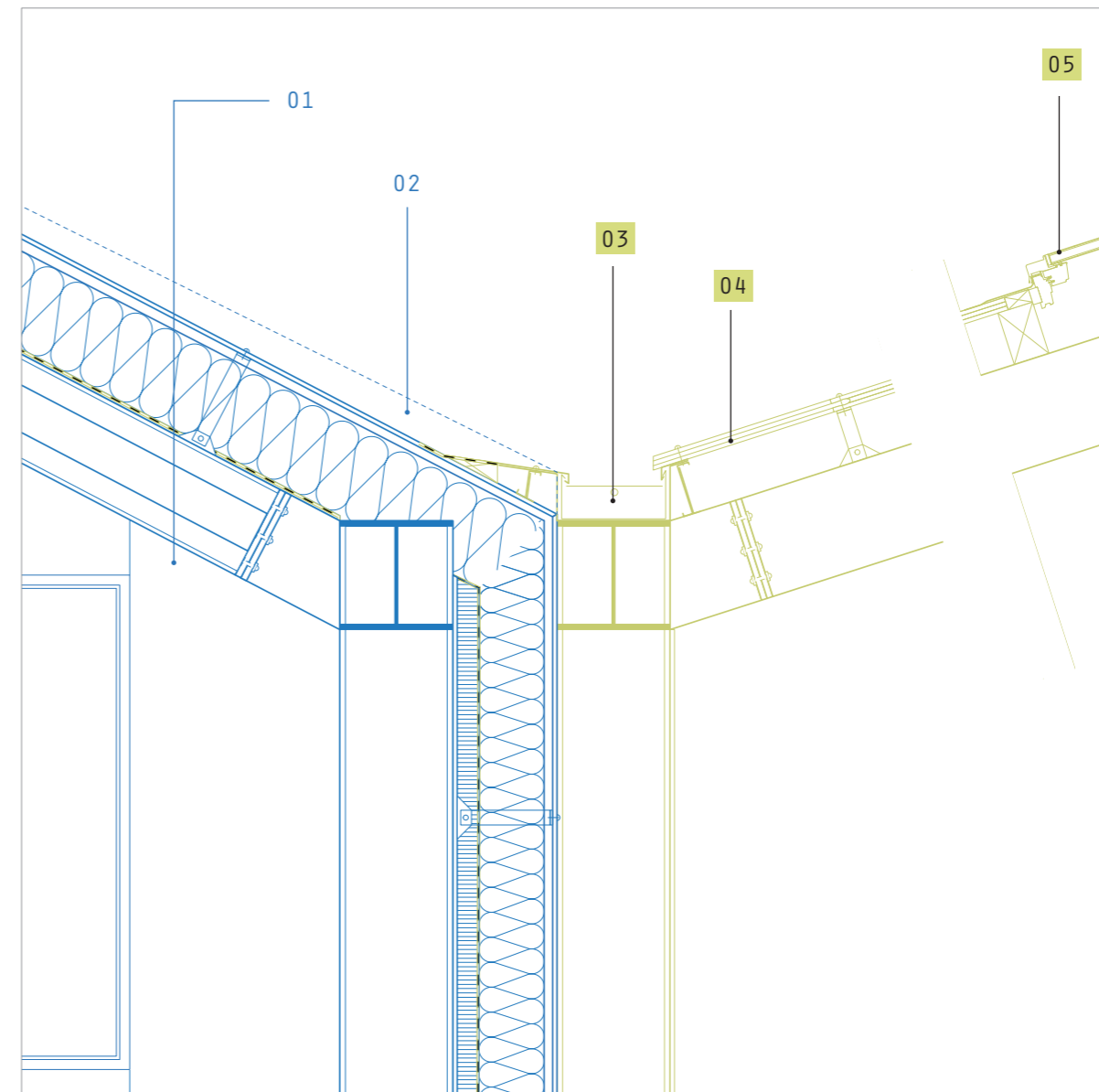


The roof top on is divided into **two different climate zones** . They differ in materialization, insulation, ventilation and use. Whilst **Zone 01** is a non insulated and ventilated space inhabiting only secondary spatial uses (storage, staircases, terrace/winter garden, entrance hall, etc.) **Zone 02** (multifunctional space with bar, stage and an event space) has mechanical ventilation, heating and insulation.





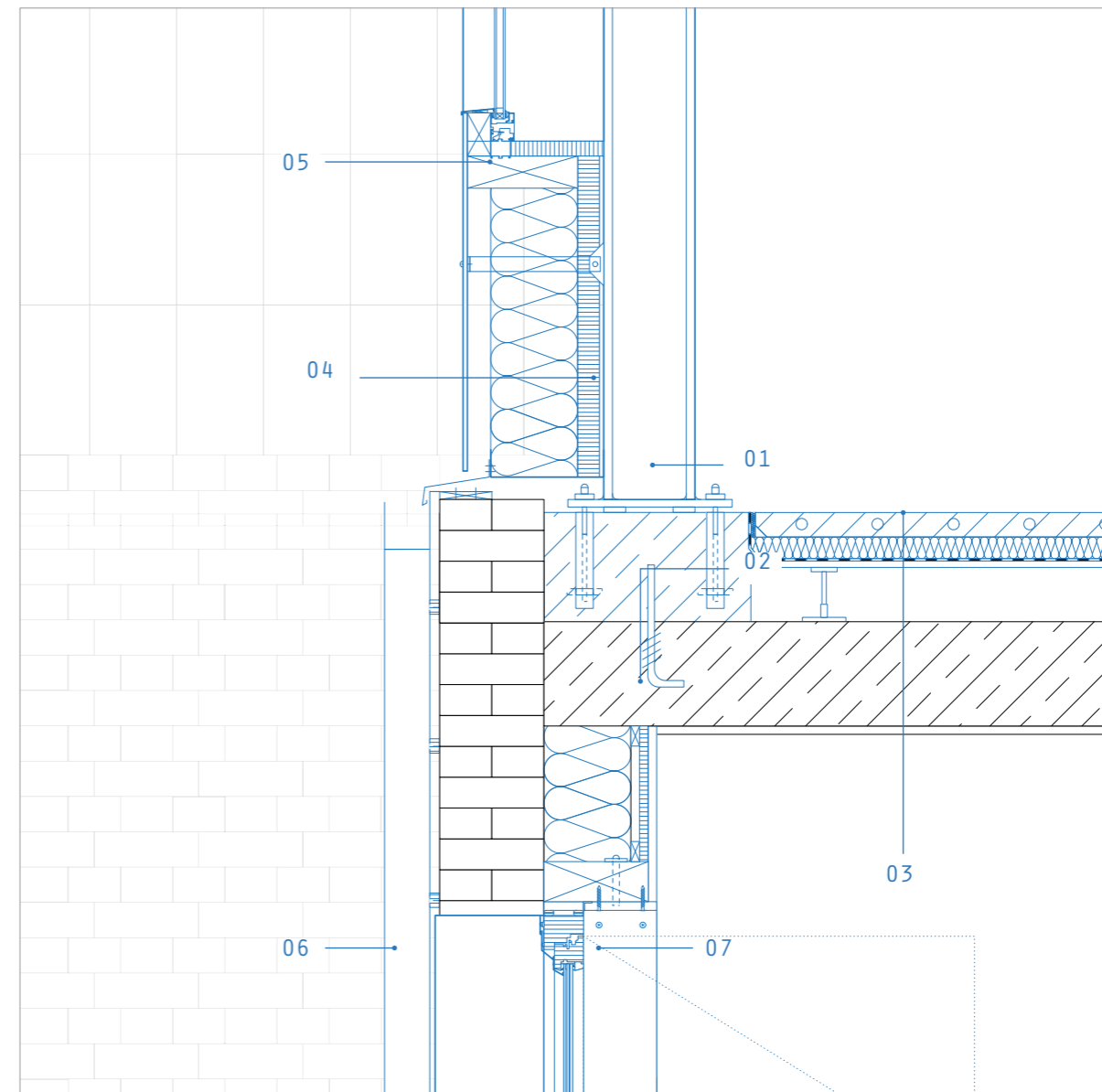
DETAIL 01
JOINT INSULATED AND NOT INSULATED ROOF EXTENSION



- 01 ROOF LAYERS (INSIDE TO OUTSIDE): STEEL BEAM (HEA), ALUMINIUM SHEETS, VAPER BARRIER, INSULATION WOODFIBER, FOIL, AIR LAYER, ALUMINIUM SHEETS (FIXED WITH SUBCONSTRUCTION TO STEEL BEAMS)
- 02 ALUMINIUM SHADING ALONG FACADE THROUGH EXTENTION OF FACADE PANELS
- 03 WATER DRAINAGE WITH INCLINATION <2% TOWARDS NORTH OR SOUTH FACADE DEPENDING ON INCLINATION DIRECTION
- 04 POLYCARBONATE PANELS FIXED WITH SUBCONSTRUCTION TO STEEL STRUCTURE
- 05 SKYLIGHT, FOR HEAT EXHAUST AND FRESH AIR



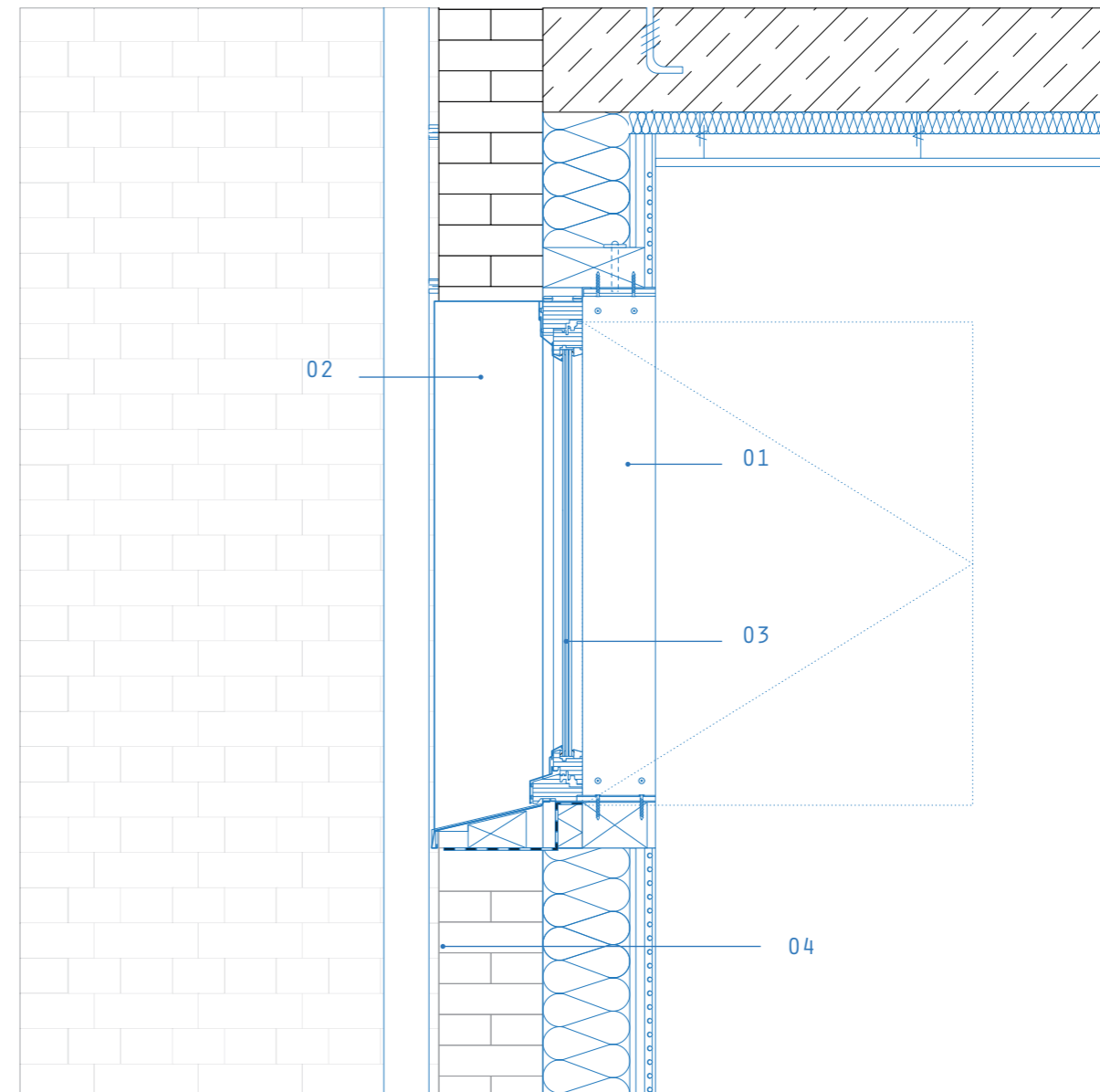
DETAIL 02
CONNECTION ROOF TOP ON TO EXISTING BUILDING



- 01 STEEL BEAM (HEA) FIRMLY FIXED TO CONCRETE FOUNDATION
- 02 CONCRETE FOUNDATION FIRMLY FIXED TO CONCRETE CEILING WITH ANCHOR
- 03 FLOOR LAYERS (TOP TO BOTTOM): POLISHED SCREED WITH FLOOR HEATING, IMPACT SOUND INSULATION, BASE PLATE WOOD, PEDESTAL CONSTRUCTION, CAVITY FOR ELECTRICITY, REINFORCED CONCRETE SLAB
- 04 WALL LAYERS (INSIDE TO OUTSIDE): PERFORATED ALUMINIUM SHEETS, ACOUSTIC PANEL, INSULATION WOODFIBER, AIR LAYER, ALUMINIUM SHEETS (FIXED WITH SUBCONSTRUCTION TO STEEL BEAMS)
- 05 FIXED DOUBLE GLAZING, ALUMINIUM
- 06 WATER DRAINAGE ALONG FACADE, FIXED TO EXISTING BRICK FACADE
- 07 INTERNAL ADDITIONAL INSULATION WOODFIBER



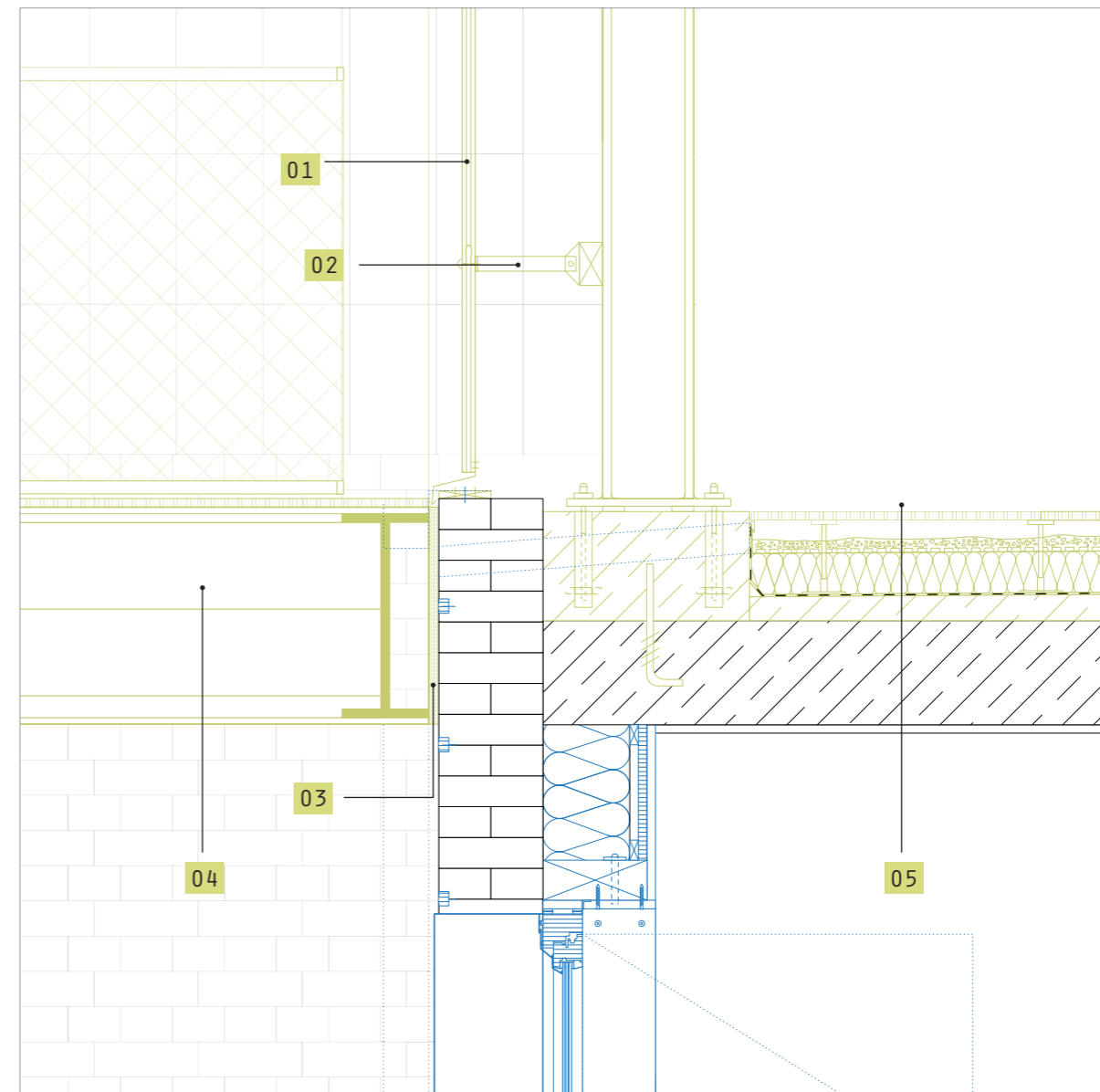
DETAIL 03
WOOD-ALUMINIUM WINDOW



- 01 WOOD FRAME ON THE INSIDE
- 02 ALUMINIUM FRAME ON THE OUTSIDE
- 03 WOOD-ALU WINDOW, DOUBLE GLAZING, CAN BE OPENED TOWARDS THE INSIDE
- 04 WALL LAYERS (FROM OUTSIDE TO INSIDE): EXISTING WALL, BRICK, VAPOUR MEMBRANE, THERMAL INSULATION IN BETWEEN WOODEN STUDS, WOOD FIBRE, SUBSTRUCTURE, PLYWOOD, WALL HEATING, VARIO THERM SYSTEM WITH ECO HEATING PLASTER, WHITE

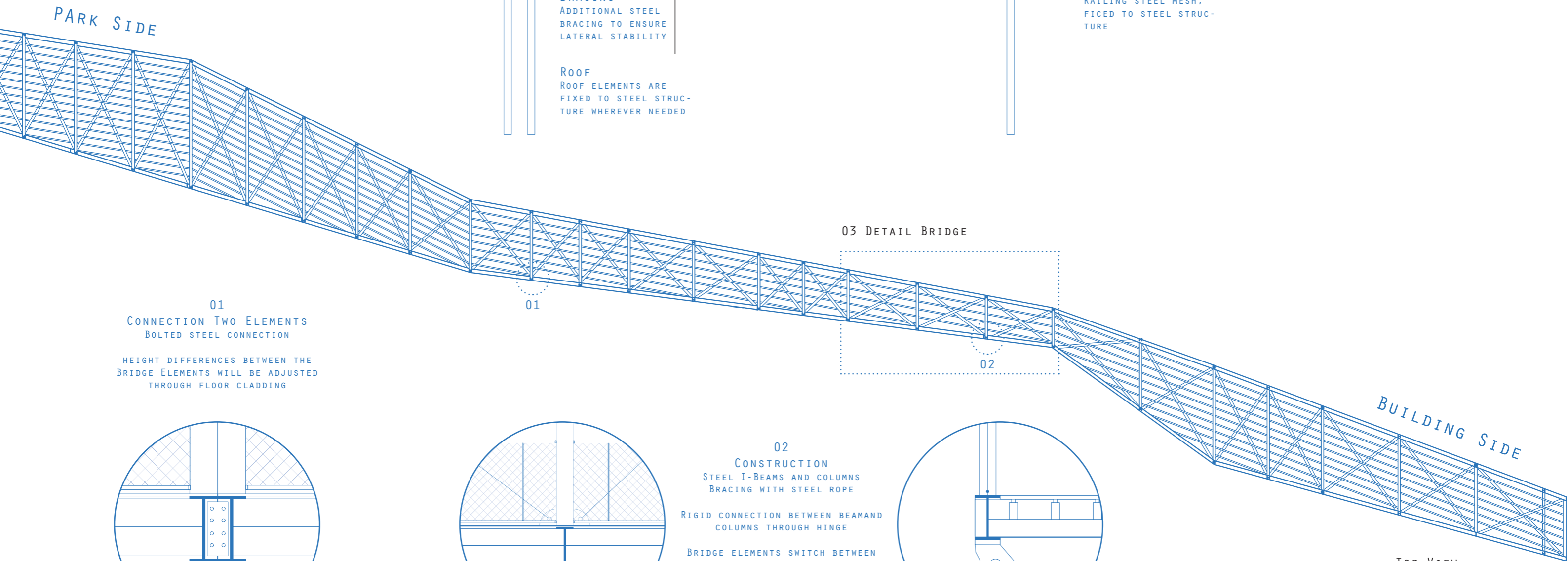
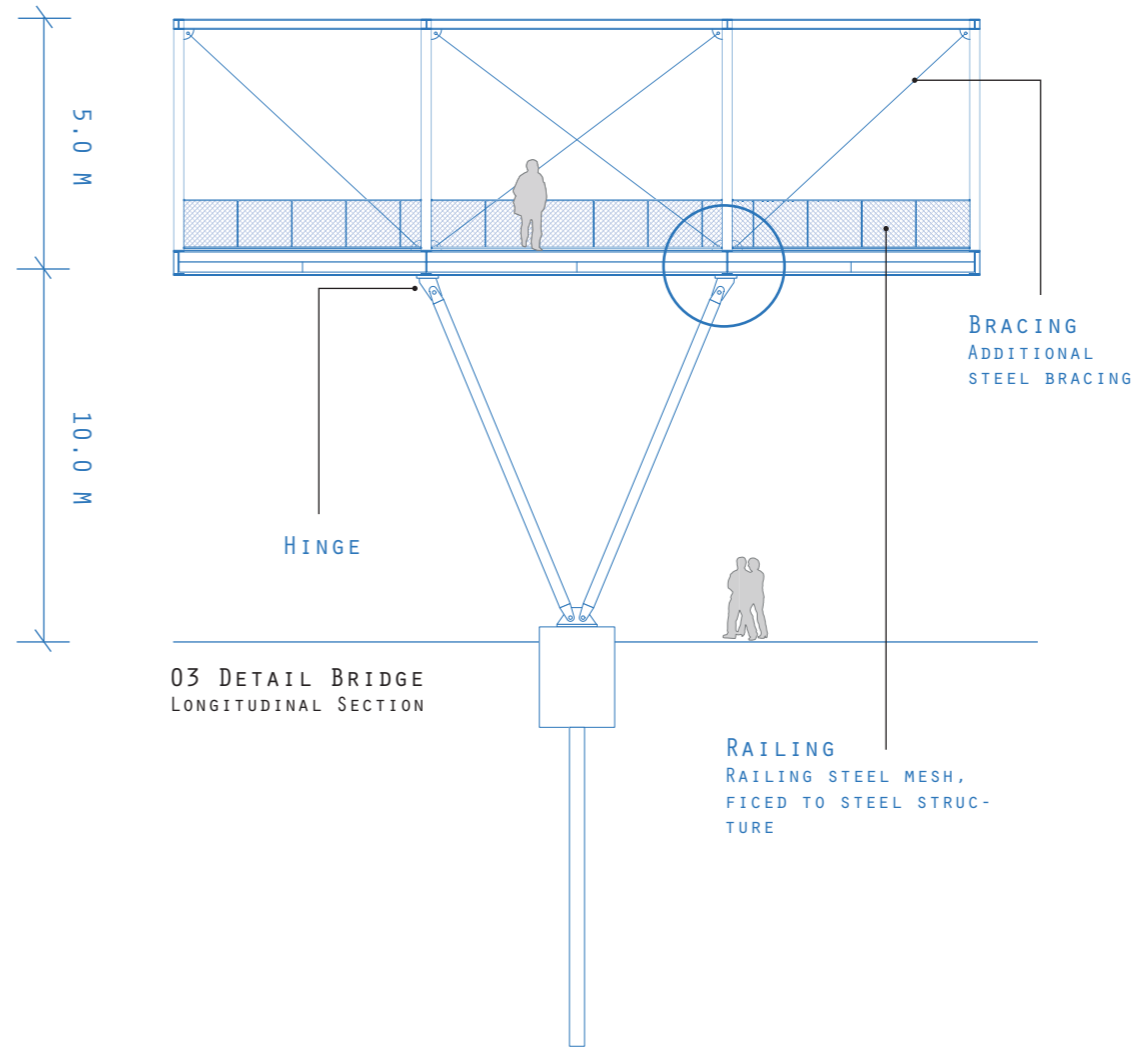
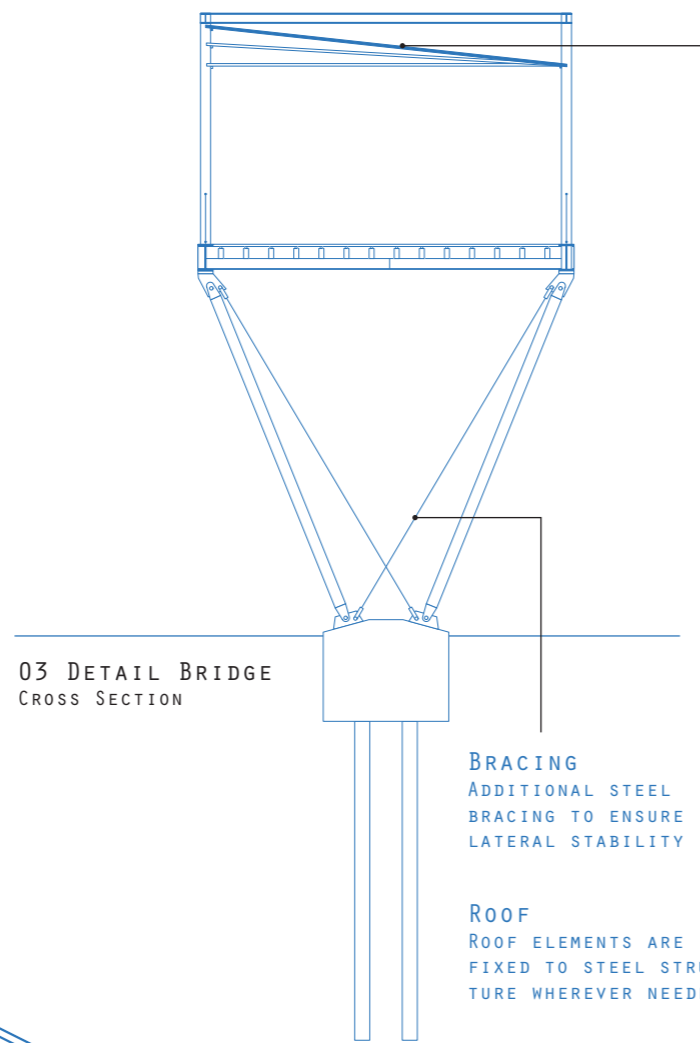


DETAIL 04
POLYCARBOAT FACADE AND BRIDGE TO ROOF TOP ON



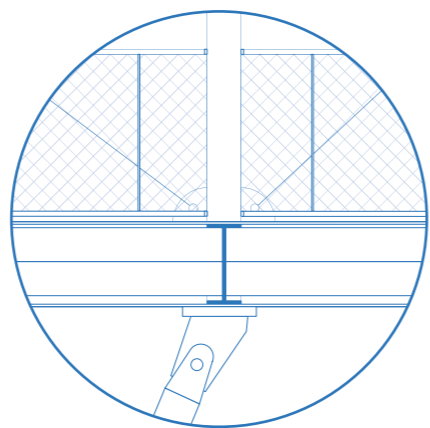
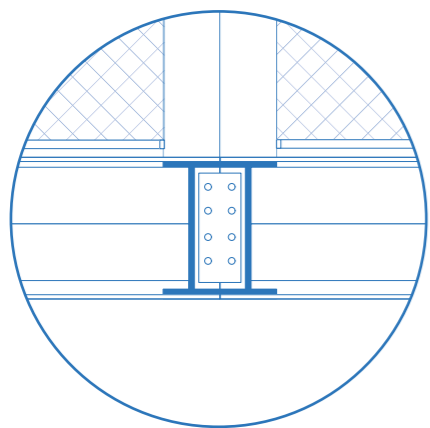
- 01 POLYCARBOAT FACADE PANELS, LEXAN THERMOCLEAR, 5-WALL
- 02 SUBSTRUCTURE, ALUMINIUM FIXED TO STEEL BEAMS
- 03 RUBBER JOINT FOR DAMPING VIBRATIONS
- 04 BRIDGE (FOR ELABORATED CONSTRUCTION SEE SLIDE 47)
- 05 FLOOR LAYERS (FROM TOP TO BOTTOM): FLOORING, METAL MESH, PEDESTAL CONSTRUCTION, GRAVEL EMBANKMENT, WATERPROOFING MEMBRANE, THERMAL INSULATION, WATER RETENTION LAYER, SLOPING CONCRETE, REINFORCED CONCRETE SLAB, PLASTER, WHITE

Construction bridge



01
CONNECTION TWO ELEMENTS
BOLTED STEEL CONNECTION

HEIGHT DIFFERENCES BETWEEN THE
BRIDGE ELEMENTS WILL BE ADJUSTED
THROUGH FLOOR CLADDING

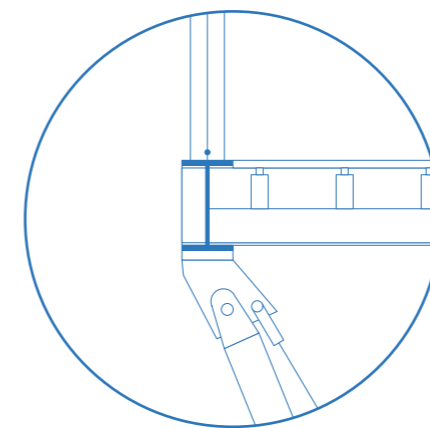


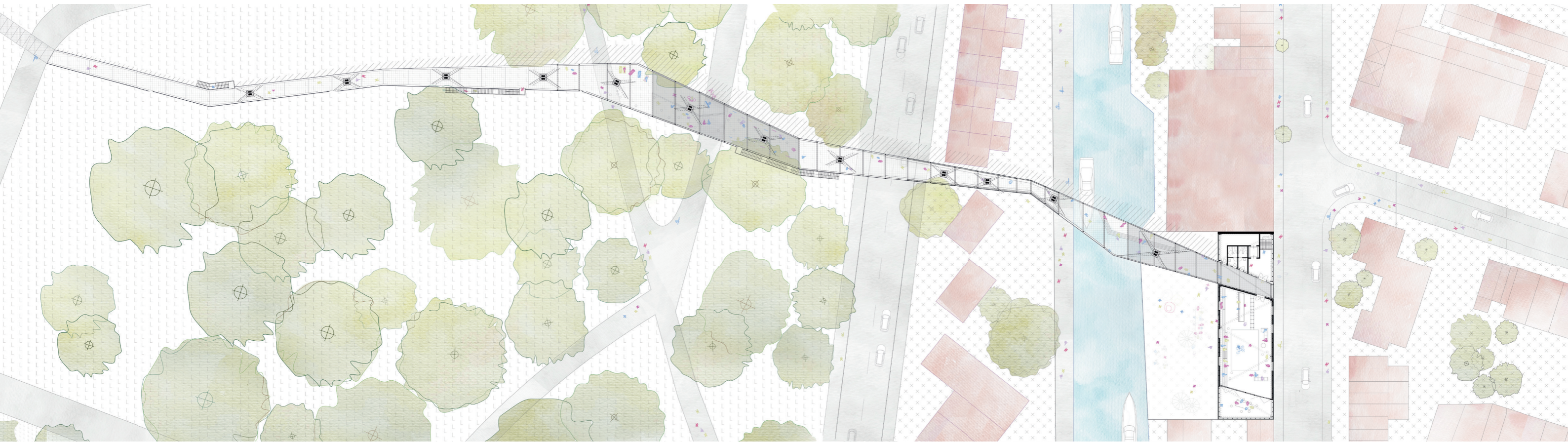
02
CONSTRUCTION
STEEL I-BEAMS AND COLUMNS
BRACING WITH STEEL ROPE

RIGID CONNECTION BETWEEN BEAM AND
COLUMNS THROUGH HINGE

BRIDGE ELEMENTS SWITCH BETWEEN
STRAIGHT AND INCLINED TO ENSURE
BARRIER-FREE ACCESSIBILITY

FLOOR CLADDING STEEL MESH





PARK

STREET

RESIDENTIAL

CANAL

SITE

STREET

RESIDENTIAL

ENTRANCE PARK

MULTI FUNCTIONAL SPACE
(STAGE AND DISPLAY)

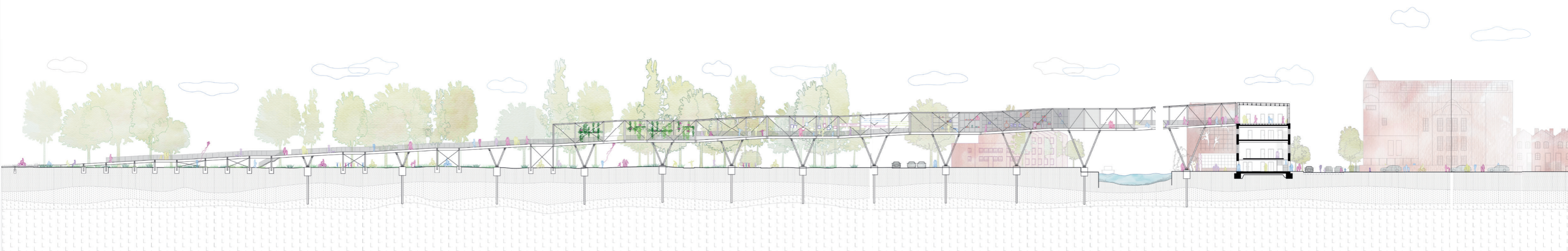
TRANSITION ZONE
(PROMOTION AND
ADVERTISEMENT)

EXHIBITION &
DISPLAY

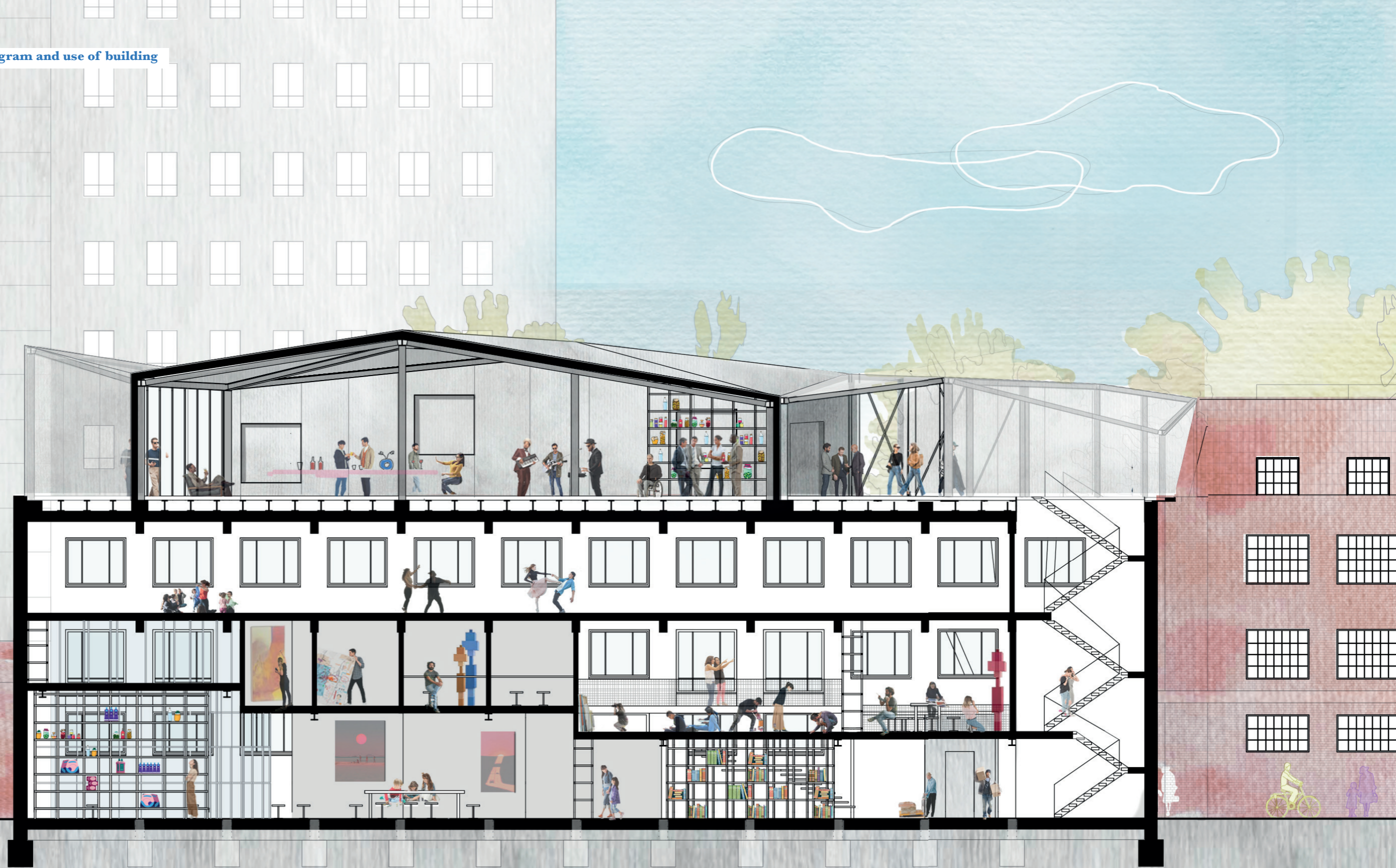
OUTDOOR
SEATING

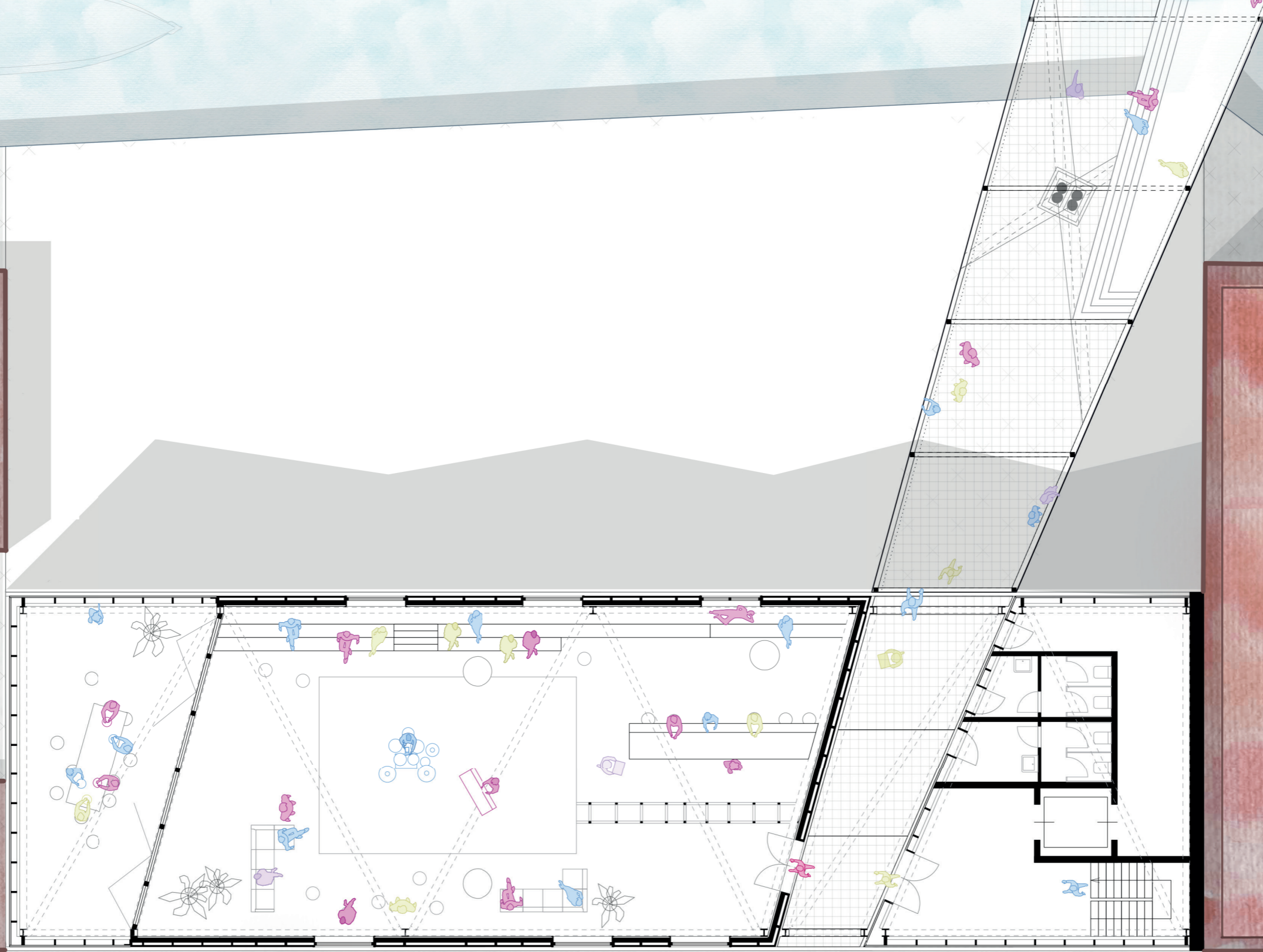
ART AGENCY
ROOF TOP

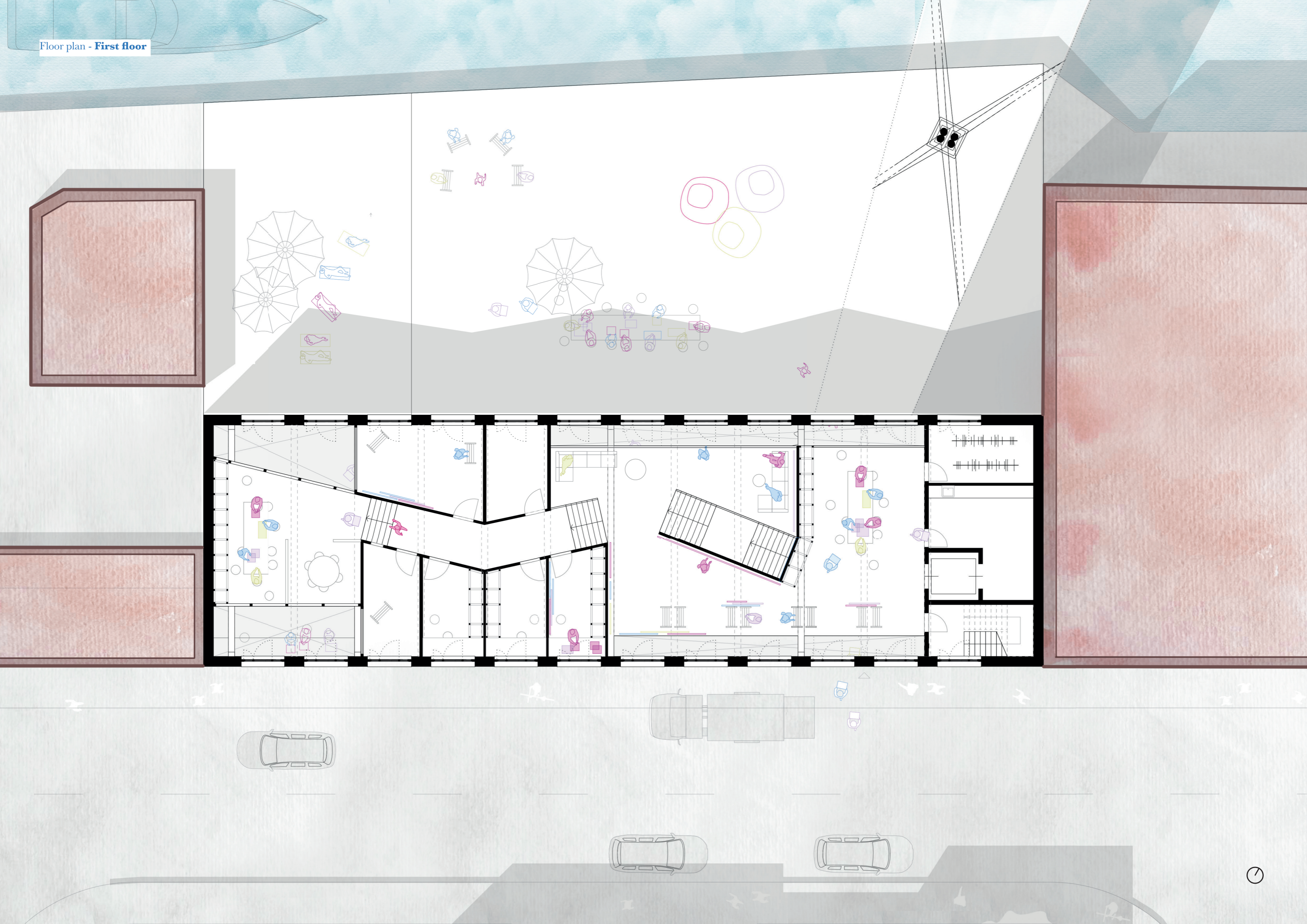
ENTRANCE STREET

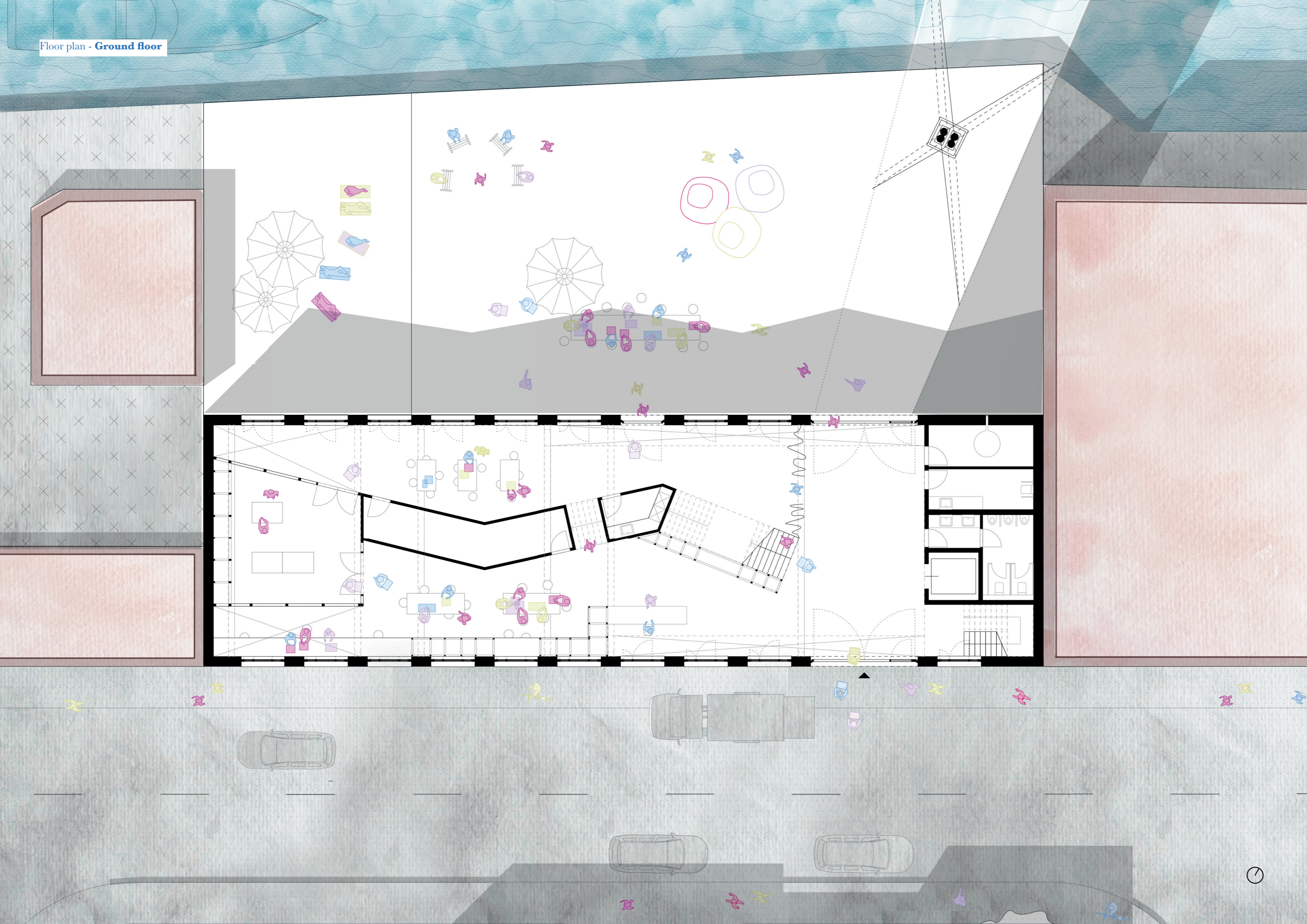


Longitudinal section - Program and use of building









Elevation - South facade (street)



Collage - North facade



Collage - On bridge in park



Collage - On bridge near building



Collage - Inside roof addition: Bar



Collage - First floor: Open studio space







R
PIZZA
DANCE
ISLAND
LETS
EET

ENDLESS
POSSIBILITIES
Experience Art
First Hand

ART AGENCY

chisenhale
dance space

Umbrella icon
Puzzle icon
The People logo