



COMPLEX PROJECTS CRISIS HUB P5.0

GERMAN RED CROSS CENTER FOR HUMANITARIAN RELIEF

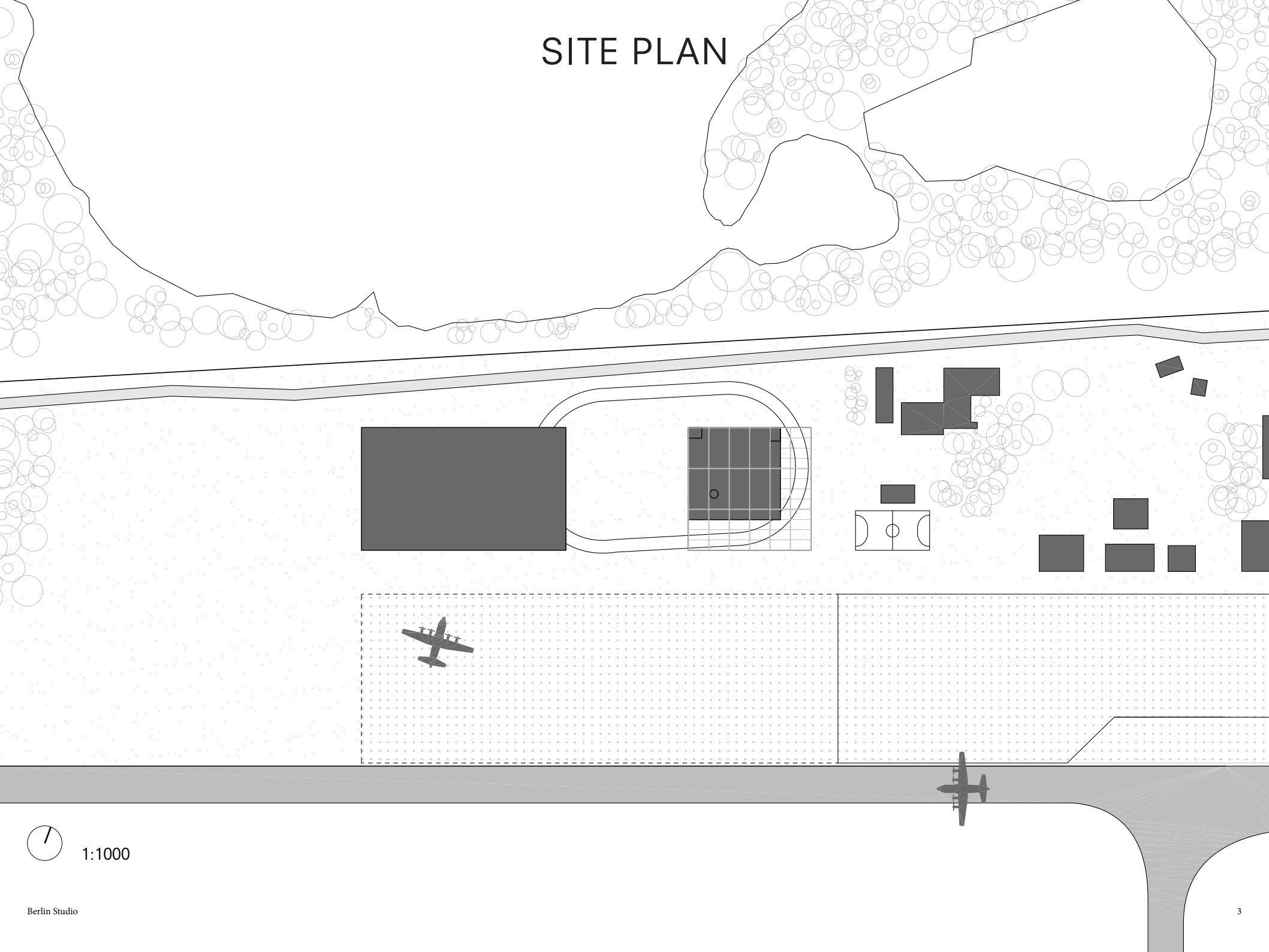
Helena van Swaay De Marchi

17th January 2025

GROUP SITE PLAN

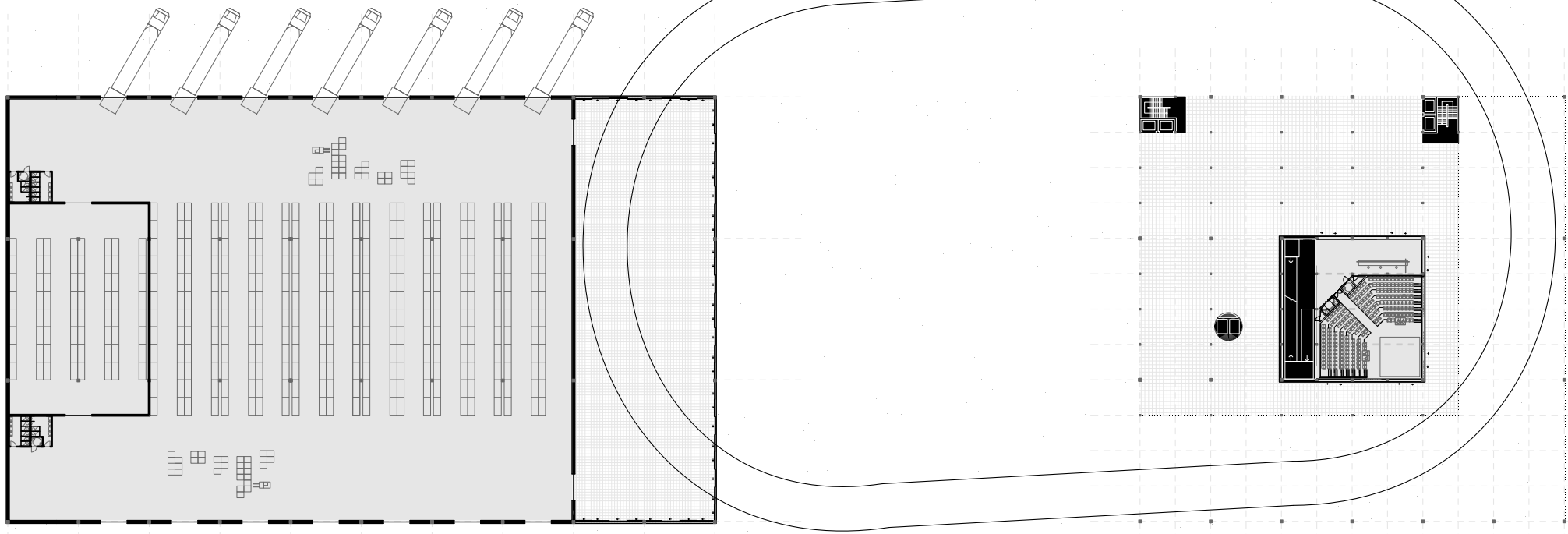


SITE PLAN

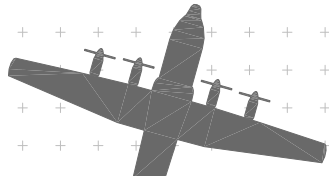


1:1000

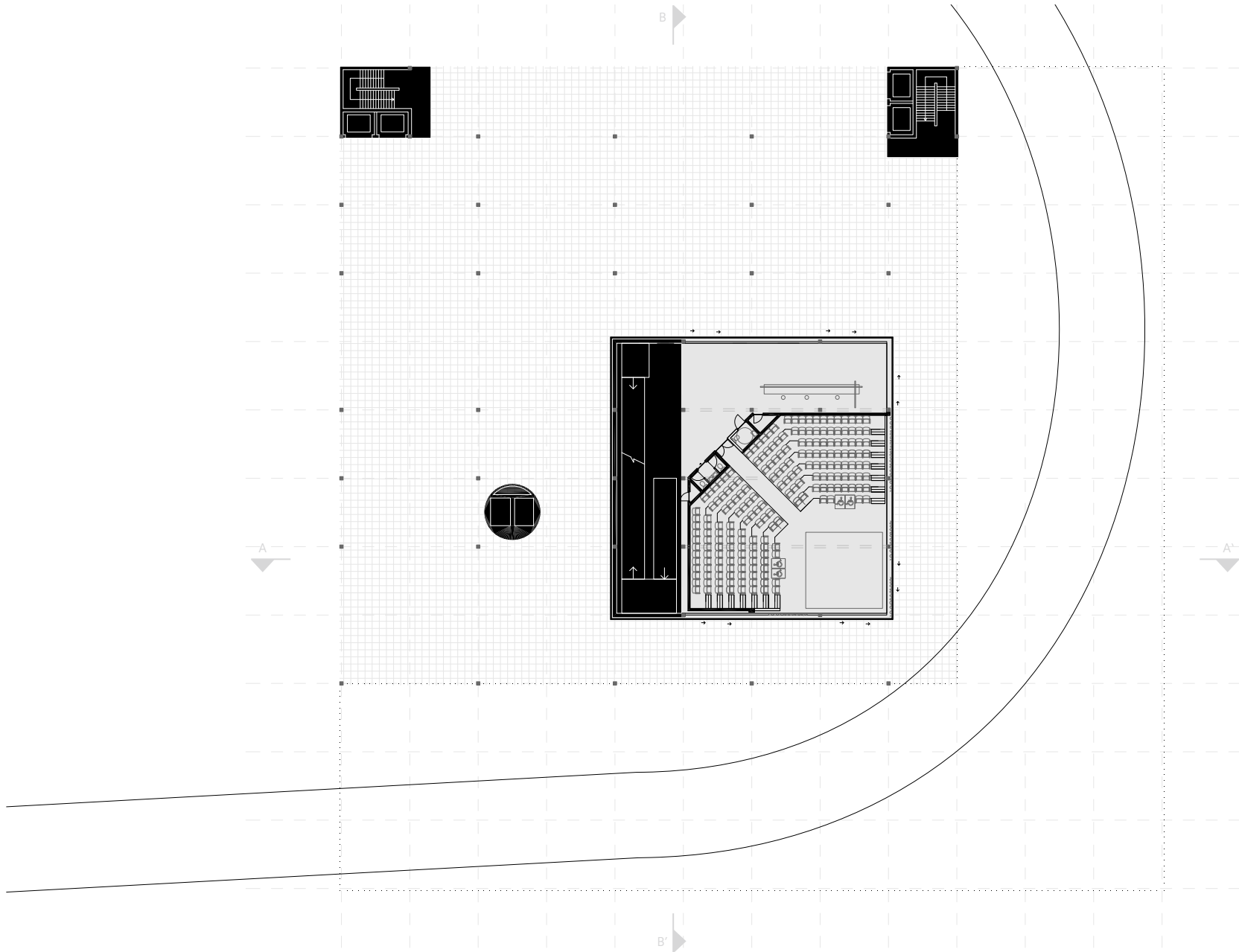
URBAN IMPLEMENTATION



1:500

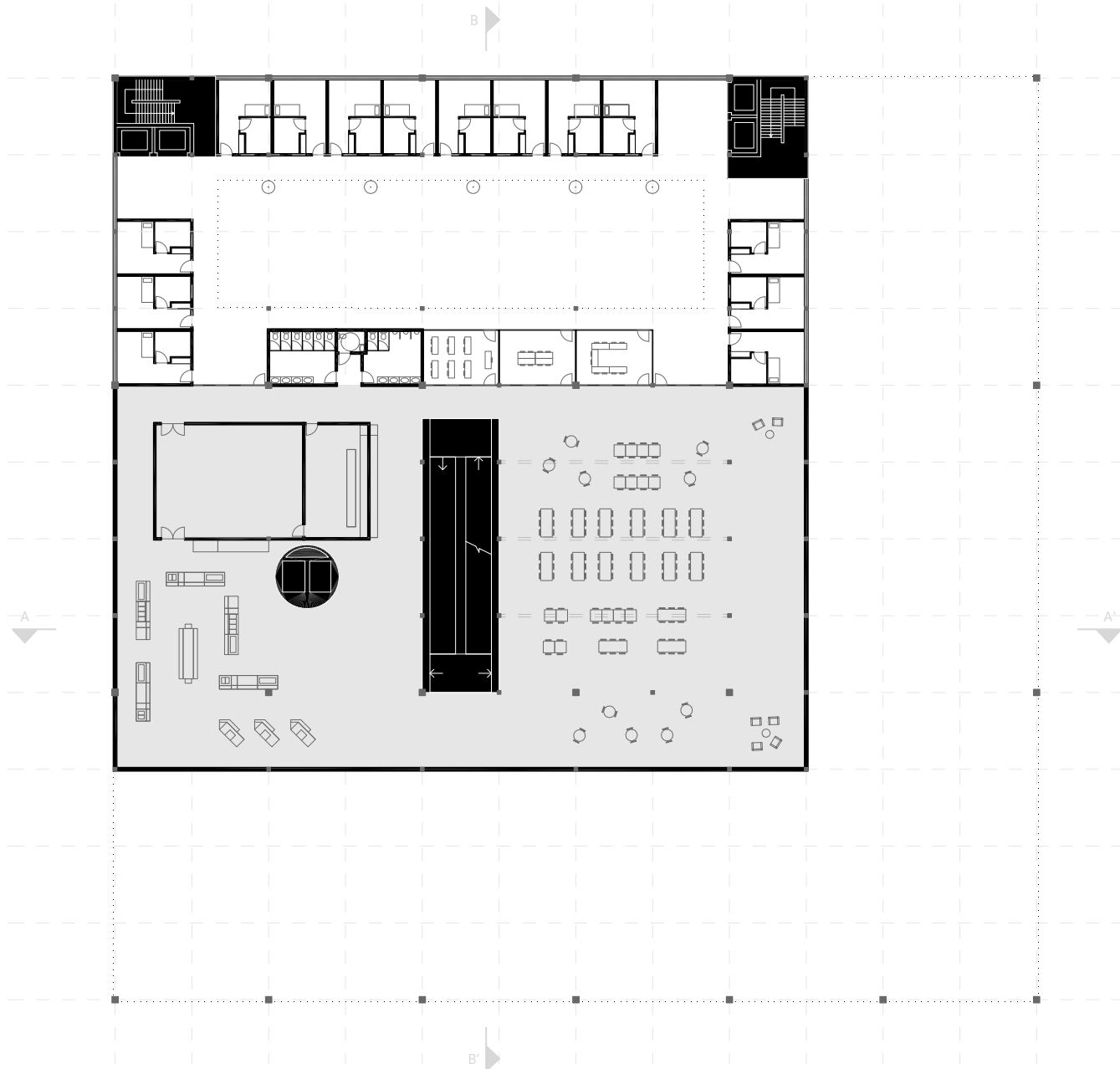


00 FLOOR PLAN



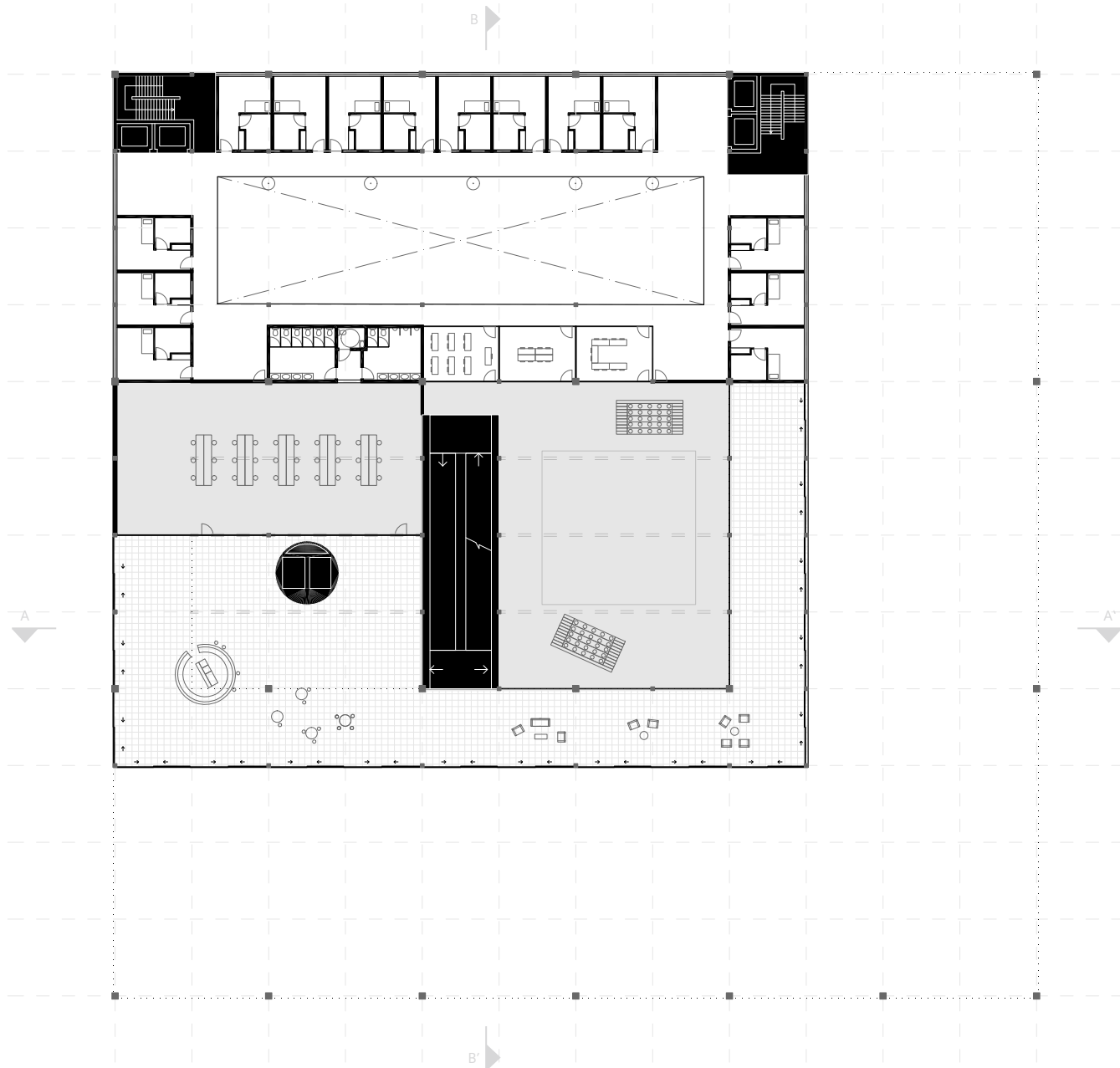
1:200

01 FLOOR PLAN



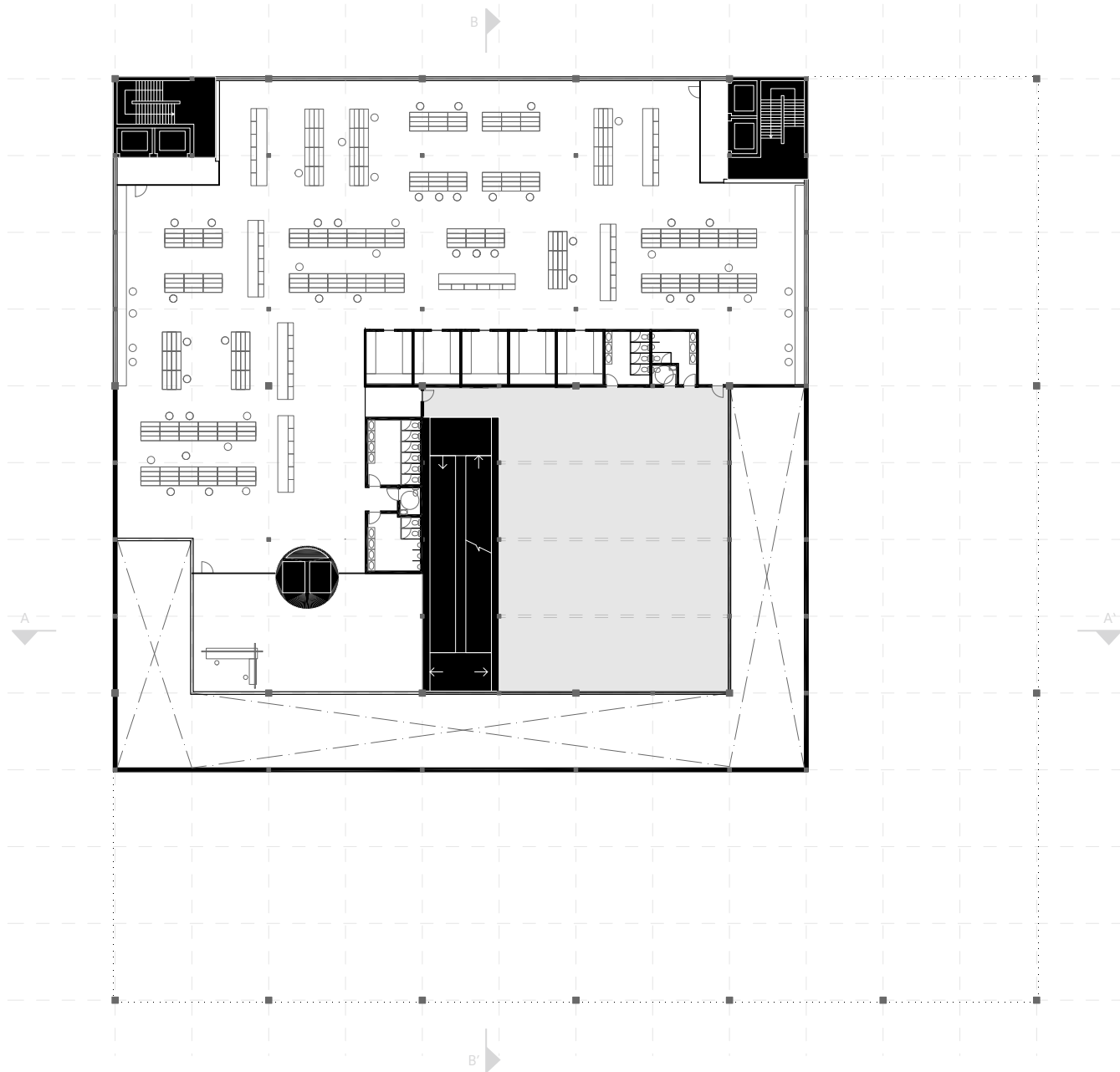
1:200

02 FLOOR PLAN



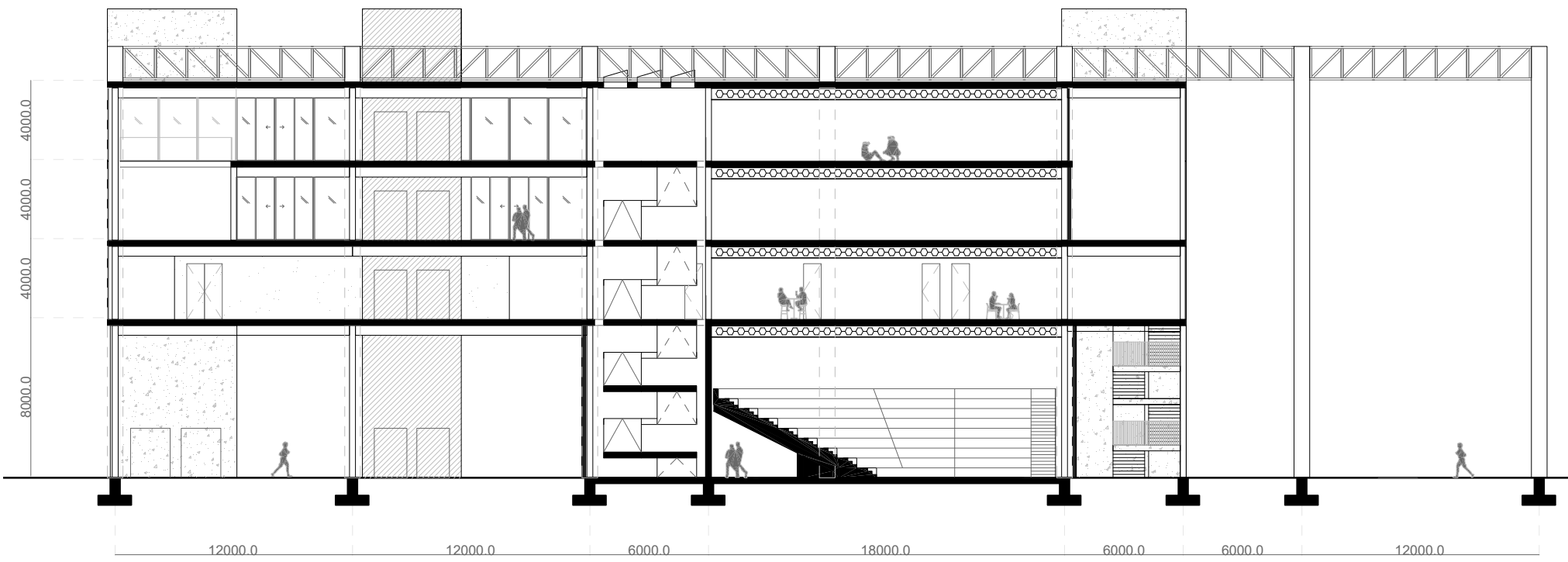
1:200

03 FLOOR PLAN



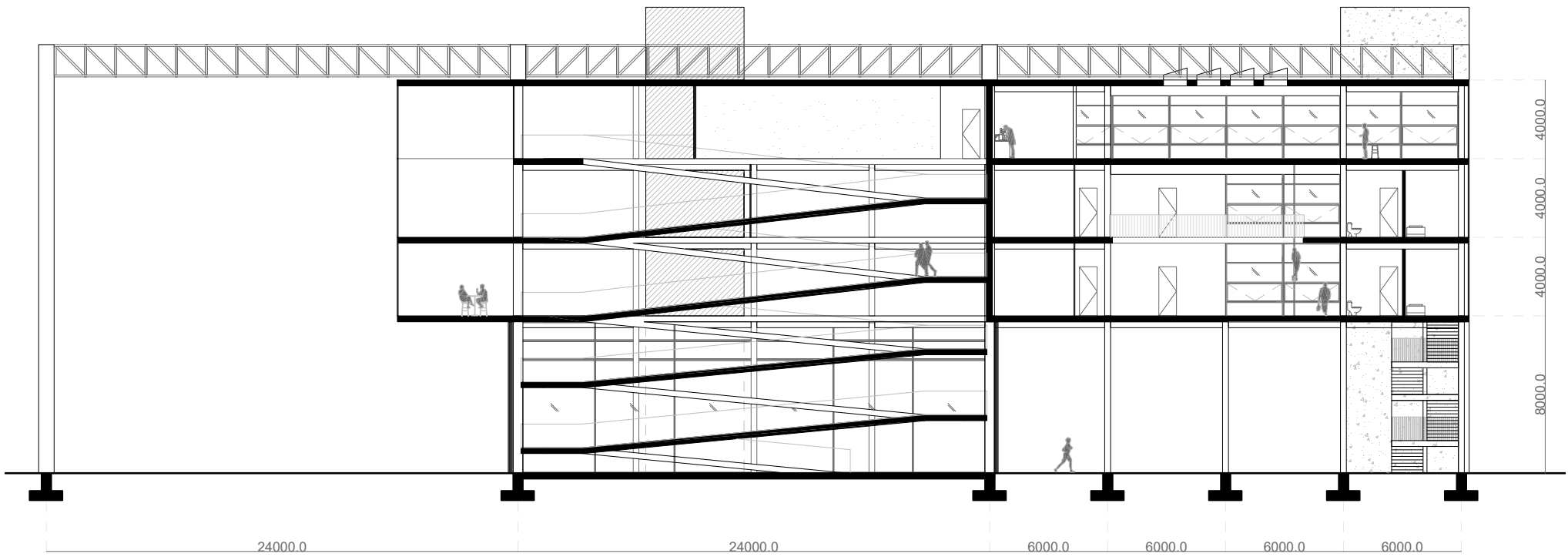
1:200

CROSS SECTION AA'



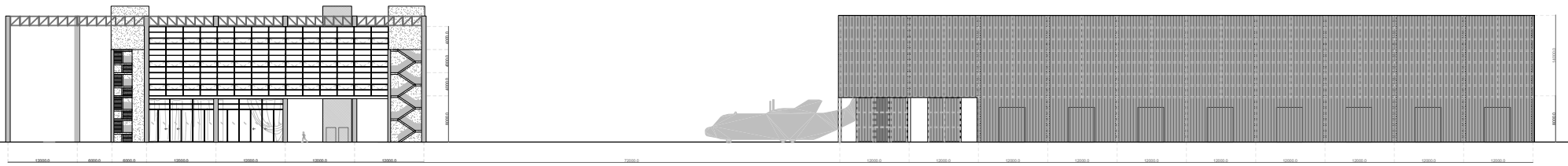
1:200

CROSS SECTION BB'

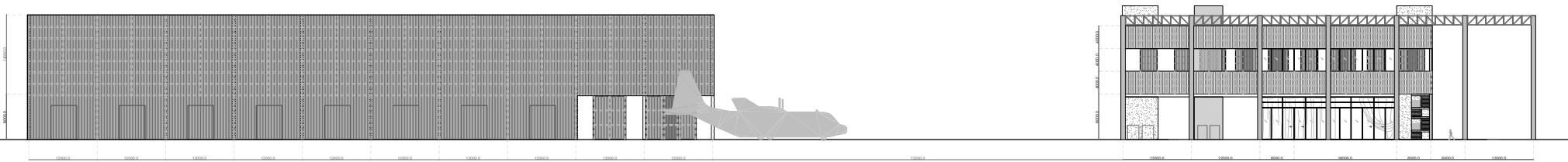


1:200

ELEVATIONS - MASTERPLAN



NORTH (LANDSIDE)



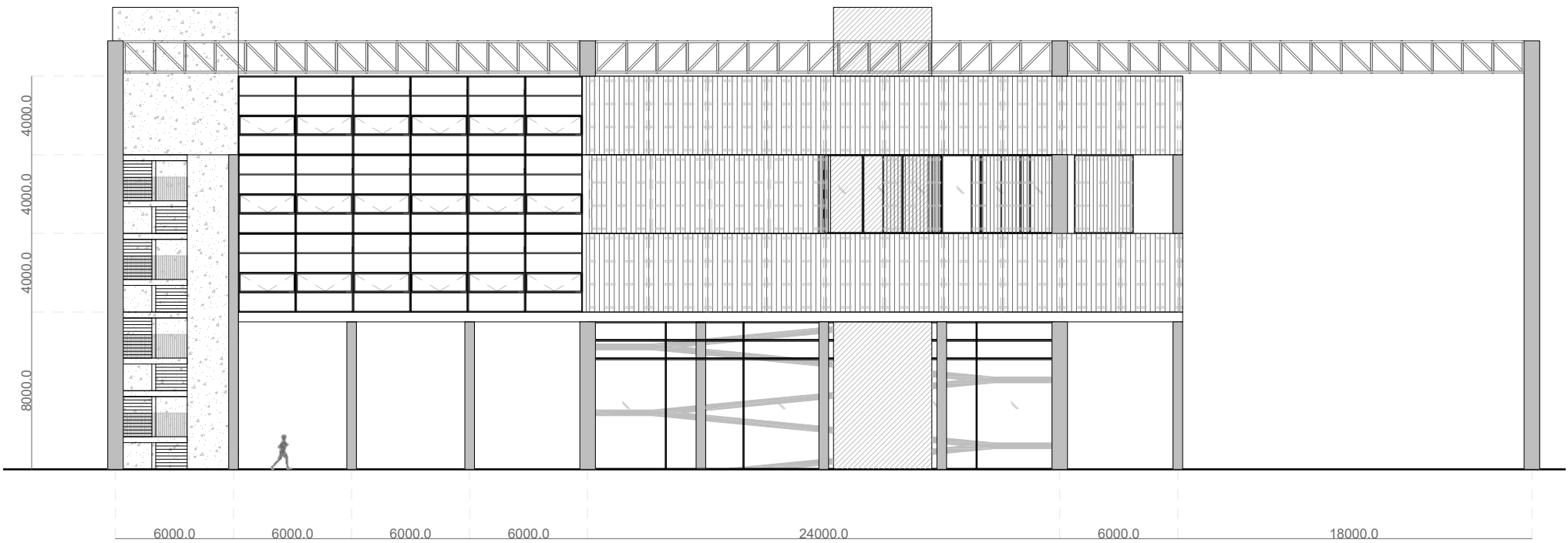
SOUTH (AIRSIDE)

ELEVATION EAST - MAIN ACCESS



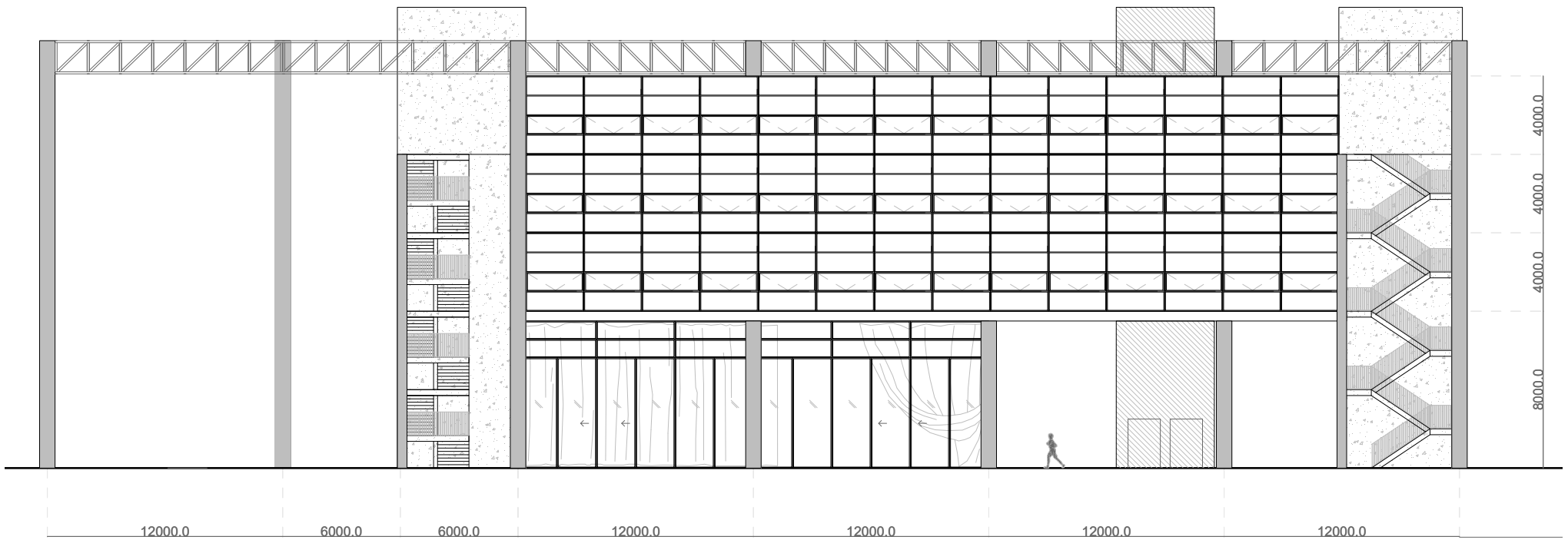
1:200

ELEVATION WEST - FROM WAREHOUSE



1:200

ELEVATION NORTH - LANDSIDE



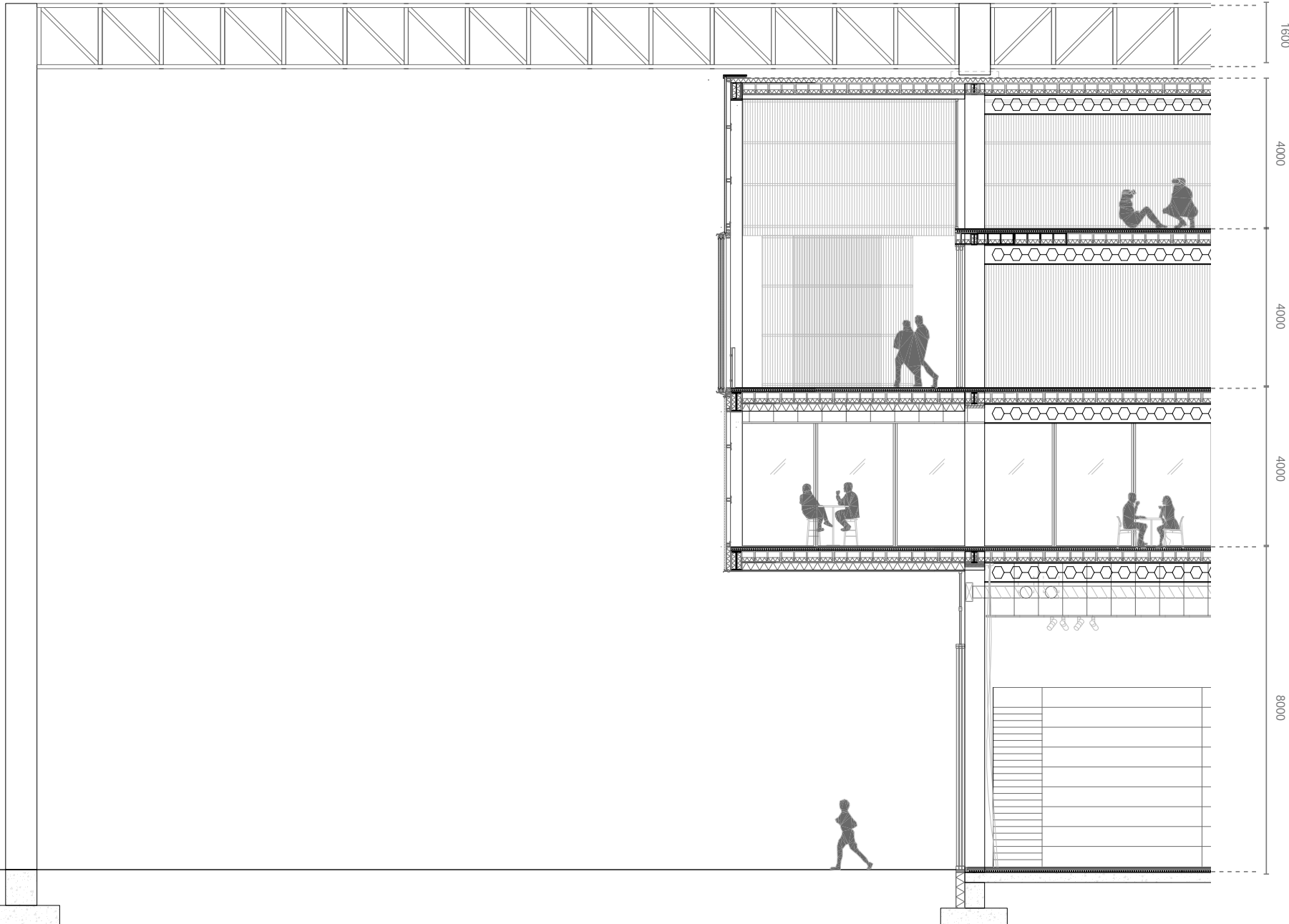
1:200

ELEVATION SOUTH - AIRSIDE



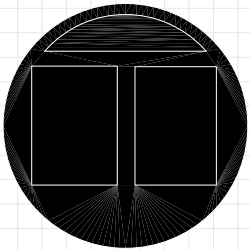
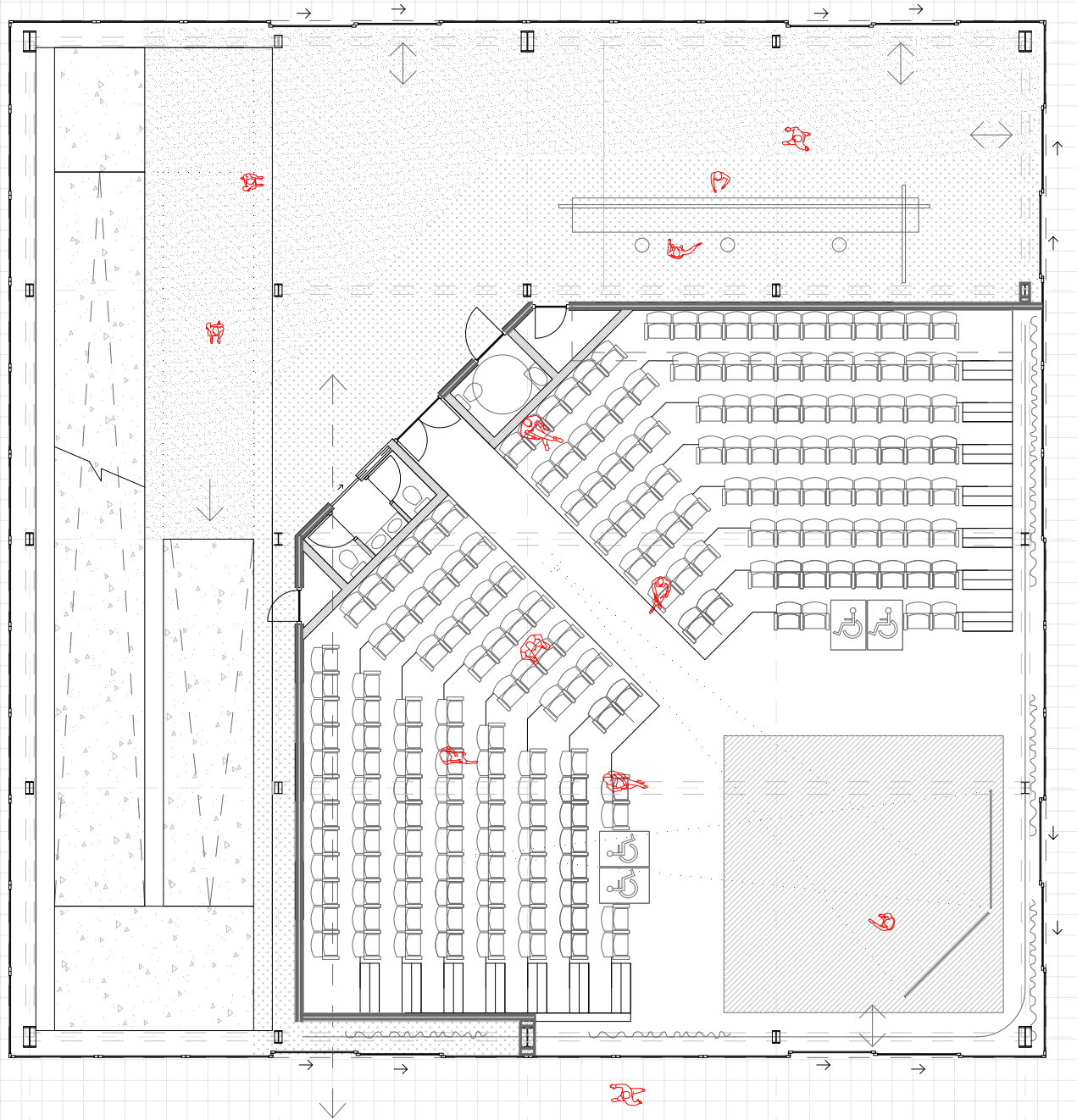
1:200

INTERIOR FRAGMENT



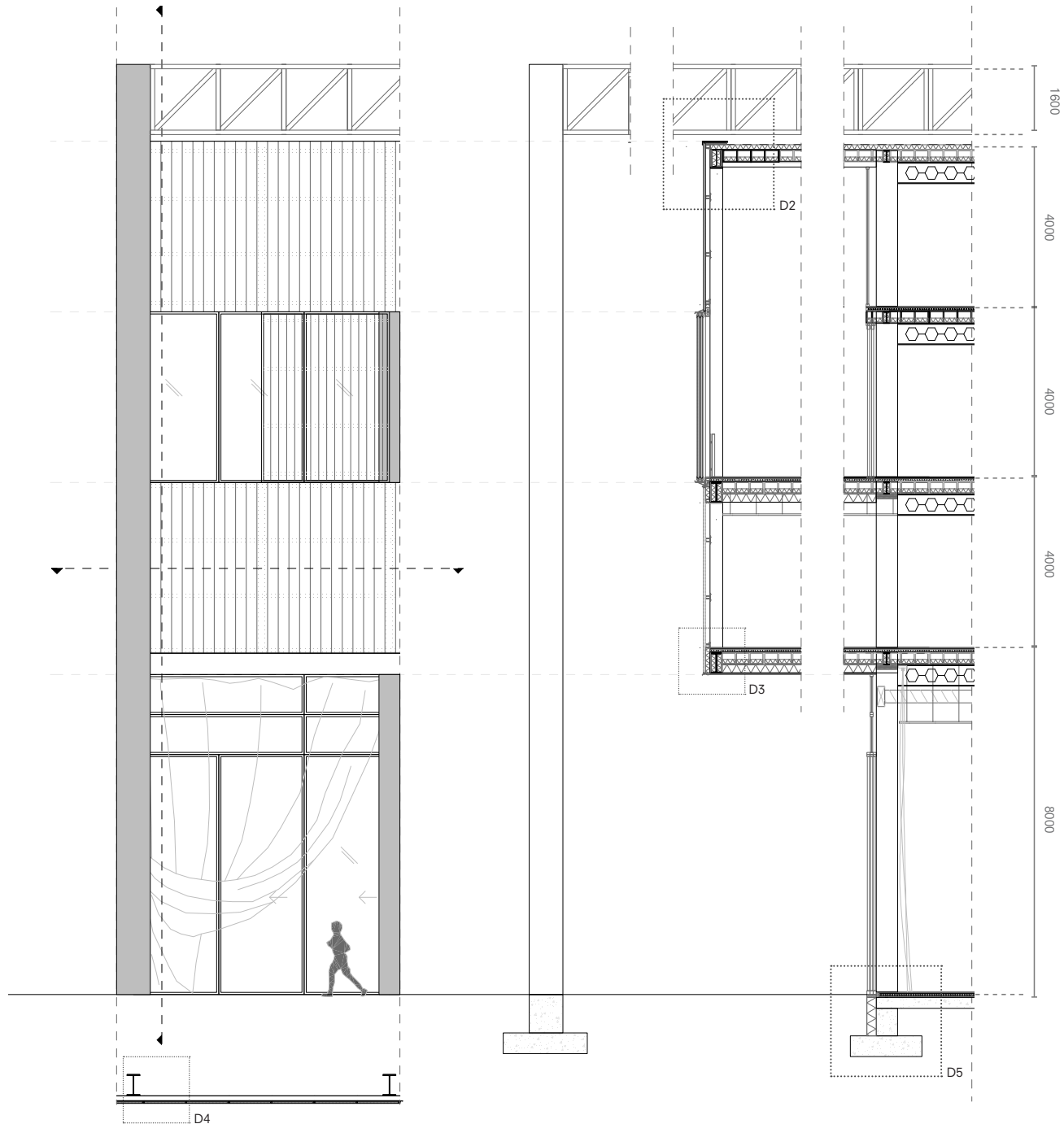
1:50

00 FLOOR PLAN



1:50

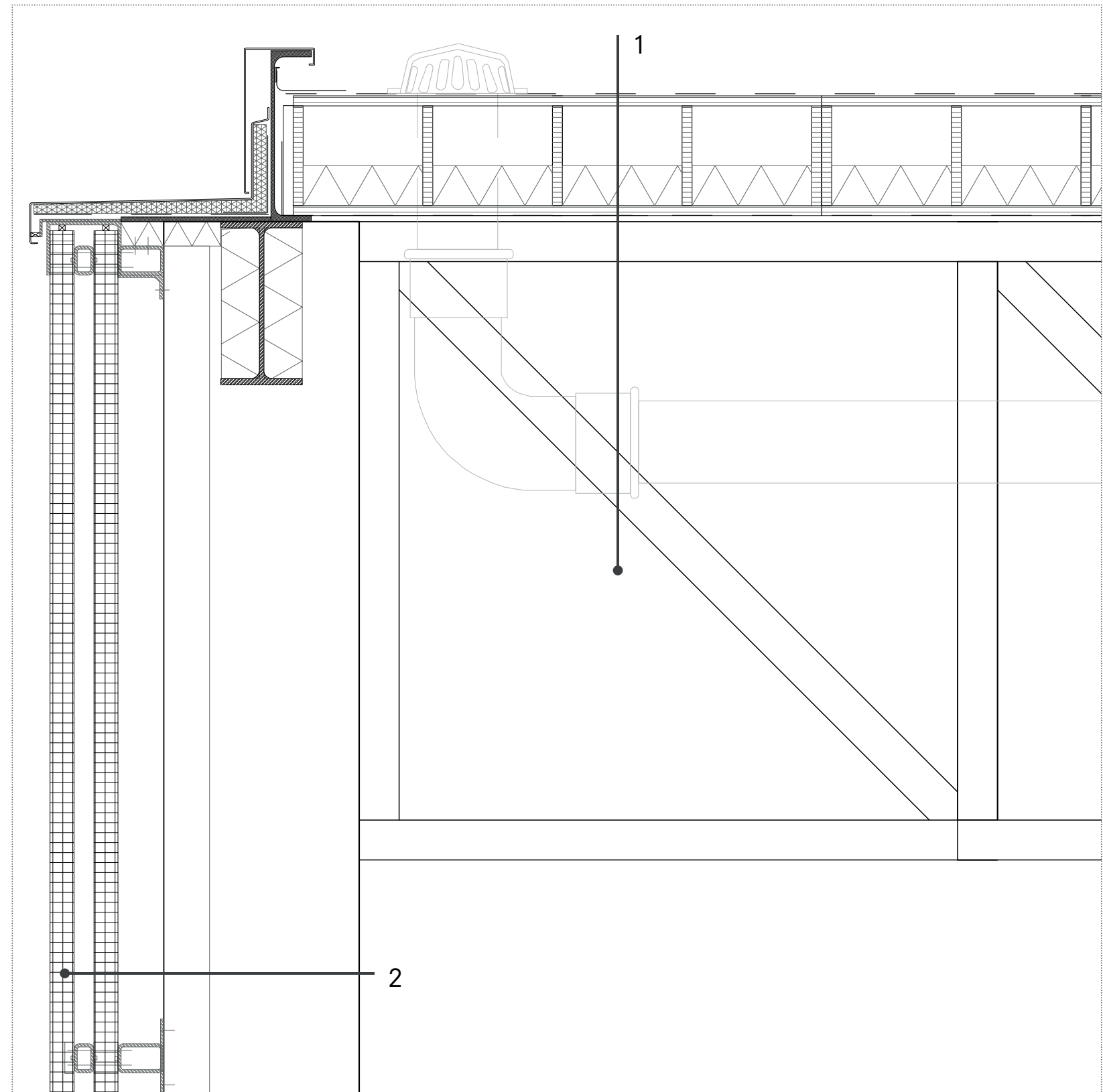
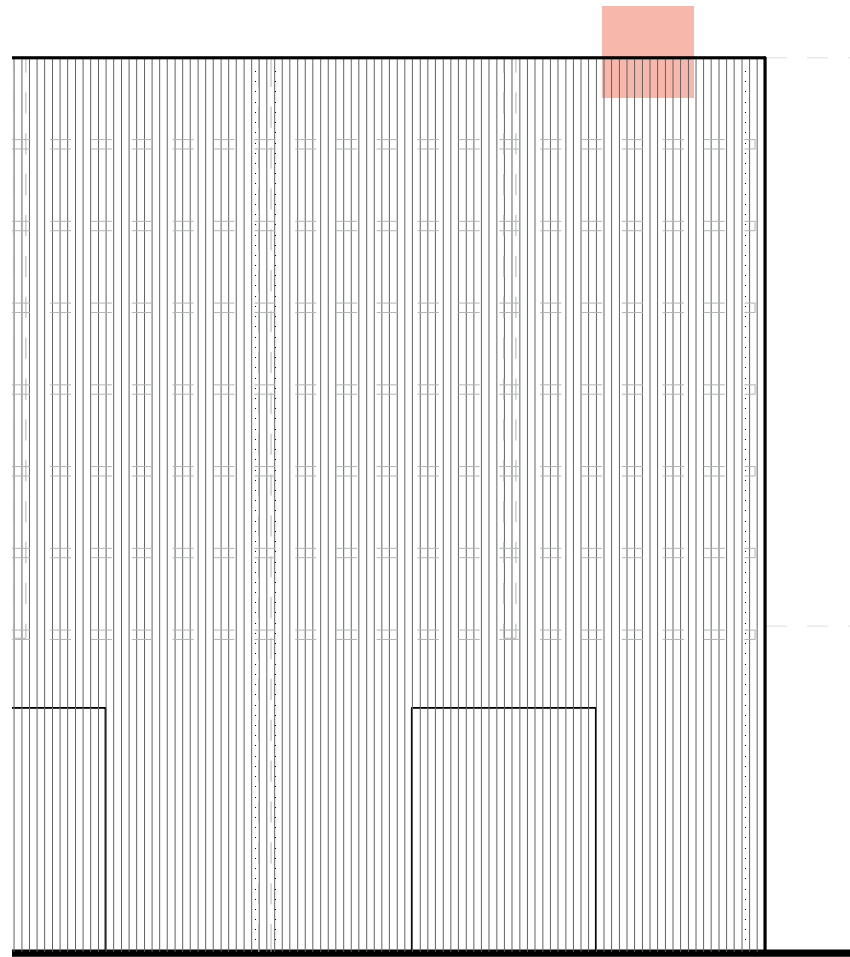
ENVELOPE FRAGMENT



1:20

DETAIL 1 - WAREHOUSE ROOF

- 1 Bitumen finishing
300mm Kerto-riipa box (prefab LVL roof element)
100mm Mineral wool insulation
Vapor barrier foil
Mechanical ventilation exhaust pipe (Smoke and Heat Exhaust Ventilation System)
1600mm pratt truss (24m span of warehouse)
- 2 60mm polycarbonate panel (3000x1150mm)
50mm ventilation/insulation gap
60mm polycarbonate panel (3000x1150mm)
Aluminium box profile for façade attachment
Secondary support structure of the polycarbonate panels (1150mm center-to-center)
HEB 500 column
IPE 500 beam

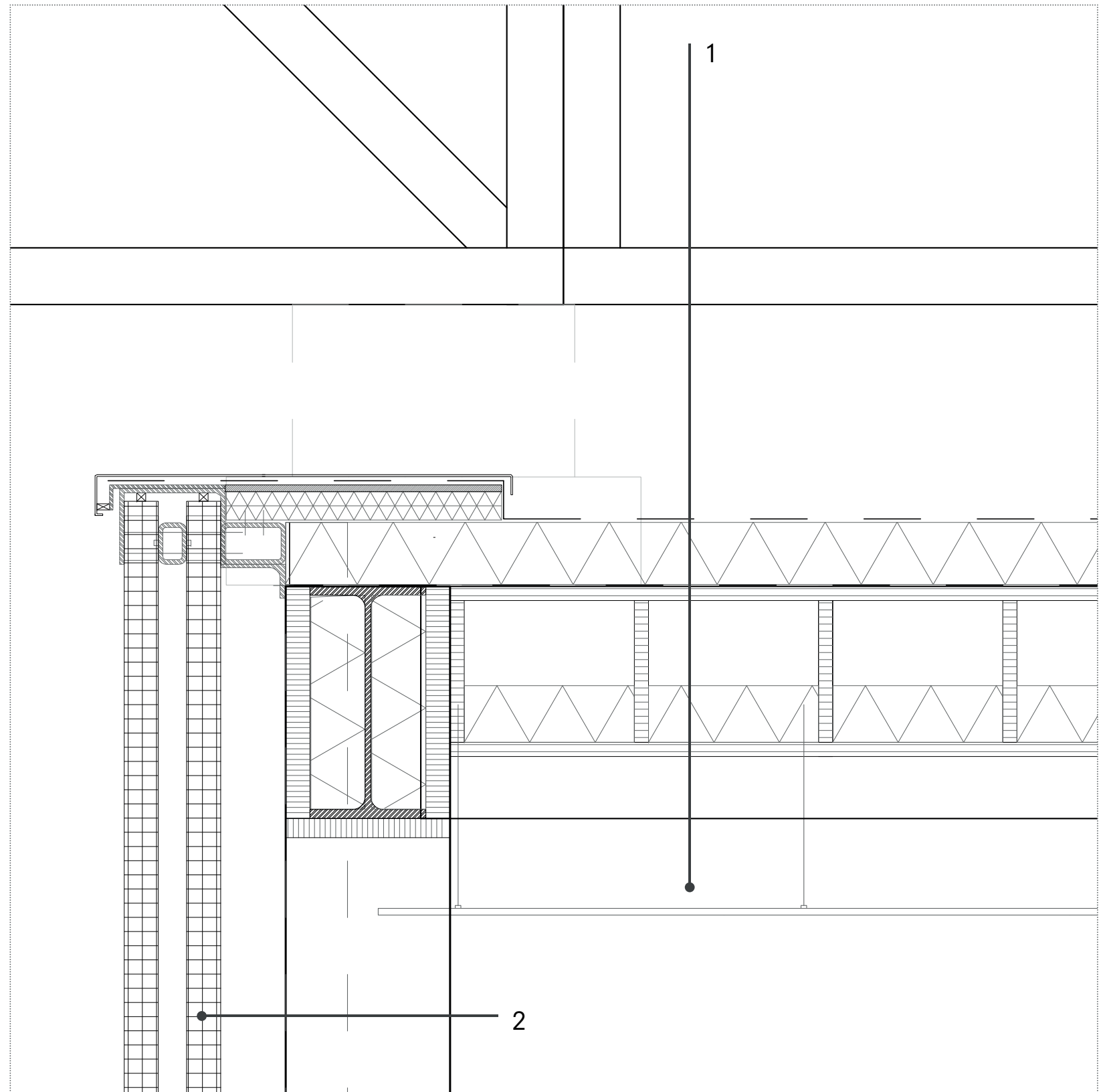
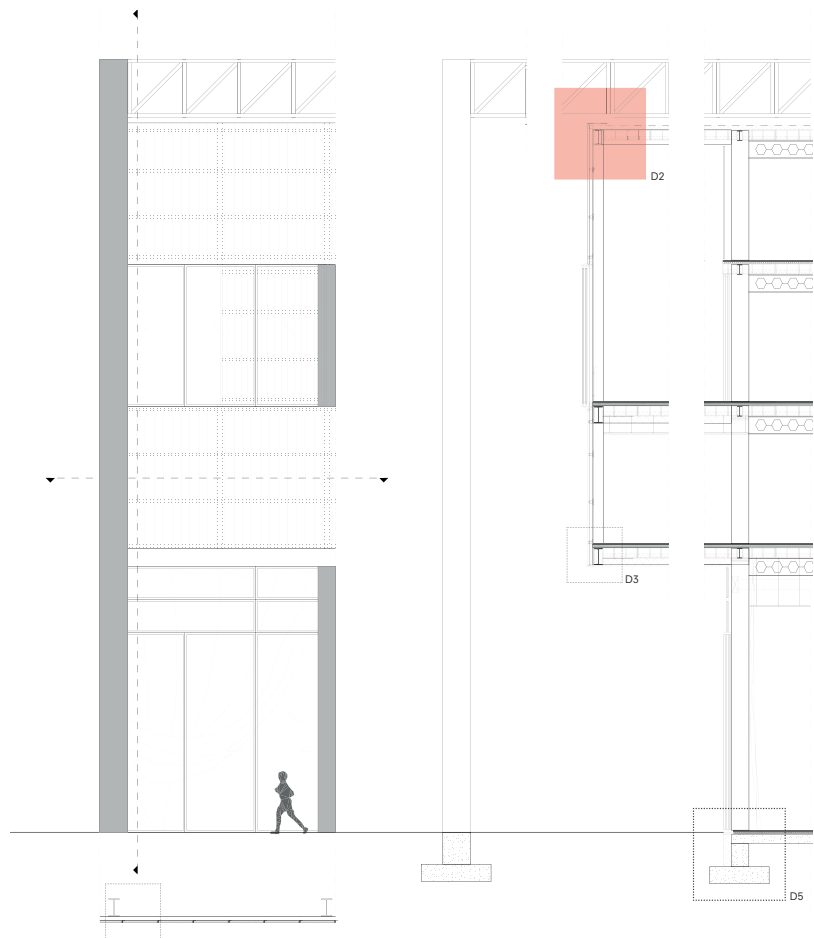


WAREHOUSE ROOF
1:5

DETAIL 2 - BUILDING ROOF

- 1 1600mm pratt truss (touchpoint element with building)
 Bitumen finishing
 110mm Mineral wool insulation
 Vapor barrier foil
 300mm Kerto-riipa box (prefab LVL slab)
 100mm Mineral wool insulation
 HEB 500 beam
 Lower ceiling

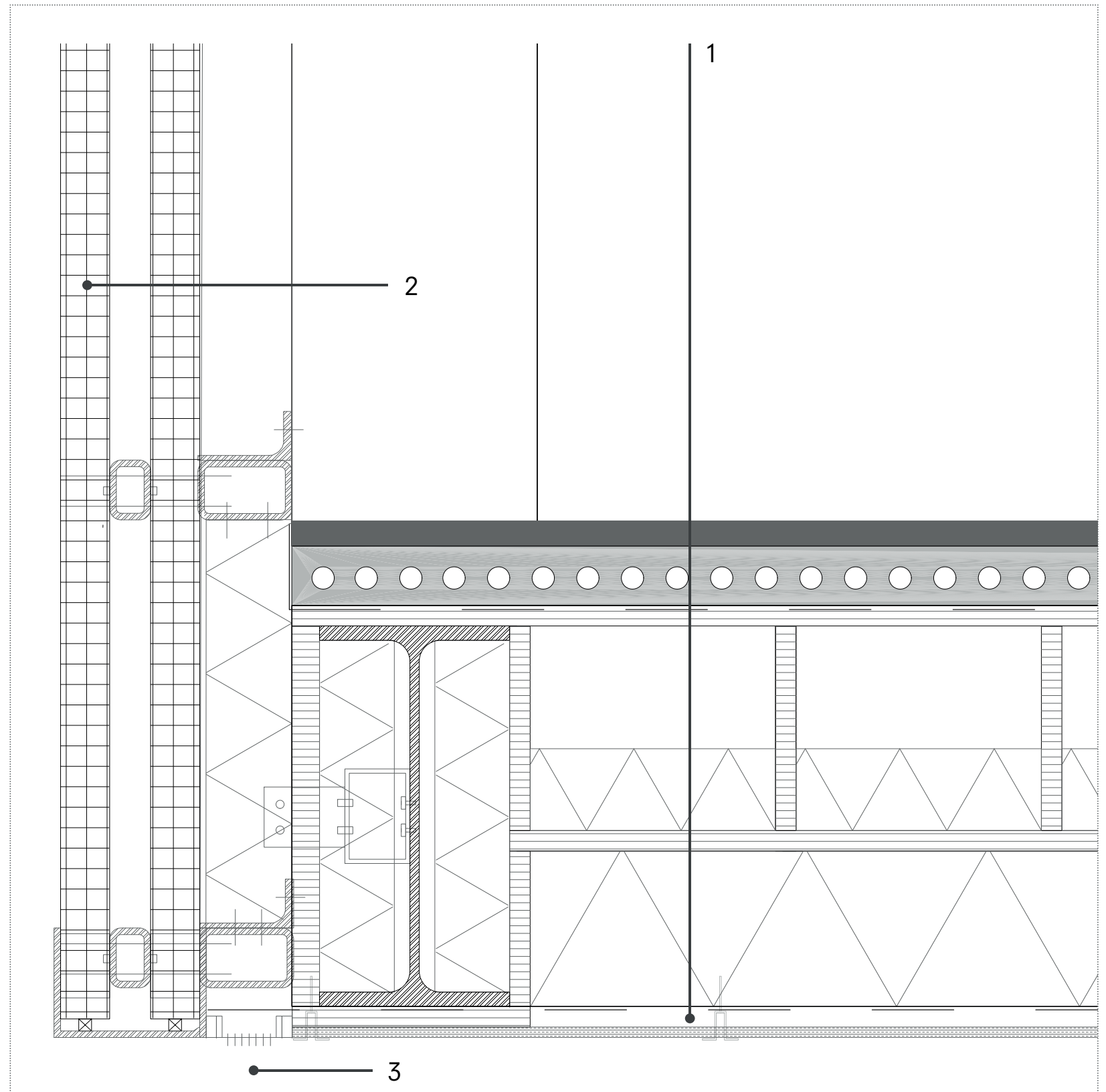
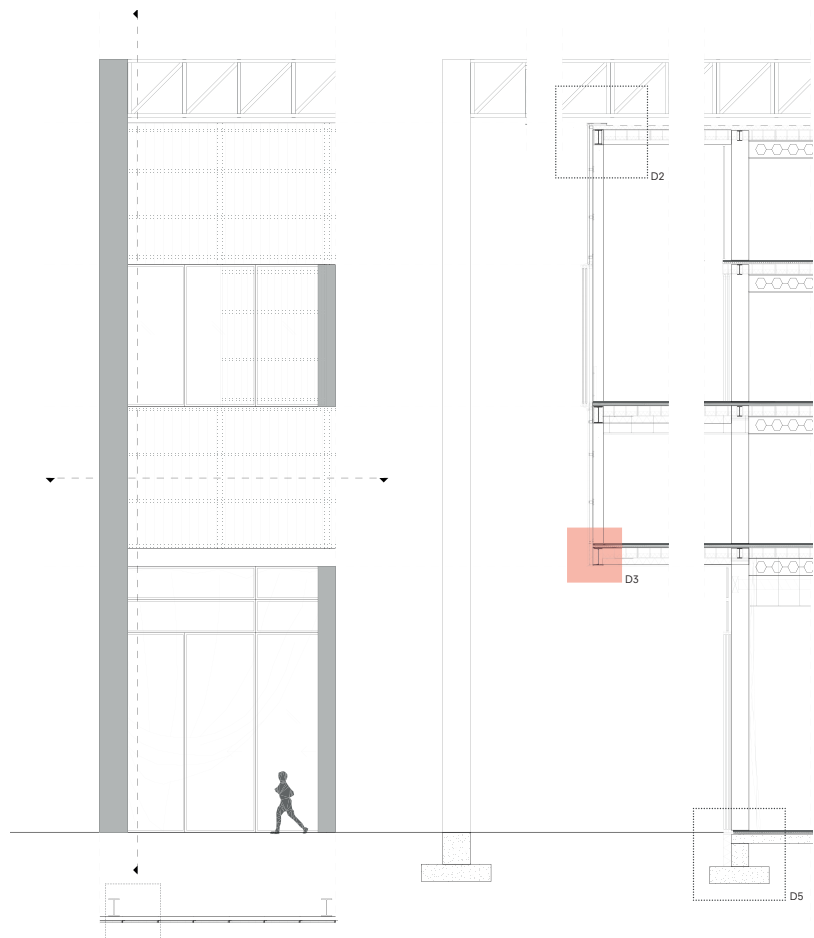
- 2 60mm polycarbonate panel (3000x1150mm)
 50mm ventilation/insulation gap
 60mm polycarbonate panel (3000x1150mm)
 Aluminium box profile for façade attachment
 HEB 500 column
 IPE 500 beam



BUILDING ROOF
1:5

DETAIL 3 - CANTILEVER

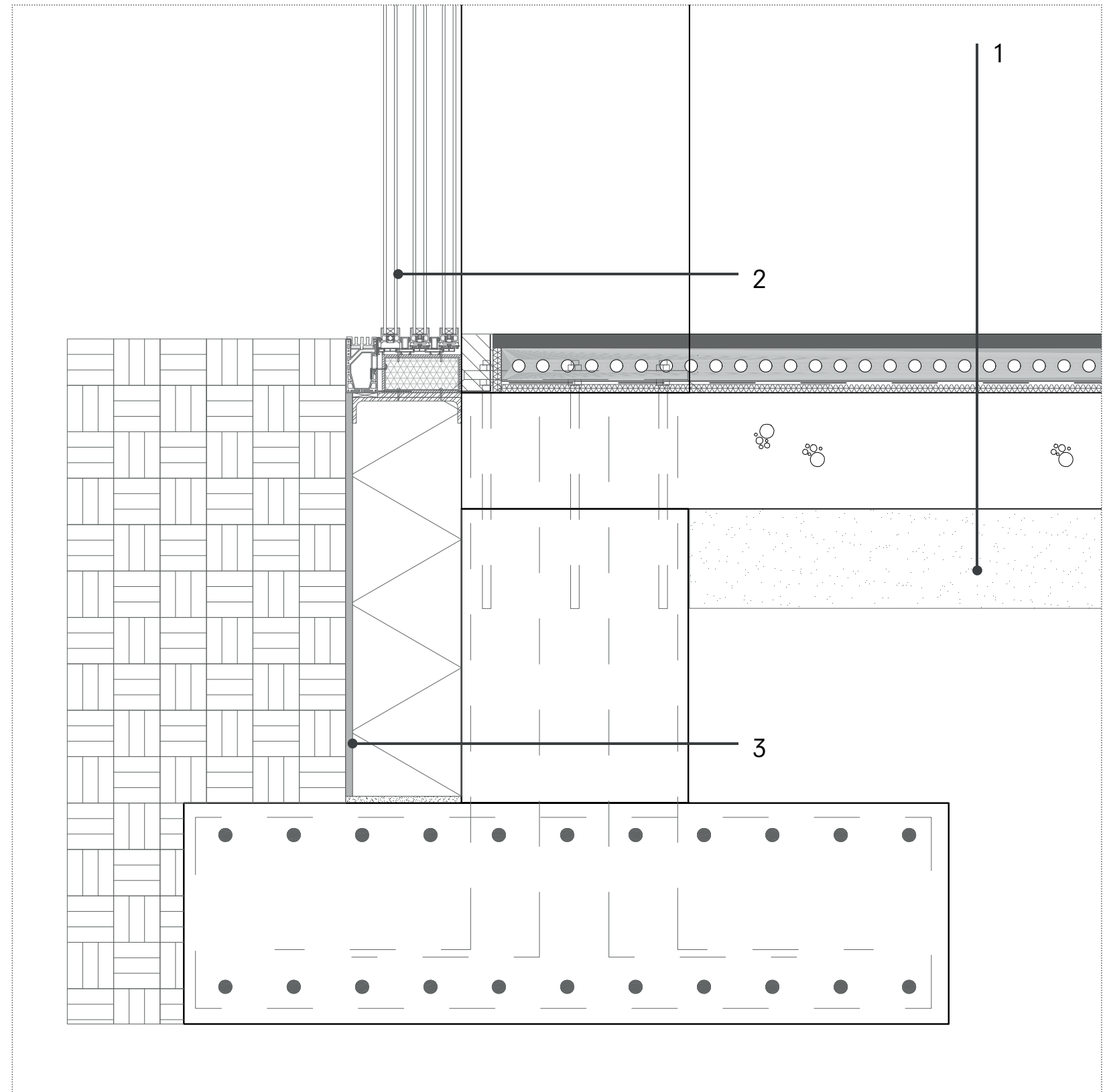
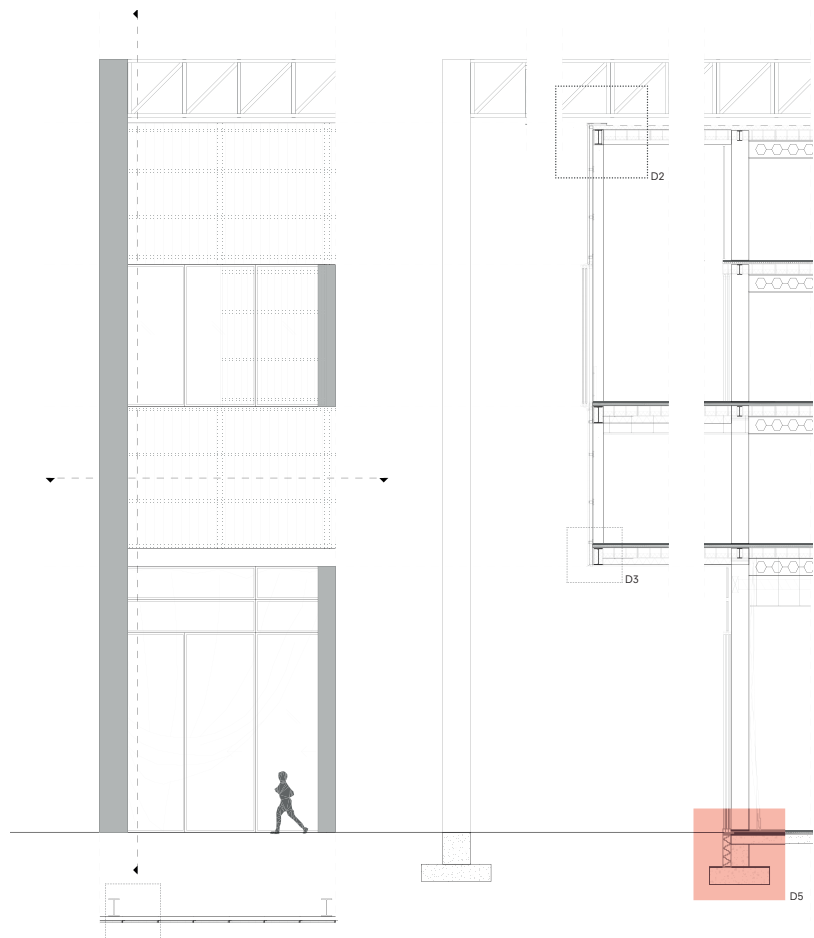
- 1 30mm floor finishing
70mm floor heating
Vapor barrier foil
100mm Mineral wool insulation
300mm Kerto-riipa box ((prefab LVL slab)
190mm mineral wool insulation
Water retaining layer
15mm Exterior finishing layer
- 2 60mm polycarbonate panel (3000x1150mm)
50mm ventilation/insulation gap
60mm polycarbonate panel (3000x1150mm)
Aluminium box profile for façade attachment
HEB 500 column
IPE 500 beam
- 3 Ventilation grid



CANTILEVER
1:5

DETAIL 4 - PAD FOUNDATION

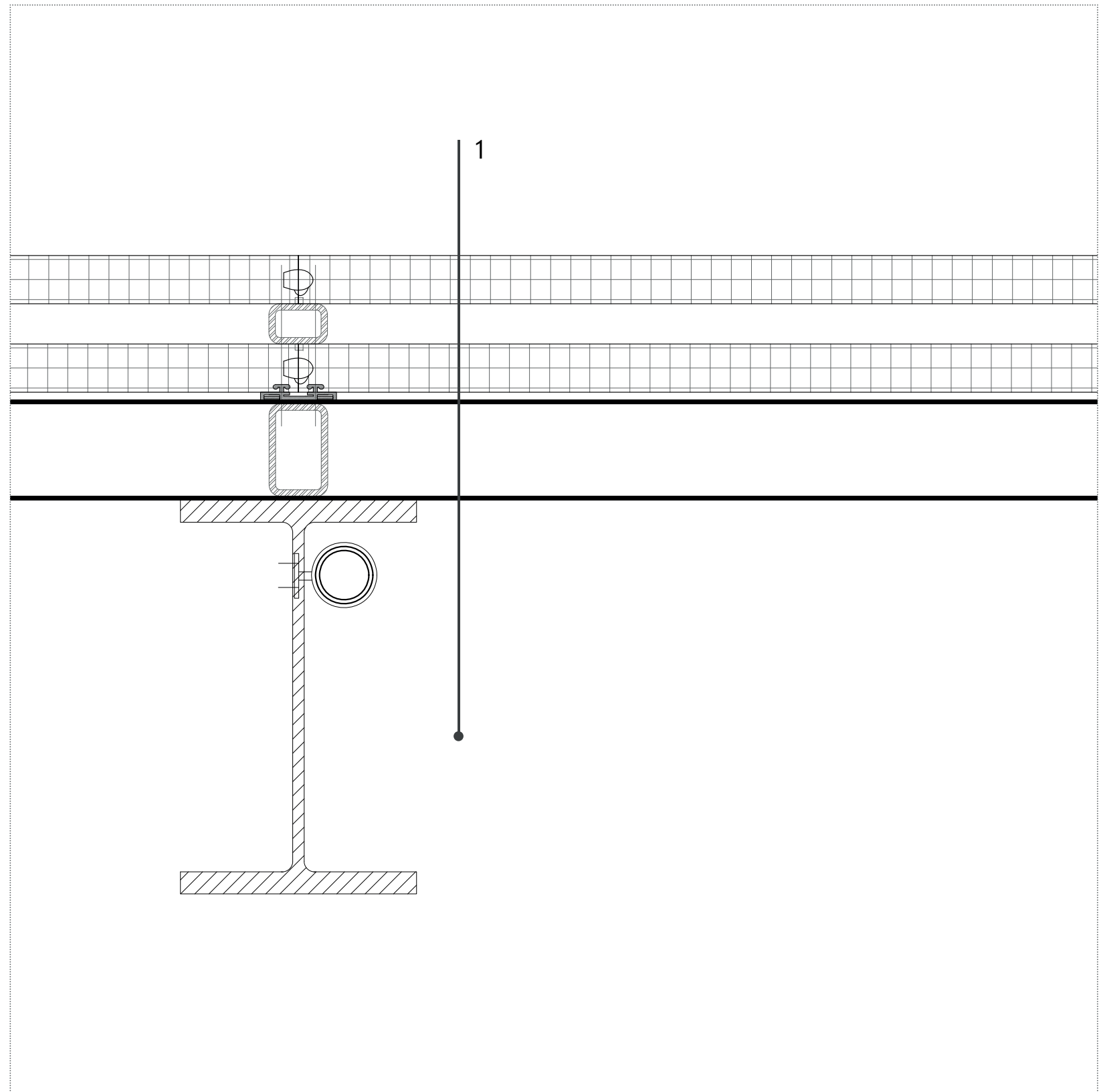
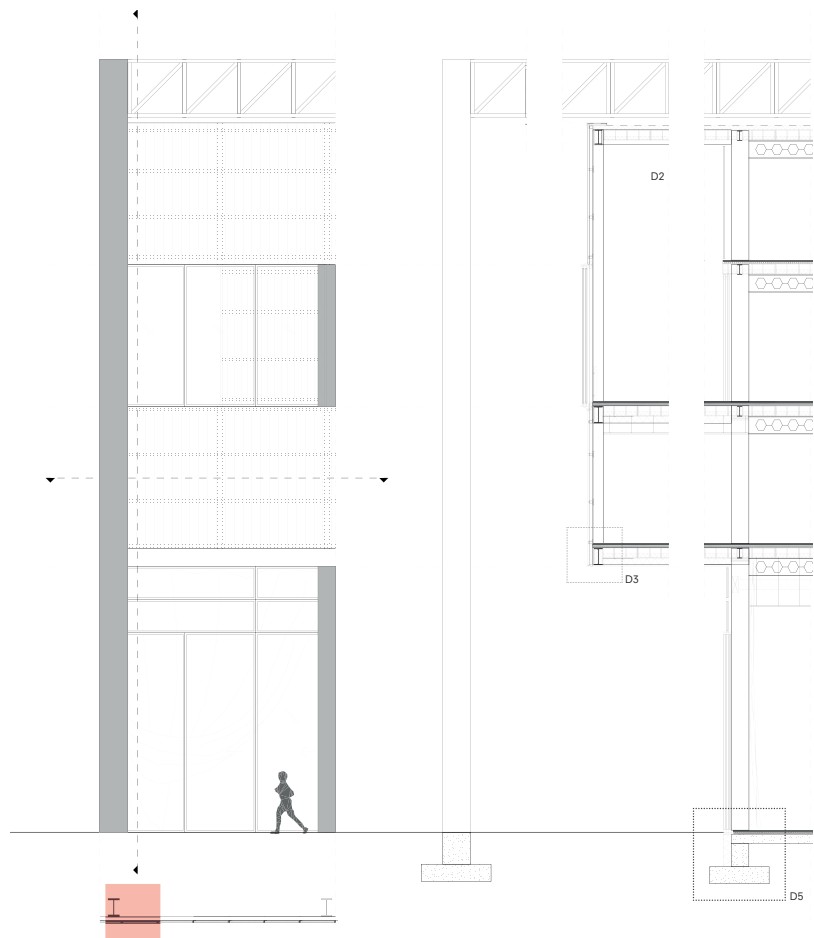
- 1 25mm Epoxi finishing (same as warehouse)
70mm Floor heating
Vapor barrier foil
20mm Insulation (fire protection rock wool)
250mm Concrete slab (in situ, same as warehouse)
220mm Gravel
- 2 Sliding glass door
HEA 500 column
- 3 500mm Pad foundation with reinforcement
200mm Mineral wool insulation
15mm Concrete plate



FOUNDATION
1:5

DETAIL 5 - POLYCARBONATE FAÇADE

- 1 60mm polycarbonate panel (3000x1150mm)
- 50mm ventilation/insulation gap
- 60mm polycarbonate panel (3000x1150mm)
- Smoke and Heat Exhaust Ventilation System (only for warehouse)
- Aluminium box profile for façade attachment
- HEA 500 (incl. fire coating)



POLYCARBONATE FAÇADE
1:5