

THEATRICAL WONDERMENT

towards dynamic atmospheres in domestic
life based on stage design transformations

By Eva ten Velden
studentnumber 4265624

How can dynamic atmospheric space be created
on **the black box theatre stage**

with the use of
lighting, perspective illusion and the fly tower,

in such a way that architects can borrow the
resulting theatrical principles to redefine
intimate/domestic space?

RESEARCH

Method - Theatre Play



INTRODUCING CHARACTERS

THEORA

ACTOR

Object:
Power of
Action

AUDIENCE

Subject:
Power of
Imagination

ACTOR

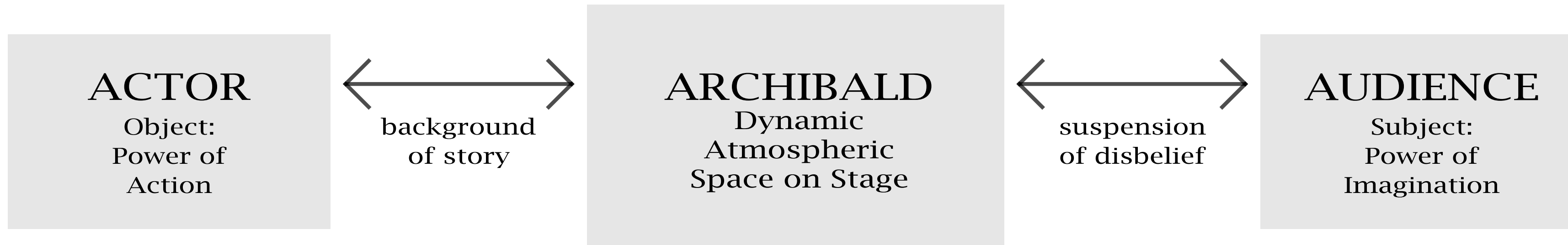
Object:
Power of
Action

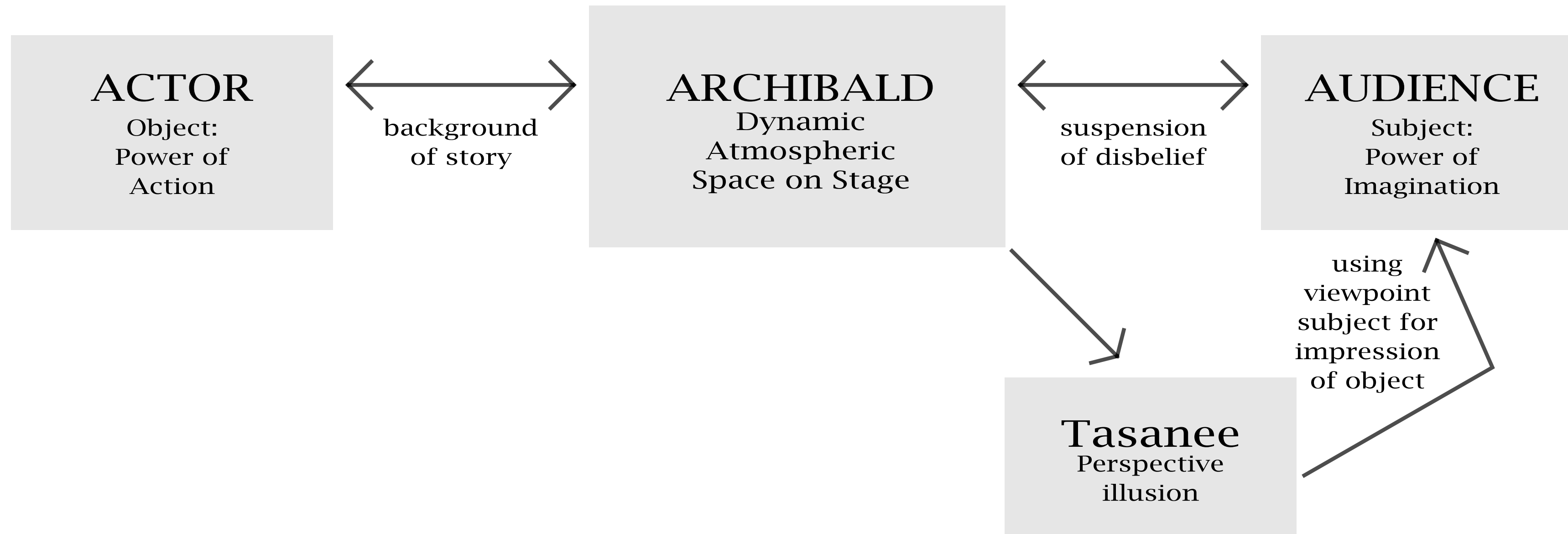
ARCHIBALD

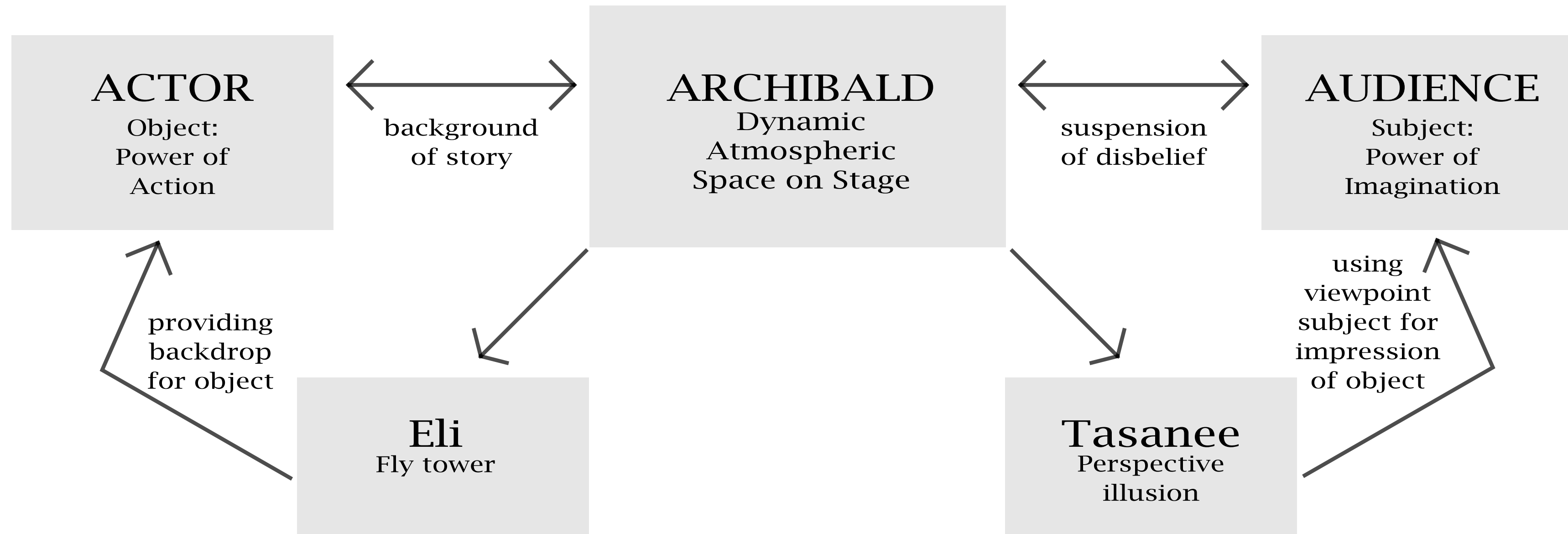
Dynamic
Atmospheric
Space on Stage

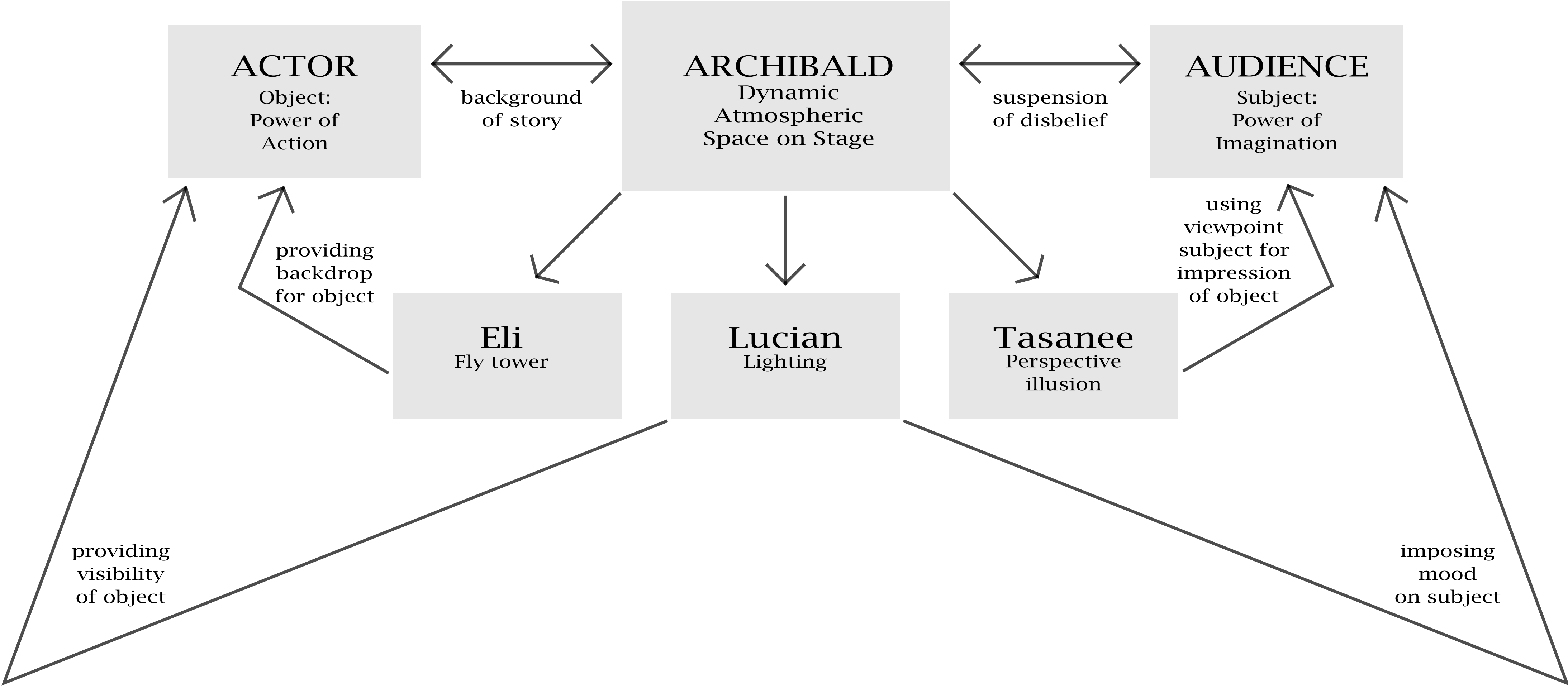
AUDIENCE

Subject:
Power of
Imagination









THEORA
Actor+Audience

“I am you.”

TASANEE
Perspective Illusion

“I need you.”

ELI

Fly Tower

“I give you.”

LUCIAN
Lightning

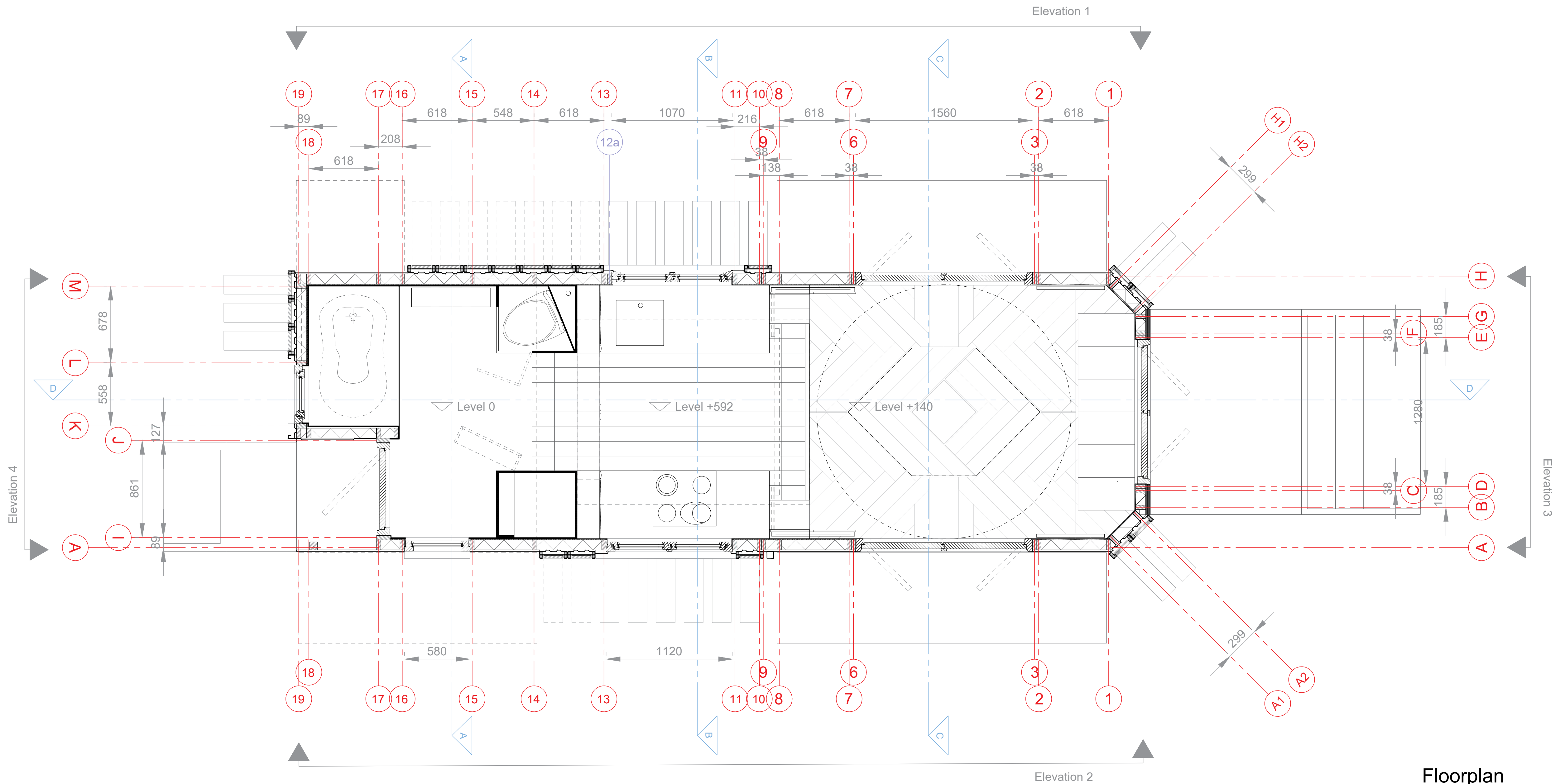
“I tell you.”

ARCHIBALD

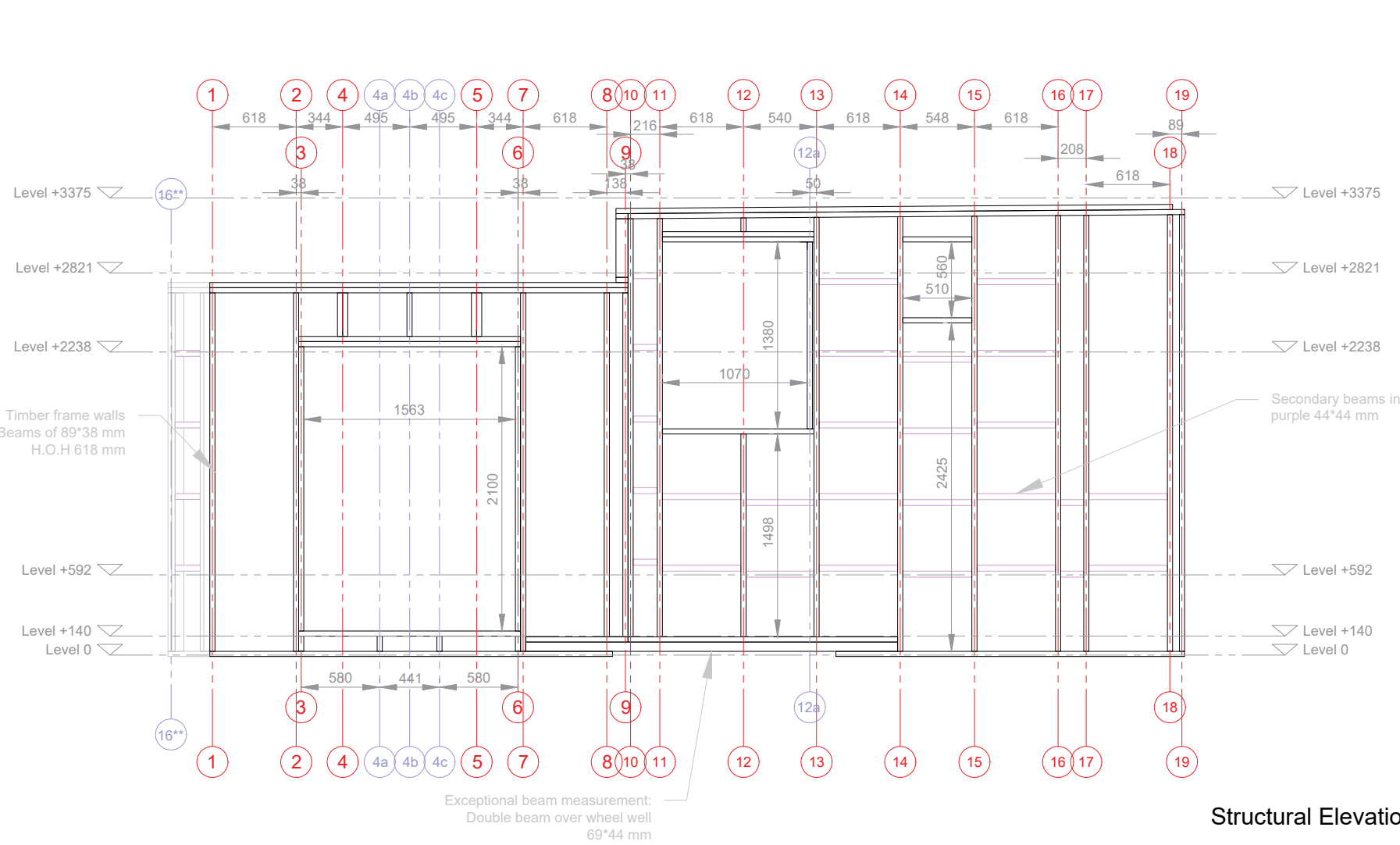
Dynamic Atmospheric Space
on Stage

“Who am I?”

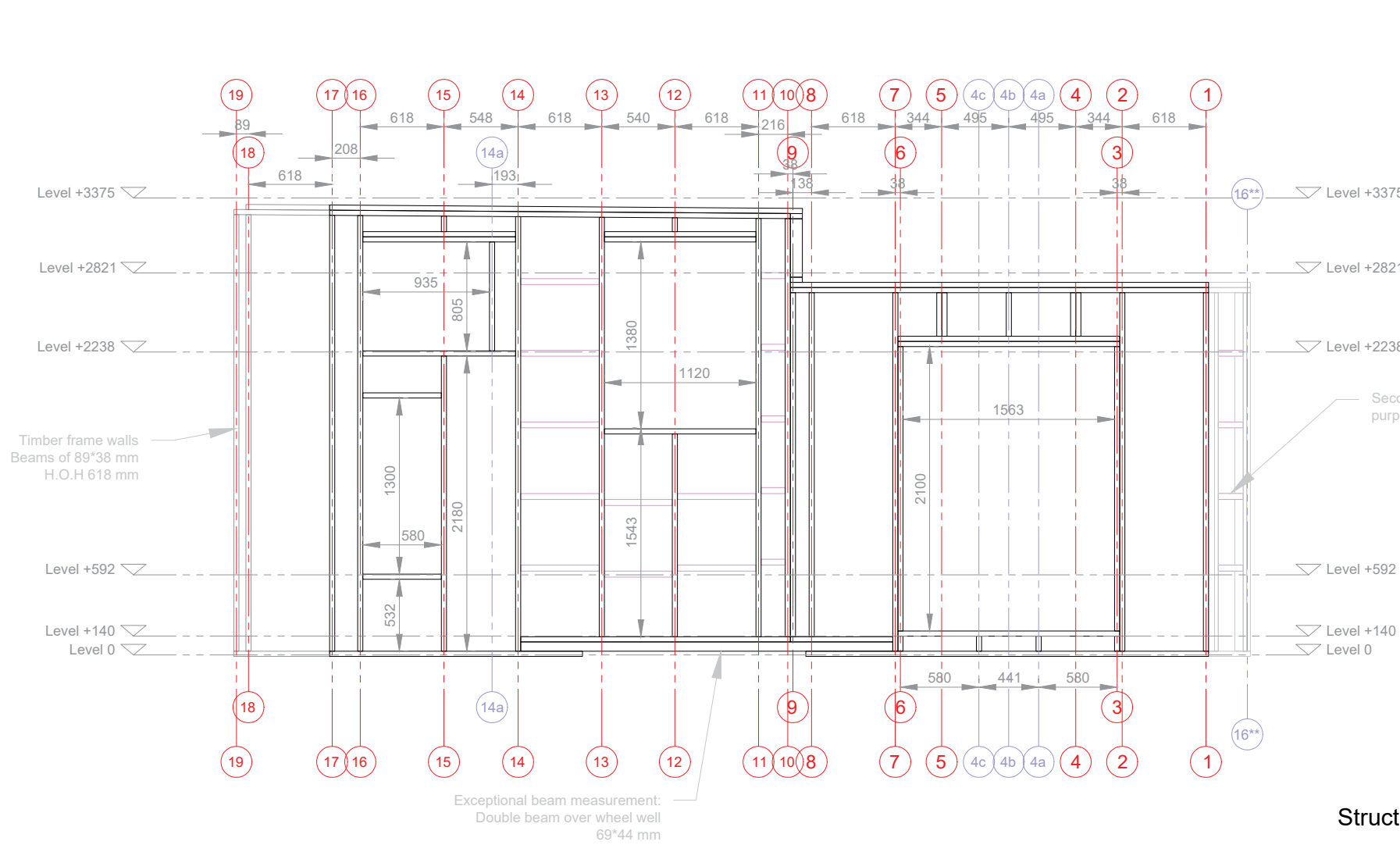
Tiny HomeStage



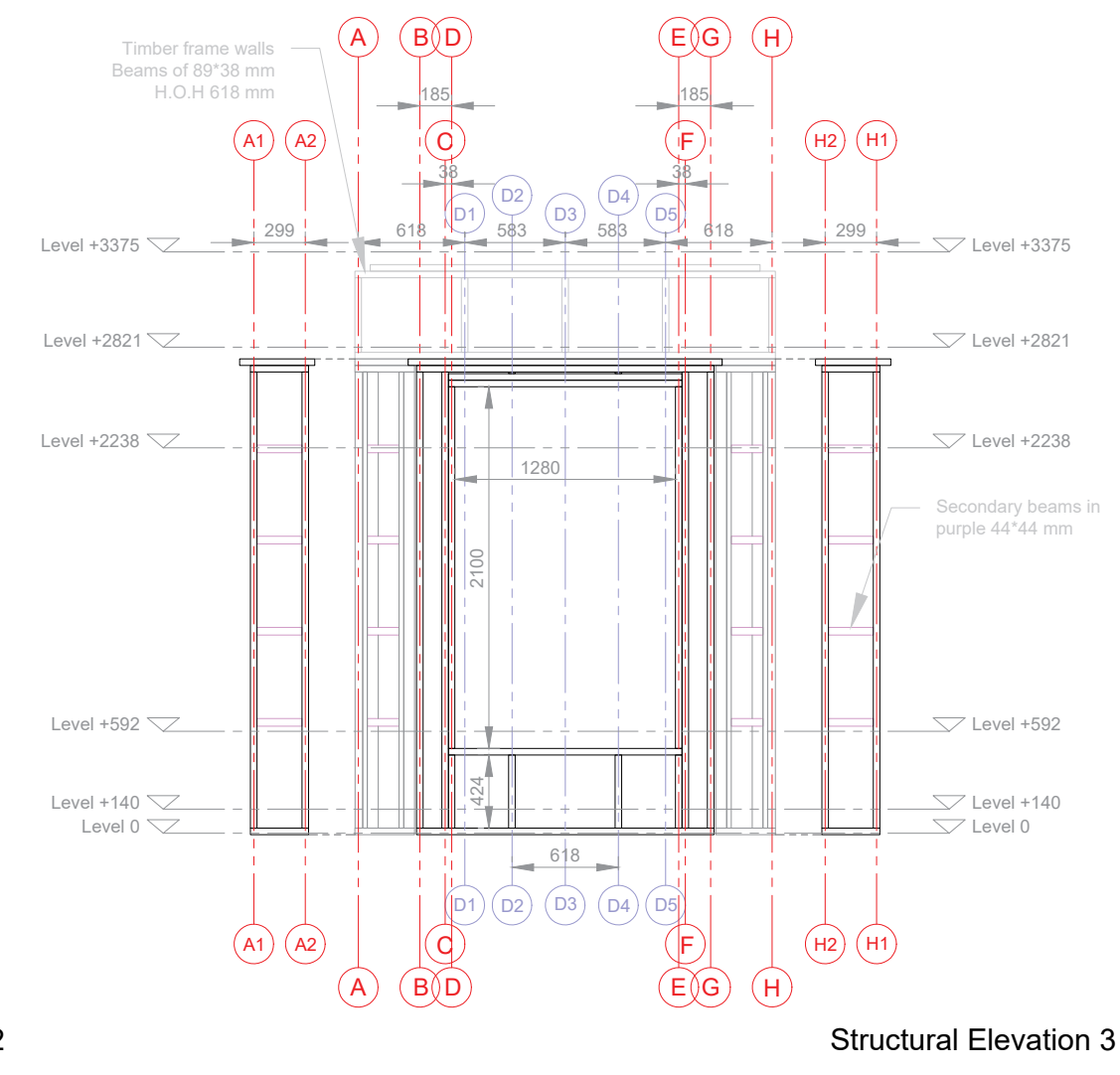
Floorplan



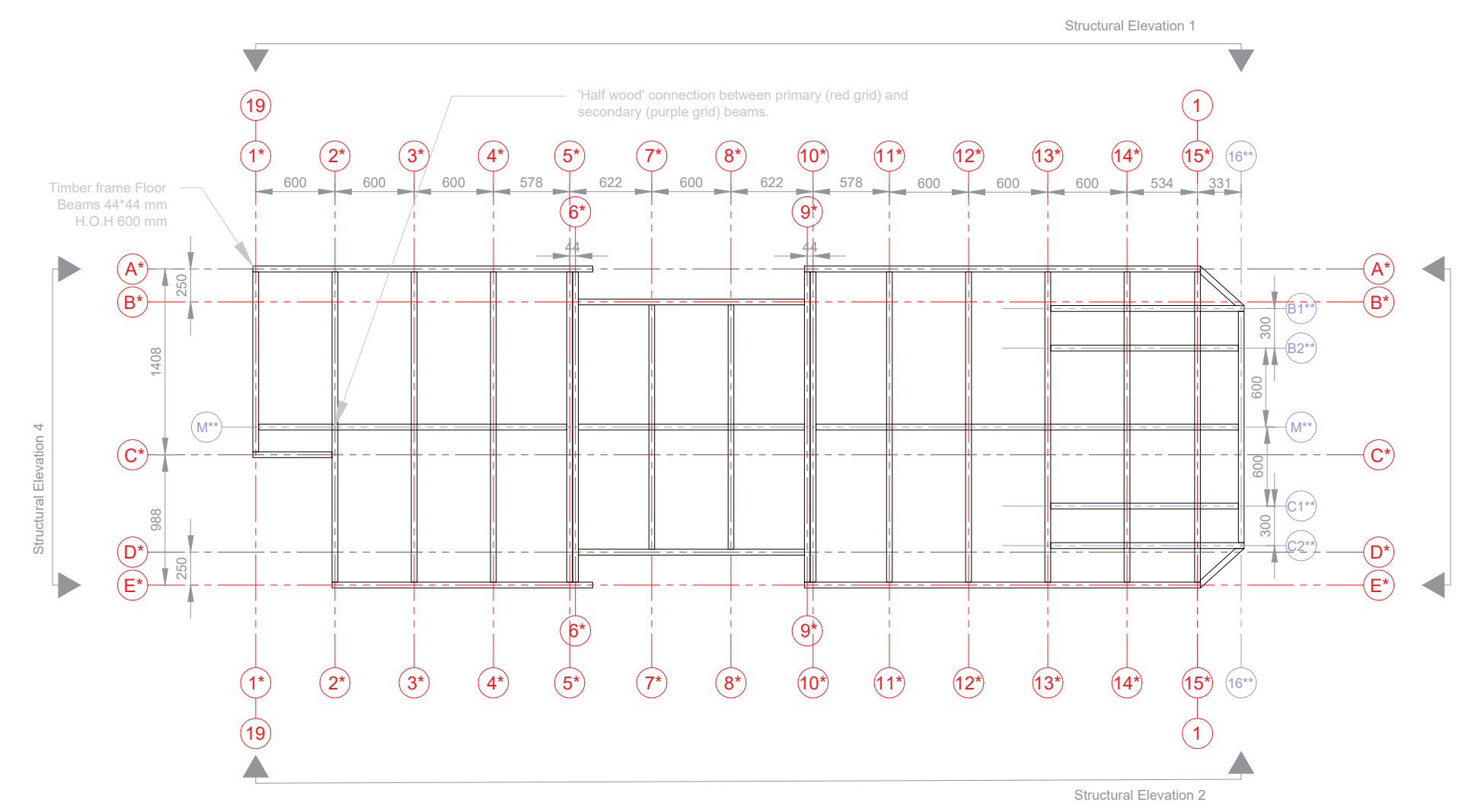
Structural Elevation 1



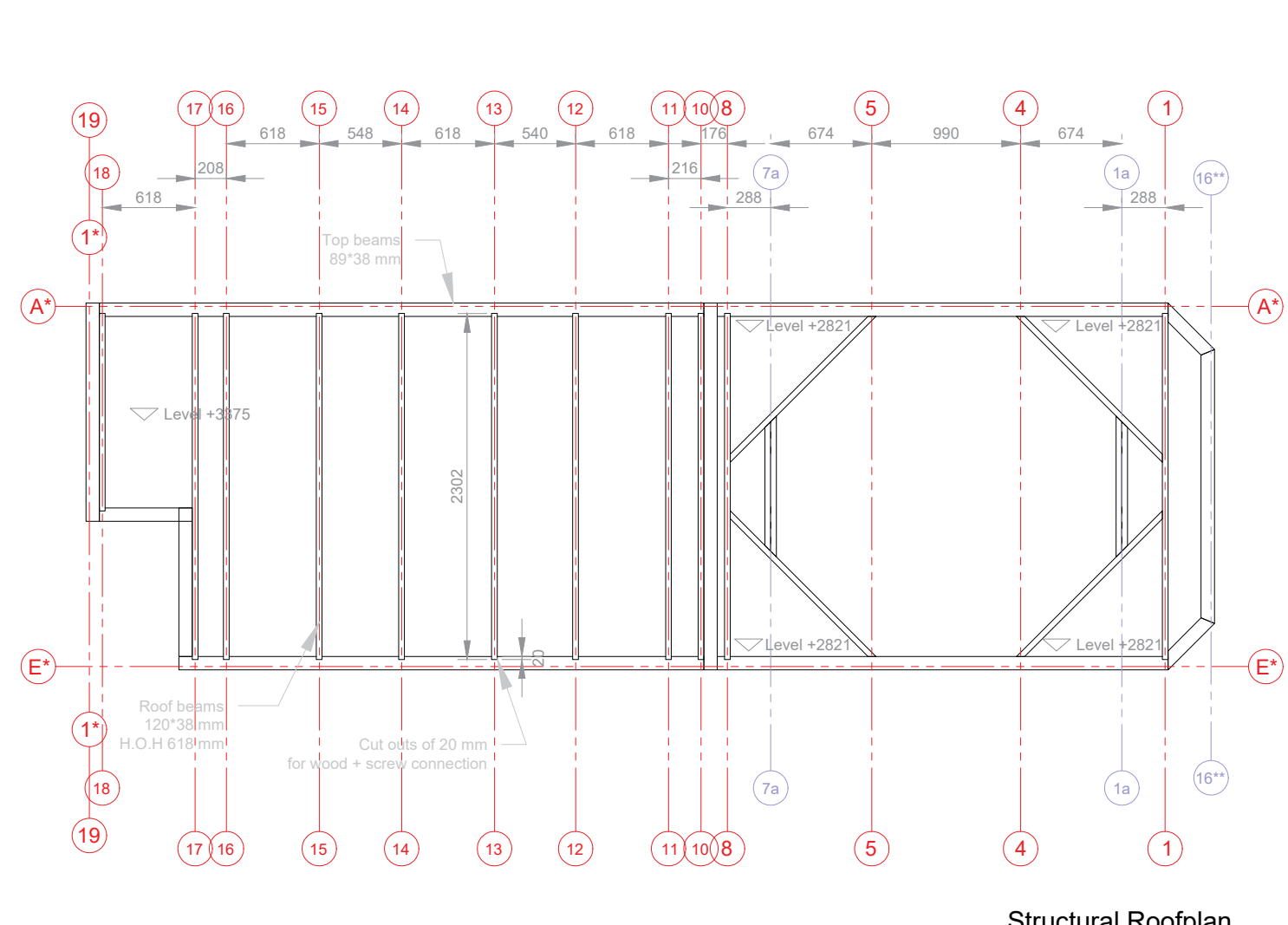
Structural Elevation 2



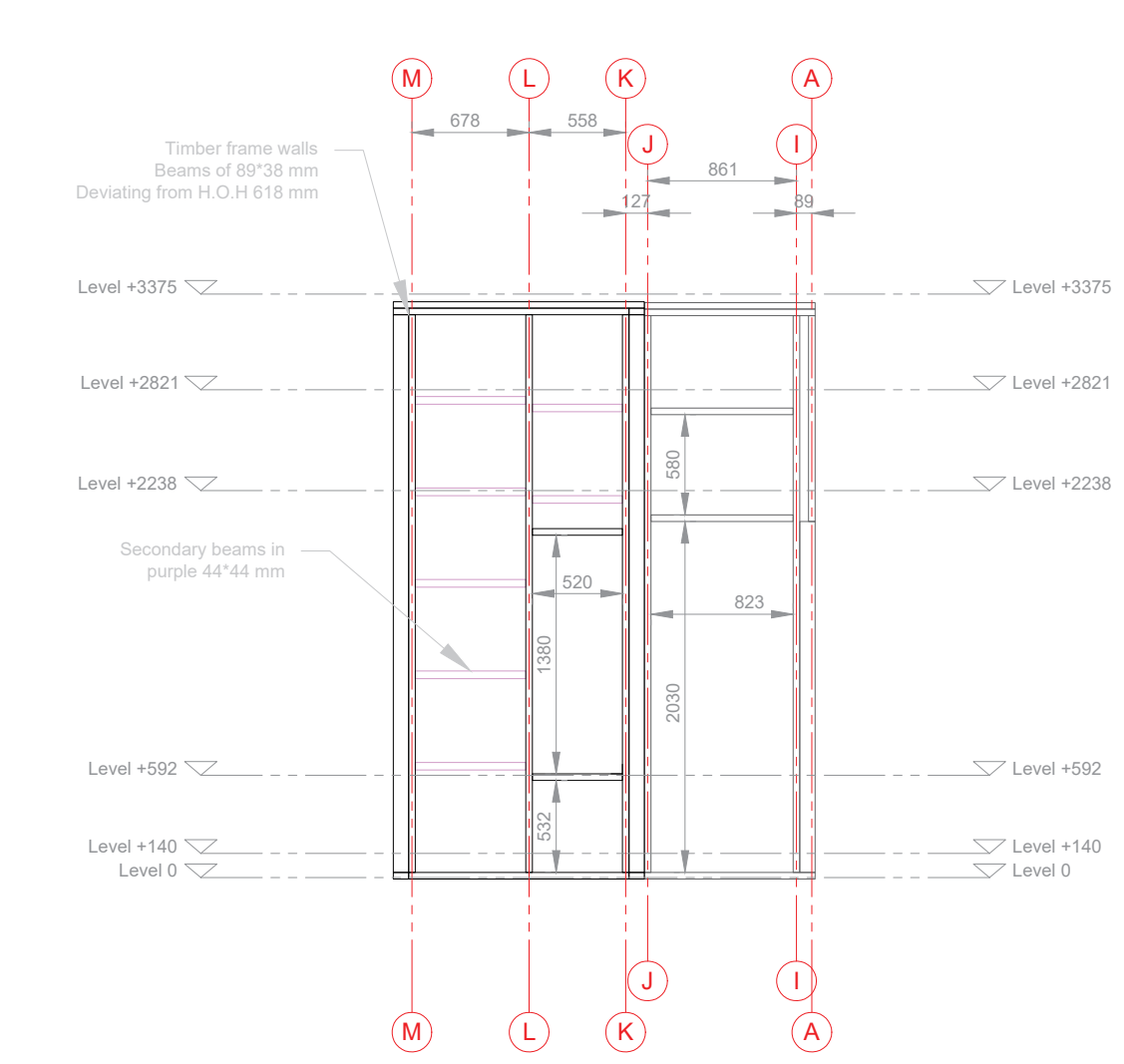
Structural Elevation 3



Structural Floorplan

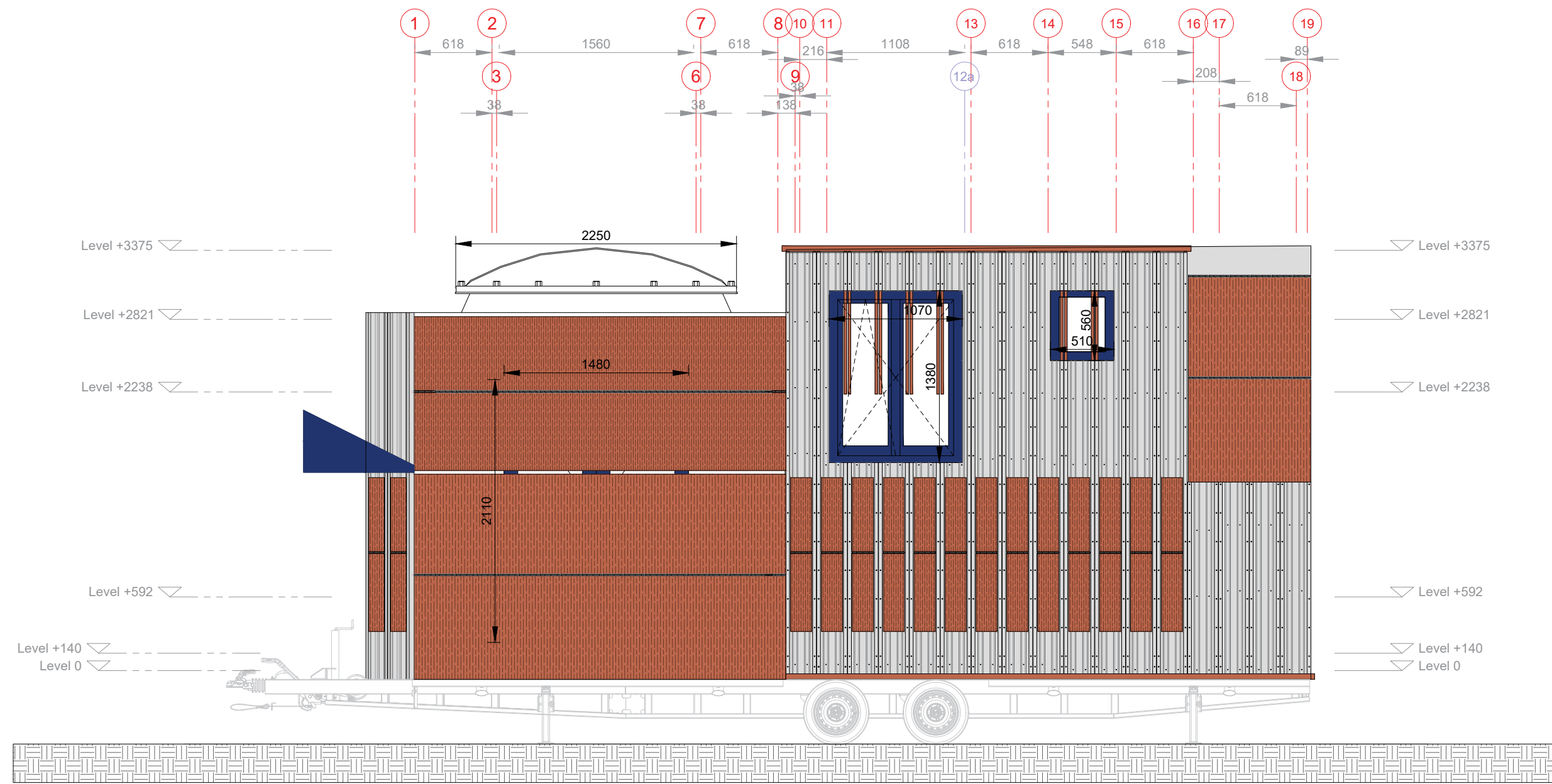


Structural Roofplan



Structural Elevation 4

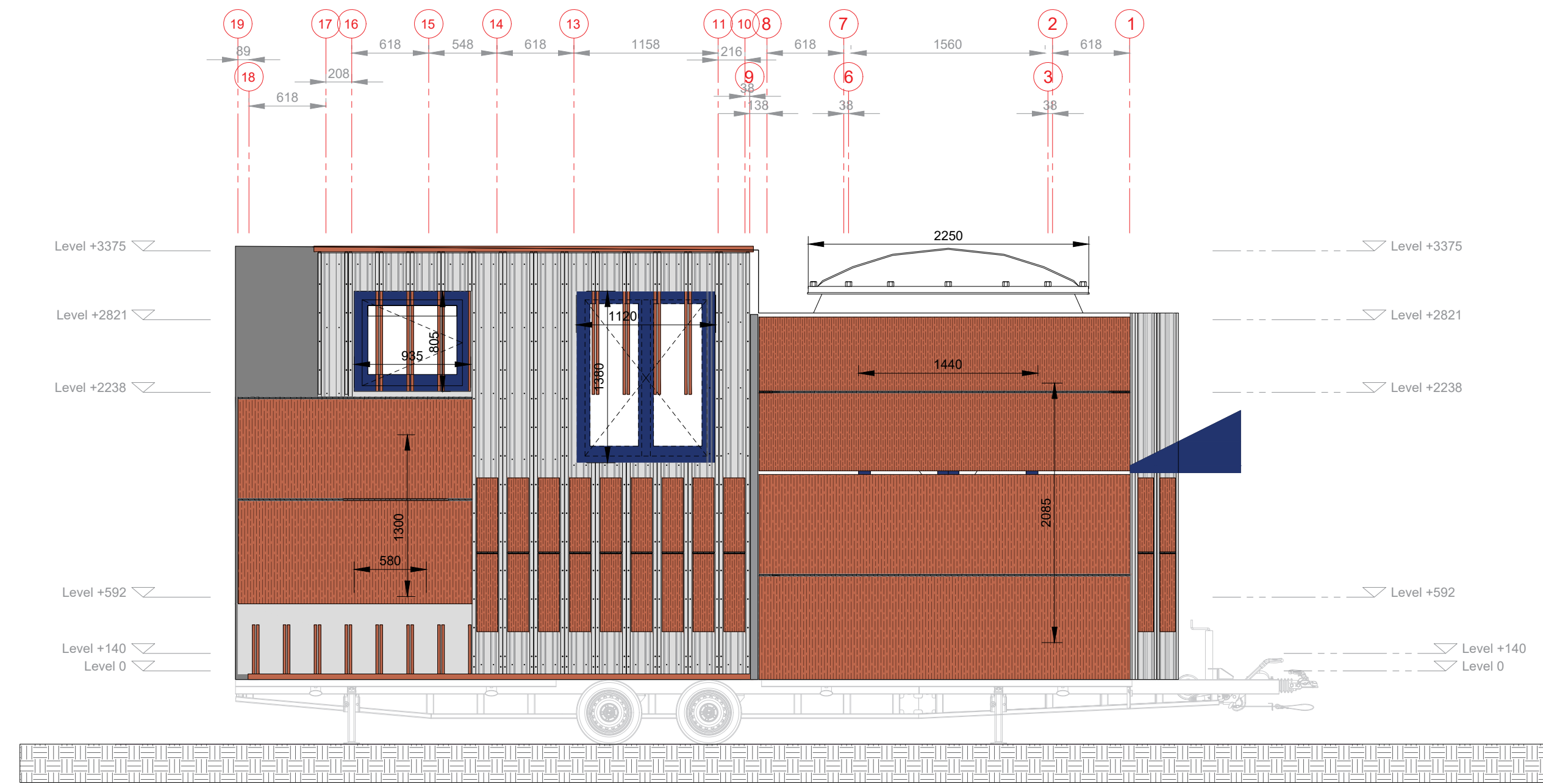
*IMPORTANT: grid of structural floorplan (with *) differs from grid in the other structural drawings, only grid lines 1 and 19 (without *) do correspond.



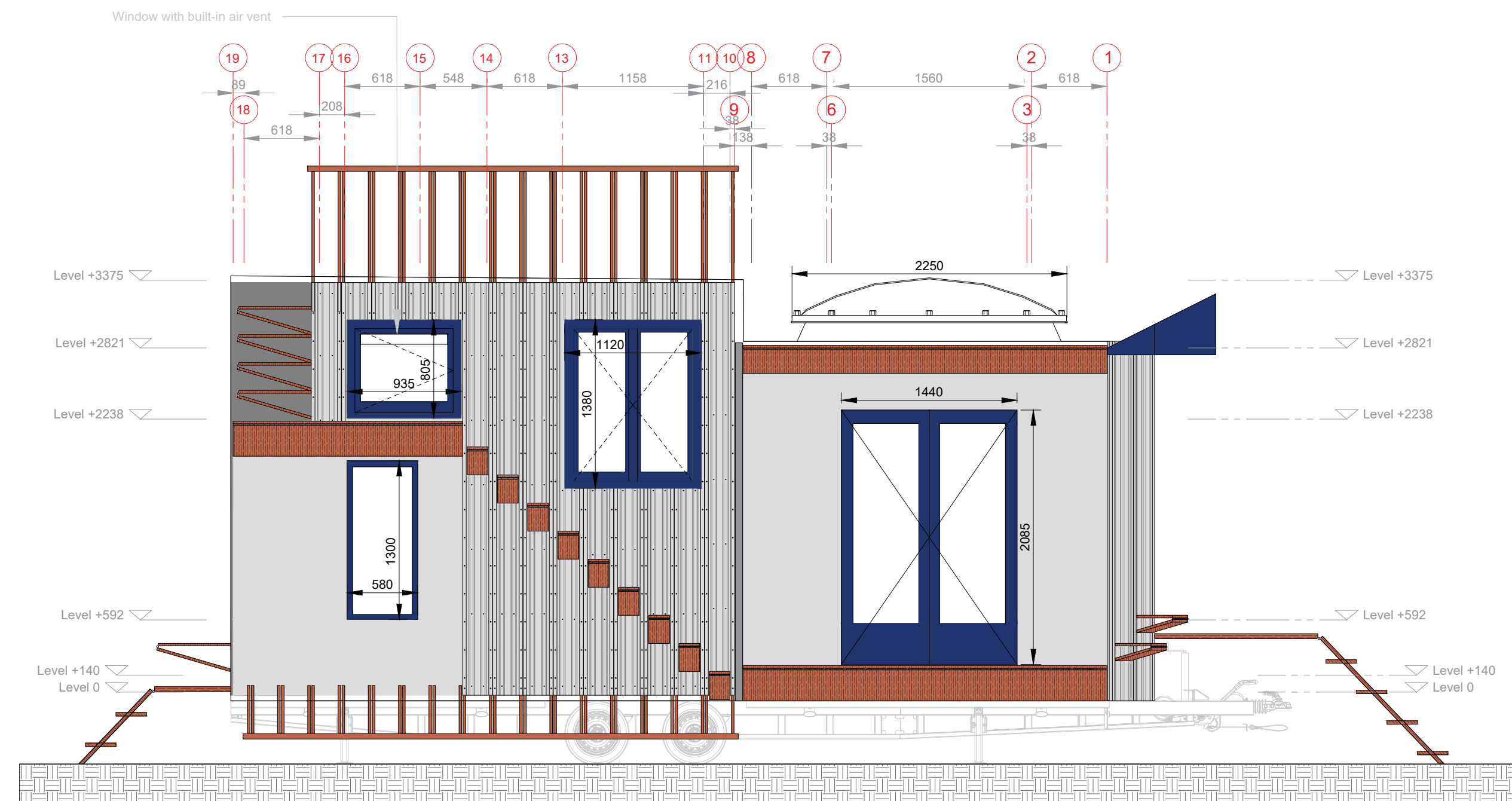
Elevation 1 Closed



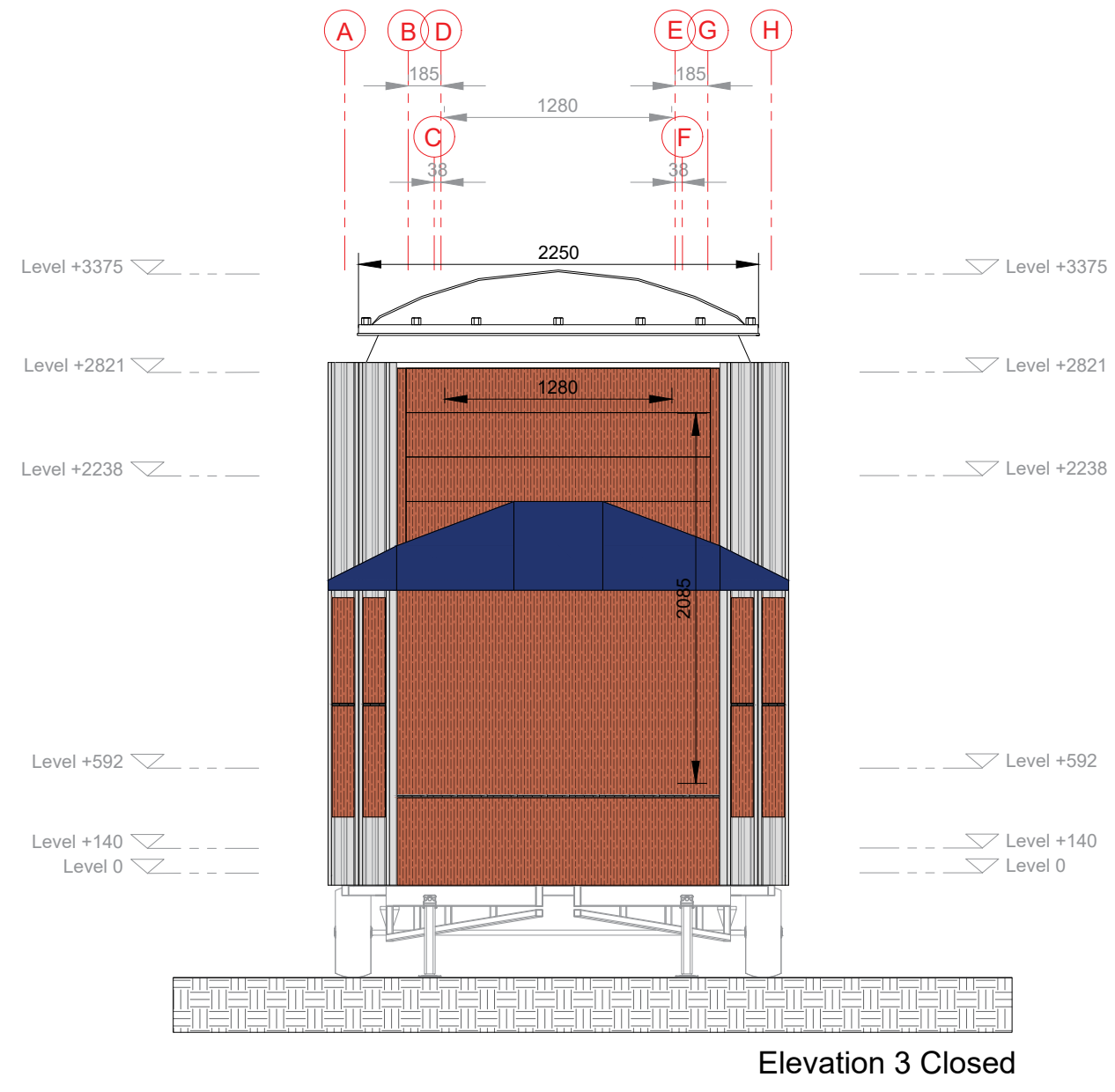
Elevation 1 Open



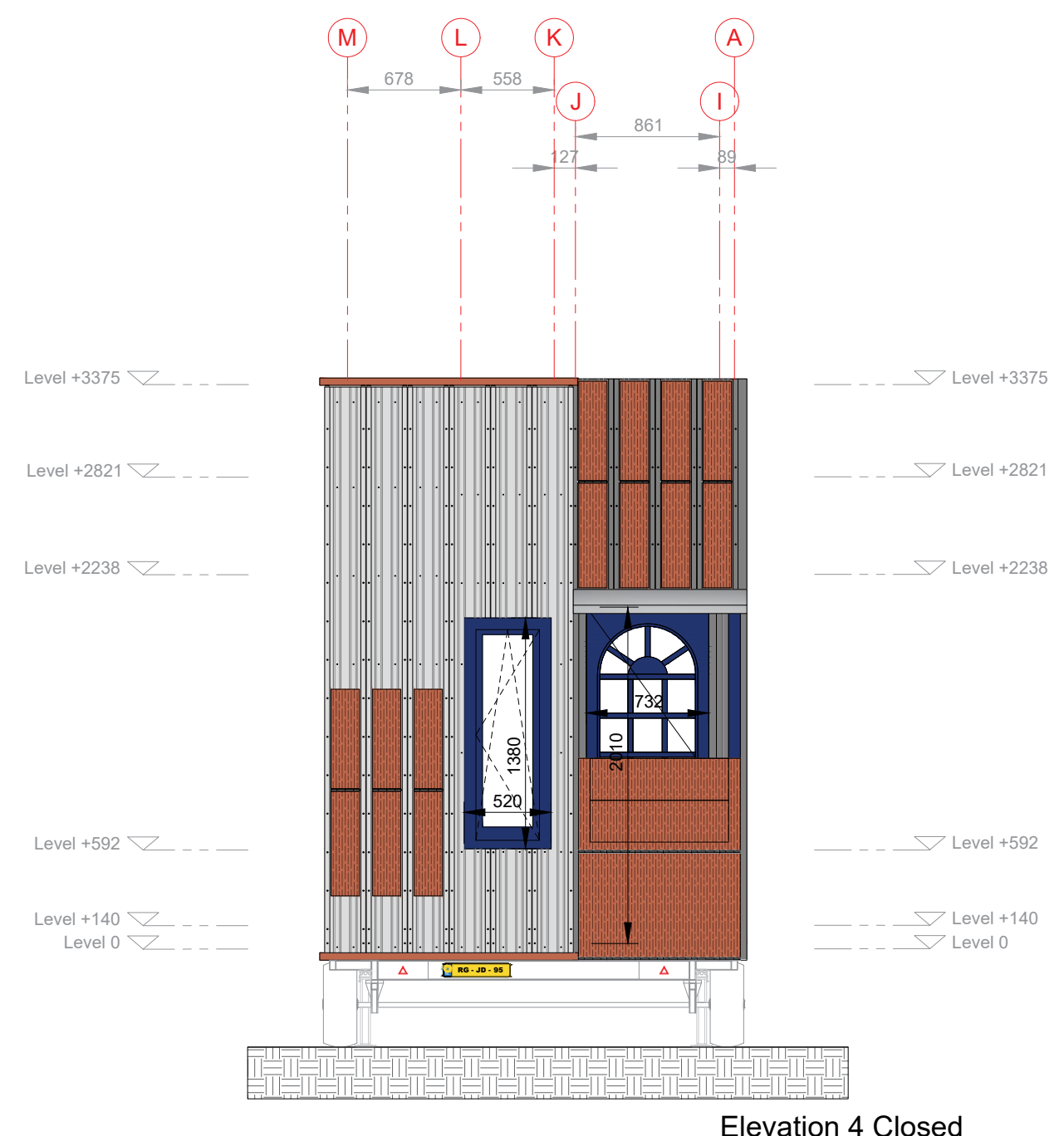
Elevation 2 Closed



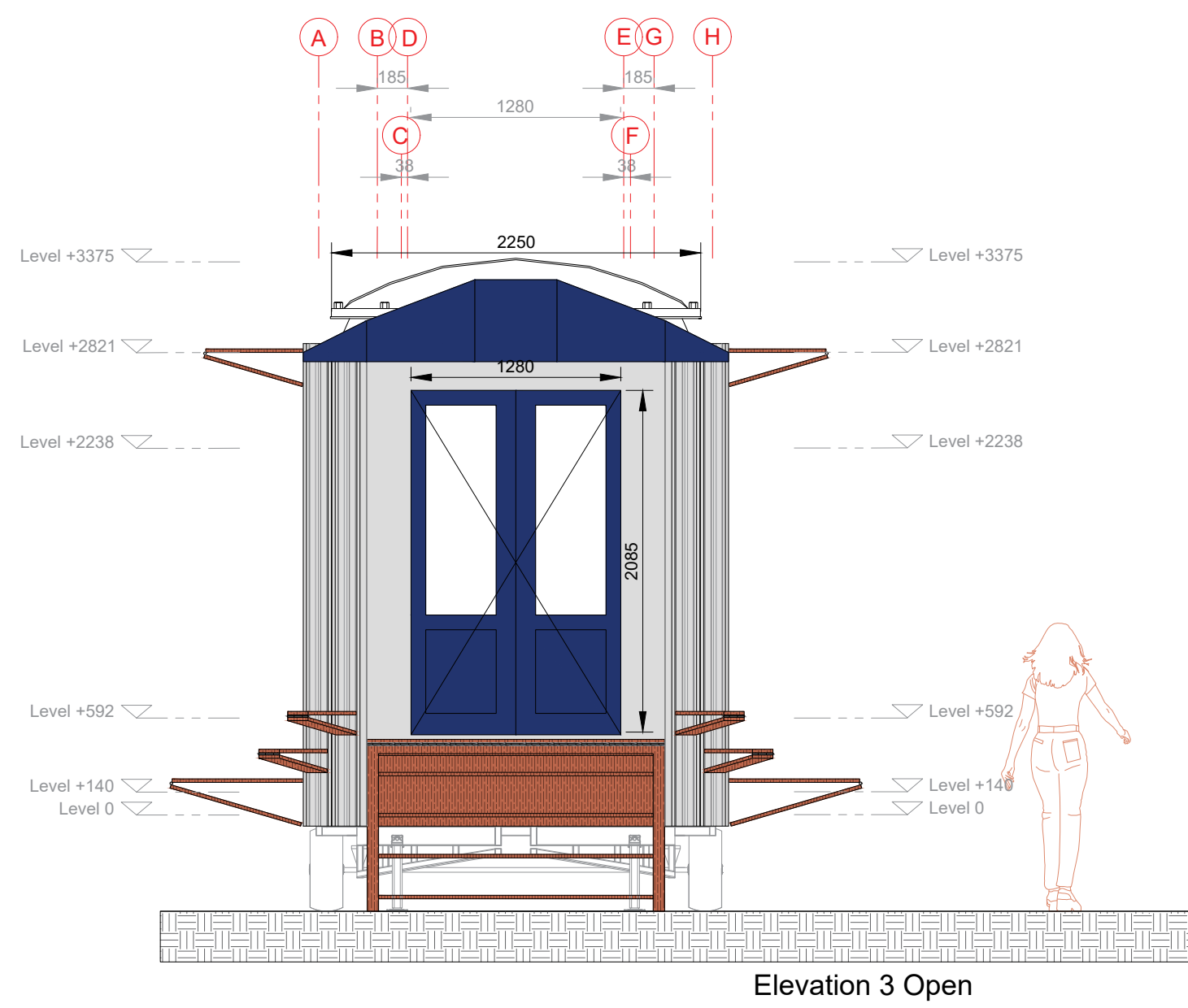
Elevation 2 Open



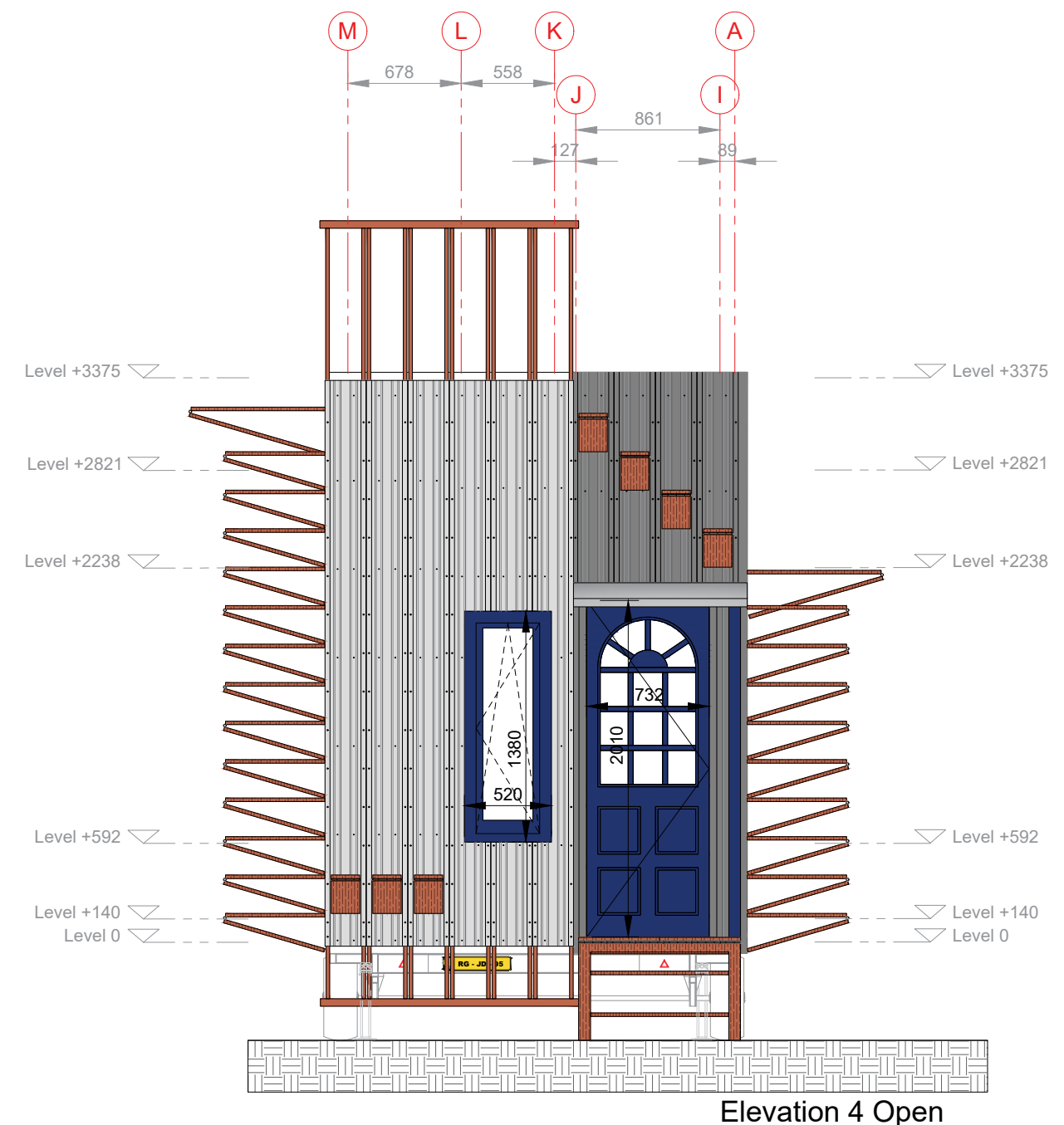
Elevation 3 Closed



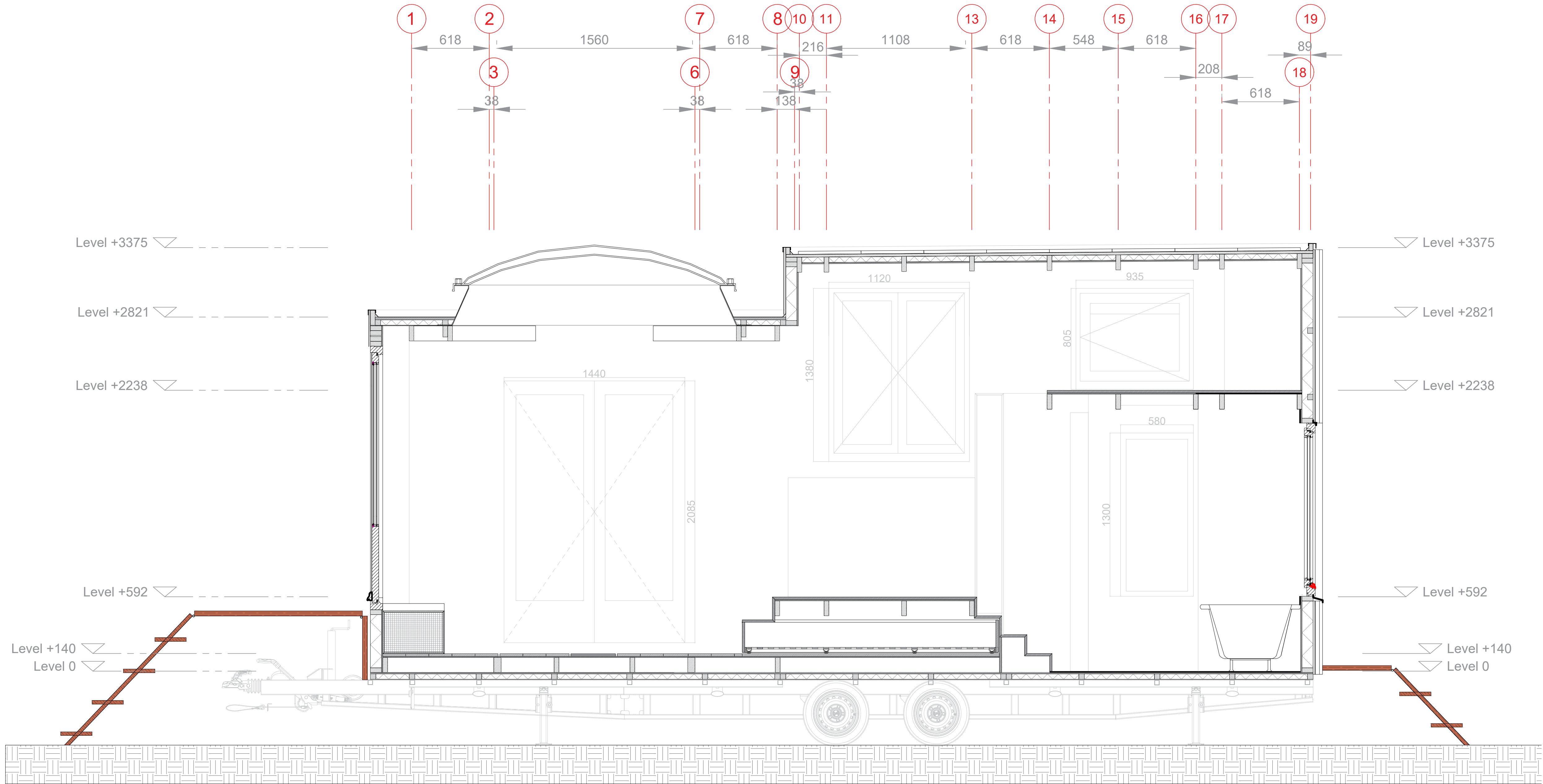
Elevation 4 Closed

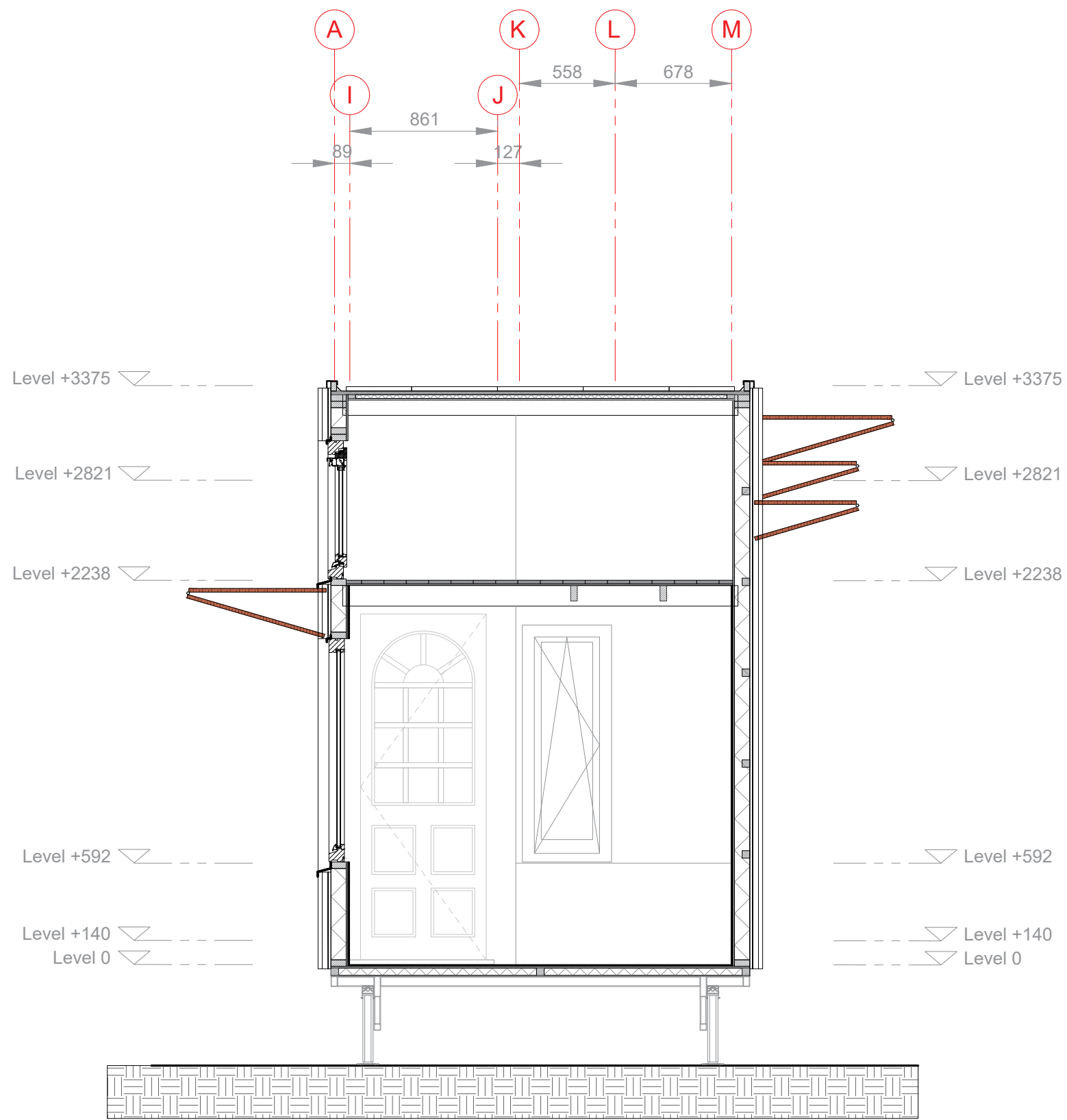


Elevation 3 Open

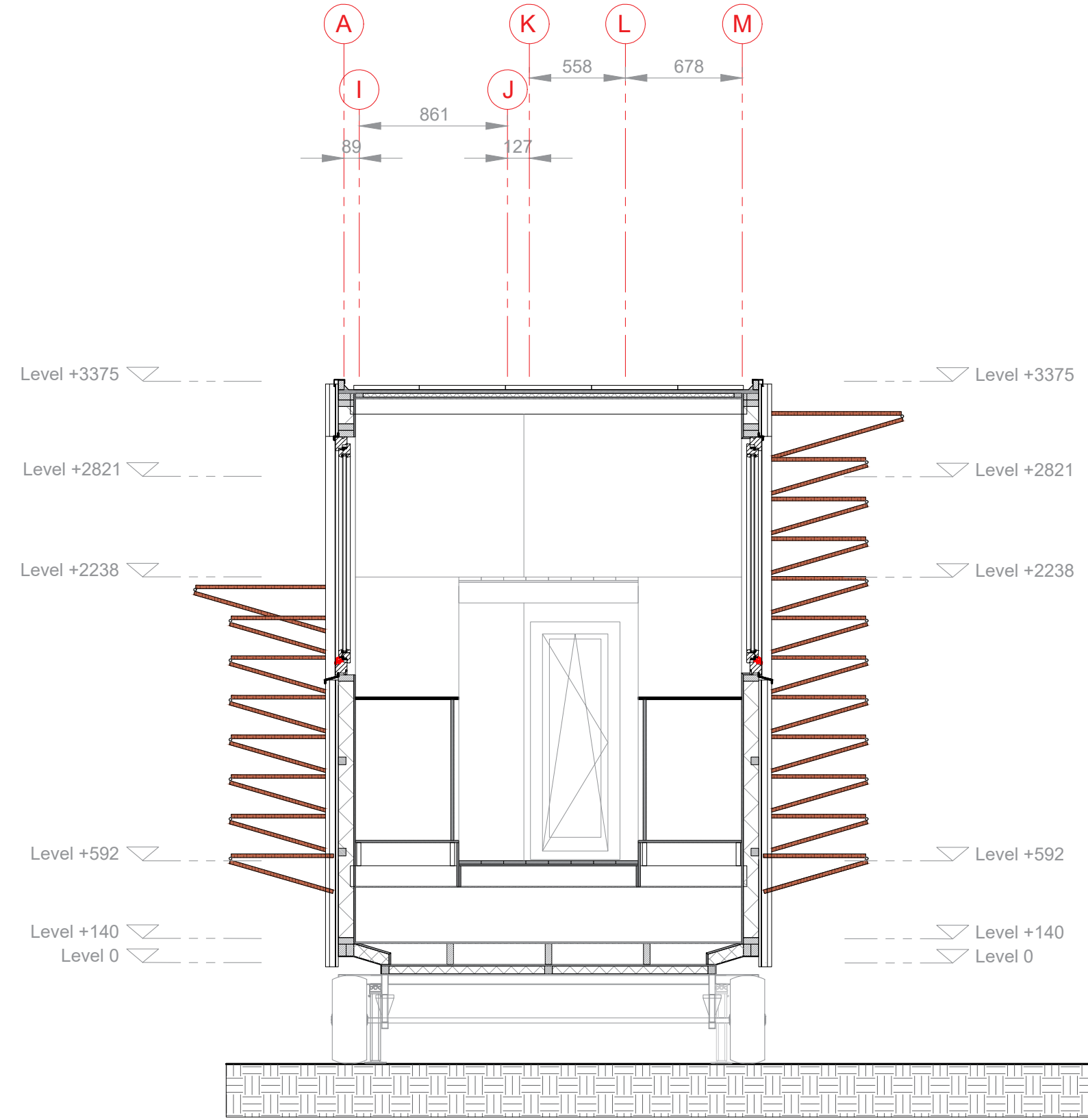


Elevation 4 Open

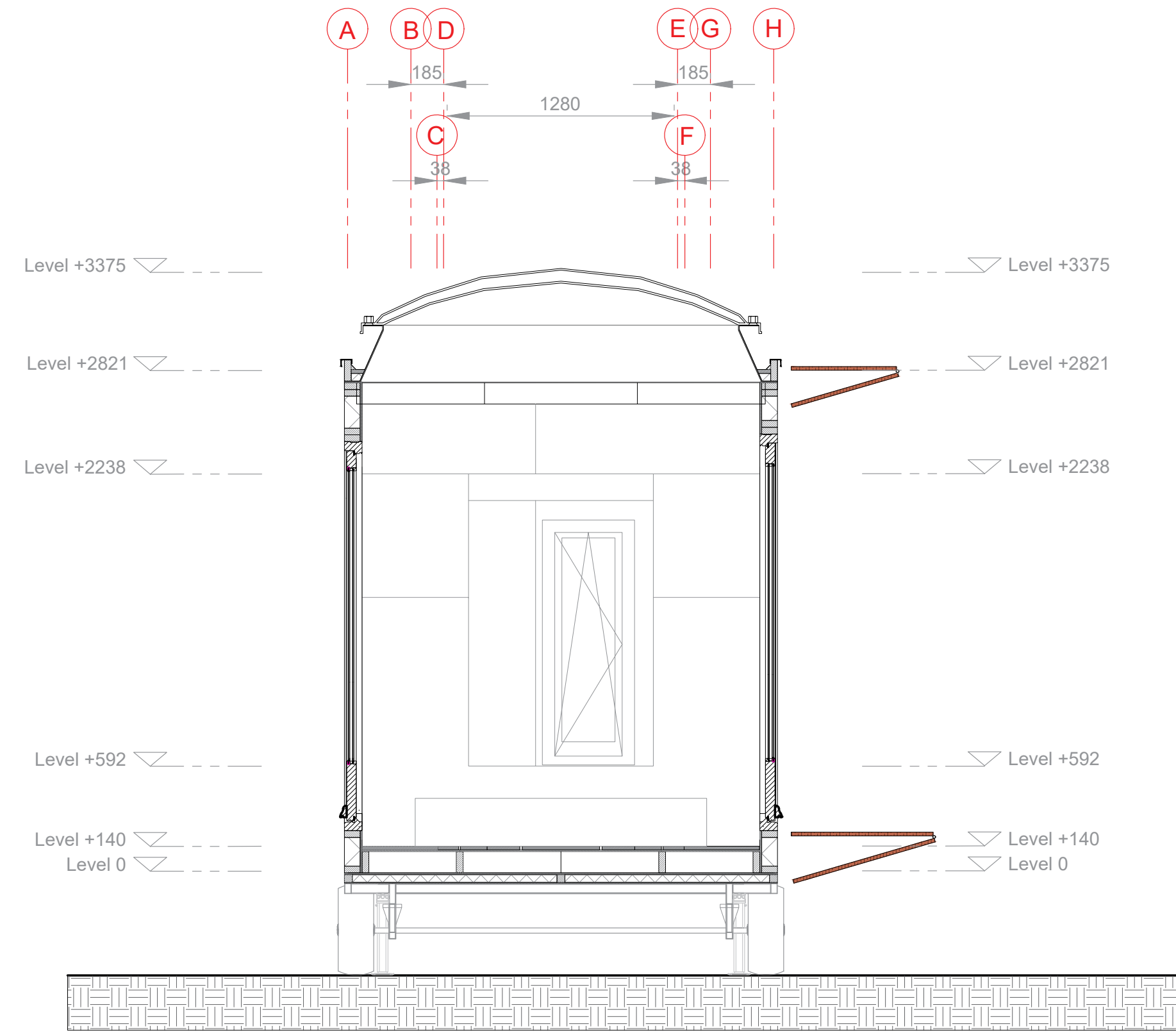




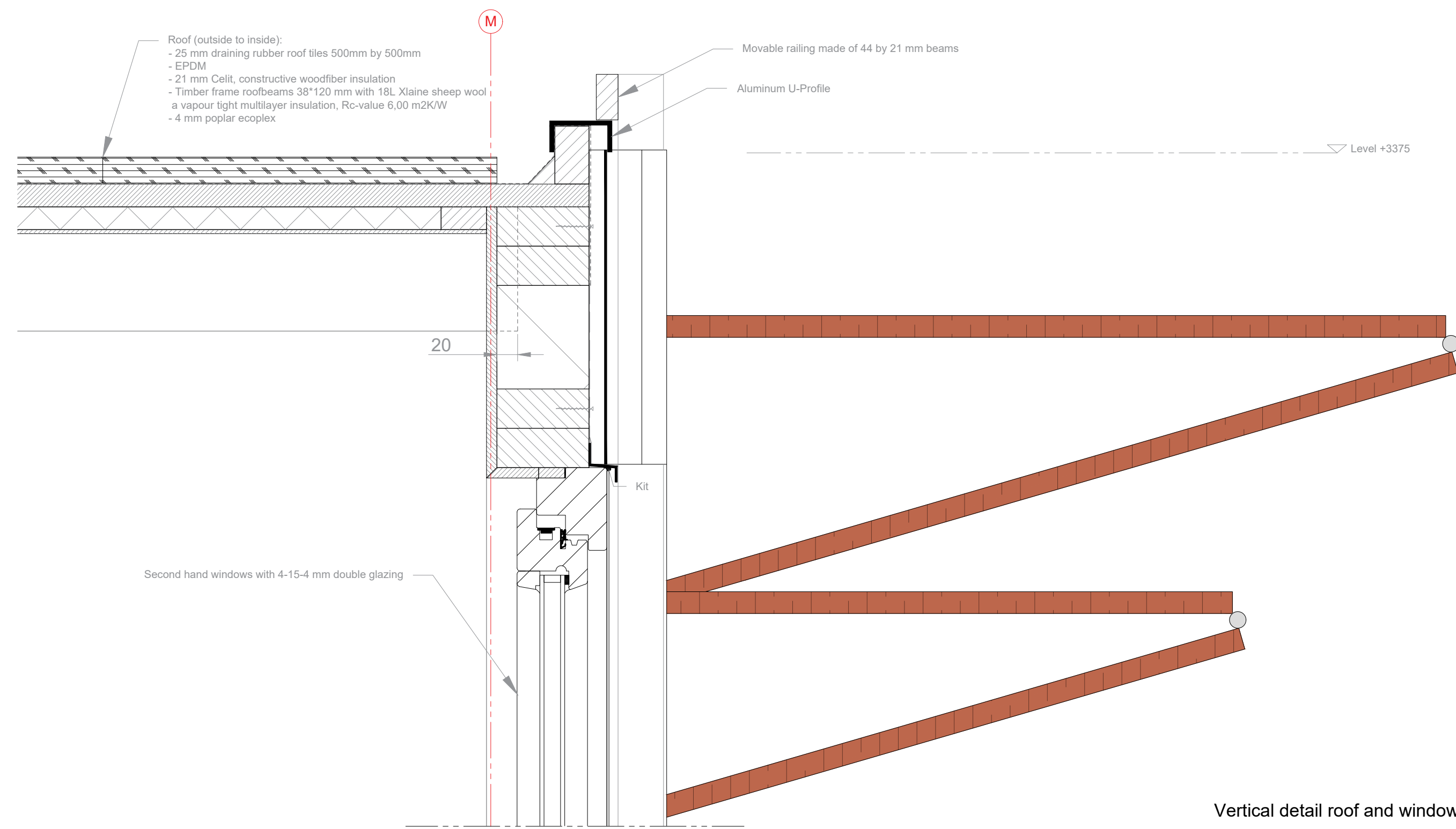
Section A



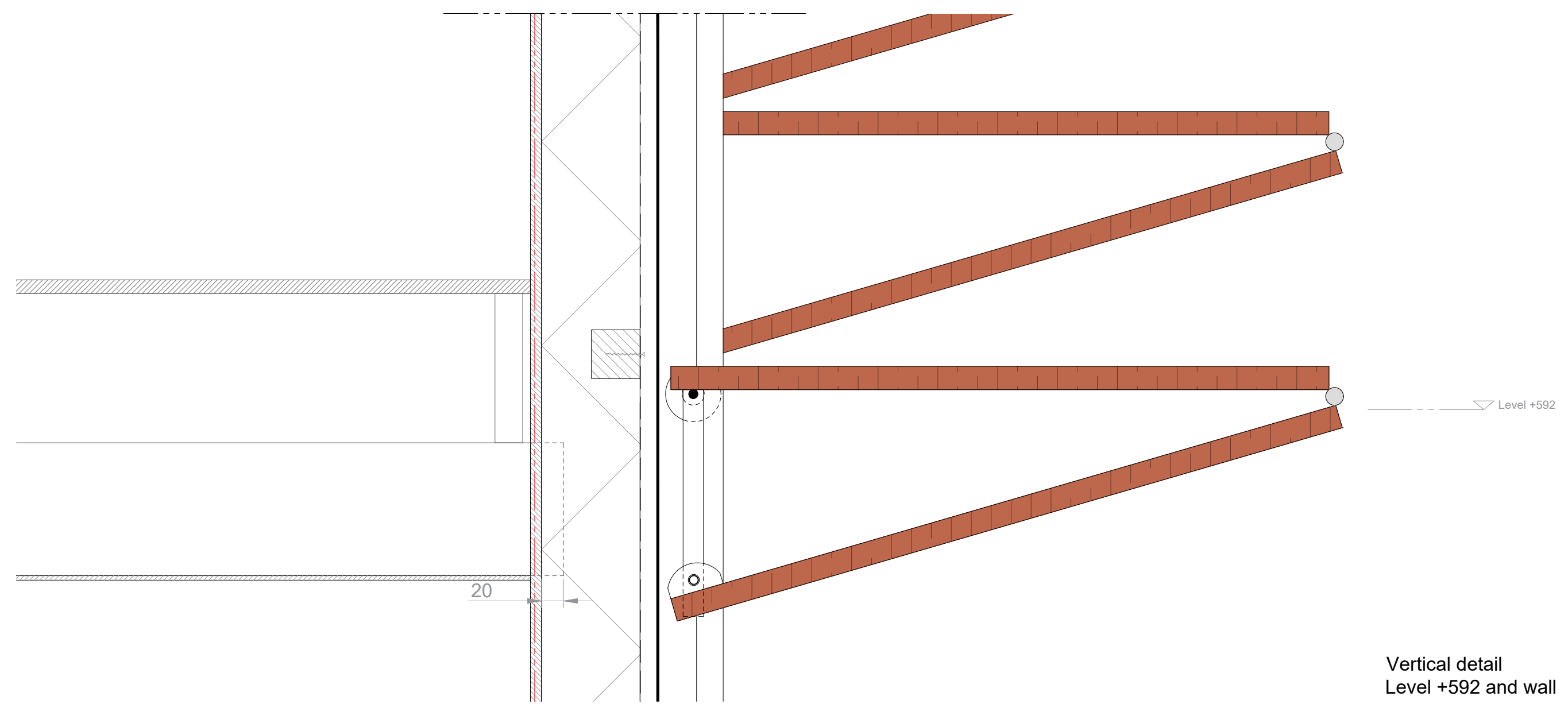
Section B



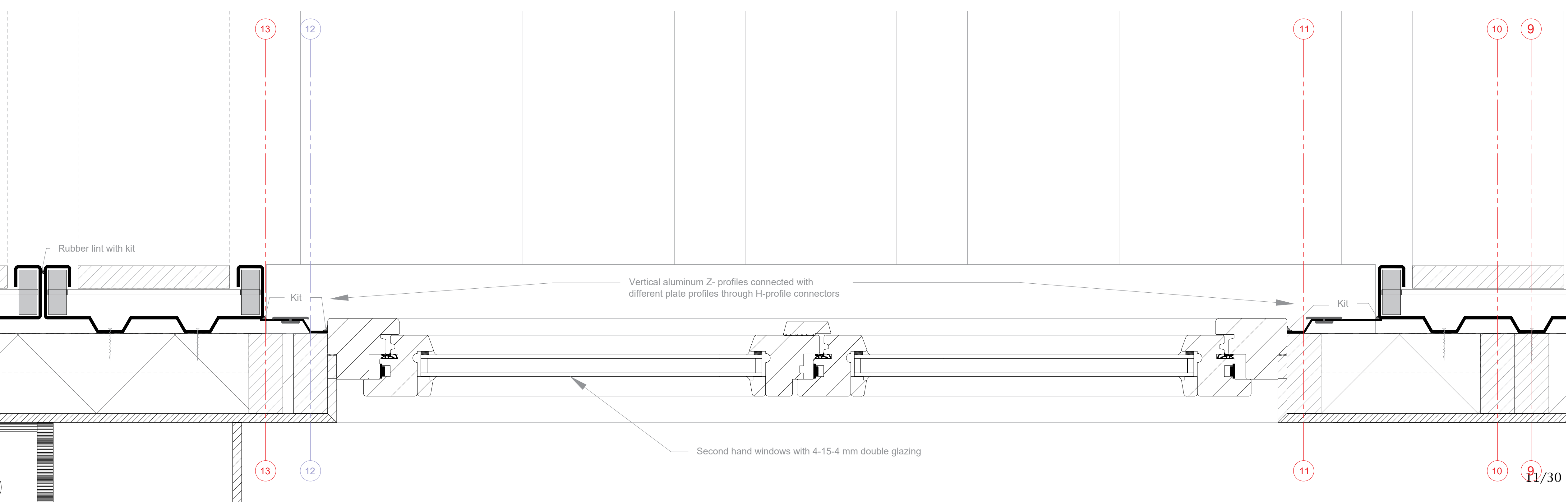
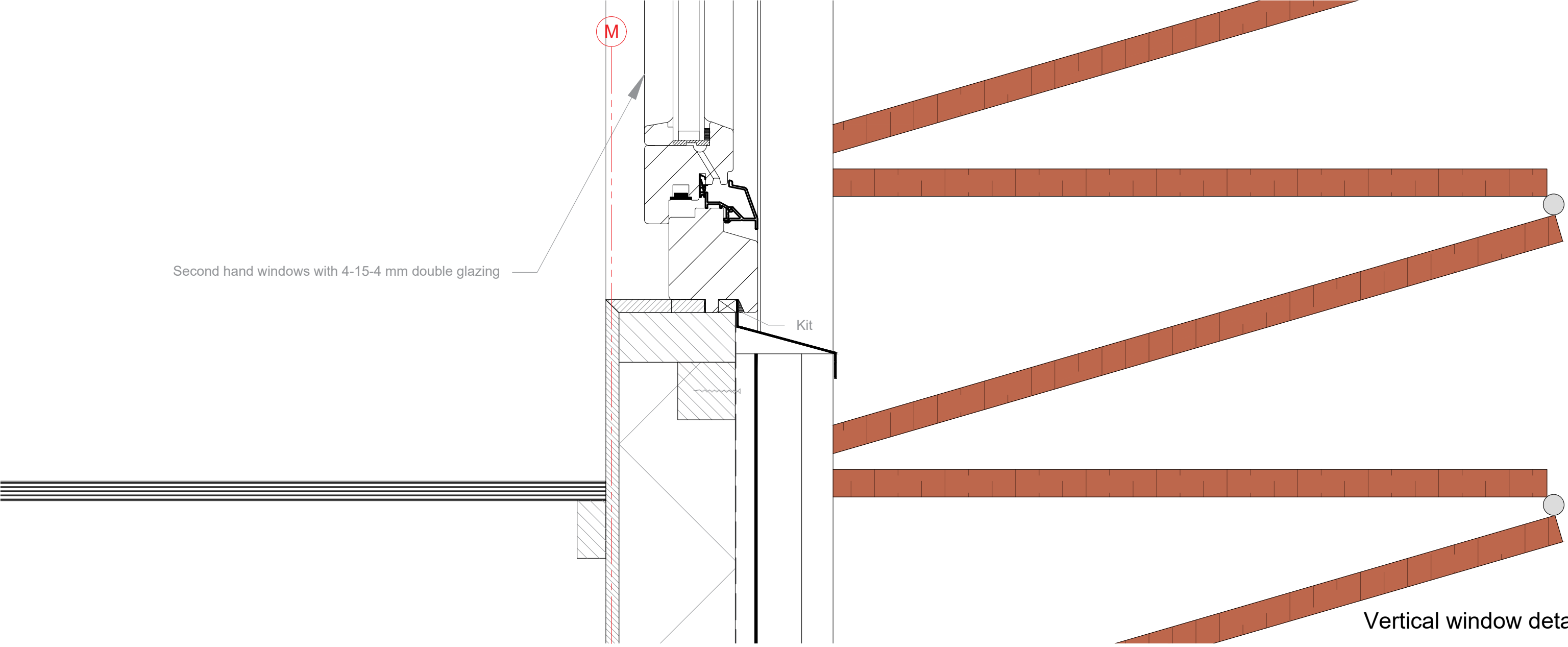
Section C

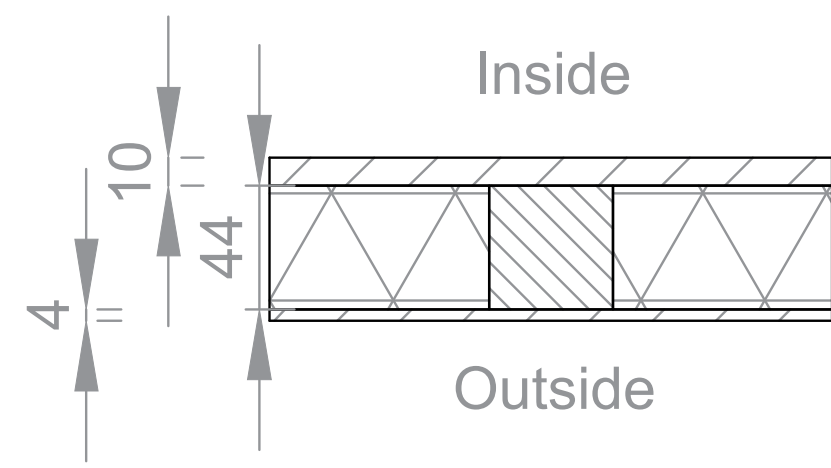


Vertical detail roof and window

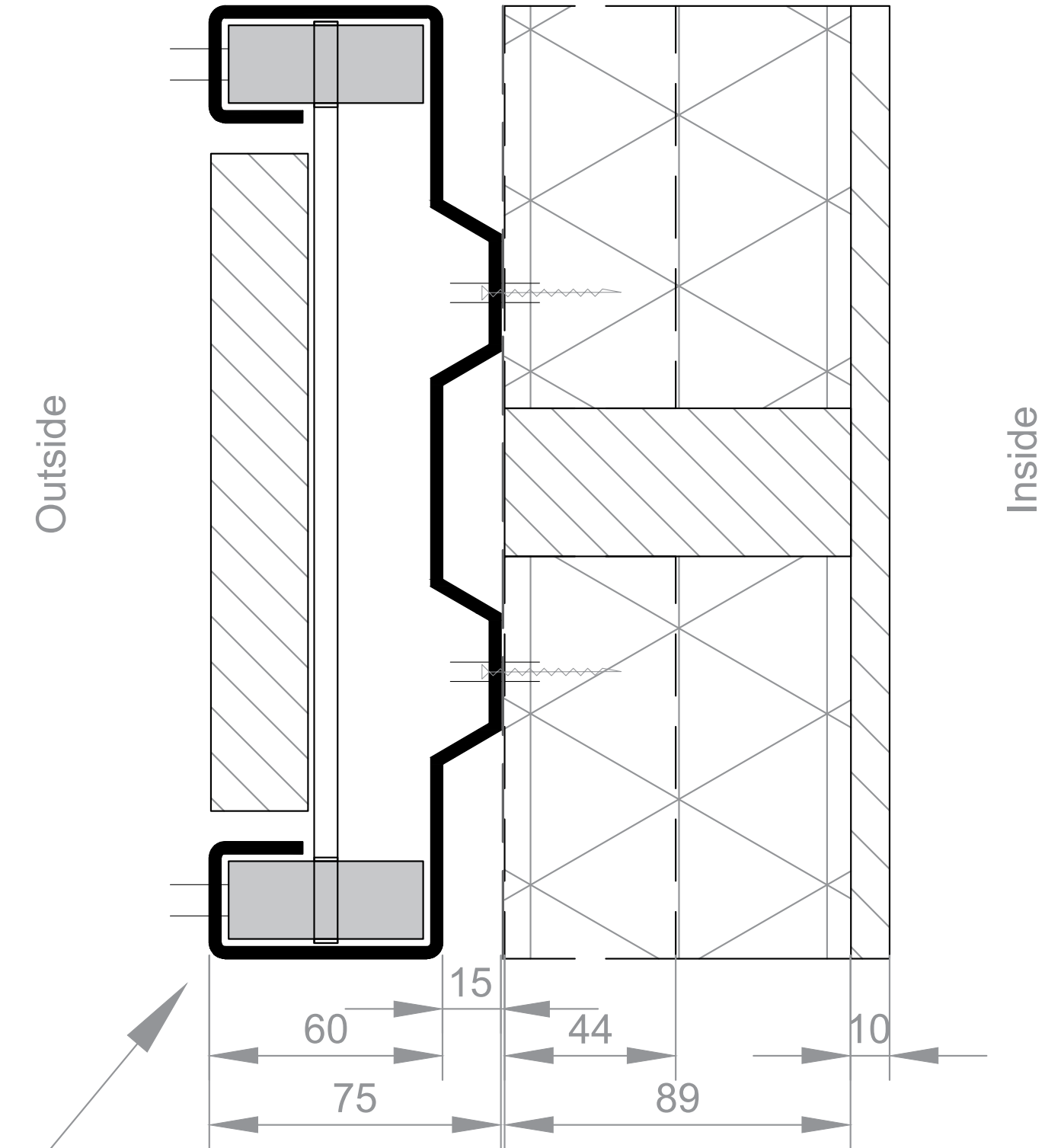
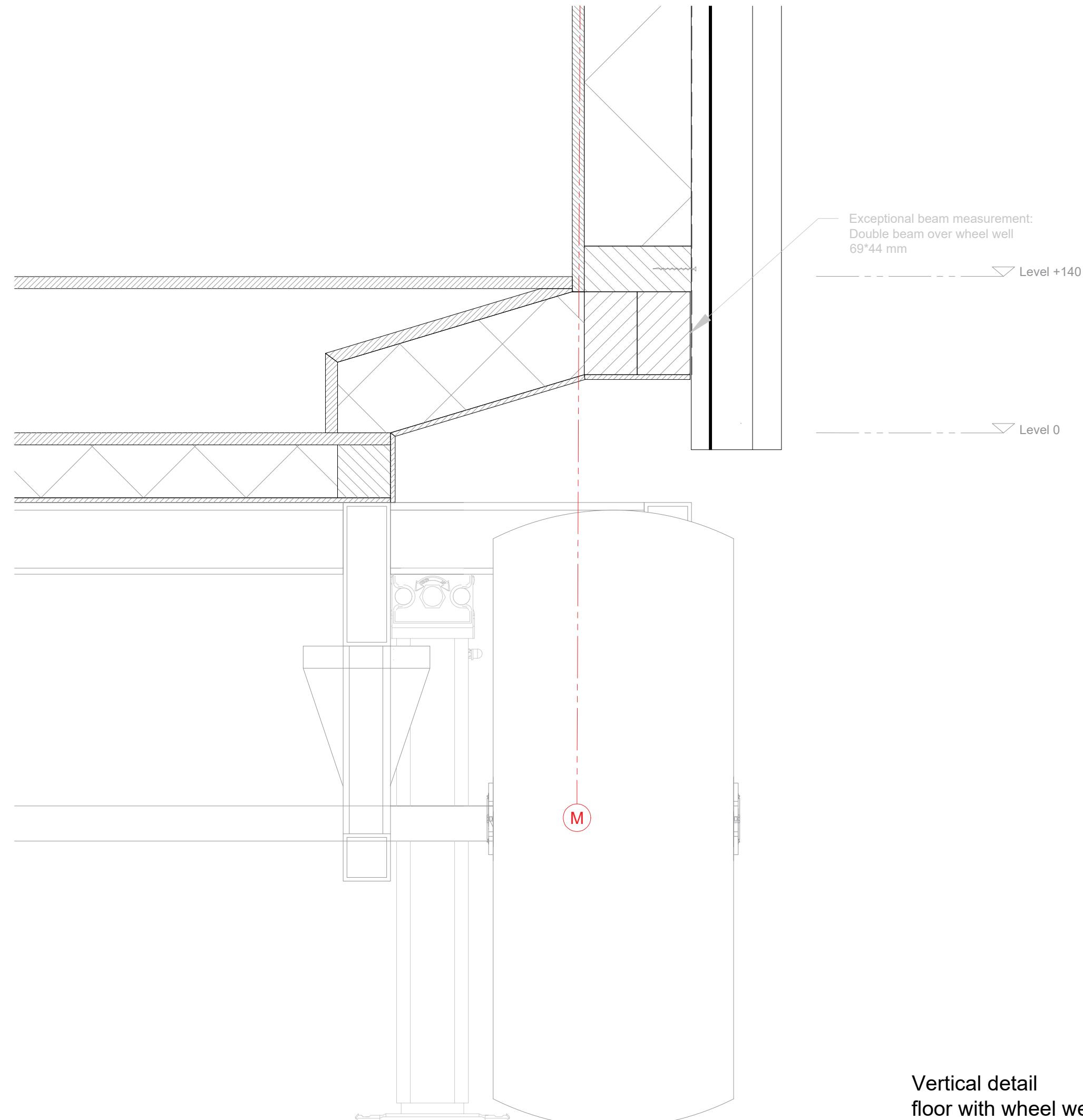


Vertical detail
Level +592 and wall

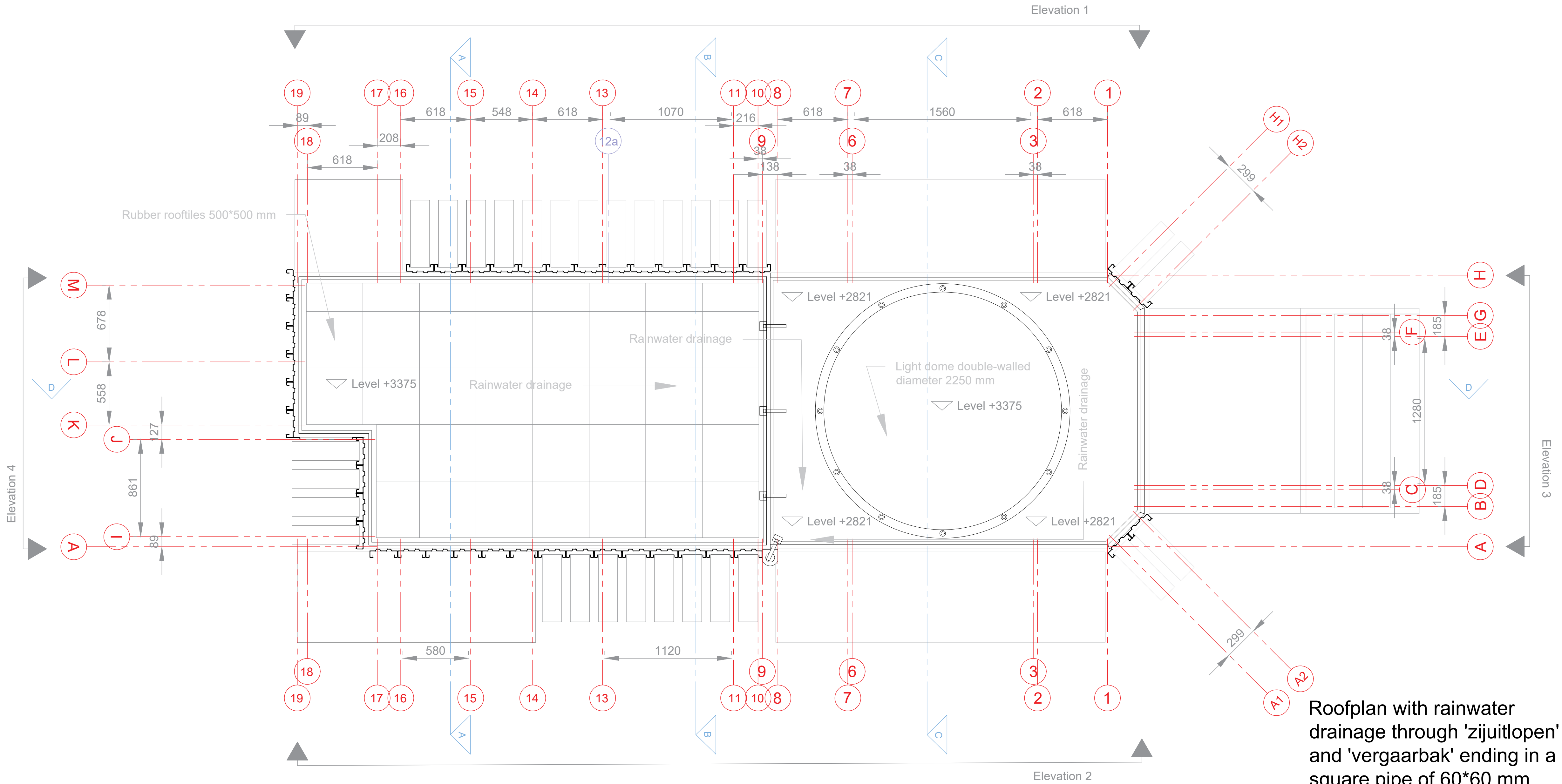




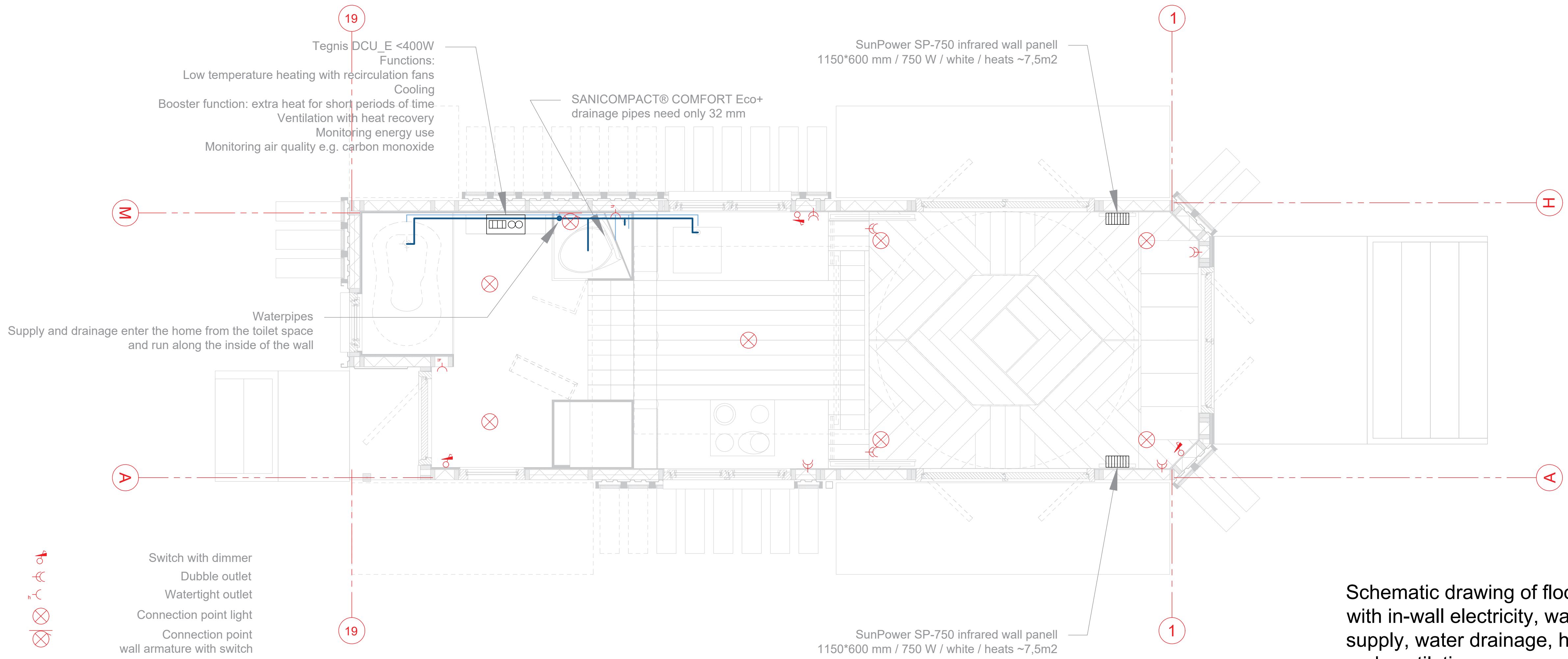
- Floor detail (outside to inside):
- 4 mm concreteplex
 - Timber frame with beams of 44*44 mm and 18L Xlaine sheep wool, a vapour tight multilayer insulation, Rc-value 6,00 m2K/W
 - 10 mm poplar ecoplex



- Walls (outside to inside):
- 75 mm facade cladding: 2 mm folded aluminum plating with integrated 25 mm wooden steps, connected to secondary beams cladding also creates a 15 mm cavity
 - Vapour open foil: Pro Clima Solitex Fronta Humida
 - Timber frames with primary beams of 89*38 mm en secondary beams of 44*44 mm and 100mm sheep wool insulation, Rc-waarde 2,60 m2K/W
 - Self-regulating vapour barrier: Pro Clima Intello
 - 10 mm poplar ecoplex for stability and interior cladding



Roofplan with rainwater drainage through 'zijitlopen' and 'vergaarbak' ending in a square pipe of 60*60 mm



Schematic drawing of floorplan with in-wall electricity, water supply, water drainage, heating and ventilation.