

**Queen reflections
a modification of Wythoff Nim**

Fokkink, Robbert

DOI

[10.1007/s00182-022-00824-1](https://doi.org/10.1007/s00182-022-00824-1)

Publication date

2022

Document Version

Final published version

Published in

International Journal of Game Theory

Citation (APA)

Fokkink, R. (2022). Queen reflections: a modification of Wythoff Nim. *International Journal of Game Theory*, 53(4), 1099-1117. <https://doi.org/10.1007/s00182-022-00824-1>

Important note

To cite this publication, please use the final published version (if applicable).
Please check the document version above.

Copyright

Other than for strictly personal use, it is not permitted to download, forward or distribute the text or part of it, without the consent of the author(s) and/or copyright holder(s), unless the work is under an open content license such as Creative Commons.

Takedown policy

Please contact us and provide details if you believe this document breaches copyrights.
We will remove access to the work immediately and investigate your claim.



Queen reflections: a modification of Wythoff Nim

Robbert Fokkink¹ · Dan Rust²

Accepted: 16 March 2022
© The Author(s) 2022

Abstract

Wythoff Nim is a classical combinatorial game of queen moves on a chessboard. There are many ways to describe its P -positions (safe positions to move to). One way is to code them by the Fibonacci word $010010100100101\dots$, which is the unique fixed point of the substitution of 0 by 01, and of 1 by 0. The coordinates of the n -th P -position are encoded by the location of the n -th zero and the n -th one in the Fibonacci word. We show that a minor modification of the rules of Wythoff Nim leads to a game with P -positions that are coded by $010010010010100100\dots$. This word can be derived by deleting all 2's from the Tribonacci word, which is the unique fixed point of the substitution of 0 by 01, of 1 by 02, and of 2 by 0.

Keywords Impartial combinatorial game · k -Bonacci word · Integer sequence

Mathematics Subject Classification 91A46 · 68R15

1 Introduction

Wythoff Nim is played by two people, taking alternate turns. Alice places a chess Queen on a large chessboard and Bob moves first. The Queen moves in the usual way but only west, south, or southwest, always moving closer to the lower left corner of the board. The player who gets the Queen in this corner is the winner. A position is *safe* if Alice can place the Queen there, knowing that if she does not

Dan Rust was supported by the Dutch Science Federation (NWO), visitor grant 040.11.700, and the German Research Foundation (DFG) via the Collaborative Research Centre (CRC 1283).

✉ Robbert Fokkink
r.j.fokkink@tudelft.nl

Dan Rust
dan.rust@open.ac.uk

¹ Institute of Applied Mathematics, Delft University of Technology, Mekelweg 4, 2628 CD Delft, The Netherlands

² School of Mathematics and Statistics, The Open University, Walton Hall, Milton Keynes MK7 6AA, UK

make any mistake later on, then Bob cannot win. This game has been extensively studied and modified because of the remarkable properties of the coordinates of the safe positions. The survey articles Duchêne et al. (2017) and Larsson (2020) give a comprehensive account.

In our modification of Wythoff Nim, the Queen can bounce against a side and continue her way, as long as the overall (Manhattan) distance to the corner decreases. More specifically, a move in the southwest direction can bounce against the left side and continue in the southeast direction. Or it can bounce against the bottom side and continue in the northwest direction. We need to consider only one bounce. A second bounce would result in a symmetric position. The Queen cannot return to the starting position, and cannot bounce when positioned at the side of the board, because the distance to the corner has to decrease.

The order of the coordinates in a safe position is unimportant because of the symmetry of the game with respect to the main diagonal. We take the first coordinate to be smaller than the second. We can line up the safe positions (a_n, b_n) in an increasing sequence. If we denote the sequence (a_n) by A and (b_n) by B and if we ignore the trivial safe position $(0, 0)$ then we get the following table:

Some patterns emerge from this table. The A and B sequences are complementary, and the sequences of differences and sums are complementary as well. The differences $b_n - a_n$ increase slowly, sometimes skipping a number. The b_n -th entry in A is either equal to $a_n + b_n$ or to $a_n + b_n - 1$. These properties are very similar to those of the safe positions of Wythoff Nim. The sequences A and B for Wythoff Nim are also complementary and they satisfy $b_n - a_n = n$ and $a_{b_n} = a_n + b_n$, see Gardner (1977). By allowing the Queen to bounce against a side, we have created slight irregularities in the sequence of safe positions, but the pattern of these irregularities can be precisely described.

The Tribonacci word ω^3 is an infinite string of the three symbols 0, 1, 2:

$$\omega^3 = 0102010010201010201001020102010010201010201 \dots \quad (1)$$

It belongs to a family of k -bonacci words ω^k , which are infinite strings of k symbols, of which the Fibonacci word ω^2 is the best known and most studied Baake and Grimm (2013) and Lothaire (2002). We will encounter these words below in our analysis of Table 1. The steps that we need to take to prove our results generalize to arbitrary k -bonacci words. That is why we put our analysis of the game in this wider setting.

The Tribonacci word is listed as A080843 in the Online Encyclopedia of Integer Sequences. It is constructed by iteratively applying the Tribonacci or Rauzy map $\theta(0) = 01, \theta(1) = 02, \theta(2) = 0$, introduced in Rauzy (1982). Starting from 0, the finite words

$$0, 01, 0102, 0102010, 0102010010201, \dots$$

produce ω^3 in the limit. If w_n is the n -th finite word in this iteration, then $w_n = w_{n-1}w_{n-2}w_{n-3}$, hence the name ‘Tribonacci’. It is listed in the OEIS as A305386. If we delete all 2’s from the Tribonacci word, then we get

$$v = 0100100100101001001001001001001010010010010 \dots \quad (2)$$

A quick comparison of this sequence and Table 1 indicates that the location of the n -th zero and the n -th one corresponds to (a_n, b_n) .

Table 1 has appeared before in the analysis of an impartial game by Duchêne and Rigo. They proved that Δ and Σ are complementary (Duchêne and Rigo 2008a, Cor. 3.6). The sequences A and B from that table are listed as A140100 and A140101 in the OEIS. They also appear in the Greedy Queens on the spiral problem, which was solved by Dekking et al. (2020). The problem here is to place Queens on an infinite $\mathbb{Z} \times \mathbb{Z}$ chess board, in such a way that none of the Queens attack each other. The squares of the chess board are numbered along a square spiral, on which a new Queen is placed if it does not attack any earlier Queen.

The structure of our paper is as follows. We first define our modification of Wythoff Nim as a take-away game and show how Table 1 can be generated by a mex-rule. Our main result Theorem 1 states that the locations of the 0's and 1's in sequence 2 indeed correspond to a_n and b_n . To prove it we introduce the notion of *differencing* tables of general k -bonacci words. It turns out that the sequences A and B can be obtained by differencing. The sequences Δ and Σ can be obtained by differencing once more. We prove in Theorem 2 that if we difference twice, then we get sequences that partition the integers. Then we show in Theorem 3 that Table 1 is indeed a table with differences and double differences, which settles our main result. Theorem 3 also settles that the differences $b_n - a_n$ skip a number at index n if and only if the n -th letter of the Tribonacci word is equal to 1.

We have searched for take-away games that can be coded by the 4-bonacci words but were unable to find any. We do establish a mex-rule to generate the tables of the 4-bonacci word in Theorem 4. We conjecture that $a_{b_n} - a_n - b_n$ is either -1 or 0 and we prove that it is bounded by -2 and 1 in Theorem 5.

Substitutions are studied in *combinatorics of words* (Lothaire 2002), which is a well-developed field of study. We adopt some of the terminology from combinatorics of words throughout the paper.

2 Splithoff: a modification of Wythoff Nim

Wythoff Nim can also be defined as a take-away game on two piles of counters. Two players alternately either take a positive number of counters from a single pile (at most the whole pile), or an equal positive number from both piles (at most the number of the smallest pile). We modify Wythoff Nim by adding an option. If a player takes an equal number of counters from both piles leading to a single pile (taking away the smallest pile), then he can *split* the remaining pile into two. For instance, from position $(2, 6)$ (as in the chess diagram in Fig. 1) it is possible to move to $(1, 3)$ by taking 2 counters from both piles and splitting the remainder into 1 and 3. A split is only allowed after taking counters from both piles. We call this *Splithoff*. We refer to the three possible moves as *single*, *double*, and *split*.

Fig. 1 Possible moves of a reflecting Queen in our modification of Wythoff Nim

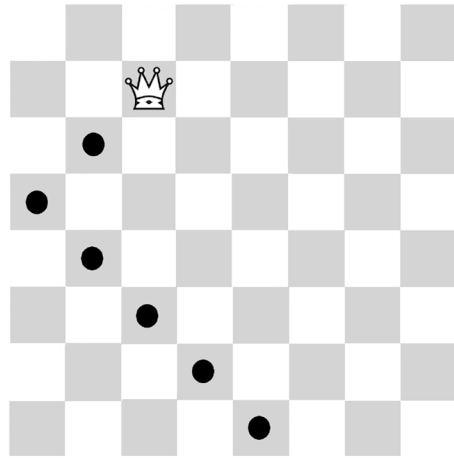


Table 1 The first fifteen non-zero safe positions for our modification of Wythoff Nim, alongside their differences Δ and sums Σ in the header and the footer of the table

Δ	1	2	4	5	6	7	9	10	11	13	14	15	16	18	19
A	1	3	4	6	7	9	10	12	14	15	17	18	20	21	23
B	2	5	8	11	13	16	19	22	25	28	31	33	36	39	42
Σ	3	8	12	17	20	25	29	34	39	43	48	51	56	60	65

We denote a position in this game as (x, y) , in which x is the number of counters on the smallest pile. In particular, x and y are in $\mathbb{N} \cup \{0\}$. We write $d(x, y) = y - x$ and $s(x, y) = x + y$ (note that this is the Manhattan distance to the corner).

Lemma 1 *There is a move from (x, y) to (x', y') if and only if the following two conditions hold*

1. $s(x, y) > s(x', y')$
2. $\{x, y\} \cap \{x', y'\}$ is non-empty or $d(x, y) \in \{d(x', y'), s(x', y')\}$.

Proof If there is a move between (x, y) and (x', y') , then condition (1) guarantees that it is from (x, y) to (x', y') . It suffices to check that condition (2) is equivalent to the fact that there is a single, double, or split between the positions. The intersection $\{x, y\} \cap \{x', y'\}$ is non-empty if and only if a pile in (x, y) is equal to a pile in (x', y') . Or equivalently, $\{x, y\} \cap \{x', y'\}$ is non-empty if and only if there is a single between the two positions. Similarly, $d(x, y) = d(x', y')$ if and only if there is a double between the two positions. Finally, $d(x, y) = s(x', y')$ if and only if there is a split from (x, y) to (x', y') (note that $x = 0$ is ruled out in this case, by condition (1)). \square

The standard method of constructing the \mathcal{P} -positions (safe positions) is by recursion, starting from the losing position $(0, 0)$ which has no move. Let \mathcal{N}^0 be the positions with a move to $(0, 0)$; these are all \mathcal{N} -positions (unsafe positions).

Remove N^0 from the game. Let P^1 be the positions with no move in this reduced game; these are all \mathcal{P} -positions. Let N^1 be the positions with a move to P^1 . Remove N^1 from the game, etc. The union of all P^i including $\{(0, 0)\}$ is equal to the set of all \mathcal{P} -positions. If we carry out this procedure for Splithoff, it turns out that it produces one new \mathcal{P} -position at a time, i.e., one column in Table 1 at a time.

2.1 A mex-rule for the \mathcal{P} -positions

Let $\mathbb{N} = \{1, 2, \dots\}$ denote the natural numbers. For a proper subset $S \subset \mathbb{N}$, the minimal excludant $\text{mex}(S)$ is the smallest element of the complement $\mathbb{N} \setminus S$. It is well-known how the \mathcal{P} -positions for Wythoff Nim can be generated from the mex. We will derive a similar rule for the \mathcal{P} -positions in Splithoff in Table 1.

For $S \subset \mathbb{N}$, let s_i denote the i -th element of S , and let $S_i = \{s_1, \dots, s_i\}$ be the subset of the first i elements of S . In particular, S_0 is the empty set. Table 1 contains four rows Σ, A, B, Δ , which are all subsets of \mathbb{N} . We denote their elements by $\Sigma = \{\sigma_1, \sigma_2, \dots\}$ and $A = \{a_1, a_2, \dots\}$, etc. The following rule set generates one new element at a time, for each of these sets.

$$\begin{aligned}
 \delta_{i+1} &= \text{mex}(\Delta_i \cup \Sigma_i) \\
 a_{i+1} &= \text{mex}(A_i \cup B_i) \\
 b_{i+1} &= a_{i+1} + \delta_{i+1} \\
 \sigma_{i+1} &= a_{i+1} + b_{i+1}
 \end{aligned}
 \tag{3}$$

Think of this as a column generation. Since A and Δ are defined by the mex, both $\{\Delta, \Sigma\}$ and $\{A, B\}$ partition \mathbb{N} . The sequence (a_n, b_n) of \mathcal{P} -positions of Splithoff Nim is produced by this rule.

The number zero is rather special and we do not include $(0, 0)$ in the table of safe positions, even though $P^0 = \{(0, 0)\}$. The set of unsafe positions N^0 , as defined above, consists of all positions (x, y) such that $x = 0$ or $x = y$. If we remove N^0 from the game, then the remaining positions (x, y) satisfy $0 < x < y$. In the reduced game, the only position without a move is $(1, 2)$, i.e., $P^1 = \{(1, 2)\}$. It is the first safe position in our table.

Lemma 2 *Let a_i and b_i be the i -th element generated by the mex-rule for A and B . Then $P^i = \{(a_i, b_i)\}$.*

Proof By induction. We already know it is true for $i = 1$. Assume that the statement is true for all $i \leq k$. We need to prove that it is true for $k + 1$. At this stage, we remove the set N^k of all positions with a move to (a_k, b_k) . By construction, the reduced game consists of all positions that have no move to (a_i, b_i) for $i \leq k$. We need to show that P^{k+1} , the set of positions with no move in the reduced game, is equal to $\{(a_{k+1}, b_{k+1})\}$.

First of all, observe that (a_{k+1}, b_{k+1}) is a position in the reduced game, i.e., admits no move to (a_i, b_i) for $i \leq k$. Indeed, if there would be such a move, then Lemma 1 implies that either $\{a_{k+1}, b_{k+1}\} \cap (A_k \cup B_k)$ is non-empty or $\delta_{k+1} = d(a_{k+1}, b_{k+1}) \in A_k \cup \Sigma_k$. The latter is impossible by the definition of δ_{k+1} . By the definition of a_{k+1} we have $a_{k+1} \notin A_k \cup B_k$. Since $b_{k+1} = a_{k+1} + \delta_{k+1} > a_k + \delta_k = b_k$, we have $b_{k+1} \notin A_k \cup B_k$. Therefore $\{a_{k+1}, b_{k+1}\} \cap (A_k \cup B_k)$ is empty. It follows that (a_{k+1}, b_{k+1}) is a position in the reduced game.

Let (x, y) be a position in the reduced game. Suppose $\{x, y\} \cap (A_k \cup B_k)$ is non-empty, or $d(x, y) \in A_k \cup \Sigma_k$. It follows from condition (2) in Lemma 1 that there is a move between (x, y) and (a_i, b_i) for some $i \leq k$ if $s(x, y) > s(a_i, b_i)$. Since (x, y) is in the reduced game, there is no move from (x, y) to (a_i, b_i) , hence $s(a_i, b_i) > s(x, y)$. It follows from Lemma 1 that there is a move from (a_i, b_i) to (x, y) . Now (a_i, b_i) only has moves to unsafe positions, i.e., positions that have a move to (a_j, b_j) for $j < i$, or a move to $(0, 0)$. It follows that (x, y) has a move to (a_j, b_j) or $(0, 0)$, which is nonsense. We conclude that $\{x, y\} \cap (A_k \cup B_k) = \emptyset$ and $d(x, y) \notin A_k \cup \Sigma_k$ for all positions (x, y) in the reduced game. In particular, $x \geq a_{k+1}$ and $y \geq a_{k+1} + \delta_{k+1} = b_{k+1}$. It follows that (a_{k+1}, b_{k+1}) is the position that is closest to the corner in the reduced game. Furthermore, all other positions (x, y) have a move in the reduced game. If $x = a_{k+1}$ then there is a single from (x, y) to (a_{k+1}, b_{k+1}) . If $x > a_{k+1}$ then there is a double from (x, y) to $(a_{k+1}, a_{k+1} + d(x, y))$, which is in the reduced game by Lemma 1. We conclude that the mex-rule in Eq. 3 generates the columns in Table 1. □

3 The positions table of the k -bonacci substitution

We show that Table 1 can be derived from the Tribonacci word ω^3 . A more general statement is possible, at no extra effort. This is why we study tables that are generated by general k -bonacci substitutions, instead of just the Tribonacci substitution. The k -bonacci substitution θ_k on the alphabet $\{0, \dots, k - 1\}$ is given by

$$\theta_k : \begin{cases} j & \mapsto 0(j + 1), \text{ if } j < k - 1 \\ k - 1 & \mapsto 0 \end{cases} .$$

The k -bonacci word ω^k is the unique fixed point of this substitution. In particular, ω^2 is the Fibonacci word and ω^3 is the Tribonacci word. If $k = 4$, then starting from 0, the finite words

0, 01, 0102, 01020103, 010201030102010, 01020103010201001020103010201

converge to ω^4 . In our analysis, $k > 2$ is fixed and we will sometimes write θ and ω instead of θ_k and ω^k .

The k -bonacci word ω is a fixed point of θ . If we apply θ to the string $\omega = \omega_1\omega_2\omega_3\omega_4\omega_5 \dots$ then we get the concatenated string

$$\theta(\omega_1)\theta(\omega_2)\theta(\omega_3)\theta(\omega_4)\theta(\omega_5) \dots ,$$

which is equal to ω . Each $\theta(\omega_i)$ contains exactly one 0 (and is equal to 0 if ω_i is equal to $k - 1$). Therefore, the i -th occurrence of 0 is in $\theta(\omega_i)$ and the difference between the i -th occurrence and the $(i + 1)$ -th occurrence is equal to two, unless $\omega_i = k - 1$ in which case the difference is one. This can be seen in the first row of the positions table of the Quadribonacci word ω^4 below. The difference between entries in the first row is equal to two, unless the entry is headed by 3 (Table 2).

If we apply θ^{i+1} for $i < k$ to $\omega = \omega_1\omega_2\omega_3\omega_4\omega_5 \dots$ then we get the concatenated string

$$\theta^{i+1}(\omega_1)\theta^{i+1}(\omega_2)\theta^{i+1}(\omega_3)\theta^{i+1}(\omega_4)\theta^{i+1}(\omega_5) \dots ,$$

which is again equal to ω . It turns out that each of these words contains the letter i exactly once.

Lemma 3 *For each $i < k$ and each letter $j \in \{0, 1, \dots, k - 1\}$ the word $\theta^{i+1}(j)$ contains the letter i exactly once and always at position 2^i . Indeed, it occurs in $\theta^{i+1}(j)$ as the final letter of $\theta^i(0)$.*

Note that in θ^{i+1} , the exponent has i as a number but the word $\theta^{i+1}(j)$ has i as a letter.

Proof We prove that i occurs only once in $\theta^{i+1}(j)$ as the final letter of $\theta^i(0)$. This is true if $i = 0$, which occurs in each $\theta(j)$ at the first position. By induction, assume that the statement is true for $i - 1$. Since i is in $\theta(j)$ if $j = i - 1$, we have that i occurs only once in $\theta(\theta^i(j))$, as the final letter of $\theta(\theta^{i-1}(0))$. Since this substitution doubles the length, as long as $i < k$, the result follows. □

The positions of i can now easily be found from the concatenated string $\theta^{i+1}(\omega_1)\theta^{i+1}(\omega_2)\theta^{i+1}(\omega_3)\theta^{i+1}(\omega_4)\theta^{i+1}(\omega_5) \dots$ by using the lengths of the words $\theta^{i+1}(j)$ and the string of letters in the k -bonacci word. We summarize this as a lemma.

Table 2 The positions table of the Quadribonacci word ω^4 , which is displayed in the gray heading line

ω^4	0	1	0	2	0	1	0	3	0	1	0	2	0	1
X^0	1	3	5	7	9	11	13	15	16	18	20	22	24	26
X^1	2	6	10	14	17	21	25	29	31	35	39	43	46	50
X^2	4	12	19	27	33	41	48	56	60	68	75	83	89	97
X^3	8	23	37	52	64	79	93	108	116	131	145	160	172	187

The first row X^0 contains the positions of the letter 0 in ω^4 , the second row X^1 contains the position of 1, etc. The first column contains consecutive powers of 2

Lemma 4 Let $\ell^i(j)$ be the length of $\theta^{i+1}(j)$. If a column is headed by j in the positions table, then the difference between that column and the next is given by

$$\begin{bmatrix} \ell^0(j) \\ \ell^1(j) \\ \vdots \\ \ell^{k-1}(j) \end{bmatrix} \tag{4}$$

If we add 4 to the final row in Table 1, we get a subsequence of the row right above it. The same happens if we subtract 4. This is a general property of the positions table.

Lemma 5 For a subset V of the integers, let $V + a$ be its translate by a . Consider the rows of the positions table as sets. We have that

$$X^i = \{X^{i+1} - 2^i\} \cup \{X^{i+1} + 2^i\}.$$

Furthermore $\{X^{i+1} - 2^i\} \cap \{X^{i+1} + 2^i\}$ contains the elements $m + 2^i$ with m taken from the columns labeled by $k - 1$.

Proof The letter $i + 1$ occurs once in every word of the concatenation

$$\theta^{i+2}(\omega_1)\theta^{i+2}(\omega_2)\theta^{i+2}(\omega_3)\theta^{i+2}(\omega_4)\theta^{i+2}(\omega_5) \dots$$

at position 2^{i+1} as the final letter of $\theta^{i+1}(0)$. In each $\theta^{i+1}(\omega_j)$ we have that i occurs at most twice. To see that, write $\theta^{i+1}(j) = \theta^i(\theta(j))$. If $j < k - 1$ then $\theta(j)$ consists of the two letters $0(j+1)$, and i occurs twice in $\theta^{i+1}(0)\theta^{i+1}(j + 1)$. If $j = k - 1$ then $\theta(j) = 0$ and i only occurs once in $\theta^{i+1}(\omega_j)$, while $i + 1$ occurs as its final letter. The result now follows from Lemma 3. □

4 The difference table

Consider the positions table of the Tribonacci word below. If we subtract the first row from the second, and the second from the third, then we get the \mathcal{P} -positions of Table 1. We prove this below (Table 3).

Table 3 The positions table for the Tribonacci word

ω^3	0	1	0	2	0	1	0	0	1	0	2	0	1	0	1	0
X^0	1	3	5	7	8	10	12	14	16	18	20	21	23	25	27	29
X^1	2	6	9	13	15	19	22	26	30	33	37	39	43	46	50	53
X^2	4	11	17	24	28	35	41	48	55	61	68	72	79	85	92	98

Observe that $X^1 - X^0$ is equal to row A in Table 1 and that $X^2 - X^1$ is equal to row B

The *difference table* of the k -bonacci word has rows $\Delta^j = X^{j+1} - X^j$. We will prove that its rows again form a partition of \mathbb{N} . It follows from Lemma 4 and Eq. 4 that the difference table can be derived from ω . The step size is

$$\begin{bmatrix} \ell^1(j) - \ell^0(j) \\ \ell^2(j) - \ell^1(j) \\ \vdots \\ \ell^{k-1}(j) - \ell^{k-2}(j) \end{bmatrix} \tag{5}$$

if j is the letter heading the column (Table 4).

Lemma 6 For each $1 \leq i \leq k - 1$ and each letter j

$$\ell^i(j) = 2\ell^{i-1}(j) - \delta_{i+j}^{k-1},$$

where δ_j^i is Kronecker's delta.

Proof We defined $\ell^i(j)$ as the length of $\theta^{i+1}(j)$. The substitution θ replaces each letter by two letters, except the final letter $k-1$, which is replaced by a single 0. It suffices to prove that $\theta^i(j)$ contains no letter $k-1$ unless $k-1 = i+j$, in which case it contains a single $k-1$.

If we start from j , the only instance that reaches $k-1$ is produced from $j \rightarrow j+1 \rightarrow \dots$. All other instances can only be produced from a 0, but do not reach $k-1$ because $i \leq k-1$. The sequence $j \mapsto j+1$ produces $k-1$ after $k-1-j$ substitutions. Hence, we have one non-doubling letter if $i = k-1-j$. □

In the positions table, the difference between consecutive entries in a row is minimal if an entry is in a column labeled by $k-1$, and maximal if a row is labeled by 0. This is because $\ell^i(j)$ is minimal if $j = k-1$ and maximal if $j = 0$. The same holds in the difference table.

Lemma 7 The difference between consecutive entries in row Δ^i is at least 2^i and at most 2^{i+1} . In row Δ^{k-2} the maximum difference is $2^{k-1} - 1$.

Proof The differences in row Δ^i are equal to $\ell^{i+1}(j) - \ell^i(j)$ for the letters j . By the previous lemma, these differences are

Table 4 The difference table for the Quadribonacci word

ω^4	0	1	0	2	0	1	0	3	0	1	0	2	0	1	0	0
Δ^0	1	3	5	7	8	10	12	14	15	17	19	21	22	24	26	28
Δ^1	2	6	9	13	16	20	23	27	29	33	36	40	43	47	50	54
Δ^2	4	11	18	25	31	38	45	52	56	63	70	77	83	90	97	104

Steps between columns depend on the letter in the header. If we add or subtract 2 in the third row, then we get entries in the second row, etc

$$\ell^i(j) - \delta_{i+j+1}^{k-1}.$$

Now $\ell^i(j)$ is the length of $\theta^{i+1}(j)$ which is at most 2^{i+1} . It is equal to 2^i if $j = k - 1$, in which case $\delta_{i+j+1}^{k-1} = 0$.

Finally, if $i = k - 2$ then $\delta_{i+j+1}^{k-1} = 1$ at $j = 0$ and the other substitutions have length $< 2^{k-1}$. Therefore, the upper bound is $2^{k-1} - 1$ in this case. □

The following result is analogous to Lemma 5.

Lemma 8 *Consider the rows of the difference table as sets. We have that*

$$\Delta^i = \{\Delta^{i+1} - 2^i\} \cup \{\Delta^{i+1} + 2^i\}.$$

Furthermore $\{\Delta^{i+1} - 2^i\} \cap \{\Delta^{i+1} + 2^i\}$ contains the elements $m + 2^i$ with m taken from the columns labeled by $k - 1$.

Proof By Lemma 5 we have

$$\Delta^i = X^{i+1} - X^i = (X^{i+2} - 2^{i+1} \cup X^{i+2} + 2^{i+1}) - (X^{i+1} - 2^i \cup X^{i+1} + 2^i).$$

If an entry in X^{i+1} is in $X^{i+2} - 2^{i+1}$ then the corresponding entry in X^i is in $X^{i+1} - 2^i$, and vice versa. Therefore we can write this intersection as

$$\Delta^i = (X^{i+2} - X^{i+1} - 2^{i+1} + 2^i) \cup (X^{i+2} - X^{i+1} + 2^{i+1} - 2^i),$$

which is $\Delta^{i+1} - 2^i \cup \Delta^{i+1} + 2^i$. The intersection $\Delta^{i+1} - 2^i \cap \Delta^{i+1} + 2^i$ contains $m + 2^i$ for which the difference between m and the consecutive entry is 2^{i+1} , which is the least possible difference according to Lemma 7. It occurs in columns labeled by the letter $k - 1$. □

Lemma 9 *The rows in the difference table are disjoint as sets:*

$$\Delta^i \cap \Delta^j = \emptyset \text{ if } i \neq j.$$

Proof Suppose $j > i$. By iterating Lemma 8 we find that each element of Δ^i is in some $\Delta^j \pm 2^{j-1} \pm \dots \pm 2^i$. By Lemma 7 the minimal distance in Δ^j is 2^j and $2^{j-1} + \dots + 1 < 2^j$. Therefore, Δ^i and Δ^j are disjoint. □

Lemma 10 *The rows in the difference table form a partition of \mathbb{N} .*

Proof We only need to prove that the rows cover \mathbb{N} . By iterating Lemma 8 each Δ^i is the union of all $\Delta^{k-2} \pm 2^{k-2} \pm \dots \pm 2^i$, with Δ^{k-2} the bottom row of our table. The union of the rows is equal to the union of $\Delta^{k-2} + n$ for all integers n that can be written as $\pm 2^{k-2} \pm \dots \pm 2^i$ for some i and some choice of the signs. Here we take $n = 0$ if $i = k - 2$. It is not hard to verify that each $n \in \{-2^{k-2} + 1, \dots, 2^{k-2} - 1\}$ admits such an expansion. The result now follows from Lemma 7 which says that the maximum difference in Δ^{k-2} is $2^{k-1} - 1$. □

Theorem 1 *The word ν , which is derived from the Tribonacci word by deleting the 2's, codes the \mathcal{P} -positions of Splithoff. More specifically, the \mathcal{P} -positions are (a_n, b_n) where a_n is the location of the n -th 0 and b_n is the location of the n -th 1 in ν .*

Proof The difference table of ω^3 consists of two rows. We will prove below in Theorem 3 that the difference table of ω^3 gives the \mathcal{P} -positions of Splithoff. The step size in the first row of this table is two in columns headed by 0 and it is one in the columns headed by 1 or 2. This implies that the first row corresponds to the locations of 0 if we apply the coding $0 \mapsto 01, 1 \mapsto 0, 2 \mapsto 0$ to ω^3 . We denote this coding by κ . The Tribonacci word ω^3 is the limit of $\theta^n(0)$. We conclude that ν is the limit of $\kappa(\theta^n(0))$.

Let λ be the coding $0 \mapsto 0, 1 \mapsto 1, 2 \mapsto \epsilon$, where ϵ denotes the empty word. The coding $\lambda \circ \theta$ is equal to κ . Therefore $\lambda(\theta^{n+1}(0)) = \kappa(\theta^n(0))$ and taking limits gives $\lambda(\omega^3) = \nu$. □

5 The double-difference table

We continue by differencing the differences

$$d\Delta^i = \Delta^{i+1} - \Delta^i$$

and collect these as rows in a *double-difference table*. It turns out that we need to add a bottom row containing the sum

$$\Sigma = \Delta^0 + \dots + \Delta^{k-2}$$

to turn the rows of the table into a partition. We call this the *sum row* and we call the other rows the *difference rows*. Again, we add the k -bonacci word ω in the header. For the Tribonacci word we have one difference row and one sum row. These are the Δ and Σ of Table 1.

Lemma 6 implies that the step between columns is

$$\begin{bmatrix} \ell^2(j) - 2\ell^1(j) + \ell^0(j) \\ \vdots \\ \ell^{k-1}(j) - 2\ell^{k-2}(j) + \ell^{k-3}(j) \\ \ell^{k-1}(j) - \ell^0(j) \end{bmatrix} = \begin{bmatrix} \ell^0(j) - \delta_{2+j}^{k-1} \\ \vdots \\ \ell^{k-3}(j) - \delta_{k-1+j}^{k-1} \\ \ell^{k-1}(j) - \ell^0(j) \end{bmatrix}. \tag{6}$$

Consider the row $d\Delta^1$ in Table 5, in particular the entries that are headed by the letter 1. These differences are 5, 18, 30, 43, ..., and if we add 2, then we get the sequence Σ . For a general k , let $M \subset d\Delta^{k-3}$ be the subsequence of entries headed by the letter 1. We will prove below that $M + 2^{k-3}$ is equal to the sum row Σ , by showing that both sequences have the same initial element, and the same steps (differences between consecutive elements).

By Lemma 3 the 1's occur in ω^k as the second letters in the concatenation $\theta^2(\omega_1)\theta^2(\omega_2)\theta^2(\omega_3)\dots$. Note that $\theta^2(h)$ is equal to 010($h + 2$) if $h < k - 2$, equal to 010 if $h = k - 2$, and equal to 01 if $h = k - 1$. If we write ω^k as a concatenation

Table 5 The double-difference table for the Quadribonacci word, in which we add the sum $\Sigma = \Delta^0 + \Delta^1 + \Delta^2$ as a final row

ω^4	0	1	0	2	0	1	0	3	0	1	0	2	0	1	0
$d\Delta^0$	1	3	4	6	8	10	11	13	14	16	17	19	21	23	24
$d\Delta^1$	2	5	9	12	15	18	22	25	27	30	34	37	40	43	47
Σ	7	20	32	45	55	68	80	93	100	113	125	138	148	161	173

$0w_1w_2w_3 \dots$ of words w_j with initial letter 1 and no other occurrences of that letter (i.e., return words as defined in Durand (1998)), then the w_j are either equal to $10(h+2)0$ or 100 or 10 . In other words, the return word w_j is equal to $\theta^2(\omega_j)$ if we delete the initial zero, and add a zero to the end.

Lemma 11 *The j -th step in M has length $\ell^{k-1}(\omega_j) - \ell^0(\omega_j)$. Therefore, the steps in M are equal to the steps of Σ .*

Proof The steps in Δ^{k-3} are equal to $\ell^{k-3}(j) - \delta_{k-1+j}^{k-1}$. The Kronecker-delta is zero, unless $j = 0$. If the j -th return word is $10(h+2)0$ for $h < k - 2$, then the j -th step in M is equal to

$$\ell^{k-3}(1) + \ell^{k-3}(0) + \ell^{k-3}(h+2) + \ell^{k-3}(0) - 2.$$

If we extend our notation and let $\ell^{k-3}(w)$ be the sum of the $\ell^{k-3}(j)$ over the letters in w , then we can write this as

$$\ell^{k-3}(w_j) - 2 = \ell^{k-3}(\theta^2(\omega_j)) - \ell^0(\omega_j), \tag{7}$$

where w_j is the return word. This equation holds because $\theta^2(\omega_j)$ has the same letters as w_j and because $\omega_j < k - 2$. If $\omega_j = k - 2$ then the return word is 100 which contains two zeroes, and the same equation holds. If $\omega_j = k - 1$ then the return word 10 contains only one zero, but $\ell^0(k - 1) = 1$. Again Equation 7 holds. Now $\ell^{k-3}(\theta^2(\omega_j)) = \ell^{k-1}(\omega_j)$. □

We now repeat Lemmas 8 and 9 for the difference rows in the double-difference table.

Lemma 12 $d\Delta^i = \{\Delta^{i+1} - 2^i\} \cup \{\Delta^{i+1} + 2^i\}$.

Proof The same as the proof of Lemma 8, with minor editing.

$$d\Delta^i = \Delta^{i+1} - \Delta^i = (\Delta^{i+2} - 2^{j+1} \cup \Delta^{i+2} + 2^{j+1}) - (\Delta^{i+1} - 2^j \cup \Delta^{i+1} + 2^j)$$

Again, the signs depend on locations and so this is equal to

$$(\Delta^{i+2} - \Delta^i - 2^{j+1} + 2^j) \cup (\Delta^{j+2} - \Delta^{j+1} + 2^{j+1} - 2^j)$$

which is $d\Delta^{i+1} - 2^j \cup d\Delta^{j+1} + 2^j$. □

Lemma 13 $d\Delta^i \cap d\Delta^j = \emptyset$ if $i \neq j$.

Proof Suppose $j > i$. By iterating Lemma 8 we find that each element of Δ^i is in some $d\Delta^i \pm 2^{j-1} \pm \dots \pm 2^i$. It follows from Eq. 6 that the minimal step size in $d\Delta^i$ is 2^j and $2^{j-1} + \dots + 1 < 2^j$. Therefore, $d\Delta^i$ and $d\Delta^j$ are disjoint. □

The rows of the double differences $d\Delta^i$ are disjoint, but they no longer cover \mathbb{N} . The maximum step in the final difference row $d\Delta^{k-3}$ occurs in columns with label 1. These lead to missing values in the union of the $d\Delta^i$ for which we need to use the sequence Σ as a filler.

Lemma 14 Let $S \subset \mathbb{N}$ be the set $S = M + 2^{k-3}$. The difference rows in the double-difference table form a partition of $\mathbb{N} \setminus S$.

Proof We only need to prove that the difference rows cover $\mathbb{N} \setminus S$. By iterating Lemma 12 each $d\Delta^i$ is the union of all $d\Delta^{k-3} \pm 2^{k-4} \pm \dots \pm 2^i$, with $d\Delta^{k-3}$ the final difference row of our table. The union of these rows is the union of $d\Delta^{k-3} + n$ for all integers $|n| < 2^{k-3}$. The maximal step in $d\Delta^{k-3}$ is 2^{k-2} , which occurs in the 1-columns. Therefore, the union of the difference rows is $\mathbb{N} \setminus S$. □

Theorem 2 The rows in the double-difference table form a partition of \mathbb{N} .

Proof We need to prove that S is equal to Σ . By Lemma 11 these sequences have equal steps. We need to show that they have the same initial element. The initial element of Σ is the sum of the initial elements of the difference sequences. This is $\ell^{k-1}(0) - \ell^0(0) = 2^{k-1} - 1$. The initial element of S is $m + 2^{k-3}$ with m the initial element of M . Now m is the second element of $d\Delta^{k-3}$. The first element of $d\Delta^{k-3}$ is 2^{k-3} and the second element is $2^{k-3} + \ell^{k-3}(0) - 1 = 2^{k-3} + 2^{k-2} - 1$. Therefore, the initial element of S is $2^{k+3} + 2^{k-3} + 2^{k-2} - 1 = 2^{k-1} - 1$. S and Σ have the same initial element. □

6 The table of safe positions of Splithoff

We already showed in Theorem 1 that deleting the 2's from ω^3 gives a string that codes the difference table. We will now show that the difference table corresponds to the safe positions in Table 1. In particular, we show that we can generate this difference table by the same mex-rule that generates the safe positions in Equation 3.

We denote the elements of the difference sequence Δ^j by a_1^j, a_2^j, \dots and the elements of $d\Delta^j$ by d_1^j, d_2^j, \dots . As before, X_i denotes the first i entries of a sequence X .

Lemma 15 $a_{i+1}^0 = \text{mex}(\Delta_i^0 \cup \Delta_i^1 \cup \dots \cup \Delta_i^{k-2})$.

Proof The rows partition \mathbb{N} and therefore $\text{mex}(\Delta_i^0 \cup \Delta_i^1 \cup \dots \cup \Delta_i^{k-2})$ occurs in one of the rows. Both rows and columns are strictly increasing. This mex has to be in the first row. □

By the same argument we find the following result.

Lemma 16 $a_{i+1}^0 = \text{mex}(d\Delta_i^0 \cup d\Delta_i^1 \cup \dots \cup d\Delta_i^{k-3} \cup \Sigma_i)$.

We can now complete the proof of our main result.

Theorem 3 *Let x_i, y_i, z_i be the locations of the i -th 0, 1, 2, respectively, in the Tribonacci word. Then the i -th \mathcal{P} -position (a_i, b_i) in Table 1 is given by $a_i = y_i - x_i$ and $b_i = z_i - y_i$.*

Proof If $k = 3$ there are only the rows $\Delta_0, \Delta_1, d\Delta_0, \Sigma$. The previous two lemmas state that

$$\begin{aligned} d_{i+1}^0 &= \text{mex}(d\Delta_i^0 \cup \Sigma_i) \\ a_{i+1}^0 &= \text{mex}(\Delta_i^0 \cup \Delta_i^1) \end{aligned} \tag{8}$$

By definition $a_{i+1}^1 = a_{i+1}^0 + d_{i+1}^0$ and if s_i denotes the entries in Σ then by definition $\sigma_{i+1} = a_{i+1}^0 + a_{i+1}^1$. These rules are the same as for the table of \mathcal{P} -positions in Eq. 3. We conclude that the difference table of the Tribonacci word is identical to the rows of Table 1. The double difference table is identical to the header and footer of that table. □

Corollary 1 *Let (δ_n) be the sequence Δ in Table 1. The steps $\delta_{n+1} - \delta_n$ are either 1 or 2. A step is equal to 2 if and only if $\omega_n = 1$.*

Proof Δ is equal to the top row of the double-difference table, for $k = 3$. According to Eq. 6 the step is equal to $\ell^0(j) - \delta_2^{2+j}$. This is equal to 1 if $j \in \{0, 2\}$ and equal to 2 if $j = 1$. □

7 A mex-rule for the Quadribonacci table

Duchêne and Rigo asked if there exists an impartial game with positions that can be coded with the Quadribonacci word (Duchêne and Rigo 2008b). We were unable to find such a game from our results. The best that we can come up with is a mex-rule to generate the positions table of the Quadribonacci word.

Lemma 17 *The bottom row of the k -bonacci positions table can be written as a sum*

$$X^{k-1} = E + X^0 + \dots + X^{k-1},$$

where E denotes the enumerating sequence $1, 2, 3, \dots$

Proof This is true for the initial column. Each next column is an increment by the vector in Eq. 4. We need to show that

$$\ell^{k-1}(i) = 1 + \ell^0(i) + \dots + \ell^{j-2}(i).$$

This is a consequence of the following observation. Suppose you start from 1 and double each time, except once, when you double and subtract one. Then the final number is the sum of the other numbers. We leave the verification to the reader. The equality above follows from the observation for $i < k - 1$. In that case, we have $\ell^0(i) = 2$ and each next $\ell^j(i)$ is doubled, unless $k - 1$ appears in $\theta^j(i)$, which happens once. If $i = k - 1$ then $\ell^j(k - 1) = 2^j$ and again the equation holds. \square

According to this lemma it suffices to generate the first three rows of the Quadribonacci table, and compute the fourth row as a sum. These three rows can be derived from the first two rows of the difference table, which can be derived from the first row of the double-difference table, which follows from the mex rule. That is the idea behind Theorem 4 below, in which we generate all three tables of the Quadribonacci word simultaneously.

We write x_i^j for the elements of the positions table.

Theorem 4 *The following rules generate the three tables for the Quadribonacci word:*

$$\begin{aligned} a_{i+1}^0 &= \text{mex}(A_i^0 \cup A_i^1 \cup A_i^2) \\ b_{i+1}^0 &= \text{mex}(dA_i^0 \cup dA_i^1 \cup \Sigma_i) \\ x_{i+1}^0 &= \text{mex}(X_i^0 \cup X_i^1 \cup X_i^2 \cup X_i^3) \\ a_{i+1}^1 &= a_{i+1}^0 + b_{i+1}^0 \\ x_{i+1}^1 &= x_{i+1}^0 + a_{i+1}^0 \\ x_{i+1}^2 &= x_{i+1}^1 + a_{i+1}^1 \\ x_{i+1}^3 &= x_{i+1}^0 + x_{i+1}^1 + x_{i+1}^2 + i + 1 \\ a_{i+1}^2 &= x_{i+1}^3 - x_{i+1}^2 \\ b_{i+1}^2 &= a_{i+1}^1 + a_{i+1}^2 + a_{i+1}^3 \end{aligned}$$

Proof The first and second equation follow from Lemma 15 and 16. The third equation can be derived in an equivalent manner. The other equations follow from Lemma 16 and the definition of the difference tables. \square

8 An additive property of the safe positions

It is well-known that consecutive pairs of Fibonacci numbers occur as safe positions in Wythoff Nim.

$$(1, 2), (3, 5), (8, 13), (21, 34), \dots$$

This follows from the fact that $a_{b_n} = a_n + b_n$ in Wythoff Nim. For Splithoff we conjecture that $-1 \leq a_{b_n} - a_n - b_n \leq 0$. We establish a slightly weaker bound below. To do that, we need some combinatorial properties of the Tribonacci word.

The number of letters j in a word w is denoted by $|w|_j$. A word w is c -balanced if $||u|_j - |v|_j| \leq c$ for each letter j and all subwords u, v of equal length. The Tribonacci word ω^3 is 2-balanced, see (Richomme et al. 2010, Theorem 1.3). If w is a prefix of ω^3 , then jw is also a subword for any letter $j \in \{0, 1, 2\}$, see (Tan and Wen 2007, Remark 1.3).

Theorem 5 *The coordinates (a_n, b_n) of the safe positions in Splithoff satisfy $-2 \leq a_{b_n} - a_n - b_n \leq 1$.*

Proof Recall from the proof of Theorem 1 that the coding $\kappa(0) = 01$, $\kappa(1) = 0$, $\kappa(2) = 0$ converts ω^3 to ν . Let w be the prefix of length n of ω^3 . Then $\kappa(w)$ is a prefix of ν containing n zeroes. Let j be the final letter of w and write $w = w'j$. Then a_n is equal to the length of $\kappa(w')0$. In particular,

$$a_n = |w'|_0 + n$$

because κ adds a 1 for each 0 in w' .

Let ν be the prefix of ω^3 that ends with the n -th zero. Then b_n is equal to the length of $\kappa(\nu)$, which contains n ones and $b_n - n$ zeroes. To get to a_{b_n} we need n more zeroes. Extend the prefix ν to νu with u of length n . Let j be the final letter of u and write $u = u'j$. Then

$$a_{b_n} = b_n + |u'|_0 + n.$$

It follows that

$$a_{b_n} - b_n - a_n = |u'|_0 - |w'|_0$$

Since the Tribonacci word is 2-balanced, we immediately get that $|a_{b_n} - b_n - a_n| \leq 2$. Now suppose that $|u'|_0 - |w'|_0 = 2$. Since νu is a prefix of ω^3 and since the final letter of ν is 0, we get that $0u'$ is a subword of ω^3 . Since w' is a prefix, $1w'$ is a subword of ω^3 . By 2-balancedness we have that $|0u'|_0 - |1w'|_0 \leq 2$. It follows that $|u'|_0 - |w'|_0 \leq 1$. \square

9 Final remarks

For Wythoff Nim, each row, column, and diagonal of $\mathbb{N} \times \mathbb{N}$ contains each Sprague-Grundy value once and only once. For Splithoff, it looks like every row or column contains each Sprague-Grundy value once and only once, see Table 6. We do not have a proof for that. Diagonals, however, do not contain each value. For instance, the diagonal $(n, n + 3)$ does not contain Sprague-Grundy value zero because 3 is missing from the difference sequence Δ .

There is a connection between Wythoff Nim and Fibonacci numeration that has been extended to other Wythoff-like games by Fraenkel (2010). We did not consider the relation between the \mathcal{P} -positions of Splithoff and the Tribonacci numeration system, but it is central in the analysis of the Greedy Queens problem in Dekking et al. (2020). The link between numeration and words is well known and extensively studied. Sirvent introduced the k -bonacci substitution in Sirvent (1997) to generalize results on Fibonacci and Tribonacci numbers. The link between words and \mathcal{P} -positions is much less clear and has been explored by Duchêne and Rigo (2008b). Recently, Fraenkel and Larsson (2019) introduced the notion of *playability* to describe the complexity of the \mathcal{P} -positions, which may be a more fruitful approach.

Splithoff is one of the many modifications of Wythoff Nim. A well-studied modification, called a -Wythoff, allows a player to remove x coins from one pile and y coins from the other, if $|x - y| < a$ for a fixed number a . It is equal to the original game if $a = 1$. We can modify our game in the same way to get a -Splithoff. We say that a move is a *double* if it removes coins from both piles. If one of the piles is

Table 6 The Sprague-Grundy values of Splithoff for piles (m, n) containing up to sixteen counters

17	13	18	20	12	11	15	22	14	4	1	19	16	10	7	24	25	21
16	17	15	19	20	14	21	12	22	0	5	8	6	24	10	9	13	25
15	16	14	18	19	17	20	21	12	2	4	22	23	7	8	11	9	24
14	15	16	17	18	13	12	19	1	3	20	21	22	23	9	8	10	7
13	14	12	11	8	16	17	0	9	5	6	18	21	19	23	7	24	10
12	9	13	7	11	15	14	2	18	8	19	20	10	21	22	23	6	16
11	12	10	13	14	9	0	16	17	6	7	15	20	18	21	22	8	19
10	11	9	8	13	12	2	15	16	17	14	7	19	6	20	4	5	1
9	10	11	12	1	7	13	14	15	16	17	6	8	5	3	2	0	4
8	6	7	10	0	2	5	3	4	15	16	17	18	9	1	12	22	14
7	8	6	9	10	1	4	5	3	14	15	16	2	0	19	21	12	22
6	7	8	1	9	10	3	4	5	13	2	0	14	17	12	20	21	15
5	3	4	0	6	8	10	1	2	7	12	9	15	16	13	17	14	11
4	5	3	2	7	6	9	10	0	1	13	14	11	8	18	19	20	12
3	4	5	6	2	0	1	9	10	12	8	13	7	11	17	18	19	20
2	0	1	5	3	4	8	6	7	11	9	10	13	12	16	14	15	18
1	2	0	4	5	3	7	8	6	10	11	12	9	14	15	16	17	13
0	1	2	3	4	5	6	7	8	9	10	11	12	13	14	15	16	17

It can be compared to the table of Wythoff Nim (Berlekamp et al., 2001, p. 74), described as ‘chaotic’. A value is printed in italics if it is different for Wythoff Nim

Table 7 The \mathcal{P} -positions for 2-Splithoff

ω^3	0	1	0	2	0	1	0	0	1	0	2	0	1	0	1	0
A	1	2	4	5	6	7	9	10	11	13	14	15	16	18	19	21
B	3	8	12	17	20	25	29	34	39	43	48	51	56	60	65	69

The steps appear to be coded by the Tribonacci word: 0 corresponds to a step of (1, 5), 1 corresponds to (2, 4), and 2 corresponds to (1, 3). The difference $a_{b_n} - a_n - b_n$ appears to be bounded

cleared by a double, then in a -Splithoff the player may split the remaining pile. We conjecture that 2-Splithoff can also be coded by the Tribonacci word, as illustrated by Table 7. The B -row appears to be equal to the difference between the first row and the third row in the positions table of ω^3 .

Wythoff led a secluded life and was not a man of many words (Fokkink 2016). At the end of his very short paper (Wythoff 1907), he left two remarks, both a bit cryptic, on the existence of certain complementary sequences $\{A_n\}$ and $\{B_n\}$. His first remark was that for any natural number a there exist $A_n = \lfloor n\alpha \rfloor$ and $B_n = \lfloor n\beta \rfloor$ such that $B_n - A_n = na$. Wythoff specified α and β (they are quadratic numbers) and mentioned that there are games that have (A_n, B_n) as \mathcal{P} -positions, leaving the rules of the games to the reader. These games were later rediscovered by Holladay (1968) and are now known as a -Wythoff Nim, the games we encountered in the above paragraph. His second remark was that for natural numbers $0 < b \leq a$ there exist $A_n = \lfloor n\alpha + \gamma \rfloor$ and $B_n = \lfloor n\beta + \delta \rfloor$ such that $B_n - A_n = na + b$. Here again $\alpha, \beta, \gamma, \delta$ are quadratic numbers. Kimberling (2011) rediscovered A_n and B_n , and called them $na+b$ Wythoff sequences.

Acknowledgements We would like to thank Michel Dekking for bringing the Greedy Queens on a spiral to our attention. A special thanks to the editors for many helpful suggestions to improve the content and exposition of this paper. Our conjecture that $a_{b_n} - a_n - b_n$ is either 0 or -1 was recently settled by Jeffrey Shallit, using the automatic prover Walnut.

Open Access This article is licensed under a Creative Commons Attribution 4.0 International License, which permits use, sharing, adaptation, distribution and reproduction in any medium or format, as long as you give appropriate credit to the original author(s) and the source, provide a link to the Creative Commons licence, and indicate if changes were made. The images or other third party material in this article are included in the article's Creative Commons licence, unless indicated otherwise in a credit line to the material. If material is not included in the article's Creative Commons licence and your intended use is not permitted by statutory regulation or exceeds the permitted use, you will need to obtain permission directly from the copyright holder. To view a copy of this licence, visit <http://creativecommons.org/licenses/by/4.0/>.

References

- Baake M, Grimm U (2013) Aperiodic order, vol 1. In: A mathematical invitation. Encycl. Mathem. Applic. 149. Cambridge University Press
- Berlekamp E, Conway JH, Guy RK (2001) Winning ways for your mathematical plays, vol 1. A.K.Peters, Natick, Massachusetts
- Dekking FM, Shallit JO, Sloane NJA (2020) Queens in exile: non-attacking queens on infinite chess boards. Electron J Combin 27(1):1.52

- Duchêne E, Rigo M (2008a) A morphic approach to combinatorial games: the Tribonacci case. *RAIRO-Theor Inf Appl* 42:375–393
- Duchêne E, Rigo M (2008b) Cubic Pisot unit combinatorial games. *Monatsh Math* 155:217–249
- Duchêne E, Fraenkel AS, Gurvich V, Ho NB, Kimberling C, Larsson U (2017) Wythoff visions. *Games of No Chance 5*, vol 70. MSRI Publications, pp 35–87
- Durand F (1998) A characterization of substitutive sequences using return words. *Discrete Math* 179:89–101
- Fokkink RJ (2016) Who knows who Willem Wijthoff was? *Nieuw Arch Wisk 5th series* 17(4):275–280
- Fraenkel AS (2010) Complementary iterated floor words and the flora game. *SIAM J Discrete Math* 24(2):570–588
- Fraenkel AS, Larsson U (2019) Playability and arbitrarily large rat games. *Integers* 19:G04
- Gardner M (1977) Mathematical games. *Sci Am* 236(3):134–141
- Holladay JC (1968) Some generalizations of Wythoff's game and other related games. *Math Mag* 41:7–13
- Kimberling C (2011) Beatty sequences and Wythoff sequences, generalized. *Fibonacci Quart.* 49(3):195–200
- Larsson U (2020) Combinatorial games. In: Sriraman B (ed) *Handbook of the mathematics of the arts and sciences*. Springer
- Lothaire M (2002) Algebraic combinatorics on words. In: *Encycl. Mathem. Applic*, vol 90. Cambridge University Press
- Rauzy G (1982) Algebraic numbers and substitutions (in French). *Bull Math Soc France* 110:147–178
- Richomme G, Saari K, Zamboni L (2010) Balance and abelian complexity of the Tribonacci word. *Adv Appl Math* 45:212–231
- Sirvent F (1997) A semigroup associated with the k -bonacci numbers with dynamic interpretation. *Fibonacci Quart* 35(4):335–340
- Tan B, Wen Z-Y (2007) Some properties of the Tribonacci sequence. *Eur J Comb* 28(6):1703–1719
- Wythoff WA (1907) A modification of the game of nim. *Nieuw Arch Wisk 2nd series* 7:199–202

Publisher's Note Springer Nature remains neutral with regard to jurisdictional claims in published maps and institutional affiliations.