

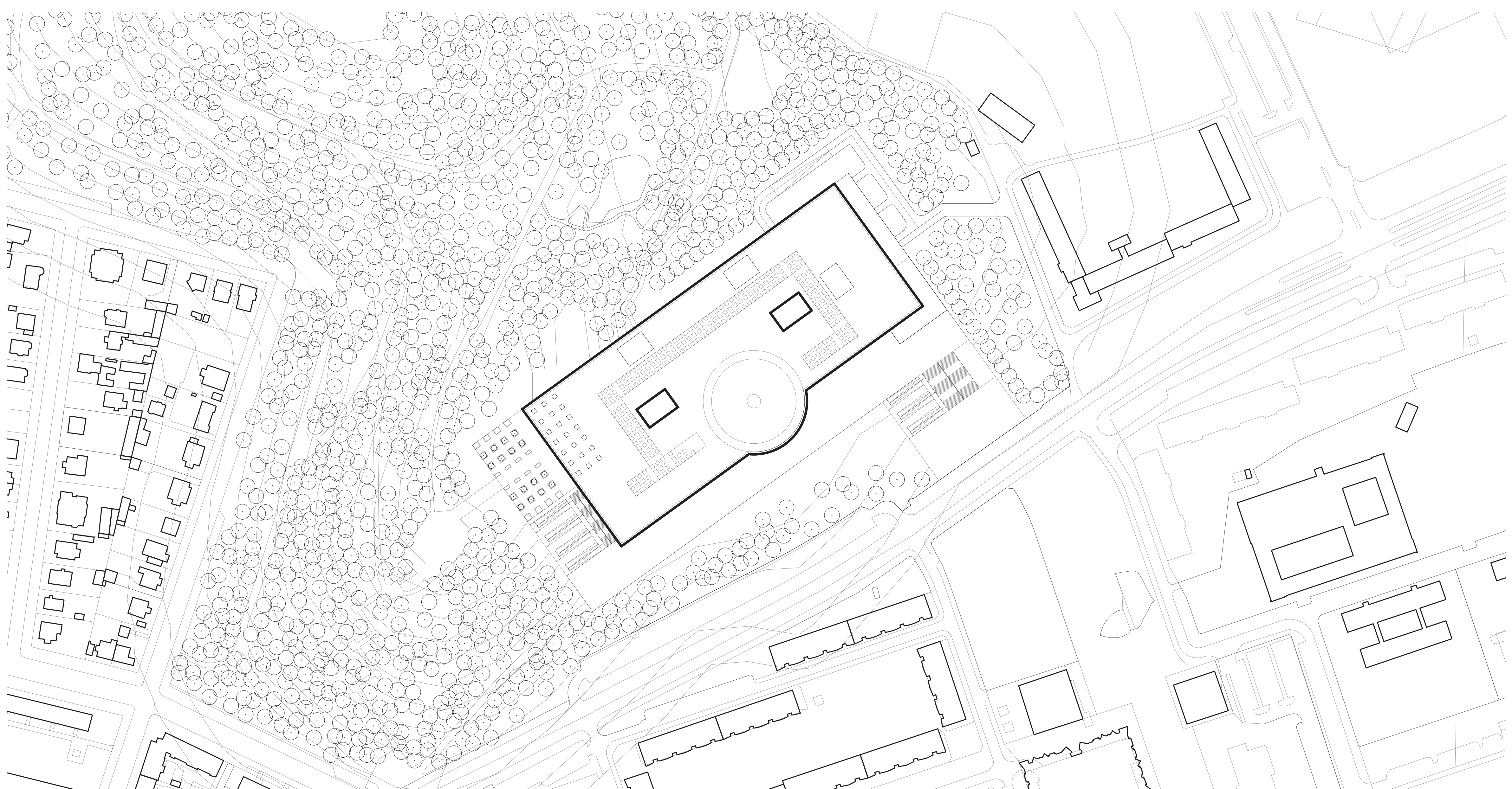
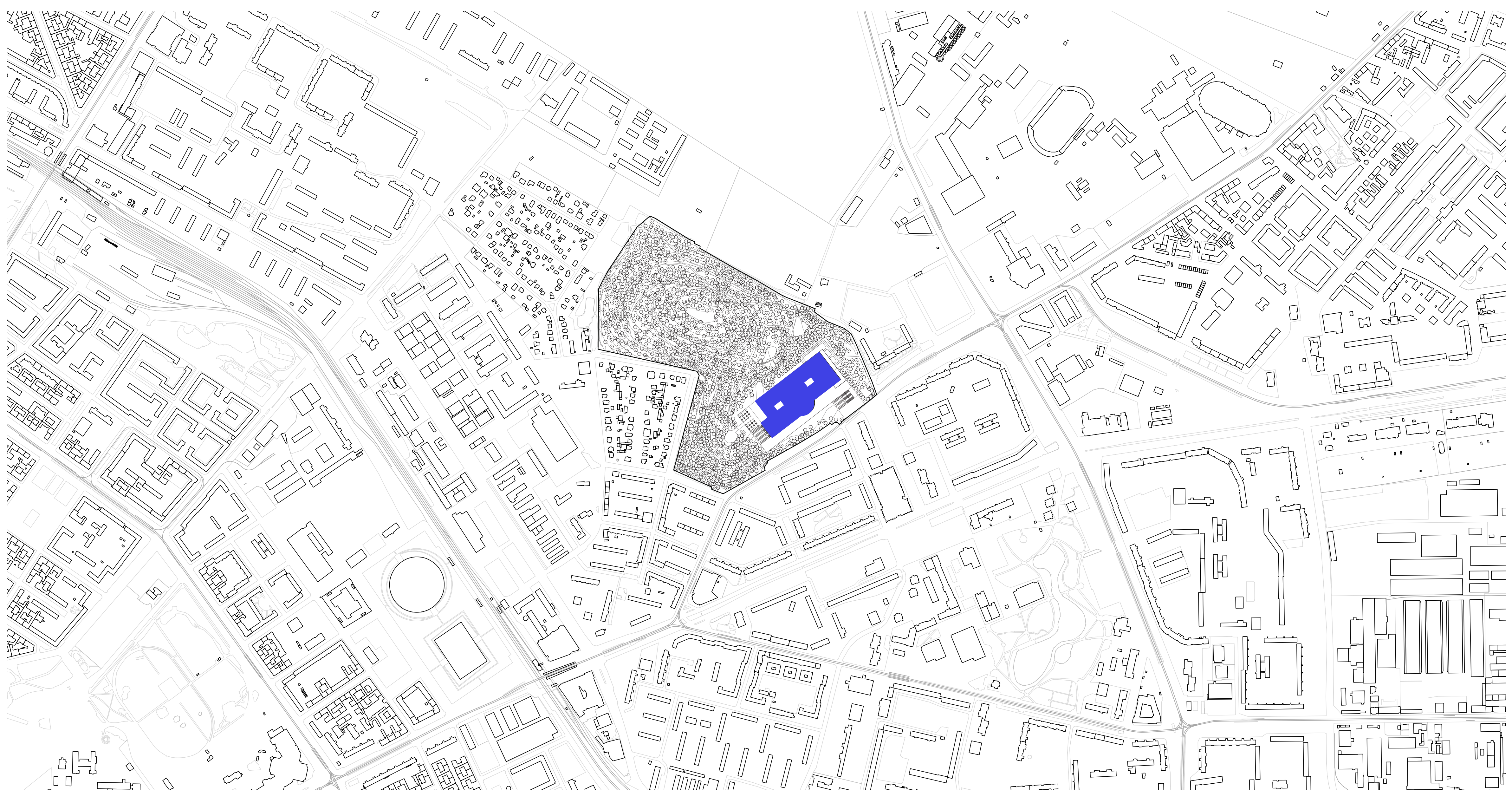
THE NEW SEAT OF THE EUROPEAN PARLIAMENT

PARLIAMENT

FUTURE

AREA

POSITIONING THE PARLIAMENT IN THE INFORMATION SOCIETY



MASTERPLANS

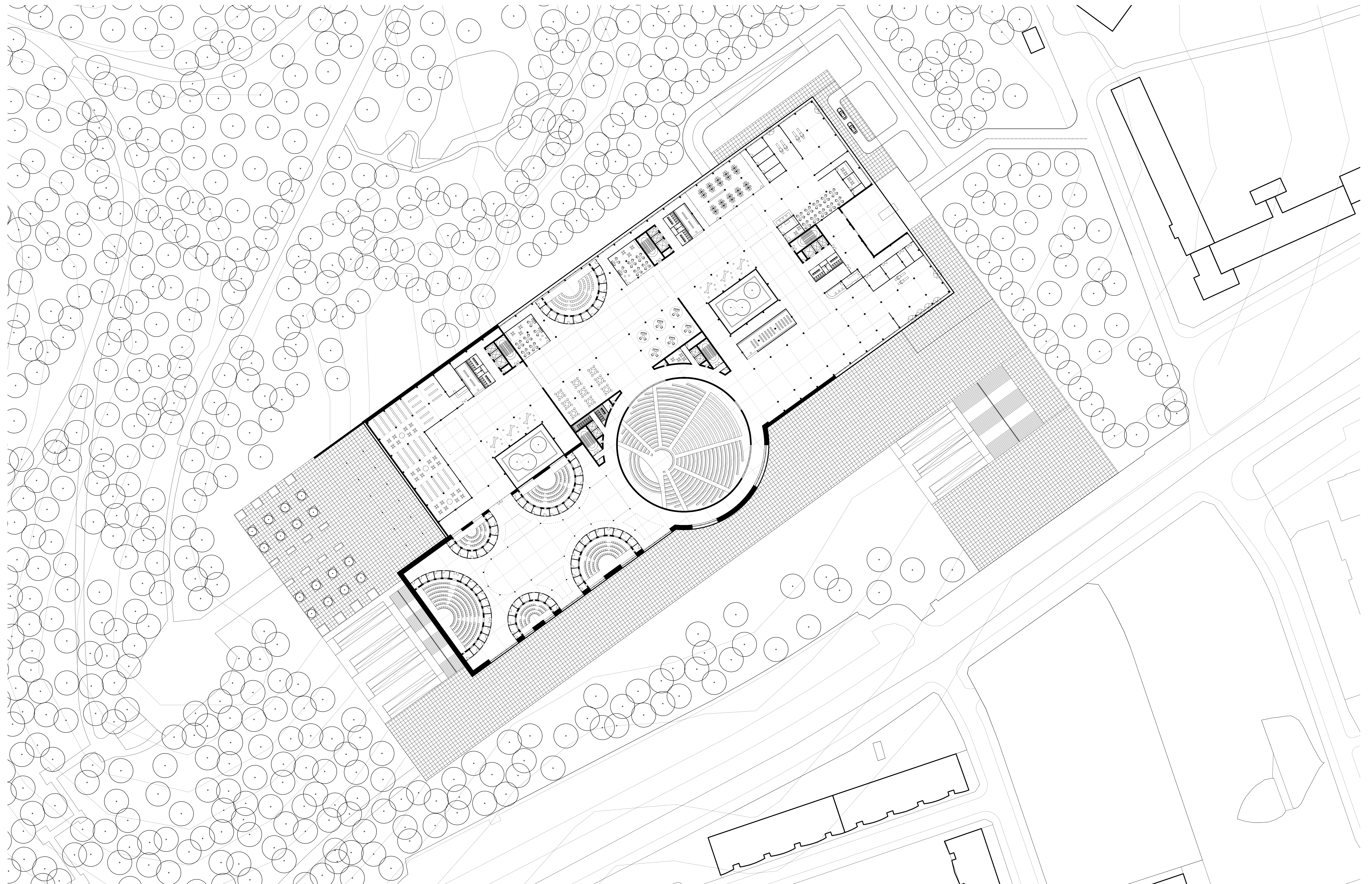
THE NEW SEAT OF THE EUROPEAN PARLIAMENT

PARLIAMENT FUTURE
POSITIONING THE PARLIAMENT IN THE INFORMATION SOCIETY

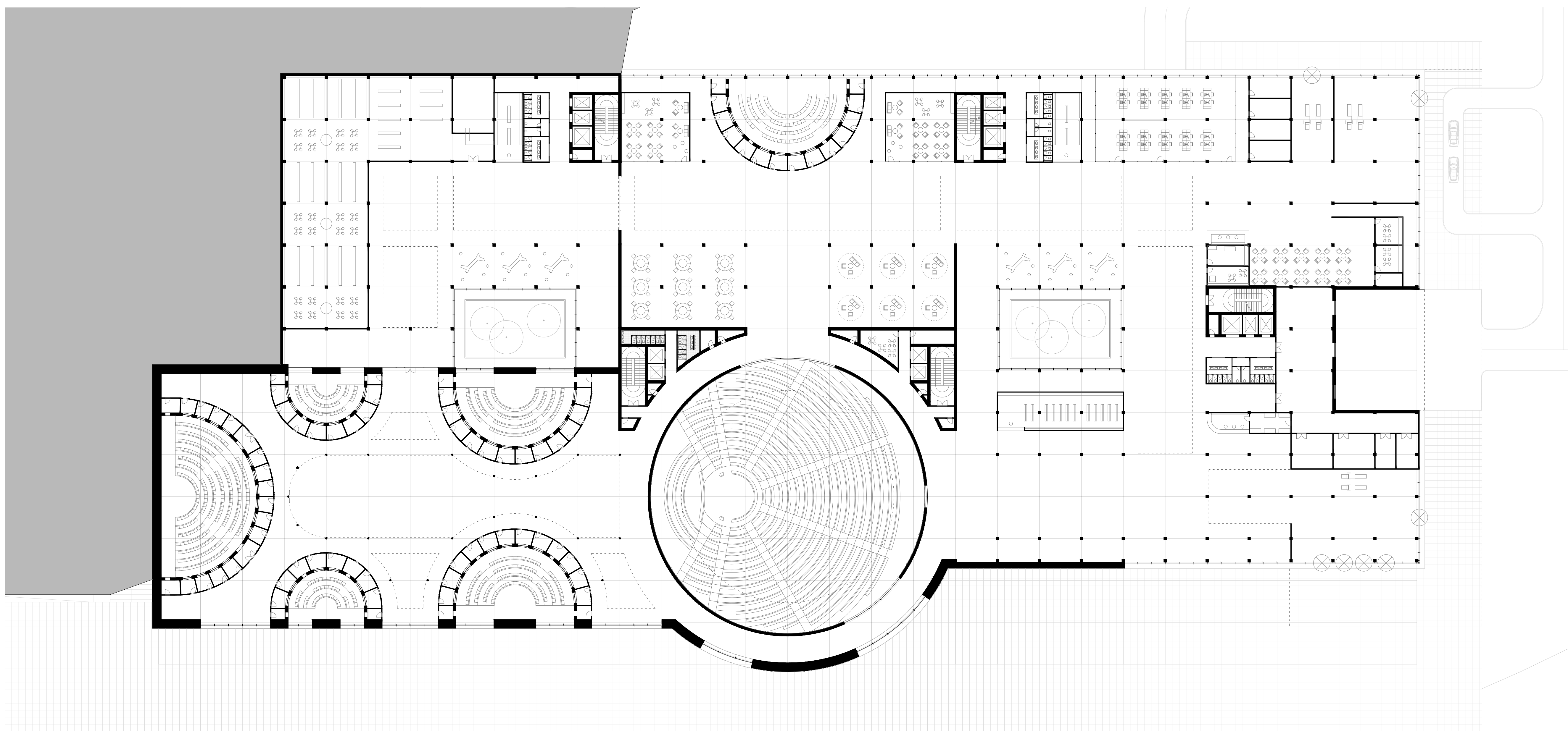
AREA

complex projects

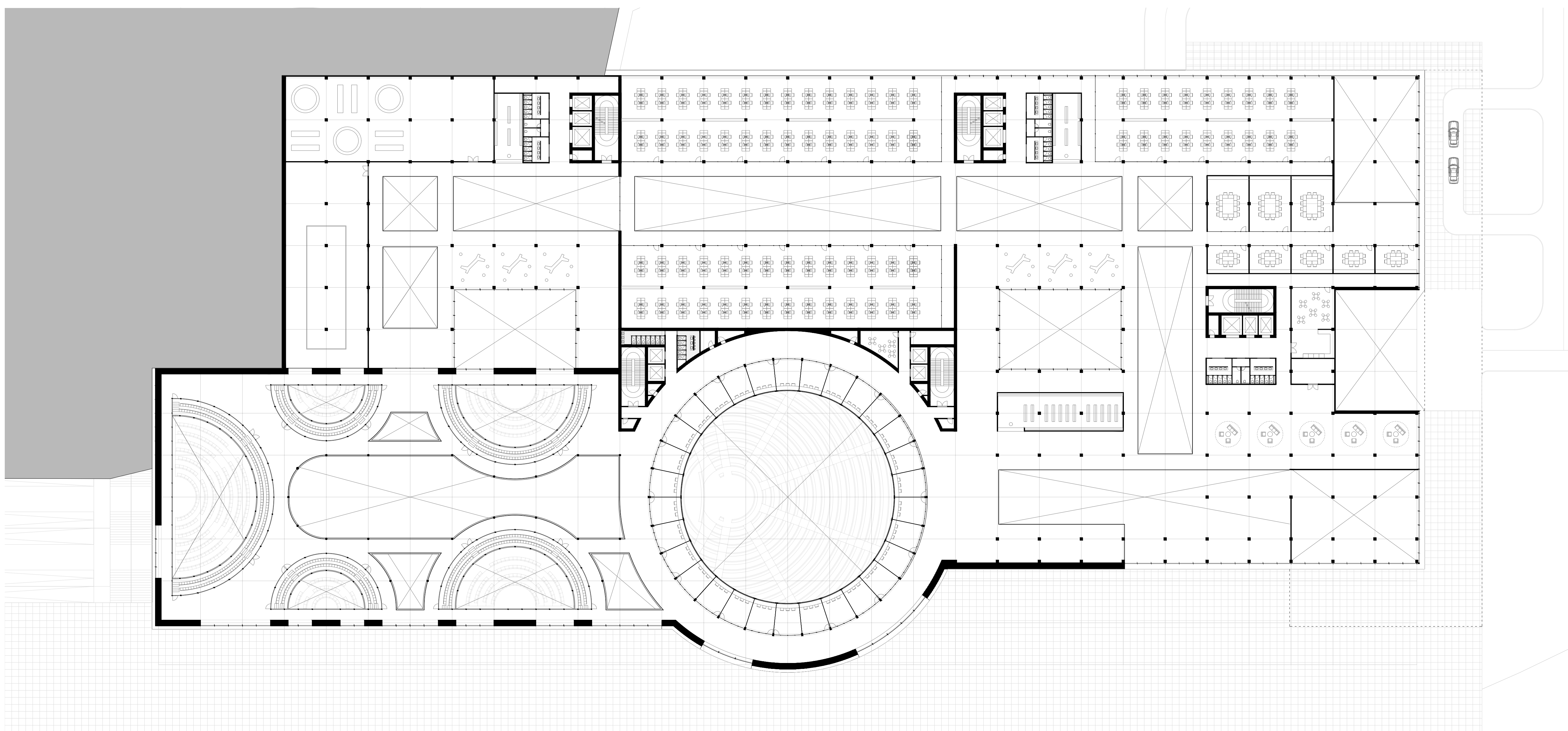
Complex Projects
Bodies & Buildings Berlin
5608724
Tudor Cosma
P5



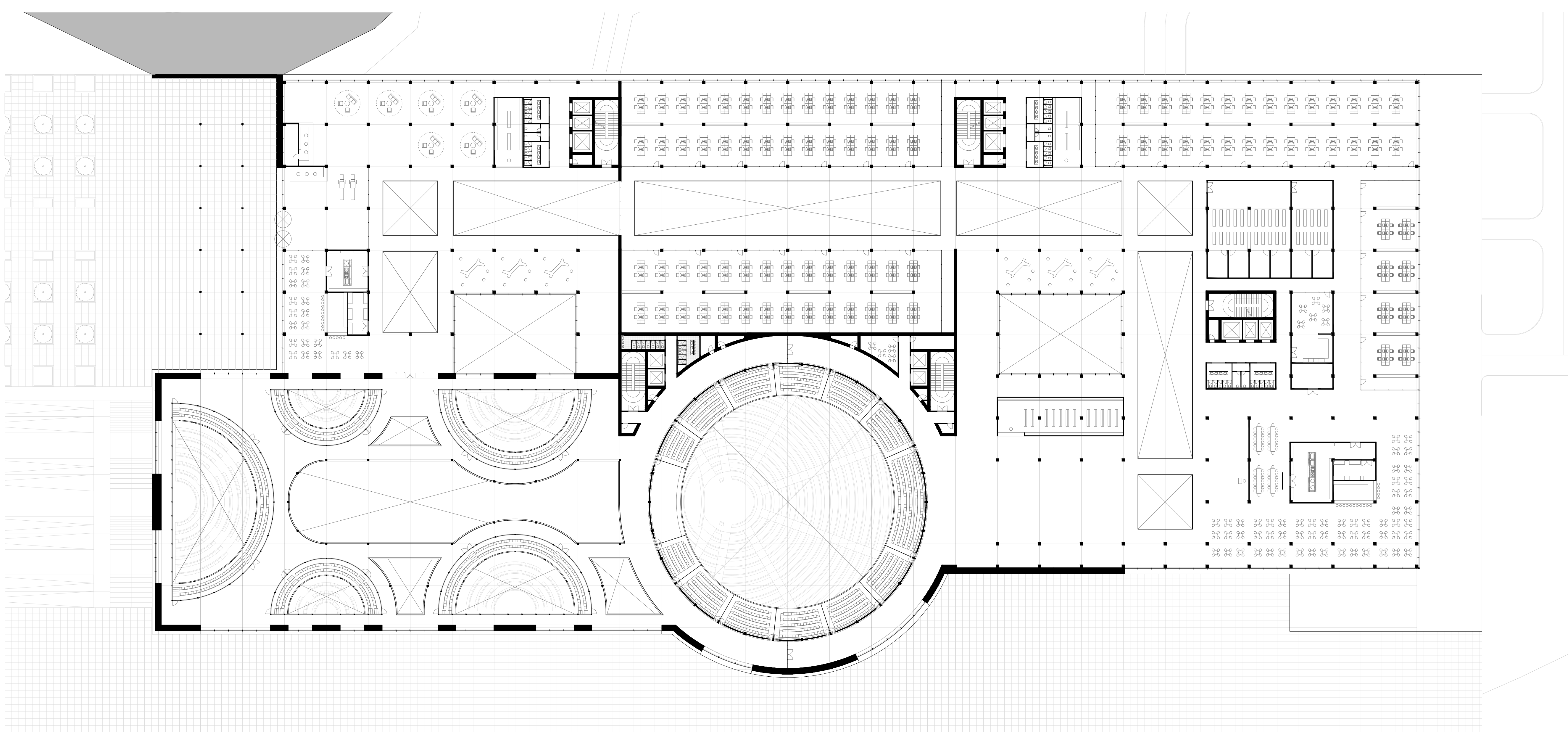
URBAN IMPLEMENTATION 1:500



LEVEL 0



LEVEL +1



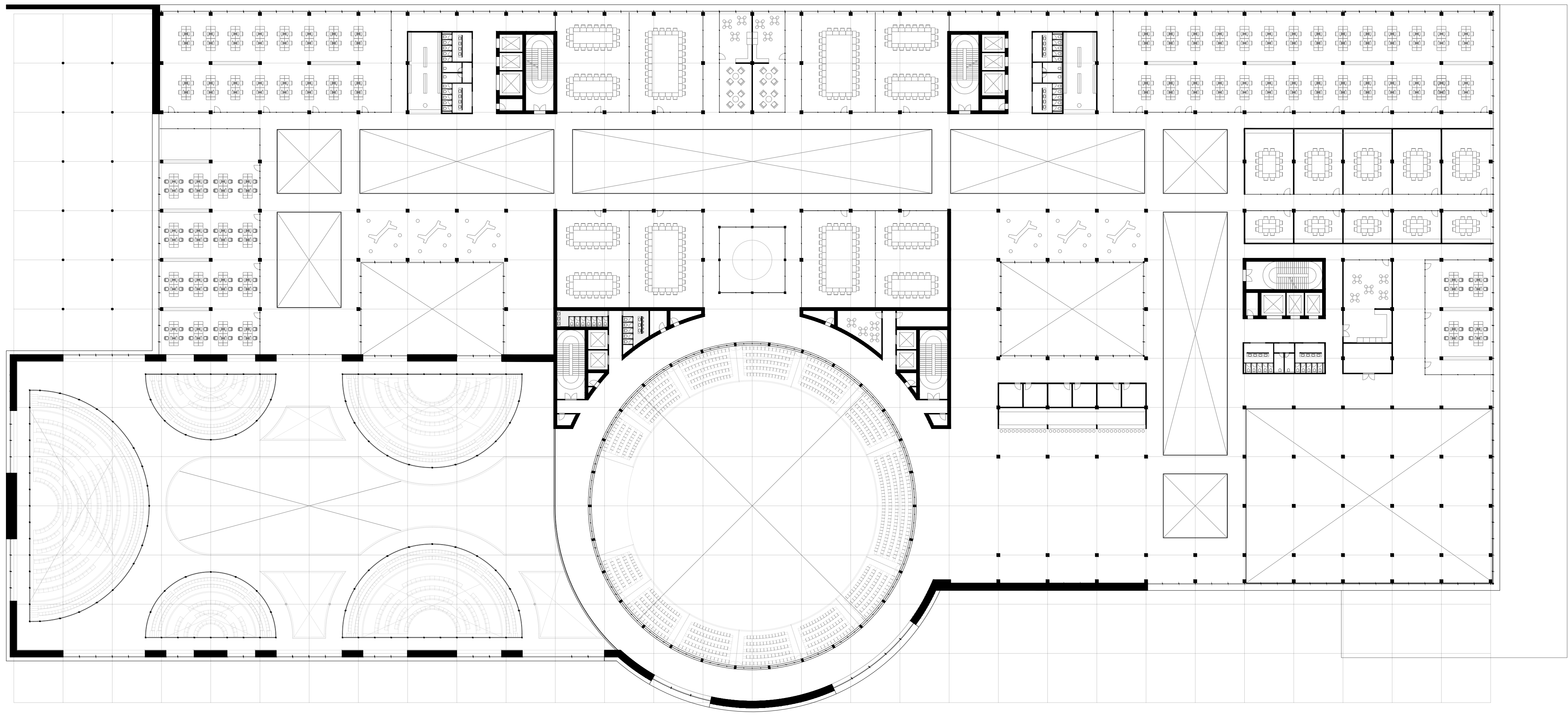
LEVEL +2

FLOORPLANS 1:200

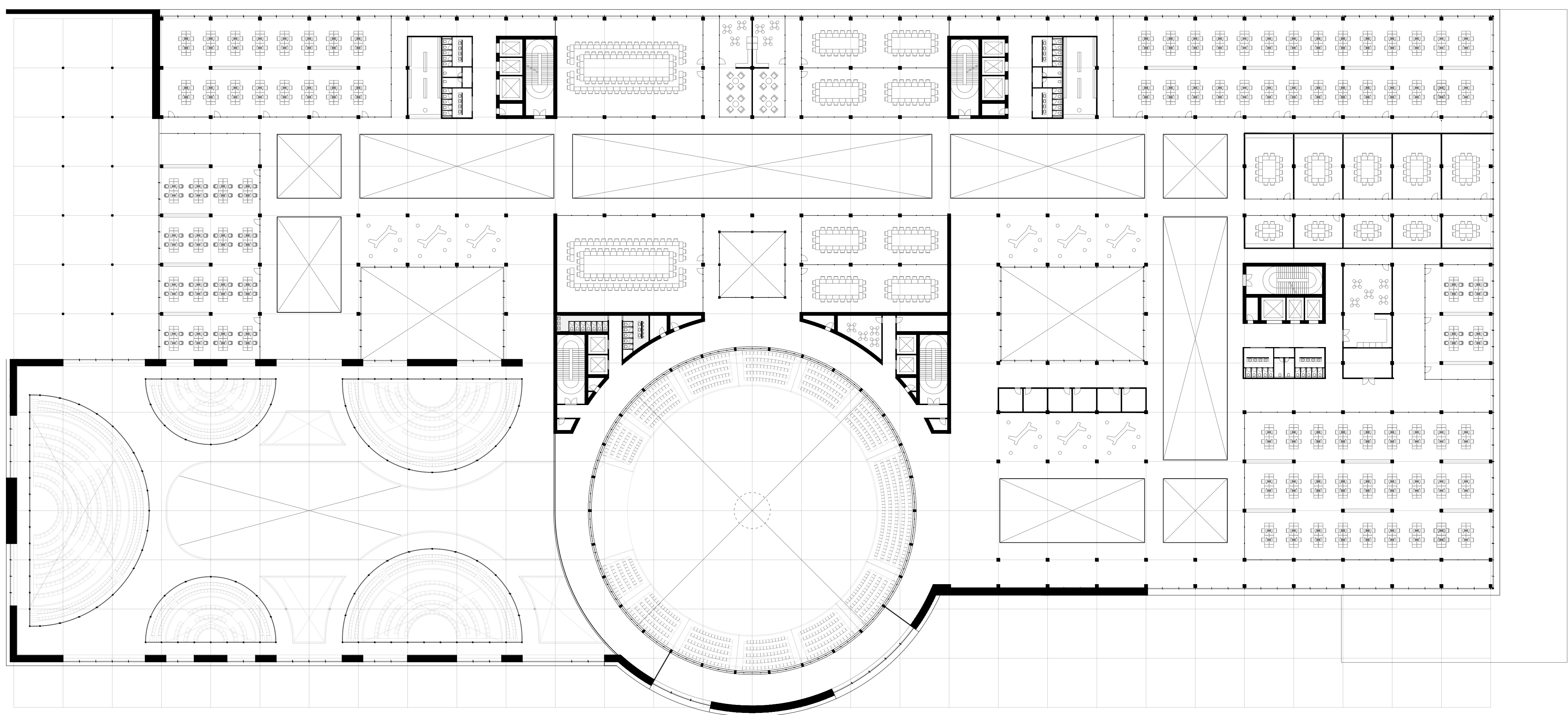
THE NEW SEAT OF THE EUROPEAN PARLIAMENT

PARLIAMENT FUTURE
POSITIONING THE PARLIAMENT IN THE INFORMATION SOCIETY

AREA



LEVEL +3



LEVEL +4



FLOORPLANS 1:200

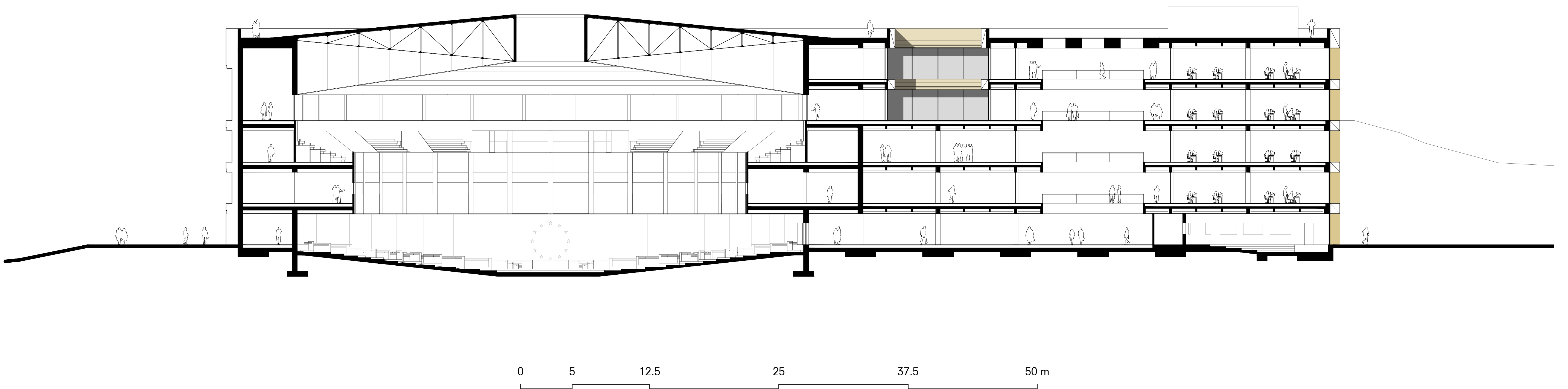
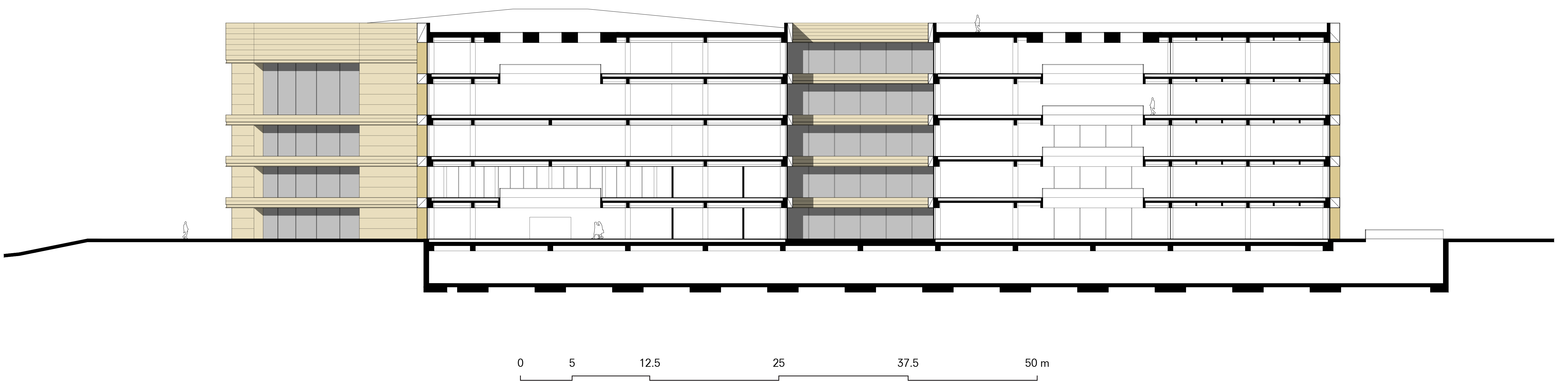
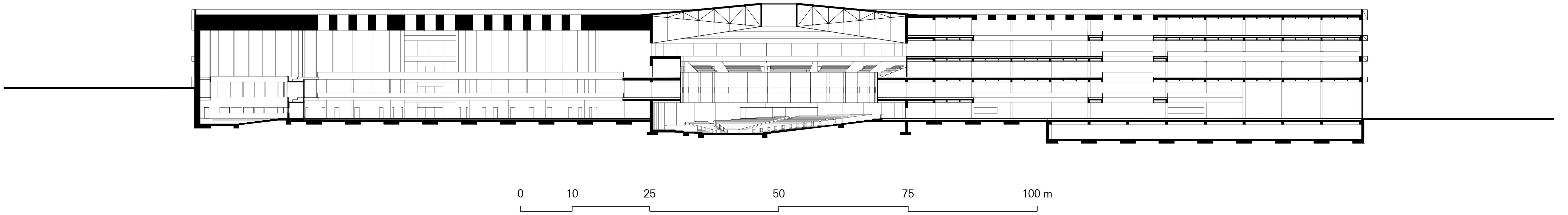
THE NEW SEAT OF THE EUROPEAN PARLIAMENT

PARLIAMENT FUTURE
POSITIONING THE PARLIAMENT IN THE INFORMATION SOCIETY

complex  projects

Complex Projects
Bodies & Buildings Berlin
5608724
Tudor Cosma
P5

AREA



SECTIONS 1:200

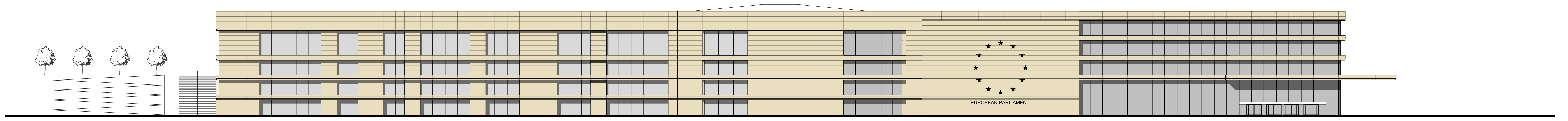
THE NEW SEAT OF THE EUROPEAN PARLIAMENT

PARLIAMENT FUTURE
POSITIONING THE PARLIAMENT IN THE INFORMATION SOCIETY

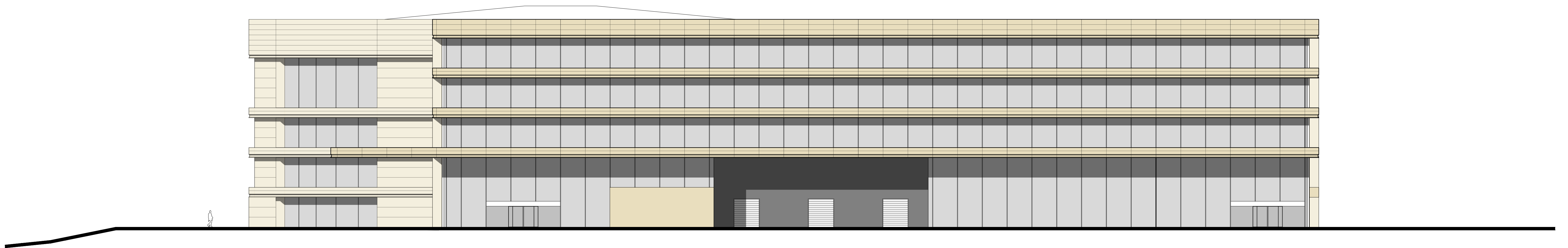
complex  projects

Complex Projects
Bodies & Buildings Berlin
5608724
Tudor Cosma
P5

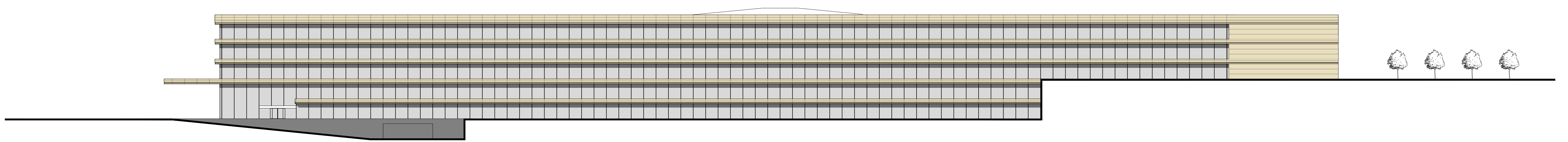
AREA



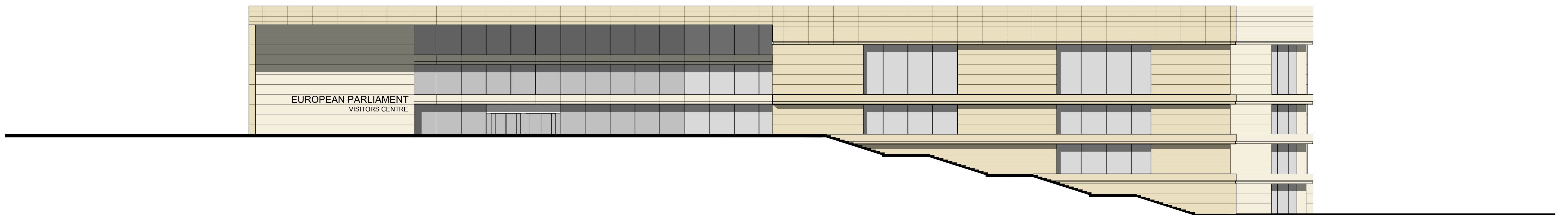
0 10 25 50 75 100 m



0 5 12.5 25 37.5 50 m



0 10 25 50 75 100 m



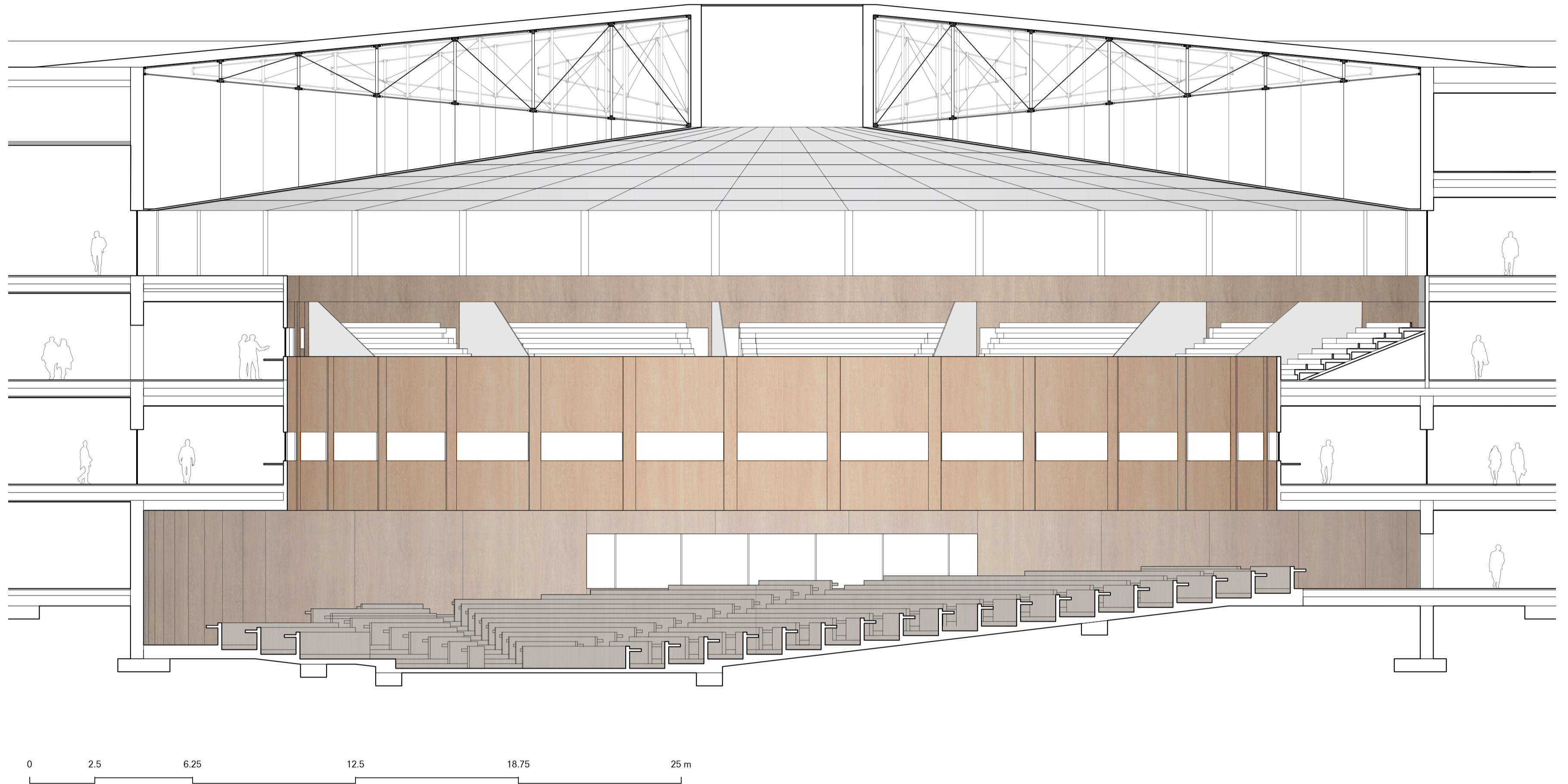
0 5 12.5 25 37.5 50 m

ELEVATIONS 1:200

THE NEW SEAT OF THE EUROPEAN PARLIAMENT

PARLIAMENT FUTURE AREA

POSITIONING THE PARLIAMENT IN THE INFORMATION SOCIETY



THE NEW SEAT OF THE EUROPEAN PARLIAMENT

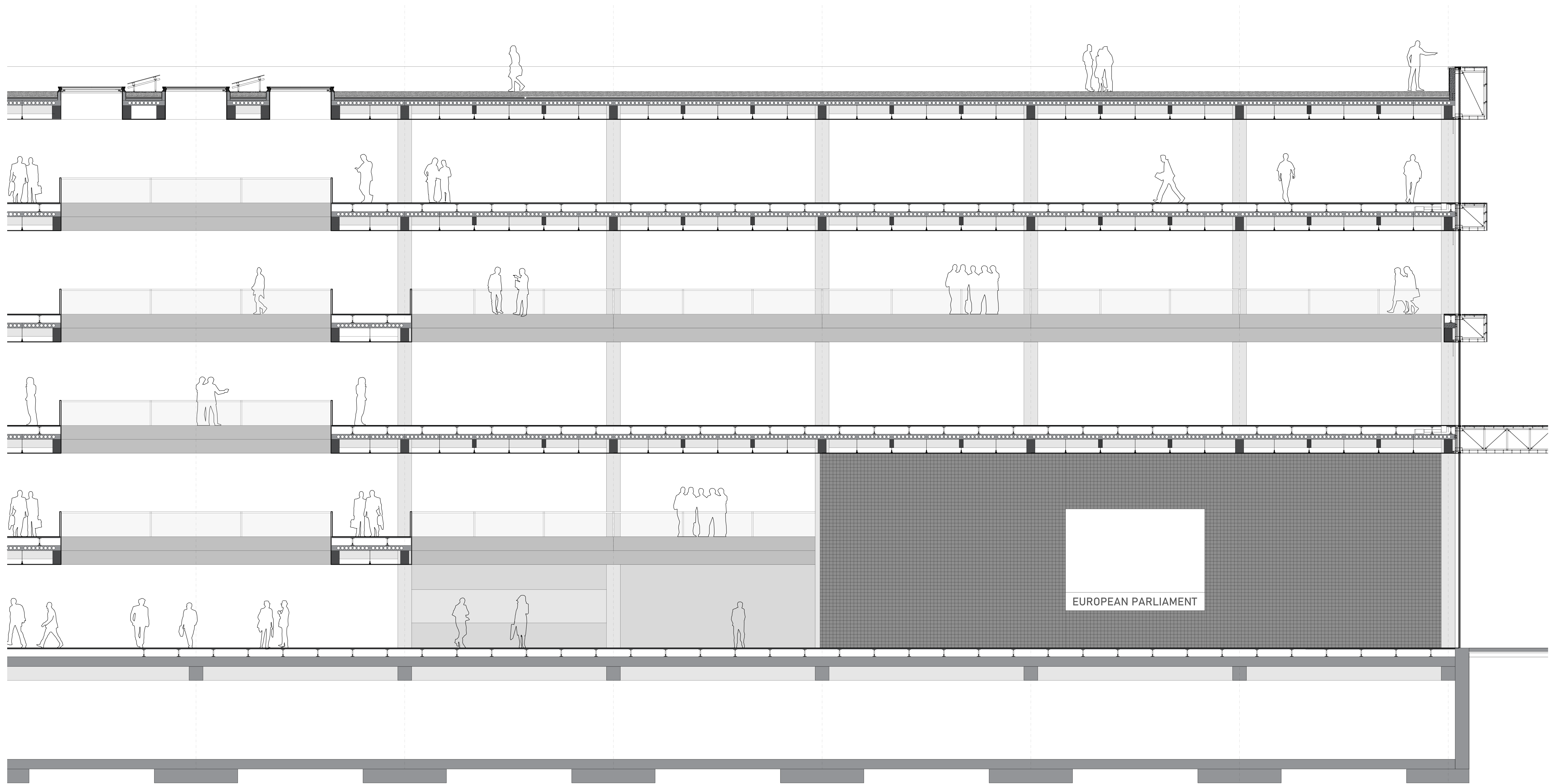
PARLIAMENT FUTURE AREA

POSITIONING THE PARLIAMENT IN THE INFORMATION SOCIETY



**THE NEW SEAT OF THE
EUROPEAN PARLIAMENT**
PARLIAMENT FUTURE
POSITIONING THE PARLIAMENT IN THE INFORMATION SOCIETY

AREA

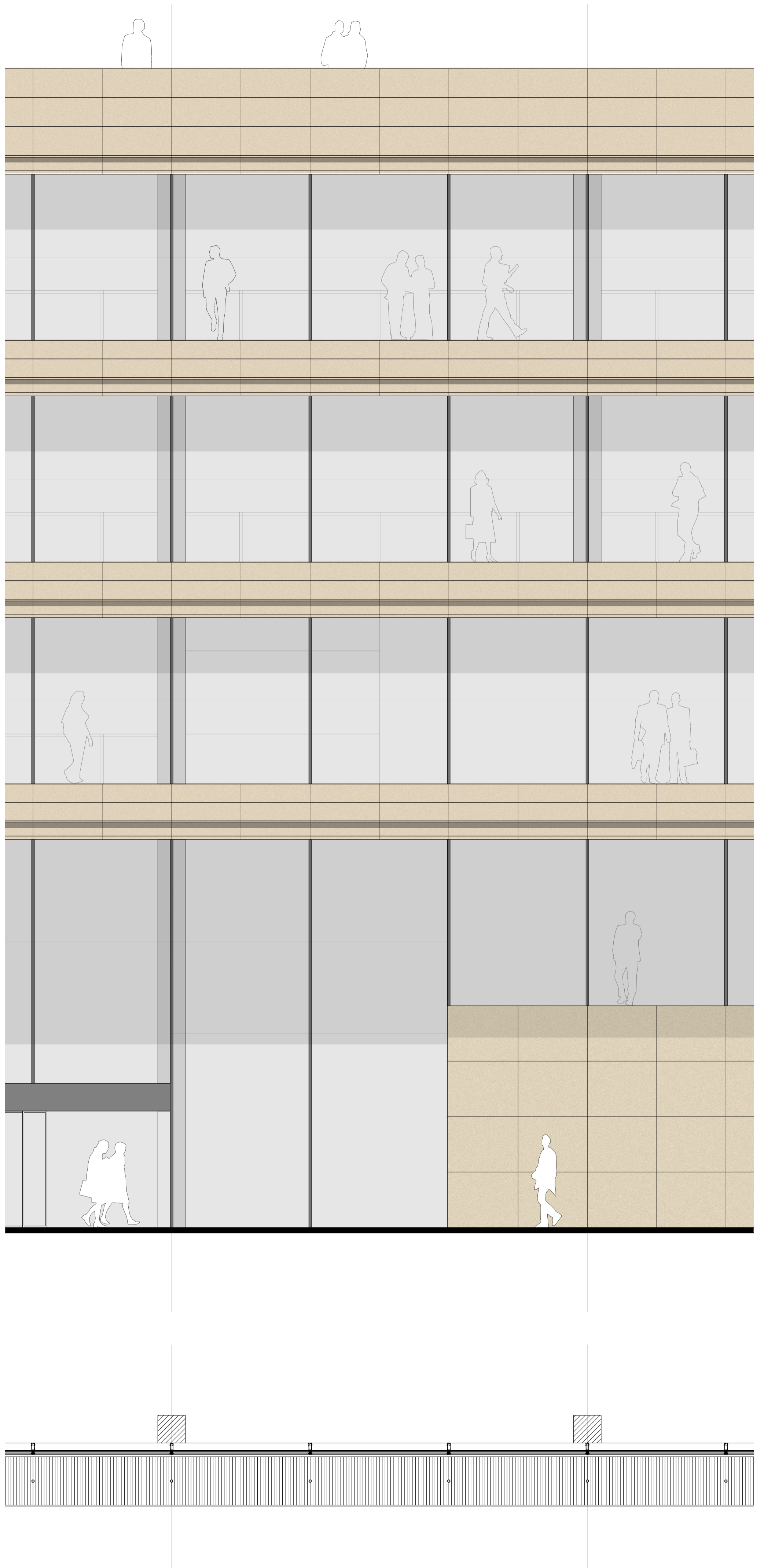
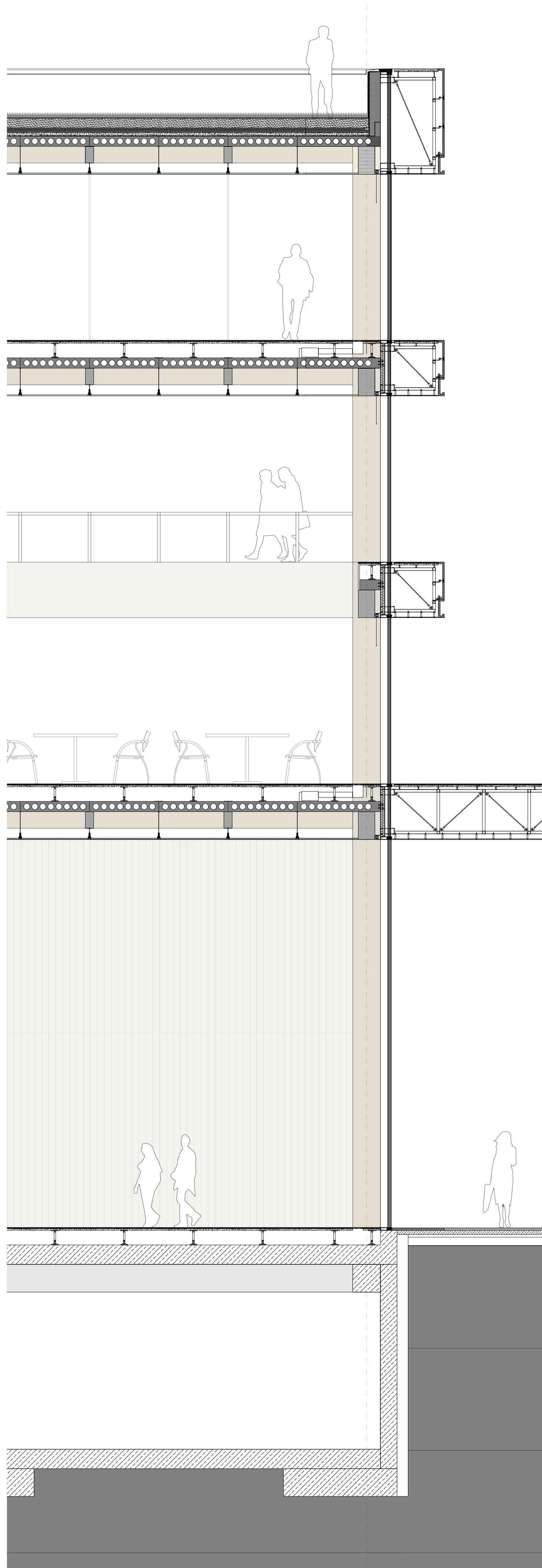


INTERIOR FRAGMENT 1:50

THE NEW SEAT OF THE EUROPEAN PARLIAMENT

PARLIAMENT FUTURE
POSITIONING THE PARLIAMENT IN THE INFORMATION SOCIETY

AREA

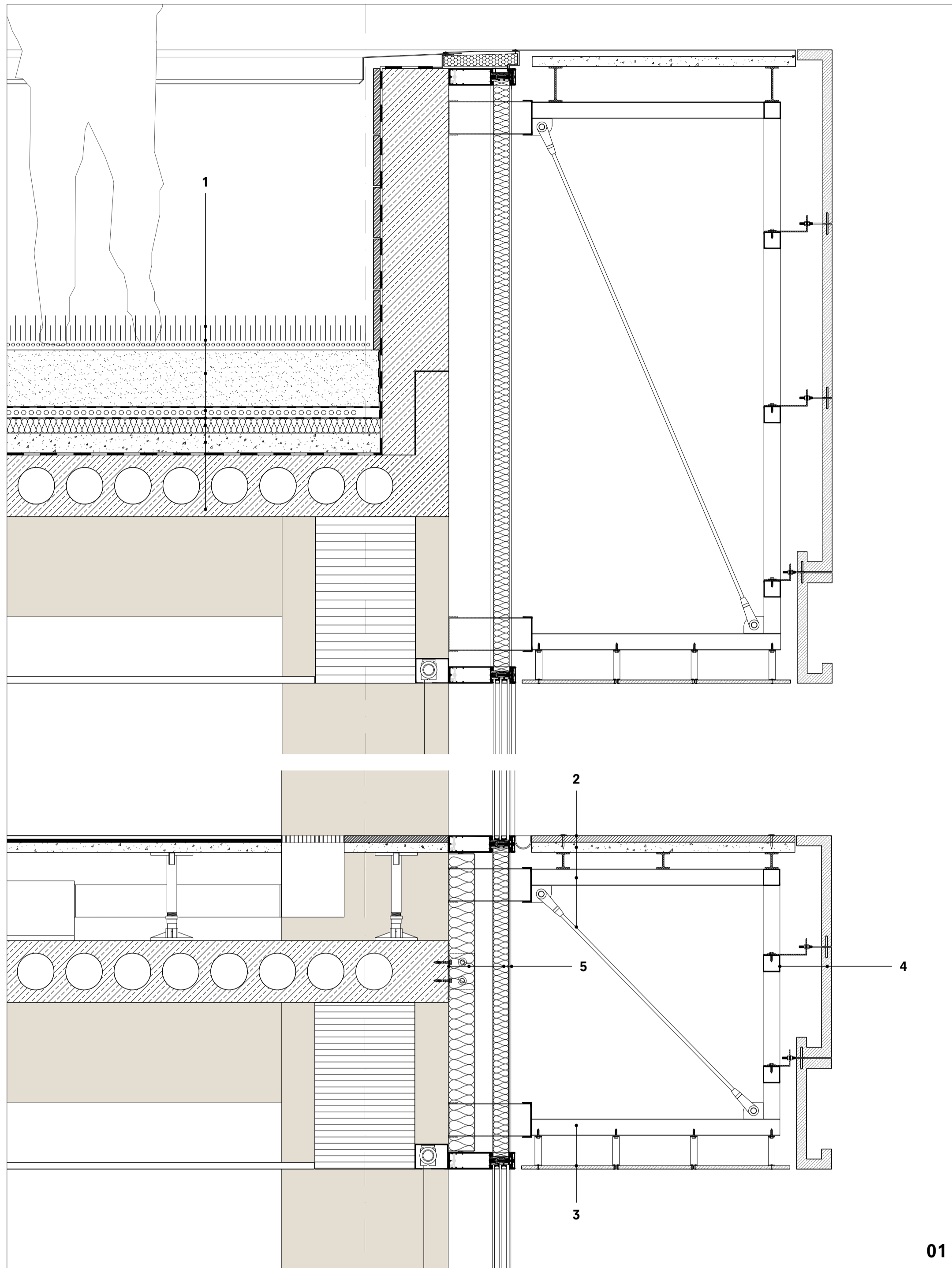


ENVELOPE FRAGMENT 1:20

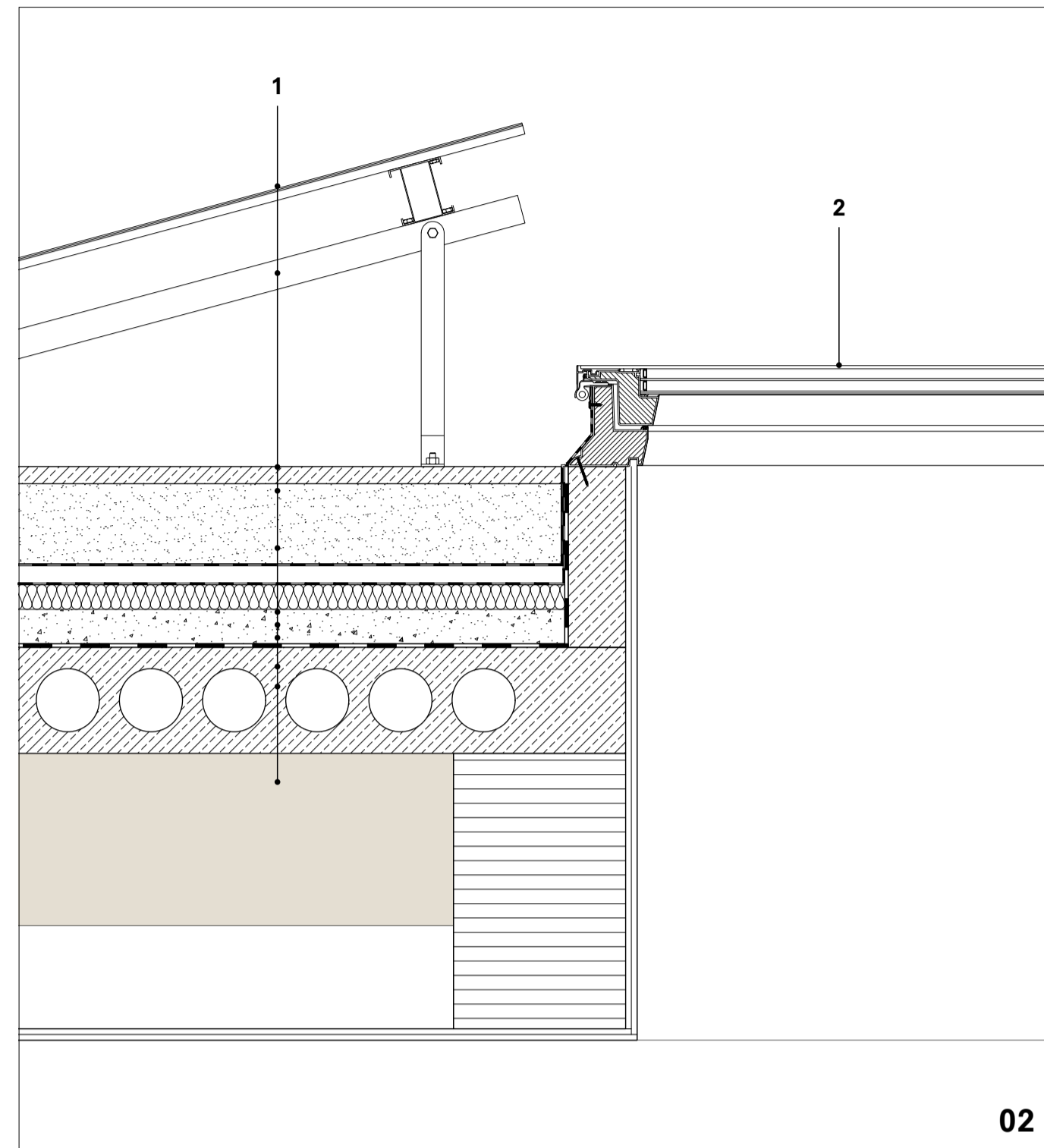
THE NEW SEAT OF THE EUROPEAN PARLIAMENT

PARLIAMENT FUTURE AREA

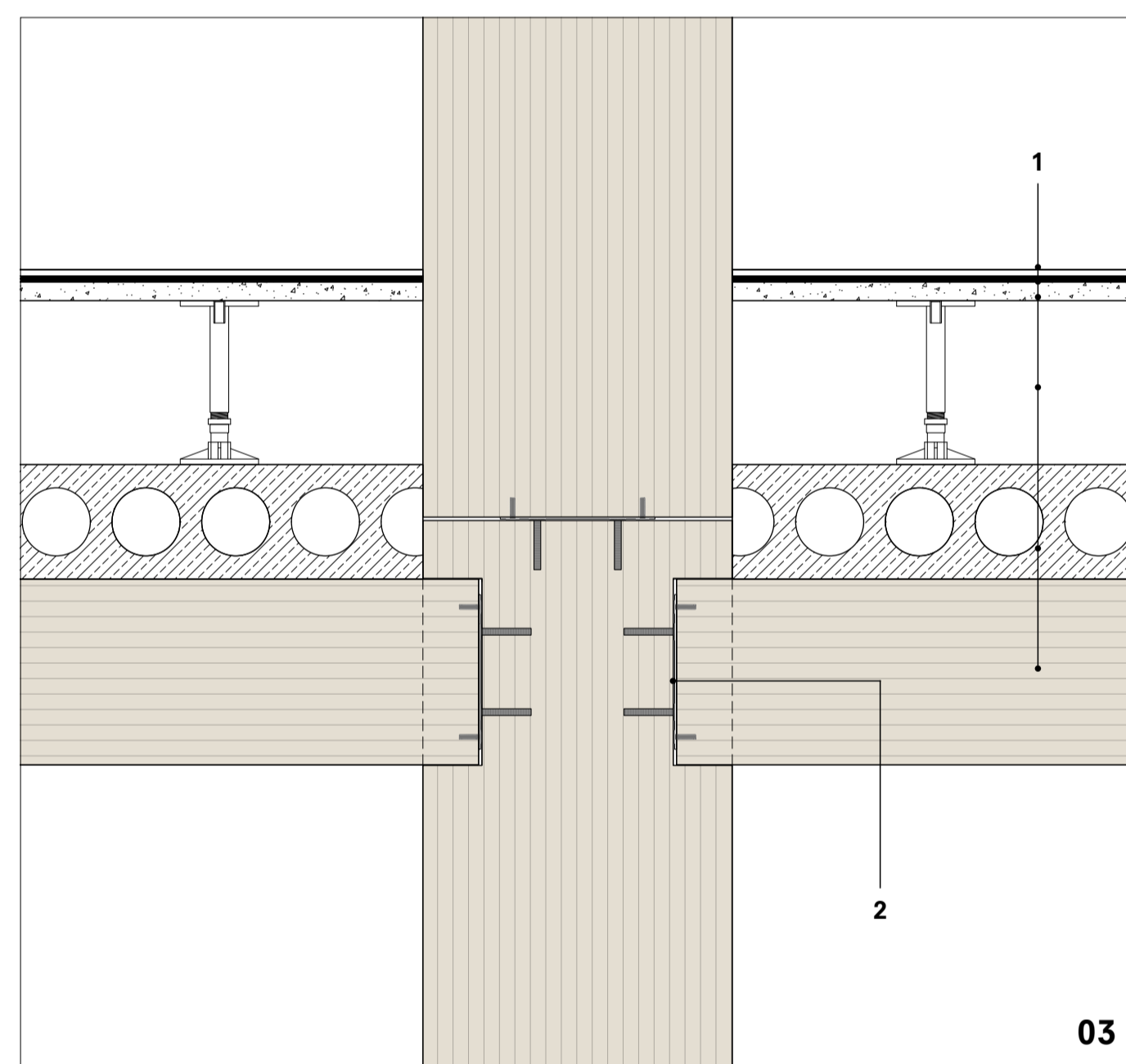
POSITIONING THE PARLIAMENT IN THE INFORMATION SOCIETY



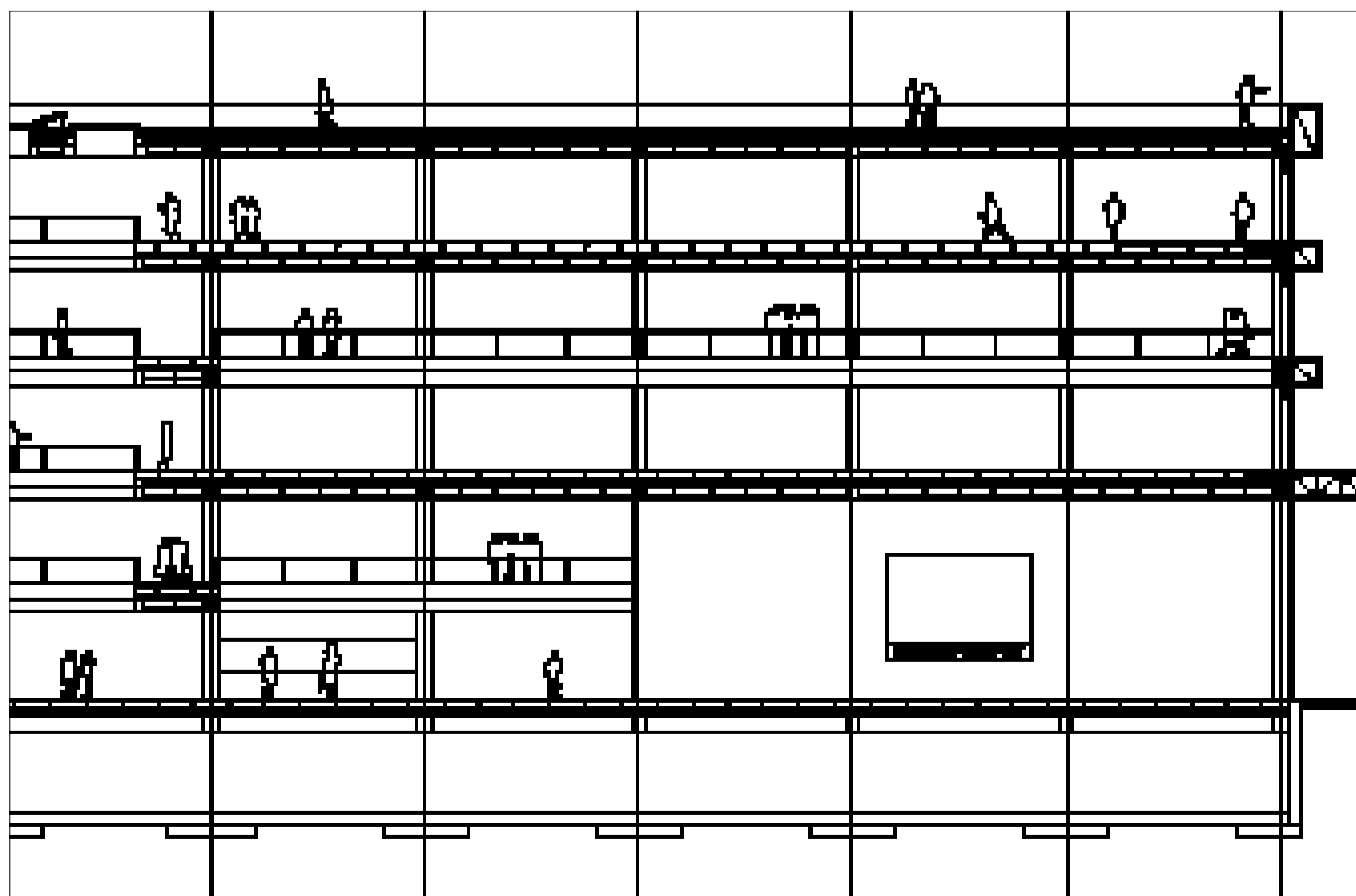
01



02



03



DETAILS 1:5

SECTION 1:5

01 CURTAIN WALL + ROOF/FLOOR

- 1 100 mm vegetation layer
170 mm substrate: earth/sand mix
3 mm bitumen layer
30 mm fine gravel
polyester waterproofing
45 mm XPS thermal insulation
60 mm concrete screed
damp proof membrane
- 2 20 mm nailed wooden slats
30 mm concrete screed
50 mm steel I-beam
tension rod
- 3 10 mm precast concrete panel
steel suspending system
50 mm steel I-beam
- 4 30 mm precast recycled rubble panel
50 x 50 mm RHS steel beam
- 5 5 mm aluminium panel
45 mm rock wool insulation
80 mm rock wool insulation
steel anchor

02 SKYLIGHT

- 1 solar panel
steel support system
170 mm substrate: earth/sand mix
3 mm bitumen layer
30 mm fine gravel
polyester waterproofing
45 mm XPS thermal insulation
60 mm concrete screed
damp proof membrane
- 2 double-pane skylight
openable system

03 TIMBER COLUMN + BEAM

- 1 anhydrite liquid screed
10 mm soundproofing foam mat
30 mm concrete screed
265 mm floor raisers
185 mm hollow core concrete slab
30 x 50 mm glulam timber beam
- 2 steel connection plate
timber specific bolts