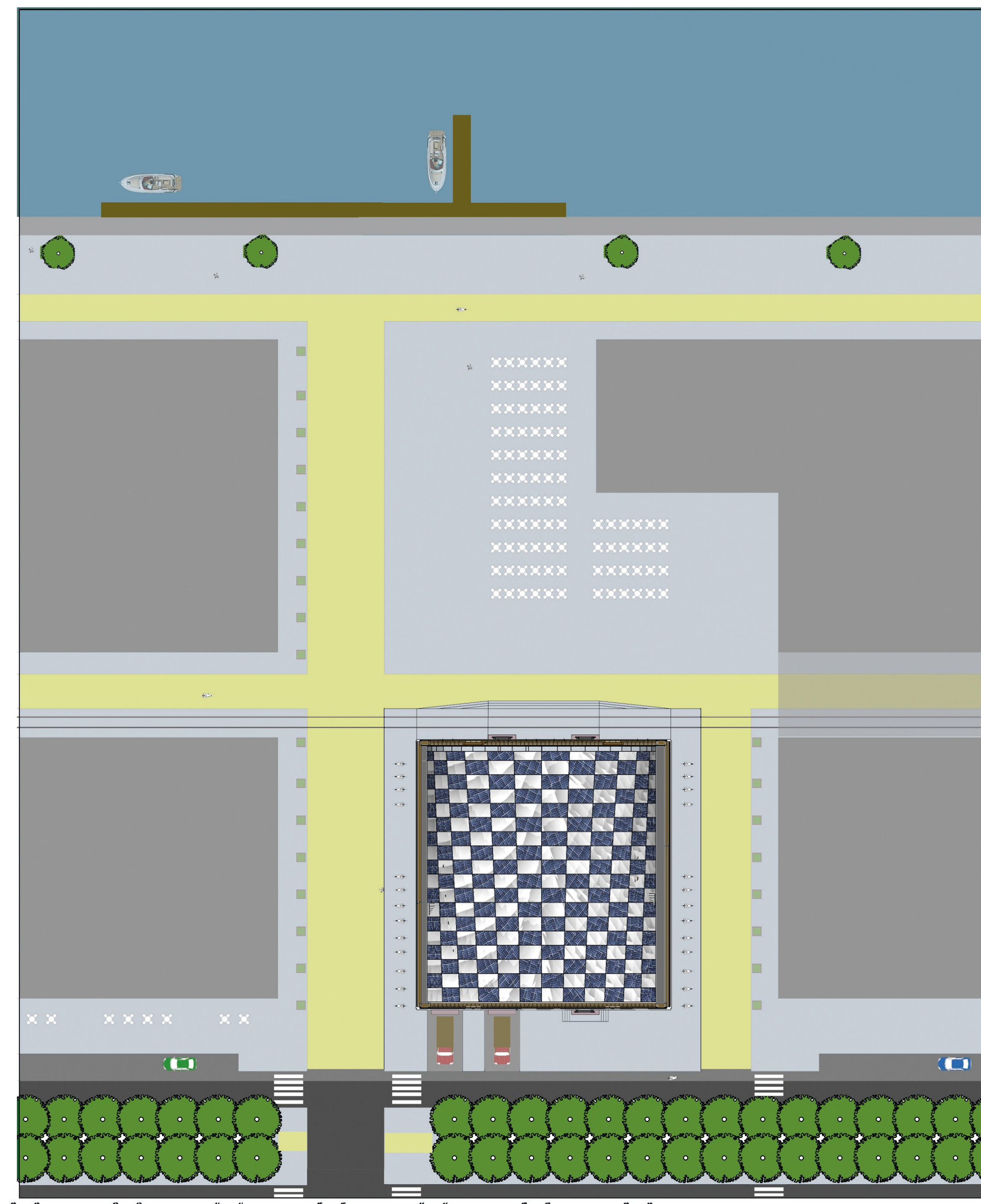
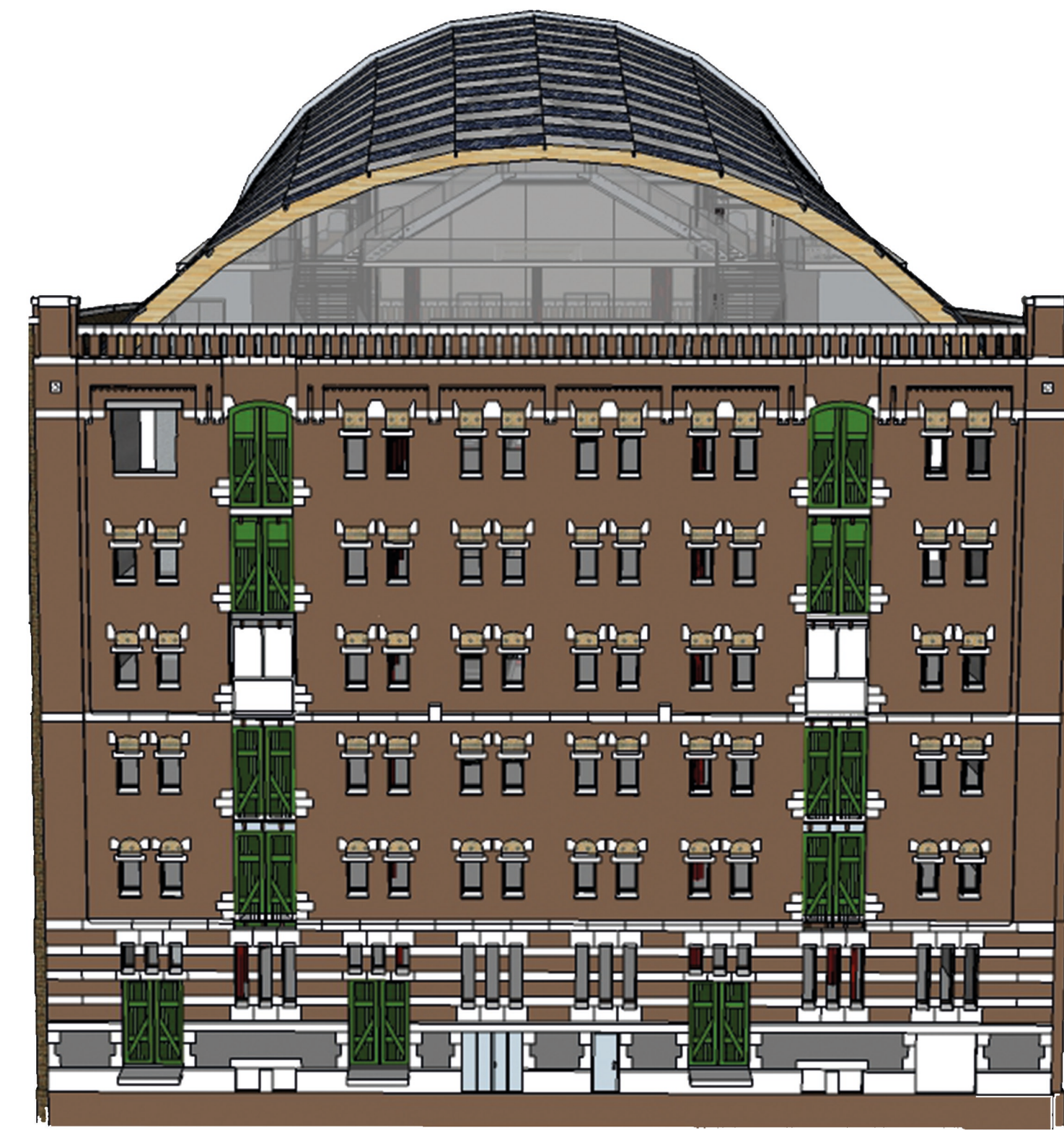


Masterplan, Facades and Floorplans

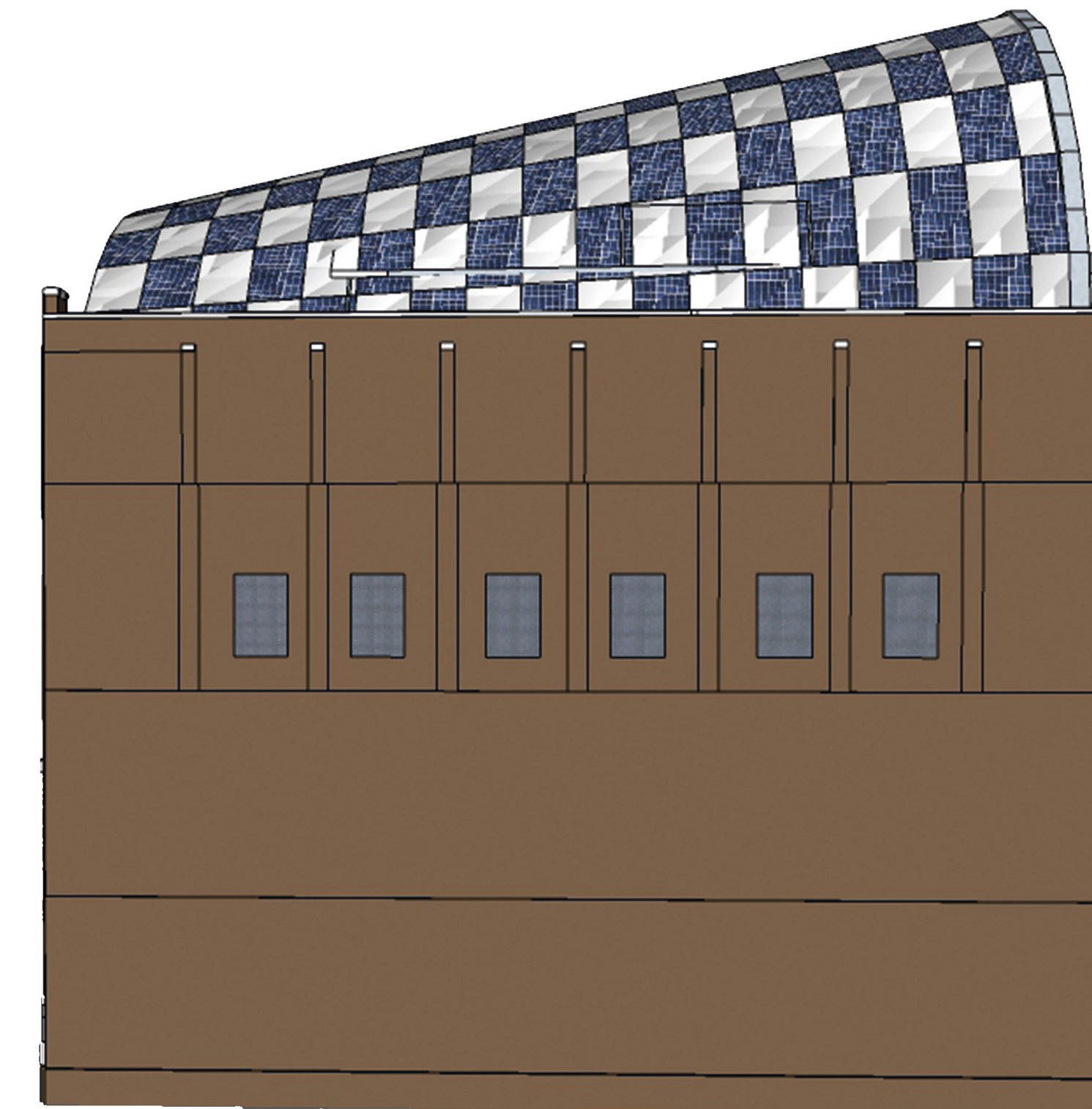
Studio: Harbour Heritage Project: Santos Lukas Jespers 1396757
Tutors: W.L.E.C. Meijers - B. Gremmen - N.J. Clarke 03-07-2018



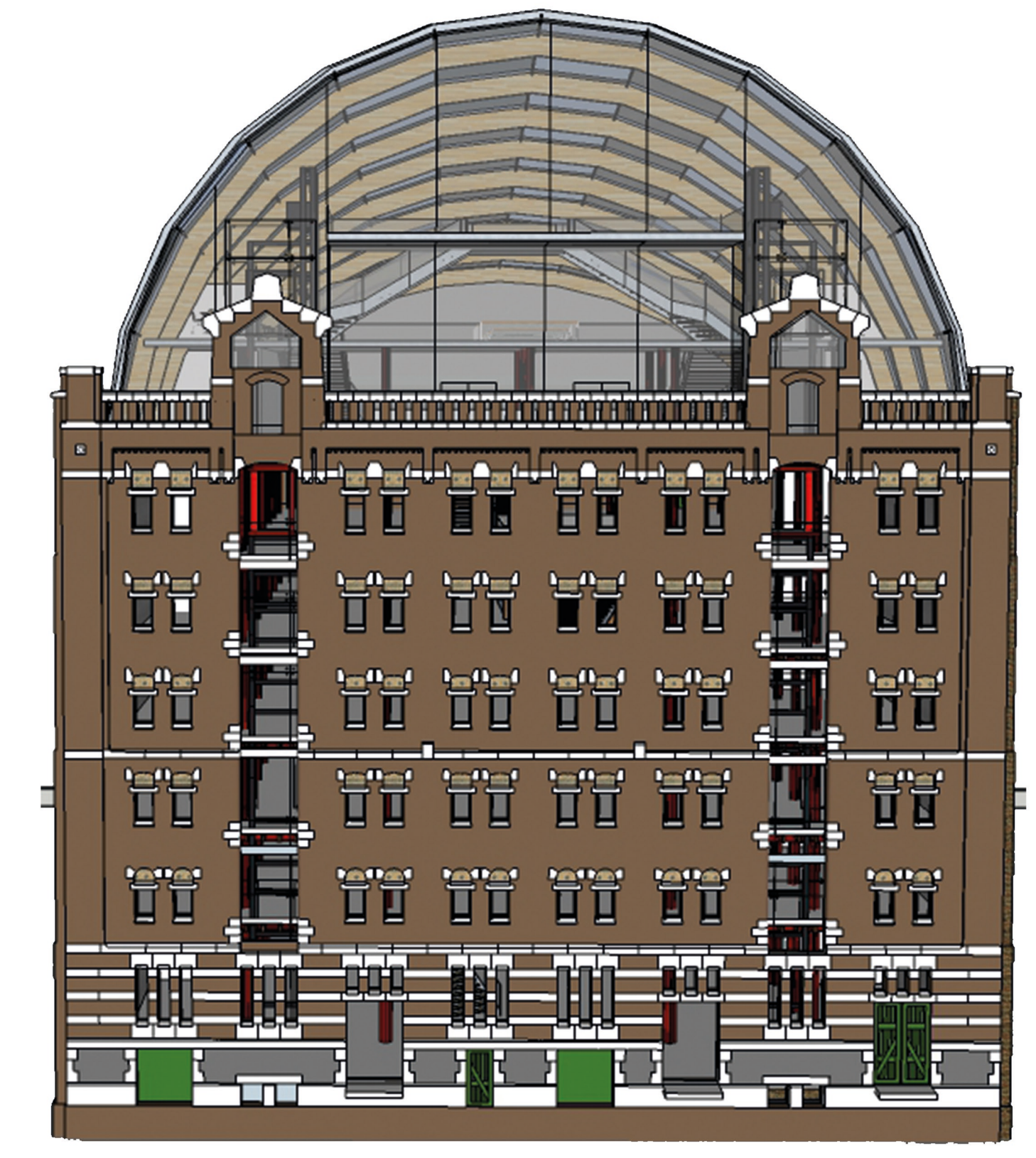
Masterplan Scale: 1:5000



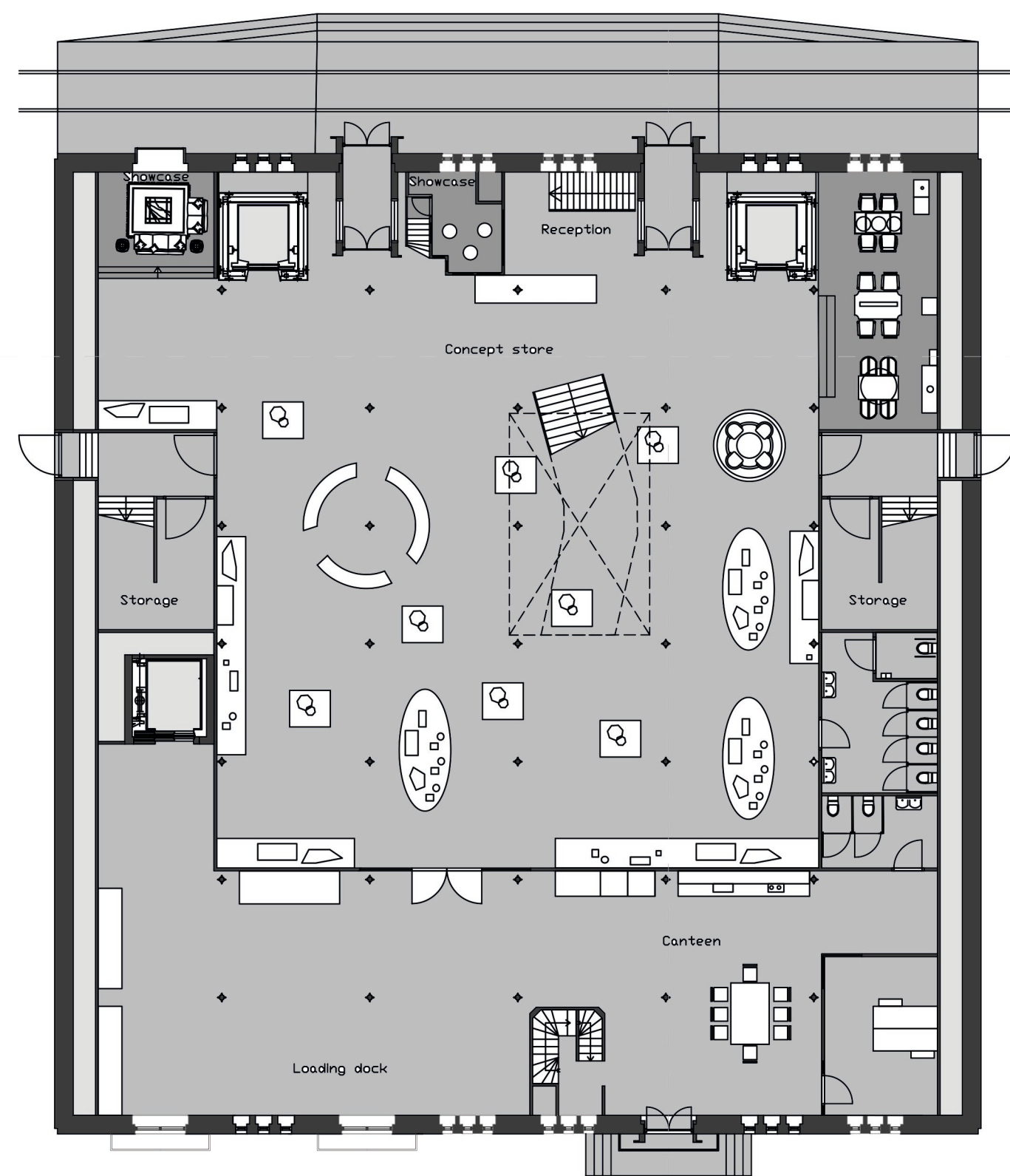
South facade



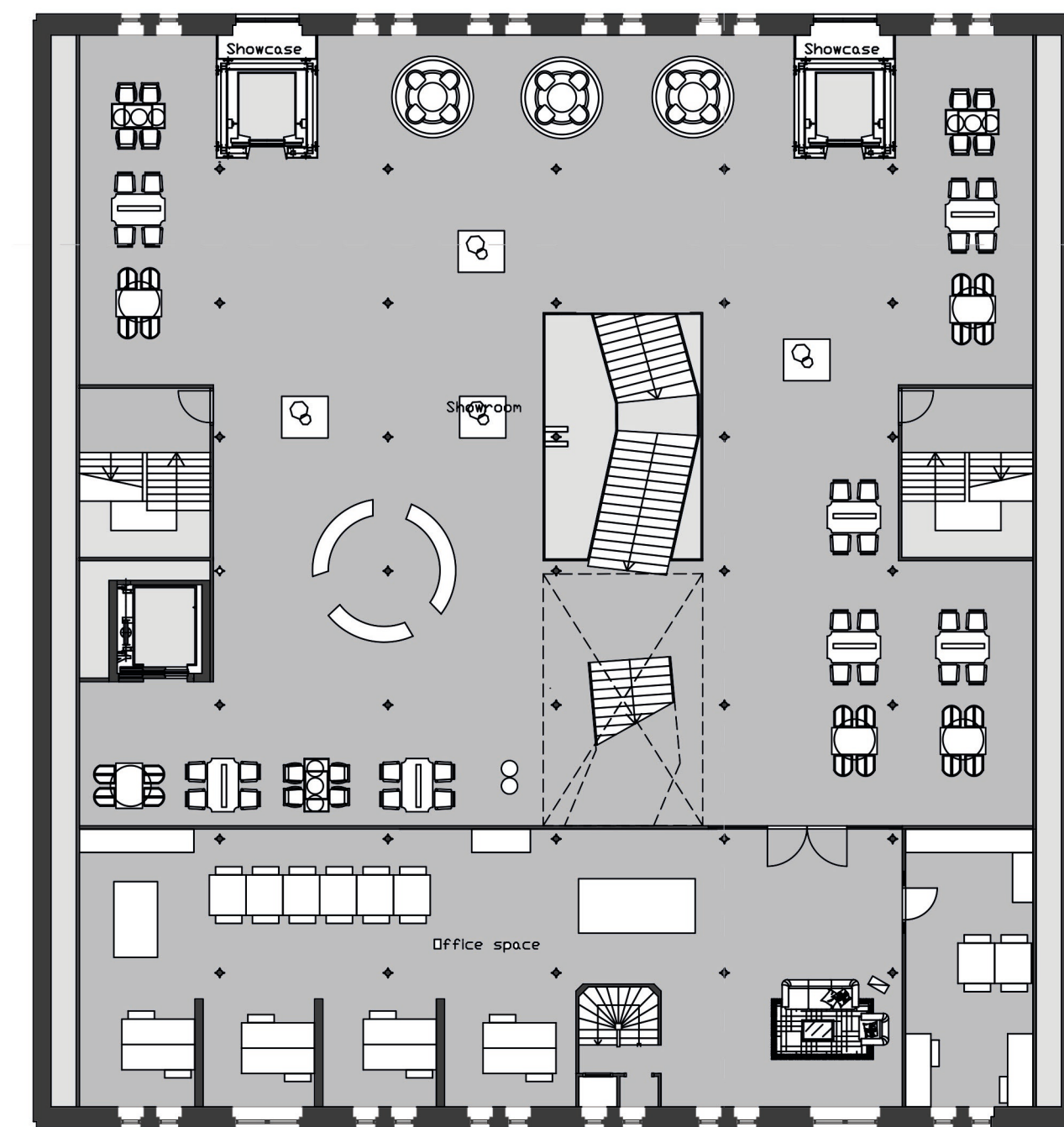
West/East facade



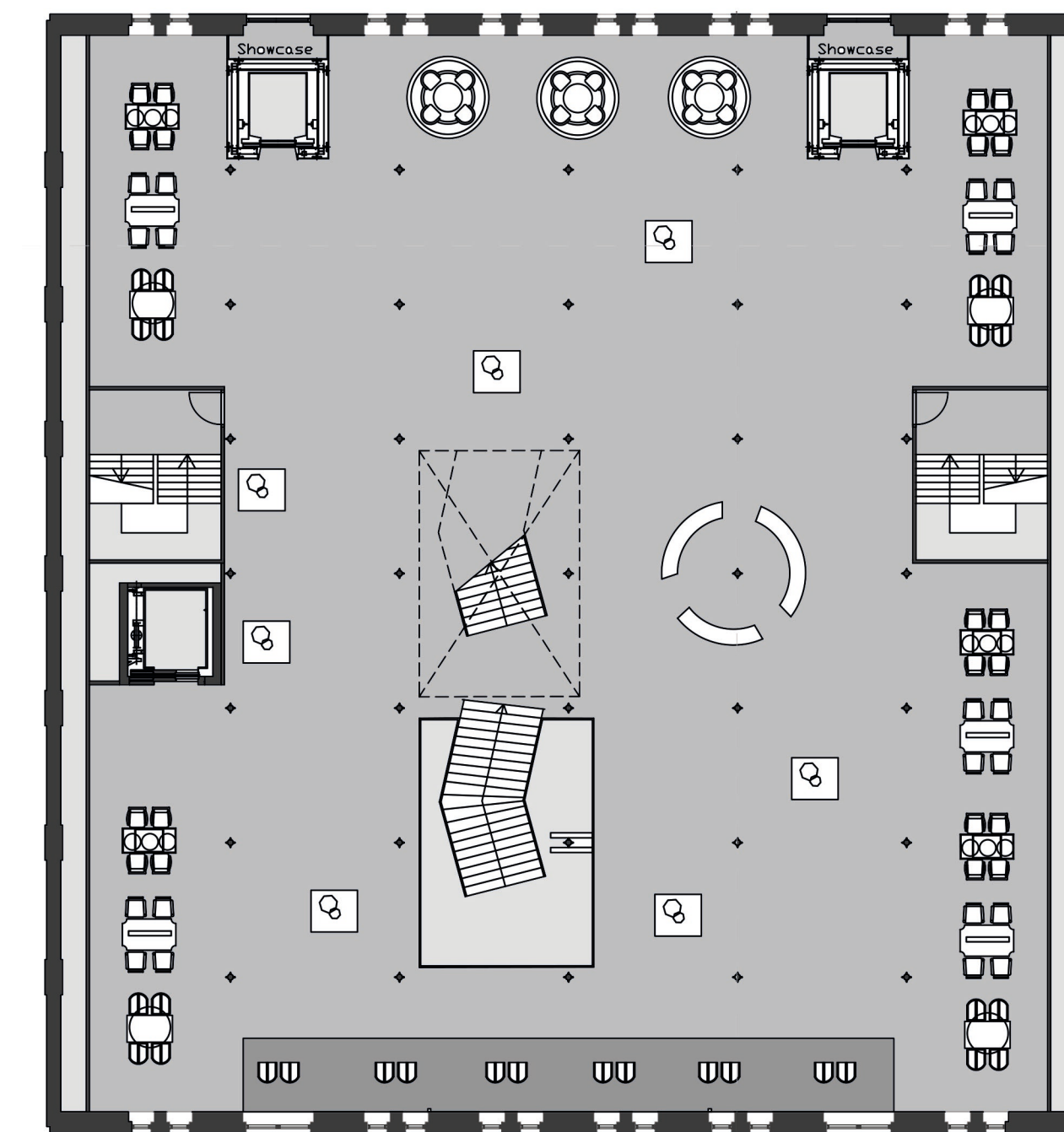
North facade



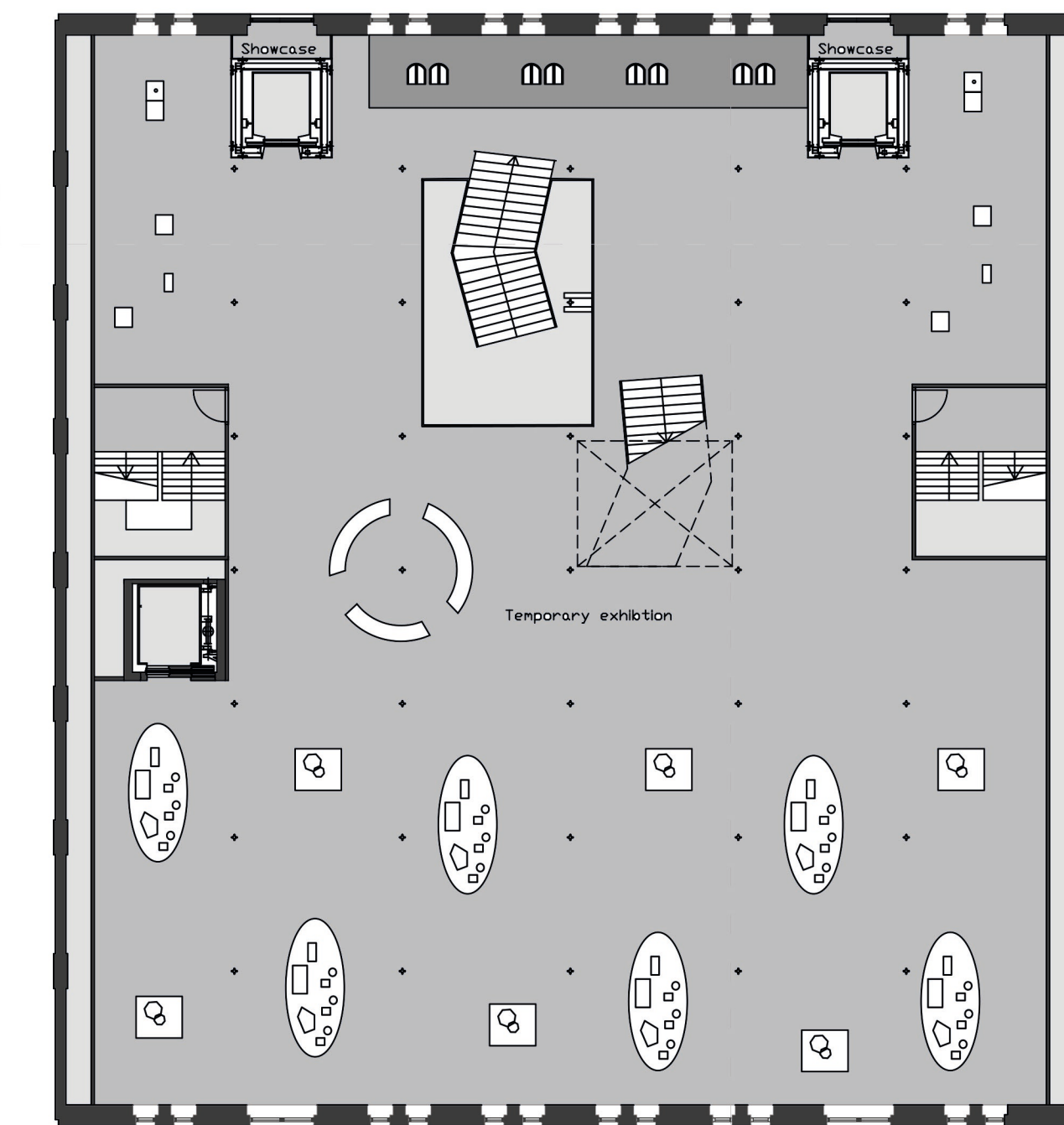
Ground floor



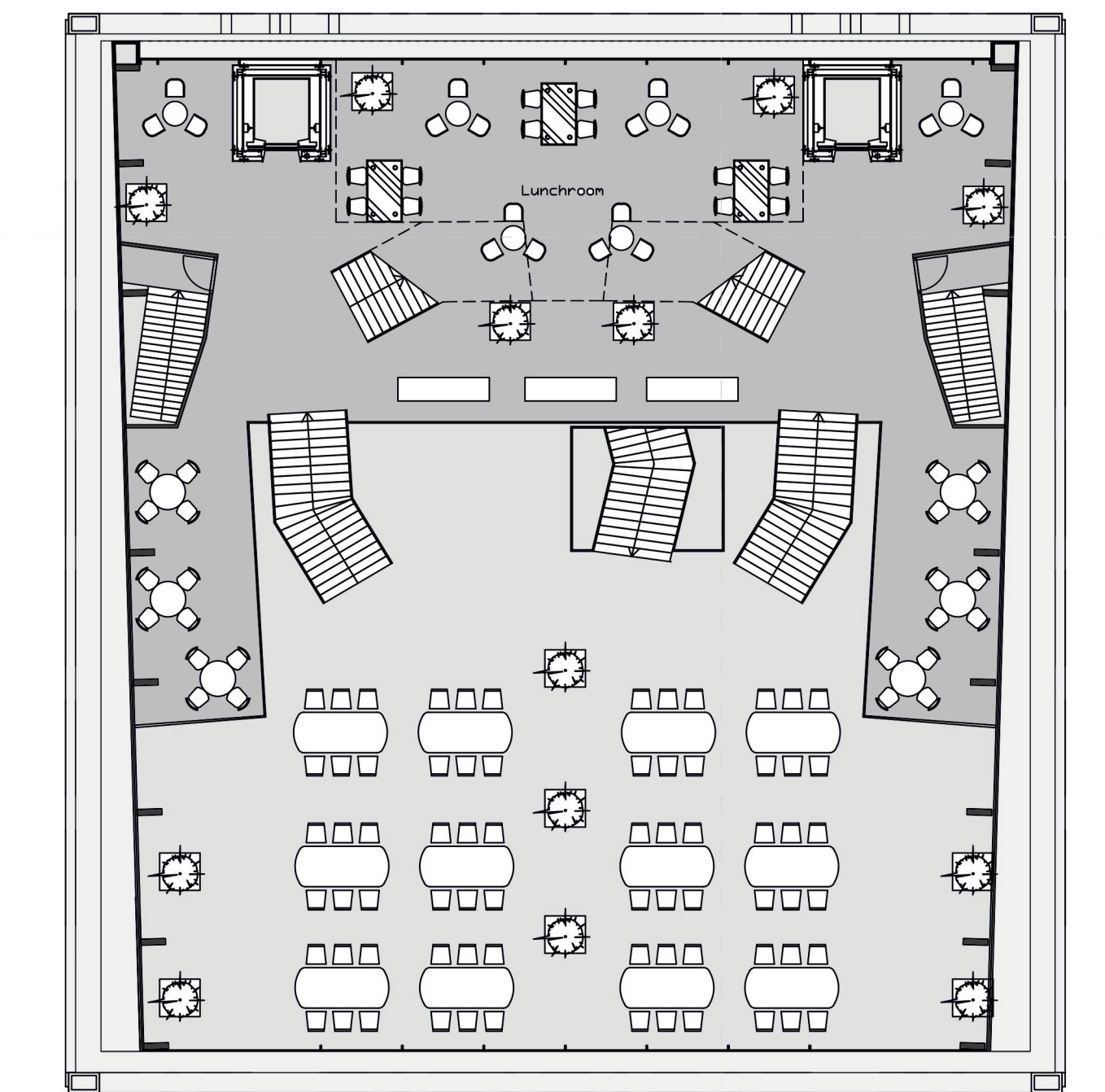
First floor



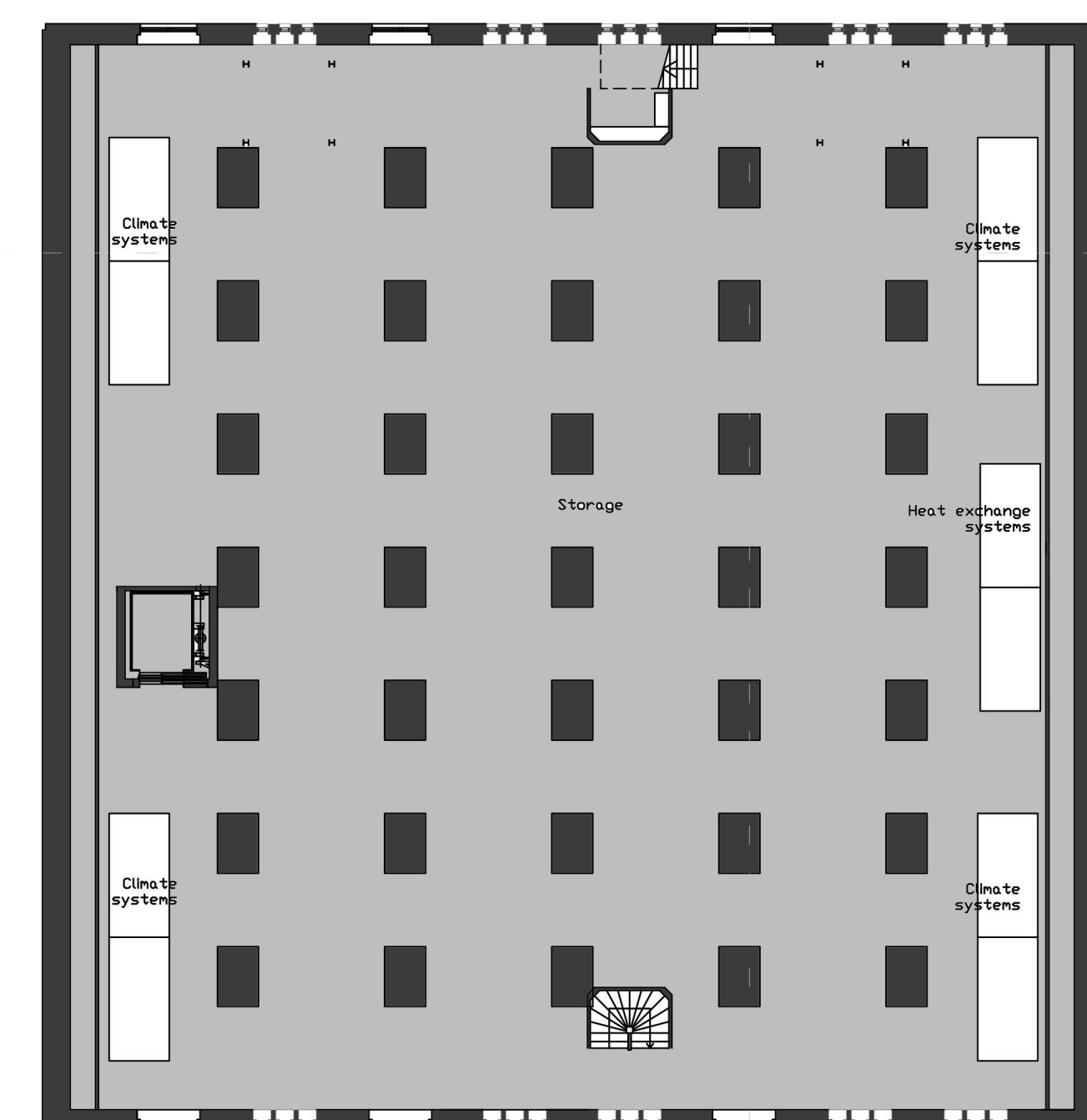
Third floor



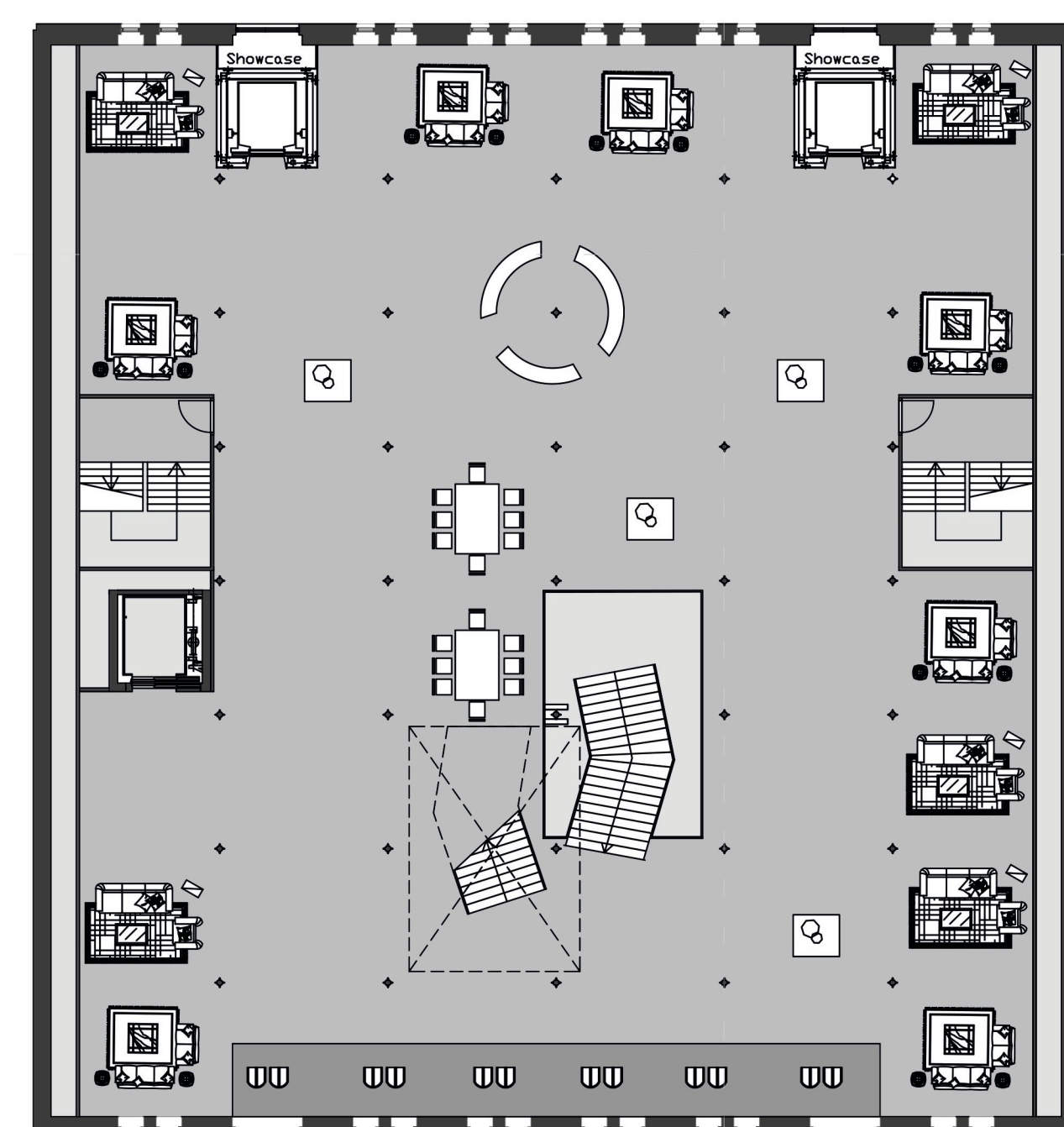
Fifth floor



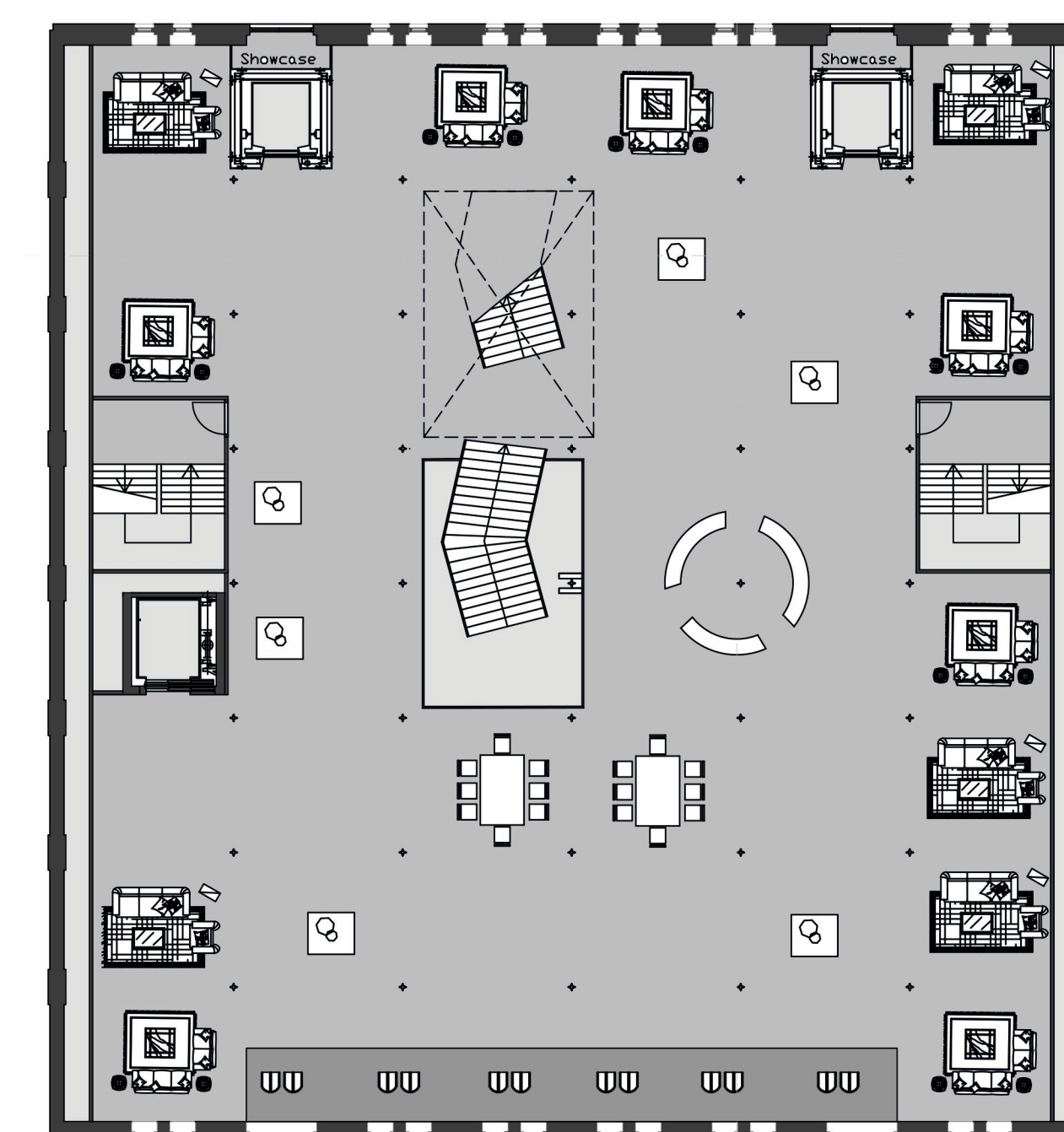
Seventh floor



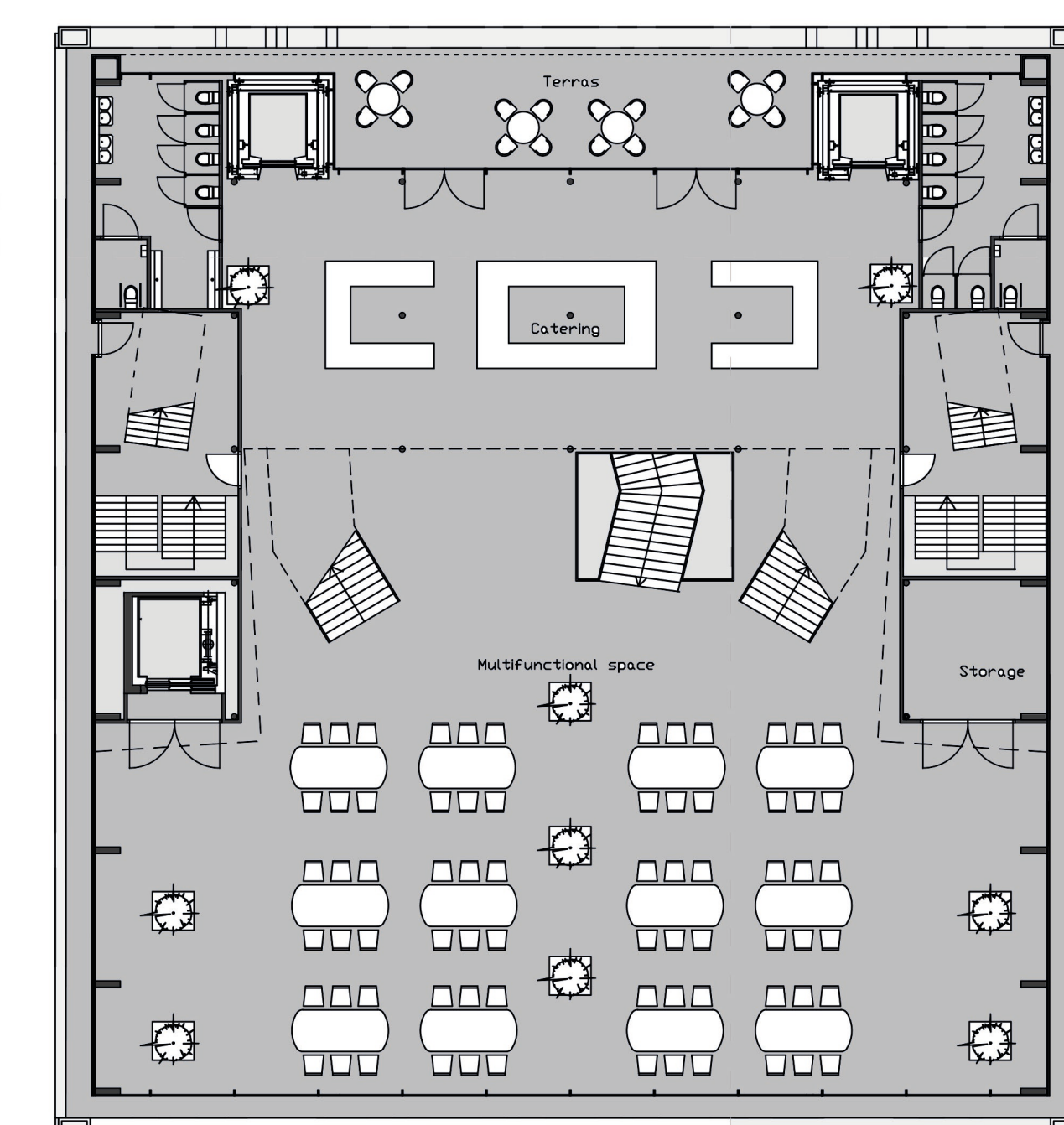
Basement



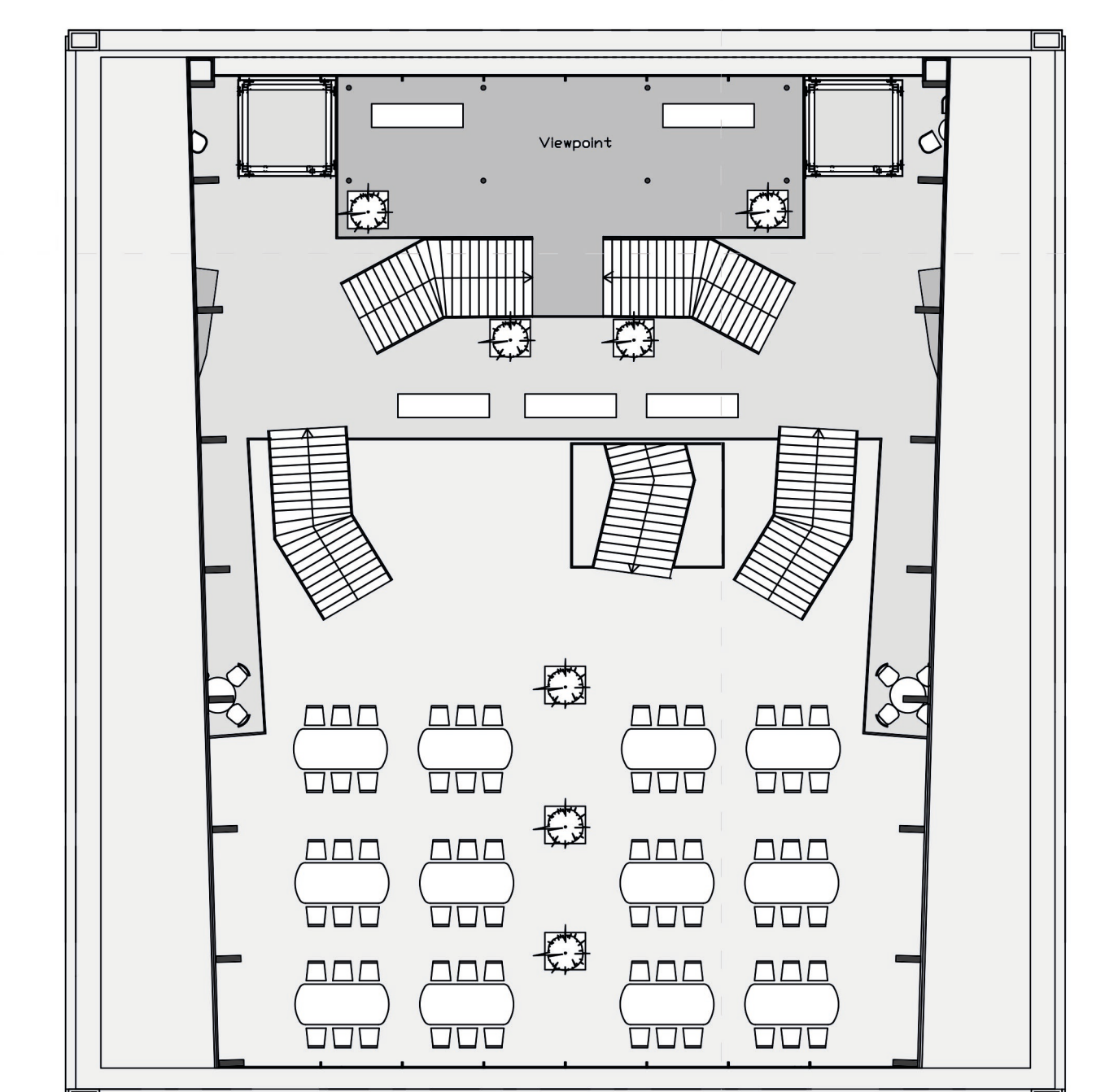
Second floor



Fourth floor



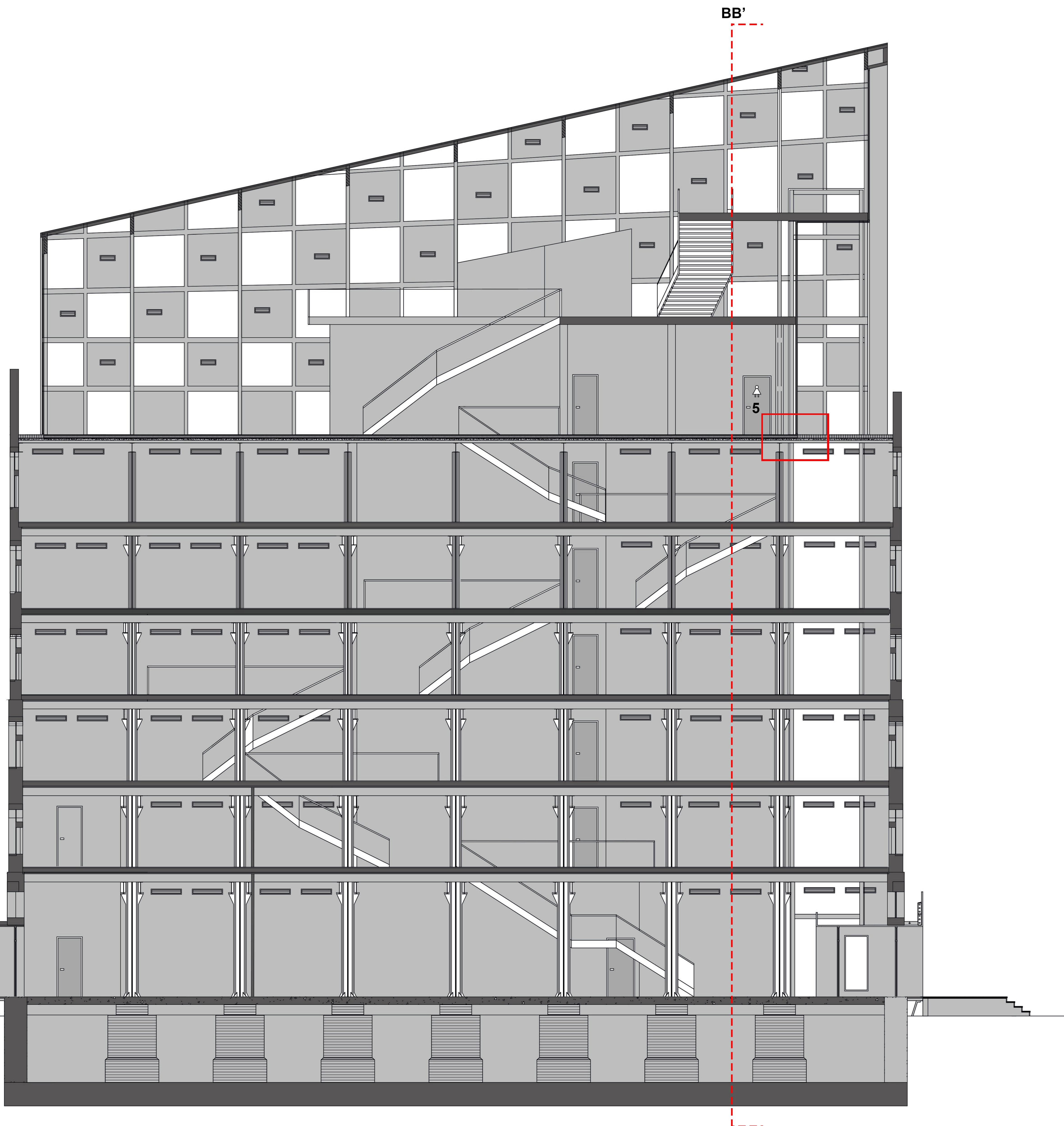
Sixth floor



Eighth floor

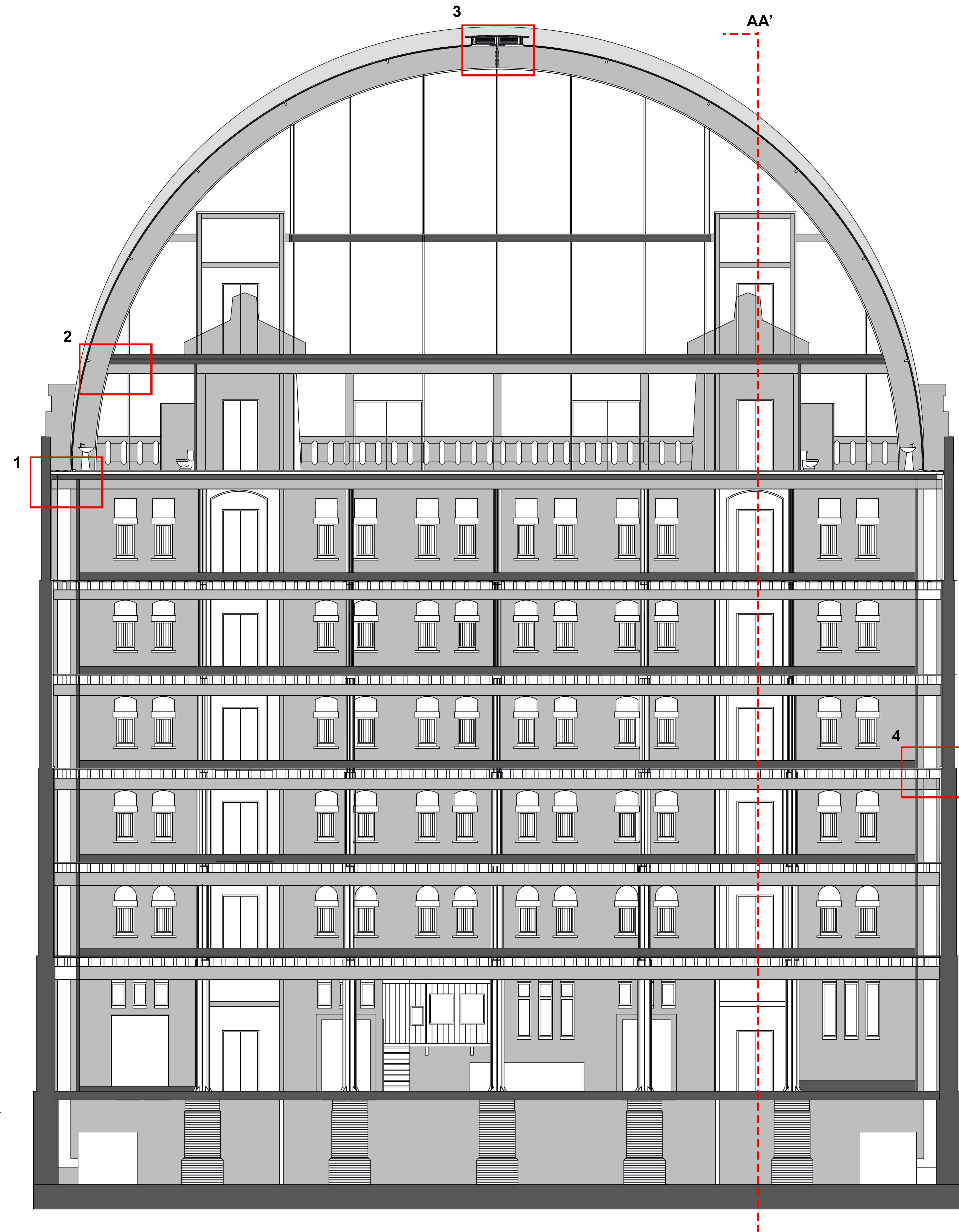
Scale 1:200

Sections



Section AA'

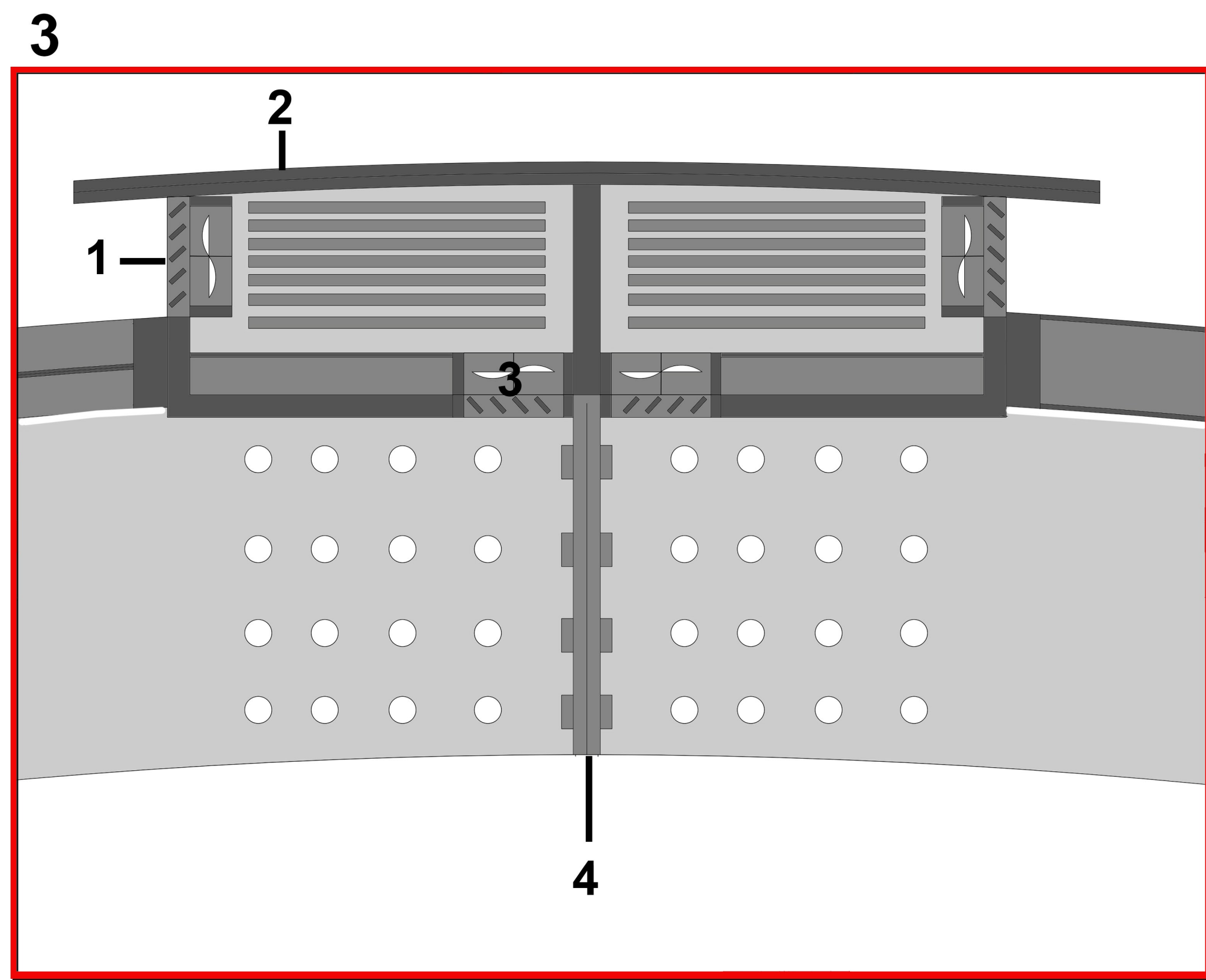
Scale 1:100



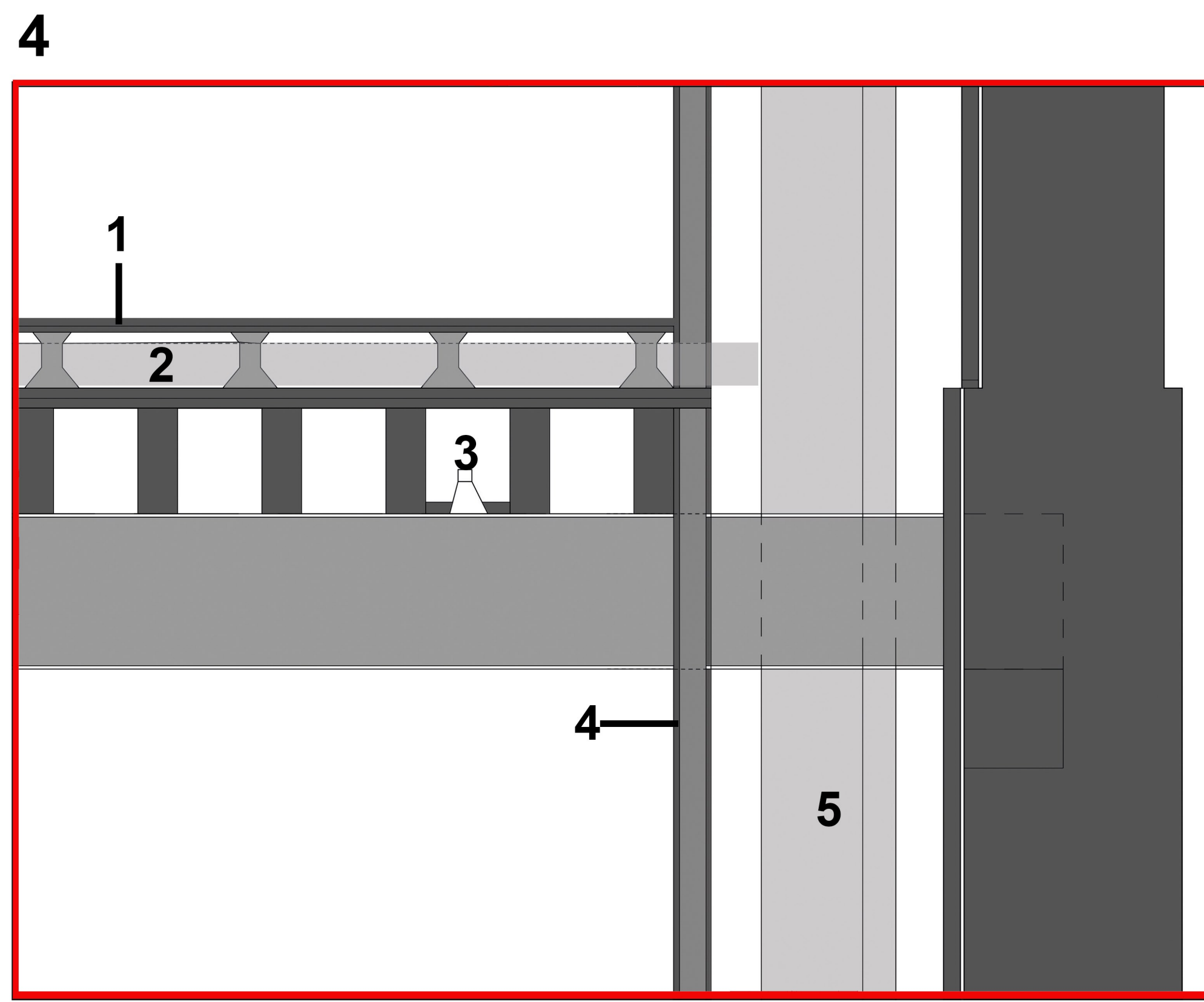
Section BB'

Scale 1:100

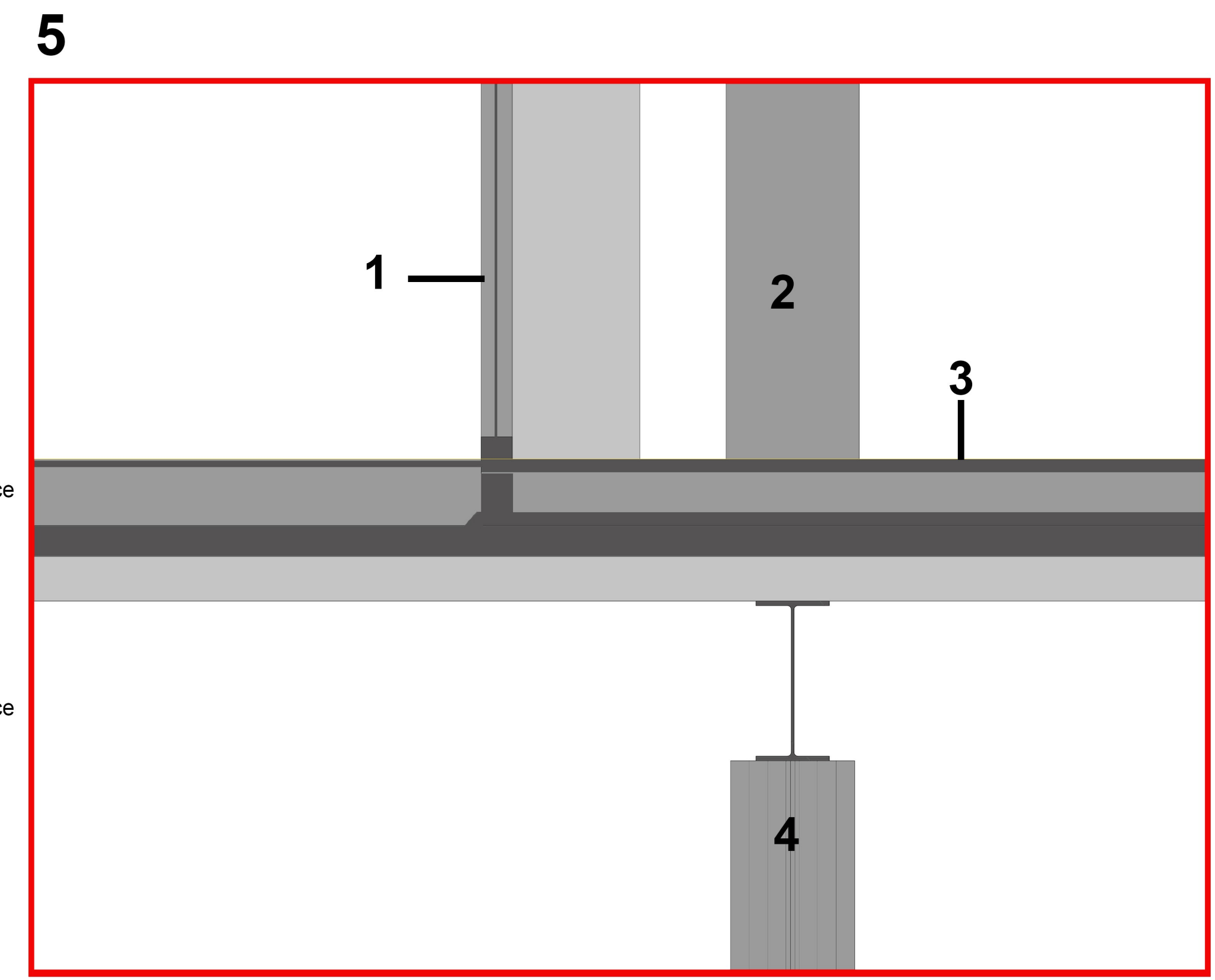
Fragment and Detail



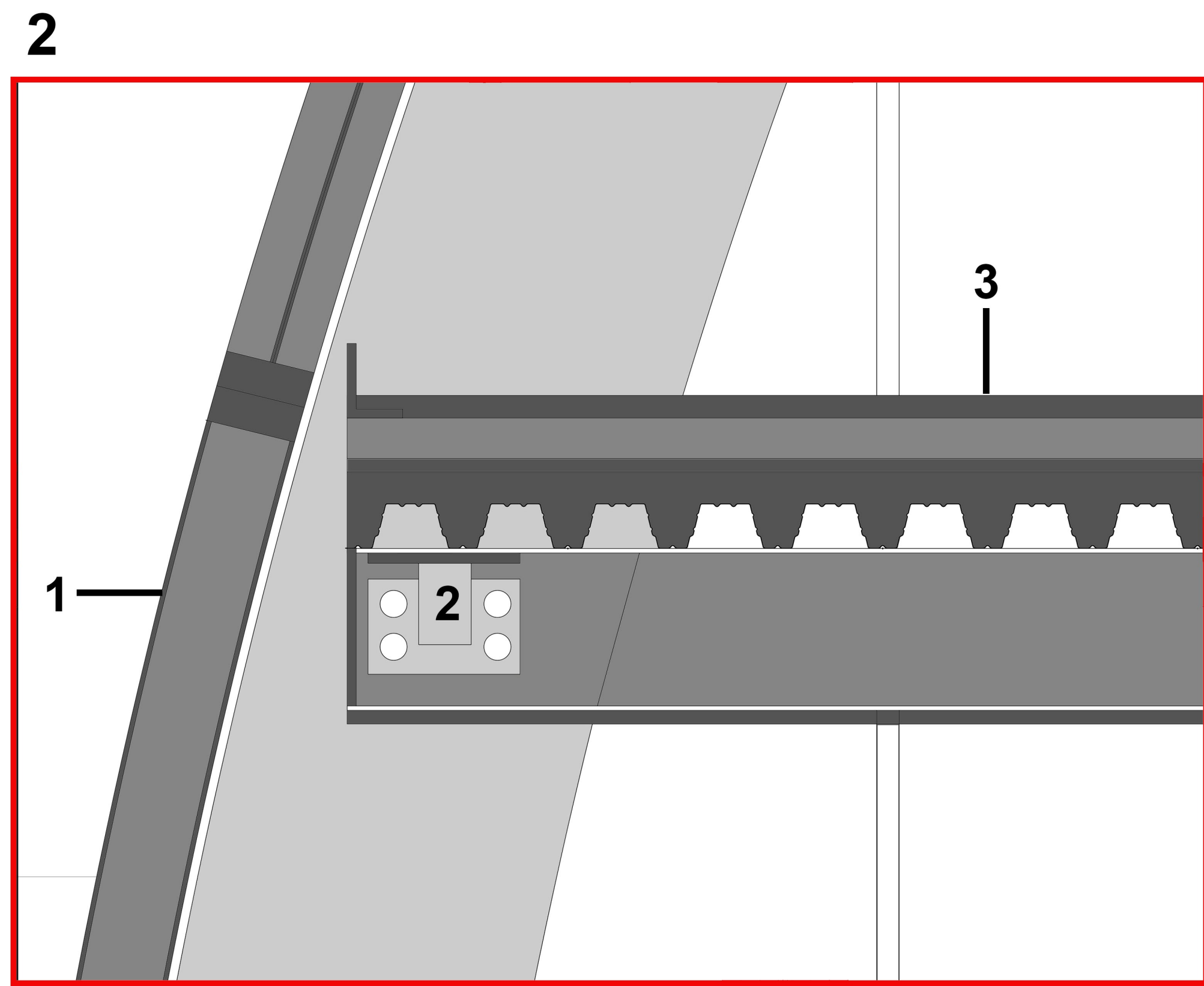
1. Steel air exhaust grating
Electric fan
Heat exchange air/water
2. 20mm Aluminium sheeting
16mm Curved aluminium frame
3. Steel air intake grating
Electric fan
4. 2x24mm Steel plate ending of the beams
bolted together



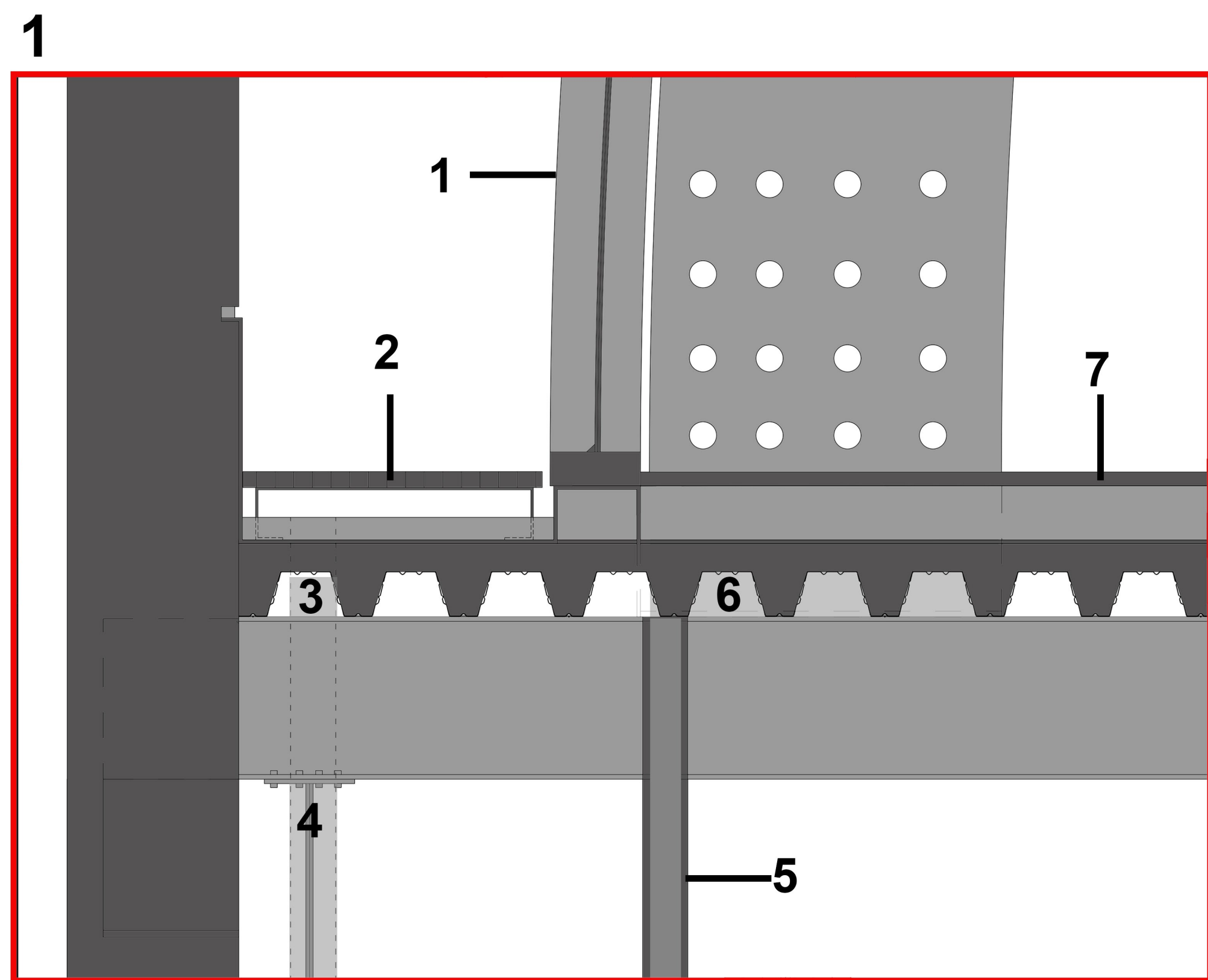
1. 3mm DGF polyetherane floor finish
2x10mm Plywood
170mm Plastic floor jack system
2x30mm Floor planks
120x360mm Floor beam
370mm Steel I-beam
2. 140mm Ventilation shaft
3. Light fixture
2x10mm Plywood
4. 10mm Plywood
80mm Thermal insulation
10mm Plywood
900mm Rear ventilation/showcase space
50mm Calsitherm moisture control
10mm Calsitherm cement
380mm Solid Brick
5. 10mm Plywood
80mm Thermal insulation
10mm Plywood
900mm Rear ventilation/showcase space
50mm Calsitherm moisture control
10mm Calsitherm cement
660mm Solid Brick



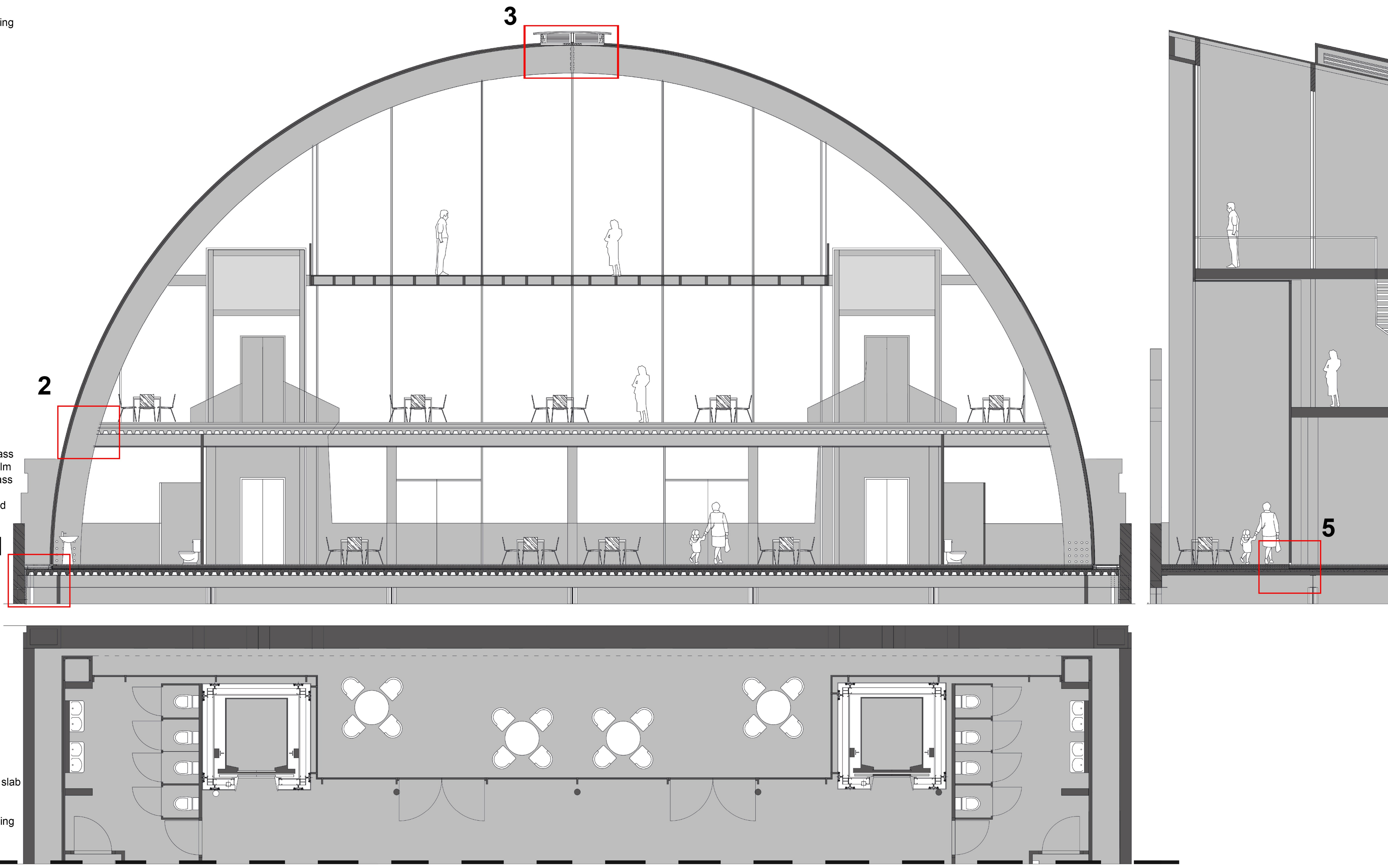
1. 70mm Aluminium frame
40x200mm Aluminium post
6mm Laminated safety glass
EVA film + PDLC switchable film + EVA film
8mm Laminated safety glass
2. Ø180mm Steel column
3. 3mm DGF polyetherane floor finish
30mm Lightweight concrete with floorheating
100mm Thermal insulation
60mm Dovetail composite floor deck
360mm Steel I-Beam
4. Ø180mm Cast-iron phoenix column



1. 200mm Aluminium post-and-rail frame
6mm Laminated double curved safety glass
EVA film + PDLC switchable film + EVA film
8mm Laminated double curved safety glass
5-15mm Steel distancer, coated
200x800mm Glue laminated timber beam, arched
2. Steel floor support bolted onto the timber beam
3. 3mm DGF polyetherane floor finish
30mm Lightweight concrete with floorheating
10mm Plywood
100mm Thermal insulation
160mm Dovetail composite floor deck
340mm Technical space
10mm Plywood
20mm Plaster finish



1. 200mm Aluminium post-and-rail frame
6mm Laminated double curved safety glass
EVA film + PDLC switchable film + EVA film
8mm Laminated double curved safety glass
5-15mm Steel distancer, coated
200x800mm Glue laminated timber beam, arched
2. 36mm Stainless steel grating
12mm Stainless steel drainage box
50mm Thermal insulation
Bituminous sealant
160mm Reinforced composite floor slab
360mm Steel I-beam
3. Ø100mm Drainage pipe
4. 16mm Steel tension plate
5. 10mm Plywood
80mm Thermal insulation
10mm Plywood
900mm Rear ventilation/showcase space
50mm Calsitherm moisture control
10mm Calsitherm cement
380mm Solid Brick
6. Steel brace bolted onto the steel dovetail slab
7. 3mm DGF polyetherane floor finish
30mm Lightweight concrete with floorheating
100mm Thermal insulation
160mm Dovetail composite floor deck
10mm Plywood
360mm Steel I-Beam



Scale 1:10

Scale 1:50