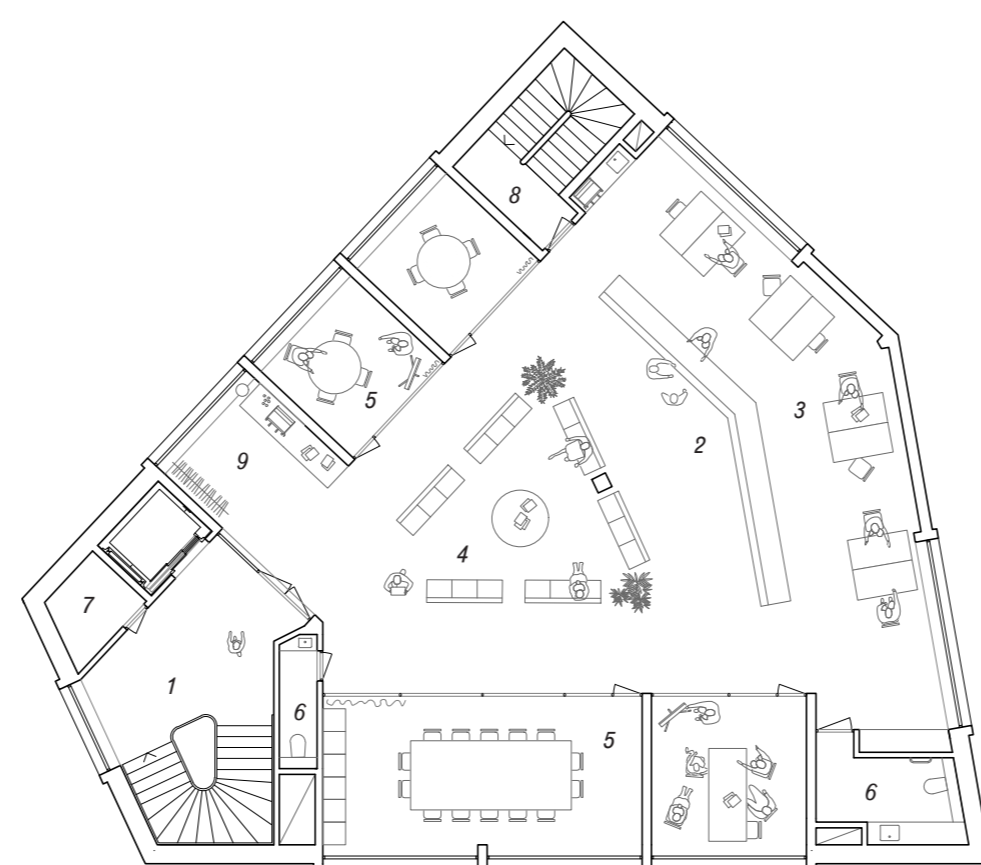


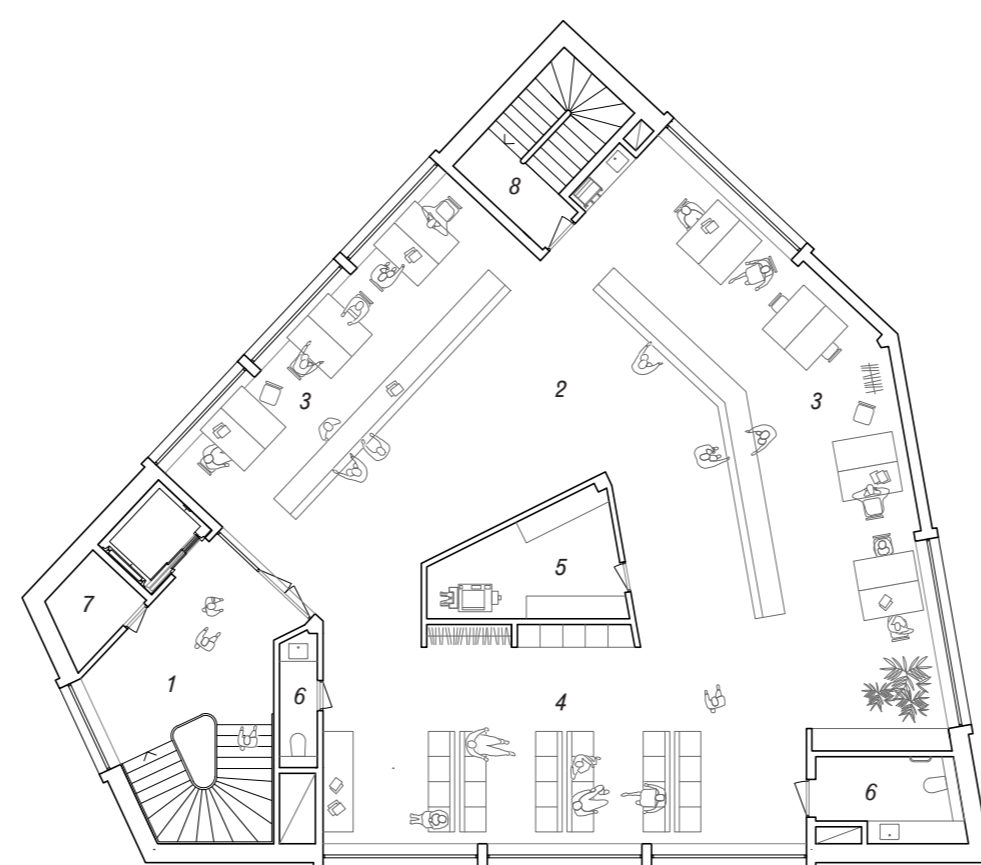
Third floor - Event room (Burgerzaal)

- 1 Foyer
- 2 Main space
- 3 Wardrobe
- 4 Storage
- 5 WC
- 6 Emergency stairs



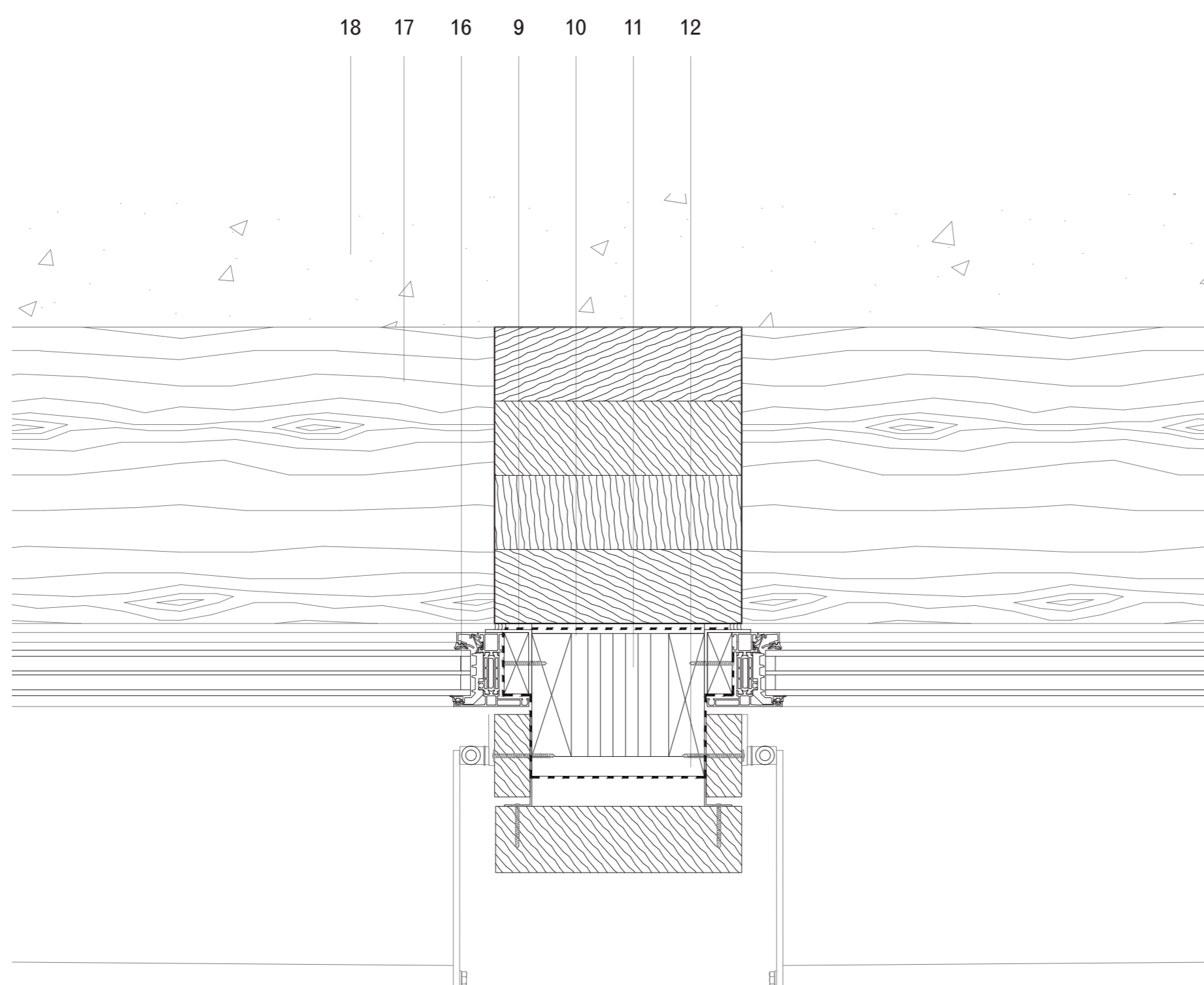
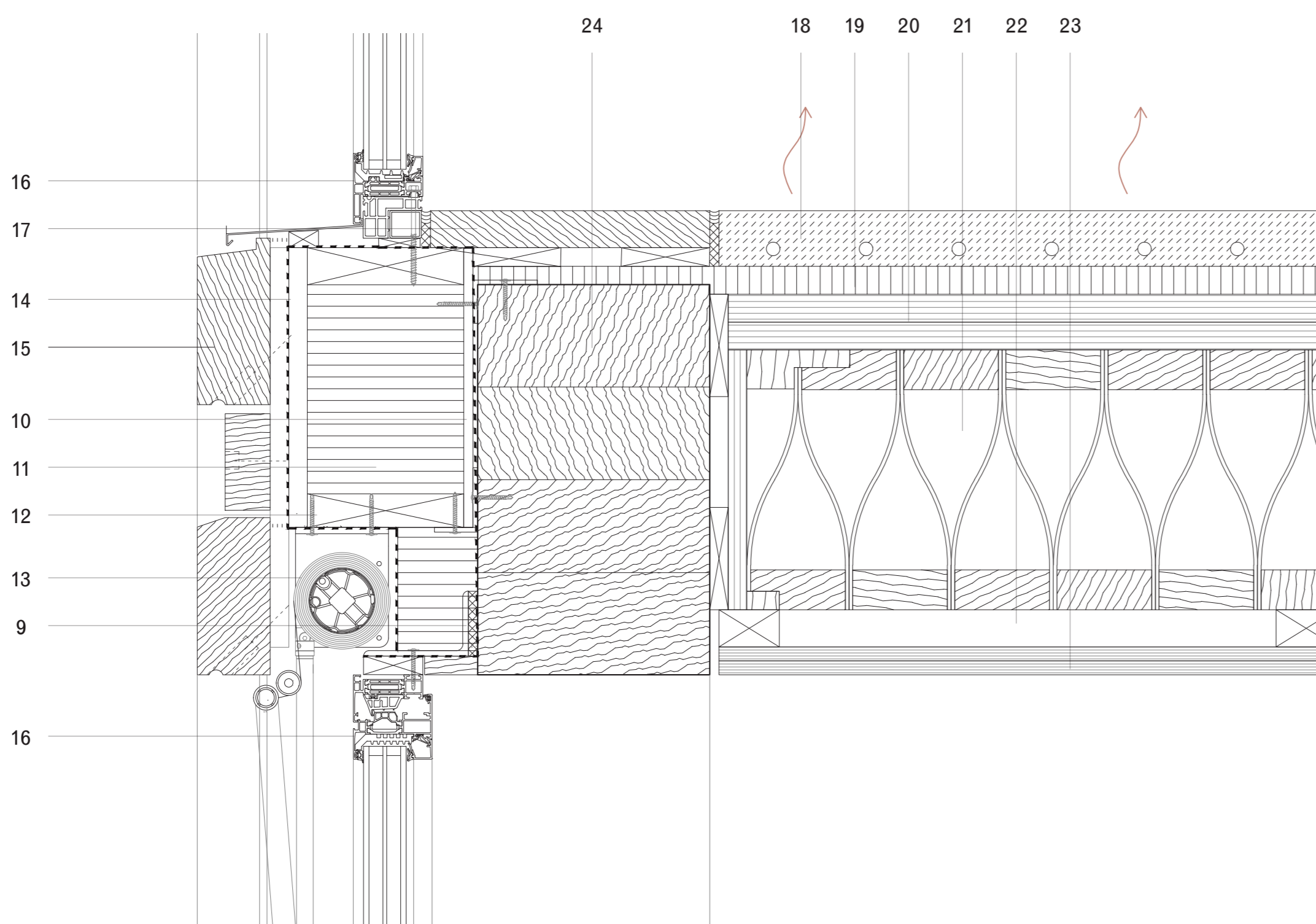
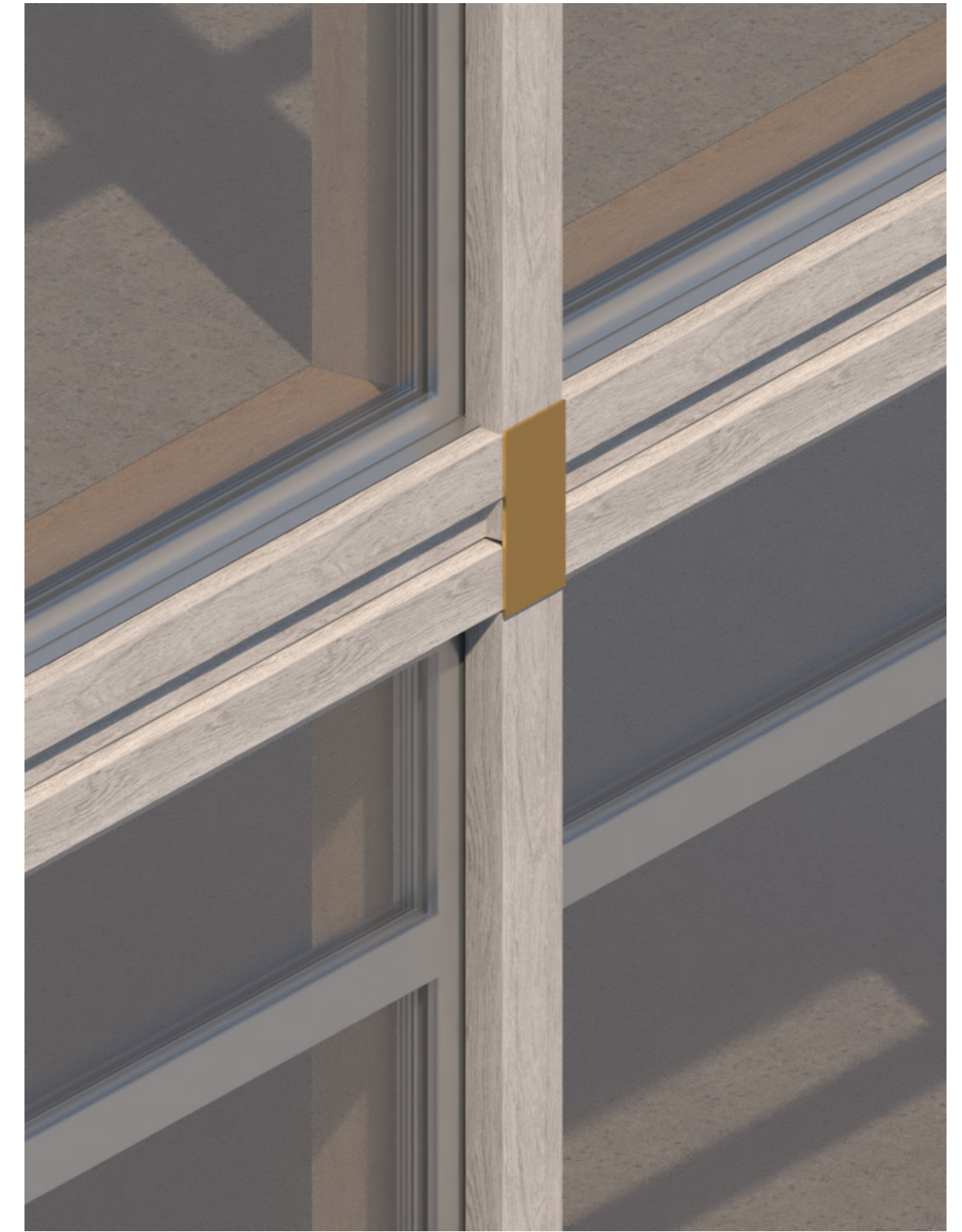
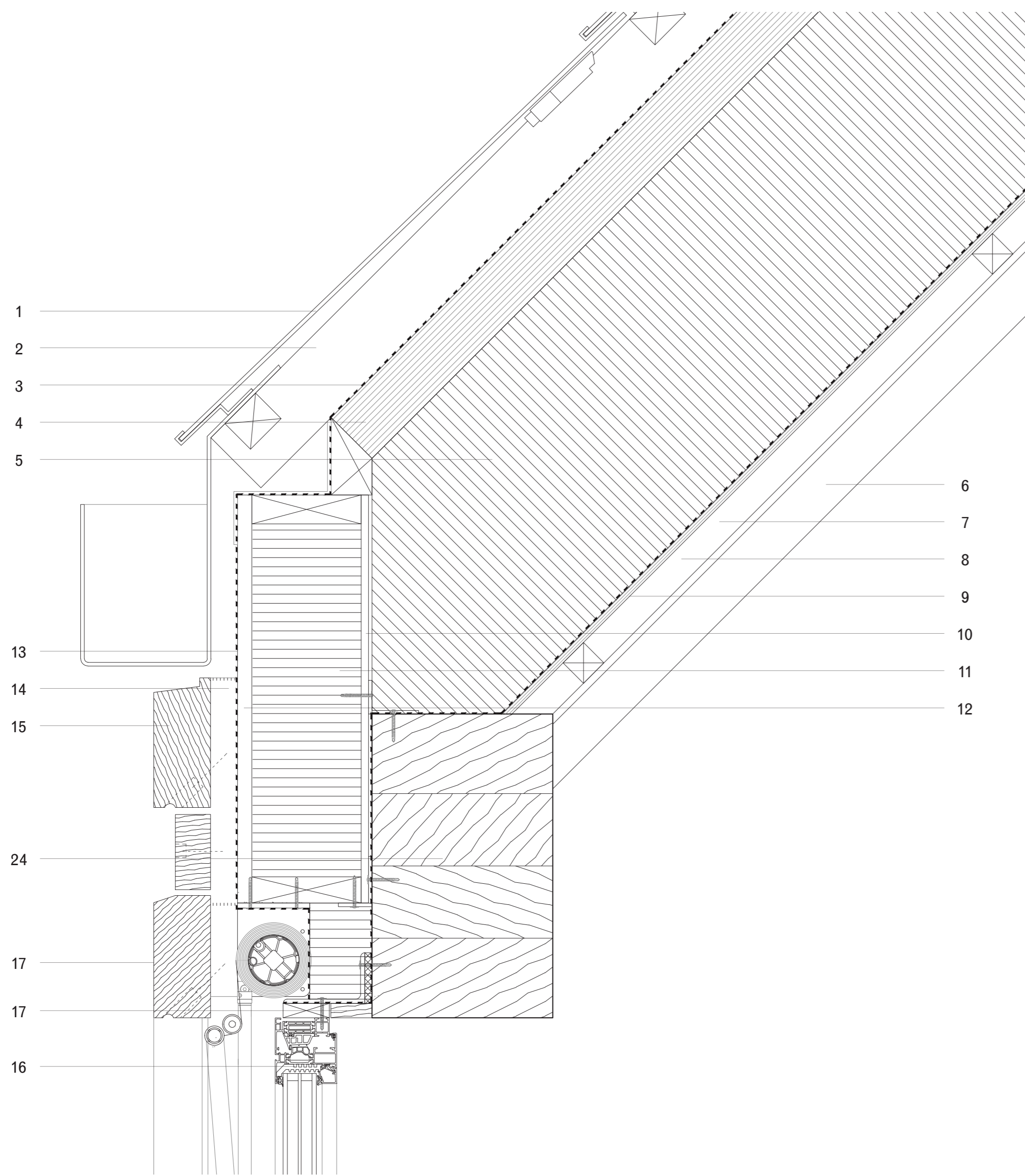
Second floor - Official meetings

- 1 Foyer
- 2 Counter area
- 3 Workstations | Office
- 4 Waiting area
- 5 Meeting rooms
- 6 WC
- 7 Cleaner's closet
- 8 Emergency stairs
- 9 Coffee corner | Wardrobe



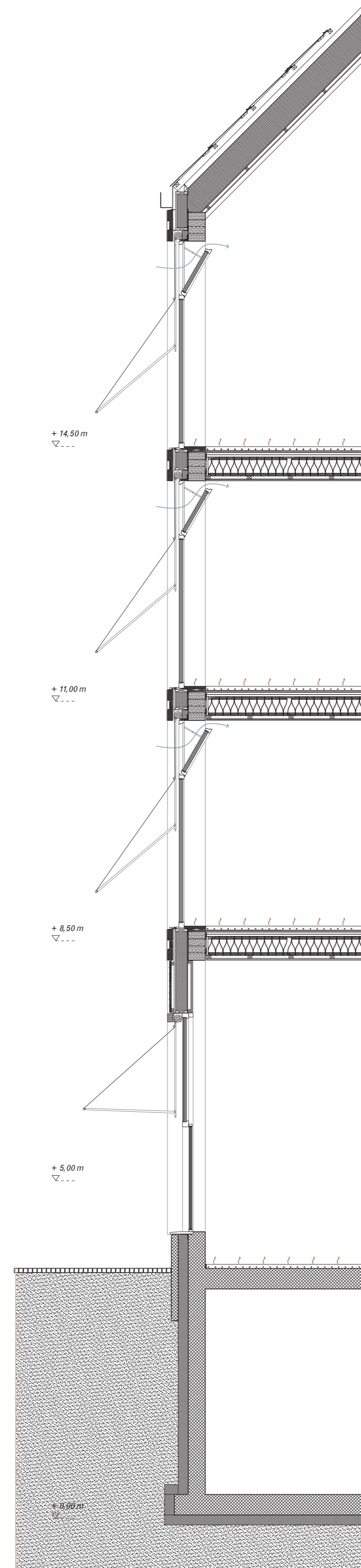
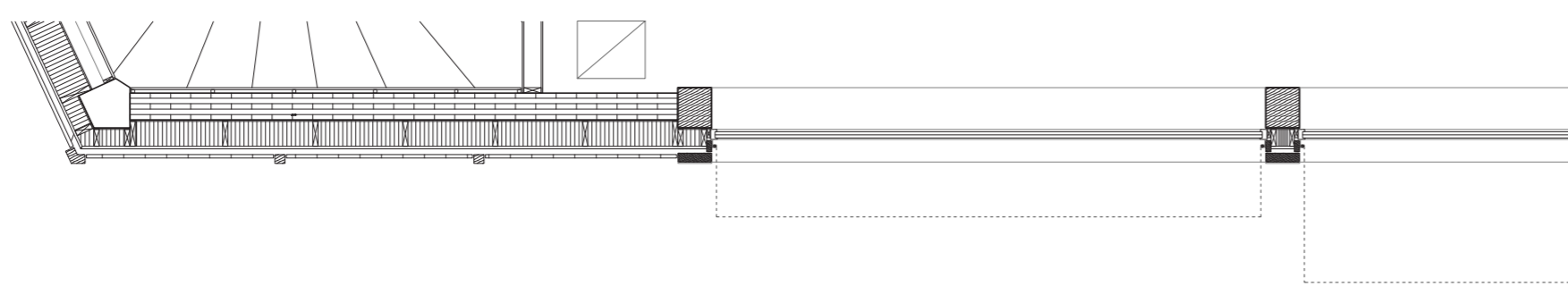
First floor - Transactions (Burgerzaken)

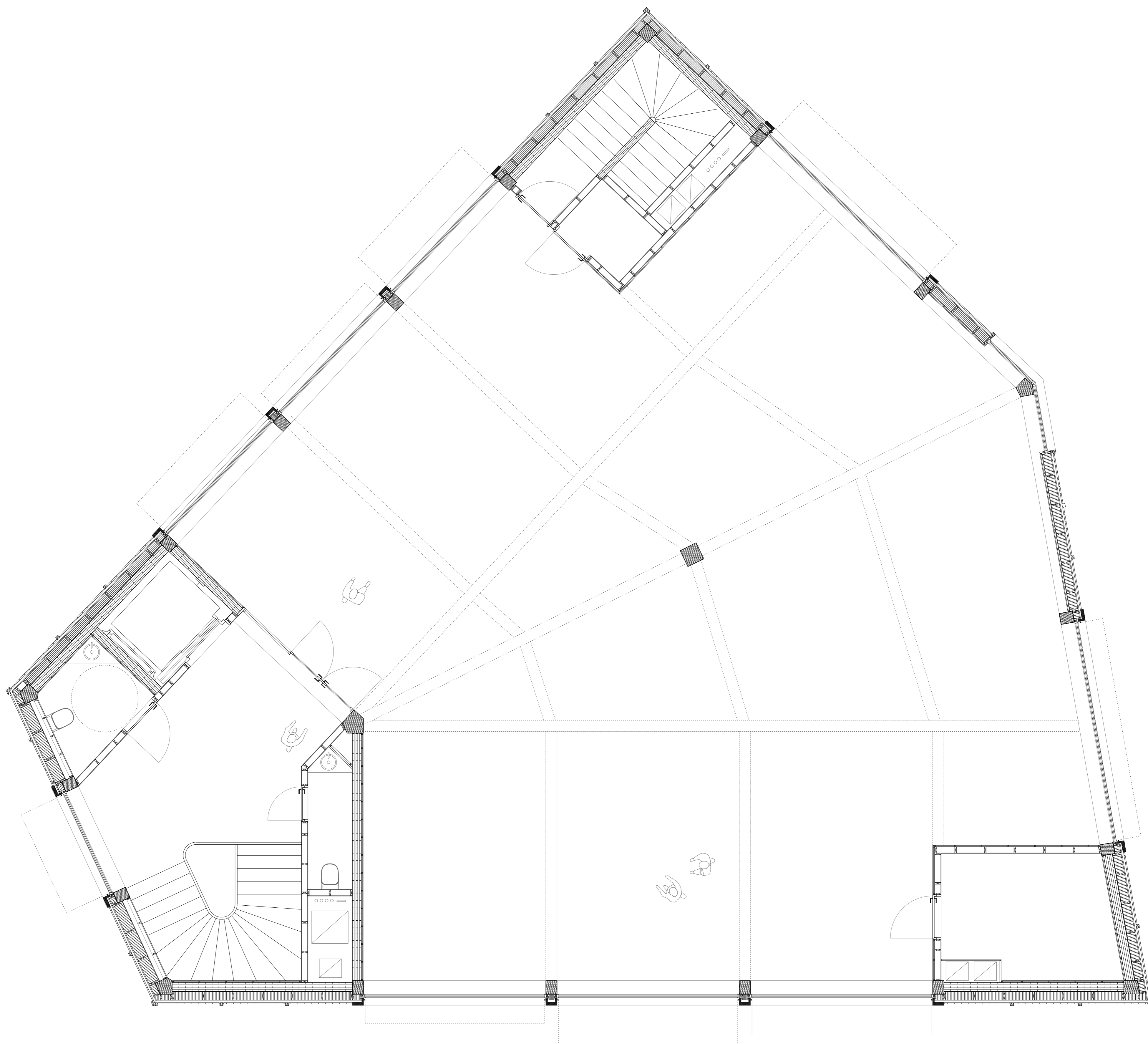
- 1 Foyer
- 2 Counter area
- 3 Workstations | Office
- 4 Waiting area
- 5 Stationery | Storage | Post
- 6 WC
- 7 Cleaner's closet
- 8 Emergency stairs



Legend

- 1 PV Panels 60mm
- 2 Batten support / ventilation 40mm
- 3 Waterproofing 1mm
- 4 Hardboard 80mm
- 5 Insulation (between rafters) 370mm
- 6 Rafters 500x250mm
- 7 Batten support / cavity 40mm
- 8 Brushed plywood finish 15mm
- 9 Vapour barrier
- 10 OSB-panel (vapour tight) 12mm
- 11 Insulation 200mm
- 12 Bitumen-impregnated fibreboard 18mm
- 10-11-12 Insulated timber platform element
- 13 Waterproofing
- 14 Battens/ventilation cavity 20mm
- 15 Oak (untreated)
- 16 Schüco window (triple glazing)
- 17 Oak reveal
- 18 Terrazzo screed heating 60mm
- 19 Footfall insulation 30mm
- 20 2-layer plywood bracing, seams overlapping 60mm
- 21 Kielsteg 280 slab element 280mm
- 22 Installation cavity 50mm
- 23 Double gypsum plaster board with brushed calico finish 35mm
- 24 Glulam beam 420x250mm
- 25 Glulam column 300x25015mm
- 26 Awning

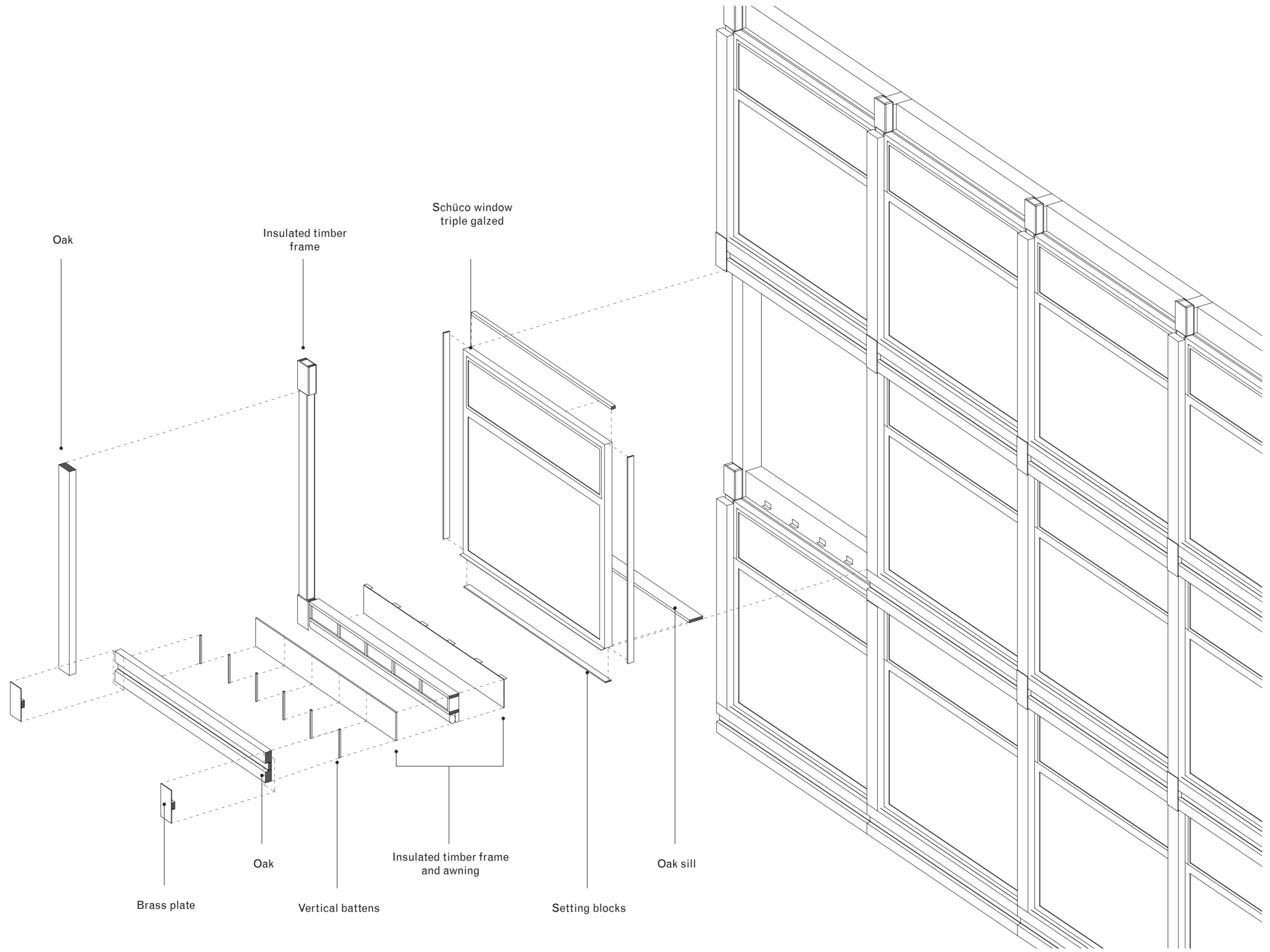






First floor - Transactions (Burgerzaken)

- 1 Foyer
- 2 Café / Commercial space
- 3 Ticket office
- 4 Passage
- 5 Cleaner's closet
- 6 WC
- 7 Emergency egress



Oak

Insulated timber frame

Schüco window triple galzed

Brass plate

Oak

Vertical battens

Insulated timber frame and awning

Setting blocks

Oak sill