

Mycomorphosis

Access to Tools for Urban Waste Flows

Migration of Mycoremediation

Thanat Prathnadi 5027918

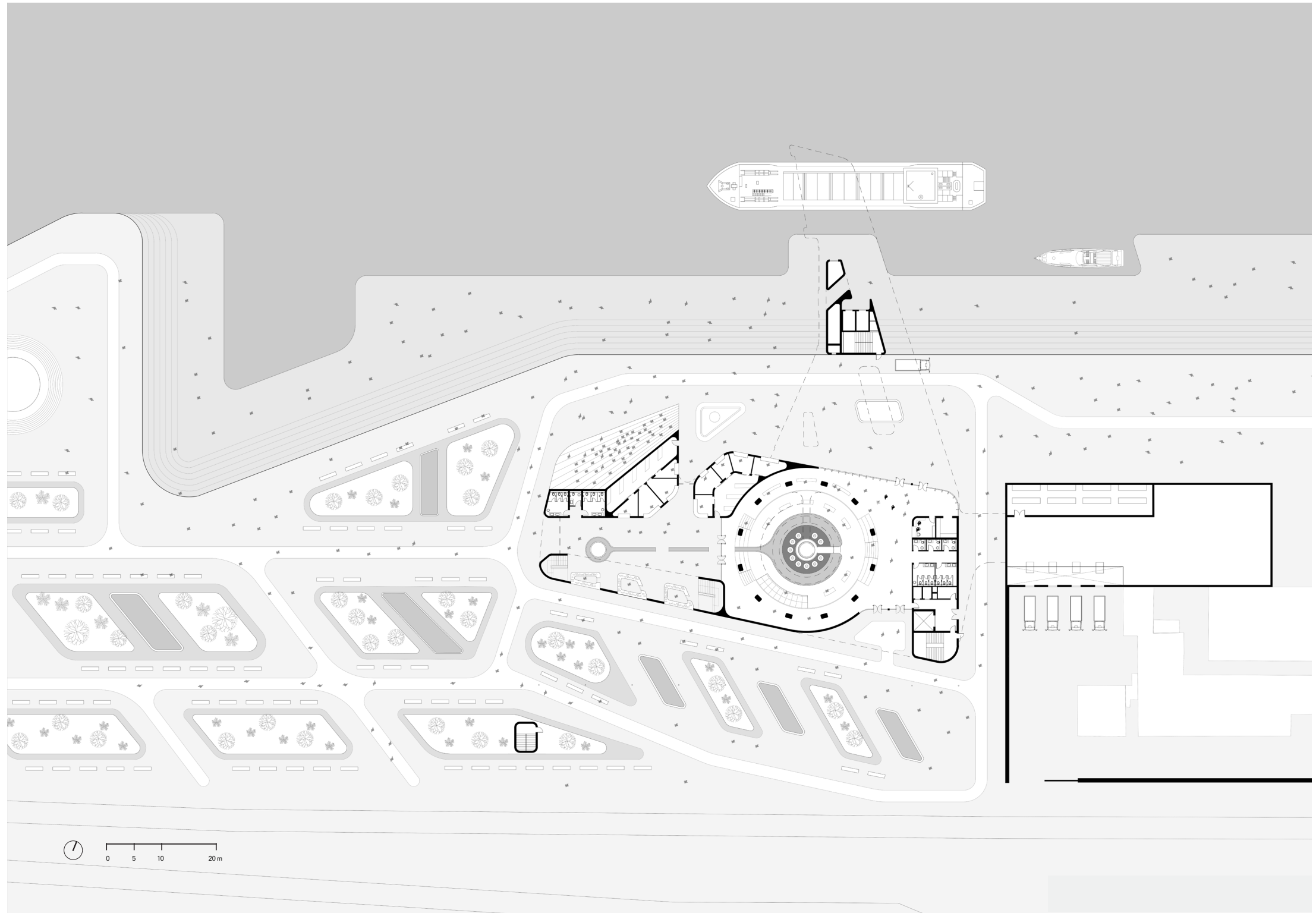
Drawing Set

Group Site Plan



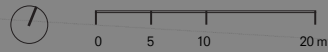
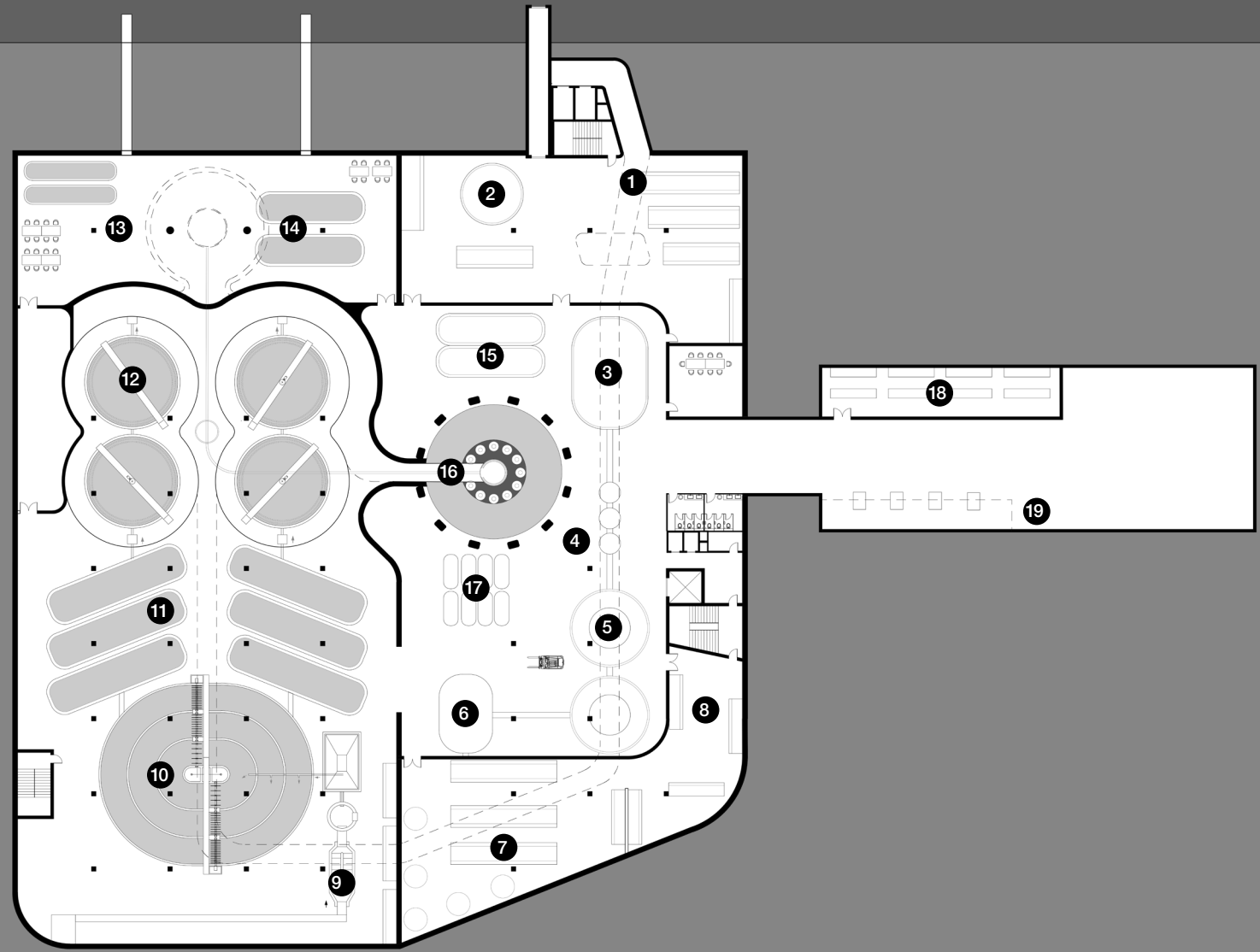
Site Plan



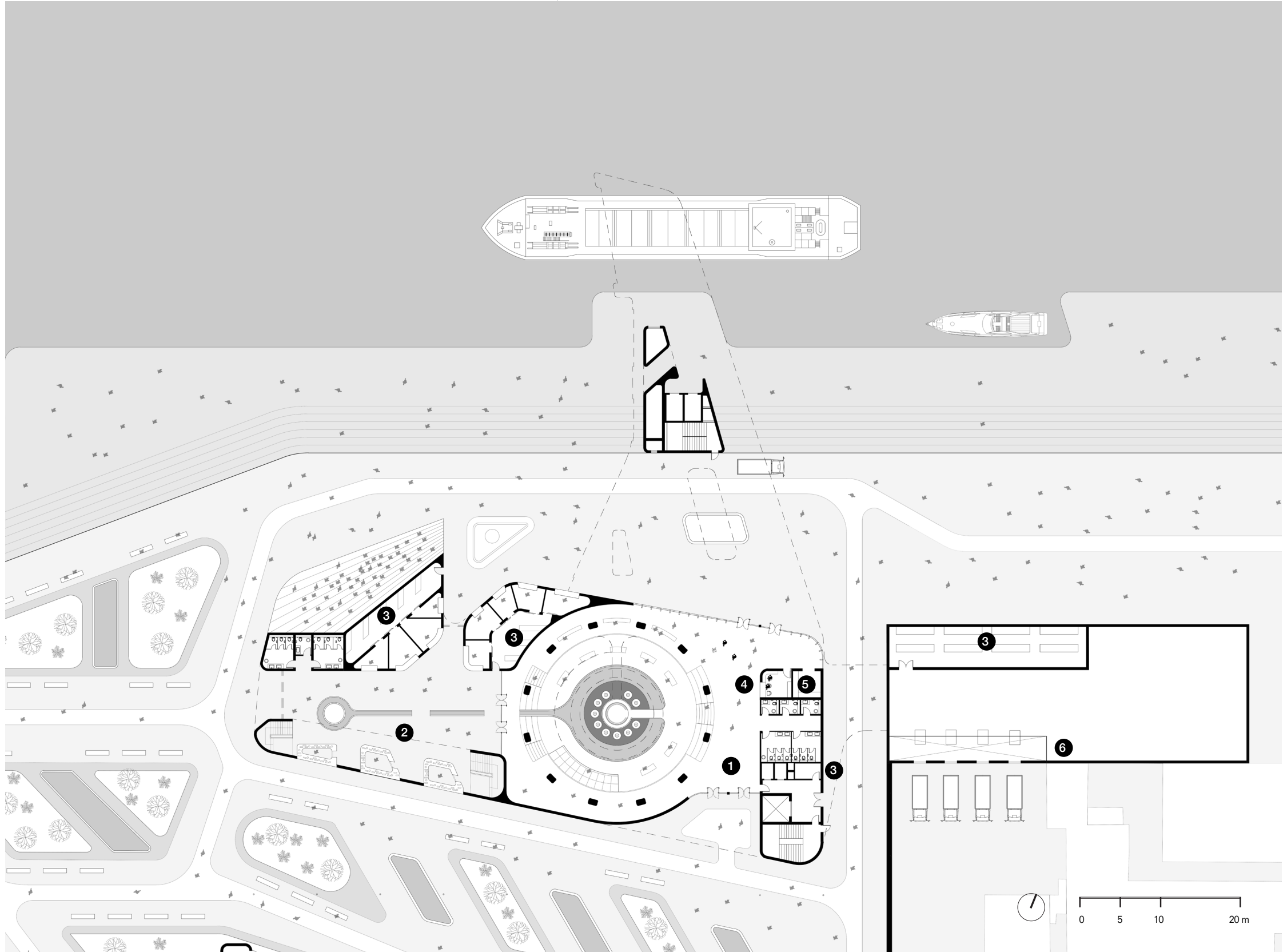


Underground Plan

- 1 tour starts
- 2 organic waste sorting
- 3 mixing tank
- 4 pasteurization
- 5 anaerobic digester
- 6 storage tank
- 7 generator
- 8 mechanical room
- 9 grit chamber
- 10 primary clarifier
- 11 aeration tank
- 12 secondary clarifier
- 13 mycofiltration
- 14 mycoremediation
- 15 sludge
- 16 tour ends
- 17 CO₂/O₂
- 18 storage
- 19 logistics

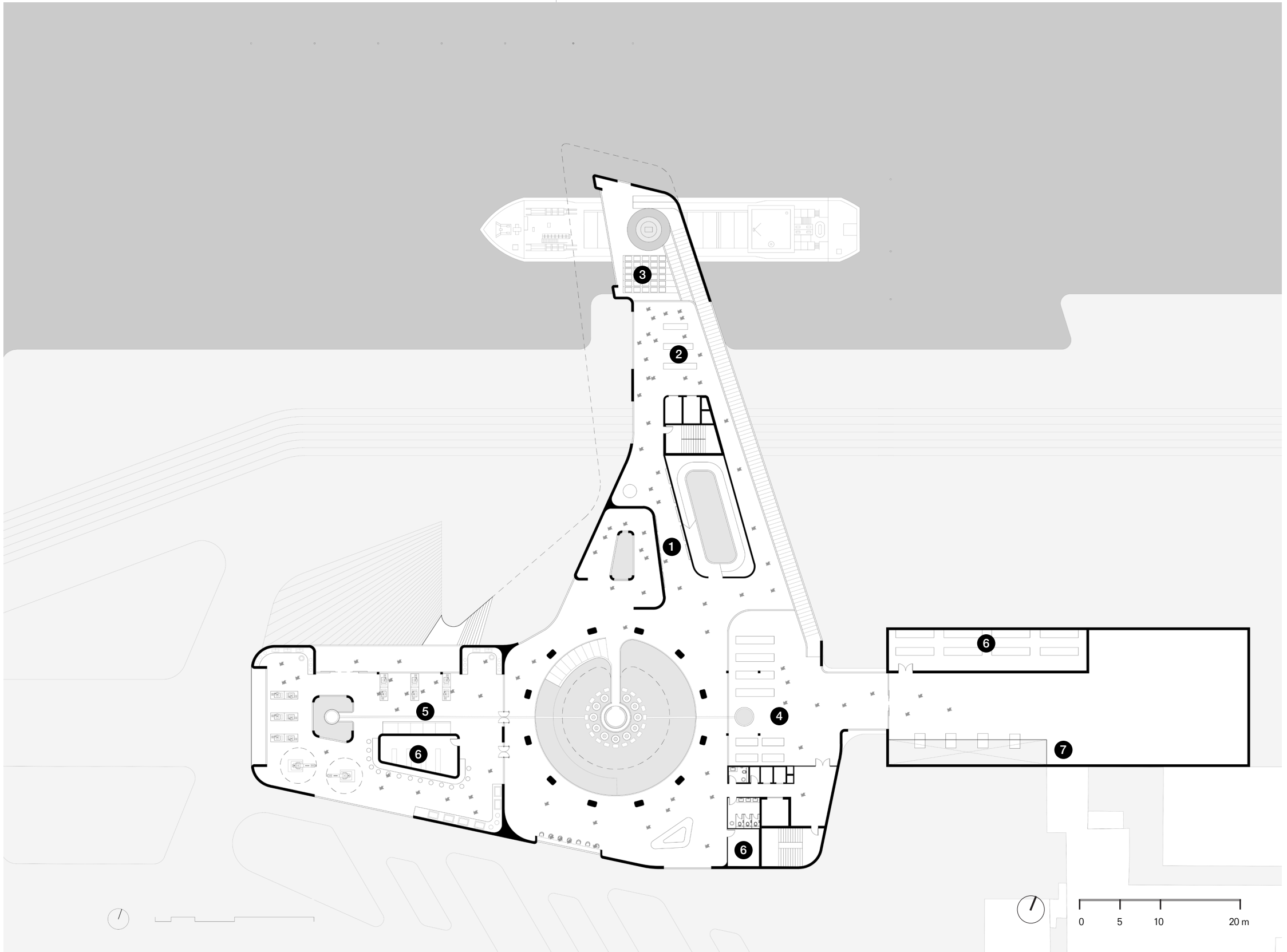


Ground Floor Plan



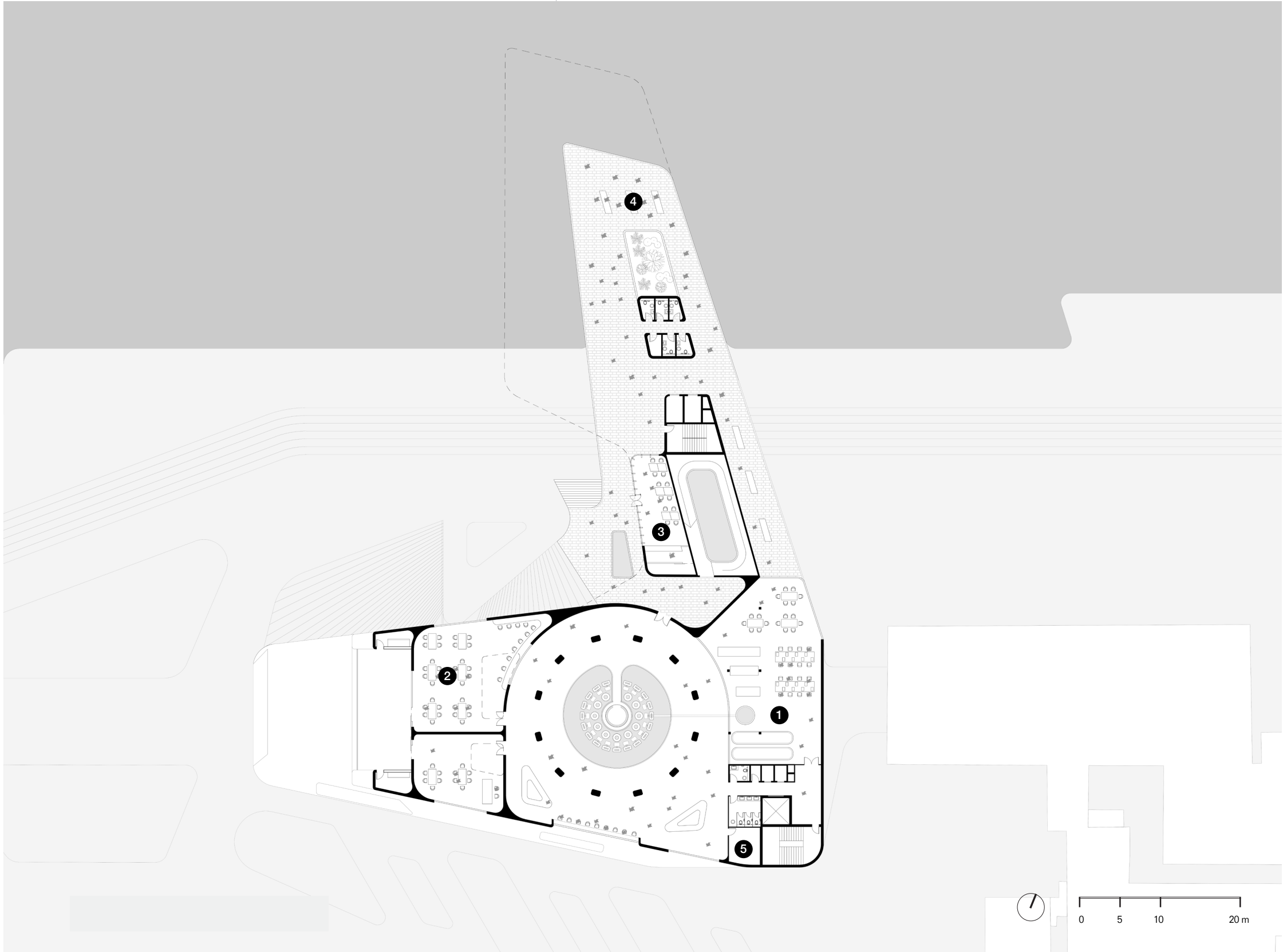
- 1 lobby
- 2 myco market
- 3 storage
- 4 ticket office
- 5 cloak room
- 6 logistics

First Floor Plan



- 1 exhibition
- 2 start of waste tour
- 3 logistics + storage
- 4 sorting
- 5 fabrication lab
- 6 storage
- 7 logistics

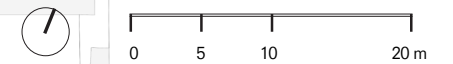
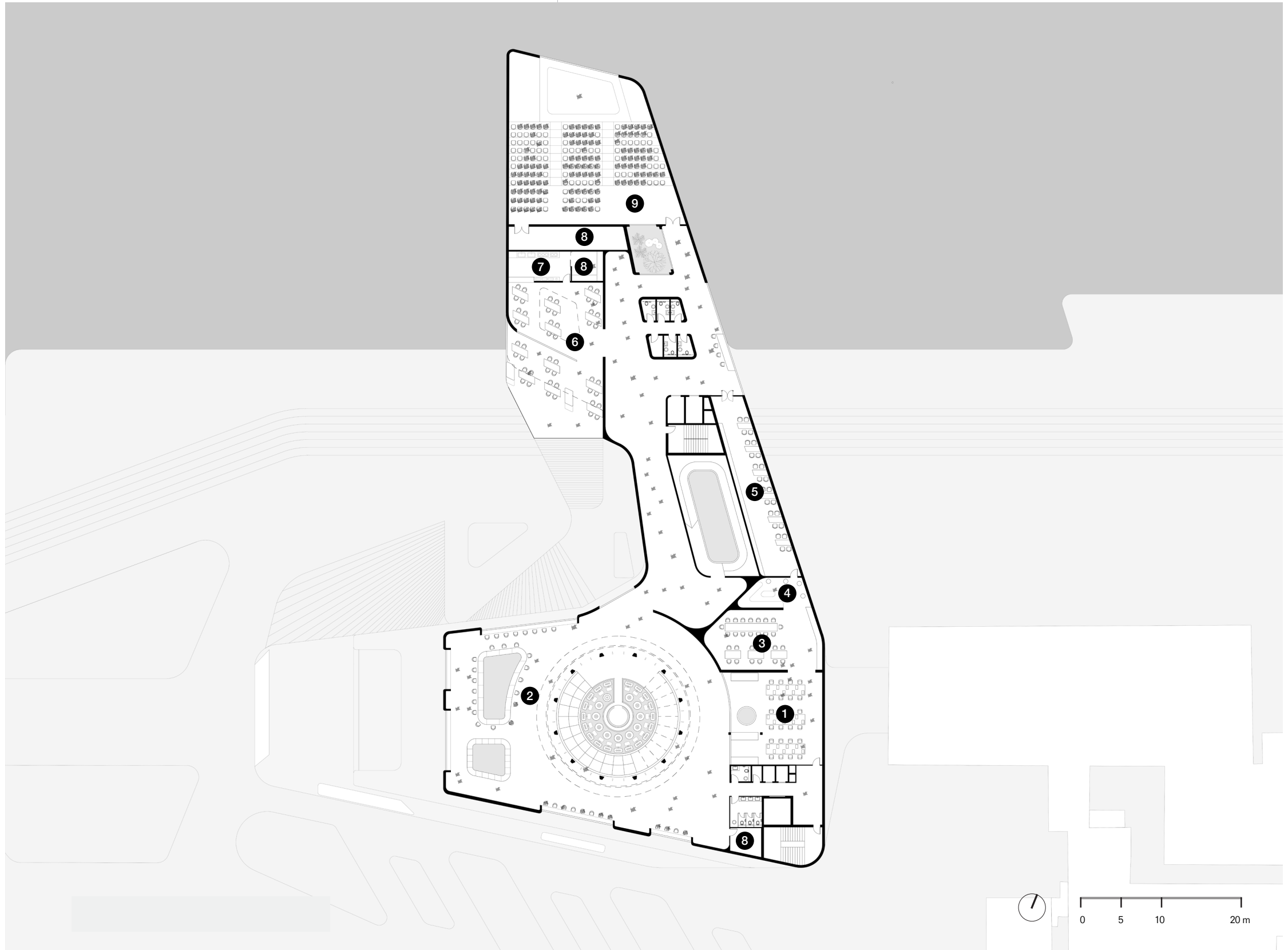
Second Floor Plan



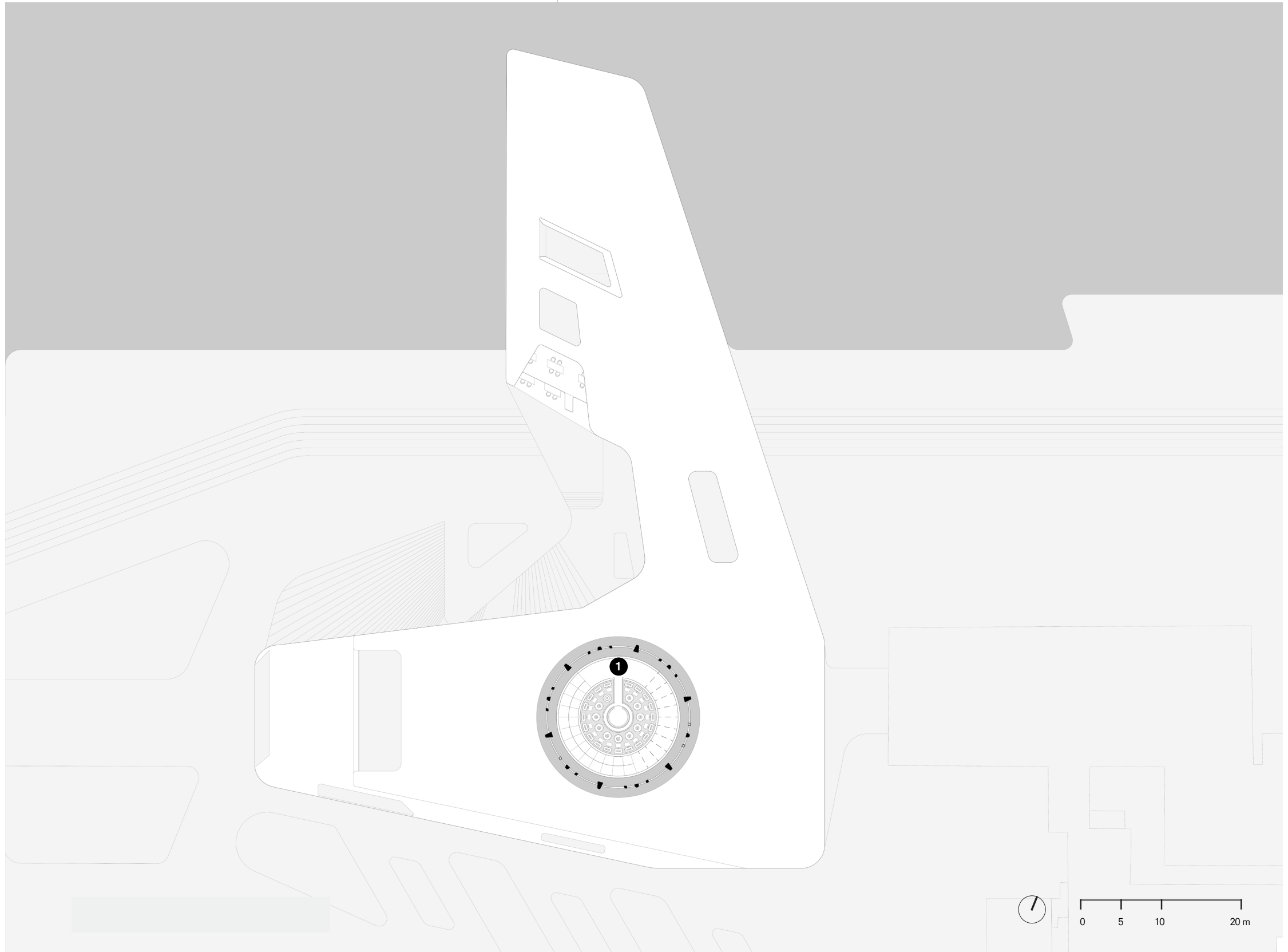
- 1 cultivation lab
- 2 classroom
- 3 cafe
- 4 myco park
- 5 storage

Third Floor Plan

- 1 office
- 2 working space
- 3 staff canteen
- 4 living room
- 5 library
- 6 restaurant
- 7 kitchen
- 8 storage
- 9 auditorium

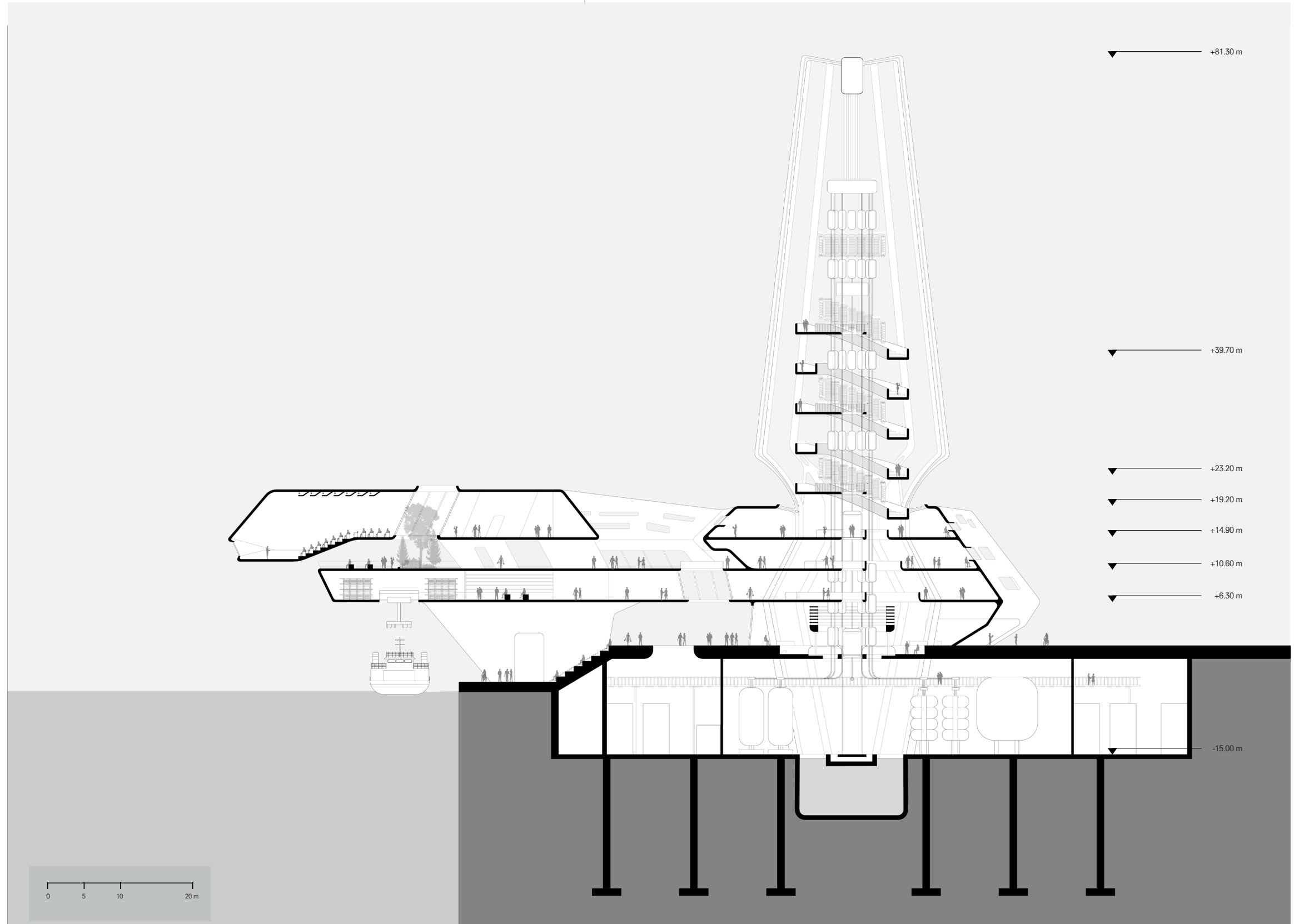


Tower Plan

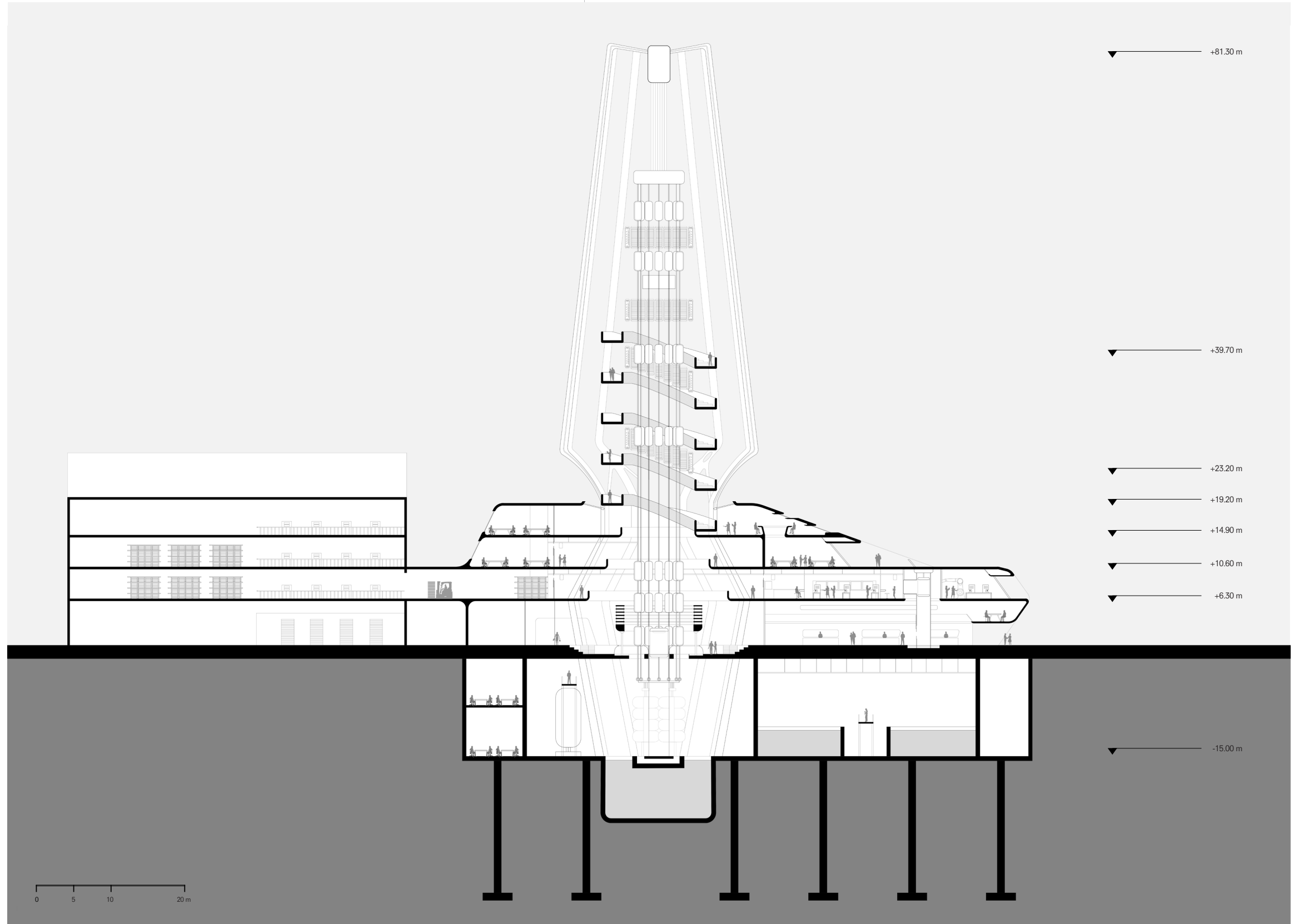


1 tower entrance

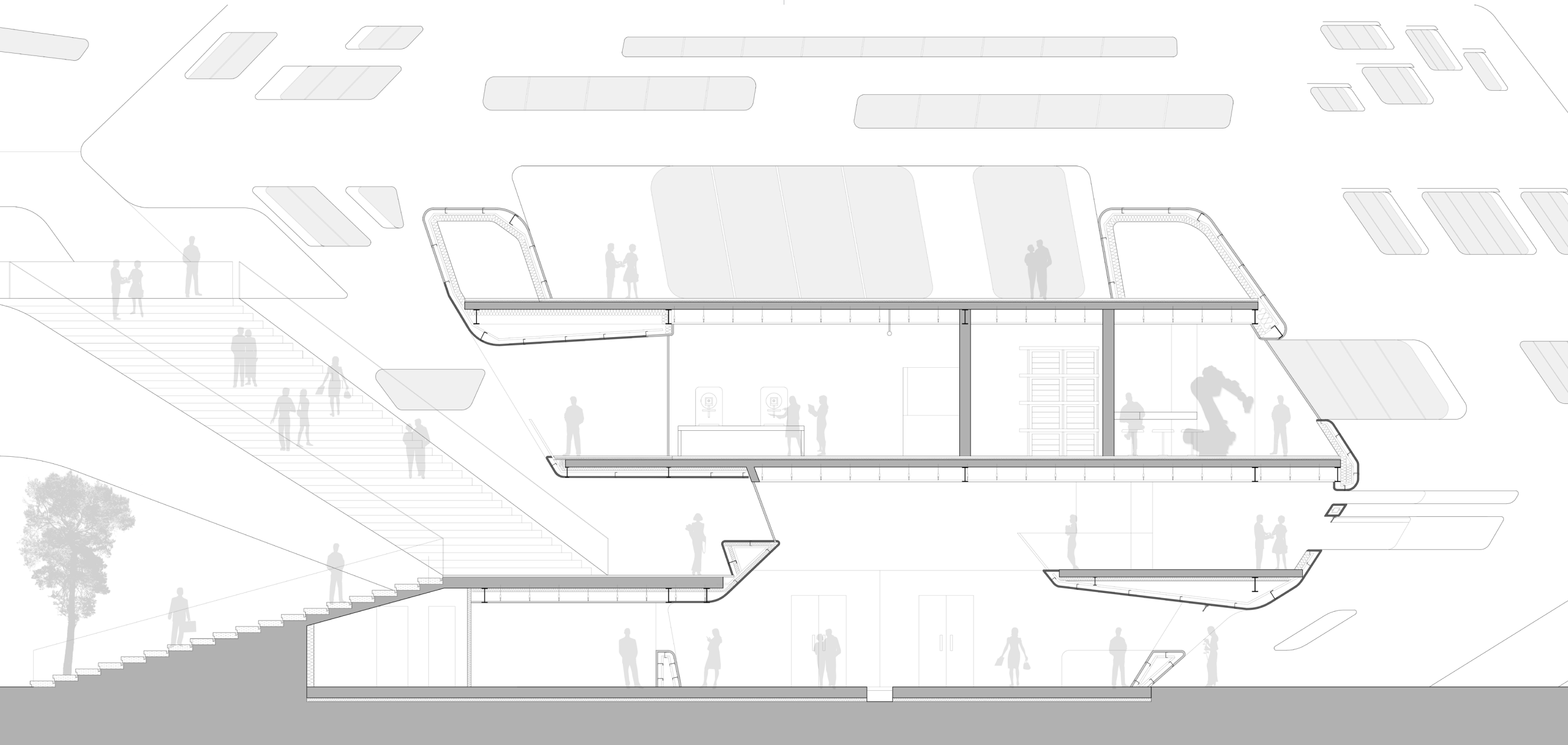
West Section



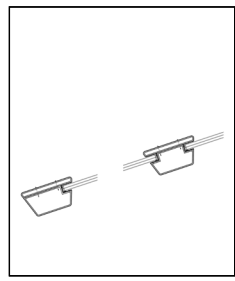
Section



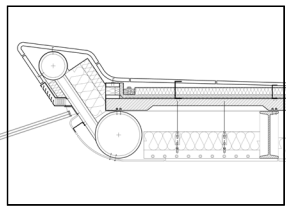
Interior Fragment (1:50)



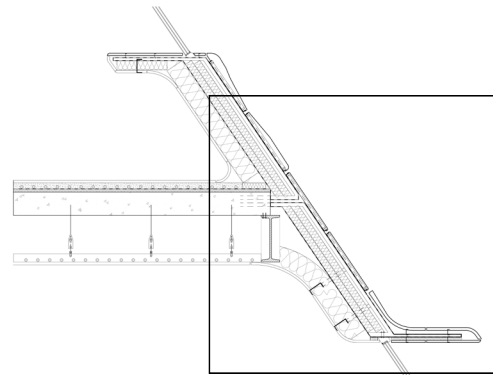
A5



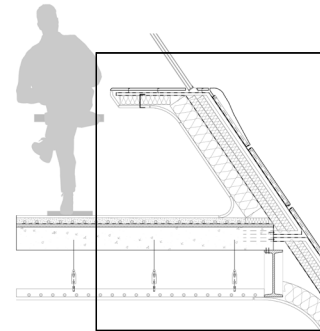
A4



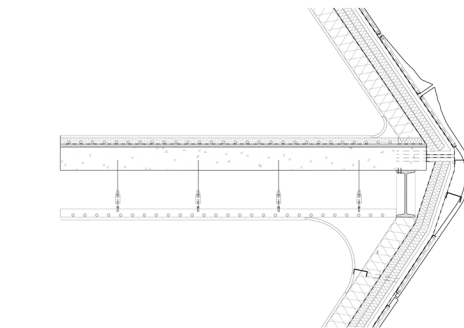
Envelope Fragment (1:20)



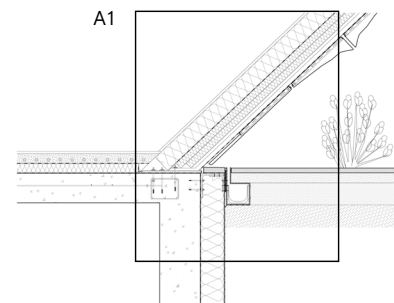
A3

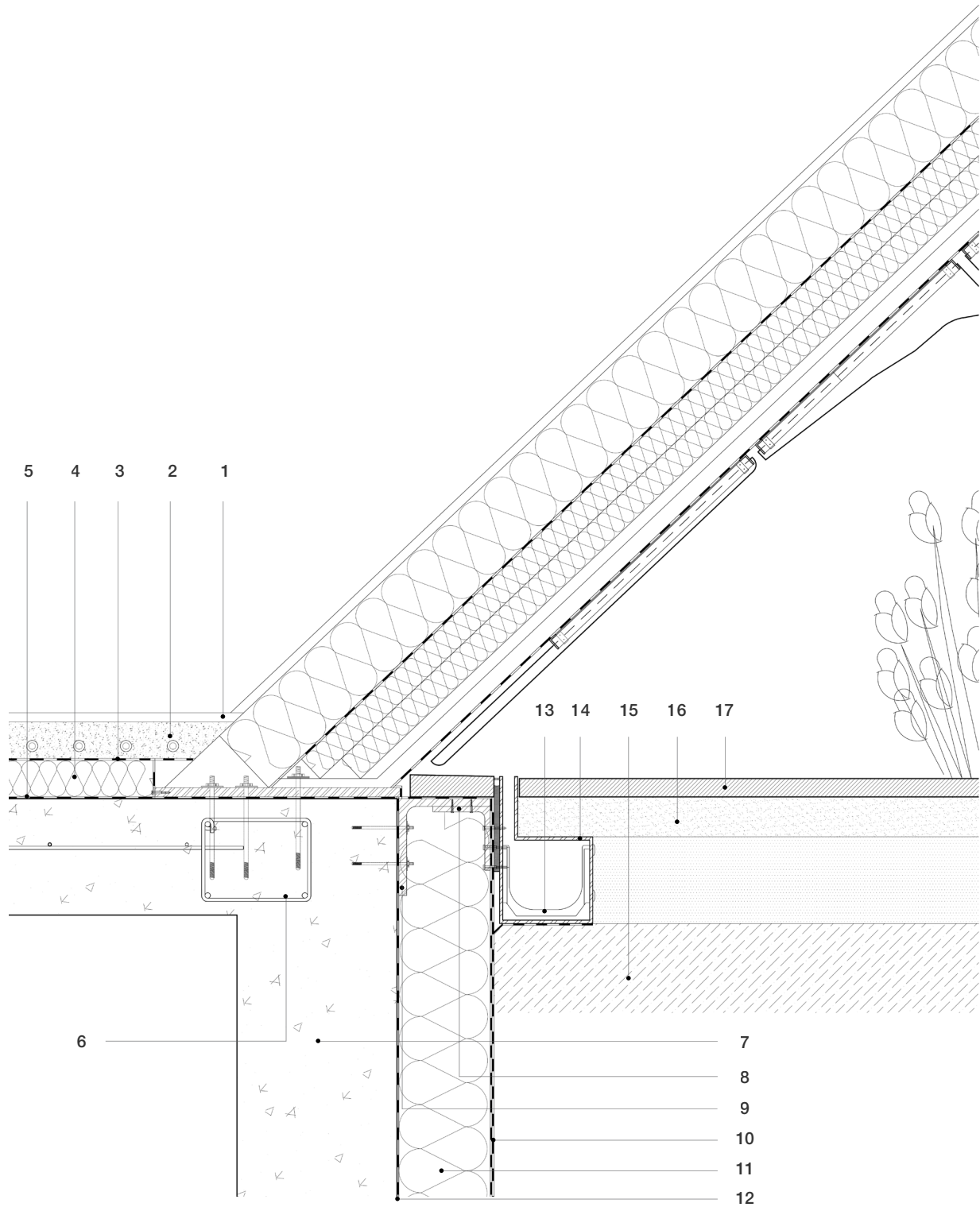


A2



A1



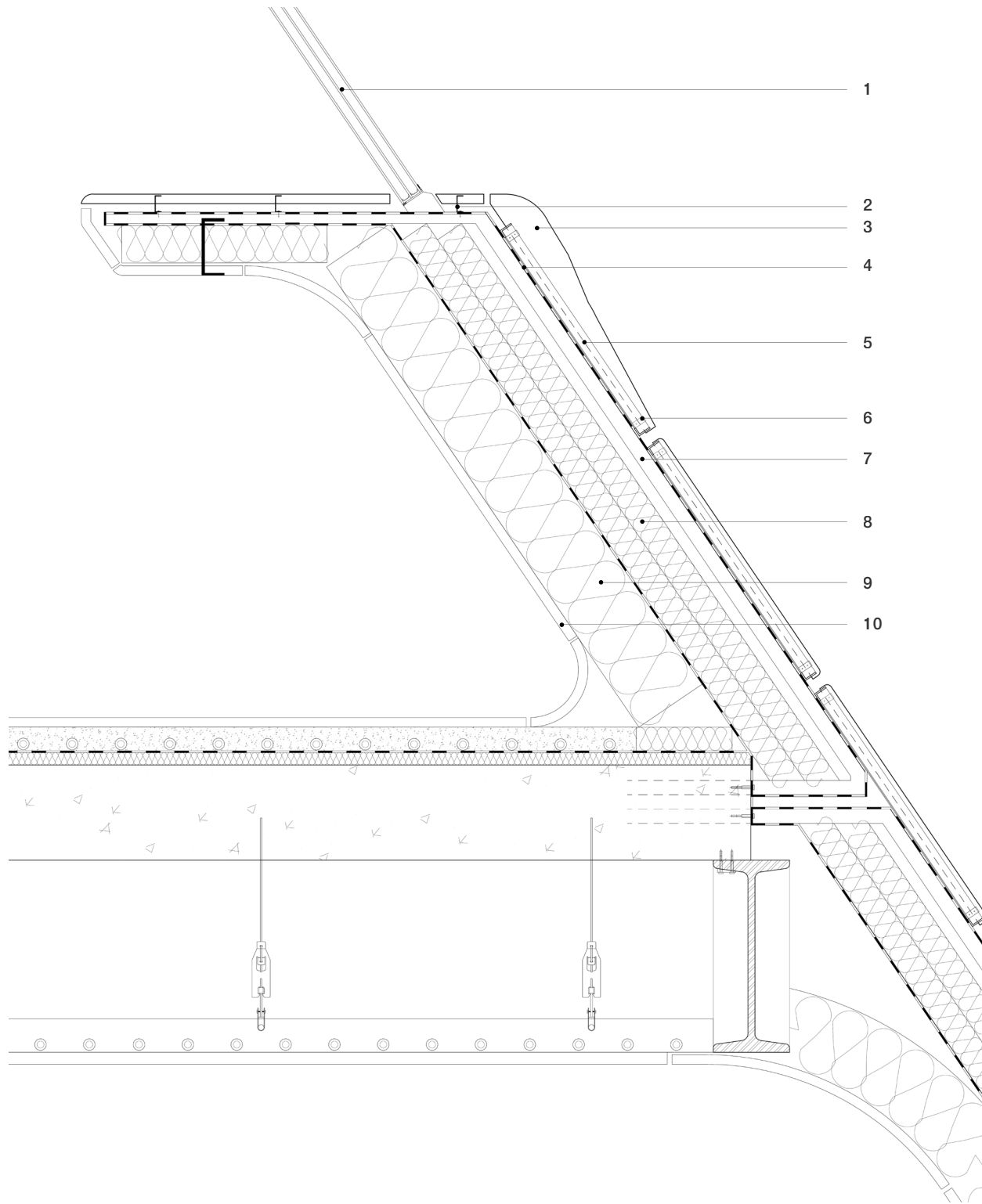


Detail A1

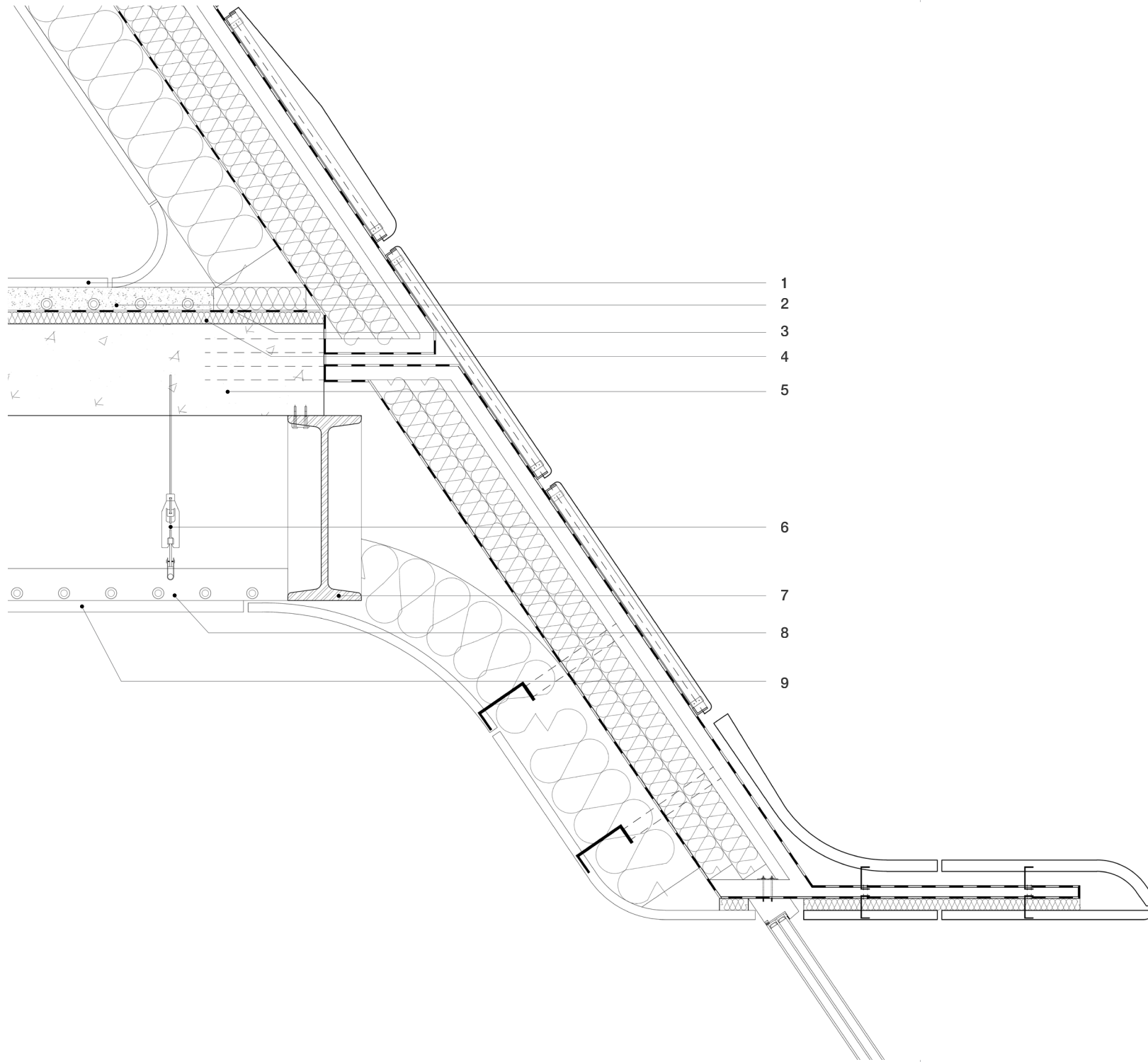
1. 20 mm Floor panel
2. 80 mm Floor screed with integrated underfloor heating
3. Water membrane
4. 80 mm Mycelium composite sound insulation
5. Vapour control layer
6. Steel rod
7. 350 mm Concrete
8. Steel gutter support L profile
9. Facade support L profile
10. Bitumen layer
11. 220 mm Mycelium composite insulation
12. Water membrane
13. Floor gutter
14. Steel gutter support structure
15. Soil
16. Sand layer
17. Exterior stone flooring

Detail A2

1. Triple glazed low-e glass wall system
2. 20 mm Stone cladding
3. Steel clipping
4. 4 mm Waterproof membrane
5. 10 mm Cavity
6. Supporting steel stud
7. Secondary supporting steel frame
8. 60 mm Mycelium composite insulation layer
9. 160 mm Mycelium composite insulation layer
10. 20 mm wall panel



Detail A3



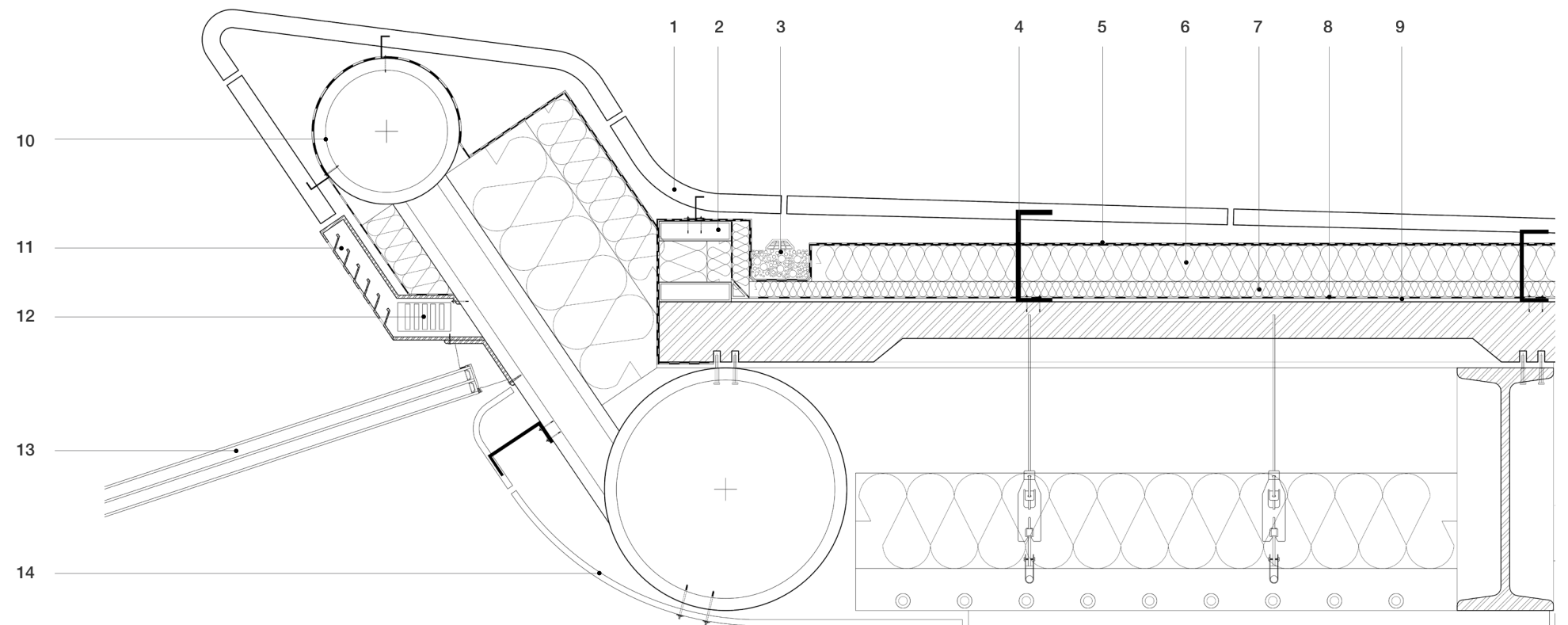
1. 20 mm Floor panel
2. 50 mm Floor screed with integrated underfloor heating
3. 4 mm Vapour control layer
4. 25 mm Mycelium composite sound insulation
5. 200 mm Reinforced concrete slab

6. **Suspended ceiling**
Explosive bolt
Suspension rod
Service gap

7. Steel beam HEB 400
8. Cooling ceiling with expanded glass granulate
9. 25 mm Plaster board

Detail A4

1. 20 mm Stone cladding
2. Light steel rectangular profile
3. Gutter for rainwater collection
4. Steel clipping
5. Water membrane
6. 60 mm Mycelium composite insulation layer
7. 30 mm Mycelium composite sound insulation
8. Vapour control layer
9. Screed
10. Steel ring beam
11. Integrated trickle ventilation
12. Fan ventilation Unit
13. Triple glazed low-e glass rooflight
14. Interior aluminium ceiling cladding



Detail A5

- 1. Steel roof cap
- 2. 4 mm Vapour control layer
- 3. Triple glazed low-e glass rooflight
- 4. Steel tower structure

