

DRAWINGBOOK

The future bank: **Designing the intermediary space**

Robin Weishaupt
4466314
MSc3/4 Interiors Buildings Cities
TU Delft

Mentors:
Sam De Vocht
Matthijs Klooster
Jurjen Zeinstra
Sereh Mendias
Daniel Rosbottom
Mark Pimlot
Susanne Pietsch

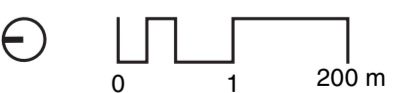
URBAN CONTEXT



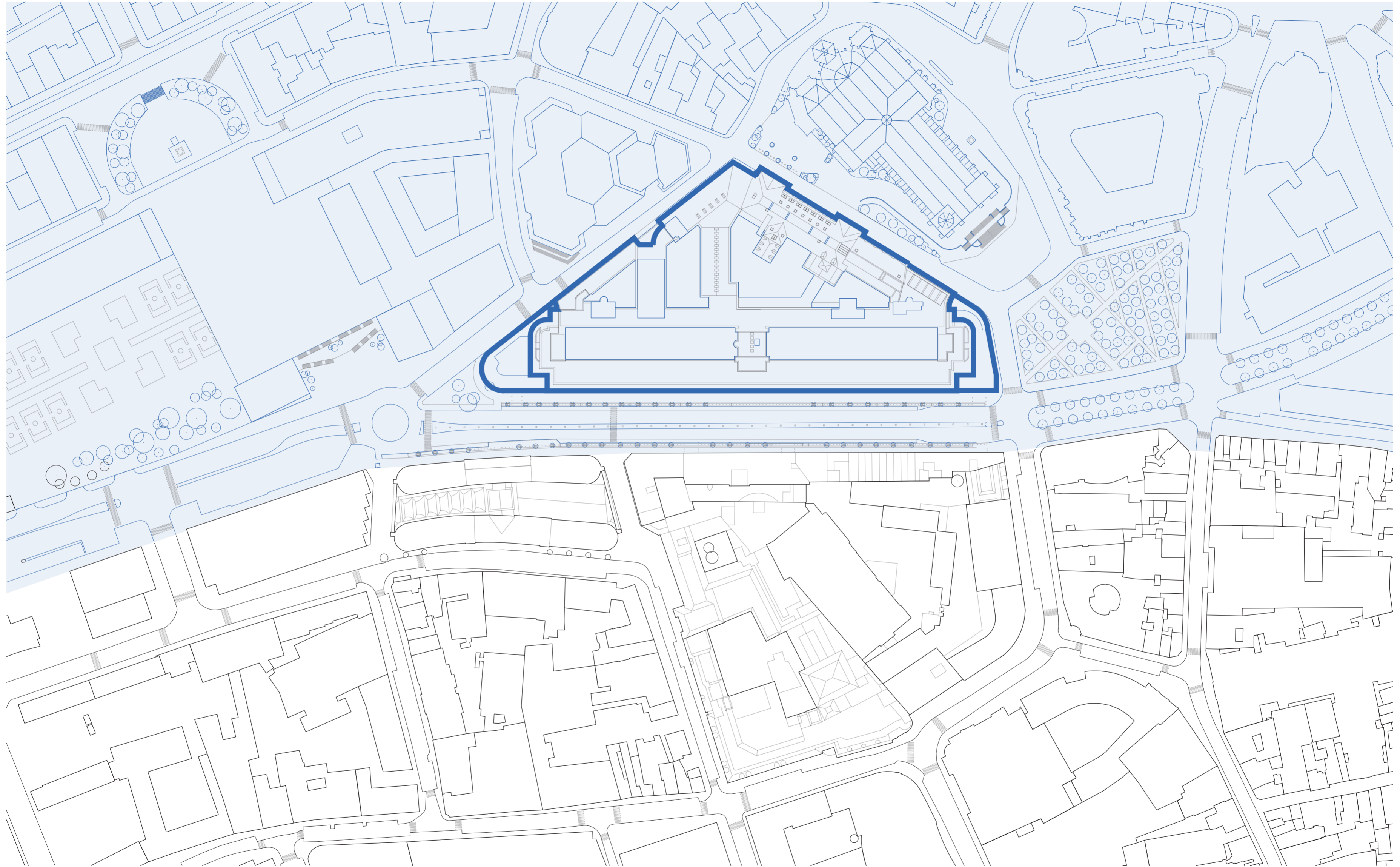
The business district (left) and the cultural district (top middle) within the city of Brussels.

CITY PLAN OF BRUSSELS

Scale 1:10000_a2
National Bank of Belgium
Brussels



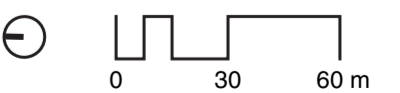
URBAN CONTEXT



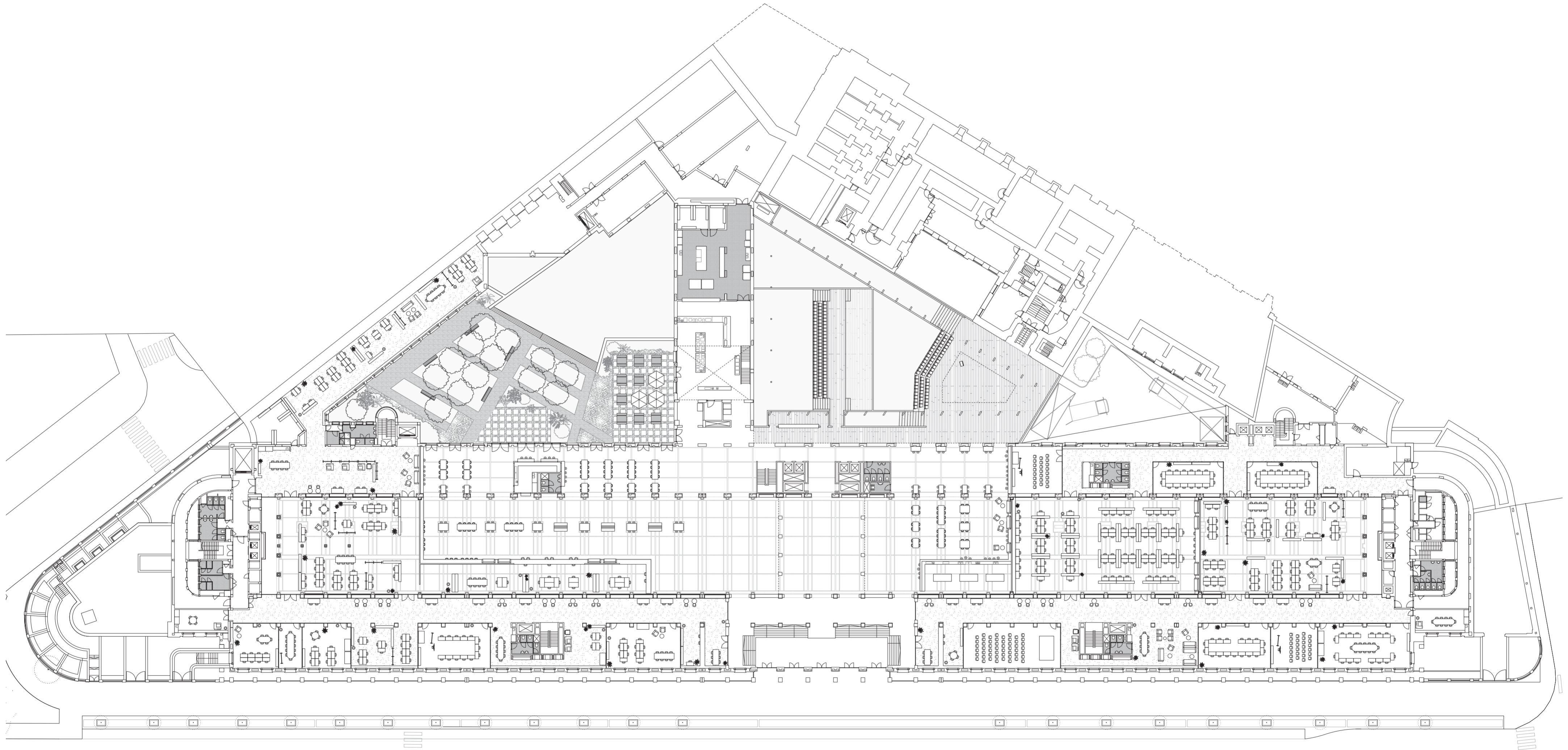
The bank's location within the city on the verge of higher (light blue) and lower (white) Brussels.

URBAN CONTEXT PLAN

Scale 1:3000_a2
National Bank of Belgium
Brussels



FLOORPLAN

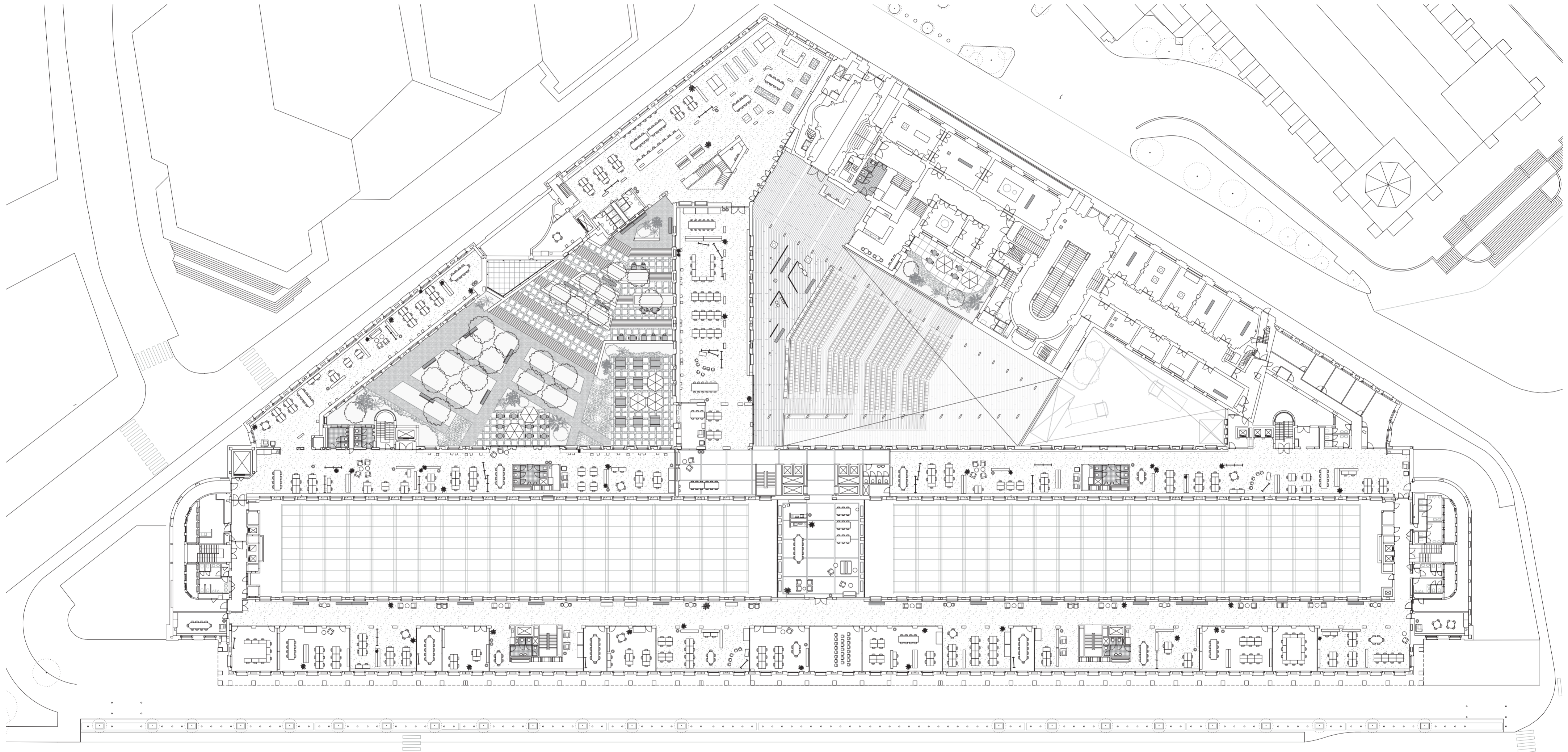


GROUND FLOOR (+0 MM)

Scale 1:450_a2
National Bank of Belgium
Brussels

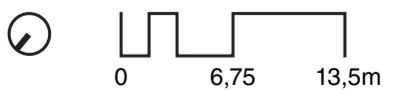


FLOORPLAN

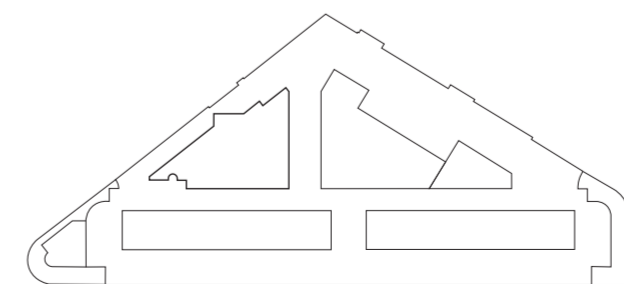


FIRST FLOOR (+8000 MM)

Scale 1:450_a2
National Bank of Belgium
Brussels

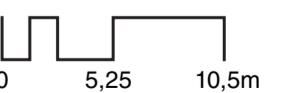


ELEVATIONS

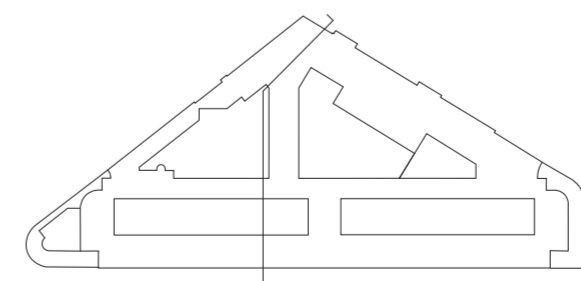


ELEVATION COURTYARD

Scale 1:350_a2
National Bank of Belgium
Brussels



SECTION

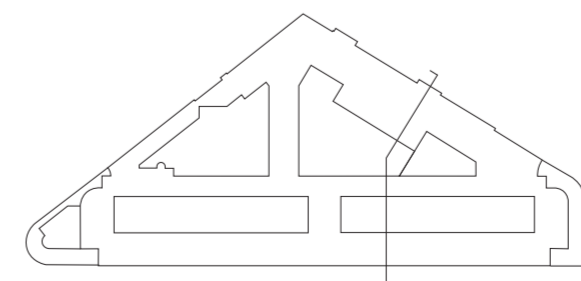
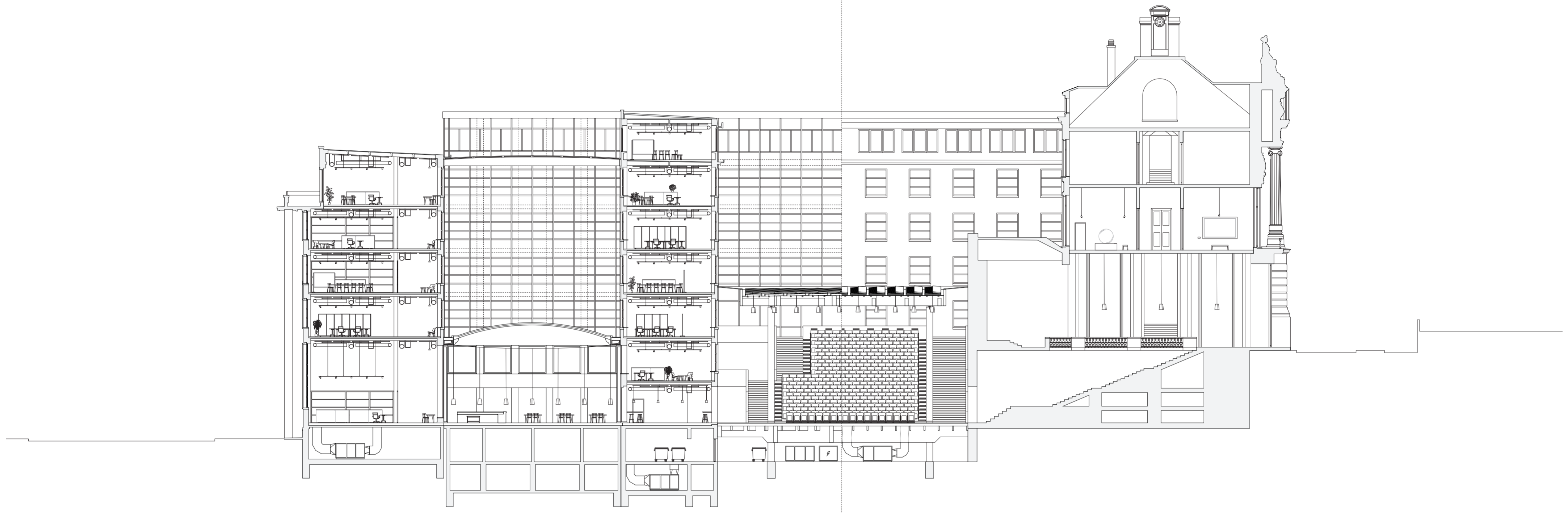


SECTION THROUGH COURTYARD

Scale 1:250_a2
National Bank of Belgium
Brussels

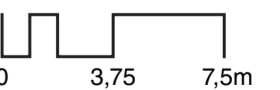


SECTION

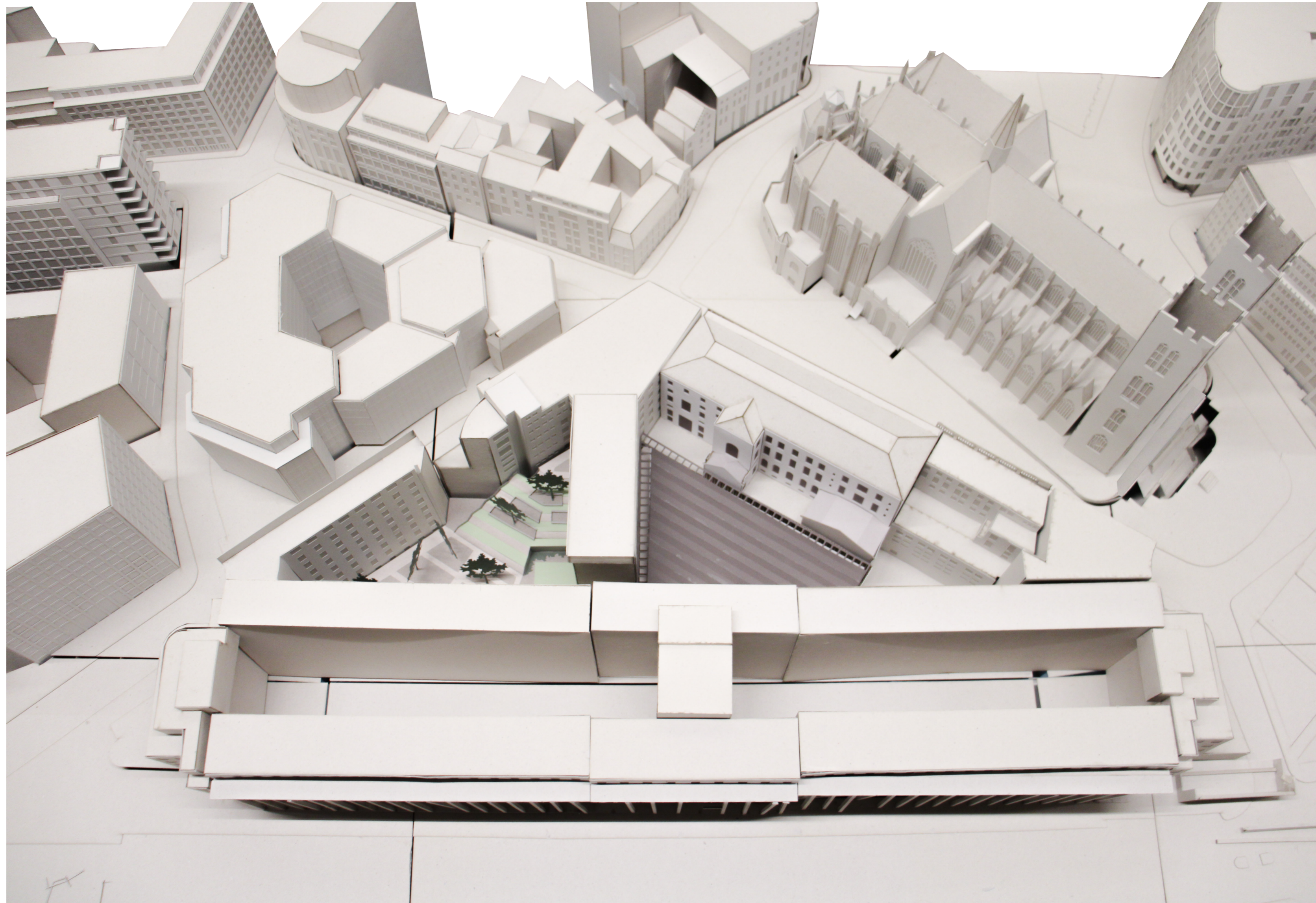


SECTION THROUGH AUDITORIUM COURT

Scale 1:250_a2
National Bank of Belgium
Brussels

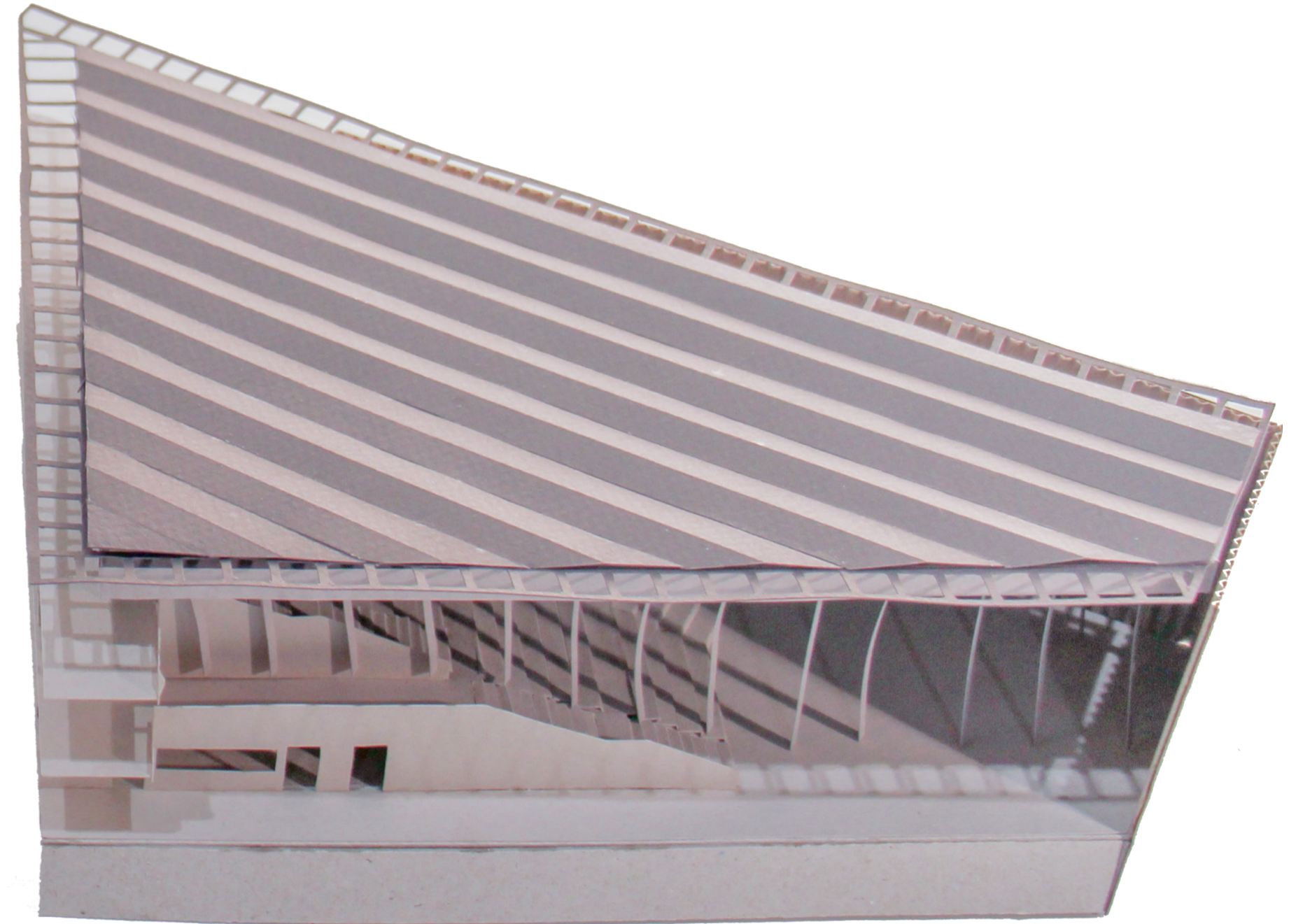
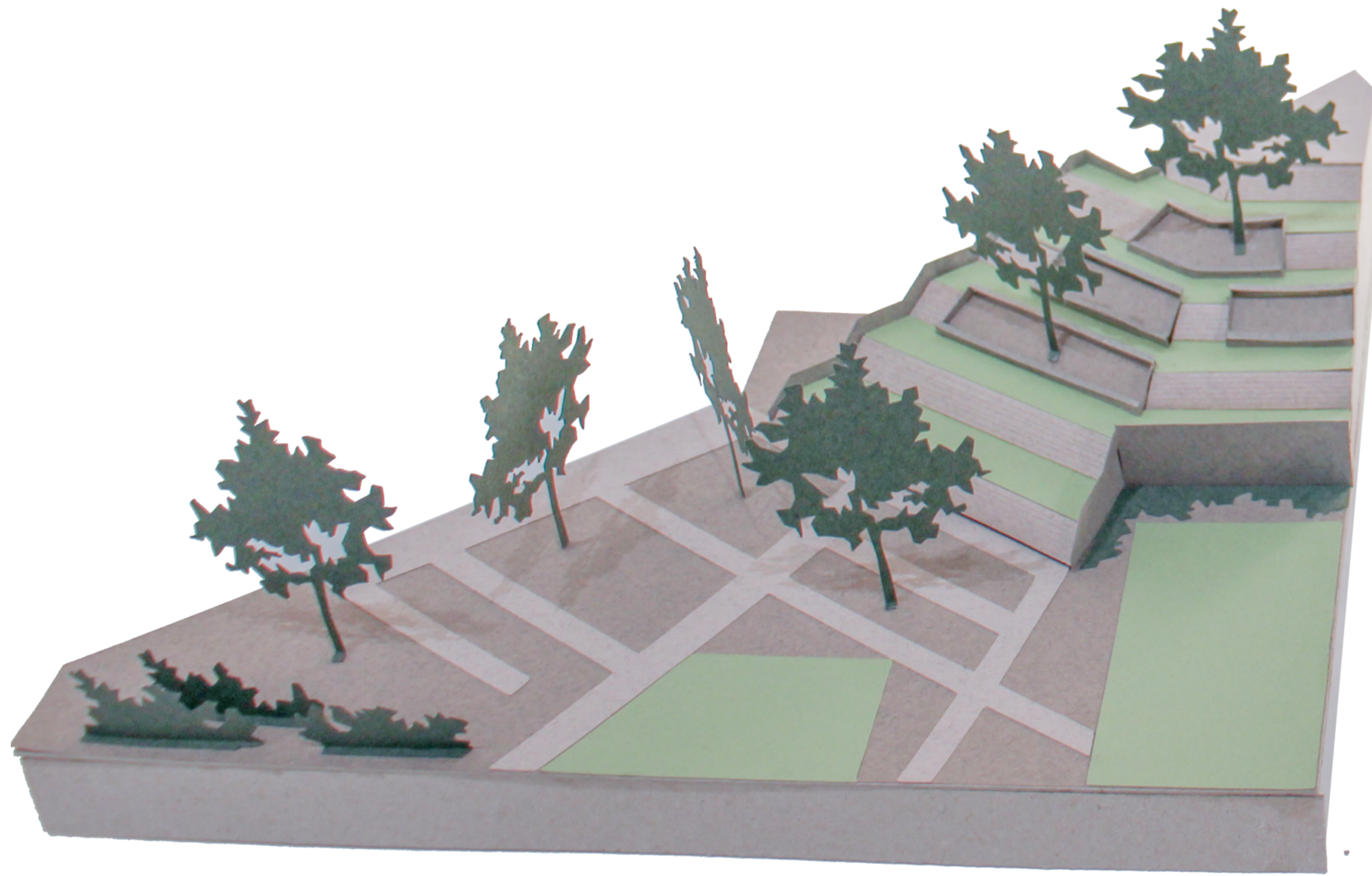


PHYSICAL MODEL



Paper models of the courtyard (left) and auditorium court (right) in the 1:200 group site model of the National Bank of Belgium.

PHYSICAL MODEL



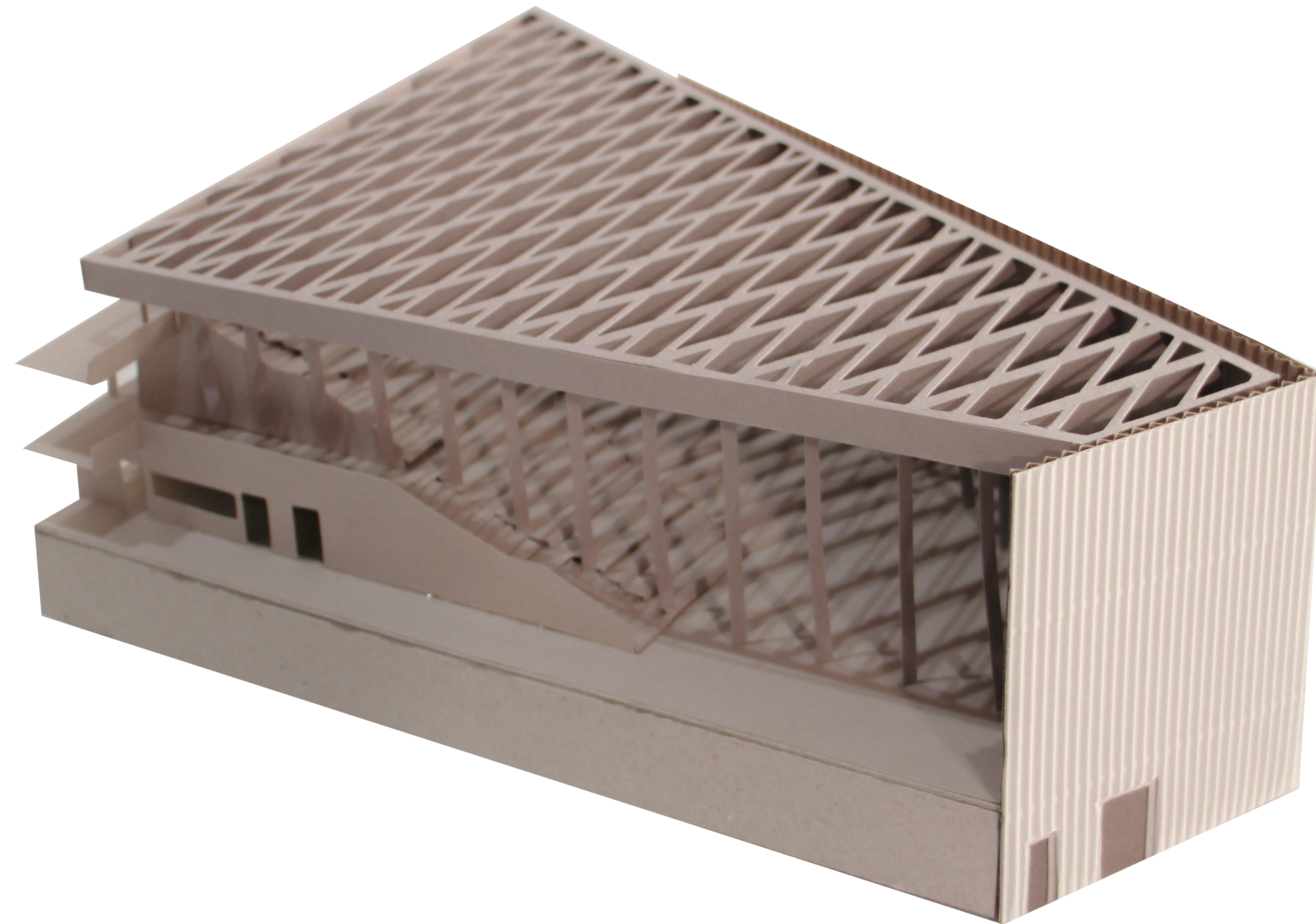
Paper models of the courtyard (left) and auditorium court (right), scale 1:200.

PHYSICAL MODEL



View in the courtyard in the paper model of the courtyard, scale 1:200.

PHYSICAL MODEL



View in the auditorium court in the paper model of the courtyard, scale 1:200.

IMPRESSION OF INTERIOR



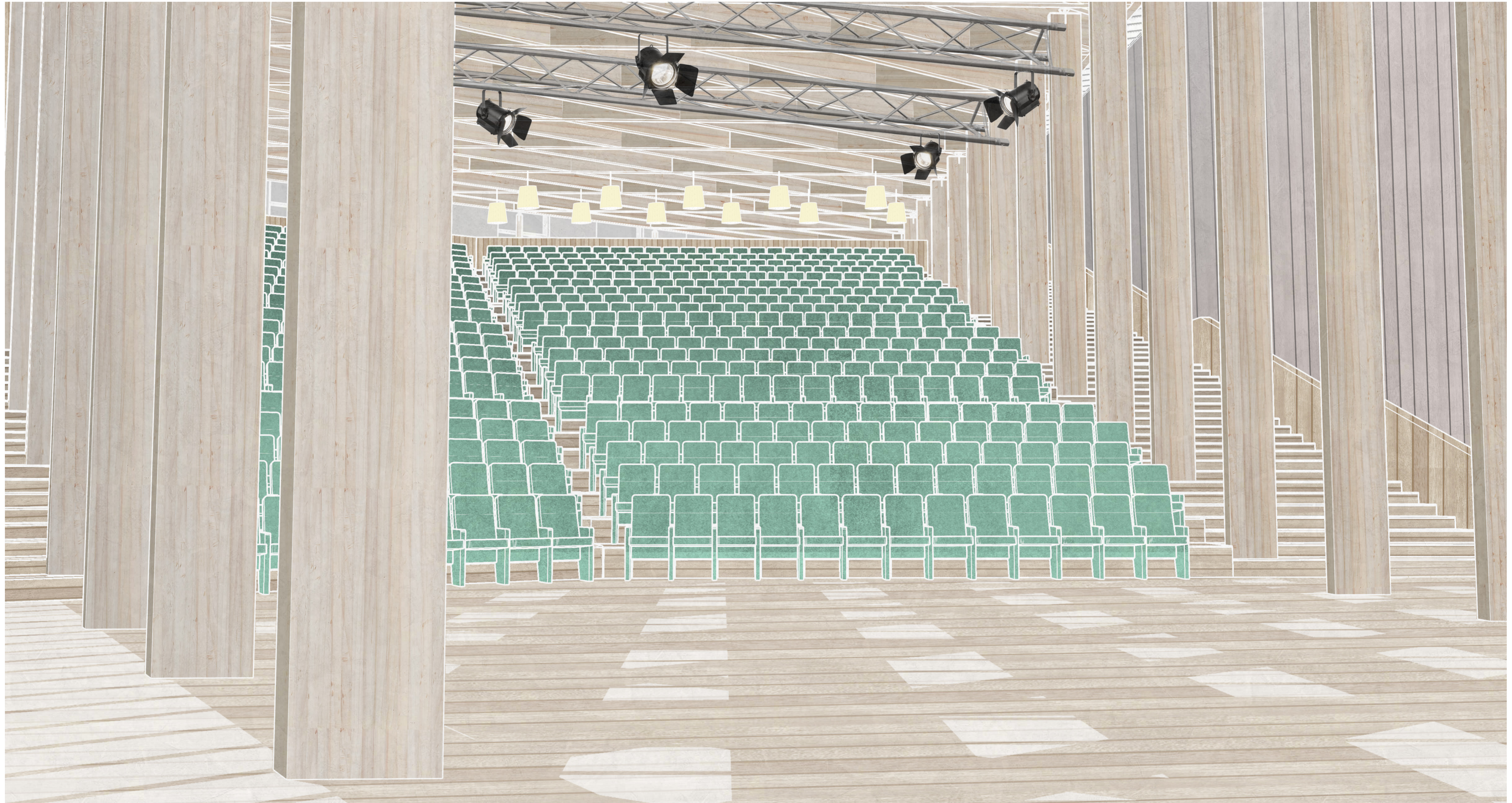
View of the south wing of the banking hall, transformed into a foyer space leading towards the auditorium court.

IMPRESSION OF INTERIOR



View of the north wing of the banking hall, containing the bank's customer service desks and a lobby space which leads towards the courtyard.

IMPRESSION OF INTERIOR



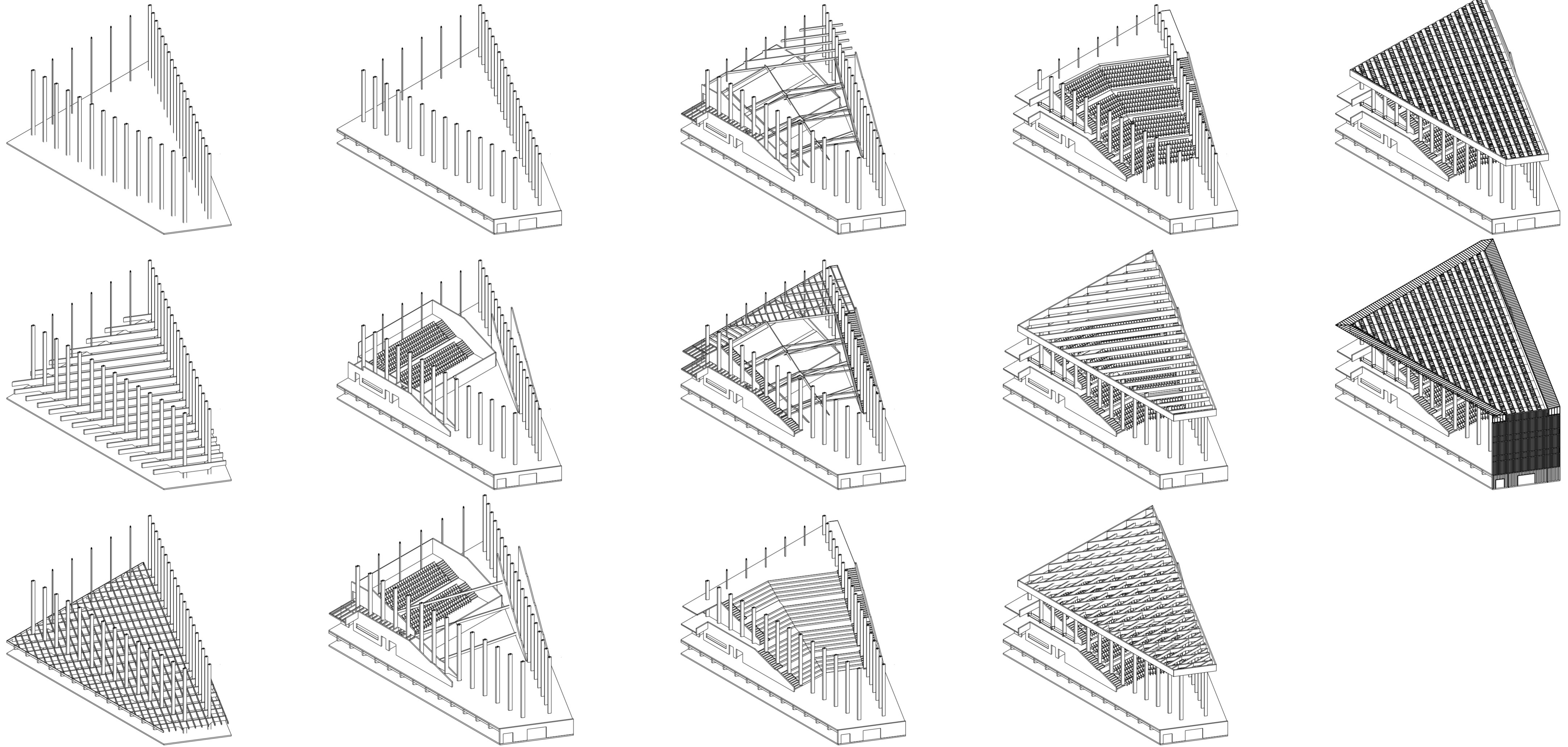
View in the auditorium court with staircases on both sides connecting the banking hall level with the level of the entrance of the museum (top of image).

IMPRESSION OF INTERIOR

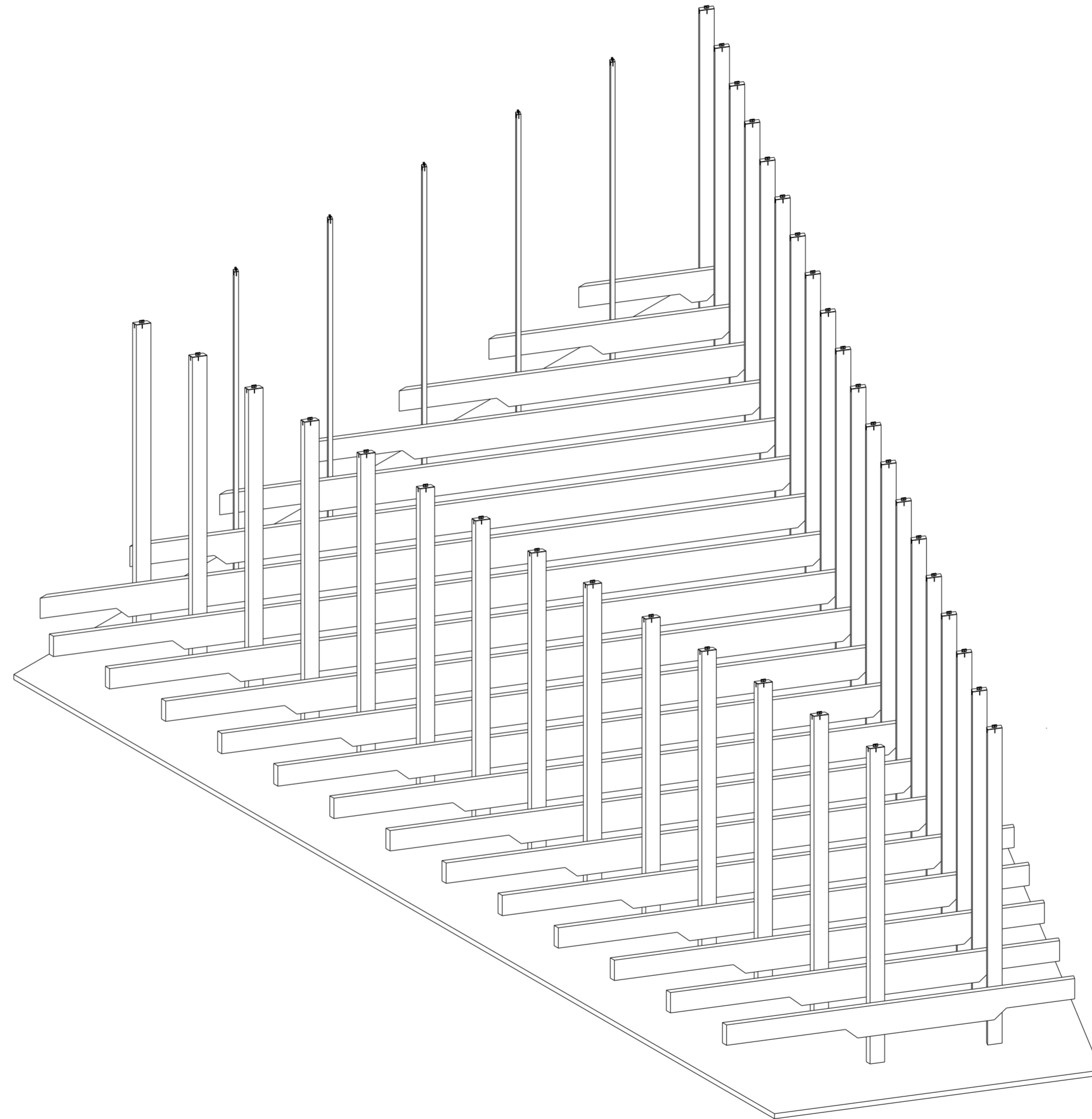


View in the open plan office spaces with a view of the roof of the banking hall (left) and the auditorium (right).

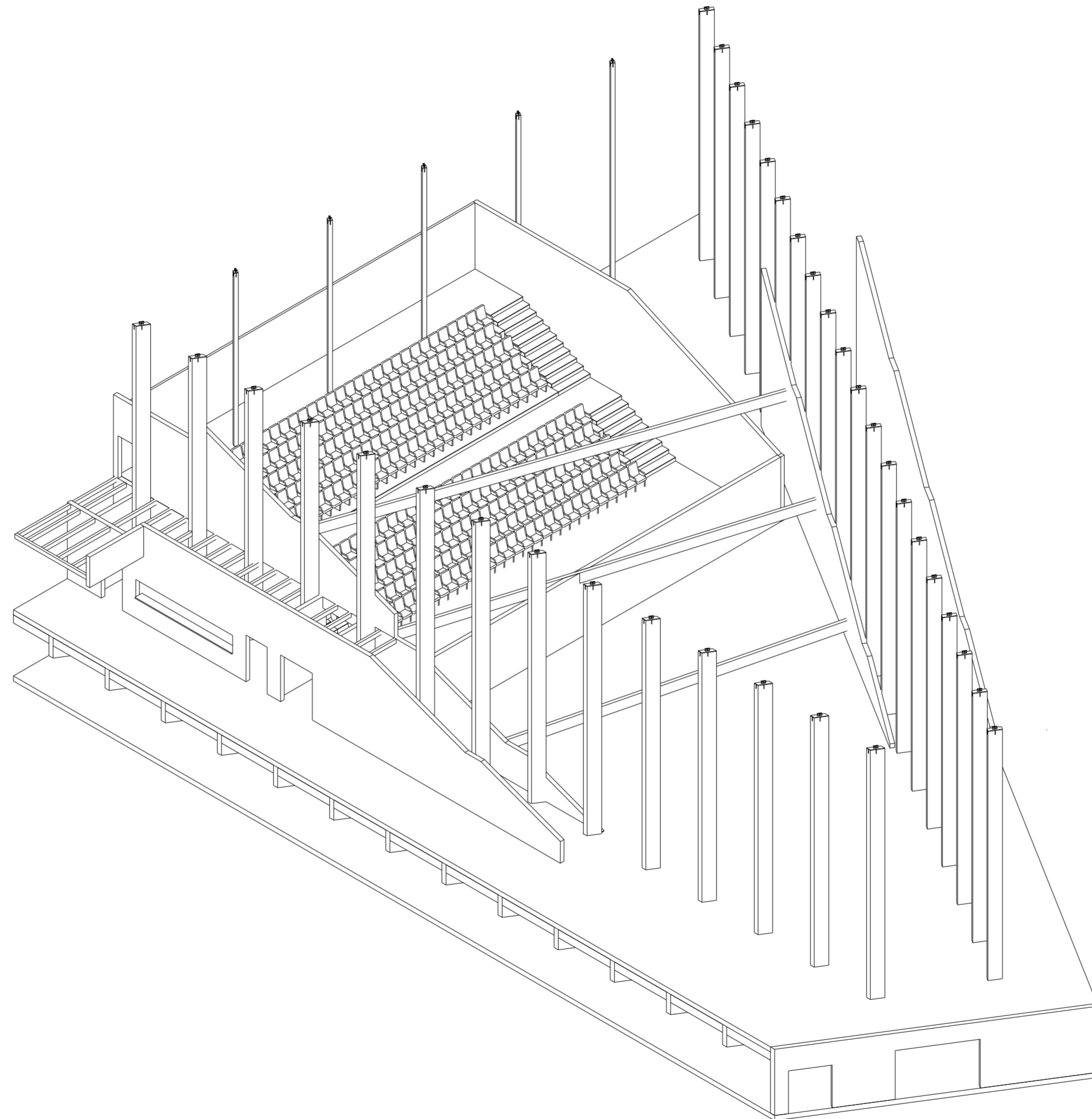
ISOMETRIC PROJECTION OF CONSTRUCTION OF THE AUDITORIUM COURT



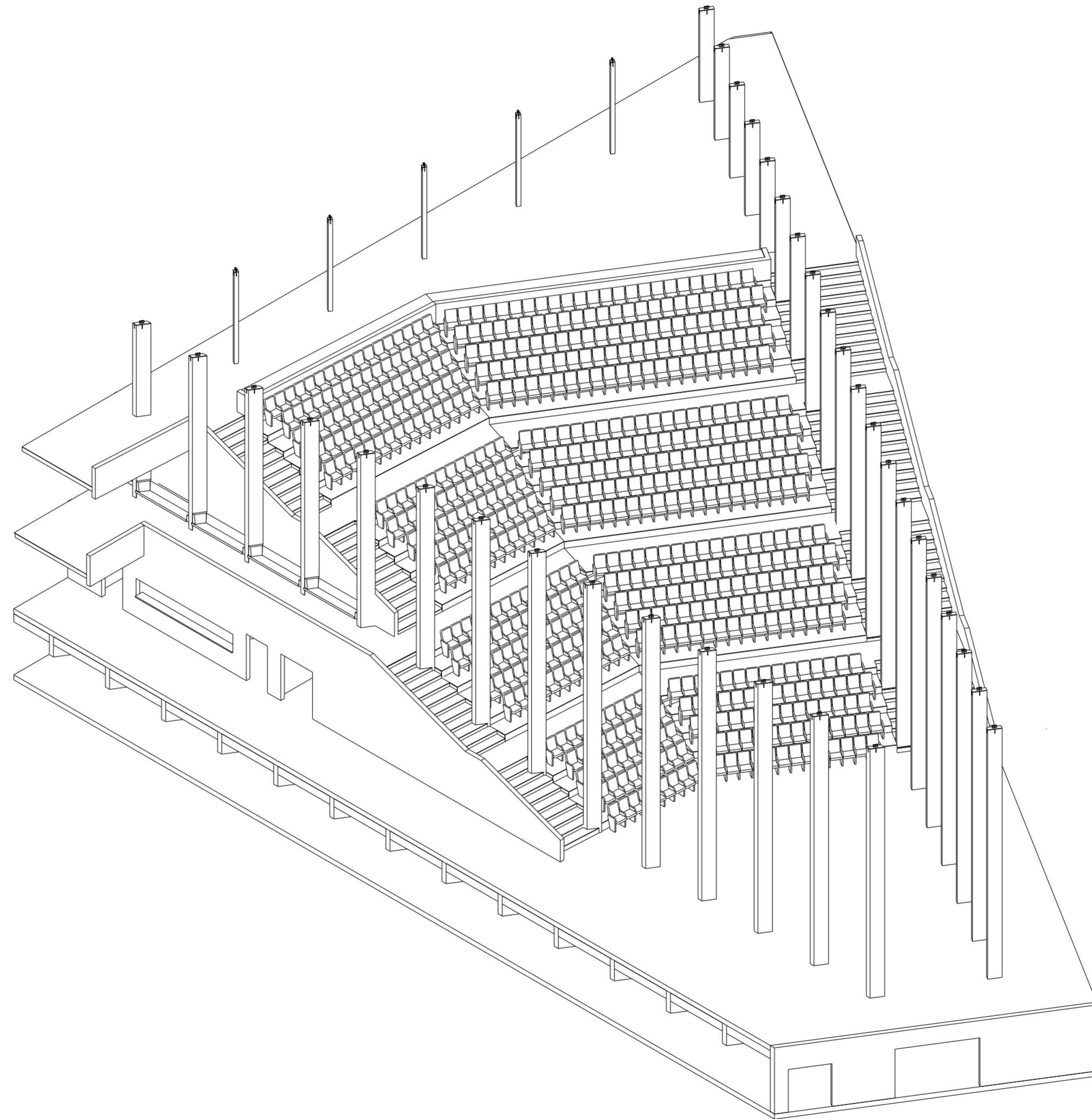
ISOMETRIC PROJECTION OF CONSTRUCTION OF THE AUDITORIUM COURT



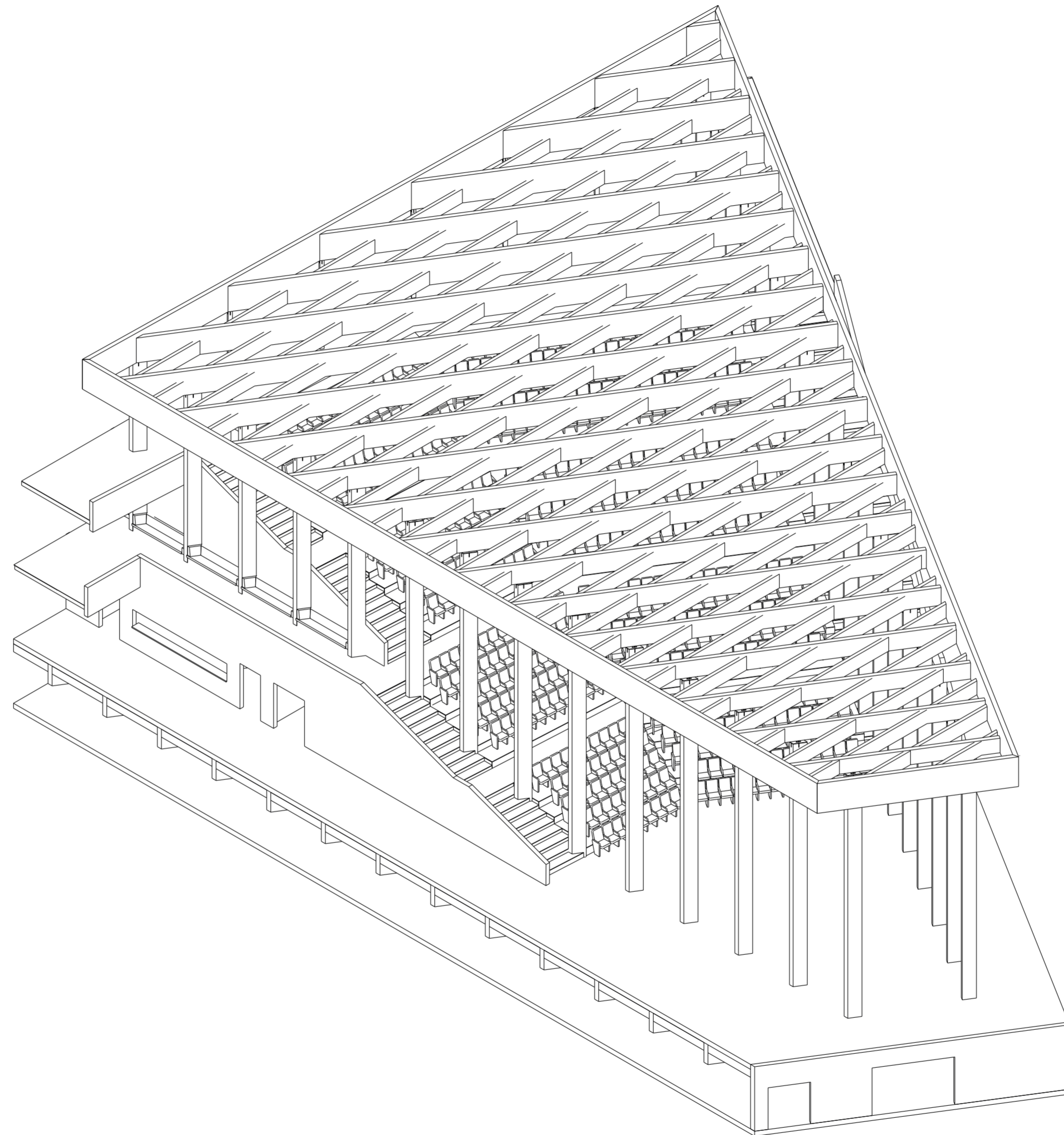
ISOMETRIC PROJECTION OF CONSTRUCTION OF THE AUDITORIUM COURT



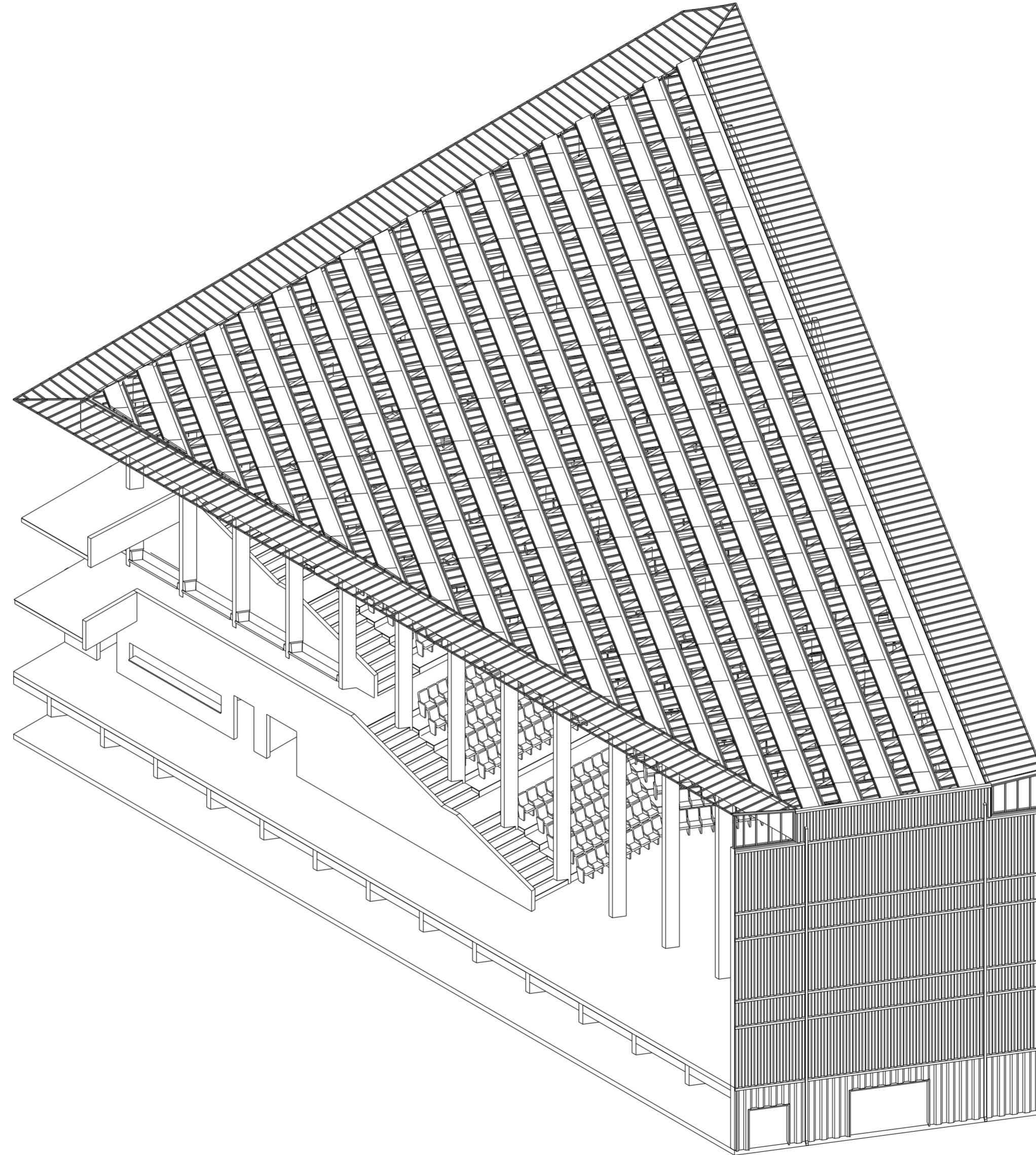
ISOMETRIC PROJECTION OF CONSTRUCTION OF THE AUDITORIUM COURT



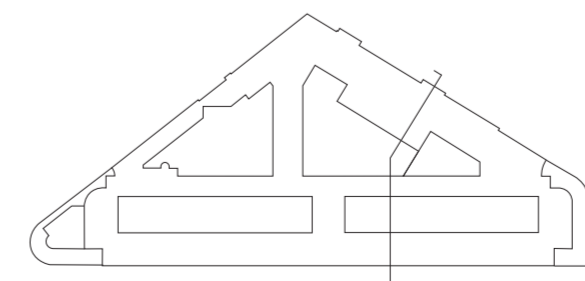
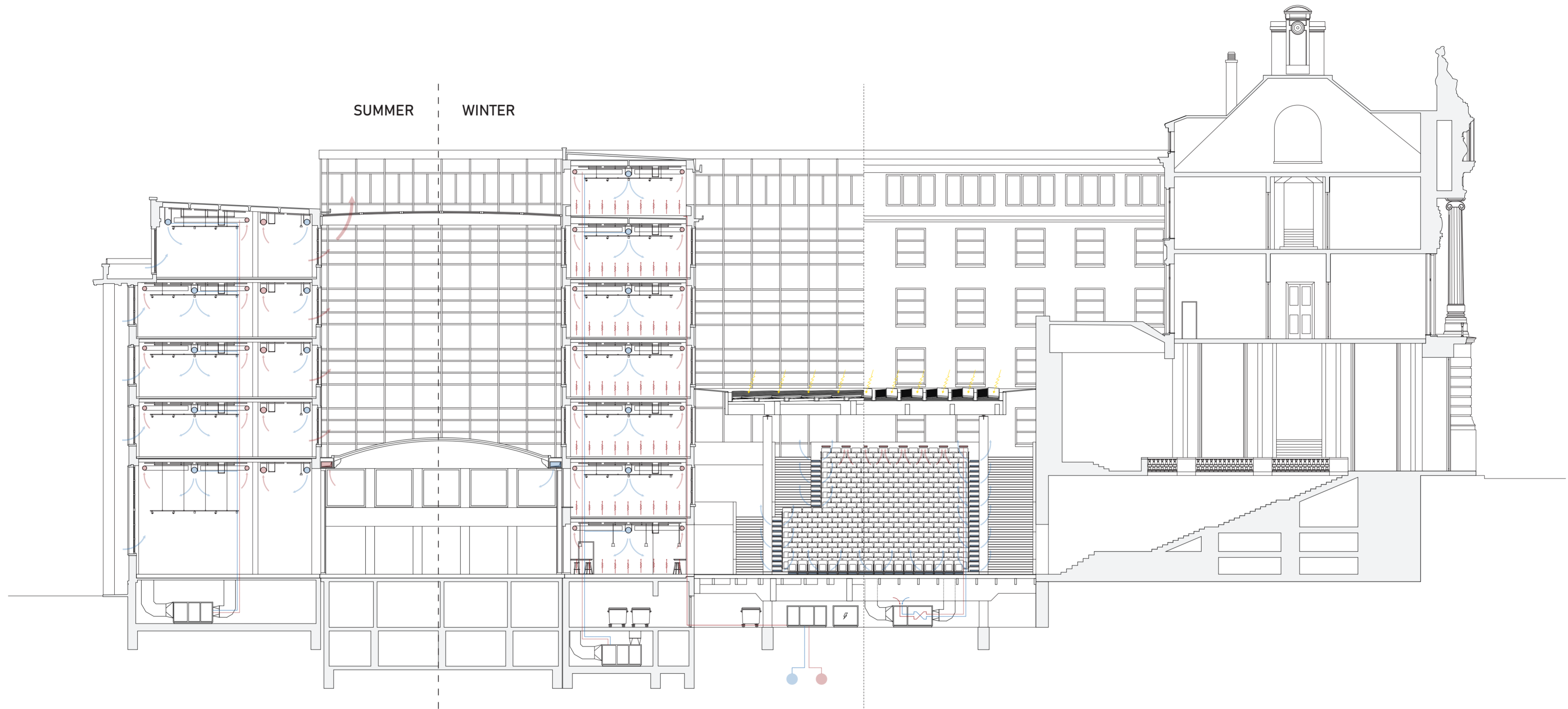
ISOMETRIC PROJECTION OF CONSTRUCTION OF THE AUDITORIUM COURT



ISOMETRIC PROJECTION OF CONSTRUCTION OF THE AUDITORIUM COURT



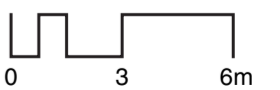
CLIMATE SECTION

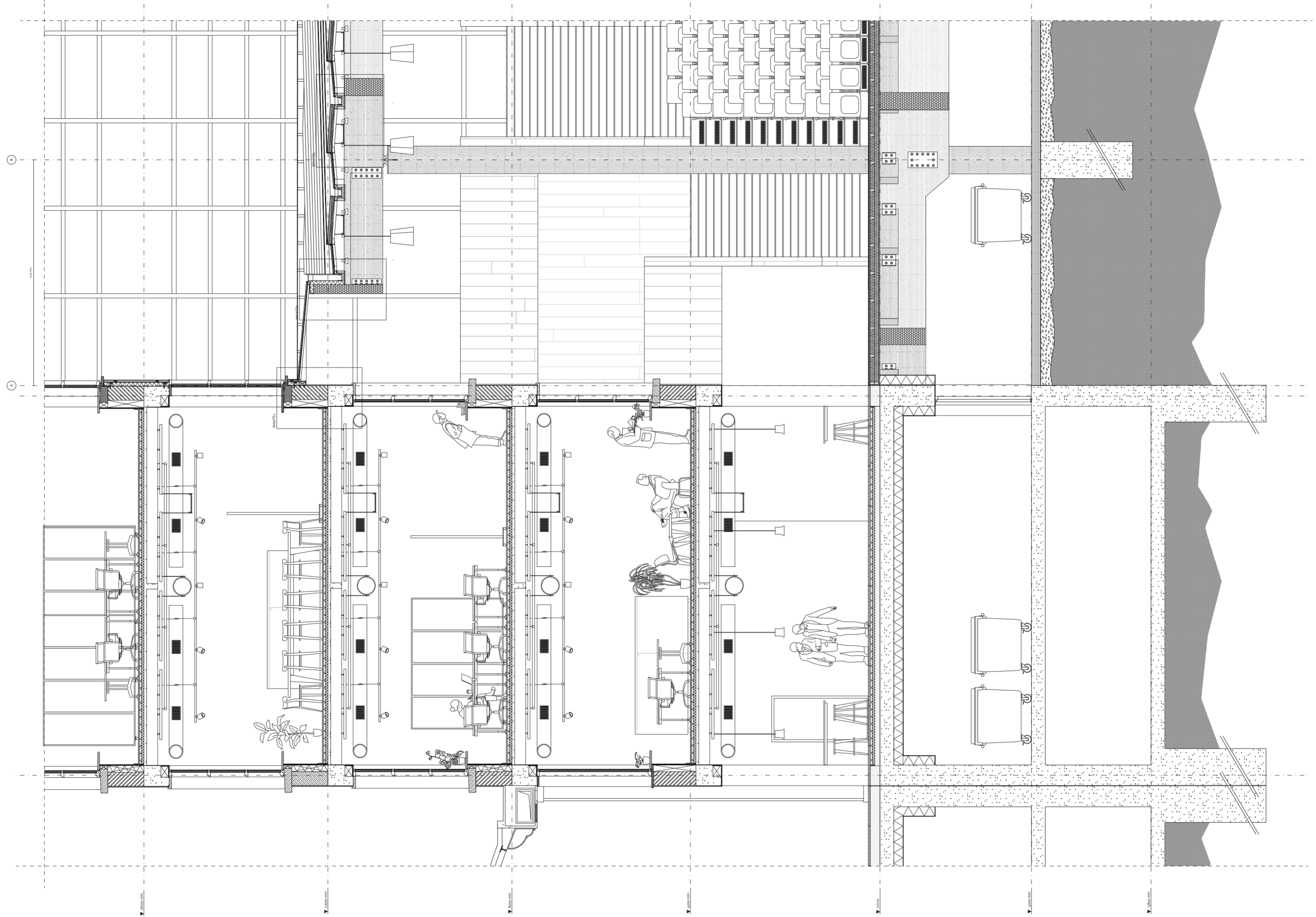


CLIMATE SYSTEMS IN AUDITORIUM COURT SECTION

Scale 1:200_a2

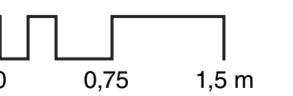
National Bank of Belgium
Brussels

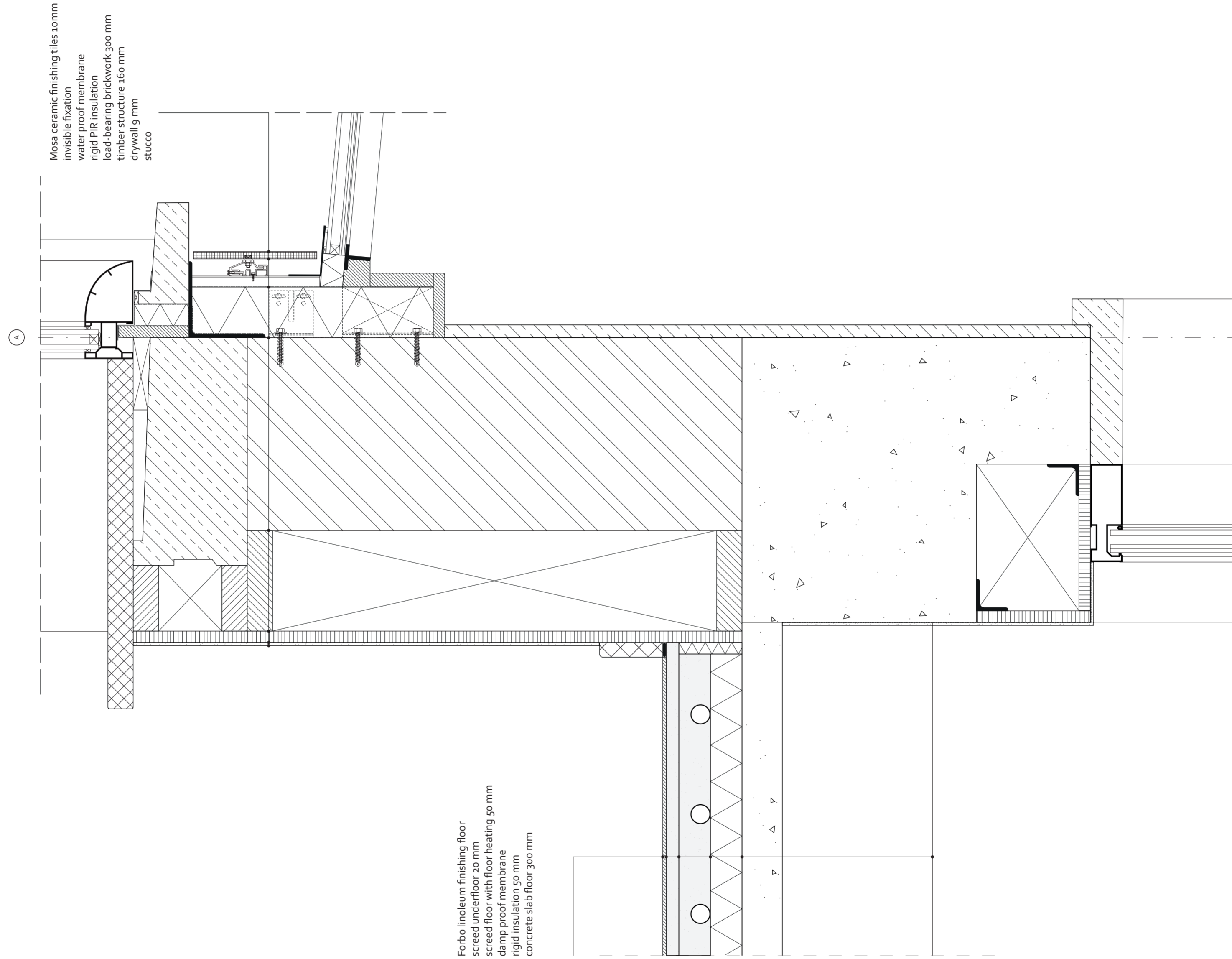




FRAGMENT OF EXISTING FACADE AND AUDITORIUM

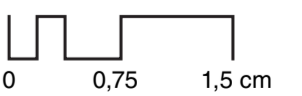
Scale 1:50_a2
National Bank of Belgium
Brussels

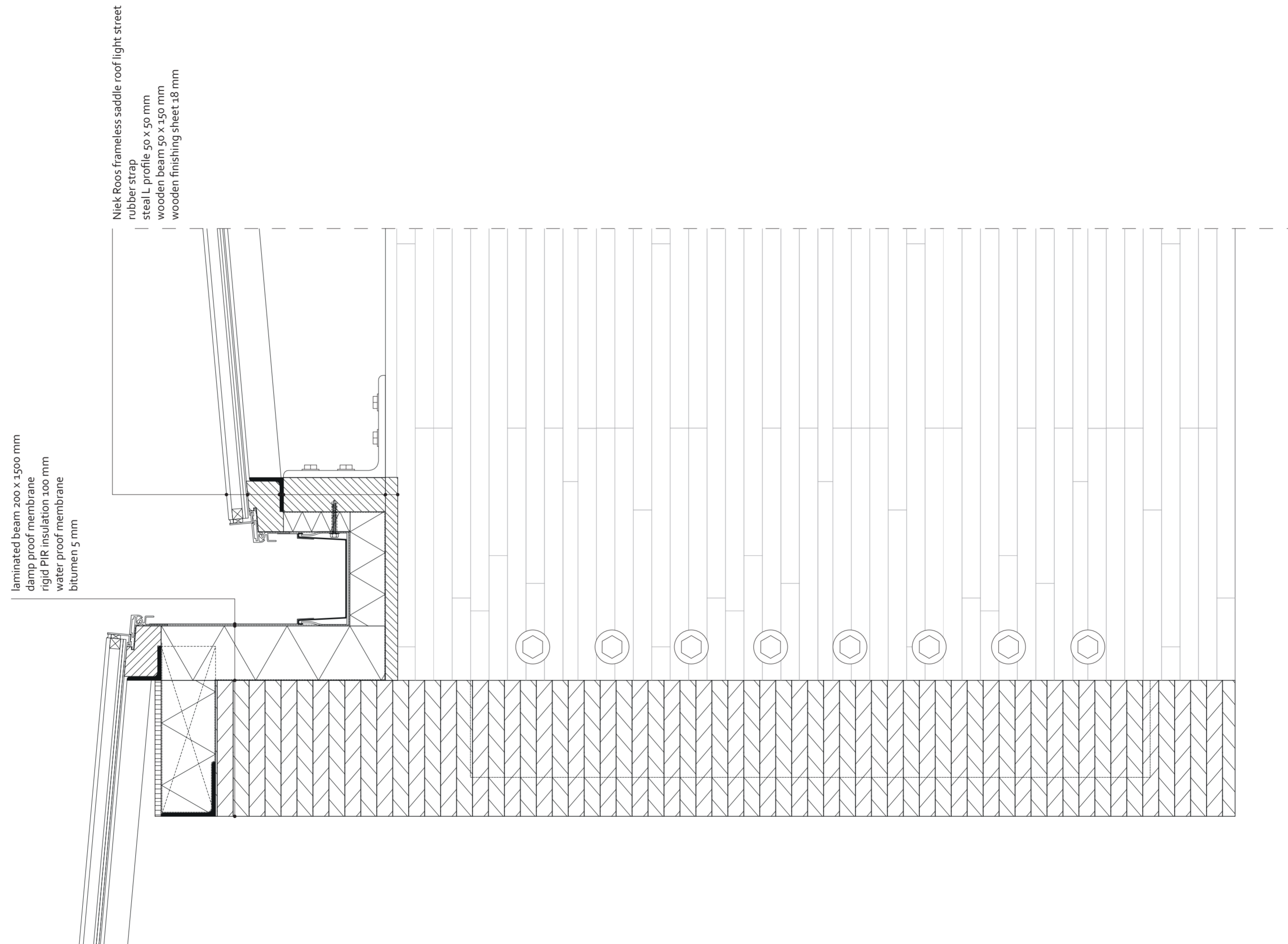




DETAIL D1

Scale 1:5_a2
National Bank of Belgium
Brussels



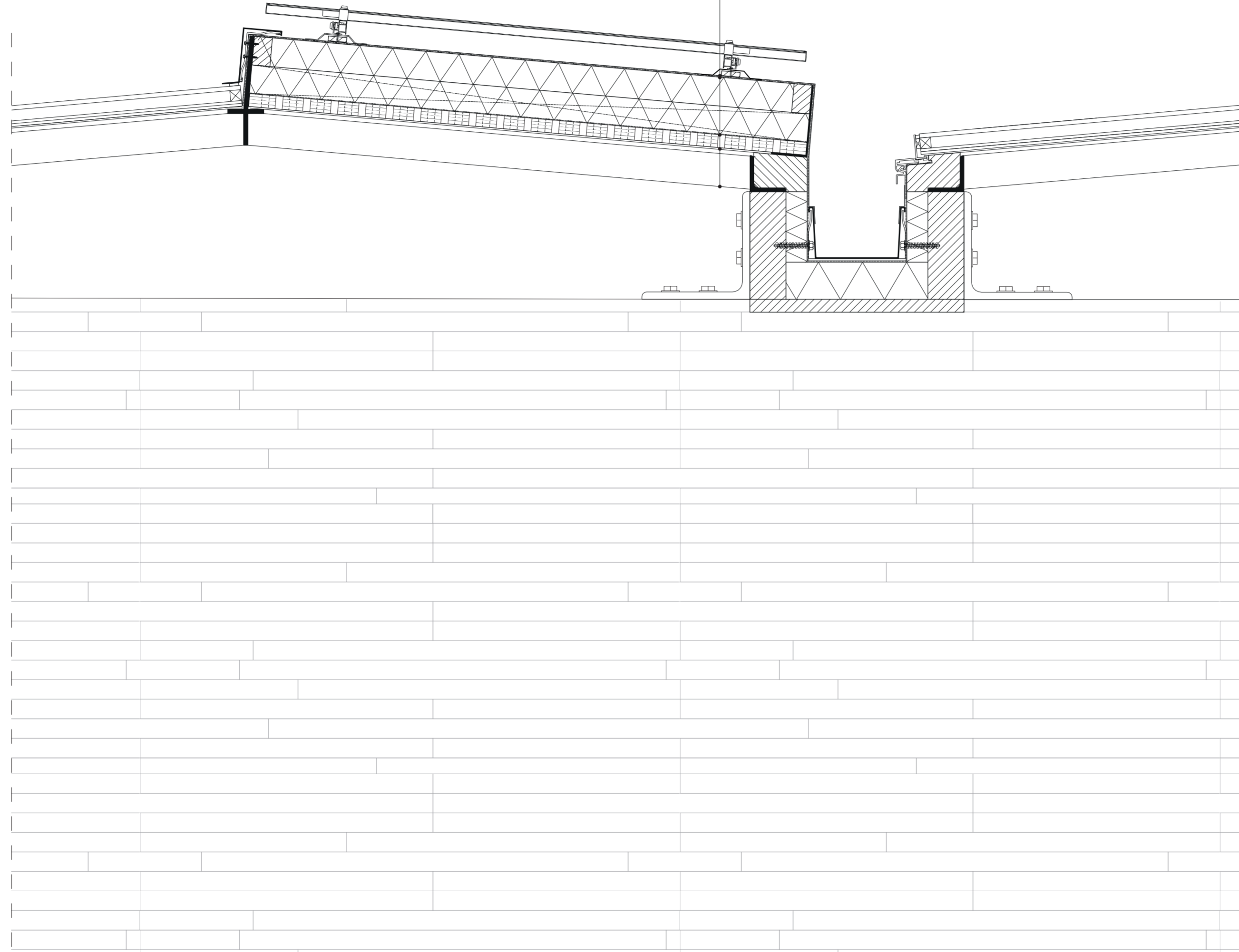


DETAIL D2

Scale 1:5_a2
National Bank of Belgium
Brussels



PV panels
bitumen 5mm
water proof membrane
rigid PIR insulation with timber frame 100mm
damp proof membrane
acoustic perforated wooden finishing panels
steal T profile 50 x 50 mm



DETAIL D3

Scale 1:5_a2
National Bank of Belgium
Brussels

