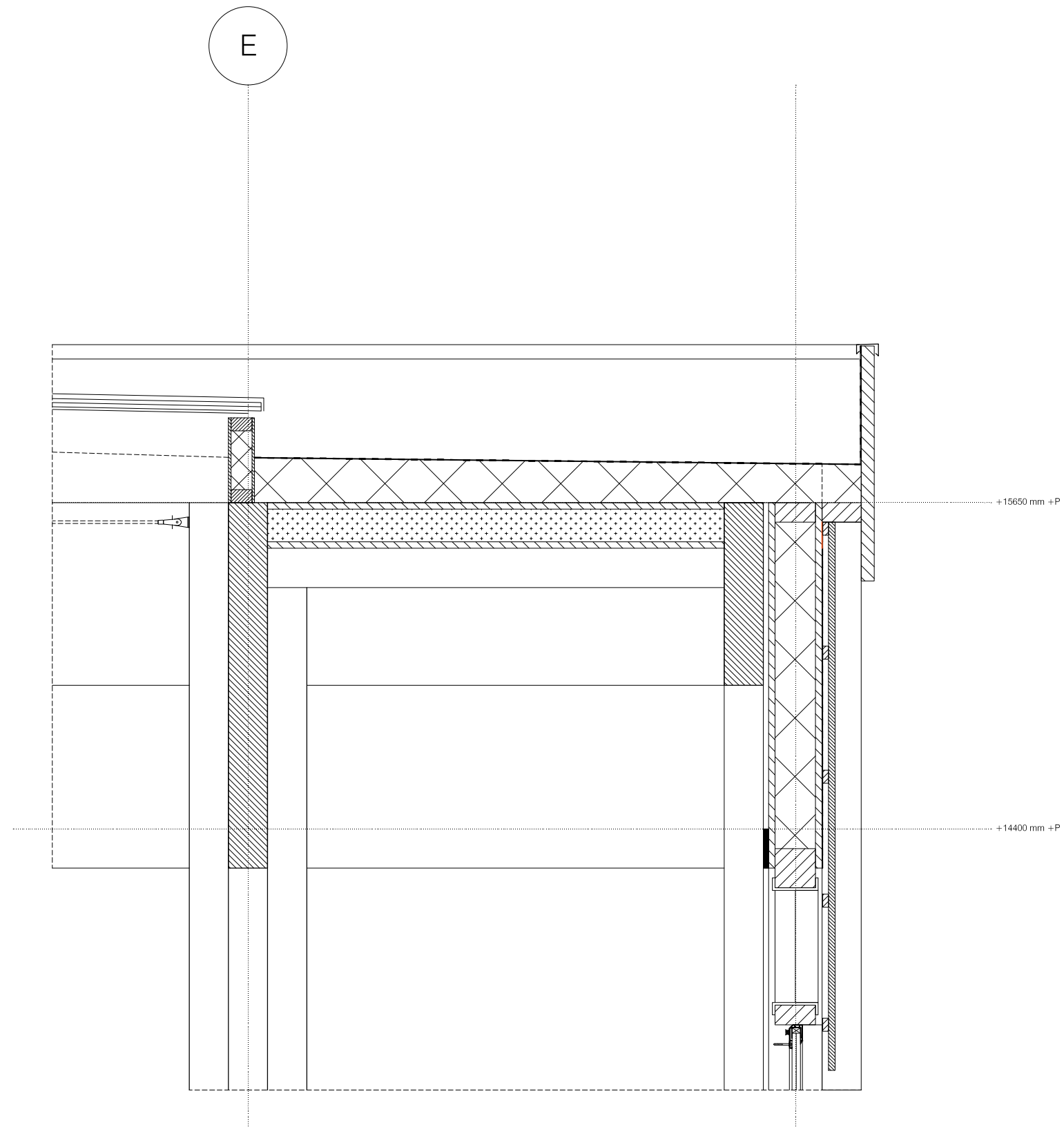
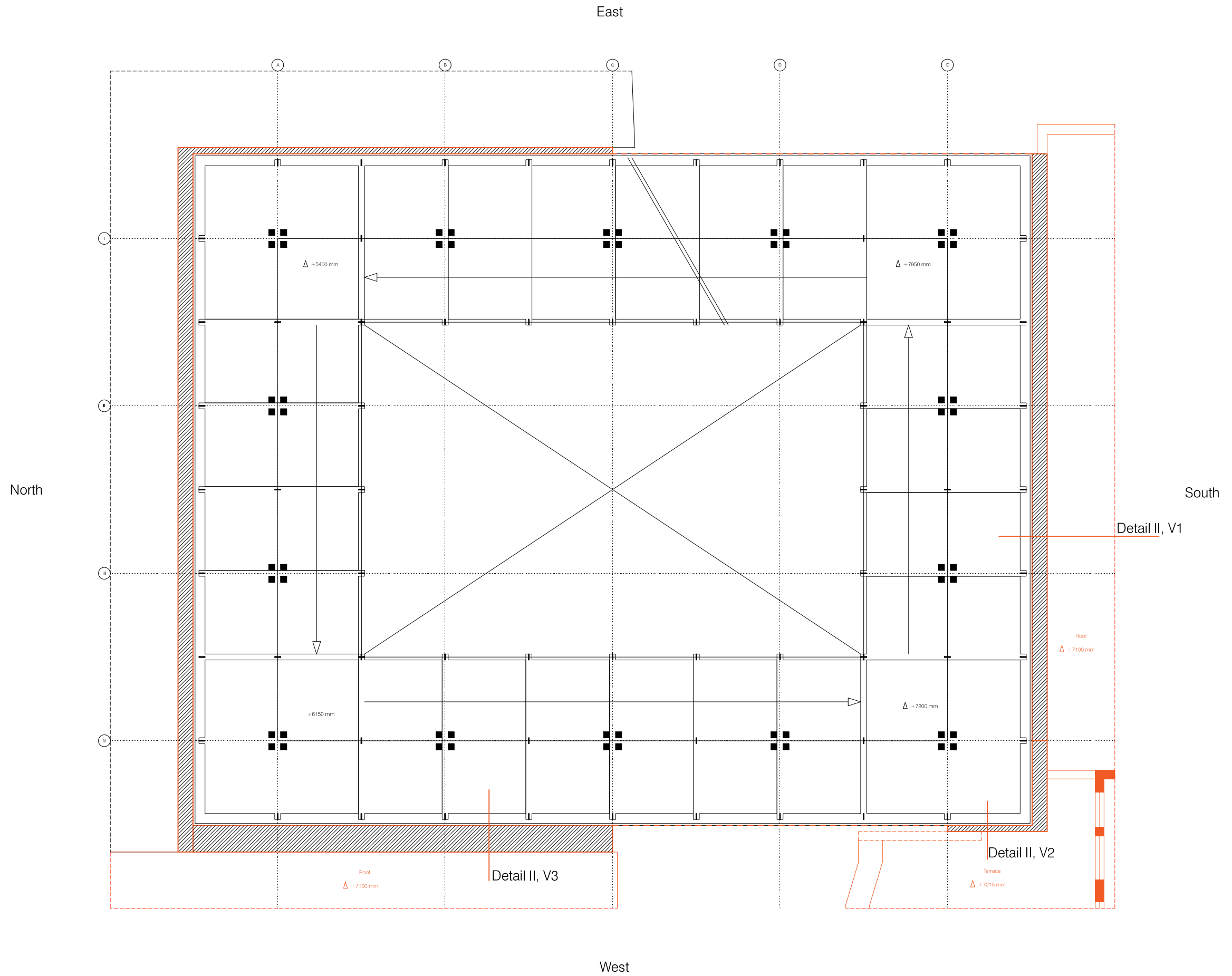


Detail I

Roof edge



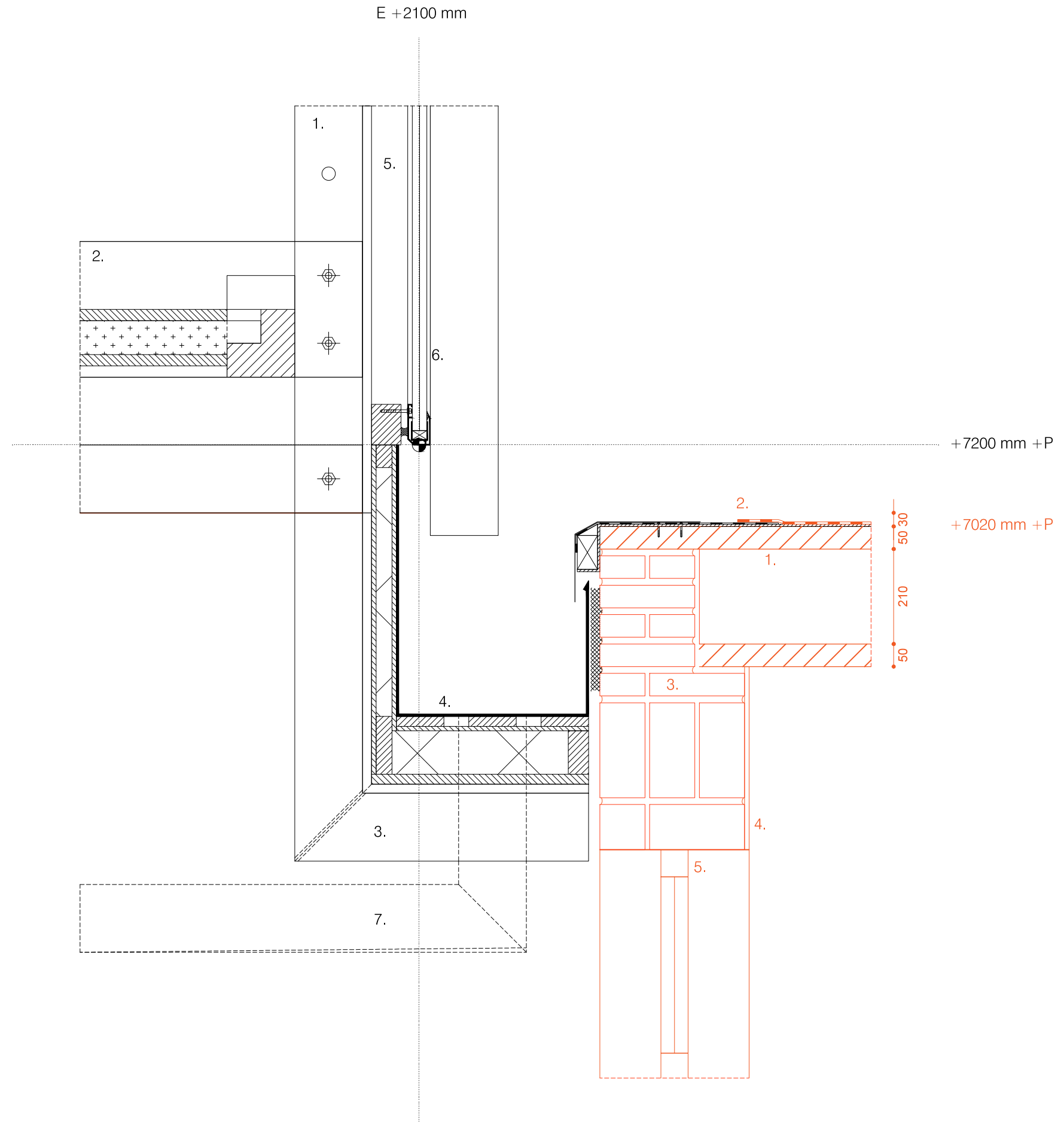


Detail II

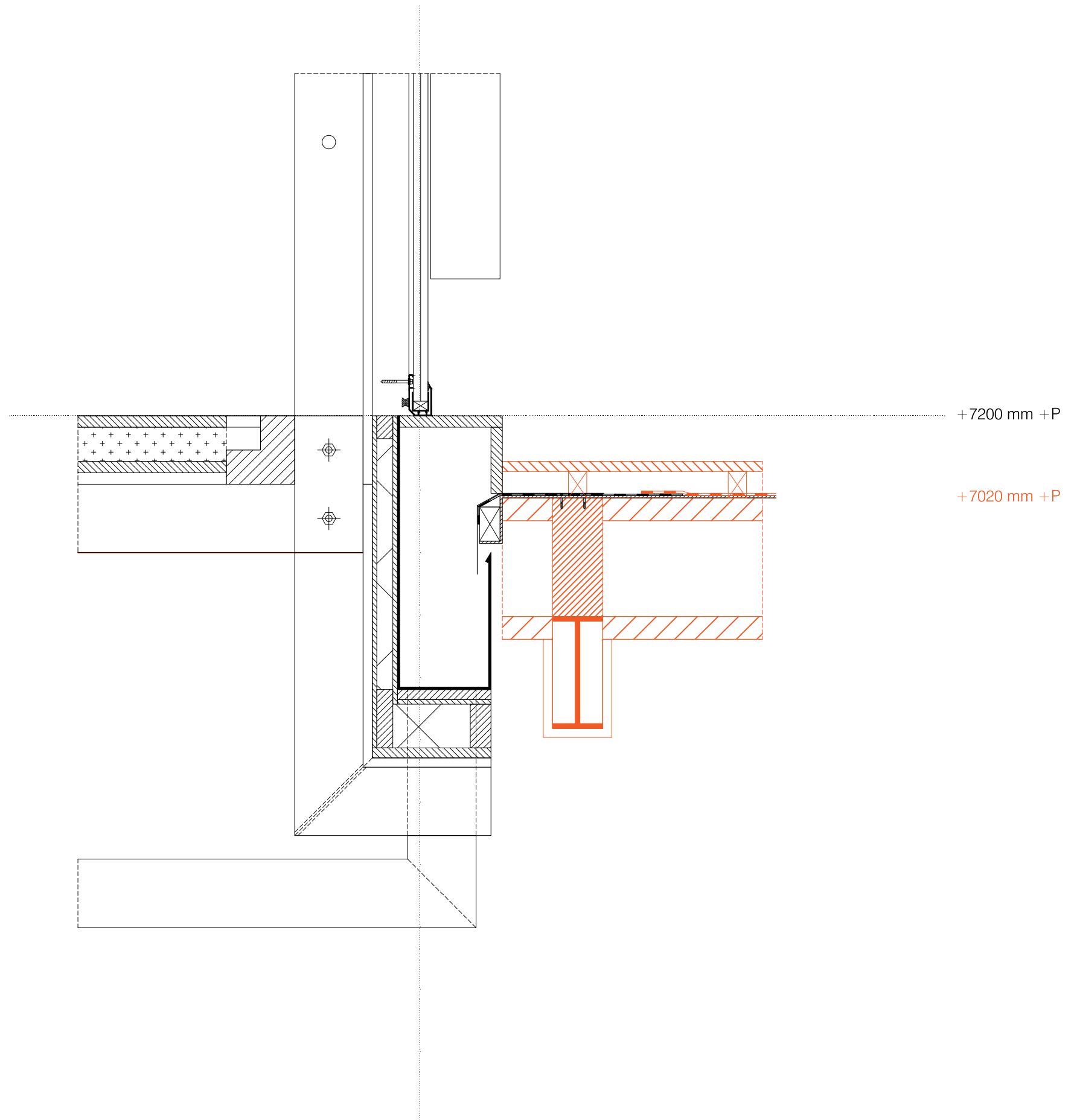
Gutter between given and new

1. 15mm thick steel slab as T-profile
2. Wooden beam, 150x300 mm,
3. 15mm thick steel slab, welded on
4. Zinc gutter, 3mm thick,
5. Wooden vertical window frame,
6. Polycarbonate, 34 mm thick, 7000mm in length
7. Water pipe

1. Wooden Roofing, 50 mm thick
2. Bitumen roof cladding
3. Brick wall, 330 mm thick
4. Plaster finishing
5. Aluminium window frame



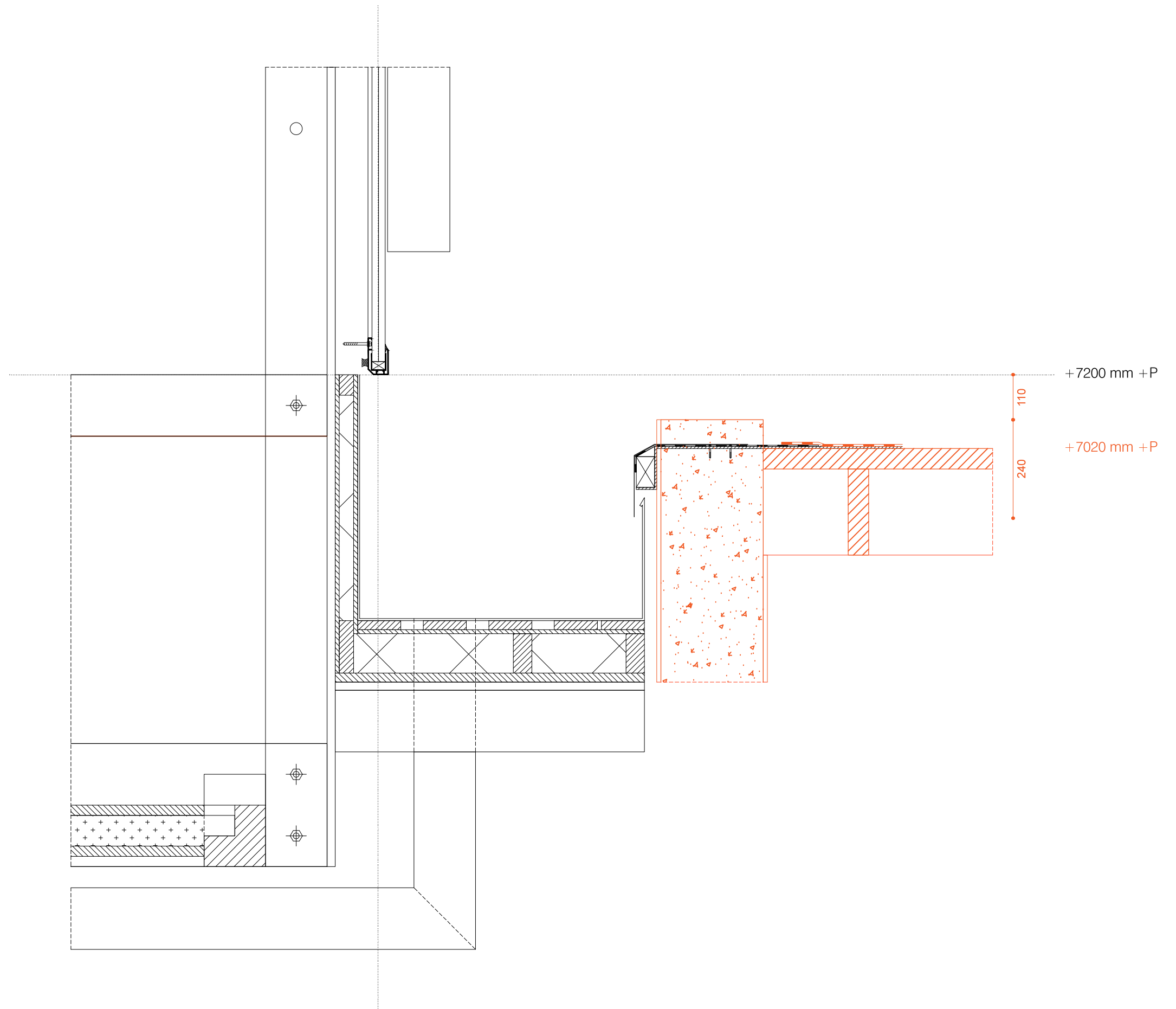
E +2100 mm



+7200 mm +P

+7020 mm +P

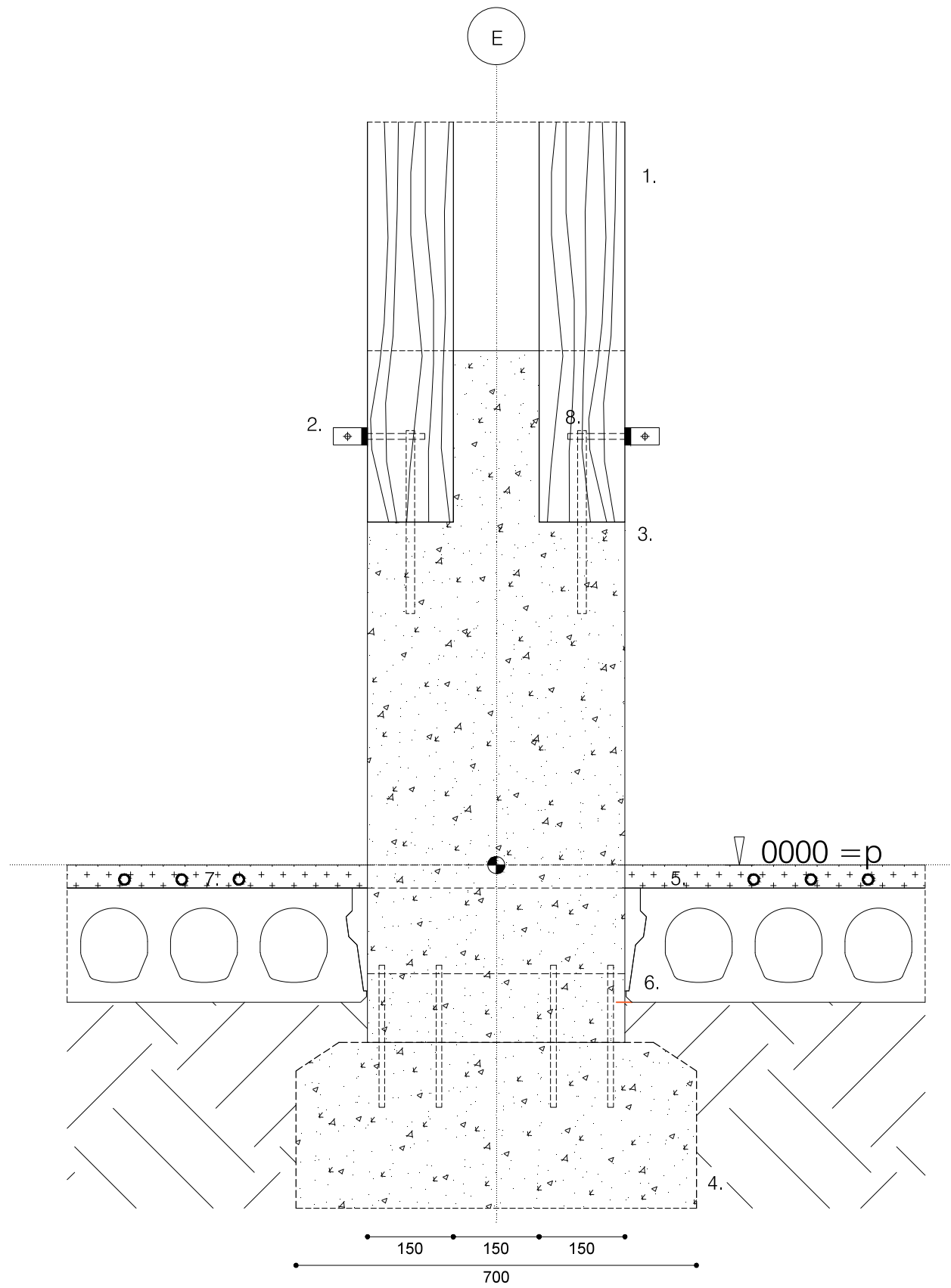
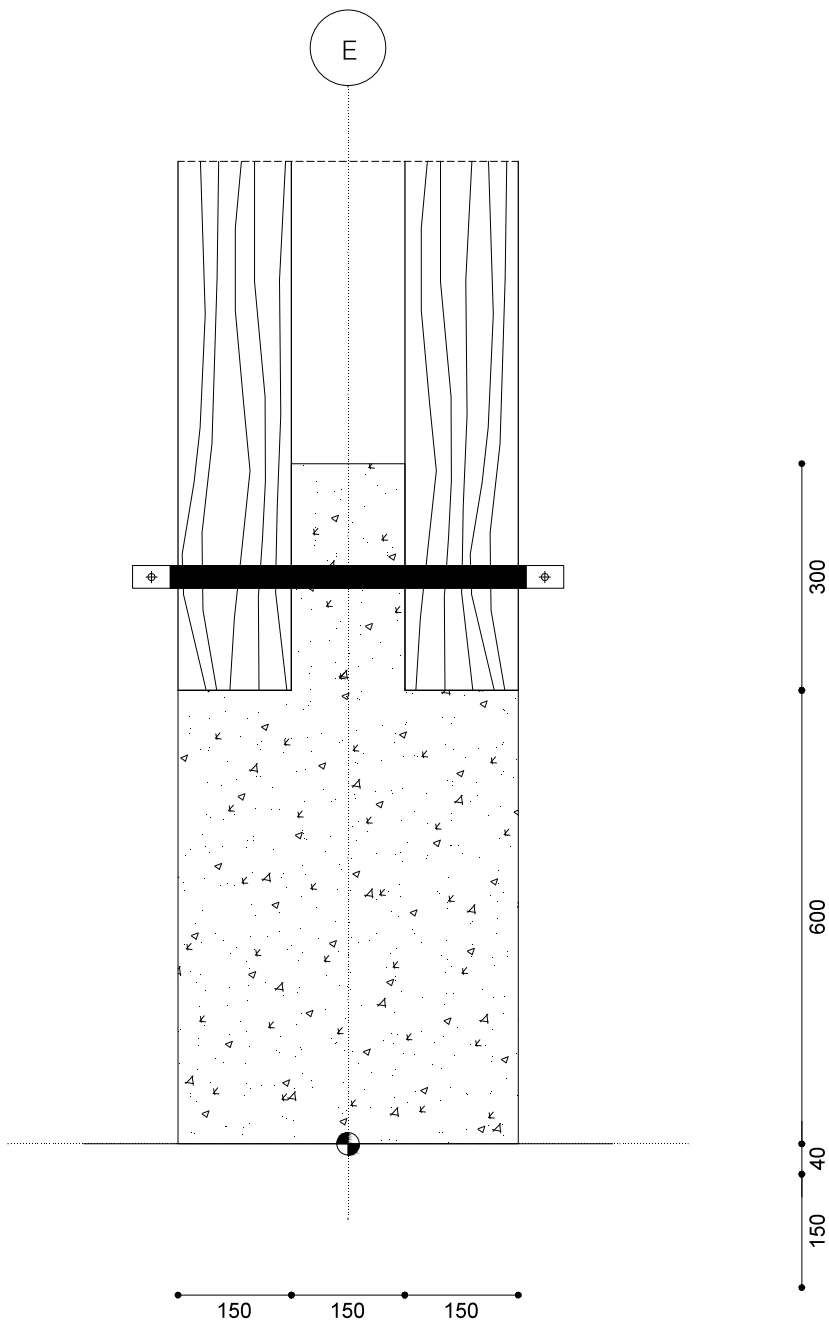
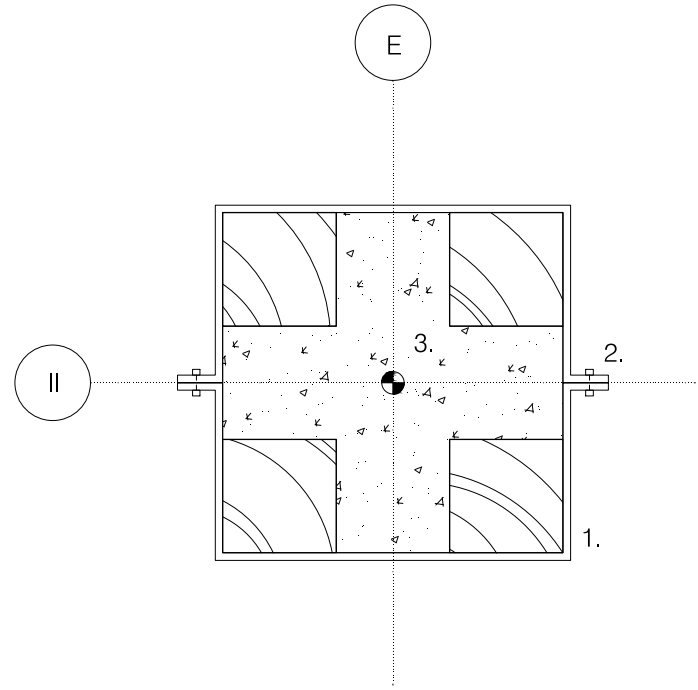
E +2100 mm



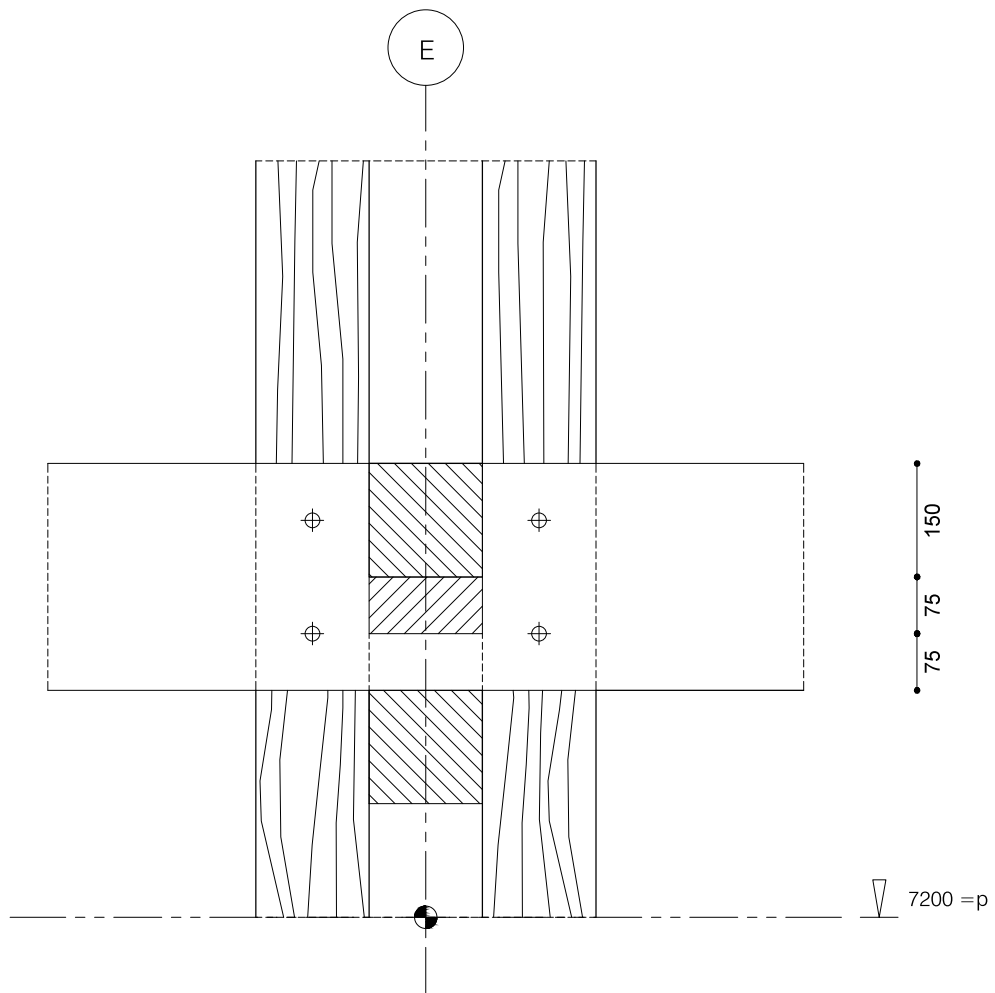
Detail III

Meeting wooden columns with foundation

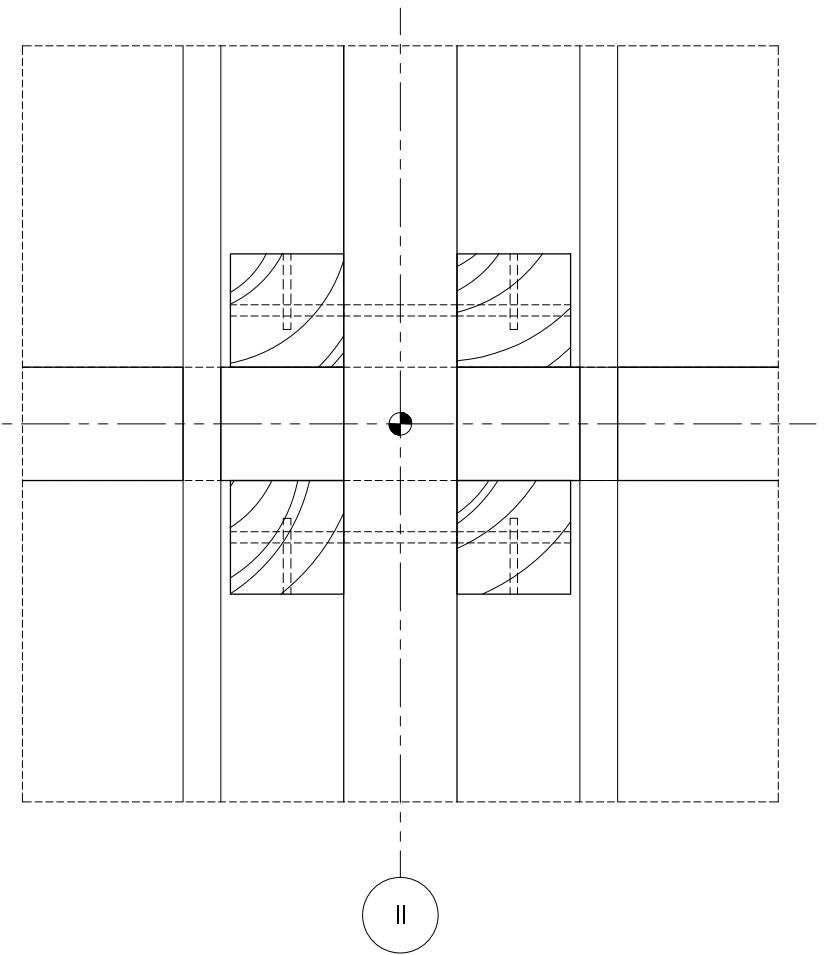
1. Column, 4x 150x150 mm, glue laminated, softwood
2. 10mm Steel slab
3. Concrete pillar, 450x450 mm, prefabricated
4. Concrete foundation Column, 700x700 mm
5. Top layer poured concrete
6. Concrete base floor
7. Integrated floor heating, 20 mm
8. Timber Linx A475, connected with galv. threaded rod
9. Water pipe,



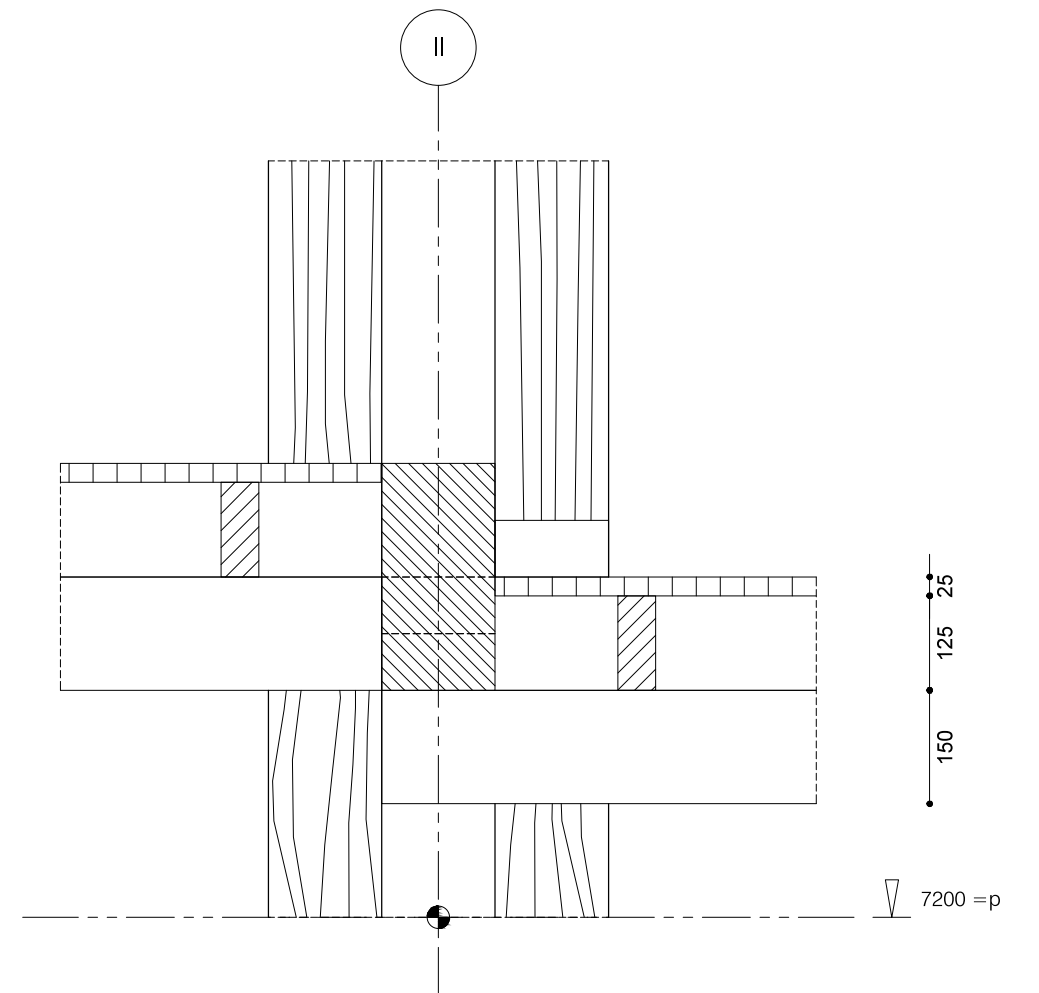
Detail IV. 1



E



II



25

125

150

7200 = p

Detail IV. 2

