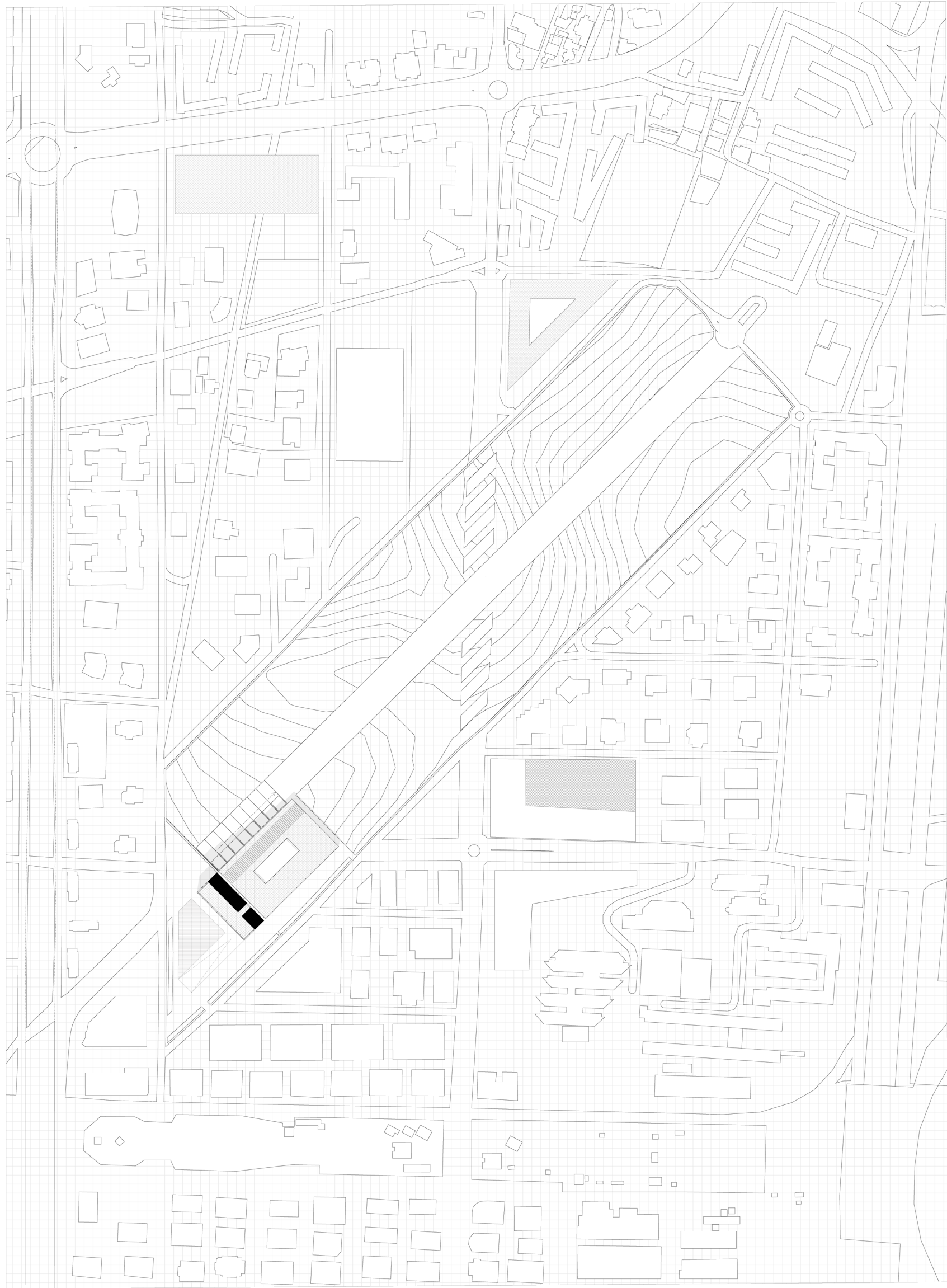
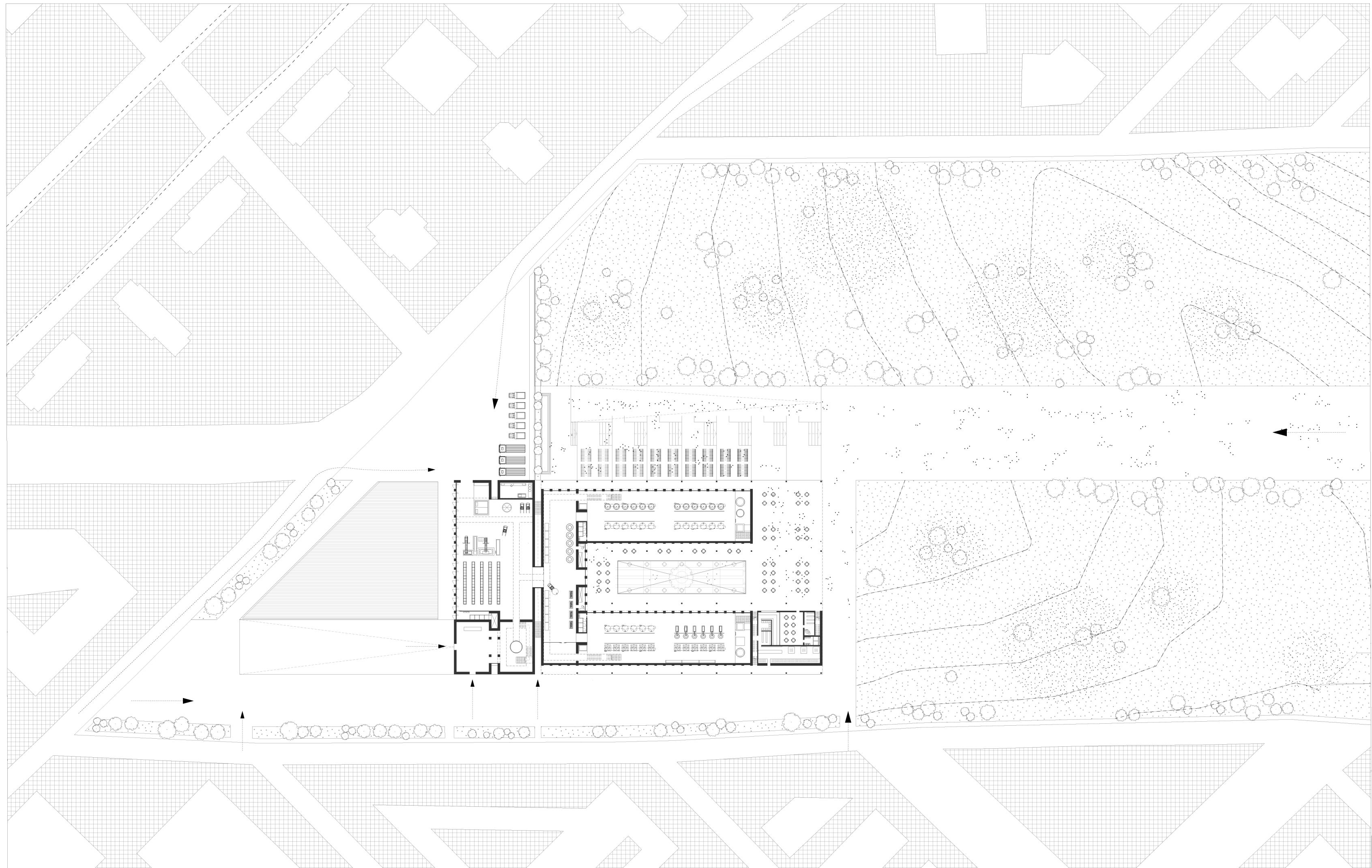
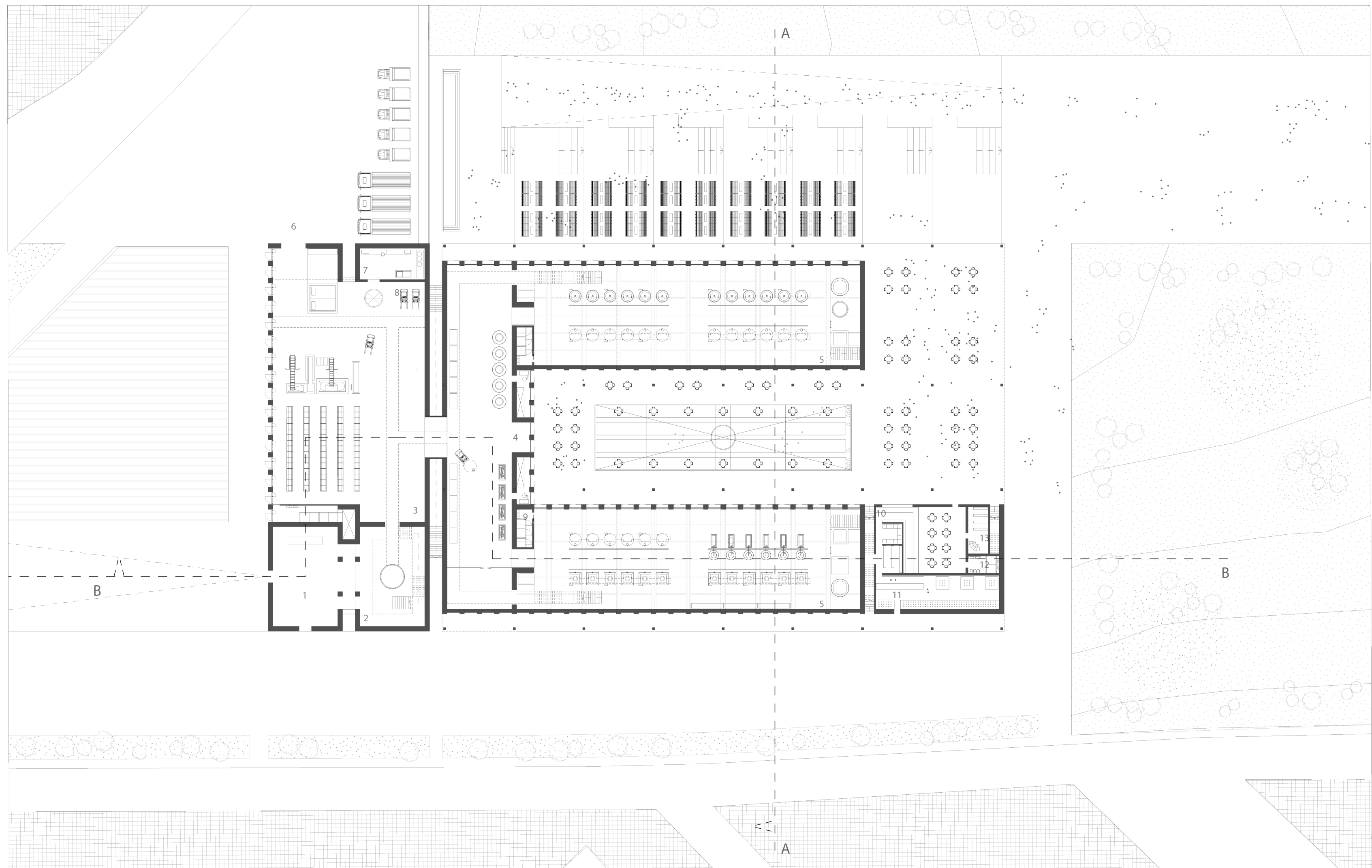


P5 DRAWING SET
martin grech 5366283





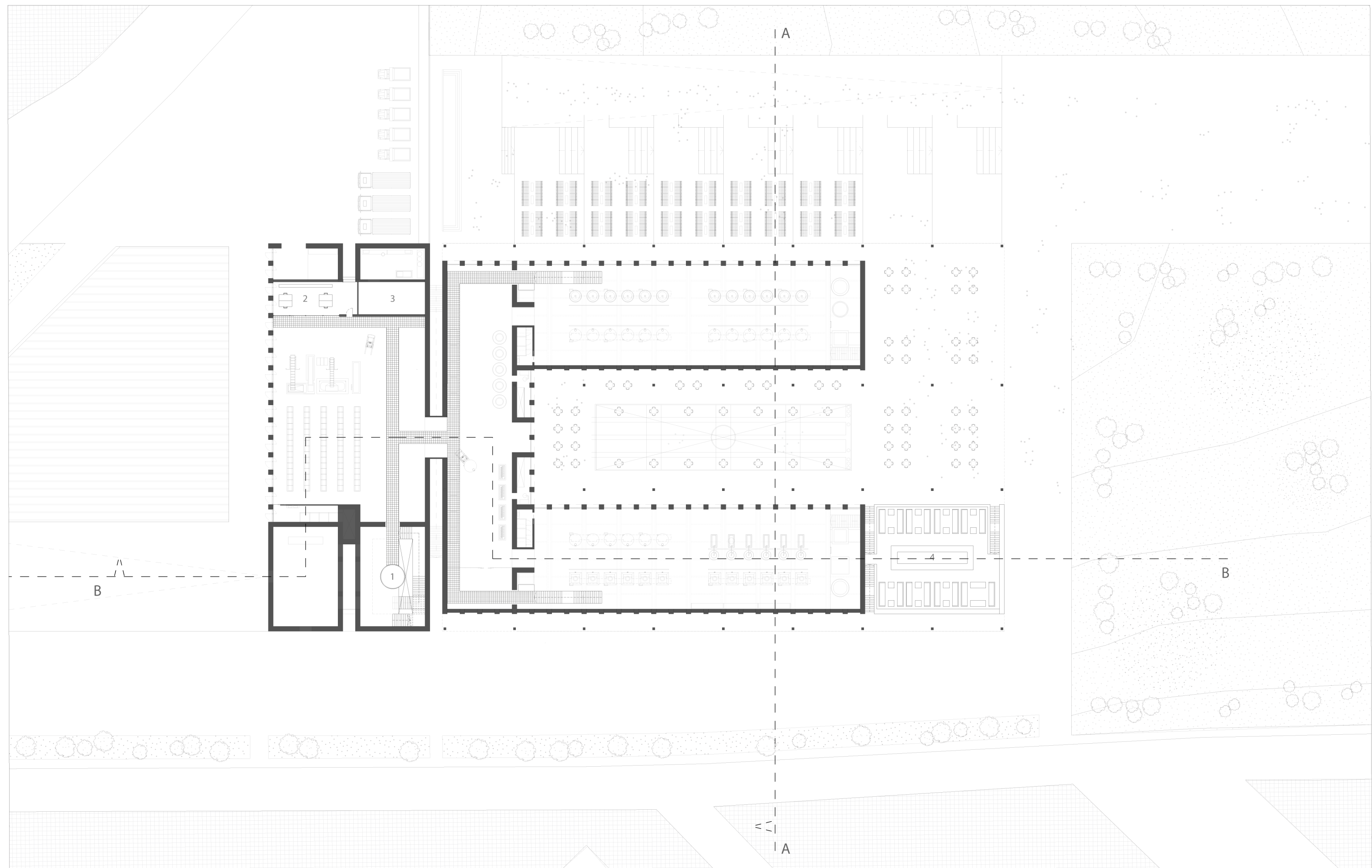
- 1. reception
- 2. circulation tower
- 3. warehouse
- 4. press and crush rooms
- 5. vinification hall
- 6. loading bay
- 7. services
- 8. forklift charging station
- 9. facilities
- 10. mezze bar
- 11. shop
- 12. facilities
- 13. food store



PLAN 00



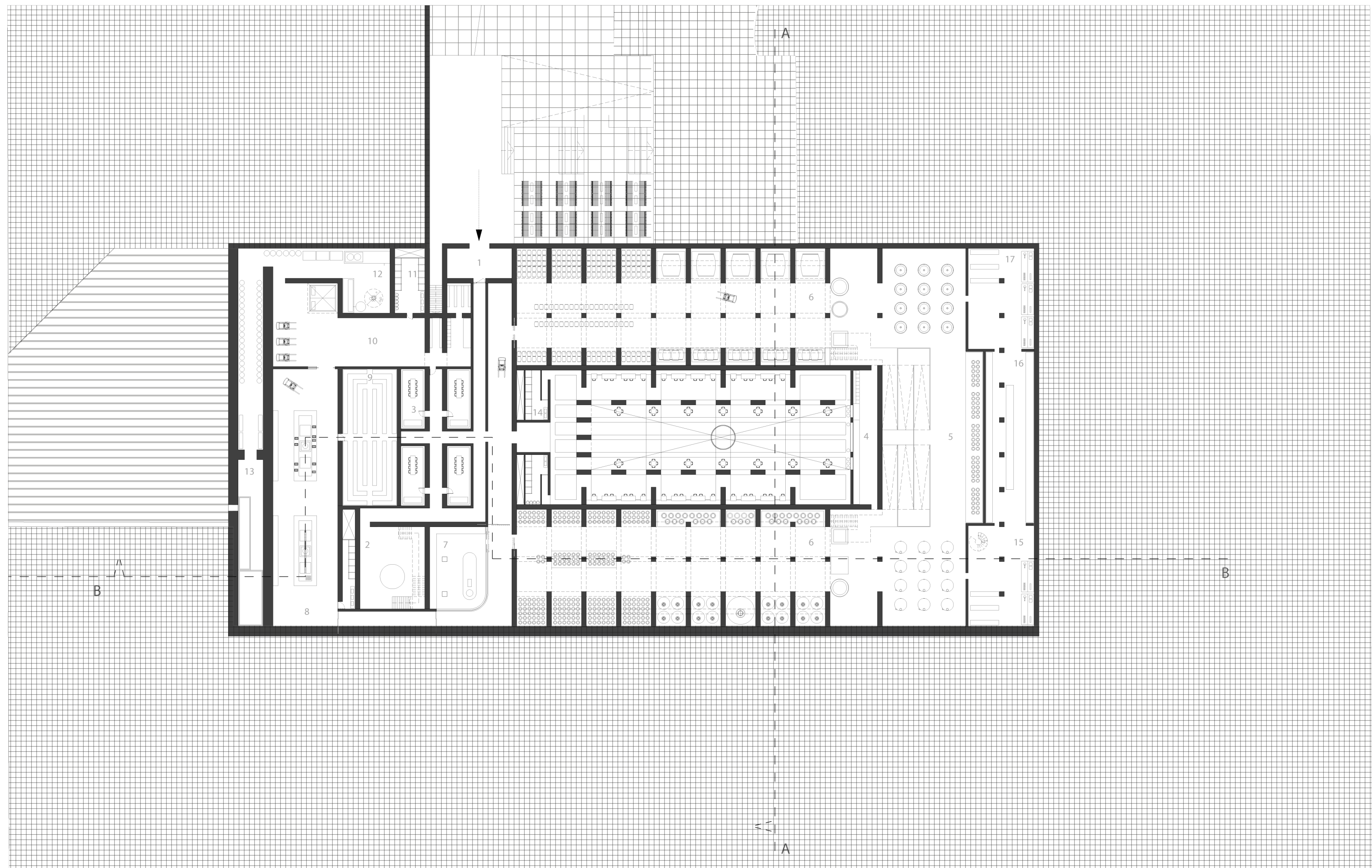
- 1. circulation tower
- 2. administration
- 3. services
- 4. mezza rooftop terrace



PLAN 01



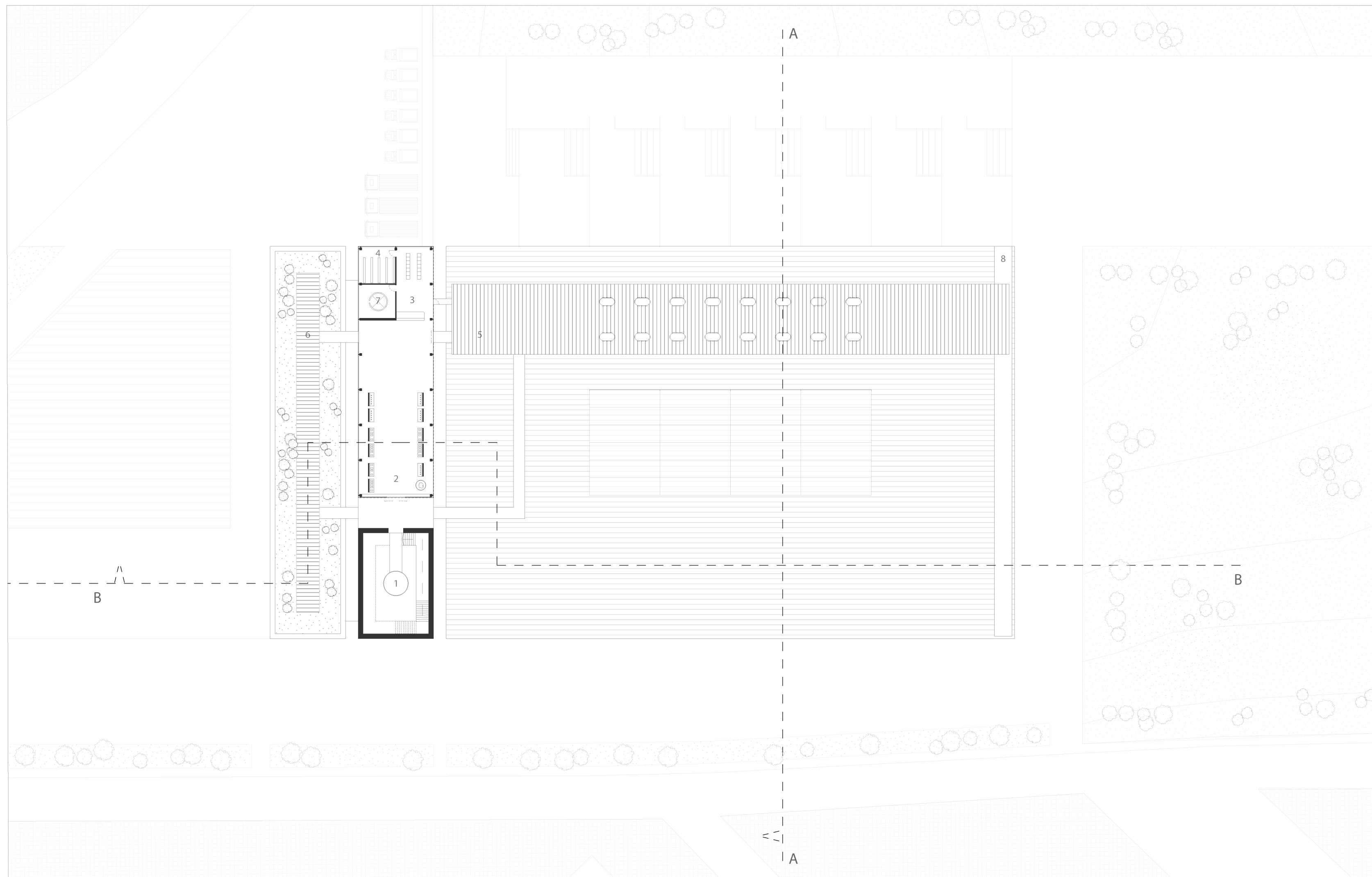
- 1. entrance
- 2. circulation tower
- 3. wine-tasting rooms
- 4. wine bar
- 5. maloactic fermentation
- 6. cellar
- 7. testing
- 8. bottling and labelling
- 9. bottle store
- 10. export store
- 11. facilities
- 12. service core
- 13. water filters
- 14. facilities
- 15. testing
- 16. store
- 17. laboratory



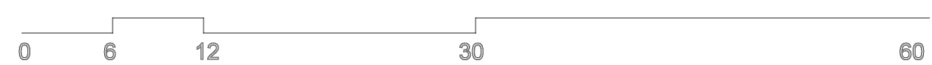
PLAN -01

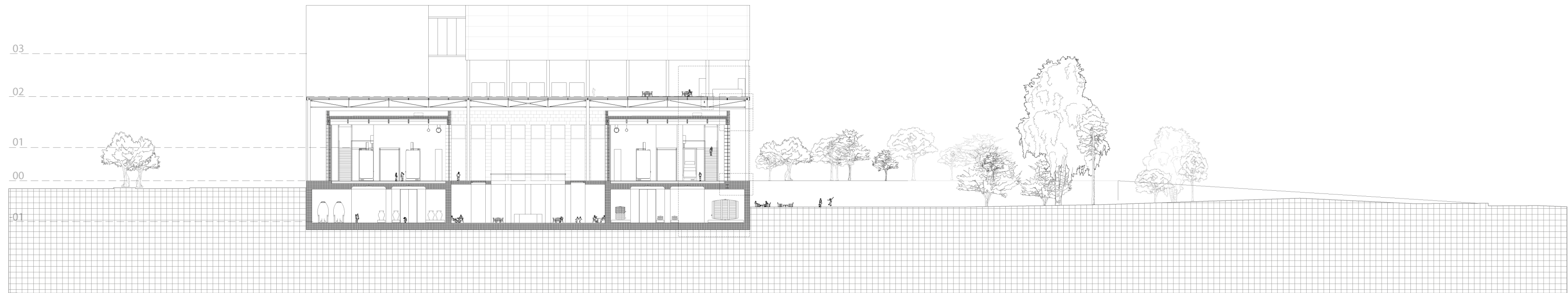


- 1. circulation tower
- 2. wine exhibition
- 3. rooftop bar and kitchen
- 4. storage
- 5. water terrace
- 6. green terrace
- 7. service core
- 8. water circulation system

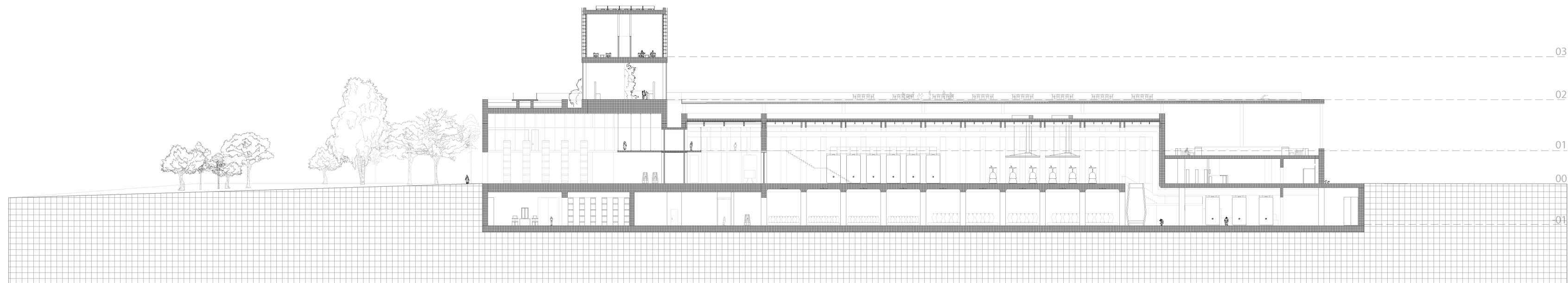


PLAN 02



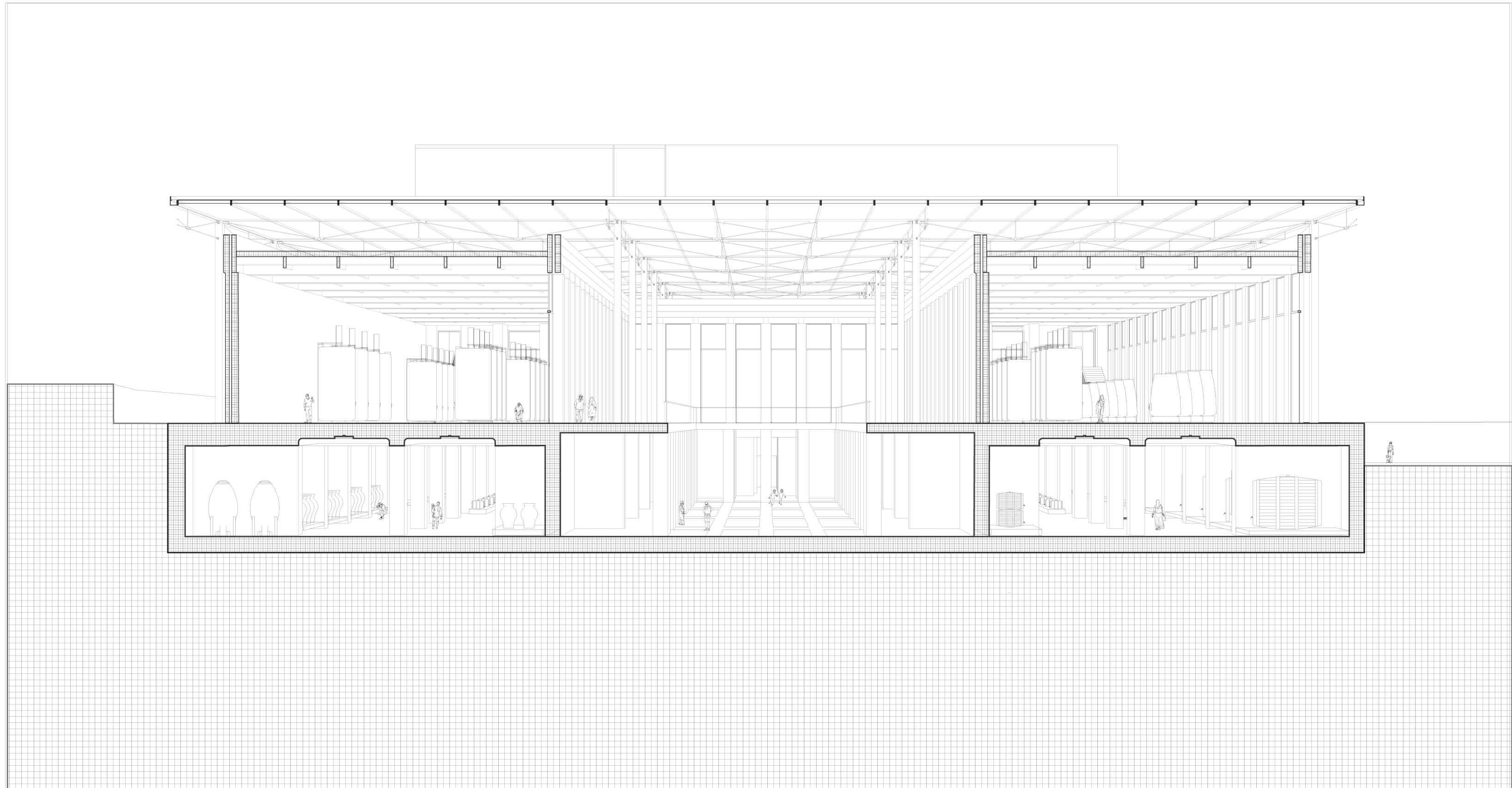


SECTION AA



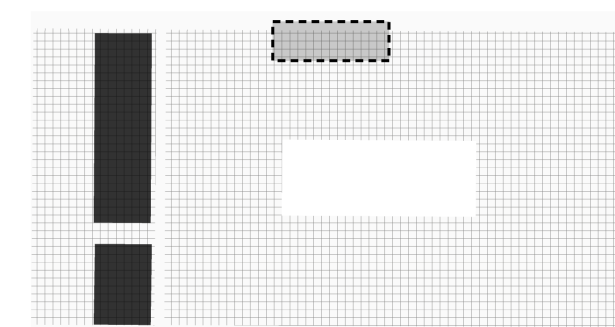
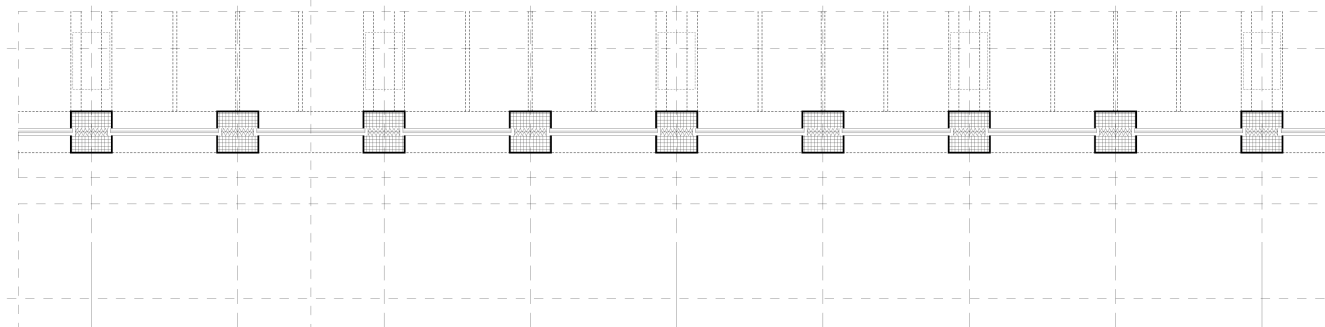
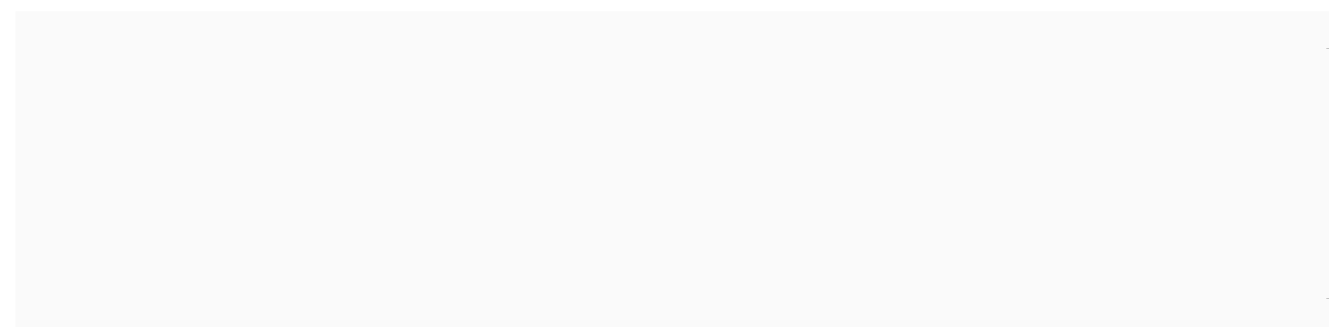
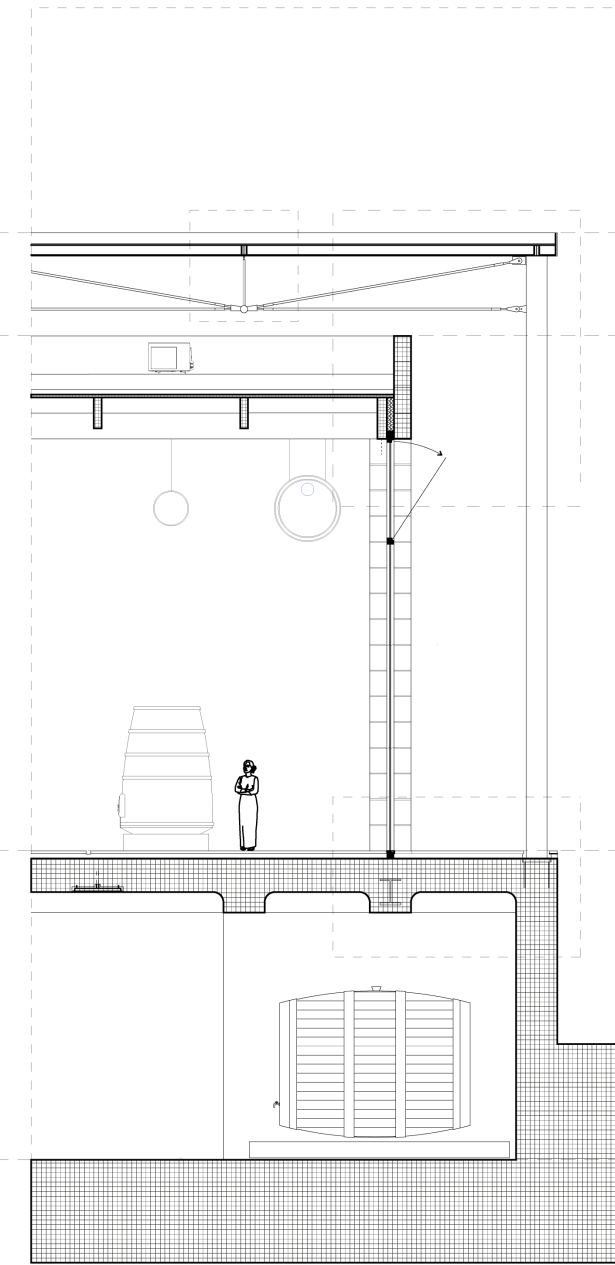
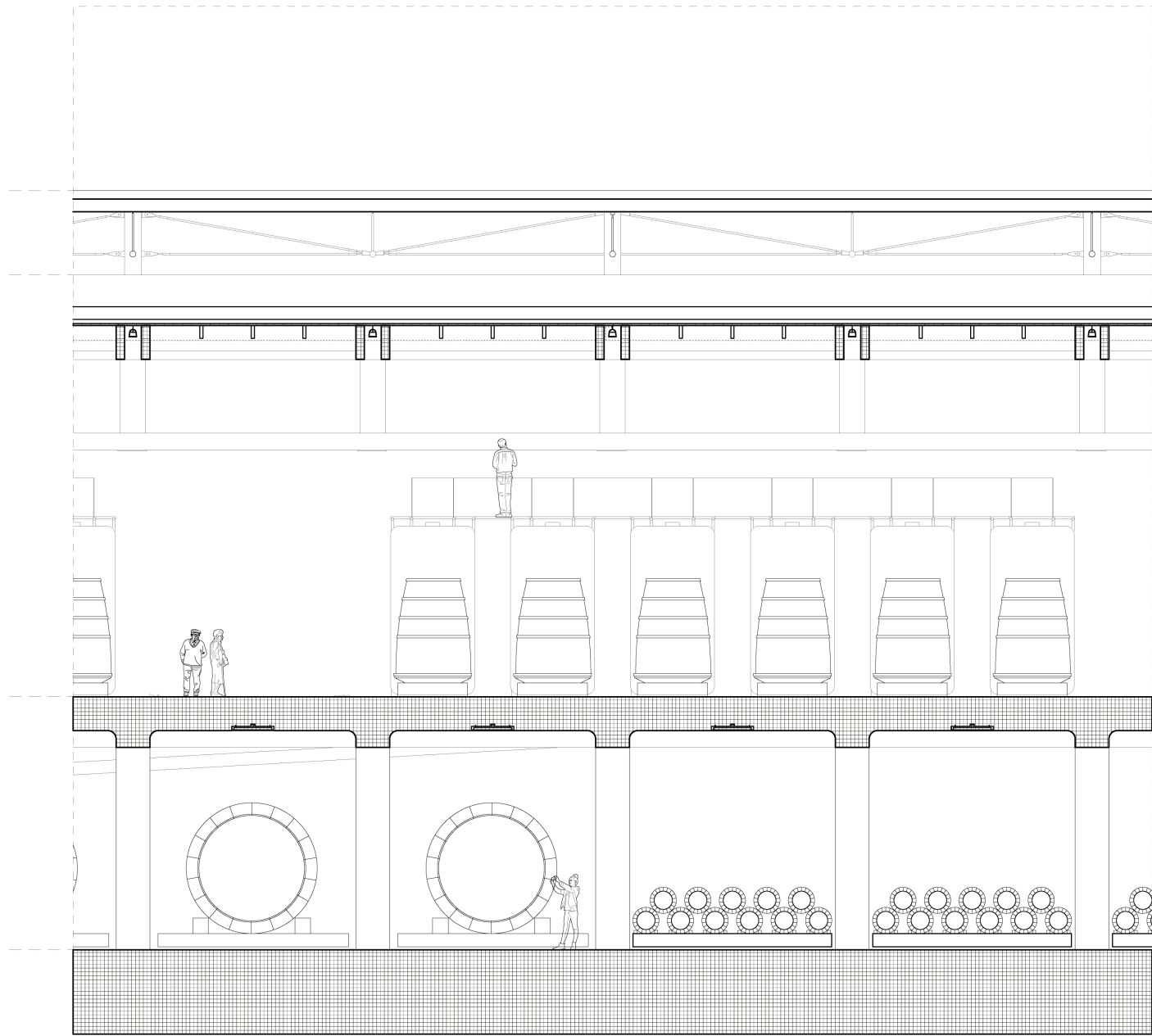
SECTION BB



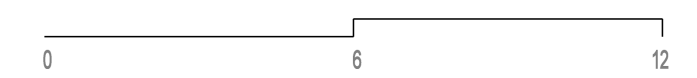


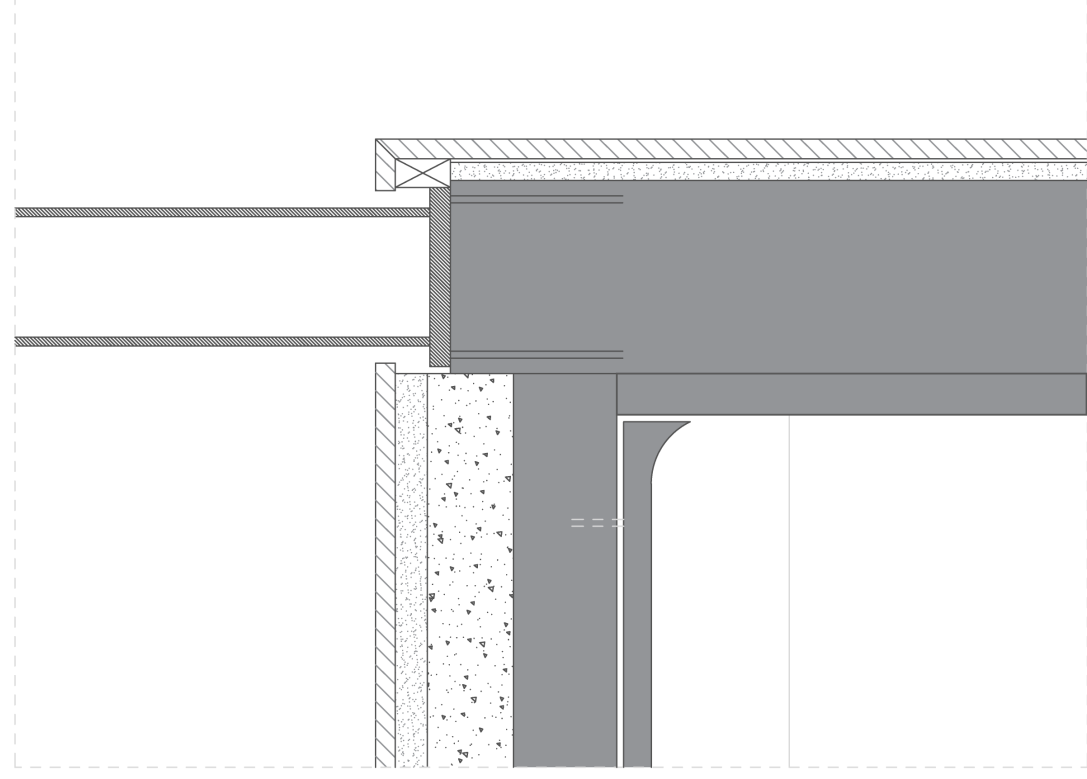
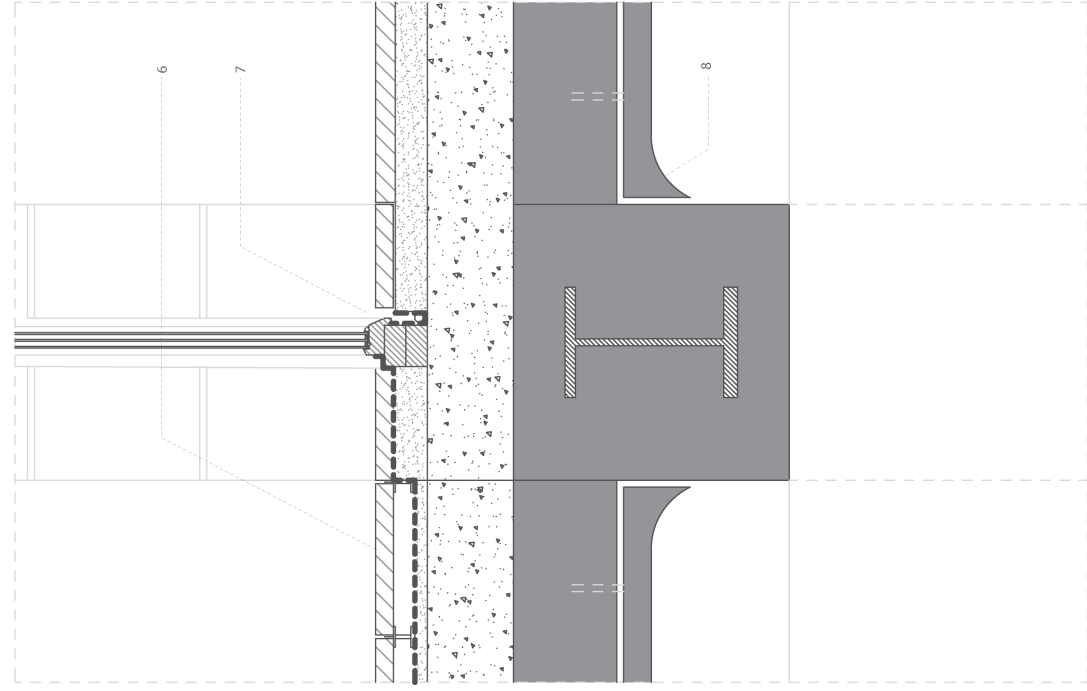
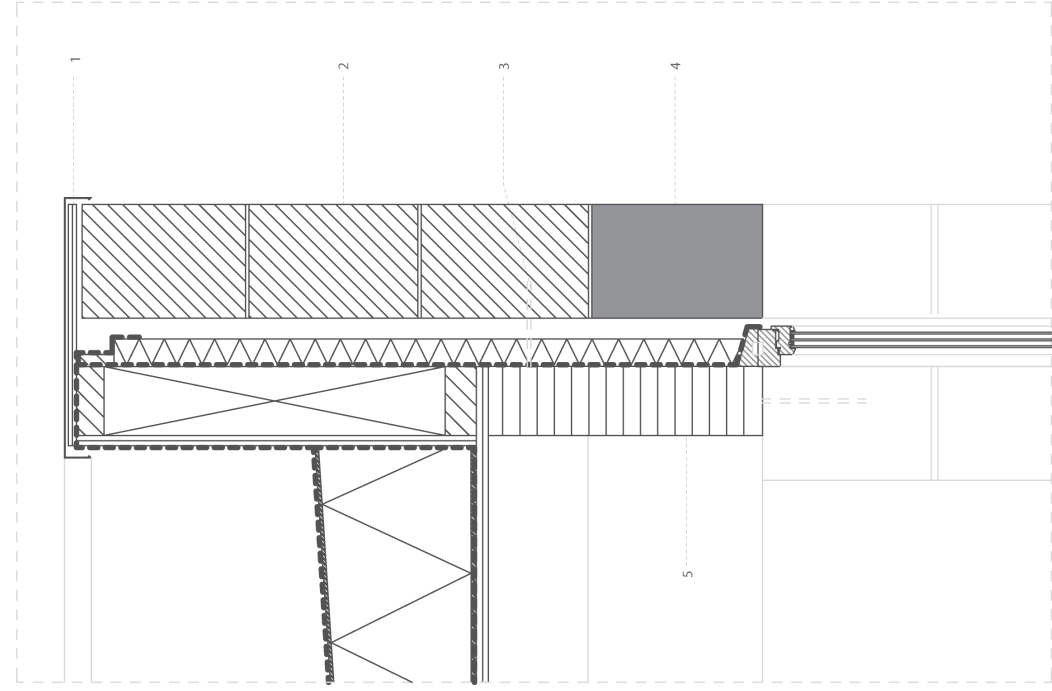
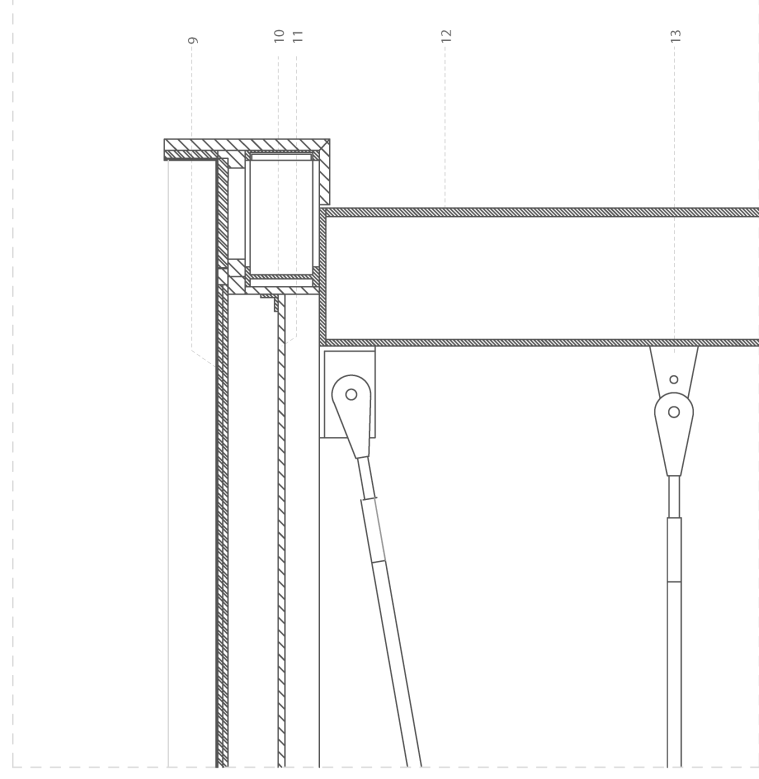
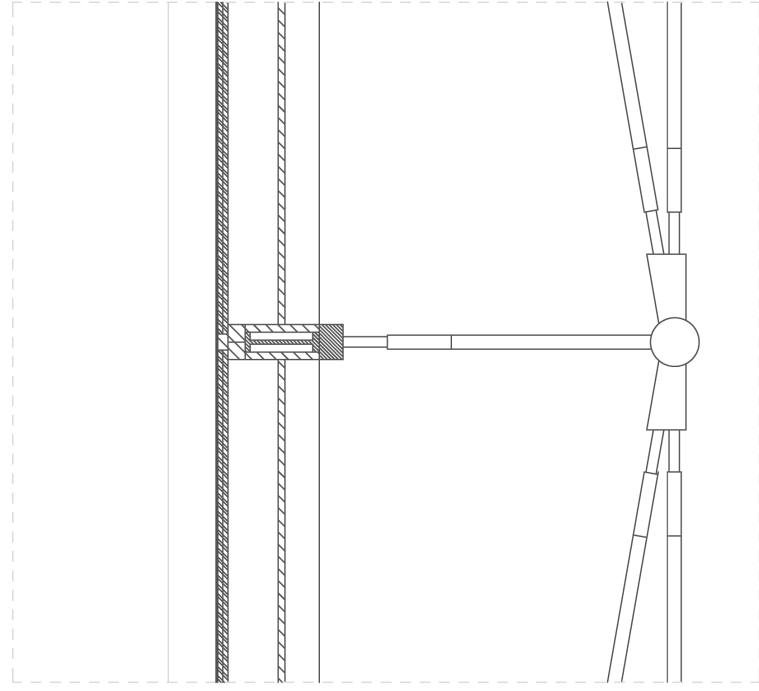
INTERNAL FRAGMENT





EXTERNAL FRAGMENT





1. zinc sheet coping
2. 100mm thick limestone masonry
3. 30mm air cavity
4. 80mm thermal insulation
5. 200mm structural timber connected to masonry anchor
6. ground floor construction: 60mm marble tile, 20mm concrete, 25/75mm screed
7. separation layer
8. 250mm concrete floor encased in concrete
9. 1.5mm stainless-steel sheet, XPS rigid foam
10. 1.5mm stainless-steel sheet
11. 250mm steel beam
12. aluminium panelling
13. 400mm stainless steel beam
14. tension cable, steel anchor plate, welded

0 1 2
VINIFICATION WALL DETAIL