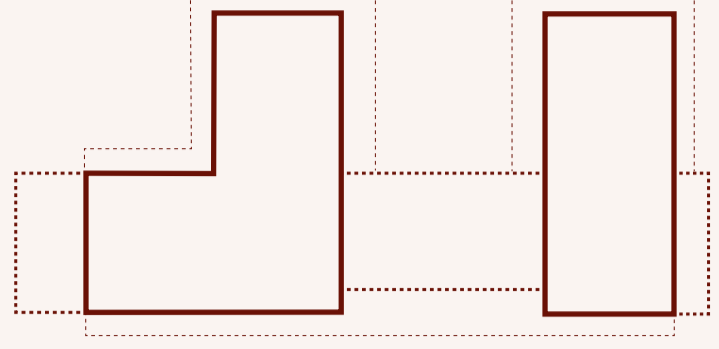


Arriere Gar(d)e

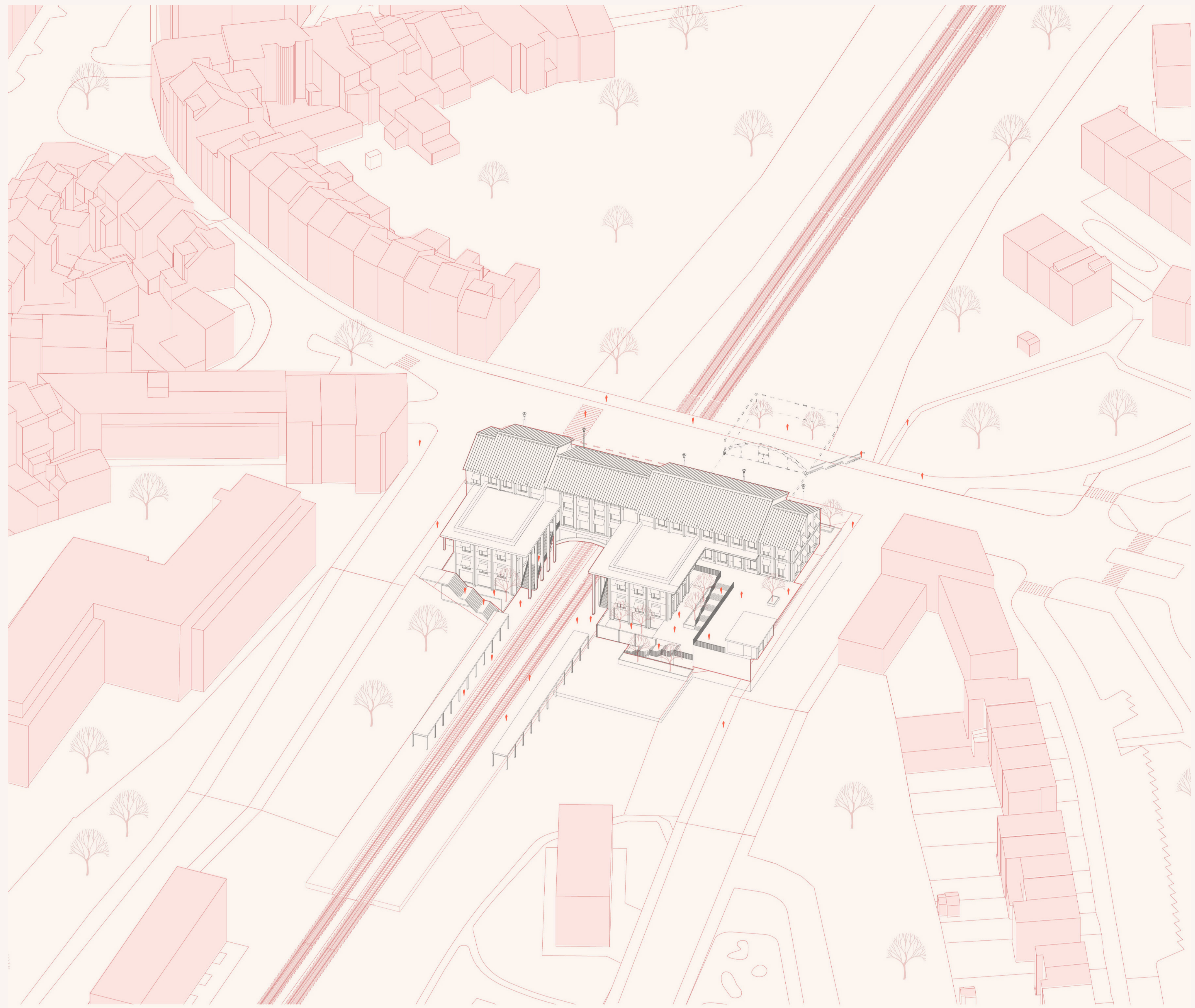
Jelte van den Berg



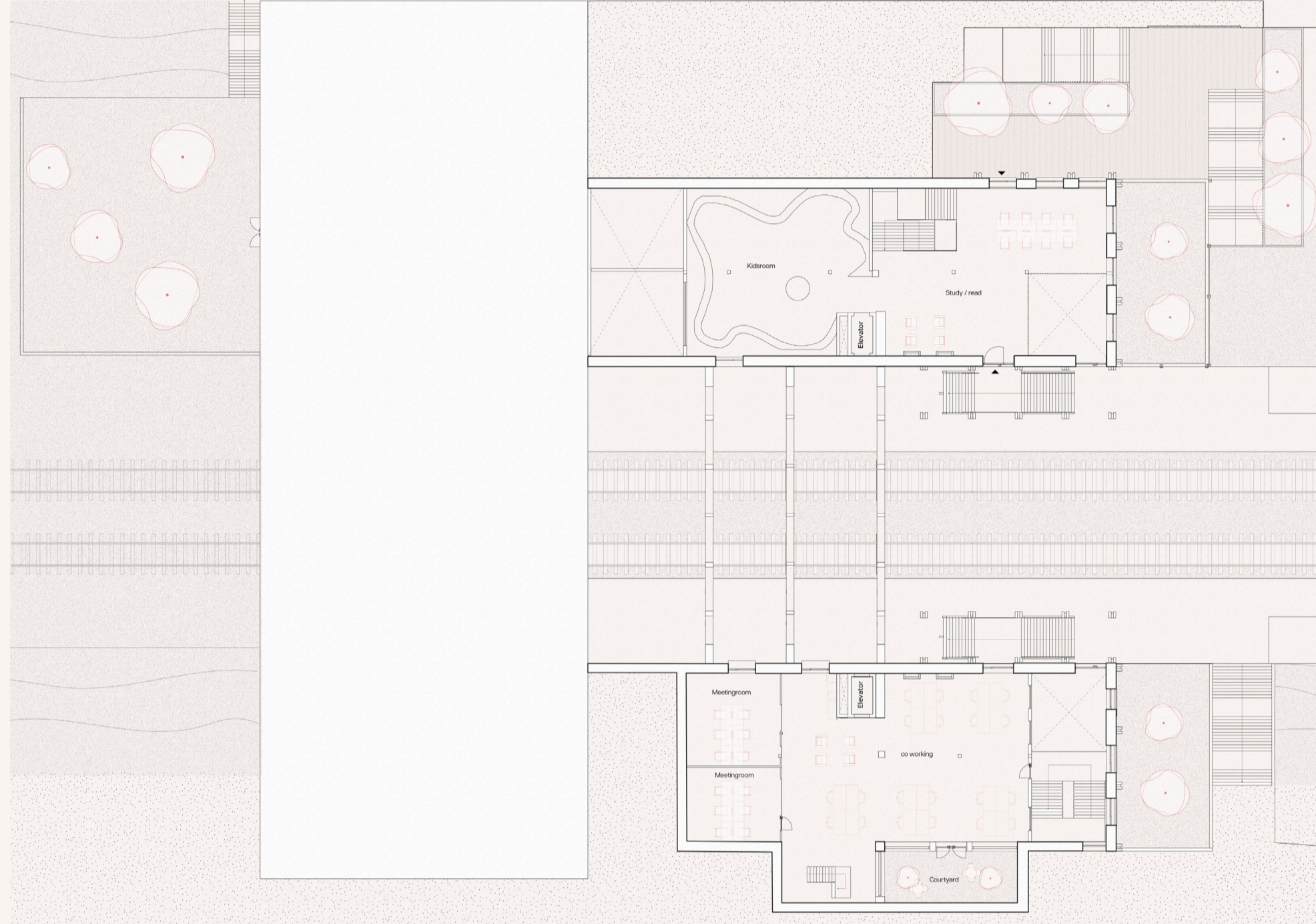
The contemporary vernacular

Arriere garde is a project that tries to connect as best as it can to the urban context it lies in. It does this on three scale levels: urbanistically, architecturally and technically. Urbanistically, the masterplan connects to the current neighbourhood by making the boundaries porous, the location of the building is situated in such a way that it forms the spill between the current and new neighbourhood. The programme of a train station combined with local functions such as the library and cafe contributes to this even more.

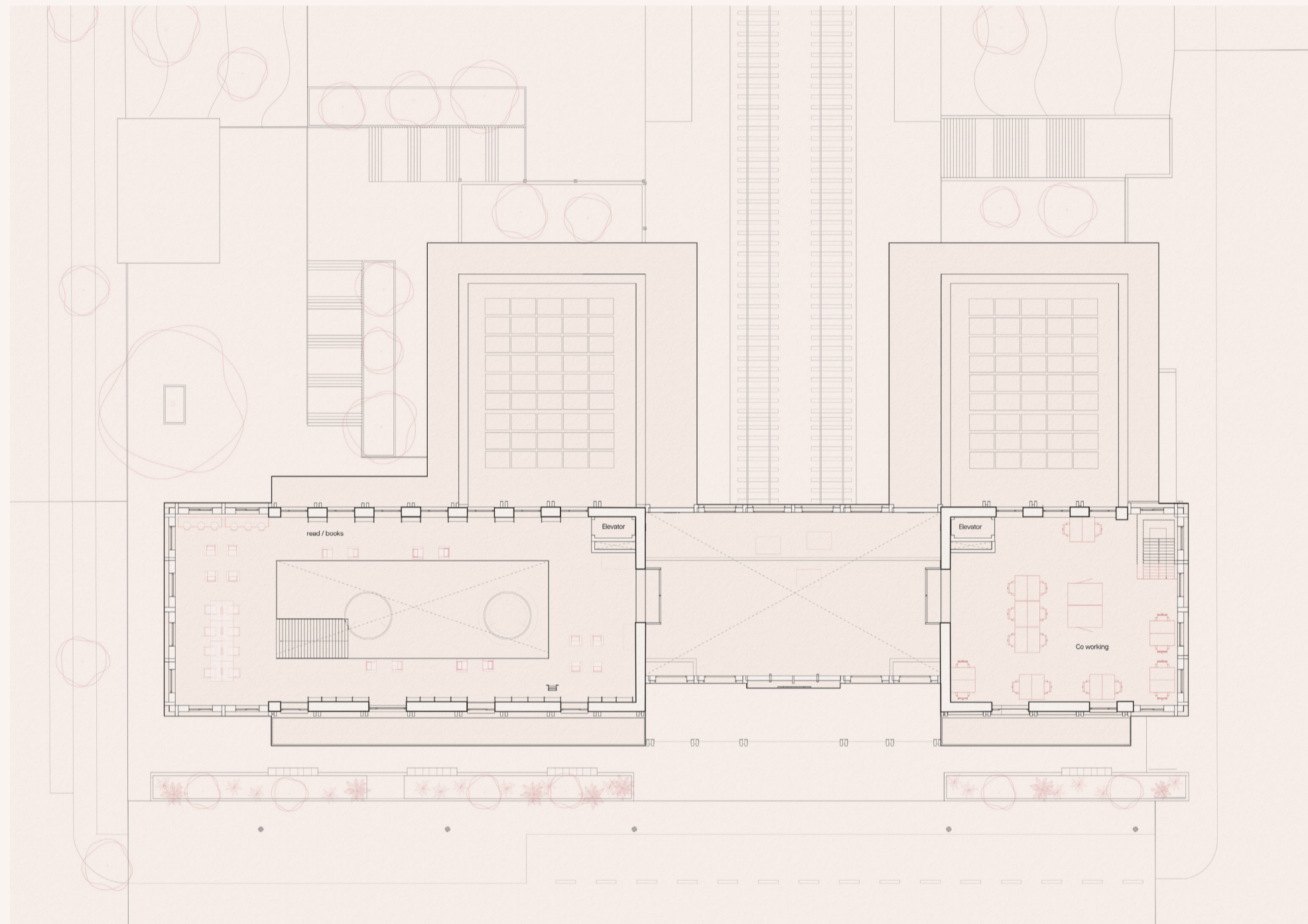
Architecturally, the buildings is inspired by the local context. It draws inspiration from local features such as massing, materiality and details to connect to the local architecture. By doing research into vernacular architecture in Brussels, the building even connects to the local context on a historical level. The local materials that are used were used in the past as well. In the contemporary context of today, they contribute to the technical aspects since they are used in their full potential. The design also had to be adapted to the technical ambition of building according to the passive standard. Adapting the design of the building onto its context is the contemporary vernacular: it is Arriere garde.



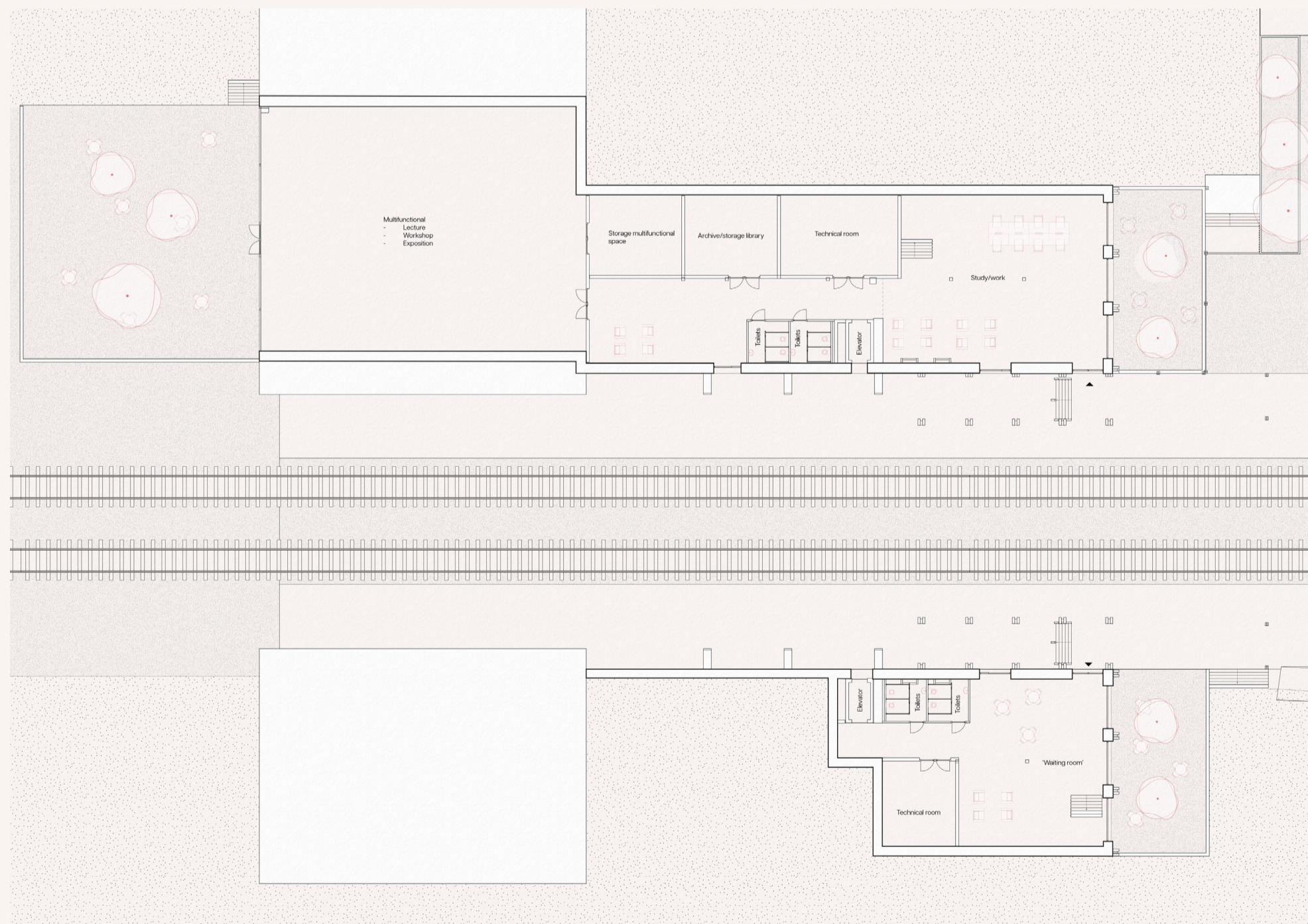
Axonometric



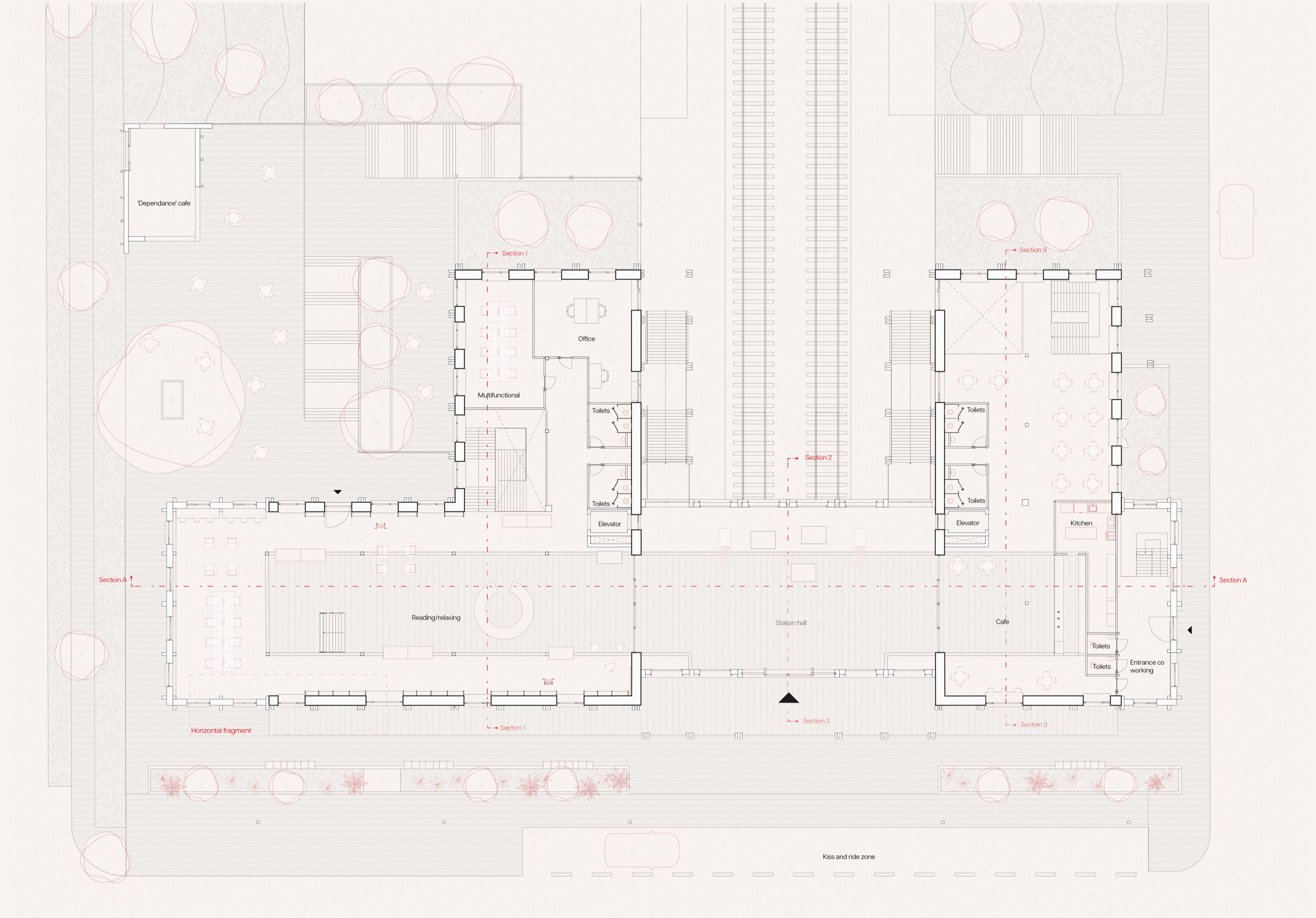
-1 floorplan 1.200 (scaled)



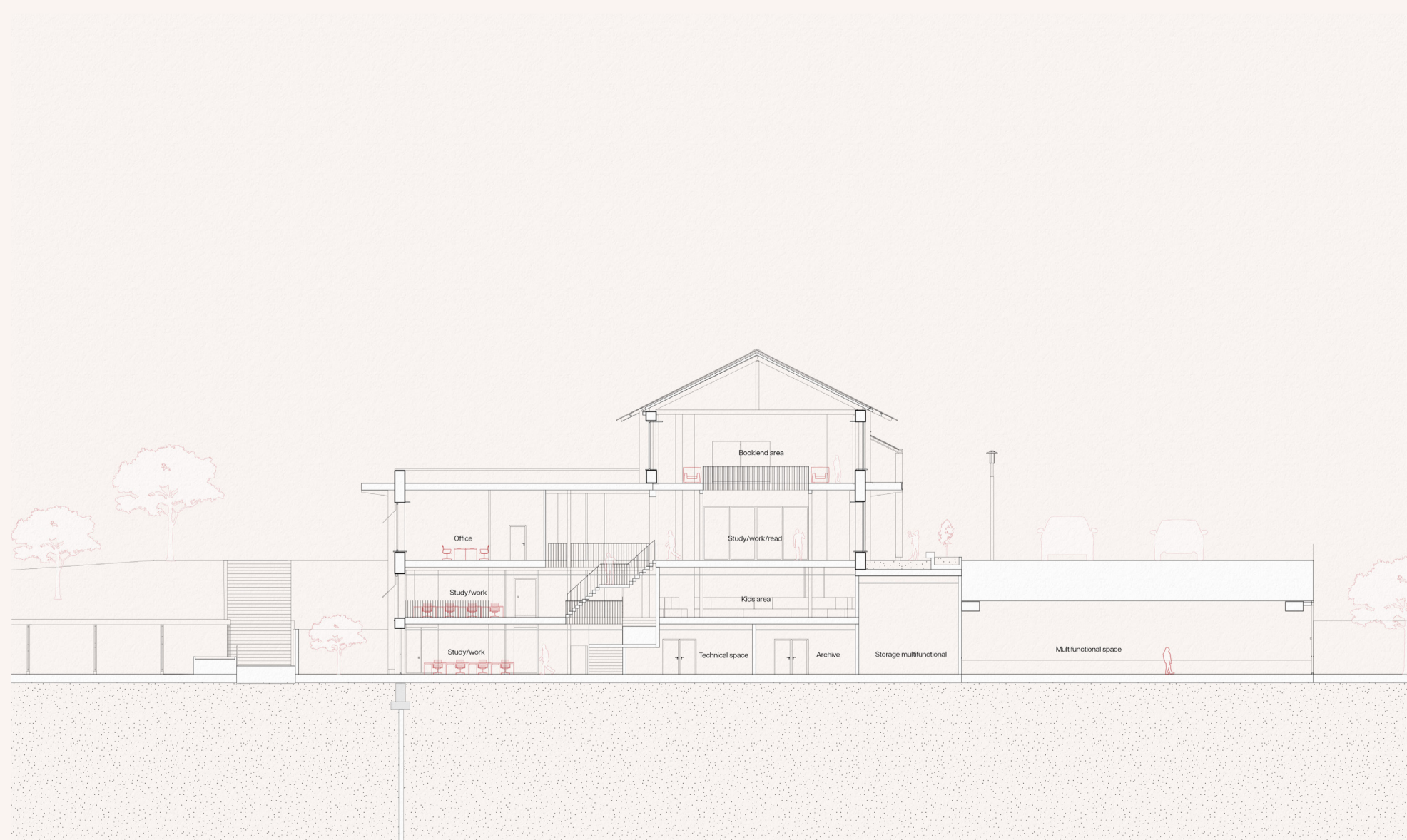
First floorplan 1.200 (scaled)



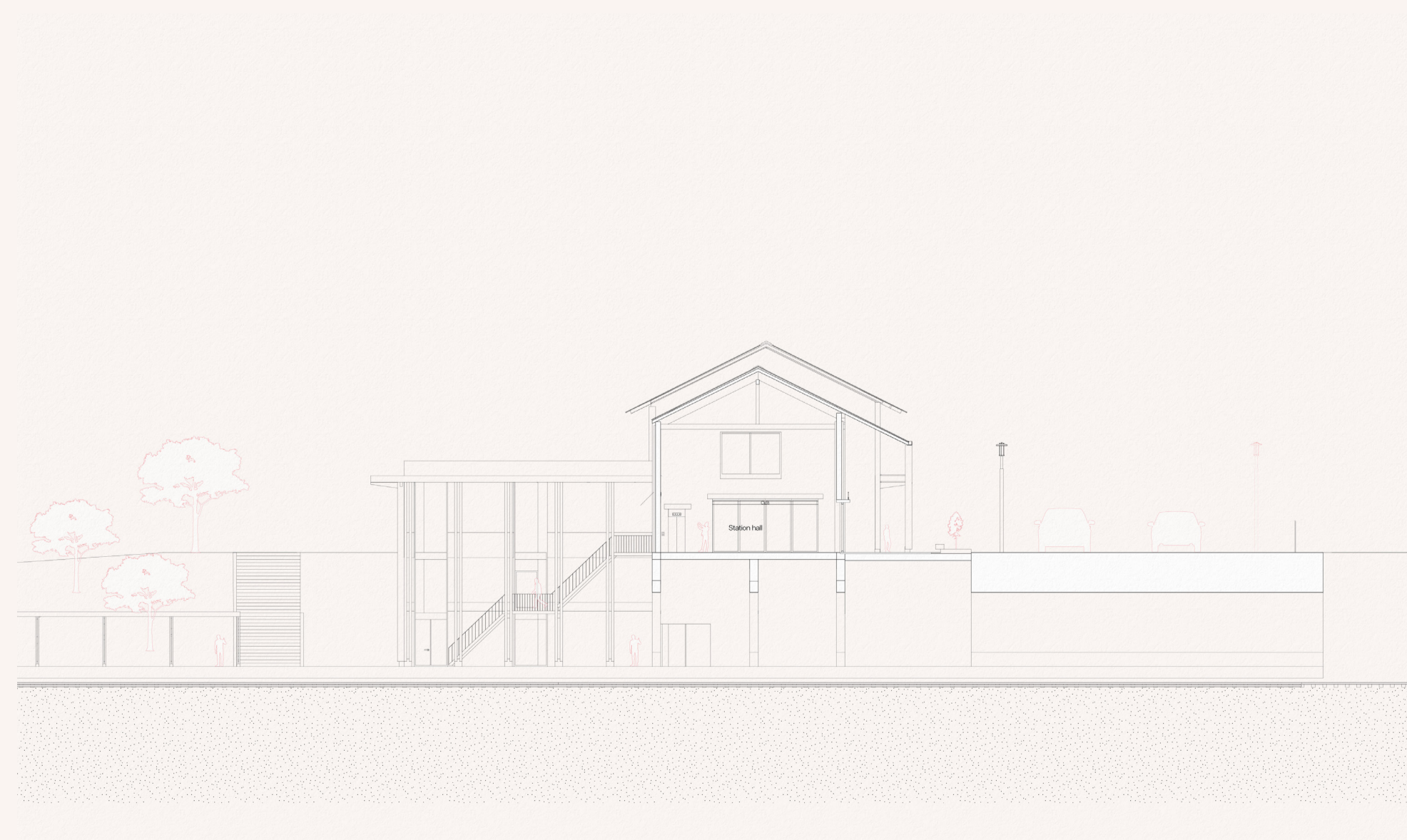
-2 floorplan 1.200 (scaled)



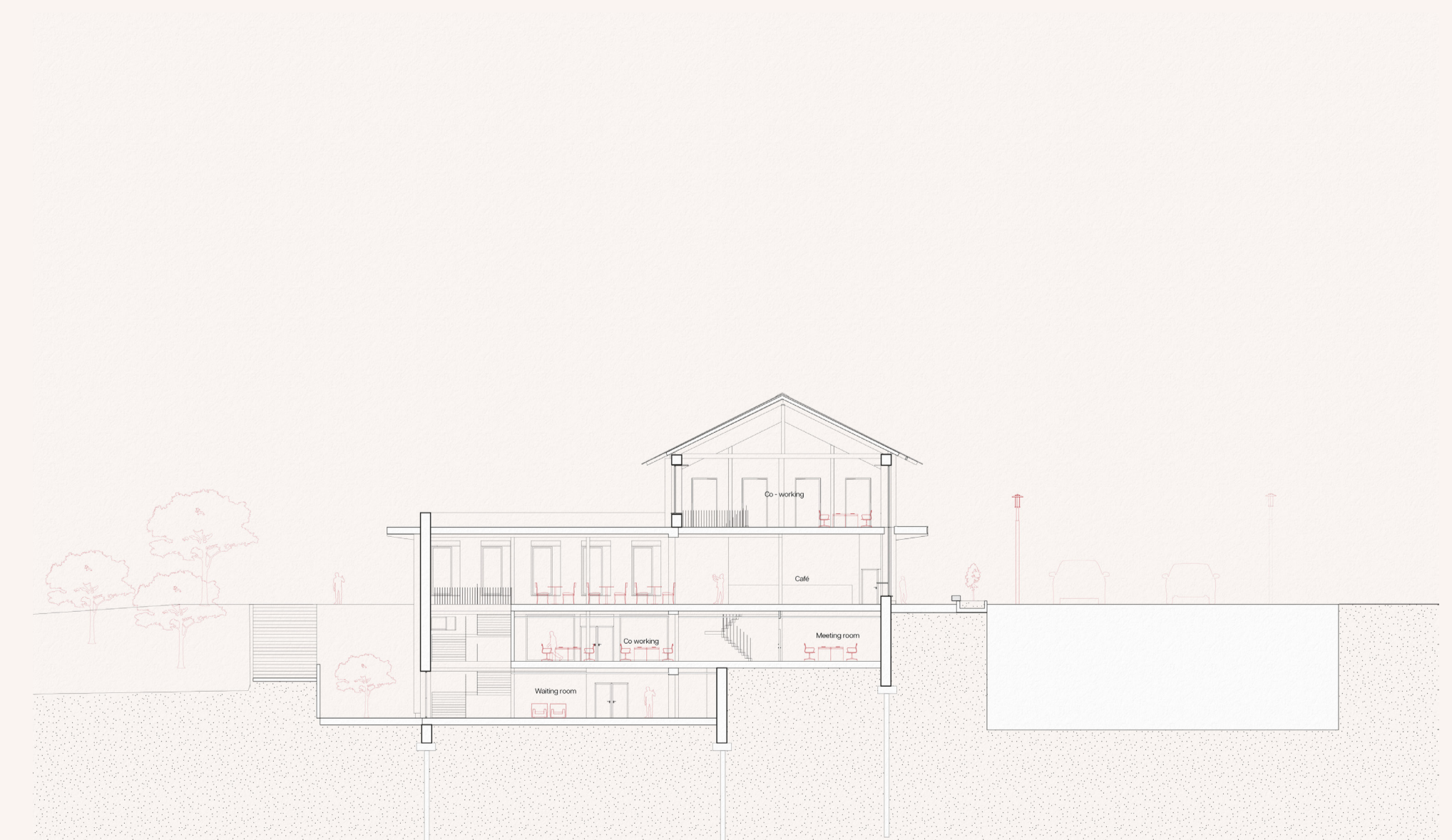
Ground floorplan 1.200 (scaled)



Section 1 1.200 (scaled)

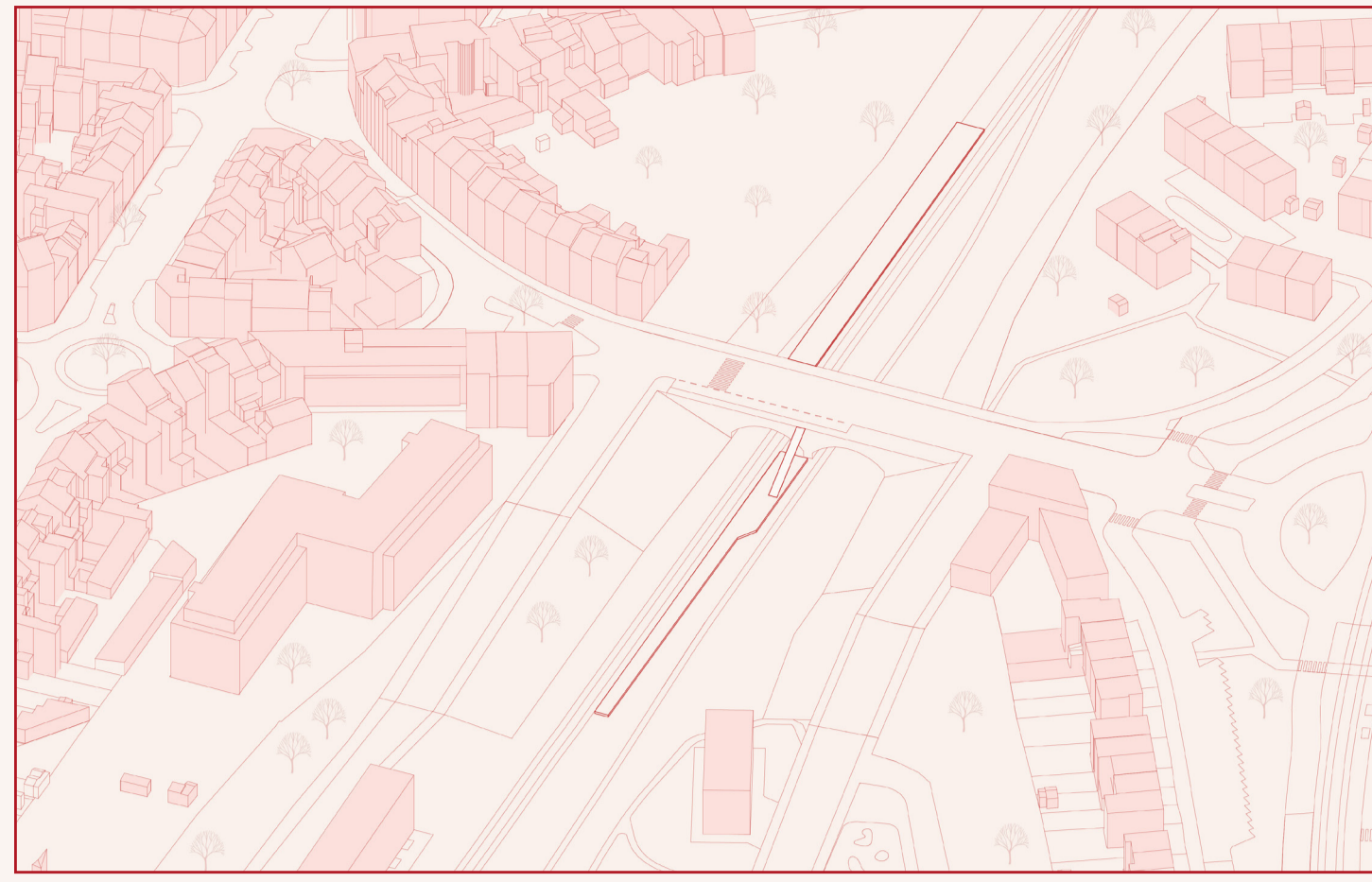


Section 2 1.200 (scaled)

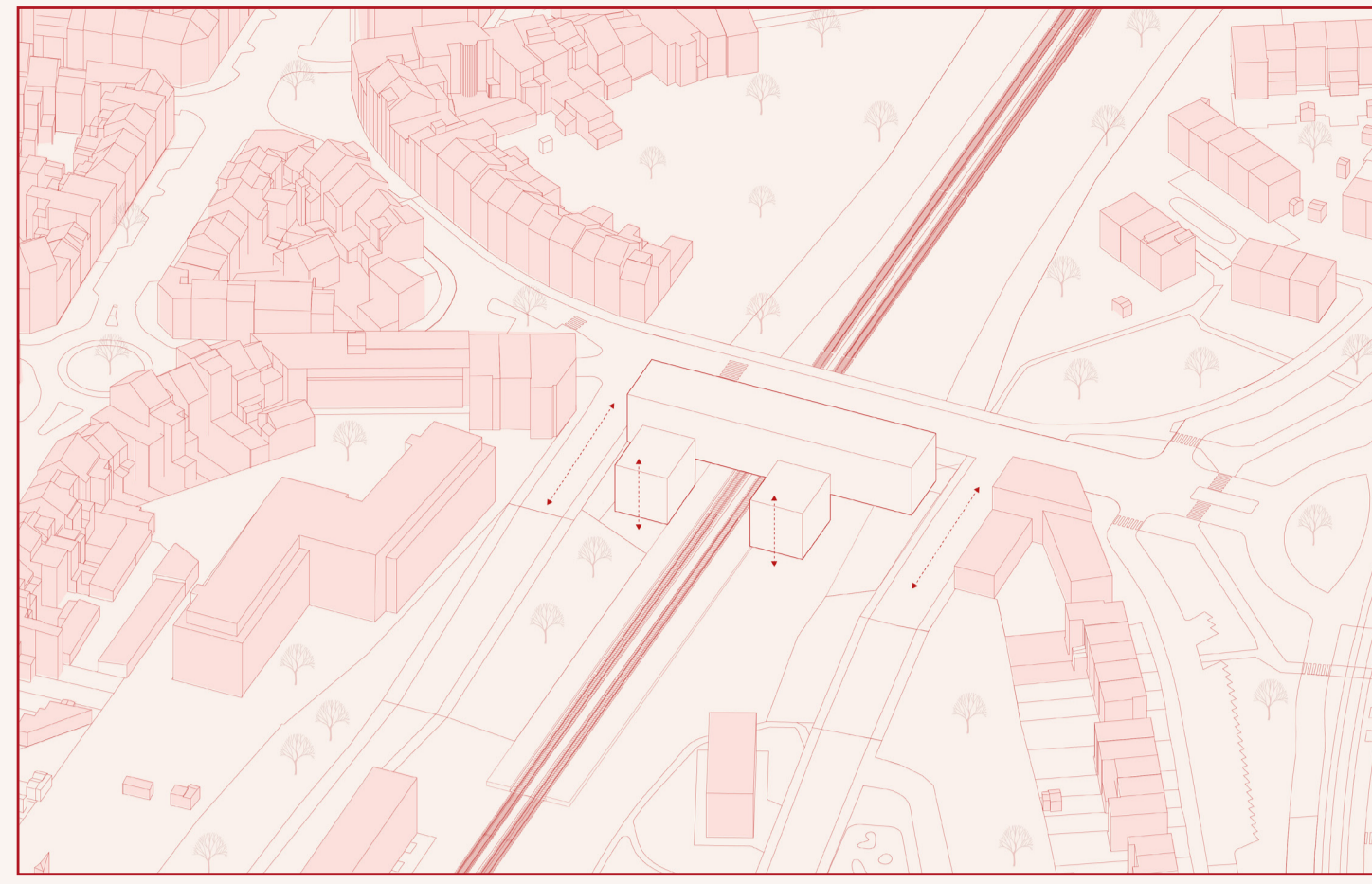


Section 3 1.200 (scaled)

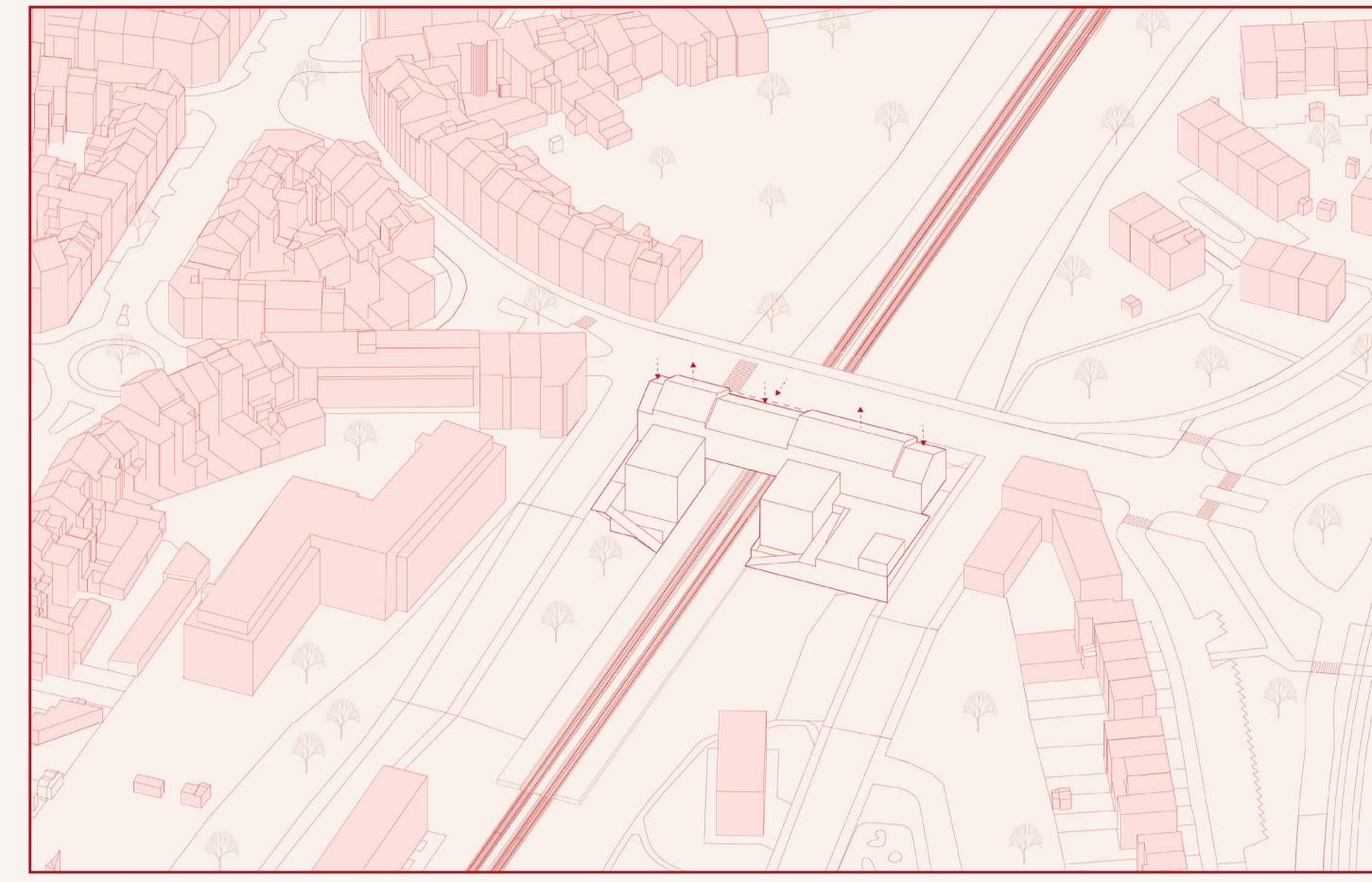
Arriere Gar(d)e



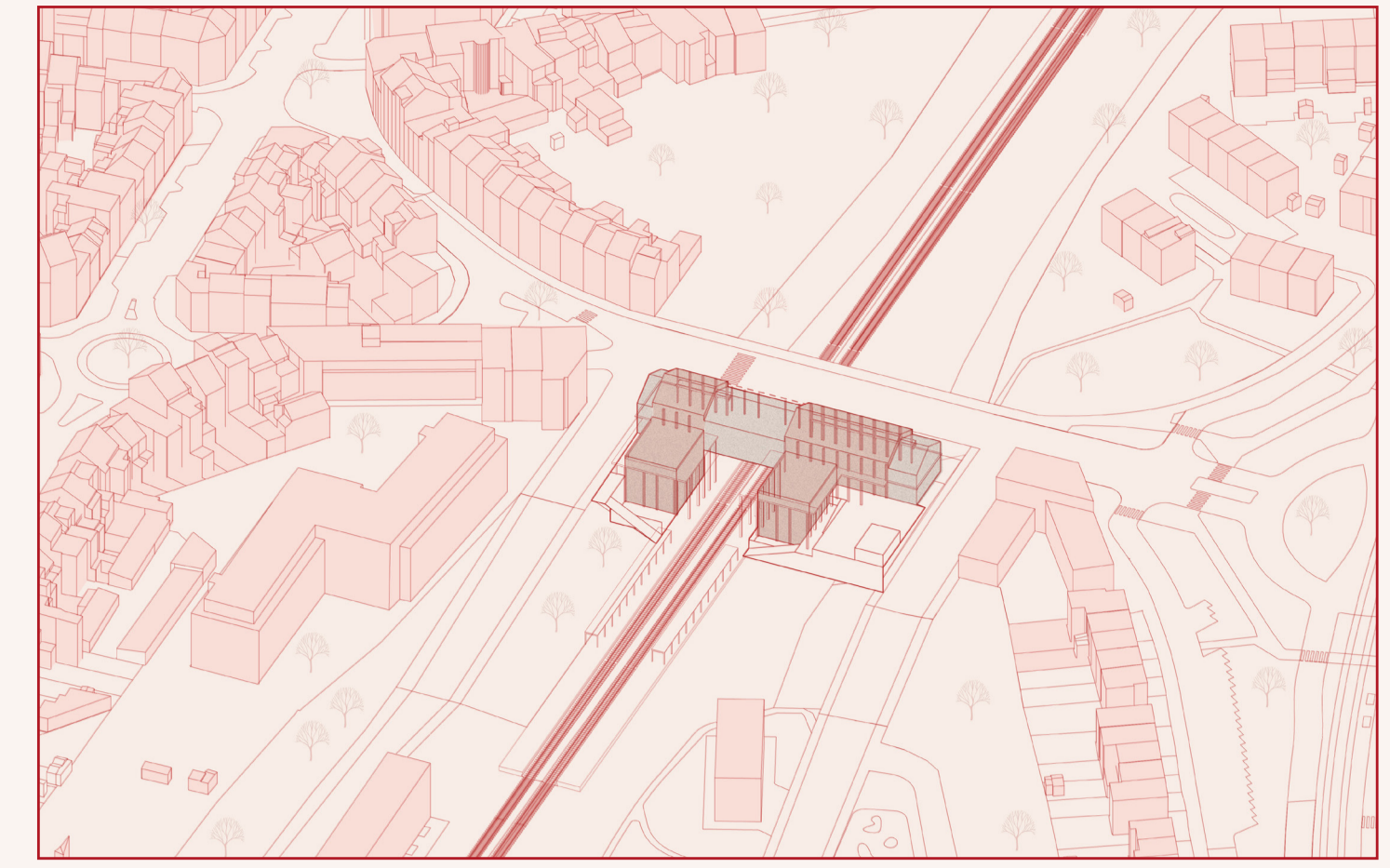
1. Current situation



2. New volume



2. Pitched roofs



3. Materials and unifying structure



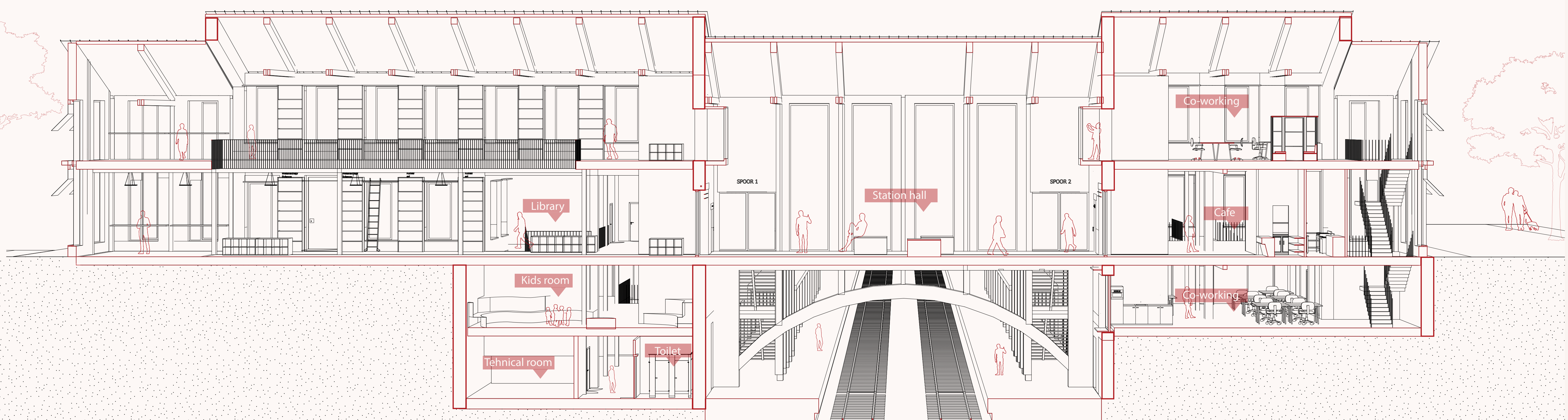
Impression front



Impression square

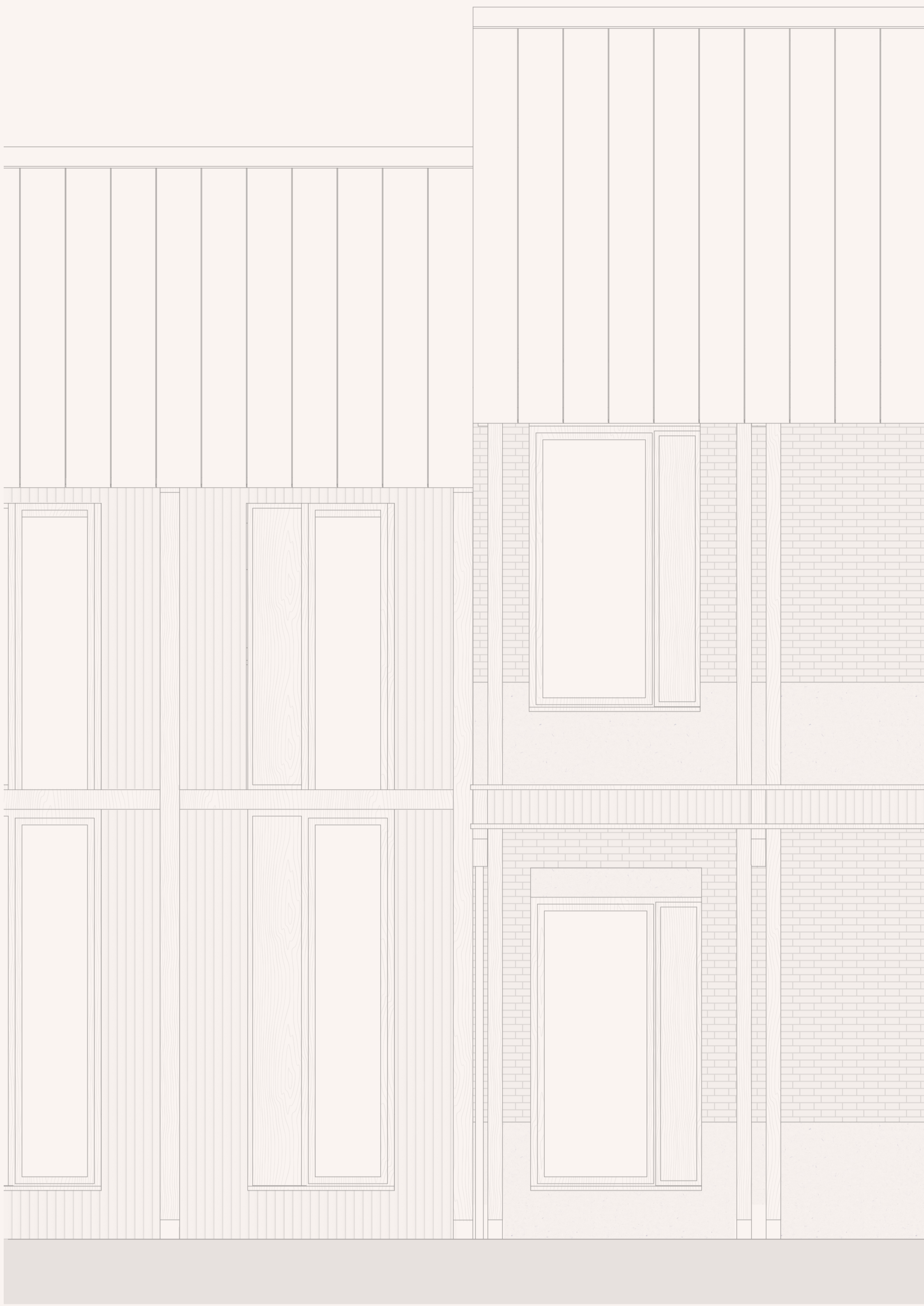


Impression platform

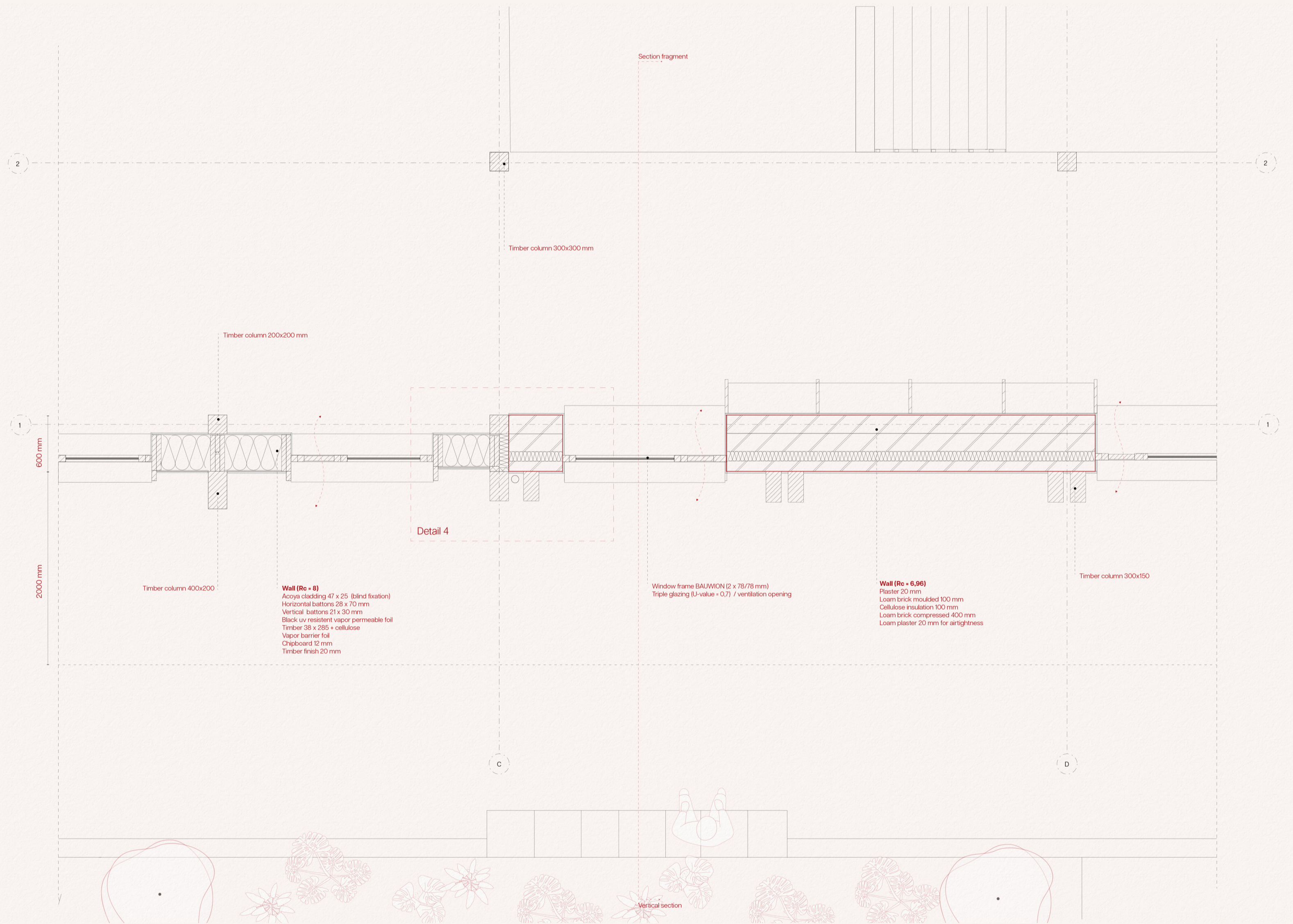


Section AA 1:200 (scaled)

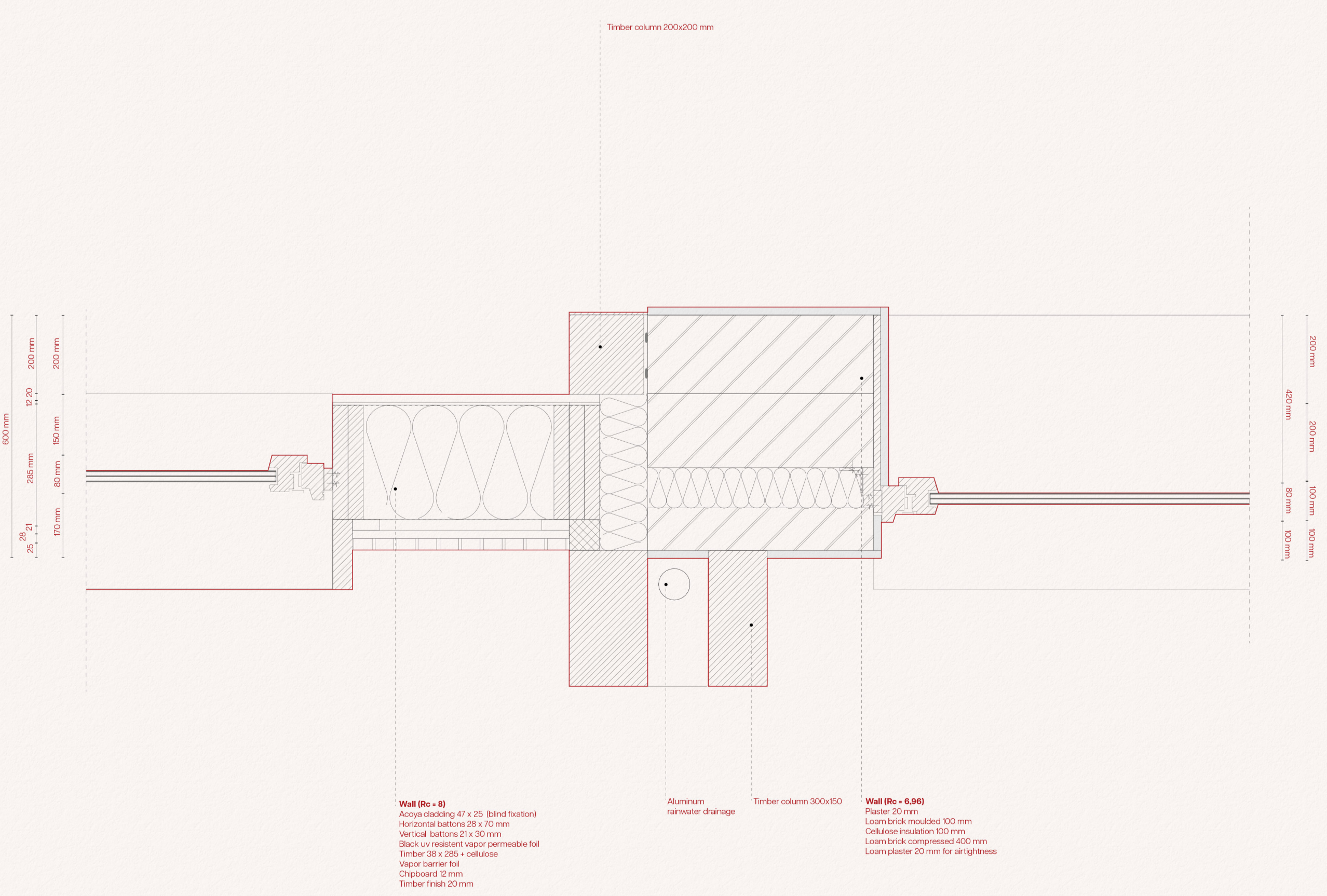
Arriere Gar(d)e



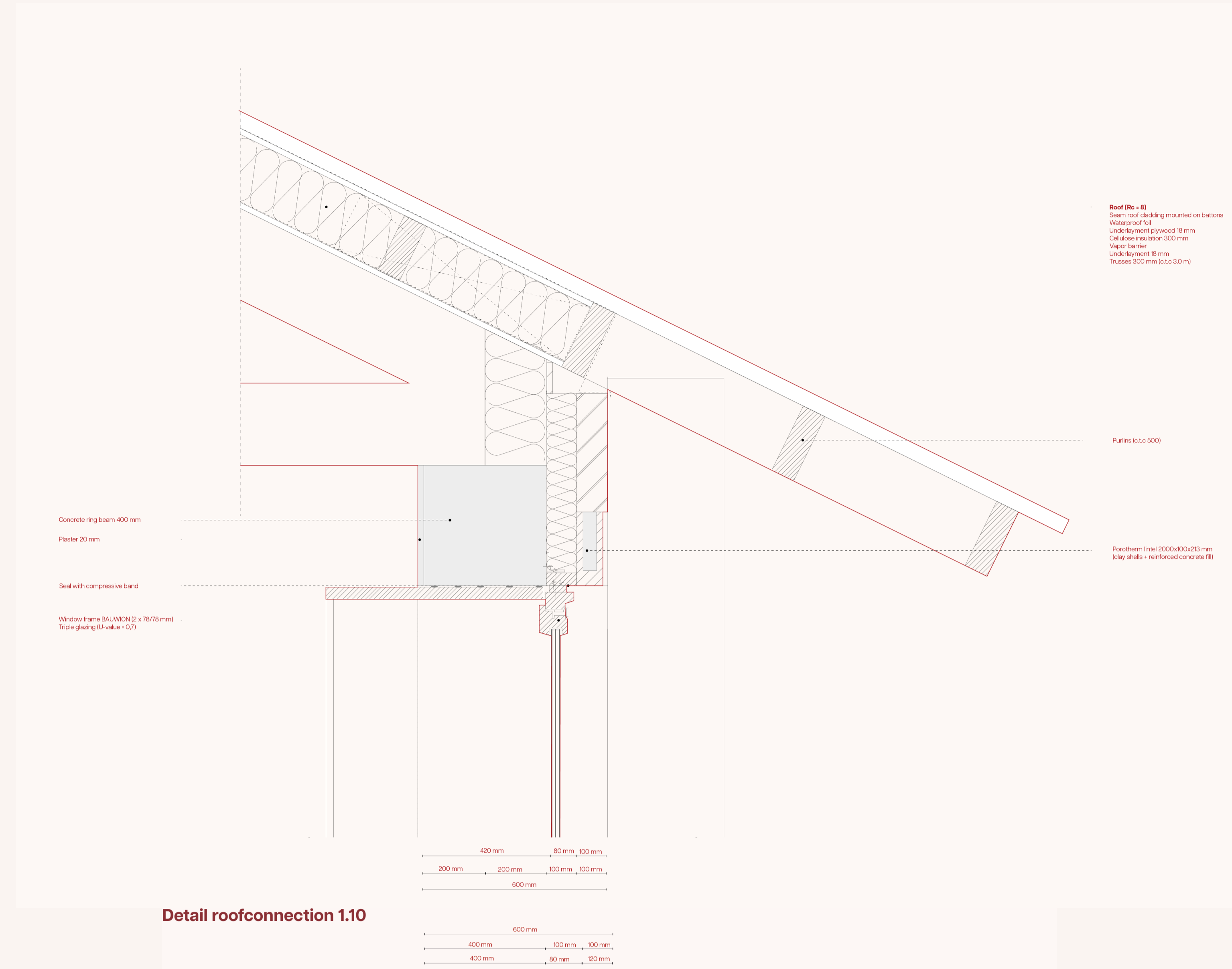
Facade fragment 1.33



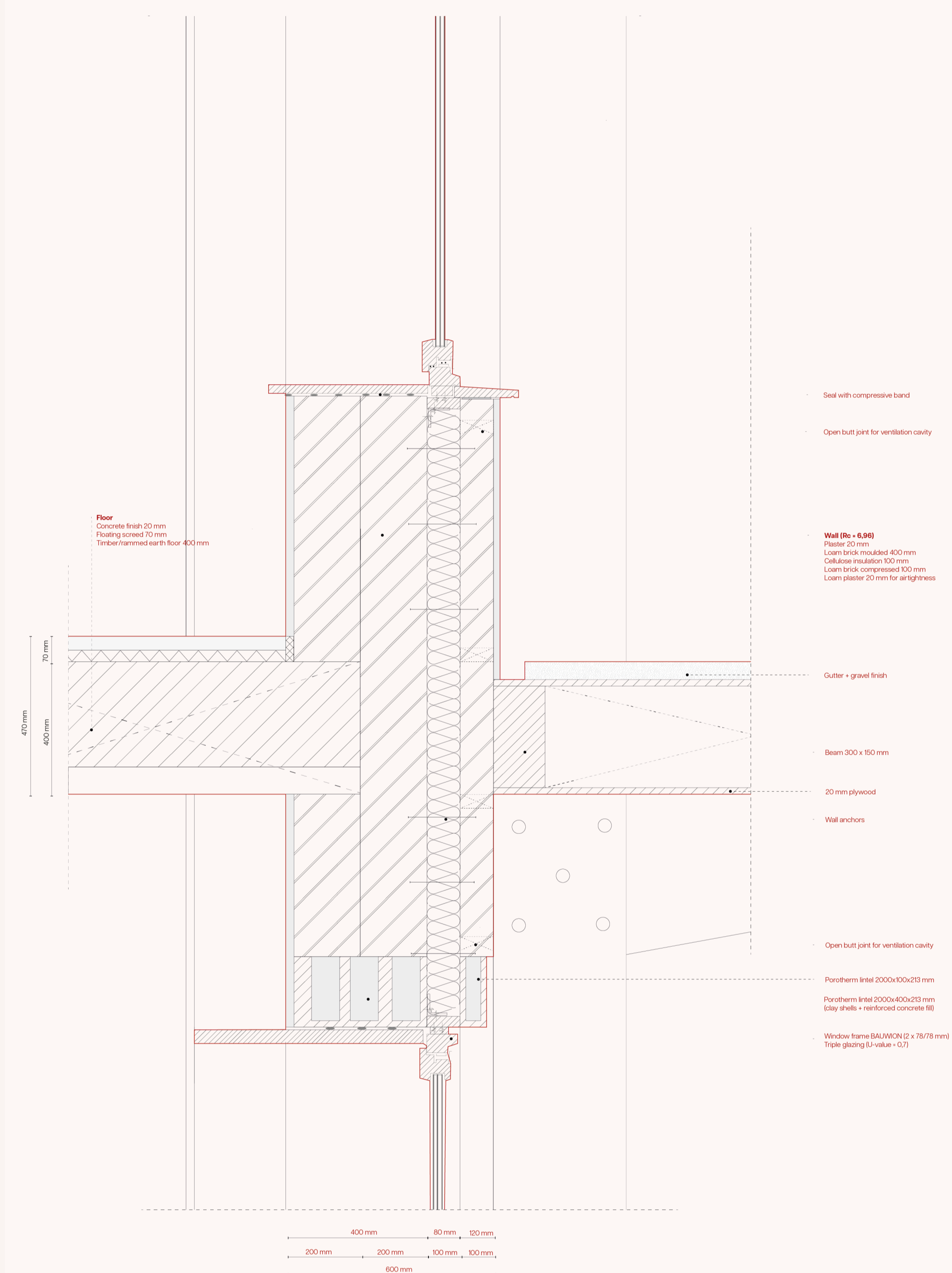
Horizontal fragment 1.33



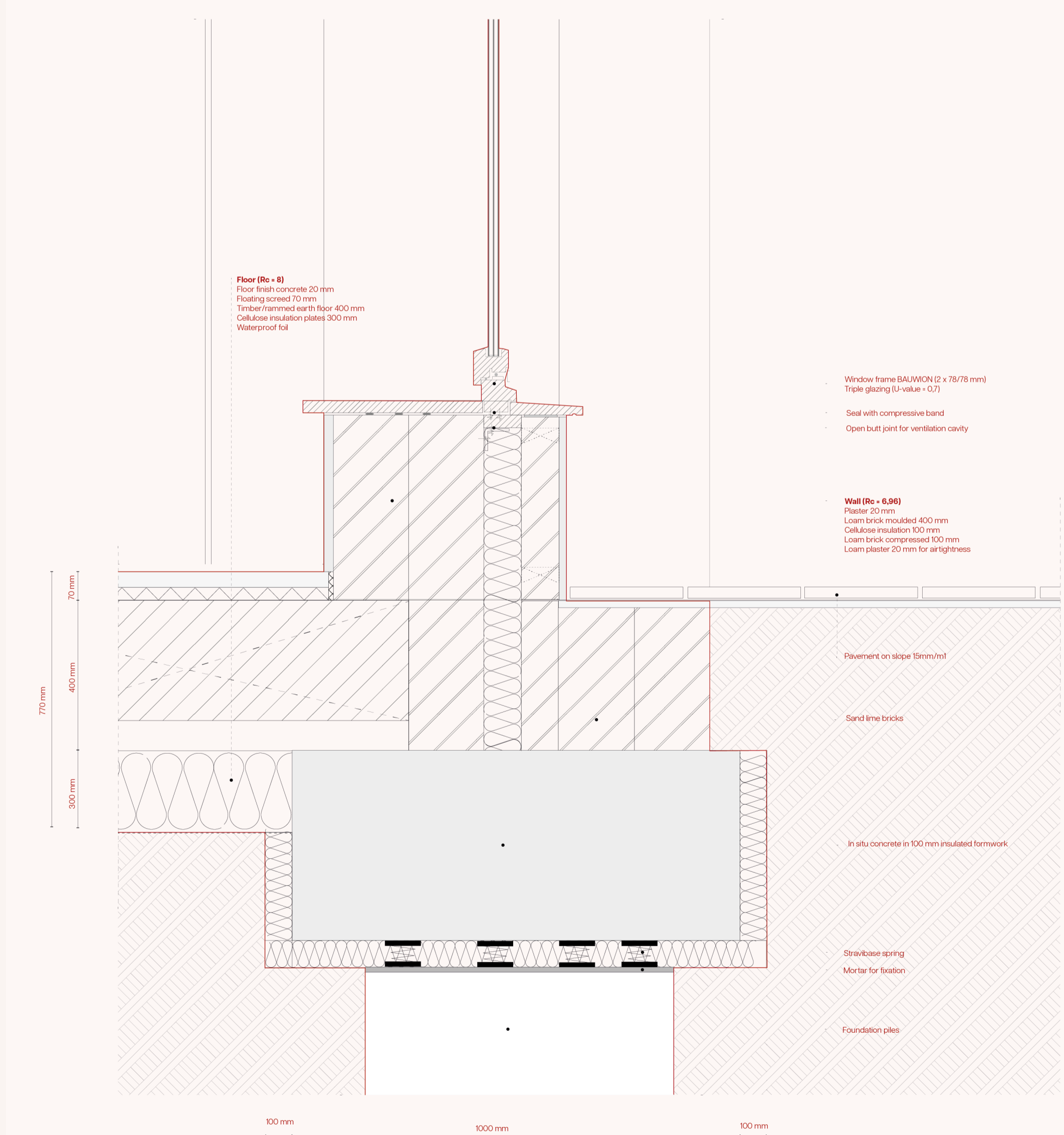
Horizontal detail 1.10



Detail roofconnection 1.10



Detail first floorconnection 1.10



Detail foundation 1.10