

THE MIGRATION OF ENERGY

DRAWING SET

Fola-sade Victoria Oshinusi



Complex Projects

12/01/2022

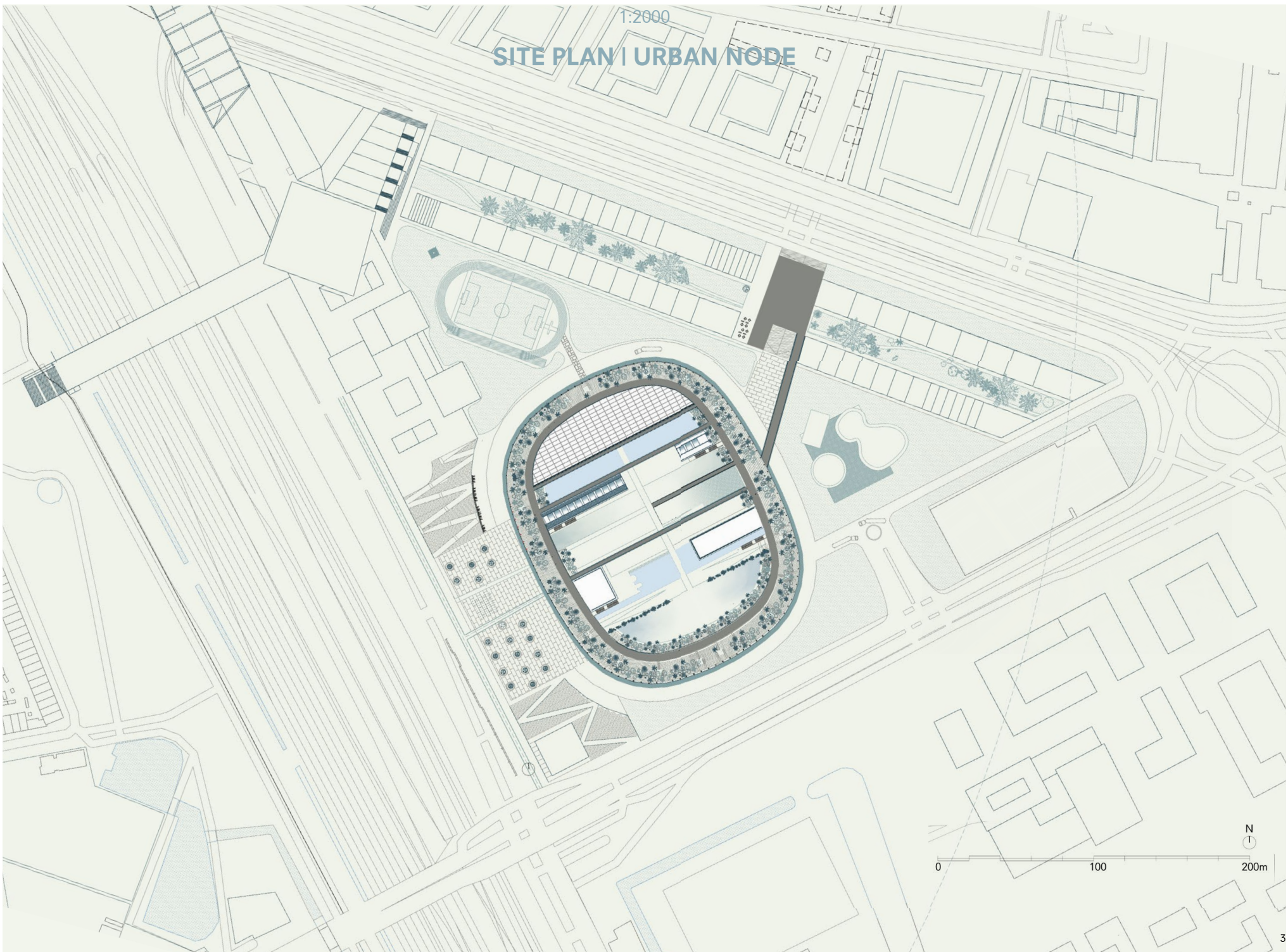
1:10,000

FEIJENPOORT GROUP SITE PLAN



1:2000

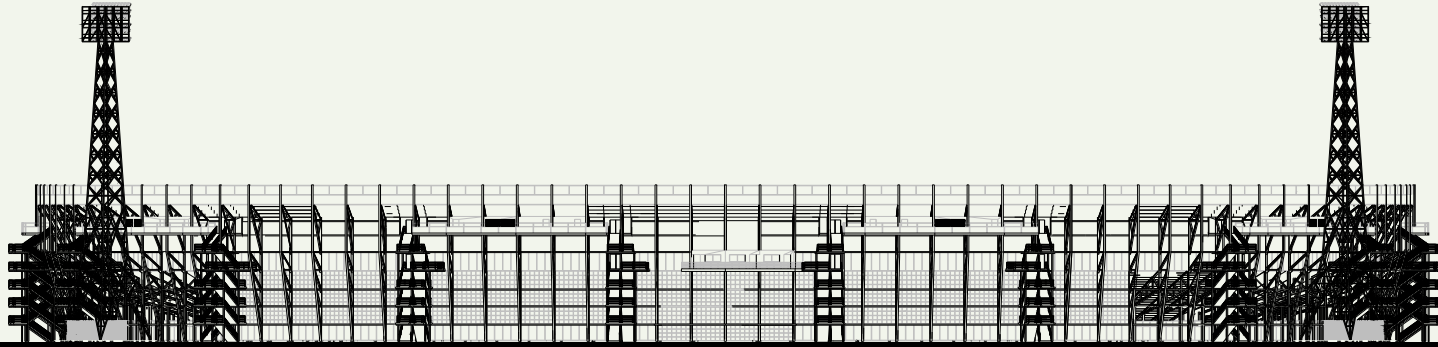
SITE PLAN | URBAN NODE



0 100 200m

1:200 Elevation

MAIN ENTRANCE | WEST ELEVATION



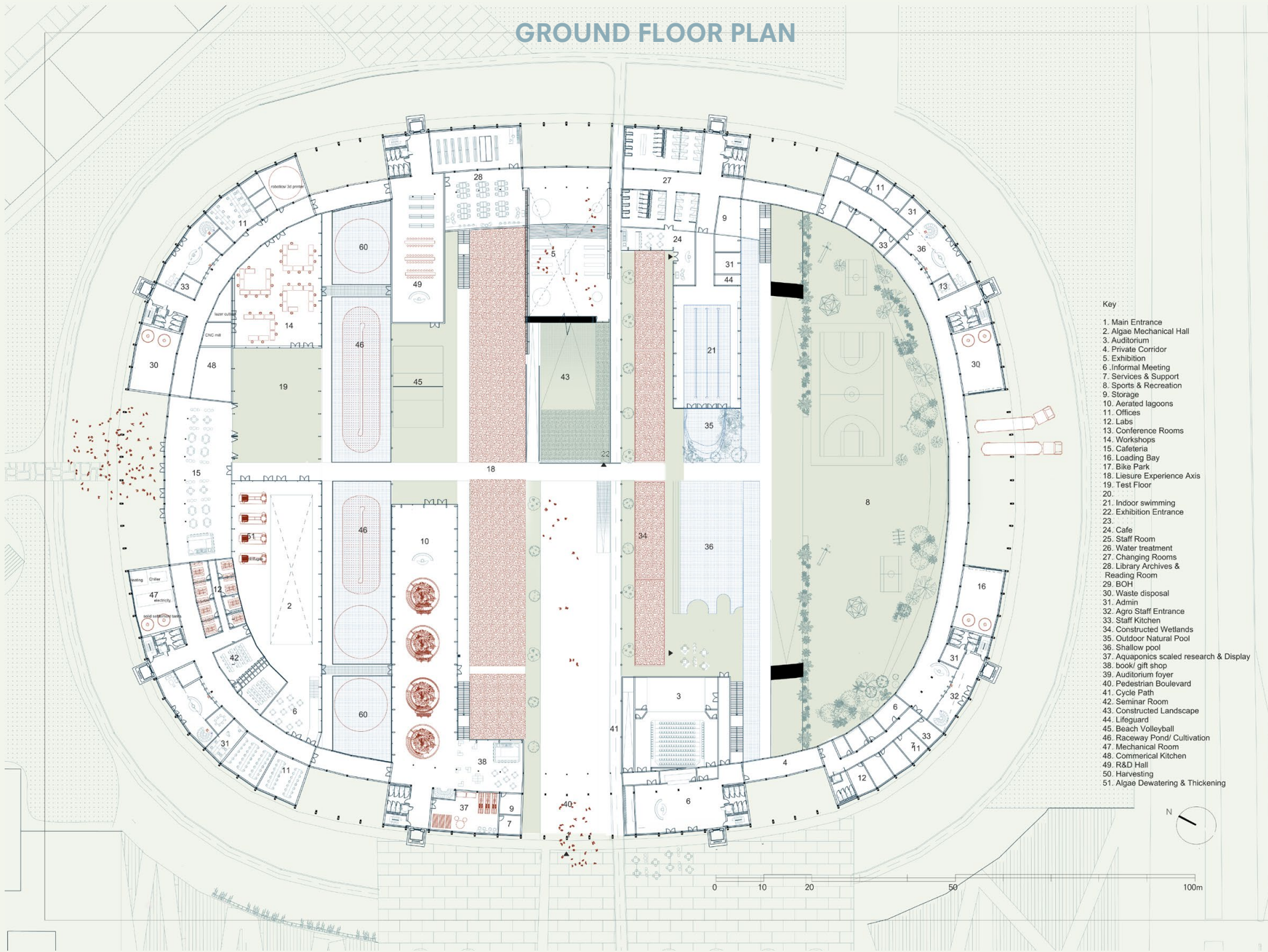
BEFORE



AFTER

1:200 Plan

GROUND FLOOR PLAN



- Key
- 1. Main Entrance
 - 2. Algae Mechanical Hall
 - 3. Auditorium
 - 4. Private Corridor
 - 5. Exhibition
 - 6. Informal Meeting
 - 7. Services & Support
 - 8. Sports & Recreation
 - 9. Storage
 - 10. Aerated lagoons
 - 11. Offices
 - 12. Labs
 - 13. Conference Rooms
 - 14. Workshops
 - 15. Cafeteria
 - 16. Loading Bay
 - 17. Bike Park
 - 18. Leisure Experience Axis
 - 19. Test Floor
 - 20.
 - 21. Indoor swimming
 - 22. Exhibition Entrance
 - 23.
 - 24. Cafe
 - 25. Staff Room
 - 26. Water treatment
 - 27. Changing Rooms
 - 28. Library Archives & Reading Room
 - 29. BOH
 - 30. Waste disposal
 - 31. Admin
 - 32. Agro Staff Entrance
 - 33. Staff Kitchen
 - 34. Constructed Wetlands
 - 35. Outdoor Natural Pool
 - 36. Shallow pool
 - 37. Aquaponics scaled research & Display
 - 38. book/ gift shop
 - 39. Auditorium foyer
 - 40. Pedestrian Boulevard
 - 41. Cycle Path
 - 42. Seminar Room
 - 43. Constructed Landscape
 - 44. Lifeguard
 - 45. Beach Volleyball
 - 46. Raceway Pond/ Cultivation
 - 47. Mechanical Room
 - 48. Commerical Kitchen
 - 49. R&D Hall
 - 50. Harvesting
 - 51. Algae Dewatering & Thickening



0 10 20 50 100m

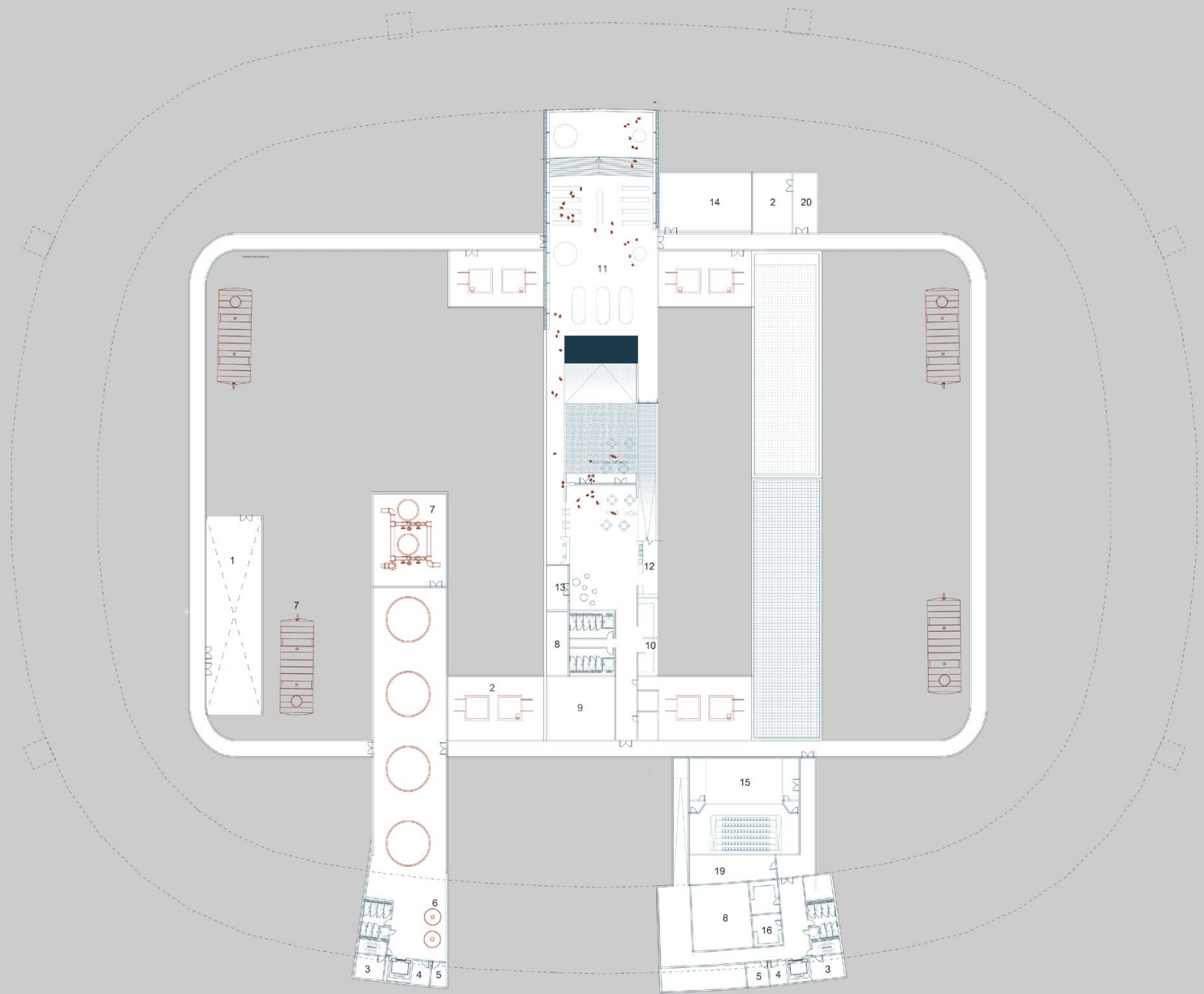
1:200 Plan

BASEMENT PLAN

21

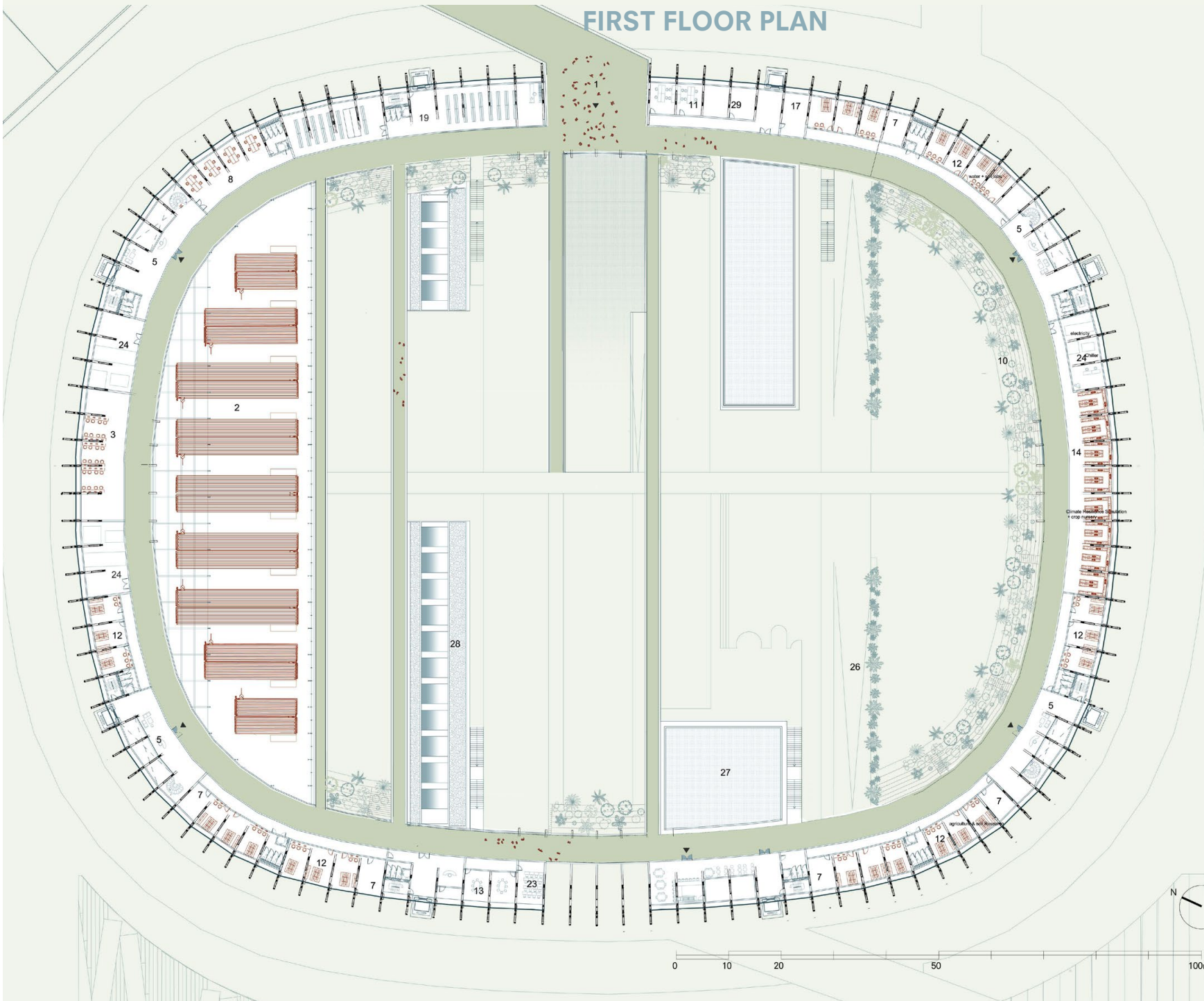
Key

- 1. Algae Mechanical Hall
- 2. Mechanical Room
- 3. Air Handling Unit
- 4. Lift Room
- 5. Electrical Room
- 6. Solid Settlement Tank
- 7. Recirculating Sand Filter
- 8. Storage
- 9. Offices
- 10. Locker Room
- 11. Exhibition
- 12. Cafe
- 13. Shop
- 14. Water Pre-Treatment
- 15. Auditorium
- 16. Changing Room
- 17. Audio-Visual
- 18. Storm Water Storage
- 19. Clean Water Storage
- 20. Pump room
- 21. Dispersal Fields



1:200 Plan

FIRST FLOOR PLAN

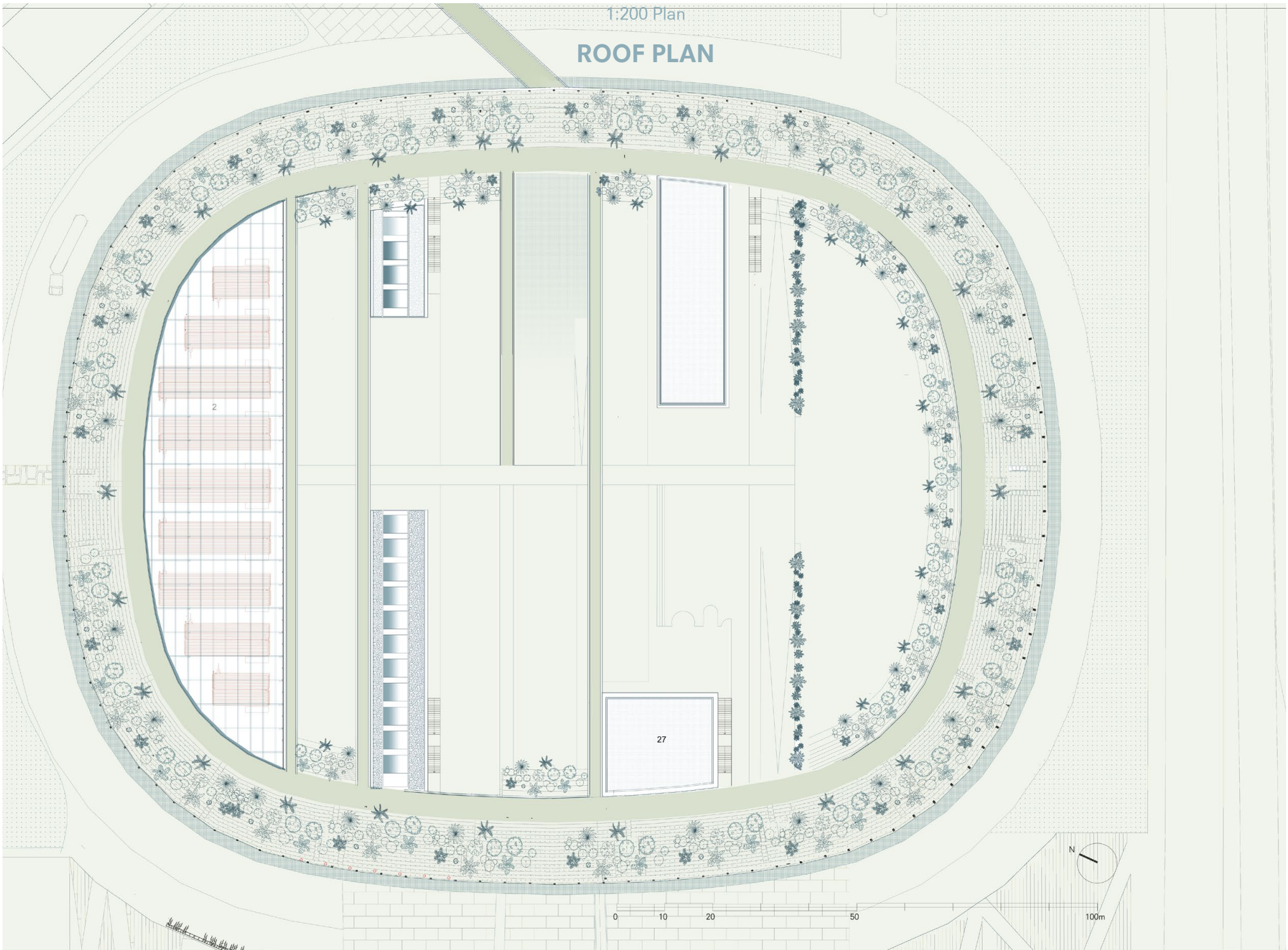


Key

- 1. Main Entrance
- 2. Algae Photobioreactor Roof
- 3. Computer Cluster
- 4. Private Corridor
- 5. Visitor Lobby
- 6. Informal Meeting
- 7. Services & Support
- 8. Project Room
- 9. Storage
- 10. Intensive Landscape
- 11. Offices
- 12. Labs
- 13. Conference Rooms
- 14. Workshops
- 15. Cafeteria
- 16. Cafe
- 17. Staff Room
- 19. Library Archives & Reading Room
- 20. Admin
- 21. Agro Staff Entrance
- 22. Staff Kitchen
- 23. Seminar Room
- 24. Mechanical Room
- 25. Commercial Kitchen
- 26. Constructed Landscape
- 27. Water Storage Roof
- 28. Extensive Roof

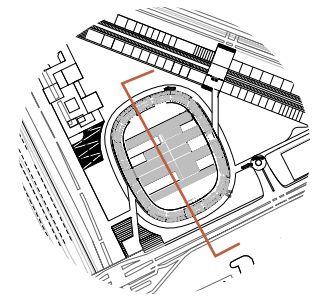
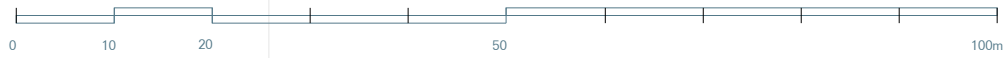
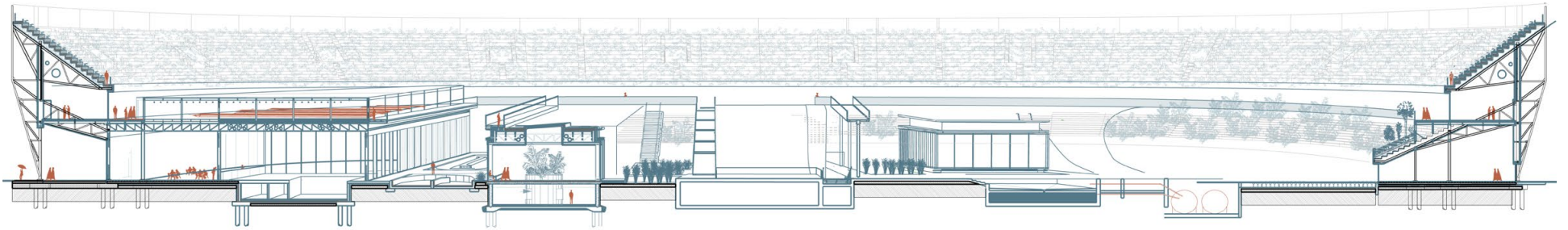
1:200 Plan

ROOF PLAN



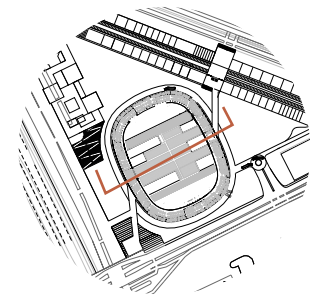
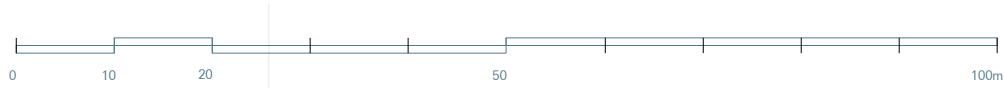
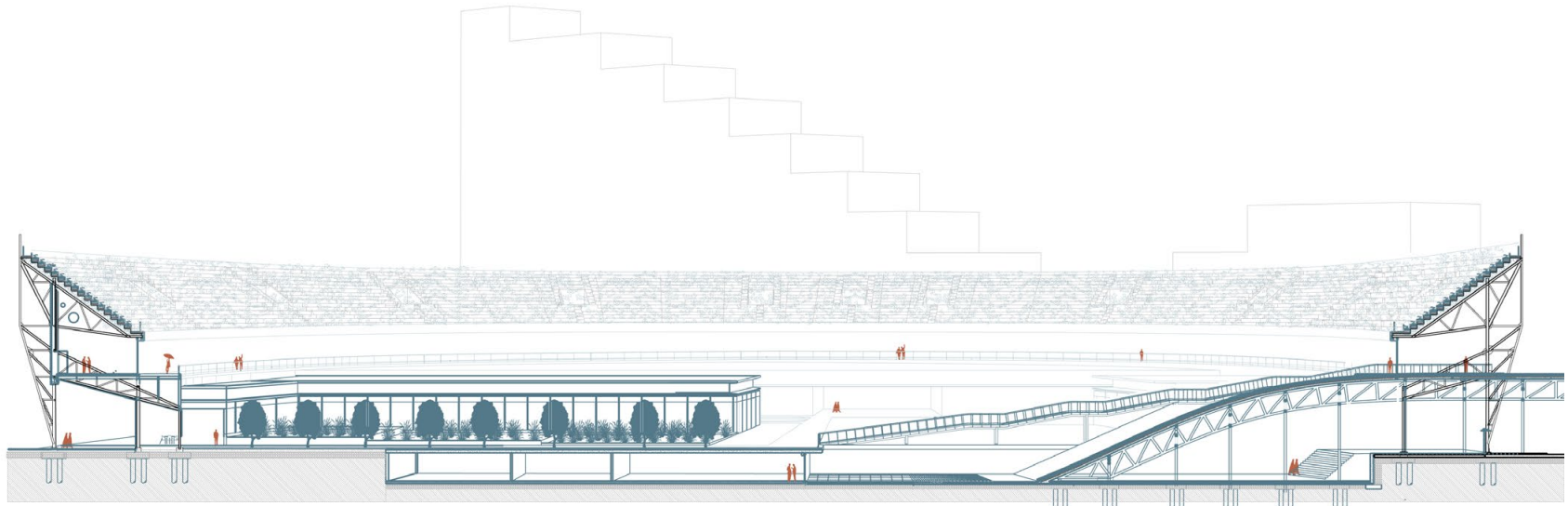
1:200 Section

LONG SECTION | NORTH - SOUTH



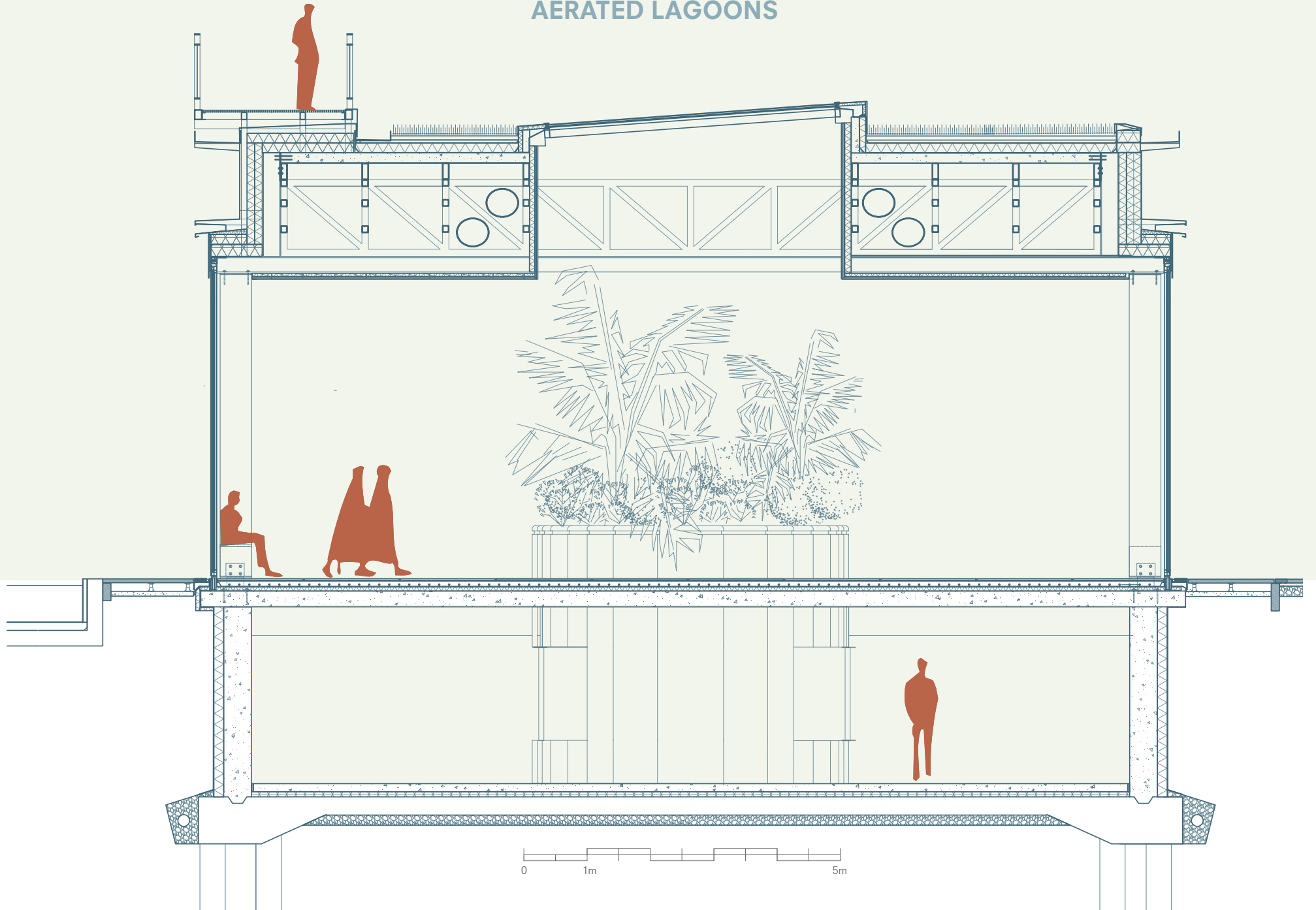
1:200 Section

SHORT SECTION, WEST-EAST



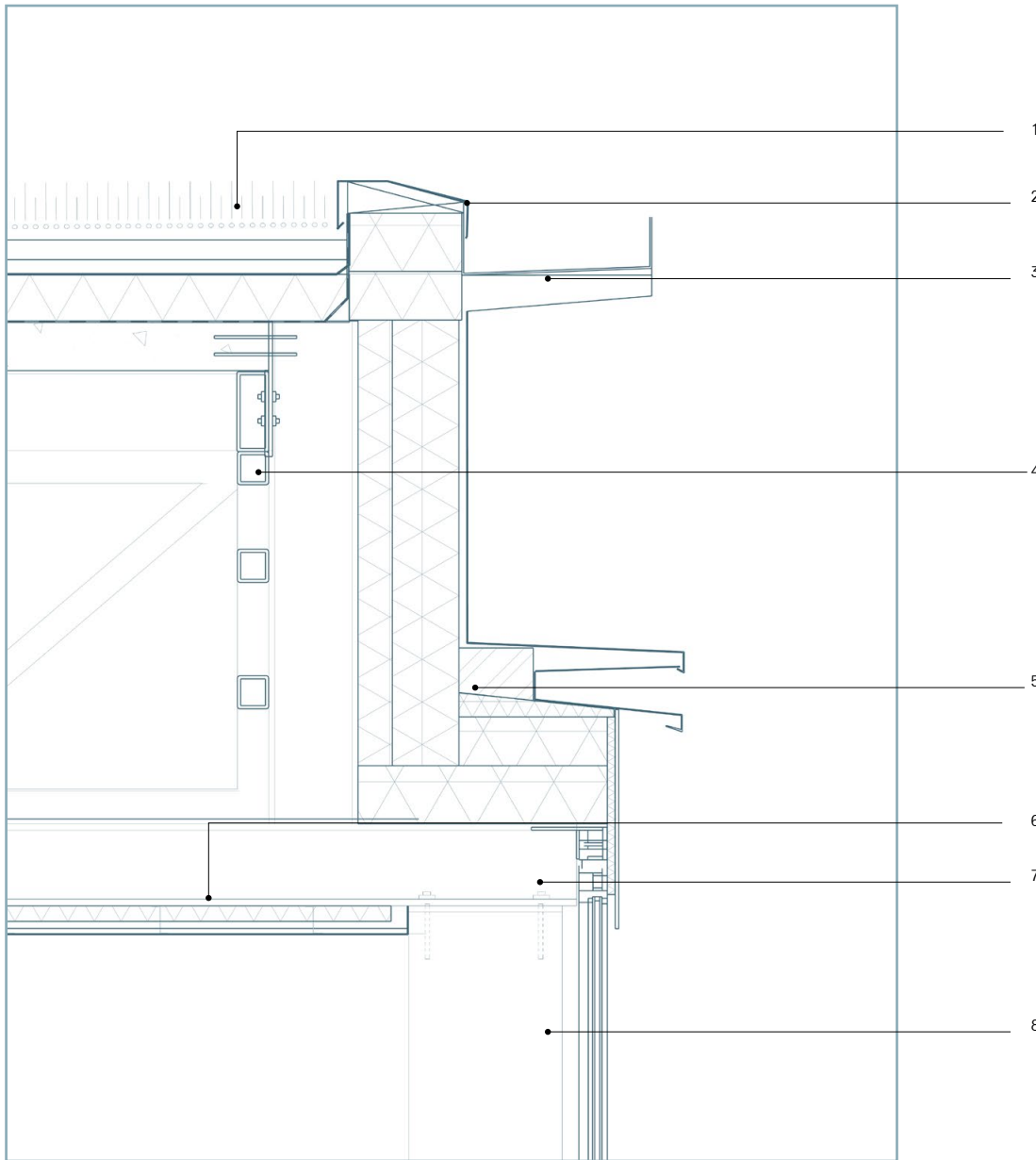
1:20 Detail

AERATED LAGOONS

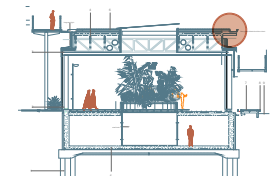


1:5 Detail

ROOF FRAGMENT

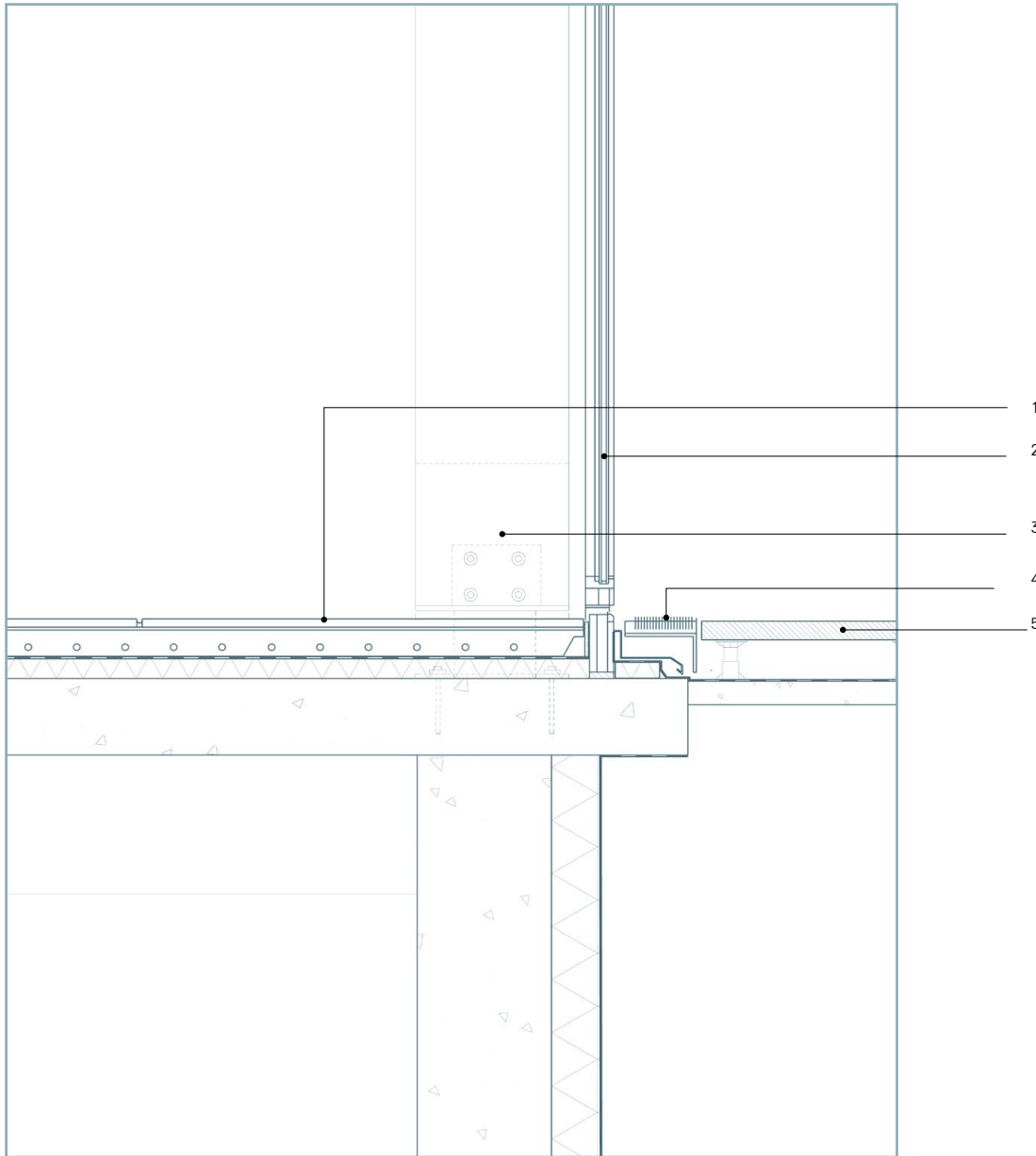


- 1 **Extensive Green Roof**
Planting
120mm Substrate on filter mat
40mm drainage layer
Waterproof membrane
160mm thermal insulation
Trapezoid profile with concrete topping
- 2 Aluminium Parapet Capping
with plywood support
- 3 3mm Folded Aluminium
Drainage Channel
- 4 Steel Rectangular Beam
1200mm Square Profile Steel
Truss
- 5 Aluminium Cladding
Ventilation Cavity
Thermal Insulation
- 6 Insulated Suspended Ceiling
- 7 Steel I Beam
- 8 500 x 350mm Glue-lam timber
column

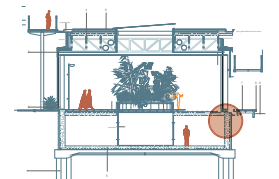


1:5 Detail

GROUND CONNECTION

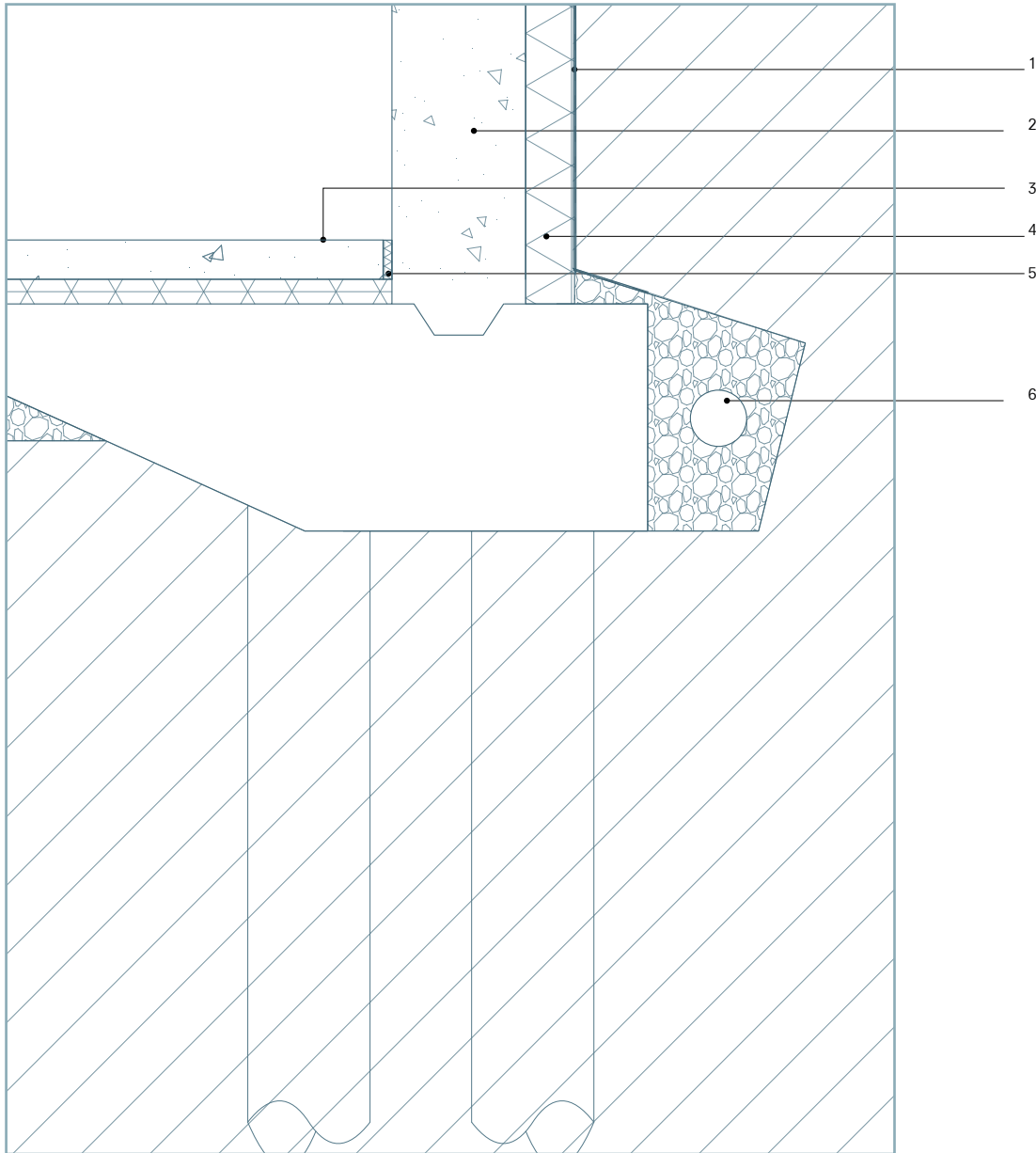


- 1 **Flooring**
Ceramic Tile
Cement screed with underfloor heating
Vapour Barrier
Rigid Foam thermal Insulation
Precast concrete slab
- 2 Insulating glazing in aluminium frame
- 3 500 x 350mm Glue lam timber column with bolted steel baseplate
- 4 Stainless steel grating
- 5 **Patio**
Pre-fabricated concrete tiles with support pedestals
Waterproof membrane
Levelling mortar

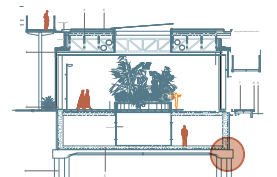


1:5 Detail

BASEMENT FRAGMENT

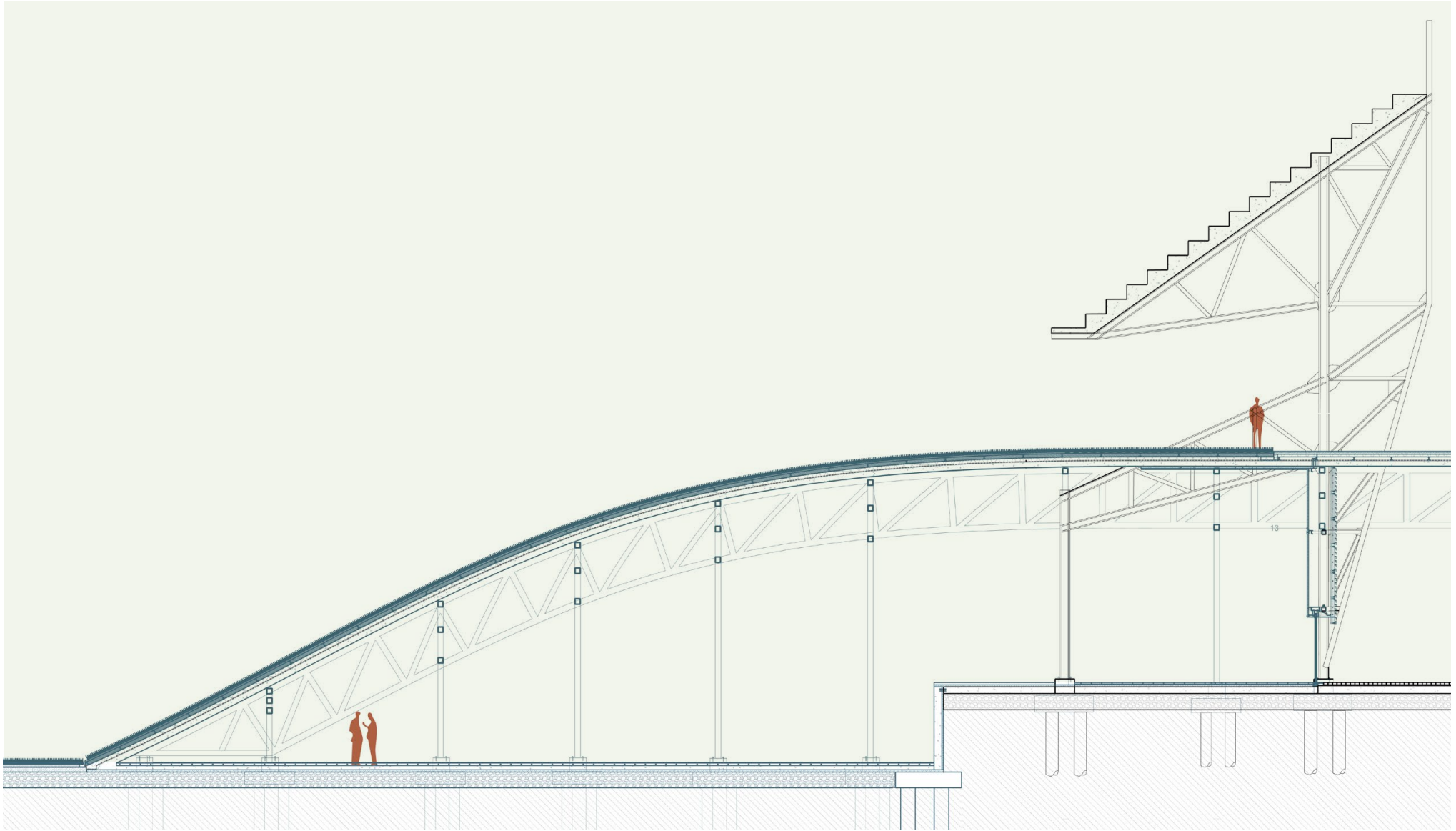


- 1 Waterproof membrane
- 2 Concrete Foundation Wall
- 3 Concrete slab
Rigid Insulation
Concrete Footing
Granular Fill
- 4 Rigid Thermal Insulation
- 5 Rigid Insulation Isolation Joint
- 6 Drainpipe in coarse gravel
granular backfill



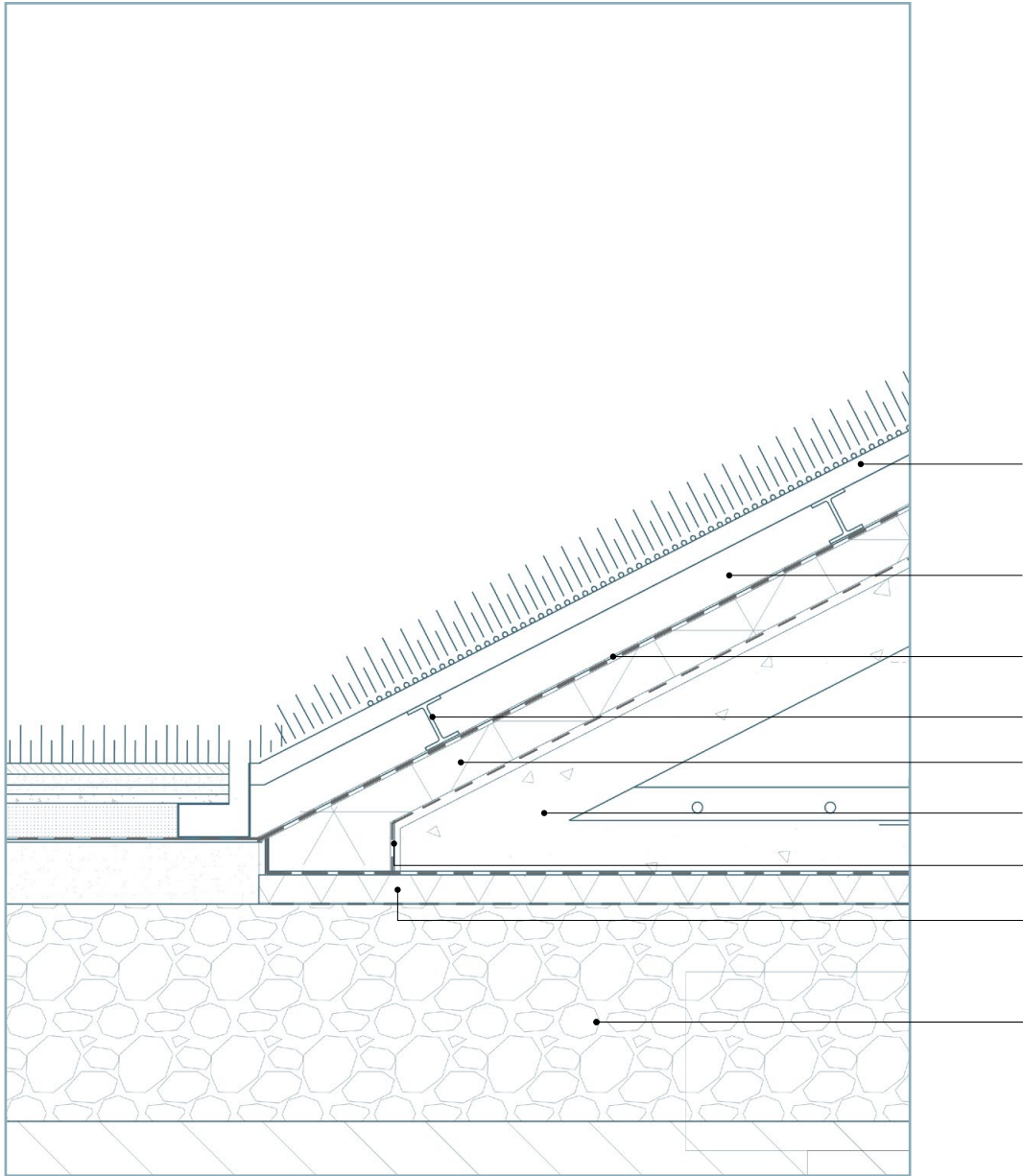
1:50 Detail

CONSTRUCTED LANDSCAPE



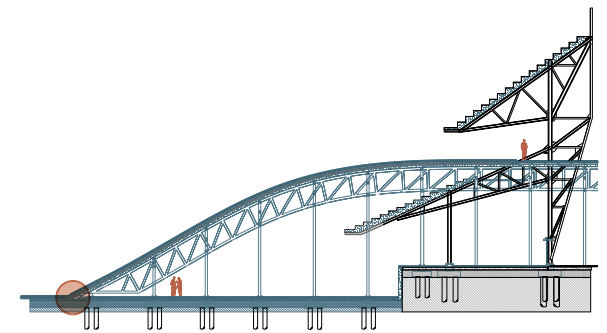
1:5 Detail

CONSTRUCTED LANDSCAPE



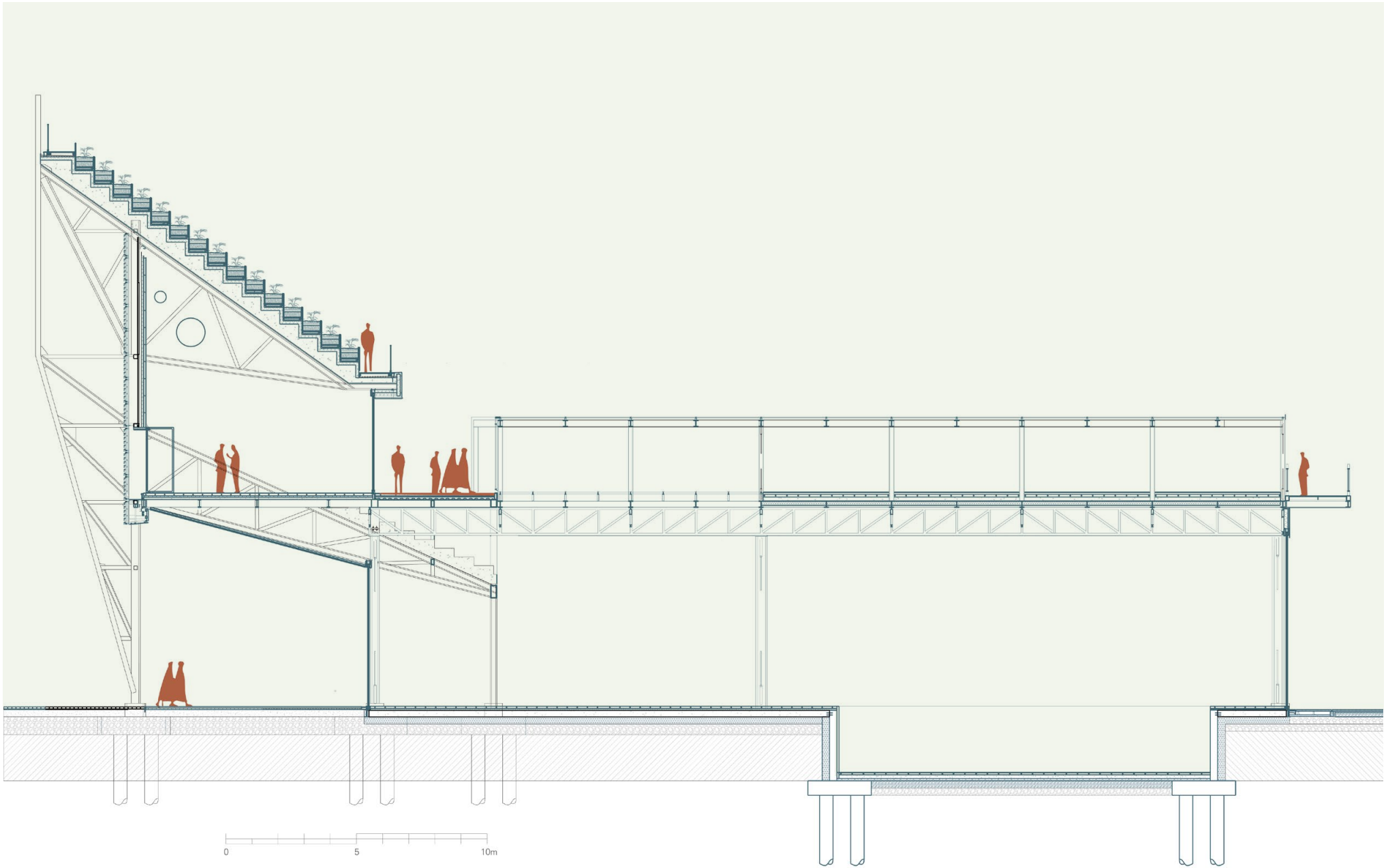
Extensive Sloping Lawn

- 1 Vegetation Mat
- 2 Extensive Substrate
- 3 Drainage Mat
- 4 Anti-Slippage Structure
- 5 Thermal Insulation
- 6 Reinforced Concrete
- 7 Vapour Seal
- 8 Thermal Rigid Insulation
- 9 Granular Fill

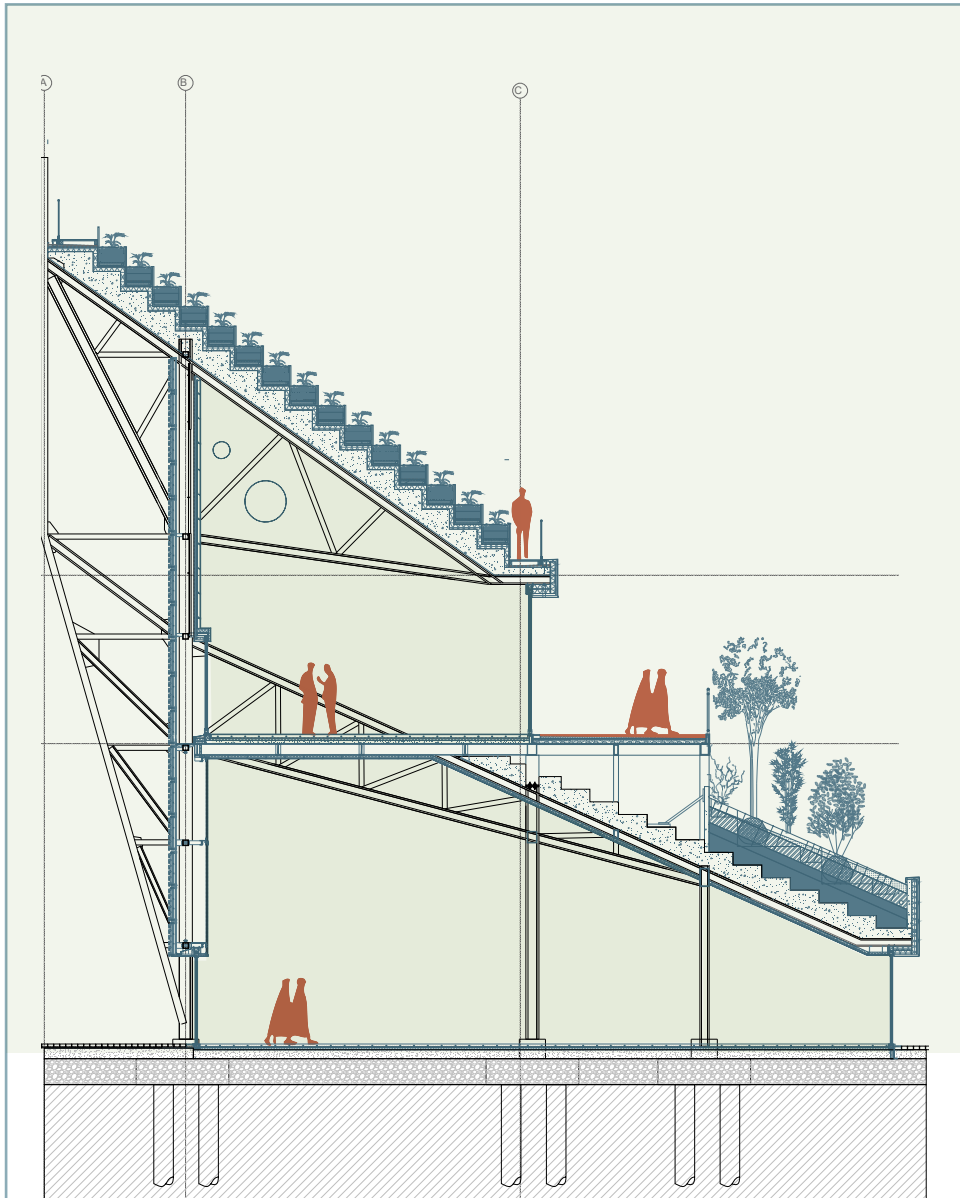


1:50 Detail

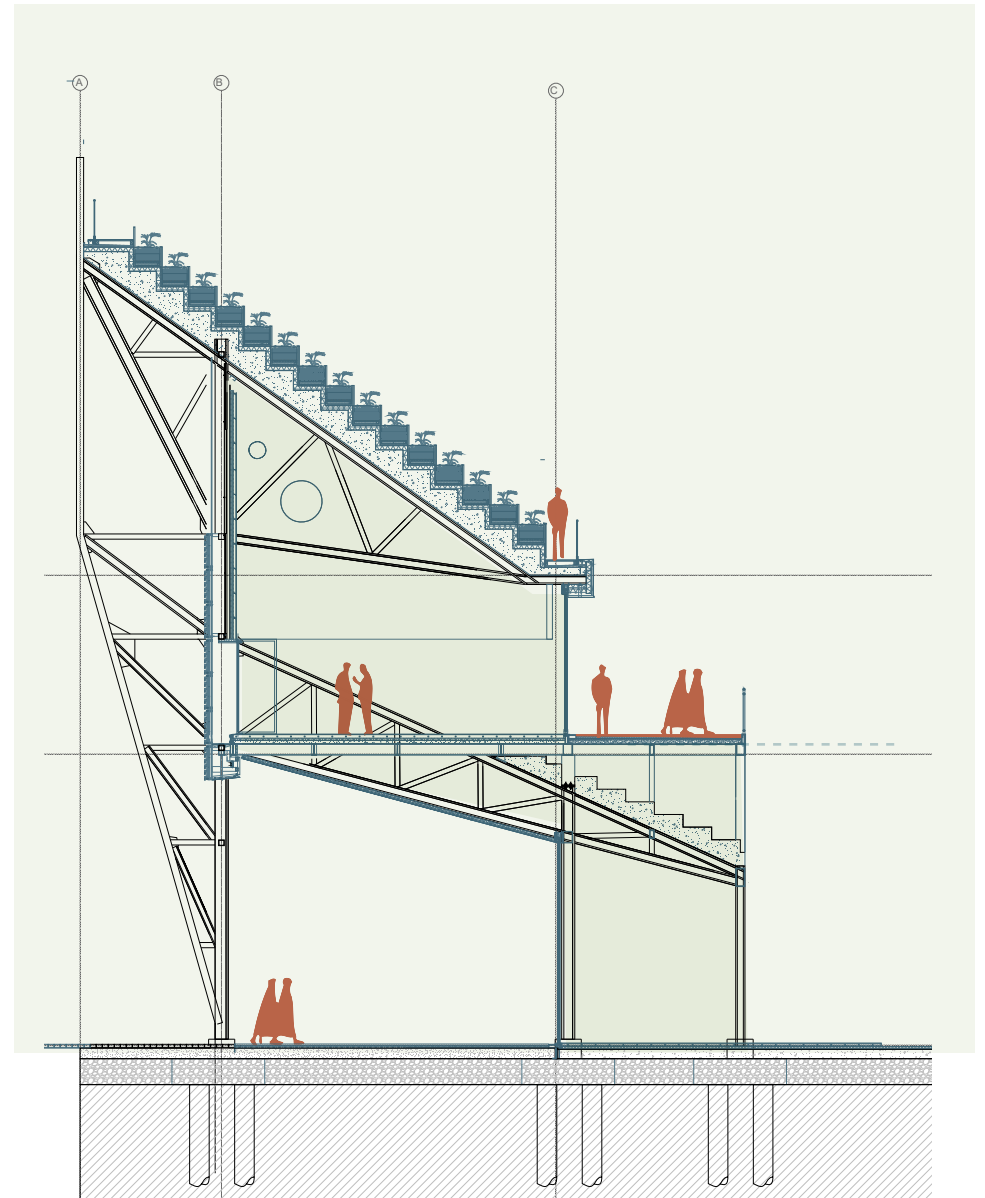
ALGAE MECHANICAL HALL



TYPICAL SECTION VS ENTRANCE



TYPICAL

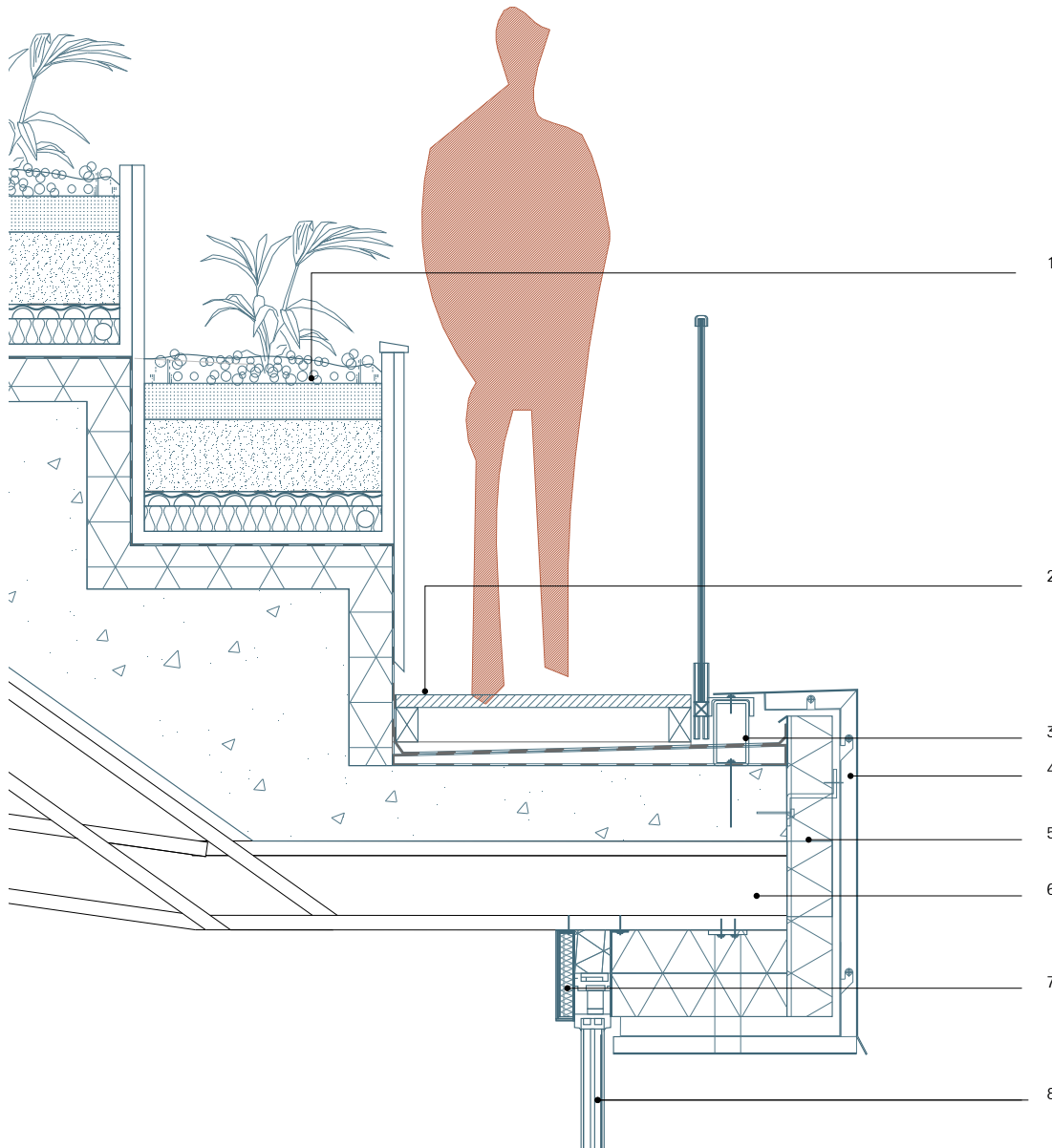


ENTRANCE

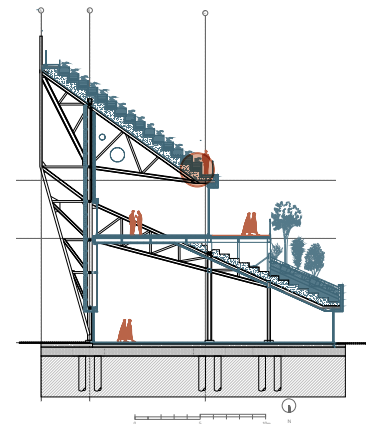


1:5 Detail

TRIBUNE ROOF

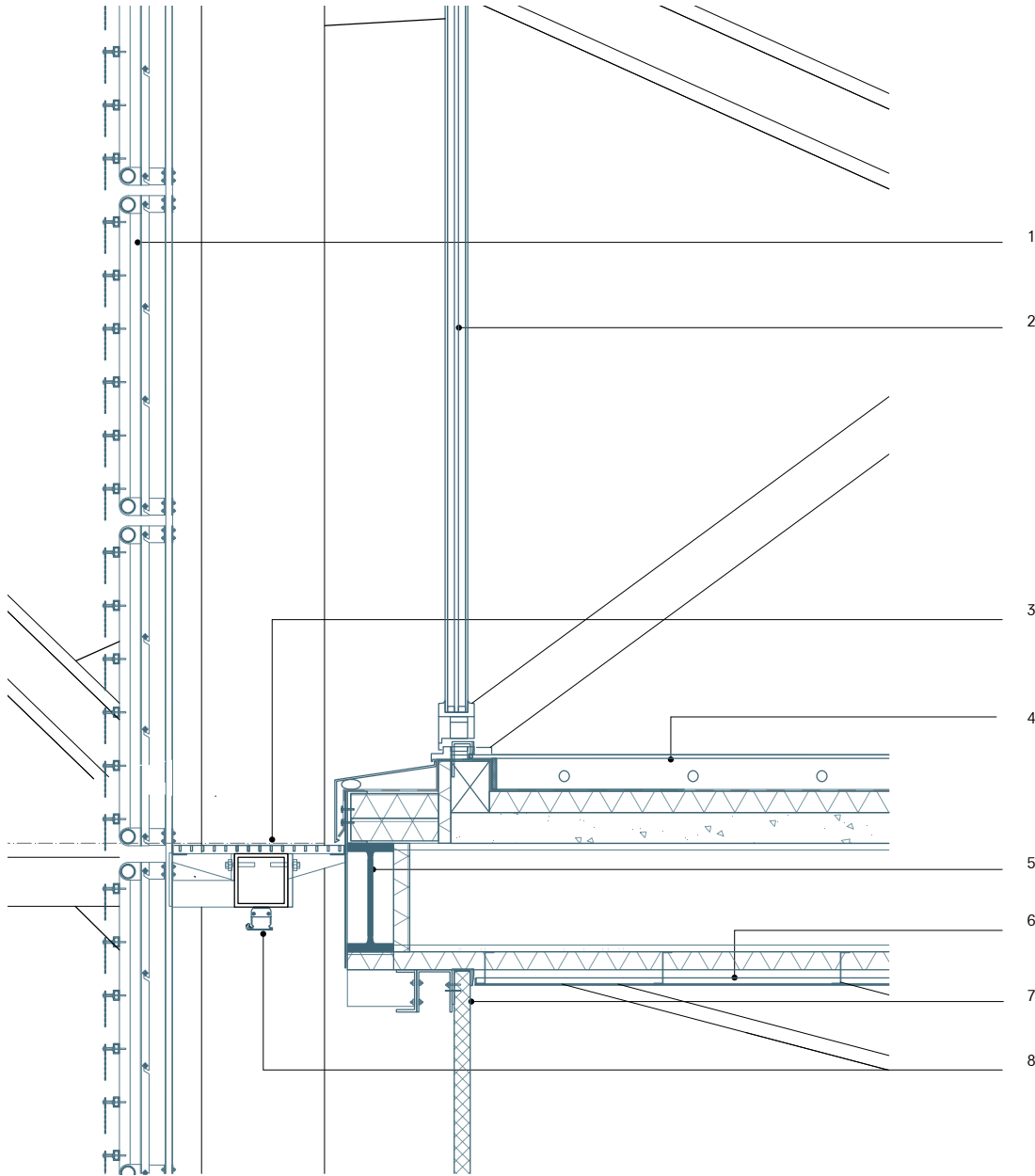


- 1 Intensive allotment**
 - Planting
 - 100mm mulch
 - 100mm top soil
 - Mix soil
 - Filtering layer
 - 40mm drainage area aeration
 - Mechanical water retention felt
 - Root proof synthetic membrane
 - Insulation
- 2** 820mm timber deck
- 3** Rectangular Hollow Section
- 4** Polished Aluminium cladding panel
- 5** Existing In-Situ concrete steps
- 6** Existing steel tribune structure
- 7** Insulation
- 8** 16mm laminated glass with/
organic, luminescent, UV solar
film

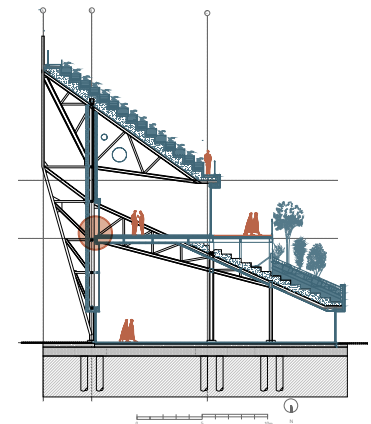


1:5 Detail

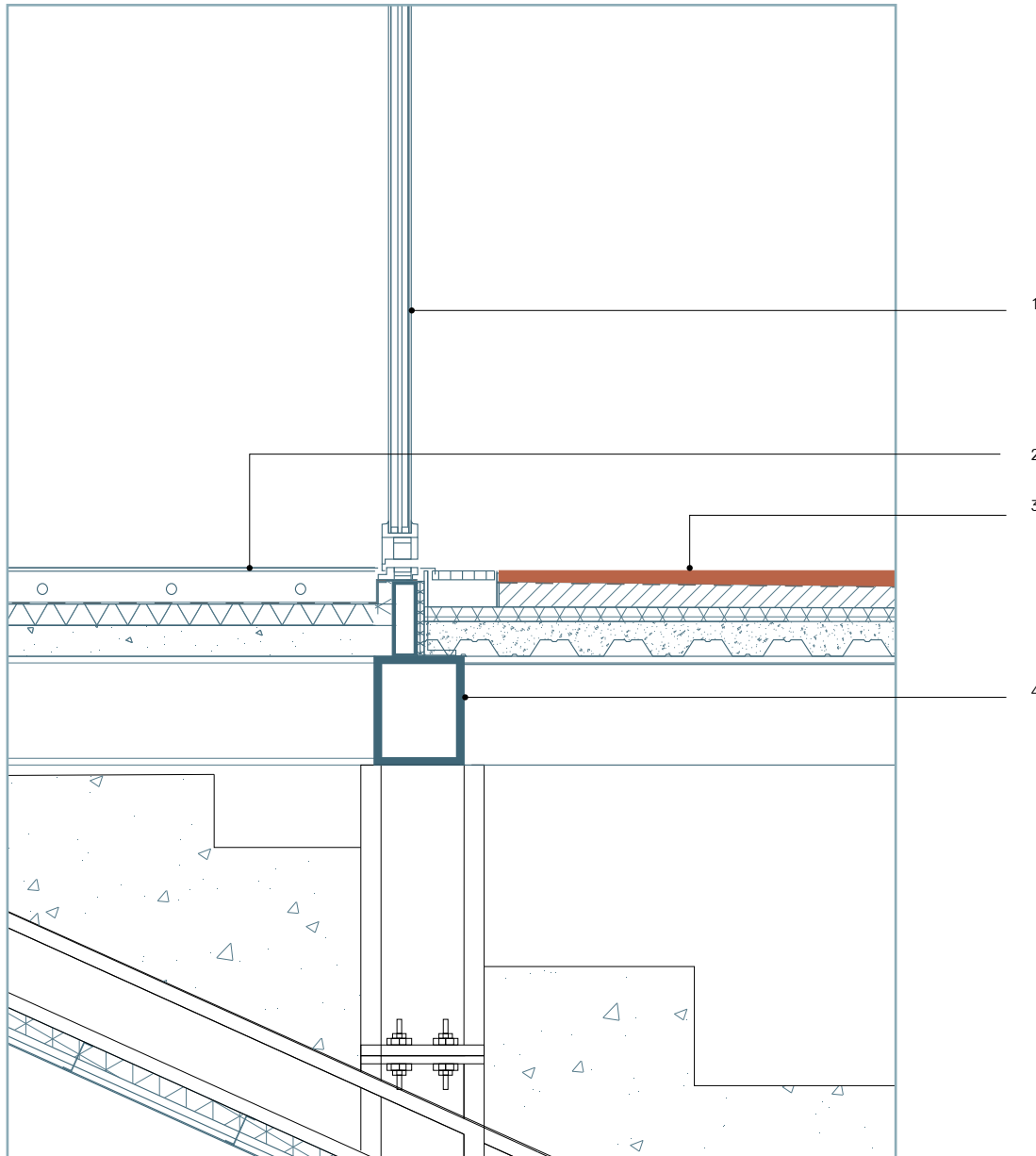
FACADE CONNECTION



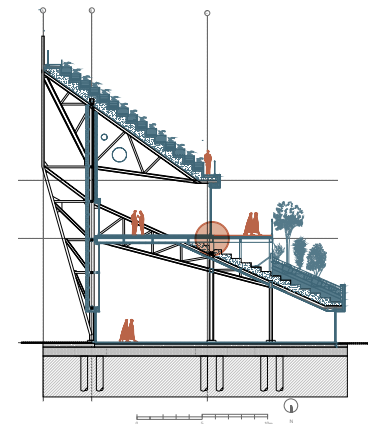
- 1 **Cladding**
3mm Perforated Polished Aluminium Plates screwed to 850x850mm circular hollow section frame.
- 2 Insulating Glazing in Aluminium Profile Frames
- 3 Floor Grating connected to existing square profile
- 4 Polished Concrete screed with underfloor heating
Vapour Barrier
Rigid Foam thermal Insulation
Composite concrete slab
Steel I Beam
- 5 Steel I Beam Section
- 6 Insulated Suspended Ceiling
- 7 45mm Polycarbonate Translucent facade panel screwed to U Channel
- 8 LED lighting screwed to existing square profile



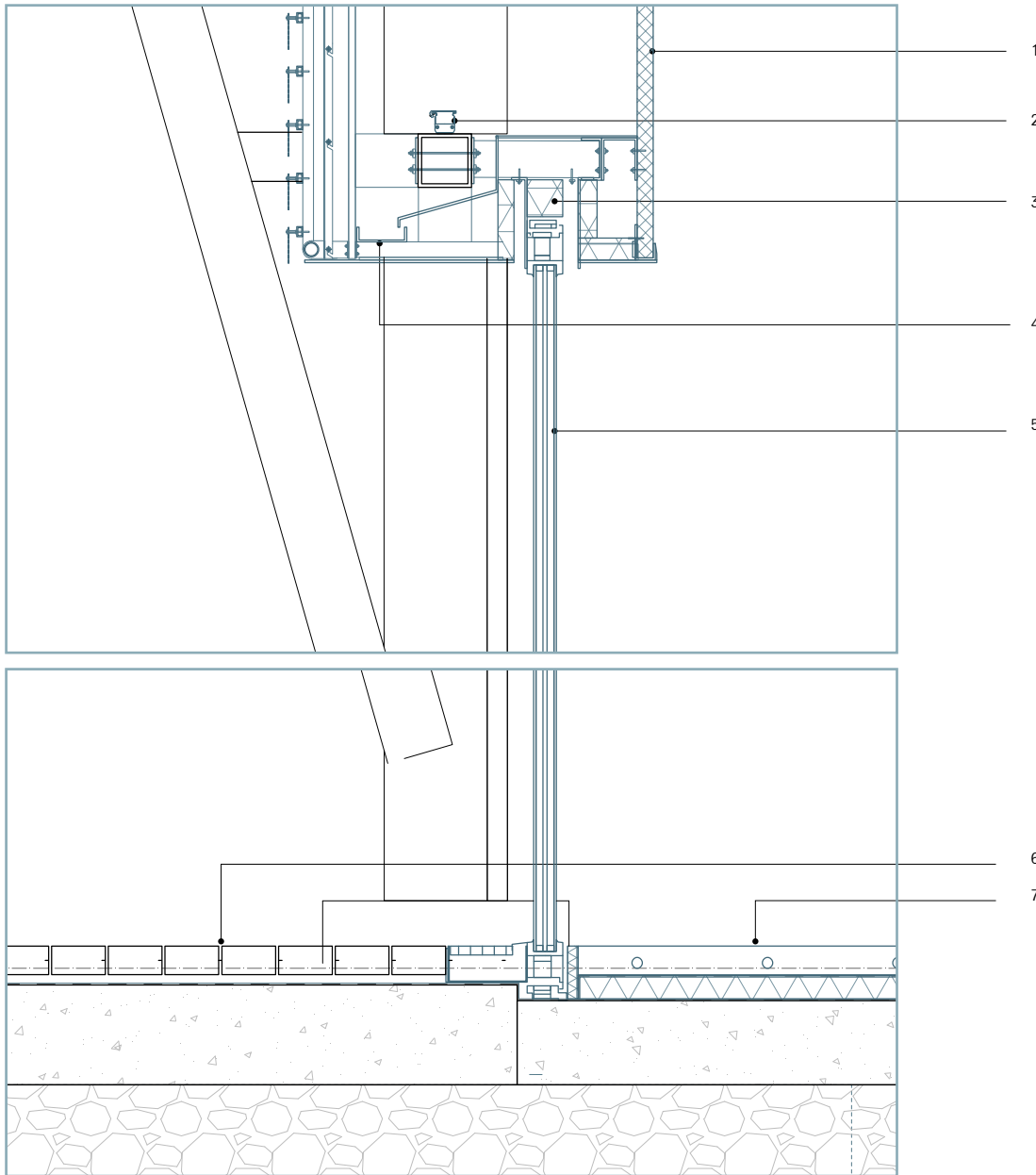
TYPICAL CONNECTION TO WALKWAY



- 1 16mm laminated glass with/
organic, luminescent, UV solar
film
- 2 Polished Concrete screed with
underfloor heating
Vapour Barrier
Rigid Foam thermal Insulation
Composite concrete slab
Steel I Beam
- 3 **Circular Walkway**
30mm rubber floor covering
40mm cement screed
Waterproof Membrane
20mm sound insulation
100mm composite steel
decking



TRANSPARENT GROUND FLOOR



- 1 45mm Polycarbonate Translucent facade panel
- 2 LED lighting screwed to existing square profile
- 3 100mm Insulation panel
- 4 Integrated drainage channel
- 5 Insulating Glazing in Aluminium Profile Frames
- 6 **Typical Existing Paving**
80mm Concrete paving
150mm ballast base course
200mm frost protection
Subsoil
- 6 Existing steel tribune structure
- 7 **New Flooring**
Polished Concrete screed with underfloor heating
Vapour Barrier
Rigid Foam thermal Insulation
Existing In-Situ Concrete slab

