

BUILDING INDIVIDUALS

**CORE PATTERNS
OF
THE DIGITAL
TRANSITION**

Master Thesis | appendix pattern booklet
Urbanism

Kevin Hollander

advised by

Maurice Hartevelt

Birgit Hausleitner

Georg Vrachliotis

2022/2023

Studio | City of the Future

Department of Urbanism
Faculty of Architecture and the Built Environment
Delft University of Technology

INTRODUCTION

In this booklet you will find the core patterns of the digital transition. Formed through the understanding of what the digital transition entails. The digital transition gives shape to three drives of change in our society. These are desynchronisation, delinearisation and multispecialisation. In turn these drivers of change demand changes of our built environment.

Why are these patterns called 'core' patterns? They are incomplete in the sense that they have not been tied to a activity by a specific individual yet. They form the starting point of practical patterns, but will need a case by case modification by people.

How this exactly works can be seen in the figure below. Having the set of core patterns we add an individual to the mix. The individual will give specific desires to these patterns. How should they look like in space? It could add new urban conditions, but in essence they transform a core pattern to a practical pattern that has direct physical implications. Making it possible to co-design in an individualised society.

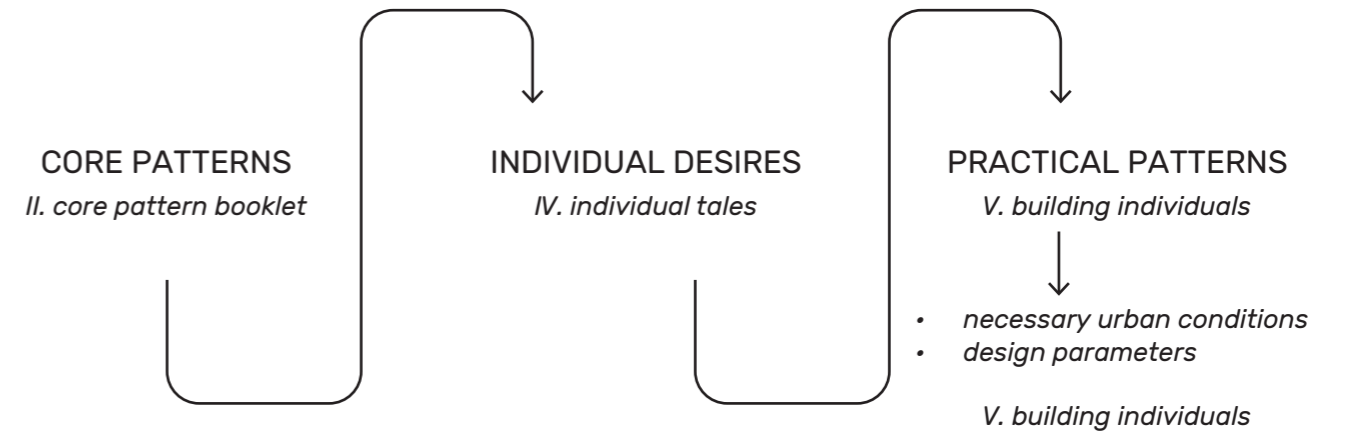


Figure: Future City design with patterns by author.

PATTERN OVERVIEW

PATTERNS OVERVIEW

DESYNCHRONISATION

1. THE URBAN COLLAGE
2. WORK WHENEVER YOU WANT
3. LIVE HOWEVER YOU WANT
4. ALL INDIVIDUALS EAT
5. MOVE HOWEVER YOU WANT

DELINEARISATION

6. THE PUBLIC DISPLAY CABINET
7. THE NEW CLOUD WORKSPACE
8. CHILD LABOUR
9. THE FIRESIDE CHAT

MULTISPECIALISATION

10. EXPLORING THE UNKNOWN
11. A NEW SYNTHESIS
12. SHAPING THE UNEXPLORED
13. HOPPING BETWEEN NETWORKS

DESYNCHRONISATION

These core patterns show our changing needs due to individualisation, it shows the necessity of diverse types of spaces and also the ability of space to be remoulded by everyone.

DESYNCHRONISATION



1

THE URBAN COLLAGE

STATEMENT

Public space is a space where individuals can appropriate and modify the space.

CLARIFICATION

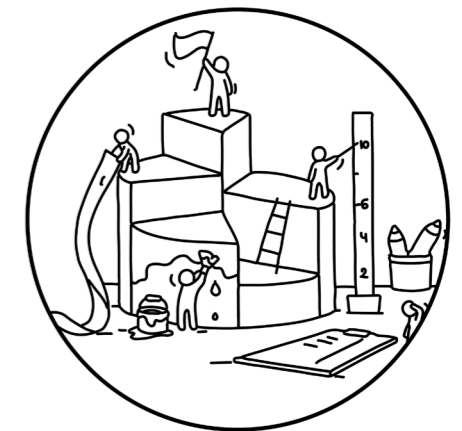
Allowing people to appropriate space and modify their surroundings not only makes people feel responsible again for their surroundings, it also allows people to express their individual traits towards the world. A space designed for everybody is a space designed for nobody, but a space that can be adjusted by anybody is a space for everybody.

SOLUTION

When designing public space, always leave a degree of adaptability for individuals. This can be done by designing a framework that leaves the final touch of the design to the individual.

URBAN CONDITIONS

- empty space
- grouping of diverse individuals



DESYNCRHONISATION



2

WORK WHEREVER YOU WANT

STATEMENT

Creating many different types of public working spaces will improve the quality of life.

CLARIFICATION

Everyone will work in a different way depending on the work they do. And even if people do similar types of work, depending on their state of mind or even how they grew up, an individual could ask for a very different space.

SOLUTION

When designing an area always observe what types of working spaces there already are. What is missing for other types of individuals? Discuss what kind of spaces are needed and find a place for them within the city.

URBAN CONDITIONS

- clustering of individuals
- close to high volume traffic
- useful to be close to shared transport (5)



DESYNCHRONISATION



3

LIVE HOWEVER YOU WANT

STATEMENT

Creating many different types of housing will improve the quality of life.

CLARIFICATION

Households will change. There will be people that live with family, but also people that live alone, people that live with friends, people that live with generations of family, people that stay for few a days of the week, and people that live in the same place for the rest of their lives. A person's life is not static,

SOLUTION

Design modular to allow households always to modify their home. Another solution when zooming out across the scale of the city, design diverse to allow people to move around to different types of housing.

URBAN CONDITIONS

- close to a form of transport
- close to basic amenities



DESYNCHRONISATION



4

ALL INDIVIDUALS EAT

STATEMENT

Creating public spaces that focuses on basic shared human needs will lead to a greater quality of life.

CLARIFICATION

Individualisation of our interests will lead to perceived loneliness, but there will always be parts of our daily life that every human shares among each other. Such as eating, giving space for such activities in public will allow people to still have chance encounters throughout their lives.

SOLUTION

Think about basic human needs and allocate these needs in public in your area. These could be places where people can simply sit and eat their food. Another example would be the Japanese bathhouse, where people come from all walks of life to parttake in their needs of cleaning themselves.

URBAN CONDITIONS

- close to high volumes of traffic
- maximum walking distance of 5 minutes



DESYNCHRONISATION



5

MOVE HOWEVER YOU WANT

STATEMENT

Designing for individuals demands different forms of transport within the city.

CLARIFICATION

Balancing transport is another important element of future design. A car free city might seem nice, but at the same time you will limit the reach of your area if you only target slow traffic. Some people might prefer the car since they prefer living far outside the city where it is calm and quiet. Others might prefer the bicycle, but not the part of owning a bicycle, therefore demanding shared bikes. It becomes a balancing act where no mode of transport dominates the other.

SOLUTION

Allow different modes of transport to occur throughout the city.

URBAN CONDITIONS

- close to infrastructure

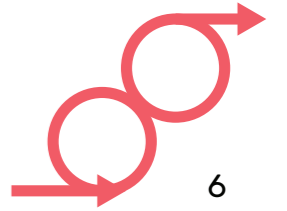




DELINEARISATION

These core patterns show our changing needs due to our new way of living through time. Learning will happen throughout our life. These patterns show how our future designs will need a timeless element tied to them.

DELINEARISATION



THE PUBLIC DISPLAY CABINET

STATEMENT

Creating places where people can display and store their individual works will help others develop their own life during any moment in time.

CLARIFICATION

We learn by observing the works of others, we question how certain things are made, what the reasoning was behind something. Letting people display their works in public will function like a display cabinet in public. The same way I learn from other other students having their works displayed in the faculty, could work on a larger city scale.

SOLUTION

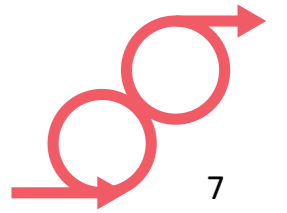
Create public exposition places, where people can display their works, where people can interact with the object and also make contact with the owner of these objects.

URBAN CONDITIONS

- in the vicinity of working spaces (2)
- near slow traffic flow
- comfortable environment



DELINEARISATION



7

THE NEW CLOUD WORKSPACE

STATEMENT

Creating public workspaces allows everyone at any stage of their life to adapt to a different lifestyle.

CLARIFICATION

People will not live a linear life anymore. This can be facilitated by having public workspaces in the city. It diminishes the need for an individual to make heavy investments just to see if the new path they chose actually fits them.

SOLUTION

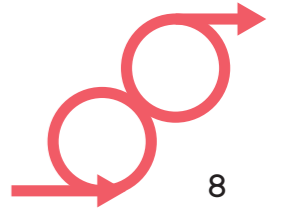
Have workspaces in the city that are always open to the public. Workspaces for creatives that might require some manufacturing tools, but also workspaces where people can simply plug in their own personal devices.

URBAN CONDITIONS

- close to housing
- easy access



DELINEARISATION



CHILD LABOUR

STATEMENT

Children will benefit if they actually come closer to everyday working life at an early stage in life.

CLARIFICATION

Children will grow up differently in the future. It will be much more about following your interests and being able to develop your own interests instead of following a strict curriculum. Children are until today protected from reality by going to school, but this will change.

SOLUTION

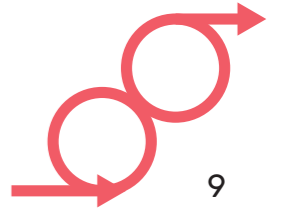
Design working spaces, partially as learning spaces. Vice versa new learning spaces can be developed along current working spaces.

URBAN CONDITIONS

- in proximity of a learning or working space
- easy and safe access



DELINEARISATION



9

THE FIRESIDE CHAT

STATEMENT

People will be able to learn at any stage of their lives if there are places in the city where everyone is able to have discussion in any form with others.

CLARIFICATION

To learn we need to interact with each other, discussion, listening, presenting. It is all part of the lifelong learning lifestyle, but to properly do so. We will need spaces where these activities are facilitated. These places should be public.

SOLUTION

Create spaces dedicated to discussion. This could be as grand as an aula, but there are also smaller forms such as a simple table in cafeteria.

URBAN CONDITIONS

- high urban density
- high volume of traffic in vicinity
- comfortable environment

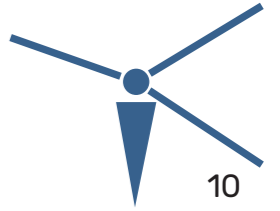




MULTISPECIALISATION

These core patterns show the need for change in space due to people becoming something in-between a generalist and specialist. Working environments will overlap between different fields making it possible to develop new fields of knowledge.

MULTISPECILIZATION



EXPLORING THE UNKNOWN

STATEMENT

Giving citizens public tools will lead to people using tools in their own creative way and help develop new fields of knowledge.

CLARIFICATION

Offering people tools allows them to their explore and develop their interest in their own way. While a tool might facilitate a specific individual. Others might figure out other ways to use these tools to their benefit.

SOLUTION

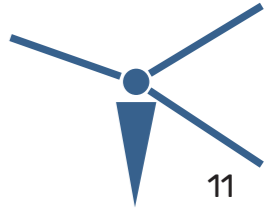
Create spaces that offer public tools, these tools might be targeted towards a specific type of individual, but by making these tools public. Others might find a different way of using them to the best of their ability.

URBAN CONDITIONS

- urban density
- easy access



MULTISPECIALISATION



A NEW SYNTHESIS

STATEMENT

People will develop new knowledge if different fields of work are mixed into the same public environment.

CLARIFICATION

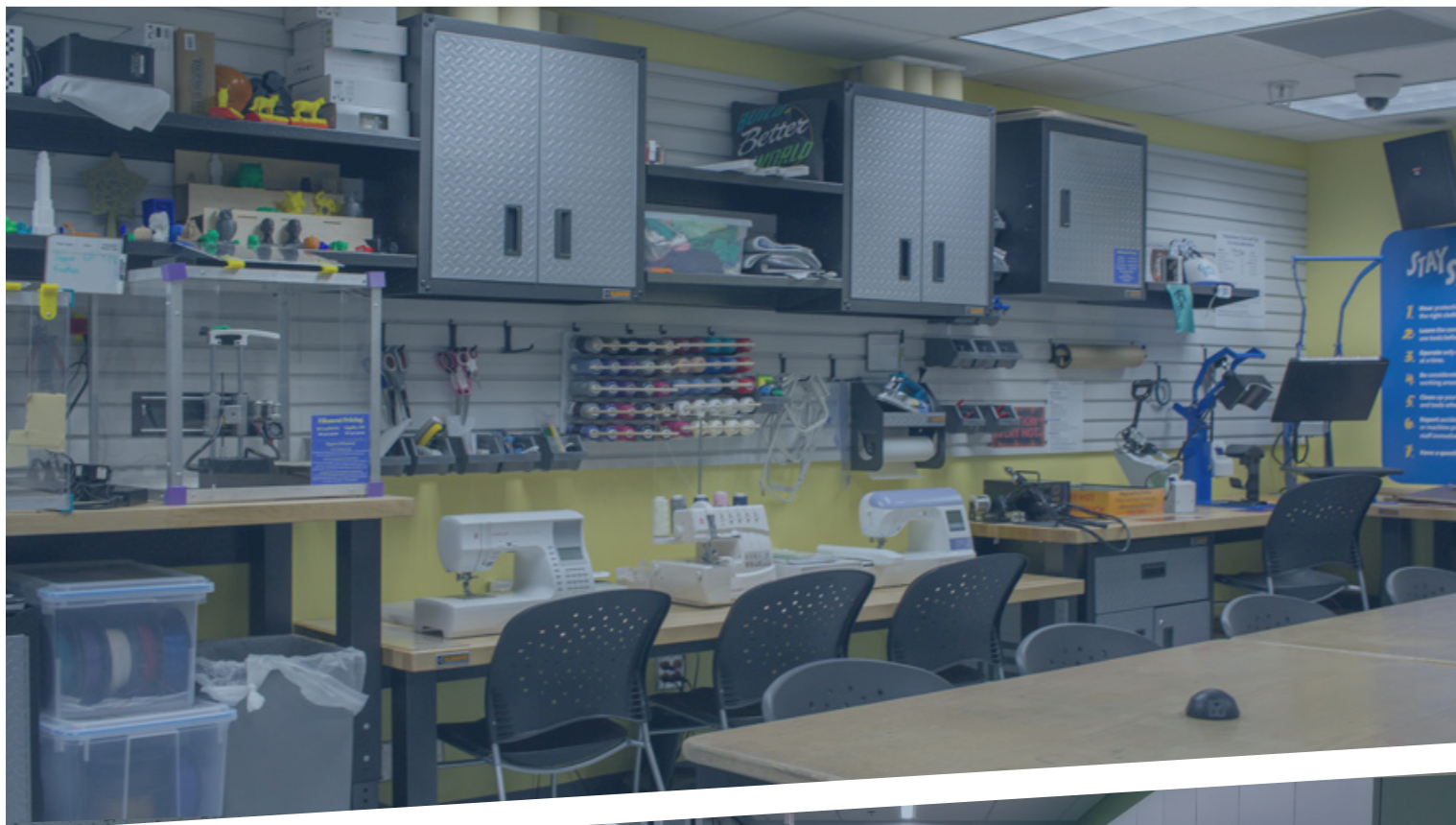
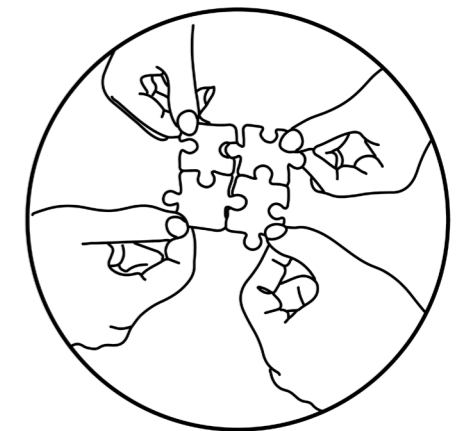
Synthesis comes from fields being intertwined with each other. Music therapy is for example a field that developed through the synthesis of music and therapy. This is one of many unexpected examples that could occur when different fields mingle in the same space.

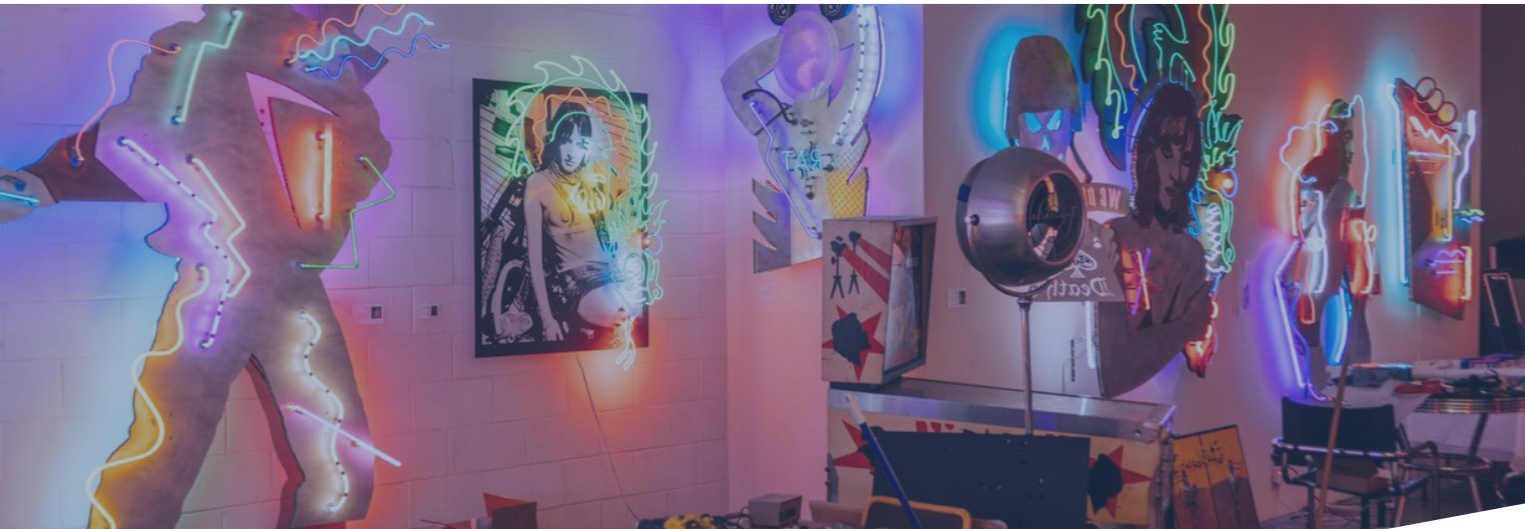
SOLUTION

Observe the context of the place you are designing, Are there things happening that could benefit from a synthesis with each other? What do they have in common? What are their differences? What kind of space could they share?

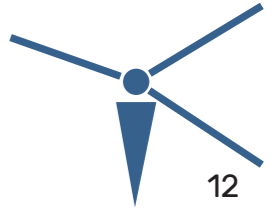
URBAN CONDITIONS

- different contexts in an area
- activities that could overlap





MULTISPECIALISATION



SHAPING THE UNEXPLORED

STATEMENT

New fields of knowledge will demand new and unexplored spatial configurations.

CLARIFICATION

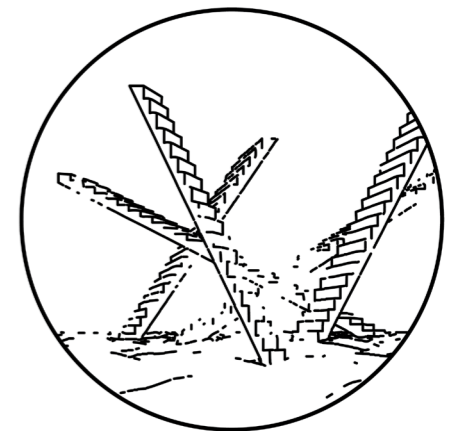
The digital transition will create many new fields of knowledge through the synthesis of existing fields. It is impossible to know what these future fields might demand of our environment.

SOLUTION

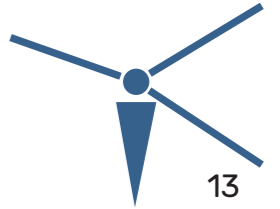
Similar to the core patterns in desynchronisation, leave a degree of uncertainty in your design. The design should be able to change over time.

URBAN CONDITIONS

- free space



MULTISPECIALISATION



HOPPING BETWEEN NETWORKS

STATEMENT

People will need a vast array of different working environments to become multispecialised.

CLARIFICATION

Working in different fields of expertise requires different working environments. This will also mean that being a multispecialist requires easy access to these different environments.

SOLUTION

Design working and learning spaces in close vicinity of each other, each with their own characteristics, but all of them together form an accessible network.

URBAN CONDITIONS

- other working spaces
- high volume of traffic
- accessibility

